

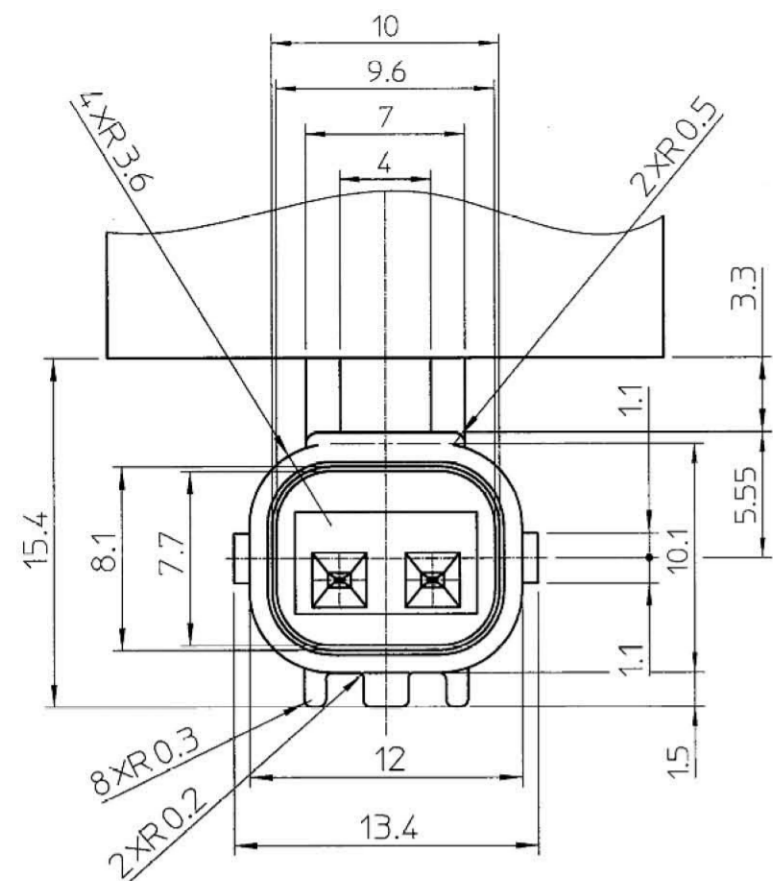
REVISIONS

NO.	REVISION RECORD	DATE	DRAWN BY	CHECKED BY	APPROVED BY	CUSTOMER
1	Add the marking specification	2019.04.08	T.Ejima	K.Fukudome	K.Shirafuji	USER
2	Add the dimensions of O-RING	2019.04.24	T.Ejima	K.Fukudome	K.Shirafuji	EQUIPMENT COMPRESSOR
3	Correction of error.	2019.05.21	T.Ejima	K.Fukudome	K.Shirafuji	CUSTOMER

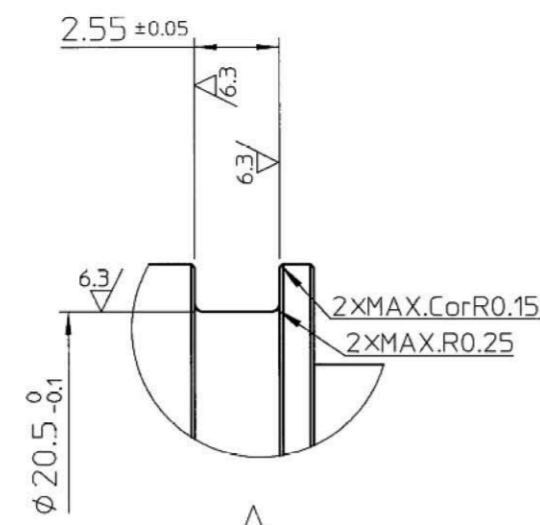
DRAWING FOR PROT-TYPE SUPPLY & PARTS

NOTE

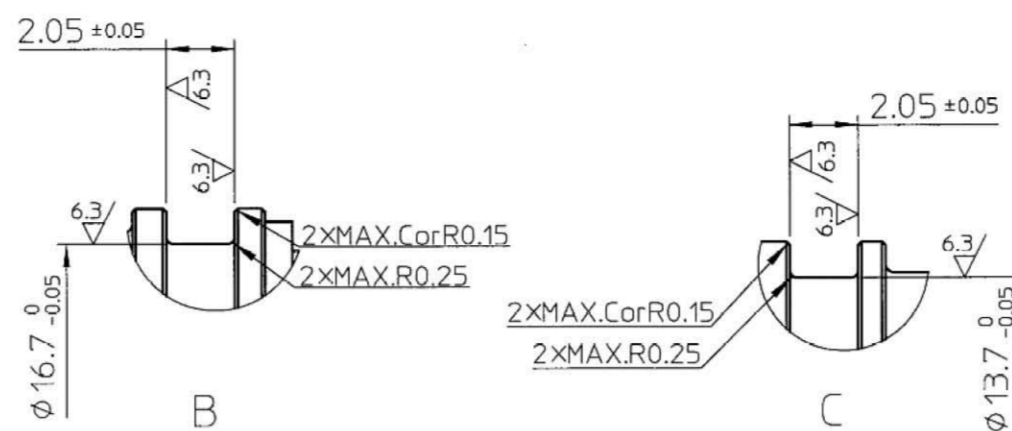
- Remark
1. Intel control type electromagnetic pressure control valve 10.6# type
 2. No edges, no burrs on all corners.
 3. Components of P/N1-0 BELLOWS ASSY are P/N1-1-1-4.
 4. Components of P/N9-0 MOLD COIL ASSY are P/N9-1-9-5.
 5. Components of P/N10-0 CASE ASSY are P/N10-1-10-3.
 6. The phase of 2-φ3, 2-φ2.5, 2-φ4 makes the options.
 7. Details of the product specification will be decided after consultation.
 8. Refer to the document No. SER-00257 for the product specifications.



G

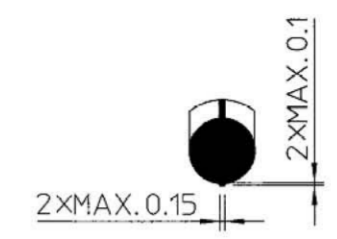


A

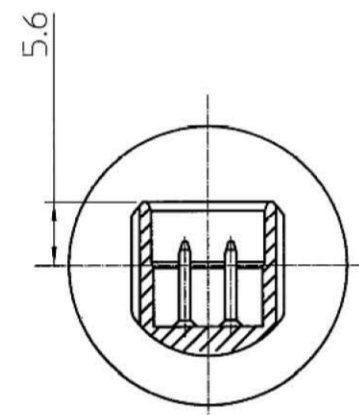


B

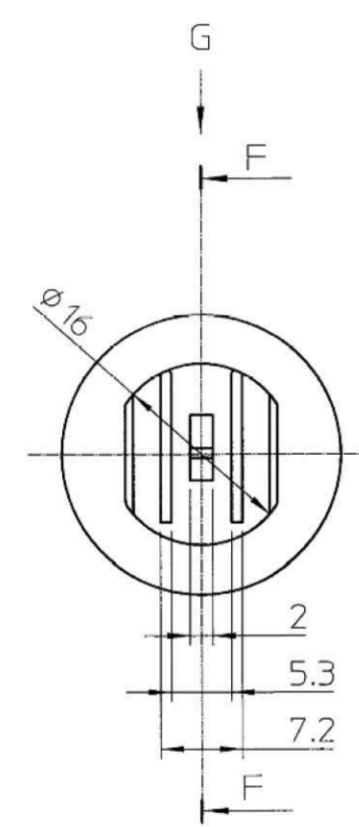
C



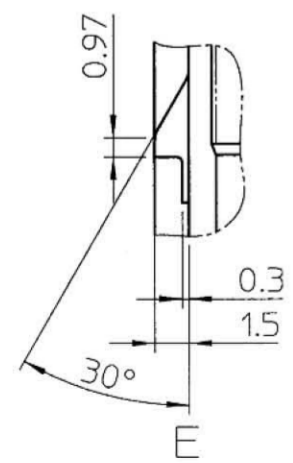
(12)(13)(14) PARTS



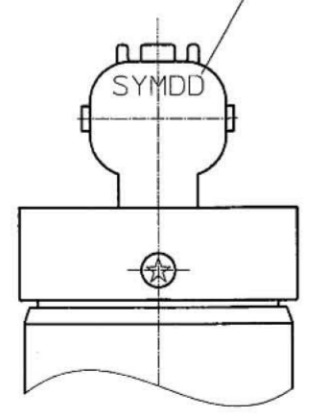
D-D



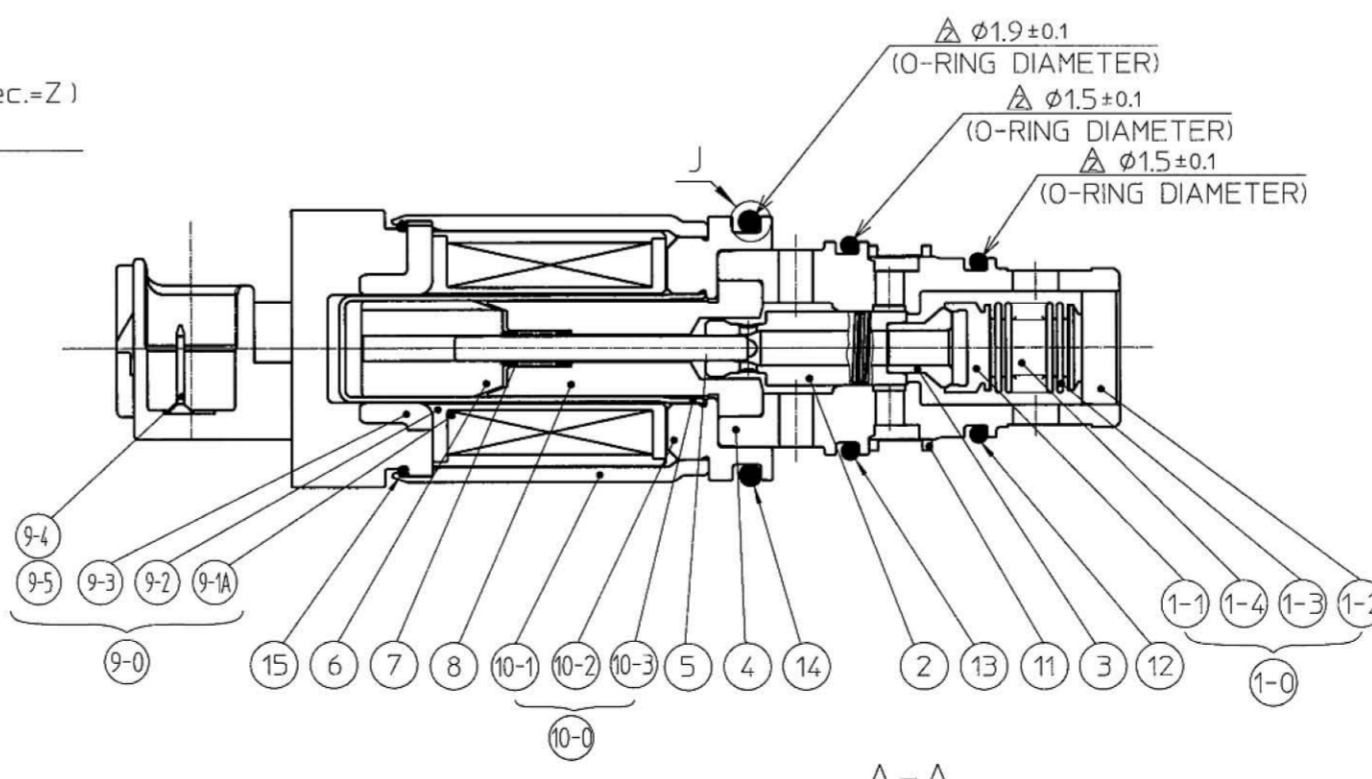
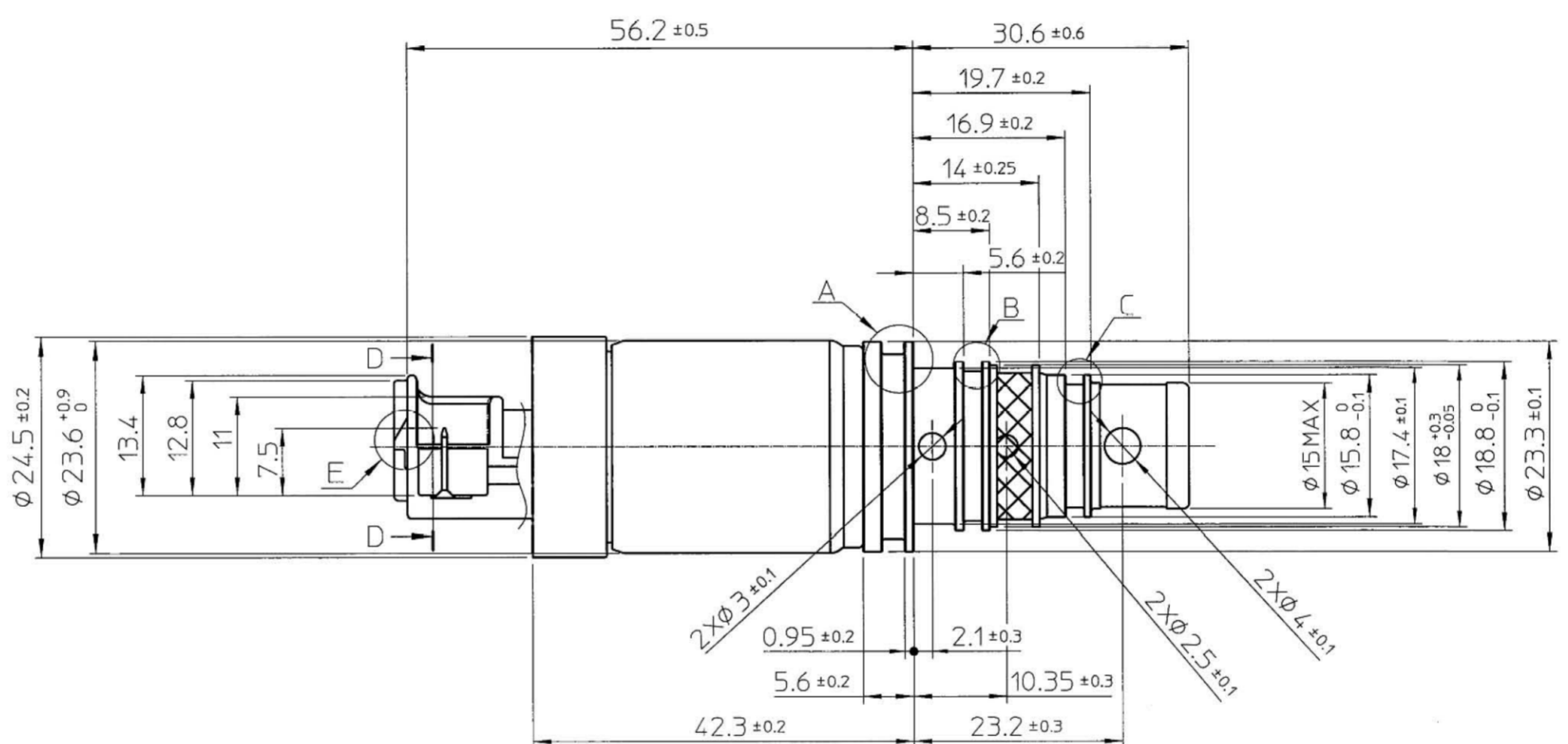
Δ S : Product identification
 Y : Lowest part column 1 letter in A.D.
 M : Production month (Oct.=X, Nov.=Y, Dec.=Z)
 DD : Production day



E



H



A-A

NO.	PART NAME	MATERIAL	QTY
15	O RING	EPDM	1
14	O RING	H-NBR	1
13	O RING	H-NBR	1
12	O RING	H-NBR	1
11	FILTER	NYLON66	1
10-3	SLEEVE	SUS304L	1
10-2	HOLDER	SUM24L	1
10-1	CASE	SPCE	1
10-0	CASE ASSY	ETC	1
9-5	TERMINAL L	C2680	1
9-4	TERMINAL R	C2680	1
9-3	UPPER PLATE	SPCC	1
9-2	BOBBIN	NYLON66	1
9-1	MOLD COIL SUBASSY	ETC	1
9-0	MOLD COIL ASSY	ETC	1
8	CENTER POST	SUM24L	1
7	SPRING R	SUS316	1
6	PLUNGER	SUM24L	1
5	ROD	SUS303	1
4	VALVEBODY	C69300	1
3	ADAPTER V	SUS420	1
2	VALVE	SUS303	1
1-4	SPRING B	SWPB	1
1-3	BELLOWS CORE	C5212R	1
1-2	HOLDER	C5212B	1
1-1	ADAPTER B	C5212B	1
1-0	BELLOWS ASSY	ETC	1



THIRD ANGLE PROJECTION	DRAWN BY	CHECKED BY	APPROVED BY
	T.Ejima	K.Fukudome	K.Shirafuji
DATE	6.Dec.2017	SCALE	NONE
NAME		Control Valve	
FUNCTION CODE	WXXXXXXXXXXXX		
PRODUCT CODE (DRW.NO.)	WG-00.1.1.10.410.00.01.03		
EKK EAGLE INDUSTRY CO., LTD.			