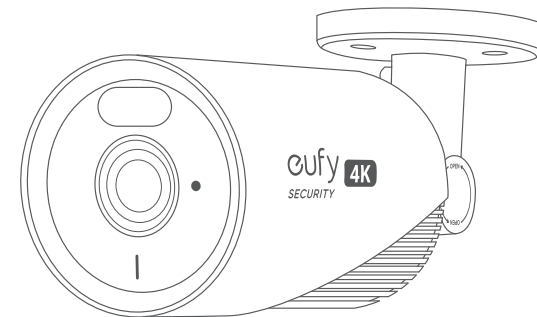


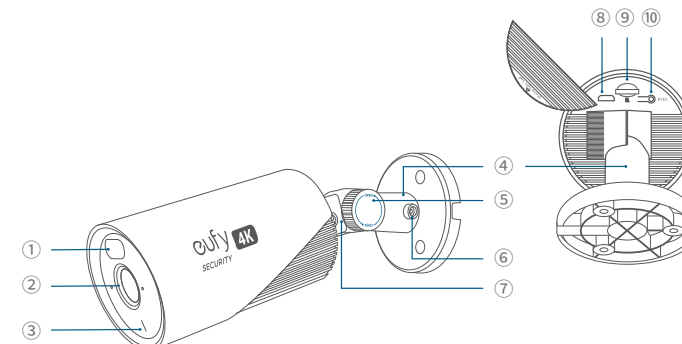
# QUICK START GUIDE

E330 eufyCam (Professional)



## AT A GLANCE

E330 eufyCam (Professional)

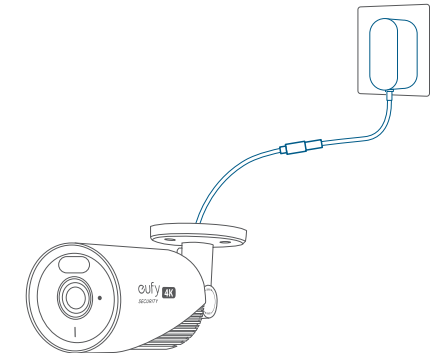


Model: T8600

- ① Spotlight
- ② Camera Lens
- ③ LED Indicator
- ④ Mounting Bracket
- ⑤ Angle Adjustment Knob
- ⑥ Bracket Pole Screw
- ⑦ Camera Bottom Screw
- ⑧ Micro USB Port (for maintenance only)
- ⑨ microSD Card Slot
- ⑩ SYNC Button

## ADDING YOUR CAMERA

1. Connect your cameras to power using their power adapters.



2. Download and install the eufy Security app, then sign in or create an account.

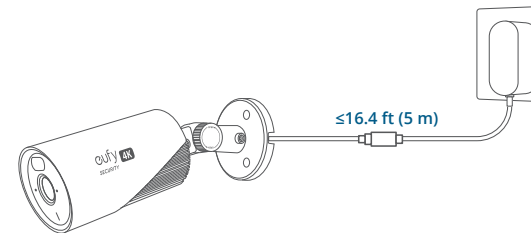


3. Follow the in-app instructions to add the camera to the device list.

## MOUNTING YOUR CAMERA

### Select a Location and a Height

Select a location that is within reach of a power outlet. If the distance exceeds 16.4 ft (5 m), please consider a separately sold extension cable.

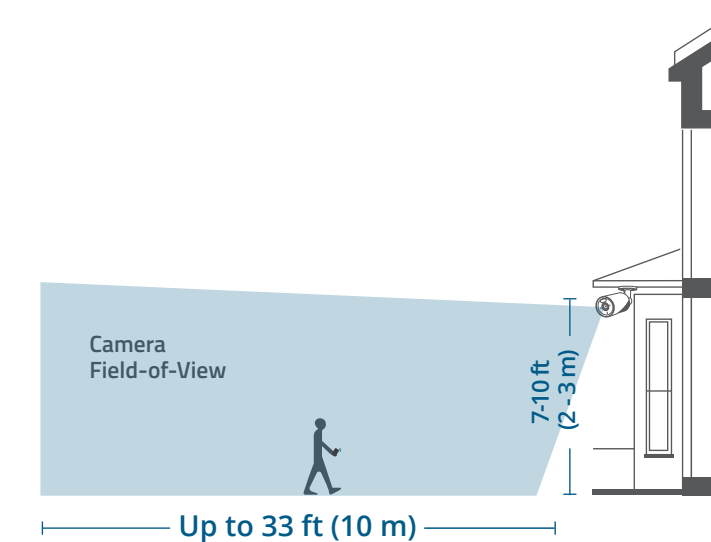


Make sure the camera receives a strong signal from your eufy Security HomeBase in the location you want to mount it to achieve a smooth video stream in the app.



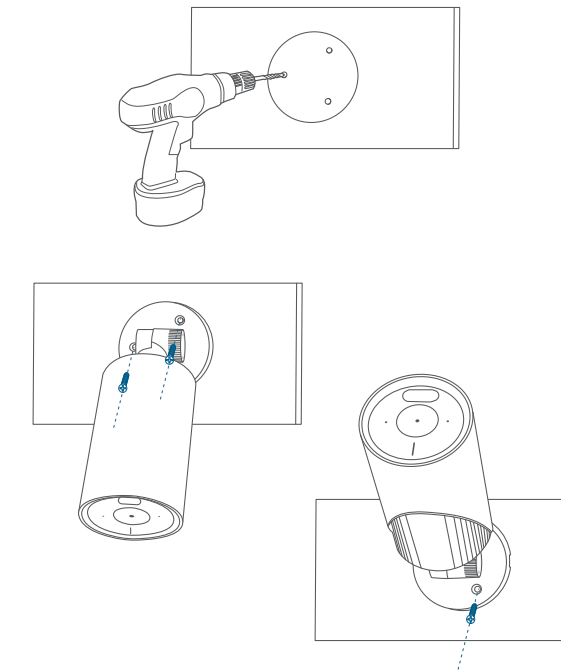
⚠ Disconnect the camera from the power outlet before mounting. We recommend mounting the camera 7-10 ft (2-3 m) above the ground. This height maximizes the detection range of the camera.

- To ensure the image quality and the accuracy of image recognition, do not point the camera lens directly at the sun.



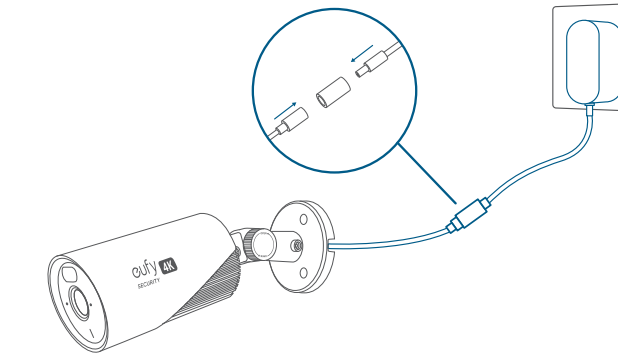
### Mount the Camera

1. Use the position template to drill holes with correct spacing, then mount the camera using the provided screws.



- Screw anchors are necessary for walls that are made out of hard materials such as concrete, brick, or stucco.

2. Route the power cable into the waterproof case and connect it to the power adaptor, then plug the adaptor into the power outlet.



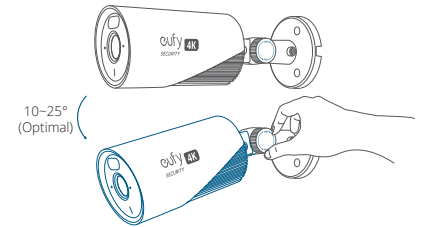


Anker Innovations Limited. All rights reserved. eufy Security and eufy Security Logo are trademarks of Anker Innovations Limited, registered in the United States and other countries. All other trademarks are the property of their respective owners.

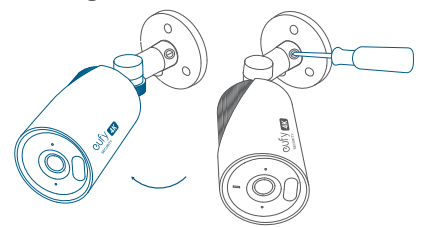
51005003758\_V2

3. Adjust the camera angle and check the view using the live stream in the eufy Security app.

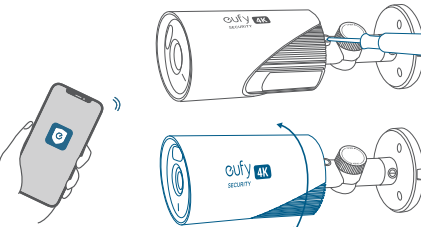
a. Loosen the knob, adjust the camera angle up or down, and then tighten the knob.



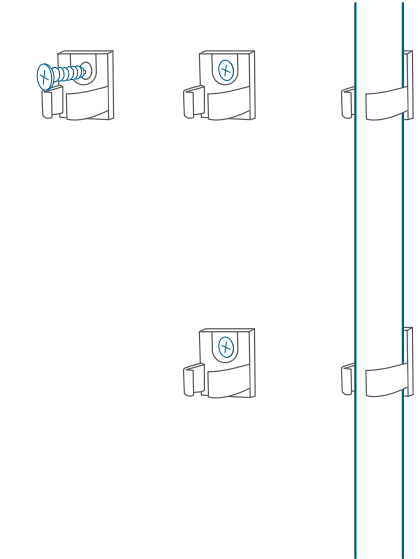
b. Loosen the bracket pole bottom screw, adjust the camera to the left or right, and then tighten the screw.



c. Loosen the camera bottom screw, adjust the viewing angle, and then tighten the screw.



4. Fasten the cable to the wall using the included cable clips if needed.



## SAFETY

- The suitable temperature range for E330 eufyCam (Professional) and accessories is -20°C to 45°C (-4°F - 113°F). The recommended temperature range for devices and accessories is 5°C to 25°C (41°F - 77°F).
- Unless specifically indicated that it is safe to do so in the user guide or instruction manual, do not use this device in an environment that exceeds the recommended low or high temperature.
- Unless specifically indicated that it is safe to do so in the user guide or instruction manual, avoid exposing your device to direct sunlight or wet environments.
- The power adapter should be installed near the equipment and should be easily accessible.
- Use only a power adapter supplied by or approved by the manufacturer. Using an unauthorized power adapter may cause danger and may violate the authorization of the device to receive service under warranty.
- The power adapter is for indoor use only. The plug is considered as a disconnect device of the adapter.

## NOTICE

### NOTICE (United States of America)

#### FCC Statement

This device complies with Part 15 of the FCC Rules. Operation is subject to the following two conditions: (1) this device may not cause harmful interference, and (2) this device must accept any interference received, including interference that may cause undesired operation.

Warning: Changes or modifications not expressly approved by the party responsible for compliance could void the user's authority to operate the equipment.

Note: This equipment has been tested and found to comply with the limits for a Class B digital device, pursuant to Part 15 of the FCC Rules. These limits are designed to provide reasonable protection against harmful interference in a residential installation.

This equipment generates uses and can radiate radio frequency energy and, if not installed and used in accordance with the instructions, may cause harmful interference to radio communications. However, there is no guarantee that interference will not occur in a particular installation. If this equipment does cause

harmful interference to radio or television reception, which can be determined by turning the equipment off and on, the user is encouraged to try to correct the interference by one or more of the following measures: (1) Reorient or relocate the receiving antenna. (2) Increase the separation between the equipment and receiver. (3) Connect the equipment into an outlet on a circuit different from that to which the receiver is connected. (4) Consult the dealer or an experienced radio/TV technician for help.

#### FCC Radio Frequency Exposure Statement

The device has been evaluated to meet general RF exposure requirements. The device can be used in fixed/mobile exposure condition. The min separation distance is 20cm.

#### Notice: Shielded cables

All connections to other computing devices must be made using shielded cables to maintain compliance with FCC regulations.

The following importer is the responsible party

Company Name: POWER MOBILE LIFE, LLC

Address: 10900 NE 8th St, Ste 501, Bellevue WA 98004

Telephone: 1-800-988-7973

### NOTICE (Canada)

This device complies with Industry Canada licence-exempt RSS standard(s).

Operation is subject to the following two conditions:

(1) this device may not cause interference, and

(2) this device must accept any interference, including interference that may cause undesired operation of the device."

Le présent appareil est conforme aux CNR d'Industrie Canada applicables aux appareils radio exempts de licence. L'exploitation est autorisée aux deux conditions suivantes:

(1) l'appareil n' doit pas produire de brouillage, et

(2) l'utilisateur de l'appareil doit accepter tout brouillage radioélectrique subi, même si le brouillage est susceptible d'en compromettre le fonctionnement."

This Class B digital apparatus complies with Canadian ICES-003.

Cet appareil numérique de la classe B est conforme à la norme NMB-003 du Canada.

#### IC RF Statement

When using the product, maintain a distance of 20cm from the body to ensure compliance with RF exposure requirements.

Lors de l'utilisation du produit, maintenez une distance de 20 cm du corps afin de vous conformer aux exigences en matière d'exposition RF.

## Customer Service

12-month limited warranty

(US) +1 (800) 988-7973

(UK) +44 (0) 1604 936200

(DE) +49 (0) 69 9579 7960

(中国) +86 400 0550 036

(日本) +81 03 4455 7823

(AU) +61 3 8331 4800

(Egypt) +20 8000000826

(UAE) +971 8000320817

(Kuwait) +965 22069086

(Saudi Arabia) +966 8008500030

support@eufy.com

Anker Innovations Limited

Room 1318-19, Hollywood Plaza, 610 Nathan Road, Mongkok, Kowloon, Hong Kong

@EufyOfficial

@EufyOfficial

@EufyOfficial