

Revision Schedule			
#	Descrip.	Date	By
1	Revision 1	09SEP12	LZ
2	Revision 2 Site	13SEP12	LZ
3	DP revision	18SEP12	LZ
4	ISSUE FOR DP	24SEP12	LZ
5	BP Revision	21OCT12	LZ
6	FFE Revision	7NOV12	LZ
7	Revised Parking	8NOV12	LZ
8	North Entry	11NOV12	LZ
9	ISSUE FOR TENDER & BLD PERMIT	19NOV12	LZ
10	ADDENDUM 1	07DEC12	LZ
11	WEST ACCESS	08JAN12	LZ
12	REVISION SITE PLAN	10JAN13	LZ
13	Revision 13	Date 13	LZ
14	ADDENDUM 2	12DEC12	LZ
15	ADDENDUM 3	04 JAN 13	LZ
16	ELEV. CHANGE	16JAN13	LZ
17	NORTH ACCESS	30JAN13	LZ
18	EAST ACCESS	07FEB13	LZ
19			
20	BLD. 2	14FEB13	LZ

55th AVENUE

55 AVENUE

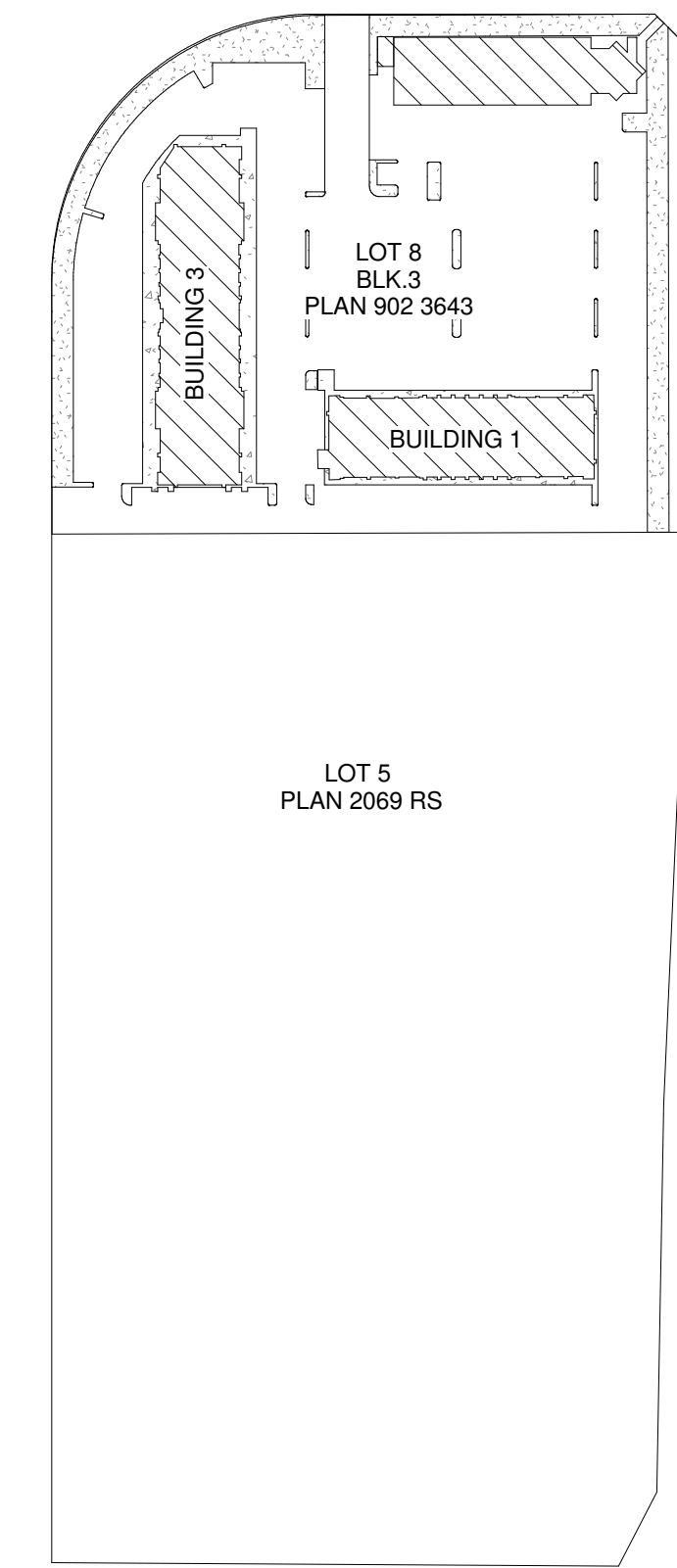
- FUTURE DEVELOPMENT
- GRASS
- HEAVY DUTY ASPHALT
- LIGHT DUTY ASPHALT
- SIDEWALKS

PIN CURB IN ALL TRANSITIONS BETWEEN GRASS AND ASPHALT

54 STREET

51 STREET

50 STREET



KEY PLAN
1 : 2000

MUNICIPAL ADDRESS

ZONING: CNC
 MUNICIPAL ADDRESS: LOT 8, BLOCK 3, PLAN 902 3643

AREA OF SITE: 248,104.49 SF
 AREA OF BUILDINGS: 51,463 SF 4,781.07 SM
 SITE COVERAGE: 20.7%

BUILDING AREA:

BLDG 1	16,958 SF	1,575.45 SM
BLD 2	12,809 SF	1,190.00 SM
BUILDING 3	21,696 SF	2,015.62 SM
TOTAL	51,463 SF	4,781.07 SM

AREA PER FLOOR:

BLD	FLOOR	SF	SM
BLD 1	1st.	16,958 SF	1,575.45 SM
	2nd	12,809 SF	1,190.00 SM
BLD 2	1st	12,809 SF	1,190.00 SM
	2nd	20,249 SF	1,831.19 SM
BLD 3	1st	21,691 SF	2,015.16 SM
	2nd	20,249 SF	1,831.19 SM
	3rd	17,611 SF	1,636.16 SM
TOT		59,551 SF	5,532.51 SM

GRAN TOT. 101,653 SF 9,443.96 SM

PARKING SPACES PROVIDED REQUIRED:
 383
 305
 (3.5 STALLS/1,000 SF)

Proposed: **AMNOR PROFESSIONAL CENTRE**
 Prepared for: **AMNOR GROUP**
 Address: **50th Street & 55th Avenue, Edmonton AB**

SITE PLAN

dw: LZ
 date: July 17, 2012
 scale:
 job #: 1204
 sheet: of:
 A001

