

## Our Savior Lutheran Cross Country Meet

### Parking

Parking is available just north of the Market. Busses can pull in the main entrance. Several spots for busses will be reserved with cones.

### Entrance

Enter by going through the market then out the doors on the left.

### Registration Table Location

The registration table is set up in the Orchard Barn, which is behind the Market.

### Bathrooms

Available inside the Market and the Orchard Barn

### Concessions

Concessions are available inside the Market and Orchard Barn. Lots of seating is available in the Orchard Barn.

### Team Tents

If your team wants to set up a team tent, please place it along the fence on the north side of the grass/play area.

### Race Times

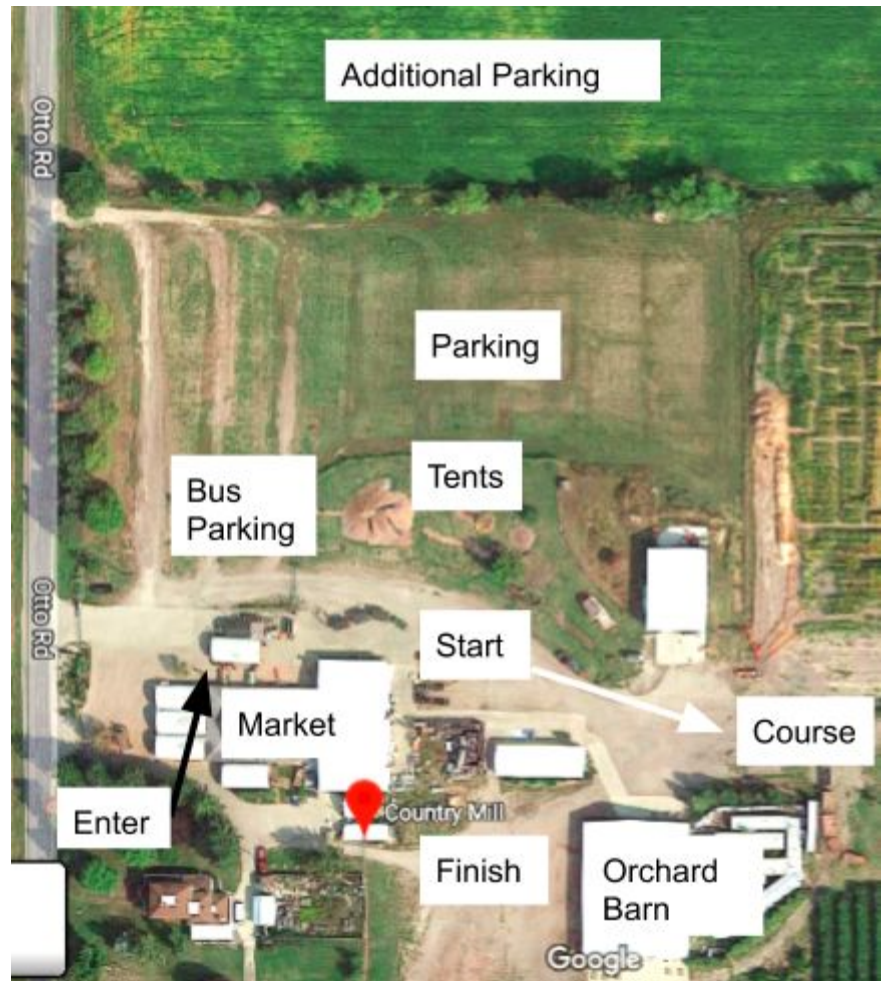
4:30 PM - Girls Top 10  
5:00 PM - Boys Top 10  
5:30 PM - Boys/Girls Open

Top Ten - Each school is able to pick their top ten runners for the top ten race. Based on times, some schools may not fill all ten spots.

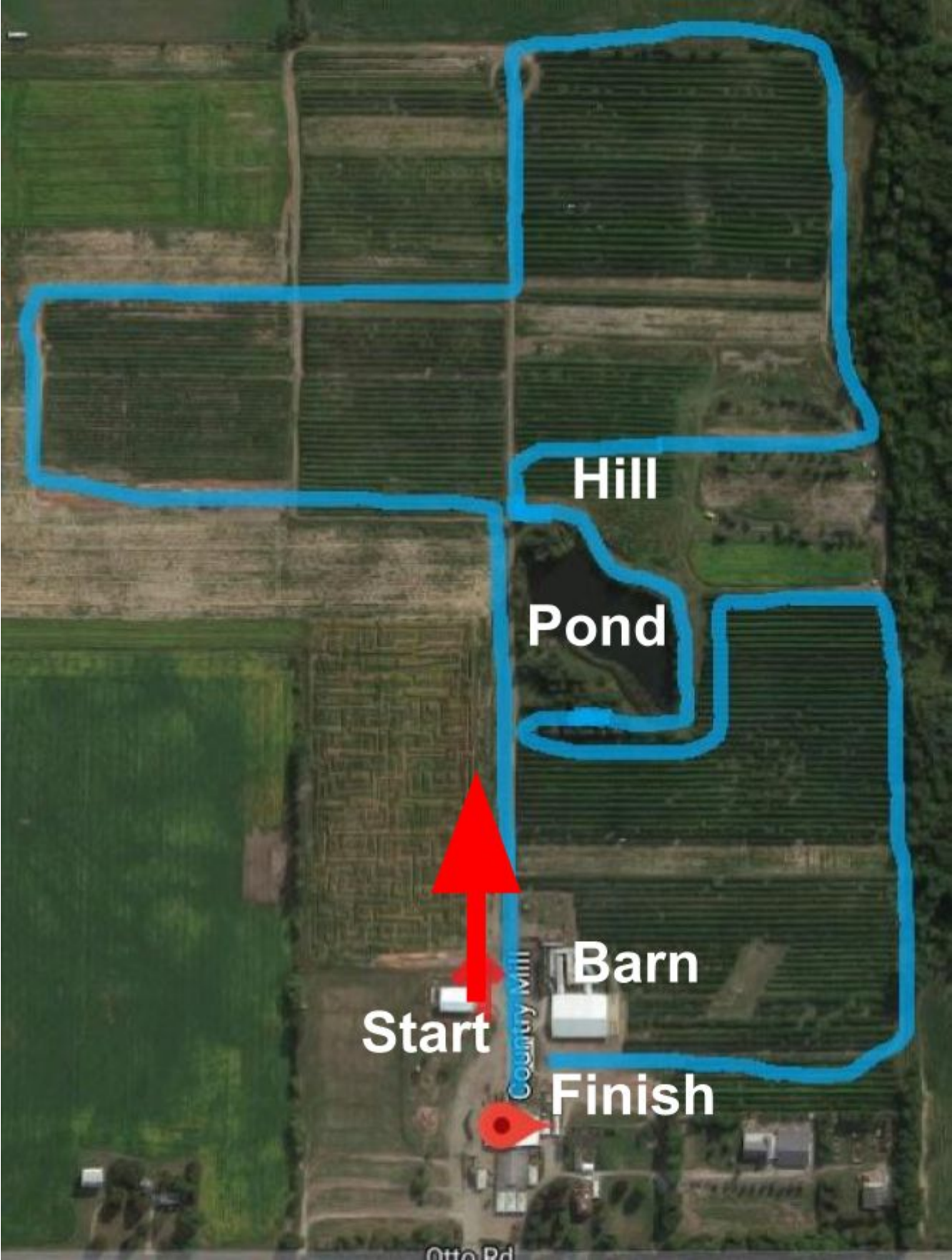
Open - Any runner can run the open.

### Awards

Medals will be awarded to the top 7 finishes for both the Boys Top 10 Race and Girls Top 10 Race as well as the top 7 boy and girl finishers (14 total) in the open. Medals will be given to runners in the finish line chute.



# Course Map



Hill

Pond

Barn

Start

Finish

Country Mill

Otto Rd