

# HUG-U-VAC Surgical Positioning System

## Patient Positioning Challenges Solved

### DIRECTION FOR USE:

1. Lay **HUG-U-VAC** on flat surface and spread beads out evenly
2. Place sedated or anesthetized animal in the longitudinal center of the **HUG-U-VAC** in the ventral, dorsal, or lateral position
3. Make certain that the head and neck are in the neutral position and fold up the sides of **HUG-U-VAC** to snugly approximate the animal's body contour
4. While an assistant snugly secures the sides of the **HUG-U-VAC** to contours of the animals, apply the vacuum in the following manner:
  - a. Push the two couplings evacuation valve together until an audible click is heard and until the red indicator ring is not visible
  - b. Connect the hose from the manual **HUG-U-VAC** vacuum pump to the barbed end of the evacuation valve to evacuate the air from **HUG-U-VAC**
5. Evacuate sufficiently to make the **HUG-U-VAC** firm to provide secure support to the animal
6. Press the metal thumb latch to close the evacuation valve to secure and detach the vacuum hose for the barbed end of the evacuation valve
7. Control the limbs by securing them with the cam buckle restraint straps at each corner and push the two couplings of the valve together until an audible click is heard to open the valve
8. Air is reintroduced to attain the flaccidity and can then be removed from the **HUG-U-VAC**
9. The **HUG-U-VAC** can be cleaned with a germicidal spray as needed



\*For more information please visit us at [dreveterinary.com](http://dreveterinary.com)\*

### SPECIFICATIONS

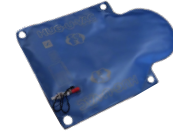


Head Positioner: 16" x 12"



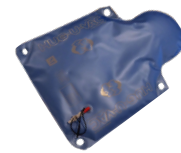
ID #1321

Size Small: 16" x 24"



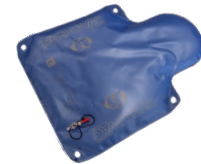
ID #1322

Size Medium: 20" x 30"



ID #1323

Size Large: 24" x 36"



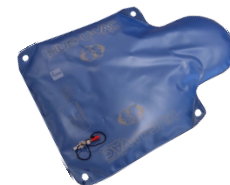
ID #1324

Size Extra Large: 30" x 45"



ID #1325

Size Jumbo: 36" x 54"



ID #1326

Set with all Six Positioners



ID #1320