

# Compcrash

Characterisation of crash behaviour of composites towards future lightweight road vehicles

PhD student: Thomas Bru

Duration: Lic. 2016-05-31

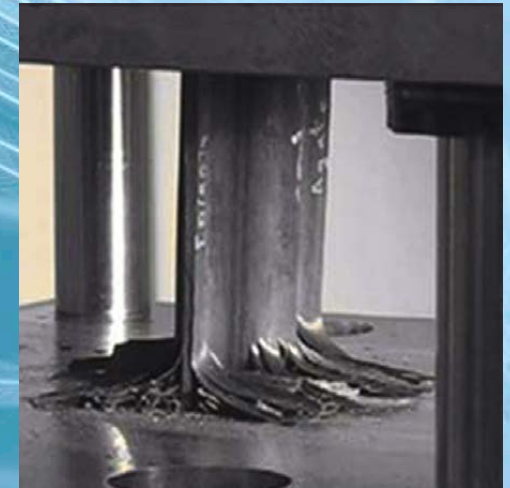
Funding: Swedish Energy Agency

Advisor: Robin Olsson

Research Scope:

- Characterisation of composites crashworthiness
- Fractography
- Development of the Iosipescu Shear Test
- Cyclic shear testing

**compcrash** 



Chalmers University of  
Technology, Graduate school of  
Solid and Structural Mechanics

**swerea** | **SICOMP**

# LIGHTer