

Fatigue design of welded joints in high strength steels

PhD student: Mansoor Khurshid

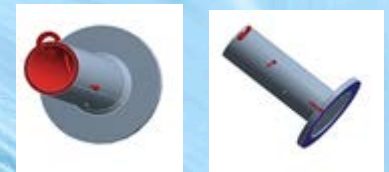
Duration: 2 years

Funding: Volvo Construction Equipment

Advisor: Dr. Zuheir Barsoum

Research Scope:

- Investigating fatigue life of welded joints subjected to complex multi-axial stress states (proportional and non-proportional) due to weld geometry and applied loading
- Development of efficient methodology and guideline for multi-axial fatigue design of welded joints



Investigated tubular joints-
exposed to complex loading



Welds in structure exposed to multiaxial stresses

LIGHTer



KTH, Department of Aeronautical and Vehicle Engineering, Division of Lightweight Structures.
Industrial Partner: Volvo Construction Equipment