

# C2T-90

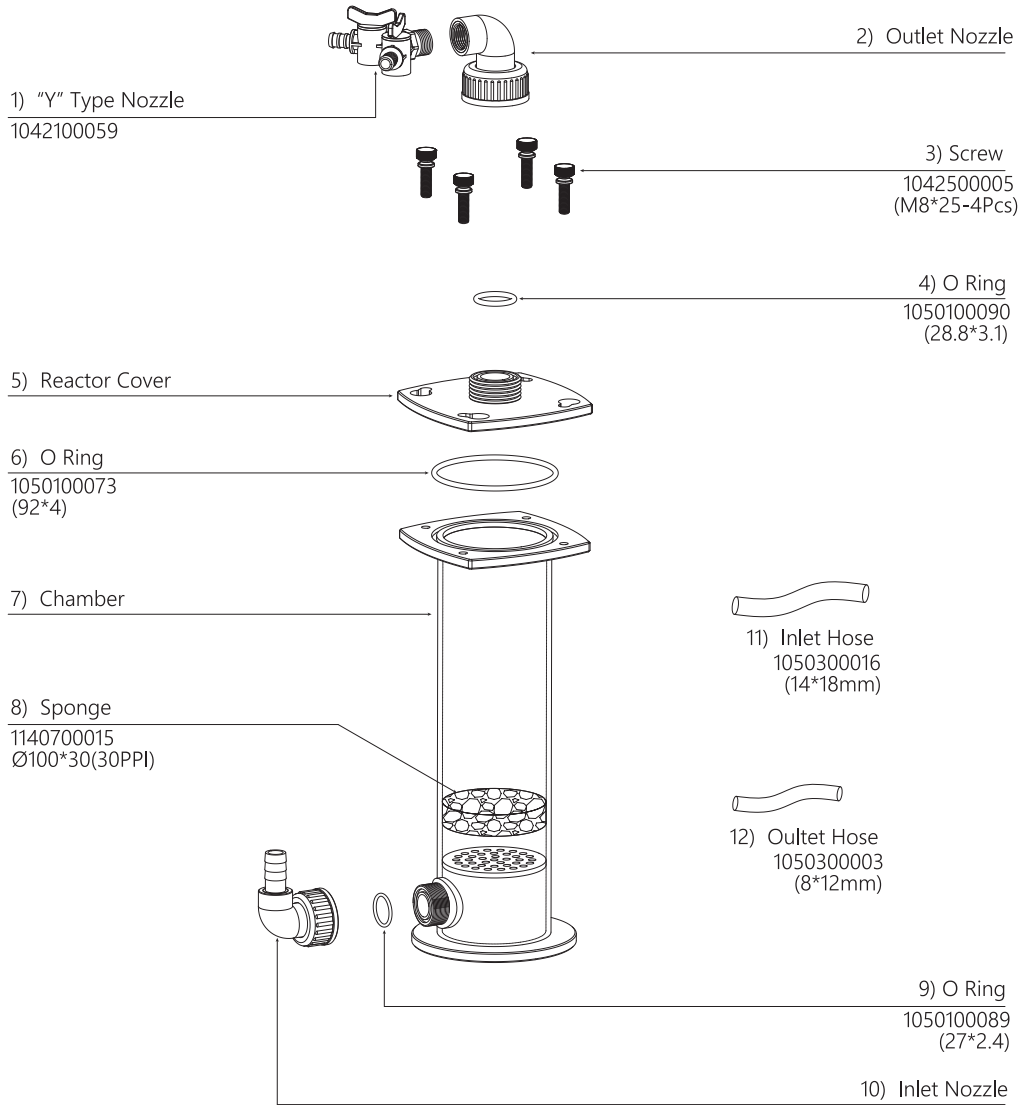
## Assembly Manual



HONYA CO., LTD  
[www.reefoctopus.com](http://www.reefoctopus.com)



# C2T-90

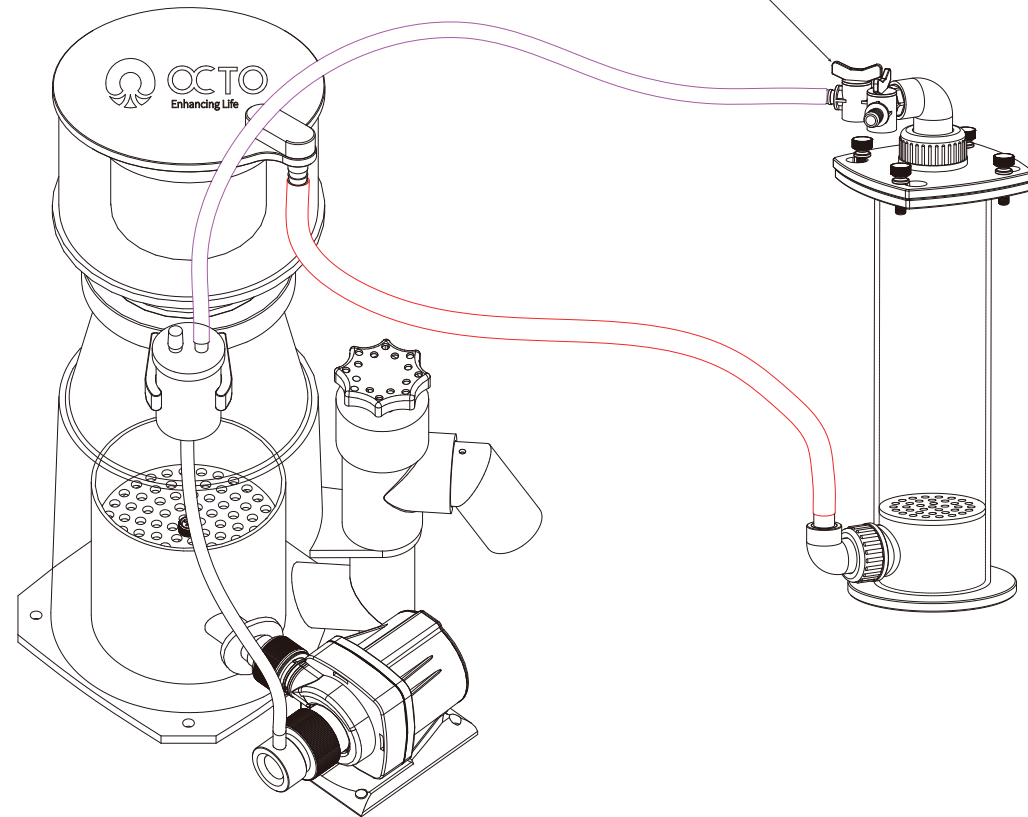


**NOTE:**

1. CO2 absorbing media require, sold separately.
2. C2T- 90 Chamber when pair with OCTO CO2 Scrubber Lid will increase the longevity of the CO2 absorbing media.

## Connection for C2T and C2C

1. Using one of the full -open outlets on the Y type nozzle, the hose can be connected directly to the Venturi, by-passing the Silencer
2. The other outlet can be used as a bleeder, open the outlet when you PH is too high for your aquarium.



Please Assemble Accordingly!  
Honya Co.,Ltd

[www.reefocopus.com](http://www.reefocopus.com)