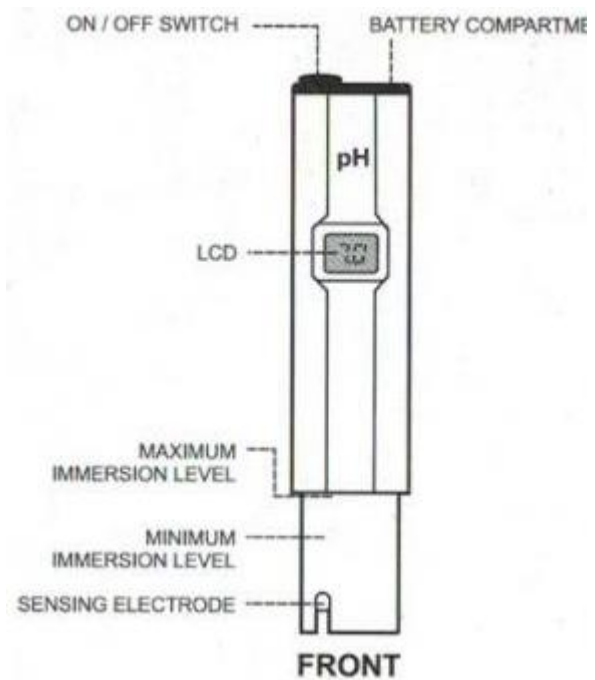
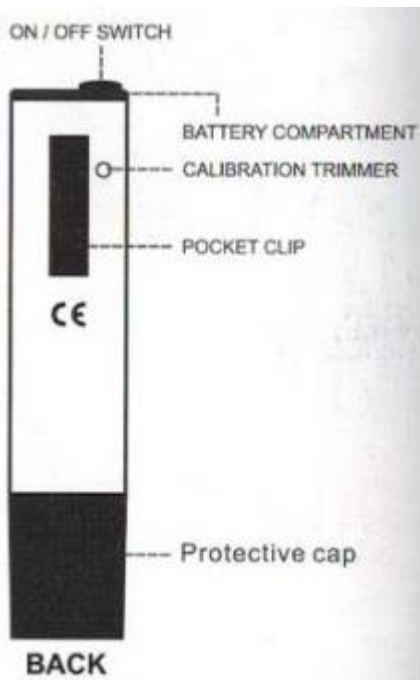
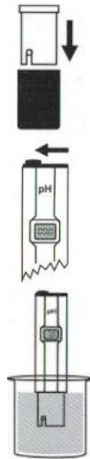


PH-208 Instruction Manual



OPERATION

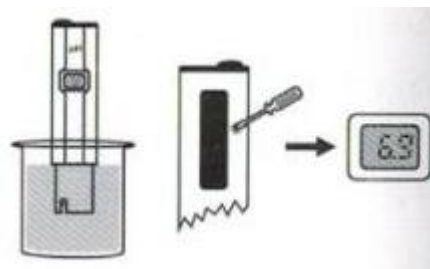
- Remove the protective cap.
- Turn the meter on by sliding the switch on the top
- Immerse into solution up to the max immersion level
- Stir gently and wait until the display stabilises
- After use, switch off pH meter, clean the electrode with clean water and replace the cap
- DO NOT USE DISTILLED OR DEIONIZED WATER FOR STORAGE PURPOSES
- Large fluctuations in readings could be due to lack of calibration, dry electrode or rundown batteries.



CALIBRATION

- Immerse the tester up to the maximum immersion level in pH 6.86 buffer solution
- Allow the reading to stabilize and using a small screwdriver adjust the calibration trimmer to read 6.86

Calibration is now complete.



BATTERY REPLACEMENT

When the meter cannot be switched on or the display fades, pull out the battery compartment and replace all three 1.5V batteries, while paying attention to their polarity. Batteries should only be replaced in a safe area using the battery type LR44.