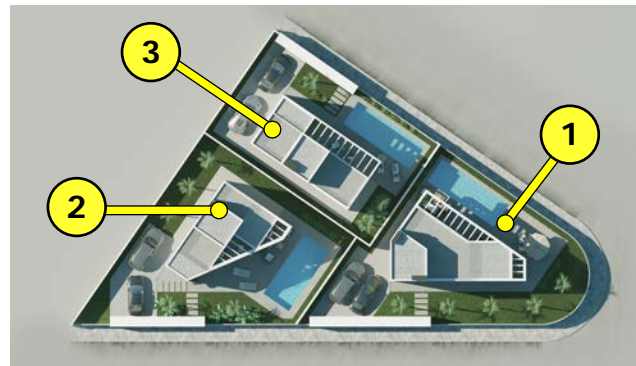


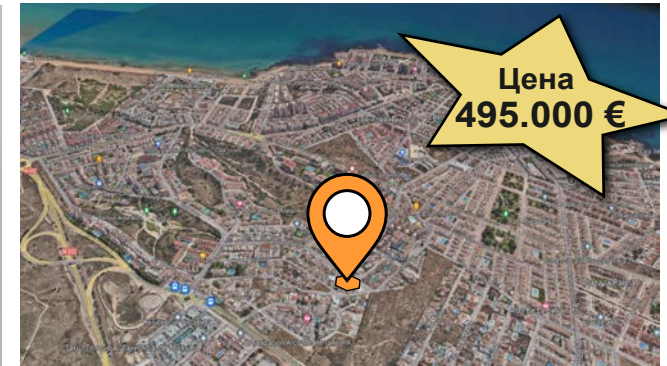
СТРОИТЕЛЬНОЕ ИНВЕСТ-ПРЕДЛОЖЕНИЕ "TORREBLANCA VILLAS"



Участок: 1.136 м²



Проектное предложение



Цена
495.000 €

Месторасположение: Торревьеха
C/Afrodita n°1




DIAMANTE
VILLA

Дом n°1: "DIAMANTE"



Участок
400 м²



Дом
218 м²



Спальных
x 4



Санузл.
x 3



Бассейн
9x3 м




ESMERALDA
VILLA

Дом n°2: "ESMERALDA"



Участок
400 м²



Дом
171 м²



Спальных
x 4



Санузл.
x 3



Бассейн
8x3,5 м




ZAFIRO
VILLA

Дом n°3: "ZAFIRO"



Участок
320 м²



Дом
200 м²



Спальных
x 4



Санузл.
x 3



Бассейн
9x3 м

Участок с проектом и лицензией для строительства 3-х
односемейных домов "Вилла" с индивидуальным
бассейном в г. Торревьеха, Испания

СТРОИТЕЛЬНОЕ ИНВЕСТ-ПРЕДЛОЖЕНИЕ "TORREBLANCA VILLAS"

А - Стоимость предложения:

495.000 €*

Включено:

- Участок + расходы нотариуса подписание купчей
- Проект (исполнительный)
- Градостроительная лицензия на строительство
- Муниципальный на строительство

В - Расходы по реализации:

1.160.000 €*

- Стоимость строительства: 975.000 €
- Авторский надзор: 20.000 €
- Контроль качества и лаборатории: 25.000 €
- Общие расходы и затраты: 50.000 €
- Накладные расходы: 25.000 €
- Нотариус и регистр собственности: 15.000 €
- Менеджмент проектом: 60.000 €

С - Рыночная стоимость и продажи:

2.225.000 €*

- Дом 1: "Diamante" 795.000 €
- Дом 2: "Esmeralda" 735.000 €
- Дом 3: "Zafiro" 695.000 €

* Н.Д.С. не включено

(П) ПРИБЫЛЬ

П=С-А-В

П=570.000 €*

**(Р) РЕНТАБЕЛЬНОСТЬ
ПРЕДЛОЖЕНИЯ**

Р=П/(А+В)

Р=34.50 %

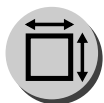
- Расчетный срок 15 месяцев
- Готовность для начала:
ПОСЛЕ ОПЛАТЫ 495.000 €

СТРОИТЕЛЬНОЕ ИНВЕСТ-ПРЕДЛОЖЕНИЕ "TORREBLANCA VILLAS"



DIAMANTE

VILLA



Участок
400 м²



Дом
218 м²



Спальных
x 4



Санузл.
x 3



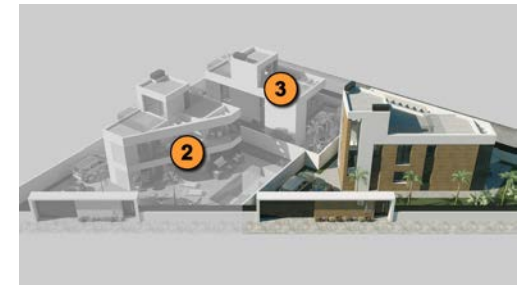
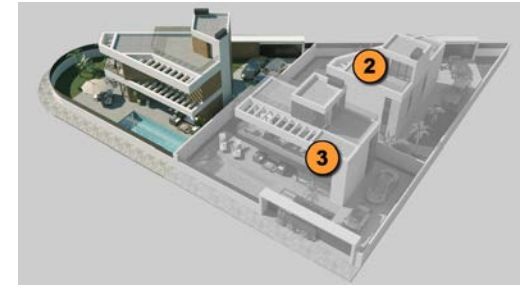
Бассейн
9x3 м

Участок с проектом и лицензией для строительства 3-х односемейных домов "Вилла" с индивидуальным бассейном в г. Торревьеха, Испания



TORREBLANCA VILLAS

Villa: "DIAMANTE"



Plot
400 m²



Villa
218 m²



Bedroom
x 4



Bathroom
x 3



Pool 9x3 m
27 m²



Efficiency
A+



Clima &
Heating



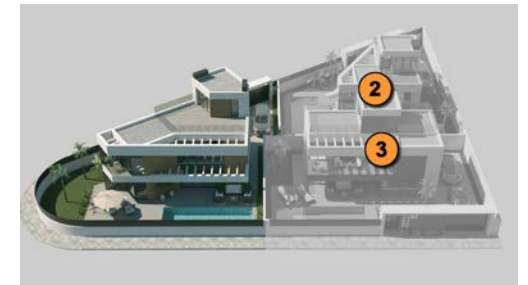
High
quality



* The promotor reserves the rights to change any elements for items with similar or higher value **images without contractual value
*La promotor se reserva el derecho a variar cualquier elemento por otro similar o de mayor valor **imagenes sin valor contractual

TORREBLANCA VILLAS

Villa: "DIAMANTE"



Plot
400 m²



Villa
218 m²



Bedroom
x 4



Bathroom
x 3



Pool 9x3 m
27 m²



Efficiency
A+



Clima &
Heating



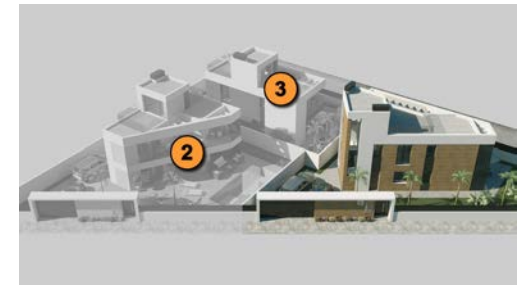
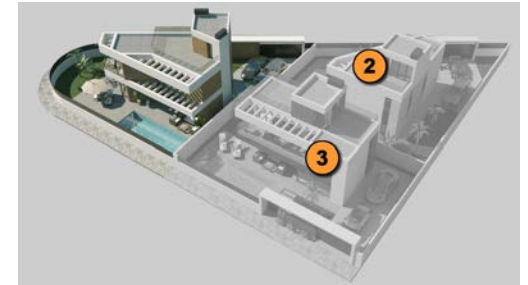
High
quality



* The promotor reserves the rights to change any elements for items with similar or higher value **images without contractual value
*La promotora se reserva el derecho a variar cualquier elemento por otro similar o de mayor valor **imagenes sin valor contractual

TORREBLANCA VILLAS

Villa: "DIAMANTE"



Plot
400 m²



Villa
218 m²



Bedroom
x 4



Bathroom
x 3



Pool 9x3 m
27 m²



Efficiency
A+



Clima &
Heating



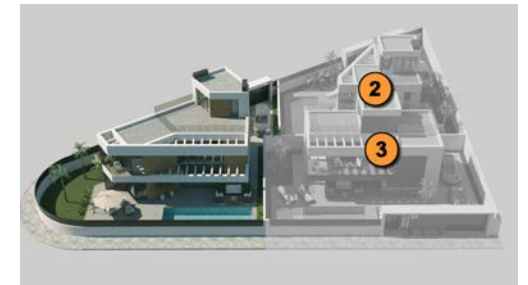
High
quality



* The promotor reserves the rights to change any elements for items with similar or higher value **images without contractual value
*La promotora se reserva el derecho a variar cualquier elemento por otro similar o de mayor valor **imagenes sin valor contractual

TORREBLANCA VILLAS

Villa: "DIAMANTE"



Plot
400 m²



Villa
218 m²



Bedroom
x 4



Bathroom
x 3



Pool 9x3 m
27 m²



Efficiency
A+



Clima &
Heating



High
quality



* The promotor reserves the rights to change any elements for items with similar or higher value **images without contractual value
*La promotora se reserva el derecho a variar cualquier elemento por otro similar o de mayor valor **imagenes sin valor contractual

GROUND FLOOR



SURFACES VILLA "DIAMANTE"

GROUND FLOOR	INTERIOR	EXTERIOR
HALL	10,90 m ²	-
LIVING-DINNING	25,50 m ²	-
OPEN KITCHEN	11,00 m ²	-
CORRIDOR GROUND FLOOR	1,50 m ²	-
BATH 01	4,05 m ²	-
BEDROOM 01	12,40 m ²	-
COVERED TERRACE 01	-	4,50 m ²
TERRACE PERGOLA 01	-	17,50 m ²
TOTAL INTERIOR GROUND FLOOR	65,35 m²	
TOTAL EXTERIOR GROUND FLOOR		22,00 m²

TOP FLOOR	INTERIOR	EXTERIOR
STAIRS 01	8,40 m ²	-
CORRIDOR TOP FLOOR	5,40 m ²	-
BEDROOM 02	10,00 m ²	-
BEDROOM 03	15,15 m ²	-
BEDROOM 04	8,25 m ²	-
BATH 02	4,05 m ²	-
BATH 03	4,05 m ²	-
COVERED TERRACE 02	-	3,90 m ²
TERRACE PERGOLA 01	-	6,50 m ²
TOTAL INTERIOR TOP FLOOR	55,30 m²	
TOTAL EXTERIOR TOP FLOOR		10,40 m²

ROOF FLOOR	INTERIOR	EXTERIOR
STAIRS 02	9,95 m ²	-
FACILITY ROOM	4,05 m ²	-
SOLARIUM TERRACE	-	50,95 m ²
TOTAL INTERIOR ROOF FLOOR	14,00 m²	
TOTAL EXTERIOR ROOF FLOOR		50,95 m²

TOTAL INTERIOR SURFACE	134,65 m²
TOTAL EXTERIOR SURFACE	83,35 m²
TOTAL BUILT SURFACE	147,00 m²
TOTAL SURFACES	218,00 m²



Plot
400 m²



Villa
218 m²



Bedroom
x 4



Bathroom
x 3



Pool 9x3 m
27 m²



Efficiency
A+

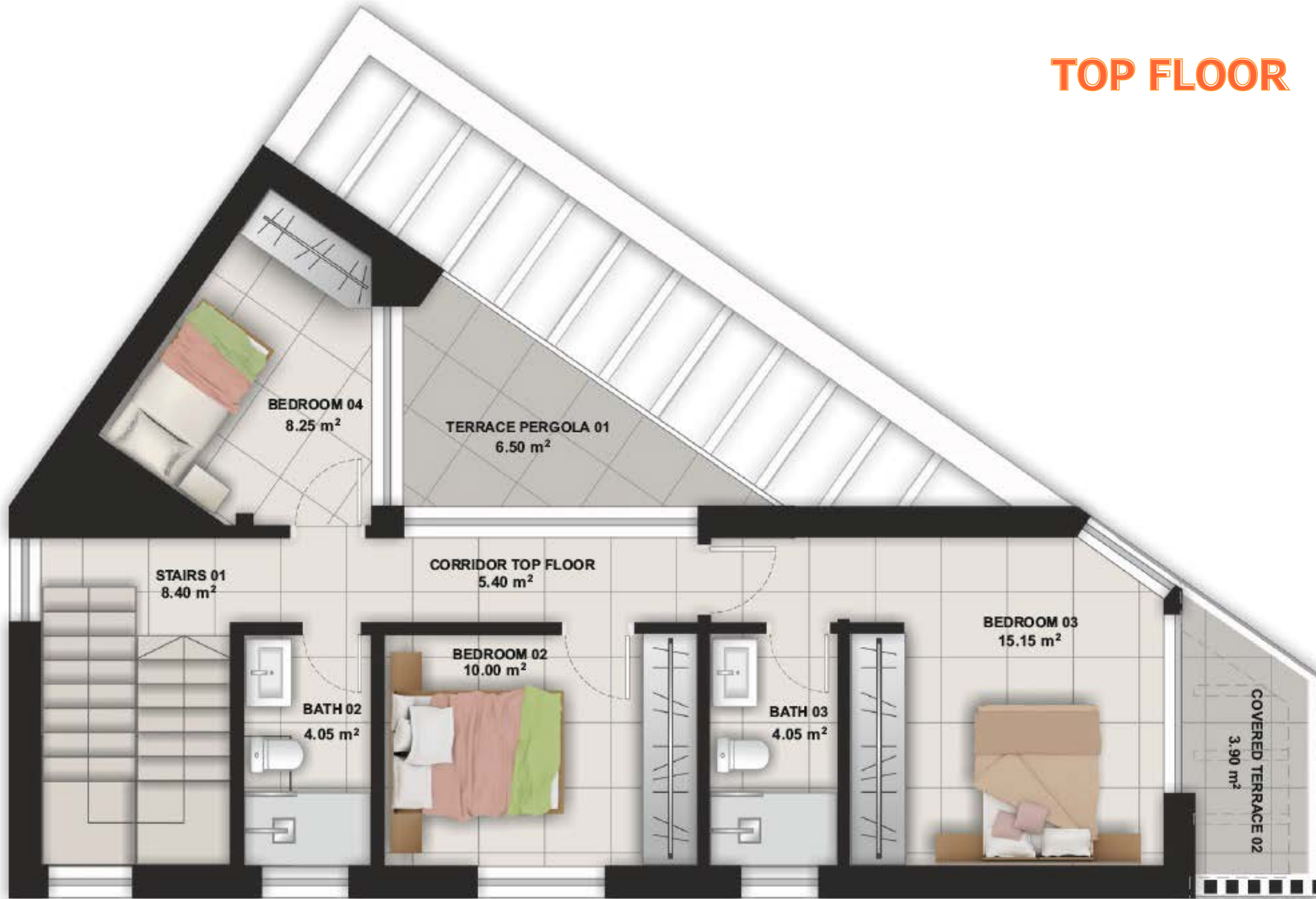


Clima &
Heating



High
quality

TOP FLOOR



SURFACES VILLA "DIAMANTE"

GROUND FLOOR	INTERIOR	EXTERIOR
HALL	10,90 m ²	-
LIVING-DINNING	25,50 m ²	-
OPEN KITCHEN	11,00 m ²	-
CORRIDOR GROUND FLOOR	1,50 m ²	-
BATH 01	4,05 m ²	-
BEDROOM 01	12,40 m ²	-
COVERED TERRACE 01	-	4,50 m ²
TERRACE PERGOLA 01	-	17,50 m ²
TOTAL INTERIOR GROUND FLOOR	65,35 m²	
TOTAL EXTERIOR GROUND FLOOR		22,00 m²

TOP FLOOR	INTERIOR	EXTERIOR
STAIRS 01	8,40 m ²	-
CORRIDOR TOP FLOOR	5,40 m ²	-
BEDROOM 02	10,00 m ²	-
BEDROOM 03	15,15 m ²	-
BEDROOM 04	8,25 m ²	-
BATH 02	4,05 m ²	-
BATH 03	4,05 m ²	-
COVERED TERRACE 02	-	3,90 m ²
TERRACE PERGOLA 01	-	6,50 m ²
TOTAL INTERIOR TOP FLOOR	55,30 m²	
TOTAL EXTERIOR TOP FLOOR		10,40 m²

ROOF FLOOR	INTERIOR	EXTERIOR
STAIRS 02	9,95 m ²	-
FACILITY ROOM	4,05 m ²	-
SOLARIUM TERRACE	-	50,95 m ²
TOTAL INTERIOR ROOF FLOOR	14,00 m²	
TOTAL EXTERIOR ROOF FLOOR		50,95 m²

TOTAL INTERIOR SURFACE	134,65 m²
TOTAL EXTERIOR SURFACE	83,35 m²
TOTAL BUILT SURFACE	147,00 m²
TOTAL SURFACES	218,00 m²



Plot
400 m²



Villa
218 m²



Bedroom
x 4



Bathroom
x 3



Pool 9x3 m
27 m²



Efficiency
A+

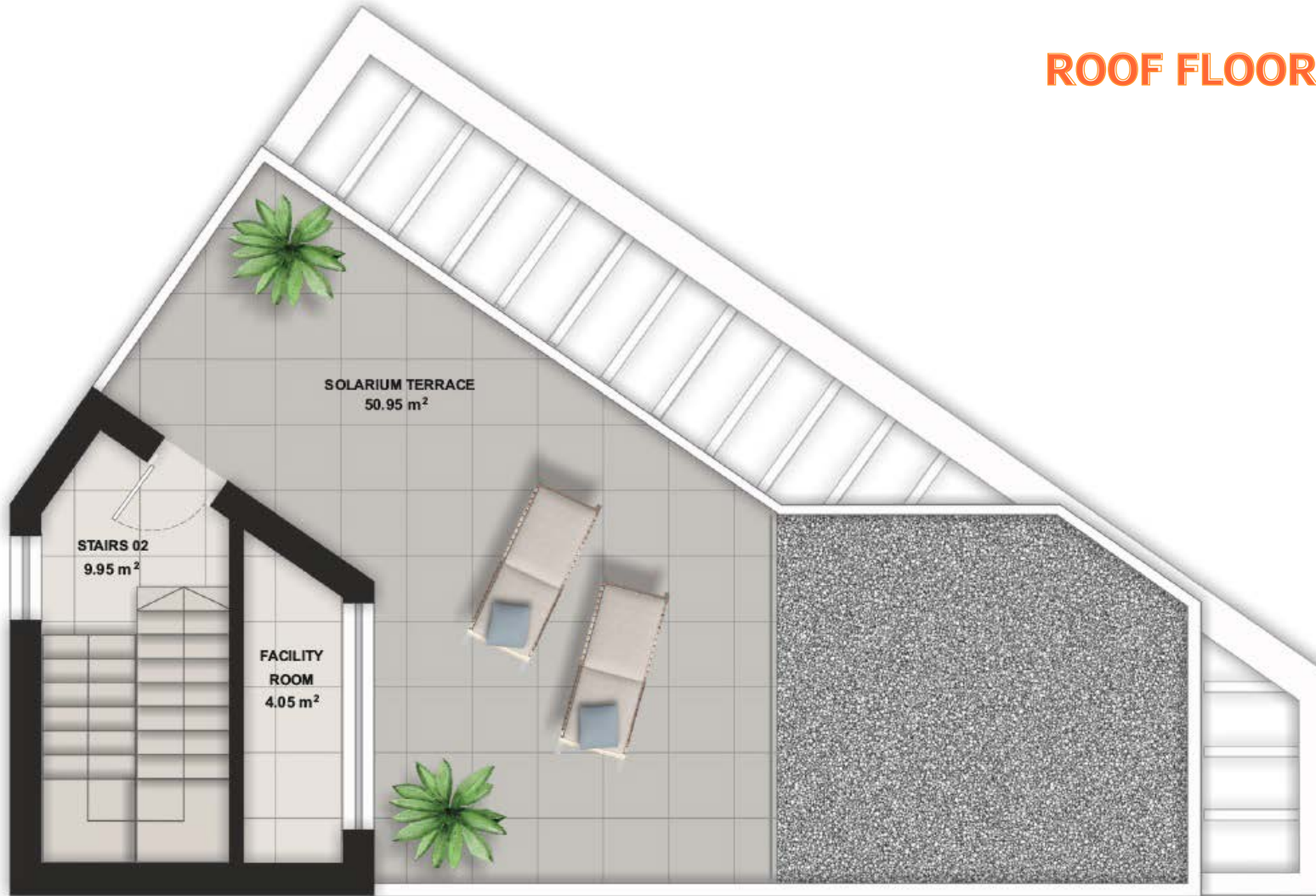


Clima &
Heating



High
quality

ROOF FLOOR



SURFACES VILLA "DIAMANTE"

GROUND FLOOR	INTERIOR	EXTERIOR
HALL	10.90 m ²	-
LIVING-DINNING	25.50 m ²	-
OPEN KITCHEN	11.00 m ²	-
CORRIDOR GROUND FLOOR	1.50 m ²	-
BATH 01	4.05 m ²	-
BEDROOM 01	12.40 m ²	-
COVERED TERRACE 01	-	4.50 m ²
TERRACE PERGOLA 01	-	17.50 m ²
TOTAL INTERIOR GROUND FLOOR	65.35 m²	
TOTAL EXTERIOR GROUND FLOOR		22.00 m²

TOP FLOOR	INTERIOR	EXTERIOR
STAIRS 01	8.40 m ²	-
CORRIDOR TOP FLOOR	5.40 m ²	-
BEDROOM 02	10.00 m ²	-
BEDROOM 03	15.15 m ²	-
BEDROOM 04	8.25 m ²	-
BATH 02	4.05 m ²	-
BATH 03	4.05 m ²	-
COVERED TERRACE 02	-	3.90 m ²
TERRACE PERGOLA 01	-	6.50 m ²
TOTAL INTERIOR TOP FLOOR	55.30 m²	
TOTAL EXTERIOR TOP FLOOR		10.40 m²

ROOF FLOOR	INTERIOR	EXTERIOR
STAIRS 02	9.95 m ²	-
FACILITY ROOM	4.05 m ²	-
SOLARIUM TERRACE	-	50.95 m ²
TOTAL INTERIOR ROOF FLOOR	14.00 m²	
TOTAL EXTERIOR ROOF FLOOR		50.95 m²

TOTAL INTERIOR SURFACE	134.65 m²
TOTAL EXTERIOR SURFACE	83.35 m²
TOTAL BUILT SURFACE	147.00 m²
TOTAL SURFACES	218.00 m²



Plot
400 m²



Villa
218 m²



Bedroom
x 4



Bathroom
x 3



Pool 9x3 m
27 m²



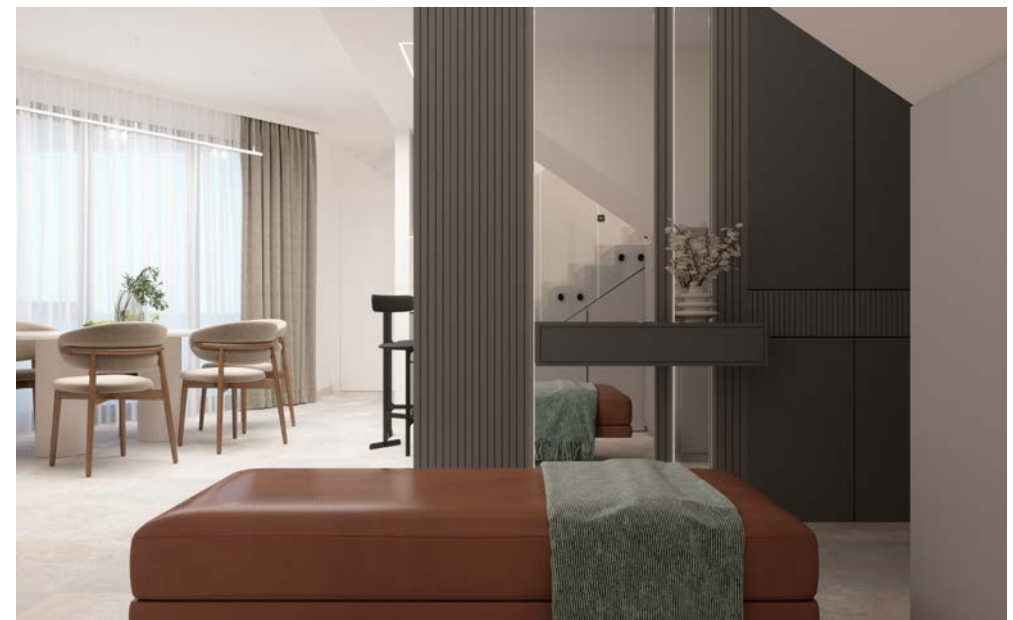
Efficiency
A+



Clima &
Heating

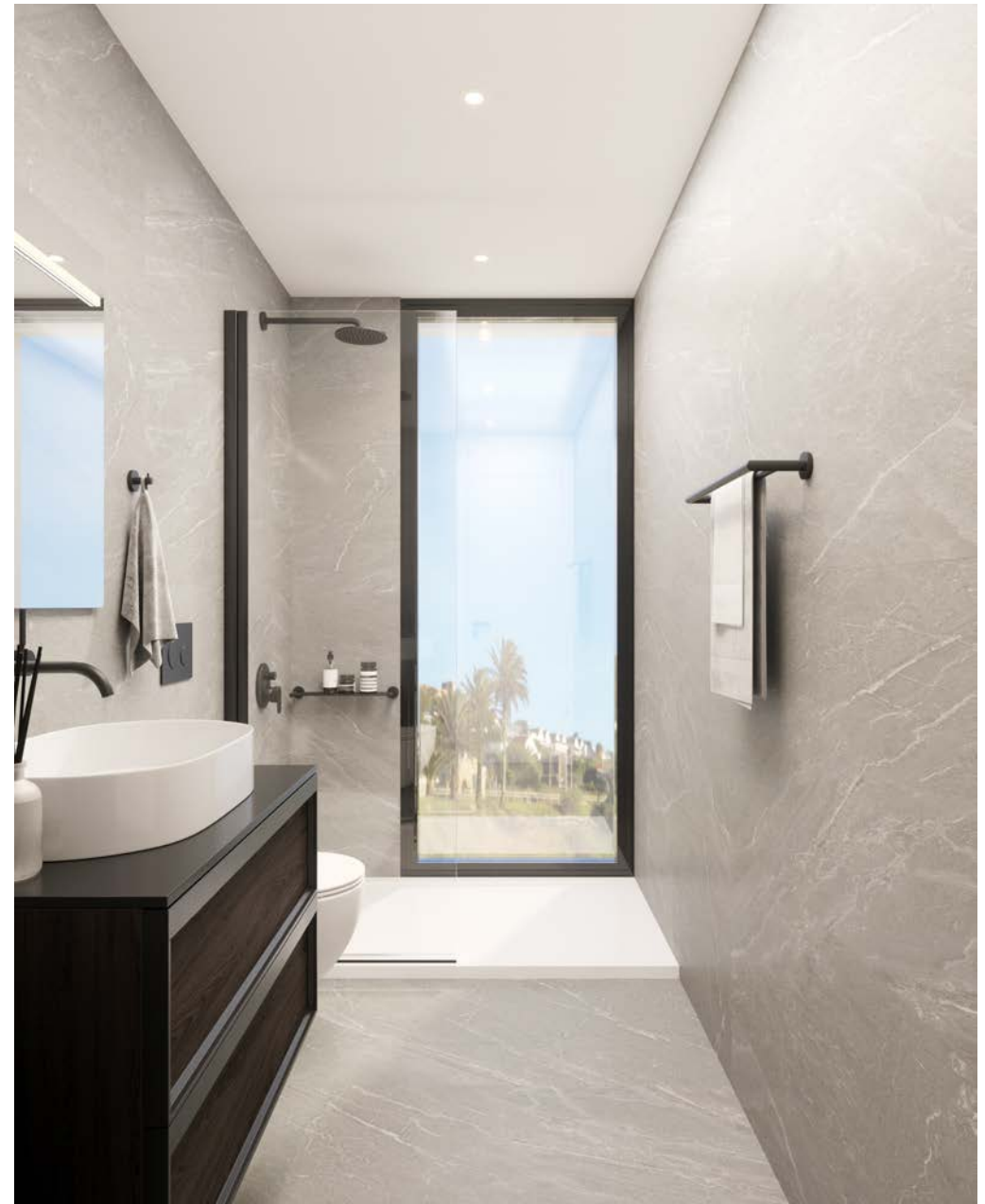


High
quality









SPACES & DESIGN: BATHROOM 1 GROUND FLOOR



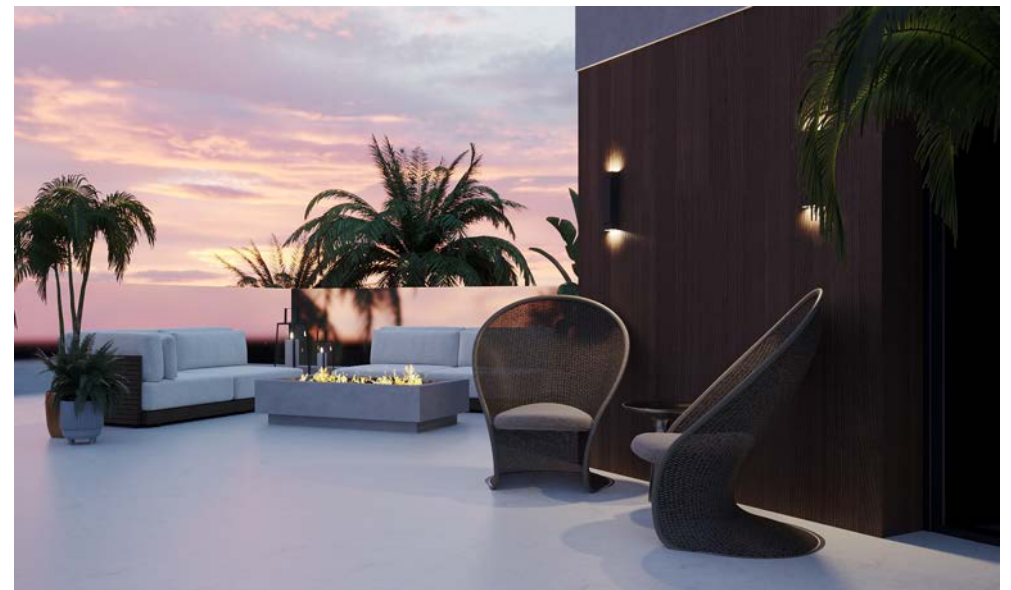








SPACES & DESIGN: BEDROOM 4 TOP FLOOR



СТРОИТЕЛЬНОЕ ИНВЕСТ-ПРЕДЛОЖЕНИЕ "TORREBLANCA VILLAS"



ESMERALDA

VILLA



Участок
400 м²



Дом
171 м²



Спальных
x 4



Санузл.
x 3



Бассейн
8x3,5 м

Участок с проектом и лицензией для строительства 3-х
односемейных домов "Вилла" с индивидуальным
бассейном в г. Торревьеха, Испания

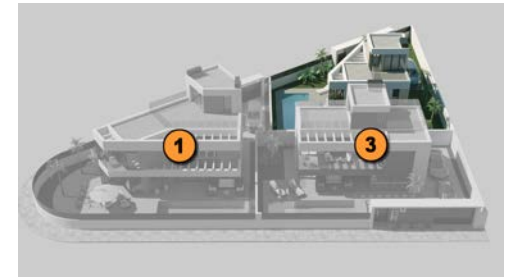
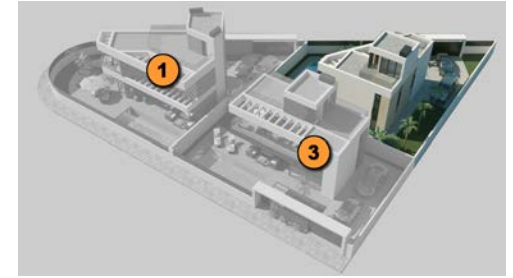


ESMERALDA

VILLA

TORREBLANCA VILLAS

Villa: "ESMERALDA"



Plot
400 m²



Villa
171 m²



Bedroom
x 4



Bathroom
x 3



Pool 8x3,5 m
28 m²



Efficiency
A+



Clima &
Heating



High
quality



* The promotor reserves the rights to change any elements for items with similar or higher value **images without contractual value
*La promotora se reserva el derecho a variar cualquier elemento por otro similar o de mayor valor **imagenes sin valor contractual

TORREBLANCA VILLAS

Villa: "ESMERALDA"



Plot
400 m²



Villa
171 m²



Bedroom
x 4



Bathroom
x 3



Pool 8x3,5 m
28 m²



Efficiency
A+



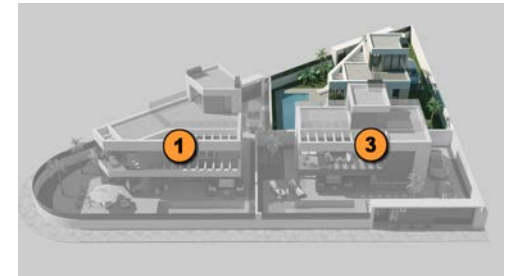
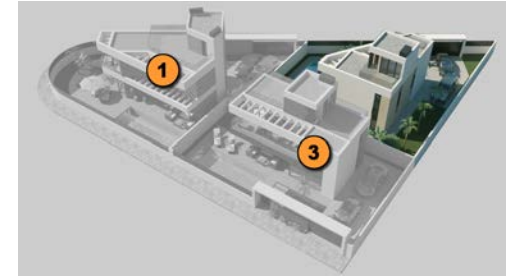
Clima &
Heating



High
quality

TORREBLANCA VILLAS

Villa: "ESMERALDA"



Plot
400 m²



Villa
171 m²



Bedroom
x 4



Bathroom
x 3



Pool 8x3,5 m
28 m²



Efficiency
A+



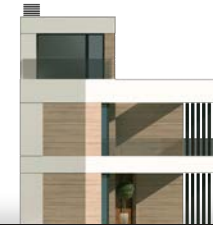
Clima &
Heating



High
quality



* The promotor reserves the rights to change any elements for items with similar or higher value **images without contractual value
*La promotor se reserva el derecho a variar cualquier elemento por otro similar o de mayor valor **imagenes sin valor contractual



Plot
400 m²



Villa
171 m²



Bedroom
x 4



Bathroom
x 3



Pool 8x3,5 m
28 m²



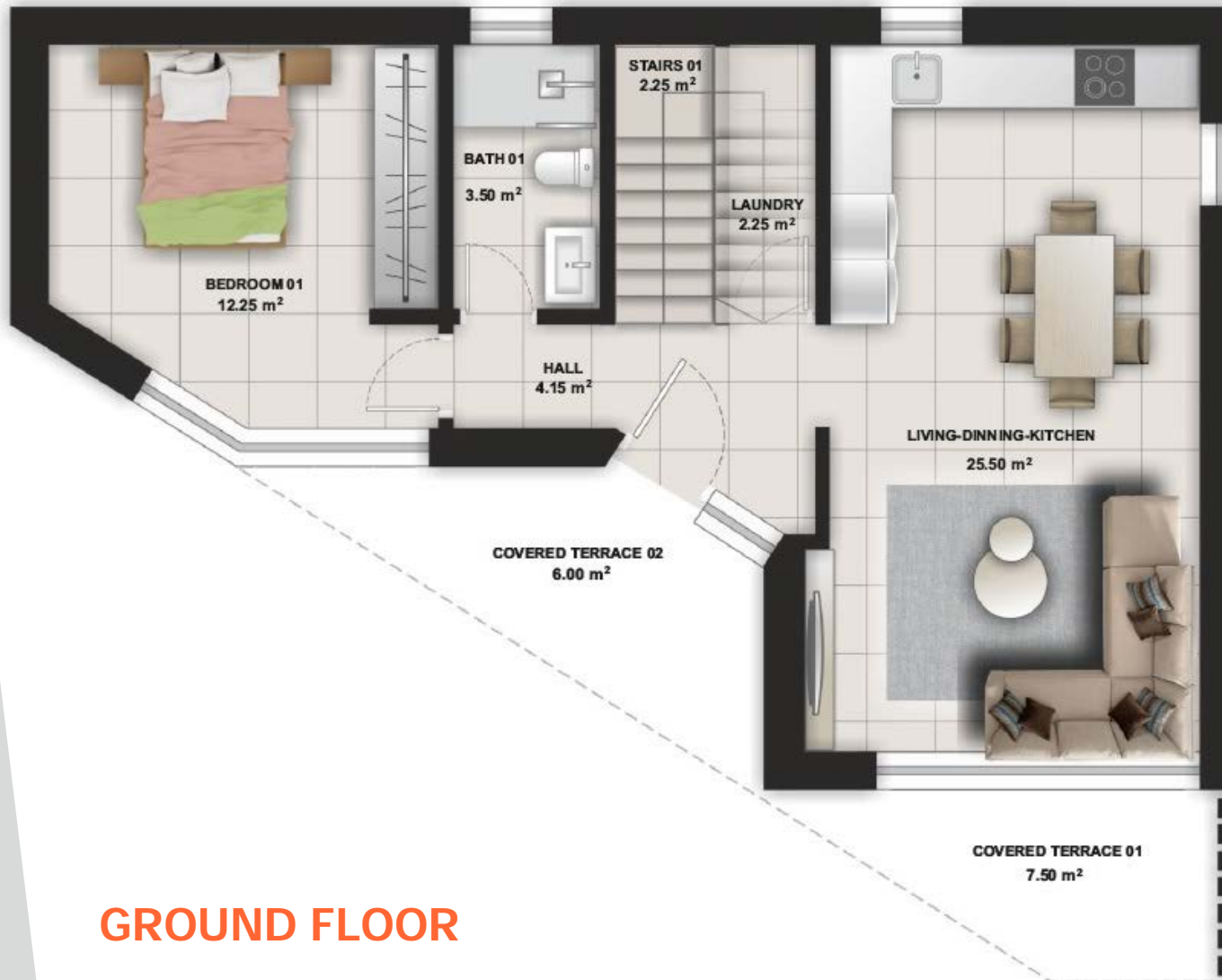
Efficiency
A+



Clima &
Heating



High
quality



GROUND FLOOR

SURFACES VILLA "ESMERALDA"

GROUND FLOOR	INTERIOR	EXTERIOR
HALL	4.15 m ²	-
LIVING-DINNING-KITCHEN	25.50 m ²	-
BEDROOM 01	12.25 m ²	-
BATH 01	3.50 m ²	-
LAUNDRY	2.25 m ²	-
STAIRS 01	2.25 m ²	-
COVERED TERRACE 01	-	7.50 m ²
COVERED TERRACE 02	-	6.00 m ²
TOTAL INTERIOR GROUND FLOOR	50.15 m²	
TOTAL EXTERIOR GROUND FLOOR		13.50 m²

TOP FLOOR	INTERIOR	EXTERIOR
CORRIDOR TOP FLOOR	4.00 m ²	-
BEDROOM 02	13.20 m ²	-
BEDROOM 03	7.50 m ²	-
BEDROOM 04	11.25 m ²	-
BATH 02	3.50 m ²	-
BATH 03	3.50 m ²	-
STAIRS 02	5.00 m ²	-
TERRACE PERGOLA 01	-	7.50 m ²
TERRACE PERGOLA 02	-	5.00 m ²
TOTAL INTERIOR TOP FLOOR	47.95 m²	
TOTAL EXTERIOR TOP FLOOR		12.50 m²

ROOF FLOOR	INTERIOR	EXTERIOR
STAIRS 03	6.90 m ²	-
FACILITY ROOM	2.50 m ²	-
SOLARIUM TERRACE 01	-	10.50 m ²
SOLARIUM TERRACE 02	-	13.00 m ²
TERRACE NOT TRANSITABLE	-	14.00 m ²
TOTAL INTERIOR ROOF FLOOR	9.40 m²	
TOTAL EXTERIOR ROOF FLOOR		37.50 m²

TOTAL INTERIOR SURFACE	107.50 m²
TOTAL EXTERIOR SURFACE	63.50 m²
TOTAL BUILT SURFACE	130.00 m²
TOTAL SURFACES	171.00 m²



Plot
400 m²



Villa
171m²



Bedroom
x 4



Bathroom
x 3



Pool 8x3,5 m
28 m²



Efficiency
A+



Clima &
Heating



High
quality



* The promotor reserves the rights to change any elements for items with similar or higher value **images without contractual value
*La promotora se reserva el derecho a variar cualquier elemento por otro similar o de mayor valor **imagenes sin valor contractual



TOP FLOOR

SURFACES VILLA "ESMERALDA"		
GROUND FLOOR	INTERIOR	EXTERIOR
HALL	4.15 m ²	-
LIVING-DINNING-KITCHEN	25.50 m ²	-
BEDROOM 01	12.25 m ²	-
BATH 01	3.50 m ²	-
LAUNDRY	2.25 m ²	-
STAIRS 01	2.25 m ²	-
COVERED TERRACE 01	-	7.50 m ²
COVERED TERRACE 02	-	6.00 m ²
TOTAL INTERIOR GROUND FLOOR		50.15 m²
TOTAL EXTERIOR GROUND FLOOR		13.50 m²

TOP FLOOR	INTERIOR	EXTERIOR
CORRIDOR TOP FLOOR	4.00 m ²	-
BEDROOM 02	13.20 m ²	-
BEDROOM 03	7.50 m ²	-
BEDROOM 04	11.25 m ²	-
BATH 02	3.50 m ²	-
BATH 03	3.50 m ²	-
STAIRS 02	5.00 m ²	-
TERRACE PERGOLA 01	-	7.50 m ²
TERRACE PERGOLA 02	-	5.00 m ²
TOTAL INTERIOR TOP FLOOR		47.95 m²
TOTAL EXTERIOR TOP FLOOR		12.50 m²

ROOF FLOOR	INTERIOR	EXTERIOR
STAIRS 03	6.90 m ²	-
FACILITY ROOM	2.50 m ²	-
SOLARIUM TERRACE 01	-	10.50 m ²
SOLARIUM TERRACE 02	-	13.00 m ²
TERRACE NOT TRANSITABLE	-	14.00 m ²
TOTAL INTERIOR ROOF FLOOR		9.40 m²
TOTAL EXTERIOR ROOF FLOOR		37.50 m²

TOTAL INTERIOR SURFACE	107.50 m²
TOTAL EXTERIOR SURFACE	63.50 m²
TOTAL BUILT SURFACE	130.00 m²
TOTAL SURFACES	171.00 m²



Plot
400 m²



Villa
171m²



Bedroom
x 4



Bathroom
x 3



Pool 8x3,5 m
28 m²



Efficiency
A+



Clima &
Heating



High
quality



* The promotor reserves the rights to change any elements for items with similar or higher value **images without contractual value
*La promotora se reserva el derecho a variar cualquier elemento por otro similar o de mayor valor **imagenes sin valor contractual



ROOF FLOOR

SURFACES VILLA "ESMERALDA"

GROUND FLOOR	INTERIOR	EXTERIOR
HALL	4.15 m ²	-
LIVING-DINNING-KITCHEN	25.50 m ²	-
BEDROOM 01	12.25 m ²	-
BATH 01	3.50 m ²	-
LAUNDRY	2.25 m ²	-
STAIRS 01	2.25 m ²	-
COVERED TERRACE 01	-	7.50 m ²
COVERED TERRACE 02	-	6.00 m ²
TOTAL INTERIOR GROUND FLOOR		50.15 m²
TOTAL EXTERIOR GROUND FLOOR		13.50 m²

TOP FLOOR	INTERIOR	EXTERIOR
CORRIDOR TOP FLOOR	4.00 m ²	-
BEDROOM 02	13.20 m ²	-
BEDROOM 03	7.50 m ²	-
BEDROOM 04	11.25 m ²	-
BATH 02	3.50 m ²	-
BATH 03	3.50 m ²	-
STAIRS 02	5.00 m ²	-
TERRACE PERGOLA 01	-	7.50 m ²
TERRACE PERGOLA 02	-	5.00 m ²
TOTAL INTERIOR TOP FLOOR		47.95 m²
TOTAL EXTERIOR TOP FLOOR		12.50 m²

ROOF FLOOR	INTERIOR	EXTERIOR
STAIRS 03	6.90 m ²	-
FACILITY ROOM	2.50 m ²	-
SOLARIUM TERRACE 01	-	10.50 m ²
SOLARIUM TERRACE 02	-	13.00 m ²
TERRACE NOT TRANSITABLE	-	14.00 m ²
TOTAL INTERIOR ROOF FLOOR		9.40 m²
TOTAL EXTERIOR ROOF FLOOR		37.50 m²

TOTAL INTERIOR SURFACE	107.50 m²
TOTAL EXTERIOR SURFACE	63.50 m²
TOTAL BUILT SURFACE	130.00 m²
TOTAL SURFACES	171.00 m²



Plot
400 m²



Villa
171m²



Bedroom
x 4



Bathroom
x 3



Pool 8x3,5 m
28 m²



Efficiency
A+



Clima &
Heating



High
quality

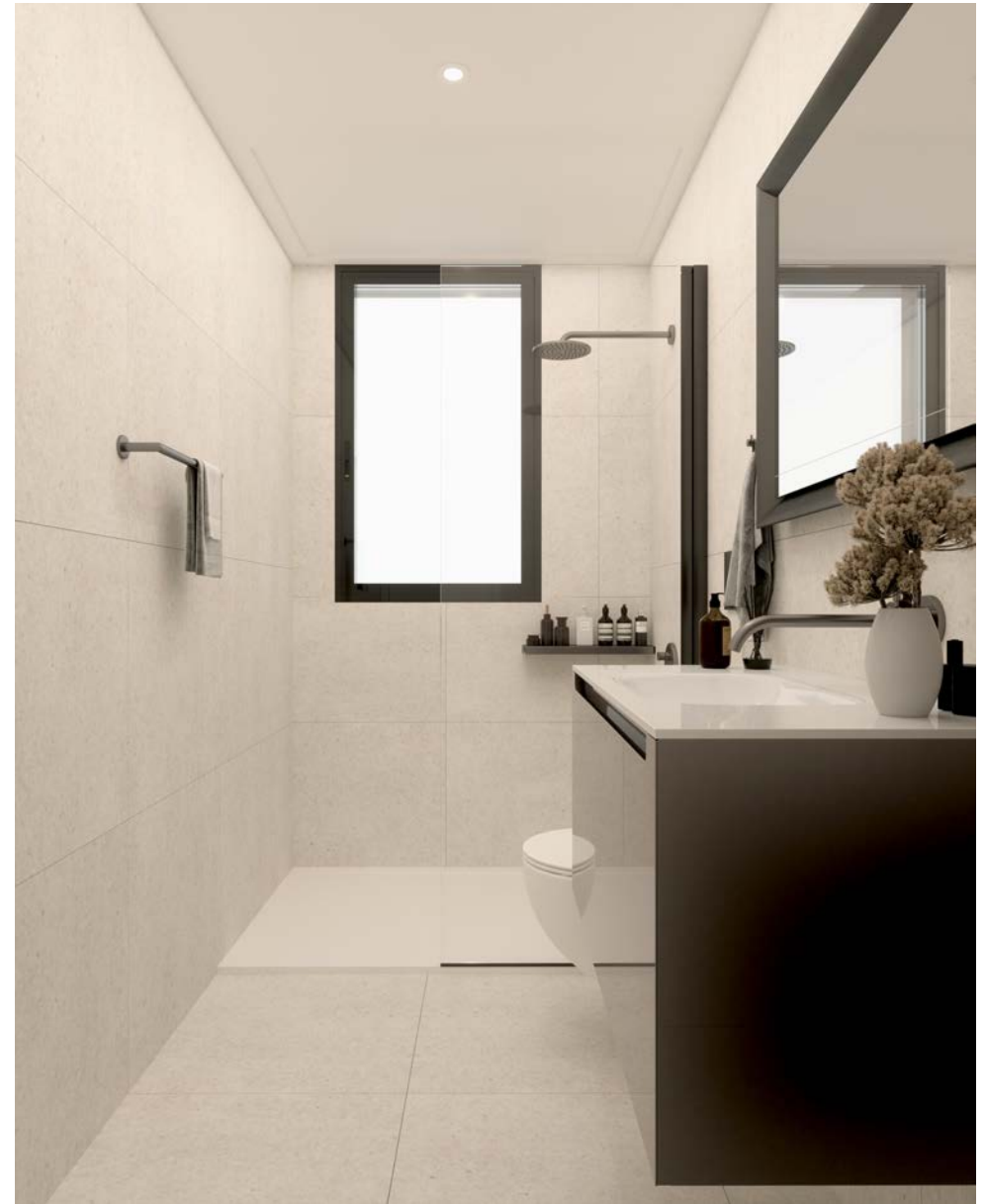


* The promotor reserves the rights to change any elements for items with similar or higher value **images without contractual value
*La promotora se reserva el derecho a variar cualquier elemento por otro similar o de mayor valor **imagenes sin valor contractual

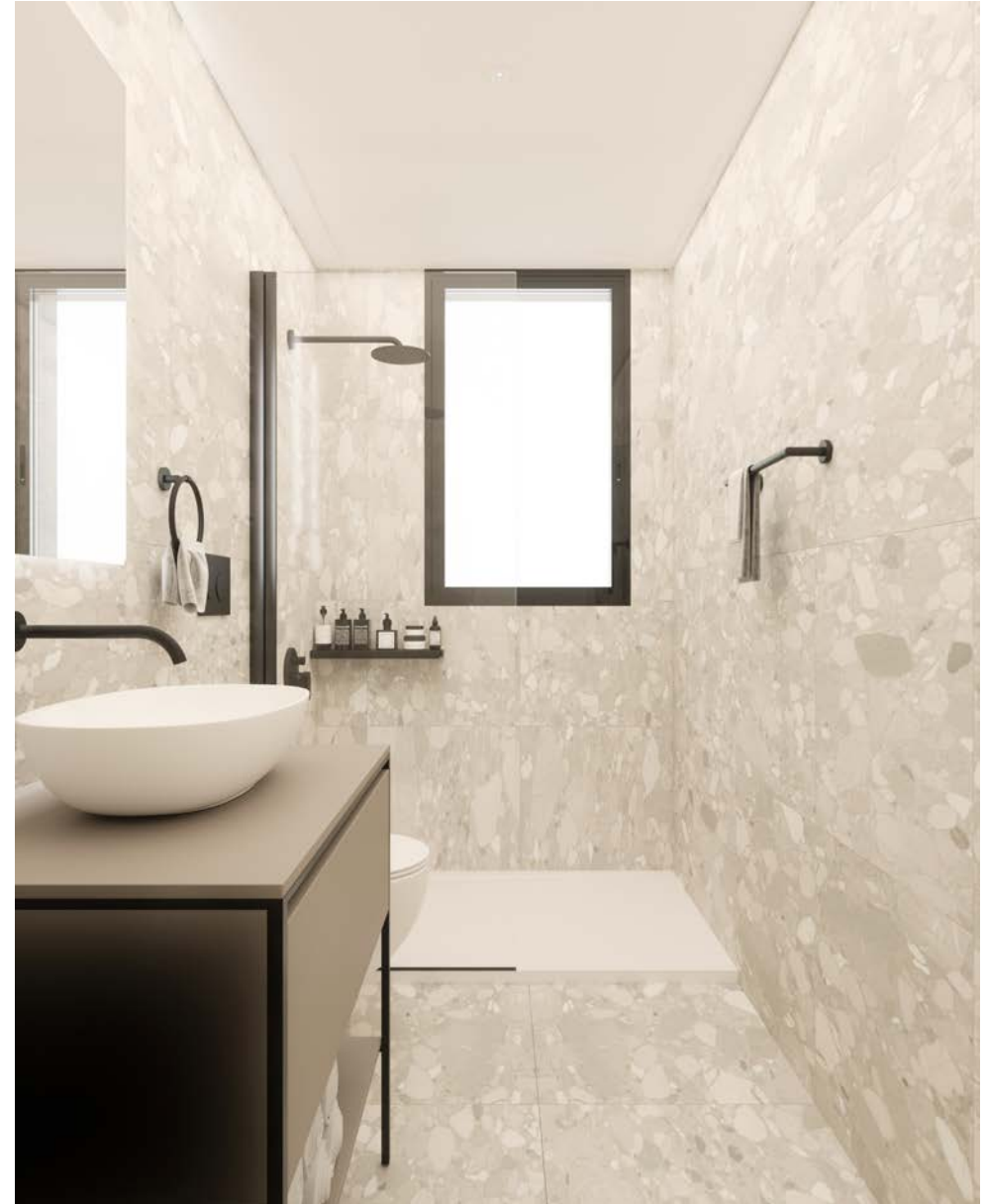


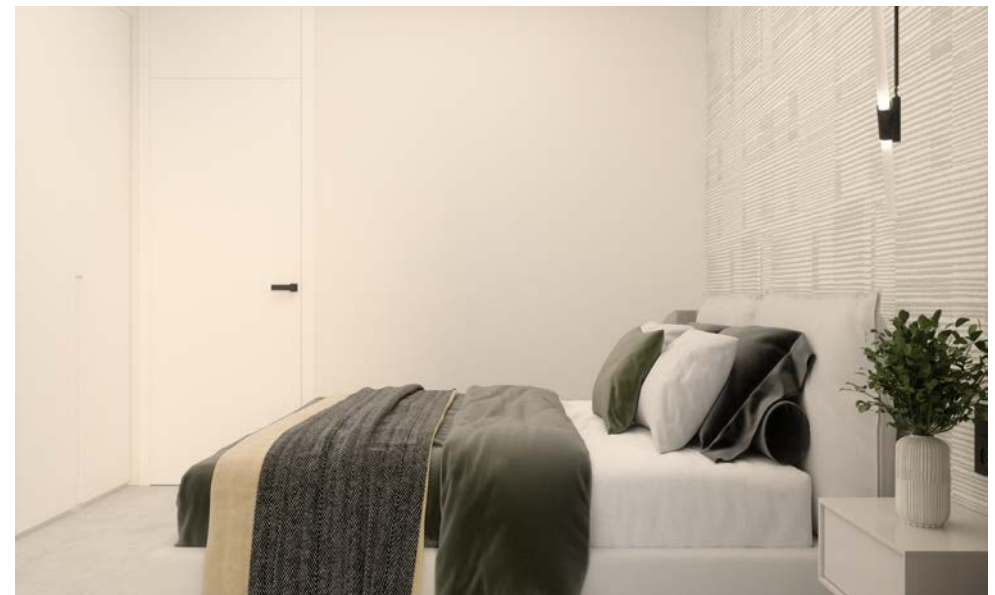


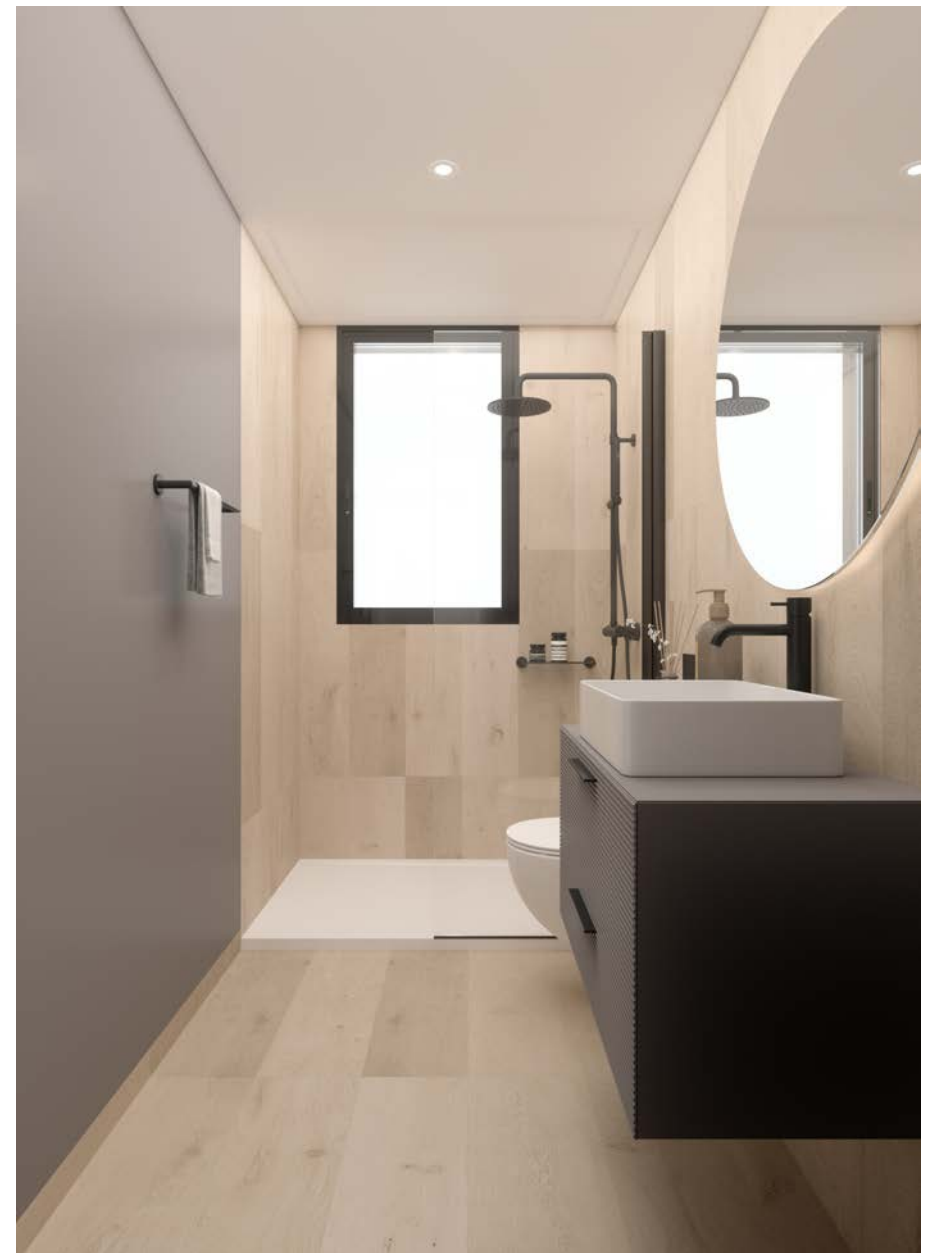






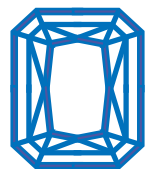






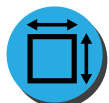


СТРОИТЕЛЬНОЕ ИНВЕСТ-ПРЕДЛОЖЕНИЕ "TORREBLANCA VILLAS"



ZAFIRO

VILLA



Участок
320 м²



Дом
200 м²



Спальных
x 4

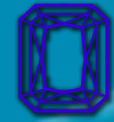


Санузл.
x 3



Бассейн
9x3 м

Участок с проектом и лицензией для строительства 3-х односемейных домов "Вилла" с индивидуальным бассейном в г. Торревьеха, Испания

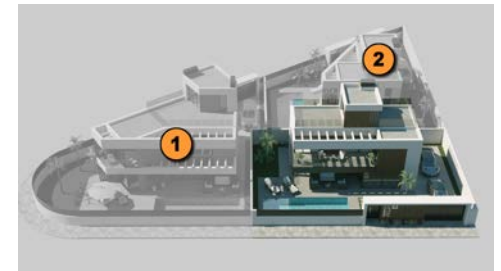


ZAFIRO
VILLA

**4 BEDROOM VILLA, WITH PANORAMIC VIEWS, POOL
& 320 m² PLOT IN THE BEST AREA OF TORREVIEJA**

TORREBLANCA VILLAS

Villa: "ESMERALDA"



Plot
320 m²



Villa
200 m²



Bedroom
x 4



Bathroom
x 3



Pool 9x3 m
27 m²



Efficiency
A+



Clima &
Heating



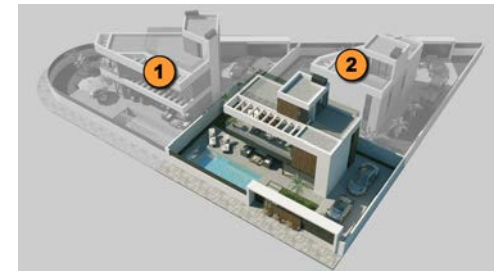
High
quality



* The promotor reserves the rights to change any elements for items with similar or higher value **images without contractual value
*La promotora se reserva el derecho a variar cualquier elemento por otro similar o de mayor valor **imagenes sin valor contractual

TORREBLANCA VILLAS

Villa: "ESMERALDA"



Plot
320 m²



Villa
200 m²



Bedroom
x 4



Bathroom
x 3



Pool 9x3 m
27 m²



Efficiency
A+



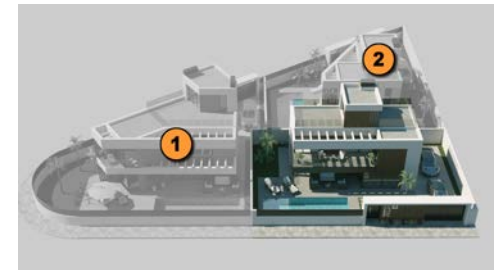
Clima &
Heating



High
quality



* The promotor reserves the rights to change any elements for items with similar or higher value **images without contractual value
*La promotor se reserva el derecho a variar cualquier elemento por otro similar o de mayor valor **imagenes sin valor contractual



Plot
320 m²



Villa
200 m²



Bedroom
x 4



Bathroom
x 3



Pool 9x3 m
27 m²



Efficiency
A+



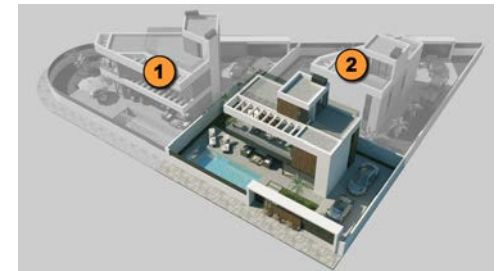
Clima &
Heating



High
quality

TORREBLANCA VILLAS

Villa: "ESMERALDA"



Plot
320 m²



Villa
200 m²



Bedroom
x 4



Bathroom
x 3



Pool 9x3 m
27 m²



Efficiency
A+



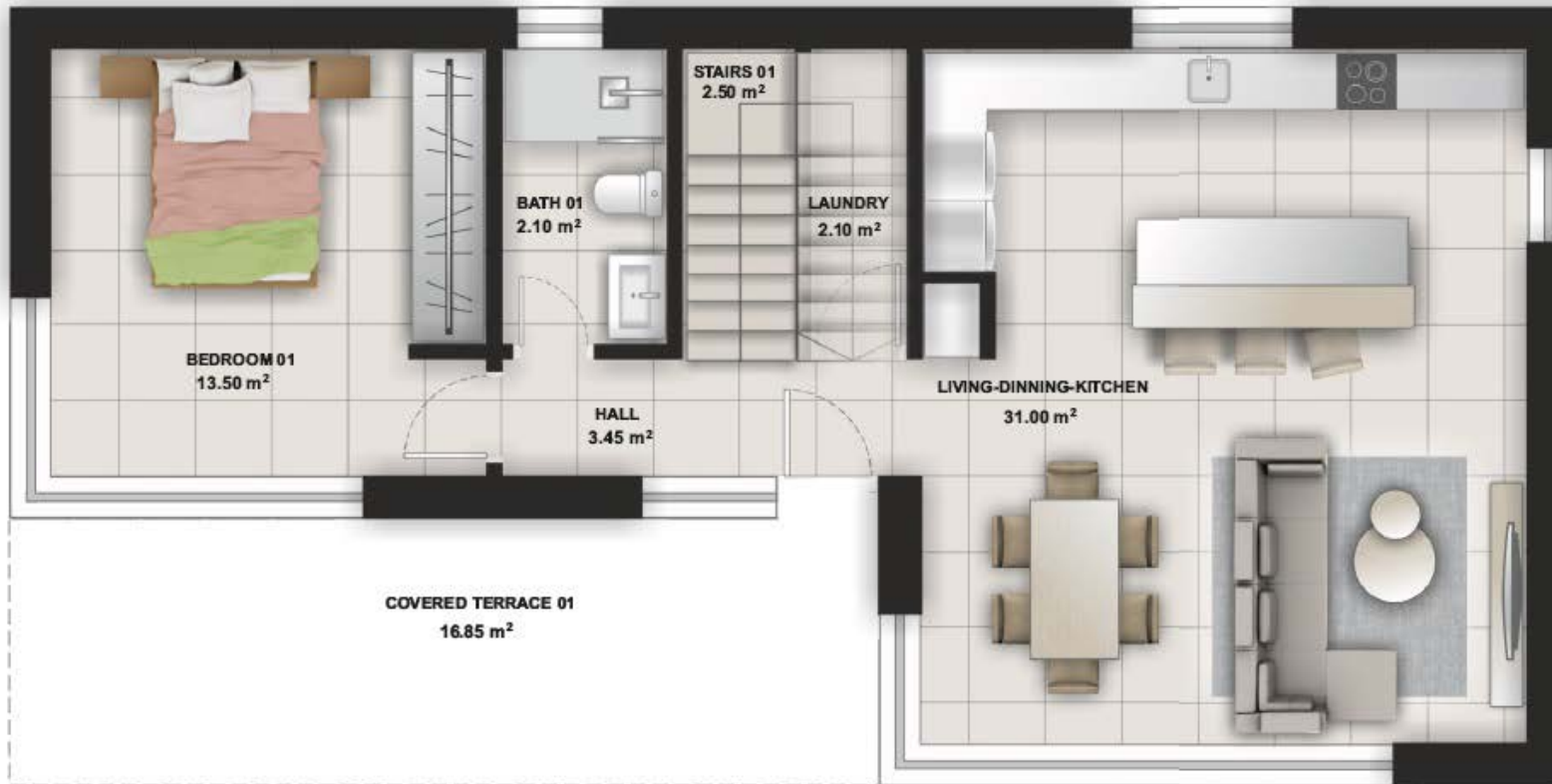
Clima &
Heating



High
quality



* The promotor reserves the rights to change any elements for items with similar or higher value **images without contractual value
*La promotora se reserva el derecho a variar cualquier elemento por otro similar o de mayor valor **imagenes sin valor contractual



GROUND FLOOR

SURFACES VILLA "ZAFIRO"

GROUND FLOOR	INTERIOR	EXTERIOR
HALL	3.45 m ²	-
LIVING-DINNING-KITCHEN	31.00 m ²	-
BEDROOM 01	13.50 m ²	-
BATH 01	2.10 m ²	-
LAUNDRY	2.10 m ²	-
STAIRS 01	2.50 m ²	-
COVERED TERRACE 01	-	16.85 m ²
TOTAL INTERIOR GROUND FLOOR	56.05 m²	
TOTAL EXTERIOR GROUND FLOOR		16.85 m²

TOP FLOOR	INTERIOR	EXTERIOR
CORRIDOR TOP FLOOR	3.50 m ²	-
BEDROOM 02	13.50 m ²	-
BEDROOM 03	9.00 m ²	-
BEDROOM 04	12.10 m ²	-
BATH 02	3.50 m ²	-
BATH 03	3.75 m ²	-
STAIRS 02	5.00 m ²	-
TERRACE PERGOLA 01	-	19.00 m ²
TOTAL INTERIOR TOP FLOOR	50.35 m²	
TOTAL EXTERIOR TOP FLOOR		19.00 m²

ROOF FLOOR	INTERIOR	EXTERIOR
STAIRS 03	6.90 m ²	-
FACILITY ROOM	2.70 m ²	-
SOLARIUM TERRACE 01	-	20.50 m ²
SOLARIUM TERRACE 02	-	17.00 m ²
TERRACE NOT TRANSITABLE	-	10.65 m ²
TOTAL INTERIOR ROOF FLOOR	9.60 m²	
TOTAL EXTERIOR ROOF FLOOR		48.15 m²

TOTAL INTERIOR SURFACE	116.00 m²
TOTAL EXTERIOR SURFACE	84.00 m²
TOTAL BUILT SURFACE	141.00 m²
TOTAL SURFACES	200.00 m²



Plot
320 m²



Villa
200 m²



Bedroom
x 4



Bathroom
x 3



Pool 9x3 m
27 m²



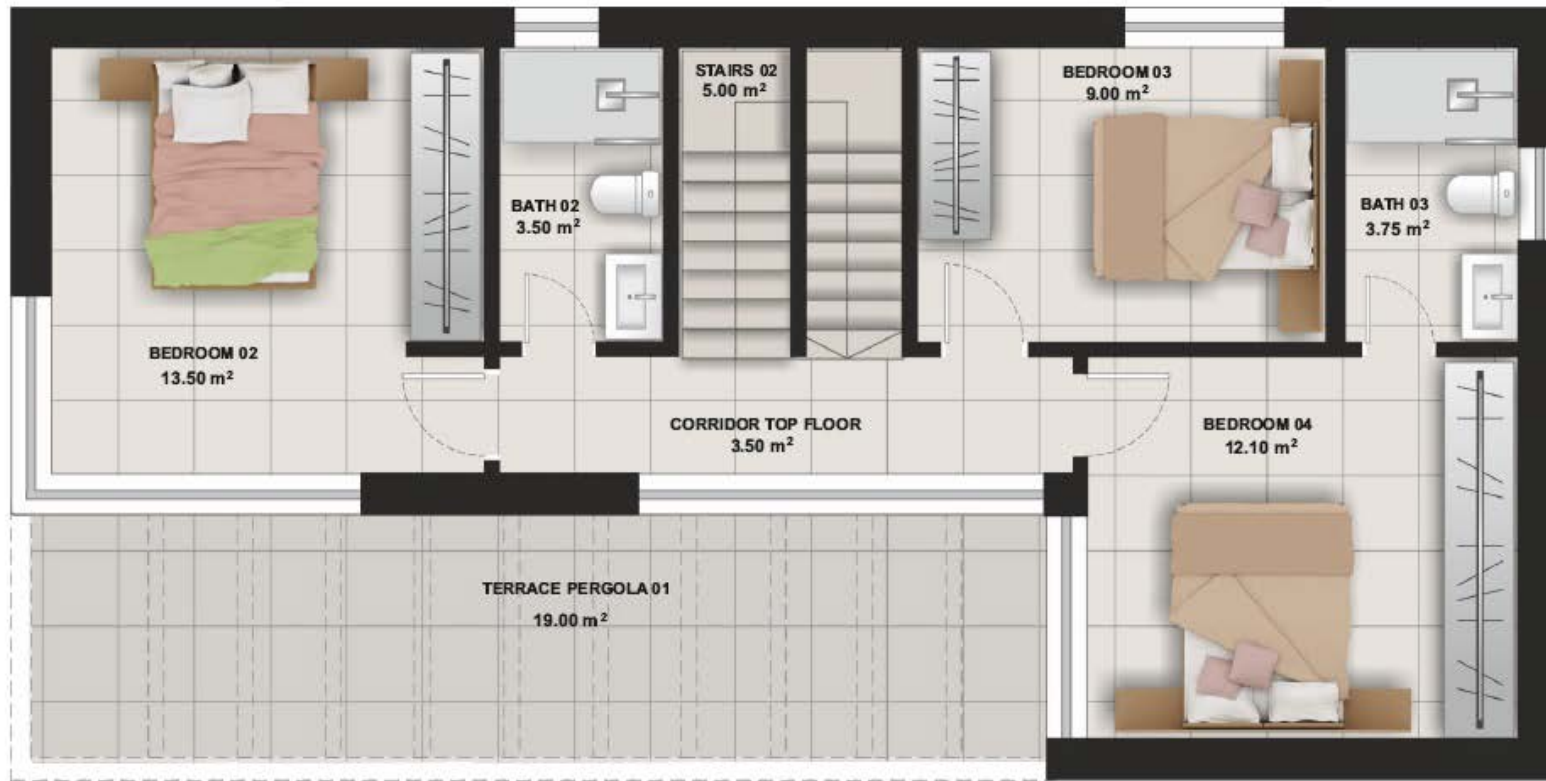
Efficiency
A+



Clima &
Heating



High
quality



TOP FLOOR

SURFACES VILLA "ZAFIRO"

GROUND FLOOR	INTERIOR	EXTERIOR
HALL	3.45 m ²	-
LIVING-DINNING-KITCHEN	31.00 m ²	-
BEDROOM 01	13.50 m ²	-
BATH 01	2.10 m ²	-
LAUNDRY	2.10 m ²	-
STAIRS 01	2.50 m ²	-
COVERED TERRACE 01	-	16.85 m ²
TOTAL INTERIOR GROUND FLOOR	56.05 m²	
TOTAL EXTERIOR GROUND FLOOR		16.85 m²

TOP FLOOR	INTERIOR	EXTERIOR
CORRIDOR TOP FLOOR	3.50 m ²	-
BEDROOM 02	13.50 m ²	-
BEDROOM 03	9.00 m ²	-
BEDROOM 04	12.10 m ²	-
BATH 02	3.50 m ²	-
BATH 03	3.75 m ²	-
STAIRS 02	5.00 m ²	-
TERRACE PERGOLA 01	-	19.00 m ²
TOTAL INTERIOR TOP FLOOR	50.35 m²	
TOTAL EXTERIOR TOP FLOOR		19.00 m²

ROOF FLOOR	INTERIOR	EXTERIOR
STAIRS 03	6.90 m ²	-
FACILITY ROOM	2.70 m ²	-
SOLARIUM TERRACE 01	-	20.50 m ²
SOLARIUM TERRACE 02	-	17.00 m ²
TERRACE NOT TRANSITABLE	-	10.65 m ²
TOTAL INTERIOR ROOF FLOOR	9.60 m²	
TOTAL EXTERIOR ROOF FLOOR		48.15 m²

TOTAL INTERIOR SURFACE	116.00 m²
TOTAL EXTERIOR SURFACE	84.00 m²
TOTAL BUILT SURFACE	141.00 m²
TOTAL SURFACES	200.00 m²



Plot
320 m²



Villa
200 m²



Bedroom
x 4



Bathroom
x 3



Pool 9x3 m
27 m²



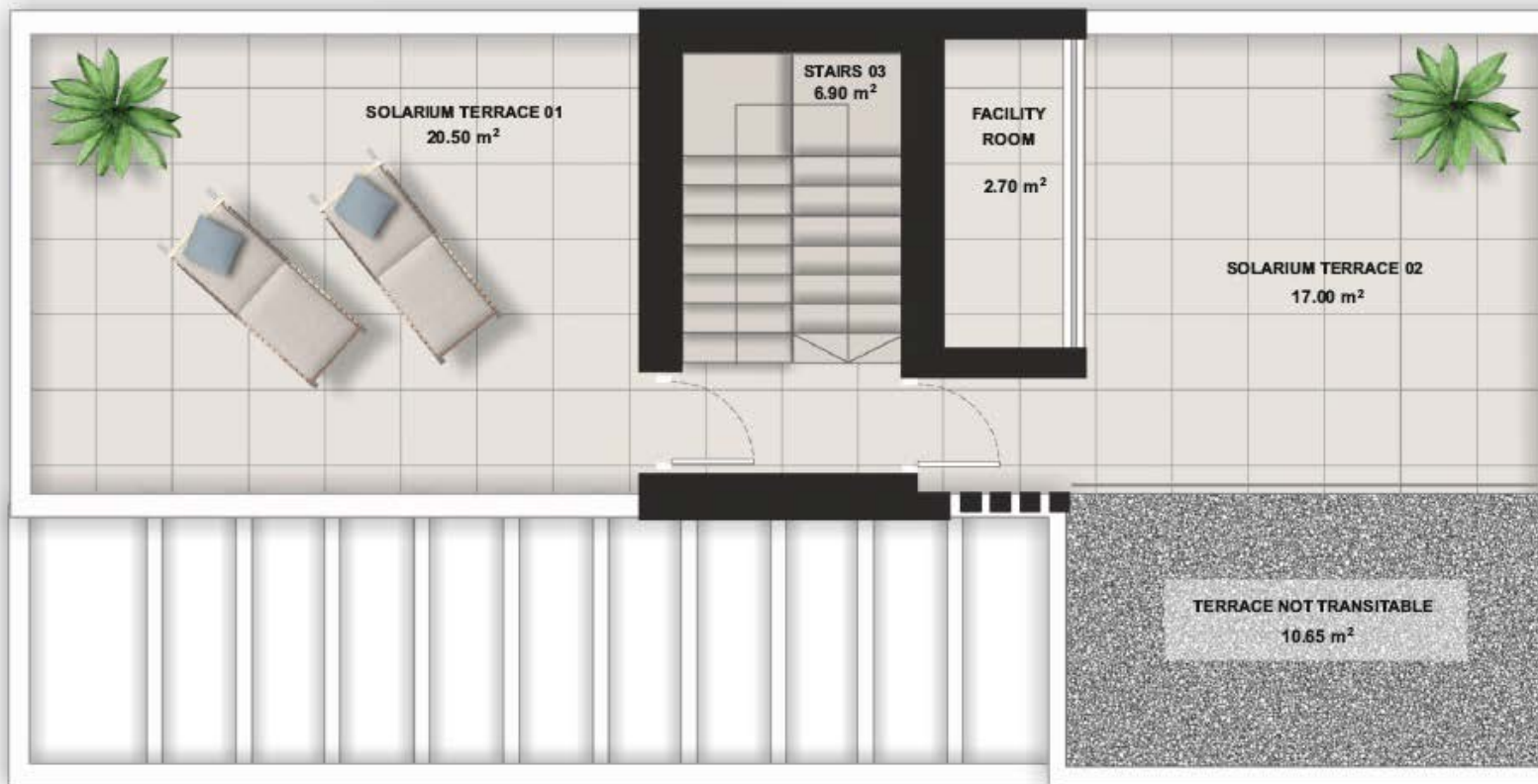
Efficiency
A+



Clima &
Heating



High
quality



ROOF FLOOR

SURFACES VILLA "ZAFIRO"

GROUND FLOOR	INTERIOR	EXTERIOR
HALL	3.45 m ²	-
LIVING-DINNING-KITCHEN	31.00 m ²	-
BEDROOM 01	13.50 m ²	-
BATH 01	2.10 m ²	-
LAUNDRY	2.10 m ²	-
STAIRS 01	2.50 m ²	-
COVERED TERRACE 01	-	16.85 m ²
TOTAL INTERIOR GROUND FLOOR	56.05 m²	
TOTAL EXTERIOR GROUND FLOOR		16.85 m²

TOP FLOOR	INTERIOR	EXTERIOR
CORRIDOR TOP FLOOR	3.50 m ²	-
BEDROOM 02	13.50 m ²	-
BEDROOM 03	9.00 m ²	-
BEDROOM 04	12.10 m ²	-
BATH 02	3.50 m ²	-
BATH 03	3.75 m ²	-
STAIRS 02	5.00 m ²	-
TERRACE PERGOLA 01	-	19.00 m ²
TOTAL INTERIOR TOP FLOOR	50.35 m²	
TOTAL EXTERIOR TOP FLOOR		19.00 m²

ROOF FLOOR	INTERIOR	EXTERIOR
STAIRS 03	6.90 m ²	-
FACILITY ROOM	2.70 m ²	-
SOLARIUM TERRACE 01	-	20.50 m ²
SOLARIUM TERRACE 02	-	17.00 m ²
TERRACE NOT TRANSITABLE	-	10.65 m ²
TOTAL INTERIOR ROOF FLOOR	9.60 m²	
TOTAL EXTERIOR ROOF FLOOR		48.15 m²

TOTAL INTERIOR SURFACE	116.00 m²
TOTAL EXTERIOR SURFACE	84.00 m²
TOTAL BUILT SURFACE	141.00 m²
TOTAL SURFACES	200.00 m²



Plot
320 m²



Villa
200 m²



Bedroom
x 4



Bathroom
x 3



Pool 9x3 m
27 m²



Efficiency
A+



Clima &
Heating



High
quality





