

Boils — Outpatient

MSEC reviewed and approved 11/20/13

Box 1:
High Risk Patients:
 - Diabetes
 - Immunosuppression
 - Peripheral vascular disease
 - Children <12 months
 - Abscess/cellulitis on lower extremity or hand (concern for palmar space infection)
Systemic symptoms:
 - Temp > 100.4
 - Tachycardia
 - Patient feels ill

PREVENTION

- Clean all steambath seating areas in the main steambath AND on the porch with a dilute bleach solution (1:10 dilution).
- Clean steambath frequently if many people are using it.
- Sit on a barrier that is cleaned with bleach after every use.
- Do not take steam baths when skin infection present.

Box 2: Empiric Oral Antibiotic Therapy

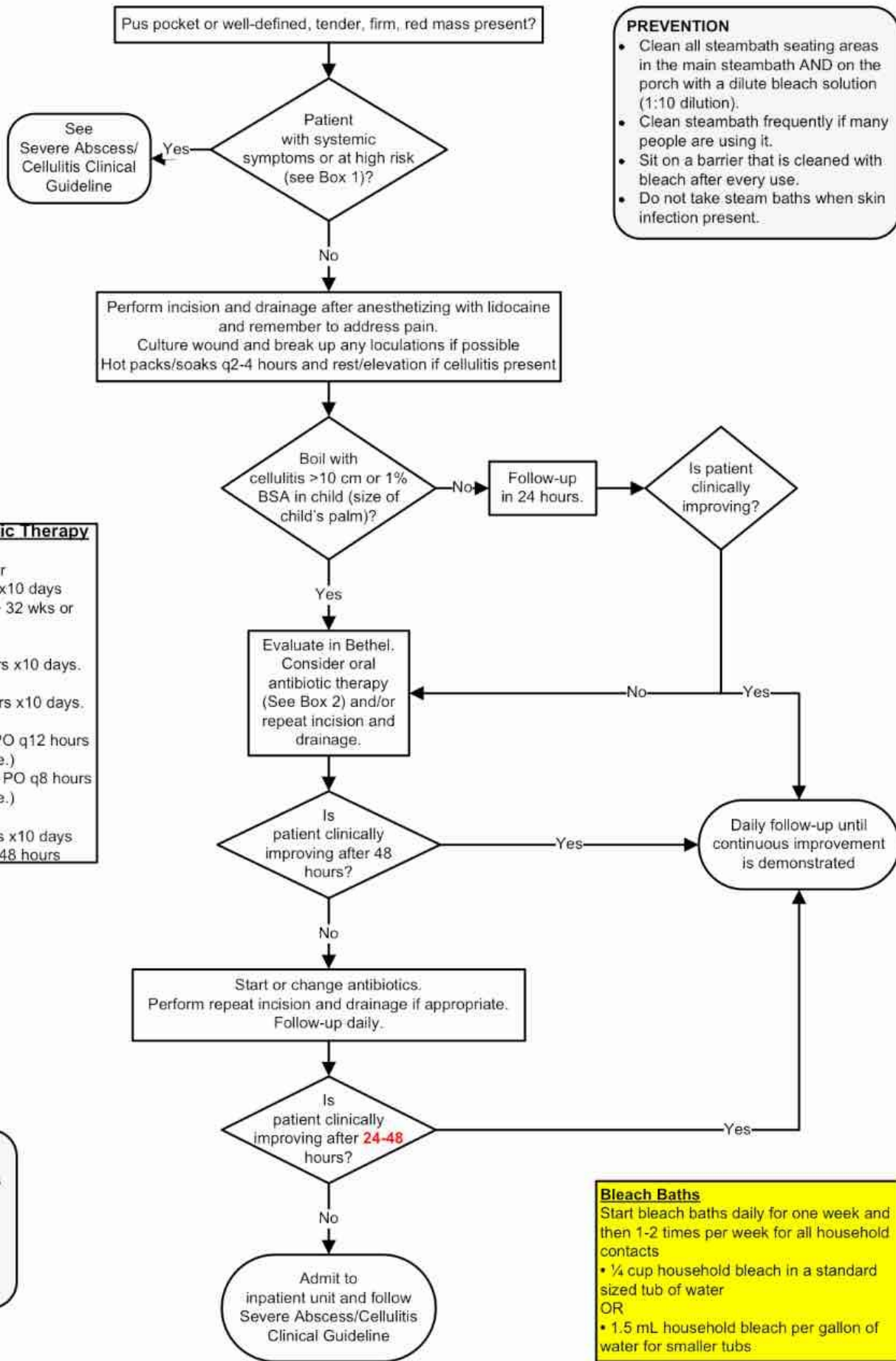
Adults:
 • Septra DS 2 tab PO q12 hours or
 • Septra SS 4 tabs PO q12 hours x10 days
 (Do not give to pregnant women > 32 wks or <9 weeks)

Children:
 • Septra 5-7.5 mg/kg PO q12 hours x10 days.

Adult with sulfa allergy:
 • Doxycycline 100mg PO q12 hours x10 days.

Children with sulfa allergy:
 • ≥8 years: Doxycycline 2 mg/kg PO q12 hours x10 days. (Max dose 100 mg/dose.)
 • <8 years: Clindamycin 10 mg/kg PO q8 hours x10 days. (Max dose 300 mg/dose.)

Pregnant Women:
 • Clindamycin 300mg PO q8 hours x10 days.
 Consult HROB if not improving in 48 hours



This guideline is designed for general use for most patients but may need to be adapted to meet the special needs of a specific patient as determined by the patient's provider

Bleach Baths
 Start bleach baths daily for one week and then 1-2 times per week for all household contacts

- ¼ cup household bleach in a standard sized tub of water
- OR
- 1.5 mL household bleach per gallon of water for smaller tubs