





Assembly overview.....	2
1. Frame inspection.....	3
2. Headset installation.....	4
3. Seatpost installation.....	5
4. Saddle adjustment.....	6-7
5. Parts listing.....	8-9

For the warranty to be valid, the bicycle must be fully assembled by an authorized Argon 18 dealer. High-end components, particularly carbon parts, need extra care when assembled. Those components must be installed using a calibrated torque wrench to make sure every bolt is at the right torque setting to prevent damage.

No more than 30mm of spacer can be placed between the stem and the top cap of the 3D system. And the use of more than 5mm spacer on top of the stem could void the efficiency of the compressor. These practices will automatically cancel any warranty claim against the manufacturer.



1. Frame inspection



2. Headset installation



3. Seatpost installation



4. Saddle adjustment



5. Parts listing

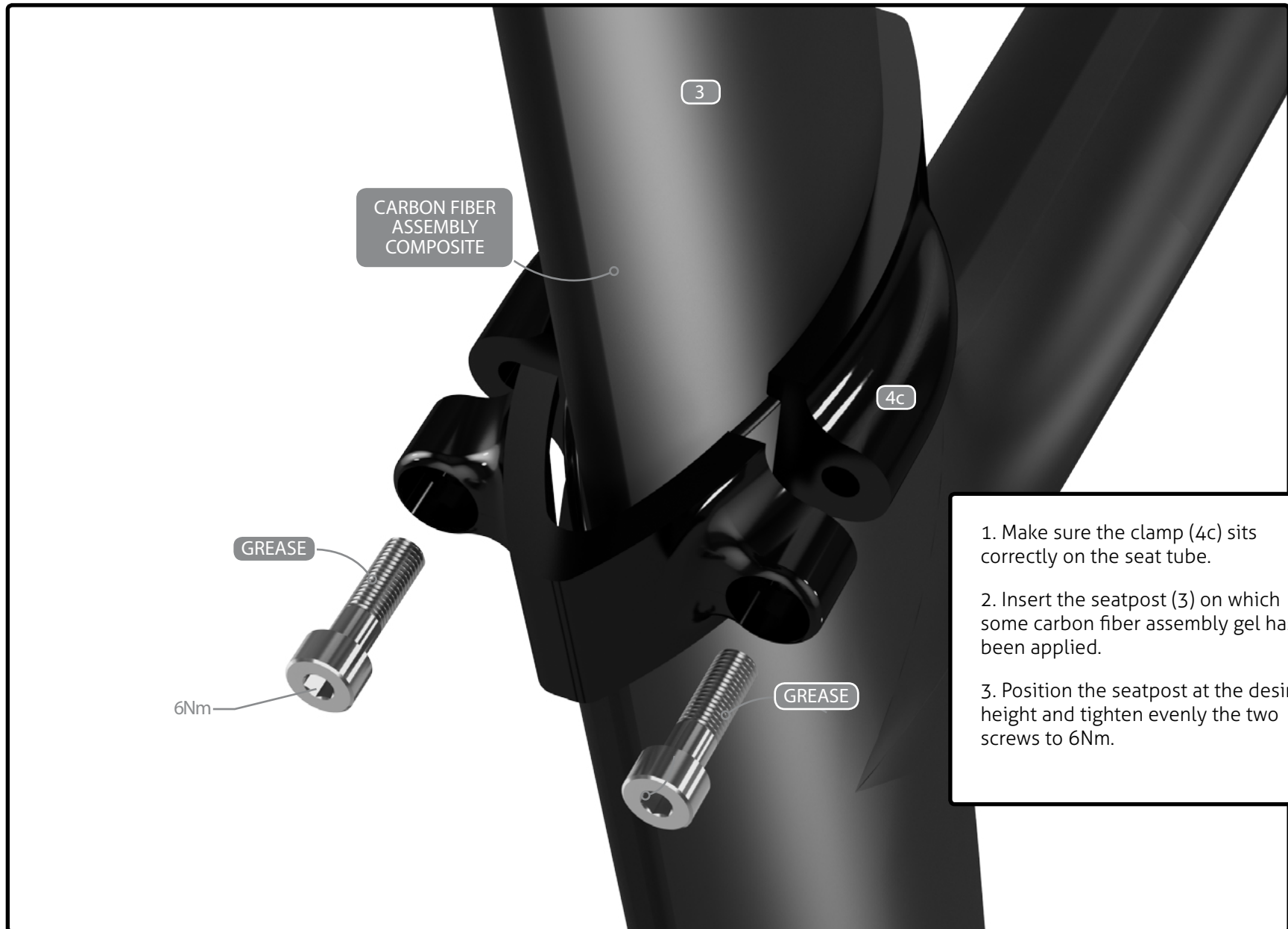


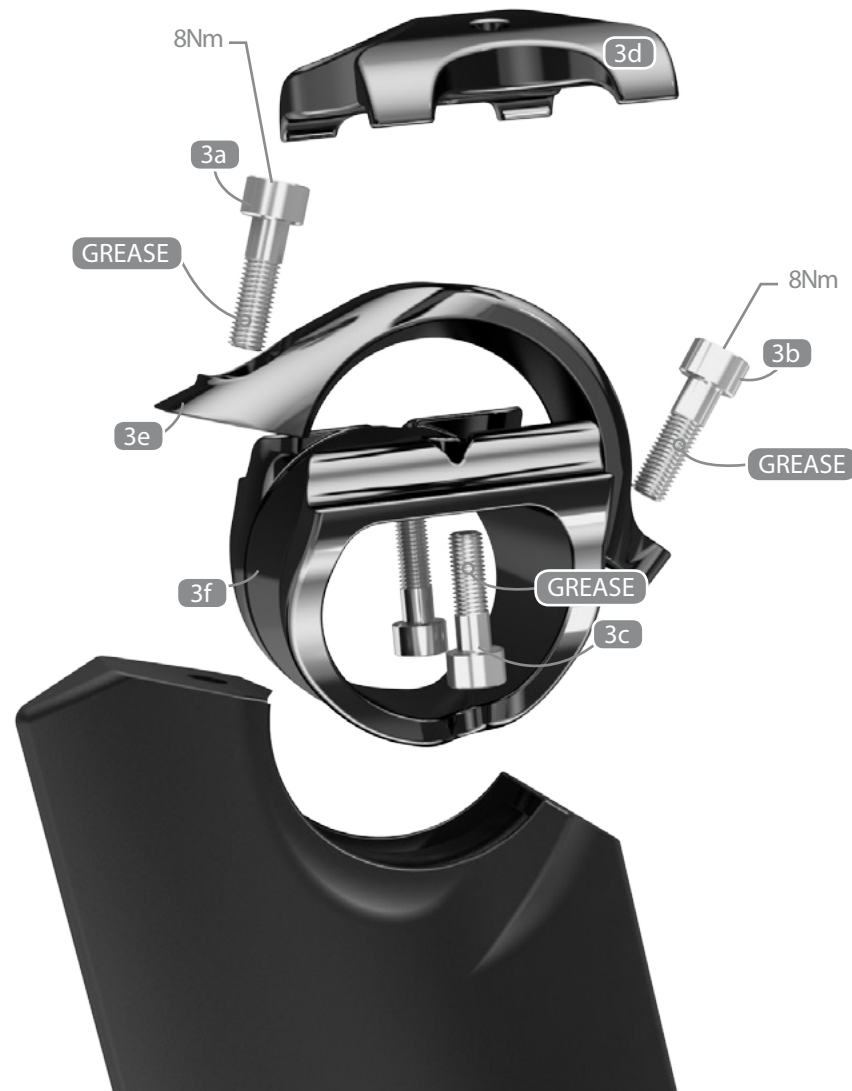
When assembling a new frame, be sure to check if the following parts are assembled correctly.

Parts installed on the frame		Description	Screw type	Torque Nm	Detail
1	Drop out insert with screws	Screw (6)	3mm	4Nm	Loctite
2	Seat clamp	Screw (1)	4mm	3Nm	Grease



Install the 3D headset (5) according to the pressfit assembly guide. You can choose from 3 different heights: 25mm, 15mm or 0mm.





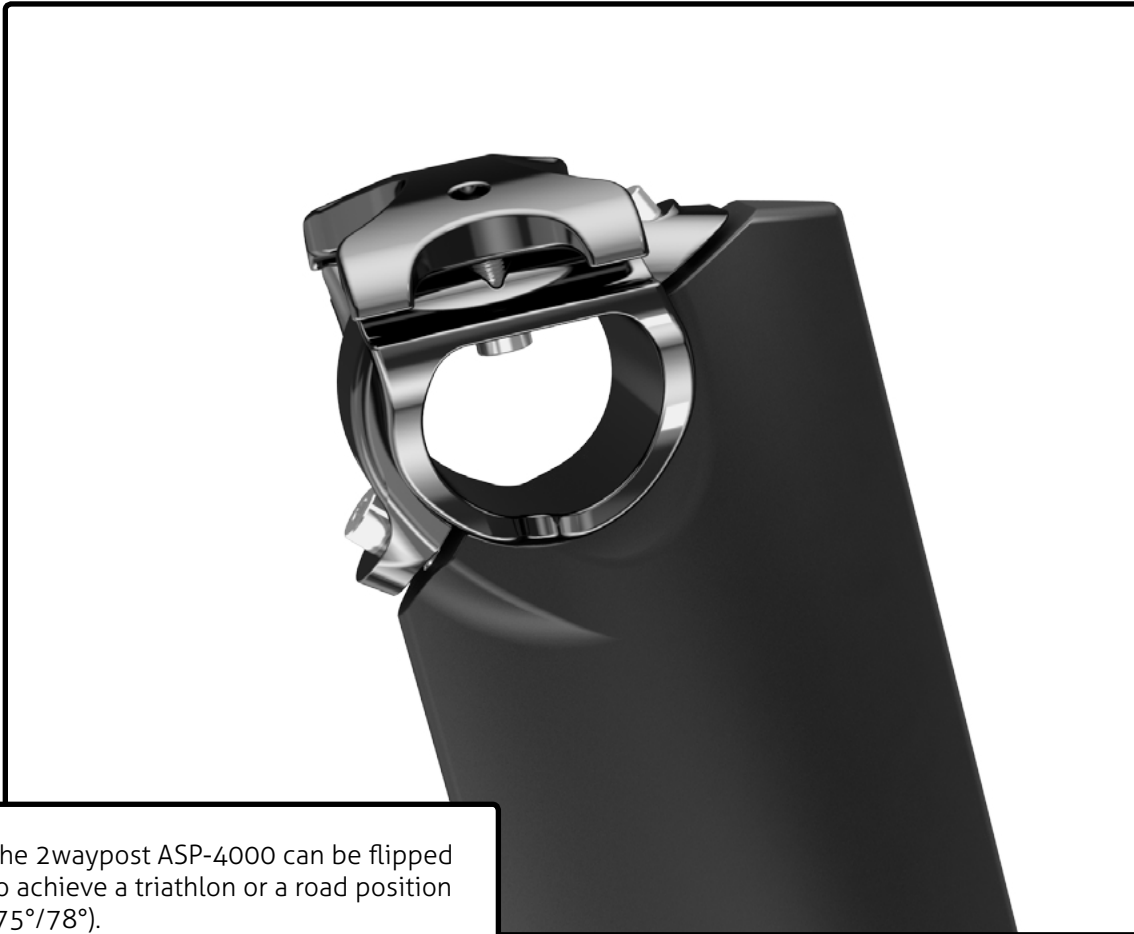
1. Install the saddle on the rocker (3f) and slightly tighten the rail clamp (3d) using a ball end hex key.

2. Tighten the upper screw of the rocker clamp (3a) by keeping a space of 2 to 3mm between the aluminum and carbon parts.

3. Adjust the angle of the saddle and tighten the lower bolt of the rocker clamp (3b).

4. Adjust the saddle offset and finalize the tightening of the rail clamp (3c).





The 2waypost ASP-4000 can be flipped to achieve a triathlon or a road position (75°/78°).

The seat clamp offset can be set by flipping the rail clamp (3d) and the rocker (3f).

Road : -10mm to -15mm

Tri : +10mm to 15mm





No.	Name	A18 SKU#	Qty
# Frameset Parts			
1	Electron Pro frame		
2	Electron Pro fork	FK.ELECC.244A	1
# Seat post with the following parts assembled			
3	Electron Pro seat post (ASP-4500)	SP.ELECC.244A	1
3a	• Upper HexSocket screw (M6*20mm S) for rocker clamp		1
3b	• Lower HexSocket screw (M6*20mm S) for rocker clamp		1
3c	• HexSocket screws (M5*20mm S)		2
3d	• Top rail clamp		1
3e	• Rocker clamp		1
3f	• Rocker		1
3g	Clamp rail holder kit seatpost setback	37116	1
# Parts installed on the frame			
4a	Inserts for rear drop out with screws M4x7mmF - Model H	35984	1 set
4b	Chain adjustor for drop out	35987	1 set
4c	Seat clamp alloy polish black with screws M5x20mmS	37834	1
# Also included with the frameset - shipped separately			
5	Headset No. IS-2 6.5 + 3D with compressor TH-881-1	37859	1
6	3D headset tool	36165	1