





Overview of the assembly 2

1. Fork installation 3-4

2. Cable housing installation 5

3. Handlebar installation 6

4. Front brake installation 7-8

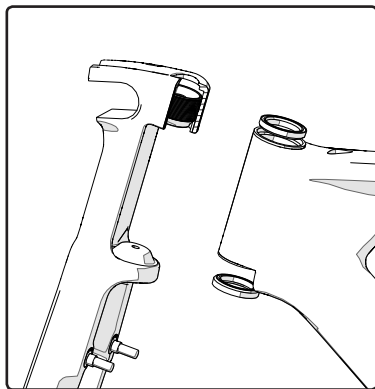
5. Rear brake installation 9-10

6. Handlebar assembly 11-14

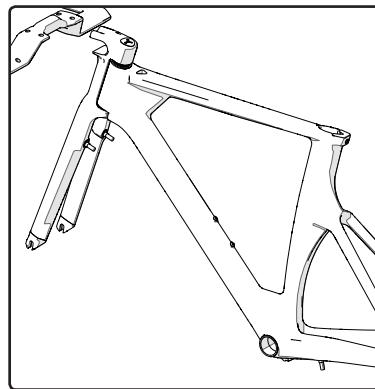
7. Seatpost installation 15

8. Saddle adjustment 16

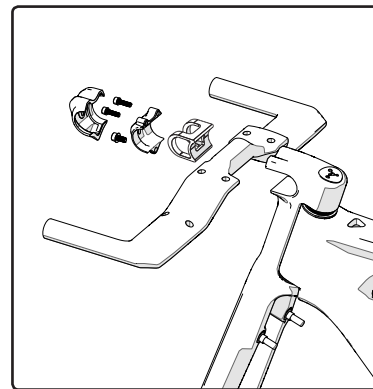
For the warranty to be valid, the bicycle must be fully assembled by an authorized Argon 18 dealer. High end components, particularly carbon parts, need extra care when assembled. Those components must be installed using a torque wrench to make sure every bolts are at the right torque setting to prevent damage.



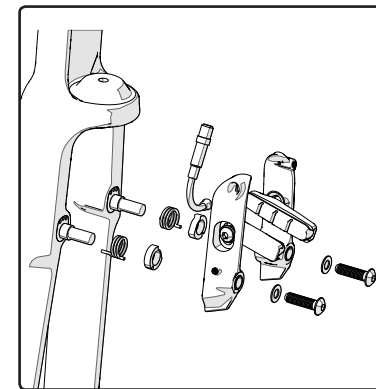
1. Fork installation



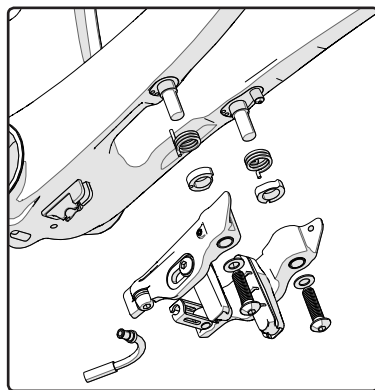
2. Cable housing installation
(IMPORTANT NOTICE: DON'T INSTALL THE BB BEFORE THE CABLE HOUSING INSTALLATION)



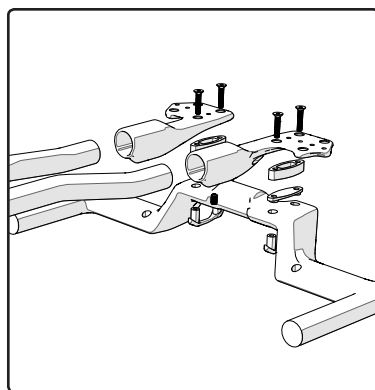
3. Handlebar installation



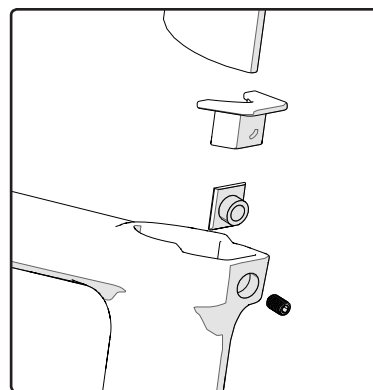
4. Front brake installation



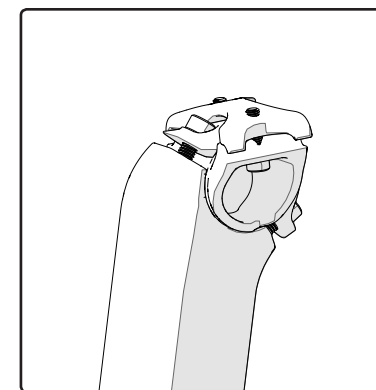
5. Rear brake installation



6. Handlebar assembly



7. Seatpost installation

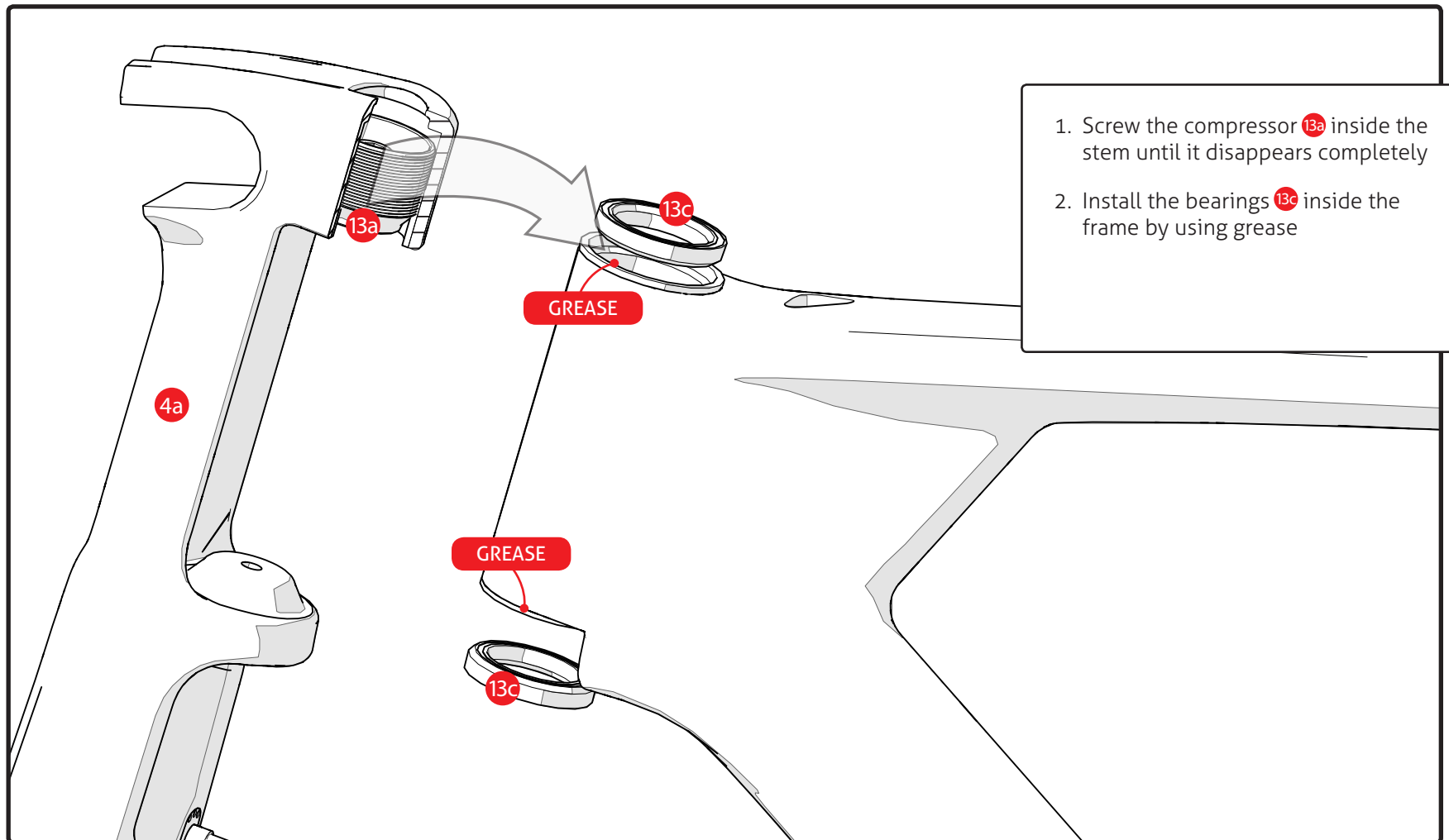


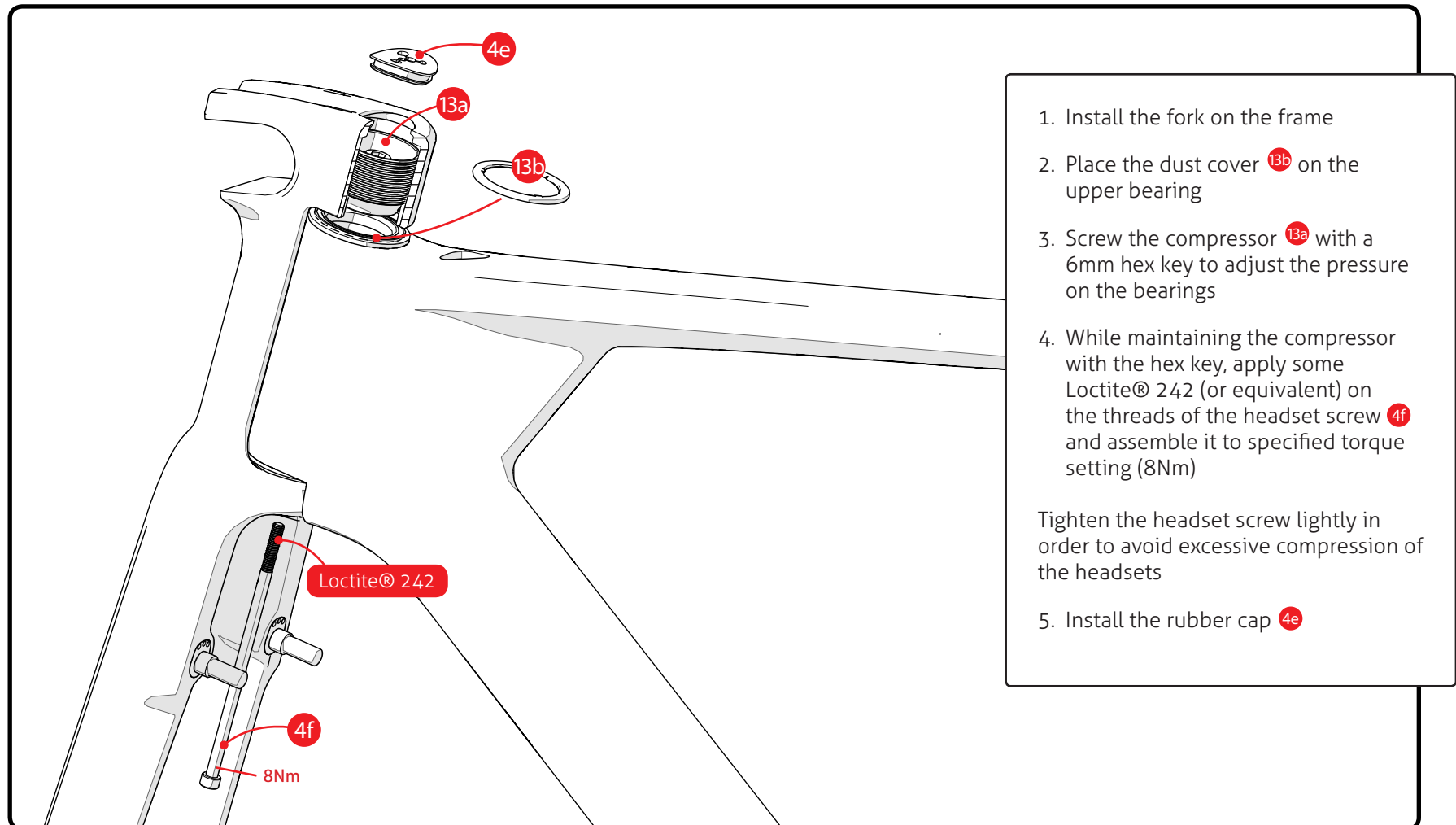
8. Saddle adjustment

1. Fork installation

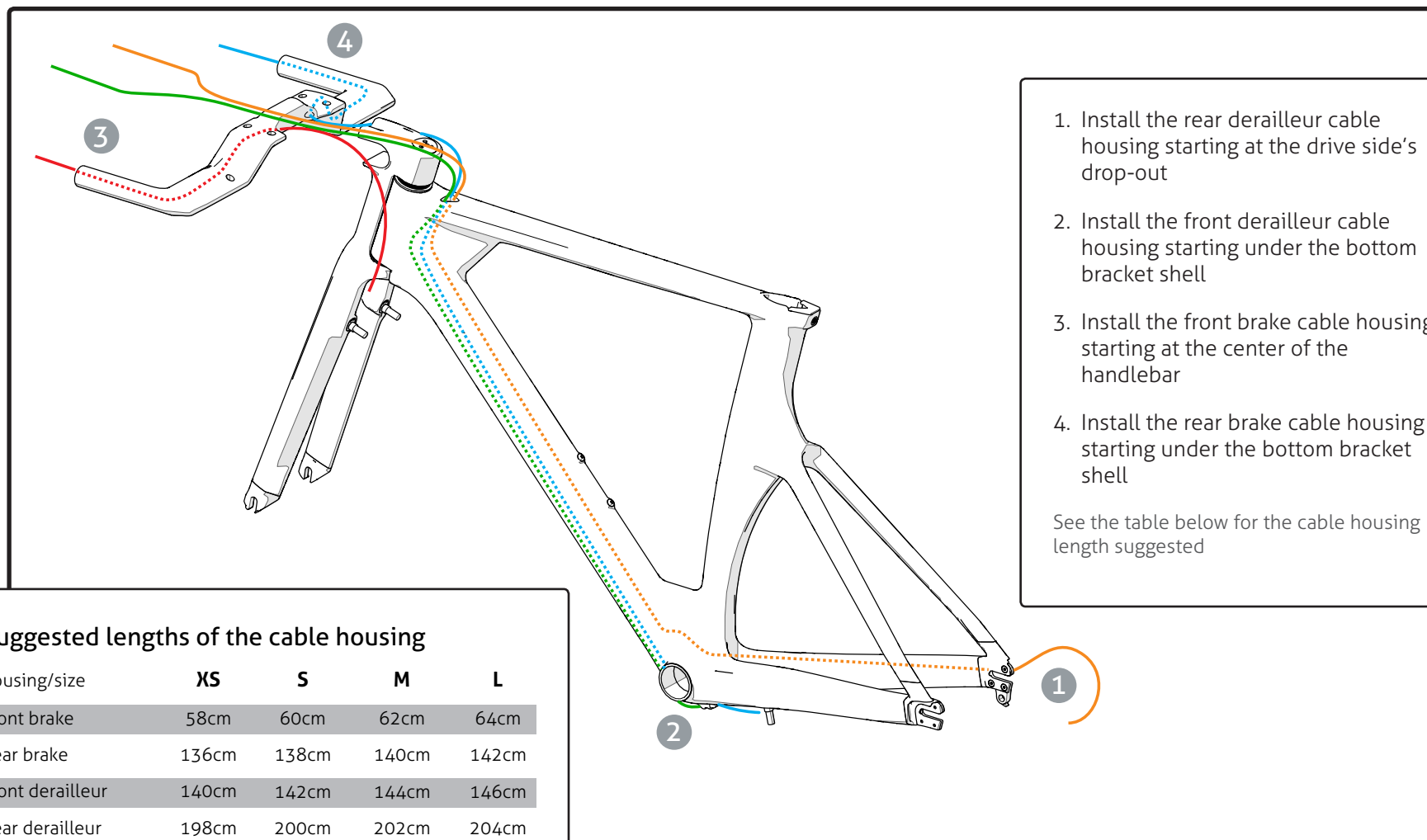


ARGON 18





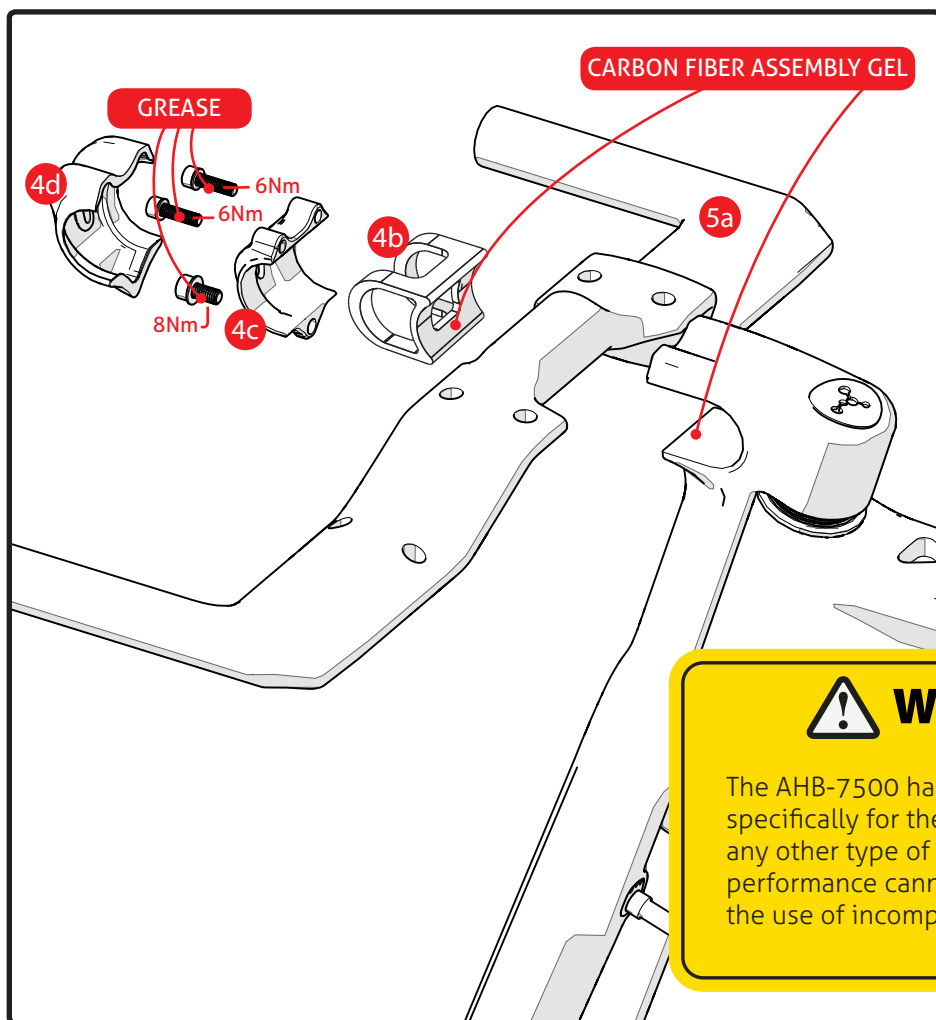
2. Cable housing installation



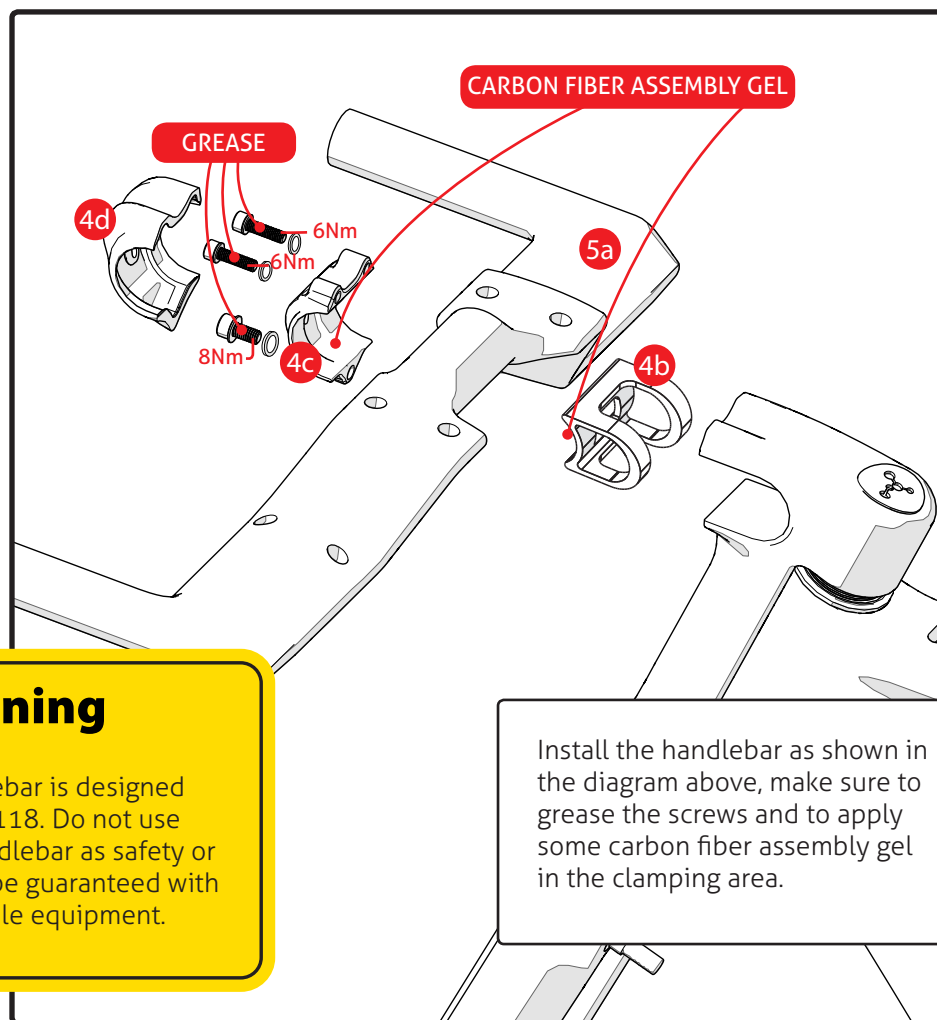
1. Install the rear derailleur cable housing starting at the drive side's drop-out
 2. Install the front derailleur cable housing starting under the bottom bracket shell
 3. Install the front brake cable housing starting at the center of the handlebar
 4. Install the rear brake cable housing starting under the bottom bracket shell
- See the table below for the cable housing length suggested

housing/size	XS	S	M	L
Front brake	58cm	60cm	62cm	64cm
Rear brake	136cm	138cm	140cm	142cm
Front derailleur	140cm	142cm	144cm	146cm
Rear derailleur	198cm	200cm	202cm	204cm

configuration for a 65 mm stem



configuration for a 95 mm stem

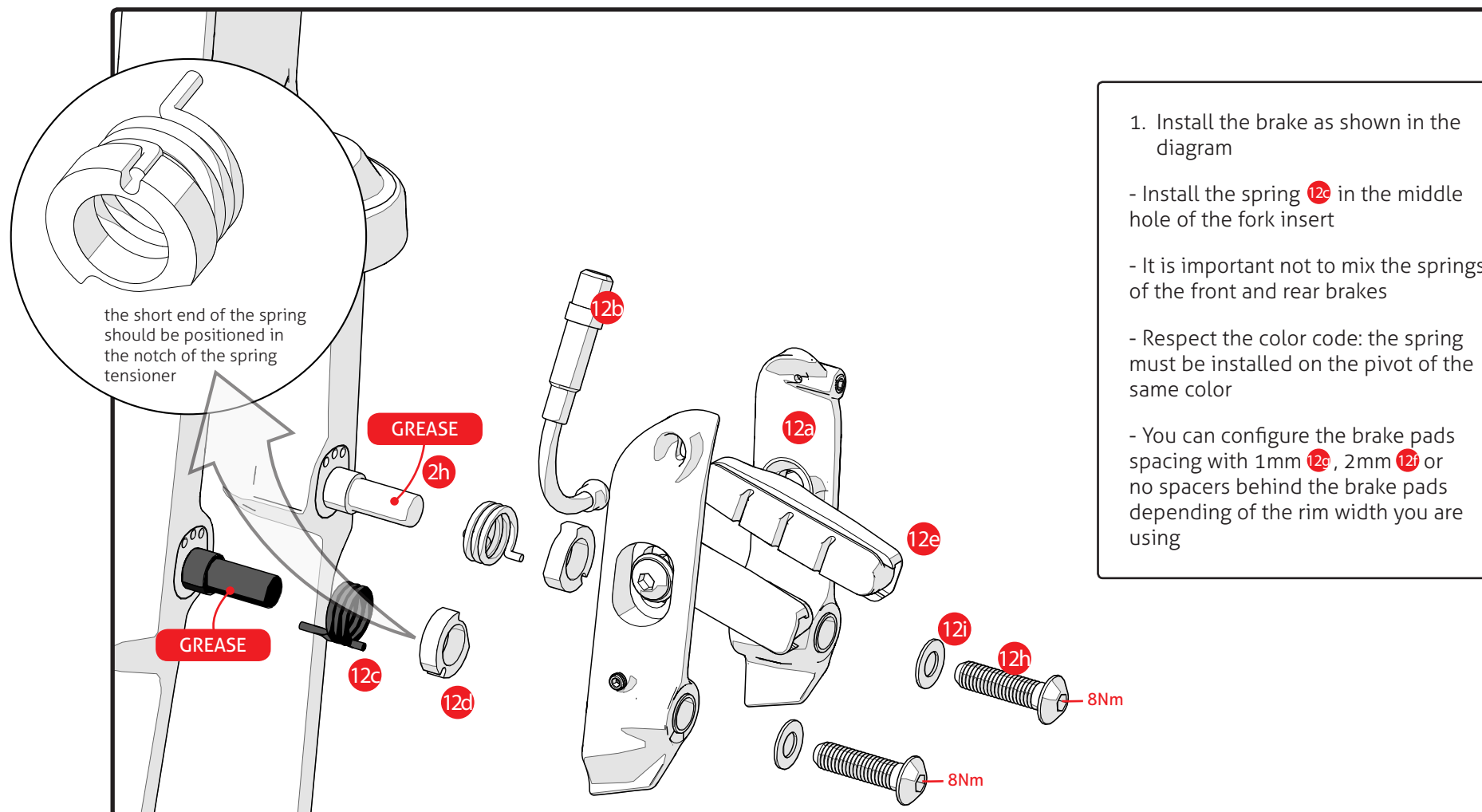


Warning

The AHB-7500 handlebar is designed specifically for the E-118. Do not use any other type of handlebar as safety or performance cannot be guaranteed with the use of incompatible equipment.

Install the handlebar as shown in the diagram above, make sure to grease the screws and to apply some carbon fiber assembly gel in the clamping area.

4. Front brake installation



1. Install the brake as shown in the diagram

- Install the spring 12c in the middle hole of the fork insert

- It is important not to mix the springs of the front and rear brakes

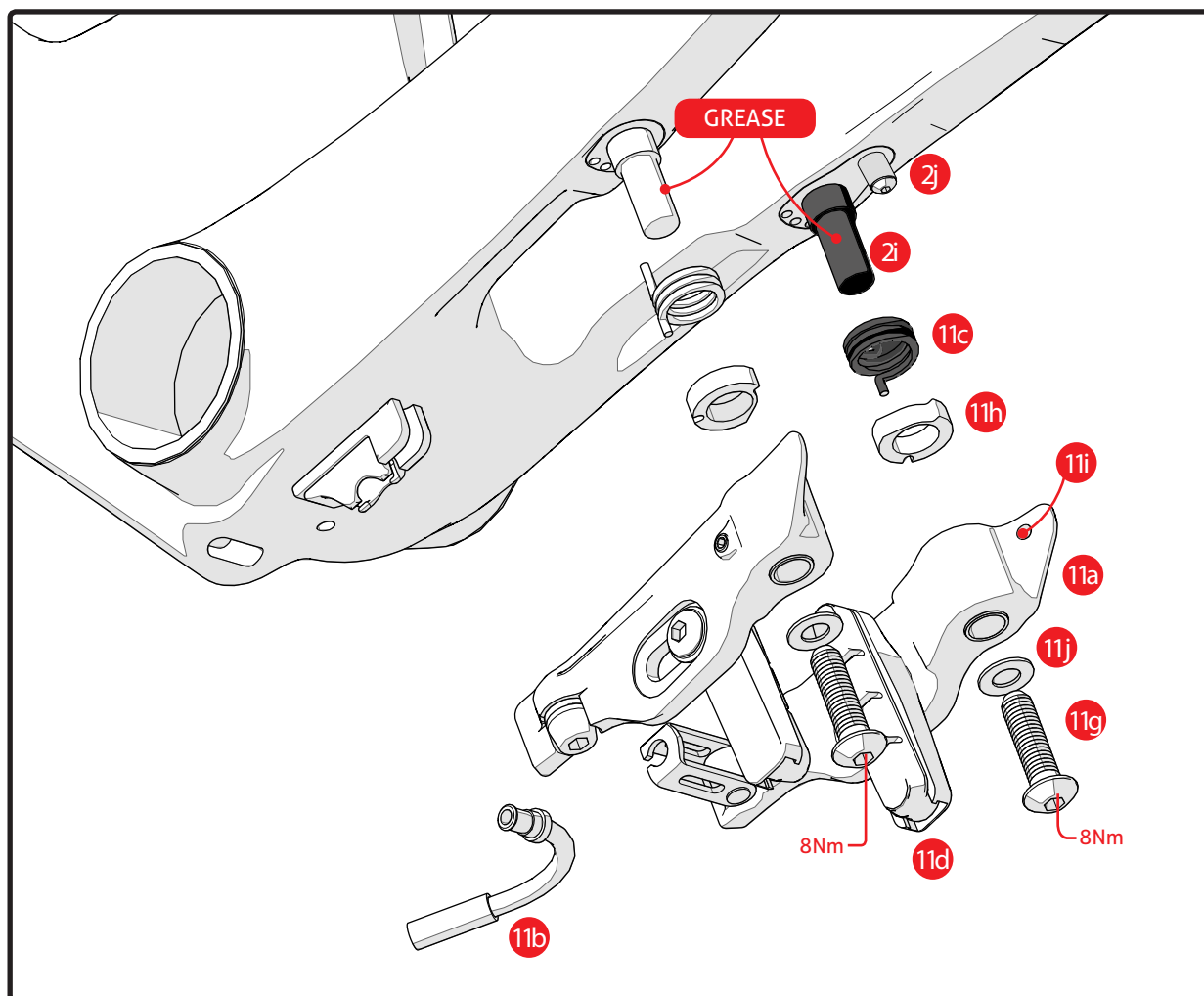
- Respect the color code: the spring must be installed on the pivot of the same color

- You can configure the brake pads spacing with 1mm 12g, 2mm 12f or no spacers behind the brake pads depending of the rim width you are using

5. Rear brake installation



ARGON 18



1. Remove the brake arm stopper **2j**
2. Install the brake as shown in the diagram
 - Install the spring **11c** in the middle hole of the fork insert
3. Install the brake arm stopper **2j** and adjust the set screw **11i** on the brake arm **11a** to avoid any contact between brake components and chain ring.

- It is important not to mix the springs of the front and rear brakes

- Respect the color code: the spring must be installed on the pivot of the same color

- You can configure the brake pads spacing with 1mm **11f**, 2mm **11e** or no spacers behind the brake pads depending of the rim width you are using

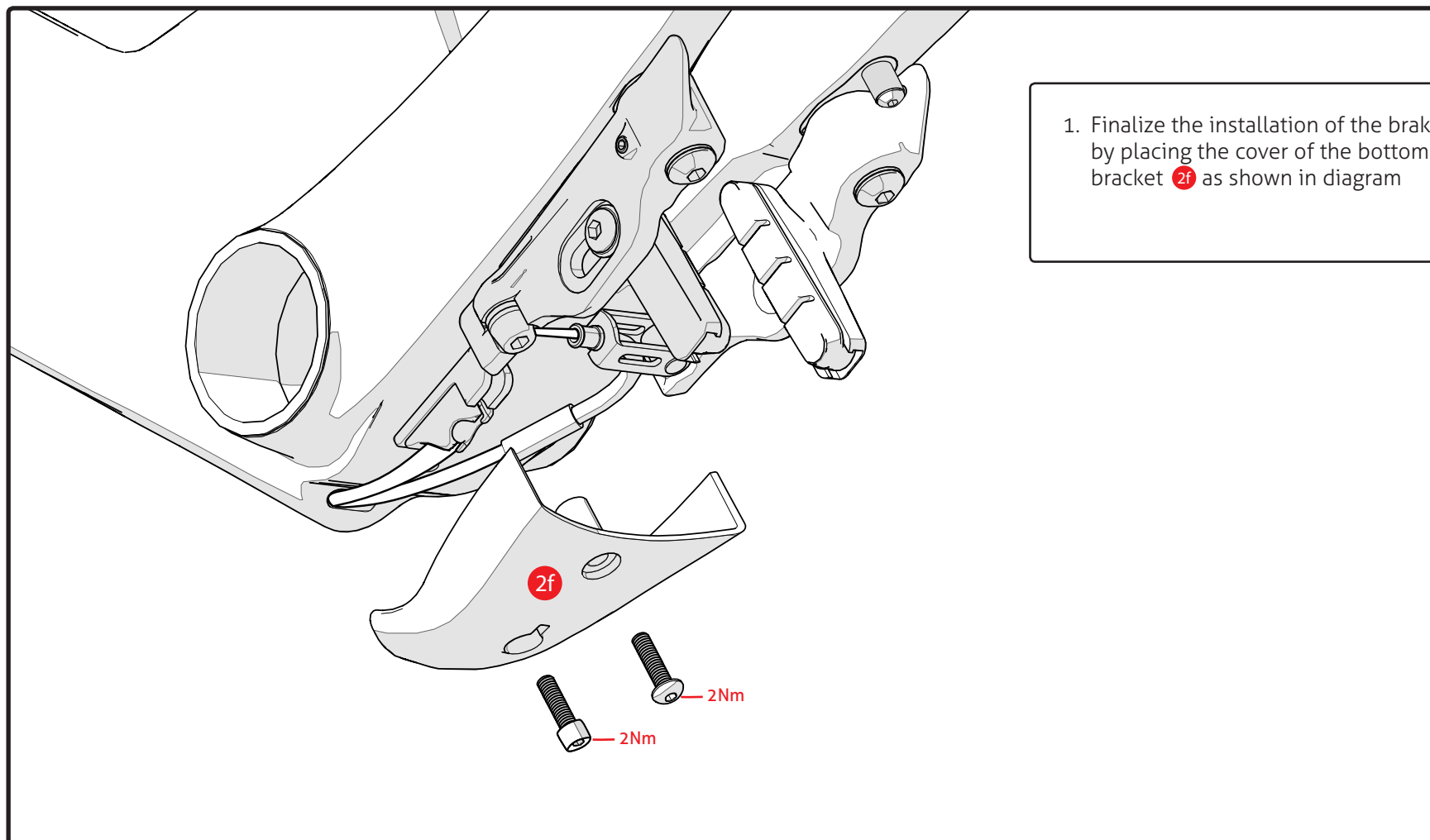
- A hex key supplied with the frame allows to adjust easily the brake when the crankset is in place



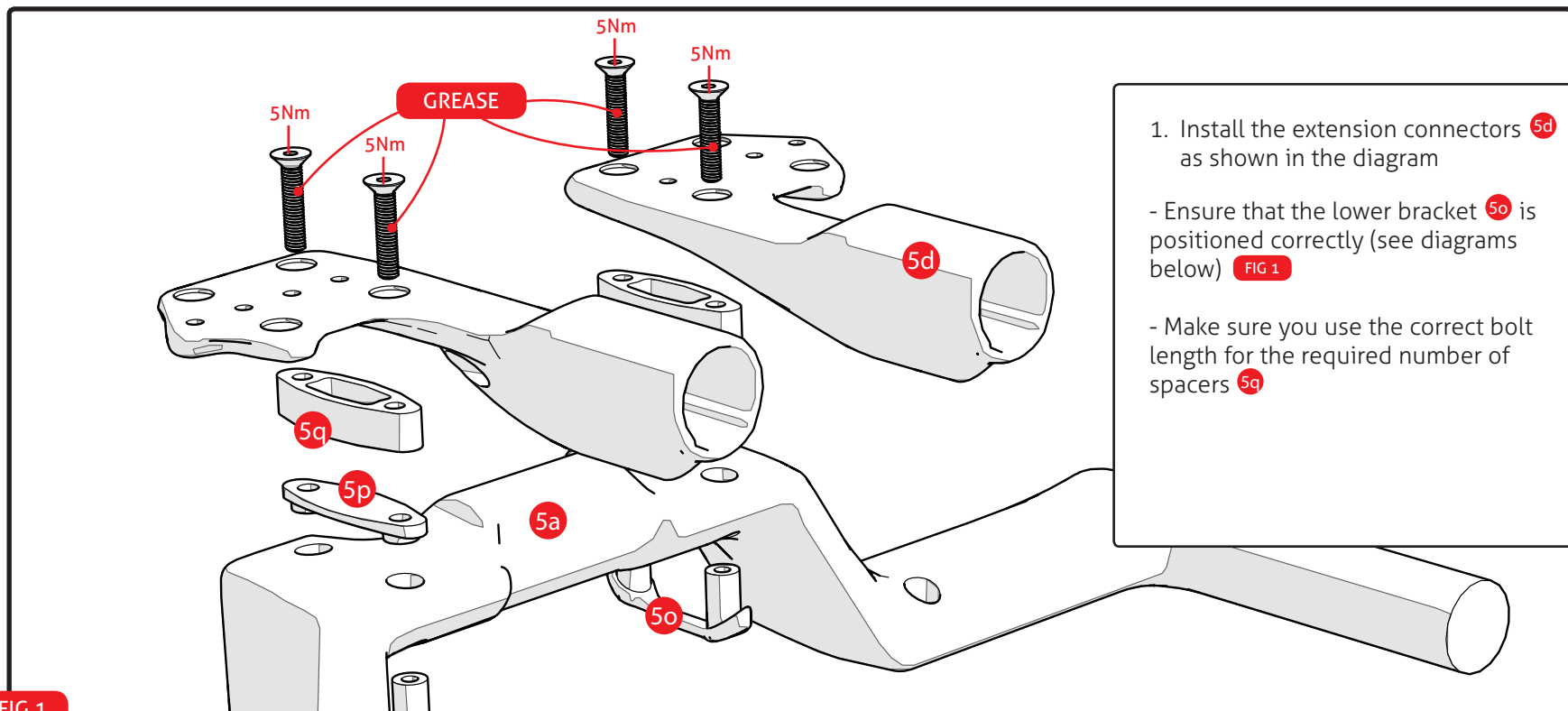
5. Rear brake installation



ARGON 18

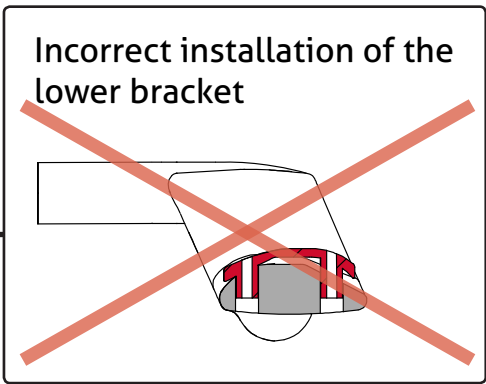
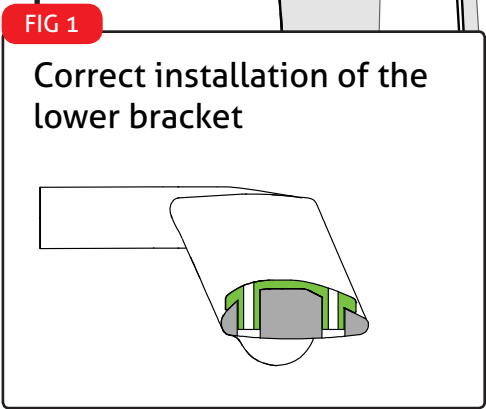


1. Finalize the installation of the brake by placing the cover of the bottom bracket **2f** as shown in diagram



1. Install the extension connectors **5d** as shown in the diagram

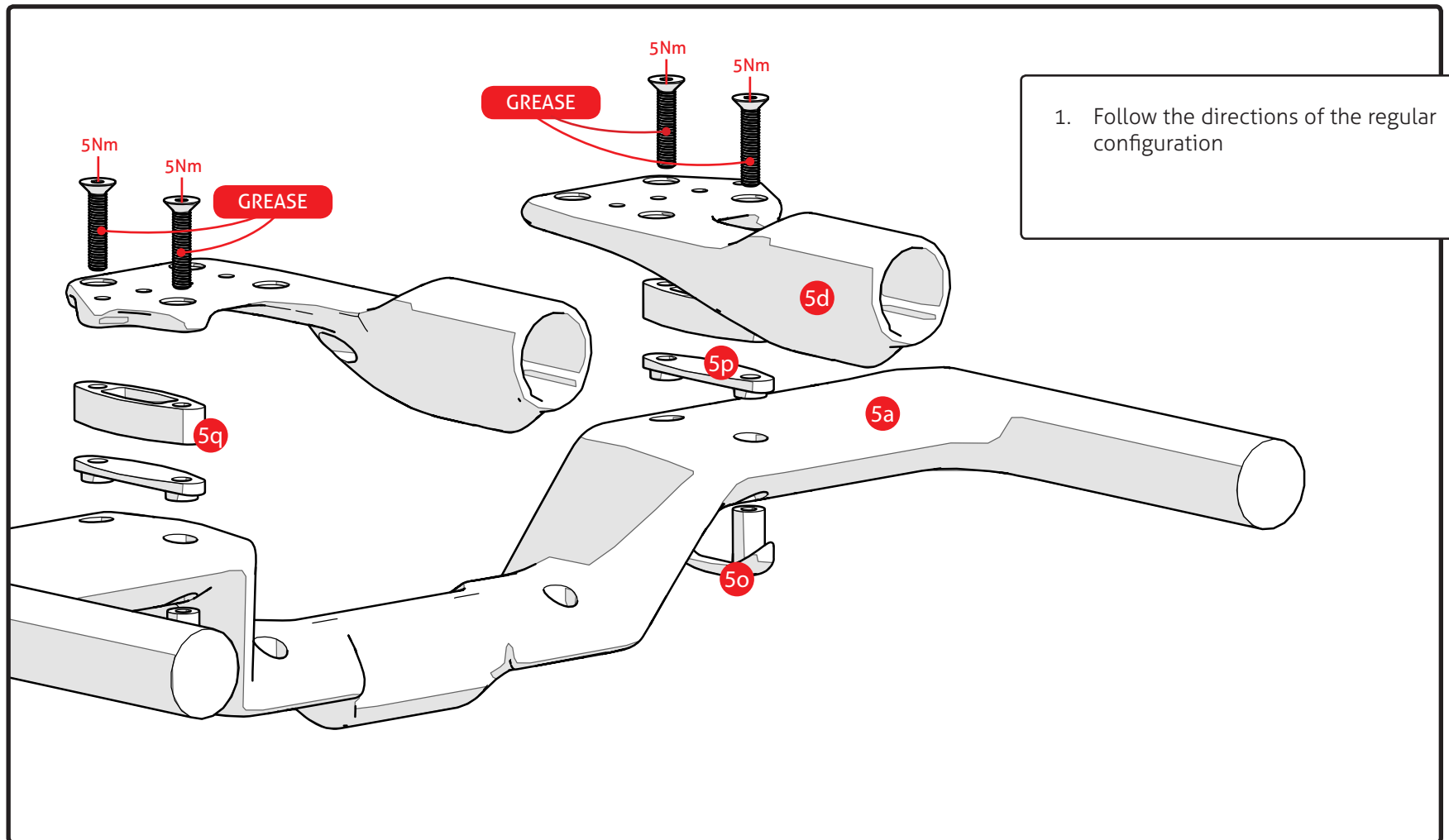
- Ensure that the lower bracket **5o** is positioned correctly (see diagrams below) **FIG 1**
- Make sure you use the correct bolt length for the required number of spacers **5q**

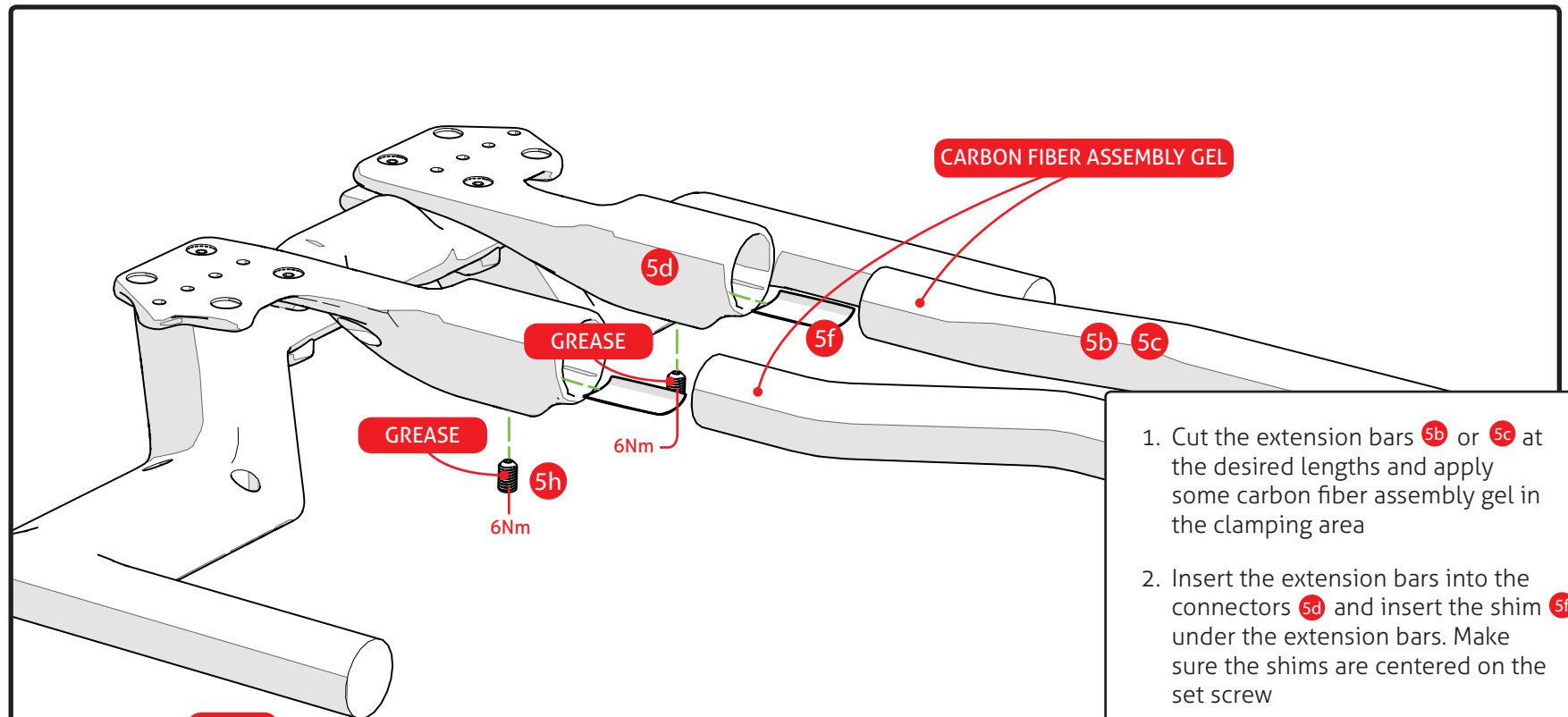


Lengths of extension holder screws

No of spacers	Length of the screws (mm)	Part number
0	25	5n
1	35	5m
2	45	5l
3	55	5k
4	65	5j
5	75	5i

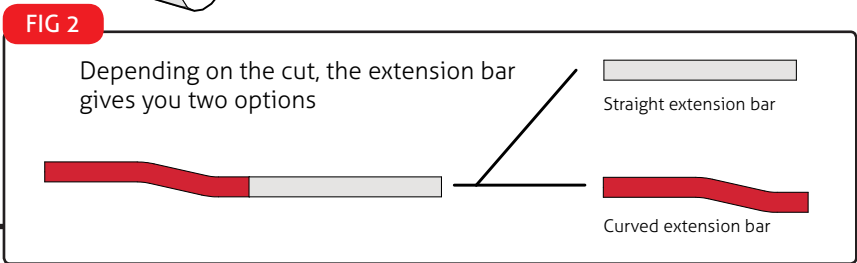
6. Handlebar assembly (configuration for the inversed handlebar: + 5cm)

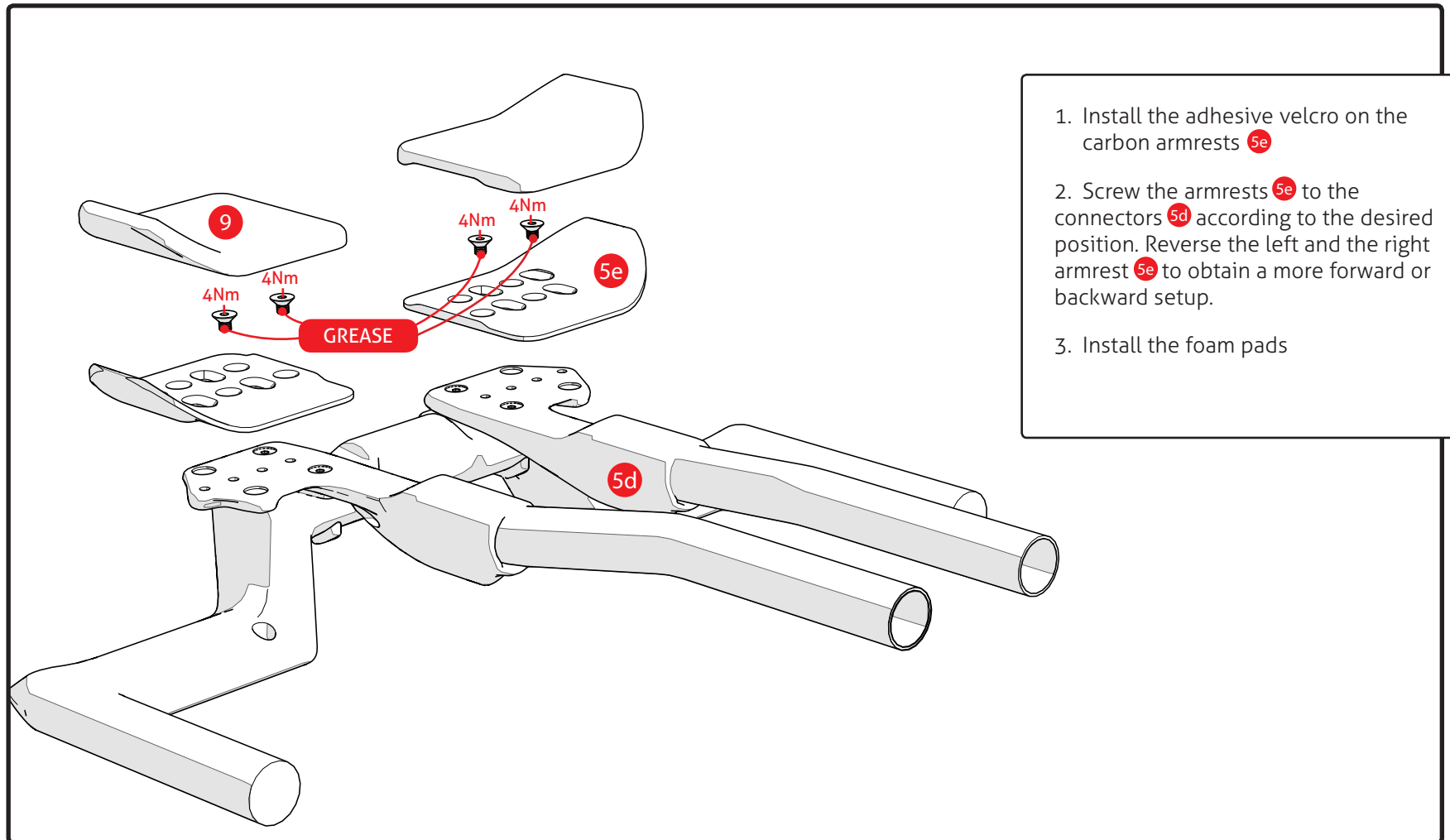




1. Cut the extension bars **5b** or **5c** at the desired lengths and apply some carbon fiber assembly gel in the clamping area
2. Insert the extension bars into the connectors **5d** and insert the shim **5f** under the extension bars. Make sure the shims are centered on the set screw
3. Tighten the extension bars using the set screw **5h**

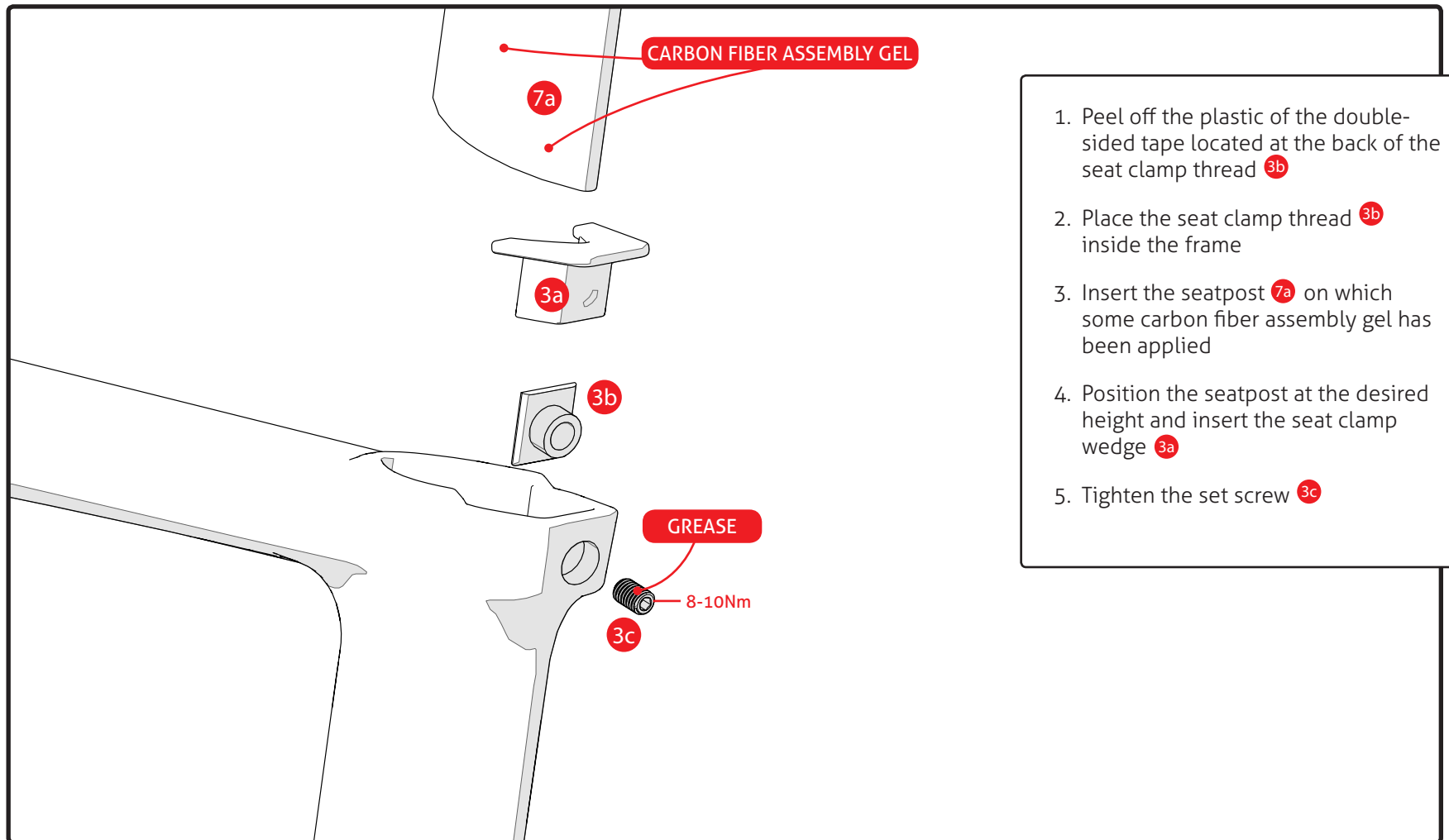
Note: It is possible to obtain the straight extension bars by cutting the curved section of extensions **FIG 2**

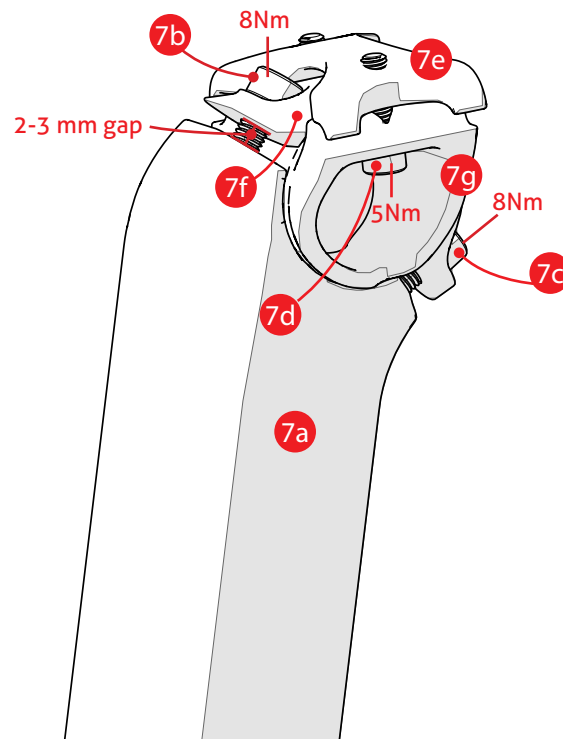




1. Install the adhesive velcro on the carbon armrests **5e**
2. Screw the armrests **5e** to the connectors **5d** according to the desired position. Reverse the left and the right armrest **5e** to obtain a more forward or backward setup.
3. Install the foam pads

7. Seatpost installation





1. Install the saddle on the rocker **7g** and lightly tighten the rail clamp **7e** using a ball end hex key
2. Tighten the upper screw **7b** of the rocker clamp **7f** by keeping a space of 2 to 3 mm between the aluminum and carbon parts
3. Adjust the angle of the saddle and tighten the lower screw of the rocker clamp **7c**
4. Adjust the saddle offset and finalize the tightening of the rail clamp **7d**



#	Frameset parts	Supplier Description
1	E-118 frame	AR-TT03-UD

#	Parts installed on the frame	Quantity
2a	Rear Derailleur Hanger and screws	1
2b	Front Derailleur Hanger and screws	1
2c	Rear drop out insert and screws	1
2d	Rear axle adjustment screws and spring	2
2e	Screws for water bottle cage	4
2f	BB plastic cap and screws	1
2g	Di2 battery mount screws	2
2h	Front brake pivot	1 black+ 1 silver
2i	Rear brake pivot	1 black+ 1 silver
2j	Brake arm stopper	1

#	Seat clamp kit	Quantity
3a	Seat clamp wedge	1
3b	Seat Clamp Thread	1
3c	Set screw	1

#	Fork kit	Quantity
4a	E118 Fork	1
4b	Stem reversible spacer	1
4c	Stem cap and screws (2xM5 + 1xM6)	1
4d	Stem front rubber cap	1
4e	Stem top rubber parts	1
4f	Head set screw (long M5 screw)	1

#	HB kit	Quantity
5a	E-118 Handle Bar	1
5b	E-118 J bar	2
5c	E-118 extension bar 25mm rise	2
5d	E-118 extension holders	1 left + 1 right
5e	E-118 armrest	2
5f	Extension shim	2
5g	Armrest screws M5x10mm	4
5h	Extension Set Screws M6	2
5i	Extension holders screws M5x75mm	4
5j	Extension holders screws M5x65mm	4
5k	Extension holders screws M5x55mm	4
5l	Extension holders screws M5x45mm	4
5m	Extension holders screws M5x35mm	4
5n	Extension holders screws M5x25mm	4
5o	Lower HB bracket	2
5p	Upper HB bracket	2
5q	Extension holders spacers	10

#	Di2 configuration specific parts	Quantity
6a	Di2 plug	2
6b	Di2 Hole Filler (no Di2)	2
6c	Di2 Top tube grommet	1
6d	Top tube grommet (no Di2)	1

#	Seat post with the following parts assembled	Quantity
7a	ASP-7500 carbon seatpost	1
7b	Upper rocker clamp M6 screw	1
7c	Lower rocker clamp M6 screw	1
7d	M5 screws	2
7e	Rail top clamp	1
7f	Rocker clamp	1
7g	Rocker	1

#	Additional tools	Quantity
8	4mm allen key for brake adjustment	1

#	Also included with the frameset shipped separately	Quantity
9	Armrest foam pads	1 package
10	Brake levers	2

11	TKB-77 Rear brake including the following parts	Quantity
11a	Brake arms	1 left + 1 right
11b	125deg. cable pipe	1
11c	Springs	1 black + 1 silver
11d	Brake pad – P963.12 for alloy rim	2
11e	2mm conical spacers	2
11f	1mm conical spacers	2
11g	Pivots bolts	2
11h	Spring tensioners	2
11i	Set screw	1
11j	Flat Washer	2

12	TKB-78* front brake including the following parts	Quantity
12a	Brake arms	1 left + 1 right
12b	110deg. Adjustable cable pipe	1
12c	Springs	1 black + 1 silver
12d	Spring tensioner	2
12e	Brake pad – P963.12 for alloy rim	2
12f	2mm conical spacers	2
12g	1mm conical spacers	2
12h	Pivots bolts	2
12i	Flat washer	2

13	EE079 Head Set including the following parts	Quantity
13a	SR102 compressor	1
13b	Plastic Dust cover	1
13c	1 1/8 cartridge bearings	2

*TKB-95 (UK, Australia)



6833 Avenue de l'Epee, suite 208 Montreal, Quebec H3N 2C7
Tel.: 514.271.2992 **1.877.578.1818** Fax: 514.271.0423