



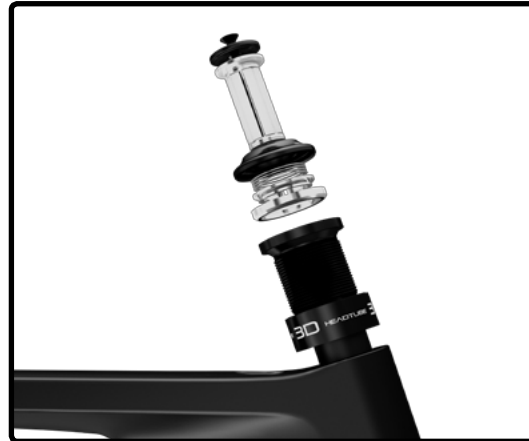


Assembly overview.....	2-3
1. Frame inspection.....	4
2. Headset installation.....	5
3. Cable housing installation.....	6
4. Electronic drive-train specification.....	7-10
5. Front brake installation.....	11-12
6. Rear brake installation.....	13-14
7. Seatpost installation.....	15
8. Saddle adjustment.....	16-17
9. Derailleur hanger adjustment.....	18
10. Parts listing.....	19-24

For the warranty to be valid, the bicycle must be fully assembled by an authorized Argon 18 dealer. High-end components, particularly carbon parts, need extra care when assembled. Those components must be installed using a calibrated torque wrench to make sure every bolt is at the right torque setting to prevent damage.



1. Frame inspection



2. Headset installation



3. Cable housing installation

IMPORTANT NOTICE: It is easier to install the cables and cable housings before the bearings.



4. Electronic drive-train specification



5. Front brake installation



6. Rear brake installation



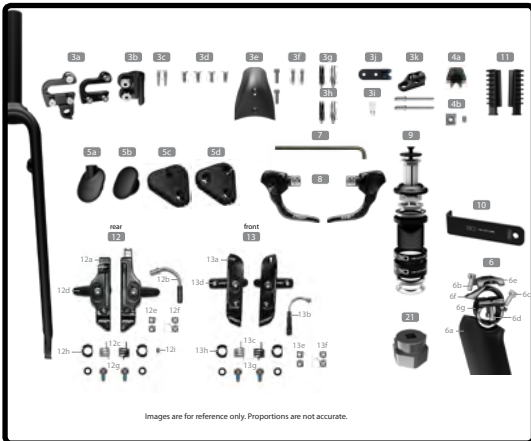
7. Seatpost installation



8. Saddle adjustment



9. Derailleur hanger adjustment



10. Parts listing



When assembling a new frame, be sure to check if the following parts are assembled correctly.

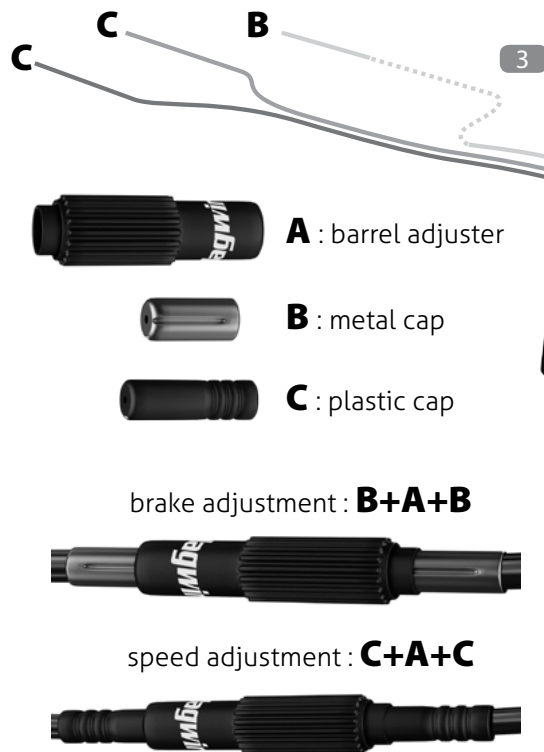
Parts installed on the frame Description			Screw type	Torque Nm	Detail
1	Front derailleur hanger	Screw (2)	3mm	4Nm	Loctite
2	Rear derailleur hanger	Screw (2)	3mm	4Nm	Loctite
3	Bottle cage	Screw (4)	4mm	3Nm	Grease
4	Bottom bracket cover	Screw (2)	5mm	2Nm	Grease



Install the 3D headset (9) according to the pressfit assembly guide. You can choose from 3 different heights : 25mm, 15mm or 0mm.



brake and speed adjustment

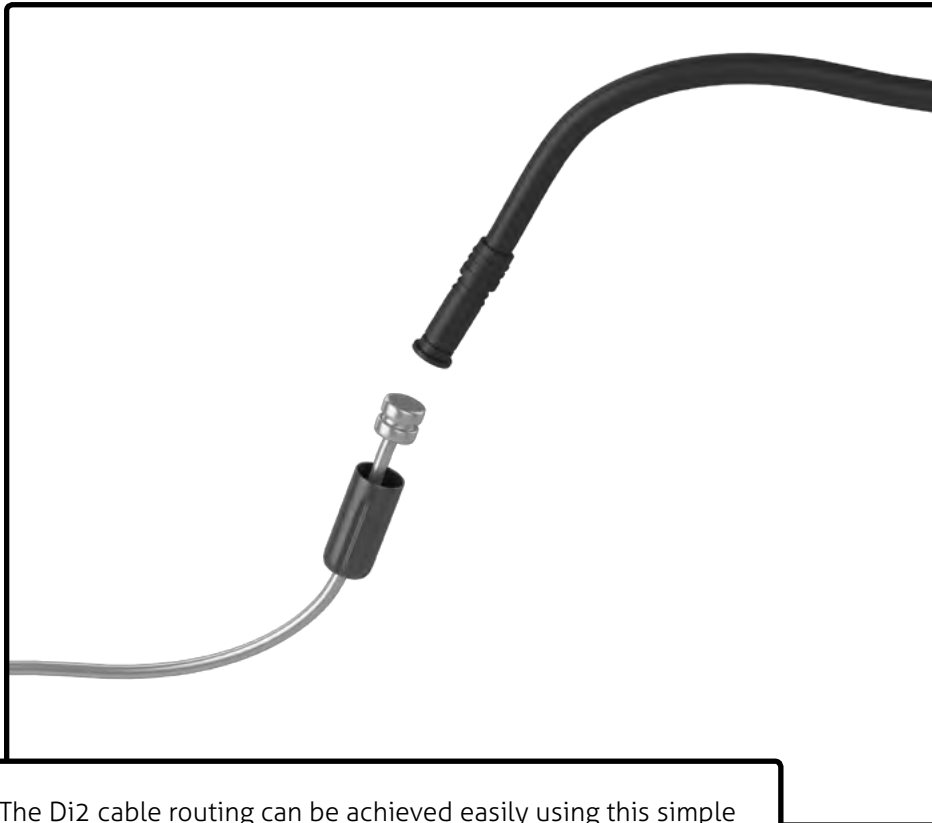


1. Install the rear derailleur cable housing starting at the drive side's drop-out.
 2. Install the front derailleur cable housing starting under the bottom bracket shell.
 3. Install the rear brake cable housing starting under the bottom bracket shell.
- See the table below for the cable housing suggested length.

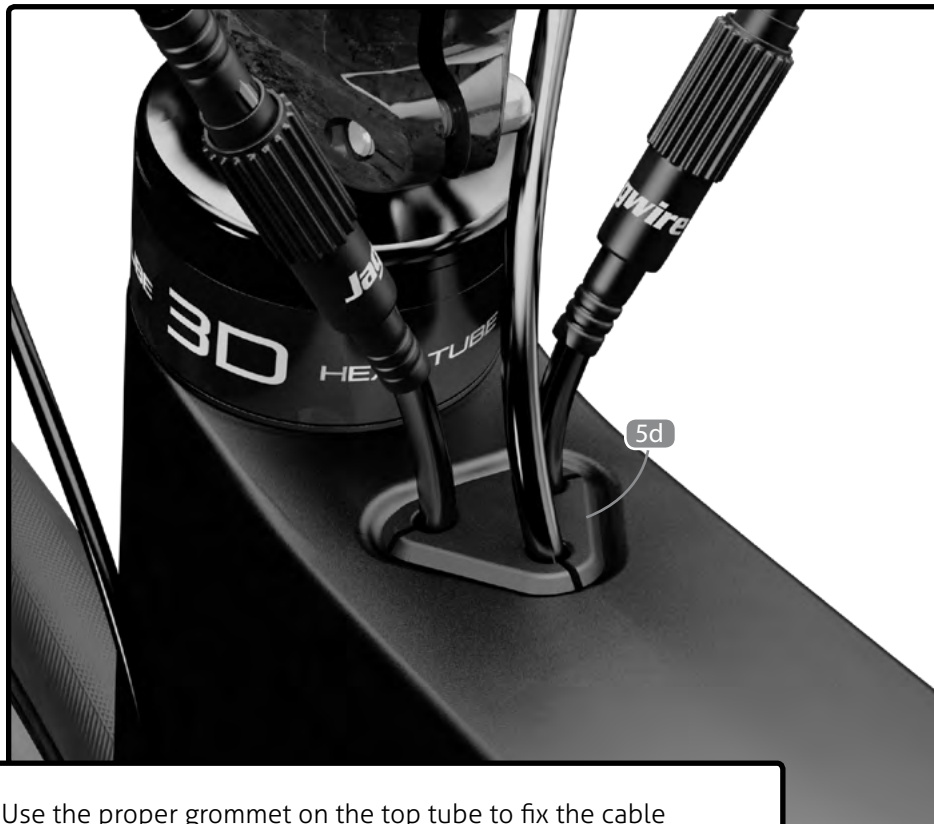
Suggested lengths of the cable housing

housing/size	XS	S	M	L
Front brake	58cm	60cm	62cm	64cm
Rear brake	136cm	138cm	140cm	142cm
Front derailleur	140cm	142cm	144cm	146cm
Rear derailleur	198cm	200cm	202cm	204cm

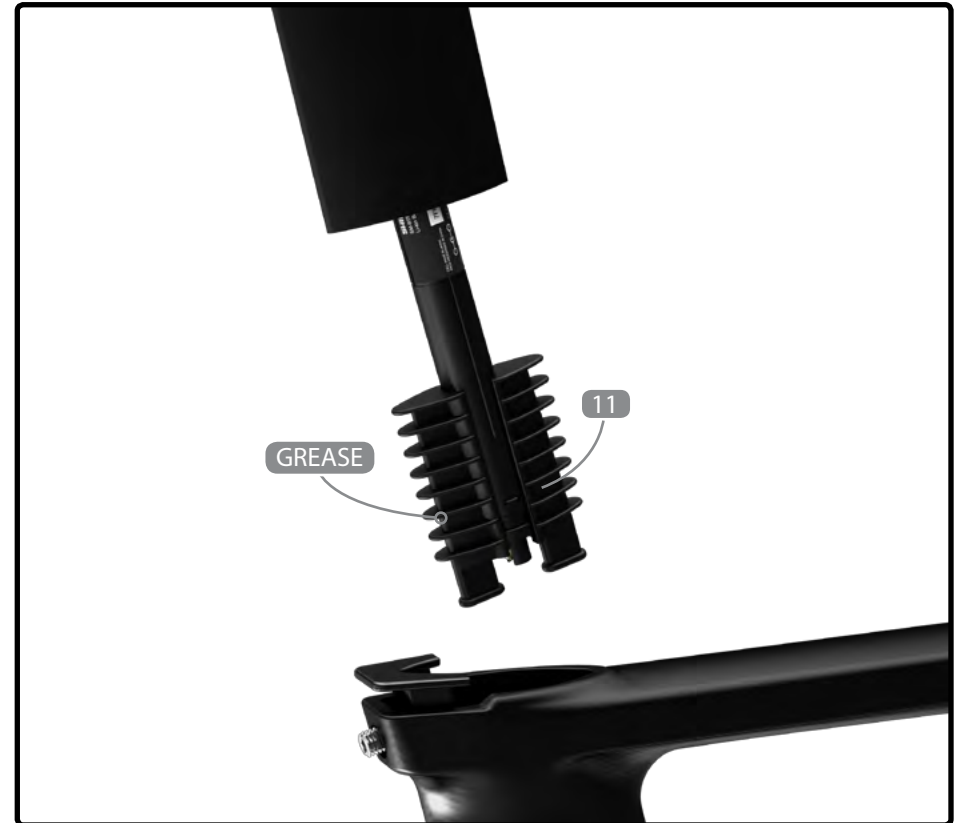




The Di2 cable routing can be achieved easily using this simple trick: use a brake cable and a metal cable end to fix the Di2 cable. For more information on Shimano Di2 electronic system installation, go to : <http://si.shimano.com>.



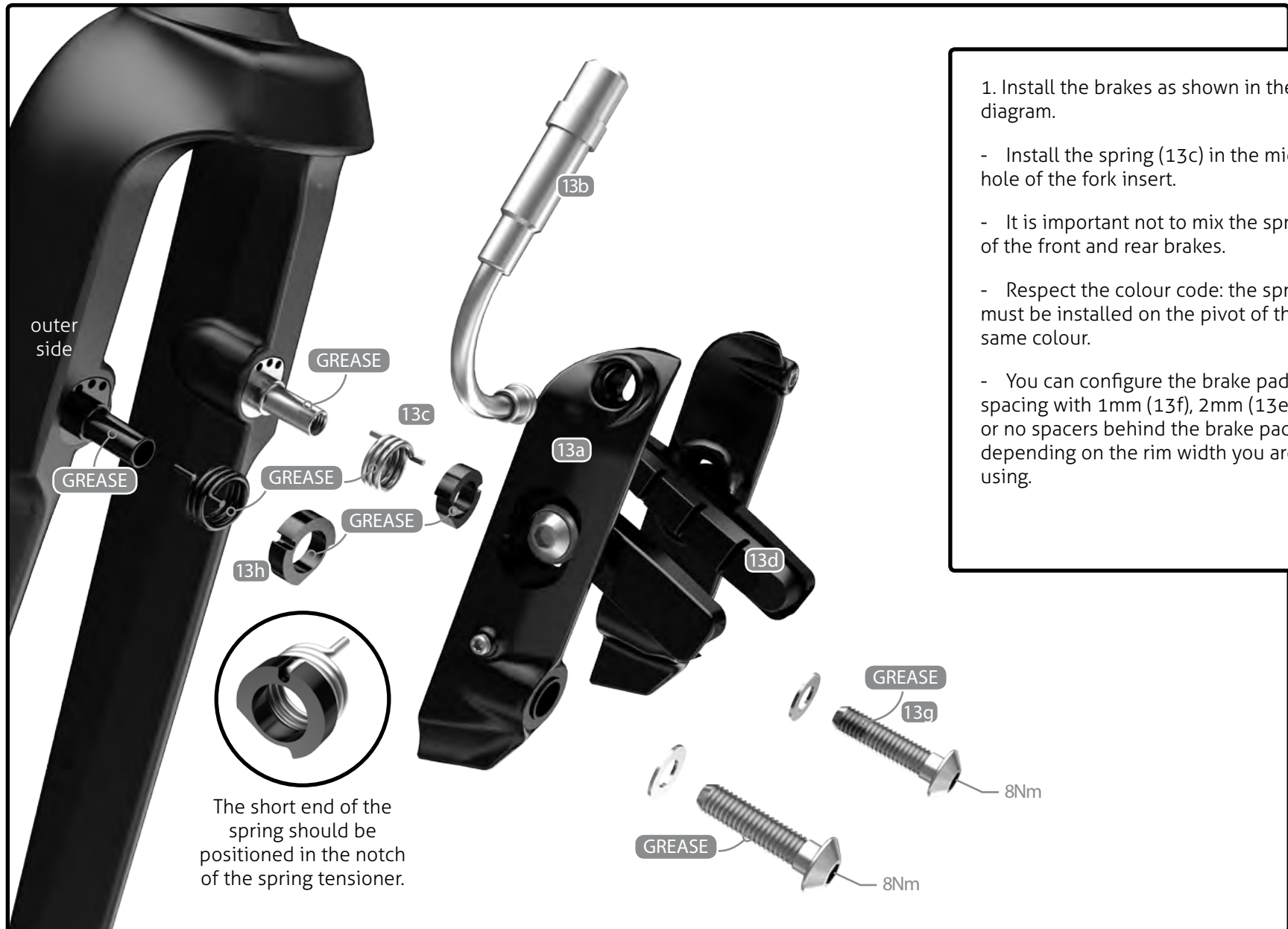
Use the proper grommet on the top tube to fix the cable correctly (depending if you use electronic shifting or mechanical drive-train).



The Di2 battery can go either under the left chainstay (Shimano SM-BTR1) or inside the seatpost (Shimano SM-BTR2) by using the 2 battery holder (11). For this configuration, apply a slight amount of grease on both parts.



Use the proper grommet for the front derailleur cable depending if you use mechanical (5b) or electronic drive-train (5a).



1. Install the brakes as shown in the diagram.
- Install the spring (13c) in the middle hole of the fork insert.
 - It is important not to mix the springs of the front and rear brakes.
 - Respect the colour code: the spring must be installed on the pivot of the same colour.
 - You can configure the brake pads spacing with 1mm (13f), 2mm (13e) or no spacers behind the brake pads depending on the rim width you are using.

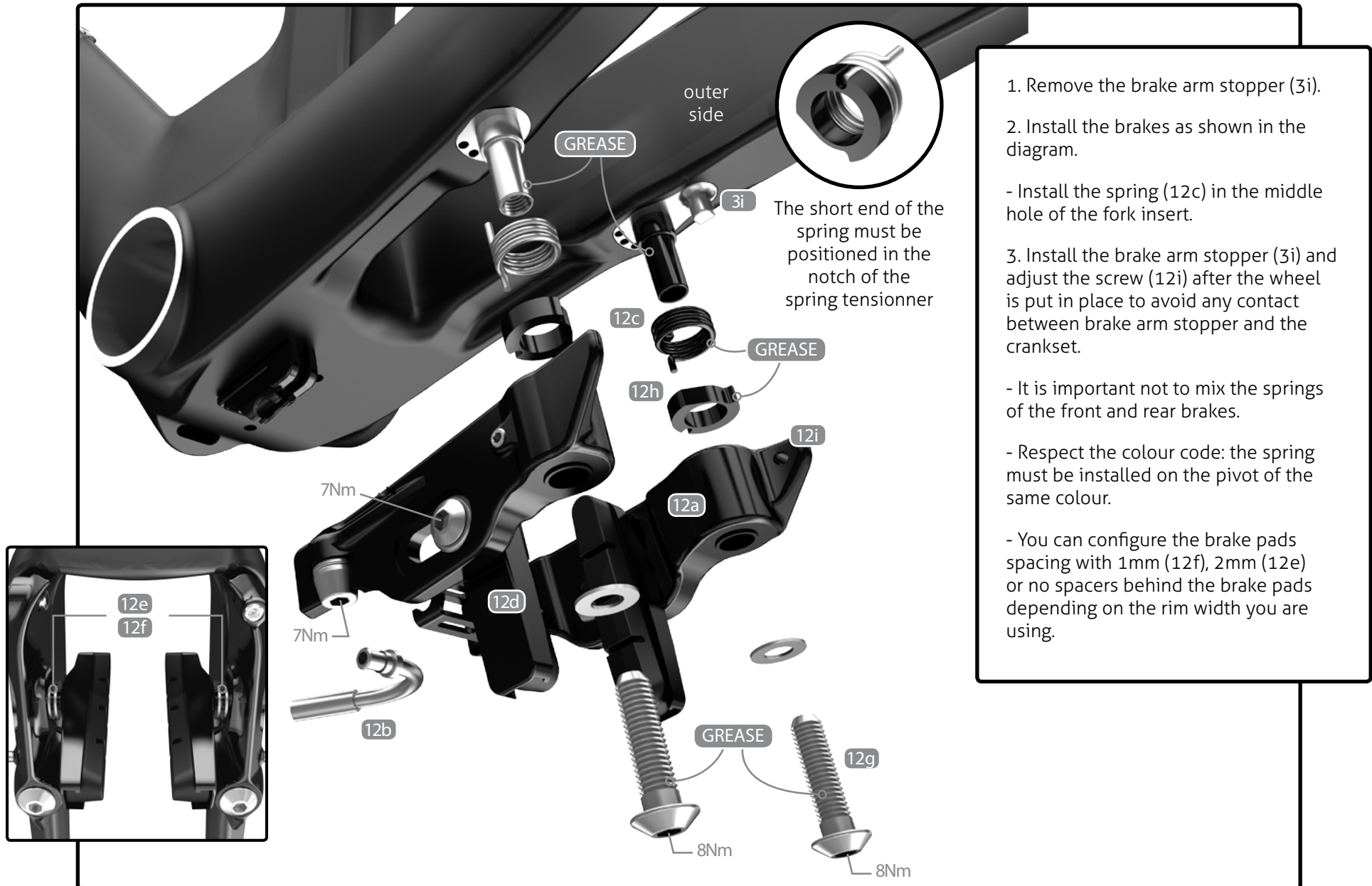


Adjust brake pads according to the width of your rims:

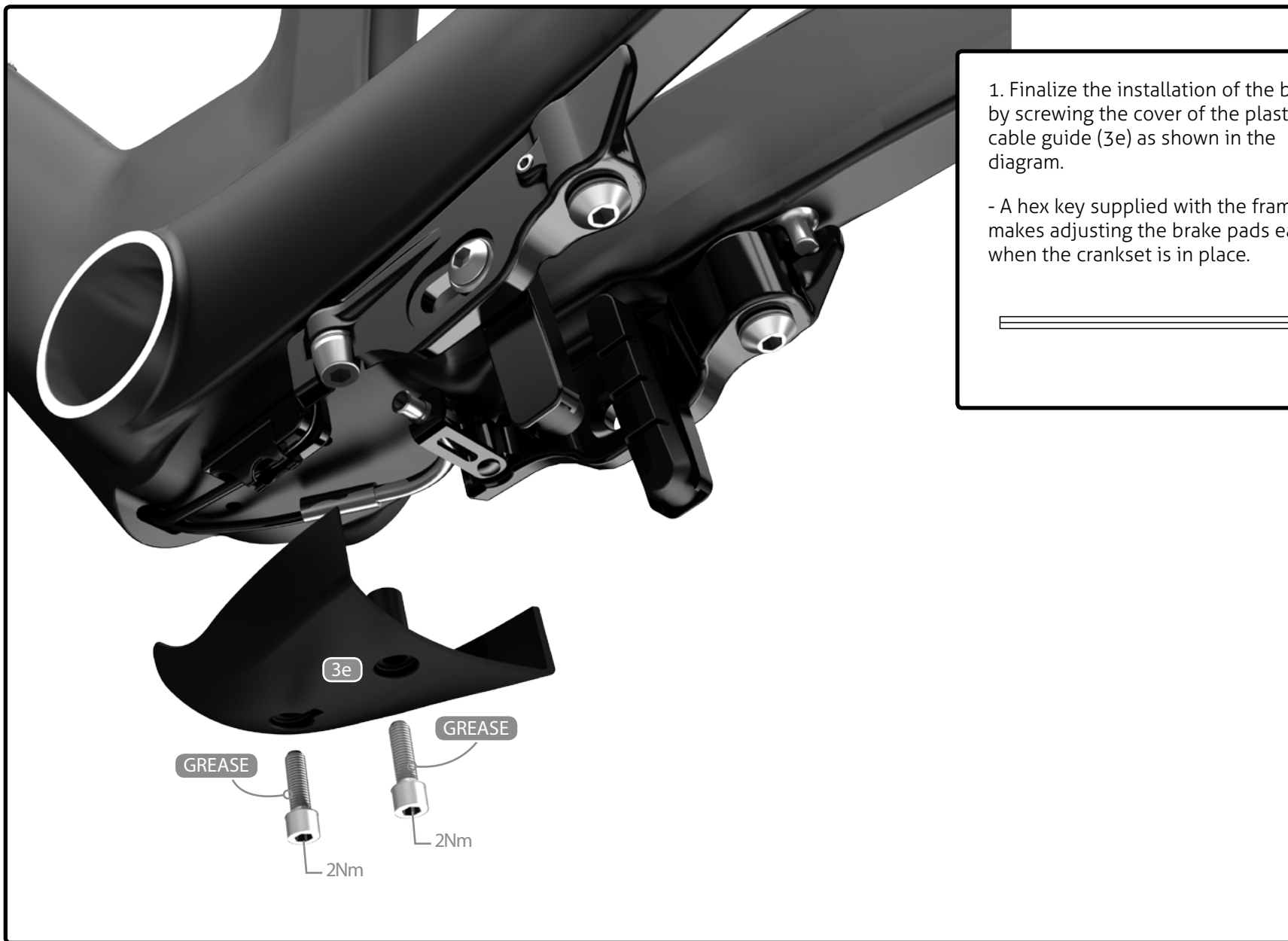
- You can configure the brake pads spacing with 1mm (13f), 2mm (13e) or no spacers behind the brake pads depending on the rim width you are using (this also apply for rear brakes).

Spacers required according to the rim width

Rim width	Spacer combinaison
19mm (ex.: Shimano C50)	2mm spacer
24mm (ex.: 808 clincher/Enve)	1mm spacer
26 to 27mm max (ex.: 808 TU/303 TU)	NO spacer

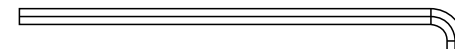


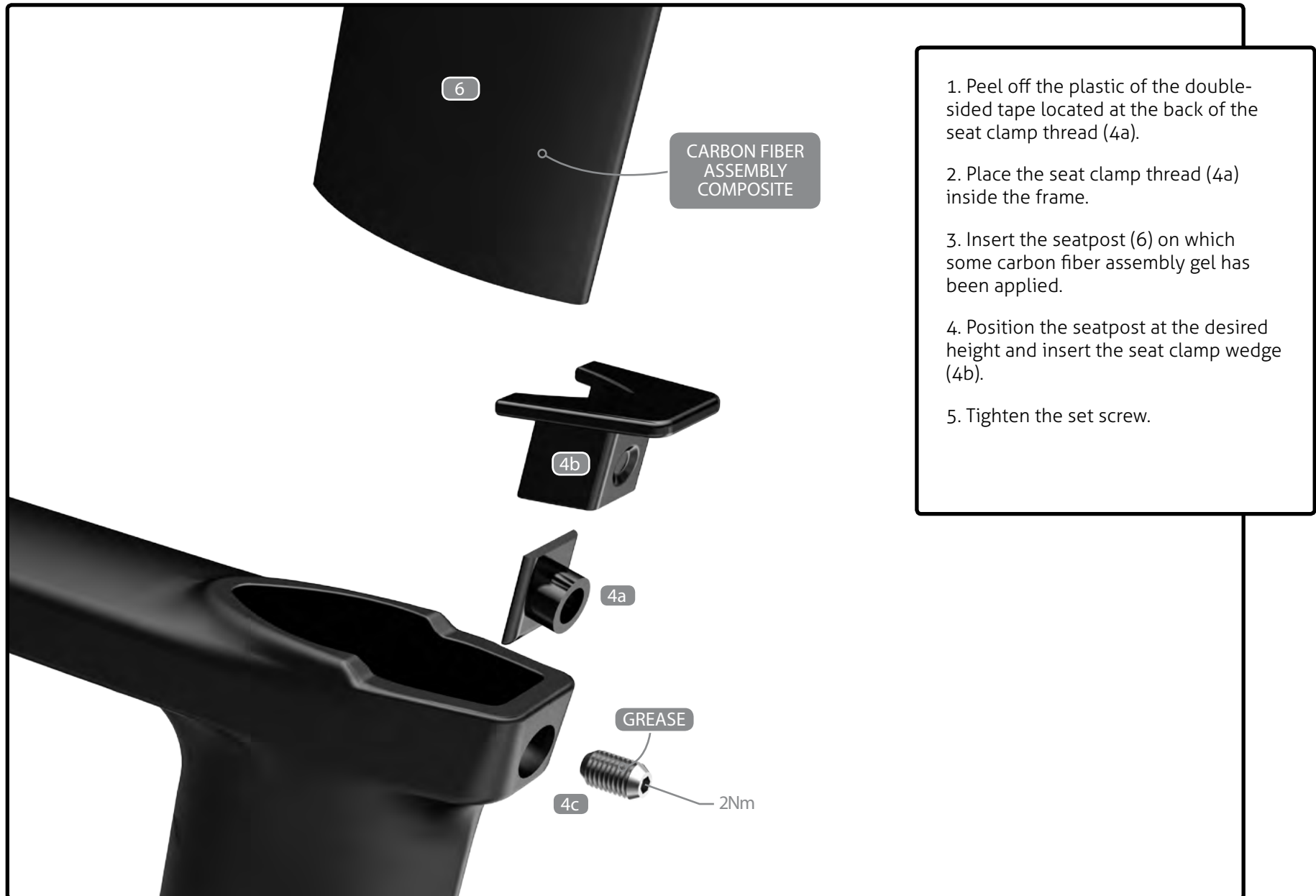
1. Remove the brake arm stopper (3i).
2. Install the brakes as shown in the diagram.
 - Install the spring (12c) in the middle hole of the fork insert.
3. Install the brake arm stopper (3i) and adjust the screw (12i) after the wheel is put in place to avoid any contact between brake arm stopper and the crankset.
 - It is important not to mix the springs of the front and rear brakes.
 - Respect the colour code: the spring must be installed on the pivot of the same colour.
 - You can configure the brake pads spacing with 1mm (12f), 2mm (12e) or no spacers behind the brake pads depending on the rim width you are using.



1. Finalize the installation of the brake by screwing the cover of the plastic cable guide (3e) as shown in the diagram.

- A hex key supplied with the frame makes adjusting the brake pads easier when the crankset is in place.





1. Peel off the plastic of the double-sided tape located at the back of the seat clamp thread (4a).
2. Place the seat clamp thread (4a) inside the frame.
3. Insert the seatpost (6) on which some carbon fiber assembly gel has been applied.
4. Position the seatpost at the desired height and insert the seat clamp wedge (4b).
5. Tighten the set screw.



1. Install the saddle on the rocker (6g) and slightly tighten the rail clamp (6f) using a ball end hex key.

2. Tighten the upper screw of the rocker clamp (6b) by keeping a space of 2 to 3mm between the aluminum and carbon parts.

3. Adjust the angle of the saddle and tighten the lower bolt of the rocker clamp (6c).

4. Adjust the saddle offset and finalize the tightening of the rail clamp (6d).



The 2waypost ASP-7500 can be flipped to achieve a triathlon or a road position (75°/78°).

The seat clamp offset can be set by flipping the rail clamp (6e) and the rocker (6g).

Road : -10mm to -15mm

Tri : +10mm to 15mm



The front derailleur hanger can be adjusted according to the front derailleur angle to obtain an equal curve between the derailleur and the big chain ring. Once at the right angle, use blue 242 Loctite and screw in at 6Nm.





Images are for reference only. Proportions are not accurate.



No.	Name	A18 SKU#	Qty
#	Frameset Parts		
1	E-116 frame		1
2	E-116 fork	38629	1
#	Parts installed on the frame		
3a	Rear derailleur hanger and drop out insert with screws M4x7mmF	38175	1 set
3b	Front derailleur hanger with screws M5x16mmB & M5x16mmF - Model D	36197	1
3c	Rear axel adjustment round head Phillips screws M3x20mm and springs		2
3d	Screws for water bottle cage M5x16mmB	38234	5
3e	Plastic BB cap with screws M5x20mmB and M5x16mmS	36660	1
3f	Di2 battery mount screw M4x16mmS	38233	2
3g	Font brake pivot	36914 (left; black) 36915 (right; silver)	1 black 1 silver
3h	Rear brake pivot	36914 (left; black) 36915 (right; silver)	1 black 1 silver
3i	Brake arm stopper round head Phillips screw M3x20mm + Aluminium sleeve		1
3j	Base of FD cable guide	36661	1
3k	FD cable guide with rivets	36659	1
#	Seat clamp kit		
4a	Seat clamp wedge	36658	1
4b	Seat clamp thread with screw M8x10mm	36657	1



No.	Name	A18 SKU#	Qty
# Di2 configuration specific parts			
5a	FD cable Di2 grommet	36195	2
5b	Grommet plug for Di2 hole filler (non Di2)	36678	2
5c	Top tube cable grommet (Di2)	36670	1
5d	Top tube cable grommet (non Di2)	36656	1
# Seat post with the following parts assembled			
6a	E-116 seatpost (ASP-7000)	38630	1
6b	Upper HexSocket screw (M6*20mm S) for rocker clamp		1
6c	Lower HexSocket screw (M6*20mm S) for rocker clamp		1
6d	HexSocket screws (M5*20mm S)		2
6e	Top rail clamp		1
6f	Rocker clamp		1
6g	Rocker		1
# Additional parts			
7	4mm allen key for brake adjustment	37589	1



No.	Name	A18 SKU#	Qty
#	Also included with the frameset - shipped separately		
8	RL977 brake levers	37470	1 pair
9	Headset No. IS-2 6.5 + 3D with compressor TH-881-1	37859	1
10	3D headset tool	36165	1
11	Di2 battery holder for Aero SP	38757	2
12	TKB77 rear brake - including the following parts	36602	
12a	Brake Arm		1 left + 1 right
12b	Tektro rear brake noodle (125 degrees)	36713	1
12c	• Springs	36714 (black)	1
		36715 (silver)	1
12d	• Brake pad – P963.12 for alloy rim		2
12e	• 2mm spacer for TKB77 & TKB78 brakes	36717	2
12f	• 1mm spacer for TKB77 & TKB78 brakes	36716	2
12g	• Pivots bolts & washers		2
12h	• Spring tensionner		2
12i	adjustments set screw		1



No.	Name	A18 SKU#	Qty
#	Also included with the frameset - shipped separately		
13	TKB150 front brake*TKB95 (for UK & Australia)	36601 - TKB95 = 37121	
	including the following parts		
13a	Brake Arm		1 left + 1 right
13b	Tektro front brake noodle assembly (125 degree)	36712	
13c	Springs	36714 (black)	1
		36715 (silver)	1
13d	Brake pad P961.11 for alloy rim		2
13e	2mm spacer for TKB77 & TKB78 brakes	36717	2
13f	1mm spacer for TKB77 & TKB78 brakes	36716	2
13g	Pivot Bolt & washers		2
13h	Spring tensionner		2