



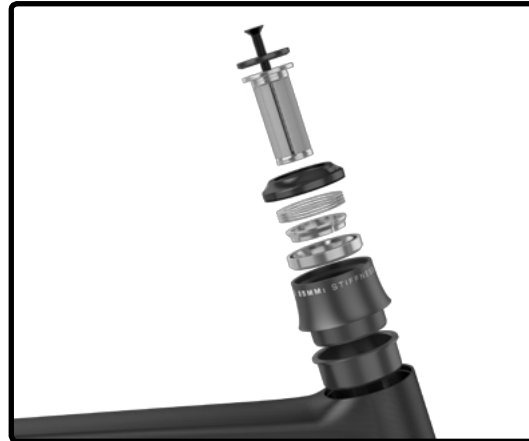


Assembly overview.....	2-3
1. Frame inspection.....	4
2. Headset installation.....	5
3. Cables & housing installation.....	6-9
4. Electronic drive-train specification.....	10-13
5. Saddle adjustment.....	14-15
6. Derailleur hanger adjustment.....	16
7. Parts listing.....	17-20

For the warranty to be valid, the bicycle must be fully assembled by an authorized Argon 18 dealer. High-end components, particularly carbon parts, need extra care when assembled. Those components must be installed using a calibrated torque wrench to make sure every bolt is at the right torque setting to prevent damage.



1. Frame inspection



2. Headset installation



3. Cable housing installation

IMPORTANT NOTICE: It is easier to install the cable housings before the bottom bracket, crank & fork.



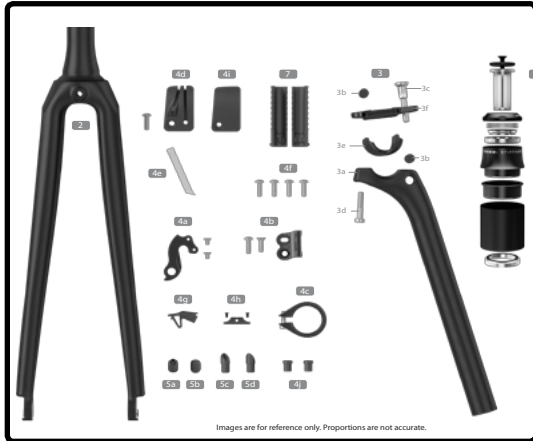
4. Electronic drive-train cable routing specification



5. Seatpost installation



6. Derailleur hanger adjustment

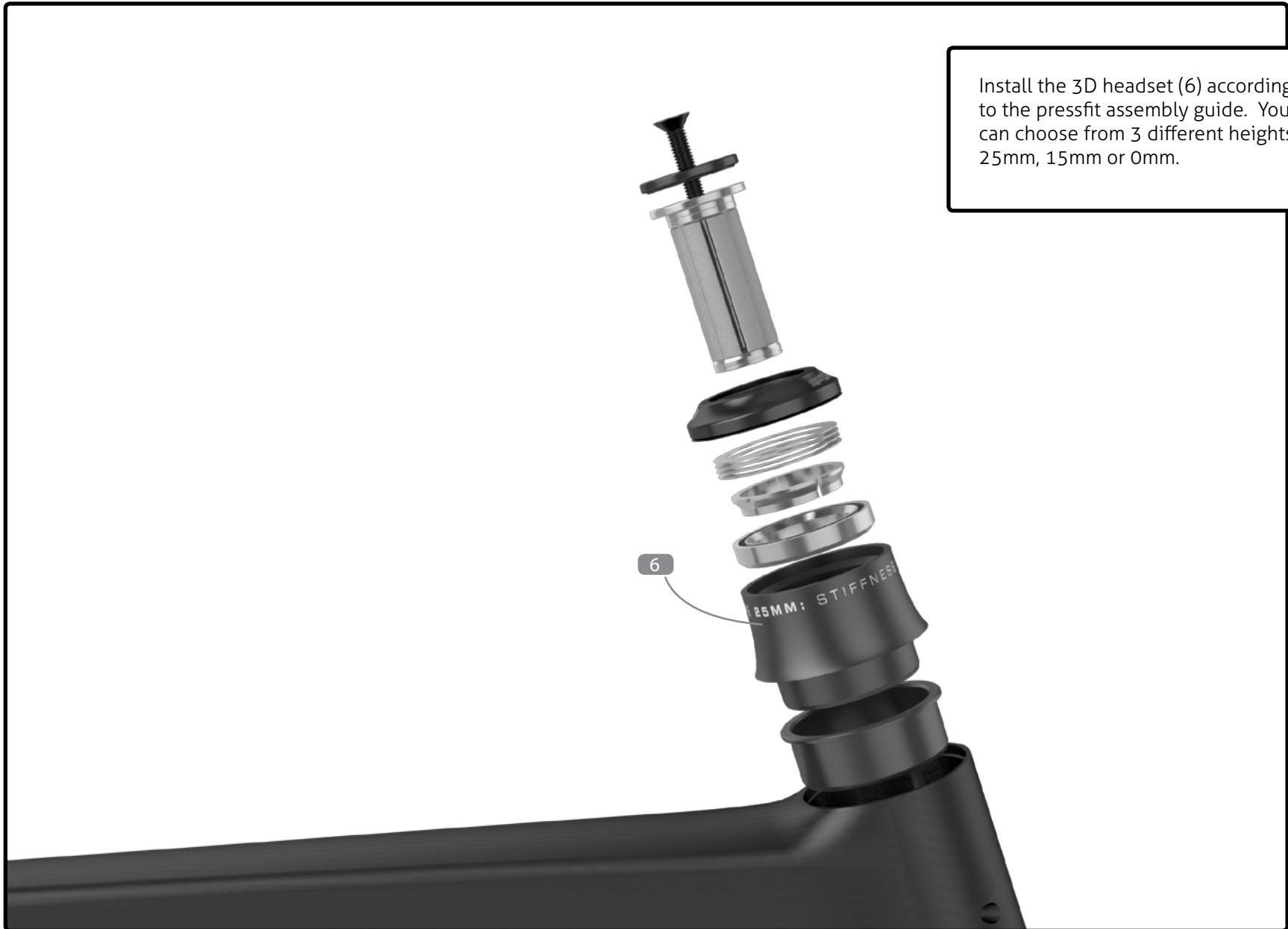


7. Parts Listing



When assembling a new frame, be sure to check if the following parts are assembled correctly.

Parts installed on the frame Description			Screw type	Torque Nm	Detail
1	Seatpost, Ø 27.2mm	Seatpost			Carbon paste
2	Front derailleur hanger	Screw	3mm	3Nm	Loctite
3	Rear derailleur hanger	Screw (2)	3mm	4Nm	Loctite
4	Bottle cage	Screw (4)	4mm	3Nm	Grease
5	Seatpost collar	Clamp	4mm	6Nm	Grease
6	Rear derailleur cable stopper	Screw (2)	2mm	2Nm	Loctite
7	Bottom bracket cable guide	Screw	5mm	3Nm	Grease



Install the 3D headset (6) according to the pressfit assembly guide. You can choose from 3 different heights : 25mm, 15mm or 0mm.



1. Install the front and rear derailleur cable starting at the head tube.
 2. Install the rear brake cable starting the head tube.
- For the derailleur and brake housing, measure a sufficient length of housing to be able to turn the handlebar both ways correctly.

-  **A** : barrel adjuster
 -  **B** : metal cap
 -  **C** : plastic cap
- speed adjustment : **C+A+C**
- 



Rear brake cable housing

Remove the cable stopper (4g) near the seat collar.

Front section: Measure the necessary cable housing to ensure a proper rotation of the handlebar. Insert the cable through the shifter, then insert the cable and the housing with a ferrule in the head tube.

Rear section: With a magnet, get the rear brake cable out of the frame, and pass it through the rear cable stopper. Measure the rear housing correctly to avoid interference with the rider's left leg. Fix the cable to the brake according to the brake manufacturer assembly guide.



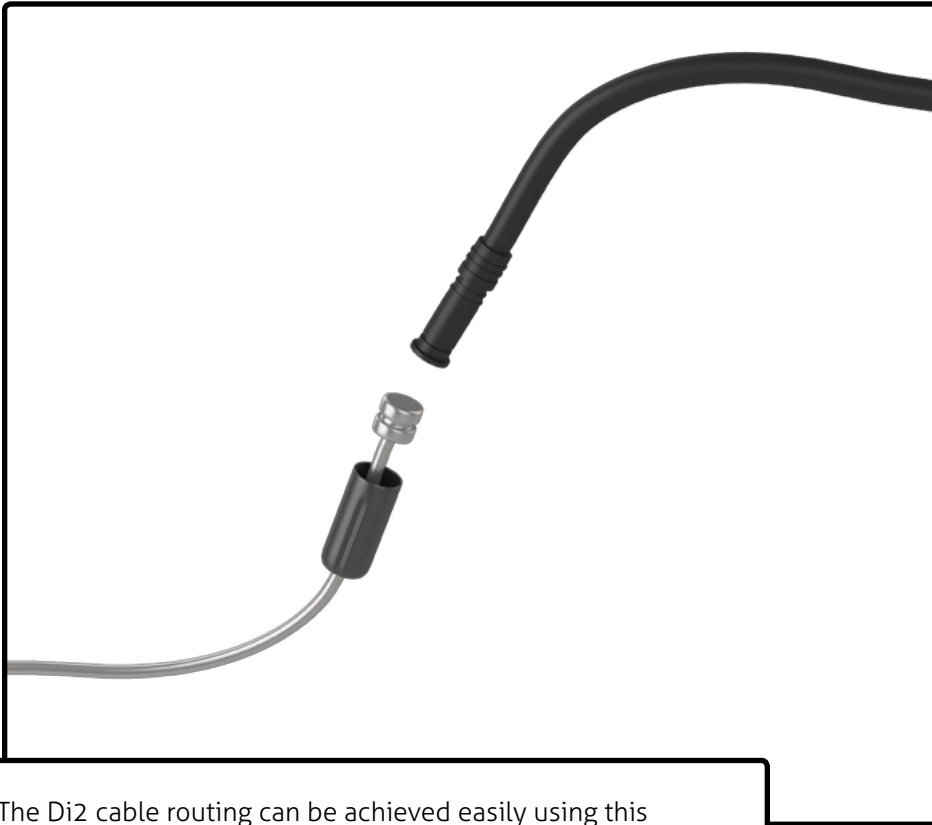
Front and rear derailleur: Pass the two cables inside the frame starting from the top tube until they come out under the bottom bracket.

Pass both cables into the cable guide (4d). Make sure the 5mm screw is set to 1.5 Nm.

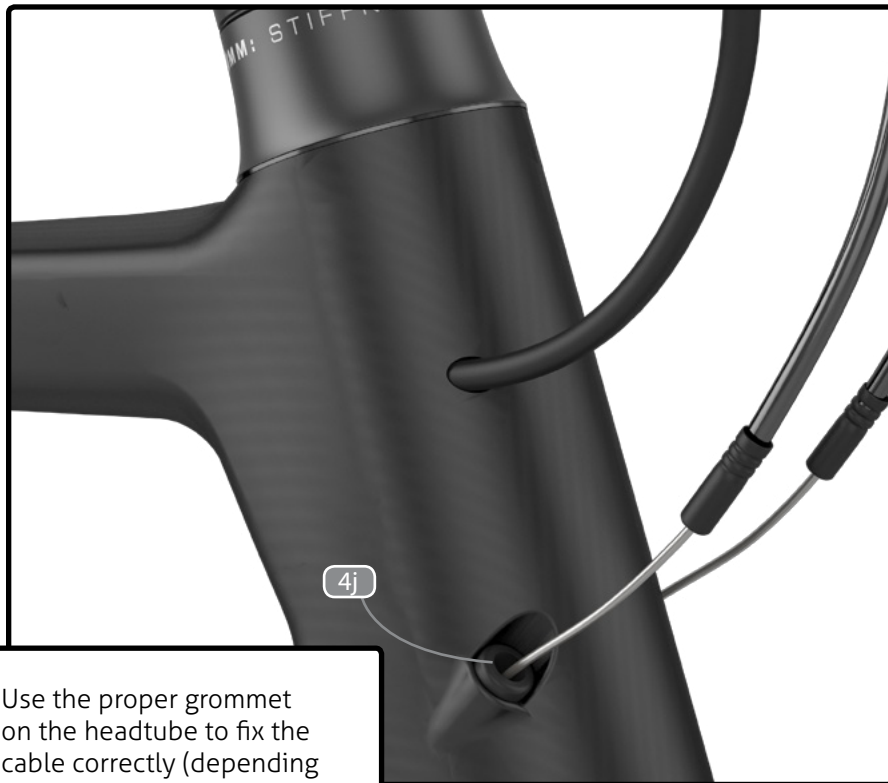
For a Di2 configuration, use the bottom bracket dedicated cover for electric shifting (4i).

It's better to install the cables before installing the bottom bracket and crank.

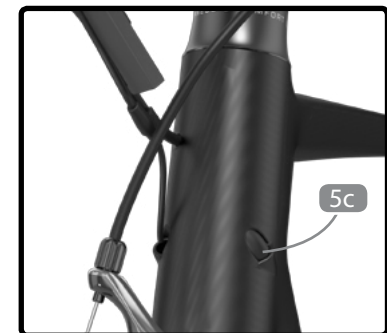
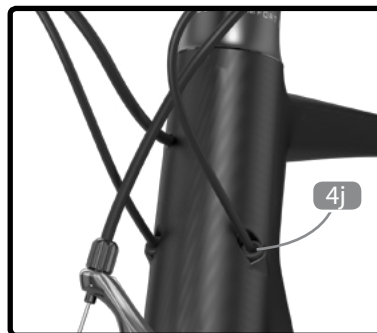




The Di2 cable routing can be achieved easily using this simple trick: use a brake cable and a metal cable end to fix the Di2 cable. For more information on Shimano Di2 electronic system installation, go to : <http://si.shimano.com>.



Use the proper grommet on the headtube to fix the cable correctly (depending if you use a mechanical or electronic drive-train).





Use the proper grommet / cable stopper for the rear derailleur (depending if you use mechanical or electronic drive-train).

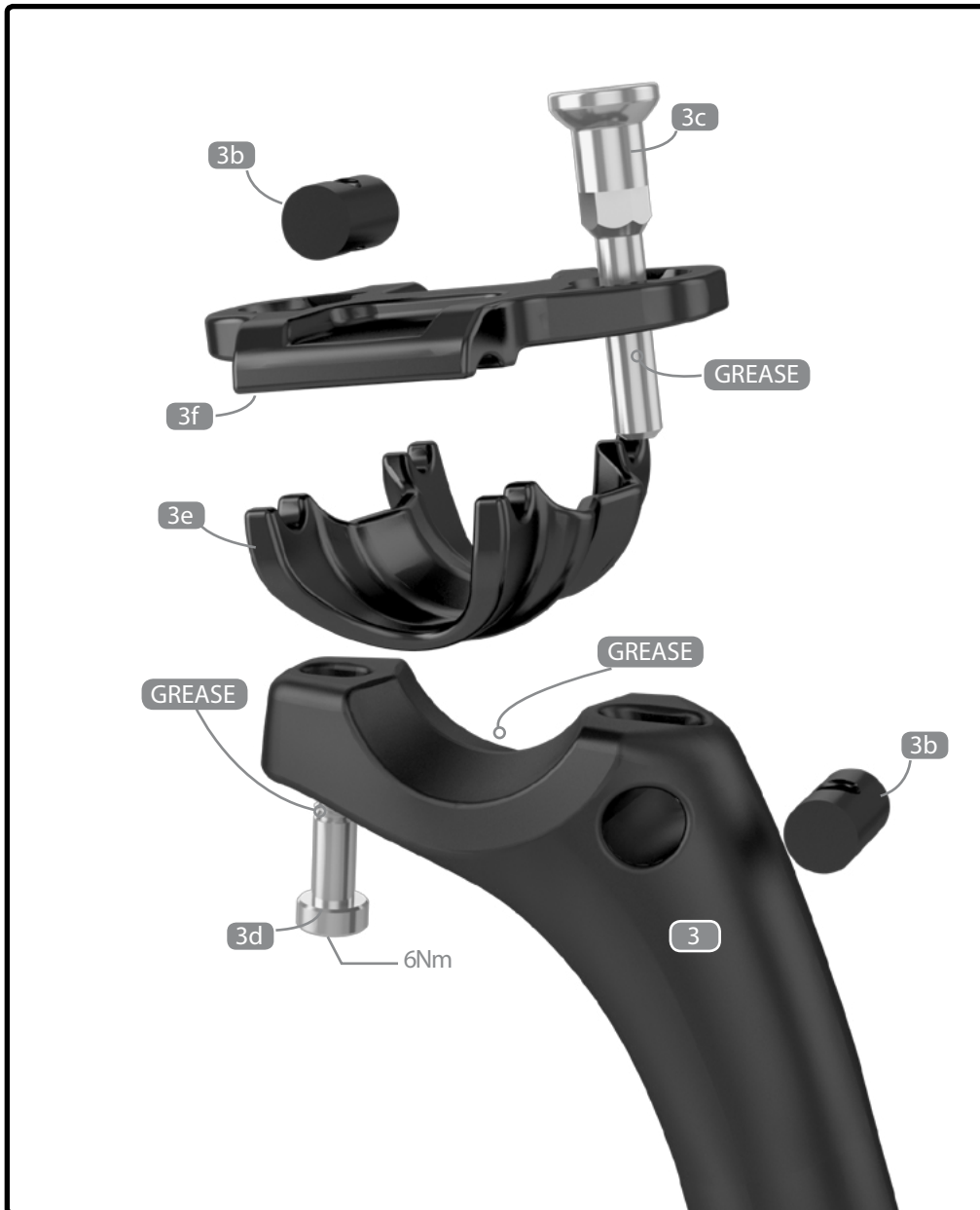
In a Di2 configuration, remove the cable stopper (4h) and use the Di2 grommet (5a) instead, but leave the 2 screws to avoid empty holes on the frame.



In a mechanical configuration, use the provided cable guide pipe (4e) for the front derailleur. For an electronic drive-train configuration, remove the cable guide pipe and use the proper grommet (5b) to fix the cable correctly.



The Di2 battery is hidden in the seatpost; use the Di2 battery holder to fix the battery correctly. Apply a slight amount of grease on both parts.



5.1 Install the saddle on the rocker (3e) and tighten the rail clamp (3f) using the screw (3d).

5.2 Adjust the angle of the saddle using a 8mm open wrench on the 3c bolt. Then tighten the assembly with the rear bolt (3d) to 6Nm.

5.3 The rail clamp (3f) can be flipped to change the saddle offset.

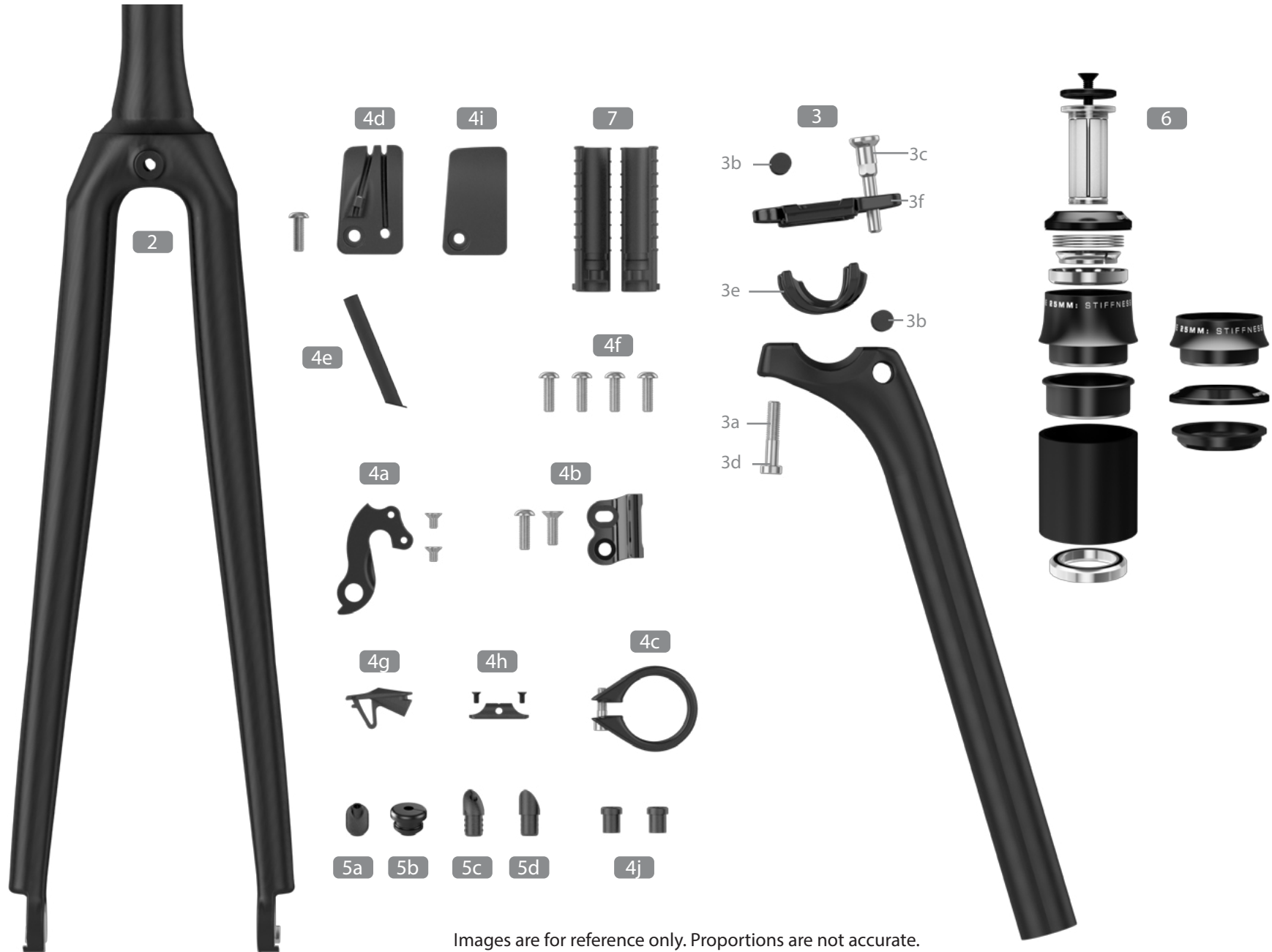


Seat clamp offset (-15mm to -25mm) by flipping the rail clamp (3f).



The front deraillieur hanger can be adjusted according to the front deraillieur angle to get an equal curve between the deraillieur and the big chain ring. Once at the right angle, use blue 242 Loctite and screw in at 6Nm.





Images are for reference only. Proportions are not accurate.



No.	Name	A18 SKU#	Qty
# Frameset Parts			
1	Gallium Pro frame		1
2	Gallium Pro fork	FK.GALLPRO.210A	1
# Seat post with the following parts assembled			
3	Gallium Pro seat post (ASP-6550)	SP.GALLPRO.210A	1
3a	Hex cap screw (M6*40mm S)		1
3b	Cylinder nuts		2
3c	SP special bolt (M6*45mm)		1
3d	Convex M6 washer		1
3e	Rocker		1
3f	Rail clamp		1



No.	Name	A18 SKU#	Qty
# Parts installed on the frame			
4a	Rear derailleur hanger with screws M4x8mmF - Model C	37830	1
4b	Front derailleur hanger with screws M5x16mmB & M5x16mmF - Model D	36197	1
4c	Seat clamp with screw M5x20mmS and washer	38256	1
4d	BB cable guide with screw round head Phillips M5*10mm	38257	1
4e	BB cable guide pipe	38258	1
4f	Screw for water bottle cage M5*15mmP	38316	4
4g	TT plastic cable stopper	38756	1
4h	Removable CS cable stopper with screws M3x10mmF	36682	1
4i	Di2 BB recess cover guide with screw round head Phillips M5x10mm	38260	1
4j	Headtube cable stopper	38259	2
# Di2 configuration specific parts			
5a	Di2 cable grommet	38251	1
5b	FD wire grommet	38891	1
5c	Downtube Di2 grommet	38252	1
5d	Downtube Di2 grommet filler	38254	1
# Also included with the frameset - shipped separately			
6	Headset No 37 + 3D	38661	1
7	Internal Di2 battery support for Gallium Pro seatpost	38446	1 set