





Overview of the assembly	2-3
1. Frame inspection	4
2. Headset installation	5
3. Cable housing installation	6-11
4. Electronic drive train specification	12-15
5. Front brake installation	16-18
6. Rear brake installation	19-20
7. Seatpost installation	21
8. Saddle adjustment	22-23
9. Derailleur hanger adjustment	24
10. Part listing	25-30

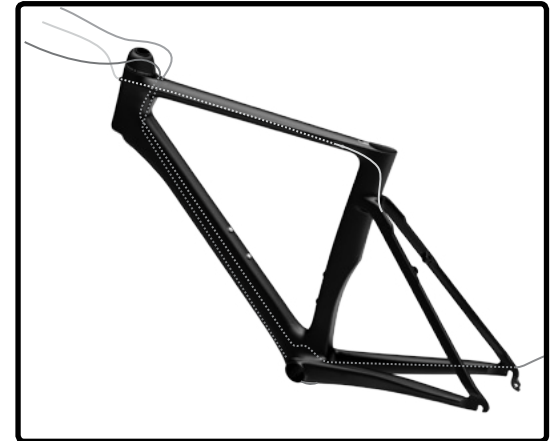
For the warranty to be valid, the bicycle must be fully assembled by an authorized Argon 18 dealer. High end components, particularly carbon parts, need extra care when assembled. Those components must be installed using a calibrated torque wrench to make sure every bolt is at the right torque setting to prevent damage.



1. Frame inspection

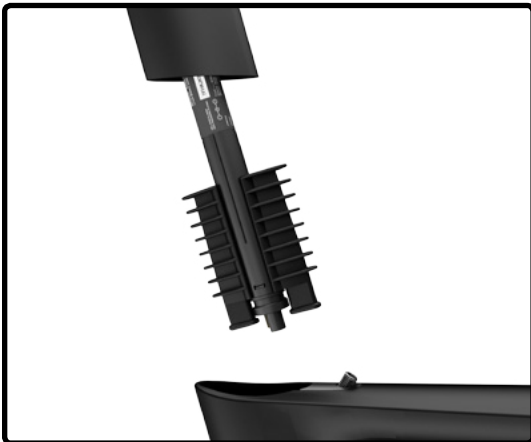


2. Headset installation



3. Cable housing installation

IMPORTANT NOTICE: It is easier to install the cable housings before the bottom bracket, crank & fork.



4. Electronic drive train specification



5. Front brake installation



6. Rear brake installation



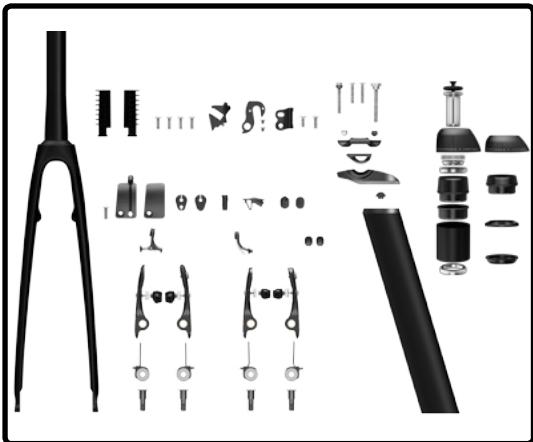
7. Seatpost installation



8. Seatpost adjustment



9. Derailleur hanger adjustment

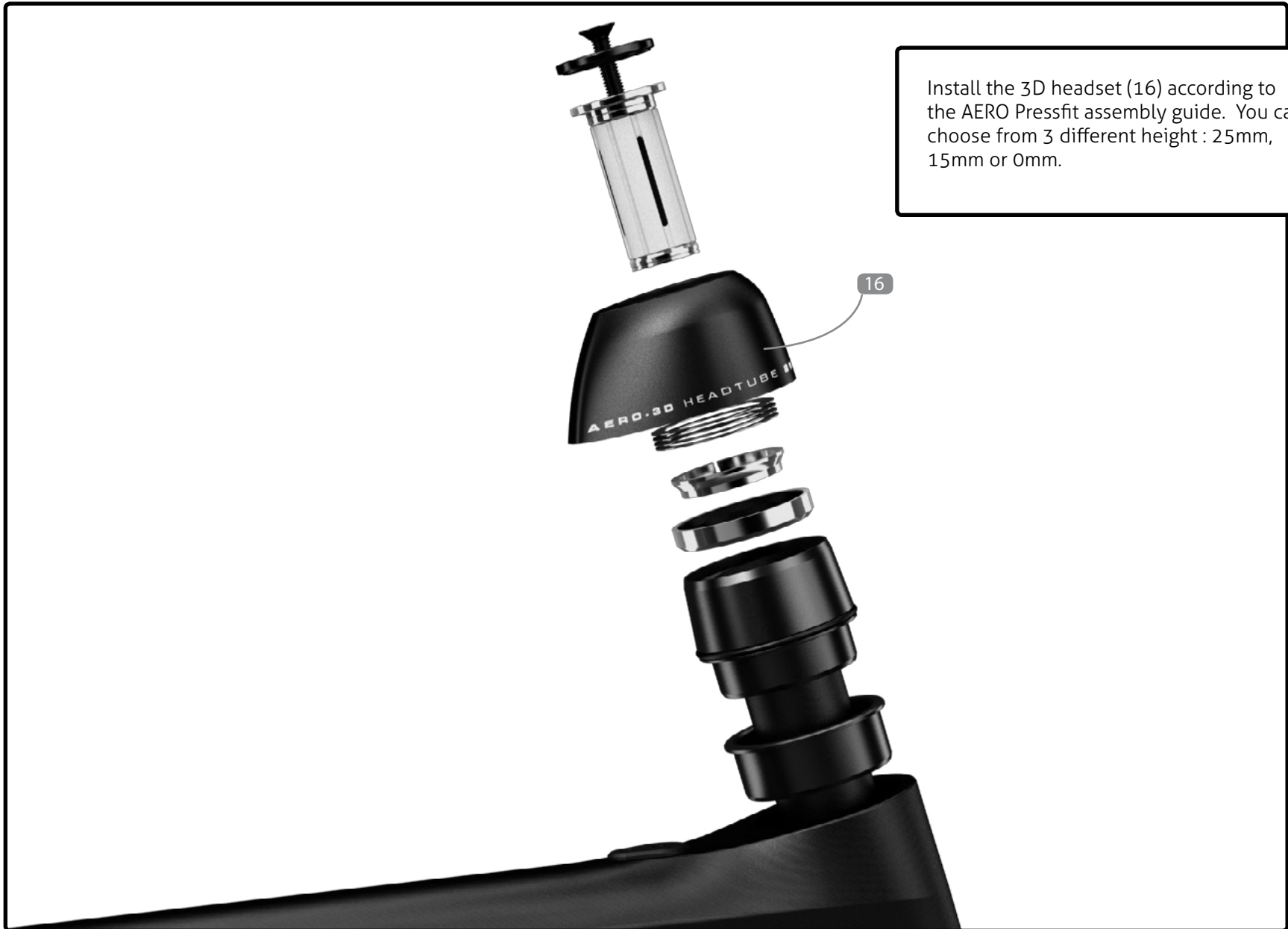


10. Part listing



When assembling a new frame, be sure to check if the following parts are assembled correctly.

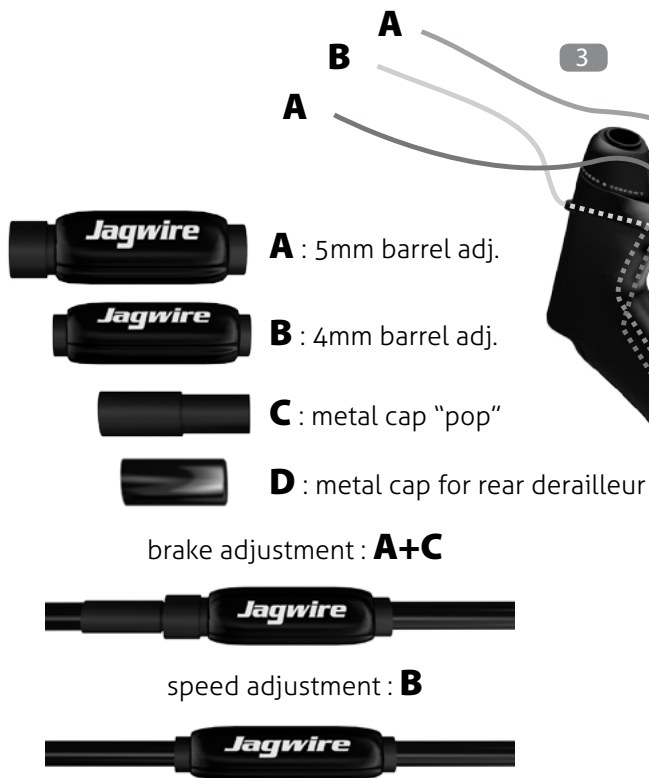
Parts installed on the frame			Description	Screw type	Tork Nm	Detail
1	Front derailleur hanger	Screw (2)		3mm	4Nm	Loctite
2	Rear derailleur hanger	Screw (2)		3mm	4Nm	Loctite
3	Bottle cage	Screw (4)		4mm	3Nm	Grease
4	Bottom bracket cable guide	Screw		5mm	3Nm	Grease



Install the 3D headset (16) according to the AERO Pressfit assembly guide. You can choose from 3 different height : 25mm, 15mm or 0mm.



brake and speed adjustment



1. Install the rear derailleur cable housing starting at the drive side's drop-out until it comes out in the top tube.
 2. Install the front derailleur cable housing starting under the bottom bracket shell.
 3. Install the rear brake cable housing (see page 8 for details). Use supplied Jagwire housing (KEB).
- Note: For maximum braking performance it is strongly recommended to use the non-compressible jagwire KEB housing (Jagwire 5mmKEB-SL / RCK###).*
- See the table below for the cable housing length suggested.

Suggested lengths of the cable housing

housing/size	XS	S	M	L
Front brake	40cm	45cm	50cm	55cm
Rear brake front section	30cm	35cm	40cm	45cm
Rear brake rear section	20cm	20cm	20cm	25cm
Front derailleur	110cm	110cm	120cm	125cm
Rear derailleur	185cm	190cm	195cm	200cm

2

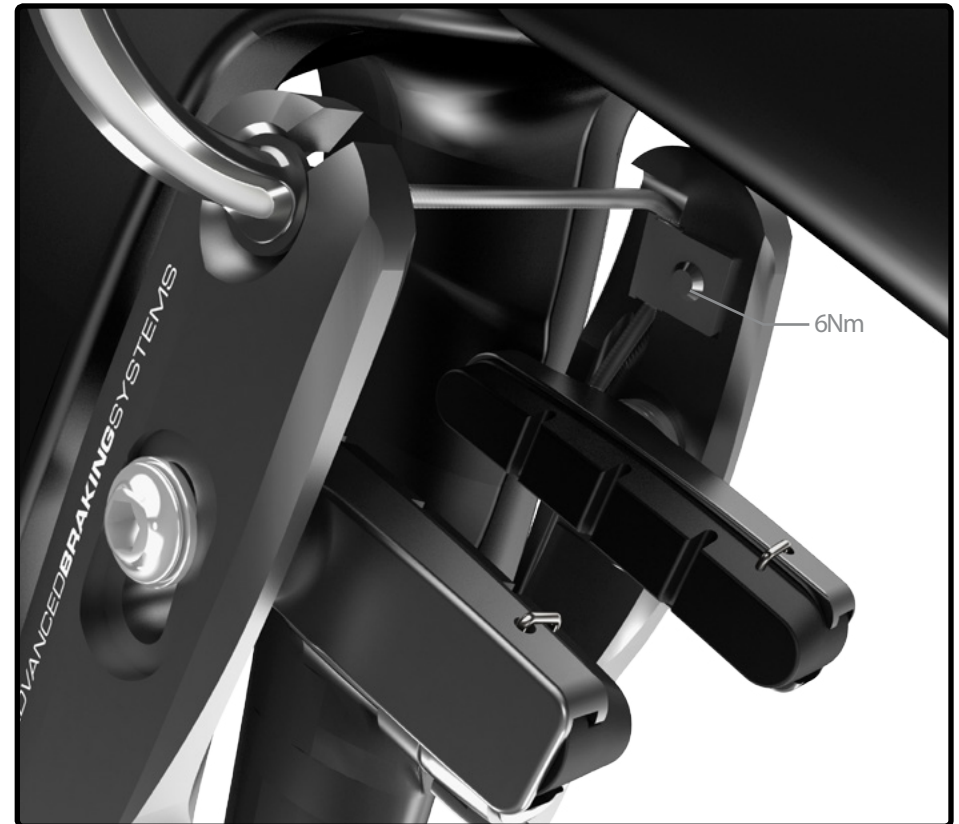
1

D

It's better to install cables housing before installing the bottom bracket, crank and fork.

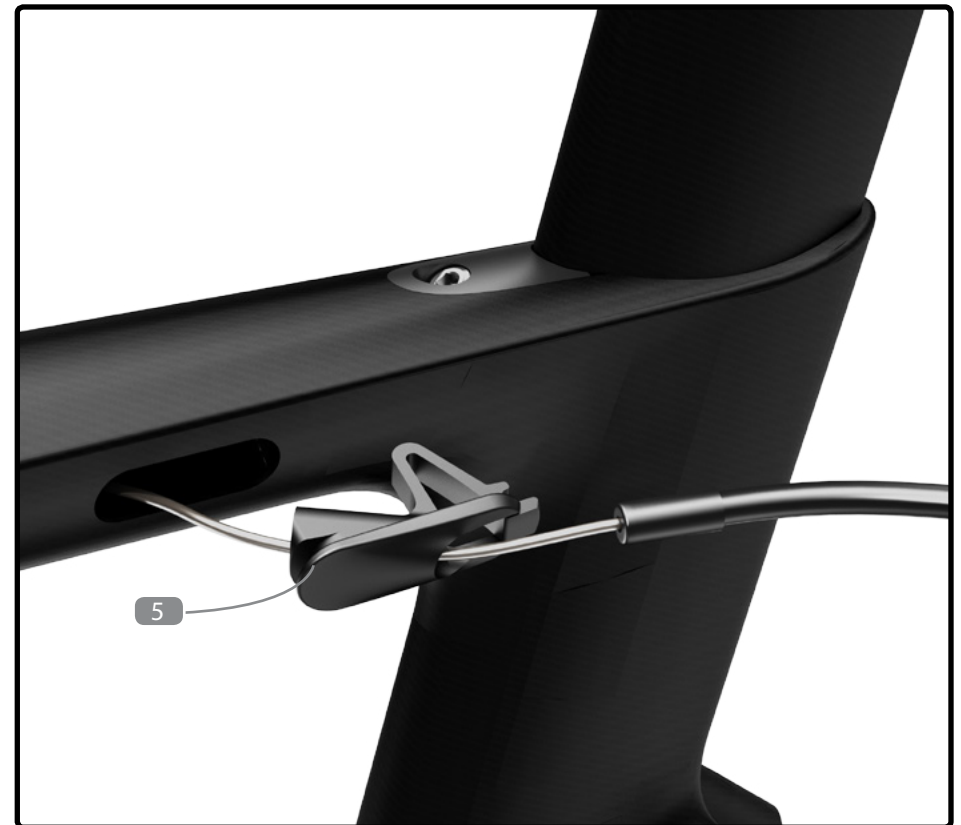
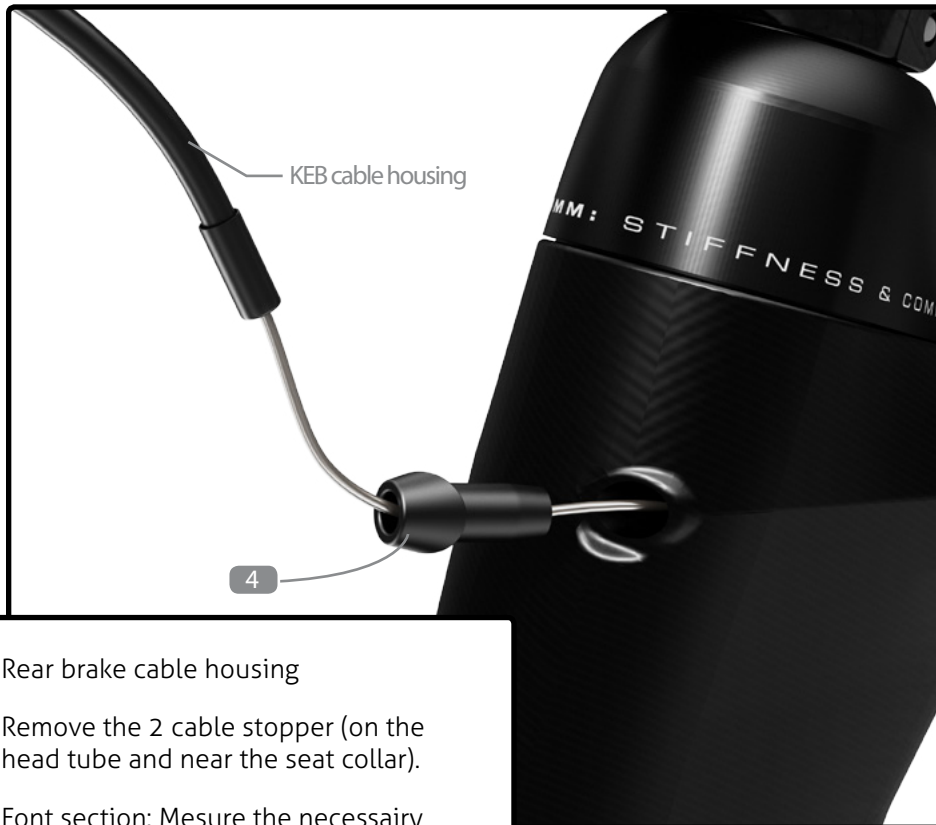


Note: The front brake cable guide (17h) should be front oriented to ensure a good rotation of the handle bar.



Pass the cable through the cable guide (17h).

Create a "hook" with the cable, it will be easier to pass it inside the retainer nut.



Rear brake cable housing

Remove the 2 cable stopper (on the head tube and near the seat collar).

Font section: Measure the necessary cable housing to ensure a proper rotation of the handlebar. Insert the "KEB" cable housing and the cable trough the top tube.

Rear section: With a magnet, get the rear brake cable out of the frame, and pass it trough the rear cable stopper. Measure the "KEB" rear housing correctly to avoid interference with the rider's left leg.



It's better to install the cable housing before installing the bottom bracket, crank and fork.

Rear derailleur: Pass the cable housing inside the frame starting at the rear derailleur hanger until it comes out the top tube.

Front derailleur: Remove the cable guide (9) under the bottom bracket. Pass the cable housing inside the downtube until it comes out the top tube.

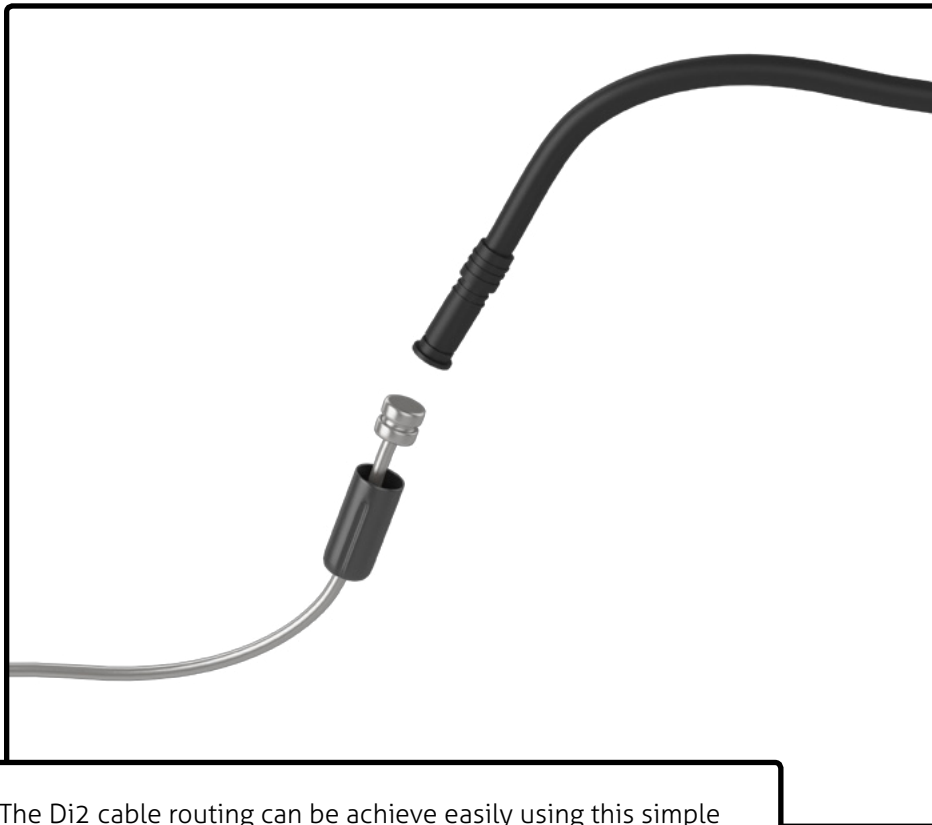
Add a plastic cap at the end of the housing, pass the rear derailleur cable inside the housing and fix the cable guide under the bottom bracket with the 5mm screw (1.5 Nm).

For a Di2 configuration, use the bottom bracket dedicated cover (10) for electric shifting.



Use the provided grommet (19) to fix correctly the rear derailleurs cable in the

chainsta



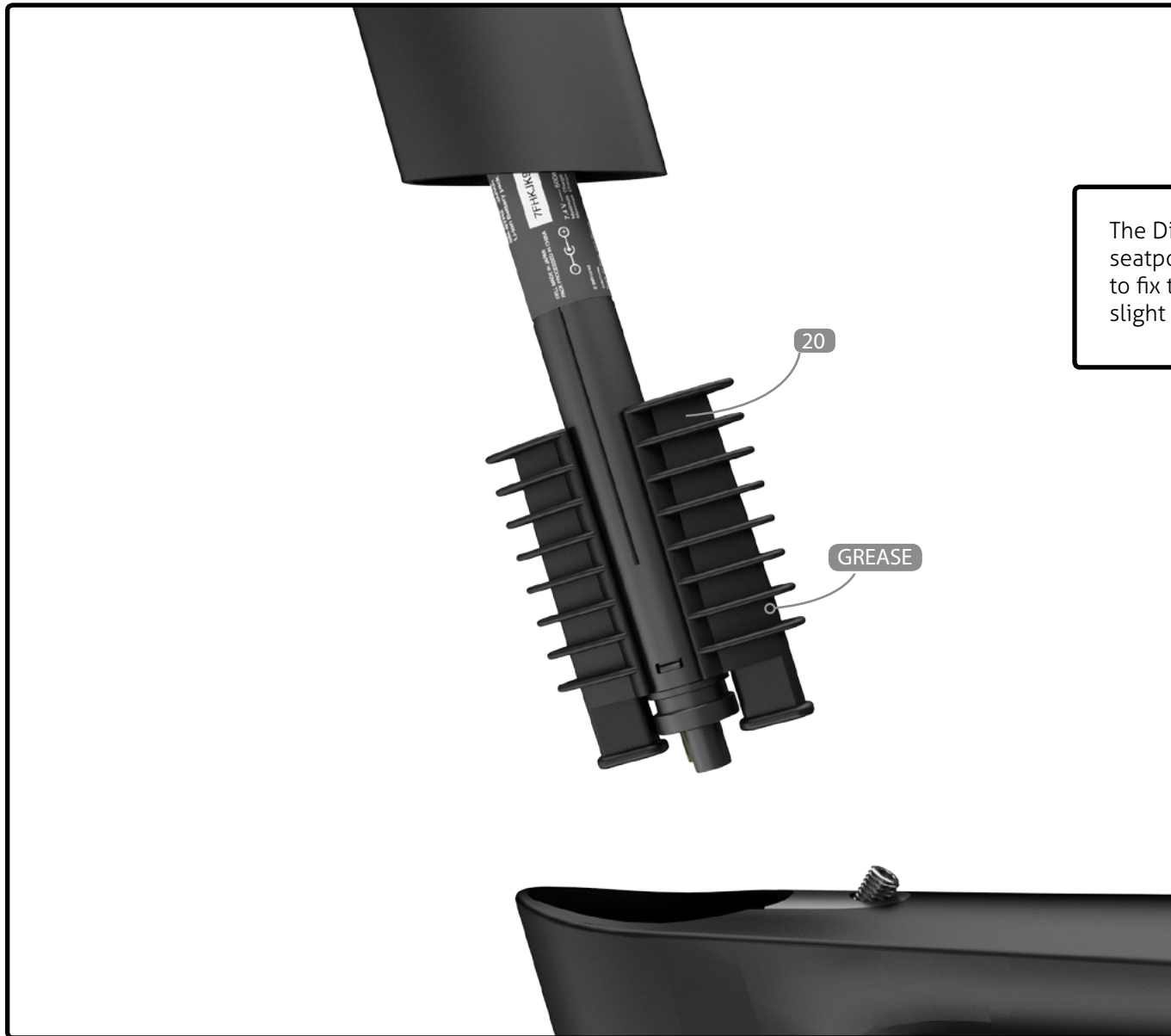
The Di2 cable routing can be achieved easily using this simple trick: use a brake cable and a metal cable end to fix the Di2 cable. For more information on Shimano Di2 electronic system installation, go to : <http://si.shimano.com>.



Use the proper gromet on the top tube to fix the cable correctly (depending if you use electronic shifting or mechanical drive train).



When using an electronic drive train, use the grommet (13) to fix the front derailleur cable.



The Di2 battery is hidden in the seatpost, use the 2 battery holder (20) to fix the battery correctly. Apply a slight amount of grease on both parts.





Adjust brake pads according to the width of your rims:

Pass the cable through the curved straw and then in the appropriate guide.

Fix the cable to the caliper with the 6mm screw and tighten it to 6Nm.





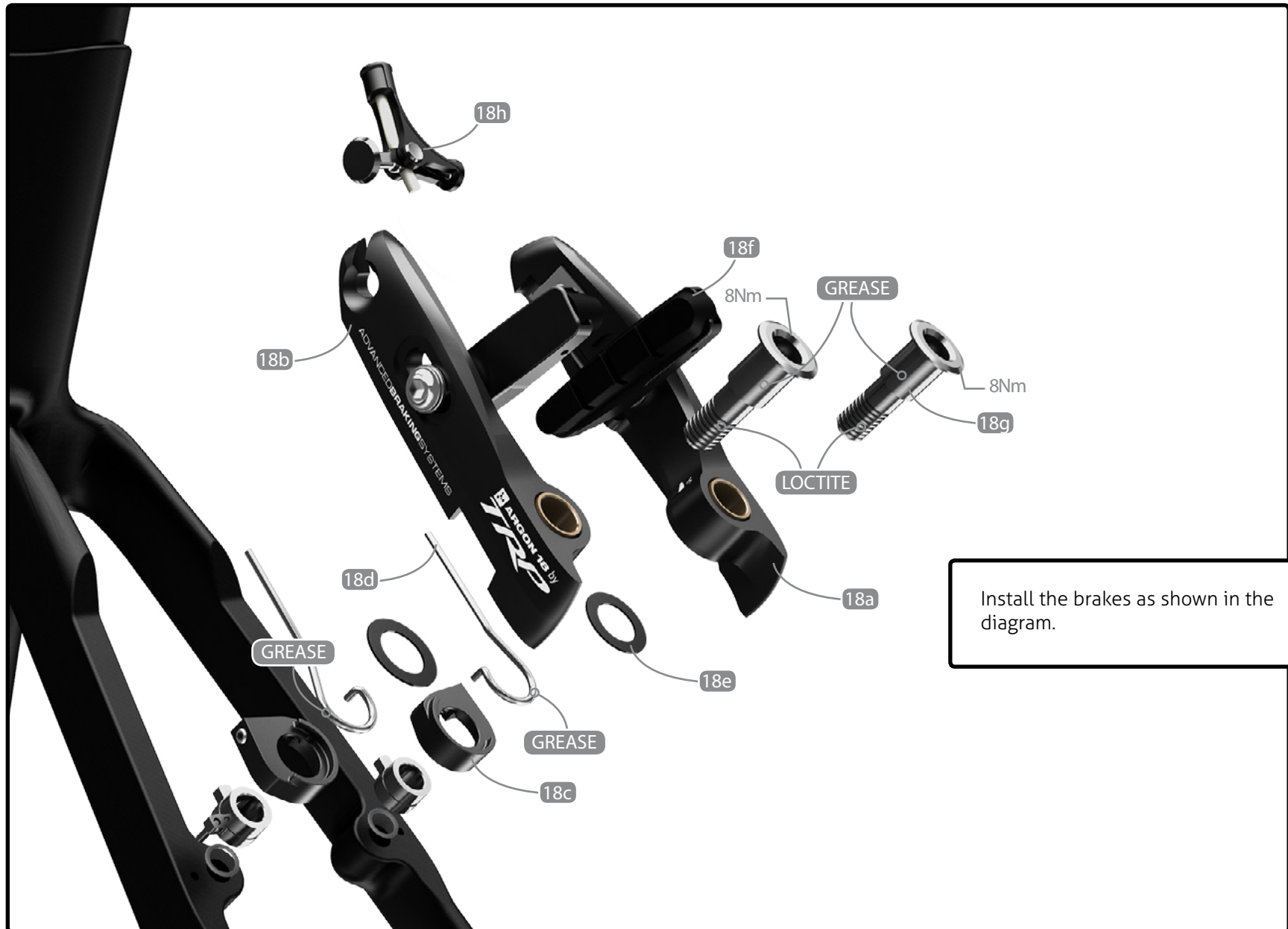
IMPORTANT : If the brake pad spacing is too thick, the brake arm can rub on the frame down tube. Make sure the pads spacing is appropriate.

Adjust brake pads according to the width of your rims:

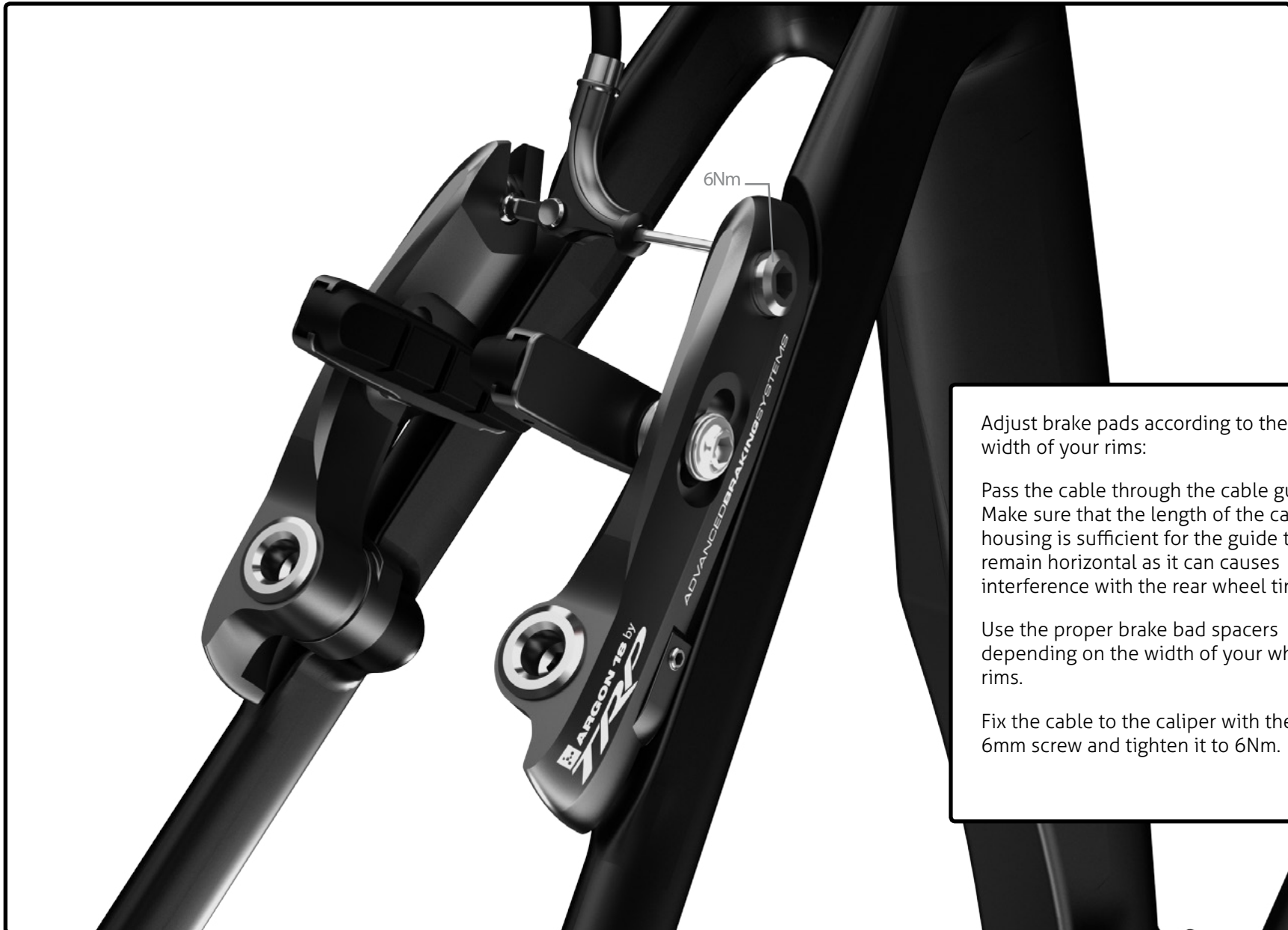
- You can configure the brake pads spacers with 1mm (17h), or 2mm (17i) depending of the rim width you are using.

Spacers required according to the rim width

Rim width	Spacer combinaison
19mm (e.g.: Shimano C50)	2mm spacer
24mm + (e.g.: 808 clincher/Enve)	1mm spacer (thin pad may be required)



Install the brakes as shown in the diagram.



Adjust brake pads according to the width of your rims:

Pass the cable through the cable guide. Make sure that the length of the cable housing is sufficient for the guide to remain horizontal as it can cause interference with the rear wheel tire.

Use the proper brake pad spacers depending on the width of your wheels rims.

Fix the cable to the caliper with the 6mm screw and tighten it to 6Nm.



RUNNING CHANGE

CARBON FIBER ASSEMBLY COMPOSITE

1. Place the seat post collar inside the frame.
2. Insert the seatpost (3) on which some carbon fiber assembly gel has been applied.
3. Position the seatpost to the desired height.
4. Apply a drop of blue Threadlocker (n. 242) on the bolt's thread
5. Tighten the set screw at max. 5.5Nm while leaving a space between the two parts allowing them to slide.

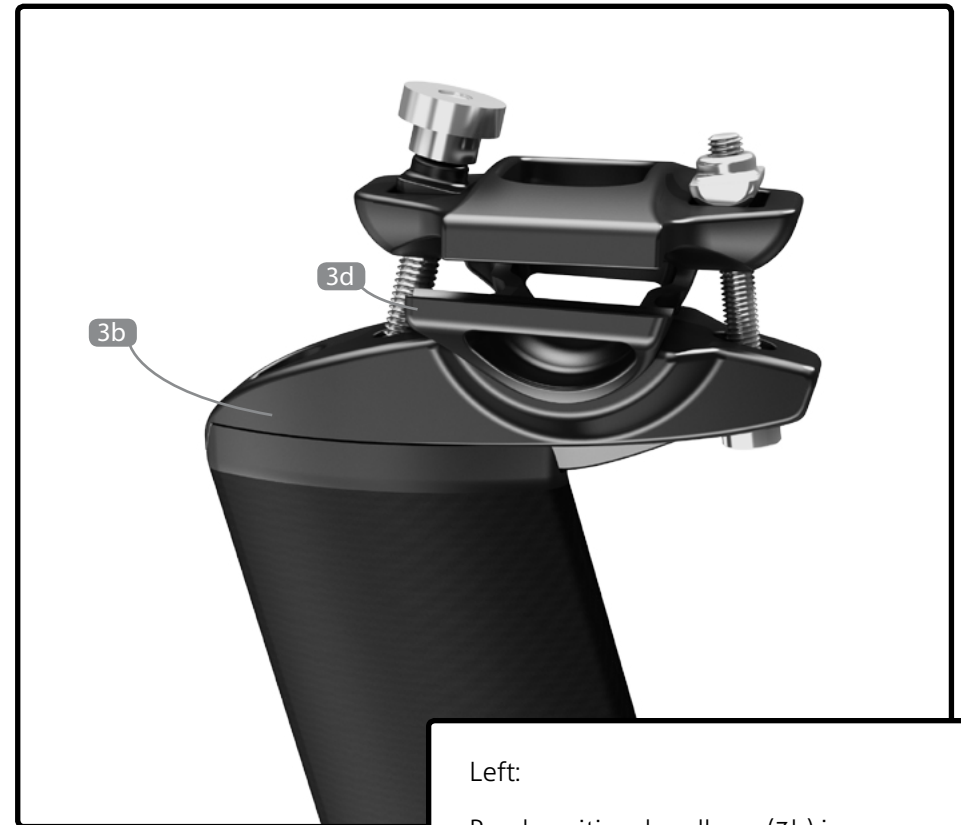
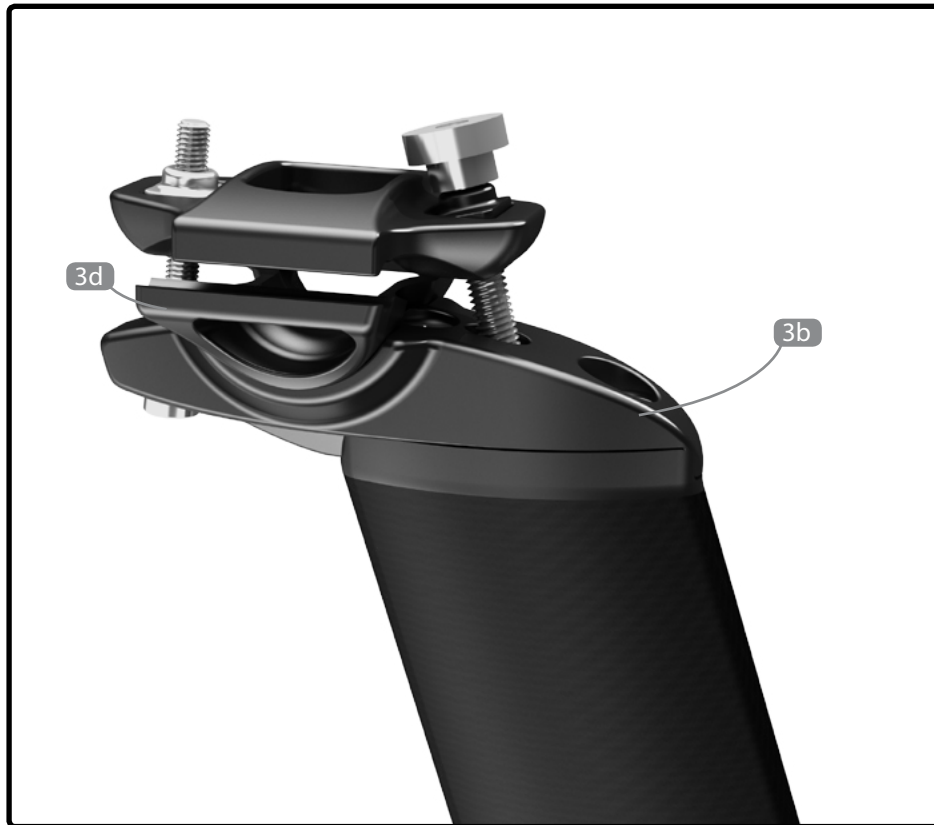


8.1 Install the saddle on the rocker (3d) and tighten the rail clamp (3e) up to 6Nm using the half-moon bolt (3k).

8.2 Adjust the angle and the offset of the saddle by hand tightening the thumb screw (3j).

8.3 The rocker (3d) can be flipped to change the saddle offset (+ / - 5mm).

8.4 The seatpost head base (3b) can also be flipped to achieve a TRI position. First remove the half-moon bolt (3k) and the thumb screw (3j), remove the top and bottom clamp (3d & 3e) to get access to the 2 head base screw (3c). Unscrew the screw to remove the head base (3b) and flip it to change the offset.



Left:

Road position: headbase (3b) is rear facing, setback offset (-17.5mm to -22.5mm) by flipping the bottom clamp (3d).

Right :

Tri position: headbase (3b) is front facing, setback offset (+30mm to +40mm) by flipping the bottom clamp (3d).

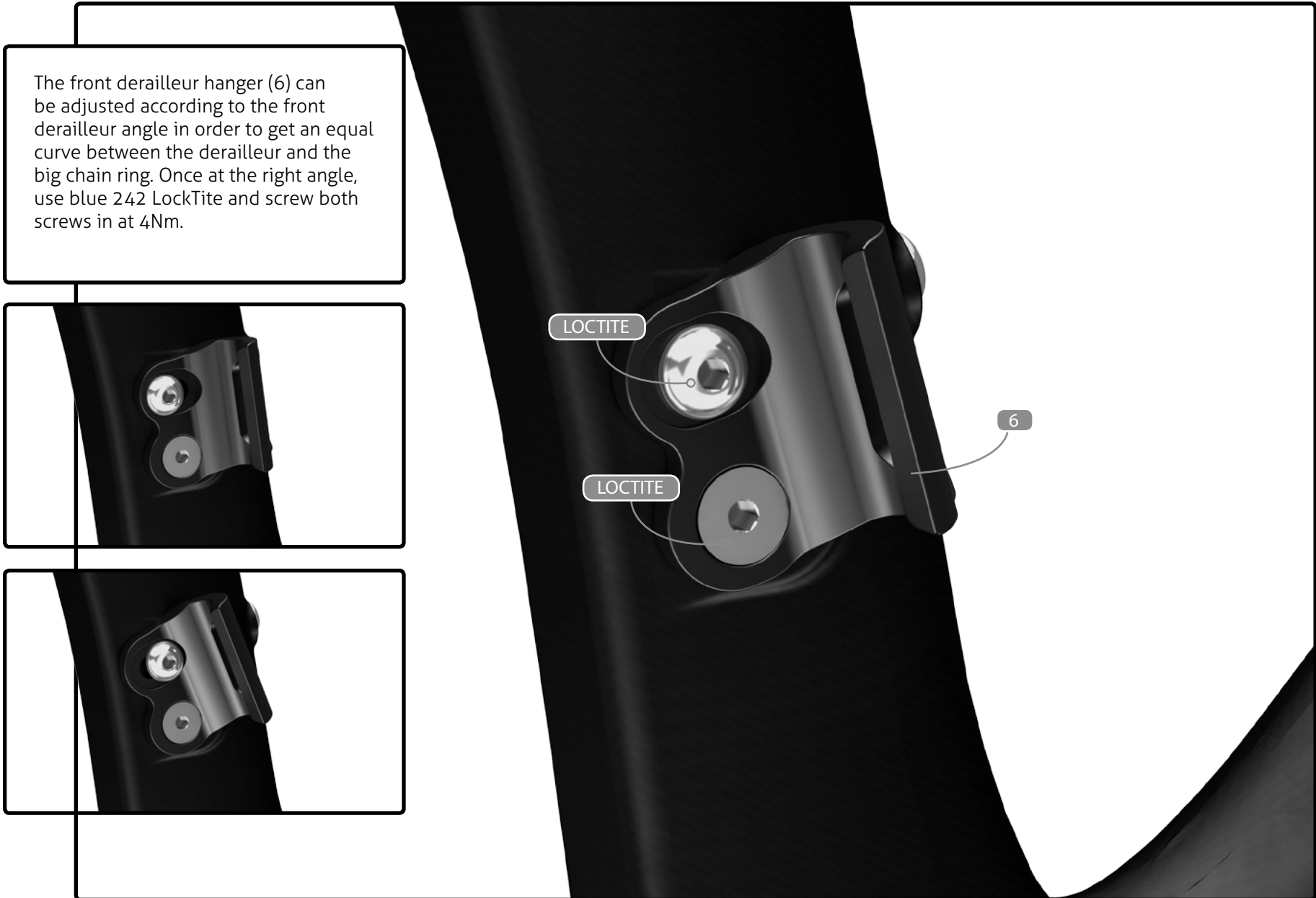


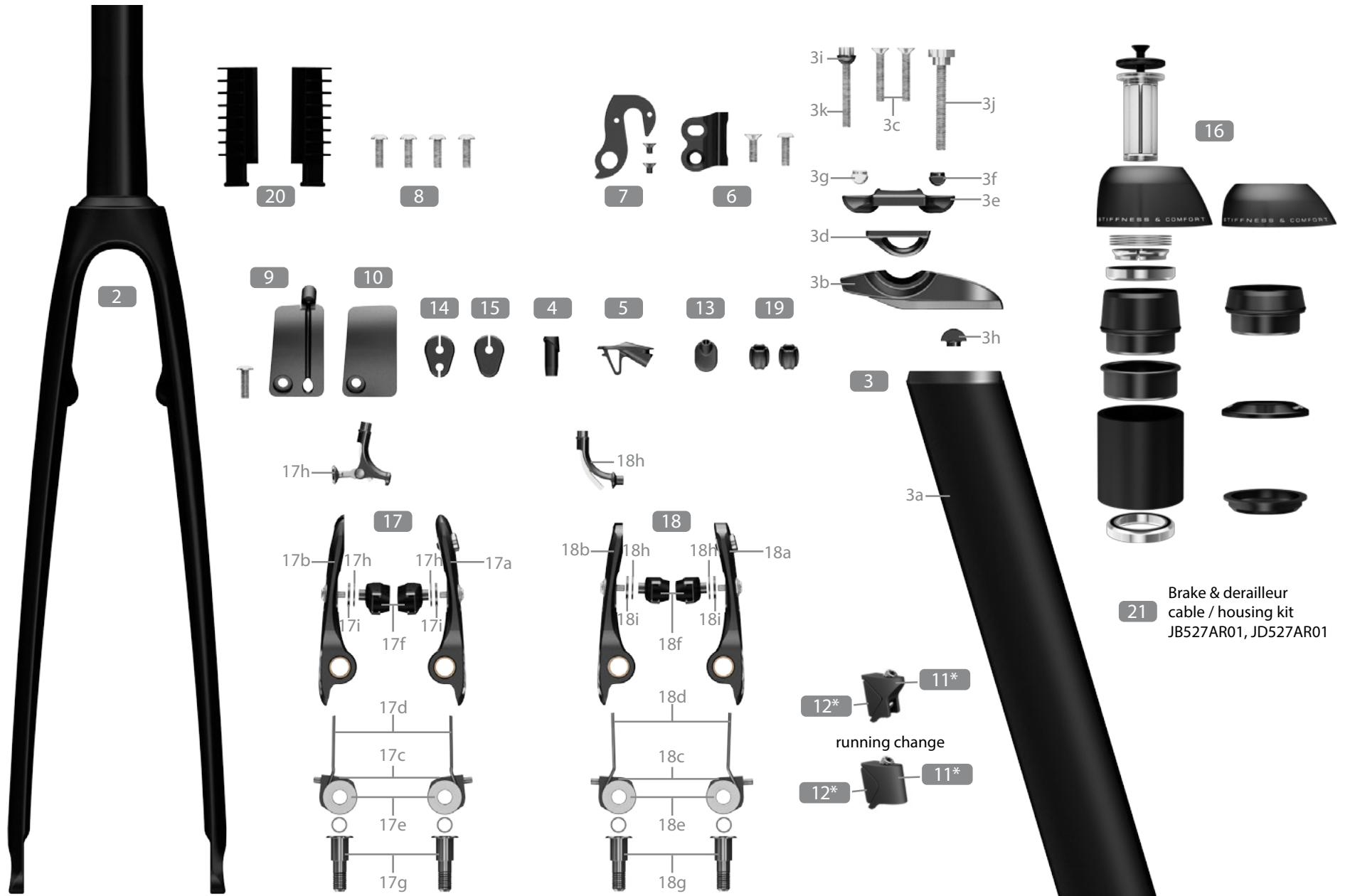
The front derailleur hanger (6) can be adjusted according to the front derailleur angle in order to get an equal curve between the derailleur and the big chain ring. Once at the right angle, use blue 242 LockTite and screw both screws in at 4Nm.

LOCTITE

LOCTITE

6





Images are for reference only. Proportions are not accurate.
 Argon 18 reserves the right to modify/change parts of the frameset at any moment without prior notice.
 *For more info please consult notice on Seatpost clamp dated 2016-06-09



No.	Name	A18 SKU#	Qty
# Frameset Parts			
1	Nitrogen MY2016 Frame		1
2	Nitrogen MY2016 Fork	FK.NIT.231B	1
# Seat post with the following parts assembled			
3	Nitrogen seat post (ASP-5000)	SP.NIT.231B	1
3a	AG-SP-01 carbon part		1
3b	Head base		1
3c	M5x30mm flat head - A2-70		2
3d	Lower Rail Clamp		1
3e	Upper Rail Clamp		1
3f	Half Moon Nut M6		1
3g	Half Moon Nut M5		1
3h	Half Moon Bolt		1
3i	Spherical Washer M5		1
3j	M6 Thumbscrew		1
3k	M5x40mm socket head		1



No.	Name	A18 SKU#	Qty
#	Frame related parts already installed		
4	Head tube brake cable stopper	38878	1
5	Top tube brake cable stopper	38879	1
6	Front derailleur hanger with screws	38882	1
7	Rear derailleur hanger with Flat Head screws (M3*8mm)	38883	1
8	Water bottle screw	38884	4
9	BB cable guide with Round Head Philips screws (M5*10mm)	38885	1
10	BB cover for elec. shifter with Round Head Philips screws (M5*10mm)	38260	1
#	Seat collar		
11	Seat collar base with screw M8x12mmF	80375, 80478	1
12	Seat collar wedge with screw M3x8mmB	80374, 80477	1



No.	Name	A18 SKU#	Qty
# Di2 configuration specific parts			
13	FD cable grommet for Di2	38888	1
14	Top tube grommet Non-Di2	38880	1
15	Top tube grommet for Di2	38881	1
# Also Included with the frameset - shipped separately			
16	Headset with compressor TH-881-	38724	1
17	Rear brake assembly	38719	1
18	Front brake assembly	38720	1
19	Grommet for chainstay	39009	1
20	DI2 battery holder for aero SP	38757	2



No.	Name	A18 SKU#	Qty
#	Also Included with the frameset - shipped separately		
17	TKB137 front brake including the following parts	38719	
17a	Brake Arm right		
17b	Brake Arm left		
17c	Brake pivot		
17d	Spring tensionners		
17e	Washers		
17f	Brake pad		
17g	Pivot bolt		
17h	cable guide	80425	
17i	2mm spacer		2
17j	1mm spacer		2
18	TKB138 rear brake including the following parts	38720	
18a	Brake Arm right		
18b	Brake Arm left		
18c	Brake pivot		
18d	Spring tensionners		
18e	Washers		
18f	Brake pad		
18g	Pivot bolt		
18h	cable guide	80424	
18i	2mm spacer		2
18j	1mm spacer		2



No.	Name	A18 SKU#	Qty
#	Also Included with the frameset - shipped separately		
21	Brake cable / housing kit including the following parts	39014	
	Housing 5mmKEB-SL		1
	End caps		2
	End caps		1
	End caps		2
	Cable		2
	Barrel adjuster		2
	Derailleur cable / housing kit including the following parts		
	Housing LEX40-SL		1
	End caps		2
	End caps		2
	Cable		2
	Barrel adjuster		2