



Sum, Sum Pro & Krypton Pro - Seatpost Saddle Top Clamp Replacement Program

Quality and reliability of our products always being our top priority, we are now implementing a **Seatpost Saddle Top Clamp Replacement Program** for all Sum, Sum Pro & Krypton Pro bikes manufactured since 2020 up to 2024. Although there have been no incidents reported to us to this date, some inspection reports show the appearance of cracks on certain seatpost saddle top clamps, which may present a potential issue. Therefore, as a proactive and preventive measure, Argon 18 is setting up this replacement program for any affected Sum, Sum Pro & Krypton Pro manufactured since 2020 up to 2024.

This replacement program covers seatposts of the Sum, Sum Pro & Krypton Pro framesets in all sizes that use the following SKUs:

- SP.KRP.364A
- SP.SUMP.352A
- SP.SUMP.352A.OSB
- SP.SUM.353A

The Sum, Sum Pro & Krypton Pro 2020-2024 models can be identified by their artwork, as shown in the following images:



Krypton Pro 364A



Sum Pro 352A



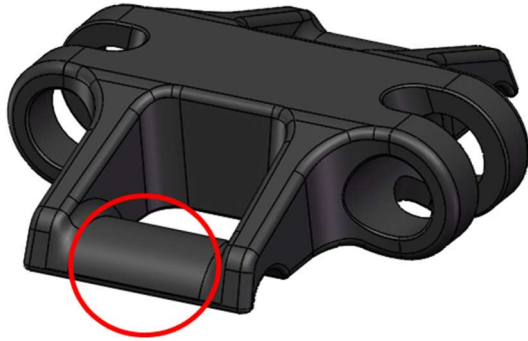
Sum 353A



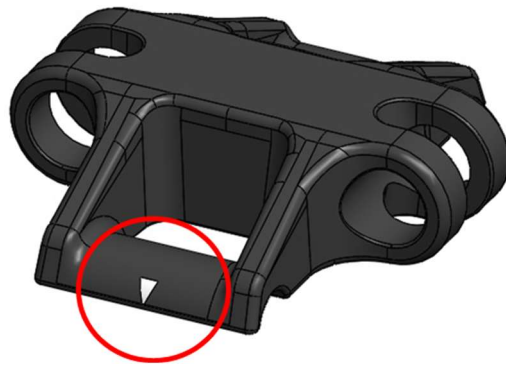
Sum 353B



To carry out this inspection and confirm if your seatpost saddle top clamp requires to be replaced, please look underneath your saddle and refer to the images below:



Seatpost top clamp needing replacement
(without white arrow)



New seatpost saddle top clamp
(with white arrow)



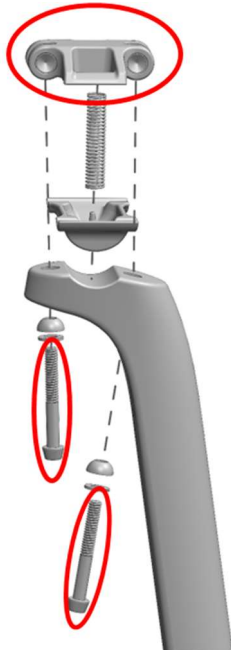
Assembled seatpost top clamp needing replacement
(without white arrow)



New seatpost saddle top clamp assembled
(with white arrow)



If, following inspection, you can confirm that your bike is equipped with a seatpost saddle top clamp that requires to be replaced, please contact your Argon 18 authorized retailer. A replacement package (SKU201116) will be sent to them rapidly. In the meantime, we recommend you refrain riding the affected bicycle.



SKU201116 Items



SKU201116 Picture

To replace the seatpost saddle top clamp, please follow instructions provided in the Sum, Sum Pro & Krypton Pro assembly guides for seatpost saddle top clamp disassembly and assembly procedures. The assembly guides are available here: <https://www.argon18.com/support/downloads/2023>

For any additional questions or information, please contact your Argon 18 Customer Service Representative.

**NOTE:**

1. Please note that there is **no spring needed** with the new seatpost saddle top clamp configuration. Therefore, it must be removed and discarded when replacing the seatpost saddle top clamp.



2. Also note that both Krypton 365A and 365B, shown below, are not subjected to this Replacement Program since their seatpost configuration is not the same as the affected one.



Krypton 365A



Krypton 365B