

JF30



995 kg (CE)



2540 x 780 x 1830 mm



8 m



6.8 m



Technical Information



Load Chart

Dimension	L x W x H	2540 x 780 x 1830 mm
Stab Area		3370 X 3370 mm

Crane & Options Weights		Kg
		JF30 1400
		/
		TF0500 12
		PP400-4DX PP220-4DX PP220-2DX 45
		JIB N 13 JIB P 10

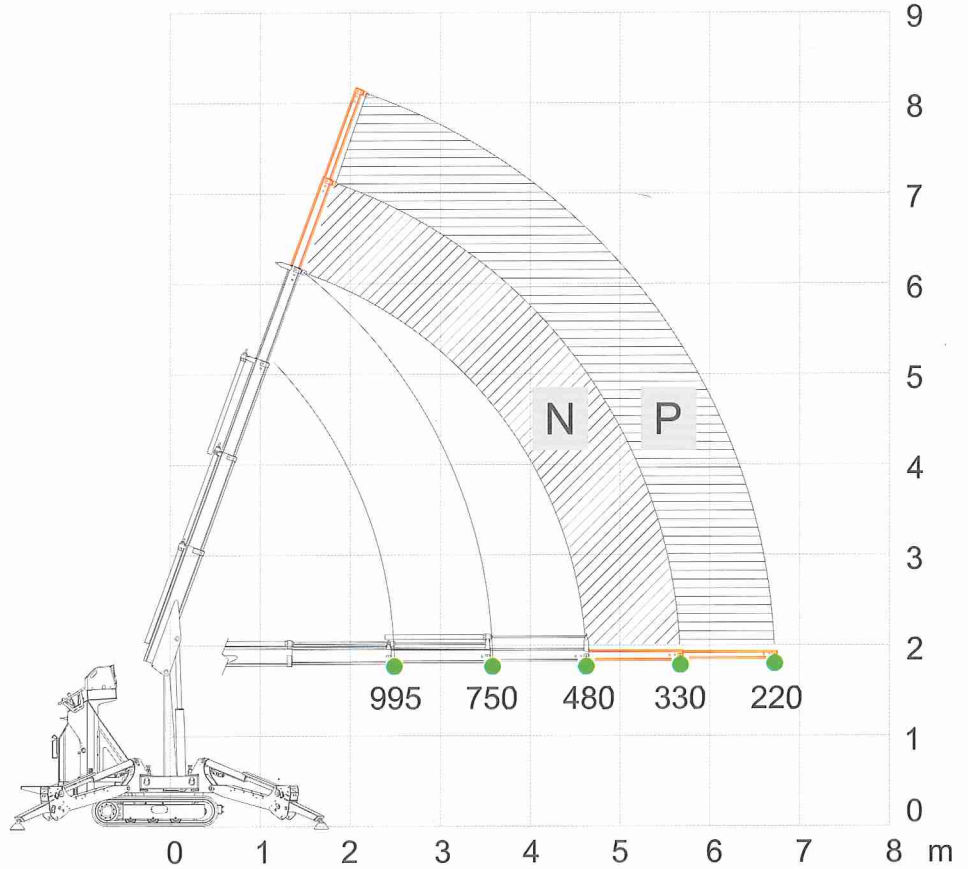
Winch		500 kg 36 m - Ø 6 mm 27-35 m/min.
-------	--	-----------------------------------------

JF30	Petrol Engine	YAMAHA MZ 360	7.6 kW 10.4 Hp
------	---------------	---------------	-------------------

Speed		2.4 km/h
-------	--	----------

Gradability		20°
-------------	--	-----

N&P: manual extensions



Electric Power Pack

	2kW - 2.7 Hp 220 V-AC
--	--------------------------

Max. Track Load

	0.32 kg/cm ²
--	-------------------------

Max. Outrigger Load

	1050 kg
--	---------

Boom Length

1.5 - 4.7 m	30 sec.
-------------	---------

Working Angle

0° / 70°	25 sec.
----------	---------

Rotation

325° / 1.0 rpm



Dimensions

