

HOW TO IRON A SHIRT



GATHER YOUR TOOLS

To iron your shirt properly, you'll need an iron, an ironing board, plus a spray bottle of water or spray starch/sizing.

CHECK GARMENT CARE LABEL & SET IRON TEMPERATURE

One dot on the iron symbol means low temp. Two dots for medium temp, & three dots for high temp.

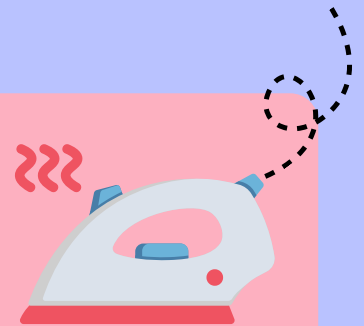


BE SAFE - DON'T GET BURNED

Don't touch the hot face of iron, rest iron upright, don't leave hot iron unattended, watch out for kids and pets, & unplug iron when done.

IRON THE PARTS OF YOUR SHIRT IN THE RIGHT ORDER

1. Collar
2. Yoke
3. Cuffs
4. Sleeves
5. Back
6. Front



HANG IT UP!

Place your freshly ironed shirt on a clothes hanger to avoid having to iron it again.