



21st July, 2020

Stock Code BSE: 500696  
NSE: HINDUNILVR  
ISIN: INE030A01027

BSE Limited,  
Corporate Relationship Department,  
2nd Floor, New Trading Wing,  
Rotunda Building, P.J. Towers,  
Dalal Street,  
Mumbai – 400 001

National Stock Exchange of India Ltd  
Exchange Plaza, 5th Floor,  
Plot No. C/1, G Block,  
Bandra – Kurla Complex,  
Bandra (E),  
Mumbai – 400 051

Dear Sir / Madam,

**Sub: Investor Presentation**

This is further to our letter dated 12th July, 2020, intimating a presentation to be made to Analysts / Investors on Unaudited Standalone and Consolidated Financial Results of the Company for the quarter ended 30th June, 2020 post Board Meeting.

Pursuant to the Regulation 30 of the Securities and Exchange Board of India (Listing Obligations and Disclosure Requirements) Regulations, 2015, we are enclosing herewith a copy of the presentation to Analysts / Investors on Unaudited Standalone and Consolidated Financial Results of the Company for the quarter ended 30th June, 2020.

Please take the above information on record.

Thanking You.

Yours faithfully,

**For Hindustan Unilever Limited**

DEVOPAM Digitally signed  
by DEVOPAM  
NARENDRA  
BAJPAI  
A BAJPAI Date: 2020.07.21  
16:22:06 +05'30'

**Dev Bajpai**  
**Executive Director, Legal & Corporate Affairs**  
**and Company Secretary**  
**DIN:00050516 / FCS No: F3354**

# HINDUSTAN UNILEVER LIMITED

## JQ'20 Results Presentation



*Hindustan Unilever Limited*

21<sup>st</sup> July, 2020

Sensitivity: Public

# Safe Harbor Statement

This Release / Communication, except for the historical information, may contain statements, including the words or phrases such as 'expects, anticipates, intends, will, would, undertakes, aims, estimates, contemplates, seeks to, objective, goal, projects, should' and similar expressions or variations of these expressions or negatives of these terms indicating future performance or results, financial or otherwise, which are forward looking statements. These forward looking statements are based on certain expectations, assumptions, anticipated developments and other factors which are not limited to, risk and uncertainties regarding fluctuations in earnings, market growth, intense competition and the pricing environment in the market, consumption level, ability to maintain and manage key customer relationship and supply chain sources and those factors which may affect our ability to implement business strategies successfully, namely changes in regulatory environments, political instability, change in international oil prices and input costs and new or changed priorities of the trade. The Company, therefore, cannot guarantee that the forward-looking statements made herein shall be realized. The Company, based on changes as stated above, may alter, amend, modify or make necessary corrective changes in any manner to any such forward looking statement contained herein or make written or oral forward looking statements as may be required from time to time on the basis of subsequent developments and events. The Company does not undertake any obligation to update forward looking statements that may be made from time to time by or on behalf of the Company to reflect the events or circumstances after the date hereof.



# Sanjiv Mehta

## Chairman & Managing Director

21<sup>st</sup> July, 2020

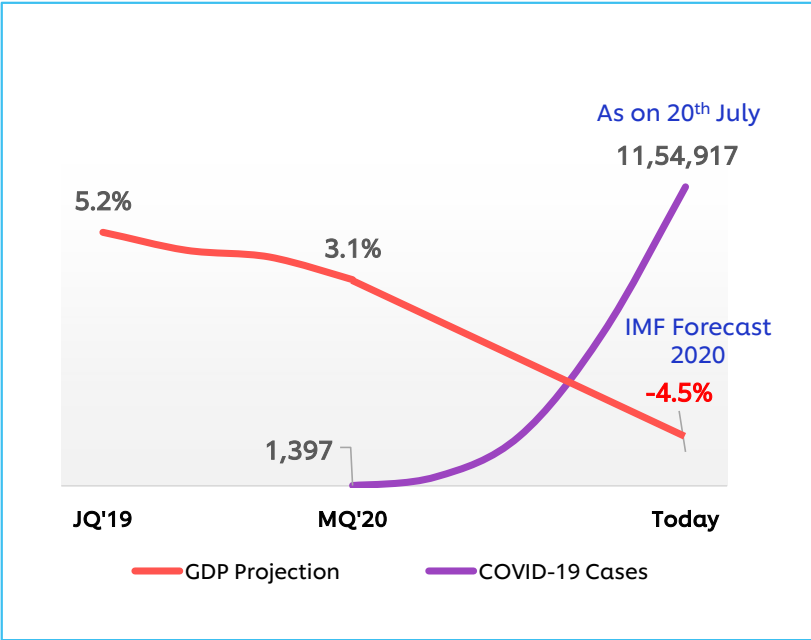
Sensitivity: Public



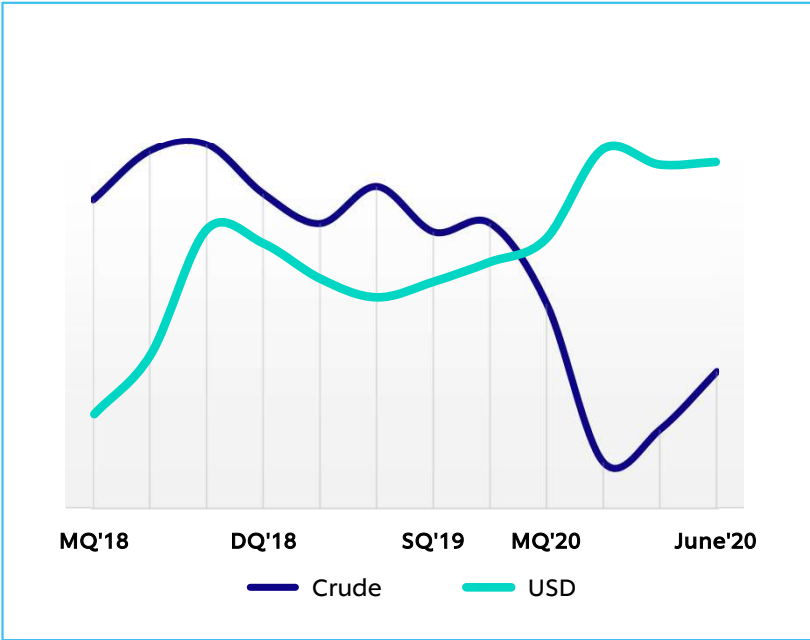
*Hindustan Unilever Limited*

# Market context : Remains challenging

### Economic uncertainty in face of COVID-19



### Heightened volatility in crude & currency



# Our strategy is serving us well

Guiding framework



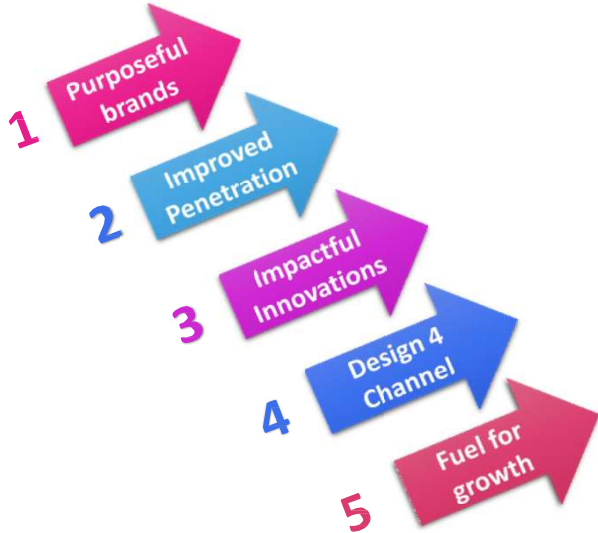
Purpose-led, Future-Fit

4G growth model



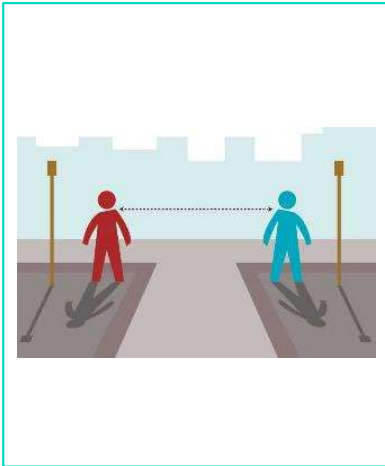
Consistent, Competitive, Profitable, Responsible Growth

Fundamentals of growth



# Good progress on focus areas

People



Supply



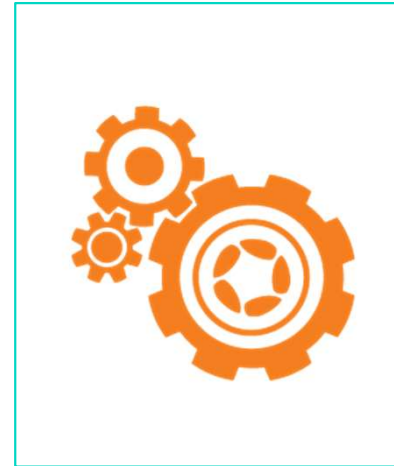
Demand



Community

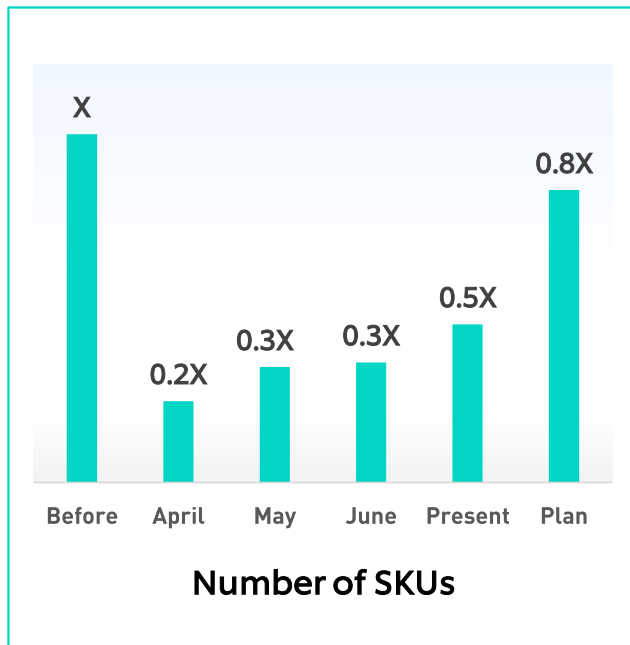


Cost & Cash

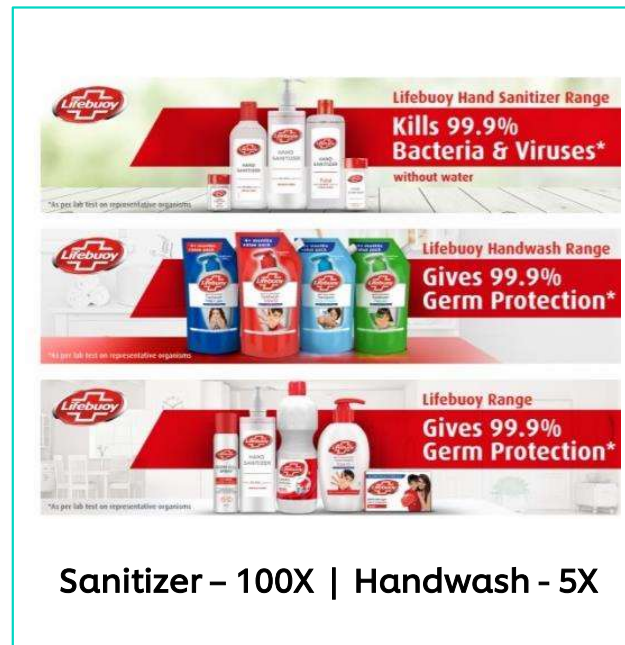


# Agility and responsiveness enables turnaround in operations

## Portfolio prioritization



## Capacity unlocks



## New demand capture & fulfilment models

**2X**  
Vs. pre-COVID levels

Average order value & #SKUs ordered

eB2B: A competitive advantage





# Nutrition business: Seamless virtual integration

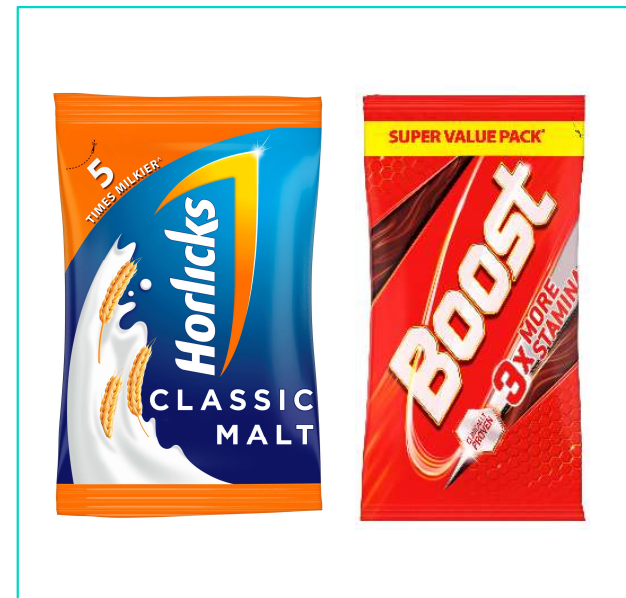
## Competitive growth



## Value-added innovations



## Enhancing accessibility



Structural growth and margin opportunity remains unchanged

# Addressing the consumer needs during COVID-19

## Clean living, Protection & Immunity



c.80% portfolio in  
Health, Hygiene & Nutrition

## Cocooning



Dialling up 'In-home'

## Conscious Consumption



₹ ₹ ₹  
High income



₹ ₹  
Mid income



₹  
Low income



Straddling the  
price-benefit pyramid

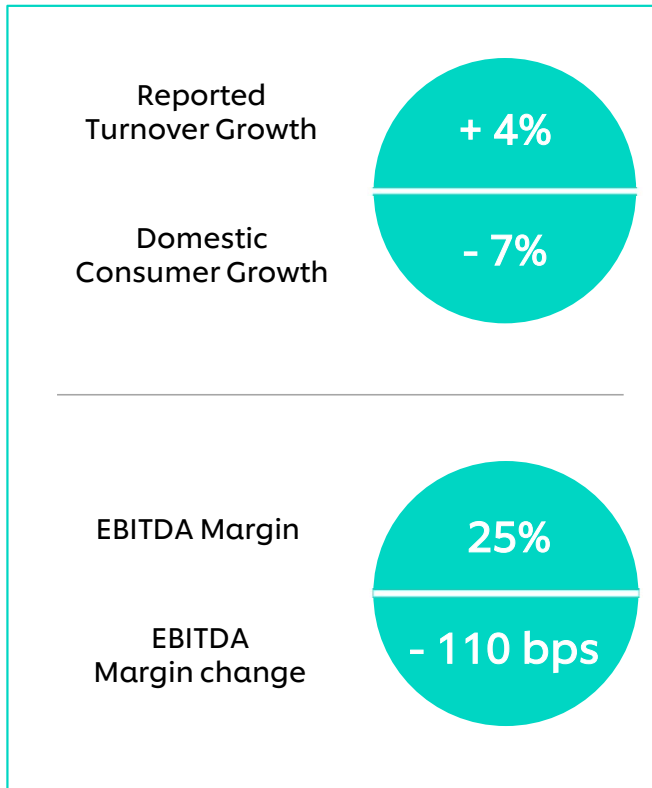
## E-everything



Re-imagining HUL:  
A competitive edge

# JQ 20 : Resilient performance

## Performance summary



## #HULStandsWithTheNation (Rs. 100 Crore committed)

### Product donations



### Healthcare partnerships



### Protecting our ecosystem



### Creating mass awareness



# Srinivas Phatak

## Chief Financial Officer

21<sup>st</sup> July, 2020

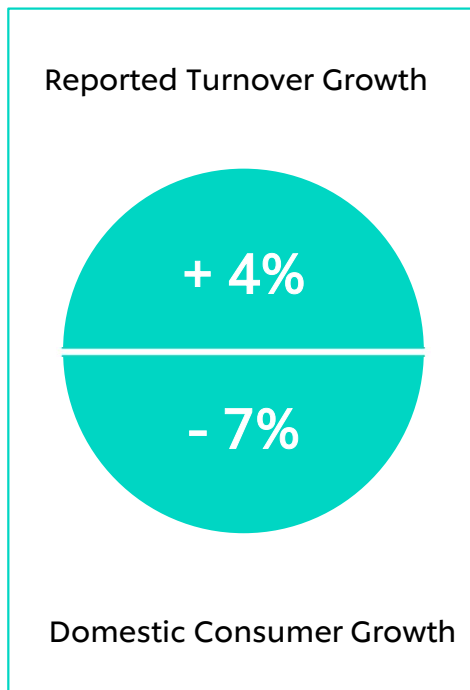
Sensitivity: Public



*Hindustan Unilever Limited*

# JQ'2020: Resilient performance in current context

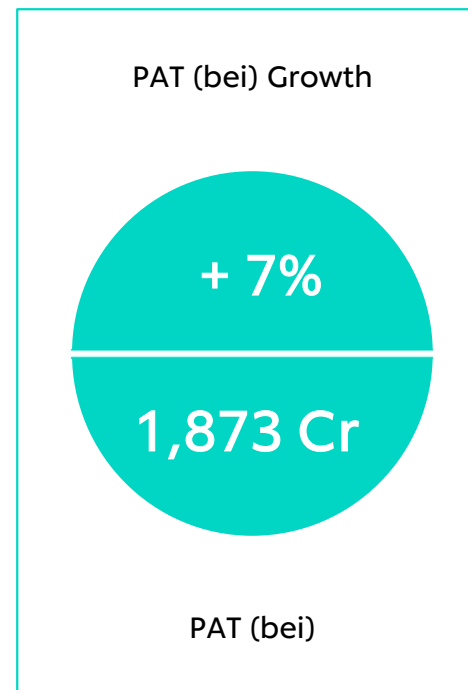
## Growth



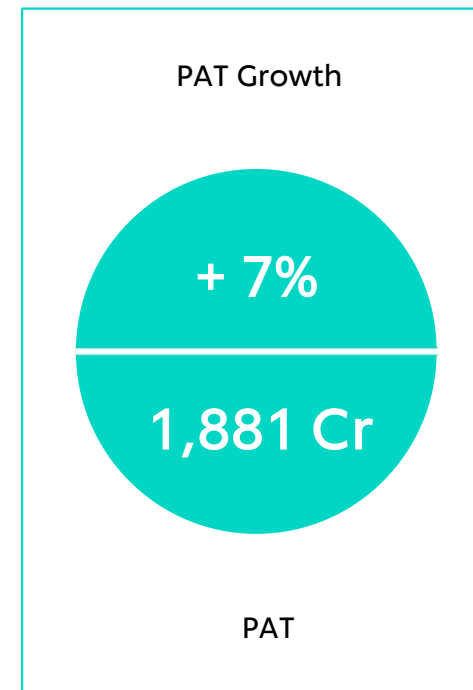
## EBITDA



## PAT (bei)



## Net Profit



**Growth competitive : 86% business winning share\***

*Difference between Reported Turnover Growth and Domestic Consumer growth reflects the impact of merger of GSK CH*

*\*Basis L3M May 2020 volume data as per Kantar Worldpanel* **12**

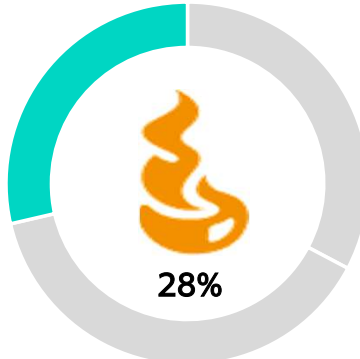
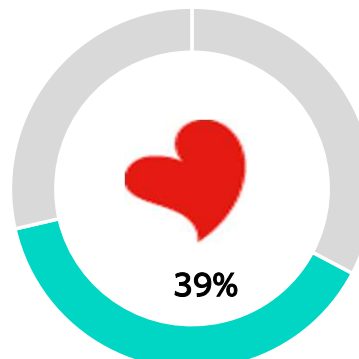
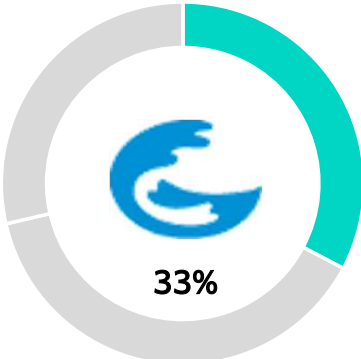


# Health, Hygiene and Nutrition perform well

HOME CARE

BEAUTY & PERSONAL CARE

FOODS & REFRESHMENT



Sales Growth\*

- 2%

- 12%

- 4%



\*Sales growth excludes the impact of merger of GSK CH 13

# Home Care

Solid portfolio performance across Household Care and Fabric Wash

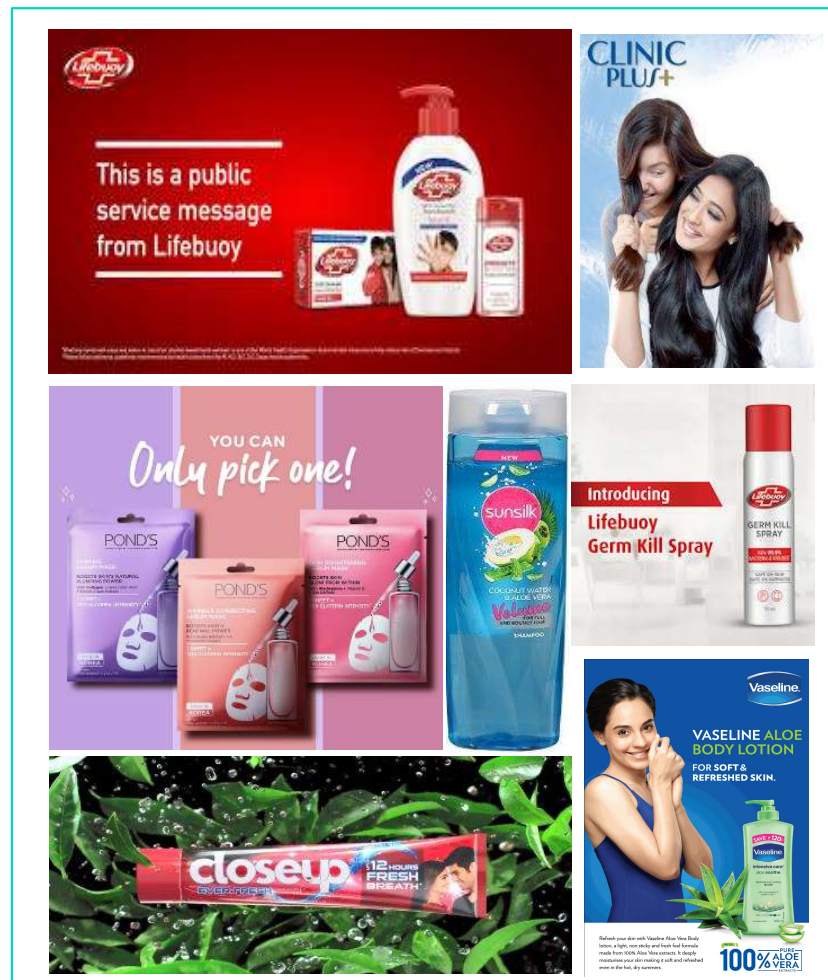


- ❑ **Household Care:** Penetration gains leading to strong growth across home & hygiene portfolio
  - *Domex with sodium hypochlorite proven to kill the virus in 60 seconds*
- ❑ **Fabric Wash:** Stable performance in both mass and premium portfolio
  - *Surf Excel remaining consumer and contextually relevant with #DaagGharPeRahenge*
- ❑ **Purifiers:** Performance impacted due to the 'Consumer Durables' nature of category



# Beauty & Personal Care

*Skin Cleansing outperforms; Discretionary categories impacted*



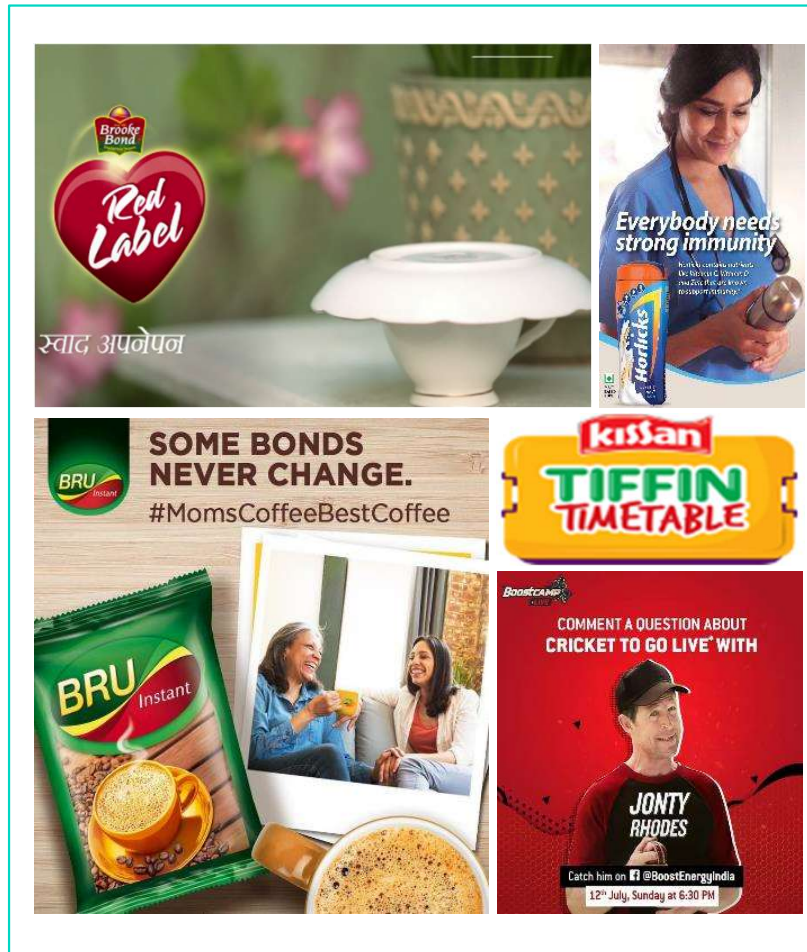
- ❑ **Skin Cleansing:** Strong double-digit growth across formats led by Lifebuoy
  - *Handwash & Sanitizers witness demand upsurge*
- ❑ **Oral Care:** Good delivery with momentum on CloseUp strengthening
- ❑ **Hair Care:** Demand picks up during latter half of quarter; Hair care is a key part of consumers' consideration set for 'Hygiene' needs
- ❑ **Discretionary segments of Skin, Deos and Color :** Adversely impacted
  - *Green shoots in parts of Skin Care portfolio*





# Foods & Refreshment

Strong growth across brands riding the trends: 'In-home, wellness & immunity'



- ❑ **Foods:** Broad-based double-digits growth across segments on back of 'In-home' consumption tailwind
- ❑ **Beverages:** Both tea & coffee deliver strong double-digits growths with consumption shifting 'In-home'
  - Heightened consumer interest around wellness and immunity augurs well
- ❑ **Nutrition:** Addressing consumer needs around nutrition & immunity
  - Launched Horlicks with added Zinc to address immunity boosting need
- ❑ **Ice Cream, Food Solutions & Vending:** Severely impacted due to out-of-home consumption loss



# Portfolio snapshot in the times of COVID

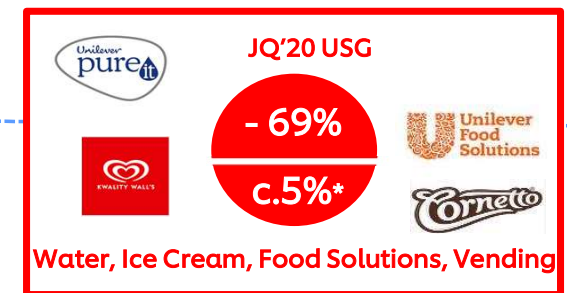
## Health, Hygiene & Nutrition



## Discretionary and supply constrained

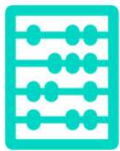


## Out of home



# P&L: Deft management to address volatility & support growth

## Headwinds due to COVID-19



Adverse mix



De-leverage



COVID-related on-cost

## Cost agility



Savings agenda dialled up



BMI spends recalibrated, competitiveness maintained



Unlocking synergies from Nutrition business

# Segmental Performance

## HOME CARE



INR 3,392 Cr

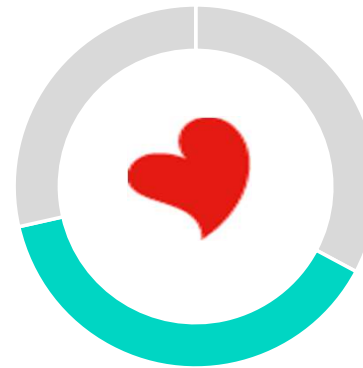
Segmental Revenue Growth\*

- 2%

Segmental Margins\*\*

19%

## BEAUTY & PERSONAL CARE



INR 4,039 Cr

- 12%

28%

## FOODS & REFRESHMENT



INR 2,958 Cr

+ 52%

20%

\*Segment Revenue Growth = Segment Turnover growth + Other Operating Income + Impact of merger of GSK CH

\*\* Segment Margins (EBIT) excludes exceptional items

# JQ'20: Results Summary

Rs. Crores

Particulars	JQ'20	JQ'19	Growth %
Sales	10,406	9,984	4%*
EBITDA	2,644	2,647	Flat
Other Income (Net)	127	123	
Exceptional Items – Credit / (Charge)	(118)	7	
PBT	2,411	2,563	- 6%
Tax	530	808	
PAT bei	1,873	1,751	7%
Net Profit	1,881	1,755	7%

- \*Domestic Consumer Growth at - 7%
- Exceptional items include costs related to Nutrition business merger and integration



# Special Dividend

Special Dividend per share



Total Special Dividend

- Business operations are well funded, and our financial model continues to be strong
- Scheme of Arrangement for transfer of balance in General Reserve of Rs. 2187.33 crores to Profit & Loss Account was approved by Shareholders in 2016. Subsequently the scheme was sanctioned by the Hon'ble National Company Law Tribunal, Mumbai Bench, vide its order dated 30th August 2018.
- The Board has approved the distribution of the reserves to shareholders by means of a special dividend of Rs.9.50 per share.



# Looking ahead

## Near-term outlook

- ❑ Unprecedented times : Difficult to estimate market growths and / or consumer demand.
- ❑ Volatility in input costs and currency to continue. Liquidity pressures remain elevated

## Organizational strengths



Brand portfolio designed for future normal



Strengths and experience



Growth fundamentals working well



Organizational agility and speed

## Key metrics



Competitive volume-led growth



Absolute profit



Cash delivery



# For more information and updates

Visit our website

## Investor Relations

### June Quarter 2020 results

Hindustan Unilever will release its financial results for June Quarter 2020 on Tuesday, 21st July, 2020.

> [June Quarter 2020 results](#)

