

LTIM/SE/STAT/2023-24/21

April 27, 2023

National Stock Exchange of India Limited,
Exchange Plaza, Bandra-Kurla Complex,
Bandra (E),
Mumbai - 400 051

The BSE Limited,
Phiroze Jeejeebhoy Towers,
Dalal Street,
Mumbai - 400 001

NSE Symbol: LTIM**BSE Scrip Code:** 540005

Dear Sir(s)/Madam,

Subject: Investor Presentation

Pursuant to Regulation 30 of the SEBI (Listing Obligations & Disclosure Requirements) Regulations, 2015, we are enclosing herewith a copy of Investor Presentation, which also will be available on the Company's website viz. <https://www.ltimindtree.com/investors/>

Please take the same on your records.

Thanking you.

Yours faithfully,
For **LTIMindtree Limited**



(Tridib Barat)
Company Secretary & Compliance Officer

Encl.: As above

LTIMindtree Limited

(Formerly Larsen & Toubro Infotech Limited)

Technology Tower 1, Gate No. 5, Saki Vihar Road, Powai, Mumbai - 400 072, India

T: + 22 6776 6776 F: + 22 4313 0997

Registered Office : L&T House, Ballard Estate, Mumbai - 400 001.

www.ltimindtree.com, E-mail : info@ltimindtree.com, CIN - L72900MH1996PLC104693



LTIMindtree Investor Presentation

April 27, 2023

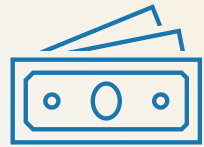


Safe Harbor

Certain statements in this release concerning the future prospects are forward-looking statements. These statements by their nature involve risks and uncertainties that could cause the actual results to differ materially from such forward-looking statements. The Company assumes no obligation to revise or update any forward-looking statements that may be made from time to time by or on behalf of the Company.

All numbers reported in the presentation represent numbers of the combined entity LTIMindtree including comparison to prior period unless stated otherwise.

Introducing LTIMindtree



Revenue

\$4.1B+

Last twelve months



Employees

84,000+

*Highly talented &
entrepreneurial professionals*



Clients

700+

Leading global enterprises



Presence

30+

Countries across 5 continents

Full Stack digital powerhouse, getting to the future, faster. Together.

One Culture

Built with purpose, **our beliefs** and **values fuel our client-centric culture.**

PURPOSE



Solve to unleash
possibilities

VISION

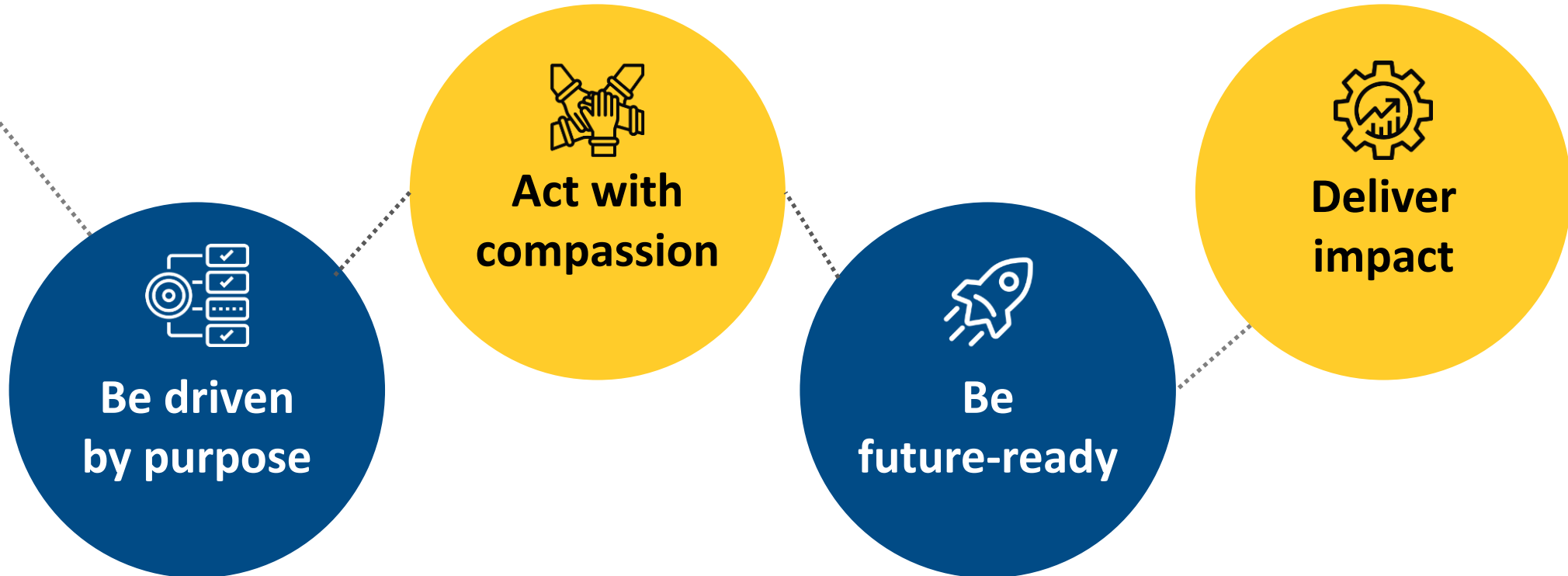


Enable businesses and
communities to flourish in a
hyperconnected world

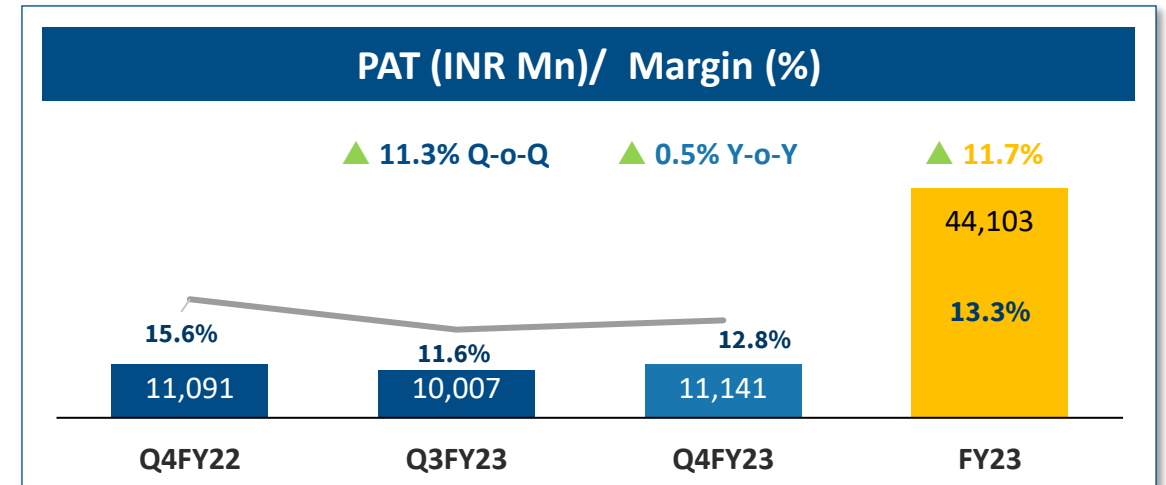
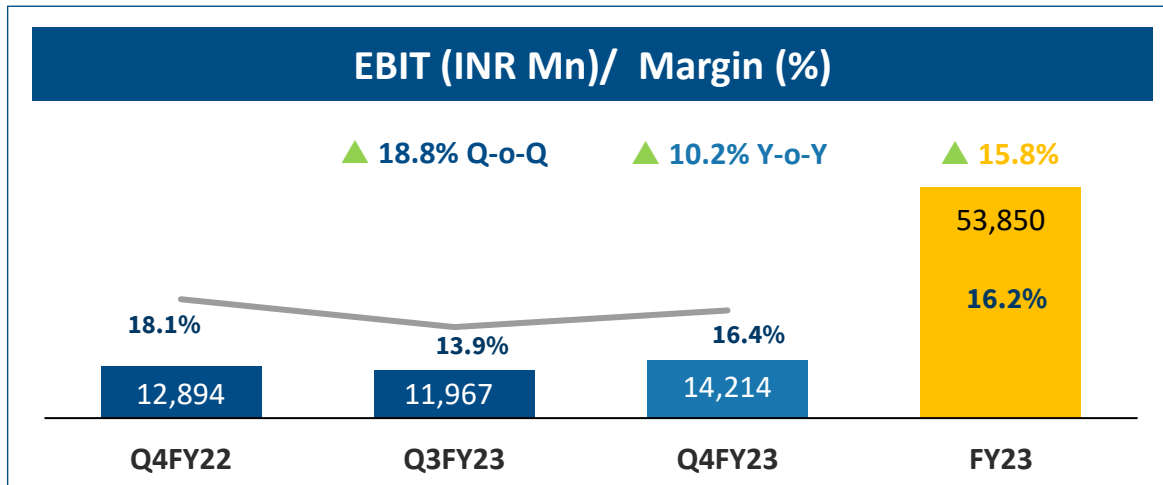
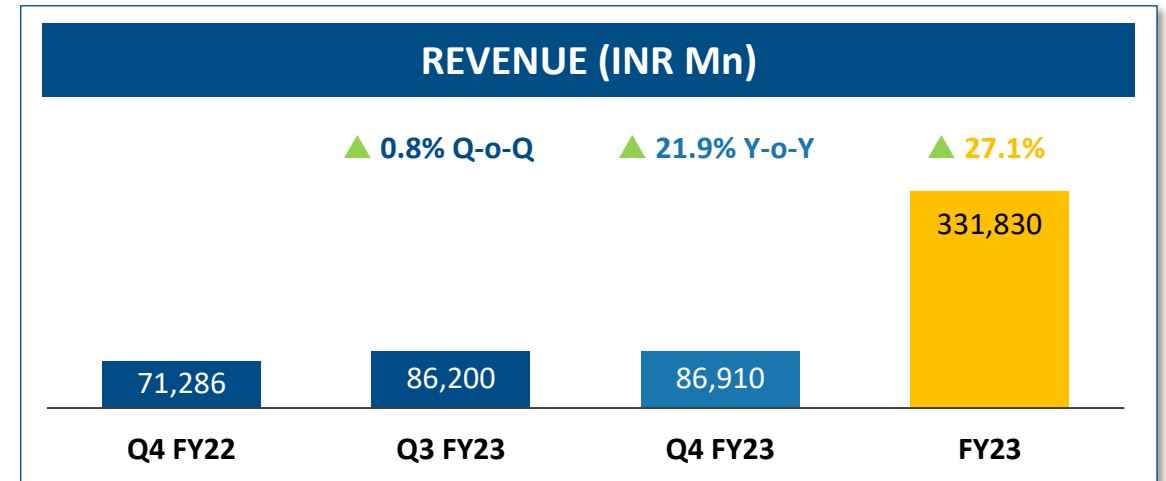
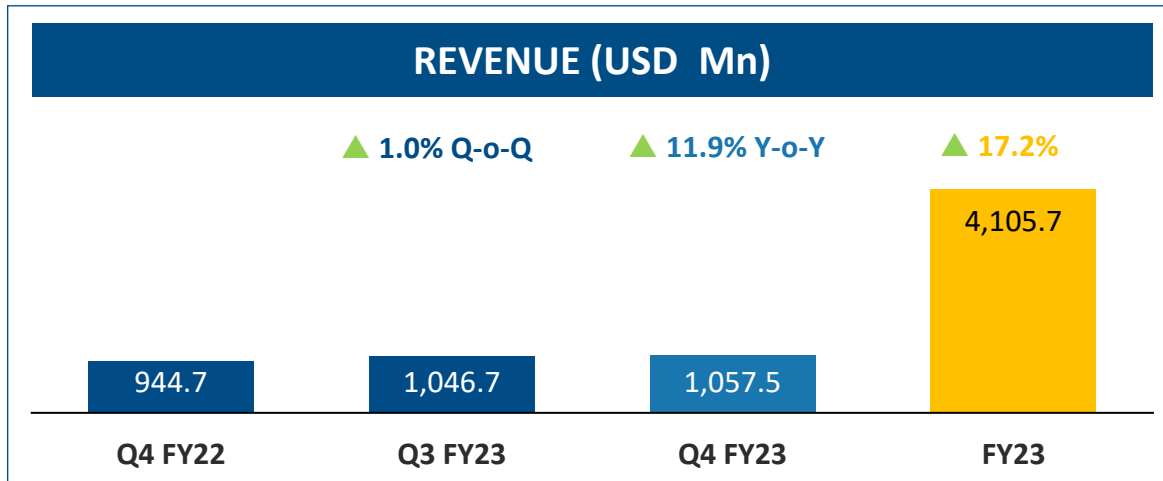
One Culture

Built with purpose, **our beliefs** and **values** fuel our client-centric culture.

CORE VALUES



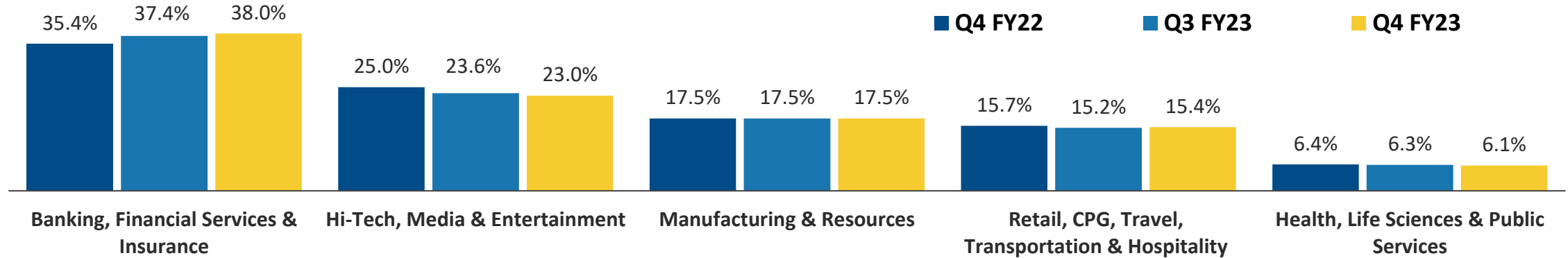
Q4 and FY23 Financials



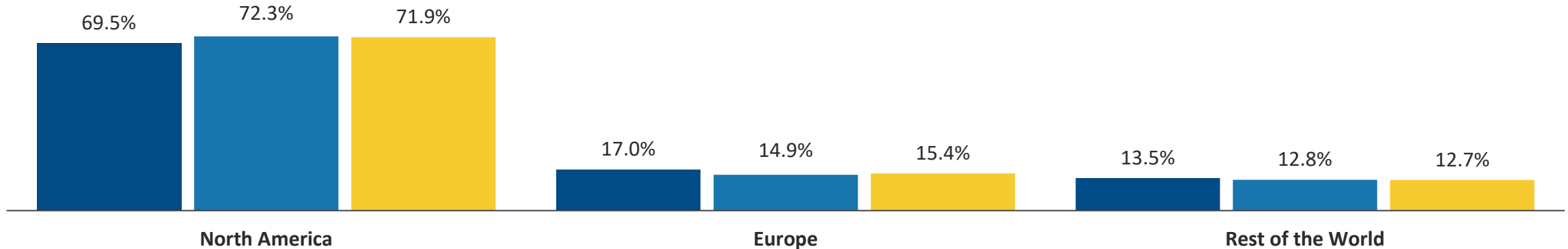
FY-o-FY growth

Resilient Portfolio

REVENUE BY INDUSTRY (%)



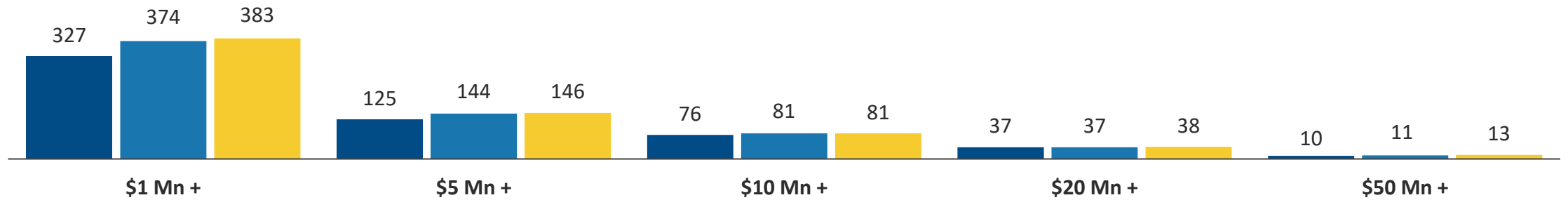
REVENUE BY GEOGRAPHY (%)



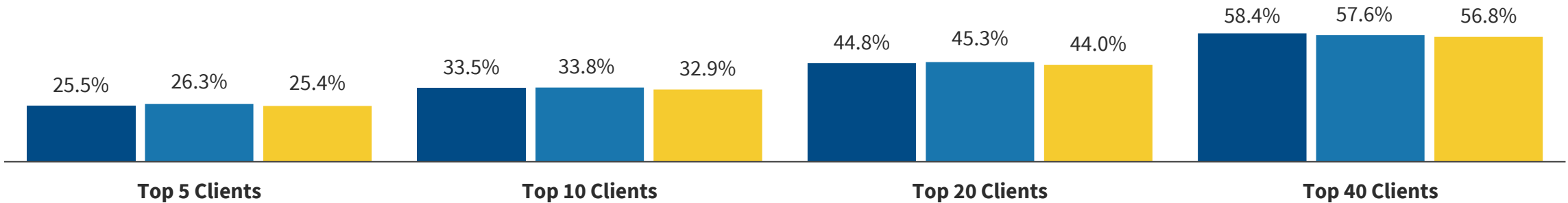
Client Composition

CLIENT METRICS

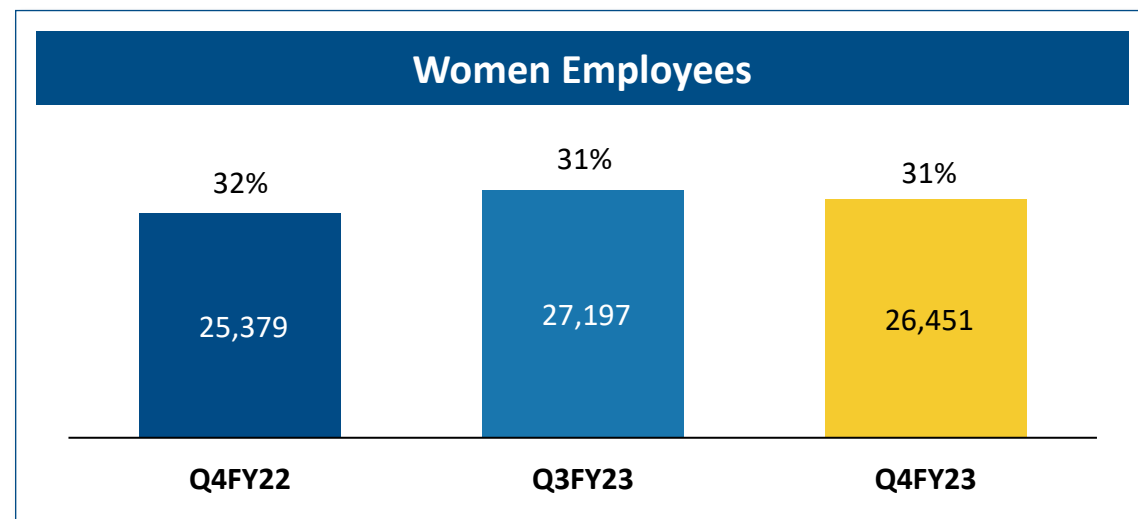
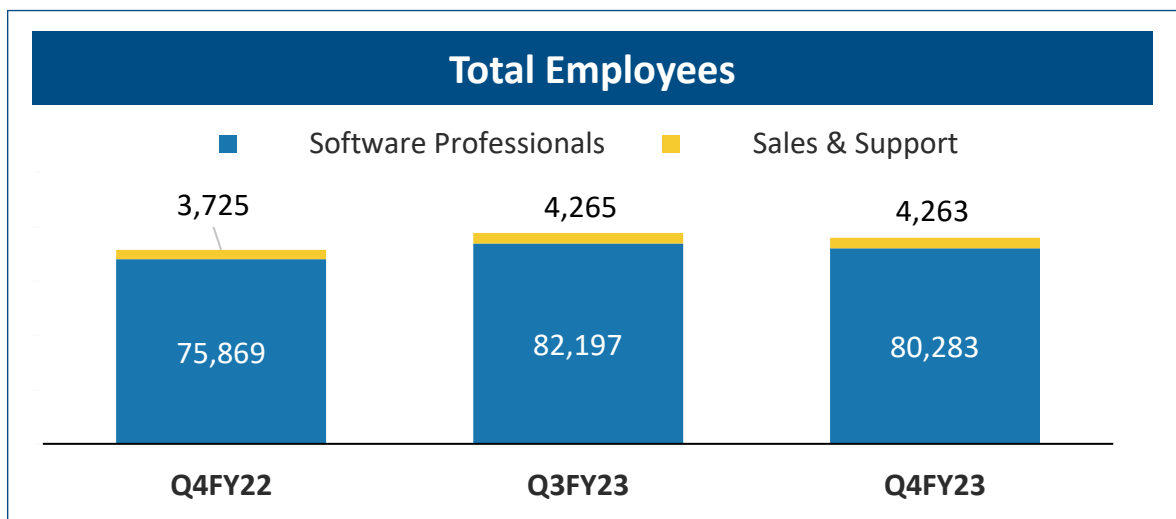
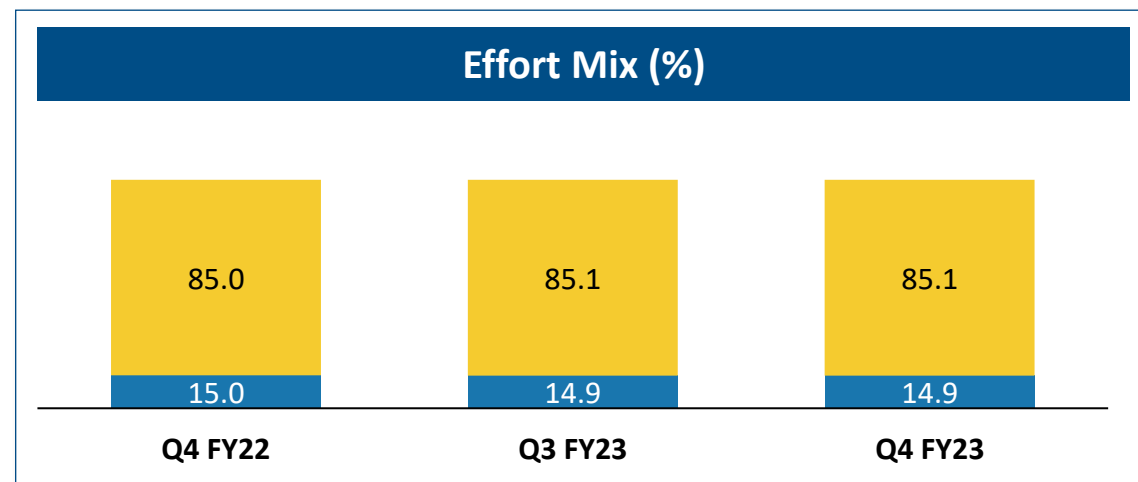
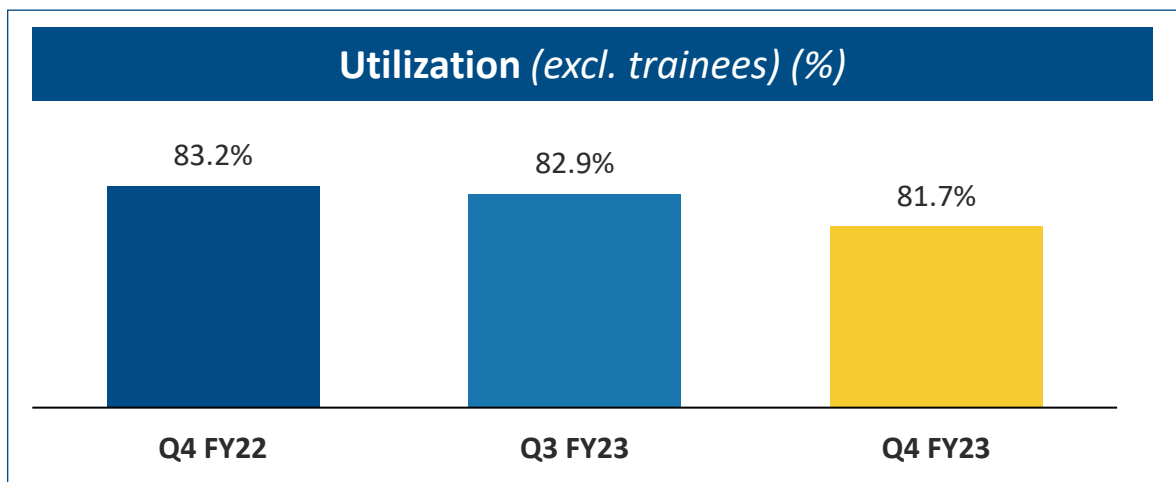
■ Q4 FY22 ■ Q3 FY23 ■ Q4 FY23



CLIENT CONTRIBUTION TO REVENUE (%)



Employee Metrics



Women employee % = Women employee Headcount / Total Headcount

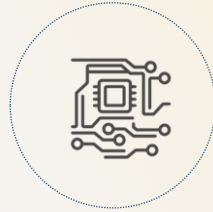
Key Deal Wins



Currys'

a UK based retailer of technology products and services

LTIMindtree aims to enhance Currys' omnichannel revenue stream and drive cost transformation.



onsemi

leader in intelligent power and image sensing technologies

Selected LTIMindtree as a strategic service provider for developing its next-generation enterprise IT support platform.



Hellenic Bank

a leading financial institution in Europe

Selected LTIMindtree as their exclusive Strategic Sourcing partner for their digital transformation program.



North American Manufacturer

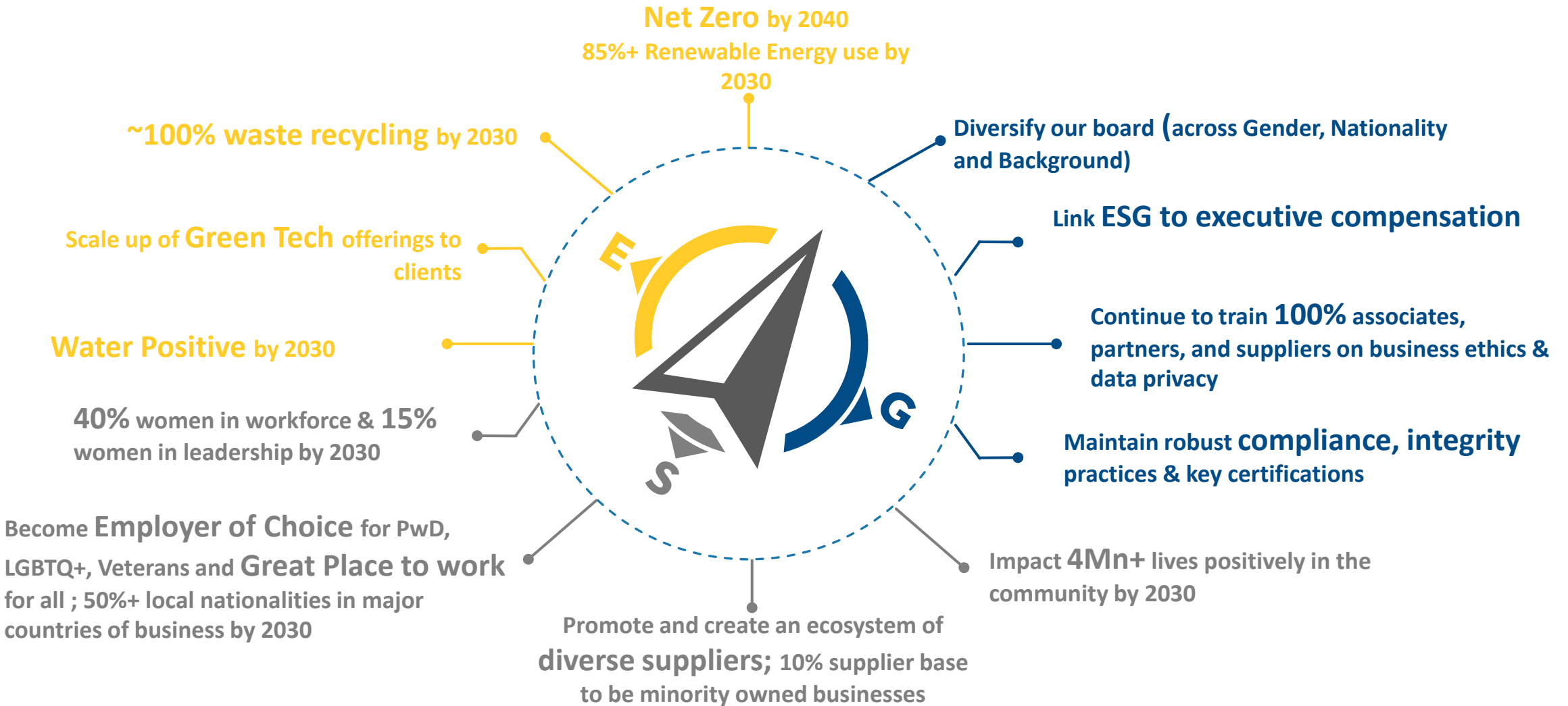
of high-performance building solutions

LTIMindtree would be the sole partner helping the client with its hybrid cloud infrastructure and 100+ enterprise applications landscape.

Robust Strategic Alliances



ESG Goals



In Summary

Digital Engineering Powerhouse
Industry leading Growth & Profitability
Let's get to the **Future, Faster.**
Together.



Thank You

