



2019-20 AUBURN WOMEN'S BASKETBALL

AUBURN ATHLETICS COMMUNICATIONS: 392 SOUTH DONAHUE DRIVE || AUBURN, AL 36830 || AUBURNTIGERS.COM || @AUBURNWBB

2019-20 SCHEDULE/RESULTS 6-10, 0-5 SEC

DATE	OPPONENT	TIME/TV/RESULT
Nov. 6	WOFFORD	W 84-82
Nov. 14	OLD DOMINION	L 77-89
Nov. 21	at UAB	L 75-80
Nov. 24	ST. JOSEPH'S	W 66-62
Nov. 29	1-vs. Middle Tennessee	L 50-73
Nov. 30	1-vs. Dayton	(OT) W 76-74
Dec. 1	1-vs. Drake	L 82-83
Dec. 4	at South Alabama	W 82-62
Dec. 7	2-at TCU	L 65-80
Dec. 15	BETHUNE-COOKMAN	W 74-56
Dec. 28	JACKSONVILLE STATE	W 62-53
Jan. 2	*at Vanderbilt	L 55-77
Jan. 5	*#20 ARKANSAS	L 70-86
Jan. 9	*FLORIDA	L 63-83
Jan. 12	*ALABAMA	L 48-75
Jan. 19	*at Georgia	L 50-61
Jan. 23	*OLE MISS	+ 6 pm
Jan. 27	*at Kentucky	SECN 6 pm
Jan. 30	*at Mississippi State	+ 7 pm
Feb. 2	*VANDERBILT	+ 2 pm
Feb. 9	*at Alabama	SECN 2 pm
Feb. 13	*at South Carolina	SECN 6 pm
Feb. 16	*LSU	SECN 4 pm
Feb. 20	*MISSISSIPPI STATE	SECN 8 pm
Feb. 23	*at Texas A&M	ESPN2 3 pm
Feb. 27	*at Missouri	+ 7 pm
Mar. 1	*TENNESSEE	SECN 2 pm
Mar. 4-8	SEC Tournament	Greenville
M20-23	NCAA First-Second Rounds	TBD
M27-30	NCAA Regionals	TBD
Apr 3-5	Women's Final Four	New Orleans

All times Central. Home Games in **BOLD CAPS**.
 1 - Gulf Coast Showcase (Estero, Fla.)
 2 - SEC/Big 12 Challenge
 + = SEC Network+ / ESPN3.com

AUBURN ATHLETICS COMMUNICATIONS

KIRK SAMPSON..... Associate AD
 kirk@auburn.edu
 WES TODD Assistant Director/WBB Contact
 wlt0006@auburn.edu
 C: 334-750-5682

Web.....AuburnTigers.com
 Twitter.....@AuburnWBB
 Facebook...../AuburnWBB
 Instagram.....@AuburnWBB
 Office Phone.....(334) 844-9800



GAME 17

Ole Miss (7-11, 1-5)

Thursday, Jan. 23, 2020 • 6 p.m. CT
We Back Pat Week



Site.....Auburn, Ala.
 Venue.....Auburn Arena (9,121)
 TV.....SEC Network + (Brad Law, Joe Ciampi)
 Radio.....WTGZ 93.9 FM (Brit Bowen, Larry DiChiara)
 Audio Webcast.....AuburnTigers.com/watch
 Live Stats.....AuburnStats.com
 Twitter.....@AuburnWBB
 Series Record.....Auburn leads 36-25
 at Auburn.....Auburn leads 18-8
 Last Meeting.....Auburn 64, Ole Miss 51 (Jan. 31, 2019, at Oxford)

GAMEDAY BREAKDOWN

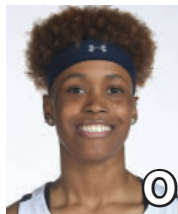
AUBURN TIGERS

Rankings.....AP: NR | Coaches: NR
 2019-20 Record.....6-10
 SEC.....0-5
 Home.....4-4
 Away.....1-4
 Neutral.....1-2
 Streak.....L5
 Head Coach.....Terri Williams-Flournoy
 Record at AU (Yrs.).....130-111 (8th)
 Overall Record (Yrs.).....273-215 (16th)
 Record vs. Ole Miss.....6-3

OLE MISS REBELS

Rankings.....AP: NR | Coaches: NR
 2019-20 Record.....7-11
 SEC.....0-5
 Home.....6-6
 Away.....0-4
 Neutral.....1-1
 Streak.....L5
 Head Coach.....Yolett McPhee-McCuin
 Record at UM (Yrs.).....16-33 (2nd)
 Overall Record (Yrs.).....110-96 (7th)
 Record vs. Auburn.....0-2

AUBURN PROJECTED STARTERS (based on last game)



DAISA ALEXANDER
 G • SR • 5-8
 Decatur, Ga.

PPG: 14.1
 RPG: 3.4
 APG: 2.0



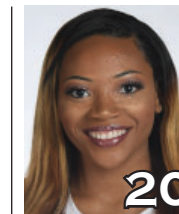
ROBYN BENTON
 G • SO • 5-9
 Atlanta, Ga.

PPG: 6.1
 RPG: 2.1
 APG: 1.3



BROOKE MOORE
 G • SO • 5-7
 Atlanta, Ga.

PPG: 10.9
 RPG: 1.5
 APG: 1.1



UNIQUE THOMPSON
 F • JR • 6-3
 Theodore, Ala.

PPG: 16.7
 RPG: 12.0
 APG: 1.8



ERIN HOWARD
 F/G • SO • 6-2
 Madison, Wis.

PPG: 6.3
 RPG: 4.3
 APG: 0.9

OFF THE BENCH

No.	Pos.	Name	Ht.	Year	PPG	RPG	Hometown
2	G	Sania Wells	5-7	Fr.	1.3	0.7	Moss Point, Miss.
3	G	Annie Hughes	5-9	Fr.	3.6	2.0	Dutton, Ala.
10	F	Kiyae' White	6-2	R-So.	4.3	5.3	Macungie, Pa.
13	G	Lauren Hansen	5-8	Fr.	7.5	1.5	Long Island, N.Y.
*14	F	Jala Jordan	6-2	So.	--	--	Philadelphia, Pa. (WVU)
*23	G	Honesty Scott-Grayson	5-9	So.	--	--	Brick, N.J. (Baylor)
30	G	Morgan Robinson-Nwagwu	5-8	Fr.	2.3	1.9	Norcross, Ga.
35	F	Natalie Kelly	6-3	So.	0.4	0.5	Albany, La.

*ineligible for 2019-20 season per NCAA transfer rules

Head Coach: Terri Williams-Flournoy

Assistants: Ty Evans, La'Keshia Frett Meredith, Clarisse Garcia

#WarEagle
#TeamOfExcellence



AuburnTigers.com



@AuburnWBB | @AuburnTigers
@AUCoachFlo



/AuburnWBB
/AuburnTigers

TEAM SCHEDULE AND MEDIA AVAILABILITY >> JANUARY 13-19 (times Central unless noted otherwise)

MONDAY January 13	TUESDAY January 14	WEDNESDAY January 15	THURSDAY January 16	FRIDAY January 17	SATURDAY January 18	SUNDAY January 19
OFF DAY	PRACTICE 2:30-5:30 p.m. Auburn Arena	PRACTICE 2:30-6 p.m. Auburn Arena	OFF DAY	PRACTICE 2:30-5:30 p.m. Auburn Arena	PRACTICE 10 a.m.-1 p.m. Auburn Arena	GAME 1:00 Auburn at Georgia
	COACH FLO SHOW 6-7 p.m. Moe's BBQ (Bent Creek Rd)				TRAVEL to Athens, Ga.	Interviews Postgame Return to Auburn

AUBURN ATHLETICS COMMUNICATIONS

QUICK FACTS

AUBURNTIGERS.COM

For updated game notes, statistics and all the latest information on Auburn basketball and gameday activities, go to AuburnTigers.com.

INTERVIEW POLICIES

- Coach Williams-Flournoy, assistant coaches and selected athletes are available for phone and personal interviews by contacting Wes Todd in the athletic communications office.
- Following home games, interviews with Coach Flo and selected players will be conducted in the media room following a 10-minute cooling-off period. Visiting coaches and players, if requested, will be available first.
- Interviews following road contests will be conducted in accordance with the home team's media policies.
- Practices are generally closed to the public, but media may cover practice with advance notice.**

CREDENTIALS

Anyone wishing to cover Auburn women's basketball should contact Wes Todd in the communications office at least one day in advance in order to make the proper arrangements. Game credentials will be held at media will call, located inside the scholarship entrance at Auburn Arena. Parking passes are not needed.

GAME DAY SERVICES

Notes for both teams and flip cards will be provided prior to the game. Stats will be distributed at halftime and after the game. Wireless internet is available in the Arena.

VIDEO SERVICES

FTP feeds of selected Auburn basketball highlights are available for the media. A number of studio and satellite services may be arranged for electronic media by calling War Eagle Productions at 334-750-4345.

COMMUNICATIONS STAFF

- Wes Todd Women's Basketball contact
cell: 334-750-5682
email: wlt0006@auburn.edu
- Grant Keith Student assistant/WBB
email: gak0005@auburn.edu
- Kirk Sampson Associate AD
cell: 334-750-1385
email: sampska@auburn.edu

GENERAL INFORMATION

- Location..... Auburn, Ala.
- Founded1856
- Enrollment.....30,440
- Nickname Tigers
- Colors..... Burnt Orange and Navy Blue
- Facility (Capacity) Auburn Arena (9,121)
- Interim President..... Dr. Jay Gogue
- Director of Athletics Allen Greene
- Sr. Assoc. AD/SWA..... Monique Holland

WOMEN'S BASKETBALL HISTORY

- First Year of Women's Basketball1971
- All-Time Record (Years).....942-488 (49th)
- All-Time SEC Record (since 1981)236-240
- All-Time Home Record437-122
- at Auburn Arena (since 2010)..... 90-51
- NCAA Tournament Appearances.....21
- Last NCAA App./Result.....2019 - First Round
- SEC Regular-Season Championships 5
- 1981, 1987, 1988, 1989, 2009
- SEC Tournament Championships..... 4
- 1981, 1987, 1990, 1997

COACHING & SUPPORT STAFF

- Head Coach..... Terri Williams-Flournoy
- Alma Mater, Year Penn State, 1991
- Overall Record 273-214 (.561) / 16th year
- Auburn Record130-110 (.542) / 8th year
- Associate Head Coach (Year at Auburn) Ty Evans (8th)
- Alma Mater, Year Wisconsin-Whitewater (1995)
- Assistant Coach (Year) La'Keshia Frett Meredith (1st)
- Alma Mater, Year Georgia (1997)
- Assistant Coach (Year at Auburn) Clarisse Garcia (4th)
- Alma Mater, Year Villanova (2007)
- Strength & Conditioning Coach Lee Taylor
- Director of Basketball Operations Bianca Webb
- Director of Basketball Services Justin Peak
- Special Asst. to the Head Coach Reneisha Hobbs
- Athletic Trainer..... Catherine Gordon
- Grad. Student Mgrs Anthony Evans, Rebecca Walthall

GAMEDAY EXPERIENCE: AUBURN ARENA

>> Auburn Arena is in its 10th season as home of Auburn Basketball. The Tigers are 90-51 since moving to the Arena in 2010-11. The facility seats 9,121 for basketball and also hosts Auburn volleyball and gymnastics.



TEAM INFORMATION

- 2018-19 Record 22-10
- 2018-19 SEC Record 9-7
- SEC Finish..... T-6th
- Starters Returning/Lost3/2
- Letterwinners Returning/Lost7/4
- Newcomers..... 6

AUBURN TIGERS

Overall: 6-10 SEC: 0-5

Head Coach: Terri Williams-Flournoy (8th Season)

PRONUNCIATION GUIDE

Daisa Alexander - DAY-zha
 Jala Jordan - JAY-lah
 Morgan Robinson-Nwagwu - wah-GOO

Sania Wells - sa-NYE-uh
 Kiyae' White - kye-YAY
 Terri Williams-Flournoy - FluH-NOY

		<i>Pts</i>	<i>Reb</i>	<i>Ast</i>	<i>Stl</i>	<i>Blk</i>	
0	DAISA ALEXANDER G • 5-8 • Sr. • Decatur, Ga. • Southwest DeKalb HS	Season High	24	6	4	4	-
		Career High	25	8	8	7	2
		PPG	RPG	SPG	FG	3FG	FT
		19-20	14.1	3.4	2.4	.432	.308
1	ROBYN BENTON G • 5-9 • So. • Atlanta, Ga. • Greater Atlanta Christian	Season High	12	5	3	4	2
		Career High	16	5	3	4	2
		PPG	RPG	SPG	FG	3FG	FT
		19-20	6.1	2.1	2.7	.333	.350
2	SANIA WELLS G • 5-7 • Fr. • Moss Point, Miss. • East Central HS	Season High	4	3	3	2	-
		Career High	4	3	3	2	-
		PPG	RPG	APG	FG	3FG	FT
		19-20	1.2	0.6	0.6	.333	.167
3	ANNIE HUGHES G • 5-9 • Fr. • Dutton, Ala. • Pisgah HS	Season High	12	7	4	3	-
		Career High	12	7	4	3	-
		PPG	RPG	APG	FG	3FG	FT
		19-20	3.6	2.0	0.8	.390	.292
5	BROOKE MOORE G • 5-7 • So. • Atlanta, Ga. • Henry County HS	Season High	20	4	3	4	1
		Career High	23	4	3	4	1
		PPG	RPG	SPG	FG	3FG	FT
		19-20	10.9	1.5	1.2	.333	.250
10	KIYAE' WHITE F • 6-2 • R-So. • Macungie, Pa. • Emmaus HS	Season High	12	11	4	3	1
		Career High	12	11	4	3	1
		PPG	RPG	SPG	FG	3FG	FT
		19-20	4.3	5.0	0.8	.489	-
13	LAUREN HANSEN G • 5-8 • Fr. • Long Island, N.Y. • Ward Melville HS	Season High	24	6	4	4	-
		Career High	24	6	4	4	-
		PPG	RPG	APG	FG	3FG	FT
		19-20	7.5	1.5	1.9	.317	.316
14	JALA JORDAN F • 6-2 • So. • Philadelphia, Pa. • West Virginia	Season High	31	19	5	2	2
		Career High	31	19	5	4	6
		PPG	RPG	SPG	FG	3FG	FT
		19-20	16.7	12.0	1.8	.583	-
20	UNIQUE THOMPSON F • 6-3 • Jr. • Theodore, Ala. • Faith Academy	Season High	14	7	3	4	2
		Career High	14	8	5	4	3
		PPG	RPG	SPG	FG	3FG	FT
		19-20	6.3	4.3	1.6	.339	.265
23	HONESTY SCOTT-GRAYSON G • 5-9 • So. • Brick, N.J. • Baylor	Season High	6	4	4	2	1
		Career High	6	4	4	2	1
		PPG	RPG	APG	FG	3FG	FT
		19-20	2.1	1.8	1.9	.222	.200
24	ERIN HOWARD F/G • 6-1 • So. • Madison, Wis. • Madison East HS	Season High	3	2	-	1	-
		Career High	3	3	-	1	1
		PPG	RPG	SPG	FG	3FG	FT
		19-20	0.4	0.5	0.2	1.000	-
30	MORGAN ROBINSON-NWAGWU G • 5-8 • Fr. • Norcross, Ga. • Norcross HS	Season High	14	7	3	4	2
		Career High	14	8	5	4	3
		PPG	RPG	SPG	FG	3FG	FT
		19-20	6.3	4.3	1.6	.339	.265
35	NATALIE KELLY F • 6-3 • So. • Albany, La. • Albany HS	Season High	14	7	3	4	2
		Career High	14	8	5	4	3
		PPG	RPG	SPG	FG	3FG	FT
		19-20	6.3	4.3	1.6	.339	.265

LAST GAME (at UGA): 17 pts, 3 reb, 3 stl, 1 ast
 • **Preseason All-SEC Second Team (coaches)**
 • 12th in SEC in scoring, 5th in steals
 • Scored 1,000th career point vs. Jacksonville St. (12/28)
 • Career-high 25 pts at Indiana (12/3/17)

LAST GAME (at UGA): 12 pts, 5 reb, 3 stl; 1st career start
 • **2019 SEC All-Freshman Team**
 • Season-high 12 pts, 5 reb in 1st career start at UGA (1/19)
 • Made season debut with 10 pts vs. B-C (12/15)
 • Missed first nine games of season with injury

LAST GAME (at UGA): Played 3 minutes
 • Scored 4 points in Auburn debut at UAB
 • Ranked as #27 PG nationally by ESPN
 • USA Today All-Mississippi Team
 • Avg. 27 pts, 5 rebs, 4 stls as HS senior

LAST GAME (at UGA): 1 steal, played 6 minutes
 • Career-high 7 rebs vs. B-C (12/15)
 • 3rd AU frosh to start debut since '12 (Thompson, Frerking)
 • 2019 Alabama Miss Basketball; 1st at AU since W. Boddie
 • Avg. 21.4 pts, 7.0 rebs, 4.2 asts, 3.5 stls as HS senior

LAST GAME (at UGA): 2 pts, 3 reb, 1 ast, 1 stl
 • Season-high 20 points, 4-6 3FG at South Alabama (12/4)
 • Began career 21-of-21 FTs
 • Career-high 23 pts, 5 3FG vs. Alabama St. (12/29/18)
 • Made 4 3FG vs. Elon as AU set single-game 3FG record

LAST GAME (at UGA): 4 pts, 1 reb, 1 stl, 1 blk
 • Career-high 12 pts, 6-8 FT vs. St. Joseph's
 • Career-high 11 rebs, 4 asts in 1st career start vs. Wofford
 • Played in 29 games as redshirt freshman in '19
 • Redshirted '17-18 while rehabbing knee injury

LAST GAME (at UGA): 3 reb, 1 stl
 • Career-hi 24 pts, 7-14 3FG vs. Drake
 • 7 3FG vs. Drake most for AU played since 1/1/17
 • Made Auburn debut vs. ODU; missed 1st game w/ injury
 • Ranked as #71 overall prospect, #20 guard by ESPN

• **Will redshirt this season after transfer from WVU**
 • Appeared in 25 games as freshman at WVU
 • Ranked #14 wing in class of '18 by ESPN

LAST GAME (at UGA): 13 pts, 11 reb, 2 ast, 1 stl, 9-13 FT
 • **Preseason All-SEC Second Team (coaches/media)**
 • Leads SEC in rebounds, 5th in scoring
 • 15 double-doubles this season; 35 career (3rd AU history)
 • Had double-double in first 12 games of season

• **Will redshirt this season after transfer from Baylor**
 • Appeared in 28 games as frosh at Baylor; avg. 2.5 ppg
 • 2018 McDonald's All-American
 • Bronze medal w/ USA Basketball U16 Team in '16
 • Ranked as #20 overall prospect, #3 guard by ESPN

LAST GAME (at UGA): 2 pts, 4 reb
 • Career-high 14 pts, 4 stl, 4 3FG at South Alabama (12/4)
 • Tip-in at buzzer vs. Dayton to force OT (11/30)
 • Appeared in 31 games as freshman, started 17
 • Career-high 12 pts vs. Missouri (2/24/19)

LAST GAME (at UGA): 1 reb, 1 stl
 • Career-high 6 points, 2 steals vs. Florida (1/9)
 • Scored first AU points at UAB (11/21)
 • Ranked as No. 28 guard by ESPN
 • 1st-team all-state; regional player of the year

LAST GAME (at UGA): DNP
 • Scored career-high 3 pts vs. St. Joseph's
 • Appeared in 12 games as freshman
 • Scored first collegiate FG vs. UL-Lafayette (11/25/18)
 • Career-high 3 rebs vs. Samford, Alabama St.

Inside the Matchup

Auburn vs. Ole Miss 36-25 (.590)

In Auburn: 18-8
 --At Auburn Arena: 5-1
 In Oxford: 12-13
 Neutral Sites: 6-4
 Trend: Auburn has won 4 of last 5 meetings

Dec. 8, 1978	L	62-107	Auburn
Feb. 13, 1980	L	65-71 (OT)	Oxford, Miss.
Jan. 2, 1982	L	68-69	Auburn
Jan. 30, 1982	L	44-58	Oxford, Miss.
Jan. 19, 1983	L	54-63	Oxford, Miss.
Feb. 2, 1983	W	79-77	Auburn
Mar. 5, 1983	L	62-73	Knoxville, Tenn.*
Jan. 7, 1984	W	58-49	Auburn
Jan. 25, 1984	L	45-46	Oxford, Miss.
Jan. 19, 1985	L	68-75	Oxford, Miss.
Feb. 11, 1985	L	65-66	Auburn
Feb. 22, 1986	W	81-56	Auburn
Mar. 20, 1986	L	55-56 (OT)	Austin, Texas@
Jan. 24, 1987	W	66-62	Oxford, Miss.
Jan. 30, 1988	W	71-70	Auburn
Mar. 6, 1988	W	69-60	Albany, Ga.*
Feb. 14, 1989	W	71-63	Oxford, Miss.
Mar. 25, 1989	W	77-51	Auburn@
Feb. 17, 1990	W	60-54	Auburn
Mar. 4, 1990	W	72-71(OT)	Albany, Ga.*
Feb. 10, 1991	W	79-54	Oxford, Miss.
Mar. 2, 1991	W	76-50	Albany, Ga.*
Dec. 20, 1991	L	51-62	Auburn
Mar. 7, 1992	L	52-58	Albany, Ga.*
Dec. 16, 1992	W	57-47	Oxford, Miss.
Mar. 6, 1993	L	55-69	Chattanooga, Tenn.*
Jan. 8, 1994	W	65-42	Auburn
Jan. 8, 1995	L	58-61	Oxford, Miss.
Feb. 24, 1996	W	59-58	Auburn
Feb. 22, 1997	L	61-67	Oxford, Miss.
Feb. 28, 1997	W	72-64	Chattanooga, Tenn.*
Jan. 28, 1998	W	65-44	Oxford, Miss.
Feb. 21, 1998	W	76-56	Auburn
Jan. 28, 1999	W	71-62	Auburn
Feb. 21, 1999	L	77-86	Oxford, Miss.
Feb. 20, 2000	W	67-63	Auburn
Feb. 18, 2001	W	59-48	Oxford, Miss.
Jan. 31, 2002	L	53-63	Auburn
Feb. 2, 2003	W	61-48	Oxford, Miss.
Feb. 12, 2004	W	82-70	Oxford, Miss.
Feb. 24, 2005	W	82-68	Auburn
Jan. 15, 2006	L	48-51	Auburn
Feb. 12, 2006	L	61-64	Oxford, Miss.
Jan. 4, 2007	L	66-74	Auburn
Feb. 25, 2007	W	64-56	Oxford, Miss.
Feb. 21, 2008	L	68-76	Oxford, Miss.
Feb. 5, 2009	W	72-65	Auburn
Mar. 6, 2009	W	71-65	N. Little Rock, Ark.*
Feb. 25, 2010	L	61-65	Oxford, Miss.
Jan. 13, 2011	W	85-73	Auburn
Jan. 29, 2012	W	67-54	Oxford, Miss.
Feb. 26, 2012	W	46-43	Auburn
Jan. 10, 2013	W	76-52	Auburn
March 2, 2014	L	71-73 (OT)	Oxford, Miss.
March 6, 2014	W	70-54	Duluth, Ga.*
Feb. 19, 2015	L	46-51	Auburn
Feb. 11, 2016	W	65-60	Oxford, Miss.
Jan. 8, 2017	W	83-60	Auburn
Feb. 16, 2017	L	59-63	Oxford, Miss.
Feb. 25, 2018	W	60-55	Auburn
Jan. 31, 2019	W	64-51	Oxford, Miss.

* SEC Tournament
 @ NCAA Tournament

Auburn Women's Basketball Quick Hitters

- This is the 62nd meeting between Auburn and Ole Miss in women's basketball
- Auburn leads the series 36-25, including an 18-8 advantage at home
- Auburn won last season's only meeting, a 64-51 win in Oxford on Jan. 31
- Auburn has won four of their last five against the Rebels
- Unique Thompson has 15 double-doubles in 16 games this year, which leads the NCAA; she has 35 career double-doubles, which ranks 3rd in Auburn history
- Thompson has been named SEC Player of the Week twice this season, including most recently on Dec. 30
- Thompson's 749 career rebounds rank 2nd among active SEC players and tied for 13th in Auburn history
- Thompson scored 31 points at TCU (12/7), her career-high and the 39th individual 30-point game in Auburn history
- Thompson's 31-point, 15-rebound effort was Auburn's first 30-15 game since Dec. 19, 2008, when DeWanna Bonner had 30 points and 16 rebounds vs. George Washington
- Senior Daisa Alexander scored her 1,000th career point in Auburn's win over Jacksonville State (12/28); she is the 34th Tiger to reach that milestone
- Alexander missed the Florida and Alabama games with an ankle injury suffered vs. Arkansas; she returned with 17 points at Georgia
- Alexander's 196 career steals rank second among active SEC players; her 1,040 points are 7th among active players
- The Tigers have employed seven different starting lineups this year; eight of 11 active players have drawn starts
- Five players have made their first career starts this year: Annie Hughes, Brooke Moore and Kiyae' White (11/6 vs. Wofford), Lauren Hansen (11/20 at UAB), and Robyn Benton (1/19 at Georgia)
- Auburn's 13 3-pointers vs. Drake (12/1) tied for the second-most in program history, one shy of the school record (14) set at Elon on Dec. 22 of last season; the Tigers followed that up with 12 at South Alabama, giving them 25 in a two-game span
- Freshman Lauren Hansen hit 7 3-pointers vs. Drake, one shy of the Auburn single-game record and the most by an Auburn player since Brandy Montgomery made 7 3-pointers at Florida on Jan. 1, 2017
- Hansen scored 24 points in the Drake game, a career-high and the most by an Auburn freshman since Unique Thompson scored 29 at Louisiana-Lafayette on Dec. 8, 2017
- Against Wofford, Unique Thompson (25 pts) and Daisa Alexander (22 pts) gave Auburn its first game with two 20-point scorers since an overtime win over North Carolina last season (Dec. 21, 2018, in Myrtle Beach)
- Auburn is in its 49th season of women's basketball and has 942 program wins
- Auburn is one of two programs nationwide with two or fewer upperclassmen on the roster; 11 of the 13 players on the roster are freshmen or sophomores

Moving On Up (Auburn Career Milestone Watch) . . .

- **Unique Thompson** is 3rd in career double-doubles with 35 (C.C. Hayden); needs 3 to tie for 2nd (Lauretta Freeman, 38)
- **Unique Thompson** is tied for 13th in career rebounds with 749, needs 8 to tie for 12th (Sharon Stewart, 757); 9 to tie for 11th (Tra'cee Tanner, 758), 12 to tie for 9th (Jordan Greenleaf & Charlene Thomas, 761)
- **Unique Thompson** is 2nd in career rebounding average at 9.98; Marianne Merritt (1975-79) is 1st at 10.02
- **Unique Thompson** needs 33 points for 1,000 in her career
- **Daisa Alexander** is 9th in career 3-point FG made with 118; needs 29 to tie for 8th (Katie Frerking, 147)
- **Daisa Alexander** is 9th in career 3-point attempts with 350; needs 20 to tie for 8th (Kristen Mulligan, 370)
- **Daisa Alexander** needs 12 steals to enter the Auburn all-time top 10 (10th: DeWanna Bonner, 208)
- **Daisa Alexander** scored her 1,000th career point vs. Jacksonville State (12/28); needs 96 points to enter the Auburn top 30

INDIVIDUAL CATEGORY LEADERS

Auburn	Ole Miss
Unique Thompson - 16.9	Deja Cage - 13.3
Unique Thompson - 12.0	Dominique Banks - 6.8
Daisa Alexander - 2.0	Mimi Reid - 3.5
Daisa Alexander - 2.4	Jayla Alexander - 1.2
Erin Howard - 0.7	Dominique Banks - 2.6
Unique Thompson - 31.6	Jayla Alexander - 30.5
Unique Thompson - .583	Dominique Banks - .436
Robyn Benton - .350	Deja Cage - .351
Brooke Moore - .775	Jayla Alexander - .850

OPENING TIP

» Auburn is back at home for the last time in January as the Tigers host Ole Miss Thursday night at Auburn Arena. Game time is 6 p.m. CT.

» Auburn is 6-10 overall, 0-5 in SEC play, dropping its last contest at Georgia 61-50 on Sunday.

» Ole Miss is 7-11 overall, 0-5 in SEC play, and fell at home to Missouri 71-57 on Sunday.

LAST TIME OUT

» Auburn played its best first half of basketball in SEC play but was unable to sustain its strong play for 40 minutes as Georgia pulled away late for a 61-50 win Sunday afternoon at Stegeman Coliseum.

» After leading at the half for the first time in SEC play, the Tigers went ice cold in the second half, shooting just 20 percent in the final 20 minutes as Georgia went on a 19-3 run spanning the third and fourth quarters to put the game away.

» Unique Thompson recorded her 15th double-double in 16 games with a 13-point, 11-rebound performance that saw most of her scoring come at the free-throw line; she made 9-of-13 attempts. Daisa Alexander made her return from an ankle injury that sidelined her the last two games, leading Auburn with 17 points. And Robyn Benton added a season-high 12 after making her first career start.

» For the game, Auburn shot 28.3 percent, tying for their second-lowest percentage of the season. But it was the second half that was the difference – Auburn made just 5 of 25 shots from the field (20%) while Georgia hit 10-of-18 in the third quarter and 15-of-31 (48.3%) for the half.

UP NEXT

» The Tigers hit the road for their next two games, beginning with a trip to Lexington, Ky., to face No. 12 Kentucky on Monday night. Game time is 6 p.m. CT at Memorial Coliseum with the broadcast on SEC Network.

AN AUBURN WIN WOULD...

» Snap a 5-game losing streak.

» Be Auburn's third straight against Ole Miss.

AUBURN-OLE MISS SERIES

» Auburn is 36-25 all-time against Ole Miss, including an 18-8 mark at home. The Tigers have won five of the last six meetings with the Rebels in Auburn.

» Five of the last eight games in the series have been decided by five points or less.

LAST MEETING: Jan. 31, 2019 (at Oxford)**Auburn 64, Ole Miss 51**

» Unique Thompson picked up her ninth double-double of the year to lead the Tigers to a 64-51 victory over Ole Miss at The Pavilion.

» The Tigers struggled from the field early in the game, but outscored the Rebels 25-10 in the third quarter to break open what had been a three-point game at the half.

» Thompson finished with 20 points and 12 rebounds and was a career-best 10-of-12 at the free-throw line. Daisa Alexander scored 10 points, all coming in that pivotal third quarter, and Crystal Primm finished with 11 points and six rebounds.

» Freshman Erin Howard moved back into the

starting lineup and filled the stat sheet with eight points, five rebounds, three steals and two assists. Janiah McKay finished with six points and six assists.

» Both teams shot 35 percent from the field, but Auburn made up for a tough shooting night by hitting 18-of-24 free throws. The Tigers also out-rebounded the Rebels 40-38, snapping a string of five straight games losing the rebounding battle.

SCOUTING OLE MISS

» Ole Miss is 7-11 on the year and 0-5 in SEC play. The Rebels have dealt with injuries and attrition throughout the season, losing one starter to injury and another to transfer.

» The Rebels average 58.3 points per game overall while giving up 63.4; in league play, Ole Miss is scoring 43.0 points/game and giving up 68.8.

» Deja Cage leads Ole Miss with 13.3 points/game and is the Rebels' top 3-point shooter, hitting 40 of 114 attempts (35.1%).

SCOUTING AUBURN

» The Tigers are among the most inexperienced teams in the country with just two upperclassmen on their 13-player roster. With four freshmen and seven sophomores, Auburn is one of just eight teams nationwide with three or fewer upperclassmen on its roster.

» Auburn averages 67.4 points per game but gives up 73.5; the Tigers lead the SEC with 10.9 steals per game.

» Junior forward Unique Thompson has 15 double-doubles through 16 games, averaging 16.7 points and 12.0 rebounds; she is the leading rebounder and fifth-leading scorer in the Southeastern Conference. She has 35 career double-doubles, which ranks 3rd in Auburn history and tied for first among active SEC players.

» Senior guard Daisa Alexander is the Tigers' second-leading scorer, averaging 14.1 points/game. She scored her 1,000th career point against Jacksonville State on Dec. 28, becoming the 34th Tiger to reach that milestone. Alexander also ranks fifth in the SEC in steals (2.4/game). Alexander missed two games with an ankle injury, but returned to the lineup with 17 points at Georgia (1/19).

» Sophomore Brooke Moore gives Auburn a third player in double figures at 10.9 points/game. She scored a season-high 20 points at South Alabama, hitting 4-of-6 3-point attempts, and she was the Tigers' leading scorer through three SEC games.

» Sophomore Robyn Benton made her season debut vs. Bethune-Cookman on Dec. 15, scoring 10 points along with two blocks. She missed the season's first nine games with injury. Benton made her first career start at Georgia (1/19), scoring 12 points to go along with 5 rebounds and 3 steals.

» Erin Howard, another sophomore, has started the last four games in league play, averaging 7.0 points and 3.8 rebounds in SEC games.

» Freshman Lauren Hansen earned her first career start at UAB on Nov. 21 in her second collegiate game. Hansen followed that up with an 18-point, 4-steal performance in a win over St. Joseph's, then a 24-point, 4-assist day against Drake where she made seven 3-pointers.

» Freshman Annie Hughes and redshirt sophomore Kiyae' White earned their first career starts on opening night vs. Wofford. Both have played in all 16 games; White is Auburn's second-

SEC STANDINGS & SCHEDULE

	<i>(thru games of Jan. 20)</i>					
	SEC Games			All Games		
	W	L	Pct.	W	L	Pct.
South Carolina	6	0	1.000	18	1	.947
Tennessee	5	1	.833	15	3	.842
Mississippi St.	4	1	.800	16	3	.833
LSU	4	2	.667	14	4	.778
Kentucky	4	2	.667	15	3	.833
Texas A&M	3	2	.600	15	3	.833
Arkansas	3	2	.600	15	3	.833
Vanderbilt	2	3	.400	12	6	.667
Georgia	2	3	.400	11	7	.611
Florida	2	4	.333	11	8	.579
Missouri	2	4	.333	5	14	.263
Alabama	1	4	.200	11	7	.611
AUBURN	0	5	.000	6	10	.375
Ole Miss	0	5	.000	7	11	.389

Sunday, Jan. 19

*Georgia 61, Auburn 50

*LSU 65, #11 Kentucky 59

*Missouri 71, Ole Miss 57

*#12 Texas A&M 69, Florida 42

*#23 Arkansas 100, Vanderbilt 66

Monday, Jan. 20

*#1 South Carolina 81, #9 Mississippi State 79

*#23 Tennessee 65, Alabama 63

Thursday, Jan. 23

#23 Tennessee at #3 Connecticut, 6 p.m. (ESPN)

*Ole Miss at Auburn, 6 p.m. (SEC+)

*Georgia at #21 Arkansas, 6 p.m. (SECN)

*#15 Texas A&M at Alabama, 7 p.m. (SEC+)

*#9 Mississippi State at Vanderbilt, 8 p.m. (SECN)

Sunday, Jan. 26

*LSU at #23 Tennessee, Noon (SECN)

*Vanderbilt at Alabama, 2 p.m. (SEC+)

*Florida at #21 Arkansas, 2 p.m. (SEC+)

*#1 South Carolina at Georgia, 2 p.m. (SECN)



*Missouri at #15 Texas A&M, 3 p.m. (SEC+)

*Ole Miss at #9 Mississippi State, 4 p.m. (SECN)

Monday, Jan. 27

*Auburn at #12 Kentucky, 6 p.m. (SECN)

Inside the Numbers

CATEGORY		
	AUBURN	OLE MISS
Points Per Game	67.4	58.3
Scoring Margin	-6.1	-5.1
Field Goal %	40.0%	39.1%
Opp. Field Goal %	46.6%	39.9%
3 pt Field Goal %	28.4%	31.3%
Opp. 3FG %	36.3%	27.5%
Rebounds	35.8	34.7
Opp. Rebounds	33.6	40.3
Rebound Margin	+2.2	-5.6
Turnovers	17.4	17.9
Opp. Turnovers	17.8	16.4
Steals	10.9	7.6
Opp. Steals	8.6	8.6
Blocks	2.1	3.2
Opp. Blocks	2.7	2.5

Associated Press Top 25

(Week 11: Jan. 20)

Rk	Team	Record	Prev
1	South Carolina (22)	17-1	1
2	Baylor (6)	15-1	2
3	Connecticut	16-1	4
4	Oregon	15-2	6
5	Louisville (2)	18-1	5
6	Stanford	16-2	3
7	Oregon State	16-2	8
8	NC State	17-1	9
9	Mississippi State	16-2	10
10	UCLA	16-1	7
11	DePaul	17-2	14
12	Kentucky	15-3	11
13	Gonzaga	18-1	16
14	Florida State	15-3	13
15	Texas A&M	15-3	12
16	Arizona State	15-4	18
17	Indiana	14-4	15
18	Arizona	15-3	21
19	Iowa	15-3	22
20	Maryland	13-4	20
21	Arkansas	15-3	23
22	Northwestern	16-2	NR
23	Tennessee	14-3	24
24	South Dakota	17-2	25
25	West Virginia	13-3	17

Also receiving votes: Missouri State, Rutgers, Princeton, LSU, Florida Gulf Coast.

USA TODAY Coaches' Top 25

(Week 11: Jan. 21)

Rk	Team	Record	Prev
1	Baylor (20)	15-1	1
2	South Carolina (12)	18-1	2
3	Louisville	18-1	4
4	Oregon	15-2	6
5	Connecticut	16-1	5
6	Stanford	16-2	3
7	Oregon State	16-2	7
8	NC State	17-1	10
9	Mississippi State	16-3	9
10	UCLA	16-1	8
11	Gonzaga	18-1	13
12	DePaul	17-2	15
13	Kentucky	15-3	11
14	Florida State	15-3	13
15	Texas A&M	15-3	12
16	Arizona State	15-4	19
17	Maryland	14-4	20
18	South Dakota	17-2	21
19	Arizona	15-3	22
20	Arkansas	15-3	23
21	Iowa	15-3	24
22	Missouri State	14-3	17
23	Tennessee	15-3	25
24	Indiana	14-5	16
25	Northwestern	16-2	NR

Also receiving votes: Princeton, West Virginia, Florida Gulf Coast, LSU, Stony Brook, Rutgers.

leading rebounder at 5.0/game.

» Auburn returned three starters (Daisa Alexander, Erin Howard, Unique Thompson) and four other letterwinners from its 2018-19 team that finished 22-10 overall, 9-7 in SEC play, and advanced to the NCAA Tournament for the third time in four seasons.

SEEING DOUBLE

» Junior Unique Thompson has 35 career double-doubles, which ranks 3rd in Auburn history. She is 15-for-16 this season.

» Thompson is the national leader with 15 double-doubles this year and had the longest streak of the season nationally with 12 in her first 12 games.

» From the final game of last season through the Arkansas game on Jan. 6, Thompson had double-doubles in 13 consecutive games, which is the second-longest streak in Auburn history (Lauretta Freeman, 18, 1992-93).

» Thompson is tied for first among active SEC players in career double-doubles (as of Jan. 21):

Player (School)	19-20	Career
Unique Thompson (Auburn)	15	35
Ayana Mitchell (LSU)	8	35
Rennia Davis (Tennessee)	7	25
Ciera Johnson (Texas A&M)	6	18
N'dea Jones (Texas A&M)	8	18

ACROSS THE DIVISIONS

» How does Unique Thompson's double-double prowess stack up across all divisions of college basketball? A comparison between the leaders in every division, men's and women's (as of 1/21):

Player (School)	Division	19-20
Unique Thompson (Auburn)	D1 Women	15
Nathan Knight (William & Mary)	D1 Men	15
Danielle Norquest (West Florida)	D2 Women	14
Andrew Sischo (Daemen)	D2 Men	14
Sekou Sylla (Saint Rose)	D2 Men	14
Milke Rapoza (Anna Maria)	D3 Men	14
Four players	D3 Women	12

MORE ABOUT UNIQUE

» Through games of Jan. 21, Unique Thompson leads the NCAA in offensive rebounds per game (5.2) and is fourth overall in rebounding (12.0). She leads the SEC in both categories. Thompson is also 22nd nationally and 2nd in the SEC in field goal percentage (58.3%).

» Thompson's 31-point, 16-rebound game at TCU (12/7) was her first 30-point effort and the first for Auburn since Katie Frerking scored 32 at Texas A&M in 2017. It was the first 30/15 game by an Auburn player since DeWanna Bonner vs. George Washington in 2008.

AUBURN HONOR ROLL

» Auburn senior Daisa Alexander and junior Unique Thompson were selected to the Preseason All-SEC Second Team by the league's coaches.

» Thompson was also selected to the All-SEC Second Team by a panel of regional and national media.

» Thompson is on the Katrina McClain Award Watch List. The Katrina McClain Award is presented to the top power forward in the country by the WBCA and the Basketball Hall of Fame.

» Thompson was named SEC Player of the Week on Nov. 26 after her performances against UAB and St. Joseph's.

» Thompson earned a second SEC Player of the Week nod after a 20-point, 10-rebound effort against Jacksonville State on Dec. 28.

ON THIS DATE

» Auburn is 9-4 all-time on Jan. 23. The last game on this date was a 71-60 loss at LSU in 2014.

YOUTH WILL BE SERVED

» With just two upperclassmen on a roster of 13 players (11 of whom are eligible this season), Auburn has one of the youngest and most inexperienced teams in all of college basketball. In fact, Auburn is one of just two teams nationwide with two or fewer upperclassmen on their roster.

School	Upperclassmen	% of Active Roster
Auburn	2	18.2% (2/11)
Coppin State	2	18.2% (2/11)
Grand Canyon	3	20.0% (3/15)
Colorado	3	23.1% (3/13)
Ohio State	3	23.1% (3/13)
Oklahoma	3	25.0% (3/12)
South Carolina	3	25.0% (3/12)
Southern California	3	25.0% (3/12)

WORKING OVERTIME

» Auburn played its first overtime game of the season and the 42nd in program history on Nov. 30 when the Tigers defeated Dayton 76-74 in Estero, Fla., at the Gulf Coast Showcase. Erin Howard tipped in a shot at the buzzer to force the OT period after the Tigers had trailed by as many as 13 at halftime.

» Auburn is 22-20 all-time in overtime and has won three straight OT games. The Tigers are 6-4 in the Coach Flo era in overtime games.

OVERTIME GAMES UNDER COACH FLO

Date	Opponent	Location	Result
11/30/19	Dayton	Estero, Fla.	W 76-74
2/3/19	Georgia	Auburn	W 59-58
12/20/18	North Carolina	Myrtle Beach, S.C.	W 86-81
2/20/17	Alabama	Auburn	L 61-63
12/18/16	Virginia Tech	Auburn	L 87-92
1/24/16	Arkansas	Auburn	W 71-60
12/13/15	Marquette	Milwaukee, Wis.	L 69-70
11/28/15	Minnesota	Guaynabo, P.R.	W 81-79
3/2/14	Ole Miss	Oxford, Miss.	L 71-73
2/27/14	Alabama	Auburn (2OT)	W 70-65

STARTING ON DAY ONE

» Freshman Annie Hughes became the seventh Auburn freshman since 2005 to earn a start in her collegiate debut. She was the third under Terri Williams-Flournoy and the seventh since 2005 to be in the starting lineup on night one.

Year	Freshman Starter	Opponent	Stats
2019	Annie Hughes	Wofford	10 pts, 4 ast
2017	Unique Thompson	@Va. Tech	9 pts, 16 reb
2013	Katie Frerking	Ga. Southern	8 pts, 3 reb
2011	Hasina Muhammad	@Mercer	12 pts, 2 reb
2008	Morgan Jennings	@Ala. A&M	4 pts, 4 reb
2005	Sherell Hobbs	UT Pan-Am.	6 pts, 5 reb
2005	DeWanna Bonner	UT Pan-Am.	19 pts, 4 reb

NEW FACES

» Auburn welcomes six newcomers to the roster for 2019-20, four freshmen and two sophomore transfers.

» Joining the Tigers and eligible to play this season are Lauren Hansen (G, 5-8, Long Island, N.Y.); Annie Hughes (G, 5-9, Dutton, Ala.); Morgan

Robinson-Nwagwu (G, 5-8, Norcross, Ga.) and Sania Wells (G, 5-7, Moss Point, Miss.)

» Two transfers will also be on the Tigers' roster but ineligible to play this season. Jala Jordan (F, 6-2, Philadelphia, Pa.), joined the Tigers this summer after transferring from West Virginia. And Honesty Scott-Grayson (G, 5-9, Brick, N.J.) enrolled in August after transferring from Baylor. Both players will have three years of eligibility beginning with the 2020-21 season.

TIGERS IN THE PROS

» DeWanna Bonner completed her 10th season in the WNBA in 2019, all with the Phoenix Mercury. Bonner was selected as an All-Star for the third time in her last four seasons, averaging 17.2 points, a career-best 7.6 rebounds, 2.7 assists and 1.3 steals per game while starting all 34 games for the Mercury. She is also playing overseas for Dynamo Kursk in Russia.

» Brandy Montgomery is playing in Europe for her third season, currently on the roster of Last year, she played in Luxembourg for Etzella Ettelbruck, averaging a team-best 21.4 points per game. In 2017-18, she played for Visby in Sweden, averaging 16.3 points, 5.1 rebounds and 1.8 assists while helping her team to the league semifinals.

AQUILA DI GUERRA

» Auburn's women's basketball team spent nine days in Italy in August, playing three exhibition games and touring sites across the country in Rome, Florence, Milan, Pisa, Bellagio and others. The Tigers dropped their first game to the Netherlands National Team and fell short in two other games against a professional European all-star team.

Auburn in the SEC & NCAA Stats

(Thru games of 1/20/20)

Category	Value	SEC	NCAA
Scoring Offense	67.4	9th	139th
Scoring Defense	73.5	14th	324th
Scoring Margin	-6.1	14th	273rd
Field Goal Pct.	.400	13th	166th
Field Goal Pct. Def.	.466	14th	344th
3-pt FG Pct.	.284	12th	267th
3-pt FG Pct. Def.	.363	14th	333rd
Free Throw Pct.	.681	7th	185th
Rebounds	35.8	11th	258th
Rebound Margin	+2.2	10th	125th
Off. Rebounds	13.6	7th	--
Def. Rebounds	22.3	13th	--
Assists	11.5	13th	267th
Assist/Turnover	0.7	14th	271st
Blocks	2.1	13th	290th
Turnover Margin	+0.4	7th	171st
Turnovers Forced	17.8	4th	114th
Steals	10.9	1st	24th

INDIVIDUALS (All Games)

Scoring

Unique Thompson	16.7	5th	93rd
Daisa Alexander	14.1	12th	240th

Rebounding

Unique Thompson	12.0	1st	4th
-----------------	------	-----	-----

Field Goal Pct.

Unique Thompson	.583	3rd	22nd
Daisa Alexander	.432	13th	198th

Free Throw Pct.

Daisa Alexander	.750	5th	185th
Unique Thompson	.689	10th	--

Steals

Daisa Alexander	2.4	5th	58th
Unique Thompson	1.8	10th	244th
Erin Howard	1.6	14th	--

3-Point FG Made

Lauren Hansen	1.7	10th	--
Brooke Moore	1.4	15th	--

Offensive Rebounds

Unique Thompson	5.2	1st	1st
-----------------	-----	-----	-----

Defensive Rebounds

Unique Thompson	6.8	2nd	--
-----------------	-----	-----	----

Double-Doubles

Unique Thompson	15	1st	1st
-----------------	----	-----	-----

Auburn Career Record Updates

Auburn Career Scoring

No.	Player	Years	Points
1.	DeWanna Bonner	2005-09	2,162
2.	Becky Jackson	1980-84	2,068
3.	Vickie Orr	1985-89	2,035
4.	Marianne Merritt	1975-79	1,979
5.	Carolyn Jones	1988-91	1,831
6.	Natasha Brackett	2001-05	1,716
7.	Janiah McKay	2015-present	1,647
8.	Brandy Montgomery	2013-17	1,644
9.	Mae Ola Bolton	1984-88	1,616
10.	Alli Smalley	2007-11	1,601
11.	Angie Hannah	1978-82	1,583
12.	Tyrese Tanner	2010-14	1,515
13.	Le'Coe Willingham	1999-03	1,475
14.	Lori Monroe	1979-83	1,415
15.	Tasha Hamilton	1997-01	1,402
16.	Sherell Hobbs	2005-09	1,372
17.	Linda Godby	1986-90	1,365
18.	Tra'Cee Tanner	2012-16	1,327
19.	Debra Larkin	1981-85	1,310
20.	C.C. Hayden	1989-92	1,306
21.	Katie Frerking	2013-17	1,271
22.	Conswella Sparrow	1997-00	1,249
23.	Blanche Alverson	2009-13	1,244
24.	Brenda Hill	1981-85	1,222
25.	Monique Morehouse	1992-96	1,191
26.	Lauretta Freeman	1989-93	1,188
27.	Hasina Muhammad	2001-15	1,184
	Sharon Stewart	1984-88	1,184
29.	Ruthie Bolton	1985-89	1,176
30.	Tiffany Krantz	1996-00	1,136
--	Daisa Alexander	2016-present	1,040
--	Unique Thompson	2017-present	967

Auburn Career Rebounding

No.	Player	Years	Rebounds
1.	Becky Jackson	1980-84	1,118
2.	DeWanna Bonner	2005-09	1,047
3.	Lori Monroe	1979-83	1,015
4.	Vickie Orr	1985-89	1,006
5.	Lauretta Freeman	1989-93	976
6.	Marianne Merritt	1975-79	972
7.	Le'Coe Willingham	1999-03	927
8.	Monique Morehouse	1992-96	792
9.	Jordan Greenleaf	2006-11	761
	Charlene Thomas	1984-87	761
11.	Tra'Cee Tanner	2012-16	758
12.	Sharon Stewart	1984-88	757
13.	Unique Thompson	2017-present	749
	C.C. Hayden	1989-92	749
	Kendall Mago	1988-92	749
16.	Tasha Hamilton	1997-01	663
	Mae Ola Bolton	1984-88	653
18.	Marita Payne	2002-06	630
19.	Katie Frerking	2013-17	627
20.	Sherell Hobbs	2005-09	612
21.	Brenda Hill	1982-85	604
22.	Blanche Alverson	2009-13	602
23.	KeKe Carrier	2005-10	600
24.	Angie Hannah	1978-82	588
	Linda Godby	1986-90	580
26.	Tyrese Tanner	2010-14	572
	Conswella Sparrow	1997-00	572
28.	Diann McNeil	1984-88	498
29.	Samantha Williams	1991-96	495
	Hasina Muhammad	2011-15	494

Auburn Career Rebounding Average

No.	Player	Years	RPG
1.	Marianne Merritt	1975-79	10.02
2.	Unique Thompson	2017-present	9.99
3.	Becky Jackson	1980-84	9.6
4.	DeWanna Bonner	2005-09	8.3
5.	Lori Monroe	1979-83	7.9
6.	C.C. Hayden	1989-92	7.8
7.	Vickie Orr	1985-89	7.7
	Le'Coe Willingham	1999-03	7.7
9.	Mae Ola Bolton	1984-88	6.8
10.	Monique Morehouse	1992-96	6.8

Auburn Career Double-Doubles

No.	Player	Years	D-Ds
1.	DeWanna Bonner	2005-09	40
2.	Lauretta Freeman	1989-93	38
3.	Unique Thompson	2017-present	35
4.	C.C. Hayden	1989-92	30
5.	Le'Coe Willingham	1999-04	29
6.	Vickie Orr	1985-89	27
7.	Monique Morehouse	1992-96	24
8.	Becky Jackson	1980-84	19
9.	Conswella Sparrow	1997-00	15
10.	Tra'Cee Tanner	2012-16	14
11.	Tasha Hamilton	1997-01	13
	Sharon Stewart	1984-88	13
13.	Daniellette Coleman	1992-94	12
	Marita Payne	2002-06	12
15.	Whitney Boddie	2005-09	11
	KeKe Carrier	2005-10	11
17.	Tia Miller	2001-04	8
	Tara Williams	1995-97	8
19.	Katie Frerking	2013-17	7
	Linda Godby	1986-90	7
	Laticia Morris	1995-97	7
	Mandisa Stevenson	2002-04	7
	Tyrese Tanner	2010-14	7
24.	Justine Agbatan	1995-98	6
	Brenda Hill	1982-83	6
	Kendall Mago	1988-92	6
	Samantha Williams	1991-96	6
28.	Ruthie Bolton	1985-89	5
	Jordan Greenleaf	2006-11	5

Auburn Career 3-Point Attempts

No.	Player	Years	3FGA
1.	Brandy Montgomery	2013-17	688
2.	Alli Smalley	2007-11	637
3.	Blanche Alverson	2009-13	618
4.	Natasha Brackett	2001-05	545
5.	Tiffany Krantz	1996-00	520
6.	Katie Frerking	2013-17	518
7.	Samantha Williams	1992-96	500
8.	Kristen Mulligan	1992-96	370
9.	Daisa Alexander	2016-present	350
10.	Shana Askew	1997-01	332

Auburn Career 3-Point FG Made

No.	Player	Years	3FGM
1.	Alli Smalley	2007-11	219
2.	Blanche Alverson	2009-13	213
3.	Brandy Montgomery	2013-17	205
4.	Tiffany Krantz	1996-00	184
5.	Natasha Brackett	2001-05	171
6.	Samantha Williams	1992-96	161
7.	Kristen Mulligan	1992-96	149
8.	Katie Frerking	2013-17	147
9.	Daisa Alexander	2016-present	118
10.	Carolyn Jones	1988-91	103

Auburn Career Steals

No.	Player	Years	Steals
1.	Mae Ola Bolton	1985-88	282
2.	Kristen Mulligan	1993-96	253
3.	Ruthie Bolton	1986-89	246
4.	Debra Larkin	1982-85	242
5.	Helene Baroody	1984-87	240
6.	Katie Frerking	2013-17	234
7.	Sherell Hobbs	2005-09	231
8.	Janiah McKay	2015-19	223
	Hasina Muhammad	2011-15	223
10.	DeWanna Bonner	2005-09	208
--	Daisa Alexander	2016-present	196

TIGERS' RECORD WHEN...

	2019-20	Under Coach Flo
At Home.....	4-4	74-38
On the Road.....	1-4	36-56
At a Neutral Site.....	1-2	20-17
When wearing white.....	5-6	75-34
When wearing orange.....	0-0	7-10
When wearing blue.....	1-4	42-63
When wearing pink.....	0-0	6-4
Leading at the half.....	5-1	102-23
Trailing at the half.....	1-9	28-82
Tied at the half.....	0-0	0-6
Scores 100+ points.....	0-0	0-0
Scores 90-99 points.....	0-0	6-0
Scores 80-89 points.....	2-1	27-2
Scores 70-79 points.....	2-3	38-9
Scores 60-69 points.....	2-2	39-29
Scores fewer than 60 points.....	0-4	18-71
Holds opponent to 41-50 points.....	0-0	31-3
Holds opponent to 31-40 points.....	0-0	7-0
Holds opponent to under 30 points.....	0-0	2-0
Force 25 or more turnovers.....	1-1	52-10
Shoots 50% FG or better.....	2-1	33-3
Shoots 40-49% FG.....	3-3	66-30
Shoots 39.9% or under FG.....	1-6	30-79
Holds opponent under 30% FG.....	0-0	25-2
Shoots higher FG% than opponent.....	4-1	102-22
Shoots lower FG% than opponent.....	2-9	28-84
Shoots same FG% as opponent.....	0-0	0-3
Shoots higher FT% than opponent.....	2-3	55-39
Shoots lower FT% than opponent.....	3-7	72-71
Shoots same FT% as opponent.....	1-0	2-2
Out-rebounds opponent.....	5-3	81-30
Out-rebounded by opponent.....	1-7	43-80
Tied in rebounds.....	0-0	5-2
Versus ranked opponent.....	0-1	5-49
In overtime.....	1-0	6-4
Games decided by 3 points or less.....	2-1	14-17
Games decided by 4-5 points.....	1-1	13-14
Games decided by 6-10 points.....	1-0	30-29
Games decided by 11-20 points.....	2-4	36-31
Games decided by 21-30 points.....	0-4	23-14
Games decided by 30+ points.....	0-0	14-6
On Television/Digital.....	5-6	67-74
In November.....	3-3	33-16
In December.....	3-2	41-10
In January.....	0-5	17-42
In February.....	0-0	23-29
In March.....	0-0	13-13

2019-20 Auburn Superlatives...

First Half

Most points scored in the first quarter.....	25, at UAB (11/21/19)
Most points scored in the second quarter.....	24, vs. Wofford (11/6/19) & vs. Drake (12/1/19)
Most points scored in the first half.....	42 vs. Drake (12/1/19)
Fewest points scored in the first half.....	18 at Vanderbilt (1/2/20)
Fewest points allowed in the first half.....	18 vs. Jacksonville State (12/28/19)
Most points allowed in the first half.....	47 at Vanderbilt (1/2/20)
Best FG % in the first half.....	.552, at UAB (11/21/19)
Worst FG % in the first half.....	.233 at Vanderbilt (1/2/20)
Best FG % by an opponent in the first half.....	.679 at Vanderbilt (1/2/20)
Worst FG % by an opponent in the first half.....	.261 vs. Jacksonville State (12/28/19)
Most rebounds in the first half.....	25, vs. Wofford (11/6/19)
Fewest rebounds in the first half.....	10, 3x; last vs. Florida (1/9/20)
Most rebounds by an opponent in the first half.....	27 at TCU (12/7/19)
Fewest rebounds by an opponent in the first half.....	11, vs. Old Dominion (11/14/19) & at UAB (11/21/19)

Second Half

Most points scored in the third quarter.....	25, vs. Dayton (11/30/19)
Most points scored in the fourth quarter.....	26, vs. Wofford (11/6/19) & at South Alabama (12/4/19)
Most points scored in an overtime period.....	13, vs. Dayton (11/30/19)
Most points scored in the second half.....	49, vs. Wofford (11/6/19)
Fewest points scored in the second half.....	21 at Georgia (1/19/20)
Fewest points allowed in the second half.....	25 vs. Bethune-Cookman (12/15/19)
Most points allowed in the second half.....	58, vs. Wofford (11/6/19)
Best FG % in the second half.....	.652 vs. Bethune-Cookman (12/15/19)
Worst FG % in the second half.....	.200 at Georgia (1/19/20)
Best FG % by an opponent in the second half.....	.692, vs. Old Dominion (11/14/19)
Worst FG % by an opponent in the second half.....	.241 vs. Bethune-Cookman (12/15/19)
Most rebounds in the second half.....	24 vs. Bethune-Cookman (12/15/19)
Fewest rebounds in the second half.....	15 vs. Alabama (1/12/20)
Most rebounds by an opponent in the second half.....	22 at TCU (12/7/19)
Fewest rebounds by an opponent in the second half.....	9 vs. Bethune-Cookman (12/15/19)

Game

Most points scored.....	84, vs. Wofford (11/6/19)
Fewest points scored.....	48 vs. Alabama (1/12/20)
Most points allowed.....	89, vs. Old Dominion (11/14/19)
Fewest points allowed.....	54 vs. Jacksonville State (12/28/19)
Best FG %.....	.533 at South Alabama (12/4/19)
Worst FG %.....	.275 vs. Alabama (1/12/20)
Best FG % by an opponent.....	.615 vs. Florida (1/9/20)
Worst FG % by an opponent.....	.339 vs. Bethune-Cookman (12/15/19)
Most rebounds.....	47, vs. Wofford (11/6/19)
Fewest rebounds.....	29 vs. Middle Tennessee (11/29/19) & vs. Drake (12/1/19)
Most rebounds by an opponent.....	49 at TCU (12/7/19)
Fewest rebounds by an opponent.....	24 vs. Drake (12/1/19)

Miscellaneous

Highest-scoring quarter.....	26, 4Q vs. Wofford (11/6/19) & 4Q at South Alabama (12/4/19)
Lowest-scoring quarter.....	6, 2Q vs. Alabama (1/12/20)
Highest-scoring opponent quarter.....	34, 4Q vs. Wofford (11/6/19)
Lowest-scoring opponent quarter.....	7, 1Q vs. Jacksonville State (12/28/19)
Largest margin in a single quarter.....	+13 (25-12) 3Q vs. Dayton (11/30/19) & (26-13) 4Q at South Alabama (12/4/19)
Largest margin of victory.....	20, at South Alabama (12/4/19)
Smallest margin of victory.....	2, vs. Wofford (11/6/19) & vs. Dayton (11/30/19)
Largest margin of defeat.....	27 vs. Alabama (1/12/20)
Smallest margin of defeat.....	2 vs. Drake (12/1/19)
Largest halftime lead.....	11, vs. Wofford (11/6/19)
Smallest halftime lead.....	3, vs. St. Joseph's (11/24/19)
Times tied at halftime.....	
Largest halftime deficit.....	29 at Vanderbilt (1/2/20)
Smallest halftime deficit.....	1, at UAB (11/21/19)
Largest rebounding margin.....	+17 vs. Bethune-Cookman (12/15/19)
Smallest rebounding margin.....	+5 vs. Drake (12/1/19)
Last time tied in rebounding.....	
Largest rebounding deficit.....	-9 at Vanderbilt (1/2/20)
Smallest rebounding deficit.....	-1, vs. Arkansas (1/5/20), vs. Florida (1/9/20), vs. Alabama (1/12/20)
Largest deficit overcome to win game.....	13, vs. Dayton (11/30/19)
Largest lead lost.....	11 vs. Drake (12/1/19)

MISCELLANEOUS STATISTICS

Category	Season	Career
Double-Doubles		
Unique Thompson	15	35
30+ Point Games		
Unique Thompson	1	1
20+ Point Games		
Unique Thompson	5	11
Daisa Alexander	4	15
Brooke Moore	1	2
Lauren Hansen	1	1
10+ Rebound Games		
Unique Thompson	16	44
Kiaye' White	1	1
10+ Assist Games		
5+ Steal Games		
Daisa Alexander	0	2
5+ Block Games		
Unique Thompson	0	1

GAMES LED AUBURN IN...

Category	Season	Career
Scoring		
Unique Thompson	8	21
Daisa Alexander	4	21
Brooke Moore	4	5
Lauren Hansen	1	1
Robyn Benton	0	1
Rebounding		
Unique Thompson	16	63
Daisa Alexander	0	4
Erin Howard	0	1
Assists		
Daisa Alexander	6	13
Unique Thompson	4	8
Lauren Hansen	4	4
Annie Hughes	2	2
Brooke Moore	2	2
Morgan Robinson-Nwagwu	3	3
Erin Howard	1	2
Kiyae' White	1	1
Sania Wells	1	1
Robyn Benton	1	1

(includes games where lead was shared)

2019-20 DOUBLE-DOUBLES

- Unique Thompson vs. Wofford (25 pts/11 reb)
- Unique Thompson vs. ODU (13 pts/10 reb)
- Unique Thompson at UAB (24 pts/19 reb)
- Unique Thompson vs St. Joseph's (17 pts/12 reb)
- Unique Thompson vs. MTSU (15 pts/10 reb)
- Unique Thompson vs. Dayton (20 pts/11 reb)
- Unique Thompson vs. Drake (12 pts/11 reb)
- Unique Thompson at South Alabama (15 pts/10 reb)
- Unique Thompson at TCU (31 pts/15 reb)
- Unique Thompson vs. B-CU (16 pts/13 reb)
- Unique Thompson vs. Jax St. (20 pts/10 reb)
- Unique Thompson at Vanderbilt (14 pts/10 reb)
- Unique Thompson vs. Florida (10 pts/10 reb)
- Unique Thompson vs. Alabama (16 pts/14 reb)
- Unique Thompson at Georgia (13 pts/11 reb)

Last Time an Auburn Team...

- Scored 90 points..... Auburn 96, Elon 44, in Elon, N.C. (Dec. 22, 2018)
- Scored 100 points..... Auburn 119, Sam Houston State 54, in Auburn, Ala. (Dec. 5, 2008)
- Scored 100 points in an SEC game..... Auburn 102, Tennessee 96, SEC Tournament in Albany, Ga. (Mar. 6, 1987)
- Scored 100 at home..... Auburn 119, Sam Houston State 54, in Auburn, Ala. (Dec. 5, 2008)
- Scored 80 points and lost..... Drake 83, Auburn 82 in Estero, Fla. (Dec. 1, 2019)**
- Scored 90 points and lost..... Kentucky 91, Auburn 90 [20T], in Auburn, Ala. (Feb. 2, 1986)
- Scored 100 points and lost..... Never
- Scored 110+ points..... Auburn 119, Sam Houston State 54, in Auburn, Ala. (Dec. 5, 2008)
- Scored 50-59 points in a half..... 51 - 1st half at Elon in Elon, N.C. (Dec. 22, 2018)
- Scored 60 or more points in a half..... 62 (2nd half) - vs. Drake in New Orleans, La. (Dec. 21, 2016)
- Scored 30 or more points in a quarter..... 30 (1st quarter) - at St. Joseph's in Philadelphia, Pa. (Dec. 6, 2018)
- Scored 50 points or less in a game..... 50 - at Georgia in Athens, Ga. (Jan. 19, 2020)**
- Scored 50 points or less and won..... Auburn 47, Missouri 45 [SEC] in Jacksonville, Fla. (March 3, 2016)
- Scored 40 points or less in a game..... Georgia 63, Auburn 30, in Athens, Ga. (Jan. 28, 2016)
- Scored less than 10 points in a quarter..... 7 points (3rd quarter) vs. Alabama in Auburn, Ala. (Jan. 12, 2020)**
- Scored less than 20 points in a 1st half..... 18 points at Vanderbilt in Nashville, Tenn. (Jan. 2, 2020)**
- Scored less than 20 points in a 2nd half..... 18 points vs. Missouri [SEC] in Jacksonville, Fla. (March 3, 2016)
- Had 35+ rebound margin..... 36 - (52-16) vs. Alabama A&M in Normal, Ala. (Nov. 19, 2013)
- Had 25+ rebound margin..... 33 - (53-26) vs. Grambling State in Auburn, Ala. (Nov. 6, 2018)
- Had 20+ rebound margin..... 33 - (53-26) vs. Grambling State in Auburn, Ala. (Nov. 6, 2018)
- Attempted 30 free throws..... 30 - vs. St. Joseph's in Auburn, Ala. (Nov. 24, 2019)**
- Attempted 35 free throws..... 36 - vs. Alabama State in Auburn, Ala. (Dec. 29, 2018)
- Attempted 40 free throws..... 41 - vs. Alabama State in Auburn, Ala. (Nov. 15, 2006)
- Attempted 5 free throws or less..... 5 - at Tennessee in Knoxville, Tenn. (Feb. 14, 2019)
- Did not attempt a free throw..... Never
- Made 20 free throws..... 20 - vs. Wofford in Auburn, Ala. (Nov. 6, 2019)**
- Made 25 free throws..... 29 - vs. Alabama State (29-36) in Auburn, Ala. (Dec. 29, 2018)
- Made 30 free throws..... 31 - vs. Northwestern State (31-43) (Dec. 30, 2003)
- Had 25 assists..... 25 - vs. Ole Miss in Auburn, Ala. (Jan. 8, 2017)
- Had 25 turnovers..... 27 - at Vanderbilt in Nashville, Tenn. (Jan. 2, 2020)**
- Had 10 turnovers or less..... 10 - vs. St. Joseph's in Auburn, Ala. (Nov. 24, 2019)**
- Had 25+ steals..... Never
- Had 20-24 steals..... 21 - vs. Georgia in Auburn, Ala. (Feb. 3, 2019)
- Had 15-19 steals..... 17 - at Vanderbilt in Nashville, Tenn. (Jan. 2, 2020)**
- Had 10-14 blocks..... 10 - vs. Louisiana Tech in Auburn, Ala. (Nov. 19, 2017)
- Had 15+ blocks..... 15 - at Florida International in Miami, Fla. (Dec. 29, 2014)
- Won an overtime game..... Auburn 74, Dayton 72 [1OT] in Estero, Fla. (Nov. 30, 2019)**
- Lost an overtime game..... Alabama 63, Auburn 61 [1OT] in Auburn, Ala. (Feb. 20, 2017)
- Played a double overtime game..... Auburn 70, Alabama 65 [2OT] in Auburn, Ala. (Feb. 27, 2014)
- Played three or more overtimes..... Never
- Shot 70% for a half..... 70.4% (19-of-27), 2nd half at Elon in Elon, N.C. (Dec. 22, 2018)
- Shot 60% for a game..... 63.3% (38-of-60) at Elon in Elon, N.C. (Dec. 22, 2018)
- Shot less than 30% for a game..... 28.3% (15-of-53) at Georgia in Athens, Ga. (Jan. 19, 2020)**
- Shot 90-99.9% from the free throw line (minimum 10 attempts)..... 92.3% (12-of-13) vs. Nicholls State in Auburn, Ala. (Nov. 9, 2018)
- Shot 100% from the free throw line (minimum 10 attempts)..... 100% (16-of-16) vs. Texas A&M in Auburn, Ala. (Jan. 7, 2018)
- Shot 50% on 3-pointers (minimum 5 attempts)..... 50.0% (6-of-12) at Missouri in Columbia, Mo. (Jan. 27, 2019)
- Shot 20-30% in a half..... 20.0% (5-of-25), 2nd half at Georgia in Athens, Ga. (Jan. 19, 2020)**
- Shot less than 20% in a half..... 18.4% (7-of-38), 1st half vs. Missouri in Auburn, Ala. (Feb. 15, 2018)
- Shot 55% or better and lost..... 58.1% (25-of-43) vs. Tennessee (Jan. 20, 2005)
- Made 10+ 3-point field goals..... 12-of-24 at South Alabama in Mobile, Ala. (Dec. 4, 2019)**
- Failed to make a 3-point field goal..... 0-of-5 vs. Southern in Auburn, Ala. (Dec. 9, 2017)
- Had 60+ rebounds..... 61 - vs. Stephen F. Austin in Auburn, Ala. (Dec. 17, 2007)
- Had 50-59 rebounds..... 53 - vs. Grambling State in Auburn, Ala. (Nov. 6, 2018)
- Defeated a Top-25 opponent..... Auburn 58, #25 Missouri 54, in Auburn, Ala. (Feb. 24, 2019)
- Defeated a Top-10 opponent..... Auburn 66, #7 Kentucky 61, in Auburn, Ala. (Jan. 3, 2016)
- Defeated a Top-25 opponent on the road..... Auburn 68, #16 Vanderbilt 62, in Nashville, Tenn. (Feb. 13, 2014)

Last Time an Auburn Player...

- Scored 25-29 points..... 25 - Unique Thompson vs. Wofford in Auburn, Ala. (Nov. 6, 2019)**
- Scored 30-34 points..... 31 - Unique Thompson at TCU in Fort Worth, Texas (Dec. 7, 2019)**
- Scored 35 points..... 35 - DeWanna Bonner vs. Tennessee in Auburn, Ala. (Jan. 25, 2009)
- Scored 40 points..... 41 - Conswella Sparrow vs. South Alabama (Feb. 17, 1998)
- Had 15+ rebounds..... 15 - Unique Thompson at TCU in Fort Worth, Texas (Dec. 7, 2019)**
- Had 20 rebounds..... 20 - Monique Morehouse at LSU (Feb. 4, 1995)
- Had 10 assists..... 10 - Janiah McKay vs. Grambling State (Nov. 6, 2018)
- Had 15 assists..... 18 - Martha Monk vs. Alabama State (Feb. 18, 1981)
- Had 5 blocks..... 6 - Unique Thompson vs. Louisiana Tech in Auburn, Ala. (Nov. 19, 2017)
- Had 7 blocks..... 7 - Jassany Williams vs. Duke (Nov. 18, 2011)
- Had 10 blocks..... 13 - Marita Payne vs. Arkansas (Feb. 3, 2005)
- Had 5 steals..... 6 - Crystal Primm vs. Kentucky in Auburn, Ala. (Feb. 7, 2019)
- Had 8 steals..... 8 - Brandy Montgomery vs. East Carolina in Auburn, Ala. (Dec. 5, 2015)
- Had 10 steals..... 10 - Kristen Mulligan vs. Northeast Illinois in Auburn, Ala. (Dec. 18, 1992)
- Made 10 field goals..... 12 - Unique Thompson [12-18] at TCU in Fort Worth, Texas (Dec. 7, 2019)**
- Made 15 field goals..... 15 - Conswella Sparrow (15-16) vs. South Alabama (Feb. 17, 1998)
- Attempted 20 field goals..... 21 - Unique Thompson vs. Alabama in Auburn, Ala. (Jan. 12, 2020)**
- Attempted 25 field goals..... 28 - Brandy Montgomery (8-28) at Marquette in Milwaukee, Wis. (Dec. 13, 2015)
- Made 5+ three-point field goals..... 7 - Lauren Hansen vs. Drake in Estero, Fla. (Dec. 1, 2019)**
- Made 8 three-point field goals..... 8 - Tiffany Krantz vs. Troy State in Auburn, Ala. (Nov. 21, 1997)
- Attempted 10 three-point field goals..... 14 - Lauren Hansen vs. Drake in Estero, Fla. (Dec. 1, 2019)**
- Attempted 15 three-point field goals..... 16 - Brandy Montgomery at Marquette in Milwaukee, Wis. (Dec. 13, 2015)
- Made 10 free throws..... 10 - Unique Thompson (10-15) vs. Dayton in Estero, Fla. (Nov. 30, 2019)**
- Made 15 free throws..... Never
- Shot 100% at the free throw line (min. 10 attempts)..... 11-11 - Janiah McKay vs. Texas A&M in Auburn, Ala. (Jan. 7, 2018)
- Had a double-double..... Unique Thompson (13 pts/11 reb) vs. Georgia in Athens, Ga. (Jan. 19, 2020)**

SEC PRESEASON POLL (Media Vote)**Order of Finish**

1. South Carolina
2. Texas A&M
3. Mississippi State
4. Kentucky
5. Arkansas
6. Tennessee
7. Auburn
8. LSU
9. Missouri
10. Georgia
11. Alabama
12. Florida
13. Ole Miss
14. Vanderbilt

Player of the Year

Chennedy Carter, Texas A&M

All-SEC First Team

Chennedy Carter, Texas A&M
 Chelsea Dungee, Arkansas
 Rhyme Howard, Kentucky
 Ayana Mitchell, LSU
 Tyasha Harris, South Carolina

All-SEC Second Team

Unique Thompson, Auburn
 Mikiah Herbert Harrigan, South Carolina
 Rennia Davis, Tennessee
 Ciera Johnson, Texas A&M
 Mariella Fasoula, Vanderbilt

SEC PRESEASON POLL (Coaches' Vote)**Order of Finish**

1. Texas A&M
2. South Carolina
3. Mississippi State
4. Kentucky
5. Arkansas
6. LSU
7. Tennessee
8. Auburn
9. Missouri
10. Georgia
11. Alabama
12. Vanderbilt
13. Ole Miss
14. Florida

Player of the Year

Chennedy Carter, Texas A&M

All-SEC First Team

Chelsea Dungee, Arkansas
 Rhyme Howard, Kentucky
 Ayana Mitchell, LSU
 Jordan Danberry, Mississippi State
 Amber Smith, Missouri
 Tyasha Harris, South Carolina
 Rennia Davis, Tennessee
 Chennedy Carter, Texas A&M

All-SEC Second Team

Cierra Johnson, Alabama
 Daisa Alexander, Auburn
 Unique Thompson, Auburn
 Gabby Connally, Georgia
 Chloe Bibby, Mississippi State
 Mikiah Herbert Harrigan, South Carolina
 Ciera Johnson, Texas A&M
 Kayla Wells, Texas A&M
 Mariella Fasoula, Vanderbilt

Had 2 consecutive double-doubles Unique Thompson: 16/14 vs. Alabama, 13/11 at Georgia (Jan. 12-19, 2020)
Had 3 consecutive double-doubles Unique Thompson: 10/10 vs. Florida, 16/14 vs. Alabama, 13/11 at Georgia (Jan. 9-19, 2020)
...Had 13 consecutive double-doubles Unique Thompson: First vs. BYU; last at Vandy (March 23, 2019-Jan. 2, 2020)
...Had 18 consecutive double-doubles (AU record) Lauretta Freeman: First vs. Furman, Last vs. Oral Roberts (Dec. 29, 1992-Feb. 23, 1993)
Had a double-double at halftime Unique Thompson (16 pts/10 rebs) at Iowa State in Ames, Iowa (Nov. 13, 2018)
Two players had a double-double Unique Thompson (14 p/13 r) & Janiah McKay (16 p/10 a) vs. Grambling State (Nov. 6, 2018)
Recorded a double-double with points and assists Janiah McKay (16 pts/10 assists) vs. Grambling State (Nov. 6, 2018)
Scored 20 points & had 20 rebounds Lauretta Freeman (30 pts/21 rebs.) vs. Alabama, (Feb. 17, 1993)
Had a triple-double Whitney Boddie (24 pts./11 rebs./12 ast.) vs. Sam Houston State (Dec. 5, 2008)
Two players scored 20 points Daisa Alexander (24), Lauren Hansen (24) vs. Drake in Estero, Fla. (Dec. 1, 2019)
Two players scored 30 points Laticia Morris (33 points) & Tara Williams (30 points) vs. South Alabama (Jan. 14, 1997)
Had 2 straight 25-point games Janiah McKay: 27 at South Carolina, 26 vs. Arkansas (Jan. 11-14, 2018)
Had 3 straight 25-point games Janiah McKay: 25 pts vs. Texas A&M, 27 pts at South Carolina, 26 pts vs. Arkansas (Jan. 7-14, 2018)
Zero players scored in double figures at Georgia in Athens, Ga. (Jan. 28, 2016)
Only one player scored in double figures Unique Thompson (16) vs. Alabama in Auburn, Ala. (Jan. 12, 2020)
Five players scored in double figures Thompson (16), Howard (12), Alexander (11), Hansen/Benton (10) vs. Bethune-Cookman (Dec. 15, 2019)
Six players scored in double figures McKay/Benton (16), Primm (15), Thompson (14), Alexander/Jones (13) vs. Grambling (Nov. 6, 2018)
Seven players scored in double figures Carrier (19 pts.), Bonner (18 pts.), Smalley (16 pts.), Boddie (13 pts.)
 R. Hobbs (13 pts.), Hilliard (13 pts.) & S. Hobbs (10 pts.) vs. Sam Houston State (Dec. 5, 2008)
Two players had 10 rebounds Unique Thompson (13) and Kiyae' White (11) vs. Wofford in Auburn, Ala. (Nov. 6, 2019)
Three players had 10 rebounds J. Greenleaf (12 rebs.), D. Bonner (12 rebs.) & .oddie (10 rebs.) vs. Oakland (Nov. 21, 2007)
Played every minute Jordan Greenleaf (40 mins.) vs. Florida in Duluth, Ga. [SEC] (Mar. 4, 2010)
Played 40 or more minutes in OT game Unique Thompson (43 mins.) vs. Georgia in Auburn, Ala. (Feb. 3, 2019)
Attempted a slam dunk Hasina Muhammad vs. St. John's in Auburn, Ala. (Dec. 6, 2013)
Made a shot from half-court or beyond Brooke Moore (end 2nd quarter) vs. Alabama State in Auburn, Ala. (Dec. 29, 2018)

Last Time an Auburn Opponent...

Shot less than 30% in a game (SEC) Alabama - 23.3% (10-of-43) in Auburn, Ala. (Feb. 17, 2019)
Shot less than 30% in a game (Non-conf) Alabama State - 29.8% (14-of-47) in Auburn, Ala. (Dec. 29, 2018)
Shot 60% in a game Florida - 61.5% (32-of-52) in Auburn, Ala. (Jan. 9, 2020)
Scored 90 points Virginia Tech 92, Auburn 87 [OT] in Auburn, Ala. (Dec. 18, 2016)
Scored 100 points Georgia 102, Auburn 72 in Athens, Ga. (Mar. 3, 1984)
Scored 100 points at Auburn Tuskegee 105, Auburn 98 (2OT) (Feb. 12, 1979)
Had 25+ rebound margin Never
Had a 20+ rebound margin 20 - Alabama (56-36) in Auburn, Ala. (Feb. 20, 2017)
Scored less than 10 points in a quarter 9 - Georgia (1st quarter) in Athens, Ga. (Jan. 19, 2020)
Scored less than 10 points in all four quarters Winthrop (9-8-8-8) in Auburn, Ala. (Dec. 16, 2015)
Scored 30 or more points in a quarter 34 - Wofford (4th quarter) in Auburn, Ala. (Nov. 6, 2019)
Scored less than 10 points in a half 8 - Jacksonville (1st half) in Auburn, Ala. (Dec. 28, 2016)
Scored less than 20 points in a 1st half 18 - Jacksonville State in Auburn, Ala. (Dec. 28, 2019)
Scored less than 20 points in a 2nd half 19 - Florida in Auburn, Ala. (Dec. 31, 2017)
Had 50 rebounds 56 - Alabama in Auburn, Ala. (Feb. 20, 2017)
Had 25 assists 25 - Florida International in Miami, Fla. (Dec. 19, 1993)
Had 25-29 turnovers 29 - Vanderbilt in Nashville, Tenn. (Jan. 2, 2020)
Had 30-34 turnovers 30 - XULA in Auburn, Ala. (Dec. 28, 2017)
Had 35+ turnovers 35 - ULM in Auburn, Ala. (Nov. 27, 2017)
Had 15 steals 15 - East Carolina in Auburn, Ala. (Dec. 5, 2015)
Had 10 blocks 10 - Georgia in Athens, Ga. (Jan. 19, 2020)
Failed to make a 3-point field goal LSU (0-6) in Baton Rouge, La. (Feb. 1, 2016)
Attempted 35 free throws 35 - Florida in Gainesville, Fla. (Feb. 28, 2016)
Made 30 free throws 30 - Arkansas (Jan. 22, 1995)
Made 10 three-point field goals 11 - Alabama in Auburn, Ala. (Jan. 12, 2020)
Made 15 three-point field goals 18 - Missouri in Columbia, Mo. (Jan. 6, 2013)
Scored 41-50 points in a game 46 - LSU in Baton Rouge, La. (March 3, 2019)
Scored 31-40 points in a game 38 - Alabama in Auburn, Ala. (Feb. 17, 2019)
Scored 30 points or less 26 - Georgia in Athens, Ga. (Feb. 22, 2015)
Scored 25 points or less 25 - Puerto Rico-Mayaguez (Dec. 17, 2000)

Last Time an Opposing Player...

Scored 30+ points (non-conference) 35 - Ajah Wayne of Old Dominion in Auburn, Ala. (Nov. 14, 2019)
Scored 30+ points (SEC) 41 - Chelsea Dungee of Arkansas in Fayetteville, Ark. (Feb. 10, 2019)
Scored 35+ points (all games) 35 - Ajah Wayne of Old Dominion in Auburn, Ala. (Nov. 14, 2019)
Scored 40+ points (all games) 41 - Chelsea Dungee of Arkansas in Fayetteville, Ark. (Feb. 10, 2019)
Attempted 25 field goals 27 - Jantel Lavender (9-27) of Ohio State (Nov. 23, 2008)
Scored 20 points & had 20 rebounds Young of Baylor in the WNIT Championship Game, (20 pts./25 rebs.) (Apr. 4, 2003)
Two players scored 20 points Jaycee Bradley (24) and Lauren Heard (21) of TCU in Fort Worth, Texas (Dec. 7, 2019)
Three players scored 20 points by LSU in Baton Rouge, Chatman (22 pts), Johnson (21 pts) & Lowery (20 pts) (Jan. 12, 1991)
Five players scored in double figures Briggs (19), Smith (15), Rickards (13), Moore (12) and Johnson (10) of Florida (Jan. 9, 2020)
Six players scored in double figures Williams (10), Lewis (13), Bonds (18), Peoples (10), Miller (12), Svetec (12) of Florida (Jan. 26, 2014)
Recorded a double-double Jasmine Walker of Alabama (23 pts/10 reb) in Auburn, Ala. (Jan. 12, 2020)
Recorded a double-double with points and assists Tyasha Harris (12 pts/11 ast) of South Carolina in Columbia, S.C. (Jan. 11, 2018)
Recorded a triple-double Ceira Ricketts (14 pts./13 rebs./12 ast.) of Arkansas (Jan. 18, 2009)
Two players recorded a double-double C. Green (16 pts/11 reb) & Davis (15 pts/10 reb) of Tennessee in Knoxville, Tenn. (Feb. 14, 2019)
Committed 10+ turnovers 10 - Shaquera Wade of Alabama in Greenville, S.C. (March 7, 2019)
Had 15-19 rebounds 15 - by N' dea Jones of Texas A&M in Auburn, Ala. (Jan. 24, 2019)
Had 20+ rebounds 21 - Ayana Mitchell of LSU in Baton Rouge, La. (March 3, 2019)
Had 10 assists 10 - Tyasha Harris of South Carolina in Auburn, Ala. (Feb. 28, 2019)
Had 15 assists 16 - Cindy McMahan of Alabama-Huntsville (Nov. 24, 1980)
Had 5 blocks 5 - Ashley Knight of Alabama in Tuscaloosa, Ala. (Feb. 18, 2018)
Had 10 blocks Never
Had 5 steals 5 - Kiara Smith of Florida in Auburn, Ala. (Jan. 9, 2020)
Made 15 field goals 15 - Chamique Holdsclaw (15-21) of Tennessee (Feb. 1, 1998)
Made 10 3-point field goals 11 - Morgan Eye (11-18) of Missouri in Columbia, Mo. (Jan. 6, 2013)

2019-20 Auburn Individual Highs...**First Half**

Points..... 21, Unique Thompson at TCU (12/7/19)
 Field Goals Made..... 9, Unique Thompson at TCU (12/7/19)
 Field Goal Attempts..... 12, Unique Thompson vs. Alabama (1/12/20)
 3-Point Field Goals Made 5, Lauren Hansen vs. Drake (12/1/19)
 3-Point Field Goal Attempts 8, Lauren Hansen vs. Drake (12/1/19)
 Free Throws Made 7, Unique Thompson at Georgia (1/19/20)
 Free Throws Attempted 9, Unique Thompson at Georgia (1/19/20)
 Rebounds 11, Unique Thompson at UAB (11/21/19) & vs. Arkansas (1/5/20)
 Assists 4, Daisa Alexander at TCU (12/7/19)
 Blocked Shots..... 2, Erin Howard at TCU (12/7/19) & vs. Alabama (1/12/20)
 Steals 3, 5x; last, Robyn Benton at Georgia (1/19/20)

Second Half

Points..... 19, Daisa Alexander vs. Drake (12/1/19)
 Field Goals Made..... 6, 4x; last, Brooke Moore vs. Arkansas (1/5/20)
 Field Goal Attempts..... 12, Daisa Alexander vs. Dayton (11/30/19)
 3-Point Field Goals Made 4, Erin Howard at South Alabama (12/4/19)
 3-Point Field Goal Attempts 6, Lauren Hansen vs. Drake (12/1/19)
 Free Throws Made 8, Daisa Alexander vs. Wofford (11/6/19)
 Free Throws Attempted 10, Daisa Alexander vs. Wofford (11/6/19)
 Rebounds 9, 3x; last, Unique Thompson at Georgia (1/19/20)
 Assists 4, Kiyae' White vs. Wofford (11/6/19)
 Blocked Shots..... 2, Unique Thompson at UAB (11/21/19)
 Steals 3, 7x; last, three players at Vanderbilt (1/2/20)

Game

Points..... 31, Unique Thompson at TCU (12/7/19)
 Field Goals Made..... 12, Unique Thompson at TCU (12/7/19)
 Field Goal Attempts..... 21, Unique Thompson vs. Alabama (1/12/20)
 3-Point Field Goals Made 7, Lauren Hansen vs. Drake (12/1/19)
 3-Point Field Goal Attempts 14, Lauren Hansen vs. Drake (12/1/19)
 Free Throws Made 10, Unique Thompson vs. Dayton (11/30/19)
 Free Throws Attempted 15, Unique Thompson vs. Dayton (11/30/19)
 Rebounds 19, Unique Thompson at UAB (11/21/19)
 Assists 6, Unique Thompson vs. Arkansas (1/5/20)
 Blocked Shots..... 2, 5x; last, Erin Howard vs. Alabama (1/12/20)
 Steals 4, 9x; last, Robyn Benton vs. Arkansas (1/5/20)

2019-20 Auburn Team Highs...**First Half**

Points..... 42 vs. Drake (12/1/19)
 Field Goals Made..... 16 at UAB (11/21/19)
 Field Goal Attempts..... 41 vs. Alabama (1/12/20)
 3-Point Field Goals Made 8 vs. Drake (12/1/19)
 3-Point Field Goal Attempts 18 vs. Drake (12/1/19)
 Free Throws Made 12 vs. Old Dominion (11/14/19)
 Free Throws Attempted 19 vs. Old Dominion (11/14/19)
 Rebounds 25 vs. Wofford (11/6/19)
 Assists 10 at South Alabama (12/4/19)
 Blocked Shots..... 3 at TCU (12/7/19)
 Steals 9 vs. Wofford (11/6/19)

Second Half

Points..... 49 vs. Wofford (11/6/19)
 Field Goals Made..... 17, 3x; last vs. Arkansas (1/5/20)
 Field Goal Attempts..... 37 vs. Old Dominion (11/14/19)
 3-Point Field Goals Made 6 at South Alabama (12/4/19)
 3-Point Field Goal Attempts 14 vs. Florida (1/9/20)
 Free Throws Made 15 at Vanderbilt (1/2/20)
 Free Throws Attempted 19 vs. Wofford (11/6/19) & at Vanderbilt (1/2/20)
 Rebounds 24 vs. Bethune-Cookman (12/15/19)
 Assists 10 vs. Wofford (11/6/19)
 Blocked Shots..... 3 at UAB (11/21/19) & vs. Bethune-Cookman (12/15/19)
 Steals 14 at Vanderbilt (1/2/20)

Game

Points..... 84 vs. Wofford (11/6/19)
 Field Goals Made..... 32 at South Alabama (12/4/19)
 Field Goal Attempts..... 69 vs. Alabama (1/12/20)
 3-Point Field Goals Made 13 vs. Drake (12/1/19)
 3-Point Field Goal Attempts 29 vs. Drake (12/1/19) & vs. Florida (1/9/20)
 Free Throws Made 20 vs. Wofford (11/6/19)
 Free Throws Attempted 30 vs. Wofford (11/6/19) & vs. St. Joseph's (11/24/19)
 Rebounds 47 vs. Wofford (11/6/19)
 Assists 16 at South Alabama (12/4/19) & vs. Arkansas (1/5/20)
 Blocked Shots..... 4 at UAB (11/21/19) & vs. Bethune-Cookman (12/15/19)
 Steals 17 at Vanderbilt (1/2/20)
 Turnovers Forced..... 29 at Vanderbilt (1/2/20)

Specialty Statistics (Auburn-Opponent)

Opponent	Points in the Paint	Points off Turnovers	2nd-Chance Points	Fast-Break Points	Bench Points
Wofford	38 -18	12-19	24 -10	11 -9	10-5
Old Dominion	28-30	14-13	22-11	4-13	15-16
at UAB	34-26	15-23	17-15	0-0	18-9
St. Joseph's	22-36	17-11	17-7	7-8	10-13
vs. Middle Tennessee	26-32	9-19	11-3	4-8	13-6
vs. Dayton	24-32	19-14	11-11	4-2	7-19
vs. Drake	27-44	24-24	7-6	4-6	11-27
at South Alabama	32-30	21-18	8-20	8-6	20-6
at TCU	32-34	9-26	12-14	7-25	10-22
vs. Bethune-Cookman	36-20	8-16	21-7	4-14	28 -16
vs. Jacksonville State	22-2	27 -11	22-5	6-3	12-14
at Vanderbilt	24- 46	12-24	3-7	6-10	18-9
vs. Arkansas	24-36	12-24	15-10	9-18	20-10
vs. Florida	22-42	9-26	17-2	10-16	20-16
vs. Alabama	24-28	10-17	13-10	0-10	24-17
at Georgia	16-28	9-19	9-12	4-19	4-34
Totals (Averages)	431 (26.9)-484 (30.2)	229 (14.3)-307 (19.2)	230 (14.4)-150 (9.4)	88 (5.5)-167 (10.4)	233 (14.6)-246 (15.4)

Lead-Deficit Comparison

Opponent	Largest Lead	Largest Deficit	Lead Changes	Ties	Result
Wofford	17 (3rd, 5:39)	4 (1st, 9:16)	7	5	W, 84-82
Old Dominion	2 (1st, 7:02)	16 (4th, 3:30)	6	3	L, 77-89
at UAB	5 (3rd, 5:34)	5 (4th, 1:10)	25	12	L, 75-80
St. Joseph's	6 (4th, 5:32)	6 (1st, 1:34)	10	11	W, 66-62
vs. Middle Tennessee	--	26 (4th, 6:37)	0	0	L, 50-73
vs. Dayton	6 (1st, 1:12)	13 (Half)	8	9	W, 76-74 (OT)
vs. Drake	11 (3rd, 1:29)	11 (1st, 2:34)	13	12	L, 82-83
at South Alabama	26 (4th, 3:02)	2 (3rd, 4:46)	4	0	W, 82-62
at TCU	--	25 (4th, 5:41)	0	3	L, 65-80
vs. Bethune-Cookman	19 (4th, 3:46)	5 (2nd, 7:25)	10	5	W, 74-56
vs. Jacksonville State	18 (4th, 4:03)	--	0	0	W, 62-53
at Vanderbilt	3 (1st, 8:56)	35 (3rd, 6:14)	1	0	L, 55-77
vs. Arkansas	7 (1st, 7:08)	27 (4th, 5:34)	1	1	L, 70-86
vs. Florida	2 (1st, 7:11)	24 (3rd, 6:50)	2	2	L, 63-83
vs. Alabama	8 (1st, 4:30)	32 (4th, 1:14)	3	4	L, 45-78
at Georgia	10 (1st, 5:13)	17 (4th, 5:48)	1	2	L, 50-61

Scoring Breakdown

(Percentage of total points in parentheses)

Opponent	Front Court	Back Court	Sr.	Jr.	So.	Fr.	Starters	Bench
Wofford	37 (44.0)	47 (56.0)	22	30	17	15	74 (88.1)	10 (10.9)
Old Dominion	26 (33.8)	51 (66.2)	17	15	26	19	62 (80.5)	15 (19.5)
at UAB	38 (50.7)	37 (49.3)	20	24	20	11	57 (76.0)	18 (24.0)
St. Joseph's	32 (48.5)	34 (51.5)	8	17	16	25	56 (84.8)	10 (15.2)
vs. Middle Tennessee	27 (54.0)	23 (46.0)	6	15	23	6	37 (74.0)	13 (26.0)
vs. Dayton	26 (34.2)	50 (65.8)	22	20	24	10	69 (90.8)	7 (9.2)
vs. Drake	20 (24.3)	62 (75.7)	24	12	13	33	71 (86.6)	11 (13.4)
at South Alabama	32 (39.0)	50 (61.0)	14	15	37	16	62 (75.6)	20 (24.4)
at TCU	40 (61.5)	25 (38.5)	6	31	17	11	55 (84.6)	10 (15.4)
vs. Bethune-Cookman	32 (43.2)	42 (56.8)	11	16	26	21	46 (62.2)	28 (37.8)
vs. Jacksonville State	28 (45.1)	34 (54.9)	10	20	23	9	50 (80.0)	12 (20.0)
at Vanderbilt	29 (52.7)	24 (47.3)	2	14	32	7	37 (67.2)	18 (32.8)
vs. Arkansas	14 (20.0)	56 (80.0)	19	6	33	12	50 (71.4)	20 (28.6)
vs. Florida	27 (42.9)	36 (57.1)	-	10	33	20	43 (68.3)	20 (31.7)
vs. Alabama	30 (62.5)	18 (37.5)	-	16	21	11	31 (64.6)	17 (35.4)
at Georgia	19 (38.0)	31 (62.0)	17	13	20	0	46 (94.0)	4 (8.0)

Comparison Statistics (Auburn/Opponent)

Opponent	1st	2nd	Score	Mar	Total FG	FG Pct	3-Pointers	3FG Pct	Free Throws	FT Pct	Reb.	Mar	Assist	TO	Bk	Stl	Fouls
Wofford	35/24	49/58	84-82	+2	30-65/26-64	.462/.406	4-16/13-30	.250/.433	20-30/17-20	.667/.850	47/34	+13	15/13	14/15	2/3	12/6	19/26
Old Dominion	39/41	38/48	77-89	(12)	26-60/32-54	.433/.593	8-19/14-28	.421/.500	17-28/11-18	.607/.611	34/28	+6	9/16	14/15	2/3	9/7	19/21
UAB	40/41	35/39	75-80	(5)	30-60/26-53	.500/.491	3-15/10-23	.200/.435	12-17/18-21	.706/.857	37/27	+10	11/15	20/17	4/3	11/8	20/12
St. Joseph's	32/29	34/33	66-62	+4	21-58/24-54	.362/.444	5-14/4-15	.357/.267	19-30/10-15	.633/.667	40/34	+6	14/15	10/14	1/5	8/5	14/20
Middle Tenn.	19/40	31/33	50-73	(23)	18-53/26-60	.340/.433	4-20/10-29	.200/.345	10-18/11-21	.556/.524	29/36	(7)	8/12	23/16	1/3	8/12	22/14
Dayton	24/37	39/26	76-74	+2	26-64/28-63	.406/.444	6-23/9-25	.261/.360	18-26/9-14	.692/.643	33/35	(2)	6/15	13/20	2/2	14/5	22/20
Drake	42/44	40/39	82-83	(1)	28-62/32-61	.452/.525	13-29/7-25	.448/.280	13-16/12-13	.813/.923	29/24	+5	15/20	20/19	2/0	11/10	14/15
South Alabama	37/32	45/30	82-62	+20	32-60/25-59	.533/.424	12-24/10-31	.500/.323	6-12/2-4	.500/.500	36/30	+6	16/12	13/15	3/0	7/4	13/7
TCU	31/44	34/36	65-80	(15)	24-67/25-67	.358/.373	3-25/7-26	.120/.269	14-19/23-33	.737/.697	42/49	(7)	14/18	19/16	3/4	11/9	25/16
Beth.-Cookman	36/31	38/25	74-56	+18	30-59/19-56	.508/.339	8-25/5-24	.320/.208	6-7/13-24	.857/.542	43/26	+17	14/7	19/11	4/0	6/9	22/8
Jacksonville St.	27/18	35/35	62-53	+9	22-55/16-47	.400/.340	5-19/13-31	.263/.419	13-16/8-9	.813/.889	36/30	+6	8/13	21/27	2/2	14/8	12/14
Vanderbilt	18/47	37/30	55-77	(22)	17-60/31-52	.283/.596	3-23/1-3	.130/.333	18-23/14-22	.783/.636	30/39	(9)	10/21	27/29	1/2	17/13	20/19
Arkansas	27/44	43/42	70-86	(16)	27-66/32-62	.409/.516	9-26/12-27	.346/.444	7-13/10-11	.538/.909	35/36	(1)	16/16	19/18	1/1	11/13	15/12
Florida	31/42	32/41	63-83	(20)	24-61/32-52	.393/.615	7-29/10-17	.241/.588	8-11/9-11	.727/.818	29/30	(1)	12/13	16/17	1/1	13/12	16/8
Alabama	26/33	22/42	48-75	(27)	19-69/28-54	.275/.519	6-26/11-29	.231/.379	4-7/8-10	.571/.800	38/39	(1)	11/21	13/17	2/4	11/5	12/14
Georgia	29/25	21/36	50-61	(11)	15-53/25-58	.283/.431	2-12/4-23	.167/.174	18-25/7-11	.720/.636	35/41	(6)	5/16	17/18	2/10	12/11	15/20

Game-by-Game Leaders

	Points	Rebounds	Assists	Steals	Blocked Shots
Wofford	25-Unique Thompson	13-Unique Thompson	4-White/Hughes	3-Annie Hughes	1-Moore/Howard
Old Dominion	17-Daisa Alexander	10-Unique Thompson	2-(three plays)	4-Daisa Alexander	1-Jackson/Howard
at UAB	24-Unique Thompson	19-Unique Thompson	3-Hughes/Howard	4-Daisa Alexander	2-Unique Thompson
St. Joseph's	18-Lauren Hansen	12-Unique Thompson	5-Unique Thompson	4-Lauren Hansen	1-Kiyae' White
Middle Tennessee	15-Unique Thompson	10-Unique Thompson	3-Sania Wells	3-Alexander/Howard	1-Erin Howard
Dayton	22-Daisa Alexander	11-Unique Thompson	3-Daisa Alexander	4-Brooke Moore	1-White/Thompson
Drake	24-Alexander/Hansen	11-Unique Thompson	4-Alexander/Hansen	4-Unique Thompson	2-Erin Howard
at South Alabama	20-Brooke Moore	10-Unique Thompson	4-Lauren Hansen	4-Erin Howard	1-(three players)
at TCU	31-Unique Thompson	15-Unique Thompson	4-Alexander/Rob.-Nwagwu	3-White/Howard	2-Erin Howard
Bethune-Cookman	16-Unique Thompson	13-Unique Thompson	3-Hansen/Rob.-Nwagwu	4-Unique Thompson	2-Robyn Benton
Jacksonville State	20-Unique Thompson	10-Unique Thompson	2-Moore/Hansen	3-(three players)	1-Thompson/Howard
at Vanderbilt	17-Brooke Moore	10-Unique Thompson	4-Daisa Alexander	4-Robyn Benton	1-Kiyae' White
Arkansas	19-Alexander/Moore	13-Unique Thompson	6-Unique Thompson	4-Robyn Benton	1-Unique Thompson
Florida	14-Brooke Moore	10-Unique Thompson	3-Hansen/Rob.-Nwagwu	4-Erin Howard	1-Robyn Benton
Alabama	16-Unique Thompson	14-Unique Thompson	4-Lauren Hansen	3-Robyn Benton	2-Erin Howard
at Georgia	17-Daisa Alexander	11-Unique Thompson	2-Unique Thompson	3-Benton/Alexander	1-Benton/White

2019-20 Starting Lineups

	Point Guard (1)	Wing (2)	Wing (3)	Wing (4)	Post (5)
Wofford	Daisa Alexander	Brooke Moore	Annie Hughes	Kiyae' White	Unique Thompson
Old Dominion	Daisa Alexander	Brooke Moore	Annie Hughes	Kiyae' White	Unique Thompson
at UAB	Lauren Hansen	Brooke Moore	Daisa Alexander	Annie Hughes	Unique Thompson
St. Joseph's	Lauren Hansen	Brooke Moore	Daisa Alexander	Kiyae' White	Unique Thompson
vs Middle Tennessee	Lauren Hansen	Brooke Moore	Daisa Alexander	Kiyae' White	Unique Thompson
vs Dayton	Lauren Hansen	Brooke Moore	Daisa Alexander	Kiyae' White	Unique Thompson
vs Drake	Lauren Hansen	Brooke Moore	Daisa Alexander	Kiyae' White	Unique Thompson
at South Alabama	Lauren Hansen	Brooke Moore	Daisa Alexander	Kiyae' White	Unique Thompson
at TCU	Lauren Hansen	Brooke Moore	Daisa Alexander	Kiyae' White	Unique Thompson
Bethune-Cookman	Lauren Hansen	Annie Hughes	Daisa Alexander	Kiyae' White	Unique Thompson
Jacksonville State	Lauren Hansen	Brooke Moore	Daisa Alexander	Kiyae' White	Unique Thompson
at Vanderbilt	Lauren Hansen	Brooke Moore	Daisa Alexander	Kiyae' White	Unique Thompson
Arkansas	Daisa Alexander	Brooke Moore	Annie Hughes	Erin Howard	Unique Thompson
Florida	Lauren Hansen	Brooke Moore	Annie Hughes	Erin Howard	Unique Thompson
Alabama	Lauren Hansen	Brooke Moore	Annie Hughes	Erin Howard	Unique Thompson
at Georgia	Daisa Alexander	Brooke Moore	Robyn Benton	Erin Howard	Unique Thompson

Record by Starting Lineup

Alexander, Moore, Hughes, White, Thompson	1-1 (.500)
Hansen, Moore, Alexander, Hughes, Thompson	0-1 (.000)
Hansen, Moore, Alexander, White, Thompson	4-4 (.500)
Hansen, Hughes, Alexander, White, Thompson	1-0 (1.000)
Alexander, Moore, Hughes, Howard, Thompson	0-1 (.000)
Hansen, Moore, Hughes, Howard, Thompson	0-2 (.000)
Alexander, Moore, Benton, Howard, Thompson	0-1 (.000)



Terri

WILLIAMS-FLOURNOY

Head Coach

Seventh Season at Auburn • 15th as a Head Coach • 27th Season in coaching

Hampton, Va. • Penn State, 1991

• Has taken her teams to postseason appearances in nine of the last 11 years, including six NCAA Tournament appearances

- Led Auburn to 19 or more wins in four of her first seven years
- Has had six players selected to All-SEC teams
- Auburn has forced an average of 20.0+ turnovers per game under Coach Flo
- Led Auburn to the postseason in five of seven seasons, advancing to WNIT Quarterfinals in 2013 and Third Round in 2014, along with NCAA Tournament in 2016, 2017 and 2019
- Won her 100th game at Auburn on Feb. 8, 2018, defeating LSU 70-62
- Picked up her 200th career head coaching victory Dec. 5, 2015 at home vs. East Carolina
- Won 250th career game at Xavier (La.) on Nov. 28, 2018
- Recorded her 400th career win as a collegiate coach in Auburn's 68-58 win over Hofstra on Dec. 9, 2012
- Won her 500th game as a collegiate coach with victory over Louisiana-Lafayette on Nov. 25, 2018

2018

- Picked up first SEC win in 50-47 win over #23 Arkansas in 2013
- Earned second win over ranked opponent at Auburn and snapped 21-game skid to #16 Vanderbilt with 68-62 win in Nashville on Feb. 13, 2014
- Picked up first top-10 win with a 66-61 victory over #7 Kentucky on Jan. 3, 2016
- Has 273 wins as a head coach and 251 as an assistant for a .614 winning percentage over 28 years as a collegiate coach
- Has been part of six conference championships and 21 post-season appearances as an assistant and head coach
- 2010 Black Coaches Association Coach of the Year
- Served as an assistant coach for Team USA that won a gold medal at the 2011 World University Games in Shenzhen, China
- Coached teams to 15 NCAA Tournament appearances, nine as an assistant and six as a head coach
- Has coached 24 players that have gone on to the professional ranks, including seven in the WNBA
- As an assistant, helped coach Georgia to an NCAA Final Four appearance and two NCAA Elite Eight appearances
- Coached three Georgetown players to three all-conference honors and one All-America award
- Has a 612-365 record in 31 seasons as a head coach, assistant coach and player
- Helped coach Georgetown to a Big East title in 1992
- As an assistant coach at Southwest Missouri State, helped the team to two straight NCAA Tournaments and two consecutive Missouri Valley Conference Tournament titles

All-time record as player and coach:	612-366 (.626)	32 seasons
Record as collegiate player:	88-36 (.709)	4 seasons
Record as collegiate coach:	524-330 (.614)	28 seasons
Record as collegiate assistant coach:	251-117 (.683)	12 seasons
Record as collegiate head coach:	273-215 (.561)	16 seasons
Record as Auburn head coach:	130-111 (.542)	8 seasons

Williams-FLOURNOY Year-by-Year

Penn State, Player (1987-91)

Year	Record	Conf.	Other Information
1987-88	20-13	11-7	NCAA Second Round
1988-89	14-14	12-6	
1989-90	25-7	15-3	NCAA Second Round
1990-91	29-2	17-1	NCAA Second Round

Georgetown, Assistant Coach (1992-96)

Year	Record	Conf.	Other Information
1992-93	23-7	15-3	Big East Champions NCAA Sweet 16
1993-94	12-15	6-12	
1994-95	11-17	6-12	
1995-96	12-15	7-11	

Georgia, Assistant Coach (1996-2002)

Year	Record	Conf.	Other Information
1996-97	25-6	11-1	SEC Champions NCAA Elite Eight
1997-98	17-11	8-6	NCAA First Round
1998-99	27-7	9-5	NCAA Final Four
1999-2000	32-4	13-1	SEC Champions NCAA Elite Eight
2000-01	27-6	11-3	SEC Tournament Champions NCAA Second Round
2001-02	19-11	6-8	NCAA First Round

Southwest Missouri State, Assistant Coach (2002-04)

Year	Record	Conf.	Other Information
2002-03	18-13	11-7	MVC Tournament Champions NCAA First Round
2003-04	28-4	16-2	Missouri Valley Champions MVC Tournament Champions NCAA First Round

Georgetown, Head Coach (2004-12)

Year	Record	Conf.	Other Information
2004-05	12-16	7-9	
2005-06	10-17	3-13	
2006-07	13-16	3-13	
2007-08	15-14	5-11	
2008-09	20-14	7-9	WNIT Quarterfinals
2009-10	26-7	13-3	NCAA Second Round
2010-11	24-11	9-7	NCAA Sweet 16
2011-12	23-9	11-5	NCAA Second Round

Auburn, Head Coach (2012-present)

Year	Record	Conf.	Other Information
2012-13	19-15	5-11	WNIT Quarterfinals
2013-14	19-15	7-9	WNIT Third Round
2014-15	13-18	3-13	
2015-16	20-13	8-8	NCAA Second Round
2016-17	17-15	7-9	NCAA First Round
2017-18	14-15	5-11	
2018-19	22-10	9-7	NCAA First Round
2019-20	6-10	0-5	



Daisa ALEXANDER

#0

Senior • Guard • 5-8

Decatur, Ga.

****2018 SEC All-Defensive Team****

Southwest DeKalb HS

Named to 2019-20 Preseason All-SEC Second Team (coaches)

- Missed the Florida and Alabama games with ankle injury suffered vs. Arkansas (1/5); returned with 17 points at UGA (1/19)
- Scored 1,000th career point vs. Jacksonville State (12/28); 34th Auburn player to reach that milestone
- 12th in SEC in scoring (14.1 ppg); has four games with 20+ points this year; 5th in steals (2.4/game)
- Opened season with 22-point, 6-rebound performance in win over Wofford (11/6)
- Auburn's leading returning scorer, averaged 12.6 points/game in 2018-19
- Scored in double-digits in 14 of 16 SEC games; led Auburn in 8 SEC games in 18-19; averaged 14.9 points in SEC play; 16.9 points in SEC road games
- Top 2 in steals in SEC last two years; led league with 2.8/game in '18; 2nd in SEC with 2.3/game in '19
- Scored career-high 25 points on 9-14 shooting at Indiana while playing just 20 minutes off the bench (12/3); 12 points in 4th quarter

SEASON HIGHS

Points	24	vs. Drake	12/1/19
Rebounds	6	2x; last vs. Jacksonville St.	12/28/19
Assists	4	3x; last at Vanderbilt	1/2/20
Blocks			

Opponent	Start	Min.	FG-A	3PT-A	FT-A	O-D-T	PF	Ast.	TO	Blk.	St.	Pts.
WOFFORD	*	33	6-12	1-3	9-14	1-5-6	3	2	3	0	2	22
OLD DOMINION	*	29	5-16	2-5	5-6	1-3-4	4	2	3	0	4	17
at UAB	*	30	9-14	2-3	0-1	0-2-2	4	1	2	0	4	20
ST. JOSEPH'S	*	33	3-13	0-1	2-4	0-2-2	2	3	0	0	2	8
vs Middle Tennessee	*	24	2-6	0-0	2-2	1-1-2	2	0	2	0	3	6
vs. Dayton	*	33	9-17	1-5	3-3	1-2-3	4	3	2	0	3	22
vs. Drake	*	31	7-17	4-9	6-6	1-2-3	1	4	3	0	3	24
at South Alabama	*	26	6-10	2-4	0-0	2-2-4	2	1	0	0	0	14
at TCU	*	21	3-11	0-5	0-0	0-2-2	5	4	1	0	2	6
BETHUNE-COOKMAN	*	28	5-10	1-5	0-0	0-4-4	3	2	2	0	1	11
JACKSONVILLE ST.	*	30	5-10	0-2	0-0	0-6-6	1	2	3	0	1	10
at Vanderbilt	*	26	0-7	0-4	2-2	2-3-5	2	4	1	0	1	2
ARKANSAS	*	23	7-12	3-5	2-2	0-1-1	3	1	3	0	2	19
FLORIDA						--DNP-Injured--						
ALABAMA						--DNP-Injured--						
at Georgia	*	33	6-14	0-1	5-8	1-2-3	1	1	4	0	3	17
OLE MISS												
at Kentucky												
at Mississippi State												
VANDERBILT												
at Alabama												
at South Carolina												
LSU												
MISSISSIPPI STATE												
at Texas A&M												
at Missouri												
TENNESSEE												

Steals	4	2x; last at UAB	11/21/19
Field Goals	9	2x; last vs. Dayton	11/30/19
Field Goal Attempts	17	2x; last vs. Drake	12/1/19
3-Point Field Goals	4	vs. Drake	12/1/19
3-Point FG Attempts	9	vs. Drake	12/1/19
Free Throws	9	vs. Wofford	11/6/19
Free Throw Attempts	14	vs. Wofford	11/6/19

CAREER HIGHS

Points	25	at Indiana	12/3/17
Rebounds	8	vs. Grambling	11/6/18
Assists	8	vs. UL-Lafayette	11/25/18
Blocks	2	at Kentucky	2/1/18
Steals	7	at LSU	1/18/18
Field Goals	9	7x; last vs. Dayton	11/30/19
Field Goal Attempts	23	at Tennessee	1/4/18
3-Point Field Goals	4	4x; last vs. Drake	12/1/19
3-Point FG Attempts	11	vs. BYU	3/23/19
Free Throws	9	vs. Wofford	11/6/19
Free Throw Attempts	9	vs. Wofford	11/6/19

ALEXANDER'S CAREER STATISTICS

Season	gp-gs	min/avg	Total		3-Point		F-Throws		Rebounds				Scoring							
			fg-fga	pct	fg-fga	pct	ft-fta	pct	off	def	tot	avg	pf	fo	ast	to	blk	stl	pts	avg
2016-17	20-0	113/5.7	9-37	.243	1-10	.100	7-10	.700	9	8	17	0.9	18	0	1	10	0	9	26	1.3
2017-18	29-12	746/25.7	157-403	.390	41-122	.336	57-77	.740	17	59	76	2.6	73	0	39	79	3	80	412	14.2
2018-19	32-32	892/27.9	148-380	.389	60-166	.361	48-70	.686	22	79	101	3.2	73	2	56	57	3	74	404	12.6
2019-20	14-14	398/28.4	73-169	.432	16-52	.308	36-48	.750	10	37	47	3.4	37	1	28	30	0	33	198	14.1
TOTAL	95-58	2149/22.6	387-989	.391	118-350	.337	148-205	.722	58	183	241	2.5	201	3	124	176	6	196	1040	10.9



Robyn BENTON

#1

Sophomore • Guard • 5-9

Conyers, Ga.

2019 SEC All-Freshman Team

Greater Atlanta Christian HS

• 2019 SEC All-Freshman Team

- Made first career start at Georgia (1/19); finished with season-high 12 points and 5 rebounds, along with 3 steals
- Leads SEC with 3.4 steals/game in conference play
- Scored 10 points in season debut vs. Bethune-Cookman (12/15); missed first 9 games with injury
- Averaged 6.1 points/game in '18-19, top 5 among SEC freshmen
- Made game-winning shot + free throw with 8.6 seconds left to finish off 20-point comeback win at Vanderbilt (1/17); named SEC Freshman/Week
- Hit 5-of-5 3-point attempts and scored 15 points in win at Elon (12/22)
- Shared team lead with 16 points and hit three 3-pointers in collegiate debut vs. Grambling (11/6)
- Sister of former Tennessee football player Inky Johnson

SEASON HIGHS

Points	12	at Georgia	1/19/20
Rebounds	5	at Georgia	1/19/20
Assists	3	2x; last vs. Florida	1/9/20
Blocks	2	vs. Bethune-Cookman	12/15/19
Steals	4	2x; last vs. Arkansas	1/5/20
Field Goals	4	2x; last at Georgia	1/19/20
Field Goal Attempts	9	2x; last at Georgia	1/19/20
3-Point Field Goals	2	3x; last at Georgia	1/19/20
3-Point FG Attempts	6	vs. Alabama	1/12/20
Free Throws	2	at Georgia	1/19/20
Free Throw Attempts	2	3x; last at Georgia	1/19/20

CAREER HIGHS

Points	16	vs. Grambling	11/6/18
Rebounds	5	at XULA	11/28/18
Assists	3	4x; last vs. Florida	1/9/20
Blocks	2	vs. Bethune-Cookman	12/15/19
Steals	4	3x; last vs. Arkansas	1/5/20
Field Goals	6	vs. Grambling	11/6/18
Field Goal Attempts	12	vs. Grambling	11/6/18
3-Point Field Goals	5	at Elon	12/22/18
3-Point FG Attempts	8	vs. Grambling	11/6/18
Free Throws	6	vs. Alabama	2/17/19
Free Throw Attempts	6	vs. Alabama	2/17/19

Opponent	Start	Min.	FG-A	3PT-A	FT-A	O-D-T	PF	Ast.	TO	Blk.	St.	Pts.
WOFFORD						--DNP-Injured--						
OLD DOMINION						--DNP-Injured--						
at UAB						--DNP-Injured--						
ST. JOSEPH'S						--DNP-Injured--						
vs Middle Tennessee						--DNP-Injured--						
vs. Dayton						--DNP-Injured--						
vs. Drake						--DNP-Injured--						
at South Alabama						--DNP-Injured--						
at TCU						--DNP-Injured--						
BETHUNE-COOKMAN	15		4-7	2-4	0-0	1-0-1	1	1	0	2	1	10
JACKSONVILLE ST.	18		2-5	0-1	0-0	1-1-2	1	1	0	0	1	4
at Vanderbilt	20		0-5	0-0	0-0	1-0-1	1	0	3	0	4	0
ARKANSAS	20		2-7	1-2	1-2	1-0-1	2	3	1	0	4	6
FLORIDA	24		1-6	0-3	0-0	0-1-1	2	3	1	1	3	2
ALABAMA	24		3-9	2-6	1-2	4-0-4	1	0	2	0	3	9
at Georgia	*	33	4-9	2-4	2-2	2-3-5	4	1	1	1	3	12
OLE MISS												
at Kentucky												
at Mississippi State												
VANDERBILT												
at Alabama												
at South Carolina												
LSU												
MISSISSIPPI STATE												
at Texas A&M												
at Missouri												
TENNESSEE												

BENTON'S CAREER STATISTICS

Season	gp-gs	min/avg	Total		3-Point		F-Throws		Rebounds				Scoring							
			fg-fga	pct	fg-fga	pct	ft-fta	pct	off	def	tot	avg	pf	fo	ast	to	blk	stl	pts	avg
2018-19	32-0	457/14.3	64-167	.383	35-94	.372	24-34	.706	16	26	42	1.3	41	0	18	15	3	34	187	5.8
2019-20	7-1	154/22.0	16-48	.333	7-20	.350	4-6	.667	10	5	15	2.1	12	0	9	8	4	19	43	6.1
TOTAL	39-1	611/15.7	80-215	.372	42-114	.368	28-40	.700	26	31	57	1.5	53	0	27	23	7	53	230	5.9



Sania WELLS

#2

Freshman • Guard • 5-7

Moss Point, Miss.

East Central HS

- Matched season-high with 4 points on 2-3 shooting vs. Florida (1/9)
- Made collegiate debut at UAB; scored 4 points while playing 17 minutes
- Missed first two games with injury
- Ranked as No. 27 point guard nationally by ESPN HoopGurlz
- USA Today All-Mississippi team
- Averaged 27 points, 5 rebounds, 4 steals as a HS senior

SEASON/CAREER HIGHS

Points	4	2x; last vs. Florida	1/9/20
Rebounds	3	vs. St. Joseph's	11/24/19
Assists	3	vs. Middle Tenn.	11/29/19
Blocks			
Steals	2	vs. Alabama	1/12/20
Field Goals	2	vs. Florida	1/9/20
Field Goal Attempts	4	at UAB	11/21/19
3-Point Field Goals	1	vs. Alabama	1/12/20
3-Point FG Attempts	3	vs. Alabama	1/12/20
Free Throws	2	2x; last vs. Drake	12/1/19
Free Throw Attempts	2	3x; last vs. Drake	12/1/19

Opponent	Start	Min.	FG-A	3PT-A	FT-A	O-D-T	PF	Ast.	TO	Blk.	St.	Pts.
WOFFORD						--DNP-Injured--						
OLD DOMINION						--DNP-Injured--						
at UAB	17		1-4	0-1	2-2	0-0-0	2	0	2	0	0	4
ST. JOSEPH'S	5		0-2	0-0	0-0	0-3-3	1	0	1	0	0	0
vs Middle Tennessee	13		1-1	0-0	1-2	0-1-1	2	3	1	0	0	3
vs. Dayton	4		0-0	0-0	0-0	0-0-0	1	0	0	0	1	0
vs. Drake	4		0-0	0-0	2-2	0-0-0	0	1	0	0	0	2
at South Alabama	3		0-1	0-0	0-0	0-1-1	0	2	0	0	0	0
at TCU	1		0-0	0-0	0-0	0-0-0	0	0	0	0	0	0
BETHUNE-COOKMAN	6		0-1	0-1	0-0	0-0-0	0	0	1	0	0	0
JACKSONVILLE ST.	3		0-0	0-0	0-0	0-0-0	0	0	1	0	0	0
at Vanderbilt						--DNP--						
ARKANSAS	1		0-0	0-0	0-0	0-0-0	0	1	0	0	0	0
FLORIDA	6		2-3	0-1	0-0	1-1-2	2	0	0	0	0	4
ALABAMA	10		1-3	1-3	0-0	1-0-1	0	1	0	0	2	3
at Georgia	3		0-0	0-0	0-0	0-0-0	0	0	0	0	0	0
OLE MISS												
at Kentucky												
at Mississippi State												
VANDERBILT												
at Alabama												
at South Carolina												
LSU												
MISSISSIPPI STATE												
at Texas A&M												
at Missouri												
TENNESSEE												

WELLS' CAREER STATISTICS

Season	gp-gs	min/avg	Total		3-Point		F-Throws		Rebounds				Scoring							
			fg-fga	pct	fg-fga	pct	ft-fta	pct	off	def	tot	avg	pf	fo	ast	to	blk	stl	pts	avg
2019-20	13-0	76/5.8	5-15	.333	1-6	.167	5-6	.833	2	6	8	0.6	8	0	8	6	0	3	16	1.2
TOTAL	13-0	76/5.8	5-15	.333	1-6	.167	5-6	.833	2	6	8	0.6	8	0	8	6	0	3	16	1.2



Annie HUGHES

#3

Freshman • Guard • 5-9

Dutton, Ala.

Pisgah HS

- Scored 10 points and led Auburn with 4 assists & 3 steals in collegiate debut vs. Wofford (11/6)
- Was the third true freshman to start her first game under Williams-Flournoy (Unique Thompson in 2017, Katie Frerking in 2013)
- 2019 Alabama Miss Basketball, first to attend Auburn since Whitney Boddie in 2005
- Led Pisgah HS to 65-2 record and back-to-back 3A state titles in 2018 and 2019
- Averaged 21.4 points, 7.0 rebounds, 4.2 assists and 3.5 steals as a high school senior
- All-state first team in 2018 and 2019
- Also helped Pisgah HS to 2019 state softball championship

SEASON/CAREER HIGHS

Points	12 vs. Old Dominion	11/14/19
Rebounds	7 vs. Bethune-Cookman	12/15/19
Assists	4 vs. Wofford	11/6/19
Blocks		
Steals	3 vs. Wofford	11/6/19
Field Goals	5 vs. Old Dominion	11/14/19
Field Goal Attempts	7 vs. Old Dominion	11/14/19
3-Point Field Goals	1 7x; last vs. Alabama	1/12/20
3-Point FG Attempts	4 vs. Alabama	1/12/20
Free Throws	2 vs. Middle Tenn.	11/29/19
Free Throw Attempts	4 vs. Middle Tenn.	11/29/19

Opponent	Start	Min.	FG-A	3PT-A	FT-A	O-D-T	PF	Ast.	TO	Blk.	St.	Pts.
WOFFORD	*	30	4-5	1-1	1-1	2-0-2	3	4	0	0	3	10
OLD DOMINION	*	35	5-7	1-1	1-2	3-1-4	1	1	0	0	2	12
at UAB	*	29	1-4	0-1	0-0	0-1-1	3	3	0	0	1	2
ST. JOSEPH'S		18	2-4	1-2	0-0	1-3-4	1	0	0	0	0	5
vs Middle Tennessee		20	0-4	0-2	2-4	0-3-3	2	0	1	0	0	2
vs. Dayton		18	1-3	0-2	0-0	0-0-0	2	0	0	0	0	2
vs. Drake		11	2-3	1-1	0-0	0-0-0	0	0	3	0	0	5
at South Alabama		16	2-3	0-0	0-0	1-0-1	0	0	0	0	1	4
at TCU		22	0-4	0-2	0-0	2-0-2	1	2	1	0	0	0
BETHUNE-COOKMAN	*	31	2-5	1-3	0-0	4-3-7	2	2	2	0	0	5
JACKSONVILLE ST.		13	0-0	0-0	0-0	1-0-1	2	1	2	0	0	0
at Vanderbilt		14	0-3	0-1	1-2	2-0-2	2	0	0	0	1	1
ARKANSAS	*	19	1-6	0-1	0-0	1-1-2	1	0	1	0	0	2
FLORIDA	*	18	1-3	1-3	0-0	0-0-0	1	0	0	0	0	3
ALABAMA	*	20	2-5	1-4	0-0	1-2-3	0	0	1	0	1	5
at Georgia		6	0-0	0-0	0-0	0-0-0	3	0	1	0	1	0
OLE MISS												
at Kentucky												
at Mississippi State												
VANDERBILT												
at Alabama												
at South Carolina												
LSU												
MISSISSIPPI STATE												
at Texas A&M												
at Missouri												
TENNESSEE												

HUGHES' CAREER STATISTICS

Season	gp-gs	min/avg	Total		3-Point		F-Throws			Rebounds				Scoring						
			fg-fga	pct	fg-fga	pct	ft-fta	pct	off	def	tot	avg	pf	fo	ast	to	blk	stl	pts	avg
2019-20	16-7	323/20.2	23-59	.390	7-24	.292	5-9	.556	18	14	32	2.0	24	0	13	12	0	10	58	3.6
TOTAL	16-7	323/20.2	23-59	.390	7-24	.292	5-9	.556	18	14	32	2.0	24	0	13	12	0	10	58	3.6



Brooke MOORE

#5

Sophomore • Guard • 5-7

Atlanta, Ga.

Henry County HS

- Season-high 20 points on 7-12 FT (4-6 3FG) at South Alabama (12/4)
- Scored 15 points while playing career-high 35 minutes in first career start vs. Wofford (11/6); matched 15-point effort vs. ODU (11/14)
- Started career 21-for-21 at the free-throw line; is 31-40 this season
- Played in 25 games as a freshman; averaged 5.2 points in 12.0 minutes/game
- Led Auburn with career-high 23 points, hit five 3-pointers in win over Alabama State (12/29); also made half-court shot at halftime; named SEC Freshman of the Week
- Scored 14 points and hit 4 3-pointers in win at Elon (12/22); helped set single-game 3-point record for 2nd time in less than a month
- Georgia Class AAAA Player of the Year as a senior; 3-time AJC Player of the Year

SEASON HIGHS

Points	20	at South Alabama	12/4/19
Rebounds	4	vs. St. Joseph's	11/24/19
Assists	3	at South Alabama	12/4/19
Blocks	1	vs. Wofford	11/6/19
Steals	4	vs. Dayton	11/30/19
Field Goals	8	vs. Arkansas	1/5/20
Field Goal Attempts	17	vs. Dayton	11/30/19
3-Point Field Goals	4	at South Alabama	12/4/19
3-Point FG Attempts	10	vs. Middle Tenn.	11/29/19
Free Throws	7	2x; last at Vanderbilt	1/2/20
Free Throw Attempts	10	at Vanderbilt	1/2/20

Opponent	Start	Min.	FG-A	3PT-A	FT-A	O-D-T	PF	Ast.	TO	Blk.	St.	Pts.
WOFFORD	*	35	6-16	1-7	2-2	1-1-2	1	1	1	1	2	15
OLD DOMINION	*	24	3-9	2-6	7-7	1-0-1	0	2	2	0	2	15
at UAB	*	23	3-8	0-4	2-2	0-1-1	2	1	1	0	1	8
ST. JOSEPH'S	*	19	0-8	0-4	1-4	2-2-4	2	2	1	0	0	1
vs Middle Tennessee	*	30	4-11	3-10	0-0	0-2-2	2	1	5	0	0	11
vs. Dayton	*	39	7-17	3-8	1-2	0-0-0	3	0	4	0	4	18
vs. Drake	*	25	2-10	1-4	0-0	3-0-3	2	2	5	0	1	5
at South Alabama	*	30	7-12	4-6	2-2	0-1-1	2	3	2	0	1	20
at TCU	*	27	3-12	1-6	1-1	2-0-2	4	0	2	0	0	8
BETHUNE-COOKMAN						--DNP-Illness--						
JACKSONVILLE ST.	*	26	2-8	1-5	6-6	1-1-2	2	2	2	0	3	11
at Vanderbilt	*	29	5-14	0-5	7-10	0-0-0	0	0	6	0	0	17
ARKANSAS	*	26	8-15	3-8	0-2	0-0-0	2	0	2	0	1	19
FLORIDA	*	32	6-12	2-6	0-0	0-1-1	0	1	3	0	1	14
ALABAMA	*	23	0-8	0-3	0-0	0-1-1	0	0	1	0	1	0
at Georgia	*	28	0-8	0-2	2-2	1-2-3	1	1	2	0	1	2
OLE MISS												
at Kentucky												
at Mississippi State												
VANDERBILT												
at Alabama												
at South Carolina												
LSU												
MISSISSIPPI STATE												
at Texas A&M												
at Missouri												
TENNESSEE												

CAREER HIGHS

Points	23	vs. Alabama State	12/29/18
Rebounds	4	2x; last vs. St. Joseph's	11/24/19
Assists	3	3x; last at South Alabama	12/4/19
Blocks	1	vs. Mississippi State	1/14/19
Steals	4	vs. Dayton	11/30/19
Field Goals	8	vs. Arkansas	1/5/20
Field Goal Attempts	17	vs. Dayton	11/30/19
3-Point Field Goals	5	vs. Alabama State	12/29/18
3-Point FG Attempts	13	vs. Alabama State	12/29/18
Free Throws	7	2x; last at Vanderbilt	1/2/20
Free Throw Attempts	10	at Vanderbilt	1/2/20

MOORE'S CAREER STATISTICS

Season	gp-gs	min/avg	Total		3-Point		F-Throws		Rebounds				Scoring							
			fg-fga	pct	fg-fga	pct	ft-fta	pct	off	def	tot	avg	pf	fo	ast	to	blk	stl	pts	avg
2018-19	25-0	299/12.0	45-147	.306	31-105	.295	10-10	1.000	7	19	26	1.0	15	0	10	19	1	11	131	5.2
2019-20	15-15	418/27.9	56-168	.333	21-84	.250	31-40	.775	11	12	23	1.5	23	0	16	39	1	18	164	10.9
TOTAL	40-15	717/17.9	101-315	.321	52-189	.275	41-50	.820	18	31	49	1.2	38	0	26	58	2	29	295	7.4



Kiyae' WHITE

#10

Redshirt Sophomore • Forward • 6-2

Macungie, Pa.

Emmaus HS

- Career-high 12 points, including 6-8 on FTs, in win over St. Joseph's (11/24)
- Made first career start vs. Wofford (11/6); pulled down career-high 11 rebounds in just 17 minutes
- Played in 29 games as a redshirt freshman; averaging 6.9 minutes/game
- Made first collegiate appearance vs. Grambling (11/6/18); had 3 points, 4 rebounds in 12 minutes of action
- Redshirted 2017-18 season due to injury
- Ranked as No. 20 forward nationally out of high school
- Three brothers all played football at West Virginia; brother, Kevin White, plays for Chicago Bears

SEASON HIGHS

Points	12	vs. St. Joseph's	11/24/19
Rebounds	11	vs. Wofford	11/6/19
Assists	4	vs. Wofford	11/6/19
Blocks	1	6x; last at Vanderbilt	1/2/20
Steals	3	at TCU	12/7/19
Field Goals	3	vs. St. Joseph's	11/24/19
Field Goal Attempts	7	vs. Middle Tenn.	11/29/19
3-Point Field Goals	0		
3-Point FG Attempts	0		
Free Throws	6	vs. St. Joseph's	11/24/19
Free Throw Attempts	8	vs. St. Joseph's	11/24/19

Opponent	Start	Min.	FG-A	3PT-A	FT-A	O-D-T	PF	Ast.	TO	Blk.	St.	Pts.
WOFFORD	*	17	1-4	0-0	0-2	2-9-11	1	4	2	0	1	2
OLD DOMINION	*	20	2-4	0-0	1-3	1-3-4	3	0	0	0	0	5
at UAB		10	1-1	0-0	1-2	3-1-4	2	0	3	1	0	3
ST. JOSEPH'S	*	26	3-4	0-0	6-8	0-3-3	2	1	0	1	1	12
vs Middle Tennessee	*	23	2-7	0-0	1-2	1-1-2	2	0	1	0	0	5
vs. Dayton	*	19	0-3	0-0	1-2	2-5-7	2	0	0	1	1	1
vs. Drake	*	16	2-2	0-0	2-2	1-2-3	3	0	1	0	0	6
at South Alabama	*	19	1-3	0-0	1-2	3-5-8	2	1	1	1	1	3
at TCU	*	12	1-3	0-0	0-2	1-3-4	4	0	0	0	3	2
BETHUNE-COOKMAN	*	14	1-1	0-0	2-2	1-5-6	3	0	4	1	0	4
JACKSONVILLE ST.	*	19	1-2	0-0	1-2	2-6-8	1	1	1	0	2	3
at Vanderbilt	*	22	1-2	0-0	0-1	3-1-4	4	1	3	1	2	2
ARKANSAS		18	1-3	0-0	2-4	3-3-6	1	0	2	0	0	4
FLORIDA		18	2-3	0-0	4-6	1-6-7	1	0	0	0	0	8
ALABAMA		17	2-2	0-0	1-2	1-1-2	2	1	1	0	0	5
at Georgia		15	2-3	0-0	0-0	0-1-1	1	0	2	0	1	4
OLE MISS												
at Kentucky												
at Mississippi State												
VANDERBILT												
at Alabama												
at South Carolina												
LSU												
MISSISSIPPI STATE												
at Texas A&M												
at Missouri												
TENNESSEE												

CAREER HIGHS

Points	12	vs. St. Joseph's	11/24/19
Rebounds	11	vs. Wofford	11/6/19
Assists	4	vs. Wofford	11/6/19
Blocks	1	7x; last at Vanderbilt	1/2/20
Steals	3	at TCU	12/7/19
Field Goals	3	vs. St. Joseph's	11/24/19
Field Goal Attempts	7	vs. Middle Tenn.	11/29/19
3-Point Field Goals	0		
3-Point FG Attempts	0		
Free Throws	6	vs. St. Joseph's	11/24/19
Free Throw Attempts	8	vs. St. Joseph's	11/24/19

WHITE'S CAREER STATISTICS

Season	gp-gs	min/avg	Total		3-Point		F-Throws		Rebounds				Scoring							
			fg-fga	pct	fg-fga	pct	ft-fga	pct	off	def	tot	avg	pf	fo	ast	to	blk	stl	pts	avg
2018-19	29-0	199/6.9	15-39	.385	0-0	.000	8-14	.571	23	28	51	1.8	27	0	9	10	1	2	38	1.3
2019-20	16-11	284/17.8	23-47	.489	0-0	.000	23-42	.548	25	55	80	5.0	34	0	9	21	7	12	69	4.3
TOTAL	45-11	483/10.7	38-86	.442	0-0	.000	31-56	.554	48	83	131	2.9	61	0	18	31	8	14	107	2.4



Lauren HANSEN

#13

Freshman • Guard • 5-8

Setauket, N.Y.

Ward Melville HS

- Career-high 24 points, 7-14 3FG vs. Drake (12/1); most 3-pointers by Auburn player since 1/1/2017 (Brandy Montgomery vs. Florida)
- Scored 18 points in second collegiate start vs. St. Joseph's; was 4-6 on 3FG and led team with 4 steals
- Made collegiate debut vs. Old Dominion (11/14); scored 7 points and added one assist and one steal
- Missed season's first game vs. Wofford with injury
- Ranked as No. 71 prospect nationally and No. 20 guard by ESPN
- USA Today First-Team All-State in New York as a senior
- All-conference and all-state selection at Ward Melville HS

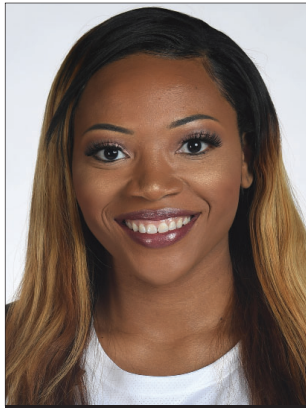
SEASON/CAREER HIGHS

Points	24	vs. Drake	12/1/19
Rebounds	6	vs. Dayton	11/30/19
Assists	4	3x; last vs. Alabama	1/12/20
Blocks			
Steals	4	vs. St. Joseph's	11/24/19
Field Goals	8	vs. Drake	12/1/19
Field Goal Attempts	15	vs. Drake	12/1/19
3-Point Field Goals	7	vs. Drake	12/1/19
3-Point FG Attempts	14	vs. Drake	12/1/19
Free Throws	2	3x; last at Vanderbilt	1/2/20
Free Throw Attempts	2	6x; last at Vanderbilt	1/2/20

Opponent	Start	Min.	FG-A	3PT-A	FT-A	O-D-T	PF	Ast.	TO	Blk.	St.	Pts.
WOFFORD						--DNP-Injured--						
OLD DOMINION		21	3-7	1-3	0-0	0-0-0	5	1	4	0	1	7
at UAB	*	22	1-7	0-2	1-2	1-0-1	3	1	5	0	1	3
ST. JOSEPH'S	*	35	6-10	4-6	2-2	0-1-1	2	2	3	0	4	18
vs Middle Tennessee	*	12	0-0	0-0	0-0	0-0-0	5	0	5	0	1	0
vs. Dayton	*	28	2-11	2-7	2-2	2-4-6	3	1	2	0	1	8
vs. Drake	*	32	8-15	7-14	1-2	0-3-3	2	4	2	0	1	24
at South Alabama	*	26	4-12	2-7	0-0	0-1-1	1	4	1	0	0	10
at TCU	*	29	2-11	2-8	2-2	0-2-2	3	1	4	0	1	8
BETHUNE-COOKMAN	*	23	4-11	2-6	0-0	0-0-0	5	3	5	0	0	10
JACKSONVILLE ST.	*	26	2-9	2-7	0-0	0-2-2	1	2	3	0	1	6
at Vanderbilt	*	17	0-5	0-5	2-2	0-0-0	2	1	4	0	0	2
ARKANSAS		20	3-8	1-4	0-0	0-0-0	1	2	3	0	0	7
FLORIDA	*	24	3-8	1-5	0-0	1-1-2	2	2	5	0	1	7
ALABAMA	*	28	1-7	1-4	0-0	0-2-2	3	4	4	0	0	3
at Georgia		14	0-2	0-1	0-0	0-3-3	0	0	2	0	1	0
OLE MISS												
at Kentucky												
at Mississippi State												
VANDERBILT												
at Alabama												
at South Carolina												
LSU												
MISSISSIPPI STATE												
at Texas A&M												
at Missouri												
TENNESSEE												

HANSEN'S CAREER STATISTICS

Season	gp-gs	min/avg	Total		3-Point		F-Throws		Rebounds				Scoring							
			fg-fga	pct	fg-fga	pct	ft-fta	pct	off	def	tot	avg	pf	fo	ast	to	blk	stl	pts	avg
2019-20	15-12	356/23.7	39-123	.317	25-79	.316	10-12	.833	4	19	23	1.5	38	3	28	52	0	13	113	7.5
TOTAL	15-12	356/23.7	39-123	.317	25-79	.316	10-12	.833	4	19	23	1.5	38	3	28	52	0	13	113	7.5



Unique THOMPSON

#20

Freshman • Forward • 6-3

Theodore, Ala.

****2018 SEC All-Freshman Team****

Faith Academy

Named to 2019-20 Preseason All-SEC Second Team (media & coaches)

Two-time SEC Player of the Week (11/25; 12/30)

Leads NCAA with 15 double-doubles this season; has 35 career double-doubles, 3rd in Auburn history

Leads NCAA in offensive rebounds per game (5.2); fourth in total rebounds (12.0)

Leads the SEC in rebounding (12.0/game); fifth in SEC in scoring (16.7 ppg) (as of 1/20)

Had a streak of 13 consecutive double-doubles from March 23 (vs. BYU, NCAA Tournament) to Jan. 2 (at Vanderbilt), 2nd-longest in Auburn history

Scored career-high 31 points at TCU along with 15 rebounds; first 30-15 game for Auburn since 2008 (DeWanna Bonner, 30/16 vs. Geo. Washington)

Scored 24 points; matched career-high with 19 rebounds at UAB (1/21)

Averaged a double-double in 2018-19 with 12.2 points, 10.3 rebounds; 5th player in Auburn history to do so, first since DeWanna Bonner in 2008

SEASON HIGHS

Points	31	at TCU	12/7/19
Rebounds	19	at UAB	11/21/19
Assists	6	vs. Arkansas	1/5/20
Blocks	2	at UAB	11/21/19
Steals	4	2x; last vs. Beth.-Cookman	12/15/19
Field Goals	12	at TCU	12/7/19
Field Goal Attempts	21	vs. Alabama	1/12/20
3-Point Field Goals			
3-Point FG Attempts			
Free Throws	10	vs. Dayton	11/30/19
Free Throw Attempts	12	vs. Dayton	11/30/19

CAREER HIGHS

Points	31	at TCU	12/7/19
Rebounds	19	3x; last at UAB	11/21/19
Assists	6	vs. Arkansas	1/5/20
Blocks	6	vs. Louisiana Tech	11/19/17
Steals	4	5x; last vs. Beth.-Cookman	12/15/19
Field Goals	12	at TCU	12/7/19
Field Goal Attempts	21	vs. Alabama	1/12/20
3-Point Field Goals			
3-Point FG Attempts			
Free Throws	10	at Ole Miss	1/31/19
Free Throw Attempts	12	at Ole Miss	1/31/19

Opponent	Start	Min.	FG-A	3PT-A	FT-A	O-D-T	PF	Ast.	TO	Blk.	St.	Pts.
WOFFORD	*	31	9-13	0-0	7-9	6-7-13	3	1	3	0	2	25
OLD DOMINION	*	30	5-6	0-0	3-8	7-3-10	2	2	2	0	0	13
at UAB	*	32	9-12	0-0	6-8	10-9-19	2	1	2	2	2	24
ST. JOSEPH'S	*	34	5-10	0-0	7-10	7-5-12	2	5	4	0	1	17
vs Middle Tennessee	*	28	6-9	0-0	3-4	6-4-10	2	0	4	0	0	15
vs. Dayton	*	37	5-9	0-0	10-15	3-8-11	3	1	5	1	2	20
vs. Drake	*	32	5-9	0-0	2-3	2-9-11	2	1	4	0	4	12
at South Alabama	*	32	7-7	0-0	1-4	3-7-10	1	1	2	1	0	15
at TCU	*	34	12-18	0-0	7-8	7-8-15	1	1	4	1	2	31
BETHUNE-COOKMAN	*	31	7-10	0-0	2-3	5-8-13	4	2	1	0	4	16
JACKSONVILLE ST.	*	30	7-13	0-0	6-8	6-4-10	2	1	5	1	3	20
at Vanderbilt	*	30	5-10	0-0	4-4	1-9-10	3	2	1	0	3	14
ARKANSAS	*	30	2-4	0-0	2-3	4-9-13	3	6	5	1	2	6
FLORIDA	*	28	4-8	0-0	2-2	7-3-10	3	2	2	0	1	10
ALABAMA	*	31	8-21	0-0	0-1	5-9-14	2	0	2	0	1	16
at Georgia	*	38	2-9	0-0	9-13	4-7-11	1	2	1	0	1	13
OLE MISS												
at Kentucky												
at Mississippi State												
VANDERBILT												
at Alabama												
at South Carolina												
LSU												
MISSISSIPPI STATE												
at Texas A&M												
at Missouri												
TENNESSEE												

THOMPSON'S CAREER STATISTICS

Season	gp-gs	min/avg	Total		3-Point		F-Throws		Rebounds				Scoring							
			fg-fga	pct	fg-fga	pct	ft-fta	pct	off	def	tot	avg	pf	fo	ast	to	blk	stl	pts	avg
2017-18	27-27	811/30.0	131-271	.483	0-0	.000	49-87	.563	112	115	227	8.4	63	0	28	66	21	32	311	11.5
2018-19	32-32	996/31.1	153-272	.563	0-0	.000	83-136	.610	143	187	330	10.3	71	1	35	63	20	57	389	12.2
2019-20	16-16	507/31.7	98-168	.583	0-0	.000	71-103	.689	83	109	192	12.0	36	0	28	48	7	28	267	16.7
TOTAL	75-75	2314/30.9	382-711	.537	0-0	.000	203-326	.623	338	411	749	10.0	170	1	91	177	48	117	967	12.9



Erin HOWARD

#24

Sophomore • Guard/Forward • 6-1

Madison, Wis.

Madison East HS

- Career-high 14 points, 4 steals along with 6 rebounds in win at South Alabama; hit career-high 4 3-pointers (12/4)
- Game-tying tip-in at fourth quarter buzzer to force overtime vs. Dayton (11/30)
- Had 9 points, 7 rebounds, 3 assists in 29 minutes off the bench at UAB (11/21)
- Started 17 games, appeared in 29 as a freshman; averaged 3.5 points, 2.9 rebounds in 20.1 minutes/game
- Career-high 12 points on 5-6 shooting (2-2 3FG) in win over #25 Missouri (2/24)
- Made first collegiate start vs. Tennessee (1/3); scored career-high 11 points in 33 minutes
- Hit record-setting 14th Auburn 3-pointer in win at Elon (12/22)
- First Auburn women's basketball player from state of Wisconsin

SEASON HIGHS

Points	14	at South Alabama	12/4/19
Rebounds	7	3x; last vs. Arkansas	1/5/20
Assists	3	at UAB	11/21/19
Blocks	2	3x; last vs. Alabama	1/12/20
Steals	4	2x; last vs. Florida	1/9/20
Field Goals	5	at South Alabama	12/4/19
Field Goal Attempts	11	vs. Middle Tenn.	11/29/19
3-Point Field Goals	4	at South Alabama	12/4/19
3-Point FG Attempts	8	2x; last at Vanderbilt	1/2/20
Free Throws	2	3x; last vs. Alabama	1/12/20
Free Throw Attempts	2	5x; last vs. Alabama	1/12/20

Opponent	Start	Min.	FG-A	3PT-A	FT-A	O-D-T	PF	Ast.	TO	Blk.	St.	Pts.
WOFFORD		18	0-3	0-3	0-0	2-1-3	3	0	0	1	1	0
OLD DOMINION		18	2-5	2-4	0-0	0-3-3	2	1	1	1	0	6
at UAB		29	4-9	1-4	0-0	2-5-7	1	3	2	0	2	9
ST. JOSEPH'S		18	0-2	0-1	0-0	1-2-3	0	0	0	0	0	0
vs Middle Tennessee		28	3-11	1-8	0-0	0-6-6	1	2	0	1	3	7
vs. Dayton		34	2-3	0-1	1-2	2-4-6	1	0	0	0	1	5
vs. Drake		30	1-4	0-1	0-1	1-4-5	1	0	2	2	1	2
at South Alabama		26	5-10	4-7	0-0	1-5-6	1	2	1	1	4	14
at TCU		33	3-8	0-4	1-2	1-3-4	2	2	3	2	3	7
BETHUNE-COOKMAN		27	4-9	2-6	2-2	2-5-7	4	1	3	0	0	12
JACKSONVILLE ST.		22	1-5	1-3	0-0	0-0-0	1	0	0	1	0	3
at Vanderbilt		23	4-11	3-8	2-2	0-4-4	4	0	1	0	3	13
ARKANSAS	*	26	2-9	0-5	0-0	2-5-7	1	0	1	0	2	4
FLORIDA	*	32	3-6	3-6	0-0	0-0-0	2	1	1	0	4	9
ALABAMA	*	25	2-7	1-3	2-2	2-2-4	3	2	0	2	1	7
at Georgia	*	22	1-7	0-4	0-0	1-3-4	4	0	2	0	0	2
OLE MISS												
at Kentucky												
at Mississippi State												
VANDERBILT												
at Alabama												
at South Carolina												
LSU												
MISSISSIPPI STATE												
at Texas A&M												
at Missouri												
TENNESSEE												

CAREER HIGHS

Points	14	at South Alabama	12/4/19
Rebounds	8	at Arkansas	2/10/19
Assists	5	at Alabama	1/10/19
Blocks	3	at Arkansas	2/10/19
Steals	4	at South Alabama	12/4/19
Field Goals	5	2x; last at South Alabama	12/4/19
Field Goal Attempts	13	vs. Alabama State	12/29/18
3-Point Field Goals	4	at South Alabama	12/4/19
3-Point FG Attempts	9	vs. Alabama State	12/29/18
Free Throws	2	4x; last at Vanderbilt	1/2/20
Free Throw Attempts	2	6x; last at Vanderbilt	1/2/20

HOWARD'S CAREER STATISTICS

Season	gp-gs	min/avg	Total		3-Point		F-Throws		Rebounds				Scoring							
			fg-fga	pct	fg-fga	pct	ft-fga	pct	off	def	tot	avg	pf	fo	ast	to	blk	stl	pts	avg
2018-19	31-17	624/20.1	42-128	.328	20-79	.253	5-6	.833	26	64	90	2.9	55	0	36	25	17	27	109	3.5
2019-20	16-4	409/25.6	37-109	.339	18-68	.265	8-11	.727	17	52	69	4.3	31	0	14	17	11	25	100	6.3
TOTAL	47-21	1033/22.0	79-237	.333	38-147	.259	13-17	.765	43	116	159	3.4	86	0	50	42	28	52	209	4.4



Morgan ROBINSON-NWAGWU

#30

Freshman • Guard • 5-8

Norcross, Ga.

Norcross HS

- Matched season-high with 6 points; also had 3 assists, 3 rebounds, 2 steals vs. Florida (1/9)
- Season-high 6 points along with 3 assists vs. Bethune-Cookman (12/15)
- Recorded 2 rebounds, 2 assists in collegiate debut vs. Wofford (11/6)
- Ranked as No. 28 guard nationally by ESPN
- Named first-team all-state and first-team all-metro by Atlanta Journal-Constitution
- Region 7A Player of the Year and All-Gwinnett County first team
- Averaged 15.3 points, 7.1 rebounds, 4.6 assists, 4.1 steals and 1.1 blocks as high school junior

SEASON/CAREER HIGHS

Points	6	2x; last vs. Florida	1/9/20
Rebounds	4	2x; last vs. Alabama	1/12/20
Assists	4	at TCU	12/7/19
Blocks	1	2x; last vs. Beth.-Cookman	12/15/19
Steals	3	at Vanderbilt	1/2/20
Field Goals	3	vs. Bethune-Cookman	12/15/19
Field Goal Attempts	12	vs. Florida	1/9/20
3-Point Field Goals	1	2x; last vs. Arkansas	1/5/20
3-Point FG Attempts	5	vs. Florida	1/9/20
Free Throws	3	at TCU	12/7/19
Free Throw Attempts	4	3x; last at TCU	12/7/19

Opponent	Start	Min.	FG-A	3PT-A	FT-A	O-D-T	PF	Ast.	TO	Blk.	St.	Pts.
WOFFORD		13	0-4	0-0	0-0	0-2-2	1	2	3	0	1	0
OLD DOMINION		7	0-4	0-0	0-0	2-2-4	0	0	2	0	0	0
at UAB		6	1-1	0-0	0-0	0-0-0	1	1	2	1	0	2
ST. JOSEPH'S		10	1-4	0-0	0-0	1-1-2	2	1	0	0	0	2
vs Middle Tennessee		18	0-4	0-0	1-4	0-3-3	2	2	4	0	1	1
vs. Dayton		13	0-1	0-0	0-0	0-0-0	3	1	0	0	1	0
vs. Drake		17	1-2	0-0	0-0	1-0-1	2	3	0	0	1	2
at South Alabama		19	0-2	0-0	2-4	0-1-1	3	2	4	0	0	2
at TCU		18	0-0	0-0	3-4	0-3-3	5	4	4	0	0	3
BETHUNE-COOKMAN		22	3-5	0-0	0-0	1-0-1	0	3	0	1	0	6
JACKSONVILLE ST.		14	1-2	1-1	0-0	0-1-1	1	0	3	0	1	3
at Vanderbilt		19	2-3	0-0	0-0	1-1-2	2	2	5	0	3	4
ARKANSAS		13	1-2	1-1	0-0	1-0-1	1	3	1	0	0	3
FLORIDA		18	2-12	0-5	2-3	2-1-3	3	3	3	0	2	6
ALABAMA		16	0-7	0-3	0-0	1-3-4	0	2	0	0	1	0
at Georgia		7	0-1	0-0	0-0	0-1-1	0	0	0	0	1	0
OLE MISS												
at Kentucky												
at Mississippi State												
VANDERBILT												
at Alabama												
at South Carolina												
LSU												
MISSISSIPPI STATE												
at Texas A&M												
at Missouri												
TENNESSEE												

ROBINSON-NWAGWU'S CAREER STATISTICS

Season	gp-gs	min/avg	Total		3-Point		F-Throws		Rebounds						Scoring					
			fg-fga	pct	fg-fga	pct	ft-fa	pct	off	def	tot	avg	pf	fo	ast	to	blk	stl	pts	avg
2019-20	16-0	227/14.2	12-54	.222	2-10	.200	8-15	.533	10	19	29	1.8	26	1	30	31	2	12	34	2.1
TOTAL	16-0	227/14.2	12-54	.222	2-10	.200	8-15	.533	10	19	29	1.8	26	1	30	31	2	12	34	2.1



Natalie KELLY

#35

Sophomore • Forward • 6-3

Albany, La.

Albany HS

- Scored career-high 3 points vs. St. Joseph's (11/24); made only shot attempt
- Has made both shots attempted so far this season (11/24 vs. SJU; 12/28 vs. JSU)
- Appeared in 12 games as a freshman
- Made first collegiate field goal vs. Louisiana-Lafayette (11/25)
- Made first SEC appearance at Missouri (1/27)
- Ranked as No. 38 post player in nation out of high school, according to ESPN HoopGurlz
- Averaged 17.1 points, 12.1 rebounds, 3.3 steals as high school senior
- Set school record for single-season rebounds with 379 as a junior

SEASON HIGHS

Points	3	vs. St. Joseph's	11/24/19
Rebounds	2	at TCU	12/7/19
Assists			
Blocks			
Steals	1	2x; last vs. Alabama	1/12/20
Field Goals	1	2x; last vs. Jacksonville St.	12/28/19
Field Goal Attempts	1	2x; last vs. Jacksonville St.	12/28/19
3-Point Field Goals			
3-Point FG Attempts			
Free Throws	1	vs. St. Joseph's	11/24/19
Free Throw Attempts	2	vs. St. Joseph's	11/24/19

Opponent	Start	Min.	FG-A	3PT-A	FT-A	O-D-T	PF	Ast.	TO	Blk.	St.	Pts.
WOFFORD		6	0-0	0-0	0-0	0-0-0	0	0	0	0	0	0
OLD DOMINION						--DNP--						
at UAB						--DNP--						
ST. JOSEPH'S		3	1-1	0-0	1-2	0-0-0	0	0	0	0	0	3
vs Middle Tennessee		4	0-0	0-0	0-0	0-0-0	2	0	0	0	0	0
vs. Dayton						--DNP--						
vs. Drake		2	0-0	0-0	0-0	0-0-0	1	0	0	0	0	0
at South Alabama		3	0-0	0-0	0-0	0-1-1	1	0	0	0	0	0
at TCU		4	0-0	0-0	0-0	0-2-2	0	0	0	0	0	0
BETHUNE-COOKMAN		3	0-0	0-0	0-0	0-1-1	0	0	0	0	0	0
JACKSONVILLE ST.		1	1-1	0-0	0-0	1-0-1	0	0	0	0	0	2
at Vanderbilt		1	0-0	0-0	0-0	0-0-0	0	0	0	0	0	0
ARKANSAS		2	0-0	0-0	0-0	0-0-0	0	0	0	0	0	0
FLORIDA		1	0-0	0-0	0-0	1-0-1	0	0	1	0	1	0
ALABAMA		6	0-0	0-0	0-0	0-0-0	1	0	1	0	1	0
at Georgia						--DNP--						
OLE MISS												
at Kentucky												
at Mississippi State												
VANDERBILT												
at Alabama												
at South Carolina												
LSU												
MISSISSIPPI STATE												
at Texas A&M												
at Missouri												
TENNESSEE												

SEASON/CAREER HIGHS

Points	3	vs. St. Joseph's	11/24/19
Rebounds	3	2x; last vs. Alabama State	12/29/18
Assists			
Blocks			
Steals	1	2x; last vs. Alabama State	12/29/18
Field Goals	1	3x; last vs. Florida	1/9/20
Field Goal Attempts	1	2x; last vs. St. Joseph's	11/24/19
3-Point Field Goals	2	vs. UL-Lafayette	11/25/18
3-Point FG Attempts			
Free Throws	1	4x; last vs. St. Joseph's	11/24/19
Free Throw Attempts	2	5x; last vs. St. Joseph's	11/24/19

KELLY'S CAREER STATISTICS

Season	gp-gs	min/avg	Total		3-Point		F-Throws		Rebounds				Assists			Steals		Scoring		
			fg-fga	pct	fg-fga	pct	ft-fta	pct	off	def	tot	avg	pf	fo	ast	to	blk	stl	pts	avg
2018-19	12-0	49/4.1	1-5	.200	0-0	.000	3-8	.375	6	4	10	0.8	4	0	0	8	2	2	5	0.4
2019-20	12-0	37/3.1	2-2	1.000	0-0	.000	1-2	.500	2	4	6	0.5	5	0	0	2	0	2	5	0.4
TOTAL	24-0	86/3.6	3-7	.429	0-0	.000	4-10	.400	8	8	16	0.7	9	0	0	10	2	4	10	0.4

Game 1: Nov. 6, 2019 Auburn 84, Wofford 82 Auburn Arena Auburn, Ala.

Official Basketball Box Score -- Game Totals -- Final Statistics
Wofford vs Auburn
11/06/19 6:00 pm at Auburn Arena -- Auburn, Ala.

Wofford 82 • 0-1-0 SoCon

#	Player	Total	3-Pr			Rebounds			PF	TP	A	T	Bk	Stl	Min
			FG	FGA	FT	FTA	Off	Def							
12	Jamari McDavid	f	2-8	0-0	3-4	4	4	8	4	7	0	3	1	0	25
14	Lilly Hatton	f	1-6	0-0	2-2	0	2	2	4	4	0	0	2	0	20
01	Chloe Wankink	g	10-21	0-0	0-0	2	5	7	1	28	2	2	0	1	38
03	Cairo Booker	g	4-9	0-3	5-6	0	2	2	3	13	6	2	0	4	37
35	Da'Ja Green	g	9-15	5-8	2-2	1	2	3	2	25	3	2	0	0	33
02	Niyah Lutz	g	0-2	0-2	0-0	0	2	2	1	0	0	0	0	0	33
20	Elena Pulance	g	0-0	0-0	0-0	0	0	0	0	0	0	1	0	0	3
21	Alexis Tomlin	g	0-2	0-0	0-0	1	2	3	5	0	1	0	0	0	15
23	Lawren Cook	g	0-1	0-0	5-6	2	3	5	4	5	0	0	1	1	14
25	Jamie Grob	g	0-0	0-0	0-0	0	2	2	0	0	0	1	0	0	5
Team															
Totals			26-64	13-30	17-20	12	22	34	26	82	13	15	3	6	200

1st FG %:	5.17	29.4%	2nd:	4.13	38.8%	3rd:	7.17	41.2%	4th:	10.17	58.8%	Game:	26.64	49.6%	Deadball
SFG %:	1.8	12.3%	3-6	59.0%	4-9	44.4%	5-7	71.4%	8-8	10.0%	43.3%	Rebounds			
FT %:	0.0	0.0%	2-2	100.0%	6-8	75.0%	9-10	90.0%	17-20	85.0%	85.0%				

Auburn 84 • 1-0-0 SEC

#	Player	Total	3-Pr			Rebounds			PF	TP	A	T	Bk	Stl	Min
			FG	FGA	FT	FTA	Off	Def							
10	Kiyae' White	f	1-4	0-0	0-2	2	9	11	1	2	4	2	0	1	17
20	Unique Thompson	f	9-13	0-0	7-9	6	7	13	3	25	1	3	0	2	30
00	Daisa Alexander	g	6-12	1-3	9-14	1	5	6	3	22	2	3	0	2	33
03	Annie Hughes	g	4-5	1-1	1-1	2	0	2	3	10	4	0	0	3	30
05	Brooke Moore	g	6-16	1-7	2-2	1	1	2	1	1	1	1	2	36	
04	Abigayle Jackson	g	2-5	0-1	1-2	1	1	2	3	5	0	1	0	7	
12	Maliya Perry	g	2-3	1-1	0-0	1	0	1	1	5	1	0	0	0	11
24	Erin Howard	g	0-3	0-0	0-0	2	1	3	3	0	0	1	1	19	
30	M. Robinson-Nwagwu	g	0-4	0-0	0-0	0	2	2	1	0	2	3	0	1	12
25	Natalie Kelly	g	0-0	0-0	0-0	0	0	0	0	0	0	0	0	0	6
Team															
Totals			30-65	4-16	20-30	19	28	47	19	84	15	14	2	12	201

1st FG %:	4.16	25.0%	2nd:	9.19	47.4%	3rd:	3.18	18.5%	4th:	10.28	55.6%	Game:	30.65	49.1%	Deadball
SFG %:	0.5	6.0%	2-6	33.3%	2-4	50.0%	0-1	0.0%	4-8	25.0%	20.0%	Rebounds			
FT %:	3.4	75.0%	4-7	57.1%	1-2	50.0%	13-17	70.6%	19-28	67.9%	67.9%				

Officials: Iyeyinna Seales,Kate Lukanch,Felicia Grinter
Technical fouls: Wofford-None. Auburn-None.
Attendance: 1618

Score by periods	1st	2nd	3rd	4th	Total
Wofford	11	19	24	34	82
Auburn	11	24	23	26	84

Last FG - Wofford 4th-00:00. AU 4th-01:19.
Largest lead - Wofford by 4. 1st-09:16. AU by 7 3rd-05:39.
Wofford led for 07:13. AU led for 27:38. Game was tied for 05:09.

AUBURN-- Junior Unique Thompson and senior Daisa Alexander combined for 47 points, and the Auburn women's basketball team held off a late rally to earn an 84-82 win over Wofford Wednesday night to open the 2019-20 season.

The Tigers (1-0) led by as many as 17 points midway through the third quarter but saw the Terriers (0-1) storm back to take the lead just nine minutes later. But strong rebounding and free-throw shooting down the stretch allowed Auburn to withstand a second-half 3-point barrage from Wofford.

Thompson picked up where she left off with her 21st career double-double, scoring 25 points and pulling down 11 rebounds. Alexander finished with 22 points and was 9-of-12 at the free-throw line, including a 7-of-8 mark in the fourth quarter.

Sophomore Brooke Moore scored 15 points in her first career start, and freshman Annie Hughes finished with 10 points, a team-high four assists and two steals. Sophomore Kiyae' White pulled down a career-high nine rebounds as she started for the first time.

Three freshmen made their Auburn debuts. Hughes started and played just under 30 minutes, and Maliya Perry and Morgan Robinson-Nwagwu saw 11 minutes each off the bench.

Auburn shot 46.9 percent for the game (30-of-64) and was 20-of-28 at the free-throw line. The Tigers out-rebounded the Terriers 43-32, including 17 offensive rebounds that led to 22 second-chance points. Auburn also controlled the paint, outscoring Wofford inside 38-18. The Terriers, shot 48.1 percent from 3-point range, hitting 13-of-27 attempts from long range, including 9-of-16 in the second half.

After the teams finished the first 10 minutes tied 11-11, Auburn outscored Wofford in the second quarter 24-13 to take a 35-24 lead at the break. An 11-4 run over the first 5:13 of the third quarter pushed the Tigers' advantage to as many as 17 at 51-34. Auburn saw its lead shrink a bit by the end of the quarter but still took a 58-48 lead to the final 10 minutes.

Game 2: Nov. 14, 2019 Old Dominion 89, Auburn 77 Auburn Arena Auburn, Ala.

Official Basketball Box Score -- Game Totals -- Final Statistics
Old Dominion vs Auburn
11/14/19 6:00 pm at Auburn Arena -- Auburn, Ala.

Old Dominion 89 • 2-0-0 C-USA

#	Player	Total	3-Pr			Rebounds			PF	TP	A	T	Bk	Stl	Min
			FG	FGA	FT	FTA	Off	Def							
23	Amari Young	f	2-5	0-1	2-4	0	5	5	2	6	0	4	2	0	22
25	Ashley Scott	c	0-0	0-0	0-0	0	2	2	0	2	0	1	0	0	21
03	Aljah Wayne	g	14-20	6-8	1-2	3	7	10	3	35	1	2	0	4	29
09	Victoria Morris	g	6-11	5-9	3-5	0	2	2	4	20	2	1	0	0	28
11	Victoria Adams	g	5-7	2-3	0-1	0	2	2	12	5	4	0	1	25	
01	Maniah Edwards	g	0-1	0-1	0-0	0	2	2	0	6	1	1	0	0	27
04	Aziah Hudson	g	1-4	1-4	0-0	0	0	0	3	0	0	0	0	11	
12	Amaya Register	g	2-3	0-1	5-6	0	2	2	1	9	1	2	0	0	14
24	Dejah Carter	g	0-0	0-0	0-0	0	0	0	1	0	0	0	0	2	
31	Marie Reichert	g	2-3	0-1	0-0	0	1	1	3	4	1	0	0	0	21
Team															
Totals			32-54	14-28	11-18	6	22	28	21	89	16	15	3	7	200

1st FG %:	9.17	52.9%	2nd:	5.13	45.5%	3rd:	9.16	56.3%	4th:	9.10	90.0%	Game:	32.54	59.3%	Deadball
SFG %:	3.12	41.3%	3-5	60.0%	4-8	50.0%	3-6	50.0%	14-28	50.0%	50.0%	Rebounds			
FT %:	1.2	50.0%	4-4	100.0%	0-1	0.0%	0.0%	0.0%	11-18	61.1%	61.1%				

Auburn 77 • 1-0-0 SEC

#	Player	Total	3-Pr			Rebounds			PF	TP	A	T	Bk	Stl	Min
			FG	FGA	FT	FTA	Off	Def							
10	Kiyae' White	f	2-4	0-0	1-3	1	3	4	3	5	0	0	0	0	20
20	Unique Thompson	f	5-6	0-0	3-8	7	3	10	2	13	2	2	0	0	30
00	Daisa Alexander	g	5-16	2-5	5-6	1	3	4	4	17	2	3	0	4	28
03	Annie Hughes	g	5-7	1-1	1-2	3	4	4	1	12	1	0	0	2	35
05	Brooke Moore	g	3-9	2-6	7-7	1	0	1	0	15	2	0	2	24	
04	Abigayle Jackson	g	1-1	0-0	0-0	0	1	1	2	0	0	0	0	10	
12	Maliya Perry	g	0-1	0-0	0-2	0	1	1	0	0	0	0	0	7	
13	Lauren Hansson	g	3-7	1-3	0-0	0	0	0	5	7	1	4	0	11	
24	Erin Howard	g	2-5	2-4	0-0	0	3	3	2	6	1	1	1	0	18
30	M. Robinson-Nwagwu	g	0-4	0-0	0-0	0	2	2	4	0	0	2	0	0	7
Team															
Totals			26-60	8-19	17-28	16	18	34	19	77	0	14	2	9	200

1st FG %:	7.10	70.0%	2nd:	5.13	38.5%	3rd:	6.19	42.1%	4th:	6.18	33.3%	Game:	26.60	43.3%	Deadball
SFG %:	1.3	33.3%	2-4	50.0%	3-6	50.0%	2-5	40.0%	8-19	42.1%	42.1%	Rebounds			
FT %:	6.8	75.0%	6-8	75.0%	7-7	100.0%	0-2	0.0%	11-17	64.7%	64.7%				

Officials: Karleena Tobin,Angel Stanton,Tina Napier
Technical fouls: Old Dominion-None. Auburn-None.
Attendance: 1635

Score by periods	1st	2nd	3rd	4th	Total
Old Dominion	24	17	19	29	89
Auburn	21	18	19	19	77

Last FG - Old Dominion 4th-03:30. AU 4th-00:26.
Largest lead - Old Dominion by 16 4th-03:30. AU by 2 1st-07:02.
Old Dominion led for 37:11. AU led for 00:45. Game was tied for 01:44.

AUBURN-- Auburn had four players in double figures, but a fourth-quarter surge from Old Dominion led the Monarchs to an 89-77 win over the Tigers in women's basketball action at Auburn Arena Thursday night.

The Tigers (1-1) trailed by just two points at the end of the third quarter, but Old Dominion (2-0) could scarcely miss in the final 10 minutes, shooting 90 percent (9-of-10) in the fourth period and 5-of-5 on 3-pointers to break open what had been a tight game.

Senior Daisa Alexander finished with 17 points and four steals to lead the Tigers. Junior Unique Thompson picked up her second double-double in as many games with a 13-point, 10-rebound performance that saw her go 5-of-6 from the floor.

Sophomore Brooke Moore recorded her second straight 15-point game and remained perfect at the free-throw line for her career, going 7-for-7. And freshman Annie Hughes scored 12 points and had two steals.

As a team, the Tigers shot 43.3 percent from the field (26-60) and hit 8-of-19 3-point attempts (42.1%). Auburn also out-rebounded the Monarchs 34-28. But Old Dominion shot a blistering 59.3 percent from the field and 50 percent (14-of-28) from 3-point range.

The Monarchs, who were just 1-of-13 from 3-point range in their first game, hit 8-of-17 from long range in the first half alone to lead most of the opening half and take a 41-39 lead at the break. Auburn led briefly in the second quarter when Hughes put back a missed free throw to give the Tigers a 33-32 advantage with 6:01 to play.

ODU jumped back ahead by as many as 10 points midway through the third quarter, but the Tigers closed the period on an 8-0 run, punctuated by a pair of 3-pointers from Erin Howard, to head to the fourth quarter down by just two at 60-58. After an Alexander free throw got Auburn within one 16 seconds into the fourth, the Monarchs missed just one shot the entire period and went on a 25-10 run over the next six-plus minutes to build a 16-point lead and secure the road win.

Game 3: Nov. 21, 2019 UAB 80, Auburn 75 Bartow Arena Birmingham, Ala.

Official Basketball Box Score -- Game Totals -- Final Statistics
Auburn vs UAB
11/21/19 8:00 p.m. at Birmingham, Ala. Bartow Arena

Auburn 75 • 1-2

#	Player	Total	3-Pr			Rebounds			PF	TP	A	T	Bk	Stl	Min
			FG	FGA	FT	FTA	Off	Def							
00															

Game 4: Nov. 24, 2019
Auburn 66, St. Joseph's 62
Auburn Arena
Auburn, Ala.

Official Basketball Box Score -- Game Totals -- Final Statistics
Saint Joseph's vs Auburn
11/24/19 6:30 pm at Auburn Arena -- Auburn, Ala.

Saint Joseph's 62 • 2-3-0-A-10

Table with columns: #, Player, Total FG-FGA, 3-Ptr FG-FGA, Rebounds (Off, Def, Tot), PF, TP, A, TO, Blk, Stl, Min. Lists stats for 14 players and team totals.

Summary statistics table with columns: 1st, 2nd, 3rd, 4th, 5th, 6th, 7th, 8th, 9th, 10th, 11th, 12th, 13th, 14th, 15th, 16th, 17th, 18th, 19th, 20th, 21st, 22nd, 23rd, 24th, 25th, 26th, 27th, 28th, 29th, 30th, 31st, 32nd, 33rd, 34th, 35th, 36th, 37th, 38th, 39th, 40th, 41st, 42nd, 43rd, 44th, 45th, 46th, 47th, 48th, 49th, 50th.

Auburn 66 • 2-2-0-SEC

Table with columns: #, Player, Total FG-FGA, 3-Ptr FG-FGA, Rebounds (Off, Def, Tot), PF, TP, A, TO, Blk, Stl, Min. Lists stats for 14 players and team totals.

Summary statistics table with columns: 1st, 2nd, 3rd, 4th, 5th, 6th, 7th, 8th, 9th, 10th, 11th, 12th, 13th, 14th, 15th, 16th, 17th, 18th, 19th, 20th, 21st, 22nd, 23rd, 24th, 25th, 26th, 27th, 28th, 29th, 30th, 31st, 32nd, 33rd, 34th, 35th, 36th, 37th, 38th, 39th, 40th, 41st, 42nd, 43rd, 44th, 45th, 46th, 47th, 48th, 49th, 50th.

Officials: Natasha Camy, Dawn Marsh, Bill Laranca
Technical fouls: Saint Joseph's-None, Auburn-None.
Attendance: 1796

Score by periods table with columns: 1st, 2nd, 3rd, 4th, Total. Shows scores for Saint Joseph's and Auburn.

Last FG - SJU 4th-02:58, AU 4th-01:16.
Largest lead - SJU by 6:35 @ 1:01:34, AU by 6 4th-05:32.
SJU led for 06:35. AU led for 26:32. Game was tied for 06:27.

AUBURN-- Career nights from redshirt sophomore Kiyae' White and freshman Lauren Hansen and a pair of late defensive stops led the Auburn women's basketball team to a 66-62 win over St. Joseph's at Auburn Arena Sunday night.

The Tigers (2-2) snapped a two-game skid with their best defensive effort of the season, turning 14 turnovers by St. Joseph's (2-3) into 17 turnovers and limiting the Hawks to just four 3-pointers on 15 attempts.

Hansen, making her second career start, led Auburn with a career-high 18 points on 6-of-10 shooting, including a 4-for-6 night from 3-point range. Hansen also led the Auburn defensive effort with a game-high four steals. White also shattered her previous career-high with a 12-point effort, going 3-for-4 from the floor and 6-of-8 at the free-throw line.

Junior Unique Thompson made it 4-for-4 this season on double-doubles with a 17-point, 12-rebound night. Dating back to the final game of last season, Thompson has five consecutive double-doubles, a feat not accomplished by an Auburn player since Le'Co'e Willingham in 2004. Thompson also led the Tigers with five assists.

Senior Daisa Alexander had eight points, three assists and two steals, and freshman Annie Hughes added five points and four rebounds off the bench.

As a team, the Tigers shot a season-low 36.2 percent from the field but got to the free-throw line 30 times for the second time this season, making 19. Auburn also out-rebounded St. Joe's 40-34 and had just 10 turnovers, a season-low.

A tough offensive third period for both teams ended with St. Joseph's holding a 46-45 lead. But the Tigers used several defensive stops and got timely shots from Hansen, Hughes and Morgan Robinson-Nwagwu to build a six-point lead at 64-58 with 1:16 to play. A pair of trips to the free-throw line for St. Joe's allowed the Hawks to cut the advantage to two points inside of 30 seconds, but the Tigers forced a turnover on the Hawks' next possession before a pair of Thompson free throws sealed the win.

Game 5: Nov. 29, 2019
Middle Tennessee 73, Auburn 50
Hertz Arena
Estero, Fla.

Official Basketball Box Score -- Game Totals -- Final Statistics
Middle Tennessee vs Auburn
11/29/19 11:00 am at Estero, Fla. (Hertz Arena)

Middle Tennessee 73 • 5-1-

Table with columns: #, Player, Total FG-FGA, 3-Ptr FG-FGA, Rebounds (Off, Def, Tot), PF, TP, A, TO, Blk, Stl, Min. Lists stats for 14 players and team totals.

Summary statistics table with columns: 1st, 2nd, 3rd, 4th, 5th, 6th, 7th, 8th, 9th, 10th, 11th, 12th, 13th, 14th, 15th, 16th, 17th, 18th, 19th, 20th, 21st, 22nd, 23rd, 24th, 25th, 26th, 27th, 28th, 29th, 30th, 31st, 32nd, 33rd, 34th, 35th, 36th, 37th, 38th, 39th, 40th, 41st, 42nd, 43rd, 44th, 45th, 46th, 47th, 48th, 49th, 50th.

Auburn 50 • 2-3

Table with columns: #, Player, Total FG-FGA, 3-Ptr FG-FGA, Rebounds (Off, Def, Tot), PF, TP, A, TO, Blk, Stl, Min. Lists stats for 14 players and team totals.

Summary statistics table with columns: 1st, 2nd, 3rd, 4th, 5th, 6th, 7th, 8th, 9th, 10th, 11th, 12th, 13th, 14th, 15th, 16th, 17th, 18th, 19th, 20th, 21st, 22nd, 23rd, 24th, 25th, 26th, 27th, 28th, 29th, 30th, 31st, 32nd, 33rd, 34th, 35th, 36th, 37th, 38th, 39th, 40th, 41st, 42nd, 43rd, 44th, 45th, 46th, 47th, 48th, 49th, 50th.

Officials: Doug Knight, Kevin Pethel, Tiara Cruse
Technical fouls: Middle Tennessee-None, Auburn-None.
Attendance: 313

Score by periods table with columns: 1st, 2nd, 3rd, 4th, Total. Shows scores for Middle Tennessee and Auburn.

Last FG - MT 4th-05:39, AU 4th-00:07.
Largest lead - MT by 26 4th-06:37, AU None.
MT led for 38:37, AU led for 00:00. Game was tied for 00:50.

ESTERO, Fla.-- Junior Unique Thompson picked up her fifth double-double in as many games, but the Auburn women's basketball team could never get going in a 73-50 loss to Middle Tennessee Friday morning to open the Gulf Coast Showcase.

A sloppy start to the game put the Tigers (2-3) in a big early hole, and Auburn was never able to climb out. Middle Tennessee (5-1) took advantage of 15 first-half Auburn turnovers to build a 21-point halftime lead, and Auburn was unable to make enough headway in the second half to get within striking distance.

Thompson finished with 15 points and 10 rebounds to give her six straight double-doubles going back to last season. Sophomore Brooke Moore was the only other Tiger in double-figures with 11 points.

Auburn shot a season-low 34.0 percent from the field (18-53) and was 4-of-20 from 3-point range. The Tigers also turned the ball over 23 times, leading to 19 MTSU points. Auburn did get 11 second-chance points off eight offensive rebounds, but the Tigers were out-rebounded for the first time this season, 36-29. The Blue Raiders also hit 10 3-pointers.

Middle Tennessee forced nine Auburn turnovers in the first quarter, and the Tigers hit just 3-of-10 shots as the Blue Raiders jumped out to a 24-7 lead. Things got slightly better in the second quarter, but ball control still proved to be an issue as MTSU took advantage of 15 first-half turnovers to lead 40-19 at the half. Auburn would get no closer than 16 points the rest of the way.

Taylor Sutton led MTSU with 27 points, followed by Aislynn Hayes with 20.

Game 6: Nov. 30, 2019
Auburn 76, Dayton 74 (OT)
Hertz Arena
Estero, Fla.

Official Basketball Box Score -- Game Totals -- Final Statistics
Dayton vs Auburn
11/30/19 11:00 am at Estero, Fla. (Hertz Arena)

Dayton 74 • 3-5

Table with columns: #, Player, Total FG-FGA, 3-Ptr FG-FGA, Rebounds (Off, Def, Tot), PF, TP, A, TO, Blk, Stl, Min. Lists stats for 14 players and team totals.

Summary statistics table with columns: 1st, 2nd, 3rd, 4th, 5th, 6th, 7th, 8th, 9th, 10th, 11th, 12th, 13th, 14th, 15th, 16th, 17th, 18th, 19th, 20th, 21st, 22nd, 23rd, 24th, 25th, 26th, 27th, 28th, 29th, 30th, 31st, 32nd, 33rd, 34th, 35th, 36th, 37th, 38th, 39th, 40th, 41st, 42nd, 43rd, 44th, 45th, 46th, 47th, 48th, 49th, 50th.

Auburn 76 • 3-3

Table with columns: #, Player, Total FG-FGA, 3-Ptr FG-FGA, Rebounds (Off, Def, Tot), PF, TP, A, TO, Blk, Stl, Min. Lists stats for 14 players and team totals.

Summary statistics table with columns: 1st, 2nd, 3rd, 4th, 5th, 6th, 7th, 8th, 9th, 10th, 11th, 12th, 13th, 14th, 15th, 16th, 17th, 18th, 19th, 20th, 21st, 22nd, 23rd, 24th, 25th, 26th, 27th, 28th, 29th, 30th, 31st, 32nd, 33rd, 34th, 35th, 36th, 37th, 38th, 39th, 40th, 41st, 42nd, 43rd, 44th, 45th, 46th, 47th, 48th, 49th, 50th.

Officials: Tim Dalry, Kyle Galloway, Meador Overstreet
Technical fouls: Dayton-None, Auburn-None.
Attendance: 317

Score by periods table with columns: 1st, 2nd, 3rd, 4th, OT, Total. Shows scores for Dayton and Auburn.

Last FG - LD 07:00:31, AU 07:01:38.
Largest lead - LD by 13 2nd-00:02, AU by 6 1st-01:12.
LD led for 28:37, AU led for 11:10. Game was tied for 00:04.

ESTERO, Fla.-- Auburn's Erin Howard tipped in a game-tying basket at the buzzer to force overtime, and the Tigers out-dueled Dayton in the extra period to earn a 76-74 win Saturday morning in the Gulf Coast Showcase.

With the score tied 74-74 and Auburn able to hold for the last shot in overtime, Unique Thompson was fouled and made one of two free throws to give the Tigers a 75-74 lead. Auburn was then whistled for a foul with 0.8 seconds to play, but Dayton's Erin Whalen - who had scored all 11 points for the Flyers in OT - missed both free throws. Kiyae' White got the rebound, and another Auburn free throw in the final two-tenths gave the Tigers the win.

The Tigers forced the extra period when, trailing 63-61 with 7.6 seconds to play, a baseline miss from Lauren Hansen came off the rim to Howard on the weak side, who tipped it in as the buzzer sounded.

Auburn (3-3) trailed by 13 points at halftime after two starters missed a large chunk of the second quarter with foul trouble; while they were on the bench, the Flyers went on a 22-4 run. But Auburn answered by outscoring Dayton 25-12 in the third quarter to tie it up, and the final 15 minutes went back-and-forth to set up the wild finish.

Daisa Alexander led the Tigers with 22 points, along with three assists and three steals. Unique Thompson added 20 points and 11 rebounds for her sixth double-double in as many games and was a key at the free throw line late, hitting 10-of-15 attempts in the game. Brooke Moore poured in a season-high 18 points, with five of those coming in the overtime period, along with a team-leading four steals.

Lauren Hansen finished with eight points and six rebounds, and Howard contributed five points and six boards off the bench, including the game-tying put-back to force overtime.

For the first time this season, Auburn forced an opponent into 20 turnovers, turning those into 19 points. Dayton shot 44.4 percent for the game to Auburn's 40.6 percent, but the Tigers took advantage of free-throw opportunities, hitting 18-of-26 (69.2%) for the game.

Game 7: Dec. 1, 2019
Drake 83, Auburn 82
Hertz Arena
Estero, Fla.

Official Basketball Box Score -- Game Totals -- Final Statistics
Drake vs Auburn
12/1/19 1:30 pm at Estero, Fla. (Hertz Arena)

Drake 83 • 6-2
Player FG-FGA 3-Pr FT-FTA Rebounds PF TP A TO Blk Stl Min
Rose, Brenni f 3-6 0-2 3-3 0 1 1 1 9 8 1 0 0 2 27
Rhine, Sara f 8-12 0-1 6-6 1 5 6 0 22 0 1 0 0 2 28
Monahan, Maddie g 0-3 0-2 0-0 0 0 0 2 0 2 2 0 1 2 22
Hittner, Becca g 3-12 1-7 3-4 0 3 3 1 10 2 2 0 1 2 26
Collier, Kierra f 7-9 1-3 0-0 0 1 1 2 15 3 5 0 0 1 27
Woodridge, Allie g 2-3 1-1 0-0 0 1 1 2 5 1 4 0 1 0 16
Fuller, Hannah g 0-0 0-0 0 0 0 0 0 0 0 0 0 0 0 8
Negaard, Maggie 6-8 3-5 0-0 0 1 1 12 15 4 2 0 0 1 19
Burch, Monica 3-10 0-0 0 2 5 7 2 4 0 0 0 0 3 17
Gauldner, Sarah Beth 1-4 0-0 0 0 0 0 3 0 0 0 0 0 0 6
Sain, Maggie 0-0 0-0 0 0 0 1 2 0 0 1 0 0 0 4
Totals 32-61 7-25 12-13 4 20 24 15 83 20 19 0 10 200

Auburn 82 • 3-4
Player FG-FGA 3-Pr FT-FTA Rebounds PF TP A TO Blk Stl Min
Kiyae' White f 2-2 0-0 2-2 1 2 3 3 6 0 1 0 0 16
Unique Thompson f 5-9 0-0 2-3 2 9 11 2 12 1 4 0 4 32
Daisa Alexander g 7-17 4-9 6-6 1 2 3 1 24 4 3 0 3 31
Brooke Moore g 2-10 1-4 0-0 3 0 3 2 5 2 5 0 1 25
Lauren Hansen g 8-15 7-14 1-2 0 3 3 2 24 4 2 0 1 32
Sania Wells 0-0 0-0 2-2 0 0 0 0 2 1 0 0 0 4
Annie Hughes 2-3 1-1 0-0 0 0 0 0 5 3 0 0 1 11
Erin Howard 1-4 0-1 0-1 1 4 5 1 2 0 2 2 1 30
M. Robinson-Nwagwu 1-2 0-0 0 0 1 0 1 2 3 0 0 1 17
Natalie Kelly 0-0 0-0 0 0 0 0 1 0 0 0 0 0 2
Totals 28-62 13-29 13-16 6 0 20 14 82 25 2 11 200

Officials: Brian Hall, Tiara Cruise, Kylie Galloway
Technical fouls: Drake-None, Auburn-None.
Attendance: 457
Score by periods 1st 2nd 3rd 4th Total
Drake 26 18 18 21 83
Auburn 18 24 24 16 82

Last FG - DU 4th-02:18, AU 4th-02:02.
Largest lead - DU by 11 1st-03:26, AU by 11 3rd-01:29.
DU led for 22:44, AU led for 13:26. Game was tied for 03:41.

Game 8: Dec. 4, 2019
Auburn 82, South Alabama 62
Mitchell Center
Mobile, Ala.

Official Basketball Box Score -- Game Totals -- Final Statistics
Auburn vs South Alabama
12/04/19 7:00 pm at Mitchell Center, Mobile, Ala.

Auburn 82 • 4-4
Player FG-FGA 3-Pr FT-FTA Rebounds PF TP A TO Blk Stl Min
Kiyae' White f 1-3 0-0 1-2 3 5 8 2 3 1 1 1 1 19
Unique Thompson f 7-7 0-0 1-4 3 7 10 1 15 1 2 1 0 32
Daisa Alexander g 6-10 2-4 0-0 2 2 4 2 14 1 0 0 0 26
Brooke Moore g 7-12 4-6 2-2 0 1 1 2 20 3 2 0 1 30
Lauren Hansen g 4-12 2-7 0-0 0 1 1 1 10 4 0 0 0 26
Sania Wells 0-1 0-0 0-0 0 1 1 0 0 2 0 0 0 3
Annie Hughes 2-3 0-0 0 0 1 0 1 0 4 0 0 1 16
Erin Howard 5-10 4-7 0-0 1 5 6 1 14 2 1 1 4 26
Morgan Robinson-Nwagwu 0-0 0-0 2-4 0 1 1 3 2 2 4 0 0 19
Natalie Kelly 0-0 0-0 0-0 0 1 1 2 0 0 0 0 0 3
Team 2 0 2 0 2 0 2 0 0 0 0 0 0
Totals 32-60 12-24 6-12 12 24 36 13 82 16 13 3 7 200

South Alabama 62 • 3-5
Player FG-FGA 3-Pr FT-FTA Rebounds PF TP A TO Blk Stl Min
Buster, Jala f 0-3 0-2 0-0 0 2 2 2 0 4 1 0 0 26
Lewis, Antonette c 5-8 0-0 0-0 5 6 11 3 10 0 2 0 1 33
Kines, Shatoria g 7-16 4-11 0-0 2 1 3 1 18 2 2 0 1 36
Telameque, Damaya g 6-11 4-11 2-4 0 1 1 15 11 4 0 2 29
Jones, Savannah g 5-7 3-11 0-0 3 3 6 0 13 0 3 0 0 30
Morrow, Jaysia 0-1 0-1 0-0 0 1 1 1 0 2 0 0 0 16
Mailard, Jaylen 0-0 0-0 0 0 0 0 0 0 0 0 0 3
Centers, Kennedi 0-1 0-0 0 0 3 3 0 0 2 0 0 0 18
Lowe, Devyn 2-4 2-4 0-0 0 1 1 0 6 1 3 0 0 9
Team 2 0 2 0 2 0 2 0 0 0 0 0 0
Totals 25-59 10-31 2-4 12 18 30 7 62 12 15 0 4 200

Officials: Katie Lukanich, Eric Baker, Staci Jefferson
Technical fouls: Auburn-None, South Alabama-None.
Attendance: 1106
Score by periods 1st 2nd 3rd 4th Total
South Alabama 15 17 17 13 62
Auburn 19 18 19 26 82

Last FG - AUS 4th-01:01, USA 4th-00:12.
Largest lead - AUS by 26 4th-03:02, USA by 2 3rd-04:46.
AUS led for 39:08, USA led for 00:32. Game was tied for 00:20.

Game 9: Dec. 7, 2019
TCU 80, Auburn 65
Schollmaier Arena
Fort Worth, Texas

Official Basketball Box Score -- Game Totals -- Final Statistics
Auburn vs TCU
12/07/19 2:00 pm at
Auburn 65 • 4-5-0 SEC

Player FG-FGA 3-Pr FT-FTA Rebounds PF TP A TO Blk Stl Min
Kiyae' White f 1-3 0-0 0-2 1 3 4 4 2 0 0 0 0 3 12
Unique Thompson f 12-18 0-0 7-8 7 8 15 1 31 1 4 1 2 33
Daisa Alexander g 3-11 0-5 0-0 0 2 2 5 6 4 1 0 2 20
Brooke Moore g 3-12 1-6 1-1 2 0 2 5 4 8 0 2 0 26
Lauren Hansen g 2-11 2-8 2-2 0 2 2 3 8 1 4 0 1 29
Sania Wells 0-0 0-0 0 0 0 0 0 0 0 0 0 0 1 1
Annie Hughes 0-4 0-2 0 0 2 0 2 0 1 2 1 0 0 23
Erin Howard 3-8 0-4 1-2 1 3 4 2 7 2 3 2 3 33
M. Robinson-Nwagwu 0-0 0-0 3-4 0 3 3 3 3 0 4 0 0 18
Natalie Kelly 0-0 0-0 0-0 0 2 2 0 0 0 0 0 0 5
Team 1 5 6 0 0 0 0 0 0 0 0 0 0
Totals 24-67 3-25 14-19 14 28 42 25 65 14 19 3 11 200

TCU 80 • 7-0-0 Big 12
Player FG-FGA 3-Pr FT-FTA Rebounds PF TP A TO Blk Stl Min
Adeloa Akomolafe f 1-4 0-0 0-0 2 0 2 2 2 0 0 0 0 16
Jaycee Bradley f 7-16 5-14 5-8 1 2 3 0 24 1 1 0 0 31
Jayde Woods f 2-4 0-1 0-1 1 3 4 3 4 4 4 0 1 26
Lauren Heard g 5-15 1-3 10-10 4 6 10 2 21 4 4 0 3 29
Kianna Ray 3-9 1-5 0-2 0 4 4 1 7 6 2 1 1 25
Ryan Payne 0-0 0-0 2-4 1 0 1 0 2 0 1 0 1 13
Becky Obinna 3-4 0-0 2-2 2 4 6 4 8 0 0 1 0 10
Yummy Morris 2-4 0-0 1-2 1 7 8 2 5 1 0 1 1 14
Madi Puli 0-0 0-0 0-0 0 0 0 0 0 0 0 0 0 3
Tavy Diggs 0-0 0-0 0-0 0 2 2 1 0 0 0 0 0 3
Alexandria Crain 1-6 0-3 0-0 0 1 1 1 2 0 0 0 1 10
Michelle Berry 1-2 0-0 3-4 3 2 5 0 5 2 1 1 2 13
Ella Hellessey 0-0 0-0 0 0 0 0 0 0 1 0 1 0 7
Team 3 0 0 0 0 0 0 0 0 0 0 0 0
Totals 25-67 7-26 32-32 18 31 49 16 80 18 16 4 9 200

Officials: Michael McConnell, Felicia Grinstead, Mark Zentz
Technical fouls: Auburn-None, TCU-None.
Attendance: 2359
2019-20 Women's Basketball. Round: 0. Auburn vs TCU. Played at Ed and Rae Scho
Score by periods 1st 2nd 3rd 4th Total
Auburn 11 20 16 18 65
TCU 20 24 20 16 80

Last FG - AU 4th-00:13, TCU 4th-02:24.
Largest lead - AU None, TCU by 25 4th-05:41.
AU led for 00:00, TCU led for 37:52. Game was tied for 02:08.

ESTERO, Fla.-- Auburn got huge offensive efforts from Daisa Alexander and Lauren Hansen, but the Tigers came up just short in a wild game with Drake Sunday afternoon, falling 83-82 in the fifth-place game of the Gulf Coast Showcase.

The Tigers (3-4) trailed by as many as 11, led by as many as 11, and saw 13 ties and 12 lead changes in an incredibly entertaining game. But a pair of free throws for Drake (6-2) with 7.8 seconds left, coupled with two misses at the other end, left Auburn behind as the clock expired.

Alexander and Hansen each scored 24 points, a career-high for Hansen and one shy of it for Alexander. Hansen made seven 3-pointers on the day, one shy of tying the Auburn single-game record. Both players also finished with four assists, and Alexander added three steals. Unique Thompson kept her double-double streak alive with a 12-point, 11-rebound effort that also included four steals.

Auburn shot 45.2 percent for the game (28-62) and hit 13-of-29 3-pointers (44.8%), coming up one short of the single-game team record. The Tigers were also stellar at the free-throw line, hitting 13-of-16 (81.3%). Auburn forced 19 Drake turnovers, turning those into 24 point.

Drake led 44-42 at the half. A slow start to the third quarter for both teams saw Auburn tie it up at 48-48, then go on a 10-0 run to build a 58-48 advantage on an Alexander 3-pointer with 3:36 left. But a flurry by the Bulldogs in the final 90 seconds cut the lead to four at 66-62 headed to the fourth.

The lead swung wildly in both directions throughout the fourth quarter with both teams leading by as many as 6. Auburn trailed 81-75 with 2:18 to play, but another 3-pointer plus two free throws from Alexander cut it to one at 81-80 with under a minute. Auburn got a stop, then Alexander drew a foul with 15 seconds left and made both free throws to put the Tigers back ahead 82-81. At the other end, Auburn forced a miss but was unable to get the rebound, and a foul with 7.8 seconds left led to two Bulldog free throws. The Tigers had two chances before the buzzer but could not get a shot to fall.

MOBILE-- Five players scored in double figures, and an offensive flurry early in the fourth quarter broke the game open as Auburn earned an 82-62 road win at South Alabama Wednesday night.

The Tigers (4-4) used a 16-0 run that spanned the end of the third and start of the fourth quarters to break open what had been a close game throughout. Auburn's long-range shooting was effective for the second straight game as the Tigers hit 12 3-pointers, giving them 25 over their last two contests.

Sophomore Brooke Moore led the Tigers' offensive attack with a season-high 20 points on 7-of-12 shooting, including 4-of-6 beyond the 3-point arc. Erin Howard and Daisa Alexander had 14 points apiece; Howard made a career-high four 3-pointers and also had a career-best four steals.

Unique Thompson grabbed three rebounds in the fourth quarter to extend her double-double streak to nine straight, dating back to last season. She finished with 15 points and 10 rebounds and was 7-of-7 from the floor. Lauren Hansen was Auburn's fifth player in double-figures with 10 points and a team-leading four assists. Kiyae' White added eight rebounds.

As a team, Auburn shot a season-high 53.3 percent from the field (32-60) and was 50 percent (12-24) from 3-point range. The Tigers out-rebounded the Jaguars 36-30 and scored 21 points off 15 USA turnovers.

South Alabama (3-5) led 47-45 with 4:46 to play in the third quarter. But the Tigers' defense held the Jaguars to just one basket over the next eight-plus minutes, out-scoring them 23-2 in that stretch to build a 19-point lead with 7:47 to play. From there, the Tigers cruised, pushing the advantage to as many as 26 before a couple of late defensive lapses let USA cut the final margin to 20.

Auburn never trailed in the first half, taking a 37-32 lead at the break. Moore hit four 3-pointers in the first half with three of those coming in the second quarter as the Tigers extended their lead to as many as eight points. But the Jaguars stayed in the game thanks to 10 second-chance points off eight offensive rebounds in the opening half.

FORT WORTH, Texas-- Unique Thompson scored a career-high 31 points, but early foul trouble and turnovers cost Auburn in an 80-65 loss at TCU Saturday in the Big 12/SEC Challenge.

Auburn (4-5) turned the ball over 19 times, leading to 26 points for TCU (7-0), and multiple Tigers missed significant minutes with foul trouble; two players fouled out. The Horned Frogs took advantage, getting into the bonus every quarter and hitting 23-of-33 free throws for the game.

Thompson's 31 points were the most by an Auburn player since Katie Frerking had 33 at Texas A&M in 2017. Thompson also added 15 rebounds to pick up her ninth double-double of the season and 10th straight dating back to last year, continuing the longest active streak in the nation.

But Thompson was Auburn's only player in double figures. Lauren Hansen and Brooke Moore added eight points and Daisa Alexander had six; all three fought foul trouble throughout the game. Alexander and Morgan Robinson-Nwagwu tied for the team lead with four assists, and Kiyae' White and Erin Howard had three steals apiece.

Neither team shot the ball particularly well; Auburn hit 24-of-67 from the floor (35.8%) and TCU was one shot better at 25-of-67 (37.3%). But the Frogs made seven 3-pointers to Auburn's three, and made up the rest of the difference at the free-throw line. TCU also out-rebounded Auburn 49-42.

Auburn went on a 13-2 run early in the second quarter to tie the game after trailing by nine at the end of the first. But foul trouble took a toll as TCU was in the bonus for the final five minutes of the quarter and took advantage, hitting 7-of-9 free throws in the period. Meanwhile, three starters missed significant minutes with two or more fouls, and the Horned Frogs took a 44-31 lead at the break.

The Tigers cut the lead to single-digits early in the third, but TCU went on a 13-5 run to take a 58-40 lead, and Auburn got no closer than 15 points the rest of the way.

Game 10: Dec. 15, 2019

Auburn 74, Bethune-Cookman 56

Auburn Arena
Auburn, Ala.

Official Basketball Box Score -- Game Totals -- Final Statistics
Bethune-Cookman vs Auburn
12/15/19 2:00 pm at Auburn Arena -- Auburn, Ala.

Table with columns: Player, Total (FG, FGA, FT, FTA), 3-Pr (FG, FGA, FT, FTA), Rebounds (Off, Def, Tot), PF, TP, A To Bk, Stl, Min. Includes totals and team statistics.

Auburn 74 4 5-5,0-0 SEC

Table with columns: Player, Total (FG, FGA, FT, FTA), 3-Pr (FG, FGA, FT, FTA), Rebounds (Off, Def, Tot), PF, TP, A To Bk, Stl, Min. Includes totals and team statistics.

Officials: Kristen Bell, Stephanie Barksdale, Cameron Inouye
Technical fouls: Bethune-Cookman-None, Auburn-None.
Attendance: 1588

Score by periods

Table with columns: 1st, 2nd, 3rd, 4th, Total. Shows scores for Bethune-Cookman and Auburn.

Last FG - BCU 4th-03:08, AU 4th-02:09
Largest lead - BCU by 5-2nd-07:25, AU by 19-4th-03:46.
BCU led for 06:10. AU led for 29:19. Game was tied for 04:31.

Game 11: Dec. 28, 2019

Auburn 62, Jacksonville State 53

Auburn Arena
Auburn, Ala.

Official Basketball Box Score -- Game Totals -- Final Statistics
Jacksonville St. vs Auburn
12/28/19 2:00 pm at Auburn Arena -- Auburn, Ala.

Table with columns: Player, Total (FG, FGA, FT, FTA), 3-Pr (FG, FGA, FT, FTA), Rebounds (Off, Def, Tot), PF, TP, A To Bk, Stl, Min. Includes totals and team statistics.

Auburn 62 4 3-3,0-0 SEC

Table with columns: Player, Total (FG, FGA, FT, FTA), 3-Pr (FG, FGA, FT, FTA), Rebounds (Off, Def, Tot), PF, TP, A To Bk, Stl, Min. Includes totals and team statistics.

Officials: Salf Estro, Puulani Spurlock, Joseph Vesizty
Technical fouls: Jacksonville St.-None, Auburn-Brooke Moore.
Attendance: 1827

Score by periods

Table with columns: 1st, 2nd, 3rd, 4th, Total. Shows scores for Jacksonville State and Auburn.

Last FG - JSU 4th-00:13, AU 4th-00:59.
Largest lead - JSU None, AU by 18-4th-04:03.
JSU led for 00:00. AU led for 37:42. Game was tied for 02:10.

Game 12: Jan. 2, 2020

Vanderbilt 77, Auburn 55

Memorial Gym
Nashville, Tenn.

Official Basketball Box Score -- Game Totals -- Final Statistics
Auburn vs Vanderbilt
01/02/20 7:00 pm at Memorial Gym - Nashville, Tenn.

Table with columns: Player, Total (FG, FGA, FT, FTA), 3-Pr (FG, FGA, FT, FTA), Rebounds (Off, Def, Tot), PF, TP, A To Bk, Stl, Min. Includes totals and team statistics.

Vanderbilt 77 4 11-3,1-0 SEC

Table with columns: Player, Total (FG, FGA, FT, FTA), 3-Pr (FG, FGA, FT, FTA), Rebounds (Off, Def, Tot), PF, TP, A To Bk, Stl, Min. Includes totals and team statistics.

Officials: Star Jefferson, Brian Hall, Beverly Roberts
Technical fouls: Auburn-Kiyae' White, Vanderbilt-None.
Attendance: 2255

Score by periods

Table with columns: 1st, 2nd, 3rd, 4th, Total. Shows scores for Auburn and Vanderbilt.

Last FG - AU 4th-00:12, VU 4th-03:15.
Largest lead - AU by 3 1st-08:56, VU by 25 3rd-06:14.
AU led for 02:13. VU led for 37:47. Game was tied for 00:00.

AUBURN-- Five Tigers scored in double-figures as the Auburn women's basketball team pulled away in the second half for a 74-56 win over Bethune-Cookman Sunday afternoon at Auburn Arena.

Auburn (5-5) shot over 65 percent in the second half and overcame a tenacious press by Bethune-Cookman (6-2) to turn a five-point halftime lead into as much as a 19-point advantage to head into the holiday break with a victory.

Junior Unique Thompson led the way with a 16-point, 13-rebound effort that also included a team-leading four steals. She was just one rebound shy of a double-double by halftime; as such, she picked up her NCAA-leading 10th double-double in 10 games and extended her streak to 11 straight games, which leads all active players nationwide.

Erin Howard added 12 points and seven rebounds off the bench, and Daisa Alexander scored 11, bringing her within four points of 1,000 for her career. Lauren Hansen scored 10 points and shared the team lead with three assists. And Robyn Benton, who missed the season's first nine games with injury, scored 10 points and added two blocks in her return to action.

Auburn found an offensive rhythm late in the second quarter to turn a five-point deficit into a five-point lead at 36-31 headed to the locker room. The Tigers then started the third quarter on a 16-4 run, extending the advantage to 52-35 with 4:15 to play.

A turnover- and foul-plagued cold spell to begin the fourth quarter allowed the Wildcats to cut the Auburn lead to as few as 10 points, but a Hughes 3-pointer with just under six minutes left sparked a 9-0 run to put the game out of reach.

AUBURN-- Auburn senior Daisa Alexander scored her 1,000th career point as the Tigers closed out non-conference play with a 62-53 win over Jacksonville State Saturday afternoon at Auburn Arena.

The Tigers (6-5) scored a season-high 27 turnovers, turning those into 27 points, and controlled the paint throughout. Auburn never trailed and led by as many as 18 in the fourth quarter before a late 3-point barrage from the Gamecocks (4-7) cut the final margin to single digits.

Alexander's fadeaway jumper with 39 seconds to play in the third quarter gave her 1,000 career points, making her the 34th Auburn player to reach the milestone. She finished with 10 points, six rebounds and three steals on the day.

Junior Unique Thompson kept her nation-leading double-double streak alive with a 20-point, 10-rebound effort, grabbing her final rebound with less than two minutes to play. She is now 11-for-11 this season and has 12 straight double-doubles, dating back to the final game of last season.

Brooke Moore added 11 points and Kiyae' White pulled down eight rebounds to aid the Tiger effort. Auburn shot 40 percent for the game (22-55) and held JSU to 34 percent (16-47) from the floor, but 13 of JSU's 16 made field goals came from 3-point range.

Auburn jumped out to an early double-digit lead, forcing seven first-quarter turnovers to lead 14-4 late in the period and 16-7 at the end of one. The Gamecocks hit back-to-back 3s to open the second quarter, but Auburn held JSU without a field goal for the next seven minutes, taking a 27-18 lead to the break.

The Gamecocks got as close as six points at 30-24 early in the third, but Auburn finished the quarter on a 15-5 run to take a 45-29 lead at the end of three. Two straight Thompson buckets midway through the final period gave Auburn its largest lead at 56-38 with 4:03 to play, but Jacksonville State hit four 3-pointers in the final 3:11 to cut the final margin to single digits.

NASHVILLE-- Auburn got off to a slow start and never recovered in a 77-55 loss to Vanderbilt Thursday night at Memorial Gym to open SEC play.

The Tigers (6-6, 0-1 SEC) had their worst shooting night of the season and saw Vanderbilt (11-3, 1-0) shoot a blistering 60 percent as the Commodores opened a big early lead and never looked back.

Unique Thompson kept her nation-leading double-double streak alive with a 14-point, 10 rebound performance. She also tallied three steals and a pair of assists. Brooke Moore led the Tigers with 17 points, and Erin Howard added 13.

Vanderbilt shot 59.6 percent from the field (31-52) and outscored Auburn in the paint 46-24. The Tigers finished at 28.3 percent (17-60). Auburn had a strong night at the free-throw line, hitting 18-of-23 (78.3%).

Auburn took a 1-0 lead before the ball was even tossed on an administrative technical due to a malfunctioning shot clock at Memorial Gym, and Moore made a layup to open the in-game scoring and give the Tigers a 3-0 lead. But it was downhill from there. The Commodores went on an 8-0 run over the next two minutes and never trailed again. A 68-percent first half gave Vanderbilt a 47-18 lead at the break. The Tigers outscored Vandy 37-30 in the second half.

Mariella Fasoula led Vanderbilt with 21 points and Demi Washington added 17.

Game 13: Jan. 5, 2020 #20 Arkansas 86, Auburn 70 Auburn Arena Auburn, Ala.

Official Basketball Box Score -- Game Totals -- Final Statistics Arkansas vs Auburn 01/05/20 1:00 pm at Auburn Arena -- Auburn, Ala.

Arkansas 86 • 13-2,1 SEC. Table with columns for Player, FG-FGA, 3-Pr, Rebounds, and Min. Totals row shows Arkansas 86 and Auburn 70.

Auburn 70 • 6-7,0-2 SEC

Table with columns for Player, FG-FGA, 3-Pr, Rebounds, and Min. Totals row shows Auburn 70.

Officials: Kevin Pethel, Eric Brewton, Dee Kanner Technical fouls: Arkansas-Anone. Auburn-None. Attendance: 1702

Score by periods table for Arkansas vs Auburn showing points by quarter and total score.

Last FG - AR 4th-0:38, AU 4th-00:11. Largest lead - AR by 27 4th-05:34, AU by 7 1st-07:08. AR led for 35:10, AU led for 03:26. Game was tied for 01:13.

AUBURN-- Daisa Alexander and Brooke Moore both scored 19 points, but Auburn fell to No. 20 Arkansas 86-70 Sunday in the home SEC opener at Auburn Arena.

The Tigers (6-7, 0-2 SEC) saw the Razorbacks (13-2, 2-0) jump out to a big early lead and never look back as Auburn was unable to slow down the SEC's top-scoring team.

Alexander and Moore shared the team lead with 19 points each and were Auburn's only two players in double-figures. Junior Unique Thompson saw her 13-game double-double streak come to an end as she pulled down a game-high 13 rebounds but was held to six points.

Thompson also led the Tigers with six assists. Erin Howard had seven rebounds, and Robyn Benton added six points and a team-leading four steals.

Auburn shot 53 percent in the second half and finished at 41 percent for the game (27-66), but Arkansas was lights-out early and finished at 51.6 percent from the field (32-62). The Razorbacks also hit 12 3-pointers on 27 attempts and scored 24 points off 19 Auburn turnovers.

The Tigers jumped out to a quick lead, hitting 3-of-4 3-pointers to start the game with a 9-2 advantage. But Auburn would make just two of its next 14 3-point shots and score just three points the rest of the quarter.

Game 14: Jan. 9, 2020 Florida 83, Auburn 63 Auburn Arena Auburn, Ala.

Official Basketball Box Score -- Game Totals -- Final Statistics Florida vs Auburn 01/09/20 6:00 pm at Auburn Arena -- Auburn, Ala.

Florida 83 • 11-5,2-1 SEC. Table with columns for Player, FG-FGA, 3-Pr, Rebounds, and Min. Totals row shows Florida 83 and Auburn 63.

Auburn 63 • 6-8,0-3 SEC

Table with columns for Player, FG-FGA, 3-Pr, Rebounds, and Min. Totals row shows Auburn 63.

Officials: Kylie Galloway, Carla Fountain, Michael McConnell Technical fouls: Florida-None. Auburn-None. Attendance: 1624

Score by periods table for Florida vs Auburn showing points by quarter and total score.

Last FG - UF 4th-00:43, AU 4th-00:34. Largest lead - UF by 24 3rd-06:50, AU by 2 1st-07:11. UF led for 37:07, AU led for 00:50. Game was tied for 02:33.

AUBURN-- Unique Thompson picked up her 13th double-double of the season, but Auburn was unable to overcome a hot-shooting Florida team Thursday night in an 83-63 loss at Auburn Arena.

Florida (11-5, 2-1 SEC) shot 61.5 percent from the field, including 58.8 percent from 3-point range, and also controlled the paint as Auburn (6-8, 0-3) fell behind early and was unable to recover.

Thompson was held scoreless in the first half but bounced back after halftime to finish with 10 points and 10 rebounds to extend her NCAA-leading double-double total. Brooke Moore was Auburn's leading scorer with 14 points. Kiyae' White added eight points and seven rebounds, and Erin Howard had four steals.

Auburn shot 39.3 percent from the field and attempted a season-high 29 3-pointers, making seven (24.1%). Florida grabbed one more rebound than Auburn (30-29). The Tigers forced Florida into 17 turnovers but was only able to convert those into nine points.

The teams traded baskets early, but the Gators ended the first quarter on a 14-5 run to take a 21-12 lead after 10 minutes. Auburn got within five midway through the second and had the chance to cut it to a two-possession game with a last shot, but a turnover led to a Florida layup at the buzzer and a 42-31 UF lead.

Florida shot 61.5% from the floor (16-26) and 67% from 3-point range (6-9) in the first half. An 13-0 run by the Gators to open the third quarter put the game out of reach as Florida turned its halftime advantage into a 55-31 lead just over three minutes into the second half.

Auburn was without the services of senior guard Daisa Alexander, who injured her ankle in Sunday's game vs. Arkansas. She was honored with a pregame ceremony that recognized her for scoring her 1,000th career point on Dec. 28 vs. Jacksonville State.

Game 15: Jan. 12, 2020 Alabama 75, Auburn 48 Auburn Arena Auburn, Ala.

Official Basketball Box Score -- Game Totals -- Final Statistics Alabama vs Auburn 01/12/20 2:00 pm at Auburn Arena -- Auburn, Ala.

Alabama 75 • 11-6,1-3 SEC. Table with columns for Player, FG-FGA, 3-Pr, Rebounds, and Min. Totals row shows Alabama 75 and Auburn 48.

Auburn 48 • 6-9,0-4 SEC

Table with columns for Player, FG-FGA, 3-Pr, Rebounds, and Min. Totals row shows Auburn 48.

Officials: Angelica Suffern, Karan Preato, Mark Zertz Technical fouls: Alabama-None. Auburn-None. Attendance: 2833

Score by periods table for Alabama vs Auburn showing points by quarter and total score.

Last FG - UA 4th-01:47, AU 4th-00:01. Largest lead - UA by 32 4th-01:14, AU by 8 1st-04:30. UA led for 26:21, AU led for 11:03. Game was tied for 02:19.

AUBURN-- Unique Thompson recorded her 14th double-double of the season, but Alabama took advantage of a long cold stretch for Auburn as the Tigers fell 75-48 Sunday afternoon at Auburn Arena.

The Tigers led by six at the end of one quarter and were tied 26-26 with just over two minutes to play in the second. But Auburn went scoreless over the next nine-plus minutes as Alabama used a 25-0 run to put the game out of reach.

Thompson led Auburn with 16 points and 14 rebounds to give her 14 double-doubles in 15 games this year, which continues to lead the nation. But she was Auburn's only player in double-figures. Robyn Benton added nine points and three steals off the bench, and Lauren Hansen had four assists.

The Tigers took 15 more shots than Alabama but made nine fewer. Alabama shot 51.9 percent (28-54) from the field, including 11-of-29 from 3-point range (37.9%) while Auburn was 19-of-69 from the field (27.5%) and 6-26 (23.1%) on 3-pointers.

Alabama had one more rebound than Auburn, 39-38, and while Auburn forced 17 Alabama turnovers, the Tigers turned those into only 10 points.

Jasmine Walker led the Tide with 23 points and 10 rebounds, and Jordan Lewis added 16 points.

Game 16: Jan. 19, 2020 Georgia 61, Auburn 50 Stegeman Coliseum Athens, Ga.

Official Basketball Box Score -- Game Totals -- Final Statistics
Auburn vs Georgia
01/19/20 2:00 pm at Athens, GA

Auburn 50 • 6-10,0-5 SEC

#	Player	Total		3-Ptr		Rebounds		PF	TP	A	TO	Bk	Stl	Min	
		FG	FGA	FG	FGA	FT	FTA								Off
20	Unique Thompson	f	2-9	0-0	9-13	4	7	11	1	13	2	1	0	1	38
24	Erin Howard	f	1-7	0-4	0-0	1	3	4	4	2	0	2	0	0	22
00	Daisa Alexander	g	6-14	0-1	5-8	1	2	3	1	17	1	4	0	3	34
01	Robyn Benton	g	4-9	2-4	2-2	2	3	5	4	12	1	1	1	3	33
05	Brooke Moore	g	0-8	0-2	2-2	1	2	3	1	2	1	2	0	1	29
02	Sania Wells	g	0-0	0-0	0-0	0	0	0	0	0	0	0	0	0	3
03	Annie Hughes	g	0-0	0-0	0-0	0	0	0	3	0	1	0	1	7	
10	Kiyae' White	g	2-3	0-0	0-0	0	1	1	1	4	0	2	1	1	15
13	Lauren Hansen	g	0-2	0-1	0-0	0	3	3	0	0	2	0	1	1	13
30	M. Robinson-Nwagwu	g	0-1	0-0	0-0	0	1	1	0	0	0	0	0	1	6
	Team					3	1	4			2				
	Totals		15-53	2-12	18-25	12	23	35	15	50	5	17	2	12	200

1st	FG %:	5-14	35.7%	2nd:	5-14	35.7%	3rd:	3-11	27.3%	4th:	2-14	14.3%	Game:	15-53	28.3%	Deadball
	3Pt %:	1-3	33.3%		0-2	0.0%		0-2	0.0%		2-12	16.7%				Rebounds
	FT %:	6-8	75.0%		2-3	66.7%		3-6	50.0%		7-8	87.5%		18-25	72.0%	

Georgia 61 • 11-7,2-3 SEC

#	Player	Total		3-Ptr		Rebounds		PF	TP	A	TO	Bk	Stl	Min	
		FG	FGA	FG	FGA	FT	FTA								Off
03	Stephanie Paul	f	2-6	0-0	3-4	2	4	6	4	7	0	1	2	1	29
14	Jenna Stalti	c	1-3	0-0	0-0	1	2	3	0	2	1	2	2	1	15
02	Gabby Connally	g	1-5	1-4	0-0	0	3	3	4	3	0	4	1	1	22
11	Maya Caldwell	g	3-9	0-5	3-4	2	1	3	2	9	0	2	0	1	14
23	Que Morrison	g	3-7	0-2	0-0	2	6	8	2	6	2	0	3	3	34
01	Chloe Chapman	g	1-2	0-0	0-0	0	4	4	2	2	6	2	1	1	17
10	Caiflin Hose	g	1-6	0-3	0-0	0	0	0	0	2	1	1	1	0	12
20	Jordan Isaacs	g	2-3	0-0	1-1	4	4	1	5	0	0	0	0	9	
21	Shaniya Jones	g	9-15	3-9	0-2	0	0	0	1	21	1	2	0	1	21
22	Malury Bates	g	2-2	0-0	0-0	3	3	6	2	4	0	2	3	1	16
35	Jaylyn Nicholson	g	0-0	0-0	0-0	1	3	4	2	0	1	0	0	1	11
	Team					0	0	0							
	Totals		25-58	4-23	7-11	11	30	41	20	61	16	18	10	11	200

1st	FG %:	3-13	23.1%	2nd:	7-14	50.0%	3rd:	10-18	55.6%	4th:	5-13	38.5%	Game:	25-58	43.1%	Deadball
	3Pt %:	0-7	0.0%		2-6	33.3%		0-4	0.0%		4-23	17.4%				Rebounds
	FT %:	3-4	75.0%		0-0	0.0%		1-4	25.0%		3-3	100.0%		7-11	63.6%	

Officials: Metta Christensen,Felicia Grinter,Tina Napier
Technical fouls: Auburn=None, Georgia=None.
Attendance: 4889

Score by periods	1st	2nd	3rd	4th	Total
Auburn	17	12	10	11	50
Georgia	9	16	23	13	61

	Points	In	Off	2nd	Fast
	Paint	T/O	Chance	Break	Bench
AU	16	9	11	4	4
UG	28	19	12	19	34

Last FG - AU 4th-00:30, UG 4th-01:45.
Largest lead - AU by 10 1st-05:13, UG by 17 4th-05:48.
AU led for 22:55, UG led for 15:54, Game was tied for 01:01.
Score tied - 2 times.
Lead changed - 1 time.

ATHENS, Ga.-- Auburn played its best first half of basketball in SEC play but was unable to sustain its strong play for 40 minutes as Georgia pulled away late for a 61-50 win Sunday afternoon at Stegeman Coliseum.

After leading at the half for the first time in SEC play, the Tigers went ice cold in the second half, shooting just 20 percent in the final 20 minutes as Georgia went on a 19-3 run spanning the third and fourth quarters to put the game away.

Unique Thompson recorded her 15th double-double in 16 games with a 13-point, 11-rebound performance that saw most of her scoring come at the free-throw line; she made 9-of-13 attempts. Daisa Alexander made her return from an ankle injury that sidelined her the last two games, leading Auburn with 17 points. And Robyn Benton added a season-high 12 after making her first career start.

For the game, Auburn shot 28.3 percent, tying for their second-lowest percentage of the season. But it was the second half that was the difference - Auburn made just 5 of 25 shots from the field (20%) while Georgia hit 10-of-18 in the third quarter and 15-of-31 (48.3%) for the half.

The Tigers forced 18 Georgia turnovers but converted those into just nine points, all in the first half. Georgia scored 19 points off 17 Auburn turnovers and outscored the Tigers on fast breaks 19-4.

Auburn led 29-25 at the half; it was the Tigers' first halftime lead in SEC play. It was as much as a 10-point lead for the Tigers at two different points in the first half. Auburn sprinted to a 14-4 lead in the first five minutes but saw Georgia close to 17-9 at the end of the first. The lead was back to 10 at 21-11 on a pair of Thompson free throws with 7:30 left in the second, but the Bulldogs went on an 11-4 run to get within as few as two.

Georgia took its first lead with 6:35 to play at 34-33. After the Bulldogs extended it to four at 38-34, Benton hit a 3-pointer with 4:33 left in the quarter to pull within one at 38-37. From there, Auburn missed its next 13 shots while Georgia made 8-of-10 to build a lead it would not relinquish.

2019-20 Auburn Women's Basketball
Auburn Combined Team Statistics (as of Jan 21, 2020)
All games

RECORD:	OVERALL	HOME	AWAY	NEUTRAL
ALL GAMES	6-10	4-4	1-4	1-2
CONFERENCE	0-5	0-3	0-2	0-0
NON-CONFERENCE	6-5	4-1	1-2	1-2

##	Player	gp-gs	min	avg	Total		3-Point		F-Throw		Rebounds				pf	dq	a	to	blk	stl	pts	avg
					fg-fga	fg%	3fg-fga	3fg%	ft-fa	ft%	off	def	tot	avg								
20	Unique Thompson	16-16	507	31.7	98-168	.583	0-0	.000	71-103	.689	83	109	192	12.0	36	0	28	48	7	28	267	16.7
00	Daisa Alexander	14-14	398	28.4	73-169	.432	16-52	.308	36-48	.750	10	37	47	3.4	37	1	28	30	0	33	198	14.1
05	Brooke Moore	15-15	418	27.9	56-168	.333	21-84	.250	31-40	.775	11	12	23	1.5	23	0	16	39	1	18	164	10.9
13	Lauren Hansen	15-12	356	23.7	39-123	.317	25-79	.316	10-12	.833	4	19	23	1.5	38	3	28	52	0	13	113	7.5
24	Erin Howard	16-4	409	25.6	37-109	.339	18-68	.265	8-11	.727	17	52	69	4.3	31	0	14	17	11	25	100	6.3
01	Robyn Benton	7-1	154	22.0	16-48	.333	7-20	.350	4-6	.667	10	5	15	2.1	12	0	9	8	4	19	43	6.1
10	Kiyae' White	16-11	284	17.8	23-47	.489	0-0	.000	23-42	.548	25	55	80	5.0	34	0	9	21	7	12	69	4.3
03	Annie Hughes	16-7	323	20.2	23-59	.390	7-24	.292	5-9	.556	18	14	32	2.0	24	0	13	12	0	10	58	3.6
30	M. Robinson-Nwagwu	16-0	227	14.2	12-54	.222	2-10	.200	8-15	.533	10	19	29	1.8	26	1	30	31	2	12	34	2.1
02	Sania Wells	13-0	76	5.8	5-15	.333	1-6	.167	5-6	.833	2	6	8	0.6	8	0	8	6	0	3	16	1.2
35	Natalie Kelly	12-0	37	3.1	2-2	1.000	0-0	.000	1-2	.500	2	4	6	0.5	5	0	0	2	0	2	5	0.4
Team											23	21	44				11					
Total.....		16	3228		389-972	.400	98-345	.284	203-298	.681	217	356	573	35.8	280	5	184	278	33	175	1079	67.4
Opponents.....		16	3225		427-916	.466	140-386	.363	182-257	.708	147	391	538	33.6	246	-	243	284	43	137	1176	73.5

TEAM STATISTICS	AU	OPP	Date	Opponent	Score	Att.	
SCORING	1079	1176	11/06/19	WOFFORD	W	84-82	1618
Points per game	67.4	73.5	11/14/19	OLD DOMINION	L	77-89	1635
Scoring margin	-6.1	-	11/21/19	at UAB	L	75-80	1081
FIELD GOALS-ATT	389-972	427-916	11/24/19	SAINT JOSEPH'S	W	66-62	1796
Field goal pct	.400	.466	1 11/29/19	vs Middle Tennessee	L	50-73	313
3 POINT FG-ATT	98-345	140-386	1 11/30/19	vs Dayton	Wot	76-74	317
3-point FG pct	.284	.363	1 12/1/19	vs Drake	L	82-83	457
3-pt FG made per game	6.1	8.8	12/04/19	at South Alabama	W	82-62	1106
FREE THROWS-ATT	203-298	182-257	12/07/19	at TCU	L	65-80	2259
Free throw pct	.681	.708	12/15/19	BETHUNE-COOKMAN	W	74-56	1588
F-Throws made per game	12.7	11.4	12/28/19	JACKSONVILLE ST.	W	62-53	1827
REBOUNDS	573	538	* 01/02/20	at Vanderbilt	L	55-77	2255
Rebounds per game	35.8	33.6	* 01/05/20	ARKANSAS	L	70-86	1702
Rebounding margin	+2.2	-	* 01/09/20	FLORIDA	L	63-83	1621
ASSISTS	184	243	* 01/12/20	ALABAMA	L	48-75	2833
Assists per game	11.5	15.2	* 01/19/20	at Georgia	L	50-61	4888
TURNOVERS	278	284					
Turnovers per game	17.4	17.8					
Turnover margin	+0.4	-					
Assist/turnover ratio	0.7	0.9					
STEALS	175	137					
Steals per game	10.9	8.6					
BLOCKS	33	43					
Blocks per game	2.1	2.7					
ATTENDANCE	14620	12676					
Home games-Avg/Game	8-1828	5-2318					
Neutral site-Avg/Game	-	3-362					

1 = Gulf Coast Showcase (Esterov, Fla.)

* = Conference game

Score by Periods	1st	2nd	3rd	4th	OT	Totals
Auburn	248	245	283	290	13	1079
Opponents	297	275	296	297	11	1176

2019-20 Auburn Women's Basketball
Auburn Combined Team Statistics (as of Jan 21, 2020)
Conference games only

RECORD:	OVERALL	HOME	AWAY	NEUTRAL
ALL GAMES	0-5	0-3	0-2	0-0
CONFERENCE	0-5	0-3	0-2	0-0
NON-CONFERENCE	0-0	0-0	0-0	0-0

#	Player	gp-gs	min	avg	Total		3-Point		F-Throw		Rebounds				a	to	blk	stl	pts	avg			
					fg-fga	fg%	3fg-fga	3fg%	ft-fa	ft%	off	def	tot	avg							pf	dq	
00	Daisa Alexander	3-3	83	27.7	13-33	.394	3-10	.300	9-12	.750	3	6	9	3.0	6	0	6	8	0	6	38	12.7	
20	Unique Thompson	5-5	158	31.6	21-52	.404	0-0	.000	17-23	.739	21	37	58	11.6	12	0	12	12	1	8	59	11.8	
05	Brooke Moore	5-5	140	28.0	19-57	.333	5-24	.208	9-14	.643	1	4	5	1.0	3	0	2	14	0	4	52	10.4	
24	Erin Howard	5-4	127	25.4	12-40	.300	7-26	.269	4-4	1.000	5	14	19	3.8	14	0	3	5	2	10	35	7.0	
01	Robyn Benton	5-1	120	24.0	10-36	.278	5-15	.333	4-6	.667	8	4	12	2.4	10	0	7	8	2	17	29	5.8	
10	Kiyae' White	5-1	90	18.0	8-13	.615	0-0	.000	7-13	.538	8	12	20	4.0	9	0	2	8	2	3	23	4.6	
13	Lauren Hansen	5-3	102	20.4	7-30	.233	3-19	.158	2-2	1.000	1	6	7	1.4	8	0	9	18	0	2	19	3.8	
30	M. Robinson-Nwagwu	5-0	72	14.4	5-25	.200	1-9	.111	2-3	.667	5	6	11	2.2	6	0	11	9	0	7	13	2.6	
03	Annie Hughes	5-3	78	15.6	4-17	.235	2-9	.222	1-2	.500	4	3	7	1.4	7	0	0	3	0	3	11	2.2	
02	Sania Wells	4-0	20	5.0	3-6	.500	1-4	.250	0-0	.000	2	1	3	0.8	2	0	2	0	0	2	7	1.8	
35	Natalie Kelly	4-0	10	2.5	0-0	.000	0-0	.000	0-0	.000	1	0	1	0.3	1	0	0	2	0	2	0	0.0	
Team											11	4	15					5					
Total.....		5	1000		102-309	.330	27-116	.233	55-79	.696	70	97	167	33.4	78	0	54	92	7	64	286	57.2	
Opponents.....		5	1000		148-278	.532	38-99	.384	48-65	.738	42	143	185	37.0	73	-	87	99	18	54	382	76.4	

TEAM STATISTICS	AU	OPP	Date	Opponent	Score	Att.
SCORING	286	382	* 01/02/20	at Vanderbilt	L 55-77	2255
Points per game	57.2	76.4	* 01/05/20	ARKANSAS	L 70-86	1702
Scoring margin	-19.2	-	* 01/09/20	FLORIDA	L 63-83	1621
FIELD GOALS-ATT	102-309	148-278	* 01/12/20	ALABAMA	L 48-75	2833
Field goal pct	.330	.532	* 01/19/20	at Georgia	L 50-61	4888
3 POINT FG-ATT	27-116	38-99	1 = Gulf Coast Showcase (Estero, Fla.)			
3-point FG pct	.233	.384	* = Conference game			
3-pt FG made per game	5.4	7.6				
FREE THROWS-ATT	55-79	48-65				
Free throw pct	.696	.738				
F-Throws made per game	11.0	9.6				
REBOUNDS	167	185				
Rebounds per game	33.4	37.0				
Rebounding margin	-3.6	-				
ASSISTS	54	87				
Assists per game	10.8	17.4				
TURNOVERS	92	99				
Turnovers per game	18.4	19.8				
Turnover margin	+1.4	-				
Assist/turnover ratio	0.6	0.9				
STEALS	64	54				
Steals per game	12.8	10.8				
BLOCKS	7	18				
Blocks per game	1.4	3.6				
ATTENDANCE	6156	7143				
Home games-Avg/Game	3-2052	2-3572				
Neutral site-Avg/Game	-	0-0				

Score by Periods	1st	2nd	3rd	4th	Totals
Auburn	70	61	68	87	286
Opponents	96	95	112	79	382



Daisa Alexander
Senior • G • 5-8
Decatur, Ga.
Southwest DeKalb HS



Robyn Benton
Sophomore • G • 5-9
Atlanta, Ga.
Greater Atlanta Christian School



Sania Wells
Freshman • G • 5-7
Moss Point, Miss.
East Central HS



Annie Hughes
Freshman • G • 5-9
Dutton, Ala.
Pisgah HS



Brooke Moore
Sophomore • G • 5-7
Atlanta, Ga.
Henry County HS



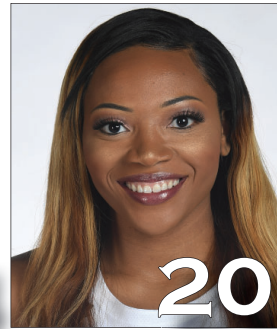
Kiyae' White
RS Sophomore • F • 6-2
Macungie, Pa.
Emmaus HS



Lauren Hansen
Freshman • G • 5-8
Long Island, N.Y.
Ward Melville HS



Jala Jordan
Sophomore • F • 6-2
Philadelphia, Pa.
West Virginia



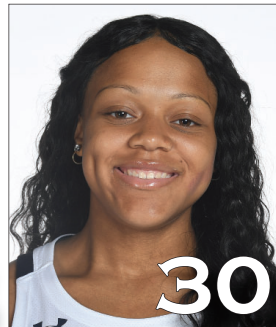
Unique Thompson
Junior • F • 6-3
Theodore, Ala.
Faith Academy



Honesty Scott-Grayson
Sophomore • G • 5-9
Brick, N.J.
Baylor



Erin Howard
Sophomore • G/F • 6-1
Madison, Wis.
Madison East HS



Morgan Robinson-Nwagwu
Freshman • G • 5-8
Norcross, Ga.
Norcross HS



Natalie Kelly
Freshman • F • 6-3
Albany, La.
Albany HS



Terri Williams-Flournoy
Head Coach
Penn State (1991)
Eighth Season



Ty Evans
Associate Head Coach
Wisconsin-Whitewater (1995)
Eighth Season



Clarisse Garcia
Assistant Coach
Villanova (2007)
Fourth Season



La'Keshia Frett Meredith
Assistant Coach
Georgia (1997)
First Season