



2013-14 Auburn Women's Basketball

Game 22 • February 2, 2014 • 2 p.m. CT

Fayetteville, Ark. (Bud Walton Arena)

18 NCAA Tournament Appearances • Three Final Fours • Four WNIT Appearances • Five SEC Titles • Four SEC Tournament Titles

AUBURN ATHLETICS COMMUNICATIONS

Interim WBB Contact: Cassie Arner • carner@auburn.edu
 Auburn Athletic Complex / 392 South Donahue / Auburn, AL 36849
 O: 334.844.9800 • C: 334.750.0502 • F: 334.844.9807
www.AuburnTigers.com
 Twitter: @AuburnWBB • Facebook: [facebook.com/AUWBB](https://www.facebook.com/AUWBB)

2013-14 Schedule/Results

NOVEMBER

9	Georgia Southern	W, 69-59
13	Jacksonville State	W, 66-49
16	at Temple	L, 74-78
19	at Alabama A&M	W, 77-49
24	at Tennessee-Chattanooga	L, 52-80
29	1 - vs. Ball State	W, 67-51
30	1 - vs. #23/15 Iowa State	L, 57-68

DECEMBER

3	Tulane	W, 62-52
6	2 - St. John's	W, 69-55
15	Florida A&M	W, 92-55
18	Presbyterian	W, 64-27
21	3 - UCLA	W, 66-60
22	3 - at Minnesota	L, 54-67

JANUARY

5	at Mississippi State*	W, 82-74
9	Vanderbilt*	L, 65-74
12	#10/11 S. Carolina* [SportSouth]	L, 66-72
16	at Alabama*	W, 61-39
19	#10/12 Kentucky* [SEC TV]	L, 71-73
23	at #15/14 LSU*	L, 60-71
26	at Florida* [ESPN]	L, 69-87
30	#17/15 Texas A&M*	L, 54-71

FEBRUARY

2	at Arkansas*	2 p.m.
9	Mississippi State*	2 p.m.
13	at Vanderbilt* [CSS]	6 p.m.
16	Missouri* [SportSouth]	2 p.m.
20	at Tennessee* [CSS]	6 p.m.
23	Georgia*	2 p.m.
27	Alabama*	6 p.m.

MARCH

2	at Ole Miss*	2 p.m.
5-9	Southeastern Conference Tournament Duluth, Ga. • Arena at Gwinnett Center	
22-25	NCAA Tournament First and Second Rounds	

APRIL

29-1	NCAA Tournament Regionals
6-8	NCAA Tournament Final Four Nashville, Tenn. • Bridgestone Arena

* - SEC Game | All Times are Central
 1 - South Point Thanksgiving Shootout (Las Vegas, Nev.)
 2 - SEC/Big East Challenge (Auburn, Ala.)
 3 - Subway Classic (Minneapolis, Minn.)
 All home games played at Auburn Arena

Bold indicates home games

www.AuburnTigers.com

GAME 22

Auburn (11-10, 2-6 SEC) vs. Arkansas (15-6, 2-6 SEC)

When: Sunday, Feb. 2 • 2 p.m. CT

Where: Bud Walton Arena (19,200) • Fayetteville, Ark.

TV: None

Radio: 94.3 FM WGZZ; Andy Burcham (PBP) & Stephanie Follett (analyst)

Audio Webcast: AuburnTigers.com/AllAccess

Live Stats: AuburnTigers.com

Series: Auburn leads, 19-12 (7-7 in Fayetteville)

Last Meeting: Auburn def. Arkansas, 50-47, in Auburn

Last Meeting in Fayetteville: Arkansas def. Auburn 59-39 on Jan. 15, 2012

Up Next: Auburn will return home to face Mississippi State on Sunday, Feb. 2 at 2 p.m. in Auburn Arena



VS.



AUBURN PROJECTED STARTERS (11-9, 2-5 SEC)

No.	Pos.	Name	Ht.	Year	PPG	RPG	Hometown
00	G	Hasina Muhammad	6-1	Jr.	11.7	5.1	Memphis, Tenn.
1	G	Meagan Tucker	5-8	Fr.	4.5	(avg) 2.3	Covington, Ga.
10	G	Brandy Montgomery	5-10	Fr.	11.8	4.0	Port St. Lucie, Fla.
32	G/F	Tyrese Tanner	6-1	Sr.	16.2	6.4	Birmingham, Ala.
44	F	Tra' Cee Tanner	6-3	So.	10.4	6.2	Birmingham, Ala.

OFF THE BENCH

3	G	Allina Starr	5-10	Fr.	1.3	(avg) 2.8	Minneapolis, Minn.
12	G	Keonna Farmer	6-1	Fr.	0.9	0.9	Birmingham, Ala.
13	G	Katie Frerking	6-1	Fr.	5.3	2.4	Johns Creek, Ga.
21	F	Melinda Brimfield	6-0	Jr.	0.5	1.0	Norway, S.C.
22	G	Kiani Parker	5-9	Jr.	2.8	(avg) 2.9	Ft. Walton Beach, Fla.
34	C	Peyton Davis	6-5	Sr.	7.3	5.0	Pinson, Ala.
35	F	Cabriana Capers	6-1	So.	1.4	3.0	Bolingbrook, Ill.
40	G	Khady Dieng	5-10	Fr.	1.7	1.4	Dakar, Senegal

Head Coach: Terri Williams-Flournoy / Assistant Coaches: Ty Evans, Caroline McCombs and Adrian Walters

ARKANSAS PROJECTED STARTERS (15-6, 2-6 SEC)

No.	Pos.	Name	Ht.	Year	PPG	RPG	Hometown
00	F	Jessica Jackson	6-3	Fr.	16.7	5.8	Jacksonville, Ark.
1	F	Keira Park	5-9	Sr.	10.5	4.6	Clyatville, Ga.
3	G	McKenzie Adams	5-9	Fr.	9.6	2.2	Frisco, Texas
11	PG	Calli Berna	5-10	Jr.	7.0	4.3	Fayetteville, Ark.
42	F	Jshasmin Bowen	6-1	Jr.	10.2	5.6	Wichita, Kansas

Head Coach: Tom Collen / Tari Cummings, Nicki Collen, Amber Shirey

Media Information

The Auburn athletics communications department considers its work with the media a top priority. The 2013-14 Auburn Women's Basketball Record Book has been prepared to assist the working media in their coverage of Tiger basketball. If you have not received a copy, or if you need additional information, interview or photograph requests, or have any questions, please contact the communications office at 334.844.9800.

Interview Policy: Coach Williams-Flournoy, her assistants and all women's basketball players are available for phone and personal interviews by contacting the athletics communications office. Post-game interviews will be allowed following a 10-minute cooling off period. Non-game day requests will be met based on the players class and practice schedules.

Credentials: Anyone wishing to cover an Auburn women's basketball game should contact the athletics communications office at least one day in advance in order to make arrangements.

On the Air: The Tigers can be heard live locally in Auburn on Wings 94.3 FM for the entire regular and postseasons. Andy Burcham, in his 26th season with the women's basketball program, handles play-by-play duties. Stephanie Follett joins Burcham for her second season and provides color commentary. Each game can also be heard live on the internet at www.AuburnTigers.com/AllAccess.

Weekly Live Radio Show: Starting in January, every Monday at 6 p.m. CT, Terri Williams-Flournoy will host the Coach Flo Show from the Victory Grille, located on Bent Creek Road, with Andy Burcham. Fans can listen to the show on 94.3 FM. Fans can ask their questions via Twitter @AuburnWBB.

Game-Day Services: Auburn Arena Press Row # (334) 844-1936. Statistics, rosters and game notes will be provided prior to the game in the media work room. Box scores will also be handed out during and following the game. Phones and fax machines are available in the media work room.

Photo/Video Services: The Auburn Athletics Communications office handles all photo requests. Please call 334.844.9800 with any requests. Video highlights of selected Auburn women's basketball games are available for the media. For information on how to access the FTP server, contact Steve Sain in the Auburn Media Relations office at 334.844.9809.

On the Web: The home for Auburn Athletics on the web, www.AuburnTigers.com, is your source for Auburn Women's Basketball. The website offers the most recent information and news on the Tigers. At www.AuburnTigers.com, you can also listen to each women's basketball game broadcast live and follow along on live scoring for every home game



Follow Auburn Women's Basketball on Twitter

@AuburnWBB



Become a fan of Auburn Women's Basketball on Facebook

www.Facebook.com/AUWBB

2013-14 Numerical Roster

No.	Name	Height	Position	Class	Hometown/High School
00	Hasina Muhammad	G	6-1	JR	Memphis, Tenn./Ridgeway
1	Meagan Tucker	G	5-8	FR	Covington, Ga./Alcovy
3	Allina Starr	G	5-10	FR	Minneapolis, Minn./DeLaSalle
10	Brandy Montgomery	G	5-10	FR	Port St. Lucie, Fla./Lincoln Park
12	Keonna Farmer	G/F	6-1	FR	Birmingham, Ala./Center Point
13	Katie Frerking	G/F	6-1	FR	Johns Creek, Ga./Wesleyan School
21	Melinda Brimfield	F	6-0	JR	Norway, S.C./Gulf Coast State
22	Kiani Parker	G	5-9	JR	Fort Walton Beach, Fla./NW Florida St.
32	Tyrese Tanner	G/F	6-1	SR	Birmingham, Ala./Hoover
34	Peyton Davis	C	6-5	SR	Pinson, Ala./Mortimer Jordan
35	Cabrina Capers	F	6-1	SO	Bolingbrook, Ill./Bolingbrook
40	Khady Dieng	G	6-0	FR	Dakar, Senegal/Gatewood (Ga.)
44	Tra'cee Tanner	F/C	6-3	SO	Birmingham, Ala./Hoover

2013-14 Alphabetical Roster

No.	Name	Height	Pos.	Ht.	Hometown
21	Melinda Brimfield	F	6-0	JR	Norway, S.C./Gulf Coast State
35	Cabrina Capers	F	6-1	SO	Bolingbrook, Ill./Bolingbrook
34	Peyton Davis	C	6-5	SR	Pinson, Ala./Mortimer Jordan
40	Khady Dieng	G	6-0	FR	Dakar, Senegal/Gatewood (Ga.)
12	Keonna Farmer	G/F	6-1	FR	Birmingham, Ala./Center Point
13	Katie Frerking	G/F	6-1	FR	Johns Creek, Ga./Wesleyan School
10	Brandy Montgomery	G	5-10	FR	Port St. Lucie, Fla./Lincoln Park
00	Hasina Muhammad	G	6-1	JR	Memphis, Tenn./Ridgeway
22	Kiani Parker	G	5-9	JR	Fort Walton Beach, Fla./NW Florida St.
3	Allina Starr	G	5-10	FR	Minneapolis, Minn./DeLaSalle
44	Tra'cee Tanner	F/C	6-3	SO	Birmingham, Ala./Hoover
32	Tyrese Tanner	G/F	6-1	SR	Birmingham, Ala./Hoover
1	Meagan Tucker	G	5-8	FR	Covington, Ga./Alcovy

STAFF:

- Head Coach:** Terri Williams-Flournoy (Penn State, 1991)
- Assistant Coach:** Ty Evans (Wisconsin-Whitewater, 1995)
- Assistant Coach:** Caroline McCombs (Youngstown State, 1998)
- Assistant Coach:** Adrian Walters (St. Francis (Pa.), 1987)
- Director of Basketball Operations:** Nikki Stewart (Tennessee, 2002)
- Director of Basketball Services:** Sherill Baker (Georgia, 2006)
- Special Assistant to the Head Coach:** Stephanie Follett (Maine, 1996)
- Administrative Graduate Assistant:** Kari Koch (Missouri State, 2006)
- Athletic Trainer:** Cindy Campbell (South Alabama, 2005)

BY CLASS:

- Seniors (2):** Peyton Davis, Tyrese Tanner
- Juniors (3):** Melinda Brimfield, Hasina Muhammad, Kiani Parker
- Sophomores (2):** Cabriana Capers, Tra'cee Tanner
- Freshmen (6):** Khady Dieng, Keonna Farmer, Katie Frerking, Brandy Montgomery, Allina Starr, Meagan Tucker

Pronunciation:

- Cabrina Capers - Kay-bree-ah-nuh
- Khady Dieng - Katie Dee-Ang
- Keonna Farmer - Kee-on-ah
- Kiani Parker - Kee-ah-knee
- Allina Starr - AL-lee-nah
- Tra' Cee Tanner - Tracy
- Tyrese Tanner - Tie-reese
- Terri Williams-Flournoy - Flah-nyo

Projected Auburn Starters



Hasina Muhammad

Guard
6-1
Junior
Memphis, Tenn.
Ridgeway High School
12.3 ppg / 5.4 rpg / 2.6 spg

00

- Career Highs: 28 points, 10 rebounds, 9 steals, 6 assists, 5 blocks
- Ranks 35th all-time at Auburn with 925 career points
- Scored career-high 28 points on 11-of-19 shooting vs. St. John's
- Named Preseason All-SEC Second Team



Meagan Tucker

Guard
5-8
Freshman
Covington, Ga.
Alcovy High School
3.8 ppg / 1.2 rpg / 2.6 apg

1

- Season Highs: 10 points, 3 rebounds, 8 assists, 2 steals
- Earned her first career start at Alabama on Jan. 16
- Totaled career highs of 10 points and 2 steals at Florida
- Scored her SEC high of 6 points against Kentucky



Brandy Montgomery

Guard
5-10
Freshman
Port St. Lucie, Fla.
Lincoln Park Academy
11.7 ppg / 3.6 rpg / 1.0 spg

10

- Season Highs: 22 points, 9 rebounds, 4 assists, 3 steals
- Scored career-high 22 points at LSU
- Posted double figures in 16 of 20 games as a Tiger
- Ranks 3rd among freshmen in scoring in the SEC



Tyrese Tanner

Guard/Forward
6-1
Senior
Birmingham, Ala.
Hoover High School
16.5 ppg / 6.6 rpg / 1.8 spg

32

- Career Highs: 29 points, 13 rebounds, 6 assists, 4 blocks, 4 steals
- Scored her SEC career high of 28 points vs. Kentucky
- Now ranks 17th all-time at Auburn in career scoring
- Named to South Point Shootout & Subway Classic All-Tournament Teams



Tra'cee Tanner

Forward/Center
6-3
Sophomore
Birmingham, Ala.
Hoover High School
10.1 ppg / 6.2 rpg / 1.2 spg

44

- Career Highs: 21 points, 12 rebounds, 4 assists, 3 blocks, 6 steals
- Has scored in double figures in five of the last seven games
- Pulled down 1st double-double of the season Jan. 16 at Alabama
- Has scored in double figures in 10 games this season

Auburn Women's Basketball Quick Hitters

- Arkansas and Auburn have identical league records at 2-6, and each are coming off losses to ranked opponents. Auburn fell to No. 15/17 Texas A&M, while the Razorback loss came in a 60-70 defeat at the hands of No. 10 Tennessee in Knoxville.
- Tyrese Tanner scored her 1,000th career point at Alabama A&M on Nov. 19 and currently ranks 17th at AU in scoring
- Auburn is in its 43rd season of women's basketball and has 841 program wins, including 199 SEC wins
- The Tigers won 19 games last season, their most wins since 2009
- Junior Hasina Muhammad was named to the Preseason All-SEC Second Team
- Auburn's freshmen have led the Tigers in scoring in eight of 21 games this season
- Auburn is 19-12 all-time vs. Arkansas and 7-7 when playing the Razorbacks in Fayetteville
- This is the second meeting between AU's Terri Williams-Flournoy and Arkansas' Tom Collen. Each have won one contest.
- Auburn is looking to snap a four-game losing skid
- Auburn has won seven out of the last 10 meetings against the Razorbacks
- The Tigers are 10-9 all-time in games played in the state of Arkansas
- The Tigers are 7-5 all-time when playing on Feb. 2 and 158-105 all-time in the month of January
- Hasina Muhammad attempted her first career dunk against St. John's... she missed
- The Tigers held Presbyterian to 27 points on Dec. 18, the fewest points allowed in nine years
- Auburn scored a season-high 92 points on Dec. 15 vs. Florida A&M, the second-most in the Coach Flo Era
- Auburn has forced nine 10-second backcourt violations this season
- The Tigers are 3-5 on the road this season, but 2-2 in SEC games
- Senior Peyton Davis earned her degree from Auburn on Aug. 3, 2013
- Tyrese Tanner has led Auburn in scoring each of the last two seasons and is one of just eight Auburn players ever to lead the team in scoring in back-to-back seasons
- The Tigers played a tough non-conference schedule this season, playing eight postseason teams from last year
- For the third time ever, Auburn's roster features a set of sisters in Tyrese and Tra'cee Tanner
- Auburn's roster features eight newcomers this season - six freshmen and two junior college transfers
- The Tigers will be televised in six games this season on SportSouth, CSS, ESPNU and SEC TV
- Auburn will recognize its Final Four teams from 1988, 1989 and 1990 at the Feb. 16 game vs. Missouri
- AU was picked 8th in the preseason SEC polls by both the media and the coaches
- The Tigers have advanced to the postseason 22 times in program history and in five of the last seven seasons
- Four former Tigers (Blanche Alverson, DeWanna Bonner, Chantel Hilliard & Najat Ouardad) are playing overseas

Moving On Up (Auburn Players in the Career Rankings) . . .

- **Tyrese Tanner** is 17th all-time at Auburn in career scoring with 1,277 points, she is 29 points from tying C.C. Hayden (1,306) for 16th all-time at Auburn in career scoring
- **Tyrese Tanner** is 1 rebound away from passing Ruthie Bolton (490) for 26th all-time in career rebounding and six away from tying Samantha Williams at No. 25 (496).
- **Tyrese Tanner** is 19 steals away from breaking into Auburn's top-10 list
- **Tyrese Tanner** is 6 blocks away from breaking into Auburn's top-10 list
- **Hasina Muhammad** is 46 points away from breaking into Auburn's top-30 scoring list
- **Hasina Muhammad** is 112 rebounds away from breaking into Auburn's top-30 list
- **Hasina Muhammad** is 25 steals away from breaking into Auburn's top-10 list
- **Hasina Muhammad** is 5 blocks away from breaking into Auburn's top-10 list

AUBURN WOMEN'S BASKETBALL WEEKLY SCHEDULE

	Monday 3	Tuesday 4	Wednesday 5	Thursday 6	Friday 7	Saturday 8	Sunday 9
Feb. 3 through Feb. 9	TBA	Practice TBA Auburn Arena	Practice TBA Auburn Arena	Practice TBA Auburn Arena	Practice TBA Auburn Arena	Practice TBA Auburn Arena	Auburn vs. Mississippi State 2 p.m. Auburn Arena Auburn, Ala.

General Information

School..... Auburn University
 City / Zip..... Auburn, Ala. / 36831
 Founded..... Oct. 1, 1856
 Enrollment..... 25,134
 Nickname..... Tigers
 Colors..... Burnt Orange and Navy Blue
 Home Court (Capacity)..... Auburn Arena (9,121)
 Affiliation..... NCAA Division I
 Conference..... Southeastern Conference
 President..... Dr. Jay Gogue
 Athletic Director..... Jay Jacobs
 Senior Women's Administrator..... Meredith Jenkins
 University Website..... www.Auburn.edu

Team Information

2012-13 Overall Record..... 19-15 (.559)
 2013-13 SEC Record..... 5-11 (.313)
 All-Time SEC Record..... 199-186 (.517)
 SEC Tournament Record..... 34-30 (.531)
 Letterwinners Returning/Lost..... 5/7
 Starters Returning/Lost..... 3/2
 Newcomers..... 8
 First Year of Basketball..... 1971
 All-Time Overall Record..... 841-405 (.675)
 All-Time Auburn Arena Record..... 37-21 (.638)
 NCAA Tournament Appearances/Last..... 18/2009
 NCAA Tournament Record..... 29-18
 WNIT Appearances/Last..... 4/2013
 WNIT Record..... 11-3

Basketball Staff

Head Coach..... Terri Williams-Flournoy (Penn State, 1991)
 Career Record..... 173-129 (.573) / 10th season
 Record at Auburn..... 30-25 (.545) / 2nd season
 Assistant Coaches (Alma Mater).....
 Ty Evans (Wisconsin-Whitewater, 1995)
 Caroline McCombs (Youngstown State, 1998)
 Adrian Walters (St. Francis (Pa.), 1987)
 Director of Basketball Operations..... Nikki Stewart
 Director of Basketball Services..... Sherill Baker
 Special Assistant to the Head Coach..... Stephanie Follett
 Administrative Graduate Assistant..... Kari Koch
 Secretary..... Vicki Coleman
 Basketball Office Phone..... (334) 844-9200
 Basketball Office Fax..... (334) 844-9862
 Athletic Trainer..... Cindy Campbell
 Strength and Conditioning..... Megan Young
 Academic Counselor..... Garon Rowland

Radio Broadcast Information

Radio Station..... WGZZ (94.3 FM)
 Play-by-Play..... Andy Burcham
 Color..... Stephanie Follett
 Burcham Email..... aburcham@anetwork.com
 Burcham Office Phone..... (334) 826-2929
 Network Address..... Auburn Network, Inc.
 P.O. Box 950
 Auburn, AL 36831-0950

ARKANSAS MEDIA RELATIONS

For information on the Arkansas Razorbacks' women's basketball team, contact Jeri Thorpe in the media relations office. Her number is 479-575-5037 (O), 479-283-3344 (C) and her email is jthorpe@uark.edu.

OFFICIALS

Denise Brooks (R), Luis Gonzalez (U1) and Pualani Spurlock (U2)

RANKINGS

Both teams are unranked heading into Sunday's contest.

NEXT UP FOR THE TIGERS

Auburn will return home on Sunday, Feb. 9 to take on the Mississippi State Bulldogs at 2 p.m. at Auburn Arena.

QUICK HITS

Auburn is in its 43rd season of women's basketball and sports an all-time record of 841-405... AU has made 18 NCAA Tournament appearances, four WNIT appearances and three Final Fours in the program's history... Head Coach Terri Williams-Flournoy is in her second season at Auburn... She has a 173-129 record as a head coach... AU advanced to the 2013 WNIT Quarterfinals... The Tigers are coming off a 19-15 season in 2012-13.

800 AND COUNTING

Auburn picked up its 800th program victory in 2011, becoming the 14th team in NCAA history to reach the 800-win plateau.

TURNAROUND TIGERS

Winning 19 games last year, Auburn had its most wins in a season since winning 30 in the 2008-09 season. The 19 wins were also a 6-win improvement over the previous season.

HASINA MUHAMMAD EARNS ALL-SEC HONORS

Auburn junior Hasina Muhammad was named to the Preseason All-SEC Second Team by the league's coaches. Muhammad averaged 14.0 points and 5.1 rebounds

per game last season.

1,000-POINT CLUB

With her 19 points at Alabama A&M, senior Tyrese Tanner became the 28th Auburn player ever to score 1,000 career points. She currently ranks 17th all-time at Auburn with 1,262 points.

AGAINST THE SEC

Auburn has a 199-186 all-time record in the Southeastern Conference. The Tigers have won five SEC titles and four SEC Tournament titles, most recently winning the regular-season title in 2009 after a 14-2 league mark.

AUBURN-ARKANSAS SERIES

This will be the 32nd meeting between Auburn and Arkansas with the Tigers leading the series, 19-12. This will mark the 14th game played between the two teams in Fayetteville.

Previous meetings against Arkansas:

Arkansas (19-12)

Nov. 24, 1984	W	70-65	Sanford, Fla. (37)
Dec. 14, 1989	W	84-69	Fayetteville, Ark.
Jan. 11, 1992	L	56-67	Fayetteville, Ark.
Jan. 9, 1993	W	68-49	Auburn
Jan. 22, 1994	W	66-57	Fayetteville, Ark.
Jan. 22, 1995	L	73-80	Auburn
Feb. 20, 1996	L	72-73 (OT)	Fayetteville, Ark.
Feb. 9, 1997	W	85-77	Auburn
Feb. 8, 1998	L	63-71	Fayetteville, Ark.
Feb. 26, 1998	L	43-59	Columbus, Ga.*
Feb. 7, 1999	W	66-46	Auburn
Feb. 17, 2000	W	73-56	Auburn
Feb. 24, 2000	W	71-58	Fayetteville, Ark.
Jan. 28, 2001	L	68-77	Fayetteville, Ark.
Feb. 22, 2001	W	68-60	Auburn
Feb. 17, 2002	L	65-88	Fayetteville, Ark.
Jan. 26, 2003	W	64-36	Auburn
Jan. 25, 2004	W	71-44	Fayetteville, Ark.
Feb. 3, 2005	W	62-51	Auburn
Jan. 12, 2006	L	60-64	Fayetteville, Ark.
Jan. 14, 2007	L	62-65	Auburn
Feb. 10, 2008	W	73-68	Fayetteville, Ark.
Mar. 2, 2008	W	74-57	Auburn
Mar. 6, 2008	W	73-51	Nashville, Tenn.*
Jan. 18, 2009	W	70-61	Fayetteville, Ark.

2013-14 SEC STANDINGS (As of Jan. 31, 2014)

	SEC	Pct.	Overall	Pct.
Texas A&M	7-1	.875	17-5	.772
South Carolina	7-1	.875	19-2	.904
LSU	6-2	.750	17-4	.809
Tennessee	6-2	.750	17-4	.809
Florida	5-3	.625	15-6	.714
Vanderbilt	5-3	.625	16-5	.761
Kentucky	4-4	.500	16-5	.761
Alabama	3-5	.375	10-11	.476
Georgia	3-5	.375	15-6	.714
Missouri	3-5	.375	14-7	.667
Arkansas	2-6	.250	15-6	.714
Auburn	2-6	.250	11-10	.523
Mississippi State	2-6	.250	15-7	.681
Ole Miss	1-7	.125	10-12	.454

This Week in the SEC

Thursday, Jan. 30

Texas A&M 71, Auburn 54
 Georgia 58, Kentucky 56
 Missouri 59, Vanderbilt 54
 Florida 75, Alabama 67
 Tennessee 70, Arkansas 60
 South Carolina 99, Ole Miss 70

Sunday, Feb. 2

LSU at Kentucky 11 a.m. (SPSO)
 Texas A&M at Vanderbilt 1 p.m. (SPSO)
 Florida at Ole Miss 1 p.m. (SEC TV)
 Missouri at South Carolina 2 p.m.
 Auburn at Arkansas 2 p.m.
 Georgia at Mississippi State 2 p.m. (CSS)
 Tennessee at Alabama 3:30 p.m. (ESPNU)

All times Central

March 1, 2009	W	94-57	Auburn
Feb. 11, 2010	L	58-73	Auburn
Feb. 13, 2011	W	64-59	Fayetteville, Ark.
Jan. 15, 2012	L	39-59	Fayetteville, Ark.
Feb. 12, 2012	L	48-51	Auburn
Jan. 6, 2013	W	50-47	Auburn

SCOUTING AUBURN

The Auburn women's basketball team, under direction of second-year head coach Terri Williams-Flournoy, returned five letterwinners and three starters from last season's team that went 19-15 (5-11 SEC) and advanced to the quarterfinals of the WNIT. AU brings in eight newcomers for the 2013-14 season.

Auburn is 11-10 on the season and 2-6 in SEC play. Four Tigers are averaging double figures, led by Tyrese Tanner with 16.2 per game and Hasina Muhammad with 11.7. Freshman Brandy Montgomery averages 11.8 per game while sophomore Tra'cee Tanner adds 10.4 points and 6.2 rebounds per game. Tyrese Tanner pulls down a team-high 6.4 boards per game.

The Auburn defense is averaging forcing 21.0 turnovers per game while tallying 10.1 steals per game.

SCOUTING ARKANSAS

Arkansas fell 70-60 on the road at No. 10 Tennessee on Thursday at Thompson-Boling Arena. The Razorbacks are 15-6 overall and 2-6 in SEC play.

Against Tennessee, Jessica Jackson led the Razorbacks with 16 points, while three other Arkansas player registered double-digit points in the loss.

Jackson leads the club averaging 16.7 points per game and also leads the club with 5.8 rebounds per game. Keira Peak (10.5 ppg) and Jhasmin Bowen (10.2 ppg) are the other two Razorbacks that average scoring in doubles-figures.

WILLIAMS-FLOURNOY VS. COLLEN

This will be the second meeting between Auburn's Terri Williams-Flournoy and Arkansas' Tom Collen. Williams-Flournoy leads 1-0.

Williams-Flournoy is in her second year at Auburn and has a 30-25 record on The Plains and a 173-129 career record. Collen is in his seventh season at Arkansas and holds a 128-8 record. In his 16th season overall, Collen holds a 345-154 career record.

LAST TIME OUT FOR AUBURN

Auburn came out firing in the second half facing a 16-point deficit, but it was not enough as No. 17 Texas A&M defeated the Tigers 71-54 at Auburn Arena.

The Tigers forced 27 turnovers against the

Aggies, but Texas A&M's early 14-3 run over the game's first six minutes was too much. Auburn clawed back to cut the deficit down to 47-39 midway through second half, but another run by the Aggies put the game out of reach.

Despite playing in foul trouble throughout the night, Tyrese Tanner led the Tigers with 15 points. Tra'cee Tanner chipped in 11 points and posted five rebounds, while Brandy Montgomery led the Tigers with six board and recorded eight points, hitting both of Auburn's three's on the night.

LAST TIME OUT FOR ARKANSAS

No. 10 Tennessee shot 62 percent from the field against Arkansas as the Lady Vols downed the Razorbacks 72-62 in Knoxville on Thursday.

Four Razorbacks scored in double figures as Arkansas finished shooting 44 percent from the field on the night. The Razorbacks stormed out to early lead behind hot shooting in the first half, but the Lady Vols hit four crucial shots from beyond the arc to put the game away in the second half.

LAST TIME VS. ARKANSAS (Jan. 3, 2013)

The Auburn women's basketball team fought until the final seconds ticked off to down No. 23 Arkansas, 50-47, on Jan. 3, last season. The win was a first for Auburn in many ways. It marked Williams-Flournoy's first career SEC victory as a head coach, and it was also the Tigers' first win over a ranked opponent since beating No. 22 Georgia on Feb. 24, 2011.

Tyrese Tanner led Auburn in scoring with 15 points, while Hasina Muhammad added 13. Peyton Davis had a career night on the boards, grabbing 17 rebounds and besting her previous career high by six.

It proved to be a defensive battle for much of the game as neither team was able to get much going offensively. Auburn finished at just 32.8 percent shooting on the night, while Arkansas was held to 16-of-58 from the floor (.276).

CAREER VS. ARKANSAS

Five current Tigers have faced Arkansas in the past. Tyrese Tanner has scored 45 points and pulled down 18 rebounds on the Razorbacks in four games, while Hasina Muhammad has 17 points and 14 boards in two contests.

IN FEBRUARY

Auburn is 158-105 all-time in the month of February (records begin in 1978-79 season, not all dates provided prior to or during that season). Head coach Terri Williams-Flournoy is 2-5 at Auburn in

Associated Press Top-25 Poll
Week 13 (Jan. 27)

Rank	School	Record	Points	Pvs
1	Connecticut (36)	21-0	900	1
2	Notre Dame	18-0	852	2
3	Duke	20-1	819	3
4	Stanford	18-1	811	4
5	Louisville	20-1	758	5
6	North Carolina	17-3	688	7
7	South Carolina	18-2	656	10
8	Maryland	16-2	638	6
9	Baylor	16-3	617	12
10	Tennessee	16-4	565	11
11	Oklahoma State	17-2	550	8
12	Penn State	15-4	485	13
13	Kentucky	16-4	471	9
14	LSU	16-4	397	15
15	Arizona State	17-3	389	14
16	Vanderbilt	16-4	351	16
17	Texas A&M	16-5	302	17
18	North Carolina State	18-3	261	23
19	Purdue	14-5	234	22
20	West Virginia	17-3	219	18
21	California	14-5	140	19
22	Gonzaga	18-3	123	25
23	Florida State	15-5	102	24
23	Iowa State	15-4	102	20
25	Middle Tennessee	17-3	84	NR

Others Receiving Votes: Nebraska 63, Rutgers 27, Michigan State 23, USC 18, St. John's 14, San Diego 7, Oklahoma 6, Syracuse 6, Wichita State 5, St. Joseph's 4, Bowling Green 3, Michigan 2, Chattanooga 2, DePaul 1, Iowa 2, Texas 1, Georgia Tech 1

USA Today / ESPN Top-25 Coaches Poll
Week 13 (Jan. 28)

Rank	School	Record	Points	Pvs
1	Connecticut (32)	21-0	800	1
2	Notre Dame	19-0	763	2
3	Duke	20-1	725	3
4	Stanford	19-1	717	4
5	Louisville	20-1	675	5
6	North Carolina	17-3	613	7
7	Baylor	16-3	576	10
8	South Carolina	18-2	561	11
9	Maryland	16-3	540	6
10	Tennessee	16-4	505	12
11	Oklahoma State	17-2	470	9
12	Kentucky	16-4	449	8
13	Penn State	15-4	433	13
14	LSU	16-4	387	14
15	Texas A&M	16-5	281	15
16	Purdue	15-5	261	20
17	Gonzaga	18-3	214	22
18	Vanderbilt	16-4	205	19
19	California	14-5	204	16
20	Arizona State	17-3	187	23
21	Iowa State	15-4	182	17
22	North Carolina State	18-3	157	24
23	Nebraska	13-5	142	18
24	West Virginia	17-3	137	21
25	Florida State	15-5	62	25

Others Receiving Votes: Middle Tennessee (17-3) 40, San Diego State (18-2) 22, Wichita State (16-2) 22, Oklahoma (13-7) 17, Syracuse (15-5) 13, Marist (15-5) 10, DePaul (15-5) 8, Dayton (12-5) 7, Michigan State (13-7) 6, Texas (13-6) 4, BYU (16-4) 2, Georgia (14-6) 2, Colorado (12-7) 1.

Bold denotes 2013-14 opponents

February.

HOME SWEET HOME

Auburn is 6-4 when playing at home this season and is 21-8 at Auburn Arena in the Coach Flo Era. Overall, the Tigers are 37-21 in their home facility.

10-10 DEFENSE

At Alabama on Jan. 16, the Auburn defense totaled 10 steals and 10 blocked shots in the game. It was the first time for Auburn's defense to reach double figures in both categories since picking up 10 blocks and 15 steals at George Washington on Dec. 12, 2012.

IN THE NATIONAL RANKINGS

In the Jan. 26 NCAA statistical rankings, Auburn is ranked in the top 100 in four categories and the top 50 in rebound margin (37th, 7.2).

SHUTDOWN DEFENSE

In the 19 games this season, Auburn held its opponent to 20 or fewer points in a half four times. The Tiger defense flexed against Presbyterian as Auburn held the Blue Hose to season-lows of 15 points in the first half and 12 in the second half. Presbyterian scored 27 points in the game, the fewest allowed by Auburn since a 76-27 win over New Orleans on Dec. 9, 2004.

EXCLUSIVE CLUB

Senior Tyrese Tanner has flourished under Coach Terri Williams-Flournoy, becoming a force on both ends of the court the last two years. Her all-around game is close to putting her in exclusive company in the Auburn record books

She is close to reaching a rare feat as she is on pace to becoming just the fifth Auburn player ever with 1,000 points, 500 rebounds, 100 assists, 100 steals and 50 blocks. Entering the Florida game, she has 1,277 points, 490 rebounds, 14 assists, 160 steals and 107 blocks - just 11 rebounds from the mark. The only other players to accomplish the feat are DeWanna Bonner (2005-09), Brenda Hill (1982-85), Lori Monroe (1979-83) and Blanche Alverson (2009-13).

TOP FROSH

Freshman Brandy Montgomery has established herself in the Auburn starting lineup and has been a consistent presence for the Tigers. The native of Port St. Lucie, Fla., has scored in double figures in 16 of the 20 games she has played in with a season-high of 22 points against LSU.

She is currently second on the team with 11.8 points per game and also ranks third among freshmen in the SEC.

Her 22 points are the most for an Auburn freshman since Tra'Cee Tanner scored 21 points last season against Jacksonville. They are the most against an SEC opponent since Hasina Muhammad scored 20 against Florida in the 2012 SEC Tournament and are the most in an SEC game since KeKe Carrier scored 26 at Georgia on Feb. 26, 2006.

MOVING ON UP

Senior Tyrese Tanner and junior Hasina Muhammad are making their way up the Auburn career scoring rankings. Tanner currently ranks 17th with 1,277 points while Muhammad is 35th with 925.

Career Scoring

Rk	Player	Years	Points
1	DeWanna Bonner	05-09	2,162
16	C. C. Hayden	89-92	1,306
17	Tyrese Tanner	10-present	1,277
18	Conswella Sparrow	97-00	1,249
19	Blanche Alverson	09-13	1,244
20	Brenda Hill	81-85	1,222
21	M. Morehouse	92-96	1,191
22	Lauretta Freeman	89-93	1,188
23	Sharon Stewart	84-88	1,184
24	Ruthie Bolton	85-89	1,176
25	Tiffany Krantz	96-00	1,136
26	Samantha Williams	92-96	1,106
27	KeKe Carrier	05-10	1,017
28	Helene Baroody	83-87	1,011
29	Tara Williams	95-97	988
30	Diann McNeil	84-88	982
31	Laticia Morris	95-97	971
32	Charlene Thomas	83-87	963
33	Whitney Boddie	05-09	951
34	Kristen Mulligan	92-96	944
35	Hasina Muhammad	11-present	925

GOING TO THE BOARD

Already one of Auburn's top scorers all-time, Tyrese Tanner is also moving up AU's all-time rebounding list. She currently ranks 27th with 489 rebounds.

Career Rebounding

Rk	Player	Years	Rebound
1	Becky Jackson	80-84	1,118
23	Conswella Sparrow	97-00	572
24	Diann McNeil	84-88	498
25	Samantha Williams	91-96	495
26	Ruthie Bolton	85-89	490
26	Tyrese Tanner	10-present	490

HISTORIC MISS

With less than two minutes left in the game vs. St. John's, freshman Brandy Montgomery picked up a steal at mid-

court and flipped it up to junior Hasina Muhammad. On the break, Muhammad decided to do what no Auburn women's basketball player has done before - attempt a slam dunk. She missed. The ball came off the back of the rim, but Muhammad put an exclamation point on the Tigers' big win over the Red Storm.

SPREADING THE WEALTH

Three times this season, Auburn has put five players in double figures in a game. Against Tulane, Tyrese Tanner, Brandy Montgomery, Tra'Cee Tanner, Hasina Muhammad and Katie Frerking finished in double figures. The Tanners, Montgomery, Muhammad and Peyton Davis then accomplished the feat at Mississippi State. On the road against Florida, all five starters – Tr. Tanner, Ty Tanner, Muhammad, Tucker and Montgomery all scored in double digits.

STANDOUT CLASS

The Tigers' freshmen class has made a big impact already this season as the class has led the team in scoring in seven of 19 games. Against Jacksonville State, the freshmen accounted for 25 of the Tigers' 66 points and 38 of Auburn's 74 points at Temple. The freshmen scored 18 of AU's 52 points at Tennessee-Chattanooga, 19 of 68 points vs. Ball State and 23 of 62 points vs. Tulane. In SEC games, the freshmen have outscored the other classes in three of the seven games thus far.

BACKCOURT

Auburn's defense made team history in the season-opener as the Tigers forced a 10-second backcourt violation on Georgia Southern at the 10:24 mark of the second half. This is the first year for the 10-second backcourt rule in women's college basketball.

The Tigers have now forced nine 10-second backcourt violations this season, including three on three-straight possessions against Presbyterian.

10-Second Backcourt Violations Forced

Opponent	Half	Time
Georgia Southern	2nd	10:24
Florida A&M	1st	6:35
Florida A&M	2nd	11:30
Presbyterian	1st	19:32
Presbyterian	2nd	14:02
Presbyterian	2nd	13:35
Presbyterian	2nd	13:19
UCLA	1st	1:47
Kentucky	2nd	4:53

DOUBLE DOWN

Senior Peyton Davis became the first

Tiger this season to notch a double-double, doing so with 15 points and 11 rebounds against Georgia Southern. She picked up another at Alabama A&M with a career-high 17 points and 12 rebounds. Tyrese Tanner also tallied a double-double with 19 points and 10 rebounds.

It marked the first time since March 6, 2009 vs. Ole Miss in the SEC Tournament for a pair of Tigers to get a double-double in the same game. DeWanna Bonner (32 points/13 rebounds) and Whitney Boddie (15 points/10 assists) were the last to do it for the Tigers.

Tanner has since added her second double-double of the season, scoring 17 points with 13 rebounds vs. Tulane.

At Alabama, sophomore Tra'Cee Tanner picked up her first double-double of the season and second of her career with 14 points and 10 rebounds.

SCORING WITH DEFENSE

Auburn has forced 420 turnovers in 21 games, averaging 20.0 per game. The Tigers have also scored 425 points off those turnovers, averaging 20.2 points off turnovers per game. Against Ball State, the Tigers scored 39 points off turnovers - the most in a game in the Coach Flo Era.

KEEPING SCORE

Against Alabama on Jan. 16, Auburn forced 21 turnovers while the Crimson Tide made 13 field goals. It marked the 10th time this season and the 28th time in the Coach Flo Era that an Auburn opponent has committed more turnovers than made field goals.

On the season, Auburn opponents have 393 turnovers on 409 made field goals.

CLUB PRESS

Auburn's high-pressure, full-court defense under coach Terri Williams-Flournoy, referred to by the players as "Club Press," ranked as one of the best ever at Auburn last year. Auburn's 402 steals set a new school record for a single season while the 701 turnovers forced went down as second all-time on The Plains.

Auburn has forced 25 or more turnovers in a game 107 times since 1987, including 14 times in the Coach Flo Era (four times this season). The Tigers have also tallied 15 or more steals in a game on 99 occasions since 1987, doing so 12 times under Coach Flo.

OFFENSIVE EXPLOSION

Auburn's 92-point output against Florida A&M was the highest scoring game for the Tigers this season and the second-most points scored in the Coach Flo Era.

Quoting Coach Flo

On the improvement of Auburn's young players ...

The reason why it is so hard is you are trying to change habits. Even as grown ups there are certain habits we have that we want to change, but it is hard. You hope to see some improvement from preseason to non-conference. So with freshmen, when you see a little bit of improvement, you jump for joy.

Usually you can get by on your talent in high school, especially when you are the best player on the team. The toughest part for us is because we are a defensive team. They've never been pushed the way we are pushing them. It really takes about a year to figure out how we want to play and get out there and see it in action, see it work.

On rebounding from loss ...

I thought they really got after it in practice. Tyrese Tanner has really tried to grab them and get them to understand that we are better than what we are showing. That we have to give better effort. I go round and round, but it means more when it comes from your teammate. For Ty, she understands this is her last season, there is no tomorrow, there is no next season. She needs to get those young ones to rally around her and back her up.

On positives from Texas A&M game ...

You look at 27 turnovers, that was a positive. We just need to get more scoring off those turnovers (Texas A&M) Coach Gary Blair said he didn't know the last time they turned the ball over 27 times and won the game. I can't remember the last time we forced 27 turnovers and lost the game. I actually thought we did a really good job of staying in the press. We showed them on film that they could've stayed in it a little bit longer and continued to stay aggressive.

On Arkansas ...

They have a steady point guard, she runs the team. She is one of the most athletic point guards in the league. They've got a great freshman post player in Jessica Jackson. It's going to be a tough game, and it's at Arkansas, a tough place to play. Arkansas if you look at their scores, they have been right there. They haven't lost by a lot, they haven't been blown out. They have a lot of different players out there from last year. I think they are still trying to figure out which five play best together, and I think he's found a good group right now.

The Southeastern Conference

Commissioner: Mike Slive
Founded: 1933
Members:
 Alabama Crimson Tide
 Arkansas Lady Razorbacks
 Auburn Tigers
 Florida Gators
 Georgia Bulldogs
 Kentucky Wildcats
 LSU Tigers
 Mississippi Rebels
 Mississippi State Bulldogs
 Missouri Tigers
 South Carolina Gamecocks
 Tennessee Lady Volunteers
 Texas A&M Aggies
 Vanderbilt Commodores

SEC Media Relations

Women's Basketball Contact: Tammy Wilson
Address:
 2201 Richard Arrington Blvd.
 Birmingham, Ala. 35203-1103
Phone: 205.458.3000
Fax: 205.458.3031
E-mail: twilson@sec.org
Web site: www.SECsports.com

SEC Women's Basketball Notes

- The SEC has posted impressive non-conference records in the last decade. The SEC compiled a 166-52 (.765) non-conference record last season.
- Since the 1990 season, the SEC has compiled a 3295-983 (.770) record against other conferences. The league has recorded 150+ wins during nine seasons & has never recorded a non-conference winning percentage below .723.
- SEC teams have earned appearances in 25 of 32 NCAA Final Fours, an accomplishment unmatched by any other league.
- Overall, SEC squads have filled 34 of the 128 Final Four berths, including having two Final Four teams in 1988 (Auburn, Tennessee), 1989 (Auburn, Tennessee), 1995 (Georgia, Tennessee), 1996 (Georgia, Tennessee), 1998 (Arkansas, Tennessee), 2004 (LSU, Tennessee), 2005 (LSU, Tennessee), 2007 (LSU, Tennessee) and 2008 (LSU, Tennessee).
- SEC teams have made 18 appearances in a nation-high 16 NCAA Championship games, winning eight NCAA Championships (Tennessee: 1987, 1989, 1991, 1996, 1997, 1998, 2007 and 2008).
- The league also had the distinction of providing both national finalists twice in its history in 1996 (Tennessee 83, Georgia 65) and in 1989 (Tennessee 76, Auburn 60).
- SEC teams have won 361 NCAA Tournament games against 187 losses (.659) for an average of 11.3 NCAA wins per year.
- In addition, all 14 current members have appeared in the NCAA Tournament.
- The SEC has paced the pack in NCAA tournament bids 22 times in its 32-year history.
- The SEC was the first league to ever have eight teams invited to the NCAA Tournament, doing so in 1999, 2002 and 2012.
- The SEC was also the first league to ever have seven teams invited to the NCAA Tournament and earned this honor a leading nine times (1986, 1991, 1995, 1996, 1997, 2003, 2004, 2007 & 2013).
- The SEC is one of a handful of leagues to have won three national tournament titles with eight NCAA, two WNIT and three NWIT. Along with the eight NCAA championships won by Tennessee, Arkansas (1999) and Auburn (2003) captured the current Women's NIT titles. But the first-ever SEC national title belongs to Georgia, winners of the 1981 NWIT which predates the current NCAA tournament. LSU (1985) and Kentucky (1990) also won NWIT titles. Both Arkansas (1987) and South Carolina (1979) won the WNIT as members of their previous conferences.

AU used a 30-0 run midway through the second half to pull away and build its lead. The Tigers led by as many as 42 points in the game, their largest lead in any game this season.

FRESH START

With her start against Georgia Southern in the season-opener, Katie Frerking became the fifth freshman in the last 10 years at Auburn to start in their first game as a Tiger. Others that have started their first game as a true freshman are Sherell Hobbs (2005), DeWanna Bonner (2005), Morgan Jennings (2008) and Hasina Muhammad (2011).

TANDEM FROSH

With Katie Frerking and Brandy Montgomery in the starting lineup against Jacksonville State, it was the first time for Auburn to start two freshmen since Tyrese Tanner and Courtney Strain started against Seton Hall in the Bahamas on Nov. 27, 2010, an 85-51 win.

FIRST OUTING

Freshman Brandy Montgomery made her first collegiate appearance and start against Jacksonville State, logging 15 points along the way. Montgomery's 15 points were the most for an Auburn player in their collegiate debut since DeWanna Bonner (19 points) and KeKe Carrier (21 points) against Texas-Pan American on Nov. 18, 2005

TANNER & MUHAMMAD NAMED TO SUBWAY CLASSIC ALL-TOURNAMENT TEAM

For their effort against UCLA and Minnesota, Tyrese Tanner and Hasina Muhammad were each named to the Subway Classic All-Tournament Team.

Tanner averaged 19.5 points and 5.5 rebounds in the two games, including a 24-point outing against UCLA. Muhammad notched 9.5 points and 6.5 boards per game.

TANNER NAMED TO SOUTH POINT THANKSGIVING SHOOTOUT ALL-TOURNAMENT TEAM

Senior Tyrese Tanner was named to the South Point Thanksgiving Shootout All-Tournament team after leading the Tigers to a 1-1 record at the tournament. She averaged 12.5 points, 5.0 rebounds and 2.0 steals per game. She scored 14 in the win over Ball State and totaled 11 points in the loss to Iowa State.

TOP SCORER

Back for her senior season, Tyrese Tanner has led the Tigers in scoring in each of the last two seasons. Her 10.6 points per game as a sophomore led the team and she was back again last year with a team-high 14.2 points per game. She is one of just eight players ever at Auburn to lead the team in scoring in back-to-back years and the first since DeWanna Bonner.

TOUGH SCHEDULE

The Tigers played a challenging non-conference schedule this season, playing eight games against teams that advanced to the postseason a year ago. Tennessee-Chattanooga, Iowa State, St. John's and UCLA played in the NCAA Tournament last year while Ball State, Tulane and Minnesota played in the WNIT. Additionally, Presbyterian played in last year's WBI.

The strength of schedule showed up in this year's preseason top-25 polls with 13 of Auburn's opponents either ranked or receiving votes.

SISTER ACT

For just the third time ever, Auburn's roster features a sister combination as Tyrese and Tra'cee Tanner step on the court. Tyrese is a senior on the squad this year while Tra'Cee is a sophomore.

Other sister combinations to play together at Auburn include Sherell (2004-09) and Reneisha (2006-10) Hobbs, and Ruthie (1985-89) and Mae Ola (1984-88) Bolton.

THE GRADUATE

Senior center Peyton Davis took a big step Aug. 3, 2013 as she earned her degree in exercise science from Auburn. Davis is currently working toward her master's degree.

NEW FACES

Auburn's roster has been overtaken by newcomers this year as eight of the 13 players on the team are in their first year. The newcomer class includes six freshmen and two junior college transfers. Making up the freshman class are Khady Dieng (Dakar, Senegal), Keonna Farmer (Birmingham, Ala.), Katie Frerking (Johns Creek, Ga.), Brandy Montgomery (Port St. Lucie, Fla.), Allina Starr (Minneapolis, Minn.) and Meagan Tucker (Covington, Ga.). The junior college transfers are Melinda Brimfield (Norway, S.C.) and Kiani Parker (Fort Walton Beach, Fla.).

AUBURN DEFENSE

Pressure defense is a pillar of Coach Flo's style of play. Since 1987, Auburn has totaled 15 or more steals in 100 games with 13 of those games in the Coach Flo Era.

Steals	Date	Opponent	Steals	Date	Opponent
24	12-5-2001	Tennessee State	16	11-23-1999	Middle Tennessee
23	12-21-2004	Monmouth	16	1-9-2000	South Carolina
23	12-7-2003	Buffalo	16	12-20-1998	Iowa
23	12-17-2000	Puerto Rico-Mayaguez	16	2-16-1999	South Alabama
22	12-29-2012	Samford	16	2-3-1997	Jacksonville State
22	11-14-2008	Alabama A&M	16	2-19-1997	South Carolina
21	12-29-2003	Alabama A&M	16	12-14-1995	Auburn-Montgomery
20	3-24-2013	Western Kentucky	16	12-18-1992	NE Illinois
20	11-11-2007	Detroit	16	12-28-1988	Syracuse
20	12-19-2007	Sam Houston State	16	1-11-1989	Ole Miss
20	11-24-1995	St. Bonaventure	16	2-1-1989	Fort Valley State
20	2-14-1995	Lynn	16	11-11-1987	South Carolina
19	12-14-2002	North Carolina A&T	16	1-6-1988	Tuskegee
19	11-21-1999	Jacksonville State	16	2-28-1988	Vanderbilt
19	11-30-1996	Georgia Southern	16	4-1-1988	Cal State-Long Beach
19	1-14-1997	South Alabama	15	1-5-14	at Mississippi State
19	12-5-1987	Georgia State	15	11-18-2012	Alabama A&M
19	11-29-1986	Minnesota	15	12-12-2012	George Washington
18	12-9-2012	Hofstra	15	3-3-2013	Mississippi State
18	12-28-2010	Alabama A&M	15	11-15-2011	Belmont
18	12-5-2003	North Carolina A&T	15	11-30-2011	Troy
18	12-18-2002	Appalachian State	15	2-26-2012	Ole Miss
18	12-8-2001	Mercer	15	11-12-2010	Mercer
18	11-29-1996	Charleston Southern	15	12-19-2008	George Washington
17	12-5-2008	Sam Houston State	15	12-28-2007	Davidson
17	12-5-2007	Colgate	15	1-27-2008	Alabama
17	12-6-2006	Jackson State	15	2-14-2008	Alabama
17	12-9-2004	New Orleans	15	12-21-2006	Oakland
17	12-30-2001	Texas-San Antonio	15	12-20-2005	Furman
17	11-24-2000	IUPUI	15	12-30-2004	Rhode Island
17	11-30-1994	Auburn-Montgomery	15	12-7-2002	Furman
17	12-20-1994	Texas Southern	15	11-25-2000	Bowling Green
17	12-3-1993	Lamar	15	12-2-2000	Arkansas-Little Rock
17	2-23-1994	South Alabama	15	12-18-2000	Nebraska
17	11-24-1990	Southern	15	12-16-1999	UNC Asheville
17	12-29-1990	South Carolina	15	12-22-1999	Charleston Southern
17	2-4-1991	Murray State	15	11-29-1995	Jacksonville State
17	1-27-1990	Tuskegee	15	12-28-1994	Old Dominion
17	2-14-1988	Kentucky	15	11-26-1993	Alcorn State
16	12-15-13	Florida A&M	15	12-29-1991	Fordham
16	11-29-13	vs. Ball State	15	1-12-1991	LSU
16	11-15-2012	Alabama State	15	1-15-1991	South Alabama
16	11-24-2012	Texas A&M-Corpus Christi	15	3-2-1991	Ole Miss
16	12-16-2012	Temple	15	12-17-1988	Syracuse
16	1-31-2013	LSU	15	12-29-1988	Nebraska
16	12-22-2011	Central Connecticut State	15	1-21-1989	Vanderbilt
16	2-19-2012	LSU	15	1-16-1988	Mississippi State
16	2-23-2012	Alabama	15	2-10-1988	Georgia
16	11-17-2008	Temple			
16	11-17-2006	Winston-Salem State			
16	11-18-2005	Texas-Pan American			
16	12-20-2001	Troy			

MORE DEFENSE

Since 1987, Auburn has a 102-7 record when forcing 25 or more turnovers.

Date	Opponent	Turnovers	Result	Date	Opponent	Turnovers	Result
12-17-00	vs. Puerto Rico-Mayaguez	45	W, 106-25	2-28-88	at Vanderbilt	28	W, 89-57
2-14-95	Lynn	40	W, 107-25	1-30-14	Texas A&M	27	L, 54-71
12-29-03	Alabama A&M	39	W, 95-28	11-19-13	at Alabama A&M	27	W, 77-49
12-5-01	Tennessee State	39	W, 96-46	11-26-10	vs. Sacred Heart	27	L, 53-65
12-22-11	Central Connecticut State	37	W, 49-40	11-17-07	UAB	27	W, 93-66
11-14-08	at Alabama A&M	37	W, 91-53	12-14-02	North Carolina A&T	27	W, 73-37
1-6-88	Tuskegee	35	W, 105-44	11-25-02	Prairie View A&M	27	W, 74-47
11-24-90	Southern	34	W, 99-30	12-20-01	Troy State	27	W, 86-44
12-18-00	vs. Nebraska	33	W, 74-55	11-30-99	Nicholls State	27	W, 95-48
1-15-91	South Alabama	33	W, 86-48	11-27-99	Kent State	27	W, 72-56
12-15-87	at UCLA	32	W, 76-52	11-30-94	Auburn-Montgomery	27	W, 86-61
3-3-13	Mississippi State	31	W, 74-65	2-5-93	South Alabama	27	W, 84-41
11-27-10	vs. Seton Hall	31	W, 85-51	3-17-91	Holy Cross	27	W, 84-58
11-24-07	vs. Winston-Salem State	31	W, 70-37	2-14-88	Kentucky	27	W, 93-57
11-29-96	Charleston Southern	31	W, 81-42	1-30-14	Texas A&M	27	L, 71-54
12-20-94	Texas Southern	31	W, 110-38	1-5-14	at Mississippi State	26	W, 82-74
12-7-03	Buffalo	30	W, 82-32	12-15-13	Florida A&M	26	W, 92-55
12-30-99	Coppin State	30	W, 85-56	3-24-13	Western Kentucky	26	W, 84-66
12-16-99	North Carolina-Asheville	30	W, 86-30	2-28-13	at Vanderbilt	26	L, 59-44
12-19-95	Eastern Washington	30	W, 69-39	12-29-12	Samford	26	W, 80-51
11-29-13	vs. Ball State	29	W, 67-51	11-24-12	vs. Texas A&M-Corpus Christi	26	W, 72-57
2-23-12	Alabama	29	W, 81-40	11-15-12	Alabama State	26	W, 80-43
12-28-10	Alabama A&M	29	W, 84-45	11-9-12	vs. Maine	26	W, 71-41
11-15-10	Florida State	29	L, 61-67	12-5-08	Sam Houston State	26	W, 119-54
11-13-09	Troy	29	W, 70-65	1-27-08	at Alabama	26	W, 62-48
11-17-08	Temple	29	W, 95-76	12-5-07	Colgate	26	W, 99-47
12-19-07	at Sam Houston State	29	W, 80-36	12-30-04	Rhode Island	26	W, 80-41
12-20-05	at Furman	29	W, 86-42	11-22-02	Troy State	26	W, 69-38
12-14-03	Prairie View A&M	29	W, 100-48	11-21-99	Jacksonville State	26	W, 93-54
12-18-02	Appalachian State	29	W, 83-58	2-16-99	South Alabama	26	W, 89-50
11-16-01	Florida A&M	29	W, 85-36	11-21-97	Troy State	26	W, 101-70
1-9-00	South Carolina	29	W, 73-50	1-14-97	South Alabama	26	W, 89-56
11-26-94	Texas Christian	29	W, 78-32	12-16-95	Jacksonville State	26	W, 89-61
11-26-93	vs. Alcorn State	29	W, 71-66, OT	11-29-95	Jacksonville State	26	W, 65-47
1-9-93	Arkansas	29	W, 68-49	1-31-13	LSU	25	L, 55-59
1-27-90	Tuskegee	29	W, 98-39	1-26-06	Alabama	25	W, 65-56
2-1-89	Fort Valley State	29	W, 97-42	11-21-03	Stetson	25	W, 92-37
12-29-88	vs. Nebraska	29	W, 80-39	12-8-01	Mercer	25	W, 97-59
11-26-88	Tennessee State	29	W, 104-30	11-25-00	Bowling Green	25	W, 94-61
12-16-12	Temple	28	W, 71-49	11-26-99	Mercer	25	W, 82-41
12-9-12	Hofstra	28	W, 68-58	1-18-97	Mississippi State	25	W, 77-59
2-26-12	Ole Miss	28	W, 46-43	11-24-95	St. Bonaventure	25	W, 91-34
11-11-07	Detroit	28	W, 91-47	12-3-93	vs. Lamar	25	W, 56-43
12-21-04	at Monmouth	28	W, 73-44	2-23-93	Oral Roberts	25	W, 78-42
12-2-00	vs. Arkansas-Little Rock	28	W, 106-37	1-6-93	Houston	25	W, 81-51
11-24-00	IUPUI	28	W, 70-55	1-21-91	New Orleans	25	W, 96-56
11-22-00	UNC Asheville	28	W, 70-31	12-18-90	at Oregon	25	W, 69-51
12-22-99	Charleston Southern	28	W, 79-31	2-10-90	Georgia	25	W, 85-64
12-20-99	Texas-Arlington	28	W, 75-42	1-31-90	DePaul	25	W, 75-48
11-23-99	Middle Tennessee State	28	W, 93-51	1-20-90	at Vanderbilt	25	W, 96-93
12-30-96	vs. George Mason	28	L, 55-58	12-28-88	vs. Syracuse	25	W, 76-52
2-13-95	St. Leo	28	W, 104-33	1-27-88	at Alabama	25	W, 88-57
2-4-91	Murray State	28	W, 81-44	1-20-88	Tennessee-Chattanooga	25	W, 96-62
12-9-89	at Illinois	28	W, 70-53				
2-22-89	Alabama	28	W, 89-44				
12-14-88	at Detroit	28	W, 87-42				

MISCELLANEOUS STATISTICS

Double-Doubles	Season	Career
Peyton Davis	2	4
Hasina Muhammad	0	1
Tra'cee Tanner	1	2
Tyrese Tanner	2	3

30+ Point Games	Season	Career
20+ Point Games	Season	Career
Brandy Montgomery	1	1
Hasina Muhammad	1	10
Tra'cee Tanner	0	1
Tyrese Tanner	4	13

10+ Rebound Games	Season	Career
Peyton Davis	2	5
Hasina Muhammad	0	1
Tra'cee Tanner	1	2
Tyrese Tanner	2	3

10+ Assist Games	Season	Career
5+ Steal Games	Season	Career
Hasina Muhammad	1	4
Tra'cee Tanner	1	1

5+ Block Games	Season	Career
Hasina Muhammad	1	1

GAMES LED AUBURN IN . .

Scoring	Season	Career
Peyton Davis	1	2
Brandy Montgomery	3	3
Hasina Muhammad	3	24
Tra'cee Tanner	2	4
Tyrese Tanner	13	34

Rebounding	Season	Career
Cabriana Capers	1	8
Peyton Davis	3	12
Hasina Muhammad	2	13
Tra'cee Tanner	10	13
Tyrese Tanner	7	16

Assists	Season	Career
Peyton Davis	0	1
Brandy Montgomery	2	2
Hasina Muhammad	4	10
Kiani Parker	7	7
Allina Starr	4	4
Tra'cee Tanner	3	3
Tyrese Tanner	2	4
Meagan Tucker	4	4

2013-14 DOUBLE-DOUBLES (5)

Player	Points	Other
Peyton Davis vs. Ga. Southern	15	11 (reb.)
Peyton Davis at Alabama A&M	17	12 (reb.)
Tyrese Tanner at Alabama A&M	19	10 (reb.)
Tyrese Tanner vs. Tulane	17	13 (reb.)
Tra'cee Tanner at Alabama	14	10 (reb.)

Last Time an Auburn Team...

Scored 100 points	Auburn 119, Sam Houston State 54 (Dec. 5, 2008)
Scored 100 points in an SEC game	Auburn 102, Tennessee 96, SEC Tournament in Albany, Ga. (Mar. 6, 1987)
Scored 100 at Auburn	Auburn 119, Sam Houston State 54 (Dec. 5, 2008)
Scored 100 points and lost	Never
Scored 110 points	Auburn 119, Sam Houston State 54 (Dec. 5, 2008)
Scored 115 points	Auburn 119, Sam Houston State 54 (Dec. 5, 2008)
Scored at least 60 points in a half	62-vs. Sam Houston State (Dec. 5, 2008)
Had 35+ rebound margin	36-Auburn 52, Alabama A&M 16 in Normal, Ala. (Nov. 19, 2013)
Had 25+ rebound margin	36-Auburn 52, Alabama A&M 16 in Normal, Ala. (Nov. 19, 2013)
Had 20+ rebound margin	36-Auburn 52, Alabama A&M 16 in Normal, Ala. (Nov. 19, 2013)
Attempted 35 free throws	35-vs. Florida A&M (Nov. 28, 2009)
Attempted 40 free throws	41-vs. Alabama State (Nov. 15, 2006)
Made 30 free throws	31-vs. Northwestern State (31-43) (Dec. 30, 2003)
Had 25 assists	25- vs. Florida A&M in Auburn, Ala. (Dec. 15, 2013)
Had 25 turnovers	25 - at Mississippi State in Starkville, Miss. (Jan. 5, 2014)
Had 25 steals	25- vs. Arkansas-Little Rock (Dec. 2, 2000)
Had 20 steals	20- vs. Western Kentucky in Auburn, Ala. (March 24, 2013)
Had 15 steals	16- at Mississippi State in Starkville, Miss. (Jan. 5, 2014)
Had 10 blocks	10-at Alabama in Tuscaloosa, Ala. (Jan. 16, 2014)
Had 15 blocks	17 - vs. Alabama A&M in Auburn, Ala. (Nov. 19, 2009)
Scored 25 points or less	25- vs. Mercer (1971)
Played an overtime game	at LSU (Jan. 10, 2010)
Won an overtime game	Auburn 64, LSU 62 at Baton Rouge, La. (Jan. 10, 2010)
Lost an overtime game	Florida 71, Auburn 68 (2OT) at Gainesville, Fla. (Jan. 7, 2010)
Played a double overtime game	Florida 71, Auburn 68 at Gainesville, Fla. (Jan. 7, 2010)
Played at least three overtimes	Never
Shot 70% for a half	70.6%, 24-34 - vs. Florida A&M in Auburn, Ala. (Dec. 15, 2013)
Shot 60% for a game	vs. Alabama (61.8%, 34-55) (Jan. 22, 2009)
Shot less than 30% for a game	(27.4%, 17-62) vs. Drexel at Auburn, Ala. (March 30, 2013)
Shot 90% from the free throw line (minimum 10 attempts)	(10-10) vs. Mississippi State (Feb. 3, 2008)
Shot 50% from 3-point line	(5-of-6, 83%) vs. Alabama A&M in Auburn, Ala. (Nov. 18, 2012)
Shot less than 30% in a half	5-of-23, 21.4% in the first half vs. Texas A&M in Auburn, Ala. (Jan. 30, 2014)
Shot less than 20% in a half	4-of-28, 14.3% in the first half vs. Drexel in Auburn, Ala. (March 30, 2013)
Shot 55% or better and lost	58.1%, 25-43-vs. Tennessee, (Jan. 20, 2005)
Made at least 10 3-point field goals	10-of-25 vs. Maine in Raleigh, N.C. (Nov. 9, 2012)
Failed to make a 3-point field goal	0-of-8 vs. Florida A&M in Auburn, Ala. (Dec. 15, 2013)
Had at least 60 rebounds	61 vs. Stephen F. Austin, (Dec. 17, 2007)
Had at least 50 rebounds	52- at Alabama in Tuscaloosa, Ala. (Jan. 16, 2014)
Scored less than 20 points in a 1st half	16 points vs. Texas A&M in Auburn, Ala. (January 30, 2014)
Scored less than 20 points in a 2nd half	15 points at LSU in Baton Rouge, La. (Feb. 19, 2012)
Scored less than 50 points in a game	43 points vs. Drexel in Auburn, Ala. (March 30, 2013)

Last Time an Auburn Player...

Scored 40 points	41-Consweila Sparrow vs. South Alabama (Feb. 17, 1998)
Scored 35 points	35-DeWanna Bonner vs. Tennessee (Jan. 25, 2009)
Scored 30 points	32-Blanche Alverson vs. Mississippi State (March 3, 2013)
Attempted 25 field goals	25-Natasha Brackett (9-25) at LSU (Jan. 30, 2005)
Attempted a slam dunk	Hasina Muhammad vs. St. John's in Auburn, Ala (Dec. 6, 2013)
Recorded a double-double	Tra'cee Tanner (14 pts./10 rebs) at Alabama in Tuscaloosa, Ala. (Jan. 16, 2014)
Recorded a double-double with points and assists	Najat Ouardad (14 points/11 assists) vs. Samford in Auburn, Ala. (Dec. 29, 2012)
Recorded consecutive double-doubles	KeKe Carrier (18 pts./10 rebs) vs. Mississippi State (Jan. 3, 2010)
	and (24 pts./12 rebs) vs. Florida in Gainesville, Fla. (Jan. 7, 2010)
Two players recorded a double-double	Peyton Davis (17 pts./12 rebs) & Tyrese Tanner (19 pts./10 rebs) at Alabama A&M in Normal, Ala. (Nov. 19, 2013)
Had a double-double at halftime	DeWanna Bonner (14 pts./10 rebs.) vs. Ole Miss (Mar. 6, 2009)
Recorded a triple-double	Whitney Boddie (24 pts./11 rebs./12 asst.) vs. Sam Houston State (Dec. 5, 2008)
Had 10 assists	14- Najat Ouardad vs. Ole Miss (Jan. 10, 2013)
Had 15 assists	18-Martha Monk vs. Alabama State (Feb. 18, 1981)
Had 10 blocks	13- Marita Payne vs. Arkansas (Feb. 3, 2005)
Had 5 blocks	5 - Hasina Muhammad at Alabama in Tuscaloosa, Ala. (Jan. 16, 2014)
Had 5 steals	6 - Tra'cee Tanner at Mississippi State in Starkville, Miss. (Jan. 5, 2014)
Had 15 rebounds	17-Peyton Davis vs. Arkansas in Auburn, Ala. (Jan. 3, 2013)
Had 20 rebounds	20-Monique Morehouse at LSU (Feb. 4, 1995)
Made 15 field goals	15-Consweila Sparrow (15-16) vs. USA (Feb. 17, 1998)
Made 5 three-point field goals	5 - Blanche Alverson (5-9) vs. Mississippi State in Auburn, Ala. (March 3, 2013)
Two players scored 20 points	Tyrese Tanner (20) and Hasina Muhammad (28) vs. St. John's in Auburn, Ala. (Dec. 6, 2013)
Two players scored 30 points	Laticia Morris (33 points) & Tara Williams (30 points) vs. South Alabama (Jan. 14, 1997)

SEC PRESEASON POLL (Media Vote)

(First-place votes in Parentheses)
Order of Finish

1. Tennessee (10).....	192
2. Kentucky (5).....	185
3. LSU.....	156
4. Texas A&M.....	144
5. Vanderbilt.....	134
6. Georgia.....	132
7. South Carolina.....	131
8. Auburn.....	84
9. Missouri.....	74
10. Florida.....	67
11. Mississippi State.....	66
12. Arkansas.....	57
13. Ole Miss.....	29
14. Alabama.....	18

Player of the Year

Meighan Simmons, Tennessee (10); Theresa Plaisance, LSU (3)

All-SEC Team

Meighan Simmons, Tennessee
Theresa Plaisance, LSU
DeNesha Stallworth, Kentucky
Bashaara Graves, Tennessee
Jasmine Lister, Vanderbilt

SEC PRESEASON POLL (Coaches' Vote)

Order of Finish

1. Tennessee (11).....	167
2. Kentucky (3).....	159
3. LSU.....	134
4. Vanderbilt.....	124
15. South Carolina.....	121
15. Texas A&M.....	121
7. Georgia.....	104
8. Auburn.....	72
9. Missouri.....	69
10. Florida.....	60
11. Mississippi State.....	51
12. Arkansas.....	42
13. Ole Miss.....	25
14. Alabama.....	24

Player of the Year

Meighan Simmons, Tennessee (7); DeNesha Stallworth, Kentucky (3); Theresa Plaisance, LSU (3); Christina Foggie, Vanderbilt (1)

All-SEC First Team

DeNesha Stallworth, Kentucky
Theresa Plaisance, LSU
Aleighsa Welch, South Carolina
Bashaara Graves, Tennessee
Meighan Simmons, Tennessee
Courtney Walker, Texas A&M
Christina Foggie, Vanderbilt
Jasmine Lister, Vanderbilt

All-SEC Second Team

Hasina Muhammad, Auburn
Jaterra Bonds, Florida
Shacobie Barbee, Georgia
Samarie Walker, Kentucky
Jennifer O'Neil, Kentucky
Danielle Ballard, LSU
Valencia McFarland, Ole Miss
Martha Alwal, Mississippi State

Back-to-back 25-point games.....Alli Smalley 26 vs. Kentucky (Feb. 28, 2010) & 29 vs. Florida in SEC Tournament in Duluth, Ga. (Mar. 4, 2010)
Only one player scored in double figures.....Tyrese Tanner (14 pts.) at Vanderbilt in Nashville, Tenn. (Feb. 28, 2013)
Five players scored in double figures.....Ty. Tanner (11), Montgomery (16), Muhammad (13), Tr. Tanner (15) & Tucker (10) at Florida (Jan. 26, 2014)
Six players scored in double figures.....Carrier (19 pts.), Bonner (18 pts.), Smalley (16 pts.), Boddie (13 pts.), R. Hobbs (13 pts.), Hilliard (13 pts.) & S. Hobbs (10 pts.) vs. Sam Houston State (Dec. 5, 2008)
Seven players scored in double figures.....Carrier (19 pts.), Bonner (18 pts.), Smalley (16 pts.), Boddie (13 pts.), R. Hobbs (13 pts.), Hilliard (13 pts.) & S. Hobbs (10 pts.) vs. Sam Houston State(Dec. 5, 2008)
Scored 20 points & had 20 rebounds.....Lauretta Freeman (30 pts/21 rebs.) vs. Alabama, (Feb. 17, 1993)
Two players had 10 rebounds.....Peyton Davis (12 rebs.) & Tyrese Tanner (10 rebs) at Alabama A&M in Normal, Ala. (Nov. 19, 2013)
Three players had 10 rebounds.....Jordan Greenleaf (12 rebs.), DeWanna Bonner (12 rebs.) & Whitney Boddie (10 rebs.) vs. Oakland (Nov. 21, 2007)
Played every minute.....Jordan Greenleaf (40 mins.) vs. Florida, SEC Tournament, Duluth, Ga., (Mar. 4, 2010)
Played more than 40 minutes...Alli Smalley (45 mins.), Jordan Greenleaf (43 mins.) & Morgan Toles (41 mins.) at LSU in Baton Rouge, La. (Jan. 10, 2010)

Last Time an Auburn Opponent...

Shot less than 30% in a game (SEC).....Georgia - 29.7% (19-of-64) in Athens, Ga. (Feb. 7, 2013)
Shot less than 30% in a game (Non-conf).....Presbyterian - 20.0% in Auburn, Ala. (Dec. 18, 2013)
Shot 60% in a game.....Vanderbilt 60.4% in Nashville, Tennessee in the SEC Tournament, (Mar. 5, 2004)
Scored 100 points.....Georgia 102, Auburn 72 in Athens, Ga. (Mar. 3, 1984)
Scored 100 points at Auburn.....Tuskegee 105, Auburn 98 (2OT) (Feb. 12, 1979)
Scored 100 points and Lost.....Never
Scored 110 points.....Never
Had 25+ rebound margin.....Never
Had a 20+ rebound margin.....Never
Scored less than 20 points in a 1st half.....14 - Alabama in Tuscaloosa, Ala. (Jan. 16, 2014)
Scored less than 20 points in a 2nd half.....12 - Presbyterian in Auburn, Ala. (Dec. 18, 2013)
Had 50 rebounds.....51 - at Alabama in Tuscaloosa, Ala. (Jan. 24, 2013)
Had 25 assists.....25- by Florida International in Miami, Fla. (Dec. 19, 1993)
Had 25 turnovers.....27 - by Texas A&M in Auburn, Ala.. (Jan. 30, 2014)
Had 15 steals.....18- by Kentucky in Lexington, Ky. (Jan. 20, 2013)
Had 10 blocks.....12-by Tennessee (Jan. 10, 2008)
Failed to make a 3-point field goal.....by Ole Miss (0-7) in Auburn, Ala. (Feb. 26, 2012)
Attempted 35 free throws.....36 - by Arizona 25-36 (Dec. 19, 2000)
Made 30 free throws.....30- by Arkansas (Jan. 22, 1995)
Made 10 three-point field goals.....10 - by Temple in Philadelphia, Pa. (Nov. 16, 2013)
Made 15 three-point field goals.....18 - by Missouri in Columbia, Mo. (Jan. 6, 2013)
Scored less than 50 points in a game.....39 - Alabama in Tuscaloosa, Ala. (Jan. 16, 2014)
Scored 40 points or less.....39 - Alabama in Tuscaloosa, Ala. (Jan. 16, 2014)
Scored 25 points or less.....25- by Puerto Rico Mayaguez (Dec. 17, 2000)
Scored 11 points or less.....11-by Montevallo (1973) and 11-by Jeff Davis (1973)

Last Time an Auburn Opponent's Player...

Scored 30 points (non-conference).....33-Andrea Smith of South Florida in Tampa, Fla. (Nov. 22, 2010)
Scored 30 points (SEC).....33-Morgan Eye of Missouri in Columbia, Mo. (Jan. 6, 2013)
Scored 35 points.....38-Lindsay Shearer of Kent State in Kent, Ohio (Nov. 20, 2005)
Attempted 25 field goals.....27- Jantel Lavender (9-27) of Ohio State (Nov. 23, 2008)
Scored 20 points & had 20 rebounds.....Young of Baylor in the Women's NIT Championship Game, (20 pts./25 rebs.) (Apr. 4, 2003)
Two players scored 20 points.....by Vanderbilt, Christina Foggie (26 pts) & Jasmine Lister (23 pts) in Auburn, Ala. (Jan. 9, 2014)
Three players scored 20 points.....by LSU in Baton Rouge, Chatman (22 pts), Johnson (21 pts) & Lowery (20 pts) (Jan. 12, 1991)
Five players scored in double figures.....Williams (10), Lewis (13), Bonds (18), Peoples (10), Miller (12), Svetе (12), Florida (Jan. 26, 2014)
Six players scored in double figures.....Williams (10), Lewis (13), Bonds (18), Peoples (10), Miller (12), Svetе (12), Florida (Jan. 26, 2014)
Recorded a double-double.....Kayla Lewis (13 pts/13 reb), Florida in Gainesville, Fla. (Jan. 26, 2014)
Recorded a double-double with points and assists.....Jasmine Lister (23 pts/10 asst) of Vanderbilt in Auburn, Ala. (Jan. 9, 2014)
Recorded a triple-double.....Ceira Ricketts (14 pts./13 rebs./12 asst.) of Arkansas (Jan. 18, 2009)
Two players recorded a double-double...Cierra Burdick (15 pts/13 rebs) & Ariel Massengale (10 pts/10 asst) of Tennessee in Knoxville, Tenn. (Feb. 21, 2013)
Committed 10 turnovers.....10-Bianca McGee of Western Kentucky in Auburn, Ala. (March 24, 2013)
Committed 15 turnovers.....15-Andreana Thomas of Hofstra in Auburn, Ala. (Dec. 9, 2012)
Had 15 rebounds.....16-by Shante Evans of Hofstra in Auburn, Ala. (Dec. 9, 2012)
Had 20 rebounds.....20-Sylvia Fowles of LSU (Jan. 28, 2007)
Had 10 assists.....10-Ariel Massengale of Tennessee in Knoxville, Tenn. (Feb. 21, 2013)
Had 10 blocks.....Never
Had 5 blocks.....5-Martha Alwal of Mississippi State in Starkville, Miss. (Jan. 5, 2014)
Had 5 steals.....6 - Tiffany Mitchell of South Carolina in Auburn, Ala., (Jan. 12, 2014)
Made 15 field goals.....15-Chamique Holdsclaw (15-21) of Tennessee (Feb. 1, 1998)
Made 10 3-point field goals.....11-Morgan Eye (11-18) of Missouri in Columbia, Mo. (Jan. 6, 2013)
Had 15 assists.....16-Cindy McHann of Alabama-Huntsville (Nov. 24, 1980)

TIGERS' RECORD WHEN . . .

	2013-14	Coach Flo Era
At Home.....	6-4	21-8
On the Road.....	3-5	5-14
At a Neutral Site.....	2-1	4-3
When wearing white.....	6-4	18-8
When wearing orange.....	2-2	5-6
When wearing blue.....	3-4	6-11
When wearing pink.....	0-0	1-0
Leading at the half.....	10-3	25-4
Trailing at the half.....	1-6	5-19
Tied at the half.....	0-1	0-2
Scores 100+ points.....	0-0	0-0
Scores 90-99 points.....	1-0	2-0
Scores 80-89 points.....	1-0	6-0
Scores 70-79 points.....	1-2	9-4
Scores 60-69 points.....	8-4	11-7
Scores fewer than 60 points.....	0-4	2-14
Holds opponent to 41-50 points.....	2-0	8-0
Holds opponent to 31-40 points.....	1-0	2-0
Holds opponent to under 30 points.....	1-0	1-0
Force 25 or more turnovers.....	4-1	12-3
Shoots 50% FG or better.....	4-0	10-1
Shoots 40-49% FG.....	4-6	16-10
Shoots 39.9% or under FG.....	3-4	4-14
Holds opponent under 30% FG.....	4-0	9-1
Shoots higher FG% than opponent.....	10-3	28-5
Shoots lower FG% than opponent.....	1-6	2-17
Shoots same FG% as opponent.....	0-0	0-2
Shoots higher FT% than opponent.....	4-2	9-9
Shoots lower FT% than opponent.....	7-6	21-14
Shoots same FT% as opponent.....	0-1	0-1
Out-rebounds opponent.....	9-5	26-10
Out-rebounded by opponent.....	2-5	4-15
Tied in rebounds.....	0-0	0-0
Versus ranked opponent.....	0-5	1-11
In overtime.....	0-0	0-0
Games decided by 3 points or less.....	0-1	1-3
Games decided by 4-5 points.....	0-1	1-2
Games decided by 6-10 points.....	4-2	8-7
Games decided by 11-20 points.....	3-5	8-8
Games decided by 21-30 points.....	2-1	7-4
Games decided by 30+ points.....	2-0	5-1
On Television.....	0-2	2-9
In November.....	4-3	9-5
In December.....	5-1	11-1
In January.....	2-6	4-12
In February.....	0-0	2-5
In March.....	0-0	4-2

2013-14 Auburn Superlatives...

First Half

Most points scored in the first half.....	44, at Temple (11-16-13)
Fewest points scored in the first half.....	16, vs. Texas A&M (1-30-14)
Fewest points allowed in the first half.....	14, at Alabama (1-16-14)
Most points allowed in the first half.....	43, vs. Vanderbilt (1-9-14)
Best FG % in the first half.....	.556, vs. Presbyterian (12-18-13)
Worst FG % in the first half.....	.217, vs. Texas A&M (1-30-14)
Best FG % by an opponent in the first half.....	.538, vs. Texas A&M (1-30-14)
Worst FG % by an opponent in the first half.....	.167, at Alabama (1-16-14)
Most rebounds in the first half.....	32, at Alabama A&M (11-19-13)
Fewest rebounds in the first half.....	10, at Minnesota (12-22-13)
Most rebounds by an opponent in the first half.....	27, vs. Georgia Southern (11-9-13)
Fewest rebounds by an opponent in the first half.....	7, vs. Texas A&M (1-30-14)

Second Half

Most points scored in the second half.....	55, vs. Florida A&M (12-15-13)
Fewest points scored in the second half.....	20, at Alabama (1-16-14)
Fewest points allowed in the second half.....	12, vs. Presbyterian (12-18-13)
Most points allowed in the second half.....	46, at Temple (11-16-13)
Best FG % in the second half.....	.706, vs. Florida A&M (12-15-13)
Worst FG % in the second half.....	.235, vs. Iowa State (11-30-13)
Best FG % by an opponent in the second half.....	.688, vs. South Carolina (1-12-14)
Worst FG % by an opponent in the second half.....	.211, vs. Presbyterian (12-18-13)
Most rebounds in the second half.....	27, vs. UCLA (12-21-13) and vs. Presbyterian (12-18-13)
Fewest rebounds in the second half.....	10, vs. St. John's (12-6-13)
Most rebounds by an opponent in the second half.....	27, vs. Tulane (12-3-13)
Fewest rebounds by an opponent in the second half.....	9, at Tennessee-Chattanooga (11-24-13) & at Alabama A&M (11-19-13)

Game

Most points scored.....	92, vs. Florida A&M (12-15-13)
Fewest points scored.....	52, at Tennessee-Chattanooga (11-24-13)
Most points allowed.....	87, at Florida (1-26-14)
Fewest points allowed.....	27, vs. Presbyterian (12-18-13)
Best FG %.....	.549, vs. Florida A&M (12-15-13)
Worst FG %.....	.329, vs. UCLA (12-21-13)
Best FG % by an opponent.....	.574, vs. Texas A&M (1-30-14)
Worst FG % by an opponent.....	.200, vs. Presbyterian (12-18-13)
Most rebounds.....	54, vs. UCLA (12-21-13)
Fewest rebounds.....	25, vs. Texas A&M (1-30-14)
Most rebounds by an opponent.....	46, vs. Tulane (12-3-13)
Fewest rebounds by an opponent.....	16, at Alabama A&M (11-19-13)

Miscellaneous

Largest margin of victory.....	37, vs. Presbyterian (12-18-13) & vs. Florida A&M (12-15-13)
Smallest margin of victory.....	6, vs. UCLA (12-21-13)
Largest margin of defeat.....	28, at Tennessee-Chattanooga (11-24-13)
Smallest margin of defeat.....	2, vs. Kentucky (1-19-14)
Largest halftime lead.....	27, at Alabama (1-16-14)
Smallest halftime lead.....	1, at LSU (1-23-14) & vs. Kentucky (1-19-14)
Last time tied at halftime.....	vs. South Carolina (1-12-14)
Largest halftime deficit.....	16, vs. Texas A&M (1-30-14)
Smallest halftime deficit.....	1, vs. Iowa State (11-30-13)
Largest rebounding margin.....	36, at Alabama A&M (11-19-13)
Smallest rebounding margin.....	2, vs. Ball State (11-29-13) & vs. Georgia Southern (11-9-13)
Last time tied in rebounding.....	---
Opponent's largest rebounding margin.....	16, vs. Texas A&M (1-30-14)
Opponents smallest rebounding margin.....	1, at LSU (1-23-14) & vs. Tulane (12-3-13)

Specialty Statistics (Auburn-Opponent)

Opponent	Bench Points	Points in the Paint	Points off Turnovers	Second Chance Points	Fast Break Points
vs. Georgia Southern	11-9	40-12	15-8	25-8	4-0
vs. Jacksonville State	11-5	52-14	24-6	19-11	14-2
at Temple	17-8	28-28	19-36	9-12	8-10
at Alabama A&M	26-5	50-14	28-15	27-5	10-10
at Tennessee-Chattanooga	17-35	24-40	5-29	6-5	4-4
vs. Ball State	19-18	30-20	39-18	13-12	6-8
vs. Iowa State	6-12	20-18	13-6	9-11	6-2
vs. Tulane	12-17	24-18	15-18	14-11	4-4
vs. St. John's	4-14	30-34	22-13	13-8	6-2
vs. Florida A&M	34-16	68-12	30-8	16-10	18-0
vs. Presbyterian	18-7	36-12	29-7	17-8	6-0
vs. UCLA	12-8	26-26	22-18	18-6	8-6
at Minnesota	23-9	30-24	15-20	16-8	4-2
at Mississippi State	24-18	48-24	28-26	21-13	16-4
vs. Vanderbilt	21-6	42-18	11-28	14-9	0-2
vs. South Carolina	16-31	28-30	27-19	10-11	6-6
at Alabama	11-13	30-14	20-11	9-12	6-5
vs. Kentucky	3-43	48-42	15-16	9-17	4-6
at LSU	14-14	28-26	10-13	6-11	6-2
at Florida	4-30	32-32	14-24	11-8	8-12
vs. Texas A&M	12-15	26-46	24-18	12-8	8-12

Lead-Deficit Comparison

Opponent	Largest Lead	Largest Deficit	Lead Changes	Ties	Result
vs. Georgia Southern	14 (1st, 7:23)	---	0	1	W, 69-59
vs. Jacksonville State	17 (2nd, 0:16)	4 (1st, 18:33)	3	1	W, 66-49
at Temple	16 (1st, 1:14)	7 (2nd, 5:16)	6	2	L, 74-78
at Alabama A&M	37 (2nd, 5:49)	---	0	1	W, 77-49
at Tennessee-Chattanooga	---	29 (2nd, 12:38)	0	0	L, 52-80
vs. Ball State	21 (2nd, 1:43)	---	0	1	W, 67-51
vs. Iowa State	11 (1st, 8:00)	13 (2nd, 8:34)	5	3	L, 57-68
vs. Tulane	21 (2nd, 19:08)	---	0	0	W, 62-52
vs. St. John's	23 (2nd, 10:02)	---	0	0	W, 69-55
vs. Florida A&M	42 (2nd, 5:18)	5 (1st, 12:24)	4	3	W, 92-55
vs. Presbyterian	37 (2nd, 0:25)	---	0	0	W, 64-27
vs. UCLA	9 (1st, 1:25)	---	0	1	W, 66-60
at Minnesota	5 (1st, 13:41)	15 (2nd, 1:10)	2	2	L, 54-67
at Mississippi State	12 (2nd, 8:18)	13 (1st, 6:36)	3	0	W, 82-74
vs. Vanderbilt	4 (1st, 19:13)	17 (1st, 3:22)	1	0	L, 65-74
vs. South Carolina	12 (1st, 8:31)	11 (2nd, 2:17)	1	4	L, 66-72
at Alabama	29 (2nd, 13:35)	---	0	1	W, 61-39
vs. Kentucky	13 (1st, 9:28)	9 (2nd, 10:06)	3	3	L, 71-73
at LSU	4 (1st, 18:27)	15 (2nd, 7:03)	9	5	L, 60-71
at Florida	3 (1st, 18:20)	25 (2nd, 10:52)	5	7	L, 69-87
vs. Texas A&M	3, (1st, 19:01)	25, (2nd, 4:52)	1	0	L, 54-71

Scoring Breakdown

(Percentage of total points in parentheses)

Opponent	Front Court	Back Court	Sr.	Jr.	So.	Fr.	Starters	Bench
vs. Georgia Southern	29 (42.0)	40 (58.0)	32	4	14	19	58 (84.1)	11 (15.9)
vs. Jacksonville State	38 (57.6)	28 (42.4)	14	5	22	25	55 (83.3)	11 (16.7)
at Temple	33 (44.6)	41 (55.4)	25	3	8	38	57 (77.0)	17 (23.0)
at Alabama A&M	53 (68.8)	24 (31.2)	36	3	14	24	51 (66.2)	26 (33.8)
at Tennessee-Chattanooga	24 (46.1)	28 (53.8)	10	10	14	18	35 (67.3)	17 (32.7)
vs. Ball State	30 (44.8)	37 (55.2)	16	18	14	19	48 (71.6)	19 (28.3)
vs. Iowa State	23 (40.4)	34 (59.6)	11	22	12	12	51 (89.5)	6 (10.5)
vs. Tulane	27 (43.5)	35 (56.5)	17	12	10	23	50 (80.6)	12 (19.4)
vs. St. John's	29 (42.0)	40 (58.0)	24	28	5	12	65 (94.2)	4 (5.8)
vs. Florida A&M	50 (54.3)	42 (45.7)	38	23	10	21	58 (63.0)	34 (37.0)
vs. Presbyterian	35 (54.7)	29 (45.3)	26	8	9	21	46 (71.9)	18 (28.1)
vs. UCLA	37 (56.1)	29 (43.9)	26	10	11	19	54 (81.8)	12 (18.2)
at Minnesota	28 (51.9)	26 (48.1)	26	9	2	17	31 (57.4)	23 (42.6)
at Mississippi State	44 (53.7)	38 (46.3)	34	11	10	27	58 (70.7)	24 (29.3)
vs. Vanderbilt	34 (52.3)	31 (47.7)	18	19	16	12	44 (67.7)	21 (32.3)
vs. South Carolina	30 (45.5)	36 (54.5)	20	13	10	23	50 (75.8)	16 (24.2)
at Alabama	37 (60.7)	24 (39.3)	23	7	14	17	50 (82.0)	11 (18.0)
vs. Kentucky	24 (33.8)	47 (66.2)	37	0	15	19	68 (95.8)	3 (4.2)
at LSU	17 (28.3)	43 (71.7)	14	2	9	35	46 (76.7)	14 (23.3)
at Florida	29 (42.0)	40 (58.0)	14	14	15	26	65 (94.2)	4 (05.8)
vs. Texas A&M	30 (60.0)	24 (40.0)	15	8	13	18	42 (77.7)	12 (22.3)

2013-14 Starting Lineups

	Point Guard (1)	Wing (2)	Wing (3)	Post (4)	Post (5)
vs. Georgia Southern	Kiani Parker	Katie Frerking	Tyrese Tanner	Tra'Cee Tanner	Peyton Davis
vs. Jacksonville State	Kiani Parker	Brandy Montgomery	Katie Frerking	Tra'Cee Tanner	Peyton Davis
at Temple	Kiani Parker	Brandy Montgomery	Katie Frerking	Tyrese Tanner	Peyton Davis
at Alabama A&M	Kiani Parker	Brandy Montgomery	Katie Frerking	Tyrese Tanner	Peyton Davis
at Tennessee-Chattanooga	Kiani Parker	Brandy Montgomery	Katie Frerking	Tyrese Tanner	Peyton Davis
vs. Ball State	Kiani Parker	Hasina Muhammad	Tyrese Tanner	Tra'Cee Tanner	Peyton Davis
vs. Iowa State	Kiani Parker	Brandy Montgomery	Hasina Muhammad	Tyrese Tanner	Tra'Cee Tanner
vs. Tulane	Kiani Parker	Brandy Montgomery	Hasina Muhammad	Tyrese Tanner	Tra'Cee Tanner
vs. St. John's	Kiani Parker	Brandy Montgomery	Hasina Muhammad	Tyrese Tanner	Tra'Cee Tanner
vs. Florida A&M	Kiani Parker	Brandy Montgomery	Hasina Muhammad	Tyrese Tanner	Tra'Cee Tanner
vs. Presbyterian	Kiani Parker	Brandy Montgomery	Hasina Muhammad	Tyrese Tanner	Tra'Cee Tanner
vs. UCLA	Kiani Parker	Brandy Montgomery	Hasina Muhammad	Tyrese Tanner	Tra'Cee Tanner
at Minnesota	Kiani Parker	Brandy Montgomery	Hasina Muhammad	Tyrese Tanner	Tra'Cee Tanner
at Mississippi State	Kiani Parker	Brandy Montgomery	Hasina Muhammad	Tyrese Tanner	Tra'Cee Tanner
vs. Vanderbilt	Kiani Parker	Brandy Montgomery	Hasina Muhammad	Tyrese Tanner	Tra'Cee Tanner
vs. South Carolina	Kiani Parker	Brandy Montgomery	Hasina Muhammad	Tyrese Tanner	Tra'Cee Tanner
at Alabama	Meagan Tucker	Brandy Montgomery	Hasina Muhammad	Tyrese Tanner	Tra'Cee Tanner
vs. Kentucky	Meagan Tucker	Brandy Montgomery	Tyrese Tanner	Tra'Cee Tanner	Peyton Davis
at LSU	Meagan Tucker	Brandy Montgomery	Tyrese Tanner	Tra'Cee Tanner	Peyton Davis
at Florida	Meagan Tucker	Brandy Montgomery	Hasina Muhammad	Tyrese Tanner	Tra'Cee Tanner
vs. Texas A&M	Meagan Tucker	Brandy Montgomery	Hasina Muhammad	Tyrese Tanner	Tra'Cee Tanner

Record by Starting Lineup

Tucker, Montgomery, Muhammad, Ty. Tanner, Tr. Tanner1-2 (.333)
Parker, Frerking, Ty. Tanner, Tr. Tanner, Davis1-0 (1.000)
Parker, Muhammad, Ty. Tanner, Tr. Tanner, Davis1-0 (1.000)
Parker, Montgomery, Frerking, Tr. Tanner, Davis1-0 (1.000)
Parker, Montgomery, Muhammad, Ty. Tanner, Tr. Tanner7-4 (.636)
Parker, Montgomery, Frerking, Ty. Tanner, Davis1-2 (.333)
Tucker, Montgomery, Ty. Tanner, Tr. Tanner, Davis0-2 (.000)



Terri WILLIAMS-FLOURNOY

Head Coach

Second Season

Hampton, Va. • Penn State, 1991

- Picked up her 150th career victory on Dec. 12 at George Washington
- Recorded her 400th career win as a collegiate assistant and head coach in Auburn's 68-58 win over Hofstra on Dec. 9
- Tallied her 500th win as a player, assistant coach and head coach with 84-66 win over Western Kentucky in the 2013 WNIT Second Round
- Led Auburn to the postseason in her first season as head coach, advancing to WNIT Quarterfinals
- Has advanced her team to the postseason in five of nine years as a head coach
- Earned her first win at Auburn in a 71-41 win over Maine on Nov. 9, 2012
- Picked up first SEC win in a 50-47 victory over #23 Arkansas
- Led Auburn to its best season in four years with 19 wins in 2012-13
- Has 173 wins as a head coach and 251 as an assistant for a .635 winning percentage over her 20 years
- Has been a part of six conference championships and 13 post-season appearances as an assistant and head coach
- 2010 Black Coaches Association Coach of the Year
- Served as an assistant coach for Team USA that won a gold medal at the 2011 World University Games in ShenZhen, China
- Coached teams to 11 NCAA Tournament appearances, nine as an assistant coach and two as a head coach
- As an assistant coach at Georgia, helped the team to two Southeastern Conference titles in 1997 and 2000 and the 2001 SEC Tournament title
- Has coached 19 players that have gone on to the professional ranks, including seven in the WNBA
- Helped coach Georgia to a NCAA Final Four appearance and two NCAA Elite Eight appearances
- Coached three Georgetown players to three all-conference honors and one All-America award
- Coached Georgetown to four straight 20-win seasons
- Sports a 512-281 record as a head coach, assistant coach and player
- Helped coach Georgetown to Big East title in 1992
- As an assistant coach at Southwest Missouri State, helped the team to two straight NCAA Tournaments and two consecutive Missouri Valley Conference Tournament Championships

All-time record as player and coach:	512-281 (.646)	26th year
Record as collegiate player:	88-36 (.709)	4 seasons
Record as collegiate coach:	424-245 (.634)	21st season
Record as collegiate assistant coach:	251-116 (.683)	12 seasons
SEC Record as an assistant coach:	130-45 (.742)	6 seasons
Record as collegiate head coach:	173-129 (.573)	10th season
Record as Auburn's head coach:	30-25 (.545)	2nd season
SEC Record as a head coach:	7-17 (.292)	2nd season

Williams-Flournoy Year-by-Year

Penn State, Player (1987-91)

Year	Record	Conf.	Other Information
1987-88	20-13	11-7	NCAA Second Round
1988-89	14-14	12-6	
1989-90	25-7	15-3	NCAA Second Round
1990-91	29-2	17-1	NCAA Second Round

Georgetown, Assistant Coach (1992-96)

Year	Record	Conf.	Other Information
1992-93	23-7	15-3	Big East Champions NCAA Sweet 16
1993-94	12-15	6-12	
1994-95	11-17	6-12	
1995-96	12-15	7-11	

Georgia, Assistant Coach (1996-2002)

Year	Record	Conf.	Other Information
1996-97	25-6	11-1	SEC Champions NCAA Elite Eight
1997-98	17-11	8-6	NCAA First Round
1998-99	27-7	9-5	NCAA Final Four
1999-2000	32-4	13-1	SEC Champions NCAA Elite Eight
2000-01	27-6	11-3	SEC Tournament Champions NCAA Second Round
2001-02	19-11	6-8	NCAA First Round

Southwest Missouri State, Assistant Coach (2002-04)

Year	Record	Conf.	Other Information
2002-03	18-13	11-7	MVC Tournament Champions NCAA First Round
2003-04	28-4	16-2	Missouri Valley Champions MVC Tournament Champions NCAA First Round

Georgetown, Head Coach (2004-12)

Year	Record	Conf.	Other Information
2004-05	12-16	7-9	
2005-06	10-17	3-13	
2006-07	13-16	3-13	
2007-08	15-14	5-11	
2008-09	20-14	7-9	WNIT Quarterfinals
2009-10	26-7	13-3	NCAA Second Round
2010-11	24-11	9-7	NCAA Sweet 16
2011-12	23-9	11-5	NCAA Second Round

Auburn, Head Coach (2012-present)

Year	Record	Conf.	Other Information
2012-13	19-15	5-11	WNIT Quarterfinals
2013-14	11-10	2-6	



Peyton DAVIS

#34

Senior • Center • 6-5

Pinson, Ala.

Mortimer Jordan High School

NOTES:

- Scored a career-high 19 points vs. Florida A&M on 9-of-10 shooting from the field
- Scored 17 points at Alabama A&M, notching her fourth career double-double with 12 points
- Pulled down her third career double-double with a career-high 15 points and 11 rebounds vs. Georgia Southern
- Earned her degree in exercise science from Auburn on Aug. 3, 2013
- Started in all 34 games, averaging 6.1 points and 4.9 rebounds per game last year
- Tallied her second career double-double with 12 points and 11 rebounds at Alabama last season
- Pulled down 17 rebounds against Arkansas on Jan. 3, 2013, a mark that ranks 27th all-time at AU in single-game rebounds and most for an AU player since 2010
- A two-sport star athlete in high school, also fielded several NCAA Division I volleyball offers; also holds a black belt in Taekwondo

Opponent	Start	Min.	FG-A	3PT-A	FT-A	O-D-T	PF	Ast.	TO	Blk.	St.	Pts.
GEORGIA SOUTHERN	*	26	6-10	0-0	3-4	5-6-11	4	0	1	2	0	15
JACKSONVILLE STATE	*	22	6-11	0-0	2-2	5-3-8	3	0	4	0	0	14
at Temple	*	16	3-4	0-0	0-0	3-4-7	5	0	0	0	0	6
at Alabama A&M	*	26	7-12	0-0	3-5	6-6-12	3	0	2	1	1	17
at Tennessee-Chattanooga	*	14	1-3	0-0	0-0	1-4-5	3	0	2	0	0	2
vs. Ball State	*	12	1-1	0-0	0-0	0-0-0	5	0	1	0	0	2
vs. Iowa State		12	0-0	0-0	0-0	0-1-1	4	1	1	0	0	0
TULANE		9	0-0	0-0	0-0	0-3-3	4	0	2	0	1	0
ST. JOHN'S		12	2-3	0-0	0-0	2-3-5	3	0	1	0	0	4
FLORIDA A&M		15	9-10	0-0	1-3	3-1-4	3	0	1	0	0	19
PRESBYTERIAN		17	2-3	0-0	4-4	2-4-6	3	1	1	1	0	8
vs. UCLA		12	1-3	0-0	0-0	1-6-7	5	1	2	0	0	2
at Minnesota		26	5-8	0-0	1-1	2-0-2	2	0	2	0	0	11
at Mississippi State		21	4-4	0-0	2-2	2-1-3	3	0	1	1	1	10
VANDERBILT		17	4-5	0-0	3-6	2-1-3	3	0	1	0	2	11
SOUTH CAROLINA		18	2-3	0-0	0-0	0-1-1	3	0	4	1	0	4
at Alabama		13	3-5	0-0	2-7	5-3-8	2	0	0	1	0	8
KENTUCKY	*	20	4-6	0-0	1-2	3-4-7	4	0	0	0	1	9
at LSU	*	27	3-4	0-0	2-2	0-5-5	4	0	1	1	2	8
at Florida		12	1-2	0-0	1-2	1-4-5	4	0	4	2	0	3
TEXAS A&M		13	0-2	0-0	0-0	1-0-1	1	0	0	1	0	0
at Arkansas												
MISSISSIPPI STATE												
at Vanderbilt												
MISSOURI												
at Tennessee												
GEORGIA												
ALABAMA												
at Ole Miss												

SEASON HIGHS

Points		
19	vs. Florida A&M	(12/15/13)
Rebounds		
12	at Alabama A&M	(11/19/13)
Assists		
1	3 times, last vs. UCLA	(12/21/13)
Blocks		
2	vs. Georgia Southern at Florida	(11/9/13) (1/26/14)
Steals		
2	vs. Vanderbilt	(1/9/14)
Field Goals		
9	vs. Florida A&M	(12/15/13)
Field Goal Attempts		
12	at Alabama A&M	(11/19/13)
3-Point Field Goals		
n/a		
3-Point FG Attempts		
n/a		
Free Throws		
4	vs. Presbyterian	(12/18/13)
Free Throw Attempts		
7	at Alabama	(1/16/14)

CAREER HIGHS

Points		
19	vs. Florida A&M	(12/15/13)
Rebounds		
17	vs. Arkansas	(1/3/13)
Assists		
2	twice, last vs. WKU	(3/24/13)
Blocks		
3	3 times, last vs. Temple	(12/16/12)
Steals		
3	twice, last vs. Hofstra	(12/9/12)
Field Goals		
9	vs. Florida A&M	(12/15/13)
Field Goal Attempts		
12	twice, last at Alabama A&M	(11/19/13)
3-Point Field Goals		
n/a		
3-Point FG Attempts		
n/a		
Free Throws		
4	3 times, last vs. PC	(12/18/13)
Free Throw Attempts		
7	at Alabama	(1/16/14)

DAVIS CAREER STATISTICS

Year	GP-GS	FG-FGA	Pct	3FG-FGA	Pct	FT-FTA	Pct	O-D-T (Reb.)	Avg	PF	FO	Ast	TO	Blk	Stl	Pts	Avg
2010-11	26-0	12-41	.293	0-0	.000	9-15	.600	18-16-34	1.3	38	0	7	13	7	4	33	1.3
2011-12	19-0	3-13	.231	0-0	.000	1-5	.200	10-13-23	1.2	15	0	1	12	4	3	7	0.4
2012-13	34-34	86-181	.475	0-0	.000	36-82	.439	78-89-167	4.9	98	3	14	59	21	26	208	6.1
2013-14	21-8	64-99	.646	0-0	.000	25-40	.625	44-60-104	5.0	71	3	3	31	11	8	153	7.3
TOTAL	100-42	165-334	.494	0-0	.000	71-142	.500	150-178-328	3.3	222	6	25	115	43	41	401	4.0



Tyrese TANNER

#32

Senior • Forward • 6-1

Birmingham, Ala.

Hoover High School

NOTES:

- Ranks 17th all-time at Auburn in career scoring with 1,277 points and is 26th all-time in rebounding with 490
- Totaled an SEC career high 28 points vs. Kentucky, her 4th 20-point game of the season and 13th of her career
- Named to the South Point Thanksgiving Shootout and the Subway Classic All-Tournament Teams
- Posted her second double-double of the season vs. Tulane with 17 points and a career-high 13 rebounds
- Scored a career-high 29 points against UAB in the first round of the WNIT last year, setting an Auburn WNIT record
- Named SEC Player of the Week on Nov. 12, 2012, the first such honor of her career
- Playing alongside her younger sister, Tra'cee Tanner, who is a sophomore on the team this season
- The Tanner sisters are the third set of sisters to play together at Auburn, joining Sherell and Reneisha Hobbs, and Ruthie and Mae Ola Bolton

Opponent	Start	Min.	FG-A	3PT-A	FT-A	O-D-T	PF	Ast.	TO	Blk.	St.	Pts.
GEORGIA SOUTHERN	*	33	6-19	0-1	5-7	2-5-7	2	5	1	1	2	17
JACKSONVILLE STATE	-- DID NOT PLAY --											
at Temple	*	28	5-8	0-0	9-12	2-6-8	4	2	4	2	0	19
at Alabama A&M	*	30	9-20	0-0	1-2	4-6-10	3	6	2	1	3	19
at Tennessee-Chattanooga	*	20	4-11	0-1	0-0	1-4-5	5	1	2	1	0	8
vs. Ball State	*	30	4-11	1-2	5-6	3-3-6	4	2	2	2	2	14
vs. Iowa State	*	32	4-14	0-0	3-4	1-3-4	3	1	1	1	2	11
TULANE	*	37	5-14	0-0	7-12	6-7-13	3	2	1	1	2	17
ST. JOHN'S	*	33	8-16	0-0	4-7	3-4-7	3	3	1	0	0	20
FLORIDA A&M	*	23	8-12	0-0	3-4	2-4-6	3	3	1	0	4	19
PRESBYTERIAN	*	22	6-14	1-1	5-6	3-4-7	3	0	1	0	2	18
vs. UCLA	*	27	8-15	1-1	7-9	7-1-8	3	2	4	0	4	24
at Minnesota	*	21	4-15	0-3	7-8	1-2-3	5	0	3	0	4	15
at Mississippi State	*	25	8-13	0-0	8-13	3-3-6	4	3	2	1	1	24
VANDERBILT	*	29	3-13	0-1	1-2	1-3-4	5	1	3	0	3	7
SOUTH CAROLINA	*	23	6-14	1-2	3-4	0-2-2	5	0	1	2	1	16
at Alabama	*	33	6-13	0-1	3-6	5-4-9	1	1	4	3	3	15
KENTUCKY	*	39	10-20	0-0	8-11	1-4-5	3	1	3	2	0	28
at LSU	*	24	3-10	0-1	0-2	1-7-8	5	2	5	4	0	6
at Florida	*	32	5-14	0-0	1-4	4-4-8	5	3	2	0	1	11
TEXAS A&M	*	23	6-13	0-0	3-5	0-1-1	4	0	3	1	3	15
at Arkansas												
MISSISSIPPI STATE												
at Vanderbilt												
MISSOURI												
at Tennessee												
GEORGIA												
ALABAMA												
at Ole Miss												

SEASON HIGHS

Points		
28	vs. Kentucky	(1/19/14)
Rebounds		
13	vs. Tulane	(12/3/13)
Assists		
6	at Alabama A&M	(11/19/13)
Blocks		
4	at LSU	(1/23/14)
Steals		
4	3 times, last at Minnesota	(12/22/13)
Field Goals		
10	vs. Kentucky	(1/19/14)
Field Goal Attempts		
20	twice, last vs. Kentucky	(1/19/14)
3-Point Field Goals		
1	4 times, last vs. USC	(1/12/14)
3-Point FG Attempts		
3	at Minnesota	(12/22/13)
Free Throws		
9	at Temple	(11/16/13)
Free Throw Attempts		
13	at Mississippi State	(1/5/14)

CAREER HIGHS

Points		
29	vs. UAB	(3/20/13)
Rebounds		
13	vs. Tulane	(12/3/13)
Assists		
6	at Alabama A&M	(11/19/13)
Blocks		
4	twice, last at LSU	(1/23/14)
Steals		
4	7 times, last at Minnesota	(12/22/13)
Field Goals		
12	vs. UAB	(3/20/13)
Field Goal Attempts		
21	vs. UAB	(3/20/13)
3-Point Field Goals		
4	vs. Belmont	(11/15/11)
3-Point FG Attempts		
5	3 times, last vs. Maine	(11/9/12)
Free Throws		
11	twice, last vs. Tulane	(3/27/13)
Free Throw Attempts		
14	at Arkansas	(1/15/12)

TANNER CAREER STATISTICS

Year	GP-GS	FG-FGA	Pct	3FG-FGA	Pct	FT-FTA	Pct	O-D-T (Reb.)	Avg	PF	FO	Ast	TO	Blk	Stl	Pts	Avg
2010-11	32-3	53-159	.333	6-37	.162	43-64	.672	48-53-101	3.2	57	1	27	48	24	21	155	4.8
2011-12	30-18	113-278	.406	7-29	.241	84-130	.646	51-64-115	3.8	78	2	33	66	24	36	317	10.6
2012-13	34-34	184-442	.416	6-31	.194	108-140	.771	70-77-147	4.3	97	5	49	68	38	69	482	14.2
2013-14	20-20	118-279	.423	4-14	.286	83-124	.669	50-77-127	6.4	73	6	38	46	22	37	323	16.2
TOTAL	116-75	468-1158	.404	23-111	.207	318-458	.694	219-271-490	4.2	305	14	147	228	108	163	1277	11.0



Hasina MUHAMMAD

#00

Junior • Guard • 6-1

Memphis, Tenn.

Ridgeway High School

NOTES:

- Named to the Preseason All-SEC Second Team
- Scored 900th career point vs. South Carolina, becoming the 35th Tiger all-time to score 900 career points
- Blocked a career-high 5 shots at Alabama
- Selected to the Subway Classic All-Tournament Team after averaging 9.5 points and 6.5 rebounds per game vs. UCLA and Minnesota
- Scored a career-high 28 points with six rebounds against St. John's; also attempted her first career slam dunk (a miss) vs. the Red Storm
- Made her season debut against Ball State with 11 points, three rebounds and six steals
- Finished second on the team in scoring with 14.0 points per game and second in rebounding with 5.1 per game
- Notched her first career double-double at George Washington last year with 21 points and 10 rebounds; also tallied 9 steals in the win

Opponent	Start	Min.	FG-A	3PT-A	FT-A	O-D-T	PF	Ast.	TO	Blk.	St.	Pts.
GEORGIA SOUTHERN						-- DID NOT PLAY --						
JACKSONVILLE STATE						-- DID NOT PLAY --						
at Temple						-- DID NOT PLAY --						
at Alabama A&M						-- DID NOT PLAY --						
at Tennessee-Chattanooga						-- DID NOT PLAY --						
vs. Ball State	*	29	5-12	0-0	1-2	1-2-3	3	2	6	3	6	11
vs. Iowa State	*	32	6-15	1-1	2-5	3-1-4	2	2	0	2	2	15
TULANE	*	20	4-10	0-1	2-3	3-6-9	4	1	1	2	0	10
ST. JOHN'S	*	32	11-19	0-0	6-7	1-5-6	2	2	1	0	2	28
FLORIDA A&M	*	25	8-12	0-1	2-4	2-3-5	2	5	0	2	4	18
PRESBYTERIAN	*	21	3-9	0-0	2-4	2-1-3	1	1	0	0	3	8
vs. UCLA	*	31	4-17	0-1	2-7	2-4-6	1	4	0	2	4	10
at Minnesota	*	22	4-9	0-0	1-2	4-3-7	3	0	2	0	1	9
at Mississippi State	*	24	4-9	0-0	2-2	0-4-4	3	2	2	0	2	10
VANDERBILT	*	34	7-16	0-0	3-3	3-5-8	3	2	1	4	2	17
SOUTH CAROLINA	*	34	1-7	0-0	3-5	2-2-4	3	4	1	2	4	5
at Alabama	*	27	2-12	0-1	3-5	4-2-6	3	0	2	5	1	7
KENTUCKY						-- DID NOT PLAY --						
at LSU						-- DID NOT PLAY --						
at Florida	*	26	5-10	0-1	3-8	5-2-7	3	4	2	3	1	13
TEXAS A&M	*	18	1-4	0-0	1-2	0-0-0	3	0	2	1	4	3
at Arkansas												
MISSISSIPPI STATE												
at Vanderbilt												
MISSOURI												
at Tennessee												
GEORGIA												
ALABAMA												
at Ole Miss												

SEASON HIGHS

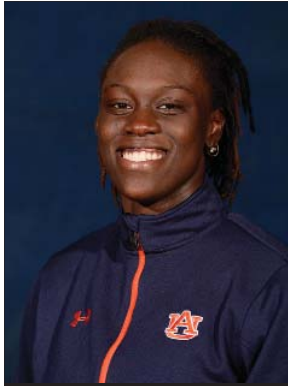
Points	28	vs. St. John's	(12/6/13)
Rebounds	9	vs. Tulane	(12/3/13)
Assists	5	vs. Florida A&M	(12/15/13)
Blocks	5	at Alabama	(1/16/14)
Steals	6	vs. Ball State	(11/29/13)
Field Goals	11	vs. St. John's	(12/6/13)
Field Goal Attempts	19	vs. St. John's	(12/6/13)
3-Point Field Goals	1	vs. Iowa State	(11/30/13)
3-Point FG Attempts	1	4 times, last at Florida	(11/26/14)
Free Throws	6	vs. St. John's	(12/6/13)
Free Throw Attempts	8	at Florida	(1/26/14)

CAREER HIGHS

Points	28	vs. St. John's	(12/6/13)
Rebounds	10	at George Washington	(12/12/12)
Assists	6	vs. Temple	(12/16/12)
Blocks	5	at Alabama	(1/16/14)
Steals	9	at George Washington	(12/12/12)
Field Goals	11	3 times, last vs. St. John's	(12/6/13)
Field Goal Attempts	24	at Texas A&M	(1/13/13)
3-Point Field Goals	3	twice, last vs. Maine	(11/9/12)
3-Point FG Attempts	6	vs. Maine	(11/9/12)
Free Throws	9	vs. Georgia	(1/8/12)
Free Throw Attempts	11	vs. Georgia	(1/8/12)

MUHAMMAD CAREER STATISTICS

Year	GP-GS	FG-FGA	Pct	3FG-FGA	Pct	FT-FTA	Pct	O-D-T (Reb.)	Avg	PF	FO	Ast	TO	Blk	Stl	Pts	Avg
2011-12	30-16	119-308	.386	11-34	.324	37-64	.578	58-54-112	3.7	51	1	38	77	31	40	286	9.5
2012-13	34-32	198-468	.423	5-17	.294	74-127	.583	80-94-174	5.1	63	1	68	96	42	82	475	14.0
2013-14	14-14	65-161	.404	1-6	.167	33-59	.559	32-40-72	5.1	36	0	29	20	26	36	164	11.7
TOTAL	78-62	382-937	.408	17-57	.298	144-250	.576	170-188-358	4.6	150	2	135	193	99	158	925	11.9



Cabriana CAPERS

#35

Sophomore • Forward • 6-1

Bolingbrook, Ill.

Bolingbrook

NOTES:

- Pulled down 8 rebounds with a steal in the season-opener vs. Georgia Southern
- Played in 30 games as a freshman, averaging 1.9 points and 3.2 rebounds per game
- Scored season-high 8 points with 6 rebounds in 25 minutes at #5 Kentucky, leading Auburn on the boards for the second time
- Was one of 8 women's basketball players in her senior class to sign NCAA Division I Letters of Intent

Opponent	Start	Min.	FG-A	3PT-A	FT-A	O-D-T	PF	Ast.	TO	Blk.	St.	Pts.
GEORGIA SOUTHERN	17		0-3	0-0	0-0	6-2-8	0	0	0	0	1	0
JACKSONVILLE STATE	21		1-2	0-0	1-2	1-3-4	2	0	1	0	0	3
at Temple	12		1-2	0-0	0-0	0-1-1	1	1	1	1	1	2
at Alabama A&M	13		2-3	0-0	2-2	1-2-3	1	3	2	0	0	6
at Tennessee-Chattanooga	21		0-2	0-0	0-0	0-3-3	2	1	1	1	0	0
vs. Ball State	19		0-1	0-0	0-0	2-1-3	2	0	1	0	1	0
vs. Iowa State	15		2-2	0-0	0-0	1-3-4	2	0	0	0	0	4
TULANE	11		0-3	0-0	0-0	1-1-2	1	0	1	0	0	0
ST. JOHN'S	12		0-0	0-0	0-0	1-1-2	1	2	0	0	0	0
FLORIDA A&M	16		1-3	0-0	0-0	2-3-5	0	0	1	0	1	2
PRESBYTERIAN	17		0-0	0-0	0-0	0-2-2	2	0	0	0	0	0
vs. UCLA	16		0-2	0-0	5-6	3-1-4	4	0	1	0	0	5
at Minnesota	21		1-5	0-0	0-0	3-0-3	1	2	1	0	0	2
at Mississippi State	19		0-1	0-0	0-0	3-4-7	2	1	0	0	0	0
VANDERBILT	16		0-1	0-0	0-0	1-3-4	1	1	2	0	3	0
SOUTH CAROLINA	9		0-1	0-0	2-2	1-0-1	0	0	0	0	0	2
at Alabama	1		0-0	0-0	0-0	0-0-0	0	0	0	0	0	0
KENTUCKY	21		0-1	0-0	0-0	0-5-5	4	1	2	0	1	0
at LSU	10		0-0	0-0	1-2	0-0-0	0	0	0	0	0	1
at Florida	7		0-0	0-0	0-0	0-1-1	0	0	0	0	0	0
TEXAS A&M	13		1-4	0-0	0-0	0-0-0	2	0	0	0	0	2
at Arkansas												
MISSISSIPPI STATE												
at Vanderbilt												
MISSOURI												
at Tennessee												
GEORGIA												
ALABAMA												
at Ole Miss												

SEASON HIGHS

Points	6	at Alabama A&M	(11/19/13)
Rebounds	8	vs. Georgia Southern	(11/9/13)
Assists	3	at Alabama A&M	(11/19/13)
Blocks	1	twice, last at UTC	(11/24/13)
Steals	3	vs. Vanderbilt	(1/9/14)
Field Goals	2	twice, last vs. Iowa State	(11/30/13)
Field Goal Attempts	5	at Minnesota	(12/22/13)
3-Point Field Goals	n/a		
3-Point FG Attempts	n/a		
Free Throws	5	vs. UCLA	(12/21/13)
Free Throw Attempts	6	vs. UCLA	(12/21/13)

CAREER HIGHS

Points	8	at Kentucky	(1/20/13)
Rebounds	9	vs. Alabama A&M	(11/18/12)
Assists	3	at Alabama A&M	(11/19/13)
Blocks	1	twice, last at Temple	(11/16/13)
Steals	3	vs. Vanderbilt	(1/9/14)
Field Goals	2	11 times, last vs. Iowa State	(11/30/13)
Field Goal Attempts	5	twice, last at Minnesota	(12/22/13)
3-Point Field Goals	n/a		
3-Point FG Attempts	n/a		
Free Throws	5	vs. UCLA	(12/21/13)
Free Throw Attempts	6	vs. UCLA	(12/21/13)

CAPERS CAREER STATISTICS

Year	GP-GS	FG-FGA	Pct	3FG-FGA	Pct	FT-FTA	Pct	O-D-T (Reb.)	Avg	PF	FO	Ast	TO	Blk	Stl	Pts	Avg
2012-13	30-1	23-41	.561	0-0	.000	10-23	.435	37-59-96	3.2	24	0	18	15	1	6	56	1.9
2013-14	21-0	9-36	.250	0-0	.000	11-14	.786	26-36-62	3.0	27	0	12	14	2	8	29	1.4
TOTAL	51-1	32-77	.416	0-0	.000	21-37	.568	63-95-158	3.1	51	0	30	29	3	14	85	1.7



Tra' Cee TANNER

#44

Sophomore • Forward/Center • 6-3

Birmingham, Ala.

Hoover

NOTES:

- Notched first double-double of the season (second of her career) with 14 points and 10 rebounds at Alabama
- Totaled a career high 6 steals at Mississippi State, tying for 12th all-time at Auburn in single-game steals
- Dished out career-high 4 assists while scoring 19 points with 9 rebounds against Jacksonville State
- Has scored in double digits in 11 games this season
- Led Auburn freshmen in scoring and rebounding with 6.3 points and 3.8 boards per game last season
- Notched first career double-double with career highs of 21 points and 12 rebounds against Jacksonville last season
- Playing alongside her older sister, Tyrese Tanner, who is a senior on the team
- The Tanner sisters are the third set of sisters to play together at Auburn, joining Sherell and Reneisha Hobbs, and Ruthie and Mae Ola Bolton

Opponent	Start	Min.	FG-A	3PT-A	FT-A	O-D-T	PF	Ast.	TO	Blk.	St.	Pts.
GEORGIA SOUTHERN	*	23	5-8	0-0	4-5	5-3-8	4	1	0	2	1	14
JACKSONVILLE STATE	*	27	9-16	0-0	1-1	5-4-9	4	4	4	1	1	19
at Temple		28	2-6	0-0	2-2	4-2-6	3	0	4	2	0	6
at Alabama A&M		11	4-5	0-0	0-1	3-1-4	2	1	3	0	0	8
at Tennessee-Chattanooga		22	5-6	0-0	4-5	2-6-8	1	2	4	2	0	14
vs. Ball State	*	23	6-7	0-0	2-4	3-3-6	3	1	4	1	0	14
vs. Iowa State	*	24	3-9	0-0	2-2	2-7-9	4	0	1	2	0	8
TULANE	*	28	4-7	0-0	2-2	1-5-6	4	1	3	2	0	10
ST. JOHN'S	*	18	2-2	0-0	1-2	2-1-3	2	3	2	0	2	5
FLORIDA A&M	*	21	2-5	0-0	4-5	0-5-5	4	2	1	0	1	8
PRESBYTERIAN	*	18	4-8	0-0	1-3	5-3-8	2	1	2	0	1	9
vs. UCLA	*	24	3-8	0-0	0-0	4-1-5	5	0	2	1	2	6
at Minnesota	*	15	0-1	0-0	0-0	0-3-3	4	0	2	0	1	0
at Mississippi State	*	19	4-6	0-0	2-3	3-2-5	5	0	5	3	6	10
VANDERBILT	*	20	7-10	0-0	2-4	3-0-3	3	0	2	2	1	16
SOUTH CAROLINA	*	29	2-6	0-0	4-4	5-1-6	4	1	5	1	0	8
at Alabama	*	35	6-8	0-0	2-4	2-8-10	3	3	4	0	4	14
KENTUCKY	*	17	5-8	0-0	5-7	3-2-5	5	0	1	0	1	15
at LSU	*	18	3-7	0-0	2-4	3-5-8	5	1	4	1	1	8
at Florida	*	30	5-10	0-0	5-8	4-4-8	2	1	2	0	0	15
TEXAS A&M	*	36	4-10	0-0	3-4	4-1-5	1	2	1	2	1	11
at Arkansas												
MISSISSIPPI STATE												
at Vanderbilt												
MISSOURI												
at Tennessee												
GEORGIA												
ALABAMA												
at Ole Miss												

SEASON HIGHS

Points	19	vs. Jacksonville State	(11/13/13)
Rebounds	10	at Alabama	(1/16/14)
Assists	4	vs. Jacksonville State	(11/13/13)
Blocks	3	at Mississippi State	(1/5/14)
Steals	6	at Mississippi State	(1/5/14)
Field Goals	9	vs. Jacksonville State	(11/13/13)
Field Goal Attempts	16	vs. Jacksonville State	(11/13/13)
3-Point Field Goals	n/a		
3-Point FG Attempts	n/a		
Free Throws	5	twice, last time at Florida	(1/26/14)
Free Throw Attempts	8	at Florida	(1/26/14)

CAREER HIGHS

Points	21	vs. Jacksonville	(12/22/12)
Rebounds	12	vs. Jacksonville	(12/22/12)
Assists	4	vs. Jacksonville State	(11/13/13)
Blocks	3	twice, last at Mississippi State	(1/5/14)
Steals	6	at Mississippi State	(1/5/14)
Field Goals	10	vs. Jacksonville	(12/22/12)
Field Goal Attempts	16	vs. Jacksonville State	(11/13/13)
3-Point Field Goals	n/a		
3-Point FG Attempts	n/a		
Free Throws	5	twice, last time at Florida	(1/26/14)
Free Throw Attempts	8	at Florida	(1/26/14)

TANNER CAREER STATISTICS

Year	GP-GS	FG-FGA	Pct	3FG-FGA	Pct	FT-FTA	Pct	O-D-T (Reb.)	Avg	PF	FO	Ast	TO	Blk	Stl	Pts	Avg
2012-13	34-2	91-167	.545	0-0	.000	33-61	.541	55-75-130	3.8	76	0	21	39	23	30	215	6.3
2013-14	21-18	85-153	.556	0-0	.000	48-70	.686	63-67-130	6.2	70	4	24	56	22	23	218	10.4
TOTAL	55-20	176-320	.550	0-0	.000	81-131	.618	118-142-260	4.7	146	4	45	95	45	53	433	7.9



Melinda BRIMFIELD

#21

Junior • Forward • 6-0

Norway, S.C.

Hunter-Kinard-Tyler • Gulf Coast State College

NOTES:

- Played 6 minutes with an assist in her Auburn debut vs. Georgia Southern
- Graduated from Hunter-Kinard-Tyler High School in South Carolina and played the last two years at Gulf Coast State College
- Is the fifth Auburn player ever from Gulf Coast State, joining Trevesha Jackson, Carol Smith, Mandisa Stevenson and Taneshea Thompson
- Averaged 7.4 points and 3.8 rebounds per game as a sophomore, leading Gulf Coast State to a fourth place finish at the NJCAA national tournament

Opponent	Start Min.	FG-A	3PT-A	FT-A	O-D-T	PF	Ast.	TO	Blk.	St.	Pts.
GEORGIA SOUTHERN	6	0-3	0-0	0-0	0-0-0	0	1	0	0	0	0
JACKSONVILLE STATE	9	1-3	0-0	0-0	1-5-6	2	0	2	0	0	2
at Temple	2	0-0	0-0	0-0	0-0-0	0	0	0	0	0	0
at Alabama A&M	9	1-1	0-0	1-2	0-1-1	0	0	1	0	0	3
at Tennessee-Chattanooga	5	0-1	0-0	0-2	0-1-1	3	0	0	0	0	0
vs. Ball State	5	0-0	0-0	0-0	0-2-2	1	0	1	0	0	0
vs. Iowa State					-- DID NOT PLAY --						
TULANE	1	0-0	0-0	0-0	0-0-0	0	0	0	0	0	0
ST. JOHN'S	3	0-0	0-0	0-0	0-0-0	0	0	0	0	0	0
FLORIDA A&M	7	1-2	0-0	0-0	0-2-2	0	0	1	0	0	2
PRESBYTERIAN	6	0-1	0-0	0-0	0-0-0	0	0	0	0	0	0
vs. UCLA					-- DID NOT PLAY --						
at Minnesota					-- DID NOT PLAY --						
at Mississippi State					-- DID NOT PLAY --						
VANDERBILT	1	0-0	0-0	0-0	0-0-0	0	0	0	0	0	0
SOUTH CAROLINA	0+	0-0	0-0	0-0	0-0-0	1	0	0	0	0	0
at Alabama					-- DID NOT PLAY --						
KENTUCKY					-- DID NOT PLAY --						
at LSU	5	0-0	0-0	0-1	0-2-2	2	0	0	0	0	0
at Florida	2	0-0	0-0	0-0	0-0-0	0	0	0	0	0	0
TEXAS A&M					-- DID NOT PLAY --						
at Arkansas											
MISSISSIPPI STATE											
at Vanderbilt											
MISSOURI											
at Tennessee											
GEORGIA											
ALABAMA											
at Ole Miss											

SEASON HIGHS

Points		
3	at Alabama A&M	(11/19/13)
Rebounds		
6	vs. Jacksonville State	(11/13/13)
Assists		
1	vs. Georgia Southern	(11/9/13)
Blocks		
n/a		
Steals		
n/a		
Field Goals		
1	twice, last at Alabama A&M	(11/19/13)
Field Goal Attempts		
3	twice, last vs. JSU	(11/13/13)
3-Point Field Goals		
n/a		
3-Point FG Attempts		
n/a		
Free Throws		
1	at Alabama A&M	(11/19/13)
Free Throw Attempts		
2	twice, last at UTC	(11/24/13)

BRIMFIELD CAREER STATISTICS

Year	GP-GS	FG-FGA	Pct	3FG-FGA	Pct	FT-FTA	Pct	O-D-T (Reb.)	Avg	PF	FO	Ast	TO	Blk	Stl	Pts	Avg
2013-14	14-0	3-11	.273	0-0	.000	1-5	.200	1-13-14	1.0	9	0	1	5	0	0	7	0.5
TOTAL	14-0	3-11	.273	0-0	.000	1-5	.200	1-13-14	1.0	9	0	1	5	0	0	7	0.5



Kiani PARKER

#22

Junior • Guard • 5-9

Ft. Walton Beach, Fla.

Fort Walton Beach • Northwest Florida State College

NOTES:

- Dished out a season-high 7 assists vs. South Carolina on Jan. 12
- Scored season-high 10 points at Tennessee-Chattanooga, her first double-digit game at Auburn
- Started and scored 4 points with 3 rebounds, 3 assists and 3 steals vs. Georgia Southern in her Auburn debut
- Graduated from Fort Walton Beach High School and played the last two years at Northwest Florida State College
- Parker is the third Auburn player ever from Northwest Florida State (formerly Okaloosa-Walton Community College), joining Tamela McCorvey and Tara Williams
- Averaged 11.0 points 3.9 assists and 3.5 rebounds per game as a sophomore, while also leading the school to the NJCAA national quarterfinals

Opponent	Start	Min.	FG-A	3PT-A	FT-A	O-D-T	PF	Ast.	TO	Blk.	St.	Pts.
GEORGIA SOUTHERN	*	26	2-4	0-2	0-0	2-1-3	2	3	3	0	3	4
JACKSONVILLE STATE	*	27	1-5	0-0	1-4	1-2-3	1	3	3	0	3	3
at Temple	*	18	0-1	0-0	3-4	0-0-0	3	4	4	0	2	3
at Alabama A&M	*	18	0-1	0-1	0-0	1-1-2	0	4	3	0	1	0
at Tennessee-Chattanooga	*	25	4-6	0-0	2-2	0-2-2	2	1	3	1	0	10
vs. Ball State	*	32	3-3	1-1	0-0	1-4-5	2	5	4	0	4	7
vs. Iowa State	*	22	3-5	1-1	0-0	0-2-2	1	2	3	0	2	7
TULANE	*	24	1-4	0-1	0-3	0-2-2	3	3	3	0	3	2
ST. JOHN'S	*	20	0-0	0-0	0-1	1-2-3	1	5	3	0	2	0
FLORIDA A&M	*	18	1-2	0-1	1-3	0-1-1	1	5	3	0	0	3
PRESBYTERIAN	*	19	0-0	0-0	0-0	0-2-2	2	4	4	0	3	0
vs. UCLA	*	19	0-3	0-0	0-2	1-5-6	1	0	1	0	0	0
at Minnesota	*	23	0-3	0-1	0-0	0-0-0	2	4	4	0	3	0
at Mississippi State	*	18	0-4	0-0	1-2	0-1-1	0	2	3	0	0	1
VANDERBILT	*	20	1-1	0-0	0-2	0-1-1	4	4	3	0	0	2
SOUTH CAROLINA	*	24	4-5	0-0	0-0	1-3-4	4	7	3	0	2	8
at Alabama		7	0-1	0-1	0-0	1-0-1	1	0	2	0	1	0
KENTUCKY		10	0-3	0-0	0-0	0-0-0	1	1	0	0	1	0
at LSU		20	1-4	0-1	0-0	0-1-1	0	2	0	0	1	2
at Florida		18	0-2	0-0	1-2	1-1-2	1	2	2	0	1	1
TEXAS A&M		18	1-4	0-0	3-3	1-0-1	1	1	3	0	1	5
at Arkansas												
MISSISSIPPI STATE												
at Vanderbilt												
MISSOURI												
at Tennessee												
GEORGIA												
ALABAMA												
at Ole Miss												

SEASON HIGHS

- Points**
- 10 at Tennessee-Chattanooga (11/24/13)
- Rebounds**
- 5 vs. Ball State (11/29/13)
- Assists**
- 7 vs. South Carolina (1/12/14)
- Blocks**
- 1 at Tennessee-Chattanooga (11/24/13)
- Steals**
- 4 vs. Ball State (11/29/13)
- Field Goals**
- 4 twice, last vs. South Carolina (1/12/14)
- Field Goal Attempts**
- 6 at Tennessee-Chattanooga (11/24/13)
- 3-Point Field Goals**
- 1 twice, last vs. Iowa State (11/30/13)
- 3-Point FG Attempts**
- 2 vs. Georgia Southern (11/9/13)
- Free Throws**
- 3 at Temple (11/16/13)
- Free Throw Attempts**
- 4 twice, last at Temple (11/13/13)

PARKER CAREER STATISTICS

Year	GP-GS	FG-FGA	Pct	3FG-FGA	Pct	FT-FTA	Pct	O-D-T (Reb.)	Avg	PF	FO	Ast	TO	Blk	Stl	Pts	Avg
2013-14	21-16	22-61	.361	2-10	.200	12-28	.429	11-31-42	2.0	33	0	62	57	1	33	58	2.8
TOTAL	21-16	22-61	.361	2-10	.200	12-28	.429	11-31-42	2.0	33	0	62	57	1	33	58	2.8



Khady DIENG

#40

Freshman • Guard/Forward • 5-10

Dakar, Senegal

Gatewood (Ga.) School

NOTES:

- Tied her season high with 5 points vs. Florida A&M, also had 2 assists and a steal
- Scored 5 points with 3 rebounds in her collegiate debut vs. Georgia Southern
- Averaged 15.8 points, 7.6 rebounds, 5.4 steals, and 4.1 assists per game as a senior at the Gatewood School in Eatonton, Ga.
- Originally from Dakar, Senegal, she moved to Georgia prior to her junior year of high school
- Is first Auburn women's basketball player from Senegal and second from Africa (Crispina Correia, West Africa)

Opponent	Start Min.	FG-A	3PT-A	FT-A	O-D-T	PF	Ast.	TO	Blk.	St.	Pts.
GEORGIA SOUTHERN	13	2-7	1-3	0-0	1-2-3	2	1	3	0	0	5
JACKSONVILLE STATE	8	2-2	0-0	0-0	1-1-2	0	1	1	0	1	4
at Temple	2	0-0	0-0	0-0	0-0-0	0	0	1	0	1	0
at Alabama A&M	11	2-2	1-1	0-0	1-3-4	2	0	3	0	1	5
at Tennessee-Chattanooga	20	1-3	1-2	0-0	2-1-3	1	1	2	0	1	3
vs. Ball State	4	0-0	0-0	0-0	1-0-1	1	0	2	0	0	0
vs. Iowa State					-- DID NOT PLAY --						
TULANE	3	0-0	0-0	0-0	0-0-0	0	0	0	0	0	0
ST. JOHN'S	2	0-0	0-0	0-0	0-0-0	0	0	0	0	1	0
FLORIDA A&M	6	2-4	0-1	1-2	1-0-1	0	2	0	0	1	5
PRESBYTERIAN	11	0-1	0-0	0-0	2-1-3	0	2	2	0	2	0
vs. UCLA					-- DID NOT PLAY --						
at Minnesota					-- DID NOT PLAY --						
at Mississippi State	5	0-3	0-1	0-0	1-0-1	0	0	1	0	0	0
VANDERBILT	1	0-0	0-0	0-0	0-0-0	1	0	0	0	0	0
SOUTH CAROLINA	0+	0-0	0-0	0-0	0-0-0	0	0	0	0	0	0
at Alabama					-- DID NOT PLAY --						
KENTUCKY					-- DID NOT PLAY --						
at LSU					-- DID NOT PLAY --						
at Florida					-- DID NOT PLAY --						
TEXAS A&M	5	0-0	0-0	2-2	1-0-1	0	1	0	0	1	2
at Arkansas											
MISSISSIPPI STATE											
at Vanderbilt											
MISSOURI											
at Tennessee											
GEORGIA											
ALABAMA											
at Ole Miss											

SEASON HIGHS		
Points	5	3 times, last vs. Florida A&M (12/15/13)
Rebounds	4	at Alabama A&M (11/19/13)
Assists	2	twice, last vs. PC (12/18/13)
Blocks	n/a	
Steals	2	vs. Presbyterian (12/18/13)
Field Goals	2	4 times, last at Fla. A&M (12/15/13)
Field Goal Attempts	7	vs. Georgia Southern (11/9/13)
3-Point Field Goals	1	3 times, last at UTC (11/24/13)
3-Point FG Attempts	3	vs. Georgia Southern (11/9/13)
Free Throws	1	vs. Florida A&M (12/15/13)
Free Throw Attempts	2	vs. Florida A&M (12/15/13)

DIENG CAREER STATISTICS

Year	GP-GS	FG-FGA	Pct	3FG-FGA	Pct	FT-FTA	Pct	O-D-T (Reb.)	Avg	PF	FO	Ast	TO	Blk	Stl	Pts	Avg
2013-14	14-0	9-22	.409	3-8	.375	3-4	.750	11-8-19	1.4	7	0	8	15	0	9	24	1.7
TOTAL	14-0	9-22	.409	3-8	.375	3-4	.750	11-8-19	1.4	7	0	8	15	0	9	24	1.7



Keonna FARMER

#12

Freshman • Guard/Forward • 6-1

Birmingham, Ala.

Center Point

NOTES:

- Notched a season-high 4 points against Presbyterian
- Scored her first basket as a Tiger at Alabama A&M, finishing the game with 2 points, 2 rebounds and 2 steals
- Pulled down a rebound with a blocked shot in her collegiate debut vs. Jacksonville State on Nov. 13
- Ranked as the 29th best win in the country by ESPN and as the No. 98 player in the country by Blue Star Basketball
- Averaged 15.0 points, 8.0 rebounds and 3.5 steals per game as a senior
- Named AHSAA All-State First Team as a junior and a senior

Opponent	Start Min.	FG-A	3PT-A	FT-A	O-D-T	PF	Ast.	TO	Blk.	St.	Pts.
GEORGIA SOUTHERN					-- DID NOT PLAY --						
JACKSONVILLE STATE	10	0-1	0-0	0-0	0-1-1	0	0	0	1	0	0
at Temple	2	0-0	0-0	0-0	0-0-0	0	0	0	0	0	0
at Alabama A&M	8	1-3	0-1	0-0	0-2-2	2	0	0	0	2	2
at Tennessee-Chattanooga					-- DID NOT PLAY --						
vs. Ball State	2	0-0	0-0	0-0	0-1-1	0	0	0	0	0	0
vs. Iowa State					-- DID NOT PLAY --						
TULANE					-- DID NOT PLAY --						
ST. JOHN'S	2	0-0	0-0	0-0	0-0-0	1	0	1	0	0	0
FLORIDA A&M	7	0-1	0-0	0-0	0-1-1	1	0	0	0	2	0
PRESBYTERIAN	6	2-2	0-0	0-1	1-0-1	0	0	0	0	0	4
vs. UCLA					-- DID NOT PLAY --						
at Minnesota					-- DID NOT PLAY --						
at Mississippi State					-- DID NOT PLAY --						
VANDERBILT					-- DID NOT PLAY --						
SOUTH CAROLINA					-- DID NOT PLAY --						
at Alabama					-- DID NOT PLAY --						
KENTUCKY					-- DID NOT PLAY --						
at LSU					-- DID NOT PLAY --						
at Florida					-- DID NOT PLAY --						
TEXAS A&M					-- DID NOT PLAY --						
at Arkansas					-- DID NOT PLAY --						
MISSISSIPPI STATE					-- DID NOT PLAY --						
at Vanderbilt					-- DID NOT PLAY --						
MISSOURI					-- DID NOT PLAY --						
at Tennessee					-- DID NOT PLAY --						
GEORGIA					-- DID NOT PLAY --						
ALABAMA					-- DID NOT PLAY --						
at Ole Miss					-- DID NOT PLAY --						

SEASON HIGHS

Points	4	vs. Presbyterian	(12/18/13)
Rebounds	2	at Alabama A&M	(11/19/13)
Assists	n/a		
Blocks	1	vs. Jacksonville State	(11/13/13)
Steals	2	twice, last vs. Florida A&M	(12/15/13)
Field Goals	2	vs. Presbyterian	(12/18/13)
Field Goal Attempts	3	at Alabama A&M	(11/19/13)
3-Point Field Goals			
3-Point FG Attempts	1	at Alabama A&M	(11/19/13)
Free Throws			
Free Throw Attempts	1	vs. Presbyterian	(12/18/13)

FARMER CAREER STATISTICS

Year	GP-GS	FG-FGA	Pct	3FG-FGA	Pct	FT-FTA	Pct	O-D-T (Reb.)	Avg	PF	FO	Ast	TO	Blk	Stl	Pts	Avg
2013-14	7-0	3-7	.429	0-1	.000	0-1	.000	1-5-6	0.9	4	0	0	1	1	4	6	0.9
TOTAL	7-0	3-7	.429	0-1	.000	0-1	.000	1-5-6	0.9	4	0	0	1	1	4	6	0.9



Katie FRERKING

#13

Freshman • Guard/Forward • 6-1

Johns Creek, Ga.

Wesleyan School

NOTES:

- Notched best SEC game with 11 points, 5 rebounds, 3 assists and 3 steals at LSU
- Had best outing of her career so far with 14 points at Temple
- Scored 7 points with 2 steals in her SEC debut at Mississippi State
- Started and scored 8 points with 3 rebounds and 2 assists in her collegiate debut against Georgia Southern
- Was the fifth Auburn freshman in the last 10 years to start in the season-opener and the first since Hasina Muhammad in 2011
- Named NCSAA National Player of the Year and AJC Georgia AA Player of the Year
- Averaged 20.4 points, 5.3 rebounds and 2.8 assists per game as a senior at the Wesleyan School
- Led the Wesleyan School to four-straight state championships

Opponent	Start	Min.	FG-A	3PT-A	FT-A	O-D-T	PF	Ast.	TO	Blk.	St.	Pts.
GEORGIA SOUTHERN	*	30	3-8	2-6	0-0	1-2-3	3	2	1	0	0	8
JACKSONVILLE STATE	*	23	2-5	0-2	0-0	0-2-2	1	3	0	0	1	4
at Temple	*	31	5-9	2-5	2-3	0-1-1	0	0	1	1	1	14
at Alabama A&M	*	21	2-8	0-3	0-0	3-2-5	1	2	1	0	2	4
at Tennessee-Chattanooga	*	29	1-3	1-2	4-6	0-1-1	2	0	0	0	0	7
vs. Ball State		10	0-1	0-1	2-2	1-1-2	0	0	1	0	1	2
vs. Iowa State		16	0-2	0-2	0-0	1-1-2	2	1	0	0	0	0
TULANE		27	4-7	2-3	0-0	1-3-4	1	2	1	0	1	10
ST. JOHN'S		13	0-4	0-3	0-0	0-1-1	2	2	1	1	1	0
FLORIDA A&M		13	3-6	0-3	0-0	2-2-4	1	0	1	0	3	6
PRESBYTERIAN		14	2-3	0-0	0-0	1-3-4	3	1	2	0	1	4
vs. UCLA		13	1-4	1-3	0-0	1-1-2	0	0	1	0	0	3
at Minnesota		21	2-6	2-5	2-2	0-1-1	0	1	0	0	1	8
at Mississippi State		17	3-7	1-2	0-0	0-0-0	2	0	2	0	2	7
VANDERBILT		24	3-8	2-5	1-1	1-1-2	4	2	1	0	0	9
SOUTH CAROLINA		22	2-10	1-6	0-0	1-3-4	2	0	0	0	1	5
at Alabama		19	1-5	1-3	0-0	0-0-0	0	2	0	1	1	3
KENTUCKY		24	1-4	1-2	0-0	2-1-3	4	4	0	0	1	3
at LSU		32	4-10	3-8	0-0	0-5-5	3	3	1	0	3	11
at Florida		14	0-2	0-1	0-0	1-0-1	3	0	1	0	0	0
TEXAS A&M		19	1-5	0-2	1-2	0-3-3	1	1	3	0	2	3
at Arkansas												
MISSISSIPPI STATE												
at Vanderbilt												
MISSOURI												
at Tennessee												
GEORGIA												
ALABAMA												
at Ole Miss												

SEASON HIGHS

Points		
14	at Temple	(11/16/13)
Rebounds		
5	twice, last at LSU	(1/23/14)
Assists		
4	vs. Kentucky	(1/19/14)
Blocks		
1	3 times, last at Alabama	(1/16/14)
Steals		
3	twice, last at LSU	(1/23/14)
Field Goals		
5	at Temple	(11/16/13)
Field Goal Attempts		
10	twice, last at LSU	(1/23/14)
3-Point Field Goals		
3	at LSU	(1/23/14)
3-Point FG Attempts		
8	at LSU	(1/23/14)
Free Throws		
4	at Tennessee-Chattanooga	(11/24/13)
Free Throw Attempts		
6	at Tennessee-Chattanooga	(11/24/13)

FRERKING CAREER STATISTICS

Year	GP-GS	FG-FGA	Pct	3FG-FGA	Pct	FT-FTA	Pct	O-D-T (Reb.)	Avg	PF	FO	Ast	TO	Blk	Stl	Pts	Avg
2013-14	21-5	40-117	.342	19-67	.284	12-16	.750	16-34-50	2.4	35	0	26	18	3	22	111	5.3
TOTAL	21-5	40-117	.342	19-67	.284	12-16	.750	16-34-50	2.4	35	0	26	18	3	22	111	5.3



Brandy MONTGOMERY

#10

Freshman • Guard • 5-10

Port St. Lucie, Fla.

Lincoln Park Academy

NOTES:

- Scored career high 22 points at LSU; most points for an Auburn player since Tra'Ce'e Tanner scored 21 vs. Jacksonville on Dec. 22, 2012
- The 22 points were the most for an AU freshman against an SEC team since Hasina Muhammad scored 20 vs. Florida in the 2012 SEC Tournament
- Has scored in double figures in all but three games in her time at Auburn
- Notched 13 points and 3 steals in SEC debut at MSU; the 13 points are the most for an AU freshman in SEC debut since Tyrese Tanner scored 15 at Alabama in 2011
- Earned her first start and made her collegiate debut against Jacksonville State on Nov. 13, scoring 15 points with 2 steals and 2 rebounds
- Her 15 points against JSU were the most for an Auburn player in their collegiate debut since 2005
- Ranked as a top-100 guard by ESPN and as the No. 113 player in the country by Blue Star Basketball
- Averaged 31.0 points, 7.1 rebounds, 5.0 assists and 4.0 steals per game as a senior at Lincoln Park Academy
- Named All-State and Florida 4A Player of the Year

Opponent	Start	Min.	FG-A	3PT-A	FT-A	O-D-T	PF	Ast.	TO	Blk.	St.	Pts.
GEORGIA SOUTHERN						-- DID NOT PLAY --						
JACKSONVILLE STATE	*	30	6-16	2-8	1-2	2-0-2	2	1	2	0	2	15
at Temple	*	30	5-16	2-7	3-3	0-2-2	4	1	2	0	1	15
at Alabama A&M	*	26	5-9	0-1	1-2	2-4-6	1	1	3	0	1	11
at Tennessee-Chattanooga	*	25	3-6	1-2	1-3	1-1-2	2	0	5	0	1	8
vs. Ball State		30	7-20	2-6	1-3	1-3-4	4	4	1	0	2	17
vs. Iowa State	*	30	3-15	2-11	2-2	2-2-4	3	2	2	0	0	10
TULANE	*	24	4-9	3-5	0-0	1-0-1	2	4	5	0	1	11
ST. JOHN'S	*	32	4-8	2-4	2-2	0-2-2	1	1	1	0	1	12
FLORIDA A&M	*	26	4-12	0-2	2-2	2-3-5	1	3	4	0	0	10
PRESBYTERIAN	*	28	4-9	1-1	2-2	1-4-5	1	0	1	0	0	11
vs. UCLA	*	37	6-17	2-8	0-1	2-4-6	1	3	6	0	2	14
at Minnesota	*	30	3-10	0-4	1-2	0-3-3	0	1	2	0	1	7
at Mississippi State	*	30	5-8	1-3	2-4	0-1-1	2	1	4	0	3	13
VANDERBILT	*	18	0-5	0-2	2-2	0-1-1	2	1	2	0	1	2
SOUTH CAROLINA	*	25	5-10	2-4	1-2	0-3-3	4	1	1	0	0	13
at Alabama	*	32	4-9	0-2	2-2	2-7-9	2	2	5	0	0	10
KENTUCKY	*	34	5-14	0-5	0-0	2-4-6	0	3	7	0	0	10
at LSU	*	37	9-18	2-8	2-4	1-2-3	1	0	2	0	1	22
at Florida	*	31	6-18	4-12	0-0	4-3-7	3	2	4	0	1	16
TEXAS A&M	*	30	2-10	2-6	2-4	1-6-7	1	1	1	0	0	8
at Arkansas												
MISSISSIPPI STATE												
at Vanderbilt												
MISSOURI												
at Tennessee												
GEORGIA												
ALABAMA												
at Ole Miss												

SEASON HIGHS

Points		
22	at LSU	(1/23/14)
Rebounds		
9	at Alabama	(1/16/14)
Assists		
4	twice, last vs. Tulane	(12/3/13)
Blocks		
n/a		
Steals		
3	at Mississippi State	(1/5/14)
Field Goals		
9	at LSU	(1/23/14)
Field Goal Attempts		
20	vs. Ball State	(11/29/13)
3-Point Field Goals		
4	at Florida	(1/26/14)
3-Point FG Attempts		
12	at Florida	(1/26/14)
Free Throws		
3	at Temple	(11/16/13)
Free Throw Attempts		
4	3x, last vs. Texas A&M	(1/30/14)

MONTGOMERY CAREER STATISTICS

Year	GP-GS	FG-FGA	Pct	3FG-FGA	Pct	FT-FTA	Pct	O-D-T (Reb.)	Avg	PF	FO	Ast	TO	Blk	Stl	Pts	Avg
2013-14	20-19	90-239	.377	28-101	.277	27-42	.643	24-55-79	4.0	37	0	32	60	0	18	235	11.8
TOTAL	20-19	90-239	.377	28-101	.277	27-42	.643	24-55-79	4.0	37	0	32	60	0	18	235	11.8



Allina STARR

#3

Freshman • Guard • 5-10

Minneapolis, Minn.

DeLaSalle

NOTES:

- Had a career outing in her SEC debut at Mississippi State with 7 points and 8 assists
- Scored her first points as a Tiger at Alabama A&M, finishing with 2 points, 2 assists and 3 steals
- Totaled 2 assists with 2 rebounds and a steal in her collegiate debut vs. Jacksonville State on Nov. 13
- Won three straight state championships at DeLaSalle High School in Minneapolis
- Averaged 18.9 points and 9.1 assists per game as a senior, compiling a 115-20 high school record

Opponent	Start Min.	FG-A	3PT-A	FT-A	O-D-T	PF	Ast.	TO	Blk.	St.	Pts.
GEORGIA SOUTHERN					-- DID NOT PLAY --						
JACKSONVILLE STATE	4	0-1	0-0	0-0	1-1-2	1	2	0	0	1	0
at Temple					-- DID NOT PLAY --						
at Alabama A&M	17	0-0	0-0	2-2	0-0-0	2	2	3	0	3	2
at Tennessee-Chattanooga	19	0-2	0-1	0-0	0-1-1	0	5	2	0	2	0
vs. Ball State	4	0-0	0-0	0-2	0-1-1	1	1	0	0	0	0
vs. Iowa State	17	1-3	0-1	0-0	1-2-3	0	1	1	0	0	2
TULANE	16	0-2	0-1	2-2	0-3-3	1	3	0	0	0	2
ST. JOHN'S	21	0-2	0-0	0-0	0-1-1	1	3	4	0	1	0
FLORIDA A&M	23	0-2	0-0	0-0	1-3-4	0	5	1	0	0	0
PRESBYTERIAN	21	0-2	0-0	2-3	0-2-2	2	6	3	0	1	2
vs. UCLA	21	0-1	0-0	2-2	0-2-2	1	3	3	0	1	2
at Minnesota	21	1-2	0-1	0-0	0-1-1	0	1	2	0	0	2
at Mississippi State	22	1-1	0-0	5-6	0-1-1	3	8	3	0	0	7
VANDERBILT	16	0-1	0-0	0-0	1-2-3	0	3	3	0	1	0
SOUTH CAROLINA	10	0-0	0-0	1-3	1-0-1	1	2	2	0	0	1
at Alabama					-- DID NOT PLAY --						
KENTUCKY					-- DID NOT PLAY --						
at LSU					-- DID NOT PLAY --						
at Florida	2	0-0	0-0	0-0	0-0-0	0	0	0	0	0	0
TEXAS A&M	5	0-0	0-0	0-0	1-0-1	1	0	1	0	0	0
at Arkansas											
MISSISSIPPI STATE											
at Vanderbilt											
MISSOURI											
at Tennessee											
GEORGIA											
ALABAMA											
at Ole Miss											

SEASON HIGHS

Points	7	at Mississippi State	(1/5/14)
Rebounds	4	vs. Florida A&M	(12/15/13)
Assists	8	at Mississippi State	(1/5/14)
Blocks	n/a		
Steals	3	at Alabama A&M	(11/19/13)
Field Goals	1	3 times, last at Mississippi St.	(1/5/14)
Field Goal Attempts	3	vs. Iowa State	(11/30/13)
3-Point Field Goals			
3-Point FG Attempts	1	twice, last vs. Iowa State	(11/30/13)
Free Throws	5	at Mississippi State	(1/5/14)
Free Throw Attempts	6	at Mississippi State	(1/5/14)

STARR CAREER STATISTICS

Year	GP-GS	FG-FGA	Pct	3FG-FGA	Pct	FT-FTA	Pct	O-D-T (Reb.)	Avg	PF	FO	Ast	TO	Blk	Stl	Pts	Avg
2013-14	16-0	3-19	.158	0-4	.000	14-20	.700	6-20-26	1.6	14	0	45	28	0	10	20	1.3
TOTAL	16-0	3-19	.158	0-4	.000	14-20	.700	6-20-26	1.6	14	0	45	28	0	10	20	1.3



Meagan TUCKER

#1

Freshman • Guard • 5-8

Covington, Ga.

Alcovy

NOTES:

- Posted best scoring effort at Florida with 10 points on 4-of-6 shooting
- Notched 6 points, 7 assists and 3 rebounds against Kentucky
- Earned first career start at Alabama, totaling 4 points with 2 rebounds and 2 assists
- Dished out 8 assists and 9 points against Temple
- Scored 6 points in her collegiate debut vs. Georgia Southern
- Ranked the 28th best high school guard in the country by ESPN and the 127th player in the nation by Blue Star Basketball
- Named honorable mention All-State at Alcovy High School as a junior and a senior
- Averaged 16.0 points and 4.0 assists per game as a senior

Opponent	Start	Min.	FG-A	3PT-A	FT-A	O-D-T	PF	Ast.	TO	Blk.	St.	Pts.
GEORGIA SOUTHERN	26		2-7	0-3	2-3	0-0-0	1	0	0	0	0	6
JACKSONVILLE STATE	19		1-2	0-0	0-0	0-0-0	1	1	1	0	1	2
at Temple	31		2-4	1-2	4-4	0-3-3	2	8	6	0	0	9
at Alabama A&M	9		0-1	0-0	0-0	0-0-0	0	1	0	0	0	0
at Tennessee-Chattanooga												-- DID NOT PLAY --
vs. Ball State												-- DID NOT PLAY --
vs. Iowa State												-- DID NOT PLAY --
TULANE												-- DID NOT PLAY --
ST. JOHN'S												-- DID NOT PLAY --
FLORIDA A&M												-- DID NOT PLAY --
PRESBYTERIAN												-- DID NOT PLAY --
vs. UCLA												-- DID NOT PLAY --
at Minnesota												-- DID NOT PLAY --
at Mississippi State												-- DID NOT PLAY --
VANDERBILT	4		0-0	0-0	1-2	0-0-0	0	0	1	0	0	1
SOUTH CAROLINA	6		1-2	0-1	2-2	0-0-0	0	0	1	0	0	4
at Alabama	* 33		2-3	0-1	0-1	0-2-2	2	2	3	0	0	4
KENTUCKY	* 35		3-5	0-0	0-0	0-3-3	2	7	3	0	1	6
at LSU	* 27		1-4	0-1	0-4	3-0-3	0	4	2	0	1	2
at Florida	* 26		4-6	0-0	2-2	0-0-0	3	1	4	0	2	10
TEXAS A&M	* 20		1-1	0-0	3-4	0-0-0	1	2	7	0	0	5
at Arkansas												
MISSISSIPPI STATE												
at Vanderbilt												
MISSOURI												
at Tennessee												
GEORGIA												
ALABAMA												
at Ole Miss												

SEASON HIGHS

Points		
10	at Florida	(1/26/14)
Rebounds		
3	4 times, last at Florida	(1/26/14)
Assists		
8	at Temple	(11/16/13)
Blocks		
n/a		
Steals		
1	3 times, last at LSU	(1/23/14)
Field Goals		
4	at Florida	(1/26/14)
Field Goal Attempts		
7	vs. Georgia Southern	(11/9/13)
3-Point Field Goals		
1	at Temple	(11/16/13)
3-Point FG Attempts		
3	vs. Georgia Southern	(11/9/13)
Free Throws		
4	at Temple	(11/16/13)
Free Throw Attempts		
4	3x, last vs. Texas A&M	(1/30/14)

TUCKER CAREER STATISTICS

Year	GP-GS	FG-FGA	Pct	3FG-FGA	Pct	FT-FTA	Pct	O-D-T (Reb.)	Avg	PF	FO	Ast	TO	Blk	Stl	Pts	Avg
2013-14	11-5	17-35	.486	1-8	.125	14-22	.636	3-8-11	1.0	12	0	26	28	0	5	49	4.5
TOTAL	11-5	17-35	.486	1-8	.125	14-22	.636	3-8-11	1.0	12	0	26	28	0	5	49	4.5

Career Statistics vs. Arkansas

Season	gp-gs	min/avg	Total		3-Point		F-Throws		Rebounds				Scoring							
			fg-fga	pct	fg-fga	pct	ft-fa	pct	off	def	tot	avg	pf	fo	ast	to	blk	stl	pts	avg
2012-13	1-0	1/1.0	0-0	.000	0-0	.000	0-0	.000	0	1	1	1.0	0	0	0	0	0	0	0	0
TOTAL	1-0	1/1.0	0-0	.000	0-0	.000	0-0	.000	0	1	1	1.0	0	0	0	0	0	0	0	

Davis, Peyton

Season	gp-gs	min/avg	Total		3-Point		F-Throws		Rebounds				Scoring								
			fg-fga	pct	fg-fga	pct	ft-fa	pct	off	def	tot	avg	pf	fo	ast	to	blk	stl	pts	avg	
2010-11	1-0	21/21.0	2-5	.400	0-0	.000	0-0	.000	3	3	6	6.0	4	0	1	3	3	0	0	4	4.0
2011-12	1-0	8/8.0	0-1	.000	0-0	.000	0-0	.000	1	0	1	1.0	4	0	0	2	0	0	0	0	0.0
2012-13	1-1	31/31.0	2-9	.222	0-0	.000	1-3	.333	10	7	17	17.0	4	0	0	3	3	2	5	5.0	
TOTAL	3-1	60/20.0	4-15	.267	0-0	.000	1-3	.333	14	10	24	8.0	12	0	1	8	6	2	9	3.0	

Muhammad, Hasina

Season	gp-gs	min/avg	Total		3-Point		F-Throws		Rebounds				Scoring							
			fg-fga	pct	fg-fga	pct	ft-fa	pct	off	def	tot	avg	pf	fo	ast	to	blk	stl	pts	avg
2011-12	2-1	45/22.5	2-19	.105	0-1	.000	0-2	.000	2	5	7	3.5	2	0	4	4	0	0	4	2.0
2012-13	1-1	35/35.0	6-19	.316	0-0	.000	1-2	.500	3	4	7	7.0	0	0	4	2	3	3	13	13.0
TOTAL	3-2	80/26.7	8-38	.211	0-1	.000	1-4	.250	5	9	14	4.7	2	0	8	6	3	3	17	5.7

Tanner, Tra'cee

Season	gp-gs	min/avg	Total		3-Point		F-Throws		Rebounds				Scoring							
			fg-fga	pct	fg-fga	pct	ft-fa	pct	off	def	tot	avg	pf	fo	ast	to	blk	stl	pts	avg
2012-13	1-0	10/10.0	4-5	.800	0-0	.000	0-0	.000	1	1	2	2.0	4	0	0	3	1	0	8	8.0
TOTAL	1-0	10/10.0	4-5	.800	0-0	.000	0-0	.000	1	1	2	2.0	4	0	0	3	1	0	8	8.0

Tanner, Tyrese

Season	gp-gs	min/avg	Total		3-Point		F-Throws		Rebounds				Scoring							
			fg-fga	pct	fg-fga	pct	ft-fa	pct	off	def	tot	avg	pf	fo	ast	to	blk	stl	pts	avg
2010-11	1-0	8/8.0	0-1	.000	0-0	.000	0-0	.000	1	1	2	2.0	0	0	1	1	0	0	0	0.0
2011-12	2-1	52/26.0	9-20	.450	0-1	.000	12-21	.571	6	4	10	5.0	7	0	2	5	2	3	30	15.0
2012-13	1-1	36/36.0	5-16	.313	0-1	.000	5-6	.833	3	3	6	6.0	2	0	1	0	1	1	15	15.0
TOTAL	4-2	96/24.0	14-37	.378	0-2	.000	17-27	.630	10	8	18	4.5	9	0	4	6	3	4	45	11.3

2013-14 Season Statistics

RECORD:	OVERALL	HOME	AWAY	NEUTRAL
ALL GAMES	11-10	6-4	3-5	2-1
CONFERENCE	2-6	0-4	2-2	0-0
NON-CONFERENCE	9-4	6-0	1-3	2-1

#	Player	gp-gs	min	avg	Total		3-Point		F-Throw		Rebounds				a	to	blk	stl	pts	avg		
					fg-fga	fg%	3fg-fga	3fg%	ft-fa	ft%	off	def	tot	avg							pf	dq
32	Tanner, Tyrese	20-20	564	28.2	118-279	.423	4-14	.286	83-124	.669	50	77	127	6.4	73	6	38	46	22	37	323	16.2
10	Montgomery, Brandy	20-19	585	29.3	90-239	.377	28-101	.277	27-42	.643	24	55	79	4.0	37	0	32	60	0	18	235	11.8
00	Muhammad, Hasina	14-14	375	26.8	65-161	.404	1-6	.167	33-59	.559	32	40	72	5.1	36	0	29	20	26	36	164	11.7
44	Tanner, Tra'Cee	21-18	486	23.1	85-153	.556	0-0	.000	48-70	.686	63	67	130	6.2	70	4	24	56	22	23	218	10.4
34	Davis, Peyton	21-8	360	17.1	64-99	.646	0-0	.000	25-40	.625	44	60	104	5.0	71	3	3	31	11	8	153	7.3
13	Frerking, Katie	21-5	432	20.6	40-117	.342	19-67	.284	12-16	.750	16	34	50	2.4	35	0	26	18	3	22	111	5.3
01	Tucker, Meagan	11-5	236	21.5	17-35	.486	1-8	.125	14-22	.636	3	8	11	1.0	12	0	26	28	0	5	49	4.5
22	Parker, Kiani	21-16	426	20.3	22-61	.361	2-10	.200	12-28	.429	11	31	42	2.0	33	0	62	57	1	33	58	2.8
40	Dieng, Khady	14-0	91	6.5	9-22	.409	3-8	.375	3-4	.750	11	8	19	1.4	7	0	8	15	0	9	24	1.7
35	Capers, Cabriana	21-0	307	14.6	9-36	.250	0-0	.000	11-14	.786	26	36	62	3.0	27	0	12	14	2	8	29	1.4
03	Starr, Allina	16-0	240	15.0	3-19	.158	0-4	.000	14-20	.700	6	20	26	1.6	14	0	45	28	0	10	20	1.3
12	Farmer, Keonna	7-0	37	5.3	3-7	.429	0-1	.000	0-1	.000	1	5	6	0.9	4	0	0	1	1	4	6	0.9
21	Brimfield, Melinda	14-0	61	4.4	3-11	.273	0-0	.000	1-5	.200	1	13	14	1.0	9	0	1	5	0	0	7	0.5
Team											52	48	100				11					
Total.....		21	4200		528-1239	.426	58-219	.265	283-445	.636	340	502	842	40.1	428	13	306	390	88	213	1397	66.5
Opponents.....		21	4200		440-1139	.386	114-361	.316	317-443	.716	261	454	715	34.0	395	-	279	420	74	195	1311	62.4

TEAM STATISTICS	AU	OPP	Date	Opponent	Score	Att.
SCORING	1397	1311	11-09-13	GEORGIA SOUTHERN	w 69-59	2982
Points per game	66.5	62.4	11-13-13	JACKSONVILLE STATE	w 66-49	1713
Scoring margin	+4.1	-	11-16-13	at TEMPLE	L 74-78	758
FIELD GOALS-ATT	528-1239	440-1139	11-19-13	at Alabama A&M	w 77-49	1362
Field goal pct	.426	.386	11-24-13	at UT-Chattanooga	L 52-80	2069
3 POINT FG-ATT	58-219	114-361	+ 11-29-13	vs Ball State	w 67-51	406
3-point FG pct	.265	.316	+ 11-30-13	vs Iowa State	L 57-68	413
3-pt FG made per game	2.8	5.4	12-03-13	TULANE	w 62-52	1611
FREE THROWS-ATT	283-445	317-443	12-06-13	ST. JOHN'S	w 69-55	1734
Free throw pct	.636	.716	12-15-13	FLORIDA A&M	w 92-55	1845
F-Throws made per game	13.5	15.1	12-18-13	PRESBYTERIAN	w 64-27	1532
REBOUNDS	842	715	^ 12-21-13	vs UCLA	w 66-60	237
Rebounds per game	40.1	34.0	^ 12-22-13	at Minnesota	L 54-67	3139
Rebounding margin	+6.0	-	* 01-05-14	at Mississippi State	w 82-74	2269
ASSISTS	306	279	* 01-09-14	VANDERBILT	L 65-74	2319
Assists per game	14.6	13.3	* 01-12-14	SOUTH CAROLINA	L 66-72	2453
TURNOVERS	390	420	* 01-16-14	at Alabama	w 61-39	2453
Turnovers per game	18.6	20.0	* 01-19-14	KENTUCKY	L 71-73	3129
Turnover margin	+1.4	-	* 01-23-14	at LSU	L 60-71	2855
Assist/turnover ratio	0.8	0.7	* 01-26-14	at Florida	L 69-87	3114
STEALS	213	195	* 01-30-14	TEXAS A&M	L 54-71	2780
Steals per game	10.1	9.3				
BLOCKS	88	74				
Blocks per game	4.2	3.5				
ATTENDANCE	22098	19075				
Home games-Avg/Game	10-2210	8-2252				
Neutral site-Avg/Game	-	3-352				

+ - South Point Thanksgiving Shootout (Las Vegas, Nev.)
^ - Subway Classic (Minneapolis, Minn.)
* - Southeastern Conference game

Score by Periods	1st	2nd	Totals
Auburn	703	694	1397
Opponents	608	703	1311

2013-14 SEC Statistics

RECORD:	OVERALL	HOME	AWAY	NEUTRAL
ALL GAMES	2-6	0-4	2-2	0-0
CONFERENCE	2-6	0-4	2-2	0-0
NON-CONFERENCE	0-0	0-0	0-0	0-0

#	Player	gp-gs	min	Total		3-Point		F-Throw		Rebounds			pf	dq	a	to	blk	stl	pts	avg				
				fg-fga	fg%	3fg-fga	3fg%	ft-fa	ft%	off	def	tot									avg			
32	Tanner, Tyrese	8-8	228	28.5	47-110	.427	1-5	.200	27-47	.574	15	28	43	5.4	32	4	11	23	13	12	122	15.3		
44	Tanner, Tra'Cee	8-8	204	25.5	36-65	.554	0-0	.000	25-38	.658	27	23	50	6.3	28	3	8	24	9	14	97	12.1		
10	Montgomery, Brandy	8-8	237	29.6	36-92	.391	11-42	.262	11-18	.611	10	27	37	4.6	15	0	11	26	0	6	94	11.8		
00	Muhammad, Hasina	6-6	163	27.2	20-58	.345	0-2	.000	15-25	.600	14	15	29	4.8	18	0	12	10	15	14	55	9.2		
34	Davis, Peyton	8-2	141	17.6	21-31	.677	0-0	.000	11-21	.524	14	19	33	4.1	24	0	0	11	7	6	53	6.6		
13	Frerking, Katie	8-0	171	21.4	15-51	.294	9-29	.310	2-3	.667	5	13	18	2.3	19	0	12	8	1	10	41	5.1		
01	Tucker, Meagan	7-5	151	21.6	12-21	.571	0-3	.000	8-15	.533	3	5	8	1.1	8	0	16	21	0	4	32	4.6		
22	Parker, Kiani	8-3	135	16.9	7-24	.292	0-2	.000	5-9	.556	4	7	11	1.4	12	0	19	16	0	7	19	2.4		
03	Starr, Allina	5-0	55	11.0	1-2	.500	0-0	.000	6-9	.667	3	3	6	1.2	5	0	13	9	0	1	8	1.6		
35	Capers, Cabriana	8-0	96	12.0	1-8	.125	0-0	.000	3-4	.750	5	13	18	2.3	9	0	3	4	0	4	5	0.6		
40	Dieng, Khady	4-0	11	2.8	0-3	.000	0-1	.000	2-2	1.000	2	0	2	0.5	1	0	1	1	0	1	2	0.5		
21	Brimfield, Melinda	4-0	8	2.0	0-0	.000	0-0	.000	0-1	.000	0	2	2	0.5	3	0	0	0	0	0	0	0.0		
Team											25	20	45											
Total.....		8	1600		196-465	.422	21-84	.250	115-192	.599	127	175	302	37.8	174	7	106	158	45	79	528	66.0		
Opponents.....		8	1600		194-453	.428	40-120	.333	133-187	.711	111	184	295	36.9	161	-	119	157	37	78	561	70.1		

TEAM STATISTICS	AU	OPP	Date	Opponent	Score	Att.
SCORING	528	561	* 01-05-14	at Mississippi State	w 82-74	2269
Points per game	66.0	70.1	* 01-09-14	VANDERBILT	L 65-74	2319
Scoring margin	-4.1	-	* 01-12-14	SOUTH CAROLINA	L 66-72	2453
FIELD GOALS-ATT	196-465	194-453	* 01-16-14	at Alabama	w 61-39	2453
Field goal pct	.422	.428	* 01-19-14	KENTUCKY	L 71-73	3129
3 POINT FG-ATT	21-84	40-120	* 01-23-14	at LSU	L 60-71	2855
3-point FG pct	.250	.333	* 01-26-14	at Florida	L 69-87	3114
3-pt FG made per game	2.6	5.0	* 01-30-14	TEXAS A&M	L 54-71	2780
FREE THROWS-ATT	115-192	133-187	+ - South Point Thanksgiving Shootout (Las Vegas, Nev.)			
Free throw pct	.599	.711	^ - Subway Classic (Minneapolis, Minn.)			
F-Throws made per game	14.4	16.6	* - Southeastern Conference game			
REBOUNDS	302	295				
Rebounds per game	37.8	36.9				
Rebounding margin	+0.9	-				
ASSISTS	106	119				
Assists per game	13.3	14.9				
TURNOVERS	158	157				
Turnovers per game	19.8	19.6				
Turnover margin	-0.1	-				
Assist/turnover ratio	0.7	0.8				
STEALS	79	78				
Steals per game	9.9	9.8				
BLOCKS	45	37				
Blocks per game	5.6	4.6				
ATTENDANCE	10681	10691				
Home games-Avg/Game	4-2670	4-2673				
Neutral site-Avg/Game	-	0-0				

Score by Periods	1st	2nd	Totals
Auburn	266	262	528
Opponents	276	285	561

Radio/TV Roster



00
Hasina Muhammad
Junior • G • 6-1
Memphis, Tenn.
Ridgeway



1
Meagan Tucker
Freshman • G • 5-8
Covington, Ga.
Alcovy



3
Allina Starr
Freshman • G • 5-10
Minneapolis, Minn.
DeLaSalle



10
Brandy Montgomery
Freshman • G • 5-10
Port St. Lucie, Fla.
Lincoln Park Academy



12
Keonna Farmer
Freshman • G/F • 6-1
Birmingham, Ala.
Center Point



13
Katie Frerking
Freshman • G/F • 6-1
Johns Creek, Ga.
Wesleyan School



21
Melinda Brimfield
Junior • F • 6-0
Norway, S.C.
Gulf Coast State College



22
Kiani Parker
Junior • G • 5-9
Ft. Walton Beach, Fla.
Northwest Florida State



32
Tyrese Tanner
Senior • G/F • 6-1
Birmingham, Ala.
Hoover



34
Peyton Davis
Senior • C • 6-5
Pinson, Ala.
Mortimer Jordan



35
Cabriana Capers
Sophomore • F • 6-1
Bolingbrook, Ill.
Bolingbrook



40
Khady Dieng
Freshman • G • 5-10
Dakar, Senegal
Gateway (Ga.) School



44
Tra'Cee Tanner
Sophomore • F/C • 6-3
Birmingham, Ala.
Hoover



Terri Williams-Flournoy
Head Coach
Penn State (1991)
30-23 at Auburn (2nd season)



Ty Evans
Assistant Coach
Wisconsin-Whitewater (1995)
Second Season at Auburn



Caroline McCombs
Assistant Coach
Youngstown State (1998)
Second Season at Auburn



Adrian Walters
Assistant Coach
St. Francis (Pa.) (1987)
Second Season at Auburn