

# **GAME DETAILS**

DATE ..... FRIDAY, NOV. 12  
 TIME ..... 6 P.M.  
 LOCATION ..... AUBURN, ALA.  
 VENUE ..... AUBURN ARENA  
 LIVE STATS ..... WWW.AUBURNTIGERS.COM



**MERCER**  
 (0-0, 0-0 A-SUN)

**AUBURN**  
 (0-0, 0-0 SEC)



## **NEXT UP**

AT  
 GEORGIA SOUTHERN  
 Nov. 16 - 7:00 P.M.



### Projected Starters



Shari Smith



Neicey Lewis



Alex Phillips



Kendra Grant



Sharnea Boykin

### 2009-10 Statistics

3.1 ppg	6.2 ppg	1.8 ppg	1.0 ppg	n/a
1.8 rpg	2.9 rpg	2.3 rpg	0.7 rpg	n/a

Date	Opponent	Location	Time/Result
Nov. 4	GCSU (Exhibition)	Macon, Ga.	5 p.m.
Nov. 12	at Auburn	Auburn, Ala.	5 p.m.
Nov. 16	at Georgia Southern	Statesboro, Ga.	7 p.m.
Nov. 19	FURMAN	Macon, Ga.	5:30 p.m.

#### *Georgia State Tournament*

Nov. 27	Rice	Atlanta, Ga.	4 p.m.
Nov. 28	TBA	Atlanta, Ga.	2/4 p.m.
Dec. 2	*at Belmont	Nashville, Tenn.	6 p.m.
Dec. 4	*at Lipscomb	Nashville, Tenn.	5 p.m.
Dec. 7	at Georgia	Athens, Ga.	7 p.m.
Dec. 20	CHARLESTON SOUTHERN	Macon, Ga.	7 p.m.
Dec. 22	UNC ASHEVILLE	Macon, Ga.	1 p.m.
Dec. 28	at Georgia Tech	Atlanta, Ga.	7 p.m.

Jan. 3	*EAST TENNESSEE STATE	Macon, Ga.	5 p.m.
Jan. 5	*USC UPSTATE	Macon, Ga.	5 p.m.
Jan. 10	*at Campbell	Buies Creek, N.C.	11:45 a.m.
Jan. 15	*at Stetson	DeLand, Fla.	1 p.m.
Jan. 17	*at Florida Gulf Coast	Fort Myers, Fla.	7:05 p.m.
Jan. 22	*NORTH FLORIDA	Macon, Ga.	2 p.m.
Jan. 24	*JACKSONVILLE	Macon, Ga.	7 p.m.
Jan. 26	*at Kennesaw State	Kennesaw, Ga.	7 p.m.
Jan. 29	*at USC Upstate	Spartanburg, S.C.	4:30 p.m.
Jan. 31	*at East Tennessee State	Johnson City, Tenn.	4:45 p.m.

Feb. 5	*CAMPBELL	Macon, Ga.	2 p.m.
Feb. 10	*KENNESAW STATE	Macon, Ga.	5 p.m.
Feb. 12	*FLORIDA GULF COAST	Macon, Ga.	2 p.m.
Feb. 14	*STETSON	Macon, Ga.	7 p.m.
Feb. 18	*at North Florida	Jacksonville, Fla.	5:30 p.m.
Feb. 20	*at Jacksonville	Jacksonville, Fla.	1 p.m.
Feb. 24	*BELMONT	Macon, Ga.	5 p.m.
Feb. 26	*LIPSCOMB	Macon, Ga.	2 p.m.

All times are Eastern  
 Home games in **BOLD**  
 \* Atlantic Sun Conference game  
 Schedule is subject to change

#### **Last Time Out:**

MACON, Ga. – Freshman Brittnee Hazel netted 11 points and finished one rebound shy of a double-double, but the Mercer women's basketball team was upended by Georgia College and State University, 67-57, in Thursday night's women's basketball exhibition game at the University Center.

#### **Series vs. Auburn:**

Friday's matchup marks Mercer's 20th meeting with the Tigers in program history. Auburn leads the all-time series between the teams, 10-9.

#### **Gardner's Debut:**

On Friday night, Mercer head coach Susie Gardner makes her debut on the sidelines with the Bears. Gardner comes from Florida, where she spent three seasons as an assistant coach. Gardner's career head coaching record is 176-147 in 11 seasons at Austin Peay and Arkansas.

#### **Nothing New Here:**

Facing the Auburn Tigers is nothing new for head coach Susie Gardner, as she has spent four seasons at the helm of the Arkansas Razorbacks. While with Arkansas, Gardner went 2-2 in four meetings with Auburn.

#### **Youth be Served:**

Mercer's 2010-11 roster features just one senior, one junior and 10 underclassmen. This year's team returns just 28.5 percent of the scoring from last season. Six of Mercer's 12 players have yet to play a regular season collegiate basketball game.

#### **Season Openers:**

Since 2000, Mercer is 3-7 in season opening contests. Last season, Mercer fell to then No. 2 Oklahoma 108-66.

#### **Scouting The Tigers:**

Auburn welcomes Mercer to Auburn Arena for the first official contest in the new venue. The Tigers, who return four starters from last year's team that finished 15-16 (5-11 SEC), aim to knock off the Bears in the teams' first meeting since 2001.

Auburn is 34-5 in home openers and is riding a streak of 13 consecutive opening game victories.

## MERCER QUICK FACTS

Location	Macon, Ga.
Founded	1833
Enrollment	8,200
Colors	Orange & Black
Conference	Atlantic Sun
Home (cap.)	University Center (3,200)
President	William Underwood
Athletics Director	Jim Cole
Website	www.mercerbears.com
Head Coach	Susie Gardner
Alma Mater	Georgia (1986)
School Record	0-0
Career Record	176-147 (.545)
Assistant Coaches	Rhet Wierzba, Tiffany Swoffard, Amy Jones
2009-10 Overall Record	14-16
2009-10 Conf. Record (Finish)	11-9 (4th)
Letterwinners Returned/Lost	5/3
Starters Returned/Lost	3/2
Newcomers	5
Sports Info. Contact	Andy Stabell
Office	478-301-5219
Email	stabell_al@mercer.edu

## AUBURN QUICK FACTS

Location	Auburn, Ala.
Founded	1856
Enrollment	24,602
Colors	Burnt Orange and Navy Blue
Conference	Southeastern
Home	Auburn Arena
President	Dr. Jay Gogue
Athletics Director	Jay Jacobs
Website	www.auburntigers.com
Head Coach	Nell Fortner
Career Record	133-84 (7 yrs)
Assistant Coaches	Kerry Cremeans, Mark Simons,
2009-10 Overall Record	15-16
2009-10 Conf. Record (Finish)	5-11 (T5th)
Letterwinners Returned/Lost	9/2
Starters Returned/Lost	4/1
Sports Info. Contact	Matt Crouch
Office	(334) 844-9800
Email	mcrouch@auburn.edu

Auburn returns 80 percent of its scoring from 2009-10, highlighted by senior Alli Smalley's 15.7 ppg average a year ago. Smalley was named to the Preseason All-SEC team by both the leagues' coaches and the media.

The Tigers were picked to finish sixth among SEC competition in the preseason polls conducted by the leagues' coaches and media.

### **Season Preview:**

The 2010-11 season marks a new era in Mercer women's basketball. Susie Gardner, a highly decorated coach who has spent the last seven seasons coaching at Arkansas and Florida, has been tabbed to take over a program has finished above .500 twice over the past decade.

Building a contender at Mercer is a welcome challenge for Gardner, who has made transforming basketball programs a trademark quality throughout her 24 years as a head coach.

In 1996, Gardner assumed the reigns of an Austin Peay program that had posted a 59-103 record in the previous five seasons. By the end of her stint with Lady Governors, the team had won three-straight Ohio Valley Conference tournaments.

Performing a similar feat at Mercer will test the coaches' ability to mold young players into winners.

The 2010-11 Bears feature just two upperclassmen and only five players who have seen significant playing time at the Division I level. Half of Mercer's one dozen players aim to touch a collegiate basketball court for the first time this season.

Senior Kourtney Carter and junior Neicey Lewis are the lone returning starters from last year's team that finished 14-16 (11-9 A-Sun). Carter and Lewis will be called upon to anchor the young squad that was picked ninth and eighth, respectively in the Atlantic Sun preseason coaches' and media polls.

Five players return for their sophomore campaign in Orange and Black, highlighted by Sharmesia Smith and Alex Phillips. Last season, Smith saw action in 28 games and earned a start in five contests. In just her second collegiate game, Smith netted 13 points and collected six rebounds in a road win at Charleston Southern. All told, Smith finished the season with 87 points and 51 boards.

Phillips appeared in 25 contests last season, averaging 2.3 rebounds and 1.8 points per game. Phillips proved to be an impact player on the defensive end, finishing the season ranked 12th in the league in blocked shots per game (0.72). Phillips was one of just three freshmen to rank among the league's top-15 shot blockers.

Joining Smith and Phillips as returning sophomores are Kendra Grant, Keema Blakney and Amber Chatmon. Grant saw playing time in 25 games last season, while Blakney played in five contests. Chatmon looks to suit up for her first game for the Bears this season.

Auburn Tigers		Mercer Bears
15-16	Overall Record	14-16
5-11	Conference Record	11-9
8-6	Home Record	7-5
4-9	Away Record	7-10
3-1	Neutral Record	0-1
61.8	PPG Scored	64.1
62.2	PPG Allowed	66.7
.418	FG Percentage	.392
.320	Three-Point FG %	.333
.588	Free Throw %	.710
39.8 (+5.3)	Reb. Per Game (Margin)	37.4 (-3.9)
16.9	Turnovers Per Game	16.5
159	Blocks	81
Alli Smalley (15.7 ppg - 4.4 rpg)	Leading Scorers	Courtney Ford (17.0 ppg - 8.0 rpg)
KeKe Carrier (12.4 ppg - 7.1 rpg)		LaToya Jackson (13.0 ppg - 3.0 rpg)
Jordan Greenleaf (7.9 ppg - 7.1 rpg)		Lacy Ramon (8.9 ppg - 5.2 rpg)

No Longer  
with the team

No Longer  
with the team

No Longer  
with the team

No Longer  
with the team

## ATLANTIC SUN PRESEASON VOTING

Coaches Poll		Media Poll		All-Conference Team
1) FGCU (7)	104	1) FGCU (14)	234	G - Tonisha Baker - Campbell
2) ETSU (2)	101	T2) ETSU (5)	221	G - Jenna Bartsokas - Lipscomb
3) USC Upstate (2)	100	T2) USC Upstate (4)	221	F/C - Jessica Conner - Jacksonville
4) UNF	84	4) Belmont	155	G - Tee'Ara Copney - USC Upstate
T5) Belmont	71	5) UNF	137	G - Tara Davis - ETSU
T5) Campbell	71	6) Campbell	133	F - Sametria Gideon-Kennesaw State
7) Jacksonville	53	7) Kennesaw State	125	G - Brittany Kirkland - UNF
8) Kennesaw State	51	<b>8) Mercer</b>	<b>102</b>	C - Chelsea McMillan - USC Upstate
<b>9) Mercer</b>	<b>39</b>	9) Jacksonville	98	G - Shannon Murphy - FGCU
10) Stetson	32	10) Stetson	54	P - Haley Nelson - Belmont
11) Lipscomb	20	11) Lipscomb	38	
Tournament Champion: ETSU		Tournament Champion: ETSU		Preseason Player of the Year: Chelsea McMillan





No.	Name	Pos.	Ht.	Cl.	Hometown/Previous School	Major
2	Briana Williams	G	5-7	Fr.	Jackson, Ga./Henry County HS	Media Studies
5	Sharmesia Smith	F	6-0	So.	Jonesboro, Ga./Jonesboro HS	Mathematics
10	Ariel Barnes	G	5-5	Fr.	Henderson, Ky./Henderson County HS	Education
11	Rebecca Clanton	G	5-7	Fr.	Greenville, S.C./Travelers Rest HS	Biology
12	Neicey Lewis	G	5-6	Jr.	Riverdale, Ga./Heritage HS	Communications
14	Alex Phillips	F	6-3	So.	Duluth, Ga./Duluth HS	Education
21	Kendra Grant	G	5-11	So.	Macon, Ga./Rutland HS	Psychology
22	Sharnea Boykin	G	5-5	Fr.	Atlanta, Ga./Westlake HS	Undeclared
23	Brittnee Hazel	F	5-11	Fr.	Loganville, Ga./Loganville HS	Journalism
24	Keema Blakney	G	5-8	So.	Simpsonville, S.C./Southside HS	Accounting
30	Kourtney Carter	C	6-0	Sr.	Fullerton, Calif./Fullerton Union HS	Business
31	Amber Chatmon	G	5-8	So.	Albany, Ga./Albany HS	Computer Engineering

### Pronunciation Guide

Neicey Lewis..... NIECE-ee

Keema Blakney ..... KEY-ma Black-knee

## Starters Returning (2)

No.	Player	Yr.	PPG	RPG	APG
30	Kourtney Carter	Sr.	5.7	4.7	0.5
12	Neicey Lewis	Jr.	6.2	2.9	1.1

## Starters Lost (3)

Player	PPG	RPG	APG
Courtney Ford	16.6	8.0	3.9
LaToya Jackson	13.1	3.0	2.8
Lacy Ramon	8.6	5.3	2.3

## Other Letterwinners Returning (2)

No.	Player	Yr.	PPG	RPG	APG
5	Sharmesia Smith	So.	3.2	1.3	0.1
14	Alex Phillips	So.	1.7	2.3	0.2

## Other Letterwinners Lost (4)

Player	PPG	RPG	APG
Lindsey Lowrie	4.4	1.3	0.1
Lorin Hammer	1.7	0.6	0.4
Amber Coleman	1.6	1.8	0.1
Samoana Ingram	1.0	1.1	0.2
Eryka Menzies	1.0	0.6	0.3
Kara Powell	0.1	0.6	0.1

## Newcomers (5)

No.	Player	Yr.	Ht.	Pos.	Hometown/Previous School
2	Briana Williams	Fr.	5-7	G	Jackson, Ga./Henry County HS
10	Ariel Barnes	Fr.	5-5	G	Henderson, Ky./Henderson County HS
11	Rebecca Clanton	Fr.	5-7	G	Greenville, S.C./Travelers Rest HS
22	Sharnea Boykin	Fr.	5-5	G	Atlanta, Ga./Westlake HS
23	Brittnee Hazel	Fr.	5-11	F	Loganville, Ga./Loganville HS

### BY STATE

#### California (1)

K. Carter

#### Kentucky (1)

A. Barnes

#### Georgia (8)

B. Williams, S. Smith,  
N. Lewis, A. Phillips,  
K. Grant, S. Boykin,  
B. Hazel, A. Chatmon

#### South Carolina (2)

R. Clanton, K. Blakney

### BY POSITION

#### Guards (8)

B. Williams, A. Barnes,  
R. Clanton, N. Lewis,  
K. Grant, S. Boykin,  
K. Blakney, A. Chatmon

#### Forwards (3)

S. Smith, A. Phillips,  
B. Hazel

#### Center (1)

K. Carter

### BY CLASS

#### Senior (1)

K. Carter

#### Junior (1)

N. Lewis

#### Sophomores (5)

S. Smith, A. Phillips,  
K. Grant, K. Blakney,  
A. Chatmon

#### Freshmen (5)

B. Williams, A. Barnes,  
R. Clanton, S. Boykin  
B. Hazel

### BY HEIGHT

#### 5-5 (2)

A. Barnes, S. Boykin

#### 5-6 (1)

N. Lewis

#### 5-7 (2)

B. Williams, R. Clanton

#### 5-8 (2)

K. Blakney, A. Chatmon

#### 5-11 (2)

K. Grant, B. Hazel

#### 6-0 (2)

S. Smith, K. Carter

#### 6-3 (1)

A. Phillips



**SUSIE GARDNER**

Head Coach  
First Season  
Georgia, 1986



Mercer University named veteran NCAA Division I coach Susie Gardner as the school's 10th women's basketball head coach on June 24, 2010.

Gardner brings a wealth of experience with her as she enters her 25th season on the sidelines. Eighteen of those seasons have been at the Division I level, including 12 as a head coach. Between her time as a college coach and player, Gardner has been involved in a combined 13 NCAA tournaments (four as a player and nine as a coach) and three WNIT bids.

Most recently, Gardner spent the three campaigns (2007-10) as an assistant coach at the University of Florida. She joined the Gators after four seasons (2003-07) as the head coach at the University of Arkansas to give her the past seven seasons as a coach in the Southeastern Conference, regarded by many as the toughest college women's basketball league in the nation.

At Florida, the 2009 Gators advanced to the second round of the NCAA tournament with Gardner on staff. Likewise, UF sandwiched that with WNIT appearances in 2008 and 2010 (advancing to the round of 16 during Gardner's first year and to the second round last season).

With Gardner at the Razorbacks' helm in 2004-05, Arkansas earned a trip to the WNIT tournament. Prior to that, she had the SEC "Player of the Year" in 2003-04. Arkansas was a combined 64-54 during Gardner's tenure and her 2005-06 team raced out to the best SEC start in the Lady 'Hogs program history.

Gardner cut her teeth as a Division I head coach at Austin Peay State University in Clarksville, Tenn., where she had a highly-successful seven season run (1996-2003) and was 112-93. The Lady Gobs accomplishments during that period included three Ohio Valley Conference tournament championships (2001, 2002 & 2003), and OVC regular season title (2003) and three NCAA post-season berths (2001, 2002 & 2003). Gardner was tabbed as the OVC "Coach of the Year" in 2003. She also produced the OVC "Player of the Year" in both 2003 and 2004, with her players also garnering the league's "Freshman of the Year" awards twice (2000 and 2001).

From 1992-95, Gardner was the assistant coach at Western Athletic Conference power San Diego State University. In her three seasons with the Aztecs, she was a part of a program that won three consecutive WAC tournament championships and, subsequently, also made three NCAA tourney





appearances. SDSU was 69-20 with Gardner on staff and garnered two WAC regular season crowns in 1994 and 1995.

Gardner's first "official" job as a coach came at Anderson College (now University), where she was the head coach of what was then a junior college program at the South Carolina campus from 1988-92. Her first season was a stellar one, as the Trojans were 24-4 and were co-champions of the NJCAA's Region 10. Her teams had runner-up Region 10 finishes in 1991 and 1992, as well.

Gardner is no stranger to middle Georgia or the Southeast region, having spent two seasons as a graduate assistant at the University of Georgia (1986-88) following a highly-successful four-year playing career for the Bulldogs under legendary head coach Andy Landers. UGA made the NCAA Final Four her last two years as a player – including a national runner-up finish in 1985 – and reached the NCAA tournament both of her years as a graduate assistant, as well. The Bulldogs won the SEC title in 1983, 1984 and 1986 as Gardner played alongside other noteworthy Georgia players like Teresa Edwards, Janet Harris and Katrina McClain.

Gardner was a member of the 1983 Sports Festival South Team which earned a gold medal. She was also a member of the USA's Select Team which competed in Canada.

Gardner earned her Bachelor of Science degree from Georgia in 1986, followed by a Master of Education degree in 1988.

A native of Mt. Juliet, Tenn., Gardner graduated from Mt. Juliet High School where she was coached by Tommy Martin.

## GARDNER D-I YEAR-BY-YEAR

### San Diego State - Assistant Coach

Year .....	W-L
1992-93 .....	19-9
1993-94 .....	26-5
1994-95 .....	24-6
<b>Three Seasons .....</b>	<b>69-20 (.780)</b>

### Austin Peay - Head Coach

Year .....	W-L
1996-97 .....	17-11
1997-98 .....	11-16
1998-99 .....	6-21
1999-00 .....	15-15
2000-01 .....	17-14
2001-02 .....	19-12
2002-03 .....	27-4
<b>Seven Seasons .....</b>	<b>112-93 (.546)</b>

### Arkansas - Head Coach

Year .....	W-L
2003-04 .....	16-12
2004-05 .....	17-14
2005-06 .....	13-15
2006-07 .....	18-13
<b>Four Seasons .....</b>	<b>64-54 (.542)</b>

### Florida - Assistant Coach

Year .....	W-L
2007-08 .....	19-14
2008-09 .....	24-8
2009-10 .....	15-17
<b>Three Seasons .....</b>	<b>58-39 (.598)</b>

### Career Record

Eleven Seasons .....	176-147 (.545)
----------------------	----------------

## Mercer Combined Team Statistics (as of Nov 11, 2010) All games

RECORD:	OVERALL	HOME	AWAY	NEUTRAL
ALL GAMES	14-16	7-5	7-10	0-1
CONFERENCE	11-9	7-3	4-6	0-0
NON-CONFERENCE	3-7	0-2	3-4	0-1

#	Player	gp-gs	min	avg	Total		3-Point		F-Throw		Rebounds				pf	dq	a	to	blk	stl	pts	avg
					fg-fga	fg%	3fg-fga	3fg%	ft-fa	ft%	off	def	tot	avg								
31	FORD, Courtney	30-30	986	32.9	179-423	.423	40-110	.364	100-135	.741	50	190	240	8.0	73	1	116	104	3	98	498	16.6
22	JACKSON, LaToya	30-30	1044	34.8	116-346	.335	69-220	.314	92-118	.780	27	64	91	3.0	51	1	83	66	0	41	393	13.1
34	RAMON, Lacy	29-28	776	26.8	88-197	.447	11-29	.379	61-77	.792	52	102	154	5.3	75	2	68	84	30	39	248	8.6
12	LEWIS, Neicey	30-15	626	20.9	68-198	.343	19-72	.264	32-53	.604	23	65	88	2.9	68	2	35	76	4	30	187	6.2
30	CARTER, Kourtney	30-30	703	23.4	79-189	.418	1-2	.500	13-15	.867	35	106	141	4.7	72	2	16	25	11	12	172	5.7
20	LOWRIE, Lindsey	30-8	373	12.4	41-117	.350	34-98	.347	11-14	.786	12	27	39	1.3	18	0	4	18	1	10	127	4.2
05	SMITH, Sharmesia	28-5	326	11.6	39-69	.565	0-0	.000	9-23	.391	32	19	51	1.8	25	0	4	24	6	10	87	3.1
14	PHILLIPS, Alex	25-0	274	11.0	19-45	.422	0-0	.000	7-12	.583	12	45	57	2.3	30	1	6	13	18	7	45	1.8
23	HAMMER, Lorin	27-1	129	4.8	15-32	.469	14-27	.519	1-2	.500	3	12	15	0.6	13	0	13	11	0	7	45	1.7
10	COLEMAN, Amber	28-0	214	7.6	18-42	.429	0-0	.000	6-13	.462	16	33	49	1.8	33	0	3	15	4	3	42	1.5
15	MENZIES, Eryka	20-0	162	8.1	7-33	.212	2-10	.200	5-7	.714	1	11	12	0.6	14	0	6	16	0	2	21	1.1
25	INGRAM, Samoana	26-1	171	6.6	10-24	.417	0-1	.000	7-14	.500	15	13	28	1.1	25	0	5	19	1	3	27	1.0
21	GRANT, Kendra	25-2	146	5.8	11-37	.297	3-4	.750	0-2	.000	6	12	18	0.7	19	0	4	5	0	3	25	1.0
24	BLAKNEY, Keema	5-0	9	1.8	1-3	.333	1-3	.333	0-0	.000	0	0	0	0.0	1	0	0	2	0	0	3	0.6
11	POWELL, Kara	16-0	59	3.7	0-8	.000	0-6	.000	2-2	1.000	3	7	10	0.6	1	0	2	5	3	0	2	0.1
Team											55	74	129				11					
Total.....		30	5998		691-1763	.392	194-582	.333	346-487	.710	342	780	1122	37.4	518	9	365	494	81	265	1922	64.1
Opponents.....		30	6001		703-1825	.385	204-620	.329	390-564	.691	430	809	1239	41.3	488	-	427	507	89	234	2000	66.7

TEAM STATISTICS	MER	OPP	Date	Opponent	Score	Att.
SCORING	1922	2000	11/13/09	at Oklahoma	L 66-108	6732
Points per game	64.1	66.7	11/20/09	vs College of Charleston	L 71-97	397
Scoring margin	-2.6	-	11/21/09	at Charleston Southern Buccaneers	w 87-77	0
FIELD GOALS-ATT	691-1763	703-1825	11/28/09	at Furman	w 75-62	279
Field goal pct	.392	.385	* 12/3/09	LIPSCOMB	w 69-59	245
3 POINT FG-ATT	194-582	204-620	* 12/5/09	BELMONT	w 98-69	0
3-point FG pct	.333	.329	12/11/09	GEORGIA SOUTHERN	L 45-76	1428
3-pt FG made per game	6.5	6.8	12-19-09	at Oklahoma State	L 68-100	2358
FREE THROWS-ATT	346-487	390-564	12-21-09	at Texas Tech	L 49-60	7851
Free throw pct	.710	.691	12-28-09	at High Point	L 71-81	309
F-Throws made per game	11.5	13.0	12-30-09	at WINTHROP	w 58-49	489
REBOUNDS	1122	1239	* 1/2/2010	at Jacksonville	L 57-72	434
Rebounds per game	37.4	41.3	* 01/04/10	at North Florida	w 54-48	0
Rebounding margin	-3.9	-	* 1/7/10	CAMPBELL	w 64-52	521
ASSISTS	365	427	* 1/9/10	ETSU	L 60-81	1100
Assists per game	12.2	14.2	* 01/14/10	at USC Upstate	w 57-53	604
TURNOVERS	494	507	* 1/16/10	KENNESAW STATE	w 60-38	1238
Turnovers per game	16.5	16.9	* 01/21/10	at Stetson	w 69-57	539
Turnover margin	+0.4	-	* 1/23/10	at Florida Gulf Coast	L 77-84	1260
Assist/turnover ratio	0.7	0.8	* 1/30/10	STETSON	w 65-51	1373
STEALS	265	234	* 2/1/10	FLORIDA GULF COAST	L 62-67	1364
Steals per game	8.8	7.8	* 02/04/10	at Kennesaw State	L 51-52	364
BLOCKS	81	89	* 2/8/10	USC UPSTATE	L 78-87	780
Blocks per game	2.7	3.0	* 2/11/10	at ETSU	L 71-83	3137
ATTENDANCE	8683	25702	* 02/13/10	at Campbell	L 60-66	647
Home games-Avg/Game	12-724	17-1489	* 2/18/10	NORTH FLORIDA	w 61-47	0
Neutral site-Avg/Game	-	1-397	* 2/20/10	JACKSONVILLE	w 63-46	634
			* 02/25/10	at Belmont	L 40-53	302
			* 02/27/10	at Lipscomb	w 76-70	0
			3/3/10	NORTH FLORIDA	L 40-55	0
Score by Periods	1st	2nd	Totals			
Mercer	891	1031	1922			
Opponents	978	1022	2000			

\* - Conference game



## #5 - SHARMESIA SMITH SOPHOMORE - FORWARD

### CAREER HIGHS

Points:	13, Charleston Southern (11/21/09)
FG Made:	6, Charleston Southern (11/21/09)
FG Att.:	8, Charleston Southern (11/21/09)
3-Point FGs:	n/a
3-Point FGA:	n/a
FT Made:	3, vs USC Upstate (2/8/10)
FT Att:	6, Charleston Southern (11/21/09)
Rebounds:	6, 2x, at Jacksonville (1/2/10)
Assists:	1, 3x, vs USC Upstate (2/8/10)
Blocks:	2, Kennesaw (1/16/10)
Steals:	2, UNF (1/4/10)
Minutes:	25, USC Upstate (1/14/10)

## #12 - NEICEY LEWIS JUNIOR - GUARD

### CAREER HIGHS

Points:	22, at FGCU (1/23/10)
FG Made:	8, at FGCU (1/23/10)
FG Att.:	13, at FGCU (1/23/10)
3-Point FGs:	3, at ETSU (2/11/10)
3-Point FGA:	6, at ETSU (2/11/10)
FT Made:	4, 4x, vs UNF (2/18/10)
FT Att.:	5, 2x, at USC Upstate (2/8/10)
Rebounds:	9, at Kennesaw (2/4/10)
Assists:	4, at Kennesaw (2/4/10)
Blocks:	1, 3X, at ETSU (2/11/10)
Steals:	3, 4x, at Kennesaw (2/4/10)
Minutes:	36, at FGCU (1/23/10)

## #14 - ALEX PHILLIPS SOPHOMORE - FORWARD

### CAREER HIGHS

Points:	7, vs. Belmont (12/5/09)
FG Made:	3 vs. Belmont (12/5/09)
FG Att.:	6, at Texas Tech (12/28/09)
3-Point FGs:	n/a
3-Point FGA:	n/a
FT Made:	2, 2x, vs. UNF (2/18/10)
FT Att:	3, vs. Belmont (12/5/09)
Rebounds:	13, vs. Belmont (12/5/09)
Assists:	n/a
Blocks:	4, vs. Belmont (12/5/09)
Steals:	3, vs USC Upstate (2/8/10)
Minutes:	22, vs. Belmont (12/5/09)

## #21 - KENDRA GRANT SOPHOMORE - GUARD

### CAREER HIGHS

Points:	6, vs Lipscomb (12/3/09)
FG Made:	2, vs Lipscomb (12/3/09)
FG Att.:	5, vs Lipscomb (12/3/09)
3-Point FGs:	1, 2x, at FGCU (1/23/10)
3-Point FGA:	1, 2x, at FGCU (1/23/10)
FT Made:	n/a
FT Att:	2, 2x, , at Kennesaw (2/4/10)
Rebounds:	3, 2x, vs USC Upstate (2/8/10)
Assists:	1, 4x, at ETSU (2/11/10)
Blocks:	n/a
Steals:	1, vs Lipscomb (12/3/09)
Minutes:	20, vs. FGCU (2/1/10)

## #24 - KEEMA BLAKNEY FRESHMAN - GUARD

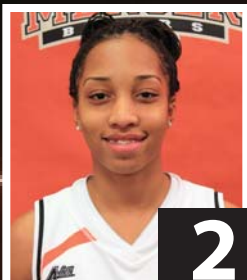
### CAREER HIGHS

Points:	3, vs. Georgia Southern (12/11/09)
FG Made:	1, vs Georgia Southern (12/11/09)
FG Att.:	2, vs. Georgia Southern (12/11/09)
3-Pt. FGs:	1, vs Georgia Southern (12/11/09)
3-Pt. FGA:	2, vs. Georgia Southern (12/11/09)
FT Made:	n/a
FT Att:	n/a
Rebounds:	n/a
Assists:	n/a
Blocks:	n/a
Steals:	n/a
Minutes:	3, vs. UNF (1/4/10)

## #30 - KOURTNEY CARTER JUNIOR - CENTER

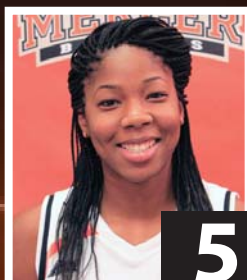
### CAREER HIGHS

Points:	18, vs. Kennesaw State (1/16/10)
FG Made:	9, vs. Kennesaw State (1/16/10)
FG Att:	15, 2x, at Kennesaw State (1/16/10)
3-Pt FGs:	1, at Oklahoma State (12/19/10)
3-Pt FGA:	1, 4x, at Oklahoma State (12/19/09)
FT Made:	5, vs. Kennesaw State (3/1/08)
FT Att:	7, vs. Kennesaw State (3/1/08)
Rebounds:	12, at USC Upstate (1/14/10)
Assists:	2, 6x, at FGCU (1/23/10)
Blocks:	2, 5x, vs. USC Upstate (2/8/10)
Steals:	2, 5x, vs. USC Upstate (2/8/10)
Minutes:	36, at Kennesaw State (1/5/08)



**2**

**Briana Williams**  
Freshman - Guard - 5-7



**5**

**Shari Smith**  
Sophomore - Forward - 6-0



**10**

**Ariel Barnes**  
Freshman - Guard - 5-5



**11**

**Rebecca Clanton**  
Freshman - Guard - 5-7



**12**

**Neicey Leiws**  
Junior - Guard - 5-6



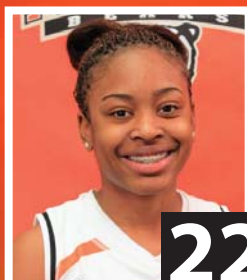
**14**

**Alex Phillips**  
Sophomore - Forward - 6-3



**21**

**Kendra Grant**  
Sophomore - Guard - 5-11



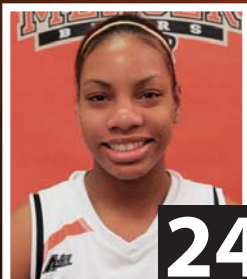
**22**

**Sharnea Boykin**  
Freshman - Guard - 5-5



**23**

**Brittnee Hazel**  
Freshman - Forward - 5-11



**24**

**Keema Blakney**  
Sophomore - Guard - 5-8



**30**

**Kourtney Carter**  
Senior - Forward - 6-0



**31**

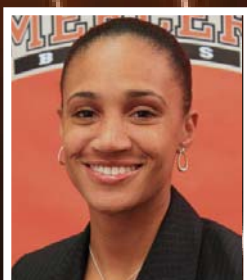
**Amber Chatmon**  
R-Sophomore - Guard - 5-8



**Susie Gardner**  
Head Coach



**Rhet Wierzba**  
Assistant Coach



**Tiffany Swoffard**  
Assistant Coach



**Amy Jones**  
Assistant Coach