



2012-13 Auburn Women's Basketball

Game 10 • December 16, 2012

vs. Temple

18 NCAA Tournament Appearances • Three Final Fours • Five SEC Titles • Four SEC Tournament Titles

AUBURN MEDIA RELATIONS

Associate Director/WBB Contact: Matt Crouch • mcrouch@auburn.edu

Auburn Athletic Complex / 392 South Donahue / Auburn, AL 36849

O: 334.844.9800 • C: 334.740.4109 • F: 334.844.9807

www.AuburnTigers.com • www.AuburnWomensHoops.com

Twitter: @AuburnWBB | @MattCrouchAU • Facebook: facebook.com/AUWBB

2012-13 SCHEDULE/RESULTS

AUGUST

7	1 - at Logan Thunder [Exhibition]	L, 86-54
10	1 - at Cairns Dolphins [Exhibition]	W, 81-71
12	1 - at Sydney Flames [Exhibition]	W, 67-58
13	1 - at Sutherland Sharks [Exhibition]	W, 84-46

NOVEMBER

9	2 - vs. Maine	W, 71-41
10	2 - at North Carolina State	L, 85-71
15	Alabama State	W, 80-43
18	Alabama A&M	W, 93-44
23	3 - vs. San Diego State	L, 78-57
24	3 - vs. Texas A&M-Corpus Christi	W, 72-57
28	at Tulane	W, 70-65

DECEMBER

9	Hofstra	W, 68-58
12	at George Washington	W, 69-59
16	Temple	2 p.m.
19	Tennessee-Chattanooga	6 p.m.
22	Jacksonville	2 p.m.
29	Samford	2 p.m.

JANUARY

3	Arkansas*	6 p.m.
6	at Missouri*	2 p.m.
10	Ole Miss*	6 p.m.
13	at Texas A&M*	2 p.m.
17	Tennessee* [CSS]	8 p.m.
20	at Kentucky* [SEC Network]	1 p.m.
24	at Alabama* [CSS]	8 p.m.
31	LSU*	6 p.m.

FEBRUARY

3	at South Carolina*	2 p.m.
7	at Georgia*	6 p.m.
10	Florida* [SportSouth]	2 p.m.
17	Alabama* [ESPN2]	1:30 p.m.
21	at Tennessee*	6 p.m.
24	Missouri*	2 p.m.
28	at Vanderbilt* [CSS]	8 p.m.

MARCH

3	Mississippi State*	2 p.m.
6-10	Southeastern Conference Tournament Duluth, Ga. • Arena at Gwinnett Center	
23-26	NCAA Tournament First and Second Rounds	

APRIL

30-2	NCAA Tournament Regionals	
7-9	NCAA Tournament Final Four New Orleans, La. • New Orleans Arena	

* - SEC Game

All Times are Central

1 - Australian Tour (Brisbane, Cairns and Sydney, Australia)

2 - Wolfpack Invitational (Raleigh, N.C.)

3 - 26th Annual Omni Hotels Classic (Boulder, Colo.)

All home games played at Auburn Arena

Bold indicates home games

www.AuburnTigers.com



VS.



GAME 10

[NR/NR] Auburn (7-2) vs. [NR/NR] Temple (5-3)

When: Sunday, December 16 • 2 p.m. CT

Where: Auburn Arena (9,121) • Auburn, Ala.

Video Webcast: AuburnTigers.com

Radio: 96.7 FM WMXA; Andy Burcham (play-by-play), Stephanie Follett (color)

Audio Webcast: AuburnTigers.com

GameTracker: AuburnTigers.com

Series: Auburn leads, 4-3

Last Meeting: Temple def. Auburn, 73-53, on Dec. 3, 2011 in Philadelphia, Pa.

Last Meeting in Auburn: Temple def. Auburn, 62-61, on Dec. 4, 2010

Up Next: Auburn will remain at home for a 2 p.m., Sunday game against

Tennessee-Chattanooga in Auburn Arena

AUBURN PROJECTED STARTERS (7-2)

No.	Pos.	Name	Ht.	Year	PPG	RPG	Hometown
00	G	Hasina Muhammad	6-1	So.	16.4	5.8	Memphis, Tenn.
3	G	Najat Ouardad	5-1	Sr.	6.0	(apg) 5.9	Orleans, France
14	F	Blanche Alverson	6-3	Sr.	11.8	5.6	Andalusia, Ala.
32	G	Tyrese Tanner	6-1	Jr.	12.4	4.4	Birmingham, Ala.
34	C	Peyton Davis	6-5	Jr.	7.4	5.9	Pinson, Ala.

OFF THE BENCH

5	G	Chadarryl Clay	5-7	Fr.	3.1	(apg) 1.1	Chattanooga, Tenn.
11	G	Courtney Strain	5-9	R-So.	5.1	0.8	Woodland, Ala.
20	C	Pascale West	6-8	Sr.	1.6	0.8	LaGrange, Ga.
22	G	Julie King	5-9	Sr.	0.4	1.4	St. Louis, Mo.
23	F	Tro'cee Tanner	6-3	Fr.	6.3	3.3	Birmingham, Ala.
25	G	Cedricka Sweeting	5-3	Fr.	1.6	(apg) 1.2	Nassau, Bahamas
50	F	Cabriana Capers	6-1	Fr.	1.2	3.2	Bolingbrook, Ill.

Head Coach: Terri Williams-Flournoy / Assistant Coaches: Ty Evans, Caroline McCombs and Adrian Walters

TEMPLE PROJECTED STARTERS (5-3)

No.	Pos.	Name	Ht.	Year	PPG	RPG	Hometown
1	G	Erica Covile	6-1	Fr.	5.3	4.3	Canton, Mich.
10	F	Sally Kabengano	5-10	Fr.	7.4	6.8	Stockholm, Sweden
23	G	Tyonna Williams	5-6	So.	8.3	(apg) 4.6	Fort Washington, Md.
25	C	Victoria Macaulay	6-4	Sr.	16.6	10.1	Staten Island, N.Y.
32	F	Natasha Thames	6-0	R-Jr.	6.3	7.3	Port Huron, Mich.

Head Coach: Tonya Cardoza / Assistant Coaches: Way Veney, Meg Barber and Willnett Crockett

Media Information

The Auburn media relations department considers its work with the media a top priority. The 2012-13 Auburn Women's Basketball Almanac has been prepared to assist the working media in their coverage of Tiger basketball. If you have not received a copy, or if you need additional information, interview or photograph requests, or have any questions, please contact Matt Crouch in the media relations office at 334.844.9800.

Interview Policy

Coach Williams-Flournoy, her assistants and all women's basketball players are available for phone and personal interviews by contacting Matt Crouch in the media relations office. Post-game interviews will be allowed following a 10-minute cooling off period. Non-game day requests will be met based on the players class and practice schedules.

Credentials

Anyone wishing to cover an Auburn women's basketball game should contact Matt Crouch in the media relations office at least one day in advance in order to make the proper arrangements.

On the Air

The Tigers can be heard live locally in Auburn on Mix 96.7 FM for the entire regular and postseasons. Andy Burcham, in his 25th season with the women's basketball program and handles play-by-play duties. Stephanie Follett joins Burcham for her first season and provides color commentary. Each game can also be heard live on the internet at www.AuburnTigers.com.

Weekly Live Radio Show

Starting in January, every Tuesday at 6 p.m. CT, Terri Williams-Flournoy will host a live show from a restaurant in Auburn with Andy Burcham. Fans can listen to the show on 96.7 FM. Fans can tweet their questions @AuburnWBB.

Game-Day Services

Statistics, rosters and game notes will be provided prior to the game in the media work room. Box scores will also be handed out during and following the game. Phones and fax machines are available in the media work room.

Photo/Video Services

Todd Van Emst of the Auburn Media Relations office handles all photo requests. Please contact Van Emst at 334.844.9514. Video highlights of selected Auburn women's basketball games are available for the media. For information on how to access the FTP server, contact Steve Sain in the Auburn Media Relations office at 334.844.9809.

On the Web

The home for Auburn Athletics on the web, www.AuburnTigers.com, is your source for Auburn Women's Basketball. The website offers the most recent information and news on the Tigers. At AuburnTigers.com, you can also listen to each women's basketball game broadcast live and follow along on live scoring for every home game.



Follow Auburn Women's Basketball on Twitter

@AuburnWBB



Become a fan of Auburn Women's Basketball on Facebook

www.Facebook.com/AUWBB

2012-13 Numerical Roster

No.	Name	Height	Position	Class	Hometown/High School
0	Hasina Muhammad	6-1	Guard/Forward	SO	Memphis, Tenn./Ridgeway
3	Najat Ouardad	5-1	Guard	SR	Orleans, France/Pensacola St. College
4	Cedricka Sweeting	5-3	Guard	FR	Miami, Fla./South Broward
11	Courtney Strain	5-9	Guard	R-SO	Woodland, Ala./Woodland
14	Blanche Alverson	6-3	Forward/Guard	SR	Andalusia, Ala./Buford (Ga.)
20	Pascale "P.J." West	6-8	Center	SR	LaGrange, Ga./Troup County
21	Chadarryl Clay	5-7	Guard	FR	Chattanooga, Tenn./Girls Preparatory
22	Julie King	5-9	Guard	SR	St. Louis, Mo./Nerinx Hall
32	Tyrese Tanner	6-1	Guard/Forward	JR	Birmingham, Ala./Hoover
34	Peyton Davis	6-5	Center	JR	Pinson, Ala./Mortimer Jordan
35	Cabrina Capers	6-1	Forward	FR	Bolingbrook, Ill./Bolingbrook
44	Tra'cee Tanner	6-3	Forward/Center	FR	Birmingham, Ala./Hoover

2012-13 Alphabetical Roster

No.	Name	Height	Pos.	Ht.	Hometown
14	Blanche Alverson	6-3	Forward/Guard	SR	Andalusia, Ala./Buford (Ga.)
35	Cabrina Capers	6-1	Forward	FR	Bolingbrook, Ill./Bolingbrook
5	Chadarryl Clay	5-7	Guard	FR	Chattanooga, Tenn./Girls Preparatory
34	Peyton Davis	6-5	Center	JR	Pinson, Ala./Mortimer Jordan
22	Julie King	5-9	Guard	SR	St. Louis, Mo./Nerinx Hall
0	Hasina Muhammad	6-1	Guard/Forward	SO	Memphis, Tenn./Ridgeway
3	Najat Ouardad	5-1	Guard	SR	Orleans, France/Pensacola St. College
11	Courtney Strain	5-9	Guard	R-SO	Woodland, Ala./Woodland
4	Cedricka Sweeting	5-3	Guard	FR	Miami, Fla./South Broward
44	Tra'cee Tanner	6-3	Forward/Center	FR	Birmingham, Ala./Hoover
32	Tyrese Tanner	6-1	Guard/Forward	JR	Birmingham, Ala./Hoover
20	Pascale "P.J." West	6-8	Center	SR	LaGrange, Ga./Troup County

STAFF:

Head Coach: Terri Williams-Flournoy (Penn State, 1991)

Assistant Coach: Ty Evans (Wisconsin-Whitewater, 1995)

Assistant Coach: Caroline McCombs (Youngstown State, 1998)

Assistant Coach: Adrian Walters (St. Francis (Pa.), 1987)

Director of Basketball Operations: Danielle Bell (Richmond, 2010)

Director of Basketball Services: Sherill Baker (Georgia, 2006)

Special Assistant to the Head Coach: Stephanie Follett (Maine, 1996)

Administrative Graduate Assistant: Kari Koch (Missouri State, 2006)

Athletic Trainer: Cindy Campbell (South Alabama, 2005)

BY CLASS:

Seniors (4): Blanche Alverson, Julie King, Najat Ouardad, Pascale "P.J." West

Juniors (2): Peyton Davis, Tyrese Tanner

Sophomores (2): Hasina Muhammad, Courtney Strain

Freshmen (4): Cabrina Capers, Chadarryl Clay, Cedricka Sweeting, Nicole Tanner

Projected Auburn Starters

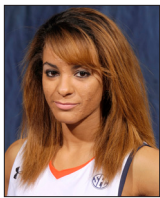


Hasina Muhammad

Guard
6-1
Sophomore
Memphis, Tenn.
Ridgeway High School
16.4 ppg / 5.8 rpg / 2.7 spg

0

- Is Auburn's top scorer so far this season, scoring in double digits every game
- Had 1st career double-double with career highs of 21 pts and 10 rebs at GW
- Picked up 9 steals at GW, ranking 4th all-time at AU in single-game steals
- Has led Auburn in scoring in five of its nine games this season



Najat Ouardad

Guard
5-1
Senior
Orleans, France
Pensacola State College
6.0 ppg / 5.9 apg / 4.7 rpg

3

- Neared triple-double at GW with 10 points, 9 rebounds and 7 assists
- Leads the SEC with 5.9 assists per game
- Tied her career high with 8 assists against TAMU-CC and Hofstra
- Scored career-high 11 points vs. Maine and at N.C. State



Blanche Alverson

Guard/Forward
6-3
Senior
Andalusia, Ala.
Buford (Ga.) High School
11.8 ppg / 5.6 rpg / .405 3fg%

14

- Named Auburn's Miss Homecoming on Nov. 3
- Was the 2012 SEC Women's Basketball Scholar-Athlete of the Year
- Eclipsed the 900-point plateau against Hofstra last Sunday
- Is 78 points away from reaching 1,000 on her career

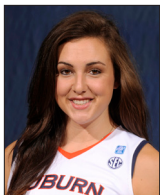


Tyrese Tanner

Guard/Forward
6-1
Junior
Birmingham, Ala.
Hoover High School
12.4 ppg / 4.4 rpg / 2.2 spg

32

- Selected to Omni Hotels Classic All-Tournament Team Nov. 23-24
- Scored career-high 26 points at North Carolina State on Nov. 10
- Neared her first double-double with 15 points and 9 rebounds vs. Maine
- Leads Auburn in free throw percentage with .824



Peyton Davis

Center
6-5
Junior
Pinson, Ala.
Mortimer Jordan High School
7.4 ppg / 5.9 rpg / .464 fg%

34

- Notched her first career double-double vs. Hofstra with 13 pts and 12 rebs
- Scored a career-high 15 points vs. TAMU-CC
- Earned first career start vs. Maine on Nov. 9
- Started all four games in Australia during the summer tour; averaged 6.5 ppg

Auburn Women's Basketball Quick Hitters

- Tigers head coach Terri Williams-Flournoy picked up the 150th win of her career Wednesday at GW
- Last Sunday's win over Hofstra was Williams-Flournoy's 400th as a coach (either assistant or head coach)
- Hasina Muhammad (16.4 ppg) & Frankie Sullivan (18.5 ppg) are the highest scoring M&W combo in the SEC
- Junior Peyton Davis pulled down AU's first double-double of the season (13 pts, 12 rebs) vs. Hofstra; Hasina Muhammad followed up at GW with the first of her career with 21 points and 10 rebounds
- Muhammad also picked up 9 steals at GW, a mark that ranks 4th all-time at AU in single-game steals
- Auburn overcame a 16-point halftime deficit to earn a 70-65 win at Tulane on Nov. 28; it was the first time for the Tigers to overcome a double-digit deficit to win since beating Liberty, 64-53, on Dec. 7, 2008
- Senior Julie King graduated from Auburn on Dec. 8
- Auburn won its 800th game last season, becoming the 14th NCAA program to do so
- This is the 8th meeting between Auburn and Temple with Auburn leading the series, 4-3
- Auburn has a 24-10 all-time record against current members of the Atlantic 10 Conference
- Auburn picked up a 69-59 win at GW in its last game; Temple lost at Kent State, 71-62
- This is the first meeting between Terri Williams-Flournoy and Temple's Tonya Cardoza as head coaches
- Auburn is 12-2 all-time when playing on Dec. 16
- The Tigers are 202-47 when playing in the month of December
- Auburn is 10-8 all-time when playing teams from the State of Pennsylvania
- Blanche Alverson is 78 points away from reaching 1,000 on her career
- Auburn has forced more than 20 turnovers in 7 of 9 games this season, more than 25 in four
- The Tigers' bench is averaging 21.6 points per game so far this season
- The Tigers return five players that accounted for 127 starts on The Plains prior to this season
- Alverson is tied for fourth all-time in career 3-pointers at Auburn with 161
- One of Auburn's newcomers is senior Julie King, a four-year letterwinner on the Auburn soccer team
- For the third time ever, Auburn's roster features a set of sisters in Tyrese and Tra'cee Tanner
- Terri Williams-Flournoy led the Tigers to a 3-1 record this summer in the team's Australian Tour
- Senior Blanche Alverson was named Auburn's Miss Homecoming Nov. 3
- Junior Tyrese Tanner was named to the Omni Hotels Classic All-Tournament Team Nov. 23-24
- Blanche Alverson's community service project, Ballin' For Books, collected more than 1,100 books last year
- The Tigers will appear on television in at least seven games this season
- Auburn was picked to finish 10th in the SEC by both the media and league's coaches
- Four freshmen grace the Tiger roster: Cabriana Capers, Chadarryl Clay, Cedricka Sweeting and Tra'cee Tanner

INDIVIDUAL CATEGORY LEADERS

Auburn		Temple
Hasina Muhammad - 16.4	Points	Victoria Macaulay - 16.6
Peyton Davis - 5.9	Rebounds	Victoria Macaulay - 10.1
Najat Ouardad - 5.9	Assists	Tyonna Williams - 4.6
Hasina Muhammad - 2.7	Steals	Sally Kabengano and Erica Covile - 1.5
Tyrese Tanner - 1.3	Blocks	Victoria Macaulay - 2.0
Blanche Alverson - 30.7	Minutes Played	Victoria Macaulay - 35.0
Tra'cee Tanner - .511	Field Goal Percentage	Victoria Macaulay - .546
Blanche Alverson - .405	3-Point Percentage	Tyonna Williams - .308
Tyrese Tanner - .824	Free-Throw Percentage	Rateska Brown - .778

AUBURN WOMEN'S BASKETBALL WEEKLY SCHEDULE

	Friday 14	Saturday 15	Sunday 16	Monday 17	Tuesday 18	Wednesday 19	Thursday 20
Dec. 14 through Dec. 20	Practice 10 a.m. - 12 p.m. CT 4 - 6 p.m. CT Auburn Arena	Practice 9 a.m. - 12 p.m. CT Auburn Arena	Auburn vs. Temple 2 p.m. CT Auburn Arena Auburn, Ala.	Practice 10 a.m. - 12 p.m. CT 4 - 6 p.m. CT Auburn Arena	Practice 12 - 3 p.m. CT Auburn Arena	Auburn vs. UT-Chattanooga 6 p.m. CT Auburn Arena Auburn, Ala.	Practice 10 a.m. - 12 p.m. CT 4 - 6 p.m. CT Auburn Arena

General Information

School.....	Auburn University
City / Zip.....	Auburn, Ala. / 36831
Founded.....	Oct. 1, 1856
Enrollment.....	25,469
Nickname.....	Tigers
Colors.....	Burnt Orange and Navy Blue
Home Court (Capacity).....	Auburn Arena (9,121)
Affiliation.....	NCAA Division I
Conference.....	Southeastern Conference
President.....	Dr. Jay Gogue
Athletic Director.....	Jay Jacobs
Senior Women's Administrator.....	Meredith Jenkins
University Website.....	www.Auburn.edu

Team Information

2011-12 Overall Record.....	13-17 (.433)
SEC Record.....	5-11 (.313)
All-Time SEC Record.....	192-168 (.533)
SEC Tournament Record.....	34-31 (.523)
Letterwinners Returning/Lost.....	7/5
Starters Returning/Lost.....	3/2
Newcomers.....	5
First Year of Basketball.....	1971
All-Time Overall Record.....	818-380 (.683)
NCAA Tournament Appearances/Last.....	18/2009
NCAA Tournament Record.....	29-18
WNIT Appearances/Last.....	3/2011
WNIT Record.....	8-2

Basketball Staff

Head Coach.....	Terri Williams-Flournoy (Penn State, 1991)
Career Record.....	150-106 (.586) / 9th season
Record at Auburn.....	7-2 (.778) / 1st season
Assistant Coaches (Alma Mater) ..	Ty Evans (Wisconsin-Whitewater, 1995)
.....	Caroline McCombs (Youngstown State, 1998)
.....	Adrian Walters (St. Francis (Pa.), 1987)
Director of Basketball Operations.....	Danielle Bell
Director of Basketball Services.....	Sherill Baker
Special Assistant to the Head Coach.....	Stephanie Follett
Administrative Graduate Assistant.....	Kari Koch
Secretary.....	Vicki Coleman
Basketball Office Phone.....	(334) 844-9200
Basketball Office Fax.....	(334) 844-9862
Strength and Conditioning.....	Megan Young
Athletic Trainer.....	Cindy Campbell
Academic Counselor.....	Dr. Mary Ann Taylor-Sims

Radio Broadcast Information

Radio Station.....	WMXA (96.7 FM)
Play-by-Play.....	Andy Burcham
Color.....	Stephanie Follett
Burcham Email.....	aburcham@auburnnetwork.com
Burcham Office Phone.....	(334) 826-2929
Network Address.....	Auburn Network, Inc.
.....	P.O. Box 950
.....	Auburn, AL 36831-0950

TEMPLE MEDIA RELATIONS

For information on the Temple Owl women's basketball team, contact Karen Auerbach in the media relations office. Her number is 928-606-8017 and her email is karena@temple.edu.

OFFICIALS

TBA

RANKINGS

Auburn and Temple are not ranked.

NEXT UP FOR THE TIGERS

Auburn will remain at home for a 6 p.m. CT, Wednesday game against Tennessee-Chattanooga (8-1) at Auburn Arena.

AUBURN'S POST-GAME PROCEDURE

The Auburn locker room is closed. Coach Terri Williams-Flournoy and selected Tiger players will be brought to the interview room after the 10-minute "cooling off" period.

QUICK HITS

Auburn is in its 42nd season of women's basketball and sports an all-time record of 818-380... AU has made 18 NCAA Tournament appearances, three WNIT appearances and three Final Fours in the program's history... Head Coach Terri Williams-Flournoy is in her first season at Auburn... She has a 150-106 record as a head coach... The Tigers are coming off a 13-17 season in 2012.

800 AND COUNTING

Auburn picked up its 800th program victory last season, becoming the 14th team in NCAA history to reach the 800-win plateau.

WINNING 150

Auburn head coach Terri Williams-Flournoy picked up the 150th win of her head coaching career on Dec. 12 as she led the Tigers to a 69-59 win at George Washington. The win was also significant as it was in Washington, D.C., where she spent her first eight years as a head coach at Georgetown.

Williams-Flournoy also hit a coaching milestone last on Dec. 9 against Hofstra as the win was the 400th of her career as either an assistant or head coach. Following the win she had 251 wins as an assistant and 149 as a head coach.

THE GRADUATE

Senior guard Julie King took a big step Dec. 8 as she earned her degree in Interdisciplinary Studies from Auburn. The fifth-year player spent her first four years at Auburn on the soccer team and is currently using her final year of eligibility with the women's basketball team.

DEADLY DUO

Frankie Sullivan of the Auburn men's basketball team currently leads the SEC with 18.5 points per game while Hasina Muhammad leads the women's team and ranks third in the SEC with 16.4 points per game. Together, the pair is the highest scoring men's and women's combination in the SEC this season.

AUBURN-TEMPLE SERIES

This will be the eighth meeting between Auburn and Temple with the Tigers leading the series, 4-3. Auburn is 3-1 when playing Temple in Auburn. The Tigers won the first four matchups of the series, but have fallen in the previous three.

Previous meetings against Temple:

Jan. 19, 1980	W	69-62	Storrs, Conn.
Jan. 23, 1982	W	85-53	Auburn
Mar. 19, 1989	W	88-54	Auburn
Nov. 17, 2008	W	95-76	Auburn
Nov. 17, 2009	L	52-66	Philadelphia, Pa.
Dec. 4, 2010	L	61-62	Auburn
Dec. 3, 2011	L	57-73	Philadelphia, Pa.

AGAINST THE ATLANTIC 10 CONFERENCE

Auburn is 24-10 all-time against current members of the Atlantic 10 Conference. Auburn's last meeting with an A-10 team came at George Washington on Wednesday as the Tigers pulled out the 69-59 win in Washington, D.C.

Statistical Comparison - Auburn vs. Temple

	Auburn	Temple
Coach:	Terri Williams-Flournoy	Tonya Cardoza
Career Record:	150-106	98-41
Top Scorer:	Muhammad (16.4)	Macaulay (16.6)
Top Rebounder:	Davis (5.9)	Macaulay (10.1)

Series Record:	Auburn leads, 4-3
- at Auburn	Auburn leads, 3-1
- at Philadelphia, Pa.	Auburn trails, 0-2
- at Neutral	Auburn leads, 1-0
- Overall Streak	Auburn has lost the last three meetings

2011-12 Record	13-17	23-10
2012-13 Record	7-2	5-3
Points Per Game	72.3	58.4
Scoring Margin	+13.4	+0.6
FG Percentage	.434	.406
Opp. FG %	.359	.340
3FG Percentage	.319	.265
Opp. 3FG %	.330	.252
Rebounds	41.7	42.6
Opp. Rebounds	37.8	35.2
Rebound Margin	+3.9	+7.4
Turnovers	15.7	22.0
Opp. Turnovers	22.3	15.5
Steals	12.8	8.4
Opp. Steals	7.3	9.8
Blocks	5.6	4.6
Opp. Blocks	2.4	3.9

Around the SEC (As of Dec. 14, 2012)

	SEC	Pct.	Overall	Pct.
Georgia	0-0	.000	10-0	1.000
South Carolina	0-0	.000	10-0	1.000
Arkansas	0-0	.000	8-1	.889
Kentucky	0-0	.000	8-1	.889
Tennessee	0-0	.000	6-1	.857
Missouri	0-0	.000	8-2	.800
Auburn	0-0	.000	7-2	.778
Alabama	0-0	.000	5-2	.714
Ole Miss	0-0	.000	5-2	.714
Florida	0-0	.000	7-3	.700
Vanderbilt	0-0	.000	7-3	.700
LSU	0-0	.000	5-3	.625
Texas A&M	0-0	.000	5-3	.625
Mississippi State	0-0	.000	4-5	.444

This Week in the SEC**Saturday, Dec. 15**

Texas A&M at Southern California	2 p.m.
Alabama at Troy	2 p.m.

Sunday, Dec. 16

Florida at LaSalle	12 p.m.
Arkansas at Furman	1 p.m.
Lipscomb at Georgia (CSS)	1 p.m.
Tennessee at Texas (FSN)	1 p.m.
Temple at Auburn	2 p.m.
Louisiana Tech at LSU (CST)	2 p.m.
Belmont at Ole Miss	2 p.m.
Florida A&M at Mississippi State	2 p.m.
Southern Illinois at Missouri	2 p.m.
Vanderbilt at Oklahoma (FSC)	2 p.m.

SCOUTING TEMPLE

Temple is currently 5-3 on the season and is coming off a 71-62 loss to Kent State on the road. Victoria Macaulay leads the Owls in scoring with 16.6 points and 10.1 rebounds per game, along with 2.0 blocks per game. Yonna Williams leads the team in assists with 4.4 per game while Sally Kabengano and Erica Covile lead the team in steals with 12.

The Owls have been relentless on defense holding opponents to 34 percent shooting, which is third best in the Atlantic 10.

The Owls are also the second youngest team in Division I, with six of its 11 players being freshman. Temple is coached by fifth-year head coach Tonya Cardoza who is just two wins away from her 100th career win.

Temple is coming off a 23-10 season a year ago in which the Owls advanced to the third round of the WNIT.

SCOUTING AUBURN

The Auburn women's basketball team, under direction of first-year head coach Terri Williams-Flournoy, returns seven letterwinners and four starters from last season's team that went 13-17 (5-11 SEC). Williams-Flournoy comes to Auburn after eight seasons as head coach at Georgetown where she put together a 143-104 record that included four postseason appearances and three straight trips to the NCAA Tournament, including a Sweet 16 appearance in 2011.

Auburn is off to a 7-2 start and is averaging a 22.3-point margin of victory in its six wins. Three Tigers are averaging double figures, led by Hasina Muhammad with 16.4 per game, including three 20-point games after her first career double-double at GW. Tyrese Tanner is at 12.4 points and 4.4 rebounds per game while Blanche Alverson comes in with 11.8 points and a 5.6 boards per game.

Coming off her first career double-double, center Peyton Davis leads the team in rebounding with 5.9, along with 7.4 points per game. Najat Ouwardad is tops in the SEC in assists with 5.9 per game while scoring 6.0 points per game.

LAST TIME OUT FOR AUBURN

Auburn junior Hasina Muhammad notched her first career double-double, tying her career high with 21 points along with 10 rebounds and nine steals, leading the Tigers to a 69-59 win at George Washington on Dec. 12. The win was also a special one for Auburn head coach Terri Williams-Flournoy as it was the 150th of her career.

The win was not an easy one as the Tigers had to fight off several Colonial runs. Auburn took a 13-point lead at halftime and extended it to 16 points early in the second half, but George Washington mounted the first of its comebacks for 16-straight points to tie the game up with 12:58 left in the game.

After the Colonials tied the game up, the Tigers went on a 10-2 run to pull back away at 51-43 with 9:04 to go. Auburn took a nine-point lead with 5:57 to play, but GW mounted another comeback, a 10-2 run of its own, to cut the lead to just one with 4:48 to play.

Auburn responded by scoring the next six points, a 3-point

play from Muhammad and a trey from Blanche Alverson, to take a 64-57 lead. The Tigers would let the Colonials no closer than five the rest of the way, pulling away for the 69-59 win.

Alverson followed Muhammad with 14 points while Najat Ouwardad added 10 points, nine rebounds and seven assists.

LAST TIME OUT FOR TEMPLE

Temple suffered a 71-62 loss at Kent State on Dec. 6 as Kent State earned its first victory of the season. Temple's Victoria Macaulay led all players with a double-double of 25 points and 13 rebounds. Yonna Williams also scored in double figures for Temple with 14 points.

After leading at halftime 35-29, the Owls got off to an 8-3 run to open the second half and stretched their lead to 11 points.

The Golden Flashes came charging back, hitting six 3-pointers in the first seven minutes of the second half, narrowing Temple's lead to two. The Golden Flashes forced the Owls to turn the ball over eight times in the first 10 minutes of the second half, and took the lead for good with 3:08 left in the game.

LAST TIME VS. TEMPLE (Dec. 3, 2011)

The Auburn women's basketball team suffered its second loss of the 2011-12 on Dec. 3, falling at Temple, 73-57. Camille Glymph led the Tigers off the bench with 12 points while Parrisha Simmons tied her career high with nine.

Auburn was down 25-31 with 3:27 to go in the first half, but was out-scored 14-2 in the final stretch, thanks partly to two Temple 3-pointers in the final 12 seconds, giving the Owls a 47-25 halftime lead. The Tigers out-scored Temple, 30-28, in the second half, but could not overcome the first-half difference.

Temple was led by Shey Peddy with 27 points and five steals. Nineteen of Peddy's points came in the second half when the Owls extended their lead to as many as 23 points. Auburn came back, however, and cut the margin to 16 by the final horn.

Auburn struggled from the field, shooting 35.0 percent (21-of-60) from the field, but was 35.3 percent (6-of-17) from beyond the arc. Temple was able to capitalize on Auburn turnovers and score in transition. The Owls forced 16 Auburn turnovers and scored 21 points off them, including 16 fast-break points.

Associated Press Top-25 Poll**Week 6 (Dec. 10)**

Rank	School	Record	Points	Pvs
1	Stanford (22)	8-0	978	1
2	Connecticut (16)	8-0	968	2
3	Baylor (2)	7-1	930	3
4	Duke	8-0	884	4
5	Notre Dame	6-1	806	5
6	Georgia	10-0	790	6
7	Kentucky	8-1	783	7
8	Louisville	9-1	713	8
9	California	7-1	614	11
10	Maryland	6-2	610	9
11	Penn State	7-2	564	10
12	Oklahoma	8-1	514	13
13	Tennessee	6-1	512	14
14	UCLA	5-1	485	17
15	Purdue	9-1	450	15
16	Oklahoma State	7-0	392	16
17	Dayton	10-0	334	19
18	Texas	5-1	326	12
19	North Carolina	8-1	230	21
20	Ohio State	6-2	223	20
21	Miami (Fla.)	7-1	211	23
22	Kansas	8-1	180	17
23	Texas A&M	5-3	83	NR
24	South Carolina	10-0	75	NR
25	West Virginia	6-2	73	NR

Others Receiving Votes: Florida State 64, **Arkansas 58**, Nebraska 55, Iowa State 53, Delaware 15, **Tennessee-Chattanooga 6**, St. John's 6, Syracuse 4, Duquesne 4, Iowa 3, Michigan State 2, Gonzaga 1, Colorado 1.

USA Today / ESPN Top-25 Coaches Poll**Week 6 (Dec. 11)**

Rank	School	Record	Points	Pvs
1	Stanford (24)	8-0	742	1
2	Connecticut (6)	8-0	722	2
3	Baylor	7-1	693	3
4	Duke	8-0	657	4
5	Notre Dame	6-1	610	5
6	Kentucky	8-1	603	6
7	Georgia	10-0	572	7
8	Louisville	9-1	530	8
9	Maryland	6-2	484	9
10	Penn State	7-2	451	10
11	California	7-1	441	11
12	Tennessee	6-1	408	13
13	Oklahoma	8-1	371	12
14	Purdue	9-1	363	14
15	Oklahoma State	7-0	329	15
16	Dayton	10-0	283	18
17	UCLA	5-1	271	19
18	South Carolina	10-0	208	21
19	Ohio State	6-2	197	20
20	Texas	5-1	152	16
21	Kansas	8-1	141	17
22	West Virginia	6-2	100	23
23	Miami (Fla.)	7-1	72	NR
24	Nebraska	7-3	70	22
25	Texas A&M	5-3	64	NR

Others Receiving Votes: Florida State 55, North Carolina 46, Syracuse 25, St. John's 19, South Florida 16, **Arkansas 16**, Gonzaga 15, Iowa State 15, **Tennessee-Chattanooga 6**, DePaul 2, Iowa 1.

Bold denotes 2012-13 opponents

LAST TIME VS. TEMPLE IN AUBURN (Dec. 4, 2010)

Temple's Brittany Lewis hit her only shot of the game, a 3-pointer from the right side with 1:22 left in the game, giving the Owls a lead it would not give up as Temple pulled out the 62-61 win against Auburn on Dec. 4, 2010. Senior Alli Smalley led the Tigers with 22 points in the loss.

Auburn trailed during most of the first half, but came back to tie the game at 33 going into halftime. Back-to-back 3-pointers from Smalley and Blanche Alverson in the final three minutes tied the game up going into the locker room.

Auburn eventually led by as many as seven points after a Chantel Hilliard layup with 6:27 to go, giving the Tigers a 54-47 lead. But Temple used its outside shooting, hitting four 3-pointers in the final five minutes, to out-score Auburn 15-7 down the stretch for the win.

Three Tigers scored in double figures, led by Smalley's 22 points. Alverson and Hilliard scored 10 points each while Jordan Greenleaf scored nine points along with her game-high 12 rebounds. Temple was led by Shey Paddy, who was 3-of-4 from beyond the arc, with 17 points and nine rebounds. Kristen McCarthy and Qwedra Wallace each added 15 for the Owls.

WILLIAMS-FOURNOY VS. CARDOZA

This will be the first meeting between Auburn's Terri Williams-Flournoy and Temple's Tonya Cardoza as head coaches.

The duo has faced each other before, though, while Williams-Flournoy was head coach at Georgetown and Cardoza was an assistant at Connecticut.

ON THIS DATE...

Auburn is 12-2 all-time when playing on Dec. 16. The Tigers' last game on Dec. 16 was 62-51 loss at George Washington in 2006. The last win was a 71-59 victory over Florida State in 2001.

IN DECEMBER

Auburn is 202-47 all-time in the month of December (records begin in 1978-79 season, not all dates provided prior to or during that season). Williams-Flournoy is 2-0 as Auburn's coach in December.

AGAINST THE QUAKER STATE

Auburn holds a 10-8 all-time record against teams from Pennsylvania. Records against Pennsylvania teams: Temple (4-3), Duquesne (2-0), Cheyney State (0-2), Penn State (2-2), St. Joseph's (1-1), and Lehigh (1-0).

CAREER VS. TEMPLE

Six current Tigers have faced Temple at least once in their career. Senior Blanche Alverson is the top performer, averaging 6.0 points and 4.0 rebounds per game in her three meetings against the Colonials. Her best outing was a 10-point, five-rebound performance as a sophomore.

Hasina Muhammad scored seven points vs. Temple last year, along with four rebounds, while Tyrese Tanner scored nine with six boards.

COMEBACK KIDS

At Tulane on Nov. 28, Auburn came from 16 points down at halftime to pull off the 70-65 win. It is the biggest comeback for the Tigers since coming back from 18 points down at Vanderbilt on Feb. 19, 2009, closing the gap to just a point in the final minute of the game only to lose 73-70. It was the first time for the Tigers to come back from a double-digit deficit since overcoming a 10-point deficit at Liberty on Dec. 7, 2008 to take away a 64-53 win.

DOUBLE DOWN

Junior Peyton Davis notched the first double-double of her career on Dec. 9 against Hofstra with 13 points and 12 rebounds. It was Auburn's first double-double of the season and the first since Blanche Alverson tallied one at Mercer in the 2011-12 season-opener.

Hasina Muhammad followed up with the first of her career the next time out, scoring 21 points with 10 rebounds at George Washington. She nearly had a triple-double as she picked up nine steals in the win.

20-20 VISION

Auburn's Blanche Alverson and Hasina Muhammad were quite a duo in the Tigers' game against Tulane. The pair combined for 42 of Auburn's 70 points, each posting 21. It was the first time two Tigers each scored 20 or more points in a single game since Alli Smalley (27) and KeKe Carrier (20) combined for 47 points against Alabama on Jan. 14, 2010.

GETTING AWAY WITH THEFT

Hasina Muhammad tallied nine steals in Auburn's win at George Washington, a mark that ranks her fourth all-time at Auburn in single-game steals. She also became the first Auburn player ever with at least 20 points and eight steals in a game.

SISTER-SISTER

Auburn's Tanner sisters made a good combination on Nov. 23 in the Tigers' loss to San Diego State. Tyrese and Tra'cee Tanner combined to score 30 points with 12 rebounds and four steals. It was the best combined effort for the sisters this season.

For the season, Tyrese and Tra'cee are combining for 18.8 points and 7.8 rebounds per game.

FORCING 25

Since 1987, Auburn has forced 25 or more turnovers in a game 97 times, including three times this season. In those 96 games, the Tigers have a 94-3 record.

COUNTING TO 1,000

Auburn senior Blanche Alverson is just 78 points away from reaching 1,000 on her career as she eclipsed the 900-point plateau against Hofstra. Should she reach the mark, she would become the 27th Auburn player to do so.

CLIMBING THE RANKINGS

Blanche Alverson is climbing her way up the Auburn scoring and rebounding lists. She currently ranks 33rd all-time at Auburn in scoring with 922 points. She is also 34th all-time on The Plains in career rebounding with 446.

TURN IT OVER

A pillar of Coach Terri Williams-Flournoy's style of play is a high-pressure defense that extends most of the floor. The Tigers have forced 20 or more turnovers in seven of their nine games, after forcing 26 against Maine, 20 against North Carolina State, 26 against Alabama State, 23 against Alabama A&M, 26 against Texas A&M-Corpus Christi, a season-high 28 vs. Hofstra and 23 at GW. In all, Auburn has scored 205 points off turnovers in its nine games, averaging 22.8 points off turnovers per game.

IT'S RAINING 3s

Blanche Alverson is climbing her way up the Auburn career 3-point list. She is currently tied for fourth with 161, along with Samantha Williams. She is 10 3-pointers behind Natasha Brackett (171) and third place. Alli Smalley holds the Auburn record with 219.

OFF THE BENCH

Auburn has had great bench support this season with at least one player coming off the bench to score in double figures in seven of the nine games. The Tigers' bench so far has scored 194 points on the season, averaging 21.6 per game.

O-BOARDS

Auburn has missed 329 shots this season with 149 (45.3 percent) resulting in offensive rebounds. That has led to 157 second-chance points on the season, averaging 17.4 per game.

KEEPING SCORE

At George Washington, Auburn forced 23 turnovers while the Colonials hit just 20 field goals. It marked the sixth time this season that an Auburn opponent has committed more turnovers than made field goals.

QUEEN BLANCHE

Senior Blanche Alverson, no stranger to awards on the court, added another piece of hardware to her collection on Nov. 3 as she was named Auburn's Miss Homecoming. After a week of campaigning, she found out the result of the vote at halftime of Auburn's Homecoming Football Game against New Mexico State. She is the first Tiger student-athlete to earn the honor.

TYRESE TANNER NAMED SEC PLAYER OF THE WEEK

Auburn junior Tyrese Tanner was named the SEC's Player of the Week on Nov. 12, the first player to earn the honor this season. She averaged 20.5 points, including a career-high 26 points, at the Sheraton Raleigh Wolfpack Invitational, Nov. 9-10.

Her 26 points were the most scored in the SEC to that point in the season. She is the first Tiger to earn the SEC's weekly honor since Blanche Alverson did on Jan. 13, 2011.

FIRST TIMERS

The season-opening game saw some firsts for Auburn players. Junior Peyton Davis earned the first start of her career while senior Julie King and freshmen Cabriana Capers, Chadarryl Clay, Cedricka Sweeting and Tra'cee Tanner made their first collegiate basketball appearance.

KICKING UP SOMETHING NEW

One of Auburn's five newcomers is former soccer player Julie King. A native of St. Louis, King started for four years for the Tigers' soccer team, helping the team to the NCAA Tournament in each season. As a co-captain last year, she led Auburn to an SEC Tournament Championship and was named SEC Co-Defensive Player of the Year.

King was an All-State basketball selection while playing prep ball at Nerinx Hall in St. Louis, Mo.

SISTER ACT

For just the third time ever, Auburn's roster featured a sister combination as Tyrese and Tra'cee Tanner step on the court. Tyrese is a junior on the squad this year while Tra'cee is a freshman.

Other sister combinations to play together at Auburn include Sherell (2004-09) and Reneisha (2006-10) Hobbs, and Ruthie (1985-89) and Mae Ola (1984-88) Bolton.

TANNER NAMED TO OMNI CLASSIC TEAM

Auburn junior Tyrese Tanner was named to the Omni Hotels Classic All-Tournament Team on Nov. 24 for her play in the two games. For the tournament, she averaged 14.0 points, 4.0 rebounds, 2.5 steals and 1.5 blocks per game. She scored 17 with three steals against San Diego State and returned for 11 points, three blocks and two steals against Texas A&M-Corpus Christi.

TANNER AND MUHAMMAD EARN WOLFPACK HONORS

Auburn's Tyrese Tanner and Hasina Muhammad were selected to the Sheraton Raleigh Wolfpack Invitational All-Tournament Team to start the season. Tanner averaged 20.5 points, including a career-high 26 against North Carolina State. She also tallied 8.5

Quoting Coach Flo

On win at George Washington...

"I thought we did a really good job. I thought we started the game with a lot of energy, forcing them into turnovers. I think we got a little complacent and kind of stepped back from our pressure and let them back into the game. George Washington played well though. They hit some big threes and they did some things that they needed to do to get back into the game."

On Hasina Muhammad and Najat Ouardad...

"I think Hasina played well. I think there were a few times where she could have attacked the basketball a little bit more, but she was getting some wide open steals. I thought she did a good job of protecting the middle and getting some easy steals, which were easy offensive possessions and that's what we try to get off of the live ball turnovers. Najat does a real good job of finding people in transition. I thought she did a really good job. She had nine rebounds and that's great for your point guard, but that means she's hustling - she's getting the 50/50 plays. She's running it down."

On Temple...

"Victoria Macaulay is going to be a little tough for us to guard. She is just so athletic. She is long, she is lanky and she is not your typical type of post player. She can put it on the floor, she can shoot it and she gets to the glass, so it's going to be a really tough matchup for us. They have really good guards that look for her and penetrate and can find her. Temple also May Dayan that can shoot the 3, so they have a couple of areas that we're going to have to defend."

On Temple head coach Tonya Cardoza...

"I remember Tanya when she was at Connecticut, but we actually scrimmaged Temple when I was at Georgetown, so we know a little bit about the team. Tanya is doing a really good job. It's always hard coming in as an assistant and trying to take over as a head coach. She's doing a really good job. I think she has them playing very well this year."

The Southeastern Conference**Commissioner:** Mike Slive**Founded:** 1933**Members:**

Alabama Crimson Tide
 Arkansas Lady Razorbacks
 Auburn Tigers
 Florida Gators
 Georgia Bulldogs
 Kentucky Wildcats
 LSU Tigers
 Mississippi Rebels
 Mississippi State Bulldogs
 South Carolina Gamecocks
 Missouri Tigers
 Tennessee Lady Volunteers
 Texas A&M Aggies
 Vanderbilt Commodores

SEC Media Relations**Women's Basketball Contact:** Tammy Wilson**Address:**

2201 Richard Arrington Blvd.
 Birmingham, Ala. 35203-1103

Phone: 205.458.3000**Fax:** 205.458.3031**E-mail:** twilson@sec.org**Web site:** www.SECsports.com**SEC Women's Basketball Notes**

- The SEC has posted impressive non-conference records in the last decade. The SEC compiled a 134-41 (.766) non-conference record in the 2011-12 season.
- Since the 1990 season, the SEC has compiled a 3047-935 (.765) record against other conferences. The league has recorded 150+ wins during eight seasons.
- SEC teams have earned appearances in 25 of 31 NCAA Final Fours, an accomplishment unmatched by any other league.
- Overall, SEC squads have filled 34 of the 124 Final Four berths, including having two Final Four teams in 1988 (Auburn, Tennessee), 1989 (Auburn, Tennessee), 1995 (Georgia, Tennessee), 1996 (Georgia, Tennessee), 1998 (Arkansas, Tennessee), 2004 (LSU, Tennessee), 2005 (LSU, Tennessee), 2007 (LSU, Tennessee) and 2008 (LSU, Tennessee).
- SEC teams have made 18 appearances in a nation-high 16 NCAA Championship games, winning eight NCAA Championships (Tennessee: 1987, 1989, 1991, 1996, 1997, 1998, 2007 and 2008).
- The league also had the distinction of providing both national finalists twice in its history in 1996 (Tennessee 83, Georgia 65) and in 1989 (Tennessee 76, Auburn 60).
- SEC teams have won 347 NCAA Tournament games against 180 losses (.658) for an average of 11.2 NCAA wins per year.
- In addition, all 14 current members have appeared in the NCAA Tournament.
- The SEC has paced the pack in NCAA tournament bids 22 times in its 31-year history.
- The SEC was the first league to ever have eight teams invited to the NCAA Tournament, doing so in 1999, 2002 and 2012.
- The SEC was also the first league to ever have seven teams invited to the NCAA Tournament and earned this honor a leading seven times (1986, 1991, 1995, 1996, 1997, 2003, 2004).
- The SEC is one of a handful of leagues to have won three national tournament titles with eight NCAA, two WNIT and three NWIT. Along with the eight NCAA championships won by Tennessee, Arkansas (1999) and Auburn (2003) captured the current Women's NIT titles. But the first-ever SEC national title belongs to Georgia, winners of the 1981 NWIT which predates the current NCAA tournament. LSU (1985) and Kentucky (1990) also won NWIT titles. Both Arkansas (1987) and South Carolina (1979) won the WNIT as members of their previous conferences.
- In 2003, Auburn won the WNIT title with wins over South Alabama, Florida State, Richmond, Creighton and Baylor. In 1999, the Arkansas Lady Razorbacks defeated Wisconsin 76-64 to claim the SEC's first WNIT championship.
- In 1981, Georgia defeated Pittsburg, California and Arizona State (in OT) to capture the NWIT Championship, the first-ever national championship of any kind for the SEC in women's basketball.

rebounds and 2.0 steals per game. Muhammad averaged 16.0 points per game, tying her then-career high with 20 points in the season-opener against Maine.

TIGERS DOWN UNDER

Auburn unofficially started its season in August as the Tigers traveled to Australia for a 10-day, four-game tour. Auburn opened with an 86-54 loss to the WNBL's Logan Thunder, but rebounded for an 81-71 win over the Cairns Dolphins. The Tigers continued on to Sydney where it tallied a 67-58 over the WNBL's Sydney Flames. The Tigers rounded out the trip with an 84-46 trouncing of the Sutherland Sharks.

Over the four-game Australian Tour, Hasina Muhammad was the top Tiger with 23.3 points per game. Blanche Alverson averaged 17.5 points while freshman Chadarryl Clay tallied 10.5. Fellow freshman Tra'cee Tanner scored 9.0 per game, followed by Peyton Davis with 6.5, Cabriana Capers with 2.8 and Pascale West with 2.0.

BALLIN' FOR BOOKS

Senior Blanche Alverson, always active in the community, started her own community service initiative last season called Ballin' For Books. The program encouraged Auburn fans to donate books during Auburn home games late in the season.

More than 1,100 books were collected as part of the program and were donated to the Loachapoka Library, Pine Hills Literacy Project, Boys and Girls Club, and Atlanta inner-city schools.

STARTING EXPERIENCE

Auburn returns five players that have started at least one game for the Tigers, including four players that saw extensive time as a starter last season. Blanche Alverson, Hasina Muhammad, Najat Ouardad, Courtney Strain and Tyrese Tanner have accounted for 127 career starts.

If you include newcomer and former Auburn soccer player Julie King (and her 88 career soccer starts), that number goes up to 215.

ON THE TUBE

At least seven Auburn games will be televised during the 2012-13 season. The Tigers will make their TV debut on Nov 28 at Tulane on Cox Sports Television. AU's home debut will be on Jan. 17 at home against Tennessee on CSS. Auburn will then play on the SEC Network at Kentucky on Jan. 20 before returning to CSS for its Jan. 24 game at Alabama.

Auburn will host Florida on SportSouth on Feb. 10, a week before taking on Alabama on ESPN2 on Feb. 17. The final TV appearance will be Feb. 28 at Vanderbilt on CSS.

TIGERS PICKED 10TH IN PRESEASON POLLS

Auburn was picked to finish 10th in both the SEC Preseason

Media and Coaches polls. Kentucky was tabbed as the preseason favorite to win the SEC in both polls.

NEW FACES

The Tigers welcome five new faces for the 2012-13 season, including one senior and four freshmen. The senior is Julie King (Nerinx Hall / St. Louis, Mo.), who joins the team after four years on the Auburn soccer team. The four freshmen are: Cabriana Capers (Bolingbrook / Bolingbrook, Ill.), Chadarryl Clay (Girls Preparatory School / Chattanooga, Tenn.), Cedricka Sweeting (South Broward (Fla.), Nassau, Bahamas), and Tra'cee Tanner (Hoover / Birmingham, Ala.).

AUBURN SIGNS SIX FOR 2013-14

The Auburn women's basketball team signed six players to National Letters of Intent during the early signing period for the class of 2013. Keonna Famer, a 6-1 wing from Birmingham, Ala., Katie Frerking, a 6-1 guard from Johns Creek, Ga., Brandy Montgomery, a 5-10 guard from Port St. Lucie, Fla., Shae Nelson, a 6-1 post from Cordova, Tenn., Allina Starr, a 5-10 point guard from Minneapolis, Minn., and Meagan Tucker, a 5-8 guard from Covington, Ga., will join the Tigers for the 2013-14 season, head coach Terri Williams-Flournoy announced Nov. 16.

MISCELLANEOUS STATISTICS

Double-Doubles	Season	Career
Blanche Alverson	0	1
Peyton Davis	1	1
Hasina Muhammad	1	1

20+ Point Games	Season	Career
Blanche Alverson	1	3
Hasina Muhammad	4	5
Tyrese Tanner	1	4

10+ Rebound Games	Season	Career
Blanche Alverson	0	1
Peyton Davis	1	1
Hasina Muhammad	1	1

10+ Assist Games	Season	Career
------------------	--------	--------

5+ Steal Games	Season	Career
Blanche Alverson	1	2
Hasina Muhammad	1	2
Najat Ouardad	1	3

GAMES LED AUBURN IN...

Scoring	Season	Career
Blanche Alverson	2	16
Peyton Davis	1	1
Hasina Muhammad	5	12
Tyrese Tanner	3	11

Rebounding	Season	Career
Blanche Alverson	1	15
Cabriana Capers	2	2
Peyton Davis	2	3
Hasina Muhammad	1	6
Tra'cee Tanner	1	1
Tyrese Tanner	2	7

Assists	Season	Career
Blanche Alverson	0	7
Chadarryl Clay	1	1
Julie King	1	1
Hasina Muhammad	0	3
Najat Ouardad	7	18
Tyrese Tanner	0	2

2012-13 DOUBLE-DOUBLES

Player	Points	Other
Peyton Davis	13	12 (reb.)
Hasina Muhammad	21	10 (reb.)

Last Time an Auburn Team...

Scored 100 points	Auburn 119, Sam Houston State 54 (Dec. 5, 2008)
Scored 100 points in an SEC game	Auburn 102, Tennessee 96, SEC Tournament in Albany, Ga. (Mar. 6, 1987)
Scored 100 at Auburn	Auburn 119, Sam Houston State 54 (Dec. 5, 2008)
Scored 100 points and lost	Never
Scored 110 points	Auburn 119, Sam Houston State 54 (Dec. 5, 2008)
Scored 115 points	Auburn 119, Sam Houston State 54 (Dec. 5, 2008)
Scored at least 60 points in a half	62-vs. Sam Houston State (Dec. 5, 2008)
Had 25+ rebound margin	28-Auburn 55, Sam Houston State 27 (Dec. 5, 2008)
Had 20+ rebound margin	20-Auburn 51, USC-Upstate 31 in Auburn, Ala. (Nov. 27, 2011)
Attempted 35 free throws	35-vs. Florida A&M (Nov. 28, 2009)
Attempted 40 free throws	41-vs. Alabama State (Nov. 15, 2006)
Made 30 free throws	31-vs. Northwestern State (31-43) (Dec. 30, 2003)
Had 25 assists	27 -vs. Alabama A&M (Nov. 18, 2012)
Had 25 turnovers	25- vs. Texas A&M-Corpus Christi (Nov. 24, 2012)
Had 25 steals	25- vs. Arkansas-Little Rock (Dec. 2, 2000)
Had 15 steals	15- at George Washington in Washington, D.C. (Dec. 12, 2012)
Had 10 blocks	10-at George Washington in Washington, D.C. (Dec. 12, 2012)
Had 15 blocks	17 - vs. Alabama A&M in Auburn, Ala. (Nov. 19, 2009)
Scored 25 points or less	25- vs. Mercer (1971)
Played an overtime game	at LSU (Jan. 10, 2010)
Won an overtime game	Auburn 64, LSU 62 at Baton Rouge, La. (Jan. 10, 2010)
Lost an overtime game	Florida 71, Auburn 68 (2OT) at Gainesville, Fla. (Jan. 7, 2010)
Played a double overtime game	Florida 71, Auburn 68 at Gainesville, Fla. (Jan. 7, 2010)
Played at least three overtimes	Never
Shot 70% for a half	70.4%, 19-27 - vs. Texas A&M-Corpus Christi (Nov. 24, 2012)
Shot 60% for a game	vs. Alabama (61.8%, 34-55) (Jan. 22, 2009)
Shot less than 30% for a game	(25.5%, 13-51) at Arkansas at Fayetteville, Ark. (Jan. 15, 2012)
Shot 90% from the free throw line (minimum 10 attempts)	(10-10) vs. Mississippi State (Feb. 3, 2008)
Shot 50% from 3-point line	(5-of-6, 83%) vs. Alabama A&M in Auburn, Ala. (Nov. 18, 2012)
Shot less than 30% in a half	29.0% in the second half vs. San Diego State in Boulder, Colo. (Nov. 23, 2012)
Shot less than 20% in a half	19.0% in the first half vs. LSU, (Feb. 14, 2010)
Shot 55% or better and lost	58.1%, 25-43-vs. Tennessee, (Jan. 20, 2005)
Made at least 10 3-point field goals	10-of-25 vs. Maine in Raleigh, N.C. (Nov. 9, 2012)
Failed to make a 3-point field goal	0-9 at Mercer in Macon, Ga. (Nov. 11, 2011)
Had at least 60 rebounds	61 vs. Stephen F. Austin, (Dec. 17, 2007)
Had at least 50 rebounds	52- vs. Alabama State in Auburn, Ala. (Nov. 15, 2012)
Scored less than 20 points in a 1st half	18 points at Arkansas in Fayetteville, Ark. (Jan. 15, 2012)
Scored less than 20 points in a 2nd half	15 points at LSU in Baton Rouge, La. (Feb. 19, 2012)
Scored less than 50 points in a game	41 points at LSU in Baton Rouge, La. (Feb. 19, 2012)

Last Time an Auburn Player...

Scored 40 points	41-Consweila Sparrow vs. South Alabama (Feb. 17, 1998)
Scored 35 points	35-DeWanna Bonner vs. Tennessee (Jan. 25, 2009)
Scored 30 points	32-DeWanna Bonner vs. Ole Miss (Mar. 6, 2009)
Attempted 25 field goals	25-Natasha Brackett (9-25) at LSU (Jan. 30, 2005)
Recorded a double-double	Hasina Muhammad (21 pts./10 rebs.) at George Washington in Washington, D.C. (Dec. 12, 2012)
Recorded a double-double with points and assists	Morgan Toles (10 pts./10 ast.) vs. Jacksonville State in Auburn, Ala., (Dec. 30, 2010)
Recorded consecutive double-doubles	KeKe Carrier (18 pts./10 rebs) vs. Mississippi State (Jan. 3, 2010)
	and (24 pts/12 rebs) vs. Florida in Gainesville, Fla. (Jan. 7, 2010)
Two players recorded a double-double	DeWanna Bonner (32 pts./13 rebs) & Whitney Boddie (15 pts./10 ast.)
	vs. Ole Miss in the SEC Tournament in North Little Rock, Ark. (March 6, 2009)
Had a double-double at halftime	DeWanna Bonner (14 pts./10 rebs.) vs. Ole Miss (Mar. 6, 2009)
Recorded a triple-double	Whitney Boddie (24 pts./11 rebs./12 ast.) vs. Sam Houston State (Dec. 5, 2008)
Had 10 assists	10- Morgan Toles vs. Jacksonville State (Dec. 30, 2010)
Had 15 assists	18-Martha Monk vs. Alabama State (Feb. 18, 1981)
Had 10 blocks	13- Marita Payne vs. Arkansas (Feb. 3, 2005)
Had 5 blocks	5 - Jassany Williams vs. Tennessee in Auburn, Ala. (Jan. 1, 2012)
Had 5 steals	9-Hasina Muhammad at George Washington in Washington, D.C. (Dec. 12, 2012)
Had 15 rebounds	16-Jordan Greenleaf vs. Mississippi State (Jan. 3, 2010)
Had 20 rebounds	20-Monique Morehouse at LSU (Feb. 4, 1995)
Made 15 field goals	15-Consweila Sparrow (15-16) vs. USA (Feb. 17, 1998)
Made 5 three-point field goals	5 - Blanche Alverson (5-8) vs. Alabama in Auburn, Ala. (Feb. 23, 2012)
Two players scored 20 points	Blanche Alverson (21) and Hasina Muhammad (21) at Tulane (Nov. 28, 2012)
Two players scored 30 points	Laticia Morris (33 points) & Tara Williams (30 points) vs. South Alabama (Jan. 14, 1997)
Back-to-back 25-point games	Alli Smalley 26 pts. vs. Kentucky (Feb. 28, 2010) & 29 pts. vs. Florida in SEC Tournament in Duluth, Ga. (Mar. 4, 2010)

TIGERS' RECORD WHEN...

When wearing white.....	4-1
When wearing orange.....	0-0
When wearing blue.....	3-1
When wearing pink.....	0-0
Leading at the half.....	5-0
Trailing at the half.....	2-2
Tied at the half.....	0-0
Scores 100+ points.....	0-0
Scores 90-99 points.....	1-0
Scores 80-89 points.....	1-0
Scores 70-79 points.....	3-1
Scores 60-69 points.....	2-0
Scores fewer than 60 points.....	0-1
Holds opponent to 41-50 points.....	3-0
Holds opponent to 31-40 points.....	0-0
Holds opponent to under 30 points.....	0-0
Shoots 50% FG or better.....	2-0
Shoots 40-49% FG.....	5-0
Shoots 39.9% or under FG.....	0-2
Holds opponent under 30% FG.....	2-0
Shoots higher FG% than opponent.....	7-0
Shoots lower FG% than opponent.....	0-2
Shoots higher FT% than opponent.....	1-1
Shoots lower FT% than opponent.....	6-1
Out-rebounds opponent.....	6-1
Out-rebounded by opponent.....	1-1
Tied in rebounds.....	0-0
Versus ranked opponent.....	0-0
In overtime.....	0-0
Games decided by 3 points or less.....	0-0
Games decided by 4-5 points.....	1-0
Games decided by 6-10 points.....	2-0
Games decided by 11-20 points.....	1-1
Games decided by 21-30 points.....	1-1
Games decided by 30+ points.....	2-0
On Television.....	1-0
In November.....	5-2
In December.....	2-0
In January.....	0-0
In February.....	0-0
In March.....	0-0

Only one player scored in double figures.....	Hasina Muhammad (19 pts.) vs. Ole Miss in Auburn, Ala. (Feb. 26, 2012)
Five players scored in double figures.....	Alverson (17 pts.), Clay (15 pts.), Muhammad (15 pts.), Tanner (13 pts.) & Davis (12 pts.) vs. Alabama State (Nov. 15, 2012)
Six players scored in double figures.....	Carrier (19 pts.), Bonner (18 pts.), Smalley (16 pts.), Boddie (13 pts.), R. Hobbs (13 pts.), Hilliard (13 pts.) & S. Hobbs (10 pts.) vs. Sam Houston State (Dec. 5, 2008)
Seven players scored in double figures.....	Carrier (19 pts.), Bonner (18 pts.), Smalley (16 pts.), Boddie (13 pts.), R. Hobbs (13 pts.), Hilliard (13 pts.) & S. Hobbs (10 pts.) vs. Sam Houston State (Dec. 5, 2008)
Scored 20 points & had 20 rebounds.....	Lauretta Freeman (30 pts/21 rebs.) vs. Alabama, (Feb. 17, 1993)
Two players had 10 rebounds.....	Chantel Hilliard (11 rebs.) & Jassany Williams (10 rebs.) at Mississippi State in Starkville, Miss. (Jan. 22, 2012)
Three players had 10 rebounds.....	Jordan Greenleaf (12 rebs.), DeWanna Bonner (12 rebs.) & Whitney Boddie (10 rebs.) vs. Oakland (Nov. 21, 2007)
Played every minute.....	Jordan Greenleaf (40 mins.) vs. Florida, SEC Tournament, Duluth, Ga., (Mar. 4, 2010)
Played more than 40 minutes.....	Alli Smalley (45 mins.), Jordan Greenleaf (43 mins.) & Morgan Toles (41 mins.) at LSU (Jan. 10, 2010)

Last Time an Auburn Opponent...

Shot less than 30% in a game (SEC).....	South Carolina - 28.6% in Auburn, Ala. (Jan. 19, 2012)
Shot less than 30% in a game (Non-conf).....	Alabama A&M - 29.6% in Auburn, Ala. (Nov. 18, 2012)
Shot 60% in a game.....	Vanderbilt 60.4% in Nashville, Tennessee in the SEC Tournament, (Mar. 5, 2004)
Scored 100 points.....	Georgia 102, Auburn 72 in Athens, Ga. (Mar. 3, 1984)
Scored 100 points at Auburn.....	Tuskegee 105, Auburn 98 (2OT) (Feb. 12, 1979)
Scored 100 points and Lost.....	Never
Scored 110 points.....	Never
Had 25+ rebound margin.....	Never
Had a 20+ rebound margin.....	Never
Scored less than 20 points in a 1st half.....	Alabama State, 17 points in Auburn, Ala. (Nov. 15, 2012)
Scored less than 20 points in a 2nd half.....	Alabama A&M, 18 points in Auburn, Ala. (Nov. 18, 2012)
Had 50 rebounds.....	52 - at North Carolina State in Raleigh, N.C. (Nov. 10, 2012)
Had 25 assists.....	25- by Florida International in Miami, Fla. (Dec. 19, 1993)
Had 25 turnovers.....	28- by Hofstra in Auburn, Ala. (Dec. 9, 2012)
Had 15 steals.....	15- by Georgia in Auburn, Ala. (Jan. 8, 2012)
Had 10 blocks.....	12- by Tennessee (Jan. 10, 2008)
Failed to make a 3-point field goal.....	by Ole Miss (0-7) in Auburn, Ala. (Feb. 26, 2012)
Attempted 35 free throws.....	36 - by Arizona 25-36 (Dec. 19, 2000)
Made 30 free throws.....	30- by Arkansas (Jan. 22, 1995)
Made 10 three-point field goals.....	by San Diego State 11 3-point FGs, in Boulder, Colo., (Nov. 23, 2012)
Scored less than 50 points in a game.....	Alabama A&M, 44 in Auburn, Ala. (Nov. 18, 2012)
Scored 40 points or less.....	Alabama, 40 in Auburn, Ala. (Feb. 23, 2012)
Scored 25 points or less.....	25- by Puerto Rico Mayaguez (Dec. 17, 2000)
Scored 11 points or less.....	11- by Montevallo (1973) and 11- by Jeff Davis (1973)

Last Time an Auburn Opponent's Player...

Scored 30 points (non-conference).....	33-Andrea Smith of South Florida in Tampa, Fla. (Nov. 22, 2010)
Scored 30 points (SEC).....	31-Tierney Jenkins of Alabama in Tuscaloosa, Ala. (Jan. 2, 2011)
Scored 35 points.....	38-Lindsay Shearer of Kent State in Kent, Ohio (Nov. 20, 2005)
Attempted 25 field goals.....	27- Jantel Lavender (9-27) of Ohio State (Nov. 23, 2008)
Scored 20 points & had 20 rebounds.....	Young of Baylor in the Women's NIT Championship Game, (20 pts./25 rebs.), (Apr. 4, 2003)
Two players scored 20 points.....	by North Carolina State, Marissa Kastanek (24 pts) & Kody Burke (26 pts), (Nov. 10, 2012)
Three players scored 20 points.....	by LSU in Baton Rouge, Chatman (22 pts), Johnson (21 pts) & Lowery (20 pts), (Jan. 12, 1991)
Five players scored in double figures.....	J. Thomas (16 pts), Gray (13 pts), K. Thomas (11 pts), Christmas (10 pts) & Peters (10 pts) of Duke (Nov. 18, 2010)
Six players scored in double figures..	Smith (15 pts), Bales (14 pts), Foley (11 pts), Williams (10 pts), Currie (10 pts) & Kurz (10 pts) of Duke (Dec. 31, 2004)
Recorded a double-double.....	Shi-Heria Shipp (12 pts/11 rebs) of George Washington in Washington, D.C. (Dec. 12, 2012)
Recorded a double-double with points and assists.....	Ceira Ricketts of Arkansas in Fayetteville, Ark., (14 pts/13 rebs/12 assts.), (Jan. 18, 2009)
Recorded a triple-double.....	Ceira Ricketts (14 pts./13 rebs./12 asst.) of Arkansas (Jan. 18, 2009)
Two players recorded a double-double.....	Glory Johnson (14pts/11rbs) and Shekinna Stricklen (11pts/10rbs) of Tennessee in Knoxville, Tenn. (Feb. 5, 2012)
Committed 15 turnovers.....	15-Andrea Thomas of Hofstra in Auburn, Ala. (Dec. 9, 2012)
Had 15 rebounds.....	16- by Shante Evans of Hofstra in Auburn, Ala. (Dec. 9, 2012)
Had 20 rebounds.....	20-Sylvia Fowles of LSU (Jan. 28, 2007)
Had 10 assists.....	10-Valencia McFarland of Ole Miss (Jan. 13, 2011)
Had 10 blocks.....	Never
Had 5 blocks.....	5-Martha Alwal of Mississippi State in Starkville, Miss. (Jan. 22, 2012)
Had 5 steals.....	5-Jasmine James of Georgia in Auburn, Ala., (Jan. 8, 2012)
Made 15 field goals.....	15-Chamique Holdsclaw (15-21) of Tennessee (Feb. 1, 1998)
Had 15 assists.....	16-Cindy McMahan of Alabama-Huntsville (Nov. 24, 1980)

SEC PRESEASON POLL (Media Vote)

(First-place votes in Parentheses)

Order of Finish

1. Kentucky (20)	376
2. Georgia (1)	352
3. Vanderbilt (2)	336
4. Tennessee (2)	316
5. Texas A&M (1)	284
6. LSU	251
7. South Carolina	194
8. Arkansas	168
9. Florida	144
10. Auburn	124
11. Mississippi State	116
12. Ole Miss	47
13. Missouri	39
14. Alabama	36

Player of the Year

A'dia Mathis, UK (20); Christina Foggie, VU (4); Anne Marie Armstrong, UGA (1); Jennifer George, UF (1)

All-SEC First TeamJennifer George, Florida
Anne Marie Armstrong, Georgia
A'dia Mathies, Kentucky
Kelsey Bone, Texas A&M
Christina Foggie, Vanderbilt**All-SEC Second Team**Sarah Watkins, Arkansas
Jasmine Hassell, Georgia
Samarie Walker, Kentucky
Ieasia Walker, South Carolina
Meighan Simmons, Tennessee**SEC PRESEASON POLL (Coaches' Vote)****Order of Finish**

1. Kentucky	167
2. Georgia	149
3. Texas A&M	145
4. Vanderbilt	143
5. Tennessee	117
6. South Carolina	102
7. LSU	96
8. Florida	92
9. Arkansas	72
10. Auburn	57
11. Mississippi State	51
11.2. Alabama	33
11.2. Missouri	33
14. Ole Miss	17

Player of the Year

A'dia Mathies (UK) 9; Christina Foggie (VU) 3; Anne Marie Armstrong (UGA) 1.

All-SEC First TeamSarah Watkins, Arkansas
Jennifer George, Florida
Anne Marie Armstrong, Georgia
Jasmine Hassell, Georgia
A'dia Mathies, Kentucky
Meighan Simmons, Tennessee
Kelsey Bone, Texas A&M
Christina Foggie, Vanderbilt
Jasmine Lister, Vanderbilt**All-SEC Second Team**Jasmine James, Georgia
Bria Goss, Kentucky
Samarie Walker, Kentucky
Adrienne Webb, LSU
Valencia McFarland, Ole Miss
Ieasia Walker, South Carolina
Ariel Massengale, Tennessee
Tiffany Clarke, Vanderbilt**2012-13 Auburn Superlatives...****First Half**

Most points scored in the first half	49, vs. Alabama A&M (11-18-12)
Fewest points scored in the first half	23, at Tulane (11-28-12)
Fewest points allowed in the first half	17, vs. Alabama State (11-15-12)
Most points allowed in the first half	39, at Tulane (11-28-12)
Best FG % in the first half568, vs. Alabama A&M (11-18-12)
Worst FG % in the first half300, at Tulane (11-28-12)
Best FG % by an opponent in the first half556, at Tulane (11-28-12)
Worst FG % by an opponent in the first half219, vs. Alabama State (11-15-12)
Most rebounds in the first half	31, vs. Alabama State (11-15-12)
Fewest rebounds in the first half	16, vs. Texas A&M-Corpus Christi (11-24-12)
Most rebounds by an opponent in the first half	28, at North Carolina State (11-10-12)
Fewest rebounds by an opponent in the first half	13, vs. Alabama A&M (11-18-12)

Second Half

Most points scored in the second half	47, at Tulane (11-28-12)
Fewest points scored in the second half	29, vs. Hofstra (12-9-12)
Fewest points allowed in the second half	18, vs. Alabama A&M (11-17-12) and Maine (11-9-12)
Most points allowed in the second half	49, vs. San Diego State (11-23-12)
Best FG % in the second half704, vs. Texas A&M-Corpus Christi (11-24-12)
Worst FG % in the second half290, vs. San Diego State (11-23-12)
Best FG % by an opponent in the second half581, vs. San Diego State (11-23-12)
Worst FG % by an opponent in the second half231, vs. Alabama A&M (11-18-12) and at Tulane (11-28-12)
Most rebounds in the second half	23, at Tulane (11-28-12)
Fewest rebounds in the second half	11, at North Carolina State (11-10-12)
Most rebounds by an opponent in the second half	25, at George Washington (12-12-12)
Fewest rebounds by an opponent in the second half	12, vs. Texas A&M-Corpus Christi (11-24-12)

Game

Most points scored	93, vs. Alabama A&M (11-18-12)
Fewest points scored	57, vs. San Diego State (11-23-12)
Most points allowed	85, at North Carolina State (11-10-12)
Fewest points allowed	41, vs. Maine (11-9-12)
Best FG %591, vs. Alabama A&M (11-18-12)
Worst FG %309, vs. San Diego State (11-23-12)
Best FG % by an opponent467, vs. San Diego State (11-23-12)
Worst FG % by an opponent259, vs. Alabama State (11-15-12)
Most rebounds	52, vs. Alabama State (11-15-12)
Fewest rebounds	36, at North Carolina State (11-10-12)
Most rebounds by an opponent	52, at North Carolina State (11-10-12)
Fewest rebounds by an opponent	27, vs. Alabama A&M (11-18-12)

Miscellaneous

Largest margin of victory	49, vs. Alabama A&M (11-18-12)
Smallest margin of victory	5, at Tulane (11-28-12)
Largest margin of defeat	21, vs. San Diego State (11-23-12)
Smallest margin of defeat	14, at North Carolina State (11-10-12)
Largest halftime lead	23, vs. Alabama A&M (11-18-12) and Alabama State (11-15-12)
Smallest halftime lead	12, vs. Maine (11-9-12)
Last time tied at halftime	---
Largest halftime deficit	16, at Tulane (11-28-12)
Smallest halftime deficit	4, vs. Texas A&M-Corpus Christi (11-24-12) and at North Carolina State (11-10-12)
Largest rebounding margin	16, vs. Alabama State (11-15-12)
Smallest rebounding margin	3, vs. San Diego State (11-23-12)
Last time tied in rebounding	---
Opponent's largest rebounding margin	16, at North Carolina State (11-10-12)
Opponents smallest rebounding margin	6, vs. Hofstra (12-9-12)

2012-13 Auburn Individual Highs...**First Half**

Points.....15, Ty. Tanner at N.C. State (11-10-12) and Muhammad vs. Alabama A&M (11-18-12)
 Field Goals Made.....7, Hasina Muhammad vs. Alabama A&M (11-18-12)
 Field Goal Attempts15, Hasina Muhammad vs. Maine (11-9-12)
 3-Point Field Goals Made2, 4 times, last by Najat Ouardad vs. Hofstra (12-9-12)
 3-Point Field Goal Attempts.....4, 3 times, last by Tyrese Tanner vs. N.C. State (11-10-12)
 Free Throws Made.....4, on two occasions
 Free Throws Attempted.....6, Peyton Davis vs. Alabama State (11-15-12)
 Rebounds.....8, Davis vs. Hofstra (12-9-12) and Ty. Tanner vs. Maine (11-9-12)
 Assists5, Najat Ouardad at George Washington (12-12-12)
 Blocked Shots2, Davis vs. Hofstra (12-9-12) and Ty. Tanner vs. Alabama State (11-15-12)
 Steals.....4, Hasina Muhammad at George Washington (12-12-12)

Second Half

Points.....16, Hasina Muhammad at Tulane (11-28-12)
 Field Goals Made.....6, Hasina Muhammad at Tulane (11-28-12)
 Field Goal Attempts12, Hasina Muhammad at Tulane (11-28-12)
 3-Point Field Goals Made2, Alverson at North Carolina State (11-10-12) & at GW (12-12-12)
 3-Point Field Goal Attempts.....6, Blanche Alverson at North Carolina State (11-10-12)
 Free Throws Made.....7, Tyrese Tanner at North Carolina State (11-10-12)
 Free Throws Attempted.....8, Tyrese Tanner at North Carolina State (11-10-12)
 Rebounds.....7, Hasine Muhammad at George Washington (12-12-12)
 Assists5, Ouardad vs. Hofstra (12-9-12), vs. TAMU-CC (11-24-12) & at Tulane (11-28-12)
 Blocked Shots2, 4 times, last by Tyrese Tanner at George Washington (12-12-12)
 Steals.....5, Alverson vs. Hofstra (12-9-12) and Muhammad at GW (12-12-12)

Game

Points.....26, Tyrese Tanner at North Carolina State (11-10-12)
 Field Goals Made.....10, Hasina Muhammad vs. Alabama A&M (11-18-12)
 Field Goal Attempts23, Hasina Muhammad vs. Maine (11-9-12)
 3-Point Field Goals Made3, 4 times, last by Alverson at George Washington (12-12-12)
 3-Point Field Goal Attempts.....9, Blanche Alverson at North Carolina State (11-10-12)
 Free Throws Made.....11, Tyrese Tanner at North Carolina State (11-10-12)
 Free Throws Attempted.....12, Tyrese Tanner at North Carolina State (11-10-12)
 Rebounds.....12, Peyton Davis vs. Hofstra (12-9-12)
 Assists8, Najat Ouardad vs. Hofstra (12-9-12) and vs. Texas A&M-Corpus Christi (11-24-12)
 Blocked Shots3, 5 times, last by Tyrese Tanner at George Washington (12-12-12)
 Steals.....9, Hasina Muhammad at George Washington (12-12-12)

2012-13 Opponent Individual Highs...**First Half**

Points.....15, Marissa Kastanek of North Carolina State (11-10-12)
 Field Goals Made.....5, Kastanek of NC State (11-10-12) & Clements of SDSU (11-23-12)
 Field Goal Attempts12, Courtney Clements of San Diego State (11-23-12)
 3-Point Field Goals Made3, 3 times, last by Janae Blount of TAMU-CC (11-24-12)
 3-Point Field Goal Attempts.....8, Marissa Kastanek of North Carolina State (11-10-12)
 Free Throws Made.....4, Deven Green of Hofstra (12-9-12)
 Free Throws Attempted.....6, Markeisha Gatling of North Carolina State (11-10-12)
 Rebounds.....8, Evans of Hofstra (12-9-12) and Gatling of North Carolina State (11-10-12)
 Assists4, Thomas of Hofstra (12-9-12) and Hopkins of San Diego State (11-23-12)
 Blocked Shots ..2, Burke of NC St. (11-10-12), Dale of Tulane (11-28-12) & White of GW (12-12-12)
 Steals.....2, on eight occasions

Second Half

Points.....20, Kody Burke of North Carolina State (11-10-12)
 Field Goals Made.....8, Kody Burke of North Carolina State (11-10-12)
 Field Goal Attempts11, Burke of N.C. State (11-10-12) & Clements of SDSU (11-23-12)
 3-Point Field Goals Made4, Nakiya Smith of Alabama State (11-15-12)
 3-Point Field Goal Attempts..7, Smith-ASU (11-15), Strickland-AAMU (11-18) & Booker-GW (12-12)
 Free Throws Made.....8, Janique Kautsky of Tulane (11-28-12)
 Free Throws Attempted.....8, Janique Kautsky of Tulane (11-28-12)
 Rebounds.....9, Kody Burke of North Carolina State (11-10-12)
 Assists5, Danni Jackson of George Washington (12-12-12)
 Blocked Shots3, Tara Booker of George Washington (12-12-12)
 Steals.....3, Danni Jackson of George Washington (12-12-12)

Game

Points.....26, Burke of N.C. State (11-10-12) and Clements of SDSU (11-23-12)
 Field Goals Made.....11, Kody Burke of North Carolina State (11-10-12)
 Field Goal Attempts23, Courtney Clements of San Diego State (11-23-12)
 3-Point Field Goals Made6, Courtney Clements of San Diego State (11-23-12)
 3-Point Field Goal Attempts.....13, Courtney Clements of San Diego State (11-23-12)
 Free Throws Made.....8, Janique Kautsky of Tulane (11-28-12)
 Free Throws Attempted.....8, Jones of Alabama State (11-15-12) and Kautsky of Tulane (11-28-12)
 Rebounds.....16, Shante Evans of Hofstra (12-9-12)
 Assists7, Brown of N.C. State (11-10-12) and Hopkins of SDSU (11-23-12)
 Blocked Shots3, Burke of N.C. State (11-10-12) and Booker of GW (12-12-12)
 Steals.....4, Chakecia Miller of George Washington (12-12-12)

Specialty Statistics (Auburn-Opponent)

Opponent	Bench Points	Points in the Paint	Points off Turnovers	Second Chance Points	Fast Break Points
vs. Maine	29-14	28-12	28-11	23-4	6-2
at North Carolina State	17-17	28-40	22-7	20-15	6-17
vs. Alabama State	23-6	40-10	28-5	14-8	20-2
vs. Alabama A&M	40-28	46-12	34-5	24-10	14-2
vs. San Diego State	18-13	18-26	16-15	13-14	0-2
vs. Texas A&M-Corpus Christi	24-13	44-12	24-23	17-13	14-0
at Tulane	18-34	30-22	17-16	20-14	4-4
vs. Hofstra	11-9	36-30	14-11	6-12	6-6
at George Washington	14-15	26-20	22-13	20-10	10-4

Lead-Deficit Comparison

Opponent	Largest Lead	Largest Deficit	Lead Changes	Ties	Result
vs. Maine	35 (2nd, 4:44)	4 (1st, 16:14)	4	0	W, 71-41
at North Carolina State	9 (1st, 14:02)	17 (2nd, 1:09)	2	1	L, 85-71
vs. Alabama State	37 (2nd, 0:52)	1 (1st, 18:45)	2	0	W, 80-43
vs. Alabama A&M	53 (2nd, 2:15)	---	0	1	W, 93-44
vs. San Diego State	2 (1st, 18:32)	23 (2nd, 0:41)	1	1	L, 78-57
vs. Texas A&M-Corpus Christi	15 (2nd, 1:14)	7 (1st, 1:36)	12	3	W, 72-57
at Tulane	5 (1st, 19:05)	16 (1st, 00:19)	2	2	W, 70-65
vs. Hofstra	20 (2nd, 12:56)	---	0	1	W, 68-58
at George Washington	16 (2nd, 18:07)	4 (1st, 16:59)	1	4	W, 69-59

Scoring Breakdown

(Percentage of total points in parentheses)

Opponent	Front Court	Back Court	Sr.	Jr.	So.	Fr.	Starters	Bench
vs. Maine	20 (28.2)	51 (71.8)	21	21	22	7	42 (59.2)	29 (40.8)
at North Carolina State	20 (28.2)	51 (71.8)	23	31	12	5	54 (76.1)	17 (23.9)
vs. Alabama State	42 (52.5)	38 (47.5)	19	25	19	17	57 (71.2)	23 (28.8)
vs. Alabama A&M	38 (40.9)	55 (59.1)	24	14	33	22	53 (57.0)	40 (43.0)
vs. San Diego State	21 (36.8)	36 (63.2)	11	18	15	13	39 (68.4)	18 (31.6)
vs. Texas A&M-Corpus Christi	27 (37.5)	45 (62.5)	6	26	30	10	48 (66.7)	24 (33.3)
at Tulane	39 (55.8)	31 (44.2)	25	8	23	14	52 (74.3)	18 (25.7)
vs. Hofstra	28 (41.2)	40 (58.8)	19	26	16	7	57 (83.8)	11 (16.2)
at George Washington	27 (39.1)	42 (60.9)	24	10	24	11	55 (79.7)	14 (20.3)

Comparison Statistics (Auburn/Opponent)

Opponent	1st	2nd	Score	Mar	Total FG	FG Pct	3-Pointers	3FG Pct	Free Throws	FT Pct	Reb.	Mar	Assist	TO	Bk	Stl	Fouls
Maine	35/23	36/18	71-41	+30	29-70/17-51	.414/.333	10-25/4-22	.400/.182	3-6/3-3	.500/1.000	40/35	+5	14/12	15/26	3/1	9/7	8/8
at North Carolina St.	33/37	38/48	71-85	(14)	23-67/32-69	.343/.464	4-19/10-23	.211/.435	21-27/11-18	.778/.611	36/52	(16)	11/20	13/20	4/3	10/9	20/22
Alabama State	40/17	40/26	80-43	+37	32-73/14-54	.438/.259	3-15/6-27	.200/.222	13-21/9-14	.619/.643	52/36	+16	23/7	15/26	8/2	16/5	16/16
Alabama A&M	49/26	44/18	93-44	+49	39-66/16-54	.591/.296	5-6/6-26	.833/.346	10-13/3-7	.769/.429	40/27	+13	27/12	11/23	4/1	15/6	10/13
San Diego State	24/29	33/49	57-78	+21	17-55/28-60	.309/.467	2-7/11-25	.286/.440	21-29/11-14	.724/.786	39/36	+3	10/14	17/16	1/3	7/8	14/24
Texas A&M-CC	28/32	44/25	72-57	+15	31-53/20-61	.585/.328	1-6/10-31	.167/.323	9-15/7-9	.600/.778	37/31	+6	16/12	25/26	7/1	16/10	15/14
at Tulane	23/39	47/26	70-65	+5	27-66/21-53	.409/.396	3-12/7-19	.250/.368	13-21/16-25	.619/.640	45/35	+10	15/18	12/13	7/4	9/3	22/15
Hofstra	39/23	29/35	68-58	+10	28-66/20-59	.424/.339	4-13/3-15	.308/.200	8-17/15-18	.471/.833	38/44	(6)	18/13	16/28	6/1	18/10	15/18
at G. Washington	36/23	33/36	69-59	+10	25-56/20-62	.400/.323	4-10/7-15	.400/.467	13-26/12-19	.500/.632	48-44	+4	14/17	17/23	10/6	15/8	15/19

Game-by-Game Leaders

	Points	Rebounds	Assists	Steals	Blocked Shots
vs. Maine	20-Hasina Muhammad	9-Tyrese Tanner	6-Najat Ouardad	3-Blanche Alverson	1-3 tied
at North Carolina State	26-Tyrese Tanner	8-Tyrese Tanner	4-Najat Ouardad	3-Alverson/Ty. Tanner	3-Blanche Alverson
vs. Alabama State	17-Blanche Alverson	9-Blanche Alverson	6-Julie King	3-Hasina Muhammad	2-3 tied
vs. Alabama A&M	21-Hasina Muhammad	9-Cabriana Capers	5-Chadarryl Clay	5-Najat Ouardad	2-Julie King
vs. San Diego State	17-Tyrese Tanner	8-Tra'cee Tanner	4-Najat Ouardad	3-Tyrese Tanner	1-Hasina Muhammad
vs. Texas A&M-Corpus Christi	16-Hasina Muhammad	7-Cabriana Capers	8-Najat Ouardad	4-Hasina Muhammad	3-Tyrese Tanner
at Tulane	21-Muhammad/Alverson	9-Peyton Davis	7-Najat Ouardad	3-Alverson/Ty. Tanner	3-Blanche Alverson
vs. Hofstra	13-Davis/Ty. Tanner	12-Peyton Davis	8-Najat Ouardad	6-Blanche Alverson	3-Peyton Davis
at George Washington	21-Hasina Muhammad	10-Hasina Muhammad	7-Najat Ouardad	9-Hasina Muhammad	3-Tyrese Tanner

2012-13 Starting Lineups

	Point Guard (1)	Wing (2)	Wing (3)	Post (4)	Post (5)
vs. Maine	Najat Ouardad	Courtney Strain	Tyrese Tanner	Blanche Alverson	Peyton Davis
at North Carolina State	Najat Ouardad	Courtney Strain	Tyrese Tanner	Blanche Alverson	Peyton Davis
vs. Alabama State	Najat Ouardad	Hasina Muhammad	Tyrese Tanner	Blanche Alverson	Peyton Davis
vs. Alabama A&M	Najat Ouardad	Hasina Muhammad	Tyrese Tanner	Blanche Alverson	Peyton Davis
vs. San Diego State	Najat Ouardad	Hasina Muhammad	Tyrese Tanner	Blanche Alverson	Peyton Davis
vs. Texas A&M-Corpus Christi	Najat Ouardad	Hasina Muhammad	Tyrese Tanner	Blanche Alverson	Peyton Davis
at Tulane	Najat Ouardad	Hasina Muhammad	Tyrese Tanner	Blanche Alverson	Peyton Davis
vs. Hofstra	Najat Ouardad	Hasina Muhammad	Tyrese Tanner	Blanche Alverson	Peyton Davis
at George Washington	Najat Ouardad	Hasina Muhammad	Tyrese Tanner	Blanche Alverson	Peyton Davis

Record by Starting Lineup

Ouardad, Strain, Ty. Tanner, Alverson, Davis
 1-1 (.500)

Ouardad, Muhammad, Ty. Tanner, Alverson, Davis
 6-1 (.857)



Terri WILLIAMS-FOURNOY

Head Coach

First Season

Hampton, Va. • Penn State, 1991

- Picked up her 150th career victory on Dec. 12 at George Washington
- Recorded her 400th career win as a collegiate assistant and/or head coach in Auburn's 68-58 win over Hofstra on Dec. 9
- Earned her first win at Auburn in a 71-41 win over Maine on Nov. 9, 2012
- Has 150 wins as a head coach and 251 as an assistant for a .644 winning percentage over her 20 years
- Has been a part of six conference championships and 13 post-season appearances as an assistant and head coach
- 2010 Black Coaches Association Coach of the Year
- Served as an assistant coach for Team USA that won a gold medal at the 2011 World University Games in ShenZhen, China
- Coached teams to 11 NCAA Tournament appearances, nine as an assistant coach and two as a head coach.
- As an assistant coach at Georgia, helped the team to two Southeastern Conference titles in 1997 and 2000 and the 2001 SEC Tournament title
- Has coached 19 players that have gone on to the professional ranks, including seven in the WNBA
- Helped coach Georgia to a NCAA Final Four appearance and two NCAA Elite Eight appearances
- Coached three Georgetown players to three all-conference honors and one All-America award
- Coached Georgetown to four straight 20-win seasons
- Sports a 489-258 record as a head coach, assistant coach and player
- Helped coached Georgetown to Big East title in 1992
- As an assistant coach at Southwest Missouri State, helped the team to two straight NCAA Tournaments and two consecutive Missouri Valley Conference Tournament Championships

All-time record as player and coach:	489-258 (.655)	26th year
Record as collegiate player:	88-36 (.709)	4 seasons
Record as collegiate coach:	401-222 (.644)	21st season
Record as collegiate assistant coach:	251-116 (.683)	12 seasons
SEC Record as an assistant coach:	130-45 (.742)	6 seasons
Record as collegiate head coach:	150-106 (.586)	9th season

Williams-Flournoy Year-by-Year

Penn State, Player (1987-91)

Year	Record	Conf.	Other Information
1987-88	20-13	11-7	NCAA Second Round
1988-89	14-14	12-6	
1989-90	25-7	15-3	NCAA Second Round
1990-91	29-2	17-1	NCAA Second Round

Georgetown, Assistant Coach (1992-96)

Year	Record	Conf.	Other Information
1992-93	23-7	15-3	Big East Champions NCAA Sweet 16
1993-94	12-15	6-12	
1994-95	11-17	6-12	
1995-96	12-15	7-11	

Georgia, Assistant Coach (1996-2002)

Year	Record	Conf.	Other Information
1996-97	25-6	11-1	SEC Champions NCAA Elite Eight
1997-98	17-11	8-6	NCAA First Round
1998-99	27-7	9-5	NCAA Final Four
1999-2000	32-4	13-1	SEC Champions NCAA Elite Eight
2000-01	27-6	11-3	SEC Tournament Champions NCAA Second Round
2001-02	19-11	6-8	NCAA First Round

Southwest Missouri State, Assistant Coach (2002-04)

Year	Record	Conf.	Other Information
2002-03	18-13	11-7	MVC Tournament Champions NCAA First Round
2003-04	28-4	16-2	Missouri Valley Champions MVC Tournament Champions NCAA First Round

Georgetown, Head Coach (2004-12)

Year	Record	Conf.	Other Information
2004-05	12-16	7-9	
2005-06	10-17	3-13	
2006-07	13-16	3-13	
2007-08	15-14	5-11	
2008-09	20-14	7-9	WNIT Quarterfinals
2009-10	26-7	13-3	NCAA Second Round
2010-11	24-11	9-7	NCAA Sweet 16
2011-12	23-9	11-5	NCAA Second Round

Auburn, Head Coach (2012-present)

Year	Record	Conf.	Other Information
2012-13	7-2		



Blanche ALVERSON

#14

Senior • Forward/Guard • 6-3

Andalusia, Ala.

Buford (Ga.) High School

NOTES:

- Posted a season-high 21 points on the road at Tulane, shooting 64 percent (9-14) from the field, including three treys
- Named Auburn's 2012 Miss Homecoming on Nov. 3 at halftime of the Homecoming Football game vs. New Mexico State
- Scored 900th career point against Hofstra on Dec. 9, becoming the 33rd Auburn player ever to score 900 career points and is 78 points from 1,000
- Also currently ranked 34th all-time at Auburn in career rebounds with 446; 59 away from reaching 500
- Is tied for 4th all-time at Auburn in career 3-pointers with 161; is 10 treys away from tying Natasha Brackett for third
- Selected as the 2012 SEC Women's Basketball Scholar-Athlete of the Year
- Was second on the team, averaging 17.5 points per game during Auburn's Australian Summer Tour
- Created her own community service program, Ballin' For Books, last season that collected more than 1,100 books for local libraries reading initiatives

Opponent	Start	Min.	FG-A	3PT-A	FT-A	O-D-T	PF	Ast.	TO	Blk.	St.	Pts.
vs. Maine	*	32	3-7	2-3	0-0	1-5-6	0	2	6	0	3	8
at North Carolina State	*	35	4-13	2-9	2-2	2-5-7	1	3	1	3	3	12
ALABAMA STATE	*	23	7-11	1-3	2-2	3-6-9	2	1	2	2	2	17
ALABAMA A&M	*	25	6-9	2-2	0-0	1-3-4	1	3	1	1	1	14
vs. San Diego State	*	38	2-9	1-3	2-2	2-2-4	0	3	1	0	1	7
vs. Texas A&M-Corpus Christi*		20	1-3	0-2	0-0	0-5-5	0	1	1	1	3	2
at Tulane	*	37	9-14	3-7	0-0	0-5-5	3	1	0	3	3	21
HOFSTRA	*	35	5-9	1-3	0-0	0-5-5	2	2	2	0	6	11
at George Washington	*	31	5-12	3-5	1-3	0-5-5	2	1	0	1	0	14

TEMPLE
TENNESSEE-CHATTANOOGA

JACKSONVILLE

SAMFORD

ARKANSAS

at Missouri

OLE MISS

at Texas A&M

TENNESSEE

at Kentucky

at Alabama

LSU

at South Carolina

at Georgia

FLORIDA

ALABAMA

at Tennessee

MISSOURI

at Vanderbilt

MISSISSIPPI STATE

SEASON HIGHS

Points

21 at Tulane (11/28/12)

Rebounds

9 vs. Alabama State (11/15/12)

Assists

3 3 times, last vs. SDSU (11/23/12)

Blocks

3 twice, last at Tulane (11/28/12)

Steals

6 vs. Hofstra (12/9/12)

Field Goals

9 at Tulane (11/28/12)

Field Goal Attempts

14 at Tulane (11/28/12)

3-Point Field Goals

3 twice, last at GW (12/12/12)

3-Point FG Attempts

9 vs. NC State (11/10/12)

Free Throws

2 3 times, last vs. SDSU (11/23/12)

Free Throw Attempts

2 3 times, last vs. SDSU (11/23/12)

CAREER HIGHS

Points

27 vs. Ole Miss (1/13/11)

Rebounds

10 at Mercer (11/11/11)

Assists

5 3 times, last vs. Alabama (1/2/11)

Blocks

3 four times, last at Tulane (11/28/12)

Steals

6 twice, last vs. Hofstra (12/9/12)

Field Goals

11 vs. Ole Miss (1/13/11)

Field Goal Attempts

17 3 times, last vs. Marist (12/21/11)

3-Point Field Goals

5 3 times, last vs. Alabama (2/23/12)

3-Point FG Attempts

10 vs. Marist (12/21/11)

Free Throws

4 three times, last at Florida (2/9/12)

Free Throw Attempts

5 vs. Seton Hall (11/27/10)

ALVERSON CAREER STATISTICS

Year	GP-GS	FG-FGA	Pct	3FG-FGA	Pct	FT-FTA	Pct	O-D-T (Reb.)	Avg	PF	FO	Ast	TO	Blk	Stl	Pts	Avg
2009-10	31-13	78-218	.358	40-128	.313	19-27	.704	26-92-118	3.8	39	1	51	44	17	15	215	6.9
2010-11	32-32	126-333	.378	50-171	.292	25-35	.714	33-118-151	4.7	44	0	33	61	17	27	327	10.2
2011-12	30-26	99-246	.402	56-136	.412	20-24	.833	20-107-127	4.2	43	0	29	42	12	30	274	9.1
2012-13	9-9	42-87	.483	15-37	.405	7-9	.778	9-41-50	5.6	11	0	17	14	11	22	106	11.8
TOTAL	102-80	345-884	.390	161-472	.341	71-95	.747	88-358-446	4.4	137	1	130	161	57	94	922	9.0



Julie KING

#22

Senior • Guard • 5-9

St. Louis, Mo.

Nerinx Hall

NOTES:

- Pulled down a season-high 5 rebounds against Texas A&M-Corpus Christi
- Grabbed a rebound in 4 minutes in her collegiate basketball debut
- Led Auburn with season-high 6 assists against Alabama A&M
- Joins the women's basketball team for her final year of eligibility after playing on the Auburn soccer team for four years
- Was co-captain of last year's SEC Tournament Champion Auburn soccer team
- Holds the Auburn career record for career matches started and is second in career matches played
- Named SEC Soccer Co-Defensive Player of the Year in 2011
- Was an All-State basketball selection at Nerinx Hall in St. Louis, Mo.

Opponent	Start	Min.	FG-A	3PT-A	FT-A	O-D-T	PF	Ast.	TO	Blk.	St.	Pts.
vs. Maine	4		0-0	0-0	0-0	0-1-1	0	0	1	0	0	0
at North Carolina State	1		0-0	0-0	0-0	0-0-0	0	0	0	0	0	0
ALABAMA STATE	13		1-2	0-0	0-1	0-2-2	2	6	1	0	2	2
ALABAMA A&M	11		0-2	0-0	0-0	0-1-1	0	2	1	2	1	0
vs. San Diego State	1		0-0	0-0	0-0	0-0-0	0	0	0	0	0	0
vs. Texas A&M-Corpus Christi	20		0-4	0-0	0-1	1-4-5	2	2	0	0	1	0
at Tulane	16		1-6	0-2	0-0	2-1-3	4	3	0	0	0	2
HOFSTRA	7		0-0	0-0	0-0	0-1-1	0	0	0	0	0	0
at George Washington	1		0-0	0-0	0-0	0-0-0	0	0	0	0	0	0

TEMPLE

TENNESSEE-CHATTANOOGA

JACKSONVILLE

SAMFORD

ARKANSAS

at Missouri

OLE MISS

at Texas A&M

TENNESSEE

at Kentucky

at Alabama

LSU

at South Carolina

at Georgia

FLORIDA

ALABAMA

at Tennessee

MISSOURI

at Vanderbilt

MISSISSIPPI STATE

KING CAREER STATISTICS

Year	GP-GS	FG-FGA	Pct	3FG-FGA	Pct	FT-FTA	Pct	O-D-T (Reb.)	Avg	PF	FO	Ast	TO	Blk	Stl	Pts	Avg
2012-13	9-0	2-14	.143	0-2	.000	0-2	.000	3-10-13	1.4	8	0	13	3	2	4	4	0.4
TOTAL	9-0	2-14	.143	0-2	.000	0-2	.000	3-10-13	1.4	8	0	13	3	2	4	4	0.4

SEASON HIGHS

Points

2 twice, last at Tulane (11/28/12)

Rebounds

5 vs. Texas A&M-CC (11/24/12)

Assists

6 vs. Alabama State (11/15/12)

Blocks

2 vs. Alabama A&M (11/18/12)

Steals

2 vs. Alabama State (11/15/12)

Field Goals

1 twice, last at Tulane (11/28/12)

Field Goal Attempts

6 at Tulane (11/28/12)

3-Point Field Goals

3-Point FG Attempts

2 at Tulane (11/28/12)

Free Throws

Free Throw Attempts

1 twice, last vs. TAMU-CC (11/24/12)



Najat OUARDAD

#3

Senior • Guard • 5-1

Orleans, France

Pensacola State College / Oak Ridge (N.C.) Military Academy / Forsyth (N.C.) Country Day

NOTES:

- Neared a triple-double at George Washington with 10 points, 9 rebounds and 7 assists
- Currently leads the SEC and is 27th in the country in assists per game with 5.9 per game
- Tied her career high with 8 assists against Texas A&M-Corpus Christi; tied it again against Hofstra
- Scored career-high 11 points in season opener against Maine; added 6 assists and tied her career high of 6 rebounds
- Tied her career high with 11 points in the second game against North Carolina State
- Her seven steals in a game last season are tied for 6th all-time at Auburn in single-game steals
- Led Pensacola State to a third-place finish at the 2011 NJCAA National Basketball Championship, compiling a 36-1 record along the way
- Played for the French National Team while in high school

Opponent	Start	Min.	FG-A	3PT-A	FT-A	O-D-T	PF	Asst.	TO	Blk.	Stl.	Pts.
vs. Maine	*	30	4-9	3-6	0-0	2-4-6	0	6	2	0	2	11
at North Carolina State	*	36	4-10	1-3	2-3	0-5-5	1	4	6	0	2	11
ALABAMA STATE	*	20	0-1	0-1	0-1	1-3-4	2	5	3	0	2	0
ALABAMA A&M	*	19	1-3	1-1	1-2	0-0-0	1	4	1	0	5	4
vs. San Diego State	*	29	1-3	0-2	2-2	1-5-6	1	4	4	0	0	4
vs. Texas A&M-Corpus Christi*	26	2-3	0-0	0-0	0-3-3	2	8	4	0	3	4	4
at Tulane	*	33	0-2	0-1	2-2	3-3-6	2	7	2	0	1	2
HOFSTRA	*	33	3-5	2-4	0-2	2-1-3	2	8	5	0	3	8
at George Washington	*	34	2-8	1-3	5-8	4-5-9	1	7	4	0	3	10

TEMPLE
TENNESSEE-CHATTANOOGA

JACKSONVILLE

SAMFORD

ARKANSAS

at Missouri

OLE MISS

at Texas A&M

TENNESSEE

at Kentucky

at Alabama

LSU

at South Carolina

at Georgia

FLORIDA

ALABAMA

at Tennessee

MISSOURI

at Vanderbilt

MISSISSIPPI STATE

OUARDAD CAREER STATISTICS

Year	GP-GS	FG-FGA	Pct	3FG-FGA	Pct	FT-FTA	Pct	O-D-T (Reb.)	Avg	PF	FO	Asst	TO	Blk	Stl	Pts	Avg
2011-12	30-18	36-110	.327	11-49	.224	11-17	.647	22-41-63	2.1	60	0	81	95	0	52	94	3.1
2012-13	9-9	17-44	.386	8-21	.381	12-20	.600	13-29-42	4.7	12	0	53	31	0	21	54	6.0
TOTAL	39-27	53-154	.344	19-70	.271	23-37	.622	35-70-105	2.7	72	0	134	126	0	73	148	3.8

SEASON HIGHS

Points

11 twice, last vs. NC State (11/10/12)

Rebounds

9 at George Washington (12/12/12)

Assists

8 twice, last vs. Hofstra (12/9/12)

Blocks

Steals

5 vs. Alabama A&M (11/18/12)

Field Goals

4 twice, vs. NC State (11/10/12)

Field Goal Attempts

10 vs. NC State (11/10/12)

3-Point Field Goals

3 vs. Maine (11/9/12)

3-Point FG Attempts

6 vs. Maine (11/9/12)

Free Throws

5 at George Washington (12/12/12)

Free Throw Attempts

8 at George Washington (12/12/12)

CAREER HIGHS

Points

11 twice, last vs. NC State (11/10/12)

Rebounds

9 at George Washington (12/12/12)

Assists

8 3 times, last vs. Hofstra (12/9/12)

Blocks

N/A

Steals

7 at Vanderbilt (1/12/12)

Field Goals

4 three times, last vs. NC State (11/10/12)

Field Goal Attempts

10 vs. NC State (11/10/12)

3-Point Field Goals

3 vs. Maine (11/9/12)

3-Point FG Attempts

6 vs. Maine (11/9/12)

Free Throws

9 at George Washington (12/12/12)

Free Throw Attempts

8 at George Washington (12/12/12)



Pascale WEST

#20

Senior • Center • 6-8

LaGrange, Ga.

Troup County Comprehensive High School

NOTES:

- Scored a career-high 6 points against Alabama A&M
- Scored 2 points with a rebounds against Maine in the season opener
- Is the tallest player in the SEC
- Her 22 blocks during the 2009-10 season rank her ninth all-time among Auburn freshmen
- Majoring in apparel merchandising and makes many of her own clothes

Opponent	Start	Min.	FG-A	3PT-A	FT-A	O-D-T	PF	Ast.	TO	Blk.	St.	Pts.
vs. Maine	7		1-1	0-0	0-0	0-1-1	0	0	2	0	0	2
at North Carolina State						-- DID NOT PLAY --						
ALABAMA STATE	11		0-2	0-0	0-0	1-0-1	3	0	0	2	2	0
ALABAMA A&M	14		3-5	0-0	0-0	0-1-1	2	0	0	0	0	6
vs. San Diego State	1		0-0	0-0	0-0	0-0-0	0	0	0	0	0	0
vs. Texas A&M-Corpus Christi						-- DID NOT PLAY --						
at Tulane						-- DID NOT PLAY --						
HOFSTRA	2		0-1	0-0	0-0	0-1-1	1	0	0	0	0	0
at George Washington						-- DID NOT PLAY --						
TEMPLE												
TENNESSEE-CHATTANOOGA												
JACKSONVILLE												
SAMFORD												
ARKANSAS												
at Missouri												
OLE MISS												
at Texas A&M												
TENNESSEE												
at Kentucky												
at Alabama												
LSU												
at South Carolina												
at Georgia												
FLORIDA												
ALABAMA												
at Tennessee												
MISSOURI												
at Vanderbilt												
MISSISSIPPI STATE												

WEST CAREER STATISTICS

Year	GP-GS	FG-FGA	Pct	3FG-FGA	Pct	FT-FTA	Pct	O-D-T (Reb.)	Avg	PF	FO	Ast	TO	Blk	Stl	Pts	Avg
2009-10	24-0	7-15	.467	0-0	.000	4-11	.364	9-23-32	1.3	31	0	5	14	22	6	18	0.8
2010-11	13-0	5-8	.625	0-0	.000	1-6	.167	1-5-6	0.5	15	0	1	9	3	1	11	0.8
2011-12	18-0	1-8	.125	0-0	.000	2-2	1.000	6-9-15	0.8	17	0	2	4	5	1	4	0.2
2012-13	5-0	4-9	.444	0-0	.000	0-0	.000	1-3-4	0.8	6	0	0	2	2	2	8	1.6
TOTAL	60-0	17-40	.425	0-0	.000	7-19	.368	17-40-57	1.0	69	0	8	29	32	10	41	0.7

SEASON HIGHS

Points

6 vs. Alabama A&M (11/18/12)

Rebounds

1 4 times, last vs. Hofstra (12/9/12)

Assists

Blocks

2 vs. Alabama State (11/15/12)

Steals

2 vs. Alabama State (11/15/12)

Field Goals

3 vs. Alabama A&M (11/18/12)

Field Goal Attempts

5 vs. Alabama A&M (11/18/12)

3-Point Field Goals

3-Point FG Attempts

Free Throws

Free Throw Attempts

CAREER HIGHS

Points

6 vs. Alabama A&M (11/18/12)

Rebounds

5 vs. Alabama A&M (11/19/09)

Assists

1 4 times, last vs. USC-Upstate (12/28/10)

Blocks

7 vs. Alabama A&M (11/19/09)

Steals

2 vs. Alabama State (11/15/12)

Field Goals

3 vs. Alabama A&M (11/18/12)

Field Goal Attempts

5 vs. Alabama A&M (11/18/12)

3-Point Field Goals

N/A

3-Point FG Attempts

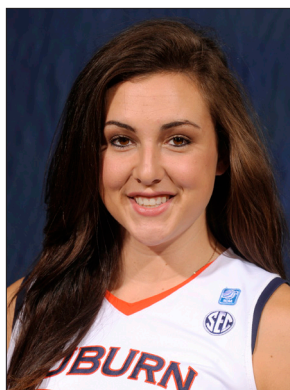
N/A

Free Throws

2 at Mercer (11/11/11)

Free Throw Attempts

4 vs. Florida A&M (11/28/09)



Peyton DAVIS

#34

Junior • Center • 6-5

Pinson, Ala.

Mortimer Jordan High School

NOTES:

- Notched her first career double-double against Hofstra with 13 points and 12 rebounds
- Her double-double was the first for Auburn since Blanche Alverson tallied one in the 2011-12 season-opener at Mercer
- Had career outing against Texas A&M-Corpus Christi with 15 points and 6 rebounds, has scored in double figures twice this season
- Earned her first career start, tying her career high with 6 points along with 3 rebounds against Maine
- Started in all four games and averaged 6.5 points per game during Auburn's 2012 Australian Summer Tour
- Neared a double-double in Australia with 8 points and 8 rebounds against the Logan Thunder
- A two-sport star athlete in high school, also fielded several NCAA Division I volleyball offers
- Holds a black belt in Taekwondo

Opponent	Start	Min.	FG-A	3PT-A	FT-A	O-D-T	PF	Ast.	TO	Blk.	St.	Pts.
vs. Maine	*	25	3-5	0-0	0-1	2-1-3	2	0	1	0	0	6
at North Carolina State	*	20	2-2	0-0	1-4	3-2-5	5	0	0	0	1	5
ALABAMA STATE	*	21	4-8	0-0	4-6	3-4-7	2	1	1	1	0	12
ALABAMA A&M	*	22	3-6	0-0	3-3	2-4-6	0	1	2	1	3	9
vs. San Diego State	*	24	0-4	0-0	1-2	0-2-2	3	0	2	0	1	1
vs. Texas A&M-Corpus Christi*	33	6-11	0-0	3-5	5-1-6	3	1	3	0	0	0	15
at Tulane	*	23	1-6	0-0	2-5	2-7-9	2	0	2	0	0	4
HOFSTRA	*	29	6-12	0-0	1-4	5-7-12	3	1	3	3	3	13
at George Washington	*	14	1-2	0-0	0-2	0-3-3	1	0	1	2	0	2

TEMPLE
TENNESSEE-CHATTANOOGA

JACKSONVILLE

SAMDOR

ARKANSAS

at Missouri

OLE MISS

at Texas A&M

TENNESSEE

at Kentucky

at Alabama

LSU

at South Carolina

at Georgia

FLORIDA

ALABAMA

at Tennessee

MISSOURI

at Vanderbilt

MISSISSIPPI STATE

SEASON HIGHS

Points

15 vs. Texas A&M-CC (11/24/12)

Rebounds

12 vs. Hofstra (12/9/12)

Assists

1 4 times, last vs. Hofstra (12/9/12)

Blocks

3 vs. Hofstra (12/9/12)

Steals

3 twice, last vs. Hofstra (12/9/12)

Field Goals

6 twice, last vs. Hofstra (12/9/12)

Field Goal Attempts

12 vs. Hofstra (12/9/12)

3-Point Field Goals

3-Point FG Attempts

Free Throws

4 vs. Alabama State (11/15/12)

Free Throw Attempts

6 vs. Alabama State (11/15/12)

CAREER HIGHS

Points

15 vs. Texas A&M-CC (11/24/12)

Rebounds

12 vs. Hofstra (12/9/12)

Assists

1 12 times, last vs. Hofstra (12/9/12)

Blocks

3 twice, last vs. Hofstra (12/9/12)

Steals

3 twice, last vs. Hofstra (12/9/12)

Field Goals

6 twice, last vs. Hofstra (12/9/12)

Field Goal Attempts

12 vs. Hofstra (12/9/12)

3-Point Field Goals

N/A

3-Point FG Attempts

N/A

Free Throws

4 vs. Alabama State (11/15/12)

Free Throw Attempts

6 vs. Alabama State (11/15/12)

DAVIS CAREER STATISTICS

Year	GP-GS	FG-FGA	Pct	3FG-FGA	Pct	FT-FTA	Pct	O-D-T (Reb.)	Avg	PF	FO	Ast	TO	Blk	Stl	Pts	Avg
2010-11	26-0	12-41	.293	0-0	.000	9-15	.600	18-16-34	1.3	38	0	7	13	7	4	33	1.3
2011-12	19-0	3-13	.231	0-0	.000	1-5	.200	10-13-23	1.2	15	0	1	12	4	3	7	0.4
2012-13	9-9	26-56	.464	0-0	.000	15-32	.469	22-31-53	5.9	21	1	4	15	7	8	67	7.4
TOTAL	54-9	41-110	.373	0-0	.000	25-52	.481	50-60-110	2.0	74	1	12	40	18	15	107	2.0



Tyrese TANNER

#32

Junior • Forward • 6-1

Birmingham, Ala.

Hoover High School

NOTES:

- Set a career-high with 5 assists while tying her career high of 3 steals at George Washington
- Named SEC Player of the Week on Nov. 12, the first such honor of her career
- Named to Sheraton Raleigh Wolfpack Invitational All-Tournament Team and the Omni Hotels Classic All-Tournament Team
- Nearly averaged a double-double in the opening weekend with 20.5 points and 8.5 rebounds per game; set career highs of 26 points and 9 boards
- Led Auburn in scoring last season with 10.6 points per game, becoming the first sophomore to lead the team in scoring since DeWanna Bonner in 2006-07
- Named to the 2012 College Sports Madness Preseason All-SEC Third Team
- Will play alongside her younger sister, Tra'cee Tanner, who is a freshman on the team this season
- The Tanner sisters are the third set of sisters to play together at Auburn, joining Sherell and Reneisha Hobbs, and Ruthie and Mae Ola Bolton

Opponent	Start	Min.	FG-A	3PT-A	FT-A	O-D-T	PF	Ast.	TO	Blk.	St.	Pts.
vs. Maine	*	31	6-14	1-5	2-3	6-3-9	0	3	0	1	1	15
at North Carolina State	*	36	7-20	1-4	11-12	5-3-8	5	2	2	1	3	26
ALABAMA STATE	*	28	6-14	0-1	1-4	3-4-7	1	1	0	2	1	13
ALABAMA A&M	*	15	2-6	0-0	1-1	0-0-0	1	3	1	0	1	5
vs. San Diego State	*	29	6-14	0-1	5-5	0-4-4	3	0	4	0	3	17
vs. Texas A&M-Corpus Christi*		21	4-6	0-1	3-3	0-4-4	2	0	3	3	2	11
at Tulane	*	18	2-8	0-0	0-0	0-0-0	4	0	5	1	3	4
HOFSTRA	*	33	4-18	0-2	5-6	1-2-3	1	2	1	1	3	13
at George Washington	*	37	4-16	0-1	0-0	2-3-5	3	5	4	3	3	8

TEMPLE
TENNESSEE-CHATTANOOGA

JACKSONVILLE

SAMFORD

ARKANSAS

at Missouri

OLE MISS

at Texas A&M

TENNESSEE

at Kentucky

at Alabama

LSU

at South Carolina

at Georgia

FLORIDA

ALABAMA

at Tennessee

MISSOURI

at Vanderbilt

MISSISSIPPI STATE

SEASON HIGHS

Points

26 vs. North Carolina State (11/10/12)

Rebounds

9 vs. Maine (11/9/12)

Assists

5 at George Washington (12/12/12)

Blocks

3 twice, last at GW (12/12/12)

Steals

3 5 times, last at GW (12/12/12)

Field Goals

7 vs. North Carolina State (11/10/12)

Field Goal Attempts

20 vs. North Carolina State (11/10/12)

3-Point Field Goals

1 vs. Maine (11/9/12)

3-Point FG Attempts

5 vs. Maine (11/9/12)

Free Throws

11 vs. North Carolina State (11/10/12)

Free Throw Attempts

12 vs. North Carolina State (11/10/12)

CAREER HIGHS

Points

26 vs. North Carolina State (11/10/12)

Rebounds

9 vs. Maine (11/9/12)

Assists

5 at George Washington (12/12/12)

Blocks

4 vs. Georgia (1/8/12)

Steals

3 10 times, last at GW (12/12/12)

Field Goals

8 vs. Alabama (2/23/12)

Field Goal Attempts

20 vs. North Carolina State (11/10/12)

3-Point Field Goals

4 vs. Belmont (11/15/11)

3-Point FG Attempts

5 3 times, last vs. Maine (11/9/12)

Free Throws

11 vs. North Carolina State (11/10/12)

Free Throw Attempts

14 at Arkansas (1/15/12)

TANNER CAREER STATISTICS

Year	GP-GS	FG-FGA	Pct	3FG-FGA	Pct	FT-FTA	Pct	O-D-T (Reb.)	Avg	PF	FO	Ast	TO	Blk	Stl	Pts	Avg
2010-11	32-3	53-159	.333	6-37	.162	43-64	.672	48-53-101	3.2	57	1	27	48	24	21	155	4.8
2011-12	30-18	113-278	.406	7-29	.241	84-130	.646	51-64-115	3.8	78	2	33	66	24	36	317	10.6
2012-13	9-9	41-116	.353	2-15	.133	28-34	.824	17-23-40	4.4	20	1	16	20	12	20	112	12.4
TOTAL	71-30	207-553	.374	15-81	.185	155-228	.680	116-140-256	3.6	155	4	76	134	60	77	584	8.2



Hasina MUHAMMAD

#00

Sophomore • Guard • 6-1

Memphis, Tenn.

Ridgeway High School

NOTES:

- Notched her first career double-double at George Washington with 21 points and 10 rebounds; also tallied 9 steals in the win
- Her nine steals at George Washington rank her 4th all-time at Auburn in single-game steals and is the most for an AU player in almost 20 years
- Has scored in double figures in all nine games this season, scoring 20 or more in four, leading Auburn in scoring five times
- Scored her career high of 21 points three times this season: vs. Alabama A&M, at Tulane and at George Washington
- Named to Sheraton Raleigh Wolfpack Invitational All-Tournament Team
- Named to the 2012 SEC All-Freshman Team
- Led Auburn in scoring on the 2012 Australian Summer Tour, averaging 23.3 points per game; Scored tour-high 29 points against the WNBL's Sydney Flames
- Was second in the SEC in scoring among freshmen last season

Opponent	Start	Min.	FG-A	3PT-A	FT-A	O-D-T	PF	Ast.	TO	Blk.	St.	Pts.
vs. Maine		25	8-23	3-6	1-2	1-2-3	1	1	1	1	2	20
at North Carolina State		29	4-15	0-3	4-4	1-2-3	4	1	2	0	1	12
ALABAMA STATE	*	22	7-13	0-0	1-2	3-3-6	0	2	1	1	3	15
ALABAMA A&M	*	19	10-14	0-0	1-2	4-3-7	3	2	1	0	1	21
vs. San Diego State	*	28	2-12	0-0	6-10	3-3-6	0	3	2	1	1	10
vs. Texas A&M-Corpus Christi*		19	6-9	1-1	3-4	3-1-4	3	1	5	1	4	16
at Tulane	*	33	8-18	0-0	5-9	7-1-8	3	2	1	2	1	21
HOFSTRA	*	28	5-9	0-0	2-5	3-2-5	3	2	2	1	2	12
at George Washington	*	30	5-15	0-0	5-9	3-7-10	3	1	5	2	9	21

TEMPLE
TENNESSEE-CHATTANOOGA

JACKSONVILLE

SAMFORD

ARKANSAS

at Missouri

OLE MISS

at Texas A&M

TENNESSEE

at Kentucky

at Alabama

LSU

at South Carolina

at Georgia

FLORIDA

ALABAMA

at Tennessee

MISSOURI

at Vanderbilt

MISSISSIPPI STATE

SEASON HIGHS

Points

21 3 times, last at GW (12/12/12)

Rebounds

10 at George Washington (12/12/12)

Assists

3 vs. San Diego State (11/23/12)

Blocks

2 twice, last at GW (12/12/12)

Steals

9 at George Washington (12/12/12)

Field Goals

10 vs. Alabama A&M (11/18/12)

Field Goal Attempts

23 vs. Maine (11/9/12)

3-Point Field Goals

3 vs. Maine (11/9/12)

3-Point FG Attempts

6 vs. Maine (11/9/12)

Free Throws

6 vs. San Diego State (11/23/12)

Free Throw Attempts

10 vs. San Diego State (11/23/12)

CAREER HIGHS

Points

21 3 times, last at GW (12/12/12)

Rebounds

10 at George Washington (12/12/12)

Assists

5 vs. Kentucky (1/26/12)

Blocks

4 vs. Florida (3/1/12)

Steals

9 at George Washington (12/12/12)

Field Goals

10 vs. Alabama A&M (11/18/12)

Field Goal Attempts

23 vs. Maine (11/9/12)

3-Point Field Goals

3 twice, last vs. Maine (11/9/12)

3-Point FG Attempts

6 vs. Maine (11/9/12)

Free Throws

9 vs. Georgia (1/8/12)

Free Throw Attempts

11 vs. Georgia (1/8/12)

MUHAMMAD CAREER STATISTICS

Year	GP-GS	FG-FGA	Pct	3FG-FGA	Pct	FT-FTA	Pct	O-D-T (Reb.)	Avg	PF	FO	Ast	TO	Blk	Stl	Pts	Avg
2011-12	30-16	119-308	.386	11-34	.324	37-64	.578	58-54-112	3.7	51	1	38	77	31	40	286	9.5
2012-13	9-7	58-128	.453	4-10	.400	28-47	.596	28-24-52	5.8	20	0	15	20	9	24	148	16.4
TOTAL	39-23	177-436	.406	15-44	.341	65-111	.586	86-78-164	4.2	71	1	53	97	40	64	434	11.1



Courtney STRAIN

#11

Redshirt Sophomore • Guard • 5-9

Woodland, Ala.

Woodland High School

NOTES:

- Had a career night against TAMU-CC, setting career highs of 14 points and 2 steals
- Scored in double figures for the first time this season against Alabama A&M with 12 points
- Made her first start in almost two years against Maine, scoring 2 points with a steal
- Missed most of last season with an injury, playing in just seven games
- Broke the Alabama state scoring record as a junior in high school, finished her career with 5,283 points - more than 1,000 than her nearest competitor
- Was also a varsity cheerleader for six years, serving as captain as a senior, graduated as salutatorian of her senior class

Opponent	Start	Min.	FG-A	3PT-A	FT-A	O-D-T	PF	Ast.	TO	Blk.	St.	Pts.
vs. Maine	*	13	1-6	0-3	0-0	0-0-0	1	0	1	0	1	2
at North Carolina State	*	15	0-3	0-0	0-0	0-0-0	3	0	1	0	0	0
ALABAMA STATE		15	1-6	0-3	2-2	1-2-3	0	2	1	0	1	4
ALABAMA A&M		20	5-8	1-1	1-2	1-1-2	0	1	1	0	1	12
vs. San Diego State		16	2-3	1-1	0-0	0-0-0	2	0	1	0	0	5
vs. Texas A&M-Corpus Christi		25	7-8	0-1	0-0	0-1-1	0	0	1	0	2	14
at Tulane		10	1-2	0-1	0-0	1-0-1	0	0	0	0	0	2
HOFSTRA		11	2-6	0-1	0-0	0-0-0	1	1	0	0	0	4
at George Washington		15	1-3	0-1	1-2	0-0-0	2	0	0	0	0	3
TEMPLE												
TENNESSEE-CHATTANOOGA												
JACKSONVILLE												
SAMFORD												
ARKANSAS												
at Missouri												
OLE MISS												
at Texas A&M												
TENNESSEE												
at Kentucky												
at Alabama												
LSU												
at South Carolina												
at Georgia												
FLORIDA												
ALABAMA												
at Tennessee												
MISSOURI												
at Vanderbilt												
MISSISSIPPI STATE												

STRAIN CAREER STATISTICS

Year	GP-GS	FG-FGA	Pct	3FG-FGA	Pct	FT-FTA	Pct	O-D-T (Reb.)	Avg	PF	FO	Ast	TO	Blk	Stl	Pts	Avg
2010-11	24-1	24-76	.316	5-19	.263	8-15	.533	6-14-20	0.8	13	0	7	16	0	7	61	2.5
2011-12	7-0	4-23	.174	0-2	.000	4-4	1.000	3-0-3	0.4	3	0	2	6	0	0	12	1.7
2012-13	9-2	20-45	.444	2-12	.167	4-6	.667	3-4-7	0.8	9	0	4	6	0	5	46	5.1
TOTAL	40-3	48-144	.333	7-33	.212	16-25	.640	12-18-30	0.8	25	0	13	28	0	12	119	3.0

SEASON HIGHS

Points		
14	vs. Texas A&M-CC	(11/24/12)
Rebounds		
3	vs. Alabama State	(11/15/12)
Assists		
2	vs. Alabama State	(11/15/12)
Blocks		
Steals		
2	vs. Texas A&M-CC	(11/24/12)
Field Goals		
7	vs. Texas A&M-CC	(11/24/12)
Field Goal Attempts		
8	twice, last vs. TAMU-CC	(11/24/12)
3-Point Field Goals		
1	twice, last vs. SDSU	(11/23/12)
3-Point FG Attempts		
3	twice, last vs. Ala. State	(11/15/12)
Free Throws		
2	vs. Alabama State	(11/15/12)
Free Throw Attempts		
2	twice, last at GW	(12/12/12)

CAREER HIGHS

Points		
14	vs. Texas A&M-CC	(11/24/12)
Rebounds		
4	at Arkansas	(2/13/11)
Assists		
2	vs. Alabama State	(11/15/12)
Blocks		N/A
Steals		
2	vs. Texas A&M-CC	(11/24/12)
Field Goals		
7	vs. Texas A&M-CC	(11/24/12)
Field Goal Attempts		
9	at Florida International	(12/30/11)
3-Point Field Goals		
1	7 times, last vs. SDSU	(11/23/12)
3-Point FG Attempts		
3	4 times, last vs. Ala. State	(11/15/12)
Free Throws		
3	vs. Sacred Heart	(11/26/10)
Free Throw Attempts		
6	vs. Sacred Heart	(11/26/10)



Cabriana CAPERS

#50

Freshman • Forward • 6-1

Bolingbrook, Ill.

Bolingbrook

NOTES:

- Tied her season high of 4 points against TAMU-CC, also led Auburn in rebounding with 7
- Made her collegiate debut against Maine, pulling down 2 rebounds in 5 minutes
- Led Auburn with a season-high 9 rebounds against Alabama A&M; also scored her first collegiate points against the Bulldogs
- Played in all four games on the Australian Summer Tour, averaging 2.8 points per game
- Rated as a 3-star prospect by ESPN's HoopGurlz, ranked as the No. 35 post in the country
- Helped Bolingbrook High School to a 26-2 record and a No. 8 national ranking in the USA Today Super 25 last season
- Was one of 8 women's basketball players in her senior class to sign NCAA Division I Letters of Intent

Opponent	Start	Min.	FG-A	3PT-A	FT-A	O-D-T	PF	Asst.	TO	Blk.	Stl.	Pts.
vs. Maine	5		0-0	0-0	0-0	1-1-2	1	0	1	0	0	0
at North Carolina State	3		0-0	0-0	0-0	0-0-0	0	0	1	0	0	0
ALABAMA STATE	14		0-2	0-0	0-0	1-3-4	0	0	1	0	0	0
ALABAMA A&M	11		2-3	0-0	0-0	4-5-9	0	1	0	0	0	4
vs. San Diego State	1		0-0	0-0	0-2	0-0-0	0	0	0	0	0	0
vs. Texas A&M-Corpus Christi	13		2-2	0-0	0-0	2-5-7	2	0	2	0	0	4
at Tulane	3		0-1	0-0	0-0	1-0-1	0	1	0	0	0	0
HOFSTRA	3		0-0	0-0	0-0	0-0-0	0	0	0	0	0	0
at George Washington	9		1-2	0-0	1-2	4-2-6	0	0	0	0	0	3

TEMPLE

TENNESSEE-CHATTANOOGA

JACKSONVILLE

SAMFORD

ARKANSAS

at Missouri

OLE MISS

at Texas A&M

TENNESSEE

at Kentucky

at Alabama

LSU

at South Carolina

at Georgia

FLORIDA

ALABAMA

at Tennessee

MISSOURI

at Vanderbilt

MISSISSIPPI STATE

CAPERS CAREER STATISTICS

Year	GP-GS	FG-FGA	Pct	3FG-FGA	Pct	FT-FTA	Pct	O-D-T (Reb.)	Avg	PF	FO	Asst	TO	Blk	Stl	Pts	Avg
2012-13	9-0	5-10	.500	0-0	.000	1-4	.250	13-16-29	3.2	3	0	2	5	0	0	11	1.2
TOTAL	9-0	5-10	.500	0-0	.000	1-4	.250	13-16-29	3.2	3	0	2	5	0	0	11	1.2

SEASON HIGHS

Points

4 twice, last vs. TAMU-CC (11/24/12)

Rebounds

9 vs. Alabama A&M (11/18/12)

Assists

1 twice, last at Tulane (11/28/12)

Blocks

Steals

Field Goals

2 twice, last vs. TAMU-CC (11/24/12)

Field Goal Attempts

3 vs. Alabama A&M (11/18/12)

3-Point Field Goals

3-Point FG Attempts

Free Throws

1 at George Washington (12/12/12)

Free Throw Attempts

2 twice, last at GW (11/23/12)



Chadarryl CLAY

#5

Freshman • Guard • 5-7

Chattanooga, Tenn.

Girls Preparatory School

NOTES:

- Scored a career-high 15 points in home opener against Alabama State
- Dished out season-high 5 assists along with 7 points against Alabama A&M
- Made her collegiate debut against Maine, dishing out one assist in two minutes
- Started all four games on the Australian Summer Tour, averaging 10.5 points per game
- Scored a tour-high 20 points against the Cairns Dolphins in Australia
- Rated as the No. 77 overall player and No. 12 guard in the country by ESPN's HoopGurlz
- Led Chattanooga's Girls Preparatory School to back-to-back state championships
- Had her No. 5 jersey retired at her high school

Opponent	Start	Min.	FG-A	3PT-A	FT-A	O-D-T	PF	Ast.	TO	Blk.	St.	Pts.
vs. Maine	2		0-1	0-1	0-0	0-0-0	0	1	0	0	0	0
at North Carolina State						-- DID NOT PLAY --						
ALABAMA STATE	12		5-8	2-5	3-3	0-1-1	2	2	2	0	1	15
ALABAMA A&M	14		2-2	1-1	2-2	1-1-2	0	5	2	0	0	7
vs. San Diego State	5		0-0	0-0	0-0	1-0-1	1	0	0	0	0	0
vs. Texas A&M-Corpus Christi	5		0-1	0-1	0-2	0-0-0	0	0	3	0	0	0
at Tulane	2		0-2	0-1	0-0	1-0-1	1	0	1	0	0	0
HOFSTRA	6		1-3	1-3	0-0	1-1-2	0	1	3	0	0	3
at George Washington	4		0-0	0-0	0-0	0-0-0	0	0	0	0	0	0

TEMPLE

TENNESSEE-CHATTANOOGA

JACKSONVILLE

SAMFORD

ARKANSAS

at Missouri

OLE MISS

at Texas A&M

TENNESSEE

at Kentucky

at Alabama

LSU

at South Carolina

at Georgia

FLORIDA

ALABAMA

at Tennessee

MISSOURI

at Vanderbilt

MISSISSIPPI STATE

CLAY CAREER STATISTICS

Year	GP-GS	FG-FGA	Pct	3FG-FGA	Pct	FT-FTA	Pct	O-D-T (Reb.)	Avg	PF	FO	Ast	TO	Blk	Stl	Pts	Avg
2012-13	8-0	8-17	.471	4-12	.333	5-7	.714	4-3-7	0.9	4	0	9	11	0	1	25	3.1
TOTAL	8-0	8-17	.471	4-12	.333	5-7	.714	4-3-7	0.9	4	0	9	11	0	1	25	3.1

SEASON HIGHS

Points

15 vs. Alabama State (11/15/12)

Rebounds

2 vs. Alabama A&M (11/18/12)

Assists

5 vs. Alabama A&M (11/18/12)

Blocks

Steals

1 vs. Alabama State (11/15/12)

Field Goals

5 vs. Alabama State (11/15/12)

Field Goal Attempts

8 vs. Alabama State (11/15/12)

3-Point Field Goals

2 vs. Alabama State (11/15/12)

3-Point FG Attempts

5 vs. Alabama State (11/15/12)

Free Throws

3 vs. Alabama State (11/15/12)

Free Throw Attempts

3 vs. Alabama State (11/15/12)



Cedricka SWEETING

#25

Freshman • Guard • 5-3

Nassau, Bahamas

South Broward (Fla.)

NOTES:

- Made her collegiate debut against Maine, scoring 3 points in 10 minutes
- Scored season-high 6 points with 4 assists against Alabama A&M
- A native of the Bahamas, she played high school basketball in the Miami area
- Was a Sun-Sentinel Fab five honoree as a senior
- Averaged 17 points, 10 assists, 5 steals and 6 rebounds per game as a senior
- Played for the Bahamas in the 2008 Junior Olympics

Opponent	Start	Min.	FG-A	3PT-A	FT-A	O-D-T	PF	Asst.	TO	Blk.	Stl.	Pts.
vs. Maine	10		1-1	0-0	1-1	0-0-0	0	1	0	0	0	3
at North Carolina State	8		1-1	0-0	0-0	0-0-0	0	0	0	0	0	2
ALABAMA STATE	13		1-4	0-2	0-0	1-2-3	1	3	1	0	1	2
ALABAMA A&M	13		3-4	0-1	0-0	0-2-2	0	4	1	0	1	6
vs. San Diego State	7		0-0	0-0	0-0	0-0-0	0	0	0	0	0	0
vs. Texas A&M-Corpus Christi	3		0-0	0-0	0-0	0-0-0	0	2	1	0	0	0
at Tulane	2		0-0	0-0	0-0	0-0-0	0	0	0	0	0	0
HOFSTRA						-- DID NOT PLAY --						
at George Washington	2		0-0	0-0	0-0	0-0-0	0	0	1	0	0	0
TEMPLE												
TENNESSEE-CHATTANOOGA												
JACKSONVILLE												
SAMFORD												
ARKANSAS												
at Missouri												
OLE MISS												
at Texas A&M												
TENNESSEE												
at Kentucky												
at Alabama												
LSU												
at South Carolina												
at Georgia												
FLORIDA												
ALABAMA												
at Tennessee												
MISSOURI												
at Vanderbilt												
MISSISSIPPI STATE												

SWEETING CAREER STATISTICS

Year	GP-GS	FG-FGA	Pct	3FG-FGA	Pct	FT-FTA	Pct	O-D-T (Reb.)	Avg	PF	FO	Asst	TO	Blk	Stl	Pts	Avg
2012-13	8-0	6-10	.600	1-4	.250	0-0	.000	1-4-5	0.6	1	0	10	4	0	2	13	1.6
TOTAL	8-0	6-10	.600	1-4	.250	0-0	.000	1-4-5	0.6	1	0	10	4	0	2	13	1.6

SEASON HIGHS

Points

6 vs. Alabama A&M (11/18/12)

Rebounds

3 vs. Alabama State (11/15/12)

Assists

4 vs. Alabama A&M (11/18/12)

Blocks

Steals

1 twice, last vs. Alab. A&M (11/18/12)

Field Goals

3 vs. Alabama A&M (11/18/12)

Field Goal Attempts

4 twice, last vs. Ala. A&M (11/18/12)

3-Point Field Goals

3-Point FG Attempts

2 vs. Alabama State (11/15/12)

Free Throws

1 vs. Maine (11/9/12)

Free Throw Attempts

1 vs. Maine (11/9/12)



Tra'cee TANNER

#23

Freshman • Forward/Center • 6-3

Birmingham, Ala.

Hoover

NOTES:

- Scored season-high 14 points with 6 rebounds, a steal and a block at Tulane
- Made her collegiate debut against Maine, scoring 4 points with 3 rebounds in 16 minutes
- Played in all four games on the Australian Summer Tour, averaging 9.0 points per game; scored tour-high 16 points in the final game against Sutherland
- Rated as a 3-star prospect by ESPN's HoopGurlz and was ranked as the 68th best forward in the country
- Helped Hoover High School to a 31-3 record, a state championship and a No. 14 national ranking in the USA today Super 25 as a senior
- Will play alongside her older sister, Tyrese Tanner, who is a junior on the team this season
- The Tanner sisters are the third set of sisters to play together at Auburn, joining Sherell and Reneisha Hobbs, and Ruthie and Mae Ola Bolton

Opponent	Start	Min.	FG-A	3PT-A	FT-A	O-D-T	PF	Ast.	TO	Blk.	St.	Pts.
vs. Maine	16	2-3	0-0	0-0	0-0	2-1-3	3	0	0	1	0	4
at North Carolina State	17	1-3	0-0	0-0	1-2	0-0-2	1	1	0	0	0	3
ALABAMA STATE	8	0-2	0-0	0-0	0-0	1-1-2	1	0	2	0	1	0
ALABAMA A&M	17	2-4	0-0	0-0	1-1	1-2-3	2	1	0	0	1	5
vs. San Diego State	21	4-10	0-0	0-0	5-6	5-3-8	4	0	0	0	1	13
vs. Texas A&M-Corpus Christi	15	3-6	0-0	0-0	0-0	0-1-1	1	1	2	2	1	6
at Tulane	23	5-7	0-0	0-0	4-5	3-3-6	3	1	0	1	1	14
HOFSTRA	13	2-3	0-0	0-0	0-0	0-2-2	2	1	0	1	1	4
at George Washington	23	4-7	0-0	0-0	0-0	0-3-3	3	0	2	2	0	8

TEMPLE

TENNESSEE-CHATTANOOGA

JACKSONVILLE

SAMFORD

ARKANSAS

at Missouri

OLE MISS

at Texas A&M

TENNESSEE

at Kentucky

at Alabama

LSU

at South Carolina

at Georgia

FLORIDA

ALABAMA

at Tennessee

MISSOURI

at Vanderbilt

MISSISSIPPI STATE

TANNER CAREER STATISTICS

Year	GP-GS	FG-FGA	Pct	3FG-FGA	Pct	FT-FTA	Pct	O-D-T (Reb.)	Avg	PF	FO	Ast	TO	Blk	Stl	Pts	Avg
2012-13	9-0	23-45	.511	0-0	.000	11-14	.786	12-18-30	3.3	20	0	5	6	7	6	57	6.3
TOTAL	9-0	23-45	.511	0-0	.000	11-14	.786	12-18-30	3.3	20	0	5	6	7	6	57	6.3

SEASON HIGHS

Points

14 at Tulane (11/28/12)

Rebounds

8 vs. San Diego State (11/23/12)

Assists

1 5 times, last vs. Hofstra (12/9/12)

Blocks

2 twice, last at GW (12/12/12)

Steals

1 6 times, last vs. Hofstra (12/9/12)

Field Goals

5 at Tulane (11/28/12)

Field Goal Attempts

10 vs. San Diego State (11/23/12)

3-Point Field Goals

3-Point FG Attempts

Free Throws

5 vs. San Diego State (11/23/12)

Free Throw Attempts

6 vs. San Diego State (11/23/12)

Game 1: Nov. 9, 2012
Auburn 71, Maine 41
Reynolds Coliseum
Raleigh, N.C.
Sheraton Raleigh Wolfpack Invitational

Official Basketball Box Score -- Game Totals -- Final Statistics

Maine vs Auburn

11-09-12 2:30 p.m. ET at Raleigh, N.C. (Reynolds Coliseum)

VISITORS: Maine (0-1)

#	Player	fg-fga	3fg-fga	ft-fa	rebounds			pf	tp	a	to	blk	s	min
					of	de	tot							
04	Courtney Anderson*	2-5	1-4	0-0	2	3	5	1	5	1	5	0	2	25
23	Ashleigh Roberts*	1-5	0-2	0-0	1	2	3	0	2	1	4	0	1	18
31	Liz Wood*	3-11	1-4	1-1	0	4	4	1	8	2	1	0	1	31
34	Corinne Wellington*	0-1	0-0	0-0	1	3	4	2	0	0	1	0	0	14
50	Anna Heise*	5-12	0-1	2-2	1	3	4	2	12	1	5	1	1	30
02	Milica Mitrovic	1-2	1-2	0-0	0	0	0	1	3	1	0	0	1	7
03	Brittany Wells	1-6	0-4	0-0	0	1	1	0	2	0	0	0	0	14
12	Michal Assaf	0-3	0-2	0-0	0	0	0	0	1	0	2	0	0	19
13	Mikaela Gustafsson	4-6	1-3	0-0	0	3	3	0	9	0	0	0	0	19
15	Lauren Bodine	0-0	0-0	0-0	0	0	0	0	0	0	1	0	0	3
20	Sophie Weckstrom	0-0	0-0	0-0	0	0	0	0	0	3	4	0	0	11
30	Chantal Charles	0-0	0-0	0-0	2	5	7	0	0	1	4	0	0	19
TEAM					1	3	4							
Totals.....		17-51	4-22	3-3	8	27	35	8	41	12	26	1	7	200

HOME: Auburn (1-0)

#	Player	fg-fga	3fg-fga	ft-fa	rebounds			pf	tp	a	to	blk	s	min
					of	de	tot							
03	Najat Ouardad*	4-9	3-6	0-0	2	4	6	0	11	6	2	0	2	30
11	Courtney Strain*	1-6	0-3	0-0	0	0	0	1	2	0	1	0	1	13
14	Blanche Alverson*	3-7	2-3	0-0	1	5	6	0	8	2	6	0	3	32
32	Tyrese Tanner*	6-14	1-5	2-3	6	3	9	0	15	3	0	1	1	31
34	Peyton Davis*	3-5	0-0	0-1	2	1	3	2	6	0	1	0	0	25
00	Hasina Muhammad	8-23	3-6	1-2	1	2	3	1	20	1	1	1	2	25
05	Chadarryl Clay	0-1	0-1	0-0	0	0	0	0	0	1	0	0	0	2
20	Pascale West	1-1	0-0	0-0	1	1	2	0	2	0	2	0	0	7
22	Julie King	0-0	0-0	0-0	0	1	1	0	0	0	1	0	0	4
23	Tia'cee Tanner	2-3	0-0	0-0	2	1	3	3	4	0	0	1	0	16
25	Cedricka Sweeting	1-1	1-1	0-0	0	0	0	0	3	1	0	0	0	10
50	Cabriana Capers	0-0	0-0	0-0	1	1	2	1	0	0	1	0	0	5
TEAM					6	6								
Totals.....		29-70	10-25	3-6	15	25	40	8	71	14	15	3	9	200

Officials: Bonita Spence, Carla Fountain, Daryl Humphrey

Technical fouls: Maine-None. Auburn-None.

Attendance: 2109

Score by Periods

	1st	2nd	Total
Maine	23	18	41
Auburn	35	36	71

Sheraton Raleigh Wolfpack Invitational First Round

RALEIGH, N.C. - The Terri Williams-Flournoy Era got off to a good start Nov. 9 as the Auburn women's basketball team beat Maine, 71-41, in the first round of the Sheraton Raleigh Wolfpack Invitational.

Williams-Flournoy became just the second Auburn head coach to earn a win in their first game on the Tiger sideline. Susan "The Nun" Nunnally is the only other coach to do so, winning the season opener over Tuskegee at the start of the 1973-74 season.

Sophomore Hasina Muhammad led three Tigers in double figures, tying her career high with 20 points. It also marked the second game in a row for her to score 20 with the other being in the SEC Tournament game against Florida last season. Junior Tyrese Tanner neared a double-double with 15 points and a career-high nine rebounds while Najat Ouardad scored a career-high 11 points with six assists and a pair of steals.

Another component to the game was the Tigers' defense, forcing 26 Maine turnovers. Blanche Alverson led Auburn with three steals, along with eight points and six rebounds. Ouardad and Muhammad added two steals each. The Tigers were able to capitalize off the turnovers, scoring 28 points on the other end.

Game 2: Nov. 10, 2012
Auburn 71, North Carolina State 85
Reynolds Coliseum
Raleigh, N.C.
Sheraton Raleigh Wolfpack Invitational

Official Basketball Box Score -- Game Totals -- Final Statistics

Auburn vs NC State

11-10-12 7:30 p.m. at Raleigh, N.C. (Reynolds Coliseum)

VISITORS: Auburn (1-1)

#	Player	fg-fga	3fg-fga	ft-fa	rebounds			pf	tp	a	to	blk	s	min
					of	de	tot							
03	Najat Ouardad*	4-10	1-3	2-3	0	5	5	1	11	4	6	0	2	36
11	Courtney Strain*	0-3	0-0	0-0	0	0	0	0	3	0	0	1	0	15
14	Blanche Alverson*	4-13	2-9	2-2	2	5	7	1	12	3	1	3	3	35
32	Tyrese Tanner*	7-20	1-4	11-12	5	3	8	5	26	2	2	1	3	36
34	Peyton Davis*	2-2	0-0	1-4	3	2	5	5	0	0	0	0	1	20
00	Hasina Muhammad	4-15	0-3	4-4	1	2	3	4	12	1	2	0	1	29
22	Julie King	0-0	0-0	0-0	0	0	0	0	0	0	0	0	0	1
23	Tia'cee Tanner	1-3	0-0	1-2	0	2	2	1	3	1	0	0	0	17
25	Cedricka Sweeting	1-1	0-0	0-0	0	0	0	0	2	0	0	0	0	8
50	Cabriana Capers	0-0	0-0	0-0	0	0	0	0	0	0	1	0	0	3
TEAM					3	3	6							
Totals.....		23-67	4-19	21-27	14	22	36	20	71	11	13	4	10	200

HOME: North Carolina State (2-0)

#	Player	fg-fga	3fg-fga	ft-fa	rebounds			pf	tp	a	to	blk	s	min
					of	de	tot							
01	M. Goodwin-Coleman*	2-7	2-5	1-2	0	3	3	4	7	5	6	0	2	18
12	Krystal Barnett*	1-5	0-0	0-1	2	1	3	0	2	3	3	0	1	21
23	Marissa Kostanek*	9-17	4-11	2-2	1	2	4	24	4	0	2	0	2	31
34	Markeisha Gatling*	3-6	0-0	3-6	2	8	10	3	9	0	1	0	2	25
44	Kody Burke*	11-18	1-2	3-4	6	6	12	1	26	2	3	3	1	36
02	Len'Nique Brown	4-7	2-3	0-1	3	6	9	2	10	7	2	0	0	26
05	Breezy Williams	0-0	0-0	0-0	0	0	0	0	2	0	0	0	0	3
10	Ashley Eli	2-6	1-2	2-2	3	4	7	2	7	2	1	0	1	24
52	Kiana Evans	0-3	0-0	0-0	0	1	4	0	1	0	0	0	0	16
TEAM					2	3	5							
Totals.....		32-69	10-23	11-18	19	33	52	22	85	20	20	3	9	200

Officials: Bonita Spence, Carla Fountain, Luis Gonzalez

Technical fouls: Auburn-None. NC State-None.

Attendance: 1586

Score by Periods

	1st	2nd	Total
Auburn	33	38	71
North Carolina State	37	48	85

Sheraton Raleigh Wolfpack Invitational Championship Game

RALEIGH, N.C. - The Auburn women's basketball team fell to 1-1 on the season on Nov. 10, dropping an 85-71 decision to host North Carolina State in the Sheraton Raleigh Wolfpack Invitational Championship Game. Junior Tyrese Tanner scored a career-high 26 points to lead the Tigers.

For their efforts in the tournament, Tanner and Hasina Muhammad were named to the All-Tournament Team.

Auburn led by nine early in the first half, but a 10-4 Wolfpack run brought them within two. North Carolina State then closed out the half by out-scoring Auburn 14-8 to take a 37-33 lead into the locker room. North Carolina State stayed in control in the second half, out-scoring Auburn 48-38 in the period and leading by as many as 17 points.

Auburn finished the game with four players in double figures, led by Tanner's 26. Blanche Alverson and Hasina Muhammad scored 12 points each while Najat Ouardad scored 11. Alverson hit two 3-pointers in the game, moving her into fifth place all-time at Auburn in career 3-pointers with 150. She surpassed Kristen Mulligan, who hit 149 in her career.

Defensively, Auburn forced 20 Wolfpack turnovers, scoring 22 points off them. It marked the second game in a for the Tigers to eclipse the 20-plateau in both categories.

Game 3: Nov. 15, 2012
Auburn 80, Alabama State 43
Auburn Arena
Auburn, Ala.

Official Basketball Box Score -- Game Totals -- Final Statistics

Alabama State vs Auburn

11-15-12 6 p.m. at Auburn, Ala. -- Auburn Arena

VISITORS: Alabama State (0-1)

#	Player	fg-fga	3fg-fga	ft-fa	rebounds			pf	tp	a	to	blk	s	min
					of	de	tot							
11	Smith, Nakiya*	9-18	4-7	3-4	1	1	2	2	25	1	6	0	0	36
21	Jones, Ashley*	2-5	0-0	6-8	2	5	7	2	10	0	4	1	0	30
34	Windom, RoTasha*	1-2	0-0	0-0	2	2	4	0	2	0	0	0	0	14
12	Arrington, Talia*	0-2	0-1	0-1	1	3	4	3	0	1	4	0	1	30
15	Paige, Kierra*	0-9	0-6	0-1	0	1	1	2	0	0	4	1	0	19
14	Peoples, Jasmine	0-0	0-0	0-0	0	2	2	0	0	0	0	1	0	5
23	Shields, Durriga	0-3	0-0	0-0	1	0	1	0	0	0	5	0	1	5
24	Henderso, Erica	1-6	1-6	0-0	1	1	2	0	3	2	1	0	2	18
31	Gazaway, Danielle	1-8	1-6	0-0	0	1	1	5	3	2	1	0	1	22
35	Howard, Brittney	0-1	0-1	0-0	0	4	4	2	0	1	0	0	0	21
TEAM					4	4	8							
Totals.....		14-54	6-27	9-14	12	24	36	16	43	7	26	2	5	200

HOME TEAM: Auburn (2-1)

#	Player	fg-fga	fg-fga	ft-fa	of	de	tot	pf	tp	a	to	blk	s	min
14	Blanche Alverson*	7-11	1-3	2-2	3	6	9	2	17	1	2	2	2	23
32	Tyrese Tanner*	6-14	0-1	1-4	3	4	7	1	13	1	0	2	1	28
34	Peyton Davis*	4-8	0-0	4-6	3	4	7	2	12	1	1	1	0	21
00	Hasina Muhammad*	7-13	0-0	1-	2	3	6	0	15	2	1	1	3	22
03	Najat Ouardad*	0-1	0-1	0-1	1	3	4	0	5	3	0	2	2	20
04	Sweeting, Cedricka	1-4	0-2	0-0	1	2	3	2	3	1	0	1	0	13
11	Courtney Strain	1-6	0-3	2-2	1	2	3	0	4	2	1	0	1	15
20	Pascal West	0-2	0-0	0-0	1	1	3	0	0	0	0	2	2	11
21	Clye, Chadarryl	5-8	2-5	3-3	0	1	1	2	15	2	2	0	1	12
22	Julie King	1-2	0-0	0-1	0	2	2	2	2	6	0	1	0	23
35	Capner, Cebriano	0-2	0-0	0-1	3	2	4	0	0	1	0	0	0	14
44	Tanner, Tra'cee	0-2	0-0	0-0	1	1	2	1	0	0	2	0	1	8
TEAM					3	3	6							
Totals.....		32-73	3-15	13-21	21	31	52	16	80	23	15	8	16	200

Game 4: Nov. 18, 2012
Auburn 93, Alabama A&M 44
Auburn Arena
Auburn, Ala.

Official Basketball Box Score -- Game Totals -- Final Statistics

Alabama A&M vs Auburn

11-18-12 2:00 p.m. at Auburn Arena -- Auburn, Ala.

VISITORS: Alabama A&M (1-2)

#	Player	fg-fga	3fg-fga	ft-fa	of	de	tot	pf	tp	a	to	blk	s	min
23	Johnson, Ebony*	1-4	0-0	2-2	2	0	2	1	4	4	4	0	0	28
55	Robertson, NeDra*	2-5	0-0	0-1	3	3	6	1	4	1	1	0	0	26
05	Strickland, Brittney*	0-6	0-2	0-0	0	0	0	2	0	1	4	0	2	16
22	Davis, Shundray*	2-3	1-1	0-2	0	2	2	1	5	2	5	0	2	23
25	ONeal, Danielle*	1-4	1-3	0-0	0	1	1	1	3	0	0	0	1	20
03	Strickland, Alyssa	5-11	5-10	0-0	0	4	4	3	15	2	4	0	0	30
12	Sippial, Taylor	3-8	2-5	0-0	1	0	1	0	8	1	1	0	1	13
14	Moffett, Shaterion	0-1	0-0	0-1	0	1	1	0	0	0	1	0	0	6
21	Hopper, Christyn	0-6	0-5	1-2	1	0	1	0	1	1	2	0	0	12
24	Sanders, Jasmine	1-3	0-0	0-0	3	0	3	3	2	0	1	0	0	10
42	Richardson, Shabron	0-0	0-0	0-0	1	0	1	0	0	0	0	1	0	5
50	Lowery, Jessica	1-3	0-0	0-0	0	1	1	0	2	0	0	0	0	11
TEAM														
Totals.....		16-54	9-26	3-7	15	12	27	13	44	12	23	1	6	200

HOME: Auburn (3-1)

#	Player	fg-fga	3fg-fga	ft-fa	of	de	tot	pf	tp	a	to	blk	s	min
14	Alverson, Blanche*	6-9	2-2	0-0	1	3	4	1	14	3	1	1	1	25
34	Davis, Peyton*	3-6	0-0	3-3	2	4	6	0	9	1	2	1	3	22
00	Muhammad, Hasina*	10-14	0-0	1-2	4	3	7	3	21	2	1	0	1	19
03	Ouardad, Najat*	1-3	1-1	1-2	0	0	0	1	4	4	1	0	5	19
32	Tanner, Tyrese*	2-6	0-0	1-1	0	0	0	1	5	3	1	0	1	15
04	Sweeting, Cedricka	3-4	0-1	0-0	0	2	2	0	6	4	1	0	1	13
11	Strain, Courtney	5-8	1-1	1-2	1	1	2	0	12	1	1	0	1	20
20	West, Pascale	3-5	0-0	0-0	1	1	2	6	0	0	0	0	0	14
21	Clay, Chadarryl	2-2	1-1	2-2	1	1	2	0	7	5	2	0	0	14
22	King, Julie	0-2	0-0	0-0	0	1	0	0	2	1	2	1	1	11
35	Capers, Cabriana	2-3	0-0	0-0	4	5	9	0	4	1	0	0	0	11
44	Tanner, Tra'cee	2-4	0-0	1-1	1	2	3	2	5	1	0	0	1	17
TEAM														
Totals.....		39-66	5-6	10-13	16	24	40	10	93	27	11	4	15	200

Officials: Brian Enterline, Ed Sidlosky, Brian Garland

Technical fouls: Alabama A&M-None. Auburn-None.

Attendance: 1768

Score by Periods	1st	2nd	Total
Alabama A&M	26	18	44
Auburn	49	44	93

AUBURN - Hasina Muhammad scored a career-high 21 points with seven rebounds and Blanche Alverson added 14 points as Auburn women's basketball defeated Alabama A&M 93-44 on Nov. 18 in Auburn Arena.

Three-point plays by both Muhammad and Tyrese Tanner gave Auburn the early advantage. A layup by Muhammad with 12:39 left made it 18-7 in favor of the Tigers. Auburn opened its lead out to 31-11 on the back of a 16-4 run that was capped by four-straight by Pascale West.

Muhammad gave Auburn its largest first half lead of 24 points on a jumper with 3:18 remaining before the break.

The Tigers opened the second half with a 20-3 run over the first seven minutes of play to ice the game. Two at the line by Peyton Davis pushed Auburn's lead to 50, 85-35, with 5:23 remaining in the contest.

Auburn held its largest lead of 53 points with 2:15 remaining. The Tigers out-scored Alabama A&M 44-18 in the second half and scored 34 points off 23 turnovers in the game.

Alyssa Strickland scored 15 points to lead the Bulldogs. Courtney Strain tied her career high with 12 points, while Davis had nine points, six rebounds and three steals. Chadarryl Clay scored seven points and tallied five of Auburn's season-high 27 assists.

Game 5: Nov. 23, 2012
Auburn 57, San Diego State 78
Coors Events Center
Boulder, Colo.
Omni Hotels Classic

Official Basketball Box Score -- Game Totals -- Final Statistics

San Diego State vs Auburn

11-23-12 5 p.m. MT at Boulder, Colo. (Coors Events Center)

VISITORS: San Diego State (3-1)

#	Player	fg-fga	3fg-fga	ft-fa	of	de	tot	pf	tp	a	to	blk	s	min
22	CLARK, Gabrielle*	3-6	1-3	2-2	0	0	0	3	9	3	0	1	0	30
25	AMARIKWA, Erimma*	1-7	0-0	2-4	2	4	6	2	4	1	3	1	2	35
42	NAHINU, Malia*	5-8	0-1	2-3	3	5	8	5	12	0	3	1	1	28
01	HOPKINS, Chelsea*	4-7	3-3	3-3	2	7	9	2	14	7	0	0	1	36
54	CLEMENTS, Courtney*	10-23	6-13	0-0	1	4	5	3	26	1	4	0	3	38
02	HUNTER, Khristina	1-1	0-0	2-2	1	0	1	3	4	0	1	0	0	6
04	NOVAK, Niki	0-0	0-0	0-0	0	0	0	0	0	0	0	0	0	+
05	CULBERSON, Chairese	0-0	0-0	0-0	0	0	0	0	0	0	1	0	0	2
11	HARVEY, Ahijalee	2-5	1-4	0-0	0	0	0	3	5	2	2	0	1	10
12	SCURRY, Deajonae	2-3	0-1	0-0	0	3	3	4	0	2	0	0	1	15
TEAM														
Totals.....		28-60	11-25	11-14	11	25	36	24	78	14	16	3	8	200

HOME: Auburn (3-2)

#	Player	fg-fga	3fg-fga	ft-fa	of	de	tot	pf	tp	a	to	blk	s	min
32	Tyrese Tanner*	6-14	0-1	5-5	0	4	4	3	17	0	4	0	3	29
34	Peyton Davis*	0-4	0-0	1-2	0	2	2	3	1	0	2	0	1	24
00	Hasina Muhammad*	2-12	0-0	6-10	3	3	6	0	10	3	2	1	1	28
03	Najat Ouardad*	1-3	0-2	2-2	1	5	6	1	4	4	0	0	0	29
14	Blanche Alverson*	2-9	1-3	2-2	2	2	4	0	7	3	1	0	1	38
04	Sweeting, Cedricka*	0-0	0-0	0-0	0	0	0	0	0	0	0	0	0	7
11	Courtney Strain*	2-3	1-1	0-0	0	0	0	2	5	0	1	0	0	16
20	Pascale West*	0-0	0-0	0-0	0	0	0	0	0	0	0	0	0	1
21	Clay, Chadarryl*	0-0	0-0	0-0	1	0	1	0	0	0	0	0	0	5
22	Julie King*	0-0	0-0	0-0	0	0	0	0	0	0	0	0	0	1
35	Capers, Cabriana*	0-0	0-0	0-2	0	0	0	0	0	0	0	0	0	1
44	Tanner, Tra'cee*	4-10	0-0	5-6	5	3	8	4	13	0	0	0	1	21
TEAM														
Totals.....		17-55	2-7	21-29	17	22	39	14	57	10	17	1	7	198

Officials: Robert Scofield, Karen Lasuik, Mazetta Garrett

Technical fouls: San Diego State-None. Auburn-None.

Attendance: 1245

Score by Periods	1st	2nd	Total
San Diego State	29	49	78
Auburn	24	33	57

26th Annual Omni Hotels Classic First Round

BOULDER, Colo. - Auburn got down early and overcame a double-digit deficit to tie the game in the second half, but could not hold off a late San Diego State run as the Tigers dropped a 78-57 decision to the Aztecs Nov. 23 in the first round of the Omni Hotels Classic in Boulder, Colo.

Auburn's Tanner sisters led the way for the Tigers. Junior Tyrese Tanner was the top scorer with 17 points, along with four rebounds and three steals, while Tra'cee Tanner followed with 13 points and a team-high eight rebounds off the bench. Hasina Muhammad rounded out the double-digit scorers with 10.

Auburn got down early against the Aztecs, trailing by as many as 15 points in the first half after San Diego State took a 24-9 lead. The Tigers rallied back, however, out-scoring the Aztecs 15-5 to close out the period and holding SDSU scoreless for the last 4:06. Tra'cee Tanner scored six of seven first-half points in the run.

The Tigers kept the momentum rolling into the second half and tied the game up at 36-36 with 15:05 to play after a 3-pointer from Courtney Strain. That would be the final run, though as San Diego State scored the next seven points and out-scored Auburn 42-21 the rest of the game.

Game 6: Nov. 24, 2012
Auburn 72, Texas A&M-Corpus Christi 57
Coors Events Center
Boulder, Colo.
Omni Hotels Classic Consolation Game

Official Basketball Box Score -- Game Totals -- Final Statistics

Auburn vs Texas A&M-Corpus Christi

11-24-12 5 p.m. MT at Coors Events Center, Boulder Colorado

VISITORS: Auburn (4-2)

#	Player	fg-fga	3fg-fga	ft-fa	of	de	tot	pf	tp	a	to	blk	s	min
14	Alverson, Blanche*	1-3	0-2	0-0	0	5	5	0	2	1	1	1	3	20
34	Davis, Peyton*	6-11	0-0	3-5	5	1	6	3	15	1	3	0	0	33
00	Muhammad, Hasina*	6-9	1-1	3-4	3	1	4	3	16	1	5	1	4	19
03	Ouardad, Najat*	2-3	0-0	0-0	0	3	3	2	4	8	4	0	3	26
32	Tanner, Tyrese*	4-6	0-1	3-3	0	4	4	2	11	0	3	3	2	21
04	Sweeting, Cedricka	0-0	0-0	0-0	0	0	0	0	2	1	0	0	0	3
11	Strain, Courtney	7-8	0-1	0-0	0	1	1	0	14	0	1	0	2	25
21	Clay, Chadarryl	0-1	0-1	0-2	0	0	0	0	0	0	0	0	3	0
22	King, Julie	0-4	0-0	0-1	1	4	5	2	0	2	0	0	1	10
35	Capers, Cabriana	2-2	0-0	0-0	2	5	7	2	4	0	2	0	0	13
44	Tanner, Tra'cee	3-6	0-0	0-0	0	1	1	1	6	1	2	2	2	15
TEAM														
Totals.....		31-53	1-6	9-15	12	25	37	15	72	16	25	7	16	200

HOME TEAM: Texas A&M-Corpus Christi (0-6)

#	Player	fg-fga	3fg-fga	ft-fa	of	de	tot	pf	tp	a	to	blk	s	min
22	Plummer, Ashanti*	1-3	0-0	0-1	0	1	1	3	2	0	2	0	0	23
03	Darley, Ashley*	4-12	2-6	2-2	7	0	7	2	12	2	3	0	2	22
10	Blount, Janae*	7-16	4-9	3-3	0	0	0	3	21	1	3	0	3	28
21	Jammer, Jessica*	2-6	0-0	0-1	0	4	4	2	4	2	6	1	1	24
33	Gregory, Taryn*	2-5	1-3	0-0	3	2	5	0	5	3	2	0	3	25
01	Amboree, Trish	0-1	0-1	0-0	0	0	0	1	0	0	0	0	0	3
05	Roberts, Alisa	2-6	2-5	0-0	0	2	2	0	6	0	2	0	0	12
12	Anderson-Sparks, M.	1-7	1-5	2-2	1	0	1	0	5	0	2	0	1	14
23	Huff, Brandi	1-3	0-2	0-0	1	0	1	0	2	1	2	0	0	17
24	Taylor, Verne'quo	0-1	0-0	0-0	0	1	1	2	0	2	2	0	0	17
30	Schwartz, Morgan	0-1	0-0	0-0	1	3	4	0	0	1	1	0	0	14
31	Alva, Sarah	0-0	0-0	0-0	0	0	0	1	0	0	0	0	0	1</

Game 7: Nov. 28, 2012
Auburn 70, Tulane 65
Devlin Fieldhouse
New Orleans, La.

Official Basketball Box Score -- Game Totals -- Final Statistics
 Auburn vs Tulane
 11-28-12 7:07 p.m. at New Orleans, La. (Devlin Fieldhouse)

VISITORS: Auburn (5-2)

		rebounds																	
#	Player	fg	fga	3fg	3fga	ft	fta	of	de	tot	pf	tp	a	to	blk	s	min		
14	Alverson, Blanche*	9-14	3-7	0-0	0	5	5	3	21	1	0	3	3	3	3	37			
32	Tanner, Tyrese*	2-8	0-0	0-0	0	0	0	4	4	0	5	1	3	18					
34	Davis, Peyton*	1-6	0-0	2-5	2	7	9	2	4	0	2	0	2	0	23				
00	Muhammad, Hasina*	8-18	0-0	5-9	7	1	8	3	21	2	1	2	1	33					
03	Ouardad, Najat*	0-2	0-1	2-2	3	3	6	2	7	2	0	1	33						
04	Sweeting, Cedricka	0-0	0-0	0-0	0	0	0	0	0	0	0	0	0	2					
11	Strain, Courtney	1-2	0-1	0-0	1	0	1	0	2	0	0	0	0	10					
21	Clay, Chadarryl	0-2	0-1	0-0	1	0	1	0	1	0	0	1	0	2					
22	King, Julie	1-6	0-2	0-0	2	1	3	4	2	3	0	0	0	16					
35	Capers, Cabriana	0-1	0-0	0-0	1	0	1	0	0	1	0	0	0	3					
44	Tanner, Tra'cee	5-7	0-0	4-5	3	3	6	3	14	1	0	1	1	23					
TEAM																			
Totals.....																			

HOME TEAM: Tulane (5-1)

		rebounds																	
#	Player	fg	fga	3fg	3fga	ft	fta	of	de	tot	pf	tp	a	to	blk	s	min		
22	DALE, Tiffany*	3-7	0-0	0-2	3	1	4	3	6	0	5	2	1	32					
31	McDONALD, Brittany*	1-2	0-0	0-0	1	2	3	1	2	1	0	0	0	10					
21	GRAYSON, Olivia*	2-9	1-4	2-2	1	1	2	2	7	2	4	0	1	17					
24	KAUTSKY, Janique*	3-5	2-4	8-8	0	2	2	2	16	2	0	0	0	28					
25	SNOW, Tyria*	0-3	0-2	0-0	0	4	1	0	3	2	0	0	0	18					
15	EBOMWONYI, Adesewa	1-2	1-2	1-2	3	0	3	1	4	1	0	1	0	15					
20	BLAGG, Danielle	3-8	2-5	0-1	0	1	1	1	8	3	1	0	0	18					
23	KAPLAN, Jamie	1-3	1-2	0-1	0	2	2	1	3	5	1	0	0	22					
30	JONES, Tierra	1-2	0-0	0-0	1	0	1	0	2	0	0	0	1	6					
32	BIBBINS, Whitney	6-12	0-0	2-5	3	4	7	1	14	1	0	1	0	26					
45	DURU, Chinwe	0-0	0-0	3-4	1	2	3	2	3	0	0	0	0	8					
TEAM																			
Totals.....																			

Officials: Mary Day, Roy Gulbeyan, Eric Koch

Technical fouls: Auburn-None. Tulane-None.

Attendance: 1236

Score by Periods	1st	2nd	Total
Auburn	23	47	70
Tulane	39	26	65

NEW ORLEANS, La. - Blanche Alverson and Hasina Muhammad scored 21 points each, leading the Auburn women's basketball team in a comeback 70-65 win at Tulane Wednesday night. The Tigers were down by 16 at halftime, but rallied back to hand the Green Wave their first loss of the season.

Auburn took a quick 7-2 lead to start the game, but Tulane rallied to score 13 straight points to take a lead it would not give up for most of the game. The Green Wave kept on rolling through the period to take a 16-point, 39-23 lead at halftime.

For everything that Auburn did wrong in the first half, the Tigers did right in the second. After shooting 30 percent in the opening period, Auburn came back to shoot 50 percent in the second to finish the game at 40.9 percent.

Auburn also limited Tulane to 23.1 percent shooting in the second half after surrendering 55.6 percent in the first. The Tigers also forced just three Green Wave turnovers in the first half, but came back to force 10 in the second, scoring 17 points off turnovers.

Alverson, Muhammad and Tra'Cee Tanner led the charge in the second half, hitting timely shots and clutch free throws. Alverson scored 11 of her 21 in the second half while Muhammad scored 16 of hers. Tra'Cee Tanner came off the bench to score a career-high 14 points with six rebounds.

Game 8: Dec. 9, 2012
Auburn 68, Hofstra 58
Auburn Arena
Auburn, Ala.

Official Basketball Box Score -- Game Totals -- Final Statistics
 Hofstra vs Auburn
 12-09-12 2 p.m. CT at Auburn, Ala. -- Auburn Arena

VISITORS: Hofstra (1-7)

		rebounds																	
#	Player	fg	fga	3fg	3fga	ft	fta	of	de	tot	pf	tp	a	to	blk	s	min		
30	Evans, Shante*	3-11	0-0	3-4	7	9	16	5	9	3	4	1	0	34					
40	Onyeukwu, Anna*	9-14	0-2	3-3	2	4	6	1	21	2	2	0	1	27					
02	Bond, Candace*	0-2	0-0	3-3	0	2	2	4	3	0	2	0	2	13					
05	Thomas, Andreana*	3-9	2-5	0-0	1	3	4	2	8	6	15	0	2	36					
32	Payton, Annie*	3-14	0-5	2-3	1	4	5	2	8	2	4	0	3	37					
01	Jackson, Asia	1-3	1-3	0-0	0	0	0	1	3	0	0	0	0	11					
03	Epps, Sydney	0-0	0-0	0-0	0	1	1	0	0	0	1	0	0	4					
23	Green, Devan	1-6	0-0	4-5	2	4	6	1	6	0	0	0	0	1	30				
24	Thomas-Palmer, Dee	0-0	0-0	0-0	0	2	2	2	2	0	0	0	0	1	8				
TEAM																			
Totals.....																			

HOME TEAM: Auburn (6-2)

		rebounds																	
#	Player	fg	fga	3fg	3fga	ft	fta	of	de	tot	pf	tp	a	to	blk	s	min		
00	Muhammad, Hasina*	5-9	0-0	2-5	3	2	5	3	12	2	2	1	2	28					
14	Alverson, Blanche*	5-9	1-3	0-0	0	5	5	2	11	2	2	0	6	35					
34	Davis, Peyton*	6-12	0-0	1-4	5	7	12	3	13	1	3	3	3	29					
03	Ouardad, Najat*	3-5	2-4	0-2	2	1	3	2	8	8	5	0	3	33					
32	Tanner, Tyrese*	4-18	0-2	5-6	1	2	3	1	13	2	1	1	3	33					
11	Strain, Courtney	2-6	0-1	0-0	0	0	0	1	4	1	0	0	0	11					
20	West, Pascale	0-1	0-0	0-0	0	1	1	0	0	0	0	0	0	2					
21	Clay, Chadarryl	1-3	1-3	0-0	1	1	2	0	3	1	3	0	0	6					
22	King, Julie	0-0	0-0	0-0	0	1	1	0	0	0	0	0	0	7					
35	Capers, Cabriana	0-0	0-0	0-0	0	0	0	0	0	0	0	0	0	3					
44	Tanner, Tra'cee	2-3	0-0	0-0	0	2	2	4	1	0	1	1	1	13					
TEAM																			
Totals.....																			

Officials: Cameron Inouye (R), Michael Price (U1), Luis Gonzalez (U2)

Technical fouls: Hofstra-None. Auburn-None.

Attendance: 1535

Score by Periods	1st	2nd	Total
Hofstra	23	35	58
Auburn	39	29	68

AUBURN - The Auburn women's basketball team picked up a win after an 11-day layoff, as it defeated Hofstra, 68-58, Dec. 9 in Auburn.

Auburn had four players score in double figures, led by Peyton Davis and Tyrese Tanner, each with 13. Hasina Muhammad added 12, and Blanche Alverson tallied 11. It was the fourth time this season that the Tigers had four or more players in double figures. Najat Ouardad tied her career high with eight assists while also scoring eight points.

In addition to leading Auburn in scoring, Davis also earned her first career double-double as she grabbed a career-high 12 rebounds in the effort. It was the first double-double for the Tigers since Blanche Alverson's in last year's season-opener against Mercer.

The Tigers got off to a sluggish start in the opening minutes of the first half, but picked up the intensity to start a 13-0 run with 9:01 remaining. Alverson and Tyrese Tanner combined for 11 of the 13 points during the run. Auburn allowed just five points in the final nine minutes of the half and held Hofstra to just one field goal from Andreana Thomas with 1:42 to play. The Tigers held a 16-point lead at halftime with the score 39-23.

AU led by as many as 20 in the second half, but let the gap close to four late in the game. The Tigers were able to hold off the Pride in the final two minutes for the 68-58 win.

Game 9: Dec. 12, 2012
Auburn 69, George Washington 59
Charles E. Smith Center
Washington, D.C.

Official Basketball Box Score -- Game Totals -- Final Statistics
 Auburn vs George Washington
 12-12-12 7 p.m. ET at Washington, D.C. (Smith Center)

VISITORS: Auburn (7-2)

#	Player	fg	fga	3fg	3fga	ft	fta	of	de	tot	pf	tp	a	to	blk	s	min
14	Alverson, Blanche*	5-12	3-5	1-3	0	5	5	2	14	1	0	1	0	1	0	31	
34	Davis, Peyton*	1-2	0-0	0-2	0	3	3	1	2	0	1	2	0	1	2	0	14
00	Muhammad, Hasina*	8-15	0-0	5-9	3	7	10	3	21	1	5	2	9	30			
03	Ouardad, Najat*	2-8	1-3	5-8	4	5	9	1	10	7	4	0	3	34			
32	Tanner, Tyrese*	4-16	0-1	0-0	2	3	5	3	8	5	4	3	3	37			
04	Sweeting, Cedricka	0-0	0-0	0-0	0	0	0	0	0	0	1	0	1	0	0	2	
11	Strain, Courtney	1-3	0-1	1-2	0	0	0	2	3	0	0	0	0	0	0	15	
21	Cloy, Chadarnyl	0-0	0-0	0-0	0	0	0	0	0	0	0	0	0	0	0	4	
22	King, Julie	0-0	0-0	0-0	0	0	0	0	0	0	0	0	0	0	0	1	
35	Capers, Cebrian	1-2	0-0	1-2	4	2	6	0	3	0	0	0	0	0	0	9	
44	Tanner, Tra'cee	4-7	0-0	0-0	0	3	3	3	8	0	2	2	2	0	23		
TEAM		5 2 7															
Totals.....		26-65	4-10	13-26	18	30	48	15	69	14	17	10	15	200			

2012-13 Season Statistics

RECORD:	OVERALL	HOME	AWAY	NEUTRAL
ALL GAMES	7-2	3-0	2-1	2-1
CONFERENCE	0-0	0-0	0-0	0-0
NON-CONFERENCE	7-2	3-0	2-1	2-1

			Total				3-Point		F-Throw		Rebounds															
##	Player	gp-gs	min	avg	fg-fga	fg%	3fg-fga	3fg%	ft-fa	ft%	off	def	tot	avg	pf	dq	a	to	blk	stl	pts	avg				
00	Hasina Muhammad	9-7	233	25.9	58-128	.453	4-10	.400	28-47	.596	28	24	52	5.8	20	0	15	20	9	24	148	16.4				
32	Tyrese Tanner	9-9	248	27.6	41-116	.353	2-15	.133	28-34	.824	17	23	40	4.4	20	1	16	20	12	20	112	12.4				
14	Blanche Alverson	9-9	276	30.7	42-87	.483	15-37	.405	7-9	.778	9	41	50	5.6	11	0	17	14	11	22	106	11.8				
34	Peyton Davis	9-9	211	23.4	26-56	.464	0-0	.000	15-32	.469	22	31	53	5.9	21	1	4	15	7	8	67	7.4				
44	Tra'cee Tanner	9-0	153	17.0	23-45	.511	0-0	.000	11-14	.786	12	18	30	3.3	20	0	5	6	7	6	57	6.3				
03	Najat Ouardad	9-9	260	28.9	17-44	.386	8-21	.381	12-20	.600	13	29	42	4.7	12	0	53	31	0	21	54	6.0				
11	Courtney Strain	9-2	140	15.6	20-45	.444	2-12	.167	4-6	.667	3	4	7	0.8	9	0	4	6	0	5	46	5.1				
21	Chadarryl Clay	8-0	50	6.3	8-17	.471	4-12	.333	5-7	.714	4	3	7	0.9	4	0	9	11	0	1	25	3.1				
04	Cedricka Sweeting	8-0	58	7.3	6-10	.600	1-4	.250	0-0	.000	1	4	5	0.6	1	0	10	4	0	2	13	1.6				
20	Pascale West	5-0	35	7.0	4-9	.444	0-0	.000	0-0	.000	1	3	4	0.8	6	0	0	2	2	2	8	1.6				
35	Cabriana Capers	9-0	62	6.9	5-10	.500	0-0	.000	1-4	.250	13	16	29	3.2	3	0	2	5	0	0	11	1.2				
22	Julie King	9-0	74	8.2	2-14	.143	0-2	.000	0-2	.000	3	10	13	1.4	8	0	13	3	2	4	4	0.4				
	Team										23	20	43					4								
	Total.....	9	1800		252-581	.434	36-113	.319	111-175	.634	149	226	375	41.7	135	2	148	141	50	115	651	72.3				
	Opponents.....	9	1800		188-523	.359	67-203	.330	87-127	.685	127	213	340	37.8	149	-	125	201	22	66	530	58.9				

TEAM STATISTICS	AU	OPP
SCORING	651	530
Points per game	72.3	58.9
Scoring margin	+13.4	-
FIELD GOALS-ATT	252-581	188-523
Field goal pct	.434	.359
3 POINT FG-ATT	36-113	67-203
3-point FG pct	.319	.330
3-pt FG made per game	4.0	7.4
FREE THROWS-ATT	111-175	87-127
Free throw pct	.634	.685
F-Throws made per game	12.3	9.7
REBOUNDS	375	340
Rebounds per game	41.7	37.8
Rebounding margin	+3.9	-
ASSISTS	148	125
Assists per game	16.4	13.9
TURNOVERS	141	201
Turnovers per game	15.7	22.3
Turnover margin	+6.7	-
Assist/turnover ratio	1.0	0.6
STEALS	115	66
Steals per game	12.8	7.3
BLOCKS	50	22
Blocks per game	5.6	2.4
ATTENDANCE	6814	8119
Home games-Avg/Game	3-2271	3-1076
Neutral site-Avg/Game	-	3-1631

Date	Opponent		Score	Att.
+ 11-09-12	vs Maine	w	71-41	2109
+ 11-10-12	at NC State	L	71-85	1586
	11-15-12	w	80-43	3511
	11-18-12	w	93-44	1768
& 11-23-12	vs San Diego State	L	57-78	1245
& 11-24-12	vs Texas A&M-Corpus Chr	w	72-57	1538
	11-28-12	w	70-65	1236
	12-09-12	w	68-58	1535
	12-12-12	w	69-59	405
+ - Sheraton Raleigh Wolfpack Invitational (Raleigh, N.C.)				
& - Omni Hotels Classic (Boulder, Colo.)				
* - Southeastern Conference game				

Score by Periods	1st	2nd	Totals
Auburn	307	344	651
Opponents	249	281	530