



2012-13 Auburn Women's Basketball

Game 7 • November 28, 2012

at Tulane

18 NCAA Tournament Appearances • Three Final Fours • Five SEC Titles • Four SEC Tournament Titles

AUBURN MEDIA RELATIONS

Associate Director/WBB Contact: Matt Crouch • mcrouch@auburn.edu

Auburn Athletic Complex / 392 South Donahue / Auburn, AL 36849

O: 334.844.9800 • C: 334.740.4109 • F: 334.844.9807

www.AuburnTigers.com • www.AuburnWomensHoops.com

Twitter: @AuburnWBB | @MattCrouchAU • Facebook: [facebook.com/AUWBB](https://www.facebook.com/AUWBB)

2012-13 SCHEDULE/RESULTS

AUGUST

7	1 - at Logan Thunder [Exhibition]	L, 86-54
10	1 - at Cairns Dolphins [Exhibition]	W, 81-71
12	1 - at Sydney Flames [Exhibition]	W, 67-58
13	1 - at Sutherland Sharks [Exhibition]	W, 84-46

NOVEMBER

9	2 - vs. Maine	W, 71-41
10	2 - at North Carolina State	L, 85-71
15	Alabama State	W, 80-43
18	Alabama A&M	W, 93-44
23	3 - vs. San Diego State	L, 78-57
24	3 - vs. Texas A&M-Corpus Christi	W, 72-57
28	at Tulane	7 p.m.

DECEMBER

9	Hofstra	2 p.m.
12	at George Washington	6 p.m.
16	Temple	2 p.m.
19	Tennessee-Chattanooga	6 p.m.
22	Jacksonville	2 p.m.
29	Samford	2 p.m.

JANUARY

3	Arkansas*	6 p.m.
6	at Missouri*	2 p.m.
10	Ole Miss*	6 p.m.
13	at Texas A&M*	2 p.m.
17	Tennessee* [CSS]	8 p.m.
20	at Kentucky* [SEC Network]	1 p.m.
24	at Alabama* [CSS]	8 p.m.
31	LSU*	6 p.m.

FEBRUARY

3	at South Carolina*	2 p.m.
7	at Georgia*	6 p.m.
10	Florida* [SportSouth]	2 p.m.
17	Alabama* [ESPN2]	1:30 p.m.
21	at Tennessee*	6 p.m.
24	Missouri*	2 p.m.
28	at Vanderbilt* [CSS]	8 p.m.

MARCH

3	Mississippi State*	2 p.m.
6-10	Southeastern Conference Tournament Duluth, Ga. • Arena at Gwinnett Center	
23-26	NCAA Tournament First and Second Rounds	

APRIL

30-2	NCAA Tournament Regionals	
7-9	NCAA Tournament Final Four New Orleans, La. • New Orleans Arena	

* - SEC Game

All Times are Central

1 - Australian Tour (Brisbane, Cairns and Sydney, Australia)

2 - Wolfpack Invitational (Raleigh, N.C.)

3 - 26th Annual Omni Hotels Classic (Boulder, Colo.)

All home games played at Auburn Arena

Bold indicates home games

www.AuburnTigers.com



AT



GAME 7

[NR/NR] Auburn (4-2) at [NR/NR] Tulane (5-0)

When: Wednesday, November 28 • 7 p.m. CT

Where: Fogelman Arena (3,600) • New Orleans, La.

TV: Cox Sports; Tim Grubbs (play-by-play), Victor Howell (color)

Radio: 910 AM WZMG; Andy Burcham (play-by-play), Stephanie Follett (color)

Audio Webcast: AuburnTigers.com

GameTracker: AuburnTigers.com

Series: Auburn leads, 2-1

Last Meeting: Auburn def. Tulane 54-37 on Dec. 5, 2004 in New Orleans

Last Meeting at a Neutral Site: Auburn def. Tulane 54-37 on Dec. 5, 2004

Up Next: Auburn will take a 10-day break for final exams, returning to the court on

Dec. 9 with a home game against Hofstra at 6 p.m. CT

AUBURN PROJECTED STARTERS (3-2)

No.	Pos.	Name	Ht.	Year	PPG	RPG	Hometown
00	G	Hasina Muhammad	6-1	So.	15.7	4.8	Memphis, Tenn.
3	G	Najat Ouardad	5-1	Sr.	5.7	(apg) 5.2	Orleans, France
14	F	Blanche Alverson	6-3	Sr.	10.0	5.8	Andalusia, Ala.
32	G	Tyrese Tanner	6-1	Jr.	14.5	5.3	Birmingham, Ala.
34	C	Peyton Davis	6-5	Jr.	8.0	4.8	Pinson, Ala.

OFF THE BENCH

5	G	Chadarryl Clay	5-7	Fr.	4.4	(apg) 1.6	Chattanooga, Tenn.
11	G	Courtney Strain	5-9	R-So.	6.2	1.0	Woodland, Ala.
20	C	Pascale West	6-8	Sr.	2.0	0.8	LaGrange, Ga.
22	G	Julie King	5-9	Sr.	0.3	1.5	St. Louis, Mo.
23	F	Tro'cee Tanner	6-3	Fr.	5.2	3.2	Birmingham, Ala.
25	G	Cedricka Sweeting	5-3	Fr.	2.2	(apg) 1.7	Nassau, Bahamas
50	F	Cabriana Capers	6-1	Fr.	1.3	3.7	Bolingbrook, Ill.

Head Coach: Terri Williams-Flournoy / Assistant Coaches: Ty Evans, Caroline McCombs and Adrian Walters

TULANE PROJECTED STARTERS (5-0)

No.	Pos.	Name	Ht.	Year	PPG	RPG	Hometown
21	G	Olivia Grayson	5-8	Sr.	9.6	7.4	Metairie, La.
22	F	Tiffany Dale	6-1	So.	9.0	5.4	Lavon, Texas
24	G/F	Janique Kautsky	5-10	Sr.	9.6	2.8	Perth, Australia
25	G	Tyria Snow	5-8	Sr.	6.6	2.0	Shreveport, La.
31	F	Brittany McDonald	6-1	Sr.	2.6	3.0	Atlanta, Ga.

Head Coach: Lisa Stockton / Assistant Coaches: Beth Dunkenberg, Alan Frey and Doshia Woods

Media Information

The Auburn media relations department considers its work with the media a top priority. The 2012-13 Auburn Women's Basketball Almanac has been prepared to assist the working media in their coverage of Tiger basketball. If you have not received a copy, or if you need additional information, interview or photograph requests, or have any questions, please contact Matt Crouch in the media relations office at 334.844.9800.

Interview Policy

Coach Williams-Flournoy, her assistants and all women's basketball players are available for phone and personal interviews by contacting Matt Crouch in the media relations office. Post-game interviews will be allowed following a 10-minute cooling off period. Non-game day requests will be met based on the players class and practice schedules.

Credentials

Anyone wishing to cover an Auburn women's basketball game should contact Matt Crouch in the media relations office at least one day in advance in order to make the proper arrangements.

On the Air

The Tigers can be heard live locally in Auburn on Mix 96.7 FM for the entire regular and postseasons. Andy Burcham, in his 25th season with the women's basketball program and handles play-by-play duties. Stephanie Follett joins Burcham for her first season and provides color commentary. Each game can also be heard live on the internet at www.AuburnTigers.com.

Weekly Live Radio Show

Starting in January, every Tuesday at 6 p.m. CT, Terri Williams-Flournoy will host a live show from Beef O'Brady's in Auburn with Andy Burcham. Fans can listen to the show on 96.7 FM. Fans can tweet their questions @AuburnWBB.

Game-Day Services

Statistics, rosters and game notes will be provided prior to the game in the media work room. Box scores will also be handed out during and following the game. Phones and fax machines are available in the media work room.

Photo/Video Services

Todd Van Emst of the Auburn Media Relations office handles all photo requests. Please contact Van Emst at 334.844.9514. Video highlights of selected Auburn women's basketball games are available for the media. For information on how to access the FTP server, contact Steve Sain in the Auburn Media Relations office at 334.844.9809.

On the Web

The home for Auburn Athletics on the web, www.AuburnTigers.com, is your source for Auburn Women's Basketball. The website offers the most recent information and news on the Tigers. At AuburnTigers.com, you can also listen to each women's basketball game broadcast live and follow along on live scoring for every home game.



Follow Auburn Women's Basketball on Twitter

@AuburnWBB



Become a fan of Auburn Women's Basketball on Facebook

www.Facebook.com/AUWBB

2012-13 Numerical Roster

No.	Name	Height	Position	Class	Hometown/High School
0	Hasina Muhammad	6-1	Guard/Forward	SO	Memphis, Tenn./Ridgeway
3	Najat Ouardad	5-1	Guard	SR	Orleans, France/Pensacola St. College
4	Cedricka Sweeting	5-3	Guard	FR	Miami, Fla./South Broward
11	Courtney Strain	5-9	Guard	R-SO	Woodland, Ala./Woodland
14	Blanche Alverson	6-3	Forward/Guard	SR	Andalusia, Ala./Buford (Ga.)
20	Pascale "P.J." West	6-8	Center	SR	LaGrange, Ga./Troup County
21	Chadarryl Clay	5-7	Guard	FR	Chattanooga, Tenn./Girls Preparatory
22	Julie King	5-9	Guard	SR	St. Louis, Mo./Nerinx Hall
32	Tyrese Tanner	6-1	Guard/Forward	JR	Birmingham, Ala./Hoover
34	Peyton Davis	6-5	Center	JR	Pinson, Ala./Mortimer Jordan
35	Cabrina Capers	6-1	Forward	FR	Bolingbrook, Ill./Bolingbrook
44	Tra'cee Tanner	6-3	Forward/Center	FR	Birmingham, Ala./Hoover

2012-13 Alphabetical Roster

No.	Name	Height	Pos.	Ht.	Hometown
14	Blanche Alverson	6-3	Forward/Guard	SR	Andalusia, Ala./Buford (Ga.)
35	Cabrina Capers	6-1	Forward	FR	Bolingbrook, Ill./Bolingbrook
5	Chadarryl Clay	5-7	Guard	FR	Chattanooga, Tenn./Girls Preparatory
34	Peyton Davis	6-5	Center	JR	Pinson, Ala./Mortimer Jordan
22	Julie King	5-9	Guard	SR	St. Louis, Mo./Nerinx Hall
0	Hasina Muhammad	6-1	Guard/Forward	SO	Memphis, Tenn./Ridgeway
3	Najat Ouardad	5-1	Guard	SR	Orleans, France/Pensacola St. College
11	Courtney Strain	5-9	Guard	R-SO	Woodland, Ala./Woodland
4	Cedricka Sweeting	5-3	Guard	FR	Miami, Fla./South Broward
44	Tra'cee Tanner	6-3	Forward/Center	FR	Birmingham, Ala./Hoover
32	Tyrese Tanner	6-1	Guard/Forward	JR	Birmingham, Ala./Hoover
20	Pascale "P.J." West	6-8	Center	SR	LaGrange, Ga./Troup County

STAFF:

Head Coach: Terri Williams-Flournoy (Penn State, 1991)

Assistant Coach: Ty Evans (Wisconsin-Whitewater, 1995)

Assistant Coach: Caroline McCombs (Youngstown State, 1998)

Assistant Coach: Adrian Walters (St. Francis (Pa.), 1987)

Director of Basketball Operations: Danielle Bell (Richmond, 2010)

Director of Basketball Services: Sherill Baker (Georgia, 2006)

Special Assistant to the Head Coach: Stephanie Follett (Maine, 1996)

Administrative Graduate Assistant: Kari Koch (Missouri State, 2006)

Athletic Trainer: Cindy Campbell (South Alabama, 2005)

BY CLASS:

Seniors (4): Blanche Alverson, Julie King, Najat Ouardad, Pascale "P.J." West

Juniors (2): Peyton Davis, Tyrese Tanner

Sophomores (2): Hasina Muhammad, Courtney Strain

Freshmen (4): Cabriana Capers, Chadarryl Clay, Cedricka Sweeting, Nicole Tanner

Projected Auburn Starters



Hasina Muhammad

Guard
6-1
Sophomore
Memphis, Tenn.
Ridgeway High School
15.7 ppg / 4.8 rpg / 2.0 spg

0

- Is Auburn's top scorer so far this season
- Led Auburn in scoring in Australia with 23.3 points per game
- Has led Auburn in scoring in three of its six games this season
- Scored a career-high 21 points against Alabama A&M



Najat Ouardad

Guard
5-1
Senior
Orleans, France
Pensacola State College
5.7 ppg / 5.2 apg / 4.0 rpg

3

- Tied her career high with 8 assists last weekend against TAMU-CC
- Scored career-high 11 points vs. Maine and at N.C. State
- Was 10th all-time at AU in single-season steals by a junior with 52
- Played in all 30 games last season, starting in 18



Blanche Alverson

Guard/Forward
6-3
Senior
Andalusia, Ala.
Buford (Ga.) High School
10.0 ppg / 5.8 rpg / .364 3fg%

14

- Named Auburn's Miss Homecoming on Nov. 3
- Was the 2012 SEC Women's Basketball Scholar-Athlete of the Year
- Averaged 17.5 points per game on the Australian Tour this summer
- Is 124 points away from reaching 1,000 on her career

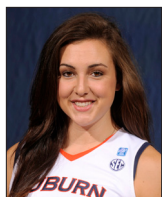


Tyrese Tanner

Guard/Forward
6-1
Junior
Birmingham, Ala.
Hoover High School
14.5 ppg / 5.3 rpg / 1.8 spg

32

- Selected to Omni Hotels Classic All-Tournament Team last weekend
- Scored career-high 26 points at North Carolina State on Nov. 10
- Neared her first double-double with 15 points and 9 rebounds vs. Maine
- Leads Auburn in free throw percentage with .821



Peyton Davis

Center
6-5
Junior
Pinson, Ala.
Mortimer Jordan High School
8-0 ppg / 4.8 rpg / .500 fg%

34

- Scored a career-high 15 points vs. TAMU-CC last weekend
- Earned first career start vs. Maine on Nov. 9
- Started all four games in Australia during the summer tour ; averaged 6.5 ppg
- Played in 19 games last season, coming off the bench each time

Auburn Women's Basketball Quick Hitters

- The Tigers are making their first appearance on television this season
- Junior Tyrese Tanner was named to the Omni Hotels Classic All-Tournament Team last weekend
- Auburn won its 800th game last season, becoming the 14th NCAA program to do so
- This is the fourth meeting between Auburn and Tulane, Auburn leads the series 2-1
- Auburn and Tulane last played on Dec. 5, 2004, a 54-37 Tiger win
- Auburn has a 41-7 all-time record against current members of Conference USA
- Auburn beat Texas A&M-Corpus Christi, 72-57, in its last game; Tulane downed Western Michigan, 66-48, its last time out
- The Tanner sisters, Tyrese and Tra'cee, combined for 30 points, 12 rebounds and 4 steals against SDSU
- This is the first meeting between Terri Williams-Flournoy and Tulane's Lisa Stockton
- Auburn is 5-1 all-time when playing on Nov. 28
- The Tigers are 112-29 when playing in the month of November
- Auburn is 49-25 all-time when playing teams from Louisiana
- The Tigers are 21-14 all-time when playing in Louisiana, 4-0 when playing in New Orleans
- Blanche Alverson is 124 points away from reaching 1,000 on her career
- Auburn has forced more than 20 turnovers in 5 of 6 games this season, more than 25 in three
- The Tigers' bench is averaging 25.2 points per game so far this season
- The Tigers return five players that accounted for 127 starts on The Plains prior to this season
- Alverson ranks 5th all-time in career 3-pointers at Auburn with 154
- One of Auburn's newcomers is senior Julie King, a four-year letterwinner on the Auburn soccer team
- For the third time ever, Auburn's roster features a set of sisters in Tyrese and Tra'cee Tanner
- Terri Williams-Flournoy led the Tigers to a 3-1 record this summer in the team's Australian Tour
- Senior Blanche Alverson was named Auburn's Miss Homecoming Nov. 3
- Blanche Alverson's community service project, Ballin' For Books, collected more than 1,100 books last year
- The Tigers will appear on television in at least seven games this season
- Auburn was picked to finish 10th in the SEC by both the media and league's coaches
- Four freshmen grace the Tiger roster: Cabriana Capers, Chadarryl Clay, Cedricka Sweeting and Tra'cee Tanner

INDIVIDUAL CATEGORY LEADERS

Auburn	Tulane
Hasina Muhammad - 15.7	Points.....Janique Kautsky and Olivia Grayson - 9.6
Blanche Alverson - 5.8	Rebounds.....Olivia Grayson - 7.4
Najat Ouardad - 5.2	Assists.....Jamie Kaplan - 4.0
Najat Ouardad - 2.3	Steals.....Olivia Grayson - 1.6
Tyrese Tanner and Blanche Alverson - 1.2	Blocks.....Tiffany Dale - 1.6
Blanche Alverson - 28.8	Minutes Played.....Olivia Grayson - 26.6
Cedricka Sweeting - .600	Field Goal Percentage.....Janique Kautsky - .563
Hasina Muhammad - .400	3-Point Percentage.....Janique Kautsky - .538
Tyrese Tanner - .821	Free-Throw Percentage.....Olivia Grayson - .889

AUBURN WOMEN'S BASKETBALL WEEKLY SCHEDULE

	Tuesday 27	Wednesday 28	Thursday 29	Friday 30	Saturday 1	Sunday 2	Monday 3
Nov. 27 through Dec. 3	Practice 2:30 - 4 p.m. CT Auburn Arena Depart for Tulane	Auburn at Tulane 7 p.m. CT Fogelman Arena New Orleans, La.	OFF	Practice 2:30 - 5:30 p.m. CT Auburn Arena	Practice 10 a.m. - 1 p.m. CT Auburn Arena	OFF	Practice 3 - 5:30 p.m. CT Auburn Arena

General Information

School.....	Auburn University
City / Zip.....	Auburn, Ala. / 36831
Founded.....	Oct. 1, 1856
Enrollment.....	25,469
Nickname.....	Tigers
Colors.....	Burnt Orange and Navy Blue
Home Court (Capacity).....	Auburn Arena (9,121)
Affiliation.....	NCAA Division I
Conference.....	Southeastern Conference
President.....	Dr. Jay Gogue
Athletic Director.....	Jay Jacobs
Senior Women's Administrator.....	Meredith Jenkins
University Website.....	www.Auburn.edu

Team Information

2011-12 Overall Record.....	13-17 (.433)
SEC Record.....	5-11 (.313)
All-Time SEC Record.....	192-168 (.533)
SEC Tournament Record.....	34-31 (.523)
Letterwinners Returning/Lost.....	7/5
Starters Returning/Lost.....	3/2
Newcomers.....	5
First Year of Basketball.....	1971
All-Time Overall Record.....	815-380 (.682)
NCAA Tournament Appearances/Lost.....	18/2009
NCAA Tournament Record.....	29-18
WNIT Appearances/Lost.....	3/2011
WNIT Record.....	8-2

Basketball Staff

Head Coach.....	Terri Williams-Flournoy (Penn State, 1991)
Career Record.....	147-106 (.581) / 9th season
Record at Auburn.....	4-2 (.667) / 1st season
Assistant Coaches (Alma Mater) ..	Ty Evans (Wisconsin-Whitewater, 1995)
.....	Caroline McCombs (Youngstown State, 1998)
.....	Adrian Walters (St. Francis (Pa.), 1987)
Director of Basketball Operations ..	Danielle Bell
Director of Basketball Services ..	Sherill Baker
Special Assistant to the Head Coach ..	Stephanie Follett
Administrative Graduate Assistant ..	Kari Koch
Secretary.....	Vicki Coleman
Basketball Office Phone.....	(334) 844-9200
Basketball Office Fax.....	(334) 844-9862
Strength and Conditioning.....	Megan Young
Athletic Trainer.....	Cindy Campbell
Academic Counselor.....	Dr. Mary Ann Taylor-Sims

Radio Broadcast Information

Radio Station.....	WMXA (96.7 FM)
Play-by-Play.....	Andy Burcham
Color.....	Stephanie Follett
Burcham Email.....	aburcham@auburnnetwork.com
Burcham Office Phone.....	(334) 826-2929
Network Address.....	Auburn Network, Inc.
.....	P.O. Box 950
.....	Auburn, AL 36831-0950

TULANE MEDIA RELATIONS

For more information on the Tulane women's basketball team, contact Richie Weaver in the media relations office. His email address is rweaver@tulane.edu and his number is 504.352.5802.

The press row number at Fogelman Arena is 504.862.8122.

OFFICIALS

TBA

RANKINGS

Auburn and Tulane are not ranked.

NEXT UP FOR THE TIGERS

Following Wednesday's game, Auburn will take a 10-day break for final exams, returning to action on Dec. 9 with a Sunday afternoon home game against Hofstra.

AUBURN'S POST-GAME PROCEDURE

The Auburn locker room is closed. Coach Terri Williams-Flournoy and selected Tiger players will be brought to the interview room after the 10-minute "cooling off" period.

QUICK HITS

Auburn is in its 42nd season of women's basketball and sports an all-time record of 815-380... AU has made 18 NCAA Tournament appearances, three WNIT appearances and three Final Fours in the program's history... Head Coach Terri Williams-Flournoy is in her first season at Auburn... She has a 147-106 record as a head coach... The Tigers are coming off a 13-17 season in 2012.

800 AND COUNTING

Auburn picked up its 800th program victory last season, becoming the 14th team in NCAA history to reach the 800-win plateau.

TANNER NAMED TO OMNI CLASSIC TEAM

Auburn junior Tyrese Tanner was named to the Omni Hotels Classic All-Tournament Team on Nov. 24 for her play in the two games. For the tournament, she averaged 14.0 points, 4.0 rebounds, 2.5 steals and 1.5 blocks per game. She scored 17 with three steals against San Diego State and returned for 11 points, three blocks and two steals against Texas A&M-Corpus Christi.

QUEEN BLANCHE

Senior Blanche Alverson, no stranger to awards on the court, added another piece of hardware to her collection on Nov. 3 as she

was named Auburn's Miss Homecoming. After a week of campaigning, she found out the result of the vote at halftime of Auburn's Homecoming Football Game against New Mexico State. She is the first Tiger student-athlete to earn the honor.

AUBURN - TULANE SERIES

This will be the fourth meeting between the Auburn and Tulane. Auburn is 2-1 when playing against Tulane, with a Tigers' 54-37 win in their last meeting on Dec. 5, 2004.

Previous Meetings With Tulane

Dec. 13, 1998	L	53-64	Birmingham, Ala.
Jan. 5, 2003	W	75-64(OT)	Auburn
Dec. 5, 2004	W	54-37	New Orleans, La.

AGAINST CONFERENCE USA

Auburn is 41-7 all-time against current members of Conference USA. The Tigers' last meeting with a Conference USA team came against Alabama-Birmingham, a 91-62 win on Nov. 26, 2008.

SCOUTING TULANE

The Tulane Green Wave is currently undefeated going into its game against the Auburn Tigers. Tulane is fresh off of a 66-48 win over Western Michigan Saturday night. Tulane has 10 letterwinners returning for the 2012-2013 season, including four starters, from last season's team that went 23-11 (9-7 Conference USA). Tulane welcomes three newcomers to the team, as well a redshirt returning for the season.

Janique Kautsky and Olivia Grayson lead the team with 9.6 points per game each this season. Grayson is also the team's top rebounder with 7.4 per game. Tulane is playing just its second home game of the season against Auburn. The Green Wave defeated Louisiana Tech, 66-59, at home in the season-opener.

The Tulane Green Wave is under the direction of head coach, Lisa Stockton, who is in her 19th season coaching the Green Wave.

SCOUTING AUBURN

The Auburn women's basketball team, under direction of first-year head coach Terri Williams-Flournoy, returns seven letterwinners and four starters from last season's team that went 13-17 (5-11 SEC). Williams-Flournoy comes to Auburn after eight seasons as head coach at Georgetown where she put together a 143-104 record that included four postseason appearances and three straight trips to the NCAA Tournament, including a Sweet 16 appearance in 2011.

Auburn is off to a 4-2 start and is averaging a 32.8-point

Statistical Comparison - Auburn vs. Tulane

Coach:	Auburn Terri Williams-Flournoy	Tulane Lisa Stockton
Career Record:	147-106	440-211
Top Scorer:	Muhammad (15.7)	2 tied (9.6)
Top Rebounder:	Alverson (5.8)	Grayson (7.4)

Series Record:	Auburn leads, 2-1
- at Auburn	Auburn leads, 1-0
- at New Orleans	Auburn leads, 1-0
- at Neutral	Tulane leads, 1-0
- Overall Streak	Auburn has won the last two meetings

2011-12 Record	13-17	23-11
2012-13 Record	4-2	5-0
Points Per Game	74.0	68.2
Scoring Margin	+16.0	+12.0
FG Percentage	.445	.433
Opp. FG %	.364	.368
3FG Percentage	.321	.292
Opp. 3FG %	.325	.261
Rebounds	40.7	41.4
Opp. Rebounds	36.2	32.2
Rebound Margin	+4.5	+9.2
Turnovers	16.0	19.0
Opp. Turnovers	22.8	18.6
Steals	12.2	8.8
Opp. Steals	7.5	8.6
Blocks	4.5	4.0
Opp. Blocks	1.8	2.4

Around the SEC (As of Nov. 26, 2012)

	SEC	Pct.	Overall	Pct.
Georgia	0-0	.000	7-0	1.000
South Carolina	0-0	.000	7-0	1.000
Alabama	0-0	.000	5-0	1.000
Arkansas	0-0	.000	5-1	.833
Kentucky	0-0	.000	4-1	.800
Tennessee	0-0	.000	4-1	.800
Florida	0-0	.000	5-2	.714
Auburn	0-0	.000	4-2	.667
Missouri	0-0	.000	4-2	.667
Ole Miss	0-0	.000	2-1	.667
LSU	0-0	.000	3-2	.600
Texas A&M	0-0	.000	3-3	.500
Vanderbilt	0-0	.000	3-3	.500
Mississippi State	0-0	.000	2-4	.333

This Week in the SEC**Tuesday, Nov. 27**

Mississippi Valley State at Ole Miss 7 p.m.

Wednesday, Nov. 28

Miami (Ohio) at Kentucky 10 a.m.
 Drexel at South Carolina 6 p.m.
 Middle Tennessee State at Tennessee 6 p.m.
 Furman at Georgia 6 p.m.
 Auburn at Tulane 7 p.m.
 Savannah State at Mississippi State 7 p.m.
 Austin Peay at Vanderbilt 7 p.m.

Thursday, Nov. 29

Texas Southern at Arkansas 7 p.m.
 Lipscomb at Ole Miss 7 p.m.
 Southeast Missouri State at Missouri 7 p.m.

margin of victory in its four wins. Three Tigers are averaging double figures, led by Muhammad with 15.7 per game, including two 20-point games. Tyrese Tanner is at 14.5 points and 5.3 rebounds per game while Blanche Alverson comes in with 10.0 points and a team-high 5.8 boards per game.

LAST TIME OUT FOR AUBURN

Peyton Davis and Courtney Strain logged career nights Nov. 24 as the Auburn women's basketball team posted a 72-57 win over Texas A&M-Corpus Christi in the consolation game of the 26th Annual Omni Hotels Classic in Boulder, Colo. Hasina Muhammad led the Tigers with 16 points, followed by 15 and 14 from Davis and Strain, respectively.

Auburn junior Tyrese Tanner, who was named to the all-tournament team, also finished in double figures with 11 points.

Along with getting four players in double figures offensively, the Tigers were also able to get the job done on the defensive end. Auburn forced the Islanders into 26 turnovers, marking the third time this season to force an opponent into 25 or more, and scored 24 points off the turnovers. The Tigers have scored 20 or more points off turnovers in five of their six games this season.

After going down at halftime, Auburn came out on a tear in the second half, out-scoring the Islanders 44-25 in the period to pull away for the win.

Cabriana Capers led the Tigers in rebounding with seven, just ahead of Davis and her six. Ouardad dished out a game-high eight assists while Muhammad led the Auburn defense with four steals. Alverson and Ouardad chipped in three steals each.

LAST TIME OUT FOR TULANE

The Green Wave pulled out a 66-48 Hilton Garden Inn Thanksgiving Tournament Championship win over Western Michigan on Nov. 24. Senior Janique Kautsky, with 13 points, tied her career-high. With the win, Tulane improves to 5-0 for the first time since the 1999-2000 season when the Wave won their first 14 games.

Kautsky, with three assists, two rebounds and a block in the game against the Broncos, was named MVP of the tournament, and was joined on the all-tournament team by fellow senior Olivia Grayson.

The Green Wave broke things open midway through the first half by holding the Broncos without a point for nearly 10 minutes. The defense forced 19 turnovers - including eight via steal - and turned those miscues into 22 points. In addition, Tulane outscored Western Michigan in the paint, 32-28, and held a 30-22 edge in points off the bench. As a team Tulane connected on 44.3 percent of its shots from the field (27-of-61), including a 50.0 clip in the second half (13-of-26), while holding Western Michigan to 35.2 percent overall (19-54).

LAST TIME VS. TULANE (Dec. 5, 2004)

Auburn held Tulane to just 12 second-half points, turning a four-point halftime lead into a 54-37 victory on Dec. 5, 2004 at Fogelman Arena in New Orleans, La.

Natasha Brackett led the Tigers with 15 points while Louise Emeagi added 13. Marita Payne pulled down a game-high 14

rebounds with eight points and eight blocked shots in the game.

Tulane was led by Lakethia Hampton with 12 points and eight rebounds. Jami Montagnino and D'Aundra Henry added nine points each.

Tulane held the lead with less than four minutes left in the first half, but Auburn out-scored the Green Wave 7-2 to take a 29-25 halftime lead. The Tigers continued rolling in the second half, holding Tulane to just four field goals and 13.8 percent shooting to pull away for the win.

WILLIAMS-FLOURNOY VS. STOCKTON

This will be the first meeting between Auburn's Terri Williams-Flournoy and Tulane's Lisa Stockton.

Williams-Flournoy is in her first season as head coach at Auburn and holds a 147-106 career record; she is 4-2 at Auburn. Stockton is in her 19th season at Tulane and holds a 377-184 record with the Green Wave. She has a 440-211 career mark.

ON THIS DATE. . .

Auburn is 5-1 all-time when playing on Nov. 28. The Tigers' last game on Nov. 28 was a 69-45 win over Florida A&M in 2009.

IN NOVEMBER

Auburn is 112-29 all-time in the month of November (records begin in 1978-79 season, not all dates provided prior to or during that season). The Tigers are 4-2 in November in the Williams-Flournoy era.

AGAINST THE PELLICAN STATE

Auburn holds a 49-25 all-time record against teams from the state of Louisiana. Records against Louisiana teams: Grambling (1-0), Louisiana-Lafayette (1-0), Louisiana-Monroe (0-1), LSU (29-17), Louisiana Tech (2-5), Loyola (1-0), New Orleans (9-0), Nicholls State (1-0), Northeast Louisiana (0-1), Northwestern State (2-0), Southeastern Louisiana (1-0) and Tulane (2-1).

WHEN PLAYING IN LOUISIANA

When playing in the state of Louisiana, Auburn holds a 21-14 record. Records against teams when playing in Louisiana: Alabama [Baton Rouge] (1-0), Cheyney State [Ruston] (1-0), Illinois State [Ruston] (1-0), Kentucky [Baton Rouge] (1-0), LSU [Baton Rouge] (11-10), Louisiana Tech [Ruston] (0-3), Louisville [Ruston] (1-0), New Orleans [New Orleans] (4-0), Northeast Louisiana [Monroe] (0-1), Northwestern [Ruston] (1-0), Tulane [New Orleans] (1-0). Auburn is 4-0 when playing in New Orleans, La.

SISTER-SISTER

Auburn's Tanner sisters made a good combination last Friday in the Tigers' loss to San Diego State. Tyrese and Tra'cee Tanner combined to score 30 points with 12 rebounds and four steals. It was the best combined effort for the sisters this season.

For the season, Tyrese and Tra'cee are combining for 19.7 points and 8.5 rebounds per game.

Associated Press Top-25 Poll**Week 3 (Nov. 26)**

Rank	School	Record	Points	Pvs
1	Stanford (21)	6-0	953	1
2	Connecticut (17)	5-0	944	2
3	Baylor (1)	5-1	901	3
4	Duke	4-0	861	4
5	Notre Dame	4-0	802	5
6	Penn State	5-0	752	6
7	Louisville	6-0	742	7
8	Georgia	7-0	701	8
9	Kentucky	4-1	656	9
10	California	5-0	615	11
11	Maryland	3-1	602	10
12	Oklahoma	5-1	459	13
13	Texas	4-0	453	15
14	Purdue	5-1	374	14
15	Ohio State	4-1	366	16
16	Tennessee	4-1	328	20
17	St. John's	4-1	314	18
18	Oklahoma State	4-0	294	21
19	UCLA	3-1	274	19
20	Kansas	5-0	265	22
21	Nebraska	5-1	185	23
22	North Carolina	6-0	181	25
23	Dayton	6-0	177	24
24	Iowa State	4-0	102	NR
25	West Virginia	3-2	91	12

Others Receiving Votes: Texas A&M 72, Florida State 49, Miami (Fla.) 31, Syracuse 30, Delaware 18, Rutgers 15, **South Carolina 15**, **Vanderbilt 12**, Virginia 12, Georgia Tech 7, DePaul 6, Iowa 6, Middle Tennessee State 4, **Tennessee-Chattanooga 3**, Gonzaga 2, Utah 1.

USA Today / ESPN Top-25 Coaches Poll**Week 3 (Nov. 27)**

Rank	School	Record	Points	Pvs
1	Stanford (21)	6-0	765	1
2	Connecticut (9)	5-0	748	2
3	Baylor (1)	5-1	716	3
4	Duke	4-0	675	4
5	Notre Dame	4-0	647	5
6	Louisville	7-0	611	6
7	Penn State	5-0	584	7
8	Kentucky	4-1	547	8
9	Georgia	7-0	527	9
10	Maryland	3-1	496	10
11	California	5-0	476	11
12	Oklahoma	5-1	383	13
13	Purdue	5-1	363	12
14	Tennessee	4-1	361	15
15	St. John's	4-1	286	16
16	Ohio State	4-1	285	17
17	Oklahoma State	4-0	272	18
18	Texas	4-0	218	21
19	Nebraska	5-1	205	20
20	Kansas	5-0	151	23
21	UCLA	3-1	137	22
22	Dayton	6-0	113	25
23	West Virginia	3-2	93	14
24	South Carolina	7-0	88	NR
25	Texas A&M	3-3	70	24

Others Receiving Votes: North Carolina 47, Iowa State 43, Syracuse 38, Florida State 36, Gonzaga 20, Miami (Fla.) 17, Middle Tennessee State 14, **Vanderbilt 12**, DePaul 9, Rutgers 6, Virginia 4, **Tennessee-Chattanooga 4**, Minnesota 4, Wisconsin-Green Bay 2, South Florida 1, Georgetown 1.

Bold denotes 2012-13 opponents

FORCING 25

Since 1987, Auburn has forced 25 or more turnovers in a game 96 times, including three times this season. In those 96 games, the Tigers have a 93-3 record.

COUNTING TO 1,000

Auburn senior Blanche Alverson is just 124 points away from reaching 1,000 on her career. Should she reach the mark, she would become the 27th Auburn player to do so. She is also 87 points away from cracking Auburn's top 30 career scoring list.

TURN IT OVER

A pillar of Coach Terri Williams-Flournoy's style of play is a high-pressure defense that extends most of the floor. The Tigers have forced 20 or more turnovers in five of their first six games, after forcing 26 against Maine, 20 against North Carolina State, 26 against Alabama State, 23 against Alabama A&M and 26 against Texas A&M-Corpus Christi. In all, Auburn scored 152 points off turnovers in its first six games, averaging 25.3 points off turnovers per game.

IT'S RAINING 3s

Blanche Alverson is climbing her way up the Auburn career 3-point list. She is currently fifth with 154, just seven behind Samantha Williams (161) and 17 behind Natasha Brackett (171). Alli Smalley holds the Auburn record with 219.

OFF THE BENCH

Auburn has had great bench support this season with at least one player coming off the bench to score in double figures in each of the six games. The Tigers' bench so far has scored 151 points on the season, averaging 25.2 per game.

O-BOARDS

Auburn has missed 213 shots this season with 95 (44.6 percent) resulting in offensive rebounds. That has led to 111 second-chance points on the season, averaging almost 20 per game.

TYRESE TANNER NAMED SEC PLAYER OF THE WEEK

Auburn junior Tyrese Tanner was named the SEC's Player of the Week on Nov. 12, the first player to earn the honor this season. She averaged 20.5 points, including a career-high 26 points, at the Sheraton Raleigh Wolfpack Invitational, Nov. 9-10.

Her 26 points were the most scored in the SEC to that point in the season. She is the first Tiger to earn the SEC's weekly honor since Blanche Alverson did on Jan. 13, 2011.

FIRST TIMERS

The season-opening game saw some firsts for Auburn players. Junior Peyton Davis earned the first start of her career while senior Julie King and freshmen Cabriana Capers, Chadarryl Clay, Cedricka Sweeting and Tra'cee Tanner made their first collegiate basketball appearance.

KICKING UP SOMETHING NEW

One of Auburn's five newcomers is former soccer player Julie King. A native of St. Louis, King started for four years for the Tigers' soccer team, helping the team to the NCAA Tournament in each season. As a co-captain last year, she led Auburn to an SEC Tournament Championship and was named SEC Co-Defensive Player of the Year.

King was an All-State basketball selection while playing prep ball at Nerinx Hall in St. Louis, Mo.

SISTER ACT

For just the third time ever, Auburn's roster featured a sister combination as Tyrese and Tra'cee Tanner step on the court. Tyrese is a junior on the squad this year while Tra'cee is a freshman.

Other sister combinations to play together at Auburn include Sherell (2004-09) and Reneisha (2006-10) Hobbs, and Ruthie (1985-89) and Mae Ola (1984-88) Bolton.

TANNER AND MUHAMMAD EARN WOLFPACK HONORS

Auburn's Tyrese Tanner and Hasina Muhammad were selected to the Sheraton Raleigh Wolfpack Invitational All-Tournament Team to start the season. Tanner averaged 20.5 points, including a career-high 26 against North Carolina State. She also tallied 8.5 rebounds and 2.0 steals per game. Muhammad averaged 16.0 points per game, tying her then-career high with 20 points in the season-opener against Maine.

TIGERS DOWN UNDER

Auburn unofficially started its season in August as the Tigers traveled to Australia for a 10-day, four-game tour. Auburn opened with an 86-54 loss to the WNBL's Logan Thunder, but rebounded for an 81-71 win over the Cairns Dolphins. The Tigers continued on to Sydney where it tallied a 67-58 over the WNBL's Sydney Flames. The Tigers rounded out the trip with an 84-46 trouncing of the Sutherland Sharks.

Over the four-game Australian Tour, Hasina Muhammad was the top Tiger with 23.3 points per game. Blanche Alverson averaged 17.5 points while freshman Chadarryl Clay tallied 10.5. Fellow freshman Tra'cee Tanner scored 9.0 per game, followed by Peyton Davis with 6.5, Cabriana Capers with 2.8 and Pascale West with 2.0.

BALLIN' FOR BOOKS

Senior Blanche Alverson, always active in the community, started her own community service initiative last season called Ballin' For Books. The program encouraged Auburn fans to donate books during Auburn home games late in the season.

More than 1,100 books were collected as part of the program and were donated to the Loachapoka Library, Pine Hills Literacy Project, Boys and Girls Club, and Atlanta inner-city schools.

STARTING EXPERIENCE

Auburn returns five players that have started at least one game for the Tigers, including four players that saw extensive time as a starter last season. Blanche Alverson, Hasina Muhammad, Najat Ouardad, Courtney Strain and Tyrese Tanner have accounted for 127 career starts.

If you include newcomer and former Auburn soccer player Julie King (and her 88 career soccer starts), that number goes up to 215.

ON THE TUBE

At least seven Auburn games will be televised during the 2012-13 season. The Tigers will make their TV debut on Nov. 28 at Tulane on Cox Sports Television. AU's home debut will be on Jan. 17 at home against Tennessee on CSS. Auburn will then play on the SEC Network at Kentucky on Jan. 20 before returning to CSS for its Jan. 24 game at Alabama.

Auburn will host Florida on SportSouth on Feb. 10, a week before taking on Alabama on ESPN2 on Feb. 17. The final TV appearance will be Feb. 28 at Vanderbilt on CSS.

TIGERS PICKED 10TH IN PRESEASON POLLS

Auburn was picked to finish 10th in both the SEC Preseason Media and Coaches polls. Kentucky was tabbed as the preseason favorite to win the SEC in both polls.

NEW FACES

The Tigers welcome five new faces for the 2012-13 season, including one senior and four freshmen. The senior is Julie King (Nerinx Hall / St. Louis, Mo.), who joins the team after four years on the Auburn soccer team. The four freshmen are: Cabriana Capers (Bolingbrook / Bolingbrook, Ill.), Chadarryl Clay (Girls Preparatory School / Chattanooga, Tenn.), Cedricka Sweeting (South Broward (Fla.), Nassau, Bahamas), and Tra'cee Tanner (Hoover / Birmingham, Ala.).

AUBURN SIGNS SIX FOR 2013-14

The Auburn women's basketball team signed six players to National Letters of Intent during the early signing period for the class of 2013. Keonna Famer, a 6-1 wing from Birmingham, Ala., Katie Frerking, a 6-1 guard from Johns Creek, Ga., Brandy Montgomery, a 5-10 guard from Port St. Lucie, Fla., Shae Nelson, a 6-1 post from Cordova, Tenn., Allina Starr, a 5-10 point guard from Minneapolis, Minn., and Meagan Tucker, a 5-8 guard from Covington, Ga., will join the Tigers for the 2013-14 season, head coach Terri Williams-Flournoy announced Nov. 16.

The Southeastern Conference

Commissioner: Mike Slive

Founded: 1933

Members:

Alabama Crimson Tide
Arkansas Lady Razorbacks
Auburn Tigers
Florida Gators
Georgia Bulldogs
Kentucky Wildcats
LSU Tigers
Mississippi Rebels
Mississippi State Bulldogs
South Carolina Gamecocks
Missouri Tigers
Tennessee Lady Volunteers
Texas A&M Aggies
Vanderbilt Commodores

SEC Media Relations

Women's Basketball Contact: Tammy Wilson

Address:

2201 Richard Arrington Blvd.
Birmingham, Ala. 35203-1103

Phone: 205.458.3000

Fax: 205.458.3031

E-mail: twilson@sec.org

Web site: www.SECsports.com

SEC Women's Basketball Notes

- The SEC has posted impressive non-conference records in the last decade. The SEC compiled a 134-41 (.766) non-conference record in the 2011-12 season.
- Since the 1990 season, the SEC has compiled a 3047-935 (.765) record against other conferences. The league has recorded 150+ wins during eight seasons.
- SEC teams have earned appearances in 25 of 31 NCAA Final Fours, an accomplishment unmatched by any other league.
- Overall, SEC squads have filled 34 of the 124 Final Four berths, including having two Final Four teams in 1988 (Auburn, Tennessee), 1989 (Auburn, Tennessee), 1995 (Georgia, Tennessee), 1996 (Georgia, Tennessee), 1998 (Arkansas, Tennessee), 2004 (LSU, Tennessee), 2005 (LSU, Tennessee), 2007 (LSU, Tennessee) and 2008 (LSU, Tennessee).
- SEC teams have made 18 appearances in a nation-high 16 NCAA Championship games, winning eight NCAA Championships (Tennessee: 1987, 1989, 1991, 1996, 1997, 1998, 2007 and 2008).
- The league also had the distinction of providing both national finalists twice in its history in 1996 (Tennessee 83, Georgia 65) and in 1989 (Tennessee 76, Auburn 60).
- SEC teams have won 347 NCAA Tournament games against 180 losses (.658) for an average of 11.2 NCAA wins per year.
- In addition, all 14 current members have appeared in the NCAA Tournament.
- The SEC has paced the pack in NCAA tournament bids 22 times in its 31-year history.
- The SEC was the first league to ever have eight teams invited to the NCAA Tournament, doing so in 1999, 2002 and 2012.
- The SEC was also the first league to ever have seven teams invited to the NCAA Tournament and earned this honor a leading seven times (1986, 1991, 1995, 1996, 1997, 2003, 2004).
- The SEC is one of a handful of leagues to have won three national tournament titles with eight NCAA, two WNIT and three NWIT. Along with the eight NCAA championships won by Tennessee, Arkansas (1999) and Auburn (2003) captured the current Women's NIT titles. But the first-ever SEC national title belongs to Georgia, winners of the 1981 NWIT which predates the current NCAA tournament. LSU (1985) and Kentucky (1990) also won NWIT titles. Both Arkansas (1987) and South Carolina (1979) won the WNIT as members of their previous conferences.
- In 2003, Auburn won the WNIT title with wins over South Alabama, Florida State, Richmond, Creighton and Baylor. In 1999, the Arkansas Lady Razorbacks defeated Wisconsin 76-64 to claim the SEC's first WNIT championship.
- In 1981, Georgia defeated Pittsburg, California and Arizona State (in OT) to capture the NWIT Championship, the first-ever national championship of any kind for the SEC in women's basketball.

Quoting Coach Flo

On Colorado Tournament...

"I thought we played well defensively in spots, at different times in the games. I saw some fight in our kids. We got down a little bit and we fought to get back in the games. Against San Diego State, we did not win, but we fought back to tie the game. Against Texas A&M-Corpus Christi, unfortunately we had to fight back again and that one we did win."

On different players stepping up...

"For us to win ball games, we are going to need all 12 ballplayers at any given time. Each game we should really have a different player stepping up to help Tyrese and Hasina because those two are our leading scorers. We can get help from anywhere, especially Peyton inside and Courtney knocking down some shots, it really helps us a lot."

On Tulane...

"Tulane is having a really good season. They are playing hard and have a great point guard in Olivia Grayson that is playing really well for them. They are having a great season so far, they have had some great games on the road that they have won, they played really well at their Thanksgiving tournament. They are a tough team right now."

On last game before Thanksgiving break...

"Right now we are trying to get a few things fixed. We are still making some bad errors and mistakes we are making, especially defensively. So we are trying to clean up some of those things before the finals break, then we will get some more time and get some more work in."

MISCELLANEOUS STATISTICS

Double-Doubles	Season	Career
Blanche Alverson	0	1

20+ Point Games	Season	Career
Blanche Alverson	0	2
Hasina Muhammad	2	3
Tyrese Tanner	1	4

10+ Rebound Games	Season	Career
Blanche Alverson	0	1

10+ Assist Games	Season	Career
------------------	--------	--------

GAMES LED AUBURN IN . .

Scoring	Season	Career
Blanche Alverson	1	15
Hasina Muhammad	3	10
Tyrese Tanner	2	10

Rebounding	Season	Career
Blanche Alverson	1	15
Cabriana Capers	2	2
Peyton Davis	0	1
Hasina Muhammad	0	5
Tra'cee Tanner	1	1
Tyrese Tanner	2	7

Assists	Season	Career
Blanche Alverson	0	7
Chadarryl Clay	1	1
Julie King	1	1
Hasina Muhammad	0	3
Najat Ouardad	4	15
Tyrese Tanner	0	2

2012-13 DOUBLE-DOUBLES

Player	Points	Other
--------	--------	-------

Last Time an Auburn Team...

Scored 100 points	Auburn 119, Sam Houston State 54 (Dec. 5, 2008)
Scored 100 points in an SEC game	Auburn 102, Tennessee 96, SEC Tournament in Albany, Ga. (Mar. 6, 1987)
Scored 100 at Auburn	Auburn 119, Sam Houston State 54 (Dec. 5, 2008)
Scored 100 points and lost	Never
Scored 110 points	Auburn 119, Sam Houston State 54 (Dec. 5, 2008)
Scored 115 points	Auburn 119, Sam Houston State 54 (Dec. 5, 2008)
Scored at least 60 points in a half	62-vs. Sam Houston State (Dec. 5, 2008)
Had 25+ rebound margin	28-Auburn 55, Sam Houston State 27 (Dec. 5, 2008)
Had 20+ rebound margin	20-Auburn 51, USC-Upstate 31 in Auburn, Ala. (Nov. 27, 2011)
Attempted 35 free throws	35-vs. Florida A&M (Nov. 28, 2009)
Attempted 40 free throws	41-vs. Alabama State (Nov. 15, 2006)
Made 30 free throws	31-vs. Northwestern State (31-43) (Dec. 30, 2003)
Had 25 assists	27 -vs. Alabama A&M (Nov. 18, 2012)
Had 25 turnovers	25- vs. Texas A&M-Corpus Christi (Nov. 24, 2012)
Had 25 steals	25- vs. Arkansas-Little Rock (Dec. 2, 2000)
Had 15 steals	16- vs. Texas A&M-Corpus Christi (Nov. 24, 2012)
Had 15 blocks	17 - vs. Alabama A&M in Auburn, Ala. (Nov. 19, 2009)
Scored 25 points or less	25- vs. Mercer (1971)
Played an overtime game	at LSU (Jan. 10, 2010)
Won an overtime game	Auburn 64, LSU 62 at Baton Rouge, La. (Jan. 10, 2010)
Lost an overtime game	Florida 71, Auburn 68 (2OT) at Gainesville, Fla. (Jan. 7, 2010)
Played a double overtime game	Florida 71, Auburn 68 at Gainesville, Fla. (Jan. 7, 2010)
Played at least three overtimes	Never
Shot 70% for a half	70.4%, 19-27 - vs. Texas A&M-Corpus Christi (Nov. 24, 2012)
Shot 60% for a game	vs. Alabama (61.8%, 34-55) (Jan. 22, 2009)
Shot less than 30% for a game	(25.5%, 13-51) at Arkansas at Fayetteville, Ark. (Jan. 15, 2012)
Shot 90% from the free throw line (minimum 10 attempts)	(10-10) vs. Mississippi State (Feb. 3, 2008)
Shot 50% from 3-point line	(5-of-6, 83%) vs. Alabama A&M in Auburn, Ala. (Nov. 18, 2012)
Shot less than 30% in a half	29.0% in the second half vs. San Diego State in Boulder, Colo. (Nov. 23, 2012)
Shot less than 20% in a half	19.0% in the first half vs. LSU, (Feb. 14, 2010)
Shot 55% or better and lost	58.1%, 25-43-vs. Tennessee, (Jan. 20, 2005)
Made at least 10 3-point field goals	10-of-25 vs. Maine in Raleigh, N.C. (Nov. 9, 2012)
Failed to make a 3-point field goal	0-9 at Mercer in Macon, Ga. (Nov. 11, 2011)
Had at least 60 rebounds	61 vs. Stephen F. Austin, (Dec. 17, 2007)
Had at least 50 rebounds	52- vs. Alabama State in Auburn, Ala. (Nov. 15, 2012)
Scored less than 20 points in a 1st half	18 points at Arkansas in Fayetteville, Ark. (Jan. 15, 2012)
Scored less than 20 points in a 2nd half	15 points at LSU in Baton Rouge, La. (Feb. 19, 2012)
Scored less than 50 points in a game	41 points at LSU in Baton Rouge, La. (Feb. 19, 2012)

Last Time an Auburn Player...

Scored 40 points	41-Consweila Sparrow vs. South Alabama (Feb. 17, 1998)
Scored 35 points	35-DeWanna Bonner vs. Tennessee (Jan. 25, 2009)
Scored 30 points	32-DeWanna Bonner vs. Ole Miss (Mar. 6, 2009)
Attempted 25 field goals	25-Natasha Brackett (9-25) at LSU (Jan. 30, 2005)
Recorded a double-double	Blanche Alverson (12 pts./10 rebs.) at Mercer in Macon, Ga. (Nov. 11, 2011)
Recorded a double-double with points and assists	Morgan Toles (10 pts./10 asst.) vs. Jacksonville State in Auburn, Ala. (Dec. 30, 2010)
Recorded consecutive double-doubles	KeKe Carrier (18 pts./10 rebs) vs. Mississippi State (Jan. 3, 2010) and (24 pts/12 rebs) vs. Florida in Gainesville, Fla. (Jan. 7, 2010)
Two players recorded a double-double	DeWanna Bonner (32 pts./13 rebs) & Whitney Boddie (15 pts./10 asst.) vs. Ole Miss in the SEC Tournament in North Little Rock, Ark. (March 6, 2009)
Had a double-double at halftime	DeWanna Bonner (14 pts./10 rebs.) vs. Ole Miss (Mar. 6, 2009)
Recorded a triple-double	Whitney Boddie (24 pts./11 rebs./12 asst.) vs. Sam Houston State (Dec. 5, 2008)
Had 10 assists	10- Morgan Toles vs. Jacksonville State (Dec. 30, 2010)
Had 15 assists	18-Martha Monk vs. Alabama State (Feb. 18, 1981)
Had 10 blocks	13- Marita Payne vs. Arkansas (Feb. 3, 2005)
Had 5 blocks	5 - Jassany Williams vs. Tennessee in Auburn, Ala. (Jan. 1, 2012)
Had 5 steals	5-Najat Ouardad vs. Alabama A&M in Auburn, Ala. (Nov. 18, 2012)
Had 15 rebounds	16-Jordan Greenleaf vs. Mississippi State (Jan. 3, 2010)
Had 20 rebounds	20-Monique Morehouse at LSU (Feb. 4, 1995)
Made 15 field goals	15-Consweila Sparrow (15-16) vs. USA (Feb. 17, 1998)
Made 5 three-point field goals	5 - Blanche Alverson (5-8) vs. Alabama in Auburn, Ala. (Feb. 23, 2012)
Two players scored 20 points	Alli Smalley (27 pts.) & KeKe Carrier (20 pts.) vs. Alabama (Jan. 14, 2010)
Two players scored 30 points	Laticia Morris (33 points) & Tara Williams (30 points) vs. South Alabama (Jan. 14, 1997)
Back-to-back 25-point games	Alli Smalley 26 pts. vs. Kentucky (Feb. 28, 2010) & 29 pts. vs. Florida in SEC Tournament in Duluth, Ga. (Mar. 4, 2010)
Only one player scored in double figures	Hasina Muhammad (19 pts.) vs. Ole Miss in Auburn, Ala. (Feb. 26, 2012)

TIGERS' RECORD WHEN...

When wearing white.....	3-1
When wearing orange.....	0-0
When wearing blue.....	1-1
When wearing pink.....	0-0
Leading at the half.....	3-0
Trailing at the half.....	1-2
Tied at the half.....	0-0
Scores 100+ points.....	0-0
Scores 90-99 points.....	1-0
Scores 80-89 points.....	1-0
Scores 70-79 points.....	2-1
Scores 60-69 points.....	0-0
Scores fewer than 60 points.....	0-1
Holds opponent to 41-50 points.....	3-0
Holds opponent to 31-40 points.....	0-0
Holds opponent to under 30 points.....	0-0
Shoots 50% FG or better.....	2-0
Shoots 40-49% FG.....	2-0
Shoots 39.9% or under FG.....	0-2
Holds opponent under 30% FG.....	2-0
Shoots higher FG% than opponent.....	4-0
Shoots lower FG% than opponent.....	0-2
Shoots higher FT% than opponent.....	1-1
Shoots lower FT% than opponent.....	3-1
Out-rebounds opponent.....	4-1
Out-rebounded by opponent.....	0-1
Tied in rebounds.....	0-0
Versus ranked opponent.....	0-0
In overtime.....	0-0
Games decided by 3 points or less.....	0-0
Games decided by 4-5 points.....	0-0
Games decided by 6-10 points.....	0-0
Games decided by 11-20 points.....	1-1
Games decided by 21-30 points.....	1-1
Games decided by 30+ points.....	2-0
On Television.....	0-0
In November.....	4-2
In December.....	0-0
In January.....	0-0
In February.....	0-0
In March.....	0-0

Five players scored in double figures.....	Alverson (17 pts.), Clay (15 pts.), Muhammad (15 pts.), Tanner (13 pts.) & Davis (12 pts.) vs. Alabama State (Nov. 15, 2012)
Six players scored in double figures.....	Carrier (19 pts.), Bonner (18 pts.), Smalley (16 pts.), Boddie (13 pts.), R. Hobbs (13 pts.), Hilliard (13 pts.) & S. Hobbs (10 pts.) vs. Sam Houston State (Dec. 5, 2008)
Seven players scored in double figures.....	Carrier (19 pts.), Bonner (18 pts.), Smalley (16 pts.), Boddie (13 pts.), R. Hobbs (13 pts.), Hilliard (13 pts.) & S. Hobbs (10 pts.) vs. Sam Houston State (Dec. 5, 2008)
Scored 20 points & had 20 rebounds.....	Lauretta Freeman (30 pts/21 rebs.) vs. Alabama, (Feb. 17, 1993)
Two players had 10 rebounds.....	Chantel Hilliard (11 rebs.) & Jassany Williams (10 rebs) at Mississippi State in Starkville, Miss. (Jan. 22, 2012)
Three players had 10 rebounds.....	Jordan Greenleaf (12 rebs.), DeWanna Bonner (12 rebs.) & Whitney Boddie (10 rebs.) vs. Oakland (Nov. 21, 2007)
Played every minute.....	Jordan Greenleaf (40 mins.) vs. Florida, SEC Tournament, Duluth, Ga., (Mar. 4, 2010)
Played more than 40 minutes.....	Alli Smalley (45 mins.), Jordan Greenleaf (43 mins.) & Morgan Toles (41 mins.) at LSU (Jan. 10, 2010)

Last Time an Auburn Opponent...

Shot less than 30% in a game (SEC).....	South Carolina - 28.6% in Auburn, Ala. (Jan. 19, 2012)
Shot less than 30% in a game (Non-conf).....	Alabama A&M - 29.6% in Auburn, Ala. (Nov. 18, 2012)
Shot 60% in a game.....	Vanderbilt 60.4% in Nashville, Tennessee in the SEC Tournament, (Mar. 5, 2004)
Scored 100 points.....	Georgia 102, Auburn 72 in Athens, Ga. (Mar. 3, 1984)
Scored 100 points at Auburn.....	Tuskegee 105, Auburn 98 (20T) (Feb. 12, 1979)
Scored 100 points and Lost.....	Never
Scored 110 points.....	Never
Had 25+ rebound margin.....	Never
Had a 20+ rebound margin.....	Never
Scored less than 20 points in a 1st half.....	Alabama State, 17 points in Auburn, Ala. (Nov. 15, 2012)
Scored less than 20 points in a 2nd half.....	Alabama A&M, 18 points in Auburn, Ala. (Nov. 18, 2012)
Had 50 rebounds.....	52 - at North Carolina State in Raleigh, N.C. (Nov. 10, 2012)
Had 25 assists.....	25- by Florida International in Miami, Fla. (Dec. 19, 1993)
Had 25 turnovers.....	26- by Texas A&M-Corpus Christi in Boulder, Colo. (Nov. 24, 2012)
Had 15 steals.....	15- by Georgia in Auburn, Ala. (Jan. 8, 2012)
Had 10 blocks.....	12-by Tennessee (Jan. 10, 2008)
Failed to make a 3-point field goal.....	by Ole Miss (0-7) in Auburn, Ala. (Feb. 26, 2012)
Attempted 35 free throws.....	36 - by Arizona 25-36 (Dec. 19, 2000)
Made 30 free throws.....	30- by Arkansas (Jan. 22, 1995)
Made 10 three-point field goals.....	by San Diego State 11 3-point FGs, in Boulder, Colo., (Nov. 23, 2012)
Scored less than 50 points in a game.....	Alabama A&M, 44 in Auburn, Ala. (Nov. 18, 2012)
Scored 40 points or less.....	Alabama, 40 in Auburn, Ala. (Feb. 23, 2012)
Scored 25 points or less.....	25- by Puerto Rico Mayaguez (Dec. 17, 2000)
Scored 11 points or less.....	11-by Montevallo (1973) and 11-by Jeff Davis (1973)

Last Time an Auburn Opponent's Player...

Scored 30 points (non-conference).....	33-Andrea Smith of South Florida in Tampa, Fla. (Nov. 22, 2010)
Scored 30 points (SEC).....	31-Tierney Jenkins of Alabama in Tuscaloosa, Ala. (Jan. 2, 2011)
Scored 35 points.....	38-Lindsay Shearer of Kent State in Kent, Ohio (Nov. 20, 2005)
Attempted 25 field goals.....	27- Jantel Lavender (9-27) of Ohio State (Nov. 23, 2008)
Scored 20 points & had 20 rebounds.....	Young of Baylor in the Women's NIT Championship Game, (20 pts./25 rebs.), (Apr. 4, 2003)
Two players scored 20 points.....	by North Carolina State, Marissa Kastanek (24 pts) & Kody Burke (26 pts), (Nov. 10, 2012)
Three players scored 20 points.....	by LSU in Baton Rouge, Chatman (22 pts), Johnson (21 pts) & Lowery (20 pts), (Jan. 12, 1991)
Five players scored in double figures.....	J. Thomas (16 pts), Gray (13 pts), K. Thomas (11 pts), Christmas (10 pts) & Peters (10 pts) of Duke (Nov. 18, 2010)
Six players scored in double figures ..	Smith (15 pts), Bales (14 pts), Foley (11 pts), Williams (10 pts), Currie (10 pts) & Kurz (10 pts) of Duke (Dec. 31, 2004)
Recorded a double-double.....	Kody Burke (26 pts/12 rebs) of North Carolina State in Raleigh, N.C. (Nov. 10, 2012)
Recorded a double-double with points and assists.....	Ceira Ricketts of Arkansas in Fayetteville, Ark., (14 pts/13 rebs/12 assts.), (Jan. 18, 2009)
Recorded a triple-double.....	Ceira Ricketts (14 pts./13 rebs./12 asst.) of Arkansas (Jan. 18, 2009)
Two players recorded a double-double	Glory Johnson (14pts/11rbs) and Shekinna Stricklen (11pts/10rbs) of Tennessee in Knoxville, Tenn. (Feb. 5, 2012)
Had 15 rebounds.....	15-by Ashley Brown of Mississippi State, 15- Samarie Walker, Kentucky (Jan. 26, 2012)
Had 20 rebounds.....	20-Sylvia Fowles of LSU (Jan. 28, 2007)
Had 10 assists.....	10-Valencia McFarland of Ole Miss (Jan. 13, 2011)
Had 10 blocks.....	Never
Had 5 blocks.....	5-Martha Alwal of Mississippi State in Starkville, Miss. (Jan. 22, 2012)
Had 5 steals.....	5-Jasmine James of Georgia in Auburn, Ala., (Jan. 8, 2012)
Made 15 field goals.....	15-Chamique Holdsclaw (15-21) of Tennessee (Feb. 1, 1998)
Had 15 assists.....	16-Cindy McMahan of Alabama-Huntsville (Nov. 24, 1980)

SEC PRESEASON POLL (Media Vote)

(First-place votes in Parentheses)

Order of Finish

1. Kentucky (20)	376
2. Georgia (1)	352
3. Vanderbilt (2)	336
4. Tennessee (2)	316
5. Texas A&M (1)	284
6. LSU	251
7. South Carolina	194
8. Arkansas	168
9. Florida	144
10. Auburn	124
11. Mississippi State	116
12. Ole Miss	47
13. Missouri	39
14. Alabama	36

Player of the Year

A'dia Mathis, UK (20); Christina Foggie, VU (4); Anne Marie Armstrong, UGA (1); Jennifer George, UF (1)

All-SEC First TeamJennifer George, Florida
Anne Marie Armstrong, Georgia
A'dia Mathies, Kentucky
Kelsey Bone, Texas A&M
Christina Foggie, Vanderbilt**All-SEC Second Team**Sarah Watkins, Arkansas
Jasmine Hassell, Georgia
Samarie Walker, Kentucky
Ieasia Walker, South Carolina
Meighan Simmons, Tennessee**SEC PRESEASON POLL (Coaches' Vote)****Order of Finish**

1. Kentucky	167
2. Georgia	149
3. Texas A&M	145
4. Vanderbilt	143
5. Tennessee	117
6. South Carolina	102
7. LSU	96
8. Florida	92
9. Arkansas	72
10. Auburn	57
11. Mississippi State	51
11.2. Alabama	33
11.2. Missouri	33
14. Ole Miss	17

Player of the Year

A'dia Mathies (UK) 9; Christina Foggie (VU) 3; Anne Marie Armstrong (UGA) 1.

All-SEC First TeamSarah Watkins, Arkansas
Jennifer George, Florida
Anne Marie Armstrong, Georgia
Jasmine Hassell, Georgia
A'dia Mathies, Kentucky
Meighan Simmons, Tennessee
Kelsey Bone, Texas A&M
Christina Foggie, Vanderbilt
Jasmine Lister, Vanderbilt**All-SEC Second Team**Jasmine James, Georgia
Bria Goss, Kentucky
Samarie Walker, Kentucky
Adrienne Webb, LSU
Valencia McFarland, Ole Miss
Ieasia Walker, South Carolina
Ariel Massengale, Tennessee
Tiffany Clarke, Vanderbilt**2012-13 Auburn Superlatives...****First Half**

Most points scored in the first half	49, vs. Alabama A&M (11-18-12)
Fewest points scored in the first half	24, vs. San Diego State (11-23-12)
Fewest points allowed in the first half	17, vs. Alabama State (11-15-12)
Most points allowed in the first half	37, at North Carolina State (11-10-12)
Best FG % in the first half568, vs. Alabama A&M (11-18-12)
Worst FG % in the first half316, at North Carolina State (11-10-12)
Best FG % by an opponent in the first half409, vs. Maine (11-9-12)
Worst FG % by an opponent in the first half219, vs. Alabama State (11-15-12)
Most rebounds in the first half	31, vs. Alabama State (11-15-12)
Fewest rebounds in the first half	16, vs. Texas A&M-Corpus Christi (11-24-12)
Most rebounds by an opponent in the first half	28, at North Carolina State (11-10-12)
Fewest rebounds by an opponent in the first half	13, vs. Alabama A&M (11-18-12)

Second Half

Most points scored in the second half	44, vs. Texas A&M-Corpus Christi (11-24-12) and Alabama A&M (11-18-12)
Fewest points scored in the second half	33, vs. San Diego State (11-23-12)
Fewest points allowed in the second half	18, vs. Alabama A&M (11-17-12) and Maine (11-9-12)
Most points allowed in the second half	49, vs. San Diego State (11-23-12)
Best FG % in the second half704, vs. Texas A&M-Corpus Christi (11-24-12)
Worst FG % in the second half290, vs. San Diego State (11-23-12)
Best FG % by an opponent in the second half581, vs. San Diego State (11-23-12)
Worst FG % by an opponent in the second half231, vs. Alabama A&M (11-18-12)
Most rebounds in the second half	21, vs. Texas A&M-Corpus Christi (11-24-12) and Alabama State (11-15-12)
Fewest rebounds in the second half	11, at North Carolina State (11-10-12)
Most rebounds by an opponent in the second half	24, at North Carolina State (11-10-12)
Fewest rebounds by an opponent in the second half	12, vs. Texas A&M-Corpus Christi (11-24-12)

Game

Most points scored	93, vs. Alabama A&M (11-18-12)
Fewest points scored	57, vs. San Diego State (11-23-12)
Most points allowed	85, at North Carolina State (11-10-12)
Fewest points allowed	41, vs. Maine (11-9-12)
Best FG %591, vs. Alabama A&M (11-18-12)
Worst FG %309, vs. San Diego State (11-23-12)
Best FG % by an opponent467, vs. San Diego State (11-23-12)
Worst FG % by an opponent259, vs. Alabama State (11-15-12)
Most rebounds	52, vs. Alabama State (11-15-12)
Fewest rebounds	36, at North Carolina State (11-10-12)
Most rebounds by an opponent	52, at North Carolina State (11-10-12)
Fewest rebounds by an opponent	27, vs. Alabama A&M (11-18-12)

Miscellaneous

Largest margin of victory	49, vs. Alabama A&M (11-18-12)
Smallest margin of victory	15, vs. Texas A&M-Corpus Christi (11-24-12)
Largest margin of defeat	21, vs. San Diego State (11-23-12)
Smallest margin of defeat	14, at North Carolina State (11-10-12)
Largest halftime lead	23, vs. Alabama A&M (11-18-12) and Alabama State (11-15-12)
Smallest halftime lead	12, vs. Maine (11-9-12)
Last time tied at halftime	---
Largest halftime deficit	5, vs. San Diego State (11-23-12)
Smallest halftime deficit	4, vs. Texas A&M-Corpus Christi (11-24-12) and at North Carolina State (11-10-12)
Largest rebounding margin	16, vs. Alabama State (11-15-12)
Smallest rebounding margin	3, vs. San Diego State (11-23-12)
Last time tied in rebounding	---
Opponent's largest rebounding margin	16, at North Carolina State (11-10-12)
Opponents smallest rebounding margin	16, at North Carolina State (11-10-12)

2012-13 Auburn Individual Highs...**First Half**

Points.....15, Ty. Tanner at N.C. State (11-10-12) and Muhammad vs. Alabama A&M (11-18-12)
 Field Goals Made.....7, Hasina Muhammad vs. Alabama A&M (11-18-12)
 Field Goal Attempts15, Hasina Muhammad vs. Maine (11-9-12)
 3-Point Field Goals Made2, Ouardad and Muhammad vs. Maine (11-10-12)
 3-Point Field Goal Attempts.....4, 3 times, last by Tyrese Tanner vs. N.C. State (11-10-12)
 Free Throws Made.....4, on two occasions
 Free Throws Attempted.....6, Peyton Davis vs. Alabama State (11-15-12)
 Rebounds.....8, Tyrese Tanner vs. Maine (11-9-12)
 Assists4, Ouardad at NC State (11-10-12), Alabama A&M (11-18-12) & SDSU (11-23-12)
 Blocked Shots2, Tyrese Tanner vs. Alabama State (11-15-12)
 Steals.....3, by three players on three occasions, last by Davis and Ouardad vs. AAMU (11-18-12)

Second Half

Points.....12, Chadarryl Clay vs. Alabama State (11-15-12)
 Field Goals Made.....5, Blanche Alverson vs. Alabama State (11-15-12)
 Field Goal Attempts ...8, Muhammad vs. Maine (11-9-12), NC State (11-10-12) & SDSU (11-23-12)
 3-Point Field Goals Made2, Blanche Alverson at North Carolina State (11-10-12)
 3-Point Field Goal Attempts.....6, Blanche Alverson at North Carolina State (11-10-12)
 Free Throws Made.....7, Tyrese Tanner at North Carolina State (11-10-12)
 Free Throws Attempted.....8, Tyrese Tanner at North Carolina State (11-10-12)
 Rebounds.....6, Cabriana Capers vs. Texas A&M-Corpus Christi (11-24-12)
 Assists5, Najat Ouardad vs. Texas A&M-Corpus Christi (11-24-12)
 Blocked Shots2, Alverson at N.C. State (11-10-12) & Ty. Tanner vs. TAMU-CC (11-24-12)
 Steals.....3, Alverson, Muhammad and Ouardad vs. TAMU-CC (11-24-12)

Game

Points.....26, Tyrese Tanner at North Carolina State (11-10-12)
 Field Goals Made.....10, Hasina Muhammad vs. Alabama A&M (11-18-12)
 Field Goal Attempts23, Hasina Muhammad vs. Maine (11-9-12)
 3-Point Field Goals Made3, Ouardad and Muhammad vs. Maine (11-9-12)
 3-Point Field Goal Attempts.....9, Blanche Alverson at North Carolina State (11-10-12)
 Free Throws Made.....11, Tyrese Tanner at North Carolina State (11-10-12)
 Free Throws Attempted.....12, Tyrese Tanner at North Carolina State (11-10-12)
 Rebounds..9, Tanner vs. UM (11-9-12), Alverson vs. ASU (11-15-12) & Capers vs. AAMU (11-18-12)
 Assists8, Najat Ouardad vs. Texas A&M-Corpus Christi (11-24-12)
 Blocked Shots3, Alverson at N.C. State (11-10-12) & Ty. Tanner vs. TAMU-CC (11-24-12)
 Steals.....5, Najat Ouardad vs. Alabama A&M (11-18-12)

2012-13 Opponent Individual Highs...**First Half**

Points.....15, Marissa Kastanek of North Carolina State (11-10-12)
 Field Goals Made.....5, Kastanek of NC State (11-10-12) & Clements of SDSU (11-23-12)
 Field Goal Attempts12, Courtney Clements of San Diego State (11-23-12)
 3-Point Field Goals Made3, 3 times, last by Janae Blount of TAMU-CC (11-24-12)
 3-Point Field Goal Attempts.....8, Marissa Kastanek of North Carolina State (11-10-12)
 Free Throws Made.....3, Markeisha Gatling of North Carolina State (11-10-12)
 Free Throws Attempted.....6, Markeisha Gatling of North Carolina State (11-10-12)
 Rebounds.....8, Markeisha Gatling of North Carolina State (11-10-12)
 Assists4, Chelsea Hopkins of San Diego State (11-23-12)
 Blocked Shots2, Kody Burke of North Carolina State (11-10-12)
 Steals.....2, on seven occasions

Second Half

Points.....20, Kody Burke of North Carolina State (11-10-12)
 Field Goals Made.....8, Kody Burke of North Carolina State (11-10-12)
 Field Goal Attempts11, Burke of N.C. State (11-10-12) & Clements of SDSU (11-23-12)
 3-Point Field Goals Made4, Nakiya Smith of Alabama State (11-15-12)
 3-Point Field Goal Attempts.....7, Smith of ASU (11-15-12) and Strickland of AAMU (11-18-12)
 Free Throws Made.....5, Ashley Jones of Alabama State (11-15-12)
 Free Throws Attempted.....6, Ashley Jones of Alabama State (11-15-12)
 Rebounds.....9, Kody Burke of North Carolina State (11-10-12)
 Assists4, Goodwin-Coleman and Brown of North Carolina State (11-10-12)
 Blocked Shots1, on five occasions
 Steals.....2, Courtney Anderson of Maine (11-9-10)

Game

Points.....26, Burke of N.C. State (11-10-12) and Clements of SDSU (11-23-12)
 Field Goals Made.....11, Kody Burke of North Carolina State (11-10-12)
 Field Goal Attempts23, Courtney Clements of San Diego State (11-23-12)
 3-Point Field Goals Made6, Courtney Clements of San Diego State (11-23-12)
 3-Point Field Goal Attempts.....13, Courtney Clements of San Diego State (11-23-12)
 Free Throws Made.....6, Ashley Jones of Alabama State (11-15-12)
 Free Throws Attempted.....8, Ashley Jones of Alabama State (11-15-12)
 Rebounds.....12, Kody Burke of North Carolina State (11-10-12)
 Assists7, Brown of N.C. State (11-10-12) and Hopkins of SDSU (11-23-12)
 Blocked Shots3, Kody Burke of North Carolina State (11-10-12)
 Steals.....3, on three occasions

Specialty Statistics (Auburn-Opponent)

Opponent	Bench Points	Points in the Paint	Points off Turnovers	Second Chance Points	Fast Break Points
vs. Maine	29-14	28-12	28-11	23-4	6-2
at North Carolina State	17-17	28-40	22-7	20-15	6-17
vs. Alabama State	23-6	40-10	28-5	14-8	20-2
vs. Alabama A&M	40-28	46-12	34-5	24-10	14-2
vs. San Diego State	18-13	18-26	16-15	13-14	0-2
vs. Texas A&M-Corpus Christi	24-13	44-12	24-23	17-13	14-0

Lead-Deficit Comparison

Opponent	Largest Lead	Largest Deficit	Lead Changes	Ties	Result
vs. Maine	35 (2nd, 4:44)	4 (1st, 16:14)	4	0	W, 71-41
at North Carolina State	9 (1st, 14:02)	17 (2nd, 1:09)	2	1	L, 85-71
vs. Alabama State	37 (2nd, 0:52)	1 (1st, 18:45)	2	0	W, 80-43
vs. Alabama A&M	53 (2nd, 2:15)	---	0	1	W, 93-44
vs. San Diego State	2 (1st, 18:32)	23 (2nd, 0:41)	1	1	L, 78-57
vs. Texas A&M-Corpus Christi	15 (2nd, 1:14)	7 (1st, 1:36)	12	3	W, 72-57

Scoring Breakdown

(Percentage of total points in parentheses)

Opponent	Front Court	Back Court	Sr.	Jr.	So.	Fr.	Starters	Bench
vs. Maine	20 (28.2)	51 (71.8)	21	21	22	7	42 (59.2)	29 (40.8)
at North Carolina State	20 (28.2)	51 (71.8)	23	31	12	5	54 (76.1)	17 (23.9)
vs. Alabama State	42 (52.5)	38 (47.5)	19	25	19	17	57 (71.2)	23 (28.8)
vs. Alabama A&M	38 (40.9)	55 (59.1)	24	14	33	22	53 (57.0)	40 (43.0)
vs. San Diego State	21 (36.8)	36 (63.2)	11	18	15	13	39 (68.4)	18 (31.6)
vs. Texas A&M-Corpus Christi	27 (37.5)	45 (62.5)	6	26	30	10	48 (66.7)	24 (33.3)

Comparison Statistics (Auburn/Opponent)

Opponent	1st	2nd	Score	Mar	Total FG	FG Pct	3-Pointers	3FG Pct	Free Throws	FT Pct	Reb.	Mar	Assist	TO	Bk	Stl	Fouls
Maine	35/23	36/18	71-41	+30	29-70/17-51	.414/.333	10-25/4-22	.400/.182	3-6/3-3	.500/1.000	40/35	+5	14/12	15/26	3/1	9/7	8/8
North Carolina St.	33/37	38/48	71-85	(14)	23-67/32-69	.343/.464	4-19/10-23	.211/.435	21-27/11-18	.778/.611	36/52	(16)	11/20	13/20	4/3	10/9	20/22
Alabama State	40/17	40/26	80-43	+37	32-73/14-54	.438/.259	3-15/6-27	.200/.222	13-21/9-14	.619/.643	52/36	+16	23/7	15/26	8/2	16/5	16/16
Alabama A&M	49/26	44/18	93-44	+49	39-66/16-54	.591/.296	5-6/6-26	.833/.346	10-13/3-7	.769/.429	40/27	+13	27/12	11/23	4/1	15/6	10/13
San Diego State	24/29	33/49	57-78	+21	17-55/28-60	.309/.467	2-7/11-25	.286/.440	21-29/11-14	.724/.786	39/36	+3	10/14	17/16	1/3	7/8	14/24
Texas A&M-CC	28/32	44/25	72-57	+15	31-53/20-61	.585/.328	1-6/10-31	.167/.323	9-15/7-9	.600/.778	37/31	+6	16/12	25/26	7/1	16/10	15/14

Game-by-Game Leaders

	Points	Rebounds	Assists	Steals	Blocked Shots
vs. Maine	20-Hasina Muhammad	9-Tyrese Tanner	6-Najat Ouardad	3-Blanche Alverson	1-3 tied
at North Carolina State	26-Tyrese Tanner	8-Tyrese Tanner	4-Najat Ouardad	3-Alverson/Ty. Tanner	3-Alverson
vs. Alabama State	17-Blanche Alverson	9-Blanche Alverson	6-Julie King	3-Hasina Muhammad	2-3 tied
vs. Alabama A&M	21-Hasina Muhammad	9-Cabrina Capers	5-Chadarryl Clay	5-Najat Ouardad	2-Julie King
vs. San Diego State	17-Tyrese Tanner	8-Tra'cee Tanner	4-Najat Ouardad	3-Tyrese Tanner	1-Hasina Muhammad
vs. Texas A&M-Corpus Christi	16-Hasina Muhammad	7-Cabrina Capers	8-Najat Ouardad	4-Hasina Muhammad	3-Tyrese Tanner

2012-13 Starting Lineups

	Point Guard (1)	Wing (2)	Wing (3)	Post (4)	Post (5)
vs. Maine	Najat Ouardad	Courtney Strain	Tyrese Tanner	Blanche Alverson	Peyton Davis
at North Carolina State	Najat Ouardad	Courtney Strain	Tyrese Tanner	Blanche Alverson	Peyton Davis
vs. Alabama State	Najat Ouardad	Hasina Muhammad	Tyrese Tanner	Blanche Alverson	Peyton Davis
vs. Alabama A&M	Najat Ouardad	Hasina Muhammad	Tyrese Tanner	Blanche Alverson	Peyton Davis
vs. San Diego State	Najat Ouardad	Hasina Muhammad	Tyrese Tanner	Blanche Alverson	Peyton Davis
vs. Texas A&M-Corpus Christi	Najat Ouardad	Hasina Muhammad	Tyrese Tanner	Blanche Alverson	Peyton Davis

Record by Starting Lineup

Ouardad, Strain, Ty. Tanner, Alverson, Davis
1-1 (.500)

Ouardad, Muhammad, Ty. Tanner, Alverson, Davis
3-1 (.750)



Terri WILLIAMS-FOURNOY

Head Coach

First Season

Hampton, Va. • Penn State, 1991

- Has nearly 400 wins as a collegiate assistant and head coach
- Earned her first win at Auburn in a 71-41 win over Maine on Nov. 9, 2012
- Has 147 wins as a head coach and 251 as an assistant for a .642 winning percentage over her 20 years
- Has been a part of six conference championships and 13 post-season appearances as an assistant and head coach
- 2010 Black Coaches Association Coach of the Year
- Served as an assistant coach for Team USA that won a gold medal at the 2011 World University Games in ShenZhen, China
- Coached teams to 11 NCAA Tournament appearances, nine as an assistant coach and two as a head coach.
- As an assistant coach at Georgia, helped the team to two Southeastern Conference titles in 1997 and 2000 and the 2001 SEC Tournament title
- Has coached 19 players that have gone on to the professional ranks, including seven in the WNBA
- Helped coach Georgia to a NCAA Final Four appearance and two NCAA Elite Eight appearances
- Coached three Georgetown players to three all-conference honors and one All-America award
- Coached Georgetown to four straight 20-win seasons
- Sports a 486-258 record as a head coach, assistant coach and player
- Helped coached Georgetown to Big East title in 1992
- As an assistant coach at Southwest Missouri State, helped the team to two straight NCAA Tournaments and two consecutive Missouri Valley Conference Tournament Championships

All-time record as player and coach:	486-258 (.653)	26th year
Record as collegiate player:	88-36 (.709)	4 seasons
Record as collegiate coach:	398-222 (.642)	21st season
Record as collegiate assistant coach:	251-116 (.683)	12 seasons
SEC Record as an assistant coach:	130-45 (.742)	6 seasons
Record as collegiate head coach:	147-106 (.581)	9th season

Williams-Flournoy Year-by-Year

Penn State, Player (1987-91)

Year	Record	Conf.	Other Information
1987-88	20-13	11-7	NCAA Second Round
1988-89	14-14	12-6	
1989-90	25-7	15-3	NCAA Second Round
1990-91	29-2	17-1	NCAA Second Round

Georgetown, Assistant Coach (1992-96)

Year	Record	Conf.	Other Information
1992-93	23-7	15-3	Big East Champions NCAA Sweet 16
1993-94	12-15	6-12	
1994-95	11-17	6-12	
1995-96	12-15	7-11	

Georgia, Assistant Coach (1996-2002)

Year	Record	Conf.	Other Information
1996-97	25-6	11-1	SEC Champions NCAA Elite Eight
1997-98	17-11	8-6	NCAA First Round
1998-99	27-7	9-5	NCAA Final Four
1999-2000	32-4	13-1	SEC Champions NCAA Elite Eight
2000-01	27-6	11-3	SEC Tournament Champions NCAA Second Round
2001-02	19-11	6-8	NCAA First Round

Southwest Missouri State, Assistant Coach (2002-04)

Year	Record	Conf.	Other Information
2002-03	18-13	11-7	MVC Tournament Champions NCAA First Round
2003-04	28-4	16-2	Missouri Valley Champions MVC Tournament Champions NCAA First Round

Georgetown, Head Coach (2004-12)

Year	Record	Conf.	Other Information
2004-05	12-16	7-9	
2005-06	10-17	3-13	
2006-07	13-16	3-13	
2007-08	15-14	5-11	
2008-09	20-14	7-9	WNIT Quarterfinals
2009-10	26-7	13-3	NCAA Second Round
2010-11	24-11	9-7	NCAA Sweet 16
2011-12	23-9	11-5	NCAA Second Round

Auburn, Head Coach (2012-present)

Year	Record	Conf.	Other Information
2012-13	4-2		



Blanche ALVERSON

#14

Senior • Forward/Guard • 6-3

Andalusia, Ala.

Buford (Ga.) High School

NOTES:

- Scored 8 points with 6 rebounds in Auburn's season-opener against Maine
- Named Auburn's 2012 Miss Homecoming on Nov. 3 at halftime of the Homecoming Football game vs. New Mexico State
- Scored 800th career point against Alabama on Feb. 23, becoming the 37th Auburn player ever to score 800 career points and is 124 points from 1,000
- Is 5th all-time at Auburn in career 3-pointers with 153; is 8 treys away from tying Samantha Williams for 4th
- Selected as the 2012 SEC Women's Basketball Scholar-Athlete of the Year
- Was second on the team, averaging 17.5 points per game during Auburn's Australian Summer Tour
- Created her own community service program, Ballin' For Books, last season that collected more than 1,100 books for local libraries reading initiatives

Opponent	Start	Min.	FG-A	3PT-A	FT-A	O-D-T	PF	Ast.	TO	Blk.	St.	Pts.
vs. Maine	*	32	3-7	2-3	0-0	1-5-6	0	2	6	0	3	8
at North Carolina State	*	35	4-13	2-9	2-2	2-5-7	1	3	1	3	3	12
ALABAMA STATE	*	23	7-11	1-3	2-2	3-6-9	2	1	2	2	2	17
ALABAMA A&M	*	25	6-9	2-2	0-0	1-3-4	1	3	1	1	1	14
vs. San Diego State	*	38	2-9	1-3	2-2	2-2-4	0	3	1	0	1	7
vs. Texas A&M-Corpus Christi*	20	1-3	0-2	0-0	0-0	0-5-5	0	1	1	1	3	2
at Tulane												
HOFSTRA												
at George Washington												
TEMPLE												
TENNESSEE-CHATTANOOGA												
JACKSONVILLE												
SAMFORD												
ARKANSAS												
at Missouri												
OLE MISS												
at Texas A&M												
TENNESSEE												
at Kentucky												
at Alabama												
LSU												
at South Carolina												
at Georgia												
FLORIDA												
ALABAMA												
at Tennessee												
MISSOURI												
at Vanderbilt												
MISSISSIPPI STATE												

ALVERSON CAREER STATISTICS

Year	GP-GS	FG-FGA	Pct	3FG-FGA	Pct	FT-FTA	Pct	O-D-T (Reb.)	Avg	PF	FO	Ast	TO	Blk	Stl	Pts	Avg
2009-10	31-13	78-218	.358	40-128	.313	19-27	.704	26-92-118	3.8	39	1	51	44	17	15	215	6.9
2010-11	32-32	126-333	.378	50-171	.292	25-35	.714	33-118-151	4.7	44	0	33	61	17	27	327	10.2
2011-12	30-26	99-246	.402	56-136	.412	20-24	.833	20-107-127	4.2	43	0	29	42	12	30	274	9.1
2012-13	6-6	23-52	.442	8-22	.364	6-6	1.000	9-26-35	5.8	4	0	13	12	7	13	60	10.0
TOTAL	99-77	326-849	.384	154-457	.337	70-92	.761	88-343-431	4.4	130	1	126	159	53	85	876	8.8

SEASON HIGHS

Points	17	vs. Alabama State	(11/15/12)
Rebounds	9	vs. Alabama State	(11/15/12)
Assists	3	3 times, last vs. SDSU	(11/23/12)
Blocks	3	vs. North Carolina State	(11/10/12)
Steals	3	3 times, last vs. TAMU-CC	(11/24/12)
Field Goals	7	vs. Alabama State	(11/15/12)
Field Goal Attempts	13	vs. NC State	(11/10/12)
3-Point Field Goals	2	3 times, last vs. AAMU	(11/18/12)
3-Point FG Attempts	9	vs. NC State	(11/10/12)
Free Throws	2	3 times, last vs. SDSU	(11/23/12)
Free Throw Attempts	2	3 times, last vs. SDSU	(11/23/12)

CAREER HIGHS

Points	27	vs. Ole Miss	(1/13/11)
Rebounds	10	at Mercer	(11/11/11)
Assists	5	3 times, last vs. Alabama	(1/2/11)
Blocks	3	three times, last vs. NC State	(11/10/12)
Steals	6	vs. Central Conn. State	(12/22/11)
Field Goals	11	vs. Ole Miss	(1/13/11)
Field Goal Attempts	17	3 times, last vs. Marist	(12/21/11)
3-Point Field Goals	5	3 times, last vs. Alabama	(2/23/12)
3-Point FG Attempts	10	vs. Marist	(12/21/11)
Free Throws	4	three times, last at Florida	(2/9/12)
Free Throw Attempts	5	vs. Seton Hall	(11/27/10)



Julie KING

#22

Senior • Guard • 5-9

St. Louis, Mo.

Nerinx Hall

NOTES:

- Pulled down a season-high 5 rebounds against Texas A&M-Corpus Christi
- Grabbed a rebound in 4 minutes in her collegiate basketball debut
- Led Auburn with season-high 6 assists against Alabama A&M
- Joins the women's basketball team for her final year of eligibility after playing on the Auburn soccer team for four years
- Was co-captain of last year's SEC Tournament Champion Auburn soccer team
- Holds the Auburn career record for career matches started and is second in career matches played
- Named SEC Soccer Co-Defensive Player of the Year in 2011
- Was an All-State basketball selection at Nerinx Hall in St. Louis, Mo.

Opponent	Start	Min.	FG-A	3PT-A	FT-A	O-D-T	PF	Ast.	TO	Blk.	St.	Pts.
vs. Maine	4	0-0	0-0	0-0	0-0	0-1-1	0	0	1	0	0	0
at North Carolina State	1	0-0	0-0	0-0	0-0	0-0-0	0	0	0	0	0	0
ALABAMA STATE	13	1-2	0-0	0-0	0-1	0-2-2	2	6	1	0	2	2
ALABAMA A&M	11	0-2	0-0	0-0	0-0	0-1-1	0	2	1	2	1	0
vs. San Diego State	1	0-0	0-0	0-0	0-0	0-0-0	0	0	0	0	0	0
vs. Texas A&M-Corpus Christi	20	0-4	0-0	0-0	0-1	1-4-5	2	2	0	0	1	0

at Tulane
HOFSTRA

at George Washington

TEMPLE

TENNESSEE-CHATTANOOGA

JACKSONVILLE

SAMFORD

ARKANSAS

at Missouri

OLE MISS

at Texas A&M

TENNESSEE

at Kentucky

at Alabama

LSU

at South Carolina

at Georgia

FLORIDA

ALABAMA

at Tennessee

MISSOURI

at Vanderbilt

MISSISSIPPI STATE

KING CAREER STATISTICS

Year	GP-GS	FG-FGA	Pct	3FG-FGA	Pct	FT-FTA	Pct	O-D-T (Reb.)	Avg	PF	FO	Ast	TO	Blk	Stl	Pts	Avg
2012-13	6-0	1-8	.125	0-0	.000	0-2	.000	1-8-9	1.5	4	0	10	3	2	4	2	0.3
TOTAL	6-0	1-8	.125	0-0	.000	0-2	.000	1-8-9	1.5	4	0	10	3	2	4	2	0.3

SEASON HIGHS

Points

2 vs. Alabama State (11/15/12)

Rebounds

5 vs. Texas A&M-CC (11/24/12)

Assists

6 vs. Alabama State (11/15/12)

Blocks

2 vs. Alabama A&M (11/18/12)

Steals

2 vs. Alabama State (11/15/12)

Field Goals

1 vs. Alabama State (11/15/12)

Field Goal Attempts

4 vs. Texas A&M-CC (11/24/12)

3-Point Field Goals

3-Point FG Attempts

Free Throws

Free Throw Attempts

1 twice, last vs. TAMU-CC (11/24/12)



Najat OUARDAD

#3

Senior • Guard • 5-1

Orleans, France

Pensacola State College / Oak Ridge (N.C.) Military Academy / Forsyth (N.C.) Country Day

NOTES:

- Tied her career high with 8 assists against Texas A&M-Corpus Christi
- Scored career-high 11 points in season opener against Maine; added 6 assists and tied her career high of 6 rebounds
- Tied her career high with 11 points in the second game against North Carolina State
- Her seven steals are tied for 6th all-time at Auburn in single-game steals
- Finished last season 13th in SEC in conference-only games with 2.5 assists per game
- In her second season at Auburn after transferring from Pensacola State College, was a two-time All-Panhandle Conference selection while at Pensacola State
- Led Pensacola State to a third-place finish at the 2011 NJCAA National Basketball Championship, compiling a 36-1 record along the way
- Played for the French National Team while in high school

Opponent	Start	Min.	FG-A	3PT-A	FT-A	O-D-T	PF	Asst.	TO	Blk.	Stl.	Pts.
vs. Maine	*	30	4-9	3-6	0-0	2-4-6	0	6	2	0	2	11
at North Carolina State	*	36	4-10	1-3	2-3	0-5-5	1	4	6	0	2	11
ALABAMA STATE	*	20	0-1	0-1	0-1	1-3-4	2	5	3	0	2	0
ALABAMA A&M	*	19	1-3	1-1	1-2	0-0-0	1	4	1	0	5	4
vs. San Diego State	*	29	1-3	0-2	2-2	1-5-6	1	4	4	0	0	4
vs. Texas A&M-Corpus Christi*		26	2-3	0-0	0-0	0-3-3	2	8	4	0	3	4

at Tulane
HOFSTRA
at George Washington
TEMPLE
TENNESSEE-CHATTANOOGA
JACKSONVILLE
SAMDOR
ARKANSAS
at Missouri
OLE MISS
at Texas A&M
TENNESSEE
at Kentucky
at Alabama
LSU
at South Carolina
at Georgia
FLORIDA
ALABAMA
at Tennessee
MISSOURI
at Vanderbilt
MISSISSIPPI STATE

SEASON HIGHS

Points	11	twice, last vs. NC State	(11/10/12)
Rebounds	6	twice, last vs. SDSU	(11/23/12)
Assists	8	vs. Texas A&M-CC	(11/24/12)
Blocks			
Steals	5	vs. Alabama A&M	(11/18/12)
Field Goals	4	twice, vs. NC State	(11/10/12)
Field Goal Attempts	10	vs. NC State	(11/10/12)
3-Point Field Goals	3	vs. Maine	(11/9/12)
3-Point FG Attempts	6	vs. Maine	(11/9/12)
Free Throws	2	twice, last vs. SDSU	(11/23/12)
Free Throw Attempts	3	vs. NC State	(11/10/12)

CAREER HIGHS

Points	11	twice, last vs. NC State	(11/10/12)
Rebounds	6	3 times, last vs. SDSU	(11/23/12)
Assists	8	twice, last vs. TAMU-CC	(11/24/12)
Blocks			N/A
Steals	7	at Vanderbilt	(1/12/12)
Field Goals	4	three times, last vs. NC State	(11/10/12)
Field Goal Attempts	10	vs. NC State	(11/10/12)
3-Point Field Goals	3	vs. Maine	(11/9/12)
3-Point FG Attempts	6	vs. Maine	(11/9/12)
Free Throws	3	at Mercer	(11/11/11)
Free Throw Attempts	4	at Mercer	(11/11/11)

OUARDAD CAREER STATISTICS

Year	GP-GS	FG-FGA	Pct	3FG-FGA	Pct	FT-FTA	Pct	O-D-T (Reb.)	Avg	PF	FO	Asst	TO	Blk	Stl	Pts	Avg
2011-12	30-18	36-110	.327	11-49	.224	11-17	.647	22-41-63	2.1	60	0	81	95	0	52	94	3.1
2012-13	6-6	12-29	.414	5-13	.385	5-8	.625	4-20-24	4.0	7	0	31	20	0	14	34	5.7
TOTAL	36-24	48-139	.345	16-62	.258	16-25	.640	26-61-87	2.4	67	0	112	115	0	66	128	3.6



Pascale WEST

#20

Senior • Center • 6-8

LaGrange, Ga.

Troup County Comprehensive High School

NOTES:

- Scored a career-high 6 points against Alabama A&M
- Scored 2 points with a rebounds against Maine in the season opener
- Is the tallest player in the SEC
- Her 22 blocks during the 2009-10 season rank her ninth all-time among Auburn freshmen
- Majoring in apparel merchandising and makes many of her own clothes

Opponent	Start	Min.	FG-A	3PT-A	FT-A	O-D-T	PF	Ast.	TO	Blk.	St.	Pts.
vs. Maine	7		1-1	0-0	0-0	0-1-1	0	0	2	0	0	2
at North Carolina State						-- DID NOT PLAY --						
ALABAMA STATE	11		0-2	0-0	0-0	1-0-1	3	0	0	2	2	0
ALABAMA A&M	14		3-5	0-0	0-0	0-1-1	2	0	0	0	0	6
vs. San Diego State	1		0-0	0-0	0-0	0-0-0	0	0	0	0	0	0
vs. Texas A&M-Corpus Christi						-- DID NOT PLAY --						
at Tulane												
HOFSTRA												
at George Washington												
TEMPLE												
TENNESSEE-CHATTANOOGA												
JACKSONVILLE												
SAMFORD												
ARKANSAS												
at Missouri												
OLE MISS												
at Texas A&M												
TENNESSEE												
at Kentucky												
at Alabama												
LSU												
at South Carolina												
at Georgia												
FLORIDA												
ALABAMA												
at Tennessee												
MISSOURI												
at Vanderbilt												
MISSISSIPPI STATE												

WEST CAREER STATISTICS

Year	GP-GS	FG-FGA	Pct	3FG-FGA	Pct	FT-FTA	Pct	O-D-T (Reb.)	Avg	PF	FO	Ast	TO	Blk	Stl	Pts	Avg
2009-10	24-0	7-15	.467	0-0	.000	4-11	.364	9-23-32	1.3	31	0	5	14	22	6	18	0.8
2010-11	13-0	5-8	.625	0-0	.000	1-6	.167	1-5-6	0.5	15	0	1	9	3	1	11	0.8
2011-12	18-0	1-8	.125	0-0	.000	2-2	1.000	6-9-15	0.8	17	0	2	4	5	1	4	0.2
2012-13	4-0	4-8	.500	0-0	.000	0-0	.000	1-2-3	0.8	5	0	0	2	2	2	8	2.0
TOTAL	59-0	17-39	.436	0-0	.000	7-19	.368	17-39-56	0.9	68	0	8	29	32	10	41	0.7

SEASON HIGHS

Points

6 vs. Alabama A&M (11/18/12)

Rebounds

1 3 times, last vs. Ala. A&M (11/18/12)

Assists

Blocks

2 vs. Alabama State (11/15/12)

Steals

2 vs. Alabama State (11/15/12)

Field Goals

3 vs. Alabama A&M (11/18/12)

Field Goal Attempts

5 vs. Alabama A&M (11/18/12)

3-Point Field Goals

3-Point FG Attempts

Free Throws

Free Throw Attempts

CAREER HIGHS

Points

6 vs. Alabama A&M (11/18/12)

Rebounds

5 vs. Alabama A&M (11/19/09)

Assists

1 4 times, last vs. USC-Upstate (12/28/10)

Blocks

7 vs. Alabama A&M (11/19/09)

Steals

2 vs. Alabama State (11/15/12)

Field Goals

3 vs. Alabama A&M (11/18/12)

Field Goal Attempts

5 vs. Alabama A&M (11/18/12)

3-Point Field Goals

N/A

3-Point FG Attempts

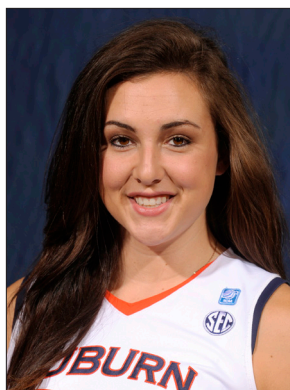
N/A

Free Throws

2 at Mercer (11/11/11)

Free Throw Attempts

4 vs. Florida A&M (11/28/09)



Peyton DAVIS

#34

Junior • Center • 6-5

Pinson, Ala.

Mortimer Jordan High School

NOTES:

- Had career outing against Texas A&M-Corpus Christi with 15 points and 6 rebounds, has scored in double figures twice this season
- Earned her first career start, tying her career high with 6 points along with 3 rebounds against Maine
- Is expected to step into a starting role in the 2012-13 season after coming off the bench the last two years
- Started in all four games and averaged 6.5 points per game during Auburn's 2012 Australian Summer Tour
- Neared a double-double in Australia with 8 points and 8 rebounds against the Logan Thunder
- A two-sport star athlete in high school, also fielded several NCAA Division I volleyball offers
- Holds a black belt in Taekwondo

Opponent	Start	Min.	FG-A	3PT-A	FT-A	O-D-T	PF	Asst.	TO	Blk.	Stl.	Pts.
vs. Maine	*	25	3-5	0-0	0-1	2-1-3	2	0	1	0	0	6
at North Carolina State	*	20	2-2	0-0	1-4	3-2-5	5	0	0	0	1	5
ALABAMA STATE	*	21	4-8	0-0	4-6	3-4-7	2	1	1	1	0	12
ALABAMA A&M	*	22	3-6	0-0	3-3	2-4-6	0	1	2	1	3	9
vs. San Diego State	*	24	0-4	0-0	1-2	0-2-2	3	0	2	0	1	1
vs. Texas A&M-Corpus Christi*	33	6-11	0-0	0-0	3-5	5-1-6	3	1	3	0	0	15

at Tulane
HOFSTRA
at George Washington
TEMPLE
TENNESSEE-CHATTANOOGA
JACKSONVILLE
SAMDOR
ARKANSAS
at Missouri
OLE MISS
at Texas A&M
TENNESSEE
at Kentucky
at Alabama
LSU
at South Carolina
at Georgia
FLORIDA
ALABAMA
at Tennessee
MISSOURI
at Vanderbilt
MISSISSIPPI STATE

DAVIS CAREER STATISTICS

Year	GP-GS	FG-FGA	Pct	3FG-FGA	Pct	FT-FTA	Pct	O-D-T (Reb.)	Avg	PF	FO	Asst	TO	Blk	Stl	Pts	Avg
2010-11	26-0	12-41	.293	0-0	.000	9-15	.600	18-16-34	1.3	38	0	7	13	7	4	33	1.3
2011-12	19-0	3-13	.231	0-0	.000	1-5	.200	10-13-23	1.2	15	0	1	12	4	3	7	0.4
2012-13	6-6	18-36	.500	0-0	.000	12-21	.571	15-14-29	4.8	15	1	3	9	2	5	48	8.0
TOTAL	51-6	33-90	.367	0-0	.000	22-41	.537	43-43-86	1.7	68	1	11	34	13	12	88	1.7

SEASON HIGHS

Points	15	vs. Texas A&M-CC	(11/24/12)
Rebounds	7	vs. Alabama State	(11/15/12)
Assists	1	3 times, last vs. TAMU-CC	(11/24/12)
Blocks	1	twice, last vs. Ala. A&M	(11/18/12)
Steals	3	vs. Alabama A&M	(11/18/12)
Field Goals	6	vs. Texas A&M-CC	(11/24/12)
Field Goal Attempts	11	vs. Texas A&M-CC	(11/24/12)
3-Point Field Goals			

3-Point FG Attempts

Free Throws	4	vs. Alabama State	(11/15/12)
Free Throw Attempts	6	vs. Alabama State	(11/15/12)

CAREER HIGHS

Points	15	vs. Texas A&M-CC	(11/24/12)
Rebounds	7	twice, last vs. Ala. State	(11/15/12)
Assists	1	11 times, last vs. TAMU-CC	(11/24/12)
Blocks	3	at Arkansas	(2/13/11)
Steals	3	vs. Alabama A&M	(11/18/12)
Field Goals	6	vs. Texas A&M-CC	(11/24/12)
Field Goal Attempts	11	vs. Texas A&M-CC	(11/24/12)
3-Point Field Goals			

N/A

3-Point FG Attempts

N/A

Free Throws	4	vs. Alabama State	(11/15/12)
Free Throw Attempts	6	vs. Alabama State	(11/15/12)



Tyrese TANNER

#32

Junior • Forward • 6-1

Birmingham, Ala.

Hoover High School

NOTES:

- Named SEC Player of the Week on Nov. 12, the first such honor of her career
- Named to Sheraton Raleigh Wolfpack Invitational All-Tournament Team and the Omni Hotels Classic All-Tournament Team
- Nearly averaged a double-double in the opening weekend with 20.5 points and 8.5 rebounds per game; set career highs of 26 points and 9 boards
- Led Auburn in scoring last season with 10.6 points per game, becoming the first sophomore to lead the team in scoring since DeWanna Bonner in 2006-07
- Named to the 2012 College Sports Madness Preseason All-SEC Third Team
- Will play alongside her younger sister, Tra'cee Tanner, who is a freshman on the team this season
- The Tanner sisters are the third set of sisters to play together at Auburn, joining Sherell and Reneisha Hobbs, and Ruthie and Mae Ola Bolton

Opponent	Start	Min.	FG-A	3PT-A	FT-A	O-D-T	PF	Ast.	TO	Blk.	St.	Pts.
vs. Maine	*	31	6-14	1-5	2-3	6-3-9	0	3	0	1	1	15
at North Carolina State	*	36	7-20	1-4	11-12	5-3-8	5	2	2	1	3	26
ALABAMA STATE	*	28	6-14	0-1	1-4	3-4-7	1	1	0	2	1	13
ALABAMA A&M	*	15	2-6	0-0	1-1	0-0-0	1	3	1	0	1	5
vs. San Diego State	*	29	6-14	0-1	5-5	0-4-4	3	0	4	0	3	17
vs. Texas A&M-Corpus Christi*		21	4-6	0-1	3-3	0-4-4	2	0	3	3	2	11

at Tulane
HOFSTRA
at George Washington
TEMPLE
TENNESSEE-CHATTANOOGA
JACKSONVILLE
SAMFORD
ARKANSAS
at Missouri
OLE MISS
at Texas A&M
TENNESSEE
at Kentucky
at Alabama
LSU
at South Carolina
at Georgia
FLORIDA
ALABAMA
at Tennessee
MISSOURI
at Vanderbilt
MISSISSIPPI STATE

SEASON HIGHS

Points		
26	vs. North Carolina State	(11/10/12)
Rebounds		
9	vs. Maine	(11/9/12)
Assists		
3	twice, last vs. Ala. A&M	(11/18/12)
Blocks		
3	vs. Texas A&M-CC	(11/24/12)
Steals		
3	twice, last vs. SDSU	(11/23/12)
Field Goals		
7	vs. North Carolina State	(11/10/12)
Field Goal Attempts		
20	vs. North Carolina State	(11/10/12)
3-Point Field Goals		
1	vs. Maine	(11/9/12)
3-Point FG Attempts		
5	vs. Maine	(11/9/12)
Free Throws		
11	vs. North Carolina State	(11/10/12)
Free Throw Attempts		
12	vs. North Carolina State	(11/10/12)

CAREER HIGHS

Points		
26	vs. North Carolina State	(11/10/12)
Rebounds		
9	vs. Maine	(11/9/12)
Assists		
4	vs. South Carolina	(1/19/12)
Blocks		
4	vs. Georgia	(1/8/12)
Steals		
3	7 times, last vs. SDSU	(11/23/12)
Field Goals		
8	vs. Alabama	(2/23/12)
Field Goal Attempts		
20	vs. North Carolina State	(11/10/12)
3-Point Field Goals		
4	vs. Belmont	(11/15/11)
3-Point FG Attempts		
5	3 times, last vs. Maine	(11/9/12)
Free Throws		
11	vs. North Carolina State	(11/10/12)
Free Throw Attempts		
14	at Arkansas	(1/15/12)

TANNER CAREER STATISTICS

Year	GP-GS	FG-FGA	Pct	3FG-FGA	Pct	FT-FTA	Pct	O-D-T (Reb.)	Avg	PF	FO	Ast	TO	Blk	Stl	Pts	Avg
2010-11	32-3	53-159	.333	6-37	.162	43-64	.672	48-53-101	3.2	57	1	27	48	24	21	155	4.8
2011-12	30-18	113-278	.406	7-29	.241	84-130	.646	51-64-115	3.8	78	2	33	66	24	36	317	10.6
2012-13	6-6	31-74	.419	2-12	.167	23-28	.821	14-18-32	5.3	12	1	9	10	7	11	87	14.5
TOTAL	68-27	197-511	.386	15-78	.192	150-222	.676	113-135-248	3.6	147	4	69	124	55	68	559	8.2



Hasina MUHAMMAD

#00

Sophomore • Guard • 6-1

Memphis, Tenn.

Ridgeway High School

NOTES:

- Has scored in double figures in all six games this season, leading Auburn in scoring three times
- Scored a career-high 21 points on 10-of-14 (.714) shooting against Alabama A&M
- Named to Sheraton Raleigh Wolfpack Invitational All-Tournament Team
- Named to the 2012 SEC All-Freshman Team
- Led Auburn in scoring on the 2012 Australian Summer Tour, averaging 23.3 points per game; Scored tour-high 29 points against the WNBL's Sydney Flames
- Played in all 30 games last season, starting in 16, and was second on the team in scoring with 9.5 points per game
- Was second in the SEC in scoring among freshmen last season

Opponent	Start	Min.	FG-A	3PT-A	FT-A	O-D-T	PF	Asst.	TO	Blk.	Stl.	Pts.
vs. Maine		25	8-23	3-6	1-2	1-2-3	1	1	1	1	2	20
at North Carolina State		29	4-15	0-3	4-4	1-2-3	4	1	2	0	1	12
ALABAMA STATE	*	22	7-13	0-0	1-2	3-3-6	0	2	1	1	3	15
ALABAMA A&M	*	19	10-14	0-0	1-2	4-3-7	3	2	1	0	1	21
vs. San Diego State	*	28	2-12	0-0	6-10	3-3-6	0	3	2	1	1	10
vs. Texas A&M-Corpus Christi*		19	6-9	1-1	3-4	3-1-4	3	1	5	1	4	16

at Tulane
HOFSTRA
at George Washington
TEMPLE
TENNESSEE-CHATTANOOGA
JACKSONVILLE
SAMDOR
ARKANSAS
at Missouri
OLE MISS
at Texas A&M
TENNESSEE
at Kentucky
at Alabama
LSU
at South Carolina
at Georgia
FLORIDA
ALABAMA
at Tennessee
MISSOURI
at Vanderbilt
MISSISSIPPI STATE

SEASON HIGHS

Points		
21	vs. Alabama A&M	(11/18/12)
Rebounds		
7	vs. Alabama A&M	(11/18/12)
Assists		
3	vs. San Diego State	(11/23/12)
Blocks		
1	4 times, last vs. TAMU-CC	(11/24/12)
Steals		
4	vs. Texas A&M-CC	(11/24/12)
Field Goals		
10	vs. Alabama A&M	(11/18/12)
Field Goal Attempts		
23	vs. Maine	(11/9/12)
3-Point Field Goals		
3	vs. Maine	(11/9/12)
3-Point FG Attempts		
6	vs. Maine	(11/9/12)
Free Throws		
6	vs. San Diego State	(11/23/12)
Free Throw Attempts		
10	vs. San Diego State	(11/23/12)

CAREER HIGHS

Points		
21	vs. Alabama A&M	(11/18/12)
Rebounds		
9	vs. Florida	(3/1/12)
Assists		
5	vs. Kentucky	(1/26/12)
Blocks		
4	vs. Florida	(3/1/12)
Steals		
6	vs. Ole Miss	(2/26/12)
Field Goals		
10	vs. Alabama A&M	(11/18/12)
Field Goal Attempts		
23	vs. Maine	(11/9/12)
3-Point Field Goals		
3	twice, last vs. Maine	(11/9/12)
3-Point FG Attempts		
6	vs. Maine	(11/9/12)
Free Throws		
9	vs. Georgia	(1/8/12)
Free Throw Attempts		
11	vs. Georgia	(1/8/12)

MUHAMMAD CAREER STATISTICS

Year	GP-GS	FG-FGA	Pct	3FG-FGA	Pct	FT-FTA	Pct	O-D-T (Reb.)	Avg	PF	FO	Asst	TO	Blk	Stl	Pts	Avg
2011-12	30-16	119-308	.386	11-34	.324	37-64	.578	58-54-112	3.7	51	1	38	77	31	40	286	9.5
2012-13	6-4	37-86	.430	4-10	.400	16-24	.667	15-14-29	4.8	11	0	10	12	4	12	94	15.7
TOTAL	36-20	156-394	.396	15-44	.341	53-88	.602	73-68-141	3.9	62	1	48	89	35	52	380	10.6



Courtney STRAIN

#11

Redshirt Sophomore • Guard • 5-9

Woodland, Ala.

Woodland High School

NOTES:

- Had a career night against TAMU-CC, setting career highs of 14 points and 2 steals
- Scored in double figures for the first time this season against Alabama A&M with 12 points
- Made her first start in almost two years against Maine, scoring 2 points with a steal
- Missed most of last season with an injury, playing in just seven games
- Broke the Alabama state scoring record as a junior in high school, finished her career with 5,283 points - more than 1,000 than her nearest competitor
- Was also a varsity cheerleader for six years, serving as captain as a senior, graduated as salutatorian of her senior class

Opponent	Start	Min.	FG-A	3PT-A	FT-A	O-D-T	PF	Ast.	TO	Blk.	St.	Pts.
vs. Maine	*	13	1-6	0-3	0-0	0-0-0	1	0	1	0	1	2
at North Carolina State	*	15	0-3	0-0	0-0	0-0-0	3	0	1	0	0	0
ALABAMA STATE		15	1-6	0-3	2-2	1-2-3	0	2	1	0	1	4
ALABAMA A&M		20	5-8	1-1	1-2	1-1-2	0	1	1	0	1	12
vs. San Diego State		16	2-3	1-1	0-0	0-0-0	2	0	1	0	0	5
vs. Texas A&M-Corpus Christi		25	7-8	0-1	0-0	0-1-1	0	0	1	0	2	14
at Tulane												
HOFSTRA												
at George Washington												
TEMPLE												
TENNESSEE-CHATTANOOGA												
JACKSONVILLE												
SAMFORD												
ARKANSAS												
at Missouri												
OLE MISS												
at Texas A&M												
TENNESSEE												
at Kentucky												
at Alabama												
LSU												
at South Carolina												
at Georgia												
FLORIDA												
ALABAMA												
at Tennessee												
MISSOURI												
at Vanderbilt												
MISSISSIPPI STATE												

STRAIN CAREER STATISTICS

Year	GP-GS	FG-FGA	Pct	3FG-FGA	Pct	FT-FTA	Pct	O-D-T (Reb.)	Avg	PF	FO	Ast	TO	Blk	Stl	Pts	Avg
2010-11	24-1	24-76	.316	5-19	.263	8-15	.533	6-14-20	0.8	13	0	7	16	0	7	61	2.5
2011-12	7-0	4-23	.174	0-2	.000	4-4	1.000	3-0-3	0.4	3	0	2	6	0	0	12	1.7
2012-13	6-2	16-34	.471	2-9	.222	3-4	.750	2-4-6	1.0	6	0	3	6	0	5	37	6.2
TOTAL	37-3	44-133	.331	7-30	.233	15-23	.652	11-18-29	0.8	22	0	12	28	0	12	110	3.0

SEASON HIGHS

Points		
14	vs. Texas A&M-CC	(11/24/12)
Rebounds		
3	vs. Alabama State	(11/15/12)
Assists		
2	vs. Alabama State	(11/15/12)
Blocks		
Steals		
2	vs. Texas A&M-CC	(11/24/12)
Field Goals		
7	vs. Texas A&M-CC	(11/24/12)
Field Goal Attempts		
8	twice, last vs. TAMU-CC	(11/24/12)
3-Point Field Goals		
1	twice, last vs. SDSU	(11/23/12)
3-Point FG Attempts		
3	twice, last vs. Ala. State	(11/15/12)
Free Throws		
2	vs. Alabama State	(11/15/12)
Free Throw Attempts		
2	vs. Alabama State	(11/15/12)

CAREER HIGHS

Points		
14	vs. Texas A&M-CC	(11/24/12)
Rebounds		
4	at Arkansas	(2/13/11)
Assists		
2	vs. Alabama State	(11/15/12)
Blocks		N/A
Steals		
2	vs. Texas A&M-CC	(11/24/12)
Field Goals		
7	vs. Texas A&M-CC	(11/24/12)
Field Goal Attempts		
9	at Florida International	(12/30/11)
3-Point Field Goals		
1	7 times, last vs. SDSU	(11/23/12)
3-Point FG Attempts		
3	4 times, last vs. Ala. State	(11/15/12)
Free Throws		
3	vs. Sacred Heart	(11/26/10)
Free Throw Attempts		
6	vs. Sacred Heart	(11/26/10)



Cabriana CAPERS

#50

Freshman • Forward • 6-1

Bolingbrook, Ill.

Bolingbrook

NOTES:

- Tied her season high of 4 points against TAMU-CC, also led Auburn in rebounding with 7
- Made her collegiate debut against Maine, pulling down 2 rebounds in 5 minutes
- Led Auburn with a season-high 9 rebounds against Alabama A&M; also scored her first collegiate points against the Bulldogs
- Played in all four games on the Australian Summer Tour, averaging 2.8 points per game
- Rated as a 3-star prospect by ESPN's HoopGurlz, ranked as the No. 35 post in the country
- Helped Bolingbrook High School to a 26-2 record and a No. 8 national ranking in the USA Today Super 25 last season
- Was one of 8 women's basketball players in her senior class to sign NCAA Division I Letters of Intent

Opponent	Start	Min.	FG-A	3PT-A	FT-A	O-D-T	PF	Asst.	TO	Blk.	Stl.	Pts.
vs. Maine	5		0-0	0-0	0-0	1-1-2	1	0	1	0	0	0
at North Carolina State	3		0-0	0-0	0-0	0-0-0	0	0	1	0	0	0
ALABAMA STATE	14		0-2	0-0	0-0	1-3-4	0	0	1	0	0	0
ALABAMA A&M	11		2-3	0-0	0-0	4-5-9	0	1	0	0	0	4
vs. San Diego State	1		0-0	0-0	0-2	0-0-0	0	0	0	0	0	0
vs. Texas A&M-Corpus Christi	13		2-2	0-0	0-0	2-5-7	2	0	2	0	0	4

at Tulane
HOFSTRA
at George Washington
TEMPLE
TENNESSEE-CHATTANOOGA
JACKSONVILLE
SAMDOR
ARKANSAS
at Missouri
OLE MISS
at Texas A&M
TENNESSEE
at Kentucky
at Alabama
LSU
at South Carolina
at Georgia
FLORIDA
ALABAMA
at Tennessee
MISSOURI
at Vanderbilt
MISSISSIPPI STATE

SEASON HIGHS

Points

4 twice, last vs. TAMU-CC (11/24/12)

Rebounds

9 vs. Alabama A&M (11/18/12)

Assists

1 vs. Alabama A&M (11/18/12)

Blocks

Steals

Field Goals

2 twice, last vs. TAMU-CC (11/24/12)

Field Goal Attempts

3 vs. Alabama A&M (11/18/12)

3-Point Field Goals

3-Point FG Attempts

Free Throws

Free Throw Attempts

2 vs. San Diego State (11/23/12)

CAPERS CAREER STATISTICS

Year	GP-GS	FG-FGA	Pct	3FG-FGA	Pct	FT-FTA	Pct	O-D-T (Reb.)	Avg	PF	FO	Asst	TO	Blk	Stl	Pts	Avg
2012-13	6-0	4-7	.571	0-0	.000	0-2	.000	8-14-22	3.7	3	0	1	5	0	0	8	1.3
TOTAL	6-0	4-7	.571	0-0	.000	0-2	.000	8-14-22	3.7	3	0	1	5	0	0	8	1.3



Chadarryl CLAY

#5

Freshman • Guard • 5-7

Chattanooga, Tenn.

Girls Preparatory School

NOTES:

- Scored a career-high 15 points in home opener against Alabama State
- Dished out season-high 5 assists along with 7 points against Alabama A&M
- Made her collegiate debut against Maine, dishing out one assist in two minutes
- Started all four games on the Australian Summer Tour, averaging 10.5 points per game
- Scored a tour-high 20 points against the Cairns Dolphins in Australia
- Rated as the No. 77 overall player and No. 12 guard in the country by ESPN's HoopGurlz
- Led Chattanooga's Girls Preparatory School to back-to-back state championships
- Had her No. 5 jersey retired at her high school

Opponent	Start	Min.	FG-A	3PT-A	FT-A	O-D-T	PF	Asst.	TO	Blk.	Stl.	Pts.
vs. Maine	2		0-1	0-1	0-0	0-0-0	0	1	0	0	0	0
at North Carolina State						-- DID NOT PLAY --						
ALABAMA STATE	12		5-8	2-5	3-3	0-1-1	2	2	2	0	1	15
ALABAMA A&M	14		2-2	1-1	2-2	1-1-2	0	5	2	0	0	7
vs. San Diego State	5		0-0	0-0	0-0	1-0-1	1	0	0	0	0	0
vs. Texas A&M-Corpus Christi	5		0-1	0-1	0-2	0-0-0	0	0	3	0	0	0
at Tulane												
HOFSTRA												
at George Washington												
TEMPLE												
TENNESSEE-CHATTANOOGA												
JACKSONVILLE												
SAMFORD												
ARKANSAS												
at Missouri												
OLE MISS												
at Texas A&M												
TENNESSEE												
at Kentucky												
at Alabama												
LSU												
at South Carolina												
at Georgia												
FLORIDA												
ALABAMA												
at Tennessee												
MISSOURI												
at Vanderbilt												
MISSISSIPPI STATE												

CLAY CAREER STATISTICS

Year	GP-GS	FG-FGA	Pct	3FG-FGA	Pct	FT-FTA	Pct	O-D-T (Reb.)	Avg	PF	FO	Asst	TO	Blk	Stl	Pts	Avg
2012-13	5-0	7-12	.583	3-8	.375	5-7	.714	2-2-4	0.8	3	0	8	7	0	1	22	4.4
TOTAL	5-0	7-12	.583	3-8	.375	5-7	.714	2-2-4	0.8	3	0	8	7	0	1	22	4.4

SEASON HIGHS

Points

15 vs. Alabama State (11/15/12)

Rebounds

2 vs. Alabama A&M (11/18/12)

Assists

5 vs. Alabama A&M (11/18/12)

Blocks

Steals

1 vs. Alabama State (11/15/12)

Field Goals

5 vs. Alabama State (11/15/12)

Field Goal Attempts

8 vs. Alabama State (11/15/12)

3-Point Field Goals

2 vs. Alabama State (11/15/12)

3-Point FG Attempts

5 vs. Alabama State (11/15/12)

Free Throws

3 vs. Alabama State (11/15/12)

Free Throw Attempts

3 vs. Alabama State (11/15/12)



Cedricka SWEETING

#25

Freshman • Guard • 5-3

Nassau, Bahamas

South Broward (Fla.)

NOTES:

- Made her collegiate debut against Maine, scoring 3 points in 10 minutes
- Scored season-high 6 points with 4 assists against Alabama A&M
- A native of the Bahamas, she played high school basketball in the Miami area
- Was a Sun-Sentinel Fab five honoree as a senior
- Averaged 17 points, 10 assists, 5 steals and 6 rebounds per game as a senior
- Played for the Bahamas in the 2008 Junior Olympics

Opponent	Start	Min.	FG-A	3PT-A	FT-A	O-D-T	PF	Asst.	TO	Blk.	Stl.	Pts.
vs. Maine	10		1-1	0-0	1-1	0-0-0	0	1	0	0	0	3
at North Carolina State	8		1-1	0-0	0-0	0-0-0	0	0	0	0	0	2
ALABAMA STATE	13		1-4	0-2	0-0	1-2-3	1	3	1	0	1	2
ALABAMA A&M	13		3-4	0-1	0-0	0-2-2	0	4	1	0	1	6
vs. San Diego State	7		0-0	0-0	0-0	0-0-0	0	0	0	0	0	0
vs. Texas A&M-Corpus Christi	3		0-0	0-0	0-0	0-0-0	0	2	1	0	0	0
at Tulane												
HOFSTRA												
at George Washington												
TEMPLE												
TENNESSEE-CHATTANOOGA												
JACKSONVILLE												
SAMFORD												
ARKANSAS												
at Missouri												
OLE MISS												
at Texas A&M												
TENNESSEE												
at Kentucky												
at Alabama												
LSU												
at South Carolina												
at Georgia												
FLORIDA												
ALABAMA												
at Tennessee												
MISSOURI												
at Vanderbilt												
MISSISSIPPI STATE												

SEASON HIGHS

Points

6 vs. Alabama A&M (11/18/12)

Rebounds

3 vs. Alabama State (11/15/12)

Assists

4 vs. Alabama A&M (11/18/12)

Blocks

Steals

1 twice, last vs. Alab. A&M (11/18/12)

Field Goals

3 vs. Alabama A&M (11/18/12)

Field Goal Attempts

4 twice, last vs. Ala. A&M (11/18/12)

3-Point Field Goals

3-Point FG Attempts

2 vs. Alabama State (11/15/12)

Free Throws

1 vs. Maine (11/9/12)

Free Throw Attempts

1 vs. Maine (11/9/12)

SWEETING CAREER STATISTICS

Year	GP-GS	FG-FGA	Pct	3FG-FGA	Pct	FT-FTA	Pct	O-D-T (Reb.)	Avg	PF	FO	Asst	TO	Blk	Stl	Pts	Avg
2012-13	6-0	6-10	.600	1-4	.250	0-0	.000	1-4-5	0.8	1	0	10	3	0	2	13	2.2
TOTAL	6-0	6-10	.600	1-4	.250	0-0	.000	1-4-5	0.8	1	0	10	3	0	2	13	2.2



Tra'cee TANNER

#23

Freshman • Forward/Center • 6-3

Birmingham, Ala.

Hoover

NOTES:

- Scored season-high 13 points with 8 rebounds and a steal against San Diego State
- Made her collegiate debut against Maine, scoring 4 points with 3 rebounds in 16 minutes
- Played in all four games on the Australian Summer Tour, averaging 9.0 points per game
- Scored tour-high 16 points in the final game against the Sutherland Sharks
- Rated as a 3-star prospect by ESPN's HoopGurlz and was ranked as the 68th best forward in the country
- Helped Hoover High School to a 31-3 record, a state championship and a No. 14 national ranking in the USA today Super 25 as a senior
- Will play alongside her older sister, Tyrese Tanner, who is a junior on the team this season
- The Tanner sisters are the third set of sisters to play together at Auburn, joining Sherell and Reneisha Hobbs, and Ruthie and Mae Ola Bolton

Opponent	Start	Min.	FG-A	3PT-A	FT-A	O-D-T	PF	Asst.	TO	Blk.	Stl.	Pts.
vs. Maine	16		2-3	0-0	0-0	2-1-3	3	0	0	1	0	4
at North Carolina State	17		1-3	0-0	1-2	0-0-2	1	1	0	0	0	3
ALABAMA STATE	8		0-2	0-0	0-0	1-1-2	1	0	2	0	1	0
ALABAMA A&M	17		2-4	0-0	1-1	1-2-3	2	1	0	0	1	5
vs. San Diego State	21		4-10	0-0	5-6	5-3-8	4	0	0	0	1	13
vs. Texas A&M-Corpus Christi	15		3-6	0-0	0-0	0-1-1	1	1	2	2	1	6

at Tulane
HOFSTRA
at George Washington
TEMPLE
TENNESSEE-CHATTANOOGA
JACKSONVILLE
SAMFORD
ARKANSAS
at Missouri
OLE MISS
at Texas A&M
TENNESSEE
at Kentucky
at Alabama
LSU
at South Carolina
at Georgia
FLORIDA
ALABAMA
at Tennessee
MISSOURI
at Vanderbilt
MISSISSIPPI STATE

TANNER CAREER STATISTICS

Year	GP-GS	FG-FGA	Pct	3FG-FGA	Pct	FT-FTA	Pct	O-D-T (Reb.)	Avg	PF	FO	Asst	TO	Blk	Stl	Pts	Avg
2012-13	6-0	12-28	.429	0-0	.000	7-9	.778	9-10-19	3.2	12	0	3	4	3	4	31	5.2
TOTAL	6-0	12-28	.429	0-0	.000	7-9	.778	9-10-19	3.2	12	0	3	4	3	4	31	5.2

SEASON HIGHS

Points		
13	vs. San Diego State	(11/23/12)
Rebounds		
8	vs. San Diego State	(11/23/12)
Assists		
1	3 times, last vs. TAMU-CC	(11/24/12)
Blocks		
2	vs. Texas A&M-CC	(11/24/12)
Steals		
1	4 times, last vs. TAMU-CC	(11/24/12)
Field Goals		
4	vs. San Diego State	(11/23/12)
Field Goal Attempts		
10	vs. San Diego State	(11/23/12)
3-Point Field Goals		

3-Point FG Attempts

Free Throws		
5	vs. San Diego State	(11/23/12)
Free Throw Attempts		
6	vs. San Diego State	(11/23/12)

Game 1: Nov. 9, 2012
Auburn 71, Maine 41
Reynolds Coliseum
Raleigh, N.C.
Sheraton Raleigh Wolfpack Invitational

Official Basketball Box Score -- Game Totals -- Final Statistics

Maine vs Auburn

11-09-12 2:30 p.m. ET at Raleigh, N.C. (Reynolds Coliseum)

VISITORS: Maine (0-1)

#	Player	fg-fga	3fg-fga	ft-fa	rebounds			pf	tp	a	to	blk	s	min
					of	de	tot							
04	Courtney Anderson*	2-5	1-4	0-0	2	3	5	1	5	1	5	0	2	25
23	Ashleigh Roberts*	1-5	0-2	0-0	1	2	3	0	2	1	4	0	1	18
31	Liz Wood*	3-11	1-4	1-1	0	4	4	1	8	2	1	0	1	31
34	Corinne Wellington*	0-1	0-0	0-0	1	3	4	2	0	0	1	0	0	14
50	Anna Heise*	5-12	0-1	2-2	1	3	4	2	12	1	5	1	1	30
02	Milica Mitrovic	1-2	1-2	0-0	0	0	0	1	3	1	0	0	1	7
03	Brittany Wells	1-6	0-4	0-0	0	1	1	0	2	0	0	0	0	14
12	Michal Assaf	0-3	0-2	0-0	0	0	0	0	1	0	2	0	0	19
13	Mikaela Gustafsson	4-6	1-3	0-0	0	3	3	0	9	0	0	0	0	19
15	Lauren Bodine	0-0	0-0	0-0	0	0	0	0	0	0	1	0	0	3
20	Sophie Weckstrom	0-0	0-0	0-0	0	0	0	0	0	3	4	0	0	11
30	Chantal Charles	0-0	0-0	0-0	2	5	7	0	0	1	4	0	0	19
TEAM					1	3	4							
Totals.....		17-51	4-22	3-3	8	27	35	8	41	12	26	1	7	200

HOME: Auburn (1-0)

#	Player	fg-fga	3fg-fga	ft-fa	rebounds			pf	tp	a	to	blk	s	min
					of	de	tot							
03	Najat Ouardad*	4-9	3-6	0-0	2	4	6	0	11	6	2	0	2	30
11	Courtney Strain*	1-6	0-3	0-0	0	0	0	1	2	0	1	0	1	13
14	Blanche Alverson*	3-7	2-3	0-0	1	5	6	0	8	2	6	0	3	32
32	Tyrese Tanner*	6-14	1-5	2-3	6	3	9	0	15	3	0	1	1	31
34	Peyton Davis*	3-5	0-0	0-1	2	1	3	2	6	0	1	0	0	25
00	Hasina Muhammad	8-23	3-6	1-2	1	2	3	1	20	1	1	1	2	25
05	Chadarryl Clay	0-1	0-1	0-0	0	0	0	0	0	1	0	0	0	2
20	Pascale West	1-1	0-0	0-0	1	1	2	0	2	0	2	0	0	7
22	Julie King	0-0	0-0	0-0	0	1	1	0	0	0	1	0	0	4
23	Tia'cee Tanner	2-3	0-0	0-0	2	1	3	3	4	0	0	1	0	16
25	Cedricka Sweeting	1-1	1-1	0-0	0	0	0	0	3	1	0	0	0	10
50	Cabriana Capers	0-0	0-0	0-0	1	1	2	1	0	0	1	0	0	5
TEAM					6	6								
Totals.....		29-70	10-25	3-6	15	25	40	8	71	14	15	3	9	200

Officials: Bonita Spence, Carla Fountain, Daryl Humphrey

Technical fouls: Maine-None. Auburn-None.

Attendance: 2109

Score by Periods

	1st	2nd	Total
Maine	23	18	41
Auburn	35	36	71

Sheraton Raleigh Wolfpack Invitational First Round

RALEIGH, N.C. - The Terri Williams-Flournoy Era got off to a good start Nov. 9 as the Auburn women's basketball team beat Maine, 71-41, in the first round of the Sheraton Raleigh Wolfpack Invitational.

Williams-Flournoy became just the second Auburn head coach to earn a win in their first game on the Tiger sideline. Susan "The Nun" Nunnally is the only other coach to do so, winning the season opener over Tuskegee at the start of the 1973-74 season.

Sophomore Hasina Muhammad led three Tigers in double figures, tying her career high with 20 points. It also marked the second game in a row for her to score 20 with the other being in the SEC Tournament game against Florida last season. Junior Tyrese Tanner neared a double-double with 15 points and a career-high nine rebounds while Najat Ouardad scored a career-high 11 points with six assists and a pair of steals.

Another component to the game was the Tigers' defense, forcing 26 Maine turnovers. Blanche Alverson led Auburn with three steals, along with eight points and six rebounds. Ouardad and Muhammad added two steals each. The Tigers were able to capitalize off the turnovers, scoring 28 points on the other end.

Game 2: Nov. 10, 2012
Auburn 71, North Carolina State 85
Reynolds Coliseum
Raleigh, N.C.
Sheraton Raleigh Wolfpack Invitational

Official Basketball Box Score -- Game Totals -- Final Statistics

Auburn vs NC State

11-10-12 7:30 p.m. at Raleigh, N.C. (Reynolds Coliseum)

VISITORS: Auburn (1-1)

#	Player	fg-fga	3fg-fga	ft-fa	rebounds			pf	tp	a	to	blk	s	min
					of	de	tot							
03	Najat Ouardad*	4-10	1-3	2-3	0	5	5	1	11	4	6	0	2	36
11	Courtney Strain*	0-3	0-0	0-0	0	0	0	0	3	0	0	1	0	15
14	Blanche Alverson*	4-13	2-9	2-2	2	5	7	1	12	3	1	3	3	35
32	Tyrese Tanner*	7-20	1-4	11-12	5	3	8	5	26	2	2	1	3	36
34	Peyton Davis*	2-2	0-0	1-4	3	2	5	5	0	0	0	0	1	20
00	Hasina Muhammad	4-15	0-3	4-4	1	2	3	4	12	1	2	0	1	29
22	Julie King	0-0	0-0	0-0	0	0	0	0	0	0	0	0	0	1
23	Tia'cee Tanner	1-3	0-0	1-2	0	2	2	1	3	1	0	0	0	17
25	Cedricka Sweeting	1-1	0-0	0-0	0	0	0	0	2	0	0	0	0	8
50	Cabriana Capers	0-0	0-0	0-0	0	0	0	0	0	0	1	0	0	3
TEAM					3	3	6							
Totals.....		23-67	4-19	21-27	14	22	36	20	71	11	13	4	10	200

HOME: North Carolina State (2-0)

#	Player	fg-fga	3fg-fga	ft-fa	rebounds			pf	tp	a	to	blk	s	min
					of	de	tot							
01	M. Goodwin-Coleman*	2-7	2-5	1-2	0	3	3	4	7	5	6	0	2	18
12	Krystal Barnett*	1-5	0-0	0-1	2	1	3	0	2	3	3	0	1	21
23	Marissa Kostanek*	9-17	4-11	2-2	1	2	4	24	4	0	2	0	2	31
34	Markeisha Gatling*	3-6	0-0	3-6	2	8	10	3	9	0	1	0	2	25
44	Kody Burke*	11-18	1-2	3-4	6	6	12	1	26	2	3	3	1	36
02	Len'Nique Brown	4-7	2-3	0-1	3	6	9	2	10	7	2	0	0	26
05	Breezy Williams	0-0	0-0	0-0	0	0	0	0	2	0	0	0	0	3
10	Ashley Eli	2-6	1-2	2-2	3	4	7	2	7	2	1	0	1	24
52	Kiana Evans	0-3	0-0	0-0	0	1	4	0	1	0	0	0	0	16
TEAM					2	3	5							
Totals.....		32-69	10-23	11-18	19	33	52	22	85	20	20	3	9	200

Officials: Bonita Spence, Carla Fountain, Luis Gonzalez

Technical fouls: Auburn-None. NC State-None.

Attendance: 1586

Score by Periods

	1st	2nd	Total
Auburn	33	38	71
North Carolina State	37	48	85

Sheraton Raleigh Wolfpack Invitational Championship Game

RALEIGH, N.C. - The Auburn women's basketball team fell to 1-1 on the season on Nov. 10, dropping an 85-71 decision to host North Carolina State in the Sheraton Raleigh Wolfpack Invitational Championship Game. Junior Tyrese Tanner scored a career-high 26 points to lead the Tigers.

For their efforts in the tournament, Tanner and Hasina Muhammad were named to the All-Tournament Team.

Auburn led by nine early in the first half, but a 10-4 Wolfpack run brought them within two. North Carolina State then closed out the half by out-scoring Auburn 14-8 to take a 37-33 lead into the locker room. North Carolina State stayed in control in the second half, out-scoring Auburn 48-38 in the period and leading by as many as 17 points.

Auburn finished the game with four players in double figures, led by Tanner's 26. Blanche Alverson and Hasina Muhammad scored 12 points each while Najat Ouardad scored 11. Alverson hit two 3-pointers in the game, moving her into fifth place all-time at Auburn in career 3-pointers with 150. She surpassed Kristen Mulligan, who hit 149 in her career.

Defensively, Auburn forced 20 Wolfpack turnovers, scoring 22 points off them. It marked the second game in a for the Tigers to eclipse the 20-plateau in both categories.

Game 3: Nov. 15, 2012
Auburn 80, Alabama State 43
Auburn Arena
Auburn, Ala.

Official Basketball Box Score -- Game Totals -- Final Statistics

Alabama State vs Auburn

11-15-12 6 p.m. at Auburn, Ala. -- Auburn Arena

VISITORS: Alabama State (0-1)

#	Player	fg-fga	3fg-fga	ft-fa	rebounds			pf	tp	a	to	blk	s	min
					of	de	tot							
11	Smith, Nakiya*	9-18	4-7	3-4	1	1	2	2	25	1	6	0	0	36
21	Jones, Ashley*	2-5	0-0	6-8	2	5	7	2	10	0	4	1	0	30
34	Windom, RoTasha*	1-2	0-0	0-0	2	2	4	0	2	0	0	0	0	14
12	Arrington, Talla*	0-2	0-1	0-1	1	3	4	3	0	1	4	0	1	30
15	Paige, Kierra*	0-9	0-6	0-1	0	1	1	2	0	0	4	1	0	19
14	Peoples, Jasmine	0-0	0-0	0-0	0	2	2	0	0	0	0	1	0	5
23	Shields, Durriga	0-3	0-0	0-0	1	0	1	0	0	0	5	0	1	5
24	Henderso, Erica	1-6	1-6	0-0	1	1	2	0	3	2	1	0	2	18
31	Gazaway, Danielle	1-8	1-6	0-0	0	1	1	5	3	2	1	0	1	22
35	Howard, Brittney	0-1	0-1	0-0	0	4	4	2	0	1	0	0	0	21
TEAM					4	4	8							
Totals.....		14-54	6-27	9-14	12	24	36	16	43	7	26	2	5	200

HOME TEAM: Auburn (2-1)

#	Player	fg-fga	fg-fga	ft-fa	of	de	tot	pf	tp	a	to	blk	s	min
14	Blanche Alverson*	7-11	1-3	2-2	3	6	9	2	17	1	2	2	2	23
32	Tyrese Tanner*	6-14	0-1	1-4	3	4	7	1	13	1	0	2	1	28
34	Peyton Davis*	4-8	0-0	4-6	3	4	7	2	12	1	1	1	0	21
00	Hasina Muhammad*	7-13	0-0	1-2	3	6	0	15	2	1	1	3	22	
03	Najat Ouardad*	0-1	0-1	0-1	1	3	4	2	0	5	3	0	2	20
04	Sweeting, Cedricka	1-4	0-2	0-0	1	2	3	1	2	3	1	0	1	13
11	Courtney Strain	1-6	0-3	2-2	1	2	3	0	4	2	1	0	1	15
20	Pascale West	0-2	0-0	0-0	1	0	1	3	0	0	0	2	2	11
21	Clay, Chadarryl	5-8	2-5	3-3	0	1	1	2	15	2	2	0	1	12
22	Jolie King	1-2	0-0	0-1	0	2	2	2	2	6	1	0	2	13
35	Capers, Cabrina	0-2	0-0	0-0	1	3	4	0	0	0	1	0	0	24
44	Tanner, Tra'cee	0-2	0-0	0-0	1	1	2	1	0	0	2	0	1	8
TEAM					3	3								
Totals.....		32-73	3-15	13-21	21	31	52	16	80	23	15	8	16	200

Game 4: Nov. 18, 2012
Auburn 93, Alabama A&M 44
Auburn Arena
Auburn, Ala.

Official Basketball Box Score -- Game Totals -- Final Statistics

Alabama A&M vs Auburn

11-18-12 2:00 p.m. at Auburn Arena -- Auburn, Ala.

VISITORS: Alabama A&M (1-2)

#	Player	fg-fga	3fg-fga	ft-fa	of	de	tot	pf	tp	a	to	blk	s	min
23	Johnson, Ebony*	1-4	0-0	2-2	2	0	2	1	4	4	4	0	0	28
55	Robertson, NeDra*	2-5	0-0	0-1	3	3	6	1	4	1	1	0	0	26
05	Strickland, Brittney*	0-6	0-2	0-0	0	0	0	2	0	1	4	0	2	16
22	Davis, Shundray*	2-3	1-1	0-2	0	2	2	1	5	2	5	0	2	23
25	ONeal, Danielle*	1-4	1-3	0-0	0	1	1	1	3	0	0	0	1	20
03	Strickland, Alyssa	5-11	5-10	0-0	0	4	4	3	15	2	4	0	0	30
12	Sippial, Taylor	3-8	2-5	0-0	1	0	1	0	8	1	1	0	1	13
14	Moffett, Shaterion	0-1	0-0	0-1	0	1	1	0	0	0	1	0	0	6
21	Hopper, Christyn	0-6	0-5	1-2	1	0	1	0	1	1	2	0	0	12
24	Sanders, Jasmine	1-3	0-0	0-0	3	0	3	3	2	0	1	0	0	10
42	Richardson, Shabron	0-0	0-0	0-0	1	0	1	0	0	0	0	1	0	5
50	Lowery, Jessica	1-3	0-0	0-0	0	1	1	0	2	0	0	0	0	11
TEAM						3		1		4				
Totals.....		16-54	9-26	3-7	15	12	27	13	44	12	23	1	6	200

HOME: Auburn (3-1)

#	Player	fg-fga	3fg-fga	ft-fa	of	de	tot	pf	tp	a	to	blk	s	min
14	Alverson, Blanche*	6-9	2-2	0-0	1	3	4	1	14	3	1	1	1	25
34	Davis, Peyton*	3-6	0-0	3-3	2	4	6	0	9	1	2	1	3	22
00	Muhammad, Hasina*	10-14	0-0	1-2	4	3	7	3	21	2	1	0	1	19
03	Ouardad, Najat*	1-3	1-1	1-2	0	0	0	1	4	4	1	0	5	19
32	Tanner, Tyrese*	2-6	0-0	1-1	0	0	0	1	5	3	1	0	1	15
04	Sweeting, Cedricka	3-4	0-1	0-0	0	2	2	0	6	4	1	0	1	13
11	Strain, Courtney	5-8	1-1	1-2	1	1	2	0	12	1	1	0	1	20
20	West, Pascale	3-5	0-0	0-0	1	1	2	6	0	0	0	0	0	14
21	Clay, Chadarryl	2-2	1-1	2-2	1	1	2	0	7	5	2	0	0	14
22	King, Julie	0-2	0-0	0-0	0	1	0	0	2	1	2	1	1	11
35	Capers, Cabriana	2-3	0-0	0-0	4	5	9	0	4	1	0	0	0	11
44	Tanner, Tra'cee	2-4	0-0	1-1	1	2	3	2	5	1	0	0	1	17
TEAM						2		1		3				
Totals.....		39-66	5-6	10-13	16	24	40	10	93	27	11	4	15	200

Officials: Brian Enterline, Ed Sidlosky, Brian Garland

Technical fouls: Alabama A&M-None. Auburn-None.

Attendance: 1768

Score by Periods	1st	2nd	Total
Alabama A&M	26	18	44
Auburn	49	44	93

AUBURN - Hasina Muhammad scored a career-high 21 points with seven rebounds and Blanche Alverson added 14 points as Auburn women's basketball defeated Alabama A&M 93-44 on Nov. 18 in Auburn Arena.

Three-point plays by both Muhammad and Tyrese Tanner gave Auburn the early advantage. A layup by Muhammad with 12:39 left made it 18-7 in favor of the Tigers. Auburn opened its lead out to 31-11 on the back of a 16-4 run that was capped by four-straight by Pascale West.

Muhammad gave Auburn its largest first half lead of 24 points on a jumper with 3:18 remaining before the break.

The Tigers opened the second half with a 20-3 run over the first seven minutes of play to ice the game. Two at the line by Peyton Davis pushed Auburn's lead to 50, 85-35, with 5:23 remaining in the contest.

Auburn held its largest lead of 53 points with 2:15 remaining. The Tigers out-scored Alabama A&M 44-18 in the second half and scored 34 points off 23 turnovers in the game.

Alyssa Strickland scored 15 points to lead the Bulldogs. Courtney Strain tied her career high with 12 points, while Davis had nine points, six rebounds and three steals. Chadarryl Clay scored seven points and tallied five of Auburn's season-high 27 assists.

Game 5: Nov. 23, 2012
Auburn 57, San Diego State 78
Coors Events Center
Boulder, Colo.
Omni Hotels Classic

Official Basketball Box Score -- Game Totals -- Final Statistics

San Diego State vs Auburn

11-23-12 5 p.m. MT at Boulder, Colo. (Coors Events Center)

VISITORS: San Diego State (3-1)

#	Player	fg-fga	3fg-fga	ft-fa	of	de	tot	pf	tp	a	to	blk	s	min
22	CLARK, Gabrielle*	3-6	1-3	2-2	0	0	0	3	9	3	0	1	0	30
25	AMARIKWA, Erimma*	1-7	0-0	2-4	2	4	6	2	4	1	3	1	2	35
42	NAHINU, Malia*	5-8	0-1	2-3	3	5	8	5	12	0	3	1	1	28
01	HOPKINS, Chelsea*	4-7	3-3	3-3	2	7	9	2	14	7	0	0	1	36
54	CLEMENTS, Courtney*	10-23	6-13	0-0	1	4	5	3	26	1	4	0	3	38
02	HUNTER, Khristina	1-1	0-0	2-2	1	0	1	3	4	0	1	0	0	6
04	NOVAK, Niki	0-0	0-0	0-0	0	0	0	0	0	0	0	0	0	+
05	CULBERSON, Chairese	0-0	0-0	0-0	0	0	0	0	0	0	1	0	0	2
11	HARVEY, Ahijalee	2-5	1-4	0-0	0	0	0	3	5	2	2	0	1	10
12	SCURRY, Deajonae	2-3	0-1	0-0	0	3	3	4	0	2	0	0	1	15
TEAM						2		2		4				
Totals.....		28-60	11-25	11-14	11	25	36	24	78	14	16	3	8	200

HOME: Auburn (3-2)

#	Player	fg-fga	3fg-fga	ft-fa	of	de	tot	pf	tp	a	to	blk	s	min
32	Tyrese Tanner*	6-14	0-1	5-5	0	4	4	3	17	0	4	0	3	29
34	Peyton Davis*	0-4	0-0	1-2	0	2	2	3	1	0	2	0	1	24
00	Hasina Muhammad*	2-12	0-0	6-10	3	3	6	0	10	3	2	1	1	28
03	Najat Ouardad*	1-3	0-2	2-2	1	5	6	1	4	4	0	0	0	29
14	Blanche Alverson*	2-9	1-3	2-2	2	2	4	0	7	3	1	0	1	38
04	Sweeting, Cedricka*	0-0	0-0	0-0	0	0	0	0	0	0	0	0	0	7
11	Courtney Strain*	2-3	1-1	0-0	0	0	0	2	5	0	1	0	0	16
20	Pascale West*	0-0	0-0	0-0	0	0	0	0	0	0	0	0	0	1
21	Clay, Chadarryl*	0-0	0-0	0-0	1	0	1	0	0	0	0	0	0	5
22	Julie King*	0-0	0-0	0-0	0	0	0	0	0	0	0	0	0	1
35	Capers, Cabriana*	0-0	0-0	0-2	0	0	0	0	0	0	0	0	0	1
44	Tanner, Tra'cee*	4-10	0-0	5-6	5	3	8	4	13	0	0	0	1	21
TEAM						5		3		8		3		
Totals.....		17-55	2-7	21-29	17	22	39	14	57	10	17	1	7	198

Officials: Robert Scofield, Karen Lasuik, Mazetta Garrett

Technical fouls: San Diego State-None. Auburn-None.

Attendance: 1245

Score by Periods	1st	2nd	Total
San Diego State	29	49	78
Auburn	24	33	57

26th Annual Omni Hotels Classic First Round

BOULDER, Colo. - Auburn got down early and overcame a double-digit deficit to tie the game in the second half, but could not hold off a late San Diego State run as the Tigers dropped a 78-57 decision to the Aztecs Nov. 23 in the first round of the Omni Hotels Classic in Boulder, Colo.

Auburn's Tanner sisters led the way for the Tigers. Junior Tyrese Tanner was the top scorer with 17 points, along with four rebounds and three steals, while Tra'cee Tanner followed with 13 points and a team-high eight rebounds off the bench. Hasina Muhammad rounded out the double-digit scorers with 10.

Auburn got down early against the Aztecs, trailing by as many as 15 points in the first half after San Diego State took a 24-9 lead. The Tigers rallied back, however, out-scoring the Aztecs 15-5 to close out the period and holding SDSU scoreless for the last 4:06. Tra'cee Tanner scored six of seven first-half points in the run.

The Tigers kept the momentum rolling into the second half and tied the game up at 36-36 with 15:05 to play after a 3-pointer from Courtney Strain. That would be the final run, though as San Diego State scored the next seven points and out-scored Auburn 42-21 the rest of the game.

Game 6: Nov. 24, 2012
Auburn 72, Texas A&M-Corpus Christi 57
Coors Events Center
Boulder, Colo.
Omni Hotels Classic Consolation Game

Official Basketball Box Score -- Game Totals -- Final Statistics

Auburn vs Texas A&M-Corpus Chr

11-24-12 5 p.m. MT at Coors Events Center, Boulder Colorado

VISITORS: Auburn (4-2)

#	Player	fg-fga	3fg-fga	ft-fa	of	de	tot	pf	tp	a	to	blk	s	min
14	Alverson, Blanche*	1-3	0-2	0-0	0	5	5	0	2	1	1	1	3	20
34	Davis, Peyton*	6-11	0-0	3-5	5	1	6	3	15	1	3	0	0	33
00	Muhammad, Hasina*	6-9	1-1	3-4	3	1	4	3	16	1	5	1	4	19
03	Ouardad, Najat*	2-3	0-0	0-0	0	3	3	2	4	8	4	0	3	26
32	Tanner, Tyrese*	4-6	0-1	3-3	0	4	4	2	11	0	3	3	2	21
04	Sweeting, Cedricka	0-0	0-0	0-0	0	0	0	0	2	1	0	0	0	3
11	Strain, Courtney	7-8	0-1	0-0	0	1	1	0	14	0	1	0	2	25
21	Clay, Chadarryl	0-1	0-1	0-2	0	0	0	0	0	0	0	0	0	5
22	King, Julie	0-4	0-0	0-1	1	4	5	2	0	2	0	0	1	10
35	Capers, Cabriana	2-2	0-0	0-0	2	5	7	2	4	0	2	0	0	13
44	Tanner, Tra'cee	3-6	0-0	0-0	0	1	1	1	6	1	2	2	1	15
TEAM						1		1						
Totals.....		31-53	1-6	9-15	12	25	37	15	72	16	25	7	16	200

HOME TEAM: Texas A&M-Corpus Christi (0-6)

#	Player	fg-fga	fg-fga	ft-fa	of	de	tot	pf	tp	a	to	blk	s	min
22	Plummer, Ashanti*	1-3	0-0	0-1	0	1	1	3	2	0	2	0	0	23
03	Darley, Ashley*	4-12	2-6	2-2	7	0	7	2	12	2	3	0	2	22
10	Blount, Janae*	7-16	4-9	3-3	0	0	0	3	21	1	3	0	3	28
21	Jammer, Jessica*	2-6	0-0	0-1	0	4	4	2	4	2	6	1	1	24
33	Gregory, Taryn*	2-5	1-3	0-0	3	2	5	0	5	3	2	0	3	25
01	Amboree,Trish	0-1	0-1	0-0	0	0	0	1	0	0	0	0	0	3
05	Roberts, Alisa	2-6	2-5	0-0	2	2	0	6	6	0	2	0	0	12
12	Anderson-Sparks, M.	1-7	1-5	2-2	1	0	1	0	5	0	2	0	1	14
23	Huff, Brandi	1-3	0-2	0-0	1	0	1	0	2	1	2	0	0	17
24	Taylor, Verne'quo	0-1	0-0	0-0	0	1	2	0	2	2	2	0	0	17
30	Schwartz, Morgan	0-1	0-0	0-0	1	3	4	0	0	1	1	0	0	14
31	Alva, Sarah	0-0	0-0	0-0	0	0	0	1	0	0	0	0	0	1
	TEAM				4	1	5			1				
	Totals.....	20-61	10-31	7-9	17	14	31	14	57	12	26	1	10	200

2012-13 Season Statistics

2012-13 Auburn Women's Basketball
Auburn Combined Team Statistics (as of Nov 26, 2012)
All games

RECORD:	OVERALL	HOME	AWAY	NEUTRAL
ALL GAMES	4-2	2-0	0-1	2-1
CONFERENCE	0-0	0-0	0-0	0-0
NON-CONFERENCE	4-2	2-0	0-1	2-1

#	Player	gp-gs	min	avg	Total		3-Point		F-Throw		Rebounds											
					fg-fga	fg%	3fg-fga	3fg%	ft-fga	ft%	off	def	tot	avg	pf	dq	a	to	blk	stl	pts	avg
00	Muhammad, Hasina	6-4	142	23.7	37-86	.430	4-10	.400	16-24	.667	15	14	29	4.8	11	0	10	12	4	12	94	15.7
32	Tanner, Tyrese	6-6	160	26.7	31-74	.419	2-12	.167	23-28	.821	14	18	32	5.3	12	1	9	10	7	11	87	14.5
14	Alverson, Blanche	6-6	173	28.8	23-52	.442	8-22	.364	6-6	1.000	9	26	35	5.8	4	0	13	12	7	13	60	10.0
34	Davis, Peyton	6-6	145	24.2	18-36	.500	0-0	.000	12-21	.571	15	14	29	4.8	15	1	3	9	2	5	48	8.0
11	Strain, Courtney	6-2	104	17.3	16-34	.471	2-9	.222	3-4	.750	2	4	6	1.0	6	0	3	6	0	5	37	6.2
03	Ouardad, Najat	6-6	160	26.7	12-29	.414	5-13	.385	5-8	.625	4	20	24	4.0	7	0	31	20	0	14	34	5.7
44	Tanner, Tra'cee	6-0	94	15.7	12-28	.429	0-0	.000	7-9	.778	9	10	19	3.2	12	0	3	4	3	4	31	5.2
21	Clay, Chadarryl	5-0	38	7.6	7-12	.583	3-8	.375	5-7	.714	2	2	4	0.8	3	0	8	7	0	1	22	4.4
04	Sweeting, Cedricka	6-0	54	9.0	6-10	.600	1-4	.250	0-0	.000	1	4	5	0.8	1	0	10	3	0	2	13	2.2
20	West, Pascale	4-0	33	8.3	4-8	.500	0-0	.000	0-0	.000	1	2	3	0.8	5	0	0	2	2	2	8	2.0
35	Capers, Cabriana	6-0	47	7.8	4-7	.571	0-0	.000	0-2	.000	8	14	22	3.7	3	0	1	5	0	0	8	1.3
22	King, Julie	6-0	50	8.3	1-8	.125	0-0	.000	0-2	.000	1	8	9	1.5	4	0	10	3	2	4	2	0.3
Team											14	13	27				3					
Total.....		6	1200		171-384	.445	25-78	.321	77-111	.694	95	149	244	40.7	83	2	101	96	27	73	444	74.0
Opponents.....		6	1200		127-349	.364	50-154	.325	44-65	.677	82	135	217	36.2	97	2	77	137	11	45	348	58.0

TEAM STATISTICS	AU	OPP	Date	Opponent	Score	Att.
SCORING	444	348	+ 11-09-12	vs Maine	w 71-41	2109
Points per game	74.0	58.0	+ 11-10-12	at NC State	L 71-85	1586
Scoring margin	+16.0	-	11-15-12	ALABAMA STATE	w 80-43	3511
FIELD GOALS-ATT	171-384	127-349	11-18-12	ALABAMA A&M	w 93-44	1768
Field goal pct	.445	.364	& 11-23-12	vs San Diego State	L 57-78	1245
3 POINT FG-ATT	25-78	50-154	& 11-24-12	vs Texas A&M-Corpus Chr	w 72-57	1538
3-point FG pct	.321	.325				
3-pt FG made per game	4.2	8.3				
FREE THROWS-ATT	77-111	44-65				
Free throw pct	.694	.677				
F-Throws made per game	12.8	7.3				
REBOUNDS	244	217				
Rebounds per game	40.7	36.2				
Rebounding margin	+4.5	-				
ASSISTS	101	77				
Assists per game	16.8	12.8				
TURNOVERS	96	137				
Turnovers per game	16.0	22.8				
Turnover margin	+6.8	-				
Assist/turnover ratio	1.1	0.6				
STEALS	73	45				
Steals per game	12.2	7.5				
BLOCKS	27	11				
Blocks per game	4.5	1.8				
ATTENDANCE	5279	6478				
Home games-Avg/Game	2-2640	1-1586				
Neutral site-Avg/Game	-	3-1631				

Score by Periods	1st	2nd	Totals
Auburn	209	235	444
Opponents	164	184	348