



# 2020-21 AUBURN WOMEN'S BASKETBALL

AUBURN ATHLETICS COMMUNICATIONS: 392 SOUTH DONAHUE DRIVE || AUBURN, AL 36830 || AUBURNTIGERS.COM || @AUBURNWBB

## 2020-21 SCHEDULE/RESULTS

5-5, 0-2 SEC

DATE	OPPONENT	TIME/TV/RESULT
Nov. 25	USC UPSTATE	W 82-41
Nov. 28	SAMFORD	W 66-64
Dec. 1	GARDNER-WEBB	W 97-61
Dec. 5	at Houston	L 61-71
Dec. 8	BELMONT	PPD
Dec. 13	SOUTH ALABAMA	W 74-66
Dec. 16	STEPHEN F. AUSTIN	L 54-67
Dec. 17	NORTH FLORIDA	W 94-81
Dec. 20	BELMONT	L 57-78
Dec. 31	*at LSU	L 43-56
Jan. 3	*GEORGIA	L 44-76
Jan. 7	*at Ole Miss	+ 6 pm
Jan. 10	*MISSOURI	+ 2 pm
Jan. 14	*KENTUCKY	SECN 7:30 pm
Jan. 17	*at Florida	SECN Noon
Jan. 24	*at Alabama	ESPNU 1 pm
Jan. 28	*TEXAS A&M	SECN 7:30 pm
Jan. 31	*at Arkansas	+ 2 pm
Feb. 4	*SOUTH CAROLINA	+ 6 pm
Feb. 11	*at Georgia	+ 6 pm
Feb. 14	*ALABAMA	SECN 5 pm
Feb. 18	*at Mississippi State	SECN 8 pm
Feb. 21	*VANDERBILT	+ 2 pm
Feb. 25	*ARKANSAS	SECN 8 pm
Feb. 28	*at Tennessee	SECN 1 pm
Mar. 3-7	SEC Tournament	Greenville
M19-22	NCAA First-Second Rounds	TBD
M26-29	NCAA Regionals	TBD
Apr 2-4	Women's Final Four	San Antonio

All times Central. Home Games in **BOLD CAPS**.  
\* SEC Game  
+ = SEC Network + / ESPN3.com

### AUBURN ATHLETICS COMMUNICATIONS

WES TODD .....Assistant Director/WBB Contact  
.....wlt0006@auburn.edu  
.....C: 334-750-5682  
KIRK SAMPSON ..... Associate AD  
.....kirk@auburn.edu

Web .....AuburnTigers.com  
Twitter .....@AuburnWBB  
Facebook ...../AuburnWBB  
Instagram .....@AuburnWBB  
Office Phone .....(334) 844-9800



## GAME 11

## at Ole Miss (6-1, 0-1)

Thursday, Jan. 7, 2021 • 6 p.m. CT



Site .....Oxford, Miss.  
Venue .....The Pavilion at Ole Miss  
TV .....SEC Network +  
Radio .....WQSI 93.9 FM (Brit Bowen, Larry DiChiara)  
Audio Webcast .....AuburnTigers.com  
Live Stats .....OleMissSports.com  
Twitter .....@AuburnWBB  
Series Record .....Auburn leads 37-25  
in Oxford .....Ole Miss leads 13-12  
Last Meeting .....Auburn 59, Ole Miss 43 (Jan. 23, 2020, in Auburn)

### GAMEDAY BREAKDOWN




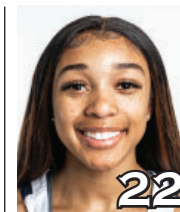

#### AUBURN TIGERS

Rankings.....AP: NR | Coaches: NR  
2020-21 Record.....5-5  
SEC.....0-2  
Home .....5-3  
Away .....0-2  
Neutral.....0-0  
Streak.....L3  
Head Coach.....Terri Williams-Flournoy  
Record at AU (Yrs.).....140-124 (9th)  
Overall Record (Yrs.).....283-228 (16th)  
Record vs. Ole Miss.....7-3

#### OLE MISS REBELS

Rankings.....AP: NR | Coaches: NR  
2020-21 Record.....6-1  
SEC.....0-1  
Home .....5-1  
Away .....1-0  
Neutral.....0-0  
Streak.....L1  
Head Coach.....Yolett McPhee-McCuin  
Record at UM (Yrs.).....22-46 (3rd)  
Overall Record (Yrs.).....116-109 (8th)  
Record vs. Auburn.....0-3

### AUBURN PROJECTED STARTERS (based on last game)

				
<b>KEYA PATTON</b> G • JR • 5-6 Indianapolis, Ind.	<b>ROMI LEVY</b> F • FR • 6-2 Herzliya, Israel	<b>JALA JORDAN</b> F • R-SO • 6-2 Philadelphia, Pa.	<b>ALAINA RICE</b> G • SO • 5-8 Rockledge, Fla.	<b>HONESTY SCOTT-GRAYSON</b> G • R-SO • 5-8 Brick, N.J.
PPG: 5.6	PPG: 5.3	PPG: 8.5	PPG: 2.9	PPG: 9.8
RPG: 2.9	RPG: 3.9	RPG: 4.0	RPG: 2.0	RPG: 3.6
APG: 0.6	APG: 1.1	APG: 0.7	APG: 1.2	APG: 1.7

### OFF THE BENCH

No.	Pos.	Name	Ht.	Year	PPG	RPG	Hometown
0	G	Alycia Reese	5-9	Jr.	3.6	0.6	Columbus, Ga.
2	G	Sania Wells	5-7	So.	3.8	0.5	Moss Point, Miss.
3	G	Annie Hughes	5-9	So.	5.6	2.9	Dutton, Ala.
4	G	Riley Donahue	5-10	Fr.	1.0	0.0	Atlanta, Ga.
5	F	Aicha Coulibaly	6-0	Fr.	4.9	3.7	Mali
10	F	Kiyae' White	6-2	R-Jr.	0.0	3.0	Macungie, Pa.
13	G	Kira Lowery	5-6	Jr.	3.8	1.2	Memphis, Tenn.
20	F	Unique Thompson	6-3	Sr.	18.8	15.3	Theodore, Ala.
24	G	Carsen McFadden	5-7	Fr.	0.6	0.4	Lucas, Texas
30	G	Morgan Robinson-Nwagwu	5-8	So.	1.4	1.3	Norcross, Ga.

**Head Coach:** Terri Williams-Flournoy

**Assistants:** La'Keshia Frett Meredith, Clarisse Garcia, Reneisha Hobbs

#WarEagle  
#TeamOfExcellence



AuburnTigers.com



@AuburnWBB | @AuburnTigers  
@AUCoachFlo



/AuburnWBB  
/AuburnTigers

**TEAM SCHEDULE AND MEDIA AVAILABILITY >> JANUARY 4-10** (times Central unless noted otherwise)

MONDAY January 4	TUESDAY January 5	WEDNESDAY January 6	THURSDAY January 7	FRIDAY January 8	SATURDAY January 9	SUNDAY January 10
OFF DAY	<b>PRACTICE</b> 1-4 p.m. Auburn Arena	<b>PRACTICE</b> 9 am-Noon Auburn Arena	<b>GAME</b> 6:00 Auburn at Ole Miss	<b>PRACTICE</b> 2:30-5 pm Auburn Arena	<b>PRACTICE</b> Noon-3 pm Auburn Arena	<b>GAME</b> 2:00 Auburn vs. Missouri
		<b>TRAVEL</b> to Oxford, Miss.	<b>Interviews postgame via Zoom Return to Auburn</b>	<b>Gymnastics vs. Florida</b>	<b>MBB vs. Alabama</b>	<b>Interviews postgame via Zoom</b>

**AUBURN ATHLETICS COMMUNICATIONS SERVICES (COVID-19 EDITION)**

**QUICK FACTS**

**AUBURNTIGERS.COM**

For updated game notes, statistics and all the latest information on Auburn basketball and gameday activities, go to AuburnTigers.com.

**INTERVIEW POLICIES**

--Coach Williams-Flournoy, assistant coaches and selected athletes are available for phone and virtual interviews by contacting Wes Todd in the athletic communications office.

--Following home games, interviews with Coach Flo and selected players will be conducted **via Zoom** following a 10-minute cooling-off period. Visiting coaches and players, if requested, will be available first **on the same Zoom link**.

--Interviews following road contests will be conducted **via Zoom**; the visiting **SID will send out links beforehand**.

--Practices are closed to the public and media until further notice.

**CREDENTIALS**

Anyone wishing to cover Auburn women's basketball should contact Wes Todd in the communications office at least one day in advance in order to make the proper arrangements. Game credentials will be held at media will call, **which will be at the north main entrance for the 2020-21 season**. There will be no season credentials. Parking passes are not needed.

**GAME DAY SERVICES**

--Printed flip cards will be available at each media seat. All other information (game notes, stats, etc.) will be available on AuburnTigers.com and StatBroadcast.com. Wireless internet is available in the Arena.

--Media will only be permitted to access the concourse level of the arena. With the exception of an extremely limited number of photographers/videographers, access to the playing floor by persons not subject to the SEC's COVID-19 testing protocol is strictly prohibited.

--Pool photos and video will be available on the SEC FTP site following most games.

**VIDEO SERVICES**

FTP feeds of selected Auburn basketball highlights are available for the media. Highlights and postgame press conference video will be posted following each game to ImagenCloud and the SEC FTP site.

**COMMUNICATIONS STAFF**

Wes Todd Women's Basketball contact  
cell: 334-750-5682  
email: wlt0006@auburn.edu  
Kirk Sampson Associate AD  
cell: 334-750-1385  
email: sampska@auburn.edu

**GENERAL INFORMATION**

Location..... Auburn, Ala.  
Founded .....1856  
Enrollment.....30,440  
Nickname ..... Tigers  
Colors..... Burnt Orange and Navy Blue  
Facility (Capacity) ..... Auburn Arena (9,121)  
2020-21 Reduced Capacity .....1,438  
President ..... Dr. Jay Gogue  
Director of Athletics ..... Allen Greene  
Sr. Assoc. AD/SWA..... Monique Holland

**WOMEN'S BASKETBALL HISTORY**

First Year of Women's Basketball .....1971  
All-Time Record (Years)..... 952-502 (50th)  
All-Time SEC Record (since 1981) .....240-250  
All-Time Home Record .....445-127  
at Auburn Arena (since 2010).....98-56  
NCAA Tournament Appearances .....21  
Last NCAA App./Result.....2019 - First Round  
SEC Regular-Season Championships ..... 5  
..... 1981, 1987, 1988, 1989, 2009  
SEC Tournament Championships..... 4  
..... 1981, 1987, 1990, 1997

**COACHING & SUPPORT STAFF**

Head Coach..... Terri Williams-Flournoy  
Alma Mater, Year .....Penn State, 1991  
Overall Record ..... 283-228 (.554) / 17th year  
Auburn Record ..... 140-124 (.530) / 9th year  
Assistant Coach (Year) ..... La'Keshia Frett Meredith (2nd)  
Alma Mater, Year .....Georgia (1997)  
Assistant Coach (Year at Auburn) ..... Clarisse Garcia (5th)  
Alma Mater, Year ..... Villanova (2007)  
Special Asst. to the Head Coach..... Reneisha Hobbs  
Strength & Conditioning Coach ..... Lee Taylor  
Director of Basketball Operations ..... Bianca Webb  
Director of Basketball Services ..... Justin Peak  
Athletic Trainer..... Catherine Gordon  
Grad. Student Mgrs ..... Sean Holmes, AK Prestridge

**GAMEDAY EXPERIENCE: AUBURN ARENA**

>> Auburn Arena is in its 11th season as home of Auburn Basketball. The Tigers are 98-55 since moving to the Arena in 2010-11. The facility seats 9,121 for basketball and also hosts Auburn volleyball and gymnastics.



**TEAM INFORMATION**

2019-20 Record..... 11-18  
2019-20 SEC Record..... 4-12  
SEC Finish..... T-12th  
Starters Returning/Lost .....1/4  
Letterwinners Returning/Lost ..... 5/8  
Redshirts Returning ..... 2  
Newcomers.....8

# AUBURN TIGERS SPEED CHART

Overall: 5-5 SEC: 0-2

Head Coach: Terri Williams-Flournoy (9th Season)

Aicha Coulibaly - ay-EE-sha coo-li-BALL-ee  
 Jala Jordan - JAY-lah  
 Romi Levy - RO-mee LEV-ee  
 Kira Lowery - KYE-rah  
 Alycia Reese - a-LEE-see-ah

Morgan Robinson-Nwagwu - WAH-goo  
 Sania Wells - sa-NYE-uh  
 Kiyae' White - kye-YAY  
 Terri Williams-Flournoy - FluH-NOY

		Pts	Reb	Ast	Stl	Blk		
0	<b>ALYCIA REESE</b> G • 5-9 • Jr. • Columbus, Ga. • Chattahoochee Valley CC	Season High	10	1	1	1	-	
		Career High	10	1	1	1	-	
		PPG	3.6	0.6	0.2	.625	.500	1.000
		20-21	3.6	0.6	0.2	.625	.500	1.000
							<b>LAST GAME (vs UGA):</b> 4 minutes • 10 pts, 2-3 3FG in 16 mins at Houston (12/5) • 4 points in Auburn debut vs. USC Upstate (11/25) • Played 2 seasons at CVCC in Phenix City • Started all 24 games as soph.; avg. 12.8 ppg, 3.8 rpg	
1	<b>KEYA PATTON</b> G • 5-6 • Jr. • Indianapolis, Ind. • Wabash Valley College	Season High	14	5	2	2	-	
		Career High	14	5	2	2	-	
		PPG	5.6	1.7	0.6	.320	.278	.765
		20-21	5.6	1.7	0.6	.320	.278	.765
							<b>LAST GAME (vs UGA):</b> 12 pts, 3 reb, 1 stl, 6-7 FT • Season-high 14 points in win over Gardner-Webb • Two-time NJCAA All-American; 1st team in 2020 • Avg. 20.8 pts, 6.8 reb, 6.4 ast, 2.9 stl as JC sophomore • Scored 1,000+ points in two JC seasons	
2	<b>SANIA WELLS</b> G • 5-7 • So. • Moss Point, Miss. • East Central HS	Season High	11	2	2	1	-	
		Career High	11	3	3	2	-	
		PPG	3.8	0.5	0.9	.234	.292	.643
		20-21	3.8	0.5	0.9	.234	.292	.643
							<b>LAST GAME (vs UGA):</b> 10 minutes • Career-high 11 points w/ 3 3FG vs. S. Alabama (12/13) • Played in 25 games as freshman; 8.6 mins/game • Career-high 8 points in 21 mins at Miss. State (1/30) • Scored 4 points in Auburn debut at UAB	
3	<b>ANNIE HUGHES</b> G • 5-9 • So. • Dutton, Ala. • Pisgah HS	Season High	17	7	1	3	1	
		Career High	17	7	4	3	1	
		PPG	5.6	2.9	0.7	.449	.350	.556
		20-21	5.6	2.9	0.7	.449	.350	.556
							<b>LAST GAME (vs UGA):</b> 3 pts, 3 reb, 1 stl • Career-high 17 pts, 7 reb, 3 stl vs. North Florida (12/17) • Scored SEC-best 8 points at Missouri (2/27/20) • Played in all 29 games in '19-20; started 7	
4	<b>RILEY DONAHUE</b> G • 5-10 • Fr. • Atlanta, Ga. • Marist School	Season High	3	-	-	-	-	
		Career High	3	-	-	-	-	
		PPG	1.0	0.0	0.0	1.000	1.000	-
		20-21	1.0	0.0	0.0	1.000	1.000	-
							<b>LAST GAME (vs UGA):</b> DNP • Scored first AU points on 3FG in last minute vs. GWU • Joined Tigers as walk-on in August • First-team GHSA all-region selection as HS senior	
5	<b>AICHA COULIBALY</b> G/F • 6-0 • Fr. • Mali • IMG Academy (Fla.)	Season High	12	6	2	2	1	
		Career High	12	6	2	2	1	
		PPG	4.9	3.7	0.7	.367	.083	.438
		20-21	4.9	3.7	0.7	.367	.083	.438
							<b>LAST GAME (vs UGA):</b> 6 pts, 2 reb, 2 stl, 1 blk • Started 1st 3 gms; 10 pts, 6 reb vs. GWU • Played for Mali U16 National Team at '17 African Champ. • Named tournament MVP, averaged 21.8 ppg in event • 3rd AU WBB player from Africa (C. Correia; K. Dieng)	
10	<b>KIYAE' WHITE</b> F • 6-2 • R-Jr. • Macungie, Pa. • Emmaus HS	Season High	-	3	-	-	-	
		Career High	15	11	4	3	1	
		PPG	0.0	3.0	0.0	.000	-	-
		20-21	0.0	3.0	0.0	.000	-	-
							<b>LAST GAME (vs UGA):</b> DNP • Made '20-21 debut vs. South Alabama, 3 rebs in 4 mins • Played all 29 games, started 14 in 2019-20 • Career-high 15 points in SEC Tour. vs. Arkansas • Career-high 11 rebs in '19-20 opener vs. Wofford	
11	<b>ROMI LEVY</b> F • 6-2 • Fr. • Herzliya, Israel • Hof Hasharon HS	Season High	12	11	3	6	2	
		Career High	12	11	3	6	2	
		PPG	5.3	3.9	1.2	.373	.261	.375
		20-21	5.3	3.9	1.2	.373	.261	.375
							<b>LAST GAME (vs UGA):</b> 3 rebounds, 6 steals • Season-high 12 pts vs. North Florida (12/17) • Scored 8 points off bench in Auburn debut vs. USCU • Bronze medal at '18 Euro Champs. with Israel U18 team • First AU WBB player from Israel	
13	<b>KIRA LOWERY</b> G • 5-6 • Jr. • Memphis, Tenn. • Dyersburg State CC	Season High	12	5	5	3	1	
		Career High	12	5	5	3	1	
		PPG	3.8	1.2	1.8	.480	.333	.765
		20-21	3.8	1.2	1.8	.480	.333	.765
							<b>LAST GAME (vs UGA):</b> 3 pts, 1 reb, 1 ast • Led AU w/ 5 assists, 3 steals in win over UNF (12/17) • 12 points in 2nd AU game vs. Samford (11/28) • Third-team NJCAA All-American in '20 • 3rd in NJCAA in scoring (23.3 ppg); 2nd in steals (4.0/gm)	
14	<b>JALA JORDAN</b> F • 6-2 • R-So. • Philadelphia, Pa. • West Virginia	Season High	16	8	4	2	3	
		Career High	16	8	4	2	3	
		PPG	8.5	4.0	0.7	.337	.250	.750
		20-21	8.5	4.0	0.7	.337	.250	.750
							<b>LAST GAME (vs UGA):</b> 9 pts, 1 reb, 1 blk • Career-hi 3 blocks in 1st career start vs. S. Ala. (12/13) • Shared AU lead w/ 16 pts in season-opener vs. USCU • Redshirted 2019-20 season after transfer from WVU • Appeared in 25 games as freshman at WVU	
20	<b>UNIQUE THOMPSON</b> F • 6-3 • Sr. • Theodore, Ala. • Faith Academy	Season High	26	23	3	5	2	
		Career High	31	23	6	5	6	
		PPG	18.8	15.3	3.1	.571	-	.776
		20-21	18.8	15.3	3.1	.571	-	.776
							<b>LAST GAME (vs UGA):</b> DNP • Preseason All-SEC; McClain, Wooden Watch Lists • 26 pts, 23 reb at HOU (12/5); 1st 20-20 at AU since '93 • 49 career double-doubles, 1st in AU history • National leader in rebounds (15.3), double-doubles (7)	
22	<b>ALAINA RICE</b> G • 5-8 • So. • Rockledge, Fla. • Florida A&M	Season High	9	4	5	2	-	
		Career High	22	11	5	5	2	
		PPG	2.9	2.0	1.2	.212	.333	.750
		20-21	2.9	2.0	1.2	.212	.333	.750
							<b>LAST GAME (vs UGA):</b> 3 pts, 4 reb • Season-high 9 pts, 2 stl vs. North Florida (12/17) • Led Auburn w/ 5 assists in debut vs. USC Upstate • 2020 MEAC Rookie of the Year at FAMU • Averaged 10.3 pts, 4.7 reb., 2.4 ast. as freshman in '20	
23	<b>HONESTY SCOTT-GRAYSON</b> G • 5-8 • R-So. • Brick, N.J. • Baylor	Season High	18	7	4	5	-	
		Career High	18	7	5	5	1	
		PPG	9.8	3.6	1.7	.362	.200	.621
		20-21	9.8	3.6	1.7	.362	.200	.621
							<b>LAST GAME (vs UGA):</b> 6 pts, 4 reb, 1 ast, 1 stl • Career-hi 18 pts, 4 ast, 3 stl vs. Belmont (12/20) • Back-to-back 16-point games vs. SFA, UNF • Redshirted '19-20 after transfer from Baylor • 2018 McDonald's All-American	
24	<b>CARSEN McFADDEN</b> G • 5-7 • Fr. • Fairview, Texas • Lovejoy HS	Season High	3	1	3	1	-	
		Career High	3	1	3	1	-	
		PPG	0.6	0.4	0.8	.333	-	.500
		20-21	0.6	0.4	0.8	.333	-	.500
							<b>LAST GAME (vs UGA):</b> 4 minutes • 1st AU points, led AU w/ 3 ast vs. S. Ala. (12/13) • Had a rebound and an assist in final minute vs. GWU • Joined Tigers as walk-on in August • Had 1,047 rebounds and 418 steals in HS career	
30	<b>MORGAN ROBINSON-NWAGWU</b> G • 5-8 • So. • Norcross, Ga. • Norcross HS	Season High	6	4	2	4	1	
		Career High	6	4	4	4	1	
		PPG	1.4	1.3	1.2	.357	.000	-
		20-21	1.4	1.3	1.2	.357	.000	-
							<b>LAST GAME (vs UGA):</b> 2 pts, 1 reb, 1 stl • Returned vs. UNF after missing prev. 3 games (ankle) • Career-high 4 steals in season-opener vs. USC Upstate • Played in all 29 games as a freshman; 10.9 mins/game • Career-high 6 points, 2 steals vs. Florida (1/9)	

Inside the Matchup

**Auburn vs. Ole Miss 37-25 (.597)**

In Auburn: 19-8  
 --At Auburn Arena: 6-1  
 In Oxford: 12-13  
 Neutral Sites: 6-4  
 Trend: Auburn has won 5 of last 6 meetings

Dec. 8, 1978	L	62-107	Auburn
Feb. 13, 1980	L	65-71 (OT)	Oxford, Miss.
Jan. 2, 1982	L	68-69	Auburn
Jan. 30, 1982	L	44-58	Oxford, Miss.
Jan. 19, 1983	L	54-63	Oxford, Miss.
Feb. 2, 1983	W	79-77	Auburn
Mar. 5, 1983	L	62-73	Knoxville, Tenn.*
Jan. 7, 1984	W	58-49	Auburn
Jan. 25, 1984	L	45-46	Oxford, Miss.
Jan. 19, 1985	L	68-75	Oxford, Miss.
Feb. 11, 1985	L	65-66	Auburn
Feb. 22, 1986	W	81-56	Auburn
Mar. 20, 1986	L	55-56 (OT)	Austin, Texas@
Jan. 24, 1987	W	66-62	Oxford, Miss.
Jan. 30, 1988	W	71-70	Auburn
Mar. 6, 1988	W	69-60	Albany, Ga.*
Feb. 14, 1989	W	71-63	Oxford, Miss.
Mar. 25, 1989	W	77-51	Auburn@
Feb. 17, 1990	W	60-54	Auburn
Mar. 4, 1990	W	72-71(OT)	Albany, Ga.*
Feb. 10, 1991	W	79-54	Oxford, Miss.
Mar. 2, 1991	W	76-50	Albany, Ga.*
Dec. 20, 1991	L	51-62	Auburn
Mar. 7, 1992	L	52-58	Albany, Ga.*
Dec. 16, 1992	W	57-47	Oxford, Miss.
Mar. 6, 1993	L	55-69	Chattanooga, Tenn.*
Jan. 8, 1994	W	65-42	Auburn
Jan. 8, 1995	L	58-61	Oxford, Miss.
Feb. 24, 1996	W	59-58	Auburn
Feb. 22, 1997	L	61-67	Oxford, Miss.
Feb. 28, 1997	W	72-64	Chattanooga, Tenn.*
Jan. 28, 1998	W	65-44	Oxford, Miss.
Feb. 21, 1998	W	76-56	Auburn
Jan. 28, 1999	W	71-62	Auburn
Feb. 21, 1999	L	77-86	Oxford, Miss.
Feb. 20, 2000	W	67-63	Auburn
Feb. 18, 2001	W	59-48	Oxford, Miss.
Jan. 31, 2002	L	53-63	Auburn
Feb. 2, 2003	W	61-48	Oxford, Miss.
Feb. 12, 2004	W	82-70	Oxford, Miss.
Feb. 24, 2005	W	82-68	Auburn
Jan. 15, 2006	L	48-51	Auburn
Feb. 12, 2006	L	61-64	Oxford, Miss.
Jan. 4, 2007	L	66-74	Auburn
Feb. 25, 2007	W	64-56	Oxford, Miss.
Feb. 21, 2008	L	68-76	Oxford, Miss.
Feb. 5, 2009	W	72-65	Auburn
Mar. 6, 2009	W	71-65	N. Little Rock, Ark.*
Feb. 25, 2010	L	61-65	Oxford, Miss.
Jan. 13, 2011	W	85-73	Auburn
Jan. 29, 2012	W	67-54	Oxford, Miss.
Feb. 26, 2012	W	46-43	Auburn
Jan. 10, 2013	W	76-52	Auburn
March 2, 2014	L	71-73 (OT)	Oxford, Miss.
March 6, 2014	W	70-54	Duluth, Ga.*
Feb. 19, 2015	L	46-51	Auburn
Feb. 11, 2016	W	65-60	Oxford, Miss.
Jan. 8, 2017	W	83-60	Auburn
Feb. 16, 2017	L	59-63	Oxford, Miss.
Feb. 25, 2018	W	60-55	Auburn
Jan. 31, 2019	W	64-51	Oxford, Miss.
Jan. 23, 2020	W	59-43	Auburn

\* SEC Tournament  
 @ NCAA Tournament

**Auburn Women's Basketball Quick Hitters**

- Auburn and Ole Miss are meeting for the 63rd time in women's basketball
- Auburn leads the all-time series 37-25, but Ole Miss has a 13-12 edge in Oxford
- Unique Thompson pulled down her 1,000th career rebound vs. Belmont (12/20); she is fourth in Auburn history with 1,010 rebounds
- Thompson is the nation's active career leader in double-doubles (49) and rebounds (1,010)
- Thompson's 26-point, 23-rebound game at Houston was Auburn's first 20-20 game since Laretta Freeman had 30 points, 21 rebounds vs. Alabama on Feb. 17, 1993; she followed that up with 20 points, 23 rebounds vs. Belmont (12/20)
- Thompson's 23 rebounds at Houston and vs. Belmont were a career-high and tied for the third-most in Auburn history (Sharon Stewart, 23 at Vanderbilt, Feb. 28, 1988)
- As of Jan. 4, Thompson's 23 rebounds at Houston and vs. Belmont were tied for the most by a player in NCAA Division I so far this season
- Thompson leads the nation with 7 double-doubles this season and is second nationally with 15.3 rebounds per game
- Thompson is the SEC's active leader in career double-doubles (49), rebounds (1,010) and steals (162)
- Auburn has utilized five different starting lineups through 10 games; seven players have made their first Division I starts this season
- Annie Hughes scored a career-high 17 points with 7 rebounds in the win over North Florida
- Honesty Scott-Grayson scored a career-high 18 points vs. Belmont; she had scored 16 in each of the previous two games
- Auburn's 97 points in their win over Gardner-Webb tied the most scored by the Tigers under Terri Williams-Flournoy
- The Gardner-Webb win was Auburn's eighth 90-point game in the Williams-Flournoy era; the UNF win was the 9th
- The Tigers held USC Upstate to 41 points in the opener, the lowest for an opponent since Feb. 17, 2019 vs. Alabama (77-38)
- Auburn's 41-point margin of victory over USC Upstate was its largest since a 56-point win at Elon (96-44) on Dec. 22, 2018; it tied for the fifth-largest winning margin at Auburn Arena
- Ten players made their Auburn debuts in the win over USC Upstate; three newcomers were in the starting lineup
- Aicha Coulibaly became the eighth Auburn player since 2005 and fourth under Coach Flo to earn a starting nod in their first game as a true freshman
- Redshirt sophomore Jala Jordan scored a career-high 16 points off the bench to share the team lead in her Auburn debut vs. USC Upstate; the WVU transfer also hit 4-of-6 3-pointers on the night
- Auburn is in its 50th season of women's basketball and has 952 program wins
- Senior forward Unique Thompson was a consensus preseason first-team All-SEC selection (coaches & media)
- Thompson is Auburn's leading returner in nearly all statistical categories, including scoring (16.2) and rebounds (11.4)
- Thompson is the nation's leading returner in double-doubles with 22 last season, one shy of the national lead in 2020

**Moving On Up (Auburn Career Milestone Watch) . . .**

- **Unique Thompson** has 49 career double-doubles, is Auburn's all-time leader and SEC and NCAA active career leader
- **Unique Thompson** needs 8 double-doubles to tie for 10th in SEC history (Alaina Coates, Chamique Holdsclaw, Armintie Price, 57)
- **Unique Thompson** is 4th in career rebounds with 1,010; needs 5 to tie for 3rd (Lori Monroe, 1,015); needs 37 to tie for 2nd (DeWanna Bonner, 1,047)
- **Unique Thompson** is 1st in career rebounding average at 10.5; Marianne Merritt (1975-79) is 2nd at 10.0
- **Unique Thompson** is 19th in career scoring with 1,320 points; needs 7 to tie for 18th (Tra' Cee Tanner, 1,327)
- **Coach Terri Williams-Flournoy** needs 17 wins for 300 in her head coaching career
- **Auburn** needs 2 home wins for 100 all-time at Auburn Arena

**INDIVIDUAL CATEGORY LEADERS**

Auburn	Ole Miss
Unique Thompson - 18.8	Shakira Austin - 18.1
Unique Thompson - 15.3	Madison Scott - 7.8
Kira Lowery - 1.8	Mimi Reid - 6.0
Unique Thompson - 3.1	Mimi Reid - 1.9
Jala Jordan - 1.0	Shakira Austin - 2.3
Unique Thompson - 29.7	Mimi Reid - 25.7
Unique Thompson - .571	Madison Scott - .628
Annie Hughes - .350	Tiya Douglas - .471
Unique Thompson - .776	Taylor Smith - 1.000

**OPENING TIP**

» The Auburn Tigers begin the second week of SEC play on the road as they travel to Oxford, Miss., to face the Ole Miss Rebels. Game time is 6 p.m. CT Thursday at The Pavilion at Ole Miss.

» Auburn is 5-5 overall, 0-2 in SEC play. The Tigers fell to Georgia 76-44 Sunday in their last game.

» Ole Miss is 6-1 overall, 0-1 in SEC play. The Rebels fell at home in overtime to LSU Monday afternoon, 77-69.

**LAST TIME OUT**

» Georgia's size and depth were too much to overcome for the Auburn women's basketball team Sunday afternoon as the Tigers fell 76-44 to the Lady Bulldogs at Auburn Arena.

» The Tigers (5-5, 0-2 SEC), without leading scorer and rebounder Unique Thompson for the second straight game, were unable to get much going on offense and turned the ball over a season-high 27 times. Georgia (9-1, 1-1) converted those turnovers into 26 points and had seven players score at least eight points in the game.

» Junior Keya Patton was Auburn's only player in double figures with 12 points, going 6-of-7 at the free-throw line. Jala Jordan added nine points. Romi Levy added a career-best six steals, the most by an Auburn player this season. Alaina Rice and Honesty Scott-Grayson were the Tigers' top rebounders with four apiece.

» Auburn shot 30.8 percent from the field (16-52) and hit just one 3-pointer on 11 tries. Georgia shot 50 percent on the day (31-62) and out-rebounded the Tigers 43-27.

**UP NEXT**

» Auburn returns home for two straight games, beginning with a visit from Missouri on Sunday, Jan. 10. Game time is 2 p.m. CT at Auburn Arena.

**AN AUBURN WIN WOULD...**

» Snap a three-game losing streak.

» Be Auburn's fourth straight win over Ole Miss.

**AUBURN-OLE MISS SERIES**

» Auburn is 37-25 all-time against Ole Miss, but the Rebels own a 13-12 advantage in games played in Oxford. The Tigers are 2-1 in Oxford since The Pavilion opened, including a 64-51 win in 2019.

**LAST MEETING: Jan. 23, 2020 in Auburn Auburn 59, Ole Miss 43**

» Auburn put together one of its best defensive efforts of the season and pulled away in the fourth quarter as the Tigers defeated Ole Miss 59-43 at Auburn Arena.

» The Tigers earned their first SEC win of the year and snapped a five-game losing streak as a four-point lead at the end of the third quarter ballooned to as much as 19 in the fourth as Auburn outscored Ole Miss 21-9 in the final period.

» Unique Thompson made a pair of late free throws to secure her NCAA-leading 16th double-double in 17 games, racking up 10 points and 13 rebounds. Daisa Alexander had a career-high 10 rebounds along with seven points, three assists and two steals.

» Auburn had another rough night from the floor, shooting 30.3 percent, but knocked down seven 3-pointers and was 12-of-15 at the free-throw line. The Tigers held Ole Miss to 27.4 percent

from the floor, the lowest by an Auburn opponent this season, and were able to keep the Rebels away from the foul line as they attempted just four free throws. The Tigers grabbed a season-high 55 rebounds, their most since pulling down 57 in an overtime game at Marquette in 2015. Auburn also scored a season-high 12 points on fast breaks.

**SCOUTING OLE MISS**

» Ole Miss is 6-1 overall, 0-1 in SEC play. The Rebels had to postpone their first SEC game due to COVID-19 issues but played LSU Monday afternoon, falling 77-69 in overtime.

» The Rebels have the SEC's top scoring defense, allowing just 52.4 points/game, and the league's top scoring margin, outscoring opponents by an average of 30.6 points.

» Maryland transfer Shakira Austin leads the Rebels with 18.1 points/game. Freshman Madison Scott is the Rebs' top rebounder with 7.8/game.

**SCOUTING AUBURN**

» Senior forward Unique Thompson leads the nation with 15.3 rebounds per game this year and leads Auburn with 18.8 points/game. She is also the national leader in double-doubles with seven. Thompson pulled down her 1,000th career rebound against Belmont on Dec. 20 and is the only active player nationally with over 1,000 career rebounds. An honorable-mention All-American and first-team All-SEC performer a year ago, Thompson is Auburn's lone returning starter. She averaged a double-double for the second straight year in 2020 with 16.2 points and 11.4 rebounds, leading Auburn in both categories.

» Thompson has been unavailable the last two games due to medical issues.

» Two redshirt sophomore transfers that sat out last season are making an immediate impact. Honesty Scott-Grayson (Baylor) and Jala Jordan (West Virginia) have both earned significant minutes through the first several games. Scott-Grayson has started all 10 games and had a career-high 18 points vs. Belmont, 16 points against both SFA and North Florida, and 14 points, 7 rebounds and 5 steals vs. Gardner-Webb. Jordan is Auburn's third-leading scorer with 8.5 points/game; she's also the Tigers' second-leading rebounder (4.0/game) and leading shot-blocker (1.0/game)

» Four other returners saw game action for Auburn last season: redshirt junior Kiyae' White and sophomores Annie Hughes, Morgan Robinson-Nwagwu and Sania Wells. Hughes scored a career-high 17 points against North Florida and has started seven games. Wells and Robinson-Nwagwu played significant minutes in the opener; Robinson-Nwagwu had a career-high four steals and matched career-highs with 6 points and 4 rebounds. Wells scored a career-high 11 points in the win over South Alabama and made her first career start at LSU.

**ALL THE NEW FACES**

» Of the 15 players on the roster, 10 of them wore an Auburn uniform for the first time in game action vs. USC Upstate. All 10 newcomers saw the floor in the Tigers' 82-41 win on Nov. 25 and again vs. Gardner-Webb on Dec. 1.

» Auburn added three junior college transfers during the offseason, including two NJCAA All-Americans:

» Kira Lowery came to Auburn from Dyersburg State CC (Tenn.) where she ranked third in the

**SEC STANDINGS & SCHEDULE**

	<i>(thru games of Jan. 4)</i>					
	SEC Games			All Games		
	W	L	Pct.	W	L	Pct.
Kentucky	2	0	1.000	9	1	.900
LSU	2	0	1.000	4	4	.500
South Carolina	2	0	1.000	7	1	.875
Texas A&M	1	0	1.000	10	0	1.000
Alabama	1	1	.500	8	1	.889
Arkansas	1	1	.500	10	2	.833
Georgia	1	1	.500	9	1	.900
Mississippi St.	1	1	.500	6	2	.750
AUBURN	0	2	.000	5	5	.500
Florida	0	2	.000	7	3	.700
Missouri	0	2	.000	6	1	.857
Ole Miss	0	1	.000	4	3	.571
Tennessee	0	0	.000	6	1	.857
Vanderbilt	0	0	.000	4	1	.800

**Sunday, Jan. 3**

Texas A&M 92, Florida 67  
Georgia 76, Auburn 44  
Arkansas 91, Missouri 88  
Kentucky 92, Mississippi State 86

**Monday, Jan. 4**

LSU 77, Ole Miss 69 (OT)  
South Carolina 77, Alabama 60



**Thursday, Jan. 7**

\*5:00 - Mississippi State at Florida (+)  
\*5:30 - Arkansas at Tennessee (SEC Network)  
\*6:00 - Alabama at LSU (+)  
\*6:00 - Auburn at Ole Miss (+)  
\*6:00 - Georgia at South Carolina (+)  
\*7:30 - Kentucky at Texas A&M (SEC Network)

**Sunday, Jan. 10**

\*11:00 - Florida at Georgia (SEC Network)  
\*11:00 - South Carolina at Kentucky (ESPN2)  
\*1:00 - Alabama at Vanderbilt (SEC Network)  
\*1:00 - Tennessee at LSU (+)  
\*2:00 - Missouri at Auburn (+)  
\*3:00 - Texas A&M at Arkansas (SEC Network)  
\*5:00 - Ole Miss at Mississippi State (SEC Network)

**Inside the Numbers**

CATEGORY		
	AUBURN	OLE MISS
Points Per Game	67.2	83.0
Scoring Margin	+1.1	+30.6
Field Goal %	38.66%	46.1%
Opp. Field Goal %	41.2%	31.2%
3 pt Field Goal %	26.3%	37.4%
Opp. 3FG %	32.2%	24.3%
Rebounds	40.9	42.9
Opp. Rebounds	36.3	36.7
Rebound Margin	+4.6	+6.1
Turnovers	18.8	15.1
Opp. Turnovers	21.1	23.3
Steals	12.5	12.1
Opp. Steals	10.9	7.9
Blocks	2.7	3.6
Opp. Blocks	2.1	1.3

**Associated Press Top 25**

(Week 6: Jan. 4)

Rk	Team	Record	Prev
1	Stanford (27)	9-0	1
2	Louisville	7-0	2
3t	NC State (2)	10-0	3
3t	Connecticut (1)	6-0	3
<b>5</b>	<b>South Carolina</b>	<b>6-1</b>	<b>5</b>
6	Baylor	8-1	7
7	Arizona	8-1	6
<b>8</b>	<b>Texas A&amp;M</b>	<b>10-0</b>	<b>9</b>
9	UCLA	6-2	11
<b>10</b>	<b>Kentucky</b>	<b>9-1</b>	<b>13</b>
11	Oregon	9-1	8
12	Maryland	6-1	14
<b>13</b>	<b>Arkansas</b>	<b>10-2</b>	<b>10</b>
<b>14</b>	<b>Mississippi State</b>	<b>6-2</b>	<b>12</b>
15	Michigan	7-0	16
16	Ohio State	4-0	17
17	Texas	8-1	19
18	South Florida	7-1	21
19	Indiana	5-2	20
20	DePaul	5-3	18
21	Gonzaga	8-2	23
22	Northwestern	4-2	15
23	Michigan State	8-0	25
24	Syracuse	5-1	22
25	Missouri State	4-2	24

**Also receiving votes:** North Carolina, South Dakota State, Georgia, Iowa, Tennessee, Rice, Alabama, Arizona State, Washington State, Oregon State, Iowa State.

**USA TODAY Coaches' Top 25**

(Week 6: Jan. 5)

Rk	Team	Record	Prev
1	Stanford (31)	9-0	1
2	Louisville (1)	7-0	2
3	NC State	10-0	3
<b>4</b>	<b>South Carolina</b>	<b>7-1</b>	<b>4</b>
5	Connecticut	6-0	5
6	Baylor	8-1	6
<b>7</b>	<b>Texas A&amp;M</b>	<b>10-0</b>	<b>9</b>
<b>8</b>	<b>Kentucky</b>	<b>9-1</b>	<b>11</b>
9	UCLA	6-2	12
10	Arizona	8-1	8
11	Oregon	8-1	7
12	Maryland	7-1	14
<b>13</b>	<b>Arkansas</b>	<b>10-2</b>	<b>10</b>
14	Michigan	7-0	17
<b>15</b>	<b>Mississippi State</b>	<b>6-2</b>	<b>13</b>
16	Ohio State	5-0	15
17	Texas	8-1	19
18	Indiana	5-3	18
19	South Florida	7-1	22
20	Syracuse	5-1	20
21	Gonzaga	9-2	23
22	DePaul	5-3	21
23	Northwestern	4-2	16
24	Michigan State	8-0	NR
25	Missouri State	4-2	24

**Also receiving votes:** South Dakota State, Georgia, Iowa, Florida State, Arizona State, Florida Gulf Coast, Tennessee, North Carolina, Central Florida, IUPUI, Clemson, Dayton.

nation in scoring (23.3 ppg) and second in steals (4.0/game) and was an NJCAA All-American in 2020. Lowery has started eight games at PG and leads Auburn with 1.8 assists/game.

» Keya Patton was a two-time All-American at Wabash Valley College (Ill.), where she scored over 1,000 points in two seasons and averaged 20.8 points, 6.8 rebounds and 6.4 steals as a sophomore. She scored a season-best 14 points vs. Gardner-Webb (12/1) and made her first Auburn start vs. Georgia (1/3).

» Alycia Reese joins the Tigers from just down the road at Chattahoochee Valley CC in Phenix City, where she led the team with 12.8 points/game last season. Reese scored 10 points and hit Auburn's only two 3-pointers at Houston (12/5).

» Sophomore Alaina Rice joined the Tigers in June after transferring from Florida A&M. Rice was MEAC Rookie of the Year in 2020 at FAMU where she averaged 10.3 points and 4.7 rebounds. Rice led Auburn with 5 assists in the season-opener and scored 9 points vs. North Florida.

» The Tigers signed two freshmen during the offseason: Romi Levy (6-2, F, Herzliya, Israel) and Aicha Coulibaly (6-0, F/G, Mali). Two others joined Auburn as walk-ons: Riley Donahue (5-10, G, Atlanta, Ga.) and Carsen McFadden (5-7, G, Fairview, Texas). Coulibaly started the first four games; Levy is averaging 5.3 points, 3.9 rebounds and 2.4 steals. McFadden played significant minutes in the win over South Alabama, sharing the team lead with three assists.

**UNIQUE LEADS THE WAY**

» Through games of Jan. 4, Unique Thompson leads the nation in double-doubles (7) and offensive rebounds per game (6.4), and ranks second nationally in rebounds per game (15.2). She also leads the SEC in all three categories.

» In addition to being the SEC and national active career leader in double-doubles, Unique Thompson is the SEC and national active leader in career rebounds (1,010), the SEC active leader in steals (162) and is third among active SEC players in career scoring (1,320).

» Last season, Thompson was second in the SEC and 10th nationally in rebounding (11.4/game), led the SEC and was 8th nationally in offensive rebounds (4.4/game), and was third in the SEC and 15th nationally in field goal percentage (58.2%).

**SEEING DOUBLE**

» With seven double-doubles so far this season, Unique Thompson has 49 career double-doubles, the all-time Auburn career record. She surpassed Auburn great DeWanna Bonner's record with her 41st double-double at Missouri on Feb. 27, 2020.

» Unique needs 8 more double-doubles this season to enter the SEC's all-time top 10.

» In 2019-20, Thompson had 22 double-doubles to lead the SEC and finish second overall nationally. She is the nation's leading returner in double-doubles.

» Thompson has averaged a double-double for two straight seasons and for her career, the first Auburn player to accomplish that feat.

» Thompson is first among active SEC players in career double-doubles (as of Dec. 29):

Player (School)	20-21	Career
<b>Unique Thompson (Auburn)</b>	<b>7</b>	<b>49</b>
N'dea Jones (Texas A&M)	6	32
Rennia Davis (Tennessee)	3	32

Ciera Johnson (Texas A&M)	2	20
Shakira Austin (Ole Miss)	1	16
Aliyah Boston (South Carolina)	3	16

**20-20 VISION**

» With 26 points and 23 rebounds at Houston (12/5), Thompson was the first Auburn player to record a 20-20 game since Laretta Freeman had 30 points and 21 rebounds at Alabama on Feb. 17, 1993. Her 23 rebounds tied for the third-most in Auburn history.

» Thompson reprised the feat two weeks later with a 20-point, 23-rebound effort against Belmont at home.

» Auburn women's basketball has now had seven 20-20 games in its history; Freeman was responsible for three of them, including two in back-to-back games in 1993:

Date	Player	Opponent	Stats
<b>12/20/20</b>	<b>Unique Thompson</b>	<b>Belmont</b>	<b>20 pts/23 reb</b>
<b>12/5/20</b>	<b>Unique Thompson</b>	<b>at Houston</b>	<b>26 pts/23 reb</b>
2/17/93	Laretta Freeman	Alabama	30 pts/21 reb
2/14/93	Laretta Freeman	at Florida	24 pts/20 reb
11/29/91	Laretta Freeman	Wisconsin	20 pts/20 reb
11/26/89	Linda Godby	Oregon	25 pts/21 reb
2/28/88	Sharon Stewart	at Vanderbilt	28 pts/23 reb

**HITTING THE ROAD = HITTING THE BOARDS**

» In her four seasons, Unique Thompson has put up 12 performances with at least 15 rebounds. Nine of those 12 have come away from Auburn Arena.

Rebs	Opponent (Location)	Date
<b>23</b>	<b>at Houston</b>	<b>12/5/20</b>
<b>23</b>	<b>vs. Belmont</b>	<b>12/20/20</b>
19	at UAB	11/21/19
19	at New Mexico	11/11/18
19	vs. BYU (at Stanford)	3/23/19
<b>18</b>	<b>vs. North Florida</b>	<b>12/17/20</b>
18	vs. North Carolina (at Myrtle Beach)	12/20/18
17	vs. Oklahoma	12/2/18
16	at Virginia Tech	11/13/17
15	at TCU	12/7/19
15	at Kentucky	1/27/20
15	vs. Arkansas (at Greenville)	3/5/20

**AUBURN HONOR ROLL**

» Unique Thompson was a consensus All-SEC First Team selection by the league's coaches and media.

» Thompson was also one of 20 players nationwide named to the Katrina McClain Award watch list. She was also named to the John R. Wooden Award Preseason Top 30, and was named the 20th-best player in the country by ESPN.

**STARTING ON DAY ONE**

» Three players making their Auburn debuts were in the starting lineup for the season opener vs. USC Upstate on Nov. 25: true freshman Aicha Coulibaly, redshirt sophomore Honesty Scott-Grayson and junior Kira Lowery.

» Coulibaly became the eighth Auburn freshman since 2005 to earn a start in her collegiate debut. She was the fourth true freshman under Terri Williams-Flournoy to be in the starting lineup on night one.

Year	Freshman Starter	Opponent	Stats
2020	Aicha Coulibaly	USC Upstate	4 pts, 6 reb
2019	Annie Hughes	Wofford	10 pts, 4 ast
2017	Unique Thompson	@Va. Tech	9 pts, 16 reb
2013	Katie Frerking	Ga. Southern	8 pts, 3 reb
2011	Hasina Muhammad	@Mercer	12 pts, 2 reb

2008	Morgan Jennings	@Ala. A&M	4 pts, 4 reb
2005	Sherell Hobbs	UT Pan-Am.	6 pts, 5 reb
2005	DeWanna Bonner	UT Pan-Am.	19 pts, 4 reb

**ON THIS DATE**

» Auburn is 8-5 all-time on Jan. 7. The Tigers' last game on this date was a 60-45 loss at Mississippi State in 2016.

**TIGERS IN THE PROS**

» DeWanna Bonner completed her 11th season in the WNBA in 2020, her first with the Connecticut Sun. It was one of her best in her pro career as she led the Sun to the WNBA semifinals while averaging 19.7 points and a career-best 7.8 rebounds per game. She was an all-WNBA second-team selection for the second time in her career. Bonner has gained North Macedonian citizenship and is competing with North Macedonia's national team in EuroBasket qualifying.

» Daisa Alexander, who graduated in 2020, is playing for Etzella Ettelbruck in Luxembourg. This is her first year as a professional.

**WORKING OVERTIME**

» Auburn is 22-21 all-time in overtime games. The Tigers are 6-5 in the Coach Flo era when games have gone to an extra period.

**OVERTIME GAMES UNDER COACH FLO**

Date	Opponent	Location	Result
2/20/20	Mississippi St.	Auburn	L 85-92
11/30/19	Dayton	Esteros, Fla.	W 76-74
2/3/19	Georgia	Auburn	W 59-58
12/20/18	North Carolina	Myrtle Beach, S.C.	W 86-81
2/20/17	Alabama	Auburn	L 61-63
12/18/16	Virginia Tech	Auburn	L 87-92
1/24/16	Arkansas	Auburn	W 71-60
12/13/15	Marquette	Milwaukee, Wis.	L 69-70
11/28/15	Minnesota	Guaynabo, P.R.	W 81-79
3/2/14	Ole Miss	Oxford, Miss.	L 71-73
2/27/14	Alabama	Auburn	(2OT) W 70-65

**THIS, THAT AND THE OTHER**

» Auburn has utilized five different starting lineups in 2020-21. Seven players - Aicha Coulibaly, Jala Jordan, Romi Levy, Kira Lowery, Keya Patton, Honesty Scott-Grayson and Sania Wells - have made their first Division I starts this season.

» Auburn's 97 points in the win over Gardner-Webb (12/1) tied for the highest-scoring output of the Terri Williams-Flournoy era. It was the eighth 90-point game for Auburn under Coach Flo. Auburn got its 9th 90-point game of the Coach Flo era with 94 points against North Florida.

» Auburn's last five women's basketball games played the same day as an Iron Bowl have been decided by a combined nine points - two-point wins over Samford (2020), Dayton (2019) and Minnesota (2015) along with a one-point loss to Northwestern (2017) and a two-point loss at Winthrop (2014).

**Auburn in the SEC & NCAA Stats***(Thru games of 1/4/21)*

Category	Value	SEC	NCAA
Scoring Offense	67.2	13th	168th
Scoring Defense	66.1	12th	155th
Scoring Margin	+1.1	13th	155th
Field Goal Pct.	.386	13th	212th
Field Goal Pct. Def.	.412	13th	203rd
3-pt FG Pct.	.263	13th	266th
3-pt FG Pct. Def.	.322	12th	218th
Free Throw Pct.	.688	7th	169th
Rebounds	40.9	9th	91st
Rebound Margin	+4.6	9th	84th
Assists	11.0	14th	252nd
Assist/Turnover	0.6	14th	273rd
Blocks	2.7	12th	210th
Turnover Margin	+2.3	7th	98th
Turnovers Forced	21.1	2nd	27th
Steals	12.5	1st	9th

**INDIVIDUALS (All Games)****Scoring**

Unique Thompson	18.8	4th	61st
-----------------	------	-----	------

**Rebounding**

Unique Thompson	15.3	1st	2nd
-----------------	------	-----	-----

**Field Goal Pct.**

Unique Thompson	.571	7th	50th
-----------------	------	-----	------

**Free Throw Pct.**

Unique Thompson	.776	10th	236th
-----------------	------	------	-------

**Steals**

Unique Thompson	3.1	2nd	26th
Romi Levy	2.4	5th	91st
Honesty Scott-Grayson	2.2	9th	153rd

**Blocked Shots**

Jala Jordan	1.0	15th	216th
-------------	-----	------	-------

**Offensive Rebounds**

Unique Thompson	6.4	1st	1st
-----------------	-----	-----	-----

**Defensive Rebounds**

Unique Thompson	8.9	1st	7th
-----------------	-----	-----	-----

**Double-Doubles**

Unique Thompson	7	1st	1st
-----------------	---	-----	-----

## Career Record Updates

## Auburn Career Scoring

No.	Player	Years	Points
1.	DeWanna Bonner	2005-09	2,162
2.	Becky Jackson	1980-84	2,068
3.	Vickie Orr	1985-89	2,035
4.	Marianne Merritt	1975-79	1,979
5.	Carolyn Jones	1988-91	1,831
6.	Natasha Brackett	2001-05	1,716
7.	Janiah McKay	2015-19	1,647
8.	Brandy Montgomery	2013-17	1,644
9.	Mae Ola Bolton	1984-88	1,616
10.	Alli Smalley	2007-11	1,601
11.	Angie Hannah	1978-82	1,583
12.	Tyrese Tanner	2010-14	1,515
13.	Le'Coe Willingham	1999-03	1,475
14.	Lori Monroe	1979-83	1,415
15.	Tasha Hamilton	1997-01	1,402
16.	Sherell Hobbs	2005-09	1,372
17.	Linda Godby	1986-90	1,365
18.	Tra'Cee Tanner	2012-16	1,327
19.	<b>Unique Thompson</b>	<b>2017-present</b>	<b>1,320</b>
20.	Debra Larkin	1981-85	1,310
21.	C.C. Hayden	1989-92	1,306
22.	Katie Frerking	2013-17	1,271
23.	Conswella Sparrow	1997-00	1,249
24.	Blanche Alverson	2009-13	1,244
25.	Brenda Hill	1981-85	1,222
26.	Daisa Alexander	2016-20	1,215
27.	Monique Morehouse	1992-96	1,191
28.	Lauretta Freeman	1989-93	1,188
29.	Hasina Muhammad	2001-15	1,184
	Sharon Stewart	1984-88	1,184

## Auburn Career Double-Doubles

No.	Player	Years	D-Ds
1.	<b>Unique Thompson</b>	<b>2017-present</b>	<b>49</b>
2.	DeWanna Bonner	2005-09	40
3.	Lauretta Freeman	1989-93	38
4.	C.C. Hayden	1989-92	30
5.	Le'Coe Willingham	1999-04	29
6.	Vickie Orr	1985-89	27
7.	Monique Morehouse	1992-96	24
8.	Becky Jackson	1980-84	19
9.	Conswella Sparrow	1997-00	15
10.	Tra'Cee Tanner	2012-16	14
11.	Tasha Hamilton	1997-01	13
	Sharon Stewart	1984-88	13
13.	Daniellette Coleman	1992-94	12
	Marita Payne	2002-06	12
15.	Whitney Boddie	2005-09	11
	KeKe Carrier	2005-10	11
17.	Tia Miller	2001-04	8
	Tara Williams	1995-97	8
19.	Katie Frerking	2013-17	7
	Linda Godby	1986-90	7
	Laticia Morris	1995-97	7
	Mandisa Stevenson	2002-04	7
	Tyrese Tanner	2010-14	7
24.	Justine Agbatan	1995-98	6
	Brenda Hill	1982-83	6
	Kendall Mago	1988-92	6
	Samantha Williams	1991-96	6
28.	Ruthie Bolton	1985-89	5
	Jordan Greenleaf	2006-11	5

## SEC Career Double-Doubles

No.	Player	Years	D-Ds
1.	Sylvia Fowles, LSU	2004-08	86
2.	Janet Harris, Georgia	1982-85	78
3.	Teaira McCowan, Miss. State	2016-19	70
4.	Julie Gross, LSU	1978-80	68
5.	Valerie Still, Kentucky	1980-83	67
6.	Murriel Page, Florida	1995-98	65
7.	Quientella Bonner, Florida	1976-81	58
8.	Alaina Coats, South Carolina	2013-17	57
	Armintie Price, Ole Miss	2003-07	57
	Charnique Holdscaw, Tenn.	1996-99	57
11.	Katrina McClain, Georgia	1984-87	56
--	<b>Unique Thompson, Auburn</b>	<b>2017-pres.</b>	<b>49</b>

## Auburn Career Free Throws Made

No.	Player	Years	FT
1.	DeWanna Bonner	2005-09	600
2.	Janiah McKay	2015-19	443
3.	Carolyn Jones	1988-91	438
4.	Tyrese Tanner	2010-14	376
5.	Conswella Sparrow	1997-00	346
	Le'Coe Willingham	1999-04	346
7.	Becky Jackson	1980-84	340
8.	Vickie Orr	1985-89	307
	Marianne Merritt	1975-79	305
10.	Tasha Hamilton	1997-01	296
--	<b>Unique Thompson</b>	<b>2017-pres.</b>	<b>286</b>

## Auburn Career Rebounding

No.	Player	Years	Rebounds
1.	Becky Jackson	1980-84	1,118
2.	DeWanna Bonner	2005-09	1,047
3.	Lori Monroe	1979-83	1,015
4.	<b>Unique Thompson</b>	<b>2017-present</b>	<b>1,010</b>
5.	Vickie Orr	1985-89	1,006
6.	Lauretta Freeman	1989-93	976
7.	Marianne Merritt	1975-79	972
8.	Le'Coe Willingham	1999-03	927
9.	Monique Morehouse	1992-96	792
10.	Jordan Greenleaf	2006-11	761
	Charlene Thomas	1984-87	761
12.	Tra'Cee Tanner	2012-16	758
13.	Sharon Stewart	1984-88	757
14.	C.C. Hayden	1989-92	749
	Kendall Mago	1988-92	749
16.	Tasha Hamilton	1997-01	663
	Mae Ola Bolton	1984-88	653
18.	Marita Payne	2002-06	630
19.	Katie Frerking	2013-17	627
20.	Sherell Hobbs	2005-09	612
21.	Brenda Hill	1982-85	604
22.	Blanche Alverson	2009-13	602
23.	KeKe Carrier	2005-10	600
24.	Angie Hannah	1978-82	588
	Linda Godby	1986-90	580
26.	Tyrese Tanner	2010-14	572
	Conswella Sparrow	1997-00	572
28.	Diann McNeil	1984-88	498
29.	Samantha Williams	1991-96	495
	Hasina Muhammad	2011-15	494

## Auburn Career Field Goals Made

No.	Player	Years	FG
1.	Becky Jackson	1980-84	864
	Vickie Orr	1985-89	864
3.	Marianne Merritt	1975-79	837
4.	DeWanna Bonner	2005-09	744
5.	Angie Hannah	1979-82	735
6.	Mae Ola Bolton	1984-88	697
7.	Carolyn Jones	1988-91	645
8.	Natasha Brackett	2001-05	641
9.	Brandy Montgomery	2013-17	627
10.	Alli Smalley	2007-11	599
--	<b>Unique Thompson</b>	<b>2017-pres.</b>	<b>517</b>

## Auburn Career Field Goal Percentage

No.	Player	Years	FG%
1.	Becky Jackson	1980-84	.602 (864-1435)
2.	Conswella Sparrow	1997-00	.590 (451-764)
3.	Vickie Orr	1985-89	.565 (864-1528)
4.	Tra'Cee Tanner	2012-16	.564 (540-957)
5.	KeKe Carrier	2005-10	.555 (417-751)
6.	Linda Godby	1986-90	.550 (590-1072)
7.	<b>Unique Thompson</b>	<b>2017-pres.</b>	<b>.547 (517-945)</b>
8.	Sharon Stewart	1984-88	.543 (458-843)
9.	Charlene Thomas	1983-87	.536 (428-799)
10.	Angie Hannah	1979-82	.527 (735-1396)



## TIGERS' RECORD WHEN...

	2020-21	Under Coach Flo
At Home.....	5-3	82-43
On the Road.....	0-2	37-63
At a Neutral Site.....	0-0	21-18
When wearing white.....	5-3	82-39
When wearing blue "Auburn".....	0-1	44-68
When wearing blue "Tigers".....	0-1	0-1
When wearing orange.....	0-0	7-10
When wearing pink.....	0-0	7-6
Leading at the half.....	4-1	110-26
Trailing at the half.....	1-3	30-90
Tied at the half.....	0-1	0-8
Scores 100+ points.....	0-0	0-0
Scores 90-99 points.....	2-0	9-0
Scores 80-89 points.....	1-0	28-3
Scores 70-79 points.....	1-0	41-10
Scores 60-69 points.....	1-1	41-33
Scores fewer than 60 points.....	0-4	19-78
Holds opponent to 41-50 points.....	1-0	33-3
Holds opponent to 31-40 points.....	0-0	7-0
Holds opponent to under 30 points.....	0-0	2-0
Force 25 or more turnovers.....	1-0	54-10
Shoots 50% FG or better.....	1-0	36-3
Shoots 40-49% FG.....	2-0	69-34
Shoots 39.9% or under FG.....	2-5	34-88
Holds opponent under 30% FG.....	2-0	28-2
Shoots higher FG% than opponent.....	2-0	107-23
Shoots lower FG% than opponent.....	3-5	33-96
Shoots same FG% as opponent.....	0-0	0-3
Shoots higher FT% than opponent.....	2-0	61-42
Shoots lower FT% than opponent.....	3-4	76-79
Shoots same FT% as opponent.....	0-1	2-4
Out-rebounds opponent.....	5-2	88-35
Out-rebounded by opponent.....	0-3	48-88
Tied in rebounds.....	0-0	5-2
Versus ranked opponent.....	0-0	5-54
In overtime.....	0-0	6-5
Games decided by 3 points or less.....	1-0	15-18
Games decided by 4-5 points.....	0-0	14-16
Games decided by 6-10 points.....	1-1	33-32
Games decided by 11-20 points.....	1-2	39-33
Games decided by 21-30 points.....	0-1	23-17
Games decided by 30+ points.....	2-1	16-8
On Television/Digital.....	5-5	76-86
In November.....	2-0	35-16
In December.....	3-4	44-14
In January.....	0-1	18-45
In February.....	0-0	26-33
In March.....	0-0	14-15

## 2020-21 Auburn Superlatives...

## First Half

Most points scored in the first quarter.....	28 vs. Gardner-Webb (12/1/20)
Most points scored in the second quarter.....	24 vs. USC Upstate (11/25/20)
Most points scored in the first half.....	49 vs. Gardner-Webb (12/1/20)
Fewest points scored in the first half.....	17 at Houston (12/5/20)
Fewest points allowed in the first half.....	9, vs. USC Upstate (11/25/20)
Most points allowed in the first half.....	45 vs. Belmont (12/20/20)
Best FG % in the first half.....	.514 vs. Gardner-Webb (12/1/20)
Worst FG % in the first half.....	.241 at Houston (12/5/20)
Best FG % by an opponent in the first half.....	.581 vs. Georgia (1/3/21)
Worst FG % by an opponent in the first half.....	.143, vs. USC Upstate (11/25/20)
Most rebounds in the first half.....	27 at Houston (12/5/20) & vs. North Florida (12/17/20)
Fewest rebounds in the first half.....	15 vs. Georgia (1/3/21)
Most rebounds by an opponent in the first half.....	23 vs. South Alabama (12/13/20)
Fewest rebounds by an opponent in the first half.....	10 vs. Samford (11/28/20)

## Second Half

Most points scored in the third quarter.....	25 vs. South Alabama (12/13/20)
Most points scored in the fourth quarter.....	28 vs. North Florida (12/17/20)
Most points scored in an overtime period.....	
Most points scored in the second half.....	50 vs. North Florida (12/17/20)
Fewest points scored in the second half.....	16 at LSU (12/31/20)
Fewest points allowed in the second half.....	32 vs. USC Upstate (11/25/20) & vs. South Alabama (12/13/20)
Most points allowed in the second half.....	47 vs. North Florida (12/17/20)
Best FG % in the second half.....	.579 vs. Gardner-Webb (12/1/20)
Worst FG % in the second half.....	.240 vs. Georgia (1/3/21)
Best FG % by an opponent in the second half.....	.519 vs. Samford (11/28/20)
Worst FG % by an opponent in the second half.....	.263 vs. Gardner-Webb (12/1/20)
Most rebounds in the second half.....	27 vs. Gardner-Webb (12/1/20)
Fewest rebounds in the second half.....	12 vs. Georgia (1/3/21)
Most rebounds by an opponent in the second half.....	24 vs. Georgia (1/3/21)
Fewest rebounds by an opponent in the second half.....	11, vs. USC Upstate (11/25/20)

## Game

Most points scored.....	97 vs. Gardner-Webb (12/1/20)
Fewest points scored.....	43 at LSU (12/31/20)
Most points allowed.....	81 vs. North Florida (12/17/20)
Fewest points allowed.....	41 vs. USC Upstate (11/25/20)
Best FG %.....	.534 vs. Gardner-Webb (12/1/20)
Worst FG %.....	.283 at LSU (12/31/20)
Best FG % by an opponent.....	.521 vs. Samford (11/28/20)
Worst FG % by an opponent.....	.286, vs. USC Upstate (11/25/20)
Most rebounds.....	48 vs. North Florida (12/17/20)
Fewest rebounds.....	27 vs. Georgia (1/3/21)
Most rebounds by an opponent.....	43 vs. Stephen F. Austin (12/16/20), at LSU (12/31/20), vs. Georgia (1/3/21)
Fewest rebounds by an opponent.....	26, vs. USC Upstate (11/25/20)

## Miscellaneous

Highest-scoring quarter.....	28, 1Q vs. Gardner-Webb (12/1/20); 4Q vs. North Florida (12/17/20)
Lowest-scoring quarter.....	6, 4Q at LSU (12/31/20); 3Q vs. Georgia (1/3/21)
Highest-scoring opponent quarter.....	28, 4Q vs. North Florida (12/17/20)
Lowest-scoring opponent quarter.....	2, 1Q vs. USC Upstate (11/25/20)
Largest margin in a single quarter.....	+19 (28-9) vs. Gardner-Webb (12/1/20)
Largest margin of victory.....	41, vs. USC Upstate (11/25/20)
Smallest margin of victory.....	2 vs. Samford (11/28/20)
Largest margin of defeat.....	32 vs. Georgia (1/3/21)
Smallest margin of defeat.....	10 at Houston (12/5/20)
Largest halftime lead.....	31, vs. USC Upstate (11/25/20)
Smallest halftime lead.....	8 at LSU (12/31/20)
Times tied at halftime.....	1 - 27-27 vs. Stephen F. Austin (12/16/20)
Largest halftime deficit.....	20 vs. Georgia (1/3/21)
Smallest halftime deficit.....	6 vs. South Alabama (12/13/20)
Largest rebounding margin.....	+19, vs. USC Upstate (11/25/20)
Smallest rebounding margin.....	+1 vs. Samford (11/28/20)
Last time tied in rebounding.....	
Largest rebounding deficit.....	-16 vs. Georgia (1/3/21)
Smallest rebounding deficit.....	-4 at LSU (12/31/20)
Largest deficit overcome to win game.....	12 vs. South Alabama (12/13/20)
Largest lead lost.....	13 at LSU (12/31/20)

MISCELLANEOUS STATISTICS

Double-Doubles	Season	Career
Unique Thompson	7	49
30+ Point Games	Season	Career
Unique Thompson	0	1
20+ Point Games	Season	Career
Unique Thompson	4	19
10+ Rebound Games	Season	Career
Unique Thompson	7	58
Romi Levy	1	1
Kiyae' White	0	1
10+ Assist Games	Season	Career
Unique Thompson	2	2
Romi Levy	2	2
Honesty Scott-Grayson	1	1
5+ Steal Games	Season	Career
Unique Thompson	2	2
Romi Levy	2	2
Honesty Scott-Grayson	1	1
5+ Block Games	Season	Career
Unique Thompson	0	1

GAMES LED AUBURN IN...

Scoring	Season	Career
Unique Thompson	7	32
Aicha Coulibaly	1	1
Jala Jordan	1	1
Honesty Scott-Grayson	1	1
Keya Patton	1	1

Rebounding	Season	Career
Unique Thompson	8	82
Romi Levy	1	1
Alaina Rice	1	1
Honesty Scott-Grayson	1	1
Kiyae' White	0	1

Assists	Season	Career
Honesty Scott-Grayson	4	4
Kira Lowery	3	3
Romi Levy	2	2
Alaina Rice	2	2
Unique Thompson	1	11
Aicha Coulibaly	1	1
Jala Jordan	1	1
Carsen McFadden	1	1
Morgan Robinson-Nwagwu	0	3
Annie Hughes	0	2
Sania Wells	0	2
Kiyae' White	0	2

(includes games where lead was shared)

2020-21 DOUBLE-DOUBLES

- Unique Thompson vs. Samford (16 pts, 11 reb)
- Unique Thompson vs. Gardner-Webb (21 pts, 12 reb)
- Unique Thompson at Houston (26 pts, 23 reb)
- Unique Thompson vs S. Alabama (21 pts, 15 reb)
- Unique Thompson vs. SFA (11 pts, 14 reb)
- Unique Thompson vs. N. Florida (19 pts, 18 reb)
- Unique Thompson vs. Belmont (20 pts, 23 reb)

Last Time an Auburn Team...

- Scored 90 points ..... Auburn 94, North Florida 81 in Auburn, Ala. (Dec. 17, 2020)
- Scored 90 points in an SEC game ..... Auburn 95, Missouri 82, in Columbia, Mo. (Feb. 27, 2020)
- Scored 100 points ..... Auburn 119, Sam Houston State 54, in Auburn, Ala. (Dec. 5, 2008)
- Scored 100 points against an SEC opponent ..... Auburn 102, Tennessee 96, SEC Tournament in Albany, Ga. (Mar. 6, 1987)
- Scored 100 points in an SEC regular-season game ..... Auburn 111, Vanderbilt 67, in Auburn, Ala. (Feb. 18, 1987)
- Scored 100 points at home ..... Auburn 119, Sam Houston State 54, in Auburn, Ala. (Dec. 5, 2008)
- Scored 100 points in a true road game ..... Auburn 103, Mercer 29, in Macon, Ga. (Feb. 23, 1987)
- Scored 110+ points ..... Auburn 119, Sam Houston State 54, in Auburn, Ala. (Dec. 5, 2008)
- Scored 80 points and lost ..... Mississippi State 92, Auburn 85 [OT] in Auburn, Ala. (Feb. 20, 2020)
- Scored 90 points and lost ..... Kentucky 91, Auburn 90 [2OT], in Auburn, Ala. (Feb. 2, 1986)
- Scored 100 points and lost ..... Never
- Scored 50-59 points in a half ..... 50 (2nd half) vs. North Florida in Auburn, Ala. (Dec. 17, 2020)
- Scored 60 or more points in a half ..... 62 (2nd half) vs. Drake in New Orleans, La. (Dec. 21, 2016)
- Scored 30 or more points in a quarter ..... 34 (3rd quarter) - at Missouri in Columbia, Mo. (Feb. 27, 2020)
- Scored 50 points or less in a game ..... 44 - vs. Georgia in Auburn, Ala. (Jan. 3, 2021)
- Scored 50 points or less and won ..... Auburn 47, Missouri 45 [SEC] in Jacksonville, Fla. (March 3, 2016)
- Scored 40 points or less in a game ..... Georgia 63, Auburn 30, in Athens, Ga. (Jan. 28, 2016)
- Scored less than 10 points in a quarter ..... 6 points (3rd quarter) vs. Georgia in Auburn, Ala. (Jan. 3, 2021)
- Scored less than 20 points in a 1st half ..... 17 points at Houston in Houston, Texas (Dec. 5, 2020)
- Scored less than 20 points in a 2nd half ..... 16 points at LSU in Baton Rouge, La. (Dec. 31, 2020)
- Had 35+ rebound margin ..... 36 - (52-16) vs. Alabama A&M in Normal, Ala. (Nov. 19, 2013)
- Had 25+ rebound margin ..... 33 - (53-26) vs. Grambling State in Auburn, Ala. (Nov. 6, 2018)
- Had 20+ rebound margin ..... 33 - (53-26) vs. Grambling State in Auburn, Ala. (Nov. 6, 2018)
- Attempted 30 free throws ..... 31 - vs. Mississippi State in Auburn, Ala. (Feb. 20, 2020)
- Attempted 35 free throws ..... 36 - vs. Alabama State in Auburn, Ala. (Dec. 29, 2018)
- Attempted 40 free throws ..... 41 - vs. Alabama State in Auburn, Ala. (Nov. 15, 2006)
- Attempted 5 free throws or less ..... 3 - at Texas A&M in College Station, Texas (Feb. 23, 2020)
- Did not attempt a free throw ..... Never
- Made 20-24 free throws ..... 20 - vs. South Alabama in Auburn, Ala. (Dec. 13, 2020)
- Made 25+ free throws ..... 28 - vs. Mississippi State in Auburn, Ala. (28-31) (Feb. 20, 2020)
- Made 30 free throws ..... 31 - vs. Northwestern State (31-43) (Dec. 30, 2003)
- Had 25 assists ..... 25 - vs. Ole Miss in Auburn, Ala. (Jan. 8, 2017)
- Had 25 turnovers ..... 27 - vs. Georgia in Auburn, Ala. (Jan. 3, 2021)
- Had 10 turnovers or less ..... 6 - vs. Tennessee in Auburn, Ala. (March 1, 2020)
- Had 25+ steals ..... Never
- Had 20-24 steals ..... 21 - vs. Georgia in Auburn, Ala. (Feb. 3, 2019)
- Had 15-19 steals ..... 16 - vs. North Florida in Auburn, Ala. (Dec. 17, 2020)
- Had 10-14 blocks ..... 10 - vs. Louisiana Tech in Auburn, Ala. (Nov. 19, 2017)
- Had 15+ blocks ..... 15 - at Florida International in Miami, Fla. (Dec. 29, 2014)
- Won an overtime game ..... Auburn 74, Dayton 72 [1OT] in Estero, Fla. (Nov. 30, 2019)
- Lost an overtime game ..... Mississippi State 92, Auburn 85 [1OT] in Auburn, Ala. (Feb. 20, 2020)
- Played a double overtime game ..... Auburn 70, Alabama 65 [2OT] in Auburn, Ala. (Feb. 27, 2014)
- Played three or more overtimes ..... Never
- Shot 70% for a half ..... 70.4% (19-of-27), 2nd half at Elon in Elon, N.C. (Dec. 22, 2018)
- Shot 60% for a game ..... 63.3% (38-of-60) at Elon in Elon, N.C. (Dec. 22, 2018)
- Shot less than 30% for a game ..... 28.3% (17-60) at LSU in Baton Rouge, La. (Dec. 31, 2020)
- Shot 90-99.9% from the free throw line (min. 10 attempts) ..... 90.3% (28-of-31) vs. Mississippi State in Auburn, Ala. (Feb. 20, 2020)
- Shot 100% from the free throw line (min. 10 attempts) ..... 100% (16-of-16) vs. Texas A&M in Auburn, Ala. (Jan. 7, 2018)
- Shot 50% on 3-pointers (minimum 5 attempts) ..... 50.0% (8-of-16) vs. LSU in Auburn, Ala. (Feb. 16, 2020)
- Shot 20-30% in a half ..... 24.0% (6-25), 2nd half vs. Georgia in Auburn, Ala. (Jan. 3, 2021)
- Shot less than 20% in a half ..... 18.4% (7-of-38), 1st half vs. Missouri in Auburn, Ala. (Feb. 15, 2018)
- Shot 55% or better and lost ..... 58.1% (25-of-43) vs. Tennessee (Jan. 20, 2005)
- Made 10+ 3-point field goals ..... 11-of-28 vs. North Florida in Auburn, Ala. (Dec. 17, 2020)
- Failed to make a 3-point field goal ..... 0-of-5 vs. Southern in Auburn, Ala. (Dec. 9, 2017)
- Had 60+ rebounds ..... 61 - vs. Stephen F. Austin in Auburn, Ala. (Dec. 17, 2007)
- Had 50-59 rebounds ..... 55 vs. Ole Miss in Auburn, Ala. (Jan. 23, 2020)
- Defeated a Top-25 opponent ..... Auburn 58, #25 Missouri 54, in Auburn, Ala. (Feb. 24, 2019)
- Defeated a Top-10 opponent ..... Auburn 66, #7 Kentucky 61, in Auburn, Ala. (Jan. 3, 2016)
- Defeated a Top-25 opponent on the road ..... Auburn 68, #16 Vanderbilt 62, in Nashville, Tenn. (Feb. 13, 2014)

Last Time an Auburn Player...

- Scored 25-29 points ..... 26 - Unique Thompson at Houston in Houston, Texas. (Dec. 5, 2020)
- Scored 30-34 points ..... 31 - Unique Thompson at TCU in Fort Worth, Texas (Dec. 7, 2019)
- Scored 35 points ..... 35 - DeWanna Bonner vs. Tennessee in Auburn, Ala. (Jan. 25, 2009)
- Scored 40 points ..... 41 - Conswella Sparrow vs. South Alabama (Feb. 17, 1998)
- Had 15-19 rebounds ..... 18 - Unique Thompson vs. North Florida in Auburn, Ala. (Dec. 17, 2020)
- Had 20+ rebounds ..... 23 - Unique Thompson vs. Belmont in Auburn, Ala. (Dec. 20, 2020)
- Had 10 assists ..... 10 - Daisa Alexander vs. LSU in Auburn, Ala. (Feb. 16, 2020)
- Had 15 assists ..... 18 - Martha Monk vs. Alabama State (Feb. 18, 1981)
- Had 5 blocks ..... 6 - Unique Thompson vs. Louisiana Tech in Auburn, Ala. (Nov. 19, 2017)
- Had 7 blocks ..... 7 - Jassany Williams vs. Duke (Nov. 18, 2011)
- Had 10 blocks ..... 13 - Marita Payne vs. Arkansas (Feb. 3, 2005)
- Had 5 steals ..... 6 - Romi Levy vs. Georgia in Auburn, Ala. (Jan. 3, 2021)
- Had 8 steals ..... 8 - Brandy Montgomery vs. East Carolina in Auburn, Ala. (Dec. 5, 2015)
- Had 10 steals ..... 10 - Kristen Mulligan vs. Northeast Illinois in Auburn, Ala. (Dec. 18, 1992)
- Made 10 field goals ..... 10 - Unique Thompson [10-18] at Houston in Houston, Texas (Dec. 5, 2020)
- Made 15 field goals ..... 15 - Conswella Sparrow (15-16) vs. South Alabama (Feb. 17, 1998)
- Attempted 20 field goals ..... 21 - Daisa Alexander vs. Vanderbilt in Greenville, S.C. (March 4, 2020)
- Attempted 25 field goals ..... 28 - Brandy Montgomery (8-28) at Marquette in Milwaukee, Wis. (Dec. 13, 2015)
- Made 5+ three-point field goals ..... 5 - Erin Howard vs. Vanderbilt in Greenville, S.C. (March 4, 2020)
- Made 8 three-point field goals ..... 8 - Tiffany Krantz vs. Troy State in Auburn, Ala. (Nov. 21, 1997)
- Attempted 10 three-point field goals ..... 14 - Lauren Hansen vs. Drake in Estero, Fla. (Dec. 1, 2019)
- Attempted 15 three-point field goals ..... 16 - Brandy Montgomery at Marquette in Milwaukee, Wis. (Dec. 13, 2015)
- Made 10 free throws ..... 12 - Daisa Alexander vs. Mississippi State (Feb. 20, 2020)
- Made 15 free throws ..... Never
- Shot 100% at the free throw line (min. 10 attempts) ..... 12-12 - Daisa Alexander vs. Mississippi State (Feb. 20, 2020)

**SEC PRESEASON POLL (Media Vote)****Order of Finish**

1. South Carolina
2. Mississippi State
3. Kentucky
4. Texas A&M
5. Arkansas
6. Tennessee
7. LSU
8. Georgia
9. Alabama
10. Florida
11. Missouri
12. Vanderbilt
13. Auburn
14. Ole Miss

**Player of the Year**

Rhyne Howard, Kentucky

**All-SEC Team**

Unique Thompson, Auburn  
 Rhyne Howard, Kentucky  
 Rickea Jackson, Mississippi State  
 Aliyah Boston, South Carolina  
 Renna Davis, Tennessee  
 N'dea Jones, Texas A&M

**SEC PRESEASON POLL (Coaches' Vote)****Order of Finish**

1. South Carolina
2. Kentucky
3. Texas A&M
4. Arkansas
5. Mississippi State
6. Tennessee
7. LSU
8. Alabama
9. Georgia
10. Missouri
11. Ole Miss
12. Florida
13. Vanderbilt
14. Auburn

**Player of the Year**

Rhyne Howard, Kentucky

**All-SEC First Team**

Chelsea Dungee, Arkansas  
 Unique Thompson, Auburn  
 Rhyne Howard, Kentucky  
 Khayla Pointer, LSU  
 Rickea Jackson, Mississippi State  
 Aliyah Boston, South Carolina  
 Renna Davis, Tennessee  
 N'dea Jones, Texas A&M

**All-SEC Second Team**

Jasmine Walker, Alabama  
 Destiny Slocum, Arkansas  
 Lavender Briggs, Florida  
 Shakira Austin, Ole Miss  
 Jessika Carter, Mississippi State  
 Aijha Blackwell, Missouri  
 Zia Cooke, South Carolina  
 Kayla Wells, Texas A&M

**Had a double-double**.....Unique Thompson (20 pts/23 reb) vs. Belmont in Auburn, Ala. (Dec. 20, 2020)  
**Had 2 consecutive double-doubles**..... Unique Thompson: 19/18 vs. North Florida, 20/23 vs. Belmont (Dec. 17-20, 2020)  
**Had 3 consecutive double-doubles**..... Unique Thompson: 11/14 vs. SFA, 19/18 vs. North Florida, 20/23 vs. Belmont (Dec. 16-20, 2020)  
**...Had 7 consecutive double-doubles**.....Unique Thompson: First vs. Samford; last vs. Belmont (Nov. 28-Dec. 20, 2020)  
 ...Had 13 consecutive double-doubles.....Unique Thompson: First vs. BYU; last at Vandy (March 23, 2019-Jan. 2, 2020)  
 ...Had 18 consecutive double-doubles (AU record)..... Laretta Freeman: First vs. Furman, Last vs. Oral Roberts (Dec. 29, 1992-Feb. 23, 1993)  
**Had a double-double at halftime**..... Unique Thompson (16 pts/10 rebs) at Iowa State in Ames, Iowa (Nov. 13, 2018)  
**Two players had a double-double**..... Unique Thompson (14 p/13 r) & Jariah McKay (16 p/10 a) vs. Grambling State (Nov. 6, 2018)  
**Recorded a double-double with points and assists**..... Jariah McKay (16 pts/10 assists) vs. Grambling State (Nov. 6, 2018)  
**Scored 20 points & had 20 rebounds**.....Unique Thompson (20 pts/23 reb) vs. Belmont in Auburn, Ala. (Dec. 20, 2020)  
**Had a triple-double**..... Whitney Boddie (24 pts./11 rebs./12 ast.) vs. Sam Houston State (Dec. 5, 2008)  
**Two or more players scored 20 points**..... Benton (23), Howard (22), Alexander (21) at Missouri in Columbia, Mo. (Feb. 27, 2020)  
**Three players scored 20 points**..... Benton (23), Howard (22), Alexander (21) at Missouri in Columbia, Mo. (Feb. 27, 2020)  
**Two players scored 30 points**..... Laticia Morris (33) & Tara Williams (30) vs. South Alabama (Jan. 14, 1997)  
**Had 2 straight 25-point games**..... Jariah McKay: 27 at South Carolina, 26 vs. Arkansas (Jan. 11-14, 2018)  
**Had 3 straight 25-point games**..... Jariah McKay: 25 pts vs. Texas A&M, 27 pts at South Carolina, 26 pts vs. Arkansas (Jan. 7-14, 2018)  
**Zero players scored in double figures**..... at Georgia in Athens, Ga. (Jan. 28, 2016)  
**Only one player scored in double figures**..... Keya Patton (12) vs. Georgia in Auburn, Ala. (Jan. 3, 2021)  
**Five players scored in double figures**..... Thompson (19), Hughes (17), Scott-Grayson (16), Levy (12), Jordan (11) vs. N. Florida (Dec. 17, 2020)  
**Six players scored in double figures**..... McKay/Benton (16), Primm (15), Thompson (14), Alexander/Jones (13) vs. Grambling (Nov. 6, 2018)  
**Seven players scored in double figures**..... Carrier (19 pts.), Bonner (18 pts.), Smalley (16 pts.), Boddie (13 pts.)  
 ..... R. Hobbs (13 pts.), Hilliard (13 pts.) & S. Hobbs (10 pts.) vs. Sam Houston State (Dec. 5, 2008)  
**Two players had 10 rebounds**..... Unique Thompson (13) and Daisa Alexander (10) vs. Ole Miss in Auburn, Ala. (Jan. 23, 2020)  
**Three players had 10 rebounds**..... J. Greenleaf (12 rebs.), D. Bonner (12 rebs.) & W. Boddie (10 rebs.) vs. Oakland (Nov. 21, 2007)  
**Played every minute**..... Jordan Greenleaf (40 mins.) vs. Florida in Duluth, Ga. [SEC] (Mar. 4, 2010)  
**Played 40 or more minutes in OT game**..... Unique Thompson (43 mins.) vs. Georgia in Auburn, Ala. (Feb. 3, 2019)  
**Attempted a slam dunk**..... Hasina Muhammad vs. St. John's in Auburn, Ala. (Dec. 6, 2013)  
**Made a shot from half-court or beyond**..... Brooke Moore (end 2nd quarter) vs. Alabama State in Auburn, Ala. (Dec. 29, 2018)

**Last Time an Auburn Opponent...**

**Shot less than 30% in a game (SEC)**.....Ole Miss - 27.4% (17-of-62) in Auburn, Ala. (Jan. 23, 2020)  
**Shot less than 30% in a game (Non-conf)**..... Gardner-Webb - 29.4% (20-of-68) in Auburn, Ala. (Dec. 1, 2020)  
**Shot 60% or better in a game**..... Florida - 61.5% (32-of-52) in Auburn, Ala. (Jan. 9, 2020)  
**Scored 90 points**..... Arkansas 90, Auburn 68 in Greenville, S.C. (March 5, 2020)  
**Scored 100 points**..... Georgia 102, Auburn 72 in Athens, Ga. (Mar. 3, 1984)  
**Scored 100 points at Auburn**..... Tuskegee 105, Auburn 98 (2OT) (Feb. 12, 1979)  
**Had 25+ rebound margin**.....Never  
**Had a 20+ rebound margin**..... 20 - Alabama (56-36) in Auburn, Ala. (Feb. 20, 2017)  
**Scored less than 5 points in a quarter**..... 2 - USC Upstate (1st quarter) in Auburn, Ala. (Nov. 25, 2020)  
**Scored less than 10 points in a quarter**..... 8 - LSU (1st quarter) in Baton Rouge, La. (Dec. 31, 2020)  
**Scored less than 10 points in all four quarters**..... Winthrop (9-8-8-8) in Auburn, Ala. (Dec. 16, 2015)  
**Scored 30 or more points in a quarter**..... 34 - Wofford (4th quarter) in Auburn, Ala. (Nov. 6, 2019)  
**Scored less than 10 points in a half**..... 9 - USC Upstate (1st half) in Auburn, Ala. (Nov. 25, 2020)  
**Scored less than 20 points in a 1st half**..... 19 - LSU in Baton Rouge, La. (Dec. 31, 2020)  
**Scored less than 20 points in a 2nd half**..... 19 - Florida in Auburn, Ala. (Dec. 31, 2017)  
**Had 50 rebounds**..... 56 - Alabama in Auburn, Ala. (Feb. 20, 2017)  
**Had 25 assists**..... 25 - Arkansas in Greenville, S.C. (March 5, 2020)  
**Had 25-29 turnovers**..... 25 - USC Upstate in Auburn, Ala. (Nov. 25, 2020)  
**Had 30-34 turnovers**..... 30 - XULA in Auburn, Ala. (Dec. 28, 2017)  
**Had 35+ turnovers**..... 35 - ULM in Auburn, Ala. (Nov. 27, 2017)  
**Had 15 steals**..... 21 - Belmont in Auburn, Ala. (Dec. 20, 2020)  
**Had 10 blocks**..... 10 - Georgia in Athens, Ga. (Jan. 19, 2020)  
**Failed to make a 3-point field goal**..... LSU (0-6) in Baton Rouge, La. (Feb. 1, 2016)  
**Attempted 35 free throws**..... 35 - Florida in Gainesville, Fla. (Feb. 28, 2016)  
**Made 30 free throws**..... 30 - Arkansas (Jan. 22, 1995)  
**Made 10-14 three-point field goals**..... 11 - Belmont in Auburn, Ala. (Dec. 20, 2020)  
**Made 15+ three-point field goals**..... 17 - Arkansas in Greenville, S.C. (March 5, 2020)  
**Scored 41-50 points in a game**..... 41 - USC Upstate in Auburn, Ala. (Nov. 25, 2020)  
**Scored 31-40 points in a game**..... 38 - Alabama in Auburn, Ala. (Feb. 17, 2019)  
**Scored 30 points or less**..... 26 - Georgia in Athens, Ga. (Feb. 22, 2015)  
**Scored 25 points or less**..... 25 - Puerto Rico-Mayaguez (Dec. 17, 2000)

**Last Time an Opposing Player...**

**Scored 30+ points (non-conference)**..... 35 - Ajah Wayne of Old Dominion in Auburn, Ala. (Nov. 14, 2019)  
**Scored 30+ points (SEC)**..... 30 - Alexis Tolefree of Arkansas in Greenville, S.C. (March 5, 2020)  
**Scored 35+ points (all games)**..... 35 - Ajah Wayne of Old Dominion in Auburn, Ala. (Nov. 14, 2019)  
**Scored 40+ points (all games)**..... 41 - Chelsea Dungee of Arkansas in Fayetteville, Ark. (Feb. 10, 2019)  
**Attempted 25 field goals**..... 27 - Jantel Lavender (9-27) of Ohio State (Nov. 23, 2008)  
**Scored 20 points & had 20 rebounds**..... Young of Baylor in the WNIT Championship Game, (20 pts./25 rebs.) (Apr. 4, 2003)  
**Two players scored 20 points**..... Jazz Bond (23) and Rhetta Moore (22) of North Florida in Auburn, Ala. (Dec. 17, 2020)  
**Three players scored 20 points**..... by LSU in Baton Rouge, Chatman (22 pts.), Johnson (21 pts) & Lowery (20 pts) (Jan. 12, 1991)  
**Five players scored in double figures**..... Cooke (13), Boston (13), Harris (12), Grissett (11), Herbert Harrigan (11) of S. Carolina (Feb. 13, 2020)  
**Six players scored in double figures**..... Williams (10), Lewis (13), Bonds (18), Peoples (10), Miller (12), Svetle (12) of Florida (Jan. 26, 2014)  
**Recorded a double-double**..... Rhetta Moore of North Florida (22 pts/10 reb) in Auburn, Ala. (Dec. 17, 2020)  
**Recorded a double-double with points and assists**..... Tyasha Harris (12 pts/11 ast) of South Carolina in Columbia, S.C. (Jan. 11, 2018)  
**Recorded a triple-double**..... Ceira Ricketts (14 pts./13 rebs./12 ast.) of Arkansas (Jan. 18, 2009)  
**Two players recorded a double-double**..... C. Green (16 pts/11 reb) & Davis (15 pts/10 reb) of Tennessee in Knoxville, Tenn. (Feb. 14, 2019)  
**Committed 10+ turnovers**..... 10 - Shaquera Wade of Alabama in Greenville, S.C. (March 7, 2019)  
**Had 15-19 rebounds**..... 15 - by N'dea Jones of Texas A&M in Auburn, Ala. (Jan. 24, 2019)  
**Had 20+ rebounds**..... 21 - Ayana Mitchell of LSU in Baton Rouge, La. (March 3, 2019)  
**Had 10 assists**..... 10 - Tyasha Harris of South Carolina in Auburn, Ala. (Feb. 28, 2019)  
**Had 15 assists**..... 16 - Cindy McMahan of Alabama-Huntsville (Nov. 24, 1980)  
**Had 5 blocks**..... 5 - Ashley Knight of Alabama in Tuscaloosa, Ala. (Feb. 18, 2018)  
**Had 10 blocks**.....Never  
**Had 5 steals**..... 11 - Jamilyn Kinney of Belmont in Auburn, Ala. (Dec. 20, 2020)  
**Made 15 field goals**..... 15 - Chamique Holdsclaw (15-21) of Tennessee (Feb. 1, 1998)  
**Made 10 3-point field goals**..... 11 - Morgan Eye (11-18) of Missouri in Columbia, Mo. (Jan. 6, 2013)

**2020-21 Auburn Individual Highs...****First Half**

Points.....	16, Unique Thompson vs. Gardner-Webb (12/1/20)
Field Goals Made.....	7, Unique Thompson vs. Gardner-Webb (12/1/20)
Field Goal Attempts.....	10, Annie Hughes vs. North Florida (12/17/20)
3-Point Field Goals Made .....	3, 3x; last, Annie Hughes vs. North Florida (12/17/20)
3-Point Field Goal Attempts .....	7, Annie Hughes vs. North Florida (12/17/20)
Free Throws Made .....	5, Honesty Scott-Grayson vs. Belmont (12/20/20)
Free Throws Attempted .....	7, Honesty Scott-Grayson vs. Belmont (12/20/20)
Rebounds .....	11, Unique Thompson vs. Belmont (12/20/20)
Assists .....	3, 2x; Honesty Scott-Grayson vs. Gardner-Webb (12/1/20)
Blocked Shots.....	2, 2x; last, Jala Jordan vs. South Alabama (12/13/20)
Steals .....	4, Romi Levy at LSU (12/31/20)

**Second Half**

Points.....	22, Unique Thompson at Houston (12/5/20)
Field Goals Made.....	8, Unique Thompson at Houston (12/5/20)
Field Goal Attempts.....	12, Unique Thompson at Houston (12/5/20)
3-Point Field Goals Made .....	2, 3x; last, Sania Wells vs. South Alabama (12/13/20)
3-Point Field Goal Attempts .....	3, 9x; last, Honesty Scott-Grayson vs. Belmont (12/20/20)
Free Throws Made .....	9, Unique Thompson vs. South Alabama (12/13/20)
Free Throws Attempted .....	9, Unique Thompson vs. South Alabama (12/13/20)
Rebounds .....	15, Unique Thompson at Houston (12/5/20)
Assists .....	4, Honesty Scott-Grayson vs. Belmont (12/20/20)
Blocked Shots.....	2, 2x; last, Jala Jordan vs. North Florida (12/17/20)
Steals .....	3, 2x; last, Romi Levy vs. Georgia (1/3/21)

**Game**

Points.....	26, Unique Thompson at Houston (12/5/20)
Field Goals Made.....	10, Unique Thompson at Houston (12/5/20)
Field Goal Attempts.....	18, Unique Thompson at Houston (12/5/20)
3-Point Field Goals Made .....	4, Jala Jordan vs. USC Upstate (11/25/20)
3-Point Field Goal Attempts .....	8, Annie Hughes vs. North Florida (12/17/20)
Free Throws Made .....	9, Unique Thompson vs. South Alabama (12/13/20)
Free Throws Attempted .....	10, Unique Thompson vs. Samford (11/28/20)
Rebounds .....	23, Unique Thompson at Houston (12/5/20) & vs. Belmont (12/20/20)
Assists .....	5, 2x; last, Kira Lowery vs. North Florida (12/17/20)
Blocked Shots.....	3, Jala Jordan vs. South Alabama (12/13/20)
Steals .....	6, Romi Levy vs. Georgia (1/3/21)

**2020-21 Auburn Team Highs...****First Half**

Points.....	49 vs. Gardner-Webb (12/1/20)
Field Goals Made.....	19 vs. Gardner-Webb (12/1/20)
Field Goal Attempts.....	43 vs. North Florida (12/17/20)
3-Point Field Goals Made .....	7 vs. North Florida (12/17/20)
3-Point Field Goal Attempts .....	17 vs. North Florida (12/17/20)
Free Throws Made .....	11 vs. Gardner-Webb (12/1/20)
Free Throws Attempted .....	16 vs. Gardner-Webb (12/1/20)
Rebounds .....	27 at Houston (12/5/20) & vs. North Florida (12/17/20)
Assists .....	9 vs. Samford (11/28/20) & vs. Gardner-Webb (12/1/20)
Blocked Shots.....	4 at Houston (12/5/20)
Steals .....	8 vs. Gardner-Webb (12/1/20) & vs. North Florida (12/17/20)

**Second Half**

Points.....	50 vs. North Florida (12/17/20)
Field Goals Made.....	20 vs. Gardner-Webb (12/1/20)
Field Goal Attempts.....	37 vs. North Florida (12/17/20)
3-Point Field Goals Made .....	4 vs. North Florida (12/17/20)
3-Point Field Goal Attempts .....	12 vs. Samford (11/28/20) & vs. Belmont (12/20/20)
Free Throws Made .....	17 vs. South Alabama (12/13/20)
Free Throws Attempted .....	21 vs. South Alabama (12/13/20)
Rebounds .....	27 vs. Gardner-Webb (12/1/20)
Assists .....	11 vs. USC Upstate (11/25/20)
Blocked Shots.....	3 vs. SFA (12/16/20) & vs. North Florida (12/17/20)
Steals .....	8, 4x; last vs. Georgia (1/3/21)

**Game**

Points.....	97 vs. Gardner-Webb (12/1/20)
Field Goals Made.....	39 vs. Gardner-Webb (12/1/20)
Field Goal Attempts.....	80 vs. North Florida (12/17/20)
3-Point Field Goals Made .....	11 vs. North Florida (12/17/20)
3-Point Field Goal Attempts .....	28 vs. North Florida (12/17/20)
Free Throws Made .....	20 vs. South Alabama (12/13/20)
Free Throws Attempted .....	29 vs. Gardner-Webb (12/1/20)
Rebounds .....	48 vs. North Florida (12/17/20)
Assists .....	19 vs. USC Upstate (11/25/20)
Blocked Shots.....	5 vs. Stephen F. Austin (12/16/20)
Steals .....	16 vs. Gardner-Webb (12/1/20) & vs. North Florida (12/17/20)
Turnovers Forced.....	25 vs. USC Upstate (11/25/20)

**Specialty Statistics (Auburn-Opponent)**

Opponent	Points in the Paint	Points off Turnovers	2nd-Chance Points	Fast-Break Points	Bench Points
USC Upstate	42-6	21-7	15-2	8-0	51-23
Samford	28-28	22-16	15-5	11-5	24-1
Gardner-Webb	62-18	25-14	20-18	14-7	43-24
at Houston	34-30	19-21	19-9	7-6	29-25
South Alabama	24-28	15-14	16-12	14-10	22-10
Stephen F. Austin	28-30	18-18	7-7	10-5	12-17
North Florida	40-38	26-17	19-4	15-12	29-13
Belmont	30-34	15-31	9-14	6-8	12-19
at LSU	22-30	7-22	12-16	6-12	19-25
Georgia	30-42	14-26	4-15	12-14	14-32

**Lead-Deficit Comparison**

Opponent	Largest Lead	Largest Deficit	Lead Changes	Ties	Result
USC Upstate	43 (4th, 0:26)	--	0	0	W, 82-41
Samford	16 (3rd, 9:03)	3 (1st, 9:01)	3	1	W, 66-64
Gardner-Webb	36 (4th, 0:19)	3 (1st, 9:25)	1	0	W, 97-61
at Houston	--	17 (2nd, 3:53)	0	0	L, 61-71
South Alabama	12 (4th, 1:01)	12 (2nd, 6:04)	2	1	W, 74-66
Stephen F. Austin	7 (1st, 1:57)	13 (4th, 0:16)	3	7	L, 54-67
North Florida	17 (2nd, 9:05)	8 (1st, 7:09)	3	2	W, 94-81
Belmont	2 (1st, 9:16)	21 (4th, 0:23)	3	4	L, 57-78
at LSU	13 (3rd, 7:14)	13 (4th, 1:54)	2	2	L, 43-56
Georgia	--	37 (3rd, 1:43)	0	1	L, 44-76

**Scoring Breakdown**

(Percentage of total points in parentheses)

Opponent	Front Court	Back Court	Sr.	Jr.	So.	Fr.	Starters	Bench
USC Upstate	44	38	16	14	24	12	31	51
Samford	34	32	16	21	19	10	42	24
Gardner-Webb	51	46	21	19	35	22	54	43
at Houston	39	22	26	18	17	0	32	29
South Alabama	35	39	21	10	32	11	52	22
Stephen F. Austin	23	31	11	2	37	4	42	12
North Florida	44	50	19	2	59	14	65	29
Belmont	24	33	20	0	33	4	45	12
at LSU	25	18	-	5	18	20	24	19
Georgia	18	26	-	15	26	6	30	14

### Comparison Statistics (Auburn/Opponent)

Opponent	1st	2nd	Score	Mar	Total FG	FG Pct	3-Pointers	3FG Pct	Free Throws	FT Pct	Reb.	Mar	Assist	TO	Blk	Stl	Fouls
USC Upstate	40-9	42-32	82-41	+41	30-65/14-49	.462/.286	8-20/7-21	.400/.333	14-17/6-6	.824/1.000	45/26	+19	19/13	14/25	1/0	13/9	7/19
Samford	38-26	28-38	66-64	+2	22-60/25-48	.367/.521	7-25/8-22	.280/.364	15-23/6-10	.652/.600	33/32	+1	11/14	12/21	1/2	14/7	14/19
Gardner-Webb	49-28	48-33	97-61	+36	39-73/20-68	.534/.294	2-11/9-37	.182/.243	12-17/17-29	.706/.586	47/41	+6	16/11	11/24	3/2	16/7	17/23
at Houston	17-34	44-37	61-71	(10)	22-61/26-64	.361/.406	2-12/10-30	.333/.167	15-20/9-12	.750/.750	45/34	+11	9/18	23/17	4/1	10/11	18/21
South Alabama	28-34	46-32	74-66	+8	23-65/21-56	.356/.375	8-22/7-19	.364/.368	20-26/17-27	.769/.630	44/37	+7	10/11	16/21	3/5	12/15	20/21
Stephen F. Austin	27-27	27-40	54-67	(13)	19-56/22-54	.339/.407	2-15/7-25	.133/.280	14-23/16-21	.609/.762	34/43	(9)	7/12	19/24	5/2	14/7	23/21
North Florida	44-32	50-47	94-81	+13	34-80/32-65	.425/.492	11-28/10-31	.393/.323	15-18/7-8	.833/.875	48/34	+14	16/17	15/22	3/0	16/8	16/18
Belmont	28-45	29-33	57-78	(21)	22-60/30-62	.367/.484	3-17/11-22	.176/.500	10-17/7-11	.588/.636	47/30	+17	13/18	27/16	1/0	8/21	12/19
at LSU	27-19	16-37	43-56	(13)	17-60/21-60	.283/.350	3-18/0-9	.167/.000	6-8/14-15	.750/.933	39/43	(4)	7/10	24/19	4/3	10/11	18/13
Georgia	23-43	21-33	44-76	(32)	16-52/31-62	.308/.500	1-11/5-14	.091/357	9-13/11-18	.611/.692	27/43	(16)	2/18	27/22	2/6	12/13	13/16

### Game-by-Game Leaders

	Points	Rebounds	Assists	Steals	Blocked Shots
USC Upstate	16-Thompson/Jordan	7-Unique Thompson	5-Alaina Rice	4-M. Robinson-Nwagwu	1-Aicha Coulibaly
Samford	16-Unique Thompson	11-Unique Thompson	4-Kira Lowery	5-Unique Thompson	1-Jala Jordan
Gardner-Webb	21-Unique Thompson	12-Unique Thompson	4-Jala Jordan	5-Honesty Scott-Grayson	2-Romi Levy
at Houston	26-Unique Thompson	23-Unique Thompson	2-Thompson/Coulibaly	2-(four players)	2-Romi Levy
South Alabama	21-Unique Thompson	14-Unique Thompson	3-Levy/McFadden	5-Unique Thompson	3-Jala Jordan
Stephen F. Austin	16-Honesty Scott-Grayson	14-Unique Thompson	2-Honesty Scott-Grayson	4-Unique Thompson	2-Unique Thompson
North Florida	19-Unique Thompson	18-Unique Thompson	5-Kira Lowery	3-(three players)	2-Unique Thompson
Belmont	20-Unique Thompson	23-Unique Thompson	4-Honesty Scott-Grayson	3-Honesty Scott-Grayson	1-Annie Hughes
at LSU	12-Aicha Coulibaly	11-Romi Levy	2-(three players)	5-Romi Levy	1-(four players)
Georgia	12-Keya Patton	4-Rice/Scott-Grayson	1-Scott-Grayson/Lowery	6-Romi Levy	1-Jordan/Coulibaly

### 2020-21 Starting Lineups

	Point Guard (1)	Wing (2)	Wing (3)	Wing (4)	Post (5)
USC Upstate	Kira Lowery	Annie Hughes	Honesty Scott-Grayson	Aicha Coulibaly	Unique Thompson
Samford	Kira Lowery	Annie Hughes	Honesty Scott-Grayson	Aicha Coulibaly	Unique Thompson
Gardner-Webb	Kira Lowery	Annie Hughes	Honesty Scott-Grayson	Aicha Coulibaly	Unique Thompson
at Houston	Kira Lowery	Romi Levy	Honesty Scott-Grayson	Aicha Coulibaly	Unique Thompson
South Alabama	Kira Lowery	Annie Hughes	Honesty Scott-Grayson	Jala Jordan	Unique Thompson
Stephen F. Austin	Kira Lowery	Annie Hughes	Honesty Scott-Grayson	Jala Jordan	Unique Thompson
North Florida	Kira Lowery	Annie Hughes	Honesty Scott-Grayson	Jala Jordan	Unique Thompson
Belmont	Kira Lowery	Annie Hughes	Honesty Scott-Grayson	Jala Jordan	Unique Thompson
at LSU	Alaina Rice	Sania Wells	Honesty Scott-Grayson	Romi Levy	Jala Jordan
Georgia	Alaina Rice	Keya Patton	Honesty Scott-Grayson	Romi Levy	Jala Jordan

### Record by Starting Lineup

Lowery, Hughes, Scott-Grayson, Coulibaly, Thompson	3-0 (1.000)
Lowery, Levy, Scott-Grayson, Coulibaly, Thompson	0-1 (.000)
Lowery, Hughes, Scott-Grayson, Jordan, Thompson	3-1 (.750)
Rice, Wells, Scott-Grayson, Levy, Jordan	0-1 (.000)
Rice, Patton, Scott-Grayson, Levy, Jordan	0-1 (.000)



# Terri

# WILLIAMS-FLOURNOY

Head Coach

Ninth Season at Auburn • 17th as a Head Coach • 29th Season in coaching

Hampton, Va. • Penn State, 1991

- *Has taken her teams to postseason appearances in nine of the last 12 years, including six NCAA Tournament appearances*
- *Has had seven players selected to All-SEC teams*
- *Auburn has forced an average of 20.0+ turnovers per game under Coach Flo*
- *Led Auburn to the postseason in five of eight seasons, advancing to WNIT Quarterfinals in 2013 and Third Round in 2014, along with NCAA Tournament in 2016, 2017 and 2019*
- *Won her 100th game at Auburn on Feb. 8, 2018, defeating LSU 70-62*
- *Picked up her 200th career head coaching victory Dec. 5, 2015 at home vs. East Carolina*
- *Won 250th career game at Xavier (La.) on Nov. 28, 2018*
- *Recorded her 400th career win as a collegiate coach in Auburn's 68-58 win over Hofstra on Dec. 9, 2012*
- *Won her 500th game as a collegiate coach with victory over Louisiana-Lafayette on Nov. 25, 2018*
- *Picked up first SEC win in 50-47 win over #23 Arkansas in 2013*
- *Earned second win over ranked opponent at Auburn and snapped 21-game skid to #16 Vanderbilt with 68-62 win in Nashville on Feb. 13, 2014*
- *Picked up first top-10 win with a 66-61 victory over #7 Kentucky on Jan. 3, 2016*
- *Has 283 wins as a head coach and 251 as an assistant for a .610 winning percentage over 28 years as a collegiate coach*
- *Has been part of six conference championships and 21 post-season appearances as an assistant and head coach*
- *2010 Black Coaches Association Coach of the Year*
- *Served as an assistant coach for Team USA that won a gold medal at the 2011 World University Games in Shenzhen, China*
- *Coached teams to 15 NCAA Tournament appearances, nine as an assistant and six as a head coach*
- *Has coached 25 players that have gone on to the professional ranks, including seven in the WNBA*
- *As an assistant, helped coach Georgia to an NCAA Final Four appearance and two NCAA Elite Eight appearances*
- *Coached three Georgetown players to three all-conference honors and one All-America award*
- *Has a 622-379 record in 33 seasons as a head coach, assistant coach and player*
- *Helped coach Georgetown to a Big East title in 1992*
- *As an assistant coach at Southwest Missouri State, helped the team to two straight NCAA Tournaments and two consecutive Missouri Valley Conference Tournament titles*

<b>All-time record as player and coach:</b>	<b>622-379 (.623)</b>	<b>33 seasons</b>
<b>Record as collegiate player:</b>	<b>88-36 (.709)</b>	<b>4 seasons</b>
<b>Record as collegiate coach:</b>	<b>534-343 (.610)</b>	<b>29 seasons</b>
<b>Record as collegiate assistant coach:</b>	<b>251-117 (.683)</b>	<b>12 seasons</b>
<b>Record as collegiate head coach:</b>	<b>283-228 (.554)</b>	<b>17 seasons</b>
<b>Record as Auburn head coach:</b>	<b>140-124 (.530)</b>	<b>9 seasons</b>

## Williams-Flournoy Year-by-Year

### Penn State, Player (1987-91)

Year	Record	Conf.	Other Information
1987-88	20-13	11-7	NCAA Second Round
1988-89	14-14	12-6	
1989-90	25-7	15-3	NCAA Second Round
1990-91	29-2	17-1	NCAA Second Round

### Georgetown, Assistant Coach (1992-96)

Year	Record	Conf.	Other Information
1992-93	23-7	15-3	Big East Champions NCAA Sweet 16
1993-94	12-15	6-12	
1994-95	11-17	6-12	
1995-96	12-15	7-11	

### Georgia, Assistant Coach (1996-2002)

Year	Record	Conf.	Other Information
1996-97	25-6	11-1	SEC Champions NCAA Elite Eight
1997-98	17-11	8-6	NCAA First Round
1998-99	27-7	9-5	NCAA Final Four
1999-2000	32-4	13-1	SEC Champions NCAA Elite Eight
2000-01	27-6	11-3	SEC Tournament Champions NCAA Second Round
2001-02	19-11	6-8	NCAA First Round

### Southwest Missouri State, Assistant Coach (2002-04)

Year	Record	Conf.	Other Information
2002-03	18-13	11-7	MVC Tournament Champions NCAA First Round
2003-04	28-4	16-2	Missouri Valley Champions MVC Tournament Champions NCAA First Round

### Georgetown, Head Coach (2004-12)

Year	Record	Conf.	Other Information
2004-05	12-16	7-9	
2005-06	10-17	3-13	
2006-07	13-16	3-13	
2007-08	15-14	5-11	
2008-09	20-14	7-9	WNIT Quarterfinals
2009-10	26-7	13-3	NCAA Second Round
2010-11	24-11	9-7	NCAA Sweet 16
2011-12	23-9	11-5	NCAA Second Round

### Auburn, Head Coach (2012-present)

Year	Record	Conf.	Other Information
2012-13	19-15	5-11	WNIT Quarterfinals
2013-14	19-15	7-9	WNIT Third Round
2014-15	13-18	3-13	
2015-16	20-13	8-8	NCAA Second Round
2016-17	17-15	7-9	NCAA First Round
2017-18	14-15	5-11	
2018-19	22-10	9-7	NCAA First Round
2019-20	11-18	4-12	
2020-21	5-5	0-2	



# Alycia REESE

# #0

Junior • Guard • 5-9

Columbus, Ga.

Carver HS | Chattahoochee Valley CC (Ala.)

- Scored season-best 10 points on 4-6 shooting, hit Auburn's only two 3-pointers at Houston (12/5)
- Hit four free throws, had one rebound in Auburn debut vs. USC Upstate (11/25)
- Signed with Auburn in the spring of 2020
- Played two seasons at CVCC in Phenix City; appeared in all 24 games as a sophomore in 2019-20; first-team all-conference selection
- Led CVCC with 12.8 points along with 3.8 rebounds, 1.6 assists, 1.5 steals per game in 2019-20
- All-state selection at Carver HS as a junior in 2017; led team to state runner-up finish
- Has a 3-year-old son, Andrew

**SEASON/CAREER HIGHS**

Points	10	at Houston	12/5/20
Rebounds	1	3x; last at LSU	12/31/20
Assists	1	at Houston	12/5/20
Blocks			
Steals	1	at Houston	12/5/20
Field Goals	4	at Houston	12/5/20
Field Goal Attempts	6	at Houston	12/5/20
3-Point Field Goals	2	at Houston	12/5/20
3-Point FG Attempts	3	at Houston	12/5/20
Free Throws	4	vs. USC Upstate	11/25/20
Free Throw Attempts	4	vs. USC Upstate	11/25/20

Opponent	Start	Min.	FG-A	3PT-A	FT-A	O-D-T	PF	Ast.	TO	Blk.	St.	Pts.
USC UPSTATE		4	0-1	0-1	4-4	0-1-1	1	0	0	0	0	4
SAMFORD						--DNP--						
GARDNER-WEBB		9	1-1	0-0	0-0	0-0-0	0	0	1	0	0	2
at Houston		16	4-6	2-3	0-0	0-1-1	0	1	1	0	1	10
SOUTH ALABAMA						--DNP--						
STEPHEN F. AUSTIN						--DNP--						
NORTH FLORIDA						--DNP--						
BELMONT						--DNP--						
at LSU		8	0-0	0-0	2-2	0-1-1	0	0	0	0	0	2
GEORGIA		5	0-0	0-0	0-0	0-0-0	0	0	0	0	0	0
at Ole Miss												
MISSOURI												
KENTUCKY												
at Florida												
at Alabama												
TEXAS A&M												
at Arkansas												
SOUTH CAROLINA												
at Georgia												
ALABAMA												
at Mississippi State												
VANDERBILT												
ARKANSAS												
at Tennessee												

**REESE'S CAREER STATISTICS (at Auburn)**

Season	gp-gs	min/avg	Total		3-Point		F-Throws		Rebounds				Scoring							
			fg-fga	pct	fg-fga	pct	ft-fta	pct	off	def	tot	avg	pf	fo	ast	to	blk	stl	pts	avg
2020-21	5-0	41/8.2	5-8	.625	2-4	.500	6-6	1.000	0	3	3	0.6	1	0	1	2	0	1	18	3.6
TOTAL	5-0	41/8.2	5-8	.625	2-4	.500	6-6	1.000	0	3	3	0.6	1	0	1	2	0	1	18	3.6





# Keya PATTON

# #1

Junior • Guard • 5-6

Indianapolis, Ind.

Cathedral HS | Wabash Valley College (Ill.)

- Made first Auburn start vs. Georgia (1/3); scored 12 points in season-high 27 minutes
- Scored 14 points off the bench in win over Gardner-Webb (12/1)
- Scored 6 points, had 5 rebounds and 2 steals in Auburn debut vs. USC Upstate (11/25)
- Signed with Auburn in the spring of 2020 after two seasons at Wabash Valley College
- Two-time NJCAA All-American; first-team in 2020, third-team in 2019; 2020 regional player of the year
- Scored over 1,000 points in two junior college seasons; set school record with 46 points vs. Olney Central College
- Averaged 20.8 points, 6.8 rebounds, 6.4 assists and 2.9 steals as a sophomore; had 10 double-doubles and a triple double
- Led Wabash Valley to 63-3 record in two seasons; sophomore postseason run cut short by pandemic
- Scored over 1,700 points in four-year high school career at Cathedral HS in Indianapolis; two-time first-team all-state selection

**SEASON/CAREER HIGHS**

Points	14	vs. Gardner-Webb	12/1/20
Rebounds	5	vs. USC Upstate	11/25/20
Assists	2	vs. Gardner-Webb	12/1/20
Blocks			
Steals	2	2x; last at Houston	12/5/20
Field Goals	5	vs. Gardner-Webb	12/1/20
Field Goal Attempts	10	at Houston	12/5/20
3-Point Field Goals	3	vs. Samford	11/28/20
3-Point FG Attempts	7	vs. Samford	11/28/20
Free Throws	6	vs. Georgia	1/3/21
Free Throw Attempts	7	vs. Georgia	1/3/21

Opponent	Start	Min.	FG-A	3PT-A	FT-A	O-D-T	PF	Ast.	TO	Blk.	St.	Pts.
USC UPSTATE		18	2-6	1-2	1-2	2-3-5	0	1	1	0	2	6
SAMFORD		20	3-9	3-7	0-0	0-1-1	2	0	1	0	0	9
GARDNER-WEBB		16	5-9	0-2	4-6	1-0-1	0	2	0	0	1	14
at Houston		22	2-10	0-2	2-2	1-0-1	2	1	2	0	2	6
SOUTH ALABAMA						--DNP--						
STEPHEN F. AUSTIN		11	0-2	0-0	0-0	0-2-2	1	0	0	0	0	0
NORTH FLORIDA		3	0-0	0-0	0-0	0-0-0	1	0	2	0	0	0
BELMONT		10	0-1	0-1	0-0	0-0-0	1	1	2	0	0	0
at LSU		24	1-4	1-3	0-0	1-1-2	3	0	2	0	1	3
GEORGIA	*	27	3-9	0-1	6-7	2-1-3	1	0	2	0	1	12
at Ole Miss												
MISSOURI												
KENTUCKY												
at Florida												
at Alabama												
TEXAS A&M												
at Arkansas												
SOUTH CAROLINA												
at Georgia												
ALABAMA												
at Mississippi State												
VANDERBILT												
ARKANSAS												
at Tennessee												

**PATTON'S CAREER STATISTICS (at Auburn)**

Season	gp-gs	min/avg	Total		3-Point		F-Throws		Rebounds				Scoring							
			fg-fga	pct	fg-fga	pct	ft-fta	pct	off	def	tot	avg	pf	fo	ast	to	blk	stl	pts	avg
2020-21	9-1	174/19.3	16-50	.320	5-18	.278	13-17	.765	7	8	15	1.7	11	0	5	12	0	7	50	5.6
TOTAL	9-1	174/19.3	16-50	.320	5-18	.278	13-17	.765	7	8	15	1.7	11	0	5	12	0	7	50	5.6



# Sania WELLS

# #2

Sophomore • Guard • 5-7

Moss Point, Miss.

East Central HS

- Career-high 11 points, 3-6 on 3FG in 25 minutes off the bench in win over South Alabama (12/13)
- Scored 7 points in season-opener vs. USC Upstate (11/25)
- Played in 25 games as a freshman, averaging 8.6 minutes/game
- Averaged 1.6 points, 0.8 rebounds, 0.5 assists in 2019-20
- Scored season-high 8 points at Mississippi State (1/30/20) in return to her home state; career-high 21 minutes off the bench
- Ranked as No. 27 point guard nationally out of high school by ESPN HoopGurlz
- USA Today All-Mississippi Team as HS senior
- Averaged 27 points, 5 rebounds, 4 steals as HS senior

### SEASON HIGHS

Points	11	vs. South Alabama	12/13/20
Rebounds	2	at LSU	12/31/20
Assists	2	2x; last vs. South Alabama	12/13/20
Blocks			
Steals	1	3x; last at LSU	12/31/20
Field Goals	3	2x; last vs. South Alabama	12/13/20
Field Goal Attempts	10	vs. South Alabama	12/13/20
3-Point Field Goals	3	vs. South Alabama	12/13/20
3-Point FG Attempts	6	vs. South Alabama	12/13/20
Free Throws	3	vs. Belmont	12/20/20
Free Throw Attempts	4	3x; last vs. Belmont	12/20/20

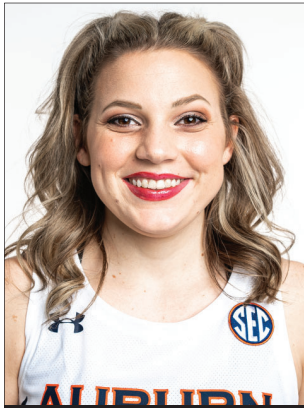
Opponent	Start	Min.	FG-A	3PT-A	FT-A	O-D-T	PF	Ast.	TO	Blk.	St.	Pts.
USC UPSTATE		12	3-6	1-3	0-0	0-0-0	0	1	0	0	0	7
SAMFORD		3	0-0	0-0	0-0	0-0-0	0	0	0	0	0	0
GARDNER-WEBB		14	0-2	0-1	2-2	0-1-1	3	2	2	0	1	2
at Houston		16	0-5	0-1	0-0	1-0-1	1	0	0	0	0	0
SOUTH ALABAMA		25	3-10	3-6	2-4	1-0-1	0	2	2	0	0	11
STEPHEN F. AUSTIN		19	1-6	0-3	2-4	0-0-0	3	0	1	0	1	4
NORTH FLORIDA		13	2-5	2-4	0-0	0-0-0	1	2	0	0	0	6
BELMONT		23	2-7	1-3	3-4	0-0-0	0	1	2	0	0	8
at LSU	*	16	0-5	0-3	0-0	0-2-2	2	1	2	0	1	0
GEORGIA		10	0-1	0-0	0-0	0-0-0	0	0	1	0	0	0
at Ole Miss												
MISSOURI												
KENTUCKY												
at Florida												
at Alabama												
TEXAS A&M												
at Arkansas												
SOUTH CAROLINA												
at Georgia												
ALABAMA												
at Mississippi State												
VANDERBILT												
ARKANSAS												
at Tennessee												

### CAREER HIGHS

Points	11	vs. South Alabama	12/13/20
Rebounds	3	3x; last at Alabama	2/9/20
Assists	3	vs. Middle Tennessee	11/29/19
Blocks			
Steals	2	vs. Alabama	1/12/20
Field Goals	3	3x; last vs. South Alabama	12/13/20
Field Goal Attempts	10	vs. South Alabama	12/13/20
3-Point Field Goals	3	vs. South Alabama	12/13/20
3-Point FG Attempts	6	vs. South Alabama	12/13/20
Free Throws	3	vs. Belmont	12/20/20
Free Throw Attempts	4	4x; last vs. Belmont	12/20/20

### WELLS' CAREER STATISTICS

Season	gp-gs	min/avg	Total		3-Point		F-Throws		Rebounds				Scoring							
			fg-fga	pct	fg-fga	pct	ft-fta	pct	off	def	tot	avg	pf	fo	ast	to	blk	stl	pts	avg
2019-20	25-0	214/8.6	14-47	.298	3-17	.176	10-14	.714	5	15	20	0.8	26	0	13	17	0	5	41	1.6
2020-21	10-1	146/14.6	11-47	.234	7-24	.292	9-14	.643	2	3	5	0.5	10	0	9	10	0	3	38	3.8
TOTAL	35-1	360/10.3	25-94	.266	10-41	.244	19-28	.679	7	18	25	0.7	36	0	22	27	0	8	79	2.3



# Annie HUGHES

# #3

Sophomore • Guard • 5-9

Dutton, Ala.

Pisgah HS

- Career-high 17 points, 7 rebounds, 3 steals in win over North Florida (12/17)
- Season-high 11 points, career-high three 3-pointers in win over South Alabama (12/13)
- Scored 6 points in first five minutes vs. Gardner-Webb (12/1); also added 4 rebounds, 1 assists, 1 steal
- Appeared in all 29 games as a freshman, earning 7 starts
- Averaged 3.6 points, 1.3 rebounds, 0.7 assists, 0.5 steals while playing 16.8 minutes/game
- Shot 45.2% from the field (42-93) and 34.2% (13-38) from 3-point range as a freshman
- Earned start in first collegiate game vs. Wofford (11/6/19); scored 10 points along with 4 assists and 3 steals
- 2019 Alabama Miss Basketball, first to attend Auburn since Whitney Boddie in 2005
- Averaged 21.4 points, 7.0 rebounds, 4.2 assists, 3.5 steals as HS senior; led Pisgah HS to back-to-back state titles in '18 and '19

## SEASON HIGHS

Points	17	vs. North Florida	12/17/20
Rebounds	7	vs. North Florida	12/17/20
Assists	1	4x; last vs. North Florida	12/17/20
Blocks	1	vs. Belmont	12/20/20
Steals	3	vs. North Florida	12/17/20
Field Goals	7	vs. North Florida	12/17/20
Field Goal Attempts	16	vs. North Florida	12/17/20
3-Point Field Goals	3	2x; last vs. North Florida	12/17/20
3-Point FG Attempts	8	vs. North Florida	12/17/20
Free Throws	2	vs. Gardner-Webb	12/1/20
Free Throw Attempts	3	vs. Samford	11/28/20

## CAREER HIGHS

Points	17	vs. North Florida	12/17/20
Rebounds	7	2x; last vs. North Florida	12/17/20
Assists	4	vs. Wofford	11/6/19
Blocks	1	vs. Belmont	12/20/20
Steals	3	2x; last vs. North Florida	12/17/20
Field Goals	7	vs. North Florida	12/17/20
Field Goal Attempts	16	vs. North Florida	12/17/20
3-Point Field Goals	3	2x; last vs. North Florida	12/17/20
3-Point FG Attempts	8	vs. North Florida	12/17/20
Free Throws	2	2x; last vs. Gardner-Webb	12/1/20
Free Throw Attempts	4	vs. Middle Tennessee	11/29/19

Opponent	Start	Min.	FG-A	3PT-A	FT-A	O-D-T	PF	Ast.	TO	Blk.	St.	Pts.
USC UPSTATE	*	10	0-1	0-0	0-0	1-0-1	0	0	0	0	0	0
SAMFORD	*	21	2-7	0-3	1-3	1-0-1	2	1	1	0	1	5
GARDNER-WEBB	*	20	2-4	0-0	2-2	1-3-4	1	1	1	0	1	6
at Houston		13	0-0	0-0	0-0	1-2-3	0	1	1	0	0	0
SOUTH ALABAMA	*	32	4-8	3-5	0-0	0-3-3	3	0	0	0	2	11
STEPHEN F. AUSTIN	*	25	2-4	0-2	1-2	3-0-3	2	0	0	0	2	5
NORTH FLORIDA	*	31	7-16	3-8	0-0	4-3-7	3	1	1	0	3	17
BELMONT	*	25	3-6	1-2	0-0	2-2-4	2	1	3	1	1	7
at LSU		6	1-1	0-0	0-0	0-0-0	0	0	2	0	0	2
GEORGIA		23	1-2	0-0	1-2	0-3-3	1	0	3	0	1	3
at Ole Miss												
MISSOURI												
KENTUCKY												
at Florida												
at Alabama												
TEXAS A&M												
at Arkansas												
SOUTH CAROLINA												
at Georgia												
ALABAMA												
at Mississippi State												
VANDERBILT												
ARKANSAS												
at Tennessee												

## HUGHES' CAREER STATISTICS

Season	gp-gs	min/avg	Total		3-Point		F-Throws		Rebounds				Scoring							
			fg-fga	pct	fg-fga	pct	ft-fga	pct	off	def	tot	avg	pf	fo	ast	to	blk	stl	pts	avg
2019-20	29-7	491/16.9	42-93	.452	13-38	.342	6-13	.462	20	17	37	1.3	29	0	19	21	0	14	103	3.6
2020-21	10-7	204/20.4	22-49	.449	7-20	.350	5-9	.556	13	16	29	2.9	14	0	5	12	1	11	56	5.6
TOTAL	39-14	695/17.8	64-142	.451	20-58	.345	11-22	.500	33	33	66	1.7	43	0	24	33	1	25	159	4.1



# Riley DONAHUE

# #4

Freshman • Guard • 5-10

Atlanta, Ga.

Marist School

- Hit first collegiate shot attempt, a 3-pointer, in final minute vs. Gardner-Webb (12/1)
- Made collegiate debut with one minute of action vs. USC Upstate (11/25)
- Joined Auburn as a walk-on in summer of 2020
- Was a GHSA first-team all-region selection as a senior

**SEASON/CAREER HIGHS**

Points	3	vs. Gardner-Webb	12/1/20
Rebounds			
Assists			
Blocks			
Steals			
Field Goals	1	vs. Gardner-Webb	12/1/20
Field Goal Attempts	1	vs. Gardner-Webb	12/1/20
3-Point Field Goals	1	vs. Gardner-Webb	12/1/20
3-Point FG Attempts	1	vs. Gardner-Webb	12/1/20
Free Throws			
Free Throw Attempts			

Opponent	Start	Min.	FG-A	3PT-A	FT-A	O-D-T	PF	Ast.	TO	Blk.	St.	Pts.
USC UPSTATE		1	0-0	0-0	0-0	0-0-0	0	0	0	0	0	0
SAMFORD						--DNP--						
GARDNER-WEBB		2	1-1	1-1	0-0	0-0-0	0	0	1	0	0	3
at Houston						--DNP--						
SOUTH ALABAMA		1	0-0	0-0	0-0	0-0-0	1	0	0	0	0	0
STEPHEN F. AUSTIN						--DNP--						
NORTH FLORIDA						--DNP--						
BELMONT						--DNP--						
at LSU						--DNP--						
GEORGIA						--DNP--						
at Ole Miss												
MISSOURI												
KENTUCKY												
at Florida												
at Alabama												
TEXAS A&M												
at Arkansas												
SOUTH CAROLINA												
at Georgia												
ALABAMA												
at Mississippi State												
VANDERBILT												
ARKANSAS												
at Tennessee												

**DONAHUE'S CAREER STATISTICS**

Season	gp-gs	min/avg	Total		3-Point		F-Throws		Rebounds				Scoring							
			fg-fga	pct	fg-fga	pct	ft-fta	pct	off	def	tot	avg	pf	fo	ast	to	blk	stl	pts	avg
2020-21	3-0	2/0.7	1-1	1.000	1-1	1.000	0-0	.000	0	0	0	0.0	1	0	0	1	0	0	3	1.0
TOTAL	3-0	2/0.7	1-1	1.000	1-1	1.000	0-0	.000	0	0	0	0.0	1	0	0	1	0	0	3	1.0



# Aicha COULIBALY

# #5

Freshman • Guard/Forward • 6-0

Mali

IMG Academy (Fla.)

- Led Auburn with season-high 12 points along with 5 rebounds at LSU (12/31)
- Scored 10 points along with 6 rebounds in win over Gardner-Webb (12/1)
- Earned start in first collegiate game vs. USC Upstate (11/25); finished with 4 points, 6 rebounds, 2 assists
- Played for Mali's national team at FIBA U16 African Championships in 2017, leading her team to tournament championship
- Named tournament MVP after scoring 21.8 points/game in that event
- Played high school basketball at IMG Academy in Florida
- Is Auburn's third women's basketball player from Africa, along with Crispina Correia (Cape Verde, 2001-03) and Khady Dieng (Senegal, 2013-17)

**SEASON/CAREER HIGHS**

Points	12	at LSU	12/31/20
Rebounds	6	vs. Gardner-Webb	12/1/20
Assists	2	2x; last at Houston	12/5/20
Blocks	1	4x; last vs. Georgia	1/2/21
Steals	2	vs. Georgia	1/2/21
Field Goals	4	2x; last at LSU	12/31/20
Field Goal Attempts	8	2x; last at LSU	12/31/20
3-Point Field Goals	1	at LSU	12/31/20
3-Point FG Attempts	3	at LSU	12/31/20
Free Throws	3	at LSU	12/31/20
Free Throw Attempts	6	vs. Gardner-Webb	12/1/20

Opponent	Start	Min.	FG-A	3PT-A	FT-A	O-D-T	PF	Ast.	TO	Blk.	St.	Pts.
USC UPSTATE	*	19	2-8	0-2	0-0	1-5-6	2	2	2	1	1	4
SAMFORD	*	15	2-5	0-2	0-0	2-2-4	1	1	0	0	0	4
GARDNER-WEBB	*	22	4-7	0-1	2-6	3-3-6	1	0	1	0	0	10
at Houston	*	12	0-2	0-0	0-2	1-2-3	3	2	1	1	0	0
SOUTH ALABAMA						--DNP--						
STEPHEN F. AUSTIN		19	2-5	0-2	0-1	0-4-4	1	1	2	1	1	4
NORTH FLORIDA		9	0-3	0-1	2-2	1-1-2	0	0	0	0	0	2
BELMONT		8	1-4	0-0	0-0	1-0-1	1	0	0	0	0	2
at LSU		24	4-8	1-3	3-4	2-3-5	1	0	1	0	0	12
GEORGIA		24	3-7	0-1	0-1	0-2-2	2	0	1	1	2	6
at Ole Miss												
MISSOURI												
KENTUCKY												
at Florida												
at Alabama												
TEXAS A&M												
at Arkansas												
SOUTH CAROLINA												
at Georgia												
ALABAMA												
at Mississippi State												
VANDERBILT												
ARKANSAS												
at Tennessee												

**COULIBALY'S CAREER STATISTICS**

Season	gp-gs	min/avg	Total		3-Point		F-Throws		Rebounds				Scoring							
			fg-fga	pct	fg-fga	pct	ft-fta	pct	off	def	tot	avg	pf	fo	ast	to	blk	stl	pts	avg
2020-21	9-4	150/16.7	18-49	.367	1-12	.083	7-16	.438	11	22	33	3.7	12	0	6	8	4	4	44	4.9
TOTAL	9-4	150/16.7	18-49	.367	1-12	.083	7-16	.438	11	22	33	3.7	12	0	6	8	4	4	44	4.9



# Kiyae' WHITE

# #10

Redshirt Junior • Forward • 6-2

Macungie, Pa.

Emmaus HS

- Made season debut vs. South Alabama; grabbed 3 rebounds in 4 minutes (12/13)
- Played in all 29 games as a redshirt sophomore, earning 14 starts; averaged 4.0 points, 4.8 rebounds in '19-20
- Shot 57.3% from the field (43-75) in 2019-20
- Scored career-high 15 points in season finale vs. Arkansas in 2020 SEC Tournament; also had 8 rebounds, 4 assists
- Had then-career high 12 points vs. St. Joseph's (11/24/19); was 3-4 from the field and 6-8 at FT line
- Career-high 11 rebounds in 2019-20 season-opener vs. Wofford while playing just 16 minutes
- Has two brothers that play in the NFL: Kevin White (49ers), Kyzir White (Chargers)

**SEASON HIGHS**

Points		
Rebounds		
3 vs. South Alabama		12/13/20
Assists		
Blocks		
Steals		
Field Goals		
Field Goal Attempts		
2 vs. South Alabama		12/13/20
3-Point Field Goals		
3-Point FG Attempts		
Free Throws		
Free Throw Attempts		

Opponent	Start	Min.	FG-A	3PT-A	FT-A	O-D-T	PF	Ast.	TO	Blk.	St.	Pts.
USC UPSTATE						--DNP--						
SAMFORD						--DNP--						
GARDNER-WEBB						--DNP--						
at Houston						--DNP--						
SOUTH ALABAMA		4	0-2	0-0	0-0	1-2-3	1	0	0	0	0	0
STEPHEN F. AUSTIN						--DNP--						
NORTH FLORIDA						--DNP--						
BELMONT						--DNP--						
at LSU						--DNP--						
GEORGIA						--DNP--						
at Ole Miss						--DNP--						
MISSOURI						--DNP--						
KENTUCKY						--DNP--						
at Florida						--DNP--						
at Alabama						--DNP--						
TEXAS A&M						--DNP--						
at Arkansas						--DNP--						
SOUTH CAROLINA						--DNP--						
at Georgia						--DNP--						
ALABAMA						--DNP--						
at Mississippi State						--DNP--						
VANDERBILT						--DNP--						
ARKANSAS						--DNP--						
at Tennessee						--DNP--						

**CAREER HIGHS**

Points		
15 vs. Arkansas		3/5/20
Rebounds		
11 vs. Wofford		11/6/19
Assists		
4 vs. Wofford		11/6/19
Blocks		
1 8x; last at Mississippi State		1/30/20
Steals		
3 2x; last vs. Tennessee		3/1/20
Field Goals		
7 vs. Arkansas		3/5/20
Field Goal Attempts		
9 vs. Arkansas		3/5/20
3-Point Field Goals		
3-Point FG Attempts		
1 at South Carolina		2/13/20
Free Throws		
6 vs. St. Joseph's		11/24/19
Free Throw Attempts		
8 vs. St. Joseph's		11/24/19

**WHITE'S CAREER STATISTICS**

Season	gp-gs	min/avg	Total		3-Point		F-Throws		Rebounds				Scoring							
			fg-fga	pct	fg-fga	pct	ft-fta	pct	off	def	tot	avg	pf	fo	ast	to	blk	stl	pts	avg
2018-19	29-0	199/6.9	15-39	.385	0-0	.000	8-14	.571	23	28	51	1.8	27	0	9	10	1	2	38	1.3
2019-20	29-14	532/18.3	43-75	.573	0-1	.000	29-56	.518	47	93	140	4.8	63	0	21	36	10	24	115	4.0
2020-21	1-0	4/4.0	0-2	.000	0-0	.000	0-0	.000	1	2	3	3.0	1	0	0	0	0	0	0	0.0
TOTAL	59-14	735/12.5	58-116	.500	0-1	.000	37-70	.529	71	123	194	3.3	91	0	30	46	11	26	153	2.6



# Romi LEVY

# #11

Freshman • Forward • 6-2

Herzliya, Israel

Hof Hasharon HS

- Made second start at LSU, led team with 11 rebounds and 5 steals along with 8 points (12/31)
- Career-high 6 steals vs. Georgia (1/3)
- Career-high 12 points along with 5 rebounds in win over North Florida (12/17)
- Had 8 points, season-high 7 rebounds, and shared team lead with 3 assists vs. South Alabama (12/13)
- Made collegiate debut vs. USC Upstate (11/25); finished with 8 points, 3 rebounds, 2 assists, 2 steals
- Competed in 2018 U18 Women's European Championships with Israeli national team
- Helped lead team to bronze medal, scoring 14 points in win over Lithuania and 13 points vs. Albania
- Completed mandatory national service in Israel before enrolling at Auburn

**SEASON/CAREER HIGHS**

Points	12	vs. North Florida	12/17/20
Rebounds	11	at LSU	12/31/20
Assists	3	vs. South Alabama	12/13/20
Blocks	2	2x; last at Houston	12/5/20
Steals	6	vs. Georgia	1/2/21
Field Goals	5	vs. North Florida	12/17/20
Field Goal Attempts	12	at LSU	12/31/20
3-Point Field Goals	2	vs. USC Upstate	11/25/20
3-Point FG Attempts	4	vs. USC Upstate	11/25/20
Free Throws	2	2x; last vs. North Florida	12/17/20
Free Throw Attempts	2	4x; last vs. South Alabama	12/13/20

Opponent	Start	Min.	FG-A	3PT-A	FT-A	O-D-T	PF	Ast.	TO	Blk.	St.	Pts.
USC UPSTATE		19	3-5	2-4	0-2	0-3-3	0	2	0	0	2	8
SAMFORD		26	2-5	1-3	1-2	1-2-3	2	1	2	0	3	6
GARDNER-WEBB		17	4-6	1-1	0-2	0-2-2	1	1	2	2	2	9
at Houston	*	15	0-2	0-1	0-0	0-1-1	2	0	2	2	0	0
SOUTH ALABAMA		24	3-6	0-2	2-2	4-3-7	1	3	2	0	3	8
STEPHEN F. AUSTIN		16	0-1	0-0	0-0	0-1-1	2	1	1	1	1	0
NORTH FLORIDA		19	5-11	2-4	0-0	2-3-5	2	1	1	0	1	12
BELMONT		14	1-4	0-2	0-0	2-1-3	2	0	2	0	1	2
at LSU	*	31	4-12	0-2	0-0	4-7-11	2	2	5	1	5	8
GEORGIA	*	34	0-7	0-4	0-0	0-3-3	2	0	2	0	6	0
at Ole Miss												
MISSOURI												
KENTUCKY												
at Florida												
at Alabama												
TEXAS A&M												
at Arkansas												
SOUTH CAROLINA												
at Georgia												
ALABAMA												
at Mississippi State												
VANDERBILT												
ARKANSAS												
at Tennessee												

**LEVY'S CAREER STATISTICS**

Season	gp-gs	min/avg	Total		3-Point		F-Throws		Rebounds				Scoring							
			fg-fga	pct	fg-fga	pct	ft-fa	pct	off	def	tot	avg	pf	fo	ast	to	blk	stl	pts	avg
2020-21	10-3	210/21.0	22-59	.373	6-23	.261	3-8	.375	13	26	39	3.9	16	0	11	19	6	24	53	5.3
TOTAL	10-3	210/21.0	22-59	.373	6-23	.261	3-8	.375	13	26	39	3.9	16	0	11	19	6	24	53	5.3



# Kira LOWERY

# #13

Junior • Guard • 5-6

Memphis, Tenn.

Southwind HS | Dyersburg State CC (Tenn.)

- Led Auburn with career-high 5 assists, 3 steals in win over North Florida (12/17)
- Scored 12 points with team-best 4 assists, hit clutch free throws in win over Samford (11/28)
- Earned start in first Division I game vs. USC Upstate (11/25); finished with 4 points, 5 rebounds, 4 assists in team-best 24 minutes
- Was a third-team NJCAA All-American in 2020 at Dyersburg State CC in Tennessee
- Ranked third nationally in scoring with 23.3 points/game; second in the nation in steals with 4.0 points/game
- Led DSCC to a 24-8 record and 3rd-place finish in Tennessee Community College Athletic Association; named TCCAA's top offensive player
- Played high school ball at Southwind High School in Memphis; scored over 1,000 career points

**SEASON/CAREER HIGHS**

Points	12	vs. Samford	11/28/20
Rebounds	5	vs. USC Upstate	11/25/20
Assists	5	vs. North Florida	12/17/20
Blocks	1	2x; last vs. North Florida	12/17/20
Steals	3	vs. North Florida	12/17/20
Field Goals	4	vs. Samford	11/28/20
Field Goal Attempts	7	vs. South Alabama	12/13/20
3-Point Field Goals	1	vs. Samford	11/28/20
3-Point FG Attempts	2	vs. Samford	11/28/20
Free Throws	4	vs. South Alabama	12/13/20
Free Throw Attempts	5	vs. South Alabama	12/13/20

Opponent	Start	Min.	FG-A	3PT-A	FT-A	O-D-T	PF	Ast.	TO	Blk.	St.	Pts.
USC UPSTATE	*	24	1-2	0-0	2-2	0-5-5	0	4	4	0	0	4
SAMFORD	*	24	4-6	1-2	3-4	0-0-0	0	4	1	0	2	12
GARDNER-WEBB	*	19	1-4	0-0	1-1	1-0-1	0	0	1	0	0	3
at Houston	*	21	1-3	0-1	0-0	0-1-1	0	0	3	0	1	2
SOUTH ALABAMA	*	28	3-7	0-0	4-5	1-1-2	1	0	2	0	2	10
STEPHEN F. AUSTIN	*	20	1-2	0-0	0-0	0-1-1	4	1	4	1	2	2
NORTH FLORIDA	*	18	0-0	0-0	2-2	0-0-0	0	5	3	1	3	2
BELMONT	*	15	0-0	0-0	0-0	0-1-1	2	3	4	0	0	0
at LSU		2	0-0	0-0	0-0	0-0-0	0	0	2	0	0	0
GEORGIA		13	1-1	0-0	1-3	0-1-1	0	1	5	0	0	3
at Ole Miss												
MISSOURI												
KENTUCKY												
at Florida												
at Alabama												
TEXAS A&M												
at Arkansas												
SOUTH CAROLINA												
at Georgia												
ALABAMA												
at Mississippi State												
VANDERBILT												
ARKANSAS												
at Tennessee												

**LOWERY'S CAREER STATISTICS (at Auburn)**

Season	gp-gs	min/avg	Total		3-Point		F-Throws		Rebounds				Scoring							
			fg-fga	pct	fg-fga	pct	ft-fa	pct	off	def	tot	avg	pf	fo	ast	to	blk	stl	pts	avg
2020-21	10-8	182/18.2	12-25	.480	1-3	.333	13-17	.765	2	10	12	1.2	7	0	18	28	2	10	38	3.8
TOTAL	10-8	182/18.2	12-25	.480	1-3	.333	13-17	.765	2	10	12	1.2	7	0	18	28	2	10	38	3.8





# Jala JORDAN

# #14

Redshirt Sophomore • Forward • 6-2

Philadelphia, Pa.

IMG Academy (Fla.) | West Virginia

- Made first career start vs. South Alabama (12/13); had career-high 3 blocks along with 6 points, 5 rebounds, 2 assists
- Led Auburn with 4 assists vs. Gardner-Webb; also scored 11 points and had 5 rebounds (12/1)
- Tied for team lead with 16 points off the bench in season-opener vs. USC Upstate (11/25); was 4-6 on 3-pointers
- Sat out 2019-20 season per NCAA rules after transferring to Auburn from West Virginia in the 2019 offseason
- Appeared in 25 games as a freshman for WVU, averaging 1.7 points and 1.4 rebounds while playing 6.4 minutes/game
- Had season-high 6 points and 2 blocks at Texas Tech
- Rated No. 14 wing in class of 2018 by ESPN HoopGurlz
- Graduated from IMG Academy; also played at St. Francis (Ga.) HS, leading them to two GHSA state titles

### SEASON HIGHS

Points	16	vs. USC Upstate	11/25/20
Rebounds	8	vs. North Florida	12/17/20
Assists	4	vs. Gardner-Webb	12/1/20
Blocks	3	vs. South Alabama	12/13/20
Steals	2	at Houston	12/5/20
Field Goals	5	2x; last vs. Gardner-Webb	12/1/20
Field Goal Attempts	14	vs. Georgia	1/2/21
3-Point Field Goals	4	vs. USC Upstate	11/25/20
3-Point FG Attempts	6	2x; last vs. South Alabama	12/13/20
Free Throws	5	at Houston	12/5/20
Free Throw Attempts	5	at Houston	12/5/20

Opponent	Start	Min.	FG-A	3PT-A	FT-A	O-D-T	PF	Ast.	TO	Blk.	St.	Pts.
USC UPSTATE		20	5-9	4-6	2-2	3-0-3	0	0	2	0	1	16
SAMFORD		13	3-4	1-2	1-2	2-2-4	3	0	1	1	0	8
GARDNER-WEBB		23	5-10	0-4	1-1	1-4-5	4	4	0	1	1	11
at Houston		26	4-11	0-4	5-5	2-3-5	5	1	3	1	2	13
SOUTH ALABAMA	*	24	2-8	1-6	1-2	1-4-5	4	2	4	3	0	6
STEPHEN F. AUSTIN	*	12	3-8	1-2	1-1	1-1-2	0	0	0	0	0	8
NORTH FLORIDA	*	20	3-10	2-4	2-4	2-6-8	3	0	1	2	1	11
BELMONT	*	14	0-5	0-2	0-0	2-1-3	1	0	3	0	1	0
at LSU	*	20	1-10	0-5	1-2	1-3-4	3	0	1	1	0	3
GEORGIA	*	18	4-14	1-5	0-1	1-0-1	3	0	3	1	0	9
at Ole Miss												
MISSOURI												
KENTUCKY												
at Florida												
at Alabama												
TEXAS A&M												
at Arkansas												
SOUTH CAROLINA												
at Georgia												
ALABAMA												
at Mississippi State												
VANDERBILT												
ARKANSAS												
at Tennessee												

### CAREER HIGHS (incl. 18-19 at WVU)

Points	16	vs. USC Upstate	11/25/20
Rebounds	8	vs. North Florida	12/17/20
Assists	4	vs. Gardner-Webb	12/1/20
Blocks	3	vs. South Alabama	12/13/20
Steals	2	2x; last at Houston	12/5/20
Field Goals	5	2x; last vs. Gardner-Webb	12/1/20
Field Goal Attempts	14	vs. Georgia	1/2/21
3-Point Field Goals	4	vs. USC Upstate	11/25/20
3-Point FG Attempts	6	2x; last vs. South Alabama	12/13/20
Free Throws	5	at Houston	12/5/20
Free Throw Attempts	5	at Houston	12/5/20

### JORDAN'S CAREER STATISTICS

Season	gp-gs	min/avg	Total		3-Point		F-Throws		Rebounds				Scoring							
			fg-fga	pct	fg-fga	pct	ft-fga	pct	off	def	tot	avg	pf	fo	ast	to	blk	stl	pts	avg
2018-19*	27-0	163/6.0	14-40	.350	4-11	.364	11-16	.688	8	21	29	1.1	21	0	3	5	8	8	43	1.6
2020-21	10-6	186/18.6	30-89	.337	10-40	.250	15-20	.750	16	24	40	4.0	26	1	7	18	10	6	85	8.5
TOTAL	10-6	186/18.6	30-89	.337	10-40	.250	15-20	.750	16	24	40	4.0	26	1	7	18	10	6	85	8.5



# Unique THOMPSON

# #20

Senior • Forward • 6-3

**\*\*2020 AP Honorable Mention All-American\*\***

Theodore, Ala.

**\*\*2020 All-SEC First Team\*\***

Faith Academy

**• Preseason All-SEC First Team (media & coaches)**

**• 2021 Katrina McClain Award watch list; 2021 Wooden Award Preseason Top 30 watch list**

**• 5th player in Auburn history with 1,000 career rebounds; Auburn all-time leader with 49 career double-doubles**

**• Leads nation and SEC in rebounds (15.3/game); is national active career leader in rebounds (1,010)**

**• 7 double-doubles this season, 49 in her career (as of 12/20); is SEC and national leader in 2020-21 and active career double-doubles**

**• Had second 20-20 game of season with 20 points, 23 rebounds vs. Belmont (12/20); also grabbed 1,000th career rebound in game**

**• 26 points, 23 rebounds at Houston (12/5); first 20-20 game for Auburn since 2/17/1993 (Lauretta Freeman, 30 pts/21 rebs vs. Alabama)**

**• Career-high 5 steals vs. Samford (11/28) and South Alabama (12/13); added 4 more vs. Gardner-Webb (12/1)**

**• SEC's active career leader with 49 double-doubles, 1,010 rebounds, 162 steals; 3rd among active SEC players with 1,320 points**

**SEASON HIGHS**

Points	26	at Houston	12/5/20
Rebounds	23	2x; last vs. Belmont	12/20/20
Assists	3	vs. North Florida	12/17/20
Blocks			
Steals	5	2x; last vs. South Alabama	12/13/20
Field Goals	10	at Houston	12/5/20
Field Goal Attempts	18	at Houston	12/5/20
3-Point Field Goals			
3-Point FG Attempts			
Free Throws	9	vs. South Alabama	12/13/20
Free Throw Attempts	10	vs. Samford	11/28/20

**CAREER HIGHS**

Points	31	at TCU	12/7/19
Rebounds	23	2x; last vs. Belmont	12/20/20
Assists	6	vs. Arkansas	1/5/20
Blocks	6	vs. Louisiana Tech	11/19/17
Steals	5	2x; last vs. South Alabama	12/13/20
Field Goals	12	at TCU	12/7/19
Field Goal Attempts	21	vs. Alabama	1/12/20
3-Point Field Goals			
3-Point FG Attempts			
Free Throws	10	at Ole Miss	1/31/19
Free Throw Attempts	12	at Ole Miss	1/31/19

Opponent	Start	Min.	FG-A	3PT-A	FT-A	O-D-T	PF	Ast.	TO	Blk.	St.	Pts.
USC UPSTATE	*	22	7-9	0-0	2-2	4-3-7	3	0	1	0	2	16
SAMFORD	*	33	4-10	0-0	8-10	5-6-11	2	1	3	0	5	16
GARDNER-WEBB	*	20	9-12	0-0	3-4	5-7-12	2	0	1	0	4	21
at Houston	*	32	10-18	0-0	6-7	10-13-23	3	2	7	0	2	26
SOUTH ALABAMA	*	31	6-14	0-0	9-9	7-7-14	5	0	4	0	5	21
STEPHEN F. AUSTIN	*	34	3-9	0-0	5-8	3-11-14	3	1	1	2	4	11
NORTH FLORIDA	*	32	8-12	0-0	3-3	8-10-18	2	3	3	0	2	19
BELMONT	*	34	9-14	0-0	2-6	9-14-23	0	1	1	0	1	20
at LSU						--DNP--						
GEORGIA						--DNP--						
at Ole Miss												
MISSOURI												
KENTUCKY												
at Florida												
at Alabama												
TEXAS A&M												
at Arkansas												
SOUTH CAROLINA												
at Georgia												
ALABAMA												
at Mississippi State												
VANDERBILT												
ARKANSAS												
at Tennessee												

**THOMPSON'S CAREER STATISTICS**

Season	gp-gs	min/avg	Total		3-Point		F-Throws		Rebounds				Scoring							
			fg-fga	pct	fg-fga	pct	ft-fga	pct	off	def	tot	avg	pf	fo	ast	to	blk	stl	pts	avg
2017-18	27-27	811/30.0	131-271	.483	0-0	.000	49-87	.563	112	115	227	8.4	63	0	28	66	21	32	311	11.5
2018-19	32-32	996/31.1	153-272	.563	0-0	.000	83-136	.610	143	187	330	10.3	71	1	35	63	20	57	389	12.2
2019-20	29-29	948/32.7	177-304	.582	0-0	.000	116-168	.690	128	203	331	11.4	63	0	51	81	12	48	470	16.2
2020-21	8-8	232/29.0	56-98	.571	0-0	.000	38-49	.776	51	71	122	15.3	20	1	8	21	2	25	150	18.8
TOTAL	96-96	2987/31.1	517-945	.547	0-0	.000	286-440	.650	434	576	1010	10.5	217	2	122	231	55	162	1320	13.8



# Alaina RICE

# #22

Sophomore • Guard • 5-8

Rockledge, Fla.

IMG Academy | Florida A&M

- Made first Auburn start at LSU, finished with 5 points, 5 rebounds, 2 assists (12/31)
- Season-high 9 points, 2 steals, first two Auburn 3-pointers in win over North Florida (12/17)
- Matched career-high, led team with 5 assists in Auburn debut vs. USC Upstate (11/25)
- Transferred from Florida A&M to Auburn in 2020 offseason; granted immediate eligibility by NCAA in November 2020
- Named MEAC Rookie of the Year in 2020 after averaging 10.3 points, 4.7 rebounds, 2.4 assists in 27 games as a freshman
- Scored in double-figures 17 times, including a career-high 22 points at Howard

### SEASON HIGHS

Points	9	vs. North Florida	12/17/20
Rebounds	5	at LSU	12/31/20
Assists	5	vs. USC Upstate	11/25/20
Blocks			
Steals	2	vs. North Florida	12/17/20
Field Goals	3	vs. North Florida	12/17/20
Field Goal Attempts	6	vs. North Florida	12/17/20
3-Point Field Goals	2	vs. North Florida	12/17/20
3-Point FG Attempts	4	vs. North Florida	12/17/20
Free Throws	4	vs. SFA	12/16/20
Free Throw Attempts	4	vs. SFA	12/16/20

Opponent	Start	Min.	FG-A	3PT-A	FT-A	O-D-T	PF	Ast.	TO	Blk.	St.	Pts.
USC UPSTATE		16	1-5	0-1	2-2	3-1-4	0	5	2	0	0	4
SAMFORD		11	0-1	0-0	1-2	2-0-2	0	1	1	0	0	1
GARDNER-WEBB		6	0-1	0-0	0-0	0-1-1	1	0	1	0	0	0
at Houston		3	0-1	0-0	0-0	0-0-0	0	0	0	0	0	0
SOUTH ALABAMA						--DNP--						
STEPHEN F. AUSTIN		20	0-3	0-1	4-4	0-0-0	4	1	6	0	1	4
NORTH FLORIDA		17	3-6	2-4	1-2	0-0-0	1	1	0	0	2	9
BELMONT		19	0-5	0-2	0-0	1-1-2	1	3	0	0	0	0
at LSU	*	24	2-6	1-1	0-0	4-1-5	3	2	4	0	1	5
GEORGIA	*	19	1-5	0-0	1-2	2-2-4	1	0	5	0	0	3
at Ole Miss												
MISSOURI												
KENTUCKY												
at Florida												
at Alabama												
TEXAS A&M												
at Arkansas												
SOUTH CAROLINA												
at Georgia												
ALABAMA												
at Mississippi State												
VANDERBILT												
ARKANSAS												
at Tennessee												

### CAREER HIGHS (incl. 19-20 at FAMU)

Points	22	at Howard	1/25/20
Rebounds	11	at S.C. State	1/18/20
Assists	5	2x; last vs. USC Upstate	11/25/20
Blocks	2	at Howard	1/25/20
Steals	5	vs. Coppin State	1/13/20
Field Goals	7	at Bethune-Cookman	3/5/20
Field Goal Attempts	17	vs. Morgan State	1/11/20
3-Point Field Goals	5	at UMES	2/17/20
3-Point FG Attempts	8	at Howard	1/25/20
Free Throws	8	at Howard	1/25/20
Free Throw Attempts	15	at Howard	1/25/20

### RICE'S CAREER STATISTICS

Season	gp-gs	min/avg	Total		3-Point		F-Throws		Rebounds				Scoring							
			fg-fga	pct	fg-fga	pct	ft-fta	pct	off	def	tot	avg	pf	fo	ast	to	blk	stl	pts	avg
2019-20*	27-23	731/27.1	91-286	.318	34-106	.321	63-99	.636	41	85	126	4.7	64	1	64	142	6	43	279	10.3
2020-21	9-2	133/14.8	7-33	.212	3-9	.333	9-12	.750	12	6	18	2.0	11	0	11	22	0	4	26	2.9
TOTAL	9-2	133/14.8	7-33	.212	3-9	.333	9-12	.750	12	6	18	2.0	11	0	11	22	0	4	26	2.9
All*	36-25	864/24.0	98-319	.307	37-115	.322	72-111	.649	53	91	144	4.0	75	1	75	164	6	47	305	8.5



# Honesty SCOTT-GRAYSON

# #23

RS Sophomore • Guard • 5-8

Brick, N.J.

Paul VI HS | Baylor

- Career-high 18 points vs. Belmont (12/20)
- Scored 16 points in back-to-back games vs. SFA and North Florida (12/16-17)
- 14 points, 7 rebounds, 5 steals in win over Gardner-Webb (12/1)
- Scored 7 points in Auburn debut vs. USC Upstate (11/25)
- Sat out the 2019-20 season under NCAA rules after transferring to Auburn from Baylor
- Played in 28 games as a freshman at Baylor, averaging 6.9 minutes/game, 2.5 points, 0.9 rebounds, 0.9 assists
- 2018 McDonald's All-American & 2018 Jordan Brand Classic All-American
- Won bronze medal with USA Basketball U16 National Team in 2015
- Ranked as No. 20 overall player and No. 3 guard by ESPN out of high school

### SEASON HIGHS

Points	18	vs. Belmont	12/20/20
Rebounds	9	at LSU	12/31/20
Assists	4	vs. Belmont	12/20/20
Blocks	1	at LSU	12/31/20
Steals	5	vs. Gardner-Webb	12/1/20
Field Goals	7	vs. SFA	12/16/20
Field Goal Attempts	16	vs. SFA	12/16/20
3-Point Field Goals	1	4x; last vs. Belmont	12/20/20
3-Point FG Attempts	5	2x; last vs. SFA	12/16/20
Free Throws	5	vs. Belmont	12/20/20
Free Throw Attempts	7	vs. Belmont	12/20/20

Opponent	Start	Min.	FG-A	3PT-A	FT-A	O-D-T	PF	Ast.	TO	Blk.	St.	Pts.
USC UPSTATE	*	17	3-8	0-0	1-1	0-1-1	0	2	1	0	1	7
SAMFORD	*	25	2-12	1-5	0-0	0-0-0	1	1	0	0	2	5
GARDNER-WEBB	*	21	6-13	0-1	2-5	2-5-7	3	3	0	0	5	14
at Houston	*	25	1-3	0-0	2-4	0-3-3	2	1	2	0	2	4
SOUTH ALABAMA	*	24	1-8	1-3	1-2	0-3-3	4	0	2	0	0	4
STEPHEN F. AUSTIN	*	25	7-16	1-5	1-3	1-2-3	3	2	4	0	2	16
NORTH FLORIDA	*	31	6-15	0-2	4-5	0-2-2	3	1	3	0	3	16
BELMONT	*	31	6-13	1-4	5-7	3-1-4	2	4	5	0	3	18
at LSU	*	34	4-12	0-0	0-0	2-7-9	3	2	1	1	2	8
GEORGIA	*	16	2-5	0-0	2-2	1-3-4	2	1	0	0	1	6
at Ole Miss												
MISSOURI												
KENTUCKY												
at Florida												
at Alabama												
TEXAS A&M												
at Arkansas												
SOUTH CAROLINA												
at Georgia												
ALABAMA												
at Mississippi State												
VANDERBILT												
ARKANSAS												
at Tennessee												

### CAREER HIGHS (incl. 18-19 at Baylor)

Points	16	2x; last vs. North Florida	12/17/20
Rebounds	9	at LSU	12/31/20
Assists	5	vs. St. Francis	11/8/18
Blocks	1	2x; last at LSU	12/31/20
Steals	5	vs. Gardner-Webb	12/1/20
Field Goals	7	vs. SFA	12/16/20
Field Goal Attempts	15	vs. SFA	12/16/20
3-Point Field Goals	1	5x; last vs. Belmont	12/20/20
3-Point FG Attempts	5	2x; last vs. SFA	12/16/20
Free Throws	5	vs. Belmont	12/20/20
Free Throw Attempts	7	vs. Belmont	12/20/20

### SCOTT-GRAYSON'S CAREER STATISTICS

Season	gp-gs	min/avg	Total		3-Point		F-Throws		Rebounds				Scoring							
			fg-fga	pct	fg-fga	pct	ft-fa	pct	off	def	tot	avg	pf	fo	ast	to	blk	stl	pts	avg
2018-19*	29-0	193/6.7	25-51	.490	5-11	.455	19-26	.731	10	15	25	0.9	26	1	24	24	3	9	74	2.6
2020-21	10-10	248/24.8	38-105	.362	4-20	.200	18-29	.621	9	27	36	3.6	22	0	17	18	1	21	98	9.8
TOTAL	10-10	248/24.8	38-105	.362	4-20	.200	18-29	.621	9	27	36	3.6	22	0	17	18	1	21	98	9.8
All*	39-10	441/11.3	63-156	.404	9-31	.290	37-55	.673	19	42	61	1.6	48	1	41	42	4	30	172	4.4



# Carsen McFADDEN

# #24

Freshman • Guard • 5-7

Fairview, Texas

Lovejoy HS

- Played 9 minutes vs. South Alabama; scored first 3 collegiate points and shared team lead with 3 assists (12/13)
- Made Auburn debut vs. USC Upstate (11/25); pulled down a rebound in final minute of game
- Joined Auburn as a walk-on in the summer of 2020
- All-state selection at Lovejoy HS as a senior and two-year team captain
- Owns high school records for rebounds in a single game (19), season (340) and career (1,047) and steals in a game (15), season (145) and career (418)
- Also competed in track & field
- Has a twin sister, Claire, who also attends Auburn

**SEASON/CAREER HIGHS**

Points	3	vs. South Alabama	12/13/20
Rebounds	1	2x; last vs. Gardner-Webb	12/1/20
Assists	3	vs. South Alabama	12/13/20
Blocks			
Steals	1	vs. North Florida	12/17/20
Field Goals	1	vs. South Alabama	12/13/20
Field Goal Attempts	2	vs. South Alabama	12/13/20
3-Point Field Goals			
3-Point FG Attempts			
Free Throws	1	vs. South Alabama	12/13/20
Free Throw Attempts	2	vs. South Alabama	12/13/20

Opponent	Start	Min.	FG-A	3PT-A	FT-A	O-D-T	PF	Ast.	TO	Blk.	St.	Pts.
USC UPSTATE		1	0-0	0-0	0-0	0-1-1	0	0	0	0	0	0
SAMFORD						--DNP--						
GARDNER-WEBB		2	0-0	0-0	0-0	1-0-1	0	1	0	0	0	0
at Houston						--DNP--						
SOUTH ALABAMA		9	1-2	0-0	1-2	0-0-0	0	3	0	0	0	3
STEPHEN F. AUSTIN						--DNP--						
NORTH FLORIDA		2	0-1	0-0	0-0	0-0-0	0	0	0	0	1	0
BELMONT						--DNP--						
at LSU						--DNP--						
GEORGIA		4	0-0	0-0	0-0	0-0-0	0	0	1	0	0	0
at Ole Miss												
MISSOURI												
KENTUCKY												
at Florida												
at Alabama												
TEXAS A&M												
at Arkansas												
SOUTH CAROLINA												
at Georgia												
ALABAMA												
at Mississippi State												
VANDERBILT												
ARKANSAS												
at Tennessee												

**McFADDEN'S CAREER STATISTICS**

Season	gp-gs	min/avg	Total		3-Point		F-Throws		Rebounds				Scoring							
			fg-fga	pct	fg-fga	pct	ft-fta	pct	off	def	tot	avg	pf	fo	ast	to	blk	stl	pts	avg
2020-21	5-0	19/3.8	1-3	.333	0-0	.000	1-2	.500	1	1	2	0.4	0	0	4	1	0	1	3	0.6
TOTAL	5-0	19/3.8	1-3	.333	0-0	.000	1-2	.500	1	1	2	0.4	0	0	4	1	0	1	3	0.6



# Morgan ROBINSON-NWAGWU

# #30

Sophomore • Guard • 5-8

Norcross, Ga.

Norcross HS

- Missed 3 games with ankle injury suffered in pregame warmups at Houston; returned to action vs. North Florida
- Career-high 4 steals; tied career-high with 6 points, 4 rebounds off the bench vs. USC Upstate (11/25)
- Played in all 29 games as a freshman; averaged 1.3 points, 1.3 rebounds, 1.5 assists, 0.7 steals in 10.9 minutes/game
- Scored season-high 6 points vs. Bethune-Cookman (12/15) and Florida (1/9)
- Season-high 4 rebounds twice, vs. ODU (11/14) and vs. Alabama (1/12)
- Recorded 3 rebounds, 2 assists, 2 steals at Missouri (2/27)
- Season-high 4 assists at TCU (12/7)
- Ranked as No. 28 guard nationally by ESPN HoopGurlz; first-team all-state selection at Norcross HS by Atlanta Journal-Constitution

### SEASON HIGHS

Points	6	vs. USC Upstate	11/25/20
Rebounds	4	vs. USC Upstate	11/25/20
Assists	2	3x; last vs. North Florida	12/17/20
Blocks	1	at LSU	12/31/20
Steals	4	vs. USC Upstate	11/25/20
Field Goals	3	vs. USC Upstate	11/25/20
Field Goal Attempts	5	vs. USC Upstate	11/25/20
3-Point Field Goals	1	5x; last at LSU	12/31/20
Free Throws			
Free Throw Attempts			

Opponent	Start	Min.	FG-A	3PT-A	FT-A	O-D-T	PF	Ast.	TO	Blk.	St.	Pts.
USC UPSTATE		17	3-5	0-1	0-0	0-4-4	1	2	1	0	4	6
SAMFORD		9	0-1	0-1	0-0	0-0-0	1	1	2	0	1	0
GARDNER-WEBB		10	1-3	0-0	0-0	0-2-2	1	2	1	0	1	2
at Houston						--DNP--						
SOUTH ALABAMA						--DNP--						
STEPHEN F. AUSTIN						--DNP--						
NORTH FLORIDA		6	0-1	0-1	0-0	0-1-1	0	2	1	0	0	0
BELMONT		6	0-1	0-1	0-0	0-1-1	0	1	2	0	1	0
at LSU		13	0-2	0-1	0-0	0-0-0	1	0	2	1	0	0
GEORGIA		9	1-1	0-0	0-0	0-1-1	1	0	3	0	1	2
at Ole Miss												
MISSOURI												
KENTUCKY												
at Florida												
at Alabama												
TEXAS A&M												
at Arkansas												
SOUTH CAROLINA												
at Georgia												
ALABAMA												
at Mississippi State												
VANDERBILT												
ARKANSAS												
at Tennessee												

### CAREER HIGHS

Points	6	3x; last vs. USC Upstate	11/25/20
Rebounds	4	3x; last vs. USC Upstate	11/25/20
Assists	4	at TCU	12/7/19
Blocks	1	3x; last at LSU	12/31/20
Steals	4	vs. USC Upstate	11/25/20
Field Goals	3	2x; last vs. USC Upstate	11/25/20
Field Goal Attempts	12	vs. Florida	1/9/20
3-Point Field Goals	1	2x; last vs. Arkansas	1/5/20
3-Point FG Attempts	5	vs. Florida	1/9/20
Free Throws	3	at TCU	12/7/19
Free Throw Attempts	4	3x; last at TCU	12/7/19

### ROBINSON-NWAGWU'S CAREER STATISTICS

Season	gp-gs	min/avg	Total		3-Point		F-Throws		Rebounds				Scoring							
			fg-fga	pct	fg-fga	pct	ft-fa	pct	off	def	tot	avg	pf	fo	ast	to	blk	stl	pts	avg
2019-20	29-0	314/10.8	13-64	.203	2-10	.200	11-21	.524	13	25	38	1.3	32	1	44	46	2	19	39	1.3
2020-21	7-0	69/9.9	5-14	.357	0-5	.000	0-0	.000	0	9	9	1.3	5	0	8	12	1	8	10	1.4
TOTAL	36-0	383/10.6	18-78	.231	2-15	.133	11-21	.524	13	34	47	1.3	37	1	52	58	3	27	49	1.4



Game 4: Dec. 5, 2020
Houston 71, Auburn 61
Fertitta Center
Houston, Texas

Official Basketball Box Score - Game Totals - Final Statistics
Auburn vs Houston
12/05/20 12:00 pm at Houston, TX
Auburn 61 • 3-1, 0-0 SEC

Box score table for Auburn vs Houston. Columns include Player, FG, 3-PT, Rebounds, PF, TP, A, TO, Blk, Stl, Min. Totals: 22-61, 10-30, 9-12, 12-22, 34-11, 21-71, 17-11, 11-200.

1st FG %: 31.2 25.0% 2nd: 4-17 23.5% 3rd: 7-14 50.0% 4th: 9-18 50.0% Game: 22-61 36.1% Deadball
3FG %: 0-1 0.0% 0-5 0.0% 1-4 25.0% 1-4 25.0% 2-12 16.7% Rebounds
FT %: 3-6 50.0%

Game 5: Dec. 13, 2020
Auburn 74, South Alabama 66
Auburn Arena
Auburn, Ala.

Official Basketball Box Score - Game Totals - Final Statistics
South Alabama vs Auburn
12/13/20 3:00 pm at Auburn, AL
South Alabama 66 • 3-2, 0-0 Sun Belt

Box score table for South Alabama vs Auburn. Columns include Player, FG, 3-PT, Rebounds, PF, TP, A, TO, Blk, Stl, Min. Totals: 21-56, 7-19, 17-27, 11-26, 37-21, 66-11, 21-51, 15-200.

1st FG %: 6-12 50.0% 2nd: 5-13 38.5% 3rd: 7-18 38.9% 4th: 3-13 23.1% Game: 21-56 37.5% Deadball
3FG %: 4-4 100.0% 3-5 60.0% 4-6 66.7% 3-5 60.0% 10-14 71.4% Rebounds
FT %: 1-2 50.0%

Game 6: Dec. 16, 2020
Stephen F. Austin 67, Auburn 54
Auburn Arena
Auburn, Ala.

Official Basketball Box Score - Game Totals - Final Statistics
SFA vs Auburn
12/16/20 6:00 pm at Auburn, AL
SFA 67 • 6-2, 0-0 Southern

Box score table for SFA vs Auburn. Columns include Player, FG, 3-PT, Rebounds, PF, TP, A, TO, Blk, Stl, Min. Totals: 22-54, 7-25, 16-21, 12-31, 43-21, 67-12, 24-2-7, 200.

1st FG %: 4-11 36.4% 2nd: 6-17 35.3% 3rd: 7-13 53.8% 4th: 5-13 38.5% Game: 22-54 49.7% Deadball
3FG %: 1-5 20.0% 0-8 0.0% 1-6 16.7% 1-4 25.0% Rebounds
FT %: 3-4 75.0% 0-1 0.0% 2-3 66.7% 1-1 100.0%

HOUSTON-- Auburn senior Unique Thompson scored 26 points and had 23 rebounds, but the Tigers were unable to climb out of a deep first-half hole as Auburn fell for the first time this season, 71-61 at Houston.

The Tigers (3-1) had turnover trouble early, went cold for a large portion of the second quarter, and dealt with foul trouble to key contributors as Houston (2-1) took a 34-17 halftime lead. Auburn fought back in the second half, cutting the deficit to as few as six points before running out of time to complete the comeback.

Thompson's career night was the first 20-point, 20-rebound game by an Auburn player since 1993, when Lauretta Freeman had 30 points and 21 rebounds against Alabama. Thompson's 23 rebounds tied for the third-most in a game in Auburn history, the most since Sharon Stewart had 23 against Vanderbilt in 1988. She now has three double-doubles in four games this year and 45 for her career.

But the rest of Auburn's offense struggled as the Tigers shot 36 percent for the game (22-of-61) and hit just two 3-pointers. Both of those treys came from junior Alycia Reese, the Chattahoochee Valley CC transfer, who scored 10 points off the bench. Jala Jordan added 13 points and five rebounds, hitting 5-of-5 free throws.

Auburn turned the ball over 10 times in the first quarter and finished with 23 for the game, which turned into 21 Houston points. The Cougars led 22-9 after one, then with Thompson on the bench in foul trouble, both teams went cold to start the second before Houston took a 34-17 lead to the break.

The Tigers started quipping away, cutting the deficit to 14 at the end of the quarter and getting within single digits with 6:47 to play. It would be as close as six points at 59-53 with 4:18 to play after a Jordan layup. But every time Auburn threatened to get within striking distance, Houston answered. The Cougars hit four of their final five shots in the game to extinguish Auburn's comeback hopes.

AUBURN-- A short-handed Auburn women's basketball team fought its way back from an early double-digit deficit to earn a 74-66 win over South Alabama Sunday afternoon at Auburn Arena.

Led by 21 points and 14 rebounds from senior Unique Thompson, four players scored in double-figures as the Tigers (4-1) trailed by as many as 12 and led by as many as 12 in a game that was truly a tale of two halves.

A flurry of 3-pointers to open the game gave South Alabama (3-2) an early lead, and a cold streak by the Tigers to open the second period pushed the Jaguars' lead to as many as 12 points at 24-12 with 6:04 to play in the half. But Auburn knocked down five straight 3-pointers in the final four minutes of the period to cut the halftime deficit to just six at 34-28.

With the Jaguars still holding the lead as the teams traded buckets the first six minutes of the second half, Auburn turned USA turnovers into points in a 9-0 run that spanned 82 seconds late in the quarter to take a 49-46 lead, its first since it was 2-0 to start the game. The Tigers would never trail again, pushing their lead to as many as 12 points with just over a minute to play.

Thompson's double-double was her fourth of the season and 46th of her career; she's totaled 47 points and 37 rebounds over her last two games. Sophomore Sania Wells added a career-high 13 points, knocking down three 3-pointers and a pair of free throws to go along with a pair of assists.

Sophomore Annie Hughes also poured in 11 points with a career-high three 3-pointers, and junior Kira Lowery added 10 points on the night. Freshman Romi Levy also had a strong performance with 8 points, 7 rebounds, 3 assists and 3 steals.

Auburn missed its first 11 3-point attempts of the night but made eight of its final 11 to finish at 36 percent. Overall, Auburn was 23-of-65 (35%) from the field and had a strong night at the free-throw line, going 20-for-26 (77%). The Tigers out-rebounded the Jags 44-37 and turned 21 USA turnovers into 15 points. Meanwhile, the Jags hit their first five 3-point attempts of the night but went just 2-of-14 from long range the rest of the way.

AUBURN-- Auburn and Stephen F. Austin traded blows for 35-plus minutes Wednesday night, but the Tigers went cold over the final five as the Ladyjacks pulled away late for a 67-54 win at Auburn Arena.

The Tigers (4-2) led throughout much of the first half, fell behind in the third period and briefly regained the lead midway through the fourth. But a tie game with less than five minutes to play got away from Auburn as SFA (6-2), the preseason pick to win the Southland Conference, ended the game on a 13-0 run.

Redshirt sophomore Honesty Scott-Grayson led the Tigers with a career-high 16 points and a pair of assists. Senior Unique Thompson picked up her fifth straight double-double with 11 points and 14 rebounds; she also led Auburn with four steals and a pair of blocks.

But baskets were tough to come by as the Tigers shot a season-low 33.9 percent (19-of-56), including 2-of-15 (13.3%) from 3-point range. Normally steady at the charity stripe, Auburn also struggled at the free-throw line, hitting 14-of-23 attempts (60.9%). Auburn was also out-rebounded for the first time this season, 43-34. The Tigers were able to force SFA into 24 turnovers, converting those into 18 points.

Auburn jumped out to a 6-0 lead and led 17-12 at the end of one. Both teams were ice cold for the next several minutes, but SFA started clawing its way back late in the half with three straight 3-pointers over a 90-second stretch to cut into the Tigers' lead. A Ladyjack layup at the buzzer would tie the game 27-27 at the half.

SFA took the lead early in the third and led 45-39 with a minute to play. But Auburn picked up the pressure and ended the quarter on a 6-0 run to tie it up 45-45 headed to the fourth. The Tigers moved back ahead 52-51 with 5:46 to play on an old-fashioned 3-point play by Scott-Grayson, but the Tigers would manage just one basket the rest of the way, missing their final eight shots of the game.



Game 7: Dec. 17, 2020
Auburn 94, North Florida 81
Auburn Arena
Auburn, Ala.

Official Basketball Box Score - Game Totals - Final Statistics
North Florida vs Auburn
12/17/20 6:00 pm at Auburn, AL

Table with 14 columns: Player, FG, FGA, 3P, 3PA, FT, FTA, Off, Def, Tot, PF, TP, A, T, Blk, Stl, Min. Includes stats for players like Jazz Bond, Erin Jones, Emma Broermann, etc.

Summary statistics table for Auburn 94 vs North Florida 81, including FG%, 3P%, FT%, and other team metrics.

Table with 14 columns: Player, FG, FGA, 3P, 3PA, FT, FTA, Off, Def, Tot, PF, TP, A, T, Blk, Stl, Min. Includes stats for players like Jala Jordan, Unique Thompson, Annie Hughes, etc.

Summary statistics table for Auburn 94 vs North Florida 81, including FG%, 3P%, FT%, and other team metrics.

Officials: Kristen Bell, Bianca Burns, Felicia Grinter
Technical fouls: North Florida-None, Auburn-None.
Attendance: 449
2020-21 Women's Basketball, Round: 0, Auburn vs North Florida, Played at Auburn

Score by periods table showing Auburn's performance in 1st, 2nd, 3rd, and 4th quarters.

Last FG - UNF 4th:01:39, AU 4th:00:56.
Largest lead - UNF by 8 1st:07:09, AU by 17 2nd:09:05.
UNF led for:04:20, AU led for:34:20. Game was tied for:01:20.

AUBURN-- Five Tigers scored in double-figures as Auburn topped the 90-point mark for the second time this season with a 94-81 win over North Florida Thursday night at Auburn Arena.

The Tigers (5-2) were able to bounce back from tough offensive night Wednesday in their loss to SFA with their second-highest scoring total of the season, getting big rebounds from senior Unique Thompson and sophomore Annie Hughes to lead the way.

Thompson led Auburn with 19 points and 18 rebounds, her sixth straight double-double and the 48th of her career. Her 18 rebounds were the most in a home game in her Auburn career; she also contributed three assists and two steals. Hughes hit for a career-high 17 points and matched a career-high with seven rebounds, knocking down three 3-pointers for the second time in three games. She also shared the team lead with three steals. Redshirt sophomore Honesty Scott-Grayson scored 16 points for the second straight night, matching her career high from Wednesday's game. She also had three steals. Freshman Romi Levy also had a career-high 12 points along with five rebounds, and Jala Jordan came up just short of her first career double-double with 11 points and eight rebounds. Alaina Rice added nine points off the bench, her best at Auburn, and Kira Lowery led the Tigers with five assists and a career-best three steals.

Auburn shot 42.5 percent for the game, hitting 34 of a season-high 80 shots. The Tigers also hit a season-best 11 3-pointers, three from Hughes and two each from Jordan, Levy, Rice and Sania Wells. It was also a much-improved night at the free-throw line as the Tigers hit 15-of-18 attempts (83.3%). Auburn out-rebounded UNF 48-34 and forced the Ospreys into 22 turnovers, leading to 26 points.

Auburn maintained its double-digit lead throughout the third as the Ospreys kept launching 3-pointers, but the Tigers increased their lead by one more point to 66-53 headed to the fourth. Taking advantage of tired legs on the part of Auburn, UNF cut the lead to as few as seven points, shooting 58 percent in the fourth. But Auburn got big buckets from Thompson, Levy and Rice down the stretch to hold off the Ospreys' comeback bid.

Game 8: Dec. 20, 2020
Belmont 78, Auburn 57
Auburn Arena
Auburn, Ala.

Official Basketball Box Score - Game Totals - Final Statistics
Belmont vs Auburn
12/17/20 2:00 pm at Auburn, AL

Table with 14 columns: Player, FG, FGA, 3P, 3PA, FT, FTA, Off, Def, Tot, PF, TP, A, T, Blk, Stl, Min. Includes stats for players like Allison Luly, Corley Chinn, Tuli Jones, etc.

Summary statistics table for Belmont 78 vs Auburn 57, including FG%, 3P%, FT%, and other team metrics.

Table with 14 columns: Player, FG, FGA, 3P, 3PA, FT, FTA, Off, Def, Tot, PF, TP, A, T, Blk, Stl, Min. Includes stats for players like Jala Jordan, Unique Thompson, Annie Hughes, etc.

Summary statistics table for Belmont 78 vs Auburn 57, including FG%, 3P%, FT%, and other team metrics.

Officials: Carmen Portorreal/Marcus Clayton,Douglas Knight
Technical fouls: Belmont-None, Auburn-None.
Attendance: 513
2020-21 Women's Basketball, Round: 0, Auburn vs Belmont, Played at Auburn Area

Score by periods table showing Auburn's performance in 1st, 2nd, 3rd, and 4th quarters.

Last FG - BEL 4th:01:14, AU 4th:02:06.
Largest lead - BEL by 21 4th:00:23, AU by 2 1st:09:16.
BEL led for:35:03, AU led for:02:52. Game was tied for:02:05.

AUBURN-- Auburn senior Unique Thompson had 20 points, 23 rebounds and hit a major milestone with her 1,000th career rebound, but the Tigers could not overcome turnover troubles in a 78-57 loss to Belmont Sunday afternoon at Auburn Arena.

Thompson became the fifth player at Auburn to surpass the 1,000-rebound mark for her career with her 13th board of the day. With 23 rebounds in the contest, Thompson now sits fourth in career rebounds with 1,010, passing Vickie Orr (1,006).

But Auburn (5-3), playing its third game in five days, turned the ball over a season-high 27 times, leading to 31 points for Belmont (4-2). The Tigers also saw the Bruins hit 11 3-pointers and shoot 50 percent from long range.

Thompson's effort was her second 20-point, 20-rebound game of the season; Auburn had only had five such games in program history heading into the year. Her 23 rebounds tied her career-high, which also ranks as the third-most in a single game in Auburn history. It was also her seventh straight double-double and 49th of her career as she continues to lead the nation in that category.

Redshirt sophomore Honesty Scott-Grayson also had her third straight strong performance with a career-high 18 points along with four rebounds, four assists and a team-leading three steals. Sania Wells added eight points, and Annie Hughes had seven.

The Tigers out-rebounded Belmont 47-30, but the Bruins controlled nearly every other statistical category. Auburn shot 37 percent (22-60) from the field and just 3-of-17 (18%) from 3-point range.

Auburn fell behind 26-14 after one quarter, thanks in large part to 10 turnovers in the first 10 minutes. The Tigers would get as close as eight points, but seemingly every time the Tigers would chip away, Belmont would answer with a big shot of its own. The Bruins led 45-28 at the half.

Conley Chinn led four Bruins in double figures with 21 points while Destinee Wells added 15, Jamilyn Kinney added 11 steals.

Game 9: Dec. 31, 2020
LSU 56, Auburn 43
Pete Maravich Assembly Center
Baton Rouge, La.

Official Basketball Box Score - Game Totals - Final Statistics
Auburn vs LSU
12/31/20 6:00 pm at Baton Rouge, LA

Table with 14 columns: Player, FG, FGA, 3P, 3PA, FT, FTA, Off, Def, Tot, PF, TP, A, T, Blk, Stl, Min. Includes stats for players like Romi Levy, Jala Jordan, Sania Wells, etc.

Summary statistics table for Auburn 43 vs LSU 56, including FG%, 3P%, FT%, and other team metrics.

Table with 14 columns: Player, FG, FGA, 3P, 3PA, FT, FTA, Off, Def, Tot, PF, TP, A, T, Blk, Stl, Min. Includes stats for players like Awa Trasi, Faustine Alfawa, Khayla Pointer, etc.

Summary statistics table for Auburn 43 vs LSU 56, including FG%, 3P%, FT%, and other team metrics.

Officials: Saff Esdo,Maggie Tieman,Billy Smith
Technical fouls: Auburn-None, LSU-None.
Attendance: 687
2020-21 Women's Basketball, Round: 0, Auburn vs LSU, Played at Maravich Assem

Score by periods table showing Auburn's performance in 1st, 2nd, 3rd, and 4th quarters.

Last FG - AU 4th:01:06, LSU 4th:01:54.
Largest lead - AU by 13 3rd:07:14, LSU by 13 4th:01:54.
AU led for:23:59, LSU led for:22:09. Game was tied for:03:12.

BATON ROUGE, La.-- Auburn got strong play from its freshmen in their first SEC road game, but second-half turnover troubles plagued Auburn in a 56-43 loss at LSU Thursday night.

Auburn (5-4, 0-1 SEC) led by eight at halftime and got a combined 20 points and 16 rebounds from freshmen Romi Levy and Aicha Coulibaly, but relentless pressure from LSU (3-4, 1-0) led to 24 turnovers that LSU converted into 22 points.

Coulibaly led Auburn with a career-high 12 points. Levy added eight points and a career-high 11 rebounds, along with 5 steals.

As a team, Auburn shot a season-low 28.3 percent from the field (17-60) and 3-of-18 (16.7%) from 3-point range. Auburn pulled down 39 rebounds to LSU's 43 and forced LSU into 19 turnovers.

The Auburn rookies contributed more than half of the team's first-half points as Auburn took a 27-19 lead at the break. Levy had six points and nine rebounds in the opening half while Coulibaly had 10 points, including her first career 3-pointer. Auburn also forced LSU into 12 first-half turnovers.

But in the second half, Auburn struggled to get the ball across half court with 13 turnovers leading to 17 LSU points. A seven-point lead quickly turned into a two-point deficit late in the third quarter as Auburn went nearly six minutes without a basket, and LSU continued to turn up the pressure in the fourth as Auburn again struggled to score.

Auburn was without the services of leading scorer and rebounder Unique Thompson, who missed the game for medical reasons.

Khayla Pointer led LSU with 14 points. Tiara Young and Jaiin Cherry added eight apiece.

**Game 10: Jan. 3, 2021**  
**Georgia 76, Auburn 44**  
**Auburn Arena**  
**Auburn, Ala.**

**Official Basketball Box Score - Game Totals - Final Statistics**  
 Georgia vs Auburn  
 01/03/21 2:00 pm at Auburn, AL

**Georgia 76 • 9-1,1-1 SEC**

#	Player	Total			3-Ptr			Rebounds			PF	TP	A	TO	Blk	Stl	Min
		FG	FGA	FT	FTA	Off	Def	Total									
20	Jordan Isaacs	f	2-3	0-0	0-0	2	5	7	1	4	1	3	0	0	17		
14	Jenna Staiti	f	5-11	0-0	3-4	2	3	5	3	13	0	1	4	1	19		
02	Gabby Connally	c	3-4	2-2	1-2	0	0	0	1	9	1	1	0	1	15		
11	Maya Caldwell	g	4-8	1-3	0-1	0	2	2	2	9	2	2	0	1	23		
23	Que Morrison	g	4-6	1-2	0-0	1	2	3	0	9	5	4	0	4	15		
00	Zoesha Smith	g	0-1	0-0	0-0	1	0	1	1	0	0	1	0	1	6		
01	Chloe Chapman	g	0-1	0-1	0-0	0	1	1	3	0	3	3	0	1	20		
03	Sarah Ashlee Barker	f	3-7	1-4	0-0	0	4	4	1	7	2	2	0	1	19		
04	Mikayla Coombs	f	3-6	0-0	2-2	2	2	4	0	8	2	2	0	2	20		
10	Caillin Hesse	f	0-3	0-2	0-0	0	1	1	0	0	0	1	0	0	8		
15	Mauri Davenport	f	1-1	0-0	0-0	0	0	0	1	2	0	2	1	8			
22	Malury Bates	f	2-5	0-0	2-2	1	2	3	1	6	2	1	0	0	13		
35	Javyn Nicholson	f	4-6	0-0	1-2	2	6	8	2	9	0	1	0	0	17		
<b>Team</b>						2	2	4									
<b>Totals</b>			31-62	5-14	9-13	13	30	43	16	76	18	22	6	13	200		

1st	FG %:	11-19	57.9%	2nd	FG %:	7-12	58.3%	3rd	FG %:	9-15	60.0%	4th	FG %:	4-16	25.0%	Game:	31-62	50.0%	Deadball	
	FT %:	1-1	100.0%		FT %:	1-4	25.0%		FT %:	0-4	0.0%		FT %:	5-14	35.7%		Rebounds			
	PF:	1-2	50.0%		PF:	2-2	100.0%		PF:	0-1	0.0%		PF:	6-8	75.0%					4

**Auburn 44 • 5-5,0-2 SEC**

#	Player	Total			3-Ptr			Rebounds			PF	TP	A	TO	Blk	Stl	Min
		FG	FGA	FT	FTA	Off	Def	Total									
11	Romi Levy	f	0-7	0-4	0-0	0	3	3	2	0	0	2	0	6	34		
14	Jala Jordan	f	4-14	1-5	0-1	1	0	1	3	9	0	3	1	0	17		
01	Keya Patton	g	3-9	0-1	6-7	2	1	3	1	12	0	2	0	1	27		
22	Alaina Rice	g	1-5	0-0	1-2	2	2	4	1	3	0	5	0	0	19		
23	H. Scott-Grayson	g	2-5	0-0	2-2	1	3	4	2	6	1	0	0	1	17		
00	Alycia Reese	g	0-0	0-0	0-0	0	0	0	0	0	0	0	0	0	4		
02	Sania Wells	g	0-1	0-0	0-0	0	0	0	0	0	0	1	0	0	10		
03	Annie Hughes	f	1-2	0-0	1-2	0	3	3	1	3	0	3	0	1	22		
05	Aicha Coulibaly	f	3-7	0-1	0-1	0	2	2	6	6	0	1	2	24			
13	Kira Lowery	f	1-1	0-0	1-3	0	1	1	0	3	1	5	0	0	12		
24	Carsen McFadden	g	0-0	0-0	0-0	0	0	0	0	0	0	1	0	0	5		
30	M. Robinson-Nwagwu	f	1-1	0-0	0-0	0	1	1	1	2	0	3	0	1	9		
<b>Team</b>						3	2	5									
<b>Totals</b>			16-52	1-11	11-18	9	18	27	13	44	2	27	2	12	200		

1st	FG %:	4-13	30.8%	2nd	FG %:	6-14	42.9%	3rd	FG %:	1-3	33.3%	4th	FG %:	5-12	41.7%	Game:	16-52	30.8%	Deadball	
	FT %:	1-2	50.0%		FT %:	0-2	0.0%		FT %:	0-4	0.0%		FT %:	1-11	9.1%		Rebounds			4
	PF:	1-4	40.0%		PF:	0-2	0.0%		PF:	4-4	100.0%		PF:	5-7	71.4%					

Officials: Carla Fountain, Angelica Suffren, Dee Kambren  
 Technical fouls: Georgia-None. Auburn-Aicha Coulibaly.  
 Attendance: 657  
 2020-21 Women's Basketball. Round: 0. Auburn vs Georgia. Played at Auburn Arena

Score by periods	1st				2nd				3rd				4th				Total
	1st	2nd	3rd	4th	1st	2nd	3rd	4th	1st	2nd	3rd	4th	1st	2nd	3rd	4th	
Georgia	26	17	19	14	76												
Auburn	10	13	6	15	44												

Last FG - USA 4th-02:15, AU 4th-02:30.  
 Largest lead - USA by 37 3rd-01:43, AU None.  
 USA led for 35:27, AU led for 00:00. Game was tied for 01:33.  
 Score tied - 1 time.  
 Lead changed - 0 times.

**AUBURN--** Georgia's size and depth were too much to overcome for the Auburn women's basketball team Sunday afternoon as the Tigers fell 76-44 to the Lady Bulldogs at Auburn Arena.

The Tigers (5-5, 0-2 SEC), without leading scorer and rebounder Unique Thompson for the second straight game, were unable to get much going on offense and turned the ball over a season-high 27 times. Georgia (9-1, 1-1) converted those turnovers into 26 points and had seven players score at least eight points in the game.

Junior Keya Patton was Auburn's only player in double figures with 12 points, going 6-of-7 at the free-throw line. Jala Jordan added nine points. Romi Levy played a career-best six steals, the most by an Auburn player this season. Alaina Rice and Honesty Scott-Grayson were the Tigers' top rebounders with four apiece.

Auburn shot 30.8 percent from the field (16-52) and hit just one 3-pointer on 11 tries. Georgia shot 50 percent on the day (31-62) and out-rebounded the Tigers 43-27.

Jenna Staiti led the Lady Bulldogs with 13 points and four blocks. Gabby Connally, Maya Caldwell, Que Morrison and Javyn Nicholson all added nine points; Nicholson was the Dawgs' top rebounder with eight.

**2020-21 Auburn Women's Basketball**  
**Auburn Combined Team Statistics (as of Jan 04, 2021)**  
**All games**

<b>RECORD:</b>	<b>OVERALL</b>	<b>HOME</b>	<b>AWAY</b>	<b>NEUTRAL</b>
ALL GAMES	5-5	5-3	0-2	0-0
CONFERENCE	0-2	0-1	0-1	0-0
NON-CONFERENCE	5-3	5-2	0-1	0-0

#	Player	gp-gs	min	avg	Total		3-Point		F-Throw		Rebounds				a	to	blk	stl	pts	avg					
					fg-fga	fg%	3fg-fga	3fg%	ft-fa	ft%	off	def	tot	avg							pf	dq			
20	Unique Thompson	8-8	232	29.0	56-98	.571	0-0	.000	38-49	.776	51	71	122	15.3	20	1	8	21	2	25	150	18.8			
23	H. Scott-Grayson	10-10	248	24.8	38-105	.362	4-20	.200	18-29	.621	9	27	36	3.6	22	0	17	18	1	21	98	9.8			
14	Jala Jordan	10-6	186	18.6	30-89	.337	10-40	.250	15-20	.750	16	24	40	4.0	26	1	7	18	10	6	85	8.5			
03	Annie Hughes	10-7	204	20.4	22-49	.449	7-20	.350	5-9	.556	13	16	29	2.9	14	0	5	12	1	11	56	5.6			
01	Keya Patton	9-1	174	19.3	16-50	.320	5-18	.278	13-17	.765	7	8	15	1.7	11	0	5	12	0	7	50	5.6			
11	Romi Levy	10-3	210	21.0	22-59	.373	6-23	.261	3-8	.375	13	26	39	3.9	16	0	11	19	6	24	53	5.3			
05	Aicha Coulibaly	9-4	150	16.7	18-49	.367	1-12	.083	7-16	.438	11	22	33	3.7	12	0	6	8	4	4	44	4.9			
13	Kira Lowery	10-8	182	18.2	12-25	.480	1-3	.333	13-17	.765	2	10	12	1.2	7	0	18	28	2	10	38	3.8			
02	Sania Wells	10-1	146	14.6	11-47	.234	7-24	.292	9-14	.643	2	3	5	0.5	10	0	9	10	0	3	38	3.8			
00	Alycia Reese	5-0	41	8.2	5-8	.625	2-4	.500	6-6	1.000	0	3	3	0.6	1	0	1	2	0	1	18	3.6			
22	Alaina Rice	9-2	133	14.8	7-33	.212	3-9	.333	9-12	.750	12	6	18	2.0	11	0	11	22	0	4	26	2.9			
30	M. Robinson-Nwagwu	7-0	69	9.9	5-14	.357	0-5	.000	0-0	.000	0	9	9	1.3	5	0	8	12	1	8	10	1.4			
04	Riley Donahue	3-0	2	0.7	1-1	1.000	1-1	1.000	0-0	.000	0	0	0	0.0	1	0	0	1	0	0	3	1.0			
24	Carsen McFadden	5-0	19	3.8	1-3	.333	0-0	.000	1-2	.500	1	1	2	0.4	0	0	4	1	0	1	3	0.6			
10	Kiyae' White	1-0	4	4.0	0-2	.000	0-0	.000	0-0	.000	1	2	3	3.0	1	0	0	0	0	0	0	0.0			
Team											21	22	43												4
Total.....		10	2000		244-632	.386	47-179	.263	137-199	.688	159	250	409	40.9	157	2	110	188	27	125	672	67.2			
Opponents.....		10	2000		242-588	.412	74-230	.322	103-140	.736	107	256	363	36.3	190	-	142	211	21	109	661	66.1			

<b>TEAM STATISTICS</b>	<b>AU</b>	<b>OPP</b>	<b>Date</b>	<b>Opponent</b>	<b>Score</b>	<b>Att.</b>	
SCORING	672	661	11/25/20	USC UPSTATE	w	82-41	588
Points per game	67.2	66.1	11/28/20	SAMFORD	w	66-64	540
Scoring margin	+1.1	-	12/01/20	GARDNER-WEBB	w	97-61	487
FIELD GOALS-ATT	244-632	242-588	12/05/20	at Houston	L	61-71	509
Field goal pct	.386	.412	12/13/20	SOUTH ALABAMA	w	74-66	520
3 POINT FG-ATT	47-179	74-230	12/16/20	SFA	L	54-67	445
3-point FG pct	.263	.322	12/17/20	NORTH FLORIDA	w	94-81	449
3-pt FG made per game	4.7	7.4	12/20/20	BELMONT	L	57-78	515
FREE THROWS-ATT	137-199	103-140	* 12/31/20	at LSU	L	43-56	687
Free throw pct	.688	.736	* 01/03/21	GEORGIA	L	44-76	657
F-Throws made per game	13.7	10.3	* - Conference game				
REBOUNDS	409	363					
Rebounds per game	40.9	36.3					
Rebounding margin	+4.6	-					
ASSISTS	110	142					
Assists per game	11.0	14.2					
TURNOVERS	188	211					
Turnovers per game	18.8	21.1					
Turnover margin	+2.3	-					
Assist/turnover ratio	0.6	0.7					
STEALS	125	109					
Steals per game	12.5	10.9					
BLOCKS	27	21					
Blocks per game	2.7	2.1					
ATTENDANCE	4201	1196					
Home games-Avg/Game	8-525	2-598					
Neutral site-Avg/Game	-	0-0					

<b>Score by Periods</b>	<b>1st</b>	<b>2nd</b>	<b>3rd</b>	<b>4th</b>	<b>Totals</b>
Auburn	169	152	180	171	672
Opponents	154	143	186	178	661

**2020-21 Auburn Women's Basketball  
Auburn Combined Team Statistics (as of Jan 04, 2021)  
Conference games only**

<b>RECORD:</b>	<b>OVERALL</b>	<b>HOME</b>	<b>AWAY</b>	<b>NEUTRAL</b>
ALL GAMES	0-2	0-1	0-1	0-0
CONFERENCE	0-2	0-1	0-1	0-0
NON-CONFERENCE	0-0	0-0	0-0	0-0

##	Player	gp-gs	min	avg	Total		3-Point		F-Throw		Rebounds				pf	dq	a	to	blk	stl	pts	avg
					fg-fga	fg%	3fg-fga	3fg%	ft-fa	ft%	off	def	tot	avg								
05	Aicha Coulibaly	2-0	47	23.5	7-15	.467	1-4	.250	3-5	.600	2	5	7	3.5	3	0	0	2	1	2	18	9.0
01	Keya Patton	2-1	51	25.5	4-13	.308	1-4	.250	6-7	.857	3	2	5	2.5	4	0	0	4	0	2	15	7.5
23	H. Scott-Grayson	2-2	50	25.0	6-17	.353	0-0	.000	2-2	1.000	3	10	13	6.5	5	0	3	1	1	3	14	7.0
14	Jala Jordan	2-2	37	18.5	5-24	.208	1-10	.100	1-3	.333	2	3	5	2.5	6	0	0	4	2	0	12	6.0
22	Alaina Rice	2-2	43	21.5	3-11	.273	1-1	1.000	1-2	.500	6	3	9	4.5	4	0	2	9	0	1	8	4.0
11	Romi Levy	2-2	64	32.0	4-19	.211	0-6	.000	0-0	.000	4	10	14	7.0	4	0	2	7	1	11	8	4.0
03	Annie Hughes	2-0	29	14.5	2-3	.667	0-0	.000	1-2	.500	0	3	3	1.5	1	0	0	5	0	1	5	2.5
13	Kira Lowery	2-0	14	7.0	1-1	1.000	0-0	.000	1-3	.333	0	1	1	0.5	0	0	1	7	0	0	3	1.5
30	M. Robinson-Nwagwu	2-0	22	11.0	1-3	.333	0-1	.000	0-0	.000	0	1	1	0.5	2	0	0	5	1	1	2	1.0
00	Alycia Reese	2-0	12	6.0	0-0	.000	0-0	.000	2-2	1.000	0	1	1	0.5	0	0	0	0	0	0	2	1.0
24	Carsen McFadden	1-0	5	5.0	0-0	.000	0-0	.000	0-0	.000	0	0	0	0.0	0	0	0	1	0	0	0	0.0
02	Sanja Wells	2-1	26	13.0	0-6	.000	0-3	.000	0-0	.000	0	2	2	1.0	2	0	1	3	0	1	0	0.0
	Team										3	2	5				3					
	Total.....	2	400		33-112	.295	4-29	.138	17-26	.654	23	43	66	33.0	31	0	9	51	6	22	87	43.5
	Opponents.....	2	400		52-122	.426	5-23	.217	23-28	.821	27	59	86	43.0	29	-	28	41	9	24	132	66.0

<b>TEAM STATISTICS</b>	<b>AU</b>	<b>OPP</b>	<b>Date</b>	<b>Opponent</b>	<b>Score</b>	<b>Att.</b>
SCORING	87	132	* 12/31/20	at LSU	L 43-56	687
Points per game	43.5	66.0	* 01/03/21	GEORGIA	L 44-76	657
Scoring margin	-22.5	-				
FIELD GOALS-ATT	33-112	52-122				
Field goal pct	.295	.426				
3 POINT FG-ATT	4-29	5-23				
3-point FG pct	.138	.217				
3-pt FG made per game	2.0	2.5				
FREE THROWS-ATT	17-26	23-28				
Free throw pct	.654	.821				
F-Throws made per game	8.5	11.5				
REBOUNDS	66	86				
Rebounds per game	33.0	43.0				
Rebounding margin	-10.0	-				
ASSISTS	9	28				
Assists per game	4.5	14.0				
TURNOVERS	51	41				
Turnovers per game	25.5	20.5				
Turnover margin	-5.0	-				
Assist/turnover ratio	0.2	0.7				
STEALS	22	24				
Steals per game	11.0	12.0				
BLOCKS	6	9				
Blocks per game	3.0	4.5				
ATTENDANCE	657	687				
Home games-Avg/Game	1-657	1-687				
Neutral site-Avg/Game	-	0-0				

<b>Score by Periods</b>	<b>1st</b>	<b>2nd</b>	<b>3rd</b>	<b>4th</b>	<b>Totals</b>
Auburn	24	26	16	21	87
Opponents	34	28	39	31	132



**Alycia Reese**  
Junior • G • 5-9  
Columbus, Ga.  
*Chattahoochee Valley CC*



**Keya Patton**  
Junior • G • 5-6  
Indianapolis, Ind.  
*Wabash Valley CC*



**Sania Wells**  
Sophomore • G • 5-7  
Moss Point, Miss.  
*East Central HS*



**Annie Hughes**  
Sophomore • G • 5-9  
Dutton, Ala.  
*Pisgah HS*



**Riley Donahue**  
Freshman • G • 5-10  
Atlanta, Ga.  
*Marist School*



**Aicha Coulibaly**  
Freshman • G/F • 6-0  
Mali  
*IMG Academy (Fla.)*



**Kiyae' White**  
RS Junior • F • 6-2  
Macungie, Pa.  
*Emmaus HS*



**Romi Levy**  
Freshman • F • 6-2  
Herzliya, Israel  
*Hof Hasharon HS*



**Kira Lowery**  
Junior • G • 5-6  
Memphis, Tenn.  
*Dyersburg State CC*



**Jala Jordan**  
RS Sophomore • F • 6-2  
Philadelphia, Pa.  
*West Virginia*



**Unique Thompson**  
Senior • F • 6-3  
Theodore, Ala.  
*Faith Academy*



**Alaina Rice**  
Sophomore • G • 5-8  
Rockledge, Fla.  
*Florida A&M*



**Honesty Scott-Grayson**  
RS Sophomore • G • 5-9  
Brick, N.J.  
*Baylor*



**Carsen McFadden**  
Freshman • G • 5-7  
Lucas, Texas  
*Lovejoy HS*



**Morgan Robinson-Nwagwu**  
Sophomore • G • 5-8  
Norcross, Ga.  
*Norcross HS*



**Terri Williams-Flournoy**  
Head Coach  
Penn State (1991)  
*Ninth Season*



**Clarisse Garcia**  
Assistant Coach  
Villanova (2007)  
*Fourth Season*



**La'Keshia Frett Meredith**  
Assistant Coach  
Georgia (1997)  
*Second Season*