



MISSISSIPPI STATE BULLDOGS WOMEN'S BASKETBALL

HAILSTATE.COM • @HAILSTATEWBK

GAME 17 • AUBURN

2018-19 SCHEDULE/RESULTS

OVERALL RECORD	15-1
SEC	3-0
NON-CONFERENCE	12-1
HOME	9-0
AWAY	6-1
NEUTRAL.....	0-0

DATE	MSU	OPP	OPPONENT	TV	TIME/RESULTS
N2	6/6	-/-	CENTRAL MISSOURI (Exh.)	SECN+	W, 97-56
N6	6/6	NR/NR	SE MISSOURI ST.	SECN+	W, 88-53
N9	6/6	RV/NR	at Virginia	ACCN Extra	W, 72-44
N15	6/6	NR/NR	LAMAR	SECN+	W, 104-53
N18	6/6	NR/NR	COPPIN STATE	SECN+	W, 110-38
N21	6/6	NR/NR	FURMAN	SECN+	W, 106-41
N24	6/6	NR/NR	JACKSON STATE	SECN+	W, 105-38
N28	6/6	NR/NR	at Little Rock		W, 98-63
D2	6/6	10/10 !	at Texas	FS1	W, 67-49
D6	6/6	18/15	MARQUETTE	SECN+	W, 87-82
D14	5/5	NR/NR	at Southern Miss		W, 86-42
D18	4/4	7/7	at Oregon	ESPN2	L, 74-82
D20	4/4	NR/NR	at Washington		W, 103-56
D30	8/7	NR/NR	LOUISIANA	SECN+	W, 104-36
J3	7/6	NR/NR *	at Arkansas	SECN	W, 93-69
J6	7/6	16/15 *	KENTUCKY	SECN	W, 86-71
J10	7/6	NR/NR *	GEORGIA	SECN	W, 80-71
J14	7/6	NR/NR *	at Auburn	SECN	6 p.m.
J17			* SOUTH CAROLINA	ESPN or SECN	6 p.m.
J24			* at Florida	SECN+	6 p.m.
J27			* OLE MISS	SECN	2 p.m.
J31			* at LSU	SECN+	6:30 p.m.
F3			* at Alabama	SECN	12 p.m.
F10			* TENNESSEE	ESPN	1 p.m.
F14			* MISSOURI	SECN	8 p.m.
F17			* at Texas A&M	SECN	1 p.m.
F21			* at Ole Miss	SECN+	7 p.m.
F24			* VANDERBILT	SECN	1 p.m.
F28			* LSU	SECN+	7 p.m.
M3			* at South Carolina	ESPN2	1 p.m.
M6-10			# SEC Tournament		
M22-25			NCAA First/Second Rounds		
M29-A1			NCAA Regionals		
A5-7			NCAA Women's Final Four (Tampa, Fla.)		

All Times Central
Home Games In **BOLD CAPS**
! — SEC/Big 12 Challenge
— SEC Tournament (Greenville, S.C.)
* — SEC Game

#HailStateHoops Communications Contacts

Brian Ogden (Interim Primary Contact)
Office: (662) 325-0970
Cell: (972) 977-7459
Email: bogden@athletics.msstate.edu

McRae Clay (Secondary Contact)
Office: (662) 325-7556
Cell: (601) 850-9610
Email: mclay@athletics.msstate.edu

@HailStateWBK
 Facebook.com/HailStateWBK

HailStateWBK
 HailState.com



MISSISSIPPI STATE

'18-19 Record.....15-1 (3-0 SEC)
Head CoachVic Schaefer
Record At MSU176-54 (7th Season)
Career Record.....256-164 (14th Season)

COMPARISON

91.4	Pts./Gm.	79.1
55.5 ...	Pts. ALLOWED/GM.	62.8
50.4%	FG%	44.7%
38.2%	3FG%	33.8%
72.2%	FT%	74.0%
46.2	Rbds./Gm.	37.6
18.6	ASSTS./GM.	14.2
9.4	STLS./GM.	12.6
6.9	BLKS./GM.	3.1



AUBURN

'18-19 Record.....14-2 (2-1 SEC)
Head CoachTerri Williams-Flournoy
Record At AU116-93 (7th Season)
Career Record.....159-197 (15th Season)

JANUARY 14, 2019 // AUBURN, ALA. // AUBURN ARENA // 6 P.M. CT

BULLDOG BITES...

- The Bulldogs set a new school record with their sixth 100-point game of the year when they defeated Louisiana, 104-36. The SEC record is 10 games set by Alabama in the 1991-92 season.
- Seniors Jazzmun Holmes and Teaira McCowan have won 114-career games, tied for the 3rd-most in the nation since 2015-16. Their 86 wins since 2016-17 lead the nation in that span.
- State has been in the AP poll 84 straight weeks, including 48 weeks in a row in the Top 10.
- The Bulldogs are the nation's 2nd-best scoring offense, averaging 91.4 ppg. Its 55.5 ppg allowed is 19th in the country, giving the Dawgs the highest scoring margin (+5.9) in Division I.
- MSU tops the SEC in FG% (50.4%), rebounding (46.2 rpg), assist/turnover ratio (1.4), assists (18.6 apg), rebound margin (+17.2), and scoring offense.
- The Bulldogs continue to lead the nation in blocked shots with 110 on the year, 6.9 bpg. Teaira McCowan's 42 blocks are 4th in the nation and lead the SEC.
- Jazzmun Holmes is 2nd in the nation with a 4.2 assist/turnover ratio. Xaria Wiggins is 3rd in the SEC (3.3), and Jordan Danberry is 8th (2.0). They have helped MSU to DI's 9th-best ratio (1.4).
- Teaira McCowan has scored double figures in 19 of her last 20 games going back to last season, with 8 of those being 20-point efforts.
- Jordan Danberry is the reigning SEC Co-Player of the Week after leading the league in scoring through the first two games (21.5 ppg). She has scored in double figures in 11 straight games.
- Over the last 9 games, Jazzmun Holmes has turned in 50 assists with just 14 turnovers. She is averaging 9.9 ppg with a 45.0% FG% (27-of-60) and making 34-of-38 from the free throw line.
- Teaira McCowan and Anriel Howard are the only pair of teammates in the SEC to be among the top 10 in the league in both scoring and rebounding average.
- MSU won its 700th game in program history on Dec. 14, defeating Southern Miss, 86-42.

PROJECTED STARTING LINEUP (Based On Previous Game)

MISSISSIPPI STATE										
No.	NAME	Pos.	Ht.	Cl.	HOMETOWN	PPG	RPG	APG	BPG	SPG
5	Anriel Howard	F	5-11	Gr.	Atlanta, Georgia	16.0	7.9	1.8	0.6	1.5
10	Jazzmun Holmes	G	5-8	Sr.	Gulfport, Mississippi	7.9	2.1	5.3	0.3	2.3
15	Teaira McCowan	C	6-7	Sr.	Brenham, Texas	16.5	13.5	0.8	2.7	0.8
24	Jordan Danberry	G	5-8	Sr.	Conway, Arkansas	13.3	3.6	3.6	0.4	1.8
55	Chloe Bibby	F	6-1	So.	Warracknabeal, Australia	12.8	4.3	1.7	0.6	0.8

AUBURN										
No.	NAME	Pos.	Ht.	Cl.	HOMETOWN	PPG	RPG	APG	BPG	SPG
0	Daisa Alexander	G	5-8	Jr.	Decatur, Georgia	12.4	3.3	2.2	0.1	2.5
20	Unique Thompson	F	6-3	So.	Theodore, Alabama	13.2	10.9	1.3	0.9	1.9
23	Crystal Primm	G	5-11	R-Jr.	West Palm Beach, Florida	11.6	4.1	1.4	0.3	1.8
24	Erin Howard	F/G	6-1	Fr.	Madison, Wisconsin	3.5	2.7	1.3	0.7	0.9
33	Janiah McKay	G	5-6	Sr.	Gainesville, Florida	14.3	2.8	4.6	0.1	2.4

SERIES HISTORY

Overall: AU leads 35-21
At MSU: AU leads 14-13
At AU: AU leads 20-6
Neutral Sites: MSU leads 2-1
Last Meeting:
MSU, 82-61 (2/22/18 in Starkville)

TV INFORMATION

Network: SEC Network
Play-by-Play: Brenda VanLengen
Analyst: Andraya Carter
Online: <https://hailst.at/2RgVs54>

RADIO/STREAMING

Network: MSU Radio Network
Play-by-Play: Jason Crowder
Analyst: Charlie Winfield
Station List: <https://hailst.at/2PysJ0P>
Online: <https://hailst.at/2RLNozi>
TuneIn: <https://hailst.at/2PFTuFh>

MISSISSIPPI STATE 2018-19 RADIO/TV ROSTER (Click the Photo for Bio)



1 MYAH TAYLOR
G • 5-7 • RFr. • Olive Branch, Miss.



2 ANDRA ESPINOZA-HUNTER
G • 5-11 • So. • Ossining, N.Y.



4 JESSIKA CARTER
F/C • 6-5 • Fr. • Waverly Hall, Ga.



5 ANRIEL HOWARD
F • 5-11 • Gr. • Atlanta, Ga.



10 JAZZMUN HOLMES
G • 5-8 • Sr. • Gulfport, Miss.



11 XARIA WIGGINS
G/F • 6-1 • Fr. • Virginia Beach, Va.



13 PROMISE TAYLOR
C • 6-5 • So. • Issaquah, Wash.



15 TEAIRA MCCOWAN
C • 6-7 • Sr. • Brenham, Texas



20 NYAH TATE
G • 6-0 • So. • Terry, Miss.



23 BRE'AMBER SCOTT
G • 5-11 • So. • Little Rock, Ark.



24 JORDAN DANBERRY
G • 5-8 • Sr. • Conway, Ark.



25 ZION CAMPBELL
C • 6-3 • R-Jr. • Washington, D.C.



55 CHLOE BIBBY
F • 6-1 • So. • Warracknabeal, Australia



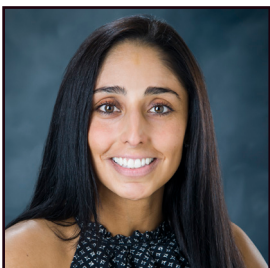
VIC SCHAEFER
Head Coach
7th Season



JOHNNIE HARRIS
Associate Head Coach
7th Season



DIONNAH JACKSON-DURRETT
Assistant Coach
4th Season



ELENA LOVATO
Assistant Coach
1st Season (3rd Overall)

PRONUNCIATIONS

- Andra Espinoza-Hunter
AHN-druh
- Anriel Howard
ANN-ree-EL
- Dionnah Jackson-Durrett
Dee-AHN-ah Jackson-DUR-et
- Elena Lovato
E-LANE-Ah LO-Vah-Toe
- Teaira McCowan
Tee-AIR-ah Mah-COW-ahn
- Xaria Wiggins
ZAR-ee-ah

MISSISSIPPI STATE 2018-19 NUMERICAL ROSTER

No.	Player	Pos.	Ht.	Cl.	Exp.	Hometown (High School/Previous School)
1	Myah Taylor	G	5-7	RFr.	RS	Olive Branch, Miss. (Olive Branch HS)
2	Andra Espinoza-Hunter	G	5-11	So.	TR	Ossining, N.Y. (Ossining HS/UConn)
4	Jessika Carter	F/C	6-5	Fr.	HS	Waverly Hall, Ga. (Harris County HS)
5	Anriel Howard	F	5-11	Gr.	TR	Atlanta, Ga. (Westlake HS/Texas A&M)
10	Jazzmun Holmes	G	5-8	Sr.	3L	Gulfport, Miss. (Harrison Central HS)
11	Xaria Wiggins	G/F	6-1	Fr.	HS	Virginia Beach, Va. (Princess Anne HS)
13	Promise Taylor*	C	6-5	So.	TR	Issaquah, Wash. (Sammamish HS/Ole Miss)
15	Teaira McCowan	C	6-7	Sr.	3L	Brenham, Texas (Brenham HS)
20	Nyah Tate	G	6-0	So.	1L	Terry, Miss. (Terry HS)
23	Bre'Amber Scott	G	5-11	So.	1L	Little Rock, Ark. (Central HS)
24	Jordan Danberry	G	5-8	Sr.	1L	Conway, Ark. (Conway HS/Arkansas)
25	Zion Campbell	C	6-3	RJr.	2L	Washington, D.C. (Riverdale Baptist School)
55	Chloe Bibby	F	6-1	So.	1L	Warracknabeal, Australia (Rowville Secondary College)

* — Currently sitting out the 2018-19 season due to NCAA transfer rules

COACHING STAFF

Head Coach.....Vic Schaefer — 7th Season
 Associate Head Coach.....Johnnie Harris — 7th Season
 Assistant Coach Dionnah Jackson-Durrett — 4th Season
 Assistant CoachElena Lovato — 1st Season (3rd Overall)

Dir. of Operations Maryann Baker — 7th Season
 Head Strength & Conditioning Coach Marci Hoppa — 2nd Season
 Certified Athletic Trainer Julie Martin — 2nd Season



2017 & 2018 NCAA NATIONAL FINALISTS



2017 & 2018 SEC CHAMPIONS

ASSOCIATED PRESS TOP 25 POLL
January 7

Rk.	School	Rcd.	Pts.	Pvs.
1	Notre Dame (12)	14-1	715	2
2	Louisville (10)	14-0	708	3
3	Connecticut (3)	12-1	701	1
4	Baylor (5)	11-1	687	8
5	Oregon	13-1	616	5
6	Stanford	12-1	609	6
7	Mississippi State	14-1	575	7
8	North Carolina State	15-0	536	9
9	Maryland	13-1	500	4
10	Oregon State	12-2	487	11
11	Texas	12-2	443	13
12	Syracuse	13-2	411	14
13	Tennessee	12-2	394	10
14	Gonzaga	15-1	318	17
15	Marquette	12-3	282	20
16	Kentucky	14-2	268	16
17	Iowa	11-3	253	19
18	Minnesota	12-2	186	12
19	Arizona State	11-3	167	22
20	Iowa State	12-2	163	25
21	South Carolina	10-4	162	23
22	Florida State	14-1	118	NR
23	Michigan State	11-3	103	15
24	California	10-3	101	18
25	Indiana	14-1	74	NR

USA TODAY TOP 25 POLL
January 8

Rk.	School	Rcd.	Pts.	Pvs.
1	Notre Dame (15)	14-1	769	2
2	Louisville (9)	14-0	758	3
3	Connecticut (6)	12-1	749	1
4	Baylor (2)	11-1	712	7
5	Mississippi State	14-1	636	6
7	Stanford	12-1	611	8
8	North Carolina State	15-0	579	9
9	Maryland	13-1	545	4
10	Oregon State	12-2	500	11
11	Texas	12-2	454	12
12	Syracuse	13-2	431	14
13	Tennessee	12-2	409	10
14	Marquette	12-3	364	16
15	Gonzaga	15-1	344	18
16	Kentucky	14-2	309	15
17	Iowa	11-3	279	20
18	Florida State	14-1	213	23
19	Arizona State	11-3	212	22
20	Minnesota	12-2	179	13
21	California	10-3	111	19
22	Iowa State	12-2	99	NR
23	Miami-Florida	14-3	83	NR
24	Michigan State	11-3	82	17
25	South Carolina	10-4	60	NR

GET TO KNOW THE OPPONENT

- Auburn enters the game with a 14-2 record (2-1 SEC) after defeating Alabama, 66-56, on Thursday night. The Tigers have yet to lose by more than 8 points.
- Auburn leads the SEC and is 6th in the nation with 12.6 steals per game. That has helped the Tigers to the No. 5 turnover margin in the country (+7.75).
- Unique Thompson is 2nd only to Teaira McCowan in offensive rebounding (4 rpg) in the SEC. Thompson has 7 double-doubles this year, but the Tigers are led in scoring by Janiah McKay (14.3 ppg).

LAST TIME OUT...

- Four Bulldogs scored in double figures as MSU downed Georgia, 80-71, on Thursday night.
- Chloe Bibby scored a career-high 24 points on 8-of-13 shooting, including four three-pointers. Teaira McCowan collected 21 rebounds, her second game with 20-plus rebounds against an SEC opponent this year.
- MSU forced 22 turnovers with 12 steals for a 30-9 edge in points off turnovers.
- Georgia took a 3-point lead midway through the fourth quarter, but State sparked a 15-3 run over the final 6:12 to seal the game.

HITTING THE CENTURY

- The Dawgs have now broken last year's school-record of four 100-point efforts in a single year with six such games this season (last vs. Louisiana - Dec. 30).
- In all six, State has won by at least 50 points. The Bulldogs have recorded a 60-plus-point margin of victory in four games, more than any other season.
- MSU broke the Alaska Airlines Arena record for points by a visiting team when it defeated Washington (12/20).
- Against Coppin State (11/18), MSU scored 110 points, tied for seventh in school history. Its 72-point victory was tied for the fifth-largest margin of victory in the Bulldog record book.

DAZZLING DANBERRY

- Jordan Danberry is averaging 13.3 points per game this season after scoring just 2.8 ppg last season. She scored in double figures in 3 games last year, but has done so in 14 of 16 contests this season.
- Danberry has scored 10-plus points in each the last 11 games, including two 20-point efforts in that span.
- In conference play, the reigning SEC Co-Player of the Week is averaging 18.3 ppg, which is 6th in the league.
- Danberry has already broken her career high in scoring four times this season, and scored more points (212) this year than in any prior season of her career.

MCCOWAN BREAKS MSU CAREER REBOUNDING RECORD

- With a dozen rebounds at Texas, McCowan has now passed LaToya Thomas (2000-03) for sole possession of the MSU career rebounds record with 1,109. She has now collected 1,231 for her career.
- The SEC active career leader on the boards, McCowan is 1st in the SEC and 2nd in Division I this season hauling down 13.5 rpg.
- She leads the nation on the offensive glass (6 rpg.)
- The Brenham, Texas, native set the SEC season rebounds record with 544 a year ago. That tally ranks 2nd in NCAA Division I history.

DAWG TOUGH AT THE HUMP

- The Dawgs have now won 29-straight games inside Humphrey Coliseum. That run is tied for the 3rd-longest active home win streak in NCAA Division I.
- MSU's men's and women's teams are a combined 54-2 in the Hump since the start of the 2017-18 season.
- Including the postseason, MSU has won 42 games in a row against non-conference competition inside The Hump. The Bulldogs' last home loss to a non-SEC foe came against South Florida in the WNIT quarterfinals on March 30, 2014.

NCAA DIVISION I LONGEST ACTIVE HOME WIN STREAKS (THROUGH 1/10/19)

Team	Wins
1. UConn	84
2. Lamar	35
3. Mississippi State	29
Baylor	29
5. Indiana	19

DAWGS MAKE IT 48 WEEKS IN A ROW IN AP TOP 10

- MSU stayed at No. 7 in this week's Associated Press Top 25 Poll, extending its 48-week streak in the Top 10. That is the fourth-longest streak in the nation.
- The Dawgs have been in the poll for 84-straight weeks, the 6th-longest active streak in the country.

WEEK-BY-WEEK RANKINGS

Week	AP	Coaches	NCAA RPI
Preseason	6	6	
Nov. 11	6	6	
Nov. 19	6	6	
Nov. 26	6	6	
Dec. 5	6	6	
Dec. 12	5	5	
Dec. 17	4	4	
Dec. 24	8	7	12
Dec. 31	7	6	18
Jan. 7	7	6	15

Week	AP	Coaches	NCAA RPI

BULLDOG GAME-BY-GAME STARTERS

OPPONENT	GUARD	GUARD	FORWARD	FORWARD	CENTER	RECORD
SEMO	Holmes	Danberry	Bibby	Howard	McCowan	1-0
at Virginia	Holmes	Danberry	Bibby	Howard	McCowan	2-0
LAMAR	Holmes	Danberry	Bibby	Howard	McCowan	3-0
COPPIN ST.	Holmes	Danberry	Bibby	Howard	McCowan	4-0
FURMAN	Holmes	Danberry	Bibby	Howard	McCowan	5-0
JACKSON ST.	Holmes	Danberry	Bibby	Howard	McCowan	6-0
at Little Rock	Holmes	Danberry	Bibby	Howard	McCowan	7-0
at Texas	Holmes	Danberry	Bibby	Howard	McCowan	8-0
MARQUETTE	Holmes	Danberry	Bibby	Howard	McCowan	9-0
at Southern Miss	Holmes	Danberry	Bibby	Howard	McCowan	10-0
at Oregon	Holmes	Danberry	Bibby	Howard	McCowan	10-1
at Washington	Holmes	Danberry	Bibby	Howard	McCowan	11-1
LOUISIANA	Holmes	Danberry	Bibby	Howard	McCowan	12-1
at Arkansas	Holmes	Danberry	Bibby	Howard	McCowan	13-1
KENTUCKY	Holmes	Danberry	Bibby	Howard	McCowan	14-1
GEORGIA	Holmes	Danberry	Bibby	Howard	McCowan	15-1
at Auburn						
SO. CAROLINA						
at Florida						
OLE MISS						
at LSU						
at Alabama						
TENNESSEE						
MISSOURI						
at Texas A&M						
at Ole Miss						
VANDERBILT						
LSU						
at So. Carolina						

MSU RECORD BY STARTING LINEUP

Bibby, Danberry, Holmes, Howard, McCowan..... 15-1



2018-19 PRESEASON SEC POLLS

COACHES

Order of Finish

1. Mississippi State
2. South Carolina
3. Georgia
4. Tennessee
5. Missouri
6. Texas A&M
7. Kentucky
8. Auburn
9. LSU
10. Alabama
11. Arkansas
12. Florida
13. Vanderbilt
14. Ole Miss

Player of the Year

Teaira McCowan, Mississippi State

Preseason All-SEC

First Team

Calyia Robinson, Georgia
 Maci Morris, Kentucky
Anriel Howard, Mississippi State
Teaira McCowan, Mississippi State
 Sophie Cunningham, Missouri
 Tyasha Harris, South Carolina
 Rennia Davis, Tennessee
 Chennedy Carter, Texas A&M.

Second Team

Malica Monk, Arkansas
 Janiah McKay, Auburn
 Unique Thompson, Auburn
 Taylor Murray, Kentucky
 Ayana Mitchell, LSU
 Shandricka Sessom, Ole Miss
 Amber Smith, Missouri
 Alexis Jennings, South Carolina
 Evina Westbrook, Tennessee

MEDIA

Order of Finish

1. Mississippi State
2. South Carolina
3. Tennessee
4. Georgia
5. Missouri
6. Texas A&M
7. Kentucky
8. Auburn
9. LSU
10. Alabama
11. Arkansas
12. Florida
13. Vanderbilt
14. Ole Miss

Player of the Year

Teaira McCowan, Mississippi State

Preseason All-SEC

Calyia Robinson, Georgia
Anriel Howard, Mississippi State
Teaira McCowan, Mississippi State
 Sophie Cunningham, Missouri
 Alexis Jennings, South Carolina
 Rennia Davis, Tennessee
 Chennedy Carter, Texas A&M

ANOTHER TOUGH SCHEDULE

- Mississippi State has been no stranger to playing top competition, as Schaefer's squads have put together some of the toughest schedules in the country.
- This year is no exception as the slate boasts 13 teams that played in the NCAA Tournament a year ago. Seven of MSU's non-conference foes that advanced to the postseason.
- The Bulldogs are 3-1 against AP Top 25 teams with wins against then-No. 10 Texas, then-No. 18 Marquette and No. 16 Kentucky.

MCCOWAN, HOLMES WIN NO. 114

- Seniors Jazzmun Holmes and Teaira McCowan picked up career victory No. 114 on Thursday against Georgia. That total is tied for the 3rd-most nationally since 2015-16 and 12 wins away from matching last year's class (126) for the program's career wins record.
- They have recorded 86 wins since 2016-17, the most in the country in that span.

MOST WINS IN DIVISION I SINCE 2015-16 (THROUGH 1/10/19)

Team	Wins
1. UConn	123
2. Notre Dame	116
3. Mississippi State	114
Baylor	114
5. Louisville	105

JAZZ DROPS THE DIMES

- Jazzmun Holmes is a big reason MSU is one of the nation's best in assists and assist/turnover ratio. Over her last 9 games, she is averaging 5.6 apg compared with just 1.6 turnovers.
- She is 2nd in the SEC dishing 5.3 apg, but she has taken care of the basketball, ranking 2nd in the nation with a 4.2 assist/turnover ratio.
- The Gulfport, Miss., native notched career assist No. 300 against Furman, and her 358-career dimes are 6th by an active SEC player and 8th in the MSU record books.

MSU CAREER ASSISTS LIST

Player	Gms.	Asst.	A/G
1 Morgan William (2015-present)	148	656	4.4
7 Polly Branch (1983-87)	111	391	3.5
8 Jazzmun Holmes (2016-pres.)	126	358	2.8
9 Diamber Johnson (2009-12)	126	351	2.8

BULLDOGS EARN SEC POW HONORS

- MSU has earned four SEC Player of the Week awards this season after Jordan Danberry shared this week's honor with Georgia's Gabby Connally. Danberry averaged 21.5 points and 6.0 rebounds in two games including a career-best 21 points and 9 rebounds at Arkansas.
- McCowan earned her second of the year on Dec. 4 after breaking State's career rebounds record (1,109). It was her sixth career Player of the Week honor, the most among current league players. She was also named SEC Freshman of the Week in the 2015-16 season, giving her seven total conference weekly honors in her Bulldog career, which ties the MSU record held by Victoria Vivians (2015-17) and LaToya Thomas (2000-03).
- Howard earned the honor for Week 2 after averaging 19.5 ppg and 10.5 rpg in wins against Lamar and Coppin State. It was the second time in her career to claim the award.
- McCowan earned the year's first honor after averaging 18.0 points, 14.5 rebounds and 5.5 blocks in opening-week wins against SE Missouri and Virginia.

DROPPING DIMES

- State has also been one of the nation's best at distributing the basketball, dishing 18.6 assists per game, an average that leads the SEC and is 13th in the nation.
- The Bulldogs lead the league and are 9th nationally in assist/turnover ratio with a 1.4 mark. MSU also led the SEC in the category last season after rating 2nd in 2016-17.
- State has recorded 20-plus assists in 7 games this year.

STATE SCORES THE POINTS

- MSU's offense has scored 100 points in 6 games this year including four straight (11/15-11/24). Six 100-point efforts in a single-season broke the school record of 5 set by last year's squad. The SEC record is 10 games set by Alabama in 1991-92.
- MSU's scoring average is 2nd in the nation (91.4 ppg) and its scoring margin (+35.9) leads Division I.
- State set a school record for points in a half with 69 in the second half against Lamar.
- MSU has shot 50.4% from the field, which is 1st in the SEC and 5th in Division I. State has shot 50% or better in 7 games this year. The Dawgs are 2nd in the league from the arc, making 38.2%.
- State is making 54.0% of its shots inside the arc, the 11th-best tally in the country by HerHoopStats.com.

BULLDOG GLASS CLEANING

- State has dominated the glass, leading the SEC in rebounds per game (46.3) and 7th in the nation.
- The Bulldogs are 2nd nationally in rebounding margin (+17.2). MSU has recorded a +10 or more advantage in all but 3 games this year.
- MSU leads the SEC, and is 2nd in DI, on the offensive glass with 19 rpg.
- According her HerHoopStats.com, the Dawgs collect offensive boards at a nation's-best 52.1% clip. MSU is 2nd in the nation grabbing the rebound on 61.1% of its opportunities.



STATE'S SUFFOCATING DEFENSE

- MSU owns the nation's 19th-best scoring defense and 3rd-lowest in the SEC, allowing 55.5 ppg. The Bulldogs have allowed 60 points in just 6 games this year.
- Only 4 teams - Marquette (82 on 12/6/18), Oregon (82 on 12/18/18), Kentucky (71 on 1/6/19) and Georgia (71 on 1/10/19) - have cracked the 70-point plateau this year.
- According to HerHoopStats.com, MSU is the nation's 15th-best defending inside the 3-point arc, keeping foes at 37.4%.

STATE SWAT TEAM

- One reason teams struggle inside the arc against MSU is because it leads the nation in blocked shots, rejecting 110 on the season. The Dawgs are 5th in the country blocking shots at a rate of 6.9 per game.
- In comparison, 24 MSU teams blocked 100 or fewer shots in a season.
- McCowan is 4th in the nation with 42 total blocks and is 14th with a 2.6 average. She blocks 9.8% of opponents' 2-point FG attempts, 38th in the country by HerHoopStats.com.
- Freshman Jessika Carter is 6th in the SEC with 24 blocks and 1.5 bpg.

REDEFINED DEFENSE

- McCowan has long been known as a shot-blocking threat, but the Bulldog senior has taken her defense to another level this season.
- The Brenham, Texas native is blocking shots at a higher rate (2.6 bpg) this year than any prior season while being more effective and limiting her fouls.
- McCowan is averaging 2.4 fouls per game, the lowest rate of her career, and has yet to foul out of a contest after doing so twice in each of the past two years and five times as a freshman.
- As a team, State's 15.9 fouls per game are the 3rd-lowest in the SEC.

BIG T MAKING BUCKETS

- McCowan holds the MSU record with 52 career double-doubles and is 8th in the SEC in scoring this season at 16.5 ppg, but she is making shots at a 66.3% clip that tops the league and is 7th in the nation this season.
- McCowan has scored double figures in 19 of her last 20 games going back to last season. In 8 of those games she has scored 20+ points.
- Against Furman, McCowan was 11-for-11 from the field, the first time a Bulldog has gone perfect from the field when attempting 10-plus attempts.
- McCowan had the 2nd-best field goal percentage in school history a year ago (60.1%), and her 58.7% career tally is tops in Bulldog annals.
- McCowan has passed LaCharlotte Smith for 6th in MSU's career scoring records with 1,544 points. That total is 3rd among active SEC players.

BULLDOG DUO AMONG NATION'S TOP CAREER REBOUNDERS

- McCowan's 1,231 career rebounds are the 3rd most among active NCAA Division I players. Anriel Howard follows close behind in 5th with 1,129 boards.
- McCowan is the SEC's active leader in the category, while Howard is 2nd.

NCAA DIVISION I TOP RETURNING REBOUNDERS (RPG) — CAREER (THROUGH 1/10/19)

Player	RBDS.
1. Channon Fluker, Cal State Northridge	1,248
2. Reyna Frost, Central Michigan	1,243
3. Teaira McCowan, Mississippi St.	1,231
4. Megan Gustafson, Iowa	1,172
5. Anriel Howard, Mississippi St.	1,129

DOUBLE-DOUBLES ABOUND

- McCowan and Howard are not only two of the nation's returning rebounds leaders, but they're also among the country's best at collecting double-doubles.
- McCowan collected her 13th double-double of the season and 52nd for her career in Thursday's win against Georgia. That total is 4th-most among active Division I players and an MSU record.
- Howard collected her 3rd as a Bulldog against Kentucky (1/6), leading all scorers with 21 points and 12 rebounds. It was the 36th double-double of her career, 11th among active DI players.
- Their 88 combined double-doubles are the most among a pair of teammates in the nation.

NCAA DIVISION I ACTIVE CAREER DOUBLE-DOUBLES LEADERS (THROUGH 1/10/19)

Player	DbI-DbIs
1. Megan Gustafson, Iowa	69
2. Channon Fluker, Cal St. Northridge	66
3. Kristine Anigwe, California	54
4. Teaira McCowan, Mississippi St.	52
5. Reyna Frost, Central Michigan	45
11. Anriel Howard, Mississippi St.	36

CAREER WATCH

SCORING

player	games	points	avg.
1 LaToya Thomas (2000-03)	125	2,981	23.8
2 Victoria Vivians (2015-2018)	147	2,527	17.1
3 Tan White (2002-05)	121	2,421	20.0
6 Teaira McCowan (2016-pres.)	129	1,544	12.0

FIELD GOAL PERCENTAGE (minimum 300 attempts)

player	games	percentage
1 Teaira McCowan (2016-pres.)	129	58.4(627-1,073)
2 LaToya Thomas (2000-03)	127	55.3 (1,119-2,024)
3 Sophie Ratliff (1987-90)	117	53.7 (454-845)
4 Ann Lashley (1985-88)	116	53.6 (439-819)
5 Erica Simmons (1990-93)	107	53.2 (223-419)
6 Chinwe Okorie (2015-17)	109	52.1 (270-518)

FIELD GOALS MADE

player	games	field goals
1 LaToya Thomas (2000-03)	125	1,119 (2,024 att.)
2 Victoria Vivians (2015-2018)	147	923 (2,286 att.)
3 Tan White (2002-05)	121	893 (2,102 att.)
4 Polly Branch (1983-87)	111	649 (1,654 att.)
5 Teaira McCowan (2016-pres.)	129	627 (1073 att.)

THREE-POINT FIELD GOALS MADE

player	games	field goals
1 Alexis Rack (2007-10)	129	340 (1,057 att.)
2 Victoria Vivians (2015-2018)	147	281 (866 att.)
3 Tan White (2002-05)	121	222 (714 att.)
4 Mary Kathryn Govero (2008-11)	128	182 (492 att.)
5 Blair Schaefer (2015-2018)	134	175 (455 att.)

THREE-POINT FIELD GOAL PERCENTAGE (minimum 100 attempts)

player	games	percentage
1 Roshunda Johnson (2017-2018)	71	42.4 (118-278)
2 Jessica Carter (2001-04)	106	41.4 (99-239)
3 Chloe Bibby (2017-pres.)	53	39.7 (44-115)
4 Blair Schaefer (2015-2018)	134	38.5 (175-455)
5 Bobbie Braddock (1990-91)	55	37.8 (59-156)
6 Angela Harris (1997-00)	110	37.6 (89-237)
7 Meadow Overstreet (1998-01)	112	37.0 (138-373)
8 Mary Kathryn Govero (2008-11)	128	37.0 (182-492)
9 Jennifer Fambrough (1999-02)	117	36.7 (69-188)
10 Jemmye Ann Helms (1993-97)	101	36.6 (100-273)

FREE THROWS MADE

player	games	free throws
1 LaToya Thomas (2000-03)	125	709 (914 att.)
2 Morgan William (2015-2018)	147	531 (627 att.)
3 Tan White (2002-05)	121	413 (557 att.)
4 Victoria Vivians (2015-2018)	147	400 (523 att.)
10 Sophie Ratliff (1987-90)	117	290 (499 att.)
10 Teaira McCowan (2016-pres.)	129	290(449 att.)

FREE THROW PERCENTAGE (minimum 150 attempts)

player	games	percentage
1 Morgan William (2015-2018)	147	84.7 (531-627)
2 Jazzmun Holmes (2016-pres.)	126	78.5 (153-195)
3 LaToya Thomas (2000-03)	124	77.6 (709-914)
4 Jennifer Fambrough (1999-02)	117	77.5 (396-511)
5 Chanel Mokango (2009-10)	67	76.9 (143-186)
6 Victoria Vivians (2015-2018)	147	76.5 (400-523)
7 Alexis Rack (2007-10)	129	76.5 (296-387)
8 Ann Sanders (1987-90)	92	75.8 (141-186)
9 Diamber Johnson (2009-12)	126	75.7 (178-235)
10 Tutti Calhoun (1975-77)	66	74.8 (152-203)

REBOUNDS

player	games	rebounds	avg.
1 Teaira McCowan (2016-pres.)	129	1,231	9.5
2 LaToya Thomas (2000-03)	125	1,108	8.9
6 Sophie Ratliff (1987-90)	117	822	7.0
7 Victoria Vivians (2015-2018)	147	783	5.3

ASSISTS

player	games	assists	avg.
1 Morgan William (2015-2018)	147	656	4.5
2 Angela Harris (1997-00)	110	463	4.2
7 Polly Branch (1983-87)	111	391	3.5
8 Jazzmun Holmes (2016-pres.)	126	358	2.8

BLOCKED SHOTS

player	games	blocks	avg.
1 Martha Alwal (2012-15)	124	328	2.6
2 Teaira McCowan (2016-pres.)	129	226	1.8

STEALS

player	games	steals	avg.
1 Tan White (2002-05)	121	372	3.1
2 Kunshinge Sorrell (1987-88)	62	238	3.8
3 LaCharlotte Smith (1993-96)	106	230	2.2
4 Victoria Vivians (2015-2018)	147	218	1.5



THE LAST TIME FOR THE BULLDOGS...

THE LAST TIME MSU...

Won 30 games in a row.....	32 games, Nov. 10, 2017-March 3, 2018
Won 20 games in a row.....	29 games, Nov. 10, 2017-Feb. 22, 2018
Won 10 home games in a row.....	29 games, March 17, 2017-Jan. 10, 2019
Won 10 road games in a row.....	13 games, Dec. 20, 2017-Dec. 14, 2018
Lost 3 games in a row.....	3 games, Jan. 16, 2014-Jan. 23, 2014
Defeated a Top 10 Team.....	at No. 10 Texas, 67-49 (12/2/18)
Defeated a Top 25 Team.....	No. 16 Kentucky, 81-76 (1/6/19)
Defeated a ranked team on the road.....	at No. 10 Texas, 67-49 (12/2/18)
Overcame a 10+ point halftime deficit to win.....	17, at Iowa State (12/3/16)
Won an overtime game.....	73-63 vs. Louisville (NCAAT) (3/30/18)
Lost an overtime game.....	75-78 at Kentucky (2/23/17)
Won a double overtime game.....	74-66 vs. Southern Miss (3/24/14)
Lost a double overtime game.....	90-92 at Kentucky (2/12/15)
Won regular season tournament.....	Duel in the Desert (Rebel Division) (2017)
Scored 100 points.....	104 vs. Louisiana (12/30/18)
Scored 100+ points in 3 or more straight games.....	4 games (11/15/18-11/24/18)
Scored 100 points on the road.....	103 at Washington (12/20/18)
Scored 90 points.....	93 at Arkansas (1/3/19)
Made 30 field goals.....	31 No. 16 Kentucky (1/6/19)
Made 40 field goals.....	41 at Washington (12/20/18)
Made 50 field goals.....	53 vs. Judson College (2/24/86)
Shot 60% from the field.....	62.7% vs. Furman (11/21/18)
Shot 55% from the field.....	56.9% at Washington (12/20/18)
Shot less than 30% from the field.....	28.6% vs. UConn (NCAAT) (3/26/16)
Made 5 3-point field goals.....	5 vs. Georgia (1/10/19)
Made 10 3-point field goals.....	12 vs. Furman (11/21/18)
Made 30 or more free throws.....	33 vs. Louisiana Tech (12/11/14)
Made 25 or more free throws.....	26 vs. Oklahoma St. (12/3/17)
Attempted 100 field goals.....	104 vs. Montevallo (11/19/19)
Attempted 30 3-point field goals.....	31 at Duke (3/22/15)
Attempted 30 or more free throws.....	30 at Southern Miss (12/14/18)
Attempted 45 or more free throws.....	46 vs. Louisiana Tech (12/11/14)
Had 65 rebounds.....	69 vs. SE Louisiana (12/7/14)
Had 70 rebounds.....	71 vs. Arkansas-Pine Bluff (11/13/09)
Had 75 rebounds.....	78 vs. Judson College (2/24/86)
Had 10 or more blocked shots in a game.....	12 vs. Louisiana (12/30/18)
Had 25 or more assists.....	28 vs. Furman (11/21/18)
Had 35 or more assists.....	37 vs. Memphis (1/3/80)
Had 10 or more steals.....	12 vs. Georgia (1/10/19)
Had 20 or more steals.....	20 vs. Miss. Valley St. (11/24/15)
Had 30 or more steals.....	30 vs. New Orleans (11/17/13)
Had four freshmen start a single game.....	4, at Vanderbilt (1/12/06)

LAST TIME SOMEONE FOR MSU...

Scored 30 points.....	30, Anriel Howard at No. 7 Oregon (12/18/18)
Scored 40 points.....	41, Teaira McCowan vs. Miss. Valley St. (12/28/17)
Scored 45 points.....	47, Tan White vs. Vanderbilt (2/3/05, 201)
Scored in double figures in 10 straight games.....	16 straight, Teaira McCowan (3/17/18-12/14/18)
Scored double figures in 100 straight games.....	125 straight, LaToya Thomas (11/9/99-3/4/03)
Scored 20 points in 2 or more straight games.....	2 straight, Teaira McCowan (11/18/18-11/21/18)
Scored 20 points in 5 or more straight games.....	9 straight, Tan White (2/19/04-11/26/04)
Scored 20 points in 10 or more straight games.....	12 straight, LaToya Thomas (2/1/01-3/20/01)
Scored 20+ points by 2 players in a game.....	Howard [29], McCowan [24] vs. No. 18 Marquette (12/6/18)
Scored 20+ points by 3 players in a game.....	vs. So. Miss. (11/20/99)
Scored 30 points in 2 straight games.....	Tan White (38) vs. Arkansas (3/3/05) & Auburn (2/27/05)
Scored 30+ points by 2 players in a game.....	McCowan [35], Vivians [30] vs. Oregon (12/13/17)
5 or more players scored double figures.....	5, vs. Louisiana (12/30/18)
5 or more scored 10+ pts. in 2 or more straight games.....	2 straight games (12/20/18-12/30/18)
Made 10 field goals in a game.....	11, Jordan Danberry at Arkansas (1/3/19)
Made 15 field goals in a game.....	19, Teaira McCowan vs. Miss. Valley St. (12/28/17)
Made 20 field goals in a game.....	20, LaToya Thomas vs. Tulsa (11/17/02)
Made 5 or more 3-pointers in a game.....	5, Bre Amber Scott vs. Louisiana (12/30/18)
Made 7 or more 3-pointers in a game.....	7, Victoria Vivians at Louisiana Tech (12/13/15)
Made 8 or more 3-pointers in a game.....	8, Meadow Overstreet vs. Miss. Valley St. (12/20/99)
Made 10 free throws in a game.....	10, Teaira McCowan vs. Southeast Missouri (11/6/18)
Made 15 free throws in a game.....	18, Jennifer Fambrough vs. Northwestern St. (12/19/98)
Had 10 or more rebounds.....	21, Teaira McCowan vs. Georgia (1/10/19)
Had 15 or more rebounds.....	21, Teaira McCowan vs. Georgia (1/10/19)
Had 20 or more rebounds.....	21, Teaira McCowan vs. Georgia (1/10/19)
Had 25 or more rebounds.....	25, Teaira McCowan vs. Louisville (NCAAT) (3/30/18)
Had 10+ rebounds in 5 straight games.....	10 straight, Teaira McCowan (11/28/18-1/10/19)
Had three players record 10 rebounds.....	vs. SE Louisiana (12/7/14)
Had 10 offensive rebounds.....	13, Teaira McCowan vs. Georgia (1/10/19)
Had 10 defensive rebounds.....	14, Teaira McCowan at Arkansas (1/3/19)
Dished 10 assists.....	13, Jazzmun Holmes vs. No. 18 Marquette (12/6/18)
Dished 15 assists.....	17, Polly Branch vs. Bryan (2/1/86)
Blocked 5 shots in a game.....	5, Teaira McCowan vs. Louisiana (12/30/18)
Blocked 10 or more shots in a game.....	10, Martha Alwal vs. Jacksonville St. (11/11/11)
Had 5 or more steals in a game.....	6, Jazzmun Holmes vs. No. 16 Kentucky (1/6/19)
20 pts. & 20 rbd. in a game.....	Teaira McCowan [21 pts., 25 rbd.] vs. Louisville (NCAAT) (3/30/18)
Had a double-double.....	Teaira McCowan [18 pts., 21 rbd.] vs. Georgia (1/10/19)
Had a double-double in 2 straight games.....	Teaira McCowan (5 straight, 12/20/18-1/10/19)
Had a double-double in 3 straight games.....	Teaira McCowan (5 straight, 12/20/18-1/10/19)
Had a double-double in 5 or more straight games.....	Teaira McCowan (5 straight, 12/20/18-1/10/19)
Had two players record a double-double.....	Anriel Howard & Teaira McCowan vs. No. 16 Kentucky (1/6/19)
Had three players record a double-double.....	vs. Arkansas-Pine Bluff (11/13/09)
Had 10+ double-doubles in a season.....	13, Teaira McCowan (2018-19)
Had a triple-double.....	Cynthia Hall, 12 pts., 10 rbd. and 12 assts. vs. La.-Lafayette (12/16/00)

LAST TIME AN OPPONENT...

Scored 60 points or less.....	36 by Louisiana (12/30/18)
Scored 50 points or less.....	36 by Louisiana (12/30/18)
Scored 40 points or less.....	36 by Louisiana (12/30/18)
Scored 30 points or less.....	26 by Northwestern St. (12/28/16)
Shot 60% from the field.....	62.7% by UConn (NCAAT) (3/26/16)
Shot 50% from the field.....	53.6% by Georgia (1/10/19)
Made 10 3-point field goals in a game.....	10 by DePaul (NCAAT) (3/19/17)
Made 10 or fewer field goals.....	8 by Savannah St. (11/29/15)
Made 35 free throws.....	38 by Union University (12/3/84)

BULLDOGS BRINGING FANS TO THE HUMP

- MSU continues to be among the nation's attendance leaders, drawing 61,068 fans this season, 7th-most in Division I. State's 7,634 average is 7th nationally.
- Starkville has become a Sunday destination for women's basketball. Through three Sunday home games, the Bulldogs are averaging 8,797 fans.

BRILLIANT BIBBY

- Chloe Bibby has enjoyed an outstanding start to her sophomore campaign, scoring in double figures in 13 of 16 games, including the first two 20-point efforts of her career with 21 against Furman (11/21) and a 24 against Georgia on Thursday.
- Bibby has been outstanding from the 3-point arc, making an SEC 8th-most 33 3-pointers after sinking just 15 all season as a freshman.
- According to HerHoopStats.com, Bibby is in the Top 3% in Division I in scoring efficiency, averaging 1.26 points with each shot attempt.

HOWARD JOINS THE 1K POINT CLUB

- Howard reached 1,000 points for her career with her first basket in State's Nov. 24 win against Jackson State.
- Her 1,186-career points are 8th-most by a current SEC player.
- The graduate transfer has found her stride offensively, scoring in double figures in 12 of her last 14 games. In that stretch she is averaging 17.1 ppg and 7.9 rpg while shooting 54.1% from the field and 37.9% from 3-point land.

MCCOWAN, HOWARD EARN PRESEASON SEC HONORS

- A year after being named First Team All-SEC and the league's co-Defensive Player of the Year, McCowan was selected the SEC Preseason Player of the Year by both league media and the coaches.
- Anriel Howard joined her new teammate on both All-SEC squads. She was tabbed Preseason All-SEC by the media, and she was also selected Preseason First Team All-SEC by the conference coaches.

HOWARD, MCCOWAN ON PLAYER OF THE YEAR WATCH LISTS

- One of the most-talented front courts in the country is landing on the player of the year watch lists.
- McCowan was selected to the WBCA's Wade Trophy Watch List and she joined Anriel Howard on the Naismith Trophy Watch List and the Wooden Award Top 30 Watch List. McCowan was recently named to the Wooden Award Top 25 as well.
- The duo also landed on the watch lists for the nation's top player at their respective positions. Howard was named to the Katrina McClain Award for the nation's top power forward, while McCowan was selected to the watch list for the Lisa Leslie Award, which is given to the country's top center.
- Last season, McCowan was a finalist for the Lisa Leslie Award, while Victoria Vivians won the Ann Meyers Drysdale Award as the country's top shooting guard.

DAWGS SET TO REPRESENT THE USA

- Although the Bulldogs are in the midst of the 2018-19 season, next summer MSU will be trading the Maroon & White for Red, White & Blue as Mississippi State has been selected to represent the United States in the 30th World University Games.
- The event will be played in Naples, Italy, with opening ceremonies slated for July 3. The basketball portion begins that day and runs through July 12.

SCHAEFER & CO. LAND NO. 6 SIGNING CLASS

- Mississippi State once again landed the top signing class in program history, inking five of the nation's best players for the No. 6 class in the nation by ESPN.
- MSU landed Michigan guard/forward Rickea Jackson, the No. 3 recruit nationally by Prospects Nation and No. 9 according to ESPN. She is the No. 2 wing by both.
- The Dawgs inked two players out of Tennessee. Jayla Hemingway (Collierville) is ranked 88th nationally by ESPN and 19th by Prospects Nation. She is the No. 24 guard. Esmery Martinez is a Dominican Republic native playing at the prep level in Chattanooga. Martinez is 49th in the country by espnW and the 8th-best post prospect.
- MSU also signed Prospects Nation four-star combo guard Aliyah Matharu (66th nationally) out of Washington, D.C.
- State went to Louisiana and inked JaMya Mingo-Young, the No. 39 prospect by HoopGuriz and the 22nd-rated guard by ESPN.



MSU'S RECORD WHEN...

	<u>2018-19</u>	<u>Under Schaefer</u>
Scoring First	11-0	120-23
Opponent Scores First	4-1	56-31
Leads at Halftime	15-1	152-15
Trails at Halftime	0-0	21-38
Is Tied at Halftime	0-0	3-1
Shoots 45% or better from field	11-1	81-6
Shoots less than 45% from field	4-0	95-48
Opp. shoots less than 45% from field	13-0	154-26
Opp. shoots 45% or better from field	2-1	22-28
Outrebounds the opponent	14-0	131-12
Ties the opponent in rebounds	0-0	6-2
Outrebounded by the opponent	1-1	39-40
Fewer (or ties) TOs than opponent	13-1	149-29
More TOs than opponent	2-0	27-25
Holds opponents to 65 points or less	11-0	147-25
In games decided by 10 points or less	2-1	55-30

MSU'S RECORD IN...

	<u>2018-19</u>	<u>Under Schaefer</u>
All Games	15-1	176-54
Home Games	9-0	100-14
Road Games	6-1	44-27
Neutral-sites	0-0	32-13
Non-SEC Games	12-1	105-13
Non-SEC Home Games	7-0	62-2
Non-SEC Road Games	5-1	18-4
Non-SEC Neutral-site Games	0-0	25-7
SEC Games	3-0	64-35
SEC Home Games	2-0	38-12
SEC Road Games	1-0	26-23
SEC Tournament	0-0	7-6
November Games	7-0	42-4
December Games	5-1	48-4
January Games	3-0	33-19
February Games	0-0	29-14
March Games	0-0	24-11
April Games	0-0	0-2
Monday Games	0-0	11-2
Tuesday Games	1-1	8-2
Wednesday Games	2-0	14-3
Thursday Games	5-0	37-23
Friday Games	2-0	28-1
Saturday Games	1-0	18-2
Sunday Games	4-0	60-21
Overtime Games	0-0	8-6
Television Games	12-1	125-33
Games vs. Ranked Opponents	3-1	30-29

BREAKING DOWN THE BULLDOGS

Double-Doubles:	<u>2018-19</u>	<u>Career</u>	Charges Taken
Teaira McCowan	13	52	Myah Taylor..... 8
Anriel Howard	3	36	Jazzmun Holmes..... 6
Promise Taylor		4	Jordan Danberry..... 1
Zion Campbell		1	Andra Espinoza-Hunter..... 1
			Bre'Amber Scott..... 1
Double-Figure Scoring:	<u>2018-19</u>	<u>Career</u>	Who Scored First
Teaira McCowan	14	72	Jordan Danberry..... 6
Jordan Danberry	14	17	Teaira McCowan..... 4
Chloe Bibby	13	18	Anriel Howard..... 3
Anriel Howard	12	54	Chloe Bibby..... 2
Andra Espinoza-Hunter	5	5	Jazzmun Holmes..... 1
Jazzmun Holmes	5	9	
Bre'Amber Scott	4	4	How The First Points Were Scored
Jessika Carter	2	2	Layup..... 6
Myah Taylor	1	1	Jumper..... 5
Xaria Wiggins	1	1	Free Throw..... 4
Promise Taylor		12	3-Pointer..... 1
Zion Campbell		1	
20-Plus Point Games:	<u>2018-19</u>	<u>Career</u>	Consecutive Free Throws Made (active)
Teaira McCowan	5	25	Myah Taylor..... 7
Anriel Howard	4	10	Xaria Wiggins..... 7
Chloe Bibby	2	2	Chloe Bibby..... 5
Jordan Danberry	2	2	Anriel Howard..... 4
Bre'Amber Scott	1	1	Zion Campbell..... 3
			Jordan Danberry..... 2
			Bre'Amber Scott..... 2
			Jazzmun Holmes..... 1
30-Plus Point Games:	<u>2018-19</u>	<u>Career</u>	Career Games Played
Anriel Howard	1	1	129..... Teaira McCowan
Teaira McCowan		5	126..... Jazzmun Holmes
			118 (102 at TAMU)..... Anriel Howard
40-Plus Point Games:	<u>2018-19</u>	<u>Career</u>	83 (36 at Arkansas)..... Jordan Danberry
Teaira McCowan		1	66..... Zion Campbell
			53..... Chloe Bibby
10+ Rebounds:	<u>2018-19</u>	<u>Career</u>	39..... Bre'Amber Scott
Teaira McCowan	14	65	31 (all at OM)..... Promise Taylor
Anriel Howard	3	62	26..... Nyah Tate
Jessika Carter	1	1	21 (7 at UConn)..... Andra Espinoza-Hunter
Promise Taylor		3	16..... Jessika Carter
Zion Campbell		1	16..... Myah Taylor
			13..... Xaria Wiggins
20+ Rebounds:	<u>2018-19</u>	<u>Career</u>	Career Games Started
Teaira McCowan	2	8	103 (87 at TAMU)..... Anriel Howard
Anriel Howard		1	71..... Teaira McCowan
			29 (13 at Arkansas)..... Jordan Danberry
5+ Blocks:	<u>2018-19</u>	<u>Career</u>	16..... Chloe Bibby
Teaira McCowan	4	10	16..... Jazzmun Holmes
Jessika Carter	2	2	13 (all at OM)..... Promise Taylor
Promise Taylor		3	
10+ Blocks:	<u>2018-19</u>	<u>Career</u>	Consecutive Games Started
Promise Taylor		1	85 (69 at TAMU)..... Anriel Howard
			61..... Teaira McCowan
5+ Assists:	<u>2018-19</u>	<u>Career</u>	16..... Chloe Bibby
Jazzmun Holmes	9	32	16..... Jordan Danberry
Myah Taylor	5	5	16..... Jazzmun Holmes
Jordan Danberry	3	4	
Anriel Howard	1	5	
10+ Assists:	<u>2018-19</u>	<u>Career</u>	
Promise Taylor		1	
5+ Steals:	<u>2018-19</u>	<u>Career</u>	
Jazzmun Holmes	1	3	
Anriel Howard		1	
Teaira McCowan		1	



MSU IN THE SEC AND NCAA
(Thru 1/10/19)

TEAM STANDINGS — ALL GAMES

CATEGORY	TOTAL	SEC	NCAA
Scoring Offense	91.4	1	2
Scoring Defense	5.5	3	19
Scoring Margin	+35.9	1	1
FG Percentage	.504	1	5
FG Percentage Def.	.361	3	47
3PT FG Percentage	.382	2	15
3PT FG Defense	.311	10	182
3PT FG Per Game	5.6	9	211
Free Throw Percentage	.722	4	84
Rebounding	46.25	1	7
Rebounding Margin	+17.2	1	2
Offensive Rebounds	19	1	2
Blocked Shots	6.9	2	5
Assists	18.6	1	13
Steals	9.4	7	88
Turnovers Forced	21.0	3	27
Turnover Margin	+7.69	3	6
Assist/Turnover Ratio	1.39	1	9

INDIVIDUAL STANDINGS — ALL GAMES

CATEGORY	TOTAL	SEC	NCAA
POINTS PER GAME			
Teaira McCowan	16.5	8	119
Anriel Howard	16.0	9	135
FIELD GOAL PERCENTAGE			
Teaira McCowan	.663	1	7
Anriel Howard	.541	3	43
Jordan Danberry	.509	5	74
REBOUNDS PER GAME			
Teaira McCowan	13.5	1	2
Anriel Howard	7.9	10	136
FREE THROW PERCENTAGE			
Jazzmun Holmes	.849	2	51
ASSISTS PER GAME			
Jazzmun Holmes	5.3	2	40
Jordan Danberry	3.6	10	231
ASSIST/TURNOVER RATIO			
Jazzmun Holmes	4.20	1	2
Jordan Danberry	1.78	5	118
BLOCKS PER GAME			
Teaira McCowan	2.63	1	14
Jessika Carter	1.5	6	91
DOUBLE-DOUBLES			
Teaira McCowan	13	1	2
3 PT FG PER GAME			
Chloe Bibby	2.06	8	203
3 PT FG PERCENTAGE			
Chloe Bibby	.446	3	28
OFFENSIVE REBOUNDS PER GAME			
Teaira McCowan	6	1	1

BULLDOG GAME-BY-GAME LEAD/DEFICIT

OPPONENT	LARGEST LEAD	LARGEST DEFICIT	TIME LED	TIME TRAILED	TIME TIED	RESULT
SEMO	36 (4th, 1:23)	None	38:46	0:00	1:12	W, 88-53
at Virginia	32 (4th, 2:09)	None	39:24	0:00	0:36	W, 72-44
LAMAR	53 (4th, 1:07)	None	38:02	0:00	1:57	W, 104-53
COPPIN ST.	76 (4th, 5:18)	None	39:45	0:00	0:15	W, 110-38
FURMAN	70 (4th, 2:35)	None	39:21	0:00	0:39	W, 106-41
JACKSON ST.	67 (4th, 0:29)	2 (1st, 8:59)	38:21	0:20	1:19	W, 105-38
at Little Rock	40 (4th, 5:56)	3 (2nd, 9:25)	36:30	2:36	0:54	W, 98-63
at Texas	26 (4th, 1:25)	3 (1st, 6:34)	35:13	3:28	1:19	W, 67-49
MARQUETTE	5 (1st, 1:55)	8 (2nd, 2:53)	18:05	17:53	4:02	W, 87-82
at Southern Miss	46 (4th, 0:57)	3 (1st, 9:28)	38:00	1:26	0:32	W, 86-42
at Oregon	7 (3rd, 6:11)	11 (4th, 3:23)	11:25	25:41	2:54	L, 74-82
at Washington	50 (4th, 0:57)	None	39:40	0:00	0:20	W, 103-56
LOUISIANA	68 (4th, 1:12)	None	39:43	0:00	0:17	W, 104-36
at Arkansas	34 (4th, 9:01)	1 (1st, 8:45)	39:14	0:22	0:24	W, 93-69
KENTUCKY	21 (4th, 3:19)	2 (1st, 8:50)	37:45	0:37	1:38	W, 86-71
GEORGIA	14 (2nd, 4:57)	3 (4th, 6:59)	35:11	3:08	1:41	W, 80-71
at Auburn						
SO. CAROLINA						
at Florida						
OLE MISS						
at LSU						
at Alabama						
TENNESSEE						
MISSOURI						
at Texas A&M						
at Ole Miss						
VANDERBILT						
LSU						
at So. Carolina						

BULLDOG GAME-BY-GAME SPECIALTY STATS (MSU/OPPONENT)

OPPONENT	PAINT	OFF TO	2ND CHANCE	FAST BREAK	BENCH
SEMO	38/12	22/12	21/9	16/4	23/15
at Virginia	36/20	26/11	13/16	22/7	23/11
LAMAR	52/20	22/13	17/12	14/8	34/12
COPPIN ST.	68/10	50/4	14/0	19/6	49/9
FURMAN	56/10	41/9	22/3	12/2	38/15
JACKSON ST.	50/24	34/6	28/6	14/0	54/18
at Little Rock	60/26	16/16	15/8	4/4	29/37
at Texas	48/28	19/9	12/5	6/8	4/18
MARQUETTE	54/44	20/17	20/4	12/21	7/10
at Southern Miss	50/22	40/10	27/7	8/4	21/22
at Oregon	28/36	9/18	11/9	9/10	4/7
at Washington	62/20	30/9	22/12	25/15	31/30
LOUISIANA	50/18	29/7	35/10	8/4	55/13
at Arkansas	62/40	14/14	22/6	15/15	18/21
KENTUCKY	48/22	31/28	25/12	12/4	9/16
GEORGIA	42/42	30/9	22/4	2/12	1/14
at Auburn					
SO. CAROLINA					
at Florida					
OLE MISS					
at LSU					
at Alabama					
TENNESSEE					
MISSOURI					
at Texas A&M					
at Ole Miss					
VANDERBILT					
LSU					
at So. Carolina					
Total	804/394	434/192	329/123	198/124	400/268
Totals/Game	50.3/24.6	27.1/12.0	20.6/7.7	12.4/7.8	25.0/16.8





VIC SCHAEFER

HEAD COACH • SEVENTH SEASON AT MSU

- 2018 SEC COACH OF THE YEAR (ASSOCIATED PRESS & SEC COACHES)
- 2018 NAISMITH, USBWA, WBCA & COLLEGE SPORTS MADNESS NATIONAL COACH OF THE YEAR
- 2017 WBCA REGION COACH OF THE YEAR
- 2017 NAISMITH NATIONAL COACH OF THE YEAR FINALIST
- 2017 ESPY FOR BEST UPSET
- 2015 ASSOCIATED PRESS SEC COACH OF THE YEAR & SEC COACHES' CO-COACH OF THE YEAR
- 2015 NAISMITH NATIONAL COACH OF THE YEAR SEMIFINALIST

- Vic Schaefer embarks on his seventh season as the Bulldogs' coach. He owns the second-most victories in program history, and his winning percentage through his first six campaigns is the best in program annals.
- Schaefer's Bulldogs have posted five-straight seasons of 20-plus wins after the program had four 20-win campaigns in the 38 years prior to his arrival. His last two squads became the first MSU teams to eclipse 30 wins.
- Schaefer entered 2018-19 having won 126 games the last four seasons, the fifth-most victories in the country in that span. In that time frame, State has recorded a 52-13 ledger in SEC games, the second-most victories in the conference.
- In his first six seasons, he has taken MSU to the postseason the last five years, including becoming the first MSU coach to take the Bulldogs to four-straight NCAA Tournaments.
- He was named SEC Coach of the Year by league coaches and Associated Press, and Naismith, WBCA, USBWA and College Sports Madness National Coach of the Year after guiding his 2017-18 Bulldogs to the first SEC regular-season championship in program history, the first one for any women's sport at Mississippi State, and a second-straight national championship game appearance.
- The 2017-18 squad passed the 2016-17 National Finalist squad for the most wins in school history with 37. It posted a 32-0 start to the year, the first SEC team to go undefeated in the regular season since 1997-98 and the second-longest win streak in SEC history.
- MSU's 37 victories last season set the program record for wins in a year for the fourth year in a row. His 2016-17 squad became the first to eclipse 30 victories as it won 34 games in advancing to the program's first Final Four. That tally came a year after the 2016 Sweet 16 squad won 28 games and two years after his 2014-15 edition notched 27 wins in claiming the program's first NCAA Tournament berth since 2009-10.
- The Bulldogs' SEC championship came behind a 16-0 SEC record. The 16 league wins passed the 2016-17 team for the most in school history and the longest conference win streak in program annals.
- Under his watch, MSU has set the season attendance record four times in the last five years, including eclipsing 100K for the first time last season with 133,906. The Top 20 single-game attendance marks have come under his watch, including a Humphrey Coliseum-record 10,794 in MSU's win against South Carolina.
- He was named Naismith National Coach of the Year and WBCA National Coach of the Year in 2018 after being a finalist for both in 2017. In 2015, after guiding State to its first NCAA Tournament berth since 2010, Schaefer was named a semifinalist for the Naismith award after earning SEC Coach of the Year accolades from both his fellow coaches and the Associated Press.
- His first signing class of Ketara Chapel, Dominique Dillingham, Chinwe Okorie and Breanna Richardson won 22 games in 2013-14 before capping their careers with their program-best 111th victory in State's Final Four upset of No. 1 UConn, a victory that won MSU the ESPY for Best Upset.
- In addition to the 34 wins in 2016-17, the Bulldogs claimed 13 SEC wins en route to finishing 2nd. The Dawgs also advanced to the SEC Tournament title game for the second-straight year.
- Schaefer picked up his 200th win as a head coach in the 2017 NCAA Tournament opening-round win against Troy (March 17, 2017).
- Schaefer also went to the Final Four in his previous two stops at Texas A&M and Arkansas. In nine seasons in College Station, he helped the Aggies to 212 wins and seven NCAA Tournament appearances, including the 2011 national championship.
- He was part of 121 wins in six seasons at Arkansas, taking the Razorbacks to the Final Four in his first season. The Razorbacks went to four NCAA Tournament appearances and won a WNIT title during his time on the staff in Fayetteville.



SCHAEFER AT MSU, TEXAS A&M & ARKANSAS

Overall: 508-221 (.697) in 21 seasons

MISSISSIPPI STATE — HEAD COACH

Year	Record	Postseason
2012-13	13-17	—
2013-14	22-14	WNIT Quarterfinals
2014-15	27-7	NCAA Second Round
2015-16	28-8	NCAA Sweet 16
2016-17	34-5	NCAA National Finalist
2017-18	37-2	NCAA National Finalist
2018-19	15-1	—

Record: 176-54 (.765) in 7 seasons

- 4 NCAA Tournament Appearances
- 2 NCAA National Finalists (2016-17, 2017-18)
- 2 Final Fours (2016-17, 2017-18)
- 2 NCAA Elite Eights (2016-17, 2017-18)
- 3 NCAA Sweet 16 (2015-16, 2016-17, 2017-18)
- 1 NCAA Second Round (2014-15)
- 1 WNIT Appearance
- 1 WNIT Quarterfinals (2013-14)
- 2 SEC Tournament Title Game Appearances (2015-16, 2016-17)

TEXAS A&M — ASSOCIATE HEAD COACH

Year	Record	Postseason
2003-04	9-19	—
2004-05	16-15	WNIT Quarterfinals
2005-06	23-9	NCAA First Round
2006-07	25-7	Big 12 Champion/ NCAA Second Round
2007-08	29-8	Big 12 Tournament Champion/ NCAA Elite Eight
2008-09	27-8	NCAA Sweet 16
2009-10	26-8	Big 12 Tournament Champion/ NCAA Second Round
2010-11	33-5	NCAA National Champion
2011-12	24-11	NCAA Sweet 16

Record: 212-90 (.702) in 9 seasons

- 7 NCAA Tournament Appearances
- 1 NCAA National Championship (2010-11)
- 1 NCAA Elite Eight (2007-08)
- 2 NCAA Sweet 16 (2008-09, 2011-12)
- 2 NCAA Second Round (2006-07, 2009-10)
- 1 NCAA First Round (2005-06)
- 1 WNIT Appearance
- 1 WNIT Quarterfinals (2004-05)

ARKANSAS — ASSOCIATE HEAD COACH

Year	Record	Postseason
1997-98	22-11	NCAA Final Four
1998-99	20-14	WNIT National Champion
1999-00	17-15	WNIT Semifinals
2000-01	20-13	NCAA Second Round
2001-02	20-12	NCAA Second Round
2002-03	22-11	NCAA Second Round

Record: 121-76 (.614) in 6 seasons

- 4 NCAA Tournament Appearances
- 1 NCAA Final Four (1997-98)
- 3 NCAA Second Round (2000-01, 2001-02, 2002-03)
- 2 WNIT Appearances
- 1 WNIT National Championship (1998-99)
- 1 WNIT Semifinal (1999-00)



2017 & 2018 NCAA NATIONAL FINALISTS



2018 SEC CHAMPIONS

YEAR-BY-YEAR AT THE HUMP

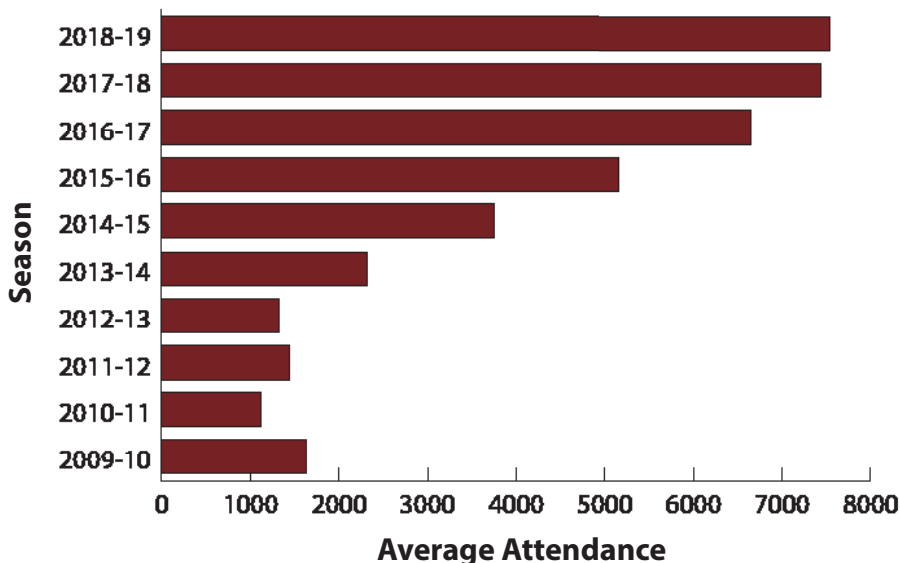
year	g	rec.	pct.	sec	non
1975-76	7	3-4	.429	---	---
1976-77	11	4-7	.364	---	---
1977-78	14	9-5	.391	---	---
1978-79	12	9-3	.750	---	---
1979-80	13	8-5	.615	---	---
1980-81	13	11-2	.846	---	---
1981-82	14	8-6	.571	---	---
1982-83	15	10-5	.667	0-4	10-1
1983-84	15	8-7	.533	0-5	8-2
1984-85	12	5-7	.417	0-4	5-3
1985-86	13	6-7	.462	0-4	6-3
1986-87	12	7-5	.583	2-3	5-2
1987-88	14	9-5	.643	0-5	9-0
1988-89	11	8-3	.727	3-2	5-1
1989-90	13	5-8	.385	0-5	5-3
1990-91	13	5-8	.385	0-4	5-4
1991-92	13	10-3	.769	3-3	7-0
1992-93	11	8-3	.727	3-2	5-1
1993-94	14	7-7	.500	1-5	6-2
1994-95	10	6-4	.600	1-4	5-0
1995-96	12	9-3	.750	4-2	5-1
1996-97	12	6-6	.500	0-6	6-0
1997-98	13	9-4	.692	3-3	6-1
1998-99	13	11-2	.846	6-2	5-0
1999-00	15	13-2	.867	5-2	8-0
2000-01	15	9-6	.600	2-5	7-1
2001-02	13	11-2	.846	5-2	6-0
2002-03	13	12-1	.923	6-1	6-0
2003-04	11	8-3	.727	5-1	3-2
2004-05	17	13-4	.765	4-3	9-1
2005-06	14	4-10	.286	0-7	4-3
2006-07	17	9-8	.529	2-5	7-3
2007-08	16	11-5	.688	3-4	8-1
2008-09	16	12-4	.750	4-3	8-1
2009-10	16	12-4	.750	4-4	8-0
2010-11	14	6-8	.429	1-7	5-1
2011-12	16	10-6	.625	2-6	8-0
2012-13	17	12-5	.706	4-4	8-1
2013-14	21	16-5	.762	4-4	12-1
2014-15	18	17-1	.944	7-1	10-0
2015-16	18	16-2	.889	6-2	10-0
2016-17	13	12-1	.923	7-1	5-0
2017-18	18	18-0	1.000	8-0	10-0
2018-19	9	9-0	1.000	2-0	7-0

ALL-TIME RECORD (44 YEARS): 411-196 (.677)

ATTENDANCE LAST 15 YEARS

YEAR	GAMES	TOTAL	Avg.
2018-19	9	67,561	7,507
2017-18	18	133,906	7,439
2016-17	13	86,328	6,641
2015-16	18	92,914	5,162
2014-15	18	67,598	3,755
2013-14	21	48,733	2,321
2012-13	17	22,384	1,317
2011-12	16	23,073	1,442
2010-11	14	15,645	1,118
2009-10	16	26,206	1,638
2008-09	16	20,590	1,287
2007-08	16	16,065	1,004
2006-07	17	12,364	727
2005-06	14	9,058	647
2004-05	17	18,392	1,082

MISSISSIPPI STATE AVERAGE HOME ATTENDANCE THE LAST 10 SEASONS



BULLDOGS AT HUMPHREY COLISEUM

- Mississippi State is in its 44th season at Humphrey Coliseum.
- The Bulldogs are 70-4 in the Hump since 2014-15, including 28-4 in SEC play.
- The Bulldogs have claimed the Top 20 single-game attendance marks during Vic Schaefer's tenure.
- MSU had the largest crowd in the history of the Hump with 10,794 vs. No. 6 South Carolina (2/5/18).

MSU'S RECORD AT HOME UNDER SCHAEFER

YEAR	OVERALL	Pct.	SEC	Pct.	NON-CONF.	Pct.
2012-13	12-5	.706	4-4	.500	8-1	.889
2013-14	16-5	.762	4-4	.500	12-1	.923
2014-15	17-1	.944	7-1	.875	10-0	1.000
2015-16	16-2	.889	6-2	.750	10-0	1.000
2016-17	12-1	.923	7-1	.875	5-0	1.000
2017-18	18-0	1.000	8-0	1.000	10-0	1.000
2018-19	9-0	1.000	2-0	1.000	7-0	1.000
TOTALS	100-14	.877	38-12	.760	62-2	.969



TOP 20 WOMEN'S CROWDS

Att.	date	opp.	score
1	10,794	2/5/18	South Carolina W, 67-53
2	10,626	1/24/16	South Carolina L, 51-57
3	10,500	2/26/17	Tennessee L, 64-82
4	10,211	3/17/18	Nicholls (NCAA) W, 95-50
5	10,242	12/30/18	Louisiana W, 104-36
6	9,933	2/18/18	Texas A&M W, 76-55
7	9,881	3/19/18	Oklahoma St. (NCAA) W, 71-56
8	9,520	2/11/18	Kentucky W, 74-55
9	9,474	2/22/18	Auburn W, 82-61
10	9,010	1/14/18	Alabama W, 75-61
11	8,840	1/16/17	Ole Miss W, 73-62
12	8,830	1/6/19	Kentucky W, 81-76
13	8,535	12/28/17	Miss. Valley St. W, 112-36
14	7,780	1/29/17	Texas A&M W, 71-61
15	7,764	11/20/16	Texas W, 79-68
16	7,326	3/1/15	Ole Miss W, 55-47
17	7,320	11/18/18	Coppin St. W, 110-38
18	7,273	12/6/18	Marquette W, 87-82
19	7,161	1/11/18	Ole Miss W, 76-45
20	7,128	1/18/16	Ole Miss W, 79-51

— Set Under Vic Schaefer In Bold

HUMPHREY COLISEUM INDIVIDUAL RECORDS

- Most Points**
47 - Tan White vs. Vanderbilt [2OT] (2/3/05)
- Most Rebounds**
26 - Sophie Ratliff vs. Shorter (2/15/88)
- Most FG Made**
20 - LaToya Thomas vs. Tulsa (11/17/02)
- Most 3FG Made**
8 - Meadow Overstreet vs. Miss. Valley St. (12/20/99)
- Most FT Made**
18 - Jennifer Fambrough vs. Northwestern St. (12/19/88)
- Most Assists**
13 - Jazzmun Holmes vs. Marquette (12/6/18)
13 - Katia May, vs. Tennessee Tech (11/21/13)
- Most Steals**
13 - Katia May, vs. Tennessee Tech (11/21/13)
- Most Blocked Shots**
10 - Martha Alwal vs. Jacksonville State (11/11/11)

HUMPHREY COLISEUM TEAM RECORDS

- Most Points**
117 - vs. Judson (2/24/86)
- Most Rebounds**
78 - vs. Judson (2/24/86)
- Most FG Made**
53 - vs. Judson (2/24/86)
- Most 3FG Made**
13 - 2x, last vs. Southern Miss (11/19/17)
- Most FT Made**
36 - vs. SE Louisiana (12/20/13)
- Most Assists**
30 - vs. Mississippi Valley (11/24/15)
30 - vs. Mississippi Valley (12/20/99)
- Most Steals**
32 - vs. Nicholls (12/7/08)
- Most Blocked Shots**
14 - vs. Jacksonville State (11/11/11)





55

CHLOE BIBBY

Forward | 6-1 | Sophomore

Warracknabeal, Australia | Rowville Secondary College

SEASON HIGHS

Points	24, vs .Georgia (1-10-19)
Rebounds	8, at Little Rock (11-28-18)
FG Made	8, 2x last vs .Georgia (1-10-19)
FG Attempts	14, vs. vs Kentucky (1-6-19)
3PT FG Made	5, vs. Furman (11-21-18)
3PT FG Attempts	7, 3x, last vs Kentucky (1-6-19)
FT Made	7, vs Kentucky (1-6-19)
FT Attempts	8, vs Kentucky (1-6-19)
Assists	4, at Washington (12-20-18)
Blocks	3, vs. SE Missouri (11-6-18)
Steals	3, 2x, last vs. Jackson State (11-24-18)

CAREER HIGHS

Points	24, vs .Georgia (1-10-19)
Rebounds	8, at Little Rock (11-28-18)
FG Made	8, 2x, last vs .Georgia (1-10-19)
FG Attempts	14, vs. vs Kentucky (1-6-19)
3PT FG Made	5, vs. Furman (11-21-18)
3PT FG Attempts	7, 3x last vs Kentucky (1-6-19)
FT Made	7, vs Kentucky (1-6-19)
FT Attempts	8, vs Kentucky (1-6-19)
Assists	4, at Washington (12-20-18)
Blocks	3, vs. SE Missouri (11-6-18)
Steals	3, 2x, last vs. Jackson State (11-24-18)

BIBBY'S 2018-19 GAME-BY-GAME (* — INDICATES GAME STARTED)

Opponent	Min.	FG-A	3PT-A	FT-A	O-D-T	PF	Ast.	TO	Blk.	Stl.	Pts.
SE MISSOURI	*32	4-13	3-7	0-0	5-1-6	1	1	2	3	0	11
at Virginia	*32	5-12	3-7	0-0	2-4-6	2	2	2	0	3	13
LAMAR	*22	4-7	3-5	0-0	4-2-6	1	2	4	1	1	11
COPPIN ST.	*18	4-4	2-2	1-2	0-3-3	0	2	2	0	2	11
FURMAN	*25	8-10	5-6	0-0	0-5-5	0	3	0	1	0	21
JACKSON ST.	*20	2-5	1-3	0-0	0-7-7	1	3	0	1	3	5
at Little Rock	*30	5-7	3-4	2-2	2-6-8	2	2	1	0	0	15
at Texas	*40	6-12	2-4	0-0	0-2-2	2	0	0	0	0	14
MARQUETTE	*31	2-7	1-5	1-2	0-2-2	1	1	1	1	0	6
at Southern Miss	*21	4-10	1-4	2-2	0-1-1	2	0	1	0	0	11
at Oregon	*40	5-11	2-5	0-0	0-0-0	1	0	1	1	0	12
at Washington	*28	6-11	1-2	2-2	2-3-5	1	4	1	0	0	15
LOUISIANA	*19	3-9	0-4	0-0	2-4-6	0	1	1	1	0	6
at Arkansas	*29	4-8	1-3	2-2	3-1-4	1	2	3	0	0	11
KENTUCKY	*37	5-14	1-7	7-8	4-3-7	2	3	5	1	1	18
GEORGIA	*40	8-13	4-6	4-4	1-0-1	1	1	2	0	2	24
at Auburn											
SO. CAROLINA											
at Florida											
OLE MISS											
at LSU											
at Alabama											
TENNESSEE											
MISSOURI											
at Texas A&M											
at Ole Miss											
VANDERBILT											
LSU											
at So. Carolina											

* — Indicates Game Started

AWARDS & HONORS

- 2018 SEC First Year Honor Roll

BULLDOG BITES...

- Has scored in double figures in 13 of 16 games.
- In the top 3% in Division I in scoring efficiency according to HerHoopStats.com, averaging 1.26 points per shot attempt.
- Drew her first-career start and tallied 11 points and 6 rebounds and a career high 3 blocked shots against Southeast Missouri.
- Scored 13 points and claimed a personal best with 3 steals at Virginia.
- Scored 11 points and grabbed 6 boards against Lamar.
- Added another 11-point showing against Coppin State, knocking down all 4 FG attempts, including both 3-point tries.
- Tallied her first 20-point game with 21 against Furman.
- Grabbed 8 rebounds and hit 5 of 7 FG attempts, 3 of 4 from 3FG range, for 15 points at Little Rock.
- Totaled 14 points at Texas.
- Scored 15 points on 6-of-11 shooting at Washington.
- Tallied 18 points and 7 rebounds despite going 5-of-14 from the field against Kentucky.
- Scored a career-high 24 points on 8-of-13 shooting including four three-pointers against Georgia.

CHLOE BIBBY'S CAREER STATISTICS

ALL GAMES

Year	GP	GS	Min	Avg	Total			3-Point			F-Throw			Rebounds				PF	FO	Ast	TO	Blk	Stl	Pts	Avg
					FG	FGA	Pct	FG	FGA	Pct	FT	FTA	Pct	Off	Def	Tot	Avg								
2017-18	37	0	505	13.6	52	138	.377	15	47	.319	27	33	.818	25	54	79	2.1	33	1	14	33	4	13	146	3.9
2018-19	16	16	464	29.0	75	153	.490	33	74	.446	21	24	.875	25	44	69	4.3	18	0	27	26	9	13	204	12.8
TOTAL	53	16	969	18.3	127	291	.436	48	121	.397	48	57	.842	50	98	148	2.8	51	1	41	59	13	26	350	6.6

SEC GAMES

Year	GP	GS	Min	Avg	Total			3-Point			F-Throw			Rebounds				PF	FO	Ast	TO	Blk	Stl	Pts	Avg
					FG	FGA	Pct	FG	FGA	Pct	FT	FTA	Pct	Off	Def	Tot	Avg								
2017-18	15	0	229	15.3	22	53	.415	8	20	.400	13	15	.867	14	22	36	2.4	16	1	8	19	2	7	65	4.3
2018-19	3	3	106	35.3	17	35	.486	6	16	.375	13	14	.929	8	4	12	4.0	4	0	6	10	1	3	53	17.7
TOTAL	18	3	335	18.6	39	88	.443	14	36	.389	26	29	.897	22	26	48	2.7	20	1	14	29	3	10	118	6.6



2017 & 2018 NCAA NATIONAL FINALISTS



2018 SEC CHAMPIONS



25

ZION CAMPBELL

Center | 6-3 | Redshirt Junior

Washington, D.C. | Riverdale Baptist School

SEASON HIGHS

Points 2, 2x last vs. Louisiana (12-30-18)
 Rebounds 3, 3x, last vs. Louisiana (12-30-18)
 FG Made 1, vs. Furman (11-21-18)
 FG Attempts 1, 2x, last vs. Jackson State (11-24-18)
 3PT FG Made —
 3PT FG Attempts —
 FT Made 2, vs. Louisiana (12-30-18)
 FT Attempts 2, 3x, last vs. Louisiana (12-30-18)
 Assists 1, 2x, last at Little Rock (11-28-18)
 Blocks 1, 3x last vs Kentucky (1-6-19)
 Steals 1, vs. SE Missouri (11-6-18)

CAREER HIGHS

Points 13, vs. Georgia State (11-16-17)
 Rebounds 11, vs. Georgia State (11-16-17)
 FG Made 6, vs. Georgia State (11-16-17)
 FG Attempts 6, vs. Georgia State (11-16-17)
 3PT FG Made —
 3PT FG Attempts —
 FT Made 3, vs. Arizona State (11-23-17)
 FT Attempts 4, vs. Arizona State (11-23-17)
 Assists 1, 13x, last at Little Rock (11-28-18)
 Blocks 3, vs. Ole Miss (1-11-18)
 Steals 2, 2x, last at Vanderbilt (2-15-18)

CAMPBELL'S 2018-19 GAME-BY-GAME (* — INDICATES GAME STARTED)

Opponent	Min.	FG-A	3PT-A	FT-A	O-D-T	PF	Ast.	TO	Blk.	Stl.	Pts.
SE MISSOURI	4	0-0	0-0	1-2	1-1-2	0	0	2	0	1	1
at Virginia	10	0-0	0-0	1-2	0-1-1	1	0	0	0	0	1
LAMAR	5	0-0	0-0	0-0	0-0-0	1	0	0	0	0	0
COPPIN ST.	9	0-0	0-0	0-0	0-3-3	0	0	0	0	0	0
FURMAN	11	1-1	0-0	0-0	1-2-3	0	0	0	1	0	2
JACKSON ST.	10	0-1	0-0	0-0	0-2-2	1	1	1	0	0	0
at Little Rock	6	0-0	0-0	0-0	0-1-1	1	1	1	1	0	0
at Texas	1	0-0	0-0	0-0	0-0-0	0	0	0	0	0	0
MARQUETTE	DNP										
at Southern Miss	DNP										
at Oregon	DNP										
at Washington	4	0-0	0-0	0-0	0-0-0	0	0	1	0	0	0
LOUISIANA	6	0-0	0-0	2-2	2-1-3	0	0	1	0	1	2
at Arkansas	4	0-0	0-0	0-0	0-0-0	0	0	0	0	0	0
KENTUCKY	3	0-0	0-0	0-0	1-0-1	0	0	1	1	0	0
GEORGIA	DNP										
at Auburn											
SO. CAROLINA											
at Florida											
OLE MISS											
at LSU											
at Alabama											
TENNESSEE											
MISSOURI											
at Texas A&M											
at Ole Miss											
VANDERBILT											
LSU											
at So. Carolina											

* — Indicates Game Started

AWARDS & HONORS

- 2017 SEC Honor Roll

BULLDOG BITES...

ZION CAMPBELL'S CAREER STATISTICS

ALL GAMES

Year	GP	GS	Min	Avg	Total			3-Point			F-Throw			Rebounds				PF	FO	Ast	TO	Blk	Stl	Pts	Avg
					FG	FGA	Pct	FG	FGA	Pct	FT	FTA	Pct	Off	Def	Tot	Avg								
2016-17	16	0	43	2.7	5	7	.714	0	0	.000	0	2	.000	4	9	13	0.8	5	0	3	1	0	1	10	0.6
2017-18	38	0	358	9.4	33	51	.647	0	0	.000	11	18	.611	24	64	88	2.3	43	1	8	16	15	9	77	2.0
2018-19	12	0	73	6.1	1	2	.500	0	0	.000	4	6	.667	5	11	16	1.3	4	0	2	7	3	2	6	0.5
TOTAL	66	0	474	7.2	39	60	.650	0	0	.000	15	26	.577	33	84	117	1.8	52	1	13	24	18	12	93	1.4

SEC GAMES

Year	GP	GS	Min	Avg	Total			3-Point			F-Throw			Rebounds				PF	FO	Ast	TO	Blk	Stl	Pts	Avg
					FG	FGA	Pct	FG	FGA	Pct	FT	FTA	Pct	Off	Def	Tot	Avg								
2016-17	7	0	20	2.9	2	3	.667	0	0	.000	0	2	.000	1	4	5	0.7	1	0	1	1	0	0	4	0.6
2017-18	16	0	126	7.9	9	15	.600	0	0	.000	4	6	.667	4	17	21	1.3	16	1	2	4	7	4	22	1.4
2018-19	2	0	7	3.5	0	0	.000	0	0	.000	0	0	.000	1	0	1	0.5	0	0	0	1	1	0	0	0.0
TOTAL	2	0	28	14.0	3	6	.500	0	0	.000	0	0	.000	3	3	6	3.0	3	0	0	2	1	0	6	3.0



2017 & 2018 NCAA NATIONAL FINALISTS



2018 SEC CHAMPIONS



4

JESSIKA CARTER

Forward/Center | 6-5 | Freshman
Waverly Hall, Ga. | Harris County HS

SEASON HIGHS		CAREER HIGHS	
Points	16, vs. Coppin State (11-18-18)	Points	16, vs. Coppin State (11-18-18)
Rebounds	10, vs. Louisiana (12-30-18)	Rebounds	10, vs. Louisiana (12-30-18)
FG Made	7, vs. Coppin State (11-18-18)	FG Made	7, vs. Coppin State (11-18-18)
FG Attempts	9, vs. Coppin State (11-18-18)	FG Attempts	9, vs. Coppin State (11-18-18)
3PT FG Made	—	3PT FG Made	—
3PT FG Attempts	—	3PT FG Attempts	—
FT Made	3, vs. Jackson State (11-24-18)	FT Made	3, vs. Jackson State (11-24-18)
FT Attempts	5, vs. Furman (11-21-18)	FT Attempts	5, vs. Furman (11-21-18)
Assists	1, 2x, last vs. Louisiana (12-30-18)	Assists	1, 2x, last vs. Louisiana (12-30-18)
Blocks	6, vs. Jackson State (11-24-18)	Blocks	6, vs. Jackson State (11-24-18)
Steals	1, 3x last vs. Louisiana (12-30-18)	Steals	1, 3x last vs. Louisiana (12-30-18)

CARTER'S 2018-19 GAME-BY-GAME (* — INDICATES GAME STARTED)

Opponent	Min.	FG-A	3PT-A	FT-A	O-D-T	PF	Ast.	TO	Blk.	Stl.	Pts.
SE MISSOURI	8	2-4	0-0	1-3	1-3-4	3	0	0	0	0	5
at Virginia	4	0-1	0-0	0-0	1-2-3	1	0	0	0	0	0
LAMAR	18	4-7	0-0	2-4	3-5-8	2	0	1	4	1	10
COPPIN ST.	21	7-9	0-0	2-4	2-6-8	3	0	4	5	0	16
FURMAN	23	2-5	0-0	1-5	6-3-9	0	1	1	4	1	5
JACKSON ST.	25	2-5	0-0	3-3	4-4-8	1	0	0	6	0	7
at Little Rock	16	2-2	0-0	2-2	0-2-2	3	0	2	0	0	6
at Texas	12	1-6	0-0	0-0	1-1-2	3	0	1	0	0	2
MARQUETTE	0+	0-0	0-0	0-0	0-0-0	0	0	0	0	0	0
at Southern Miss	15	3-4	0-0	0-0	1-3-4	1	0	3	2	0	6
at Oregon	6	0-1	0-0	1-2	0-0-0	1	0	0	0	0	1
at Washington	14	4-6	0-0	0-0	1-3-4	3	0	0	1	0	8
LOUISIANA	21	3-6	0-0	0-2	4-6-10	1	1	0	1	1	6
at Arkansas	13	1-2	0-0	0-0	0-2-2	1	0	0	0	0	2
KENTUCKY	15	2-4	0-0	0-0	3-1-4	2	0	2	1	0	4
GEORGIA	4	0-0	0-0	0-0	0-1-1	0	0	1	0	0	0
at Auburn											
SO. CAROLINA											
at Florida											
OLE MISS											
at LSU											
at Alabama											
TENNESSEE											
MISSOURI											
at Texas A&M											
at Ole Miss											
VANDERBILT											
LSU											
at So. Carolina											

* — Indicates Game Started

AWARDS & HONORS

BULLDOG BITES...

- 6th in SEC with 24 blocks, 1.6 bpg.
- Collected 5 points, 4 rebounds in her Bulldog debut against Southeast Missouri.
- Had 10 points, 8 rebounds and 4 blocks against Lamar.
- Went 7-of-9 from the field for 16 points, grabbed 8 rebounds and blocked 5 shots against Coppin State.
- Added 4 blocks and a season-high 9 rebounds in State's win against Furman.
- Rejected a personal-best 6 shots against Jackson State.
- Totaled 8 points on 4-of-6 shooting at Washington.
- Grabbed a season-high 10 rebounds to go along with 6 points against Louisiana.

JESSIKA CARTER'S CAREER STATISTICS

ALL GAMES

Year	GP	GS	Min	Avg	Total			3-Point			F-Throw			Rebounds				PF	FO	Ast	TO	Blk	Stl	Pts	Avg
					FG	FGA	Pct	FG	FGA	Pct	FT	FTA	Pct	Off	Def	Tot	Avg								
2018-19	16	0	215	13.4	33	62	.532	0	0	.000	12	25	.480	27	43	70	4.4	26	0	2	16	24	3	78	4.9
TOTAL	16	0	215	13.4	33	62	.532	0	0	.000	12	25	.480	27	43	70	4.4	26	0	2	16	24	3	78	4.9

SEC GAMES

Year	GP	GS	Min	Avg	Total			3-Point			F-Throw			Rebounds				PF	FO	Ast	TO	Blk	Stl	Pts	Avg
					FG	FGA	Pct	FG	FGA	Pct	FT	FTA	Pct	Off	Def	Tot	Avg								
2018-19	3	0	32	10.7	3	6	.500	0	0	.000	0	0	.000	3	4	7	2.3	4	0	0	3	1	0	6	2.0
TOTAL	3	0	32	10.7	3	6	.500	0	0	.000	0	0	.000	3	4	7	2.3	4	0	0	3	1	0	6	2.0



24

JORDAN DANBERRY

Guard | 5-8 | Senior
Conway, Ark. | Conway HS/Arkansas

SEASON HIGHS

Points	26, at Arkansas (1-3-19)
Rebounds	9, at Arkansas (1-3-19)
FG Made	11, at Arkansas (1-3-19)
FG Attempts	17, at Washington (12-20-18)
3PT FG Made	—
3PT FG Attempts	1, at Washington (12-20-18)
FT Made	5, vs. Marquette (12-6-18)
FT Attempts	8, at Arkansas (1-3-19)
Assists	7, vs. Coppin State (11-18-18)
Blocks	1, 5x, last vs Kentucky (1-6-19)
Steals	4, at Washington (12-20-18)

CAREER HIGHS

Points	26, at Arkansas (1-3-19)
Rebounds	9, at Arkansas (1-3-19)
FG Made	11, at Arkansas (1-3-19)
FG Attempts	17, at Washington (12-20-18)
3PT FG Made	2*, vs. Louisiana-Monroe (11-13-16)
3PT FG Attempts	4*, at San Diego State (11-18-15)
FT Made	5*, 2x, last vs. Marquette (12-6-18)
FT Attempts	11*, vs. Ole Miss (2-28-16)
Assists	10*, vs. Alabama (1-18-16)
Blocks	1*, 15x, last vs Kentucky (1-6-19)
Steals	4, at Washington (12-20-18)

*Includes games at Arkansas

DANBERRY'S 2018-19 GAME-BY-GAME (* — INDICATES GAME STARTED)

Opponent	Min.	FG-A	3PT-A	FT-A	O-D-T	PF	Ast.	TO	Blk.	Stl.	Pts.
SE MISSOURI	*25	4-7	0-0	2-2	3-2-5	0	3	1	1	1	10
at Virginia	*22	4-5	0-0	0-0	0-3-3	2	3	3	1	2	8
LAMAR	*18	6-10	0-0	3-5	1-3-4	2	3	1	0	1	15
COPPIN ST.	*18	4-6	0-0	2-4	1-2-3	1	7	1	0	2	10
FURMAN	*21	4-7	0-0	0-0	0-0-0	2	6	2	0	1	8
JACKSON ST.	*19	7-11	0-0	2-2	1-0-1	1	3	0	0	2	16
at Little Rock	*24	5-8	0-0	0-0	2-1-3	1	3	1	0	1	10
at Texas	*34	6-11	0-0	0-0	2-1-3	2	2	3	0	2	12
MARQUETTE	*29	4-13	0-0	5-7	0-4-4	3	2	4	1	1	13
at Southern Miss	*29	5-15	0-0	2-4	6-2-8	2	2	0	0	2	12
at Oregon	*28	4-8	0-0	3-4	4-1-5	5	3	3	0	3	11
at Washington	*27	9-17	0-1	2-3	1-1-2	1	4	1	1	4	20
LOUISIANA	*18	5-8	0-0	2-3	0-1-1	2	4	2	0	2	12
at Arkansas	*32	11-12	0-0	4-8	5-4-9	2	4	3	1	2	26
KENTUCKY	*37	7-12	0-0	3-3	2-1-3	2	5	4	1	1	17
GEORGIA	*33	4-16	0-0	4-7	3-1-4	4	3	3	0	2	12
at Auburn											
SO. CAROLINA											
at Florida											
OLE MISS											
at LSU											
at Alabama											
TENNESSEE											
MISSOURI											
at Texas A&M											
at Ole Miss											
VANDERBILT											
LSU											
at So. Carolina											

* — Indicates Game Started

AWARDS & HONORS

- 2018 NCAA Elite 90 Award
- 2018 SEC Academic Honor Roll

BULLDOG BITES...

- 5th in SEC in assist/turnover ratio (1.78)
- Has scored in double figures in 11 straight games, averaging 14.6 ppg in that span.
- Tallied 10 points against SE Missouri in her first MSU start.
- Scored 15 points in 18 minutes against Lamar.
- Matched her MSU career high with 7 assists against Coppin State.
- Dished 6 assists and scored 8 points against Furman.
- Scored 16 points in MSU's win against Jackson State.
- Put in 10 points at Little Rock in a return to her home state of Arkansas.
- Scored 12 points on 6-of-11 shooting at Texas.
- Recorded a 13-point night against Marquette.
- Scored a then career-high 20 points while recording a career-best 4 steals at Washington.
- Turned in a career-high 26 points on 11-of-12 shooting against her former school at Arkansas.
- Scored 17 points against Kentucky while dishing out 5 assists.
- Named SEC Co-Player of the Week on Jan. 8 after averaging 21.5 ppg and 6.0 rpg in the first two games of conference play.

JORDAN DANBERRY'S CAREER STATISTICS

ALL GAMES (MSU & ARKANSAS)

Year	GP	GS	Min	Avg	Total			3-Point			F-Throw			Rebounds				PF	FO	Ast	TO	Blk	Stl	Pts	Avg
					FG	FGA	Pct	FG	FGA	Pct	FT	FTA	Pct	Off	Def	Tot	Avg								
2015-16*	30	13	575	19.2	77	233	.330	3	28	.107	44	71	.620	30	48	78	2.6	72	2	70	83	5	27	201	6.7
2016-17*	6	0	72	12.0	8	19	.421	2	3	.667	10	13	.769	10	13	23	3.8	10	0	4	12	0	2	28	4.7
2017-18	31	0	298	9.6	35	96	.365	1	2	.500	15	28	.536	15	25	40	1.3	35	0	34	22	4	22	86	2.8
2018-19	16	16	414	25.9	89	175	.509	0	1	.000	34	52	.654	31	27	58	3.6	32	1	57	32	6	28	212	13.3
MSU TOTAL	47	16	712	15.1	124	271	.458	1	3	.333	49	80	.613	46	52	98	2.1	67	1	91	54	10	50	298	6.3
All*	82	28	1326	16.2	205	507	.404	6	34	.176	99	157	.631	83	112	195	2.4	145	3	162	146	15	77	515	6.3

Statistics from Arkansas

SEC GAMES (MSU ONLY)

Year	GP	GS	Min	Avg	Total			3-Point			F-Throw			Rebounds				PF	FO	Ast	TO	Blk	Stl	Pts	Avg
					FG	FGA	Pct	FG	FGA	Pct	FT	FTA	Pct	Off	Def	Tot	Avg								
2017-18	16	0	134	8.4	20	45	.444	0	0	.000	3	9	.333	7	8	15	0.9	14	0	13	9	3	13	43	2.7
2018-19	3	3	102	34.0	22	49	.449	0	0	.000	11	18	.611	10	6	16	5.3	8	0	12	10	2	4	55	18.3
TOTAL	19	3	236	12.4	42	94	.447	0	0	.000	14	27	.519	17	14	31	1.6	22	0	25	19	5	17	98	5.2



2017 & 2018 NCAA NATIONAL FINALISTS



2018 SEC CHAMPIONS



2 ANDRA ESPINOZA-HUNTER

Guard | 5-11 | Sophomore
Ossining, N.Y. | Ossining HS/UConn

SEASON HIGHS

Points	16, vs. Coppin State (11-18-1)
Rebounds	4, at Little Rock (11-28-18)
FG Made	6, vs. Coppin State (11-18-18)
FG Attempts	12, 2x, last vs. Furman (11-21-18)
3PT FG Made	4, vs. Coppin State (11-18-18)
3PT FG Attempts	8, 2x, last Jackson State (11-24-18)
FT Made	2, 2x, last at Little Rock (11-28-18)
FT Attempts	2, 3x, last vs. Georgia (1-10-19)
Assists	3, vs. Coppin State (11-18-18)
Blocks	1, 2x, vs. Coppin State (11-18-18)
Steals	1, 3x, last vs. Louisiana (12-30-18)

CAREER HIGHS

Points	16, vs. Coppin State (11-18-1)
Rebounds	4, at Little Rock (11-28-18)
FG Made	6, vs. Coppin State (11-18-18)
FG Attempts	12, 2x, last vs. Furman (11-21-18)
3PT FG Made	4, vs. Coppin State (11-18-18)
3PT FG Attempts	8, 2x, last Jackson State (11-24-18)
FT Made	2, 2x, last at Little Rock (11-28-18)
FT Attempts	2, 3x, last vs. Georgia (1-10-19)
Assists	3, vs. Coppin State (11-18-18)
Blocks	1, 2x, vs. Coppin State (11-18-18)
Steals	1*, 4x, last vs. Louisiana (12-30-18)

*includes games at UConn

ESPINOZA-HUNTER'S 2018-19 GAME-BY-GAME (* — INDICATES GAME STARTED)

Opponent	Min.	FG-A	3PT-A	FT-A	O-D-T	PF	Ast.	TO	Blk.	Stl.	Pts.
SE MISSOURI	DNP										
at Virginia	29	5-12	3-8	0-0	0-1-1	2	1	1	0	0	13
LAMAR	19	3-10	1-6	0-0	0-2-2	1	0	1	1	0	7
COPPIN ST.	20	6-9	4-6	0-0	1-2-3	1	3	1	1	0	16
FURMAN	20	5-12	2-5	2-2	1-1-2	0	0	1	0	1	14
JACKSON ST.	14	5-10	3-8	0-0	0-0-0	0	1	1	0	1	13
at Little Rock	22	1-6	0-2	2-2	3-1-4	1	2	2	0	0	4
at Texas	4	0-0	0-0	0-0	0-0-0	0	0	0	0	0	0
MARQUETTE	5	0-2	0-1	0-0	0-1-1	1	0	1	0	0	0
at Southern Miss	16	1-6	0-3	0-0	0-1-1	0	1	0	0	0	2
at Oregon	5	0-2	0-1	0-0	0-0-0	0	0	0	0	0	0
at Washington	21	4-7	3-5	0-0	0-0-0	1	1	2	0	0	11
LOUISIANA	18	3-8	1-4	0-0	0-3-3	0	1	1	0	1	7
at Arkansas	12	2-7	1-3	0-0	0-0-0	0	0	0	0	0	5
KENTUCKY	DNP										
GEORGIA	7	0-1	0-1	1-2	0-0-0	0	1	0	0	0	1
at Auburn											
SO. CAROLINA											
at Florida											
OLE MISS											
at LSU											
at Alabama											
TENNESSEE											
MISSOURI											
at Texas A&M											
at Ole Miss											
VANDERBILT											
LSU											
at So. Carolina											

AWARDS & HONORS

BULLDOG BITES...

- Had waiver for immediate eligibility accepted Nov. 7.
- Tallied a team-high 13 points in her MSU debut, a win at Virginia.
- Was 6-of-9 from the field, 4-of-6 from 3-point range, for 16 points vs. Coppin State.
- Scored 14 points in the Bulldogs' win against Furman.
- Put in 13 points in 14 minutes against Jackson State.
- Went 3-of-5 from beyond the arc for 11 points at Washington.

ESPINOZA-HUNTER'S CAREER STATISTICS

ALL GAMES

Year	GP	GS	Min	Avg	Total			3-Point			F-Throw			Rebounds				PF	FO	Ast	TO	Blk	Stl	Pts	Avg
					FG	FGA	Pct	FG	FGA	Pct	FT	FTA	Pct	Off	Def	Tot	Avg								
2017-18*	7	0	49	7.0	5	13	.385	4	11	.364	0	0	.000	1	0	1	0.1	7	0	1	4	0	2	14	2.0
2018-19	14	0	212	15.1	35	92	.380	18	53	.340	5	6	.833	5	12	17	1.2	7	0	11	11	2	3	93	6.6
MSU TOTAL	14	0	212	15.1	35	92	.380	18	53	.340	5	6	.833	5	12	17	1.2	7	0	11	11	2	3	93	6.6
All*	21	0	261	12.4	40	105	.381	22	64	.344	5	6	.833	6	12	18	0.9	14	0	12	15	2	5	107	5.1

Statistics from UConn

SEC GAMES

Year	GP	GS	Min	Avg	Total			3-Point			F-Throw			Rebounds				PF	FO	Ast	TO	Blk	Stl	Pts	Avg
					FG	FGA	Pct	FG	FGA	Pct	FT	FTA	Pct	Off	Def	Tot	Avg								
2018-19	2	0	19	9.5	2	8	.250	1	4	.250	1	2	.500	0	0	0	0.0	0	0	1	0	0	0	6	3.0
TOTAL	2	0	19	9.5	2	8	.250	1	4	.250	1	2	.500	0	0	0	0.0	0	0	1	0	0	0	6	3.0



2017 & 2018 NCAA NATIONAL FINALISTS



2018 SEC CHAMPIONS



10

JAZZMUN HOLMES

Guard | 5-8 | Senior
Gulfport, Miss. | Harrison Central HS

SEASON HIGHS

Points	17, at Texas (12-2-18)
Rebounds	5, vs. Lamar (11-15-18)
FG Made	7, at Texas (12-2-18)
FG Attempts	11, at Texas (12-2-18)
3PT FG Made	1, 2x, last at Texas (12-2-18)
3PT FG Attempts	2, 2x, last at Oregon (12-18-18)
FT Made	9, at Southern Miss (12-14-18)
FT Attempts	10, at Southern Miss (12-14-18)
Assists	13, vs. Marquette (12-6-18)
Blocks	2, vs. Marquette (12-6-18)
Steals	6, vs. Kentucky (1-6-19)

CAREER HIGHS

Points	17, at Texas (12-2-18)
Rebounds	6, vs. Grambling (11-21-15)
FG Made	7, at Texas (12-2-18)
FG Attempts	11, at Texas (12-2-18)
3PT FG Made	1, 9x, last at Texas (12-2-18)
3PT FG Attempts	3, 3x, last vs. Florida (1-12-17)
FT Made	9, at Southern Miss (12-14-18)
FT Attempts	10, 2x last at Southern Miss (12-14-18)
Assists	13, vs. Marquette (12-6-18)
Blocks	2, 3x, vs. Marquette (12-6-18)
Steals	6, vs. Kentucky (1-6-19)

HOLMES' 2018-19 GAME-BY-GAME (* — INDICATES GAME STARTED)

Opponent	Min.	FG-A	3PT-A	FT-A	O-D-T	PF	Ast.	TO	Blk.	Stl.	Pts.
SE MISSOURI	*28	5-8	0-0	1-3	0-2-2	1	5	1	0	2	11
at Virginia	*31	3-7	0-0	2-2	0-0-0	2	4	2	0	3	8
LAMAR	*27	1-4	0-0	7-8	0-5-5	2	9	2	0	1	9
COPPIN ST.	*18	1-1	0-0	0-0	0-1-1	0	2	0	0	2	2
FURMAN	*22	1-2	1-1	0-0	1-3-4	0	6	0	0	2	3
JACKSON ST.	*13	0-1	0-0	0-0	0-0-0	2	4	0	0	2	13
at Little Rock	*20	2-5	0-0	1-2	0-3-3	3	4	1	0	0	5
at Texas	*38	7-11	1-2	2-2	0-2-2	3	2	2	0	2	17
MARQUETTE	*38	3-8	0-0	2-2	0-0-0	4	13	1	2	1	13
at Southern Miss	*22	2-5	0-0	9-10	0-0-0	0	6	0	0	4	13
at Oregon	*39	3-8	0-2	6-6	1-0-1	2	7	0	0	0	12
at Washington	*22	3-5	0-0	2-2	0-4-4	1	3	3	0	4	8
LOUISIANA	*15	1-4	0-0	0-0	0-0-0	2	4	2	1	1	2
at Arkansas	*30	4-6	0-0	6-8	0-4-4	0	5	1	0	3	14
KENTUCKY	*38	2-7	0-0	4-4	4-2-6	3	5	4	1	6	8
GEORGIA	*35	2-6	0-0	3-4	0-2-2	2	5	1	0	3	7
at Auburn											
SO. CAROLINA											
at Florida											
OLE MISS											
at LSU											
at Alabama											
TENNESSEE											
MISSOURI											
at Texas A&M											
at Ole Miss											
VANDERBILT											
LSU											
at So. Carolina											

* — Indicates Game Started

AWARDS & HONORS

- SEC Academic Honor Roll (2018, 2017)

BULLDOG BITES...

- Dished 5+ assists in 32 games in her career.
- Leads the nation in assist/turnover ratio (4.2).
- 2nd in SEC in assists (5.3 apg)
- 8th in MSU career history with 358 assists,
- 9th among active SEC players with 127 career steals.
- Made her first-career start against SE Missouri, scoring 11 points and dishing 5 assists.
- Scored 9 points and dished a then-career-best 9 assists against Lamar.
- Collected career assist No. 300 in a 6-assist effort against Furman.
- Scored a career-high 17 points at Texas and made a career-best 7 field goals.
- Dealt out a career-high 13 assists against Marquette, which tied the Humphrey Coliseum record, while only turning the ball over once and blocking a career-high-tying two shots.
- Dished six assists without turning the ball over at Southern Miss will recording four steals and 13 points.
- Matched her season-high with four steals at Washington.
- Scored 14 points and tallied 5 assists at Arkansas.
- Dished out 5 assists against Georgia with 3 steals.
- Has turned in 50 assists with just 14 turnovers over the last 9 games while averaging 9.9 ppg, shooting 45.0% from the field (27-of-60) and making 34-of-38 from the free

JAZZMUN HOLMES' CAREER STATISTICS

ALL GAMES

Year	GP	GS	Min	Avg	Total			3-Point			F-Throw			Rebounds				PF	FO	Ast	TO	Blk	Stl	Pts	Avg
					FG	FGA	Pct	FG	FGA	Pct	FT	FTA	Pct	Off	Def	Tot	Avg								
2015-16	33	0	298	9.0	20	70	.286	2	17	.118	20	24	.833	8	25	33	1.0	26	0	71	32	3	21	62	1.9
2016-17	38	0	445	11.7	32	91	.352	4	13	.308	34	47	.723	12	30	42	1.1	43	0	98	43	3	25	102	2.7
2017-18	39	0	578	14.8	55	117	.470	1	3	.333	54	71	.761	14	42	56	1.4	46	0	105	38	9	45	165	4.2
2018-19	16	16	433	27.1	40	88	.455	2	5	.400	45	53	.849	6	28	34	2.1	27	0	84	20	4	36	127	7.9
TOTAL	126	16	1754	13.9	147	366	.402	9	38	.237	153	195	.785	40	125	165	1.3	142	0	358	133	19	127	456	3.6

SEC GAMES

Year	GP	GS	Min	Avg	Total			3-Point			F-Throw			Rebounds				PF	FO	Ast	TO	Blk	Stl	Pts	Avg
					FG	FGA	Pct	FG	FGA	Pct	FT	FTA	Pct	Off	Def	Tot	Avg								
2015-16	14	0	80	5.7	7	20	.350	1	4	.250	6	8	.750	1	7	8	0.6	7	0	14	16	1	6	21	1.5
2016-17	15	0	157	10.5	9	35	.257	1	6	.167	9	15	.600	5	10	15	1.0	15	0	31	17	1	11	28	1.9
2017-18	16	0	237	14.8	18	41	.439	0	1	.000	22	28	.786	4	15	19	1.2	19	0	38	14	2	19	58	3.6
2018-19	3	3	103	34.3	8	19	.421	0	0	.000	13	16	.813	4	8	12	4.0	5	0	15	6	1	12	29	9.7
TOTAL	48	3	577	12.0	42	115	.365	2	11	.182	50	67	.746	14	40	54	1.1	46	0	98	53	5	48	136	2.8



2017 & 2018 NCAA NATIONAL FINALISTS



2018 SEC CHAMPIONS



5 ANRIEL HOWARD

Forward | 5-11 | Graduate Senior
Atlanta, Ga. | Westlake HS/Texas A&M

SEASON HIGHS

Points	30, at Oregon (12-18-18)
Rebounds	13, vs. Lamar (11-15-18)
FG Made	13, vs. Marquette (12-6-18)
FG Attempts	18, 2x, last vs. Georgia (1-10-19)
3PT FG Made	2, 2x, last vs. Marquette (12-6-18)
3PT FG Attempts	4, 2x, last vs. Louisiana (12-30-18)
FT Made	5, 4x, last at Washington (12-20-18)
FT Attempts	8, vs. Furman (11-21-18)
Assists	6, at Little Rock (11-28-18)
Blocks	3, 2x, last at Texas (12-2-18)
Steals	4, vs. Georgia (1-10-19)

CAREER HIGHS

Points	30, at Oregon (12-18-18)
Rebounds	27*, vs. Missouri State (3-19-16)
FG Made	13, vs. Marquette (12-6-18)
FG Attempts	21*, vs. Notre Dame (3-24-18)
3PT FG Made	3*, at Arkansas (2-22-18)
3PT FG Attempts	4, 2x, last vs. Louisiana (12-30-18)
FT Made	8*, 2x, last vs. Kentucky (1-4-18)
FT Attempts	12*, vs. Kentucky (1-4-18)
Assists	6*, 2x, last at Little Rock (11-28-18)
Blocks	3*, 3x, at Texas (12-2-18)
Steals	5*, vs. Texas A&M-Corpus Christi (12-10-16)

*includes games at Texas A&M

HOWARD'S 2018-19 GAME-BY-GAME (* — INDICATES GAME STARTED)

Opponent	Min.	FG-A	3PT-A	FT-A	O-D-T	PF	Ast.	TO	Blk.	Stl.	Pts.
SE MISSOURI	*19	4-7	0-0	1-3	2-5-7	4	1	2	0	0	9
at Virginia	*20	4-8	0-1	0-0	5-4-9	3	1	1	3	0	8
LAMAR	*25	9-15	1-3	5-5	6-7-13	1	3	5	0	1	24
COPPIN ST.	*23	6-11	0-0	3-4	2-6-8	2	3	1	0	2	15
FURMAN	*19	3-7	2-3	4-8	3-3-6	2	1	2	0	0	12
JACKSON ST.	*17	3-8	0-1	5-7	4-3-7	2	1	0	0	2	11
at Little Rock	*23	6-11	1-3	3-4	2-7-9	3	6	3	0	0	16
at Texas	*36	3-14	0-3	1-2	5-3-8	1	2	2	3	2	7
MARQUETTE	*33	13-18	2-2	1-1	9-3-12	2	2	0	1	3	29
at Southern Miss	*25	6-12	1-4	3-6	4-3-7	0	0	1	0	2	16
at Oregon	*39	12-17	1-4	5-7	2-4-6	5	1	5	0	0	30
at Washington	*26	5-8	1-1	5-6	2-5-7	2	0	2	0	3	16
LOUISIANA'	*18	6-9	0-4	0-0	3-3-6	2	0	1	1	2	16
at Arkansas	21	4-8	0-0	0-0	3-3-6	4	2	2	0	1	8
KENTUCKY	*36	8-14	1-1	4-5	5-7-12	4	2	3	1	2	21
GEORGIA	*40	8-18	1-3	1-1	1-3-4	4	3	1	1	4	18
at Auburn											
SO. CAROLINA											
at Florida											
OLE MISS											
at LSU											
at Alabama											
TENNESSEE											
MISSOURI											
at Texas A&M											
at Ole Miss											
VANDERBILT											
LSU											
at So. Carolina											

* — Indicates Game Started

AWARDS & HONORS

- Preseason All-SEC (media)
- SEC Player of the Week (11/20/18)
- Preseason First Team All-SEC (coaches)
- 2018 SEC Community Service Team
- Wooden Award Top 30 Watch List
- Naismith Trophy Preseason Watch List
- Katrina McClain Award Watch List

BULLDOG BITES...

- 2nd among active SEC players, 5th in Division I, in career rebounds (1,129).
- 2nd in SEC, 11th active player in Division I in career double-doubles (36).
- 8th active SEC player in career scoring (1,186), tied for 6th in steals (132).
- Averaging 19.3 ppg and 7.5 rpg while shooting 59.6% from the field (62-of-104) over the last 8 games.
- Tallied 8 points, 9 rebounds and 3 blocked shots at Virginia.
- Named SEC Player of the Week for the 2nd time in her career after averaging 19.5 ppg and 10.5 rpg vs. Lamar and Coppin State.
- Claimed her first double-double as a Bulldog vs. Lamar, the 34th of her career.
- Put in 15 points and grabbed 8 rebounds against Coppin State.
- Made a season-high 2 3-pointers in a 12-point effort against Furman.
- Notched her 1,000th-career point in an 11-point, 7-rebound showing against Jackson State.
- Knocked down 6-of-11 FG attempts for 16 points and grabbed 9 rebounds at Little Rock.
- Matched her career-high with three blocks at Texas while scoring 7 points and collecting 9 rebounds.
- Set career highs in points (29), field goals (13) and field goal attempts (18) in the win over Marquette.
- Scored a career-high 30 points at Oregon while going 12-of-17 from the field.
- Turned in 16 points and 7 rebounds at Washington.
- Recorded her third double-double of the season against Kentucky with 21 points and 12 rebounds.
- Scored 18 points and recorded a season-high 4 steals against Georgia.

ANRIEL HOWARD'S CAREER STATISTICS

ALL GAMES (MSU & TEXAS A&M)

Year	GP	GS	Min	Avg	Total			3-Point			F-Throw			Rebounds				PF	FO	Ast	TO	Blk	Stl	Pts	Avg
					FG	FGA	Pct	FG	FGA	Pct	FT	FTA	Pct	Off	Def	Tot	Avg								
2015-16*	32	17	541	16.9	59	127	.465	0	0	.000	29	52	.558	84	125	209	6.5	76	1	12	35	10	21	147	4.6
2016-17*	34	34	1059	31.1	141	340	.415	1	2	.500	64	97	.660	130	224	354	10.4	109	6	30	67	9	50	347	10.2
2017-18*	36	36	1210	33.6	153	347	.441	12	39	.308	118	157	.752	166	273	439	12.2	99	3	70	74	14	37	436	12.1
2018-19	16	16	420	26.3	100	185	.541	11	30	.367	45	63	.714	58	69	127	7.9	41	1	28	31	10	24	256	16.0
MSU TOTAL	16	16	420	26.3	100	185	.541	11	30	.367	45	63	.714	58	69	127	7.9	41	1	28	31	10	24	256	16.0
All*	118	103	3230	27.4	453	999	.453	24	71	.338	256	369	.694	438	691	1129	9.6	325	11	140	207	43	132	1186	10.1

Statistics from Texas A&M

SEC GAMES (MSU ONLY)

Year	GP	GS	Min	Avg	Total			3-Point			F-Throw			Rebounds				PF	FO	Ast	TO	Blk	Stl	Pts	Avg
					FG	FGA	Pct	FG	FGA	Pct	FT	FTA	Pct	Off	Def	Tot	Avg								
2018-19	3	3	97	32.3	20	40	.500	2	4	.500	5	6	.833	9	13	22	7.3	12	0	7	6	2	7	47	15.7
TOTAL	3	3	97	32.3	20	40	.500	2	4	.500	5	6	.833	9	13	22	7.3	12	0	7	6	2	7	47	15.7





15 **TEAIRA McCOWAN**
Center | 6-7 | Senior
Brenham, Texas | Brenham HS

SEASON HIGHS		CAREER HIGHS	
Points	24, 3x, last vs. Marquette (12-6-18)	Points	41, vs. MVSU (12-28-17)
Rebounds	22, at Arkansas (1-3-19)	Rebounds	25, vs. Louisville (3-30-18)
FG Made	11, vs. Furman (11-21-18)	FG Made	19, vs. MVSU (12-28-17)
FG Attempts	19, at Little Rock (11-28-18)	FG Attempts	24, 2x, last at LSU (1-7-18)
3PT FG Made	—	3PT FG Made	—
3PT FG Attempts	—	3PT FG Attempts	—
FT Made	10, vs. SE Missouri (11-6-18)	FT Made	10, vs. SE Missouri (11-6-18)
FT Attempts	15, vs. SE Missouri (11-6-18)	FT Attempts	15, vs. SE Missouri (11-6-18)
Assists	2, 3x last at Washington (12-20-18)	Assists	2, 11x, last at Washington (12-20-18)
Blocks	7, vs. SE Missouri (11-6-18)	Blocks	7, vs. SE Missouri (11-6-18)
Steals	3, vs. Virginia (11-9-18)	Steals	5, vs. Vanderbilt (3-4-16)

McCOWAN'S 2018-19 GAME-BY-GAME (* — INDICATES GAME STARTED)

Opponent	Min.	FG-A	3PT-A	FT-A	O-D-T	PF	Ast.	TO	Blk.	Stl.	Pts.
SE MISSOURI	*28	7-11	0-0	10-15	7-10-17	1	0	4	7	1	24
at Virginia	*29	5-10	0-0	2-2	3-9-12	4	2	0	4	3	12
LAMAR	*22	5-8	0-0	1-2	3-13-16	4	0	0	5	0	11
COPPIN ST.	*19	10-12	0-0	3-4	3-3-6	4	1	2	5	2	23
FURMAN	*20	11-11	0-0	2-2	5-5-10	1	0	0	1	1	24
JACKSON ST.	*19	8-9	0-0	3-5	3-3-6	1	0	2	2	0	19
at Little Rock	*24	11-19	0-0	1-4	10-5-15	1	1	1	1	0	23
at Texas	*26	5-8	0-0	3-4	7-5-12	4	1	1	0	1	13
MARQUETTE	*40	9-12	0-0	6-6	8-10-18	2	1	4	2	0	24
at Southern Miss	*25	5-8	0-0	3-3	9-7-16	1	0	0	1	1	13
at Oregon	34	2-5	0-0	1-1	2-9-11	2	2	2	4	0	5
at Washington	*22	6-8	0-0	1-1	5-8-13	2	2	0	0	1	13
LOUISIANA	*21	5-5	0-0	3-3	4-7-11	2	0	2	5	0	13
at Arkansas	*25	7-11	0-0	2-2	8-14-22	3	1	3	3	0	16
KENTUCKY	*22	5-10	0-0	3-5	3-7-10	4	1	3	0	1	13
GEORGIA	*36	7-16	0-0	4-8	13-8-21	2	0	0	2	1	18
at Auburn											
SO. CAROLINA											
at Florida											
OLE MISS											
at LSU											
at Alabama											
TENNESSEE											
MISSOURI											
at Texas A&M											
at Ole Miss											
VANDERBILT											
LSU											
at So. Carolina											

* — Indicates Game Started

AWARDS & HONORS

- SEC Preseason POY (media & coaches)
- Preseason First Team All-SEC (coaches)
- Preseason All-SEC (media)
- Naismith Trophy Preseason Watch List
- Wooden Award Top 30 Watch List
- Wade Trophy Watch List
- Lisa Leslie Award Watch List
- SEC Player of the Week (11/13/18, 12/4/18)
- 2018 Naismith Defensive Player of the Yr.
- 2018 WBCA, AP All-American
- 2018 SEC Co-Def. POY

BULLDOG BITES...

- SEC active career rebounds leader and 3rd in NCAA Division I (1,231).
- 4th nationally, 1st in SEC, among active players in career double-doubles (52).
- Ranks 40th among active players in Division I with 1,544 points, which is 2nd in the SEC.
- Broke LaToya Thomas' (2000-03) career rebound record at Texas with her 1,109th board.
- 2nd in SEC, and 8th nationally, among active players in career blocks (226).
- 4th in the nation in blocked shots for the season (42).
- 26 career games with 20+ points; 13 career games with 20+ pts. and 15+ rebounds.
- Averaging 17.7 rebounds per game in conference play, which leads the league.
- Has won seven career SEC weekly awards, which is tied for MSU's career record (Victoria Vivians, LaToya Thomas), including six SEC Player of the Week awards, which leads all active players.
- Eamed her first SEC Player of the Week award this year after averaging 18.0 ppg, 14.5 rpg and 5.5 bpg against SE Missouri and Virginia.
- Recorded her 200th-career block with 11 points, 16 rebounds, 5 swats against Lamar.
- Put in 23 points and blocked 5 shots against Coppin State.
- Became the first Bulldog to go perfect from the field on 10 or more FG attempts, making 11-for-11 to tally 24 points and 10 rebounds against Furman.
- Made 8-of-9 shots for 19 points against Jackson State, having a run of 22-consecutive made field goals snapped in the 3rd quarter.
- Talled 23 points, 15 rebounds in a road win at Little Rock.
- Picked up her second SEC Player of the Week honor of the season after averaging 18.0 points and 13.5 rebounds and shooting 59.3 percent from the field against Little Rock and Texas.
- Set season highs in both points (24) and rebounds (18) against Marquette while blocking two shots.
- Collected a season-high 22 rebounds along with 16 points against Arkansas.
- Grabbed 21 rebounds, including 13 on the offensive glass, against Georgia and added 18 points.

TEAIRA McCOWAN'S CAREER STATISTICS

ALL GAMES

Year	GP	GS	Total		3-Point			F-Throw			Rebounds				PF	FO	Ast	TO	Blk	Stl	Pts	Avg			
			FG	FGA	FGA	Pct	FG	FGA	Pct	FT	FTA	Pct	Off	Def									Tot	Avg	
2015-16	35	1	481	13.7	92	186	.495	0	0	.000	46	69	.667	100	95	195	5.6	93	5	9	49	46	18	230	6.6
2016-17	39	6	769	19.7	141	248	.569	0	0	.000	58	95	.611	107	169	276	7.1	108	2	20	42	57	31	340	8.7
2017-18	39	39	1191	30.5	286	476	.601	0	0	.000	138	218	.633	237	307	544	13.9	98	2	18	79	81	32	710	18.2
2018-19	16	16	412	25.8	108	163	.663	0	0	.000	48	67	.716	93	123	216	13.5	38	0	12	24	42	12	264	16.5
TOTAL	129	62	2853	22.1	627	1073	.584	0	0	.000	290	449	.646	537	694	1231	9.5	337	9	59	194	226	93	1544	12.0

SEC GAMES

Year	GP	GS	Total		3-Point			F-Throw			Rebounds				PF	FO	Ast	TO	Blk	Stl	Pts	Avg			
			FG	FGA	FGA	Pct	FG	FGA	Pct	FT	FTA	Pct	Off	Def									Tot	Avg	
2015-16	16	0	227	14.2	33	71	.465	0	0	.000	16	24	.667	49	39	88	5.5	38	1	5	17	23	4	82	5.1
2016-17	16	0	326	20.4	65	98	.663	0	0	.000	18	30	.600	45	70	115	7.2	50	1	7	16	23	11	148	9.3
2017-18	16	16	510	31.9	109	194	.562	0	0	.000	65	101	.644	103	127	230	14.4	39	0	6	33	28	9	283	17.7
2018-19	3	3	83	27.7	19	37	.514	0	0	.000	9	15	.600	24	29	53	17.7	9	0	2	6	5	2	47	15.7
TOTAL	51	19	1146	22.5	226	400	.565	0	0	.000	108	170	.635	221	265	486	9.5	136	2	20	72	79	26	560	11.0



2017 & 2018 NCAA NATIONAL FINALISTS



2018 SEC CHAMPIONS



23

BRE'AMBER SCOTT

Guard | 5-11 | Sophomore
Little Rock, Ark. | Central HS

SEASON HIGHS

Points21, vs. Louisiana (12-30-18)
Rebounds5, vs. SE Missouri (11-6-18)
FG Made.....7, vs. Louisiana (12-30-18)
FG Attempts9, vs. Louisiana (12-30-18)
3PT FG Made5, vs. Louisiana (12-30-18)
3PT FG Attempts.....6, vs. Louisiana (12-30-18)
FT Made7, vs. Jackson State (11-24-18)
FT Attempts.....8, vs. Jackson State (11-24-18)
Assists.....3, 3x, last vs. Louisiana (12-30-18)
Blocks1, 4x, last vs. Kentucky (1-6-19)
Steals2, 2x, last vs. Louisiana (12-30-18)

CAREER HIGHS

Points21, vs. Louisiana (12-30-18)
Rebounds5, 2x, last vs. SE Missouri (11-6-18)
FG Made.....7, vs. Louisiana (12-30-18)
FG Attempts9, vs. Louisiana (12-30-18)
3PT FG Made5, vs. Louisiana (12-30-18)
3PT FG Attempts.....6, vs. Louisiana (12-30-18)
FT Made7, vs. Jackson State (11-24-18)
FT Attempts.....8, vs. Jackson State (11-24-18)
Assists.....3, 3x, last vs. Louisiana (12-30-18)
Blocks1, 5x, last vs. Kentucky (1-6-19)
Steals2, 4x, last vs. Louisiana (12-30-18)

SCOTT'S 2018-19 GAME-BY-GAME (* — INDICATES GAME STARTED)

Opponent	Min.	FG-A	3PT-A	FT-A	O-D-T	PF	Ast.	TO	Blk.	Stl.	Pts.
SE MISSOURI	19	0-5	0-1	6-6	4-1-5	4	2	1	0	0	6
at Virginia	3	1-1	0-0	1-2	1-0-1	0	0	1	0	0	3
LAMAR	13	0-1	0-0	2-2	0-3-3	1	3	0	0	1	2
COPPIN ST.	20	4-6	0-2	2-3	0-1-1	1	3	0	0	2	10
FURMAN	8	2-5	0-1	1-2	0-1-1	0	1	0	0	1	5
JACKSON ST.	11	3-3	1-1	7-8	2-1-3	3	2	1	0	1	14
at Little Rock	18	5-6	0-1	3-3	0-0-0	3	0	0	0	0	13
at Texas	5	1-3	0-0	0-0	0-1-1	0	1	0	0	0	0
MARQUETTE	20	2-6	1-3	2-2	0-2-2	2	2	2	1	1	7
at Southern Miss	11	0-1	0-0	1-2	1-1-2	1	0	1	0	0	1
at Oregon	7	1-2	1-1	0-0	0-0-0	3	1	0	0	0	3
at Washington	5	2-4	0-0	0-0	1-0-1	1	0	0	0	0	4
LOUISIANA	22	7-9	5-6	2-2	1-1-2	2	3	1	1	2	21
at Arkansas	14	3-6	1-1	0-0	0-2-2	2	0	1	1	0	7
KENTUCKY	10	2-6	1-3	0-0	0-0-0	0	0	1	1	1	5
GEORGIA	3	0-0	0-0	0-0	0-0-0	0	0	1	0	0	0
at Auburn											
SO. CAROLINA											
at Florida											
OLE MISS											
at LSU											
at Alabama											
TENNESSEE											
MISSOURI											
at Texas A&M											
at Ole Miss											
VANDERBILT											
LSU											
at So. Carolina											

* — Indicates Game Started

AWARDS & HONORS

- SEC First Year Honor Roll (2018)

BULLDOG BITES...

- Shooting 84.4% from the free throw line this year (27-of-32).
- Had her first double-digit scoring game with 10 points against Coppin State.
- Tallied a then career-high 14 points against Jackson State, including going a personal-best 7-of-8 at the free-throw line.
- Returned to her hometown of Little Rock and scored 13 points on 5-of-6 shooting.
- Scored a career-high 21 points to lead all scorers against Louisiana while making a career-best 5 three-pointers.

BRE'AMBER SCOTT'S CAREER STATISTICS

ALL GAMES

Year	GP	GS	Min	Avg	Total			3-Point			F-Throw			Rebounds				PF	FO	Ast	TO	Blk	Stl	Pts	Avg
					FG	FGA	Pct	FG	FGA	Pct	FT	FTA	Pct	Off	Def	Tot	Avg								
2017-18	23	0	123	5.3	11	34	.324	0	10	.000	17	25	.680	9	10	19	0.8	14	0	8	15	1	11	39	1.7
2018-19	15	0	185	12.3	33	64	.516	10	20	.500	27	32	.844	10	14	24	1.6	23	0	18	9	4	8	103	6.9
TOTAL	38	0	308	8.1	44	98	.449	10	30	.333	44	57	.772	19	24	43	1.1	37	0	26	24	5	19	142	3.7

SEC GAMES

Year	GP	GS	Min	Avg	Total			3-Point			F-Throw			Rebounds				PF	FO	Ast	TO	Blk	Stl	Pts	Avg
					FG	FGA	Pct	FG	FGA	Pct	FT	FTA	Pct	Off	Def	Tot	Avg								
2017-18	23	0	123	5.3	11	34	.324	0	10	.000	17	25	.680	9	10	19	0.8	14	0	8	15	1	11	39	1.7
2018-19	3	0	27	9.0	5	12	.417	2	4	.500	0	0	.000	0	2	2	0.7	3	0	0	3	2	1	12	4.0
TOTAL	11	0	55	5.0	10	19	.526	2	6	.333	3	3	1.000	4	4	8	0.7	7	0	3	7	2	5	25	2.3



2017 & 2018 NCAA NATIONAL FINALISTS



2018 SEC CHAMPIONS



20 NYAH TATE

Guard | 6-0 | Sophomore
Terry, Miss. | Terry HS

SEASON HIGHS

Points	5, vs. Jackson State (11-24-18)
Rebounds	2, vs. Jackson State (11-24-18)
FG Made	2, vs. Jackson State (11-24-18)
FG Attempts	3, 2x, last vs. Louisiana (12-30-18)
3PT FG Made	1, vs. Jackson State (11-24-18)
3PT FG Attempts	2, vs. Jackson State (11-24-18)
FT Made	—
FT Attempts	—
Assists	1, 2x, last at Washington (12-20-18)
Blocks	—
Steals	—

CAREER HIGHS

Points	5, 3x, last vs. Jackson State (11-24-18)
Rebounds	2, 3x, last vs. Jackson State (11-24-18)
FG Made	2, 4x, last vs. Jackson State (11-24-18)
FG Attempts	5, vs. Nicholls (3-17-18)
3PT FG Made	1, 5x, last vs. vs. Jackson State (11-24-18)
3PT FG Attempts	2, 2x, last vs. Jackson State (11-24-18)
FT Made	2, vs. Georgia State (11-16-17)
FT Attempts	4, vs. Georgia State (11-16-17)
Assists	1, 2x, last at Washington (12-20-18)
Blocks	—
Steals	1, at Vanderbilt (2-15-18)

TATE'S 2018-19 GAME-BY-GAME (* — INDICATES GAME STARTED)

Opponent	Min.	FG-A	3PT-A	FT-A	O-D-T	PF	Ast.	TO	Blk.	Stl.	Pts.
SE MISSOURI	DNP										
at Virginia	DNP										
LAMAR	DNP										
COPPIN ST.	DNP										
FURMAN	DNP										
JACKSON ST	8	2-3	1-2	0-0	0-2-2	1	0	0	0	0	5
at Little Rock	DNP										
at Texas	DNP										
MARQUETTE	DNP										
at Southern Miss	4	0-0	0-0	0-0	0-0-0	0	1	0	0	0	0
at Oregon	DNP										
at Washington	3	1-1	0-0	0-0	0-1-1	0	1	0	0	0	2
LOUISIANA	2	0-3	0-0	0-0	1-0-1	1	0	0	0	0	0
at Arkansas	2	0-0	0-0	0-0	0-0-0	0	0	0	0	0	0
KENTUCKY	DNP										
GEORGIA	DNP										
at Auburn											
SO. CAROLINA											
at Florida											
OLE MISS											
at LSU											
at Alabama											
TENNESSEE											
MISSOURI											
at Texas A&M											
at Ole Miss											
VANDERBILT											
LSU											
at So. Carolina											

* — Indicates Game Started

AWARDS & HONORS

- SEC First Year Honor Roll (2018)

BULLDOG BITES...

- Saw her first action of the season against Jackson State, tying her career high with 5 points.
- Played four minutes at Southern Miss, recording one assist.

NYAH TATE'S CAREER STATISTICS

ALL GAMES

Year	GP	GS	Min	Avg	Total			3-Point			F-Throw			Rebounds				PF	FO	Ast	TO	Blk	Stl	Pts	Avg
					FG	FGA	Pct	FG	FGA	Pct	FT	FTA	Pct	Off	Def	Tot	Avg								
2017-18	21	0	71	3.4	13	29	.448	4	9	.444	2	4	.500	1	7	8	0.4	2	0	0	6	0	1	32	1.5
2018-19	5	0	19	3.8	3	7	.429	1	2	.500	0	0	.000	1	4	5	1.0	2	0	2	0	0	0	7	1.4
TOTAL	26	0	90	3.5	16	36	.444	5	11	.455	2	4	.500	2	11	13	0.5	4	0	2	6	0	1	39	1.5

SEC GAMES

Year	GP	GS	Min	Avg	Total			3-Point			F-Throw			Rebounds				PF	FO	Ast	TO	Blk	Stl	Pts	Avg
					FG	FGA	Pct	FG	FGA	Pct	FT	FTA	Pct	Off	Def	Tot	Avg								
2017-18	7	0	13	1.9	4	7	.571	1	3	.333	0	0	.000	0	1	1	0.1	1	0	0	0	0	1	9	1.3
2018-19	1	0	2	2.0	0	0	.000	0	0	.000	0	0	.000	0	1	1	1.0	0	0	0	0	0	0	0	0.0
TOTAL	8	0	15	1.9	4	7	.571	1	3	.333	0	0	.000	0	2	2	0.3	1	0	0	0	0	1	9	1.1





1

MYAH TAYLOR

Guard | 5-7 | Redshirt Freshman
Olive Branch, Miss. | Olive Branch HS

SEASON HIGHS

Points	10, vs. Furman (11-21-18)
Rebounds	4, vs. Coppin State (11-18-18)
FG Made	4, vs. Furman (11-21-18)
FG Attempts	9, vs. Jackson State (11-24-18)
3PT FG Made	2, vs. Furman (11-21-18)
3PT FG Attempts	4, vs. Jackson State (11-24-18)
FT Made	3, 2x, last at Washington (12-20-18)
FT Attempts	4, 3x, last at Washington (12-20-18)
Assists	7, vs. Louisiana (12-30-18)
Blocks	—
Steals	3, 2x, last at Southern Miss (12-14-18)

CAREER HIGHS

Points	10, vs. Furman (11-21-18)
Rebounds	4, vs. Coppin State (11-18-18)
FG Made	4, vs. Furman (11-21-18)
FG Attempts	9, vs. Jackson State (11-24-18)
3PT FG Made	2, vs. Furman (11-21-18)
3PT FG Attempts	4, vs. Jackson State (11-24-18)
FT Made	3, 2x, last at Washington (12-20-18)
FT Attempts	4, 3x, last at Washington (12-20-18)
Assists	7, vs. Louisiana (12-30-18)
Blocks	—
Steals	3, 2x, last at Southern Miss (12-14-18)

TAYLOR'S 2018-19 GAME-BY-GAME (* — INDICATES GAME STARTED)

Opponent	Min.	FG-A	3PT-A	FT-A	O-D-T	PF	Ast.	TO	Blk.	Stl.	Pts.
SE MISSOURI	19	2-4	1-2	2-2	0-0-0	4	6	2	0	0	7
at Virginia	11	1-3	1-2	1-2	0-2-2	1	0	2	0	0	4
LAMAR	14	2-5	0-2	3-4	1-0-1	1	2	6	0	1	7
COPPIN ST.	22	2-8	0-3	0-1	0-4-4	4	5	2	0	0	4
FURMAN	18	4-4	2-2	0-0	0-1-1	0	6	3	0	3	10
JACKSON ST.	27	2-9	0-4	2-4	2-1-3	2	6	2	0	0	6
at Little Rock	15	2-3	1-1	1-2	1-1-2	1	2	1	0	2	6
at Texas	3	0-0	0-0	0-0	0-0-0	0	0	0	0	0	0
MARQUETTE	4	0-1	0-0	0-0	0-0-0	0	0	1	0	0	0
at Southern Miss	18	3-3	1-1	0-1	0-1-1	3	2	1	0	3	7
at Oregon	2	0-0	0-0	0-0	0-0-0	0	0	0	0	0	0
at Washington	18	0-1	0-0	3-4	0-0-0	2	3	4	0	0	3
LOUISIANA	25	3-7	1-3	2-2	0-3-3	1	7	3	0	2	9
at Arkansas	10	0-2	0-2	2-2	0-0-0	2	1	0	0	0	2
KENTUCKY	2	0-1	0-0	0-0	0-0-0	0	0	0	0	0	0
GEORGIA	2	0-0	0-0	0-0	0-0-0	0	1	0	0	0	0
at Auburn											
SO. CAROLINA											
at Florida											
OLE MISS											
at LSU											
at Alabama											
TENNESSEE											
MISSOURI											
at Texas A&M											
at Ole Miss											
VANDERBILT											
LSU											
at So. Carolina											

* — Indicates Game Started

AWARDS & HONORS

- SEC First Year Honor Roll (2018)

BULLDOG BITES...

- Made her Bulldog debut against SE Missouri, scoring 7 points to go with 6 assists.
- Matched her season high with 7 points against Lamar.
- Had season highs with 10 points, 6 assists and 3 steals vs. Furman.
- Was perfect from the field at Southern Miss, scoring 7 points to go along with two assists and three steals.
- Totaled 9 points and 7 assists against Louisiana.

MYAH TAYLOR'S CAREER STATISTICS

ALL GAMES

Year	GP	GS	Min	Avg	Total			3-Point			F-Throw			Rebounds				PF	FO	Ast	TO	Blk	Stl	Pts	Avg
					FG	FGA	Pct	FG	FGA	Pct	FT	FTA	Pct	Off	Def	Tot	Avg								
2017-18																									
2018-19	16	0	210	13.1	21	51	.412	7	22	.318	16	24	.667	4	13	17	1.1	22	0	41	27	0	11	65	4.1
TOTAL	16	0	210	13.1	21	51	.412	7	22	.318	16	24	.667	4	13	17	1.1	22	0	41	27	0	11	65	4.1

SEC GAMES

Year	GP	GS	Min	Avg	Total			3-Point			F-Throw			Rebounds				PF	FO	Ast	TO	Blk	Stl	Pts	Avg
					FG	FGA	Pct	FG	FGA	Pct	FT	FTA	Pct	Off	Def	Tot	Avg								
2017-18																									
2018-19	3	0	14	4.7	0	3	.000	0	2	.000	2	2	1.000	0	0	0	0.0	3	0	2	0	0	0	2	0.7
TOTAL	3	0	14	4.7	0	3	.000	0	2	.000	2	2	1.000	0	0	0	0.0	3	0	2	0	0	0	2	0.7



2017 & 2018 NCAA NATIONAL FINALISTS



2017 SEC CHAMPIONS



13

PROMISE TAYLOR

Center | 6-5 | Sophomore
Issaquah, Wash. | Sammamish HS/Ole Miss

SEASON HIGHS

Points	—
Rebounds	—
FG Made	—
FG Attempts	—
3PT FG Made	—
3PT FG Attempts	—
FT Made	—
FT Attempts	—
Assists	—
Blocks	—
Steals	—

CAREER HIGHS

Points	19*, vs. Kennesaw State (11-13-17)
Rebounds	13*, 2x, last vs. Mississippi State (1-28-18)
FG Made	9*, vs. Kennesaw State (11-13-17)
FG Attempts	11*, 2x, last at Temple (11-25-17)
3PT FG Made	—
3PT FG Attempts	—
FT Made	4*, 2x, last at Texas A&M (2-8-18)
FT Attempts	8*, at Texas A&M (2-8-18)
Assists	3*, vs. Florida (1-7-18)
Blocks	10*, at Texas A&M (2-8-18)
Steals	3*, 2x, last at Auburn (2-25-18)

*Includes games at Ole Miss

TAYLOR'S 2018-19 GAME-BY-GAME (* — INDICATES GAME STARTED)

Opponent	Min.	FG-A	3PT-A	FT-A	O-D-T	PF	Ast.	TO	Blk.	Stl.	Pts.
SE MISSOURI	DNP										
at Virginia	DNP										
LAMAR	DNP										
COPPIN ST.	DNP										
FURMAN	DNP										
JACKSON ST.	DNP										
at Little Rock	DNP										
at Texas	DNP										
MARQUETTE	DNP										
at Southern Miss	DNP										
at Oregon	DNP										
at Washington	DNP										
LOUISIANA	DNP										
at Arkansas	DNP										
KENTUCKY	DNP										
GEORGIA	DNP										
at Auburn											
SO. CAROLINA											
at Florida											
OLE MISS											
at LSU											
at Alabama											
TENNESSEE											
MISSOURI											
at Texas A&M											
at Ole Miss											
VANDERBILT											
LSU											
at So. Carolina											

* — Indicates Game Started

AWARDS & HONORS

- 2018 SEC All-Freshman Team

BULLDOG BITES...

PROMISE TAYLOR'S CAREER STATISTICS

ALL GAMES (MSU & OLE MISS)

Year	GP	GS	Min	Avg	Total			3-Point			F-Throw			Rebounds				PF	FO	Ast	TO	Blk	Stl	Pts	Avg
					FG	FGA	Pct	FG	FGA	Pct	FT	FTA	Pct	Off	Def	Tot	Avg								
2017-18*	31	13	717	23.1	111	183	.607	0	0	.000	35	73	.479	67	119	186	6.0	75	3	12	51	82	12	257	8.3
ALL*	31	13	717	23.1	111	183	.607	0	0	.000	35	73	.479	67	119	186	6.0	75	3	12	51	82	12	257	8.3

* Statistics from Ole Miss

SEC GAMES (MSU ONLY)

Year	GP	GS	Min	Avg	Total			3-Point			F-Throw			Rebounds				PF	FO	Ast	TO	Blk	Stl	Pts	Avg
					FG	FGA	Pct	FG	FGA	Pct	FT	FTA	Pct	Off	Def	Tot	Avg								



2017 & 2018 NCAA NATIONAL FINALISTS



2017 SEC CHAMPIONS



11 XARIA WIGGINS

Guard/Forward | 6-1 | Freshman
Virginia Beach, Va. | Princess Anne HS

SEASON HIGHS		CAREER HIGHS	
Points	10, vs. Louisiana (12-30-18)	Points	10, vs. Louisiana (12-30-18)
Rebounds	6, vs. Louisiana (12-30-18)	Rebounds	6, vs. Louisiana (12-30-18)
FG Made	3, 2x, last vs. Jackson State (11-24-18)	FG Made	3, 2x, last vs. Jackson State (11-24-18)
FG Attempts	8, 2x, last vs. Jackson State (11-24-18)	FG Attempts	8, 2x, last vs. Jackson State (11-24-18)
3PT FG Made	2, vs. Jackson State (11-24-18)	3PT FG Made	2, vs. Jackson State (11-24-18)
3PT FG Attempts	5, vs. Virginia (11-9-18)	3PT FG Attempts	5, vs. Virginia (11-9-18)
FT Made	7, vs. Louisiana (12-30-18)	FT Made	7, vs. Louisiana (12-30-18)
FT Attempts	10, vs. Louisiana (12-30-18)	FT Attempts	10, vs. Louisiana (12-30-18)
Assists	4, vs. Furman (11-21-18)	Assists	4, vs. Furman (11-21-18)
Blocks	2, vs. Louisiana (12-30-18)	Blocks	2, vs. Louisiana (12-30-18)
Steals	3, vs. SE Missouri (11-6-18)	Steals	3, vs. SE Missouri (11-6-18)

WIGGINS' 2018-19 GAME-BY-GAME (* — INDICATES GAME STARTED)

Opponent	Min.	FG-A	3PT-A	FT-A	O-D-T	PF	Ast.	TO	Blk.	Stl.	Pts.
SE MISSOURI	21	1-5	1-4	1-2	1-0-1	2	0	0	0	3	4
at Virginia	9	1-7	0-5	0-0	0-0-0	0	1	0	0	1	2
LAMAR	17	3-8	1-3	1-1	1-2-3	0	0	0	1	2	8
COPPIN ST.	12	1-5	1-3	0-0	1-1-2	3	3	2	0	1	3
FURMAN	13	1-3	0-2	0-0	0-1-1	1	4	2	1	1	2
JACKSON ST.	17	3-8	2-4	1-2	1-3-4	2	0	0	0	1	9
at Little Rock	2	0-1	0-0	0-0	0-0-0	0	0	0	0	0	0
at Texas	1	0-0	0-0	0-0	0-0-0	0	0	0	0	0	0
MARQUETTE	DNP										
at Southern Miss	14	2-5	0-1	1-2	0-0-0	0	1	0	1	1	5
at Oregon	1	0-0	0-0	0-2	0-0-0	0	0	0	0	0	0
at Washington	10	1-4	1-2	0-0	1-2-3	1	1	0	0	1	3
LOUISIANA	15	1-5	1-2	7-10	2-4-6	3	2	0	2	0	10
at Arkansas	8	1-4	0-0	0-0	0-1-1	0	1	0	1	0	2
KENTUCKY	DNP										
GEORGIA	DNP										
at Auburn											
SO. CAROLINA											
at Florida											
OLE MISS											
at LSU											
at Alabama											
TENNESSEE											
MISSOURI											
at Texas A&M											
at Ole Miss											
VANDERBILT											
LSU											
at So. Carolina											

* — Indicates Game Started

AWARDS & HONORS

BULLDOG BITES...

- Contributed 3 steals and 4 points in her MSU debut against SE Missouri.
- Tallied a season-high 9 points and 4 rebounds against Jackson State.
- Set season highs in points (10), rebounds (6), free throws made (7), free throws attempted (10) and blocks (2) against Louisiana.

XARIA WIGGINS' CAREER STATISTICS

ALL GAMES

Year	GP	GS	Min	Avg	Total			3-Point			F-Throw			Rebounds				PF	FO	Ast	TO	Blk	Stl	Pts	Avg
					FG	FGA	Pct	FG	FGA	Pct	FT	FTA	Pct	Off	Def	Tot	Avg								
2018-19	13	0	140	10.8	15	55	.273	7	26	.269	11	19	.579	7	14	21	1.6	12	0	13	4	6	11	48	3.7
TOTAL	13	0	140	10.8	15	55	.273	7	26	.269	11	19	.579	7	14	21	1.6	12	0	13	4	6	11	48	3.7

SEC GAMES

Year	GP	GS	Min	Avg	Total			3-Point			F-Throw			Rebounds				PF	FO	Ast	TO	Blk	Stl	Pts	Avg
					FG	FGA	Pct	FG	FGA	Pct	FT	FTA	Pct	Off	Def	Tot	Avg								
2018-19	1	0	8	8.0	1	4	.250	0	0	.000	0	0	.000	0	1	1	1.0	0	0	1	0	1	0	2	2.0
TOTAL	1	0	8	8.0	1	4	.250	0	0	.000	0	0	.000	0	1	1	1.0	0	0	1	0	1	0	2	2.0





MISSISSIPPI STATE BASKETBALL
Mississippi State Combined Team Statistics (as of Jan 10, 2019)
All games



RECORD:	OVERALL	HOME	AWAY	NEUTRAL
ALL GAMES	15-1	9-0	6-1	0-0
CONFERENCE	3-0	2-0	1-0	0-0
NON-CONFERENCE	12-1	7-0	5-1	0-0

#	Player	gp-gs	min	avg	Total		3-Point		F-Throw		Rebounds				pf	dq	a	to	blk	stl	pts	avg
					fg-fga	fg%	3fg-fga	3fg%	ft-fa	ft%	off	def	tot	avg								
15	Teaira McCowan	16-16	412	25.8	108-163	.663	0-0	.000	48-67	.716	93	123	216	13.5	38	0	12	24	42	12	264	16.5
05	Anriel Howard	16-16	420	26.3	100-185	.541	11-30	.367	45-63	.714	58	69	127	7.9	41	1	28	31	10	24	256	16.0
24	Jordan Danberry	16-16	414	25.9	89-175	.509	0-1	.000	34-52	.654	31	27	58	3.6	32	1	57	32	6	28	212	13.3
55	Chloe Bibby	16-16	464	29.0	75-153	.490	33-74	.446	21-24	.875	25	44	69	4.3	18	0	27	26	9	13	204	12.8
10	Jazzmun Holmes	16-16	433	27.1	40-88	.455	2-5	.400	45-53	.849	6	28	34	2.1	27	0	84	20	4	36	127	7.9
02	Andra Espinoza-Hunte	14-0	212	15.1	35-92	.380	18-53	.340	5-6	.833	5	12	17	1.2	7	0	11	11	2	3	93	6.6
23	Bre'Amber Scott	16-0	188	11.8	33-64	.516	10-20	.500	27-32	.844	10	14	24	1.5	24	0	18	10	4	8	103	6.4
04	Jessika Carter	16-0	215	13.4	33-62	.532	0-0	.000	12-25	.480	27	42	69	4.3	26	0	2	15	24	3	78	4.9
01	Myah Taylor	16-0	210	13.1	21-51	.412	7-22	.318	16-24	.667	4	13	17	1.1	22	0	41	27	0	11	65	4.1
11	Xaria Wiggins	13-0	140	10.8	15-55	.273	7-26	.269	11-19	.579	7	14	21	1.6	12	0	13	4	6	11	48	3.7
20	Nyah Tate	5-0	19	3.8	3-7	.429	1-2	.500	0-0	.000	1	4	5	1.0	2	0	2	0	0	0	7	1.4
25	Zion Campbell	12-0	73	6.1	1-2	.500	0-0	.000	4-6	.667	5	11	16	1.3	4	0	2	7	3	2	6	0.5
Team												36	30	66		1		5				
Total.....		16	3200		553-1097	.504	89-233	.382	268-371	.722	308	431	739	46.2	254	2	297	212	110	151	1463	91.4
Opponents.....		16	3200		330-913	.361	70-225	.311	158-226	.699	182	283	465	29.1	330	-	151	336	71	90	888	55.5

TEAM STATISTICS	MS	OPP	Date	Opponent	Score	Att.
SCORING	1463	888	11/06/18	SE MISSOURI	w 88-53	6373
Points per game	91.4	55.5	11/09/18	at Virginia	w 72-44	4453
Scoring margin	+35.9	-	11/15/18	LAMAR	w 104-53	7107
FIELD GOALS-ATT	553-1097	330-913	11/18/18	COPPIN STATE	w 110-38	7320
Field goal pct	.504	.361	11/21/18	FURMAN	w 106-41	6970
3 POINT FG-ATT	89-233	70-225	11/24/18	JACKSON STATE	w 105-38	6953
3-point FG pct	.382	.311	11/28/18	at Little Rock	w 98-63	2261
3-pt FG made per game	5.6	4.4	12/02/18	at Texas	w 67-49	4579
FREE THROWS-ATT	268-371	158-226	12/06/18	MARQUETTE	w 87-82	7273
Free throw pct	.722	.699	12/14/18	at Southern Miss	w 86-42	4448
F-Throws made per game	16.8	9.9	12/18/18	at Oregon	L 74-82	8951
REBOUNDS	739	465	12/20/18	at Washington	w 103-56	1669
Rebounds per game	46.2	29.1	12/30/18	LOUISIANA	w 104-36	10242
Rebounding margin	+17.1	-	* 01/03/19	at Arkansas	w 93-69	2263
ASSISTS	297	151	* 01/06/19	KENTUCKY	w 86-71	8830
Assists per game	18.6	9.4	* 01/10/19	GEORGIA	w 80-71	6493
TURNOVERS	212	336				
Turnovers per game	13.3	21.0				
Turnover margin	+7.8	-				
Assist/turnover ratio	1.4	0.4				
STEALS	151	90				
Steals per game	9.4	5.6				
BLOCKS	110	71				
Blocks per game	6.9	4.4				
ATTENDANCE	67561	28624				
Home games-Avg/Game	9-7507	7-4089				
Neutral site-Avg/Game	-	0-0				

Score by Periods	1st	2nd	3rd	4th	Totals
Mississippi State	389	364	382	328	1463
Opponents	204	208	234	242	888





MISSISSIPPI STATE BASKETBALL
 Mississippi State Combined Team Statistics (as of Jan 10, 2019)
Conference games only



RECORD:	OVERALL	HOME	AWAY	NEUTRAL
ALL GAMES	3-0	2-0	1-0	0-0
CONFERENCE	3-0	2-0	1-0	0-0
NON-CONFERENCE	0-0	0-0	0-0	0-0

#	Player	gp-gs	min	avg	Total		3-Point		F-Throw		Rebounds				pf	dq	a	to	blk	stl	pts	avg
					fg-fga	fg%	3fg-fga	3fg%	ft-fa	ft%	off	def	tot	avg								
24	Jordan Danberry	3-3	102	34.0	22-49	.449	0-0	.000	11-18	.611	10	6	16	5.3	8	0	12	10	2	4	55	18.3
55	Chloe Bibby	3-3	106	35.3	17-35	.486	6-16	.375	13-14	.929	8	4	12	4.0	4	0	6	10	1	3	53	17.7
05	Anriel Howard	3-3	97	32.3	20-40	.500	2-4	.500	5-6	.833	9	13	22	7.3	12	0	7	6	2	7	47	15.7
15	Teaira McCowan	3-3	83	27.7	19-37	.514	0-0	.000	9-15	.600	24	29	53	17.7	9	0	2	6	5	2	47	15.7
10	Jazzmun Holmes	3-3	103	34.3	8-19	.421	0-0	.000	13-16	.813	4	8	12	4.0	5	0	15	6	1	12	29	9.7
23	Bre'Amber Scott	3-0	27	9.0	5-12	.417	2-4	.500	0-0	.000	0	2	2	0.7	3	0	0	3	2	1	12	4.0
02	Andra Espinoza-Hunte	2-0	19	9.5	2-8	.250	1-4	.250	1-2	.500	0	0	0	0.0	0	0	1	0	0	0	6	3.0
04	Jessika Carter	3-0	32	10.7	3-6	.500	0-0	.000	0-0	.000	3	4	7	2.3	4	0	0	3	1	0	6	2.0
11	Xaria Wiggins	1-0	8	8.0	1-4	.250	0-0	.000	0-0	.000	0	1	1	1.0	0	0	1	0	1	0	2	2.0
01	Myah Taylor	3-0	14	4.7	0-3	.000	0-2	.000	2-2	1.000	0	0	0	0.0	3	0	2	0	0	0	2	0.7
20	Nyah Tate	1-0	2	2.0	0-0	.000	0-0	.000	0-0	.000	0	1	1	1.0	0	0	0	0	0	0	0	0.0
25	Zion Campbell	2-0	7	3.5	0-0	.000	0-0	.000	0-0	.000	1	0	1	0.5	0	0	0	1	1	0	0	0.0
Team											10	6	16		1		2					
Total.....		3	600		97-213	.455	11-30	.367	54-73	.740	69	74	143	47.7	49	0	46	47	16	29	259	86.3
Opponents.....		3	600		82-186	.441	13-43	.302	34-40	.850	34	56	90	30.0	58	-	35	54	27	27	211	70.3

TEAM STATISTICS	MS	OPP	Date	Opponent	Score	Att.
SCORING	259	211	* 01/03/19	at Arkansas	w 93-69	2263
Points per game	86.3	70.3	* 01/06/19	KENTUCKY	w 86-71	8830
Scoring margin	+16.0	-	* 01/10/19	GEORGIA	w 80-71	6493
FIELD GOALS-ATT	97-213	82-186	* - Conference game			
Field goal pct	.455	.441				
3 POINT FG-ATT	11-30	13-43				
3-point FG pct	.367	.302				
3-pt FG made per game	3.7	4.3				
FREE THROWS-ATT	54-73	34-40				
Free throw pct	.740	.850				
F-Throws made per game	18.0	11.3				
REBOUNDS	143	90				
Rebounds per game	47.7	30.0				
Rebounding margin	+17.7	-				
ASSISTS	46	35				
Assists per game	15.3	11.7				
TURNOVERS	47	54				
Turnovers per game	15.7	18.0				
Turnover margin	+2.3	-				
Assist/turnover ratio	1.0	0.6				
STEALS	29	27				
Steals per game	9.7	9.0				
BLOCKS	16	27				
Blocks per game	5.3	9.0				
ATTENDANCE	15323	2263				
Home games-Avg/Game	2-7662	1-2263				
Neutral site-Avg/Game	-	0-0				

Score by Periods	1st	2nd	3rd	4th	Totals
Mississippi State	75	58	63	63	259
Opponents	46	47	54	64	211



MISSISSIPPI STATE BASKETBALL
Mississippi State Team Game-by-Game (as of Jan 10, 2019)
All games

TEAM STATISTICS

Opponent	Date	Score	Total		3-Pointers		Free throws		Rebounds					pts avg						
			fg-fga	pct	3fg-fga	pct	ft-fia	pct	off	def	tot	avg	pf		a	t/o	blk	stl		
SE MISSOURI	11/06/18	88-53	W	29-64	.453	5-14	.357	25-38	.658	26	28	54	54.0	20	18	15	11	8	88	88.0
at Virginia	11/09/18	72-44	W	29-66	.439	7-23	.304	7-10	.700	14	27	41	47.5	18	14	12	8	12	72	80.0
LAMAR	11/15/18	104-53	W	37-75	.493	6-19	.316	24-31	.774	19	45	64	53.0	16	22	20	12	9	104	88.0
COPPIN STATE	11/18/18	110-38	W	45-71	.634	7-16	.438	13-22	.591	14	34	48	51.8	19	29	15	11	13	110	93.5
FURMAN	11/21/18	106-41	W	42-67	.627	12-20	.600	10-19	.526	18	27	45	50.4	6	28	11	8	11	106	96.0
JACKSON STATE	11/24/18	105-38	W	37-73	.507	8-23	.348	23-31	.742	19	29	48	50.0	17	21	7	9	12	105	97.5
at Little Rock	11/28/18	98-63	W	39-68	.574	5-11	.455	15-21	.714	22	28	50	50.0	19	21	14	2	3	98	97.6
at Texas	12/02/18	67-49	W	29-65	.446	3-9	.333	6-8	.750	17	18	35	48.1	15	8	10	3	7	67	93.8
MARQUETTE	12/06/18	87-82	W	33-67	.493	4-11	.364	17-20	.850	17	23	40	47.2	15	21	14	8	5	87	93.0
at Southern Miss	12/14/18	86-42	W	31-69	.449	3-13	.231	21-30	.700	23	20	43	46.8	10	13	8	4	13	86	92.3
at Oregon	12/18/18	74-82	L	27-54	.500	4-13	.308	16-22	.727	11	15	26	44.9	19	14	12	4	4	74	90.6
at Washington	12/20/18	103-56	W	41-72	.569	6-11	.545	15-18	.833	16	29	45	44.9	15	19	14	2	13	103	91.7
LOUISIANA	12/30/18	104-36	W	37-73	.507	8-20	.400	22-28	.786	23	35	58	45.9	16	23	14	12	12	104	92.6
at Arkansas	01/03/19	93-69	W	37-75	.493	3-9	.333	16-22	.727	22	35	57	46.7	15	16	13	6	6	93	92.6
KENTUCKY	01/06/19	86-71	W	31-68	.456	3-11	.273	21-25	.840	25	23	48	46.8	18	16	24	7	11	86	92.2
GEORGIA	01/10/19	80-71	W	29-70	.414	5-10	.500	17-26	.654	22	16	38	46.2	16	14	10	3	12	80	91.4
Mississippi State		1463		553-1097	.504	89-233	.382	268-371	.722	308	432	740	46.2	254	297	213	110	151	1463	91.4
Opponents		888		330-914	.361	70-225	.311	158-226	.699	182	283	465	29.1	330	151	336	71	90	888	55.5

Games played: 16
 Points/game: 91.4
 FG Pct: 50.4
 3FG Pct: 38.2
 FT Pct: 72.2

Rebounds/game: 46.2
 Assists/game: 18.6
 Turnovers/game: 13.3
 Assist/turnover ratio: 1.4
 Steals/game: 9.4
 Blocks/game: 6.9



MISSISSIPPI STATE BASKETBALL
Mississippi State Points-Rebounds-Assists (as of Jan 10, 2019)
All games

Opponent	Date	Score		01	02	04	05	10	11	15
				TAYLOR,MYA	ESPINOZA-H	CARTER,JES	HOWARD,ANR	HOLMES,JAZ	WIGGINS,XA	MCCOWAN,TE
SE MISSOURI	11/06/18	88-53	w	7-0-6	DNP	5-4-0	9-7-1	11-2-5	4-1-0	24-17-0
at Virginia	11/09/18	72-44	w	4-2-0	13-1-1	0-3-0	8-9-1	8-0-4	2-0-1	12-12-2
LAMAR	11/15/18	104-53	w	7-1-2	7-2-0	10-8-0	24-13-3	9-5-9	8-3-0	11-16-0
COPPIN STATE	11/18/18	110-38	w	4-4-5	16-3-3	16-8-0	15-8-3	2-1-2	3-2-3	23-6-1
FURMAN	11/21/18	106-41	w	10-1-6	14-2-0	5-9-1	12-6-1	3-4-6	2-1-4	24-10-0
JACKSON STATE	11/24/18	105-38	w	6-3-6	13-0-1	7-8-0	11-7-1	0-0-4	9-4-0	19-6-0
at Little Rock	11/28/18	98-63	w	6-2-2	4-4-2	6-2-0	16-9-6	5-3-4	0-0-0	23-15-1
at Texas	12/02/18	67-49	w	0-0-0	0-0-0	2-2-0	7-8-2	17-2-2	0-0-0	13-12-1
MARQUETTE	12/06/18	87-82	w	0-0-0	0-1-0	0-0-0	29-12-2	8-0-13	DNP	24-18-1
at Southern Miss	12/14/18	86-42	w	7-1-2	2-1-1	6-4-0	16-7-0	13-0-6	5-0-1	13-16-0
at Oregon	12/18/18	74-82	L	0-0-0	0-0-0	1-1-0	30-6-1	12-1-7	0-0-0	5-11-2
at Washington	12/20/18	103-56	w	3-0-3	11-0-1	8-4-0	16-7-0	8-4-3	3-3-1	13-13-2
LOUISIANA	12/30/18	104-36	w	9-3-7	7-3-1	6-10-1	16-6-0	2-0-4	10-6-2	13-11-0
at Arkansas	01/03/19	93-69	w	2-0-1	5-0-0	2-2-0	8-6-2	14-4-5	2-1-1	16-22-1
KENTUCKY	01/06/19	86-71	w	0-0-0	DNP	4-4-0	21-12-2	8-6-5	DNP	13-10-1
GEORGIA	01/10/19	80-71	w	0-0-1	1-0-1	0-1-0	18-4-3	7-2-5	DNP	18-21-0

Opponent	Date	Score		20	23	24	25	55
				TATE,NYAH	SCOTT,BRE'	DANBERRY,J	CAMPBELL,Z	BIBBY,CHLO
SE MISSOURI	11/06/18	88-53	w	DNP	6-5-2	10-5-3	1-2-0	11-6-1
at Virginia	11/09/18	72-44	w	DNP	3-1-0	8-3-3	1-1-0	13-6-2
LAMAR	11/15/18	104-53	w	DNP	2-3-3	15-4-3	0-0-0	11-6-2
COPPIN STATE	11/18/18	110-38	w	DNP	10-1-3	10-3-7	0-3-0	11-3-2
FURMAN	11/21/18	106-41	w	DNP	5-1-1	8-0-6	2-3-0	21-5-3
JACKSON STATE	11/24/18	105-38	w	5-2-0	14-3-2	16-1-3	0-2-1	5-7-3
at Little Rock	11/28/18	98-63	w	DNP	13-0-0	10-3-3	0-1-1	15-8-2
at Texas	12/02/18	67-49	w	DNP	2-1-1	12-3-2	0-0-0	14-2-0
MARQUETTE	12/06/18	87-82	w	DNP	7-2-2	13-4-2	DNP	6-2-1
at Southern Miss	12/14/18	86-42	w	0-0-1	1-2-0	12-8-2	DNP	11-1-0
at Oregon	12/18/18	74-82	L	DNP	3-0-1	11-5-3	DNP	12-0-0
at Washington	12/20/18	103-56	w	2-1-1	4-1-0	20-2-4	0-0-0	15-5-4
LOUISIANA	12/30/18	104-36	w	0-1-0	21-2-3	12-1-4	2-3-0	6-6-1
at Arkansas	01/03/19	93-69	w	0-1-0	7-2-0	26-9-4	0-0-0	11-4-2
KENTUCKY	01/06/19	86-71	w	DNP	5-0-0	17-3-5	0-1-0	18-7-3
GEORGIA	01/10/19	80-71	w	DNP	0-0-0	12-4-3	DNP	24-1-1



GAME 1

SOUTHEAST MISSOURI ST. 53
MISSISSIPPI ST. 88

NOVEMBER 6, 2018 • STARKVILLE, MISS.

SE Missouri 53 • 0-1

#	Player	Total		3-Ptr		Rebounds		PF	TP	A	TO	Blk	Stl	Min
		FG-FGA	FG-FGA	FT-FTA	Off	Def	Total							
01	Kennedi Allen	f	0-2	0-0	0-0	1	0	1	5	0	0	0	0	10
23	Jocelyn Taylor	f	0-2	0-0	0-0	0	0	0	4	0	0	0	0	13
03	Adrianna Murphy	g	2-6	0-1	0-0	0	2	2	3	4	3	4	0	30
10	Taelour Pruitt	g	6-12	1-1	2-4	1	3	4	2	15	2	3	0	29
24	Tesia Thompson	g	5-15	0-2	9-12	1	2	3	3	19	0	3	1	29
02	Carrie Shephard	g	3-5	3-4	0-0	0	0	0	2	9	0	3	0	17
04	Dolapo Balogun	g	0-0	0-0	0-0	0	0	0	0	0	0	0	0	6
05	Tionne Colyer	g	0-0	0-0	0-0	0	0	0	0	0	0	0	0	2
13	Jessie Harshberger	g	0-1	0-0	0-0	0	0	0	1	0	0	3	0	16
21	Yanna Mccurdy	g	0-2	0-0	0-0	2	0	2	1	0	0	1	0	11
25	Sarah Balfour	g	1-2	0-1	0-0	0	0	0	0	2	0	1	0	2
30	Brittney Cupp	g	0-0	0-0	0-0	0	0	0	0	0	0	0	0	2
32	Losmie Lutaya	g	0-1	0-0	0-0	1	1	2	3	0	0	1	0	8
40	Latrese Saine	g	0-2	0-0	3-4	1	1	2	4	3	0	0	2	7
55	Celeste Akoro	g	0-3	0-0	1-2	1	2	3	4	1	0	1	2	18
	Team					4	3	7						
	Totals		17-53	4-9	15-22	12	14	26	32	53	5	20	5	4 200

1st - FG %: 3-15 20.0% 2nd: 5-14 35.7% 3rd: 5-14 35.7% 4th: 4-10 40.0% Game: 17-53 32.1% Deadball Rebounds 3
 3FG %: 1-2 50.0% 1-2 50.0% 2-4 50.0% 0-1 0.0% 4-9 44.4%
 FT %: 5-8 62.5% 2-2 100.0% 2-2 100.0% 6-10 60.0% 15-22 68.2%

Mississippi State 88 • 1-0

#	Player	Total		3-Ptr		Rebounds		PF	TP	A	TO	Blk	Stl	Min	
		FG-FGA	FG-FGA	FT-FTA	Off	Def	Total								
05	Anriel Howard	f	4-7	0-0	1-3	2	5	7	4	9	1	2	0	0	19
55	Chloe Bibby	f	4-13	3-7	0-0	5	1	6	1	11	1	2	3	0	32
15	Teaira McCowan	c	7-11	0-0	10-15	7	10	17	1	24	0	4	7	1	28
10	Jazzmun Holmes	g	5-8	0-0	1-3	0	2	2	1	11	5	1	0	2	25
24	Jordan Danberry	g	4-7	0-0	2-2	3	2	5	0	10	3	1	1	1	25
01	Myah Taylor	g	2-4	1-2	2-2	0	0	0	4	7	6	2	0	0	19
04	Jessika Carter	g	2-4	0-0	1-3	1	3	4	3	5	0	0	0	0	8
11	Xaria Wiggins	g	1-5	1-4	1-2	1	1	2	4	0	0	0	3	21	
23	Bre'Amber Scott	g	0-5	0-1	6-6	4	1	5	4	6	2	1	0	0	19
25	Zion Campbell	g	0-0	0-0	1-2	1	0	1	2	0	1	0	2	0	4
	Team					2	3	5							
	Totals		29-64	5-14	25-38	26	28	54	20	88	18	11	8	0	200

1st - FG %: 7-22 31.8% 2nd: 7-12 58.3% 3rd: 10-14 71.4% 4th: 5-16 31.3% Game: 29-64 45.3% Deadball Rebounds 8
 3FG %: 0-2 0.0% 1-5 20.0% 2-3 66.7% 2-4 50.0% 5-14 35.7%
 FT %: 5-8 62.5% 11-12 91.7% 4-7 57.1% 5-9 55.6% 25-38 65.8%

Officials: Denise Brooks, Frank Steratore, Jennifer Rezac
 Technical fouls: SE Missouri-None. Mississippi State-None.
 Attendance: 6373

Score by periods	1st	2nd	3rd	4th	Total
SE Missouri	12	13	14	14	53
Mississippi State	19	26	17	17	88

Points In Off 2nd Fast
SE Missouri 12 12 12 9 23
Mississippi State 38 22 21 16 23

Score tied - 2 times.
Lead changed - 0 times.

GAME 2

B/G MISSISSIPPI ST. 72
RV/NR VIRGINIA 44

NOVEMBER 9, 2018 • CHARLOTTESVILLE, VA.

Mississippi St. 72 • 2-0

#	Player	Total		3-Ptr		Rebounds		PF	TP	A	TO	Blk	Stl	Min	
		FG-FGA	FG-FGA	FT-FTA	Off	Def	Total								
05	Anriel Howard	f	4-8	0-1	0-0	5	4	9	3	8	1	1	3	0	20
55	Chloe Bibby	f	5-12	3-7	0-0	2	4	6	4	12	2	2	0	3	32
15	Teaira McCowan	c	5-10	0-0	2-2	3	9	12	4	12	2	0	4	3	29
10	Jazzmun Holmes	g	3-7	0-0	2-2	0	0	0	2	8	4	2	0	3	31
24	Jordan Danberry	g	4-5	0-0	0-0	0	3	3	2	8	3	3	1	2	22
01	Myah Taylor	g	1-3	1-2	1-2	0	2	2	1	4	0	2	0	0	11
02	Andra Espinoza-Hunte	g	5-12	3-8	0-0	0	1	1	2	13	1	1	0	0	29
04	Jessika Carter	g	0-1	0-0	0-0	1	2	3	1	0	0	0	0	0	4
11	Xaria Wiggins	g	1-7	0-5	0-0	0	0	0	0	2	1	0	0	1	9
23	Bre'Amber Scott	g	1-1	0-0	1-2	1	0	1	0	3	0	1	0	0	3
25	Zion Campbell	g	0-0	0-0	1-2	0	1	1	1	1	0	0	0	0	10
	Team					2	1	3							
	Totals		29-66	7-23	7-10	14	27	41	18	72	14	12	8	12	200

1st - FG %: 11-22 50.0% 2nd: 7-17 41.2% 3rd: 4-14 28.6% 4th: 7-13 53.8% Game: 29-66 43.9% Deadball Rebounds 2
 3FG %: 3-6 50.0% 3-8 37.5% 0-4 0.0% 1-5 20.0% 7-23 30.4%
 FT %: 1-2 50.0% 2-2 100.0% 2-2 100.0% 2-4 50.0% 7-10 70.0%

Virginia 44 • 0-1

#	Player	Total		3-Ptr		Rebounds		PF	TP	A	TO	Blk	Stl	Min	
		FG-FGA	FG-FGA	FT-FTA	Off	Def	Total								
32	Mone Jones	f	2-3	0-0	0-0	1	1	2	3	4	2	4	0	2	33
30	Felicita Aiyetotan	c	2-6	0-0	0-0	4	12	16	2	4	0	1	4	0	35
04	Dominique Toussaint	g	7-18	2-5	3-4	1	2	3	1	19	1	3	0	2	32
05	Khyasia Caldwell	g	1-11	0-1	1-2	0	2	2	1	3	0	6	0	1	24
13	Jocelyn Willoughby	g	1-6	0-0	1-4	2	1	3	2	3	0	6	0	1	19
01	Bianna Tinsley	g	2-11	2-4	0-0	0	2	2	0	6	1	2	0	0	24
14	Lisa Jablonowski	g	0-2	0-0	0-0	2	0	2	0	0	1	0	0	0	16
20	Erica Martinsen	g	1-3	1-3	0-0	0	1	1	1	3	0	1	0	1	12
35	Shakyna Payne	g	0-1	0-0	0-2	1	1	2	3	2	2	0	0	0	5
	Team					8	2	10							
	Totals		16-61	5-13	7-12	19	24	43	13	44	7	23	4	7	200

1st - FG %: 4-15 26.7% 2nd: 2-16 12.5% 3rd: 7-16 43.8% 4th: 3-14 21.4% Game: 16-61 26.2% Deadball Rebounds 4
 3FG %: 0-1 0.0% 0-2 0.0% 2-4 50.0% 2-6 33.3% 5-13 38.5%
 FT %: 4-5 80.0% 0-0 0.0% 2-3 66.7% 1-4 25.0% 7-12 58.3%

Officials: Technical fouls: Mississippi St.-None. Virginia-None.
 Attendance: 4453
 2018-19 Women's Basketball. Round: 0. Mississippi St. vs Virginia. Played at .

Score by periods	1st	2nd	3rd	4th	Total
Mississippi St.	26	19	10	17	72
Virginia	13	4	18	9	44

Points In Off 2nd Fast
Mississippi St. 26 26 15 15 66
Virginia 13 16 11 6 46

Score tied - 0 times.
Lead changed - 0 times.

GAME 3

LAMAR 53
B/G MISSISSIPPI ST. 104

NOVEMBER 15, 2018 • STARKVILLE, MISS.

Lamar 53 • 3-1

#	Player	Total		3-Ptr		Rebounds		PF	TP	A	TO	Blk	Stl	Min	
		FG-FGA	FG-FGA	FT-FTA	Off	Def	Total								
22	Miya Crump	f	1-4	1-2	6-8	2	2	4	5	9	0	4	0	1	28
04	Briana Laidler	c	0-0	0-0	2-2	0	0	0	3	2	0	0	0	1	8
01	Jadyn Pimentel	g	3-13	1-3	0-3	1	1	2	3	7	0	3	1	4	20
10	Chastadie Barrs	g	7-24	0-1	2-4	1	3	4	4	16	1	4	1	4	40
23	Moe Kinard	g	3-16	1-8	0-0	0	5	5	3	7	2	5	0	0	27
02	Angel Hastings	g	2-6	2-4	0-0	1	1	2	2	6	2	2	0	2	15
13	Shedricka Pierson	g	1-6	0-0	0-0	0	1	1	1	2	0	0	0	0	23
20	Rikiah Cowart	g	2-3	0-0	0-0	2	1	3	3	4	0	1	0	1	22
24	Ashlan Miles	g	0-0	0-0	0-0	0	0	0	0	0	0	0	0	0	1
32	Umaja Collins	g	0-2	0-0	0-0	2	1	3	2	0	0	1	1	1	16
	Team					4	4	8							
	Totals		19-74	5-18	10-17	13	19	32	26	53	5	20	3	14	200

1st - FG %: 6-20 30.0% 2nd: 6-16 37.5% 3rd: 4-22 18.2% 4th: 3-16 18.8% Game: 19-74 25.7% Deadball Rebounds 4,2
 3FG %: 2-6 33.3% 1-6 16.7% 1-5 20.0% 1-5 20.0% 5-18 27.8%
 FT %: 1-5 20.0% 0-0 0.0% 6-8 75.0% 3-4 75.0% 10-17 58.8%

Mississippi State 104 • 0-0

#	Player	Total		3-Ptr		Rebounds		PF	TP	A	TO	Blk	Stl	Min	
		FG-FGA	FG-FGA	FT-FTA	Off	Def	Total								
05	Anriel Howard	f	9-15	1-3	5-5	6	7	13	1	24	3	5	0	1	25
55	Chloe Bibby	f	4-7	3-5	0-0	4	2	6	4	11	2	4	1	1	22
15	Teaira McCowan	c	5-8	0-0	1-2	3	13	16	4	11	0	0	5	0	22
10	Jazzmun Holmes	g	1-4	0-0	7-8	0	5	5	2	9	2	0	1	1	27
24	Jordan Danberry	g	6-10	0-0	3-5	1	3	4	2	15	3	1	0	1	18
01	Myah Taylor	g	2-5	0-2	3-4	1	0	1	1	7	2	6	0	1	14
02	Andra Espinoza-Hunte	g	3-10	1-6	0-0	0	2	2	1	7	0	1	1	0	19
04	Jessika Carter	g	4-7	0-0	2-4	3	5	8	2	10	0	1	4	1	18
11	Xaria Wiggins	g	3-8	1-3	1-1	1	2	3	0	8	0	0	1	2	17
23	Bre'Amber Scott	g	0-1	0-0	2-2	0	3	3	1	2	3	0	0	1	13
25	Zion Campbell	g	0-0	0-0	0-0	0	0	0	1	0	0	0	0	0	5
	Team					0	3	3							
	Totals		37-75	6-19	24-31	19	45	64	16	104	22	20	12	9	200

1st - FG %: 8-17 47.1% 2nd: 6-20 30.0% 3rd: 12-17 70.6% 4th: 11-21 52.4% Game: 37-75 49.3% Deadball Rebounds 5
 3FG %: 1-4 25.0% 1-6 16.7% 3-6 50.0% 1-3 33.3% 6

GAME 5

FURMAN
6/6 MISSISSIPPI ST.41
106

NOVEMBER 21, 2018 ■ STARKVILLE, MISS.

Furman 41 • 2-3

#	Player	Total			3-Ptr		Rebounds			PF	TP	A	TO	Blk	Stl	Min	
		FG-FGA	FG-FGA	FT-FTA	Off	Def	Off	Def	Tot								
13	Kaitlyn Duncan	f	2-5	0-1	0-0	1	4	5	3	4	0	2	1	1	22		
15	Tierra Hodges	f	1-1	0-0	0-0	0	3	3	2	2	0	1	0	0	24		
01	Milica Manojlovic	g	1-2	1-1	0-0	0	0	0	1	3	0	6	0	0	12		
10	Le'Zae Davidson	g	6-22	5-17	0-0	1	0	1	2	17	0	4	0	0	33		
44	Taylor Petty	g	0-3	0-1	0-0	1	0	1	1	0	2	1	1	0	20		
02	Jarya Outten	f	1-4	0-1	0-0	1	1	2	1	2	3	5	0	0	15		
03	Sutton West	g	0-0	0-0	0-0	0	0	0	0	0	0	0	0	0	6		
04	Jade Kirisome	g	0-4	0-2	0-0	0	1	1	0	1	0	1	0	1	14		
05	Sydn Donovan	g	0-1	0-0	0-0	0	0	0	0	3	0	0	0	0	11		
11	Hannah Sellinger	f	2-2	1-1	0-0	0	0	0	1	5	0	0	0	0	5		
12	Tyha Hunter	f	2-6	0-0	0-0	0	1	1	0	4	1	1	0	0	18		
14	Grace van Rij	g	0-0	0-0	0-0	0	0	0	0	0	0	0	0	0	5		
23	Beatriz Mateo	g	0-0	0-0	0-0	0	0	0	0	0	1	0	0	0	1		
24	Greyson Boone	g	1-1	0-0	0-0	0	0	0	0	2	0	0	0	0	2		
30	Natalie Wilson	f	1-2	0-0	0-0	1	4	5	2	0	0	0	0	0	7		
55	Celena Taborn	f	0-0	0-0	0-0	0	0	0	5	0	0	3	0	0	5		
Team																	
Totals			17-53	7-24	0-0	4	1	5	9	15	24	19	41	8	26	2	200

1st - FG %:	3-10	30.0%	2nd: 4-12	33.3%	3rd: 3-13	23.1%	4th: 7-18	38.9%	Game: 7-24	29.2%	Deadball	
3FG %:	1-5	20.0%	3-7	42.9%	2-7	28.6%	1-5	20.0%	7-24	29.2%	Rebounds	
FT %:	0-0	0.0%	0-0	0.0%	0-0	0.0%	0-0	0.0%	0-0	0.0%		

Mississippi State 106 • 5-0

#	Player	Total			3-Ptr		Rebounds			PF	TP	A	TO	Blk	Stl	Min
		FG-FGA	FG-FGA	FT-FTA	Off	Def	Off	Def	Tot							
05	Anriel Howard	f	3-7	2-3	4-8	3	3	6	2	12	1	2	0	0	19	
55	Chloe Bibby	f	8-10	5-6	0-0	0	5	5	1	21	3	0	1	0	25	
15	Teaira McCowan	c	11-11	0-0	2-2	5	5	10	1	24	0	0	1	1	20	
10	Jazzmun Holmes	g	1-2	1-1	0-0	1	3	4	0	3	6	0	0	2	22	
24	Jordan Danberry	g	4-7	0-0	0-0	0	0	2	8	6	2	0	1	21		
01	Myah Taylor	g	4-4	2-2	0-0	0	1	1	10	6	3	0	3	18		
02	Andra Espinoza-Hunte	g	5-12	2-5	2-2	1	1	2	14	0	1	0	1	20		
04	Jessika Carter	g	2-5	0-0	1-5	6	3	9	0	5	1	1	4	11		
11	Xaria Wiggins	g	1-3	0-2	0-0	0	1	1	1	2	4	2	1	13		
23	Bre'Amber Scott	g	2-5	0-1	1-2	0	1	1	0	5	1	0	0	1	8	
25	Zion Campbell	g	1-1	0-0	0-0	1	2	3	0	2	0	0	1	0	11	
Team																
Totals			42-67	12-20	10-19	18	27	45	6	106	28	11	8	11	200	

1st - FG %:	12-19	63.2%	2nd: 12-19	63.2%	3rd: 11-15	73.3%	4th: 7-14	50.0%	Game: 42-67	62.7%	Deadball	
3FG %:	5-6	83.3%	3-5	60.0%	2-3	66.7%	2-6	33.3%	12-20	60.0%	Rebounds	
FT %:	2-5	40.0%	2-4	50.0%	4-6	66.7%	2-4	50.0%	10-19	52.6%	1	

Officials: Kevin Pethel, Dawn Marsh, Frank Steratore

Technical fouls: Furman-None, Mississippi State-None.

Attendance: 6970

Score by periods	1st	2nd	3rd	4th	Total
Furman	7	11	8	15	41
Mississippi State	31	29	28	18	106

Last FG - FUR 4th-00:11, MS 4th-00:48.
Largest lead - FUR None, MS by 70 4th-02:35.
FUR led for 00:00, MS led for 39:21. Game was tied for 00:39.

GAME 7

6/6 MISSISSIPPI ST.
LITTLE ROCK98
63

NOVEMBER 28, 2018 ■ LITTLE ROCK, ARK.

Mississippi State 98 • 7-0

#	Player	Total			3-Ptr		Rebounds			PF	TP	A	TO	Blk	Stl	Min
		FG-FGA	FG-FGA	FT-FTA	Off	Def	Off	Def	Tot							
05	Anriel Howard	*	6-11	1-3	3-4	2	7	9	3	16	6	3	0	0	23	
10	Jazzmun Holmes	*	2-5	0-0	1-2	0	3	3	3	5	4	1	0	0	20	
15	Teaira McCowan	*	11-19	0-0	1-4	10	5	15	1	23	1	1	1	0	24	
24	Jordan Danberry	*	5-8	0-0	0-0	2	1	3	1	10	3	1	0	1	24	
55	Chloe Bibby	*	5-7	3-4	2-2	2	6	8	2	15	2	1	0	0	30	
01	Myah Taylor		2-3	1-1	1-2	1	1	2	1	6	2	1	0	15		
02	Andra Espinoza-Hunte		1-6	0-2	2-2	3	1	4	1	4	2	2	0	0	22	
04	Jessika Carter		2-2	0-0	2-2	0	2	2	3	6	0	2	0	0	16	
11	Xaria Wiggins		0-1	0-0	0-0	0	0	0	0	0	0	0	0	2		
23	Bre'Amber Scott		5-6	0-1	3-3	0	0	0	3	13	0	0	0	0	18	
25	Zion Campbell		0-0	0-0	0-0	0	1	1	1	0	1	1	1	0	6	
Team																
Totals			39-68	5-11	15-21	22	28	50	19	98	21	14	2	3	200	

1st - FG %:	6-20	30.0%	2nd: 13-20	65.0%	3rd: 12-17	70.6%	4th: 8-11	72.7%	Game: 39-68	57.4%	Deadball	
3FG %:	0-3	0.0%	2-2	100.0%	3-3	33.3%	2-3	66.7%	5-11	45.5%	Rebounds	
FT %:	1-2	50.0%	3-6	50.0%	7-8	87.5%	4-5	80.0%	15-21	71.4%	2	

Little Rock 63 • 2-4

#	Player	Total			3-Ptr		Rebounds			PF	TP	A	TO	Blk	Stl	Min
		FG-FGA	FG-FGA	FT-FTA	Off	Def	Off	Def	Tot							
00	DeGray,Ronjanea	*	2-6	0-0	0-4	3	3	6	3	8	2	0	0	0	30	
02	Chastain,Sydney	*	1-4	0-1	0-0	1	0	1	5	2	4	2	0	0	28	
15	Scott,Kiara	*	0-1	0-1	0-0	0	1	0	0	3	0	0	0	0	18	
22	Inkina,Yanina	*	4-10	3-5	0-0	0	0	0	5	11	0	1	0	1	19	
35	Battle,Teal	*	1-3	0-0	3-4	2	3	5	1	5	0	1	1	0	28	
11	Dodson,Gabby		0-1	0-0	0-0	1	0	1	1	0	0	1	0	0	2	
23	Walker,Antwainette		4-7	0-0	6-13	1	0	1	2	14	0	4	0	2	16	
13	Colliver,Kyra		9-19	1-1	2-3	1	3	4	2	21	1	4	0	1	31	
20	Hurlburt,Anna		0-2	0-0	0-0	1	0	1	0	0	0	3	0	0	15	
30	DeGray,Raeyana		1-4	0-0	0-0	1	0	1	1	2	0	0	0	0	13	
Team																
Totals			22-57	4-8	15-24	11	11	22	20	63	10	13	4	4	200	

1st - FG %:	5-14	35.7%	2nd: 6-14	42.9%	3rd: 4-15	26.7%	4th: 7-14	50.0%	Game: 22-57	38.6%	Deadball	
3FG %:	0-2	0.0%	1-2	50.0%	3-3	75.0%	0-0	0.0%	4-8	50.0%	Rebounds	
FT %:	4-5	80.0%	3-6	50.0%	3-6	50.0%	5-7	71.4%	15-24	62.5%	5	

Officials: Roy Gubrial, Corilla Fountain, Royce Blevins

Technical fouls: Mississippi State-None, Little Rock-None.

Attendance: 2261

Technical Fouls: Mississippi State head coach, 4:32 2nd Period

Score by periods	1st	2nd	3rd	4th	Total
Mississippi State	13	31	32	22	98
Little Rock	14	16	14	19	63

Last FG - MS 4th-04:32, LR 4th-01:32.
Largest lead - MS by 40 4th-05:56, LR by 3 2nd-09:25.
MS led for 36:30, LR led for 02:36. Game was tied for 00:54.

GAME 6

JACKSON ST.
6/6 MISSISSIPPI ST.38
105

NOVEMBER 24, 2018 ■ STARKVILLE, MISS.

Jackson State 38 • 1-4

#	Player	Total			3-Ptr		Rebounds			PF	TP	A	TO	Blk	Stl	Min
		FG-FGA	FG-FGA	FT-FTA	Off	Def	Off	Def	Tot							
23	Marniesha Hamer	f	3-7	0-0	0-0	0	1	1	4	6	0	1	0	0	16	
35	Chelsea Causey	f	1-8	0-0	0-0	0	0	0	4	2	0	0	0	0	15	
01	Kaisah Lucky	g	2-4	0-0	3-5	0	6	6	2	7	2	8	0	0	36	
03	D'Asia Mitchell	g	1-3	1-3	0-0	0	3	3	4	3	0	2	0	0	16	
04	Christina Ellis	g	1-11	0-2	0-0	1	1	2	4	2	6	0	1	36		
10	Antionette Womack	g	5-9	0-0	0-6	1	3	4	5	10	4	3	0	25		
11	Sumar Williams	g	2-3	0-0	2-2	3	1	4	2	6	3	4	2	0	27	
12	Meghan Flowers	g	0-0	0-0	0-0	0	0	0	0	0	0	0	0	0	1	
14	Adia Rodgers	g	0-0	0-0	0-0	0	0	0	0	0	0	0	0	0	1	
20	N'Jiya Tallie	g	0-0	0-0	0-0	0	0	0	0	0	0	0	0	0	2	
22	Jasmine Redmon	g	0-1	0-1	0-0	0	1	1	1	0	0	0	0	0	12	
25	Shelby Augustine	g	0-0	0-0	0-0	0	0	0	0	0	0	0	0	0	1	
30	Jasmine Cowen	g	0-1	0-0	0-0	0	0	0	1	0	0	0	0	0	5	
32	Bianca King	g	1-3	0-0	0-0	3	2	5	1	2	0	1				

GAME 9

18/15 MARQUETTE
6/6 MISSISSIPPI ST.

82
87

DECEMBER 6, 2018 • STARKVILLE, MISS.

Marquette 82 • 6-2

Table with columns: # Player, FG-FGA, 3-Ptr FG-FGA, FT-FTA, Rebounds (Off, Def, Tot), PF, TP, A TO Blk Stl, Min. Rows include Davenport, Erika, King, Danielle, Hiedeman, Natisha, etc.

1st - FG %: 10-14 71.4%, 2nd: 7-17 41.2%, 3rd: 10-21 47.6%, 4th: 6-9 66.7%, Game: 33-61 54.1%
3FG %: 1-4 25.0%, 1-4 25.0%, 4-8 50.0%, 2-5 40.0%, 8-21 38.1%, 8-20 40.0%
FT %: 2-2 100.0%, 5-7 71.4%, 0-0 0.0%, 6-8 75.0%, 8-11 72.7%, 2-3 66.7%

Mississippi State 87 • 9-0

Table with columns: # Player, FG-FGA, 3-Ptr FG-FGA, FT-FTA, Rebounds (Off, Def, Tot), PF, TP, A TO Blk Stl, Min. Rows include Anriel Howard, Chloe Bibby, Teaira McCowan, etc.

1st - FG %: 7-17 41.2%, 2nd: 7-13 53.8%, 3rd: 9-22 40.9%, 4th: 10-15 66.7%, Game: 33-67 49.3%
3FG %: 2-6 33.3%, 1-1 100.0%, 0-2 0.0%, 1-2 50.0%, 4-11 36.4%, 4-10 40.0%
FT %: 5-7 71.4%, 3-3 100.0%, 3-3 100.0%, 17-20 85.0%, 17-20 85.0%

Officials: Tina Napier, Brian Hall, Tiara Cruse
Technical fouls: Marquette-None, Mississippi State-None.
Attendance: 7273

Score by periods table: 1st 22, 2nd 20, 3rd 21, 4th 24, Total 87
Points MU 54, MS 44
In Paint MU 44, MS 44
Off T/O MU 17, MS 20
2nd Chance MU 4, MS 21
Fast Break MU 2, MS 10
Bench MU 10, MS 7

Last FG - MU 4th-01:59, MS 4th-00:13.
Largest lead - MU by 8 2nd-02:53, MS by 5 1st-01:55.
MU led for 17:53, MS led for 18:05. Game was tied for 04:02.
Score tied - 8 times.
Lead changed - 25 times.

GAME 10

5/5 MISSISSIPPI ST.
SOUTHERN MISS

86
42

DECEMBER 14, 2018 • HATTIESBURG, MISS.

Mississippi State 86 • 10-0

Table with columns: # Player, FG-FGA, 3-Ptr FG-FGA, FT-FTA, Rebounds (Off, Def, Tot), PF, TP, A TO Blk Stl, Min. Rows include Anriel Howard, Chloe Bibby, Teaira McCowan, etc.

1st - FG %: 8-16 50.0%, 2nd: 6-20 30.0%, 3rd: 6-20 30.0%, 4th: 9-13 69.2%, Game: 31-69 44.9%
3FG %: 0-3 0.0%, 0-1 0.0%, 2-6 33.3%, 1-3 33.3%, 3-13 23.1%, 3-13 23.1%
FT %: 5-8 62.5%, 5-6 83.3%, 9-11 81.8%, 2-5 40.0%, 21-30 70.0%

Southern Miss 42 • 6-4

Table with columns: # Player, FG-FGA, 3-Ptr FG-FGA, FT-FTA, Rebounds (Off, Def, Tot), PF, TP, A TO Blk Stl, Min. Rows include MAYZE, Alarie, LEAPHART, Respect, LANDING, Amber, etc.

1st - FG %: 7-9 77.8%, 2nd: 5-13 38.5%, 3rd: 4-10 40.0%, 4th: 2-13 15.4%, Game: 18-45 40.0%
3FG %: 2-3 66.7%, 0-1 0.0%, 0-1 0.0%, 0-4 0.0%, 2-9 22.2%, 4-6 66.7%
FT %: 0-0 0.0%, 1-2 50.0%, 0-0 0.0%, 3-4 75.0%, 4-6 66.7%

Officials: Felicia Grinter, Mark Zentz, Gina Cross
Technical fouls: Mississippi State-None, Southern Miss-None.
Attendance: 4448

Score by periods table: 1st 21, 2nd 11, 3rd 23, 4th 21, Total 86
Points MSU 40, WASH 44
In Paint MSU 22, WASH 10
Off T/O MSU 8, WASH 4
2nd Chance MSU 7, WASH 4
Fast Break MSU 2, WASH 2
Bench MSU 8, WASH 22

Last FG - MS 4th-01:18, USM 4th-00:25.
Largest lead - MS by 46 0th-00:57, USM by 3 1st-09:28.
MS led for 38:00, USM led for 01:28. Game was tied for 00:32.
Score tied - 1 time.
Lead changed - 1 time.

GAME 11

5/5 MISSISSIPPI ST.
7/7 OREGON

74
82

DECEMBER 18, 2018 • EUGENE, ORE.

Mississippi State 74 • 10-1

Table with columns: # Player, FG-FGA, 3-Ptr FG-FGA, FT-FTA, Rebounds (Off, Def, Tot), PF, TP, A TO Blk Stl, Min. Rows include Anriel Howard, Chloe Bibby, Teaira McCowan, etc.

1st - FG %: 7-15 46.7%, 2nd: 8-16 50.0%, 3rd: 5-11 45.5%, 4th: 7-12 58.3%, Game: 27-54 50.0%
3FG %: 1-5 20.0%, 1-3 33.3%, 0-3 0.0%, 4-13 30.8%, 4-13 30.8%
FT %: 2-2 100.0%, 6-7 85.7%, 5-5 100.0%, 3-8 37.5%, 16-22 72.7%

Oregon 82 • 9-1

Table with columns: # Player, FG-FGA, 3-Ptr FG-FGA, FT-FTA, Rebounds (Off, Def, Tot), PF, TP, A TO Blk Stl, Min. Rows include Satou Sabally, Erin Boley, Ruthy Hebard, etc.

1st - FG %: 8-13 61.5%, 2nd: 7-11 63.6%, 3rd: 5-14 35.7%, 4th: 5-12 41.7%, Game: 25-50 50.0%
3FG %: 1-2 50.0%, 2-3 66.7%, 2-5 40.0%, 5-12 41.7%, 15-15 100.0%
FT %: 2-2 100.0%, 4-4 100.0%, 6-7 85.7%, 15-15 100.0%, 27-28 96.4%

Officials: Benny Luna, Michol Murray, Michael Price
Technical fouls: Mississippi State-TEAM, Oregon-None.
Attendance: 8951
2018-19 Women's Basketball. Round: 0. Mississippi St. vs Oregon. Played at .

Score by periods table: 1st 17, 2nd 23, 3rd 15, 4th 19, Total 74
Points MSU 28, OREGON 46
In Paint MSU 17, OREGON 36
Off T/O MSU 9, OREGON 20
2nd Chance MSU 11, OREGON 9
Fast Break MSU 9, OREGON 10
Bench MSU 4, OREGON 7

Last FG - MS 4th-01:23, UO 4th-02:10.
Largest lead - MS by 7 3rd-06:11, UO by 11 4th-03:23.
MS led for 11:27, UO led for 26:18. Game was tied for 02:15.
Score tied - 7 times.
Lead changed - 16 times.

GAME 12

5/5 MISSISSIPPI ST.
WASHINGTON

103
56

DECEMBER 20, 2018 • SEATTLE, WASH.

Mississippi State 103 • 11-1

Table with columns: # Player, FG-FGA, 3-Ptr FG-FGA, FT-FTA, Rebounds (Off, Def, Tot), PF, TP, A TO Blk Stl, Min. Rows include Anriel Howard, Chloe Bibby, Teaira McCowan, etc.

1st - FG %: 12-23 52.2%, 2nd: 9-13 69.2%, 3rd: 10-19 52.6%, 4th: 10-17 58.8%, Game: 41-72 56.9%
3FG %: 2-4 50.0%, 1-1 100.0%, 0-1 0.0%, 3-5 60.0%, 6-11 54.5%, 6-11 54.5%
FT %: 2-3 66.7%, 9-10 90.0%, 0-1 0.0%, 4-4 100.0%, 15-18 83.3%

Washington 56 • 7-5

Table with columns: # Player, FG-FGA, 3-Ptr FG-FGA, FT-FTA, Rebounds (Off, Def, Tot), PF, TP, A TO Blk Stl, Min. Rows include Johnson, Hannah, Henson, Mai-Loni, Melgoza, Amber, etc.

1st - FG %: 2-4 50.0%, 2nd: 6-13 46.2%, 3rd: 6-15 40.0%, 4th: 6-18 33.3%, Game: 20-60 33.3%
3FG %: 1-5 20.0%, 1-3 33.3%, 3-8 37.5%, 4-10 40.0%, 9-26 34.6%, 9-26 34.6%
FT %: 2-2 100.0%, 1-2 50.0%, 2-6 33.3%, 2-4 50.0%, 7-14 50.0%

Officials: Lorena Ahumada, Julie Krommenhoek, Lisa Jones
Technical fouls: Mississippi State-None, Washington-None.
Attendance: 1669

Score by periods table: 1st 28, 2nd 28, 3rd 20, 4th 27, Total 103
Points MSU 62, WASH 41
In Paint MSU 20, WASH 9
Off T/O MSU 12, WASH 25
2nd Chance MSU 22, WASH 15
Fast Break MSU 31, WASH 30
Bench MSU 25, WASH 15

Last FG - MSU 4th-02:04, WASH 4th-00:37.
Largest lead - MSU by 54 4th-00:57, WASH None.
MSU led for 39:40, WASH led for 00:00. Game was tied for 00:20.
Score tied - 0 times.
Lead changed - 0 times.

GAME 13

LOUISIANA 36 MISSISSIPPI ST. 104

DECEMBER 30, 2018 • STARKVILLE, MISS.

Louisiana 36 • 2-9

Table with columns: Player, FG-FGA, 3-Ptr, FT-FTA, Rebounds, PF, TP, A, TO, Blk, Stl, Min. Includes team totals and shooting percentages.

Mississippi State 104 • 12-1

Table with columns: Player, FG-FGA, 3-Ptr, FT-FTA, Rebounds, PF, TP, A, TO, Blk, Stl, Min. Includes team totals and shooting percentages.

Officials: Gina Cross, Eric Baker, Dawn Marsh. Technical fouls: Louisiana-None, Mississippi State-None.

Score by periods table showing 1st, 2nd, 3rd, 4th, and Total scores for Louisiana and Mississippi State.

Technical fouls: Louisiana-None, Mississippi State-None. Attendance: 10242.

GAME 14

7/6 MISSISSIPPI ST. 93 ARKANSAS 69

JANUARY 3, 2019 • FAYETTEVILLE, ARK.

#7/6 Miss State 93 • 13-1, 1-0 SEC

Table with columns: Player, FG-FGA, 3-Ptr, FT-FTA, Rebounds, PF, TP, A, TO, Blk, Stl, Min. Includes team totals and shooting percentages.

Arkansas 69 • 11-4, 0-1 SEC

Table with columns: Player, FG-FGA, 3-Ptr, FT-FTA, Rebounds, PF, TP, A, TO, Blk, Stl, Min. Includes team totals and shooting percentages.

Officials: Bryan Enterline, Maj Forsberg, Kevin Pethelt. Attendance: 2263.

Score by periods table showing 1st, 2nd, 3rd, 4th, and Total scores for Mississippi State and Arkansas.

Technical fouls: #7/6 Miss State-None, Arkansas-TEAM. Attendance: 1535.

GAME 15

16/15 KENTUCKY 71 MISSISSIPPI ST. 86

JANUARY 6, 2018 • STARKVILLE, MISS.

Kentucky 71 • 14-2 (1-1 SEC)

Table with columns: Player, FG-FGA, 3-Ptr, FT-FTA, Rebounds, PF, TP, A, TO, Blk, Stl, Min. Includes team totals and shooting percentages.

Mississippi State 86 • 14-1 (2-0 SEC)

Table with columns: Player, FG-FGA, 3-Ptr, FT-FTA, Rebounds, PF, TP, A, TO, Blk, Stl, Min. Includes team totals and shooting percentages.

Officials: Scott Yarbrough, Douglas Knight, Jennifer Rezac. Attendance: 8830.

Score by periods table showing 1st, 2nd, 3rd, 4th, and Total scores for Kentucky and Mississippi State.

Technical foul on MSU Head Coach at 3:13 in the 2nd. Attendance: 8830.

GAME 16

7/6 GEORGIA 71 MISSISSIPPI ST. 80

JANUARY 10, 2018 • STARKVILLE, MISS.

Georgia 71 • 11-5 (2-1 SEC)

Table with columns: Player, FG-FGA, 3-Ptr, FT-FTA, Rebounds, PF, TP, A, TO, Blk, Stl, Min. Includes team totals and shooting percentages.

Mississippi State 80 • 15-1 (3-0 SEC)

Table with columns: Player, FG-FGA, 3-Ptr, FT-FTA, Rebounds, PF, TP, A, TO, Blk, Stl, Min. Includes team totals and shooting percentages.

Officials: Denise Brooks, Frank Steratore, Katie Lukanich. Attendance: 6493.

Score by periods table showing 1st, 2nd, 3rd, 4th, and Total scores for Georgia and Mississippi State.

Technical fouls: Georgia-None, Mississippi State-None. Attendance: 6493.



MISSISSIPPI STATE BULLDOGS
(15-1 Overall, 3-0 SEC)

Head Coach: Vic Schaefer (7th Season)
Associate Head Coach: Johnnie Harris (7th Season)
Assistant Coach: Dionnah Jackson-Durrett (4th Season)
Assistant Coach: Elena Lovato (1st Season, 3rd Overall)

	PPG	RPG	APG	FG%	3FG%	FT%		
 <p>1 • MYAH TAYLOR G • 5-7 • R-Fr. Olive Branch, Miss. (Olive Branch HS)</p>	2018-19 Career	4.1 4.1	1.1 1.1	2.6 2.6	.412 .412	.318 .318	.667 .667	<ul style="list-style-type: none"> • SEC First-Year Honor Roll • Tallied season highs w/ 10 pts., 6 assists, 3 stls. vs. Furman • Matched her season high with 6 assists vs. Jackson St. • Scored 9 pts. and tallied 6 assts. vs. Louisiana
 <p>2 • ANDRA ESPINOZA-HUNTER (AHN-drah) G • 5-11 • So. Ossining, N.Y. (Ossining HS/UConn)</p>	2018-19 Career ^(ALL)	6.6 5.1	1.2 0.9	0.8 0.6	.380 .381	.340 .344	.833 .833	<ul style="list-style-type: none"> • Granted NCAA waiver to play this season on Nov. 7 • Made her MSU debut at Virginia, tying for a team high with 13 pts. • Season high 16 pts. vs. Coppin St.
 <p>4 • JESSIKA CARTER F/C • 6-5 • Fr. Waverly Hall, Ga. (Harrison Central HS)</p>	2018-19 2018-19	4.9 4.9	4.4 4.4	1.5 1.5	.532 .532	.000 .000	.480 .480	<ul style="list-style-type: none"> • 6th in SEC in blocks per game (1.6 bpg) • Swatted 24 shots, 6th in SEC • Tallied 10 pts., 8 rbd., 4 blks. against Lamar • 16 pts., 8 rbd., 5 blks. 7-of-9 FG vs. Coppin St. • Blocked a season-high 6 shots vs. Jackson St.
 <p>5 • ANRIEL HOWARD (ANN-ree-el) F • 5-11 • Gr. Atlanta, Ga. (Westlake HS/Texas A&M)</p>	2018-19 Career ^(ALL)	16.0 10.1	7.9 9.6	1.8 1.2	.541 .453	.367 .338	.714 .694	<ul style="list-style-type: none"> • Preseason All-SEC by league media and coaches • Katrina McClain Award Watch List (nation's top power forward) • Wooden Award and Naismith Trophy Watch Lists • Scored career-high 30 pts. at Oregon • 5th NCAA DI, 2nd SEC, in active career rebounds (1,113) • Scored her 1,000th-career pt. vs. Jackson St. (1,147 pts.)
 <p>10 • JAZZMUN HOLMES G • 5-8 • Sr. Gulfport, Miss. (Harrison Central HS)</p>	2018-19 Career	7.9 3.6	2.1 1.3	5.3 2.8	.455 .402	.400 .237	.849 .785	<ul style="list-style-type: none"> • Leads nation in assist/turnover ratio (4.20) • 2nd in league with 5.3 apg • Scored a career-high 17 points to lead all scorers at Texas • 5th among active SEC players with 358 career assists • 9th among active SEC players in career steals (127) • Dished a career-best 13 assists against Marquette
 <p>11 • XARIA WIGGINS (ZAR-ee-ah) G/F • 6-1 • Fr. Virginia Beach, Va. (Princess Anne HS)</p>	2018-19 Career	3.7 3.7	1.6 1.6	1.0 1.0	.237 .237	.269 .269	.579 .579	<ul style="list-style-type: none"> • Collected 3 steals in her MSU debut • Tallied 8 pts. vs. Lamar • Scored a season-high 9 pts. vs. Jackson St. • Set season highs with 10 pts. and 6 rbd. vs. Louisiana
 <p>13 • PROMISE TAYLOR C • 6-5 • So. Issaquah, Wash. (Sammamish HS/Ole Miss)</p>	2018-19 Career ^(OM)	8.3 8.3	6.0 6.0	2.6 2.6	.607 .607	.000 .000	.479 .479	<ul style="list-style-type: none"> • 2018 SEC All-Freshman Team while playing at Ole Miss • Ranked 3rd in the SEC with 2.6 bpg as a freshman • Made an SEC-best 65.5% from the field in league play last season
 <p>15 • TEAIRA MCCOWAN (Tee-AIR-ah) C • 6-7 • Sr. Brenham, Texas (Brenham HS)</p>	2018-19 Career	16.5 12.0	13.5 9.5	2.6 1.8	.663 .584	.000 .000	.716 .646	<ul style="list-style-type: none"> • SEC Preseason Player of the Year by league media and coaches • Wooden, Naismith, Wade, Lisa Leslie Watch Lists • 1,231 career rbd. — MSU career record holder • 52-career double-doubles, 4th among active DI players & 1st SEC • 4th DI in blocked shots (42), 7th in FG% (66.3%) • Averaging a career-low 2.4 fouls per game and career-high 2.6 bpg
 <p>20 • NYAH TATE G • 6-0 • So. Terry, Miss. (Terry HS)</p>	2018-19 Career	1.4 1.5	1.0 0.5	0.4 0.1	.429 .444	.500 .500	.000 .500	<ul style="list-style-type: none"> • 2018 SEC First Year Honor Roll • Saw her 1st action of the season vs. Jackson St., matching her career high with 5 pts.
 <p>23 • BRE'AMBER SCOTT G • 5-11 • So. Little Rock, Ark. (Central HS)</p>	2018-19 Career	6.4 3.6	1.5 1.1	1.2 0.7	.516 .449	.500 .333	.844 .772	<ul style="list-style-type: none"> • 84.4% from the free throw line this year (27-of-32) • Recorded her first double-digit scoring game with 10 pts. vs. Coppin State • Tallied 13 pts. on 5-of-6 shooting vs. Little Rock in her hometown • Scored a career-high 21 pts. on 5-of-6 3FG shooting vs. Louisiana
 <p>24 • JORDAN DANBERRY G • 5-8 • Sr. Conway, Ark. (Conway HS/Arkansas)</p>	2018-19 Career ^(ALL)	13.3 6.3	3.6 2.4	3.7 2.0	.509 .400	.000 .176	.654 .628	<ul style="list-style-type: none"> • 2018 SEC Academic Honor Roll • 2018 NCAA Elite 90 Award (Top GPA at the Final Four) • 10th in SEC in assists (3.6 apg); 13th in asst./turnover ratio (1.8) • Double-figure pts. in 14 of 16 games this season • Scored a career-high 26 pts. at Arkansas • Averaging 18.3 ppg in conference play
 <p>25 • ZION CAMPBELL C • 6-3 • R-Jr. Washington, D.C. (Riverdale Baptist School)</p>	2018-19 Career	0.5 1.4	1.4 1.8	0.2 0.3	.500 .650	.000 .000	.667 .577	<ul style="list-style-type: none"> • Twice named to the SEC Academic Honor Roll
 <p>55 • CHLOE BIBBY F • 6-1 • So. Warracknabeal, Australia (Rowville Secondary)</p>	2018-19 Career	12.8 6.6	4.3 2.8	1.7 0.8	.490 .436	.466 .397	.875 .842	<ul style="list-style-type: none"> • Averages 2.1 3FG made per game, 8th in SEC • Scored double figures in 13 of 16 games this season • Notched 1st 20-point game with career-high 21 vs. Furman • Put up a career-high 24 points against Georgia • Averaging 17.7 ppg in conference play which is 8th in the SEC

