



# 2012-13 Auburn Women's Basketball

Game 6 • November 24, 2012

vs. Texas A&M-Corpus Christi • 26th Annual Omni Hotels Classic Consolation Game

18 NCAA Tournament Appearances • Three Final Fours • Five SEC Titles • Four SEC Tournament Titles



## AUBURN MEDIA RELATIONS

Associate Director/WBB Contact: Matt Crouch • mcrouch@auburn.edu

Auburn Athletic Complex / 392 South Donahue / Auburn, AL 36849

O: 334.844.9800 • C: 334.740.4109 • F: 334.844.9807

[www.AuburnTigers.com](http://www.AuburnTigers.com) • [www.AuburnWomensHoops.com](http://www.AuburnWomensHoops.com)

Twitter: @AuburnWBB | @MattCrouchAU • Facebook: facebook.com/AUWBB

## 2012-13 SCHEDULE/RESULTS

### AUGUST

7	1 - at Logan Thunder [Exhibition]	L, 86-54
10	1 - at Cairns Dolphins [Exhibition]	W, 81-71
12	1 - at Sydney Flames [Exhibition]	W, 67-58
13	1 - at Sutherland Sharks [Exhibition]	W, 84-46

### NOVEMBER

9	2 - vs. Maine	W, 71-41
10	2 - at North Carolina State	L, 85-71
15	Alabama State	W, 80-43
18	Alabama A&M	W, 93-44
23	3 - vs. San Diego State	L, 78-57
24	3 - vs. Texas A&M-Corpus Christi	6 p.m.
28	at Tulane	7 p.m.

### DECEMBER

9	Hofstra	2 p.m.
12	at George Washington	6 p.m.
16	Temple	2 p.m.
19	Tennessee-Chattanooga	6 p.m.
22	Jacksonville	2 p.m.
29	Samford	2 p.m.

### JANUARY

3	Arkansas*	6 p.m.
6	at Missouri*	2 p.m.
10	Ole Miss*	6 p.m.
13	at Texas A&M*	2 p.m.
17	Tennessee* [CSS]	8 p.m.
20	at Kentucky* [SEC Network]	1 p.m.
24	at Alabama* [CSS]	8 p.m.
31	LSU*	6 p.m.

### FEBRUARY

3	at South Carolina*	2 p.m.
7	at Georgia*	6 p.m.
10	Florida* [SportSouth]	2 p.m.
17	Alabama* [ESPN2]	1:30 p.m.
21	at Tennessee*	6 p.m.
24	Missouri*	2 p.m.
28	at Vanderbilt* [CSS]	8 p.m.

### MARCH

3	Mississippi State*	2 p.m.
6-10	Southeastern Conference Tournament Duluth, Ga. • Arena at Gwinnett Center	
23-26	NCAA Tournament First and Second Rounds	

### APRIL

30-2	NCAA Tournament Regionals	
7-9	NCAA Tournament Final Four New Orleans, La. • New Orleans Arena	

\* - SEC Game

All Times are Central

1 - Australian Tour (Brisbane, Cairns and Sydney, Australia)

2 - Wolfpack Invitational (Raleigh, N.C.)

3 - 26th Annual Omni Hotels Classic (Boulder, Colo.)

All home games played at Auburn Arena

**Bold indicates home games**

[www.AuburnTigers.com](http://www.AuburnTigers.com)



VS.



## GAME 6 • OMNI HOTELS CLASSIC CONSOLATION GAME

[NR/NR] Auburn (3-2) vs. [NR/NR] Texas A&M-Corpus Christi (0-5)

**When:** Saturday, November 24 • 6 p.m. CT

**Where:** Coors Events Center (11,064) • Boulder, Colo.

**Video Webcast:** N/A

**Radio:** 910 AM WZMG; Andy Burcham (play-by-play)

**Audio Webcast:** AuburnTigers.com

**Live Stats:** CUBuffs.com

**Series:** First Meeting

**Last Meeting:** First Meeting

**Last Meeting at a Neutral Site:** First Meeting

**Up Next:** Auburn will stay on the road, traveling to New Orleans for a Nov. 28 meeting with Tulane

## AUBURN PROJECTED STARTERS (3-2)

No.	Pos.	Name	Ht.	Year	PPG	RPG	Hometown
00	G	Hasina Muhammad	6-1	So.	15.6	5.0	Memphis, Tenn.
3	G	Najat Ouardad	5-1	Sr.	6.0	(apg) 4.6	Orleans, France
14	F	Blanche Alverson	6-3	Sr.	11.6	6.0	Andalusia, Ala.
32	G	Tyrese Tanner	6-1	Jr.	15.2	5.6	Birmingham, Ala.
34	C	Peyton Davis	6-5	Jr.	6.6	4.6	Pinson, Ala.

## OFF THE BENCH

5	G	Chadarryl Clay	5-7	Fr.	5.5	(apg) 1.6	Chattanooga, Tenn.
11	G	Courtney Strain	5-9	R-So.	4.6	1.0	Woodland, Ala.
20	C	Pascale West	6-8	Sr.	2.0	0.8	LaGrange, Ga.
22	G	Julie King	5-9	Sr.	0.4	0.8	St. Louis, Mo.
23	F	Tro'cee Tanner	6-3	Fr.	5.0	3.6	Birmingham, Ala.
25	G	Cedricka Sweeting	5-3	Fr.	2.6	(apg) 1.6	Nassau, Bahamas
50	F	Cabriana Capers	6-1	Fr.	0.8	3.0	Bolingbrook, Ill.

Head Coach: Terri Williams-Flournoy / Assistant Coaches: Ty Evans, Caroline McCombs and Adrian Walters

## TEXAS A&M-CORPUS CHRISTI PROJECTED STARTERS (0-5)

No.	Pos.	Name	Ht.	Year	PPG	RPG	Hometown
3	G	Ashley Darley	5-6	R-Jr.	8.4	2.4	Corpus Christi, Texas
10	G	Janae Blount	5-8	Fr.	11.8	2.6	Washington, D.C.
21	G	Jessica Jammer	5-10	Sr.	6.4	5.8	Brookshire, Texas
22	F	Ashanti Plummer	6-2	Fr.	2.2	2.4	Manhattan, N.Y.
33	G	Taryn Gregory	5-6	Jr.	2.2	2.4	Channelview, Texas

Head Coach: Royce Chadwick / Associate Head Coach: Roxanne White / Assistant Coaches: Darren Brunson and Geoff Grawn

**Media Information**

The Auburn media relations department considers its work with the media a top priority. The 2012-13 Auburn Women's Basketball Almanac has been prepared to assist the working media in their coverage of Tiger basketball. If you have not received a copy, or if you need additional information, interview or photograph requests, or have any questions, please contact Matt Crouch in the media relations office at 334.844.9800.

**Interview Policy**

Coach Williams-Flournoy, her assistants and all women's basketball players are available for phone and personal interviews by contacting Matt Crouch in the media relations office. Post-game interviews will be allowed following a 10-minute cooling off period. Non-game day requests will be met based on the players class and practice schedules.

**Credentials**

Anyone wishing to cover an Auburn women's basketball game should contact Matt Crouch in the media relations office at least one day in advance in order to make the proper arrangements.

**On the Air**

The Tigers can be heard live locally in Auburn on Mix 96.7 FM for the entire regular and postseasons. Andy Burcham, in his 25th season with the women's basketball program and handles play-by-play duties. Stephanie Follett joins Burcham for her first season and provides color commentary. Each game can also be heard live on the internet at [www.AuburnTigers.com](http://www.AuburnTigers.com).

**Weekly Live Radio Show**

Starting in January, every Tuesday at 6 p.m. CT, Terri Williams-Flournoy will host a live show from Beef O'Brady's in Auburn with Andy Burcham. Fans can listen to the show on 96.7 FM. Fans can tweet their questions @AuburnWBB.

**Game-Day Services**

Statistics, rosters and game notes will be provided prior to the game in the media work room. Box scores will also be handed out during and following the game. Phones and fax machines are available in the media work room.

**Photo/Video Services**

Todd Van Emst of the Auburn Media Relations office handles all photo requests. Please contact Van Emst at 334.844.9514. Video highlights of selected Auburn women's basketball games are available for the media. For information on how to access the FTP server, contact Steve Sain in the Auburn Media Relations office at 334.844.9809.

**On the Web**

The home for Auburn Athletics on the web, [www.AuburnTigers.com](http://www.AuburnTigers.com), is your source for Auburn Women's Basketball. The website offers the most recent information and news on the Tigers. At [AuburnTigers.com](http://AuburnTigers.com), you can also listen to each women's basketball game broadcast live and follow along on live scoring for every home game.



**Follow Auburn Women's Basketball on Twitter**

**@AuburnWBB**



**Become a fan of Auburn Women's Basketball on Facebook**

**[www.Facebook.com/AUWBB](http://www.Facebook.com/AUWBB)**

**2012-13 Numerical Roster**

No.	Name	Height	Position	Class	Hometown/High School
0	Hasina Muhammad	6-1	Guard/Forward	SO	Memphis, Tenn./Ridgeway
3	Najat Ouardad	5-1	Guard	SR	Orleans, France/Pensacola St. College
4	Cedricka Sweeting	5-3	Guard	FR	Miami, Fla./South Broward
11	Courtney Strain	5-9	Guard	R-SO	Woodland, Ala./Woodland
14	Blanche Alverson	6-3	Forward/Guard	SR	Andalusia, Ala./Buford (Ga.)
20	Pascale "P.J." West	6-8	Center	SR	LaGrange, Ga./Troup County
21	Chadarryl Clay	5-7	Guard	FR	Chattanooga, Tenn./Girls Preparatory
22	Julie King	5-9	Guard	SR	St. Louis, Mo./Nerinx Hall
32	Tyrese Tanner	6-1	Guard/Forward	JR	Birmingham, Ala./Hoover
34	Peyton Davis	6-5	Center	JR	Pinson, Ala./Mortimer Jordan
35	Cabrina Capers	6-1	Forward	FR	Bolingbrook, Ill./Bolingbrook
44	Tra'cee Tanner	6-3	Forward/Center	FR	Birmingham, Ala./Hoover

**2012-13 Alphabetical Roster**

No.	Name	Height	Pos.	Ht.	Hometown
14	Blanche Alverson	6-3	Forward/Guard	SR	Andalusia, Ala./Buford (Ga.)
35	Cabrina Capers	6-1	Forward	FR	Bolingbrook, Ill./Bolingbrook
5	Chadarryl Clay	5-7	Guard	FR	Chattanooga, Tenn./Girls Preparatory
34	Peyton Davis	6-5	Center	JR	Pinson, Ala./Mortimer Jordan
22	Julie King	5-9	Guard	SR	St. Louis, Mo./Nerinx Hall
0	Hasina Muhammad	6-1	Guard/Forward	SO	Memphis, Tenn./Ridgeway
3	Najat Ouardad	5-1	Guard	SR	Orleans, France/Pensacola St. College
11	Courtney Strain	5-9	Guard	R-SO	Woodland, Ala./Woodland
4	Cedricka Sweeting	5-3	Guard	FR	Miami, Fla./South Broward
44	Tra'cee Tanner	6-3	Forward/Center	FR	Birmingham, Ala./Hoover
32	Tyrese Tanner	6-1	Guard/Forward	JR	Birmingham, Ala./Hoover
20	Pascale "P.J." West	6-8	Center	SR	LaGrange, Ga./Troup County

**STAFF:**

**Head Coach:** Terri Williams-Flournoy (Penn State, 1991)

**Assistant Coach:** Ty Evans (Wisconsin-Whitewater, 1995)

**Assistant Coach:** Caroline McCombs (Youngstown State, 1998)

**Assistant Coach:** Adrian Walters (St. Francis (Pa.), 1987)

**Director of Basketball Operations:** Danielle Bell (Richmond, 2010)

**Director of Basketball Services:** Sherill Baker (Georgia, 2006)

**Special Assistant to the Head Coach:** Stephanie Follett (Maine, 1996)

**Administrative Graduate Assistant:** Kari Koch (Missouri State, 2006)

**Athletic Trainer:** Cindy Campbell (South Alabama, 2005)

**BY CLASS:**

**Seniors (4):** Blanche Alverson, Julie King, Najat Ouardad, Pascale "P.J." West

**Juniors (2):** Peyton Davis, Tyrese Tanner

**Sophomores (2):** Hasina Muhammad, Courtney Strain

**Freshmen (4):** Cabrina Capers, Chadarryl Clay, Cedricka Sweeting, Nicole Tanner

## Projected Auburn Starters



### Hasina Muhammad

Guard  
6-1  
Sophomore  
Memphis, Tenn.  
Ridgeway High School  
15.6 ppg / 5.0 rpg / 1.6 spg

0

- Led Auburn in scoring in Australia with 23.3 points per game
- Has led Auburn in scoring in two of its five games this season
- Scored a career-high 21 points against Alabama A&M
- Played in all 30 games last season, starting in 16



### Najat Ouardad

Guard  
5-1  
Senior  
Orleans, France  
Pensacola State College  
6.0 ppg / 4.2 apg / 4.6 rpg

3

- Scored career-high 11 points vs. Maine and at N.C. State
- Was 10th all-time at AU in single-season steals by a junior with 52
- Played in all 30 games last season, starting in 18
- Had career-high 8 assists vs. USC-Upstate on Nov. 27 last season



### Blanche Alverson

Guard/Forward  
6-3  
Senior  
Andalusia, Ala.  
Buford (Ga.) High School  
11.6 ppg / 6.0 rpg / .400 3fg%

14

- Named Auburn's Miss Homecoming on Nov. 3
- Was the 2012 SEC Women's Basketball Scholar-Athlete of the Year
- Averaged 17.5 points per game on the Australian Tour this summer
- Is 126 points away from reaching 1,000 on her career

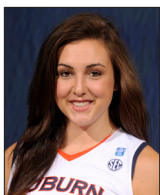


### Tyrese Tanner

Guard/Forward  
6-1  
Junior  
Birmingham, Ala.  
Hoover High School  
15.2 ppg / 5.6 rpg / 1.8 spg

32

- Named SEC Player of the Week on Nov. 12
- Scored career-high 26 points at North Carolina State on Nov. 10
- Neared her first double-double with 15 points and 9 rebounds vs. Maine
- Leads Auburn in free throw percentage with .800



### Peyton Davis

Center  
6-5  
Junior  
Pinson, Ala.  
Mortimer Jordan High School  
6.6 ppg / 4.6 rpg / .480 fg%

34

- Scored a career-high 12 points vs. Alabama State on Nov. 15
- Earned first career start vs. Maine on Nov. 9
- Started all four games in Australia during the summer tour ; averaged 6.5 ppg
- Played in 19 games last season, coming off the bench each time

## Auburn Women's Basketball Quick Hitters

- Auburn is playing at its second tournament of the season this week at the Omni Hotels Classic
- Coach Terri Williams-Flournoy owns a 14-9 career record in regular-season tournaments and is 1-2 at AU
- Auburn won its 800th game last season, becoming the 14th NCAA program to do so
- This is the first meeting between Auburn and Texas A&M-Corpus Christi
- Auburn has a 13-1 all-time record against current members of the Southland Conference
- Auburn lost to San Diego State, 78-57, in the first round of the tournament; Texas A&M-Corpus Christi lost to host Colorado, 75-48
- The Tanner sisters, Tyrese and Tra'cee, combined for 30 points, 12 rebounds and 4 steals against SDSU
- This is the first meeting between Williams-Flournoy and TAMU-CC's Royce Chadwick
- Auburn is 8-2 all-time when playing on Nov. 24
- The Tigers are 111-29 when playing in the month of November
- Auburn is 24-4 all-time when playing teams from Texas and is 3-2 when playing in Colorado
- Blanche Alverson is 126 points away from reaching 1,000 on her career
- Auburn has forced more than 20 turnovers in 4 of 5 games this season, more than 25 in two
- The Tigers' bench is averaging 25.4 points per game so far this season
- The Tigers return five players that accounted for 127 starts on The Plains prior to this season
- Alverson ranks 5th all-time in career 3-pointers at Auburn with 154
- One of Auburn's newcomers is senior Julie King, a four-year letterwinner on the Auburn soccer team
- For the third time ever, Auburn's roster features a set of sisters in Tyrese and Tra'cee Tanner
- Terri Williams-Flournoy led the Tigers to a 3-1 record this summer in the team's Australian Tour
- Senior Blanche Alverson was named Auburn's Miss Homecoming Nov. 3
- Blanche Alverson's community service project, Ballin' For Books, collected more than 1,100 books last year
- The Tigers will appear on television in at least six games this season
- Auburn was picked to finish 10th in the SEC by both the media and league's coaches
- Four freshmen grace the Tiger roster: Cabriana Capers, Chadarryl Clay, Cedricka Sweeting and Tra'cee Tanner

## INDIVIDUAL CATEGORY LEADERS

Auburn		Texas A&M-Corpus Christi
Hasina Muhammad - 15.6	Points	Janae Blount - 11.8
Blanche Alverson - 6.0	Rebounds	Jessica Jammer - 5.8
Najat Ouardad - 4.6	Assists	Taryn Gregory - 2.0
Najat Ouardad - 2.8	Steals	Ashley Darley and Jessica Jammer - 1.8
Najat Ouardad - 2.2	Blocks	Brandi Huff - 0.6
Blanche Alverson - 30.6	Minutes Played	Jessica Jammer - 26.4
Chadarryl Clay - .636	Field Goal Percentage	Ashley Darley - .439
Najat Ouardad - .400	3-Point Percentage	Ashley Darley - .500
Tyrese Tanner - .800	Free-Throw Percentage	Marquesha Anderson-Sparks - .933

## AUBURN WOMEN'S BASKETBALL WEEKLY SCHEDULE

	Wednesday 21	Thursday 22	Friday 23	Saturday 24	Sunday 25	Monday 26	Tuesday 27
<b>Nov. 21 through Feb. 27</b>	Depart Auburn at 10 a.m. CT  Practice 8 - 9:30 p.m. CT	Practice 1 - 3 p.m. CT Coors Events Center	Auburn vs. San Diego State L, 78-57 Coors Events Center Boulder, Colo.	Auburn vs. TAMU-CC 6 p.m. CT Coors Events Center Boulder, Colo.	Return to Auburn	Practice 2:30 - 5:30 p.m. CT Auburn Arena	Practice 2:30 - 4 p.m. CT Auburn Arena  Depart for Tulane

## General Information

School.....	Auburn University
City / Zip.....	Auburn, Ala. / 36831
Founded.....	Oct. 1, 1856
Enrollment.....	25,469
Nickname.....	Tigers
Colors.....	Burnt Orange and Navy Blue
Home Court (Capacity).....	Auburn Arena (9,121)
Affiliation.....	NCAA Division I
Conference.....	Southeastern Conference
President.....	Dr. Jay Gogue
Athletic Director.....	Jay Jacobs
Senior Women's Administrator.....	Meredith Jenkins
University Website.....	www.Auburn.edu

## Team Information

2011-12 Overall Record.....	13-17 (.433)
SEC Record.....	5-11 (.313)
All-Time SEC Record.....	192-168 (.533)
SEC Tournament Record.....	34-31 (.523)
Letterwinners Returning/Lost.....	7/5
Starters Returning/Lost.....	3/2
Newcomers.....	5
First Year of Basketball.....	1971
All-Time Overall Record.....	814-380 (.682)
NCAA Tournament Appearances/Last.....	18/2009
NCAA Tournament Record.....	29-18
WNIT Appearances/Last.....	3/2011
WNIT Record.....	8-2

## Basketball Staff

Head Coach.....	Terri Williams-Flournoy (Penn State, 1991)
Career Record.....	146-106 (.579) / 9th season
Record at Auburn.....	3-2 (.600) / 1st season
Assistant Coaches (Alma Mater) ..	Ty Evans (Wisconsin-Whitewater, 1995)
.....	Caroline McCombs (Youngstown State, 1998)
.....	Adrian Walters (St. Francis (Pa.), 1987)
Director of Basketball Operations ..	Danielle Bell
Director of Basketball Services ..	Sherill Baker
Special Assistant to the Head Coach ..	Stephanie Follett
Administrative Graduate Assistant ..	Kari Koch
Secretary.....	Vicki Coleman
Basketball Office Phone.....	(334) 844-9200
Basketball Office Fax.....	(334) 844-9862
Strength and Conditioning.....	Megan Young
Athletic Trainer.....	Cindy Campbell
Academic Counselor.....	Dr. Mary Ann Taylor-Sims

## Radio Broadcast Information

Radio Station.....	WMXA (96.7 FM)
Play-by-Play.....	Andy Burcham
Color.....	Stephanie Follett
Burcham Email.....	aburcham@ounetwork.com
Burcham Office Phone.....	(334) 826-2929
Network Address.....	Auburn Network, Inc.
.....	P.O. Box 950
.....	Auburn, AL 36831-0950

## 26TH ANNUAL OMNI HOTELS CLASSIC

The Tigers are competing this week at the 26th Annual Omni Hotels Classic in Boulder, Colo. The tournament host is the University of Colorado. For more information, contact Troy Andre in the Buffaloes' media relations office. His number is 303.903.3654 and his email is andre@colorado.edu. The press row numbers at the Coors Events Center are 303.492.1552 or 303.492.4381.

## TEXAS A&amp;M-CORPUS CHRISTI MEDIA RELATIONS

For more information on the Texas A&M-Corpus Christi women's basketball team, contact Amber Sleek in the media relations office. Her email address is amber.sleek@tamucc.edu and her number is 419.680.0004.

## OFFICIALS

TBA

## RANKINGS

Auburn and Texas A&M-Corpus Christi are not ranked.

## NEXT UP FOR THE TIGERS

Following the Omni Hotels Classic, Auburn will stay on the road for a 7 p.m., Nov. 28 game at Tulane in New Orleans, La.

## AUBURN'S POST-GAME PROCEDURE

The Auburn locker room is closed. Coach Terri Williams-Flournoy and selected Tiger players will be brought to the interview room after the 10-minute "cooling off" period.

## QUICK HITS

Auburn is in its 42nd season of women's basketball and sports an all-time record of 814-380... AU has made 18 NCAA Tournament appearances, three WNIT appearances and three Final Fours in the program's history... Head Coach Terri Williams-Flournoy is in her first season at Auburn... She has a 146-106 record as a head coach... The Tigers are coming off a 13-17 season in 2012.

## 800 AND COUNTING

Auburn picked up its 800th program victory last season, becoming the 14th team in NCAA history to reach the 800-win plateau.

## QUEEN BLANCHE

Senior Blanche Alverson, no stranger to awards on the court, added another piece of hardware to her collection on Nov. 3 as she was named Auburn's Miss Homecoming. After a week of campaign-

ing, she found out the result of the vote at halftime of Auburn's Homecoming Football Game against New Mexico State. She is the first Tiger student-athlete to earn the honor.

## AUBURN - TEXAS A&amp;M-CORPUS CHRISTI SERIES

This will be the first meeting between Auburn and Texas A&M-Corpus Christi.

## AGAINST THE SOUTHLAND

Auburn is 13-1 all-time against current members of the Southland Conference. Auburn's last meeting with a Mountain West team came against Stephen F. Austin on Jan. 3, 2009, a 79-56 Auburn win.

## TOURNAMENT TIME

Auburn is playing in a tournament for the second time this season as it heads to the Omni Hotels Classic. The Tigers took runner-up honors earlier this season at the Sheraton Raleigh Wolfpack Invitational.

## COACH FLO TOURNAMENT TIME

Coach Terri Williams-Flournoy sports a 14-9 record as a head coach in regular season tournaments. That tally includes a pair of tournament championships last year at Georgetown, winning the Lady Rebel Roundup and the Blue Sky Classic.

## SCOUTING TEXAS A&amp;M-CORPUS CHRISTI

Texas A&M-Corpus Christi is still looking for its first win of the season after dropping a 75-48 decision to Colorado Friday night. The Islanders return 10 letterwinners, including three starters, from last season's team that went 9-20 (5-11 Southland). TAMU-CC welcomes five newcomers to the team this season, including freshman Janae Blount, who is leading the team in scoring with 11.8 points per game.

The Islanders are under the direction of first-year head coach Royce Chadwick. He comes to Texas A&M-Corpus Christi after spending the previous 11 years at Marshall.

## SCOUTING AUBURN

The Auburn women's basketball team, under direction of first-year head coach Terri Williams-Flournoy, returns seven letterwinners and four starters from last season's team that went 13-17 (5-11 SEC). Williams-Flournoy comes to Auburn after eight seasons as head coach at Georgetown where she put together a 143-104 record that included four postseason appearances and three straight



## Statistical Comparison - Auburn vs. Texas A&amp;M-CC

	Auburn	TAMU-CC
<b>Coach:</b>	Terri Williams-Flournoy	Royce Chadwick
<b>Career Record:</b>	146-106	561-307
<b>Top Scorer:</b>	Muhammad (15.6)	Blount (11.8)
<b>Top Rebounder:</b>	Alverson (6.0)	Jammer (5.8)
<b>Series Record:</b>	First Meeting	
- at Auburn	N/A	
- at Corpus Christi, Texas	N/A	
- at Neutral	First Meeting	
- Overall Streak	This will be the first meeting	
2011-12 Record	13-17	9-20
2012-13 Record	3-2	0-5
Points Per Game	74.4	50.8
Scoring Margin	+16.2	-16.6
FG Percentage	.423	.341
Opp. FG %	.372	.436
3FG Percentage	.333	.267
Opp. 3FG %	.325	.432
Rebounds	41.4	32.2
Opp. Rebounds	37.2	38.8
Rebound Margin	+4.2	-6.6
Turnovers	14.2	20.8
Opp. Turnovers	22.4	18.2
Steals	11.4	9.6
Opp. Steals	7.0	8.8
Blocks	4.0	2.8
Opp. Blocks	2.0	3.4

## Around the SEC (As of Nov. 23, 2012)

	SEC	Pct.	Overall	Pct.
Georgia	0-0	.000	6-0	1.000
South Carolina	0-0	.000	6-0	1.000
Alabama	0-0	.000	4-0	1.000
Florida	0-0	.000	4-1	.800
Missouri	0-0	.000	4-1	.800
Arkansas	0-0	.000	3-1	.750
Kentucky	0-0	.000	3-1	.750
Tennessee	0-0	.000	3-1	.750
Ole Miss	0-0	.000	2-1	.667
Auburn	0-0	.000	3-2	.600
Vanderbilt	0-0	.000	3-2	.600
LSU	0-0	.000	2-2	.500
Texas A&M	0-0	.000	2-3	.400
Mississippi State	0-0	.000	2-4	.333

**This Week in the SEC****Saturday, Nov. 24**

Florida vs. Northern Iowa	2 p.m.
South Carolina vs. DePaul	2:30 p.m.
Arkansas at Hawai'i	4 p.m.
Vanderbilt vs. Florida State	4 p.m.
Missouri vs. Minnesota	5 p.m.
Auburn vs. Texas A&M-Corpus Christi	6 p.m.
Georgia at New Mexico	8 p.m.

**Sunday, Nov. 25**

South Carolina-Upstate at Kentucky (UK IMG/FSN)	12 p.m.
Alcorn State at Tennessee	1 p.m.
Marquette at Texas A&M	1:30 p.m.
Southeastern Louisiana at Alabama	2 p.m.
LSU at Florida International	2 p.m.
Florida vs. Arizona State	2 p.m.
Arkansas vs. Oregon	4 p.m.

trips to the NCAA Tournament, including a Sweet 16 appearance in 2011.

Auburn returns its top scorer from last season in Tyrese Tanner (10.6 ppg), while also welcoming back 2012 SEC All-Freshman Team member Hasina Muhammad (9.5 ppg) and 2012 SEC Scholar-Athlete of the Year Blanche Alverson (9.1 ppg, 4.2 rpg). Alverson, one of four seniors on Auburn's squad, was named Auburn's Miss Homecoming on Nov. 3 at the Homecoming Football Game.

Auburn is off to a 3-2 start and is averaging a 38.7-point margin of victory in its three wins. Three Tigers are averaging double figures, led by Muhammad with 15.6 per game, including two 20-point games. Tanner is at 15.2 points and 5.6 rebounds per game while Alverson comes in with 11.6 points and 6.0 boards per game.

**LAST TIME OUT FOR AUBURN**

Auburn got down early and overcame a double-digit deficit to tie the game in the second half, but could not hold off a late San Diego State run as the Tigers dropped a 78-57 decision to the Aztecs Nov. 23 in the first round of the Omni Hotels Classic in Boulder, Colo.

Auburn's Tanner sisters led the way for the Tigers. Junior Tyrese Tanner was the top scorer with 17 points, along with four rebounds and three steals, while Tra'Cee Tanner followed with 13 points and a team-high eight rebounds off the bench. Hasina Muhammad rounded out the double-digit scorers with 10.

Auburn got down early against the Aztecs, trailing by as many as 15 points in the first half after San Diego State took a 24-9 lead. The Tigers rallied back, however, out-scoring the Aztecs 15-5 to close out the period and holding SDSU scoreless for the last 4:06. Tra'Cee Tanner scored six of seven first-half points in the run.

The Tigers kept the momentum rolling into the second half and tied the game up at 36-36 with 15:05 to play after a 3-pointer from Courtney Strain. That would be the final run, though as San Diego State scored the next seven points and out-scored Auburn 42-21 the rest of the game.

**LAST TIME OUT FOR TEXAS A&M-CORPUS CHRISTI**

Host Colorado used a big second half to pull away from Texas A&M-Corpus Christi in the first round of the Omni Hotels Classic, taking the 75-48 win.

Janae Blount tallied 13 points to pace the Islanders with her fourth double-figure scoring game of the season. The freshman also tied a season-high three 3-pointers and led the glass with six rebounds. Ashley Darley chipped in 12 points, including two from behind the arc. The Islanders tallied a season-high seven three-pointers.

Colorado held a 35-24 lead at halftime. The Islanders cut the lead to as few as six early in the second half, but the Buffaloes pulled away, out-scoring TAMU-CC 40-24 in the half, for the win.

**WILLIAMS-FLOURNOY VS. CHADWICK**

This will be the first meeting between Auburn's Terri Williams-Flournoy and TAMU-CC's Royce Chadwick.

Williams-Flournoy is in her first season as head coach at Auburn and holds a 146-106 record; she is 3-2 at Auburn. Chadwick is in his first season at Texas A&M-Corpus Christi and holds a 0-5 record; he is 561-307 on his career.

**ON THIS DATE. . .**

Auburn is 8-2 all-time when playing on Nov. 24. The Tigers' last game on Nov. 24 was a 62-56 win over Georgia Southern in 2009.

**IN NOVEMBER**

Auburn is 111-29 all-time in the month of November (records begin in 1978-79 season, not all dates provided prior to or during that season). The Tigers are 3-2 in November in the Williams-Flournoy era.

**AGAINST THE LONE STAR STATE**

Auburn is 24-4 all-time against teams from the state of Texas. The most frequent opponent is Stephen F. Austin at five meetings. The last meeting with a Texas team was a 79-59 loss to Texas A&M in Auburn on Nov. 22, 2009.

**WHEN PLAYING IN COLORADO**

Auburn is 3-2 all-time when playing in the state of Colorado with all five games taking place in Boulder. The Tigers won a pair of NCAA Tournament games in Boulder in 1996, downing Hawaii (73-53) in the first round before beating host Colorado (68-61) in overtime in the second round.

Auburn returned to The Centennial State in 2003, playing in the WBCA Tournament in Boulder. The Tigers lost to Notre Dame (64-77) in the first round, but bounced back for an 84-49 win over Old Dominion in the consolation game.

**SISTER-SISTER**

Auburn's Tanner sisters made a good combination Friday in the Tigers' loss to San Diego State. Tyrese and Tra'cee Tanner combined to score 30 points with 12 rebounds and four steals. It was the best combined effort for the sisters this season.

**FORCING 25**

Since 1987, Auburn has forced 25 or more turnovers in a game 95 times, including twice this season. In those 95 games, the Tigers have a 92-3 record.

**COUNTING TO 1,000**

Auburn senior Blanche Alverson is just 126 points away from reaching 1,000 on her career. Should she reach the mark, she would become the 27th Auburn player to do so. She is also 89 points away from cracking Auburn's top 30 career scoring list.

**Associated Press Top-25 Poll****Week 2 (Nov. 19)**

Rank	School	Record	Points	Pvs
1	Stanford (21)	5-0	952	4
2	Connecticut (17)	2-0	943	2
3	Baylor (1)	4-1	903	1
4	Duke	2-0	866	3
5	Notre Dame	2-0	791	7
6	Penn State	3-0	746	9
7	Louisville	3-0	743	8
8	<b>Georgia</b>	<b>4-0</b>	<b>691</b>	<b>10</b>
9	<b>Kentucky</b>	<b>2-1</b>	<b>644</b>	<b>6</b>
10	Maryland	2-1	617	5
11	California	2-0	604	12
12	West Virginia	3-0	502	14
13	Oklahoma	2-1	398	11
14	Purdue	2-0	385	18
15	Texas	2-0	362	19
16	Ohio State	2-1	311	20
17	<b>Vanderbilt</b>	<b>3-1</b>	<b>271</b>	<b>13</b>
18	St. John's	2-1	265	20
19	UCLA	2-0	258	NR
20	<b>Tennessee</b>	<b>3-1</b>	<b>254</b>	<b>24</b>
21	Oklahoma State	3-0	245	22
22	Kansas	3-0	169	NR
23	Nebraska	3-1	167	15
24	Dayton	4-0	101	NR
25	North Carolina	4-0	89	NR

**Others Receiving Votes:** Iowa State 76, **Texas A&M 76**, Miami (Fla.) 53, Georgia Tech 36, Delaware 31, Georgetown 20, DePaul 19, Virginia 19, Wisconsin-Green Bay 16, **Tennessee-Chattanooga 12**, Rutgers 12, Middle Tennessee State 8, Florida State 6, Iowa 5, **South Carolina 4**, Saint Joseph's 3, **San Diego State 1**, Gonzaga 1.

**USA Today / ESPN Top-25 Coaches Poll****Week 2 (Nov. 20)**

Rank	School	Record	Points	Pvs
1	Stanford (17)	5-0	758	4
2	Connecticut (12)	2-0	749	2
3	Baylor (2)	4-1	719	1
4	Duke	2-0	676	3
5	Notre Dame	2-0	646	6
6	Louisville	3-0	603	8
7	Penn State	3-0	582	9
8	<b>Kentucky</b>	<b>2-1</b>	<b>545</b>	<b>7</b>
9	<b>Georgia</b>	<b>4-0</b>	<b>519</b>	<b>10</b>
10	Maryland	2-1	502	5
11	California	3-0	464	12
12	Purdue	3-0	386	14
13	Oklahoma	2-1	323	11
14	West Virginia	3-0	319	19
15	<b>Tennessee</b>	<b>3-1</b>	<b>287</b>	<b>20</b>
16	St. John's	2-1	255	18
17	Ohio State	2-1	253	21
18	Oklahoma State	3-0	212	22
19	<b>Vanderbilt</b>	<b>3-1</b>	<b>189</b>	<b>16</b>
20	Nebraska	3-1	180	15
21	Texas	2-0	168	24
22	UCLA	2-0	109	NR
23	Kansas	3-0	106	25
24	<b>Texas A&amp;M</b>	<b>0-3</b>	<b>95</b>	<b>13</b>
25	Dayton	4-0	81	NR

**Others Receiving Votes:** Miami (Fla.) 53, Gonzaga 41, **South Carolina 38**, Georgia Tech 31, Iowa State 30, North Carolina 29, Virginia 20, Delaware 18, DePaul 18, Wisconsin-Green Bay 16, Georgetown 12, Syracuse 11, Middle Tennessee State 11, **Tennessee-Chattanooga 10**, Rutgers 6, Florida State 3, Minnesota 2.

**Bold denotes 2012-13 opponents**

**TURN IT OVER**

A pillar of Coach Terri Williams-Flournoy's style of play is a high-pressure defense that extends most of the floor. The Tigers have forced 20 or more turnovers in four of their first five games, after forcing 26 against Maine, 20 against North Carolina State, 26 against Alabama State and 23 against Alabama A&M. In all, Auburn scored 128 points off turnovers in its first four games, averaging 25.6 points off turnovers per game.

**IT'S RAINING 3s**

Blanche Alverson is climbing her way up the Auburn career 3-point list. She is currently fifth with 154, just seven behind Samantha Williams (161) and 17 behind Natasha Brackett (171). Alli Smalley holds the Auburn record with 219.

**OFF THE BENCH**

Auburn has had great bench support this season with at least one player coming off the bench to score in double figures in each of the five games. The Tigers' bench so far has scored 127 points on the season, averaging 25.4 per game.

**O-BOARDS**

Auburn has missed 191 shots this season with 83 (43.5 percent) resulting in offensive rebounds. That has led to 94 second-chance points on the season, averaging almost 20 per game.

**TYRESE TANNER NAMED SEC PLAYER OF THE WEEK**

Auburn junior Tyrese Tanner was named the SEC's Player of the Week on Nov. 12, the first player to earn the honor this season.

She averaged 20.5 points, including a career-high 26 points, at the Sheraton Raleigh Wolfpack Invitational, Nov. 9-10.

Her 26 points were the most scored in the SEC to that point in the season. She is the first Tiger to earn the SEC's weekly honor since Blanche Alverson did on Jan. 13, 2011.

**FIRST TIMERS**

The season-opening game saw some firsts for Auburn players.

Junior Peyton Davis earned the first start of her career while senior Julie King and freshmen Cabriana Capers, Chadarryl Clay, Cedricka Sweeting and Tra'cee Tanner made their first collegiate basketball appearance.

**KICKING UP SOMETHING NEW**

One of Auburn's five newcomers is former soccer player Julie King. A native of St. Louis, King started for four years for the Tigers' soccer team, helping the team to the NCAA Tournament in each season. As a co-captain last year, she led Auburn to an SEC Tournament Championship and was named SEC Co-Defensive Player of the Year.

King was an All-State basketball selection while playing prep ball at Nerinx Hall in St. Louis, Mo.

**SISTER ACT**

For just the third time ever, Auburn's roster featured a sister combination as Tyrese and Tra'cee Tanner step on the court. Tyrese

is a junior on the squad this year while Tra'cee is a freshman.

Other sister combinations to play together at Auburn include Sherell (2004-09) and Reneisha (2006-10) Hobbs, and Ruthie (1985-89) and Mae Ola (1984-88) Bolton.

**TIGERS DOWN UNDER**

Auburn unofficially started its season in August as the Tigers traveled to Australia for a 10-day, four-game tour. Auburn opened with an 86-54 loss to the WNBL's Logan Thunder, but rebounded for an 81-71 win over the Cairns Dolphins. The Tigers continued on to Sydney where it tallied a 67-58 over the WNBL's Sydney Flames. The Tigers rounded out the trip with an 84-46 trouncing of the Sutherland Sharks.

Over the four-game Australian Tour, Hasina Muhammad was the top Tiger with 23.3 points per game. Blanche Alverson averaged 17.5 points while freshman Chadarryl Clay tallied 10.5. Fellow freshman Tra'cee Tanner scored 9.0 per game, followed by Peyton Davis with 6.5, Cabriana Capers with 2.8 and Pascale West with 2.0.

**BALLIN' FOR BOOKS**

Senior Blanche Alverson, always active in the community, started her own community service initiative last season called Ballin' For Books. The program encouraged Auburn fans to donate books during Auburn home games late in the season.

More than 1,100 books were collected as part of the program and were donated to the Loachapoka Library, Pine Hills Literacy Project, Boys and Girls Club, and Atlanta inner-city schools.

**STARTING EXPERIENCE**

Auburn returns five players that have started at least one game for the Tigers, including four players that saw extensive time as a starter last season. Blanche Alverson, Hasina Muhammad, Najat Ouaddad, Courtney Strain and Tyrese Tanner have accounted for 127 career starts.

If you include newcomer and former Auburn soccer player Julie King (and her 88 career soccer starts), that number goes up to 215.

**ON THE TUBE**

At least six Auburn games will be televised during the 2012-13 season. The Tigers will make their TV debut on Jan. 17 at home against Tennessee on CSS. Auburn will then play on the SEC Network at Kentucky on Jan. 20 before returning to CSS for its Jan. 24 game at Alabama.

Auburn will host Florida on SportSouth on Feb. 10, a week before taking on Alabama on ESPN2 on Feb. 17. The final TV appearance will be Feb. 28 at Vanderbilt on CSS.

**TIGERS PICKED 10TH IN PRESEASON POLLS**

Auburn was picked to finish 10th in both the SEC Preseason Media and Coaches polls. Kentucky was tabbed as the preseason favorite to win the SEC in both polls.

**NEW FACES**

The Tigers welcome five new faces for the 2012-13 season, including one senior and four freshmen. The senior is Julie King (Nerinx Hall / St. Louis, Mo.), who joins the team after four years on the Auburn soccer team. The four freshmen are: Cabriana Capers (Bolingbrook / Bolingbrook, Ill.), Chadarryl Clay (Girls Preparatory School / Chattanooga, Tenn.), Cedricka Sweeting (South Broward (Fla.), Nassau, Bahamas), and Tra'cee Tanner (Hoover / Birmingham, Ala.).

**AUBURN SIGNS SIX FOR 2013-14**

The Auburn women's basketball team signed six players to National Letters of Intent during the early signing period for the class of 2013. Keonna Famer, a 6-1 wing from Birmingham, Ala., Katie Frerking, a 6-1 guard from Johns Creek, Ga., Brandy Montgomery, a 5-10 guard from Port St. Lucie, Fla., Shae Nelson, a 6-1 post from Cordova, Tenn., Allina Starr, a 5-10 point guard from Minneapolis, Minn., and Meagan Tucker, a 5-8 guard from Covington, Ga., will join the Tigers for the 2013-14 season, head coach Terri Williams-Flournoy announced Nov. 16.

**The Southeastern Conference**

**Commissioner:** Mike Slive

**Founded:** 1933

**Members:**

Alabama Crimson Tide  
Arkansas Lady Razorbacks  
Auburn Tigers  
Florida Gators  
Georgia Bulldogs  
Kentucky Wildcats  
LSU Tigers  
Mississippi Rebels  
Mississippi State Bulldogs  
South Carolina Gamecocks  
Missouri Tigers  
Tennessee Lady Volunteers  
Texas A&M Aggies  
Vanderbilt Commodores

**SEC Media Relations**

**Women's Basketball Contact:** Tammy Wilson

**Address:**

2201 Richard Arrington Blvd.  
Birmingham, Ala. 35203-1103

**Phone:** 205.458.3000

**Fax:** 205.458.3031

**E-mail:** twilson@sec.org

**Web site:** www.SECsports.com

**SEC Women's Basketball Notes**

- The SEC has posted impressive non-conference records in the last decade. The SEC compiled a 134-41 (.766) non-conference record in the 2011-12 season.
- Since the 1990 season, the SEC has compiled a 3047-935 (.765) record against other conferences. The league has recorded 150+ wins during eight seasons.
- SEC teams have earned appearances in 25 of 31 NCAA Final Fours, an accomplishment unmatched by any other league.
- Overall, SEC squads have filled 34 of the 124 Final Four berths, including having two Final Four teams in 1988 (Auburn, Tennessee), 1989 (Auburn, Tennessee), 1995 (Georgia, Tennessee), 1996 (Georgia, Tennessee), 1998 (Arkansas, Tennessee), 2004 (LSU, Tennessee), 2005 (LSU, Tennessee), 2007 (LSU, Tennessee) and 2008 (LSU, Tennessee).
- SEC teams have made 18 appearances in a nation-high 16 NCAA Championship games, winning eight NCAA Championships (Tennessee: 1987, 1989, 1991, 1996, 1997, 1998, 2007 and 2008).
- The league also had the distinction of providing both national finalists twice in its history in 1996 (Tennessee 83, Georgia 65) and in 1989 (Tennessee 76, Auburn 60).
- SEC teams have won 347 NCAA Tournament games against 180 losses (.658) for an average of 11.2 NCAA wins per year.
- In addition, all 14 current members have appeared in the NCAA Tournament.
- The SEC has paced the pack in NCAA tournament bids 22 times in its 31-year history.
- The SEC was the first league to ever have eight teams invited to the NCAA Tournament, doing so in 1999, 2002 and 2012.
- The SEC was also the first league to ever have seven teams invited to the NCAA Tournament and earned this honor a leading seven times (1986, 1991, 1995, 1996, 1997, 2003, 2004).
- The SEC is one of a handful of leagues to have won three national tournament titles with eight NCAA, two WNIT and three NWIT. Along with the eight NCAA championships won by Tennessee, Arkansas (1999) and Auburn (2003) captured the current Women's NIT titles. But the first-ever SEC national title belongs to Georgia, winners of the 1981 NWIT which predates the current NCAA tournament. LSU (1985) and Kentucky (1990) also won NWIT titles. Both Arkansas (1987) and South Carolina (1979) won the WNIT as members of their previous conferences.
- In 2003, Auburn won the WNIT title with wins over South Alabama, Florida State, Richmond, Creighton and Baylor. In 1999, the Arkansas Lady Razorbacks defeated Wisconsin 76-64 to claim the SEC's first WNIT championship.
- In 1981, Georgia defeated Pittsburg, California and Arizona State (in OT) to capture the NWIT Championship, the first-ever national championship of any kind for the SEC in women's basketball.

**Quoting Coach Flo**

On the win against Alabama A&M...

"It was good. I was impressed with our scoring, scoring 93 points, but we took good shots and had a high percentage. We were not just standing out there jacking up 3s, we were actually running our offense, getting high-percentage shots."

On forcing 20 or more turnovers in each of the first four games...

"We have to be able to force teams into turnovers.

You are making it difficult for them to run their offense, forcing them into uncomfortable conditions and it gives us another opportunity to push and score in transition."

On San Diego State...

"They are doing really well. They had a tough game against UCLA, one that they could have and maybe should have won. They are playing really well, their guards are very good and can score off the bounce. It is going to be a tough game for us."

On SDSU's Courtney Clements...

"Courtney Clements is a tough matchup to guard. She can score off the bounce, in transition, and she pushes the ball hard in transition. If you don't stop the ball, she won't stop herself. She runs the team, she gets to the offensive glass, she is just a really good player for them."

On playing in a tournament...

"You just want to teach the players to be able to play for something so that when you go to these tournaments, you want to win the first game because you want to play in the championship game. It just gets us ready to always prepare yourself for the championship game, whether it is the SEC Tournament, NCAA Tournament, whatever it is, you are preparing yourself to win."

## MISCELLANEOUS STATISTICS

Double-Doubles	Season	Career
Blanche Alverson	0	1

20+ Point Games	Season	Career
Blanche Alverson	0	2
Hasina Muhammad	2	3
Tyrese Tanner	1	4

10+ Rebound Games	Season	Career
Blanche Alverson	0	1

10+ Assist Games	Season	Career
------------------	--------	--------

## GAMES LED AUBURN IN . .

Scoring	Season	Career
Blanche Alverson	1	15
Hasina Muhammad	2	9
Tyrese Tanner	2	10

Rebounding	Season	Career
Blanche Alverson	1	15
Cabriana Capers	1	1
Peyton Davis	0	1
Hasina Muhammad	0	5
Tra'cee Tanner	1	1
Tyrese Tanner	2	7

Assists	Season	Career
Blanche Alverson	0	7
Chadarryl Clay	1	1
Julie King	1	1
Hasina Muhammad	0	3
Najat Ouardad	3	14
Tyrese Tanner	0	2

## 2012-13 DOUBLE-DOUBLES

Player	Points	Other
--------	--------	-------

## Last Time an Auburn Team...

Scored 100 points	Auburn 119, Sam Houston State 54 (Dec. 5, 2008)
Scored 100 points in an SEC game	Auburn 102, Tennessee 96, SEC Tournament in Albany, Ga. (Mar. 6, 1987)
Scored 100 at Auburn	Auburn 119, Sam Houston State 54 (Dec. 5, 2008)
Scored 100 points and lost	Never
Scored 110 points	Auburn 119, Sam Houston State 54 (Dec. 5, 2008)
Scored 115 points	Auburn 119, Sam Houston State 54 (Dec. 5, 2008)
Scored at least 60 points in a half	62-vs. Sam Houston State (Dec. 5, 2008)
Had 25+ rebound margin	28-Auburn 55, Sam Houston State 27 (Dec. 5, 2008)
Had 20+ rebound margin	20-Auburn 51, USC-Upstate 31 in Auburn, Ala. (Nov. 27, 2011)
Attempted 35 free throws	35-vs. Florida A&M (Nov. 28, 2009)
Attempted 40 free throws	41-vs. Alabama State (Nov. 15, 2006)
Made 30 free throws	31-vs. Northwestern State (31-43) (Dec. 30, 2003)
Had 25 assists	27 -vs. Alabama A&M (Nov. 18, 2012)
Had 25 turnovers	30- vs. Georgia and vs. Kentucky (Jan. 26, 2012)
Had 25 steals	25- vs. Arkansas-Little Rock (Dec. 2, 2000)
Had 15 steals	15- vs. Alabama A&M (Nov. 18, 2012)
Had 15 blocks	17 - vs. Alabama A&M in Auburn, Ala. (Nov. 19, 2009)
Scored 25 points or less	25- vs. Mercer (1971)
Played an overtime game	at LSU (Jan. 10, 2010)
Won an overtime game	Auburn 64, LSU 62 at Baton Rouge, La. (Jan. 10, 2010)
Lost an overtime game	Florida 71, Auburn 68 (2OT) at Gainesville, Fla. (Jan. 7, 2010)
Played a double overtime game	Florida 71, Auburn 68 at Gainesville, Fla. (Jan. 7, 2010)
Played at least three overtimes	Never
Shot 70% for a half	73.9%, 17-23-vs. Alabama (Jan. 22, 2009)
Shot 60% for a game	vs. Alabama (61.8%, 34-55) (Jan. 22, 2009)
Shot less than 30% for a game	(25.5%, 13-51) at Arkansas at Fayetteville, Ark. (Jan. 15, 2012)
Shot 90% from the free throw line (minimum 10 attempts)	(10-10) vs. Mississippi State (Feb. 3, 2008)
Shot 50% from 3-point line	(5-of-6, 83%) vs. Alabama A&M in Auburn, Ala. (Nov. 18, 2012)
Shot less than 30% in a half	29.0% in the second half vs. San Diego State in Boulder, Colo. (Nov. 23, 2012)
Shot less than 20% in a half	19.0% in the first half vs. LSU, (Feb. 14, 2010)
Shot 55% or better and lost	58.1%, 25-43-vs. Tennessee, (Jan. 20, 2005)
Made at least 10 3-point field goals	10-of-25 vs. Maine in Raleigh, N.C. (Nov. 9, 2012)
Failed to make a 3-point field goal	0-9 at Mercer in Macon, Ga. (Nov. 11, 2011)
Had at least 60 rebounds	61 vs. Stephen F. Austin, (Dec. 17, 2007)
Had at least 50 rebounds	52- vs. Alabama State in Auburn, Ala. (Nov. 15, 2012)
Scored less than 20 points in a 1st half	18 points at Arkansas in Fayetteville, Ark. (Jan. 15, 2012)
Scored less than 20 points in a 2nd half	15 points at LSU in Baton Rouge, La. (Feb. 19, 2012)
Scored less than 50 points in a game	41 points at LSU in Baton Rouge, La. (Feb. 19, 2012)

## Last Time an Auburn Player...

Scored 40 points	41-Consweila Sparrow vs. South Alabama (Feb. 17, 1998)
Scored 35 points	35-DeWanna Bonner vs. Tennessee (Jan. 25, 2009)
Scored 30 points	32-DeWanna Bonner vs. Ole Miss (Mar. 6, 2009)
Attempted 25 field goals	25-Natasha Brackett (9-25) at LSU (Jan. 30, 2005)
Recorded a double-double	Blanche Alverson (12 pts./10 rebs.) at Mercer in Macon, Ga. (Nov. 11, 2011)
Recorded a double-double with points and assists	Morgan Toles (10 pts./10 asst.) vs. Jacksonville State in Auburn, Ala. (Dec. 30, 2010)
Recorded consecutive double-doubles	KeKe Carrier (18 pts./10 rebs) vs. Mississippi State (Jan. 3, 2010)
Two players recorded a double-double	and (24 pts/12 rebs) vs. Florida in Gainesville, Fla. (Jan. 7, 2010)
	DeWanna Bonner (32 pts./13 rebs) & Whitney Boddie (15 pts./10 asst.)
	vs. Ole Miss in the SEC Tournament in North Little Rock, Ark. (March 6, 2009)
Had a double-double at halftime	DeWanna Bonner (14 pts./10 rebs.) vs. Ole Miss (Mar. 6, 2009)
Recorded a triple-double	Whitney Boddie (24 pts./11 rebs./12 asst.) vs. Sam Houston State (Dec. 5, 2008)
Had 10 assists	10- Morgan Toles vs. Jacksonville State (Dec. 30, 2010)
Had 15 assists	18-Martha Monk vs. Alabama State (Feb. 18, 1981)
Had 10 blocks	13- Marita Payne vs. Arkansas (Feb. 3, 2005)
Had 5 blocks	5 - Jassany Williams vs. Tennessee in Auburn, Ala. (Jan. 1, 2012)
Had 5 steals	5-Najat Ouardad vs. Alabama A&M in Auburn, Ala. (Nov. 18, 2012)
Had 15 rebounds	16-Jordan Greenleaf vs. Mississippi State (Jan. 3, 2010)
Had 20 rebounds	20-Monique Morehouse at LSU (Feb. 4, 1995)
Made 15 field goals	15-Consweila Sparrow (15-16) vs. USA (Feb. 17, 1998)
Made 5 three-point field goals	5 - Blanche Alverson (5-8) vs. Alabama in Auburn, Ala. (Feb. 23, 2012)
Two players scored 20 points	Alli Smalley (27 pts.) & KeKe Carrier (20 pts.) vs. Alabama (Jan. 14, 2010)
Two players scored 30 points	Laticia Morris (33 points) & Tara Williams (30 points) vs. South Alabama (Jan. 14, 1997)
Back-to-back 25-point games	Alli Smalley 26 pts. vs. Kentucky (Feb. 28, 2010) & 29 pts. vs. Florida in SEC Tournament in Duluth, Ga. (Mar. 4, 2010)
Only one player scored in double figures	Hasina Muhammad (19 pts.) vs. Ole Miss in Auburn, Ala. (Feb. 26, 2012)



**TIGERS' RECORD WHEN...**

When wearing white.....	3-1
When wearing orange.....	0-0
When wearing blue.....	0-1
When wearing pink.....	0-0
Leading at the half.....	3-0
Trailing at the half.....	0-2
Tied at the half.....	0-0
Scores 100+ points.....	0-0
Scores 90-99 points.....	1-0
Scores 80-89 points.....	1-0
Scores 70-79 points.....	1-1
Scores 60-69 points.....	0-0
Scores fewer than 60 points.....	0-1
Holds opponent to 41-50 points.....	3-0
Holds opponent to 31-40 points.....	0-0
Holds opponent to under 30 points.....	0-0
Shoots 50% FG or better.....	1-0
Shoots 40-49% FG.....	2-0
Shoots 39.9% or under FG.....	0-2
Holds opponent under 30% FG.....	2-0
Shoots higher FG% than opponent.....	3-0
Shoots lower FG% than opponent.....	0-2
Shoots higher FT% than opponent.....	1-1
Shoots lower FT% than opponent.....	2-1
Out-rebounds opponent.....	3-1
Out-rebounded by opponent.....	0-1
Tied in rebounds.....	0-0
Versus ranked opponent.....	0-0
In overtime.....	0-0
Games decided by 3 points or less.....	0-0
Games decided by 4-5 points.....	0-0
Games decided by 6-10 points.....	0-0
Games decided by 11-20 points.....	0-1
Games decided by 21-30 points.....	1-1
Games decided by 30+ points.....	2-0
On Television.....	0-0
In November.....	3-2
In December.....	0-0
In January.....	0-0
In February.....	0-0
In March.....	0-0

Five players scored in double figures.....	Alverson (17 pts.), Clay (15 pts.), Muhammad (15 pts.), Tanner (13 pts.) & Davis (12 pts.) vs. Alabama State (Nov. 15, 2012)
Six players scored in double figures.....	Carrier (19 pts.), Bonner (18 pts.), Smalley (16 pts.), Boddie (13 pts.), R. Hobbs (13 pts.), Hilliard (13 pts.) & S. Hobbs (10 pts.) vs. Sam Houston State (Dec. 5, 2008)
Seven players scored in double figures.....	Carrier (19 pts.), Bonner (18 pts.), Smalley (16 pts.), Boddie (13 pts.), R. Hobbs (13 pts.), Hilliard (13 pts.) & S. Hobbs (10 pts.) vs. Sam Houston State (Dec. 5, 2008)
Scored 20 points & had 20 rebounds.....	Lauretta Freeman (30 pts/21 rebs.) vs. Alabama, (Feb. 17, 1993)
Two players had 10 rebounds.....	Chantel Hilliard (11 rebs.) & Jassany Williams (10 rebs) at Mississippi State in Starkville, Miss. (Jan. 22, 2012)
Three players had 10 rebounds.....	Jordan Greenleaf (12 rebs.), DeWanna Bonner (12 rebs.) & Whitney Boddie (10 rebs.) vs. Oakland (Nov. 21, 2007)
Played every minute.....	Jordan Greenleaf (40 mins.) vs. Florida, SEC Tournament, Duluth, Ga., (Mar. 4, 2010)
Played more than 40 minutes.....	Alli Smalley (45 mins.), Jordan Greenleaf (43 mins.) & Morgan Toles (41 mins.) at LSU (Jan. 10, 2010)

**Last Time an Auburn Opponent...**

Shot less than 30% in a game (SEC).....	South Carolina - 28.6% in Auburn, Ala. (Jan. 19, 2012)
Shot less than 30% in a game (Non-conf).....	Alabama A&M - 29.6% in Auburn, Ala. (Nov. 18, 2012)
Shot 60% in a game.....	Vanderbilt 60.4% in Nashville, Tennessee in the SEC Tournament, (Mar. 5, 2004)
Scored 100 points.....	Georgia 102, Auburn 72 in Athens, Ga. (Mar. 3, 1984)
Scored 100 points at Auburn.....	Tuskegee 105, Auburn 98 (20T) (Feb. 12, 1979)
Scored 100 points and Lost.....	Never
Scored 110 points.....	Never
Had 25+ rebound margin.....	Never
Had a 20+ rebound margin.....	Never
Scored less than 20 points in a 1st half.....	Alabama State, 17 points in Auburn, Ala. (Nov. 15, 2012)
Scored less than 20 points in a 2nd half.....	Alabama A&M, 18 points in Auburn, Ala. (Nov. 18, 2012)
Had 50 rebounds.....	52 - at North Carolina State in Raleigh, N.C. (Nov. 10, 2012)
Had 25 assists.....	25- by Florida International in Miami, Fla. (Dec. 19, 1993)
Had 25 turnovers.....	26- by Alabama State in Auburn, Ala. (Nov. 15, 2012)
Had 15 steals.....	15- by Georgia in Auburn, Ala. (Jan. 8, 2012)
Had 10 blocks.....	12-by Tennessee (Jan. 10, 2008)
Failed to make a 3-point field goal.....	by Ole Miss (0-7) in Auburn, Ala. (Feb. 26, 2012)
Attempted 35 free throws.....	36 - by Arizona 25-36 (Dec. 19, 2000)
Made 30 free throws.....	30- by Arkansas (Jan. 22, 1995)
Made 10 three-point field goals.....	by San Diego State 11 3-point FGs, in Boulder, Colo., (Nov. 23, 2012)
Scored less than 50 points in a game.....	Alabama A&M, 44 in Auburn, Ala. (Nov. 18, 2012)
Scored 40 points or less.....	Alabama, 40 in Auburn, Ala. (Feb. 23, 2012)
Scored 25 points or less.....	25- by Puerto Rico Mayaguez (Dec. 17, 2000)
Scored 11 points or less.....	11-by Montevallo (1973) and 11-by Jeff Davis (1973)

**Last Time an Auburn Opponent's Player...**

Scored 30 points (non-conference).....	33-Andrea Smith of South Florida in Tampa, Fla. (Nov. 22, 2010)
Scored 30 points (SEC).....	31-Tierney Jenkins of Alabama in Tuscaloosa, Ala. (Jan. 2, 2011)
Scored 35 points.....	38-Lindsay Shearer of Kent State in Kent, Ohio (Nov. 20, 2005)
Attempted 25 field goals.....	27- Jantel Lavender (9-27) of Ohio State (Nov. 23, 2008)
Scored 20 points & had 20 rebounds.....	Young of Baylor in the Women's NIT Championship Game, (20 pts./25 rebs.), (Apr. 4, 2003)
Two players scored 20 points.....	by North Carolina State, Marissa Kastanek (24 pts) & Kody Burke (26 pts), (Nov. 10, 2012)
Three players scored 20 points.....	by LSU in Baton Rouge, Chatman (22 pts), Johnson (21 pts) & Lowery (20 pts), (Jan. 12, 1991)
Five players scored in double figures.....	J. Thomas (16 pts), Gray (13 pts), K. Thomas (11 pts), Christmas (10 pts) & Peters (10 pts) of Duke (Nov. 18, 2010)
Six players scored in double figures ..	Smith (15 pts), Bales (14 pts), Foley (11 pts), Williams (10 pts), Currie (10 pts) & Kurz (10 pts) of Duke (Dec. 31, 2004)
Recorded a double-double.....	Kody Burke (26 pts/12 rebs) of North Carolina State in Raleigh, N.C. (Nov. 10, 2012)
Recorded a double-double with points and assists.....	Ceira Ricketts of Arkansas in Fayetteville, Ark., (14 pts/13 rebs/12 assts.), (Jan. 18, 2009)
Recorded a triple-double.....	Ceira Ricketts (14 pts./13 rebs./12 asst.) of Arkansas (Jan. 18, 2009)
Two players recorded a double-double .....	Glory Johnson (14pts/11rbs) and Shekinna Stricklen (11pts/10rbs) of Tennessee in Knoxville, Tenn. (Feb. 5, 2012)
Had 15 rebounds.....	15-by Ashley Brown of Mississippi State, 15- Samarie Walker, Kentucky (Jan. 26, 2012)
Had 20 rebounds.....	20-Sylvia Fowles of LSU (Jan. 28, 2007)
Had 10 assists.....	10-Valencia McFarland of Ole Miss (Jan. 13, 2011)
Had 10 blocks.....	Never
Had 5 blocks.....	5-Martha Alwal of Mississippi State in Starkville, Miss. (Jan. 22, 2012)
Had 5 steals.....	5-Jasmine James of Georgia in Auburn, Ala., (Jan. 8, 2012)
Made 15 field goals.....	15-Chamique Holdsclaw (15-21) of Tennessee (Feb. 1, 1998)
Had 15 assists.....	16-Cindy McMahan of Alabama-Huntsville (Nov. 24, 1980)

**SEC PRESEASON POLL (Media Vote)**

(First-place votes in Parentheses)

**Order of Finish**

1. Kentucky (20) .....	376
2. Georgia (1) .....	352
3. Vanderbilt (2) .....	336
4. Tennessee (2) .....	316
5. Texas A&M (1) .....	284
6. LSU .....	251
7. South Carolina .....	194
8. Arkansas .....	168
9. Florida .....	144
10. Auburn .....	124
11. Mississippi State .....	116
12. Ole Miss .....	47
13. Missouri .....	39
14. Alabama .....	36

**Player of the Year**

A'dia Mathis, UK (20); Christina Foggie, VU (4); Anne Marie Armstrong, UGA (1); Jennifer George, UF (1)

**All-SEC First Team**Jennifer George, Florida  
Anne Marie Armstrong, Georgia  
A'dia Mathies, Kentucky  
Kelsey Bone, Texas A&M  
Christina Foggie, Vanderbilt**All-SEC Second Team**Sarah Watkins, Arkansas  
Jasmine Hassell, Georgia  
Samarie Walker, Kentucky  
Ieasia Walker, South Carolina  
Meighan Simmons, Tennessee**SEC PRESEASON POLL (Coaches' Vote)****Order of Finish**

1. Kentucky .....	167
2. Georgia .....	149
3. Texas A&M .....	145
4. Vanderbilt .....	143
5. Tennessee .....	117
6. South Carolina .....	102
7. LSU .....	96
8. Florida .....	92
9. Arkansas .....	72
10. Auburn .....	57
11. Mississippi State .....	51
11.2. Alabama .....	33
11.2. Missouri .....	33
14. Ole Miss .....	17

**Player of the Year**

A'dia Mathies (UK) 9; Christina Foggie (VU) 3; Anne Marie Armstrong (UGA) 1.

**All-SEC First Team**Sarah Watkins, Arkansas  
Jennifer George, Florida  
Anne Marie Armstrong, Georgia  
Jasmine Hassell, Georgia  
A'dia Mathies, Kentucky  
Meighan Simmons, Tennessee  
Kelsey Bone, Texas A&M  
Christina Foggie, Vanderbilt  
Jasmine Lister, Vanderbilt**All-SEC Second Team**Jasmine James, Georgia  
Bria Goss, Kentucky  
Samarie Walker, Kentucky  
Adrienne Webb, LSU  
Valencia McFarland, Ole Miss  
Ieasia Walker, South Carolina  
Ariel Massengale, Tennessee  
Tiffany Clarke, Vanderbilt**2012-13 Auburn Superlatives...****First Half**

Most points scored in the first half .....	49, vs. Alabama A&M (11-18-12)
Fewest points scored in the first half .....	24, vs. San Diego State (11-23-12)
Fewest points allowed in the first half .....	17, vs. Alabama State (11-15-12)
Most points allowed in the first half .....	37, at North Carolina State (11-10-12)
Best FG % in the first half .....	.568, vs. Alabama A&M (11-18-12)
Worst FG % in the first half .....	.316, at North Carolina State (11-10-12)
Best FG % by an opponent in the first half .....	.409, vs. Maine (11-9-12)
Worst FG % by an opponent in the first half .....	.219, vs. Alabama State (11-15-12)
Most rebounds in the first half .....	31, vs. Alabama State (11-15-12)
Fewest rebounds in the first half .....	22, vs. Maine (11-9-12) and vs. SDSU (11-23-12)
Most rebounds by an opponent in the first half .....	28, at North Carolina State (11-10-12)
Fewest rebounds by an opponent in the first half .....	13, vs. Alabama A&M (11-18-12)

**Second Half**

Most points scored in the second half .....	44, vs. Alabama A&M (11-18-12)
Fewest points scored in the second half .....	33, vs. San Diego State (11-23-12)
Fewest points allowed in the second half .....	18, vs. Alabama A&M (11-17-12) and Maine (11-9-12)
Most points allowed in the second half .....	49, vs. San Diego State (11-23-12)
Best FG % in the second half .....	.621, vs. Alabama A&M (11-18-12)
Worst FG % in the second half .....	.290, vs. San Diego State (11-23-12)
Best FG % by an opponent in the second half .....	.581, vs. San Diego State (11-23-12)
Worst FG % by an opponent in the second half .....	.231, vs. Alabama A&M (11-18-12)
Most rebounds in the second half .....	21, vs. Alabama State (11-15-12)
Fewest rebounds in the second half .....	11, at North Carolina State (11-10-12)
Most rebounds by an opponent in the second half .....	24, at North Carolina State (11-10-12)
Fewest rebounds by an opponent in the second half .....	14, vs. Alabama A&M (11-18-12)

**Game**

Most points scored .....	93, vs. Alabama A&M (11-18-12)
Fewest points scored .....	57, vs. San Diego State (11-23-12)
Most points allowed .....	85, at North Carolina State (11-10-12)
Fewest points allowed .....	41, vs. Maine (11-9-12)
Best FG % .....	.591, vs. Alabama A&M (11-18-12)
Worst FG % .....	.309, vs. San Diego State (11-23-12)
Best FG % by an opponent .....	.467, vs. San Diego State (11-23-12)
Worst FG % by an opponent .....	.259, vs. Alabama State (11-15-12)
Most rebounds .....	52, vs. Alabama State (11-15-12)
Fewest rebounds .....	36, at North Carolina State (11-10-12)
Most rebounds by an opponent .....	52, at North Carolina State (11-10-12)
Fewest rebounds by an opponent .....	27, vs. Alabama A&M (11-18-12)

**Miscellaneous**

Largest margin of victory .....	49, vs. Alabama A&M (11-18-12)
Smallest margin of victory .....	30, vs. Maine (11-9-12)
Largest margin of defeat .....	21, vs. San Diego State (11-23-12)
Smallest margin of defeat .....	14, at North Carolina State (11-10-12)
Largest halftime lead .....	23, vs. Alabama A&M (11-18-12) and Alabama State (11-15-12)
Smallest halftime lead .....	12, vs. Maine (11-9-12)
Last time tied at halftime .....	---
Largest halftime deficit .....	5, vs. San Diego State (11-23-12)
Smallest halftime deficit .....	4, at North Carolina State (11-10-12)
Largest rebounding margin .....	16, vs. Alabama State (11-15-12)
Smallest rebounding margin .....	3, vs. San Diego State (11-23-12)
Last time tied in rebounding .....	---
Opponent's largest rebounding margin .....	16, at North Carolina State (11-10-12)
Opponents smallest rebounding margin .....	16, at North Carolina State (11-10-12)

**2012-13 Auburn Individual Highs...****First Half**

Points.....15, Ty. Tanner at N.C. State (11-10-12) and Muhammad vs. Alabama A&M (11-18-12)  
 Field Goals Made.....7, Hasina Muhammad vs. Alabama A&M (11-18-12)  
 Field Goal Attempts .....15, Hasina Muhammad vs. Maine (11-9-12)  
 3-Point Field Goals Made .....2, Ouardad and Muhammad vs. Maine (11-10-12)  
 3-Point Field Goal Attempts.....4, 3 times, last by Tyrese Tanner vs. N.C. State (11-10-12)  
 Free Throws Made.....4, on two occasions  
 Free Throws Attempted.....6, Peyton Davis vs. Alabama State (11-15-12)  
 Rebounds.....8, Tyrese Tanner vs. Maine (11-9-12)  
 Assists .....4, Ouardad at NC State (11-10-12), Alabama A&M (11-18-12) & SDSU (11-23-12)  
 Blocked Shots .....2, Tyrese Tanner vs. Alabama State (11-15-12)  
 Steals.....3, by three players on three occasions, last by Davis and Ouardad vs. AAMU (11-18-12)

**Second Half**

Points.....12, Chadarryl Clay vs. Alabama State (11-15-12)  
 Field Goals Made.....5, Blanche Alverson vs. Alabama State (11-15-12)  
 Field Goal Attempts ...8, Muhammad vs. Maine (11-9-12), NC State (11-10-12) & SDSU (11-23-12)  
 3-Point Field Goals Made .....2, Blanche Alverson at North Carolina State (11-10-12)  
 3-Point Field Goal Attempts.....6, Blanche Alverson at North Carolina State (11-10-12)  
 Free Throws Made.....7, Tyrese Tanner at North Carolina State (11-10-12)  
 Free Throws Attempted.....8, Tyrese Tanner at North Carolina State (11-10-12)  
 Rebounds.....5, Capers vs. Alabama A&M (11-18-12) and Muhammad vs. SDSU (11-23-12)  
 Assists .....4, King vs. Alabama State (11-15-12) and Clay vs. Alabama A&M (11-18-12)  
 Blocked Shots .....2, Blanche Alverson at North Carolina State (11-10-12)  
 Steals.....2, on six occasions

**Game**

Points.....26, Tyrese Tanner at North Carolina State (11-10-12)  
 Field Goals Made.....10, Hasina Muhammad vs. Alabama A&M (11-18-12)  
 Field Goal Attempts .....23, Hasina Muhammad vs. Maine (11-9-12)  
 3-Point Field Goals Made .....3, Ouardad and Muhammad vs. Maine (11-9-12)  
 3-Point Field Goal Attempts.....9, Blanche Alverson at North Carolina State (11-10-12)  
 Free Throws Made.....11, Tyrese Tanner at North Carolina State (11-10-12)  
 Free Throws Attempted.....12, Tyrese Tanner at North Carolina State (11-10-12)  
 Rebounds..9, Tanner vs. UM (11-9-12), Alverson vs. ASU (11-15-12) & Capers vs. AAMU (11-18-12)  
 Assists .....6, Ouardad vs. Maine (11-9-12) and King vs. Alabama State (11-15-12)  
 Blocked Shots .....3, Blanche Alverson at North Carolina State (11-9-12)  
 Steals.....5, Najat Ouardad vs. Alabama A&M (11-18-12)

**2012-13 Opponent Individual Highs...****First Half**

Points.....15, Marissa Kastanek of North Carolina State (11-10-12)  
 Field Goals Made.....5, Kastanek of NC State (11-10-12) & Clements of SDSU (11-23-12)  
 Field Goal Attempts .....12, Courtney Clements of San Diego State (11-23-12)  
 3-Point Field Goals Made .....3, Kastanek of NC State (11-10-12) & Clements of SDSU (11-23-12)  
 3-Point Field Goal Attempts.....8, Marissa Kastanek of North Carolina State (11-10-12)  
 Free Throws Made.....3, Markeisha Gatling of North Carolina State (11-10-12)  
 Free Throws Attempted.....6, Markeisha Gatling of North Carolina State (11-10-12)  
 Rebounds.....8, Markeisha Gatling of North Carolina State (11-10-12)  
 Assists .....4, Chelsea Hopkins of San Diego State (11-23-12)  
 Blocked Shots .....2, Kody Burke of North Carolina State (11-10-12)  
 Steals.....2, on four occasions

**Second Half**

Points.....20, Kody Burke of North Carolina State (11-10-12)  
 Field Goals Made.....8, Kody Burke of North Carolina State (11-10-12)  
 Field Goal Attempts .....11, Burke of N.C. State (11-10-12) & Clements of SDSU (11-23-12)  
 3-Point Field Goals Made .....4, Nakiya Smith of Alabama State (11-15-12)  
 3-Point Field Goal Attempts.....7, Smith of ASU (11-15-12) and Strickland of AAMU (11-18-12)  
 Free Throws Made.....5, Ashley Jones of Alabama State (11-15-12)  
 Free Throws Attempted.....6, Ashley Jones of Alabama State (11-15-12)  
 Rebounds.....9, Kody Burke of North Carolina State (11-10-12)  
 Assists .....4, Goodwin-Coleman and Brown of North Carolina State (11-10-12)  
 Blocked Shots .....1, on four occasions  
 Steals.....2, Courtney Anderson of Maine (11-9-10)

**Game**

Points.....26, Burke of N.C. State (11-10-12) and Clements of SDSU (11-23-12)  
 Field Goals Made.....11, Kody Burke of North Carolina State (11-10-12)  
 Field Goal Attempts .....23, Courtney Clements of San Diego State (11-23-12)  
 3-Point Field Goals Made .....6, Courtney Clements of San Diego State (11-23-12)  
 3-Point Field Goal Attempts.....13, Courtney Clements of San Diego State (11-23-12)  
 Free Throws Made.....6, Ashley Jones of Alabama State (11-15-12)  
 Free Throws Attempted.....8, Ashley Jones of Alabama State (11-15-12)  
 Rebounds.....12, Kody Burke of North Carolina State (11-10-12)  
 Assists .....7, Brown of N.C. State (11-10-12) and Hopkins of SDSU (11-23-12)  
 Blocked Shots .....3, Kody Burke of North Carolina State (11-10-12)  
 Steals.....3, Courtney Clements of San Diego State (11-23-12)

**Specialty Statistics (Auburn-Opponent)**

Opponent	Bench Points	Points in the Paint	Points off Turnovers	Second Chance Points	Fast Break Points
vs. Maine	29-14	28-12	28-11	23-4	6-2
at North Carolina State	17-17	28-40	22-7	20-15	6-17
vs. Alabama State	23-6	40-10	28-5	14-8	20-2
vs. Alabama A&M	40-28	46-12	34-5	24-10	14-2
vs. San Diego State	18-13	18-26	16-15	13-14	0-2

**Lead-Deficit Comparison**

Opponent	Largest Lead	Largest Deficit	Lead Changes	Ties	Result
vs. Maine	35 (2nd, 4:44)	4 (1st, 16:14)	4	0	W, 71-41
at North Carolina State	9 (1st, 14:02)	17 (2nd, 1:09)	2	1	L, 85-71
vs. Alabama State	37 (2nd, 0:52)	1 (1st, 18:45)	2	0	W, 80-43
vs. Alabama A&M	53 (2nd, 2:15)	---	0	1	W, 93-44
vs. San Diego State	2 (1st, 18:32)	23 (2nd, 0:41)	1	1	L, 78-57

**Scoring Breakdown**

(Percentage of total points in parentheses)

Opponent	Front Court	Back Court	Sr.	Jr.	So.	Fr.	Starters	Bench
vs. Maine	20 (28.2)	51 (71.8)	21	21	22	7	42 (59.2)	29 (40.8)
at North Carolina State	20 (28.2)	51 (71.8)	23	31	12	5	54 (76.1)	17 (23.9)
vs. Alabama State	42 (52.5)	38 (47.5)	19	25	19	17	57 (71.2)	23 (28.8)
vs. Alabama A&M	38 (40.9)	55 (59.1)	24	14	33	22	53 (57.0)	40 (43.0)
vs. San Diego State	21 (36.8)	36 (63.2)	11	18	15	13	39 (68.4)	18 (31.6)



**Comparison Statistics (Auburn/Opponent)**

Opponent	1st	2nd	Score	Mar	Total FG	FG Pct	3-Pointers	3FG Pct	Free Throws	FT Pct	Reb.	Mar	Assist	TO	Bk	Stl	Fouls
Maine	35/23	36/18	71-41	+30	29-70/17-51	.414/.333	10-25/4-22	.400/.182	3-6/3-3	.500/1.000	40/35	+5	14/12	15/26	3/1	9/7	8/8
North Carolina St.	33/37	38/48	71-85	(14)	23-67/32-69	.343/.464	4-19/10-23	.211/.435	21-27/11-18	.778/.611	36/52	(16)	11/20	13/20	4/3	10/9	20/22
Alabama State	40/17	40/26	80-43	+37	32-73/14-54	.438/.259	3-15/6-27	.200/.222	13-21/9-14	.619/.643	52/36	+16	23/7	15/26	8/2	16/5	16/16
Alabama A&M	49/26	44/18	93-44	+49	39-66/16-54	.591/.296	5-6/6-26	.833/.346	10-13/3-7	.769/.429	40/27	+13	27/12	11/23	4/1	15/6	10/13
San Diego St.	24/29	33/49	57-78	+21	17-55/28-60	.309/.467	2-7/11-25	.286/.440	21-29/11-14	.724/.786	39/36	+3	10/14	17/16	1/3	7/8	14/24

**Game-by-Game Leaders**

	Points	Rebounds	Assists	Steals	Blocked Shots
<b>vs. Maine</b>	20-Hasina Muhammad	9-Tyrese Tanner	6-Najat Ouardad	3-Blanche Alverson	1-3 tied
<b>at North Carolina State</b>	26-Tyrese Tanner	8-Tyrese Tanner	4-Najat Ouardad	3-Alverson/Ty. Tanner	3-Alverson
<b>vs. Alabama State</b>	17-Blanche Alverson	9-Blanche Alverson	6-Julie King	3-Hasina Muhammad	2-3 tied
<b>vs. Alabama A&amp;M</b>	21-Hasina Muhammad	9-Cabriana Capers	5-Chadarryl Clay	5-Najat Ouardad	2-Julie King
<b>vs. San Diego State</b>	17-Tyrese Tanner	8-Tra'cee Tanner	4-Najat Ouardad	3-Tyrese Tanner	1-Hasina Muhammad

**2012-13 Starting Lineups**

	Point Guard (1)	Wing (2)	Wing (3)	Post (4)	Post (5)
<b>vs. Maine</b>	Najat Ouardad	Courtney Strain	Tyrese Tanner	Blanche Alverson	Peyton Davis
<b>at North Carolina State</b>	Najat Ouardad	Courtney Strain	Tyrese Tanner	Blanche Alverson	Peyton Davis
<b>vs. Alabama State</b>	Najat Ouardad	Hasina Muhammad	Tyrese Tanner	Blanche Alverson	Peyton Davis
<b>vs. Alabama A&amp;M</b>	Najat Ouardad	Hasina Muhammad	Tyrese Tanner	Blanche Alverson	Peyton Davis
<b>vs. San Diego State</b>	Najat Ouardad	Hasina Muhammad	Tyrese Tanner	Blanche Alverson	Peyton Davis

**Record by Starting Lineup**

Ouardad, Strain, Ty. Tanner, Alverson, Davis  
 .....1-1 (.500)

Ouardad, Muhammad, Ty. Tanner, Alverson, Davis  
 .....2-1 (.667)



# Terri WILLIAMS-FOURNOY

Head Coach

First Season

Hampton, Va. • Penn State, 1991

- Has nearly 400 wins as a collegiate assistant and head coach
- Earned her first win at Auburn in a 71-41 win over Maine on Nov. 9, 2012
- Has 146 wins as a head coach and 251 as an assistant for a .641 winning percentage over her 20 years
- Has been a part of six conference championships and 13 post-season appearances as an assistant and head coach
- 2010 Black Coaches Association Coach of the Year
- Served as an assistant coach for Team USA that won a gold medal at the 2011 World University Games in ShenZhen, China
- Coached teams to 11 NCAA Tournament appearances, nine as an assistant coach and two as a head coach.
- As an assistant coach at Georgia, helped the team to two Southeastern Conference titles in 1997 and 2000 and the 2001 SEC Tournament title
- Has coached 19 players that have gone on to the professional ranks, including seven in the WNBA
- Helped coach Georgia to a NCAA Final Four appearance and two NCAA Elite Eight appearances
- Coached three Georgetown players to three all-conference honors and one All-America award
- Coached Georgetown to four straight 20-win seasons
- Sports a 485-258 record as a head coach, assistant coach and player
- Helped coached Georgetown to Big East title in 1992
- As an assistant coach at Southwest Missouri State, helped the team to two straight NCAA Tournaments and two consecutive Missouri Valley Conference Tournament Championships

All-time record as player and coach:	485-258 (.653)	26th year
Record as collegiate player:	88-36 (.709)	4 seasons
Record as collegiate coach:	397-222 (.641)	21st season
Record as collegiate assistant coach:	251-116 (.683)	12 seasons
SEC Record as an assistant coach:	130-45 (.742)	6 seasons
Record as collegiate head coach:	146-106 (.619)	9th season

## Williams-Flournoy Year-by-Year

### Penn State, Player (1987-91)

Year	Record	Conf.	Other Information
1987-88	20-13	11-7	NCAA Second Round
1988-89	14-14	12-6	
1989-90	25-7	15-3	NCAA Second Round
1990-91	29-2	17-1	NCAA Second Round

### Georgetown, Assistant Coach (1992-96)

Year	Record	Conf.	Other Information
1992-93	23-7	15-3	Big East Champions NCAA Sweet 16
1993-94	12-15	6-12	
1994-95	11-17	6-12	
1995-96	12-15	7-11	

### Georgia, Assistant Coach (1996-2002)

Year	Record	Conf.	Other Information
1996-97	25-6	11-1	SEC Champions NCAA Elite Eight
1997-98	17-11	8-6	NCAA First Round
1998-99	27-7	9-5	NCAA Final Four
1999-2000	32-4	13-1	SEC Champions NCAA Elite Eight
2000-01	27-6	11-3	SEC Tournament Champions NCAA Second Round
2001-02	19-11	6-8	NCAA First Round

### Southwest Missouri State, Assistant Coach (2002-04)

Year	Record	Conf.	Other Information
2002-03	18-13	11-7	MVC Tournament Champions NCAA First Round
2003-04	28-4	16-2	Missouri Valley Champions MVC Tournament Champions NCAA First Round

### Georgetown, Head Coach (2004-12)

Year	Record	Conf.	Other Information
2004-05	12-16	7-9	
2005-06	10-17	3-13	
2006-07	13-16	3-13	
2007-08	15-14	5-11	
2008-09	20-14	7-9	WNIT Quarterfinals
2009-10	26-7	13-3	NCAA Second Round
2010-11	24-11	9-7	NCAA Sweet 16
2011-12	23-9	11-5	NCAA Second Round

### Auburn, Head Coach (2012-present)

Year	Record	Conf.	Other Information
2012-13	3-2		



# Blanche ALVERSON

# #14

Senior • Forward/Guard • 6-3

Andalusia, Ala.

Buford (Ga.) High School

## NOTES:

- Scored 8 points with 6 rebounds in Auburn's season-opener against Maine
- Named Auburn's 2012 Miss Homecoming on Nov. 3 at halftime of the Homecoming Football game vs. New Mexico State
- Scored 800th career point against Alabama on Feb. 23, becoming the 37th Auburn player ever to score 800 career points and is 133 points from 1,000
- Is 5th all-time at Auburn in career 3-pointers with 153; is 8 treys away from tying Samantha Williams for 4th
- Selected as the 2012 SEC Women's Basketball Scholar-Athlete of the Year
- Was second on the team, averaging 17.5 points per game during Auburn's Australian Summer Tour
- Created her own community service program, Ballin' For Books, last season that collected more than 1,100 books for local libraries reading initiatives

Opponent	Start	Min.	FG-A	3PT-A	FT-A	O-D-T	PF	Ast.	TO	Blk.	St.	Pts.
vs. Maine	*	32	3-7	2-3	0-0	1-5-6	0	2	6	0	3	8
at North Carolina State	*	35	4-13	2-9	2-2	2-5-7	1	3	1	3	3	12
ALABAMA STATE	*	23	7-11	1-3	2-2	3-6-9	2	1	2	2	2	17
ALABAMA A&M	*	25	6-9	2-2	0-0	1-3-4	1	3	1	1	1	14
vs. San Diego State	*	38	2-9	1-3	2-2	2-2-4	0	3	1	0	1	7
vs. Texas A&M-Corpus Christi												
at Tulane												
HOFSTRA												
at George Washington												
TEMPLE												
TENNESSEE-CHATTANOOGA												
JACKSONVILLE												
SAMFORD												
ARKANSAS												
at Missouri												
OLE MISS												
at Texas A&M												
TENNESSEE												
at Kentucky												
at Alabama												
LSU												
at South Carolina												
at Georgia												
FLORIDA												
ALABAMA												
at Tennessee												
MISSOURI												
at Vanderbilt												
MISSISSIPPI STATE												

## ALVERSON CAREER STATISTICS

Year	GP-GS	FG-FGA	Pct	3FG-FGA	Pct	FT-FTA	Pct	O-D-T (Reb.)	Avg	PF	FO	Ast	TO	Blk	Stl	Pts	Avg
2009-10	31-13	78-218	.358	40-128	.313	19-27	.704	26-92-118	3.8	39	1	51	44	17	15	215	6.9
2010-11	32-32	126-333	.378	50-171	.292	25-35	.714	33-118-151	4.7	44	0	33	61	17	27	327	10.2
2011-12	30-26	99-246	.402	56-136	.412	20-24	.833	20-107-127	4.2	43	0	29	42	12	30	274	9.1
2012-13	5-5	22-49	.449	8-20	.400	6-6	1.000	9-21-30	6.0	4	0	12	11	6	10	58	11.6
<b>TOTAL</b>	<b>98-76</b>	<b>325-846</b>	<b>.384</b>	<b>154-455</b>	<b>.338</b>	<b>70-92</b>	<b>.761</b>	<b>88-338-426</b>	<b>4.3</b>	<b>130</b>	<b>1</b>	<b>125</b>	<b>158</b>	<b>52</b>	<b>82</b>	<b>874</b>	<b>8.9</b>

## SEASON HIGHS

<b>Points</b>	17	vs. Alabama State	(11/15/12)
<b>Rebounds</b>	9	vs. Alabama State	(11/15/12)
<b>Assists</b>	3	3 times, last vs. SDSU	(11/23/12)
<b>Blocks</b>	3	vs. North Carolina State	(11/10/12)
<b>Steals</b>	3	twice, last vs. NC State	(11/10/12)
<b>Field Goals</b>	7	vs. Alabama State	(11/15/12)
<b>Field Goal Attempts</b>	13	vs. NC State	(11/10/12)
<b>3-Point Field Goals</b>	2	3 times, last vs. AAMU	(11/18/12)
<b>3-Point FG Attempts</b>	9	vs. NC State	(11/10/12)
<b>Free Throws</b>	2	3 times, last vs. SDSU	(11/23/12)
<b>Free Throw Attempts</b>	2	3 times, last vs. SDSU	(11/23/12)

## CAREER HIGHS

<b>Points</b>	27	vs. Ole Miss	(1/13/11)
<b>Rebounds</b>	10	at Mercer	(11/11/11)
<b>Assists</b>	5	3 times, last vs. Alabama	(1/2/11)
<b>Blocks</b>	3	three times, last vs. NC State	(11/10/12)
<b>Steals</b>	6	vs. Central Conn. State	(12/22/11)
<b>Field Goals</b>	11	vs. Ole Miss	(1/13/11)
<b>Field Goal Attempts</b>	17	3 times, last vs. Marist	(12/21/11)
<b>3-Point Field Goals</b>	5	3 times, last vs. Alabama	(2/23/12)
<b>3-Point FG Attempts</b>	10	vs. Marist	(12/21/11)
<b>Free Throws</b>	4	three times, last at Florida	(2/9/12)
<b>Free Throw Attempts</b>	5	vs. Seton Hall	(11/27/10)



# Julie KING

# #22

Senior • Guard • 5-9

St. Louis, Mo.

Nerinx Hall

## NOTES:

- Grabbed a rebound in 4 minutes in her collegiate basketball debut
- Led Auburn with season-high 6 assists against Alabama A&M
- Joins the women's basketball team for her final year of eligibility after playing on the Auburn soccer team for four years
- Was co-captain of last year's SEC Tournament Champion Auburn soccer team
- Holds the Auburn career record for career matches started and is second in career matches played
- Named SEC Soccer Co-Defensive Player of the Year in 2011
- Was an All-State basketball selection at Nerinx Hall in St. Louis, Mo.

Opponent	Start	Min.	FG-A	3PT-A	FT-A	O-D-T	PF	Asst.	TO	Blk.	Stl.	Pts.
vs. Maine	4		0-0	0-0	0-0	0-1-1	0	0	1	0	0	0
at North Carolina State	1		0-0	0-0	0-0	0-0-0	0	0	0	0	0	0
ALABAMA STATE	13		1-2	0-0	0-1	0-2-2	2	6	1	0	2	2
ALABAMA A&M	11		0-2	0-0	0-0	0-1-1	0	2	1	2	1	0
vs. San Diego State	1		0-0	0-0	0-0	0-0-0	0	0	0	0	0	0
vs. Texas A&M-Corpus Christi												
at Tulane												
HOFSTRA												
at George Washington												
TEMPLE												
TENNESSEE-CHATTANOOGA												
JACKSONVILLE												
SAMFORD												
ARKANSAS												
at Missouri												
OLE MISS												
at Texas A&M												
TENNESSEE												
at Kentucky												
at Alabama												
LSU												
at South Carolina												
at Georgia												
FLORIDA												
ALABAMA												
at Tennessee												
MISSOURI												
at Vanderbilt												
MISSISSIPPI STATE												

## KING CAREER STATISTICS

Year	GP-GS	FG-FGA	Pct	3FG-FGA	Pct	FT-FTA	Pct	O-D-T (Reb.)	Avg	PF	FO	Asst	TO	Blk	Stl	Pts	Avg
2012-13	5-0	1-4	.250	0-0	.000	0-1	.000	0-4-4	0.8	2	0	8	3	2	3	2	0.4
TOTAL	5-0	1-4	.250	0-0	.000	0-1	.000	0-4-4	0.8	2	0	8	3	2	3	2	0.4

## SEASON HIGHS

## Points

2 vs. Alabama State (11/15/12)

## Rebounds

2 vs. Alabama State (11/15/12)

## Assists

6 vs. Alabama State (11/15/12)

## Blocks

2 vs. Alabama A&amp;M (11/18/12)

## Steals

2 vs. Alabama State (11/15/12)

## Field Goals

1 vs. Alabama State (11/15/12)

## Field Goal Attempts

2 vs. Alabama State (11/15/12)

## 3-Point Field Goals

## 3-Point FG Attempts

## Free Throws

## Free Throw Attempts

1 vs. Alabama State (11/15/12)





# Najat OUARDAD

# #3

Senior • Guard • 5-1

Orleans, France

Pensacola State College / Oak Ridge (N.C.) Military Academy / Forsyth (N.C.) Country Day

## NOTES:

- Scored career-high 11 points in season opener against Maine; added 6 assists and tied her career high of 6 rebounds
- Tied her career high with 11 points in the second game against North Carolina State
- Her seven steals are tied for 6th all-time at Auburn in single-game steals
- Finished last season 13th in SEC in conference-only games with 2.5 assists per game
- In her second season at Auburn after transferring from Pensacola State College, was a two-time All-Panhandle Conference selection while at Pensacola State
- Led Pensacola State to a third-place finish at the 2011 NJCAA National Basketball Championship, compiling a 36-1 record along the way
- Played for the French National Team while in high school

Opponent	Start	Min.	FG-A	3PT-A	FT-A	O-D-T	PF	Ass.	TO	Blk.	St.	Pts.
vs. Maine	*	30	4-9	3-6	0-0	2-4-6	0	6	2	0	2	11
at North Carolina State	*	36	4-10	1-3	2-3	0-5-5	1	4	6	0	2	11
ALABAMA STATE	*	20	0-1	0-1	0-1	1-3-4	2	5	3	0	2	0
ALABAMA A&M	*	19	1-3	1-1	1-2	0-0-0	1	4	1	0	5	4
vs. San Diego State	*	29	1-3	0-2	2-2	1-5-6	1	4	4	0	0	4
vs. Texas A&M-Corpus Christi												
at Tulane												
HOFSTRA												
at George Washington												
TEMPLE												
TENNESSEE-CHATTANOOGA												
JACKSONVILLE												
SAMFORD												
ARKANSAS												
at Missouri												
OLE MISS												
at Texas A&M												
TENNESSEE												
at Kentucky												
at Alabama												
LSU												
at South Carolina												
at Georgia												
FLORIDA												
ALABAMA												
at Tennessee												
MISSOURI												
at Vanderbilt												
MISSISSIPPI STATE												

## OUARDAD CAREER STATISTICS

Year	GP-GS	FG-FGA	Pct	3FG-FGA	Pct	FT-FTA	Pct	O-D-T (Reb.)	Avg	PF	FO	Ass	TO	Blk	Stl	Pts	Avg
2011-12	30-18	36-110	.327	11-49	.224	11-17	.647	22-41-63	2.1	60	0	81	95	0	52	94	3.1
2012-13	5-5	10-26	.385	5-13	.385	5-8	.625	4-17-21	4.2	5	0	23	16	0	11	30	6.0
<b>TOTAL</b>	<b>35-23</b>	<b>46-136</b>	<b>.338</b>	<b>16-62</b>	<b>.258</b>	<b>16-25</b>	<b>.640</b>	<b>26-58-84</b>	<b>2.4</b>	<b>65</b>	<b>0</b>	<b>104</b>	<b>111</b>	<b>0</b>	<b>63</b>	<b>124</b>	<b>3.5</b>

## SEASON HIGHS

<b>Points</b>	11	twice, last vs. NC State	(11/10/12)
<b>Rebounds</b>	6	twice, last vs. SDSU	(11/23/12)
<b>Assists</b>	6	vs. Maine	(11/9/12)
<b>Blocks</b>			
<b>Steals</b>	5	vs. Alabama A&M	(11/18/12)
<b>Field Goals</b>	4	twice, vs. NC State	(11/10/12)
<b>Field Goal Attempts</b>	10	vs. NC State	(11/10/12)
<b>3-Point Field Goals</b>	3	vs. Maine	(11/9/12)
<b>3-Point FG Attempts</b>	6	vs. Maine	(11/9/12)
<b>Free Throws</b>	2	twice, last vs. SDSU	(11/23/12)
<b>Free Throw Attempts</b>	3	vs. NC State	(11/10/12)

## CAREER HIGHS

<b>Points</b>	11	twice, last vs. NC State	(11/10/12)
<b>Rebounds</b>	6	3 times, last vs. SDSU	(11/23/12)
<b>Assists</b>	8	vs. USC-Upstate	(11/27/11)
<b>Blocks</b>			N/A
<b>Steals</b>	7	at Vanderbilt	(1/12/12)
<b>Field Goals</b>	4	three times, last vs. NC State	(11/10/12)
<b>Field Goal Attempts</b>	10	vs. NC State	(11/10/12)
<b>3-Point Field Goals</b>	3	vs. Maine	(11/9/12)
<b>3-Point FG Attempts</b>	6	vs. Maine	(11/9/12)
<b>Free Throws</b>	3	at Mercer	(11/11/11)
<b>Free Throw Attempts</b>	4	at Mercer	(11/11/11)



# Pascale WEST

# #20

Senior • Center • 6-8

LaGrange, Ga.

Troup County Comprehensive High School

## NOTES:

- Scored a career-high 6 points against Alabama A&M
- Scored 2 points with a rebounds against Maine in the season opener
- Is the tallest player in the SEC
- Her 22 blocks during the 2009-10 season rank her ninth all-time among Auburn freshmen
- Majoring in apparel merchandising and makes many of her own clothes

Opponent	Start	Min.	FG-A	3PT-A	FT-A	O-D-T	PF	Ast.	TO	Blk.	St.	Pts.
vs. Maine	7		1-1	0-0	0-0	0-1-1	0	0	2	0	0	2
at North Carolina State						-- DID NOT PLAY --						
ALABAMA STATE	11		0-2	0-0	0-0	1-0-1	3	0	0	2	2	0
ALABAMA A&M	14		3-5	0-0	0-0	0-1-1	2	0	0	0	0	6
vs. San Diego State	1		0-0	0-0	0-0	0-0-0	0	0	0	0	0	0
vs. Texas A&M-Corpus Christi												
at Tulane												
HOFSTRA												
at George Washington												
TEMPLE												
TENNESSEE-CHATTANOOGA												
JACKSONVILLE												
SAMFORD												
ARKANSAS												
at Missouri												
OLE MISS												
at Texas A&M												
TENNESSEE												
at Kentucky												
at Alabama												
LSU												
at South Carolina												
at Georgia												
FLORIDA												
ALABAMA												
at Tennessee												
MISSOURI												
at Vanderbilt												
MISSISSIPPI STATE												

## WEST CAREER STATISTICS

Year	GP-GS	FG-FGA	Pct	3FG-FGA	Pct	FT-FTA	Pct	O-D-T (Reb.)	Avg	PF	FO	Ast	TO	Blk	Stl	Pts	Avg
2009-10	24-0	7-15	.467	0-0	.000	4-11	.364	9-23-32	1.3	31	0	5	14	22	6	18	0.8
2010-11	13-0	5-8	.625	0-0	.000	1-6	.167	1-5-6	0.5	15	0	1	9	3	1	11	0.8
2011-12	18-0	1-8	.125	0-0	.000	2-2	1.000	6-9-15	0.8	17	0	2	4	5	1	4	0.2
2012-13	4-0	4-8	.500	0-0	.000	0-0	.000	1-2-3	0.8	5	0	0	2	2	2	8	2.0
<b>TOTAL</b>	<b>59-0</b>	<b>17-39</b>	<b>.436</b>	<b>0-0</b>	<b>.000</b>	<b>7-19</b>	<b>.368</b>	<b>17-39-56</b>	<b>0.9</b>	<b>68</b>	<b>0</b>	<b>8</b>	<b>29</b>	<b>32</b>	<b>10</b>	<b>41</b>	<b>0.7</b>

## SEASON HIGHS

## Points

6 vs. Alabama A&amp;M (11/18/12)

## Rebounds

1 3 times, last vs. Ala. A&amp;M (11/18/12)

## Assists

## Blocks

2 vs. Alabama State (11/15/12)

## Steals

2 vs. Alabama State (11/15/12)

## Field Goals

3 vs. Alabama A&amp;M (11/18/12)

## Field Goal Attempts

5 vs. Alabama A&amp;M (11/18/12)

## 3-Point Field Goals

## 3-Point FG Attempts

## Free Throws

## Free Throw Attempts

## CAREER HIGHS

## Points

6 vs. Alabama A&amp;M (11/18/12)

## Rebounds

5 vs. Alabama A&amp;M (11/19/09)

## Assists

1 4 times, last vs. USC-Upstate (12/28/10)

## Blocks

7 vs. Alabama A&amp;M (11/19/09)

## Steals

2 vs. Alabama State (11/15/12)

## Field Goals

3 vs. Alabama A&amp;M (11/18/12)

## Field Goal Attempts

5 vs. Alabama A&amp;M (11/18/12)

## 3-Point Field Goals

N/A

## 3-Point FG Attempts

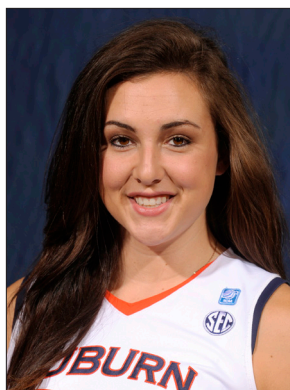
N/A

## Free Throws

2 at Mercer (11/11/11)

## Free Throw Attempts

4 vs. Florida A&amp;M (11/28/09)



# Peyton DAVIS

# #34

Junior • Center • 6-5

Pinson, Ala.

Mortimer Jordan High School

## NOTES:

- Had career outing against Alabama State with 12 points and 7 rebounds
- Earned her first career start, tying her career high with 6 points along with 3 rebounds against Maine
- Is expected to step into a starting role in the 2012-13 season after coming off the bench the last two years
- Started in all four games and averaged 6.5 points per game during Auburn's 2012 Australian Summer Tour
- Neared a double-double in Australia with 8 points and 8 rebounds against the Logan Thunder
- A two-sport star athlete in high school, also fielded several NCAA Division I volleyball offers
- Holds a black belt in Taekwondo

Opponent	Start	Min.	FG-A	3PT-A	FT-A	O-D-T	PF	Ast.	TO	Blk.	St.	Pts.
vs. Maine	*	25	3-5	0-0	0-1	2-1-3	2	0	1	0	0	6
at North Carolina State	*	20	2-2	0-0	1-4	3-2-5	5	0	0	0	1	5
ALABAMA STATE	*	21	4-8	0-0	4-6	3-4-7	2	1	1	1	0	12
ALABAMA A&M	*	22	3-6	0-0	3-3	2-4-6	0	1	2	1	3	9
vs. San Diego State	*	24	0-4	0-0	1-2	0-2-2	3	0	2	0	1	1
vs. Texas A&M-Corpus Christi												
at Tulane												
HOFSTRA												
at George Washington												
TEMPLE												
TENNESSEE-CHATTANOOGA												
JACKSONVILLE												
SAMFORD												
ARKANSAS												
at Missouri												
OLE MISS												
at Texas A&M												
TENNESSEE												
at Kentucky												
at Alabama												
LSU												
at South Carolina												
at Georgia												
FLORIDA												
ALABAMA												
at Tennessee												
MISSOURI												
at Vanderbilt												
MISSISSIPPI STATE												

## DAVIS CAREER STATISTICS

Year	GP-GS	FG-FGA	Pct	3FG-FGA	Pct	FT-FTA	Pct	O-D-T (Reb.)	Avg	PF	FO	Ast	TO	Blk	Stl	Pts	Avg
2010-11	26-0	12-41	.293	0-0	.000	9-15	.600	18-16-34	1.3	38	0	7	13	7	4	33	1.3
2011-12	19-0	3-13	.231	0-0	.000	1-5	.200	10-13-23	1.2	15	0	1	12	4	3	7	0.4
2012-13	5-5	12-25	.480	0-0	.000	9-16	.563	10-13-23	4.6	12	1	2	6	2	5	33	6.6
<b>TOTAL</b>	<b>50-5</b>	<b>27-79</b>	<b>.342</b>	<b>0-0</b>	<b>.000</b>	<b>19-36</b>	<b>.528</b>	<b>38-42-80</b>	<b>1.6</b>	<b>65</b>	<b>1</b>	<b>10</b>	<b>31</b>	<b>13</b>	<b>12</b>	<b>73</b>	<b>1.5</b>

## SEASON HIGHS

Points 12 vs. Alabama State (11/15/12)

Rebounds 7 vs. Alabama State (11/15/12)

Assists 1 twice, last vs. Ala. A&amp;M (11/18/12)

Blocks 1 twice, last vs. Ala. A&amp;M (11/18/12)

Steals 3 vs. Alabama A&amp;M (11/18/12)

Field Goals 4 vs. Alabama State (11/15/12)

Field Goal Attempts 8 vs. Alabama State (11/15/12)

3-Point Field Goals

3-Point FG Attempts

Free Throws 4 vs. Alabama State (11/15/12)

Free Throw Attempts 6 vs. Alabama State (11/15/12)

3-Point FG Attempts

Free Throws

Free Throw Attempts

3-Point Field Goals

3-Point FG Attempts

Free Throws

Free Throw Attempts

3-Point Field Goals

3-Point FG Attempts

Free Throws

Free Throw Attempts

3-Point Field Goals

3-Point FG Attempts

Free Throws

Free Throw Attempts

3-Point Field Goals

3-Point FG Attempts

Free Throws

Free Throw Attempts

3-Point Field Goals

3-Point FG Attempts

Free Throws

Free Throw Attempts

3-Point Field Goals

3-Point FG Attempts

Free Throws

Free Throw Attempts

3-Point Field Goals

3-Point FG Attempts

Free Throws

Free Throw Attempts

3-Point Field Goals

3-Point FG Attempts



# Tyrese TANNER

# #32

Junior • Forward • 6-1

Birmingham, Ala.

Hoover High School

## NOTES:

- Named SEC Player of the Week on Nov. 12, the first such honor of her career
- Named to Sheraton Raleigh Wolfpack Invitational All-Tournament Team
- Nearly averaged a double-double in the opening weekend with 20.5 points and 8.5 rebounds per game; set career highs of 26 points and 9 boards
- Led Auburn in scoring last season with 10.6 points per game, becoming the first sophomore to lead the team in scoring since DeWanna Bonner in 2006-07
- Named to the 2012 College Sports Madness Preseason All-SEC Third Team
- Will play alongside her younger sister, Tra'cee Tanner, who is a freshman on the team this season
- The Tanner sisters are the third set of sisters to play together at Auburn, joining Sherell and Reneisha Hobbs, and Ruthie and Mae Ola Bolton

Opponent	Start	Min.	FG-A	3PT-A	FT-A	O-D-T	PF	Ast.	TO	Blk.	St.	Pts.
vs. Maine	*	31	6-14	1-5	2-3	6-3-9	0	3	0	1	1	15
at North Carolina State	*	36	7-20	1-4	11-12	5-3-8	5	2	2	1	3	26
ALABAMA STATE	*	28	6-14	0-1	1-4	3-4-7	1	1	0	2	1	13
ALABAMA A&M	*	15	2-6	0-0	1-1	0-0-0	1	3	1	0	1	5
vs. San Diego State	*	29	6-14	0-1	5-5	0-4-4	3	0	4	0	3	17
vs. Texas A&M-Corpus Christi												
at Tulane												
HOFSTRA												
at George Washington												
TEMPLE												
TENNESSEE-CHATTANOOGA												
JACKSONVILLE												
SAMFORD												
ARKANSAS												
at Missouri												
OLE MISS												
at Texas A&M												
TENNESSEE												
at Kentucky												
at Alabama												
LSU												
at South Carolina												
at Georgia												
FLORIDA												
ALABAMA												
at Tennessee												
MISSOURI												
at Vanderbilt												
MISSISSIPPI STATE												

## TANNER CAREER STATISTICS

Year	GP-GS	FG-FGA	Pct	3FG-FGA	Pct	FT-FTA	Pct	O-D-T (Reb.)	Avg	PF	FO	Ast	TO	Blk	Stl	Pts	Avg
2010-11	32-3	53-159	.333	6-37	.162	43-64	.672	48-53-101	3.2	57	1	27	48	24	21	155	4.8
2011-12	30-18	113-278	.406	7-29	.241	84-130	.646	51-64-115	3.8	78	2	33	66	24	36	317	10.6
2012-13	5-5	27-68	.397	2-11	.182	20-25	.800	14-14-28	5.6	10	1	9	7	4	9	76	15.2
<b>TOTAL</b>	<b>67-26</b>	<b>193-505</b>	<b>.382</b>	<b>15-77</b>	<b>.195</b>	<b>147-219</b>	<b>.671</b>	<b>113-131-244</b>	<b>3.6</b>	<b>145</b>	<b>4</b>	<b>69</b>	<b>121</b>	<b>52</b>	<b>66</b>	<b>548</b>	<b>8.2</b>

## SEASON HIGHS

<b>Points</b>		
26	vs. North Carolina State	(11/10/12)
<b>Rebounds</b>		
9	vs. Maine	(11/9/12)
<b>Assists</b>		
3	twice, last vs. Ala. A&M	(11/18/12)
<b>Blocks</b>		
2	vs. Alabama State	(11/15/12)
<b>Steals</b>		
3	twice, last vs. SDSU	(11/23/12)
<b>Field Goals</b>		
7	vs. North Carolina State	(11/10/12)
<b>Field Goal Attempts</b>		
20	vs. North Carolina State	(11/10/12)
<b>3-Point Field Goals</b>		
1	vs. Maine	(11/9/12)
<b>3-Point FG Attempts</b>		
5	vs. Maine	(11/9/12)
<b>Free Throws</b>		
11	vs. North Carolina State	(11/10/12)
<b>Free Throw Attempts</b>		
12	vs. North Carolina State	(11/10/12)

## CAREER HIGHS

<b>Points</b>		
26	vs. North Carolina State	(11/10/12)
<b>Rebounds</b>		
9	vs. Maine	(11/9/12)
<b>Assists</b>		
4	vs. South Carolina	(1/19/12)
<b>Blocks</b>		
4	vs. Georgia	(1/8/12)
<b>Steals</b>		
3	7 times, last vs. SDSU	(11/23/12)
<b>Field Goals</b>		
8	vs. Alabama	(2/23/12)
<b>Field Goal Attempts</b>		
20	vs. North Carolina State	(11/10/12)
<b>3-Point Field Goals</b>		
4	vs. Belmont	(11/15/11)
<b>3-Point FG Attempts</b>		
5	3 times, last vs. Maine	(11/9/12)
<b>Free Throws</b>		
11	vs. North Carolina State	(11/10/12)
<b>Free Throw Attempts</b>		
14	at Arkansas	(1/15/12)





# Hasina MUHAMMAD

# #00

Sophomore • Guard • 6-1

Memphis, Tenn.

Ridgeway High School

#### NOTES:

- Scored a career-high 21 points on 10-of-14 (.714) shooting
- Named to Sheraton Raleigh Wolfpack Invitational All-Tournament Team
- Named to the 2012 SEC All-Freshman Team
- Led Auburn in scoring on the 2012 Australian Summer Tour, averaging 23.3 points per game
- Scored a tour-high 29 points in Australia against the WNBL's Sydney Flames
- Played in all 30 games last season, starting in 16, and was second on the team in scoring with 9.5 points per game
- Was second in the SEC in scoring among freshmen
- Scored career-high 20 points vs. Florida in the SEC Tournament

Opponent	Start	Min.	FG-A	3PT-A	FT-A	O-D-T	PF	Asst.	TO	Blk.	Stl.	Pts.
vs. Maine		25	8-23	3-6	1-2	1-2-3	1	1	1	1	2	20
at North Carolina State		29	4-15	0-3	4-4	1-2-3	4	1	2	0	1	12
ALABAMA STATE	*	22	7-13	0-0	1-2	3-3-6	0	2	1	1	3	15
ALABAMA A&M	*	19	10-14	0-0	1-2	4-3-7	3	2	1	0	1	21
vs. San Diego State	*	28	2-12	0-0	6-10	3-3-6	0	3	2	1	1	10

vs. Texas A&M-Corpus Christi

at Tulane

HOFSTRA

at George Washington

TEMPLE

TENNESSEE-CHATTANOOGA

JACKSONVILLE

SAMFORD

ARKANSAS

at Missouri

OLE MISS

at Texas A&M

TENNESSEE

at Kentucky

at Alabama

LSU

at South Carolina

at Georgia

FLORIDA

ALABAMA

at Tennessee

MISSOURI

at Vanderbilt

MISSISSIPPI STATE

#### SEASON HIGHS

##### Points

21 vs. Alabama A&M (11/18/12)

##### Rebounds

7 vs. Alabama A&M (11/18/12)

##### Assists

3 vs. San Diego State (11/23/12)

##### Blocks

1 3 times, last vs. SDSU (11/23/12)

##### Steals

3 vs. Alabama State (11/15/12)

##### Field Goals

10 vs. Alabama A&M (11/18/12)

##### Field Goal Attempts

23 vs. Maine (11/9/12)

##### 3-Point Field Goals

3 vs. Maine (11/9/12)

##### 3-Point FG Attempts

6 vs. Maine (11/9/12)

##### Free Throws

6 vs. San Diego State (11/23/12)

##### Free Throw Attempts

10 vs. San Diego State (11/23/12)

#### CAREER HIGHS

##### Points

21 vs. Alabama A&M (11/18/12)

##### Rebounds

9 vs. Florida (3/1/12)

##### Assists

5 vs. Kentucky (1/26/12)

##### Blocks

4 vs. Florida (3/1/12)

##### Steals

6 vs. Ole Miss (2/26/12)

##### Field Goals

10 vs. Alabama A&M (11/18/12)

##### Field Goal Attempts

23 vs. Maine (11/9/12)

##### 3-Point Field Goals

3 twice, last vs. Maine (11/9/12)

##### 3-Point FG Attempts

6 vs. Maine (11/9/12)

##### Free Throws

9 vs. Georgia (1/8/12)

##### Free Throw Attempts

11 vs. Georgia (1/8/12)

#### MUHAMMAD CAREER STATISTICS

Year	GP-GS	FG-FGA	Pct	3FG-FGA	Pct	FT-FTA	Pct	O-D-T (Reb.)	Avg	PF	FO	Asst	TO	Blk	Stl	Pts	Avg
2011-12	30-16	119-308	.386	11-34	.324	37-64	.578	58-54-112	3.7	51	1	38	77	31	40	286	9.5
2012-13	5-3	31-77	.403	3-9	.333	13-20	.650	12-13-25	5.0	8	0	9	7	3	8	78	15.6
<b>TOTAL</b>	<b>35-19</b>	<b>150-385</b>	<b>.390</b>	<b>14-43</b>	<b>.326</b>	<b>50-84</b>	<b>.595</b>	<b>70-67-137</b>	<b>3.9</b>	<b>59</b>	<b>1</b>	<b>47</b>	<b>84</b>	<b>34</b>	<b>48</b>	<b>364</b>	<b>10.4</b>



# Courtney STRAIN

# #11

Redshirt Sophomore • Guard • 5-9

Woodland, Ala.

Woodland High School

## NOTES:

- Tied her career high with 12 points against Alabama A&M
- Made her first start in almost two years against Maine, scoring 2 points with a steal
- Missed most of last season with an injury, playing in just seven games
- Broke the Alabama state scoring record as a junior in high school, finished her career with 5,283 points - more than 1,000 than her nearest competitor
- Was also a varsity cheerleader for six years, serving as captain as a senior, graduated as salutatorian of her senior class

Opponent	Start	Min.	FG-A	3PT-A	FT-A	O-D-T	PF	Ast.	TO	Blk.	St.	Pts.
vs. Maine	*	13	1-6	0-3	0-0	0-0-0	1	0	1	0	1	2
at North Carolina State	*	15	0-3	0-0	0-0	0-0-0	3	0	1	0	0	0
ALABAMA STATE		15	1-6	0-3	2-2	1-2-3	0	2	1	0	1	4
ALABAMA A&M		20	5-8	1-1	1-2	1-1-2	0	1	1	0	1	12
vs. San Diego State		16	2-3	1-1	0-0	0-0-0	2	0	1	0	0	5
vs. Texas A&M-Corpus Christi												
at Tulane												
HOFSTRA												
at George Washington												
TEMPLE												
TENNESSEE-CHATTANOOGA												
JACKSONVILLE												
SAMFORD												
ARKANSAS												
at Missouri												
OLE MISS												
at Texas A&M												
TENNESSEE												
at Kentucky												
at Alabama												
LSU												
at South Carolina												
at Georgia												
FLORIDA												
ALABAMA												
at Tennessee												
MISSOURI												
at Vanderbilt												
MISSISSIPPI STATE												

## STRAIN CAREER STATISTICS

Year	GP-GS	FG-FGA	Pct	3FG-FGA	Pct	FT-FTA	Pct	O-D-T (Reb.)	Avg	PF	FO	Ast	TO	Blk	Stl	Pts	Avg
2010-11	24-1	24-76	.316	5-19	.263	8-15	.533	6-14-20	0.8	13	0	7	16	0	7	61	2.5
2011-12	7-0	4-23	.174	0-2	.000	4-4	1.000	3-0-3	0.4	3	0	2	6	0	0	12	1.7
2012-13	5-2	9-26	.346	2-8	.250	3-4	.750	2-3-5	1.0	6	0	3	5	0	3	23	4.6
<b>TOTAL</b>	<b>36-3</b>	<b>37-125</b>	<b>.296</b>	<b>7-29</b>	<b>.241</b>	<b>15-23</b>	<b>.652</b>	<b>11-17-28</b>	<b>0.8</b>	<b>22</b>	<b>0</b>	<b>12</b>	<b>27</b>	<b>0</b>	<b>10</b>	<b>96</b>	<b>2.7</b>

## SEASON HIGHS

## Points

12 vs. Alabama A&amp;M (11/18/12)

## Rebounds

3 vs. Alabama State (11/15/12)

## Assists

2 vs. Alabama State (11/15/12)

## Blocks

## Steals

1 3 times, last vs. Ala. A&amp;M (11/18/12)

## Field Goals

5 vs. Alabama A&amp;M (11/18/12)

## Field Goal Attempts

8 vs. Alabama A&amp;M (11/18/12)

## 3-Point Field Goals

1 twice, last vs. SDSU (11/23/12)

## 3-Point FG Attempts

3 twice, last vs. Ala. State (11/15/12)

## Free Throws

2 vs. Alabama State (11/15/12)

## Free Throw Attempts

2 vs. Alabama State (11/15/12)

## CAREER HIGHS

## Points

12 twice, last vs. Ala. A&amp;M (11/18/12)

## Rebounds

4 at Arkansas (2/13/11)

## Assists

2 vs. Alabama State (11/15/12)

## Blocks

N/A

## Steals

1 10 times, last vs. Ala. A&amp;M (11/18/12)

## Field Goals

5 twice, last vs. Ala. A&amp;M (11/18/12)

## Field Goal Attempts

9 at Florida International (12/30/11)

## 3-Point Field Goals

1 7 times, last vs. SDSU (11/23/12)

## 3-Point FG Attempts

3 4 times, last vs. Ala. State (11/15/12)

## Free Throws

3 vs. Sacred Heart (11/26/10)

## Free Throw Attempts

6 vs. Sacred Heart (11/26/10)



# Cabriana CAPERS

# #50

Freshman • Forward • 6-1

Bolingbrook, Ill.

Bolingbrook

## NOTES:

- Made her collegiate debut against Maine, pulling down 2 rebounds in 5 minutes
- Led Auburn with a season-high 9 rebounds against Alabama A&M; also scored her first collegiate points against the Bulldogs
- Played in all four games on the Australian Summer Tour, averaging 2.8 points per game
- Rated as a 3-star prospect by ESPN's HoopGurlz, ranked as the No. 35 post in the country
- Helped Bolingbrook High School to a 26-2 record and a No. 8 national ranking in the USA Today Super 25 last season
- Was one of 8 women's basketball players in her senior class to sign NCAA Division I Letters of Intent

Opponent	Start	Min.	FG-A	3PT-A	FT-A	O-D-T	PF	Ass.	TO	Blk.	St.	Pts.
vs. Maine	5		0-0	0-0	0-0	1-1-2	1	0	1	0	0	0
at North Carolina State	3		0-0	0-0	0-0	0-0-0	0	0	1	0	0	0
ALABAMA STATE	14		0-2	0-0	0-0	1-3-4	0	0	1	0	0	0
ALABAMA A&M	11		2-3	0-0	0-0	4-5-9	0	1	0	0	0	4
vs. San Diego State	1		0-0	0-0	0-2	0-0-0	0	0	0	0	0	0
vs. Texas A&M-Corpus Christi												
at Tulane												
HOFSTRA												
at George Washington												
TEMPLE												
TENNESSEE-CHATTANOOGA												
JACKSONVILLE												
SAMFORD												
ARKANSAS												
at Missouri												
OLE MISS												
at Texas A&M												
TENNESSEE												
at Kentucky												
at Alabama												
LSU												
at South Carolina												
at Georgia												
FLORIDA												
ALABAMA												
at Tennessee												
MISSOURI												
at Vanderbilt												
MISSISSIPPI STATE												

## CAPERS CAREER STATISTICS

Year	GP-GS	FG-FGA	Pct	3FG-FGA	Pct	FT-FTA	Pct	O-D-T (Reb.)	Avg	PF	FO	Ass	TO	Blk	Stl	Pts	Avg
2012-13	5-0	2-5	.400	0-0	.000	0-2	.000	6-9-15	3.0	1	0	1	3	0	0	4	0.8
TOTAL	5-0	2-5	.400	0-0	.000	0-2	.000	6-9-15	3.0	1	0	1	3	0	0	4	0.8

## SEASON HIGHS

## Points

4 vs. Alabama A&amp;M (11/18/12)

## Rebounds

9 vs. Alabama A&amp;M (11/18/12)

## Assists

1 vs. Alabama A&amp;M (11/18/12)

## Blocks

## Steals

## Field Goals

2 vs. Alabama A&amp;M (11/18/12)

## Field Goal Attempts

3 vs. Alabama A&amp;M (11/18/12)

## 3-Point Field Goals

## 3-Point FG Attempts

## Free Throws

## Free Throw Attempts

2 vs. San Diego State (11/23/12)



# Chadarryl CLAY

# #5

Freshman • Guard • 5-7

Chattanooga, Tenn.

Girls Preparatory School

## NOTES:

- Scored a career-high 15 points in home opener against Alabama State
- Dished out season-high 5 assists along with 7 points against Alabama A&M
- Made her collegiate debut against Maine, dishing out one assist in two minutes
- Started all four games on the Australian Summer Tour, averaging 10.5 points per game
- Scored a tour-high 20 points against the Cairns Dolphins in Australia
- Rated as the No. 77 overall player and No. 12 guard in the country by ESPN's HoopGurlz
- Led Chattanooga's Girls Preparatory School to back-to-back state championships
- Had her No. 5 jersey retired at her high school

Opponent	Start	Min.	FG-A	3PT-A	FT-A	O-D-T	PF	Ass.	TO	Blk.	Stl.	Pts.
vs. Maine	2		0-1	0-1	0-0	0-0-0	0	1	0	0	0	0
at North Carolina State						-- DID NOT PLAY --						
ALABAMA STATE	12		5-8	2-5	3-3	0-1-1	2	2	2	0	1	15
ALABAMA A&M	14		2-2	1-1	2-2	1-1-2	0	5	2	0	0	7
vs. San Diego State	5		0-0	0-0	0-0	1-0-1	1	0	0	0	0	0
vs. Texas A&M-Corpus Christi												
at Tulane												
HOFSTRA												
at George Washington												
TEMPLE												
TENNESSEE-CHATTANOOGA												
JACKSONVILLE												
SAMFORD												
ARKANSAS												
at Missouri												
OLE MISS												
at Texas A&M												
TENNESSEE												
at Kentucky												
at Alabama												
LSU												
at South Carolina												
at Georgia												
FLORIDA												
ALABAMA												
at Tennessee												
MISSOURI												
at Vanderbilt												
MISSISSIPPI STATE												

## CLAY CAREER STATISTICS

Year	GP-GS	FG-FGA	Pct	3FG-FGA	Pct	FT-FTA	Pct	O-D-T (Reb.)	Avg	PF	FO	Ass	TO	Blk	Stl	Pts	Avg
2012-13	4-0	7-11	.636	3-7	.429	5-5	1.000	2-2-4	1.0	3	0	8	4	0	1	22	5.5
TOTAL	4-0	7-11	.636	3-7	.429	5-5	1.000	2-2-4	1.0	3	0	8	4	0	1	22	5.5

## SEASON HIGHS

## Points

15 vs. Alabama State (11/15/12)

## Rebounds

2 vs. Alabama A&amp;M (11/18/12)

## Assists

5 vs. Alabama A&amp;M (11/18/12)

## Blocks

## Steals

1 vs. Alabama State (11/15/12)

## Field Goals

5 vs. Alabama State (11/15/12)

## Field Goal Attempts

8 vs. Alabama State (11/15/12)

## 3-Point Field Goals

2 vs. Alabama State (11/15/12)

## 3-Point FG Attempts

5 vs. Alabama State (11/15/12)

## Free Throws

3 vs. Alabama State (11/15/12)

## Free Throw Attempts

3 vs. Alabama State (11/15/12)





# Cedricka SWEETING

# #25

Freshman • Guard • 5-3

Nassau, Bahamas

South Broward (Fla.)

## NOTES:

- Made her collegiate debut against Maine, scoring 3 points in 10 minutes
- Scored season-high 6 points with 4 assists against Alabama A&M
- A native of the Bahamas, she played high school basketball in the Miami area
- Was a Sun-Sentinel Fab five honoree as a senior
- Averaged 17 points, 10 assists, 5 steals and 6 rebounds per game as a senior
- Played for the Bahamas in the 2008 Junior Olympics

Opponent	Start	Min.	FG-A	3PT-A	FT-A	O-D-T	PF	Ass.	TO	Blk.	St.	Pts.
vs. Maine	10		1-1	0-0	1-1	0-0-0	0	1	0	0	0	3
at North Carolina State	8		1-1	0-0	0-0	0-0-0	0	0	0	0	0	2
ALABAMA STATE	13		1-4	0-2	0-0	1-2-3	1	3	1	0	1	2
ALABAMA A&M	13		3-4	0-1	0-0	0-2-2	0	4	1	0	1	6
vs. San Diego State	7		0-0	0-0	0-0	0-0-0	0	0	0	0	0	0
vs. Texas A&M-Corpus Christi												
at Tulane												
HOFSTRA												
at George Washington												
TEMPLE												
TENNESSEE-CHATTANOOGA												
JACKSONVILLE												
SAMFORD												
ARKANSAS												
at Missouri												
OLE MISS												
at Texas A&M												
TENNESSEE												
at Kentucky												
at Alabama												
LSU												
at South Carolina												
at Georgia												
FLORIDA												
ALABAMA												
at Tennessee												
MISSOURI												
at Vanderbilt												
MISSISSIPPI STATE												

## SWEETING CAREER STATISTICS

Year	GP-GS	FG-FGA	Pct	3FG-FGA	Pct	FT-FTA	Pct	O-D-T (Reb.)	Avg	PF	FO	Ass	TO	Blk	Stl	Pts	Avg
2012-13	5-0	6-10	.600	1-4	.250	0-0	.000	1-4-5	1.0	1	0	8	2	0	2	13	2.6
TOTAL	5-0	6-10	.600	1-4	.250	0-0	.000	1-4-5	1.0	1	0	8	2	0	2	13	2.6

## SEASON HIGHS

## Points

6 vs. Alabama A&amp;M (11/18/12)

## Rebounds

3 vs. Alabama State (11/15/12)

## Assists

4 vs. Alabama A&amp;M (11/18/12)

## Blocks

## Steals

1 twice, last vs. Alab. A&amp;M (11/18/12)

## Field Goals

3 vs. Alabama A&amp;M (11/18/12)

## Field Goal Attempts

4 twice, last vs. Ala. A&amp;M (11/18/12)

## 3-Point Field Goals

## 3-Point FG Attempts

2 vs. Alabama State (11/15/12)

## Free Throws

1 vs. Maine (11/9/12)

## Free Throw Attempts

1 vs. Maine (11/9/12)



# Tra'cee TANNER

# #23

Freshman • Forward/Center • 6-3

Birmingham, Ala.

Hoover

## NOTES:

- Scored season-high 13 points with 8 rebounds and a steal against San Diego State
- Made her collegiate debut against Maine, scoring 4 points with 3 rebounds in 16 minutes
- Played in all four games on the Australian Summer Tour, averaging 9.0 points per game
- Scored tour-high 16 points in the final game against the Sutherland Sharks
- Rated as a 3-star prospect by ESPN's HoopGurlz and was ranked as the 68th best forward in the country
- Helped Hoover High School to a 31-3 record, a state championship and a No. 14 national ranking in the USA today Super 25 as a senior
- Will play alongside her older sister, Tyrese Tanner, who is a junior on the team this season
- The Tanner sisters are the third set of sisters to play together at Auburn, joining Sherell and Reneisha Hobbs, and Ruthie and Mae Ola Bolton

Opponent	Start	Min.	FG-A	3PT-A	FT-A	O-D-T	PF	Asst.	TO	Blk.	Stl.	Pts.
vs. Maine	16		2-3	0-0	0-0	2-1-3	3	0	0	1	0	4
at North Carolina State	17		1-3	0-0	1-2	0-0-2	1	1	0	0	0	3
ALABAMA STATE	8		0-2	0-0	0-0	1-1-2	1	0	2	0	1	0
ALABAMA A&M	17		2-4	0-0	1-1	1-2-3	2	1	0	0	1	5
vs. San Diego State	21		4-10	0-0	5-6	5-3-8	4	0	0	0	1	13

vs. Texas A&amp;M-Corpus Christi

at Tulane

HOFSTRA

at George Washington

TEMPLE

TENNESSEE-CHATTANOOGA

JACKSONVILLE

SAMFORD

ARKANSAS

at Missouri

OLE MISS

at Texas A&amp;M

TENNESSEE

at Kentucky

at Alabama

LSU

at South Carolina

at Georgia

FLORIDA

ALABAMA

at Tennessee

MISSOURI

at Vanderbilt

MISSISSIPPI STATE

## TANNER CAREER STATISTICS

Year	GP-GS	FG-FGA	Pct	3FG-FGA	Pct	FT-FTA	Pct	O-D-T (Reb.)	Avg	PF	FO	Asst	TO	Blk	Stl	Pts	Avg
2012-13	5-0	9-22	.409	0-0	.000	7-9	.778	9-9-18	3.6	11	0	2	2	1	3	25	5.0
TOTAL	5-0	9-22	.409	0-0	.000	7-9	.778	9-9-18	3.6	11	0	2	2	1	3	25	5.0

## SEASON HIGHS

## Points

13 vs. San Diego State (11/23/12)

## Rebounds

8 vs. San Diego State (11/23/12)

## Assists

1 vs. Alabama A&amp;M (11/18/12)

## Blocks

1 vs. Maine (11/9/12)

## Steals

1 3 times, last vs. SDSU (11/23/12)

## Field Goals

4 vs. San Diego State (11/23/12)

## Field Goal Attempts

10 vs. San Diego State (11/23/12)

## 3-Point Field Goals

## 3-Point FG Attempts

## Free Throws

5 vs. San Diego State (11/23/12)

## Free Throw Attempts

6 vs. San Diego State (11/23/12)

## Game 1: Nov. 9, 2012

Auburn 71, Maine 41

Reynolds Coliseum

Raleigh, N.C.

Sheraton Raleigh Wolfpack Invitational

Official Basketball Box Score -- Game Totals -- Final Statistics

Maine vs Auburn

11-09-12 2:30 p.m. ET at Raleigh, N.C. (Reynolds Coliseum)

VISITORS: Maine (0-1)

#	Player	fg-fga	3fg-fga	ft-fa	rebounds			pf	tp	a	to	blk	s	min
					of	de	tot							
04	Courtney Anderson*	2-5	1-4	0-0	2	3	5	1	5	1	5	0	2	25
23	Ashleigh Roberts*	1-5	0-2	0-0	1	2	3	0	2	1	4	0	1	18
31	Liz Wood*	3-11	1-4	1-1	0	4	4	1	8	2	1	0	1	31
34	Corinne Wellington*	0-1	0-0	0-0	1	3	4	2	0	0	1	0	0	14
50	Anna Heise*	5-12	0-1	2-2	1	3	4	2	12	1	5	1	1	30
02	Milica Mitrovic	1-2	1-2	0-0	0	0	0	1	3	1	0	0	1	7
03	Brittany Wells	1-6	0-4	0-0	0	1	1	0	2	0	1	0	0	14
12	Michal Assaf	0-3	0-2	0-0	0	0	0	1	0	2	0	0	1	9
13	Mikaela Gustafsson	4-6	1-3	0-0	0	3	3	0	9	0	0	0	0	19
15	Lauren Bodine	0-0	0-0	0-0	0	0	0	0	0	0	1	0	0	3
20	Sophie Weckstrom	0-0	0-0	0-0	0	0	0	0	0	3	4	0	0	11
30	Chantal Charles	0-0	0-0	0-0	2	5	7	0	0	1	4	0	0	19
TEAM					1	3	4							
Totals.....		17-51	4-22	3-3	8	27	35	8	41	12	26	1	7	200

HOME: Auburn (1-0)

#	Player	fg-fga	3fg-fga	ft-fa	rebounds			pf	tp	a	to	blk	s	min
					of	de	tot							
03	Najat Ouardad*	4-9	3-6	0-0	2	4	6	0	11	6	2	0	2	30
11	Courtney Strain*	1-6	0-3	0-0	0	0	0	1	2	0	1	0	1	13
14	Blanche Alverson*	3-7	2-3	0-0	1	5	6	0	8	2	6	0	3	32
32	Tyrese Tanner*	6-14	1-5	2-3	6	3	9	0	15	3	0	1	1	31
34	Peyton Davis*	3-5	0-0	0-1	2	1	3	2	6	0	1	0	0	25
00	Hasina Muhammad	8-23	3-6	1-2	1	2	3	1	20	1	1	1	2	25
05	Chadarryl Clay	0-1	0-1	0-0	0	0	0	0	0	1	0	0	0	2
20	Pascale West	1-1	0-0	0-0	0	1	1	0	2	0	2	0	0	7
22	Julie King	0-0	0-0	0-0	0	1	1	0	0	0	1	0	0	4
23	Tia'cee Tanner	2-3	0-0	0-0	2	1	3	3	4	0	0	1	0	16
25	Cedricka Sweeting	1-1	1-1	0-0	0	0	0	0	3	1	0	0	0	10
50	Cabriana Capers	0-0	0-0	0-0	1	1	2	1	0	0	1	0	0	5
TEAM					6	6								
Totals.....		29-70	10-25	3-6	15	25	40	8	71	14	15	3	9	200

Officials: Bonita Spence, Carla Fountain, Daryl Humphrey

Technical fouls: Maine-None. Auburn-None.

Attendance: 2109

Score by Periods

	1st	2nd	Total
Maine	23	18	41
Auburn	35	36	71

Sheraton Raleigh Wolfpack Invitational First Round

RALEIGH, N.C. - The Terri Williams-Flournoy Era got off to a good start Nov. 9 as the Auburn women's basketball team beat Maine, 71-41, in the first round of the Sheraton Raleigh Wolfpack Invitational.

Williams-Flournoy became just the second Auburn head coach to earn a win in their first game on the Tiger sideline. Susan "The Nun" Nunnally is the only other coach to do so, winning the season opener over Tuskegee at the start of the 1973-74 season.

Sophomore Hasina Muhammad led three Tigers in double figures, tying her career high with 20 points. It also marked the second game in a row for her to score 20 with the other being in the SEC Tournament game against Florida last season. Junior Tyrese Tanner neared a double-double with 15 points and a career-high nine rebounds while Najat Ouardad scored a career-high 11 points with six assists and a pair of steals.

Another component to the game was the Tigers' defense, forcing 26 Maine turnovers. Blanche Alverson led Auburn with three steals, along with eight points and six rebounds. Ouardad and Muhammad added two steals each. The Tigers were able to capitalize off the turnovers, scoring 28 points on the other end.

## Game 2: Nov. 10, 2012

Auburn 71, North Carolina State 85

Reynolds Coliseum

Raleigh, N.C.

Sheraton Raleigh Wolfpack Invitational

Official Basketball Box Score -- Game Totals -- Final Statistics

Auburn vs NC State

11-10-12 7:30 p.m. at Raleigh, N.C. (Reynolds Coliseum)

VISITORS: Auburn (1-1)

#	Player	fg-fga	3fg-fga	ft-fa	rebounds			pf	tp	a	to	blk	s	min
					of	de	tot							
03	Najat Ouardad*	4-10	1-3	2-3	0	5	5	1	11	4	6	0	2	36
11	Courtney Strain*	0-3	0-0	0-0	0	0	0	0	3	0	0	1	0	15
14	Blanche Alverson*	4-13	2-9	2-2	2	5	7	1	12	3	1	3	3	35
32	Tyrese Tanner*	7-20	1-4	11-12	5	3	8	5	26	2	2	1	3	36
34	Peyton Davis*	2-2	0-0	1-4	3	2	5	5	5	0	0	0	1	20
00	Hasina Muhammad	4-15	0-3	4-4	1	2	3	4	12	1	2	0	1	29
22	Julie King	0-0	0-0	0-0	0	0	0	0	0	0	0	0	0	1
23	Tia'cee Tanner	1-3	0-0	1-2	0	2	2	1	3	1	0	0	0	17
25	Cedricka Sweeting	1-1	0-0	0-0	0	0	0	0	2	0	0	0	0	8
50	Cabriana Capers	0-0	0-0	0-0	0	0	0	0	0	0	1	0	0	3
TEAM					3	3	6							
Totals.....		23-67	4-19	21-27	14	22	36	20	71	11	13	4	10	200

HOME: North Carolina State (2-0)

Northwestern State														rebounds													
#	Player	fg-fga	3fg-fga	ft-fa	of	de	tot	pf	tp	a	to	blk	s	min													
01	M. Goodwin-Coleman*	2-7	2-5	1-2	0	3	3	4	7	5	6	0	2	18													
12	Krystal Barrett*	1-5	0-0	0-1	2	1	3	0	2	3	3	0	1	21													
23	Marissa Kastanek*	9-17	4-11	2-2	1	2	4	24	0	4	0	2	31														
34	Markeisha Gatling*	3-6	0-0	3-6	2	8	10	3	9	0	1	0	2	25													
44	Kody Burke*	11-18	1-2	3-4	6	6	12	1	26	2	3	3	1	36													
02	Len'Nique Brown	4-7	2-3	0-1	3	6	9	2	10	7	2	0	0	26													
05	Breezy Williams	0-0	0-0	0-0	0	0	0	0	2	0	0	0	0	3													
10	Ashley Eli	2-6	1-2	2-2	3	4	7	2	7	2	1	0	1	24													
52	Kiana Evans	0-3	0-0	0-0	0	1	4	0	1	0	0	0	0	16													
TEAM		2 3 5																									
Totals.....		32-69	10-23	11-18	19	33	52	22	85	20	20	3	9	200													

Officials: Bonita Spence, Carla Fountain, Luis Gonzalez

Technical fouls: Auburn-None. NC State-None.

Attendance: 1586

Score by Periods

	1st	2nd	Total
Auburn	33	38	71
North Carolina State	37	48	85

Sheraton Raleigh Wolfpack Invitational Championship Game

RALEIGH, N.C. - The Auburn women's basketball team fell to 1-1 on the season on Nov. 10, dropping an 85-71 decision to host North Carolina State in the Sheraton Raleigh Wolfpack Invitational Championship Game. Junior Tyrese Tanner scored a career-high 26 points to lead the Tigers.

For their efforts in the tournament, Tanner and Hasina Muhammad were named to the All-Tournament Team.

Auburn led by nine early in the first half, but a 10-4 Wolfpack run brought them within two. North Carolina State then closed out the half by out-scoring Auburn 14-8 to take a 37-33 lead into the locker room. North Carolina State stayed in control in the second half, out-scoring Auburn 48-38 in the period and leading by as many as 17 points.

Auburn finished the game with four players in double figures, led by Tanner's 26. Blanche Alverson and Hasina Muhammad scored 12 points each while Najat Ouardad scored 11. Alverson hit two 3-pointers in the game, moving her into fifth place all-time at Auburn in career 3-pointers with 150. She surpassed Kristen Mulligan, who hit 149 in her career.

Defensively, Auburn forced 20 Wolfpack turnovers, scoring 22 points off them. It marked the second game in a for the Tigers to eclipse the 20-plateau in both categories.

## Game 3: Nov. 15, 2012

Auburn 80, Alabama State 43

Auburn Arena

Auburn, Ala.

Official Basketball Box Score -- Game Totals -- Final Statistics

Alabama State vs Auburn

11-15-12 6 p.m. at Auburn, Ala. -- Auburn Arena

VISITORS: Alabama State (0-1)

#	Player	fg-fga	3fg-fga	ft-fa	rebounds			pf	tp	a	to	blk	s	min
					of	de	tot							
11	Smith, Nakiya*	9-18	4-7	3-4	1	1	2	2	25	1	6	0	0	36
21	Jones, Ashley*	2-5	0-0	6-8	2	5	7	2	10	0	4	1	0	30
34	Windom, RoTasha*	1-2	0-0	0-0	2	2	4	0	2	0	0	0	0	14
12	Arrington, Talla*	0-2	0-1	0-1	1	3	4	3	0	1	4	0	1	30
15	Paige, Kierra*	0-9	0-6	0-1	0	1	1	2	0	0	4	1	0	19
14	Peoples, Jasmine	0-0	0-0	0-0	0	2	2	0	0	0	0	1	0	5
23	Shields, Durriga	0-3	0-0	0-0	1	0	1	0	0	0	5	0	1	5
24	Henderso, Erica	1-6	1-6	0-0	1	1	2	0	3	2	1	0	2	18
31	Gazaway, Danielle	1-8	1-6	0-0	0	1	1	5	3	2	1	0	1	22
35	Howard, Brittney	0-1	0-1	0-0	0	4	4	2	0	1	0	0	0	21
TEAM					4	4	8							
Totals.....		14-54	6-27	9-14	12	24	36	16	43	7	26	2	5	200

HOME TEAM: Auburn (2-1)

#	Player	fg-fga	fg-fga	ft-fa	of	de	tot	pf	tp	a	to	blk	s	min
14	Blanche Alverson*	7-11	1-3	2-2	3	6	9	2	17	1	2	2	2	23
32	Tyrese Tanner*	6-14	0-1	1-4	3	4	7	1	13	1	0	2	1	28
34	Peyton Davis*	4-8	0-0	4-6	3	4	7	2	12	1	1	1	0	21
00	Hassan Muhammad*	7-13	0-0	1-2	3	6	0	15	2	1	1	3	3	22
03	Najat Ouardad*	0-1	0-1	0-1	1	3	4	0	5	3	0	2	2	20
04	Swetting Cedricka	1-4	0-2	0-0	1	2	3	2	3	1	0	1	1	13
11	Courtney Strain	1-6	0-3	2-2	1	2	3	0	4	2	1	0	1	15
20	Pascal West	0-2	0-0	0-0	1	1	3	0	0	0	0	2	2	11
21	Clye, Chadarryl	5-8	2-5	3-3	0	1	1	2	15	2	2	0	1	12
22	Julie King	1-2	0-0	0-1	0	2	2	2	2	6	0	1	0	23
35	Campos, Cibriano	0-2	0-0	0-1	3	4	0	0	0	1	0	0	0	14
44	Tanner, Tra'cee	0-2	0-0	0-0	1	1	2	1	0	0	2	0	1	8
TEAM		3					3	52	16	80	23	15	8	16 200
Totals.....		32-73	3-15	13-21	21	31	52	16	80	23	15	8	16	200

**Game 4: Nov. 18, 2012**  
**Auburn 93, Alabama A&M 44**  
**Auburn Arena**  
**Auburn, Ala.**

Official Basketball Box Score -- Game Totals -- Final Statistics

Alabama A&amp;M vs Auburn

11-18-12 2:00 p.m. at Auburn Arena -- Auburn, Ala.

VISITORS: Alabama A&amp;M (1-2)

#	Player	fg-fga	3fg-fga	ft-fa	rebounds		pf	tp	a	to	blk	s	min
					of	de							
23	Johnson, Ebony*	1-4	0-0	2-2	2	0	2	1	4	4	0	0	28
55	Robertson, NeDra*	2-5	0-0	0-1	3	3	6	1	4	1	1	0	26
05	Strickland, Brittney*	0-6	0-2	0-0	0	0	2	0	1	4	0	2	16
22	Davis, Shundray*	2-3	1-1	0-2	0	2	2	1	5	2	5	0	23
25	Oneal, Danielle*	1-4	1-3	0-0	0	1	1	1	3	0	0	1	20
03	Strickland, Alyssa	5-11	5-10	0-0	0	4	4	3	15	2	4	0	30
12	Sippial, Taylor	3-8	2-5	0-0	1	0	1	0	8	1	1	0	13
14	Moffett, Shaterion	0-1	0-0	0-0	1	0	1	1	0	0	1	0	6
21	Hopper, Christyn	0-6	0-5	1-2	1	0	1	0	1	1	2	0	12
24	Sanders, Jasmine	1-3	0-0	0-0	3	0	3	2	0	1	0	0	10
42	Richardson, ShaBr'ion	0-0	0-0	0-0	1	0	1	0	0	0	0	1	5
50	Lowery, Jessica	1-3	0-0	0-0	0	1	1	0	2	0	0	0	11
TEAM						3	1	4					
Totals.....		16-54	9-26	3-7	15	12	27	13	44	12	23	1	6 200

HOME: Auburn (3-1)

#	Player	fg-fga	3fg-fga	ft-fa	rebounds		pf	tp	a	to	blk	s	min
					of	de							
14	Alverson, Blanche*	6-9	2-2	0-0	1	3	4	1	14	3	1	1	25
34	Davis, Peyton*	3-6	0-0	3-3	2	4	6	0	9	1	2	1	3 22
00	Muhammad, Hasina*	10-14	0-0	1-2	4	3	7	3	21	2	1	0	1 19
03	Ouardad, Najat*	1-3	1-1	1-2	0	0	1	4	4	1	0	5	19
32	Tanner, Tyrese*	2-6	0-0	1-1	0	0	0	1	5	3	1	0	1 15
04	Sweeting, Cedricka	3-4	0-1	0-0	0	2	2	0	6	4	1	0	1 13
11	Strain, Courtney	5-8	1-1	1-2	1	1	2	0	12	1	1	0	1 20
20	West, Pascale	3-5	0-0	0-0	0	1	1	2	6	0	0	0	0 14
21	Clay, Chadarryl	2-2	1-1	2-2	1	1	2	0	7	5	2	0	0 14
22	King, Julie	0-2	0-0	0-0	0	1	1	0	0	2	1	2	1 11
35	Capers, Cabriana	2-3	0-0	0-0	4	5	9	0	4	1	0	0	0 11
44	Tanner, Tra'cee	2-4	0-0	1-1	1	2	3	2	5	1	0	0	1 17
TEAM						2	1	3					
Totals.....		39-66	5-6	10-13	16	24	40	10	93	27	11	4	15 200

Officials: Brian Enterline, Ed Sidlosky, Brian Garland

Technical fouls: Alabama A&amp;M-None. Auburn-None.

Attendance: 1768

Score by Periods	1st	2nd	Total
Alabama A&M	26	18	44
Auburn	49	44	93

AUBURN - Hasina Muhammad scored a career-high 21 points with seven rebounds and Blanche Alverson added 14 points as Auburn women's basketball defeated Alabama A&M 93-44 on Nov. 18 in Auburn Arena.

Three-point plays by both Muhammad and Tyrese Tanner gave Auburn the early advantage. A layup by Muhammad with 12:39 left made it 18-7 in favor of the Tigers. Auburn opened its lead out to 31-11 on the back of a 16-4 run that was capped by four-straight by Pascale West.

Muhammad gave Auburn its largest first half lead of 24 points on a jumper with 3:18 remaining before the break.

The Tigers opened the second half with a 20-3 run over the first seven minutes of play to ice the game. Two at the line by Peyton Davis pushed Auburn's lead to 50, 85-35, with 5:23 remaining in the contest.

Auburn held its largest lead of 53 points with 2:15 remaining. The Tigers out-scored Alabama A&M 44-18 in the second half and scored 34 points off 23 turnovers in the game.

Alyssa Strickland scored 15 points to lead the Bulldogs. Courtney Strain tied her career high with 12 points, while Davis had nine points, six rebounds and three steals. Chadarryl Clay scored seven points and tallied five of Auburn's season-high 27 assists.

**Game 5: Nov. 23, 2012**  
**Auburn 57, San Diego State 78**  
**Coors Events Center**  
**Boulder, Colo.**  
**Omni Hotels Classic**

Official Basketball Box Score -- Game Totals -- Final Statistics

San Diego State vs Auburn

11-23-12 5 p.m. MT at Boulder, Colo. (Coors Events Center)

VISITORS: San Diego State (3-1)

#	Player	fg-fga	3fg-fga	ft-fa	rebounds		pf	tp	a	to	blk	s	min
					of	de							
22	CLARK, Gabrielle*	3-6	1-3	2-2	0	0	0	3	9	3	0	1	0 30
25	AMARIKWA, Erimma*	1-7	0-0	2-4	2	4	6	2	4	1	3	1	2 35
42	NAHINU, Malia*	5-8	0-1	2-3	3	5	8	5	12	0	3	1	1 28
01	HOPKINS, Chelsea*	4-7	3-3	3-3	2	7	9	2	14	7	0	0	1 36
54	CLEMENTS, Courtney*	10-23	6-13	0-0	1	4	5	3	26	1	4	0	3 38
02	HUNTER, Khristina	1-1	0-0	2-2	1	0	1	3	4	0	1	0	0 6
04	NOVAK, Niki	0-0	0-0	0-0	0	0	0	0	0	0	0	0	0 0+
05	CULBERSON, Chairese	0-0	0-0	0-0	0	0	0	0	0	0	0	1	0 2
11	HARVEY, Ahijalee	2-5	1-4	0-0	0	0	0	3	5	2	2	0	1 10
12	SCURRY, Deajonae	2-3	0-1	0-0	0	3	3	4	0	2	0	0	1 15
TEAM						2	2	4					
Totals.....		28-60	11-25	11-14	11	25	36	24	78	14	16	3	8 200

HOME: Auburn (3-2)

#	Player	fg-fga	3fg-fga	ft-fa	rebounds		pf	tp	a	to	blk	s	min
					of	de							
32	Tyrese Tanner*	6-14	0-1	5-5	0	4	4	3	17	0	4	0	3 29
34	Peyton Davis*	0-4	0-0	1-2	0	2	2	3	1	0	2	0	1 24
00	Hasina Muhammad*	2-12	0-0	6-10	3	3	6	0	10	3	2	1	1 28
03	Najat Ouardad*	1-3	0-2	2-2	1	5	6	1	4	4	0	0	0 29
14	Blanche Alverson*	2-9	1-3	2-2	2	2	4	0	7	3	1	0	1 38
04	Sweeting, Cedricka*	0-0	0-0	0-0	0	0	0	0	0	0	0	0	0 7
11	Courtney Strain*	2-3	1-1	0-0	0	0	0	2	5	0	1	0	0 16
20	Pascale West*	0-0	0-0	0-0	0	0	0	0	0	0	0	0	0 1
21	Clay, Chadarryl*	0-0	0-0	0-0	1	0	1	1	0	0	0	0	0 5
22	Julie King*	0-0	0-0	0-0	0	0	0	0	0	0	0	0	0 1
35	Capers, Cabriana*	0-0	0-0	0-2	0	0	0	0	0	0	0	0	0 1
44	Tanner, Tra'cee*	4-10	0-0	5-6	5	3	8	4	13	0	0	0	1 21
TEAM						5	3	8					
Totals.....		17-55	2-7	21-29	17	22	39	14	57	10	17	1	7 198

Officials: Robert Scofield, Karen Lasuik, Mazetta Garrett

Technical fouls: San Diego State-None. Auburn-None.

Attendance: 1245

Score by Periods	1st	2nd	Total
San Diego State	29	49	78
Auburn	24	33	57

26th Annual Omni Hotels Classic First Round

BOULDER, Colo. - Auburn got down early and overcame a double-digit deficit to tie the game in the second half, but could not hold off a late San Diego State run as the Tigers dropped a 78-57 decision to the Aztecs Nov. 23 in the first round of the Omni Hotels Classic in Boulder, Colo.

Auburn's Tanner sisters led the way for the Tigers. Junior Tyrese Tanner was the top scorer with 17 points, along with four rebounds and three steals, while Tra'cee Tanner followed with 13 points and a team-high eight rebounds off the bench. Hasina Muhammad rounded out the double-digit scorers with 10.

Auburn got down early against the Aztecs, trailing by as many as 15 points in the first half after San Diego State took a 24-9 lead. The Tigers rallied back, however, out-scoring the Aztecs 15-5 to close out the period and holding SDSU scoreless for the last 4:06. Tra'cee Tanner scored six of seven first-half points in the run.

The Tigers kept the momentum rolling into the second half and tied the game up at 36-36 with 15:05 to play after a 3-pointer from Courtney Strain. That would be the final run, though as San Diego State scored the next seven points and out-scored Auburn 42-21 the rest of the game.

## 2012-13 Season Statistics

**2012-13 Auburn Women's Basketball**  
**Auburn Combined Team Statistics (as of Nov 23, 2012)**  
**All games**

RECORD:	OVERALL	HOME	AWAY	NEUTRAL
ALL GAMES	3-2	2-0	0-1	1-1
CONFERENCE	0-0	0-0	0-0	0-0
NON-CONFERENCE	3-2	2-0	0-1	1-1

#	Player	gp-gs	min	avg	Total		3-Point		F-Throw		Rebounds				pf	dq	a	to	blk	stl	pts	avg
					fg-fga	fg%	3fg-fga	3fg%	ft-fga	ft%	off	def	tot	avg								
00	Hasina Muhammad	5-3	123	24.6	31-77	.403	3-9	.333	13-20	.650	12	13	25	5.0	8	0	9	7	3	8	78	15.6
32	Tyrese Tanner	5-5	139	27.8	27-68	.397	2-11	.182	20-25	.800	14	14	28	5.6	10	1	9	7	4	9	76	15.2
14	Blanche Alverson	5-5	153	30.6	22-49	.449	8-20	.400	6-6	1.000	9	21	30	6.0	4	0	12	11	6	10	58	11.6
34	Peyton Davis	5-5	112	22.4	12-25	.480	0-0	.000	9-16	.563	10	13	23	4.6	12	1	2	6	2	5	33	6.6
03	Najat Ouardad	5-5	134	26.8	10-26	.385	5-13	.385	5-8	.625	4	17	21	4.2	5	0	23	16	0	11	30	6.0
05	Chadarryl Clay	4-0	33	8.3	7-11	.636	3-7	.429	5-5	1.000	2	2	4	1.0	3	0	8	4	0	1	22	5.5
23	Tra'cee Tanner	5-0	79	15.8	9-22	.409	0-0	.000	7-9	.778	9	9	18	3.6	11	0	2	2	1	3	25	5.0
11	Courtney Strain	5-2	79	15.8	9-26	.346	2-8	.250	3-4	.750	2	3	5	1.0	6	0	3	5	0	3	23	4.6
25	Cedricka Sweeting	5-0	51	10.2	6-10	.600	1-4	.250	0-0	.000	1	4	5	1.0	1	0	8	2	0	2	13	2.6
20	Pascale West	4-0	33	8.3	4-8	.500	0-0	.000	0-0	.000	1	2	3	0.8	5	0	0	2	2	2	8	2.0
50	Cabriana Capers	5-0	34	6.8	2-5	.400	0-0	.000	0-2	.000	6	9	15	3.0	1	0	1	3	0	0	4	0.8
22	Julie King	5-0	30	6.0	1-4	.250	0-0	.000	0-1	.000	0	4	4	0.8	2	0	8	3	2	3	2	0.4
Team											13	13	26					3				
Total.....		5	1000		140-331	.423	24-72	.333	68-96	.708	83	124	207	41.4	68	2	85	71	20	57	372	74.4
Opponents.....		5	1000		107-288	.372	40-123	.325	37-56	.661	65	121	186	37.2	83	-	65	111	10	35	291	58.2

TEAM STATISTICS	AU	OPP
SCORING	372	291
Points per game	74.4	58.2
Scoring margin	+16.2	-
FIELD GOALS-ATT	140-331	107-288
Field goal pct	.423	.372
3 POINT FG-ATT	24-72	40-123
3-point FG pct	.333	.325
3-pt FG made per game	4.8	8.0
FREE THROWS-ATT	68-96	37-56
Free throw pct	.708	.661
F-Throws made per game	13.6	7.4
REBOUNDS	207	186
Rebounds per game	41.4	37.2
Rebounding margin	+4.2	-
ASSISTS	85	65
Assists per game	17.0	13.0
TURNOVERS	71	111
Turnovers per game	14.2	22.2
Turnover margin	+8.0	-
Assist/turnover ratio	1.2	0.6
STEALS	57	35
Steals per game	11.4	7.0
BLOCKS	20	10
Blocks per game	4.0	2.0
ATTENDANCE	5279	4940
Home games-Avg/Game	2-2640	1-1586
Neutral site-Avg/Game	-	2-1677

Date	Opponent		Score	Att.
+ 11-09-12	vs Maine	W	71-41	2109
+ 11-10-12	at NC State	L	71-85	1586
11-15-12	ALABAMA STATE	W	80-43	3511
11-18-12	ALABAMA A&M	W	93-44	1768
& 11-23-12	vs San Diego State	L	57-78	1245
+ - Sheraton Raleigh Wolfpack Invitational (Raleigh, N.C.)				
& - Omni Hotels Classic (Boulder, Colo.)				
* - Southeastern Conference game				

Score by Periods	1st	2nd	Totals
Auburn	181	191	372
Opponents	132	159	291