



2011-12 Auburn Women's Basketball

Game 10 • December 21, 2011

vs. Marist • New York Life Holiday Invitational hosted by Hofstra

18 NCAA Tournament Appearances • Three Final Fours • Five SEC Titles • Four SEC Tournament Titles

AUBURN MEDIA RELATIONS

Associate Director/WBB Contact: Matt Crouch • mcrouch@auburn.edu

Auburn Athletic Complex / 392 South Donahue / Auburn, AL 36849

O: 334.844.9800 • C: 334.740.4109 • F: 334.844.9807

www.AuburnTigers.com

Twitter: @AuburnWBB • Facebook: facebook.com/AUWBB

2011-12 SCHEDULE/RESULTS

OCTOBER		
30	Georgia College	W, 85-25
NOVEMBER		
11	at Mercer	W, 77-43
15	Belmont	W, 80-53
18	at #6 Duke	L, 50-73
23	George Washington	W, 55-47
27	South Carolina-Upstate	W, 75-34
30	Troy	W, 74-47
DECEMBER		
3	at Temple	L, 57-73
14	South Florida	W, 62-45
18	#22 Purdue	L, 54-62
21	1-vs. Marist	1:30 p.m.
22	1-vs. Hofstra or Central Conn. St.	TBA
29	2-vs. North Carolina-Charlotte	7 p.m.
30	2-vs. FIU or Albany	3 or 5 p.m.
JANUARY		
1	Tennessee* (CSS)	2 p.m.
5	at Alabama*	6:30 p.m.
8	Georgia* (CSS)	1 p.m.
12	at Vanderbilt* (CSS)	8 p.m.
15	at Arkansas* (FSN)	1:30 p.m.
19	South Carolina*	6 p.m.
22	at Mississippi State*	2 p.m.
26	Kentucky*	6 p.m.
29	at Ole Miss* (FSN)	1 p.m.
FEBRUARY		
2	Vanderbilt*	6 p.m.
5	at Tennessee* (SECN)	1 p.m.
9	at Florida*	6 p.m.
12	Arkansas* (ESPN2)	1:30 p.m.
19	at LSU*	2 p.m.
23	Alabama* (CSS)	8 p.m.
26	Ole Miss* (FSN)	2:30 p.m.
MARCH		
1-4	Southeastern Conference Tournament Nashville, Tenn. • Bridgestone Arena	
17-20	NCAA Tournament First and Second Rounds	
24-27	NCAA Tournament Regionals	
APRIL		
1-3	NCAA Tournament Final Four Denver, Colo. • Pepsi Center	

* - SEC Game

All Times are Central

1 - Hofstra Holiday Classic (Hempstead, N.Y.)

2 - Sun and Fun Classic (Miami, Fla.)

All home games played at Auburn Arena

Bold indicates home games

www.AuburnTigers.com



VS.



GAME 10

[NR/NR] Auburn (6-3) vs. [NR/NR] Marist (4-4)

When: Wednesday, December 21 • 1:30 p.m. CT**Where:** Mack Complex (5,045) • Hempstead, N.Y.**TV/Webcast:** GoHofstra.com**Radio:** 96.7 WMXA; Andy Burcham (play-by-play), Arnika Edwards (color)**Audio Webcast:** AuburnTigers.com**GameTracker:** GoHofstra.com**Series:** Auburn leads the series, 2-0 (1-0 at neutral sites)**Last Meeting:** Auburn def. Marist, 63-47, on Dec. 21, 2003 in Poughkeepsie, N.Y.**Last Meeting in a Tournament:** Auburn def. Marist, 94-42, on Dec. 28, 1998**Up Next:** Auburn will play either Hofstra or Central Connecticut State in the second round of the New York Life Holiday Tournament

AUBURN PROJECTED STARTERS

No.	Pos.	Name	Ht.	Year	PPG	RPG	Hometown
2	G	Morgan Jennings	5-8	Sr.	5.6	4.0	Atlanta, Ga.
4	G	Parrisha Simmons	6-0	Sr.	5.0	7.6	Macon, Ga.
14	F	Blanche Alverson	6-3	Jr.	9.6	4.7	Andalusia, Ala.
22	G	Camille Glymph	5-10	So.	10.8	2.3	Greenville, S.C.
32	G/F	Tyrese Tanner	6-1	So.	10.0	4.2	Birmingham, Ala.

OFF THE BENCH

0	G	Hasina Muhammad	6-1	Fr.	10.3	3.4	Memphis, Tenn.
3	G	Najat Ouardad	5-1	Jr.	3.4	(avg) 3.6	Orleans, France
11	G	Courtney Strain	5-9	So.	0.0	0.5	Woodland, Ala.
20	C	Pascale West	6-8	Jr.	0.5	1.4	LaGrange, Ga.
23	F	Chantel Hilliard	6-2	Sr.	4.8	4.4	Biloxi, Miss.
25	F	Jassany Williams	6-2	So.	5.0	3.9	Davie, Fla.
34	C	Peyton Davis	6-5	So.	0.0	2.3	Pinson, Ala.

Head Coach: Nell Fortner / Associate Head Coach: Kerry Cremeans / Assistant Coaches: Mark Simons and Carla McGhee

MARIST PROJECTED STARTERS

No.	Pos.	Name	Ht.	Year	PPG	RPG	Hometown
11	G	Leanne Ockenden	5-10	So.	7.9	3.6	Syracuse, N.Y.
14	G	Casey Dulin	5-10	So.	6.8	2.1	Milford, Conn.
24	G	Corielle Yarde	5-8	Sr.	14.3	6.6	Reading, Pa.
33	F	Kristina Danella	6-1	R-Jr.	6.0	4.6	Manalapan, N.J.
34	F	Brandy Gang	6-2	Sr.	10.3	3.9	Hartville, Ohio

Head Coach: Brian Giorgis / Assistant Coaches: Megan Gebbia, Alisa Kresge and Erin Leger

Media Information

The Auburn media relations department considers its work with the media a top priority. The 2011-12 Auburn Women's Basketball Almanac has been prepared to assist the working media in their coverage of Tiger basketball. If you have not received a copy, or if you need additional information, interview or photograph requests, or have any questions, please contact Matt Crouch in the media relations office at 334.844.9709.

Interview Policy

Coach Fortner, her assistants and all women's basketball players are available for phone and personal interviews by contacting Matt Crouch in the media relations office. Post-game interviews will be allowed following a 10-minute cooling off period. Non-game day requests will be met based on the players class and practice schedules.

Credentials

Anyone wishing to cover an Auburn women's basketball game should contact Matt Crouch in the media relations office at least one day in advance in order to make the proper arrangements.

On the Air

The Tigers can be heard live locally in Auburn on Mix 96.7 FM for the entire regular and postseasons. Andy Burcham, in his 24th season with the women's basketball program and handles play-by-play duties. Arnika Edwards joins Burcham for her fifth season and provides color commentary. Each game can also be heard live on the internet at www.AuburnTigers.com.

Weekly Live Radio Show

Starting in January, every Tuesday at 6 p.m. CT Nell Fortner will host a live show from Logan's Roadhouse in Tiger Town with Andy Burcham. Fans can listen to the show on 96.7 FM. The number to call in to the show is 1-800-282-2557.

Game-Day Services

Statistics, rosters and game notes will be provided prior to the game in the media work room. Box scores will also be handed out during and following the game. Phones and fax machines are available in the media work room.

Photo/Video Services

Todd Van Emst of the Auburn Media Relations office handles all photo requests. Please contact Van Emst at 334-844-9514. Video highlights of selected Auburn women's basketball games are available for the media. For information on how to access the FTP server, contact Steve Sain in the Auburn Media Relations office at 334.844.9809.

On the Web

The home for Auburn Athletics on the web, www.AuburnTigers.com, is your source for Auburn Women's Basketball. The website offers the most recent information and news on the Tigers. At AuburnTigers.com, you can also listen to each women's basketball game broadcast live and follow along on live scoring for every home game.



Follow Auburn Women's Basketball on Twitter

@AuburnWBB



Become a fan of Auburn Women's Basketball on Facebook

www.Facebook.com/AUWBB

2011-12 Numerical Roster

No.	Name	Height	Position	Class	Hometown/High School
0	Hasina Muhammad	6-1	Guard/Forward	FR	Memphis, Tenn./Ridgeway
2	Morgan Jennings	5-8	Guard	SR	Atlanta, Ga./Frederick Douglass
3	Najat Ouardad	5-1	Guard	JR	Orleans, France/Pensacola St. College
4	Parrisha Simmons	6-0	Guard	SR	Macon, Ga./Southwest Macon
11	Courtney Strain	5-9	Guard	SO	Woodland, Ala./Woodland
14	Blanche Alverson	6-3	Forward/Guard	JR	Andalusia, Ala./Buford (Ga.)
20	Pascale "P.J." West	6-8	Center	JR	LaGrange, Ga./Troup County
22	Camille Glymph	5-10	Guard	SO	Greenville, S.C./J.L. Mann
23	Chantel Hilliard	6-2	Forward/Center	SR	Biloxi, Miss./St. Martin
25	Jassany Williams	6-2	Forward	SO	Davie, Fla./Nova
32	Tyrese Tanner	6-1	Guard/Forward	SO	Birmingham, Ala./Hoover
34	Peyton Davis	6-5	Center	SO	Pinson, Ala./Mortimer Jordan

2011-12 Alphabetical Roster

No.	Name	Height	Pos.	Ht.	Hometown
14	Blanche Alverson	6-3	Forward/Guard	JR	Andalusia, Ala./Buford (Ga.)
34	Peyton Davis	6-5	Center	SO	Pinson, Ala./Mortimer Jordan
22	Camille Glymph	5-10	Guard	SO	Greenville, S.C./J.L. Mann
23	Chantel Hilliard	6-2	Forward/Center	SR	Biloxi, Miss./St. Martin
2	Morgan Jennings	5-8	Guard	SR	Atlanta, Ga./Frederick Douglass
0	Hasina Muhammad	6-1	Guard/Forward	FR	Memphis, Tenn./Ridgeway
3	Najat Ouardad	5-1	Guard	JR	Orleans, France/Pensacola St. College
4	Parrisha Simmons	6-0	Guard	SR	Macon, Ga./Southwest Macon
11	Courtney Strain	5-9	Guard	SO	Woodland, Ala./Woodland
32	Tyrese Tanner	6-1	Guard/Forward	SO	Birmingham, Ala./Hoover
20	Pascale "P.J." West	6-8	Center	JR	LaGrange, Ga./Troup County
25	Jassany Williams	6-2	Forward	SO	Davie, Fla./Nova

STAFF:

Head Coach: Nell Fortner (Texas, 1982)

Associate Head Coach: Kerry Cremeans (Florida, 1994)

Assistant Coach: Mark Simons (Aquinas College, 1972)

Assistant Coach: Carla McGhee (Tennessee, 1990)

Director of Basketball Operations: Melissa Maines (Texas Tech, 1998)

Video Coordinator: Wes Kitchens (Auburn, 2011)

Administrative Assistant: Janese Banks (Wisconsin, 2008)

Director of Administrative Support Services: Arnika Edwards (Alabama A&M, 1991)

Athletic Trainer: Angie Lawrence (Appalachian State, 1997)

BY CLASS:

Seniors (3): Chantel Hilliard, Morgan Jennings, Parrisha Simmons

Juniors (3): Blanche Alverson, Najat Ouardad, Pascale "P.J." West

Sophomores (5): Peyton Davis, Camille Glymph, Courtney Strain, Tyrese Tanner, Jassany Williams

Freshmen (1): Hasina Muhammad

Projected Auburn Starters



Morgan Jennings

Guard
5-8
Senior
Atlanta, Ga.
Frederick Douglass High School
5.6 ppg / 4.0 apg / 4.0 rpg

2

- Leads Auburn in assists with 4.0 per game
- One of only two players to start all nine games this season
- Dished out career-high 9 assists vs. Belmont in home-opener
- Scored career high 16 points vs. Kentucky in final regular-season game



Parrisha Simmons

Guard/Forward
6-0
Senior
Macon, Ga.
Southwest Macon High School
5.0 ppg / 7.6 rpg / 1.3 spg

4

- Has started last five games after coming off the bench in the first four
- Leads Auburn in rebounding with 7.6 per game, including 4.7 orpg
- Tied her career high with 9 points against Purdue and Temple
- Pulled down career-high 16 boards vs. Purdue

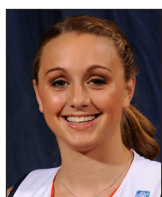


Blanche Alverson

Guard/Forward
6-3
Junior
Andalusia, Ala.
Buford (Ga.) High School
9.6 ppg / 4.7 rpg / .447 3fg%

14

- Moved into 6th all-time in career 3s at Auburn during the Purdue game
- Scored a season-high 15 points with five 3-pointers vs. Purdue
- Scored a career-high 27 points last season vs. Ole Miss
- Pulled down career-high 10 rebounds against Mercer in season-opener



Camille Glymph

Guard
5-10
Sophomore
Greenville, S.C.
J.L. High School
10.8 ppg / 2.3 rpg / 2.3 3pg

22

- Earned first career start vs. South Florida and scored career-high 23 points
- Was first AU player to eclipse 20 points in a game this season
- Leads the team in scoring with 10.8 ppg and 21 3-pointers on the season
- Has led Auburn in scoring four times this season



Tyrese Tanner

Guard/Forward
6-1
Sophomore
Hoover, Ala.
Hoover High School
10.0 ppg / 4.2 rpg / 1.1 spg

32

- Is Auburn's second-leading scorer with 10.0 points per game
- Has scored in double figures in four games this season
- Is one of two Tigers to start in all nine games so far this season
- Scored a career-high 16 points against Belmont

Auburn Women's Basketball Quick Hitters

- Auburn is playing in the first of two regular-season tournaments it will participate in this season
- Auburn has a 22-9 record under Nell Fortner in regular-season tournaments and have won eight tournament titles
- Senior Chantel Hilliard earned her degree in political science from Auburn on Dec. 12
- Jassany Williams (2.3 bpg) ranks 35th in the nation in blocks
- Senior Parrisha Simmons pulled down 16 rebounds against Purdue, the most for an AU player in almost two years
- Auburn is 6-3 through nine games; the team's best start since the 2008-09 season
- Auburn picked up its 800th win in program history on Nov. 15 against Belmont, 80-53
- Blanche Alverson moved into sixth all-time at Auburn in career 3-pointers in the Purdue game
- Marist is coming off a 67-56 loss at St. Bonaventure; Auburn is coming off a 62-54 loss to No. 22 Purdue
- The Tigers used their fourth different starting lineup against South Florida, nine different Tigers have started this season
- The Tigers lead the all-time series with Marist, 2-0
- Auburn won the last meeting over Marist, 63-47, on Dec. 21, 2003 in Poughkeepsie, N.Y.
- Auburn is 6-0 all-time against teams from the Metro Atlantic Athletic Conference
- This will be the first meeting between Nell Fortner and Marist's Brian Giorgis
- Auburn is 8-3 all-time on Dec. 21 and 197-53 all-time in the month of December, 38-11 under Fortner
- The Tigers are 21-0 all-time when playing a team from the State of New York
- Auburn is 8-0 when playing in the Empire State
- Auburn is 89-2 under Nell Fortner when scoring 70 or more points in a game
- Nell Fortner has guided Auburn to a 85-37 record in non-conference games
- Auburn's bench has out-scored the opponent in two games this season
- Auburn's defense has averaged scoring 19.9 points off turnovers in the nine games this season
- The Tiger bench has stepped up, averaging 25.8 points per game this season
- When facing non-conference opponents at home, Auburn has a 134-10 record since Jan. 5, 1992
- The Tigers return three starters from last season, along with seven players who saw time as a starter a year ago
- Auburn was picked ninth in the SEC Preseason Media and Coaches polls, Tennessee was picked to win the league
- Nell Fortner is in her eighth season at Auburn, marking her longest tenure at any job
- The Tigers welcome two newcomers: junior college transfer Najat Ouardad and freshman Hasina Muhammad
- Auburn is coming off a 16-16 season in 2010-11, one that ended with a berth in the WNIT
- The Tigers have advanced to the post-season in four of the last five seasons
- Auburn signed four players during the Early Signing Period: Cabriana Capers (6-1, F, Bolingbrook, Ill.), Chadarryl Clay (5-7, G, Chattanooga, Tenn.), Nicole Tanner (6-3, F, Hoover, Ala.) and Nariah Taylor (6-5, P, Indianapolis, Ind.)

INDIVIDUAL CATEGORY LEADERS

Auburn		Marist
Camille Glymph - 10.8.....	Points.....	Corielle Yarde - 14.3
Parrisha Simmons - 7.6.....	Rebounds.....	Corielle Yarde - 6.6
Morgan Jennings - 4.0.....	Assists.....	Corielle Yarde - 4.3
Najat Ouardad - 1.9.....	Steals.....	Corielle Yarde - 2.3
Jassany Williams - 2.3.....	Blocks.....	Corielle Yarde - 1.4
Morgan Jennings - 26.6.....	Minutes Played.....	Corielle Yarde - 34.4
Jassany Williams - .528.....	Field Goal Percentage.....	Leanne Ockenden - .440
Hasina Muhammad - .583.....	3-Point Percentage.....	Kristina Danella - .462
Camille Glymph - .909.....	Free-Throw Percentage.....	Kristina Danella - .941

AUBURN WOMEN'S BASKETBALL WEEKLY SCHEDULE

	Monday 19	Tuesday 20	Wednesday 21	Thursday 22	Friday 23	Saturday 24	Sunday 25
Dec. 16 through Dec. 22	Travel to New York Practice 6:45 - 8:45 p.m. CT Hempstead, N.Y.	Practice 8 - 10 a.m. CT Hempstead, N.Y.	Auburn vs. Marist 1:30 p.m. CT Mack Complex	Auburn vs. TBA TBA Mack Complex	OFF	OFF	OFF

General Information

School	Auburn University
City / Zip	Auburn, Ala. / 36831
Founded	Oct. 1, 1856
Enrollment	24,602
Nickname	Tigers
Colors	Burnt Orange and Navy Blue
Home Court (Capacity)	Auburn Arena (9,121)
Affiliation	NCAA Division I
Conference	Southeastern Conference
President	Dr. Jay Gogue
Athletic Director	Jay Jacobs
Senior Women's Administrator	Meredith Jenkins
University Website	www.Auburn.edu

Team Information

2010-11 Record (SEC Record)	16-16 (8-8)
SEC Finish / Tournament Finish	T5th / First Round
All-time SEC Record	187-157 (.544)
All-time SEC Tournament Record	34-28
Starters Returning/Lost	3/2
Letterwinners Returning/Lost	10/3
Newcomers	2
First Year of Basketball	1971
All-Time Overall Record	804-364 (.688)
NCAA Tournament Appearances/Last	18/2009
NCAA Tournament Record	29-18
WNIT Appearances/Last	3/2011
WNIT Record	8-2

Basketball Staff

Head Coach (Alma Mater)	Nell Fortner (Texas, 1982)
Career Record	155-103 (.601) / 9 years
Record at Auburn	138-92 (.600) / 8 years
Associate Head Coach (Alma Mater)	Kerry Cremeans (Florida, 1994)
Assistant Coaches (Alma Mater)	Mark Simons (Aquinas College, 1972) Carla McGhee (Tennessee, 1990)
Director of Basketball Operations	Melissa Maines
Director of Administrative Support Services	Arnika Edwards
Administrative Assistant	Janese Banks
Video Coordinator	Wes Kitchens
Secretary	Ann Yates
Basketball Office Phone	(334) 844-9200
Basketball Office Fax	(334) 844-9862
Strength and Conditioning	Megan Young
Athletic Trainer	Angie Lawrence
Academic Counselor	Jenna Sample

Radio Broadcast Information

Radio Station	WMTX (96.7 FM)
Play-by-Play	Andy Burcham
Color	Arnika Edwards
Burcham Email	aburcham@auburnnetwork.com
Burcham Office Phone	(334) 826-2929
Network Address	Auburn Network, Inc. P.O. Box 950 Auburn, AL 36831-0950

TOURNAMENT INFORMATION

For more information on the New York Life Holiday Tournament hosted by Hofstra, access Hofstra's Web site at www.GoHofstra.com. The Pride are hosting the tournament for the first time since the 1982-83 season.

Games will be Webcast on GoHofstra.com and a tape-delayed broadcast will be available on Verizon FiOS1 TV.

The press row number at Hofstra's Mack Complex is 516.463.7725.

MARIST MEDIA RELATIONS

For information on the Marist Red Fox women's basketball team, contact Brendan Thomas in the media relations office. His number is 207.400.2840 and his email is brendan.thomas1@marist.edu.

For more information, go to www.GoRedFoxes.com.

OFFICIALS

TBA

RANKINGS

Auburn and Marist are not ranked.

NEXT UP FOR THE TIGERS

Auburn will play either Hofstra or Central Connecticut State in the second round of the New York Life Holiday Tournament on Thursday. The consolation game starts at 11 a.m. CT while the championship game is set for 1:30 p.m. CT.

AUBURN'S POST-GAME PROCEDURE

The Auburn locker room is closed. Coach Nell Fortner and selected Tiger players will be brought to the interview room after the 10-minute "cooling off" period.

QUICK HITS

Auburn is in its 41st season of women's basketball and sports an all-time record of 804-364... AU has made 18 NCAA Tournament appearances, three WNIT appearances and three Final Fours in the program's history... Head Coach Nell Fortner is in her eighth season at Auburn with a 155-103 career record and a 138-92 record on the Plains... The Tigers are coming off a 16-16 season in 2011 with an appearance in the second round of the WNIT.

800 AND COUNTING

Auburn picked up its 800th program victory Nov. 15, defeating Belmont 80-53. Of the 800 wins, Auburn head coach Nell Fortner had coached the Tigers to 134 of them.

By reaching 800, the Tigers became the 14th team in NCAA Division I history to reach the 800-win plateau.

TOURNAMENT TIME WITH FORTNER

Auburn has a 22-9 record under head coach Nell Fortner when playing in regular-season tournaments. Since becoming the Tigers' head coach, she has led the team to eight regular-season tournament titles.

AUBURN-MARIST SERIES

This will be the third meeting between Auburn and Marist with the the Tigers leading 2-0. Auburn won the last meeting at Marist, 63-47, on Dec. 21, 2003. This will be the second meeting in a tournament as Auburn won the first meeting, 94-42, on Dec. 28, 1998 at the Nationwide Cavalier Classic in Charlottesville, Va.

Previous meetings against Marist:

Dec. 28, 1998	W	94-42	Charlottesville, Va.
Dec. 21, 2003	W	63-47	Poughkeepsie, N.Y.

SCOUTING MARIST

Marist enters the Invitational at 4-4 after dropping their last two games. The Red Foxes are led by senior guard Corielle Yarde in every statistical category. Through eight games, Yarde is averaging 14.3 points per game, 6.6 rebounds per game, 4.3 assists, 2.3 steals and 1.4 blocks per game.

The Rex Foxes return 10 letterwinners and two starters from last season's team that went 31-3 and advanced to the second round of the NCAA Tournament. Marist has struggled so far this season, though, with losses to Villanova, Princeton, Boston University and St. Bonaventure. The Rex Foxes are winless in road games this season, but are 2-0 so far in games on neutral courts.

Statistical Comparison - Auburn vs. Marist

Coefficient:	Auburn	Marist
Career Record:	Nell Fortner	Sharon Versyp
Top Scorer:	155-103	229-69
Top Rebounder:	Glymph (10.8)	Yarde (14.3)
	Simmons (7.6)	Yarde (6.6)
Series Record:	Auburn leads, 2-0	
- at Auburn	N/A	
- at Poughkeepsie, N.Y.	Auburn leads, 1-0	
- at Neutral	Auburn leads, 1-0	
- Overall Streak	Auburn has won the two previous games	
Record	6-3	4-4
Conference Record	--	--
Points Per Game	64.9	54.8
Scoring Margin	+11.9	-2.1
FG Percentage	.402	.357
Opp. FG %	.355	.352
3FG Percentage	.369	.262
Opp. 3FG %	.252	.325
Rebounds	42.1	35.2
Opp. Rebounds	33.8	40.2
Rebound Margin	+8.3	-5.0
Turnovers	18.0	14.5
Opp. Turnovers	18.9	14.6
Steals	10.1	8.3
Opp. Steals	9.6	7.1
Blocks	6.7	4.0
Opp. Blocks	1.2	2.6

Around the SEC (Through Games of Dec. 19, 2011)

	SEC	Pct.	Overall	Pct.
Kentucky	0-0	.000	10-1	.909
Vanderbilt	0-0	.000	10-1	.909
Arkansas	0-0	.000	9-1	.900
Mississippi State	0-0	.000	9-2	.818
South Carolina	0-0	.000	9-2	.818
Georgia	0-0	.000	8-2	.800
Tennessee	0-0	.000	7-2	.778
Ole Miss	0-0	.000	10-3	.769
Florida	0-0	.000	7-3	.700
LSU	0-0	.000	7-3	.700
Alabama	0-0	.000	9-4	.692
Auburn	0-0	.000	6-3	.667

This Week in the SEC

Monday, December 19

Presbyterian at Alabama (WVUA-TD)	Alabama, 65-47
Murray State at Ole Miss	Ole Miss, 64-59
Georgia vs. Gonzaga	Gonzaga, 71-68
Louisiana-Lafayette at Mississippi State	MSU, 72-38
Morgan State at Arkansas	Arkansas, 81-50

Tuesday, December 20

Georgia vs. Montana State	5:30 p.m.
Charleston Southern at Florida	6 p.m.
Tennessee at Stanford (CSN)	9 p.m.

Wednesday, December 21

Savannah State at South Carolina	11 a.m.
Cleveland State at Ole Miss	1 p.m.
Auburn vs. Marist	1:30 p.m.
Texas Southern at Arkansas	6 p.m.
TBD at Florida	6 p.m.
Samford at Kentucky	6 p.m.

SCOUTING AUBURN

Auburn is off to its best start since the 2008-09 season, posting a 6-3 slate through the first nine games. Head coach Nell Fortner has utilized the team's depth so far this season with four different starting lineups and nine different players seeing time as a starter.

Two of the Tigers' three losses this season have come on the road, first at No. 8 Duke and again at Temple. Auburn suffered its first home loss on Sunday, falling to Purdue. But, Auburn's six wins have come at an average margin of 24.0 points per game.

Through nine games in 2011-12, sophomore Camille Glymph is leading the team in scoring with 10.8 points per game and is coming off a career-high 23 points against South Florida. Joining her in double figures is fellow sophomore Tyrese Tanner with 10.0 points per game and freshman Hasina Muhammad with 10.3 points per game. Four other Tigers are averaging more than 5.0 points per game, led by Blanche Alverson with 9.6 points per game. Senior Parrisha Simmons leads the team in rebounding with 7.6 boards per game and is coming off a career-high 16 rebounds against Purdue.

LAST TIME OUT FOR AUBURN

The Auburn women's basketball team suffered a 62-54 loss to No. 22 Purdue Dec. 18 at Auburn Arena. Auburn trailed by as many as 12 points before cutting it to four in the final minutes, but ran out of time. The Tigers fell to 6-3, while the Boilermakers improved to 8-3.

The Tigers shot just 30.2 percent from the floor, but went 8-of-17 from beyond the arc. Junior Blanche Alverson's season-high 15 points all came from 3-point range, as did nine of freshman Hasina Muhammad's 17 points. Alverson's five 3-pointers tied her career high and moved her past former Tiger Carolyn Jones (1988-91) for sixth all-time at Auburn in career 3-pointers with 107.

Purdue's Alex Guyton came off the bench to finish with a career-high 19 points. Brittany Rayburn added 15 points in the win.

Auburn led 21-20 at halftime, but the Boilermakers scored the first four points of the period to re-take the lead, one they would not give up the rest of the game.

A 3-pointer by Alverson with 16:34 left in the game cut the Purdue lead to one, but that would be the last Auburn field goal for almost 10 minutes as the Boilermakers pulled away for a 12-point lead with 7:04 to go. Alverson ended the drought with a trey at the 6:49 mark, cutting the Purdue lead back to single digits.

The Tigers would cut the Boilermaker lead to as few as four points with 4:41 left in the game, but Purdue was able to hold on to the lead for the 62-54 final score.

LAST TIME OUT FOR MARIST

Brandy Gang scored a team-high 18 points, on 8-of-14 shooting, as the Marist women's basketball team shot 42% as a team, but it was not enough as they lost to St. Bonaventure 67-56 Sunday afternoon.

Corielly Yarde was the only other Red Fox in double figures, scoring 12 points and adding five rebounds and a team-high six assists. Leanne Ockenden had eight points and Kelsey Beynon contributed seven points, four rebounds and a career-high three assists while

coming off the bench. Sophomore Casey Dulin made the first start of her career and had five points. Marist had seven blocks as a team as Yarde, Gang and Emily Stallings each had two.

Marist came from behind and led 27-26 at halftime. St. Bonaventure hit a 3-pointer to open the second half and the Rex Foxes never led again. St. Bonaventure pulled away late thanks to free throws for the 67-56 win.

LAST TIME VS. MARIST

The Tigers last faced Marist on Dec. 21, 2003, in Poughkeepsie, N.Y., picking up a 63-47 win. Despite shooting just 33.9 percent from the floor, Auburn had three players in double figures in the victory, including two double-doubles. LeCoe Willingham led the Tigers with 16 points and 11 rebounds, while Mandisa Stevenson added 11 points and 11 rebounds. Nicole Loudon tallied 13 points.

FORTNER VS. GIORGIS

This will be the first time that Auburn's Nell Fortner and Marist's Brian Giorgis will face each other.

Fortner is in her eighth season at Auburn and holds a 138-92 record on The Plains. Giorgis is in his 10th season at Marist and holds a 229-69 record.

VS. THE METRO ATLANTIC ATHLETIC CONFERENCE

Auburn is 6-0 all-time against current members of the Metro Atlantic Athletic Conference. Auburn's last meeting with a MAAC team came in 2003 when the Tigers defeated Marist, 63-47.

ON THIS DATE. . .

Auburn is 8-3 all-time when playing on Dec. 21. Nell Fortner is 4-0 on Dec. 21. The Tigers are 7-2 when playing on the road on Dec. 21 with the last time being a 67-63 win over Chicago State last season.

IN DECEMBER

Auburn is 197-53 all-time in the month of December, including a 38-11 mark under Nell Fortner (records begin in 1978-79 season, not all dates provided prior to or during that season).

AGAINST THE EMPIRE STATE

Auburn has a 21-0 record all-time when playing teams from the State of New York. Auburn's record against teams from the Empire State: Army (1-0), Buffalo (2-0), Colgate (1-0), Fordham (4-0), Iona (2-0), Manhattan (1-0), Marist (2-0), Niagara (1-0), Queens (1-0), St. Bonaventure (1-0) and Syracuse (5-0).

WHEN PLAYING IN NEW YORK

Auburn is 8-0 while playing in the State of New York. The last time the Tigers were in New York was a 70-41 win at Buffalo on Nov. 22, 2005. Nell Fortner has a 2-0 record when coaching the Tigers in New York.

Associated Press Top-25 Poll**Week 6 (Dec. 19)**

Rank	School	Record	Points	Pvs
1	Baylor (40)	11-0	1,000	1
2	Connecticut	9-1	944	2
3	Notre Dame	10-1	926	3
4	Stanford	7-1	878	4
5	Maryland	11-0	825	5
6	Tennessee	7-2	802	6
7	Miami (Fla.)	9-1	758	7
8	Kentucky	10-1	692	8
9	Duke	7-2	657	9
10	Texas A&M	8-2	613	10
11	Ohio State	11-0	585	12
12	Rutgers	10-2	546	11
13	Georgia	8-1	500	13
14	Louisville	10-2	483	14
15	Texas Tech	9-0	476	15
16	Penn State	9-2	390	16
17	Georgetown	9-2	363	17
18	Wisconsin-Green Bay	8-0	300	19
19	Delaware	8-0	259	21
20	Purdue	8-3	213	22
21	DePaul	10-2	204	23
22	Texas	8-2	162	24
23	North Carolina	7-2	114	18
24	Nebraska	10-1	110	25
25	Vanderbilt	10-1	103	20

Others Receiving Votes: Virginia 26, California 19, **LSU 15**, **South Carolina 10**, **Arkansas 6**, Northwestern 5, Georgia Tech 3, Gonzaga 3, Southern California 3, Brigham Young 2, Michigan 2, Kansas 1, St. Bonaventure 1, Tulane 1.

USA Today / ESPN Top-25 Coaches Poll**Week 5 (Dec. 13)**

Rank	School	Record	Points	Pvs
1	Baylor (29)	10-0	773	1
2	Connecticut (2)	9-0	745	2
3	Notre Dame	9-1	713	3
4	Stanford	6-1	679	4
5	Maryland	11-0	639	6
6	Tennessee	5-2	590	8
7	Kentucky	10-0	582	10
8	Miami (Fla.)	8-1	560	9
9	Duke	7-2	524	5
10	Texas A&M	7-2	516	7
11	Rutgers	9-1	463	11
12	Georgia	8-1	429	12
13	Louisville	8-2	389	13
14	Ohio State	8-0	348	15
15	Wisconsin-Green Bay	8-0	321	16
16	North Carolina	7-1	285	17
17	Penn State	8-2	259	18
18	Vanderbilt	10-0	255	19
19	Georgetown	9-2	226	20
20	Texas Tech	8-0	179	22
21	DePaul	8-2	148	21
22	Purdue	7-3	131	14
23	Delaware	8-0	115	25
24	Texas	6-2	109	24
25	Gonzaga	7-2	28	NR

Others Receiving Votes: Nebraska 19, Georgia Tech 16, Kansas 12, Michigan 6, California 5, Oklahoma 4, Southern California 2, West Virginia 2, Duquesne 2, Villanova 1.

Bold denotes 2011-12 opponents

THE GRADUATE

Auburn senior Chantel Hilliard got a step up on the next phase of her life on Dec. 12 as she graduated from Auburn with a degree in political science.

OFF AND RUNNING

Auburn is off to a 6-3 start on the season, the team's best start through nine games since it was 9-0 during the 2008-09 season.

HOME COOKIN'

Since a 77-70 loss to Virginia on Jan. 5, 1992, the Auburn Tigers have compiled a 134-11 record against non-conference opponents when playing at home.

GOING TO THE BENCH

Auburn's bench has stepped up this season, scoring 232 points in the nine games, averaging 25.8 points per game. In two games alone, the Auburn bench has out-scored the opponent (35-34 vs. USC-Upstate and 48-47 against Troy).

Blanche Alverson led Auburn off the bench at Mercer, scoring 12 points, while Camille Glymph led the Tigers off the bench vs. Belmont, leading the way with 18 points, and again at Duke with 12 points. Parrisha Simmons came off the bench for seven points vs. George Washington and Alverson again came off the bench for a team-best 14 points vs. USC-Upstate. Against Troy, freshman Hasina Muhammad came off the bench for a career-high 19 points. Glymph again led the Tigers off the bench at Temple with 12 points. Muhammad led the Tigers off the bench against Purdue with 17 points.

DEPTH PROVIDES BOOST

Auburn has banked off its depth so far in the 2011-12 season, utilizing nine different starters in four different starting lineups. Four different players (Blanche Alverson, Camille Glymph, Hasina Muhammad and Tyrese Tanner) have led the Tigers in scoring this season.

HOME SWEET HOME

Auburn has dominated at home this season, posting a 5-1 record in Auburn Arena while winning by an average of 19 points per game. Camille Glymph is the top performer at home with 11.5 points per game, followed by Hasina Muhammad with 10.7. Parrisha Simmons averages 9.0 rebounds per game.

CHAIRWOMAN OF THE BOARD

Senior Parrisha Simmons has dominated the boards this season, pulling down a team-high 7.6 rebounds per game. Included in that total are 16 rebounds she tallied against Purdue. It was the most rebounds in a single game for an Auburn player since Jordan Greenleaf pulled down 16 against Mississippi State on Jan. 3, 2010.

IN THE NATIONAL RANKINGS

Auburn's Jassany Williams is ranked 35th in the nation in blocks per game with 2.3 in the Dec. 19 rankings.

As a team, Auburn made the top 50 in five different categories: Scoring Defense (30th, 53.0 ppg), Rebound Margin (23rd, +8.3 rpg), 3-point Field Goal Percentage (19th, .369), Blocks Per Game (9th, 6.7 bpg) and 3-Point Field Goal Defense (20th, .252).

MOVING ON UP

Junior Blanche Alverson hit five 3-pointers against Purdue, moving her past former Tiger Carolyn Jones (1988-91) into sixth place all-time at Auburn in career 3-pointers.

She currently has 107 on her career as she moves toward Kristen Mulligan's (1992-96) 149.

BLOCK PARTY

Auburn blocked 13 shots against Troy on Nov. 30, marking the most blocked shots for the Tigers since swatting a school-record 17 against Alabama A&M on Nov. 19, 2009. It also set a new Auburn Arena record for blocked shots and was the second time this season for the Tigers to block more than 10 shots in a game.

LITTLE THIEF

Junior point guard Najat Ouardad collected five steals against Troy on Nov. 30, the most steals for an Auburn player since DeWanna Bonner picked up six against Tennessee on Jan. 25, 2009.

OFFENSE WINS GAMES

Auburn is 89-2 when scoring 70 or more points in the Nell Fortner era. The only times Auburn has lost when scoring at least 70 points was on Jan. 20, 2005 vs. No. 7 Tennessee, 71-81 and Feb. 19, 2009 at No. 18 Vanderbilt, 73-70. When scoring less than 70 points, Auburn is 49-90 during the Fortner era.

DEFENSE MAKES OFFENSE

In Auburn's first nine games of the season, the Tigers have used their defense to spark their offense. Auburn has forced 170 turnovers (18.9 per game) this season on 91 steals (10.1 per game), turning them into 19.9 points per game (179 total points).

Auburn has scored 20 or more points off turnovers in five games this season.

OUTSIDE THE LEAGUE

Nell Fortner has guided the Tigers to an 85-37 ledger in non-conference play. When playing at home, Fortner's teams have posted a 38-8 mark. The only seven non-conference losses at home came from Xavier on Dec. 2, 2005 (58-60), No. 2 Duke on Dec. 31, 2004 (61-80), No. 20 George Washington on Jan. 3, 2008 (66-68), No. 15 Texas A&M on Nov. 22, 2009 (59-79), No. 16 Florida State on Nov. 15, 2010 (61-67), No. 6 Duke on Nov. 18, 2010 (62-75), Temple on Dec. 4, 2010 (62-61) and No. 22 Purdue on Dec. 18, 2011 (62-54).

TIGERS PICKED NINTH IN PRESEASON POLL

Auburn was predicted to finish ninth in the SEC in a voting of a select panel of both SEC and national media members. Tennessee was picked to win the league with all 22 first-place votes.

The Lady Vols were followed by Georgia (228), Kentucky (212), LSU (189), Vanderbilt (172) and Florida (151) rounding out the top half of the league. Arkansas (142), South Carolina (107), Auburn (94), Alabama (55), Mississippi State (54) and Ole Miss (48) round out the bottom half.

STARTING EXPERIENCE

Auburn has seven players on its roster that had started at least one game prior to the 2011-12 season. That group of seven also combined for 123 career starts, led by Blanche Alverson with 45. Senior Parrisha Simmons has started 41 while her classmates, Chantel Hilliard and Morgan Jennings, have started 12 each.

NEW FACES

The Tigers welcome two new faces to the roster this season in Hasina Muhammad and Najat Ouardad. Muhammad is a true freshman from Memphis, Tenn., playing at Ridgeway High School. Ouardad, a native of Orleans, France, comes to Auburn from Pensacola State College.

MAKING IT HOME

Nell Fortner enters her eighth season as Auburn's head coach, marking her longest tenure at any position in her career. The longest Fortner had stayed at a job prior to Auburn came from 1990-95 while she was an assistant coach at Louisiana Tech under legendary head coach Leon Barnmore.

AUBURN SIGNS FOUR FOR 2012-13

Auburn head coach Nell Fortner has signed four players for the 2012-13 season during the Early Signing Period. They are Cabriana Capers, a 6-1 forward from Bolingbrook, Ill., Chadarryl Clay, a 5-7 guard from Chattanooga, Tenn., Nicole Tanner, a 6-3 forward from Hoover, Ala., and Nariah Taylor, a 6-5 post from Indianapolis, Ind.

Capers is rated a three-star prospect by ESPN's HoopGurlz and is rated as the No. 35 post prospect in the country. Clay is rated as the No. 77 overall player in the country and 12th-best guard in the country according to ESPN's HoopGurlz.

Tanner, the younger sister of Auburn sophomore Tyrese Tanner, is rated as one of the top five prospects in the state of Alabama and a top-100 post in the country. Taylor is ranked as the No. 14 post player in the country by ESPN's HoopGurlz. She is also ranked as the No. 88 overall player in the nation by Blue Star Basketball and 97th by the All-Star Girls Report.

TIGERS ON THE TUBE

The Auburn women's basketball team will appear on television at least nine times during the 2011-12 season as part of the Southeastern Conference Women's Basketball Television Package, the league announced Sept. 22.

The Tigers will make their first appearance on Sunday, Jan. 1

with a 2 p.m. matchup against defending SEC champion Tennessee at Auburn Arena. Auburn will then appear on CSS in back-to-back games, first on Sunday, Jan. 8 at 1 p.m. against Georgia in Auburn. The next is an 8 p.m., Thursday, Jan. 12 game at Vanderbilt.

The Tigers' will make their first appearance on FSN on Jan. 15 in the first of three Sunday afternoon appearances on the network. Auburn will travel to Arkansas for a 1:30 p.m., Jan. 15 game before returning to the network on Jan. 29 for a 1 p.m. game at Ole Miss.

Auburn's lone appearances on the SEC Network, a part of the ESPN Regional Network, will be on Feb. 5 at Tennessee. The game is set for a 1 p.m. CT tipoff. The Tigers will then host Arkansas on Feb. 12 in a 1:30 p.m. game that will air live on ESPN2.

Auburn's final appearance on CSS will come on Thursday, Feb. 23 with in-state rival Alabama coming to town for an 8 p.m. matchup. The Tigers' final regular-season TV appearance will be Sunday, Feb. 26 on FSN with Auburn hosting Ole Miss at 2:30 p.m.

Quoting Head Coach Nell Fortner

On bringing the team to New York. . .

"It gives us a great opportunity to bring the team to a place they may have never been before and may never get a chance to go again. Coming to New York City is a great experience and we will get to play against some very good teams up here."

On Marist. . .

"Marist has a great tradition and Brian Giorgis has done an excellent job with that program. They have won their conference tournament the last several years and have made some nice runs in the NCAA Tournament with those. They made it to the second round of the tournament last season and played a really close game with Duke that they lost. Marist lost some key players from that team, but that also return some very good veteran players that got that experience. It's going to be a tough test for us."

On taking the team to tournaments. . .

"Taking the team to tournaments like this is a great experience. We get to get for a few days and spend time together just as a team and it is a great bonding experience. Also, the experience of having to prepare for multiple teams and short turnarounds is invaluable and something that can really pay off in the post-season."

The Southeastern Conference**Commissioner:** Mike Slive**Founded:** 1933**Members:**

Alabama Crimson Tide
 Arkansas Lady Razorbacks
 Auburn Tigers
 Florida Gators
 Georgia Bulldogs
 Kentucky Wildcats
 LSU Tigers
 Mississippi Rebels
 Mississippi State Bulldogs
 South Carolina Gamecocks
 Tennessee Lady Volunteers
 Texas A&M Aggies (Beginning 2012-13)
 Vanderbilt Commodores

SEC Media Relations**Women's Basketball Contact:** Tommy Wilson**Address:**

2201 Richard Arrington Blvd.
 Birmingham, Ala. 35203-1103

Phone: 205.458.3000**Fax:** 205.458.3031**E-mail:** twilson@sec.org**Web site:** www.SECsports.com**SEC Women's Basketball Notes**

- The SEC has posted impressive non-conference records in the last decade. The SEC compiled a 131-49 (.728) non-conference record for the 2009-10 season.
 - Since the 1990 season, the SEC has compiled a 2914-894 (.765) record against other conferences. The league has recorded 150+ wins during eight seasons and has never recorded a non-conference winning percentage below .723.
 - SEC teams have earned appearances in 25 of 30 NCAA Final Fours, an accomplishment unmatched by any other league.
 - Overall, SEC squads have filled 34 of the 120 Final Four berths, including having two Final Four teams in 1988 (Auburn, Tennessee), 1989 (Auburn, Tennessee), 1995 (Georgia, Tennessee), 1996 (Georgia, Tennessee), 1998 (Arkansas, Tennessee), 2004 (LSU, Tennessee), 2005 (LSU, Tennessee), 2007 (LSU, Tennessee) and 2008 (LSU, Tennessee).
 - SEC teams have made 18 appearances in a nation-high 16 NCAA Championship games, winning eight NCAA Championships (Tennessee: 1987, 1989, 1991, 1996, 1997, 1998, 2007 and 2008).
 - The league also had the distinction of providing both national finalists twice in its history in 1996 (Tennessee 83, Georgia 65) and in 1989 (Tennessee 76, Auburn 60).
 - SEC teams have won 335 NCAA Tournament games against 172 losses (.661) for an average of 11.2 NCAA wins per year.
 - In addition, all 12 current members have appeared in the NCAA Tournament.
 - The SEC has paced the pack in NCAA tournament bids 21 times in its 30-year history.
 - The SEC was the first league to ever have eight teams invited to the NCAA Tournament, doing so in 1999 and 2002.
 - The SEC was also the first league to ever have seven teams invited to the NCAA Tournament and earned this honor a leading seven times (1986, 1991, 1995, 1996, 1997, 2003, 2004).
 - The SEC is one of a handful of leagues to have won three national tournament titles with eight NCAA, two WNIT and three NWIT. Along with the eight NCAA championships won by Tennessee, Arkansas (1999) and Auburn (2003) captured the current Women's NIT titles. But the first-ever SEC national title belongs to Georgia, winners of the 1981 NWIT which predates the current NCAA tournament. LSU (1985) and Kentucky (1990) each won NWIT titles. Both Arkansas (1987) and South Carolina (1979) won the WNIT as members of their previous conferences.
 - In 2003, Auburn won the WNIT title with wins over South Alabama, Florida State, Richmond, Creighton and Baylor. In 1999, the Arkansas Lady Razorbacks defeated Wisconsin 76-64 to claim the SEC's first WNIT championship.
 - In 1981, Georgia defeated Pittsburg, California and Arizona State (in OT) to capture the NWIT Championship, the first-ever national championship of any kind for the SEC in women's basketball.

SEC PRESEASON POLL (Media Vote)
(First-place votes in Parentheses)**SEC Champion**

Tennessee (22)

Order of Finish

1. Tennessee	264
2. Georgia	228
3. Kentucky	212
4. LSU	189
5. Vanderbilt	172
6. Florida	151
7. Arkansas	142
8. South Carolina	107
9. Auburn	94
10. Alabama	55
11. Mississippi State	54
12. Ole Miss	48

Player of the Year

Shekinna Stricklen, Tennessee (16); Glory Johnson, Tennessee (3); LaSondra Barrett, LSU (2); Jasmine James, Georgia (1)

All-SEC First Team

Jasmine James, Georgia
 A'dia Mathies, Kentucky
 LaSondra Barrett, LSU
 Glory Johnson, Tennessee
 Shekinna Stricklen, Tennessee

All-SEC Second Team

C'eria Ricketts, Arkansas
 Sarah Watkins, Arkansas
 Valencia McFarland, Ole Miss
 Meighan Simmons, Tennessee
 Stephanie Holzer, Vanderbilt

SEC PRESEASON POLL (Coaches' Vote)**SEC Champion**

Tennessee

Order of Finish

1. Tennessee	120
2. Kentucky	100
3. Georgia	98
4. LSU	96
5. Florida	92
6. Vanderbilt	85
7. South Carolina	62
8. Arkansas	57
9. Auburn	39
10. Alabama	29
11. Mississippi State	25
12. Ole Miss	16

Player of the Year

Shekinna Stricklen, UT (6); Glory Johnson, UT (3); A'dia Mathies, UK (1); LaSondra Barrett, LSU (1); Meighan Simmons, UT (1)

All-SEC First Team

C'eria Ricketts, Arkansas
 Jasmine James, Georgia
 A'dia Mathies, Kentucky
 LaSondra Barrett, LSU
 Glory Johnson, Tennessee
 Meighan Simmons, Tennessee
 Shekinna Stricklen, Tennessee
 Stephanie Holzer, Vanderbilt

All-SEC Second Team

Ericka Russell, Alabama
 Sarah Watkins, Arkansas
 Jasmine Hassell, Georgia
 Adrienne Webb, LSU
 Valencia McFarland, Ole Miss
 La'Keisha Sutton, South Carolina
 Teasia Walker, South Carolina
 Tiffany Clarke, Vanderbilt

MISCELLANEOUS STATISTICS

Double-Doubles	Season	Career
Blanche Alverson	1	1
Chantel Hilliard	0	1

20+ Point Games	Season	Career
Blanche Alverson	0	1
Camille Glymph	1	1

10+ Rebound Games	Season	Career
Blanche Alverson	1	1
Chantel Hilliard	0	2
Parrisha Simmons	3	4
Jassany Williams	0	1

10+ Assist Games	Season	Career
------------------	--------	--------

GAMES LED AUBURN IN . .

Scoring	Season	Career
Blanche Alverson	2	10
Camille Glymph	4	4
Chantel Hilliard	0	4
Hosina Muhammad	2	2
Tyrese Tanner	1	2

Rebounding	Season	Career
Blanche Alverson	1	10
Peyton Davis	0	1
Chantel Hilliard	1	6
Morgan Jennings	2	3
Parrisha Simmons	4	12
Tyrese Tanner	0	1
Jassany Williams	1	6

Assists	Season	Career
Blanche Alverson	0	4
Camille Glymph	1	2
Morgan Jennings	5	10
Najat Ouardad	3	3
Parrisha Simmons	0	3
Tyrese Tanner	0	1

2011-12 DOUBLE-DOUBLES

Player	Points	Other
Blanche Alverson (vs. Mercer)	14	10 (reb.)

Last Time an Auburn Team...

Scored 100 points	Auburn 119, Sam Houston State 54 (Dec. 5, 2008)
Scored 100 points in an SEC game	Auburn 102, Tennessee 96, SEC Tournament in Albany, Ga. (Mar. 6, 1987)
Scored 100 at Auburn	Auburn 119, Sam Houston State 54 (Dec. 5, 2008)
Scored 100 points and lost	Never
Scored 110 points	Auburn 119, Sam Houston State 54 (Dec. 5, 2008)
Scored 115 points	Auburn 119, Sam Houston State 54 (Dec. 5, 2008)
Scored at least 60 points in a half	62-vs. Sam Houston State (Dec. 5, 2008)
Had 25+ rebound margin	28-Auburn 55, Sam Houston State 27 (Dec. 5, 2008)
Had 20+ rebound margin	20-Auburn 51, USC-Upstate 31 in Auburn, Ala. (Nov. 27, 2011)
Attempted 35 free throws	35-vs. Florida A&M (Nov. 28, 2009)
Attempted 40 free throws	41-vs. Alabama State (Nov. 15, 2006)
Made 30 free throws	31-vs. Northwestern State (31-43) (Dec. 30, 2003)
Had 25 assists	25- vs. Alabama (Jan. 22, 2009)
Had 25 turnovers	25- vs. Purdue (Dec. 18, 2011)
Had 25 steals	25- vs. Arkansas-Little Rock (Dec. 2, 2000)
Had 15 blocks	17- vs. Alabama A&M in Auburn, Ala. (Nov. 19, 2009)
Scored 25 points or less	25- vs. Mercer (1971)
Played an overtime game	at LSU (Jan. 10, 2010)
Won an overtime game	Auburn 64, LSU 62 at Baton Rouge, La. (Jan. 10, 2010)
Lost an overtime game	Florida 71, Auburn 68 (20T) at Gainesville, Fla. (Jan. 7, 2010)
Played a double overtime game	Florida 71, Auburn 68 at Gainesville, Fla. (Jan. 7, 2010)
Played at least three overtimes	Never
Shot 70% for a half	73.9%, 17-23-vs. Alabama (Jan. 22, 2009)
Shot 60% for a game	vs. Alabama (61.8%, 34-55) (Jan. 22, 2009)
Shot less than 30% for a game	(29.7%, 19-64) at George Washington at Washington, D.C. (Dec. 15, 2010)
Shot 90% from the free throw line (minimum 10 attempts)	(10-10) vs. Mississippi State (Feb. 3, 2008)
Shot 50% from 3-point line	(5-8, 62.5%) vs. Florida in Auburn, Ala. (Jan. 6, 2011)
Shot less than 30% in a half	26.9% in the second half at Duke in Durham, N.C. (Nov. 18, 2011)
Shot less than 20% in a half	19.0% in the first half vs. LSU, (Feb. 14, 2010)
Shot 55% or better and lost	58.1%, 25-43-vs. Tennessee, (Jan. 20, 2005)
Made at least 10 3-point field goals	10-of-21 vs. Belmont in Auburn, Ala. (Nov. 15, 2011)
Failed to make a 3-point field goal	0-9 at Mercer in Macon, Ga. (Nov. 11, 2011)
Had at least 60 rebounds	61 vs. Stephen F. Austin, (Dec. 17, 2007)
Had at least 50 rebounds	51- vs. USC-Upstate in Auburn, Ala. (Nov. 27, 2011)
Scored less than 20 points in a 1st half	19 points vs. George Washington in Auburn, Ala. (Nov. 23, 2011)
Scored less than 20 points in a 2nd half	19 points at Duke in Durham, N.C. (Nov. 18, 2011)
Scored less than 50 points in a game	47 points vs. Mississippi State in SEC Tournament in Nashville, Tenn. (Mar. 3, 2011)

Last Time an Auburn Player...

Scored 40 points	41-Consweila Sparrow vs. South Alabama (Feb. 17, 1998)
Scored 35 points	35-DeWanna Bonner vs. Tennessee (Jan. 25, 2009)
Scored 30 points	32-DeWanna Bonner vs. Ole Miss (Mar. 6, 2009)
Attempted 25 field goals	25-Natasha Brackett (9-25) at LSU (Jan. 30, 2005)
Recorded a double-double	Blanche Alverson (12 pts./10 rebs.) at Mercer in Macon, Ga. (Nov. 11, 2011)
Recorded a double-double with points and assists	Morgan Toles (10 pts./10 asst.) vs. Jacksonville State in Auburn, Ala., (Dec. 30, 2010)
Recorded consecutive double-doubles	KeKe Carrier (18 pts./10 rebs) vs. Mississippi State (Jan. 3, 2010)
..... and (24 pts/12 rebs) vs. Florida in Gainesville, Fla. (Jan. 7, 2010)	
Two players recorded a double-double	DeWanna Bonner (32 pts./13 rebs) & Whitney Boddie (15 pts./10 asst.)
..... vs. Ole Miss in the SEC Tournament in North Little Rock, Ark. (March 6, 2009)	
Had a double-double at halftime	DeWanna Bonner (14 pts./10 rebs.) vs. Ole Miss (Mar. 6, 2009)
Recorded a triple-double	Whitney Boddie (24 pts./11 rebs./12 asst.) vs. Sam Houston State (Dec. 5, 2008)
Had 10 assists	10- Morgan Toles vs. Jacksonville State (Dec. 30, 2010)
Had 15 assists	18-Martha Monk vs. Alabama State (Feb. 18, 1981)
Had 10 blocks	13- Marita Payne vs. Arkansas (Feb. 3, 2005)
Had 5 blocks	7 - Jassany Williams at Duke in Durham, N.C. (Nov. 18, 2011)
Had 5 steals	5-Najat Ouardad vs. Troy in Auburn, Ala. (Nov. 30, 2011)
Had 15 rebounds	16-Jordan Greenleaf vs. Mississippi State (Jan. 3, 2010)
Had 20 rebounds	20-Monique Morehouse at LSU (Feb. 4, 1995)
Made 15 field goals	15-Consweila Sparrow (15-16) vs. USA (Feb. 17, 1998)
Made 5 three-point field goals	5 - Blanche Alverson (5-9) vs. Purdue in Auburn, Ala. (Dec. 18, 2011)
Two players scored 20 points	Alli Smalley (27 pts.) & KeKe Carrier (20 pts.) vs. Alabama (Jan. 14, 2010)
Two players scored 30 points	Laticia Morris (33 points) & Tara Williams (30 points) vs. South Alabama (Jan. 14, 1997)
Back-to-back 25-point games	Alli Smalley 26 pts. vs. Kentucky (Feb. 28, 2010) & 29 pts. vs. Florida in SEC Tournament in Duluth, Ga. (Mar. 4, 2010)
Only one player scored in double figures	Morgan Toles (13 pts.) vs. Alabama in Auburn, Ala. (Feb. 17, 2011)

TIGERS' RECORD WHEN...

When wearing white.....	5-1
When wearing orange.....	0-1
When wearing blue.....	1-1
When wearing pink.....	0-0
Leading at the half.....	5-1
Trailing at the half.....	1-2
Tied at the half.....	0-0
Scores 100+ points.....	0-0
Scores 90-99 points.....	0-0
Scores 80-89 points.....	1-0
Scores 70-79 points.....	3-0
Scores 60-69 points.....	1-0
Scores fewer than 60 points.....	1-3
Holds opponent to 41-50 points.....	4-0
Holds opponent to 31-40 points.....	1-0
Holds opponent to under 30 points.....	0-0
Shoots 50% FG or better.....	1-0
Shoots 40-49% FG.....	3-0
Shoots 39% or under FG.....	2-3
Holds opponent under 30% FG.....	3-0
Shoots higher FG% than opponent.....	6-0
Shoots lower FG% than opponent.....	0-3
Shoots higher FT% than opponent.....	3-1
Shoots lower FT% than opponent.....	3-2
Out-rebounds opponent.....	6-1
Out-rebounded by opponent.....	0-2
Tied in rebounds.....	0-0
Versus ranked opponent.....	0-2
In overtime.....	0-0
Games decided by 3 points or less.....	0-0
Games decided by 4-5 points.....	0-0
Games decided by 6-10 points.....	1-1
Games decided by 11-20 points.....	1-1
Games decided by 21-30 points.....	2-1
Games decided by 30+ points.....	2-0
On Television.....	0-0
In November.....	5-1
In December.....	1-2
In January.....	0-0
In February.....	0-0
In March.....	0-0

Five players scored in double figures.....	Alverson (17 pts.), Greenleaf (15 pts.), Tanner (11 pts.), Smalley (11 pts.) & Toles (10 pts.) vs. Jacksonville State (Dec. 30, 2010)
Six players scored in double figures.....	Carrier (19 pts.), Bonner (18 pts.), Smalley (16 pts.), Boddie (13 pts.), R. Hobbs (13 pts.), Hilliard (13 pts.) & S. Hobbs (10 pts.) vs. Sam Houston State (Dec. 5, 2008)
Seven players scored in double figures.....	Carrier (19 pts.), Bonner (18 pts.), Smalley (16 pts.), Boddie (13 pts.), R. Hobbs (13 pts.), Hilliard (13 pts.) & S. Hobbs (10 pts.) vs. Sam Houston State (Dec. 5, 2008)
Scored 20 points & had 20 rebounds.....	Lauretta Freeman (30 pts/21 rebs.) vs. Alabama, (Feb. 17, 1993)
Two players had 10 rebounds.....	KeKe Carrier (12 rebs.) & Jordan Greenleaf (10 rebs.) vs. Florida in Gainesville, Fla. (Jan. 7, 2010)
Three players had 10 rebounds.....	Jordan Greenleaf (12 rebs.), DeWanna Bonner (12 rebs.) & Whitney Boddie (10 rebs.) vs. Oakland (Nov. 21, 2007)
Played every minute.....	Jordan Greenleaf (40 Mins.) vs. Florida, SEC Tournament, Duluth, Ga., (Mar. 4, 2010)
Played more than 40 minutes.....	Alli Smalley (45 mins.), Jordan Greenleaf (43 mins.) & Morgan Toles (41 mins.) at LSU (Jan. 10, 2010)

Last Time an Auburn Opponent...

Shot less than 30% in a game (SEC).....	LSU - 27.3% in Baton Rouge, La. (Feb. 10, 2011)
Shot less than 30% in a game (Non-conf).....	South Florida - 29.3% in Auburn, Ala. (Dec. 14, 2011)
Shot 60% in a game.....	Vanderbilt 60.4% in Nashville, Tennessee in the SEC Tournament, (Mar. 5, 2004)
Scored 100 points.....	Georgia 102, Auburn 72 in Athens, Ga. (Mar. 3, 1984)
Scored 100 points at Auburn.....	Tuskegee 105, Auburn 98 (20T) (Feb. 12, 1979)
Scored 100 points and lost.....	Never
Scored 110 points.....	Never
Had 25+ rebound margin.....	Never
Had a 20+ rebound margin.....	Never
Scored less than 20 points in a 1st half.....	South Florida, 19 points in Auburn, Ala. (Dec. 14, 2011)
Scored less than 20 points in a 2nd half.....	USC-Upstate, 16 points in Auburn, Ala. (Nov. 27, 2011)
Had 50 rebounds.....	52 - at Duke in Durham, N.C. (Nov. 18, 2011)
Had 25 assists.....	25- by Florida International in Miami, Fla. (Dec. 19, 1993)
Had 25 turnovers.....	29- by Alabama A&M in Auburn, Ala. (Dec. 28, 2010)
Had 15 steals.....	15- by South Florida in Auburn, Ala. (Dec. 14, 2011)
Had 10 blocks.....	12-by Tennessee (Jan. 10, 2008)
Failed to make a 3-point field goal.....	by Duke (0-12) in Durham, N.C. (Nov. 18, 2011)
Attempted 35 free throws.....	36 - by Arizona 25-36 (Dec. 19, 2000)
Made 30 free throws.....	30- by Arkansas (Jan. 22, 1995)
Made 10 three-point field goals.....	by South Florida 10 3-point FGs, in Tampa, Fla., (Nov. 22, 2010)
Scored less than 50 points in a game.....	South Florida, 45 in Auburn, Ala. (Dec. 14, 2011)
Scored 40 points or less.....	USC-Upstate, 34 in Auburn, Ala. (Nov. 27, 2011)
Scored 25 points or less.....	25- by Puerto Rico Mayaguez (Dec. 17, 2000)
Scored 11 points or less.....	11-by Montevallo (1973) and 11-by Jeff Davis (1973)

Last Time an Auburn Opponent's Player...

Scored 30 points (non-conference).....	33-Andrea Smith of South Florida in Tampa, Fla. (Nov. 22, 2010)
Scored 30 points (SEC).....	31-Tierney Jenkins of Alabama in Tuscaloosa, Ala. (Jan. 2, 2011)
Scored 35 points.....	38-Lindsay Shearer of Kent State in Kent, Ohio (Nov. 20, 2005)
Attempted 25 field goals.....	27- Jantel Lavender (9-27) of Ohio State (Nov. 23, 2008)
Scored 20 points & had 20 rebounds.....	Young of Baylor in the Women's NIT Championship Game, (20 pts./25 rebs.), (Apr. 4, 2003)
Two players scored 20 points.....	by Ole Miss, Kayla Melson (29 pts) & Shae Nelson (21 pts), (Jan. 13, 2011)
Three players scored 20 points.....	by LSU in Baton Rouge, Chatman (22 pts), Johnson (21 pts) & Lowery (20 pts), (Jan. 12, 1991)
Five players scored in double figures.....	J. Thomas (16 pts), Gray (13 pts), K. Thomas (11 pts), Christmas (10 pts) & Peters (10 pts) of Duke (Nov. 18, 2010)
Six players scored in double figures.....	Smith (15 pts), Bales (14 pts), Foley (11 pts), Williams (10 pts), Currie (10 pts) & Kurz (10 pts) of Duke (Dec. 31, 2004)
Recorded a double-double.....	Elizabeth Williams (18 pts/13 rebs) of Duke in Durham, N.C. (Nov. 18, 2011)
Recorded a double-double with points and assists.....	Ceira Ricketts of Arkansas in Fayetteville, Ark., (14 pts/13 rebs/12 assts.), (Jan. 18, 2009)
Recorded a triple-double.....	Ceira Ricketts (14 pts./13 rebs./12 asst.) of Arkansas (Jan. 18, 2009)
Two players recorded a double-double.....	Ashley Daniels (22 pts/11 rebs) and Sarah Watkins (12 pts/10 rebs) of Arkansas in Fayetteville, Ark. (Feb. 13, 2011)
Had 15 rebounds.....	15-by Ashley Brown of Mississippi State (Jan. 20, 2011)
Had 20 rebounds.....	20-Sylvia Fowles of LSU (Jan. 28, 2007)
Had 10 assists.....	10-Valencia McFarland of Ole Miss (Jan. 13, 2011)
Had 10 blocks.....	Never
Had 5 blocks.....	5-Azania Stewart of Florida (Jan. 7, 2010)
Had 5 steals.....	7-Jasmine Wynne of South Florida in Auburn, Ala., (Dec. 14, 2011)
Made 15 field goals.....	15-Chamique Holdscaw (15-21) of Tennessee (Feb. 1, 1998)
Had 15 assists.....	16-Cindy McMahan of Alabama-Huntsville (Nov. 24, 1980)

2011-12 Auburn Superlatives...

First Half

Most points scored in the first half.....	44, vs. USC-Upstate (11-27-11)
Fewest points scored in the first half.....	19, vs. George Washington (11-23-11)
Fewest points allowed in the first half.....	18, vs. USC-Upstate (11-27-11)
Most points allowed in the first half.....	45, at Temple (12-3-11)
Best FG % in the first half.....	.565, at Mercer (11-11-11)
Worst FG % in the first half.....	.250, vs. George Washington (11-23-11)
Best FG % by an opponent in the first half.....	.552, at Temple (12-3-11)
Worst FG % by an opponent in the first half.....	.226, at Mercer (11-11-11)
Most rebounds in the first half.....	26, at Mercer (11-11-11)
Fewest rebounds in the first half.....	14, at Temple (12-3-11)
Most rebounds by an opponent in the first half.....	24, at Duke (11-18-11)
Fewest rebounds by an opponent in the first half.....	13, vs. South Florida (12-14-11)

Second Half

Most points scored in the second half.....	41, at Mercer (11-11-11) and vs. Belmont (11-15-11)
Fewest points scored in the second half.....	19, at Duke (11-18-11)
Fewest points allowed in the second half.....	16, vs. USC-Upstate (11-27-11)
Most points allowed in the second half.....	42, vs. Purdue (12-18-11)
Best FG % in the second half.....	.577, vs. Belmont (11-15-11)
Worst FG % in the second half.....	.269, at Duke (11-18-11)
Best FG % by an opponent in the second half.....	.591, vs. Purdue (12-18-11)
Worst FG % by an opponent in the second half.....	.233, vs. USC-Upstate (11-27-11)
Most rebounds in the second half.....	32, vs. USC-Upstate (11-27-11)
Fewest rebounds in the second half.....	13, at Duke (11-18-11)
Most rebounds by an opponent in the second half.....	28, at Duke (11-18-11)
Fewest rebounds by an opponent in the second half.....	11, vs. Purdue (12-18-11)

Game

Most points scored.....	80, vs. Belmont (11-15-11)
Fewest points scored.....	50, at Duke (11-18-11)
Most points allowed.....	73, at Duke (11-18-11) and at Temple (12-3-11)
Fewest points allowed.....	34, vs. USC-Upstate (11-27-11)
Best FG %.....	.554, at Mercer (11-11-11)
Worst FG %.....	.302, vs. Purdue (12-18-11)
Best FG % by an opponent.....	.491, at Temple (12-3-11)
Worst FG % by an opponent.....	.255, vs. USC-Upstate (11-27-11)
Most rebounds.....	51, vs. USC-Upstate (11-27-11)
Fewest rebounds.....	35, vs. Belmont (11-15-11), at Duke (11-18-11) and at Temple (12-3-11)
Most rebounds by an opponent.....	52, at Duke (11-18-11)
Fewest rebounds by an opponent.....	27, at Mercer (11-11-11)

Miscellaneous

Largest margin of victory.....	41, vs. USC-Upstate (11-27-11)
Smallest margin of victory.....	8, vs. George Washington (11-23-11)
Largest margin of defeat.....	23, at Duke (11-18-11)
Smallest margin of defeat.....	8, vs. Purdue (12-18-11)
Largest halftime lead.....	26, vs. USC-Upstate (11-27-11)
Smallest halftime lead.....	1, vs. Purdue (12-18-11)
Last time tied at halftime.....	N/A
Largest halftime deficit.....	18, at Temple (12-3-11)
Smallest halftime deficit.....	1, at Duke (11-18-11)
Largest rebounding margin.....	21, at Mercer (11-11-11)
Smallest rebounding margin.....	1, vs. George Washington (11-23-11)
Last time tied in rebounding.....	N/A
Opponent's largest rebounding margin.....	17, at Duke (11-18-11)
Opponents smallest rebounding margin.....	2, at Temple (12-3-11)

2011-12 Auburn Individual Highs...**First Half**

Points..... 14, Blanche Alverson vs. USC-Upstate (11-27-11)
 Field Goals Made..... 5, Alverson vs. USC-Upstate (11-27-11) and Muhammad vs. Troy (11-30-11)
 Field Goal Attempts 12, Blanche Alverson vs. USC-Upstate (11-27-11)
 3-Point Field Goals Made 4, Tanner vs. Belmont (11-15-11) & Alverson vs. USC-Upstate (11-27-11)
 3-Point Field Goal Attempts..... 8, Blanche Alverson vs. USC-Upstate (11-27-11)
 Free Throws Made..... 4, Parrisha Simmons vs. USC-Upstate (11-27-11)
 Free Throws Attempted..... 5, Morgan Jennings vs. Mercer (11-11-11)
 Rebounds..... 7, Hilliard vs. Belmont (11-15-11) and Simmons vs. Purdue (12-18-11)
 Assists 5, Najat Ouardad vs. USC-Upstate (11-27-11)
 Blocked Shots 4, Jassany Williams vs. Troy (11-30-11)
 Steals..... 3, Najat Ouardad vs. Troy (11-30-11)

Second Half

Points..... 13, Camille Glymph vs. South Florida (12-14-11)
 Field Goals Made..... 5, Tyrese Tanner at Mercer (11-11-11)
 Field Goal Attempts 11, Hasina Muhammad vs. Purdue (12-18-11)
 3-Point Field Goals Made 4, Blanche Alverson vs. Purdue (12-18-11)
 3-Point Field Goal Attempts..... 6, Blanche Alverson vs. Purdue (12-18-11)
 Free Throws Made..... 8, Parrisha Simmons vs. Purdue (12-18-11)
 Free Throws Attempted..... 12, Parrisha Simmons vs. Purdue (12-18-11)
 Rebounds..... 9, Parrisha Simmons vs. Purdue (12-18-11)
 Assists 7, Morgan Jennings vs. Mercer (11-11-11)
 Blocked Shots 6, Jassany Williams at Duke (11-18-11)
 Steals..... 5, by five players on five occasions

Game

Points..... 23, Camille Glymph vs. South Florida (12-14-11)
 Field Goals Made..... 9, Hasina Muhammad vs. Troy (11-30-11)
 Field Goal Attempts 19, Hasina Muhammad vs. Purdue (12-18-11)
 3-Point Field Goals Made 5, Glymph vs. Belmont (11-15-11) and Alverson vs. Purdue (12-18-11)
 3-Point Field Goal Attempts..... 9, 3 times, last by Alverson vs. Purdue (12-18-11)
 Free Throws Made..... 9, Parrisha Simmons vs. Purdue (12-18-11)
 Free Throws Attempted..... 14, Parrisha Simmons vs. Purdue (12-18-11)
 Rebounds..... 16, Parrisha Simmons vs. Purdue (12-18-11)
 Assists 9, Morgan Jennings vs. Belmont (11-15-11)
 Blocked Shots 7, Jassany Williams at Duke (11-18-11)
 Steals..... 5, Najat Ouardad vs. Troy (11-30-11)

2011-12 Opponent Individual Highs...**First Half**

Points..... 14, Tee'Ara Copney of USC-Upstate (11-27-11)
 Field Goals Made..... 4, Williams of Duke (11-18-11) and Copney of USC-Upstate (11-27-11)
 Field Goal Attempts 10, DeAngela Sword of Troy (11-30-11)
 3-Point Field Goals Made 3, Tee'Ara Copney of USC-Upstate (11-27-11)
 3-Point Field Goal Attempts..... 5, Briana Williams of Mercer (11-11-11)
 Free Throws Made..... 3, on six occasions, last by Jasmine Wynne of USF (12-14-11)
 Free Throws Attempted..... 6, Jasmine Wynne of South Florida (12-14-11)
 Rebounds..... 7, Williams of Duke (11-18-11) and McCarthy of Temple (12-3-11)
 Assists 6, Adrienne Tarrence of Belmont (11-15-11)
 Blocked Shots 2, Elizabeth Williams of Duke (11-18-11)
 Steals..... 3, on three occasions, last by Jasmine Wynne of South Florida (12-14-11)

Second Half

Points..... 19, Shey Peddy of Temple (12-3-11)
 Field Goals Made..... 8, Shey Peddy of Temple (12-3-11)
 Field Goal Attempts 11, Shey Peddy of Temple (12-3-11)
 3-Point Field Goals Made 2, A. Williams of Mercer (11-11-11) and Ernst of Belmont (11-15-11)
 3-Point Field Goal Attempts..... 5, Castlebury of USC-Upstate (11-27-11) & Smith of USF (12-14-11)
 Free Throws Made..... 6, Brittany Rayburn of Purdue (12-18-11)
 Free Throws Attempted..... 6, Brittany Rayburn and Alex Guyton of Purdue (12-18-11)
 Rebounds..... 6, Elizabeth Williams and Richae Jackson of Duke (11-18-11)
 Assists 4, Chelsea Gray of Duke (11-18-11)
 Blocked Shots 2, Williams of Duke (11-18-11) and McDonald of USF (12-14-11)
 Steals..... 4, Jasmine Wynne of South Florida (12-14-11)

Game

Points..... 27, Shey Peddy of Temple (12-3-11)
 Field Goals Made..... 11, Shey Peddy of Temple (12-3-11)
 Field Goal Attempts 16, Shey Peddy of Temple (12-3-11)
 3-Point Field Goals Made 4, Tee'Ara Copney of USC-Upstate (11-27-11)
 3-Point Field Goal Attempts..... 9, Briana Williams of Mercer (11-11-11)
 Free Throws Made..... 8, Brittany Rayburn of Purdue (12-18-11)
 Free Throws Attempted..... 10, Jasmine Wynne of South Florida (12-14-11)
 Rebounds..... 13, Elizabeth Williams of Duke (11-18-11)
 Assists 8, Tarrence of Belmont (11-15-11) and Gray of Duke (11-18-11)
 Blocked Shots 4, Elizabeth Williams of Duke (11-18-11)
 Steals..... 7, Jasmine Wynne of South Florida (12-14-11)

2011-12 Starting Lineups

	Guard (1)	Guard (2)	Guard/Forward (3)	Forward (4)	Forward/Center (5)
at Mercer	Morgan Jennings	Tyrese Tanner	Hasina Muhammad	Jassany Williams	Chantel Hilliard
BELMONT	Morgan Jennings	Tyrese Tanner	Hasina Muhammad	Jassany Williams	Blanche Alverson
at Duke	Morgan Jennings	Tyrese Tanner	Hasina Muhammad	Jassany Williams	Blanche Alverson
GEORGE WASHINGTON	Morgan Jennings	Tyrese Tanner	Hasina Muhammad	Jassany Williams	Blanche Alverson
USC-UPSTATE	Najat Ouardad	Morgan Jennings	Tyrese Tanner	Parrisha Simmons	Chantel Hilliard
TROY	Najat Ouardad	Morgan Jennings	Tyrese Tanner	Parrisha Simmons	Chantel Hilliard
at Temple	Najat Ouardad	Morgan Jennings	Tyrese Tanner	Parrisha Simmons	Chantel Hilliard
SOUTH FLORIDA	Morgan Jennings	Camille Glymph	Tyrese Tanner	Blanche Alverson	Parrisha Simmons
PURDUE	Morgan Jennings	Camille Glymph	Tyrese Tanner	Blanche Alverson	Parrisha Simmons

Record by Starting Lineup

Jennings, Tanner, Muhammad, Williams, Hilliard	1-0 (1.000)
Ouardad, Jennings, Tanner, Simmons, Hilliard	2-1 (.667)
Jennings, Tanner, Muhammad, Williams, Alverson	2-1 (.667)
Jennings, Glymph, Tanner, Alverson, Simmons	1-1 (.500)

Game-by-Game Leaders

	Points	Rebounds	Assists	Steals	Blocked Shots
at Mercer	14-Tanner	10-Alverson	8-Jennings	3-Ouardad	2-Williams
BELMONT	18-Glymph	9-Hilliard	9-Jennings	3-Ouardad/Jennings	4-Williams
at #8 Duke	12-Glymph	6-Jennings	3-Jennings	2-Williams/Jennings	7-Williams
GEORGE WASHINGTON	14-Alverson	8-Simmons	5-Jennings	2-Alverson	2-Glymph
USC-UPSTATE	14-Alverson	10-Simmons	8-Ouardad	2-Ouardad/Williams	3-Williams
TROY	19-Muhammad	8-Williams	5-Ouardad	5-Ouardad	4-Williams
at Temple	12-Glymph	7-Jennings	4-Ouardad	3-Tanner	1-Hilliard/Simmons
SOUTH FLORIDA	23-Glymph	11-Simmons	4-Jennings	4-Simmons	2-Muhammad
PURDUE	17-Muhammad	16-Simmons	3-Glymph	2-Muhammad/Glymph	3-Muhammad

Comparison Statistics (Auburn/Opponent)

Opponent	1st	2nd	Score	Mar	Total FG	FG Pct	3-Pointers	3FG Pct	Free Throws	FT Pct	Reb.	Mar	Assist	TO	Bk	Stl	Fouls
at Mercer	36/19	41/24	77-43	+34	31-56/15-55	.554/.273	0-9/4-18	.000/.222	15-24/9-16	.625/.563	48-27	+21	23/7	21/19	5/1	11/10	19/20
BELMONT	39/25	41/28	80-53	+27	29-61/19-48	.475/.396	10-21/8-19	.476/.421	12-15/7-14	.800/.500	35-32	+3	20/12	12/24	7/1	15/6	15/14
at Duke	31/32	19/41	50-73	(-23)	19-58/27-71	.328/.380	5-16/0-12	.313/.000	7-12/19-23	.583/.826	35-52	(-17)	9/16	22/16	11/5	8/11	18/14
G. WASHINGTON	19/26	36/21	55-47	+8	18-53/15-46	.340/.326	4-18/3-9	.222/.333	15-25/14-19	.600/.737	39-38	+1	14/7	10/16	3/1	7/7	15/16
USC-UPSTATE	44/18	31/16	75-34	+41	30-71/13-51	.423/.255	8-19/5-25	.421/.200	7-11/3-4	.636/.750	51-31	+20	19/8	14/22	7/0	8/10	9/11
TROY	38/23	36/24	74-47	+27	31-72/16-46	.431/.348	7-15/4-12	.467/.333	5-13/11-17	.385/.647	48-30	+18	14/8	13/22	13/0	15/6	11/12
at Temple	27/45	30/28	57-73	(-16)	21-60/27-55	.350/.491	6-17/6-14	.353/.429	9-11/13-18	.818/.722	35-37	(-2)	12/10	16/13	2/1	9/8	19/13
SOUTH FLORIDA	27/19	35/26	62-45	+17	18-46/17-58	.391/.293	7-17/1-10	.412/.100	19-25/10-19	.760/.526	48-29	+19	11/8	29/20	7/2	11/15	14/20
PURDUE	21/20	33/42	54-62	(-8)	16-53/21-49	.302/.429	8-17/1-8	.471/.125	14-21/19-23	.667/.826	39-29	+10	11-13	25/18	5/0	7/13	20/18

Scoring Breakdown

(Percentage of total points in parentheses)

Opponent	Front Court	Back Court	Sr.	Jr.	So.	Fr.	Starters	Bench
at Mercer	34 (44.2)	43 (55.8)	17	21	27	12	47 (61.0)	30 (39.0)
BELMONT	31 (38.8)	49 (61.2)	19	10	46	5	49 (61.2)	31 (38.8)
at Duke	15 (30.0)	35 (70.0)	8	7	25	10	30 (60.0)	20 (40.0)
GEORGE WASHINGTON	26 (47.3)	29 (52.7)	11	14	20	10	44 (80.0)	11 (20.0)
USC-UPSTATE	33 (44.0)	42 (56.0)	26	23	14	12	40 (53.3)	35 (46.7)
TROY	17 (23.0)	57 (77.0)	13	10	32	19	26 (35.1)	48 (64.9)
at Temple	14 (24.6)	43 (75.4)	19	8	23	7	30 (52.6)	27 (47.4)
SOUTH FLORIDA	18 (29.0)	44 (71.0)	11	13	37	1	49 (79.0)	13 (21.0)
PURDUE	13 (24.1)	41 (75.9)	14	15	8	17	37 (68.5)	17 (31.5)

Lead-Deficit Comparison

Opponent	Largest Lead	Largest Deficit	Lead Changes	Ties	Result
at Mercer	34 (2nd, 2:17)	---	0	0	W, 77-43
BELMONT	27 (2nd, 0:45)	6 (1st, 18:37)	3	2	W, 80-53
at Duke	1 (1st, 19:39)	23 (2nd, 2:10)	2	1	L, 50-73
GEORGE WASHINGTON	10 (2nd, 0:14)	9 (1st, 0:31)	1	5	W, 55-47
USC-UPSTATE	41 (2nd, 2:18)	---	0	1	W, 75-34
TROY	29 (2nd, 2:04)	---	0	0	W, 74-47
at Temple	3 (1st, 18:52)	23 (2nd, 7:56)	4	1	L, 57-73
SOUTH FLORIDA	23 (2nd, 13:34)	---	0	0	W, 62-45
PURDUE	3 (1st, 12:00)	12 (2nd, 7:44)	4	4	L, 54-62

Specialty Statistics (Auburn-Opponent)

Opponent	Bench Points	Points in the Paint	Points off Turnovers	Second Chance Points	Fast Break Points
at Mercer	30-22	54-14	20-13	12-1	10-4
BELMONT	31-18	32-17	35-9	13-10	13-2
at Duke	20-21	18-44	17-23	14-12	7-14
GEORGE WASHINGTON	11-11	14-18	13-9	8-7	2-4
USC-UPSTATE	35-4	32-16	24-5	17-1	2-4
TROY	48-13	44-12	20-17	19-12	8-2
at Temple	27-26	24-30	13-21	20-17	6-16
SOUTH FLORIDA	13-16	12-32	14-15	13-6	4-4
PURDUE	17-44	10-18	23-22	14-4	2-2



Nell FORTNER

Head Coach

Eighth Season

Jackson, Miss • Texas, 1981

- Coached Auburn to its first SEC title in 20 years during 2008-09 season
- Produced Auburn's first SEC Player of the Year since 1988 in DeWanna Bonner
- Has an overall record of 155-103 for a .601 winning percentage
- Sports a 712-254 (.737) record as a head coach, assistant coach and player at all levels (college, professional, international)
- Coached teams to 11 NCAA Tournament appearances, eight as an assistant coach and three as a head coach
- 2000 USA Basketball Coach of the Year
- 1997 and 2009 Basketball Times National Coach of the Year
- 2009 Russell Athletic/WBCA Region III Coach of the Year
- 1997 Big Ten Coach of the Year
- 2009 SEC Coach of the Year
- Led the U.S. National Team to a gold medal in the 2000 Olympics
- Coached 10 different U.S. squads to a 101-14 (.878) record
- Served as an assistant coach for the U.S. National Team that won a gold medal at the 1996 Olympics
- Coached three players to State Farm/WBCA All-America honors
- Coached eight players to 10 all-conference honors
- Coached Auburn to three straight 20-win seasons, including a 30-win season in 2009 - Auburn's first in 20 years
- Produced two WNBA draft picks (DeWanna Bonner and Whitney Boddie) out of her first recruiting class at Auburn
- Spent three years as Head Coach and General Manager of the WNBA's Indiana Fever, leading the team to the playoffs in her second season
- As an assistant coach at Louisiana Tech, helped the team to the Elite Eight in 1993 and the National Championship game in 1994
- Spent four years as a studio analyst with ESPN (2001-04, 2005 WNBA Playoffs)

All-time record as player and coach at all levels:	712-254 (.737)	30 years
Record as a WNBA coach:	42-56 (.429)	3 seasons
Record as USA Head Coach:	101-14 (.878)	4 years
Record as a collegiate player:	127-26 (.830)	4 seasons
Record as a collegiate coach:	390-158 (.712)	17 seasons
Record as a collegiate assistant coach:	235-55 (.810)	9 seasons
Record as a collegiate head coach:	155-103 (.601)	9 seasons
Record at Auburn:	138-92 (.600)	8 seasons
SEC Record:	48-54 (.471)	7 seasons

Fortner Year-by-Year

Texas, Player (1977-81)

Year	Record	Conf.	Other Information
1977-78	29-10	--	5th AIAW
1978-79	37-4	--	3rd AIAW
1979-80	33-4	--	5th AIAW
1980-81	28-8	--	9th AIAW

Stephen F. Austin, Graduate Assistant/Assistant (1986-90)

Year	Record	Conf.	Other Information
1986-87	25-6	9-1	WNIT Third Round
1987-88	29-5	13-1	Southland Champions NCAA Second Round
1988-89	30-4	13-1	Southland Champions NCAA Regional Finalist
1989-90	28-3	14-0	Southland Champions NCAA Regional Finalist

Louisiana Tech, Assistant Coach (1990-95)

Year	Record	Conf.	Other Information
1990-91	18-12	9-3	American South Conference Runner-Up NCAA First Round
1991-92	20-10	12-4	NCAA First Round
1992-93	26-6	13-1	Sun Belt Conference Champion NCAA Elite Eight
1993-94	31-4	14-0	Sun Belt Conference Champion NCAA Runner-up
1994-95	28-5	13-1	Sun Belt Conference Champion NCAA Sweet 16

USA Basketball, Assistant Coach (1995-96)

52-0 Overall Record (1.000)

Purdue, Head Coach (1996-97)

Year	Record	Conf.	Other Information
1996-97	17-11	12-4	Big Ten Co-Champions NCAA Second Round

USA Basketball, Head Coach (1997-2000)

101-14 Overall Record (.878)

Indiana Fever (WNBA), Head Coach (2001-03)

Year	Record	Conf.	Other Information
2001	10-22	--	
2002	16-16	--	WNBA Playoffs First Round
2003	16-18	--	

Auburn, Head Coach (2004-present)

Year	Record	Conf.	Other Information
2004-05	16-13	6-8	
2005-06	14-15	4-10	
2006-07	21-13	6-8	WNIT Quarterfinals
2007-08	20-12	7-7	NCAA First Round
2008-09	30-4	12-2	SEC Champions SEC Tournament Runner-Up NCAA Second Round
2009-10	15-16	5-11	
2010-11	16-16	8-8	WNIT Second Round
2011-12	6-3		



Chantel HILLIARD

#23

Senior • Forward/Center • 6-2

Biloxi, Miss.

St. Martin High School

NOTES:

- Graduated from Auburn with degree in political science on Dec. 12
- Returned to the starting lineup vs. USC-Upstate, scoring season-high 12 points with 4 rebounds
- Nearing a double-double with 9 rebounds and 8 points in home-opener vs. Belmont
- Started and scored 6 points with 5 rebounds and 2 steals at Mercer in the season-opener
- Started nine of the final 10 games of the 2010-11 season
- Picked up her first career double-double with career highs of 18 points and 11 rebounds vs. Mississippi State in the SEC Tournament
- Led Auburn in scoring for the first time in her career, coming off the bench for a career-high 16 points on 7-of-9 shooting at South Florida
- Scored in double figures nine times this season, including four of the last six games of the season

Opponent	Start	Min.	FG-A	3PT-A	FT-A	O-D-T	PF	Ast.	TO	Blk.	St.	Pts.
GCSU (Exhibition)	*	19	3-9	0-0	4-6	8-7-15	2	0	3	2	1	10
at Mercer	*	18	3-5	0-0	0-0	0-5-5	2	1	4	0	2	6
BELMONT		19	4-5	0-0	0-0	3-6-9	2	2	2	1	2	8
at Duke		23	3-7	0-1	0-0	2-2-4	3	0	1	1	0	6
GEORGE WASHINGTON		16	0-1	0-0	0-0	2-3-5	4	0	0	0	1	0
USC-UPSTATE	*	18	6-8	0-0	0-1	2-2-4	0	0	1	1	0	12
TROY	*	17	2-6	0-0	0-0	1-1-2	2	1	2	1	0	4
at Temple	*	19	1-3	0-0	1-1	0-0-0	3	0	1	1	1	3
SOUTH FLORIDA		19	1-3	0-0	2-2	3-3-6	2	0	2	1	2	4
PURDUE		12	0-3	0-0	0-0	2-3-5	2	0	2	0	0	0

vs. Marist

vs. Hofstra/Central Connecticut State

vs. North Carolina-Charlotte

vs. Florida International/Albany

TENNESSEE

at Alabama

GEORGIA

at Vanderbilt

at Arkansas

SOUTH CAROLINA

at Mississippi State

KENTUCKY

at Ole Miss

VANDERBILT

at Tennessee

at Florida

ARKANSAS

at LSU

ALABAMA

OLE MISS

SEASON HIGHS

Points

12 vs. USC-Upstate (11/27/11)

Rebounds

9 vs. Belmont (11/15/11)

Assists

2 vs. Belmont (11/15/11)

Blocks

1 4 times, last vs. Troy (11/30/11)

Steals

2 3 times, last vs. USF (12/14/11)

Field Goals

6 vs. USC-Upstate (11/27/11)

Field Goal Attempts

8 vs. USC-Upstate (11/27/11)

3-Point Field Goals

N/A

3-Point FG Attempts

1 at Duke (11/18/11)

Free Throws

2 vs. South Florida (12/14/11)

Free Throw Attempts

2 vs. South Florida (12/14/11)

CAREER HIGHS

Points

18 vs. Mississippi State (3/3/11)

Rebounds

11 Twice, last vs. Mississippi (3/3/11)

Assists

2 3 times, last vs. Belmont (11/15/11)

Blocks

3 twice, last vs. Duquesne (12/29/08)

Steals

3 vs. Duquesne (12/29/08)

Field Goals

8 vs. Mississippi State (3/3/11)

Field Goal Attempts

15 vs. Mississippi State (3/3/11)

3-Point Field Goals

N/A

3-Point FG Attempts

1 5 times, last at Duke (11/18/11)

Free Throws

7 vs. Florida (1/6/11)

Free Throw Attempts

12 vs. Sam Houston State (12/5/08)

HILLIARD CAREER STATISTICS

Year	GP-GS	FG-FGA	Pct	3FG-FGA	Pct	FT-FTA	Pct	O-D-T (Reb.)	Avg	PF	FO	Ast	TO	Blk	Stl	Pts	Avg
2008-09	30-0	53-106	.500	0-2	.000	15-32	.469	29-56-85	2.8	50	0	7	26	12	13	121	4.0
2009-10	27-2	37-89	.416	0-0	.000	20-43	.465	31-35-66	2.4	49	1	6	35	13	11	94	3.5
2010-11	32-10	83-159	.522	0-2	.000	39-61	.639	44-69-113	3.5	62	0	9	50	13	18	205	6.4
2011-12	9-4	20-41	.488	0-1	.000	3-4	.750	15-25-40	4.4	20	0	4	15	6	8	43	4.8
TOTAL	98-16	193-395	.489	0-5	.000	77-140	.550	119-185-304	3.1	181	1	26	126	44	50	463	4.7



Morgan JENNINGS

#2

Senior • Guard • 5-8

Atlanta, Ga.

Frederick Douglass High School

NOTES:

- Scored in double figures for the first time this season against USC-Upstate, tallying 10 with 2 assists and 2 rebounds
- Dished out a career-high 9 assists, along with 8 points, in home-opener vs. Belmont
- Started at point guard in the season-opener, tallying 6 points, 6 rebounds and 8 assists at Mercer
- Started the final six games of the 2010-11 season
- Scored career-high 16 points vs. Kentucky on Feb. 27, including career-high 6 free throws
- Earned first start in almost two months at USC; tallied 6 points, 4 rebounds, 3 steals while playing more minutes than she had in the last seven games combined
- Collected career-high 4 steals against Alabama A&M last season

Opponent	Start	Min.	FG-A	3PT-A	FT-A	O-D-T	PF	Ast.	TO	Blk.	St.	Pts.
GCSU (Exhibition)	*	21	2-6	0-1	2-2	1-4-5	1	2	1	0	0	6
at Mercer	*	24	2-6	0-1	2-5	2-4-6	1	8	3	0	0	6
BELMONT	*	30	4-9	0-1	0-0	1-1-2	2	9	1	0	3	8
at Duke	*	30	0-4	0-0	2-4	0-6-6	5	3	5	0	2	2
GEORGE WASHINGTON	*	37	1-7	0-0	2-2	1-1-2	0	5	2	0	1	4
USC-UPSTATE	*	25	5-7	0-0	0-0	0-2-2	0	2	3	0	1	10
TROY	*	29	3-8	0-0	0-1	2-5-7	1	3	0	1	0	6
at Temple	*	29	3-7	0-0	1-1	1-6-7	1	2	2	0	1	7
SOUTH FLORIDA	*	23	1-5	0-0	0-0	1-3-4	0	4	6	1	0	2
PURDUE	*	12	2-2	0-0	1-2	0-0-0	1	0	5	0	1	5

vs. Marist

vs. Hofstra/Central Connecticut State

vs. North Carolina-Charlotte

vs. Florida International/Albany

TENNESSEE

at Alabama

GEORGIA

at Vanderbilt

at Arkansas

SOUTH CAROLINA

at Mississippi State

KENTUCKY

at Ole Miss

VANDERBILT

at Tennessee

at Florida

ARKANSAS

at LSU

ALABAMA

OLE MISS

SEASON HIGHS

Points

10 vs. USC-Upstate (11/27/11)

Rebounds

7 twice, last at Temple (12/03/11)

Assists

9 vs. Belmont (11/15/11)

Blocks

1 vs. Troy (11/30/11)

Steals

3 vs. Belmont (11/15/11)

Field Goals

5 vs. USC-Upstate (11/27/11)

Field Goal Attempts

9 vs. Belmont (11/15/11)

3-Point Field Goals

N/A

3-Point FG Attempts

1 twice, last vs. Belmont (11/15/11)

Free Throws

2 3 times, last vs. GW (11/23/11)

Free Throw Attempts

5 at Mercer (11/11/11)

CAREER HIGHS

Points

16 vs. Kentucky (2/27/11)

Rebounds

7 twice, last at Temple (12/03/11)

Assists

9 vs. Belmont (11/15/11)

Blocks

1 three times, last vs. Troy (11/30/11)

Steals

4 vs. Alabama A&M (12/28/10)

Field Goals

7 at Seton Hall (11/27/10)

Field Goal Attempts

9 twice, last vs. Belmont (11/15/11)

3-Point Field Goals

N/A

3-Point FG Attempts

1 3 times, last vs. Belmont (11/15/11)

Free Throws

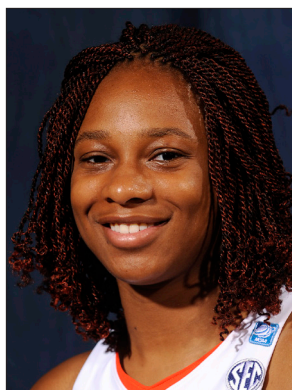
6 vs. Kentucky (2/27/11)

Free Throw Attempts

7 vs. Kentucky (2/27/11)

JENNINGS CAREER STATISTICS

Year	GP-GS	FG-FGA	Pct	3FG-FGA	Pct	FT-FTA	Pct	O-D-T (Reb.)	Avg	PF	FO	Ast	TO	Blk	Stl	Pts	Avg
2008-09	30-4	30-77	.390	0-0	.000	11-24	.458	18-30-48	1.6	25	0	34	41	0	16	71	2.4
2009-10	13-0	9-32	.281	0-1	.000	1-4	.250	2-9-11	0.8	9	0	15	14	0	2	19	1.5
2010-11	31-8	37-101	.366	0-1	.000	32-47	.681	19-38-57	1.8	31	0	41	46	2	30	106	3.4
2011-12	9-9	21-55	.382	0-2	.000	8-15	.533	8-28-36	4.0	11	1	36	27	2	9	50	5.6
TOTAL	83-21	97-265	.366	0-4	.000	52-90	.578	47-105-152	1.8	76	1	126	128	4	57	246	3.0



Parrisha SIMMONS

#4

Senior • Guard • 6-0

Macon, Ga.

Southwest Macon High School

NOTES:

- Averaging 6.0 points, 9.6 rebounds and 1.9 steals per game in five games as a starter
- Pulled down a career-high 16 rebounds vs. Purdue, the most for an Auburn player in a game in almost two years
- Tied her career high with 9 points at Temple and again vs. Purdue
- Earned first start of the season vs. USC-Upstate, pulling down 10 rebounds with 4 points and a steal
- Came off the bench to score 5 points with 9 rebounds while playing in her hometown at Mercer in the season-opener
- Snagged career-high 4 steals vs. South Florida
- A defensive and rebounding specialist

Opponent	Start	Min.	FG-A	3PT-A	FT-A	O-D-T	PF	Ast.	TO	Blk.	St.	Pts.
GCSU (Exhibition)		17	1-2	0-0	2-2	2-7-9	1	2	0	1	3	4
at Mercer		18	1-3	0-0	3-4	5-4-9	2	0	2	1	0	5
BELMONT		14	1-1	0-0	1-2	2-0-2	1	1	1	0	1	3
at Duke		12	0-1	0-0	0-0	0-1-1	0	0	0	0	1	0
GEORGE WASHINGTON		20	2-4	0-0	3-5	3-5-8	3	0	2	0	1	7
USC-UPSTATE		19	0-4	0-0	4-4	7-3-10	0	1	0	0	1	4
TROY	*	16	1-4	0-0	1-4	6-1-7	1	3	3	2	2	3
at Temple	*	24	3-6	0-0	3-4	4-0-4	1	1	1	1	2	9
SOUTH FLORIDA	*	21	1-1	0-0	3-4	6-5-11	2	1	4	1	4	5
PURDUE	*	33	0-2	0-0	9-14	9-7-16	2	2	2	1	0	9

vs. Marist

vs. Hofstra/Central Connecticut State

vs. North Carolina-Charlotte

vs. Florida International/Albany

TENNESSEE

at Alabama

GEORGIA

at Vanderbilt

at Arkansas

SOUTH CAROLINA

at Mississippi State

KENTUCKY

at Ole Miss

VANDERBILT

at Tennessee

at Florida

ARKANSAS

at LSU

ALABAMA

OLE MISS

SEASON HIGHS

Points

9 twice, last vs. Purdue (12/18/11)

Rebounds

16 vs. Purdue (12/18/11)

Assists

3 vs. Troy (11/30/11)

Blocks

2 vs. Troy (11/30/11)

Steals

4 vs. South Florida (12/14/11)

Field Goals

3 at Temple (12/03/11)

Field Goal Attempts

6 at Temple (12/03/11)

3-Point Field Goals

N/A

3-Point FG Attempts

N/A

Free Throws

9 vs. Purdue (12/18/11)

Free Throw Attempts

14 vs. Purdue (12/18/11)

CAREER HIGHS

Points

9 4 times, last vs. Purdue (12/18/11)

Rebounds

16 vs. Purdue (12/18/11)

Assists

4 vs. Valparaiso (12/28/09)

Blocks

2 vs. Troy (11/30/11)

Steals

4 vs. South Florida (12/14/11)

Field Goals

4 twice, last at N.C. A&T (12/1/09)

Field Goal Attempts

7 twice, last vs. USC (1/30/11)

3-Point Field Goals

N/A

3-Point FG Attempts

N/A

Free Throws

9 vs. Purdue (12/18/11)

Free Throw Attempts

14 vs. Purdue (12/18/11)

SIMMONS CAREER STATISTICS

Year	GP-GS	FG-FGA	Pct	3FG-FGA	Pct	FT-FTA	Pct	O-D-T (Reb.)	Avg	PF	FO	Ast	TO	Blk	Stl	Pts	Avg
2008-09	21-0	9-25	.360	0-0	.000	4-20	.200	20-36-56	2.7	13	0	12	14	4	6	22	1.0
2009-10	31-22	39-89	.438	0-0	.000	17-49	.347	88-71-159	5.1	51	0	34	43	1	16	95	3.1
2010-11	32-19	24-66	.364	0-0	.000	26-58	.448	54-46-100	3.1	38	0	27	28	2	18	74	2.3
2011-12	9-5	9-26	.346	0-0	.000	27-41	.659	42-26-68	7.6	12	0	9	15	6	12	45	5.0
TOTAL	93-46	81-206	.393	0-0	.000	74-168	.440	204-179-383	4.1	114	0	82	100	13	52	236	2.5



Blanche ALVERSON

#14

Junior • Forward/Center • 6-3

Andalusia, Ala.

Buford (Ga.) High School

NOTES:

- Is 42 3-pointers away from tying Kristen Mulligan for 5th all-time at Auburn in career 3-pointers
- Scored a season-high 15 points against Purdue, tying her career high of five 3-pointers in the process
- Returned to the starting lineup for 8 points and 3 rebounds in the home-opener vs. Belmont
- Came off the bench, breaking a 38-game start streak, to register her first career double-double with 12 points and 10 rebounds at Mercer in the season-opener
- Had a career outing last season vs. Ole Miss with 27 points, including a career-high five 3-pointers
- Pulled down a career-high 10 rebounds at Mercer in the 2011-12 season-opener
- Scored Auburn's first field goal in the new Auburn Arena, a 3-pointer that came 56 seconds into the game against Mercer in 2010
- A deep shooting threat, she is also one of the most versatile players on the team because of her size and post skills

Opponent	Start	Min.	FG-A	3PT-A	FT-A	O-D-T	PF	Ast.	TO	Blk.	St.	Pts.
GCSU (Exhibition)	*	23	3-8	2-6	1-1	0-2-2	1	4	0	0	4	9
at Mercer		26	5-6	0-0	2-4	1-9-10	0	1	1	1	0	12
BELMONT	*	21	2-9	1-5	3-3	1-2-3	2	0	1	0	0	8
at Duke	*	22	2-8	1-4	0-0	0-3-3	2	1	2	0	0	5
GEORGE WASHINGTON	*	26	5-7	2-3	2-2	0-5-5	0	0	2	0	2	14
USC-UPSTATE		25	5-15	4-9	0-0	1-4-5	0	2	0	0	0	14
TROY		19	2-5	1-3	0-0	0-3-3	1	1	0	0	1	5
at Temple		20	2-4	2-3	0-0	0-2-2	1	1	0	0	0	6
SOUTH FLORIDA	*	20	3-5	1-2	0-0	0-5-5	2	1	3	0	1	7
PURDUE	*	30	5-9	5-9	0-0	0-6-6	3	1	4	1	1	15

vs. Marist

vs. Hofstra/Central Connecticut State

vs. North Carolina-Charlotte

vs. Florida International/Albany

TENNESSEE

at Alabama

GEORGIA

at Vanderbilt

at Arkansas

SOUTH CAROLINA

at Mississippi State

KENTUCKY

at Ole Miss

VANDERBILT

at Tennessee

at Florida

ARKANSAS

at LSU

ALABAMA

OLE MISS

SEASON HIGHS

Points

15 vs. Purdue (12/18/11)

Rebounds

10 at Mercer (11/11/11)

Assists

2 vs. USC-Upstate (11/27/11)

Blocks

1 at Mercer (11/11/11)

Steals

2 vs. George Washington (11/23/11)

Field Goals

5 3 times, last vs. Purdue (12/18/11)

Field Goal Attempts

15 vs USC-Upstate (11/27/11)

3-Point Field Goals

5 vs. Purdue (12/18/11)

3-Point FG Attempts

9 twice, last vs. Purdue (12/18/11)

Free Throws

3 vs Belmont (11/15/11)

Free Throw Attempts

4 at Mercer (11/11/11)

CAREER HIGHS

Points

27 vs. Ole Miss (1/13/11)

Rebounds

10 at Mercer (11/11/11)

Assists

5 3 times, last vs. Alabama (1/2/11)

Blocks

3 twice, last at Alabama (1/2/11)

Steals

4 vs. LSU (1/16/11)

Field Goals

11 vs. Ole Miss (1/13/11)

Field Goal Attempts

17 twice, last vs. Mississippi St. (2/6/11)

3-Point Field Goals

5 twice, last vs. Purdue (12/18/11)

3-Point FG Attempts

9 5 times, last vs. Purdue (12/18/11)

Free Throws

4 twice, last vs. Seton Hall (11/27/10)

Free Throw Attempts

5 vs. Seton Hall (11/27/10)

ALVERSON CAREER STATISTICS

Year	GP-GS	FG-FGA	Pct	3FG-FGA	Pct	FT-FTA	Pct	O-D-T (Reb.)	Avg	PF	FO	Ast	TO	Blk	Stl	Pts	Avg
2009-10	31-13	78-218	.358	40-128	.313	19-27	.704	26-92-118	3.8	39	1	51	44	17	15	215	6.9
2010-11	32-32	126-333	.378	50-171	.292	25-35	.714	33-118-151	4.7	44	0	33	61	17	27	327	10.2
2011-12	9-5	31-68	.456	17-38	.447	7-9	.778	3-39-42	4.7	11	0	8	13	2	5	86	9.6
TOTAL	72-50	235-619	.380	107-337	.318	51-71	.718	62-249-311	4.3	94	1	92	118	36	47	628	8.7



Najat OUARDAD

#3

Junior • Guard • 5-1

Orleans, France

Pensacola State College / Oak Ridge (N.C.) Military Academy / Forsyth (N.C.) Country Day

NOTES:

- Leads the team in steals with 1.9 per game
- Averaging 4.7 points, 5.7 assists and 2.3 steals per game as a starter
- Started first game as a Tiger vs. USC-Upstate, tallying 7 points with 8 assists and 2 steals
- Scored 7 points with 4 assists and 3 rebounds in debut as a Tiger at Mercer
- Entering her first season at Auburn after transferring from Pensacola State College, was a two-time All-Panhandle Conference selection while at Pensacola State
- Averaged 6.4 points, 2.6 rebounds, 5.1 assists and 2.5 steals per game, after averaging 6.6 points, 2.0 rebounds, 6.5 assists and 2.5 steals per game as a freshman
- Led Pensacola State to a third-place finish at the 2011 NJCAA National Basketball Championship, compiling a 36-1 record along the way
- Played for the French National Team while in high school

Opponent	Start	Min.	FG-A	3PT-A	FT-A	O-D-T	PF	Asst.	TO	Blk.	Stl.	Pts.
GCSU (Exhibition)		18	0-2	0-1	2-2	1-1-2	3	3	2	0	5	2
at Mercer		16	2-5	0-2	3-4	1-2-3	1	4	4	0	3	7
BELMONT		13	1-4	0-2	0-0	0-0-0	1	3	2	0	3	2
at Duke		14	1-2	0-0	0-1	1-1-2	2	2	4	0	1	2
GEORGE WASHINGTON		15	0-3	0-3	0-0	2-1-3	0	2	2	0	1	0
USC-UPSTATE	*	19	2-6	2-4	1-2	1-0-1	3	8	6	0	2	7
TROY	*	21	2-7	1-2	0-0	2-1-3	0	5	2	0	5	5
at Temple	*	21	1-5	0-2	0-0	2-0-2	4	4	3	0	1	2
SOUTH FLORIDA		14	2-5	2-4	0-1	0-2-2	1	2	4	0	0	6
PURDUE		16	0-1	0-1	0-0	0-0-0	2	2	3	0	1	2

vs. Marist

vs. Hofstra/Central Connecticut State

vs. North Carolina-Charlotte

vs. Florida International/Albany

TENNESSEE

at Alabama

GEORGIA

at Vanderbilt

at Arkansas

SOUTH CAROLINA

at Mississippi State

KENTUCKY

at Ole Miss

VANDERBILT

at Tennessee

at Florida

ARKANSAS

at LSU

ALABAMA

OLE MISS

OUARDAD CAREER STATISTICS

Year	GP-GS	FG-FGA	Pct	3FG-FGA	Pct	FT-FTA	Pct	O-D-T (Reb.)	Avg	PF	FO	Asst	TO	Blk	Stl	Pts	Avg
2011-12	9-3	11-38	.289	5-20	.250	4-8	.500	9-7-16	1.8	14	0	32	30	0	17	31	3.4
TOTAL	9-3	11-38	.289	5-20	.250	4-8	.500	9-7-16	1.8	14	0	32	30	0	17	31	3.4

SEASON HIGHS

Points

7 twice, last vs. USC-Upstate (11/27/11)

Rebounds

3 three times, last vs. Troy (11/30/11)

Assists

8 vs. USC-Upstate (11/27/11)

Blocks

N/A

Steals

5 vs. Troy (11/30/11)

Field Goals

2 four times, last vs. USF (12/14/11)

Field Goal Attempts

7 vs. Troy (11/30/11)

3-Point Field Goals

2 twice, last vs. South Florida (12/14/11)

3-Point FG Attempts

4 twice, last vs. South Florida (12/14/11)

Free Throws

3 at Mercer (11/11/11)

Free Throw Attempts

4 at Mercer (11/11/11)



Pascale WEST

#20

Junior • Center • 6-8

LaGrange, Ga.

Troup County Comprehensive High School

NOTES:

- Had best game of the season vs. USC-Upstate, scoring 2 points with 3 rebounds and an assist
- Pulled down season-high 4 rebounds with a block against George Washington
- Came off the bench for 2 points and a rebound in the season-opener at Mercer
- Tied her career high againn with 4 points at LSU last season
- Is the tallest player in the SEC
- Her 22 blocks during the 2009-10 season rank her ninth all-time among Auburn freshmen

Opponent	Start	Min.	FG-A	3PT-A	FT-A	O-D-T	PF	Asst.	TO	Blk.	Stl.	Pts.
GCSU (Exhibition)	13		1-4	0-0	2-3	0-3-3	0	1	1	0	0	4
at Mercer	5		0-0	0-0	2-2	0-1-1	3	0	1	0	0	2
BELMONT	6		0-0	0-0	0-0	0-0-0	2	0	1	0	0	0
at Duke						---	DNP - COACHES' DECISION ---					
GEORGE WASHINGTON	12		0-0	0-0	0-0	2-2-4	3	0	0	1	0	0
USC-UPSTATE	10		1-3	0-0	0-0	1-2-3	1	1	0	0	0	2
TROY	7		0-1	0-0	0-0	0-2-2	1	0	0	1	1	0
at Temple	3		0-0	0-0	0-0	0-1-1	1	0	0	0	0	0
SOUTH FLORIDA	4		0-0	0-0	0-0	0-0-0	1	0	1	0	0	0
PURDUE	1		0-0	0-0	0-0	0-0-0	0	0	0	0	0	0

vs. Marist

vs. Hofstra/Central Connecticut State

vs. North Carolina-Charlotte

vs. Florida International/Albany

TENNESSEE

at Alabama

GEORGIA

at Vanderbilt

at Arkansas

SOUTH CAROLINA

at Mississippi State

KENTUCKY

at Ole Miss

VANDERBILT

at Tennessee

at Florida

ARKANSAS

at LSU

ALABAMA

OLE MISS

SEASON HIGHS

Points

2 twice, last vs. USC-Upstate (11/27/11)

Rebounds

4 vs. George Washington (11/23/11)

Assists

1 vs. USC-Upstate (11/27/11)

Blocks

1 twice, last vs. Troy (11/30/11)

Steals

1 vs. Troy (11/30/11)

Field Goals

1 vs. USC-Upstate (11/27/11)

Field Goal Attempts

3 vs. USC-Upstate (11/27/11)

3-Point Field Goals

N/A

3-Point FG Attempts

N/A

Free Throws

2 at Mercer (11/11/11)

Free Throw Attempts

2 at Mercer (11/11/11)

CAREER HIGHS

Points

4 4 times, last at LSU (2/10/11)

Rebounds

5 vs. Alabama A&M (11/19/09)

Assists

1 4 times, last vs. USC-Upstate(12/28/10)

Blocks

7 vs. Alabama A&M (11/19/09)

Steals

1 8 times, last vs. Troy (11/30/10)

Field Goals

2 4 times, last at LSU (2/10/11)

Field Goal Attempts

4 at North Carolina A&T (12/1/09)

3-Point Field Goals

N/A

3-Point FG Attempts

N/A

Free Throws

2 at Mercer (11/11/11)

Free Throw Attempts

4 vs. Florida A&M (11/28/09)

WEST CAREER STATISTICS

Year	GP-GS	FG-FGA	Pct	3FG-FGA	Pct	FT-FTA	Pct	O-D-T (Reb.)	Avg	PF	FO	Asst	TO	Blk	Stl	Pts	Avg
2009-10	24-0	7-15	.467	0-0	.000	4-11	.364	9-23-32	1.3	31	0	5	14	22	6	18	0.8
2010-11	13-0	5-8	.625	0-0	.000	1-6	.167	1-5-6	0.5	15	0	1	9	3	1	11	0.8
2011-12	8-0	1-4	.250	0-0	.000	2-2	1.000	3-8-11	1.4	12	0	1	3	2	1	4	0.5
TOTAL	45-0	13-27	.481	0-0	.000	7-19	.368	13-36-49	1.1	58	0	7	26	27	8	33	0.7



Peyton DAVIS

#34

Sophomore • Center • 6-5

Pinson, Ala.

Mortimer Jordan High School

NOTES:

- Saw first action of the season against USC-Upstate, pulling down 4 rebounds in 7 minutes
- Played season-high 21 minutes at Arkansas as a freshman, tallying 4 points, 6 rebounds and a season-high 3 blocks
- Had a career outing at Vanderbilt, notching season highs in points (6), rebounds (7) and steals (2) in a season-high 15 minutes
- Led Auburn in rebounding for the first time with 7 at Vanderbilt
- A two-sport star athlete in high school, also fielded several NCAA Division I volleyball offers
- Holds a black belt in Taekwondo

Opponent	Start Min.	FG-A	3PT-A	FT-A	O-D-T	PF	Ass.	TO	Blk.	St.	Pts.
GCSU (Exhibition)					--- DNP - INJURED ---						
at Mercer					--- DNP - INJURED ---						
BELMONT					--- DNP - INJURED ---						
at Duke					--- DNP - COACHES' DECISION ---						
GEORGE WASHINGTON					--- DNP - INJURED ---						
USC-UPSTATE	7	0-1	0-0	0-0	0-4-4	0	0	0	0	0	0
TROY	6	0-1	0-0	0-0	1-2-3	1	0	0	1	0	0
at Temple					--- DNP - COACHES' DECISION ---						
SOUTH FLORIDA					--- DNP - COACHES' DECISION ---						
PURDUE	5	0-0	0-0	0-0	0-0-0	0	1	0	0	0	0
vs. Marist											
vs. Hofstra/Central Connecticut State											
vs. North Carolina-Charlotte											
vs. Florida International/Albany											
TENNESSEE											
at Alabama											
GEORGIA											
at Vanderbilt											
at Arkansas											
SOUTH CAROLINA											
at Mississippi State											
KENTUCKY											
at Ole Miss											
VANDERBILT											
at Tennessee											
at Florida											
ARKANSAS											
at LSU											
ALABAMA											
OLE MISS											

DAVIS CAREER STATISTICS

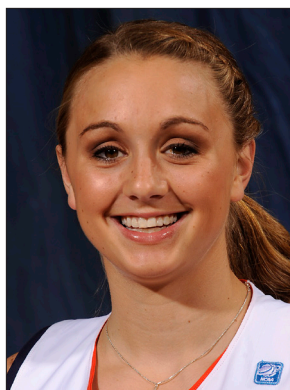
Year	GP-GS	FG-FGA	Pct	3FG-FGA	Pct	FT-FTA	Pct	O-D-T (Reb.)	Avg	PF	FO	Ass	TO	Blk	Stl	Pts	Avg
2010-11	26-0	12-41	.293	0-0	.000	9-15	.600	18-16-34	1.3	38	0	7	13	7	4	33	1.3
2011-12	3-0	0-2	.000	0-0	.000	0-0	.000	1-6-7	2.3	1	0	1	0	1	0	0	0.0
TOTAL	29-0	12-43	.279	0-0	.000	9-15	.600	19-22-41	1.4	39	0	8	13	8	4	33	1.1

SEASON HIGHS

Points		(N/A)
Rebounds		
4	vs. USC-Upstate	(11/27/11)
Assists		
1	vs. Purdue	(12/18/11)
Blocks		
1	vs. Troy	(11/30/11)
Steals		
		(N/A)
Field Goals		
		(N/A)
Field Goal Attempts		
1	twice, last vs. Troy	(11/30/11)
3-Point Field Goals		
		(N/A)
3-Point FG Attempts		
		(N/A)
Free Throws		
		(N/A)
Free Throw Attempts		
		(N/A)

CAREER HIGHS

Points		
6	at Vanderbilt	(1/9/11)
Rebounds		
7	at Vanderbilt	(1/9/11)
Assists		
1	8 times, last vs. Purdue	(12/18/11)
Blocks		
3	at Arkansas	(2/13/11)
Steals		
2	at Vanderbilt	(1/9/11)
Field Goals		
2	4 times, last at Arkansas	(2/13/11)
Field Goal Attempts		
6	vs. Alabama A&M	(12/28/10)
3-Point Field Goals		
		N/A
3-Point FG Attempts		
		N/A
Free Throws		
3	vs. Mercer	(11/12/10)
Free Throw Attempts		
4	vs. Mercer	(11/12/10)



Camille GLYMPH

#22

Sophomore • Guard • 5-10

Greenville, S.C.

J.L. Mann High School

NOTES:

- Has led Auburn in scoring in four of the last eight games and leads the team in scoring with 10.8 points per game
- Scored a career-high 23 points vs. South Florida, becoming the first Tiger this season to score 20 or more points in a game
- Leads the team with 2.3 three-pointers per game this season
- Is 21-of-52 (.404) from beyond the arc in the last seven games; hitting four or more 3-pointers in four games
- Came off the bench in home-opener vs. Belmont for career-high 18 points on 5-of-8 shooting from beyond the arc
- Made her collegiate and SEC debut on Jan. 13, 2011 against Ole Miss after missing half the season with an injury, recording 4 points and a steal

Opponent	Start	Min.	FG-A	3PT-A	FT-A	O-D-T	PF	Asst.	TO	Blk.	Stl.	Pts.
GCSU (Exhibition)	22		5-14	5-12	0-0	0-1-1	2	1	0	0	1	15
at Mercer	24		2-7	0-4	0-0	1-2-3	0	3	0	0	2	4
BELMONT	23		6-11	5-8	1-1	0-1-1	0	3	1	0	1	18
at Duke	28		4-12	4-8	0-0	0-3-3	0	0	0	0	1	12
GEORGE WASHINGTON	19		2-9	0-7	0-0	0-3-3	1	1	0	2	0	4
USC-UPSTATE	12		2-6	2-4	0-0	0-2-2	0	1	0	0	0	6
TROY	26		5-10	4-8	0-0	1-1-2	2	1	2	0	3	14
at Temple	26		5-9	2-6	0-0	0-2-2	0	2	1	0	0	12
SOUTH FLORIDA	*	30	6-12	4-9	7-8	0-2-2	1	1	3	0	1	23
PURDUE	*	34	1-6	0-2	2-2	0-3-3	3	3	2	0	2	4

vs. Marist

vs. Hofstra/Central Connecticut State

vs. North Carolina-Charlotte

vs. Florida International/Albany

TENNESSEE

at Alabama

GEORGIA

at Vanderbilt

at Arkansas

SOUTH CAROLINA

at Mississippi State

KENTUCKY

at Ole Miss

VANDERBILT

at Tennessee

at Florida

ARKANSAS

at LSU

ALABAMA

OLE MISS

SEASON HIGHS**Points**

23 vs. South Florida (12/14/11)

Rebounds

3 3 times, last vs. Purdue (12/18/11)

Assists

3 3 times, last vs. Purdue (12/18/11)

Blocks

2 vs. George Washington (11/23/11)

Steals

3 vs. Troy (11/30/11)

Field Goals

6 twice, last vs. South Florida (12/14/11)

Field Goal Attempts

12 twice, last vs. South Florida (12/14/11)

3-Point Field Goals

5 vs. Belmont (11/15/11)

3-Point FG Attempts

9 vs. South Florida (12/14/11)

Free Throws

7 vs. South Florida (12/14/11)

Free Throw Attempts

8 vs. South Florida (12/14/11)

CAREER HIGHS**Points**

23 vs. South Florida (12/14/11)

Rebounds

4 vs. Alabama (2/17/11)

Assists

3 4 times, last vs. Purdue (12/18/11)

Blocks

2 vs. George Washington (11/23/11)

Steals

3 vs. Troy (11/30/11)

Field Goals

6 twice, last vs. South Florida (12/14/11)

Field Goal Attempts

12 3 times, last vs. USF (12/14/11)

3-Point Field Goals

5 vs. Belmont (11/15/11)

3-Point FG Attempts

9 vs. South Florida (12/14/11)

Free Throws

7 vs. South Florida (12/14/11)

Free Throw Attempts

8 vs. South Florida (12/14/11)

GLYMPH CAREER STATISTICS

Year	GP-GS	FG-FGA	Pct	3FG-FGA	Pct	FT-FTA	Pct	O-D-T (Reb.)	Avg	PF	FO	Asst	TO	Blk	Stl	Pts	Avg
2010-11	13-0	11-40	.275	5-21	.238	2-2	1.000	3-9-12	0.9	3	0	8	15	2	3	29	2.2
2011-12	9-2	33-82	.402	21-56	.375	10-11	.909	2-19-21	2.3	7	0	15	9	2	10	97	10.8
TOTAL	22-2	44-122	.361	26-77	.338	12-13	.923	5-28-33	1.5	10	0	23	24	4	13	126	5.7



Courtney STRAIN

#11

Sophomore • Guard • 5-9

Woodland, Ala.

Woodland High School

NOTES:

- Made first appearance of the season against South Florida, playing 5 minutes in the game
- Tallied a total of 6 points in exhibition against Georgia College
- Played season-high 22 minutes at Arkansas last season, setting season highs in points (12) and rebounds (4)
- Earned first collegiate start vs. Seton Hall at the 2010 Junkanoo Jam, scoring 7 points
- Scored 3 points with 2 rebounds in collegiate debut vs. Mercer in 2010
- Broke the Alabama state scoring record as a junior in high school, finished her career with 5,283 points - more than 1,000 than her nearest competitor
- Was also a varsity cheerleader for six years, serving as captain as a senior
- Graduated as salutatorian of her graduating class

Opponent	Start	Min.	FG-A	3PT-A	FT-A	0-D-T	PF	Ast.	TO	Blk.	St.	Pts.
GCSU (Exhibition)		18	3-7	0-3	0-2	0-1-1	3	0	0	0	1	6
at Mercer						--- DNP - INJURED ---						
BELMONT						--- DNP - INJURED ---						
at Duke						--- DNP - INJURED ---						
GEORGE WASHINGTON						--- DNP - INJURED ---						
USC-UPSTATE						--- DNP - INJURED ---						
TROY						--- DNP - INJURED ---						
at Temple						--- DNP - INJURED ---						
SOUTH FLORIDA	5		0-2	0-1	0-0	0-0-0	0	0	1	0	0	0
PURDUE	9		0-3	0-0	0-0	1-0-1	0	1	1	0	0	0
vs. Marist												
vs. Hofstra/Central Connecticut State												
vs. North Carolina-Charlotte												
vs. Florida International/Albany												
TENNESSEE												
at Alabama												
GEORGIA												
at Vanderbilt												
at Arkansas												
SOUTH CAROLINA												
at Mississippi State												
KENTUCKY												
at Ole Miss												
VANDERBILT												
at Tennessee												
at Florida												
ARKANSAS												
at LSU												
ALABAMA												
OLE MISS												

STRAIN CAREER STATISTICS

Year	GP-GS	FG-FGA	Pct	3FG-FGA	Pct	FT-FTA	Pct	0-D-T (Reb.)	Avg	PF	FO	Ast	TO	Blk	Stl	Pts	Avg
2010-11	24-1	24-76	.316	5-19	.263	8-15	.533	6-14-20	0.8	13	0	7	16	0	7	61	2.5
2011-12	2-0	0-5	.000	0-1	.000	0-0	.000	1-0-1	0.5	0	0	1	2	0	0	0	0.0
TOTAL	26-1	24-81	.296	5-20	.250	8-15	.533	7-14-21	0.8	13	0	8	18	0	7	61	2.3

SEASON HIGHS

Points

Rebounds

1 vs. Purdue (12/18/11)

Assists

1 vs. Purdue (12/18/11)

Blocks

Steals

Field Goals

Field Goal Attempts

3 vs. Purdue (12/18/11)

3-Point Field Goals

3-Point FG Attempts

1 vs. South Florida (12/14/11)

Free Throws

Free Throw Attempts

CAREER HIGHS

Points

12 at Arkansas (2/13/11)

Rebounds

4 at Arkansas (2/13/11)

Assists

1 8 times, last vs. Purdue (12/18/11)

Blocks

N/A

Steals

1 7 times, last vs. Kentucky (2/27/11)

Field Goals

5 at Arkansas (2/13/11)

Field Goal Attempts

8 at Toledo (3/19/11)

3-Point Field Goals

1 5 times, last at LSU (2/10/11)

3-Point FG Attempts

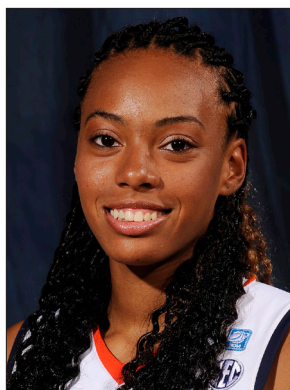
3 twice, last vs. Seton Hall (11/27/10)

Free Throws

3 vs. Sacred Heart (11/26/10)

Free Throw Attempts

6 vs. Sacred Heart (11/26/10)



Tyrese TANNER

#32

Sophomore • Forward • 6-1

Birmingham, Ala.

Hoover High School

NOTES:

- Is third on the team in scoring with 10.0 points per game this season
- Has scored in double figures in four games this season
- Scored career-high 16 points in home-opener win over Belmont on career-high 4-of-5 shooting from 3-point range
- Started and led Auburn in scoring with 14 points in the season-opener at Mercer, also tallied 3 assists and 2 steals
- Averaged 11.0 points, 7.0 rebounds and 1.5 blocks per game in the two 2011 WNIT games
- Tied her career high with 15 points at Alabama, hitting four free throws in the final 20 seconds for the win
- Made first collegiate start vs. Seton Hall, went on to start the next two games

Opponent	Start	Min.	FG-A	3PT-A	FT-A	O-D-T	PF	Ast.	TO	Blk.	St.	Pts.
GCSU (Exhibition)		7	3-4	1-1	1-2	1-0-1	2	0	1	1	1	8
at Mercer	*	17	6-8	0-1	2-2	0-0-0	4	3	1	0	2	14
BELMONT	*	28	5-11	4-5	2-2	2-2-4	1	1	1	1	1	16
at Duke	*	26	3-11	0-3	3-3	0-4-4	2	1	3	2	1	9
GEORGE WASHINGTON	*	30	3-14	0-3	5-8	0-3-3	3	2	0	0	0	11
USC-UPSTATE	*	27	3-8	0-1	1-2	4-2-6	0	1	1	2	1	7
TROY	*	21	2-8	0-1	4-7	5-1-6	1	0	2	0	0	8
at Temple	*	32	2-14	1-4	4-5	3-3-6	2	2	3	0	3	9
SOUTH FLORIDA	*	30	4-8	0-0	4-6	3-4-7	2	2	3	1	2	12
PURDUE	*	22	1-7	0-1	2-3	1-1-2	4	1	4	0	0	4

vs. Marist

vs. Hofstra/Central Connecticut State

vs. North Carolina-Charlotte

vs. Florida International/Albany

TENNESSEE

at Alabama

GEORGIA

at Vanderbilt

at Arkansas

SOUTH CAROLINA

at Mississippi State

KENTUCKY

at Ole Miss

VANDERBILT

at Tennessee

at Florida

ARKANSAS

at LSU

ALABAMA

OLE MISS

SEASON HIGHS

Points

16 vs. Belmont (11/15/11)

Rebounds

7 vs. South Florida (12/14/11)

Assists

3 at Mercer (11/11/11)

Blocks

2 twice, last vs USC-Upstate (11/28/11)

Steals

3 at Temple (12/03/11)

Field Goals

6 at Mercer (11/11/11)

Field Goal Attempts

14 twice, last at Temple (12/03/11)

3-Point Field Goals

4 vs Belmont (11/15/11)

3-Point FG Attempts

5 at Mercer (11/15/11)

Free Throws

5 vs. George Washington (11/23/11)

Free Throw Attempts

8 vs. George Washington (11/23/11)

CAREER HIGHS

Points

16 vs Belmont (11/15/11)

Rebounds

7 3 times, last vs. USF (12/14/11)

Assists

3 4 times, last vs. Belmont (11/15/11)

Blocks

3 at Tennessee Tech (3/17/11)

Steals

3 four times, last at Temple (12/03/11)

Field Goals

6 at Mercer (11/11/11)

Field Goal Attempts

14 twice, last at Temple (12/03/11)

3-Point Field Goals

4 vs Belmont (11/15/11)

3-Point FG Attempts

5 twice, last vs. Belmont (11/15/11)

Free Throws

6 twice, last at Toledo (3/19/11)

Free Throw Attempts

6 5 times, last at Toledo (3/19/11)

TANNER CAREER STATISTICS

Year	GP-GS	FG-FGA	Pct	3FG-FGA	Pct	FT-FTA	Pct	O-D-T (Reb.)	Avg	PF	FO	Ast	TO	Blk	Stl	Pts	Avg
2010-11	32-3	53-159	.333	6-37	.162	43-64	.672	48-53-101	3.2	57	1	27	48	24	21	155	4.8
2011-12	9-9	29-89	.326	5-19	.263	27-38	.711	18-20-38	4.2	19	0	13	18	6	10	90	10.0
TOTAL	41-12	82-248	.331	11-56	.196	70-102	.686	66-73-139	3.4	76	1	40	66	30	31	245	6.0



Jassany WILLIAMS

#25

Sophomore • Forward • 6-2

Davie, Fla.

Nova High School

NOTES:

- Neared a double-double with 12 points and 8 rebounds against Troy
- Blocked a career-high 7 shots at Duke, tying for 13th all-time at Auburn in single-game blocks
- Started and logged 9 points, 5 rebounds and 2 blocks in the season-opener at Mercer
- Started the last nine games of the 2010-11 season
- Pulled down a career-high 12 rebounds against Alabama
- Earned her first career start at LSU, scoring 6 points with 2 rebounds and 2 blocked shots in 19 minutes
- Came off the bench to score career high 13 points vs. South Alabama last season

Opponent	Start	Min.	FG-A	3PT-A	FT-A	O-D-T	PF	Ast.	TO	Blk.	St.	Pts.
GCSU (Exhibition)	*	24	2-4	0-0	4-6	4-7-11	1	2	0	1	1	8
at Mercer	*	29	4-6	0-0	1-2	1-4-5	3	2	1	2	1	9
BELMONT	*	29	5-8	0-0	2-2	1-6-7	3	0	1	4	2	12
at Duke	*	23	2-5	0-0	0-0	2-2-4	2	1	2	7	2	4
GEORGE WASHINGTON	*	7	2-2	0-0	1-4	1-0-1	1	0	0	0	0	5
USC-UPSTATE		14	0-2	0-0	1-2	3-1-4	2	0	1	3	2	1
TROY		18	5-8	0-0	0-0	3-5-8	0	0	0	4	1	10
at Temple		11	1-3	0-0	0-0	2-0-2	3	0	1	0	1	2
SOUTH FLORIDA		15	0-1	0-0	2-2	0-4-4	2	0	1	1	0	2
PURDUE		4	0-1	0-0	0-0	0-0-0	0	0	0	0	0	0

vs. Marist

vs. Hofstra/Central Connecticut State

vs. North Carolina-Charlotte

vs. Florida International/Albany

TENNESSEE

at Alabama

GEORGIA

at Vanderbilt

at Arkansas

SOUTH CAROLINA

at Mississippi State

KENTUCKY

at Ole Miss

VANDERBILT

at Tennessee

at Florida

ARKANSAS

at LSU

ALABAMA

OLE MISS

WILLIAMS CAREER STATISTICS

Year	GP-GS	FG-FGA	Pct	3FG-FGA	Pct	FT-FTA	Pct	O-D-T (Reb.)	Avg	PF	FO	Ast	TO	Blk	Stl	Pts	Avg
2010-11	32-9	45-113	.398	0-0	.000	28-52	.538	52-68-120	3.8	53	1	7	39	23	26	118	3.7
2011-12	9-4	19-36	.528	0-0	.000	7-12	.583	13-22-35	3.9	16	0	3	7	21	9	45	5.0
TOTAL	41-13	64-149	.430	0-0	.000	35-64	.547	65-90-155	3.8	69	1	10	46	44	35	163	4.0

SEASON HIGHS

Points

12 vs. Belmont (11/15/11)

Rebounds

8 vs. Troy (11/30/11)

Assists

2 at Mercer (11/11/11)

Blocks

7 at Duke (11/18/11)

Steals

2 3 times, last at USC-Upstate (11/28/11)

Field Goals

5 twice, last vs. Troy (11/30/11)

Field Goal Attempts

8 twice, last vs. Troy (11/30/11)

3-Point Field Goals

N/A

3-Point FG Attempts

N/A

Free Throws

2 twice, last vs. South Florida (12/14/11)

Free Throw Attempts

4 vs. George Washington (11/23/11)

CAREER HIGHS

Points

13 vs. South Alabama (12/2/10)

Rebounds

12 vs. Alabama (2/17/11)

Assists

2 twice, last at Mercer (11/11/11)

Blocks

7 at Duke (11/18/11)

Steals

3 3 times, last vs. USC (1/30/11)

Field Goals

5 three times, last vs. Troy (11/30/11)

Field Goal Attempts

13 vs. Mercer (11/12/10)

3-Point Field Goals

N/A

3-Point FG Attempts

N/A

Free Throws

3 4 times, last vs. Florida (1/6/11)

Free Throw Attempts

7 vs. Alabama (2/17/11)



Hasina MUHAMMAD

#0

Freshman • Guard/Forward • 6-1

Memphis, Tenn.

Ridgeway High School

NOTES:

- Scored career-high 19 points against Troy
- Has scored in double figures in all but three games this season
- Became first Auburn true freshman to start in season-opener since Morgan Jennings started the season-opener in 2008
- Tallied 12 points, two rebounds, a block and a steal in her debut as a Tiger at Mercer
- Ranked as the No. 66 overall player in the country by ESPN's HoopGurlz, also ranked as the 17th-best guard in the country and the No. 2 prospect in Tennessee
- Ranked as the No. 50 overall prospect by the All-Star Girls Report and No. 47 by the Girls Basketball Report
- Averaged 17.8 points, 7.4 rebounds, 2.3 assists, 3.9 blocks and 2.6 steals per game as a senior, leading Ridgeway to a 20-9 record
- Two-time All-State selection and three-time All-Region; also was a finalist for Tennessee's Miss Basketball

Opponent	Start	Min.	FG-A	3PT-A	FT-A	O-D-T	PF	Asst.	TO	Blk.	Stl.	Pts.
GCSU (Exhibition)	*	18	5-10	0-2	3-5	4-0-4	1	1	0	1	2	13
at Mercer	*	23	6-10	0-1	0-1	0-2-2	3	1	4	1	1	12
BELMONT	*	17	1-3	0-0	3-5	1-4-5	1	1	1	1	2	5
at Duke	*	22	4-8	0-0	2-4	1-2-3	2	1	4	1	0	10
GEORGE WASHINGTON	*	18	3-6	2-2	2-4	1-1-2	0	4	2	0	1	10
USC-UPSTATE		20	6-11	0-1	0-0	3-4-7	3	3	2	1	1	12
TROY		20	9-14	1-1	0-1	4-0-4	1	0	2	3	2	19
at Temple		15	3-9	1-2	0-0	2-2-4	3	0	4	0	0	7
SOUTH FLORIDA		19	0-4	0-1	1-2	1-1-2	1	0	1	2	1	1
PURDUE		22	7-19	3-4	0-0	2-0-2	3	0	2	3	2	17

vs. Marist

vs. Hofstra/Central Connecticut State

vs. North Carolina-Charlotte

vs. Florida International/Albany

TENNESSEE

at Alabama

GEORGIA

at Vanderbilt

at Arkansas

SOUTH CAROLINA

at Mississippi State

KENTUCKY

at Ole Miss

VANDERBILT

at Tennessee

at Florida

ARKANSAS

at LSU

ALABAMA

OLE MISS

MUHAMMAD CAREER STATISTICS

Year	GP-GS	FG-FGA	Pct	3FG-FGA	Pct	FT-FTA	Pct	O-D-T (Reb.)	Avg	PF	FO	Asst	TO	Blk	Stl	Pts	Avg
2011-12	9-4	39-84	.464	7-12	.583	8-17	.471	15-16-31	3.4	17	0	10	22	12	10	93	10.3
TOTAL	9-4	39-84	.464	7-12	.583	8-17	.471	15-16-31	3.4	17	0	10	22	12	10	93	10.3

SEASON HIGHS

Points

19 vs. Troy (11/30/11)

Rebounds

7 vs. USC-Upstate (11/27/11)

Assists

4 vs. George Washington (11/23/11)

Blocks

3 twice, last vs. Purdue (12/18/11)

Steals

2 3 times, last vs. Purdue (12/18/11)

Field Goals

9 vs. Troy (11/30/11)

Field Goal Attempts

19 vs. Purdue (12/18/11)

3-Point Field Goals

3 vs. Purdue (12/18/11)

3-Point FG Attempts

4 vs. Purdue (12/18/11)

Free Throws

3 vs. Belmont (11/15/11)

Free Throw Attempts

5 vs. Belmont (11/15/11)

Exhibition Game: Oct. 30, 2011
Auburn 85, Georgia College 25
Auburn Arena
Auburn, Ala.

Official Basketball Box Score -- Game Totals -- Final Statistics
 GCSU vs Auburn
 10-30-11 2 p.m. at Auburn, Ala. -- Auburn Arena

VISITORS: Georgia College

		rebounds											
#	Player	fg-fga	3fg-fga	ft-fa	of	de	tot	pf	tp	a	to	blk	s min
12	Abby Slocumb*	0-2	0-0	0-0	1	2	2	0	1	2	1	0	19
32	Krysta Lewis*	1-9	0-3	0-2	3	4	7	3	2	0	1	0	19
04	Myeshia Simms*	1-5	0-0	4-6	0	3	3	1	6	1	8	0	30
21	Mikalyn DeFoor*	0-3	0-2	0-0	0	0	0	3	0	0	0	0	16
23	Shanteona Keys*	2-10	1-5	3-4	1	2	3	8	0	2	0	1	25
02	Terryuana Godwin	2-4	0-0	1-1	2	0	2	5	0	0	0	0	6
10	Lisa Mitchell	0-3	0-2	0-0	0	2	2	1	0	0	3	0	12
03	Hollyn Phelps	0-0	0-0	0-0	1	0	1	1	0	0	1	0	15
14	Enisha Donley	1-4	1-1	0-3	1	3	4	2	3	0	1	0	19
24	Jasmine Williams	0-7	0-1	0-0	0	6	6	3	0	0	1	0	22
33	Belinda Schaafsma	0-4	0-1	1-2	0	4	4	2	1	0	3	0	17
TEAM		4 1 5											
Totals.....		7-51	2-15	9-18	13	26	39	21	25	2	22	1	6 200

HOME: Auburn

		rebounds											
#	Player	fg-fga	3fg-fga	ft-fa	of	de	tot	pf	tp	a	to	blk	s min
14	Alverson, Blanche*	3-8	2-6	1-1	0	2	2	1	9	4	0	0	4 23
25	Williams, Jassany*	2-4	0-0	4-6	4	7	11	1	8	2	0	1	24
23	Hilliard, Chantel*	3-9	0-0	4-6	8	7	15	2	10	0	3	2	19
00	Muhammad, Hasina*	5-10	0-2	3-5	4	0	4	1	13	1	0	1	2 18
02	Jennings, Morgan*	2-6	0-1	2-2	1	4	5	1	6	2	1	0	21
03	Ouardad, Najat	0-2	0-1	2-2	1	1	2	3	2	3	2	0	5 18
04	Simmons, Parrisha	1-2	0-0	2-2	2	7	9	1	4	2	0	1	3 17
11	Strain, Courtney	3-7	0-3	0-2	0	1	1	3	6	0	0	0	1 18
20	West, Pascale	1-4	0-0	2-3	0	3	3	0	4	1	1	0	0 13
22	Glymph, Camille	5-14	5-12	0-0	0	1	1	2	15	1	0	0	1 22
32	Tanner, Tyrese	3-4	1-1	1-2	1	0	1	2	8	0	1	1	1 7
TEAM		2 4 6											
Totals.....		28-70	8-26	21-31	23	37	60	17	85	16	8	6	19 200

Officials: Nannette Sisk (R), Denise Brooks (U1), Dawn Marsh (U2)

Technical fouls: GCSU-None. Auburn-None.

Attendance: 731

Score by Periods	1st	2nd	Total
GCSU	6	19	25
Auburn	43	42	85

Exhibition Game

AUBURN - The Auburn women's basketball team took a decisive 85-25 win over Georgia College and State University in its exhibition game on Oct. 30 at the Auburn Arena. Sophomore Camille Glymph led the Tigers with 15 points off the bench while senior Chantel Hilliard notched a double-double with 10 points and 15 rebounds.

Senior Blanche Alverson started things off for Auburn, draining a 3-pointer just 18 seconds into the game. The Tigers newly implemented defense held the Bobcats scoreless for the first 12:45 of the game, until Georgia College ended the drought on a free throw from Shanteona Keys with 7:15 remaining in the half.

Holding the Bobcats to just six points off of free throws in the first half, the Tigers went into the locker room at the half with a substantial 43-6 lead. Auburn scored 19 points off of Georgia College's 15 first-half turnovers.

The Tigers came out strong in the second half and once again kept the Bobcats scoreless for the opening three minutes, while adding seven points to their lead. Georgia College hit its first field goal of the game with 13:55 remaining on a layup from Terryuana Godwin.

The Tigers eventually led by as many as 62 points with 5:13 left in the game before holding on for the 85-25 win.

Auburn shot 40.0 percent from the field while holding the Bobcats to 13.7 percent. Auburn also forced 22 turnovers, turning them in to 27 points on the other end.

Game 1: Nov. 11, 2011
Auburn 77, Mercer 43
University Center
Macon, Ga.

Official Basketball Box Score -- Game Totals -- Final Statistics
 Auburn vs Mercer
 11-11-11 7 p.m. at Macon, Ga. - University Center

VISITORS: Auburn (1-0)

		rebounds											
#	Player	fg-fga	3fg-fga	ft-fa	of	de	tot	pf	tp	a	to	blk	s min
00	Muhammad, Hasina*	6-10	0-1	0-1	0	2	2	3	12	1	4	1	1 23
02	Jennings, Morgan*	2-6	0-1	2-5	2	4	6	1	6	8	3	0	0 24
23	Hilliard, Chantel*	3-5	0-0	0-0	0	5	5	2	6	1	4	0	2 18
25	Williams, Jassany*	4-6	0-0	1-2	1	4	5	3	9	2	1	2	1 29
32	Tanner, Tyrese*	6-8	0-1	2-2	0	0	0	4	14	3	1	0	2 17
03	Ouardad, Najat	2-5	0-2	3-4	1	2	3	1	7	4	4	0	3 16
04	Simmons, Parrisha	1-3	0-0	3-4	5	4	9	2	5	0	2	1	0 18
14	Alverson, Blanche	5-6	0-0	2-4	1	9	10	0	12	1	1	1	0 26
20	West, Pascale	0-0	0-0	2-2	0	1	1	3	2	0	1	0	0 5
22	Glymph, Camille	2-7	0-4	0-0	1	2	3	0	4	3	0	0	2 24
TEAM		2 2 4											
Totals.....		31-56	0-9	15-24	13	35	48	19	77	23	21	5	11 200

HOME: Mercer (0-1)

		rebounds											
#	Player	fg-fga	3fg-fga	ft-fa	of	de	tot	pf	tp	a	to	blk	s min
01	BUCHANAN, Ry'van*	2-6	0-0	0-0	2	1	3	3	4	0	1	0	2 20
02	WILLIAMS, Briana*	2-14	1-9	4-5	1	2	3	2	9	1	3	0	1 33
05	SMITH, Sharmesia*	0-2	0-0	0-2	2	4	6	1	0	0	3	0	1 24
22	BOYKIN, Sharmea*	1-3	0-0	0-0	0	2	2	2	4	3	0	4	34
33	BRIDGES, Precious*	3-7	0-1	0-0	0	0	0	2	6	2	0	0	1 21
04	WILLIAMS, Alicia	2-5	2-4	3-4	0	0	0	0	9	0	2	0	0 18
11	SMITH, Alesha	0-1	0-0	0-0	0	0	0	0	0	0	0	0	0 2
15	PHILLIPS, Alex	0-3	0-1	0-1	1	0	1	3	0	0	0	0	0 6
23	HAZEL, Brittnee	3-9	0-0	0-0	0	5	5	3	6	0	3	1	1 20
24	BLAKEMORE, Jasmine	1-2	0-0	2-4	0	1	1	3	4	0	2	0	0 10
51	BRADSHAW, Tobitha	1-3	1-3	0-0	1	1	2	1	3	0	1	0	0 12
TEAM		1 3 4											
Totals.....		15-55	4-18	9-16	8	19	27	20	43	7	19	1	10 200

Officials: Nan Sisk, Alan Sheffield, Kevin Self

Technical fouls: Auburn-None. Mercer-None.

Attendance: 2728

Score by Periods	1st	2nd	Total
Auburn	36	41	77
Mercer	19	24	43

Largest women's basketball crowd in University Center history

Season-opening game

MACON, Ga. - Auburn scored the first 12 points of the game and never looked back as the Tigers trounced Mercer 77-43 Nov. 11 in Macon, Ga. Sophomore Tyrese Tanner started and led the Tigers with 14 points in the season-opening victory for the women's basketball team.

Tanner was one of three Tigers in double figures in the game, followed by freshman Hasina Muhammad and junior Blanche Alverson with 12 points each. Alverson tallied the first double-double of her career, also pulling down a career-high 10 rebounds.

Auburn held Mercer scoreless for the first four minutes of the game and led by as many as 20 points before taking a 36-19 lead into the locker room at halftime.

The Bears came out and went shot-for-shot with Auburn in the early going of the second half, cutting the lead to 14 with 14:51 to play. The Tigers answered with an 8-0 to get the lead back to 22, fueled by six transition baskets by Tanner.

Mercer would get no closer than 18 points the rest of the way as Auburn gradually pulled away for the eventual 34-point, 77-43, victory.

The game was the Auburn debut for a pair of new Tigers, freshman Muhammad and junior point guard Najat Ouardad. Muhammed started and scored 12 points with two rebounds, a block and a steal. Ouardad came off the bench for seven points, four assists, three rebounds and three steals.

Game 2: Nov. 15, 2011
Auburn 80, Belmont 53
Auburn Arena
Auburn, Ala.

Official Basketball Box Score -- Game Totals -- Final Statistics
 Belmont vs Auburn
 11-15-11 6 p.m. at Auburn, Ala. -- Auburn Arena

VISITORS: Belmont (0-3)

		rebounds											
#	Player	fg-fga	3fg-fga	ft-fa	of	de	tot	pf	tp	a	to	blk	s min
33	DANIEL, Triston*	1-3	1-3	0-0	0	1	1	1	3	1	2	0	0 15
44	NELSON, Haley*	5-12	0-1	3-6	1	10	11	2	13	1	3	1	3 33
01	TARRENCE, Adrienne*	1-3	0-0	2-3	1	1	2	1	4	8	3	0	0 28
20	ERNST, Molly*	2-8	2-6	0-0	1	2	3	2	6	0	2	0	0 23
22	BURNETT, Cacy*	3-6	3-4	0-0	1	0	1	2	9	0	0	0	0 19
04	DOWNS, Julianne	2-2	1-1	0-0	0	2	2	1	5	0	0	0	0 16
10	CARROLL, Katie	0-1	0-1	0-0	0	0	0	2	0	0	3	0	2 10
11	MAYERS, Amara	2-6	0-1	1-2	0	0	0	2	5	0	1	0	1 20
23	VAUGHT, Torie	0-0	0-0	0-0	0	0	0	0	0	0	2	0	0 4
24	WILKINS, Shai	0-0	0-0	0-0	1	0	1	0	0	0	0	0	0 2
32	BROOKS, Katie	0-0	0-0	0-0	0	1	1	0	0	2	3	0	0 12
50	VISBEEN, Alyssa	3-7	1-2	1-3	0	1	1	1	8	0	5	0	0 18
TEAM		4 5 9											
Totals.....		19-48	8-19	7-14	9	23	32	14	53	12	24	1	6 200

HOME: Auburn (2-0)

		rebounds													
#	Player	fg-fga	3fg-fga	ft-fa	of	de	tot	pf	tp	a	to	blk	s	min	
14	Alverson, Blanche*	2-9	1-5	3-3	1	2	3	2	8	0	1	0	0	21	
25	Williams, Jassany*	5-8	0-0	2-2	1	6	7	3	12	0	1	4	2	29	
32	Tanner, Tyrese*	5-11	4-5	2-2	2	2	4	1	16	1	1	1	1	28	
00	Muhammad, Hasina*	1-3	0-0	3-5	1	4	5	1	5	1	1	1	2	17	
02	Jennings, Morgan*	4-9	0-1	0-0	1	1	2	2	8	9	1	0	3	30	
03	Ouardad, Najat	1-4	0-2	0-0	0	0	0	1	2	3	2	0	3	13	
04	Simmons, Parrisha	1-1	0-0	1-2	2	0	2	1	3	1	1	0	1	14	
20	West, Pascale	0-0	0-0	0-0	0	0	0	2	0	0	0	1	0	6	
22	Glymph, Camille	6-11	5-8	1-1	0	1	1	0	18	3	1	0	1	23	
23	Hilliard, Chantel	4-5	0-0	0-0	3	6	9	2	8	2	2	1	2	19	
TEAM							2	2							
Totals.....		29-61	10-21	12-15	11	24	35	15	80	20	12	7	15	200	

Game 3: Nov. 18, 2011
Auburn 50, #8 Duke 73
Cameron Indoor Stadium
Durham, N.C.

Official Basketball Box Score -- Game Totals -- Final Statistics
 Auburn vs #8 Duke
 11-18-11 12:05 p.m. at Durham, N.C. (Cameron Indoor Stadium)

VISITORS: Auburn (2-1)

#	Player	rebounds										s	min
		fg-fga	3fg-fga	ft-fa	of	de	tot	pf	tp	a	to		
14	Alverson, Blanche*	2-8	1-4	0-0	0	3	3	2	5	1	2	0	22
25	Williams, Jassany*	2-5	0-0	0-0	2	2	4	2	4	1	2	7	23
32	Tanner, Tyrese*	3-11	0-3	3-3	0	4	4	2	9	1	3	2	26
00	Muhammad, Hasina*	4-8	0-0	2-4	1	2	3	2	10	1	4	1	22
02	Jennings, Morgan*	0-4	0-0	2-4	0	6	6	5	2	3	5	0	23
03	Ouardad, Najat	1-2	0-0	0-1	1	1	2	2	2	2	4	0	14
04	Simmons, Parrisha	0-1	0-0	0-0	0	1	1	0	0	0	0	0	12
22	Glymph, Camille	4-12	4-8	0-0	0	3	3	0	12	0	0	0	128
23	Hilliard, Chantel	3-7	0-1	0-0	2	2	4	3	6	0	1	1	023
TEAM		4 1 5										1	
Totals.....		19-58	5-16	7-12	10	25	35	18	50	9	22	11	8 200

HOME: #8 Duke (2-0)

#	Player	rebounds										s	min
		fg-fga	3fg-fga	ft-fa	of	de	tot	pf	tp	a	to		
33	Haley Peters*	5-12	0-1	0-0	2	3	5	3	10	1	2	0	121
01	Elizabeth Williams*	8-12	0-0	2-4	4	9	13	2	18	1	1	4	133
03	Shay Selby*	0-4	0-2	3-4	0	2	2	2	3	4	3	1	224
04	Chloe Wells*	4-9	0-1	6-6	0	1	1	4	14	0	0	0	327
12	Chelsea Gray*	3-11	0-3	1-1	2	5	7	1	7	8	5	0	230
14	Ka'la Johnson	0-0	0-0	0-0	0	0	0	0	0	0	0	0	3
15	Richa Jackson	3-9	0-1	2-2	4	5	9	1	8	1	0	0	026
24	Kathleen Scheer	1-1	0-0	2-2	0	2	2	0	4	0	1	0	04
30	Amber Henson	0-1	0-1	1-2	0	1	1	0	1	0	2	0	17
32	Tricia Liston	0-6	0-3	0-0	1	1	2	1	0	1	0	0	014
43	Allison Vernerey	3-6	0-0	2-2	2	1	3	0	8	0	2	0	111
TEAM		6 1 7											
Totals.....		27-71	0-12	19-23	21	31	52	14	73	16	16	5	11 200

Officials: Dee Kantner, Eric Brewton, Jules Gallien

Technical fouls: Auburn-None. #8/8 Duke-None.

Attendance: 4219

Score by Periods

	1st	2nd	Total
Auburn	31	19	50
#8 Duke	32	41	73

AU: Morgan Jennings fouled out at 00:14.5 of the 2nd half

DURHAM, N.C. - Duke's Elizabeth Williams notched a double-double with 18 points and 13 rebounds, leading the No. 8-ranked Blue Devils to a 73-50 win over Auburn, handing the Tigers their first loss of the season.

Sophomore Camille Glymph came off the bench and led the Tigers in scoring for the second game in a row, shooting 4-of-6 from 3-point range for a team-high 12 points. Freshman Hasina Muhammad also finished in double figures, finishing with 10 points and three rebounds.

It was a tale of two halves for the Tigers as Auburn clawed back from being down double figures to pull within one, 32-31, at halftime. Duke turned the tables on Auburn in the second half, out-scoring the Tigers 41-19 to pull away for the win.

Auburn shot just 32.8 percent from the field while Duke shot 41.7 percent in the second half to finish at 38.0 percent for the game. The Blue Devils won the rebounding battle, 52-35, and dominated inside with 44 points in the paint.

Auburn was 5-of-16 from 3-point range with Glymph accounting for four of Auburn's treys. The Tigers held Duke to 0-for-12 from beyond the arc.

Williams was one of three Blue Devils in double figures, ahead of Chloe Wells and Haley Peters with 14 and 10 points each, respectively. Senior Morgan Jennings led Auburn with six rebounds and three assists.

Game 4: Nov. 23, 2011
Auburn 55, George Washington 47
Auburn Arena
Auburn, Ala.

Official Basketball Box Score -- Game Totals -- Final Statistics
 George Washington vs Auburn
 11-23-11 6 p.m. at Auburn, Ala. -- Auburn Arena

VISITORS: George Washington (1-3)

#	Player	rebounds										s	min
		fg-fga	3fg-fga	ft-fa	of	de	tot	pf	tp	a	to		
11	WILSON, Brooke*	1-3	1-1	0-0	0	8	8	1	3	3	0	1	3 27
12	JACKSON, Danni*	4-10	1-1	3-3	1	2	3	3	12	0	2	0	1 21
31	BOOKER, Tara*	3-9	1-4	0-0	2	5	7	2	7	0	4	0	0 37
44	MOSTAFA, Sara*	4-6	0-0	5-6	1	2	3	3	13	0	2	0	1 22
03	ALDRIDGE, Kristin*	0-5	0-0	1-2	0	5	5	1	1	1	5	0	2 29
01	MILLER, Chakacia	1-4	0-1	3-4	1	2	3	4	5	2	0	0	0 19
05	MYERS, Tiana	0-2	0-1	0-0	0	2	2	0	0	0	1	0	0 5
10	SHIPP, Shi-Heria	0-1	0-0	0-0	0	0	0	0	0	0	1	0	0 4
14	PAINTER, Chelsea	1-3	0-0	1-2	1	1	2	0	3	0	1	0	0 12
21	BOURGEOIS, Bria	0-0	0-0	0-0	0	0	0	0	0	0	0	0	0 2
22	NIPE, Megan	1-3	0-1	1-2	1	3	4	0	3	1	0	0	0 22
TEAM		1 1											
Totals.....		15-46	3-9	14-19	8	30	38	16	47	7	16	1	7 200

HOME: Auburn (3-1)

#	Player	rebounds										s	min
		fg-fga	3fg-fga	ft-fa	of	de	tot	pf	tp	a	to		
14	Alverson, Blanche*	5-7	2-3	2-2	0	5	5	0	14	0	2	0	2 26
25	Williams, Jassany*	2-2	0-0	1-4	1	0	1	1	5	0	0	0	0 7
32	Tanner, Tyrese*	3-14	0-3	5-8	0	3	3	3	11	2	0	0	0 30
00	Muhammad, Hasina*	3-6	2-2	2-4	1	1	2	0	10	4	2	0	1 18
02	Jennings, Morgan*	1-7	0-0	2-2	1	1	2	0	4	5	2	0	1 37
03	Ouardad, Najat	0-3	0-3	0-0	2	1	3	0	0	2	2	0	1 15
04	Simmons, Parrisha	2-4	0-0	3-5	3	5	8	3	7	0	2	0	1 20
20	West, Pascale	0-0	0-0	0-0	2	2	4	3	0	0	0	1	0 12
22	Glymph, Camille	2-9	0-7	0-0	0	3	3	1	4	1	0	2	0 19
23	Hilliard, Chantel	0-1	0-0	0-0	2	3	5	4	0	0	0	0	1 16
TEAM		3 3											
Totals.....		18-53	4-18	15-25	12	29	39	15	55	14	10	3	7 200

Officials: Dennis DelMayo (R), Bill Lorange (U1), Amy Bonner (U2)

Technical fouls: George Washington-None. Auburn-None.

Attendance: 1624

Score by Periods

	1st	2nd	Total
George Washington	26	21	47
Auburn	19	36	55

AUBURN - The Auburn women's basketball team overcame a seven-point halftime deficit to rally and defeat George Washington, 55-47, Nov. 23 at the Auburn Arena. The Tigers opened the second half on a 10-2 run, holding the Colonials to two points for the first 9:37 of the half.

Junior Blanche Alverson led the Tigers in scoring with 14 points, followed by Tyrese Tanner with 11 and freshman Hasina Muhammad with 10. Senior Parrisha Simmons provided a spark off the bench, accounting for seven points and a team-high eight rebounds.

Auburn came out of the locker room after halftime eager to turn things around. The Tigers went on a 10-2 run, fueled by four points each from Tanner and Simmons, taking a 33-28 lead. George Washington was never able to regain the lead in the second half as the Tigers would go on to lead by as many as 10 points with 14 seconds left before a Danni Jackson layup on the final possession cut it to eight.

Auburn shot a much-improved 44 percent in the second half and went 11-of-14 from the line. The Tigers forced 16 GW turnovers in the game, turning them into 13 points. Auburn also edged out the rebounding battle, 39-38.

Senior Morgan Jennings led Auburn with five assists while Muhammad added four. Six different Tigers tallied a steal in the game with Alverson leading with two.

Game 5: Nov. 27, 2011
Auburn 75, USC-Upstate 34
Auburn Arena
Auburn, Ala.

Official Basketball Box Score -- Game Totals -- Final Statistics
 South Carolina-Upstate vs Auburn
 11-27-11 2 p.m. at Auburn, Ala. -- Auburn Arena

VISITORS: South Carolina-Upstate (0-6)

#	Player	rebounds										s	min
		fg-fga	3fg-fga	ft-fa	of	de	tot	pf	tp	a	to		
15	McROBERTS, Lauren*	1-5	0-0	0-0	1	0	1	2	2	0	2	0	3 23
21	WEBB, Modisen*	3-6	1-2	0-0	0	3	3	2	7	1	3	0	1 30
01	SMITH, Tyra*	1-2	0-0	0-0	1	0	1	4	2	3	7	0	1 24
13	OHL, Hannah*	0-6	0-4	0-0	1	3	4	0	0	1	3	0	0 27
23	COPNEY, Tee'Ara*	6-12	4-7	3-4	0	5	5	1	19	1	2	0	1 32
00	ROBINSON, Briana	2-4	0-2	0-0	0	2	2	0	4	0	1	0	2 22
05	CASTLEBURY, Logan	0-7	0-7	0-0	0	1	1	1	0	0	0	0	0 15
10	PINKETT, Erin	0-4	0-3	0-0	1	1	2	0	0	0	0	0	1 7
32	HICKS, Shelby	0-5	0-0	0-0	1	3	4	1	0	2	4	0	1 20
TEAM		4 3 7											
Totals.....		13-51	5-25	3-4	9	21	30	11	34	8	22	0	10 200

HOME: Auburn (4-1)

#	Player	rebounds										s	min
		fg-fga	3fg-fga	ft-fa	of	de	tot	pf	tp	a	to		
32	Tanner, Tyrese*	3-8	0-1	1-2	4	2	6	0	7	1	1	2	1 27
23	Hilliard, Chantel*	6-8	0-0	0-1	2	2	4	0	12	0	1	1	0 18
02	Jennings, Morgan*	5-7	0-0	0-0	0	2	2	0	10	2	3	0	1 25
03	Ouardad, Najat*	2-6	2-4	1-2	1	0	1	3	7	8	6	0	2 23
04	Simmons, Parrisha*	0-4	0-0	4-4	7	3	10	0	4	1	0	0	1 19
00	Muhammad, Hasina	6-11	0-1	0-0	3	4	7	3	12	3	2	1	1 20
14	Alverson, Blanche	5-15	4-9	0-0	1	4	5	0	14	2	0	0	0 25
20	West, Pascale	1-3	0-0	0-0	1	2	3	1	2	1	0	0	0 10
22	Glymph, Camille	2-6	2-4	0-0	0	2	2	0	6	1	0	0	0 12
25	Williams, Jassany	0-2	0-0	1-2	3	1	4	2	1	0	1	3	2 14
34	Davis, Peyton	0-1	0-0	0-0	0	4	4	0	0	0	0	0	0 7
TEAM		1 3 4											
Totals.....		30-71	8-19	7-11	23	29	52	9	75	19	14	7	8 200

Game 6: Nov. 30, 2011
Auburn 74, Troy 47
Auburn Arena
Auburn, Ala.

Official Basketball Box Score -- Game Totals -- Final Statistics
 Troy vs Auburn
 11-30-11 6 p.m. at Auburn, Ala. -- Auburn Arena

VISITORS: Troy (0-6)

#	Player	fg	fga	3fg	3fga	ft	fta	of	de	tot	pf	tp	a	to	blk	s	min
35	Coleman, Kourtney*	3-7	0-0	2-5	1	2	3	2	3	2	8	0	0	0	0	0	29
44	Manuel, Tenia*	2-6	1-3	1-2	2	3	5	1	6	1	4	0	0	3	39		
11	Nagy, Ieva*	2-4	0-1	0-0	0	2	2	3	4	0	0	0	0	0	20		
22	Sword, DeAngela*	4-12	1-3	4-6	1	2	3	0	13	1	3	0	0	31			
32	Hynes, Rosie*	1-5	1-1	0-0	1	3	4	3	3	4	9	0	0	37			
05	McAppion, Sarah	0-2	0-0	2-2	0	0	0	1	2	0	0	0	0	7			
14	Bowie, Brooke	3-6	1-3	0-0	0	4	4	2	7	1	2	0	2	19			
40	Blake, Jamesha	1-3	0-1	0-0	0	1	1	0	2	0	4	0	1	14			
50	Ross, Dominique	0-1	0-0	2-2	0	1	1	0	2	1	0	0	0	4			
TEAM		6 1 7															
Totals.....		16-46	4-12	11-17	11	19	30	12	47	8	22	0	6	200			

HOME: Auburn (5-1)

#	Player	fg-fga	3fg-3fga	ft-ftr	of	de	tot	pf	tp	a	to	blk	s	min
32	Tanner, Tyrese*	2-8	0-1	4-7	5	1	6	1	8	0	2	0	0	21
23	Hilliard, Chantel*	2-6	0-0	0-0	1	2	2	4	1	2	1	0	1	17
02	Jennings, Morgan*	3-8	0-0	0-1	2	5	7	1	6	3	0	1	0	29
03	Ouadad, Najat*	2-7	1-2	0-0	2	1	3	0	5	5	2	0	5	21
04	Simmons, Parrisha*	1-4	0-0	1-4	6	1	7	1	3	3	3	2	2	16
00	Muhammad, Hasina	9-14	1-1	0-1	4	0	4	1	19	0	2	3	2	20
14	Alverson, Blanche	2-5	1-3	0-0	0	3	3	1	5	1	0	0	1	19
20	West, Pascale	0-1	0-0	0-0	0	2	2	1	0	0	0	1	1	7
22	Glymph, Camille	5-10	4-8	0-0	1	1	2	2	14	1	2	0	3	26
25	Williams, Jassany	5-8	0-0	0-0	3	5	8	0	10	0	0	4	1	18
34	Davis, Peyton	0-1	0-0	0-0	1	2	3	1	0	0	0	1	0	6
TEAM		1 1												
Totals.....		31-72	7-15	5-13	25	23	48	11	74	14	13	13	15	200

Officials: Joe Cunningham, Metta Roberts, Kim Thebo
 Technical fouls: Troy-None. Auburn-None.

Attendance: 1791

Score by Periods	1st	2nd	Total
Troy	23	24	47
Auburn	38	36	74

AUBURN - The Auburn women's basketball team improved to 5-1 on the season as it rolled past Troy, 74-47, Nov. 30 at the Auburn Arena. The game marked the last of a three-game home stand for the Tigers. The Trojans fell to 0-6 on the season. Freshman Hasina Muhammad came off the bench to lead the Tigers in scoring with 19 points.

Auburn's 48 bench points were the most so far this season and marks the second-consecutive game that the Tigers' bench has outscored the opponent. The Tiger bench scored 35 points to South Carolina-Upstate's 34 on Sunday. Auburn had three players in double-figures on the evening, all of whom came in off the bench.

Muhammad led the Tigers with a career-high 19 points, four rebounds, three blocks and two steals. She finished at 9-of-14 shooting from the floor in just 20 minutes of play. Camille Glymph also came off the bench for 14 points, with 12 of them coming from beyond the arc. Jassany Williams added 10 points, eight rebounds and four blocks, marking the third game this season for her to block at least four shots.

As a team, the Tigers blocked 13 shots against Troy, the most since tying the school record of 17 against Alabama A&M on Nov. 19, 2009.

DeAngela Sword led Troy in scoring with 13 points and picked up three rebounds. Courtney Coleman added eight points while Tenia Manuel scored six with a team-high five boards.

Game 7: Dec. 3, 2011
Auburn 57, Temple 73
Liaccouras Center
Philadelphia, Pa.

Official Basketball Box Score -- Game Totals -- Final Statistics
 Auburn vs Temple
 12-03-11 1 p.m. at Philadelphia, Pa. (Liaccouras Center)

VISITORS: Auburn (5-2)

#	Player	rebounds												s	min
		fg	fga	ft	fta	of	de	tot	pf	tp	a	to	blk		
23	Hilliard, Chantel*	1-3	0-0	1-1	0	0	0	3	3	0	1	1	1	19	
32	Tanner, Tyrese*	2-14	1-4	4-5	3	6	2	9	2	3	0	3	32		
02	Jennings, Morgan*	3-7	0-0	1-1	1	6	7	1	7	2	2	0	1	29	
03	Ouadad, Najat*	1-5	0-2	0-0	2	0	2	4	2	4	3	0	1	21	
04	Simmons, Parrisha*	3-6	0-0	3-4	4	0	4	1	9	1	1	1	2	24	
00	Muhammad, Hasina	3-9	1-2	0-0	2	2	4	3	7	0	4	0	0	15	
14	Alverson, Blanche	2-4	2-3	0-0	0	2	2	1	6	1	0	0	0	20	
20	West, Pascale	0-0	0-0	0-0	0	1	1	0	0	0	0	0	0	3	
22	Glymph, Camille	5-9	2-6	0-0	0	2	2	0	12	2	1	0	0	26	
25	Williams, Jassany	1-3	0-0	0-0	2	0	2	3	2	0	1	0	1	11	
TEAM		2 3 5													
Totals.....		21-60	6-17	9-11	16	19	35	19	57	12	16	2	9	200	

HOME: Temple (3-5)

		rebounds												
#	Player	fg-fga	3fg-fga	ft-ftr	of	de	tot	pf	tp	a	to	blk	s	min
32	THAMES, Natasha*	1-3	0-0	1-2	2	2	4	0	3	0	1	0	0	8
14	CONNELLY, Joelle*	1-3	0-0	2-2	1	0	1	1	4	2	3	0	0	16
03	WILLIAMS, BJ*	1-2	1-1	2-2	0	0	4	5	4	1	0	2	20	
05	MCCARTHY, Kristen*	4-8	0-1	0-2	2	7	9	0	8	0	1	0	1	36
11	PEDDY, Shay*	11-16	3-5	2-2	1	5	6	3	27	2	2	1	5	34
01	LEWIS, Brittany	3-7	1-2	2-2	1	3	4	3	9	0	2	0	0	28
04	BROWN, Rakesha	0-0	0-0	0-0	0	0	0	0	0	0	1	0	0	4
21	WORKS, Nikki	2-3	0-0	0-0	0	1	1	1	4	0	0	0	0	13
23	WILLIAMS, Tyonna	1-7	1-5	0-1	0	1	1	3	2	0	0	0	0	22
25	MACAULAY, Victoria	3-6	0-0	3-3	1	3	4	0	9	0	1	0	0	15
30	MERRITT, Monaye	0-0	0-0	1-2	1	1	2	0	1	0	1	0	0	4
TEAM		3 2 5												
Totals.....		27-55	6-14	13-18	13	24	37	13	73	10	13	1	8	200

Officials: Dee Kantner, Joseph Vaszily, Bonnie Pettus
 Technical fouls: Auburn-None. Temple-None.

Attendance: 5,215

Score by Periods	1st	2nd	Total
Auburn	27	30	57
Temple	45	28	73

PHILADELPHIA, Pa. - The Auburn women's basketball team suffered its second loss of the season Dec. 3, falling at Temple, 73-57. Camille Glymph led the Tigers off the bench with 12 points while Parrisha Simmons tied her career high with nine.

Auburn was down 25-31 with 3:27 to go in the first half, but was out-scored 14-2 in the final stretch, thanks partly to two Temple 3-pointers in the final 12 seconds, giving the Owls a 47-25 halftime lead. The Tigers out-scored Temple, 30-28, in the second half, but could not overcome the first-half difference.

Temple was led by Shay Peddy with 27 points and five steals. Nineteen of Peddy's points came in the second half when the Owls extended their lead to as many as 23 points. Auburn came back, however, and cut the margin to 16 by the final horn.

Auburn struggled from the field, shooting 35.0 percent (21-of-60) from the field, but was 35.3 percent (6-of-17) from beyond the arc. Temple was able to capitalize on Auburn turnovers and score in transition. The Owls forced 16 Auburn turnovers and scored 21 points off them, including 16 fast-break points.

Along with Simmons, sophomore Tyrese Tanner scored nine points with six rebounds and a team-high three steals. Senior Morgan Jennings led the Tigers on the boards with seven rebounds along with her seven points and two assists. Freshman Hasina Muhammad also scored seven points.

Game 8: Dec. 14, 2011
Auburn 62, South Florida 45
Auburn Arena
Auburn, Ala.

Official Basketball Box Score -- Game Totals -- Final Statistics
 South Florida vs Auburn
 12-14-11 6 p.m. at Auburn, Ala. -- Auburn Arena

VISITORS: South Florida (6-5)

#	Player	rebounds												s	min
		fg	fga	ft	fta	of	tot	pf	tp	a	to	blk			
00	JOHNSON, Tahir*	2-6	0-0	0-0	2	0	2	1	4	1	4	0	0	17	
32	MCDONALD, Akila*	1-1	0-0	2-5	0	0	0	5	4	0	0	2	0	12	
01	WYNNIE, Jasmine*	5-12	1-2	6-10	2	3	5	2	17	2	2	0	7	40	
03	SAUNDERS, Kaneisha*	2-8	0-1	0-0	0	1	1	3	4	1	3	0	2	27	
05	BERNARD, Sasha*	0-3	0-0	0-0	1	2	3	1	0	2	3	0	2	21	
04	CONNER, Tiffany	1-4	0-0	0-0	3	1	4	5	2	2	1	0	1	22	
11	ROWE, Caitlin	5-14	0-1	0-0	1	4	5	0	10	0	0	0	0	26	
12	SMITH, Andrell	1-10	0-6	2-4	1	1	2	3	4	0	5	0	2	27	
22	FLOWERS, Aleshia	0-0	0-0	0-0	0	0	0	0	0	0	0	0	0	3	
23	STRINGFIELD, Shaleth	0-0	0-0	0-0	0	0	0	0	0	0	2	0	1	5	
TEAM		5 2 7													
Totals.....		17-58	1-10	10-19	15	14	29	20	45	8	20	2	15	200	

HOME: Auburn (6-2)

#	Player	fg	fga	3fg	3fga	ft	fta	of	de	tot	pf	tp	a	to	blk	s	min
04	Simmons, Parrisha*	1-1	0-0	3-4	6	5	11	2	5	1	4	1	4	1	4	21	
14	Alverson, Blanche*	3-5	1-2	0-0	0	5	5	2	7	1	3	0	1	20			
32	Tanner, Tyrese*	4-8	0-0	4-6	3	4	7	2	12	2	3	1	2	30			
02	Jennings, Morgan*	1-5	0-0	0-0	1	3	4	0	2	4	6	1	0	23			
22	Glymph, Camille*	6-12	4-9	7-8	0	2	2	1	23	1	3	0	1	30			
00	Muhammad, Hasina	0-4	0-1	1-2	1	2	1	1	0	1	2	1	19				
03	Ouadad, Najat	2-5	2-4	0-1	0	2	2	1	6	2	4	0	0	14			
11	Strain, Courtney	0-2	0-1	0-0	0	0	0	0	0	0	1	0	0	5			
20	West, Pascale	0-0	0-0	0-0	0	0	0	0	0	0	1	0	0	4			
23	Hilliard, Chantel	1-3	0-0	2-2	3	3	6	2	4	0	2	1	2	19			
25	Williams, Jassany	0-1	0-0	2-2	0	4	4	2	2	0	1	1	0	15			
TEAM		2 3 5															
Totals.....		18-46	7-17	19-25	16	32	48	14	62	11	29	7	11	200			

Game 9: Dec. 18, 2011
Auburn 54, #22 Purdue 62
Auburn Arena
Auburn, Ala.

Official Basketball Box Score -- Game Totals -- Final Statistics

#22 Purdue vs Auburn

12-18-11 2 p.m. at Auburn, Ala. -- Auburn Arena

VISITORS: Purdue (8-3)

#	Player	rebounds												
		fg-fga	3fg-fga	ft-fa	of	de	tot	pf	tp	a	to	blk	s	min
32	Ostareello, Sam*	5-9	0-0	0-0	1	6	7	4	10	3	2	0	1	33
40	Jones, Chelsea*	1-3	0-0	0-0	0	2	2	1	2	3	0	0	1	16
15	Moses, Courtney*	1-6	0-2	0-0	0	2	2	4	2	0	3	0	2	19
22	Houser, KK*	0-8	0-3	0-0	0	2	2	2	0	3	1	0	2	25
43	Poston, Chantel*	1-3	0-0	2-4	3	2	5	0	4	1	2	0	1	26
02	Howard, Antionette	3-3	0-0	0-0	0	0	0	0	6	0	0	0	0	8
04	Thornton, Torrie	0-0	0-0	0-0	0	0	0	1	0	0	2	0	0	3
05	Rayburn, Brittany	3-7	1-3	8-8	0	2	2	0	15	3	4	0	3	23
20	Williams, Dee Dee	0-0	0-0	4-4	1	1	2	2	4	0	1	0	0	18
41	Guyton, Alex	7-10	0-0	5-7	1	0	1	3	19	0	2	0	3	25
54	Woods, Samantha	0-0	0-0	0-0	0	0	0	0	0	0	1	0	0	4
TEAM		3 3 6 1												
Totals.....		21-49	1-8	19-23	9	20	29	18	62	13	18	0	13	200

HOME: Auburn (6-3)

#	Player	rebounds												
		fg-fga	3fg-fga	ft-fa	of	de	tot	pf	tp	a	to	blk	s	min
14	Alverson, Blanche*	5-9	5-9	0-0	0	6	6	3	15	1	4	1	1	30
32	Tanner, Tyrese*	1-7	0-1	2-3	1	1	2	4	4	1	4	0	0	22
02	Jennings, Morgan*	2-2	0-0	1-2	0	0	0	1	5	0	5	0	1	12
04	Simmons, Parrisha*	0-2	0-0	9-14	9	7	16	2	9	2	2	1	0	33
22	Glymph, Camille*	1-6	0-2	2-2	0	3	3	3	4	3	2	0	2	34
00	Muhammad, Hasina	7-19	3-4	0-0	2	0	2	3	17	0	2	3	2	22
03	Ouardad, Najat	0-1	0-1	0-0	0	0	0	2	0	2	3	0	1	16
11	Strain, Courtney	0-3	0-0	0-0	1	0	1	0	0	1	1	0	0	9
20	West, Pascale	0-0	0-0	0-0	0	0	0	0	0	0	0	0	0	1
23	Hilliard, Chantel	0-3	0-0	0-0	2	3	5	2	0	0	2	0	0	12
25	Williams, Jassany	0-1	0-0	0-0	0	0	0	0	0	0	0	0	0	4
34	Davis, Peyton	0-0	0-0	0-0	0	0	0	0	0	1	0	0	0	5
TEAM		3 1 4												
Totals.....		16-53	8-17	14-21	18	21	39	20	54	11	25	5	7	200

Officials: Beverly Roberts (R), Tina Napier (U1), Michael McConnell (U2)

Technical fouls: Purdue-TEAM. Auburn-None.

Attendance: 2034

Score by Periods

	1st	2nd	Total
Purdue	20	42	62
Auburn	21	33	54

AUBURN - The Auburn women's basketball team suffered a 62-54 loss to No. 22 Purdue Dec. 18 at Auburn Arena. Auburn trailed by as many as 12 points before cutting it to four in the final minutes, but ran out of time. The Tigers fell to 6-3, while the Boilermakers improved to 8-3.

The Tigers shot just 30.2 percent from the floor, but went 8-of-17 from beyond the arc. Junior Blanche Alverson's season-high 15 points all came from 3-point range, as did nine of freshman Hasina Muhammad's 17 points. Alverson's five 3-pointers tied her career high and moved her past former Tiger Carolyn Jones (1988-91) for sixth all-time at Auburn in career 3-pointers with 107.

Purdue's Alex Guyton came off the bench to finish with a career-high 19 points. Brittany Rayburn added 15 points in the win.

Auburn led 21-20 at halftime, but the Boilermakers scored the first four points of the period to re-take the lead, one they would not give up the rest of the game.

A 3-pointer by Alverson with 16:34 left in the game cut the Purdue lead to one, but that would be the last Auburn field goal for almost 10 minutes as the Boilermakers pulled away for a 12-point lead with 7:04 to go. Alverson ended the drought with a trey at the 6:49 mark, cutting the Purdue lead back to single digits.

The Tigers would cut the Boilermaker lead to as few as four points with 4:41 left in the game, but Purdue was able to hold on to the lead for the 62-54 final score.

Season Statistics

RECORD:	OVERALL	HOME	AWAY	NEUTRAL
ALL GAMES	6-3	5-1	1-2	0-0
CONFERENCE	0-0	0-0	0-0	0-0
NON-CONFERENCE	6-3	5-1	1-2	0-0

#	Player	gp-gs	min	avg	Total		3-Point		F-Throw		Rebounds				pf	dq	a	to	blk	stl	pts	avg
					fg-fga	fg%	3fg-fga	3fg%	ft-fa	ft%	off	def	tot	avg								
22	Glymph, Camille	9-2	222	24.7	33-82	.402	21-56	.375	10-11	.909	2	19	21	2.3	7	0	15	9	2	10	97	10.8
00	Muhammad, Hasina	9-4	176	19.6	39-84	.464	7-12	.583	8-17	.471	15	16	31	3.4	17	0	10	22	12	10	93	10.3
32	Tanner, Tyrese	9-9	233	25.9	29-89	.326	5-19	.263	27-38	.711	18	20	38	4.2	19	0	13	18	6	10	90	10.0
14	Alverson, Blanche	9-5	209	23.2	31-68	.456	17-38	.447	7-9	.778	3	39	42	4.7	11	0	8	13	2	5	86	9.6
02	Jennings, Morgan	9-9	239	26.6	21-55	.382	0-2	.000	8-15	.533	8	28	36	4.0	11	1	36	27	2	9	50	5.6
04	Simmons, Parrisha	9-5	177	19.7	9-26	.346	0-0	.000	27-41	.659	42	26	68	7.6	12	0	9	15	6	12	45	5.0
25	Williams, Jassany	9-4	150	16.7	19-36	.528	0-0	.000	7-12	.583	13	22	35	3.9	16	0	3	7	21	9	45	5.0
23	Hilliard, Chantel	9-4	161	17.9	20-41	.488	0-1	.000	3-4	.750	15	25	40	4.4	20	0	4	15	6	8	43	4.8
03	Ouardad, Najat	9-3	153	17.0	11-38	.289	5-20	.250	4-8	.500	9	7	16	1.8	14	0	32	30	0	17	31	3.4
20	West, Pascale	8-0	48	6.0	1-4	.250	0-0	.000	2-2	1.000	3	8	11	1.4	12	0	1	3	2	1	4	0.5
11	Strain, Courtney	2-0	14	7.0	0-5	.000	0-1	.000	0-0	.000	1	0	1	0.5	0	0	1	2	0	0	0	0.0
34	Davis, Peyton	3-0	18	6.0	0-2	.000	0-0	.000	0-0	.000	1	6	7	2.3	1	0	1	0	1	0	0	0.0
Team											14	19	33					1				
Total.....		9	1800		213-530	.402	55-149	.369	103-157	.656	144	235	379	42.1	140	1	133	162	60	91	584	64.9
Opponents.....		9	1800		170-479	.355	32-127	.252	105-153	.686	103	201	304	33.8	138	-	89	170	11	86	477	53.0

TEAM STATISTICS	AU	OPP	Date	Opponent	Score	Att.
SCORING	584	477	11-11-11	at Mercer	w 77-43	2728
Points per game	64.9	53.0	11-15-11	BELMONT	w 80-53	2249
Scoring margin	+11.9	-	11-18-11	at #8/8 Duke	L 50-73	4219
FIELD GOALS-ATT	213-530	170-479	11-23-11	GEORGE WASHINGTON	w 55-47	1624
Field goal pct	.402	.355	11-27-11	USC-UPSTATE	w 75-34	1630
3 POINT FG-ATT	55-149	32-127	11-30-11	TROY	w 74-47	1791
3-point FG pct	.369	.252	12-03-11	at Temple	L 57-73	5215
3-pt FG made per game	6.1	3.6	12-14-11	SOUTH FLORIDA	w 62-45	1632
FREE THROWS-ATT	103-157	105-153	12-18-11	PURDUE	L 54-62	2034
Free throw pct	.656	.686				
F-Throws made per game	11.4	11.7				
REBOUNDS	379	304				
Rebounds per game	42.1	33.8				
Rebounding margin	+8.3	-				
ASSISTS	133	89				
Assists per game	14.8	9.9				
TURNOVERS	162	170				
Turnovers per game	18.0	18.9				
Turnover margin	+0.9	-				
Assist/turnover ratio	0.8	0.5				
STEALS	91	86				
Steals per game	10.1	9.6				
BLOCKS	60	11				
Blocks per game	6.7	1.2				
ATTENDANCE	10960	12162				
Home games-Avg/Game	6-1827	3-4054				
Neutral site-Avg/Game	-	0-0				

* - Conference game

Score by Periods	1st	2nd	Totals
Auburn	282	302	584
Opponents	227	250	477