



2014-15 Auburn Women's Basketball

Game 1 • November 14, 2014

vs. Troy • Season Opener

18 NCAA Tournament Appearances • Three Final Fours • Five WNIT Appearances • Five SEC Titles • Four SEC Tournament Titles

AUBURN ATHLETICS COMMUNICATIONS

Assistant Director/WBB Contact: Wes Todd • wlt0006@auburn.edu

Auburn Athletic Complex / 392 S. Donahue / Auburn, AL 36849

O: 334.844.9800 • C: 334.750.5682 • F: 334.844.9807

AuburnTigers.com

Twitter: @AuburnWBB • Facebook: facebook.com/AUWBB • Instagram: AuburnWBB

GAME 1 • Season Opener



VS.



Auburn Tigers (0-0) vs. Troy Trojans (0-0)

When: Friday, November 14 • 6 p.m. CT

Where: Auburn Arena (9,121) • Auburn, Ala.

TV: SEC Network + ; Brit Bowen (PBP), Joe Ciampi (color)

Radio: 94.3 FM WGZZ; Andy Burcham (PBP), Stephanie Follett (color)

Audio Webcast: AuburnTigers.com/AllAccess

Gametracker: AuburnTigers.com

Series: Auburn leads the series over Troy, 32-2 (20-0 in Auburn)

Last Meeting: Auburn 74, Troy 47 (Nov. 30, 2011, in Auburn)

Up Next: Auburn hosts Grambling State on Monday, Nov. 17, at 6 p.m.

Troy visits Clemson on Sunday, Nov. 16, at 1 p.m.

TONIGHT'S MATCHUP

Auburn		Troy
0-0	Overall Record	0-0
0-0	Home Record	0-0
0-0	Road Record	0-0
0-0	Neutral Record	0-0
N/A	Ranking	N/A
Terri Williams-Flournoy	Head Coach	Chanda Rigby
181-134 (11)	Coach's Overall Record (Years)	248-141 (13)
38-30 (3)	Record at School (Years)	19-42 (3)

AUBURN PROJECTED STARTERS [Stats from 2013-14]

No.	Pos.	Name	Ht.	Year	PPG	RPG	Hometown
00	G	Hasina Muhammad	6-1	Sr.	9.3	4.8	Memphis, Tenn.
10	G	Brandy Montgomery	5-10	So.	11.4	4.0	Port St. Lucie, Fla.
13	F	Katie Frerking	6-1	So.	4.9	2.4	Johns Creek, Ga.
22	G	Kiani Parker	5-9	Sr.	2.6	2.2	Ft. Walton Beach, Fla.
44	F	Tra'Cee Tanner	6-3	Jr.	10.5	6.0	Birmingham, Ala.

OFF THE BENCH

2	G	Bria Johnson	5-8	Fr.	--	--	Baton Rouge, La.
15	F	Jazmine Jones	6-2	Fr.	--	--	Winston-Salem, N.C.
23	F	Jessica Jones	6-2	Fr.	--	--	Winston-Salem, N.C.
25	G	Neydja Petithomme	5-8	Fr.	--	--	Boca Raton, Fla.
35	F	Asia Robeson	6-4	Fr.	--	--	Kalamazoo, Mich.
40	G	Khady Dieng	5-10	So.	3.1	1.4	Dakar, Senegal
50	F	Cabriana Capers	6-1	Jr.	1.1	2.4	Bolingbrook, Ill.

Head Coach: Terri Williams-Flournoy / Assistant Coaches: Ty Evans, Sherill Baker and Adrian Walters

2014-15 Schedule/Results

NOVEMBER

14	Troy [+]	6 p.m.
17	Grambling State [+]	6 p.m.
20	Florida Gulf Coast [+]	6 p.m.
23	at Virginia	1 p.m.
29	at Winthrop	Noon

DECEMBER

2	Marquette [+]	6 p.m.
4	Southeastern Louisiana	6 p.m.
14	Samford [+]	2 p.m.
17	Savannah State [+]	5:30 p.m.
20	1 - at St. John's	11 a.m.
21	1 - vs. SMU/Indiana State	TBA
29	2 - at Florida International	6 p.m.
30	2 - vs. Bowling Green/Hampton	3:30 p.m.

JANUARY

2	at South Carolina * [SECN]	6 p.m.
4	Florida * [SECN]	3 p.m.
8	at Kentucky * [+]	6 p.m.
11	Georgia * [SECN]	1 p.m.
15	Tennessee * [FSN]	7 p.m.
22	at Alabama * [FSN]	8 p.m.
26	Mississippi State * [SECN]	8 p.m.
29	at Arkansas * [+]	7 p.m.

FEBRUARY

1	at Texas A&M * [+]	2 p.m.
5	LSU * [FSN]	6 p.m.
8	at Missouri * [+]	2 p.m.
15	Arkansas * [SECN]	1 p.m.
19	Ole Miss * [FSN]	8 p.m.
22	at Georgia * [+]	1 p.m.
26	at Vanderbilt * [FSN]	8 p.m.

MARCH

1	Alabama * [+]	2 p.m.
4-8	Southeastern Conference Tournament North Little Rock, Ark. • Verizon Arena	
21-24	NCAA Tournament First and Second Rounds	
28-31	NCAA Tournament Regionals	
APRIL		
5-7	NCAA Women's Final	
Four	Tampa, Fla. • Tampa Bay Times Forum	

* - SEC Game | All Times are Central

1 - St. John's Chartwells Holiday Classic (Queens, N.Y.)

2 - FIU Fun & Sun Classic (Miami, Fla.)

All home games played at Auburn Arena

+ - Game available via SEC Network +

Bold indicates home games

Media Information

The Auburn athletics communications department considers its work with the media a top priority. These game notes have been prepared to assist the working media in their coverage of Tiger basketball. If you need additional information, interview or photograph requests, or have any questions, please contact Wes Todd in the communications office at 334.844.9182.

Interview Policy

Coach Williams-Flournoy, her assistants and all women's basketball players (excluding freshmen) are available for phone and personal interviews by contacting Wes Todd in the media relations office. Post-game interviews will be allowed following a 10-minute cooling off period. Non-game day requests will be met based on the players' class and practice schedules. Practices are closed to the media unless otherwise specified.

Credentials

Anyone wishing to cover an Auburn women's basketball game should contact Wes Todd in the media relations office at least one day in advance in order to make the proper arrangements.

On the Air

The Tigers can be heard live locally in Auburn on Wings 94.3 FM for the entire regular and postseason. Andy Burcham, in his 27th season with the women's basketball program and handles play-by-play duties. Stephanie Follett joins Burcham for her third season and provides color commentary. Each game can also be heard live for free on the internet at AuburnTigers.com/AllAccess.

Weekly Live Radio Show

Starting in January, every Tuesday at 6 p.m. CT, coach Terri Williams-Flournoy will host the Coach Flo Show from the Victory Grille, located on Bent Creek Road, with Andy Burcham. Fans can listen to the show on 94.3 FM. Fans can ask their questions via Twitter @AuburnWBB.

Game-Day Services

Statistics, rosters and game notes will be provided prior to the game in the media work room. Box scores will also be handed out during and following the game. Phones and fax machines are available in the media work room.

Photo/Video Services

Wade Rackley of the Auburn Athletic Communications office handles all photo requests. Please contact Rackley at 334.750.6907. Video highlights of selected Auburn women's basketball games are available for the media. For information on how to access the FTP server, contact Karina Anglada of War Eagle Productions at 334.750.4345.

On the Web

The home for Auburn Athletics on the web, AuburnTigers.com, is your source for Auburn Women's Basketball. The website offers the most recent information and news on the Tigers.



Follow Auburn Women's Basketball on Twitter

@AuburnWBB



Become a fan of Auburn Women's Basketball on Facebook

www.Facebook.com/AUWBB

2014-15 Numerical Roster

No.	Name	Height	Position	Class	Hometown/High School
00	Hasina Muhammad	G	6-1	SR	Memphis, Tenn./Ridgeway
2	Bria Johnson	G	5-8	FR	Baton Rouge, La./Episcopal
10	Brandy Montgomery	G	5-10	SO	Port St. Lucie, Fla./Lincoln Park Academy
13	Katie Frerking	G/F	6-1	SO	Johns Creek, Ga./Wesleyan School
15	Jasmine Jones	F	6-2	FR	Winston-Salem, N.C./West Forsyth
22	Kiani Parker	G	5-9	SR	Fort Walton Beach, Fla./NW Fla. St.
23	Jessica Jones	F	6-2	FR	Winston-Salem, N.C./West Forsyth
25	Neydja Petithomme	G	5-8	FR	Boca Raton, Fla./Grandview Prep
35	Asia Robeson	F	6-4	FR	Kalamazoo, Mich./Kalamazoo Central
40	Khady Dieng	G	6-0	SO	Dakar, Senegal/Gatewood (Ga.)
44	Tra'cee Tanner	F/C	6-3	JR	Birmingham, Ala./Hoover
50	Cabrina Capers	F	6-1	JR	Bolingbrook, Ill./Bolingbrook

2014-15 Alphabetical Roster

No.	Name	Height	Position	Class	Hometown/High School
50	Cabrina Capers	F	6-1	JR	Bolingbrook, Ill./Bolingbrook
40	Khady Dieng	G	6-0	SO	Dakar, Senegal/Gatewood (Ga.)
13	Katie Frerking	G/F	6-1	SO	Johns Creek, Ga./Wesleyan School
2	Bria Johnson	G	5-8	FR	Baton Rouge, La./Episcopal
15	Jasmine Jones	F	6-2	FR	Winston-Salem, N.C./West Forsyth
23	Jessica Jones	F	6-2	FR	Winston-Salem, N.C./West Forsyth
10	Brandy Montgomery	G	5-10	SO	Port St. Lucie, Fla./Lincoln Park Academy
00	Hasina Muhammad	G	6-1	SR	Memphis, Tenn./Ridgeway
22	Kiani Parker	G	5-9	SR	Fort Walton Beach, Fla./NW Fla. St.
25	Neydja Petithomme	G	5-8	FR	Boca Raton, Fla./Grandview Prep
35	Asia Robeson	F	6-4	FR	Kalamazoo, Mich./Kalamazoo Central
44	Tra'cee Tanner	F/C	6-3	JR	Birmingham, Ala./Hoover

STAFF:

Head Coach: Terri Williams-Flournoy (Penn State, 1991)

Assistant Coach: Ty Evans (Wisconsin-Whitewater, 1995)

Assistant Coach: Adrian Walters (St. Francis (Pa.), 1987)

Assistant Coach: Sherill Baker (Georgia, 2006)

Director of Basketball Operations: Precious Morris (Auburn, 2012)

Director of Basketball Services: Alli Bracewell (Auburn, 2012)

Special Assistant to the Head Coach: Stephanie Follett (Maine, 1996)

Graduate Assistant: Chantel Tremiere (Auburn, 1991)

Athletic Trainer: Cindy Campbell (South Alabama, 2005)

BY CLASS:

Seniors (2): Hasina Muhammad, Kiani Parker

Juniors (2): Cabrina Capers, Tra'cee Tanner

Sophomores (3): Khady Dieng, Katie Frerking, Brandy Montgomery,

Freshmen (5): Bria Johnson, Jasmine Jones, Jessica Jones, Neydja Petithomme, Asia Robeson

AUBURN QUICK NOTES

Overall: 0-0 SEC: 0-0

Head Coach: Terri Williams-Flournoy (3rd Season)

Sherill Baker - sha-RELL
Cabriana Capers - Kay-bree-AH-nuh
Khady Dieng - Katie Dee-ANG
Kiani Parker - Kee-AH-nee

Neydja Petithomme - NEE-zhah PED-ee-home
Tra' Cee Tanner - Tracy
Terri Williams-Flournoy - Flah-NOY

00	HASINA MUHAMMAD G • 6-1 • Sr. • Memphis, Tenn. • Ridgeway HS	PPG 14-15 - Career 11.1	RPG 4.6	SPG 2.0	FG .404	3FG .288	FT .569	<ul style="list-style-type: none"> • 2014 SEC All-Defensive Team • 2nd in SEC in steals (2.4/game) in '14 • 4th in SEC in blocks (2.1/game) in '14
2	BRIA JOHNSON G • 5-8 • Fr. • Baton Rouge, La. • Episcopal HS	PPG 14-15 - Career -	RPG -	SPG -	FG -	3FG -	FT -	<ul style="list-style-type: none"> • No. 135 player by All-Star Girls Report • No. 60 PG in the nation according to ESPN • 21.8 ppg, 6.5 rpg as HS senior
10	BRANDY MONTGOMERY G • 5-10 • So. • Port St. Lucie, Fla. • Lincoln Park Acad.	PPG 14-15 - Career 11.4	RPG 4.0	APG 1.7	FG .362	3FG .286	FT .699	<ul style="list-style-type: none"> • 2014 SEC All-Freshman Team • Auburn's leading returning scorer (11.4 ppg) • Double figures in 25 of 33 games in '14
13	KATIE FRERKING G/F • 6-1 • So. • Johns Creek, Ga. • Wesleyan School	PPG 14-15 - Career 4.9	RPG 2.4	APG 1.3	FG .363	3FG .302	FT .727	<ul style="list-style-type: none"> • Played in all 34 games as a freshman, • 4.9 pts, 2.4 reb, 1.3 ast in 20.3 mins/game • Career-high 14 pts in 3rd collegiate game at Temple (11/16)
15	JAZMINE JONES F • 6-2 • Fr. • Winston-Salem, N.C. • West Forsyth HS	PPG 14-15 - Career -	RPG -	SPG -	FG -	3FG -	FT -	<ul style="list-style-type: none"> • 25th-best wing in nation by ESPN • 39th-best small forward in the country by Collegiate Girls Basketball Report • 15.1 ppg, 7.1 rpg as a HS senior
22	KIANI PARKER G • 5-9 • Sr. • Fort Walton Beach, Fla. • NW Fla. St. Coll.	PPG 14-15 - Career 2.6	RPG 2.2	APG 3.3	FG .294	3FG .231	FT .489	<ul style="list-style-type: none"> • Led Auburn with 113 assists in 2013-14 • Played in all 34 games in '14, starting 29 • Averaged 20.6 minutes/game in 2013-14
23	JESSICA JONES F • 6-2 • Fr. • Winston-Salem, N.C. • West Forsyth HS	PPG 14-15 - Career -	RPG -	SPG -	FG -	3FG -	FT -	<ul style="list-style-type: none"> • 95th overall, 20th among forwards (ESPN) • No. 153 overall (Blue Star Basketball) • 15.2 ppg, 9.3 rpg as a HS senior
25	NEYDJA PETITHOMME G • 5-8 • Fr. • Boca Raton, Fla. • Grandview Prep	PPG 14-15 - Career -	RPG -	APG -	FG -	3FG -	FT -	<ul style="list-style-type: none"> • No. 19 guard nationally (ESPN) • Finalist for McDonald's All-American status • Scored 1,800+ points in high school career
35	ASIA ROBESON F • 6-4 • Fr. • Kalamazoo, Mich. • Kalamazoo Central HS	PPG 14-15 - Career -	RPG -	BPG -	FG -	3FG -	FT -	<ul style="list-style-type: none"> • 2013-14 HS Hon. Mention All-American • #22 overall, #5 forward (ESPN) • 17.9 ppg, 15.2 rpg, 8.9 bpg as a HS senior with 13 triple-doubles
40	KHADY DIENG G • 5-10 • So. • Dakar, Senegal • Gatewood (Ga.) School	PPG 14-15 - Career 3.1	RPG 1.4	SPG 0.7	FG .367	3FG .238	FT .895	<ul style="list-style-type: none"> • Played in 27 games in '14 • 3.1 ppg, 1.4 rpg in 10.7 mins/game in '14 • AU's best FT shooter by pct, 17-19 (.895) • Originally from Dakar, Senegal, moved to Georgia prior to her junior year of HS
44	TRA'CEE TANNER F/C • 6-3 • Jr. • Birmingham, Ala. • Hoover HS	PPG 14-15 - Career 8.4	RPG 4.9	SPG 1.1	FG .552	3FG .000	FT .657	<ul style="list-style-type: none"> • Started 31 of 34 games in '14 • AU's 3rd-leading scorer in '14 (10.5 ppg) • 2 double-doubles in '14
50	CABRIANA CAPERS F • 6-1 • Jr. • Bolingbrook, Ill. • Bolingbrook HS	PPG 14-15 - Career 1.5	RPG 2.8	APG 0.5	FG .402	3FG .000	FT .537	<ul style="list-style-type: none"> • Played in 30 game in '14, 11.7 mins/game • Season-high 8 rebs in 13-14 opener vs. Georgia Southern (11/9) • Season-high 6 pts at Alabama A&M (11/19)

Series History vs. Troy

Overall: 32-2

In Auburn: 20-0 (1-0 at Auburn Arena)

In Troy: 12-2

Neutral: N/A

Trend: Auburn has won 14 straight

1971-72	W	47-25	Troy, Ala.
1971-72	W	58-26	Auburn
1971-72	W	60-46	Troy, Ala. (1)
1972-73	W	42-37	Troy, Ala.
1972-73	W	26-16	Auburn
1973-74	W	77-35	Troy, Ala.
1973-74	W	69-36	Troy, Ala.
1973-74	W	N/A	Auburn
1974-75	W	75-66	Troy, Ala.
1974-75	W	88-66	Auburn
1975-76	W	64-63	Auburn
1975-76	W	75-58	Troy, Ala.
1975-76	W	94-80	Auburn
Dec. 10, 1976	W	83-79	Troy, Ala.
Feb. 16, 1977	W	63-60	Auburn
Jan. 17, 1978	W	70-67	Troy, Ala.
Feb. 16, 1978	W	64-63	Auburn
Jan. 16, 1979	L	70-76	Troy, Ala.
Nov. 30, 1979	W	88-73	Auburn
Jan. 7, 1980	L	56-75	Troy, Ala.
Dec. 1, 1980	W	72-59	Auburn
Feb. 11, 1981	W	70-57	Troy, Ala.
Dec. 2, 1981	W	73-26	Auburn
Feb. 5, 1982	W	88-57	Troy, Ala.
Dec. 2, 1982	W	71-34	Auburn
Jan. 31, 1996	W	90-64	Troy, Ala.
Dec. 16, 1996	W	87-76	Auburn
Nov. 21, 1997	W	101-70	Auburn
Nov. 20, 1998	W	83-53	Auburn
Dec. 20, 2001	W	86-44	Auburn
Nov. 22, 2002	W	69-38	Auburn
Nov. 14, 2007	W	77-61	Auburn
Nov. 13, 2009	W	70-65	Auburn
Nov. 30, 2011	W	74-47	Auburn

Auburn Women's Basketball Quick Hitters

- Auburn is 35-8 all-time in season-openers and 23-3 when opening the season at home
- The Tigers have won 23 straight home season openers with the last loss coming in 1977
- Auburn is entering its 44th season of women's basketball and has 849 program wins
- The Tigers won 19 games last season, equaling their mark from the 2012-13 season
- This is the 35th all-time meeting between Auburn and Troy with AU holding a 32-2 series lead
- The Tigers have won all 20 meetings with Troy in Auburn
- AU won the last meeting with Troy, 74-47, on Nov. 30, 2011 in Auburn Arena
- Auburn is 91-15 all-time against current members of the Sun Belt Conference
- Troy returns two starters and seven letterwinners from its 2014 team that finished 12-18
- This is the first meeting between Terri Williams-Flournoy and GSU's Chanda Rigby
- Auburn is 240-61 all-time against in-state opponents
- The Tigers are 2-1 all-time on Nov. 14, including a win over Troy in 2007
- Auburn is 117-32 all-time in the month of November; Coach Flo is 9-5 in November at Auburn
- The Tigers will play a tough non-conference schedule this season, playing as many as eight postseason teams from 2014
- Sophomore Brandy Montgomery is Auburn's leading returning scorer at 11.4 points/game
- Montgomery was named to the SEC All-Freshman Team in 2014
- For the fourth time ever (and third-straight year), Auburn's roster features a set of sisters in freshman twins Jazmine and Jessica Jones
- Auburn returns four starters and seven overall letter-winners from 2014 and welcomes five newcomers, all freshmen
- A total of 23 Auburn games will be televised by SEC Network, SEC Network+, ESPN3 and Fox Sports South
- Auburn was picked 10th in the preseason SEC polls by both the media and the coaches
- The Tigers have advanced to the postseason 23 times in program history and in six of the last eight seasons
- Former Tiger DeWanna Bonner won a WNBA championship with the Phoenix Mercury this summer

Moving On Up (Auburn Players in the Career Rankings) . . .

- **Hasina Muhammad** is 28th in career scoring (1,012 points); needs 5 points to tie for 27th
- **Hasina Muhammad** is 8th in career blocks (129); needs 10 more to tie for 6th
- **Hasina Muhammad** is 55 rebounds away from breaking into Auburn's top-30 list
- **Hasina Muhammad** is 37 assists away from breaking into Auburn's top-30 list
- **Hasina Muhammad** is one steal away from breaking into Auburn's top-10 list
- **Tra'Cee Tanner** is 137 rebounds away from breaking into Auburn's top-30 list
- **Kiani Parker** is 72 assists away from breaking into Auburn's top-30 list
- **Brandy Montgomery** is 33 made 3-pointers away from breaking into Auburn's top-10 list

RETURNING INDIVIDUAL CATEGORY LEADERS (2013-14 Stats)

Auburn	Troy
Brandy Montgomery - 11.4	Points Ashley Beverly-Kelley - 13.2
Tra'Cee Tanner - 6.0	Rebounds Ronita Garrett - 7.9
Kiani Parker - 3.3	Assists Ashley Beverly-Kelley - 3.5
Hasina Muhammad - 2.4	Steals Ashley Beverly-Kelley - 1.7
Hasina Muhammad - 2.1	Blocks Kristen Emerson - 1.0
Brandy Montgomery - 29.7	Minutes Played Ashley Beverly-Kelley - 33.1
Tra'cee Tanner - .556	Field Goal Percentage Aissata Maiga - .455
Katie Frerking - .302	3-Point Percentage Ronita Garrett - .383
Khady Dieng - .895	Free-Throw Percentage Ashley Beverly-Kelley - .840

AUBURN WOMEN'S BASKETBALL WEEKLY SCHEDULE

	Wednesday 12	Thursday 13	Friday 14	Saturday 15	Sunday 16	Monday 17	Tuesday 18
Nov. 12 through Nov. 18	Practice 2 - 5:30 p.m. CT Auburn Arena	Practice 2 - 5 p.m. CT Auburn Arena	Auburn vs. Troy 6 p.m. Auburn Arena Auburn, Ala. (SECN +)	Practice 2 - 4 p.m. CT Auburn Arena	Practice 2 - 5 p.m. CT Auburn Arena	Auburn vs. Grambling State 6 p.m. Auburn Arena Auburn, Ala. (SECN +)	OFF

Quick Facts

School	Auburn University
City / Zip	Auburn, Ala. / 36831
Founded	Oct. 1, 1856
Enrollment	25,134
Nickname	Tigers
Colors	Burnt Orange and Navy Blue
Home Court (Capacity)	Auburn Arena (9,121)
Affiliation	NCAA Division I
Conference	Southeastern Conference
President	Dr. Jay Gogue
Athletic Director	Jay Jacobs
Senior Women's Administrator	Meredith Jenkins
University Website	www.Auburn.edu

Team Information

2013-14 Overall Record	19-15 (.559)
2013-14 SEC Record	7-9 (.438)
All-Time SEC Record	204-188 (.520)
SEC Tournament Record	35-31 (.530)
Letterwinners Returning/Lost	8/5
Starters Returning/Lost	4/1
Newcomers	5
First Year of Basketball	1971
All-Time Overall Record	849-408 (.675)
All-Time Auburn Arena Record	42-22 (.646)
NCAA Tournament Appearances/Last	18/2009
NCAA Tournament Record	29-18
WNIT Appearances/Last	5/2014
WNIT Record	13-4

Basketball Staff

Head Coach	Terri Williams-Flournoy (Penn State, 1991)
Career Record	181-134 (.575) / 11th season
Record at Auburn	38-30 (.559) / 3rd season
Assistant Coaches (Alma Mater) ..	Ty Evans (Wisconsin-Whitewater, 1995)
.....	Adrian Walters (St. Francis (Pa.), 1987)
.....	Sherill Baker (Georgia, 2006)
Director of Basketball Operations	Precious Morris
Director of Basketball Services	Alli Bracewell
Special Assistant to the Head Coach	Stephanie Follett
Graduate Assistant	Chantel Tremittiere
Secretary	Vicki Coleman
Basketball Office Phone	(334) 844-9200
Basketball Office Fax	(334) 844-9862
Athletic Trainer	Cindy Campbell
Strength and Conditioning	Megan Young
Academic Counselor	Garon Rowland

Radio Broadcast Information

Radio Station	WGZZ (94.3 FM)
Play-by-Play	Andy Burcham
Color	Stephanie Follett
Burcham Email	aburcham@auburnnetwork.com
Burcham Office Phone	(334) 826-2929
Network Address	Auburn Network, Inc.
.....	P.O. Box 950
.....	Auburn, AL 36831-0950

TONIGHT'S OFFICIALS

Jesse Dickerson, Mary Day, Melanie Davis

LOOKING AHEAD

Auburn will host Grambling State at 6 p.m. Monday, Nov. 17, at Auburn Arena. The game will be broadcast by SEC Network+.

Troy travels to Clemson for a 1 p.m. CT game on Sunday, Nov. 16 at Littlejohn Coliseum.

QUICK HITS

Auburn begins its 44th season of women's basketball and sports an all-time record of 849-408... Auburn has made 18 NCAA Tournament appearances, five WNIT appearances and three Final Fours in the program's history... Head Coach Terri Williams-Flournoy is in her third season at Auburn... She has a 181-134 record as a head coach... AU advanced to the 2013 WNIT Quarterfinals and the 2014 WNIT Third Round... The Tigers are coming off back-to-back 19-15 seasons.

ONE MORE FOR A MILESTONE

Auburn's next win will be its 850th in program history. Currently tied with Maryland at 849 all-time wins - both programs entering their 44th year - either the Tigers or Terps will be the 19th team in NCAA history to reach 850 victories. Auburn is the 22nd-winningest program in NCAA history with a .675 all-time winning percentage.

BACK-TO-BACK 19-WIN SEASONS

Auburn has posted back-to-back seasons with a 19-15 record, which tie for the most wins in a season since the Tigers' SEC Championship season of 2009. The Tigers advanced to the WNIT quarterfinals in 2013 and the WNIT third round in 2014.

AUBURN - TROY SERIES

This will be the 35th meeting all-time between Auburn and Troy. The Tigers own a 32-2 series lead over Troy and are winners of the last 14 meetings, dating back to 1980. Auburn has won all

20 series meetings in Auburn, including the only meeting at Auburn Arena in 2011.

LAST MEETING: AUBURN 74, TROY 47 (2011)

Hasina Muhammad scored 19 points off the bench as Auburn rolled past Troy, 74-47, on Nov. 30, 2011, at Auburn Arena.

Auburn improved to 5-1 as Troy fell to 0-6.

Auburn scored 48 points off the bench, marking the second-consecutive game that the Tigers' bench has outscored the opponent. The Tiger bench scored 35 points to South Carolina-Upstate's 34 in the previous game. Auburn had three players in double-figures on the evening, all of whom came in off the bench.

Muhammad led the Tigers with a career-high 19 points, four rebounds, three blocks and two steals. She finished at 9-of-14 shooting from the floor in just 20 minutes of play. Camille Glymph also came off the bench for 14 points, with 12 of them coming from beyond the arc. Jassany Williams added 10 points, eight rebounds and four blocks, marking the third game this season for her to block at least four shots. Junior point guard Najat Ouardad picked up a team-high five steals, along with five points and five rebounds. Her five steals were the most for an Auburn player since DeWanna Bonner stole six against Tennessee on Jan. 25, 2009.

AGAINST THE SUN BELT CONFERENCE

Auburn is 91-15 all-time against current members of the Sun Belt Conference. The Tigers' last meeting with a current Sun Belt team came in the 2013-14 season-opener, a 69-59 victory over Georgia Southern on Nov. 9, 2013, at Auburn Arena.

SCOUTING TROY

Troy is coming off a 12-18 season in 2013-14 that included an 8-10 record in Sun Belt Conference play and a fifth-place league finish. The Trojans led the Sun Belt in scoring last season, averaging 80.4 points per game. Chanda Rigby is in her third season as the Trojans' head coach and has a record of 19-42 at Troy.

The Trojans defeated Alabama-Huntsville in an exhibition game

Statistical Comparison ('13-14 Stats)

	AUBURN	TROY
2013-14 Record	19-15	12-18
Conference Record	7-9	8-10
Points Per Game	65.9	80.4
Scoring Margin	+2.8	-1.7
FG Percentage	.412	.395
Opp. FG %	.388	.407
3FG Percentage	.263	.324
Opp. 3FG %	.314	.306
Rebounds	39.4	43.4
Opp. Rebounds	35.8	50.9
Rebound Margin	+3.6	-7.6
Turnovers	17.4	16.6
Opp. Turnovers	19.4	20.1
Steals	10.4	9.9
Opp. Steals	8.7	7.3
Blocks	4.9	4.2
Opp. Blocks	3.1	2.6

Final 2013-14 SEC Standings

	SEC	Pct.	Overall	Pct.
*South Carolina	14-2	.875	29-5	.853
#Tennessee	13-3	.813	29-6	.829
Texas A&M	13-3	.813	27-9	.750
Kentucky	10-6	.625	26-9	.743
Florida	8-8	.500	20-13	.606
Auburn	7-9	.438	19-15	.559
Georgia	7-8	.438	20-12	.625
LSU	7-9	.438	21-13	.618
Vanderbilt	7-9	.438	18-13	.581
Alabama	7-9	.438	14-16	.467
Arkansas	6-10	.375	19-11	.633
Missouri	6-10	.375	17-14	.548
Mississippi State	5-11	.313	22-14	.611
Ole Miss	2-14	.125	12-20	.375

* - SEC Regular-Season Champion

- SEC Tournament Champion

SEC Champion South Carolina
SEC Tournament Champion Tennessee

NCAA Tournament Participants Florida (Second Round)
 Georgia (First Round)
 Kentucky (Sweet 16)
 LSU (Sweet 16)
 South Carolina (Sweet 16)
 Tennessee (Sweet 16)
 Texas A&M (Elite 8)
 Vanderbilt (First Round)

WNIT Participants Auburn (Round of 16)
 Mississippi State (Quarterfinals)
 Missouri (First Round)

last week, 92-56. Troy forced 37 turnovers in the game. Rachel Reid, a junior college transfer, led Troy with 26 points in the game. Junior guard Ashley Beverly-Kelley is the Trojans' leading returner in scoring (13.2 ppg), assists (3.5), steals (1.7) and minutes played (33.1).

SCOUTING AUBURN

Coming off a second-straight 19-15 season and WNIT appearance, Auburn enters its third season under head coach Terri Williams-Flournoy. Coach Flo is 38-30 in two years on The Plains and owns a 181-134 overall record entering her 11th season as a collegiate head coach. The Tigers return seven letterwinners from last year's team, including four starters, while welcoming five newcomers — all freshmen — to the roster.

Three of Auburn's top four scorers from a year ago return, including sophomore Brandy Montgomery (11.4 ppg), junior Tra'Cee Tanner (10.5), senior Hasina Muhammad (9.3). Muhammad was an SEC All-Defensive Team selection last year, finishing second in the SEC in steals (2.4/game) and fourth in the league in blocks (2.1/game).

Pressure defense is a staple of Coach Flo's strategy as the Tigers have forced an average of 20.0 turnovers per game in two years under her leadership.

AGAINST IN-STATE FOES

Auburn holds a 240-61 all-time record against teams from the state of Alabama. Records below:

Alabama (.797)	240	61
Alabama	46	36
UAB	30	4
Alabama A&M	7	0
Alabama-Huntsville	7	0
Alabama State	18	0
Athens State	3	0
Auburn-Montgomery	4	0
Calhoun Junior College	1	0
Faulkner State	1	1
Gadsden Junior College	1	0
Jacksonville State	14	1
Jefferson State Junior College	1	0
Jefferson Davis	1	0
Judson College	6	0
Montevallo	8	1
North Alabama	1	0
Samford	1	0
South Alabama	39	2
Talladega College	3	9
Troy	32	2
Tuskegee	17	5

WILLIAMS-FOURNOY VS. RIGBY

This will be the first meeting between Auburn's Terri Williams-Flournoy and Troy's Chanda Rigby.

Williams-Flournoy is in her third year at Auburn and has a 38-30 record on The Plains and a 181-134 career record. Rigby is in her third season at Troy, where she is 19-42, and she is 248-141 in her 13th year as a collegiate coach.

LAST TIME OUT FOR TROY

The Troy women's basketball team fell victim to a couple of scoring droughts in a 66-54 loss to UALR in the quarterfinals of the Sun Belt Championships at Lakefront Arena on Wednesday night.

Troy (12-18) closed the second season under head coach Chanda Rigby with its second straight five-win improvement.

A 12-0 run by UALR (18-11) in the first half allowed them to build an eight-point halftime advantage at 36-28. However, Kourtney Coleman gave Troy a spark to start the second half, getting her team within two points, 42-40.

Coleman finished with 20 points, the second 20-point game of her career and the second in 10 days. She was 8-of-12 from the field, including two 3-pointers. However, Troy could never any closer than the two points deficit.

LAST TIME OUT FOR AUBURN

Auburn could not hold onto a 14-point second-half lead as Mississippi State rallied for a 59-54 win in the third round of the WNIT in Starkville, Miss.

Tyrese Tanner got her second foul three minutes into the game and sat the rest of the half. It didn't seem to matter. Muhammad scored 10 points and Auburn ran out to a 28-19 lead.

Auburn finished with 26 turnovers to 23 for Mississippi State and was called for 27 fouls to Mississippi State's 17.

Tanner was 4-for-12 from the field and scored 11 points in her final Auburn game. Muhammad scored 13 points, but just three in the second half. Montgomery had 10 points. Davis had 10 rebounds.

Auburn held Martha Alwal, the Bulldogs' leading scorer, to 11 points on 4-of-9 shooting. But Alwal had 11 rebounds, eight crucial ones on the offensive end. Kendra Grant hit big shots down the stretch and finished with 20 points.

IN SEASON-OPENING GAMES

In 43 previous seasons, Auburn has put together a 35-8 record in season openers (home or away) and sports a 23-3 record when

Associated Press Top-25 Poll**Preseason (Oct. 30)**

Rank	School	Record	Points	Pvs
1	Connecticut (35)	0-0	875	1
2	South Carolina	0-0	824	8
3	Notre Dame	0-0	798	2
4	Tennessee	0-0	749	3
5	Texas A&M	0-0	702	15
6	Stanford	0-0	645	6
7	Duke	0-0	577	9
8	Baylor	0-0	573	5
9	Texas	0-0	532	NR
10	Maryland	0-0	531	11
11	Kentucky	0-0	522	10
12	Louisville	0-0	505	4
13	North Carolina	0-0	504	12
14	Michigan State	0-0	433	20
15	California	0-0	423	24
16	Nebraska	0-0	314	13
17	West Virginia	0-0	306	7
18	DePaul	0-0	301	23
19	Iowa	0-0	236	19
20	Oregon State	0-0	183	NR
21	Oklahoma State	0-0	158	21
22	Dayton	0-0	95	NR
23	UCLA	0-0	86	NR
T24	Rutgers	0-0	65	NR
T24	Syracuse	0-0	65	NR

Others Receiving Votes: LSU 58, Purdue 45, Penn State 43, **Georgia 28**, NC State 24, **Vanderbilt 23**, Oklahoma 17, BYU 14, **Arkansas 14**, **Mississippi State 13**, Florida State 10, South Florida 8, Minnesota 8, **St. John's 7**, Oregon 5, Western Kentucky 4, Green Bay 4, Middle Tennessee 3, Iowa State 2, Northwestern 2, Arizona State 1, Colorado State 1, Albany 1, James Madison 1.

USA Today / ESPN Top-25 Coaches Poll**Preseason (Nov. 3)**

Rank	School	Record	Points	Pvs
1	Connecticut (32)	0-0	800	1
2	South Carolina	0-0	739	9
3	Notre Dame	0-0	736	3
4	Tennessee	0-0	683	8
5	Texas A&M	0-0	630	10
6	Stanford	0-0	608	3
7	Duke	0-0	566	13
8	Maryland	0-0	543	4
9	Baylor	0-0	531	6
10	Kentucky	0-0	484	11
11	Louisville	0-0	474	5
12	Texas	0-0	458	NR
13	North Carolina	0-0	407	7
14	California	0-0	366	20
15	Michigan State	0-0	343	23
16	Nebraska	0-0	305	17
17	West Virginia	0-0	274	12
18	DePaul	0-0	246	16
19	Iowa	0-0	217	NR
20	Oklahoma State	0-0	164	15
21	Oregon State	0-0	123	25
22	Dayton	0-0	117	NR
23	UCLA	0-0	116	NR
24	LSU	0-0	65	24
25	Syracuse	0-0	55	NR

Others Receiving Votes: Penn State 50, Rutgers 45, Purdue 37, **Georgia 29**, **Vanderbilt 24**, Gonzaga 17, BYU 16, Florida St. 16, **St. John's 16**, NC State 14, Iowa State 12, South Florida 11, Ohio State 10, **Arkansas 9**, Oklahoma 8, Oregon 8, Middle Tennessee 7, Southern California 7, Western Kentucky 5, James Madison 3, Arizona State 2, Albany 1, Arkansas St. 1, Marist 1, Cal State Northridge 1.

Bold denotes 2014-15 opponents

opening the season at home. The Tigers are winners of their last 23 home season openers with the last time Auburn last being a 71-56 loss to Talladega in the 1977-78 season opener.

Head Coach Terri Williams-Flournoy is 2-0 in season-openers as Auburn's head coach after a 69-59 win over Georgia Southern last season. Coach Flo holds a 7-3 record as a head coach in season-openers, winning her last six.

ON THIS DATE . .

This will be the fourth game for Auburn on Nov. 14. The Tigers are 2-1 on this date, including a win over Troy in 2007.

IN NOVEMBER

Auburn is 117-32 all-time in the month of November (records begin in 1978-79 season, not all dates provided prior to or during that season). The Tigers are 9-5 in November in the Williams-Flournoy era.

MOVING UP THE CHARTS

Hasina Muhammad scored her 1,000th career point in last season's finale against Mississippi State and enters the season 28th all-time at Auburn in scoring with 1,012 points. She is five points shy of 27th place.

Muhammad also needs just one steal to break into the Auburn all-time top 10; her next steal will tie Tyrese Tanner for 10th with 187 career steals.

CLUB PRESS

Auburn's high-pressure, full-court defense under coach Terri Williams-Flournoy, referred to by the players as "Club Press," has ranked as one of the best ever at Auburn over the last two seasons. In 2012-13, Auburn's 402 steals set a new school record for a single season while the 701 turnovers forced went down as second all-time on The Plains.

In 2013-14, the Tigers forced 659 opponent turnovers while recording 354 steals, remaining a major force on defense in the Southeastern Conference.

Auburn has forced 25 or more turnovers in a game 111 times since 1987 and did so eight times last season. The Tigers have also tallied 15 or more steals in a game on 102 occasions since 1987, doing so five times last season.

The Tigers used the defense to fuel their offense, averaging 19.3 points per game off turnovers last year.

LOCKDOWN DEFENDER

Hasina Muhammad returns for her senior season as one of the top defensive players in the Southeastern Conference. A selection to the SEC All-Defensive Team in 2014, Muhammad ranked second in the SEC in steals (2.4/game) and fourth in the league in blocks (2.1/game). She also ranked in the top 50 nationally in both categories in 2014.

TOUGH SCHEDULE

The Tigers will play a challenging schedule this season, playing as many as seven non-conference games against teams that advanced to the postseason a year ago. Florida Gulf Coast, Winthrop, St. John's and Hampton all played in the NCAA Tournament last year, while SMU, Marquette and Bowling Green advanced to the WNIT.

Auburn's first five SEC opponents - South Carolina, Florida, Kentucky, Georgia, and Tennessee - all advanced to the NCAA Tournament last season. Texas A&M, LSU and Vanderbilt all made the Big Dance, while Mississippi State and Missouri joined Auburn in the WNIT.

The strength of schedule showed up in this year's preseason top-25 polls with 10 of Auburn's opponents either ranked or receiving votes.

SISTER ACT

For just the fourth time ever, Auburn's roster features a sister combination as twin freshmen Jazmine and Jessica Jones will be in uniform for the Tigers. It gives Auburn a pair of sisters on the roster for the third-straight year as Tyrese and Tra'Cee Tanner played together the last two seasons.

Other sister combinations to play together at Auburn include Tyrese (2010-14) and Tra'Cee Tanner (2012-present); Sherell (2004-09) and Reneisha (2006-10) Hobbs, and Ruthie (1985-89) and Mae Ola (1984-88) Bolton.

NEW FACES

Auburn welcomes five newcomers to the roster for 2014-15, all freshmen. Joining the Tigers this year are G Bria Johnson (Baton Rouge, La.), F Jazmine Jones (Winston-Salem, N.C.), F Jessica Jones (Winston-Salem, N.C.), PG Neydja Petithomme (Boca Raton, Fla.) and F Asia Robeson (Kalamazoo, Mich.).

ON THE TUBE

A total of 23 Auburn games will be televised on either digital or linear networks during the course of the 2014-15 season. Twelve games will appear on SEC Network +, which is available online and on mobile devices via the WatchESPN platform. The Tigers' game at St. John's on Dec. 20 will also be available online via ESPN3.

Ten games will appear on linear networks, with the SEC Network and Fox Sports Net broadcasting five games each.

TIGERS PICKED 10TH IN PRESEASON POLLS

Auburn was picked to finish 10th in both the SEC Preseason Media and Coaches polls. South Carolina was tabbed as the preseason favorite to win the SEC title in both polls.

POSTSEASON REGULAR

The Auburn women's basketball team has been to the postseason 23 times in the program's history, 18 NCAA Tournaments and five WNITs. Of those, the Tigers advanced to three Final Fours and won the WNIT in 2003.

Recently, Auburn has been the postseason in six of the last eight seasons with two NCAA Tournament appearances (2008 & 2009) and four WNIT appearances (2007, 2011, 2013 & 2014).

WNBA CHAMPION

Former Auburn star DeWanna Bonner won her second WNBA title this season as a member of the Phoenix Mercury, helping the team to one of the best seasons in WNBA history. In the 2014 playoffs, she averaged 11.3 points, 6.0 rebounds and 2.0 assists per game, starting all eight games in the postseason. During the 2014 regular season, she scored 13.2 points per game while pulling down 6.0 rebounds and averaging 1.6 assists and 1.1 steals per game, starting all 34 games.

Quoting Coach Flo

On opening the 2014-15 season vs. Troy...

"We're excited to begin our season on Friday. I'm sure our young ladies are tired of practicing against each other and getting beaten up by the scout team. They're really ready to open our season Friday against Troy. Troy is a good team, a very experienced team. We scrimmaged against them last year, so we know a little about them. They love to press, love to push in transition. They are definitely a team where we have to make sure we have our defense on the right page."

On opening season with Georgia Southern...

"Everybody is finally back healthy, back practicing. We've got everybody back out there. There are some nagging injuries that they'll just have to learn to deal with, but for the majority, they're all cleared to play."

On players she expects to step up early this year...

"Definitely the four starters returning from last year — I say starters of last year, not particularly starters of this year. When you look at Tra'Cee (Tanner), Hasina (Muhammad), Brandy (Montgomery) and Kiani (Parker), you expect them to be better than they were a year ago. They all went home with goals they needed to improve on during the summer. We hope to see better players of the upperclassmen than we saw last year. And then our freshmen — you're going to see a lot of our freshmen on the floor. We're going to depend on our freshmen a lot to help us this year, especially Asia Robeson — she'll play a little bit of the four and five position. Jazmine Jones will play mostly the four and Jessica Jones will play mostly the five. Then you have Neydja Petithomme who you will see a lot at the point guard position."

TIGERS' RECORD WHEN...

	2013-14	Coach Flo Era
At Home	11-5	26-9
On the Road	5-8	7-17
At a Neutral Site	3-2	5-4
When wearing white	11-4	23-8
When wearing orange	2-3	5-7
When wearing blue	5-7	8-14
When wearing pink	1-0	2-0
Leading at the half	14-4	29-5
Trailing at the half	5-10	8-23
Tied at the half	0-1	0-2
Scores 100+ points	0-0	0-0
Scores 90-99 points	1-0	2-0
Scores 80-89 points	2-0	7-0
Scores 70-79 points	5-2	13-4
Scores 60-69 points	10-5	13-8
Scores fewer than 60 points	3-6	5-16
Holds opponent to 41-50 points	4-0	10-0
Holds opponent to 31-40 points	1-0	2-0
Holds opponent to under 30 points	1-0	1-0
Force 25 or more turnovers	5-2	13-4
Shoots 50% FG or better	6-0	12-1
Shoots 40-49% FG	5-7	17-12
Shoots 39.9% or under FG	8-7	9-17
Holds opponent under 30% FG	5-0	10-1
Shoots higher FG% than opponent	16-4	34-6
Shoots lower FG% than opponent	3-10	4-21
Shoots same FG% as opponent	0-0	0-2
Shoots higher FT% than opponent	11-3	15-10
Shoots lower FT% than opponent	8-10	22-18
Shoots same FT% as opponent	0-1	0-1
Out-rebounds opponent	15-6	32-11
Out-rebounded by opponent	4-8	6-18
Tied in rebounds	0-1	0-1
Versus ranked opponent	1-6	2-12
In overtime	1-1	1-1
Games decided by 3 points or less	0-2	1-4
Games decided by 4-5 points	1-2	2-3
Games decided by 6-10 points	8-3	12-8
Games decided by 11-20 points	5-5	10-8
Games decided by 21-30 points	3-2	8-5
Games decided by 30+ points	2-1	5-2
On Television	2-4	4-11
In November	4-3	9-5
In December	5-1	11-1
In January	2-6	4-12
In February	5-2	7-7
In March	3-3	7-5

2013-14 Auburn Superlatives...

First Half

Most points scored in the first half	44, at Temple (11-16-13)
Fewest points scored in the first half	14, vs. Missouri (2-16-14)
Fewest points allowed in the first half	14, at Alabama (1-16-14)
Most points allowed in the first half	54, at Tennessee (2-20-14)
Best FG % in the first half556, vs. Presbyterian (12-18-13)
Worst FG % in the first half214, vs. Missouri (2-16-14)
Best FG % by an opponent in the first half600, at Tennessee (2-20-14)
Worst FG % by an opponent in the first half167, at Alabama (1-16-14)
Most rebounds in the first half	32, at Alabama A&M (11-19-13)
Fewest rebounds in the first half	10, twice vs. Missouri (2-16-14) and at Minnesota (12-22-13)
Most rebounds by an opponent in the first half	28, vs. Missouri (2-16-14)
Fewest rebounds by an opponent in the first half	7, vs. Texas A&M (1-30-14)

Second Half

Most points scored in the second half	55, vs. Florida A&M (12-15-13)
Fewest points scored in the second half	20, at Alabama (1-16-14)
Fewest points allowed in the second half	12, vs. Presbyterian (12-18-13)
Most points allowed in the second half	46, at Temple (11-16-13)
Best FG % in the second half706, vs. Florida A&M (12-15-13)
Worst FG % in the second half235, vs. Iowa State (11-30-13)
Best FG % by an opponent in the second half688, vs. South Carolina (1-12-14)
Worst FG % by an opponent in the second half190, vs. Mississippi State (2-9-14)
Most rebounds in the second half	27, three times, last vs. Ole Miss (3-6-14)
Fewest rebounds in the second half	10, vs. St. John's (12-6-13)
Most rebounds by an opponent in the second half	27, vs. Tulane (12-3-13)
Fewest rebounds by an opponent in the second half	9, at UT-Chattanooga (11-24-13) and at Alabama A&M (11-19-13)

Game

Most points scored	92, vs. Florida A&M (12-15-13)
Fewest points scored	51, vs. Mississippi State (2-11-14)
Most points allowed	93, at Tennessee (2-20-14)
Fewest points allowed	27, vs. Presbyterian (12-18-13)
Best FG %549, vs. Florida A&M (12-15-13)
Worst FG %235, vs. Iowa State (11-30-13)
Best FG % by an opponent574, vs. Texas A&M (1-30-14)
Worst FG % by an opponent190, vs. Mississippi State (2-9-14)
Most rebounds	54, vs. UCLA (12-21-13)
Fewest rebounds	25, vs. Texas A&M (1-30-14)
Most rebounds by an opponent	47, at Tennessee (2-20-14) and vs. Missouri (2-16-14)
Fewest rebounds by an opponent	16, at Alabama A&M (11-19-13)

Miscellaneous

Largest margin of victory	37, vs. Presbyterian (12-18-13) and vs. Florida A&M (12-15-13)
Smallest margin of victory	6, vs. UCLA (12-21-13) and Vanderbilt (2-13-14)
Largest margin of defeat	32, vs. Texas A&M (SECT) (3-7-14)
Smallest margin of defeat	2, vs. Kentucky (1-19-14)
Largest halftime lead	27, at Alabama (1-16-14)
Smallest halftime lead	1, at LSU (1-23-14) and vs. Kentucky (1-19-14)
Last time tied at halftime	vs. South Carolina (1-12-14)
Largest halftime deficit	28, vs. Missouri (2-16-14)
Smallest halftime deficit	1, vs. Iowa State (11-30-13) & Georgia (2-23-14)
Largest rebounding margin	36, at Alabama A&M (11-19-13)
Smallest rebounding margin	2, three times, last at Arkansas (2-2-13)
Last time tied in rebounding	35-35, at Mississippi State (WNIT) (3-27-14)
Opponent's largest rebounding margin	17, vs. Texas A&M (SECT) (3-7-14)
Opponents smallest rebounding margin	1, at LSU (1-23-14) and vs. Tulane (12-3-13)
Largest deficit overcome to win game	17, vs. Alabama (2-27-14)

AUBURN DEFENSE

Pressure defense is a pillar of Coach Flo's style of play. Since 1987, Auburn has totaled 15 or more steals in 102 games with 15 of those games in the Coach Flo Era.

Steals	Date	Opponent	Steals	Date	Opponent
24	12-5-2001	Tennessee State	16	11-18-2005	Texas-Pan American
23	12-21-2004	Monmouth	16	12-20-2001	Troy
23	12-7-2003	Buffalo	16	11-23-1999	Middle Tennessee
23	12-17-2000	Puerto Rico-Mayaguez	16	1-9-2000	South Carolina
22	12-29-2012	Samford	16	12-20-1998	Iowa
22	11-14-2008	Alabama A&M	16	2-16-1999	South Alabama
21	12-29-2003	Alabama A&M	16	2-3-1997	Jacksonville State
20	2-9-2014	Mississippi State	16	2-19-1997	South Carolina
20	3-24-2013	Western Kentucky	16	12-14-1995	Auburn-Montgomery
20	11-11-2007	Detroit	16	12-18-1992	NE Illinois
20	12-19-2007	Sam Houston State	16	12-28-1988	Syracuse
20	11-24-1995	St. Bonaventure	16	1-11-1989	Ole Miss
20	2-14-1995	Lynn	16	2-1-1989	Fort Valley State
19	12-14-2002	North Carolina A&T	16	11-11-1987	South Carolina
19	11-21-1999	Jacksonville State	16	1-6-1988	Tuskegee
19	11-30-1996	Georgia Southern	16	2-28-1988	Vanderbilt
19	1-14-1997	South Alabama	16	4-1-1988	Cal State-Long Beach
19	12-5-1987	Georgia State	15	1-5-2014	Mississippi State
19	11-29-1986	Minnesota	15	11-18-2012	Alabama A&M
18	2-16-2014	Missouri	15	12-12-2012	George Washington
18	12-9-2012	Hofstra	15	3-3-2013	Mississippi State
18	12-28-2010	Alabama A&M	15	11-15-2011	Belmont
18	12-5-2003	North Carolina A&T	15	11-30-2011	Troy
18	12-18-2002	Appalachian State	15	2-26-2012	Ole Miss
18	12-8-2001	Mercer	15	11-12-2010	Mercer
18	11-29-1996	Charleston Southern	15	12-19-2008	George Washington
17	12-5-2008	Sam Houston State	15	12-28-2007	Davidson
17	12-5-2007	Colgate	15	1-27-2008	Alabama
17	12-6-2006	Jackson State	15	2-14-2008	Alabama
17	12-9-2004	New Orleans	15	12-21-2006	Oakland
17	12-30-2001	Texas-San Antonio	15	12-20-2005	Furman
17	11-24-2000	IUPUI	15	12-30-2004	Rhode Island
17	11-30-1994	Auburn-Montgomery	15	12-7-2002	Furman
17	12-20-1994	Texas Southern	15	11-25-2000	Bowling Green
17	12-3-1993	Lamar	15	12-2-2000	Arkansas-Little Rock
17	2-23-1994	South Alabama	15	12-18-2000	Nebraska
17	11-24-1990	Southern	15	12-16-1999	UNC Asheville
17	12-29-1990	South Carolina	15	12-22-1999	Charleston Southern
17	2-4-1991	Murray State	15	11-29-1995	Jacksonville State
17	1-27-1990	Tuskegee	15	12-28-1994	Old Dominion
17	2-14-1988	Kentucky	15	11-26-1993	Alcorn State
16	2-23-2014	Georgia	15	12-29-1991	Fordham
16	12-15-2013	Florida A&M	15	1-12-1991	LSU
16	11-29-2013	Ball State	15	1-15-1991	South Alabama
16	11-15-2012	Alabama State	15	3-2-1991	Ole Miss
16	11-24-2012	Texas A&M-Corpus Christi	15	12-17-1988	Syracuse
16	12-16-2012	Temple	15	12-29-1988	Nebraska
16	1-31-2013	LSU	15	1-21-1989	Vanderbilt
16	12-22-2011	Central Connecticut State	15	1-16-1988	Mississippi State
16	2-19-2012	LSU	15	2-10-1988	Georgia
16	2-23-2012	Alabama			
16	11-17-2008	Temple			
16	11-17-2006	Winston-Salem State			

MORE DEFENSE

Since 1987, Auburn has a 103-8 record when forcing 25 or more turnovers.

Date	Opponent	Turnovers	Result	Date	Opponent	Turnovers	Result
12-17-00	vs. Puerto Rico-Mayaguez	45	W, 106-25	11-19-13	at Alabama A&M	27	W, 77-49
2-14-95	Lynn	40	W, 107-25	11-26-10	vs. Sacred Heart	27	L, 53-65
12-29-03	Alabama A&M	39	W, 95-28	11-17-07	UAB	27	W, 93-66
12-5-01	Tennessee State	39	W, 96-46	12-14-02	North Carolina A&T	27	W, 73-37
12-22-11	Central Connecticut State	37	W, 49-40	11-25-02	Prairie View A&M	27	W, 74-47
11-14-08	at Alabama A&M	37	W, 91-53	12-20-01	Troy State	27	W, 86-44
1-6-88	Tuskegee	35	W, 105-44	11-30-99	Nicholls State	27	W, 95-48
11-24-90	Southern	34	W, 99-30	11-27-99	Kent State	27	W, 72-56
12-18-00	vs. Nebraska	33	W, 74-55	11-30-94	Auburn-Montgomery	27	W, 86-61
1-15-91	South Alabama	33	W, 86-48	2-5-93	South Alabama	27	W, 84-41
12-15-87	at UCLA	32	W, 76-52	3-17-91	Holy Cross	27	W, 84-58
3-3-13	Mississippi State	31	W, 74-65	2-14-88	Kentucky	27	W, 93-57
11-27-10	vs. Seton Hall	31	W, 85-51	1-5-14	at Mississippi State	26	W, 82-74
11-24-07	vs. Winston-Salem State	31	W, 70-37	12-15-13	Florida A&M	26	W, 92-55
11-29-96	Charleston Southern	31	W, 81-42	3-24-13	Western Kentucky	26	W, 84-66
12-20-94	Texas Southern	31	W, 110-38	2-28-13	at Vanderbilt	26	L, 59-44
12-7-03	Buffalo	30	W, 82-32	12-29-12	Samford	26	W, 80-51
12-30-99	Coppin State	30	W, 85-56	11-24-12	vs. Texas A&M-Corpus Christi	26	W, 72-57
12-16-99	North Carolina-Asheville	30	W, 86-30	11-15-12	Alabama State	26	W, 80-43
12-19-95	Eastern Washington	30	W, 69-39	11-9-12	vs. Maine	26	W, 71-41
11-29-13	Ball State	29	W, 67-51	12-5-08	Sam Houston State	26	W, 119-54
2-23-12	Alabama	29	W, 81-40	1-27-08	at Alabama	26	W, 62-48
12-28-10	Alabama A&M	29	W, 84-45	12-5-07	Colgate	26	W, 99-47
11-15-10	Florida State	29	L, 61-67	12-30-04	Rhode Island	26	W, 80-41
11-13-09	Troy	29	W, 70-65	11-22-02	Troy State	26	W, 69-38
11-17-08	Temple	29	W, 95-76	11-21-99	Jacksonville State	26	W, 93-54
12-19-07	at Sam Houston State	29	W, 80-36	2-16-99	South Alabama	26	W, 89-50
12-20-05	at Furman	29	W, 86-42	11-21-97	Troy State	26	W, 101-70
12-14-03	Prairie View A&M	29	W, 100-48	1-14-97	South Alabama	26	W, 89-56
12-18-02	Appalachian State	29	W, 83-58	12-16-95	Jacksonville State	26	W, 89-61
11-16-01	Florida A&M	29	W, 85-36	11-29-95	Jacksonville State	26	W, 65-47
1-9-00	South Carolina	29	W, 73-50	1-31-13	LSU	25	L, 55-59
11-26-94	Texas Christian	29	W, 78-32	1-26-06	Alabama	25	W, 65-56
11-26-93	vs. Alcorn State	29	W, 71-66, OT	11-21-03	Stetson	25	W, 92-37
1-9-93	Arkansas	29	W, 68-49	12-8-01	Mercer	25	W, 97-59
1-27-90	Tuskegee	29	W, 98-39	11-25-00	Bowling Green	25	W, 94-61
2-1-89	Fort Valley State	29	W, 97-42	11-26-99	Mercer	25	W, 82-41
12-29-88	vs. Nebraska	29	W, 80-39	1-18-97	Mississippi State	25	W, 77-59
11-26-88	Tennessee State	29	W, 104-30	11-24-95	St. Bonaventure	25	W, 91-34
12-16-12	Temple	28	W, 71-49	12-3-93	vs. Lamar	25	W, 56-43
12-9-12	Hofstra	28	W, 68-58	2-23-93	Oral Roberts	25	W, 78-42
2-26-12	Ole Miss	28	W, 46-43	1-6-93	Houston	25	W, 81-51
11-11-07	Detroit	28	W, 91-47	1-21-91	New Orleans	25	W, 96-56
12-21-04	at Monmouth	28	W, 73-44	12-18-90	at Oregon	25	W, 69-51
12-2-00	vs. Arkansas-Little Rock	28	W, 106-37	2-10-90	Georgia	25	W, 85-64
11-24-00	IUPUI	28	W, 70-55	1-31-90	DePaul	25	W, 75-48
11-22-00	UNC Asheville	28	W, 70-31	1-20-90	at Vanderbilt	25	W, 96-93
12-22-99	Charleston Southern	28	W, 79-31	12-28-88	vs. Syracuse	25	W, 76-52
12-20-99	Texas-Arlington	28	W, 75-42	1-27-88	at Alabama	25	W, 88-57
11-23-99	Middle Tennessee State	28	W, 93-51	1-20-88	Tennessee-Chattanooga	25	W, 96-62
12-30-96	vs. George Mason	28	L, 55-58				
2-13-95	St. Leo	28	W, 104-33				
2-4-91	Murray State	28	W, 81-44				
12-9-89	at Illinois	28	W, 70-53				
2-22-89	Alabama	28	W, 89-44				
12-14-88	at Detroit	28	W, 87-42				
2-28-88	at Vanderbilt	28	W, 89-57				
2-16-14	Missouri	27	L, 58-68				
2-9-14	Mississippi State	27	W, 51-43				
1-30-14	Texas A&M	27	L, 54-71				

MISCELLANEOUS STATISTICS

Double-Doubles	Season	Career
Brandy Montgomery	0	1
Hasina Muhammad	0	1
Tra'cee Tanner	0	3

30+ Point Games	Season	Career
------------------------	---------------	---------------

20+ Point Games	Season	Career
Brandy Montgomery	0	2
Hasina Muhammad	0	10
Tra'cee Tanner	0	1

10+ Rebound Games	Season	Career
Brandy Montgomery	0	1
Hasina Muhammad	0	1
Tra'cee Tanner	0	3

10+ Assist Games	Season	Career
Kiani Parker	0	1

5+ Steal Games	Season	Career
Hasina Muhammad	0	4
Tra'cee Tanner	0	2

5+ Block Games	Season	Career
Hasina Muhammad	0	2

GAMES LED AUBURN IN . .

Scoring	Season	Career
Brandy Montgomery	0	4
Hasina Muhammad	0	25
Tra'cee Tanner	0	5

Rebounding	Season	Career
Cabriana Capers	0	8
Hasina Muhammad	0	13
Tra'cee Tanner	0	15

Assists	Season	Career
Brandy Montgomery	0	1
Hasina Muhammad	0	10
Kiani Parker	0	14
Tra'cee Tanner	0	3

Last Time an Auburn Team...

Scored 100 points	Auburn 119, Sam Houston State 54 (Dec. 5, 2008)
Scored 100 points in an SEC game	Auburn 102, Tennessee 96, SEC Tournament in Albany, Ga. (Mar. 6, 1987)
Scored 100 at Auburn	Auburn 119, Sam Houston State 54 (Dec. 5, 2008)
Scored 100 points and lost	Never
Scored 110 points	Auburn 119, Sam Houston State 54 (Dec. 5, 2008)
Scored 115 points	Auburn 119, Sam Houston State 54 (Dec. 5, 2008)
Scored at least 60 points in a half	62-vs. Sam Houston State (Dec. 5, 2008)
Had 35+ rebound margin	36-Auburn 52, Alabama A&M 16 in Normal, Ala. (Nov. 19, 2013)
Had 25+ rebound margin	36-Auburn 52, Alabama A&M 16 in Normal, Ala. (Nov. 19, 2013)
Had 20+ rebound margin	36-Auburn 52, Alabama A&M 16 in Normal, Ala. (Nov. 19, 2013)
Attempted 35 free throws	35-vs. Florida A&M (Nov. 28, 2009)
Attempted 40 free throws	41-vs. Alabama State (Nov. 15, 2006)
Made 30 free throws	31-vs. Northwestern State (31-43) (Dec. 30, 2003)
Had 25 assists	29 - vs. Old Dominion in Auburn, Ala. [WNIT] (March 24, 2014)
Had 25 turnovers	26 - at Mississippi State in Starkville, Miss. [WNIT] (March 27, 2014)
Had 25 steals	25- vs. Arkansas-Little Rock (Dec. 2, 2000)
Had 20 steals	20- vs. Mississippi State in Auburn, Ala. (Feb. 9, 2014)
Had 15 steals	16 - vs. Georgia (Feb. 23, 2014)
Had 10 blocks	10 - vs. Old Dominion in Auburn, Ala. [WNIT] (March 24, 2014)
Had 15 blocks	17 - vs. Alabama A&M in Auburn, Ala. (Nov. 19, 2009)
Scored 25 points or less	25- vs. Mercer (1971)
Played an overtime game	at Ole Miss (March 2, 2014)
Won an overtime game	Auburn 70, Alabama 65 [20T] in Auburn, Ala. (Feb. 27, 2014)
Lost an overtime game	Ole Miss 73, Auburn 71 in Oxford, Miss. (March 2, 2014)
Played a double overtime game	Auburn 70, Alabama 65 [20T] in Auburn, Ala. (Feb. 27, 2014)
Played at least three overtimes	Never
Shot 70% for a half	70.6%, 24-34 - vs. Florida A&M in Auburn, Ala. (Dec. 15, 2013)
Shot 60% for a game	vs. Alabama (61.8%, 34-55) (Jan. 22, 2009)
Shot less than 30% for a game	(27.4%, 17-62) vs. Drexel at Auburn, Ala. (March 30, 2013)
Shot 90% from the free throw line (minimum 10 attempts)	(10-10) vs. Mississippi State (Feb. 3, 2008)
Shot 50% from 3-point line	(5-of-6, 83%) vs. Alabama A&M in Auburn, Ala. (Nov. 18, 2012)
Shot less than 30% in a half	6-of-28, 21.4% in the first half vs. Missouri in Auburn, Ala. (Feb. 16, 2014)
Shot less than 20% in a half	4-of-28, 14.3% in the first half vs. Drexel in Auburn, Ala. (March 30, 2013)
Shot 55% or better and lost	58.1%, 25-43-vs. Tennessee, (Jan. 20, 2005)
Made at least 10 3-point field goals	10-of-25 vs. Maine in Raleigh, N.C. (Nov. 9, 2012)
Failed to make a 3-point field goal	0-of-3 at Mississippi State in Starkville, Miss. [WNIT] (March 27, 2014)
Had at least 60 rebounds	61 vs. Stephen F. Austin, (Dec. 17, 2007)
Had at least 50 rebounds	50 - vs. Alabama in Auburn, Ala. (Feb. 27, 2014)
Scored less than 20 points in a 1st half	18 points vs. Alabama in Auburn, Ala. (Feb. 27, 2014)
Scored less than 20 points in a 2nd half	15 points at LSU in Baton Rouge, La. (Feb. 19, 2012)
Scored less than 50 points in a game	43 points vs. Drexel in Auburn, Ala. (March 30, 2013)

Last Time an Auburn Player...

Scored 40 points	41-Consweila Sparrow vs. South Alabama (Feb. 17, 1998)
Scored 35 points	35-DeWanna Bonner vs. Tennessee (Jan. 25, 2009)
Scored 30 points	32-Blanche Alverson vs. Mississippi State (March 3, 2013)
Attempted 25 field goals	25-Tyrese Tanner vs. Alabama (Feb. 27, 2014)
Attempted a slam dunk	Hasina Muhammad vs. St. John's in Auburn, Ala. (Dec. 6, 2013)
Recorded a double-double	Tyrese Tanner (26 points/11 rebounds) vs. Alabama in Auburn, Ala. (Feb. 27, 2014)
Recorded a double-double with points and assists	Najat Ouardad (14 points/11 assists) vs. Samford in Auburn, Ala. (Dec. 29, 2012)
Recorded consecutive double-doubles	Tyrese Tanner (20 pts/11 reb) at Ole Miss (March 2, 2014); (16 pts/12 reb) vs. Ole Miss [SEC] (March 6, 2014)
Recorded three consecutive double-doubles	Tyrese Tanner (26 pts/11 reb) vs. Alabama (Feb. 27, 2014); (20 pts/11 reb) at Ole Miss (March 2, 2014); (16 pts/12 reb) vs. Ole Miss [SEC] (March 6, 2014)
Two players recorded a double-double	Peyton Davis (17 pts/12 reb) & Tyrese Tanner (19 pts/10 reb) at Alabama A&M in Normal, Ala. (Nov. 19, 2013)
Had a double-double at halftime	DeWanna Bonner (14 pts./10 rebs.) vs. Ole Miss (Mar. 6, 2009)
Recorded a triple-double	Whitney Boddie (24 pts./11 rebs./12 asst.) vs. Sam Houston State (Dec. 5, 2008)
Had 10 assists	11 - Kiani Parker at Vanderbilt (Feb. 13, 2014)
Had 15 assists	18-Martha Monk vs. Alabama State (Feb. 18, 1981)
Had 10 blocks	13- Marita Payne vs. Arkansas (Feb. 3, 2005)
Had 5 blocks	5 - Hasina Muhammad vs. Ole Miss [SEC] (March 6, 2014)
Had 5 steals	6- Tra'cee Tanner vs. Mississippi State in Auburn, Ala. (Feb. 11, 2014)
Had 15 rebounds	17-Peyton Davis vs. Arkansas in Auburn, Ala. (Jan. 3, 2013)
Had 20 rebounds	20-Monique Morehouse at LSU (Feb. 4, 1995)
Made 15 field goals	15-Consweila Sparrow (15-16) vs. South Alabama (Feb. 17, 1998)
Made 5 three-point field goals	5 - Blanche Alverson (5-9) vs. Mississippi State in Auburn, Ala. (March 3, 2013)
Two players scored 20 points	Tyrese Tanner (24) and Hasina Muhammad (27) vs. Western Kentucky in Auburn, Ala. (March 24, 2013)
Two players scored 30 points	Laticia Morris (33 points) & Tara Williams (30 points) vs. South Alabama (Jan. 14, 1997)
Back-to-back 25-point games	Alli Smalley 26 pts. vs. Kentucky (Feb. 28, 2010) & 29 pts. vs. Florida in SEC Tournament in Duluth, Ga. (Mar. 4, 2010)
Only one player scored in double figures	Tyrese Tanner (21 pts.) vs. Mississippi State in Auburn, Ala. (Feb. 9, 2014)

SEC PRESEASON POLL (Media Vote)*(First-place votes in Parentheses)***Order of Finish**

1. South Carolina	210
2. Tennessee	191
3. Texas A&M	179
4. Kentucky	154
5. Vanderbilt	150
6. Georgia	132
7. LSU	122
8. Mississippi State	108
9. Florida	96
10. Auburn	83
11. Arkansas	77
11. Missouri	77
13. Alabama	74
14. Ole Miss	21

Player of the Year

Tiffany Mitchell, South Carolina

All-SEC Team

Martha Alwal, Mississippi State
 Tiffany Mitchell, South Carolina
 Aleighsa Welch, South Carolina
 Isabelle Harrison, Tennessee
 Courtney Walker, Texas A&M

SEC PRESEASON POLL (Coaches' Vote)**Order of Finish**

1. South Carolina	169
2. Tennessee	155
3. Texas A&M	144
4. Kentucky	135
5. Georgia	108
6. Vanderbilt	107
7. LSU	94
8. Mississippi State	87
9. Florida	86
10. Auburn	53
11. Missouri	48
12. Arkansas	40
13. Alabama	25
14. Ole Miss	23

Player of the Year

Tiffany Mitchell, South Carolina

All-SEC First Team

Jessica Jackson, Arkansas
 Jennifer O'Neill, Kentucky
 Danielle Ballard, LSU
 Martha Alwal, Mississippi State
 Alaina Coates, South Carolina
 Tiffany Mitchell, South Carolina
 Aleighsa Welch, South Carolina
 Bashaara Graves, Tennessee
 Isabelle Harrison, Tennessee
 Courtney Walker, Texas A&M

All-SEC Second Team

Kayla Lewis, Florida
 Shacobia Barbee, Georgia
 Brianna Goss, Kentucky
 Tia Faleru, Ole Miss
 Morgan Eye, Missouri
 Jordan Jones, Texas A&M
 Courtney Williams, Texas A&M
 Rebekah Dahlman, Vanderbilt

Five players scored in double figures	Ty. Tanner (24), Montgomery (10), Frerking (11), Tr. Tanner (10) and Davis (12)
.....	vs. Old Dominion in Auburn, Ala. [WNIT] (March 24, 2014)
Six players scored in double figures	Carrier (19 pts.), Bonner (18 pts.), Smalley (16 pts.), Boddie (13 pts.),
.....	R. Hobbs (13 pts.), Hilliard (13 pts.) & S. Hobbs (10 pts.) vs. Sam Houston State (Dec. 5, 2008)
Seven players scored in double figures	Carrier (19 pts.), Bonner (18 pts.), Smalley (16 pts.), Boddie (13 pts.),
.....	R. Hobbs (13 pts.), Hilliard (13 pts.) & S. Hobbs (10 pts.) vs. Sam Houston State (Dec. 5, 2008)
Scored 20 points & had 20 rebounds	Lauretta Freeman (30 pts/21 rebs.) vs. Alabama, (Feb. 17, 1993)
Two players had 10 rebounds	Peyton Davis (12) and Tyrese Tanner (10) at Alabama A&M in Normal, Ala. (Nov. 19, 2013)
Three players had 10 rebounds	Jordan Greenleaf (12 rebs.), DeWanna Bonner (12 rebs.) & Whitney Boddie (10 rebs.) vs. Oakland (Nov. 21, 2007)
Played every minute	Jordan Greenleaf (40 mins.) vs. Florida in Duluth, Ga. [SEC] (Mar. 4, 2010)
Played more than 40 minutes	Alli Smalley (45 mins.), Jordan Greenleaf (43 mins.) & Morgan Toles (41 mins.) at LSU (Jan. 10, 2010)

Last Time an Auburn Opponent...

Shot less than 30% in a game (SEC)	Ole Miss - 28.1% (16-of-57) in Duluth, Ga. [SEC] (March 6, 2014)
Shot less than 30% in a game (Non-conf)	Presbyterian - 20.0% (8-of-40) in Auburn, Ala. (Dec. 18, 2013)
Shot 60% in a game	Vanderbilt - 60.4% in Nashville, Tenn. [SEC] (Mar. 5, 2004)
Scored 100 points	Georgia 102, Auburn 72 in Athens, Ga. (Mar. 3, 1984)
Scored 100 points at Auburn	Tuskegee 105, Auburn 98 (2OT) (Feb. 12, 1979)
Scored 100 points and Lost	Never
Scored 110 points	Never
Had 25+ rebound margin	Never
Had a 20+ rebound margin	Never
Scored less than 20 points in a 1st half	14 - Alabama Tuscaloosa, Ala. (Jan. 16, 2014)
Scored less than 20 points in a 2nd half	17 - Ole Miss in Duluth, Ga. [SEC] (March 6, 2014)
Had 50 rebounds	51 - at Alabama in Tuscaloosa, Ala. (Jan. 24, 2013)
Had 25 assists	25 - by Florida International in Miami, Fla. (Dec. 19, 1993)
Had 25 turnovers	27 - Missouri in Auburn, Ala. (Feb. 16, 2014)
Had 15 steals	18 - by Kentucky in Lexington, Ky. (Jan. 20, 2013)
Had 10 blocks	12 - by Tennessee (Jan. 10, 2008)
Failed to make a 3-point field goal	by Ole Miss (0-7) in Auburn, Ala. (Feb. 26, 2012)
Attempted 35 free throws	36 - by Arizona 25-36 (Dec. 19, 2000)
Made 30 free throws	30 - by Arkansas (Jan. 22, 1995)
Made 10 three-point field goals	12 - Missouri in Auburn, Ala. (Feb. 16, 2014)
Made 15 three-point field goals	18 - Missouri in Columbia, Mo. (Jan. 6, 2013)
Scored less than 50 points in a game	43 - Mississippi State in Auburn, Ala. (Feb. 9, 2014)
Scored 40 points or less	39 - Alabama in Tuscaloosa, Ala. (Jan. 16, 2014)
Scored 30 points or less	27 - Presbyterian in Auburn, Ala. (Dec. 18, 2013)
Scored 25 points or less	25 - by Puerto Rico Mayaguez (Dec. 17, 2000)
Scored 11 points or less	11 - by Montevallo (1973) and 11 - by Jeff Davis (1973)

Last Time an Auburn Opponent's Player...

Scored 30 points (non-conference)	33 - Andrea Smith of South Florida in Tampa, Fla. (Nov. 22, 2010)
Scored 30 points (SEC)	33 - Morgan Eye of Missouri in Columbia, Mo. (Jan. 6, 2013)
Scored 35 points	38 - Lindsay Shearer of Kent State in Kent, Ohio (Nov. 20, 2005)
Attempted 25 field goals	27 - Jantel Lavender (9-27) of Ohio State (Nov. 23, 2008)
Scored 20 points & had 20 rebounds	Young of Baylor in the Women's NIT Championship Game, (20 pts./25 rebs.) (Apr. 4, 2003)
Two players scored 20 points	by Vanderbilt, Christina Foggie (26 pts) and Jasmine Lister (23 pts) in Auburn, Ala. (Jan. 9, 2014)
Three players scored 20 points	by LSU in Baton Rouge, Chatman (22 pts), Johnson (21 pts) & Lowery (20 pts) (Jan. 12, 1991)
Five players scored in double figures	Williams (10), Lewis (13), Bonds (18), Peoples (10), Miller (12), Svete (12) of Florida (Jan. 26, 2014)
Six players scored in double figures	Williams (10), Lewis (13), Bonds (18), Peoples (10), Miller (12), Svete (12) of Florida (Jan. 26, 2014)
Recorded a double-double	Martha Alwal (11 pts/11 rebs) of Mississippi State in Starkville, Miss. [WNIT] (March 27, 2014)
Recorded a double-double with points and assists	Jasmine Lister (23 pts/10 assists) of Vanderbilt in Auburn, Ala. (Jan. 9, 2014)
Recorded a triple-double	Ceira Ricketts (14 pts./13 rebs./12 asst.) of Arkansas (Jan. 18, 2009)
Two players recorded a double-double	ieria Burdick (15 pts/13 rebs) & Ariel Massengale (10 pts/10 asst) of Tennessee in Knoxville, Tenn. (Feb. 21, 2013)
Committed 10 turnovers	10 - Bianca McGee of Western Kentucky in Auburn, Ala. (March 24, 2013)
Committed 15 turnovers	15 - Andreana Thomas of Hofstra in Auburn, Ala. (Dec. 9, 2012)
Had 15 rebounds	16 - by Shante Evans of Hofstra in Auburn, Ala. (Dec. 9, 2012)
Had 20 rebounds	20 - Sylvia Fowles of LSU (Jan. 28, 2007)
Had 10 assists	10 - Ariel Massengale of Tennessee in Knoxville, Tenn. (Feb. 21, 2013)
Had 10 blocks	Never
Had 5 blocks	5 - Martha Alwal of Mississippi State in Starkville, Miss. (Jan. 5, 2014)
Had 5 steals	6 - Tiffany Mitchell of South Carolina in Auburn, Ala. (Jan. 12, 2014)
Made 15 field goals	15 - Chamique Holdsclaw (15-21) of Tennessee (Feb. 1, 1998)
Made 10 3-point field goals	11 - Morgan Eye (11-18) of Missouri in Columbia, Mo. (Jan. 6, 2013)
Had 15 assists	16 - Cindy McMahan of Alabama-Huntsville (Nov. 24, 1980)



Terri WILLIAMS-FLOURNOY

Head Coach

Third Season

Hampton, Va. • Penn State, 1991

- Has led Auburn to back-to-back 19-win seasons in her first two years
- In two years, has had three players selected to All-SEC teams
- Auburn has forced an average of 20.0 turnovers per game under Coach Flo
- Led Auburn to the postseason in her first two seasons, advancing to WNIT Quarterfinals in 2013 and Third Round in 2014
- Has advanced her teams to the postseason in six consecutive years as a head coach
- Picked up her 175th career victory Feb. 9, 2014, vs. Mississippi State
- Recorded her 400th career win as a collegiate coach in Auburn's 68-58 win over Hofstra on Dec. 9, 2012
- Tallied her 500th win as a player, assistant coach and head coach with 84-66 win over Western Kentucky in 2013 WNIT Second Round
- Picked up first SEC win in 50-47 win over #23 Arkansas in 2013
- Earned second win over ranked opponent at Auburn and snapped 21-game skid to #16 Vanderbilt with 68-62 win in Nashville on Feb. 13, 2014
- Has 181 wins as a head coach and 251 as an assistant for a .645 winning percentage over 21 years as a collegiate coach
- Has been part of six conference championships and 18 post-season appearances as an assistant and head coach
- 2010 Black Coaches Association Coach of the Year
- Served as an assistant coach for Team USA that won a gold medal at the 2011 World University Games in ShenZhen, China
- Coached teams to 11 NCAA Tournament appearances, nine as an assistant and two as a head coach
- Has coached 21 players that have gone on to the professional ranks, including seven in the WNBA
- As an assistant, helped coach Georgia to an NCAA Final Four appearance and two NCAA Elite Eight appearances
- Coached three Georgetown players to three all-conference honors and one All-America award
- Has a 520-286 record as a head coach, assistant coach and player
- Helped coach Georgetown to a Big East title in 1992
- As an assistant coach at Southwest Missouri State, helped the team to two straight NCAA Tournaments and two consecutive Missouri Valley Conference Tournament titles

All-time record as player and coach:	520-285 (.646)	27 seasons
Record as collegiate player:	88-36 (.709)	4 seasons
Record as collegiate coach:	432-249 (.634)	22 seasons
Record as collegiate assistant coach:	251-116 (.683)	12 seasons
SEC Record as an assistant coach:	130-45 (.742)	6 seasons
Record as collegiate head coach:	181-133 (.576)	10 seasons
SEC Record as a head coach:	12-20 (.375)	2 seasons

Williams-FLOURNOY Year-by-Year

Penn State, Player (1987-91)

Year	Record	Conf.	Other Information
1987-88	20-13	11-7	NCAA Second Round
1988-89	14-14	12-6	
1989-90	25-7	15-3	NCAA Second Round
1990-91	29-2	17-1	NCAA Second Round

Georgetown, Assistant Coach (1992-96)

Year	Record	Conf.	Other Information
1992-93	23-7	15-3	Big East Champions NCAA Sweet 16
1993-94	12-15	6-12	
1994-95	11-17	6-12	
1995-96	12-15	7-11	

Georgia, Assistant Coach (1996-2002)

Year	Record	Conf.	Other Information
1996-97	25-6	11-1	SEC Champions NCAA Elite Eight
1997-98	17-11	8-6	NCAA First Round
1998-99	27-7	9-5	NCAA Final Four
1999-2000	32-4	13-1	SEC Champions NCAA Elite Eight
2000-01	27-6	11-3	SEC Tournament Champions NCAA Second Round
2001-02	19-11	6-8	NCAA First Round

Southwest Missouri State, Assistant Coach (2002-04)

Year	Record	Conf.	Other Information
2002-03	18-13	11-7	MVC Tournament Champions NCAA First Round
2003-04	28-4	16-2	Missouri Valley Champions MVC Tournament Champions NCAA First Round

Georgetown, Head Coach (2004-12)

Year	Record	Conf.	Other Information
2004-05	12-16	7-9	
2005-06	10-17	3-13	
2006-07	13-16	3-13	
2007-08	15-14	5-11	
2008-09	20-14	7-9	WNIT Quarterfinals
2009-10	26-7	13-3	NCAA Second Round
2010-11	24-11	9-7	NCAA Sweet 16
2011-12	23-9	11-5	NCAA Second Round

Auburn, Head Coach (2012-present)

Year	Record	Conf.	Other Information
2012-13	19-15	5-11	WNIT Quarterfinals
2013-14	19-15	7-9	WNIT Third Round
2014-15			



Hasina MUHAMMAD

#00

Senior • Guard • 6-1

Memphis, Tenn.

Ridgeway High School

NOTES:

- 2014 SEC All-Defensive Team selection
- Led team and ranked 2nd in SEC with 64 steals (2.4/game) in 2013-14
- Led team with 56 blocks (2.1/game) in '13-14, 4th-best in SEC and 9th-most in Auburn history
- Scored 1,000th career point in final game of '13-14 in 3rd-round WNIT game at Mississippi State
- Enters 2014-15 season 28th in Auburn history in career scoring (1,012 points); needs 5 points to move into 27th (KeKe Carrier, 1,017 points)
- 8th in career blocks (129), needs 10 blocks to tie for 6th (DeWanna Bonner & Jordan Greenleaf, 139)
- Needs one steal to move into Auburn top 10

Opponent	Start	Min.	FG-A	3PT-A	FT-A	O-D-T	PF	Asst.	TO	Blk.	Stl.	Pts.
TROY												
GRAMBLING STATE												
FLORIDA GULF COAST												
at Virginia												
at Winthrop												
MARQUETTE												
SE LOUISIANA												
SAMFORD												
SAVANNAH STATE												
at St. John's												
vs. SMU/Indiana St.												
at FIU												
vs. Hampton/BGSU												
at South Carolina												
FLORIDA												
at Kentucky												
GEORGIA												
TENNESSEE												
at Alabama												
MISSISSIPPI STATE												
at Arkansas												
at Texas A&M												
LSU												
at Missouri												
ARKANSAS												
OLE MISS												
at Georgia												
at Vanderbilt												
ALABAMA												

MUHAMMAD CAREER STATISTICS

Year	GP-GS	FG-FGA	Pct	3FG-FGA	Pct	FT-FTA	Pct	O-D-T (Reb.)	Avg	PF	FO	Asst	TO	Blk	Stl	Pts	Avg
2011-12	30-16	119-308	.386	11-34	.324	37-64	.578	58-54-112	3.7	51	1	38	77	31	40	286	9.5
2012-13	34-32	198-468	.423	5-17	.294	74-127	.583	80-94-174	5.1	63	1	68	96	42	82	475	14.0
2013-14	27-27	100-256	.391	1-8	.125	50-92	.543	55-74-129	4.8	63	0	42	43	56	64	251	9.3
TOTAL	91-75	417-1032	.404	17-59	.288	161-283	.569	193-222-415	4.6	177	2	148	216	129	186	1012	11.1

SEASON HIGHS

Points

Rebounds

Assists

Blocks

Steals

Field Goals

Field Goal Attempts

3-Point Field Goals

3-Point FG Attempts

Free Throws

Free Throw Attempts

CAREER HIGHS

Points

28 vs. St. John's (12/6/13)

Rebounds

10 at George Washington (12/12/12)

Assists

6 vs. Temple (12/16/12)

Blocks

5 twice, last vs. Ole Miss (3/6/14)

Steals

9 at George Washington (12/12/12)

Field Goals

11 3x, last vs. St. John's (12/6/13)

Field Goal Attempts

24 at Texas A&M (1/13/13)

3-Point Field Goals

3 twice, last vs. Maine (11/9/12)

3-Point FG Attempts

6 vs. Maine (11/9/12)

Free Throws

9 vs. Georgia (1/8/12)

Free Throw Attempts

11 vs. Georgia (1/8/12)



Kiani PARKER

#22

Senior • Guard • 5-9

Ft. Walton Beach, Fla.

Fort Walton Beach • Northwest Florida State College

NOTES:

- Led Auburn with 113 assists in 2013-14
- Played in all 34 games as a junior, starting 29
- Averaged 20.6 minutes/game in 2013-14
- Career-high 11 assists on Feb. 13, 2014, at Vanderbilt, leading Auburn to first win at Vandy in 14 years
- Averaged 11.0 points, 3.9 assists, 3.5 rebounds as a sophomore at NW Florida State College; led team to NJCAA quarterfinals

Opponent	Start	Min.	FG-A	3PT-A	FT-A	O-D-T	PF	Ass.	TO	Blk.	St.	Pts.
TROY												
GRAMBLING STATE												
FLORIDA GULF COAST												
at Virginia												
at Winthrop												
MARQUETTE												
SE LOUISIANA												
SAMFORD												
SAVANNAH STATE												
at St. John's												
vs. SMU/Indiana St.												
at FIU												
vs. Hampton/BGSU												
at South Carolina												
FLORIDA												
at Kentucky												
GEORGIA												
TENNESSEE												
at Alabama												
MISSISSIPPI STATE												
at Arkansas												
at Texas A&M												
LSU												
at Missouri												
ARKANSAS												
OLE MISS												
at Georgia												
at Vanderbilt												
ALABAMA												

PARKER CAREER STATISTICS

Year	GP-GS	FG-FGA	Pct	3FG-FGA	Pct	FT-FTA	Pct	O-D-T (Reb.)	Avg	PF	FO	Ass	TO	Blk	Stl	Pts	Avg
2013-14	34-29	32-109	.294	3-13	.231	22-45	.489	18-57-75	2.2	60	0	113	86	3	54	89	2.6
TOTAL	34-29	32-109	.294	3-13	.231	22-45	.489	18-57-75	2.2	60	0	113	86	3	54	89	2.6

CAREER HIGHS

Points		
10	at UT-Chattanooga	(11/24/13)
Rebounds		
6	twice, last vs. Alabama	(2/27/14)
Assists		
11	at Vanderbilt	(2/13/14)
Blocks		
1	3x, last vs. Old Dominion	(3/24/14)
Steals		
5	vs. Georgia	(2/23/14)
Field Goals		
4	twice, last vs. S. Carolina	(1/12/14)
Field Goal Attempts		
8	vs. Missouri	(2/16/14)
3-Point Field Goals		
1	3x, last at Arkansas	(2/2/14)
3-Point FG Attempts		
2	vs. Georgia Southern	(11/9/13)
Free Throws		
3	vs. Georgia	(2/23/14)
Free Throw Attempts		
4	3 times, last vs. Georgia	(2/23/14)



Cabriana CAPERS

#50

Junior • Forward • 6-1

Bolingbrook, Ill.

Bolingbrook

NOTES:

- Played in 30 games as a sophomore, averaging 11.7 minutes per game
- Had a season-high 8 rebounds in 2013-14 season-opener vs. Georgia Southern (11/9)
- Season-high of six points came in win over Alabama A&M (11/19)
- Averaged 1.1 points and 2.4 rebounds as a sophomore
- As a freshman, averaged 1.9 points, 3.2 rebounds per game while playing in 30 games

Opponent	Start	Min.	FG-A	3PT-A	FT-A	O-D-T	PF	Ast.	TO	Blk.	St.	Pts.
TROY												
GRAMBLING STATE												
FLORIDA GULF COAST												
at Virginia												
at Winthrop												
MARQUETTE												
SE LOUISIANA												
SAMFORD												
SAVANNAH STATE												
at St. John's												
vs. SMU/Indiana St.												
at FIU												
vs. Hampton/BGSU												
at South Carolina												
FLORIDA												
at Kentucky												
GEORGIA												
TENNESSEE												
at Alabama												
MISSISSIPPI STATE												
at Arkansas												
at Texas A&M												
LSU												
at Missouri												
ARKANSAS												
OLE MISS												
at Georgia												
at Vanderbilt												
ALABAMA												

CAPERS CAREER STATISTICS

Year	GP-GS	FG-FGA	Pct	3FG-FGA	Pct	FT-FTA	Pct	O-D-T (Reb.)	Avg	PF	FO	Ast	TO	Blk	Stl	Pts	Avg
2012-13	30-1	23-41	.561	0-0	.000	10-23	.435	37-59-96	3.2	24	0	18	15	1	6	56	1.9
2013-14	30-0	10-41	.244	0-0	.000	12-18	.667	28-43-71	2.4	31	0	15	16	2	11	32	1.1
TOTAL	60-1	33-82	.402	0-0	.000	22-41	.537	65-102-167	2.8	55	0	33	31	3	17	88	1.5

SEASON HIGHS

Points

Rebounds

Assists

Blocks

Steals

Field Goals

Field Goal Attempts

3-Point Field Goals

3-Point FG Attempts

Free Throws

Free Throw Attempts

CAREER HIGHS

Points

8 at Kentucky (1/20/13)

Rebounds

9 vs. Alabama A&M (11/18/12)

Assists

3 at Alabama A&M (11/19/13)

Blocks

1 3x, last at UT-Chattanooga (11/24/13)

Steals

3 vs. Vanderbilt (1/9/14)

Field Goals

2 11 times, last vs. Iowa St. (11/30/13)

Field Goal Attempts

5 twice, last at Minnesota (12/22/13)

3-Point Field Goals

3-Point FG Attempts

Free Throws

5 vs. UCLA (12/21/13)

Free Throw Attempts

6 vs. UCLA (12/21/13)



Tra'Ceé TANNER

#44

Junior • Forward/Center • 6-3

Birmingham, Ala.

Hoover

NOTES:

- Played in all 34 games as a sophomore, earning 31 starts
- Was Auburn's third-leading scorer in 2013-14, averaging 10.5 points and 6.0 rebounds/game
- Had two double-doubles as a sophomore - 14 points, 10 rebounds at Alabama (1/16); 14 points, 10 rebounds at Tennessee (2/20)
- Led team with 17 points in SEC Tournament win over Ole Miss
- Scored season-high 19 points and pulled down 9 rebounds in win over Jacksonville State (11/13)

Opponent	Start	Min.	FG-A	3PT-A	FT-A	O-D-T	PF	Ass.	TO	Blk.	St.	Pts.
TROY												
GRAMBLING STATE												
FLORIDA GULF COAST												
at Virginia												
at Winthrop												
MARQUETTE												
SE LOUISIANA												
SAMFORD												
SAVANNAH STATE												
at St. John's												
vs. SMU/Indiana St.												
at FIU												
vs. Hampton/BGSU												
at South Carolina												
FLORIDA												
at Kentucky												
GEORGIA												
TENNESSEE												
at Alabama												
MISSISSIPPI STATE												
at Arkansas												
at Texas A&M												
LSU												
at Missouri												
ARKANSAS												
OLE MISS												
at Georgia												
at Vanderbilt												
ALABAMA												

TANNER CAREER STATISTICS

Year	GP-GS	FG-FGA	Pct	3FG-FGA	Pct	FT-FTA	Pct	O-D-T (Reb.)	Avg	PF	FO	Ass	TO	Blk	Stl	Pts	Avg
2012-13	34-2	91-167	.545	0-0	.000	33-61	.541	55-75-130	3.8	76	0	21	39	23	30	215	6.3
2013-14	34-31	138-248	.556	0-0	.000	82-114	.719	89-114-203	6.0	117	7	38	79	42	45	358	10.5
TOTAL	68-33	229-415	.552	0-0	.000	115-175	.657	144-189-333	4.9	193	7	59	118	65	75	573	8.4

SEASON HIGHS

Points

Rebounds

Assists

Blocks

Steals

Field Goals

Field Goal Attempts

3-Point Field Goals

3-Point FG Attempts

Free Throws

Free Throw Attempts

CAREER HIGHS

Points

21 vs. Jacksonville (12/22/12)

Rebounds

12 vs. Jacksonville (12/22/12)

Assists

4 vs. Jacksonville State (11/13/13)

Blocks

3 vs. Ole Miss (1/10/13)

Steals

6 twice, last vs. Miss. State (2/9/14)

Field Goals

10 vs. Jacksonville (12/22/12)

Field Goal Attempts

16 vs. Jacksonville State (11/13/13)

3-Point Field Goals

3-Point FG Attempts

Free Throws

7 vs. Ole Miss (3/6/14)

Free Throw Attempts

8 vs. Ole Miss (3/6/14)



Khady DIENG

#40

Sophomore • Guard/Forward • 5-10

Dakar, Senegal

Gatewood (Ga.) School

NOTES:

- Appeared in 27 games as a freshman, averaging 3.1 points and 1.4 rebounds in 10.7 minutes/game
- Scored a career-high 16 points in WNIT first-round win over Furman (3/20)
- Was Auburn's best free-throw shooter by percentage, hitting 17-of-19 attempts (89.5%) in 2013-14
- Originally from Dakar, Senegal, she moved to Georgia prior to her junior year of high school
- Is first Auburn women's basketball player from Senegal and second from Africa (Crispina Correia, West Africa)

Opponent	Start	Min.	FG-A	3PT-A	FT-A	O-D-T	PF	Ast.	TO	Blk.	St.	Pts.
TROY												
GRAMBLING STATE												
FLORIDA GULF COAST												
at Virginia												
at Winthrop												
MARQUETTE												
SE LOUISIANA												
SAMFORD												
SAVANNAH STATE												
at St. John's												
vs. SMU/Indiana St.												
at FIU												
vs. Hampton/BGSU												
at South Carolina												
FLORIDA												
at Kentucky												
GEORGIA												
TENNESSEE												
at Alabama												
MISSISSIPPI STATE												
at Arkansas												
at Texas A&M												
LSU												
at Missouri												
ARKANSAS												
OLE MISS												
at Georgia												
at Vanderbilt												
ALABAMA												

DIENG CAREER STATISTICS

Year	GP-GS	FG-FGA	Pct	3FG-FGA	Pct	FT-FTA	Pct	O-D-T (Reb.)	Avg	PF	FO	Ast	TO	Blk	Stl	Pts	Avg
2013-14	27-0	29-79	.367	10-42	.238	17-19	.895	21-18-39	1.4	21	0	16	25	1	18	85	3.1
TOTAL	27-0	29-79	.367	10-42	.238	17-19	.895	21-18-39	1.4	21	0	16	25	1	18	85	3.1

SEASON HIGHS

Points

Rebounds

Assists

Blocks

Steals

Field Goals

Field Goal Attempts

3-Point Field Goals

3-Point FG Attempts

Free Throws

Free Throw Attempts

CAREER HIGHS

Points

16 vs. Furman (3/20/14)

Rebounds

4 twice, last vs. Ole Miss (3/6/14)

Assists

2 3x, last vs. Ole Miss (3/6/14)

Blocks

1 vs. Missouri (2/16/14)

Steals

4 vs. Missouri (2/16/14)

Field Goals

5 vs. Furman (3/20/14)

Field Goal Attempts

7 twice, last vs. Missouri (2/16/14)

3-Point Field Goals

2 twice, last vs. Ole Miss (3/6/14)

3-Point FG Attempts

6 vs. Missouri (2/16/14)

Free Throws

6 vs. Furman (3/20/14)

Free Throw Attempts

6 vs. Furman (3/20/14)



Katie FRERKING

#13

Sophomore • Guard/Forward • 6-1

Johns Creek, Ga.

Wesleyan School

NOTES:

- Played in all 34 games as a freshman, averaging 4.9 points, 2.4 rebounds and 1.3 assists in 20.3 minutes/game
- Had career-high 14 points in her third collegiate game at Temple (11/16)
- Was the fifth Auburn freshman in the last 10 years to start the season-opener; first since Hasina Muhammad in 2011
- Named NSCAA National Player of the Year and AJC Georgia AA Player of the Year as a high school senior
- Averaged 20.4 points, 5.3 rebounds and 2.8 assists per game as a senior at the Wesleyan School
- Led the Wesleyan School to four-straight state championships

Opponent	Start	Min.	FG-A	3PT-A	FT-A	O-D-T	PF	Asst.	TO	Blk.	St.	Pts.
TROY												
GRAMBLING STATE												
FLORIDA GULF COAST												
at Virginia												
at Winthrop												
MARQUETTE												
SE LOUISIANA												
SAMFORD												
SAVANNAH STATE												
at St. John's												
vs. SMU/Indiana St.												
at FIU												
vs. Hampton/BGSU												
at South Carolina												
FLORIDA												
at Kentucky												
GEORGIA												
TENNESSEE												
at Alabama												
MISSISSIPPI STATE												
at Arkansas												
at Texas A&M												
LSU												
at Missouri												
ARKANSAS												
OLE MISS												
at Georgia												
at Vanderbilt												
ALABAMA												

FRERKING CAREER STATISTICS

Year	GP-GS	FG-FGA	Pct	3FG-FGA	Pct	FT-FTA	Pct	O-D-T (Reb.)	Avg	PF	FO	Asst	TO	Blk	Stl	Pts	Avg
2013-14	34-5	61-168	.363	29-96	.302	16-22	.727	29-53-82	2.4	55	0	43	32	9	28	167	4.9
TOTAL	34-5	61-168	.363	29-96	.302	16-22	.727	29-53-82	2.4	55	0	43	32	9	28	167	4.9

SEASON HIGHS

Points

Rebounds

Assists

Blocks

Steals

Field Goals

Field Goal Attempts

3-Point Field Goals

3-Point FG Attempts

Free Throws

Free Throw Attempts

SEASON HIGHS

Points

14 at Temple (11/16/13)

Rebounds

6 vs. Georgia (2/23/14)

Assists

4 vs. Kentucky (1/19/14)

Blocks

2 vs. Texas A&M (3/7/14)

Steals

3 twice, last at LSU (1/23/14)

Field Goals

5 at Temple (11/16/13)

Field Goal Attempts

10 twice, last at LSU (1/23/14)

3-Point Field Goals

3 twice, last at Arkansas (2/2/14)

3-Point FG Attempts

8 at LSU (1/23/14)

Free Throws

4 at UT-Chattanooga (11/24/13)

Free Throw Attempts

6 at UT-Chattanooga (11/24/13)



Brandy MONTGOMERY

#10

Sophomore • Guard • 5-10

Port St. Lucie, Fla.

Lincoln Park Academy

NOTES:

- Named to SEC All-Freshman Team; was the fourth-highest scoring freshman in the SEC
- Auburn's leading returning scorer; averaged 11.4 points per game in 33 appearances (32 starts)
- Topped the 20-point plateau twice: 22 points at LSU (1/23); 21 points vs. Georgia (2/23)
- Scored in double figures in 25 of 33 games as a freshman
- Averaged 31.0 points, 7.1 rebounds, 5.0 assists and 4.0 steals per game as a senior at Lincoln Park Academy
- Named All-State and Florida 4A Player of the Year

Opponent	Start	Min.	FG-A	3PT-A	FT-A	O-D-T	PF	Asst.	TO	Blk.	Stl.	Pts.
TROY												
GRAMBLING STATE												
FLORIDA GULF COAST												
at Virginia												
at Winthrop												
MARQUETTE												
SE LOUISIANA												
SAMFORD												
SAVANNAH STATE												
at St. John's												
vs. SMU/Indiana St.												
at FIU												
vs. Hampton/BGSU												
at South Carolina												
FLORIDA												
at Kentucky												
GEORGIA												
TENNESSEE												
at Alabama												
MISSISSIPPI STATE												
at Arkansas												
at Texas A&M												
LSU												
at Missouri												
ARKANSAS												
OLE MISS												
at Georgia												
at Vanderbilt												
ALABAMA												

MONTGOMERY CAREER STATISTICS

Year	GP-GS	FG-FGA	Pct	3FG-FGA	Pct	FT-FTA	Pct	O-D-T (Reb.)	Avg	PF	FO	Asst	TO	Blk	Stl	Pts	Avg
2013-14	33-32	137-378	.362	50-175	.286	51-73	.699	35-97-132	4.0	59	0	55	79	0	28	375	11.4
TOTAL	33-32	137-378	.362	50-175	.286	51-73	.699	35-97-132	4.0	59	0	55	79	0	28	375	11.4

SEASON HIGHS

Points

Rebounds

Assists

Blocks

Steals

Field Goals

Field Goal Attempts

3-Point Field Goals

3-Point FG Attempts

Free Throws

Free Throw Attempts

CAREER HIGHS

Points

22 at LSU (1/23/14)

Rebounds

10 at Ole Miss (3/2/14)

Assists

4 4x, last vs. Old Dominion (3/24/14)

Blocks

Steals

4 vs. Mississippi State (2/9/14)

Field Goals

9 at LSU (1/23/14)

Field Goal Attempts

20 vs. Ball State (11/29/13)

3-Point Field Goals

4 twice, last at Ole Miss (3/2/14)

3-Point FG Attempts

12 at Florida (1/26/14)

Free Throws

4 6x, last at Miss. State (3/27/14)

Free Throw Attempts

8 at Miss. State (3/27/14)



Bria JOHNSON

#2

Freshman • Guard • 5-8

Baton Rouge, La.

Episcopal

NOTES:

- Ranked as the No. 135 player in the nation by All-Star Girls Report
- No. 60 point guard in the nation according to ESPN
- Averaged 21.8 points and 6.5 rebounds as a senior at Episcopal High School

Opponent	Start	Min.	FG-A	3PT-A	FT-A	O-D-T	PF	Ast.	TO	Blk.	St.	Pts.
TROY												
GRAMBLING STATE												
FLORIDA GULF COAST												
at Virginia												
at Winthrop												
MARQUETTE												
SE LOUISIANA												
SAMFORD												
SAVANNAH STATE												
at St. John's												
vs. SMU/Indiana St.												
at FIU												
vs. Hampton/BGSU												
at South Carolina												
FLORIDA												
at Kentucky												
GEORGIA												
TENNESSEE												
at Alabama												
MISSISSIPPI STATE												
at Arkansas												
at Texas A&M												
LSU												
at Missouri												
ARKANSAS												
OLE MISS												
at Georgia												
at Vanderbilt												
ALABAMA												

JOHNSON CAREER STATISTICS

Year GP-GS FG-FGA Pct 3FG-FGA Pct FT-FTA Pct O-D-T (Reb.) Avg PF FO Ast TO Blk Stl Pts Avg

SEASON HIGHS

Points

Rebounds

Assists

Blocks

Steals

Field Goals

Field Goal Attempts

3-Point Field Goals

3-Point FG Attempts

Free Throws

Free Throw Attempts



Jazmine JONES

#15

Freshman • Forward • 6-2

Winston-Salem, N.C.

West Forsyth

NOTES:

- Ranked as 25th-best wing in nation by ESPN
- Rated as a top-200 player and the 39th-best small forward in the country by Collegiate Girls Basketball Report
- Averaged 15.1 points and 7.1 rebounds as a senior at West Forsyth HS while spending part of the season as the team's point guard

Opponent	Start	Min.	FG-A	3PT-A	FT-A	O-D-T	PF	Ass.	TO	Blk.	St.	Pts.
TROY												
GRAMBLING STATE												
FLORIDA GULF COAST												
at Virginia												
at Winthrop												
MARQUETTE												
SE LOUISIANA												
SAMFORD												
SAVANNAH STATE												
at St. John's												
vs. SMU/Indiana St.												
at FIU												
vs. Hampton/BGSU												
at South Carolina												
FLORIDA												
at Kentucky												
GEORGIA												
TENNESSEE												
at Alabama												
MISSISSIPPI STATE												
at Arkansas												
at Texas A&M												
LSU												
at Missouri												
ARKANSAS												
OLE MISS												
at Georgia												
at Vanderbilt												
ALABAMA												

JAZMINE JONES CAREER STATISTICS

Year GP-GS FG-FGA Pct 3FG-FGA Pct FT-FTA Pct O-D-T (Reb.) Avg PF FO Ast TO Blk Stl Pts Avg

SEASON HIGHS

Points

Rebounds

Assists

Blocks

Steals

Field Goals

Field Goal Attempts

3-Point Field Goals

3-Point FG Attempts

Free Throws

Free Throw Attempts



Jessica JONES

#23

Freshman • Forward • 6-2

Winston-Salem, N.C.

West Forsyth

NOTES:

- Ranked 95th overall and 20th among forward in the nation by ESPN and Collegiate Girls Basketball Report
- No. 153 overall player in the country according to Blue Star Basketball
- Averaged 15.2 points and 9.3 rebounds per game as a senior at West Forsyth HS

Opponent	Start	Min.	FG-A	3PT-A	FT-A	O-D-T	PF	Ast.	TO	Blk.	St.	Pts.
TROY												
GRAMBLING STATE												
FLORIDA GULF COAST												
at Virginia												
at Winthrop												
MARQUETTE												
SE LOUISIANA												
SAMFORD												
SAVANNAH STATE												
at St. John's												
vs. SMU/Indiana St.												
at FIU												
vs. Hampton/BGSU												
at South Carolina												
FLORIDA												
at Kentucky												
GEORGIA												
TENNESSEE												
at Alabama												
MISSISSIPPI STATE												
at Arkansas												
at Texas A&M												
LSU												
at Missouri												
ARKANSAS												
OLE MISS												
at Georgia												
at Vanderbilt												
ALABAMA												

JESSICA JONES CAREER STATISTICS

Year GP-GS FG-FGA Pct 3FG-FGA Pct FT-FTA Pct O-D-T (Reb.) Avg PF FO Ast TO Blk Stl Pts Avg

SEASON HIGHS

Points

Rebounds

Assists

Blocks

Steals

Field Goals

Field Goal Attempts

3-Point Field Goals

3-Point FG Attempts

Free Throws

Free Throw Attempts



Neydja PETITHOMME

#25

Freshman • Guard • 5-8

Boca Raton, Fla.

Grandview Prep

NOTES:

- Ranked as the No. 19 guard nationally by ESPN; finalist for consideration as a McDonald's All-American
- Scored more than 1,800 points in her high school career at Grandview Prep
- Helped team to Class 2A state title as a senior; named MVP of state championship game

Opponent	Start	Min.	FG-A	3PT-A	FT-A	O-D-T	PF	Ast.	TO	Blk.	St.	Pts.
TROY												
GRAMBLING STATE												
FLORIDA GULF COAST												
at Virginia												
at Winthrop												
MARQUETTE												
SE LOUISIANA												
SAMFORD												
SAVANNAH STATE												
at St. John's												
vs. SMU/Indiana St.												
at FIU												
vs. Hampton/BGSU												
at South Carolina												
FLORIDA												
at Kentucky												
GEORGIA												
TENNESSEE												
at Alabama												
MISSISSIPPI STATE												
at Arkansas												
at Texas A&M												
LSU												
at Missouri												
ARKANSAS												
OLE MISS												
at Georgia												
at Vanderbilt												
ALABAMA												

PETITHOMME CAREER STATISTICS

Year GP-GS FG-FGA Pct 3FG-FGA Pct FT-FTA Pct O-D-T (Reb.) Avg PF FO Ast TO Blk Stl Pts Avg

SEASON HIGHS

Points

Rebounds

Assists

Blocks

Steals

Field Goals

Field Goal Attempts

3-Point Field Goals

3-Point FG Attempts

Free Throws

Free Throw Attempts



Asia ROBESON

#35

Freshman • Forward • 6-4

Kalamazoo, Mich.

Kalamazoo Central

NOTES:

- Named a 2013-14 High School Honorable Mention All-American by the Sporting News
- Ranked as No. 22 overall player in the country and No. 5 forward by ESPN and Collegiate Girls Basketball Report
- Averaged 17.9 points, 15.2 rebounds and 8.9 blocks per game as a senior in high school with 13 triple-doubles

Opponent	Start	Min.	FG-A	3PT-A	FT-A	O-D-T	PF	Ast.	TO	Blk.	St.	Pts.
TROY												
GRAMBLING STATE												
FLORIDA GULF COAST												
at Virginia												
at Winthrop												
MARQUETTE												
SE LOUISIANA												
SAMFORD												
SAVANNAH STATE												
at St. John's												
vs. SMU/Indiana St.												
at FIU												
vs. Hampton/BGSU												
at South Carolina												
FLORIDA												
at Kentucky												
GEORGIA												
TENNESSEE												
at Alabama												
MISSISSIPPI STATE												
at Arkansas												
at Texas A&M												
LSU												
at Missouri												
ARKANSAS												
OLE MISS												
at Georgia												
at Vanderbilt												
ALABAMA												

ROBESON CAREER STATISTICS

Year	GP-GS	FG-FGA	Pct	3FG-FGA	Pct	FT-FTA	Pct	O-D-T (Reb.)	Avg	PF	FO	Ast	TO	Blk	Stl	Pts	Avg
------	-------	--------	-----	---------	-----	--------	-----	--------------	-----	----	----	-----	----	-----	-----	-----	-----

SEASON HIGHS

Points

Rebounds

Assists

Blocks

Steals

Field Goals

Field Goal Attempts

3-Point Field Goals

3-Point FG Attempts

Free Throws

Free Throw Attempts

2013-14 Final Season Statistics

RECORD:	OVERALL	HOME	AWAY	NEUTRAL
ALL GAMES	19-15	11-5	5-8	3-2
CONFERENCE	7-9	3-5	4-4	0-0
NON-CONFERENCE	12-6	8-0	1-4	3-2

#	Player	gp-gs	min	avg	Total		3-Point		F-Throw		Rebounds				pf	dq	a	to	blk	stl	pts	avg
					fg-fga	fg%	3fg-fga	3fg%	ft-fa	ft%	off	def	tot	avg								
32	Tanner, Tyrese	33-33	924	28.0	208-491	.424	4-19	.211	141-202	.698	78	131	209	6.3	120	10	63	72	39	61	561	17.0
10	Montgomery, Brandy	33-32	980	29.7	137-378	.362	50-175	.286	51-73	.699	35	97	132	4.0	59	0	55	79	0	28	375	11.4
44	Tanner, Tra'Cee	34-31	806	23.7	138-248	.556	0-0	.000	82-114	.719	89	114	203	6.0	117	7	38	79	42	45	358	10.5
00	Muhammad, Hasina	27-27	711	26.3	100-256	.391	1-8	.125	50-92	.543	55	74	129	4.8	63	0	42	43	56	64	251	9.3
34	Davis, Peyton	34-8	582	17.1	85-152	.559	0-0	.000	34-55	.618	69	111	180	5.3	115	5	8	49	13	13	204	6.0
13	Frerking, Katie	34-5	691	20.3	61-168	.363	29-96	.302	16-22	.727	29	53	82	2.4	55	0	43	32	9	28	167	4.9
01	Tucker, Meagan	24-5	461	19.2	25-68	.368	1-14	.071	26-36	.722	3	20	23	1.0	24	0	61	53	0	11	77	3.2
40	Dieng, Khady	27-0	290	10.7	29-79	.367	10-42	.238	17-19	.895	21	18	39	1.4	21	0	16	25	1	18	85	3.1
22	Parker, Kiani	34-29	700	20.6	32-109	.294	3-13	.231	22-45	.489	18	57	75	2.2	60	0	113	86	3	54	89	2.6
03	Starr, Allina	20-0	278	13.9	5-22	.227	0-4	.000	17-25	.680	7	21	28	1.4	16	0	50	39	0	17	27	1.4
35	Capers, Cabriana	30-0	352	11.7	10-41	.244	0-0	.000	12-18	.667	28	43	71	2.4	31	0	15	16	2	11	32	1.1
12	Farmer, Keonna	8-0	39	4.9	3-7	.429	0-1	.000	0-1	.000	1	5	6	0.8	4	0	0	1	1	4	6	0.8
21	Brimfield, Melinda	14-0	61	4.4	3-11	.273	0-0	.000	1-5	.200	1	13	14	1.0	9	0	1	5	0	0	7	0.5
Team											78	71	149					14				
Total.....		34	6875		836-2030	.412	98-372	.263	469-707	.663	512	828	1340	39.4	694	22	505	593	166	354	2239	65.9
Opponents.....		34	6875		728-1877	.388	185-590	.314	503-721	.698	418	800	1218	35.8	623	-	448	659	107	295	2144	63.1

TEAM STATISTICS	AU	OPP
SCORING	2239	2144
Points per game	65.9	63.1
Scoring margin	+2.8	-
FIELD GOALS-ATT	836-2030	728-1877
Field goal pct	.412	.388
3 POINT FG-ATT	98-372	185-590
3-point FG pct	.263	.314
3-pt FG made per game	2.9	5.4
FREE THROWS-ATT	469-707	503-721
Free throw pct	.663	.698
F-Throws made per game	13.8	14.8
REBOUNDS	1340	1218
Rebounds per game	39.4	35.8
Rebounding margin	+3.6	-
ASSISTS	505	448
Assists per game	14.9	13.2
TURNOVERS	593	659
Turnovers per game	17.4	19.4
Turnover margin	+1.9	-
Assist/turnover ratio	0.9	0.7
STEALS	354	295
Steals per game	10.4	8.7
BLOCKS	166	107
Blocks per game	4.9	3.1
ATTENDANCE	35994	44724
Home games-Avg/Game	16-2250	13-2714
Neutral site-Avg/Game	-	5-1888

Score by Periods	1st	2nd	OT	OT2	Totals
Auburn	1049	1167	10	13	2239
Opponents	1031	1093	12	8	2144

Date	Opponent		Score	Att.
11-09-13	GEORGIA SOUTHERN	w	69-59	2982
11-13-13	JACKSONVILLE STATE	w	66-49	1713
11-16-13	at TEMPLE	L	74-78	758
11-19-13	at Alabama A&M	w	77-49	1362
11-24-13	at UT-Chattanooga	L	52-80	2069
+ 11-29-13	vs Ball State	w	67-51	406
+ 11-30-13	vs Iowa State	L	57-68	413
12-03-13	TULANE	w	62-52	1611
12-06-13	ST. JOHN'S	w	69-55	1734
12-15-13	FLORIDA A&M	w	92-55	1845
12-18-13	PRESBYTERIAN	w	64-27	1532
^ 12-21-13	vs UCLA	w	66-60	237
^ 12-22-13	at Minnesota	L	54-67	3139
* 01-05-14	at Mississippi State	w	82-74	2269
* 01-09-14	VANDERBILT	L	65-74	2319
* 01-12-14	SOUTH CAROLINA	L	66-72	2453
* 01-16-14	at Alabama	w	61-39	2453
* 01-19-14	KENTUCKY	L	71-73	3129
* 01-23-14	at LSU	L	60-71	2855
* 01-26-14	at Florida	L	69-87	3114
* 01-30-14	TEXAS A&M	L	54-71	2780
* 02-02-14	at ARKANSAS	w	56-48	1387
* 02-09-14	MISSISSIPPI STATE	w	51-43	3278
* 02-13-14	at Vanderbilt	w	68-62	3023
* 02-16-14	MISSOURI	L	58-68	2241
* 02-20-14	at Tennessee	L	63-93	10111
* 02-23-14	GEORGIA	w	67-59	2694
* 02-27-14	ALABAMA	Wo2	70-65	3649
* 03-02-14	at Ole Miss	Lot	71-73	935
\$ 03-06-14	vs Ole Miss	w	70-54	3152
\$ 03-07-14	vs Texas A&M	L	54-86	5232
& 03-20-14	FURMAN	w	78-64	734
& 03-24-14	OLD DOMINION	w	82-59	1300
% 03-27-14	at Mississippi State	L	54-59	1809

+ - South Point Thanksgiving Shootout (Las Vegas, Nev.)

^ - Subway Classic (Minneapolis, Minn.)

\$ - Southeastern Conference Tournament (Duluth, Ga.)

& - Women's NIT First and Second Rounds (Auburn, Ala.)

% - Women's NIT Third Round (Starkville, Miss.)

* - Southeastern Conference game

Radio/TV Roster



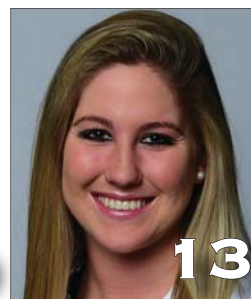
Hasina Muhammad
Senior • G • 6-1
Memphis, Tenn.
Ridgeway



Bria Johnson
Freshman • G • 5-8
Baton Rouge, La.
Episcopal



Brandy Montgomery
Freshman • G • 5-10
Port St. Lucie, Fla.
Lincoln Park Academy



Katie Frerking
Freshman • G/F • 6-1
Johns Creek, Ga.
Wesleyan School



Jazmine Jones
Freshman • F • 6-2
Winston-Salem, N.C.
West Forsyth



Kiani Parker
Junior • G • 5-9
Ft. Walton Beach, Fla.
Northwest Florida State College



Jessica Jones
Freshman • F • 6-2
Winston-Salem, N.C.
West Forsyth



Neydja Petithomme
Freshman • G • 5-8
Boca Raton, Fla.
Grandview Prep



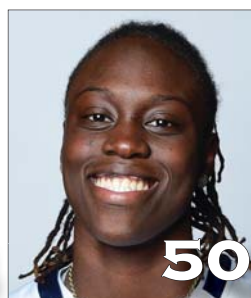
Asia Robeson
Freshman • F • 6-4
Kalamazoo, Mich.
Kalamazoo Central



Khady Dieng
Sophomore • G • 5-10
Dakar, Senegal
Gatewood (Ga.) School



Tra'Cee Tanner
Junior • F/C • 6-3
Birmingham, Ala.
Hoover



Cabriana Capers
Junior • F • 6-1
Bolingbrook, Ill.
Bolingbrook



Terri Williams-Flournoy
Head Coach
Penn State (1991)
38-30 at Auburn (2 seasons)
181-134 Overall (10 seasons)



Ty Evans
Assistant Coach
Wisconsin-Whitewater (1995)
Third Season



Sherill Baker
Assistant Coach
Georgia (2006)
First Season



Adrian Walters
Assistant Coach
St. Francis (Pa.) (1987)
Third Season