



2012-13 Auburn Women's Basketball

Game 23 • February 7, 2013

at #9/10 Georgia

18 NCAA Tournament Appearances • Three Final Fours • Five SEC Titles • Four SEC Tournament Titles

AUBURN MEDIA RELATIONS

Associate Director/WBB Contact: Matt Crouch • mcrouch@auburn.edu

Auburn Athletic Complex / 392 South Donahue / Auburn, AL 36849

O: 334.844.9800 • C: 334.740.4109 • F: 334.844.9807

www.AuburnTigers.com • www.AuburnWomensHoops.com

Twitter: @AuburnWBB | @MattCrouchAU • Facebook: [facebook.com/AUWBB](https://www.facebook.com/AUWBB)

2012-13 SCHEDULE/RESULTS

AUGUST

7	1 - at Logan Thunder [Exhibition]	L, 86-54
10	1 - at Cairns Dolphins [Exhibition]	W, 81-71
12	1 - at Sydney Flames [Exhibition]	W, 67-58
13	1 - at Sutherland Sharks [Exhibition]	W, 84-46

NOVEMBER

9	2 - vs. Maine	W, 71-41
10	2 - at North Carolina State	L, 85-71
15	Alabama State	W, 80-43
18	Alabama A&M	W, 93-44
23	3 - vs. San Diego State	L, 78-57
24	3 - vs. Texas A&M-Corpus Christi	W, 72-57
28	at Tulane [Cox Sports]	W, 70-65

DECEMBER

9	Hofstra	W, 68-58
12	at George Washington	W, 69-59
16	Temple	W, 71-49
19	Tennessee-Chattanooga	W, 53-40
22	Jacksonville	W, 85-49
29	Samford	W, 80-51

JANUARY

3	Arkansas*	W, 50-47
6	at Missouri* [FSN Midwest]	L, 82-76
10	Ole Miss*	W, 76-52
13	at Texas A&M*	L, 78-56
17	Tennessee* [CSS]	L, 75-66
20	at Kentucky* [SEC Network]	L, 97-53
24	at Alabama* [CSS]	L, 61-51
31	LSU*	L, 59-55

FEBRUARY

3	at South Carolina*	L, 59-51
7	at Georgia*	6 p.m.
10	Florida* [SportSouth]	2 p.m.
17	Alabama* [ESPN2]	1:30 p.m.
21	at Tennessee*	6 p.m.
24	Missouri*	2 p.m.
28	at Vanderbilt* [CSS]	8 p.m.

MARCH

3	Mississippi State*	2 p.m.
6-10	Southeastern Conference Tournament Duluth, Ga. • Arena at Gwinnett Center	
23-26	NCAA Tournament First and Second Rounds	

APRIL

30-2	NCAA Tournament Regionals	
7-9	NCAA Tournament Final Four New Orleans, La. • New Orleans Arena	

* - SEC Game

All Times are Central

1 - Australian Tour (Brisbane, Cairns and Sydney, Australia)

2 - Wolfpack Invitational (Raleigh, N.C.)

3 - 26th Annual Omni Hotels Classic (Boulder, Colo.)

All home games played at Auburn Arena

Bold indicates home games

www.AuburnTigers.com

GAME 23

[NR/NR] Auburn (13-9, 2-7 SEC) at [9/10] Georgia (19-3, 7-2 SEC)

When: Thursday, February 7 • 6 p.m. CT

Where: Stegeman Coliseum (10,523) • Athens, Ga.

Video Webcast: AuburnTigers.com

Radio: 96.7 FM WMXA; Andy Burcham (play-by-play), Stephanie Follett (color)

Audio Webcast: AuburnTigers.com

GameTracker: AuburnTigers.com

Series: Auburn trails 16-24; 4-15 when playing in Athens, Ga.

Last Meeting: Georgia def. Auburn, 70-45, on Jan. 8, 2012 in Auburn, Ala.

Last Meeting in Athens: Auburn def. Georgia, 63-58, on Feb. 24, 2011

Up Next: Auburn will return home for the first of two-straight Sunday home games, taking on Florida at 2 p.m. CT at Auburn Arena

AUBURN PROJECTED STARTERS (13-9, 2-7 SEC)

No.	Pos.	Name	Ht.	Year	PPG	RPG	Hometown
00	G	Hasina Muhammad	6-1	So.	15.8	5.3	Memphis, Tenn.
3	G	Najat Ouardad	5-1	Sr.	5.0	(apg) 6.6	Orleans, France
14	F	Blanche Alverson	6-3	Sr.	11.1	5.7	Andalusia, Ala.
32	G	Tyrese Tanner	6-1	Jr.	12.6	4.0	Birmingham, Ala.
34	C	Peyton Davis	6-5	Jr.	6.6	5.5	Pinson, Ala.

OFF THE BENCH

4	G	Cedricka Sweeting	5-3	Fr.	0.9	(apg) 0.55	Nassau, Bahamas
11	G	Courtney Strain	5-9	R-So.	3.6	0.9	Woodland, Ala.
20	C	Pascale West	6-8	Sr.	1.3	0.7	LaGrange, Ga.
21	G	Chadarryl Clay	5-7	Fr.	2.2	(apg) 1.5	Chattanooga, Tenn.
22	G	Julie King	5-9	Sr.	1.4	1.8	St. Louis, Mo.
35	F	Cabriana Capers	6-1	Fr.	1.6	2.8	Bolingbrook, Ill.
44	F	Tra'cee Tanner	6-3	Fr.	7.4	3.6	Birmingham, Ala.

Head Coach: Terri Williams-Flournoy / Assistant Coaches: Ty Evans, Caroline McCombs and Adrian Walters

GEORGIA PROJECTED STARTERS (19-3, 7-2 SEC)

No.	Pos.	Name	Ht.	Year	PPG	RPG	Hometown
10	G	Jasmine James	5-9	Sr.	11.4	3.0	Memphis, Tenn.
11	G	Tiaria Griffin	5-7	Fr.	7.6	2.8	Monticello, Miss.
20	G	Shacobia Barbee	5-10	Fr.	5.9	5.7	Murfreesboro, Tenn.
13	F	Merritt Hempe	6-2	Fr.	4.4	3.7	Fredericksburg, Va.
12	F	Jasmine Hassell	6-2	Sr.	11.7	5.2	Lebanon, Tenn.

Head Coach: Andy Landers / Associate Head Coach: Joni Crenshaw / Assistant Coaches: Angie Johnson and Robert Mosley

Media Information

The Auburn media relations department considers its work with the media a top priority. The 2012-13 Auburn Women's Basketball Almanac has been prepared to assist the working media in their coverage of Tiger basketball. If you have not received a copy, or if you need additional information, interview or photograph requests, or have any questions, please contact Matt Crouch in the media relations office at 334.844.9800.

Interview Policy

Coach Williams-Flournoy, her assistants and all women's basketball players are available for phone and personal interviews by contacting Matt Crouch in the media relations office. Post-game interviews will be allowed following a 10-minute cooling off period. Non-game day requests will be met based on the players class and practice schedules.

Credentials

Anyone wishing to cover an Auburn women's basketball game should contact Matt Crouch in the media relations office at least one day in advance in order to make the proper arrangements.

On the Air

The Tigers can be heard live locally in Auburn on Mix 96.7 FM for the entire regular and postseasons. Andy Burcham, in his 25th season with the women's basketball program and handles play-by-play duties. Stephanie Follett joins Burcham for her first season and provides color commentary. Each game can also be heard live on the internet at www.AuburnTigers.com.

Weekly Live Radio Show

Starting in January, every Monday at 6 p.m. CT, Terri Williams-Flournoy will host the Coach Flo Show from Piccolo, located inside Ariccia Trattoria & Bar at The Hotel at Auburn University with Andy Burcham. Fans can listen to the show on 96.7 FM. Fans can tweet their questions @AuburnWBB.

Game-Day Services

Statistics, rosters and game notes will be provided prior to the game in the media work room. Box scores will also be handed out during and following the game. Phones and fax machines are available in the media work room.

Photo/Video Services

Todd Van Emst of the Auburn Media Relations office handles all photo requests. Please contact Van Emst at 334.844.9514. Video highlights of selected Auburn women's basketball games are available for the media. For information on how to access the FTP server, contact Steve Sain in the Auburn Media Relations office at 334.844.9809.

On the Web

The home for Auburn Athletics on the web, www.AuburnTigers.com, is your source for Auburn Women's Basketball. The website offers the most recent information and news on the Tigers. At AuburnTigers.com, you can also listen to each women's basketball game broadcast live and follow along on live scoring for every home game.



Follow Auburn Women's Basketball on Twitter

@AuburnWBB



Become a fan of Auburn Women's Basketball on Facebook

www.Facebook.com/AUWBB

2012-13 Numerical Roster

No.	Name	Height	Position	Class	Hometown/High School
0	Hasina Muhammad	6-1	Guard/Forward	SO	Memphis, Tenn./Ridgeway
3	Najat Ouardad	5-1	Guard	SR	Orleans, France/Pensacola St. College
4	Cedricka Sweeting	5-3	Guard	FR	Miami, Fla./South Broward
11	Courtney Strain	5-9	Guard	R-SO	Woodland, Ala./Woodland
14	Blanche Alverson	6-3	Forward/Guard	SR	Andalusia, Ala./Buford (Ga.)
20	Pascale "P.J." West	6-8	Center	SR	LaGrange, Ga./Troup County
21	Chadarryl Clay	5-7	Guard	FR	Chattanooga, Tenn./Girls Preparatory
22	Julie King	5-9	Guard	SR	St. Louis, Mo./Nerinx Hall
32	Tyrese Tanner	6-1	Guard/Forward	JR	Birmingham, Ala./Hoover
34	Peyton Davis	6-5	Center	JR	Pinson, Ala./Mortimer Jordan
35	Cabrina Capers	6-1	Forward	FR	Bolingbrook, Ill./Bolingbrook
44	Tra'cee Tanner	6-3	Forward/Center	FR	Birmingham, Ala./Hoover

2012-13 Alphabetical Roster

No.	Name	Height	Pos.	Ht.	Hometown
14	Blanche Alverson	6-3	Forward/Guard	SR	Andalusia, Ala./Buford (Ga.)
35	Cabrina Capers	6-1	Forward	FR	Bolingbrook, Ill./Bolingbrook
5	Chadarryl Clay	5-7	Guard	FR	Chattanooga, Tenn./Girls Preparatory
34	Peyton Davis	6-5	Center	JR	Pinson, Ala./Mortimer Jordan
22	Julie King	5-9	Guard	SR	St. Louis, Mo./Nerinx Hall
0	Hasina Muhammad	6-1	Guard/Forward	SO	Memphis, Tenn./Ridgeway
3	Najat Ouardad	5-1	Guard	SR	Orleans, France/Pensacola St. College
11	Courtney Strain	5-9	Guard	R-SO	Woodland, Ala./Woodland
4	Cedricka Sweeting	5-3	Guard	FR	Miami, Fla./South Broward
44	Tra'cee Tanner	6-3	Forward/Center	FR	Birmingham, Ala./Hoover
32	Tyrese Tanner	6-1	Guard/Forward	JR	Birmingham, Ala./Hoover
20	Pascale "P.J." West	6-8	Center	SR	LaGrange, Ga./Troup County

STAFF:

Head Coach: Terri Williams-Flournoy (Penn State, 1991)

Assistant Coach: Ty Evans (Wisconsin-Whitewater, 1995)

Assistant Coach: Caroline McCombs (Youngstown State, 1998)

Assistant Coach: Adrian Walters (St. Francis (Pa.), 1987)

Director of Basketball Operations: Danielle Bell (Richmond, 2010)

Director of Basketball Services: Sherill Baker (Georgia, 2006)

Special Assistant to the Head Coach: Stephanie Follett (Maine, 1996)

Administrative Graduate Assistant: Kari Koch (Missouri State, 2006)

Athletic Trainer: Cindy Campbell (South Alabama, 2005)

BY CLASS:

Seniors (4): Blanche Alverson, Julie King, Najat Ouardad, Pascale "P.J." West

Juniors (2): Peyton Davis, Tyrese Tanner

Sophomores (2): Hasina Muhammad, Courtney Strain

Freshmen (4): Cabrina Capers, Chadarryl Clay, Cedricka Sweeting, Tra'cee Tanner

Projected Auburn Starters



Hasina Muhammad

Guard
6-1
Sophomore
Memphis, Tenn.
Ridgeway High School
15.8 ppg / 5.3 rpg / 2.5 spg

0

- Scored career-high 24 points at Missouri on Jan. 6
- Is Auburn's top scorer so far this season, scoring in double digits in 22 games
- Had 1st career double-double with career highs of 21 pts and 10 rebs at GW
- Picked up 9 steals at GW, ranking 4th all-time at AU in single-game steals



Najat Ouardad

Guard
5-1
Senior
Orleans, France
Pensacola State College
5.0 ppg / 6.6 apg / 4.2 rpg

3

- Dished out SEC-high 14 assists against Ole Miss
- Neared triple-double vs. Samford with 14 points, 11 assists and 9 steals
- Leads the SEC and ranks 13th in the nation with 6.6 assists per game
- Is 2nd in the SEC and ranks 47th in the nation with 2.8 steals per game



Blanche Alverson

Guard/Forward
6-3
Senior
Andalusia, Ala.
Buford (Ga.) High School
11.1 ppg / 5.7 rpg / .371 3fg%

14

- Scored the 1,000th point of her career against Ole Miss
- Named Auburn's Miss Homecoming on Nov. 3
- 2013 Capital One Academic All-District First Team
- Ranks in the top 25 in both scoring and rebounding all-time at AU

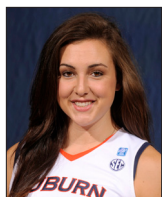


Tyrese Tanner

Guard/Forward
6-1
Junior
Birmingham, Ala.
Hoover High School
12.6 ppg / 4.0 rpg / 1.9 spg

32

- Scored career-high 26 points at North Carolina State on Nov. 10
- Neared her first double-double with 15 points and 9 rebounds vs. Maine
- Scored 15 pts to lead Auburn to 50-47 win over #23 Arkansas
- Selected to Omni Hotels Classic All-Tournament Team Nov. 23-24



Peyton Davis

Center
6-5
Junior
Pinson, Ala.
Mortimer Jordan High School
6.6 ppg / 5.5 rpg / .484 fg%

34

- Picked up second double-double of the season with 12 pts and 11 rebs at Ala.
- Pulled down 17 rebs vs. Arkansas, 2nd-most in SEC this season
- Scored a career-high 15 points vs. TAMU-CC
- Earned first career start vs. Maine on Nov. 9

Auburn Women's Basketball Quick Hitters

- Coach Terri Williams-Flournoy spent six seasons as an assistant coach from 1996-2002
- Senior Pascale West if a Georgia native (LaGrange) while Blanche Alverson went to high school in Georgia (Buford)
- Blanche Alverson was named to the Capital One Academic All-District First Team last Thursday
- Georgia is Auburn's 6th ranked opponent this season, the Tigers are 1-4 against ranked teams in 2013
- Blanche Alverson is the 4th AU player ever to tally 1,000 pts, 500 rebs, 100 stls, 100 asst & 50 blks in their career
- Alverson cleared the 1,000-point plateau on Jan. 10 vs. Ole Miss and the 500-rebound mark at Kentucky on Jan. 20
- Najat Ouardad currently ranks 13th in the country in assists with 6.6 per game and 47th in steals with 2.8 per game
- Auburn def. #23 Arkansas, 50-47, in the SEC opener - its first win over a ranked opponent in two years
- Hasina Muhammad (15.8 ppg) & Frankie Sullivan (16.5 ppg) are the second-highest scoring M&W combo in the SEC
- Muhammad has scored in double figures in 37 of her 52 career games on The Plains and 21 of 22 this season
- The Tigers have forced more opponent turnovers (472) than field goals allowed (460)
- Five Tigers (Peyton Davis, Hasina Muhammad, Blanche Alverson, Tra'cee Tanner and Najat Ouardad) have double-doubles this season; the first time for 5 different Tigers to do so since the 2006-07 season
- Muhammad and Ouardad each have SEC highs of nine steals in games this season
- Georgia leads the all-time series with Auburn, 24-16, and 15-4 when playing in Athens
- Georgia won the last meeting, 70-45, on Jan. 8, 2012; Auburn won the last meeting in Athens, 63-58, on Feb. 24, 2011
- The Tigers are 194-175 all-time in the Southeastern Conference
- Auburn is coming off a 59-51 loss at South Carolina on Sunday; Georgia is coming off a 75-71 win at Kentucky
- This is the second meeting between Terri Williams-Flournoy and Georgia's Andy Landers with Coach Flo leading, 1-0
- Auburn is 7-5 all-time when playing on Feb. 7 and 168-109 when playing in the month of February
- Auburn is 44-50 all-time when playing teams from Georgia; 31-32 when playing in Georgia
- AU averages 21.4 points off turnovers per game, forcing more than 20 TOs in 16 of 22 games, more than 25 in seven
- Hasina Muhammad and Tyrese Tanner have been named SEC Player of the Week this season
- Auburn great Vickie Orr has been named to the Alabama Sports Hall of Fame Class of 2013
- Senior Julie King graduated from Auburn on Dec. 8
- Auburn won its 800th game last season, becoming the 14th NCAA program to do so
- One of Auburn's newcomers is senior Julie King, a four-year letterwinner on the Auburn soccer team
- For the third time ever, Auburn's roster features a set of sisters in Tyrese and Tra'cee Tanner
- Terri Williams-Flournoy led the Tigers to a 3-1 record this summer in the team's Australian Tour
- Senior Blanche Alverson was named Auburn's Miss Homecoming Nov. 3
- Blanche Alverson's community service project, Ballin' For Books, collected more than 1,100 books last year
- Auburn was picked to finish 10th in the SEC by both the media and league's coaches

Moving On Up (Auburn Players in the Career Rankings) . .

- **Blanche Alverson** needs to play in nine more games to tie Jordan Greenleaf and Lori Monroe for 10th all-time at Auburn in career games played with 124
- **Blanche Alverson** needs 34 more 3-pointers to tie Alli Smalley for the Auburn record for career 3-pointers (219)
- **Blanche Alverson** is 5 3-point shots away from tying Natahsa Brackett for 2nd all-time at AU in career 3-point attempts (545)
- **Blanche Alverson** is 45 points away from tying Samantha Williams (1,106) for 24th in career points
- **Blanche Alverson** is 51 rebounds away from tying Consweila Sparrow (572) for 22nd all-time at Auburn in career rebounding
- **Najat Ouardad** is 10 assists away from tying Nitasha Brown (236) for 16th all-time at Auburn in career assists, 26 from tying Mae Ola Bolton (252) for 15th and 28 from tying Cindy Sagrera (254) for 14th

INDIVIDUAL CATEGORY LEADERS

Auburn	Georgia
Hasina Muhammad - 15.8..... Points	Jasmine Hassell - 11.7
Blanche Alverson - 5.7..... Rebounds	Shacobia Barbee - 5.7
Najat Ouardad - 6.6..... Assists.....	Jasmine James - 3.5
Najat Ouardad - 2.8..... Steals.....	Jasmine James - 2.5
Hasina Muhammad - 1.2..... Blocks.....	Anne Marie Armstrong - 0.9
Blanche Alverson - 31.4..... Minutes Played.....	Jasmine James - 28.0
Tra'cee Tanner - .585..... Field Goal Percentage	Jasmine Hassell - .520
Blanche Alverson - .371..... 3-Point Percentage.....	Shacobia Barbee - .387
Blanche Alverson - .818..... Free-Throw Percentage	Khaalidah Miller - .897

AUBURN WOMEN'S BASKETBALL WEEKLY SCHEDULE

	Tuesday 5	Wednesday 6	Thursday 7	Friday 8	Saturday 9	Sunday 10	Monday 11
Jan. 29 through Feb. 4	Practice 2:30 - 5:30 p.m. CT Auburn Arena	Practice 2:30 - 4:30 p.m. CT Auburn Arena Depart for Athens, Ga.	Auburn at Georgia 6 p.m. CT Stegeman Coliseum Athens, Ga.	Practice 2:30 - 5:30 p.m. CT Auburn Arena	Practice 10 a.m. - 12 p.m. Auburn Arena	Auburn vs. Florida 2 p.m. Auburn Arena Auburn, Ala.	OFF

General Information

School.....	Auburn University
City / Zip.....	Auburn, Ala. / 36831
Founded.....	Oct. 1, 1856
Enrollment.....	25,469
Nickname.....	Tigers
Colors.....	Burnt Orange and Navy Blue
Home Court (Capacity).....	Auburn Arena (9,121)
Affiliation.....	NCAA Division I
Conference.....	Southeastern Conference
President.....	Dr. Jay Gogue
Athletic Director.....	Jay Jacobs
Senior Women's Administrator.....	Meredith Jenkins
University Website.....	www.Auburn.edu

Team Information

2011-12 Overall Record.....	13-17 (.433)
SEC Record.....	5-11 (.313)
All-Time SEC Record.....	194-175 (.526)
SEC Tournament Record.....	34-31 (.523)
Letterwinners Returning/Lost.....	7/5
Starters Returning/Lost.....	3/2
Newcomers.....	5
First Year of Basketball.....	1971
All-Time Overall Record.....	824-387 (.680)
All-Time Auburn Arena Record.....	23-15 (.605)
NCAA Tournament Appearances/Last.....	18/2009
NCAA Tournament Record.....	29-18
WNIT Appearances/Last.....	3/2011
WNIT Record.....	8-2

Basketball Staff

Head Coach.....	Terri Williams-Flournoy (Penn State, 1991)
Career Record.....	156-113 (.580) / 9th season
Record at Auburn.....	13-9 (.591) / 1st season
Assistant Coaches (Alma Mater).....	Ty Evans (Wisconsin-Whitewater, 1995)
.....	Caroline McCombs (Youngstown State, 1998)
.....	Adrian Walters (St. Francis (Pa.), 1987)
Director of Basketball Operations.....	Danielle Bell
Director of Basketball Services.....	Sherill Baker
Special Assistant to the Head Coach.....	Stephanie Follett
Administrative Graduate Assistant.....	Kari Koch
Secretary.....	Vicki Coleman
Basketball Office Phone.....	(334) 844-9200
Basketball Office Fax.....	(334) 844-9862
Athletic Trainer.....	Cindy Campbell
Strength and Conditioning.....	Megan Young
Academic Counselor.....	Dr. Mary Ann Taylor-Sims

Radio Broadcast Information

Radio Station.....	WMXA (96.7 FM)
Play-by-Play.....	Andy Burcham
Color.....	Stephanie Follett
Burcham Email.....	aburcham@ounetwork.com
Burcham Office Phone.....	(334) 826-2929
Network Address.....	Auburn Network, Inc.
.....	P.O. Box 950
.....	Auburn, AL 36831-0950

GEORGIA MEDIA RELATIONS

For information on the Georgia Bulldog women's basketball team, contact Mike Mobley in the media relations office. His number is 706.548.0858 and his email is mmobley@sports.uga.edu.

The press row number at Stegeman Coliseum is 706.542.8052. For more information, go to www.GeorgiaDogs.com.

NUMBER CHANGE

For today's game, sophomore Hasina Muhammad will wear #12, as opposed to her normal #0.

OFFICIALS

TBA.

RANKINGS

Auburn is not ranked. Georgia is ranked No. 9 in the Associated Press poll and No. 10 in the coaches poll.

NEXT UP FOR THE TIGERS

Auburn will return home for its first home Sunday SEC game. The Tigers will take on Florida at 2 p.m., at Auburn Arena and the game will air live on SportSouth.

AUBURN'S POST-GAME PROCEDURE

The Auburn locker room is closed. Coach Terri Williams-Flournoy and selected Tiger players will be brought to the interview room after the 10-minute "cooling off" period.

QUICK HITS

Auburn is in its 42nd season of women's basketball and sports an all-time record of 824-387... AU has made 18 NCAA Tournament appearances, three WNIT appearances and three Final Fours in the program's history... Head Coach Terri Williams-Flournoy is in her first season at Auburn... She has a 156-113 record as a head coach... The Tigers are coming off a 13-17 season in 2012.

800 AND COUNTING

Auburn picked up its 800th program victory last season, becoming the 14th team in NCAA history to reach the 800-win plateau.

WINNING 150

Auburn head coach Terri Williams-Flournoy picked up the 150th win of her head coaching career on Dec. 12 as she led the Tigers to

a 69-59 win at George Washington. The win was also significant as it was in Washington, D.C., where she spent her first eight years as a head coach at Georgetown.

Williams-Flournoy also hit a coaching milestone last on Dec. 9 against Hofstra as the win was the 400th of her career as either an assistant or head coach. Following the win she had 251 wins as an assistant and 149 as a head coach.

DEADLY DUO

Frankie Sullivan of the Auburn men's basketball team currently leads the team and is fourth in the SEC with 16.5 points per game while Hasina Muhammad leads the women's team and ranks sixth in the SEC with 15.8 points per game. Together, the pair is the second-highest scoring men's and women's combination in the SEC this season with 32.3 points per game.

ALVERSON NAMED TO CAPITAL ONE ACADEMIC ALL-DISTRICT TEAM

Auburn senior Blanche Alverson was named to the Capital One Academic All-District IV Women's Basketball First Team, the College Sports Information Directors of America (CoSIDA) announced Jan. 31. By virtue of making the first team, her named will be added to the ballot for the Capital One Academic All-America Team.

She is one of just three SEC players named to Academic All-District teams, joining Calli Berna (Arkansas) and Taber Spani (Tennessee).

Alverson earns the honor for the third year in a row, making the Capital One Academic All-District Second Team as a sophomore and the First Team as a junior. A biomedical sciences (pre-med) major, she currently holds a 3.6 cumulative grade-point average.

ALL-AROUND STAR

Senior Blanche Alverson has been a super-star both on and off the court in her Auburn career. Off the court, she carries a 3.6 GPA as a biomedical sciences major, she was named Auburn's 2012 Miss Homecoming and she started her own community service program, Ballin' 4 Books.

On the court, she joined select company on Jan. 20 at Kentucky as she pulled down her 500th career rebound against the Wildcats. By reaching that plateau, she became just the fourth Auburn player ever to tally 1,000 points, 500 rebounds, 100 assists, 100 steals and 50 blocks. Entering the Georgia game, she now has 1,061 points, 521 rebounds, 152 assists, 106 steals and 63 blocks. The only other players to accomplish the feat are DeWanna Bonner (2005-09), Brenda Hill (1982-85) and Lori Monroe (1979-83).

Statistical Comparison - Auburn at Georgia

	Auburn	Georgia
Coach:	Terri Williams-Flournoy	Andy Landers
Career Record:	156-113	896-292
Top Scorer:	Muhammad (15.8)	Hassell (11.7)
Top Rebounder:	Alverson (5.7)	Barbee (5.7)

Series Record:	Georgia leads, 24-16
- at Auburn	Tied, 9-9
- at Athens, Ga.	Georgia leads, 15-4
- at Neutral	Auburn leads, 3-1
- Overall Streak	Auburn lost the last meeting

NCAA RPI	88	16
2012-13 Record	13-9	19-3
2012-13 SEC Record	2-7	7-2
Points Per Game	67.0	70.2
Scoring Margin	+6.6	+16.9
FG Percentage	.434	.424
Opp. FG %	.371	.372
3FG Percentage	.289	.298
Opp. 3FG %	.338	.299
Rebounds	38.8	40.4
Opp. Rebounds	36.4	35.1
Rebound Margin	+2.4	+5.3
Turnovers	16.8	14.8
Opp. Turnovers	21.5	22.3
Steals	12.1	12.2
Opp. Steals	8.5	7.4
Blocks	4.8	3.2
Opp. Blocks	2.2	3.0

Around the SEC (As of Feb. 6, 2012)

	SEC	Pct.	Overall	Pct.
Tennessee	8-1	.889	17-5	.773
Texas A&M	8-1	.889	18-5	.783
Georgia	7-2	.778	19-3	.864
Kentucky	7-2	.778	19-3	.864
South Carolina	7-2	.778	19-3	.864
Vanderbilt	5-4	.556	15-7	.682
LSU	4-5	.444	13-9	.591
Missouri	4-5	.444	15-8	.652
Arkansas	3-6	.333	15-7	.682
Florida	3-6	.333	14-9	.609
Alabama	2-7	.222	12-10	.545
Auburn	2-7	.222	13-9	.591
Mississippi State	2-7	.222	10-12	.455
Ole Miss	1-8	.111	8-14	.364

This Week in the SEC**Monday, Feb. 4**

Texas A&M at LSU (ESPN2) TAMU, 74-57

Thursday, Feb. 7

Auburn at Georgia	6 p.m.
South Carolina at Alabama	6:30 p.m.
Kentucky at Arkansas	7 p.m.
Tennessee at LSU (CSS/CST)	8 p.m.

Sunday, Feb. 10

Georgia at LSU (ESPNU)	12:30 p.m.
Ole Miss at Tennessee	1 p.m.
Mississippi St. at Missouri (SECN)	1 p.m.
Arkansas at Alabama	2 p.m.
Florida at Auburn (SPSO)	2 p.m.
Texas A&M at South Carolina	2:30 p.m.
Kentucky at Vanderbilt (ESPN2)	3 p.m.

All Times Central

GEORGIA TIGERS

Georgia ranks second to only Alabama as the state where the most Auburn women's basketball players have come from with 32 all-time. Two players who spent at least part of their lives in Georgia are on the roster this year.

Senior Pascale West (LaGrange) is the lone Georgia native on the team. A native of Andalusia, Ala., Blanche Alverson led Buford (Ga.) High School to a Georgia state championship and was named the Class AA Player of the Year as a senior.

GEORGIA ON MY MIND

The trip to Athens for Thursday's game will be a homecoming for some on the Auburn staff. Head coach Terri Williams-Flournoy spent six seasons as an assistant coach at Georgia from 1996-2002, helping the Bulldogs to NCAA Tournament appearances every season, including three trips to the Elite Eight and one to the Final Four. The team also won two SEC titles and an SEC Tournament Championship during her time.

Sherill Baker, Auburn's Director of Basketball Services, played at Georgia from 2002-06, going to the NCAA Tournament each of her four seasons with two Sweet 16s and an Elite Eight appearance. During her career at Georgia she started 122 of 131 games played and tallied 1,665 points (12.7 ppg), and she sits at No. 10 on Georgia's all-time scoring list. She also holds the single-season and career Georgia records for steals with 149 and 426, respectively.

Lastly, Auburn Director of Basketball Operations Danielle Bell spent the last two seasons at Georgia as a graduate assistant. The Bulldogs went to the NCAA Tournament both of her years there and advanced to the Sweet 16 in 2011 after winning the Auburn Regional.

AUBURN-GEORGIA SERIES

This will be the 41st meeting between Auburn and Georgia with the Tigers trailing, 16-24. Auburn has won three of the last four meetings, but is 4-15 when playing in Athens, Ga.

Previous meetings against Georgia:

Feb. 7, 1975	L	76-93	Athens, Ga.
Feb. 16, 1980	L	71-79	Athens, Ga.
Feb. 21, 1981	W	74-58	Auburn
Feb. 26, 1982	L	65-66	Lexington, Ky.
Feb. 14, 1983	W	58-54	Auburn
Feb. 15, 1984	L	68-84	Athens, Ga.
Mar. 3, 1984	L	72-102	Athens, Ga.
Mar. 3, 1985	W	80-65	Oxford, Miss.
Jan. 18, 1986	L	61-95	Auburn
Feb. 8, 1987	L	71-72	Athens, Ga.
Mar. 7, 1987	W	83-57	Albany, Ga.
Feb. 10, 1988	W	89-70	Auburn
Mar. 24, 1988	W	68-65	Athens, Ga.
Feb. 25, 1989	W	86-76	Athens, Ga.
Feb. 10, 1990	W	85-64	Auburn
Feb. 23, 1991	L	66-70	Athens, Ga.
Feb. 8, 1992	W	84-56	Auburn
Feb. 7, 1993	W	82-56	Athens, Ga.

Feb. 20, 1994	L	54-58	Auburn
Feb. 19, 1995	L	56-78	Athens, Ga.
Jan. 12, 1996	L	71-79	Auburn
Jan. 11, 1997	L	55-82	Athens, Ga.
Mar. 1, 1997	W	75-47	Chattanooga, Tenn.
Jan. 17, 1998	L	70-73	Auburn
Jan. 17, 1999	L	78-96	Athens, Ga.
Jan. 23, 2000	L	68-54	Auburn
Jan. 20, 2001	L	60-77	Athens, Ga.
Jan. 17, 2002	L	49-60	Auburn
Feb. 9, 2003	L	67-78	Athens, Ga.
Jan. 15, 2004	W	72-54	Auburn
Jan. 16, 2005	L	56-71	Athens, Ga.
Feb. 26, 2006	L	61-74	Athens, Ga.
Feb. 18, 2007	L	55-62	Auburn
Jan. 13, 2008	W	82-52	Auburn
Feb. 24, 2008	L	56-68	Athens, Ga.
Jan. 29, 2009	L	58-67	Athens, Ga.
Feb. 22, 2009	W	65-59	Auburn
Jan. 31, 2010	W	67-53	Auburn
Feb. 24, 2011	W	63-58	Athens, Ga.
Jan. 8, 2012	L	45-70	Auburn

SCOUTING GEORGIA

No. 9/10 Georgia enters Thursday's game at 19-3 (7-2 SEC) with a dominating 12-1 home record during the 2012-13 season. The Bulldogs are scoring 70.2 points per game with a 16.9 point average win margin.

With no player averaging more than 12 points per game, Georgia has done it with its depth and defense this season, holding opponents to 53.3 points and 22.3 turnovers per game. Ten different players are averaging more than 12.0 minutes per game this season with nine of them starting at least one game.

Jasmine Hassell leads the team with 11.7 points per game, followed by Jasmine James with 11.4. Khaalidah Miller rounds out the double-figure Bulldogs with 10.0 per game. Freshman Shacobia Barbee leads the team in rebounding with 5.7, followed by Hassell with 5.2 per game.

SCOUTING AUBURN

The Auburn women's basketball team, under direction of first-year head coach Terri Williams-Flournoy, returns seven letterwinners and four starters from last season's team that went 13-17 (5-11 SEC). Williams-Flournoy comes to Auburn after eight seasons as head coach at Georgetown where she put together a 143-104 record that included four postseason appearances and three straight trips to the NCAA Tournament, including a Sweet 16 appearance in 2011.

Auburn is 13-9 and averaging a 21.5-point margin of victory in the 13 wins. Three Tigers are averaging double figures, led by Hasina Muhammad with 15.8 per game, including six 20-point games, and 5.3 rebounds. Tyrese Tanner is at 12.6 points and 4.0 rebounds per game while Blanche Alverson comes in with 11.1 points and a team-high 5.7 boards per game.

Center Peyton Davis leads the team in the post, averaging 6.6

Associated Press Top-25 Poll**Week 14 (Feb. 4)**

Rank	School	Record	Points	Pvs
1	Baylor (37)	20-1	997	1
2	Notre Dame	20-1	955	2
3	Connecticut (3)	20-1	928	3
4	Stanford	20-2	862	4
5	Duke	20-1	845	5
6	California	19-2	807	6
7	Maryland	18-3	753	10
8	Penn State	17-3	642	7
9	Georgia	19-3	632	13
10	Kentucky	19-3	630	8
11	Louisville	19-4	553	12
12	Tennessee	17-5	512	9
13	Purdue	18-3	502	14
14	Texas A&M	17-5	497	16
15	South Carolina	19-3	480	15
16	North Carolina	20-3	458	11
17	UCLA	17-4	409	18
18	Dayton	19-1	397	17
19	Florida State	18-4	223	20
20	Delaware	18-3	205	25
21	Colorado	16-5	162	22
22	Oklahoma State	15-5	128	19
23	Oklahoma	16-5	127	21
24	Syracuse	18-3	80	NR
25	Iowa State	15-5	71	23

Others Receiving Votes: Wisconsin-Green Bay 31, Nebraska 20, West Virginia 20, Michigan State 19, Michigan 13, Toledo 11, Kansas 7, Texas-El Paso 5, Villanova 4, Washington 4, Pacific 2, Southern Methodist 2, Miami (Fla.) 2, Middle Tennessee State 2, Creighton 1, Iowa 1, Wyoming 1.

USA Today / ESPN Top-25 Coaches Poll**Week 14 (Feb. 5)**

Rank	School	Record	Points	Pvs
1	Baylor (26)	20-1	768	1
2	Connecticut (4)	20-1	743	2
3	Notre Dame (1)	20-1	721	3
4	Duke	20-1	669	4
5	Stanford	20-2	658	5
6	California	19-2	625	6
7	Maryland	18-3	581	9
8	Kentucky	19-3	507	7
9	Penn State	18-3	480	8
10	Georgia	19-3	472	14
11	Louisville	19-4	467	12
12	South Carolina	19-3	447	13
13	Tennessee	17-5	412	10
14	Purdue	18-4	409	11
15	Dayton	19-1	345	15
16	Texas A&M	18-5	326	T16
17	UCLA	17-4	273	19
18	North Carolina	20-3	250	18
19	Oklahoma	16-5	155	20
20	Florida State	18-4	151	21
21	Oklahoma State	15-5	149	T16
22	Syracuse	18-3	138	24
23	Delaware	18-3	87	NR
24	Iowa State	15-5	68	22
25	Colorado	16-5	64	23

Others Receiving Votes: Wisconsin-Green Bay 27, Nebraska 19, Middle Tennessee State 18, DePaul 8, Villanova 7, Pacific 6, Texas Tech 6, Iowa 4, Kansas 4, **Vanderbilt 4**, Princeton 2, West Virginia 2, **Tennessee-Chattanooga 1**, **San Diego State 1**, Southern Methodist (16-4) 1.

Bold denotes 2012-13 opponents

points and a team-high 5.5 rebounds per game. Najat Ouwardad is tops in the SEC and 13th in the country in assists with 6.6 per game while scoring 5.0 points per game.

LAST TIME VS. GEORGIA (Jan. 8, 2012)

Auburn committed a season-high 30 turnovers, leading to 25 Georgia points, as the Tigers dropped a 70-45 decision to No. 16/15 Georgia Jan. 8 at Auburn Arena. Freshman Hasina Muhammad led all scorers with 15 points in the loss.

Auburn struggled from the field, shooting just 27.1 percent. Sixteen of Auburn's points came at the free throw line as the Tigers took advantage of the Bulldogs' pressure defense to draw fouls.

Blanche Alverson followed Muhammad with 13 points while Tyrese Tanner came off the bench to pull down a team-high six rebounds along with four points. Four Bulldogs finished in double figures, led by Jasmine Hassell and Jasmine James with 14 each.

LAST TIME VS. GEORGIA IN ATHENS (Feb. 24, 2011)

Auburn took home its first win over Georgia in Athens since 1993, as the Tigers defeated the Bulldogs, 63-58, on Feb. 24, 2011, in Stegeman Coliseum.

Alli Smalley scored 22 points, marking back-to-back games against the Bulldogs in which Smalley tallied 22 points. Behind Smalley were Morgan Jennings and Blanche Alverson with 10 points each. Jassany Williams scored eight points with a team-high seven rebounds.

Khaalidah Miller led the Bulldogs with 20 points, followed by Porsha Phillips with 13 points and a game-high 12 rebounds. Jasmine James and Jasmine Hassell scored eight points each with Hassell added 10 boards.

WILLIAMS-FOURNOY VS. LANDERS

This will be the second meeting between Auburn's Terri Williams-Flournoy and Georgia's Andy Landers. Williams-Flournoy defeated her old boss, 64-56, last year in Las Vegas while at Georgetown.

Williams-Flournoy is in her first year at Auburn and has a 13-9 record this season for a 156-113 career record. Landers is in his 33rd season at Georgia and has an 814-271 record with the Bulldogs. He is 896-292 on his career.

LAST TIME OUT FOR AUBURN

The Auburn women's basketball team stayed neck and neck with No. 15/13 South Carolina the majority of the game, but was never able to overcome the Gamecocks, as Auburn fell, 59-51, Feb. 3 in Columbia, S.C. Auburn got within two points late in the game, but South Carolina got 13 of its final 17 points from the free throw line to pull away.

Auburn's Tanner sisters led the Tigers in scoring, as Tyrese and Tra'cee each tallied 10 points apiece. In addition to freshman Tra'cee Tanner's effort off the bench, freshman Chadarryl Clay added seven points and three rebounds in 17 minutes off the bench while Cabriana Capers led the Tigers in rebounding with seven.

South Carolina led by as many as eight points in the second

half, but the Tigers fought back and cut the lead to two, 49-47, with 2:40 to go after a basket from Tra'cee Tanner.

That is as close as Auburn would get, though, as an 8-2 South Carolina run over the next two minutes put the lead out of reach for the 59-51 win.

South Carolina finished with three players in double figures, as Khadijah Sessions led with 19 points and Aleighsa Welch and Tiffany Mitchell each added 10. Ieasia Walker also added eight points, five assists and four steals in the effort.

LAST TIME OUT FOR GEORGIA

Georgia trailed Kentucky by as many as 13 points in the second half, but rallied to get the 75-71 win over the Wildcats Sunday in Lexington, Ky. Khaalidah Miller led UGA with 25 points while Anne Marie Armstrong and Jasmine James added 12 each.

UK pounced early and led 14-4 less than seven minutes into the game. The Wildcats extended the lead to 13 at 21-8 with less than 10 minutes remaining in the half. Georgia responded with a 15-6 run to cut the lead to four, but Kentucky pulled back away for a 40-30 halftime lead.

Kentucky quickly extended its lead back to 13 to start the second half, but a 17-2 Georgia run gave the Bulldogs their first lead, 49-47, with 13:19 left in the game. Kentucky re-grouped and built back an eight-point lead with 6:04 to play, but Georgia out-scored the Wildcats 16-4 the rest of the way for the 75-71 win.

AGAINST THE RANKED

Auburn is 93-168 all-time against teams ranked in the Associated Press Top-25. Auburn is 1-4 against ranked teams this season. The win was a 50-47 decision over #23 Arkansas on Jan. 3. Auburn has since added a 78-56 loss at #20 Texas A&M on Jan. 13, a 75-66 loss to #9 Tennessee on Jan. 17, a 97-53 loss at #5 Kentucky on Jan. 20 and a 59-51 loss at South Carolina on Feb. 3.

The win over the Razorbacks was Auburn's first win over a ranked team since downing #22 Georgia, 63-58, on Feb. 24, 2011 and the first home win over a ranked team since downing #16 Kentucky, 65-53, on Feb. 28, 2010.

ALL EVEN

The Jan. 10 win over Ole Miss was Auburn's 13th of the season, tying last season's win total. The Tigers finished the 2011-12 season with a 13-17 record.

ON THIS DATE...

Auburn is 7-5 all-time when playing on Feb. 7. The Tigers' last game on Feb. 7 was a 55-53 loss at Alabama in 2010. The last win on Feb. 7 came in a 66-46 victory over Arkansas in Auburn in 1999.

IN FEBRUARY

Auburn is 168-109 all-time when playing in the month of February (records begin in 1978-79 season, not all dates provided prior to or during that season). Head Coach Terri Williams-Flournoy is 0-1 at Auburn in February.

AGAINST THE PEACH STATE

Auburn holds a 44-50 record against teams from the state of Georgia. Records against Georgia teams: Berry College (0-2), Fort Valley State (0-1), Georgia (16-24), Georgia Southern (4-1), Georgia State (7-7), Georgia Tech (3-0), Mercer (12-9), North Georgia (0-1), Shorter College (0-1), Valdosta State (0-1) and West Georgia (2-3).

WHEN PLAYING IN GEORGIA

Auburn is 31-32 all-time when playing in the state of Georgia. The Tigers' last game in Georgia came against Mercer in a 77-43 win in Macon on Nov. 11, 2011.

20 AND 10

Auburn's defense has continued to be a bright spot as the team enters SEC play. The Tigers have forced 20 or more turnovers in 11 of the last 16 games while also tallying 10 or more steals in 12 of the last 16.

DOUBLE STREAK

Hasina Muhammad saw her double-digit scoring streak come to an end last week at 23 games. The sophomore had scored in double figures in the last two games of the 2011-12 season and all 21 games this season to that point. In all, she has scored in double figures in 37 of her 52 games on The Plains.

20-20 VISION

Against Ole Miss, Auburn's Hasina Muhammad scored 22 points while Blanche Alverson added 23. It marked the third time this season for two Tigers to score 20 points in a game. Muhammad (24) and Tyrese Tanner (20) both scored in the 20s at Missouri while Muhammad and Alverson each scored 21 at Tulane.

Prior to that game, two Auburn players had scored 20 or more points in the same game just once in the previous 116 games. Since, it has happened three times in 15 games.

CAREER VS. GEORGIA

Seven current Tigers have played against Georgia at least once in their career. Hasina Muhammad has the best single game against the Bulldogs with 15 points against Georgia last season. Blanche Alverson scored 13 against Georgia last year and averages 9.3 points per game in her three meetings with the Bulldogs. Tyrese Tanner averages 4.5 points and 6.0 rebounds in two games against Georgia.

IN THE NATIONAL RANKINGS

In the Feb. 4 NCAA statistical rankings, Auburn is ranked in the top 100 in nine categories and the top 40 in five. Top 40 rankings for Auburn are: FG Percentage (30th, .434), Assists Per Game (26th, 16.2), Blocks Per Game (36th, 4.8), Steals Per Game (20th, 12.1) and Turnover Margin (34th, 4.68).

Individually, Najat Ouardad is 13th in assists (6.6) and 47th in steals (2.8).

DOUBLE DOWN

Five different Tigers have pulled down six double-doubles this season. Peyton Davis had the first with 13 points and 12 rebounds against Hofstra. Hasina Muhammad followed up with 21 points and 10 rebounds against George Washington.

Blanche Alverson picked up her first of the season, second of her career, with 11 points and 10 rebounds against UTC. Freshman Tra'cee Tanner tallied one with 21 points and 12 rebounds against Jacksonville. She was the first freshman since DeWanna Bonner on March 2, 2006 to notch a double-double.

Najat Ouardad tallied one with 14 points and 11 assists against Samford. Davis has the most recent with 12 points and 11 boards at Alabama.

With five Tigers pulling down double-doubles, it marks the first time since the 2006-07 season for Auburn to have five different players do so.

GETTING AWAY WITH THEFT

Hasina Muhammad and Najat Ouardad have both tallied nine steals in a game this season. Muhammad stole nine at George Washington while Ouardad got hers against Samford.

The mark ties for fourth all-time at Auburn in single-game steals and is the most in the SEC this season. The nine steals are also tied for 10th in the nation in single-game steals.

When Muhammad reached the mark, it was the most steals in a game for an Auburn player in 20 years.

GOING TO THE BOARD

Junior Peyton Davis pulled down a career-high 17 rebounds against Arkansas on Jan. 3. The 17 boards are the most for an Auburn player since KeKe Carrier pulled down 19 against Valparaiso on Dec. 28, 2010. Davis' 17 rebounds are also tied for 27th all-time at Auburn in single-game rebounds.

SISTER-SISTER

Auburn's Tanner sisters made a good combination on Dec. 22 in the Tigers' win over Jacksonville. Tyrese and Tra'cee Tanner combined to score 37 points with 15 rebounds and four steals. It was the best combined effort for the sisters this season.

For the season, Tyrese and Tra'cee are combining for 20.0 points and 7.6 rebounds per game.

1,000-POINT CLUB

With her second 3-pointer against Ole Miss, Auburn senior Blanche Alverson became the 27th Tiger all-time to score 1,000 career points. She currently ranks 25th all-time at Auburn in career scoring with 1,061 points.

THE GRADUATE

Senior guard Julie King took a big step Dec. 8 as she earned her degree in Interdisciplinary Studies from Auburn. The fifth-year player spent her first four years at Auburn on the soccer team and is currently using her final year of eligibility with the women's basketball team.

Quoting Coach Flo

On coaching at Georgia...

"I was there for six years at Georgia with Andy Landers and they were really good years. We were very good, very successful. It was easy to recruit there with the tradition of Georgia and it was a good time."

On Georgia...

"They are definitely a team with a great inside-out presence. Jasmine Hassell is a really good post player and I think she is very strong inside. Then you just look at so many guards that they have. If you take Jasmine James out of the picture, just look at everybody else that they have, they just have a lot of really good guards."

On Coach Landers playing a true freshman...

"It is funny because one thing that I learned from him is put the best kids on the floor. It does not really matter what year they are. If a freshman comes in and is showing that she is ready to play and she can play, put them on the floor. You have seen that this year with Tiaria Griffin, Shacobia Barbee and Merritt Hempe getting a lot of playing time."

On both team's presses...

"I think Georgia sort of has an advantage in that they have more players. Their pressure is just a little bit different from ours where in the half court they will be more pressure man defense. With us, we will try to extend ours out into more of a three-quarter or full-court."

On positioning for the SEC Tournament...

"We are right now over into the second half of the season, so this is the time when you have to make some sort of a run to position yourself for the SEC Tournament. There have just been so many crazy games and upsets. At any given night, you just never know who's going to win."

The Southeastern Conference**Commissioner:** Mike Slive**Founded:** 1933**Members:**

Alabama Crimson Tide
 Arkansas Lady Razorbacks
 Auburn Tigers
 Florida Gators
 Georgia Bulldogs
 Kentucky Wildcats
 LSU Tigers
 Mississippi Rebels
 Mississippi State Bulldogs
 South Carolina Gamecocks
 Missouri Tigers
 Tennessee Lady Volunteers
 Texas A&M Aggies
 Vanderbilt Commodores

SEC Media Relations**Women's Basketball Contact:** Tammy Wilson**Address:**

2201 Richard Arrington Blvd.
 Birmingham, Ala. 35203-1103

Phone: 205.458.3000**Fax:** 205.458.3031**E-mail:** twilson@sec.org**Web site:** www.SECsports.com**SEC Women's Basketball Notes**

- The SEC has posted impressive non-conference records in the last decade. The SEC compiled a 134-41 (.766) non-conference record in the 2011-12 season.
- Since the 1990 season, the SEC has compiled a 3047-935 (.765) record against other conferences. The league has recorded 150+ wins during eight seasons.
- SEC teams have earned appearances in 25 of 31 NCAA Final Fours, an accomplishment unmatched by any other league.
- Overall, SEC squads have filled 34 of the 124 Final Four berths, including having two Final Four teams in 1988 (Auburn, Tennessee), 1989 (Auburn, Tennessee), 1995 (Georgia, Tennessee), 1996 (Georgia, Tennessee), 1998 (Arkansas, Tennessee), 2004 (LSU, Tennessee), 2005 (LSU, Tennessee), 2007 (LSU, Tennessee) and 2008 (LSU, Tennessee).
- SEC teams have made 18 appearances in a nation-high 16 NCAA Championship games, winning eight NCAA Championships (Tennessee: 1987, 1989, 1991, 1996, 1997, 1998, 2007 and 2008).
- The league also had the distinction of providing both national finalists twice in its history in 1996 (Tennessee 83, Georgia 65) and in 1989 (Tennessee 76, Auburn 60).
- SEC teams have won 347 NCAA Tournament games against 180 losses (.658) for an average of 11.2 NCAA wins per year.
- In addition, all 14 current members have appeared in the NCAA Tournament.
- The SEC has paced the pack in NCAA tournament bids 22 times in its 31-year history.
- The SEC was the first league to ever have eight teams invited to the NCAA Tournament, doing so in 1999, 2002 and 2012.
- The SEC was also the first league to ever have seven teams invited to the NCAA Tournament and earned this honor a leading seven times (1986, 1991, 1995, 1996, 1997, 2003, 2004).
- The SEC is one of a handful of leagues to have won three national tournament titles with eight NCAA, two WNIT and three NWIT. Along with the eight NCAA championships won by Tennessee, Arkansas (1999) and Auburn (2003) captured the current Women's NIT titles. But the first-ever SEC national title belongs to Georgia, winners of the 1981 NWIT which predates the current NCAA tournament. LSU (1985) and Kentucky (1990) also won NWIT titles. Both Arkansas (1987) and South Carolina (1979) won the WNIT as members of their previous conferences.
- In 2003, Auburn won the WNIT title with wins over South Alabama, Florida State, Richmond, Creighton and Baylor. In 1999, the Arkansas Lady Razorbacks defeated Wisconsin 76-64 to claim the SEC's first WNIT championship.
- In 1981, Georgia defeated Pittsburg, California and Arizona State (in OT) to capture the NWIT Championship, the first-ever national championship of any kind for the SEC in women's basketball.

FORCING 25

Since 1987, Auburn has forced 25 or more turnovers in a game 100 times, including seven times this season. In those 100 games, the Tigers have a 96-4 record.

The seven 25-turnover games this season equal the amount from the last two seasons combined.

CLIMBING THE RANKINGS

Blanche Alverson is climbing her way up the Auburn scoring and rebounding lists. She is currently 25th all-time at Auburn in scoring with 1,061 points. She is also 23rd all-time on The Plains in career rebounding with 521.

TURN IT OVER

A pillar of Coach Terri Williams-Flournoy's style of play is a high-pressure defense that extends most of the floor. The Tigers have forced 20 or more turnovers in 16 of their 22 games this season. Auburn has forced 25 or more in seven games with a season-high 28 against Hofstra. In all, Auburn has scored 471 points off turnovers in its 21 games, averaging 21.4 points off turnovers per game.

Auburn has tallied 10 or more steals in 15 games this season, including a season-high 22 against Samford. The 22 steals were the most in a game in more than four years for the Tigers.

JET POWERED

Najat Ouardad is making her own waves this season. The 5-1 senior tallied 11 assists vs. Samford, but topped the feat against Ole Miss with 14 assists. Her 14 assists are the most in the SEC this season and are tied for second in the nation this year. They are the most for an Auburn player since 1988 and are tied for fifth all-time at AU in single-game steals. The 11 assists are tied for 19th all-time at Auburn.

She also now has 226 career assists, a mark that ranks 10th among active SEC players and tied for 17th all-time at Auburn.

IT'S RAINING 3s

Blanche Alverson is climbing her way up the Auburn career 3-point list. She is currently second with 185. Alverson is 34 3-pointers behind Auburn record holder, and former teammate, Alli Smalley (219).

OFF THE BENCH

Auburn has had great bench support this season with at least one player coming off the bench to score in double figures in 12 of the 22 games. The Tigers' bench so far has scored 379 points on the season, averaging 17.2 per game.

O-BOARDS

Auburn has missed 771 shots this season with 328 (42.5 percent) resulting in offensive rebounds. That has led to 339 second-chance points on the season, averaging 15.4 per game.

KEEPING SCORE

Against LSU, Auburn forced 25 turnovers while the Lady Tigers

made 22 field goals. It marked the 13th time this season that an Auburn opponent has committed more turnovers than made field goals.

On the season, Auburn opponents have hit 460 field goals compared to 472 turnovers. The Tigers have committed just 369 turnovers for a +103 margin on the season.

HOME SWEET HOME

Auburn has made itself at home this season, winning nine of its 11 games at Auburn Arena. The Tigers had a 16-13 record in Auburn Arena entering the season, but have improved to 25-15 since.

QUEEN BLANCHE

Senior Blanche Alverson, no stranger to awards on the court, added another piece of hardware to her collection on Nov. 3 as she was named Auburn's Miss Homecoming. After a week of campaigning, she found out the result of the vote at halftime of Auburn's Homecoming Football Game against New Mexico State. She is the first Tiger student-athlete to earn the honor.

COMEBACK KIDS

At Tulane on Nov. 28, Auburn came from 16 points down at halftime to pull off the 70-65 win. It is the biggest comeback for the Tigers since coming back from 18 points down at Vanderbilt on Feb. 19, 2009, closing the gap to just a point in the final minute of the game only to lose 73-70. It was the first time for the Tigers to come back from a double-digit deficit since overcoming a 10-point deficit at Liberty on Dec. 7, 2008 to take away a 64-53 win.

OVERSEAS TIGERS

Five former Auburn women's basketball players are continuing their careers overseas this season. They are:

Whitney Boddie..... Elitzur Maclaren Holon (Israel)
 DeWanna Bonner Nadezhda Orenburg (Russia)
 Chantel Hilliard CS Nova Vita Targu Mures (Romania)
 Mandisa Stevenson..... Hondarribia-Irun (Spain)
 Le'Coe Willingham..... Perfumerias Avenida Salamanca (Spain)

MUHAMMAD NAMED SEC PLAYER OF THE WEEK

After averaging 18.5 points, 8.0 rebounds, 7.0 steals and 2.5 blocks per game in Auburn's games against GW and Temple, sophomore guard Hasina Muhammad was named the SEC Player of the Week for the first time in her career on Dec. 17.

At GW, Muhammad tied her career high with 21 points, including 14 in the second half, leading Auburn to a 69-59 win over the Colonials. She earned her first career double-double with a career-high 10 rebounds and nearly had a triple-double as she tallied nine steals. Her nine steals are the most for a player in the SEC this season and rank fourth all-time at Auburn in single-game steals.

She came right back against Temple on Sunday with 16 points, six rebounds, six assists, five steals and three blocks. Her six assists were a new career high while her three blocked shots tied her

career high.

TYRESE TANNER NAMED SEC PLAYER OF THE WEEK

Auburn junior Tyrese Tanner was named the SEC's Player of the Week on Nov. 12, the first player to earn the honor this season. She averaged 20.5 points, including a career-high 26 points, at the Sheraton Raleigh Wolfpack Invitational, Nov. 9-10.

Her 26 points were the most scored in the SEC to that point in the season. She is the first Tiger to earn the SEC's weekly honor since Blanche Alverson did on Jan. 13, 2011.

JACKSON NAMED SEC GREAT

Former Auburn great Becky Jackson was announced Jan. 10 as a member of the SEC 2013 Class of Women's Legends. The class will be recognized during the 2013 SEC Women's Basketball Tournament in Duluth, Ga. Jackson, a native of Franklin, La., played basketball at Auburn from 1980-84.

A four-time All-SEC performer, Becky Jackson finished her career as Auburn's all-time leading scorer and rebounder with 2,068 points and 1,118 rebounds. The Kodak All-American scored 38 points in a game, matching the second-highest mark in school history. She was named an All-SEC performer as a freshman and was also named to the Alabama State All-Tournament Team. In 1981 and 1983, Jackson was named to the American Women's Sports Foundation All-American team and was named MVP of the SEC Tournament in 1981.

Her career totals are still among the best all-time at Auburn as she ranks second in career scoring, behind DeWanna Bonner, ranks ninth in career blocks and still holds the Auburn career rebounding record.

Jackson will also be recognized in Auburn on Feb. 17 at halftime of the Tigers' game against Alabama. Her jersey will be retired that afternoon with her joining the ranks of Ruthie Bolton, Carolyn Jones and Vickie Orr.

ORR NAMED TO ALABAMA SPORTS HALL OF FAME

Auburn great Vickie Orr is one of eight individuals that make up the Alabama Sports Hall of Fame Class of 2013. The banquet will be held May 18, 2013 in Birmingham.

One of Auburn's greatest women's basketball players, Orr was a Kodak All-American three consecutive years in 1987, 1988 and 1989. The 1988 SEC Player of Year, Orr is second all-time at Auburn scoring with 2,035 points and is one of only two Tiger players to score more than 2,000 points and have 1,000 rebounds.

Orr helped led the Tigers to two straight NCAA Championship games and was the MVP of the NCAA Mid-East Regional and All-Final Four team in 1989. Internationally, Orr was a member of the 1990 U.S.A. Team that won a Gold Medal in the World Championships and a member of the 1990 Goodwill team that won the Gold Medal. She was also a member of the 1992 U.S. Olympic Team that won a Bronze Medal. She went on to play professionally in Italy from 1990-92.

FIRST TIMERS

The season-opening game saw some firsts for Auburn players.

Junior Peyton Davis earned the first start of her career while senior Julie King and freshmen Cabrana Capers, Chadarryl Clay, Cedricka Sweeting and Tra'cee Tanner made their first collegiate basketball appearance.

KICKING UP SOMETHING NEW

One of Auburn's five newcomers is former soccer player Julie King. A native of St. Louis, King started for four years for the Tigers' soccer team, helping the team to the NCAA Tournament in each season. As a co-captain last year, she led Auburn to an SEC Tournament Championship and was named SEC Co-Defensive Player of the Year.

King was an All-State basketball selection while playing prep ball at Nerinx Hall in St. Louis, Mo.

SISTER ACT

For just the third time ever, Auburn's roster featured a sister combination as Tyrese and Tra'cee Tanner step on the court. Tyrese is a junior on the squad this year while Tra'cee is a freshman.

Other sister combinations to play together at Auburn include Sherell (2004-09) and Reneisha (2006-10) Hobbs, and Ruthie (1985-89) and Mae Ola (1984-88) Bolton.

TANNER NAMED TO OMNI CLASSIC TEAM

Auburn junior Tyrese Tanner was named to the Omni Hotels Classic All-Tournament Team on Nov. 24 for her play in the two games. For the tournament, she averaged 14.0 points, 4.0 rebounds, 2.5 steals and 1.5 blocks per game. She scored 17 with three steals against San Diego State and returned for 11 points, three blocks and two steals against Texas A&M-Corpus Christi.

TANNER AND MUHAMMAD EARN WOLFPACK HONORS

Auburn's Tyrese Tanner and Hasina Muhammad were selected to the Sheraton Raleigh Wolfpack Invitational All-Tournament Team to start the season. Tanner averaged 20.5 points, including a career-high 26 against North Carolina State. She also tallied 8.5 rebounds and 2.0 steals per game. Muhammad averaged 16.0 points per game, tying her then-career high with 20 points in the season-opener against Maine.

TIGERS DOWN UNDER

Auburn unofficially started its season in August as the Tigers traveled to Australia for a 10-day, four-game tour. Auburn opened with an 86-54 loss to the WNBL's Logan Thunder, but rebounded for an 81-71 win over the Cairns Dolphins. The Tigers continued on to Sydney where it tallied a 67-58 over the WNBL's Sydney Flames. The Tigers rounded out the trip with an 84-46 trouncing of the Sutherland Sharks.

Over the four-game tour, Hasina Muhammad was the top Tiger with 23.3 points per game. Blanche Alverson averaged 17.5 points while freshman Chadarryl Clay tallied 10.5. Fellow freshman Tra'cee Tanner scored 9.0 per game, followed by Peyton Davis with 6.5, Cabrana Capers with 2.8 and Pascale West with 2.0.

BALLIN' FOR BOOKS

2012-13 DOUBLE-DOUBLES (6)

Player	Points	Other
Peyton Davis vs. Hofstra	13	12 (reb.)
Hasina Muhammad at GW	21	10 (reb.)
Blanche Alverson vs. UTC	11	10 (reb.)
Tra'cee Tanner vs. Jacksonville	21	12 (reb.)
Najat Ouardad vs. Samford	14	11 (asst.)
Peyton Davis at Alabama	12	11 (reb.)

2012-13 20-POINT GAMES (11)

Player	Points	Opp. (Date)
Tyrese Tanner	26	NCSU (11-10)
Hasina Muhammad	24	Missouri (1-6)
Blanche Alverson	23	Ole Miss (1-10)
Hasina Muhammad	22	Ole Miss (1-10)
Hasina Muhammad	21	AAMU (11-18)
Hasina Muhammad	21	Tulane (11-28)
Blanche Alverson	21	Tulane (11-28)
Hasina Muhammad	21	GW (12-12)
Tra'cee Tanner	21	JU (12-22)
Hasina Muhammad	20	Maine (11-9)
Tyrese Tanner	20	Missouri (1-6)

2012-13 10-REBOUND GAMES (6)

Player	Rebounds	Opp. (Date)
Peyton Davis	17	Arkansas (1-3)
Peyton Davis	12	Hofstra (12-9)
Tra'cee Tanner	12	JU (12-22)
Hasina Muhammad	10	GW (12-12)
Blanche Alverson	10	UTC (12-19)
Peyton Davis	11	Alabama (1-24)

2012-13 10-ASSIST GAMES (3)

Player	Steals	Opp. (Date)
Najat Ouardad	14	Ole Miss (1-10)
Najat Ouardad	11	Samford (12-29)
Najat Ouardad	10	Missouri (1-6)

2012-13 5-STEAL GAMES (7)

Player	Steals	Opp. (Date)
Najat Ouardad	9	Samford (12-29)
Hasina Muhammad	9	GW (12-12)
Blanche Alverson	6	Hofstra (12-9)
Najat Ouardad	5	Arkansas (1-3)
Najat Ouardad	5	AAMU (11-18)
Hasina Muhammad	5	Temple (12-16)
Najat Ouardad	5	Temple (12-16)

Senior Blanche Alverson, always active in the community, started her own community service initiative last season called Ballin' For Books. The program encouraged Auburn fans to donate books during Auburn home games late in the season.

More than 1,100 books were collected as part of the program and were donated to the Loachapoka Library, Pine Hills Literacy Project, Boys and Girls Club, and Atlanta inner-city schools.

STARTING EXPERIENCE

Auburn returned five players that combined for 127 career starts at Auburn entering the season. Previous starters were Blanche Alverson, Hasina Muhammad, Najat Ouardad, Courtney Strain and Tyrese Tanner. If you include newcomer and former Auburn soccer player Julie King (and her 88 career soccer starts), that number goes up to 215.

TIGERS PICKED 10TH IN PRESEASON POLLS

Auburn was picked to finish 10th in both the SEC Preseason Media and Coaches polls. Kentucky was tabbed as the preseason favorite to win the SEC in both polls.

NEW FACES

The Tigers welcome five new faces for the 2012-13 season,

including one senior and four freshmen. The senior is Julie King (Nerinx Hall / St. Louis, Mo.), who joins the team after four years on the Auburn soccer team. The four freshmen are: Cabriana Capers (Bolingbrook / Bolingbrook, Ill.), Chadarryl Clay (Girls Preparatory School / Chattanooga, Tenn.), Cedricka Sweeting (South Broward (Fla.), Nassau, Bahamas), and Tra'cee Tanner (Hoover / Birmingham, Ala.).

AUBURN SIGNS SIX FOR 2013-14

The Auburn women's basketball team signed six players to National Letters of Intent during the early signing period for the class of 2013. Keonna Famer, a 6-1 wing from Birmingham, Ala., Katie Frerking, a 6-1 guard from Johns Creek, Ga., Brandy Montgomery, a 5-10 guard from Port St. Lucie, Fla., Shae Nelson, a 6-1 post from Cordova, Tenn., Allina Starr, a 5-10 point guard from Minneapolis, Minn., and Meagan Tucker, a 5-8 guard from Covington, Ga., will join the Tigers for the 2013-14 season, head coach Terri Williams-Fournoy announced Nov. 16.

ON THE TUBE

At least seven Auburn games will be televised during the 2012-13 season. The Tigers made their TV debut on Nov. 28 at Tulane on Cox Sports Television, following up with a Jan. 6 appearance on

FSN Midwest at Missouri. AU's home debut was on Jan. 17 at home against Tennessee on CSS. Auburn played on the SEC Network at Kentucky on Jan. 20 before returning to CSS for its Jan. 24 game at Alabama.

Auburn will host Florida on SportSouth on Feb. 10, a week before taking on Alabama on ESPN2 on Feb. 17. The final TV appearance will be Feb. 28 at Vanderbilt on CSS.

BLANCHE ALVERSON CAREER STATISTICS VS. GEORGIA

Year	GP-GS	FG-FGA	Pct	3FG-FGA	Pct	FT-FTA	Pct	O-D-T (Reb.)	Avg	PF	FO	Ast	TO	Blk	Stl	Pts	Avg
2009-10	1-1	2-7	.286	1-6	.167	0-0	.000	0-2-2	2.0	2	0	3	1	0	1	5	5.0
2010-11	1-1	4-8	.500	0-2	.000	2-3	.667	1-4-5	5.0	2	0	0	1	0	1	10	10.0
2011-12	1-1	5-9	.556	3-6	.500	0-0	.000	0-3-3	3.0	0	0	0	0	1	0	13	13.0
TOTAL	3-3	11-24	.458	4-14	.286	2-3	.667	1-9-10	3.3	4	0	3	2	1	2	28	9.3

PEYTON DAVIS CAREER STATISTICS VS. GEORGIA

Year	GP-GS	FG-FGA	Pct	3FG-FGA	Pct	FT-FTA	Pct	O-D-T (Reb.)	Avg	PF	FO	Ast	TO	Blk	Stl	Pts	Avg
2010-11	1-0	1-2	.500	0-0	.000	0-0	.000	0-1-1	1.0	0	0	0	0	0	0	2	2.0
2011-12	1-0	0-1	.000	0-0	.000	0-0	.000	0-1-1	1.0	1	0	0	3	0	0	0	0.0
TOTAL	2-0	1-3	.333	0-0	.000	0-0	.000	0-2-2	1.0	1	0	0	3	0	0	2	1.0

HASINA MUHAMMAD CAREER STATISTICS VS. GEORGIA

Year	GP-GS	FG-FGA	Pct	3FG-FGA	Pct	FT-FTA	Pct	O-D-T (Reb.)	Avg	PF	FO	Ast	TO	Blk	Stl	Pts	Avg
2011-12	1-1	3-13	.231	0-2	.000	9-11	.818	1-1-2	2.0	1	0	1	4	0	1	15	15.0
TOTAL	1-1	3-13	.231	0-2	.000	9-11	.818	1-1-2	2.0	1	0	1	4	0	1	15	15.0

NAJAT OUARDAD CAREER STATISTICS VS. GEORGIA

Year	GP-GS	FG-FGA	Pct	3FG-FGA	Pct	FT-FTA	Pct	O-D-T (Reb.)	Avg	PF	FO	Ast	TO	Blk	Stl	Pts	Avg
2011-12	1-0	0-1	.000	0-1	.000	0-0	.000	0-0-0	0.0	1	0	1	4	0	2	0	0.0
TOTAL	1-0	0-1	.000	0-1	.000	0-0	.000	0-0-0	0.0	1	0	1	4	0	2	0	0.0

COURTNEY STRAIN CAREER STATISTICS VS. GEORGIA

Year	GP-GS	FG-FGA	Pct	3FG-FGA	Pct	FT-FTA	Pct	O-D-T (Reb.)	Avg	PF	FO	Ast	TO	Blk	Stl	Pts	Avg
2010-11	1-0	1-2	.500	0-0	.000	0-0	.000	0-0-0	0.0	1	0	0	0	0	1	2	2.0
TOTAL	1-0	1-2	.500	0-0	.000	0-0	.000	0-0-0	0.0	1	0	0	0	0	1	2	2.0

TYRESE TANNER CAREER STATISTICS VS. GEORGIA

Year	GP-GS	FG-FGA	Pct	3FG-FGA	Pct	FT-FTA	Pct	O-D-T (Reb.)	Avg	PF	FO	Ast	TO	Blk	Stl	Pts	Avg
2010-11	1-0	1-5	.200	0-1	.000	3-6	.500	1-5-6	6.0	2	0	0	2	1	1	5	5.0
2011-12	1-0	2-8	.250	0-1	.000	0-0	.000	1-5-6	6.0	4	0	0	5	4	0	4	4.0
TOTAL	2-0	3-13	.231	0-2	.000	3-6	.500	2-10-12	6.0	6	0	0	7	5	1	9	4.5

PASCALE WEST CAREER STATISTICS VS. GEORGIA

Year	GP-GS	FG-FGA	Pct	3FG-FGA	Pct	FT-FTA	Pct	O-D-T (Reb.)	Avg	PF	FO	Ast	TO	Blk	Stl	Pts	Avg
2011-12	1-0	0-1	.000	0-0	.000	0-0	.000	1-0-1	1.0	0	0	0	0	0	0	0	0.0
TOTAL	1-0	0-1	.000	0-0	.000	0-0	.000	1-0-1	1.0	0	0	0	0	0	0	0	0.0

MISCELLANEOUS STATISTICS

Double-Doubles	Season	Career
Blanche Alverson	1	2
Peyton Davis	2	2
Hasina Muhammad	1	1
Najat Ouardad	1	1
Tra'cee Tanner	1	1

20+ Point Games	Season	Career
Blanche Alverson	2	4
Hasina Muhammad	6	7
Tra'cee Tanner	1	1
Tyrese Tanner	2	5

10+ Rebound Games	Season	Career
Blanche Alverson	1	2
Peyton Davis	3	3
Hasina Muhammad	1	1
Tra'cee Tanner	1	1

10+ Assist Games	Season	Career
Najat Ouardad	3	3

5+ Steal Games	Season	Career
Blanche Alverson	1	2
Hasina Muhammad	2	3
Najat Ouardad	4	6

GAMES LED AUBURN IN . .

Scoring	Season	Career
Blanche Alverson	4	18
Peyton Davis	1	1
Hasina Muhammad	12	19
Tra'cee Tanner	2	2
Tyrese Tanner	7	15

Rebounding	Season	Career
Blanche Alverson	6	20
Cabriana Capers	4	4
Peyton Davis	6	7
Hasina Muhammad	3	8
Tra'cee Tanner	2	2
Tyrese Tanner	2	7

Assists	Season	Career
Blanche Alverson	0	7
Chadarryl Clay	2	2
Julie King	1	1
Hasina Muhammad	0	3
Najat Ouardad	19	30
Tyrese Tanner	0	2

Last Time an Auburn Team . .

Scored 100 points	Auburn 119, Sam Houston State 54 (Dec. 5, 2008)
Scored 100 points in an SEC game	Auburn 102, Tennessee 96, SEC Tournament in Albany, Ga. (Mar. 6, 1987)
Scored 100 at Auburn	Auburn 119, Sam Houston State 54 (Dec. 5, 2008)
Scored 100 points and lost	Never
Scored 110 points	Auburn 119, Sam Houston State 54 (Dec. 5, 2008)
Scored 115 points	Auburn 119, Sam Houston State 54 (Dec. 5, 2008)
Scored at least 60 points in a half	62-vs. Sam Houston State (Dec. 5, 2008)
Had 25+ rebound margin	28-Auburn 55, Sam Houston State 27 (Dec. 5, 2008)
Had 20+ rebound margin	20-Auburn 51, USC-Upstate 31 in Auburn, Ala. (Nov. 27, 2011)
Attempted 35 free throws	35-vs. Florida A&M (Nov. 28, 2009)
Attempted 40 free throws	41-vs. Alabama State (Nov. 15, 2006)
Made 30 free throws	31-vs. Northwestern State (31-43) (Dec. 30, 2003)
Had 25 assists	28- vs. Jacksonville (Dec. 22, 2012)
Had 25 turnovers	30 - at Kentucky in Lexington, Ky. (Jan. 20, 2013)
Had 25 steals	25- vs. Arkansas-Little Rock (Dec. 2, 2000)
Had 20 steals	22- vs. Samford in Auburn, Ala. (Dec. 29, 2012)
Had 15 steals	16- vs. LSU in Auburn, Ala. (Jan. 31, 2013)
Had 10 blocks	10-at George Washington in Washington, D.C. (Dec. 12, 2012)
Had 15 blocks	17 - vs. Alabama A&M in Auburn, Ala. (Nov. 19, 2009)
Scored 25 points or less	25- vs. Mercer (1971)
Played an overtime game	at LSU (Jan. 10, 2010)
Won an overtime game	Auburn 64, LSU 62 at Baton Rouge, La. (Jan. 10, 2010)
Lost an overtime game	Florida 71, Auburn 68 (20T) at Gainesville, Fla. (Jan. 7, 2010)
Played a double overtime game	Florida 71, Auburn 68 at Gainesville, Fla. (Jan. 7, 2010)
Played at least three overtimes	Never
Shot 70% for a half	70.4%, 19-27 - vs. Texas A&M-Corpus Christi (Nov. 24, 2012)
Shot 60% for a game	vs. Alabama (61.8%, 34-55) (Jan. 22, 2009)
Shot less than 30% for a game	(25.5%, 13-51) at Arkansas at Fayetteville, Ark. (Jan. 15, 2012)
Shot 90% from the free throw line (minimum 10 attempts)	(10-10) vs. Mississippi State (Feb. 3, 2008)
Shot 50% from 3-point line	(5-of-6, 83%) vs. Alabama A&M in Auburn, Ala. (Nov. 18, 2012)
Shot less than 30% in a half	26.7% in the first half at Alabama in Tuscaloosa, Ala. (Jan. 24, 2013)
Shot less than 20% in a half	19.0% in the first half vs. LSU, (Feb. 14, 2010)
Shot 55% or better and lost	58.1%, 25-43-vs. Tennessee, (Jan. 20, 2005)
Made at least 10 3-point field goals	10-of-25 vs. Maine in Raleigh, N.C. (Nov. 9, 2012)
Failed to make a 3-point field goal	0-of-10 at Alabama in Tuscaloosa, Ala. (Jan. 24, 2013)
Had at least 60 rebounds	61 vs. Stephen F. Austin, (Dec. 17, 2007)
Had at least 50 rebounds	52- vs. Alabama State in Auburn, Ala. (Nov. 15, 2012)
Scored less than 20 points in a 1st half	19 points vs. Arkansas in Auburn, Ala. (Jan. 3, 2013)
Scored less than 20 points in a 2nd half	15 points at LSU in Baton Rouge, La. (Feb. 19, 2012)
Scored less than 50 points in a game	41 points at LSU in Baton Rouge, La. (Feb. 19, 2012)

Last Time an Auburn Player . .

Scored 40 points	41-Consweila Sparrow vs. South Alabama (Feb. 17, 1998)
Scored 35 points	35-DeWanna Bonner vs. Tennessee (Jan. 25, 2009)
Scored 30 points	32-DeWanna Bonner vs. Ole Miss (Mar. 6, 2009)
Attempted 25 field goals	25-Natasha Brackett (9-25) at LSU (Jan. 30, 2005)
Recorded a double-double	Peyton Davis (12 points/11 rebounds) at Alabama in Tuscaloosa, Ala. (Jan. 24, 2013)
Recorded a double-double with points and assists	Najat Ouardad (14 points/11 assists) vs. Samford in Auburn, Ala. (Dec. 29, 2012)
Recorded consecutive double-doubles	KeKe Carrier (18 pts./10 rebs) vs. Mississippi State (Jan. 3, 2010) and (24 pts/12 rebs) vs. Florida in Gainesville, Fla. (Jan. 7, 2010)
Two players recorded a double-double	DeWanna Bonner (32 pts./13 rebs) & Whitney Boddie (15 pts./10 asst.) vs. Ole Miss in the SEC Tournament in North Little Rock, Ark. (March 6, 2009)
Had a double-double at halftime	DeWanna Bonner (14 pts./10 rebs.) vs. Ole Miss (Mar. 6, 2009)
Recorded a triple-double	Whitney Boddie (24 pts./11 rebs./12 asst.) vs. Sam Houston State (Dec. 5, 2008)
Had 10 assists	14- Najat Ouardad vs. Ole Miss (Jan. 10, 2013)
Had 15 assists	18-Martha Monk vs. Alabama State (Feb. 18, 1981)
Had 10 blocks	13- Marita Payne vs. Arkansas (Feb. 3, 2005)
Had 5 blocks	5 - Jassany Williams vs. Tennessee in Auburn, Ala. (Jan. 1, 2012)
Had 5 steals	5- Najat Ouardad vs. Arkansas in Auburn, Ala. (Jan. 3, 2013)
Had 15 rebounds	17-Peyton Davis vs. Arkansas in Auburn, Ala. (Jan. 3, 2013)
Had 20 rebounds	20-Monique Morehouse at LSU (Feb. 4, 1995)
Made 15 field goals	15-Consweila Sparrow (15-16) vs. USA (Feb. 17, 1998)
Made 5 three-point field goals	5 - Blanche Alverson (5-9) vs. Ole Miss in Auburn, Ala. (Jan. 10, 2013)
Two players scored 20 points	Blanche Alverson (23) and Hasina Muhammad (22) vs. Ole Miss in Auburn, Ala. (Jan. 10, 2013)
Two players scored 30 points	Laticia Morris (33 points) & Tara Williams (30 points) vs. South Alabama (Jan. 14, 1997)

TIGERS' RECORD WHEN...

When wearing white.....	10-2
When wearing orange.....	0-2
When wearing blue.....	3-5
When wearing pink.....	0-0
Leading at the half.....	10-1
Trailing at the half.....	3-8
Tied at the half.....	0-0
Scores 100+ points.....	0-0
Scores 90-99 points.....	1-0
Scores 80-89 points.....	3-0
Scores 70-79 points.....	5-2
Scores 60-69 points.....	2-1
Scores fewer than 60 points.....	2-6
Holds opponent to 41-50 points.....	6-0
Holds opponent to 31-40 points.....	1-0
Holds opponent to under 30 points.....	0-0
Shoots 50% FG or better.....	6-0
Shoots 40-49% FG.....	6-3
Shoots 39.9% or under FG.....	1-6
Holds opponent under 30% FG.....	5-1
Shoots higher FG% than opponent.....	13-1
Shoots lower FG% than opponent.....	0-7
Shoots same FG% as opponent.....	0-1
Shoots higher FT% than opponent.....	1-6
Shoots lower FT% than opponent.....	12-3
Out-rebounds opponent.....	12-2
Out-rebounded by opponent.....	1-7
Tied in rebounds.....	0-0
Versus ranked opponent.....	1-4
In overtime.....	0-0
Games decided by 3 points or less.....	1-0
Games decided by 4-5 points.....	1-1
Games decided by 6-10 points.....	2-4
Games decided by 11-20 points.....	2-1
Games decided by 21-30 points.....	4-2
Games decided by 30+ points.....	3-1
On Television.....	1-4
In November.....	5-2
In December.....	6-0
In January.....	2-6
In February.....	0-1
In March.....	0-0

Back-to-back 25-point games.....	Alli Smalley 26 pts. vs. Kentucky (Feb. 28, 2010) & 29 pts. vs. Florida in SEC Tournament in Duluth, Ga. (Mar. 4, 2010)
Only one player scored in double figures.....	Hasina Muhammad (19 pts.) vs. Ole Miss in Auburn, Ala. (Feb. 26, 2012)
Five players scored in double figures.....	Alverson (15 pts.), Muhammad (15 pts.), Ouardad (11 pts.), Ty Tanner (10 pts.) & Davis (10 pts.) vs. Tennessee in Auburn, Ala. (Jan. 17, 2013)
Six players scored in double figures.....	Carrier (19 pts.), Bonner (18 pts.), Smalley (16 pts.), Boddie (13 pts.), R. Hobbs (13 pts.), Hilliard (13 pts.) & S. Hobbs (10 pts.) vs. Sam Houston State (Dec. 5, 2008)
Seven players scored in double figures.....	Carrier (19 pts.), Bonner (18 pts.), Smalley (16 pts.), Boddie (13 pts.), R. Hobbs (13 pts.), Hilliard (13 pts.) & S. Hobbs (10 pts.) vs. Sam Houston State (Dec. 5, 2008)
Scored 20 points & had 20 rebounds.....	Lauretta Freeman (30 pts/21 rebs.) vs. Alabama, (Feb. 17, 1993)
Two players had 10 rebounds.....	Chantel Hilliard (11 rebs.) & Jassany Williams (10 rebs.) at Mississippi State in Starkville, Miss. (Jan. 22, 2012)
Three players had 10 rebounds.....	Jordan Greenleaf (12 rebs.), DeWanna Bonner (12 rebs.) & Whitney Boddie (10 rebs.) vs. Oakland (Nov. 21, 2007)
Played every minute.....	Jordan Greenleaf (40 mins.) vs. Florida, SEC Tournament, Duluth, Ga., (Mar. 4, 2010)
Played more than 40 minutes.....	Alli Smalley (45 mins.), Jordan Greenleaf (43 mins.) & Morgan Toles (41 mins.) at LSU (Jan. 10, 2010)

Last Time an Auburn Opponent...

Shot less than 30% in a game (SEC).....	Alabama - 29.7% in Tuscaloosa, Ala. (Jan. 24, 2013)
Shot less than 30% in a game (Non-conf).....	Tennessee-Chattanooga - 27.3% in Auburn, Ala. (Dec. 19, 2012)
Shot 60% in a game.....	Vanderbilt 60.4% in Nashville, Tennessee in the SEC Tournament, (Mar. 5, 2004)
Scored 100 points.....	Georgia 102, Auburn 72 in Athens, Ga. (Mar. 3, 1984)
Scored 100 points at Auburn.....	Tuskegee 105, Auburn 98 (20T) (Feb. 12, 1979)
Scored 100 points and Lost.....	Never
Scored 110 points.....	Never
Had 25+ rebound margin.....	Never
Had a 20+ rebound margin.....	Never
Scored less than 20 points in a 1st half.....	Samford, 19 points in Auburn, Ala. (Dec. 29, 2012)
Scored less than 20 points in a 2nd half.....	Alabama A&M, 18 points in Auburn, Ala. (Nov. 18, 2012)
Had 50 rebounds.....	51 - at Alabama in Tuscaloosa, Ala. (Jan. 24, 2013)
Had 25 assists.....	25- by Florida International in Miami, Fla. (Dec. 19, 1993)
Had 25 turnovers.....	25- by LSU in Auburn, Ala. (Jan. 31, 2013)
Had 15 steals.....	18- by Kentucky in Lexington, Ky. (Jan. 20, 2013)
Had 10 blocks.....	12-by Tennessee (Jan. 10, 2008)
Failed to make a 3-point field goal.....	by Ole Miss (0-7) in Auburn, Ala. (Feb. 26, 2012)
Attempted 35 free throws.....	36 - by Arizona 25-36 (Dec. 19, 2000)
Made 30 free throws.....	30- by Arkansas (Jan. 22, 1995)
Made 10 three-point field goals.....	12 - by Kentucky in Lexington, Ky. (Jan. 20, 2013)
Made 15 three-point field goals.....	18 - by Missouri in Columbia, Mo. (Jan. 6, 2013)
Scored less than 50 points in a game.....	Arkansas, 47 in Auburn, Ala. (Jan. 3, 2013)
Scored 40 points or less.....	Tennessee-Chattanooga, 40 in Auburn, Ala. (Dec. 19, 2012)
Scored 25 points or less.....	25- by Puerto Rico Mayaguez (Dec. 17, 2000)
Scored 11 points or less.....	11-by Montevallo (1973) and 11-by Jeff Davis (1973)

Last Time an Auburn Opponent's Player...

Scored 30 points (non-conference).....	33-Andrea Smith of South Florida in Tampa, Fla. (Nov. 22, 2010)
Scored 30 points (SEC).....	33-Morgan Eye of Missouri in Columbia, Mo. (Jan. 6, 2013)
Scored 35 points.....	38-Lindsay Shearer of Kent State in Kent, Ohio (Nov. 20, 2005)
Attempted 25 field goals.....	27- Jantel Lavender (9-27) of Ohio State (Nov. 23, 2008)
Scored 20 points & had 20 rebounds.....	Young of Baylor in the Women's NIT Championship Game, (20 pts./25 rebs.), (Apr. 4, 2003)
Two players scored 20 points.....	by North Carolina State, Marissa Kastanek (24 pts) & Kody Burke (26 pts), (Nov. 10, 2012)
Three players scored 20 points.....	by LSU in Baton Rouge, Chatman (22 pts), Johnson (21 pts) & Lowery (20 pts), (Jan. 12, 1991)
Five players scored in double figures.....	Mathies (24 pts), O'Neill (17 pts), Stallworth (16 pts), Walker (15 pts) & Goss (10 pts) of Kentucky (Jan. 20, 2013)
Six players scored in double figures ..	Smith (15 pts), Bales (14 pts), Foley (11 pts), Williams (10 pts), Currie (10 pts) & Kurz (10 pts) of Duke (Dec. 31, 2004)
Recorded a double-double.....	DeNesha Stallworth (16 pts/10 rebs) of Kentucky in Lexington, Ky. (Jan. 20, 2013)
Recorded a double-double with points and assists.....	Ceira Ricketts of Arkansas in Fayetteville, Ark., (14 pts/13 rebs/12 assts.), (Jan. 18, 2009)
Recorded a triple-double.....	Ceira Ricketts (14 pts./13 rebs./12 asst.) of Arkansas (Jan. 18, 2009)
Two players recorded a double-double ..	Kelsey Bone (19 pts/10 rebs) & Kristi Bellock (13 pts/10 rebs) of Texas A&M in College Station, Texas (Jan. 13, 2013)
Committed 10 turnovers.....	12-Krista Stricklin of Samford in Auburn, Ala. (Dec. 29, 2012)
Committed 15 turnovers.....	15-Andreana Thomas of Hofstra in Auburn, Ala. (Dec. 9, 2012)
Had 15 rebounds.....	16-by Shante Evans of Hofstra in Auburn, Ala. (Dec. 9, 2012)
Had 20 rebounds.....	20-Sylvia Fowles of LSU (Jan. 28, 2007)
Had 10 assists.....	10-Valencia McFarland of Ole Miss (Jan. 13, 2011)
Had 10 blocks.....	Never
Had 5 blocks.....	5-Martha Alwal of Mississippi State in Starkville, Miss. (Jan. 22, 2012)
Had 5 steals.....	6 - Bernisha Pinkett of Kentucky in Lexington, Ky., (Jan. 20, 2013)
Made 15 field goals.....	15-Chamique Holdsclaw (15-21) of Tennessee (Feb. 1, 1998)
Made 10 3-point field goals.....	11-Morgan Eye (11-18) of Missouri in Columbia, Mo. (Jan. 6, 2013)
Had 15 assists.....	16-Cindy McMahan of Alabama-Huntsville (Nov. 24, 1980)

SEC PRESEASON POLL (Media Vote)

(First-place votes in Parentheses)

Order of Finish

1. Kentucky (20)	376
2. Georgia (1)	352
3. Vanderbilt (2)	336
4. Tennessee (2)	316
5. Texas A&M (1)	284
6. LSU	251
7. South Carolina	194
8. Arkansas	168
9. Florida	144
10. Auburn	124
11. Mississippi State	116
12. Ole Miss	47
13. Missouri	39
14. Alabama	36

Player of the Year

A'dia Mathis, UK (20); Christina Foggie, VU (4); Anne Marie Armstrong, UGA (1); Jennifer George, UF (1)

All-SEC First TeamJennifer George, Florida
Anne Marie Armstrong, Georgia
A'dia Mathies, Kentucky
Kelsey Bone, Texas A&M
Christina Foggie, Vanderbilt**All-SEC Second Team**Sarah Watkins, Arkansas
Jasmine Hassell, Georgia
Samarie Walker, Kentucky
Ieasia Walker, South Carolina
Meighan Simmons, Tennessee**SEC PRESEASON POLL (Coaches' Vote)****Order of Finish**

1. Kentucky	167
2. Georgia	149
3. Texas A&M	145
4. Vanderbilt	143
5. Tennessee	117
6. South Carolina	102
7. LSU	96
8. Florida	92
9. Arkansas	72
10. Auburn	57
11. Mississippi State	51
11.2. Alabama	33
11.2. Missouri	33
14. Ole Miss	17

Player of the Year

A'dia Mathies (UK) 9; Christina Foggie (VU) 3; Anne Marie Armstrong (UGA) 1.

All-SEC First TeamSarah Watkins, Arkansas
Jennifer George, Florida
Anne Marie Armstrong, Georgia
Jasmine Hassell, Georgia
A'dia Mathies, Kentucky
Meighan Simmons, Tennessee
Kelsey Bone, Texas A&M
Christina Foggie, Vanderbilt
Jasmine Lister, Vanderbilt**All-SEC Second Team**Jasmine James, Georgia
Bria Goss, Kentucky
Samarie Walker, Kentucky
Adrienne Webb, LSU
Valencia McFarland, Ole Miss
Ieasia Walker, South Carolina
Ariel Massengale, Tennessee
Tiffany Clarke, Vanderbilt**2012-13 Auburn Superlatives...****First Half**

Most points scored in the first half	49, vs. Alabama A&M (11-18-12)
Fewest points scored in the first half	19, vs. Arkansas (1-3-13)
Fewest points allowed in the first half	15, vs. Tennessee-Chattanooga (12-19-12)
Most points allowed in the first half	51, at Kentucky (1-20-13)
Best FG % in the first half606, vs. Ole Miss (1-10-13)
Worst FG % in the first half267, at Alabama (1-24-13)
Best FG % by an opponent in the first half556, at Tulane (11-28-12)
Worst FG % by an opponent in the first half207, vs. Tennessee-Chattanooga (12-19-12)
Most rebounds in the first half	31, vs. Alabama State (11-15-12)
Fewest rebounds in the first half	15, at South Carolina (2-3-13) and at Missouri (1-6-13)
Most rebounds by an opponent in the first half	29, at Alabama (1-24-13)
Fewest rebounds by an opponent in the first half	10, vs. Samford (12-29-12)

Second Half

Most points scored in the second half	47, at Tulane (11-28-12)
Fewest points scored in the second half	25, vs. Tennessee-Chattanooga (12-19-12)
Fewest points allowed in the second half	18, vs. Alabama A&M (11-17-12) and Maine (11-9-12)
Most points allowed in the second half	49, vs. San Diego State (11-23-12)
Best FG % in the second half704, vs. Texas A&M-Corpus Christi (11-24-12)
Worst FG % in the second half290, vs. San Diego State (11-23-12)
Best FG % by an opponent in the second half581, vs. San Diego State (11-23-12)
Worst FG % by an opponent in the second half231, vs. Alabama A&M (11-18-12) and at Tulane (11-28-12)
Most rebounds in the second half	23, vs. Arkansas (1-3-13), at Tulane (11-28-12) and at Alabama (1-24-13)
Fewest rebounds in the second half	11, at North Carolina State (11-10-12), vs. Samford (12-29-12) and vs. Tennessee (1-17-13)
Most rebounds by an opponent in the second half	25, at George Washington (12-12-12)
Fewest rebounds by an opponent in the second half	12, vs. Texas A&M-Corpus Christi (11-24-12)

Game

Most points scored	93, vs. Alabama A&M (11-18-12)
Fewest points scored	50, vs. Arkansas (1-3-13)
Most points allowed	97, at Kentucky (1-20-13)
Fewest points allowed	40, vs. Tennessee-Chattanooga (12-19-12)
Best FG %591, vs. Alabama A&M (11-18-12)
Worst FG %306, at Alabama (1-24-13)
Best FG % by an opponent518, at Missouri (1-6-13)
Worst FG % by an opponent259, vs. Alabama State (11-15-12) and Jacksonville (12-22-12)
Most rebounds	52, vs. Alabama State (11-15-12)
Fewest rebounds	28, at Missouri (1-6-13)
Most rebounds by an opponent	52, at North Carolina State (11-10-12)
Fewest rebounds by an opponent	25, vs. Samford (12-29-12)

Miscellaneous

Largest margin of victory	49, vs. Alabama A&M (11-18-12)
Smallest margin of victory	3, vs. Arkansas (1-3-13)
Largest margin of defeat	44, at Kentucky (1-20-13)
Smallest margin of defeat	4, vs. LSU (1-31-13)
Largest halftime lead	23, vs. Alabama A&M (11-18-12) and Alabama State (11-15-12)
Smallest halftime lead	5, vs. Tennessee (1-17-13)
Last time tied at halftime	---
Largest halftime deficit	30, at Kentucky (1-20-13)
Smallest halftime deficit	1, vs. Arkansas (1-3-13)
Largest rebounding margin	16, vs. Alabama State (11-15-12)
Smallest rebounding margin	3, vs. San Diego State (11-23-12)
Last time tied in rebounding	---
Opponent's largest rebounding margin	16, at North Carolina State (11-10-12)
Opponents smallest rebounding margin	3, at Alabama (1-24-13)

2012-13 Auburn Individual Highs...**First Half**

Points..... 16, Hasina Muhammad at Missouri (1-6-13)
 Field Goals Made..... 8, Hasina Muhammad at Missouri (1-6-13)
 Field Goal Attempts..... 15, Hasina Muhammad vs. Maine (11-9-12)
 3-Point Field Goals Made..... 3, Najat Ouardad vs. Samford (12-29-12)
 3-Point Field Goal Attempts..... 5, Blanche Alverson vs. Samford (12-29-12)
 Free Throws Made..... 4, 3 times, last by Blanche Alverson vs. UTC (12-19-12)
 Free Throws Attempted..... 6, Peyton Davis vs. Alabama State (11-15-12)
 Rebounds..... 9, Peyton Davis vs. Arkansas (1-3-13)
 Assists..... 8, Najat Ouardad vs. Jacksonville (12-22-12)
 Blocked Shots..... 2, 7 times, last by Tyrese and Tra'cee Tanner vs. Ole Miss (1-10-13)
 Steals..... 4, Ouardad vs. Samford (12-29-12) & Muhammad at George Washington (12-12-12)

Second Half

Points..... 16, Hasina Muhammad at Tulane (11-28-12)
 Field Goals Made..... 7, Tra'cee Tanner vs. Jacksonville (12-22-12)
 Field Goal Attempts..... 14, Hasina Muhammad at Texas A&M (1-13-13)
 3-Point Field Goals Made..... 4, Blanche Alverson at Missouri (1-6-13)
 3-Point Field Goal Attempts..... 7, Blanche Alverson at Missouri (1-6-13)
 Free Throws Made..... 7, Tyrese Tanner at North Carolina State (11-10-12)
 Free Throws Attempted..... 8, Tyrese Tanner at North Carolina State (11-10-12)
 Rebounds..... 8, Davis vs. Arkansas (1-3-13) and Tra'cee Tanner vs. Jacksonville (12-22-12)
 Assists..... 8, Najat Ouardad vs. Ole Miss (1-10-13)
 Blocked Shots..... 2, 5 times, last by Peyton Davis vs. Arkansas (1-3-13)
 Steals..... 5, Ouardad vs. Samford (12-29), Alverson vs. Hofstra (12-9) & Muhammad at GW (12-12)

Game

Points..... 26, Tyrese Tanner at North Carolina State (11-10-12)
 Field Goals Made..... 11, Hasina Muhammad vs. Ole Miss (1-10-13)
 Field Goal Attempts..... 24, Hasina Muhammad at Texas A&M (1-13-13)
 3-Point Field Goals Made..... 5, Blanche Alverson vs. Ole Miss (1-10-13) & at Missouri (1-6-13)
 3-Point Field Goal Attempts..... 10, Blanche Alverson at Missouri (1-6-13)
 Free Throws Made..... 11, Tyrese Tanner at North Carolina State (11-10-12)
 Free Throws Attempted..... 12, Tyrese Tanner at North Carolina State (11-10-12)
 Rebounds..... 17, Peyton Davis vs. Arkansas (1-3-13)
 Assists..... 14, Najat Ouardad vs. Ole Miss (1-10-13)
 Blocked Shots..... 3, 11 times, last by Hasina Muhammad at Alabama (1-24-13)
 Steals..... 9, Najat Ouardad vs. Samford (12-29-12) & Hasina Muhammad at GW (12-12-12)

2012-13 Opponent Individual Highs...**First Half**

Points..... 16, A'dia Mathies of Kentucky (1-20-13)
 Field Goals Made..... 5, 4 times, last by A'dia Mathies of Kentucky (1-20-13)
 Field Goal Attempts..... 12, Courtney Clements of San Diego State (11-23-12)
 3-Point Field Goals Made..... 4, Eye of Missouri (1-6-13) and Myers of Alabama (1-24-13)
 3-Point Field Goal Attempts..... 8, Marissa Kastanek of North Carolina State (11-10-12)
 Free Throws Made..... 4, Deven Green of Hofstra (12-9-12)
 Free Throws Attempted..... 6, Markeisha Gatling of North Carolina State (11-10-12)
 Rebounds..... 8, 4 times, last by DeNesha Stallworth of Kentucky (1-20-13)
 Assists..... 4, 5 times, last by Daisha Simmons of Alabama (1-24-13)
 Blocked Shots..... 2, 5 times, last by Samarie Walker of Kentucky (1-20-13)
 Steals..... 3, 4 times, last by Ieasia Walker of South Carolina (2-3-13)

Second Half

Points..... 21, Morgan Eye of Missouri (1-6-13)
 Field Goals Made..... 8, Kody Burke of North Carolina State (11-10-12)
 Field Goal Attempts..... 12, Morgan Eye of Missouri (1-6-13)
 3-Point Field Goals Made..... 7, Morgan Eye of Missouri (1-6-13)
 3-Point Field Goal Attempts..... 11, Morgan Eye of Missouri (1-6-13)
 Free Throws Made..... 8, Sessions of South Carolina (2-3-13) & Kautsky of Tulane (11-28-12)
 Free Throws Attempted..... 10, Daisha Simmons of Alabama (1-24-13)
 Rebounds..... 9, Kody Burke of North Carolina State (11-10-12)
 Assists..... 5, Doty of Missouri (1-6-13) and Jackson of George Washington (12-12-12)
 Blocked Shots..... 3, Tara Booker of George Washington (12-12-12)
 Steals..... 3, 5 times, last by Danielle Ballard of LSU (1-31-13)

Game

Points..... 33, Morgan Eye of Missouri (1-6-13)
 Field Goals Made..... 11, Eye of Missouri (1-6-13) and Burke of North Carolina State (11-10-12)
 Field Goal Attempts..... 23, Courtney Clements of San Diego State (11-23-12)
 3-Point Field Goals Made..... 11, Morgan Eye of Missouri (1-6-13)
 3-Point Field Goal Attempts..... 18, Morgan Eye of Missouri (1-6-13)
 Free Throws Made..... 8, Sessions of South Carolina (2-3-13) & Kautsky of Tulane (11-28-12)
 Free Throws Attempted..... 10, Daisha Simmons of Alabama (1-24-13)
 Rebounds..... 16, Shante Evans of Hofstra (12-9-12)
 Assists..... 8, Lianna Doty of Missouri (1-6-13)
 Blocked Shots..... 3, Burke of N.C. State (11-10), Booker of GW (12-12) & Macaulay of Temple (12-16)
 Steals..... 6, Bernisha Pinkett of Kentucky (1-20-13)

Specialty Statistics (Auburn-Opponent)

Opponent	Bench Points	Points in the Paint	Points off Turnovers	Second Chance Points	Fast Break Points
vs. Maine	29-14	28-12	28-11	23-4	6-2
at North Carolina State	17-17	28-40	22-7	20-15	6-17
vs. Alabama State	23-6	40-10	28-5	14-8	20-2
vs. Alabama A&M	40-28	46-12	34-5	24-10	14-2
vs. San Diego State	18-13	18-26	16-15	13-14	0-2
vs. Texas A&M-Corpus Christi	24-13	44-12	24-23	17-13	14-0
at Tulane	18-34	30-22	17-16	20-14	4-4
vs. Hofstra	11-9	36-30	14-11	6-12	6-6
at George Washington	14-15	26-20	22-13	20-10	10-4
vs. Temple	17-8	50-22	36-12	21-8	12-4
vs. Tennessee-Chattanooga	11-11	24-16	11-9	13-8	2-0
vs. Jacksonville	35-13	54-10	27-8	14-14	10-2
vs. Samford	15-17	38-2	32-1	13-7	16-0
vs. Arkansas	10-14	36-10	13-4	9-12	8-0
at Missouri	13-48	22-16	25-18	9-12	10-0
vs. Ole Miss	14-24	38-24	17-13	21-10	10-2
at Texas A&M	8-10	36-36	25-25	10-13	12-19
vs. Tennessee	5-12	32-20	23-26	16-5	10-4
at Kentucky	13-15	32-40	15-34	10-23	4-12
at Alabama	11-2	28-20	11-14	9-8	6-10
vs. LSU	10-8	32-28	18-13	14-8	10-4
at South Carolina	23-22	26-18	13-15	12-16	2-6

Lead-Deficit Comparison

Opponent	Largest Lead	Largest Deficit	Lead Changes	Ties	Result
vs. Maine	35 (2nd, 4:44)	4 (1st, 16:14)	4	0	W, 71-41
at North Carolina State	9 (1st, 14:02)	17 (2nd, 1:09)	2	1	L, 85-71
vs. Alabama State	37 (2nd, 0:52)	1 (1st, 18:45)	2	0	W, 80-43
vs. Alabama A&M	53 (2nd, 2:15)	---	0	1	W, 93-44
vs. San Diego State	2 (1st, 18:32)	23 (2nd, 0:41)	1	1	L, 78-57
vs. Texas A&M-Corpus Christi	15 (2nd, 1:14)	7 (1st, 1:36)	12	3	W, 72-57
at Tulane	5 (1st, 19:05)	16 (1st, 00:19)	2	2	W, 70-65
vs. Hofstra	20 (2nd, 12:56)	---	0	1	W, 68-58
at George Washington	16 (2nd, 18:07)	4 (1st, 16:59)	1	4	W, 69-59
vs. Temple	23 (2nd, 2:13)	1 (1st, 18:48)	3	0	W, 71-49
vs. Tennessee-Chattanooga	16 (2nd, 2:48)	2 (1st, 18:11)	2	2	W, 53-40
vs. Jacksonville	39 (2nd, 0:48)	1 (1st, 19:31)	2	0	W, 85-49
vs. Samford	31 (2nd, 1:51)	1 (1st, 19:01)	2	2	W, 80-51
vs. Arkansas	10 (2nd, 8:27)	3 (1st, 16:00)	11	3	W, 50-47
at Missouri	8 (1st, 15:06)	15 (2nd, 10:35)	1	2	L, 82-76
vs. Ole Miss	29 (2nd, 10:46)	---	0	0	W, 76-52
at Texas A&M	---	30 (2nd, 10:29)	0	0	L, 78-56
vs. Tennessee	12 (2nd, 14:29)	13 (2nd, 1:31)	4	4	L, 75-66
at Kentucky	1 (1st, 17:51)	46 (2nd, 1:30)	2	2	L, 97-53
at Alabama	5 (1st, 12:59)	19 (2nd, 5:34)	2	1	L, 61-51
vs. LSU	7 (1st, 12:30)	6 (2nd, 0:07)	6	11	L, 59-55
at South Carolina	3 (1st, 11:05)	9 (1st, 2:43)	8	2	L, 59-51

Scoring Breakdown

(Percentage of total points in parentheses)

Opponent	Front Court	Back Court	Sr.	Jr.	So.	Fr.	Starters	Bench
vs. Maine	20 (28.2)	51 (71.8)	21	21	22	7	42 (59.2)	29 (40.8)
at North Carolina State	20 (28.2)	51 (71.8)	23	31	12	5	54 (76.1)	17 (23.9)
vs. Alabama State	42 (52.5)	38 (47.5)	19	25	19	17	57 (71.2)	23 (28.8)
vs. Alabama A&M	38 (40.9)	55 (59.1)	24	14	33	22	53 (57.0)	40 (43.0)
vs. San Diego State	21 (36.8)	36 (63.2)	11	18	15	13	39 (68.4)	18 (31.6)
vs. Texas A&M-Corpus Christi	27 (37.5)	45 (62.5)	6	26	30	10	48 (66.7)	24 (33.3)
at Tulane	39 (55.8)	31 (44.2)	25	8	23	14	52 (74.3)	18 (25.7)
vs. Hofstra	28 (41.2)	40 (58.8)	19	26	16	7	57 (83.8)	11 (16.2)
at George Washington	27 (39.1)	42 (60.9)	24	10	24	11	55 (79.7)	14 (20.3)
vs. Temple	28 (39.4)	43 (60.6)	12	26	20	13	54 (76.1)	17 (23.9)
vs. Tennessee-Chattanooga	23 (43.4)	30 (56.6)	15	8	21	9	42 (79.2)	11 (20.8)
vs. Jacksonville	51 (60.0)	34 (40.0)	28	24	10	23	50 (58.8)	35 (41.2)
vs. Samford	29 (36.3)	51 (63.7)	36	17	21	6	65 (81.3)	15 (18.7)
vs. Arkansas	16 (32.0)	34 (68.0)	9	20	13	8	40 (80.0)	10 (20.0)
at Missouri	30 (39.5)	46 (60.5)	19	20	24	13	63 (82.9)	13 (17.1)
vs. Ole Miss	38 (50.0)	38 (50.0)	23	17	22	14	62 (81.6)	14 (18.4)
at Texas A&M	13 (23.2)	43 (76.8)	15	17	18	6	48 (85.7)	8 (14.3)
vs. Tennessee	30 (45.5)	36 (54.5)	26	20	15	5	61 (92.4)	5 (7.6)
at Kentucky	28 (52.8)	25 (47.2)	12	18	13	13	40 (75.5)	13 (24.5)
at Alabama	24 (47.1)	27 (52.9)	11	19	13	8	40 (78.4)	11 (21.6)
vs. LSU	22 (40.0)	33 (60.0)	12	25	11	7	45 (81.8)	10 (18.2)
at South Carolina	18 (35.3)	33 (64.7)	11	12	7	21	28 (54.9)	23 (45.1)

Comparison Statistics (Auburn/Opponent)

Opponent	1st	2nd	Score	Mar	Total FG	FG Pct	3-Pointers	3FG Pct	Free Throws	FT Pct	Reb.	Mar	Assist	TO	Bk	Stl	Fouls
Maine	35/23	36/18	71-41	+30	29-70/17-51	.414/.333	10-25/4-22	.400/.182	3-6/3-3	.500/1.000	40/35	+5	14/12	15/26	3/1	9/7	8/8
at North Carolina St.	33/37	38/48	71-85	(14)	23-67/32-69	.343/.464	4-19/10-23	.211/.435	21-27/11-18	.778/.611	36/52	(16)	11/20	13/20	4/3	10/9	20/22
Alabama State	40/17	40/26	80-43	+37	32-73/14-54	.438/.259	3-15/6-27	.200/.222	13-21/9-14	.619/.643	52/36	+16	23/7	15/26	8/2	16/5	16/16
Alabama A&M	49/26	44/18	93-44	+49	39-66/16-54	.591/.296	5-6/6-26	.833/.346	10-13/3-7	.769/.429	40/27	+13	27/12	11/23	4/1	15/6	10/13
San Diego State	24/29	33/49	57-78	(21)	17-55/28-60	.309/.467	2-7/11-25	.286/.440	21-29/11-14	.724/.786	39/36	+3	10/14	17/16	1/3	7/8	14/24
Texas A&M-CC	28/32	44/25	72-57	+15	31-53/20-61	.585/.328	1-6/10-31	.167/.323	9-15/7-9	.600/.778	37/31	+6	16/12	25/26	7/1	16/10	15/14
at Tulane	23/39	47/26	70-65	+5	27-66/21-53	.409/.396	3-12/7-19	.250/.368	13-21/16-25	.619/.640	45/35	+10	15/18	12/13	7/4	9/3	22/15
Hofstra	39/23	29/35	68-58	+10	28-66/20-59	.424/.339	4-13/3-15	.308/.200	8-17/15-18	.471/.833	38/44	(6)	18/13	16/28	6/1	18/10	15/18
at G. Washington	36/23	33/36	69-59	+10	25-56/20-62	.400/.323	4-10/7-15	.400/.467	13-26/12-19	.500/.632	48-44	+4	14/17	17/23	10/6	15/8	15/19
Temple	30/17	41/32	71-49	+22	32-61/19-56	.525/.339	3-8/4-21	.375/.190	4-7/7-10	.571/.700	36-32	+4	20/13	22/28	8/4	16/12	12/7
UT-Chattanooga	28/15	25/25	53-40	+13	21-51/15-55	.412/.273	1-9/4-31	.111/.129	10-19/6-8	.526/.750	42-32	+10	14/10	21/22	3/0	10/8	13/17
Jacksonville	43/22	42/27	85-49	+26	40-73/15-58	.548/.259	2-9/9-25	.222/.360	3-7/10-14	.429/.714	44-34	+10	28/9	8/20	7/0	10/5	13/7
Samford	41/19	39/32	80-51	+29	31-60/15-37	.517/.405	6-14/12-14	.429/.500	12-17/9-11	.706/.818	29-25	+4	22/12	9/26	2/0	22/6	13/14
Arkansas	19/20	31/27	50-47	+3	21-64/16-58	.328/.276	1-5/5-22	.200/.227	7-11/10-14	.636/.714	46-40	+6	13/9	16/20	9/3	13/8	15/14
at Missouri	32/39	44/43	76-82	(6)	28-61/29-56	.459/.518	5-15/18-36	.333/.500	15-18/6-10	.833/.600	28-37	(9)	17/24	13/22	4/0	13/8	15/15
Ole Miss	45/27	31/25	76-52	+24	34-62/19-59	.548/.322	5-12/3-18	.417/.167	3-7/11-12	.429/.917	41-28	+13	24/8	18/20	5/1	12/7	17/8
at Texas A&M	23/43	33/35	56-78	(22)	25-66/27-56	.379/.482	1-8/5-12	.125/.417	5-9/19-23	.556/.826	33-41	(8)	17/19	17/22	2/4	10/9	21/15
Tennessee	32/37	34/48	66-75	(9)	25-58/25-58	.431/.431	3-9/8-16	.333/.500	13-18/17-24	.722/.708	33-37	(4)	14/14	20/19	5/1	13/10	21/13
at Kentucky	21/51	32/46	53-97	(44)	19-47/34-72	.404/.472	1-3/12-28	.333/.429	14-18/17-23	.778/.739	31-40	(9)	8/17	30/16	1/3	5/18	19/15
at Alabama	20/30	31/31	51-61	(10)	19-62/19-64	.306/.297	0-10/9-27	.000/.333	13-22/14-27	.591/.519	48-51	(3)	5/13	20/18	6/5	6/8	22/16
vs. LSU	26/28	29/31	55-59	(4)	22-60/22-48	.367/.458	1-9/3-8	.111/.375	10-16/12-20	.625/.600	32-36	(4)	14/16	18/25	3/3	16/12	20/15
at South Carolina	22/28	29/31	51-59	(8)	22-56/17-41	.393/.415	2-8/6-17	.250/.353	5-9/19-28	.556/.679	35-28	+7	13/11	16/13	0/3	6/9	23/14

Game-by-Game Leaders

	Points	Rebounds	Assists	Steals	Blocked Shots
vs. Maine	20-Hasina Muhammad	9-Tyrese Tanner	6-Najat Ouardad	3-Blanche Alverson	1-3 tied
at North Carolina State	26-Tyrese Tanner	8-Tyrese Tanner	4-Najat Ouardad	3-Alverson/Ty. Tanner	3-Blanche Alverson
vs. Alabama State	17-Blanche Alverson	9-Blanche Alverson	6-Julie King	3-Hasina Muhammad	2-3 tied
vs. Alabama A&M	21-Hasina Muhammad	9-Cabrina Capers	5-Chadarryl Clay	5-Najat Ouardad	2-Julie King
vs. San Diego State	17-Tyrese Tanner	8-Tra'cee Tanner	4-Najat Ouardad	3-Tyrese Tanner	1-Hasina Muhammad
vs. Texas A&M-Corpus Christi	16-Hasina Muhammad	7-Cabrina Capers	8-Najat Ouardad	4-Hasina Muhammad	3-Tyrese Tanner
at Tulane	21-Muhammad/Alverson	9-Peyton Davis	7-Najat Ouardad	3-Alverson/Ty. Tanner	3-Blanche Alverson
vs. Hofstra	13-Davis/Ty. Tanner	12-Peyton Davis	8-Najat Ouardad	6-Blanche Alverson	3-Peyton Davis
at George Washington	21-Hasina Muhammad	10-Hasina Muhammad	7-Najat Ouardad	9-Hasina Muhammad	3-Tyrese Tanner
vs. Temple	18-Tyrese Tanner	7-Peyton Davis	8-Najat Ouardad	5-Muhammad/Ouardad	3-Muhammad/Davis
vs. Tennessee-Chattanooga	19-Hasina Muhammad	10-Blanche Alverson	5-Najat Ouardad	3-Muhammad/Ty. Tanner	1-3 tied
vs. Jacksonville	21-Tra'cee Tanner	12-Tra'cee Tanner	9-Najat Ouardad	3-Tyrese Tanner	2-Blanche Alverson
vs. Samford	19-Hasina Muhammad	6-Blanche Alverson	11-Najat Ouardad	9-Najat Ouardad	1-Davis/Muhammad
vs. Arkansas	15-Tyrese Tanner	17-Peyton Davis	5-Najat Ouardad	5-Najat Ouardad	3-Davis/Muhammad
at Missouri	24-Hasina Muhammad	7-Blanche Alverson	10-Najat Ouardad	4-Najat Ouardad	2-Hasina Muhammad
vs. Ole Miss	23-Blanche Alverson	9-Blanche Alverson	14-Najat Ouardad	3-Najat Ouardad	3-Tra'cee Tanner
at Texas A&M	18-Hasina Muhammad	8-Hasina Muhammad	7-Najat Ouardad	4-Ouardad/Tr. Tanner	1-Muhammad/Ty. Tanner
vs. Tennessee	15-Muhammad/Alverson	7-Hasina Muhammad	8-Najat Ouardad	4-Najat Ouardad	2-Blanche Alverson
at Kentucky	13-Hasina Muhammad	6-Cabrina Capers	3-Chadarryl Clay	2-Julie King	1-Hasina Muhammad
at Alabama	13-Hasina Muhammad	11-Peyton Davis	4-Najat Ouardad	3-Hasina Muhammad	3-Hasina Muhammad
vs. LSU	17-Tyrese Tanner	6-Alverson/Davis	5-Najat Ouardad	4-Hasina Muhammad	1-3 tied
at South Carolina	10-Tyrese & Tra'cee Tanner	7-Cabrina Capers	5-Najat Ouardad	2-Clay/Muhammad	---

2012-13 Starting Lineups

	Point Guard (1)	Wing (2)	Wing (3)	Post (4)	Post (5)
vs. Maine	Najat Ouardad	Courtney Strain	Tyrese Tanner	Blanche Alverson	Peyton Davis
at North Carolina State	Najat Ouardad	Courtney Strain	Tyrese Tanner	Blanche Alverson	Peyton Davis
vs. Alabama State	Najat Ouardad	Hasina Muhammad	Tyrese Tanner	Blanche Alverson	Peyton Davis
vs. Alabama A&M	Najat Ouardad	Hasina Muhammad	Tyrese Tanner	Blanche Alverson	Peyton Davis
vs. San Diego State	Najat Ouardad	Hasina Muhammad	Tyrese Tanner	Blanche Alverson	Peyton Davis
vs. Texas A&M-Corpus Christi	Najat Ouardad	Hasina Muhammad	Tyrese Tanner	Blanche Alverson	Peyton Davis
at Tulane	Najat Ouardad	Hasina Muhammad	Tyrese Tanner	Blanche Alverson	Peyton Davis
vs. Hofstra	Najat Ouardad	Hasina Muhammad	Tyrese Tanner	Blanche Alverson	Peyton Davis
at George Washington	Najat Ouardad	Hasina Muhammad	Tyrese Tanner	Blanche Alverson	Peyton Davis
vs. Temple	Najat Ouardad	Hasina Muhammad	Tyrese Tanner	Blanche Alverson	Peyton Davis
vs. Tennessee-Chattanooga	Najat Ouardad	Hasina Muhammad	Tyrese Tanner	Blanche Alverson	Peyton Davis
vs. Jacksonville	Najat Ouardad	Hasina Muhammad	Tyrese Tanner	Blanche Alverson	Peyton Davis
vs. Samford	Najat Ouardad	Hasina Muhammad	Tyrese Tanner	Blanche Alverson	Peyton Davis
vs. Arkansas	Najat Ouardad	Hasina Muhammad	Tyrese Tanner	Blanche Alverson	Peyton Davis
at Missouri	Najat Ouardad	Hasina Muhammad	Tyrese Tanner	Blanche Alverson	Peyton Davis
vs. Ole Miss	Najat Ouardad	Hasina Muhammad	Tyrese Tanner	Blanche Alverson	Peyton Davis
at Texas A&M	Najat Ouardad	Hasina Muhammad	Tyrese Tanner	Blanche Alverson	Peyton Davis
vs. Tennessee	Najat Ouardad	Hasina Muhammad	Tyrese Tanner	Blanche Alverson	Peyton Davis
at Kentucky	Najat Ouardad	Hasina Muhammad	Tyrese Tanner	Blanche Alverson	Peyton Davis
at Alabama	Najat Ouardad	Hasina Muhammad	Tyrese Tanner	Blanche Alverson	Peyton Davis
vs. LSU	Najat Ouardad	Hasina Muhammad	Tyrese Tanner	Blanche Alverson	Peyton Davis
at South Carolina	Najat Ouardad	Hasina Muhammad	Tyrese Tanner	Blanche Alverson	Peyton Davis

Record by Starting Lineup

Ouardad, Strain, Ty. Tanner, Alverson, Davis

..... 1-1 (.500)

Ouardad, Muhammad, Ty. Tanner, Alverson, Davis

..... 12-8 (.600)

Auburn Career Records Update

Games Played

Rk	Player	Years	G
1	Ruthie Bolton	85-89	132
	Linda Godby	86-90	132
3	Vickie Orr	85-89	131
4	Kendall Mago	88-92	130
5	Alli Smalley	07-11	129
	Sharon Stewart	84-88	129
	Sherell Hobbs	05-09	129
8	Mae Ola Bolton	84-88	128
9	DeWanna Bonner	05-09	126
10	Lori Monroe	79-83	124
	Jordan Greenleaf	06-11	124
--	Blanche Alverson	09-present	115

3-Point Field Goals

Rk	Player	Years	3FG
1	Alli Smalley	07-11	219
2	Blanche Alverson	09-pres	185
3	Tiffany Krantz	96-00	184
4	Natasha Brackett	01-05	171
5	Samantha Williams	92-96	161
6	Kristen Mulligan	92-96	149
7	Carolyn Jones	88-91	103
8	Shana Askew	97-01	94
9	Tamela McCorvey	06-08	90
10	Lynn Stevenson	87-91	83

3-Point Field Goal Attempts

Rk	Player	Years	ATT
1	Alli Smalley	07-11	637
2	Natasha Brackett	01-05	545
3	Blanche Alverson	09-present	540
4	Tiffany Krantz	96-00	520
5	Samantha Williams	92-96	500
6	Kristen Mulligan	92-96	370
7	Shana Askew	97-01	332
8	Nitasha Brown	02-06	271
9	Tamela McCorvey	06-08	270
10	Carolyn Jones	88-91	248

3-Point Field Goals Pct. (100 Att.)

Rk	Player	Years	Pct.
1	Carolyn Jones	88-91	.415 (103-248)
2	Kristen Mulligan	92-96	.403 (149-370)
3	Suzette Sargeant	90-92	.388 (57-147)
4	Lynn Stevenson	86-91	.376 (83-221)
5	LaRita Spencer	99-01	.364 (59-162)
6	Louise Emeagi	02-05	.359 (78-217)
7	Tiffany Krantz	96-00	.354 (184-520)
8	Alli Smalley	07-11	.344 (219-637)
9	Blanche Alverson	09-pres	.343 (185-540)
10	Joanna Clayden	05-07	.337 (62-184)

Points

Rk	Player	Years	Points
1	DeWanna Bonner	05-09	2,162
2	Becky Jackson	80-84	2,068
3	Vickie Orr	85-89	2,035
4	Marianne Merritt	75-79	1,979

5	Carolyn Jones	88-91	1,831
6	Natasha Brackett	01-05	1,716
7	Mae Ola Bolton	84-88	1,616
8	Alli Smalley	07-11	1,601
9	Angie Hannah	78-82	1,583
10	Le'Coie Willingham	99-00, 01-03	1,475
11	Lori Monroe	79-83	1,415
12	Tasha Hamilton	97-01	1,402
13	Sherell Hobbs	05-09	1,372
14	Linda Godby	86-90	1,365
15	Debra Larkin	81-85	1,310
16	C. C. Hayden	89-92	1,306
17	Consweila Sparrow	97-00	1,249
18	Brenda Hill	81-85	1,222
19	M. Morehouse	92-96	1,191
20	Lauretta Freeman	89-93	1,188
21	Sharon Stewart	84-88	1,184
22	Ruthie Bolton	85-89	1,176
23	Tiffany Krantz	96-00	1,136
24	Samantha Williams	92-96	1,106
25	Blanche Alverson	09-present	1,061
26	KeKe Carrier	05-10	1,017
27	Helene Baroody	83-87	1,011
28	Tara Williams	95-97	988
29	Diann McNeil	84-88	982
30	Laticia Morris	95-97	971
31	Charlene Thomas	83-87	963
32	Whitney Boddie	05-09	951
33	Kristen Mulligan	92-96	944

Rebounds

Rk	Player	Years	Points
1	Becky Jackson	80-84	1,118
2	DeWanna Bonner	05-09	1,047
3	Lori Monroe	79-83	1,015
4	Vickie Orr	85-89	1,006
5	Lauretta Freeman	89-93	976
6	Marianne Merritt	75-79	972
7	Le'Coie Willingham	99-00, 01-03	927
8	M. Morehouse	92-96	792
9	Jordan Greenleaf	06-11	761
	Charlene Thomas	84-87	761
11	Sharon Stewart	84-88	757
12	C.C. Hayden	89-92	749
	Kendall Mago	88-92	749
14	Tasha Hamilton	97-01	663
15	Mae Ola Bolton	84-88	653
16	Marita Payne	02-06	630
17	Sherell Hobbs	05-09	612
18	Brenda Hill	82-85	604
19	KeKe Carrier	05-10	600
20	Angie Hannah	78-82	588
21	Linda Godby	86-90	580
22	Consweila Sparrow	97-00	572
23	Blanche Alverson	09-present	521
24	Diann McNeil	84-88	498
25	Samantha Williams	91-96	495
26	Ruthie Bolton	85-89	490
27	Natasha Brackett	01-05	478
28	LaKeisha Johnson	99-03	477

29	Whitney Boddie	05-09	473
30	Carolyn Jones	88-91	470
	Parrisha Simmons	08-12	470

Assists

Rk	Player	Years	AST
1	Whitney Boddie	05-09	603
2	Renae Halbrooks	78-82	593
3	Helene Baroody	83-87	587
4	Kristen Mulligan	92-96	551
5	Ruthie Bolton	85-89	526
6	Martha Monk	79-81	525
7	Chantel Tremiere	87-91	490
8	Tiffany Krantz	96-00	414
9	Debra Larkin	81-85	386
10	Samantha Williams	91-96	323
11	Nicole Loudon	01-05	311
12	Alli Smalley	07-11	303
13	Morgan Toles	09-11	267
14	Cindy Sagrera	81-84	254
15	Mae Ola Bolton	84-88	252
16	Nitasha Brown	02-06	236
17	DeWanna Bonner	05-09	226
	Najat Ouardad	11-present	226
19	Tasha Hamilton	97-01	219
20	Angie Hannah	78-82	214
21	Lynn Stevenson	87-91	212
22	LaRita Spencer	99-01	209
23	Terryland Robinson	89-93	207
24	Diann McNeil	84-88	202
25	Justine Agbaton	95-98	201
26	Nancy Derrick	00-04	200
	Sherell Hobbs	05-09	200
28	Tamela McCorvey	06-08	189
29	Carolyn Jones	88-91	187
30	Lori Monroe	79-83	179

Assist Average (30 games)

Rk	Player	Years	APG
1	Martha Monk	79-81	8.3
2	Whitney Boddie	05-09	5.9
3	Renae Halbrooks	78-82	5.5
4	Helene Baroody	83-87	5.1
5	Morgan Toles	09-11	4.8
6	Kristen Mulligan	92-96	4.7
7	Najat Ouardad	11-present	4.3
8	Ruthie Bolton	85-89	3.985
9	Chantel Tremiere	87-91	3.984
10	LaRita Spencer	99-01	3.542
11	Tiffany Krantz	96-00	3.538



Terri WILLIAMS-FOURNOY

Head Coach

First Season

Hampton, Va. • Penn State, 1991

- **Picked up her 150th career victory on Dec. 12 at George Washington**
- **Recorded her 400th career win as a collegiate assistant and/or head coach in Auburn's 68-58 win over Hofstra on Dec. 9**
- **Earned her first win at Auburn in a 71-41 win over Maine on Nov. 9, 2012**
- **Picked up first SEC win in a 50-47 victory over #23 Arkansas**
- **Has 156 wins as a head coach and 251 as an assistant for a .640 winning percentage over her 20 years**
- **Has been a part of six conference championships and 13 post-season appearances as an assistant and head coach**
- **2010 Black Coaches Association Coach of the Year**
- **Served as an assistant coach for Team USA that won a gold medal at the 2011 World University Games in ShenZhen, China**
- **Coached teams to 11 NCAA Tournament appearances, nine as an assistant coach and two as a head coach.**
- **As an assistant coach at Georgia, helped the team to two Southeastern Conference titles in 1997 and 2000 and the 2001 SEC Tournament title**
- **Has coached 19 players that have gone on to the professional ranks, including seven in the WNBA**
- **Helped coach Georgia to a NCAA Final Four appearance and two NCAA Elite Eight appearances**
- **Coached three Georgetown players to three all-conference honors and one All-America award**
- **Coached Georgetown to four straight 20-win seasons**
- **Sports a 495-265 record as a head coach, assistant coach and player**
- **Helped coach Georgetown to Big East title in 1992**
- **As an assistant coach at Southwest Missouri State, helped the team to two straight NCAA Tournaments and two consecutive Missouri Valley Conference Tournament Championships**

All-time record as player and coach:	495-265 (.651)	26th year
Record as collegiate player:	88-36 (.709)	4 seasons
Record as collegiate coach:	407-229 (.640)	21st season
Record as collegiate assistant coach:	251-116 (.683)	12 seasons
SEC Record as an assistant coach:	130-45 (.742)	6 seasons
Record as collegiate head coach:	156-113 (.580)	9th season
SEC Record as a head coach:	2-7 (.222)	1st season

Williams-Flournoy Year-by-Year

Penn State, Player (1987-91)

Year	Record	Conf.	Other Information
1987-88	20-13	11-7	NCAA Second Round
1988-89	14-14	12-6	
1989-90	25-7	15-3	NCAA Second Round
1990-91	29-2	17-1	NCAA Second Round

Georgetown, Assistant Coach (1992-96)

Year	Record	Conf.	Other Information
1992-93	23-7	15-3	Big East Champions NCAA Sweet 16
1993-94	12-15	6-12	
1994-95	11-17	6-12	
1995-96	12-15	7-11	

Georgia, Assistant Coach (1996-2002)

Year	Record	Conf.	Other Information
1996-97	25-6	11-1	SEC Champions NCAA Elite Eight
1997-98	17-11	8-6	NCAA First Round
1998-99	27-7	9-5	NCAA Final Four
1999-2000	32-4	13-1	SEC Champions NCAA Elite Eight
2000-01	27-6	11-3	SEC Tournament Champions NCAA Second Round
2001-02	19-11	6-8	NCAA First Round

Southwest Missouri State, Assistant Coach (2002-04)

Year	Record	Conf.	Other Information
2002-03	18-13	11-7	MVC Tournament Champions NCAA First Round
2003-04	28-4	16-2	Missouri Valley Champions MVC Tournament Champions NCAA First Round

Georgetown, Head Coach (2004-12)

Year	Record	Conf.	Other Information
2004-05	12-16	7-9	
2005-06	10-17	3-13	
2006-07	13-16	3-13	
2007-08	15-14	5-11	
2008-09	20-14	7-9	WNIT Quarterfinals
2009-10	26-7	13-3	NCAA Second Round
2010-11	24-11	9-7	NCAA Sweet 16
2011-12	23-9	11-5	NCAA Second Round

Auburn, Head Coach (2012-present)

Year	Record	Conf.	Other Information
2012-13	13-9	2-7	



Blanche ALVERSON

#14

Senior • Forward/Guard • 6-3

Andalusia, Ala.

Buford (Ga.) High School

NOTES:

- Selected to the 2013 Capital One Academic All-District First Team
- Is just the 4th Auburn player ever to tally 1,000 points, 500 rebounds, 100 assists, 100 steals and 50 blocks in their career
- Pulled down her first double-double of the season, second of her career, vs. UTC with 11 points and 10 rebounds
- Posted a season-high 23 points against Ole Miss, shooting 64 percent (9-14) from the field, including five treys
- Scored 1,000th career point against Ole Miss on Jan. 10, becoming the 27th Auburn player ever to score 1,000 career points
- Is currently 24th in career scoring at Auburn with 1,061 points and is 23rd in career rebounding with 521; ranks 11th among active SEC players with 1,061 points
- Is 2nd all-time at Auburn in career 3-pointers with 185; is 34 treys away from tying Alli Smalley's Auburn record 219
- Selected as the 2012 SEC Women's Basketball Scholar-Athlete of the Year; named Auburn's 2012 Miss Homecoming on Nov. 3
- Created her own community service program, Ballin' For Books, last season that collected more than 1,100 books for local libraries reading initiatives

Opponent	Start	Min.	FG-A	3PT-A	FT-A	O-D-T	PF	Asst.	TO	Blk.	St.	Pts.
vs. Maine	*	32	3-7	2-3	0-0	1-5-6	0	2	6	0	3	8
at North Carolina State	*	35	4-13	2-9	2-2	2-5-7	1	3	1	3	3	12
ALABAMA STATE	*	23	7-11	1-3	2-2	3-6-9	2	1	2	2	2	17
ALABAMA A&M	*	25	6-9	2-2	0-0	1-3-4	1	3	1	1	1	14
vs. San Diego State	*	38	2-9	1-3	2-2	2-2-4	0	3	1	0	1	7
vs. Texas A&M-Corpus Christi*	20	1-3	0-2	0-0	0-5-5	0	1	1	1	1	3	2
at Tulane	*	37	9-14	3-7	0-0	0-5-5	3	1	0	3	3	21
HOFSTRA	*	35	5-9	1-3	0-0	0-5-5	2	2	2	0	6	11
at George Washington	*	31	5-12	3-5	1-3	0-5-5	2	1	0	1	0	14
TEMPLE	*	31	4-9	2-4	0-0	0-5-5	3	1	1	0	1	10
TENNESSEE-CHATTANOOGA*	38	3-8	1-4	4-4	2-8-10	1	2	4	1	0	0	11
JACKSONVILLE	*	28	7-10	2-4	0-0	0-6-6	1	3	1	2	1	16
SAMFORD	*	26	6-12	3-6	0-0	1-5-6	1	1	0	0	1	15
ARKANSAS	*	37	1-9	1-4	0-0	1-0-1	2	1	0	0	2	3
at Missouri	*	37	6-13	5-10	0-0	1-6-7	1	2	0	0	2	17
OLE MISS	*	32	9-14	5-9	0-0	3-6-9	2	4	1	0	2	23
at Texas A&M	*	31	3-11	1-6	0-0	0-5-5	1	2	2	0	0	7
TENNESSEE	*	35	4-9	2-5	5-6	1-3-4	2	3	3	2	1	15
at Kentucky	*	29	3-7	1-3	0-0	0-3-3	1	0	2	0	1	7
at Alabama	*	31	2-13	0-6	2-2	2-6-8	2	1	2	0	0	6
LSU	*	38	3-10	1-4	0-0	1-5-6	3	2	1	1	1	7
at South Carolina	*	22	1-4	0-3	0-1	0-5-5	1	0	0	0	0	2
at Georgia												
FLORIDA												
ALABAMA												
at Tennessee												
MISSOURI												
at Vanderbilt												
MISSISSIPPI STATE												

ALVERSON CAREER STATISTICS

Year	GP-GS	FG-FGA	Pct	3FG-FGA	Pct	FT-FTA	Pct	O-D-T (Reb.)	Avg	PF	FO	Asst	TO	Blk	Stl	Pts	Avg
2009-10	31-13	78-218	.358	40-128	.313	19-27	.704	26-92-118	3.8	39	1	51	44	17	15	215	6.9
2010-11	32-32	126-333	.378	50-171	.292	25-35	.714	33-118-151	4.7	44	0	33	61	17	27	327	10.2
2011-12	30-26	99-246	.402	56-136	.412	20-24	.833	20-107-127	4.2	43	0	29	42	12	30	274	9.1
2012-13	22-22	94-216	.435	39-105	.371	18-22	.818	21-104-125	5.7	32	0	39	31	17	34	245	11.1
TOTAL	115-93	397-1013	.392	185-540	.343	82-108	.759	100-421-521	4.5	158	1	152	178	63	106	1061	9.2

SEASON HIGHS

Points		
23	vs. Ole Miss	(1/10/13)
Rebounds		
10	vs. UT-Chattanooga	(12/19/12)
Assists		
4	vs. Ole Miss	(1/10/13)
Blocks		
3	twice, last at Tulane	(11/28/12)
Steals		
6	vs. Hofstra	(12/9/12)
Field Goals		
9	twice, vs. Ole Miss	(1/10/13)
Field Goal Attempts		
14	twice, vs. Ole Miss	(1/10/13)
3-Point Field Goals		
5	twice, vs. Ole Miss	(1/10/13)
3-Point FG Attempts		
10	at Missouri	(1/6/13)
Free Throws		
4	vs. UT-Chattanooga	(12/19/12)
Free Throw Attempts		
4	vs. UT-Chattanooga	(12/19/12)

CAREER HIGHS

Points		
27	vs. Ole Miss	(1/13/11)
Rebounds		
10	twice, last vs. UTC	(12/19/12)
Assists		
5	3 times, last vs. Alabama	(1/2/11)
Blocks		
3	four times, last at Tulane	(11/28/12)
Steals		
6	twice, last vs. Hofstra	(12/9/12)
Field Goals		
11	vs. Ole Miss	(1/13/11)
Field Goal Attempts		
17	3 times, last vs. Marist	(12/21/11)
3-Point Field Goals		
5	5 times, last vs. Ole Miss	(1/10/13)
3-Point FG Attempts		
10	twice, last at Missouri	(1/6/13)
Free Throws		
4	4 times, last vs. UTC	(12/19/12)
Free Throw Attempts		
5	vs. Seton Hall	(11/27/10)



Julie KING

#22

Senior • Guard • 5-9

St. Louis, Mo.

Nerinx Hall

NOTES:

- Had best SEC game vs. LSU with 3 points, 3 rebounds, 2 assists and 3 steals
- Scored a career high 6 points against Jacksonville; pulled down a season-high 5 rebounds against Texas A&M-Corpus Christi
- Grabbed a rebound in 4 minutes in her collegiate basketball debut against Maine
- Led Auburn with season-high 6 assists against Alabama A&M
- Joins the women's basketball team for her final year of eligibility after playing on the Auburn soccer team for four years
- Was co-captain of last year's SEC Tournament Champion Auburn soccer team; Named SEC Soccer Co-Defensive Player of the Year in 2011
- Holds the Auburn career record for career matches started and is second in career matches played
- Was an All-State basketball selection at Nerinx Hall in St. Louis, Mo.

Opponent	Start	Min.	FG-A	3PT-A	FT-A	O-D-T	PF	Ast.	TO	Blk.	St.	Pts.
vs. Maine	4	0-0	0-0	0-0	0-0	0-1-1	0	0	1	0	0	0
at North Carolina State	1	0-0	0-0	0-0	0-0	0-0-0	0	0	0	0	0	0
ALABAMA STATE	13	1-2	0-0	0-1	0-2-2	2	6	1	0	2	2	2
ALABAMA A&M	11	0-2	0-0	0-0	0-1-1	0	2	1	2	1	0	0
vs. San Diego State	1	0-0	0-0	0-0	0-0-0	0	0	0	0	0	0	0
vs. Texas A&M-Corpus Christi	20	0-4	0-0	0-1	1-4-5	2	2	0	0	1	0	0
at Tulane	16	1-6	0-2	0-0	2-1-3	4	3	0	0	0	2	2
HOFSTRA	7	0-0	0-0	0-0	0-1-1	0	0	0	0	0	0	0
at George Washington	1	0-0	0-0	0-0	0-0-0	0	0	0	0	0	0	0
TEMPLE	1	0-1	0-0	0-0	0-0-0	0	0	0	0	0	0	0
TENNESSEE-CHATTANOOGA	5	0-0	0-0	0-0	1-0-1	1	1	0	0	0	0	0
JACKSONVILLE	22	3-5	0-1	0-0	0-2-2	2	2	0	0	1	6	6
SAMFORD	11	2-2	0-0	1-1	3-1-4	0	2	2	0	1	5	5
ARKANSAS	9	1-2	0-0	0-0	0-2-2	0	2	0	0	0	2	2
at Missouri	14	0-2	0-1	0-0	1-2-3	0	0	3	0	0	0	0
OLE MISS	8	0-2	0-0	0-0	0-1-1	1	0	1	0	0	0	0
at Texas A&M	13	0-1	0-0	2-2	1-1-2	0	1	0	0	0	2	2
TENNESSEE	7	0-1	0-0	0-0	0-0-0	3	0	0	0	2	0	0
at Kentucky	16	1-2	0-0	1-2	2-1-3	3	2	3	0	2	3	3
at Alabama	11	1-2	0-0	1-1	1-2-3	4	0	1	0	0	3	3
LSU	10	0-2	0-0	3-4	3-0-3	1	2	2	0	3	3	3
at South Carolina	11	1-1	0-0	0-0	1-1-2	0	0	1	0	0	2	2
at Georgia												
FLORIDA												
ALABAMA												
at Tennessee												
MISSOURI												
at Vanderbilt												
MISSISSIPPI STATE												

KING CAREER STATISTICS

Year	GP-GS	FG-FGA	Pct	3FG-FGA	Pct	FT-FTA	Pct	O-D-T (Reb.)	Avg	PF	FO	Ast	TO	Blk	Stl	Pts	Avg
2012-13	22-0	11-37	.297	0-4	.000	8-12	.667	16-23-39	1.8	23	0	25	16	2	13	30	1.4
TOTAL	22-0	11-37	.297	0-4	.000	8-12	.667	16-23-39	1.8	23	0	25	16	2	13	30	1.4

SEASON HIGHS

Points

6 vs. Jacksonville (12/22/12)

Rebounds

5 vs. Texas A&M-CC (11/24/12)

Assists

6 vs. Alabama State (11/15/12)

Blocks

2 vs. Alabama A&M (11/18/12)

Steals

3 vs. LSU (1/31/13)

Field Goals

3 vs. Jacksonville (12/22/12)

Field Goal Attempts

6 at Tulane (11/28/12)

3-Point Field Goals

3-Point FG Attempts

2 at Tulane (11/28/12)

Free Throws

3 vs. LSU (1/31/13)

Free Throw Attempts

4 vs. LSU (1/31/13)



Najat OUARDAD

#3

Senior • Guard • 5-1

Orleans, France

Pensacola State College / Oak Ridge (N.C.) Military Academy / Forsyth (N.C.) Country Day

NOTES:

- Never had a double-digit assists game at Auburn, now has three this season
- Is tied for 17th all-time at Auburn in career assists and is 10th among active SEC players
- Dished out career-high 14 assists against Ole Miss, a mark that ranks T5th all-time at AU and is the most for a Tiger since 1988
- The 14 assists are the most in the SEC this season and are tied for 4th in the nation this season
- Currently leads the SEC and is 13th in the country in assists per game with 6.6 per game; is also 2nd in the SEC and 47th in the country with 2.8 steals per game
- Had a career outing against Samford with then-career highs of 14 points, 11 assists and 9 steals, tallying her first career double-double
- The double-double was the 25th all-time at Auburn with assists and was the first for the Tigers in two years
- Her 11 assists are tied for 19th all-time at AU in single-game assists while the 9 steals are tied for 4th all-time at Auburn
- Led Pensacola State to a third-place finish at the 2011 NJCAA National Basketball Championship, compiling a 36-1 record along the way

Opponent	Start	Min.	FG-A	3PT-A	FT-A	O-D-T	PF	Asst.	TO	Blk.	St.	Pts.
vs. Maine	*	30	4-9	3-6	0-0	2-4-6	0	6	2	0	2	11
at North Carolina State	*	36	4-10	1-3	2-3	0-5-5	1	4	6	0	2	11
ALABAMA STATE	*	20	0-1	0-1	0-1	1-3-4	2	5	3	0	2	0
ALABAMA A&M	*	19	1-3	1-1	1-2	0-0-0	1	4	1	0	5	4
vs. San Diego State	*	29	1-3	0-2	2-2	1-5-6	1	4	4	0	0	4
vs. Texas A&M-Corpus Christi*	26	2-3	0-0	0-0	0-0	0-3-3	2	8	4	0	3	4
at Tulane	*	33	0-2	0-1	2-2	3-3-6	2	7	2	0	1	2
HOFSTRA	*	33	3-5	2-4	0-2	2-1-3	2	8	5	0	3	8
at George Washington	*	34	2-8	1-3	5-8	4-5-9	1	7	4	0	3	10
TEMPLE	*	33	1-3	0-1	0-0	0-3-3	1	8	8	0	5	2
TENNESSEE-CHATTANOOGA*	27	2-5	0-2	0-0	0-0	1-3-4	3	5	5	0	2	4
JACKSONVILLE	*	20	0-0	0-0	0-0	1-1-2	0	9	2	0	2	0
SAMFORD	*	34	5-7	3-4	1-2	1-0-1	1	11	3	0	9	14
ARKANSAS	*	37	2-3	0-0	0-0	1-4-5	3	5	7	0	5	4
at Missouri	*	37	0-4	0-1	2-2	1-3-4	4	10	4	0	4	2
OLE MISS	*	34	0-1	0-1	0-0	1-4-5	2	14	5	0	3	0
at Texas A&M	*	35	2-5	0-2	2-2	0-2-2	4	7	5	0	4	6
TENNESSEE	*	39	4-10	1-4	2-3	2-3-5	5	8	6	0	4	11
at Kentucky	*	24	1-3	0-0	0-0	0-3-3	3	1	8	0	0	2
at Alabama	*	35	1-9	0-3	0-0	3-6-9	1	4	3	0	1	2
LSU	*	33	1-6	0-3	0-0	1-4-5	2	5	6	0	2	2
at South Carolina	*	34	3-7	1-3	0-0	1-2-3	4	5	4	0	0	7
at Georgia												
FLORIDA												
ALABAMA												
at Tennessee												
MISSOURI												
at Vanderbilt												
MISSISSIPPI STATE												

OUARDAD CAREER STATISTICS

Year	GP-GS	FG-FGA	Pct	3FG-FGA	Pct	FT-FTA	Pct	O-D-T (Reb.)	Avg	PF	FO	Asst	TO	Blk	Stl	Pts	Avg
2011-12	30-18	36-110	.327	11-49	.224	11-17	.647	22-41-63	2.1	60	0	81	95	0	52	94	3.1
2012-13	22-22	39-107	.364	13-45	.289	19-29	.655	26-67-93	4.2	45	1	145	97	0	62	110	5.0
TOTAL	52-40	75-217	.346	24-94	.255	30-46	.652	48-108-156	3.0	105	1	226	192	0	114	204	3.9

SEASON HIGHS

Points		
14	vs. Samford	(12/29/12)
Rebounds		
9	twice, last at Alabama	(1/24/13)
Assists		
14	vs. Ole Miss	(1/10/13)
Blocks		

Steals		
9	vs. Samford	(12/29/12)
Field Goals		
5	vs. Samford	(12/29/12)
Field Goal Attempts		
10	twice, last vs. Tennessee	(1/17/13)
3-Point Field Goals		
3	twice, last vs. Samford	(12/29/12)
3-Point FG Attempts		
6	vs. Maine	(11/9/12)
Free Throws		
5	at George Washington	(12/12/12)
Free Throw Attempts		
8	at George Washington	(12/12/12)

CAREER HIGHS

Points		
14	vs. Samford	(12/29/12)
Rebounds		
9	twice, last at Alabama	(1/24/13)
Assists		
14	vs. Ole Miss	(1/10/13)
Blocks		

Steals		
9	vs. Samford	(12/29/12)
Field Goals		
5	vs. Samford	(12/29/12)
Field Goal Attempts		
10	twice, last vs. Tennessee	(1/17/13)
3-Point Field Goals		
3	twice, last vs. Samford	(12/29/12)
3-Point FG Attempts		
6	vs. Maine	(11/9/12)
Free Throws		
9	at George Washington	(12/12/12)
Free Throw Attempts		
8	at George Washington	(12/12/12)



Pascale WEST

#20

Senior • Center • 6-8

LaGrange, Ga.

Troup County Comprehensive High School

NOTES:

- Scored a career-high 6 points against Alabama A&M; tied it against Jacksonville
- Scored 2 points with a rebounds against Maine in the season opener
- Is the tallest player in the SEC
- Her 22 blocks during the 2009-10 season rank her ninth all-time among Auburn freshmen
- Majoring in apparel merchandising and makes many of her own clothes

Opponent	Start	Min.	FG-A	3PT-A	FT-A	O-D-T	PF	Ast.	TO	Blk.	St.	Pts.
vs. Maine	7		1-1	0-0	0-0	0-1-1	0	0	2	0	0	2
at North Carolina State						-- DID NOT PLAY --						
ALABAMA STATE	11		0-2	0-0	0-0	1-0-1	3	0	0	2	2	0
ALABAMA A&M	14		3-5	0-0	0-0	0-1-1	2	0	0	0	0	6
vs. San Diego State	1		0-0	0-0	0-0	0-0-0	0	0	0	0	0	0
vs. Texas A&M-Corpus Christi						-- DID NOT PLAY --						
at Tulane						-- DID NOT PLAY --						
HOFSTRA	2		0-1	0-0	0-0	0-1-1	1	0	0	0	0	0
at George Washington						-- DID NOT PLAY --						
TEMPLE	2		0-0	0-0	0-0	0-0-0	0	0	0	0	0	0
TENNESSEE-CHATTANOOGA						-- DID NOT PLAY --						
JACKSONVILLE	13		3-4	0-0	0-0	0-2-2	3	0	1	1	0	6
SAMFORD	7		1-1	0-0	0-0	0-1-1	1	0	0	0	0	2
ARKANSAS	0+		0-0	0-0	0-0	0-0-0	0	0	0	0	0	0
at Missouri						-- DID NOT DRESS --						
OLE MISS	2		0-0	0-0	0-0	0-0-0	0	0	0	0	0	0
at Texas A&M						-- DID NOT PLAY --						
TENNESSEE						-- DID NOT PLAY --						
at Kentucky	4		0-0	0-0	0-0	0-1-1	0	0	0	0	0	0
at Alabama						-- DID NOT PLAY --						
LSU						-- DID NOT PLAY --						
at South Carolina	7		0-1	0-0	0-0	0-0-0	0	0	0	0	0	0
at Georgia												
FLORIDA												
ALABAMA												
at Tennessee												
MISSOURI												
at Vanderbilt												
MISSISSIPPI STATE												

WEST CAREER STATISTICS

Year	GP-GS	FG-FGA	Pct	3FG-FGA	Pct	FT-FTA	Pct	O-D-T (Reb.)	Avg	PF	FO	Ast	TO	Blk	Stl	Pts	Avg
2009-10	24-0	7-15	.467	0-0	.000	4-11	.364	9-23-32	1.3	31	0	5	14	22	6	18	0.8
2010-11	13-0	5-8	.625	0-0	.000	1-6	.167	1-5-6	0.5	15	0	1	9	3	1	11	0.8
2011-12	18-0	1-8	.125	0-0	.000	2-2	1.000	6-9-15	0.8	17	0	2	4	5	1	4	0.2
2012-13	12-0	8-15	.533	0-0	.000	0-0	.000	1-7-8	0.7	10	0	0	3	3	2	16	1.3
TOTAL	67-0	21-46	.457	0-0	.000	7-19	.368	17-44-61	0.9	73	0	8	30	33	10	49	0.7

SEASON HIGHS

Points

6 twice, last vs. Jacksonville (12/22/12)

Rebounds

2 vs. Jacksonville (12/22/12)

Assists

Blocks

2 vs. Alabama State (11/15/12)

Steals

2 vs. Alabama State (11/15/12)

Field Goals

3 twice, last vs. Jacksonville (12/22/12)

Field Goal Attempts

5 vs. Alabama A&M (11/18/12)

3-Point Field Goals

3-Point FG Attempts

Free Throws

Free Throw Attempts

CAREER HIGHS

Points

6 twice, last vs. Jacksonville (12/22/12)

Rebounds

5 vs. Alabama A&M (11/19/09)

Assists

1 4 times, last vs. USC-Upstate (12/28/10)

Blocks

7 vs. Alabama A&M (11/19/09)

Steals

2 vs. Alabama State (11/15/12)

Field Goals

3 twice, last vs. Jacksonville (12/22/12)

Field Goal Attempts

5 vs. Alabama A&M (11/18/12)

3-Point Field Goals

N/A

3-Point FG Attempts

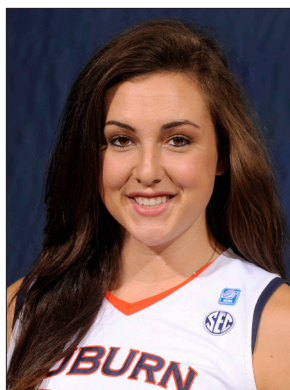
N/A

Free Throws

2 at Mercer (11/11/11)

Free Throw Attempts

4 vs. Florida A&M (11/28/09)



Peyton DAVIS

#34

Junior • Center • 6-5

Pinson, Ala.

Mortimer Jordan High School

NOTES:

- Tallied her second career double-double with 12 points and 11 rebounds at Alabama
- Pulled down 17 rebounds against Arkansas, a mark that ranks 27th all-time at AU in single-game rebounds and most for an AU player since 2010
- Notched her first career double-double against Hofstra with 13 points and 12 rebounds
- Her double-double was the first for Auburn since Blanche Alverson tallied one in the 2011-12 season-opener at Mercer
- Had career outing against Texas A&M-Corpus Christi with 15 points and 6 rebounds, has scored in double figures three times this season
- Earned her first career start, tying her then-career high with 6 points along with 3 rebounds against Maine
- Started in all four games and averaged 6.5 points per game during Auburn's 2012 Australian Summer Tour
- A two-sport star athlete in high school, also fielded several NCAA Division I volleyball offers; also holds a black belt in Taekwondo

Opponent	Start	Min.	FG-A	3PT-A	FT-A	O-D-T	PF	Ast.	TO	Blk.	St.	Pts.
vs. Maine	*	25	3-5	0-0	0-1	2-1-3	2	0	1	0	0	6
at North Carolina State	*	20	2-2	0-0	1-4	3-2-5	5	0	0	0	1	5
ALABAMA STATE	*	21	4-8	0-0	4-6	3-4-7	2	1	1	1	0	12
ALABAMA A&M	*	22	3-6	0-0	3-3	2-4-6	0	1	2	1	3	9
vs. San Diego State	*	24	0-4	0-0	1-2	0-2-2	3	0	2	0	1	1
vs. Texas A&M-Corpus Christi*	33	6-11	0-0	3-5	5-1-6	3	1	3	0	0	0	15
at Tulane	*	23	1-6	0-0	2-5	2-7-9	2	0	2	0	0	4
HOFSTRA	*	29	6-12	0-0	1-4	5-7-12	3	1	3	3	3	13
at George Washington	*	14	1-2	0-0	0-2	0-3-3	1	0	1	2	0	2
TEMPLE	*	24	4-6	0-0	0-1	4-3-7	4	1	5	3	2	8
TENNESSEE-CHATTANOOGA*	19	1-1	0-0	1-6	0-2-2	1	0	2	1	0	0	3
JACKSONVILLE	*	10	4-5	0-0	0-0	1-1-2	1	0	0	0	0	8
SAMFORD	*	18	3-5	0-0	0-1	3-2-5	4	0	1	1	0	6
ARKANSAS	*	31	2-9	0-0	1-3	10-7-17	4	0	3	3	2	5
at Missouri	*	15	0-3	0-0	0-0	0-0-0	1	0	0	0	2	0
OLE MISS	*	14	1-2	0-0	1-4	2-3-5	4	0	1	0	1	3
at Texas A&M	*	18	1-3	0-0	0-2	2-1-3	5	0	1	0	0	2
TENNESSEE	*	23	3-4	0-0	4-4	1-4-5	4	1	2	0	2	10
at Kentucky	*	20	4-4	0-0	3-3	2-3-5	3	1	2	0	0	11
at Alabama	*	30	5-14	0-0	2-6	3-8-11	2	0	2	1	0	12
LSU	*	25	4-8	0-0	0-1	2-4-6	4	0	0	0	3	8
at South Carolina	*	13	1-2	0-0	0-0	0-1-1	4	1	2	0	1	2
at Georgia												
FLORIDA												
ALABAMA												
at Tennessee												
MISSOURI												
at Vanderbilt												
MISSISSIPPI STATE												

DAVIS CAREER STATISTICS

Year	GP-GS	FG-FGA	Pct	3FG-FGA	Pct	FT-FTA	Pct	O-D-T (Reb.)	Avg	PF	FO	Ast	TO	Blk	Stl	Pts	Avg
2010-11	26-0	12-41	.293	0-0	.000	9-15	.600	18-16-34	1.3	38	0	7	13	7	4	33	1.3
2011-12	19-0	3-13	.231	0-0	.000	1-5	.200	10-13-23	1.2	15	0	1	12	4	3	7	0.4
2012-13	22-22	59-122	.484	0-0	.000	27-63	.429	52-70-122	5.5	62	2	8	36	16	21	145	6.6
TOTAL	67-22	74-176	.420	0-0	.000	37-83	.446	80-99-179	2.7	115	2	16	61	27	28	185	2.8

SEASON HIGHS

Points

15 vs. Texas A&M-CC (11/24/12)

Rebounds

17 vs. Arkansas (1/3/13)

Assists

1 6 times, last vs. Tennessee (1/17/13)

Blocks

3 3 times, last vs. Arkansas (1/3/13)

Steals

3 3 times, last vs. LSU (1/31/13)

Field Goals

6 twice, last vs. Hofstra (12/9/12)

Field Goal Attempts

12 vs. Hofstra (12/9/12)

3-Point Field Goals

3-Point FG Attempts

Free Throws

4 twice, last vs. Tennessee (1/17/13)

Free Throw Attempts

6 twice, last vs. UTC (12/19/12)

CAREER HIGHS

Points

15 vs. Texas A&M-CC (11/24/12)

Rebounds

17 vs. Arkansas (1/3/13)

Assists

1 14 times, last vs. Tennessee (1/17/13)

Blocks

3 3 times, last vs. Temple (12/16/12)

Steals

3 twice, last vs. Hofstra (12/9/12)

Field Goals

6 twice, last vs. Hofstra (12/9/12)

Field Goal Attempts

12 vs. Hofstra (12/9/12)

3-Point Field Goals

N/A

3-Point FG Attempts

N/A

Free Throws

4 twice, last vs. Tennessee (1/17/13)

Free Throw Attempts

6 vs. Alabama State (11/15/12)



Tyrese TANNER

#32

Junior • Forward • 6-1

Birmingham, Ala.

Hoover High School

NOTES:

- Set a career-high with 5 assists while tying her career high of 3 steals at George Washington
- Named SEC Player of the Week on Nov. 12, the first such honor of her career
- Named to Sheraton Raleigh Wolfpack Invitational All-Tournament Team and the Omni Hotels Classic All-Tournament Team
- Nearly averaged a double-double in the opening weekend with 20.5 points and 8.5 rebounds per game; set career highs of 26 points and 9 boards
- Led Auburn in scoring last season with 10.6 points per game, becoming the first sophomore to lead the team in scoring since DeWanna Bonner in 2006-07
- Named to the 2012 College Sports Madness Preseason All-SEC Third Team
- Will play alongside her younger sister, Tra'cee Tanner, who is a freshman on the team this season
- The Tanner sisters are the third set of sisters to play together at Auburn, joining Sherell and Reneisha Hobbs, and Ruthie and Mae Ola Bolton

Opponent	Start	Min.	FG-A	3PT-A	FT-A	O-D-T	PF	Ass.	TO	Blk.	St.	Pts.
vs. Maine	*	31	6-14	1-5	2-3	6-3-9	0	3	0	1	1	15
at North Carolina State	*	36	7-20	1-4	11-12	5-3-8	5	2	2	1	3	26
ALABAMA STATE	*	28	6-14	0-1	1-4	3-4-7	1	1	0	2	1	13
ALABAMA A&M	*	15	2-6	0-0	1-1	0-0-0	1	3	1	0	1	5
vs. San Diego State	*	29	6-14	0-1	5-5	0-4-4	3	0	4	0	3	17
vs. Texas A&M-Corpus Christi*	21	4-6	0-1	3-3	0-4-4	2	0	3	3	2	11	
at Tulane	*	18	2-8	0-0	0-0	0-0-0	4	0	5	1	3	4
HOFSTRA	*	33	4-18	0-2	5-6	1-2-3	1	2	1	1	3	13
at George Washington	*	37	4-16	0-1	0-0	2-3-5	3	5	4	3	3	8
TEMPLE	*	34	8-14	0-0	2-2	2-0-2	0	2	0	2	2	18
TENNESSEE-CHATTANOOGA*	31	2-4	0-1	1-2	4-4-8	3	0	4	0	3	5	
JACKSONVILLE	*	23	7-15	0-0	2-3	3-0-3	1	1	1	1	3	16
SAMFORD	*	30	4-9	0-1	3-4	0-2-2	2	0	1	0	2	11
ARKANSAS	*	36	5-16	0-1	5-6	3-3-6	2	1	0	1	1	15
at Missouri	*	31	7-14	0-2	6-7	0-1-1	5	1	0	1	3	20
OLE MISS	*	31	6-9	0-0	2-2	2-1-3	2	0	3	2	1	14
at Texas A&M	*	26	7-14	0-0	1-2	1-2-3	4	1	0	1	1	15
TENNESSEE	*	38	5-14	0-0	0-0	2-3-5	4	1	2	1	1	10
at Kentucky	*	28	1-8	0-0	5-7	0-4-4	3	1	5	0	1	7
at Alabama	*	26	2-8	0-1	3-6	2-1-3	5	0	4	1	2	7
LSU	*	35	7-14	0-0	3-4	1-3-4	5	1	3	1	2	17
at South Carolina	*	36	4-11	0-1	2-2	2-2-4	5	3	0	0	0	10
at Georgia												
FLORIDA												
ALABAMA												
at Tennessee												
MISSOURI												
at Vanderbilt												
MISSISSIPPI STATE												

TANNER CAREER STATISTICS

Year	GP-GS	FG-FGA	Pct	3FG-FGA	Pct	FT-FTA	Pct	O-D-T (Reb.)	Avg	PF	FO	Ass	TO	Blk	Stl	Pts	Avg
2010-11	32-3	53-159	.333	6-37	.162	43-64	.672	48-53-101	3.2	57	1	27	48	24	21	155	4.8
2011-12	30-18	113-278	.406	7-29	.241	84-130	.646	51-64-115	3.8	78	2	33	66	24	36	317	10.6
2012-13	22-22	106-266	.398	2-22	.091	63-81	.778	39-49-88	4.0	61	5	28	43	23	42	277	12.6
TOTAL	84-43	272-703	.387	15-88	.170	190-275	.691	138-166-304	3.6	196	8	88	157	71	99	749	8.9

SEASON HIGHS

Points		
26	vs. North Carolina State	(11/10/12)
Rebounds		
9	vs. Maine	(11/9/12)
Assists		
5	at George Washington	(12/12/12)
Blocks		
3	twice, last at GW	(12/12/12)
Steals		
3	7 times, last at Missouri	(1/6/13)
Field Goals		
7	5 times, last vs. LSU	(1/31/13)
Field Goal Attempts		
20	vs. North Carolina State	(11/10/12)
3-Point Field Goals		
1	vs. Maine	(11/9/12)
3-Point FG Attempts		
5	vs. Maine	(11/9/12)
Free Throws		
11	vs. North Carolina State	(11/10/12)
Free Throw Attempts		
12	vs. North Carolina State	(11/10/12)

CAREER HIGHS

Points		
26	vs. North Carolina State	(11/10/12)
Rebounds		
9	vs. Maine	(11/9/12)
Assists		
5	at George Washington	(12/12/12)
Blocks		
4	vs. Georgia	(1/8/12)
Steals		
3	12 times, last at Missouri	(1/6/13)
Field Goals		
8	vs. Alabama	(2/23/12)
Field Goal Attempts		
20	vs. North Carolina State	(11/10/12)
3-Point Field Goals		
4	vs. Belmont	(11/15/11)
3-Point FG Attempts		
5	3 times, last vs. Maine	(11/9/12)
Free Throws		
11	vs. North Carolina State	(11/10/12)
Free Throw Attempts		
14	at Arkansas	(1/15/12)



Hasina MUHAMMAD

#00

Sophomore • Guard • 6-1

Memphis, Tenn.

Ridgeway High School

NOTES:

- Scored career high 24 points at Missouri on Jan. 6; followed up with a 22-point performance against Ole Miss
- Scored 500th career point vs. Arkansas, becoming the 58th Tiger all-time to score 500 career points
- Had a 23-game double-digit scoring streak to open the season
- Named SEC Player of the Week for the first time in her career on Dec. 17
- Notched her first career double-double at George Washington with 21 points and 10 rebounds; also tallied 9 steals in the win
- Her nine steals at George Washington rank her 4th all-time at Auburn in single-game steals and are the most for an AU player in almost 20 years
- Has scored in double figures in all 21 games this season, scoring 20 or more in six, leading Auburn in scoring 10 times
- Named to Sheraton Raleigh Wolfpack Invitational All-Tournament Team
- Led Auburn in scoring on the 2012 Australian Summer Tour, averaging 23.3 points per game; Scored tour-high 29 points against the WNBL's Sydney Flames

Opponent	Start	Min.	FG-A	3PT-A	FT-A	O-D-T	PF	Ast.	TO	Blk.	St.	Pts.
vs. Maine		25	8-23	3-6	1-2	1-2-3	1	1	1	1	2	20
at North Carolina State		29	4-15	0-3	4-4	1-2-3	4	1	2	0	1	12
ALABAMA STATE	*	22	7-13	0-0	1-2	3-3-6	0	2	1	1	3	15
ALABAMA A&M	*	19	10-14	0-0	1-2	4-3-7	3	2	1	0	1	21
vs. San Diego State	*	28	2-12	0-0	6-10	3-3-6	0	3	2	1	1	10
vs. Texas A&M-Corpus Christi*		19	6-9	1-1	3-4	3-1-4	3	1	5	1	4	16
at Tulane	*	33	8-18	0-0	5-9	7-1-8	3	2	1	2	1	21
HOFSTRA	*	28	5-9	0-0	2-5	3-2-5	3	2	2	1	2	12
at George Washington	*	30	5-15	0-0	5-9	3-7-10	3	1	5	2	9	21
TEMPLE	*	32	7-13	0-1	2-4	2-4-6	1	6	5	3	5	16
TENNESSEE-CHATTANOOGA*		37	9-23	0-1	1-3	1-4-5	1	1	3	1	3	19
JACKSONVILLE	*	26	5-12	0-0	0-0	1-4-5	2	3	1	1	1	10
SAMFORD	*	29	7-12	0-0	5-7	2-3-5	2	4	1	1	4	19
ARKANSAS	*	35	6-19	0-0	1-2	3-4-7	0	4	2	3	3	13
at Missouri	*	38	10-18	0-0	4-5	1-3-4	2	2	2	2	0	24
OLE MISS	*	28	11-18	0-0	0-1	4-4-8	1	2	4	0	2	22
at Texas A&M	*	32	9-24	0-0	0-1	5-3-8	3	2	3	1	1	18
TENNESSEE	*	35	7-17	0-0	1-3	2-5-7	0	0	5	1	2	15
at Kentucky	*	30	6-14	0-0	1-2	0-0-0	2	0	4	1	1	13
at Alabama	*	32	5-10	0-0	3-5	1-3-4	3	0	4	3	3	13
LSU	*	33	4-15	0-1	3-4	3-1-4	1	2	3	1	4	11
at South Carolina	*	26	2-13	0-0	3-4	1-0-1	2	1	4	0	2	7
at Georgia												
FLORIDA												
ALABAMA												
at Tennessee												
MISSOURI												
at Vanderbilt												
MISSISSIPPI STATE												

MUHAMMAD CAREER STATISTICS

Year	GP-GS	FG-FGA	Pct	3FG-FGA	Pct	FT-FTA	Pct	O-D-T (Reb.)	Avg	PF	FO	Ast	TO	Blk	Stl	Pts	Avg
2011-12	30-16	119-308	.386	11-34	.324	37-64	.578	58-54-112	3.7	51	1	38	77	31	40	286	9.5
2012-13	22-20	146-336	.435	4-13	.308	52-88	.591	54-62-116	5.3	40	0	42	61	27	55	348	15.8
TOTAL	52-36	265-644	.411	15-47	.319	89-152	.586	112-116-228	4.4	91	1	80	138	58	95	634	12.2

SEASON HIGHS

Points		
24	at Missouri	(1/6/13)
Rebounds		
10	at George Washington	(12/12/12)
Assists		
6	vs. Temple	(12/16/12)
Blocks		
3	3 times, last at Alabama	(1/24/13)
Steals		
9	at George Washington	(12/12/12)
Field Goals		
11	vs. Ole Miss	(1/10/13)
Field Goal Attempts		
24	at Texas A&M	(1/13/13)
3-Point Field Goals		
3	vs. Maine	(11/9/12)
3-Point FG Attempts		
6	vs. Maine	(11/9/12)
Free Throws		
6	vs. San Diego State	(11/23/12)
Free Throw Attempts		
10	vs. San Diego State	(11/23/12)

CAREER HIGHS

Points		
24	at Missouri	(1/6/13)
Rebounds		
10	at George Washington	(12/12/12)
Assists		
6	vs. Temple	(12/16/12)
Blocks		
4	vs. Florida	(3/1/12)
Steals		
9	at George Washington	(12/12/12)
Field Goals		
11	vs. Ole Miss	(1/10/13)
Field Goal Attempts		
24	at Texas A&M	(1/13/13)
3-Point Field Goals		
3	twice, last vs. Maine	(11/9/12)
3-Point FG Attempts		
6	vs. Maine	(11/9/12)
Free Throws		
9	vs. Georgia	(1/8/12)
Free Throw Attempts		
11	vs. Georgia	(1/8/12)



Courtney STRAIN

#11

Redshirt Sophomore • Guard • 5-9

Woodland, Ala.

Woodland High School

NOTES:

- Tied her career high with 4 rebounds against Temple
- Had a career night against TAMU-CC, setting career highs of 14 points and 2 steals
- Scored in double figures for the first time this season against Alabama A&M with 12 points
- Made her first start in almost two years against Maine, scoring 2 points with a steal
- Missed most of last season with an injury, playing in just seven games
- Broke the Alabama state scoring record as a junior in high school, finished her career with 5,283 points - more than 1,000 than her nearest competitor
- Was also a varsity cheerleader for six years, serving as captain as a senior, graduated as salutatorian of her senior class

Opponent	Start	Min.	FG-A	3PT-A	FT-A	O-D-T	PF	Ast.	TO	Blk.	St.	Pts.
vs. Maine	*	13	1-6	0-3	0-0	0-0-0	1	0	1	0	1	2
at North Carolina State	*	15	0-3	0-0	0-0	0-0-0	3	0	1	0	0	0
ALABAMA STATE		15	1-6	0-3	2-2	1-2-3	0	2	1	0	1	4
ALABAMA A&M		20	5-8	1-1	1-2	1-1-2	0	1	1	0	1	12
vs. San Diego State		16	2-3	1-1	0-0	0-0-0	2	0	1	0	0	5
vs. Texas A&M-Corpus Christi		25	7-8	0-1	0-0	0-1-1	0	0	1	0	2	14
at Tulane		10	1-2	0-1	0-0	1-0-1	0	0	0	0	0	2
HOFSTRA		11	2-6	0-1	0-0	0-0-0	1	1	0	0	0	4
at George Washington		15	1-3	0-1	1-2	0-0-0	2	0	0	0	0	3
TEMPLE		16	2-6	0-1	0-0	1-3-4	1	1	1	0	0	4
TENNESSEE-CHATTANOOGA		7	1-2	0-0	0-0	0-1-1	0	0	0	0	0	2
JACKSONVILLE						-- DID NOT DRESS --						
SAMFORD		10	1-3	0-2	0-0	0-0-0	0	1	1	0	2	2
ARKANSAS		1	0-0	0-0	0-0	0-0-0	0	0	0	0	0	0
at Missouri		3	0-0	0-0	0-0	0-2-2	0	1	0	0	0	0
OLE MISS		11	0-3	0-2	0-0	0-0-0	1	0	3	0	1	0
at Texas A&M						-- DID NOT DRESS --						
TENNESSEE						-- DID NOT DRESS --						
at Kentucky						-- DID NOT DRESS --						
at Alabama						-- DID NOT DRESS --						
LSU						-- DID NOT DRESS --						
at South Carolina						-- DID NOT DRESS --						
at Georgia						-- DID NOT DRESS --						
FLORIDA												
ALABAMA												
at Tennessee												
MISSOURI												
at Vanderbilt												
MISSISSIPPI STATE												

STRAIN CAREER STATISTICS

Year	GP-GS	FG-FGA	Pct	3FG-FGA	Pct	FT-FTA	Pct	O-D-T (Reb.)	Avg	PF	FO	Ast	TO	Blk	Stl	Pts	Avg
2010-11	24-1	24-76	.316	5-19	.263	8-15	.533	6-14-20	0.8	13	0	7	16	0	7	61	2.5
2011-12	7-0	4-23	.174	0-2	.000	4-4	1.000	3-0-3	0.4	3	0	2	6	0	0	12	1.7
2012-13	15-2	24-59	.407	2-17	.118	4-6	.667	4-10-14	0.9	11	0	7	11	0	8	54	3.6
TOTAL	46-3	52-158	.329	7-38	.184	16-25	.640	13-24-37	0.8	27	0	16	33	0	15	127	2.8

SEASON HIGHS

Points

14 vs. Texas A&M-CC (11/24/12)

Rebounds

4 vs. Temple (12/16/12)

Assists

2 vs. Alabama State (11/15/12)

Blocks

Steals

2 twice, last vs. Samford (12/29/12)

Field Goals

7 vs. Texas A&M-CC (11/24/12)

Field Goal Attempts

8 twice, last vs. TAMU-CC (11/24/12)

3-Point Field Goals

1 twice, last vs. SDSU (11/23/12)

3-Point FG Attempts

3 twice, last vs. Ala. State (11/15/12)

Free Throws

2 vs. Alabama State (11/15/12)

Free Throw Attempts

2 twice, last at GW (12/12/12)

CAREER HIGHS

Points

14 vs. Texas A&M-CC (11/24/12)

Rebounds

4 twice, last vs. Temple (12/16/12)

Assists

2 vs. Alabama State (11/15/12)

Blocks

N/A

Steals

2 twice, last vs. Samford (12/29/12)

Field Goals

7 vs. Texas A&M-CC (11/24/12)

Field Goal Attempts

9 at Florida International (12/30/11)

3-Point Field Goals

1 7 times, last vs. SDSU (11/23/12)

3-Point FG Attempts

3 4 times, last vs. Ala. State (11/15/12)

Free Throws

3 vs. Sacred Heart (11/26/10)

Free Throw Attempts

6 vs. Sacred Heart (11/26/10)



Cabriana CAPERS

#35

Freshman • Forward • 6-1

Bolingbrook, Ill.

Bolingbrook

NOTES:

- Scored season-high 8 points with 6 rebounds in 25 minutes at #5 Kentucky, leading Auburn on the boards for the second time this season
- Made her collegiate debut against Maine, pulling down 2 rebounds in 5 minutes
- Led Auburn with a season-high 9 rebounds against Alabama A&M; also scored her first collegiate points against the Bulldogs
- Played in all four games on the Australian Summer Tour, averaging 2.8 points per game
- Rated as a 3-star prospect by ESPN's HoopGurlz, ranked as the No. 35 post in the country
- Helped Bolingbrook High School to a 26-2 record and a No. 8 national ranking in the USA Today Super 25 last season
- Was one of 8 women's basketball players in her senior class to sign NCAA Division I Letters of Intent

Opponent	Start	Min.	FG-A	3PT-A	FT-A	O-D-T	PF	Ast.	TO	Blk.	St.	Pts.
vs. Maine	5	0-0	0-0	0-0	0-0	1-1-2	1	0	1	0	0	0
at North Carolina State	3	0-0	0-0	0-0	0-0	0-0-0	0	0	1	0	0	0
ALABAMA STATE	14	0-2	0-0	0-0	0-0	1-3-4	0	0	1	0	0	0
ALABAMA A&M	11	2-3	0-0	0-0	0-0	4-5-9	0	1	0	0	0	4
vs. San Diego State	1	0-0	0-0	0-0	0-2	0-0-0	0	0	0	0	0	0
vs. Texas A&M-Corpus Christi	13	2-2	0-0	0-0	0-0	2-5-7	2	0	2	0	0	4
at Tulane	3	0-1	0-0	0-0	0-0	1-0-1	0	1	0	0	0	0
HOFSTRA	3	0-0	0-0	0-0	0-0	0-0-0	0	0	0	0	0	0
at George Washington	9	1-2	0-0	0-0	1-2	4-2-6	0	0	0	0	0	3
TEMPLE	3	0-0	0-0	0-0	0-0	0-0-0	0	0	0	0	0	0
TENNESSEE-CHATTANOOGA						-- DID NOT PLAY --						
JACKSONVILLE	10	0-1	0-0	0-0	0-0	1-3-4	0	2	0	0	0	0
SAMFORD	9	2-2	0-0	0-0	0-0	0-0-0	1	1	0	0	0	4
ARKANSAS	1	0-0	0-0	0-0	0-0	0-1-1	0	0	0	0	0	0
at Missouri						-- DID NOT PLAY --						
OLE MISS	6	1-1	0-0	0-0	0-0	0-0-0	1	0	0	0	0	2
at Texas A&M	12	0-0	0-0	0-0	0-0	1-0-1	0	2	2	0	0	0
TENNESSEE	4	0-0	0-0	0-0	0-0	0-1-1	0	0	0	0	0	0
at Kentucky	25	2-3	0-0	0-0	4-4	1-5-6	1	0	0	0	0	8
at Alabama	13	1-2	0-0	0-0	0-0	1-4-5	2	0	1	0	0	2
LSU	1	0-0	0-0	0-0	0-0	1-0-01	0	0	0	0	0	0
at South Carolina	14	2-4	0-0	0-0	0-0	4-3-7	3	1	0	0	0	4
at Georgia												
FLORIDA												
ALABAMA												
at Tennessee												
MISSOURI												
at Vanderbilt												
MISSISSIPPI STATE												

CAPERS CAREER STATISTICS

Year	GP-GS	FG-FGA	Pct	3FG-FGA	Pct	FT-FTA	Pct	O-D-T (Reb.)	Avg	PF	FO	Ast	TO	Blk	Stl	Pts	Avg
2012-13	20-0	13-23	.565	0-0	.000	5-8	.625	22-33-55	2.8	11	0	8	8	0	0	31	1.6
TOTAL	20-0	13-23	.565	0-0	.000	5-8	.625	22-33-55	2.8	11	0	8	8	0	0	31	1.6

SEASON HIGHS

Points

8 at Kentucky (1/20/13)

Rebounds

9 vs. Alabama A&M (11/18/12)

Assists

2 twice, vs. Texas A&M (1/13/13)

Blocks

Steals

Field Goals

2 5 times, last at South Carolina (2/3/13)

Field Goal Attempts

4 at South Carolina (2/3/13)

3-Point Field Goals

3-Point FG Attempts

Free Throws

4 at Kentucky (1/20/13)

Free Throw Attempts

4 at Kentucky (1/20/13)



Chadarryl CLAY

#21

Freshman • Guard • 5-7

Chattanooga, Tenn.

Girls Preparatory School

NOTES:

- Made her SEC debut against Arkansas on Jan. 3; notched best SEC game with 7 points, 3 rebounds and 2 steals at South Carolina
- Dished out season-high 6 assists against Jacksonville
- Scored a career-high 15 points in home opener against Alabama State
- Made her collegiate debut against Maine, dishing out one assist in two minutes
- Started all four games on the Australian Summer Tour, averaging 10.5 points per game
- Scored a tour-high 20 points against the Cairns Dolphins in Australia
- Rated as the No. 77 overall player and No. 12 guard in the country by ESPN's HoopGurlz
- Led Chattanooga's Girls Preparatory School to back-to-back state championships and had her No. 5 jersey retired at her high school

Opponent	Start	Min.	FG-A	3PT-A	FT-A	O-D-T	PF	Ast.	TO	Blk.	St.	Pts.
vs. Maine	2		0-1	0-1	0-0	0-0-0	0	1	0	0	0	0
at North Carolina State						-- DID NOT PLAY --						
ALABAMA STATE	12		5-8	2-5	3-3	0-1-1	2	2	2	0	1	15
ALABAMA A&M	14		2-2	1-1	2-2	1-1-2	0	5	2	0	0	7
vs. San Diego State	5		0-0	0-0	0-0	1-0-1	1	0	0	0	0	0
vs. Texas A&M-Corpus Christi	5		0-1	0-1	0-2	0-0-0	0	0	3	0	0	0
at Tulane	2		0-2	0-1	0-0	1-0-1	1	0	1	0	0	0
HOFSTRA	6		1-3	1-3	0-0	1-1-2	0	1	3	0	0	3
at George Washington	4		0-0	0-0	0-0	0-0-0	0	0	0	0	0	0
TEMPLE	4		1-1	1-1	0-0	0-2-2	2	1	1	0	0	3
TENNESSEE-CHATTANOOGA	14		0-3	0-1	0-0	0-0-0	1	4	2	0	2	0
JACKSONVILLE	25		1-9	0-4	0-0	1-2-3	0	6	1	1	1	2
SAMFORD	9		0-2	0-0	0-0	1-0-1	1	1	0	0	1	0
ARKANSAS	3		0-1	0-0	0-0	0-0-0	0	0	1	1	0	0
at Missouri	3		0-1	0-1	0-0	0-1-1	1	1	1	0	0	0
OLE MISS	7		1-4	0-0	0-0	0-0-0	1	3	0	0	1	2
at Texas A&M	6		1-2	0-0	0-0	0-1-1	1	0	1	0	0	2
TENNESSEE						-- DID NOT PLAY --						
at Kentucky	10		0-2	0-0	0-0	0-1-1	2	3	2	0	0	0
at Alabama	5		1-2	0-0	0-0	2-0-2	0	0	1	0	0	2
LSU	8		0-1	0-1	0-0	1-0-1	0	1	2	0	1	0
at South Carolina	17		3-6	1-1	0-2	2-1-3	0	1	2	0	2	7
at Georgia												
FLORIDA												
ALABAMA												
at Tennessee												
MISSOURI												
at Vanderbilt												
MISSISSIPPI STATE												

CLAY CAREER STATISTICS

Year	GP-GS	FG-FGA	Pct	3FG-FGA	Pct	FT-FTA	Pct	O-D-T (Reb.)	Avg	PF	FO	Ast	TO	Blk	Stl	Pts	Avg
2012-13	20-0	16-51	.314	6-21	.286	5-9	.556	11-11-22	1.1	13	0	30	25	2	9	43	2.2
TOTAL	20-0	16-51	.314	6-21	.286	5-9	.556	11-11-22	1.1	13	0	30	25	2	9	43	2.2

SEASON HIGHS

Points

15 vs. Alabama State (11/15/12)

Rebounds

3 twice, last at South Carolina (2/3/13)

Assists

6 vs. Jacksonville (12/22/12)

Blocks

1 twice, last vs. Arkansas (1/3/13)

Steals

2 twice, last at South Carolina (2/3/13)

Field Goals

5 vs. Alabama State (11/15/12)

Field Goal Attempts

9 vs. Jacksonville (12/22/12)

3-Point Field Goals

2 vs. Alabama State (11/15/12)

3-Point FG Attempts

5 vs. Alabama State (11/15/12)

Free Throws

3 vs. Alabama State (11/15/12)

Free Throw Attempts

3 vs. Alabama State (11/15/12)



Cedricka SWEETING

#4

Freshman • Guard • 5-3

Nassau, Bahamas

South Broward (Fla.)

NOTES:

- Made her SEC debut against Ole Miss on Jan. 10
- Made her collegiate debut against Maine, scoring 3 points in 10 minutes
- Scored season-high 6 points with 4 assists against Alabama A&M
- A native of the Bahamas, she played high school basketball in the Miami area
- Was a Sun-Sentinel Fab five honoree as a senior
- Averaged 17 points, 10 assists, 5 steals and 6 rebounds per game as a senior
- Played for the Bahamas in the 2008 Junior Olympics

Opponent	Start	Min.	FG-A	3PT-A	FT-A	O-D-T	PF	Asst.	TO	Blk.	St.	Pts.
vs. Maine	10		1-1	0-0	1-1	0-0-0	0	1	0	0	0	3
at North Carolina State	8		1-1	0-0	0-0	0-0-0	0	0	0	0	0	2
ALABAMA STATE	13		1-4	0-2	0-0	1-2-3	1	3	1	0	1	2
ALABAMA A&M	13		3-4	0-1	0-0	0-2-2	0	4	1	0	1	6
vs. San Diego State	7		0-0	0-0	0-0	0-0-0	0	0	0	0	0	0
vs. Texas A&M-Corpus Christi	3		0-0	0-0	0-0	0-0-0	0	2	1	0	0	0
at Tulane	2		0-0	0-0	0-0	0-0-0	0	0	0	0	0	0
HOFSTRA						-- DID NOT PLAY --						
at George Washington	2		0-0	0-0	0-0	0-0-0	0	0	1	0	0	0
TEMPLE						-- DID NOT PLAY --						
TENNESSEE-CHATTANOOGA						-- DID NOT PLAY --						
JACKSONVILLE	4		0-0	0-0	0-0	0-0-0	0	1	1	0	0	0
SAMFORD	2		0-1	0-1	0-0	0-0-0	0	0	0	0	0	0
ARKANSAS						-- DID NOT PLAY --						
at Missouri						-- DID NOT PLAY --						
OLE MISS	2		0-0	0-0	0-0	0-0-0	0	0	0	0	0	0
at Texas A&M	1		0-0	0-0	0-0	0-0-0	0	0	0	0	0	0
TENNESSEE						-- DID NOT PLAY --						
at Kentucky	4		0-1	0-0	0-0	0-0-0	0	0	1	0	0	0
at Alabama	2		0-0	0-0	0-0	0-1-1	0	0	1	0	0	0
LSU						-- DID NOT PLAY --						
at South Carolina						-- DID NOT PLAY --						
at Georgia						-- DID NOT PLAY --						
FLORIDA												
ALABAMA												
at Tennessee												
MISSOURI												
at Vanderbilt												
MISSISSIPPI STATE												

SEASON HIGHS

Points

6 vs. Alabama A&M (11/18/12)

Rebounds

3 vs. Alabama State (11/15/12)

Assists

4 vs. Alabama A&M (11/18/12)

Blocks

Steals

1 twice, last vs. Alab. A&M (11/18/12)

Field Goals

3 vs. Alabama A&M (11/18/12)

Field Goal Attempts

4 twice, last vs. Ala. A&M (11/18/12)

3-Point Field Goals

3-Point FG Attempts

2 vs. Alabama State (11/15/12)

Free Throws

1 vs. Maine (11/9/12)

Free Throw Attempts

1 vs. Maine (11/9/12)

SWEETING CAREER STATISTICS

Year	GP-GS	FG-FGA	Pct	3FG-FGA	Pct	FT-FTA	Pct	O-D-T (Reb.)	Avg	PF	FO	Asst	TO	Blk	Stl	Pts	Avg
2012-13	14-0	6-12	.500	1-5	.200	0-0	.000	1-5-6	0.4	1	0	11	7	0	2	13	0.9
TOTAL	14-0	6-12	.500	1-5	.200	0-0	.000	1-5-6	0.4	1	0	11	7	0	2	13	0.9



Tra'cee TANNER

#44

Freshman • Forward/Center • 6-3

Birmingham, Ala.

Hoover

NOTES:

- Has scored in double figures in seven games, more than 20 in one
- Scored 8 points with 2 rebounds in her SEC debut against #23 Arkansas
- Notched first career double-double with career highs of 21 points and 12 rebounds against Jacksonville
- Her double-double was the first for an Auburn freshman since DeWanna Bonner on March 2, 2006
- Played in all four games on the Australian Summer Tour, averaging 9.0 points per game; scored tour-high 16 points in the final game against Sutherland
- Rated as a 3-star prospect by ESPN's HoopGurlz and was ranked as the 68th best forward in the country
- Will play alongside her older sister, Tyrese Tanner, who is a junior on the team this season
- The Tanner sisters are the third set of sisters to play together at Auburn, joining Sherell and Reneisha Hobbs, and Ruthie and Mae Ola Bolton

Opponent	Start	Min.	FG-A	3PT-A	FT-A	O-D-T	PF	Ast.	TO	Blk.	St.	Pts.
vs. Maine	16	2-3	0-0	0-0	2-1-3	3	0	0	1	0	4	
at North Carolina State	17	1-3	0-0	1-2	0-0-2	1	1	0	0	0	3	
ALABAMA STATE	8	0-2	0-0	0-0	1-1-2	1	0	2	0	1	0	
ALABAMA A&M	17	2-4	0-0	1-1	1-2-3	2	1	0	0	1	5	
vs. San Diego State	21	4-10	0-0	5-6	5-3-8	4	0	0	0	1	13	
vs. Texas A&M-Corpus Christi	15	3-6	0-0	0-0	0-1-1	1	1	2	2	1	6	
at Tulane	23	5-7	0-0	4-5	3-3-6	3	1	0	1	1	14	
HOFSTRA	13	2-3	0-0	0-0	0-2-2	2	1	0	1	1	4	
at George Washington	23	4-7	0-0	0-0	0-3-3	3	0	2	2	0	8	
TEMPLE	20	5-8	0-0	0-0	0-3-3	0	0	1	0	1	10	
TENNESSEE-CHATTANOOGA	22	3-5	0-0	3-4	3-4-7	2	1	1	0	0	9	
JACKSONVILLE	19	10-12	0-0	1-4	7-5-12	3	1	0	1	1	21	
SAMFORD	15	0-4	0-0	2-2	1-0-1	0	1	0	0	2	2	
ARKANSAS	10	4-5	0-0	0-0	1-1-2	4	0	3	1	0	8	
at Missouri	22	5-6	0-0	3-4	3-1-4	1	0	3	1	2	13	
OLE MISS	25	5-8	0-0	0-0	3-3-6	2	1	0	3	1	10	
at Texas A&M	26	2-6	0-0	0-0	0-3-3	3	2	3	0	4	4	
TENNESSEE	19	2-3	0-0	1-2	2-2-4	3	1	2	1	1	5	
at Kentucky	10	1-3	0-0	0-0	0-3-3	1	0	0	0	0	2	
at Alabama	15	1-2	0-0	2-2	0-0-0	3	0	1	1	0	4	
LSU	17	3-4	0-0	1-3	0-1-1	4	1	1	0	0	7	
at South Carolina	20	5-7	0-0	0-0	3-1-4	4	1	1	0	1	10	
at Georgia												
FLORIDA												
ALABAMA												
at Tennessee												
MISSOURI												
at Vanderbilt												
MISSISSIPPI STATE												

TANNER CAREER STATISTICS

Year	GP-GS	FG-FGA	Pct	3FG-FGA	Pct	FT-FTA	Pct	O-D-T (Reb.)	Avg	PF	FO	Ast	TO	Blk	Stl	Pts	Avg
2012-13	22-0	69-118	.585	0-0	.000	24-35	.686	35-45-80	3.6	50	0	14	22	15	19	162	7.4
TOTAL	22-0	69-118	.585	0-0	.000	24-35	.686	35-45-80	3.6	50	0	14	22	15	19	162	7.4

SEASON HIGHS

Points

21 vs. Jacksonville (12/22/12)

Rebounds

12 vs. Jacksonville (12/22/12)

Assists

2 at Texas A&M (1/13/13)

Blocks

3 vs. Ole Miss (1/10/13)

Steals

4 at Texas A&M (1/13/13)

Field Goals

10 vs. Jacksonville (12/22/12)

Field Goal Attempts

12 vs. Jacksonville (12/22/12)

3-Point Field Goals

3-Point FG Attempts

Free Throws

5 vs. San Diego State (11/23/12)

Free Throw Attempts

6 vs. San Diego State (11/23/12)

Game 22: Feb. 3, 2013
Auburn 51, #15/13 South Carolina 59
Colonial Life Arena
Columbia, S.C.

Official Basketball Box Score -- Game Totals -- Final Statistics

Auburn vs South Carolina

02-03-13 3 p.m. ET at Columbia, S.C./Colonial Life Arena

VISITORS: Auburn (13-9, 2-7 SEC)

#	Player	rebounds										s	min
		fg-fga	3fg-3fga	ft-fra	of	de	tot	pf	tp	a	to	blk	
14	Alverson, Blanche*	1-4	0-3	0-1	0	5	5	1	2	0	0	0	22
32	Tanner, Tyrese*	4-11	0-1	2-2	2	2	4	5	10	3	0	0	36
34	Davis, Peyton*	1-2	0-0	0-0	0	1	1	4	2	1	2	0	13
03	Ouadad, Najat*	3-7	1-3	0-0	1	2	3	4	7	5	4	0	34
12	Muhammad, Hasina*	2-13	0-0	3-4	1	0	1	2	7	1	4	0	26
20	West, Pascale	0-1	0-0	0-0	0	0	0	0	0	0	0	0	7
21	Clay, Chadarryl	3-6	1-1	0-2	2	1	3	0	7	1	2	0	17
22	King, Julie	1-1	0-0	0-0	1	1	2	0	2	0	1	0	11
35	Capers, Cabriana	2-4	0-0	0-0	4	3	7	3	4	1	0	0	14
44	Tanner, Tra'cee	5-7	0-0	0-0	3	1	4	4	10	1	1	0	20
TEAM					4	1	5				2		
Totals.....		22-56	2-8	5-9	18	17	35	23	51	13	16	0	200

HOME: South Carolina (19-3, 7-2 SEC)

#	Player	rebounds										s	min
		fg-fga	3fg-3fga	ft-fra	of	de	tot	pf	tp	a	to	blk	
21	BRUNER, Ashley*	3-5	0-0	0-2	2	1	3	3	6	1	2	1	29
24	WELCH, Aleighsa*	2-4	0-0	6-8	1	2	3	2	10	1	1	1	37
02	WALKER, Ieasia*	2-7	2-7	2-4	1	3	4	2	8	5	3	1	34
20	WHITE, Sancheon*	1-3	1-2	0-0	1	1	2	1	3	1	2	0	22
25	MITCHELL, Tiffany*	3-9	1-2	3-5	0	4	4	2	10	0	2	0	34
05	SESSIONS, Khadijah	5-9	1-3	8-9	2	1	3	1	19	3	2	0	25
12	MONTOUT, Wilka	1-2	1-2	0-0	1	1	2	0	3	0	0	0	5
31	DOZIER, Asia	0-2	0-1	0-0	0	1	1	1	0	0	0	0	4
33	IBIAM, Elem	0-0	0-0	0-0	0	3	3	2	0	0	0	0	10
TEAM					2	1	3				1		
Totals.....		17-41	6-17	19-28	10	18	28	14	59	11	13	3	200

Officials: Felicia Grinter (R), Bonita Spence (U1), Charlie Hust (U2)

Technical fouls: Auburn-None. South Carolina-None.

Attendance: 3797

Score by Periods	1st	2nd	Total
Auburn	22	29	51
South Carolina	28	31	59

AP Rank: No. 15 South Carolina

COLUMBIA, S.C. - The Auburn women's basketball team stayed neck and neck with No. 15/13 South Carolina the majority of the game, but was never able to overcome the Gamecocks, as Auburn fell, 59-51, Feb. 3 in Columbia, S.C. Auburn got within two points late in the game, but South Carolina got 13 of its final 17 points from the free throw line to pull away.

Auburn's Tanner sisters led the Tigers in scoring, as Tyrese and Tra'cee each tallied 10 points apiece. In addition to freshman Tra'cee Tanner's effort off the bench, freshman Chadarryl Clay added seven points and three rebounds in 17 minutes off the bench while Cabriana Capers led the Tigers in rebounding with seven.

South Carolina led by as many as eight points in the second half, but the Tigers fought back and cut the lead to two, 49-47, with 2:40 to go after a basket from Tra'cee Tanner.

That is as close as Auburn would get, though, as an 8-2 South Carolina run over the next two minutes put the lead out of reach for the 59-51 win.

South Carolina finished with three players in double figures, as Khadijah Sessions led with 19 points and Aleighsa Welch and Tiffany Mitchell each added 10. Ieasia Walker also added eight points, five assists and four steals in the effort.

2012-13 Road Statistics

RECORD:	OVERALL	HOME	AWAY	NEUTRAL
ALL GAMES	2-6	0-0	2-6	0-0
CONFERENCE	0-5	0-0	0-5	0-0
NON-CONFERENCE	2-1	0-0	2-1	0-0

#	Player	gp-gs	min	avg	Total		3-Point		F-Throw		Rebounds										pts	avg
					fg-fga	fg%	3fg-fga	3fg%	ft-fa	ft%	off	def	tot	avg	pf	dq	a	to	blk	stl		
00	Muhammad, Hasina	8-7	250	31.3	52-127	.409	0-3	.000	25-39	.641	19	19	38	4.8	22	0	9	25	11	18	129	16.1
32	Tanner, Tyrese	8-8	238	29.8	34-99	.343	1-9	.111	28-36	.778	12	16	28	3.5	34	4	13	20	8	16	97	12.1
14	Alverson, Blanche	8-8	253	31.6	33-87	.379	15-49	.306	5-8	.625	5	40	45	5.6	12	0	10	7	7	9	86	10.8
44	Tanner, Tra'cee	8-0	156	19.5	24-41	.585	0-0	.000	10-13	.769	9	16	25	3.1	19	0	5	10	5	8	58	7.3
03	Ouardad, Najat	8-8	268	33.5	13-48	.271	3-16	.188	13-17	.765	12	29	41	5.1	20	0	45	36	0	15	42	5.3
34	Davis, Peyton	8-8	153	19.1	15-36	.417	0-0	.000	8-22	.364	12	25	37	4.6	23	2	2	10	3	4	38	4.8
35	Capers, Cabriana	7-0	79	11.3	6-12	.500	0-0	.000	5-6	.833	12	14	26	3.7	6	0	4	4	0	0	17	2.4
21	Clay, Chadarryl	7-0	47	6.7	5-15	.333	1-3	.333	0-2	.000	5	4	9	1.3	5	0	5	8	0	2	11	1.6
22	King, Julie	8-0	83	10.4	4-14	.286	0-3	.000	4-5	.800	8	8	16	2.0	11	0	6	8	0	2	12	1.5
11	Strain, Courtney	4-1	43	10.8	2-8	.250	0-2	.000	1-2	.500	1	2	3	0.8	5	0	1	1	0	0	5	1.3
04	Sweeting, Cedricka	6-0	19	3.2	1-2	.500	0-0	.000	0-0	.000	0	1	1	0.2	0	0	0	3	0	0	2	0.3
20	West, Pascale	2-0	11	5.5	0-1	.000	0-0	.000	0-0	.000	0	1	1	0.5	0	0	0	0	0	0	0	0.0
Team											23	11	34				6					
Total.....		8	1600		189-490	.386	20-85	.235	99-150	.660	118	186	304	38.0	157	6	100	138	34	74	497	62.1
Opponents.....		8	1600		199-473	.421	74-177	.418	114-173	.659	121	207	328	41.0	131	1	139	147	28	72	586	73.2

TEAM STATISTICS	AU	OPP
SCORING	497	586
Points per game	62.1	73.2
Scoring margin	-11.1	-
FIELD GOALS-ATT	189-490	199-473
Field goal pct	.386	.421
3 POINT FG-ATT	20-85	74-177
3-point FG pct	.235	.418
3-pt FG made per game	2.5	9.3
FREE THROWS-ATT	99-150	114-173
Free throw pct	.660	.659
F-Throws made per game	12.4	14.3
REBOUNDS	304	328
Rebounds per game	38.0	41.0
Rebounding margin	-3.0	-
ASSISTS	100	139
Assists per game	12.5	17.4
TURNOVERS	138	147
Turnovers per game	17.3	18.4
Turnover margin	+1.1	-
Assist/turnover ratio	0.7	0.9
STEALS	74	72
Steals per game	9.3	9.0
BLOCKS	34	28
Blocks per game	4.3	3.5
ATTENDANCE	0	21492
Home games-Avg/Game	0-0	8-2686
Neutral site-Avg/Game	-	0-0

Date	Opponent	Score	Att.
+ 11-10-12	at NC State	L 71-85	1586
11-28-12	at Tulane	W 70-65	1236
12-12-12	at George Washington	W 69-59	405
* 01-06-13	at Missouri	L 76-82	2126
* 01-13-13	at Texas A&M	L 56-78	5836
* 01-20-13	at Kentucky	L 53-97	5372
* 01-24-13	at Alabama	L 51-61	1134
* 02-03-13	at South Carolina	L 51-59	3797

+ - Sheraton Raleigh Wolfpack Invitational (Raleigh, N.C.)
 & - Omni Hotels Classic (Boulder, Colo.)
 * - Southeastern Conference game

Score by Periods	1st	2nd	Totals
Auburn	210	287	497
Opponents	290	296	586

2012-13 SEC Statistics

RECORD:	OVERALL	HOME	AWAY	NEUTRAL
ALL GAMES	2-7	2-2	0-5	0-0
CONFERENCE	2-7	2-2	0-5	0-0
NON-CONFERENCE	0-0	0-0	0-0	0-0

#	Player	gp-gs	min	avg	Total		3-Point		F-Throw		Rebounds				pf	dq	a	to	blk	stl	pts	avg
					fg-fga	fg%	3fg-fga	3fg%	ft-fa	ft%	off	def	tot	avg								
00	Muhammad, Hasina	9-9	289	32.1	60-148	.405	0-1	.000	16-27	.593	20	23	43	4.8	14	0	13	31	12	18	136	15.1
32	Tanner, Tyrese	9-9	287	31.9	44-108	.407	0-5	.000	27-36	.750	13	20	33	3.7	35	4	9	17	8	12	115	12.8
14	Alverson, Blanche	9-9	292	32.4	32-90	.356	16-50	.320	7-9	.778	9	39	48	5.3	15	0	15	11	3	9	87	9.7
44	Tanner, Tra'cee	9-0	164	18.2	28-44	.636	0-0	.000	7-11	.636	12	15	27	3.0	25	0	6	14	7	9	63	7.0
34	Davis, Peyton	9-9	189	21.0	21-49	.429	0-0	.000	11-23	.478	22	31	53	5.9	31	1	3	13	4	11	53	5.9
03	Ouardad, Najat	9-9	308	34.2	14-48	.292	2-17	.118	6-7	.857	10	31	41	4.6	28	1	59	48	0	23	36	4.0
35	Capers, Cabriana	8-0	76	9.5	6-10	.600	0-0	.000	4-4	1.000	8	14	22	2.8	7	0	3	3	0	0	16	2.0
22	King, Julie	9-0	99	11.0	4-15	.267	0-1	.000	7-9	.778	9	10	19	2.1	12	0	7	11	0	7	15	1.7
21	Clay, Chadarryl	8-0	59	7.4	6-19	.316	1-3	.333	0-2	.000	5	4	9	1.1	5	0	9	10	1	4	13	1.6
20	West, Pascale	4-0	13	3.3	0-1	.000	0-0	.000	0-0	.000	0	1	1	0.3	0	0	0	0	0	0	0	0.0
04	Sweeting, Cedricka	4-0	9	2.3	0-1	.000	0-0	.000	0-0	.000	0	1	1	0.3	0	0	0	2	0	0	0	0.0
11	Strain, Courtney	3-0	15	5.0	0-3	.000	0-2	.000	0-0	.000	0	2	2	0.7	1	0	1	3	0	1	0	0.0
Team											17	11	28					5				
Total.....		9	1800		215-536	.401	19-79	.241	85-128	.664	125	202	327	36.3	173	6	125	168	35	94	534	59.3
Opponents.....		9	1800		208-512	.406	69-184	.375	125-181	.691	126	212	338	37.6	125	2	131	175	23	89	610	67.8

TEAM STATISTICS	AU	OPP
SCORING	534	610
Points per game	59.3	67.8
Scoring margin	-8.4	-
FIELD GOALS-ATT	215-536	208-512
Field goal pct	.401	.406
3 POINT FG-ATT	19-79	69-184
3-point FG pct	.241	.375
3-pt FG made per game	2.1	7.7
FREE THROWS-ATT	85-128	125-181
Free throw pct	.664	.691
F-Throws made per game	9.4	13.9
REBOUNDS	327	338
Rebounds per game	36.3	37.6
Rebounding margin	-1.2	-
ASSISTS	125	131
Assists per game	13.9	14.6
TURNOVERS	168	175
Turnovers per game	18.7	19.4
Turnover margin	+0.8	-
Assist/turnover ratio	0.7	0.7
STEALS	94	89
Steals per game	10.4	9.9
BLOCKS	35	23
Blocks per game	3.9	2.6
ATTENDANCE	10724	18265
Home games-Avg/Game	4-2681	5-3653
Neutral site-Avg/Game	-	0-0

Date	Opponent		Score	Att.
* 01-03-13	ARKANSAS	w	50-47	2090
* 01-06-13	at Missouri	L	76-82	2126
* 01-10-13	OLE MISS	w	76-52	2150
* 01-13-13	at Texas A&M	L	56-78	5836
* 01-17-13	TENNESSEE	L	66-75	3312
* 01-20-13	at Kentucky	L	53-97	5372
* 01-24-13	at Alabama	L	51-61	1134
* 01-31-13	LSU	L	55-59	3172
* 02-03-13	at South Carolina	L	51-59	3797

+ - Sheraton Raleigh Wolfpack Invitational (Raleigh, N.C.)
 & - Omni Hotels Classic (Boulder, Colo.)
 * - Southeastern Conference game

Score by Periods	1st	2nd	Totals
Auburn	240	294	534
Opponents	293	317	610

2012-13 Season Statistics

RECORD:	OVERALL	HOME	AWAY	NEUTRAL
ALL GAMES	13-9	9-2	2-6	2-1
CONFERENCE	2-7	2-2	0-5	0-0
NON-CONFERENCE	11-2	7-0	2-1	2-1

#	Player	gp-gs	min	avg	Total		3-Point		F-Throw		Rebounds				pf	dq	a	to	blk	stl	pts	avg
					fg-fga	fg%	3fg-fga	3fg%	ft-fa	ft%	off	def	tot	avg								
00	Muhammad, Hasina	22-20	646	29.4	146-336	.435	4-13	.308	52-88	.591	54	62	116	5.3	40	0	42	61	27	55	348	15.8
32	Tanner, Tyrese	22-22	653	29.7	106-266	.398	2-22	.091	63-81	.778	39	49	88	4.0	61	5	28	43	23	42	277	12.6
14	Alverson, Blanche	22-22	691	31.4	94-216	.435	39-105	.371	18-22	.818	21	104	125	5.7	32	0	39	31	17	34	245	11.1
44	Tanner, Tra'cee	22-0	393	17.9	69-118	.585	0-0	.000	24-35	.686	35	45	80	3.6	50	0	14	22	15	19	162	7.4
34	Davis, Peyton	22-22	471	21.4	59-122	.484	0-0	.000	27-63	.429	52	70	122	5.5	62	2	8	36	16	21	145	6.6
03	Ouardad, Najat	22-22	682	31.0	39-107	.364	13-45	.289	19-29	.655	26	67	93	4.2	45	1	145	97	0	62	110	5.0
11	Strain, Courtney	15-2	188	12.5	24-59	.407	2-17	.118	4-6	.667	4	10	14	0.9	11	0	7	11	0	8	54	3.6
21	Clay, Chadarryl	20-0	161	8.1	16-51	.314	6-21	.286	5-9	.556	11	11	22	1.1	13	0	30	25	2	9	43	2.2
35	Capers, Cabriana	20-0	160	8.0	13-23	.565	0-0	.000	5-8	.625	22	33	55	2.8	11	0	8	8	0	0	31	1.6
22	King, Julie	22-0	212	9.6	11-37	.297	0-4	.000	8-12	.667	16	23	39	1.8	23	0	25	16	2	13	30	1.4
20	West, Pascale	12-0	70	5.8	8-15	.533	0-0	.000	0-0	.000	1	7	8	0.7	10	0	0	3	3	2	16	1.3
04	Sweeting, Cedricka	14-0	73	5.2	6-12	.500	1-5	.200	0-0	.000	1	5	6	0.4	1	0	11	7	0	2	13	0.9
Team											46	39	85					9				
Total.....		22	4400		591-1362	.434	67-232	.289	225-353	.637	328	525	853	38.8	359	8	357	369	105	267	1474	67.0
Opponents.....		22	4400		460-1241	.371	165-488	.338	244-351	.695	302	499	801	36.4	319	6	300	472	49	186	1329	60.4

TEAM STATISTICS	AU	OPP
SCORING	1474	1329
Points per game	67.0	60.4
Scoring margin	+6.6	-
FIELD GOALS-ATT	591-1362	460-1241
Field goal pct	.434	.371
3 POINT FG-ATT	67-232	165-488
3-point FG pct	.289	.338
3-pt FG made per game	3.0	7.5
FREE THROWS-ATT	225-353	244-351
Free throw pct	.637	.695
F-Throws made per game	10.2	11.1
REBOUNDS	853	801
Rebounds per game	38.8	36.4
Rebounding margin	+2.4	-
ASSISTS	357	300
Assists per game	16.2	13.6
TURNOVERS	369	472
Turnovers per game	16.8	21.5
Turnover margin	+4.7	-
Assist/turnover ratio	1.0	0.6
STEALS	267	186
Steals per game	12.1	8.5
BLOCKS	105	49
Blocks per game	4.8	2.2
ATTENDANCE	24699	26384
Home games-Avg/Game	11-2245	8-2686
Neutral site-Avg/Game	-	3-1631

Date	Opponent	Score	Att.
+ 11-09-12	vs Maine	w 71-41	2109
+ 11-10-12	at NC State	L 71-85	1586
11-15-12	ALABAMA STATE	w 80-43	3511
11-18-12	ALABAMA A&M	w 93-44	1768
& 11-23-12	vs San Diego State	L 57-78	1245
& 11-24-12	vs Texas A&M-Corpus Chr	w 72-57	1538
11-28-12	at Tulane	w 70-65	1236
12-09-12	HOFSTRA	w 68-58	1535
12-12-12	at George Washington	w 69-59	405
12-16-12	TEMPLE	w 71-49	1662
12-19-12	UT-CHATTANOOGA	w 53-40	1591
12-22-12	JACKSONVILLE	w 85-49	1699
12-29-12	SAMFORD	w 80-51	2209
* 01-03-13	ARKANSAS	w 50-47	2090
* 01-06-13	at Missouri	L 76-82	2126
* 01-10-13	OLE MISS	w 76-52	2150
* 01-13-13	at Texas A&M	L 56-78	5836
* 01-17-13	TENNESSEE	L 66-75	3312
* 01-20-13	at Kentucky	L 53-97	5372
* 01-24-13	at Alabama	L 51-61	1134
* 01-31-13	LSU	L 55-59	3172
* 02-03-13	at South Carolina	L 51-59	3797

+ - Sheraton Raleigh Wolfpack Invitational (Raleigh, N.C.)

& - Omni Hotels Classic (Boulder, Colo.)

* - Southeastern Conference game

Score by Periods	1st	2nd	Totals
Auburn	689	785	1474
Opponents	615	714	1329

Radio/TV Roster



Hasina Muhammad
Sophomore • G • 6-1
Memphis, Tenn.
Ridgeway



Najat Ouwardad
Senior • G • 5-1
Orleans, France
Pensacola State College



Cedricka Sweeting
Freshman • G • 5-5
Nassau, Bahamas
South Broward (Fla.)



Courtney Strain
Redshirt Sophomore • G • 5-9
Woodland, Ala.
Woodland



Blanche Alverson
Senior • G/F • 6-3
Andalusia, Ala.
Buford (Ga.)



Pascale West
Senior • C • 6-8
LaGrange, Ga.
Troup County



Chadarryl Clay
Freshman • G • 5-7
Chattanooga, Tenn.
Girls Preparatory School



Julie King
Senior • G • 5-9
St. Louis, Mo.
Nerinx Hall



Tyrese Tanner
Junior • F • 6-1
Birmingham, Ala.
Hoover



Peyton Davis
Junior • C • 6-5
Pinson, Ala.
Mortimer Jordan



Cabriana Capers
Freshman • F • 6-1
Bolingbrook, Ill.
Bolingbrook



Tra'cee Tanner
Freshman • F/C • 6-3
Birmingham, Ala.
Hoover



Ty Evans
Assistant Coach
Wisconsin-Whitewater (1995)
First Season at Auburn



Caroline McCombs
Assistant Coach
Youngstown State (1998)
First Season at Auburn



Adrian Walters
Assistant Coach
St. Francis (Pa.) (1987)
First Season at Auburn



Terri Williams-Flournoy
Head Coach
Penn State (1991)
156-113 Overall (9th Season)
13-9 at Auburn (1st Season)