



# GEORGIA BASKETBALL

# GAME 17

31 NCAA TOURNEYS ► 20 SWEET 16s ► 11 ELITE EIGHTS ► 5 FINAL FOURS ► TWO-TIME NCAA RUNNER-UP ('85, '96)  
7 SEC CHAMPIONSHIPS • 4 SEC TOURNAMENT TITLES • 517 WEEKS IN AP POLL • 25 WNBA PLAYERS (16 DRAFTEES SINCE '01)

## 2014-15 SCHEDULE

OVERALL: 14-2 ♦ SEC: 2-1

HOME: 10-0 ♦ ROAD: 4-2 ♦ NEUTRAL: 0-0

DATE	OPPONENT (MEDIA)	SCORE/TIP
11/14	MORGAN STATE (SECN+)	W 68-36
11/16	TCU (SECN+)	W 62-53
11/19	at Ohio State (BTN Plus)	W 67-59
11/23	at Georgia Tech (espn3)	W 64-57
11/25	GEORGIA SOUTHERN (SECN+)	W 93-52
11/26	COLGATE (SECN+)	W 66-35
11/29	at Tennessee Tech	W 74-51
12/2	COPPIN STATE (SECN+)	W 49-29
12/4	at Mercer (espn3)	W 68-49
12/7	MICHIGAN STATE (SECN)	W 69-60
12/20	FURMAN (SECN+)	W 58-51
12/22	BELMONT (SECN+)	W 62-43
12/28	at Seton Hall (BIG EAST Digital)	L 51-70
1/2	* at Mississippi St. (SECN+)	L 56-64
1/4	* ALABAMA (SPSO)	W 64-47
1/8	* MISSOURI (SECN+)	W 69-48
1/11	* at Auburn (SECN)	2:00
1/15	* at Ole Miss (SECN+)	7:00
1/18	* VANDERBILT (SECN+)	2:00
1/22	* TEXAS A&M (SECN+)	7:00
1/25	* at Tennessee (SECN)	2:00
2/1	* at Kentucky (SECN)	1:00
2/5	* SOUTH CAROLINA (SECN)	7:00
2/9	* at Arkansas (SECN)	7:00
2/12	* FLORIDA (SECN+)	7:00
2/19	* at LSU (SECN+)	8:00
2/22	* AUBURN (SECN+)	2:00
2/26	* TENNESSEE (SECN)	9:00
3/1	* at Florida (SECN)	3:00
3/5-9	SEC Tourney (N. Little Rock, Ark.)	

\* Denotes SEC game ♦ All times EASTERN

## SID CONTACTS

UGA Mike Mobley  
mmobley@sports.uga.edu / 706-540-7486  
Press Row: 706-542-8052

MU Wes Todd  
wlt00006@auburn.edu / 334-750-5682

## THE BASICS



GEORGIA

AUBURN

RECORDS: 14-2, 2-1 SEC 9-7, 0-3 SEC

RANK: 20 AP NR

19 USAT/ESPN NR

COACH: Andy Landers T. Williams-Flournoy

857-289, 36th at UGA 47-37, 3rd at AU

939-310, 40th overall 190-141, 11th overall

DATE: Sunday, January 11

TIPOFF: 2:00 p.m. ET

LOCATION: Auburn, Ala.

ARENA: Auburn Arena (9,121)

TV: SEC Network

- Paul Sunderland, play-by-play;
- Nell Fortner, analyst

RADIO: Georgia Bulldog Radio Network  
(AM 960 The Ref in Athens & 103.7 FM from Gainesville)

- Jeff Dantzler, play-by-play

NEXT UP: at Ole Miss on Thursday, January 15 at 7 p.m. ET

## STARTING 5

UGA is 25-17 all-time against AU; but AU leads the series in Auburn, 10-8

T. Griffin has averaged 15.0 ppg by making 57.1 pct. of her FGs and 50.0 pct. of her 3FGs in three SEC games

Sunday's game is Andy Landers' 1250th as a collegiate head coach

UGA (12-0) was one of this season's last six undefeated Division I wbb teams when it lost at Seton Hall on 12/28

UGA's 11/29 win at Tennessee Tech made Andy Landers just the seventh college hoops coach – men's or women's – with 850 wins at one D-I school

## GEORGIA LADY BULLDOG ROSTER

NO.	NAME	HT.	CL.	POS.	HOMETOWN	PPG	RPG	NOTES
1	TERRYUANA GODWIN	5-4	Jr.	G	Hogansville, Ga.	0.6	0.1	Helped Butler (Kan.) CC to 34-3 record & No. 6 ranking in '13-14
3	TIARIA GRIFFIN	5-7	Jr.	G	Monticello, Miss.	11.9	3.1	Has accounted for 45.3 percent of UGA's made 3s (34-of-75)
4	HANNAH KOHL ALMIRE	5-9	Soph.	G	Atlanta, Ga.	0.1	0.4	Logged PT in 9 of 13 non-conf. games as a freshman
11	PACHIS ROBERTS	5-11	Soph.	G/F	Powder Springs, Ga.	3.5	1.7	First start vs. Missouri; Tied career-high with 11 points at SHU
12	HALEY CLARK	5-9	Fr.	G	Orlando, Fla.	1.1	0.8	Helped Edgewater HS to 104-9 record & 3 Florida 6A titles
13	MERRITT HEMPE	6-2	Jr.	F	Fredericksburg, Va.	8.1	5.1	vs. Furman, tied career-high with 11 boards...2nd double-double
14	JASMINE CARTER	5-7	Fr.	G	Dacula, Ga.	1.5	0.5	Helped St. Pius X to back-to-back Georgia 3A titles in '13 & '14
15	KRISTA DONALD	5-11	Sr.	F	Lake, Miss.	8.2	7.4	Double-doubles vs. both TCU and Georgia Tech
20	SHACOBIA BARBEE	5-10	Jr.	G/F	Murfreesboro, Tenn.	12.4	6.7	UGA's top-two point tallies in '14-15 – 25 vs. Furman, 24 vs. GT
23	HALLE WASHINGTON	6-2	Soph.	F	Bossier City, La	1.8	2.7	Best game of season – 6 points, 6 boards – vs. Missouri
24	MARJORIE BUTLER	5-8	Jr.	G	Knoxville, Tenn.	4.5	3.1	12-of-13 FTs in final 30 seconds vs. OSU, GT, Mich. St. & Furman
31	ERIKA FORD	5-9	Sr.	G	Alpharetta, Ga.	4.8	2.7	Led UGA in scoring in a team-high 11 games in '13-14
33	MACKENZIE ENGRAM	6-2	Fr.	F	Powder Springs, Ga.	7.9	4.8	Firsts at OSU: double-digit pts. (12), rebs. (10) & double-double
54	NASHEEMA OLIVER	6-3	Fr.	F	Cordele, Ga.	3.0	2.0	Out indefinitely with left foot injury

TWITTER: @UGA\_WBB & @UGACOACHLANDERS • INSTAGRAM: @UGA\_WBB • WWW.FACEBOOK/UGAWOMENSBASKETBALL

## TALE OF THE TAPE

STATISTIC	UGA	AU
Points Per Game	65.0	63.1
Opp. Point Per Game	50.2	55.4
Scoring Margin	+14.8	+7.8
Field Goal Pct.	.384	.422
Opp. Field Goal Pct.	.350	.363
3-Point Pct.	.291	.292
3-Pointers Per Game	4.7	3.5
Opp. 3-Point Pct.	.259	.285
Free Throw Pct.	.697	.568
Free Throws Per Game	13.8	8.4
Rebounds Per Game	41.8	38.5
Opp. Rebound Per Game	35.3	36.7
Rebound Margin	+6.5	+1.8
Assists Per Game	14.1	15.5
Turnovers Per Game	15.4	16.6
Assist-to-Turnover Ratio	0.9	0.9
Turnover Margin	+5.4	+4.4
Steals Per Game	12.3	12.2
Blocks Per Game	2.3	5.0

## UGA QUICK FACTS

LOCATION.....	Athens, Ga.
ENROLLMENT .....	35,197
FOUNDED .....	1785
CONFERENCE .....	Southeastern
NICKNAME .....	Lady Bulldogs
MASCOT .....	Uga IX
COLORS .....	Red & Black
PRESIDENT .....	Jere W. Morehead (UGA J.D. '80)
FACULTY ATHLETICS REPRESENTATIVE .....	David Shiply (Oberlin '72)
J. REID PARKER DIRECTOR OF ATHLETICS .....	Greg McGarity (Georgia '76)

## UGA: FIRST &amp; STILL FOREMOST

- UGA was chartered on Jan. 27, 1785, and – as the first state-chartered university in America – serves as the birthplace of public higher education in the U.S.
- UGA's was chartered two years before the U.S. Constitution was signed and four years prior to George Washington's inauguration as our first President.
- UGA has been ranked among the nation's top-25 public universities by *U.S. News & World Report* every year since 2000.

## LADY BULLDOGS TRAVEL TO THE PLAINS

The No. 20-ranked Georgia Lady Bulldogs travel to The Plains on Sunday for a matinee matchup against Auburn that will be televised by the SEC Network.

Thursday night, the Lady Bulldogs opened up a double-digit lead late in the first half and cruised to a 69-48 win over Missouri in Athens. **Georgia improved to 14-2 overall, 10-0 at home and 2-1 in the SEC with the victory.**

**Shacobia Barbee leads the Lady Bulldogs in scoring at 12.4 ppg, while Tiaria Griffin is contributing 11.9 ppg. Krista Donald is Georgia's top rebounder at 7.4 rpg.**

**Griffin has posted game-high scoring totals in each of Georgia's first three SEC outings – 13 points at Mississippi State and 16 versus both Alabama and Missouri. She is averaging 15.0 ppg while shooting 57.1 percent from the field and 50.0 percent from 3-point range in league play.**

**All told, eight different Lady Bulldogs – Barbee, Marjorie Butler, Donald, Mackenzie Ingram, Erika Ford, Griffin, Merritt Hempe and Pachis Roberts – have combined to score in double figures 43 times for the Lady Bulldogs.**

**Auburn slipped to 9-7 overall and 0-3 in SEC action with a 78-57 setback at No. 10 Kentucky on Thursday night.**

**Tra'cee Tanner is the Tigers' leading scorer at 12.8 ppg, while Brandy Montgomery is chipping in 10.6 ppg. Katie Frerking is collecting a team-high 5.9 rpg. Hasina Muhammad is leading Auburn offensively in league play at an SEC-high 17.0 ppg.**

## SERIES HISTORY VERSUS AUBURN

**Georgia owns a 25-17 lead in the all-time series with Auburn; however, the Tigers possess a 10-8 advantage in games contested on The Plains.**

**On Feb. 23 last season in Auburn, the Tigers surged ahead in the final moments en route to a 67-59 victory over Georgia in a game featuring double-digit ties and lead changes.**

*A complete box score from that outing – as well as game-by-game results in the series – can be found on Page 3 of these Game Notes.*

## THE MATCHUP

## GEORGIA LADY BULLDOGS

**RECORDS:** 14-2, 2-1 SEC  
**COACH:** Andy Landers  
 857-289 (.748), 36th at UGA  
 939-310 (.752), 40th overall

## AUBURN TIGERS

**RECORDS:** 9-7, 0-3 SEC  
**COACH:** Terry Williams-Flournoy  
 47-37 (.560), 3rd at AU  
 190-141 (.572), 11th overall

## PROBABLE STARTERS

NO.	NAME	PPG	RPG		NO.	NAME	PPG	RPG
24	MARJORIE BUTLER	4.5	3.1	G	25	NEYDJA PETITHOMME	5.3	1.8
	(5-8; Jr.; Knoxville, Tenn.)					(5-8; Fr.; Boca Raton, Fla.)		
3	TIARIA GRIFFIN	11.9	3.1	G	40	KHADY DIENG	6.9	2.4
	(5-7; Jr.; Monticello, Miss.)					(5-10; Soph.; Dakar, Senegal)		
20	SHACOBIA BARBEE	12.4	6.7	G	00	HASINA MUHAMMAD	9.0	3.6
	(5-10; Jr.; Murfreesboro, Tenn.)					(6-1; Sr.; Memphis, Tenn.)		
15	KRISTA DONALD	8.2	7.4	F • G	13	KATIE FRERKING	5.7	5.9
	(5-11; Sr.; Lake, Miss.)					(6-1; Soph.; Johns Creek, Ga.)		
13	MERRITT HEMPE	8.1	5.1	F	44	TRA'CEE TANNER	12.8	5.4
	(6-2; Jr.; Fredericksburg, Va.)					(6-3; Jr.; Birmingham, Ala.)		

## OFF THE BENCH

31	ERIKA FORD	4.8	2.7	G	10	BRANDY MONTGOMERY	10.6	4.1
	(5-9; Sr.; Alpharetta, Ga.)					(5-10; Soph.; Port St. Lucie, Fla.)		
33	MACKENZIE INGRAM	7.9	4.8	F • G	22	KIANI PARKER	3.3	2.4
	(6-2; Fr.; Powder Springs, Ga.)					(5-9; Sr.; Fort Walton Beach, Fla.)		
23	HALLE WASHINGTON	1.8	2.7	F	35	ASIA ROBESON	2.6	2.4
	(6-2; Soph.; Bossier City, La.)					(6-4; Fr.; Kalamazoo, Mich.)		
11	PACHIS ROBERTS	3.5	1.7	G • F	50	CABRIANA CAPERS	2.2	2.8
	(5-11; Soph.; Powder Springs, Ga.)					(6-1; Jr.; Bolingbrook, Ill.)		

Shacobia Barbee recorded her fourth double-double of the season with 19 points and 13 rebounds to lead Georgia.

The Tigers scored 34 points off of a season-high 24 turnovers by Georgia and converted on 24-of-31 attempts at the line.

A back-and-forth first half featured five ties and five lead changes.

Georgia grabbed its first lead at 18-17 on a Krista Donald layup with 5:44 left in the half and pushed the margin to 20-17 on a Barbee stickback 43 seconds later.

Brandy Montgomery, who scored Auburn's final 14 points of the first half, then hit a trio of 3-pointers in a span of 2:09 and also scored on a layup at the 1:59 mark to put the Tigers up 28-24.

Donald scored the final five points of the period to put Georgia up 29-28 at the break.

The second stanza also featured five ties and five more changes.

Georgia enjoyed its largest lead at 44-39 with 9:54 left, but Auburn answered with a 10-0 run over the next 2:07 to flip the margin

**KEEPING AN EYE ON...****ENTERING TODAY'S GAME:****MILLENNIUM POINT WATCH...**

- Shacobia Barbee is 182 points from 1,000
- Erika Ford is 235 points from 1,000

**LADY BULLDOG BASKETBALL IS...**

- 6 wins from the program's 900th victory

**ANDY LANDERS IS...**

- 11 victories from his 950th win as a collegiate head coach

to 49-44. The Lady Bulldogs last led 50-49 following a Donald layup with 5:55 left.

Peyton Davis answered on Auburn's next possession and the Tigers outscored Georgia 18-9 the rest of the way.

**LAST TIME OUT**

Fueled by a 16-point night from Tiaria Griffin, No. 20 Georgia defeated Missouri 69-48 on Thursday night at Stegeman Coliseum.

Griffin's output represented her third straight game-high scoring tally. Shacobia Barbee added 12 points, and Krista Donald grabbed a team-best nine rebounds.

Georgia led 21-18 when Barbee hit a jumper to ignite a Georgia run. Marjorie Butler capitalized on a Missouri turnover, hitting consecutive shots, one from behind the arc, and Barbee added another basket to put the Lady Bulldogs up 30-18 at halftime.

Georgia continued its surge in the second stanza, outscoring the Tigers 14-4 in the opening minutes of the half to double-up Missouri, 44-22. Spanning both periods, the Lady Bulldogs kept the Tigers without a made field goal for more than eight minutes.

The Tigers rallied and narrowed the deficit from 23 points to 14, but Griffin put Georgia back in control on a 3-pointer that was followed by a jumper from Mackenzie Engram.

Georgia capitalized on turnovers, converting 22 Missouri miscues into 29 points. The Tigers managed only six points on 11 Lady Bulldog turnovers.

**QUOTING COACH LANDERS... ON FACING AUBURN...**

"Auburn wants to press you full court. Their offense is their defense. They create turnovers. They create easy baskets. We've got to be spot-on in our execution of our press offenses."

**ON THURSDAY'S WIN OVER MISSOURI...**

"It was an excellent team effort. That's what it was going to take because when you run people off as many screens as they do and the motion that they do defensively, you have to have five people ready to help each other and ready to jump switch. And I thought we were really good. I thought the press had its effect early in the game. It got us out of the gate. It got us some turnovers, got us some layups and got us out and going. Anytime we do that, it kick starts our confidence a bit and we usually follow that kind of play when we can turn people over with some made shots in the half court."

**ON INTRODUCING NEWCOMERS TO PLAYING IN THE SEC...**

"You hope that the pre-conference schedule has prepared them some, but I think it's probably more along the lines of throwing a kid into a swimming pool and telling them to swim. There's nothing quite like it."

**LANDERS COACHES 1250TH GAME**

Sunday's contest against Auburn will represent the 1250th on the sidelines for Georgia's Andy Landers in his 40 seasons as a collegiate head coach.

Landers compiled an 82-21 record (103 games) in four seasons as head coach at Roane State Community College in Harriman, Tenn., from 1975-79.

Landers is now 857-289 (1,146 games) in his 36th season as the University of Georgia's first – and still only – full-time women's basketball head coach.

All told, he is 939-310 in 1,249 contests.

**GRIFFIN SIZZLING IN EARLY SEC ACTION**

Tiaria Griffin is off to a strong start in SEC play, posting game-high scoring tallies of 13 points at Mississippi State and 16 points against both Alabama and Missouri.

Griffin has done so in an efficient fashion. She connected on 5-of-9 shots from the floor and 3-of-5 3-point attempts in Starkville. Griffin was 7-of-11 from the field and 2-of-5 from behind the arc versus the Crimson Tide. On Thursday, she made 4-of-8 field goal attempts, including 3-of-6 on 3-pointers.

Griffin is shooting 57.1 percent from the field and 50.0 percent from 3-point range.

**LAST MEETING****27****Auburn 67,  
Georgia 59****2/23/14 • Auburn, Ala.****GEORGIA (18-9, 6-8)**

Player	FGs	3FGs	FTs	Rb	Pf	Pts	A	B	S	MP
Barbee	9-17	0-5	1-4	13	3	19	3	0	2	38
Donald	6-8	0-0	3-4	6	4	15	0	0	1	37
Hempe	2-6	0-0	2-3	4	4	6	1	0	0	31
Ford	6-19	1-6	0-1	5	4	13	2	0	0	38
Miller	1-7	0-3	2-2	4	4	4	4	1	2	37
Griffin	1-2	0-0	0-0	3	0	2	0	0	1	4
Washington	0-2	0-0	0-0	3	3	0	0	1	0	12
Butler	0-0	0-0	0-0	0	2	0	0	0	0	3
<b>TOTALS</b>	<b>25-61</b>	<b>1-14</b>	<b>8-14</b>	<b>43</b>	<b>24</b>	<b>59</b>	<b>10</b>	<b>2</b>	<b>6</b>	<b>200</b>

**AUBURN (15-12, 6-8)**

Muhammad	1-6	0-0	0-0	3	2	2	1	4	4	29
Ty. Tanner	5-11	0-0	11-12	3	4	21	0	1	1	20
Tr. Tanner	3-6	0-0	5-6	6	4	11	0	1	3	26
Montgomery	7-19	3-10	4-7	2	1	21	0	0	1	34
Parker	1-3	0-1	3-4	1	3	5	4	0	5	20
Tucker	1-3	0-1	0-0	1	1	2	4	0	0	20
Frerking	1-5	0-4	0-0	6	2	2	3	0	2	26
Davis	1-3	0-0	1-2	7	3	3	0	0	0	21
Dieng	0-3	0-2	0-0	2	0	0	0	0	0	4
<b>Totals</b>	<b>20-59</b>	<b>3-18</b>	<b>24-31</b>	<b>34</b>	<b>20</b>	<b>67</b>	<b>12</b>	<b>6</b>	<b>16</b>	<b>200</b>

Half: UGA 28, AU 28. TOs: UGA 24 (Donald 7, Ford 7), AU 13 (Davis 2, Dieng 2, Muhammad 2, Tr. Tanner 2, Tucker 2). Officials: Trammell, Roberts, Hust. Att.: 2,694.

**SERIES HISTORY**

**UGA LEADS OVERALL: ..... 25-17**  
**AU LEADS IN AUBURN: ..... 10-8**

2/7/75	W	Athens	93-68
2/16/80	W	Athens	79-71
2/21/81	L	at Auburn	58-74
2/25/82	W	# at Lexington, Ky.	66-65
2/14/83	L	at Auburn	54-58
2/15/84	W	Athens	84-68
3/1/84	W	# Athens	102-72
3/3/85	L	# at Oxford, Miss.	65-80
1/18/86	W	at Auburn	95-61
2/8/87	W	Athens	72-71
3/6/87	L	# at Albany, Ga.	57-83
2/10/88	L	at Auburn	70-89
3/24/88	L	* Athens	65-68
2/28/89	L	Athens	76-86
2/10/90	L	at Auburn	64-85
2/23/91	W	Athens	70-66
2/8/92	L	at Auburn	56-84
2/7/93	L	Athens	56-82
2/20/94	W	at Auburn	58-54
2/19/95	W	Athens	78-56
1/12/96	W	at Auburn	79-71
1/11/97	W	Athens	82-55
3/1/97	L	# at Chattanooga, Tenn.	47-75
1/17/98	W	at Auburn	73-70
1/17/99	W	Athens	96-78
1/23/00	W	at Auburn	68-54
1/20/01	W	Athens	77-60
1/17/02	W	at Auburn	60-49
2/9/03	W	Athens	78-67
1/15/04	L	at Auburn	52-74
1/16/05	W	Athens	71-56
2/26/06	W	Athens	74-61
2/18/07	W	at Auburn	62-55
1/13/08	L	at Auburn	52-82
2/24/08	W	Athens	68-56
1/29/09	W	Athens	67-58
2/22/09	L	at Auburn	69-65
1/31/10	L	at Auburn	52-67
2/24/11	L	Athens	58-63
1/8/12	W	at Auburn	70-45
2/7/13	W	Athens	61-58
2/23/14	L	at Auburn	59-67

# – SEC Tournament \* – NCAA Tournament



## DOUBLE-DIGIT DOGS

POINTS	SEASON	CAREER
Tiaria Griffin	12	35
Shacobia Barbee	10	38
Merritt Hempe	7	20
Krista Donald	5	25
Mackenzie Engram	5	5
Erika Ford	2	28
Marjorie Butler	1	3
Pachis Roberts	1	*3
Halle Washington	0	2

\* - Two of Roberts' games at Syracuse in '12-13

REBOUNDS	SEASON	CAREER
Shacobia Barbee	3	15
Krista Donald	3	11
Merritt Hempe	1	2
Mackenzie Engram	1	1
Erika Ford	0	2
Tiaria Griffin	0	1

DOUBLE-DOUBLES	SEASON	CAREER
Shacobia Barbee	2	9
Krista Donald	2	8
Merritt Hempe	1	2
Mackenzie Engram	1	1
Erika Ford	0	2
Tiaria Griffin	0	1

20-POINT GAMES	SEASON	CAREER
Shacobia Barbee	2	5
Tiaria Griffin	1	4
Mackenzie Engram	1	1
Erika Ford	0	4
Krista Donald	0	1
Merritt Hempe	0	1

## LEADING LADY DOGS

GAMES LEADING	PT.	REB.	AST.	BLK.	STL.
Shacobia Barbee	6	6	6	2	8
Marjorie Butler	0	0	9	0	5
Krista Donald	1	7	1	1	3
Mackenzie Engram	2	4	0	6	1
Tiaria Griffin	8	0	3	1	4
Merritt Hempe	1	4	0	8	1
Halle Washington	0	0	1	4	0

\* - Includes when tied for team-high

That's also a solid sign from a year ago when Griffin was the Lady Bulldogs' leading scorer in non-conference play at 14.2 ppg but then averaged just 6.2 ppg in SEC action.

**Griffin now leads Georgia in both double-digit scoring efforts (12) and games leading the Lady Bulldogs offensively (eight).** In the SEC, she ranks No. 17 in scoring and No. 3 in both 3-pointers per game (2.1) and 3-point percentage (.386).

## FAMILIAR FACES ON THE OTHER BENCH

Auburn head coach Terri Williams-Flournoy and assistant coach Sherill Baker have strong ties to Georgia Basketball.

Williams-Flournoy was an assistant coach on Andy Landers' staff for six seasons from 1996-2002. During that span, UGA made six consecutive NCAA Tournament appearances including reaching the 1999 Final Four. Georgia also won the 1997 and 2000 SEC Championships and the 2001 SEC Tournament.

Baker - dubbed the "Queen of Thieves" while playing for Georgia - started 122 of 131 games played from 2002-06 and tallied 1,665 points, which is No. 10 all-time at UGA.

The Stone Mountain, Ga., native scored many of those points in the same fashion... on steals and layups. **Baker holds the Georgia and SEC single-season and career records for takeaways with 149 (in 2005-06) and 426, respectively.**

Baker served as UGA's "Legend" at last season's SEC Tournament at the Arena at Gwinnett Center, which is located about 10 miles from Greater Atlanta School where Baker won 2002 Miss Georgia Basketball honors before joining the Lady Bulldogs.

In addition, Vicky Coleman, administrative assistant in the Auburn women's basketball office, served in the same role for the Lady Bulldogs for nine seasons from 1991-92 through 1999-2000.

## LADY BULLDOGS' STARTING STREAK

UGA's 12-0 mark to open 2014-15 tied the 2013 "Elite Eight" and 1995 Final Four teams for the fifth-best start in program history.



## LANDERS JOINS ELITE LIST

Georgia's 74-51 win at Tennessee Tech on Nov. 29 represented Andy Landers' 850th victory at UGA. Landers became just the seventh college basketball coach - men's or women's - with 850 victories at one Division I school.

The milestone was more memorable since it occurred Landers' alma mater. He earned bachelor's and master's degrees from Tennessee Tech in 1973 and 1974, respectively. Landers and his wife, Pam, also a Tech graduate, were honored as distinguished alumni prior to tipoff. After the contest, Landers was presented the game ball by longtime friend and TTU coach Jim Davis.

That game was then autographed by the current Lady Bulldog Basketball family and again presented to Landers prior to Georgia's home game against Coppin State on Dec. 2. Seniors Krista Donald and Erika Ford and Greg McGarity, UGA's J. Reid Parker Director of Athletics, (pictured above) gave Landers the autographed basketball. Interestingly, McGarity was at Landers' very first win at UGA against Piedmont on Nov. 10, 1979, serving as the team's sports information director.

The seven coaches to reach the 850-win plateau at one Division I school - with win totals of the active coaches through games of Jan. 10 - are listed above to the right.

COACH, SCHOOL	WINS
Pat Summitt, Tennessee	1098
Jim Boeheim, Syracuse	959
Mike Krzyzewski, Duke	924
Geno Auriemma, Connecticut	892
Dean Smith, North Carolina	879
Adolph Rupp, Kentucky	876
ANDY LANDERS, GEORGIA	857

The only better beginnings were: 16-0 by the 2010 "Sweet 16" team; 14-0 by the 1999 Final Four squad; and 13-0 by the 2008 and 1990 NCAA second-round Lady Bulldogs.

## UGA AMONG LAST UNBEATENS

The Lady Bulldogs were one of just six remaining undefeated Division I teams when UGA lost at Seton Hall on Dec. 28.

The only remaining unbeatens were Akron, Mississippi State, Princeton, South Carolina and Texas.

## FIRST TO DOUBLE-DIGIT "Ws"

On Dec. 7, the Lady Bulldogs became the first of the nation's 688 Division I basketball teams - 345 men's and 343 women's - to reach 10 victories this season when then No. 19 Georgia upset No. 16 Michigan State at Stegeman Coliseum.

## 21ST DOUBLE-DIGIT "W" STRING

Georgia's Dec. 7 victory over No. 16 Michigan State produced the 21st double-figure winning streak in program history.

UGA's longest string of success is 20 games – from a New Year's Eve 1985 win over No. 4 Long Beach State to the 1986 "Sweet 16."

### SHACOBIA BARBEE: PLAYMAKER

Shacobia Barbee's scoring often gets the headlines, but that's just part of the story. Barbee has inflicted her influence on both ends of the floor all season.

The junior from Murfreesboro, Tenn., ranks among SEC leaders in six categories.

Perhaps Barbee's best outing came at arch rival Georgia Tech on Nov. 23 when she was stellar from the opening tip to the final horn.

Barbee hit back-to-back 3-pointers that ignited an 11-2 run to put UGA up 13-6. After Tech pulled ahead 25-22 late in the half, Barbee scored five points in the final 56 seconds of the period to put Georgia up at the break.

Throughout the game, Barbee worked the sideline in UGA's press break and turned long passes into strong drives to the basket. She also made several key defensive plays, none bigger than a steal from Kaela Davis with a minute remaining and Georgia up four.

"Cobi really has a nice understanding of basketball," Andy Landers said. "She understands how to play it and where the opportunities are, whether that's defensive opportunities or offensive opportunities. Early, it was good for our basketball team when she hit those threes. She also sensed at the back of the press offense that there were some opportunities...that on the outside lane on the break, they hadn't quite gotten back. She was a playmaker, defensively and offensively."

### AN EFFICIENT TRIO

Georgia's trio of leading scorers at Mercer on Dec. 4 was extremely efficient with its scoring chances. Shacobia Barbee, Mackenzie Ingram and Tiaria Griffin all scored 12 points.

Barbee hit 6-of-9 field goals, Ingram made 6-of-8 FG attempts and Tiaria Griffin connected on 4-of-4 FGs, including 2-of-2 3-pointers.

**They combined to sink 16-of-21 their shots from the floor, a sizzling 76.2 percent.**

### INGRAM VS. COPPIN STATE

**Mackenzie Ingram accounted for more than half of Georgia's made field goals and 3-pointers en route to her career-high 20 points against Coppin State on Dec. 2.**

Ingram was 7-of-13 from the field, a solid 53.8 percent, while the rest of the Lady Bulldog roster was just 6-of-37, a paltry 16.2 percent. While Ingram was good on both of her 3-point attempts, Georgia was 1-of-10 from behind the arc otherwise.

### LADY BULLDOGS RETURN TO POLLS

The Lady Bulldogs were not ranked in the preseason editions of the Associated Press or USA Today/ESPN coaches polls, which was an extreme rarity.

**Georgia was not in the AP preseason poll for just the second time since 1981-82 and was left out of the coaches poll for the first time since it was initiated in 1985-86.** The last time Georgia was not ranked in the AP poll was the 2008-09 season.

The Lady Bulldogs' absence from the rankings was brief.

## GAME PROMOTIONS

### JAN. 18 VS. VANDERBILT

- Free phone cases to the first 750 fans
- Girl Scout Day

### FEB. 5 VS. SOUTH CAROLINA

- Free beanie hat to first 250 students
- Free pizza to the first 100 students
- Chipotle gift cards to 50 random students

### FEB. 12 VS. FLORIDA

- Free "Dawgs > Gators" t-shirt to the first 250 students
- Free pizza to the first 100 students

### FEB. 22 VS. AUBURN

- Free Katrina McClain bobble head to the first 1,000 fans
- Rally the Dawgs School Challenge Day
- Girl Power Day
- Pink Game
- Senior Day
- Alumni Reunion

### FEB. 26 VS. TENNESSEE

- Free tank tops to first 300 students
- Free pizza to the first 100 students
- Student giveaways at timeouts: iPad mini, tv, Beats Pill, gift cards, etc

Georgia entered the AP poll on Nov. 17 after opening the year with wins over Morgan State and TCU. UGA joined the USA Today/ESPN coaches poll the next week following road victories at Ohio State and Georgia Tech.

**Georgia has now appeared in 517 weekly editions of the AP rankings, the second-most of any program in the nation.** The Lady Bulldogs are second in weeks ranked despite not being featured in the first seven years of the AP poll's existence.

**Georgia first appeared in an Associated Press poll in the preseason edition prior to the 1981-82 season. Since then, UGA has been included in 517 of the 604 (85.6 percent) of the weekly AP polls. During that same span, the Lady Bulldogs have appeared in the top-10 44.4 percent of the time (268 weeks).**

The WBCA initiated a coaches poll with the 1985-86 campaign. Since then, Georgia

## BY THE NUMBERS

### GEORGIA'S RECORD IS...

Overall:	14-2
Home:	10-0
Away:	4-2
Neutral:	0-0
Day Games:	5-2
Night Games:	9-0
November Games:	7-0
December Games:	5-1
January Games:	2-1
February Games:	0-0
March Games:	0-0
Monday Games:	1-0
Tuesday Games:	2-0
Wednesday Games:	2-0
Thursday Games:	2-0
Friday Games:	1-1
Saturday Games:	1-0
Sunday Games:	5-1
Overtime Games:	0-0
Television Games:	2-0
vs. Ranked Opponents:	1-1

### GEORGIA'S RECORD WHEN...

Leading at Halftime:	11-0
Home Games:	8-0
Road Games:	3-0
Neutral Games:	0-0
Trailing at Halftime:	3-2
Home Games:	2-0
Road Games:	1-2
Neutral Games:	0-0
Tied at Halftime:	0-0
Home Games:	0-0
Road Games:	0-0
Neutral Games:	0-0
UGA Shoots 50 percent or better:	1-0
UGA Shoots 40-49 percent:	3-0
UGA Shoots 39 percent or less:	10-2
Opp. Shoots 50 percent or better:	0-0
Opp. Shoots 40-49 percent:	2-1
Opp. Shoots 30-39 percent:	9-1
Opp. Shoots 29 percent or less:	3-0
UGA Outrebounds (or ties) Opp.:	12-1
Opp. Outrebounds Georgia:	2-1
UGA Has Fewer (or equal) TOs:	11-0
Opp. Has Fewer TOs:	3-2
UGA Scores 80 points or more:	1-0
UGA Scores 70-79 points:	1-0
UGA Scores 60-69 points:	10-0
UGA Scores 59 points or less:	2-2

## CAREER STATS VS. AUBURN

No.	Name	G-GS	FGs	Pct.	3FGs	Pct.	FTs	Pct.	PPG	RPG	A	B	S
3	Tiaria Griffin	2-0	1-5	.200	0-3	.000	0-0	.000	1.0	2.5	0	0	1
4	Hannahkohl Almire	0-0											
13	Merritt Hempe	2-1	3-8	.375	0-0	.000	2-3	.667	4.0	3.0	1	0	0
15	Krista Donald	3-1	7-11	.636	0-1	.000	5-6	.833	6.3	3.0	1	0	2
20	Shacobia Barbee	2-2	13-28	.464	1-7	.143	6-10	.600	16.5	10.5	4	0	4
23	Halle Washington	1-0	0-2	.000	0-0	.000	0-0	.000	0.0	0.0	0	1	0
24	Marjorie Butler	1-0	0-0	.000	0-0	.000	0-0	.000	0.0	0.0	0	0	0
31	Erika Ford	3-1	8-26	.308	1-7	.143	0-1	.000	5.7	4.0	4	0	1



## SPECIALTY STATS

OPPONENT	IN PAINT	OFF TOS	2ND CHANCE	BENCH
Morgan State	42-20	28-18	12-4	25-17
TCU	38-20	14-15	14-6	19-13
Ohio State	30-16	19-13	16-10	15-8
Georgia Tech	24-24	4-12	6-12	14-4
Ga. Southern	46-8	39-9	11-5	39-28
Colgate	40-12	35-3	21-10	24-5
Tennessee Tech	26-14	31-11	11-8	19-25
Coppin State	16-14	12-6	9-8	27-6
Mercer	40-16	27-8	6-13	31-18
Michigan State	16-26	17-10	10-11	15-18
Furman	26-18	13-12	19-5	5-9
Belmont	26-22	27-16	12-4	13-12
Seton Hall	22-34	6-19	5-4	16-12
Mississippi State	18-34	4-10	18-12	16-43
Alabama	30-22	11-14	10-14	15-23
Missouri	22-22	29-6	12-7	31-21
Auburn				
Ole Miss				
Vanderbilt				
Texas A&M				
Tennessee				
Kentucky				
South Carolina				
Arkansas				
Florida				
LSU				
Auburn				
Tennessee				
Florida				
SEASON TOTALS	UGA	OPP.	DIFF.	
IN PAINT	464	320	+144	
OFF TOS	316	182	+134	
2ND CHANCE	192	133	+59	
BENCH	324	262	+62	

## LADY BULLDOG LARGEST IN 2014-15

LEAD .....	48 (85-37 vs. Georgia Southern on 11/25/14; 6:36 of 2nd)
DEFICIT .....	21 (43-64 vs. Seton Hall on 12/28/14; 5:55 of 2nd)
MARGIN OF VICTORY .....	41 (93-52 vs. Georgia Southern on 11/25/14)
MARGIN OF DEFEAT .....	19 (51-70 vs. Seton Hall on 12/28/14)
HALFTIME LEAD .....	26 (48-22 vs. Georgia Southern on 11/25/14)
HALFTIME DEFICIT .....	8 (25-33 vs. Seton Hall on 12/28/14)
DEFICIT IN WIN .....	9 (2x, vs. Ohio State on 11/19/14 & TCU on 11/16/14)
HALFTIME DEFICIT IN WIN .....	5 (30-35 vs. TCU on 11/16/14)
LEAD IN LOSS .....	4 (4-0 vs. Seton Hall on 12/28/14)
HALFTIME LEAD IN LOSS .....	

has been ranked in 438 of 532 (82.3 percent) of weekly polls, including 234 weeks (44.0 percent) in the top 10.

## LANDERS, UGA APPROACH MILESTONES

In addition to Andy Landers' 850th win at the University of Georgia (secured at Tennessee Tech on Nov. 29), he and Lady Bulldog Basketball are within reach of additional significant milestone victory marks during the 2014-15 season.

The Lady Bulldogs are now six wins shy of their 900th all-time victory. Georgia became the 10th Division I women's basketball program to reach 850 all-time victories against Alabama on Jan. 31, 2013.

Landers began the campaign with 925 "Ws" in his 39 seasons as a collegiate head coach and enters the Auburn game 11 victories away from his 950th career win. That tally includes 82 victories secured in four seasons at Roane State College from 1975-79.

## HOMECOMINGS FOR BARBEE &amp; BUTLER

Shacobia Barbee and Marjorie Butler had strong cheering sections for Georgia's Nov. 29 win at Tennessee Tech.

Barbee is from Murfreesboro, which is about an hour from Cookeville, while Butler's home in Knoxville is approximately 90 minutes away.

Barbee and Butler combined to secure three Miss Tennessee Basketball titles.

Barbee was the Class AAA honoree as both a junior and a senior at Riverdale High. Butler won the Division II-Class A honor as a junior at The Webb School but then missed almost all of her senior year due to a knee injury.

Both Barbee and Butler enjoyed solid outings in Cookeville. Barbee notched team-high tallies of 14 points, six rebounds and four assists. Butler scored eight points, equaled Barbee's four assists and collected a game-high four steals.

## HITTING THE MAGIC NUMBER

The Lady Bulldogs' 93-52 victory over Georgia Southern on Nov. 25 added another notch to one of the greatest statistical indicators in any sport.

Georgia improved to 432-6 when scoring 80 or more points during Andy Landers' 36 seasons as the University of Georgia's first – and still only – full-time women's basketball head coach.

That equates to an almost unfathomable winning percentage of 98.630136986301.

## A MEANINGFUL EVENING FOR ENGRAM

Freshman Mackenzie Engram took care of a couple of career milestones at Ohio State on Nov 19.

Engram posted both her first double-digit scoring output (12 points all in the second half) and double-figure rebounding tally (10 boards) en route to her first career double-double.

The performance was even more memorable considering Engram had approximately 20 family members and friends in the crowd in Columbus, including her mother, Michelle Zelina, who is an OSU alum.

## GEORGIA SIGNS THREE

The Lady Bulldogs inked three recruits to letters-of-intent during the Nov. 12-19 NCAA early signing period.

Amber Skidgel signed her papers on the initial day of the period, followed by Shanea Armbrister on Nov. 13 and Caliya Robinson on Nov. 14.

## GAME PROMOTIONS

## JAN. 18 VS. VANDERBILT

- Free phone cases to the first 750 fans
- Girl Scout Day

## FEB. 5 VS. SOUTH CAROLINA

- Free beanie hat to first 250 students
- Free pizza to the first 100 students
- Chipotle gift cards to 50 random students

## FEB. 12 VS. FLORIDA

- Free "Dawgs > Gators" t-shirt to the first 250 students
- Free pizza to the first 100 students

## FEB. 22 VS. AUBURN

- Free Katrina McClain bobble head to the first 1,000 fans
- Rally the Dawgs School Challenge Day
- Girl Power Day
- Pink Game
- Senior Day
- Alumni Reunion

## FEB. 26 VS. TENNESSEE

- Free tank tops to first 300 students
- Free pizza to the first 100 students
- Student giveaways at timeouts: iPad mini, tv, Beats Pill, gift cards, etc

Skidgel is a 6-0, guard, from Bethlehem, Ga., who helped Archer High to a runner-up showing in the 6A State Tournament last season when she averaged 12.2 ppg and 3.8 rpg and made 74 3-pointer while shooting 43.0 percent from behind the arc.

Armbrister is a 6-2, guard-forward, from Darton Junior College in Albany, Ga., who was a third-team All-American last season after averaging 18.9 ppg and 8.4 rpg. Nationally, she ranked No. 23 in scoring and No. 9 in free throw percentage (84.4).

Robinson, a 6-3, forward from McEachern High, has been rated as one of the nation's No. 19 prospect by Fullcourt.com, as well as No. 33 by ESPN Hoopgurlz and No. 44 by Prospect Nation. Last season, she averaged 13.0 ppg, 11.2 rpg, 6.6 bpg, 3.8 apg and 3.3 spg while helping McEachern to the Georgia 6A state title.



## AN AMAZING ITALIAN TOUR

For the first time ever, the Lady Bulldogs embarked on an overseas exhibition tour prior to the 2014-15 season. Georgia traveled to Italy from August 3-13 for 10 days of touring and three exhibition contests. NCAA rules allow teams preparing for such trips to conduct 10 summer practices. The Lady Bulldogs took full advantage of that opportunity.

When Georgia hit the floor for its first official practice on Sunday, Oct. 5, the players – including the Lady Bulldogs' four freshmen – had the added benefit of those summer practice sessions and games under their belts.

"What we did this summer can have terrific carryover and should give us some momentum, some positive momentum as we start practice," Andy Landers said. "I think our players feel good about what we were able to do in practices and on the trip. I think that there's a positive vibe from those experiences, so we'll pick up from there and continue to build and feel like as we do that, that we're a little bit ahead and less pressed to get things done."

Georgia dispatched its three Italian exhibition opponents by an average of 34.0 points per game.

### HARRIS ELECTED TO WBB HALL OF FAME

Janet Harris, the Lady Bulldogs' only four-time All-American, will be inducted into the Women's Basketball Hall of Fame in 2015.

Harris was the nation's top-rated prospect when she signed with a relatively unknown UGA program. She arrived in 1981, the first year of NCAA women's athletics, and became the first women's player in NCAA history to score 2,500 points and collect 1,250 rebounds.

"Janet Harris was our first great player and she made it cool for other great players to come to Georgia," Andy Landers said. "She was the first great power player under the NCAA and one of the greatest of all time."

Among NCAA career leaders, Harris still ranks No. 34 in points (2,641) and No. 18 in rebounds (1,398). She also remains No. 2 in SEC history and No. 5 in NCAA annals with 78 career double-doubles.

## HIT ME WITH YOUR HORNS AND MAKE THAT MONEY!

Seven Lady Bulldogs are currently playing professionally in five different countries.

### ANNE MARIE ARMSTRONG

- A.S. Ramat Hasharon Electra in Israel

### KARA BRAXTON

- Ormanspor Gencilik in Turkey

### JASMINE HASSELL

- Cote D'Opale Basket Calais in France

### ASHLEY HOUTS

- Elitzue Ramla in Israel

### DEANNA "TWEETY" NOLAN

- UMMC Ekaterinburg in Russia

### ANGEL ROBINSON

- Perfumerias Avenida Salamanca in Spain

### CHRISTI THOMAS

- Haray BSB in Turkey

With Harris, UGA: reached the first NCAA tourney in 1982; won its first SEC title and advanced the NCAA Final Four in 1983; captured another SEC crown in 1984; and was 1985 NCAA runner-up.

### COACHES, MEDIA AGREE ON SEC

Coaches and media predicted similar finishes in the SEC this season as outlined below.

#### SEC PRESEASON PREDICTIONS

COACHES	MEDIA
1. South Carolina	South Carolina
2. Tennessee	Tennessee
3. Texas A&M	Texas A&M
4. Kentucky	Kentucky
5. <b>GEORGIA</b>	Vanderbilt
6. Vanderbilt	<b>GEORGIA</b>
7. LSU	LSU
8. Mississippi St.	Mississippi St.
9. Florida	Florida
10. Auburn	Auburn
11. Missouri	Missouri & Arkansas
12. Arkansas	
13. Alabama	Alabama
14. Ole Miss	Ole Miss

## UGA STAT RANKINGS

### TEAM CATEGORIES

STATISTIC	NO.	SEC	NCAA
Scoring Offense	65.0	10	171
Scoring Defense	50.2	2	6
Scoring Margin	+14.8	4	29
FG Percentage	.384	13	228
Opp. FG Percentage	.350	6	32
3FG Percentage	.291	11	234
3FGs Per Game	4.7	7	216
Opp. 3FG Percentage	.259	4	24
FT Percentage	.697	4	124
Rebound Margin	+6.5	7	51
Assists Per Game	14.1	6	114
Turnover Margin	+5.4	6	32
Assist-to-TO Ratio	0.9	6	97
Blocks Per Game	2.3	14	296
Steals Per Game	12.3	3	12

### INDIVIDUAL CATEGORIES

PLAYER	STAT	SEC	NCAA
<b>SCORING</b>			
Shacobia Barbee	12.4	15	
Tiaria Griffin	11.9	17	
<b>REBOUNDING</b>			
Krista Donald	7.4	9	195
Shacobia Barbee	6.7	16	
<b>3-POINT FIELD GOAL PERCENTAGE</b>			
Tiaria Griffin	.386	3	73
<b>3-POINT FGS</b>			
Tiaria Griffin	2.1	3	135
<b>FREE THROW GPERCENTAGE</b>			
Merritt Hempe	.727	9	
<b>ASSISTS</b>			
Marjorie Butler	3.8	5	148
Shacobia Barbee	3.1	12	
<b>STEALS</b>			
Shacobia Barbee	2.5	5	74
Marjorie Butler	1.9	13	188
<b>ASSIST-TO-TURNOVER RATIO</b>			
Shacobia Barbee	2.0	6	61
Marjorie Butler	1.8	8	93

Rankings through games of Jan. 8.





# 2014-15 GEORGIA LADY BULLDOGS (14-2)

## INDIVIDUAL STATISTICS – ALL GAMES

HOME: 10-0

AWAY: 4-2

NEUTRAL: 0-0

No. Player	GP-GS	Min-Avg	FG-FGA	Pct	3FG-FGA	Pct	FT-FTA	Pct	OR	DR	Tot-Avg	PF-FO	A	TO	Blk	Stl	Pts-Avg.
20 Shacobia Barbee	16-15	443-27.7	79-171	.462	14-49	.286	26-42	.619	34	73	107-6.7	22-0	50	25	2	40	198-12.4
03 Tiaria Griffin	16-16	405-25.3	61-153	.399	34-88	.386	34-42	.810	13	36	49-3.1	20-0	27	23	1	25	190-11.9
15 Krista Donald	16-16	409-25.6	50-105	.476	4-11	.364	27-40	.675	38	81	119-7.4	35-0	18	27	1	19	131-8.2
13 Merritt Hempe	16-16	365-22.8	44-115	.383	1-9	.111	40-55	.727	34	47	81-5.1	42-2	13	28	14	14	129-8.1
33 Mackenzie Engram	16-0	305-19.1	47-106	.443	4-17	.235	29-35	.829	35	42	77-4.8	30-0	5	26	10	14	127-7.9
31 Erika Ford	15-0	233-15.5	26-92	.283	6-24	.250	14-22	.636	15	26	41-2.7	15-0	11	15	0	13	72-4.8
24 Marjorie Butler	16-16	428-26.8	21-87	.241	6-33	.182	24-33	.727	19	30	49-3.1	26-0	61	33	0	31	72-4.5
11 Pachis Roberts	15-1	154-10.3	17-44	.386	5-20	.250	14-21	.667	8	17	25-1.7	15-1	10	6	1	16	53-3.5
54 Nasheema Oliver	3-0	23-7.7	4-9	.444	0-0	.000	1-2	.500	4	2	6-2.0	5-0	0	2	0	0	9-3.0
23 Halle Washington	12-0	144-12.0	8-27	.296	0-0	.000	6-15	.400	11	21	32-2.7	27-2	6	13	7	8	22-1.8
14 Jasmine Carter	10-0	67-6.7	8-28	.286	0-3	.000	0-1	.000	2	3	5-0.5	3-0	2	5	0	5	16-1.6
12 Haley Clark	15-0	181-12.1	6-24	.250	0-2	.000	4-5	.800	1	11	12-0.8	23-0	17	27	1	10	16-1.1
01 Terryuana Godwin	7-0	16-2.3	1-6	.167	1-2	.500	1-2	.500	1	0	1-0.1	2-0	3	1	0	1	4-0.6
04 Hannahkohl Almire	7-0	16-2.3	0-1	.000	0-0	.000	1-2	.500	1	2	3-0.4	1-0	1	3	0	0	1-0.1
02 Sydnei McCaskill	1-0	11-11.0	0-0	.000	0-0	.000	0-0	.000	0	0	0-0.0	0-0	2	2	0	0	0-0.0
TM TEAM									30	32	62-3.9			10			
Total	16		372-968	.384	75-258	.291	221-317	.697	246	423	669-41.8	266-5	226	246	37	196	1040-65.0
Opponents	16		293-836	.350	75-290	.259	143-219	.653	164	401	565-35.3	293-9	158	332	49	111	804-50.2

BY PERIOD	1st	2nd	OT	Total	DEADBALL REBOUNDS	TOTAL
Georgia	487	553	-	1040	Georgia	45
Opponents	374	430	-	804	Opponents	32

# 2014-15 GEORGIA LADY BULLDOGS (2-1)

## INDIVIDUAL STATISTICS – SEC GAMES ONLY

HOME: 2-0

AWAY: 0-1

NEUTRAL: 0-0

No. Player	GP-GS	Min-Avg	FG-FGA	Pct	3FG-FGA	Pct	FT-FTA	Pct	OR	DR	Tot-Avg	PF-FO	A	TO	Blk	Stl	Pts-Avg.
03 Tiaria Griffin	3-3	77-25.7	16-28	.571	8-16	.500	5-7	.714	2	9	11-3.7	4-0	4	3	0	2	45-15.0
20 Shacobia Barbee	3-2	88-29.3	10-27	.370	0-4	.000	9-12	.750	7	12	19-6.3	4-0	12	7	0	5	29-9.7
33 Mackenzie Engram	3-0	51-17.0	9-19	.474	1-7	.143	6-7	.857	5	11	16-5.3	8-0	1	5	6	1	25-8.3
15 Krista Donald	3-3	69-23.0	10-16	.625	2-5	.400	0-1	.000	6	14	20-6.7	8-0	2	3	0	8	22-7.3
24 Marjorie Butler	3-3	99-33.0	6-28	.214	4-15	.267	2-4	.500	4	6	10-3.3	5-0	13	5	0	4	18-6.0
13 Merritt Hempe	3-3	63-21.0	4-12	.333	0-4	.000	9-10	.900	3	10	13-4.3	10-1	4	6	1	1	17-5.7
31 Erika Ford	2-0	30-15.0	3-15	.200	0-4	.000	3-4	.750	1	1	2-1.0	4-0	2	2	0	0	9-4.5
23 Halle Washington	3-0	50-16.7	4-9	.444	0-0	.000	2-3	.667	6	6	12-4.0	10-1	1	6	2	3	10-3.3
14 Jasmine Carter	2-0	13-6.5	3-6	.500	0-0	.000	0-0	.000	1	0	1-0.5	2-0	0	1	0	0	6-3.0
11 Pachis Roberts	3-1	34-11.3	3-13	.231	2-9	.222	0-0	.000	0	3	3-1.0	5-0	3	2	0	2	8-2.7
04 Hannah Kohl Almire	2-0	3-1.5	0-1	.000	0-0	.000	0-0	.000	0	1	1-0.5	0-0	0	0	0	0	0-0.0
12 Haley Clark	2-0	20-10.0	0-3	.000	0-0	.000	0-0	.000	0	0	0-0.0	2-0	1	4	0	0	0-0.0
01 Terryuana Godwin	2-0	3-1.5	0-0	.000	0-0	.000	0-0	.000	0	0	0-0.0	1-0	0	0	0	0	0-0.0
TM TEAM									9	5	14-4.7			1			
<b>Total</b>	<b>3</b>		<b>68-177</b>	<b>.384</b>	<b>17-64</b>	<b>.266</b>	<b>36-48</b>	<b>.750</b>	<b>44</b>	<b>78</b>	<b>122-40.7</b>	<b>63-2</b>	<b>43</b>	<b>45</b>	<b>9</b>	<b>26</b>	<b>189-63.0</b>
<b>Opponents</b>	<b>3</b>		<b>56-158</b>	<b>.354</b>	<b>12-47</b>	<b>.255</b>	<b>35-60</b>	<b>.583</b>	<b>38</b>	<b>71</b>	<b>109-36.3</b>	<b>52-1</b>	<b>31</b>	<b>51</b>	<b>10</b>	<b>16</b>	<b>159-53.0</b>

BY PERIOD	1st	2nd	OT	Total	DEADBALL REBOUNDS	TOTAL
Georgia	99	90	-	189	Georgia	6
Opponents	72	87	-	159	Opponents	11

# 2014-15 GEORGIA RESULTS/SCHEDULE

DATE	OPPONENT (WEB/TV)	SCORE/TIP	UGA POINTS	UGA REBOUNDS	OPPONENT POINTS	OPPONENT REBOUNDS
11/14	MORGAN STATE (SECN+)	W 68-36	20 – GRIFFIN	7 – HEMPE	13 – CARRINGTON	5 – THREE PLAYERS
11/16	TCU (SECN+)	W 62-53	13 – DONALD	14 – BARBEE	19 – MEDLEY	8 – PRINCE
11/19	at Ohio State	W 67-59	16 – GRIFFIN	10 – ENGRAM	26 – MITCHELL	13 – ALSTON
11/23	at Georgia Tech (espn3)	W 64-57	24 – BARBEE	12 – DONALD	20 – DAVIS	8 – DAVIS, ROGERS
11/25	GEORGIA SOUTHERN (SECN+)	W 93-52	17 – HEMPE	8 – HEMPE	13 – P. BUTLER	5 – McGOWAN
11/26	COLGATE (SECN+)	W 66-35	16 – BARBEE	7 – DONALD	14 – HARRIS	8 – STOCKILL
11/29	at Tennessee Tech	W 74-51	14 – BARBEE	6 – THREE PLAYERS	14 – HOWARD	8 – HOWARD
12/2	COPPIN STATE (SECN+)	W 49-29	20 – ENGRAM	10 – BARBEE	6 – SWAILS	6 – TAYONG
12/4	at Mercer (espn3)	W 68-49	12 – THREE PLAYERS	5 – THREE PLAYERS	13 – BRIDGES, LAWRENCE	8 – ALEX WILLIAMS
12/7	MICHIGAN STATE (SECN)	W 69-60	15 – GRIFFIN	9 – DONALD	18 – POWERS	10 – MILLS
12/20	FURMAN (SECN+)	W 58-51	25 – BARBEE	12 – BARBEE	19 – DURDALLER	12 – DURDALLER
12/22	BELMONT (SECN+)	W 62-43	13 – BARBEE	8 – BARBEE, HEMPE	13 – JOUBRAN	8 – JOUBRAN
12/28	at Seton Hall	L 51-70	16 – GRIFFIN	13 – DONALD	25 – RICHARDSON-SMITH	8 – ALI
1/2	* at Mississippi St. (SECN+)	L 56-64	13 – GRIFFIN	9 – ENGRAM	11 – THREE PLAYERS	7 – ALWAL, GRANT
1/4	* ALABAMA (FSN)	W 64-47	16 – GRIFFIN	8 – BARBEE	12 – BOLTON, WILLIAMS	6 – RIVERS, WILLIAMS
1/8	* MISSOURI (SECN+)	W 69-48	16 – GRIFFIN	9 – DONALD	12 – FRERICKS	7 – FRERICKS
1/11	* at Auburn (SECN)	2:00				
1/15	* at Ole Miss (SECN+)	7:00				
1/18	* VANDERBILT (SECN+)	2:00				
1/22	* TEXAS A&M (SECN+)	7:00				
1/25	* at Tennessee (SECN)	2:00				
2/1	* at Kentucky (SECN)	1:00				
2/5	* SOUTH CAROLINA (SECN)	7:00				
2/9	* at Arkansas (SECN)	7:00				
2/12	* FLORIDA (SECN+)	7:00				
2/19	* at LSU (SECN+)	8:00				
2/22	* AUBURN (SECN+)	2:00				
2/26	* TENNESSEE (SECN)	9:00				
3/1	* at Florida (SECN)	3:00				
3/5-9	SECTourney (N. Little Rock, Ark.)					

\* – Denotes SEC games ◇ All times are EASTERN





# 2014-15 SINGLE-GAME SUPERLATIVES

## LADY BULLDOG TEAM HIGHS & LOWS

### CATEGORY HIGH

**Total Points:** 93 vs. Georgia Southern  
**1st Half Points:** 48 vs. Georgia Southern  
**2nd Half Points:** 54 vs. Georgia Southern  
**Rebounds:** 37 vs. Georgia Southern  
**FGs Made:** 73 vs. Georgia Southern  
**FGs Attempted:** 507 vs. Georgia Southern  
**FG Percentage:** 8 vs. Michigan St., Ohio St.  
**3FGs Made:** 32 vs. Missouri  
**3FGs Attempted:** 500 vs. Mercer  
**3FG Percentage:** 26 vs. Tennessee Tech  
**FTs Made:** 39 vs. Tennessee Tech  
**FTs Attempted:** 905 vs. Georgia Tech  
**FT Percentage:** 23 vs. Georgia Southern  
**Assists:** 25 vs. Morgan St.  
**Turnovers:** 5 vs. Mississippi St.  
**Blocked Shots:** 23 vs. Georgia Southern  
**Steals:**

### LOW

49 vs. Coppin St.  
 19 vs. Belmont  
 26 vs. Seton Hall, Mercer  
 33 vs. Michigan St., Mercer  
 13 vs. Coppin St.  
 50 vs. Alabama, Coppin St.  
 260 vs. Coppin St.  
 2 vs. Tennessee Tech, Colgate, TCU  
 8 vs. Mercer, Tennessee Tech  
 154 vs. TCU  
 6 vs. Mercer  
 9 vs. Mercer  
 444 vs. Furman  
 10 vs. Seton Hall, Coppin St., Tennessee Tech  
 8 vs. Colgate  
 0 vs. Ohio St.  
 3 vs. Georgia Tech

## OPPONENT TEAM HIGHS & LOWS

### CATEGORY HIGH

**Total Points:** 70 by Seton Hall  
**1st Half Points:** 35 by TCU  
**2nd Half Points:** 39 by Michigan St.  
**Rebounds:** 43 by Seton Hall  
**FGs Made:** 26 by Michigan St.  
**FGs Attempted:** 62 by Georgia Tech  
**FG Percentage:** 448 by Michigan St.  
**3FGs Made:** 13 by Ohio St.  
**3FGs Attempted:** 39 by Ohio St.  
**3FG Percentage:** 440 by Georgia Southern  
**FTs Made:** 17 by Mississippi St., Seton Hall, Tennessee Tech  
**FTs Attempted:** 29 by Tennessee Tech  
**FT Percentage:** 1,000 by Furman  
**Assists:** 14 by Georgia Southern  
**Turnovers:** 32 by Georgia Southern  
**Blocked Shots:** 7 by Ohio St.  
**Steals:** 17 by Morgan St.

### LOW

29 by Coppin St.  
 13 by Morgan St.  
 15 by Coppin St.  
 29 by Georgia Southern  
 12 by Coppin St.  
 41 by Tennessee Tech  
 255 by Coppin St.  
 2 by Coppin St., Tennessee Tech, Morgan St.  
 6 by Coppin St.  
 136 by Belmont  
 1 by Georgia Southern  
 3 by Georgia Southern  
 .333 by Georgia Southern  
 4 by Morgan St.  
 12 by Seton Hall, Georgia Tech  
 0 by Michigan St., Coppin St., Morgan St.  
 2 by Missouri, Colgate

## LADY BULLDOG & OPPONENT INDIVIDUAL HIGHS

### CATEGORY GEORGIA

**Total Points:** 25 by Shacobia Barbee vs. Furman  
**Rebounds:** 14 by Shacobia Barbee vs. TCU  
**FGs Made:** 11 by Shacobia Barbee vs. Furman  
**FGs Attempted:** 20 by Shacobia Barbee vs. Furman  
**3FGs Made:** 4 by Tiaria Griffin vs. Georgia Southern  
**3FGs Attempted:** 9 by Tiaria Griffin vs. Ohio St.  
**FTs Made:** 9 by Merritt Hempe vs. Alabama  
**FTs Attempted:** 11 by Merritt Hempe vs. Furman  
**Assists:** 6 by Marjorie Butler vs. Missouri, Belmont, Ga. Southern  
 6 by Shacobia Barbee vs. Mississippi St.  
 6 by Tiaria Griffin vs. Michigan St.  
 6 by Krista Donald vs. Georgia Tech  
 4 by Mackenzie Ingram vs. Mississippi St.  
**Blocked Shots:** 6 by Shacobia Barbee vs. Mercer  
**Steals:** 40 by Marjorie Butler vs. Mississippi St.  
**Minutes Played:**

### OPPONENT

26 by Kelsey Mitchell (Ohio St.)  
 13 by Ameryst Alston (Ohio St.)  
 9 by T. Richardson-Smith (Seton Hall)  
 9 by Kelsey Mitchell (Ohio St.)  
 21 by Tracey Carrington (Morgan St.)  
 7 by Kelsey Mitchell (Ohio St.)  
 14 by Kelsey Mitchell (Ohio St.)  
 11 by Ke-Deidre Simmons (Seton Hall)  
 12 by Ke-Deidre Simmons (Seton Hall)  
 6 by Asia Doss (Ohio St.)  
 6 by Daisha Simmons (Seton Hall)  
 4 by Roddreka Rogers (Georgia Tech)  
 6 by Ke-Deidre Simmons (Seton Hall)  
 40 by W. Bunn & S. Durdaller (Furman)





1

### Georgia 68, Morgan State 36 11/14/14 • Athens, Ga.

#### MORGAN STATE (0-1)

Player	FGs	3FGs	FTs	Rb	Pf	Pts	A	B	S	MP
Carrington	6-21	0-3	1-2	2	2	13	3	0	1	13
Duncan	0-1	0-0	0-0	5	1	0	0	0	1	19
Spears	1-5	0-0	0-0	3	2	2	0	0	1	11
Farrar	1-7	0-2	0-0	1	0	2	0	0	1	16
Myers	0-3	0-2	2-2	2	1	2	0	0	2	12
Williams	2-8	1-2	0-0	2	4	5	0	0	1	15
White	1-3	0-0	0-2	5	0	2	0	0	3	18
Chestnut	1-2	0-0	1-2	3	1	3	0	0	0	12
Harrington	1-2	0-0	0-0	0	0	2	0	0	2	14
Sampson	0-0	0-0	0-0	5	1	0	0	0	0	15
Robinson	1-5	1-4	0-0	4	4	3	1	0	4	27
Postell	1-1	0-0	0-0	0	0	2	0	0	1	3
<b>TOTALS</b>	<b>15-58</b>	<b>2-13</b>	<b>4-8</b>	<b>35</b>	<b>16</b>	<b>36</b>	<b>4</b>	<b>0</b>	<b>17</b>	<b>200</b>

#### GEORGIA (1-0)

Player	FGs	3FGs	FTs	Rb	Pf	Pts	A	B	S	MP
Barbee	3-6	0-2	1-2	5	0	7	2	0	2	18
Donald	1-3	0-0	2-2	6	2	4	1	0	2	20
Hempe	4-7	0-1	2-2	7	0	10	1	2	1	20
Griffin	7-13	3-5	3-3	5	1	20	2	0	4	18
Butler	1-3	0-0	0-0	1	0	2	3	0	4	12
Godwin	0-1	0-0	0-0	1	1	0	0	0	0	2
McCaskill	0-0	0-0	0-0	0	0	0	2	0	0	11
Almire	0-0	0-0	0-0	0	0	0	0	0	0	2
Roberts	1-2	0-1	0-0	2	0	2	2	0	3	14
Clark	1-2	0-0	0-0	2	1	2	1	0	0	16
Carter	0-3	0-0	0-1	3	0	0	0	0	0	10
Ford	3-10	0-2	0-0	6	2	6	0	0	3	18
Engram	3-12	0-3	2-2	5	4	8	0	0	2	23
Oliver	3-7	0-0	1-2	5	3	7	0	0	0	16
<b>TOTALS</b>	<b>27-69</b>	<b>3-14</b>	<b>11-14</b>	<b>54</b>	<b>14</b>	<b>68</b>	<b>14</b>	<b>2</b>	<b>21</b>	<b>200</b>

Half: UGA 30, MSU 13. **TOs:** MSU 17 (Carrington 5, Farrar 5), UGA 25 (Engram 6). **Officials:** Cunningham, Overstreet, Baker. **Att.** - 3,054.

4

### No. 24/NR Georgia 64, Georgia Tech 57 11/23/14 • Atlanta, Ga.

#### GEORGIA (4-0)

Player	FGs	3FGs	FTs	Rb	Pf	Pts	A	B	S	MP
Barbee	8-15	3-8	5-7	7	2	24	3	0	1	27
Donald	4-8	1-1	2-2	12	2	11	6	0	0	38
Hempe	3-7	0-0	0-0	2	4	6	1	0	1	16
Griffin	1-8	1-5	0-0	1	0	3	0	0	1	26
Butler	1-6	0-3	4-4	7	4	6	3	0	0	31
Roberts	0-0	0-0	0-0	1	0	0	0	0	0	1
Clark	0-0	0-0	2-2	2	3	2	1	0	0	9
Ford	0-5	0-2	0-0	3	0	0	0	0	0	15
Engram	3-7	0-0	6-6	6	1	12	0	1	0	27
<b>TOTALS</b>	<b>20-56</b>	<b>5-19</b>	<b>19-21</b>	<b>45</b>	<b>16</b>	<b>64</b>	<b>14</b>	<b>1</b>	<b>3</b>	<b>200</b>

#### GEORGIA TECH (3-1)

Player	FGs	3FGs	FTs	Rb	Pf	Pts	A	B	S	MP
Davis	8-18	1-5	3-4	8	4	20	1	0	1	38
Whiteside	3-11	1-2	5-7	4	1	12	2	1	1	36
Rogers	5-9	0-0	3-4	8	2	13	1	4	0	38
Wallace	3-13	1-8	0-0	7	2	7	3	0	2	38
Peresson	0-3	0-3	1-2	2	1	1	2	0	1	25
Vuckovic	1-5	0-1	0-0	5	5	2	1	1	1	19
Taylor	0-0	0-0	0-0	0	2	0	0	0	0	1
O'Neil	1-3	0-0	0-2	1	2	2	0	0	0	5
<b>TOTALS</b>	<b>21-62</b>	<b>3-19</b>	<b>12-19</b>	<b>35</b>	<b>19</b>	<b>57</b>	<b>10</b>	<b>6</b>	<b>6</b>	<b>200</b>

Half: UGA 27, GT 25. **TOs:** UGA 17 (Griffin 4), GT 12 (Davis 5). **Officials:** Brewton, Brooks, Smith. **Att.** - 2,458.

#### NOTEWORTHY

Back-to-back Barbee 3s open an 11-2 UGA run that makes it 13-6...GT grabs a 25-22 lead before Barbee scores the final five points of the half...UGA goes up for good on a Donald 3 that makes it 49-47...a 7-2 run puts UGA ahead 60-54 with 35 seconds remaining...after a Davis 3, Butler hits 4-of-4 FTs in the final 15 seconds to ice the victory.



Tiaria Griffin notched her fourth career 20-point in the opener and added 11 more against TCU.

2

### Georgia 62, TCU 53 11/16/14 • Athens, Ga.

#### TCU (1-1)

Player	FGs	3FGs	FTs	Rb	Pf	Pts	A	B	S	MP
Standish	1-5	1-4	2-2	1	5	5	0	0	0	24
Prince	1-8	0-1	3-3	8	4	5	1	1	1	23
Breaux	3-10	1-6	2-5	6	3	9	1	0	2	27
Medley	7-15	2-8	3-4	5	2	19	1	0	0	35
Butts	0-6	0-1	2-2	2	2	2	1	1	1	28
Hamilton	3-5	0-0	0-0	2	1	6	1	1	1	10
Manning-Drake	0-0	0-0	0-0	1	0	0	0	0	0	2
Bradshaw	1-1	0-0	1-2	1	1	3	0	2	1	7
Alix	0-2	0-2	0-0	2	0	0	2	0	1	6
Ventress	2-8	0-3	0-0	2	3	4	0	0	1	25
Willie	0-1	0-0	0-0	3	4	0	1	1	0	13
<b>TOTALS</b>	<b>18-61</b>	<b>4-25</b>	<b>13-18</b>	<b>37</b>	<b>25</b>	<b>53</b>	<b>8</b>	<b>6</b>	<b>8</b>	<b>200</b>

#### GEORGIA (2-0)

Player	FGs	3FGs	FTs	Rb	Pf	Pts	A	B	S	MP
Barbee	5-12	0-5	2-4	14	2	12	4	0	5	35
Donald	4-8	0-0	5-5	10	2	13	1	0	0	32
Hempe	2-7	0-0	0-0	1	4	4	1	3	1	19
Griffin	3-8	2-5	3-4	4	0	11	0	0	0	16
Butler	1-3	0-1	1-5	4	1	3	5	0	0	34
Roberts	0-0	0-0	0-0	1	0	0	0	0	0	5
Clark	0-0	0-0	0-0	0	1	0	0	0	0	6
Washington	0-0	0-0	0-0	3	3	0	1	1	0	9
Ford	5-13	0-1	1-3	4	1	11	0	1	0	24
Engram	3-5	0-1	0-0	3	1	6	1	0	0	18
Oliver	1-1	0-0	0-0	1	1	2	0	0	0	2
<b>TOTALS</b>	<b>24-57</b>	<b>2-13</b>	<b>12-21</b>	<b>48</b>	<b>17</b>	<b>62</b>	<b>13</b>	<b>4</b>	<b>7</b>	<b>200</b>

Half: TCU 35, UGA 30. **TOs:** TCU 16 (Medley 4), UGA 22 (Barbee 5, Donald 5). **Officials:** Roberts, Brooks, Spurlock. **Att.** - 2,994.

#### NOTEWORTHY

TCU leads by nine in the first half before UGA rallies to victory.

6

### No. 22/25 Georgia 66, Colgate 35 11/26/14 • Athens, Ga.

#### COLGATE (0-4)

Player	FGs	3FGs	FTs	Rb	Pf	Pts	A	B	S	MP
Repoli	2-6	0-4	0-0	4	0	4	0	0	0	34
Harris	6-13	0-0	2-2	3	2	14	1	0	0	37
Stockill	0-6	0-0	2-4	8	2	2	2	2	0	29
Butler	3-5	1-2	0-0	7	5	7	2	0	0	22
Jones	1-7	1-4	0-0	4	1	3	2	0	2	32
Stone	1-4	1-4	0-0	1	1	3	0	0	0	13
Etheridge	0-0	0-0	0-0	0	1	0	0	0	0	0+
Curtis	0-1	0-1	0-0	1	0	0	0	0	0	8
Kritfcher	0-0	0-0	0-0	0	0	0	0	0	0	9
Poland	0-0	0-0	0-0	0	0	0	0	0	0	5
Pozsonyi	0-0	0-0	2-2	2	1	2	0	0	0	10
Barcello	0-0	0-0	0-0	0	1	0	0	0	0	1
<b>TOTALS</b>	<b>13-42</b>	<b>3-15</b>	<b>6-8</b>	<b>36</b>	<b>14</b>	<b>35</b>	<b>7</b>	<b>2</b>	<b>2</b>	<b>200</b>

#### GEORGIA (6-0)

Player	FGs	3FGs	FTs	Rb	Pf	Pts	A	B	S	MP
Barbee	7-13	1-3	1-1	5	1	16	5	0	2	23
Donald	4-8	0-1	0-0	7	2	8	1	0	0	20
Hempe	3-9	0-0	4-4	5	1	10	1	0	2	18
Griffin	3-8	0-3	2-3	3	0	8	2	0	1	20
Butler	0-1	0-0	0-0	0	0	0	3	0	2	19
Godwin	0-0	0-0	0-0	0	0	0	0	0	0	1
Almire	0-0	0-0	1-2	0	0	1	1	0	0	2
Roberts	1-3	1-2	0-0	2	1	3	0	0	2	15
Clark	1-3	0-0	0-0	1	0	2	0	0	2	20
Carter	0-4	0-2	0-0	0	0	0	0	0	1	6
Washington	3-6	0-0	1-2	4	1	7	0	1	1	18
Ford	2-7	0-0	0-0	5	0	4	1	0	0	19
Engram	1-3	0-0	5-6	3	2	7	1	1	3	19
<b>TOTALS</b>	<b>25-65</b>	<b>2-11</b>	<b>14-18</b>	<b>38</b>	<b>8</b>	<b>66</b>	<b>15</b>	<b>2</b>	<b>16</b>	<b>200</b>

Half: UGA 32, CU 19. **TOs:** CU 28 (Jones 9), UGA 8 (Clark 2, Donald 2). **Officials:** Enterline, Sidlasky, Bradley. **Att.** - 2,240.

3

### No. 24/NR Georgia 67, Ohio State 59 11/19/14 • Columbus, Ohio

#### GEORGIA (3-0)

Player	FGs	3FGs	FTs	Rb	Pf	Pts	A	B	S	MP
Barbee	5-13	3-5	0-0	7	1	13	3	0	0	34
Donald	6-10	0-1	0-0	6	4	12	1	0	0	29
Hempe	2-11	0-0	1-3	6	3	5	1	0	0	22
Griffin	6-18	3-9	1-2	4	1	16	3	0	2	37
Butler	0-4	0-3	6-6	4	3	6	4	0	3	36
Clark	0-0	0-0	0-0	0	0	0	1	0	0	4
Ford	1-3	1-3	0-0	3	1	3	2	0	0	9
Engram	4-8	1-1	3-4	10	2	12	1	0	1	24
Oliver	0-1	0-0	0-0	0	1	0	0	0	0	5
<b>TOTALS</b>	<b>24-68</b>	<b>8-22</b>	<b>11-15</b>	<b>50</b>	<b>16</b>	<b>67</b>	<b>16</b>	<b>0</b>	<b>6</b>	<b>200</b>

#### OHIO STATE (1-2)

Player	FGs	3FGs	FTs	Rb	Pf	Pts	A	B	S	MP
Hart	1-2	0-0	1-3	1	4	3	0	2	0	20
Mitchell	9-20	7-14	1-1	7	1	26	3	0	1	40-
Craft	6-14	5-12	0-0	3	4	17	1	1	1	39

8

### No. 19/23 Georgia 49, Coppin State 29 12/2/14 • Athens, Ga.

#### COPPIN STATE (1-5)

Player	FGs	3FGs	FTs	Rb	Pf	Pts	A	B	S	MP
Swails	3-6	0-1	0-0	4	3	6	0	0	2	29
Lane	2-8	0-0	0-0	5	5	4	0	0	1	26
Harris	2-10	0-0	0-1	5	5	4	0	0	0	30
Samuels	1-8	1-2	2-2	3	3	5	1	0	1	31
Griffin	2-7	0-1	0-1	1	0	4	4	0	0	35
Lucas	1-3	1-1	0-0	2	2	3	1	0	0	16
Henderson	0-4	0-1	0-0	2	1	0	0	0	1	13
Tayong	1-1	0-0	1-2	6	5	3	0	0	0	17
Adejimi	0-0	0-0	0-0	1	1	0	0	0	0	3
<b>TOTALS</b>	<b>12-47</b>	<b>2-6</b>	<b>3-6</b>	<b>38</b>	<b>25</b>	<b>29</b>	<b>6</b>	<b>0</b>	<b>5</b>	<b>200</b>

#### GEORGIA (8-0)

Player	FGs	3FGs	FTs	Rb	Pf	Pts	A	B	S	MP
Barbee	2-10	0-3	4-6	10	1	8	3	0	4	26
Donald	2-5	0-0	5-7	9	2	9	0	0	2	26
Hempe	0-4	0-0	0-0	3	1	0	1	0	0	8
Griffin	1-4	1-4	0-0	3	1	3	3	0	2	27
Butler	1-4	0-1	0-0	2	1	2	1	0	3	21
Roberts	0-2	0-1	2-4	3	1	2	0	0	1	9
Clark	0-1	0-0	0-0	0	2	0	1	0	2	17
Carter	0-0	0-0	0-0	0	0	0	0	0	0	4
Washington	0-3	0-0	3-8	1	5	3	0	1	0	12
Ford	0-4	0-1	2-2	3	0	2	1	0	0	16
Engram	7-13	2-2	4-4	7	1	20	0	1	2	34
<b>TOTALS</b>	<b>13-50</b>	<b>3-12</b>	<b>20-31</b>	<b>43</b>	<b>15</b>	<b>49</b>	<b>10</b>	<b>2</b>	<b>16</b>	<b>200</b>

Half: UGA 20, CSU 14. **TOs:** CSU 26 (Lucas 7), UGA 17 (Barbee 4).  
**Officials:** Brooks, Larence, Thebo. **Att.** - 2,303.

#### NOTEWORTHY

After CSU leads 6-2, UGA goes on an 18-2 run...UGA scores the first 12 points of the second half...Engram makes more FGs (7) than the rest of UGA's roster combined (6).



Shacobia Barbee scored 19 of her career-high 25 points in the second half against Furman.

9

### No. 19/23 Georgia 68, Mercer 49 12/4/14 • Macon, Ga.

#### GEORGIA (9-0)

Player	FGs	3FGs	FTs	Rb	Pf	Pts	A	B	S	MP
Barbee	6-9	0-0	0-0	0	0	12	3	0	6	20
Donald	4-9	0-1	0-1	5	0	8	0	0	0	17
Hempe	1-4	0-0	1-2	5	2	3	0	1	2	26
Griffin	4-4	2-2	2-2	2	3	12	3	0	3	17
Butler	0-4	0-0	2-2	2	4	2	1	0	1	18
Godwin	0-1	0-1	1-2	0	0	1	2	0	1	2
Almire	0-0	0-0	0-0	1	0	0	0	0	0	3
Roberts	2-3	0-1	0-0	2	1	4	0	0	2	15
Clark	2-3	0-0	0-0	2	4	4	2	0	1	20
Carter	2-5	0-1	0-0	0	1	4	0	0	0	12
Washington	0-4	0-0	0-0	4	2	0	3	0	1	17
Ford	2-8	2-2	0-3	3	1	6	2	0	0	15
Engram	6-8	0-0	0-0	5	3	12	1	0	1	18
<b>TOTALS</b>	<b>29-62</b>	<b>2-4</b>	<b>6-9</b>	<b>33</b>	<b>21</b>	<b>68</b>	<b>17</b>	<b>1</b>	<b>18</b>	<b>200</b>

#### MERCER (4-3)

Player	FGs	3FGs	FTs	Rb	Pf	Pts	A	B	S	MP
Alex Williams	0-2	0-0	2-2	8	3	2	0	1	3	28
Alicia Williams	3-8	0-1	2-4	4	2	8	3	0	2	34
Robinson	1-2	0-0	1-1	6	3	3	0	1	0	36
B. Williams	2-6	1-3	0-0	1	0	5	1	0	0	16
Bridges	3-13	1-4	6-6	2	2	13	2	0	3	36
Broadway	0-0	0-0	0-0	1	0	0	0	0	0	2
Means	1-1	0-0	0-0	0	2	2	0	0	0	5
Mitchell	1-2	1-2	0-0	3	0	3	0	0	0	11
Lawrence	5-11	0-0	3-5	3	0	13	3	0	1	32
<b>TOTALS</b>	<b>16-45</b>	<b>3-10</b>	<b>14-18</b>	<b>30</b>	<b>12</b>	<b>49</b>	<b>9</b>	<b>2</b>	<b>9</b>	<b>200</b>

Half: UGA 42, MU 25. **TOs:** UGA 15 (Clark 4), MU 23 (Lawrence 7).  
**Officials:** Cunningham, Marsh, Michel. **Att.** - 2,816.

#### NOTEWORTHY

UGA uses an 8-0 run to go up 23-11 and a 15-2 surge to build a 38-18 lead...Barbee, Engram and Griffin are a combined 16-of-21 from the field.

12

### No. 14/17 Georgia 62, Belmont 43 12/22/14 • Athens, Ga.

#### BELMONT (3-9)

Player	FGs	3FGs	FTs	Rb	Pf	Pts	A	B	S	MP
Luffman-Hartsfield	2-6	2-5	1-2	7	1	7	0	0	2	31
Joubran	5-9	0-1	3-4	8	3	13	1	0	1	33
McCabe	3-10	1-3	0-0	5	3	7	3	2	2	23
Carroll	0-8	0-5	0-0	0	2	0	0	0	1	23
Tarrence	2-3	0-1	0-0	4	2	4	2	0	2	26
Perry	0-0	0-0	0-0	0	0	0	1	0	0	5
Mills	1-5	0-4	2-2	2	0	4	3	0	0	26
Blevins	0-1	0-1	0-0	1	0	0	0	0	0	2
Jones	0-3	0-2	0-0	0	0	0	0	0	0	5
Thompson	2-2	0-0	2-2	0	1	6	0	0	0	10
Cohlmeier	0-0	0-0	0-0	1	0	0	0	0	0	2
Vaught	1-2	0-0	0-0	1	2	2	0	0	1	8
Bryce	0-0	0-0	0-0	0	2	0	0	0	0	6
<b>TOTALS</b>	<b>16-49</b>	<b>3-22</b>	<b>8-10</b>	<b>33</b>	<b>16</b>	<b>43</b>	<b>10</b>	<b>2</b>	<b>9</b>	<b>200</b>

#### GEORGIA (12-0)

Player	FGs	3FGs	FTs	Rb	Pf	Pts	A	B	S	MP
Barbee	5-11	2-4	1-2	8	0	13	1	1	3	33
Donald	3-6	0-0	3-4	6	4	9	1	1	2	24
Hempe	3-8	0-0	3-3	8	3	9	0	1	2	33
Griffin	2-8	2-6	5-6	3	1	11	1	1	3	29
Butler	3-7	1-3	0-0	2	1	7	6	0	2	29
Godwin	1-2	1-1	0-0	0	0	3	0	0	0	2
Almire	0-0	0-0	0-0	0	0	0	0	0	0	2
Roberts	1-1	0-0	1-2	1	0	3	1	0	1	7
Clark	0-2	0-0	0-0	0	0	0	1	0	1	7
Carter	0-2	0-0	0-0	0	0	0	0	0	0	2
Washington	1-2	0-0	0-2	1	0	2	1	0	0	6
Ford	0-2	0-1	0-0	0	2	0	0	0	0	12
Engram	2-4	0-0	1-2	7	2	5	0	0	1	14
<b>TOTALS</b>	<b>21-55</b>	<b>6-15</b>	<b>14-21</b>	<b>37</b>	<b>15</b>	<b>62</b>	<b>12</b>	<b>4</b>	<b>15</b>	<b>200</b>

Half: BU 21, UGA 19. **TOs:** BU 24 (Luffman-Hartsfield 5, Tarrence 5), UGA 14 (Barbee 3, Griffin 3, Hempe 3). **Officials:** Morris, Fountain, Marsh. **Att.** - 2,363.

10

### No. 19/23 Georgia 69, No. 16/16 Michigan St. 60 12/7/14 • Athens, Ga.

#### MICHIGAN STATE (5-2)

Player	FGs	3FGs	FTs	Rb	Pf	Pts	A	B	S	MP
Powers	8-18	2-7	0-0	9	2	18	2	0	2	40-
Lumpkin	0-1	0-0	0-0	1	2	0	0	0	0	6
Mills	4-7	0-2	0-0	10	5	8	2	0	0	34
Jonkoska	6-16	2-10	2-3	5	2	16	4	0	2	37
Morrissey	0-3	0-3	0-0	2	1	0	5	0	0	39
Miller	1-1	0-0	0-0	1	1	2	0	0	0	11
Hines	5-9	0-0	2-4	4	4	12	0	0	1	24
Johnson	2-3	0-0	0-0	0	1	4	0	0	0	9
<b>TOTALS</b>	<b>26-58</b>	<b>4-22</b>	<b>4-7</b>	<b>37</b>	<b>18</b>	<b>60</b>	<b>13</b>	<b>0</b>	<b>5</b>	<b>200</b>

#### GEORGIA (10-0)

Player	FGs	3FGs	FTs	Rb	Pf	Pts	A	B	S	MP
Barbee	3-8	1-3	0-0	4	0	7	2	0	3	20
Donald	4-9	1-2	3-6	9	2	12	0	0	0	33
Hempe	3-7	1-2	2-3	2	5	9	0	3	2	30
Griffin	3-10	3-7	6-6	8	1	15	6	0	3	32
Butler	4-9	1-3	2-2	3	1	11	4	0	0	29
Roberts	2-3	1-1	1-1	1	1	6	1	0	0	4
Clark	1-2	0-0	0-0	0	1	2	1	1	0	11
Washington	0-0	0-0	0-0	1	2	0	0	0	0	6
Ford	0-3	0-2	5-6	1	0	5	0	0	2	24
Engram	1-3	0-1	0-0	1	1	2	0	0	0	11
<b>TOTALS</b>	<b>21-54</b>	<b>8-21</b>	<b>19-24</b>	<b>33</b>	<b>14</b>	<b>69</b>	<b>14</b>	<b>4</b>	<b>10</b>	<b>200</b>

Half: UGA 36, MSU 21. **TOs:** MSU 15 (Powers 5), UGA 9 (Butler 2, Clark 2, Griffin 2). **Officials:** Mattingly, Blauch, Morris. **Att.** - 3,524.

#### NOTEWORTHY

After MSU leads 2-0, UGA reels off an 8-0 run and never trails...the lead gets to 22-10 and bulges to 36-13 before MSU ends the first half on an 8-0 spurt and opens the second stanza with a bucket to close the gap to 13...MSU gets within 45-27 but UGA answers with a 7-0 run...MSU chips away to 63-58 with 57 seconds left before UGA hits 6-of-6 FTs to preserve the upset.

13

### Seton Hall 70, No. 14/16 Georgia 51 12/28/14 • South Orange, N.J.

#### GEORGIA (12-1)

Player	FGs	3FGs	FTs	Rb	Pf	Pts	A	B	S	MP
Barbee	1-7	0-2	0-0	3	3	2	2	0	0	19
Donald	0-1	0-0	4-6	13	3	4	2	0	1	29
Hempe	5-10	0-1	3-4	5	2	13	0	1	1	33
Griffin	6-15	3-9	1-3	1	2	16	0	0	0	34
Butler	0-3	0-1	0-0	2	2	0	3	0	0	24
Roberts	4-6	0-1	3-4	1	5	11	2	1	2	18
Clark	0-4	0-1	0-1	2	4	0	1	0	0	13
Carter	0-2	0-0	0-0	0	0	0	0	0	0	3
Washington	0-0	0-0	0-0	3	1	0	0	2	1	8
Ford	1-6	1-3	0-0	2	1	3	0	0	0	8
Engram	1-4	0-0	0-0	6	0	2	0	0	1	11
<b>TOTALS</b>	<b>18-58</b>	<b>4-18</b>	<b>11-18</b>	<b>41</b>	<b>23</b>	<b>51</b>	<b>10</b>	<b>4</b>	<b>9</b>	<b>200</b>

#### SETON HALL (12-1)

Richardson-Smith	9-16	5-11	2-2	6	1	25	0	0	2	34
Ali	3-6	0-1	0-0	8	3	6	1	1	2	30
Johnson	0-3	0-2	0-0	5	3	0	2	0	0	20
D. Simmons	3-13	0-2	4-5	4	1	10	6	0	3	37
K. Simmons	3-9	0-0	11-12	3	3	17	2	0	6	37
Jones	5-8	0-0	0-0	6	5	10	0	2	0	11
Ekedigwe	0-0	0-0	0-1	2	2	0	0	0	0	7
Mosley	1-3	0-1	0-0	0	0	2	0	0	0	9
Egan	0-0	0-0	0-0	1	0	0	0	0	0	4
Kucera	0-0	0-0	0-0	0	0	0	0	0	0	1
Inman	0-0	0-0	0-0	0	0	0	0	0	0	1
Gordon	0-0	0-0	0-2	3	1	0	0	0	1	9
Totals	24-58	5-17	17-22	42	19	70	11	3	14	200

**15****No. 19/19 Georgia 64,  
Alabama 47****1/4/15 • Athens, Ga.****ALABAMA (11-6, 0-2)**

Player	FGs	3FGs	FTs	Rb	Pf	Pts	A	B	S	MP
Hutchen	1-2	0-1	0-0	3	2	2	2	0	2	18
Williams	4-9	0-0	4-10	6	2	12	0	1	3	32
Hegstetter	1-3	0-1	0-0	4	2	2	0	0	0	20
Cook	0-8	0-5	1-2	2	0	1	2	0	1	18
Middlebrook	3-4	1-2	0-3	3	3	7	2	0	0	26
Bolton	5-12	1-5	1-1	2	2	12	2	1	1	23
Hayden	0-4	0-2	0-0	0	0	0	0	0	1	20
Knight	1-6	1-3	3-4	2	1	6	1	0	1	19
Rivers	1-5	1-4	2-4	6	3	5	1	0	0	19
Hamilton	0-0	0-0	0-0	1	1	0	0	2	0	5
<b>TOTALS</b>	<b>16-53</b>	<b>4-23</b>	<b>11-24</b>	<b>32</b>	<b>16</b>	<b>47</b>	<b>10</b>	<b>4</b>	<b>9</b>	<b>200</b>

**GEORGIA (13-2, 1-1)**

Barbee	3-9	0-0	2-2	8	0	8	5	0	1	31
Donald	4-4	1-1	0-0	5	2	9	1	0	3	22
Hempe	3-7	0-0	9-10	7	1	15	1	0	1	24
Griffin	7-11	2-5	0-0	4	1	16	1	0	2	28
Butler	0-4	0-2	1-2	2	3	1	4	0	1	25
Godwin	0-0	0-0	0-0	0	1	0	0	0	0	1
Allmire	0-0	0-0	0-0	0	0	0	0	0	0	2
Roberts	0-3	0-1	0-0	2	1	0	0	0	0	11
Clark	0-1	0-0	0-0	0	2	0	0	0	0	14
Carter	2-4	0-0	0-0	1	2	4	0	0	0	10
Washington	2-3	0-0	0-0	2	5	4	1	0	2	14
Engram	2-4	1-2	2-2	6	3	7	1	2	0	18
<b>Totals</b>	<b>13-50</b>	<b>3-12</b>	<b>20-31</b>	<b>43</b>	<b>15</b>	<b>49</b>	<b>10</b>	<b>2</b>	<b>16</b>	<b>200</b>

**Half:** UGA 41, UA 23. **TOs:** UA 16 (Cook 3, Hutchen 3), UGA 21 (Washington 5). **Officials:** Grinter, Cross, Small. **Att.** - 3,419.

**NOTEWORTHY**

UGA scores the first nine points and never looks back...UGA leads by double digits from the 15:21 mark of the first half through the final horn.

**16****No. 20/19 Georgia 69,  
Missouri 48****1/8/15 • Athens, Ga.****MISSOURI (10-6, 0-3)**

Player	FGs	3FGs	FTs	Rb	Pf	Pts	A	B	S	MP
Michaelis	2-6	0-2	0-0	3	3	4	1	0	1	21
Cunningham	0-1	0-0	2-2	3	1	2	1	0	0	28
Frericks	6-14	0-0	0-4	7	4	12	0	0	0	26
Fowler	1-4	1-2	1-4	5	3	4	0	0	0	26
Ma. Stock	1-6	1-6	2-3	4	0	5	3	0	1	29
Mo. Stock	3-5	2-3	1-1	6	1	9	2	1	0	20
Hudyn	1-3	0-0	1-2	3	1	3	0	2	0	14
Robinson	3-8	0-2	0-0	3	4	6	3	0	0	18
Eye	1-2	1-2	0-0	2	1	3	0	0	0	18
<b>TOTALS</b>	<b>18-49</b>	<b>5-17</b>	<b>7-16</b>	<b>40</b>	<b>18</b>	<b>48</b>	<b>10</b>	<b>3</b>	<b>2</b>	<b>200</b>

**GEORGIA (14-2, 2-1)**

Roberts	3-10	2-8	0-0	1	4	8	2	0	2	20
Donald	2-6	1-4	0-0	9	4	5	0	0	3	23
Hempe	0-1	0-1	0-0	3	5	0	0	1	0	17
Griffin	4-8	3-6	5-5	5	1	16	3	0	0	29
Butler	3-11	2-6	1-2	5	1	9	6	0	2	34
Godwin	0-0	0-0	0-0	0	0	0	0	0	0	2
Almire	0-1	0-0	0-0	1	0	0	0	0	0	1
Clark	0-2	0-0	0-0	0	0	0	1	0	0	6
Carter	1-2	0-0	0-0	0	0	2	0	0	0	3
Barbee	4-7	0-2	4-6	4	0	12	1	0	3	20
Washington	2-5	0-0	2-3	6	3	6	0	1	1	18
Ford	1-3	0-2	2-2	0	0	4	2	0	0	10
Engram	3-6	0-3	1-2	1	2	7	0	0	1	17
<b>Totals</b>	<b>23-62</b>	<b>8-32</b>	<b>15-20</b>	<b>38</b>	<b>20</b>	<b>69</b>	<b>15</b>	<b>2</b>	<b>12</b>	<b>200</b>

**Half:** UGA 30, MU 18. **TOs:** MU 22 (Michaelis 6), UGA 10 (Hempe 3). **Officials:** Blauch, Gulbeyan, Newton. **Att.** - 2,467.

**NOTEWORTHY**

Up 21-18, UGA ends the first half and starts the second on a 19-2 run.





# 1 TERRYUANA GODWIN

5-4 • JUNIOR • GUARD • HOGANSVILLE, GA. • BUTLER (KAN.) CC

## SEASON & CAREER HIGHS

### POINTS

Both: 3 Belmont (12/22/14)

### REBOUNDS

Both: 1 Morgan St. (11/14/14)

### ASSISTS

Both: 1 Mercer (12/4/14)  
1 Ga. Southern (11/25/14)

### BLOCKS

Both: -

### STEALS

Both: 1 Mercer (12/4/14)

### MINUTES

Both: 6 Ga. Southern (11/25/14)

## CAREER HIGHLIGHTS

- ♦ Coached by Mike Helmer at Butler Community College in El Dorado, Kansas, in 2013-14.
- ♦ Redshirted during the 2012-13 season due to a torn anterior cruciate ligament (ACL).
- ♦ In 2013-14, helped Butler record a 34-3 finish, reach the quarterfinals of the NJCAA National Tournament and post a final national ranking of No. 6.
- ♦ Played in 31 games and averaged 4.5 ppg, 3.1 rpg, 1.5 spg and 1.3 apg during 2013-14.
- ♦ Recorded three double-digit scoring outputs, including back-to-back performances of 10 points against Colby and a season-high 14 points versus Cloud County in the first two rounds of the Region VI Tournament.
- ♦ Coached by Maurice Smith at Georgia College in 2010-11, where she averaged 3.2 ppg and 1.2 rpg per game in five games before leaving school after fall semester.
- ♦ Coached by Jan Jones at LaGrange High where she was named honorable mention All-State as a senior.
- ♦ Helped LaGrange finish 21-2 as a senior, as well as a 20-9 mark and the semifinals of the 3A state tourney as a junior.

## 2014-15 SEASON HIGHLIGHTS

- ♦ Saw two minutes of action in the season opener against Morgan State and notched her first rebound.
- ♦ Logged six minutes of playing time in Georgia's 93-52 victory over Georgia Southern.
- ♦ Recorded her first point at Georgia by connecting on the front end of a one-and-one in the waning moments of the Lady Bulldogs' win at Mercer.
- ♦ Closed out the Lady Bulldogs' scoring against Belmont with a 3-pointer from the right wing.

## PERSONAL

- ♦ Born May 25, 1993, Terryuana is the daughter of Olivia and Terry Godwin, Sr., and is majoring in Psychology.

## GAME-BY-GAME LINESCORES

Opponent	GS	MP	FGs	3FGs	FTs	R	A	B	S	Pts.
Morgan State	2		0-1	0-0	0-0	1	0	0	0	0
TCU	DNP									
Ohio State	DNP									
Georgia Tech	DNP									
Georgia Southern	6		0-2	0-0	0-0	0	1	0	0	0
Colgate	1		0-0	0-0	0-0	0	0	0	0	0
Tennessee Tech	DNP									
Coppin State	DNP									
Mercer	2		0-1	0-1	1-2	0	2	0	1	1
Michigan State	DNP									
Furman	DNP									
Belmont	2		1-2	1-1	0-0	0	0	0	0	3
Seton Hall	DNP									
Mississippi State	DNP									
Alabama	1		0-0	0-0	0-0	0	0	0	0	0
Missouri	2		0-0	0-0	0-0	0	0	0	0	0
Auburn										
Ole Miss										
Vanderbilt										
Texas A&M										
Tennessee										
Kentucky										
South Carolina										
Arkansas										
Florida										
LSU										
Auburn										
Tennessee										
Florida										

## TERRYUANA GODWIN'S CAREER STATISTICS

OVERALL															SEC																
	GP-GS	MP-Avg.	FGs	Pct.	3FGs	Pct.	FTs	Pct.	Rbs.-Avg.	PF-D	A	TO	BL	ST	Pts.-Avg.		GP-GS	MP-Avg.	FGs	Pct.	3FGs	Pct.	FTs	Pct.	Rbs.-Avg.	PF-D	A	TO	BL	ST	Pts.-Avg.
2014-15	7-0	16-2.3	1-6	.167	1-2	.500	1-2	.500	1-0.1	2-0	3	1	0	1	4-0.6	2014-15	2-0	3-1.5	0-0	.000	0-0	.000	0-0	.000	0-0.0	1-0	0	0	0	0	0-0.0
TOTALS	7-0	16-2.3	1-6	.167	1-2	.500	1-2	.500	1-0.1	2-0	3	1	0	1	4-0.6	TOTALS	2-0	3-1.5	0-0	.000	0-0	.000	0-0	.000	0-0.0	1-0	0	0	0	0	0-0.0



# 3 TIARIA GRIFFIN

5-7 • JUNIOR • GUARD • MONTICELLO, MISS. • HATTIESBURG HS

## SEASON & CAREER HIGHS

### POINTS

Season: 20 Morgan St. (11/14/14)

Career: 21 Furman (11/19/13)

### REBOUNDS

Season: 8 Michigan St. (12/7/14)

Career: 10 S.C. State (11/26/13)

### ASSISTS

Season: 6 Michigan St. (12/7/14)

Career: 9 S.C. State (11/26/13)

### BLOCKS

Season: 1 Belmont (12/22/14)

Career: 1 Belmont (12/22/14)

1 St. Joseph's (3/23/14)

1 LSU (2/10/13)

1 Missouri (1/13/13)

1 Furman (11/28/12)

### STEALS

Season: 4 Morgan St. (11/14/13)

Career: 6 Furman (11/19/13)

### MINUTES

Season: 37 Ohio St. (11/19/14)

Career: 37 Ohio St. (11/19/14)

37 S.C. State (11/26/13)

## MISCELLANEOUS STATS

### DOUBLE DIGIT POINTS

Season: 12 Career: 35

### DOUBLE DIGIT REBOUNDS

Season: 0 Career: 1

### DOUBLE-DOUBLES

Season: 0 Career: 1

### 20-POINT GAMES

Season: 1 Career: 4

## CAREER HIGHLIGHTS

- ♦ In 2013-14, Georgia's leading scorer in non-conference play, averaging 14.2 ppg.
- ♦ Produced UGA's best free throw percentage on the season, connecting on 74.5 percent (35-of-47) of her attempts at the line.
- ♦ Came within an assist of the third triple-double in Lady Bulldog history against S.C. State on Nov. 26, 2013. Posted career highs for rebounds and assists in that contest.
- ♦ Named MVP of the 2013 Georgia State Thanksgiving Invitational after leading Georgia offensively in both games and averaging 16.0 points per game.
- ♦ In 2012-13, started 17 games, including the last 10.
- ♦ Along with Shacobia Barbee, made UGA the only team with two freshman starters to reach the "Sweet 16" and "Elite Eight" rounds of the NCAA Tourney.
- ♦ Scored 10 of her 13 points after halftime in UGA's "Sweet 16" upset of No. 4 Stanford.
- ♦ Coached by Caronica Jackson at Hattiesburg HS as a senior and by Vicki Rutland at Lawrence County HS in her freshman, sophomore and junior seasons.
- ♦ Selected first-team All-State as a junior and senior – for Class 4A in 2011 and for Class 6A in 2012.

## 2014-15 SEASON HIGHLIGHTS

- ♦ Opened the season with her fourth career 20-point game against Morgan State.
- ♦ Scored a dozen of her 15 points against Michigan State in the second half, including a pair of huge 3-pointers after the Spartans whittled Georgia's lead from 23 points to single digits.
- ♦ Notched game-high scoring tallies in Georgia's first three SEC games – 13 points at Mississippi State and 16 vs. both Alabama and Missouri – by shooting 57.1 percent from the field and 50.0 percent from 3-point range.
- ♦ Paced UGA offensively a team-high eight times – versus Morgan State, Ohio State, Mercer, Michigan State, Seton Hall, Mississippi State, Alabama and Missouri.
- ♦ Has accounted for 44.3 percent (35-of-75) of UGA's 3-pointers as a team and has connected on more shots from behind the arc (34) than inside (27).
- ♦ Among SEC leaders, ranks No. 3 in 3-point percentage (.386) and 3-pointers per game (2.1).

## PERSONAL

- ♦ Born Aug. 30, 1994, Tiaria is the daughter of LaShannon Slay and Steve Griffin and is majoring in Human Development & Family Science.

## GAME-BY-GAME LINESCORES

Opponent	GS	MP	FGs	3FGs	FTs	R	A	B	S	Pts.
Morgan State	*	18	7-13	3-5	3-3	5	2	0	4	20
TCU	*	16	3-8	2-5	3-4	4	0	0	0	11
Ohio State	*	37	6-18	3-9	1-2	4	3	0	2	16
Georgia Tech	*	26	1-8	1-5	0-0	1	0	0	1	3
Georgia Southern	*	18	5-11	4-8	0-0	1	1	0	1	14
Colgate	*	20	3-8	0-3	2-3	3	2	0	1	8
Tennessee Tech	*	27	2-10	0-4	6-6	2	0	0	1	10
Coppin State	*	27	1-4	1-4	0-0	3	3	0	2	3
Mercer	*	17	4-4	2-2	2-2	2	3	0	3	12
Michigan State	*	32	3-10	3-7	6-6	8	6	0	3	15
Furman	*	27	2-8	2-5	0-0	1	2	0	2	6
Belmont	*	29	2-8	2-6	5-6	3	1	1	3	11
Seton Hall	*	34	6-15	3-9	1-3	1	0	0	0	16
Mississippi State	*	20	5-9	3-5	0-2	2	0	0	0	13
Alabama	*	28	7-11	2-5	0-0	4	1	0	2	16
Missouri	*	29	4-8	3-6	5-5	5	3	0	0	16
Auburn										
Ole Miss										
Vanderbilt										
Texas A&M										
Tennessee										
Kentucky										
South Carolina										
Arkansas										
Florida										
LSU										
Auburn										
Tennessee										
Florida										

## TIARIA GRIFFIN'S CAREER STATISTICS

OVERALL															SEC																
	GP-GS	MP-Avg.	FGs	Pct.	3FGs	Pct.	FTs	Pct.	Rbs.-Avg.	PF-D	A	TO	BL	ST	Pts.-Avg.		GP-GS	MP-Avg.	FGs	Pct.	3FGs	Pct.	FTs	Pct.	Rbs.-Avg.	PF-D	A	TO	BL	ST	Pts.-Avg.
2012-13	35-17	653-18.7	87-268	.325	46-155	.297	35-51	.686	102-2.9	35-0	29	38	3	32	255-7.3	2012-13	16-8	279-17.4	37-114	.325	19-63	.302	18-23	.783	45-2.8	17-0	7	19	2	13	111-6.9
2013-14	29-6	607-20.9	94-258	.364	41-134	.306	35-47	.745	68-2.3	28-0	49	42	1	42	264-9.1	2013-14	16-4	296-18.5	40-118	.339	16-56	.286	11-14	.786	27-1.7	18-0	17	18	0	17	107-6.7
2014-15	16-16	405-25.3	61-153	.399	34-88	.386	34-42	.810	49-3.1	20-0	27	23	1	25	190-11.9	2014-15	3-3	77-25.7	16-28	.571	8-16	.500	5-7	.714	11-3.7	4-0	4	3	0	2	45-15.0
TOTALS	80-39	1665-20.8	242-679	.356	121-377	.321	104-140	.743	219-2.7	83-0	105	103	5	99	709-8.9	TOTALS	35-15	652-18.6	93-260	.358	43-135	.319	34-44	.773	83-2.4	39-0	28	40	2	32	263-7.5



# 4 HANNAH KOHL ALMIRE

5-9 • SOPHOMORE • GUARD • ATLANTA, GA. • RIVERWOOD CHARTER

## SEASON & CAREER HIGHS

### POINTS

Season: 1 Colgate (11/26/14)  
Career: 2 Kennesaw (12/15/14)

### REBOUNDS

Season: 1 Missouri (1/5/15)  
1 Mercer (12/4/14)  
1 Ga. Southern (11/25/14)  
Career: 2 Kennesaw St. 12/15/13)  
2 Mercer (11/14/13)

### ASSISTS

Season: 1 Colgate (11/26/14)  
Career: 1 Colgate (11/26/14)  
1 Lipcomb (12/17/13)  
1 Belmont (12/12/13)  
1 Mercer (11/14/13)

### BLOCKS

Season: -  
Career: -

### STEALS

Season: -  
Career: -

### MINUTES

Season: 4 Ga. Southern (11/25/14)  
Career: 9 Kennesaw St. (12/15/14)

## CAREER HIGHLIGHTS

- ♦ Named to the 2014 SEC Academic Honor Roll for freshmen.
- ♦ Walk-on who played in 12 games, averaging 0.3 ppg, 0.5 rpg and 0.3 apg as a freshman.
- ♦ Notched playing time in nine of 13 non-conference games, including a season-high nine minutes of PT against Kennesaw State.
- ♦ Saw first-half playing time in two contests – Mercer and Kennesaw State.
- ♦ Coached by Vanessa White at Riverwood International Charter School, where she was four-year starter for the Lady Raiders.
- ♦ Named Riverwood's best defensive performer as a freshman, top offensive player as a sophomore and Most Valuable Player as both a junior and a senior.
- ♦ A stellar all-around athlete who: was named All-Region 7 of Class 5A in both basketball and soccer; finished 22nd individually at the state cross country championships as a sophomore; and finished sixth in the 800-meter run at the state track & field championships as a freshman.

## 2014-15 SEASON HIGHLIGHTS

- ♦ Has garnered playing time in seven games to date, with assists against both Georgia Southern and Colgate, a point versus Colgate and rebounds at Mercer and against Missouri.
- ♦ Had her first made FG of the season waved off due to a shot clock violation against Alabama – a call Andy Landers protested profusely.
- ♦ Already has played in as many SEC outings and logged one more minute of PT in league play this season as she did in the entire 2013-14 campaign.

## GAME-BY-GAME LINESCORES

Opponent	GS	MP	FGs	3FGs	FTs	R	A	B	S	Pts.
Morgan State	2		0-0	0-0	0-0	0	0	0	0	0
TCU	DNP									
Ohio State	DNP									
Georgia Tech	DNP									
Georgia Southern	4		0-0	0-0	0-0	0	1	0	0	0
Colgate	2		0-0	0-0	1-2	0	1	0	0	1
Tennessee Tech	DNP									
Coppin State	DNP									
Mercer	3		0-0	0-0	0-0	1	0	0	0	0
Michigan State	DNP									
Furman	DNP									
Belmont	2		0-0	0-0	0-0	0	0	0	0	0
Seton Hall	DNP									
Mississippi State	DNP									
Alabama	2		0-0	0-0	0-0	0	0	0	0	0
Missouri	1		0-1	0-0	0-0	1	0	0	0	0
Auburn										
Ole Miss										
Vanderbilt										
Texas A&M										
Tennessee										
Kentucky										
South Carolina										
Arkansas										
Florida										
LSU										
Auburn										
Tennessee										
Florida										

## PERSONAL

- ♦ Born Aug. 12, 1995, Hannah Kohl is the daughter of Monique and David Almire and is majoring in Marketing.

## HANNAH KOHL ALMIRE'S CAREER STATISTICS

OVERALL																SEC															
	GP-GS	MP-Avg.	FGs	Pct.	3FGs	Pct.	FTs	Pct.	Rbs.-Avg.	PF-D	A	TO	BL	ST	Pts.-Avg.		GP-GS	MP-Avg.	FGs	Pct.	3FGs	Pct.	FTs	Pct.	Rbs.-Avg.	PF-D	A	TO	BL	ST	Pts.-Avg.
2013-14	12-0	33-2.8	1-7	.143	0-1	.000	1-3	.333	6-0.5	4-0	3	3	0	0	3-0.3	2013-14	2-0	2-1.0	0-0	.000	0-0	.000	0-0	.000	0-0.0	0-0	0	1	0	0	0-0.0
2014-15	7-0	16-2.3	0-1	.000	0-0	.000	1-2	.500	3-0.4	1-0	1	3	0	0	1-0.1	2014-15	2-0	3-1.5	0-1	.000	0-0	.000	0-0	.000	1-0.5	0-0	0	0	0	0	0-0.0
TOTALS	19-0	49-2.6	1-8	.125	0-1	.000	2-5	.400	9-0.5	5-0	4	6	0	0	4-0.2	TOTALS	4-0	5-1.3	0-1	.000	0-0	.000	0-0	.000	1-0.3	0-0	0	1	0	0	0-0.0





# 11 PACHIS ROBERTS

## GAME-BY-GAME LINESCORES

## CAREER HIGHLIGHTS

♦ Transferred to UGA from Syracuse during the 2013 summer and, per NCAA regulations, practiced but did not play last year.

- ♦ Averaged 3.6 points, 1.8 rebounds and 0.8 steals per game during her freshman season.
- ♦ Helped Syracuse to a 24-8 record, an NCAA Tournament bid and a final Associated Press ranking of No. 22 in 2012-13.

♦ Recorded her two double-digit outputs (11 points) in back-to-back games against Georgia Tech and Virginia.

♦ Coached by Phyllis Arthur at McEachern High where she scored 1,591 career points and helped the Indians to a combined 104-20 record in her four seasons.

♦ Selected as the consensus 2012 Miss Georgia Basketball.

◆ As a senior in 2012, led McEachern's Indians to a perfect 33-0 record, the Class 5A Georgia State Championship and a No. 2 national ranking in the POWERADE FAB 50.

## 2014-15 SEASON HIGHLIGHTS

♦ Came within a point of her third career double-digit scoring output against Georgia Southern, largely due to connecting on 5-of-6 trips to the free throw line.

◆ Posted career highs for rebounds (5) and minutes played (22) versus Georgia Southern.

- ◇ Made a huge impact against Michigan State, scoring six points, grabbing a rebound and dishing out an assist in just four minutes of action. The buckets Roberts made and assisted pushed Georgia's lead from nine points to 19.

♦ Tied her career-high with 11 points at Seton Hall, equaling the mark she set twice as a freshman at Syracuse in 2012-13.

◆ Notched her first collegiate start against Missouri.

## PERSONAL

♦ Born Nov. 3, 1994, Pachis is the daughter of Phillip and Marie Roberts and is majoring in Consumer Economics.

## PACHIS ROBERTS' CAREER STATISTICS

[illegible]



# 12 HALEY CLARK

5-9 • FRESHMAN • GUARD • ORLANDO, FLA. • EDGEWATER HS

## SEASON & CAREER HIGHS

### POINTS

Both: 4 Mercer (12/4/14)  
4 Tenn. Tech (11/29/14)

### REBOUNDS

Both: 2 Seton Hall (12/28/30)  
2 Mercer (12/4/14)  
2 Ga. Southern (11/25/14)  
2 Ga. Tech (11/23/14)  
2 Morgan St. (11/14/14)

### ASSISTS

Both: 5 Ga. Southern (11/25/14)

### BLOCKS

Both: 1 Michigan St. (12/7/14)

### STEALS

Both: 2 Coppin St. (12/2/14)  
2 Tenn. Tech (11/29/14)  
2 Colgate (11/26/14)

### MINUTES

Both: 20 Mercer (12/4/14)  
20 Colgate (11/26/14)

## CAREER HIGHLIGHTS

- ♦ Coached by Malcolm Lewis at Edgewater where she was a four-year starter and helped the Eagles to a combined record of 104-19 record and a trio of 6A state titles
- ♦ Rated as the nation's No. 24 point guard prospect by ESPN Hoopgurlz.
- ♦ Tabbed second-team 6A All-State by the Florida Association of Basketball Coaches (FABC) as a senior.
- ♦ Finished her career with 1,075 points, 391 assists, 303 steals and 239 rebounds.
- ♦ Tabbed MVP of the 2014 6A State Tournament after averaging 12.5 points, 8.5 rebounds, 5.0 assists and 4.5 steals during two tourney outings.
- ♦ Notched game-high tallies of 20 points, seven assists and six steals in Edgewater's 59-58 loss to No. 7 Riverdale Baptist (Upper Marlboro, Md.) in the semifinals of the 2014 Dick's Sports Goods National Tournament.

## 2014-15 SEASON HIGHLIGHTS

- ♦ Her minutes played have been exclusively at the point, backing up Marjorie Butler.
- ♦ Hit two key free throws with 5:19 left at Georgia Tech that help the Lady Bulldogs maintain a lead they never relinquished the rest of the day.
- ♦ Recorded a pair of steals in successive outings against Colgate, Tennessee Tech and Coppin State.

## GAME-BY-GAME LINESCORES

Opponent	GS	MP	FGs	3FGs	FTs	R	A	B	S	Pts.
Morgan State		16	1-2	0-0	0-0	2	1	0	0	2
TCU		6	0-0	0-0	0-0	0	0	0	0	0
Ohio State		4	0-0	0-0	0-0	0	1	0	0	0
Georgia Tech		9	0-0	0-0	2-2	2	1	0	0	2
Georgia Southern		17	0-2	0-1	0-0	2	5	0	1	0
Colgate		20	1-3	0-0	0-0	1	0	0	2	2
Tennessee Tech		11	1-1	0-0	2-2	0	0	0	2	4
Coppin State		17	0-1	0-0	0-0	0	1	0	2	0
Mercer		20	2-3	0-0	0-0	2	2	0	1	4
Michigan State		11	1-2	0-0	0-0	0	1	1	0	2
Furman		10	0-1	0-0	0-0	1	2	0	1	0
Belmont		7	0-2	0-0	0-0	0	1	0	1	0
Seton Hall		13	0-4	0-1	0-1	2	1	0	0	0
Mississippi State			DNP							
Alabama		14	0-1	0-0	0-0	0	0	0	0	0
Missouri		6	0-2	0-0	0-0	0	1	0	0	0
Auburn										
Ole Miss										
Vanderbilt										
Texas A&M										
Tennessee										
Kentucky										
South Carolina										
Arkansas										
Florida										
LSU										
Auburn										
Tennessee										
Florida										

## PERSONAL

- ♦ Born December 5, 1995, Haley is the daughter of Robert and Lisa Clark and is majoring in Pre-Business/Finance.

## HALEY CLARK'S CAREER STATISTICS

OVERALL															SEC																
	GP-GS	MP-Avg.	FGs	Pct.	3FGs	Pct.	FTs	Pct.	Rbs.-Avg.	PF-D	A	TO	BL	ST	Pts.-Avg.		GP-GS	MP-Avg.	FGs	Pct.	3FGs	Pct.	FTs	Pct.	Rbs.-Avg.	PF-D	A	TO	BL	ST	Pts.-Avg.
2014-15	15-0	181-12.1	6-24	.250	0-2	.000	4-5	.800	12-0.8	23-0	17	27	1	10	16-1.1	2014-15	2-0	20-10.0	0-3	.000	0-0	.000	0-0	.000	0-0.0	2-0	1	4	0	0	0-0.0
TOTALS	15-0	181-12.1	6-24	.250	0-2	.000	4-5	.800	12-0.8	23-0	17	27	1	10	16-1.1	TOTALS	2-0	20-10.0	0-3	.000	0-0	.000	0-0	.000	0-0.0	2-0	1	4	0	0	0-0.0



# 13 MERRITT HEMPE

6-2 • JUNIOR • FORWARD • FREDERICKSBURG, VA. • STAFFORD HS

## SEASON & CAREER HIGHS

### POINTS

Season: 17 Ga. Southern (11/25/14)  
Career: 22 Mississippi St. (3/2/14)

### REBOUNDS

Season: 11 Furman (12/20/14)  
Career: 11 Furman (12/20/14)  
11 Kentucky (1/30/14)

### ASSISTS

Season: 3 Mississippi St. (1/2/15)  
Career: 3 Mississippi St. (1/2/15)  
3 Tennessee (1/5/14)  
3 Ga. State (12/1/13)

### BLOCKS

Season: 3 Michigan St. (12/7/14)  
3 TCU (11/16/14)  
Career: 4 Arkansas (2/21/13)

### STEALS

Season: 2 Four times  
Career: 3 Presbyterian (11/14/12)

### MINUTES

Season: 33 Seton Hall (12/28/30)  
33 Belmont (12/22/14)  
Career: 37 Florida (2/16/14)  
37 Vanderbilt (1/2/14)

## MISCELLANEOUS STATS

### DOUBLE DIGIT POINTS

Season: 7 Career: 20

### DOUBLE DIGIT REBOUNDS

Season: 1 Career: 2

### DOUBLE-DOUBLES

Season: 1 Career: 2

### 20-POINT GAMES

Season: 0 Career: 1

## CAREER HIGHLIGHTS

- ♦ In 2013-14, started 31 of 32 games for the Lady Bulldogs, missing out against S.C. State when she played just five minutes due to an illness.
- ♦ Selected to the SEC Academic Honor Roll for the second straight season.
- ♦ Posted four career-high scoring outputs, progressing from 13 vs. Mercer to 18 vs. Kennesaw State to 19 at No. 14 Texas A&M and to 22 against Mississippi State.
- ♦ Scored 14 first-half points against Kennesaw State, three more than the Owls produced as a team during the period.
- ♦ Exploded for a career-high 22 points against Mississippi State in the regular-season finale, doing so against Martha Alwal, the 2014 SEC co-Defensive Player of the Year.
- ♦ In 2012-13, logged action in 30 games, including a quartet of starts against S.C. State, Belmont, Savannah State and Alabama in Athens.
- ♦ Finished second on the team with 18 blocks, including 10 versus SEC foes.
- ♦ Against S.C. State, became the 71st – of now 74 – freshman to start during for Andy Landers at UGA.
- ♦ Coached by Carl Harris at Stafford where she was second-team All-Met by the Washington Post as a senior.
- ♦ Tabbed honorable mention all-class all-state by the Virginia High School Coaches Association and Commonwealth District Player of the Year as a senior.

## 2014-15 SEASON HIGHLIGHTS

- ♦ Posted game-high tallies of 17 points and eight rebounds against Georgia Southern.
- ♦ Notched back-to-back-to-back double-digit scoring outputs against Georgia Southern, Colgate and Tennessee Tech, averaging 13.0 ppg over that span.
- ♦ Equaled her career high with 11 rebounds against Furman en route to her second career double-double.
- ♦ Her 9-of-10 effort at the line against Alabama pushed her into SEC leaders in free throw percentage. She is currently No. 9 at .727.

## PERSONAL

- ♦ Born July 27, 1994, Merritt is the daughter of Rebecca and David Hempe and is majoring in Pre-Business/Management.

## GAME-BY-GAME LINESCORES

Opponent	GS	MP	FGs	3FGs	FTs	R	A	B	S	Pts.
Morgan State	*	20	4-7	0-1	2-2	7	1	2	1	10
TCU	*	19	2-7	0-0	0-0	1	1	3	1	4
Ohio State	*	22	2-11	0-0	1-3	6	1	0	0	5
Georgia Tech	*	16	3-7	0-0	0-0	2	1	0	1	6
Georgia Southern	*	20	6-11	0-1	5-6	8	0	1	1	17
Colgate	*	18	3-9	0-0	4-4	5	1	0	2	10
Tennessee Tech	*	25	4-8	0-0	4-7	5	1	0	0	12
Coppin State	*	8	0-4	0-0	0-0	3	1	0	0	0
Mercer	*	26	1-4	0-0	1-2	5	0	1	2	3
Michigan State	*	30	3-7	1-2	2-3	2	0	3	2	9
Furman	*	32	4-10	0-0	6-11	11	2	1	0	14
Belmont	*	33	3-8	0-0	3-3	8	0	1	2	9
Seton Hall	*	33	5-10	0-1	3-4	5	0	1	1	13
Mississippi State	*	22	1-4	0-2	0-0	3	3	0	0	2
Alabama	*	24	3-7	0-0	9-10	7	1	0	1	15
Missouri	*	17	0-1	0-1	0-0	3	0	1	0	0
Auburn										
Ole Miss										
Vanderbilt										
Texas A&M										
Tennessee										
Kentucky										
South Carolina										
Arkansas										
Florida										
LSU										
Auburn										
Tennessee										
Florida										

## MERRITT HEMPE'S CAREER STATISTICS

OVERALL															SEC																
	GP-GS	MP-Avg.	FGs	Pct.	3FGs	Pct.	FTs	Pct.	Rbs.-Avg.	PF-D	A	TO	BL	ST	Pts.-Avg.		GP-GS	MP-Avg.	FGs	Pct.	3FGs	Pct.	FTs	Pct.	Rbs.-Avg.	PF-D	A	TO	BL	ST	Pts.-Avg.
2012-13	30-4	357-11.9	37-97	.381	3-19	.158	20-29	.690	85-2.8	57-1	12	25	18	13	97-3.2	2012-13	14-1	146-10.4	17-41	.415	2-8	.250	5-11	.455	33-2.4	27-0	4	9	8	5	41-2.9
2013-14	32-31	807-25.2	106-229	.463	2-18	.111	63-92	.685	152-4.8	124-11	23	67	27	15	277-8.7	2013-14	16-16	449-28.1	54-113	.478	1-11	.091	36-51	.706	87-5.4	69-8	12	39	16	4	145-9.1
2014-15	16-16	365-22.8	44-115	.383	1-9	.111	40-55	.727	81-5.1	42-2	13	28	14	14	129-8.1	2014-15	3-3	63-21.0	4-12	.333	0-4	.000	9-10	.900	13-4.3	10-1	4	6	1	1	17-5.7
TOTALS	78-51	1529-19.6	187-441	.424	6-46	.130	123-176	.699	318-4.1	223-14	48	120	59	42	503-6.4	TOTALS	33-20	658-19.9	75-166	.452	3-23	.130	50-72	.694	133-4.0	106-9	20	54	25	10	203-6.2



# 14 JASMINE CARTER

5-7 • FRESHMAN • GUARD • DACULA, GA. • ST. PIUS X HS

## SEASON & CAREER HIGHS

### POINTS

Both: 6 Ga. Southern (11/25/14)

### REBOUNDS

Both: 3 Morgan St. (11/14/14)

### ASSISTS

Both: 2 Ga. Southern (11/25/14)

### BLOCKS

Both: -

### STEALS

Both: 4 Ga. Southern (11/25/14)

### MINUTES

Both: 16 Ga. Southern (11/25/14)

## CAREER HIGHLIGHTS

- ◊ Coached by Kyle Snipes as a junior and senior at St. Pius X after playing for Ashley Phillips at Mill Creek High as a freshman and a sophomore.
- ◊ A two-time Class 3A All-State selection, earning second-team honors from both the Atlanta Journal-Constitution and the Georgia Sports Writers Association as a junior and a senior.
- ◊ Completed her prep career with 1,694 points – 840 at St. Pius X and 854 at Mill Creek.
- ◊ Helped lead the St. Pius X Golden Lions to consecutive 30-3 finishes and Georgia 3A state titles.
- ◊ Helped Mill Creek reach the semifinals of the Georgia 5A State Tournament as a freshman and the quarterfinals as a sophomore.

## 2014-15 SEASON HIGHLIGHTS

- ◊ Scored six points, collected four steals and dished out a pair of assists in her first extended action of the season against Georgia Southern.
- ◊ Chipped in nicely in her first SEC action against Alabama, knocking down a pair of jumpers. Andy Landers was pleased Carter was able "...to remember that when certain things happen you have the ability to do this. There's no question in my mind that she went out there, recognized what the defense was doing and took advantage with the one-dribble pull up."

## PERSONAL

- ◊ Born March 8, 1996, Jasmine is the daughter of Joel and Pat Carter and is undecided on a major.
- ◊ Recipient of the Victoria P. Farmer Women's Basketball Scholarship for 2014-15.

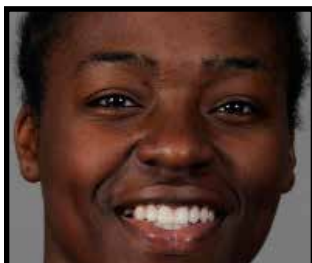
## GAME-BY-GAME LINESCORES

Opponent	GS	MP	FGs	3FGs	FTs	R	A	B	S	Pts.
Morgan State	10		0-3	0-0	0-1	3	0	0	0	0
TCU	DNP									
Ohio State	DNP									
Georgia Tech	DNP									
Georgia Southern	16	3-6	0-0	0-0	1	2	0	4	6	
Colgate	6	0-4	0-2	0-0	0	0	0	1	0	
Tennessee Tech	1	0-0	0-0	0-0	0	0	0	0	0	
Coppin State	4	0-0	0-0	0-0	0	0	0	0	0	
Mercer	12	2-5	0-1	0-0	0	0	0	0	4	
Michigan State	DNP									
Furman	DNP									
Belmont	2	0-2	0-0	0-0	0	0	0	0	0	
Seton Hall	3	0-2	0-0	0-0	0	0	0	0	0	
Mississippi State	DNP									
Alabama	10	2-4	0-0	0-0	1	0	0	0	4	
Missouri	3	1-2	0-0	0-0	0	0	0	0	2	
Auburn										
Ole Miss										
Vanderbilt										
Texas A&M										
Tennessee										
Kentucky										
South Carolina										
Arkansas										
Florida										
LSU										
Auburn										
Tennessee										
Florida										

## JASMINE CARTER'S CAREER STATISTICS

OVERALL															SEC																
	GP-GS	MP-Avg.	FGs	Pct.	3FGs	Pct.	FTs	Pct.	Rbs.-Avg.	PF-D	A	TO	BL	ST	Pts.-Avg.		GP-GS	MP-Avg.	FGs	Pct.	3FGs	Pct.	FTs	Pct.	Rbs.-Avg.	PF-D	A	TO	BL	ST	Pts.-Avg.
2014-15	10-0	67-6.7	8-28	.286	0-3	.000	0-1	.000	5-0.5	3-0	2	5	0	5	16-1.6	2014-15	2-0	13-6.5	3-6	.500	0-0	.000	0-0	.000	1-0.5	2-0	0	1	0	0	6-3.0
TOTALS	10-0	67-6.7	8-28	.286	0-3	.000	0-1	.000	5-0.5	3-0	2	5	0	5	16-1.6	TOTALS	2-0	13-6.5	3-6	.500	0-0	.000	0-0	.000	1-0.5	2-0	0	1	0	0	6-3.0





# 15 KRISTA DONALD

5-11 • SENIOR • FORWARD • LAKE, MISS. • LAKE HS

## SEASON & CAREER HIGHS

### POINTS

Season: 13 TCU (11/16/14)  
Career: 22 App. St. (12/22/11)

### REBOUNDS

Season: 13 Seton Hall (12/28/30)  
Career: 16 Ohio State (11/17/13)

### ASSISTS

Season: 6 Ga. Tech (11/23/14)  
Career: 7 Illinois (12/28/13)

### BLOCKS

Season: 1 Belmont (12/22/14)  
Career: 2 Presbyterian (11/10/13)  
2 Montana (2/23/13)

### STEALS

Season: 3 Missouri (1/5/15)  
3 Alabama (1/4/15)  
Career: 4 Mississippi St. (3/2/14)  
4 Illinois (12/28/13)

### MINUTES

Season: 38 Ga. Tech (11/23/14)  
Career: 44 Texas A&M (2/13/14)

## MISCELLANEOUS STATS

### DOUBLE DIGIT POINTS

Season: 5 Career: 25

### DOUBLE DIGIT REBOUNDS

Season: 3 Career: 11

### DOUBLE-DOUBLES

Season: 2 Career: 8

### 20-POINT GAMES

Season: 0 Career: 1

## CAREER HIGHLIGHTS

- ◊ Had what was unequivocally a successful arthroscopic procedure during the summer of 2013 to address issues with the posterior cruciate ligament (PCL) in her left knee that hindered her practice and playing time during her first two seasons at UGA.
- ◊ After averaging 12.3 minutes per game during her freshman and sophomore years, logged 30.0 mpg as a junior.
- ◊ Displayed what was to come throughout her junior season with a 10-point, 16-rebound effort against Ohio State in the third game of the year. That tally held up as the most boards by any Lady Bulldog during 2013-14.
- ◊ A very consistent scorer against league competition in 2014, with 10 double-digit outputs in 18 combined games of regular-season and SEC Tournament play.
- ◊ Missed the first dozen games of 2012-13 while focusing on academics. Returned to see action in 21 of the remaining 23 contests.
- ◊ Named Feb. 6, 2011 SEC Freshman of the Week, largely due to game-highs of 18 points and nine boards at Alabama.
- ◊ Coached by Victor Gilstrap at Lake High where she scored 2,456 points and hauled down 1,470 rebounds and was tabbed as the 2011 Mississippi Gatorade Player of the Year.

## 2014-15 SEASON HIGHLIGHTS

- ◊ Solid contributor in successive key early-season wins over TCU, Ohio State and Georgia Tech. Averaged 12.0 ppg and 9.3 rpg in those contest with double-doubles against the Horned Frogs and Yellow Jackets.
- ◊ Came within a rebound of her third double-double of the season versus Michigan State.
- ◊ Has led the Lady Bulldogs in rebounding seven times, headlined by a season-high 13 boards at Seton Hall.
- ◊ Posted season-high steals tallies in consecutive SEC outings against Alabama and Missouri.
- ◊ Paces Georgia and ranks No. 9 in the SEC in rebounding at 7.4 rpg.

## PERSONAL

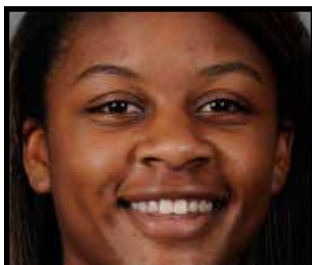
- ◊ Born Jan. 10, 1993, Krista is the daughter of Angelia Donald and is majoring in Criminal Justice.
- ◊ Recipient of the Andy Landers Scholarship for 2012-13, 2013-14 and 2014-15.

## GAME-BY-GAME LINESCORES

Opponent	GS	MP	FGs	3FGs	FTs	R	A	B	S	Pts.
Morgan State	*	20	1-3	0-0	2-2	6	1	0	2	4
TCU	*	32	4-8	0-0	5-5	10	1	0	0	13
Ohio State	*	29	6-10	0-1	0-0	6	1	0	0	12
Georgia Tech	*	38	4-8	1-1	2-2	12	6	0	0	11
Georgia Southern	*	17	1-4	0-0	0-0	5	3	0	2	2
Colgate	*	20	4-8	0-1	0-0	7	1	0	0	8
Tennessee Tech	*	27	4-6	0-0	3-4	6	0	0	0	11
Coppin State	*	26	2-5	0-0	5-7	9	0	0	2	9
Mercer	*	17	4-9	0-1	0-1	5	0	0	0	8
Michigan State	*	33	4-9	1-2	3-6	9	0	0	0	12
Furman	*	28	3-12	0-0	0-2	5	0	0	2	6
Belmont	*	24	3-6	0-0	3-4	6	1	1	2	9
Seton Hall	*	29	0-1	0-0	4-6	13	2	0	1	4
Mississippi State	*	24	4-6	0-0	0-1	6	1	0	2	8
Alabama	*	22	4-4	1-1	0-0	5	1	0	3	9
Missouri	*	23	2-6	1-4	0-0	9	0	0	3	5
Auburn										
Ole Miss										
Vanderbilt										
Texas A&M										
Tennessee										
Kentucky										
South Carolina										
Arkansas										
Florida										
LSU										
Auburn										
Tennessee										
Florida										

## KRISTA DONALD'S CAREER STATISTICS

OVERALL															SEC																
	GP-GS	MP-Avg.	FGs	Pct.	3FGs	Pct.	FTs	Pct.	Rbs.-Avg.	PF-D	A	TO	BL	ST	Pts.-Avg.		GP-GS	MP-Avg.	FGs	Pct.	3FGs	Pct.	FTs	Pct.	Rbs.-Avg.	PF-D	A	TO	BL	ST	Pts.-Avg.
2011-12	27-1	354-13.1	47-97	.485	3-5	.600	37-55	.673	86-3.2	40-0	15	33	4	10	134-5.0	2011-12	12-0	134-11.2	19-46	.413	1-1	1.000	14-23	.609	31-2.6	15-0	5	11	0	4	53-4.4
2012-13	21-1	237-11.3	19-49	.388	2-13	.154	12-14	.857	53-2.5	29-0	17	25	5	4	52-2.5	2012-13	14-1	176-12.6	14-38	.368	1-9	.111	12-14	.857	41-2.9	23-0	12	19	3	3	41-2.9
2013-14	32-31	961-30.0	111-209	.531	8-18	.444	47-76	.618	223-7.0	71-0	61	65	6	33	277-8.7	2013-14	16-16	508-31.8	56-100	.560	4-10	.400	28-41	.683	95-5.9	36-0	31	38	1	16	144-9.0
2014-15	16-16	409-25.6	50-105	.476	4-11	.364	27-40	.675	119-7.4	35-0	18	27	1	19	131-8.2	2014-15	3-3	69-23.0	10-16	.625	2-5	.400	0-1	.000	20-6.7	8-0	2	3	0	8	22-7.3
TOTALS	96-49	1961-20.4	227-460	.493	17-47	.362	123-185	.665	481-5.0	175-0	111	150	16	66	594-6.2	TOTALS	45-20	887-19.7	99-200	.495	8-25	.320	54-79	.684	187-4.2	82-0	50	71	4	31	260-5.8



# 20 SHACOBIA BARBEE

5-10 • JUNIOR • G/F • MURFREESBORO, TENN. • RIVERDALE HS

## SEASON & CAREER HIGHS

### POINTS

Season: 25 Furman (12/20/14)

Career: 25 Furman (12/20/14)

### REBOUNDS

Season: 14 TCU (11/16/14)

Career: 15 Mercer (11/14/13)

### ASSISTS

Season: 6 Mississippi St. (1/2/15)

Career: 6 Nine Times

### BLOCKS

Season: 1 Belmont (12/22/14)

Career: 1 Twelve Times

### STEALS

Season: 6 Mercer (12/4/14)

Career: 7 Ga. State (12/1/13)

7 Alabama (1/10/13)

### MINUTES

Season: 37 Mississippi St. (1/2/15)

37 Ga. Tech (11/23/14)

Career: 43 Texas A&M (2/13/14)

## MISCELLANEOUS STATS

### DOUBLE DIGIT POINTS

Season: 10 Career: 38

### DOUBLE DIGIT REBOUNDS

Season: 3 Career: 15

### DOUBLE-DOUBLES

Season: 2 Career: 9

### 20-POINT GAMES

Season: 2 Career: 5

## CAREER HIGHLIGHTS

- ♦ In 2013-14, named second-team All-SEC and also voted to the SEC All-Defensive team (for a second straight year) by league coaches.
- ♦ Became the first player Lady Bulldog history – as well as the only SEC player and one of seven Division I players – to lead their team in ppg, rpg, apg and spg during 2013-14.
- ♦ Led the SEC and ranked No. 26 nationally in steals (2.6 spg).
- ♦ In 2012-13, voted by SEC coaches to the league's All-Freshman and All-Defensive teams.
- ♦ Named to the 2013 All-Spokane Regional, the first UGA freshman to secure All-Regional honors since Teresa Edwards in 1983.
- ♦ After averaging 6.4 ppg and 5.4 rpg in the regular season, upped those to 11.3 ppg and a team-best 8.3 rpg in six SEC and NCAA tourney games, with a pair of double-doubles.
- ♦ Coached by John Wild as a junior and senior at Riverdale and by Hillary Hodges as a freshman and sophomore.
- ♦ Tabbed 2011 and 2012 Miss Tennessee Basketball for Class 3A.
- ♦ Helped Riverdale to a pair of strong finishes in ESPN's Powerade Fab 50 high school rankings – No. 27 in 2011 and No. 5 in 2012.

## 2014-15 SEASON HIGHLIGHTS

- ♦ Tabbed second-team All-SEC in preseason balloting of league coaches.
- ♦ Poured in what was then a career-high 24 points at Georgia Tech. Defensively, forced at least five Tech turnovers, with a key steal with 1:00 left in the game.
- ♦ Her 25-point outburst against Furman featured 19 second-half points and 13 in the final 9:10 of the contest that featured 11 ties and 12 lead changes.
- ♦ Her 25 points vs. Furman, 14 boards against TCU and six steals at Mercer are single-game highs for all Lady Bulldogs to date.
- ♦ Has led UGA in scoring in six games, in rebounds six times, in assists in six contests and in steals in eight matchups.
- ♦ Ranked among SEC statistical leaders in six stats – No. 6 in assist-to-turnover ratio, No. 5 in steals, No. 12 in assists, No. 12 in defensive rebounds, No. 16 in rebounding and No. 17 in scoring.

## GAME-BY-GAME LINESCORES

Opponent	GS	MP	FGs	3FGs	FTs	R	A	B	S	Pts.
Morgan State	*	18	3-6	0-2	1-2	5	2	0	2	7
TCU	*	35	5-12	0-5	2-4	14	4	0	5	12
Ohio State	*	34	5-13	3-5	0-0	7	3	0	0	13
Georgia Tech	*	37	8-15	3-8	5-7	7	3	0	1	24
Georgia Southern	*	20	8-11	0-2	0-1	7	4	0	2	16
Colgate	*	23	7-13	1-3	1-1	5	5	0	2	16
Tennessee Tech	*	35	5-9	1-2	3-5	6	4	1	2	14
Coppin State	*	26	2-10	0-3	4-6	10	2	0	4	8
Mercer	*	20	6-9	0-0	0-0	0	3	0	6	12
Michigan State	*	20	3-8	1-3	0-0	4	2	0	3	7
Furman	*	35	11-20	3-6	0-2	12	2	0	5	25
Belmont	*	33	5-11	2-4	1-2	8	1	1	3	13
Seton Hall	*	19	1-7	0-2	0-0	3	2	0	0	2
Mississippi State	*	37	3-11	0-2	3-4	7	6	0	1	9
Alabama	*	31	3-9	0-0	2-2	8	5	0	1	8
Missouri		20	4-7	0-2	4-6	4	1	0	3	12
Auburn										
Ole Miss										
Vanderbilt										
Texas A&M										
Tennessee										
Kentucky										
South Carolina										
Arkansas										
Florida										
LSU										
Auburn										
Tennessee										
Florida										

## PERSONAL

- ♦ Born Aug. 9, 1994, Shacobia is the daughter of Felicia Nelson and Tim Barbee and is majoring in Human Development & Family Science.
- ♦ Recipient of the Vickie and Leon Farmer Scholarship for 2013-14 and 2014-15.

## SHACOBIA BARBEE'S CAREER STATISTICS

OVERALL															SEC																
	GP-GS	MP-Avg.	FGs	Pct.	3FGs	Pct.	FTs	Pct.	Rbs.-Avg.	PF-D	A	TO	BL	ST	Pts.-Avg.		GP-GS	MP-Avg.	FGs	Pct.	3FGs	Pct.	FTs	Pct.	Rbs.-Avg.	PF-D	A	TO	BL	ST	Pts.-Avg.
2012-13	35-34	941-26.9	86-214	.402	20-67	.299	61-103	.592	212-6.1	61-1	87	70	2	85	253-7.2	2012-13	16-16	438-27.4	38-98	.388	9-30	.300	32-52	.615	93-5.8	35-1	31	32	0	43	117-7.3
2013-14	30-26	941-31.4	137-314	.436	25-91	.275	68-120	.567	236-7.9	80-3	95	65	9	79	367-12.2	2013-14	16-12	528-33.0	73-171	.427	17-57	.298	48-81	.593	128-8.0	48-3	42	32	4	42	211-13.2
2014-15	16-15	443-27.7	79-171	.462	14-49	.286	26-42	.619	107-6.7	22-0	50	25	2	40	198-12.4	2014-15	3-2	88-29.3	10-27	.370	0-4	.000	9-12	.750	19-6.3	4-0	12	7	0	5	29-9.7
TOTALS	81-75	2325-28.7	302-699	.432	59-207	.285	155-265	.585	555-6.9	163-4	232	160	13	204	818-10.1	TOTALS	35-30	1054-30.1	121-296	.409	26-91	.286	89-145	.614	240-6.9	87-4	85	71	4	90	357-10.2



# 23 HALLE WASHINGTON

6-2 • SOPHOMORE • FORWARD • BOSSIER CITY, LA. • PARKWAY HS

## SEASON & CAREER HIGHS

### POINTS

Season: 7 Colgate (11/26/14)  
Career: 12 Kennesaw St. (12/15/13)  
12 G. Washington (11/29/13)

### REBOUNDS

Season: 6 Missouri (1/5/15)  
Career: 8 Kennesaw St. (12/15/13)  
8 Presbyterian (11/10/13)

### ASSISTS

Season: 3 Mercer (12/4/14)  
Career: 4 Kennesaw St. (12/15/13)

### BLOCKS

Season: 2 Seton Hall (12/28/30)  
Career: 3 Ole Miss (2/9/14)  
3 Furman (11/19/13)  
3 Presbyterian (11/10/13)

### STEALS

Season: 2 Alabama (1/4/15)  
Career: 3 Furman (11/19/13)

### MINUTES

Season: 18 Missouri (1/5/15)  
18 Mississippi St. (1/2/15)  
18 Colgate (11/26/14)  
Career: 37 Kennesaw St. (12/15/13)

## MISCELLANEOUS STATS

### DOUBLE DIGIT POINTS

Season: 0 Career: 2

## CAREER HIGHLIGHTS

- ♦ Named to the SEC Academic Honor Roll for freshmen.
- ♦ Played in all 32 games, including a start against S.C. State. Became the 74th freshman to start for the Lady Bulldogs under Andy Landers.
- ♦ Led Georgia in blocks in 15 games, a team high for most occurrences.
- ♦ Entered the Georgia Tech game just 4-of-11 from the line on the season but knocked down 3-of-4 free throw attempts in the final 1:17 against the Yellow Jackets.
- ♦ Reached double figures for the first time against George Washington, doing so in the first half alone by 4-of-4 from the field and 2-of-2 from the line in opening period.
- ♦ Logged a career-high 28 minutes in an SEC Tournament victory over Vanderbilt.
- ♦ Coached by Aaron Megee at Parkway where she was ranked as one of the nation's top-50 prospects by four recruiting services – No. 29 by collegesportsmadness.com, No. 30 by both ESPN Hoopgurlz and ProspectsNation.com and No. 48 by Full Court Press.

## 2014-15 SEASON HIGHLIGHTS

- ♦ Following an early-season injury, logged double-digit minutes in each of the Lady Bulldogs' next four games.
- ♦ Handed out three assists in just 17 minutes of action at Mercer.
- ♦ Equaled her season high with 18 minutes of PT in of UGA's first three SEC dates – at Mississippi State and vs. Missouri.
- ♦ Turned in her best outing of the year against Missouri. Said Andy Landers: "I think she's finally starting to get in shape and get a little confidence. She did a nice job defensively and an excellent job of rebounding the ball. And then in close to the basket, she did a terrific job of finishing."
- ♦ After averaging 10.4 minutes in nine non-conference appearances, has seen 16.7 mpg in UGA's first two SEC outings.

## GAME-BY-GAME LINESCORES

Opponent	GS	MP	FGs	3FGs	FTs	R	A	B	S	Pts.
Morgan State	DNP									
TCU	9	0-0	0-0	0-0	3	1	1	0	0	
Ohio State	DNP									
Georgia Tech	DNP									
Georgia Southern	DNP									
Colgate	18	3-6	0-0	1-2	4	0	1	1	7	
Tennessee Tech	14	0-2	0-0	0-0	2	0	0	1	0	
Coppin State	12	0-3	0-0	3-8	1	0	1	0	3	
Mercer	17	0-4	0-0	0-0	4	3	0	1	0	
Michigan State	6	0-0	0-0	0-0	1	0	0	0	0	
Furman	4	0-1	0-0	0-0	1	0	0	1	0	
Belmont	6	1-2	0-0	0-2	1	1	0	0	2	
Seton Hall	8	0-0	0-0	0-0	3	0	2	1	0	
Mississippi State	18	0-1	0-0	0-0	4	0	1	0	0	
Alabama	14	2-3	0-0	0-0	2	1	0	2	4	
Missouri	18	2-5	0-0	2-3	6	0	1	1	6	
Auburn										
Ole Miss										
Vanderbilt										
Texas A&M										
Tennessee										
Kentucky										
South Carolina										
Arkansas										
Florida										
LSU										
Auburn										
Tennessee										
Florida										

## PERSONAL

- ♦ Born Jan. 24, 1994, Halle is the daughter of Harvey and Nina Washington and is undecided on a major.
- ♦ Recipient of the Val Porter Family Women's Basketball Scholarship for 2014-15.

## HALLE WASHINGTON'S CAREER STATISTICS

OVERALL																SEC															
	GP-GS	MP-Avg.	FGs	Pct.	3FGs	Pct.	FTs	Pct.	Rbs.-Avg.	PF-D	A	TO	BL	ST	Pts.-Avg.		GP-GS	MP-Avg.	FGs	Pct.	3FGs	Pct.	FTs	Pct.	Rbs.-Avg.	PF-D	A	TO	BL	ST	Pts.-Avg.
2013-14	32-1	502-15.7	51-125	.408	0-0	.000	29-64	.453	124-3.9	114-8	12	55	25	17	131-4.1	2013-14	16-0	224-14.0	20-44	.455	0-0	.000	6-14	.429	47-2.9	57-4	7	24	12	5	46-2.9
2014-15	12-0	144-12.0	8-27	.296	0-0	.000	6-15	.400	32-2.7	27-2	6	13	7	8	22-1.8	2014-15	3-0	50-16.7	4-9	.444	0-0	.000	2-3	.667	12-4.0	10-1	1	6	2	3	10-3.3
TOTALS	44-1	646-14.7	59-152	.388	0-0	.000	35-79	.443	156-3.5	141-10	18	68	32	25	153-3.5	TOTALS	19-0	274-14.4	24-53	.453	0-0	.000	8-17	.471	59-3.1	67-5	8	30	14	8	56-2.9



# 24 MARJORIE BUTLER

5-8 • JUNIOR • GUARD • KNOXVILLE, TENN. • WEBB SCHOOL

## SEASON & CAREER HIGHS

### POINTS

Season: 11 Michigan St. (12/7/14)  
Career: 11 Michigan St. (12/7/14)  
11 Missouri (1/3/13)

### REBOUNDS

Season: 7 Furman (12/20/14)  
7 Ga. Tech (11/23/14)  
Career: 7 Furman (12/20/14)  
7 Ga. Tech (11/23/14)

### ASSISTS

Season: 6 Missouri (1/5/15)  
6 Belmont (12/22/14)  
6 Ga. Southern (11/25/14)  
Career: 7 Kennesaw 12/15/13)

### BLOCKS

Season: -  
Career: 1 Furman (11/28/12)

### STEALS

Season: 5 Ga. Southern (11/25/14)  
Career: 5 Ga. Southern (11/25/14)

### MINUTES

Season: 40 Mississippi St. (1/2/15)  
Career: 40 Mississippi St. (1/2/15)

### MISCELLANEOUS STATS

DOUBLE DIGIT POINTS  
Season: 1 Career: 3

## CAREER HIGHLIGHTS

- ♦ Named to both the 2014 SEC Academic Honor Roll (for the second straight season) and to the SEC's Community Service team for women's basketball.
- ♦ Logged her first career start at Rutgers and her first SEC career start at Missouri.
- ♦ Enjoyed her best collegiate outing against Arkansas. Scored a season-high 10 points in a career-high 38 minutes. Knocked down a key 3-pointer after the Razorbacks had whittled a 14-point deficit to two points with 4:40 left.
- ♦ In 2012-13, posted her first double-digit scoring output in the SEC opener versus Missouri.
- ♦ Coached by Shelley Collier at Webb where she was named 2011 Miss Tennessee Basketball for Division II-Class A. Helped Webb compile a 98-29 record in four seasons before missing the majority of her senior year due to a knee injury. Helped Webb to a state title as a freshman in 2009, as well as runner-up finishes in 2008 and 2011.

## 2014-15 SEASON HIGHLIGHTS

- ♦ Instead of a "student-athlete" Butler is unofficially categorized as a "professor-player."
- ♦ A senior academically, largely due to arriving at UGA with 50-plus AP credit hours. During Winter Semester, is helping instruct "Exercise is Medicine," a 2500 level kinesiology class. The course features 30-40 students and examine epidemiology, with the focal point being on diseases and how exercise affects them. Butler will lead a Friday lab portion of approximately half of the students.
- ♦ Equaled her career high with 11 points against Michigan State, including: 1) her first 3-pointer of the season with 1:58 left after the Spartans cut UGA's 23-point lead to seven; and 2) making both ends of a one-and-one with the Lady Bulldogs up 65-60 with 26 seconds remaining.
- ♦ Clutch in late-game situations at the line against Ohio State, Georgia Tech, Michigan State and Furman, knocking down 12-of-13 free throws in the final 29 seconds of those outings contests. Two trips at Tech and one versus both Michigan State and Furman were one-and-one situations.

- ♦ Ranked among SEC leaders in assists (No. 5 at 3.8 apg), assist-to-turnover ratio (No. 8 at 1.8) and steals (No. 13 at 1.9 spg).

## PERSONAL

- ♦ Born Nov. 25, 1993, Marjorie is the daughter of Danny and Anne Butler and is double majoring in Biology and Sport and Exercise Science.

## GAME-BY-GAME LINESCORES

Opponent	GS	MP	FGs	3FGs	FTs	R	A	B	S	Pts.
Morgan State	*	12	1-3	0-0	0-0	1	3	0	4	2
TCU	*	34	1-3	0-1	1-5	4	5	0	0	3
Ohio State	*	36	0-4	0-3	6-6	4	4	0	3	6
Georgia Tech	*	31	1-6	0-3	4-4	7	3	0	0	6
Georgia Southern	*	17	2-3	0-0	1-2	2	6	0	5	5
Colgate	*	19	0-1	0-0	0-0	0	3	0	2	0
Tennessee Tech	*	29	2-5	0-0	4-5	3	4	0	4	8
Coppin State	*	21	1-4	0-1	0-0	2	1	0	3	2
Mercer	*	18	0-4	0-0	2-2	2	1	0	1	2
Michigan State	*	29	4-9	1-3	2-2	3	4	0	0	11
Furman	*	30	0-7	0-3	2-3	7	5	0	0	2
Belmont	*	29	3-7	1-3	0-0	1	6	0	2	7
Seton Hall	*	24	0-3	0-1	0-0	2	3	0	3	0
Mississippi State	*	40	3-13	2-7	0-0	3	3	0	1	8
Alabama	*	25	0-4	0-2	1-2	2	4	0	1	1
Missouri	*	34	3-11	2-6	1-2	5	6	0	2	9
Auburn										
Ole Miss										
Vanderbilt										
Texas A&M										
Tennessee										
Kentucky										
South Carolina										
Arkansas										
Florida										
LSU										
Auburn										
Tennessee										
Florida										

## MAJORIE BUTLER'S CAREER STATISTICS

MADONN BOYER CAREER STATISTICS																															
OVERALL															SEC																
	GP-GS	MP-Avg.	FGs	Pct.	3FGs	Pct.	FTs	Pct.	Rbs.-Avg.	PF-D	A	TO	BL	ST	Pts.-Avg.		GP-GS	MP-Avg.	FGs	Pct.	3FGs	Pct.	FTs	Pct.	Rbs.-Avg.	PF-D	A	TO	BL	ST	Pts.-Avg.
2012-13	27-0	295-10.9	21-57	.368	5-16	.313	14-19	.737	28-1.0	29-1	37	42	1	14	61-2.3	2012-13	10-0	87-8.7	6-16	.375	1-3	.333	4-4	1.000	8-0.8	9-0	6	15	0	2	17-1.7
2013-14	25-5	353-14.1	17-57	.298	7-25	.280	12-19	.632	33-1.3	41-0	38	44	0	15	53-2.1	2013-14	16-4	216-13.5	10-37	.270	7-19	.368	3-8	.375	17-1.1	25-0	17	28	0	8	30-1.9
2014-15	16-16	428-26.8	21-87	.241	6-33	.182	24-33	.727	49-3.1	26-0	61	33	0	31	72-4.5	2014-15	3-3	99-33.0	6-28	.214	4-15	.267	2-4	.500	10-3.3	5-0	13	5	0	4	18-6.0
TOTALS	68-21	1076-15.8	59-201	.294	18-74	.243	50-71	.704	110-1.6	96-1	136	119	1	60	186-2.7	TOTALS	29-7	402-13.9	22-81	.272	12-37	.324	9-16	.563	35-1.2	39-0	36	48	0	14	65-2.2





# 31 ERIKA FORD

5-9 • SENIOR • GUARD • ALPHARETTA, GA. • CHATTAHOOCHEE HS

## SEASON & CAREER HIGHS

### POINTS

Season: 15 Ga. Southern (11/25/14)  
Career: 27 Mississippi St. (2/2/14)

### REBOUNDS

Season: 6 Morgan St. (11/14/14)  
Career: 11 G. Washington (11/29/13)

### ASSISTS

Season: 2 FourTimes, Most  
Recent Missouri (1/5/15)  
Career: 5 Furman (11/19/13)

### BLOCKS

Season: -  
Career: 1 EightTimes, Most  
Recent LSU (2/20/14)

### STEALS

Season: 3 Furman (12/20/14)  
3 Ga. Southern (11/25/14)  
3 Morgan St. (11/14/14)  
Career: 6 Lipscomb (12/16/12)

### MINUTES

Season: 24 Michigan St. & TCU  
Career: 40 Tennessee (1/29/12)

## MISCELLANEOUS STATS

### DOUBLE DIGIT POINTS

Season: 2 Career: 28

### DOUBLE DIGIT REBOUNDS

Season: 0 Career: 2

### DOUBLE-DOUBLES

Season: 0 Career: 2

### 20-POINT GAMES

Season: 0 Career: 4

## CAREER HIGHLIGHTS

- ♦ In 2013-14, led UGA offensively a team-best 11 times and accounted for UGA's three highest single-game outputs – 27 vs. Mississippi State and 23 against both Florida (in Gainesville) and S.C. State. FYI, Shacobia Barbee scored 23 points at Alabama..
- ♦ Scored 16 second-half points against LSU, including 10 in the final 3:58. Hit four jumpshots during the final 3:58 after the Lady Tigers had trimmed UGA's lead to a single possession.
- ♦ Averaged 15.6 ppg in Georgia's last eight regular-season outings and reached double figures in two of three post-season outings.
- ♦ In 2012-13, played in 34 games, including a quartet of starts.
- ♦ Was a huge spark off the bench in the first two games. Scored five of her eight points against Rutgers in a second-half span of just 1:18 and then poured in a season-high 14 points against Furman.
- ♦ In 2011-12, named SEC All-Freshman by league coaches.
- ♦ Exploded for team- and career-bests of 18 points and seven boards against Northeastern in her first career start.
- ♦ Named Jan. 2, 2012 SEC Freshman of the Week after averaging 9.5 ppg and 6.0 rpg versus Furman and Arkansas.
- ♦ Coached by Eric Herrick at Chattahoochee where she was named All-State as a sophomore and junior but missed most of her senior year due to a stress fracture in her leg.

## 2014-15 SEASON HIGHLIGHTS

- ♦ Hit a pair of 3-pointers in an 8-0 run at Mercer that put the Lady Bulldogs up 23-11 midway through the first half.
- ♦ Missed the Alabama game due to a cut on her foot suffered while removing tape after practice on Jan. 1. Actually cut her foot the day before the SEC opener at Mississippi State and played in Starkville. Could have played against Alabama but did not after UGA jumped out to a 23-7 lead.

## PERSONAL

- ♦ Born Dec. 3, 1992, Erika is the daughter of Marilyn Ford and is majoring in Human Development & Family Science.

## GAME-BY-GAME LINESCORES

Opponent	GS	MP	FGs	3FGs	FTs	R	A	B	S	Pts.
Morgan State	18	3-10	0-2	0-0	6	0	0	3	6	
TCU	24	5-13	0-1	1-3	4	0	0	1	11	
Ohio State	9	1-3	1-3	0-0	3	2	0	0	3	
Georgia Tech	15	0-5	0-2	0-0	3	0	0	0	0	
Georgia Southern	19	6-9	1-2	2-3	4	0	0	3	15	
Colgate	19	2-7	0-0	0-0	5	1	0	0	4	
Tennessee Tech	12	2-3	1-1	1-4	3	1	0	1	6	
Coppin State	16	0-4	0-1	2-2	3	1	0	0	2	
Mercer	15	2-8	2-2	0-0	3	2	0	0	6	
Michigan State	24	0-3	0-2	5-6	1	0	0	2	5	
Furman	12	1-4	0-0	0-0	2	2	0	3	2	
Belmont	12	0-2	0-1	0-0	0	0	0	0	0	
Seton Hall	8	1-6	1-3	0-0	2	0	0	0	3	
Mississippi State	20	2-12	0-2	1-2	2	0	0	0	5	
Alabama		DNP								
Missouri	10	1-3	0-2	2-2	0	2	0	0	4	
Auburn										
Ole Miss										
Vanderbilt										
Texas A&M										
Tennessee										
Kentucky										
South Carolina										
Arkansas										
Florida										
LSU										
Auburn										
Tennessee										
Florida										

## ERIKA FORD'S CAREER STATISTICS

OVERALL															SEC																
	GP-GS	MP-Avg.	FGs	Pct.	3FGs	Pct.	FTs	Pct.	Rbs.-Avg.	PF-D	A	TO	BL	ST	Pts.-Avg.		GP-GS	MP-Avg.	FGs	Pct.	3FGs	Pct.	FTs	Pct.	Rbs.-Avg.	PF-D	A	TO	BL	ST	Pts.-Avg.
2011-12	30-12	622-20.7	65-191	.340	7-34	.206	27-45	.600	103-3.4	52-0	33	47	0	30	164-5.5	2011-12	16-6	335-20.9	33-93	.355	2-13	.154	11-19	.579	55-3.4	25-0	18	24	0	16	79-4.9
2012-13	34-5	486-14.3	72-172	.419	14-41	.341	22-37	.595	101-3.0	29-0	27	22	2	19	180-5.3	2012-13	16-1	230-14.4	30-90	.333	2-18	.111	14-18	.778	42-2.6	16-0	9	10	1	4	76-4.8
2013-14	32-28	840-26.3	138-346	.399	35-94	.372	38-56	.679	132-4.1	66-0	44	58	6	35	349-10.9	2013-14	16-12	400-25.0	70-182	.385	17-49	.347	21-32	.656	63-3.9	32-0	23	30	2	16	178-11.1
2014-15	15-0	233-15.5	26-92	.283	6-24	.250	14-22	.636	41-2.7	15-0	11	15	0	13	72-4.8	2014-15	2-0	30-15.0	3-15	.200	0-4	.000	3-4	.750	2-1.0	4-0	2	2	0	0	9-4.5
TOTALS	111-45	2181-19.6	301-801	.376	62-193	.321	101-160	.631	377-3.4	162-0	115	142	8	97	765-6.9	TOTALS	50-19	995-19.9	136-380	.358	21-84	.250	49-73	.671	162-3.2	77-0	52	66	3	36	342-6.8



# 33 MACKENZIE ENGRAM

6-2 • FRESHMAN • FORWARD • POWDER SPRINGS, GA. • HILLGROVE HS

## SEASON & CAREER HIGHS

### POINTS

Both: 20 Coppin St. (12/2/14)

### REBOUNDS

Both: 10 Ohio State (11/19/14)

### ASSISTS

Both: 1 Mercer (12/4/14)  
1 Ohio State (11/19/14)  
1 TCU (11/16/14)

### BLOCKS

Both: 4 Mississippi St. (1/2/15)

### STEALS

Both: 2 Coppin St. (12/2/14)  
2 Morgan St. (11/14/14)

### MINUTES

Both: 34 Coppin St. (12/2/14)

## MISCELLANEOUS STATS

### DOUBLE DIGIT POINTS

Season: 5 Career: 5

### DOUBLE DIGIT REBOUNDS

Season: 1 Career: 1

### DOUBLE-DOUBLES

Season: 1 Career: 1

### 20-POINT GAMES

Season: 1 Career: 1

## CAREER HIGHLIGHTS

- ♦ Coached by Susan Milam as a junior and senior and by Sheryl Fowler in her first two years at Hillgrove.
- ♦ A four-year starter and helped the Lady Hawks to a combined 93-24 record from 2010-14.
- ♦ Rated as the nation's No. 38 overall prospect by Prospect Nation, as well as No. 41 by Blue Star, No. 71 by ESPN Hoopgurlz and No. 72 by the Girls Basketball Report.
- ♦ Tabbed first-team Class 6A All-State by the Atlanta Journal-Constitution as both a junior and a senior. Named first- and second-team 6A All-State by the GSWA as a junior and a senior, respectively.
- ♦ As a sophomore, helped Hillgrove to a 26-5 record and a runner-up finish in the 5A State Tournament.
- ♦ As a freshman, started for the Lady Hawks, who reached the "Elite Eight" of the Georgia 5A State Tourney.

## 2014-15 SEASON HIGHLIGHTS

- ♦ Took care of a trio of career firsts at Ohio State, reaching double digits in points and rebounds en route to her initial double-double in a Georgia uniform.
- ♦ The outing in Columbus was even more memorable considering she had approximately 20 family members and friends in attendance, including her mother, Michelle Zelina, who is an OSU alum.
- ♦ Scored all 12 of her points at Ohio State in the second half.
- ♦ Posted eight first-half points at Georgia Tech, including a perfect 6-of-6 on FT attempts.
- ♦ Paced UGA for the first time with a career-high 20 points against Coppin State.
- ♦ Against Coppin State: 1) made more FGs (7) than the rest of the UGA roster combined (6); 2) accounted for two of UGA's three 3-pointers in the contest; 3) outscored CSU three-quarters of the way through the game. Scored her 18th point with 10:20 remaining that put the Lady Bulldogs up 34-16. The Eagles finally surged ahead of Engram (23-20) with 7:15 left.

♦ Scored 11 points – all in the second half – and grabbed a game-high nine rebounds at Mississippi State in the SEC opener.

♦ Blocked four shots against Mississippi State, the Lady Bulldogs' single-game high for the season.

## PERSONAL

♦ Born November 29, 1995, Mackenzie is the daughter of Michelle Zelina and Derrick Engram and is intending to major in Mass Media Arts.

♦ Her older brother, Evan Engram, is an All-SEC tight end on the Ole Miss football team.

## GAME-BY-GAME LINESCORES

Opponent	GS	MP	FGs	3FGs	FTs	R	A	B	S	Pts.
Morgan State	23	3-12	0-3	2-2	5	0	0	2	8	
TCU	18	3-5	0-1	0-0	3	1	0	0	6	
Ohio State	24	4-8	1-1	3-4	10	1	0	1	12	
Georgia Tech	27	3-7	0-0	6-6	6	0	1	0	12	
Georgia Southern	24	4-9	0-0	1-2	2	0	0	1	9	
Colgate	19	1-3	0-0	5-6	3	1	1	3	7	
Tennessee Tech	14	3-8	0-0	1-2	6	0	1	0	7	
Coppin State	34	7-13	2-2	4-4	7	0	1	2	20	
Mercer	18	6-8	0-0	0-0	5	1	0	1	12	
Michigan State	11	1-3	0-1	0-0	1	0	0	0	2	
Furman	17	0-3	0-2	0-0	0	0	0	1	0	
Belmont	14	2-4	0-0	1-2	7	0	0	1	5	
Seton Hall	11	1-4	0-0	0-0	6	0	0	1	2	
Mississippi State	16	4-9	0-2	3-3	9	0	4	0	11	
Alabama	18	2-4	1-2	2-2	6	1	2	0	7	
Missouri	17	3-6	0-3	1-2	1	0	0	1	7	
Auburn										
Ole Miss										
Vanderbilt										
Texas A&M										
Tennessee										
Kentucky										
South Carolina										
Arkansas										
Florida										
LSU										
Auburn										
Tennessee										
Florida										

## MACKENZIE ENGRAM'S CAREER STATISTICS

OVERALL															SEC																
GP-GS	MP-Avg.	FGs	Pct.	3FGs	Pct.	FTs	Pct.	Rbs.-Avg.	PF-D	A	TO	BL	ST	Pts.-Avg.	GP-GS	MP-Avg.	FGs	Pct.	3FGs	Pct.	FTs	Pct.	Rbs.-Avg.	PF-D	A	TO	BL	ST	Pts.-Avg.		
2014-15	16-0	305-19.1	47-106	.443	4-17	.235	29-35	.829	77-4.8	30-0	5	26	10	14	127-7.9	2014-15	3-0	51-17.0	9-19	.474	1-7	.143	6-7	.857	16-5.3	8-0	1	5	6	1	25-8.3
TOTALS	16-0	305-19.1	47-106	.443	4-17	.235	29-35	.829	77-4.8	30-0	5	26	10	14	127-7.9	TOTALS	3-0	51-17.0	9-19	.474	1-7	.143	6-7	.857	16-5.3	8-0	1	5	6	1	25-8.3



# 54 NASHEEMA OLIVER

## SEASON & CAREER HIGHS

## POINTS

**Both:** 7 Morgan St. (11/14/14)

## REBOUNDS

**Both:** 5 Morgan St. (11/14/14)

## ASSISTS

Both: —

## BLOCKS

Both: —

## STEALS

Both: —

## MINUTES

**Both:** 16 Morgan St. (11/14/14)

## CAREER HIGHLIGHTS

- ◇ Coached by Barrett Wilkes as a junior and senior at Crisp County and by Molly Speir in her first two seasons.
- ◇ Rated as the nation's No. 18 overall prospect by Blue Star, as well as No. 37 by Prospect Nation, No. 58 by ESPN Hoopgurlz and No. 59 by the Girls Basketball Report.
- ◇ A three-time All-State honoree at Crisp County, earning recognition for Class 3A as a freshman and a sophomore and Class 4A as a senior.
- ◇ Scored in double digits in 26 of 29 games as a senior, including five 20-point outings.
- ◇ As a sophomore, averaged 18.0 points, 12.0 rebounds and 3.0 blocks per game as the Lady Cougars captured just the fourth region championship in the school's 54-year history.
- ◇ Consistently developed throughout her freshman season and helped Crisp County bounce back from a 6-13 start to finish 15-15 and reach the semifinals of the Georgia 3A State Tournament.

## 2014-15 SEASON HIGHLIGHTS

- ♦ Enjoyed a solid debut outing against Morgan State.
- ♦ Currently out of action indefinitely due to a left foot injury.

## PERSONAL

- ♦ Born May 4, 1995, Nasheema is the daughter of Gregory and Marquetta Oliver and is undecided on a major.
- ♦ First-ever recipient of the Angie Watson Women's Basketball Scholarship for 2014-15. Angie is the wife of two-time Masters champion and UGA graduate Bubba Watson. The former Angie Ball, she was a four-year letterwinner and captain of Georgia's 2000 team that won a school-record 32 games and captured the SEC Championship.

## GAME-BY-GAME LINESCORES

[illegible]

## NASHEEMA OLIVER'S CAREER STATISTICS

[illegible]

# LADY BULLDOG SEASON & CAREER HIGHS

## 1 TERRYUANA GODWIN

SEASON & CAREER	
POINTS	3 Belmont (12/22/14)
REBOUNDS	1 Morgan St. (11/14/14)
ASSISTS	1 Ga. Southern (11/25/14)
BLOCKS	-
STEALS	1 Mercer (12/4/14)
MINUTES	6 Ga. Southern (11/25/14)

## 3 TIARIA GRIFFIN

SEASON	CAREER
POINTS	20 Morgan St. (11/14/13)
REBOUNDS	8 Michigan St. (12/7/14)
ASSISTS	6 Michigan St. (12/7/14)
BLOCKS	1 Belmont (12/22/14)
STEALS	4 Morgan St. (11/14/13)
MINUTES	37 Ohio St. (11/19/14)
	37 S.C. State (11/26/13)
	21 Furman (11/19/13)
	10 S.C. State (11/26/13)
	9 S.C. State (11/26/13)
	1 Five Times, Most Recent Belmont (12/22/14)

## 4 HANNAHKOHL ALMIRE

SEASON	CAREER
POINTS	1 Colgate (11/26/14)
REBOUNDS	1 Missouri (1/8/15)
ASSISTS	1 Colgate (11/26/14)
BLOCKS	-
STEALS	-
MINUTES	4 Ga. Southern (11/25/14)
	2 Kennesaw St. (12/15/13)
	2 Kennesaw St. (12/15/13)
	2 Mercer (11/14/13)
	1 Mercer (12/4/14)
	1 Ga. Southern (11/25/14)
	1 Four Times
	9 Kennesaw St. (12/15/13)

## 11 PACHIS ROBERTS

SEASON	CAREER
POINTS	11 Seton Hall (12/28/14)
REBOUNDS	5 Ga. Southern (11/25/14)
ASSISTS	2 Three Times
BLOCKS	1 Seton Hall (12/28/14)
STEALS	3 Ga. Southern (11/25/14)
MINUTES	22 Ga. Southern (11/25/14)
	11 also Virginia (11/24/12)
	11 Ga. Tech (11/23/12)
	5 Ga. Southern (11/25/14)
	3 Providence (2/2/12)
	1 also Ga. Tech (11/23/12)
	4 Cornell (11/16/12)
	22 Ga. Southern (11/25/14)

## 12 HALEY CLARK

SEASON & CAREER	
POINTS	4 Mercer (12/4/14), Tenn. Tech (11/29/14)
REBOUNDS	2 Seton Hall (12/28/14); Mercer (12/4/14); Ga. Southern (11/25/14); Ga. Tech (11/23/14); Morgan St. (11/14/14)
ASSISTS	5 Ga. Southern (11/25/14)
BLOCKS	1 Michigan St. (12/7/14)
STEALS	2 Coppin St. (12/2/14); Tenn. Tech (11/29/14), Colgate (11/26/14)
MINUTES	20 Mercer (12/4/14); Colgate (11/26/14)

## 13 MERRITT HEMPE

SEASON	CAREER
POINTS	17 Ga. Southern (11/25/14)
REBOUNDS	11 Furman (12/20/14)
ASSISTS	3 Mississippi St. (1/2/15)
BLOCKS	3 Michigan St. (12/7/14)
STEALS	2 Four Times
MINUTES	33 Seton Hall (12/28/14)
	33 Belmont (12/22/14)
	22 Mississippi St. (3/2/14)
	11 also Kentucky (1/30/14)
	3 also Tennessee (1/5/14)
	3 Ga. State (12/1/13)
	4 Arkansas (2/21/13)
	3 Presbyterian (11/14/12)
	37 Florida (2/16/14)
	37 Vanderbilt (1/2/14)

## 14 JASMINE CARTER

SEASON & CAREER	
POINTS	6 Ga. Southern (11/25/14)
REBOUNDS	3 Morgan St. (11/14/14)
ASSISTS	2 Ga. Southern (11/25/14)
BLOCKS	-
STEALS	4 Ga. Southern (11/25/14)
MINUTES	16 Ga. Southern (11/25/14)

## 15 KRISTA DONALD

SEASON	CAREER
POINTS	13 TCU (11/16/14)
REBOUNDS	13 Seton Hall (12/28/14)
ASSISTS	6 Ga. Tech (11/23/14)
BLOCKS	1 Belmont (12/22/14)
STEALS	3 Missouri (1/8/15)
MINUTES	38 Ga. Tech (11/23/14)
	22 Appalachian St. (12/22/11)
	16 Ohio St. (11/17/13)
	7 Illinois (12/28/13)
	2 Presbyterian (11/10/13)
	2 Montana (3/23/13)
	4 Mississippi St. (3/2/14)
	4 Illinois (12/28/13)
	44 Texas A&M (2/13/14)

## 20 SHACOBIA BARBEE

SEASON	CAREER
POINTS	25 Furman (12/20/14)
REBOUNDS	14 TCU (11/16/14)
ASSISTS	6 Mississippi St. (1/2/15)
BLOCKS	1 Belmont (12/22/14)
STEALS	6 Mercer (12/4/14)
MINUTES	37 Mississippi St. (1/2/15)
	37 Ga. Tech (11/23/14)
	15 Mercer (11/14/13)
	6 Nine Times
	1 Twelve Times
	7 Ga. State (12/1/13)
	7 Alabama (1/10/13)
	43 Texas A&M (2/13/14)

## 23 HALLE WASHINGTON

SEASON	CAREER
POINTS	7 Colgate (11/26/14)
REBOUNDS	6 Missouri (1/5/15)
ASSISTS	3 Mercer (12/4/14)
BLOCKS	2 Seton Hall (12/28/14)
STEALS	2 Alabama (1/4/15)
MINUTES	18 Three Times
	12 Kennesaw St. (12/15/13)
	12 G. Washington (11/29/13)
	8 Kennesaw St. (12/15/13)
	8 Presbyterian (11/10/13)
	4 Kennesaw St. (12/15/13)
	3 Three Times, Most Recent Ole Miss (2/9/14)
	3 Furman (11/19/13)
	37 Kennesaw St. (12/15/13)

## 24 MARJORIE BUTLER

SEASON	CAREER
POINTS	11 Michigan St. (12/7/14)
REBOUNDS	7 Furman (12/20/14)
ASSISTS	6 Three Times
BLOCKS	-
STEALS	5 Ga. Southern (11/25/14)
MINUTES	40 Mississippi St. (1/2/15)
	11 Missouri (1/3/13)
	7 Furman (12/20/14)
	7 Ga. Tech (11/23/14)
	7 Ga. Tech (11/23/14)
	7 Kennesaw St. (12/15/13)
	1 Furman (11/28/12)
	5 Ga. Southern (11/25/14)
	40 Mississippi St. (1/2/15)

## 31 ERIKA FORD

SEASON	CAREER
POINTS	15 Ga. Southern (11/25/14)
REBOUNDS	6 Morgan St. (11/14/14)
ASSISTS	2 Four Times
BLOCKS	-
STEALS	3 Three Times
MINUTES	24 Michigan St. (12/7/14)
	27 Mississippi St. (2/2/14)
	11 G. Washington (11/29/13)
	5 Furman (11/19/13)
	1 Eight Times...LSU (2/20/14)
	5 Lipscomb (12/16/12)
	40 Tennessee (1/29/12)

## 33 MACKENZIE ENGRAM

SEASON & CAREER	
POINTS	20 Coppin St. (12/2/14)
REBOUNDS	10 Ohio St. (11/19/14)
ASSISTS	1 Mercer (12/4/14); Ohio St. (11/19/14); TCU (11/16/14)
BLOCKS	4 Mississippi St. (1/2/15)
STEALS	2 Coppin St. (12/2/14); Morgan St. (11/14/14)
MINUTES	34 Coppin St. (12/2/14)

## 54 NASHEEMA OLIVER

SEASON & CAREER	
POINTS	7 Morgan St. (11/14/14)
REBOUNDS	5 Morgan St. (11/14/14)
ASSISTS	-
BLOCKS	-
STEALS	-
MINUTES	16 Morgan St. (11/14/14)

## DOUBLE-DIGIT PERFORMANCES

POINTS		REBOUNDS		DOUBLE-DOUBLES		20-POINT GAMES		
SEASON	CAREER	SEASON	CAREER	SEASON	CAREER	SEASON	CAREER	
Griffin	12	35	Barbee	3	15	Barbee	2	5
Barbee	10	38	Donald	3	11	Donald	2	8
Hempe	7	20	Hempe	1	2	Hempe	1	2
Donald	5	25	Engram	1	1	Engram	1	1
Engram	5	5	Ford	0	2	Ford	0	2
Ford	2	28	Griffin	0	1	Griffin	0	1
Butler	1	3						
Roberts	1	*3						
Washington	0	2						

\* 2 for Roberts at Syracuse



**ANDY LANDERS**

857-289 in 36 seasons at UGA  
939-310 in 40 seasons overall

**1 TERRYUANA GODWIN**

5-4 • Junior • Guard  
Hogansville, Ga.

**3 TIARIA GRIFFIN**

5-7 • Junior • Guard  
Monticello, Miss.

**4 HANNAH KOHL ALMIRE**

5-9 • Sophomore • Guard  
Atlanta, Ga.

**11 PACHIS ROBERTS**

5-11 • Sophomore • G/F  
Powder Springs, Ga.

**12 HALEY CLARK**

5-9 • Freshman • Guard  
Orlando, Fla.

**13 MERRITT HEMPE**

6-2 • Junior • Forward  
Fredericksburg, Va.

**14 JASMINE CARTER**

5-7 • Freshman • Guard  
Dacula, Ga.

**15 KRISTA DONALD**

5-11 • Senior • Forward  
Lake, Miss.

**20 SHACOBIA BARBEE**

5-10 • Junior • G/F  
Murfreesboro, Tenn.

**23 HALLE WASHINGTON**

6-2 • Sophomore • Forward  
Bossier City, La.

**24 MARJORIE BUTLER**

5-8 • Junior • Guard  
Knoxville, Tenn.

**31 ERIKA FORD**

5-9 • Senior • Guard  
Alpharetta, Ga.

**33 MACKENZIE INGRAM**

6-2 • Freshman • Forward  
Powder Springs, Ga.

**54 NASHEEMA OLIVER**

6-3 • Freshman • Forward  
Cordele, Ga.

## PRONUNCIATIONS

**1 TERRYUANA** (Terry-ah-nuh) Godwin

**3 TIARIA** (Tee-air-uh) Griffin

**4 HANNAH KOHL** (Hannah-cole) **ALMIRE** (All-mire)

**13 Merritt HEMPE** (Hem-pee)

**20 SHACOBIA** (Sha-co-be-uh) **BARBEE** (Bar-bee)

**23 HALLE** (Haley) Washington

**54 NASHEEMA** (Nuh-she-muh) Olliver

## LADY BULLDOG NUMERICAL ROSTER

NO.	NAME	POS.	HT.	CL.-EXP.	HOMETOWN / SCHOOL(S)
1	TERRYUANA GODWIN	G	5-4	Jr.-TR	Hogansville, Ga. / Butler (Kansas) Community College
3	TIARIA GRIFFIN	G	5-7	Jr.-2L	Monticello, Miss. / Hattiesburg High School
4	HANNAHKOHL ALMIRE	G	5-9	So.-1L	Atlanta, Ga. / Riverwood International Charter School
11	PACHIS ROBERTS	G/F	5-11	So.-SQ	Powder Springs, Ga. / McEachern High School / Tr.-Syracuse
12	HALEY CLARK	G	5-9	Fr.-HS	Orlando, Fla. / Edgewater High School
13	MERRITT HEMPE	F	6-2	Jr.-2L	Fredericksburg, Va. / Stafford High School
14	JASMINE CARTER	G	5-7	Fr.-HS	Dacula, Ga. / St. Pius X High School
15	KRISTA DONALD	F	5-11	Sr.-3L	Lake, Miss. / Lake High School
20	SHACOBIA BARBEE	G/F	5-10	Jr.-2L	Murfreesboro, Tenn. / Riverdale High School
23	HALLE WASHINGTON	F	6-2	So.-1L	Bossier City, La. / Parkway High School
24	MARJORIE BUTLER	G	5-8	Jr.-2L	Knoxville, Tenn. / Webb School
31	ERIKA FORD	G	5-9	Sr.-3L	Alpharetta, Ga. / Chattahoochee High School
33	MACKENZIE ENGRAM	F	6-2	Fr.-HS	Powder Springs, Ga. / Hillgrove High School
54	NASHEEMA OLIVER	F	6-3	Fr.-HS	Cordele, Ga. / Crisp County High School

## LADY BULLDOG ALPHABETICAL ROSTER

NO.	NAME	POS.	HT.	CL.-EXP.	HOMETOWN / SCHOOL(S)
4	HANNAHKOHL ALMIRE	G	5-9	So.-1L	Atlanta, Ga. / Riverwood International Charter School
20	SHACOBIA BARBEE	G/F	5-10	Jr.-2L	Murfreesboro, Tenn. / Riverdale High School
24	MARJORIE BUTLER	G	5-8	Jr.-2L	Knoxville, Tenn. / Webb School
14	JASMINE CARTER	G	5-7	Fr.-HS	Dacula, Ga. / St. Pius X High School
12	HALEY CLARK	G	5-9	Fr.-HS	Orlando, Fla. / Edgewater High School
15	KRISTA DONALD	F	5-11	Sr.-3L	Lake, Miss. / Lake High School
33	MACKENZIE ENGRAM	F	6-2	Fr.-HS	Powder Springs, Ga. / Hillgrove High School
31	ERIKA FORD	G	5-9	Sr.-3L	Alpharetta, Ga. / Chattahoochee High School
1	TERRYUANA GODWIN	G	5-4	Jr.-TR	Hogansville, Ga. / Butler (Kansas) Community College
3	TIARIA GRIFFIN	G	5-7	Jr.-2L	Monticello, Miss. / Hattiesburg High School
13	MERRITT HEMPE	F	6-2	Jr.-2L	Fredericksburg, Va. / Stafford High School
54	NASHEEMA OLIVER	F	6-3	Fr.-HS	Cordele, Ga. / Crisp County High School
11	PACHIS ROBERTS	G/F	5-11	So.-SQ	Powder Springs, Ga. / McEachern High School / Tr.-Syracuse
23	HALLE WASHINGTON	F	6-2	So.-1L	Bossier City, La. / Parkway High School

### HEAD COACH:

Andy Landers (Tennessee Tech '74)

### ASSOCIATE HEAD COACH:

Joni Crenshaw (Alabama '02)

### ASSISTANT COACHES:

Angie Johnson (Louisville '91)

Robert Mosley (Miles '99)

### DIRECTOR OF OPS:

Meredith Mitchell (Georgia '11)

### ATHLETIC TRAINER:

Shannon Dolezal (Wis.-La Crosse '04)

### PRO-NUN-SEE-Ā-SHUN GUIDE

HANNAHKOHL (Hannah-cole) ALMIRE (All-mire) Merritt HEMPE (Hem-pee)

SHACOBIA (Sha-co-be-uh) BARBEE (Bar-bee) NASHEEMA (Nuh-she-muh) Oliver

TERRYUANA (Terry-ah-nuh) Godwin HALLE (Haley) Washington

TIARIA (Tee-air-uh) Griffin

## PLAYER BREAKDOWN

### BY CLASS:

SENIORS ..... 2

Donald, Ford

JUNIORS ..... 5

Barbee, Butler, Godwin,  
Griffin, Hempe

SOPHOMORES ..... 3

Almire, Roberts, Washington

FRESHMEN ..... 4

Carter, Clark, Engram, Oliver

### BY HEIGHT:

6-3 Neeshma Oliver

6-2 Mackenzie Engram

Merritt Hempe  
Halle Washington

5-11 Krista Donald

Pachis Roberts

5-10 Shacobia Barbee

5-9 Hannahkohl Almire

Haley Clark  
Erika Ford

5-8 Marjorie Butler

5-7 Jasmine Carter

Tiaria Griffin

5-4 Terryuana Godwin

### BY STATE:

GEORGIA ..... 7

Almire, Carter, Engram,  
Ford, Godwin, Oliver, Roberts

FLORIDA ..... 1

Clark

MISSISSIPPI ..... 2

Donald, Griffin

TENNESSEE ..... 2

Barbee, Butler

LOUISIANA ..... 1

Washington

VIRGINIA ..... 1

Hempe