



2012-13 Auburn Women's Basketball

Game 15 • January 6, 2013

at Missouri • SEC Road Opener

18 NCAA Tournament Appearances • Three Final Fours • Five SEC Titles • Four SEC Tournament Titles

AUBURN MEDIA RELATIONS

Associate Director/WBB Contact: Matt Crouch • mcrouch@auburn.edu

Auburn Athletic Complex / 392 South Donahue / Auburn, AL 36849

O: 334.844.9800 • C: 334.740.4109 • F: 334.844.9807

www.AuburnTigers.com • www.AuburnWomensHoops.com

Twitter: @AuburnWBB | @MattCrouchAU • Facebook: [facebook.com/AUWBB](https://www.facebook.com/AUWBB)

2012-13 SCHEDULE/RESULTS

AUGUST

7	1 - at Logan Thunder [Exhibition]	L, 86-54
10	1 - at Cairns Dolphins [Exhibition]	W, 81-71
12	1 - at Sydney Flames [Exhibition]	W, 67-58
13	1 - at Sutherland Sharks [Exhibition]	W, 84-46

NOVEMBER

9	2 - vs. Maine	W, 71-41
10	2 - at North Carolina State	L, 85-71
15	Alabama State	W, 80-43
18	Alabama A&M	W, 93-44
23	3 - vs. San Diego State	L, 78-57
24	3 - vs. Texas A&M-Corpus Christi	W, 72-57
28	at Tulane	W, 70-65

DECEMBER

9	Hofstra	W, 68-58
12	at George Washington	W, 69-59
16	Temple	W, 71-49
19	Tennessee-Chattanooga	W, 53-40
22	Jacksonville	W, 85-49
29	Samford	W, 80-51

JANUARY

3	Arkansas*	W, 50-47
6	at Missouri* [ESPN3.com]	2 p.m.
10	Ole Miss*	6 p.m.
13	at Texas A&M*	2 p.m.
17	Tennessee* [CSS]	8 p.m.
20	at Kentucky* [SEC Network]	1 p.m.
24	at Alabama* [CSS]	8 p.m.
31	LSU*	6 p.m.

FEBRUARY

3	at South Carolina*	2 p.m.
7	at Georgia*	6 p.m.
10	Florida* [SportSouth]	2 p.m.
17	Alabama* [ESPN2]	1:30 p.m.
21	at Tennessee*	6 p.m.
24	Missouri*	2 p.m.
28	at Vanderbilt* [CSS]	8 p.m.

MARCH

3	Mississippi State*	2 p.m.
6-10	Southeastern Conference Tournament Duluth, Ga. • Arena at Gwinnett Center	
23-26	NCAA Tournament First and Second Rounds	

APRIL

30-2	NCAA Tournament Regionals	
7-9	NCAA Tournament Final Four New Orleans, La. • New Orleans Arena	

* - SEC Game

All Times are Central

1 - Australian Tour (Brisbane, Cairns and Sydney, Australia)

2 - Wolfpack Invitational (Raleigh, N.C.)

3 - 26th Annual Omni Hotels Classic (Boulder, Colo.)

All home games played at Auburn Arena

Bold indicates home games

www.AuburnTigers.com



AT



GAME 15 | SEC Road Opener

[NR/NR] Auburn (12-2, 1-0 SEC) at [NR/NR] Missouri (11-4, 0-1 SEC)

When: Sunday, January 6 • 2 p.m. CT

Where: Mizzou Arena (15,061) • Columbia, Mo.

Video Webcast: ESPN3.com

Radio: 96.7 FM WMXA; Andy Burcham (play-by-play), Stephanie Follett (color)

Satellite Radio: Sirius 113/XM 199 (Missouri feed)

Audio Webcast: AuburnTigers.com

GameTracker: AuburnTigers.com

Series: Auburn leads, 2-0; First meeting in Columbia, Mo.

Last Meeting: Auburn def. Missouri, 75-62, on Jan. 3, 1985 in Miami, Fla.

Up Next: Auburn will return home for a 6 p.m. CT, Thursday game against SEC foe

Ole Miss at Auburn Arena

AUBURN PROJECTED STARTERS (12-2, 1-0 SEC)

No.	Pos.	Name	Ht.	Year	PPG	RPG	Hometown
00	G	Hasina Muhammad	6-1	So.	16.1	5.7	Memphis, Tenn.
3	G	Najat Ouardad	5-1	Sr.	5.6	(apg) 6.5	Orleans, France
14	F	Blanche Alverson	6-3	Sr.	11.5	5.6	Andalusia, Ala.
32	G	Tyrese Tanner	6-1	Jr.	12.6	4.4	Birmingham, Ala.
34	C	Peyton Davis	6-5	Jr.	6.9	6.1	Pinson, Ala.

OFF THE BENCH

5	G	Chadarryl Clay	5-7	Fr.	2.3	(apg) 1.6	Chattanooga, Tenn.
11	G	Courtney Strain	5-9	R-So.	4.2	0.9	Woodland, Ala.
20	C	Pascale West	6-8	Sr.	1.8	0.8	LaGrange, Ga.
22	G	Julie King	5-9	Sr.	1.2	1.6	St. Louis, Mo.
23	F	Tro'cee Tanner	6-3	Fr.	7.6	3.9	Birmingham, Ala.
25	G	Cedricka Sweeting	5-3	Fr.	1.3	(apg) 1.1	Nassau, Bahamas
50	F	Cabriana Capers	6-1	Fr.	1.2	2.6	Bolingbrook, Ill.

Head Coach: Terri Williams-Flournoy / Assistant Coaches: Ty Evans, Caroline McCombs and Adrian Walters

MISSOURI PROJECTED STARTERS (11-4, 0-1 SEC)

No.	Pos.	Name	Ht.	Year	PPG	RPG	Hometown
1	G	Lianna Doty	5-7	Fr.	8.5	(apg) 4.7	St. Louis, Mo.
13	F	Bri Kulas	6-1	Jr.	14.5	6.5	Shawnee Mission, Kan.
15	G	Kyley Simmons	5-7	So.	3.6	1.8	Council Bluffs, Iowa
21	G	Sydney Crafton	5-10	Sr.	11.2	5.8	Jefferson City, Mo.
45	C	Liz Smith	6-1	Sr.	5.7	5.5	Overland Park, Kan.

Head Coach: Robin Pingeton / Associate Head Coach: Randy Norton / Assistant Coaches: Willie Cox and Jenny Putnam

Media Information

The Auburn media relations department considers its work with the media a top priority. The 2012-13 Auburn Women's Basketball Almanac has been prepared to assist the working media in their coverage of Tiger basketball. If you have not received a copy, or if you need additional information, interview or photograph requests, or have any questions, please contact Matt Crouch in the media relations office at 334.844.9800.

Interview Policy

Coach Williams-Flournoy, her assistants and all women's basketball players are available for phone and personal interviews by contacting Matt Crouch in the media relations office. Post-game interviews will be allowed following a 10-minute cooling off period. Non-game day requests will be met based on the players class and practice schedules.

Credentials

Anyone wishing to cover an Auburn women's basketball game should contact Matt Crouch in the media relations office at least one day in advance in order to make the proper arrangements.

On the Air

The Tigers can be heard live locally in Auburn on Mix 96.7 FM for the entire regular and postseasons. Andy Burcham, in his 25th season with the women's basketball program and handles play-by-play duties. Stephanie Follett joins Burcham for her first season and provides color commentary. Each game can also be heard live on the internet at www.AuburnTigers.com.

Weekly Live Radio Show

Starting in January, every Tuesday at 6 p.m. CT, Terri Williams-Flournoy will host a live show from a restaurant in Auburn with Andy Burcham. Fans can listen to the show on 96.7 FM. Fans can tweet their questions @AuburnWBB.

Game-Day Services

Statistics, rosters and game notes will be provided prior to the game in the media work room. Box scores will also be handed out during and following the game. Phones and fax machines are available in the media work room.

Photo/Video Services

Todd Van Emst of the Auburn Media Relations office handles all photo requests. Please contact Van Emst at 334.844.9514. Video highlights of selected Auburn women's basketball games are available for the media. For information on how to access the FTP server, contact Steve Sain in the Auburn Media Relations office at 334.844.9809.

On the Web

The home for Auburn Athletics on the web, www.AuburnTigers.com, is your source for Auburn Women's Basketball. The website offers the most recent information and news on the Tigers. At AuburnTigers.com, you can also listen to each women's basketball game broadcast live and follow along on live scoring for every home game.



Follow Auburn Women's Basketball on Twitter

@AuburnWBB



Become a fan of Auburn Women's Basketball on Facebook

www.Facebook.com/AUWBB

2012-13 Numerical Roster

No.	Name	Height	Position	Class	Hometown/High School
0	Hasina Muhammad	6-1	Guard/Forward	SO	Memphis, Tenn./Ridgeway
3	Najat Ouardad	5-1	Guard	SR	Orleans, France/Pensacola St. College
4	Cedricka Sweeting	5-3	Guard	FR	Miami, Fla./South Broward
11	Courtney Strain	5-9	Guard	R-SO	Woodland, Ala./Woodland
14	Blanche Alverson	6-3	Forward/Guard	SR	Andalusia, Ala./Buford (Ga.)
20	Pascale "P.J." West	6-8	Center	SR	LaGrange, Ga./Troup County
21	Chadarryl Clay	5-7	Guard	FR	Chattanooga, Tenn./Girls Preparatory
22	Julie King	5-9	Guard	SR	St. Louis, Mo./Nerinx Hall
32	Tyrese Tanner	6-1	Guard/Forward	JR	Birmingham, Ala./Hoover
34	Peyton Davis	6-5	Center	JR	Pinson, Ala./Mortimer Jordan
35	Cabrina Capers	6-1	Forward	FR	Bolingbrook, Ill./Bolingbrook
44	Tra'cee Tanner	6-3	Forward/Center	FR	Birmingham, Ala./Hoover

2012-13 Alphabetical Roster

No.	Name	Height	Pos.	Ht.	Hometown
14	Blanche Alverson	6-3	Forward/Guard	SR	Andalusia, Ala./Buford (Ga.)
35	Cabrina Capers	6-1	Forward	FR	Bolingbrook, Ill./Bolingbrook
5	Chadarryl Clay	5-7	Guard	FR	Chattanooga, Tenn./Girls Preparatory
34	Peyton Davis	6-5	Center	JR	Pinson, Ala./Mortimer Jordan
22	Julie King	5-9	Guard	SR	St. Louis, Mo./Nerinx Hall
0	Hasina Muhammad	6-1	Guard/Forward	SO	Memphis, Tenn./Ridgeway
3	Najat Ouardad	5-1	Guard	SR	Orleans, France/Pensacola St. College
11	Courtney Strain	5-9	Guard	R-SO	Woodland, Ala./Woodland
4	Cedricka Sweeting	5-3	Guard	FR	Miami, Fla./South Broward
44	Tra'cee Tanner	6-3	Forward/Center	FR	Birmingham, Ala./Hoover
32	Tyrese Tanner	6-1	Guard/Forward	JR	Birmingham, Ala./Hoover
20	Pascale "P.J." West	6-8	Center	SR	LaGrange, Ga./Troup County

STAFF:

Head Coach: Terri Williams-Flournoy (Penn State, 1991)

Assistant Coach: Ty Evans (Wisconsin-Whitewater, 1995)

Assistant Coach: Caroline McCombs (Youngstown State, 1998)

Assistant Coach: Adrian Walters (St. Francis (Pa.), 1987)

Director of Basketball Operations: Danielle Bell (Richmond, 2010)

Director of Basketball Services: Sherill Baker (Georgia, 2006)

Special Assistant to the Head Coach: Stephanie Follett (Maine, 1996)

Administrative Graduate Assistant: Kari Koch (Missouri State, 2006)

Athletic Trainer: Cindy Campbell (South Alabama, 2005)

BY CLASS:

Seniors (4): Blanche Alverson, Julie King, Najat Ouardad, Pascale "P.J." West

Juniors (2): Peyton Davis, Tyrese Tanner

Sophomores (2): Hasina Muhammad, Courtney Strain

Freshmen (4): Cabrina Capers, Chadarryl Clay, Cedricka Sweeting, Nicole Tanner

Projected Auburn Starters



Hasina Muhammad

Guard
6-1
Sophomore
Memphis, Tenn.
Ridgeway High School
16.1 ppg / 5.7 rpg / 2.9 spg

0

- Named SEC Player of the Week on Dec. 17, the first honor of her career
- Is Auburn's top scorer so far this season, scoring in double digits every game
- Had 1st career double-double with career highs of 21 pts and 10 rebs at GW
- Picked up 9 steals at GW, ranking 4th all-time at AU in single-game steals



Najat Ouardad

Guard
5-1
Senior
Orleans, France
Pensacola State College
5.6 ppg / 6.5 apg / 4.1 rpg

3

- Neared triple-double vs. Samford with 14 points, 11 assists and 9 steals
- The double-double was the 1st of her career and the fifth for AU this season
- Leads the SEC and ranks 14th in the nation with 6.5 assists per game
- Is 28 assists from 200 career assists



Blanche Alverson

Guard/Forward
6-3
Senior
Andalusia, Ala.
Buford (Ga.) High School
11.5 ppg / 5.6 rpg / .407 3fg%

14

- Named Auburn's Miss Homecoming on Nov. 3
- Was the 2012 SEC Women's Basketball Scholar-Athlete of the Year
- Eclipsed the 900-point plateau against Hofstra on Dec. 9
- Is 23 points away from reaching 1,000 on her career

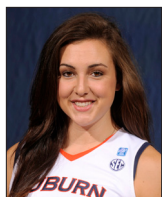


Tyrese Tanner

Guard/Forward
6-1
Junior
Birmingham, Ala.
Hoover High School
12.6 ppg / 4.4 rpg / 2.2 spg

32

- Selected to Omni Hotels Classic All-Tournament Team Nov. 23-24
- Scored career-high 26 points at North Carolina State on Nov. 10
- Neared her first double-double with 15 points and 9 rebounds vs. Maine
- Scored 15 pts to lead Auburn to 50-47 win over #23 Arkansas



Peyton Davis

Center
6-5
Junior
Pinson, Ala.
Mortimer Jordan High School
6.9 ppg / 6.1 rpg / .488 fg%

34

- Notched her first career double-double vs. Hofstra with 13 pts and 12 rebs
- Pulled down 17 rebs vs. Arkansas, 2nd-most in SEC this season
- Scored a career-high 15 points vs. TAMU-CC
- Earned first career start vs. Maine on Nov. 9

Auburn Women's Basketball Quick Hitters

- Auburn def. #23 Arkansas, 50-47, its last time out - first win over a ranked opponent in two years
- Auburn is currently on a nine-game winning streak and a 10-game home winning streak
- Senior Julie King is the only Auburn women's basketball player ever from Missouri (St. Louis)
- Auburn great Vickie Orr has been named to the Alabama Sports Hall of Fame Class of 2013
- Muhammad is the only player in the SEC this season to score in double figures in every game
- Hasina Muhammad (16.1 ppg) & Frankie Sullivan (17.8 ppg) are the highest scoring M&W combo in the SEC
- Auburn is 13-20 all-time in SEC road openers
- Auburn is off to its best start through 14 games since the 2008-09 season
- The Tigers have forced more opponent turnovers (317) than field goals allowed (268)
- Five Tigers (Peyton Davis, Hasina Muhammad, Blanche Alverson, Tra'cee Tanner and Najat Ouardad) have double-doubles this season; the first time for 5 different Tigers to do so since the 2006-07 season
- Muhammad and Ouardad each have SEC highs of nine steals in games this season
- Auburn leads the all-time series with Missouri, 2-0, but this is the first meeting in Columbia
- Auburn won the last meeting over Missouri, 75-62, on Jan. 3, 1985 in Miami, Fla.
- The Tigers are 193-168 all-time in the Southeastern Conference
- Missouri dropped its SEC opener, 77-46, at Georgia on Thursday
- This is the first meeting between Terri Williams-Flournoy and Missouri's Robin Pingeton
- Auburn is 5-3 all-time when playing on Jan. 6 and 190-104 when playing in the month of January
- Auburn is 3-0 all-time when playing teams from the State of Missouri
- Auburn has forced more than 20 turnovers in 12 of 14 games this season, more than 25 in six
- Blanche Alverson is closing in on becoming the 4th AU player ever to tally 1,000 pts, 500 rebs, 100 stls, 100 asst & 50 blks
- The Tigers' bench is averaging 20.1 points per game so far this season
- Hasina Muhammad and Tyrese Tanner have been named SEC Player of the Week this season
- Senior Julie King graduated from Auburn on Dec. 8
- Auburn won its 800th game last season, becoming the 14th NCAA program to do so
- One of Auburn's newcomers is senior Julie King, a four-year letterwinner on the Auburn soccer team
- For the third time ever, Auburn's roster features a set of sisters in Tyrese and Tra'cee Tanner
- Terri Williams-Flournoy led the Tigers to a 3-1 record this summer in the team's Australian Tour
- Senior Blanche Alverson was named Auburn's Miss Homecoming Nov. 3
- Blanche Alverson's community service project, Ballin' For Books, collected more than 1,100 books last year
- Auburn was picked to finish 10th in the SEC by both the media and league's coaches

Moving On Up (Auburn Players in the Career Rankings)...

- Blanche Alverson** needs to play in 17 more games to tie Jordan Greenleaf and Lori Monroe for 10th all-time at Auburn in career games played with 124
- Blanche Alverson** needs one more 3-pointer to tie Natasha Brackett for 3rd all-time at Auburn in career 3-pointers (171)
- Blanche Alverson** is six 3-point shots away from tying Samantha Williams for 4th all-time at AU in career 3-point attempts (500)
- Blanche Alverson** is five points away from tying Diann McNeil (982) for 28th in career points and 11 points away from tying Tara Williams (988) for 27th
- Blanche Alverson** is three rebounds away from tying LaKeisha Johnson (477) for 27th, four from tying Natasha Brackett (478) for 26th and 16 away from tying Ruthie Bolton (490) for 25th
- Najat Ouardad** is 15 assists away from tying Carolyn Jones (187) for 29th all-time at Auburn in career assists and 17 away from tying Tamela McConvey (189) for 28th

INDIVIDUAL CATEGORY LEADERS

Auburn	Missouri
Hasina Muhammad - 16.1..... Points	Bri Kulas - 14.5
Peyton Davis - 6.1..... Rebounds	Bri Kulas - 6.5
Najat Ouardad - 6.5..... Assists	Lianna Doty - 4.7
Najat Ouardad - 3.1..... Steals	Lianna Doty - 2.3
Hasina Muhammad - 1.3..... Blocks	Liz Smith - 0.9
Blanche Alverson - 31.1..... Minutes Played.....	Bri Kulas - 28.7
Tra'cee Tanner - .570..... Field Goal Percentage	Sydney Crafton - .593
Blanche Alverson - .407..... 3-Point Percentage.....	Morgan Eye - .445
Blanche Alverson - .846..... Free-Throw Percentage	Morgan Eye - .818

AUBURN WOMEN'S BASKETBALL WEEKLY SCHEDULE

	Tuesday 1	Wednesday 2	Thursday 3	Friday 4	Saturday 5	Sunday 6	Monday 7
Jan. 1 through Jan. 7	Practice 4 - 7 p.m. CT Auburn Arena	Practice 12 - 3 p.m. CT Auburn Arena	Auburn vs. #23 Arkansas W, 50-47 Auburn Arena Auburn, Ala.	Practice 10 a.m. - 12 p.m. Auburn Arena	Practice 10 a.m. - 2 p.m. CT Auburn Arena Travel to Missouri	Auburn at Missouri 2 p.m. CT Mizzou Arena Columbia, Mo.	OFF

General Information

School.....	Auburn University
City / Zip.....	Auburn, Ala. / 36831
Founded.....	Oct. 1, 1856
Enrollment.....	25,469
Nickname.....	Tigers
Colors.....	Burnt Orange and Navy Blue
Home Court (Capacity).....	Auburn Arena (9,121)
Affiliation.....	NCAA Division I
Conference.....	Southeastern Conference
President.....	Dr. Jay Gogue
Athletic Director.....	Jay Jacobs
Senior Women's Administrator.....	Meredith Jenkins
University Website.....	www.Auburn.edu

Team Information

2011-12 Overall Record.....	13-17 (.433)
SEC Record.....	5-11 (.313)
All-Time SEC Record.....	193-168 (.535)
SEC Tournament Record.....	34-31 (.523)
Letterwinners Returning/Lost.....	7/5
Starters Returning/Lost.....	3/2
Newcomers.....	5
First Year of Basketball.....	1971
All-Time Overall Record.....	823-380 (.684)
All-Time Auburn Arena Record.....	23-13 (.639)
NCAA Tournament Appearances/Last.....	18/2009
NCAA Tournament Record.....	29-18
WNIT Appearances/Last.....	3/2011
WNIT Record.....	8-2

Basketball Staff

Head Coach.....	Terri Williams-Flournoy (Penn State, 1991)
Career Record.....	155-106 (.594) / 9th season
Record at Auburn.....	12-2 (.857) / 1st season
Assistant Coaches (Alma Mater).....	Ty Evans (Wisconsin-Whitewater, 1995)
.....	Caroline McCombs (Youngstown State, 1998)
.....	Adrian Walters (St. Francis (Pa.), 1987)
Director of Basketball Operations.....	Danielle Bell
Director of Basketball Services.....	Sherill Baker
Special Assistant to the Head Coach.....	Stephanie Follett
Administrative Graduate Assistant.....	Kari Koch
Secretary.....	Vicki Coleman
Basketball Office Phone.....	(334) 844-9200
Basketball Office Fax.....	(334) 844-9862
Strength and Conditioning.....	Megan Young
Athletic Trainer.....	Cindy Campbell
Academic Counselor.....	Dr. Mary Ann Taylor-Sims

Radio Broadcast Information

Radio Station.....	WVMA (96.7 FM)
Play-by-Play.....	Andy Burcham
Color.....	Stephanie Follett
Burcham Email.....	aburcham@auburnnetwork.com
Burcham Office Phone.....	(334) 826-2929
Network Address.....	Auburn Network, Inc.
.....	P.O. Box 950
.....	Auburn, AL 36831-0950

MISSOURI MEDIA RELATIONS

For information on the Missouri Tiger women's basketball team, contact Jenny Dewar in the media relations office. Her number is 847.567.2487 and her email is dewarj@missouri.edu.

The press row number at Mizzou Arena is 573.882.1442. For more information, go to www.MUTigers.com.

OFFICIALS

TBA

RANKINGS

Auburn and Missouri are not ranked.

NEXT UP FOR THE TIGERS

Auburn will return home to take on Ole Miss. Tipoff is set for 6 p.m. CT, Thursday, Jan. 10 at Auburn Arena.

AUBURN'S POST-GAME PROCEDURE

The Auburn locker room is closed. Coach Terri Williams-Flournoy and selected Tiger players will be brought to the interview room after the 10-minute "cooling off" period.

QUICK HITS

Auburn is in its 42nd season of women's basketball and sports an all-time record of 823-380... AU has made 18 NCAA Tournament appearances, three WNIT appearances and three Final Fours in the program's history... Head Coach Terri Williams-Flournoy is in her first season at Auburn... She has a 155-106 record as a head coach... The Tigers are coming off a 13-17 season in 2012.

OFF TO A FAST START

Auburn has an 12-2 record through the first 14 games of the season, marking the best start for the Tigers since starting the 2008-09 season 14-0. Auburn eventually went 20-0 before going on to win the SEC title and finish the season with a 30-4 record.

800 AND COUNTING

Auburn picked up its 800th program victory last season, becoming the 14th team in NCAA history to reach the 800-win plateau.

WINNING 150

Auburn head coach Terri Williams-Flournoy picked up the 150th win of her head coaching career on Dec. 12 as she led the Tigers to a 69-59 win at George Washington. The win was also significant as it was in Washington, D.C., where she spent her first eight years as a head coach at Georgetown.

Williams-Flournoy also hit a coaching milestone last on Dec. 9 against Hofstra as the win was the 400th of her career as either an assistant or head coach. Following the win she had 251 wins as an assistant and 149 as a head coach.

THE GRADUATE

Senior guard Julie King took a big step Dec. 8 as she earned her degree in Interdisciplinary Studies from Auburn. The fifth-year player spent her first four years at Auburn on the soccer team and is currently using her final year of eligibility with the women's basketball team.

DEADLY DUO

Frankie Sullivan of the Auburn men's basketball team currently leads the team and is second in the SEC with 17.8 points per game while Hasina Muhammad leads the women's team and ranks third in the SEC with 16.1 points per game. Together, the pair is the highest scoring men's and women's combination in the SEC this season with 33.9 points per game.

AUBURN-MISSOURI SERIES

This is the third all-time matchup between Auburn and Missouri with Auburn leading 2-0.

Previous Meetings with Missouri

Mar. 19, 1983	W	89-76	Auburn
Jan. 3, 1985	W	75-62	Miami, Fla.

AGAINST THE SEC

Auburn has a 193-168 all-time record in the Southeastern Conference. The Tigers have won five SEC titles and four SEC Tournament titles, most recently winning the regular-season title in 2009 after a 14-2 league mark.

Statistical Comparison - Auburn vs. Missouri

	Auburn	Missouri
Coach:	Terri Williams-Flournoy	Robin Pingeton
Career Record:	155-106	372-196
Top Scorer:	Muhammad (16.1)	Kulas (14.5)
Top Rebounder:	Davis (6.1)	Kulas (6.5)
Series Record:	Auburn leads, 2-0	
- at Auburn	Auburn leads, 1-0	
- at Columbia, Mo.	First Meeting	
- at Neutral	Auburn leads, 1-0	
- Overall Streak	Auburn has won both meetings	
2011-12 Record	13-17	13-18
2012-13 Record	12-2	11-4
2012-13 SEC Record	1-0	0-1
Points Per Game	70.7	72.0
Scoring Margin	+16.0	+13.1
FG Percentage	.446	.433
Opp. FG %	.341	.356
3FG Percentage	.310	.348
Opp. 3FG %	.310	.298
Rebounds	40.9	40.4
Opp. Rebounds	35.9	37.1
Rebound Margin	+5.0	+3.3
Turnovers	15.5	15.3
Opp. Turnovers	22.6	15.7
Steals	13.3	7.7
Opp. Steals	7.5	7.7
Blocks	5.6	3.3
Opp. Blocks	2.1	2.4

Around the SEC (As of Jan. 5, 2012)

	SEC	Pct.	Overall	Pct.
Auburn	1-0	1.000	12-2	.857
Georgia	1-0	1.000	13-1	.929
Kentucky	1-0	1.000	13-1	.929
LSU	1-0	1.000	10-4	.714
Tennessee	1-0	1.000	10-3	.769
Texas A&M	1-0	1.000	11-4	.733
Vanderbilt	1-0	1.000	11-3	.786
Alabama	0-1	.000	10-4	.714
Arkansas	0-1	.000	12-2	.857
Florida	0-1	.000	11-4	.733
Ole Miss	0-1	.000	7-7	.500
Mississippi State	0-1	.000	8-6	.571
Missouri	0-1	.000	11-4	.733
South Carolina	0-1	.000	12-2	.857

This Week in the SEC**Tuesday, Jan. 1**

Rice at Texas A&M TAMU, 80-57

Thursday, Jan. 3

Arkansas at Auburn AU, 50-47
 Florida at Kentucky (SPSO) UK, 76-69
 Missouri at Georgia UGA, 77-46
 Alabama at Texas A&M (FSN) TAMU, 91-52
 Ole Miss at LSU LSU, 84-79
 Mississippi State at Vanderbilt VU, 92-41
 Tennessee at South Carolina (SPSO) UT, 73-53

Sunday, Jan. 6

Georgia at Tennessee (SPSO) 12 p.m.
 LSU at Florida (SECN) 1 p.m.
 Kentucky at Alabama 2 p.m.
 Texas A&M at Arkansas (SPSO) 2 p.m.
 Auburn at Missouri (ESPN3) 2 p.m.
 South Carolina at Mississippi State 2 p.m.
 Vanderbilt at Ole Miss (ESPN) 2:30 p.m.

SCOUTING MISSOURI

Missouri enters its second conference game at 11-4 on the season having lost its SEC opener to No. 10/11 Georgia, 77-46, in Athens, Ga.

The Tigers have been tough at home this season, posting a 10-0 record at Mizzou Arena. Of Missouri's two losses, two have come on the road while the other two were in Cancun, Mexico.

The Tigers are led by Bri Kulas, averaging 14.5 points per game and 6.5 rebounds per game. Morgan Eye is adding 12.9 points per game, including shooting 44.5 percent from beyond the arc, while Sydney Crafton averages 11.2 points and 5.8 rebounds per game. Point guard Lianna Doty leads the team with 4.7 assists per game.

SCOUTING AUBURN

The Auburn women's basketball team, under direction of first-year head coach Terri Williams-Flournoy, returns seven letterwinners and four starters from last season's team that went 13-17 (5-11 SEC). Williams-Flournoy comes to Auburn after eight seasons as head coach at Georgetown where she put together a 143-104 record that included four postseason appearances and three straight trips to the NCAA Tournament, including a Sweet 16 appearance in 2011.

Auburn is off to a 12-2 start through the first 14 games, the team's best start since opening the 2008-09 season 14-0. The Tigers are averaging a 21.3-point margin of victory in their 12 wins. Three Tigers are averaging double figures, led by Hasina Muhammad with 16.1 per game, including four 20-point games after her first career double-double at GW. Tyrese Tanner is at 12.6 points and 4.4 rebounds per game while Blanche Alverson comes in with 11.5 points and 5.6 boards per game.

Center Peyton Davis leads the team in the post, averaging 6.9 points and a team-high 6.1 rebounds per game. Najat Ouadad is tops in the SEC and 14th in the country in assists with 6.5 per game while scoring 5.6 points per game.

LAST TIME VS. MISSOURI (Jan. 3, 1985)

Auburn and Missouri last met on Jan. 3, 1985, when Auburn took a 75-62 victory at the Miami Women's Court Classic in Miami, Fla. This is the third all-time meeting between the two teams and have never faced off in Columbia.

Debra Larkin led Auburn with 16 points while Brenda Hill pulled down a team-high 11 rebounds. The win improved Auburn to 11-0 on the season and put the Tigers in the tournament championship game against Rutgers. Auburn went on to win the tournament title with a 61-48 win over Rutgers.

WILLIAMS-FOURNOY VS. PINGETON

This will be the first meeting between Auburn's Terri Williams-Flournoy and Missouri's Robin Pingeton.

Williams-Flournoy is in her first year at Auburn and has an 12-2 record this season for a 155-106 career record. Pingeton is in her 18th season as a head coach and has a 372-196 record, she is 37-40 in three seasons at Missouri.

LAST TIME OUT FOR AUBURN

The Auburn women's basketball team fought until the final seconds ticked off to pick up its first Southeastern Conference win in the SEC opener, as the Tigers downed No. 23 Arkansas, 50-47, Thursday at Auburn Arena.

The win was a first for Auburn in more ways than one. It marked Williams-Flournoy's first career SEC victory as a head coach, and it was also the Tigers' first win over a ranked opponent since beating No. 22 Georgia on Feb. 24, 2011. Arkansas entered the game ranked No. 23 in the AP poll.

Tyrese Tanner led Auburn in scoring with 15 points, while Hasina Muhammad added 13. Peyton Davis had a career night on the boards, grabbing 17 rebounds and besting her previous career high by six. Davis is tied for 27th all-time in single-game rebounds and is the most rebounds for an Auburn player since DeWanna Bonner tallied 19 against St. Joseph's on Dec. 29, 2007.

The team's traded the lead before Auburn pulled away for a five-point lead early in the first half. Arkansas came back, though, taking a 20-19 advantage at halftime.

It was back and forth to open the second half, but a 15-4 Tiger run gave Auburn a lead it would not give up. The Hogs cut it to one late, but Auburn was able to hold on for the 50-47 victory.

LAST TIME OUT FOR MISSOURI

Missouri opened its inaugural Southeastern Conference season at Georgia on Jan. 3, falling to the Bulldogs, 77-46. Junior Bri Kulas recorded 14 points in the loss, marking her 10th consecutive double-figure scoring game and her 12th this season. Morgan Eye also put up 13 points in the loss, grabbing four rebounds as well.

Georgia led just 29-15 with 8:01 to play in the first half, but the Bulldogs went on a 10-0 run to ensure a secure lead going into the half. Morgan Eye hit a jumper before the buzzer to send the teams into the locker room with a 45-23 score.

The Tigers and the Bulldogs had an aggressive second half, but Missouri could not stop Georgia. The Bulldogs put up 32 points in the second half to win the game 77-46.

MISSOURI TIGER

Auburn senior Julie King, a native of St. Louis, is the lone Missouri native on Auburn's roster. Not only is she the lone current Tiger from Missouri, she is also the only Auburn women's basketball player ever from the Show Me State.

The coaching staff does have a couple connections to the state. Administrative Graduate Assistant Kari Koch is a native of Elsberry, Mo., and a graduate of Missouri State University. Head Coach Terri Williams-Flournoy and Special Assistant to the Head Coach Stephanie Follett are also former Missouri State assistant coaches.

ON THIS DATE. . .

Auburn is 5-3 all-time when playing on Jan. 6. The Tigers' last game on Jan. 6 was a 73-56 win over Florida in 2011 in Auburn.

Associated Press Top-25 Poll**Week 9 (Dec. 31)**

Rank	School	Record	Points	Pvs
1	Connecticut (37)	11-0	997	2
2	Baylor (3)	10-1	948	3
3	Duke	11-0	904	4
4	Stanford	11-1	899	1
5	Notre Dame	11-1	841	5
6	Kentucky	12-1	799	7
7	California	10-1	724	8
8	Maryland	10-2	703	9
9	Penn State	10-2	664	10
10	Georgia	12-1	600	6
11	Louisville	11-2	563	12
12	Tennessee	9-3	557	13
13	Oklahoma State	11-0	504	14
14	Purdue	11-2	444	11
15	North Carolina	13-1	403	16
16	UCLA	8-2	350	17
17	Oklahoma	10-2	312	18
18	South Carolina	12-1	309	19
19	Florida State	11-1	259	21
20	Colorado	11-0	224	23
21	Kansas	9-2	183	22
22	Dayton	12-1	177	15
23	Arkansas	12-1	165	25
24	Texas A&M	9-4	135	24
25	Nebraska	10-3	81	NR

Others Receiving Votes: Miami (Fla.) 52, Iowa State 50, Ohio State 36, **Vanderbilt 23**, West Virginia 22, Syracuse 15, Michigan 13, Michigan State 12, Iowa 10, Duquesne 9, Texas-El Paso 8, Texas 4, Villanova 1.

USA Today / ESPN Top-25 Coaches Poll**Week 9 (Jan. 1)**

Rank	School	Record	Points	Pvs
1	Connecticut (31)	12-0	775	2
2	Baylor	10-1	732	3
3	Stanford	11-1	707	1
4	Duke	11-0	691	4
5	Notre Dame	11-1	654	5
6	Kentucky	12-1	623	6
7	California	10-1	579	8
8	Maryland	10-2	548	9
9	Penn State	10-2	501	10
10	Louisville	12-2	461	12
11	Georgia	12-1	459	7
12	Oklahoma State	11-0	434	13
13	Tennessee	9-3	408	15
14	Purdue	11-2	365	11
15	South Carolina	12-1	349	16
16	Oklahoma	10-2	290	17
17	UCLA	9-2	252	18
18	Dayton	12-1	214	14
19	Nebraska	10-3	183	19
20	Kansas	9-2	166	20
21	Florida State	11-1	140	25
22	Texas A&M	9-4	134	22
23	North Carolina	13-1	101	23
24	Ohio State	10-3	99	24
25	Colorado	11-0	60	NR

Others Receiving Votes: Iowa State 39, Syracuse 25, **Arkansas 23**, Miami (Fla.) 17, Toledo 10, Texas-El Paso 9, **Vanderbilt 7**, Kansas State 6, Iowa 4, Texas 3, South Florida 2, DePaul 2, West Virginia 2, Gonzaga 1.

Bold denotes 2012-13 opponents

IN JANUARY

Auburn is 190-104 all-time in the month of January (records begin in 1978-79 season, not all dates provided prior to or during that season). Head coach Terri Williams-Flournoy is 1-0 at Auburn in January.

IN DECEMBER

Auburn is 206-47 all-time in the month of December (records begin in 1978-79 season, not all dates provided prior to or during that season). Williams-Flournoy went a perfect 6-0 in her first December as Auburn's head coach.

ALL ALONE

Sophomore Hasina Muhammad has scored in double figures in all 14 games this season and is the only player in the SEC to score in double figures in every game. Going back to last season, Muhammad has scored in double figures in 16 straight games. Her double-digit streak is the longest at Auburn since DeWanna Bonner scored in double figures in 19 straight from Dec. 30, 2008 until March 7, 2009.

AGAINST THE SHOW ME STATE

Auburn holds a 3-0 record against teams from the state of Missouri. Records against Missouri teams: Missouri (2-0) and Missouri State (1-0). The last time Auburn faced a Missouri team was on March 17, 2000, when the Tigers defeated Missouri State (then Southwest Missouri State) 78-74 in State College, Pa., in the NCAA Tournament.

GOING STREAKING

Auburn has won its last nine games, giving the team its longest streak since winning 20 in a row to start the 2008-09 season.

STREAKING AT HOME

The Tigers are also on a 10-game home winning streak, dating back to last season - its longest winning streak in Auburn Arena. Auburn won its last two home games last season and has won all eight this year. The last time Auburn had a streak of at least 10 wins at home was a 15-game win streak from March 2, 2008 until Nov. 19, 2009 - spanning over three seasons (2007-08, 2008-09 and 2009-10). The first win of the streak was a 74-57 win over Arkansas and the last win of the streak was an 83-56 win over Alabama A&M.

IN SEC ROAD OPENERS

The Auburn women's basketball team is 13-20 in SEC road openers, dating back to the 1979-80 season. The Tigers won their road opener in 2012, defeating Alabama, 65-55. This is the first time for Auburn to play its SEC road opener at Missouri.

Auburn in SEC road-openers vs.: Alabama (3-1), Arkansas (0-1), Florida (0-3), Kentucky (0-2), LSU (1-2), Ole Miss (2-4), Mississippi State (3-1), South Carolina (3-1), Tennessee (1-3) and Vanderbilt (0-2).

IN SEC OPENERS

The Auburn women's basketball team is 15-19 in SEC openers, dating back to the 1979-80 season after defeating #23 Arkansas, 50-47, Thursday in Auburn.

Auburn in SEC season-openers vs.: Mississippi State (4-1), South Carolina (2-0), Tennessee (2-2), Alabama (1-0), Arkansas (1-0), LSU (2-4), Kentucky (1-3), Ole Miss (1-3), Vanderbilt (1-3) and Florida (0-3).

IN SEC HOME OPENERS

The Auburn women's basketball team is 19-15 in SEC home openers, dating back to the 1979-80 season after defeating #23 Arkansas, 50-47, Thursday in Auburn.

Auburn in SEC home openers vs.: Alabama (0-1), Arkansas (2-0), Florida (2-1), Georgia (2-1), Kentucky (1-1), LSU (2-2), Ole Miss (1-3), Mississippi State (2-1), South Carolina (3-2), Tennessee (3-1) and Vanderbilt (1-2).

AGAINST THE RANKED

Auburn is 93-164 all-time against teams ranked in the Associated Press Top-25. Auburn is 1-0 against ranked teams this season after a 50-47 win over #23 Arkansas on Jan. 3.

The win over the Razorbacks was Auburn's first win over a ranked team since downing #22 Georgia, 63-58, on Feb. 24, 2011 and the first home win over a ranked team since downing #16 Kentucky, 65-53, on Feb. 28, 2010.

IN THE NATIONAL RANKINGS

In the Jan. 4 NCAA statistical rankings, Auburn is ranked in the top 75 in 14 categories and the top 30 in eight. Top 30 rankings for Auburn are: Scoring Margin (29th, 16.0), FG Percentage (24th, .446), Winning Percentage (19th, .857), Assists Per Game (16th, 17.5), Blocks Per Game (22nd, 5.6), Steals Per Game (14th, 13.3), Assist-Turnover Ratio (15th, 1.13) and Turnover Margin (11th, 7.14).

Individually, Najat Ouwardad is 14th in assists (6.5) and 32nd in steals (3.14).

DOUBLE DOWN

Five different Tigers have pulled down double-doubles this season. Peyton Davis had the first with 13 points and 12 rebounds against Hofstra. Hasina Muhammad followed up with 21 points and 10 rebounds against George Washington.

Blanche Alverson picked up her first of the season, second of her career, with 11 points and 10 rebounds against UTC. Freshman Tra'cee Tanner tallied one with 21 points and 12 rebounds against Jacksonville. She was the first freshman since DeWanna Bonner on March 2, 2006 to notch a double-double.

Najat Ouwardad has the most recent with 14 points and 11 assists against Samford.

With five Tigers pulling down double-doubles, it marks the first time since the 2006-07 season for Auburn to have five different players do so.

GETTING AWAY WITH THEFT

Hasina Muhammad and Najat Ouardad have both tallied nine steals in a game this season. Muhammad stole nine at George Washington while Ouardad got hers against Samford.

The mark ties for fourth all-time at Auburn in single-game steals and is the most in the SEC this season. The nine steals are also tied for 10th in the nation in single-game steals.

When Muhammad reached the mark, it was the most steals in a game for an Auburn player in 20 years.

GOING TO THE BOARD

Junior Peyton Davis pulled down a career-high 17 rebounds against Arkansas on Jan. 3. The 17 boards are the most for an Auburn player since KeKe Carrier pulled down 19 against Valparaiso on Dec. 28, 2010. Davis' 17 rebounds are also tied for 27th all-time at Auburn in single-game rebounds.

SISTER-SISTER

Auburn's Tanner sisters made a good combination on Dec. 22 in the Tigers' win over Jacksonville. Tyrese and Tra'cee Tanner combined to score 37 points with 15 rebounds and four steals. It was the best combined effort for the sisters this season.

For the season, Tyrese and Tra'cee are combining for 20.2 points and 8.3 rebounds per game.

ALL-AROUND STAR

Senior Blanche Alverson has been a super-star both on and off the court in her Auburn career. Off the court, she carries a 3.6 GPA as a biomedical sciences major, she was named Auburn's 2012 Miss Homecoming and she started her own community service program, Ballin' 4 Books.

On the court, she is close to reaching a rare feat as she is on pace to becoming just the fourth Auburn player ever with 1,000 points, 500 rebounds, 100 assists, 100 steals and 50 blocks. Entering the SEC road opener at Missouri, she has 977 points, 474 rebounds, 138 assists, 99 steals and 60 blocks. The only other players to accomplish the feat are DeWanna Bonner (2005-09), Brenda Hill (1982-85) and Lori Monroe (1979-83).

FORCING 25

Since 1987, Auburn has forced 25 or more turnovers in a game 99 times, including six times this season. In those 99 games, the Tigers have a 96-3 record.

COUNTING TO 1,000

Auburn senior Blanche Alverson is just 23 points away from reaching 1,000 on her career as she eclipsed the 900-point plateau against Hofstra. Should she reach the mark, she would become the 27th Auburn player to do so.

CLIMBING THE RANKINGS

Blanche Alverson is climbing her way up the Auburn scoring and rebounding lists. She currently ranks 29th all-time at Auburn in scoring with 977 points. She is also 28th all-time on The Plains in career rebounding with 474.

TURN IT OVER

A pillar of Coach Terri Williams-Flournoy's style of play is a high-pressure defense that extends most of the floor. The Tigers have forced 20 or more turnovers in 12 of their 14 games this season. Auburn has forced 25 or more in six games with a season-high 28 against Hofstra. In all, Auburn has scored 324 points off turnovers in its 14 games, averaging 23.1 points off turnovers per game.

Auburn has tallied 10 or more steals in 10 games this season, including a season-high 22 against Samford. The 22 steals were the most in a game in more than four years for the Tigers.

JET POWERED

Najat Ouardad is making her own waves this season. The 5-1 senior tallied her first career double-double against Samford, giving Auburn its first double-double with points and assists in two years. Her 11 assists in the game tied for third in the SEC this season and are tied for 18th all-time at Auburn in single-game steals.

She also now has 172 career assists, a mark that ranks 13th among active SEC players and 30th all-time at Auburn.

IT'S RAINING 3s

Blanche Alverson is climbing her way up the Auburn career 3-point list. She is currently fourth with 170. Alverson is one 3-pointer behind Natasha Brackett (171) and third place. Alli Smalley holds the Auburn record with 219.

OFF THE BENCH

Auburn has had great bench support this season with at least one player coming off the bench to score in double figures in nine of the 14 games. The Tigers' bench so far has scored 282 points on the season, averaging 20.1 per game.

O-BOARDS

Auburn has missed 493 shots this season with 224 (45.4 percent) resulting in offensive rebounds. That has led to 238 second-chance points on the season, averaging 17.0 per game.

KEEPING SCORE

Against Arkansas, Auburn forced 20 turnovers while the Razorbacks made just 16 field goals. It marked the 11th time this season that an Auburn opponent has committed more turnovers than made field goals.

On the season, Auburn opponents have hit just 268 field goals compared to 317 turnovers. The Tigers have committed just 217 turnovers for a +100 margin on the season.

HOME SWEET HOME

Auburn has made itself at home this season, winning all eight of its games at Auburn Arena. The Tigers had a 16-13 record in Auburn Arena entering the season, but have improved to 24-13 since.

Quoting Coach Flo

On getting first SEC win...

"Honestly, it is more about the players than it is about me. Right now it is at a point where it is more exciting for the players to get their wins, to get their confidence, to get their first this or first that because the more we can get them to believe in themselves and believe in what we are doing, the more it will benefit us."

On confidence from defense against Arkansas...

"It helps me to yell at them even more to make them do it right because they understand the importance of doing it right all the time and how effective it can be to help us win games."

On Missouri...

"Three-point shooters, Missouri has a lot of 3-point shooters. Just like UT-Chattanooga and Samford that we have guarded in our last non-conference games, this is a Missouri team with good 3-point shooters. They are good 3-point shooters from one through four, so for me it always comes back to our defense and how we handle that."

On Missouri being 10-0 at home...

"That is something that we won't even emphasize. We always emphasize the things that we need to do to win the game and right now we need to contain their 3-point shooting."

On Hasina Muhammad's play...

"She scored a silent 13 points against Arkansas, I did not even know that she was in double figures until the game was over because I thought she just played OK. I thought she took a few bad shots, but for Hasina it is a matter of making sure she knows exactly where she fits in the offense and how we can help her create shots for herself. Arkansas did a good job of guarding her, which made her have to think a little more and she took a few bad shots out of that. Every day she has got to get better."

The Southeastern Conference**Commissioner:** Mike Slive**Founded:** 1933**Members:**

Alabama Crimson Tide
 Arkansas Lady Razorbacks
 Auburn Tigers
 Florida Gators
 Georgia Bulldogs
 Kentucky Wildcats
 LSU Tigers
 Mississippi Rebels
 Mississippi State Bulldogs
 South Carolina Gamecocks
 Missouri Tigers
 Tennessee Lady Volunteers
 Texas A&M Aggies
 Vanderbilt Commodores

SEC Media Relations**Women's Basketball Contact:** Tammy Wilson**Address:**

2201 Richard Arrington Blvd.
 Birmingham, Ala. 35203-1103

Phone: 205.458.3000**Fax:** 205.458.3031**E-mail:** twilson@sec.org**Web site:** www.SECsports.com**SEC Women's Basketball Notes**

- The SEC has posted impressive non-conference records in the last decade. The SEC compiled a 134-41 (.766) non-conference record in the 2011-12 season.
- Since the 1990 season, the SEC has compiled a 3047-935 (.765) record against other conferences. The league has recorded 150+ wins during eight seasons.
- SEC teams have earned appearances in 25 of 31 NCAA Final Fours, an accomplishment unmatched by any other league.
- Overall, SEC squads have filled 34 of the 124 Final Four berths, including having two Final Four teams in 1988 (Auburn, Tennessee), 1989 (Auburn, Tennessee), 1995 (Georgia, Tennessee), 1996 (Georgia, Tennessee), 1998 (Arkansas, Tennessee), 2004 (LSU, Tennessee), 2005 (LSU, Tennessee), 2007 (LSU, Tennessee) and 2008 (LSU, Tennessee).
- SEC teams have made 18 appearances in a nation-high 16 NCAA Championship games, winning eight NCAA Championships (Tennessee: 1987, 1989, 1991, 1996, 1997, 1998, 2007 and 2008).
- The league also had the distinction of providing both national finalists twice in its history in 1996 (Tennessee 83, Georgia 65) and in 1989 (Tennessee 76, Auburn 60).
- SEC teams have won 347 NCAA Tournament games against 180 losses (.658) for an average of 11.2 NCAA wins per year.
- In addition, all 14 current members have appeared in the NCAA Tournament.
- The SEC has paced the pack in NCAA tournament bids 22 times in its 31-year history.
- The SEC was the first league to ever have eight teams invited to the NCAA Tournament, doing so in 1999, 2002 and 2012.
- The SEC was also the first league to ever have seven teams invited to the NCAA Tournament and earned this honor a leading seven times (1986, 1991, 1995, 1996, 1997, 2003, 2004).
- The SEC is one of a handful of leagues to have won three national tournament titles with eight NCAA, two WNIT and three NWIT. Along with the eight NCAA championships won by Tennessee, Arkansas (1999) and Auburn (2003) captured the current Women's NIT titles. But the first-ever SEC national title belongs to Georgia, winners of the 1981 WNIT which predates the current NCAA tournament. LSU (1985) and Kentucky (1990) also won WNIT titles. Both Arkansas (1987) and South Carolina (1979) won the WNIT as members of their previous conferences.
- In 2003, Auburn won the WNIT title with wins over South Alabama, Florida State, Richmond, Creighton and Baylor. In 1999, the Arkansas Lady Razorbacks defeated Wisconsin 76-64 to claim the SEC's first WNIT championship.
- In 1981, Georgia defeated Pittsburg, California and Arizona State (in OT) to capture the WNIT Championship, the first-ever national championship of any kind for the SEC in women's basketball.

A HALF AT A TIME

In 15 of 28 halves this season, Auburn has out-scored its opponent by double figures.

QUEEN BLANCHE

Senior Blanche Alverson, no stranger to awards on the court, added another piece of hardware to her collection on Nov. 3 as she was named Auburn's Miss Homecoming. After a week of campaigning, she found out the result of the vote at halftime of Auburn's Homecoming Football Game against New Mexico State. She is the first Tiger student-athlete to earn the honor.

20-20 VISION

Auburn's Blanche Alverson and Hasina Muhammad were quite a duo in the Tigers' game against Tulane. The pair combined for 42 of Auburn's 70 points, each posting 21. It was the first time two Tigers each scored 20 or more points in a single game since Alli Smalley (27) and KeKe Carrier (20) combined for 47 points against Alabama on Jan. 14, 2010.

COMEBACK KIDS

At Tulane on Nov. 28, Auburn came from 16 points down at halftime to pull off the 70-65 win. It is the biggest comeback for the Tigers since coming back from 18 points down at Vanderbilt on Feb. 19, 2009, closing the gap to just a point in the final minute of the game only to lose 73-70. It was the first time for the Tigers to come back from a double-digit deficit since overcoming a 10-point deficit at Liberty on Dec. 7, 2008 to take away a 64-53 win.

MUHAMMAD NAMED SEC PLAYER OF THE WEEK

After averaging 18.5 points, 8.0 rebounds, 7.0 steals and 2.5 blocks per game in Auburn's games against GW and Temple, sophomore guard Hasina Muhammad was named the SEC Player of the Week for the first time in her career on Dec. 17.

At GW, Muhammad tied her career high with 21 points, including 14 in the second half, leading Auburn to a 69-59 win over the Colonials. She earned her first career double-double with a career-high 10 rebounds and nearly had a triple-double as she tallied nine steals. Her nine steals are the most for a player in the SEC this season and rank fourth all-time at Auburn in single-game steals.

She came right back against Temple on Sunday with 16 points, six rebounds, six assists, five steals and three blocks. Her six assists were a new career high while her three blocked shots tied her career high.

ORR NAMED TO ALABAMA SPORTS HALL OF FAME

Auburn great Vickie Orr is one of eight individuals that make up the Alabama Sports Hall of Fame Class of 2013. The banquet will be held May 18, 2013 in Birmingham.

One of Auburn's greatest women's basketball players, Orr was a Kodak All-American three consecutive years in 1987, 1988 and 1989. The 1988 SEC Player of the Year, Orr is second all-time at Auburn scoring with 2,035 points and is one of only two Tiger

players to score more than 2,000 points and have 1,000 rebounds.

Orr helped lead the Tigers to two straight NCAA Championship games and was the MVP of the NCAA Mid-East Regional and All-Final Four team in 1989. Internationally, Orr was a member of the 1990 U.S.A. Team that won a Gold Medal in the World Championships and a member of the 1990 Goodwill team that won the Gold Medal. She was also a member of the 1992 U.S. Olympic Team that won a Bronze Medal. She went on to play professionally in Italy from 1990-92.

TYRESE TANNER NAMED SEC PLAYER OF THE WEEK

Auburn junior Tyrese Tanner was named the SEC's Player of the Week on Nov. 12, the first player to earn the honor this season. She averaged 20.5 points, including a career-high 26 points, at the Sheraton Raleigh Wolfpack Invitational, Nov. 9-10.

Her 26 points were the most scored in the SEC to that point in the season. She is the first Tiger to earn the SEC's weekly honor since Blanche Alverson did on Jan. 13, 2011.

FIRST TIMERS

The season-opening game saw some firsts for Auburn players. Junior Peyton Davis earned the first start of her career while senior Julie King and freshmen Cabriana Capers, Chadarryl Clay, Cedricka Sweeting and Tra'cee Tanner made their first collegiate basketball appearance.

KICKING UP SOMETHING NEW

One of Auburn's five newcomers is former soccer player Julie King. A native of St. Louis, King started for four years for the Tigers' soccer team, helping the team to the NCAA Tournament in each season. As a co-captain last year, she led Auburn to an SEC Tournament Championship and was named SEC Co-Defensive Player of the Year.

King was an All-State basketball selection while playing prep ball at Nerinx Hall in St. Louis, Mo.

SISTER ACT

For just the third time ever, Auburn's roster featured a sister combination as Tyrese and Tra'cee Tanner step on the court. Tyrese is a junior on the squad this year while Tra'cee is a freshman.

Other sister combinations to play together at Auburn include Sherell (2004-09) and Reneisha (2006-10) Hobbs, and Ruthie (1985-89) and Mae Ola (1984-88) Bolton.

TANNER NAMED TO OMNI CLASSIC TEAM

Auburn junior Tyrese Tanner was named to the Omni Hotels Classic All-Tournament Team on Nov. 24 for her play in the two games. For the tournament, she averaged 14.0 points, 4.0 rebounds, 2.5 steals and 1.5 blocks per game. She scored 17 with three steals against San Diego State and returned for 11 points, three blocks and two steals against Texas A&M-Corpus Christi.

TANNER AND MUHAMMAD EARN WOLFPACK HONORS

Auburn's Tyrese Tanner and Hasina Muhammad were selected to the Sheraton Raleigh Wolfpack Invitational All-Tournament Team to start the season. Tanner averaged 20.5 points, including a career-high 26 against North Carolina State. She also tallied 8.5 rebounds and 2.0 steals per game. Muhammad averaged 16.0 points per game, tying her then-career high with 20 points in the season-opener against Maine.

TIGERS DOWN UNDER

Auburn unofficially started its season in August as the Tigers traveled to Australia for a 10-day, four-game tour. Auburn opened with an 86-54 loss to the WNBL's Logan Thunder, but rebounded for an 81-71 win over the Cairns Dolphins. The Tigers continued on to Sydney where it tallied a 67-58 over the WNBL's Sydney Flames. The Tigers rounded out the trip with an 84-46 trouncing of the Sutherland Sharks.

Over the four-game tour, Hasina Muhammad was the top Tiger with 23.3 points per game. Blanche Alverson averaged 17.5 points while freshman Chadarryl Clay tallied 10.5. Fellow freshman Tra'cee Tanner scored 9.0 per game, followed by Peyton Davis with 6.5, Cabriana Capers with 2.8 and Pascale West with 2.0.

BALLIN' FOR BOOKS

Senior Blanche Alverson, always active in the community, started her own community service initiative last season called Ballin' For Books. The program encouraged Auburn fans to donate books during Auburn home games late in the season.

More than 1,100 books were collected as part of the program and were donated to the Loachapoka Library, Pine Hills Literacy Project, Boys and Girls Club, and Atlanta inner-city schools.

STARTING EXPERIENCE

Auburn returned five players that combined for 127 career starts at Auburn entering the season. Previous starters were Blanche Alverson, Hasina Muhammad, Najat Ouadad, Courtney Strain and Tyrese Tanner. If you include newcomer and former Auburn soccer player Julie King (and her 88 career soccer starts), that number goes up to 215.

ON THE TUBE

At least seven Auburn games will be televised during the 2012-13 season. The Tigers will make their TV debut on Nov 28 at Tulane on Cox Sports Television. AU's home debut will be on Jan. 17 at home against Tennessee on CSS. Auburn will then play on the SEC Network at Kentucky on Jan. 20 before returning to CSS for its Jan. 24 game at Alabama.

Auburn will host Florida on SportSouth on Feb. 10, a week before taking on Alabama on ESPN2 on Feb. 17. The final TV appearance will be Feb. 28 at Vanderbilt on CSS.

TIGERS PICKED 10TH IN PRESEASON POLLS

Auburn was picked to finish 10th in both the SEC Preseason Media and Coaches polls. Kentucky was tabbed as the preseason favorite to win the SEC in both polls.

NEW FACES

The Tigers welcome five new faces for the 2012-13 season, including one senior and four freshmen. The senior is Julie King (Nerinx Hall / St. Louis, Mo.), who joins the team after four years on the Auburn soccer team. The four freshmen are: Cabriana Capers (Bolingbrook / Bolingbrook, Ill.), Chadarryl Clay (Girls Preparatory School / Chattanooga, Tenn.), Cedricka Sweeting (South Broward (Fla.), Nassau, Bahamas), and Tra'cee Tanner (Hoover / Birmingham, Ala.).

AUBURN SIGNS SIX FOR 2013-14

The Auburn women's basketball team signed six players to National Letters of Intent during the early signing period for the class of 2013. Keonna Famer, a 6-1 wing from Birmingham, Ala., Katie Frerking, a 6-1 guard from Johns Creek, Ga., Brandy Montgomery, a 5-10 guard from Port St. Lucie, Fla., Shae Nelson, a 6-1 post from Cordova, Tenn., Allina Starr, a 5-10 point guard from Minneapolis, Minn., and Meagan Tucker, a 5-8 guard from Covington, Ga., will join the Tigers for the 2013-14 season, head coach Terri Williams-Flournoy announced Nov. 16.

2012-13 DOUBLE-DOUBLES

Player	Points	Other
Peyton Davis vs. Hofstra	13	12 (reb.)
Hasina Muhammad at GW	21	10 (reb.)
Blanche Alverson vs. UTC	11	10 (reb.)
Tra'cee Tanner vs. Jacksonville	21	12 (reb.)
Najat Ouadad vs. Samford	14	11 (asst.)

2012-13 20-POINT GAMES

Player	Points	Opp. (Date)
Tyrese Tanner	26	NCSU (11-10)
Hasina Muhammad	21	AAMU (11-18)
Hasina Muhammad	21	Tulane (11-28)
Blanche Alverson	21	Tulane (11-28)
Hasina Muhammad	21	GW (12-12)
Tra'cee Tanner	21	JU (12-22)
Hasina Muhammad	20	Maine (11-9)

2012-13 10-REBOUND GAMES

Player	Rebounds	Opp. (Date)
Peyton Davis	17	Arkansas (1-3)
Peyton Davis	12	Hofstra (12-9)
Tra'cee Tanner	12	JU (12-22)
Hasina Muhammad	10	GW (12-12)
Blanche Alverson	10	UTC (12-19)

2012-13 10-ASSIST GAMES

Player	Steals	Opp. (Date)
Najat Ouadad	11	Samford (12-29)

2012-13 5-STEAL GAMES

Player	Steals	Opp. (Date)
Najat Ouadad	9	Samford (12-29)
Hasina Muhammad	9	GW (12-12)
Blanche Alverson	6	Hofstra (12-9)
Najat Ouadad	5	Arkansas (1-3)
Najat Ouadad	5	AAMU (11-18)
Hasina Muhammad	5	Temple (12-16)
Najat Ouadad	5	Temple (12-16)

MISCELLANEOUS STATISTICS

Double-Doubles	Season	Career
Blanche Alverson	1	2
Peyton Davis	1	1
Hasina Muhammad	1	1
Najat Ouardad	1	1
Tra'cee Tanner	1	1

20+ Point Games	Season	Career
Blanche Alverson	1	3
Hasina Muhammad	4	5
Tra'cee Tanner	1	1
Tyrese Tanner	1	4

10+ Rebound Games	Season	Career
Blanche Alverson	1	2
Peyton Davis	2	2
Hasina Muhammad	1	1
Tra'cee Tanner	1	1

10+ Assist Games	Season	Career
Najat Ouardad	1	1

5+ Steal Games	Season	Career
Blanche Alverson	1	2
Hasina Muhammad	2	3
Najat Ouardad	4	6

GAMES LED AUBURN IN . .

Scoring	Season	Career
Blanche Alverson	2	16
Peyton Davis	1	1
Hasina Muhammad	7	14
Tra'cee Tanner	1	1
Tyrese Tanner	5	13

Rebounding	Season	Career
Blanche Alverson	3	17
Cabriana Copers	2	2
Peyton Davis	4	5
Hasina Muhammad	1	6
Tra'cee Tanner	2	2
Tyrese Tanner	2	7

Assists	Season	Career
Blanche Alverson	0	7
Chadarryl Clay	1	1
Julie King	1	1
Hasina Muhammad	0	3
Najat Ouardad	12	23
Tyrese Tanner	0	2

Last Time an Auburn Team...

Scored 100 points	Auburn 119, Sam Houston State 54 (Dec. 5, 2008)
Scored 100 points in an SEC game	Auburn 102, Tennessee 96, SEC Tournament in Albany, Ga. (Mar. 6, 1987)
Scored 100 at Auburn	Auburn 119, Sam Houston State 54 (Dec. 5, 2008)
Scored 100 points and lost	Never
Scored 110 points	Auburn 119, Sam Houston State 54 (Dec. 5, 2008)
Scored 115 points	Auburn 119, Sam Houston State 54 (Dec. 5, 2008)
Scored at least 60 points in a half	62-vs. Sam Houston State (Dec. 5, 2008)
Had 25+ rebound margin	28-Auburn 55, Sam Houston State 27 (Dec. 5, 2008)
Had 20+ rebound margin	20-Auburn 51, USC-Upstate 31 in Auburn, Ala. (Nov. 27, 2011)
Attempted 35 free throws	35-vs. Florida A&M (Nov. 28, 2009)
Attempted 40 free throws	41-vs. Alabama State (Nov. 15, 2006)
Made 30 free throws	31-vs. Northwestern State (31-43) (Dec. 30, 2003)
Had 25 assists	28- vs. Jacksonville (Dec. 22, 2012)
Had 25 turnovers	25- vs. Texas A&M-Corpus Christi (Nov. 24, 2012)
Had 25 steals	25- vs. Arkansas-Little Rock (Dec. 2, 2000)
Had 15 steals	22- vs. Samford in Auburn, Ala. (Dec. 29, 2012)
Had 10 blocks	10-at George Washington in Washington, D.C. (Dec. 12, 2012)
Had 15 blocks	17- vs. Alabama A&M in Auburn, Ala. (Nov. 19, 2009)
Scored 25 points or less	25- vs. Mercer (1971)
Played an overtime game	at LSU (Jan. 10, 2010)
Won an overtime game	Auburn 64, LSU 62 at Baton Rouge, La. (Jan. 10, 2010)
Lost an overtime game	Florida 71, Auburn 68 (2OT) at Gainesville, Fla. (Jan. 7, 2010)
Played a double overtime game	Florida 71, Auburn 68 at Gainesville, Fla. (Jan. 7, 2010)
Played at least three overtimes	Never
Shot 70% for a half	70.4%, 19-27 - vs. Texas A&M-Corpus Christi (Nov. 24, 2012)
Shot 60% for a game	vs. Alabama (61.8%, 34-55) (Jan. 22, 2009)
Shot less than 30% for a game	(25.5%, 13-51) at Arkansas at Fayetteville, Ark. (Jan. 15, 2012)
Shot 90% from the free throw line (minimum 10 attempts)	(10-10) vs. Mississippi State (Feb. 3, 2008)
Shot 50% from 3-point line	(5-of-6, 83%) vs. Alabama A&M in Auburn, Ala. (Nov. 18, 2012)
Shot less than 30% in a half	27.6% in the first half vs. Arkansas in Auburn, Ala. (Jan. 3, 2013)
Shot less than 20% in a half	19.0% in the first half vs. LSU, (Feb. 14, 2010)
Shot 55% or better and lost	58.1%, 25-43-vs. Tennessee, (Jan. 20, 2005)
Made at least 10 3-point field goals	10-of-25 vs. Maine in Raleigh, N.C. (Nov. 9, 2012)
Failed to make a 3-point field goal	0-9 at Mercer in Macon, Ga. (Nov. 11, 2011)
Had at least 60 rebounds	61 vs. Stephen F. Austin, (Dec. 17, 2007)
Had at least 50 rebounds	52- vs. Alabama State in Auburn, Ala. (Nov. 15, 2012)
Scored less than 20 points in a 1st half	19 points vs. Arkansas in Auburn, Ala. (Jan. 3, 2013)
Scored less than 20 points in a 2nd half	15 points at LSU in Baton Rouge, La. (Feb. 19, 2012)
Scored less than 50 points in a game	41 points at LSU in Baton Rouge, La. (Feb. 19, 2012)

Last Time an Auburn Player...

Scored 40 points	41-Consweila Sparrow vs. South Alabama (Feb. 17, 1998)
Scored 35 points	35-DeWanna Bonner vs. Tennessee (Jan. 25, 2009)
Scored 30 points	32-DeWanna Bonner vs. Ole Miss (Mar. 6, 2009)
Attempted 25 field goals	25-Natasha Brackett (9-25) at LSU (Jan. 30, 2005)
Recorded a double-double	Najat Ouardad (14 points/11 assists) vs. Samford in Auburn, Ala. (Dec. 29, 2012)
Recorded a double-double with points and assists	Najat Ouardad (14 points/11 assists) vs. Samford in Auburn, Ala. (Dec. 29, 2012)
Recorded consecutive double-doubles	KeKe Carrier (18 pts./10 rebs) vs. Mississippi State (Jan. 3, 2010) and (24 pts/12 rebs) vs. Florida in Gainesville, Fla. (Jan. 7, 2010)
Two players recorded a double-double	DeWanna Bonner (32 pts./13 rebs) & Whitney Boddie (15 pts./10 asst.) vs. Ole Miss in the SEC Tournament in North Little Rock, Ark. (March 6, 2009)
Had a double-double at halftime	DeWanna Bonner (14 pts./10 rebs.) vs. Ole Miss (Mar. 6, 2009)
Recorded a triple-double	Whitney Boddie (24 pts./11 rebs./12 asst.) vs. Sam Houston State (Dec. 5, 2008)
Had 10 assists	11- Morgan Toles vs. Samford (Dec. 29, 2012)
Had 15 assists	18-Martha Monk vs. Alabama State (Feb. 18, 1981)
Had 10 blocks	13- Marita Payne vs. Arkansas (Feb. 3, 2005)
Had 5 blocks	5- Jassany Williams vs. Tennessee in Auburn, Ala. (Jan. 1, 2012)
Had 5 steals	5- Najat Ouardad vs. Arkansas in Auburn, Ala. (Jan. 3, 2013)
Had 15 rebounds	17-Peyton Davis vs. Arkansas in Auburn, Ala. (Jan. 3, 2013)
Had 20 rebounds	20-Monique Morehouse at LSU (Feb. 4, 1995)
Made 15 field goals	15-Consweila Sparrow (15-16) vs. USA (Feb. 17, 1998)
Made 5 three-point field goals	5- Blanche Alverson (5-8) vs. Alabama in Auburn, Ala. (Feb. 23, 2012)
Two players scored 20 points	Blanche Alverson (21) and Hasina Muhammad (21) at Tulane (Nov. 28, 2012)
Two players scored 30 points	Laticia Morris (33 points) & Tara Williams (30 points) vs. South Alabama (Jan. 14, 1997)
Back-to-back 25-point games	Alli Smalley 26 pts. vs. Kentucky (Feb. 28, 2010) & 29 pts. vs. Florida in SEC Tournament in Duluth, Ga. (Mar. 4, 2010)

TIGERS' RECORD WHEN...

When wearing white.....	9-1
When wearing orange.....	0-0
When wearing blue.....	3-1
When wearing pink.....	0-0
Leading at the half.....	9-0
Trailing at the half.....	3-2
Tied at the half.....	0-0
Scores 100+ points.....	0-0
Scores 90-99 points.....	1-0
Scores 80-89 points.....	3-0
Scores 70-79 points.....	4-1
Scores 60-69 points.....	2-0
Scores fewer than 60 points.....	2-1
Holds opponent to 41-50 points.....	6-0
Holds opponent to 31-40 points.....	1-0
Holds opponent to under 30 points.....	0-0
Shoots 50% FG or better.....	5-0
Shoots 40-49% FG.....	6-0
Shoots 39.9% or under FG.....	1-2
Holds opponent under 30% FG.....	5-0
Shoots higher FG% than opponent.....	12-0
Shoots lower FG% than opponent.....	0-2
Shoots higher FT% than opponent.....	1-1
Shoots lower FT% than opponent.....	11-1
Out-rebounds opponent.....	11-1
Out-rebounded by opponent.....	1-1
Tied in rebounds.....	0-0
Versus ranked opponent.....	0-0
In overtime.....	0-0
Games decided by 3 points or less.....	1-0
Games decided by 4-5 points.....	1-0
Games decided by 6-10 points.....	2-0
Games decided by 11-20 points.....	2-1
Games decided by 21-30 points.....	3-1
Games decided by 30+ points.....	3-0
On Television.....	1-0
In November.....	5-2
In December.....	6-0
In January.....	1-0
In February.....	0-0
In March.....	0-0

Only one player scored in double figures.....	Hasina Muhammad (19 pts.) vs. Ole Miss in Auburn, Ala. (Feb. 26, 2012)
Five players scored in double figures.....	Alverson (17 pts.), Clay (15 pts.), Muhammad (15 pts.), Tanner (13 pts.) & Davis (12 pts.) vs. Alabama State (Nov. 15, 2012)
Six players scored in double figures.....	Carrier (19 pts.), Bonner (18 pts.), Smalley (16 pts.), Boddie (13 pts.), R. Hobbs (13 pts.), Hilliard (13 pts.) & S. Hobbs (10 pts.) vs. Sam Houston State (Dec. 5, 2008)
Seven players scored in double figures.....	Carrier (19 pts.), Bonner (18 pts.), Smalley (16 pts.), Boddie (13 pts.), R. Hobbs (13 pts.), Hilliard (13 pts.) & S. Hobbs (10 pts.) vs. Sam Houston State (Dec. 5, 2008)
Scored 20 points & had 20 rebounds.....	Lauretta Freeman (30 pts/21 rebs.) vs. Alabama, (Feb. 17, 1993)
Two players had 10 rebounds.....	Chantel Hilliard (11 rebs.) & Jassany Williams (10 rebs.) at Mississippi State in Starkville, Miss. (Jan. 22, 2012)
Three players had 10 rebounds.....	Jordan Greenleaf (12 rebs.), DeWanna Bonner (12 rebs.) & Whitney Boddie (10 rebs.) vs. Oakland (Nov. 21, 2007)
Played every minute.....	Jordan Greenleaf (40 mins.) vs. Florida, SEC Tournament, Duluth, Ga., (Mar. 4, 2010)
Played more than 40 minutes.....	Alli Smalley (45 mins.), Jordan Greenleaf (43 mins.) & Morgan Toles (41 mins.) at LSU (Jan. 10, 2010)

Last Time an Auburn Opponent...

Shot less than 30% in a game (SEC).....	Arkansas - 27.6% in Auburn, Ala. (Jan. 3, 2013)
Shot less than 30% in a game (Non-conf).....	Tennessee-Chattanooga - 27.3% in Auburn, Ala. (Dec. 19, 2012)
Shot 60% in a game.....	Vanderbilt 60.4% in Nashville, Tennessee in the SEC Tournament, (Mar. 5, 2004)
Scored 100 points.....	Georgia 102, Auburn 72 in Athens, Ga. (Mar. 3, 1984)
Scored 100 points at Auburn.....	Tuskegee 105, Auburn 98 (2OT) (Feb. 12, 1979)
Scored 100 points and Lost.....	Never
Scored 110 points.....	Never
Had 25+ rebound margin.....	Never
Had a 20+ rebound margin.....	Never
Scored less than 20 points in a 1st half.....	Samford, 19 points in Auburn, Ala. (Dec. 29, 2012)
Scored less than 20 points in a 2nd half.....	Alabama A&M, 18 points in Auburn, Ala. (Nov. 18, 2012)
Had 50 rebounds.....	52 - at North Carolina State in Raleigh, N.C. (Nov. 10, 2012)
Had 25 assists.....	25- by Florida International in Miami, Fla. (Dec. 19, 1993)
Had 25 turnovers.....	26- by Samford in Auburn, Ala. (Dec. 29, 2012)
Had 15 steals.....	15- by Georgia in Auburn, Ala. (Jan. 8, 2012)
Had 10 blocks.....	12-by Tennessee (Jan. 10, 2008)
Failed to make a 3-point field goal.....	by Ole Miss (0-7) in Auburn, Ala. (Feb. 26, 2012)
Attempted 35 free throws.....	36 - by Arizona 25-36 (Dec. 19, 2000)
Made 30 free throws.....	30- by Arkansas (Jan. 22, 1995)
Made 10 three-point field goals.....	by Samford, 12 3-point FGs, in Auburn, Ala., (Dec. 29, 2012)
Scored less than 50 points in a game.....	Arkansas, 47 in Auburn, Ala. (Jan. 3, 2013)
Scored 40 points or less.....	Tennessee-Chattanooga, 40 in Auburn, Ala. (Dec. 19, 2012)
Scored 25 points or less.....	25- by Puerto Rico Mayaguez (Dec. 17, 2000)
Scored 11 points or less.....	11-by Montevallo (1973) and 11-by Jeff Davis (1973)

Last Time an Auburn Opponent's Player...

Scored 30 points (non-conference).....	33-Andrea Smith of South Florida in Tampa, Fla. (Nov. 22, 2010)
Scored 30 points (SEC).....	31-Tierney Jenkins of Alabama in Tuscaloosa, Ala. (Jan. 2, 2011)
Scored 35 points.....	38-Lindsay Shearer of Kent State in Kent, Ohio (Nov. 20, 2005)
Attempted 25 field goals.....	27- Jantel Lavender (9-27) of Ohio State (Nov. 23, 2008)
Scored 20 points & had 20 rebounds.....	Young of Baylor in the Women's NIT Championship Game, (20 pts./25 rebs.), (Apr. 4, 2003)
Two players scored 20 points.....	by North Carolina State, Marissa Kastanek (24 pts) & Kody Burke (26 pts), (Nov. 10, 2012)
Three players scored 20 points.....	by LSU in Baton Rouge, Chatman (22 pts), Johnson (21 pts) & Lowery (20 pts), (Jan. 12, 1991)
Five players scored in double figures.....	J. Thomas (16 pts), Gray (13 pts), K. Thomas (11 pts), Christmas (10 pts) & Peters (10 pts) of Duke (Nov. 18, 2010)
Six players scored in double figures..	Smith (15 pts), Bales (14 pts), Foley (11 pts), Williams (10 pts), Currie (10 pts) & Kurz (10 pts) of Duke (Dec. 31, 2004)
Recorded a double-double.....	Shi-Heria Shipp (12 pts/11 rebs) of George Washington in Washington, D.C. (Dec. 12, 2012)
Recorded a double-double with points and assists.....	Ceira Ricketts of Arkansas in Fayetteville, Ark., (14 pts/13 rebs/12 assts.), (Jan. 18, 2009)
Recorded a triple-double.....	Ceira Ricketts (14 pts./13 rebs./12 asst.) of Arkansas (Jan. 18, 2009)
Two players recorded a double-double.....	Glory Johnson (14pts/11rbs) and Shekinna Stricklen (11pts/10rbs) of Tennessee in Knoxville, Tenn. (Feb. 5, 2012)
Committed 10 turnovers.....	12-Krista Stricklin of Samford in Auburn, Ala. (Dec. 29, 2012)
Committed 15 turnovers.....	15-Andreana Thomas of Hofstra in Auburn, Ala. (Dec. 9, 2012)
Had 15 rebounds.....	16-by Shante Evans of Hofstra in Auburn, Ala. (Dec. 9, 2012)
Had 20 rebounds.....	20-Sylvia Fowles of LSU (Jan. 28, 2007)
Had 10 assists.....	10-Valencia McFarland of Ole Miss (Jan. 13, 2011)
Had 10 blocks.....	Never
Had 5 blocks.....	5-Martha Alwal of Mississippi State in Starkville, Miss. (Jan. 22, 2012)
Had 5 steals.....	5-Jasmine James of Georgia in Auburn, Ala., (Jan. 8, 2012)
Made 15 field goals.....	15-Chamique Holdsclaw (15-21) of Tennessee (Feb. 1, 1998)
Had 15 assists.....	16-Cindy McMahan of Alabama-Huntsville (Nov. 24, 1980)

SEC PRESEASON POLL (Media Vote)

(First-place votes in Parentheses)

Order of Finish

1. Kentucky (20)	376
2. Georgia (1)	352
3. Vanderbilt (2)	336
4. Tennessee (2)	316
5. Texas A&M (1)	284
6. LSU	251
7. South Carolina	194
8. Arkansas	168
9. Florida	144
10. Auburn	124
11. Mississippi State	116
12. Ole Miss	47
13. Missouri	39
14. Alabama	36

Player of the Year

A'dia Mathis, UK (20); Christina Foggie, VU (4); Anne Marie Armstrong, UGA (1); Jennifer George, UF (1)

All-SEC First TeamJennifer George, Florida
Anne Marie Armstrong, Georgia
A'dia Mathies, Kentucky
Kelsey Bone, Texas A&M
Christina Foggie, Vanderbilt**All-SEC Second Team**Sarah Watkins, Arkansas
Jasmine Hassell, Georgia
Samarie Walker, Kentucky
Ieasia Walker, South Carolina
Meighan Simmons, Tennessee**SEC PRESEASON POLL (Coaches' Vote)****Order of Finish**

1. Kentucky	167
2. Georgia	149
3. Texas A&M	145
4. Vanderbilt	143
5. Tennessee	117
6. South Carolina	102
7. LSU	96
8. Florida	92
9. Arkansas	72
10. Auburn	57
11. Mississippi State	51
11.2. Alabama	33
11.2. Missouri	33
14. Ole Miss	17

Player of the Year

A'dia Mathies (UK) 9; Christina Foggie (VU) 3; Anne Marie Armstrong (UGA) 1.

All-SEC First TeamSarah Watkins, Arkansas
Jennifer George, Florida
Anne Marie Armstrong, Georgia
Jasmine Hassell, Georgia
A'dia Mathies, Kentucky
Meighan Simmons, Tennessee
Kelsey Bone, Texas A&M
Christina Foggie, Vanderbilt
Jasmine Lister, Vanderbilt**All-SEC Second Team**Jasmine James, Georgia
Bria Goss, Kentucky
Samarie Walker, Kentucky
Adrienne Webb, LSU
Valencia McFarland, Ole Miss
Ieasia Walker, South Carolina
Ariel Massengale, Tennessee
Tiffany Clarke, Vanderbilt**2012-13 Auburn Superlatives...****First Half**

Most points scored in the first half	49, vs. Alabama A&M (11-18-12)
Fewest points scored in the first half	19, vs. Arkansas (1-3-13)
Fewest points allowed in the first half	15, vs. Tennessee-Chattanooga (12-19-12)
Most points allowed in the first half	39, at Tulane (11-28-12)
Best FG % in the first half568, vs. Alabama A&M (11-18-12)
Worst FG % in the first half276, vs. Arkansas (1-3-13)
Best FG % by an opponent in the first half556, at Tulane (11-28-12)
Worst FG % by an opponent in the first half207, vs. Tennessee-Chattanooga (12-19-12)
Most rebounds in the first half	31, vs. Alabama State (11-15-12)
Fewest rebounds in the first half	16, vs. Texas A&M-Corpus Christi (11-24-12)
Most rebounds by an opponent in the first half	28, at North Carolina State (11-10-12)
Fewest rebounds by an opponent in the first half	10, vs. Samford (12-29-12)

Second Half

Most points scored in the second half	47, at Tulane (11-28-12)
Fewest points scored in the second half	25, vs. Tennessee-Chattanooga (12-19-12)
Fewest points allowed in the second half	18, vs. Alabama A&M (11-17-12) and Maine (11-9-12)
Most points allowed in the second half	49, vs. San Diego State (11-23-12)
Best FG % in the second half704, vs. Texas A&M-Corpus Christi (11-24-12)
Worst FG % in the second half290, vs. San Diego State (11-23-12)
Best FG % by an opponent in the second half581, vs. San Diego State (11-23-12)
Worst FG % by an opponent in the second half231, vs. Alabama A&M (11-18-12) and at Tulane (11-28-12)
Most rebounds in the second half	23, vs. Arkansas (1-3-13) and at Tulane (11-28-12)
Fewest rebounds in the second half	11, at North Carolina State (11-10-12) and vs. Samford (12-29-12)
Most rebounds by an opponent in the second half	25, at George Washington (12-12-12)
Fewest rebounds by an opponent in the second half	12, vs. Texas A&M-Corpus Christi (11-24-12)

Game

Most points scored	93, vs. Alabama A&M (11-18-12)
Fewest points scored	50, vs. Arkansas (1-3-13)
Most points allowed	85, at North Carolina State (11-10-12)
Fewest points allowed	40, vs. Tennessee-Chattanooga (12-19-12)
Best FG %591, vs. Alabama A&M (11-18-12)
Worst FG %309, vs. San Diego State (11-23-12)
Best FG % by an opponent467, vs. San Diego State (11-23-12)
Worst FG % by an opponent259, vs. Alabama State (11-15-12) and Jacksonville (12-22-12)
Most rebounds	52, vs. Alabama State (11-15-12)
Fewest rebounds	29, vs. Samford (12-29-12)
Most rebounds by an opponent	52, at North Carolina State (11-10-12)
Fewest rebounds by an opponent	25, vs. Samford (12-29-12)

Miscellaneous

Largest margin of victory	49, vs. Alabama A&M (11-18-12)
Smallest margin of victory	3, vs. Arkansas (1-3-13)
Largest margin of defeat	21, vs. San Diego State (11-23-12)
Smallest margin of defeat	14, at North Carolina State (11-10-12)
Largest halftime lead	23, vs. Alabama A&M (11-18-12) and Alabama State (11-15-12)
Smallest halftime lead	12, vs. Maine (11-9-12)
Last time tied at halftime	---
Largest halftime deficit	16, at Tulane (11-28-12)
Smallest halftime deficit	1, vs. Arkansas (1-3-13)
Largest rebounding margin	16, vs. Alabama State (11-15-12)
Smallest rebounding margin	3, vs. San Diego State (11-23-12)
Last time tied in rebounding	---
Opponent's largest rebounding margin	16, at North Carolina State (11-10-12)
Opponents smallest rebounding margin	6, vs. Hofstra (12-9-12)

2012-13 Auburn Individual Highs...**First Half**

Points.....15, Ty. Tanner at N.C. State (11-10-12) and Muhammad vs. Alabama A&M (11-18-12)
 Field Goals Made.....7, Hasina Muhammad vs. Alabama A&M (11-18-12)
 Field Goal Attempts15, Hasina Muhammad vs. Maine (11-9-12)
 3-Point Field Goals Made3, Najat Ouardad vs. Samford (12-29-12)
 3-Point Field Goal Attempts.....5, Blanche Alverson vs. Samford (12-29-12)
 Free Throws Made.....4, 3 times, last by Blanche Alverson vs. UTC (12-19-12)
 Free Throws Attempted.....6, Peyton Davis vs. Alabama State (11-15-12)
 Rebounds.....9, Peyton Davis vs. Arkansas (1-3-13)
 Assists8, Najat Ouardad vs. Jacksonville (12-22-12)
 Blocked Shots2, 5 times, last by Hasina Muhammad vs. Arkansas (1-3-13)
 Steals.....4, Ouardad vs. Samford (12-29-12) & Muhammad at George Washington (12-12-12)

Second Half

Points.....16, Hasina Muhammad at Tulane (11-28-12)
 Field Goals Made.....7, Tra'cee Tanner vs. Jacksonville (12-22-12)
 Field Goal Attempts12, Hasina Muhammad at Tulane (11-28-12)
 3-Point Field Goals Made2, Alverson at North Carolina State (11-10-12) & at GW (12-12-12)
 3-Point Field Goal Attempts.....6, Blanche Alverson at North Carolina State (11-10-12)
 Free Throws Made.....7, Tyrese Tanner at North Carolina State (11-10-12)
 Free Throws Attempted.....8, Tyrese Tanner at North Carolina State (11-10-12)
 Rebounds.....8, Davis vs. Arkansas (1-3-13) and Tra'cee Tanner vs. Jacksonville (12-22-12)
 Assists5, 7 times, last by Najat Ouardad vs. Arkansas (1-3-13)
 Blocked Shots2, 5 times, last by Peyton Davis vs. Arkansas (1-3-13)
 Steals.....5, Ouardad vs. Samford (12-29), Alverson vs. Hofstra (12-9) & Muhammad at GW (12-12)

Game

Points.....26, Tyrese Tanner at North Carolina State (11-10-12)
 Field Goals Made.....10, Muhammad vs. AAMU (11-18-12) & Tr. Tanner vs. Jacksonville (12-22-12)
 Field Goal Attempts23, Hasina Muhammad vs. Maine (11-9-12) and UTC (12-19-12)
 3-Point Field Goals Made3, 5 times, last by Alverson vs. Samford (12-29-12)
 3-Point Field Goal Attempts.....9, Blanche Alverson at North Carolina State (11-10-12)
 Free Throws Made.....11, Tyrese Tanner at North Carolina State (11-10-12)
 Free Throws Attempted.....12, Tyrese Tanner at North Carolina State (11-10-12)
 Rebounds.....17, Peyton Davis vs. Arkansas (1-3-13)
 Assists11, Najat Ouardad vs. Samford (12-29-12)
 Blocked Shots3, 9 times, last by Muhammad and Davis vs. Arkansas (1-3-13)
 Steals.....9, Najat Ouardad vs. Samford (12-29-12) & Hasina Muhammad at GW (12-12-12)

2012-13 Opponent Individual Highs...**First Half**

Points.....15, Marissa Kastanek of North Carolina State (11-10-12)
 Field Goals Made.....5, Kastanek of NC State (11-10-12) & Clements of SDSU (11-23-12)
 Field Goal Attempts12, Courtney Clements of San Diego State (11-23-12)
 3-Point Field Goals Made3, 3 times, last by Janae Blount of TAMU-CC (11-24-12)
 3-Point Field Goal Attempts.....8, Marissa Kastanek of North Carolina State (11-10-12)
 Free Throws Made.....4, Deven Green of Hofstra (12-9-12)
 Free Throws Attempted.....6, Markeisha Gatling of North Carolina State (11-10-12)
 Rebounds.....8, Evans of Hofstra (12-9-12) and Gatling of North Carolina State (11-10-12)
 Assists4, Thomas of Hofstra (12-9-12) and Hopkins of San Diego State (11-23-12)
 Blocked Shots ..2, Burke of NC St. (11-10-12), Dale of Tulane (11-28-12) & White of GW (12-12-12)
 Steals.....3, Tyonna Williams of Temple (12-16-12)

Second Half

Points.....20, Kody Burke of North Carolina State (11-10-12)
 Field Goals Made.....8, Kody Burke of North Carolina State (11-10-12)
 Field Goal Attempts11, Burke of N.C. State (11-10-12) & Clements of SDSU (11-23-12)
 3-Point Field Goals Made4, Nakiya Smith of Alabama State (11-15-12)
 3-Point Field Goal Attempts..7, Smith-ASU (11-15), Strickland-AAMU (11-18) & Booker-GW (12-12)
 Free Throws Made.....8, Janique Kautsky of Tulane (11-28-12)
 Free Throws Attempted.....8, Janique Kautsky of Tulane (11-28-12)
 Rebounds.....9, Kody Burke of North Carolina State (11-10-12)
 Assists5, Danni Jackson of George Washington (12-12-12)
 Blocked Shots3, Tara Booker of George Washington (12-12-12)
 Steals.....3, Jackson of GW (12-12-12) and Kabengano of Temple (12-16-12)

Game

Points.....26, Burke of N.C. State (11-10-12) and Clements of SDSU (11-23-12)
 Field Goals Made.....11, Kody Burke of North Carolina State (11-10-12)
 Field Goal Attempts23, Courtney Clements of San Diego State (11-23-12)
 3-Point Field Goals Made6, Courtney Clements of San Diego State (11-23-12)
 3-Point Field Goal Attempts.....13, Courtney Clements of San Diego State (11-23-12)
 Free Throws Made.....8, Janique Kautsky of Tulane (11-28-12)
 Free Throws Attempted.....8, Jones of Alabama State (11-15-12) and Kautsky of Tulane (11-28-12)
 Rebounds.....16, Shante Evans of Hofstra (12-9-12)
 Assists7, Brown of N.C. State (11-10-12) and Hopkins of SDSU (11-23-12)
 Blocked Shots ..3, Burke of N.C. State (11-10), Booker of GW (12-12) & Macaulay of Temple (12-16)
 Steals.....4, Miller of GW (12-12-12) and Williams of Temple (12-16-12)

Specialty Statistics (Auburn-Opponent)

Opponent	Bench Points	Points in the Paint	Points off Turnovers	Second Chance Points	Fast Break Points
vs. Maine	29-14	28-12	28-11	23-4	6-2
at North Carolina State	17-17	28-40	22-7	20-15	6-17
vs. Alabama State	23-6	40-10	28-5	14-8	20-2
vs. Alabama A&M	40-28	46-12	34-5	24-10	14-2
vs. San Diego State	18-13	18-26	16-15	13-14	0-2
vs. Texas A&M-Corpus Christi	24-13	44-12	24-23	17-13	14-0
at Tulane	18-34	30-22	17-16	20-14	4-4
vs. Hofstra	11-9	36-30	14-11	6-12	6-6
at George Washington	14-15	26-20	22-13	20-10	10-4
vs. Temple	17-8	50-22	36-12	21-8	12-4
vs. Tennessee-Chattanooga	11-11	24-16	11-9	13-8	2-0
vs. Jacksonville	35-13	54-10	27-8	14-14	10-2
vs. Samford	15-17	38-2	32-1	13-7	16-0
vs. Arkansas	10-14	36-10	13-4	9-12	8-0

Lead-Deficit Comparison

Opponent	Largest Lead	Largest Deficit	Lead Changes	Ties	Result
vs. Maine	35 (2nd, 4:44)	4 (1st, 16:14)	4	0	W, 71-41
at North Carolina State	9 (1st, 14:02)	17 (2nd, 1:09)	2	1	L, 85-71
vs. Alabama State	37 (2nd, 0:52)	1 (1st, 18:45)	2	0	W, 80-43
vs. Alabama A&M	53 (2nd, 2:15)	---	0	1	W, 93-44
vs. San Diego State	2 (1st, 18:32)	23 (2nd, 0:41)	1	1	L, 78-57
vs. Texas A&M-Corpus Christi	15 (2nd, 1:14)	7 (1st, 1:36)	12	3	W, 72-57
at Tulane	5 (1st, 19:05)	16 (1st, 00:19)	2	2	W, 70-65
vs. Hofstra	20 (2nd, 12:56)	---	0	1	W, 68-58
at George Washington	16 (2nd, 18:07)	4 (1st, 16:59)	1	4	W, 69-59
vs. Temple	23 (2nd, 2:13)	1 (1st, 18:48)	3	0	W, 71-49
vs. Tennessee-Chattanooga	16 (2nd, 2:48)	2 (1st, 18:11)	2	2	W, 53-40
vs. Jacksonville	39 (2nd, 0:48)	1 (1st, 19:31)	2	0	W, 85-49
vs. Samford	31 (2nd, 1:51)	1 (1st, 19:01)	2	2	W, 80-51
vs. Arkansas	10 (2nd, 8:27)	3 (1st, 16:00)	11	3	W, 50-47

Scoring Breakdown

(Percentage of total points in parentheses)

Opponent	Front Court	Back Court	Sr.	Jr.	So.	Fr.	Starters	Bench
vs. Maine	20 (28.2)	51 (71.8)	21	21	22	7	42 (59.2)	29 (40.8)
at North Carolina State	20 (28.2)	51 (71.8)	23	31	12	5	54 (76.1)	17 (23.9)
vs. Alabama State	42 (52.5)	38 (47.5)	19	25	19	17	57 (71.2)	23 (28.8)
vs. Alabama A&M	38 (40.9)	55 (59.1)	24	14	33	22	53 (57.0)	40 (43.0)
vs. San Diego State	21 (36.8)	36 (63.2)	11	18	15	13	39 (68.4)	18 (31.6)
vs. Texas A&M-Corpus Christi	27 (37.5)	45 (62.5)	6	26	30	10	48 (66.7)	24 (33.3)
at Tulane	39 (55.8)	31 (44.2)	25	8	23	14	52 (74.3)	18 (25.7)
vs. Hofstra	28 (41.2)	40 (58.8)	19	26	16	7	57 (83.8)	11 (16.2)
at George Washington	27 (39.1)	42 (60.9)	24	10	24	11	55 (79.7)	14 (20.3)
vs. Temple	28 (39.4)	43 (60.6)	12	26	20	13	54 (76.1)	17 (23.9)
vs. Tennessee-Chattanooga	23 (43.4)	30 (56.6)	15	8	21	9	42 (79.2)	11 (20.8)
vs. Jacksonville	51 (60.0)	34 (40.0)	28	24	10	23	50 (58.8)	35 (41.2)
vs. Samford	29 (36.3)	51 (63.7)	36	17	21	6	65 (81.3)	15 (18.7)
vs. Arkansas	16 (32.0)	34 (68.0)	9	20	13	8	40 (80.0)	10 (20.0)

Comparison Statistics (Auburn/Opponent)

Opponent	1st	2nd	Score	Mar	Total FG	FG Pct	3-Pointers	3FG Pct	Free Throws	FT Pct	Reb.	Mar	Assist	TO	Bk	Stl	Fouls
Maine	35/23	36/18	71-41	+30	29-70/17-51	.414/.333	10-25/4-22	.400/.182	3-6/3-3	.500/1.000	40/35	+5	14/12	15/26	3/1	9/7	8/8
at North Carolina St.	33/37	38/48	71-85	(14)	23-67/32-69	.343/.464	4-19/10-23	.211/.435	21-27/11-18	.778/.611	36/52	(16)	11/20	13/20	4/3	10/9	20/22
Alabama State	40/17	40/26	80-43	+37	32-73/14-54	.438/.259	3-15/6-27	.200/.222	13-21/9-14	.619/.643	52/36	+16	23/7	15/26	8/2	16/5	16/16
Alabama A&M	49/26	44/18	93-44	+49	39-66/16-54	.591/.296	5-6/6-26	.833/.346	10-13/3-7	.769/.429	40/27	+13	27/12	11/23	4/1	15/6	10/13
San Diego State	24/29	33/49	57-78	(21)	17-55/28-60	.309/.467	2-7/11-25	.286/.440	21-29/11-14	.724/.786	39/36	+3	10/14	17/16	1/3	7/8	14/24
Texas A&M-CC	28/32	44/25	72-57	+15	31-53/20-61	.585/.328	1-6/10-31	.167/.323	9-15/7-9	.600/.778	37/31	+6	16/12	25/26	7/1	16/10	15/14
at Tulane	23/39	47/26	70-65	+5	27-66/21-53	.409/.396	3-12/7-19	.250/.368	13-21/16-25	.619/.640	45/35	+10	15/18	12/13	7/4	9/3	22/15
Hofstra	39/23	29/35	68-58	+10	28-66/20-59	.424/.339	4-13/3-15	.308/.200	8-17/15-18	.471/.833	38/44	(6)	18/13	16/28	6/1	18/10	15/18
at G. Washington	36/23	33/36	69-59	+10	25-56/20-62	.400/.323	4-10/7-15	.400/.467	13-26/12-19	.500/.632	48-44	+4	14/17	17/23	10/6	15/8	15/19
Temple	30/17	41/32	71-49	+22	32-61/19-56	.525/.339	3-8/4-21	.375/.190	4-7/7-10	.571/.700	36-32	+4	20/13	22/28	8/4	16/12	12/7
UT-Chattanooga	28/15	25/25	53-40	+13	21-51/15-55	.412/.273	1-9/4-31	.111/.129	10-19/6-8	.526/.750	42-32	+10	14/10	21/22	3/0	10/8	13/17
Jacksonville	43/22	42/27	85-49	+26	40-73/15-58	.548/.259	2-9/9-25	.222/.360	3-7/10-14	.429/.714	44-34	+10	28/9	8/20	7/0	10/5	13/7
Samford	41/19	39/32	80-51	+29	31-60/15-37	.517/.405	6-14/12-14	.429/.500	12-17/9-11	.706/.818	29-25	+4	22/12	9/26	2/0	22/6	13/14
Arkansas	19/20	31/27	50-47	+3	21-64/16-58	.328/.276	1-5/5-22	.200/.227	7-11/10-14	.636/.714	46-40	+6	13/9	16/20	9/3	13/8	15/14

Game-by-Game Leaders

	Points	Rebounds	Assists	Steals	Blocked Shots
vs. Maine	20-Hasina Muhammad	9-Tyrese Tanner	6-Najat Ouardad	3-Blanche Alverson	1-3 tied
at North Carolina State	26-Tyrese Tanner	8-Tyrese Tanner	4-Najat Ouardad	3-Alverson/Ty. Tanner	3-Blanche Alverson
vs. Alabama State	17-Blanche Alverson	9-Blanche Alverson	6-Julie King	3-Hasina Muhammad	2-3 tied
vs. Alabama A&M	21-Hasina Muhammad	9-Cabrina Capers	5-Chadarryl Clay	5-Najat Ouardad	2-Julie King
vs. San Diego State	17-Tyrese Tanner	8-Tra'cee Tanner	4-Najat Ouardad	3-Tyrese Tanner	1-Hasina Muhammad
vs. Texas A&M-Corpus Christi	16-Hasina Muhammad	7-Cabrina Capers	8-Najat Ouardad	4-Hasina Muhammad	3-Tyrese Tanner
at Tulane	21-Muhammad/Alverson	9-Peyton Davis	7-Najat Ouardad	3-Alverson/Ty. Tanner	3-Blanche Alverson
vs. Hofstra	13-Davis/Ty. Tanner	12-Peyton Davis	8-Najat Ouardad	6-Blanche Alverson	3-Peyton Davis
at George Washington	21-Hasina Muhammad	10-Hasina Muhammad	7-Najat Ouardad	9-Hasina Muhammad	3-Tyrese Tanner
vs. Temple	18-Tyrese Tanner	7-Peyton Davis	8-Najat Ouardad	5-Muhammad/Ouardad	3-Muhammad/Davis
vs. Tennessee-Chattanooga	19-Hasina Muhammad	10-Blanche Alverson	5-Najat Ouardad	3-Muhammad/Ty. Tanner	1-3 tied
vs. Jacksonville	21-Tra'cee Tanner	12-Tra'cee Tanner	9-Najat Ouardad	3-Tyrese Tanner	2-Blanche Alverson
vs. Samford	19-Hasina Muhammad	6-Blanche Alverson	11-Najat Ouardad	9-Najat Ouardad	1-Davis/Muhammad
vs. Arkansas	15-Tyrese Tanner	17-Peyton Davis	5-Najat Ouardad	5-Najat Ouardad	3-Davis/Muhammad

2012-13 Starting Lineups

	Point Guard (1)	Wing (2)	Wing (3)	Post (4)	Post (5)
vs. Maine	Najat Ouardad	Courtney Strain	Tyrese Tanner	Blanche Alverson	Peyton Davis
at North Carolina State	Najat Ouardad	Courtney Strain	Tyrese Tanner	Blanche Alverson	Peyton Davis
vs. Alabama State	Najat Ouardad	Hasina Muhammad	Tyrese Tanner	Blanche Alverson	Peyton Davis
vs. Alabama A&M	Najat Ouardad	Hasina Muhammad	Tyrese Tanner	Blanche Alverson	Peyton Davis
vs. San Diego State	Najat Ouardad	Hasina Muhammad	Tyrese Tanner	Blanche Alverson	Peyton Davis
vs. Texas A&M-Corpus Christi	Najat Ouardad	Hasina Muhammad	Tyrese Tanner	Blanche Alverson	Peyton Davis
at Tulane	Najat Ouardad	Hasina Muhammad	Tyrese Tanner	Blanche Alverson	Peyton Davis
vs. Hofstra	Najat Ouardad	Hasina Muhammad	Tyrese Tanner	Blanche Alverson	Peyton Davis
at George Washington	Najat Ouardad	Hasina Muhammad	Tyrese Tanner	Blanche Alverson	Peyton Davis
vs. Temple	Najat Ouardad	Hasina Muhammad	Tyrese Tanner	Blanche Alverson	Peyton Davis
vs. Tennessee-Chattanooga	Najat Ouardad	Hasina Muhammad	Tyrese Tanner	Blanche Alverson	Peyton Davis
vs. Jacksonville	Najat Ouardad	Hasina Muhammad	Tyrese Tanner	Blanche Alverson	Peyton Davis
vs. Samford	Najat Ouardad	Hasina Muhammad	Tyrese Tanner	Blanche Alverson	Peyton Davis
vs. Arkansas	Najat Ouardad	Hasina Muhammad	Tyrese Tanner	Blanche Alverson	Peyton Davis

Record by Starting Lineup

Ouardad, Strain, Ty. Tanner, Alverson, Davis

.....1-1 (.500)

Ouardad, Muhammad, Ty. Tanner, Alverson, Davis

.....11-1 (.917)

Auburn Career Records Update

Games Played

Rk	Player	Years	G
1	Ruthie Bolton	85-89	132
	Linda Godby	86-90	132
3	Vickie Orr	85-89	131
4	Kendall Mago	88-92	130
5	Alli Smalley	07-11	129
	Sharon Stewart	84-88	129
	Sherell Hobbs	05-09	129
8	Mae Ola Bolton	84-88	128
9	DeWanna Bonner	05-09	126
10	Lori Monroe	79-83	124
	Jordan Greenleaf	06-11	124
--	Blanche Alverson	09-present	107

3-Point Field Goals

Rk	Player	Years	3FG
1	Alli Smalley	07-11	219
2	Tiffany Krantz	96-00	184
3	Natasha Brackett	01-05	171
4	Blanche Alverson	09-pres.	170
5	Samantha Williams	92-96	161
6	Kristen Mulligan	92-96	149
7	Carolyn Jones	88-91	103
8	Shana Askew	97-01	94
9	Tamela McCorvey	06-08	90
10	Lynn Stevenson	87-91	83

3-Point Field Goal Attempts

Rk	Player	Years	ATT
1	Alli Smalley	07-11	637
2	Natasha Brackett	01-05	545
3	Tiffany Krantz	96-00	520
4	Samantha Williams	92-96	500
5	Blanche Alverson	09-present	494
6	Kristen Mulligan	92-96	370
7	Shana Askew	97-01	332
8	Nitasha Brown	02-06	271
9	Tamela McCorvey	06-08	270
10	Carolyn Jones	88-91	248

3-Point Field Goals Pct. (100 Att.)

Rk	Player	Years	Pct.
1	Carolyn Jones	88-91	.415 (103-248)
2	Kristen Mulligan	92-96	.403 (149-370)
3	Suzette Sargeant	90-92	.388 (57-147)
4	Lynn Stevenson	86-91	.376 (83-221)
5	LaRita Spencer	99-01	.364 (59-162)
6	Louise Emeagi	02-05	.359 (78-217)
7	Tiffany Krantz	96-00	.354 (184-520)
8	Blanche Alverson	09-pres.	.3441 (170-494)
9	Alli Smalley	07-11	.3437 (219-637)
10	Joanna Clayden	05-07	.337 (62-184)

Points

Rk	Player	Years	Points
1	DeWanna Bonner	05-09	2,162
2	Becky Jackson	80-84	2,068
3	Vickie Orr	85-89	2,035
4	Marianne Merritt	75-79	1,979

5	Carolyn Jones	88-91	1,831
6	Natasha Brackett	01-05	1,716
7	Mae Ola Bolton	84-88	1,616
8	Alli Smalley	07-11	1,601
9	Angie Hannah	78-82	1,583
10	Le'Co'e Willingham	99-00, 01-03	1,475
11	Lori Monroe	79-83	1,415
12	Tasha Hamilton	97-01	1,402
13	Sherell Hobbs	05-09	1,372
14	Linda Godby	86-90	1,365
15	Debra Larkin	81-85	1,310
16	C. C. Hayden	89-92	1,306
17	Conswella Sparrow	97-00	1,249
18	Brenda Hill	81-85	1,222
19	M. Morehouse	92-96	1,191
20	Lauretta Freeman	89-93	1,188
21	Sharon Stewart	84-88	1,184
22	Ruthie Bolton	85-89	1,176
23	Tiffany Krantz	96-00	1,136
24	Samantha Williams	92-96	1,106
25	Ke'Ke Carrier	05-10	1,017
26	Helene Baroody	83-87	1,011
27	Tara Williams	95-97	988
28	Diann McNeil	84-88	982
29	Blanche Alverson	09-present	977
30	Laticia Morris	95-97	971
31	Charlene Thomas	83-87	963
32	Whitney Boddie	05-09	951
33	Kristen Mulligan	92-96	944

Rebounds

Rk	Player	Years	Points
1	Becky Jackson	80-84	1,118
2	DeWanna Bonner	05-09	1,047
3	Lori Monroe	79-83	1,015
4	Vickie Orr	85-89	1,006
5	Lauretta Freeman	89-93	976
6	Marianne Merritt	75-79	972
7	Le'Co'e Willingham	99-00, 01-03	927
8	M. Morehouse	92-96	792
9	Jordan Greenleaf	06-11	761
	Charlene Thomas	84-87	761
11	Sharon Stewart	84-88	757
12	C.C. Hayden	89-92	749
	Kendall Mago	88-92	749
14	Tasha Hamilton	97-01	663
15	Mae Ola Bolton	84-88	653
16	Marita Payne	02-06	630
17	Sherell Hobbs	05-09	612
18	Brenda Hill	82-85	604
19	Ke'Ke Carrier	05-10	600
20	Angie Hannah	78-82	588
21	Linda Godby	86-90	580
22	Conswella Sparrow	97-00	572
23	Diann McNeil	84-88	498
24	Samantha Williams	91-96	495
25	Ruthie Bolton	85-89	490
26	Natasha Brackett	01-05	478
27	LaKeisha Johnson	99-03	477
28	Blanche Alverson	09-present	474

29	Whitney Boddie	05-09	473
30	Carolyn Jones	88-91	470
	Parrisha Simmons	08-12	470

Assists

Rk	Player	Years	AST
1	Whitney Boddie	05-09	603
2	Renee Halbrooks	78-82	593
3	Helene Baroody	83-87	587
4	Kristen Mulligan	92-96	551
5	Ruthie Bolton	85-89	526
6	Martha Monk	79-81	525
7	Chantel Tremiere	87-91	490
8	Tiffany Krantz	96-00	414
9	Debra Larkin	81-85	386
10	Samantha Williams	91-96	323
11	Nicole Loudon	01-05	311
12	Alli Smalley	07-11	303
13	Debra Larkin	81-85	286
14	Morgan Toles	09-11	267
15	Cindy Sagrera	81-84	254
16	Mae Ola Bolton	84-88	252
17	Nitasha Brown	02-06	236
18	Tasha Hamilton	97-01	219
19	Angie Hannah	78-82	214
20	Lynn Stevenson	87-91	212
21	LaRita Spencer	99-01	209
22	Terryland Robinson	89-93	207
23	Diann McNeil	84-88	202
24	Justine Agbatan	95-98	201
25	Nancy Derrick	00-04	200
26	Sherell Hobbs	05-09	200
27	DeWanna Bonner	05-09	226
28	Tamela McCorvey	06-08	189
29	Carolyn Jones	88-91	187
30	Najat Ouardad	11-present	172

Assist Average (30 games)

Rk	Player	Years	APG
1	Martha Monk	79-81	8.3
2	Whitney Boddie	05-09	5.9
3	Renee Halbrooks	78-82	5.5
4	Helene Baroody	83-87	5.1
5	Morgan Toles	09-11	4.8
6	Kristen Mulligan	92-96	4.7
7	Ruthie Bolton	85-89	4.0
8	Chantel Tremiere	87-91	4.0
9	Najat Ouardad	11-present	3.9
10	LaRita Spencer	99-01	3.542
11	Tiffany Krantz	96-00	3.538



Terri WILLIAMS-FOURNOY

Head Coach

First Season

Hampton, Va. • Penn State, 1991

- Picked up her 150th career victory on Dec. 12 at George Washington
- Recorded her 400th career win as a collegiate assistant and/or head coach in Auburn's 68-58 win over Hofstra on Dec. 9
- Earned her first win at Auburn in a 71-41 win over Maine on Nov. 9, 2012
- Picked up first SEC win in a 50-47 victory over #23 Arkansas
- Has 155 wins as a head coach and 251 as an assistant for a .646 winning percentage over her 20 years
- Has been a part of six conference championships and 13 post-season appearances as an assistant and head coach
- 2010 Black Coaches Association Coach of the Year
- Served as an assistant coach for Team USA that won a gold medal at the 2011 World University Games in ShenZhen, China
- Coached teams to 11 NCAA Tournament appearances, nine as an assistant coach and two as a head coach.
- As an assistant coach at Georgia, helped the team to two Southeastern Conference titles in 1997 and 2000 and the 2001 SEC Tournament title
- Has coached 19 players that have gone on to the professional ranks, including seven in the WNBA
- Helped coach Georgia to a NCAA Final Four appearance and two NCAA Elite Eight appearances
- Coached three Georgetown players to three all-conference honors and one All-America award
- Coached Georgetown to four straight 20-win seasons
- Sports a 494-258 record as a head coach, assistant coach and player
- Helped coach Georgetown to Big East title in 1992
- As an assistant coach at Southwest Missouri State, helped the team to two straight NCAA Tournaments and two consecutive Missouri Valley Conference Tournament Championships

All-time record as player and coach:	494-258 (.657)	26th year
Record as collegiate player:	88-36 (.709)	4 seasons
Record as collegiate coach:	406-222 (.646)	21st season
Record as collegiate assistant coach:	251-116 (.683)	12 seasons
SEC Record as an assistant coach:	130-45 (.742)	6 seasons
Record as collegiate head coach:	155-106 (.594)	9th season
SEC Record as a head coach:	1-0 (1.000)	1st season

Williams-Flournoy Year-by-Year

Penn State, Player (1987-91)

Year	Record	Conf.	Other Information
1987-88	20-13	11-7	NCAA Second Round
1988-89	14-14	12-6	
1989-90	25-7	15-3	NCAA Second Round
1990-91	29-2	17-1	NCAA Second Round

Georgetown, Assistant Coach (1992-96)

Year	Record	Conf.	Other Information
1992-93	23-7	15-3	Big East Champions NCAA Sweet 16
1993-94	12-15	6-12	
1994-95	11-17	6-12	
1995-96	12-15	7-11	

Georgia, Assistant Coach (1996-2002)

Year	Record	Conf.	Other Information
1996-97	25-6	11-1	SEC Champions NCAA Elite Eight
1997-98	17-11	8-6	NCAA First Round
1998-99	27-7	9-5	NCAA Final Four
1999-2000	32-4	13-1	SEC Champions NCAA Elite Eight
2000-01	27-6	11-3	SEC Tournament Champions NCAA Second Round
2001-02	19-11	6-8	NCAA First Round

Southwest Missouri State, Assistant Coach (2002-04)

Year	Record	Conf.	Other Information
2002-03	18-13	11-7	MVC Tournament Champions NCAA First Round
2003-04	28-4	16-2	Missouri Valley Champions MVC Tournament Champions NCAA First Round

Georgetown, Head Coach (2004-12)

Year	Record	Conf.	Other Information
2004-05	12-16	7-9	
2005-06	10-17	3-13	
2006-07	13-16	3-13	
2007-08	15-14	5-11	
2008-09	20-14	7-9	WNIT Quarterfinals
2009-10	26-7	13-3	NCAA Second Round
2010-11	24-11	9-7	NCAA Sweet 16
2011-12	23-9	11-5	NCAA Second Round

Auburn, Head Coach (2012-present)

Year	Record	Conf.	Other Information
2012-13	12-2	1-0	



Blanche ALVERSON

#14

Senior • Forward/Guard • 6-3

Andalusia, Ala.

Buford (Ga.) High School

NOTES:

- Pulled down her first double-double of the season, second of her career, vs. UTC with 11 points and 10 rebounds
- Currently ranks 10th among active SEC players in career scoring with 974 points
- Posted a season-high 21 points on the road at Tulane, shooting 64 percent (9-14) from the field, including three treys
- Named Auburn's 2012 Miss Homecoming on Nov. 3 at halftime of the Homecoming Football game vs. New Mexico State
- Scored 900th career point against Hofstra on Dec. 9, becoming the 33rd Auburn player ever to score 900 career points and is 23 points from 1,000
- Also currently ranked 28th all-time at Auburn in career rebounds with 474; 26 away from reaching 500
- Ranks 4th all-time at Auburn in career 3-pointers with 170; is one trey away from tying Natasha Brackett for third
- Selected as the 2012 SEC Women's Basketball Scholar-Athlete of the Year
- Created her own community service program, Ballin' For Books, last season that collected more than 1,100 books for local libraries reading initiatives

Opponent	Start	Min.	FG-A	3PT-A	FT-A	O-D-T	PF	Ast.	TO	Blk.	St.	Pts.
vs. Maine	*	32	3-7	2-3	0-0	1-5-6	0	2	6	0	3	8
at North Carolina State	*	35	4-13	2-9	2-2	2-5-7	1	3	1	3	3	12
ALABAMA STATE	*	23	7-11	1-3	2-2	3-6-9	2	1	2	2	2	17
ALABAMA A&M	*	25	6-9	2-2	0-0	1-3-4	1	3	1	1	1	14
vs. San Diego State	*	38	2-9	1-3	2-2	2-2-4	0	3	1	0	1	7
vs. Texas A&M-Corpus Christi*	20	1-3	0-2	0-0	0-5-5	0	1	1	1	1	3	2
at Tulane	*	37	9-14	3-7	0-0	0-5-5	3	1	0	3	3	21
HOFSTRA	*	35	5-9	1-3	0-0	0-5-5	2	2	2	0	6	11
at George Washington	*	31	5-12	3-5	1-3	0-5-5	2	1	0	1	0	14
TEMPLE	*	31	4-9	2-4	0-0	0-5-5	3	1	1	0	1	10
TENNESSEE-CHATTANOOGA*	38	3-8	1-4	4-4	2-8-10	1	2	4	1	0	11	
JACKSONVILLE	*	28	7-10	2-4	0-0	0-6-6	1	3	1	2	1	16
SAMFORD	*	26	6-12	3-6	0-0	1-5-6	1	1	0	0	1	15
ARKANSAS	*	37	1-9	1-4	0-0	1-0-1	2	1	0	0	2	3
at Missouri												
OLE MISS												
at Texas A&M												
TENNESSEE												
at Kentucky												
at Alabama												
LSU												
at South Carolina												
at Georgia												
FLORIDA												
ALABAMA												
at Tennessee												
MISSOURI												
at Vanderbilt												
MISSISSIPPI STATE												

ALVERSON CAREER STATISTICS

Year	GP-GS	FG-FGA	Pct	3FG-FGA	Pct	FT-FTA	Pct	O-D-T (Reb.)	Avg	PF	FO	Ast	TO	Blk	Stl	Pts	Avg
2009-10	31-13	78-218	.358	40-128	.313	19-27	.704	26-92-118	3.8	39	1	51	44	17	15	215	6.9
2010-11	32-32	126-333	.378	50-171	.292	25-35	.714	33-118-151	4.7	44	0	33	61	17	27	327	10.2
2011-12	30-26	99-246	.402	56-136	.412	20-24	.833	20-107-127	4.2	43	0	29	42	12	30	274	9.1
2012-13	14-14	63-135	.467	24-59	.407	11-13	.846	13-65-78	5.6	19	0	25	20	14	27	161	11.5
TOTAL	107-85	366-932	.393	170-494	.344	75-99	.758	92-382-474	4.4	145	1	138	167	60	99	977	9.1

SEASON HIGHS

Points

21 at Tulane (11/28/12)

Rebounds

10 vs. UT-Chattanooga (12/19/12)

Assists

3 4 times, last vs. Jacksonville (12/22/12)

Blocks

3 twice, last at Tulane (11/28/12)

Steals

6 vs. Hofstra (12/9/12)

Field Goals

9 at Tulane (11/28/12)

Field Goal Attempts

14 at Tulane (11/28/12)

3-Point Field Goals

3 3 times, last vs. Samford (12/29/12)

3-Point FG Attempts

9 vs. NC State (11/10/12)

Free Throws

4 vs. UT-Chattanooga (12/19/12)

Free Throw Attempts

4 vs. UT-Chattanooga (12/19/12)

CAREER HIGHS

Points

27 vs. Ole Miss (1/13/11)

Rebounds

10 twice, last vs. UTC (12/19/12)

Assists

5 3 times, last vs. Alabama (1/2/11)

Blocks

3 four times, last at Tulane (11/28/12)

Steals

6 twice, last vs. Hofstra (12/9/12)

Field Goals

11 vs. Ole Miss (1/13/11)

Field Goal Attempts

17 3 times, last vs. Marist (12/21/11)

3-Point Field Goals

5 3 times, last vs. Alabama (2/23/12)

3-Point FG Attempts

10 vs. Marist (12/21/11)

Free Throws

4 4 times, last vs. UTC (12/19/12)

Free Throw Attempts

5 vs. Seton Hall (11/27/10)



Julie KING

#22

Senior • Guard • 5-9

St. Louis, Mo.

Nerinx Hall

NOTES:

- Scored a career high 6 points against Jacksonville
- Pulled down a season-high 5 rebounds against Texas A&M-Corpus Christi
- Grabbed a rebound in 4 minutes in her collegiate basketball debut against Maine
- Led Auburn with season-high 6 assists against Alabama A&M
- Joins the women's basketball team for her final year of eligibility after playing on the Auburn soccer team for four years
- Was co-captain of last year's SEC Tournament Champion Auburn soccer team; Named SEC Soccer Co-Defensive Player of the Year in 2011
- Holds the Auburn career record for career matches started and is second in career matches played
- Was an All-State basketball selection at Nerinx Hall in St. Louis, Mo.

Opponent	Start	Min.	FG-A	3PT-A	FT-A	O-D-T	PF	Ast.	TO	Blk.	St.	Pts.
vs. Maine	4		0-0	0-0	0-0	0-1-1	0	0	1	0	0	0
at North Carolina State	1		0-0	0-0	0-0	0-0-0	0	0	0	0	0	0
ALABAMA STATE	13		1-2	0-0	0-1	0-2-2	2	6	1	0	2	2
ALABAMA A&M	11		0-2	0-0	0-0	0-1-1	0	2	1	2	1	0
vs. San Diego State	1		0-0	0-0	0-0	0-0-0	0	0	0	0	0	0
vs. Texas A&M-Corpus Christi	20		0-4	0-0	0-1	1-4-5	2	2	0	0	1	0
at Tulane	16		1-6	0-2	0-0	2-1-3	4	3	0	0	0	2
HOFSTRA	7		0-0	0-0	0-0	0-1-1	0	0	0	0	0	0
at George Washington	1		0-0	0-0	0-0	0-0-0	0	0	0	0	0	0
TEMPLE	1		0-1	0-0	0-0	0-0-0	0	0	0	0	0	0
TENNESSEE-CHATTANOOGA	5		0-0	0-0	0-0	1-0-1	1	1	0	0	0	0
JACKSONVILLE	22		3-5	0-1	0-0	0-2-2	2	2	0	0	1	6
SAMFORD	11		2-2	0-0	1-1	3-1-4	0	2	2	0	1	5
ARKANSAS	9		1-2	0-0	0-0	0-2-2	0	2	0	0	0	2

at Missouri
OLE MISS
at Texas A&M
TENNESSEE
at Kentucky
at Alabama
LSU
at South Carolina
at Georgia
FLORIDA
ALABAMA
at Tennessee
MISSOURI
at Vanderbilt
MISSISSIPPI STATE

KING CAREER STATISTICS

Year	GP-GS	FG-FGA	Pct	3FG-FGA	Pct	FT-FTA	Pct	O-D-T (Reb.)	Avg	PF	FO	Ast	TO	Blk	Stl	Pts	Avg
2012-13	14-0	8-24	.333	0-3	.000	1-3	.333	7-15-22	1.6	11	0	20	5	2	6	17	1.2
TOTAL	14-0	8-24	.333	0-3	.000	1-3	.333	7-15-22	1.6	11	0	20	5	2	6	17	1.2

SEASON HIGHS

Points

6 vs. Jacksonville (12/22/12)

Rebounds

5 vs. Texas A&M-CC (11/24/12)

Assists

6 vs. Alabama State (11/15/12)

Blocks

2 vs. Alabama A&M (11/18/12)

Steals

2 vs. Alabama State (11/15/12)

Field Goals

3 vs. Jacksonville (12/22/12)

Field Goal Attempts

6 at Tulane (11/28/12)

3-Point Field Goals

3-Point FG Attempts

2 at Tulane (11/28/12)

Free Throws

1 vs. Samford (12/29/12)

Free Throw Attempts

1 3 times, last vs. Samford (12/29/12)



Najat OUARDAD

#3

Senior • Guard • 5-1

Orleans, France

Pensacola State College / Oak Ridge (N.C.) Military Academy / Forsyth (N.C.) Country Day

NOTES:

- Currently leads the SEC and is 14th in the country in assists per game with 6.5 per game
- Is also tied for second in the SEC and 32nd in the country in steals per game with 3.14
- Had a career outing against Samford with career highs of 14 points, 11 assists and 9 steals, tallying her first career double-double
- The double-double was the 25th all-time at Auburn with assists and was the first for the Tigers in two years
- Her 11 assists are tied for 18th all-time at AU in single-game assists while the 9 steals are tied for 4th all-time at Auburn
- Neared a triple-double at George Washington with 10 points, 9 rebounds and 7 assists
- Led Pensacola State to a third-place finish at the 2011 NJCAA National Basketball Championship, compiling a 36-1 record along the way
- Played for the French National Team while in high school

Opponent	Start	Min.	FG-A	3PT-A	FT-A	O-D-T	PF	Ast.	TO	Blk.	St.	Pts.
vs. Maine	*	30	4-9	3-6	0-0	2-4-6	0	6	2	0	2	11
at North Carolina State	*	36	4-10	1-3	2-3	0-5-5	1	4	6	0	2	11
ALABAMA STATE	*	20	0-1	0-1	0-1	1-3-4	2	5	3	0	2	0
ALABAMA A&M	*	19	1-3	1-1	1-2	0-0-0	1	4	1	0	5	4
vs. San Diego State	*	29	1-3	0-2	2-2	1-5-6	1	4	4	0	0	4
vs. Texas A&M-Corpus Christi*	26	2-3	0-0	0-0	0-3-3	2	8	4	0	3	4	4
at Tulane	*	33	0-2	0-1	2-2	3-3-6	2	7	2	0	1	2
HOFSTRA	*	33	3-5	2-4	0-2	2-1-3	2	8	5	0	3	8
at George Washington	*	34	2-8	1-3	5-8	4-5-9	1	7	4	0	3	10
TEMPLE	*	33	1-3	0-1	0-0	0-3-3	1	8	8	0	5	2
TENNESSEE-CHATTANOOGA*	27	2-5	0-2	0-0	0-0	1-3-4	3	5	5	0	2	4
JACKSONVILLE	*	20	0-0	0-0	0-0	1-1-2	0	9	2	0	2	0
SAMFORD	*	34	5-7	3-4	1-2	1-0-1	1	11	3	0	9	14
ARKANSAS	*	37	2-3	0-0	0-0	1-4-5	3	5	7	0	5	4

at Missouri
OLE MISS
at Texas A&M
TENNESSEE
at Kentucky
at Alabama
LSU
at South Carolina
at Georgia
FLORIDA
ALABAMA
at Tennessee
MISSOURI
at Vanderbilt
MISSISSIPPI STATE

OUARDAD CAREER STATISTICS

Year	GP-GS	FG-FGA	Pct	3FG-FGA	Pct	FT-FTA	Pct	O-D-T (Reb.)	Avg	PF	FO	Ast	TO	Blk	Stl	Pts	Avg
2011-12	30-18	36-110	.327	11-49	.224	11-17	.647	22-41-63	2.1	60	0	81	95	0	52	94	3.1
2012-13	14-14	27-62	.435	11-28	.393	13-22	.591	17-40-57	4.1	20	0	91	56	0	44	78	5.6
TOTAL	44-32	63-172	.366	22-77	.286	24-39	.615	39-81-120	2.7	80	0	172	151	0	96	172	3.9

SEASON HIGHS

Points

14 vs. Samford (12/29/12)

Rebounds

9 at George Washington (12/12/12)

Assists

11 vs. Samford (12/29/12)

Blocks

Steals

9 vs. Samford (12/29/12)

Field Goals

5 vs. Samford (12/29/12)

Field Goal Attempts

10 vs. North Carolina State (11/10/12)

3-Point Field Goals

3 twice, last vs. Samford (12/29/12)

3-Point FG Attempts

6 vs. Maine (11/9/12)

Free Throws

5 at George Washington (12/12/12)

Free Throw Attempts

8 at George Washington (12/12/12)

CAREER HIGHS

Points

14 vs. Samford (12/29/12)

Rebounds

9 at George Washington (12/12/12)

Assists

11 vs. Samford (12/29/12)

Blocks

Steals

9 vs. Samford (12/29/12)

Field Goals

5 vs. Samford (12/29/12)

Field Goal Attempts

10 vs. NC State (11/10/12)

3-Point Field Goals

3 twice, last vs. Samford (12/29/12)

3-Point FG Attempts

6 vs. Maine (11/9/12)

Free Throws

9 at George Washington (12/12/12)

Free Throw Attempts

8 at George Washington (12/12/12)



Pascale WEST

#20

Senior • Center • 6-8

LaGrange, Ga.

Troup County Comprehensive High School

NOTES:

- Scored a career-high 6 points against Alabama A&M; tied it against Jacksonville
- Scored 2 points with a rebounds against Maine in the season opener
- Is the tallest player in the SEC
- Her 22 blocks during the 2009-10 season rank her ninth all-time among Auburn freshmen
- Majoring in apparel merchandising and makes many of her own clothes

Opponent	Start	Min.	FG-A	3PT-A	FT-A	O-D-T	PF	Ast.	TO	Blk.	St.	Pts.
vs. Maine	7		1-1	0-0	0-0	0-1-1	0	0	2	0	0	2
at North Carolina State						-- DID NOT PLAY --						
ALABAMA STATE	11		0-2	0-0	0-0	1-0-1	3	0	0	2	2	0
ALABAMA A&M	14		3-5	0-0	0-0	0-1-1	2	0	0	0	0	6
vs. San Diego State	1		0-0	0-0	0-0	0-0-0	0	0	0	0	0	0
vs. Texas A&M-Corpus Christi						-- DID NOT PLAY --						
at Tulane						-- DID NOT PLAY --						
HOFSTRA	2		0-1	0-0	0-0	0-1-1	1	0	0	0	0	0
at George Washington						-- DID NOT PLAY --						
TEMPLE	2		0-0	0-0	0-0	0-0-0	0	0	0	0	0	0
TENNESSEE-CHATTANOOGA						-- DID NOT PLAY --						
JACKSONVILLE	13		3-4	0-0	0-0	0-2-2	3	0	1	1	0	6
SAMFORD	7		1-1	0-0	0-0	0-1-1	1	0	0	0	0	2
ARKANSAS	0+		0-0	0-0	0-0	0-0-0	0	0	0	0	0	0
at Missouri												
OLE MISS												
at Texas A&M												
TENNESSEE												
at Kentucky												
at Alabama												
LSU												
at South Carolina												
at Georgia												
FLORIDA												
ALABAMA												
at Tennessee												
MISSOURI												
at Vanderbilt												
MISSISSIPPI STATE												

WEST CAREER STATISTICS

Year	GP-GS	FG-FGA	Pct	3FG-FGA	Pct	FT-FTA	Pct	O-D-T (Reb.)	Avg	PF	FO	Ast	TO	Blk	Stl	Pts	Avg
2009-10	24-0	7-15	.467	0-0	.000	4-11	.364	9-23-32	1.3	31	0	5	14	22	6	18	0.8
2010-11	13-0	5-8	.625	0-0	.000	1-6	.167	1-5-6	0.5	15	0	1	9	3	1	11	0.8
2011-12	18-0	1-8	.125	0-0	.000	2-2	1.000	6-9-15	0.8	17	0	2	4	5	1	4	0.2
2012-13	9-0	8-14	.571	0-0	.000	0-0	.000	1-6-7	0.8	10	0	0	3	3	2	16	1.8
TOTAL	64-0	21-45	.467	0-0	.000	7-19	.368	17-43-60	0.9	73	0	8	30	33	10	49	0.8

SEASON HIGHS

Points

6 twice, last vs. Jacksonville (12/22/12)

Rebounds

2 vs. Jacksonville (12/22/12)

Assists

Blocks

2 vs. Alabama State (11/15/12)

Steals

2 vs. Alabama State (11/15/12)

Field Goals

3 twice, last vs. Jacksonville (12/22/12)

Field Goal Attempts

5 vs. Alabama A&M (11/18/12)

3-Point Field Goals

3-Point FG Attempts

Free Throws

Free Throw Attempts

CAREER HIGHS

Points

6 twice, last vs. Jacksonville (12/22/12)

Rebounds

5 vs. Alabama A&M (11/19/09)

Assists

1 4 times, last vs. USC-Upstate (12/28/10)

Blocks

7 vs. Alabama A&M (11/19/09)

Steals

2 vs. Alabama State (11/15/12)

Field Goals

3 twice, last vs. Jacksonville (12/22/12)

Field Goal Attempts

5 vs. Alabama A&M (11/18/12)

3-Point Field Goals

N/A

3-Point FG Attempts

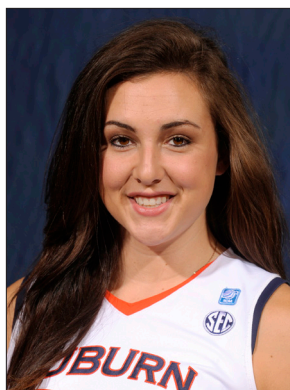
N/A

Free Throws

2 at Mercer (11/11/11)

Free Throw Attempts

4 vs. Florida A&M (11/28/09)



Peyton DAVIS

#34

Junior • Center • 6-5

Pinson, Ala.

Mortimer Jordan High School

NOTES:

- Pulled down 17 rebounds against Arkansas, a mark that ranks 27th all-time at AU in single-game rebounds and most for an AU player since 2010
- Notched her first career double-double against Hofstra with 13 points and 12 rebounds
- Her double-double was the first for Auburn since Blanche Alverson tallied one in the 2011-12 season-opener at Mercer
- Had career outing against Texas A&M-Corpus Christi with 15 points and 6 rebounds, has scored in double figures three times this season
- Earned her first career start, tying her career high with 6 points along with 3 rebounds against Maine
- Started in all four games and averaged 6.5 points per game during Auburn's 2012 Australian Summer Tour
- A two-sport star athlete in high school, also fielded several NCAA Division I volleyball offers
- Holds a black belt in Taekwondo

Opponent	Start	Min.	FG-A	3PT-A	FT-A	O-D-T	PF	Ast.	TO	Blk.	St.	Pts.
vs. Maine	*	25	3-5	0-0	0-1	2-1-3	2	0	1	0	0	6
at North Carolina State	*	20	2-2	0-0	1-4	3-2-5	5	0	0	0	1	5
ALABAMA STATE	*	21	4-8	0-0	4-6	3-4-7	2	1	1	1	0	12
ALABAMA A&M	*	22	3-6	0-0	3-3	2-4-6	0	1	2	1	3	9
vs. San Diego State	*	24	0-4	0-0	1-2	0-2-2	3	0	2	0	1	1
vs. Texas A&M-Corpus Christi*	33	6-11	0-0	3-5	5-1-6	3	1	3	0	0	0	15
at Tulane	*	23	1-6	0-0	2-5	2-7-9	2	0	2	0	0	4
HOFSTRA	*	29	6-12	0-0	1-4	5-7-12	3	1	3	3	3	13
at George Washington	*	14	1-2	0-0	0-2	0-3-3	1	0	1	2	0	2
TEMPLE	*	24	4-6	0-0	0-1	4-3-7	4	1	5	3	2	8
TENNESSEE-CHATTANOOGA*	19	1-1	0-0	1-6	0-2-2	1	0	2	1	0	0	3
JACKSONVILLE	*	10	4-5	0-0	0-0	1-1-2	1	0	0	0	0	8
SAMFORD	*	18	3-5	0-0	0-1	3-2-5	4	0	1	1	0	6
ARKANSAS	*	31	2-9	0-0	1-3	10-7-17	4	0	3	3	2	5

at Missouri
OLE MISS
at Texas A&M
TENNESSEE
at Kentucky
at Alabama
LSU
at South Carolina
at Georgia
FLORIDA
ALABAMA
at Tennessee
MISSOURI
at Vanderbilt
MISSISSIPPI STATE

DAVIS CAREER STATISTICS

Year	GP-GS	FG-FGA	Pct	3FG-FGA	Pct	FT-FTA	Pct	O-D-T (Reb.)	Avg	PF	FO	Ast	TO	Blk	Stl	Pts	Avg
2010-11	26-0	12-41	.293	0-0	.000	9-15	.600	18-16-34	1.3	38	0	7	13	7	4	33	1.3
2011-12	19-0	3-13	.231	0-0	.000	1-5	.200	10-13-23	1.2	15	0	1	12	4	3	7	0.4
2012-13	14-14	40-82	.488	0-0	.000	17-43	.395	40-46-86	6.1	35	1	5	26	15	12	97	6.9
TOTAL	59-14	55-136	.404	0-0	.000	27-63	.429	68-75-143	2.4	88	1	13	51	26	19	137	2.3

SEASON HIGHS

Points

15 vs. Texas A&M-CC (11/24/12)

Rebounds

17 vs. Arkansas (1/3/13)

Assists

1 5 times, last vs. Temple (12/16/12)

Blocks

3 3 times, last vs. Arkansas (1/3/13)

Steals

3 twice, last vs. Hofstra (12/9/12)

Field Goals

6 twice, last vs. Hofstra (12/9/12)

Field Goal Attempts

12 vs. Hofstra (12/9/12)

3-Point Field Goals

3-Point FG Attempts

Free Throws

4 vs. Alabama State (11/15/12)

Free Throw Attempts

6 twice, last vs. UTC (12/19/12)

CAREER HIGHS

Points

15 vs. Texas A&M-CC (11/24/12)

Rebounds

17 vs. Arkansas (1/3/13)

Assists

1 13 times, last vs. Temple (12/16/12)

Blocks

3 3 times, last vs. Temple (12/16/12)

Steals

3 twice, last vs. Hofstra (12/9/12)

Field Goals

6 twice, last vs. Hofstra (12/9/12)

Field Goal Attempts

12 vs. Hofstra (12/9/12)

3-Point Field Goals

N/A

3-Point FG Attempts

N/A

Free Throws

4 vs. Alabama State (11/15/12)

Free Throw Attempts

6 vs. Alabama State (11/15/12)



Tyrese TANNER

#32

Junior • Forward • 6-1

Birmingham, Ala.

Hoover High School

NOTES:

- Set a career-high with 5 assists while tying her career high of 3 steals at George Washington
- Named SEC Player of the Week on Nov. 12, the first such honor of her career
- Named to Sheraton Raleigh Wolfpack Invitational All-Tournament Team and the Omni Hotels Classic All-Tournament Team
- Nearly averaged a double-double in the opening weekend with 20.5 points and 8.5 rebounds per game; set career highs of 26 points and 9 boards
- Led Auburn in scoring last season with 10.6 points per game, becoming the first sophomore to lead the team in scoring since DeWanna Bonner in 2006-07
- Named to the 2012 College Sports Madness Preseason All-SEC Third Team
- Will play alongside her younger sister, Tra'cee Tanner, who is a freshman on the team this season
- The Tanner sisters are the third set of sisters to play together at Auburn, joining Sherell and Reneisha Hobbs, and Ruthie and Mae Ola Bolton

Opponent	Start	Min.	FG-A	3PT-A	FT-A	O-D-T	PF	Ast.	TO	Blk.	St.	Pts.
vs. Maine	*	31	6-14	1-5	2-3	6-3-9	0	3	0	1	1	15
at North Carolina State	*	36	7-20	1-4	11-12	5-3-8	5	2	2	1	3	26
ALABAMA STATE	*	28	6-14	0-1	1-4	3-4-7	1	1	0	2	1	13
ALABAMA A&M	*	15	2-6	0-0	1-1	0-0-0	1	3	1	0	1	5
vs. San Diego State	*	29	6-14	0-1	5-5	0-4-4	3	0	4	0	3	17
vs. Texas A&M-Corpus Christi*	21	4-6	0-1	3-3	0-4-4	2	0	3	3	2	11	
at Tulane	*	18	2-8	0-0	0-0	0-0-0	4	0	5	1	3	4
HOFSTRA	*	33	4-18	0-2	5-6	1-2-3	1	2	1	1	3	13
at George Washington	*	37	4-16	0-1	0-0	2-3-5	3	5	4	3	3	8
TEMPLE	*	34	8-14	0-0	2-2	2-0-2	0	2	0	2	2	18
TENNESSEE-CHATTANOOGA*	31	2-4	0-1	1-2	4-4-8	3	0	4	0	3	5	
JACKSONVILLE	*	23	7-15	0-0	2-3	3-0-3	1	1	1	1	3	16
SAMFORD	*	30	4-9	0-1	3-4	0-2-2	2	0	1	0	2	11
ARKANSAS	*	36	5-16	0-1	5-6	3-3-6	2	1	0	1	1	15

at Missouri
OLE MISS
at Texas A&M
TENNESSEE
at Kentucky
at Alabama
LSU
at South Carolina
at Georgia
FLORIDA
ALABAMA
at Tennessee
MISSOURI
at Vanderbilt
MISSISSIPPI STATE

TANNER CAREER STATISTICS

Year	GP-GS	FG-FGA	Pct	3FG-FGA	Pct	FT-FTA	Pct	O-D-T (Reb.)	Avg	PF	FO	Ast	TO	Blk	Stl	Pts	Avg
2010-11	32-3	53-159	.333	6-37	.162	43-64	.672	48-53-101	3.2	57	1	27	48	24	21	155	4.8
2011-12	30-18	113-278	.406	7-29	.241	84-130	.646	51-64-115	3.8	78	2	33	66	24	36	317	10.6
2012-13	14-14	67-174	.385	2-18	.111	41-51	.804	29-32-61	4.4	28	1	20	26	16	31	177	12.6
TOTAL	76-35	233-611	.381	15-84	.179	168-245	.686	128-149-277	3.6	163	4	80	140	64	88	649	8.5

SEASON HIGHS

Points	26	vs. North Carolina State	(11/10/12)
Rebounds	9	vs. Maine	(11/9/12)
Assists	5	at George Washington	(12/12/12)
Blocks	3	twice, last at GW	(12/12/12)
Steals	3	6 times, last vs. UTC	(12/19/12)
Field Goals	7	twice, last vs. Jacksonville	(12/22/12)
Field Goal Attempts	20	vs. North Carolina State	(11/10/12)
3-Point Field Goals	1	vs. Maine	(11/9/12)
3-Point FG Attempts	5	vs. Maine	(11/9/12)
Free Throws	11	vs. North Carolina State	(11/10/12)
Free Throw Attempts	12	vs. North Carolina State	(11/10/12)

CAREER HIGHS

Points	26	vs. North Carolina State	(11/10/12)
Rebounds	9	vs. Maine	(11/9/12)
Assists	5	at George Washington	(12/12/12)
Blocks	4	vs. Georgia	(1/8/12)
Steals	3	11 times, last vs. UTC	(12/19/12)
Field Goals	8	vs. Alabama	(2/23/12)
Field Goal Attempts	20	vs. North Carolina State	(11/10/12)
3-Point Field Goals	4	vs. Belmont	(11/15/11)
3-Point FG Attempts	5	3 times, last vs. Maine	(11/9/12)
Free Throws	11	vs. North Carolina State	(11/10/12)
Free Throw Attempts	14	at Arkansas	(1/15/12)



Hasina MUHAMMAD

#00

Sophomore • Guard • 6-1

Memphis, Tenn.

Ridgeway High School

NOTES:

- Scored 500th career point vs. Arkansas, becoming the 58th Tiger all-time to score 500 career points
- Is the only player in the SEC to score in double figures in every game this season; has scored in double figures in 16 straight games going back to last season
- Named SEC Player of the Week for the first time in her career on Dec. 17
- Notched her first career double-double at George Washington with 21 points and 10 rebounds; also tallied 9 steals in the win
- Her nine steals at George Washington rank her 4th all-time at Auburn in single-game steals and are the most for an AU player in almost 20 years
- Has scored in double figures in all 14 games this season, scoring 20 or more in four, leading Auburn in scoring six times
- Scored her career high of 21 points three times this season: vs. Alabama A&M, at Tulane and at George Washington
- Named to Sheraton Raleigh Wolfpack Invitational All-Tournament Team
- Led Auburn in scoring on the 2012 Australian Summer Tour, averaging 23.3 points per game; Scored tour-high 29 points against the WNBL's Sydney Flames

Opponent	Start	Min.	FG-A	3PT-A	FT-A	O-D-T	PF	Ast.	TO	Blk.	St.	Pts.
vs. Maine		25	8-23	3-6	1-2	1-2-3	1	1	1	1	2	20
at North Carolina State		29	4-15	0-3	4-4	1-2-3	4	1	2	0	1	12
ALABAMA STATE	*	22	7-13	0-0	1-2	3-3-6	0	2	1	1	3	15
ALABAMA A&M	*	19	10-14	0-0	1-2	4-3-7	3	2	1	0	1	21
vs. San Diego State	*	28	2-12	0-0	6-10	3-3-6	0	3	2	1	1	10
vs. Texas A&M-Corpus Christi*		19	6-9	1-1	3-4	3-1-4	3	1	5	1	4	16
at Tulane	*	33	8-18	0-0	5-9	7-1-8	3	2	1	2	1	21
HOFSTRA	*	28	5-9	0-0	2-5	3-2-5	3	2	2	1	2	12
at George Washington	*	30	5-15	0-0	5-9	3-7-10	3	1	5	2	9	21
TEMPLE	*	32	7-13	0-1	2-4	2-4-6	1	6	5	3	5	16
TENNESSEE-CHATTANOOGA*		37	9-23	0-1	1-3	1-4-5	1	1	3	1	3	19
JACKSONVILLE	*	26	5-12	0-0	0-0	1-4-5	2	3	1	1	1	10
SAMFORD	*	29	7-12	0-0	5-7	2-3-5	2	4	1	1	4	19
ARKANSAS	*	35	6-19	0-0	1-2	3-4-7	0	4	2	3	3	13
at Missouri												
OLE MISS												
at Texas A&M												
TENNESSEE												
at Kentucky												
at Alabama												
LSU												
at South Carolina												
at Georgia												
FLORIDA												
ALABAMA												
at Tennessee												
MISSOURI												
at Vanderbilt												
MISSISSIPPI STATE												

MUHAMMAD CAREER STATISTICS

Year	GP-GS	FG-FGA	Pct	3FG-FGA	Pct	FT-FTA	Pct	O-D-T (Reb.)	Avg	PF	FO	Ast	TO	Blk	Stl	Pts	Avg
2011-12	30-16	119-308	.386	11-34	.324	37-64	.578	58-54-112	3.7	51	1	38	77	31	40	286	9.5
2012-13	14-12	92-207	.444	4-12	.333	37-63	.587	37-43-80	5.7	26	0	33	32	18	40	225	16.1
TOTAL	44-28	211-515	.410	15-46	.326	74-127	.583	95-97-192	4.4	77	1	71	109	49	80	511	11.6

SEASON HIGHS

Points	21	3 times, last at GW	(12/12/12)
Rebounds	10	at George Washington	(12/12/12)
Assists	6	vs. Temple	(12/16/12)
Blocks	3	twice, last vs. Arkansas	(1/3/13)
Steals	9	at George Washington	(12/12/12)
Field Goals	10	vs. Alabama A&M	(11/18/12)
Field Goal Attempts	23	twice, last vs. UTC	(12/19/12)
3-Point Field Goals	3	vs. Maine	(11/9/12)
3-Point FG Attempts	6	vs. Maine	(11/9/12)
Free Throws	6	vs. San Diego State	(11/23/12)
Free Throw Attempts	10	vs. San Diego State	(11/23/12)

CAREER HIGHS

Points	21	3 times, last at GW	(12/12/12)
Rebounds	10	at George Washington	(12/12/12)
Assists	6	vs. Temple	(12/16/12)
Blocks	4	vs. Florida	(3/1/12)
Steals	9	at George Washington	(12/12/12)
Field Goals	10	vs. Alabama A&M	(11/18/12)
Field Goal Attempts	23	twice, last vs. UTC	(12/19/12)
3-Point Field Goals	3	twice, last vs. Maine	(11/9/12)
3-Point FG Attempts	6	vs. Maine	(11/9/12)
Free Throws	9	vs. Georgia	(1/8/12)
Free Throw Attempts	11	vs. Georgia	(1/8/12)



Courtney STRAIN

#11

Redshirt Sophomore • Guard • 5-9

Woodland, Ala.

Woodland High School

NOTES:

- Tied her career high with 4 rebounds against Temple
- Had a career night against TAMU-CC, setting career highs of 14 points and 2 steals
- Scored in double figures for the first time this season against Alabama A&M with 12 points
- Made her first start in almost two years against Maine, scoring 2 points with a steal
- Missed most of last season with an injury, playing in just seven games
- Broke the Alabama state scoring record as a junior in high school, finished her career with 5,283 points - more than 1,000 than her nearest competitor
- Was also a varsity cheerleader for six years, serving as captain as a senior, graduated as salutatorian of her senior class

Opponent	Start	Min.	FG-A	3PT-A	FT-A	O-D-T	PF	Ast.	TO	Blk.	St.	Pts.
vs. Maine	*	13	1-6	0-3	0-0	0-0-0	1	0	1	0	1	2
at North Carolina State	*	15	0-3	0-0	0-0	0-0-0	3	0	1	0	0	0
ALABAMA STATE		15	1-6	0-3	2-2	1-2-3	0	2	1	0	1	4
ALABAMA A&M		20	5-8	1-1	1-2	1-1-2	0	1	1	0	1	12
vs. San Diego State		16	2-3	1-1	0-0	0-0-0	2	0	1	0	0	5
vs. Texas A&M-Corpus Christi		25	7-8	0-1	0-0	0-1-1	0	0	1	0	2	14
at Tulane		10	1-2	0-1	0-0	1-0-1	0	0	0	0	0	2
HOFSTRA		11	2-6	0-1	0-0	0-0-0	1	1	0	0	0	4
at George Washington		15	1-3	0-1	1-2	0-0-0	2	0	0	0	0	3
TEMPLE		16	2-6	0-1	0-0	1-3-4	1	1	1	0	0	4
TENNESSEE-CHATTANOOGA		7	1-2	0-0	0-0	0-1-1	0	0	0	0	0	2
JACKSONVILLE						-- DID NOT DRESS --						
SAMFORD		10	1-3	0-2	0-0	0-0-0	0	1	1	0	2	2
ARKANSAS		1	0-0	0-0	0-0	0-0-0	0	0	0	0	0	0
at Missouri												
OLE MISS												
at Texas A&M												
TENNESSEE												
at Kentucky												
at Alabama												
LSU												
at South Carolina												
at Georgia												
FLORIDA												
ALABAMA												
at Tennessee												
MISSOURI												
at Vanderbilt												
MISSISSIPPI STATE												

STRAIN CAREER STATISTICS

Year	GP-GS	FG-FGA	Pct	3FG-FGA	Pct	FT-FTA	Pct	O-D-T (Reb.)	Avg	PF	FO	Ast	TO	Blk	Stl	Pts	Avg
2010-11	24-1	24-76	.316	5-19	.263	8-15	.533	6-14-20	0.8	13	0	7	16	0	7	61	2.5
2011-12	7-0	4-23	.174	0-2	.000	4-4	1.000	3-0-3	0.4	3	0	2	6	0	0	12	1.7
2012-13	13-2	24-56	.429	2-15	.133	4-6	.667	4-8-12	0.9	10	0	6	8	0	7	54	4.2
TOTAL	44-3	52-155	.335	7-36	.194	16-25	.640	13-22-35	0.8	26	0	15	30	0	14	127	2.9

SEASON HIGHS

Points		
14	vs. Texas A&M-CC	(11/24/12)
Rebounds		
4	vs. Temple	(12/16/12)
Assists		
2	vs. Alabama State	(11/15/12)
Blocks		
Steals		
2	twice, last vs. Samford	(12/29/12)
Field Goals		
7	vs. Texas A&M-CC	(11/24/12)
Field Goal Attempts		
8	twice, last vs. TAMU-CC	(11/24/12)
3-Point Field Goals		
1	twice, last vs. SDSU	(11/23/12)
3-Point FG Attempts		
3	twice, last vs. Ala. State	(11/15/12)
Free Throws		
2	vs. Alabama State	(11/15/12)
Free Throw Attempts		
2	twice, last at GW	(12/12/12)

CAREER HIGHS

Points		
14	vs. Texas A&M-CC	(11/24/12)
Rebounds		
4	twice, last vs. Temple	(12/16/12)
Assists		
2	vs. Alabama State	(11/15/12)
Blocks		N/A
Steals		
2	twice, last vs. Samford	(12/29/12)
Field Goals		
7	vs. Texas A&M-CC	(11/24/12)
Field Goal Attempts		
9	at Florida International	(12/30/11)
3-Point Field Goals		
1	7 times, last vs. SDSU	(11/23/12)
3-Point FG Attempts		
3	4 times, last vs. Ala. State	(11/15/12)
Free Throws		
3	vs. Sacred Heart	(11/26/10)
Free Throw Attempts		
6	vs. Sacred Heart	(11/26/10)



Cabriana CAPERS

#50

Freshman • Forward • 6-1

Bolingbrook, Ill.

Bolingbrook

NOTES:

- Tied her career high with 4 points in Auburn's non-conference finale against Samford
- Tied her season high of 4 points against TAMU-CC, also led Auburn in rebounding with 7
- Made her collegiate debut against Maine, pulling down 2 rebounds in 5 minutes
- Led Auburn with a season-high 9 rebounds against Alabama A&M; also scored her first collegiate points against the Bulldogs
- Played in all four games on the Australian Summer Tour, averaging 2.8 points per game
- Rated as a 3-star prospect by ESPN's HoopGurlz, ranked as the No. 35 post in the country
- Helped Bolingbrook High School to a 26-2 record and a No. 8 national ranking in the USA Today Super 25 last season
- Was one of 8 women's basketball players in her senior class to sign NCAA Division I Letters of Intent

Opponent	Start	Min.	FG-A	3PT-A	FT-A	O-D-T	PF	Asst.	TO	Blk.	St.	Pts.
vs. Maine	5		0-0	0-0	0-0	1-1-2	1	0	1	0	0	0
at North Carolina State	3		0-0	0-0	0-0	0-0-0	0	0	1	0	0	0
ALABAMA STATE	14		0-2	0-0	0-0	1-3-4	0	0	1	0	0	0
ALABAMA A&M	11		2-3	0-0	0-0	4-5-9	0	1	0	0	0	4
vs. San Diego State	1		0-0	0-0	0-2	0-0-0	0	0	0	0	0	0
vs. Texas A&M-Corpus Christi	13		2-2	0-0	0-0	2-5-7	2	0	2	0	0	4
at Tulane	3		0-1	0-0	0-0	1-0-1	0	1	0	0	0	0
HOFSTRA	3		0-0	0-0	0-0	0-0-0	0	0	0	0	0	0
at George Washington	9		1-2	0-0	1-2	4-2-6	0	0	0	0	0	3
TEMPLE	3		0-0	0-0	0-0	0-0-0	0	0	0	0	0	0
TENNESSEE-CHATTANOOGA						-- DID NOT PLAY --						
JACKSONVILLE	10		0-1	0-0	0-0	1-3-4	0	2	0	0	0	0
SAMFORD	9		2-2	0-0	0-0	0-0-0	1	1	0	0	0	4
ARKANSAS	1		0-0	0-0	0-0	0-1-1	0	0	0	0	0	0

at Missouri
OLE MISS
at Texas A&M
TENNESSEE
at Kentucky
at Alabama
LSU
at South Carolina
at Georgia
FLORIDA
ALABAMA
at Tennessee
MISSOURI
at Vanderbilt
MISSISSIPPI STATE

SEASON HIGHS

Points

4 3 times, last vs. Samford (12/29/12)

Rebounds

9 vs. Alabama A&M (11/18/12)

Assists

2 vs. Jacksonville (12/22/12)

Blocks

Steals

Field Goals

2 3 times, last vs. Samford (12/29/12)

Field Goal Attempts

3 vs. Alabama A&M (11/18/12)

3-Point Field Goals

3-Point FG Attempts

Free Throws

1 at George Washington (12/12/12)

Free Throw Attempts

2 twice, last at GW (11/23/12)

CAPERS CAREER STATISTICS

Year	GP-GS	FG-FGA	Pct	3FG-FGA	Pct	FT-FTA	Pct	O-D-T (Reb.)	Avg	PF	FO	Asst	TO	Blk	Stl	Pts	Avg
2012-13	13-0	7-13	.538	0-0	.000	1-4	.250	14-20-34	2.6	4	0	5	5	0	0	15	1.2
TOTAL	13-0	7-13	.538	0-0	.000	1-4	.250	14-20-34	2.6	4	0	5	5	0	0	15	1.2



Chadarryl CLAY

#5

Freshman • Guard • 5-7

Chattanooga, Tenn.

Girls Preparatory School

NOTES:

- Dished out season-high 6 assists against Jacksonville
- Scored a career-high 15 points in home opener against Alabama State
- Made her collegiate debut against Maine, dishing out one assist in two minutes
- Started all four games on the Australian Summer Tour, averaging 10.5 points per game
- Scored a tour-high 20 points against the Cairns Dolphins in Australia
- Rated as the No. 77 overall player and No. 12 guard in the country by ESPN's HoopGurlz
- Led Chattanooga's Girls Preparatory School to back-to-back state championships and had her No. 5 jersey retired at her high school

Opponent	Start	Min.	FG-A	3PT-A	FT-A	O-D-T	PF	Asst.	TO	Blk.	Stl.	Pts.
vs. Maine	2		0-1	0-1	0-0	0-0-0	0	1	0	0	0	0
at North Carolina State						-- DID NOT PLAY --						
ALABAMA STATE	12		5-8	2-5	3-3	0-1-1	2	2	2	0	1	15
ALABAMA A&M	14		2-2	1-1	2-2	1-1-2	0	5	2	0	0	7
vs. San Diego State	5		0-0	0-0	0-0	1-0-1	1	0	0	0	0	0
vs. Texas A&M-Corpus Christi	5		0-1	0-1	0-2	0-0-0	0	0	3	0	0	0
at Tulane	2		0-2	0-1	0-0	1-0-1	1	0	1	0	0	0
HOFSTRA	6		1-3	1-3	0-0	1-1-2	0	1	3	0	0	3
at George Washington	4		0-0	0-0	0-0	0-0-0	0	0	0	0	0	0
TEMPLE	4		1-1	1-1	0-0	0-2-2	2	1	1	0	0	3
TENNESSEE-CHATTANOOGA	14		0-3	0-1	0-0	0-0-0	1	4	2	0	2	0
JACKSONVILLE	25		1-9	0-4	0-0	1-2-3	0	6	1	1	1	2
SAMFORD	9		0-2	0-0	0-0	1-0-1	1	1	0	0	1	0
ARKANSAS	3		0-1	0-0	0-0	0-0-0	0	0	1	1	0	0
at Missouri												
OLE MISS												
at Texas A&M												
TENNESSEE												
at Kentucky												
at Alabama												
LSU												
at South Carolina												
at Georgia												
FLORIDA												
ALABAMA												
at Tennessee												
MISSOURI												
at Vanderbilt												
MISSISSIPPI STATE												

CLAY CAREER STATISTICS

Year	GP-GS	FG-FGA	Pct	3FG-FGA	Pct	FT-FTA	Pct	O-D-T (Reb.)	Avg	PF	FO	Asst	TO	Blk	Stl	Pts	Avg
2012-13	13-0	10-33	.303	5-18	.278	5-7	.714	6-7-13	1.0	8	0	21	16	2	5	30	2.3
TOTAL	13-0	10-33	.303	5-18	.278	5-7	.714	6-7-13	1.0	8	0	21	16	2	5	30	2.3

SEASON HIGHS

Points

15 vs. Alabama State (11/15/12)

Rebounds

3 vs. Jacksonville (12/22/12)

Assists

6 vs. Jacksonville (12/22/12)

Blocks

1 twice, last vs. Arkansas (1/3/13)

Steals

2 vs. UT-Chattanooga (12/19/12)

Field Goals

5 vs. Alabama State (11/15/12)

Field Goal Attempts

9 vs. Jacksonville (12/22/12)

3-Point Field Goals

2 vs. Alabama State (11/15/12)

3-Point FG Attempts

5 vs. Alabama State (11/15/12)

Free Throws

3 vs. Alabama State (11/15/12)

Free Throw Attempts

3 vs. Alabama State (11/15/12)



Cedricka SWEETING

#25

Freshman • Guard • 5-3

Nassau, Bahamas

South Broward (Fla.)

NOTES:

- Made her collegiate debut against Maine, scoring 3 points in 10 minutes
- Scored season-high 6 points with 4 assists against Alabama A&M
- A native of the Bahamas, she played high school basketball in the Miami area
- Was a Sun-Sentinel Fab five honoree as a senior
- Averaged 17 points, 10 assists, 5 steals and 6 rebounds per game as a senior
- Played for the Bahamas in the 2008 Junior Olympics

Opponent	Start Min.	FG-A	3PT-A	FT-A	O-D-T	PF	Asst.	TO	Blk.	St.	Pts.
vs. Maine	10	1-1	0-0	1-1	0-0-0	0	1	0	0	0	3
at North Carolina State	8	1-1	0-0	0-0	0-0-0	0	0	0	0	0	2
ALABAMA STATE	13	1-4	0-2	0-0	1-2-3	1	3	1	0	1	2
ALABAMA A&M	13	3-4	0-1	0-0	0-2-2	0	4	1	0	1	6
vs. San Diego State	7	0-0	0-0	0-0	0-0-0	0	0	0	0	0	0
vs. Texas A&M-Corpus Christi	3	0-0	0-0	0-0	0-0-0	0	2	1	0	0	0
at Tulane	2	0-0	0-0	0-0	0-0-0	0	0	0	0	0	0
HOFSTRA					-- DID NOT PLAY --						
at George Washington	2	0-0	0-0	0-0	0-0-0	0	0	1	0	0	0
TEMPLE					-- DID NOT PLAY --						
TENNESSEE-CHATTANOOGA					-- DID NOT PLAY --						
JACKSONVILLE	4	0-0	0-0	0-0	0-0-0	0	1	1	0	0	0
SAMFORD	2	0-1	0-1	0-0	0-0-0	0	0	0	0	0	0
ARKANSAS					-- DID NOT PLAY --						
at Missouri											
OLE MISS											
at Texas A&M											
TENNESSEE											
at Kentucky											
at Alabama											
LSU											
at South Carolina											
at Georgia											
FLORIDA											
ALABAMA											
at Tennessee											
MISSOURI											
at Vanderbilt											
MISSISSIPPI STATE											

SWEETING CAREER STATISTICS

Year	GP-GS	FG-FGA	Pct	3FG-FGA	Pct	FT-FTA	Pct	O-D-T (Reb.)	Avg	PF	FO	Asst	TO	Blk	Stl	Pts	Avg
2012-13	10-0	6-11	.545	1-5	.200	0-0	.000	1-4-5	0.5	1	0	11	5	0	2	13	1.3
TOTAL	10-0	6-11	.545	1-5	.200	0-0	.000	1-4-5	0.5	1	0	11	5	0	2	13	1.3

SEASON HIGHS

Points

6 vs. Alabama A&M (11/18/12)

Rebounds

3 vs. Alabama State (11/15/12)

Assists

4 vs. Alabama A&M (11/18/12)

Blocks

Steals

1 twice, last vs. Alab. A&M (11/18/12)

Field Goals

3 vs. Alabama A&M (11/18/12)

Field Goal Attempts

4 twice, last vs. Ala. A&M (11/18/12)

3-Point Field Goals

3-Point FG Attempts

2 vs. Alabama State (11/15/12)

Free Throws

1 vs. Maine (11/9/12)

Free Throw Attempts

1 vs. Maine (11/9/12)



Tra'cee TANNER

#23

Freshman • Forward/Center • 6-3

Birmingham, Ala.

Hoover

NOTES:

- Scored 8 points with 2 rebounds in her SEC debut against #23 Arkansas
- Notched first career double-double with career highs of 21 points and 12 rebounds against Jacksonville
- Her double-double was the first for an Auburn freshman since DeWanna Bonner on March 2, 2006
- Made her collegiate debut against Maine, scoring 4 points with 3 rebounds in 16 minutes
- Played in all four games on the Australian Summer Tour, averaging 9.0 points per game; scored tour-high 16 points in the final game against Sutherland
- Rated as a 3-star prospect by ESPN's HoopGurlz and was ranked as the 68th best forward in the country
- Will play alongside her older sister, Tyrese Tanner, who is a junior on the team this season
- The Tanner sisters are the third set of sisters to play together at Auburn, joining Sherell and Reneisha Hobbs, and Ruthie and Mae Ola Bolton

Opponent	Start	Min.	FG-A	3PT-A	FT-A	O-D-T	PF	Ast.	TO	Blk.	St.	Pts.
vs. Maine	16	2-3	0-0	0-0	0-0	2-1-3	3	0	0	1	0	4
at North Carolina State	17	1-3	0-0	1-2	0-0-2	1	1	0	0	0	0	3
ALABAMA STATE	8	0-2	0-0	0-0	1-1-2	1	0	2	0	1	0	0
ALABAMA A&M	17	2-4	0-0	1-1	1-2-3	2	1	0	0	1	5	5
vs. San Diego State	21	4-10	0-0	5-6	5-3-8	4	0	0	0	1	13	13
vs. Texas A&M-Corpus Christi	15	3-6	0-0	0-0	0-1-1	1	1	2	2	1	6	6
at Tulane	23	5-7	0-0	4-5	3-3-6	3	1	0	1	1	14	14
HOFSTRA	13	2-3	0-0	0-0	0-2-2	2	1	0	1	1	4	4
at George Washington	23	4-7	0-0	0-0	0-3-3	3	0	2	2	0	8	8
TEMPLE	20	5-8	0-0	0-0	0-3-3	0	0	1	0	1	10	10
TENNESSEE-CHATTANOOGA	22	3-5	0-0	3-4	3-4-7	2	1	1	0	0	9	9
JACKSONVILLE	19	10-12	0-0	1-4	7-5-12	3	1	0	1	1	21	21
SAMFORD	15	0-4	0-0	2-2	1-0-1	0	1	0	0	2	2	2
ARKANSAS	10	4-5	0-0	0-0	1-1-2	4	0	3	1	0	8	8

at Missouri
OLE MISS
at Texas A&M
TENNESSEE
at Kentucky
at Alabama
LSU
at South Carolina
at Georgia
FLORIDA
ALABAMA
at Tennessee
MISSOURI
at Vanderbilt
MISSISSIPPI STATE

TANNER CAREER STATISTICS

Year	GP-GS	FG-FGA	Pct	3FG-FGA	Pct	FT-FTA	Pct	O-D-T (Reb.)	Avg	PF	FO	Ast	TO	Blk	Stl	Pts	Avg
2012-13	14-0	45-79	.570	0-0	.000	17-24	.708	24-31-55	3.9	29	0	8	11	9	10	107	7.6
TOTAL	14-0	45-79	.570	0-0	.000	17-24	.708	24-31-55	3.9	29	0	8	11	9	10	107	7.6

SEASON HIGHS

Points

21 vs. Jacksonville (12/22/12)

Rebounds

12 vs. Jacksonville (12/22/12)

Assists

1 8 times, last vs. Samford (12/29/12)

Blocks

2 twice, last at GW (12/12/12)

Steals

2 vs. Samford (12/29/12)

Field Goals

10 vs. Jacksonville (12/22/12)

Field Goal Attempts

12 vs. Jacksonville (12/22/12)

3-Point Field Goals

3-Point FG Attempts

Free Throws

5 vs. San Diego State (11/23/12)

Free Throw Attempts

6 vs. San Diego State (11/23/12)

Game 1: Nov. 9, 2012
Auburn 71, Maine 41
Reynolds Coliseum
Raleigh, N.C.
Sheraton Raleigh Wolfpack Invitational

Official Basketball Box Score -- Game Totals -- Final Statistics

Maine vs Auburn

11-09-12 2:30 p.m. ET at Raleigh, N.C. (Reynolds Coliseum)

VISITORS: Maine (0-1)

#	Player	fg-fga	3fg-fga	ft-fa	rebounds			pf	tp	a	to	blk	s	min
					of	de	tot							
04	Courtney Anderson*	2-5	1-4	0-0	2	3	5	1	5	1	5	0	2	25
23	Ashleigh Roberts*	1-5	0-2	0-0	1	2	3	0	2	1	4	0	1	18
31	Liz Wood*	3-11	1-4	1-1	0	4	4	1	8	2	1	0	1	31
34	Corinne Wellington*	0-1	0-0	0-0	1	3	4	2	0	0	1	0	0	14
50	Anna Heise*	5-12	0-1	2-2	1	3	4	2	12	1	5	1	1	30
02	Milica Mitrovic	1-2	1-2	0-0	0	0	0	1	3	1	0	0	1	7
03	Brittany Wells	1-6	0-4	0-0	0	1	1	0	2	0	1	0	0	14
12	Michal Assaf	0-3	0-2	0-0	0	0	0	1	0	2	0	0	1	9
13	Mikaela Gustafsson	4-6	1-3	0-0	0	3	3	0	9	0	0	0	0	19
15	Lauren Bodine	0-0	0-0	0-0	0	0	0	0	0	0	1	0	0	3
20	Sophie Weckstrom	0-0	0-0	0-0	0	0	0	0	0	3	4	0	0	11
30	Chantal Charles	0-0	0-0	0-0	2	5	7	0	0	1	4	0	0	19
TEAM					1	3	4							
Totals.....		17-51	4-22	3-3	8	27	35	8	41	12	26	1	7	200

HOME: Auburn (1-0)

#	Player	fg-fga	3fg-fga	ft-fa	rebounds			pf	tp	a	to	blk	s	min
					of	de	tot							
03	Najat Ouardad*	4-9	3-6	0-0	2	4	6	0	11	6	2	0	2	30
11	Courtney Strain*	1-6	0-3	0-0	0	0	0	1	2	0	1	0	1	13
14	Blanche Alverson*	3-7	2-3	0-0	1	5	6	0	8	2	6	0	3	32
32	Tyrese Tanner*	6-14	1-5	2-3	6	3	9	0	15	3	0	1	1	31
34	Peyton Davis*	3-5	0-0	0-1	2	1	3	2	6	0	1	0	0	25
00	Hasina Muhammad	8-23	3-6	1-2	1	2	3	1	20	1	1	1	2	25
05	Chadarryl Clay	0-1	0-1	0-0	0	0	0	0	0	1	0	0	0	2
20	Pascale West	1-1	0-0	0-0	1	1	2	0	2	0	2	0	0	7
22	Julie King	0-0	0-0	0-0	0	1	1	0	0	0	1	0	0	4
23	Tia'cee Tanner	2-3	0-0	0-0	2	1	3	3	4	0	0	1	0	16
25	Cedricka Sweeting	1-1	1-1	0-0	0	0	0	0	3	1	0	0	0	10
50	Cabriana Capers	0-0	0-0	0-0	1	1	2	1	0	0	1	0	0	5
TEAM					6	6								
Totals.....		29-70	10-25	3-6	15	25	40	8	71	14	15	3	9	200

Officials: Bonita Spence, Carla Fountain, Daryl Humphrey

Technical fouls: Maine-None. Auburn-None.

Attendance: 2109

Score by Periods

	1st	2nd	Total
Maine	23	18	41
Auburn	35	36	71

Sheraton Raleigh Wolfpack Invitational First Round

RALEIGH, N.C. - The Terri Williams-Flournoy Era got off to a good start Nov. 9 as the Auburn women's basketball team beat Maine, 71-41, in the first round of the Sheraton Raleigh Wolfpack Invitational.

Williams-Flournoy became just the second Auburn head coach to earn a win in their first game on the Tiger sideline. Susan "The Nun" Nunnally is the only other coach to do so, winning the season opener over Tuskegee at the start of the 1973-74 season.

Sophomore Hasina Muhammad led three Tigers in double figures, tying her career high with 20 points. It also marked the second game in a row for her to score 20 with the other being in the SEC Tournament game against Florida last season. Junior Tyrese Tanner neared a double-double with 15 points and a career-high nine rebounds while Najat Ouardad scored a career-high 11 points with six assists and a pair of steals.

Another component to the game was the Tigers' defense, forcing 26 Maine turnovers. Blanche Alverson led Auburn with three steals, along with eight points and six rebounds. Ouardad and Muhammad added two steals each. The Tigers were able to capitalize off the turnovers, scoring 28 points on the other end.

Game 2: Nov. 10, 2012
Auburn 71, North Carolina State 85
Reynolds Coliseum
Raleigh, N.C.
Sheraton Raleigh Wolfpack Invitational

Official Basketball Box Score -- Game Totals -- Final Statistics

Auburn vs NC State

11-10-12 7:30 p.m. at Raleigh, N.C. (Reynolds Coliseum)

VISITORS: Auburn (1-1)

#	Player	fg-fga	3fg-fga	ft-fa	rebounds			pf	tp	a	to	blk	s	min
					of	de	tot							
03	Najat Ouardad*	4-10	1-3	2-3	0	5	5	1	11	4	6	0	2	36
11	Courtney Strain*	0-3	0-0	0-0	0	0	0	0	3	0	0	1	0	15
14	Blanche Alverson*	4-13	2-9	2-2	2	5	7	1	12	3	1	3	3	35
32	Tyrese Tanner*	7-20	1-4	11-12	5	3	8	5	26	2	2	1	3	36
34	Peyton Davis*	2-2	0-0	1-4	3	2	5	5	5	0	0	0	1	20
00	Hasina Muhammad	4-15	0-3	4-4	1	2	3	4	12	1	2	0	1	29
22	Julie King	0-0	0-0	0-0	0	0	0	0	0	0	0	0	0	1
23	Tia'cee Tanner	1-3	0-0	1-2	0	2	2	1	3	1	0	0	0	17
25	Cedricka Sweeting	1-1	0-0	0-0	0	0	0	0	2	0	0	0	0	8
50	Cabriana Capers	0-0	0-0	0-0	0	0	0	0	0	0	1	0	0	3
TEAM					3	3	6							
Totals.....		23-67	4-19	21-27	14	22	36	20	71	11	13	4	10	200

HOME: North Carolina State (2-0)

Northwestern State														rebounds
#	Player	fg-fga	3fg-fga	ft-fa	of	de	tot	pf	tp	a	to	blk	s	min
01	M. Goodwin-Coleman*	2-7	2-5	1-2	0	3	3	4	7	5	6	0	2	18
12	Krystal Barnett*	1-5	0-0	0-1	2	1	3	0	2	3	3	0	1	21
23	Marissa Kastanek*	9-17	4-11	2-2	1	2	4	24	0	4	0	2	31	
34	Markeisha Gatling*	3-6	0-0	3-6	2	8	10	3	9	0	1	0	2	25
44	Kody Burke*	11-18	1-2	3-4	6	6	12	1	26	2	3	3	1	36
02	Len'Nique Brown	4-7	2-3	0-1	3	6	9	2	10	7	2	0	0	26
05	Breezy Williams	0-0	0-0	0-0	0	0	0	2	0	0	0	0	0	3
10	Ashley Eli	2-6	1-2	2-2	3	4	7	2	7	2	1	0	1	24
52	Kiana Evans	0-3	0-0	0-0	0	1	4	0	1	0	0	0	0	16
TEAM						2	3	5						
Totals.....		32-69	10-23	11-18	19	33	52	22	85	20	20	3	9	200

Officials: Bonita Spence, Carla Fountain, Luis Gonzalez

Technical fouls: Auburn-None. NC State-None.

Attendance: 1586

Score by Periods

	1st	2nd	Total
Auburn	33	38	71
North Carolina State	37	48	85

Sheraton Raleigh Wolfpack Invitational Championship Game

RALEIGH, N.C. - The Auburn women's basketball team fell to 1-1 on the season on Nov. 10, dropping an 85-71 decision to host North Carolina State in the Sheraton Raleigh Wolfpack Invitational Championship Game. Junior Tyrese Tanner scored a career-high 26 points to lead the Tigers.

For their efforts in the tournament, Tanner and Hasina Muhammad were named to the All-Tournament Team.

Auburn led by nine early in the first half, but a 10-4 Wolfpack run brought them within two. North Carolina State then closed out the half by out-scoring Auburn 14-8 to take a 37-33 lead into the locker room. North Carolina State stayed in control in the second half, out-scoring Auburn 48-38 in the period and leading by as many as 17 points.

Auburn finished the game with four players in double figures, led by Tanner's 26. Blanche Alverson and Hasina Muhammad scored 12 points each while Najat Ouardad scored 11. Alverson hit two 3-pointers in the game, moving her into fifth place all-time at Auburn in career 3-pointers with 150. She surpassed Kristen Mulligan, who hit 149 in her career.

Defensively, Auburn forced 20 Wolfpack turnovers, scoring 22 points off them. It marked the second game in a for the Tigers to eclipse the 20-plateau in both categories.

Game 3: Nov. 15, 2012
Auburn 80, Alabama State 43
Auburn Arena
Auburn, Ala.

Official Basketball Box Score -- Game Totals -- Final Statistics

Alabama State vs Auburn

11-15-12 6 p.m. at Auburn, Ala. -- Auburn Arena

VISITORS: Alabama State (0-1)

#	Player	fg-fga	3fg-fga	ft-fa	rebounds			pf	tp	a	to	blk	s	min
					of	de	tot							
11	Smith, Nakiya*	9-18	4-7	3-4	1	1	2	2	25	1	6	0	0	36
21	Jones, Ashley*	2-5	0-0	6-8	2	5	7	2	10	0	4	1	0	30
34	Windom, RoTasha*	1-2	0-0	0-0	2	2	4	0	2	0	0	0	0	14
12	Arrington, Talla*	0-2	0-1	0-1	1	3	4	3	0	1	4	0	1	30
15	Paige, Kierra*	0-9	0-6	0-1	0	1	1	2	0	0	4	1	0	19
14	Peoples, Jasmine	0-0	0-0	0-0	0	2	2	0	0	0	0	1	0	5
23	Shields, Durriga	0-3	0-0	0-0	1	0	1	0	0	0	5	0	1	5
24	Henderso, Erica	1-6	1-6	0-0	1	1	2	0	3	2	1	0	2	18
31	Gazaway, Danielle	1-8	1-6	0-0	0	1	1	5	3	2	1	0	1	22
35	Howard, Brittney	0-1	0-1	0-0	0	4	4	2	0	1	0	0	0	21
TEAM					4	4	8							
Totals.....		14-54	6-27	9-14	12	24	36	16	43	7	26	2	5	200

HOME TEAM: Auburn (2-1)

#	Player	fg-fga	fg-fga	ft-fta	of	de	tot	pf	tp	a	to	blk	s	min
14	Blanche Alverson*	7-11	1-3	2-2	3	6	9	2	17	1	2	2	2	23
32	Tyrese Tanner*	6-14	0-1	1-4	3	4	7	1	13	1	0	2	1	28
34	Peyton Davis*	4-8	0-0	4-6	3	4	7	2	12	1	1	1	0	21
00	Hasina Muhammad*	7-13	0-0	1-2	3	3	6	0	15	2	1	1	3	22
03	Najat Ouardad*	0-1	0-1	0-1	1	3	4	2	0	5	3	0	2	20
04	Sweeting, Cedricka	1-4	0-2	0-0	1	2	3	1	2	3	1	0	1	13
11	Courtney Strain	1-6	0-3	2-2	1	2	3	0	4	2	1	0	1	15
20	Pascal Weir	0-2	0-0	0-0	1	1	3	0	0	0	0	2	2	11
21	Clyde, Chadarryl	5-8	2-5	3-3	0	1	1	2	15	2	2	0	1	12
22	Julie King	1-2	0-0	0-1	0	2	2	2	2	6	0	1	0	23
35	Capners, Cebriano	0-2	0-0	0-1	3	2	4	0	0	1	0	0	1	14
44	Tanner, Tra'cee	0-2	0-0	0-0	1	1	2	1	0	0	2	0	1	8
TEAM					3	3								
Totals.....		32-73	3-15	13-21	21	31	52	16	80	23	15	8	16	200

Game 4: Nov. 18, 2012
Auburn 93, Alabama A&M 44
Auburn Arena
Auburn, Ala.

Official Basketball Box Score -- Game Totals -- Final Statistics

Alabama A&M vs Auburn

11-18-12 2:00 p.m. at Auburn Arena -- Auburn, Ala.

VISITORS: Alabama A&M (1-2)

#	Player	fg-fga	3fg-fga	ft-fa	of	de	tot	pf	tp	a	to	blk	s	min
23	Johnson, Ebony*	1-4	0-0	2-2	2	0	2	1	4	4	4	0	0	28
55	Robertson, NeDra*	2-5	0-0	0-1	3	3	6	1	4	1	1	0	0	26
05	Strickland, Brittney*	0-6	0-2	0-0	0	0	0	2	0	1	4	0	2	16
22	Davis, Shundray*	2-3	1-1	0-2	0	2	2	1	5	2	5	0	2	23
25	ONeal, Danielle*	1-4	1-3	0-0	0	1	1	1	3	0	0	0	1	20
03	Strickland, Alyssa	5-11	5-10	0-0	0	4	4	3	15	2	4	0	0	30
12	Sippial, Taylor	3-8	2-5	0-0	1	0	1	0	8	1	1	0	1	13
14	Moffett, Shaterion	0-1	0-0	0-1	0	1	1	0	0	0	1	0	0	6
21	Hopper, Christyn	0-6	0-5	1-2	1	0	1	0	1	1	2	0	0	12
24	Sanders, Jasmine	1-3	0-0	0-0	3	0	3	3	2	0	1	0	0	10
42	Richardson, Shabron	0-0	0-0	0-0	1	0	1	0	0	0	0	0	1	5
50	Lowery, Jessica	1-3	0-0	0-0	0	1	1	0	2	0	0	0	0	11
TEAM						3		1		4				
Totals.....		16-54	9-26	3-7	15	12	27	13	44	12	23	1	6	200

HOME: Auburn (3-1)

#	Player	fg-fga	3fg-fga	ft-fa	of	de	tot	pf	tp	a	to	blk	s	min
14	Alverson, Blanche*	6-9	2-2	0-0	1	3	4	1	14	3	1	1	1	25
34	Davis, Peyton*	3-6	0-0	3-3	2	4	6	0	9	1	2	1	3	22
00	Muhammad, Hasina*	10-14	0-0	1-2	4	3	7	3	21	2	1	0	1	19
03	Ouardad, Najat*	1-3	1-1	1-2	0	0	0	1	4	4	1	0	5	19
32	Tanner, Tyrese*	2-6	0-0	1-1	0	0	0	1	5	3	1	0	1	15
04	Sweeting, Cedricka	3-4	0-1	0-0	0	2	2	0	6	4	1	0	1	13
11	Strain, Courtney	5-8	1-1	1-2	1	1	2	0	12	1	1	0	1	20
20	West, Pascale	3-5	0-0	0-0	1	1	2	6	0	0	0	0	0	14
21	Clay, Chadarryl	2-2	1-1	2-2	1	1	2	0	7	5	2	0	0	14
22	King, Julie	0-2	0-0	0-0	0	1	0	0	2	1	2	1	1	11
35	Capers, Cabriana	2-3	0-0	0-0	4	5	9	0	4	1	0	0	0	11
44	Tanner, Tra'cee	2-4	0-0	1-1	1	2	3	2	5	1	0	0	1	17
TEAM						2		1		3				
Totals.....		39-66	5-6	10-13	16	24	40	10	93	27	11	4	15	200

Officials: Brian Enterline, Ed Sidlosky, Brian Garland

Technical fouls: Alabama A&M-None. Auburn-None.

Attendance: 1768

Score by Periods	1st	2nd	Total
Alabama A&M	26	18	44
Auburn	49	44	93

AUBURN - Hasina Muhammad scored a career-high 21 points with seven rebounds and Blanche Alverson added 14 points as Auburn women's basketball defeated Alabama A&M 93-44 on Nov. 18 in Auburn Arena.

Three-point plays by both Muhammad and Tyrese Tanner gave Auburn the early advantage. A layup by Muhammad with 12:39 left made it 18-7 in favor of the Tigers. Auburn opened its lead out to 31-11 on the back of a 16-4 run that was capped by four-straight by Pascale West.

Muhammad gave Auburn its largest first half lead of 24 points on a jumper with 3:18 remaining before the break.

The Tigers opened the second half with a 20-3 run over the first seven minutes of play to ice the game. Two at the line by Peyton Davis pushed Auburn's lead to 50, 85-35, with 5:23 remaining in the contest.

Auburn held its largest lead of 53 points with 2:15 remaining. The Tigers out-scored Alabama A&M 44-18 in the second half and scored 34 points off 23 turnovers in the game.

Alyssa Strickland scored 15 points to lead the Bulldogs. Courtney Strain tied her career high with 12 points, while Davis had nine points, six rebounds and three steals. Chadarryl Clay scored seven points and tallied five of Auburn's season-high 27 assists.

Game 5: Nov. 23, 2012
Auburn 57, San Diego State 78
Coors Events Center
Boulder, Colo.
Omni Hotels Classic

Official Basketball Box Score -- Game Totals -- Final Statistics

San Diego State vs Auburn

11-23-12 5 p.m. MT at Boulder, Colo. (Coors Events Center)

VISITORS: San Diego State (3-1)

#	Player	fg-fga	3fg-fga	ft-fa	of	de	tot	pf	tp	a	to	blk	s	min
22	CLARK, Gabrielle*	3-6	1-3	2-2	0	0	0	3	9	3	0	1	0	30
25	AMARIKWA, Erimma*	1-7	0-0	2-4	2	4	6	2	4	1	3	1	2	35
42	NAHINU, Malia*	5-8	0-1	2-3	3	5	8	5	12	0	3	1	1	28
01	HOPKINS, Chelsea*	4-7	3-3	3-3	2	7	9	2	14	7	0	0	1	36
54	CLEMENTS, Courtney*	10-23	6-13	0-0	1	4	5	3	26	1	4	0	3	38
02	HUNTER, Khristina	1-1	0-0	2-2	1	0	1	3	4	0	1	0	0	6
04	NOVAK, Niki	0-0	0-0	0-0	0	0	0	0	0	0	0	0	0	+
05	CULBERSON, Chairese	0-0	0-0	0-0	0	0	0	0	0	0	1	0	0	2
11	HARVEY, Ahijalee	2-5	1-4	0-0	0	0	0	3	5	2	2	0	1	10
12	SCURRY, Deajonae	2-3	0-1	0-0	0	3	3	4	0	2	0	0	0	15
TEAM						2		2		4				
Totals.....		28-60	11-25	11-14	11	25	36	24	78	14	16	3	8	200

HOME: Auburn (3-2)

#	Player	fg-fga	3fg-fga	ft-fa	of	de	tot	pf	tp	a	to	blk	s	min
32	Tyrese Tanner*	6-14	0-1	5-5	0	4	4	3	17	0	4	0	3	29
34	Peyton Davis*	0-4	0-0	1-2	0	2	2	3	1	0	2	0	1	24
00	Hasina Muhammad*	2-12	0-0	6-10	3	3	6	0	10	3	2	1	1	28
03	Najat Ouardad*	1-3	0-2	2-2	1	5	6	1	4	4	4	0	0	2
14	Blanche Alverson*	2-9	1-3	2-2	2	2	4	0	7	3	1	0	1	38
04	Sweeting, Cedricka	0-0	0-0	0-0	0	0	0	0	0	0	0	0	0	7
11	Courtney Strain	2-3	1-1	0-0	0	0	0	2	5	0	1	0	0	16
20	Pascale West	0-0	0-0	0-0	0	0	0	0	0	0	0	0	0	1
21	Clay, Chadarryl	0-0	0-0	0-0	1	0	1	0	0	0	0	0	0	5
22	Julie King	0-0	0-0	0-0	0	0	0	0	0	0	0	0	0	1
35	Capers, Cabriana	0-0	0-0	0-2	0	0	0	0	0	0	0	0	0	1
44	Tanner, Tra'cee	4-10	0-0	5-6	5	3	8	4	13	0	0	0	1	21
TEAM						5		3		8		3		
Totals.....		17-55	2-7	21-29	17	22	39	14	57	10	17	1	7	198

Officials: Robert Scofield, Karen Lasuik, Mazetta Garrett

Technical fouls: San Diego State-None. Auburn-None.

Attendance: 1245

Score by Periods	1st	2nd	Total
San Diego State	29	49	78
Auburn	24	33	57

26th Annual Omni Hotels Classic First Round

BOULDER, Colo. - Auburn got down early and overcame a double-digit deficit to tie the game in the second half, but could not hold off a late San Diego State run as the Tigers dropped a 78-57 decision to the Aztecs Nov. 23 in the first round of the Omni Hotels Classic in Boulder, Colo.

Auburn's Tanner sisters led the way for the Tigers. Junior Tyrese Tanner was the top scorer with 17 points, along with four rebounds and three steals, while Tra'cee Tanner followed with 13 points and a team-high eight rebounds off the bench. Hasina Muhammad rounded out the double-digit scorers with 10.

Auburn got down early against the Aztecs, trailing by as many as 15 points in the first half after San Diego State took a 24-9 lead. The Tigers rallied back, however, out-scoring the Aztecs 15-5 to close out the period and holding SDSU scoreless for the last 4:06. Tra'cee Tanner scored six of seven first-half points in the run.

The Tigers kept the momentum rolling into the second half and tied the game up at 36-36 with 15:05 to play after a 3-pointer from Courtney Strain. That would be the final run, though as San Diego State scored the next seven points and out-scored Auburn 42-21 the rest of the game.

Game 6: Nov. 24, 2012
Auburn 72, Texas A&M-Corpus Christi 57
Coors Events Center
Boulder, Colo.
Omni Hotels Classic Consolation Game

Official Basketball Box Score -- Game Totals -- Final Statistics

Auburn vs Texas A&M-Corpus Christi

11-24-12 5 p.m. MT at Coors Events Center, Boulder Colorado

VISITORS: Auburn (4-2)

#	Player	fg-fga	3fg-fga	ft-fa	of	de	tot	pf	tp	a	to	blk	s	min
14	Alverson, Blanche*	1-3	0-2	0-0	0	5	5	0	2	1	1	1	3	20
34	Davis, Peyton*	6-11	0-0	3-5	5	1	6	3	15	1	3	0	0	33
00	Muhammad, Hasina*	6-9	1-1	3-4	3	1	4	3	16	1	5	1	4	19
03	Ouardad, Najat*	2-3	0-0	0-0	0	3	3	2	4	8	4	0	3	26
32	Tanner, Tyrese*	4-6	0-1	3-3	0	4	4	2	11	0	3	3	2	21
04	Sweeting, Cedricka	0-0	0-0	0-0	0	0	0	0	2	1	0	0	0	3
11	Strain, Courtney	7-8	0-1	0-0	0	1	1	0	14	0	1	0	2	25
21	Clay, Chadarryl	0-1	0-1	0-2	0	0	0	0	0	0	0	0	3	0
22	King, Julie	0-4	0-0	0-1	1	4	5	2	0	2	0	0	1	20
35	Capers, Cabriana	2-2	0-0	0-0	2	5	7	2	4	0	2	0	0	13
44	Tanner, Tra'cee	3-6	0-0	0-0	0	1	1	1	6	1	2	2	2	15
TEAM						1		1						
Totals.....		31-53	1-6	9-15	12	25	37	15	72	16	25	7	16	200

HOME TEAM: Texas A&M-Corpus Christi (0-6)

Average Points Per Game (x 5)														rebounds									
#	Player	fg-fga	fg-fga	ft-fa	of	de	tot	pf	tp	a	to	blk	s	min									
22	Plummer, Ashanti*	1-3	0-0	0-1	0	1	1	3	2	0	2	0	0	23									
03	Darley, Ashley*	4-12	2-6	2-2	7	0	7	2	12	2	3	0	2	22									
10	Blount, Janae*	7-16	4-9	3-3	0	0	0	3	21	1	3	0	3	28									
21	Jammer, Jessica*	2-6	0-0	0-1	0	4	4	2	4	2	6	1	1	24									
33	Gregory, Taryn*	2-5	1-3	0-0	3	2	5	0	5	3	2	0	3	25									
01	Amboree,Trish	0-1	0-1	0-0	0	0	0	1	0	0	0	0	0	3									
05	Roberts, Alisa	2-6	2-5	0-0	0	2	2	0	6	0	2	0	0	12									
12	Anderson-Sparks, M.	1-7	1-5	2-2	1	0	1	0	5	0	2	0	1	14									
23	Huff, Brandi	1-3	0-2	0-0	1	0	1	0	2	1	2	0	0	17									
24	Taylor, Verne'qua	0-1	0-0	0-0	0	1	1	2	0	2	2	0	0	17									
30	Schwartz, Morgan	0-1	0-0	0-0	1	3	4	0	0	1	1	0	0	14									
31	Alva, Sarah	0-0	0-0	0-0	0	0	0	1	0	0	0	0	0	1									
TEAM						4	1	5															
Totals.....		20-61	10-31	7-9	17	14	31	14	57	12	26	1	10	200									

Game 7: Nov. 28, 2012
Auburn 70, Tulane 65
Devlin Fieldhouse
New Orleans, La.

Official Basketball Box Score -- Game Totals -- Final Statistics

Auburn vs Tulane

11-28-12 7:07 p.m. at New Orleans, La. (Devlin Fieldhouse)

VISITORS: Auburn (5-2)

#	Player	fg-fga	3fg-3ga	ft-fa	rebounds		of	de	tot	pf	tp	a	to	blk	s	min
					fg	ft										
14	Alverson, Blanche*	9-14	3-7	0-0	0	5	5	3	21	1	0	3	3	3	37	
32	Tanner, Tyrese*	2-8	0-0	0-0	0	0	0	4	4	0	5	1	3	18		
34	Davis, Peyton*	1-6	0-0	2-5	2	7	9	2	4	0	2	0	2	0	23	
00	Muhammad, Hasina*	8-18	0-0	5-9	7	1	8	3	21	2	1	2	1	33		
03	Ouardad, Najat*	0-2	0-1	2-2	3	3	6	2	7	2	0	1	33			
04	Sweeting, Cedricka	0-0	0-0	0-0	0	0	0	0	0	0	0	0	0	2		
11	Strain, Courtney	1-2	0-1	0-0	1	0	1	0	2	0	0	0	0	10		
21	Clay, Chadarryl	0-2	0-1	0-0	1	0	1	0	1	0	0	1	0	2		
22	King, Julie	1-6	0-2	0-0	2	1	3	4	2	3	0	0	0	16		
35	Capers, Cabriana	0-1	0-0	0-0	1	0	1	0	1	0	0	1	0	0	3	
44	Tanner, Tra'cee	5-7	0-0	4-5	3	3	6	3	14	1	0	1	0	1	23	
TEAM					3	2	5						1			
Totals.....		27-66	3-12	13-21	23	22	45	22	70	15	12	7	9	200		

HOME TEAM: Tulane (5-1)

#	Player	fg-fga	3fg-3ga	ft-fa	rebounds		of	de	tot	pf	tp	a	to	blk	s	min
					fg	ft										
22	DALE, Tiffany*	3-7	0-0	0-2	3	1	4	3	6	0	5	2	1	32		
31	McDONALD, Brittany*	1-2	0-0	0-0	1	2	3	1	2	1	0	0	0	10		
21	GRAYSON, Olivia*	2-9	1-4	2-2	1	1	2	2	7	2	4	0	1	17		
24	KAUTSKY, Janique*	3-5	2-4	8-8	0	2	2	2	16	2	0	0	0	28		
25	SNOW, Tyria*	0-3	0-2	0-0	0	4	1	0	3	2	0	0	0	18		
15	EBOMWONYI, Adesewa	1-2	1-2	1-2	3	0	3	1	4	1	0	1	0	15		
20	BLAGG, Danielle	3-8	2-5	0-1	0	1	1	1	8	3	1	0	0	18		
23	KAPLAN, Jamie	1-3	1-2	0-1	0	2	2	1	3	5	1	0	0	22		
30	JONES, Tierra	1-2	0-0	0-0	1	0	1	0	2	0	0	0	0	1	6	
32	BIBBINS, Whitney	6-12	0-0	2-5	3	4	7	1	14	1	0	1	0	26		
45	DURU, Chinwe	0-0	0-0	3-4	1	2	3	2	3	0	0	0	0	8		
TEAM					2	1	3									
Totals.....		21-53	7-19	16-25	15	20	35	15	65	18	13	4	3	200		

Officials: Mary Day, Roy Gulbeyan, Eric Koch

Technical fouls: Auburn-None. Tulane-None.

Attendance: 1236

Score by Periods	1st	2nd	Total
Auburn	23	47	70
Tulane	39	26	65

NEW ORLEANS, La. - Blanche Alverson and Hasina Muhammad scored 21 points each, leading the Auburn women's basketball team in a comeback 70-65 win at Tulane Wednesday night. The Tigers were down by 16 at halftime, but rallied back to hand the Green Wave their first loss of the season.

Auburn took a quick 7-2 lead to start the game, but Tulane rallied to score 13 straight points to take a lead it would not give up for most of the game. The Green Wave kept on rolling through the period to take a 16-point, 39-23 lead at halftime.

For everything that Auburn did wrong in the first half, the Tigers did right in the second. After shooting 30 percent in the opening period, Auburn came back to shoot 50 percent in the second to finish the game at 40.9 percent.

Auburn also limited Tulane to 23.1 percent shooting in the second half after surrendering 55.6 percent in the first. The Tigers also forced just three Green Wave turnovers in the first half, but came back to force 10 in the second, scoring 17 points off turnovers.

Alverson, Muhammad and Tra'Cee Tanner led the charge in the second half, hitting timely shots and clutch free throws. Alverson scored 11 of her 21 in the second half while Muhammad scored 16 of hers. Tra'Cee Tanner came off the bench to score a career-high 14 points with six rebounds.

Game 8: Dec. 9, 2012
Auburn 68, Hofstra 58
Auburn Arena
Auburn, Ala.

Official Basketball Box Score -- Game Totals -- Final Statistics

Hofstra vs Auburn

12-09-12 2 p.m. CT at Auburn, Ala. -- Auburn Arena

VISITORS: Hofstra (1-7)

#	Player	fg-fga	3fg-3ga	ft-fa	rebounds		of	de	tot	pf	tp	a	to	blk	s	min
					fg	ft										
30	Evans, Shante*	3-11	0-0	3-4	7	9	16	5	9	3	4	1	0	34		
40	Onyeukwu, Anna*	9-14	0-2	3-3	2	4	6	1	21	2	2	0	1	27		
02	Bond, Candace*	0-2	0-0	3-3	0	2	2	4	3	0	2	0	2	13		
05	Thomas, Andreana*	3-9	2-5	0-0	1	3	4	2	8	6	15	0	2	36		
32	Payton, Annie*	3-14	0-5	2-3	1	4	5	2	8	2	4	0	3	37		
01	Jackson, Asia	1-3	1-3	0-0	0	0	0	1	3	0	0	0	0	11		
03	Epps, Sydny	0-0	0-0	0-0	0	1	1	0	0	0	1	0	0	4		
23	Green, Devan	1-6	0-0	4-5	2	4	6	1	6	0	0	0	0	1	30	
24	Thomas-Palmer, Dee	0-0	0-0	0-0	0	2	2	2	2	0	0	0	0	1	8	
TEAM					1	1	2									
Totals.....		20-59	3-15	15-18	14	30	44	18	58	13	28	1	10	200		

HOME TEAM: Auburn (6-2)

#	Player	fg-fga	3fg-3ga	ft-fa	rebounds		of	de	tot	pf	tp	a	to	blk	s	min
					fg	ft										
00	Muhammad, Hasina*	5-9	0-0	2-5	3	2	5	3	12	2	2	1	2	28		
14	Alverson, Blanche*	5-9	1-3	0-0	0	5	5	2	11	2	2	0	6	35		
34	Davis, Peyton*	6-12	0-0	1-4	5	7	12	3	13	1	3	3	3	29		
03	Ouardad, Najat*	3-5	2-4	0-2	2	1	3	2	8	8	5	0	3	33		
32	Tanner, Tyrese*	4-18	0-2	5-6	1	2	3	1	13	2	1	1	3	33		
11	Strain, Courtney	2-6	0-1	0-0	0	0	0	1	4	1	0	0	0	11		
20	West, Pascale	0-1	0-0	0-0	0	1	1	0	0	0	0	0	0	2		
21	Clay, Chadarryl	1-3	1-3	0-0	1	1	2	0	3	1	3	0	0	6		
22	King, Julie	0-0	0-0	0-0	0	1	1	0	0	0	0	0	0	7		
35	Capers, Cabriana	0-0	0-0	0-0	0	0	0	0	0	0	0	0	0	3		
44	Tanner, Tra'cee	2-3	0-0	0-0	0	2	2	4	1	0	1	1	1	13		
TEAM					1	3	4									
Totals.....		28-66	4-13	8-17	13	25	38	15	68	18	16	6	18	200		

Officials: Cameron Inouye (R), Michael Price (U1), Luis Gonzalez (U2)

Technical fouls: Hofstra-None. Auburn-None.

Attendance: 1535

Score by Periods	1st	2nd	Total
Hofstra	23	35	58
Auburn	39	29	68

AUBURN - The Auburn women's basketball team picked up a win after an 11-day layoff, as it defeated Hofstra, 68-58, Dec. 9 in Auburn.

Auburn had four players score in double figures, led by Peyton Davis and Tyrese Tanner, each with 13. Hasina Muhammad added 12, and Blanche Alverson tallied 11. It was the fourth time this season that the Tigers had four or more players in double figures. Najat Ouardad tied her career high with eight assists while also scoring eight points.

In addition to leading Auburn in scoring, Davis also earned her first career double-double as she grabbed a career-high 12 rebounds in the effort. It was the first double-double for the Tigers since Blanche Alverson's in last year's season-opener against Mercer.

The Tigers got off to a sluggish start in the opening minutes of the first half, but picked up the intensity to start a 13-0 run with 9:01 remaining. Alverson and Tyrese Tanner combined for 11 of the 13 points during the run. Auburn allowed just five points in the final nine minutes of the half and held Hofstra to just one field goal from Andreana Thomas with 1:42 to play. The Tigers held a 16-point lead at halftime with the score 39-23.

AU led by as many as 20 in the second half, but let the gap close to four late in the game. The Tigers were able to hold off the Pride in the final two minutes for the 68-58 win.

Game 9: Dec. 12, 2012
Auburn 69, George Washington 59
Charles E. Smith Center
Washington, D.C.

Official Basketball Box Score -- Game Totals -- Final Statistics

Auburn vs George Washington

12-12-12 7 p.m. ET at Washington, D.C. (Smith Center)

VISITORS: Auburn (7-2)

#	Player	fg-fga	3fg-3ga	ft-fa	rebounds		of	de	tot	pf	tp	a	to	blk	s	min
					fg	ft										
14	Alverson, Blanche*	5-12	3-5	1-3	0	5	5	2	14	1	0	1	0	31		
34	Davis, Peyton*	1-2	0-0	0-2	0	3	3	1	2	0	1	2	0	14		
00	Muhammad, Hasina*	8-15	0-0	5-9	3	7	10	3	21	1	5	2	9	30		
03	Ouardad, Najat*	2-8	1-3	5-8	4	5	9	1	10	7	4	0	3	34		
32	Tanner, Tyrese*	4-16	0-1	0-0	2	3	5	3	8	5	4	3	3	37		
04	Sweeting, Cedricka	0-0	0-0	0-0	0	0	0	0	0	0	1	0	0	2		
11	Strain, Courtney	1-3	0-1	1-2	0	0	0	2	3	0	0	0	0	15		
21	Clay, Chadarryl	0-0	0-0	0-0	0	0	0	0	0	0	0	0	0	4		
22	King, Julie	0-0	0-0	0-0	0	0	0	0	0	0	0	0	0	1		
35	Capers, Cabriana	1-2	0-0	1-2	4	2	6	0	3	0	0	0	0	9		
44	Tanner, Tra'cee	4-7	0-0	0-0	0	3	3	8	0	2	2	0	2	23		
TEAM					5	2	7									
Totals.....		26-65	4-10	13-26	18	30	48	15	69	14	17	10	15	200		

HOME TEAM: George Washington (4-5)

#	Player	fg-fga	3fg-3ga	ft-fa	rebounds		of	de	tot	pf	
---	--------	--------	---------	-------	----------	--	----	----	-----	----	--

Game 10: Dec. 16, 2012
Auburn 71, Temple 49
Auburn, Arena
Auburn, Ala.

Official Basketball Box Score -- Game Totals -- Final Statistics

Temple vs Auburn

12-16-12 2 p.m. CT at Auburn, Ala. -- Auburn Arena

VISITORS: Temple (5-4)

#	Player	rebounds													s	min
		fg	fga	3fg	3fga	ft	fta	of	de	tot	pf	tp	a	to		
10	KABENGANO, Sally*	1-11	0-6	0-0	1	3	4	1	2	4	7	0	3	33		
32	THAMES, Natasha*	3-7	0-0	3-4	3	2	5	1	9	3	3	1	2	38		
25	MACAULAY, Victoria*	8-11	0-0	2-4	2	4	6	0	18	1	4	3	3	40		
01	COVILE, Erica*	0-2	0-0	0-0	1	2	3	1	0	0	6	0	0	13		
23	WILLIAMS, Tyonna*	4-13	2-7	2-2	2	2	4	3	12	3	6	0	4	37		
20	ROXAS, Meghan	3-11	2-7	0-0	1	1	2	0	8	1	1	0	0	24		
24	DAYAN, May	0-1	0-1	0-0	0	2	2	1	0	1	1	0	0	15		
TEAM		4 2 6														
Totals.....		19-56	4-21	7-10	14	18	32	7	49	13	28	4	12	200		

HOME TEAM: Auburn (8-2)

#	Player	rebounds													s	min
		fg	fga	3fg	3fga	ft	fta	of	de	tot	pf	tp	a	to		
00	Muhammad, Hasina*	7-13	0-1	2-4	2	4	6	1	16	6	5	3	5	32		
14	Alverson, Blanche*	4-9	2-4	0-0	0	5	5	3	10	1	1	0	1	31		
34	Davis, Peyton*	4-6	0-0	0-1	4	3	7	4	8	1	5	3	2	24		
03	Ouadard, Najat*	1-3	0-1	0-0	0	3	3	1	2	8	8	0	5	33		
32	Tanner, Tyrese*	8-14	0-0	2-2	2	0	2	0	18	2	0	2	2	34		
11	Strain, Courtney	2-6	0-1	0-0	1	3	4	1	4	1	1	0	0	16		
20	West, Pascale	0-0	0-0	0-0	0	0	0	0	0	0	0	0	0	2		
21	Clay, Chadaryl	1-1	1-1	0-0	0	2	2	2	3	1	1	0	0	4		
12	King, Julie	0-1	0-0	0-0	0	0	0	0	0	0	0	0	0	1		
35	Capers, Cabriana	0-0	0-0	0-0	0	0	0	0	0	0	0	0	0	3		
44	Tanner, Tra'cee	5-8	0-0	0-0	0	3	3	0	10	0	1	0	1	20		
TEAM		3 1 4														
Totals.....		32-61	3-8	4-7	12	24	36	12	71	20	22	8	16	200		

Officials: Bryan Enterline (R), Bruce Morris, Angelica Suffien

Technical fouls: Temple-WILLIAMS, Tyonna. Auburn-None.

Attendance: 1662

Score by Periods	1st	2nd	Total
Temple	17	32	49
Auburn	30	41	71

AUBURN - The Auburn women's basketball team is on its best start through 10 games since the 2008-09 season after picking up a 71-49 win over Temple on Dec. 16. Turnovers were once again the key to success in Auburn's playbook against Temple. The Tigers forced 28 turnovers, tying their season high, and scored 36 points off turnovers.

Auburn had four players score in double figures for the fifth time this season. Tyrese Tanner led the Tigers with 18 points, and Hasina Muhammad followed with 16. Muhammad also added a career high six assists, a season high three blocks and five steals. Blanche Alverson and Tra'cee Tanner each tallied 10 points.

The Tigers started out slow in the first half, but put together a 7-0 run beginning with 14:57 remaining in the half. Auburn held Temple scoreless for more than five minutes during the run before the Owls picked up a basket with 11:49 remaining. Both sides traded field goals before Auburn began to pull away for good.

With a 30-17 lead at the half, the Tigers continued to pressure Temple and never let the Owls get within eight of the lead. Tyrese Tanner and Muhammad combined for 21 of Auburn's 41 second-half points and the Tigers held on for the decisive 22-point victory.

Victoria Macaulay led Temple with 18 points and six rebounds, while Tyonna Williams added 12.

Game 11: Dec. 19, 2012
Auburn 53, Tennessee-Chattanooga 40
Auburn Arena
Auburn, Ala.

Official Basketball Box Score -- Game Totals -- Final Statistics

Tennessee-Chattanooga vs Auburn

12-19-12 6 p.m. CT at Auburn, Ala. -- Auburn Arena

VISITORS: Tennessee-Chattanooga (8-2)

#	Player	rebounds													s	min
		fg	fga	3fg	3fga	ft	fta	of	de	tot	pf	tp	a	to		
31	HALL, Taylor*	1-5	0-2	1-2	3	5	8	3	3	2	3	0	0	29		
44	DEWART, Ashlen*	5-9	0-0	3-3	2	3	5	3	13	1	2	0	1	30		
03	CHRISTOPHER, Kayla*	3-11	3-9	2-2	3	1	4	2	11	0	3	0	3	38		
21	BLACK, Alex*	0-6	0-4	0-1	0	0	0	1	0	0	5	0	2	18		
22	LAMBERT, Kylie*	1-5	0-4	0-0	2	5	7	4	2	3	4	0	1	27		
01	PAYNE, Alicia	0-0	0-0	0-0	0	1	1	0	0	0	0	0	0	8		
11	TOWNS, Ka'Yonne	1-7	0-4	0-0	0	2	2	1	2	3	1	0	1	21		
12	DOWNES, Meghan	2-8	0-6	0-0	2	0	2	2	4	1	3	0	0	19		
33	JACKSON, Tatianna	2-4	1-2	0-0	0	1	1	1	5	0	1	0	0	10		
TEAM		1 1 2														
Totals.....		15-55	4-31	6-8	13	19	32	17	40	10	22	0	8	200		

HOME TEAM: Auburn (9-2)

#	Player	rebounds													s	min
		fg	fga	3fg	3fga	ft	fta	of	de	tot	pf	tp	a	to		
14	Blanche Alverson*	3-8	1-4	4-4	2	8	10	1	11	2	4	1	0	38		
32	Tyrese Tanner*	2-4	0-1	1-2	4	8	3	5	0	4	0	3	31			
34	Peyton Davis*	1-1	0-0	1-6	0	2	2	1	3	0	2	1	0	19		
00	Hasina Muhammad*	9-23	0-1	1-3	1	4	5	1	19	1	3	1	3	37		
03	Najat Ouadard*	2-5	0-2	0-0	1	3	4	3	4	5	5	0	2	27		
11	Courtney Strain	1-2	0-0	0-0	0	1	1	0	2	0	0	0	0	7		
21	Chadaryl Clay	0-3	0-1	0-0	0	0	1	0	4	2	0	2	14			
22	Julie King	0-0	0-0	0-0	1	0	1	0	1	0	1	0	0	5		
44	Tra'cee Tanner	3-5	0-0	3-4	3	4	7	2	9	1	1	0	0	22		
TEAM		3 1 4														
Totals.....		21-51	1-9	10-19	15	27	42	13	53	14	21	3	10	200		

Officials: Scott Yarbrough (R), Nanette Sisk (U1), Kelly Johnson (U2)

Technical fouls: UT-Chattanooga-None. Auburn-None.

Attendance: 1591

Score by Periods	1st	2nd	Total
Tennessee-Chattanooga	15	25	40
Auburn	28	25	53

AUBURN - The Auburn women's basketball team utilized a 17-0 run early in the game to scrap its way to a 53-40 win over the University of Tennessee at Chattanooga Dec. 19 at Auburn Arena. UT-Chattanooga entered the game with a pair of wins already this season over SEC teams, downing Tennessee in the season-opener and winning at Alabama.

It proved to be a low-scoring game by both teams, as Auburn and UTC each posted season-lows in scoring. The Lady Mocs' 40 points were also the fewest allowed by the Auburn defense this season.

Hasina Muhammad led the Tigers with 19 points, followed by Blanche Alverson with 11. Alverson tallied her first double-double on the season, adding 10 rebounds in the effort. She is also now 30th all-time in career rebounding at Auburn with 461.

Auburn created a spark in the opening half with a 17-0 run, holding UTC scoreless for more than seven minutes. The Tigers limited the Lady Mocs to a season-low 15 points at halftime, as Auburn took a 28-15 lead into the locker room. UTC shot just 20.7 percent from the floor in the first half, the lowest of any Auburn opponent this season.

Both sides tallied 25 points apiece in the second half and traded field goals, but UTC could not come within seven points the rest of the way. Auburn held on to its lead for the 53-40 victory.

Game 12: Dec. 22, 2012
Auburn 85, Jacksonville 49
Auburn Arena
Auburn, Ala.

Official Basketball Box Score -- Game Totals -- Final Statistics

Jacksonville vs Auburn

12-22-12 2 p.m. CT at Auburn, Ala. -- Auburn Arena

VISITORS: Jacksonville (4-7)

#	Player	rebounds													s	min
		fg	fga	3fg	3fga	ft	fta	of	de	tot	pf	tp	a	to		
05	CARGILL, Jade*	2-9	0-0	0-0	4	1	5	1	4	0	1	0	1	0	3	30
22	SNEED, Tracie*	3-9	1-1	0-0	4	7	11	2	7	1	1	0	1	0	1	32
24	BROWN, Briana*	3-9	3-4	4-6	1	1	2	1	13	0	5	0	1	26		
15	WILSON, Maggie*	1-8	1-7	2-2	1	2	3	0	5	3	1	0	0	35		
21	EDWARDS, Stephanie*	2-9	1-4	2-4	1	1	2	0	7	2	3	0	0	23		
03	ALFORD, Queen	3-7	2-4	2-2	1	2	3	1	10	0	1	0	0	25		
11	MITCHELL, Ronisha	1-5	1-4	0-0	0	0	1	3	2	4	0	0	0	15		
12	HOLLIDAY, Britney	0-0	0-0	0-0	0	2	2	1	0	0	1	0	0	7		
20	MCLEE, Ciara	0-2	0-1	0-0	1	0	1	0	0	1	3	0	0	7		
TEAM		3 2 5														
Totals.....		15-58	9-25	10-14	16	18	34	7	49	9	20	0	5	200		

HOME TEAM: Auburn (10-2)

#	Player	rebounds													s	min
		fg	fga	ft	fta	of	de	tot	pf	tp	a	to	bkl			
00	Hasina Muhammad*	5-12	0-0	0-0	1	4	5	2	10	3	1	1	1	26		
14	Blanche Alverson*	7-10	2-4	0-0	0	6	6	1	16	3	1	2	1	28		
34	Peyton Davis*	4-5	0-0	0-0	1	1	2	1	8	0	0	0	0	10		
03	Najat Ouard*	0-0	0-0	0-0	1	1	2	0	9	2	0	2	2	20		
32	Tyrese Tanner*	7-15	0-0	2-3	3	0	3	1	16	1	1	1	3	23		
04	Cedricka Sweeting	0-0	0-0	0-0	0	0	0	0	0	1	1	0	0	4		
20	Pascale West	3-4	0-0	0-0	0	2	2	3	6	0	1	1	0	13		
21	Chodarryl Clay	1-9	0-4	0-0	1	2	3	0	2	6	1	1	1	25		
22	Julie King	3-5	0-1	0-0	0	2	2	6	2	0	0	0	1	22		
35	Cabriana Capers	0-1	0-0	0-0	1	2	4	0	0	2	0	0	0	10		
44	Tra'cee Tanner	10-12	0-0	1-4	7	5	12	3	21	1	0	1	1	19		
TEAM		3 3														
Totals.....		40-73	2-9	3-7	15	29	44	13	85	28	8	7	10	200		

Game 13: Dec. 29, 2012
Auburn 80, Samford 51
Auburn, Arena
Auburn, Ala.

Official Basketball Box Score -- Game Totals -- Final Statistics

Samford vs Auburn

12-29-12 2 p.m. CT at Auburn, Ala. -- Auburn Arena

VISITORS: Samford (5-6)

		rebounds												
#	Player	fg-fga	3fg-3fga	ft-fa	of	de	tot	pf	tp	a	to	blk	s	min
10	REECE, Taylor*	0-1	0-0	2-2	0	0	0	3	2	2	1	0	0	32
33	DAWSON, Hannah*	3-8	3-6	0-0	0	7	7	3	9	3	3	0	3	36
04	MARTIN, Jazmine*	6-13	4-10	2-3	0	3	3	2	18	2	4	0	0	36
20	CAMPBELL, Shelby*	0-0	0-0	0-0	0	0	0	0	0	1	0	0	0	2
32	SCHWANTZ, Kendall*	2-4	1-1	0-0	0	4	4	2	5	1	3	0	0	33
12	STRICKLIN, Krista	1-5	1-3	0-0	1	2	3	0	3	0	12	0	0	24
21	FLETCHER, Keke	1-1	1-1	0-0	0	0	0	1	3	0	1	0	1	6
24	MAYES, Ashli	2-4	2-3	5-6	3	2	5	1	11	3	2	0	2	22
34	ROBINSON, Christy	0-1	0-0	0-0	0	0	0	1	0	0	0	0	0	9
TEAM						2	1	3	1					
Totals.....		15-37	12-24	9-11	6	19	25	14	51	12	26	0	6	200

HOME TEAM: Auburn (11-2)

#	Player	fg-fga	3fg-3fga	ft-fa	of	de	tot	pf	tp	a	to	blk	s	min
14	Blanche Alverson*	6-12	3-6	0-0	1	5	6	1	15	1	0	0	1	26
32	Tyrese Tanner*	4-9	0-1	3-4	0	2	2	2	11	0	1	0	0	230
34	Peyton Davis*	3-5	0-0	0-1	3	2	5	4	6	0	1	1	0	18
00	Hasina Muhammad*	7-12	0-0	5-7	2	3	5	2	19	4	1	1	4	29
03	Najat Ouardad*	5-7	3-4	1-2	1	0	1	1	14	11	3	0	9	34
04	Cadricka Sweeting	0-1	0-1	0-0	0	0	0	0	0	0	0	0	0	2
11	Courtney Strain	1-3	0-2	0-0	0	0	0	0	2	1	1	0	2	10
20	Pascale West	1-1	0-0	0-0	0	1	1	1	2	0	0	0	0	7
21	Chadarryl Clay	0-2	0-0	0-0	1	0	1	1	0	1	0	0	1	9
22	Julie King	2-2	0-0	1-1	3	1	4	0	5	2	2	0	1	11
35	Cabriana Capers	2-2	0-0	0-0	0	0	0	1	4	1	0	0	0	9
44	Tra'cee Tanner	0-4	0-0	2-2	1	0	1	0	2	1	0	0	2	15
TEAM						3		3						
Totals.....		31-60	6-14	12-17	12	17	29	13	80	22	9	2	22	200

Officials: Lawson Newton (R), Roy Gulbeyan (U1), Kylie Galloway (U2)

Technical fouls: Samford-TEAM. Auburn-None.

Attendance: 2209

Score by Periods	1st	2nd	Total
Samford	19	32	51
Auburn	41	39	80

AUBURN - The Auburn women's basketball team wrapped up non-conference play with an 80-51 win over Samford on Dec. 29 at Auburn Arena.

Hasina Muhammad led Auburn with 19 points, while Blanche Alverson added 15, Najat Ouardad posted 14 and Tyrese Tanner tallied 11. It marked the sixth game this season in which the Tigers had four or more players in double figures, and the 11th game with three or more.

Ouardad had a career day with a double-double with career highs of 14 points and 11 assists, as well as a career high nine steals

Auburn pulled out to a 13-5 lead on an 8-0 run early in the first half. The Bulldogs scored eight unanswered to tie it at 13-all midway through the half.

Samford again went scoreless for seven minutes, while the Tigers went on a 19-3 run to make it 32-16 with just 2:40 remaining in the half. Ouardad and Muhammad combined for 14 of Auburn's 19 points during the run, and the Tigers took a 41-19 lead at the half.

The Tigers continued applying pressure after the break, creating 15 turnovers resulting in 21 of Auburn's 39 second-half points. AU increased its lead to as many as 31 points with 1:51 remaining and never allowed Samford within 17.

Game 14: Jan. 3, 2013
Auburn 50, #23/RV Arkansas 47
Auburn Arena
Auburn, Ala.

Official Basketball Box Score -- Game Totals -- Final Statistics

Arkansas vs Auburn

01-03-13 6 p.m. CT at Auburn, Ala. -- Auburn Arena

VISITORS: #23 Arkansas (12-2, 0-1 SEC)

#	Player	fg-fga	3fg-3fga	ft-fa	of	de	tot	pf	tp	a	to	blk	s	min
01	PEAK, Keira*	3-9	1-2	0-2	2	2	4	1	7	2	2	2	2	21
24	WILLIAMS, Quistelle*	6-13	1-7	0-0	5	3	8	1	13	0	2	0	1	36
42	BOWEN, Jhasmin*	0-2	0-0	0-0	1	2	3	2	0	0	1	0	1	14
11	BERNA, Colli*	2-7	2-5	2-2	0	2	2	2	8	3	3	1	2	40
12	WILSON, Dominique*	1-8	0-3	3-4	0	1	1	2	5	1	3	0	1	23
04	WATKINS, Sarah	2-9	0-1	5-6	1	2	3	5	9	3	5	0	0	30
21	ROBINSON, Dominique	0-3	0-0	0-0	0	1	1	0	0	0	2	0	0	12
33	WOLFF, Melissa	2-7	1-4	0-0	4	7	11	1	5	0	2	0	1	24
TEAM						4	3	7						
Totals.....		16-58	5-22	10-14	17	23	40	14	47	9	20	3	8	200

HOME TEAM: Auburn (12-2, 1-0 SEC)

#	Player	rebounds													s	min
		fg-fga	fg-3ga	ft-fa	of	de	tot	pf	tp	a	to	blk	s			
14	Alverson, Blanche*	1-9	1-4	0-0	1	0	1	2	3	1	0	0	2	37		
32	Tanner, Tyrese*	5-16	0-1	5-6	3	3	6	2	15	1	0	1	1	36		
34	Davis, Peyton*	2-9	0-0	1-3	10	7	17	4	5	0	3	3	2	31		
00	Muhammad, Hasina*	6-19	0-0	1-2	3	4	7	0	13	4	2	3	3	35		
03	Ouardad, Najat*	2-3	0-0	0-0	1	4	5	3	4	5	7	0	5	37		
11	Strain, Courtney	0-0	0-0	0-0	0	0	0	0	0	0	0	0	0	1		
20	West, Pascale	0-0	0-0	0-0	0	0	0	0	0	0	0	0	0	0+		
21	Clay, Chadarryl	0-1	0-0	0-0	0	0	0	0	0	0	1	1	0	3		
22	King, Julie	1-2	0-0	0-0	0	2	2	0	2	2	0	0	0	9		
35	Capers, Cabriana	0-0	0-0	0-0	0	1	1	0	0	0	0	0	0	1		
44	Tanner, Tra'cee	4-5	0-0	0-0	1	1	2	4	8	0	3	1	0	10		
TEAM						2		3		5						
Totals.....		21-64	1-5	7-11	21	25	46	15	50	13	16	9	13	200		

Officials: Bob Trammell (R), Gina Cross (U1), Kevin Pethel (U2)

Technical fouls: Arkansas-None. Auburn-None.

Attendance: 2090

Score by Periods	1st	2nd	Total
Arkansas	20	27	47
Auburn	19	31	50

AP Rank: #23 Arkansas

AUBURN - The Auburn women's basketball team fought until the final seconds ticked off to pick up its first Southeastern Conference win in the SEC opener, as the Tigers downed No. 23 Arkansas, 50-47, Thursday at Auburn Arena.

The win was a first for Auburn in more ways than one. It marked Williams-Flournoy's first career SEC victory as a head coach, and it was also the Tigers' first win over a ranked opponent since beating No. 22 Georgia on Feb. 24, 2011. Arkansas entered the game ranked No. 23 in the AP poll.

Tyrese Tanner led Auburn in scoring with 15 points, while Hasina Muhammad added 13. Peyton Davis had a career night on the boards, grabbing 17 rebounds and besting her previous career high by six. Davis is tied for 27th all-time in single-game rebounds and is the most rebounds for an Auburn player since DeWanna Bonner tallied 19 against St. Joseph's on Dec. 29, 2007.

The team's traded the lead before Auburn pulled away for a five-point lead early in the first half. Arkansas came back, though, taking a 20-19 advantage at halftime.

It was back and forth to open the second half, but a 15-4 Tiger run gave Auburn a lead it would not give up. The Hogs cut it to one late, but Auburn was able to hold on for the 50-47 victory.

2012-13 Road Statistics

RECORD:	OVERALL	HOME	AWAY	NEUTRAL
ALL GAMES	2-1	0-0	2-1	0-0
CONFERENCE	0-0	0-0	0-0	0-0
NON-CONFERENCE	2-1	0-0	2-1	0-0

#	Player	gp-gs	min	avg	Total		3-Point		F-Throw		Rebounds											
					fg-fga	fg%	3fg-fga	3fg%	ft-fa	ft%	off	def	tot	avg	pf	dq	a	to	blk	stl	pts	avg
00	Muhammad, Hasina	3-2	92	30.7	20-48	.417	0-3	.000	14-22	.636	11	10	21	7.0	10	0	4	8	4	11	54	18.0
14	Alverson, Blanche	3-3	103	34.3	18-39	.462	8-21	.381	3-5	.600	2	15	17	5.7	6	0	5	1	7	6	47	15.7
32	Tanner, Tyrese	3-3	91	30.3	13-44	.295	1-5	.200	11-12	.917	7	6	13	4.3	12	1	7	11	5	9	38	12.7
44	Tanner, Tra'cee	3-0	63	21.0	10-17	.588	0-0	.000	5-7	.714	3	8	11	3.7	7	0	2	2	3	1	25	8.3
03	Ouardad, Najat	3-3	103	34.3	6-20	.300	2-7	.286	9-13	.692	7	13	20	6.7	4	0	18	12	0	6	23	7.7
34	Davis, Peyton	3-3	57	19.0	4-10	.400	0-0	.000	3-11	.273	5	12	17	5.7	8	1	0	3	2	1	11	3.7
11	Strain, Courtney	3-1	40	13.3	2-8	.250	0-2	.000	1-2	.500	1	0	1	0.3	5	0	0	1	0	0	5	1.7
35	Capers, Cabriana	3-0	15	5.0	1-3	.333	0-0	.000	1-2	.500	5	2	7	2.3	0	0	1	1	0	0	3	1.0
22	King, Julie	3-0	18	6.0	1-6	.167	0-2	.000	0-0	.000	2	1	3	1.0	4	0	3	0	0	0	2	0.7
04	Sweeting, Cedricka	3-0	12	4.0	1-1	1.000	0-0	.000	0-0	.000	0	0	0	0.0	0	0	0	1	0	0	2	0.7
21	Clay, Chadarryl	2-0	6	3.0	0-2	.000	0-1	.000	0-0	.000	1	0	1	0.5	1	0	0	1	0	0	0	0.0
Team											11	7	18				1					
Total.....		3	600		76-198	.384	11-41	.268	47-74	.635	55	74	129	43.0	57	2	40	42	21	34	210	70.0
Opponents.....		3	600		73-184	.397	24-57	.421	39-62	.629	50	81	131	43.7	56	1	55	56	13	20	209	69.7

TEAM STATISTICS	AU	OPP
SCORING	210	209
Points per game	70.0	69.7
Scoring margin	+0.3	-
FIELD GOALS-ATT	76-198	73-184
Field goal pct	.384	.397
3 POINT FG-ATT	11-41	24-57
3-point FG pct	.268	.421
3-pt FG made per game	3.7	8.0
FREE THROWS-ATT	47-74	39-62
Free throw pct	.635	.629
F-Throws made per game	15.7	13.0
REBOUNDS	129	131
Rebounds per game	43.0	43.7
Rebounding margin	-0.7	-
ASSISTS	40	55
Assists per game	13.3	18.3
TURNOVERS	42	56
Turnovers per game	14.0	18.7
Turnover margin	+4.7	-
Assist/turnover ratio	1.0	1.0
STEALS	34	20
Steals per game	11.3	6.7
BLOCKS	21	13
Blocks per game	7.0	4.3
ATTENDANCE	0	3227
Home games-Avg/Game	0-0	3-1076
Neutral site-Avg/Game	-	0-0

Date	Opponent		Score	Att.
+ 11-10-12	at NC State	L	71-85	1586
11-28-12	at Tulane	W	70-65	1236
12-12-12	at George Washington	W	69-59	405

+ - Sheraton Raleigh Wolfpack Invitational (Raleigh, N.C.)
 & - Omni Hotels Classic (Boulder, Colo.)
 * - Southeastern Conference game

Score by Periods	1st	2nd	Totals
Auburn	92	118	210
Opponents	99	110	209

2012-13 SEC Statistics

RECORD:	OVERALL	HOME	AWAY	NEUTRAL
ALL GAMES	1-0	1-0	0-0	0-0
CONFERENCE	1-0	1-0	0-0	0-0
NON-CONFERENCE	0-0	0-0	0-0	0-0

#	Player	gp-gs	min	avg	Total		3-Point		F-Throw		Rebounds				pf	dq	a	to	blk	stl	pts	avg
					fg-fga	fg%	3fg-fga	3fg%	ft-fa	ft%	off	def	tot	avg								
32	Tanner, Tyrese	1-1	36	36.0	5-16	.313	0-1	.000	5-6	.833	3	3	6	6.0	2	0	1	0	1	1	15	15.0
00	Muhammad, Hasina	1-1	35	35.0	6-19	.316	0-0	.000	1-2	.500	3	4	7	7.0	0	0	4	2	3	3	13	13.0
44	Tanner, Tra'cee	1-0	10	10.0	4-5	.800	0-0	.000	0-0	.000	1	1	2	2.0	4	0	0	3	1	0	8	8.0
34	Davis, Peyton	1-1	31	31.0	2-9	.222	0-0	.000	1-3	.333	10	7	17	17.0	4	0	0	3	3	2	5	5.0
03	Ouardad, Najat	1-1	37	37.0	2-3	.667	0-0	.000	0-0	.000	1	4	5	5.0	3	0	5	7	0	5	4	4.0
14	Alverson, Blanche	1-1	37	37.0	1-9	.111	1-4	.250	0-0	.000	1	0	1	1.0	2	0	1	0	0	2	3	3.0
22	King, Julie	1-0	9	9.0	1-2	.500	0-0	.000	0-0	.000	0	2	2	2.0	0	0	2	0	0	0	2	2.0
21	Clay, Chadarryl	1-0	3	3.0	0-1	.000	0-0	.000	0-0	.000	0	0	0	0.0	0	0	0	1	1	0	0	0.0
20	West, Pascale	1-0	0	0.0	0-0	.000	0-0	.000	0-0	.000	0	0	0	0.0	0	0	0	0	0	0	0	0.0
35	Capers, Cabriana	1-0	1	1.0	0-0	.000	0-0	.000	0-0	.000	0	1	1	1.0	0	0	0	0	0	0	0	0.0
11	Strain, Courtney	1-0	1	1.0	0-0	.000	0-0	.000	0-0	.000	0	0	0	0.0	0	0	0	0	0	0	0	0.0
Team											2	3	5									
Total.....		1	200		21-64	.328	1-5	.200	7-11	.636	21	25	46	46.0	15	0	13	16	9	13	50	50.0
Opponents.....		1	200		16-58	.276	5-22	.227	10-14	.714	17	23	40	40.0	14	1	9	20	3	8	47	47.0

TEAM STATISTICS	AU	OPP
SCORING	50	47
Points per game	50.0	47.0
Scoring margin	+3.0	-
FIELD GOALS-ATT	21-64	16-58
Field goal pct	.328	.276
3 POINT FG-ATT	1-5	5-22
3-point FG pct	.200	.227
3-pt FG made per game	1.0	5.0
FREE THROWS-ATT	7-11	10-14
Free throw pct	.636	.714
F-Throws made per game	7.0	10.0
REBOUNDS	46	40
Rebounds per game	46.0	40.0
Rebounding margin	+6.0	-
ASSISTS	13	9
Assists per game	13.0	9.0
TURNOVERS	16	20
Turnovers per game	16.0	20.0
Turnover margin	+4.0	-
Assist/turnover ratio	0.8	0.5
STEALS	13	8
Steals per game	13.0	8.0
BLOCKS	9	3
Blocks per game	9.0	3.0
ATTENDANCE	2090	0
Home games-Avg/Game	1-2090	0-0
Neutral site-Avg/Game	-	0-0

Date	Opponent	Score	Att.
* 01-03-13	ARKANSAS	w 50-47	2090

+ - Sheraton Raleigh Wolfpack Invitational (Raleigh, N.C.)

& - Omni Hotels Classic (Boulder, Colo.)

* - Southeastern Conference game

Score by Periods	1st	2nd	Totals
Auburn	19	31	50
Opponents	20	27	47

2012-13 Season Statistics

RECORD:	OVERALL	HOME	AWAY	NEUTRAL
ALL GAMES	12-2	8-0	2-1	2-1
CONFERENCE	1-0	1-0	0-0	0-0
NON-CONFERENCE	11-2	7-0	2-1	2-1

#	Player	gp-gs	min	avg	Total		3-Point		F-Throw		Rebounds										pts	avg
					fg-fga	fg%	3fg-fga	3fg%	ft-fa	ft%	off	def	tot	avg	pf	dq	a	to	blk	stl		
00	Muhammad, Hasina	14-12	392	28.0	92-207	.444	4-12	.333	37-63	.587	37	43	80	5.7	26	0	33	32	18	40	225	16.1
32	Tanner, Tyrese	14-14	402	28.7	67-174	.385	2-18	.111	41-51	.804	29	32	61	4.4	28	1	20	26	16	31	177	12.6
14	Alverson, Blanche	14-14	436	31.1	63-135	.467	24-59	.407	11-13	.846	13	65	78	5.6	19	0	25	20	14	27	161	11.5
44	Tanner, Tra'cee	14-0	239	17.1	45-79	.570	0-0	.000	17-24	.708	24	31	55	3.9	29	0	8	11	9	10	107	7.6
34	Davis, Peyton	14-14	313	22.4	40-82	.488	0-0	.000	17-43	.395	40	46	86	6.1	35	1	5	26	15	12	97	6.9
03	Ouardad, Najat	14-14	411	29.4	27-62	.435	11-28	.393	13-22	.591	17	40	57	4.1	20	0	91	56	0	44	78	5.6
11	Strain, Courtney	13-2	174	13.4	24-56	.429	2-15	.133	4-6	.667	4	8	12	0.9	10	0	6	8	0	7	54	4.2
21	Clay, Chadarryl	13-0	105	8.1	10-33	.303	5-18	.278	5-7	.714	6	7	13	1.0	8	0	21	16	2	5	30	2.3
20	West, Pascale	9-0	57	6.3	8-14	.571	0-0	.000	0-0	.000	1	6	7	0.8	10	0	0	3	3	2	16	1.8
04	Sweeting, Cedricka	10-0	64	6.4	6-11	.545	1-5	.200	0-0	.000	1	4	5	0.5	1	0	11	5	0	2	13	1.3
22	King, Julie	14-0	122	8.7	8-24	.333	0-3	.000	1-3	.333	7	15	22	1.6	11	0	20	5	2	6	17	1.2
35	Capers, Cabriana	13-0	85	6.5	7-13	.538	0-0	.000	1-4	.250	14	20	34	2.6	4	0	5	5	0	0	15	1.2
	Team										31	31	62				4					
	Total.....	14	2800		397-890	.446	49-158	.310	147-236	.623	224	348	572	40.9	201	2	245	217	79	186	990	70.7
	Opponents.....	14	2800		268-787	.341	101-326	.310	129-184	.701	193	310	503	35.9	208	5	178	317	29	105	766	54.7

TEAM STATISTICS	AU	OPP
SCORING	990	766
Points per game	70.7	54.7
Scoring margin	+16.0	-
FIELD GOALS-ATT	397-890	268-787
Field goal pct	.446	.341
3 POINT FG-ATT	49-158	101-326
3-point FG pct	.310	.310
3-pt FG made per game	3.5	7.2
FREE THROWS-ATT	147-236	129-184
Free throw pct	.623	.701
F-Throws made per game	10.5	9.2
REBOUNDS	572	503
Rebounds per game	40.9	35.9
Rebounding margin	+4.9	-
ASSISTS	245	178
Assists per game	17.5	12.7
TURNOVERS	217	317
Turnovers per game	15.5	22.6
Turnover margin	+7.1	-
Assist/turnover ratio	1.1	0.6
STEALS	186	105
Steals per game	13.3	7.5
BLOCKS	79	29
Blocks per game	5.6	2.1
ATTENDANCE	16065	8119
Home games-Avg/Game	8-2008	3-1076
Neutral site-Avg/Game	-	3-1631

Date	Opponent	Score	Att.
+ 11-09-12	vs Maine	w 71-41	2109
+ 11-10-12	at NC State	L 71-85	1586
11-15-12	ALABAMA STATE	w 80-43	3511
11-18-12	ALABAMA A&M	w 93-44	1768
& 11-23-12	vs San Diego State	L 57-78	1245
& 11-24-12	vs Texas A&M-Corpus Chr	w 72-57	1538
11-28-12	at Tulane	w 70-65	1236
12-09-12	HOFSTRA	w 68-58	1535
12-12-12	at George Washington	w 69-59	405
12-16-12	TEMPLE	w 71-49	1662
12-19-12	UT-CHATTANOOGA	w 53-40	1591
12-22-12	JACKSONVILLE	w 85-49	1699
12-29-12	SAMFORD	w 80-51	2209
* 01-03-13	ARKANSAS	w 50-47	2090

+ - Sheraton Raleigh Wolfpack Invitational (Raleigh, N.C.)

& - Omni Hotels Classic (Boulder, Colo.)

* - Southeastern Conference game

Score by Periods	1st	2nd	Totals
Auburn	468	522	990
Opponents	342	424	766

Radio/TV Roster



Hasina Muhammad
Sophomore • G • 6-1
Memphis, Tenn.
Ridgeway



Najat Ouwardad
Senior • G • 5-1
Orleans, France
Pensacola State College



Cedricka Sweeting
Freshman • G • 5-5
Nassau, Bahamas
South Broward (Fla.)



Courtney Strain
Redshirt Sophomore • G • 5-9
Woodland, Ala.
Woodland



Blanche Alverson
Senior • G/F • 6-3
Andalusia, Ala.
Buford (Ga.)



Pascale West
Senior • C • 6-8
LaGrange, Ga.
Troup County



Chadarryl Clay
Freshman • G • 5-7
Chattanooga, Tenn.
Girls Preparatory School



Julie King
Senior • G • 5-9
St. Louis, Mo.
Nerinx Hall



Tyrese Tanner
Junior • F • 6-1
Birmingham, Ala.
Hoover



Peyton Davis
Junior • C • 6-5
Pinson, Ala.
Mortimer Jordan



Cabriana Capers
Freshman • F • 6-1
Bolingbrook, Ill.
Bolingbrook



Nicole Tanner
Freshman • F/C • 6-3
Birmingham, Ala.
Hoover



Ty Evans
Assistant Coach
Wisconsin-Whitewater (1995)
First Season at Auburn



Caroline McCombs
Assistant Coach
Youngstown State (1998)
First Season at Auburn



Adrian Walters
Assistant Coach
St. Francis (Pa.) (1987)
First Season at Auburn



Terri Williams-Flournoy
Head Coach
Penn State (1991)
155-106 Overall (9th Season)
12-2 at Auburn (1st Season)