



2011-12 Auburn Women's Basketball

Game 8 • December 14, 2011

vs. South Florida • Doubleheader

18 NCAA Tournament Appearances • Three Final Fours • Five SEC Titles • Four SEC Tournament Titles

AUBURN MEDIA RELATIONS

Associate Director/WBB Contact: Matt Crouch • mcrouch@auburn.edu

Auburn Athletic Complex / 392 South Donahue / Auburn, AL 36849

O: 334.844.9800 • C: 334.740.4109 • F: 334.844.9807

www.AuburnTigers.com

Twitter: @AuburnWBB • Facebook: [facebook.com/AUWBB](https://www.facebook.com/AUWBB)

2011-12 SCHEDULE/RESULTS

OCTOBER		
30	Georgia College	W, 85-25
NOVEMBER		
11	at Mercer	W, 77-43
15	Belmont	W, 80-53
18	at Duke	L, 50-73
23	George Washington	W, 55-47
27	South Carolina-Upstate	W, 75-34
30	Troy	W, 74-47
DECEMBER		
3	at Temple	L, 57-73
14	South Florida	6 p.m.
18	Purdue	2 p.m.
21	1-vs. Marist	1:30 p.m.
22	1-vs. Hofstra or Central Conn. St.	TBA
29	2-vs. North Carolina-Charlotte	7 p.m.
30	2-vs. FIU or Albany	3 or 5 p.m.
JANUARY		
1	Tennessee* (CSS)	2 p.m.
5	at Alabama*	6:30 p.m.
8	Georgia* (CSS)	1 p.m.
12	at Vanderbilt* (CSS)	8 p.m.
15	at Arkansas* (FSN)	1:30 p.m.
19	South Carolina*	6 p.m.
22	at Mississippi State*	2 p.m.
26	Kentucky*	6 p.m.
29	at Ole Miss* (FSN)	1 p.m.
FEBRUARY		
2	Vanderbilt*	6 p.m.
5	at Tennessee* (SECN)	1 p.m.
9	at Florida*	6 p.m.
12	Arkansas* (ESPN2)	1:30 p.m.
19	at LSU*	2 p.m.
23	Alabama* (CSS)	8 p.m.
26	Ole Miss* (FSN)	2:30 p.m.
MARCH		
1-4	Southeastern Conference Tournament Nashville, Tenn. • Bridgestone Arena	
17-20	NCAA Tournament First and Second Rounds	
24-27	NCAA Tournament Regionals	
APRIL		
1-3	NCAA Tournament Final Four Denver, Colo. • Pepsi Center	

* - SEC Game

All Times are Central

1 - Hofstra Holiday Classic (Hempstead, N.Y.)

2 - Sun and Fun Classic (Miami, Fla.)

All home games played at Auburn Arena

Bold indicates home games

www.AuburnTigers.com



VS.



GAME 8

[NR/NR] Auburn (5-2) vs. [NR/NR] South Florida (6-4)

When: Wednesday, December 14 • 6 p.m. CT

Where: Auburn Arena (9,121) • Auburn, Ala.

TV/Webcast: AuburnTigers.com

Radio: 96.7 WMXA; Andy Burcham (play-by-play), Arnika Edwards (color)

Audio Webcast: AuburnTigers.com

GameTracker: AuburnTigers.com

Series: Auburn trails in the series, 0-1 (First Meeting in Auburn)

Last Meeting: USF def. Auburn, 49-67, on Nov. 22, 2010 in Tampa, Fla.

Last Meeting in Auburn: First Meeting

Up Next: Auburn will remain at home for a 12 p.m., Sunday meeting with nationally-ranked Purdue in Auburn Arena

AUBURN PROJECTED STARTERS

No.	Pos.	Name	Ht.	Year	PPG	RPG	Hometown
2	G	Morgan Jennings	5-8	Sr.	6.1	(apg) 4.6	Atlanta, Ga.
3	G	Najat Ouardad	5-1	Jr.	3.6	(apg) 4.0	Orleans, France
4	G	Parrisha Simmons	6-0	Sr.	4.4	5.9	Macon, Ga.
23	F	Chantel Hilliard	6-2	Sr.	5.6	4.1	Biloxi, Miss.
32	G/F	Tyrese Tanner	6-1	So.	10.6	4.1	Birmingham, Ala.

OFF THE BENCH

0	G	Hasina Muhammad	6-1	Fr.	10.7	3.9	Memphis, Tenn.
11	G	Courtney Strain	5-9	So.	--	--	Woodland, Ala.
14	F	Blanche Alverson	6-3	Jr.	9.1	4.4	Andalusia, Ala.
20	C	Pascale West	6-8	Jr.	0.7	1.8	LaGrange, Ga.
22	G	Camille Glymph	5-10	So.	10.0	2.3	Greenville, S.C.
25	F	Jassany Williams	6-2	So.	6.1	4.4	Davie, Fla.
34	C	Peyton Davis	6-5	So.	0.0	3.5	Pinson, Ala.

Head Coach: Nell Fortner / Associate Head Coach: Kerry Cremeans / Assistant Coaches: Mark Simons and Carla McGhee

SOUTH FLORIDA PROJECTED STARTERS

No.	Pos.	Name	Ht.	Year	PPG	RPG	Hometown
1	G	Jasmine Wynne	5-7	Sr.	14.0	5.9	Jacksonville, Fla.
3	G	Kaneisha Saunders	5-7	Jr.	12.3	3.0	Delray Beach, Fla.
11	F	Caitlin Rowe	6-4	Jr.	8.0	5.0	Canberra, Australia
12	G	Andrell Smith	5-8	Jr.	10.4	4.5	Lakeland, Fla.
32	F	Akila McDonald	6-4	So.	5.7	4.5	Decatur, Ga.

Head Coach: Jose Fernandez / Assistant Coaches: Jeff Osterman, Carrie Banks and Michele Woods-Baxter

Media Information

The Auburn media relations department considers its work with the media a top priority. The 2011-12 Auburn Women's Basketball Almanac has been prepared to assist the working media in their coverage of Tiger basketball. If you have not received a copy, or if you need additional information, interview or photograph requests, or have any questions, please contact Matt Crouch in the media relations office at 334.844.9709.

Interview Policy

Coach Fortner, her assistants and all women's basketball players are available for phone and personal interviews by contacting Matt Crouch in the media relations office. Post-game interviews will be allowed following a 10-minute cooling off period. Non-game day requests will be met based on the players class and practice schedules.

Credentials

Anyone wishing to cover an Auburn women's basketball game should contact Matt Crouch in the media relations office at least one day in advance in order to make the proper arrangements.

On the Air

The Tigers can be heard live locally in Auburn on Mix 96.7 FM for the entire regular and postseasons. Andy Burcham, in his 24th season with the women's basketball program and handles play-by-play duties. Arnika Edwards joins Burcham for her fifth season and provides color commentary. Each game can also be heard live on the internet at www.AuburnTigers.com.

Weekly Live Radio Show

Starting in January, every Tuesday at 6 p.m. CT Nell Fortner will host a live show from Logan's Roadhouse in Tiger Town with Andy Burcham. Fans can listen to the show on 96.7 FM. The number to call in to the show is 1-800-282-2557.

Game-Day Services

Statistics, rosters and game notes will be provided prior to the game in the media work room. Box scores will also be handed out during and following the game. Phones and fax machines are available in the media work room.

Photo/Video Services

Todd Van Emst of the Auburn Media Relations office handles all photo requests. Please contact Van Emst at 334-844-9514. Video highlights of selected Auburn women's basketball games are available for the media. For information on how to access the FTP server, contact Steve Sain in the Auburn Media Relations office at 334.844.9809.

On the Web

The home for Auburn Athletics on the web, www.AuburnTigers.com, is your source for Auburn Women's Basketball. The website offers the most recent information and news on the Tigers. At AuburnTigers.com, you can also listen to each women's basketball game broadcast live and follow along on live scoring for every home game.



Follow Auburn Women's Basketball on Twitter

@AuburnWBB



Become a fan of Auburn Women's Basketball on Facebook

www.Facebook.com/AUWBB

2011-12 Numerical Roster

No.	Name	Height	Position	Class	Hometown/High School
0	Hasina Muhammad	6-1	Guard/Forward	FR	Memphis, Tenn./Ridgeway
2	Morgan Jennings	5-8	Guard	SR	Atlanta, Ga./Frederick Douglass
3	Najat Ouardad	5-1	Guard	JR	Orleans, France/Pensacola St. College
4	Parrisha Simmons	6-0	Guard	SR	Macon, Ga./Southwest Macon
11	Courtney Strain	5-9	Guard	SO	Woodland, Ala./Woodland
14	Blanche Alverson	6-3	Foward/Guard	JR	Andalusia, Ala./Buford (Ga.)
20	Pascale "P.J." West	6-8	Center	JR	LaGrange, Ga./Troup County
22	Camille Glymph	5-10	Guard	SO	Greenville, S.C./J.L. Mann
23	Chantel Hilliard	6-2	Forward/Center	SR	Biloxi, Miss./St. Martin
25	Jassany Williams	6-2	Forward	SO	Davie, Fla./Nova
32	Tyrese Tanner	6-1	Guard/Forward	SO	Birmingham, Ala./Hoover
34	Peyton Davis	6-5	Center	SO	Pinson, Ala./Mortimer Jordan

2011-12 Alphabetical Roster

No.	Name	Height	Pos.	Ht.	Hometown
14	Blanche Alverson	6-3	Foward/Guard	JR	Andalusia, Ala./Buford (Ga.)
34	Peyton Davis	6-5	Center	SO	Pinson, Ala./Mortimer Jordan
22	Camille Glymph	5-10	Guard	SO	Greenville, S.C./J.L. Mann
23	Chantel Hilliard	6-2	Forward/Center	SR	Biloxi, Miss./St. Martin
2	Morgan Jennings	5-8	Guard	SR	Atlanta, Ga./Frederick Douglass
0	Hasina Muhammad	6-1	Guard/Forward	FR	Memphis, Tenn./Ridgeway
3	Najat Ouardad	5-1	Guard	JR	Orleans, France/Pensacola St. College
4	Parrisha Simmons	6-0	Guard	SR	Macon, Ga./Southwest Macon
11	Courtney Strain	5-9	Guard	SO	Woodland, Ala./Woodland
32	Tyrese Tanner	6-1	Guard/Forward	SO	Birmingham, Ala./Hoover
20	Pascale "P.J." West	6-8	Center	JR	LaGrange, Ga./Troup County
25	Jassany Williams	6-2	Forward	SO	Davie, Fla./Nova

STAFF:

Head Coach: Nell Fortner (Texas, 1982)

Associate Head Coach: Kerry Cremeans (Florida, 1994)

Assistant Coach: Mark Simons (Aquinas College, 1972)

Assistant Coach: Carla McGhee (Tennessee, 1990)

Director of Basketball Operations: Melissa Maines (Texas Tech, 1998)

Video Coordinator: Wes Kitchens (Auburn, 2011)

Administrative Assistant: Janese Banks (Wisconsin, 2008)

Director of Administrative Support Services: Arnika Edwards (Alabama A&M, 1991)

Athletic Trainer: Angie Lawrence (Appalachian State, 1997)

BY CLASS:

Seniors (3): Chantel Hilliard, Morgan Jennings, Parrisha Simmons

Juniors (3): Blanche Alverson, Najat Ouardad, Pascale "P.J." West

Sophomores (5): Peyton Davis, Camille Glymph, Courtney Strain, Tyrese Tanner, Jassany Williams

Freshmen (1): Hasina Muhammad

Projected Auburn Starters



Morgan Jennings

Guard
5-8
Senior
Atlanta, Ga.
Frederick Douglass High School
6.1 ppg / 4.6 apg / 4.6 rpg

2

- Leads Auburn and ranks 68th in the nation with 4.6 assists per game
- Had 3 rebounds and 2 assists last season at South Florida
- Dished out career-high 9 assists vs. Belmont in home-opener
- Scored career high 16 points vs. Kentucky in final regular-season game



Najat Ouardad

Guard
5-1
Junior
Orleans, France
Pensacola State College
3.6 ppg / 4.0 apg / 2.3 spg

3

- Is averaging 4.7 points, 5.7 assists and 2.3 steals per game as a starter
- Her 5 steals vs. Troy were the most for an Auburn player since 2008-09 season
- Dished out 8 assists with season-high 7 points vs. USC-Upstate
- In her first season at Auburn after transferring from Pensacola State College



Parrisha Simmons

Guard/Forward
6-0
Senior
Macon, Ga.
Southwest Macon High School
4.4 ppg / 5.9 rpg / 1.1 spg

4

- Has started last three games after coming off the bench in the first four
- Leads Auburn in rebounding with 5.9 per game, including 3.9 orpg
- Tied her career high with 9 points at Temple
- Pulled down season-high 10 boards vs. South Carolina-Upstate



Chantel Hilliard

Forward/Center
6-2
Senior
Biloxi, Miss.
St. Martin High School
5.6 ppg / 4.1 rpg / .543 fg%

23

- Led Auburn with 16 points and 7 rebounds last season at South Florida
- Scored a season-high 12 points vs. USC-Upstate
- Pulled down season-high nine boards vs. Belmont
- Tallied career-highs of 18 points and 11 rebounds last season vs. MSU



Tyrese Tanner

Guard/Forward
6-1
Sophomore
Hoover, Ala.
Hoover High School
10.6 ppg / 4.1 rpg / 1.1 spg

32

- Scored 2 points with 3 rebounds and 3 assists last season at South Florida
- Is Auburn's second-leading scorer with 10.6 points per game
- Is one of two Tigers to start in all 7 games so far this season
- Coming off an 9-point, 6-rebound effort at Temple

Auburn Women's Basketball Quick Hitters

- Senior Chantel Hilliard earned her degree in political science from Auburn on Dec. 12
- Wednesday's game is the first of a doubleheader with the Auburn men's team
- Jassany Williams (2.9 bpg) ranks 18th in the nation in blocks
- Auburn is 5-2 through seven games; the team's best start since the 2008-09 season
- Auburn picked up its 800th win in program history on Nov. 15 against Belmont, 80-53
- Blanche Alverson is two 3-pointers away from tying for 6th all-time at Auburn in career 3-pointers
- Jassany Williams is the lone Florida native on Auburn's roster
- USF is coming off a 73-70 win at Air Force; Auburn is coming off a 73-57 loss at Temple
- The Tigers used their third different starting lineup against USC-Upstate, eight different Tigers have started this season
- The Tigers trail the all-time series with South Florida, 0-1; this is the first meeting between the teams in Auburn
- South Florida won the last meeting with AU, 67-49 on Nov. 22, 2010
- Auburn is 19-10 all-time against teams from the Big East Conference
- Nell Fortner is 0-1 all-time when facing USF Head Coach Jose Fernandez
- Seven current Tigers faced South Florida last season; senior Chantel Hilliard leads the group with 16 points vs. the Bulls
- Auburn is 12-2 all-time on Dec. 14 and 196-52 all-time in the month of December, 37-10 under Fortner
- The Tigers are 52-20 all-time when playing a team from the State of Florida
- Auburn is 89-2 under Nell Fortner when scoring 70 or more points in a game
- Nell Fortner has guided Auburn to a 84-36 record in non-conference games
- Auburn's bench has out-scored the opponent in two games this season
- Auburn's defense has averaged scoring 20.3 points off turnovers in the six games this season
- The Tiger bench has stepped up, averaging 28.9 points per game this season
- Nell Fortner has guided Auburn to an 84-36 record in non-conference games
- When facing non-conference opponents at home, Auburn has a 133-10 record since Jan. 5, 1992
- Auburn returned seven players that had seen time as a starter, accounting for 123 career starts
- The Tigers return three starters from last season, along with seven players who saw time as a starter a year ago
- Auburn was picked ninth in the SEC Preseason Media and Coaches polls, Tennessee was picked to win the league
- Nell Fortner is in her eighth season at Auburn, marking her longest tenure at any job
- The Tigers welcome two newcomers: junior college transfer Najat Ouardad and freshman Hasina Muhammad
- Auburn is coming off a 16-16 season in 2010-11, one that ended with a berth in the WNIT
- The Tigers have advanced to the post-season in four of the last five seasons
- Auburn signed four players during the Early Signing Period: Cabriana Capers (6-1, F, Bolingbrook, Ill.), Chadarryl Clay (5-7, G, Chattanooga, Tenn.), Nicole Tanner (6-3, F, Hoover, Ala.) and Nariah Taylor (6-5, P, Indianapolis, Ind.)

INDIVIDUAL CATEGORY LEADERS

Auburn		South Florida
Hasina Muhammad - 10.7	Points	Jasmine Wynne - 14.0
Parrisha Simmons - 5.9	Rebounds	Jasmine Wynne - 5.9
Morgan Jennings - 4.6	Assists	Kaneisha Saunders - 3.5
Najat Ouardad - 2.3	Steals	Jasmine Wynne - 2.9
Jassany Williams - 2.9	Blocks	Akila McDonald - 2.0
Morgan Jennings - 29.1	Minutes Played	Jasmine Wynne - 30.0
Jassany Williams - .559	Field Goal Percentage	Akila McDonald - .615
Blanche Alverson - .407	3-Point Percentage	Andre Smith - .358
Blanche Alverson - .778	Free-Throw Percentage	Kaneisha Saunders - .795

AUBURN WOMEN'S BASKETBALL WEEKLY SCHEDULE

	Monday 12	Tuesday 13	Wednesday 14	Thursday 15	Friday 16	Saturday 17	Sunday 18
Dec. 12 through Dec. 18	Practice 2 - 4:30 p.m. Auburn Arena	Practice 12 - 3 p.m. Auburn Arena	Auburn vs. South Florida 6 p.m. CT Auburn Arena	OFF	Practice 10 a.m. - 1 p.m. Auburn Arena	Practice 10 a.m. - 1 p.m. Auburn Arena	Auburn vs. Purdue 2 p.m. CT Auburn Arena

General Information

School..... Auburn University
City / Zip..... Auburn, Ala. / 36831
Founded..... Oct. 1, 1856
Enrollment..... 24,602
Nickname..... Tigers
Colors..... Burnt Orange and Navy Blue
Home Court (Capacity)..... Auburn Arena (9,121)
Affiliation..... NCAA Division I
Conference..... Southeastern Conference
President..... Dr. Jay Gogue
Athletic Director..... Jay Jacobs
Senior Women's Administrator..... Meredith Jenkins
University Website..... www.Auburn.edu

Team Information

2010-11 Record (SEC Record)..... 16-16 (8-8)
SEC Finish / Tournament Finish..... T5th / First Round
All-time SEC Record..... 187-157 (.544)
All-time SEC Tournament Record..... 34-28
Starters Returning/Lost..... 3/2
Letterwinners Returning/Lost..... 10/3
Newcomers..... 2
First Year of Basketball..... 1971
All-Time Overall Record..... 803-363 (.689)
NCAA Tournament Appearances/Last..... 18/2009
NCAA Tournament Record..... 29-18
WNIT Appearances/Last..... 3/2011
WNIT Record..... 8-2

Basketball Staff

Head Coach (Alma Mater)..... Nell Fortner (Texas, 1982)
Career Record..... 154-102 (.602) / 9 years
Record at Auburn..... 137-91 (.601) / 8 years
Associate Head Coach (Alma Mater)..... Kerry Creameans (Florida, 1994)
Assistant Coaches (Alma Mater)..... Mark Simons (Aquinas College, 1972)
..... Carla McGhee (Tennessee, 1990)
Director of Basketball Operations..... Melissa Maines
Director of Administrative Support Services..... Arnika Edwards
Administrative Assistant..... Janese Banks
Video Coordinator..... Wes Kitchens
Secretary..... Ann Yates
Basketball Office Phone..... (334) 844-9200
Basketball Office Fax..... (334) 844-9862
Strength and Conditioning..... Megan Young
Athletic Trainer..... Angie Lawrence
Academic Counselor..... Jenna Sample

Radio Broadcast Information

Radio Station..... WMXA (96.7 FM)
Play-by-Play..... Andy Burcham
Color..... Arnika Edwards
Burcham Email..... aburcham@ounetwork.com
Burcham Office Phone..... (334) 826-2929
Network Address..... Auburn Network, Inc.
..... P.O. Box 950
..... Auburn, AL 36831-0950

SOUTH FLORIDA MEDIA RELATIONS

For information on the South Florida Bull women's basketball team, contact Charlie Terenzio in the media relations office. His number is 813.480.3766 and his email is cterenzi@usf.edu.

For more information, go to www.GoUSFBulls.com.

OFFICIALS

TBA

RANKINGS

Auburn and South Florida are not ranked.

NEXT UP FOR THE TIGERS

Auburn will play its final home game of 2011 on Sunday, Dec. 18 as the Tigers host nationally-ranked Purdue at 2 p.m. at Auburn Arena.

AUBURN'S POST-GAME PROCEDURE

The Auburn locker room is closed. Coach Nell Fortner and selected Tiger players will be brought to the interview room after the 10-minute "cooling off" period.

QUICK HITS

Auburn is in its 41st season of women's basketball and sports an all-time record of 803-363... AU has made 18 NCAA Tournament appearances, three WNIT appearances and three Final Fours in the program's history... Head Coach Nell Fortner is in her eighth season at Auburn with a 154-102 career record and a 137-91 record on the Plains... The Tigers are coming off a 16-16 season in 2011 with an appearance in the second round of the WNIT.

800 AND COUNTING

Auburn picked up its 800th program victory Nov. 15, defeating Belmont 80-53. Of the 800 wins, Auburn head coach Nell Fortner had coached the Tigers to 134 of them.

By reaching 800, the Tigers became the 14th team in NCAA Division I history to reach the 800-win plateau.

AUBURN-SOUTH FLORIDA SERIES

This will be the second meeting between Auburn and South Florida with the Bulls holding a 1-0 advantage. The Tigers lost the only previous meeting vs. USF, falling 67-49 in Tampa, Fla., on Nov. 22, 2010.

Previous meetings against South Florida:

Nov. 17, 2010	L	49-67	Tampa, Fla.
---------------	---	-------	-------------

FLORIDA TIGER

Sophomore Jassany Williams is the lone Florida native on Auburn's roster. She attended Nova High School in Davie, Fla.

SCOUTING SOUTH FLORIDA

The South Florida Bulls are coming off an 11-day break and a 73-70 victory at Air Force before taking on the Tigers at Auburn Arena. The Bulls started the season off by dropping the first two games to Florida State and Arkansas, before going on a four-game winning streak. During their streak, the Bulls knocked off Minnesota, North Florida, Bethune Cookman and Central Michigan in overtime. After suffering a 20-point loss to Miami (Fla.), USF bounced back with a 77-62 win over Stetson. The Bulls dropped a 76-63 decision to Idaho State before defeating Air Force.

The Bulls are led by senior point guard Jasmine Wynne who is leading the team in points with 14.0 and in rebounds with 5.9. Junior guard Kaneisha Saunders has also been a key contributor averaging 12.3 points a game while also leading the team in assists with 3.5. Junior Andreell Smith is also averaging double figures for USF, tallying 10.4 points per game.

SCOUTING AUBURN

Auburn is off to its best start since the 2008-09 season, posting a 5-2 slate through the first seven games. Head coach Nell Fortner has utilized the team's depth so far this season with three different starting lineups and eight different players seeing time as a starter.

The Tigers' losses this season have come on the road, first at No. 8 Duke and again at Temple. But, the five wins have come at an average margin of 27.4 points per game.

Through seven games in 2011-12, freshman Hasina Muhammad leads the team in scoring with 10.7 points per game and is joined in double figures by Tyrese Tanner with 10.6 points per game and Camille Glymph with 10.0 points per game. Four other Tigers are averaging more than 5.0 points per game, led by Blanche Alverson with 9.1 points per game. Senior Morgan Jennings leads the team with 4.6 assists per game while sophomore Jassany Williams is 18th in the country with 2.9 blocks per game.

Statistical Comparison - Auburn vs. South Florida

Coch:	Auburn Nell Fortner	South Florida Jose Fernandez
Career Record:	154-102	176-172
Top Scorer:	Muhammad (10.7)	Wynne (14.0)
Top Rebounder:	Simmons (6.2)	Wynne (5.9)
Series Record:	Auburn trails, 0-1	
- at Auburn	First Meeting	
- at Tampa, Fla.	Auburn trails, 0-1	
- at Neutral	N/A	
- Overall Streak	Auburn has lost the only meeting	
Record	5-2	6-4
Conference Record	--	--
Points Per Game	66.9	68.9
Scoring Margin	+14.0	+5.3
FG Percentage	.415	.382
Opp. FG %	.355	.363
3FG Percentage	.348	.305
Opp. 3FG %	.275	.290
Rebounds	41.7	41.6
Opp. Rebounds	35.1	44.4
Rebound Margin	+6.6	-2.8
Turnovers	15.4	18.6
Opp. Turnovers	18.9	23.0
Steals	10.4	12.1
Opp. Steals	8.3	8.6
Blocks	6.9	4.9
Opp. Blocks	1.3	3.6

Around the SEC (Through Games of Dec. 12, 2011)

	SEC	Pct.	Overall	Pct.
Kentucky	0-0	.000	10-0	1.000
Vanderbilt	0-0	.000	10-0	1.000
Arkansas	0-0	.000	8-1	.889
Georgia	0-0	.000	8-1	.889
Mississippi State	0-0	.000	7-2	.778
South Carolina	0-0	.000	7-2	.778
Ole Miss	0-0	.000	6-2	.750
Auburn	0-0	.000	5-2	.714
Tennessee	0-0	.000	5-2	.714
Florida	0-0	.000	7-3	.700
Alabama	0-0	.000	7-4	.636
LSU	0-0	.000	4-3	.571

This Week in the SEC

Tuesday, December 13

Tennessee at Rutgers (ESPN)	6 p.m.
UCLA at LSU (CST)	7 p.m.

Wednesday, December 14

South Carolina State at South Carolina	11 a.m.
Central Michigan at Ole Miss	2:30 p.m.
South Florida at Auburn	6 p.m.

Friday, December 16

Ole Miss at Lipscomb	6:30 p.m.
LSU at McNeese State	7 p.m.
Southern Mississippi at Mississippi State	7 p.m.

Saturday, December 17

Tennessee at UCLA	4 p.m.
Alabama at Alabama State	6 p.m.

LAST TIME OUT FOR AUBURN

The Auburn women's basketball team suffered its second loss of the season Dec. 3, falling at Temple, 73-57. Camille Glymph led the Tigers off the bench with 12 points while Parrisha Simmons tied her career high with nine.

Auburn was down 25-31 with 3:27 to go in the first half, but was out-scored 14-2 in the final stretch, thanks partly to two Temple 3-pointers in the final 12 seconds, giving the Owls a 47-25 halftime lead. The Tigers out-scored Temple, 30-28, in the second half, but could not overcome the first-half difference.

Temple was led by Shey Peddy with 27 points and five steals. Nineteen of Peddy's points came in the second half when the Owls extended their lead to as many as 23 points. Auburn came back, however, and cut the margin to 16 by the final horn.

Auburn struggled from the field, shooting 35.0 percent (21-of-60) from the field, but was 35.3 percent (6-of-17) from beyond the arc. Temple was able to capitalize on Auburn turnovers and score in transition. The Owls forced 16 Auburn turnovers and scored 21 points off them, including 16 fast-break points.

Along with Simmons, sophomore Tyrese Tanner scored nine points with six rebounds and a team-high three steals. Senior Morgan Jennings led the Tigers on the boards with seven rebounds along with her seven points and two assists. Freshman Hasina Muhammad also scored seven points.

LAST TIME OUT FOR SOUTH FLORIDA

South Florida trailed by as many as 12 points early in the second half, but a 22-8 run for the Bulls gave USF a lead it would not give up. South Florida led by as many as six points late in the game, holding on for the 73-70 win over Air Force.

Jasmine Wynne led USF with 18 points, followed by Andreell Smith with 12. Caitlin Rowe pulled down a team-high six rebounds along with five points.

USF used its defense to fuel its offense, scoring 32 points off turnovers. The Bulls tallied 28 steals in the game, forcing 36 Air Force turnovers. Tiffany Connor came off the bench for eight steals and was joined by Sasha Bernard with six. Wynne and Kaneisha Saunders collected five steals each.

LAST TIME VS. SOUTH FLORIDA

Playing on the road for the first time last season, Auburn struggled from the field, shooting 29 percent, as South Florida pulled out the 67-49 win. Junior Chantel Hilliard scored 16 points off the bench to lead the Tigers in the loss.

South Florida scored 22 of the first 25 points of the game, taking a 22-3 lead with 12:01 to go in the first half. The Tigers were able to get back on their feet, out-scoring USF 21-14 during the rest of the period to cut the Bull lead to 12 at halftime, 36-24.

Auburn came out of the locker room on a mission, scoring the first eight points, four from Hilliard, to cut the lead to four in the first three minutes of the second half, forcing USF to call at timeout at the 17:23 mark. That would be as close as the Tigers would come, though, as the Bulls came out of the timeout scoring the next four points to put its lead back to eight.

Led by 10 second-half points each from Hilliard and senior Jordan Greenleaf, Auburn was able to keep the South Florida lead in single digits for most of the remainder of the half.

A Hilliard layup cut the lead to seven with 7:58 to play, but that is as close as Auburn would get in the final minutes as USF's Andrea Smith answered with a 3-pointer, one of her eight on the

night, to build the lead back to 10 with 6:47 to go.

Smith's 3-pointer opened up a 16-5 USF run to finish the game, building the lead back to as much as 19 points as the Bulls cruised to the 67-49 win. Smith would go on to score a game-high 33 points.

FORTNER VS. FERNANDEZ

This will be the second time that Auburn's Nell Fortner and South Florida's Jose Fernandez will face each other with Fernandez having a 1-0 advantage.

Fortner is in her eighth season at Auburn and holds a 137-91 record on The Plains. Fernandez is in his 11th season at USF and holds a 176-172 record.

VS. THE BIG EAST CONFERENCE

Auburn is 19-10 all-time against current members of the Big East Conference. Auburn's last meeting with a Big East team came on Nov. 27, 2010 with the Tigers defeating Seton Hall 85-51.

ON THIS DATE...

Auburn is 12-2 all-time when playing on Dec. 14. This will be Nell Fortner's first game at Auburn on Nov. 14. The Tigers' last game on Dec. 14 was a 100-48 win over Prairie View A&M in 2003.

IN DECEMBER

Auburn is 196-52 all-time in the month of December, including a 37-10 mark under Nell Fortner (records begin in 1978-79 season, not all dates provided prior to or during that season).

AGAINST THE SUNSHINE STATE

Auburn holds a 52-20 all-time record against teams from the state of Florida. Records against Florida teams: Florida (33-15), Florida A&M (3-1), Florida International (2-1), Florida Southern (1-0), Florida State (9-3), Lynn (1-0), Rollins College (1-0), St. Leo (1-0) and Stetson (1-0).

DOUBLE THE FUN

Wednesday's game is a doubleheader with the men's basketball team, who is also playing South Florida.

THE GRADUATE

Auburn senior Chantel Hilliard got a step up on the next phase of her life on Dec. 12 as she graduated from Auburn with a degree in political science.

OFF AND RUNNING

Auburn is off to a 5-2 start on the season, the team's best start through seven games since it was 7-0 during the 2008-09 season.

Associated Press Top-25 Poll**Week 5 (Dec. 12)**

Rank	School	Record	Points	Pvs
1	Baylor (39)	10-0	975	1
2	Connecticut	9-0	930	2
3	Notre Dame	9-1	896	3
4	Stanford	6-1	852	4
5	Maryland	11-0	803	5
6	Tennessee	5-2	773	7
7	Miami (Fla.)	8-1	723	9
8	Kentucky	10-0	717	10
9	Duke	7-2	637	6
10	Texas A&M	7-2	575	8
11	Rutgers	9-1	560	11
12	Ohio State	8-0	547	13
13	Georgia	8-1	480	14
14	Louisville	8-2	457	15
15	Texas Tech	8-0	451	16
16	Penn State	8-2	364	17
17	Georgetown	9-2	316	19
18	North Carolina	7-1	313	18
19	Wisconsin-Green Bay	8-0	241	21
20	Vanderbilt	10-0	220	23
21	Delaware	8-0	209	22
22	Purdue	7-3	206	12
23	DePaul	8-2	166	20
24	Texas	6-2	130	25
25	Nebraska	9-1	54	NR

Others Receiving Votes: California 21, Virginia 11, Oklahoma 8, **LSU 8**, Southern California 7, Arizona State 4, **Arkansas 4**, Georgia Tech 3, Northwestern 3, Tulane 3, Brigham Young 2, Gonzaga 2, Michigan 2, Florida State 1, Kansas 1.

USA Today / ESPN Top-25 Coaches Poll**Week 4 (Dec. 6)**

Rank	School	Record	Points	Pvs
1	Baylor (29)	8-0	773	1
2	Connecticut (2)	7-0	745	2
3	Notre Dame	7-1	711	3
4	Stanford	6-1	681	5
5	Duke	6-1	630	6
6	Maryland	9-0	602	7
7	Texas A&M	6-1	578	4
8	Tennessee	4-2	567	8
9	Miami (Fla.)	7-1	539	9
10	Kentucky	8-0	520	10
11	Rutgers	8-1	421	12
12	Georgia	7-1	418	14
13	Louisville	7-2	367	11
14	Purdue	7-1	366	16
15	Ohio State	7-0	313	18
16	Wisconsin-Green Bay	7-0	292	17
17	North Carolina	5-1	272	13
18	Penn State	6-2	257	15
19	Vanderbilt	9-0	198	22
20	Georgetown	7-2	196	20
21	DePaul	6-1	182	21
22	Texas Tech	7-0	136	25
23	Oklahoma	3-2	128	18
24	Texas	5-2	69	22
25	Delaware	7-0	59	NR

Others Receiving Votes: Michigan 16, Gonzaga 15, Georgia Tech 12, Kansas 3, California 2, **Florida 2**, Princeton 1, Syracuse 1.

Bold denotes 2011-12 opponents

GOING TO THE BENCH

Auburn's bench has stepped up this season, scoring 202 points in the seven games, averaging 28.9 points per game. In two games alone, the Auburn bench has out-scored the opponent (35-34 vs. USC-Upstate and 48-47 against Troy).

Blanche Alverson led Auburn off the bench at Mercer, scoring 12 points, while Camille Glymph led the Tigers off the bench vs. Belmont, leading the way with 18 points, and again at Duke with 12 points. Parrisha Simmons came off the bench for seven points vs. George Washington and Alverson again came off the bench for a team-best 14 points vs. USC-Upstate. Against Troy, freshman Hasina Muhammad came off the bench for a career-high 19 points. Glymph again led the Tigers off the bench at Temple with 12 points.

DEPTH PROVIDES BOOST

Auburn has banked off its depth so far in the 2011-12 season, utilizing eight different starters in three different starting lineups. Four different players (Blanche Alverson, Camille Glymph, Hasina Muhammad and Tyrese Tanner) have led the Tigers in scoring this season.

IN THE NATIONAL RANKINGS

Auburn's Jassany Williams is ranked 18th in the nation in blocks per game with 2.9 in the Dec. 12 rankings. Senior Morgan Jennings is in the top 50 in assist-to-turnover ratio, coming in at 49th with a 2.0 ratio.

As a team, Auburn made the top 50 in six different categories: Scoring Defense (35th, 52.9 ppg), Scoring Margin (48th, +14.0 ppg) Rebound Margin (44th, +6.6 rpg), 3-point Field Goal Percentage (47th, .348), Assists Per Game (47th, 15.9 apg) and Assist-Turnover Ratio (21st, 1.03).

MOVING ON UP

Junior Blanche Alverson hit a 3-pointer as time expired on the shot clock with 6:48 to go in the game against George Washington, giving her 94 on her career, tying her with Shana Askew for seventh all-time at Auburn.

She combined to hit seven 3-pointers against USC-Upstate, Troy and at Temple, and needs just two 3-pointers to move into a tie for sixth with Carolyn Jones at 103.

BLOCK PARTY

Auburn blocked 13 shots against Troy on Nov. 30, marking the most blocked shots for the Tigers since swatting a school-record 17 against Alabama A&M on Nov. 19, 2009. It was also the second time this season for the Tigers to block more than 10 shots in a game.

LITTLE THIEF

Junior point guard Najat Ouardad collected five steals against Troy on Nov. 30, the most steals for an Auburn player since DeWanna Bonner picked up six against Tennessee on Jan. 25, 2009.

OFFENSE WINS GAMES

Auburn is 89-2 when scoring 70 or more points in the Nell Fortner era. The only times Auburn has lost when scoring at least 70 points was on Jan. 20, 2005 vs. No. 7 Tennessee, 71-81 and Feb. 19, 2009 at No. 18 Vanderbilt, 73-70. When scoring less than 70 points, Auburn is 48-89 during the Fortner era.

DEFENSE MAKES OFFENSE

In Auburn's first seven games of the season, the Tigers have used their defense to spark their offense. Auburn has forced 132 turnovers (18.9 per game) this season on 71 steals (10.1 per game), turning them into 20.3 points per game (142 total points).

Auburn has scored 20 or more points off turnovers in four games this season.

OUTSIDE THE LEAGUE

Nell Fortner has guided the Tigers to an 84-36 ledger in non-conference play. When playing at home, Fortner's teams have posted a 37-7 mark. The only seven non-conference losses at home came from Xavier on Dec. 2, 2005 (58-60), No. 2 Duke on Dec. 31, 2004 (61-80), No. 20 George Washington on Jan. 3, 2008 (66-68), No. 15 Texas A&M on Nov. 22, 2009 (59-79), No. 16 Florida State on Nov. 15, 2010 (61-67), No. 6 Duke on Nov. 18, 2010 (62-75) and Temple on Dec. 4, 2010 (62-61).

HOME COOKIN'

Since a 77-70 loss to Virginia on Jan. 5, 1992, the Auburn Tigers have compiled a 133-10 record against non-conference opponents when playing at home.

TIGERS PICKED NINTH IN PRESEASON POLL

Auburn was predicted to finish ninth in the SEC in a voting of a select panel of both SEC and national media members. Tennessee was picked to win the league with all 22 first-place votes.

The Lady Vols were followed by Georgia (228), Kentucky (212), LSU (189), Vanderbilt (172) and Florida (151) rounding out the top half of the league. Arkansas (142), South Carolina (107), Auburn (94), Alabama (55), Mississippi State (54) and Ole Miss (48) round out the bottom half.

STARTING EXPERIENCE

Auburn has seven players on its roster that had started at least one game prior to the 2011-12 season. That group of seven also combined for 123 career starts, led by Blanche Alverson with 45. Senior Parrisha Simmons has started 41 while her classmates, Chantel Hilliard and Morgan Jennings, have started 12 each.

NEW FACES

The Tigers welcome two new faces to the roster this season in Hasina Muhammad and Najat Ouardad. Muhammad is a true freshman from Memphis, Tenn., playing at Ridgeway High School. Ouardad, a native of Orleans, France, comes to Auburn from Pensacola State College.

MAKING IT HOME

Nell Fortner enters her eighth season as Auburn's head coach, marking her longest tenure at any position in her career. The longest Fortner had stayed at a job prior to Auburn came from 1990-95 while she was an assistant coach at Louisiana Tech under legendary head coach Leon Barmore.

AUBURN SIGNS FOUR FOR 2012-13

Auburn head coach Nell Fortner has signed four players for the 2012-13 season during the Early Signing Period. They are Cabrana Capers, a 6-1 forward from Bolingbrook, Ill., Chadarryl Clay, a 5-7 guard from Chattanooga, Tenn., Nicole Tanner, a 6-3 forward from Hoover, Ala., and Nariah Taylor, a 6-5 post from Indianapolis, Ind.

Capers is rated a three-star prospect by ESPN's HoopGurlz and is rated as the No. 35 post prospect in the country. Clay is rated as the No. 77 overall player in the country and 12th-best guard in the country according to ESPN's HoopGurlz.

Tanner, the younger sister of Auburn sophomore Tyrese Tanner, is rated as one of the top five prospects in the state of Alabama and a top-100 post in the country. Taylor is ranked as the No. 14 post player in the country by ESPN's HoopGurlz. She is also ranked as the No. 88 overall player in the nation by Blue Star Basketball and 97th by the All-Star Girls Report.

TIGERS ON THE TUBE

The Auburn women's basketball team will appear on television at least nine times during the 2011-12 season as part of the Southeastern Conference Women's Basketball Television Package, the league announced Sept. 22.

The Tigers will make their first appearance on Sunday, Jan. 1 with a 2 p.m. matchup against defending SEC champion Tennessee at Auburn Arena. Auburn will then appear on CSS in back-to-back games, first on Sunday, Jan. 8 at 1 p.m. against Georgia in Auburn. The next is on 8 p.m., Thursday, Jan. 12 game at Vanderbilt.

The Tigers' will make their first appearance on FSN on Jan. 15 in the first of three Sunday afternoon appearances on the network. Auburn will travel to Arkansas for a 1:30 p.m., Jan. 15 game before returning to the network on Jan. 29 for a 1 p.m. game at Ole Miss.

Auburn's lone appearances on the SEC Network, a part of the ESPN Regional Network, will be on Feb. 5 at Tennessee. The game is set for a 1 p.m. CT tipoff. The Tigers will then host Arkansas on Feb. 12 in a 1:30 p.m. game that will air live on ESPN2.

Auburn's final appearance on CSS will come on Thursday, Feb. 23 with in-state rival Alabama coming to town for an 8 p.m. matchup. The Tigers' final regular-season TV appearance will be Sunday, Feb. 26 on FSN with Auburn hosting Ole Miss at 2:30 p.m.

BLANCHE ALVERSON CAREER STATISTICS VS. SOUTH FLORIDA

Year	GP-GS	FG-FGA	Pct	3FG-FGA	Pct	FT-FTA	Pct	O-D-I (Reb.)	Avg	PF	FO	Ast	TO	Blk	Stl	Pts	Avg
2010-11	1-1	3-11	.273	2-8	.250	0-0	.000	1-1-2	2.0	3	0	0	1	0	0	8	8.0
TOTAL	1-1	3-11	.273	2-8	.250	0-0	.000	1-1-2	2.0	3	0	0	1	0	0	8	8.0

PEYTON DAVIS CAREER STATISTICS VS. SOUTH FLORIDA

Year	GP-GS	FG-FGA	Pct	3FG-FGA	Pct	FT-FTA	Pct	O-D-I (Reb.)	Avg	PF	FO	Ast	TO	Blk	Stl	Pts	Avg
2010-11	1-0	0-1	.000	0-0	.000	0-0	.000	1-2-3	3.0	1	0	0	1	0	0	0	0.0
TOTAL	1-0	0-1	.000	0-0	.000	0-0	.000	1-2-3	3.0	1	0	0	1	0	0	0	0.0

CHANTEL HILLIARD CAREER STATISTICS VS. SOUTH FLORIDA

Year	GP-GS	FG-FGA	Pct	3FG-FGA	Pct	FT-FTA	Pct	O-D-I (Reb.)	Avg	PF	FO	Ast	TO	Blk	Stl	Pts	Avg
2010-11	1-0	7-9	.778	0-0	.000	2-2	1.000	4-3-7	7.0	1	0	0	0	0	0	16	16.0
TOTAL	1-0	7-9	.778	0-0	.000	2-2	1.000	4-3-7	7.0	1	0	0	0	0	0	16	16.0

MORGAN JENNINGS CAREER STATISTICS VS. SOUTH FLORIDA

Year	GP-GS	FG-FGA	Pct	3FG-FGA	Pct	FT-FTA	Pct	O-D-I (Reb.)	Avg	PF	FO	Ast	TO	Blk	Stl	Pts	Avg
2010-11	1-0	0-4	.000	0-0	.000	1-2	.500	2-1-3	3.0	1	0	2	1	0	0	1	1.0
TOTAL	1-0	0-4	.000	0-0	.000	1-2	.500	2-1-3	3.0	1	0	2	1	0	0	1	1.0

PARRISHA SIMMONS CAREER STATISTICS VS. SOUTH FLORIDA

Year	GP-GS	FG-FGA	Pct	3FG-FGA	Pct	FT-FTA	Pct	O-D-I (Reb.)	Avg	PF	FO	Ast	TO	Blk	Stl	Pts	Avg
2010-11	1-1	0-0	.000	0-0	.000	0-2	.000	0-1-1	1.0	2	0	0	0	0	0	0	0.0
TOTAL	1-1	0-0	.000	0-0	.000	0-2	.000	0-1-1	1.0	2	0	0	0	0	0	0	0.0

TYRESE TANNER CAREER STATISTICS VS. SOUTH FLORIDA

Year	GP-GS	FG-FGA	Pct	3FG-FGA	Pct	FT-FTA	Pct	O-D-I (Reb.)	Avg	PF	FO	Ast	TO	Blk	Stl	Pts	Avg
2010-11	1-0	1-3	.333	0-0	.000	0-0	.000	1-2-3	3.0	4	0	3	1	1	0	2	2.0
TOTAL	1-0	1-3	.333	0-0	.000	0-0	.000	1-2-3	3.0	4	0	3	1	1	0	2	2.0

JASSANY WILLIAMS CAREER STATISTICS VS. SOUTH FLORIDA

Year	GP-GS	FG-FGA	Pct	3FG-FGA	Pct	FT-FTA	Pct	O-D-I (Reb.)	Avg	PF	FO	Ast	TO	Blk	Stl	Pts	Avg
2010-11	1-0	1-6	.167	0-0	.000	0-0	.000	2-1-3	3.0	1	0	0	2	0	0	2	2.0
TOTAL	1-0	1-6	.167	0-0	.000	0-0	.000	2-1-3	3.0	1	0	0	2	0	0	2	2.0

The Southeastern Conference**Commissioner:** Mike Slive**Founded:** 1933**Members:**

Alabama Crimson Tide
 Arkansas Lady Razorbacks
 Auburn Tigers
 Florida Gators
 Georgia Bulldogs
 Kentucky Wildcats
 LSU Tigers
 Mississippi Rebels
 Mississippi State Bulldogs
 South Carolina Gamecocks
 Tennessee Lady Volunteers
 Texas A&M Aggies (Beginning 2012-13)
 Vanderbilt Commodores

SEC Media Relations**Women's Basketball Contact:** Tommy Wilson**Address:**

2201 Richard Arrington Blvd.
 Birmingham, Ala. 35203-1103

Phone: 205.458.3000**Fax:** 205.458.3031**E-mail:** twilson@sec.org**Web site:** www.SECsports.com**SEC Women's Basketball Notes**

- The SEC has posted impressive non-conference records in the last decade. The SEC compiled a 131-49 (.728) non-conference record for the 2009-10 season.
 - Since the 1990 season, the SEC has compiled a 2914-894 (.765) record against other conferences. The league has recorded 150+ wins during eight seasons and has never recorded a non-conference winning percentage below .723.
 - SEC teams have earned appearances in 25 of 30 NCAA Final Fours, an accomplishment unmatched by any other league.
- Overall, SEC squads have filled 34 of the 120 Final Four berths, including having two Final Four teams in 1988 (Auburn, Tennessee), 1989 (Auburn, Tennessee), 1995 (Georgia, Tennessee), 1996 (Georgia, Tennessee), 1998 (Arkansas, Tennessee), 2004 (LSU, Tennessee), 2005 (LSU, Tennessee), 2007 (LSU, Tennessee) and 2008 (LSU, Tennessee).
- SEC teams have made 18 appearances in a nation-high 16 NCAA Championship games, winning eight NCAA Championships (Tennessee: 1987, 1989, 1991, 1996, 1997, 1998, 2007 and 2008).
- The league also had the distinction of providing both national finalists twice in its history in 1996 (Tennessee 83, Georgia 65) and in 1989 (Tennessee 76, Auburn 60).
 - SEC teams have won 335 NCAA Tournament games against 172 losses (.661) for an average of 11.2 NCAA wins per year.
- In addition, all 12 current members have appeared in the NCAA Tournament.
- The SEC has paced the pack in NCAA tournament bids 21 times in its 30-year history.
 - The SEC was the first league to ever have eight teams invited to the NCAA Tournament, doing so in 1999 and 2002.
 - The SEC was also the first league to ever have seven teams invited to the NCAA Tournament and earned this honor a leading seven times (1986, 1991, 1995, 1996, 1997, 2003, 2004).
 - The SEC is one of a handful of leagues to have won three national tournament titles with eight NCAA, two WNIT and three NWIT. Along with the eight NCAA championships won by Tennessee, Arkansas (1999) and Auburn (2003) captured the current Women's NIT titles. But the first-ever SEC national title belongs to Georgia, winners of the 1981 NWIT which predates the current NCAA tournament. LSU (1985) and Kentucky (1990) each won NWIT titles. Both Arkansas (1987) and South Carolina (1979) won the WNIT as members of their previous conferences.
 - In 2003, Auburn won the WNIT title with wins over South Alabama, Florida State, Richmond, Creighton and Baylor. In 1999, the Arkansas Lady Razorbacks defeated Wisconsin 76-64 to claim the SEC's first WNIT championship.
 - In 1981, Georgia defeated Pittsburg, California and Arizona State (in OT) to capture the NWIT Championship, the first-ever national championship of any kind for the SEC in women's basketball.

SEC PRESEASON POLL (Media Vote)
(First-place votes in Parentheses)**SEC Champion**

Tennessee (22)

Order of Finish

1. Tennessee.....	264
2. Georgia.....	228
3. Kentucky.....	212
4. LSU.....	189
5. Vanderbilt.....	172
6. Florida.....	151
7. Arkansas.....	142
8. South Carolina.....	107
9. Auburn.....	94
10. Alabama.....	55
11. Mississippi State.....	54
12. Ole Miss.....	48

Player of the Year

Shekinna Stricklen, Tennessee (16); Glory Johnson, Tennessee (3); LaSondra Barrett, LSU (2); Jasmine James, Georgia (1)

All-SEC First Team

Jasmine James, Georgia
 A'dia Mathies, Kentucky
 LaSondra Barrett, LSU
 Glory Johnson, Tennessee
 Shekinna Stricklen, Tennessee

All-SEC Second Team

C'eria Ricketts, Arkansas
 Sarah Watkins, Arkansas
 Valencia McFarland, Ole Miss
 Meighan Simmons, Tennessee
 Stephanie Holzer, Vanderbilt

SEC PRESEASON POLL (Coaches' Vote)**SEC Champion**

Tennessee

Order of Finish

1. Tennessee.....	120
2. Kentucky.....	100
3. Georgia.....	98
4. LSU.....	96
5. Florida.....	92
6. Vanderbilt.....	85
7. South Carolina.....	82
8. Arkansas.....	57
9. Auburn.....	39
10. Alabama.....	29
11. Mississippi State.....	25
12. Ole Miss.....	16

Player of the Year

Shekinna Stricklen, UT (6); Glory Johnson, UT (3); A'dia Mathies, UK (1); LaSondra Barrett, LSU (1); Meighan Simmons, UT (1)

All-SEC First Team

C'eria Ricketts, Arkansas
 Jasmine James, Georgia
 A'dia Mathies, Kentucky
 LaSondra Barrett, LSU
 Glory Johnson, Tennessee
 Meighan Simmons, Tennessee
 Shekinna Stricklen, Tennessee
 Stephanie Holzer, Vanderbilt

All-SEC Second Team

Ericka Russell, Alabama
 Sarah Watkins, Arkansas
 Jasmine Hassell, Georgia
 Adrienne Webb, LSU
 Valencia McFarland, Ole Miss
 La'Keisha Sutton, South Carolina
 Teasia Walker, South Carolina
 Tiffany Clarke, Vanderbilt

Quoting Head Coach Nell Fortner

On the finals break . . .

"We have had some really productive days. The kids were busy with finals and then they got done on Friday, everyone did really well, so we are pleased with that. But, it gave us an opportunity to put in a lot of good work on some fundamentals and re-visiting and re-teaching some offenses, working on some of the littler things that make an offense work. I was really proud of their hard work and hopefully it will continue to pay off for us."

On playing South Florida . . .

"We did not play very well at South Florida last year. It was not a good stop for us, but we are just looking forward to getting back on the court and playing. It will be a very competitive game. They are a fast, guard-oriented team, they just push the ball and get down the floor very fast. Our transition defense is going to get tested, really our defense in general."

On playing four games in the next eight days . . .

"We talk about it a lot, that everything we do is important. Every drill, every scout, every offense you are guarding, because you are probably going to see it again the next week. It is just a matter of keeping the team focused and helping them understand the importance of every day, every practice and every game preparation. Hopefully we will see that pay off Wednesday night."

On Chantel Hilliard graduating early on Dec. 12 . . .

"We are all so proud of Chantel. She has come in here and put in the work academically and it has paid off. She is going to have some opportunities for her when her basketball career is over and we are just so proud of her."

MISCELLANEOUS STATISTICS

Double-Doubles	Season	Career
Blanche Alverson	1	1
Chantel Hilliard	0	1

20+ Point Games	Season	Career
Blanche Alverson	1	1

10+ Rebound Games	Season	Career
Blanche Alverson	1	1
Chantel Hilliard	0	2
Parrisha Simmons	1	2
Jassany Williams	0	1

10+ Assist Games	Season	Career
------------------	--------	--------

GAMES LED AUBURN IN . .

Scoring	Season	Career
Blanche Alverson	2	10
Camille Glymph	3	3
Chantel Hilliard	0	4
Hosina Muhammad	1	1
Tyrese Tanner	1	2

Rebounding	Season	Career
Blanche Alverson	1	10
Peyton Davis	0	1
Chantel Hilliard	1	6
Morgan Jennings	2	3
Parrisha Simmons	2	10
Tyrese Tanner	0	1
Jassany Williams	1	6

Assists	Season	Career
Blanche Alverson	0	4
Camille Glymph	0	1
Morgan Jennings	4	9
Najat Ouardad	3	3
Parrisha Simmons	0	3
Tyrese Tanner	0	1

2011-12 DOUBLE-DOUBLES

Player	Points	Other
Blanche Alverson (vs. Mercer)	14	10 (reb.)

Last Time an Auburn Team...

Scored 100 points	Auburn 119, Sam Houston State 54 (Dec. 5, 2008)
Scored 100 points in an SEC game	Auburn 102, Tennessee 96, SEC Tournament in Albany, Ga. (Mar. 6, 1987)
Scored 100 at Auburn	Auburn 119, Sam Houston State 54 (Dec. 5, 2008)
Scored 100 points and lost	Never
Scored 110 points	Auburn 119, Sam Houston State 54 (Dec. 5, 2008)
Scored 115 points	Auburn 119, Sam Houston State 54 (Dec. 5, 2008)
Scored at least 60 points in a half	62-vs. Sam Houston State (Dec. 5, 2008)
Had 25+ rebound margin	28-Auburn 55, Sam Houston State 27 (Dec. 5, 2008)
Had 20+ rebound margin	20-Auburn 51, USC-Upstate 31 in Auburn, Ala. (Nov. 27, 2011)
Attempted 35 free throws	35-vs. Florida A&M (Nov. 28, 2009)
Attempted 40 free throws	41-vs. Alabama State (Nov. 15, 2006)
Made 30 free throws	31-vs. Northwestern State (31-43) (Dec. 30, 2003)
Had 25 assists	25- vs. Alabama (Jan. 22, 2009)
Had 25 turnovers	29- vs. Kentucky (Feb. 27, 2011)
Had 25 steals	25- vs. Arkansas-Little Rock (Dec. 2, 2000)
Had 15 blocks	17 - vs. Alabama A&M in Auburn, Ala. (Nov. 19, 2009)
Scored 25 points or less	25- vs. Mercer (1971)
Played an overtime game	at LSU (Jan. 10, 2010)
Won an overtime game	Auburn 64, LSU 62 at Baton Rouge, La. (Jan. 10, 2010)
Lost an overtime game	Florida 71, Auburn 68 (2OT) at Gainesville, Fla. (Jan. 7, 2010)
Played a double overtime game	Florida 71, Auburn 68 at Gainesville, Fla. (Jan. 7, 2010)
Played at least three overtimes	Never
Shot 70% for a half	73.9%, 17-23-vs. Alabama (Jan. 22, 2009)
Shot 60% for a game	vs. Alabama (61.8%, 34-55) (Jan. 22, 2009)
Shot less than 30% for a game	(29.7%, 19-64) at George Washington at Washington, D.C. (Dec. 15, 2010)
Shot 90% from the free throw line (minimum 10 attempts)	(10-10) vs. Mississippi State (Feb. 3, 2008)
Shot 50% from 3-point line	(5-8, 62.5%) vs. Florida in Auburn, Ala. (Jan. 6, 2011)
Shot less than 30% in a half	26.9% in the second half at Duke in Durham, N.C. (Nov. 18, 2011)
Shot less than 20% in a half	19.0% in the first half vs. LSU, (Feb. 14, 2010)
Shot 55% or better and lost	58.1%, 25-43-vs. Tennessee, (Jan. 20, 2005)
Made at least 10 3-point field goals	10-of-21 vs. Belmont in Auburn, Ala. (Nov. 15, 2011)
Failed to make a 3-point field goal	0-9 at Mercer in Macon, Ga. (Nov. 11, 2011)
Had at least 60 rebounds	61 vs. Stephen F. Austin, (Dec. 17, 2007)
Had at least 50 rebounds	51- vs. USC-Upstate in Auburn, Ala. (Nov. 27, 2011)
Scored less than 20 points in a 1st half	19 points vs. George Washington in Auburn, Ala. (Nov. 23, 2011)
Scored less than 20 points in a 2nd half	19 points at Duke in Durham, N.C. (Nov. 18, 2011)
Scored less than 50 points in a game	47 points vs. Mississippi State in SEC Tournament in Nashville, Tenn. (Mar. 3, 2011)

Last Time an Auburn Player...

Scored 40 points	41-Consweila Sparrow vs. South Alabama (Feb. 17, 1998)
Scored 35 points	35-DeWanna Bonner vs. Tennessee (Jan. 25, 2009)
Scored 30 points	32-DeWanna Bonner vs. Ole Miss (Mar. 6, 2009)
Attempted 25 field goals	25-Natasha Brackett (9-25) at LSU (Jan. 30, 2005)
Recorded a double-double	Blanche Alverson (12 pts./10 rebs.) at Mercer in Macon, Ga. (Nov. 11, 2011)
Recorded a double-double with points and assists	Morgan Toles (10 pts./10 asst.) vs. Jacksonville State in Auburn, Ala., (Dec. 30, 2010)
Recorded consecutive double-doubles	KeKe Carrier (18 pts./10 rebs) vs. Mississippi State (Jan. 3, 2010)
Two players recorded a double-double	and (24 pts/12 rebs) vs. Florida in Gainesville, Fla. (Jan. 7, 2010)
	DeWanna Bonner (32 pts./13 rebs) & Whitney Boddie (15 pts./10 asst.)
	vs. Ole Miss in the SEC Tournament in North Little Rock, Ark. (March 6, 2009)
Had a double-double at halftime	DeWanna Bonner (14 pts./10 rebs.) vs. Ole Miss (Mar. 6, 2009)
Recorded a triple-double	Whitney Boddie (24 pts./11 rebs./12 asst.) vs. Sam Houston State (Dec. 5, 2008)
Had 10 assists	10- Morgan Toles vs. Jacksonville State (Dec. 30, 2010)
Had 15 assists	18-Martha Monk vs. Alabama State (Feb. 18, 1981)
Had 10 blocks	13- Marita Payne vs. Arkansas (Feb. 3, 2005)
Had 5 blocks	7 - Jassany Williams at Duke in Durham, N.C. (Nov. 18, 2011)
Had 5 steals	5-Najat Ouardad vs. Troy in Auburn, Ala. (Nov. 30, 2011)
Had 15 rebounds	16-Jordan Greenleaf vs. Mississippi State (Jan. 3, 2010)
Had 20 rebounds	20-Monique Morehouse at LSU (Feb. 4, 1995)
Made 15 field goals	15-Consweila Sparrow (15-16) vs. USA (Feb. 17, 1998)
Made 5 three-point field goals	5 - Camille Glymph (5-8) vs. Belmont in Auburn, Ala. (Nov. 15, 2011)
Two players scored 20 points	Alli Smalley (27 pts.) & KeKe Carrier (20 pts.) vs. Alabama (Jan. 14, 2010)
Two players scored 30 points	Laticia Morris (33 points) & Tara Williams (30 points) vs. South Alabama (Jan. 14, 1997)
Back-to-back 25-point games	Alli Smalley 26 pts. vs. Kentucky (Feb. 28, 2010) & 29 pts. vs. Florida in SEC Tournament in Duluth, Ga. (Mar. 4, 2010)
Only one player scored in double figures	Morgan Toles (13 pts.) vs. Alabama in Auburn, Ala. (Feb. 17, 2011)

TIGERS' RECORD WHEN...

When wearing white.....	4-0
When wearing orange.....	0-1
When wearing blue.....	1-1
When wearing pink.....	0-0
Leading at the half.....	4-0
Trailing at the half.....	1-2
Tied at the half.....	0-0
Scores 100+ points.....	0-0
Scores 90-99 points.....	0-0
Scores 80-89 points.....	1-0
Scores 70-79 points.....	3-0
Scores 60-69 points.....	0-0
Scores fewer than 60 points.....	1-2
Holds opponent to 41-50 points.....	3-0
Holds opponent to 31-40 points.....	1-0
Holds opponent to under 30 points.....	0-0
Shoots 50% FG or better.....	1-0
Shoots 40-49% FG.....	3-0
Shoots 39% or under FG.....	1-2
Holds opponent under 30% FG.....	2-0
Shoots higher FG% than opponent.....	5-0
Shoots lower FG% than opponent.....	0-2
Shoots higher FT% than opponent.....	2-1
Shoots lower FT% than opponent.....	3-1
Out-rebounds opponent.....	5-0
Out-rebounded by opponent.....	0-2
Tied in rebounds.....	0-0
Versus ranked opponent.....	0-1
In overtime.....	0-0
Games decided by 3 points or less.....	0-0
Games decided by 4-5 points.....	0-0
Games decided by 6-10 points.....	1-0
Games decided by 11-20 points.....	0-1
Games decided by 21-30 points.....	2-1
Games decided by 30+ points.....	2-0
On Television.....	0-0
In November.....	5-1
In December.....	0-1
In January.....	0-0
In February.....	0-0
In March.....	0-0

Five players scored in double figures.....	Alverson (17 pts.), Greenleaf (15 pts.), Tanner (11 pts.), Smalley (11 pts.) & Toles (10 pts.) vs. Jacksonville State (Dec. 30, 2010)
Six players scored in double figures.....	Carrier (19 pts.), Bonner (18 pts.), Smalley (16 pts.), Boddie (13 pts.), R. Hobbs (13 pts.), Hilliard (13 pts.) & S. Hobbs (10 pts.) vs. Sam Houston State (Dec. 5, 2008)
Seven players scored in double figures.....	Carrier (19 pts.), Bonner (18 pts.), Smalley (16 pts.), Boddie (13 pts.), R. Hobbs (13 pts.), Hilliard (13 pts.) & S. Hobbs (10 pts.) vs. Sam Houston State (Dec. 5, 2008)
Scored 20 points & had 20 rebounds.....	Lauretta Freeman (30 pts/21 rebs.) vs. Alabama, (Feb. 17, 1993)
Two players had 10 rebounds.....	KeKe Carrier (12 rebs.) & Jordan Greenleaf (10 rebs.) vs. Florida in Gainesville, Fla. (Jan. 7, 2010)
Three players had 10 rebounds.....	Jordan Greenleaf (12 rebs.), DeWanna Bonner (12 rebs.) & Whitney Boddie (10 rebs.) vs. Oakland (Nov. 21, 2007)
Played every minute.....	Jordan Greenleaf (40 Mins.) vs. Florida, SEC Tournament, Duluth, Ga., (Mar. 4, 2010)
Played more than 40 minutes.....	Alli Smalley (45 mins.), Jordan Greenleaf (43 mins.) & Morgan Toles (41 mins.) at LSU (Jan. 10, 2010)

Last Time an Auburn Opponent...

Shot less than 30% in a game (SEC).....	LSU - 27.3% in Baton Rouge, La. (Feb. 10, 2011)
Shot less than 30% in a game (Non-conf).....	USC-Upstate - 25.5% in Auburn, Ala. (Nov. 27, 2011)
Shot 60% in a game.....	Vanderbilt 60.4% in Nashville, Tennessee in the SEC Tournament, (Mar. 5, 2004)
Scored 100 points.....	Georgia 102, Auburn 72 in Athens, Ga. (Mar. 3, 1984)
Scored 100 points at Auburn.....	Tuskegee 105, Auburn 98 (20T) (Feb. 12, 1979)
Scored 100 points and lost.....	Never
Scored 110 points.....	Never
Had 25+ rebound margin.....	Never
Had a 20+ rebound margin.....	Never
Scored less than 20 points in a 1st half.....	USC-Upstate, 18 points in Auburn, Ala. (Nov. 27, 2011)
Scored less than 20 points in a 2nd half.....	USC-Upstate, 16 points in Auburn, Ala. (Nov. 27, 2011)
Had 50 rebounds.....	52 - at Duke in Durham, N.C. (Nov. 18, 2011)
Had 25 assists.....	25- by Florida International in Miami, Fla. (Dec. 19, 1993)
Had 25 turnovers.....	29- by Alabama A&M in Auburn, Ala. (Dec. 28, 2010)
Had 15 steals.....	15- by Kentucky in Auburn, Ala. (Feb. 27, 2011)
Had 10 blocks.....	12-by Tennessee (Jan. 10, 2008)
Failed to make a 3-point field goal.....	by Duke (0-12) in Durham, N.C. (Nov. 18, 2011)
Attempted 35 free throws.....	36 - by Arizona 25-36 (Dec. 19, 2000)
Made 30 free throws.....	30- by Arkansas (Jan. 22, 1995)
Made 10 three-point field goals.....	by South Florida 10 3-point FGs, in Tampa, Fla., (Nov. 22, 2010)
Scored less than 50 points in a game.....	USC-Upstate, 34 in Auburn, Ala. (Nov. 27, 2011)
Scored 40 points or less.....	USC-Upstate, 34 in Auburn, Ala. (Nov. 27, 2011)
Scored 25 points or less.....	25- by Puerto Rico Mayaguez (Dec. 17, 2000)
Scored 11 points or less.....	11-by Montevallo (1973) and 11-by Jeff Davis (1973)

Last Time an Auburn Opponent's Player...

Scored 30 points (non-conference).....	33-Andrea Smith of South Florida in Tampa, Fla. (Nov. 22, 2010)
Scored 30 points (SEC).....	31-Tierney Jenkins of Alabama in Tuscaloosa, Ala. (Jan. 2, 2011)
Scored 35 points.....	38-Lindsay Shearer of Kent State in Kent, Ohio (Nov. 20, 2005)
Attempted 25 field goals.....	27- Jantel Lavender (9-27) of Ohio State (Nov. 23, 2008)
Scored 20 points & had 20 rebounds.....	Young of Baylor in the Women's NIT Championship Game, (20 pts./25 rebs.), (Apr. 4, 2003)
Two players scored 20 points.....	by Ole Miss, Kayla Melson (29 pts) & Shae Nelson (21 pts), (Jan. 13, 2011)
Three players scored 20 points.....	by LSU in Baton Rouge, Chatman (22 pts), Johnson (21 pts) & Lowery (20 pts), (Jan. 12, 1991)
Five players scored in double figures.....	J. Thomas (16 pts), Gray (13 pts), K. Thomas (11 pts), Christmas (10 pts) & Peters (10 pts) of Duke (Nov. 18, 2010)
Six players scored in double figures.....	Smith (15 pts), Bales (14 pts), Foley (11 pts), Williams (10 pts), Currie (10 pts) & Kurz (10 pts) of Duke (Dec. 31, 2004)
Recorded a double-double.....	Elizabeth Williams (18 pts/13 rebs) of Duke in Durham, N.C. (Nov. 18, 2011)
Recorded a double-double with points and assists.....	Ceira Ricketts of Arkansas in Fayetteville, Ark., (14 pts/13 rebs/12 assts.), (Jan. 18, 2009)
Recorded a triple-double.....	Ceira Ricketts (14 pts./13 rebs./12 asst.) of Arkansas (Jan. 18, 2009)
Two players recorded a double-double.....	Ashley Daniels (22 pts/11 rebs) and Sarah Watkins (12 pts/10 rebs) of Arkansas in Fayetteville, Ark. (Feb. 13, 2011)
Had 15 rebounds.....	15-by Ashley Brown of Mississippi State (Jan. 20, 2011)
Had 20 rebounds.....	20-Sylvia Fowles of LSU (Jan. 28, 2007)
Had 10 assists.....	10-Valencia McFarland of Ole Miss (Jan. 13, 2011)
Had 10 blocks.....	Never
Had 5 blocks.....	5-Azania Stewart of Florida (Jan. 7, 2010)
Had 5 steals.....	5-Shey Peddy of Temple in Philadelphia, Pa. (Dec. 3, 2011)
Made 15 field goals.....	15-Chamique Holdscow (15-21) of Tennessee (Feb. 1, 1998)
Had 15 assists.....	16-Cindy McMahan of Alabama-Huntsville (Nov. 24, 1980)

2011-12 Auburn Superlatives...

First Half

Most points scored in the first half.....	44, vs. USC-Upstate (11-27-11)
Fewest points scored in the first half.....	19, vs. George Washington (11-23-11)
Fewest points allowed in the first half.....	18, vs. USC-Upstate (11-27-11)
Most points allowed in the first half.....	45, at Temple (12-3-11)
Best FG % in the first half.....	.565, at Mercer (11-11-11)
Worst FG % in the first half.....	.250, vs. George Washington (11-23-11)
Best FG % by an opponent in the first half.....	.552, at Temple (12-3-11)
Worst FG % by an opponent in the first half.....	.226, at Mercer (11-11-11)
Most rebounds in the first half.....	26, at Mercer (11-11-11)
Fewest rebounds in the first half.....	14, at Temple (12-3-11)
Most rebounds by an opponent in the first half.....	24, at Duke (11-18-11)
Fewest rebounds by an opponent in the first half.....	15, at Mercer (11-11-11)

Second Half

Most points scored in the second half.....	41, at Mercer (11-11-11) and vs. Belmont (11-15-11)
Fewest points scored in the second half.....	19, at Duke (11-18-11)
Fewest points allowed in the second half.....	16, vs. USC-Upstate (11-27-11)
Most points allowed in the second half.....	41, at Duke (11-18-11)
Best FG % in the second half.....	.577, vs. Belmont (11-15-11)
Worst FG % in the second half.....	.269, at Duke (11-18-11)
Best FG % by an opponent in the second half.....	.423, at Temple (12-3-11)
Worst FG % by an opponent in the second half.....	.233, vs. USC-Upstate (11-27-11)
Most rebounds in the second half.....	32, vs. USC-Upstate (11-27-11)
Fewest rebounds in the second half.....	13, at Duke (11-18-11)
Most rebounds by an opponent in the second half.....	28, at Duke (11-18-11)
Fewest rebounds by an opponent in the second half.....	12, at Mercer (11-11-11) and vs. Troy (11-30-11)

Game

Most points scored.....	80, vs. Belmont (11-15-11)
Fewest points scored.....	50, at Duke (11-18-11)
Most points allowed.....	73, at Duke (11-18-11) and at Temple (12-3-11)
Fewest points allowed.....	34, vs. USC-Upstate (11-27-11)
Best FG %.....	.554, at Mercer (11-11-11)
Worst FG %.....	.328, at Duke (11-18-11)
Best FG % by an opponent.....	.491, at Temple (12-3-11)
Worst FG % by an opponent.....	.255, vs. USC-Upstate (11-27-11)
Most rebounds.....	51, vs. USC-Upstate (11-27-11)
Fewest rebounds.....	35, vs. Belmont (11-15-11), at Duke (11-18-11) and at Temple (12-3-11)
Most rebounds by an opponent.....	52, at Duke (11-18-11)
Fewest rebounds by an opponent.....	27, at Mercer (11-11-11)

Miscellaneous

Largest margin of victory.....	41, vs. USC-Upstate (11-27-11)
Smallest margin of victory.....	8, vs. George Washington (11-23-11)
Largest margin of defeat.....	23, at Duke (11-18-11)
Smallest margin of defeat.....	16, at Temple (12-3-11)
Largest halftime lead.....	26, vs. USC-Upstate (11-27-11)
Smallest halftime lead.....	14, vs. Belmont (11-15-11)
Last time tied at halftime.....	N/A
Largest halftime deficit.....	18, at Temple (12-3-11)
Smallest halftime deficit.....	1, at Duke (11-18-11)
Largest rebounding margin.....	21, at Mercer (11-11-11)
Smallest rebounding margin.....	1, vs. George Washington (11-23-11)
Last time tied in rebounding.....	N/A
Opponent's largest rebounding margin.....	17, at Duke (11-18-11)
Opponents smallest rebounding margin.....	2, at Temple (12-3-11)

2011-12 Auburn Individual Highs...**First Half**

Points..... 14, Blanche Alverson vs. USC-Upstate (11-27-11)
 Field Goals Made..... 5, Alverson vs. USC-Upstate (11-27-11) and Muhammad vs. Troy (11-30-11)
 Field Goal Attempts 12, Blanche Alverson vs. USC-Upstate (11-27-11)
 3-Point Field Goals Made 4, Tanner vs. Belmont (11-15-11) & Alverson vs. USC-Upstate (11-27-11)
 3-Point Field Goal Attempts..... 8, Blanche Alverson vs. USC-Upstate (11-27-11)
 Free Throws Made..... 4, Parrisha Simmons vs. USC-Upstate (11-27-11)
 Free Throws Attempted..... 5, Morgan Jennings vs. Mercer (11-11-11)
 Rebounds..... 7, Chantel Hilliard vs. Belmont (11-15-11)
 Assists 5, Najat Ouardad vs. USC-Upstate (11-27-11)
 Blocked Shots 4, Jassany Williams vs. Troy (11-30-11)
 Steals..... 3, Najat Ouardad vs. Troy (11-30-11)

Second Half

Points..... 11, Alverson vs. GW (11-23-11) and Glymph vs. Troy (11-30-11)
 Field Goals Made..... 5, Tyrese Tanner at Mercer (11-11-11)
 Field Goal Attempts 9, Hasina Muhammad vs. Troy (11-30-11)
 3-Point Field Goals Made 3, Camille Glymph vs. Troy (11-30-11)
 3-Point Field Goal Attempts..... 5, Camille Glymph at Duke (11-18-11)
 Free Throws Made..... 5, Tyrese Tanner vs. George Washington (11-23-11)
 Free Throws Attempted..... 8, Tyrese Tanner vs. George Washington (11-23-11)
 Rebounds..... 7, Alverson vs. Mercer (11-11-11) and Muhammad vs. USC-Upstate (11-27-11)
 Assists 7, Morgan Jennings vs. Mercer (11-11-11)
 Blocked Shots 6, Jassany Williams at Duke (11-18-11)
 Steals..... 5, by five players on five occasions

Game

Points..... 19, Hasina Muhammad vs. Troy (11-30-11)
 Field Goals Made..... 9, Hasina Muhammad vs. Troy (11-30-11)
 Field Goal Attempts 15, Blanche Alverson vs. USC-Upstate (11-27-11)
 3-Point Field Goals Made 5, Camille Glymph vs. Belmont (11-15-11)
 3-Point Field Goal Attempts..... 9, Blanche Alverson vs. USC-Upstate (11-27-11)
 Free Throws Made..... 5, Tyrese Tanner vs. George Washington (11-23-11)
 Free Throws Attempted..... 8, Tyrese Tanner vs. George Washington (11-23-11)
 Rebounds..... 10, Alverson at Mercer (11-11-11) and Simmons vs. USC-Upstate (11-27-11)
 Assists 9, Morgan Jennings vs. Belmont (11-15-11)
 Blocked Shots 7, Jassany Williams at Duke (11-18-11)
 Steals..... 5, Najat Ouardad vs. Troy (11-30-11)

2011-12 Opponent Individual Highs...**First Half**

Points..... 14, Tee'Ara Copney of USC-Upstate (11-27-11)
 Field Goals Made..... 4, Williams of Duke (11-18-11) and Copney of USC-Upstate (11-27-11)
 Field Goal Attempts 10, DeAngela Sword of Troy (11-30-11)
 3-Point Field Goals Made 3, Tee'Ara Copney of USC-Upstate (11-27-11)
 3-Point Field Goal Attempts..... 5, Briana Williams of Mercer (11-11-11)
 Free Throws Made..... 3, on five occasions, last by DeAngela Sword of Troy (11-30-11)
 Free Throws Attempted..... 4, on five occasions, last by DeAngela Sword of Troy (11-30-11)
 Rebounds..... 7, Williams of Duke (11-18-11) and McCarthy of Temple (12-3-11)
 Assists 6, Adrienne Tarrence of Belmont (11-15-11)
 Blocked Shots 2, Elizabeth Williams of Duke (11-18-11)
 Steals..... 3, Boykin of Mercer (11-11-11) and Peddy of Temple (12-3-11)

Second Half

Points..... 19, Shey Peddy of Temple (12-3-11)
 Field Goals Made..... 8, Shey Peddy of Temple (12-3-11)
 Field Goal Attempts 11, Shey Peddy of Temple (12-3-11)
 3-Point Field Goals Made 2, A. Williams of Mercer (11-11-11) and Ernst of Belmont (11-15-11)
 3-Point Field Goal Attempts..... 5, Logan Castlebury of USC-Upstate (11-27-11)
 Free Throws Made..... 4, Chloe Wells of Duke (11-18-11)
 Free Throws Attempted..... 5, Kourtney Coleman of Troy (11-30-11)
 Rebounds..... 6, Elizabeth Williams and Richae Jackson of Duke (11-18-11)
 Assists 4, Chelsea Gray of Duke (11-18-11)
 Blocked Shots 2, Elizabeth Williams of Duke (11-18-11)
 Steals..... 2, by four people on three occasions

Game

Points..... 27, Shey Peddy of Temple (12-3-11)
 Field Goals Made..... 11, Shey Peddy of Temple (12-3-11)
 Field Goal Attempts 16, Shey Peddy of Temple (12-3-11)
 3-Point Field Goals Made 4, Tee'Ara Copney of USC-Upstate (11-27-11)
 3-Point Field Goal Attempts..... 9, Briana Williams of Mercer (11-11-11)
 Free Throws Made..... 6, Chloe Wells of Duke (11-18-11)
 Free Throws Attempted..... 6, by three players on three occasions
 Rebounds..... 13, Elizabeth Williams of Duke (11-18-11)
 Assists 8, Tarrence of Belmont (11-15-11) and Gray of Duke (11-18-11)
 Blocked Shots 4, Elizabeth Williams of Duke (11-18-11)
 Steals..... 5, Shey Peddy of Temple (12-3-11)

2011-12 Starting Lineups

	Guard (1)	Guard (2)	Guard/Forward (3)	Forward (4)	Forward/Center (5)
at Mercer	Morgan Jennings	Tyrese Tanner	Hasina Muhammad	Jassany Williams	Chantel Hilliard
BELMONT	Morgan Jennings	Tyrese Tanner	Hasina Muhammad	Jassany Williams	Blanche Alverson
at Duke	Morgan Jennings	Tyrese Tanner	Hasina Muhammad	Jassany Williams	Blanche Alverson
GEORGE WASHINGTON	Morgan Jennings	Tyrese Tanner	Hasina Muhammad	Jassany Williams	Blanche Alverson
USC-UPSTATE	Najat Ouardad	Morgan Jennings	Tyrese Tanner	Parrisha Simmons	Chantel Hilliard
TROY	Najat Ouardad	Morgan Jennings	Tyrese Tanner	Parrisha Simmons	Chantel Hilliard
at Temple	Najat Ouardad	Morgan Jennings	Tyrese Tanner	Parrisha Simmons	Chantel Hilliard

Record by Starting Lineup

Jennings, Tanner, Muhammad, Williams, Hilliard	1-0 (1.000)
Ouardad, Jennings, Tanner, Simmons, Hilliard	2-1 (.667)
Jennings, Tanner, Muhammad, Williams, Alverson	2-1 (.667)

Game-by-Game Leaders

	Points	Rebounds	Assists	Steals	Blocked Shots
at Mercer	14-Tanner	10-Alverson	8-Jennings	3-Ouardad	2-Williams
BELMONT	18-Glymph	9-Hilliard	9-Jennings	3-Ouardad/Jennings	4-Williams
at #8 Duke	12-Glymph	6-Jennings	3-Jennings	2-Williams/Jennings	7-Williams
GEORGE WASHINGTON	14-Alverson	8-Simmons	5-Jennings	2-Alverson	2-Glymph
USC-UPSTATE	14-Alverson	10-Simmons	8-Ouardad	2-Ouardad/Williams	3-Williams
TROY	19-Muhammad	8-Williams	5-Ouardad	5-Ouardad	4-Williams
at Temple	12-Glymph	7-Jennings	4-Ouardad	3-Tanner	1-Hilliard/Simmons

Comparison Statistics (Auburn/Opponent)

Opponent	1st	2nd	Score	Mar	Total FG	FG Pct	3-Pointers	3FG Pct	Free Throws	FT Pct	Reb.	Mar	Assist	TO	Bk	Stl	Fouls
at Mercer	36/19	41/24	77-43	+34	31-56/15-55	.554/.273	0-9/4-18	.000/.222	15-24/9-16	.625/.563	48-27	+21	23/7	21/19	5/1	11/10	19/20
BELMONT	39/25	41/28	80-53	+27	29-61/19-48	.475/.396	10-21/8-19	.476/.421	12-15/7-14	.800/.500	35-32	+3	20/12	12/24	7/1	15/6	15/14
at Duke	31/32	19/41	50-73	(-23)	19-58/27-71	.328/.380	5-16/0-12	.313/.000	7-12/19-23	.583/.826	35-52	(-17)	9/16	22/16	11/5	8/11	18/14
G. WASHINGTON	19/26	36/21	55-47	+8	18-53/15-46	.340/.326	4-18/3-9	.222/.333	15-25/14-19	.600/.737	39-38	+1	14/7	10/16	3/1	7/7	15/16
USC-UPSTATE	44/18	31/16	75-34	+41	30-71/13-51	.423/.255	8-19/5-25	.421/.200	7-11/3-4	.636/.750	51-31	+20	19/8	14/22	7/0	8/10	9/11
TROY	38/23	36/24	74-47	+27	31-72/16-46	.431/.348	7-15/4-12	.467/.333	5-13/11-17	.385/.647	48-30	+18	14/8	13/22	13/0	15/6	11/12
at Temple	27/45	30/28	57-73	(-16)	21-60/27-55	.350/.491	6-17/6-14	.353/.429	9-11/13-18	.818/.722	35-37	(-2)	12/10	16/13	2/1	9/8	19/13

Scoring Breakdown

(Percentage of total points in parentheses)

Opponent	Front Court	Back Court	Sr.	Jr.	So.	Fr.	Starters	Bench
at Mercer	34 (44.2)	43 (55.8)	17	21	27	12	47 (61.0)	30 (39.0)
BELMONT	31 (38.8)	49 (61.2)	19	10	46	5	49 (61.2)	31 (38.8)
at Duke	15 (30.0)	35 (70.0)	8	7	25	10	30 (60.0)	20 (40.0)
GEORGE WASHINGTON	26 (47.3)	29 (52.7)	11	14	20	10	44 (80.0)	11 (20.0)
USC-UPSTATE	33 (44.0)	42 (56.0)	26	23	14	12	40 (53.3)	35 (46.7)
TROY	17 (23.0)	57 (77.0)	13	10	32	19	26 (35.1)	48 (64.9)
at Temple	14 (24.6)	43 (75.4)	19	8	23	7	30 (52.6)	27 (47.4)

Lead-Deficit Comparison

Opponent	Largest Lead	Largest Deficit	Lead Changes	Ties	Result
at Mercer	34 (2nd, 2:17)	---	0	0	W, 77-43
BELMONT	27 (2nd, 0:45)	6 (1st, 18:37)	3	2	W, 80-53
at Duke	1 (1st, 19:39)	23 (2nd, 2:10)	2	1	L, 50-73
GEORGE WASHINGTON	10 (2nd, 0:14)	9 (1st, 0:31)	1	5	W, 55-47
USC-UPSTATE	41 (2nd, 2:18)	---	0	1	W, 75-34
TROY	29 (2nd, 2:04)	---	0	0	W, 74-47
at Temple	3 (1st, 18:52)	23 (2nd, 7:56)	4	1	L, 57-73

Specialty Statistics (Auburn-Opponent)

Opponent	Bench Points	Points in the Paint	Points off Turnovers	Second Chance Points	Fast Break Points
at Mercer	30-22	54-14	20-13	12-1	10-4
BELMONT	31-18	32-17	35-9	13-10	13-2
at Duke	20-21	18-44	17-23	14-12	7-14
GEORGE WASHINGTON	11-11	14-18	13-9	8-7	2-4
USC-UPSTATE	35-4	32-16	24-5	17-1	2-4
TROY	48-13	44-12	20-17	19-12	8-2
at Temple	27-26	24-30	13-21	20-17	6-16



Nell FORTNER

Head Coach

Eighth Season

Jackson, Miss • Texas, 1981

- Coached Auburn to its first SEC title in 20 years during 2008-09 season
- Produced Auburn's first SEC Player of the Year since 1988 in DeWanna Bonner
- Has an overall record of 154-102 for a .602 winning percentage
- Sports a 711-253 (.738) record as a head coach, assistant coach and player at all levels (college, professional, international)
- Coached teams to 11 NCAA Tournament appearances, eight as an assistant coach and three as a head coach
- 2000 USA Basketball Coach of the Year
- 1997 and 2009 Basketball Times National Coach of the Year
- 2009 Russell Athletic/WBCA Region III Coach of the Year
- 1997 Big Ten Coach of the Year
- 2009 SEC Coach of the Year
- Led the U.S. National Team to a gold medal in the 2000 Olympics
- Coached 10 different U.S. squads to a 101-14 (.878) record
- Served as an assistant coach for the U.S. National Team that won a gold medal at the 1996 Olympics
- Coached three players to State Farm/WBCA All-America honors
- Coached eight players to 10 all-conference honors
- Coached Auburn to three straight 20-win seasons, including a 30-win season in 2009 - Auburn's first in 20 years
- Produced two WNBA draft picks (DeWanna Bonner and Whitney Boddie) out of her first recruiting class at Auburn
- Spent three years as Head Coach and General Manager of the WNBA's Indiana Fever, leading the team to the playoffs in her second season
- As an assistant coach at Louisiana Tech, helped the team to the Elite Eight in 1993 and the National Championship game in 1994
- Spent four years as a studio analyst with ESPN (2001-04, 2005 WNBA Playoffs)

All-time record as player and coach at all levels:	711-253 (.738)	30 years
Record as a WNBA coach:	42-56 (.429)	3 seasons
Record as USA Head Coach:	101-14 (.878)	4 years
Record as a collegiate player:	127-26 (.830)	4 seasons
Record as a collegiate coach:	389-157 (.712)	17 seasons
Record as a collegiate assistant coach:	235-55 (.810)	9 seasons
Record as a collegiate head coach:	154-102 (.602)	9 seasons
Record at Auburn:	137-91 (.601)	8 seasons
SEC Record:	48-54 (.471)	7 seasons

Fortner Year-by-Year

Texas, Player (1977-81)

Year	Record	Conf.	Other Information
1977-78	29-10	--	5th AIAW
1978-79	37-4	--	3rd AIAW
1979-80	33-4	--	5th AIAW
1980-81	28-8	--	9th AIAW

Stephen F. Austin, Graduate Assistant/Assistant (1986-90)

Year	Record	Conf.	Other Information
1986-87	25-6	9-1	WNIT Third Round
1987-88	29-5	13-1	Southland Champions NCAA Second Round
1988-89	30-4	13-1	Southland Champions NCAA Regional Finalist
1989-90	28-3	14-0	Southland Champions NCAA Regional Finalist

Louisiana Tech, Assistant Coach (1990-95)

Year	Record	Conf.	Other Information
1990-91	18-12	9-3	American South Conference Runner-Up NCAA First Round
1991-92	20-10	12-4	NCAA First Round
1992-93	26-6	13-1	Sun Belt Conference Champion NCAA Elite Eight
1993-94	31-4	14-0	Sun Belt Conference Champion NCAA Runner-up
1994-95	28-5	13-1	Sun Belt Conference Champion NCAA Sweet 16

USA Basketball, Assistant Coach (1995-96)

52-0 Overall Record (1.000)

Purdue, Head Coach (1996-97)

Year	Record	Conf.	Other Information
1996-97	17-11	12-4	Big Ten Co-Champions NCAA Second Round

USA Basketball, Head Coach (1997-2000)

101-14 Overall Record (.878)

Indiana Fever (WNBA), Head Coach (2001-03)

Year	Record	Conf.	Other Information
2001	10-22	--	
2002	16-16	--	WNBA Playoffs First Round
2003	16-18	--	

Auburn, Head Coach (2004-present)

Year	Record	Conf.	Other Information
2004-05	16-13	6-8	
2005-06	14-15	4-10	
2006-07	21-13	6-8	WNIT Quarterfinals
2007-08	20-12	7-7	NCAA First Round
2008-09	30-4	12-2	SEC Champions SEC Tournament Runner-Up NCAA Second Round
2009-10	15-16	5-11	
2010-11	16-16	8-8	WNIT Second Round
2011-12	5-2		



Chantel HILLIARD

#23

Senior • Forward/Center • 6-2

Biloxi, Miss.

St. Martin High School

NOTES:

- Graduated from Auburn with degree in political science on Dec. 12
- Returned to the starting lineup vs. USC-Upstate, scoring season-high 12 points with 4 rebounds
- Neared a double-double with 9 rebounds and 8 points in home-opener vs. Belmont
- Started and scored 6 points with 5 rebounds and 2 steals at Mercer in the season-opener
- Started nine of the final 10 games of the 2010-11 season
- Picked up her first career double-double with career highs of 18 points and 11 rebounds vs. Mississippi State in the SEC Tournament
- Led Auburn in scoring for the first time in her career, coming off the bench for a career-high 16 points on 7-of-9 shooting at South Florida
- Scored in double figures nine times this season, including four of the last six games of the season

Opponent	Start	Min.	FG-A	3PT-A	FT-A	O-D-T	PF	Ast.	TO	Blk.	St.	Pts.
GCSU (Exhibition)	*	19	3-9	0-0	4-6	8-7-15	2	0	3	2	1	10
at Mercer	*	18	3-5	0-0	0-0	0-5-5	2	1	4	0	2	6
BELMONT		19	4-5	0-0	0-0	3-6-9	2	2	2	1	2	8
at Duke		23	3-7	0-1	0-0	2-2-4	3	0	1	1	0	6
GEORGE WASHINGTON		16	0-1	0-0	0-0	2-3-5	4	0	0	0	1	0
USC-UPSTATE	*	18	6-8	0-0	0-1	2-2-4	0	0	1	1	0	12
TROY	*	17	2-6	0-0	0-0	1-1-2	2	1	2	1	0	4
at Temple	*	19	1-3	0-0	1-1	0-0-0	3	0	1	1	1	3
SOUTH FLORIDA												
PURDUE												
vs. Marist												
vs. Hofstra/Central Connecticut State												
vs. North Carolina-Charlotte												
vs. Florida International/Albany												
TENNESSEE												
at Alabama												
GEORGIA												
at Vanderbilt												
at Arkansas												
SOUTH CAROLINA												
at Mississippi State												
KENTUCKY												
at Ole Miss												
VANDERBILT												
at Tennessee												
at Florida												
ARKANSAS												
at LSU												
ALABAMA												
OLE MISS												

HILLIARD CAREER STATISTICS

Year	GP-GS	FG-FGA	Pct	3FG-FGA	Pct	FT-FTA	Pct	O-D-T (Reb.)	Avg	PF	FO	Ast	TO	Blk	Stl	Pts	Avg
2008-09	30-0	53-106	.500	0-2	.000	15-32	.469	29-56-85	2.8	50	0	7	26	12	13	121	4.0
2009-10	27-2	37-89	.416	0-0	.000	20-43	.465	31-35-66	2.4	49	1	6	35	13	11	94	3.5
2010-11	32-10	83-159	.522	0-2	.000	39-61	.639	44-69-113	3.5	62	0	9	50	13	18	205	6.4
2011-12	7-4	19-35	.543	0-1	.000	1-2	.500	10-19-29	4.1	16	0	4	11	5	6	39	5.6
TOTAL	96-16	192-389	.494	0-5	.000	75-138	.543	114-179-293	3.1	177	1	26	122	43	48	459	4.8

SEASON HIGHS

Points		
12	vs. USC-Upstate	(11/27/11)
Rebounds		
9	vs. Belmont	(11/15/11)
Assists		
2	vs. Belmont	(11/15/11)
Blocks		
1	4 times, last vs. Troy	(11/30/11)
Steals		
2	twice, last vs. Belmont	(11/15/11)
Field Goals		
6	vs. USC-Upstate	(11/27/11)
Field Goal Attempts		
8	vs USC-Upstate	(11/27/11)
3-Point Field Goals		
		N/A
3-Point FG Attempts		
1	at Duke	(11/18/11)
Free Throws		
		N/A
Free Throw Attempts		
1	vs USC-Upstate	(11/27/11)

CAREER HIGHS

Points		
18	vs. Mississippi State	(3/3/11)
Rebounds		
11	Twice, last vs. Mississippi	(3/3/11)
Assists		
2	3 times, last vs. Belmont	(11/15/11)
Blocks		
3	twice, last vs. Duquesne	(12/29/08)
Steals		
3	vs. Duquesne	(12/29/08)
Field Goals		
8	vs. Mississippi State	(3/3/11)
Field Goal Attempts		
15	vs. Mississippi State	(3/3/11)
3-Point Field Goals		
		N/A
3-Point FG Attempts		
1	5 times, last at Duke	(11/18/11)
Free Throws		
7	vs. Florida	(1/6/11)
Free Throw Attempts		
12	vs. Sam Houston State	(12/5/08)



Morgan JENNINGS

#2

Senior • Guard • 5-8

Atlanta, Ga.

Frederick Douglass High School

NOTES:

- Scored in double figures for the first time this season against USC-Upstate, tallying 10 with 2 assists and 2 rebounds
- Dished out a career-high 9 assists, along with 8 points, in home-opener vs. Belmont
- Started at point guard in the season-opener, tallying 6 points, 6 rebounds and 8 assists at Mercer
- Started the final six games of the 2010-11 season
- Scored career-high 16 points vs. Kentucky on Feb. 27, including career-high 6 free throws
- Earned first start in almost two months at USC; tallied 6 points, 4 rebounds, 3 steals while playing more minutes than she had in the last seven games combined
- Collected career-high 4 steals against Alabama A&M last season

Opponent	Start	Min.	FG-A	3PT-A	FT-A	O-D-T	PF	Asst.	TO	Blk.	Stl.	Pts.
GCSU (Exhibition)	*	21	2-6	0-1	2-2	1-4-5	1	2	1	0	0	6
at Mercer	*	24	2-6	0-1	2-5	2-4-6	1	8	3	0	0	6
BELMONT	*	30	4-9	0-1	0-0	1-1-2	2	9	1	0	3	8
at Duke	*	30	0-4	0-0	2-4	0-6-6	5	3	5	0	2	2
GEORGE WASHINGTON	*	37	1-7	0-0	2-2	1-1-2	0	5	2	0	1	4
USC-UPSTATE	*	25	5-7	0-0	0-0	0-2-2	0	2	3	0	1	10
TROY	*	29	3-8	0-0	0-1	2-5-7	1	3	0	1	0	6
at Temple	*	29	3-7	0-0	1-1	1-6-7	1	2	2	0	1	7
SOUTH FLORIDA												
PURDUE												
vs. Marist												
vs. Hofstra/Central Connecticut State												
vs. North Carolina-Charlotte												
vs. Florida International/Albany												
TENNESSEE												
at Alabama												
GEORGIA												
at Vanderbilt												
at Arkansas												
SOUTH CAROLINA												
at Mississippi State												
KENTUCKY												
at Ole Miss												
VANDERBILT												
at Tennessee												
at Florida												
ARKANSAS												
at LSU												
ALABAMA												
OLE MISS												

SEASON HIGHS

Points		
10	vs. USC-Upstate	(11/27/11)
Rebounds		
7	twice, last at Temple	(12/03/11)
Assists		
9	vs. Belmont	(11/15/11)
Blocks		
1	vs. Troy	(11/30/11)
Steals		
3	vs. Belmont	(11/15/11)
Field Goals		
5	vs. USC-Upstate	(11/27/11)
Field Goal Attempts		
9	vs. Belmont	(11/15/11)
3-Point Field Goals		N/A
3-Point FG Attempts		
1	twice, last vs. Belmont	(11/15/11)
Free Throws		
2	3 times, last vs. GW	(11/23/11)
Free Throw Attempts		
5	at Mercer	(11/11/11)

CAREER HIGHS

Points		
16	vs. Kentucky	(2/27/11)
Rebounds		
7	twice, last at Temple	(12/03/11)
Assists		
9	vs. Belmont	(11/15/11)
Blocks		
1	three times, last vs. Troy	(11/30/11)
Steals		
4	vs. Alabama A&M	(12/28/10)
Field Goals		
7	at Seton Hall	(11/27/10)
Field Goal Attempts		
9	twice, last vs. Belmont	(11/15/11)
3-Point Field Goals		N/A
3-Point FG Attempts		
1	3 times, last vs. Belmont	(11/15/11)
Free Throws		
6	vs. Kentucky	(2/27/11)
Free Throw Attempts		
7	vs. Kentucky	(2/27/11)

JENNINGS CAREER STATISTICS

Year	GP-GS	FG-FGA	Pct	3FG-FGA	Pct	FT-FTA	Pct	O-D-T (Reb.)	Avg	PF	FO	Asst	TO	Blk	Stl	Pts	Avg
2008-09	30-4	30-77	.390	0-0	.000	11-24	.458	18-30-48	1.6	25	0	34	41	0	16	71	2.4
2009-10	13-0	9-32	.281	0-1	.000	1-4	.250	2-9-11	0.8	9	0	15	14	0	2	19	1.5
2010-11	31-8	37-101	.366	0-1	.000	32-47	.681	19-38-57	1.8	31	0	41	46	2	30	106	3.4
2011-12	7-7	18-48	.375	0-2	.000	7-13	.538	7-25-32	4.6	10	1	32	16	1	8	43	6.1
TOTAL	81-19	94-258	.364	0-4	.000	51-88	.580	46-102-148	1.8	75	1	122	117	3	56	239	3.0



Parrisha SIMMONS

#4

Senior • Guard • 6-0

Macon, Ga.

Southwest Macon High School

NOTES:

- Averaging 5.3 points, 7.0 rebounds and 1.7 steals per game in two games as a starter
- Tied her career high with 9 points at Temple
- Earned first start of the season vs. USC-Upstate, pulling down 10 rebounds with 4 points and a steal
- Came off the bench to score 5 points with 9 rebounds while playing in her hometown at Mercer in the season-opener
- Scored season-high 6 points vs. Purdue; tied the mark against Florida and vs. Mississippi State last season
- Snagged career-high 3 steals vs. Alabama A&M
- A defensive and rebounding specialist

Opponent	Start	Min.	FG-A	3PT-A	FT-A	O-D-T	PF	Ast.	TO	Blk.	St.	Pts.
GCSU (Exhibition)	17	1-2	0-0	2-2	2-7-9	1	2	0	1	3	4	
at Mercer	18	1-3	0-0	3-4	5-4-9	2	0	2	1	0	5	
BELMONT	14	1-1	0-0	1-2	2-0-2	1	1	1	0	1	3	
at Duke	12	0-1	0-0	0-0	0-1-1	0	0	0	0	1	0	
GEORGE WASHINGTON	20	2-4	0-0	3-5	3-5-8	3	0	2	0	1	7	
USC-UPSTATE	* 19	0-4	0-0	4-4	7-3-10	0	1	0	0	1	4	
TROY	* 16	1-4	0-0	1-4	6-1-7	1	3	3	2	2	3	
at Temple	* 24	3-6	0-0	3-4	4-0-4	1	1	1	1	2	9	
SOUTH FLORIDA												
PURDUE												
vs. Marist												
vs. Hofstra/Central Connecticut State												
vs. North Carolina-Charlotte												
vs. Florida International/Albany												
TENNESSEE												
at Alabama												
GEORGIA												
at Vanderbilt												
at Arkansas												
SOUTH CAROLINA												
at Mississippi State												
KENTUCKY												
at Ole Miss												
VANDERBILT												
at Tennessee												
at Florida												
ARKANSAS												
at LSU												
ALABAMA												
OLE MISS												

SIMMONS CAREER STATISTICS

Year	GP-GS	FG-FGA	Pct	3FG-FGA	Pct	FT-FTA	Pct	O-D-T (Reb.)	Avg	PF	FO	Ast	TO	Blk	Stl	Pts	Avg
2008-09	21-0	9-25	.360	0-0	.000	4-20	.200	20-36-56	2.7	13	0	12	14	4	6	22	1.0
2009-10	31-22	39-89	.438	0-0	.000	17-49	.347	88-71-159	5.1	51	0	34	43	1	16	95	3.1
2010-11	32-19	24-66	.364	0-0	.000	26-58	.448	54-46-100	3.1	38	0	27	28	2	18	74	2.3
2011-12	7-3	8-23	.348	0-0	.000	15-23	.652	27-14-41	5.9	8	0	6	9	4	8	31	4.4
TOTAL	91-44	80-203	.394	0-0	.000	62-150	.413	189-167-356	3.9	110	0	79	94	11	48	222	2.4

SEASON HIGHS

Points		
9	at Temple	(12/03/11)
Rebounds		
10	vs. USC-Upstate	(11/27/11)
Assists		
3	vs. Troy	(11/30/11)
Blocks		
2	vs. Troy	(11/30/11)
Steals		
2	twice, last at Temple	(12/03/11)
Field Goals		
3	at Temple	(12/03/11)
Field Goal Attempts		
6	at Temple	(12/03/11)
3-Point Field Goals		
		N/A
3-Point FG Attempts		
		N/A
Free Throws		
4	vs. USC-Upstate	(11/27/11)
Free Throw Attempts		
5	vs. George Washington	(11/23/11)

CAREER HIGHS

Points		
9	three times, last at Temple	(12/03/11)
Rebounds		
12	vs. George Washington	(12/5/09)
Assists		
4	vs. Valparaiso	(12/28/09)
Blocks		
2	vs. Troy	(11/30/11)
Steals		
3	vs. Alabama A&M	(12/28/10)
Field Goals		
4	twice, last at N.C. A&T	(12/1/09)
Field Goal Attempts		
7	twice, last vs. USC	(1/30/11)
3-Point Field Goals		
		N/A
3-Point FG Attempts		
		N/A
Free Throws		
5	vs. South Alabama	(12/2/10)
Free Throw Attempts		
9	at Chicago State	(12/21/10)



Blanche ALVERSON

#14

Junior • Forward/Center • 6-3

Andalusia, Ala.

Buford (Ga.) High School

NOTES:

- Is two 3-pointers away from tying Carolyn Jones for 6th all-time at Auburn in career 3-pointers
- Scored a season-high 14 points against George Washington; tied it the next game vs. USC-Upstate
- Returned to the starting lineup for 8 points and 3 rebounds in the home-opener vs. Belmont
- Came off the bench, breaking a 38-game start streak, to register her first career double-double with 12 points and 10 rebounds at Mercer in the season-opener
- Had a career outing last season vs. Ole Miss with 27 points, including a career-high five 3-pointers
- Pulled down a career-high 10 rebounds at Mercer in the 2011-12 season-opener
- Scored Auburn's first field goal in the new Auburn Arena, a 3-pointer that came 56 seconds into the game against Mercer in 2010
- A deep shooting threat, she is also one of the most versatile players on the team because of her size and post skills

Opponent	Start	Min.	FG-A	3PT-A	FT-A	O-D-T	PF	Ast.	TO	Blk.	St.	Pts.
GCSU (Exhibition)	*	23	3-8	2-6	1-1	0-2-2	1	4	0	0	4	9
at Mercer		26	5-6	0-0	2-4	1-9-10	0	1	1	1	0	12
BELMONT	*	21	2-9	1-5	3-3	1-2-3	2	0	1	0	0	8
at Duke	*	22	2-8	1-4	0-0	0-3-3	2	1	2	0	0	5
GEORGE WASHINGTON	*	26	5-7	2-3	2-2	0-5-5	0	0	2	0	2	14
USC-UPSTATE		25	5-15	4-9	0-0	1-4-5	0	2	0	0	0	14
TROY		19	2-5	1-3	0-0	0-3-3	1	1	0	0	1	5
at Temple		20	2-4	2-3	0-0	0-2-2	1	1	0	0	0	6
SOUTH FLORIDA												
PURDUE												
vs. Marist												
vs. Hofstra/Central Connecticut State												
vs. North Carolina-Charlotte												
vs. Florida International/Albany												
TENNESSEE												
at Alabama												
GEORGIA												
at Vanderbilt												
at Arkansas												
SOUTH CAROLINA												
at Mississippi State												
KENTUCKY												
at Ole Miss												
VANDERBILT												
at Tennessee												
at Florida												
ARKANSAS												
at LSU												
ALABAMA												
OLE MISS												

SEASON HIGHS

Points

14 twice, last vs. USC-Upstate (11/27/11)

Rebounds

10 at Mercer (11/11/11)

Assists

2 vs. USC-Upstate (11/27/11)

Blocks

1 at Mercer (11/11/11)

Steals

2 vs. George Washington (11/23/11)

Field Goals

5 twice, last vs. USC-Upstate (11/27/11)

Field Goal Attempts

15 vs USC-Upstate (11/27/11)

3-Point Field Goals

4 vs. USC-Upstate (11/27/11)

3-Point FG Attempts

9 vs USC-Upstate (11/27/11)

Free Throws

3 vs Belmont (11/15/11)

Free Throw Attempts

4 at Mercer (11/11/11)

CAREER HIGHS

Points

27 vs. Ole Miss (1/13/11)

Rebounds

10 at Mercer (11/11/11)

Assists

5 3 times, last vs. Alabama (1/2/11)

Blocks

3 twice, last at Alabama (1/2/11)

Steals

4 vs. LSU (1/16/11)

Field Goals

11 vs. Ole Miss (1/13/11)

Field Goal Attempts

17 twice, last vs. Mississippi St. (2/6/11)

3-Point Field Goals

5 vs. Ole Miss (1/13/11)

3-Point FG Attempts

9 4 times, last vs. USC-Upstate (11/27/11)

Free Throws

4 twice, last vs. Seton Hall (11/27/10)

Free Throw Attempts

5 vs. Seton Hall (11/27/10)

ALVERSON CAREER STATISTICS

Year	GP-GS	FG-FGA	Pct	3FG-FGA	Pct	FT-FTA	Pct	O-D-T (Reb.)	Avg	PF	FO	Ast	TO	Blk	Stl	Pts	Avg
2009-10	31-13	78-218	.358	40-128	.313	19-27	.704	26-92-118	3.8	39	1	51	44	17	15	215	6.9
2010-11	32-32	126-333	.378	50-171	.292	25-35	.714	33-118-151	4.7	44	0	33	61	17	27	327	10.2
2011-12	7-3	23-54	.426	11-27	.407	7-9	.778	3-28-31	4.4	6	0	6	6	1	3	64	9.1
TOTAL	70-48	227-605	.375	101-326	.310	51-71	.718	62-238-300	4.3	89	1	90	111	35	45	606	8.7



Najat OUARDAD

#3

Junior • Guard • 5-1

Orleans, France

Pensacola State College

NOTES:

- Has started the last three games, averaging 4.7 points, 5.7 assists and 2.3 steals per game as a starter
- Started first game as a Tiger vs. USC-Upstate, tallying 7 points with 8 assists and 2 steals
- Scored 7 points with 4 assists and 3 rebounds in debut as a Tiger at Mercer
- Entering her first season at Auburn after transferring from Pensacola State College, was a two-time All-Panhandle Conference selection while at Pensacola State
- Averaged 6.4 points, 2.6 rebounds, 5.1 assists and 2.5 steals per game, after averaging 6.6 points, 2.0 rebounds, 6.5 assists and 2.5 steals per game as a freshman
- Led Pensacola State to a third-place finish at the 2011 NJCAA National Basketball Championship, compiling a 36-1 record along the way
- Played for the French National Team while in high school
- Attended Oak Ridge Military Academy (Oak Ridge, N.C.) and Forsyth Country Day (Lewisville, N.C.) before going to PSC

Opponent	Start	Min.	FG-A	3PT-A	FT-A	O-D-T	PF	Asst.	TO	Blk.	Stl.	Pts.
GCSU (Exhibition)		18	0-2	0-1	2-2	1-1-2	3	3	2	0	5	2
at Mercer		16	2-5	0-2	3-4	1-2-3	1	4	4	0	3	7
BELMONT		13	1-4	0-2	0-0	0-0-0	1	3	2	0	3	2
at Duke		14	1-2	0-0	0-1	1-1-2	2	2	4	0	1	2
GEORGE WASHINGTON		15	0-3	0-3	0-0	2-1-3	0	2	2	0	1	0
USC-UPSTATE	*	19	2-6	2-4	1-2	1-0-1	3	8	6	0	2	7
TROY	*	21	2-7	1-2	0-0	2-1-3	0	5	2	0	5	5
at Temple	*	21	1-5	0-2	0-0	2-0-2	4	4	3	0	1	2

SOUTH FLORIDA

PURDUE

vs. Marist

vs. Hofstra/Central Connecticut State

vs. North Carolina-Charlotte

vs. Florida International/Albany

TENNESSEE

at Alabama

GEORGIA

at Vanderbilt

at Arkansas

SOUTH CAROLINA

at Mississippi State

KENTUCKY

at Ole Miss

VANDERBILT

at Tennessee

at Florida

ARKANSAS

at LSU

ALABAMA

OLE MISS

OUARDAD CAREER STATISTICS

Year	GP-GS	FG-FGA	Pct	3FG-FGA	Pct	FT-FTA	Pct	O-D-T (Reb.)	Avg	PF	FO	Asst	TO	Blk	Stl	Pts	Avg
2011-12	7-3	9-32	.281	3-15	.200	4-7	.571	9-5-14	2.0	11	0	28	23	0	16	25	3.6
TOTAL	7-3	9-32	.281	3-15	.200	4-7	.571	9-5-14	2.0	11	0	28	23	0	16	25	3.6

SEASON HIGHS

Points

7 twice, last vs. USC-Upstate (11/27/11)

Rebounds

3 three times, last vs. Troy (11/30/11)

Assists

8 vs. USC-Upstate (11/27/11)

Blocks

N/A

Steals

5 vs. Troy (11/30/11)

Field Goals

2 three times, last vs. Troy (11/30/11)

Field Goal Attempts

7 vs. Troy (11/30/11)

3-Point Field Goals

2 vs. USC-Upstate (11/27/11)

3-Point FG Attempts

4 vs. USC-Upstate (11/27/11)

Free Throws

3 at Mercer (11/11/11)

Free Throw Attempts

4 at Mercer (11/11/11)



Pascale WEST

#20

Junior • Center • 6-8

LaGrange, Ga.

Troup County Comprehensive High School

NOTES:

- Had best game of the season vs. USC-Upstate, scoring 2 points with 3 rebounds and an assist
- Pulled down season-high 4 rebounds with a block against George Washington
- Came off the bench for 2 points and a rebound in the season-opener at Mercer
- Tied her career high againn with 4 points at LSU last season
- Is the tallest player in the SEC
- Her 22 blocks during the 2009-10 season rank her ninth all-time among Auburn freshmen

Opponent	Start	Min.	FG-A	3PT-A	FT-A	O-D-T	PF	Asst.	TO	Blk.	Stl.	Pts.
GCSU (Exhibition)	13		1-4	0-0	2-3	0-3-3	0	1	1	0	0	4
at Mercer	5		0-0	0-0	2-2	0-1-1	3	0	1	0	0	2
BELMONT	6		0-0	0-0	0-0	0-0-0	2	0	1	0	0	0
at Duke						---	DNP - COACHES' DECISION ---					
GEORGE WASHINGTON	12		0-0	0-0	0-0	2-2-4	3	0	0	1	0	0
USC-UPSTATE	10		1-3	0-0	0-0	1-2-3	1	1	0	0	0	2
TROY	7		0-1	0-0	0-0	0-2-2	1	0	0	1	1	0
at Temple	3		0-0	0-0	0-0	0-1-1	1	0	0	0	0	0
SOUTH FLORIDA												
PURDUE												
vs. Marist												
vs. Hofstra/Central Connecticut State												
vs. North Carolina-Charlotte												
vs. Florida International/Albany												
TENNESSEE												
at Alabama												
GEORGIA												
at Vanderbilt												
at Arkansas												
SOUTH CAROLINA												
at Mississippi State												
KENTUCKY												
at Ole Miss												
VANDERBILT												
at Tennessee												
at Florida												
ARKANSAS												
at LSU												
ALABAMA												
OLE MISS												

SEASON HIGHS

Points

2 twice, last vs. USC-Upstate (11/27/11)

Rebounds

4 vs. George Washington (11/23/11)

Assists

1 vs. USC-Upstate (11/27/11)

Blocks

1 twice, last vs. Troy (11/30/11)

Steals

1 vs. Troy (11/30/11)

Field Goals

1 vs. USC-Upstate (11/27/11)

Field Goal Attempts

3 vs. USC-Upstate (11/27/11)

3-Point Field Goals

N/A

3-Point FG Attempts

N/A

Free Throws

2 at Mercer (11/11/11)

Free Throw Attempts

2 at Mercer (11/11/11)

CAREER HIGHS

Points

4 4 times, last at LSU (2/10/11)

Rebounds

5 vs. Alabama A&M (11/19/09)

Assists

1 4 times, last vs. USC-Upstate(12/28/10)

Blocks

7 vs. Alabama A&M (11/19/09)

Steals

1 8 times, last vs. Troy (11/30/10)

Field Goals

2 4 times, last at LSU (2/10/11)

Field Goal Attempts

4 at North Carolina A&T (12/1/09)

3-Point Field Goals

N/A

3-Point FG Attempts

N/A

Free Throws

2 at Mercer (11/11/11)

Free Throw Attempts

4 vs. Florida A&M (11/28/09)

WEST CAREER STATISTICS

Year	GP-GS	FG-FGA	Pct	3FG-FGA	Pct	FT-FTA	Pct	O-D-T (Reb.)	Avg	PF	FO	Asst	TO	Blk	Stl	Pts	Avg
2009-10	24-0	7-15	.467	0-0	.000	4-11	.364	9-23-32	1.3	31	0	5	14	22	6	18	0.8
2010-11	13-0	5-8	.625	0-0	.000	1-6	.167	1-5-6	0.5	15	0	1	9	3	1	11	0.8
2011-12	6-0	1-4	.250	0-0	.000	2-2	1.000	3-8-11	1.8	11	0	1	2	2	1	4	0.7
TOTAL	43-0	13-27	.481	0-0	.000	7-19	.368	13-36-49	1.1	57	0	7	25	27	8	33	0.8



Peyton DAVIS

#34

Sophomore • Center • 6-5

Pinson, Ala.

Mortimer Jordan High School

NOTES:

- Saw first action of the season against USC-Upstate, pulling down 4 rebounds in 7 minutes
- Played season-high 21 minutes at Arkansas as a freshman, tallying 4 points, 6 rebounds and a season-high 3 blocks
- Had a career outing at Vanderbilt, notching season highs in points (6), rebounds (7) and steals (2) in a season-high 15 minutes
- Led Auburn in rebounding for the first time with 7 at Vanderbilt
- A two-sport star athlete in high school, also fielded several NCAA Division I volleyball offers
- Holds a black belt in Taekwondo

Opponent	Start	Min.	FG-A	3PT-A	FT-A	O-D-T	PF	Ass.	TO	Blk.	St.	Pts.
GCSU (Exhibition)						--- DNP - INJURED ---						
at Mercer						--- DNP - INJURED ---						
BELMONT						--- DNP - INJURED ---						
at Duke						--- DNP - COACHES' DECISION ---						
GEORGE WASHINGTON						--- DNP - INJURED ---						
USC-UPSTATE	7		0-1	0-0	0-0	0-4-4	0	0	0	0	0	0
TROY	6		0-1	0-0	0-0	1-2-3	1	0	0	1	0	0
at Temple						--- DNP - COACHES' DECISION ---						
SOUTH FLORIDA												
PURDUE												
vs. Marist												
vs. Hofstra/Central Connecticut State												
vs. North Carolina-Charlotte												
vs. Florida International/Albany												
TENNESSEE												
at Alabama												
GEORGIA												
at Vanderbilt												
at Arkansas												
SOUTH CAROLINA												
at Mississippi State												
KENTUCKY												
at Ole Miss												
VANDERBILT												
at Tennessee												
at Florida												
ARKANSAS												
at LSU												
ALABAMA												
OLE MISS												

SEASON HIGHS

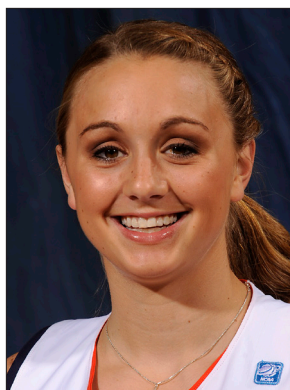
Points	(N/A)
Rebounds	(N/A)
4 vs. USC-Upstate	(11/27/11)
Assists	(N/A)
Blocks	(N/A)
1 vs. Troy	(11/30/11)
Steals	(N/A)
Field Goals	(N/A)
Field Goal Attempts	(N/A)
1 twice, last vs. Troy	(11/30/11)
3-Point Field Goals	(N/A)
3-Point FG Attempts	(N/A)
Free Throws	(N/A)
Free Throw Attempts	(N/A)

CAREER HIGHS

Points	(1/9/11)
6 at Vanderbilt	(1/9/11)
Rebounds	(1/9/11)
7 at Vanderbilt	(1/9/11)
Assists	(3/3/11)
1 7 times, last vs. MSU	(3/3/11)
Blocks	(2/13/11)
3 at Arkansas	(2/13/11)
Steals	(1/9/11)
2 at Vanderbilt	(1/9/11)
Field Goals	(2/13/11)
2 4 times, last at Arkansas	(2/13/11)
Field Goal Attempts	(12/28/10)
6 vs. Alabama A&M	(12/28/10)
3-Point Field Goals	N/A
3-Point FG Attempts	N/A
Free Throws	(11/12/10)
3 vs. Mercer	(11/12/10)
Free Throw Attempts	(11/12/10)
4 vs. Mercer	(11/12/10)

DAVIS CAREER STATISTICS

Year	GP-GS	FG-FGA	Pct	3FG-FGA	Pct	FT-FTA	Pct	O-D-T (Reb.)	Avg	PF	FO	Ass	TO	Blk	Stl	Pts	Avg
2010-11	26-0	12-41	.293	0-0	.000	9-15	.600	18-16-34	1.3	38	0	7	13	7	4	33	1.3
2011-12	2-0	0-2	.000	0-0	.000	0-0	.000	1-6-7	3.5	1	0	0	0	1	0	0	0.0
TOTAL	28-0	12-43	.279	0-0	.000	9-15	.600	19-22-41	1.5	39	0	7	13	8	4	33	1.2



Camille GLYMPH

#22

Sophomore • Guard • 5-10

Greenville, S.C.

J.L. Mann High School

NOTES:

- Has led Auburn in scoring in three of the last six games and is tied for third on the team in scoring with 10.0 points per game
- Leads the team with 2.4 three-pointers per game this season
- Is 17-of-41 (.415) from beyond the arc in the last five games
- Came off the bench in home-opener vs. Belmont for career-high 18 points on 5-of-8 shooting from beyond the arc
- Scored season-high 8 points at Toledo in the second round of the 2011 WNIT
- Made her collegiate and SEC debut on Jan. 13, 2011 against Ole Miss after missing half the season with an injury, recording 4 points and a steal

Opponent	Start	Min.	FG-A	3PT-A	FT-A	O-D-T	PF	Ast.	TO	Blk.	St.	Pts.
GCSU (Exhibition)	22		5-14	5-12	0-0	0-1-1	2	1	0	0	1	15
at Mercer	24		2-7	0-4	0-0	1-2-3	0	3	0	0	2	4
BELMONT	23		6-11	5-8	1-1	0-1-1	0	3	1	0	1	18
at Duke	28		4-12	4-8	0-0	0-3-3	0	0	0	0	1	12
GEORGE WASHINGTON	19		2-9	0-7	0-0	0-3-3	1	1	0	2	0	4
USC-UPSTATE	12		2-6	2-4	0-0	0-2-2	0	1	0	0	0	6
TROY	26		5-10	4-8	0-0	1-1-2	2	1	2	0	3	14
at Temple	26		5-9	2-6	0-0	0-2-2	0	2	1	0	0	12
SOUTH FLORIDA												
PURDUE												
vs. Marist												
vs. Hofstra/Central Connecticut State												
vs. North Carolina-Charlotte												
vs. Florida International/Albany												
TENNESSEE												
at Alabama												
GEORGIA												
at Vanderbilt												
at Arkansas												
SOUTH CAROLINA												
at Mississippi State												
KENTUCKY												
at Ole Miss												
VANDERBILT												
at Tennessee												
at Florida												
ARKANSAS												
at LSU												
ALABAMA												
OLE MISS												

GLYMPH CAREER STATISTICS

Year	GP-GS	FG-FGA	Pct	3FG-FGA	Pct	FT-FTA	Pct	O-D-T (Reb.)	Avg	PF	FO	Ast	TO	Blk	Stl	Pts	Avg
2010-11	13-0	11-40	.275	5-21	.238	2-2	1.000	3-9-12	0.9	3	0	8	15	2	3	29	2.2
2011-12	7-0	26-64	.406	17-45	.378	1-1	1.000	2-14-16	2.3	3	0	11	4	2	7	70	10.0
TOTAL	20-0	37-104	.356	22-66	.333	3-3	1.000	5-23-28	1.4	6	0	19	19	4	10	99	5.0

SEASON HIGHS

Points		
18	vs. Belmont	(11/15/11)
Rebounds		
3	twice, last at Duke	(11/18/11)
Assists		
3	twice, last vs Belmont	(11/15/11)
Blocks		
2	vs. George Washington	(11/23/11)
Steals		
3	vs. Troy	(11/30/11)
Field Goals		
6	vs. Belmont	(11/15/11)
Field Goal Attempts		
12	at Duke	(11/18/11)
3-Point Field Goals		
5	vs Belmont	(11/15/11)
3-Point FG Attempts		
8	three times, last vs. Troy	(11/30/11)
Free Throws		
1	vs Belmont	(11/15/11)
Free Throw Attempts		
1	vs Belmont	(11/15/11)

CAREER HIGHS

Points		
18	vs Belmont	(11/15/11)
Rebounds		
4	vs. Alabama	(2/17/11)
Assists		
3	3 times, last vs. Belmont	(11/15/11)
Blocks		
2	vs. George Washington	(11/23/11)
Steals		
3	vs. Troy	(11/30/11)
Field Goals		
6	vs Belmont	(11/15/11)
Field Goal Attempts		
12	twice, last at Duke	(11/18/11)
3-Point Field Goals		
5	vs Belmont	(11/15/11)
3-Point FG Attempts		
8	three times, last vs. Troy	(11/30/11)
Free Throws		
2	vs. Ole Miss	(1/13/11)
Free Throw Attempts		
2	vs. Ole Miss	(1/13/11)



Courtney STRAIN

#11

Sophomore • Guard • 5-9

Woodland, Ala.

Woodland High School

NOTES:

- Tallied a total of 6 points in exhibition against Georgia College
- Played season-high 22 minutes at Arkansas last season, setting season highs in points (12) and rebounds (4)
- Earned first collegiate start vs. Seton Hall at the 2010 Junkanoo Jam, scoring 7 points
- Scored 3 points with 2 rebounds in collegiate debut vs. Mercer in 2010
- Broke the Alabama state scoring record as a junior in high school, finished her career with 5,283 points - more than 1,000 than her nearest competitor
- Was also a varsity cheerleader for six years, serving as captain as a senior
- Graduated as salutatorian of her graduating class

Opponent	Start	Min.	FG-A	3PT-A	FT-A	O-D-T	PF	Asst.	TO	Blk.	Stl.	Pts.
GCSU (Exhibition)		18	3-7	0-3	0-2	0-1-1	3	0	0	0	1	6
at Mercer						--- DNP - INJURED ---						
BELMONT						--- DNP - INJURED ---						
at Duke						--- DNP - INJURED ---						
GEORGE WASHINGTON						--- DNP - INJURED ---						
USC-UPSTATE						--- DNP - INJURED ---						
TROY						--- DNP - INJURED ---						
at Temple						--- DNP - INJURED ---						
SOUTH FLORIDA												
PURDUE												
vs. Marist												
vs. Hofstra/Central Connecticut State												
vs. North Carolina-Charlotte												
vs. Florida International/Albany												
TENNESSEE												
at Alabama												
GEORGIA												
at Vanderbilt												
at Arkansas												
SOUTH CAROLINA												
at Mississippi State												
KENTUCKY												
at Ole Miss												
VANDERBILT												
at Tennessee												
at Florida												
ARKANSAS												
at LSU												
ALABAMA												
OLE MISS												

STRAIN CAREER STATISTICS

Year	GP-GS	FG-FGA	Pct	3FG-FGA	Pct	FT-FTA	Pct	O-D-T (Reb.)	Avg	PF	FO	Asst	TO	Blk	Stl	Pts	Avg
2010-11	24-1	24-76	.316	5-19	.263	8-15	.533	6-14-20	0.8	13	0	7	16	0	7	61	2.5
TOTAL	24-1	24-76	.316	5-19	.263	8-15	.533	6-14-20	0.8	13	0	7	16	0	7	61	2.5

SEASON HIGHS

Points

Rebounds

Assists

Blocks

Steals

Field Goals

Field Goal Attempts

3-Point Field Goals

3-Point FG Attempts

Free Throws

Free Throw Attempts

CAREER HIGHS

Points

12 at Arkansas (2/13/11)

Rebounds

4 at Arkansas (2/13/11)

Assists

1 7 times, last at Toledo (3/19/11)

Blocks

N/A

Steals

1 7 times, last vs. Kentucky (2/27/11)

Field Goals

5 at Arkansas (2/13/11)

Field Goal Attempts

8 at Toledo (3/19/11)

3-Point Field Goals

1 5 times, last at LSU (2/10/11)

3-Point FG Attempts

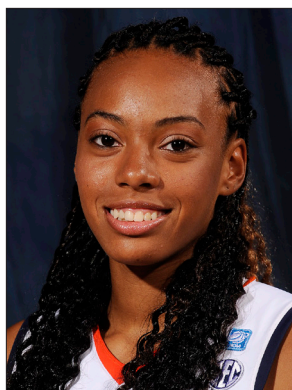
3 twice, last vs. Seton Hall (11/27/10)

Free Throws

3 vs. Sacred Heart (11/26/10)

Free Throw Attempts

6 vs. Sacred Heart (11/26/10)



Tyrese TANNER

#32

Sophomore • Forward • 6-1

Birmingham, Ala.

Hoover High School

NOTES:

- Is second on the team in scoring with 10.6 points per game this season
- Scored career-high 16 points in home-opener win over Belmont on career-high 4-of-5 shooting from 3-point range
- Started and led Auburn in scoring with 14 points in the season-opener at Mercer, also tallied 3 assists and 2 steals
- Averaged 11.0 points, 7.0 rebounds and 1.5 blocks per game in the two 2011 WNIT games
- Tied her career high with 15 points at Alabama, hitting four free throws in the final 20 seconds for the win
- Made first collegiate start vs. Seton Hall, went on to start the next two games

Opponent	Start	Min.	FG-A	3PT-A	FT-A	O-D-T	PF	Ast.	TO	Blk.	St.	Pts.
GCSU (Exhibition)		7	3-4	1-1	1-2	1-0-1	2	0	1	1	1	8
at Mercer	*	17	6-8	0-1	2-2	0-0-0	4	3	1	0	2	14
BELMONT	*	28	5-11	4-5	2-2	2-2-4	1	1	1	1	1	16
at Duke	*	26	3-11	0-3	3-3	0-4-4	2	1	3	2	1	9
GEORGE WASHINGTON	*	30	3-14	0-3	5-8	0-3-3	3	2	0	0	0	11
USC-UPSTATE	*	27	3-8	0-1	1-2	4-2-6	0	1	1	2	1	7
TROY	*	21	2-8	0-1	4-7	5-1-6	1	0	2	0	0	8
at Temple	*	32	2-14	1-4	4-5	3-3-6	2	2	3	0	3	9
SOUTH FLORIDA												
PURDUE												
vs. Marist												
vs. Hofstra/Central Connecticut State												
vs. North Carolina-Charlotte												
vs. Florida International/Albany												
TENNESSEE												
at Alabama												
GEORGIA												
at Vanderbilt												
at Arkansas												
SOUTH CAROLINA												
at Mississippi State												
KENTUCKY												
at Ole Miss												
VANDERBILT												
at Tennessee												
at Florida												
ARKANSAS												
at LSU												
ALABAMA												
OLE MISS												

TANNER CAREER STATISTICS

Year	GP-GS	FG-FGA	Pct	3FG-FGA	Pct	FT-FTA	Pct	O-D-T (Reb.)	Avg	PF	FO	Ast	TO	Blk	Stl	Pts	Avg
2010-11	32-3	53-159	.333	6-37	.162	43-64	.672	48-53-101	3.2	57	1	27	48	24	21	155	4.8
2011-12	7-7	24-74	.324	5-18	.278	21-29	.724	14-15-29	4.1	13	0	10	11	5	8	74	10.6
TOTAL	39-10	77-233	.330	11-55	.200	64-93	.688	62-68-130	3.3	70	1	37	59	29	29	229	5.9

SEASON HIGHS

Points		
16	vs. Belmont	(11/15/11)
Rebounds		
6	twice, last vs. Troy	(11/30/11)
Assists		
3	at Mercer	(11/11/11)
Blocks		
2	twice, last vs USC-Upstate	(11/28/11)
Steals		
3	at Temple	(12/03/11)
Field Goals		
6	at Mercer	(11/11/11)
Field Goal Attempts		
14	twice, last at Temple	(12/03/11)
3-Point Field Goals		
4	vs Belmont	(11/15/11)
3-Point FG Attempts		
5	at Mercer	(11/15/11)
Free Throws		
5	vs. George Washington	(11/23/11)
Free Throw Attempts		
8	vs. George Washington	(11/23/11)

CAREER HIGHS

Points		
16	vs Belmont	(11/15/11)
Rebounds		
7	twice, last at Toledo	(3/19/11)
Assists		
3	4 times, last vs. Belmont	(11/15/11)
Blocks		
3	at Tennessee Tech	(3/17/11)
Steals		
3	four times, last at Temple	(12/03/11)
Field Goals		
6	at Mercer	(11/11/11)
Field Goal Attempts		
14	twice, last at Temple	(12/03/11)
3-Point Field Goals		
4	vs Belmont	(11/15/11)
3-Point FG Attempts		
5	twice, last vs. Belmont	(11/15/11)
Free Throws		
6	twice, last at Toledo	(3/19/11)
Free Throw Attempts		
6	5 times, last at Toledo	(3/19/11)



Jassany WILLIAMS

#25

Sophomore • Forward • 6-2

Davie, Fla.

Nova High School

NOTES:

- Ranks 18th in the nation in blocks per game with 2.9
- Neared a double-double with 12 points and 8 rebounds against Troy
- Blocked a career-high 7 shots at Duke, tying for 13th all-time at Auburn in single-game blocks
- Started and logged 9 points, 5 rebounds and 2 blocks in the season-opener at Mercer
- Started the last nine games of the 2010-11 season
- Pulled down a career-high 12 rebounds against Alabama
- Earned her first career start at LSU, scoring 6 points with 2 rebounds and 2 blocked shots in 19 minutes
- Came off the bench to score career high 13 points vs. South Alabama last season

Opponent	Start	Min.	FG-A	3PT-A	FT-A	O-D-T	PF	Ast.	TO	Blk.	St.	Pts.
GCSU (Exhibition)	*	24	2-4	0-0	4-6	4-7-11	1	2	0	1	1	8
at Mercer	*	29	4-6	0-0	1-2	1-4-5	3	2	1	2	1	9
BELMONT	*	29	5-8	0-0	2-2	1-6-7	3	0	1	4	2	12
at Duke	*	23	2-5	0-0	0-0	2-2-4	2	1	2	7	2	4
GEORGE WASHINGTON	*	7	2-2	0-0	1-4	1-0-1	1	0	0	0	0	5
USC-UPSTATE		14	0-2	0-0	1-2	3-1-4	2	0	1	3	2	1
TROY		18	5-8	0-0	0-0	3-5-8	0	0	0	4	1	10
at Temple		11	1-3	0-0	0-0	2-0-2	3	0	1	0	1	2
SOUTH FLORIDA												
PURDUE												
vs. Marist												
vs. Hofstra/Central Connecticut State												
vs. North Carolina-Charlotte												
vs. Florida International/Albany												
TENNESSEE												
at Alabama												
GEORGIA												
at Vanderbilt												
at Arkansas												
SOUTH CAROLINA												
at Mississippi State												
KENTUCKY												
at Ole Miss												
VANDERBILT												
at Tennessee												
at Florida												
ARKANSAS												
at LSU												
ALABAMA												
OLE MISS												

WILLIAMS CAREER STATISTICS

Year	GP-GS	FG-FGA	Pct	3FG-FGA	Pct	FT-FTA	Pct	O-D-T (Reb.)	Avg	PF	FO	Ast	TO	Blk	Stl	Pts	Avg
2010-11	32-9	45-113	.398	0-0	.000	28-52	.538	52-68-120	3.8	53	1	7	39	23	26	118	3.7
2011-12	7-4	19-34	.559	0-0	.000	5-10	.500	13-18-31	4.4	14	0	3	6	20	9	43	6.1
TOTAL	39-13	64-147	.435	0-0	.000	33-62	.532	65-86-151	3.9	67	1	10	45	43	35	161	4.1

SEASON HIGHS

Points		
12	vs. Belmont	(11/15/11)
Rebounds		
8	vs. Troy	(11/30/11)
Assists		
2	at Mercer	(11/11/11)
Blocks		
7	at Duke	(11/18/11)
Steals		
2	3 times, last at USC-Upstate	(11/28/11)
Field Goals		
5	twice, last vs. Troy	(11/30/11)
Field Goal Attempts		
8	twice, last vs. Troy	(11/30/11)
3-Point Field Goals		
		N/A
3-Point FG Attempts		
		N/A
Free Throws		
2	vs Belmont	(11/15/11)
Free Throw Attempts		
4	vs George Washington	(11/23/11)

CAREER HIGHS

Points		
13	vs. South Alabama	(12/2/10)
Rebounds		
12	vs. Alabama	(2/17/11)
Assists		
2	twice, last at Mercer	(11/11/11)
Blocks		
7	at Duke	(11/18/11)
Steals		
3	3 times, last vs. USC	(1/30/11)
Field Goals		
5	three times, last vs. Troy	(11/30/11)
Field Goal Attempts		
13	vs. Mercer	(11/12/10)
3-Point Field Goals		
		N/A
3-Point FG Attempts		
		N/A
Free Throws		
3	4 times, last vs. Florida	(1/6/11)
Free Throw Attempts		
7	vs. Alabama	(2/17/11)



Hasina MUHAMMAD

#0

Freshman • Guard/Forward • 6-1

Memphis, Tenn.

Ridgeway High School

NOTES:

- Scored career-high 19 points against Troy; has accounted for 31 points over the last two games
- Has scored in double figures in all but two games this season
- Became first Auburn true freshman to start in season-opener since Morgan Jennings started the season-opener in 2008
- Tallied 12 points, two rebounds, a block and a steal in her debut as a Tiger at Mercer
- Ranked as the No. 66 overall player in the country by ESPN's HoopGurlz, also ranked as the 17th-best guard in the country and the No. 2 prospect in Tennessee
- Ranked as the No. 50 overall prospect by the All-Star Girls Report and No. 47 by the Girls Basketball Report
- Averaged 17.8 points, 7.4 rebounds, 2.3 assists, 3.9 blocks and 2.6 steals per game as a senior, leading Ridgeway to a 20-9 record
- Two-time All-State selection and three-time All-Region; also was a finalist for Tennessee's Miss Basketball

Opponent	Start	Min.	FG-A	3PT-A	FT-A	O-D-T	PF	Ast.	TO	Blk.	Stl.	Pts.
GCSU (Exhibition)	*	18	5-10	0-2	3-5	4-0-4	1	1	0	1	2	13
at Mercer	*	23	6-10	0-1	0-1	0-2-2	3	1	4	1	1	12
BELMONT	*	17	1-3	0-0	3-5	1-4-5	1	1	1	1	2	5
at Duke	*	22	4-8	0-0	2-4	1-2-3	2	1	4	1	0	10
GEORGE WASHINGTON	*	18	3-6	2-2	2-4	1-1-2	0	4	2	0	1	10
USC-UPSTATE		20	6-11	0-1	0-0	3-4-7	3	3	2	1	1	12
TROY		20	9-14	1-1	0-1	4-0-4	1	0	2	3	2	19
at Temple		15	3-9	1-2	0-0	2-2-4	3	0	4	0	0	7

SOUTH FLORIDA

PURDUE

vs. Marist

vs. Hofstra/Central Connecticut State

vs. North Carolina-Charlotte

vs. Florida International/Albany

TENNESSEE

at Alabama

GEORGIA

at Vanderbilt

at Arkansas

SOUTH CAROLINA

at Mississippi State

KENTUCKY

at Ole Miss

VANDERBILT

at Tennessee

at Florida

ARKANSAS

at LSU

ALABAMA

OLE MISS

MUHAMMAD CAREER STATISTICS

Year	GP-GS	FG-FGA	Pct	3FG-FGA	Pct	FT-FTA	Pct	O-D-T (Reb.)	Avg	PF	FO	Ast	TO	Blk	Stl	Pts	Avg
2011-12	7-4	32-61	.525	4-7	.571	7-15	.467	12-15-27	3.9	13	0	10	19	7	7	75	10.7
TOTAL	7-4	32-61	.525	4-7	.571	7-15	.467	12-15-27	3.9	13	0	10	19	7	7	75	10.7

SEASON HIGHS

Points

19 vs. Troy (11/30/11)

Rebounds

7 vs. USC-Upstate (11/27/11)

Assists

4 vs. George Washington (11/23/11)

Blocks

3 vs. Troy (11/30/11)

Steals

2 twice, last vs. Troy (11/30/11)

Field Goals

9 vs. Troy (11/30/11)

Field Goal Attempts

14 vs. Troy (11/30/11)

3-Point Field Goals

2 vs. George Washington (11/23/11)

3-Point FG Attempts

2 twice, last at Temple (12/03/11)

Free Throws

3 vs. Belmont (11/15/11)

Free Throw Attempts

5 vs. Belmont (11/15/11)

Exhibition Game: Oct. 30, 2011
Auburn 85, Georgia College 25
Auburn Arena
Auburn, Ala.

Official Basketball Box Score -- Game Totals -- Final Statistics
 GCSU vs Auburn
 10-30-11 2 p.m. at Auburn, Ala. -- Auburn Arena

VISITORS: Georgia College

#	Player	fg-fga	3fg-fga	ft-fa	of	de	tot	pf	tp	a	to	blk	s	min
12	Abby Slocumb*	0-2	0-0	0-0	1	1	2	2	0	1	2	1	0	19
32	Krysta Lewis*	1-9	0-3	0-2	3	4	7	3	2	0	1	0	0	19
04	Myeshia Simms*	1-5	0-0	4-6	0	3	3	1	6	1	8	0	4	30
21	Mikalya DeFoor*	0-3	0-2	0-0	0	0	0	3	0	0	0	0	0	16
23	Shanteona Keys*	2-10	1-5	3-4	1	2	3	3	8	0	2	0	1	25
02	Terryuana Godwin	2-4	0-0	1-1	2	0	2	5	0	0	0	0	0	6
03	Lisa Mitchell	0-3	0-2	0-0	0	2	2	1	0	0	3	0	0	12
10	Hollyn Phelps	0-0	0-0	0-0	1	0	1	1	0	0	1	0	0	15
14	Enisha Donley	1-4	1-1	0-3	1	3	4	2	3	0	1	0	0	19
24	Jasmine Williams	0-7	0-1	0-0	0	6	6	3	0	0	1	0	1	22
33	Belinda Schaafsma	0-4	0-1	1-2	0	4	4	2	1	0	3	0	0	17
TEAM		4 1 5												
Totals.....		7-51	2-15	9-18	13	26	39	21	25	2	22	1	6	200

HOME: Auburn

#	Player	fg-fga	3fg-fga	ft-fa	of	de	tot	pf	tp	a	to	blk	s	min
14	Alverson, Blanche*	3-8	2-6	1-1	0	2	2	1	9	4	0	0	4	23
25	Williams, Jassany*	2-4	0-0	4-6	4	7	11	1	8	2	0	1	1	24
23	Hilliard, Chantel*	3-9	0-0	4-6	8	7	15	2	10	0	3	2	1	19
00	Muhammad, Hasina*	5-10	0-2	3-5	4	0	4	1	13	1	0	1	2	18
02	Jennings, Morgan*	2-6	0-1	2-2	1	4	5	1	6	2	1	0	0	21
03	Ouardad, Najat	0-2	0-1	2-2	1	1	2	3	2	3	2	0	5	18
04	Simmons, Parrisha	1-2	0-0	2-2	2	7	9	1	4	2	0	1	3	17
11	Strain, Courtney	3-7	0-3	0-2	0	1	1	3	6	0	0	0	1	18
20	West, Pascale	1-4	0-0	2-3	0	3	3	0	4	1	1	0	0	13
22	Glymph, Camille	5-14	5-12	0-0	0	1	1	2	15	1	0	0	1	22
32	Tanner, Tyrese	3-4	1-1	1-2	1	0	1	2	8	0	1	1	1	7
TEAM		2 4 6												
Totals.....		28-70	8-26	21-31	23	37	60	17	85	16	8	6	19	200

Officials: Nannette Sisk (R), Denise Brooks (U1), Dawn Marsh (U2)

Technical fouls: GCSU-None. Auburn-None.

Attendance: 731

Score by Periods	1st	2nd	Total
GCSU	6	19	25
Auburn	43	42	85

Exhibition Game

AUBURN - The Auburn women's basketball team took a decisive 85-25 win over Georgia College and State University in its exhibition game on Oct. 30 at the Auburn Arena. Sophomore Camille Glymph led the Tigers with 15 points off the bench while senior Chantel Hilliard notched a double-double with 10 points and 15 rebounds.

Senior Blanche Alverson started things off for Auburn, draining a 3-pointer just 18 seconds into the game. The Tigers newly implemented defense held the Bobcats scoreless for the first 12:45 of the game, until Georgia College ended the drought on a free throw from Shanteona Keys with 7:15 remaining in the half.

Holding the Bobcats to just six points off of free throws in the first half, the Tigers went into the locker room at the half with a substantial 43-6 lead. Auburn scored 19 points off of Georgia College's 15 first-half turnovers.

The Tigers came out strong in the second half and once again kept the Bobcats scoreless for the opening three minutes, while adding seven points to their lead. Georgia College hit its first field goal of the game with 13:55 remaining on a layup from Terryuana Godwin.

The Tigers eventually led by as many as 62 points with 5:13 left in the game before holding on for the 85-25 win.

Auburn shot 40.0 percent from the field while holding the Bobcats to 13.7 percent. Auburn also forced 22 turnovers, turning them in to 27 points on the other end.

Game 1: Nov. 11, 2011
Auburn 77, Mercer 43
University Center
Macon, Ga.

Official Basketball Box Score -- Game Totals -- Final Statistics
 Auburn vs Mercer
 11-11-11 7 p.m. at Macon, Ga. - University Center

VISITORS: Auburn (1-0)

#	Player	fg-fga	3fg-fga	ft-fa	of	de	tot	pf	tp	a	to	blk	s	min
00	Muhammad, Hasina*	6-10	0-1	0-1	0	2	2	3	12	1	4	1	1	23
02	Jennings, Morgan*	2-6	0-1	2-5	2	4	6	1	6	8	3	0	0	24
23	Hilliard, Chantel*	3-5	0-0	0-0	0	5	5	2	6	1	4	0	2	18
25	Williams, Jassany*	4-6	0-0	1-2	1	4	5	3	9	2	1	2	1	29
32	Tanner, Tyrese*	6-8	0-1	2-2	0	0	0	4	14	3	1	0	2	17
03	Ouardad, Najat	2-5	0-2	3-4	1	2	3	1	7	4	4	0	3	16
04	Simmons, Parrisha	1-3	0-0	3-4	5	4	9	2	5	0	2	1	0	18
14	Alverson, Blanche	5-6	0-0	2-4	1	9	10	0	12	1	1	1	0	26
20	West, Pascale	0-0	0-0	2-2	0	1	1	3	2	0	1	0	0	5
22	Glymph, Camille	2-7	0-4	0-0	1	2	3	0	4	3	0	0	2	24
TEAM		2 2 4												
Totals.....		31-56	0-9	15-24	13	35	48	19	77	23	21	5	11	200

HOME: Mercer (0-1)

#	Player	fg-fga	3fg-fga	ft-fa	of	de	tot	pf	tp	a	to	blk	s	min
01	BUCHANAN, Ry'van*	2-6	0-0	0-0	2	1	3	3	4	0	1	0	2	20
02	WILLIAMS, Briana*	2-14	1-9	4-5	1	2	3	2	9	1	3	0	1	33
05	SMITH, Sharmesia*	0-2	0-0	0-2	2	4	6	1	0	0	3	0	1	24
22	BOYKIN, Sharnea*	1-3	0-0	0-0	0	2	2	2	2	4	3	0	4	34
33	BRIDGES, Precious*	3-7	0-1	0-0	0	0	0	2	6	2	0	0	1	21
04	WILLIAMS, Alicia	2-5	2-4	3-4	0	0	0	0	9	0	2	0	0	18
11	SMITH, Alesha	0-1	0-0	0-0	0	0	0	0	0	0	0	0	0	2
15	PHILLIPS, Alex	0-3	0-1	0-1	1	0	1	3	0	0	0	0	0	6
23	HAZEL, Brittnee	3-9	0-0	0-0	0	5	5	3	6	0	3	1	1	20
24	BLAKEMORE, Jasmine	1-2	0-0	2-4	0	1	1	3	4	0	2	0	0	10
51	BRADSHAW, Tobitha	1-3	1-3	0-0	1	1	2	1	3	0	1	0	0	12
TEAM		1 3 4												
Totals.....		15-55	4-18	9-16	8	19	27	20	43	7	19	1	10	200

Officials: Nan Sisk, Alan Sheffield, Kevin Self

Technical fouls: Auburn-None. Mercer-None.

Attendance: 2728

Score by Periods	1st	2nd	Total
Auburn	36	41	77
Mercer	19	24	43

Largest women's basketball crowd in University Center history

Season-opening game

MACON, Ga. - Auburn scored the first 12 points of the game and never looked back as the Tigers trounced Mercer 77-43 Nov. 11 in Macon, Ga. Sophomore Tyrese Tanner started and led the Tigers with 14 points in the season-opening victory for the women's basketball team.

Tanner was one of three Tigers in double figures in the game, followed by freshman Hasina Muhammad and junior Blanche Alverson with 12 points each. Alverson tallied the first double-double of her career, also pulling down a career-high 10 rebounds.

Auburn held Mercer scoreless for the first four minutes of the game and led by as many as 20 points before taking a 36-19 lead into the locker room at halftime.

The Bears came out and went shot-for-shot with Auburn in the early going of the second half, cutting the lead to 14 with 14:51 to play. The Tigers answered with an 8-0 to get the lead back to 22, fueled by six transition baskets by Tanner.

Mercer would get no closer than 18 points the rest of the way as Auburn gradually pulled away for the eventual 34-point, 77-43, victory.

The game was the Auburn debut for a pair of new Tigers, freshman Muhammad and junior point guard Najat Ouardad. Muhammed started and scored 12 points with two rebounds, a block and a steal. Ouardad came off the bench for seven points, four assists, three rebounds and three steals.

Game 2: Nov. 15, 2011
Auburn 80, Belmont 53
Auburn Arena
Auburn, Ala.

Official Basketball Box Score -- Game Totals -- Final Statistics
 Belmont vs Auburn
 11-15-11 6 p.m. at Auburn, Ala. -- Auburn Arena

VISITORS: Belmont (0-3)

#	Player	fg-fga	3fg-fga	ft-fa	of	de	tot	pf	tp	a	to	blk	s	min
33	DANIEL, Triston*	1-3	1-3	0-0	0	1	1	1	3	1	2	0	0	15
44	NELSON, Haley*	5-12	0-1	3-6	1	10	11	2	13	1	3	1	3	33
01	TARRENCE, Adrienne*	1-3	0-0	2-3	1	1	2	1	4	8	3	0	0	28
20	ERNST, Molly*	2-8	2-6	0-0	1	2	3	2	6	0	2	0	0	23
22	BURTNETT, Cacy*	3-6	3-4	0-0	1	0	1	2	9	0	0	0	0	19
04	DOWNES, Julianne	2-2	1-1	0-0	0	2	2	1	5	0	0	0	0	16
10	CARROLL, Katie	0-1	0-1	0-0	0	0	0	2	0	0	3	0	2	10
11	MAYERS, Amara	2-6	0-1	1-2	0	0	0	2	5	0	1	0	1	20
23	VAUGHT, Torie	0-0	0-0	0-0	0	0	0	0	0	0	2	0	0	4
24	WILKINS, Shai	0-0	0-0	0-0	1	0	1	0	0	0	0	0	0	2
32	BROOKS, Katie	0-0	0-0	0-0	0	1	1	0	0	2	3	0	0	12
50	VISBEEN, Alyssa	3-7	1-2	1-3	0	1	1	1	8	0	5	0	0	18
TEAM		4 5 9												
Totals.....		19-48	8-19	7-14	9	23	32	14	53	12	24	1	6	200

HOME: Auburn (2-0)

#	Player	fg-fga	3fg-fga	ft-fa	of	de	tot	pf	tp	a	to	blk	s	min
14	Alverson, Blanche*	2-9	1-5	3-3	1	2	3	2	8	0	1	0	0	21
25	Williams, Jassany*	5-8	0-0	2-2	1	6	7	3	12	0	1	4	2	29
32	Tanner, Tyrese*	5-11	4-5	2-2	2	2	4	1	16	1	1	1	1	28
00	Muhammad, Hasina*	1-3	0-0	3-5	1	4	5	1	5	1	1	1	2	17
02	Jennings, Morgan*	4-9	0-1	0-0	1	1	2	2	8	9	1	0	3	30
03	Ouardad, Najat	1-4	0-2	0-0	0	0	0	1	2	3	2	0	3	13
04	Simmons, Parrisha	1-1	0-0	1-2	2	0	2	1	3	1	1	0	1	14
20	West, Pascale	0-0	0-0	0-0	0	0	0	2	0	0	1	0	0	6
22	Glymph, Camille	6-11	5-8	1-1	0	1	1	0	18	3	1	0	1	23
23	Hilliard, Chantel	4-5	0-0	0-0	3	6	9	2	8	2	2	1	2	19
TEAM		2 2												
Totals.....		29-61	10-21	12-15	11	24	35	15	80	20	12	7	15	200

Officials: Wesley Dean (R), Billy Smith (U1), Metta Roberts (U2)

Technical fouls: Belmont-None. Auburn-None.

Attendance: 2249

Score by Periods	1st	2nd	Total
Belmont	25	28	5

Game 3: Nov. 18, 2011
Auburn 50, #8 Duke 73
Cameron Indoor Stadium
Durham, N.C.

Official Basketball Box Score -- Game Totals -- Final Statistics
 Auburn vs #8 Duke
 11-18-11 12:05 p.m. at Durham, N.C. (Cameron Indoor Stadium)

VISITORS: Auburn (2-1)

#	Player	fg-fga	3fg-fga	ft-fa	of	de	tot	pf	tp	a	to	blk	s	min
14	Alverson, Blanche*	2-8	1-4	0-0	0	3	3	2	5	1	2	0	0	22
25	Williams, Jassany*	2-5	0-0	0-0	2	2	4	2	4	1	2	7	2	23
32	Tanner, Tyrese*	3-11	0-3	3-3	0	4	4	2	9	1	3	2	1	26
00	Muhammad, Hasina*	4-8	0-0	2-4	1	2	3	2	10	1	4	1	0	22
02	Jennings, Morgan*	0-4	0-0	2-4	0	6	6	5	2	3	5	0	2	30
03	Ouardad, Najat	1-2	0-0	0-1	1	1	2	2	2	2	4	0	1	14
04	Simmons, Parrisha	0-1	0-0	0-0	0	1	1	0	0	0	0	0	1	12
22	Glymph, Camille	4-12	4-8	0-0	0	3	3	0	12	0	0	0	1	28
23	Hilliard, Chantel	3-7	0-1	0-0	2	2	4	3	6	0	1	1	0	23
TEAM						4		5				1		
Totals.....		19-58	5-16	7-12	10	25	35	18	50	9	22	11	8	200

HOME: #8 Duke (2-0)

#	Player	fg-fga	3fg-fga	ft-fa	of	de	tot	pf	tp	a	to	blk	s	min
33	Haley Peters*	5-12	0-1	0-0	2	3	5	3	10	1	2	0	1	21
01	Elizabeth Williams*	8-12	0-0	2-4	4	9	13	2	18	1	1	4	1	33
03	Shay Selby*	0-4	0-2	3-4	0	2	2	2	3	4	3	1	2	24
04	Chloe Wells*	4-9	0-1	6-6	0	1	1	4	14	0	0	0	3	27
12	Chelsea Gray*	3-11	0-3	1-1	2	5	7	1	7	8	5	0	2	30
14	Ka'la Johnson	0-0	0-0	0-0	0	0	0	0	0	0	0	0	0	3
15	Richa Jackson	3-9	0-1	2-2	4	5	9	1	8	1	0	0	0	26
24	Kathleen Scheer	1-1	0-0	2-2	0	2	2	0	4	0	1	0	0	4
30	Amber Henson	0-1	0-1	1-2	0	1	1	0	1	0	2	0	1	7
32	Tricia Liston	0-6	0-3	0-0	1	1	2	1	0	1	0	0	0	14
43	Allison Vernerey	3-6	0-0	2-2	2	1	3	0	8	0	2	0	1	11
TEAM						6		7						
Totals.....		27-71	0-12	19-23	21	31	52	14	73	16	16	5	11	200

Officials: Dee Kantner, Eric Brewton, Jules Gallien

Technical fouls: Auburn-None. #8/8 Duke-None.

Attendance: 4219

Score by Periods

	1st	2nd	Total
Auburn	31	19	50
#8 Duke	32	41	73

AU: Morgan Jennings fouled out at 00:14.5 of the 2nd half

DURHAM, N.C. - Duke's Elizabeth Williams notched a double-double with 18 points and 13 rebounds, leading the No. 8-ranked Blue Devils to a 73-50 win over Auburn, handing the Tigers their first loss of the season.

Sophomore Camille Glymph came off the bench and led the Tigers in scoring for the second game in a row, shooting 4-of-6 from 3-point range for a team-high 12 points. Freshman Hasina Muhammad also finished in double figures, finishing with 10 points and three rebounds.

It was a tale of two halves for the Tigers as Auburn clawed back from being down double figures to pull within one, 32-31, at halftime. Duke turned the tables on Auburn in the second half, out-scoring the Tigers 41-19 to pull away for the win.

Auburn shot just 32.8 percent from the field while Duke shot 41.7 percent in the second half to finish at 38.0 percent for the game. The Blue Devils won the rebounding battle, 52-35, and dominated inside with 44 points in the paint.

Auburn was 5-of-16 from 3-point range with Glymph accounting for four of Auburn's treys. The Tigers held Duke to 0-for-12 from beyond the arc.

Williams was one of three Blue Devils in double figures, ahead of Chloe Wells and Haley Peters with 14 and 10 points each, respectively. Senior Morgan Jennings led Auburn with six rebounds and three assists.

Game 4: Nov. 23, 2011
Auburn 55, George Washington 47
Auburn Arena
Auburn, Ala.

Official Basketball Box Score -- Game Totals -- Final Statistics
 George Washington vs Auburn
 11-23-11 6 p.m. at Auburn, Ala. -- Auburn Arena

VISITORS: George Washington (1-3)

#	Player	fg-fga	3fg-fga	ft-fa	of	de	tot	pf	tp	a	to	blk	s	min
11	WILSON, Brooke*	1-3	1-1	0-0	0	8	8	1	3	3	0	1	3	27
12	JACKSON, Danni*	4-10	1-1	3-3	1	2	3	3	12	0	2	0	1	21
31	BOOKER, Tara*	3-9	1-4	0-0	2	5	7	2	7	0	4	0	0	37
44	MOSTAFA, Sara*	4-6	0-0	5-6	1	2	3	3	13	0	2	0	1	22
03	ALDRIDGE, Kristin*	0-5	0-0	1-2	0	5	5	1	1	1	5	0	2	29
01	MILLER, Chakacia	1-4	0-1	3-4	1	2	3	4	5	2	0	0	0	19
05	MYERS, Tiana	0-2	0-1	0-0	0	2	2	2	0	0	1	0	0	5
10	SHIPP, Shi-Heria	0-1	0-0	0-0	0	0	0	0	0	0	1	0	0	4
14	PAINTER, Chelsea	1-3	0-0	1-2	1	1	2	0	3	0	1	0	0	12
21	BOURGEOIS, Bria	0-0	0-0	0-0	0	0	0	0	0	0	0	0	0	2
22	NIPE, Megan	1-3	0-1	1-2	1	3	4	0	3	1	0	0	0	22
TEAM						1		1						
Totals.....		15-46	3-9	14-19	8	30	38	16	47	7	16	1	7	200

HOME: Auburn (3-1)

#	Player	fg-fga	3fg-fga	ft-fa	of	de	tot	pf	tp	a	to	blk	s	min
14	Alverson, Blanche*	5-7	2-3	2-2	0	5	5	0	14	0	2	0	2	26
25	Williams, Jassany*	2-2	0-0	1-4	1	0	1	1	5	0	0	0	0	7
32	Tanner, Tyrese*	3-14	0-3	5-8	0	3	3	3	11	2	0	0	0	30
00	Muhammad, Hasina*	3-6	2-2	2-4	1	1	2	0	10	4	2	0	1	18
02	Jennings, Morgan*	1-7	0-0	2-2	1	1	2	0	4	5	2	0	1	37
03	Ouardad, Najat	0-3	0-3	0-0	2	1	3	0	0	2	2	0	1	15
04	Simmons, Parrisha	2-4	0-0	3-5	3	5	8	3	7	0	2	0	1	20
20	West, Pascale	0-0	0-0	0-0	2	2	4	3	0	0	0	1	0	12
22	Glymph, Camille	2-9	0-7	0-0	0	3	3	1	4	1	0	2	0	19
23	Hilliard, Chantel	0-1	0-0	0-0	2	3	5	4	0	0	0	0	1	16
TEAM						3		3						
Totals.....		18-53	4-18	15-25	12	27	39	15	55	14	10	3	7	200

Officials: Dennis DelMayo (R), Bill Lorange (U1), Amy Bonner (U2)

Technical fouls: George Washington-None. Auburn-None.

Attendance: 1624

Score by Periods

	1st	2nd	Total
George Washington	26	21	47
Auburn	19	36	55

AUBURN - The Auburn women's basketball team overcame a seven-point halftime deficit to rally and defeat George Washington, 55-47, Nov. 23 at the Auburn Arena. The Tigers opened the second half on a 10-2 run, holding the Colonials to two points for the first 9:37 of the half.

Junior Blanche Alverson led the Tigers in scoring with 14 points, followed by Tyrese Tanner with 11 and freshman Hasina Muhammad with 10. Senior Parrisha Simmons provided a spark off the bench, accounting for seven points and a team-high eight rebounds.

Auburn came out of the locker room after halftime eager to turn things around. The Tigers went on a 10-2 run, fueled by four points each from Tanner and Simmons, taking a 33-28 lead. George Washington was never able to regain the lead in the second half as the Tigers would go on to lead by as many as 10 points with 14 seconds left before a Danni Jackson layup on the final possession cut it to eight.

Auburn shot a much-improved 44 percent in the second half and went 11-of-14 from the line. The Tigers forced 16 GW turnovers in the game, turning them into 13 points. Auburn also edged out the rebounding battle, 39-38.

Senior Morgan Jennings led Auburn with five assists while Muhammad added four. Six different Tigers tallied a steal in the game with Alverson leading with two.

Game 5: Nov. 27, 2011
Auburn 75, USC-Upstate 34
Auburn Arena
Auburn, Ala.

Official Basketball Box Score -- Game Totals -- Final Statistics
 South Carolina-Upstate vs Auburn
 11-27-11 2 p.m. at Auburn, Ala. -- Auburn Arena

VISITORS: South Carolina-Upstate (0-6)

#	Player	fg-fga	3fg-fga	ft-fa	of	de	tot	pf	tp	a	to	blk	s	min
15	McROBERTS, Lauren*	1-5	0-0	0-0	1	0	1	2	2	0	2	0	3	23
21	WEBB, Modisen*	3-6	1-2	0-0	0	3	3	2	7	1	3	0	1	30
01	SMITH, Tyra*	1-2	0-0	0-0	1	0	1	4	2	3	7	0	1	24
13	OHL, Hannah*	0-6	0-4	0-0	1	3	4	0	0	1	3	0	0	27
23	COPNEY, Tee'Ara*	6-12	4-7	3-4	0	5	5	1	19	1	2	0	1	32
00	ROBINSON, Briana	2-4	0-2	0-0	0	2	2	0	4	0	1	0	2	22
05	CASTLEBURY, Logan	0-7	0-7	0-0	0	1	1	1	0	0	0	0	0	15
10	PINKETT, Erin	0-4	0-3	0-0	1	1	2	0	0	0	0	0	0	17
32	HICKS, Shelby	0-5	0-0	0-0	1	3	4	1	0	2	4	0	1	20
TEAM						4		3		7				
Totals.....		13-51	5-25	3-4	9	21	30	11	34	8	22	0	10	200

HOME: Auburn (4-1)

#	Player	fg-fga	3fg-fga	ft-fa	of	de	tot	pf	tp	a	to	blk	s	min
32	Tanner, Tyrese*	3-8	0-1	1-2	4	2	6	0	7	1	1	2	1	27
23	Hilliard, Chantel*	6-8	0-0	0-1	2	2	4	0	12	0	1	1	0	18
02	Jennings, Morgan*	5-7	0-0	0-0	0	2	2	0	10	2	3	0	1	25
03	Ouardad, Najat*	2-6	2-4	1-2	1	0	1	3	7	8	6	0	2	23
04	Simmons, Parrisha*	0-4	0-0	4-4	7	3	10	0	4	1	0	0	1	19
00	Muhammad, Hasina	6-11	0-1	0-0	3	4	7	3	12	3	2	1	1	20
14	Alverson, Blanche	5-15	4-9	0-0	1	4	5	0	14	2	0	0	0	25
20	West, Pascale	1-3	0-0	0-0	1	2	3	1	2	1	0	0	0	10
22	Glymph, Camille	2-6	2-4	0-0	0	2	2	0	6	1	0	0	0	12
25	Williams, Jassany	0-2	0-0	1-2	3	1	4	2	1	0	1	3	2	14
34	Davis, Peyton	0-1	0-0	0-0	0	4	4	0	0	0	0	0	0	7
TEAM						1		3		4				
Totals.....		30-71	8-19	7-11	23	29	52	9	75	19	14	7	8	200

Officials: Kelly Johnson (R), Erica Bradley (U1), Kylie Galloway (U2)

Technical fouls: USC-Upstate-None. Auburn-None.

Attendance: 1630

Score by Periods

	1st	2nd	Total
USC-Upstate	18	16	34
Auburn	44	31	75

AUBURN - Four Auburn players scored in double figures, led by 14 points from Blanche Alverson, as the Tiger women's basketball team beat South Carolina-Upstate, 75-34, on Nov. 27 at Auburn Arena.

Despite shooting just 42.3 percent from the floor, Auburn utilized its defense to earn create 24 points off of 22 turnovers from USC-Upstate, including eight steals from the Tigers. Auburn also out-rebounded the Spartans 51-31.</

Game 6: Nov. 30, 2011
Auburn 74, Troy 47
Auburn Arena
Auburn, Ala.

Official Basketball Box Score -- Game Totals -- Final Statistics

Troy vs Auburn

11-30-11 6 p.m. at Auburn, Ala. -- Auburn Arena

VISITORS: Troy (0-6)

#	Player	fg-fga	3fg-fga	ft-fa	rebounds		of	de	tot	pf	tp	a	to	blk	s	min
					fg	ft										
35	Coleman, Courtney*	3-7	0-0	2-5	1	2	3	2	8	0	0	0	0	0	0	29
44	Manuel, Tenia*	2-6	1-3	1-2	2	3	5	1	6	1	4	0	0	3	39	
11	Nagy, Ieva*	2-4	0-1	0-0	0	2	2	3	4	0	0	0	0	0	20	
22	Sword, DeAngela*	4-12	1-3	4-6	1	2	3	0	13	1	3	0	0	0	31	
32	Hynes, Rosie*	1-5	1-1	0-0	1	3	4	3	3	4	9	0	0	0	37	
05	McAppion, Sarah	0-2	0-0	2-2	0	0	0	1	2	0	0	0	0	0	7	
14	Bowie, Brooke	3-6	1-3	0-0	0	4	4	2	7	1	2	0	2	2	19	
40	Blake, Jamesha	1-3	0-1	0-0	0	1	1	0	2	0	4	0	1	14		
50	Ross, Dominique	0-1	0-0	2-2	0	1	1	0	2	1	0	0	0	0	4	
TEAM																
Totals.....		16-46	4-12	11-17	11	19	30	12	47	8	22	0	6	200		

HOME: Auburn (5-1)

#	Player	fg-fga	3fg-fga	ft-fa	rebounds		of	de	tot	pf	tp	a	to	blk	s	min
					fg	ft										
32	Tanner, Tyrese*	2-8	0-1	4-7	5	1	6	1	8	0	2	0	0	0	21	
23	Hilliard, Chantel*	2-6	0-0	0-0	1	1	2	2	4	1	2	1	0	17		
02	Jennings, Morgan*	3-8	0-0	0-1	2	5	7	1	6	3	0	1	0	29		
03	Ouardad, Najat*	2-7	1-2	0-0	2	1	3	0	5	5	2	0	5	21		
04	Simmons, Parrisha*	1-4	0-0	1-4	6	1	7	1	3	3	3	2	2	16		
00	Muhammad, Hasina	9-14	1-1	0-1	4	0	4	1	19	0	2	3	2	20		
14	Alverson, Blanche	2-5	1-3	0-0	0	3	3	1	5	1	0	0	1	19		
20	West, Pascale	0-1	0-0	0-0	0	2	2	1	0	0	0	1	1	7		
22	Glymph, Camille	5-10	4-8	0-0	1	1	2	2	14	1	2	0	3	26		
25	Williams, Jassany	5-8	0-0	0-0	3	5	8	0	10	0	0	4	1	18		
34	Davis, Peyton	0-1	0-0	0-1	1	2	3	1	0	0	0	1	0	6		
TEAM																
Totals.....		31-72	7-15	5-13	25	23	48	11	74	14	13	13	15	200		

Officials: Joe Cunningham, Metta Roberts, Kim Thebo

Technical fouls: Troy-None. Auburn-None.

Attendance: 1791

Score by Periods	1st	2nd	Total
Troy	23	24	47
Auburn	38	36	74

AUBURN - The Auburn women's basketball team improved to 5-1 on the season as it rolled past Troy, 74-47, Nov. 30 at the Auburn Arena. The game marked the last of a three-game home stand for the Tigers. The Trojans fell to 0-6 on the season. Freshman Hasina Muhammad came off the bench to lead the Tigers in scoring with 19 points.

Auburn's 48 bench points were the most so far this season and marks the second-consecutive game that the Tigers' bench has outscored the opponent. The Tiger bench scored 35 points to South Carolina-Upstate's 34 on Sunday. Auburn had three players in double-figures on the evening, all of whom came in off the bench.

Muhammad led the Tigers with a career-high 19 points, four rebounds, three blocks and two steals. She finished at 9-of-14 shooting from the floor in just 20 minutes of play. Camille Glymph also came off the bench for 14 points, with 12 of them coming from beyond the arc. Jassany Williams added 10 points, eight rebounds and four blocks, marking the third game this season for her to block at least four shots.

As a team, the Tigers blocked 13 shots against Troy, the most since tying the school record of 17 against Alabama A&M on Nov. 19, 2009.

DeAngela Sword led Troy in scoring with 13 points and picked up three rebounds. Courtney Coleman added eight points while Tenia Manuel scored six with a team-high five boards.

Game 7: Dec. 3, 2011
Auburn 57, Temple 73
Liacouras Center
Philadelphia, Pa.

Official Basketball Box Score -- Game Totals -- Final Statistics

Auburn vs Temple

12-03-11 1 p.m. at Philadelphia, Pa. (Liacouras Center)

VISITORS: Auburn (5-2)

#	Player	fg-fga	3fg-fga	ft-fa	rebounds		of	de	tot	pf	tp	a	to	blk	s	min
					fg	ft										
23	Hilliard, Chantel*	1-3	0-0	1-1	0	0	0	3	3	0	1	1	1	1	19	
32	Tanner, Tyrese*	2-14	1-4	4-5	3	3	6	2	9	2	3	0	3	32		
02	Jennings, Morgan*	3-7	0-0	1-1	1	6	7	1	7	2	2	0	1	29		
03	Ouardad, Najat*	1-5	0-2	0-0	2	0	2	4	2	4	3	0	1	21		
04	Simmons, Parrisha*	3-6	0-0	3-4	4	0	4	1	9	1	1	1	1	24		
00	Muhammad, Hasina	3-9	1-2	0-0	2	2	4	3	7	0	4	0	0	15		
14	Alverson, Blanche	2-4	2-3	0-0	0	2	2	1	6	1	0	0	0	20		
20	West, Pascale	0-0	0-0	0-0	0	1	1	1	0	0	0	0	0	3		
22	Glymph, Camille	5-9	2-6	0-0	0	2	2	0	12	2	1	0	0	26		
25	Williams, Jassany	1-3	0-0	0-0	2	0	2	3	2	0	1	0	1	11		
TEAM																
Totals.....		21-60	6-17	9-11	16	19	35	19	57	12	16	2	9	200		

HOME: Temple (3-5)

#	Player	fg-fga	3fg-fga	ft-fa	of	de	tot	pf	tp	a	to	blk	s	min
32	THAMES, Natasha*	1-3	0-0	1-2	2	4	0	3	0	1	0	0	8	
14	CONNELLY, Joelle*	1-3	0-0	2-2	1	0	1	4	2	3	0	0	16	
03	WILLIAMS, BJ*	1-2	1-1	2-2	0	0	4	5	4	1	0	2	20	
05	MCCARTHY, Kristen*	4-8	0-1	0-2	2	7	9	0	8	0	1	0	1	36
11	PEDDY, Shey*	11-16	3-5	2-2	1	5	6	3	27	2	2	1	5	34
01	LEWIS, Brittany	3-7	1-2	2-2	1	3	4	3	9	0	2	0	0	28
04	BROWN, Rakesha	0-0	0-0	0-0	0	0	0	0	0	0	1	0	0	4
21	WORKS, Nikki	2-3	0-0	0-0	0	1	1	1	4	0	0	0	0	13
23	WILLIAMS, Tyonna	1-7	1-5	0-1	1	0	1	1	3	2	0	0	0	22
25	MACAULAY, Victoria	3-6	0-0	3-3	1	3	4	0	9	0	1	0	0	15
30	MERRITT, Monaye	0-0	0-0	1-2	1	1	2	0	1	0	1	0	0	4
TEAM						3	2	5						
Totals.....		27-55	6-14	13-18	13	24	37	13	73	10	13	1	8	200

Officials: Dee Kantner, Joseph Vaszily, Bonnie Pettus

Technical fouls: Auburn-None. Temple-None.

Attendance: 5,215

Score by Periods	1st	2nd	Total
Auburn	27	30	57
Temple	45	28	73

PHILADELPHIA, Pa. - The Auburn women's basketball team suffered its second loss of the season Dec. 3, falling at Temple, 73-57. Camille Glymph led the Tigers off the bench with 12 points while Parrisha Simmons tied her career high with nine.

Auburn was down 25-31 with 3:27 to go in the first half, but was out-scored 14-2 in the final stretch, thanks partly to two Temple 3-pointers in the final 12 seconds, giving the Owls a 47-25 halftime lead. The Tigers out-scored Temple, 30-28, in the second half, but could not overcome the first-half difference.

Temple was led by Shey Peddy with 27 points and five steals. Nine-teen of Peddy's points came in the second half when the Owls extended their lead to as many as 23 points. Auburn came back, however, and cut the margin to 16 by the final horn.

Auburn struggled from the field, shooting 35.0 percent (21-of-60) from the field, but was 35.3 percent (6-of-17) from beyond the arc. Temple was able to capitalize on Auburn turnovers and score in transition. The Owls forced 16 Auburn turnovers and scored 21 points off them, including 16 fast-break points.

Along with Simmons, sophomore Tyrese Tanner scored nine points with six rebounds and a team-high three steals. Senior Morgan Jennings led the Tigers on the boards with seven rebounds along with her seven points and two assists. Freshman Hasina Muhammad also scored seven points.

Season Statistics

RECORD:	OVERALL	HOME	AWAY	NEUTRAL
ALL GAMES	5-2	4-0	1-2	0-0
CONFERENCE	0-0	0-0	0-0	0-0
NON-CONFERENCE	5-2	4-0	1-2	0-0

#	Player	gp-gs	min	avg	Total		3-Point		F-Throw		Rebounds				pf	dq	a	to	blk	stl	pts	avg
					fg-fga	fg%	3fg-fga	3fg%	ft-fa	ft%	off	def	tot	avg								
00	Muhammad, Hasina	7-4	135	19.3	32-61	.525	4-7	.571	7-15	.467	12	15	27	3.9	13	0	10	19	7	7	75	10.7
32	Tanner, Tyrese	7-7	181	25.9	24-74	.324	5-18	.278	21-29	.724	14	15	29	4.1	13	0	10	11	5	8	74	10.6
22	Glymph, Camille	7-0	158	22.6	26-64	.406	17-45	.378	1-1	1.000	2	14	16	2.3	3	0	11	4	2	7	70	10.0
14	Alverson, Blanche	7-3	159	22.7	23-54	.426	11-27	.407	7-9	.778	3	28	31	4.4	6	0	6	6	1	3	64	9.1
02	Jennings, Morgan	7-7	204	29.1	18-48	.375	0-2	.000	7-13	.538	7	25	32	4.6	10	1	32	16	1	8	43	6.1
25	Williams, Jassany	7-4	131	18.7	19-34	.559	0-0	.000	5-10	.500	13	18	31	4.4	14	0	3	6	20	9	43	6.1
23	Hilliard, Chantel	7-4	130	18.6	19-35	.543	0-1	.000	1-2	.500	10	19	29	4.1	16	0	4	11	5	6	39	5.6
04	Simmons, Parrisha	7-3	123	17.6	8-23	.348	0-0	.000	15-23	.652	27	14	41	5.9	8	0	6	9	4	8	31	4.4
03	Ouardad, Najat	7-3	123	17.6	9-32	.281	3-15	.200	4-7	.571	9	5	14	2.0	11	0	28	23	0	16	25	3.6
20	West, Pascale	6-0	43	7.2	1-4	.250	0-0	.000	2-2	1.000	3	8	11	1.8	11	0	1	2	2	1	4	0.7
34	Davis, Peyton	2-0	13	6.5	0-2	.000	0-0	.000	0-0	.000	1	6	7	3.5	1	0	0	0	1	0	0	0.0
Team											9	15	24					1				
Total.....		7	1400		179-431	.415	40-115	.348	70-111	.631	110	182	292	41.7	106	1	111	108	48	73	468	66.9
Opponents.....		7	1400		132-372	.355	30-109	.275	76-111	.685	79	167	246	35.1	100	-	68	132	9	58	370	52.9

TEAM STATISTICS	AU	OPP	Date	Opponent	Score	Att.
SCORING	468	370	11-11-11	at Mercer	W 77-43	2728
Points per game	66.9	52.9	11-15-11	BELMONT	W 80-53	2249
Scoring margin	+14.0	-	11-18-11	at #8/8 Duke	L 50-73	4219
FIELD GOALS-ATT	179-431	132-372	11-23-11	GEORGE WASHINGTON	W 55-47	1624
Field goal pct	.415	.355	11-27-11	USC-UPSTATE	W 75-34	1630
3 POINT FG-ATT	40-115	30-109	11-30-11	TROY	W 74-47	1791
3-point FG pct	.348	.275	12-03-11	at Temple	L 57-73	0
3-pt FG made per game	5.7	4.3	* - Conference game			
FREE THROWS-ATT	70-111	76-111				
Free throw pct	.631	.685				
F-Throws made per game	10.0	10.9				
REBOUNDS	292	246				
Rebounds per game	41.7	35.1				
Rebounding margin	+6.6	-				
ASSISTS	111	68				
Assists per game	15.9	9.7				
TURNOVERS	108	132				
Turnovers per game	15.4	18.9				
Turnover margin	+3.4	-				
Assist/turnover ratio	1.0	0.5				
STEALS	73	58				
Steals per game	10.4	8.3				
BLOCKS	48	9				
Blocks per game	6.9	1.3				
ATTENDANCE	7294	6947				
Home games-Avg/Game	4-1824	3-2316				
Neutral site-Avg/Game	-	0-0				

Score by Periods	1st	2nd	Totals
Auburn	234	234	468
Opponents	188	182	370