



2020-21 AUBURN WOMEN'S BASKETBALL

AUBURN ATHLETICS COMMUNICATIONS: 392 SOUTH DONAHUE DRIVE || AUBURN, AL 36830 || AUBURNTIGERS.COM || @AUBURNWBB

2020-21 SCHEDULE/RESULTS 5-8, 0-5 SEC

DATE	OPPONENT	TIME/TV/RESULT
Nov. 25	USC UPSTATE	W 82-41
Nov. 28	SAMFORD	W 66-64
Dec. 1	GARDNER-WEBB	W 97-61
Dec. 5	at Houston	L 61-71
Dec. 8	BELMONT	PPD
Dec. 13	SOUTH ALABAMA	W 74-66
Dec. 16	STEPHEN F. AUSTIN	L 54-67
Dec. 17	NORTH FLORIDA	W 94-81
Dec. 20	BELMONT	L 57-78
Dec. 31	*at LSU	L 43-56
Jan. 3	*GEORGIA	L 44-76
Jan. 7	*at Ole Miss	L 58-62
Jan. 10	*MISSOURI	PPD
Jan. 14	*#12 KENTUCKY	PPD
Jan. 17	*at Florida	L 54-68
Jan. 21	*#12 KENTUCKY	L 71-76
Jan. 24	*at Alabama	ESPNU 1 pm
Jan. 28	*#7 TEXAS A&M	SECN 7:30 pm
Jan. 31	*at #17 Arkansas	+ 2 pm
Feb. 4	*#5 SOUTH CAROLINA	+ 6 pm
Feb. 11	*at Georgia	+ 6 pm
Feb. 14	*ALABAMA	SECN 5 pm
Feb. 18	*at #14 Mississippi State	SECN 8 pm
Feb. 21	*VANDERBILT	Canceled
Feb. 25	*#17 ARKANSAS	SECN 8 pm
Feb. 28	*at #23 Tennessee	SECN 1 pm
Mar. 3-7	SEC Tournament	Greenville
M19-22	NCAA First-Second Rounds	TBD
M26-29	NCAA Regionals	TBD
Apr 2-4	Women's Final Four	San Antonio

All times Central. Home Games in **BOLD CAPS**.
* SEC Game
+ = SEC Network + / ESPN3.com

AUBURN ATHLETICS COMMUNICATIONS

WES TODDAssistant Director/WBB Contact
..... wlt0006@auburn.edu
.....C: 334-750-5682
KIRK SAMPSON Associate AD
..... kirk@auburn.edu

WebAuburnTigers.com
Twitter.....@AuburnWBB
Facebook...../AuburnWBB
Instagram.....@AuburnWBB
Office Phone(334) 844-9800



GAME 14

at Alabama (11-2, 4-2)

Sunday, Jan. 24, 2021 • 1 p.m. CT



SiteTuscaloosa, Ala.
 VenueColeman Coliseum
 TVESPNU (Sam Gore, Tamika Catchings)
 RadioWQSI 93.9 FM (Brit Bowen, Larry DiChiara)
 Audio WebcastAuburnTigers.com/Auburn Athletics app
 Live Stats.....RollTide.com
 Twitter.....@AuburnWBB
 Series Record.....Auburn leads 53-40
 in TuscaloosaAlabama leads 24-18
 Last Meeting.....Alabama 68, Auburn 64 (Feb. 9, 2020, at Tuscaloosa)

GAMEDAY BREAKDOWN

AUBURN TIGERS

Rankings.....AP: NR | Coaches: NR
 2020-21 Record.....5-8
 SEC.....0-5
 Home5-4
 Away0-4
 Neutral0-0
 Streak.....L6
 Head Coach.....Terri Williams-Flournoy
 Record at AU (Yrs.).....140-127 (9th)
 Overall Record (Yrs.).....283-231 (17th)
 Record vs. Alabama10-6

ALABAMA CRIMSON TIDE

Rankings.....AP: RV | Coaches: NR
 2020-21 Record.....11-2
 SEC.....4-2
 Home5-2
 Away6-0
 Neutral0-0
 Streak.....L1
 Head Coach.....Kristy Curry
 Record at UA (Yrs.).....127-110 (8th)
 Overall Record (Yrs.).....436-259 (22nd)
 Record vs. Auburn5-10

AUBURN PROJECTED STARTERS (based on last game)



ANNIE HUGHES
G • SO • 5-9
Dutton, Ala.

PPG: 5.0
RPG: 2.5
APG: 0.6



ROMI LEVY
F • FR • 6-2
Herzliya, Israel

PPG: 5.6
RPG: 3.8
APG: 1.6



UNIQUE THOMPSON
F • SR • 6-3
Theodore, Ala.

PPG: 18.6
RPG: 14.6
APG: 1.4



HONESTY SCOTT-GRAYSON
G • R-SO • 5-8
Brick, N.J.

PPG: 11.5
RPG: 4.2
APG: 1.7



MORGAN ROBINSON-NWAGWU
G • SO • 5-8
Norcross, Ga.

PPG: 2.5
RPG: 1.4
APG: 1.8

OFF THE BENCH

No.	Pos.	Name	Ht.	Year	PPG	RPG	Hometown
0	G	Alycia Reese	5-9	Jr.	3.0	1.0	Columbus, Ga.
1	G	Keya Patton	5-6	Jr.	5.6	1.7	Indianapolis, Ind.
2	G	Sania Wells	5-7	So.	3.6	0.8	Moss Point, Miss.
4	G	Riley Donahue	5-10	Fr.	1.0	0.0	Atlanta, Ga.
5	F	Aicha Coulibaly	6-0	Fr.	4.6	3.3	Mali
10	F	Kiyae' White	6-2	R-Jr.	0.0	3.0	Macungie, Pa.
13	G	Kira Lowery	5-6	Jr.	3.5	1.2	Memphis, Tenn.
14	F	Jala Jordan	6-2	R-So.	7.7	3.5	Philadelphia, Pa.
22	G	Alaina Rice	5-8	So.	3.1	2.2	Rockledge, Fla.
24	G	Carsen McFadden	5-7	Fr.	0.5	0.5	Lucas, Texas

Head Coach: Terri Williams-Flournoy

Assistants: La'Keshia Frett Meredith, Clarisse Garcia, Reneisha Hobbs

#WarEagle
#TeamOfExcellence



AuburnTigers.com



@AuburnWBB | @AuburnTigers
@AUCoachFlo



/AuburnWBB
/AuburnTigers

TEAM SCHEDULE AND MEDIA AVAILABILITY >> JANUARY 18-24 (times Central unless noted otherwise)

MONDAY January 18	TUESDAY January 19	WEDNESDAY January 20	THURSDAY January 21	FRIDAY January 22	SATURDAY January 23	SUNDAY January 24
OFF DAY	PRACTICE 2:30-5:30 pm Auburn Arena	PRACTICE 2:30-5:30 pm Auburn Arena	GAME 7:30 Auburn vs. Kentucky Interviews Postgame via Zoom	PRACTICE 2:30-5:30 pm Auburn Arena	PRACTICE 10 am-1 pm Auburn Arena TRAVEL to Tuscaloosa, Ala.	GAME 1:00 Auburn at Alabama Interviews postgame via Zoom Return to Auburn

AUBURN ATHLETICS COMMUNICATIONS SERVICES (COVID-19 EDITION)

QUICK FACTS

AUBURNTIGERS.COM

For updated game notes, statistics and all the latest information on Auburn basketball and gameday activities, go to AuburnTigers.com.

INTERVIEW POLICIES

--Coach Williams-Flournoy, assistant coaches and selected athletes are available for phone and virtual interviews by contacting Wes Todd in the athletic communications office.

--Following home games, interviews with Coach Flo and selected players will be conducted **via Zoom** following a 10-minute cooling-off period. Visiting coaches and players, if requested, will be available first **on the same Zoom link**.

--Interviews following road contests will be conducted **via Zoom**; the visiting **SID will send out links beforehand**.

--Practices are closed to the public and media until further notice.

CREDENTIALS

Anyone wishing to cover Auburn women's basketball should contact Wes Todd in the communications office at least one day in advance in order to make the proper arrangements. Game credentials will be held at media will call, **which will be at the north main entrance for the 2020-21 season**. There will be no season credentials. Parking passes are not needed.

GAME DAY SERVICES

--Printed flip cards will be available at each media seat. All other information (game notes, stats, etc.) will be available on AuburnTigers.com and StatBroadcast.com. Wireless internet is available in the Arena.

--Media will only be permitted to access the concourse level of the arena. With the exception of an extremely limited number of photographers/videographers, access to the playing floor by persons not subject to the SEC's COVID-19 testing protocol is strictly prohibited.

--Pool photos and video will be available on the SEC FTP site following most games.

VIDEO SERVICES

FTP feeds of selected Auburn basketball highlights are available for the media. Highlights and postgame press conference video will be posted following each game to ImagenCloud and the SEC FTP site.

COMMUNICATIONS STAFF

Wes Todd Women's Basketball contact
cell: 334-750-5682
email: wlt0006@auburn.edu
Kirk Sampson Associate AD
cell: 334-750-1385
email: sampska@auburn.edu

GENERAL INFORMATION

Location..... Auburn, Ala.
Founded1856
Enrollment.....30,440
Nickname Tigers
Colors..... Burnt Orange and Navy Blue
Facility (Capacity) Auburn Arena (9,121)
2020-21 Reduced Capacity1,438
President Dr. Jay Gogue
Director of Athletics Allen Greene
Sr. Assoc. AD/SWA..... Monique Holland

WOMEN'S BASKETBALL HISTORY

First Year of Women's Basketball1971
All-Time Record (Years)..... 952-505 (50th)
All-Time SEC Record (since 1981)240-253
All-Time Home Record 445-128
at Auburn Arena (since 2010)..... 98-57
NCAA Tournament Appearances21
Last NCAA App./Result.....2019 - First Round
SEC Regular-Season Championships 5
..... 1981, 1987, 1988, 1989, 2009
SEC Tournament Championships..... 4
..... 1981, 1987, 1990, 1997

COACHING & SUPPORT STAFF

Head Coach..... Terri Williams-Flournoy
Alma Mater, YearPenn State, 1991
Overall Record283-231 (.551) / 17th year
Auburn Record140-127 (.525) / 9th year
Assistant Coach (Year) La'Keshia Frett Meredith (2nd)
Alma Mater, YearGeorgia (1997)
Assistant Coach (Year at Auburn) Clarisse Garcia (5th)
Alma Mater, Year Villanova (2007)
Special Asst. to the Head Coach..... Reneisha Hobbs
Strength & Conditioning Coach Lee Taylor
Director of Basketball Operations Bianca Webb
Director of Basketball Services Justin Peak
Athletic Trainer..... Catherine Gordon
Grad. Student Mgrs Sean Holmes, AK Prestridge
Manager..... Trey Larrimore

GAMEDAY EXPERIENCE: AUBURN ARENA

>> Auburn Arena is in its 11th season as home of Auburn Basketball. The Tigers are 98-57 since moving to the Arena in 2010-11. The facility seats 9,121 for basketball and also hosts Auburn volleyball and gymnastics.



TEAM INFORMATION

2019-20 Record..... 11-18
2019-20 SEC Record..... 4-12
SEC Finish..... T-12th
Starters Returning/Lost1/4
Letterwinners Returning/Lost 5/8
Redshirts Returning 2
Newcomers..... 8

AUBURN TIGERS SPEED CHART

Overall: 5-8 SEC: 0-5

Head Coach: Terri Williams-Flournoy (9th Season)

Aicha Coulibaly - ay-EE-sha coo-li-BALL-ee
 Jala Jordan - JAY-lah
 Romi Levy - RO-mee LEV-ee
 Kira Lowery - KYE-rah
 Alycia Reese - a-LEE-see-ah

Morgan Robinson-Nwagwu - WAH-goo
 Sania Wells - sa-NYE-uh
 Kiyae' White - kye-YAY
 Terri Williams-Flournoy - FluH-NOY

		Pts	Reb	Ast	Stl	Blk		
0	ALYCIA REESE G • 5-9 • Jr. • Columbus, Ga. • Chattahoochee Valley CC	Season High	10	4	1	1	-	
		Career High	10	4	1	1	-	
		PPG	3.0	1.0	0.3	.429	.300	1.000
		20-21	3.0	1.0	0.3	.429	.300	1.000
							LAST GAME (vs. UK): 3 pts, 4 reb, 21 mins • 10 pts, 2-3 3FG in 16 mins at Houston (12/5) • 4 points in Auburn debut vs. USC Upstate (11/25) • Played 2 seasons at CVCC in Phenix City • Started all 24 games as soph.; avg. 12.8 ppg, 3.8 rpg	
1	KEYA PATTON G • 5-6 • Jr. • Indianapolis, Ind. • Wabash Valley College	Season High	14	5	2	2	-	
		Career High	14	5	2	2	-	
		PPG	5.6	1.7	0.6	.321	.318	.765
		20-21	5.6	1.7	0.6	.321	.318	.765
							LAST GAME (vs. UK): DNP • Season-high 14 points in win over Gardner-Webb • Two-time NJCAA All-American; 1st team in 2020 • Avg. 20.8 pts, 6.8 reb, 6.4 ast, 2.9 stl as JC sophomore • Scored 1,000+ points in two JC seasons	
2	SANIA WELLS G • 5-7 • So. • Moss Point, Miss. • East Central HS	Season High	11	5	2	1	-	
		Career High	11	5	3	2	-	
		PPG	3.6	0.8	0.8	.212	.250	.667
		20-21	3.6	0.8	0.8	.212	.250	.667
							LAST GAME (vs. UK): 13 minutes • Career-high 5 rebounds at Florida (11/17) • Career-high 11 points w/ 3 3FG vs. S. Alabama (12/13) • Played in 25 games as freshman; 8.6 mins/game • Scored 4 points in Auburn debut at UAB	
3	ANNIE HUGHES G • 5-9 • So. • Dutton, Ala. • Pisgah HS	Season High	17	7	1	3	1	
		Career High	17	7	4	3	1	
		PPG	5.0	2.5	0.6	.410	.308	.583
		20-21	5.0	2.5	0.6	.410	.308	.583
							LAST GAME (vs. UK): 3 points, 1 steal • Career-high 17 pts, 7 reb, 3 stl vs. North Florida (12/17) • Scored SEC-best 8 points at Missouri (2/27/20) • Played in all 29 games in '19-20; started 7	
4	RILEY DONAHUE G • 5-10 • Fr. • Atlanta, Ga. • Marist School	Season High	3	-	-	-	-	
		Career High	3	-	-	-	-	
		PPG	1.0	0.0	0.0	1.000	1.000	-
		20-21	1.0	0.0	0.0	1.000	1.000	-
							LAST GAME (vs. UK): DNP • Scored first AU points on 3FG in last minute vs. GWU • Joined Tigers as walk-on in August • First-team GHSA all-region selection as HS senior	
5	AICHA COULIBALY G/F • 6-0 • Fr. • Mali • IMG Academy (Fla.)	Season High	12	6	2	2	2	
		Career High	12	6	2	2	2	
		PPG	4.6	3.3	0.7	.383	.077	.444
		20-21	4.6	3.3	0.7	.383	.077	.444
							LAST GAME (vs. UK): 7 pts, 4 reb, 1 ast • Started 1st 3 gms; 10 pts, 6 reb vs. GWU • Played for Mali U16 National Team at '17 African Champ. • Named tournament MVP, averaged 21.8 ppg in event • 3rd AU WBB player from Africa (C. Correia; K. Dieng)	
10	KIYAE' WHITE F • 6-2 • R-Jr. • Macungie, Pa. • Emmaus HS	Season High	-	3	-	-	-	
		Career High	15	11	4	3	1	
		PPG	0.0	3.0	0.0	.000	-	-
		20-21	0.0	3.0	0.0	.000	-	-
							LAST GAME (vs. UK): DNP • Made '20-21 debut vs. South Alabama, 3 rebs in 4 mins • Played all 29 games, started 14 in 2019-20 • Career-high 15 points in SEC Tour. vs. Arkansas • Career-high 11 rebs in '19-20 opener vs. Wofford	
11	ROMI LEVY F • 6-2 • Fr. • Herzliya, Israel • Hof Hasharon HS	Season High	12	11	7	6	2	
		Career High	12	11	7	6	2	
		PPG	5.6	3.8	1.6	.365	.222	.300
		20-21	5.6	3.8	1.6	.365	.222	.300
							LAST GAME (vs. UK): 5 pts, 4 reb, 7 ast, 1 stl • 7 assists vs. Kentucky (1/21); most by AU player in 20-21 • Season-high 13 pts at Ole Miss (1/7) • Scored 8 points off bench in Auburn debut vs. USCU • First AU WBB player from Israel	
13	KIRA LOWERY G • 5-6 • Jr. • Memphis, Tenn. • Dyersburg State CC	Season High	12	5	5	3	1	
		Career High	12	5	5	3	1	
		PPG	3.5	1.2	1.8	.462	.333	.765
		20-21	3.5	1.2	1.8	.462	.333	.765
							LAST GAME (vs. UK): DNP • Led AU w/ 5 assists, 3 steals in win over UNF (12/17) • 12 points in 2nd AU game vs. Samford (11/28) • Third-team NJCAA All-American in '20 • 3rd in NJCAA in scoring (23.3 ppg); 2nd in steals (4.0/gm)	
14	JALA JORDAN F • 6-2 • R-So. • Philadelphia, Pa. • West Virginia	Season High	16	8	4	2	3	
		Career High	16	8	4	2	3	
		PPG	7.7	3.5	0.7	.343	.265	.682
		20-21	7.7	3.5	0.7	.343	.265	.682
							LAST GAME (vs. UK): 11 points, 1 rebound • Career-hi 3 blocks in 1st career start vs. S. Ala. (12/13) • Shared AU lead w/ 16 pts in season-opener vs. USCU • Redshirted 2019-20 season after transfer from WVU • Appeared in 25 games as freshman at WVU	
20	UNIQUE THOMPSON F • 6-3 • Sr. • Theodore, Ala. • Faith Academy	Season High	26	23	3	5	2	
		Career High	31	23	6	5	6	
		PPG	18.6	14.6	2.8	.563	-	.800
		20-21	18.6	14.6	2.8	.563	-	.800
							LAST GAME (vs. UK): 22 pts, 10 reb, 2 ast, 1 stl, 2 blk • Preseason All-SEC; McClain, Wooden Watch Lists • 26 pts, 23 reb at HOU (12/5); 1st 20-20 at AU since '93 • 51 career double-doubles, 1st in AU history • NCAA leader in rebounds (14.6), double-doubles (9)	
22	ALAINA RICE G • 5-8 • So. • Rockledge, Fla. • Florida A&M	Season High	9	4	5	2	-	
		Career High	22	11	5	5	2	
		PPG	3.1	2.2	1.1	.238	.273	.733
		20-21	3.1	2.2	1.1	.238	.273	.733
							LAST GAME (vs. UK): 6 pts, 3 reb, 1 stl • Season-high 9 pts, 2 stl vs. North Florida (12/17) • Led Auburn w/ 5 assists in debut vs. USC Upstate • 2020 MEAC Rookie of the Year at FAMU • Averaged 10.3 pts, 4.7 reb., 2.4 ast. as freshman in '20	
23	HONESTY SCOTT-GRAYSON G • 5-8 • R-So. • Brick, N.J. • Baylor	Season High	23	7	4	5	-	
		Career High	23	7	5	5	1	
		PPG	11.5	4.2	1.7	.377	.265	.70
		20-21	11.5	4.2	1.7	.377	.265	.70
							LAST GAME (vs. UK): 10 pts, 8 reb, 3 stl, 1 ast • Career-hi 23 pts, 5 reb, 3 stl at Ole Miss (1/7) • Back-to-back 16-point games vs. SFA, UNF • Redshirted '19-20 after transfer from Baylor • 2018 McDonald's All-American	
24	CARSEN McFADDEN G • 5-7 • Fr. • Fairview, Texas • Lovejoy HS	Season High	3	1	3	1	-	
		Career High	3	1	3	1	-	
		PPG	0.5	0.5	0.7	.333	-	.500
		20-21	0.5	0.5	0.7	.333	-	.500
							LAST GAME (vs. UK): DNP • 1st AU points, led AU w/ 3 ast vs. S. Ala. (12/13) • Had a rebound and an assist in final minute vs. GWU • Joined Tigers as walk-on in August • Had 1,047 rebounds and 418 steals in HS career	
30	MORGAN ROBINSON-NWAGWU G • 5-8 • So. • Norcross, Ga. • Norcross HS	Season High	9	4	6	4	1	
		Career High	9	4	6	4	1	
		PPG	2.5	1.4	1.8	.320	.111	.889
		20-21	2.5	1.4	1.8	.320	.111	.889
							LAST GAME (vs. UK): 4 pts, 2 reb, 2 ast • 1st career start at UF; scored career-high 9 pts (1/17) • Career-high 6 assists at Ole Miss (1/7) • Career-high 4 steals in season-opener vs. USC Upstate • Played in all 29 games as a freshman; 10.9 mins/game	

Inside the Matchup

Auburn vs. Alabama 53-40 (-.570)

In Auburn: 31-11
 --At Auburn Arena: 7-3
 In Tuscaloosa: 18-24
 Neutral Sites: 4-5
 Trend: Auburn has won 8 of last 12 meetings

(17 meetings prior to 1980 omitted for space)

Jan. 23, 1980	W	77-71	Auburn
Jan. 12, 1981	L	65-66	Tuscaloosa, Ala.
Feb. 1, 1981	W	61-50	Baton Rouge, La.
Feb. 28, 1981	W	67-50	Troy, Ala.
Jan. 27, 1982	W	72-56	Auburn
Feb. 22, 1982	W	63-59	Tuscaloosa, Ala.
Jan. 5, 1983	W	60-49	Auburn
Feb. 9, 1983	W	79-63	Tuscaloosa, Ala.
Jan. 4, 1984	L	56-65	Auburn
Feb. 9, 1984	L	60-64	Tuscaloosa, Ala.
Jan. 16, 1985	W	71-53	Auburn
Feb. 18, 1985	L	67-84	Tuscaloosa, Ala.
Jan. 15, 1986	W	87-86 (OT)	Tuscaloosa, Ala.
Feb. 21, 1987	W	78-60	Auburn
Mar. 5, 1987	W	89-61	Albany, Ga. *
Jan. 27, 1988	W	88-57	Tuscaloosa, Ala.
Feb. 18, 1989	W	89-44	Auburn
Feb. 21, 1990	L	68-71	Tuscaloosa, Ala.
Feb. 2, 1991	W	77-48	Auburn
Feb. 12, 1992	L	69-72	Tuscaloosa, Ala.
Feb. 17, 1993	W	93-67	Auburn
Feb. 16, 1994	L	71-84	Tuscaloosa, Ala.
Jan. 24, 1995	W	86-70	Auburn
Jan. 24, 1996	L	67-69	Tuscaloosa, Ala.
Feb. 13, 1996	W	75-58	Auburn
Mar. 2, 1996	L	59-65	Chattanooga, Tenn. *
Jan. 7, 1997	L	65-68	Auburn
Feb. 11, 1997	L	57-89	Tuscaloosa, Ala.
Jan. 7, 1998	L	48-62	Tuscaloosa, Ala.
Feb. 11, 1998	L	45-62	Auburn
Jan. 7, 1999	W	73-69	Auburn
Feb. 11, 1999	L	57-72	Tuscaloosa, Ala.
Feb. 26, 1999	L	72-76	Chattanooga, Tenn. *
Jan. 13, 2000	W	69-51	Auburn
Feb. 13, 2000	W	69-59	Tuscaloosa, Ala.
Jan. 11, 2001	L	53-60	Tuscaloosa, Ala.
Feb. 11, 2001	L	60-61	Auburn
Mar. 1, 2001	L	55-59	Memphis, Tenn. *
Jan. 24, 2002	L	70-78	Tuscaloosa, Ala.
Feb. 10, 2002	L	57-60	Auburn
Jan. 19, 2003	W	65-61	Auburn
Feb. 27, 2003	L	62-67	Tuscaloosa, Ala.
Jan. 22, 2004	W	70-61	Auburn
Feb. 26, 2004	W	72-40	Tuscaloosa, Ala.
Jan. 23, 2005	W	59-43	Auburn
Feb. 17, 2005	W	74-63	Tuscaloosa, Ala.
Jan. 8, 2006	L	54-68	Tuscaloosa, Ala.
Jan. 26, 2006	W	65-56	Auburn
Jan. 7, 2007	W	63-58	Tuscaloosa, Ala.
Feb. 1, 2007	W	93-61	Auburn
Jan. 28, 2008	W	62-48	Tuscaloosa, Ala.
Feb. 14, 2008	W	74-49	Auburn
Jan. 22, 2009	W	84-66	Auburn
Feb. 8, 2009	W	81-54	Tuscaloosa, Ala.
Jan. 14, 2010	W	74-62	Auburn
Feb. 7, 2010	L	53-55	Tuscaloosa, Ala.
Jan. 2, 2011	W	66-55	Tuscaloosa, Ala.
Feb. 17, 2011	L	51-59	Auburn
Jan. 5, 2012	W	65-55	Tuscaloosa, Ala.
Feb. 23, 2012	W	81-40	Auburn
Jan. 24, 2013	L	51-61	Tuscaloosa, Ala.
Feb. 17, 2013	W	70-53	Auburn
Jan. 16, 2014	W	61-39	Tuscaloosa, Ala.
Feb. 27, 2014	W	70-65 (2OT)	Auburn
Jan. 22, 2015	L	50-51	Tuscaloosa, Ala.
March 1, 2015	W	80-73	Auburn
Jan. 14, 2016	W	72-59	Auburn
Feb. 7, 2016	W	59-55	Tuscaloosa, Ala.
Jan. 29, 2017	W	66-55	Tuscaloosa, Ala.
Feb. 20, 2017	L	61-63 (OT)	Auburn
Jan. 28, 2018	W	69-60	Auburn
Feb. 18, 2018	L	60-70	Tuscaloosa, Ala.
Jan. 10, 2019	W	66-56	Tuscaloosa, Ala.
Feb. 17, 2019	W	77-38	Auburn
March 7, 2019	W	53-52	Greenville, S.C. *
Jan. 12, 2020	L	48-75	Auburn
Feb. 9, 2020	L	64-68	Tuscaloosa, Ala.

*SEC Tournament

Auburn Women's Basketball Quick Hitters

- Auburn and Alabama are meeting for the 94th time in women's basketball; it is the second-most played series in the SEC, behind only Ole Miss-Mississippi State
- Auburn leads the all-time series 53-40, but Alabama leads 24-18 in Tuscaloosa and won both meetings last season
- Unique Thompson pulled down her 1,000th career rebound vs. Belmont (12/20); she is third in Auburn history with 1,034 rebounds after passing Lori Monroe in the Florida game (1/17)
- Thompson is the nation's active career leader in double-doubles (51) and the SEC's active leader in rebounds (1,034)
- Thompson leads the nation in rebounds per game (14.6) and offensive rebounds per game (6.4)
- Thompson's 26-point, 23-rebound game at Houston was Auburn's first 20-20 game since Lauretta Freeman had 30 points, 21 rebounds vs. Alabama on Feb. 17, 1993; she followed that up with 20 points, 23 rebounds vs. Belmont (12/20)
- Thompson's 23 rebounds at Houston and vs. Belmont were a career-high and tied for the third-most in Auburn history (Sharon Stewart, 23 at Vanderbilt, Feb. 28, 1988)
- As of Jan. 22, Thompson's 23 rebounds at Houston and vs. Belmont were tied for the most by a player in NCAA Division I so far this season
- Honesty Scott-Grayson scored a career-high 23 points at Ole Miss; she is averaging 11.6 points/game overall and 13.8/game in SEC play
- Morgan Robinson-Nwagwu's 6 assists at Ole Miss were a career-high and the most by an Auburn player this season
- Robinson-Nwagwu made her first career start at Florida and scored a career-high 9 points
- Auburn has utilized six different starting lineups through 13 games; 11 of 13 scholarship players have started at least one game and 8 players have made their first Division I starts
- Annie Hughes scored a career-high 17 points with 7 rebounds in the win over North Florida
- Auburn's 97 points in their win over Gardner-Webb tied the most scored by the Tigers under Terri Williams-Fournoy
- The Gardner-Webb win was Auburn's eighth 90-point game in the Williams-Fournoy era; the UNF win was the 9th
- The Tigers held USC Upstate to 41 points in the opener, the lowest for an opponent since Feb. 17, 2019 vs. Alabama (77-38)
- Auburn's 41-point margin of victory over USC Upstate was its largest since a 56-point win at Elon (96-44) on Dec. 22, 2018; it tied for the fifth-largest winning margin at Auburn Arena
- Ten players made their Auburn debuts in the win over USC Upstate; three newcomers were in the starting lineup
- Aicha Coulibaly became the eighth Auburn player since 2005 and fourth under Coach Flo to earn a starting nod in their first game as a true freshman
- Redshirt sophomore Jala Jordan scored a career-high 16 points off the bench to share the team lead in her Auburn debut vs. USC Upstate; the WVU transfer also hit 4-of-6 3-pointers on the night
- Auburn is in its 50th season of women's basketball and has 952 program wins
- Senior forward Unique Thompson was a consensus preseason first-team All-SEC selection (coaches & media)

Moving On Up (Auburn Career Milestone Watch) . . .

- **Unique Thompson** has 51 career double-doubles, is Auburn's all-time leader and SEC and NCAA active career leader
- **Unique Thompson** needs 6 double-doubles to tie for 10th in SEC history (Alaina Coates, Chamique Holdscraw, Armintie Price, 57)
- **Unique Thompson** is 3rd in career rebounds with 1,034; needs 13 to tie for 2nd (DeWanna Bonner, 1,047)
- **Unique Thompson** is 1st in career rebounding average at 10.5; Marianne Merritt (1975-79) is 2nd at 10.0
- **Unique Thompson** is 18th in career scoring with 1,356 points; needs 9 to tie for 17th (Linda Godby, 1,365)
- **Coach Terri Williams-Fournoy** needs 17 wins for 300 in her head coaching career
- **Auburn** needs 2 home wins for 100 all-time at Auburn Arena

INDIVIDUAL CATEGORY LEADERS

Auburn	Alabama
Unique Thompson - 18.6	Jasmine Walker - 19.8
Unique Thompson - 14.6	Jasmine Walker - 10.2
Honesty Scott-Grayson - 1.7	Jordan Lewis - 4.1
Unique Thompson - 2.8	Megan Abrams - 1.2
Jala Jordan - 0.8	Walker/Copeland - 0.8
Unique Thompson - 29.4	Jasmine Walker - 35.1
Unique Thompson - .563	Ariyah Copeland - .670
Keya Patton - .318	Jasmine Walker - .394
Unique Thompson - .800	Jordan Lewis - .805

OPENING TIP

» The Auburn Tigers hit the road for the fourth time of the 2021 SEC season Sunday when they make the cross-state trek to Tuscaloosa to face the rival Alabama Crimson Tide. Game time is 1 p.m. CT at Coleman Coliseum.

» Auburn is 5-8 overall, 0-5 in SEC play. A hard-fought effort came up just short against No. 12 Kentucky Thursday night in a 76-71 loss at home.

» Alabama is 11-2 overall, 4-2 in SEC play. The Crimson Tide fell 82-56 to No. 23 Tennessee last Sunday in their previous game.

LAST TIME OUT

» Auburn battled the nation's 12th-ranked team for a full 40 minutes Thursday night, but a late rally fell just short in a 76-71 loss to No. 12 Kentucky at Auburn Arena.

» The Tigers got 22 points from senior Unique Thompson - 13 of them in the fourth quarter - and never let the Wildcats out of their sights in Auburn's most complete effort so far in SEC play.

» Auburn was nearly at full strength with 12 players dressed for Thursday's game, and the added depth was readily apparent as the Tigers' bench scored 27 points, their most since dropping 29 against North Florida on Dec. 17.

» Thompson led all scorers with 22 points and picked up her ninth straight double-double with 10 rebounds as well. Jala Jordan had her best performance in SEC play with 11 points, and Honesty Scott-Grayson added 10 points and eight rebounds. Romi Levy contributed a career-high seven assists, the most by an Auburn player this year, along with five points and four rebounds.

UP NEXT

» Auburn returns home to face No. 8 Texas A&M Thursday night. Game time is 7:30 p.m. CT at Auburn Arena with a national broadcast on SEC Network.

AN AUBURN WIN WOULD...

» Snap a six-game losing streak.

» Break a two-game skid against Alabama.

» Be Auburn's fourth win over Alabama in the last six meetings.

AUBURN-ALABAMA SERIES

» This is the 94th meeting between Auburn and Alabama in women's basketball, the first of two this season. It is the second-most played women's basketball series in the SEC, behind only Ole Miss-Mississippi State.

» Auburn is 53-40 all-time against Alabama, but the Tide own a 24-18 advantage in Tuscaloosa. The teams have split the last four meetings at Coleman Coliseum.

» The Tigers have won 8 of the last 12 and 11 of the last 16 meetings between the teams, dating back to 2013.

**LAST MEETING: Feb. 9, 2020 in Tuscaloosa
Alabama 68, Auburn 64**

» Three Tigers finished in double figures, but a back-and-forth game went Alabama's way as Auburn fell 68-64 at Coleman Coliseum.

» In a game that featured 12 ties and 13 lead changes, Auburn led 61-60 with 1:24 to play. But Alabama, which had missed 11 straight 3-pointers, hit one from the corner to take a 63-61 lead with under a minute to play. Auburn came up empty on

its next possession, and Alabama sank 5-of-6 free throws down the stretch to earn the win.

» The Tigers shot 36.1 percent (22-of-61) while Alabama was slightly better at 40.7 percent. Both teams made 22 shots, but Alabama made one more 3-pointer and three more free throws. Auburn committed just seven turnovers, a season-low, but also forced Alabama into only 11, also a season-low. Alabama out-rebounded Auburn 41-34.

SCOUTING ALABAMA

» Alabama is 11-2 overall, 4-2 in SEC play. The Crimson Tide are receiving votes in the most recent Associated Press poll.

» The Tide average 77.4 points/game while holding opponents to 65.5/game. Alabama is the SEC's top free throw-shooting team at 76.8%, and the Tide make an average of 8.3 3-pointers per game, second-best in the league.

» Jasmine Walker is one of four players in the SEC averaging a double-double with 19.8 points and 10.2 rebounds/game. She is also the league's top 3-point shooter, making 3.0 per game and shooting 39.4% from long-range.

SCOUTING AUBURN

» Senior forward Unique Thompson leads the nation with 14.6 rebounds per game this year and leads Auburn with 18.6 points/game. She leads the nation and the SEC in double-doubles with nine. Thompson pulled down her 1,000th career rebound against Belmont on Dec. 20 and is the only active player nationally with over 1,000 career rebounds. An honorable-mention All-American and first-team All-SEC performer a year ago, Thompson is Auburn's lone returning starter. She averaged a double-double for the second straight year in 2020 with 16.2 points and 11.4 rebounds, leading Auburn in both categories.

» Thompson was unavailable the first three games of SEC play with medical issues, but made her return at Florida Jan. 17 with 14 points and 14 rebounds, then followed up with 22 points and 10 rebounds vs. Kentucky.

» Two redshirt sophomore transfers that sat out last season are making an immediate impact. Honesty Scott-Grayson (Baylor) and Jala Jordan (West Virginia) have both earned significant minutes through the first several games. Scott-Grayson has started all 13 games and had a career-high 23 points at Ole Miss, 18 points vs. Belmont & Florida, 16 points against both SFA and North Florida, and 14 points, 7 rebounds and 5 steals vs. Gardner-Webb. Jordan is Auburn's third-leading scorer with 7.7 points/game; she's also the Tigers' leading shot-blocker (0.8/game).

» Four other returners saw game action for Auburn last season: redshirt junior Kiyae' White and sophomores Annie Hughes, Morgan Robinson-Nwagwu and Sania Wells. Hughes scored a career-high 17 points against North Florida and has started seven games. Wells and Robinson-Nwagwu played significant minutes in the opener; Robinson-Nwagwu had a career-high four steals and matched career-highs with 6 points and 4 rebounds. She also had a career-high 6 steals at Ole Miss, then made her first career start at Florida and scored a career-high 9 points. Wells scored a career-high 11 points in the win over South Alabama and made her first career start at LSU.

SEC STANDINGS & SCHEDULE

	<i>(thru games of Jan. 18)</i>					
	SEC Games			All Games		
	W	L	Pct.	W	L	Pct.
South Carolina	6	0	1.000	11	1	.917
Texas A&M	4	1	.800	13	1	.923
Tennessee	3	1	.750	9	3	.750
Alabama	4	2	.667	11	2	.846
Georgia	4	2	.667	12	2	.857
Kentucky	4	2	.667	11	3	.786
LSU	4	2	.667	6	6	.500
Mississippi St.	3	3	.500	8	4	.667
Arkansas	2	4	.333	11	5	.688
Missouri	1	3	.250	5	4	.556
Ole Miss	1	4	.200	7	4	.636
Florida	1	5	.167	8	6	.571
AUBURN	0	5	.000	5	8	.385
[^] Vanderbilt	0	3	.000	4	4	.500

Thursday, Jan. 21

South Carolina 62, Georgia 50

Connecticut 67, Tennessee 61

Kentucky 76, Auburn 71

Sunday, Jan. 24

*Noon - South Carolina at LSU (SEC Network)

*1:00 - Auburn at Alabama (ESPN)

*1:00 - Kentucky at Tennessee (ESPN2)

*2:00 - Florida at Ole Miss (+)

*4:00 - Texas A&M at Missouri (SEC Network)

Monday, Jan. 25

*6:00 - Arkansas at Georgia (SEC Network)

Thursday, Jan. 28

5:00 - Connecticut at Arkansas (ESPN2)

*5:30 - Alabama at Kentucky (SEC Network)

*6:00 - Missouri at Florida (+)



*6:00 - LSU at Georgia (+)

*6:00 - Ole Miss at Tennessee (+)

*6:00 - South Carolina at Mississippi State (ESPN)

*7:30 - Texas A&M at Auburn (SEC Network)

Inside the Numbers

CATEGORY		
	AUBURN	ALABAMA
Points Per Game	65.8	77.4
Scoring Margin	-0.9	+11.9
Field Goal %	38.0%	43.8%
Opp. Field Goal %	42.0%	40.6%
3 pt Field Goal %	25.6%	34.7%
Opp. 3FG %	32.9%	33.5%
Rebounds	40.2	40.9
Opp. Rebounds	36.6	36.1
Rebound Margin	+3.6	+4.8
Turnovers	17.9	13.8
Opp. Turnovers	19.8	13.8
Steals	11.7	5.8
Opp. Steals	10.5	6.7
Blocks	2.5	2.5
Opp. Blocks	2.2	2.7

Associated Press Top 25

(Week 8: Jan. 18)

Rk	Team	Record	Prev
1	Louisville (20)	12-0	2
2	NC State (5)	10-0	3
3	Connecticut (1)	7-0	4
4	South Carolina (2)	9-1	5
5	Stanford (1)	11-1	4
6	UCLA	8-2	8
7	Maryland	11-1	8
8	Texas A&M	13-1	7
9	Baylor	8-2	6
10	Arizona	10-2	11
11	Michigan	10-0	13
12	Kentucky	10-3	12
13	Oregon	9-3	10
14	South Florida	10-1	16
15	Arkansas	11-4	17
16	Indiana	8-3	18
17	Ohio State	7-1	16
18	DePaul	8-3	19
19	Mississippi State	8-4	14
20	Gonzaga	12-2	20
21	Northwestern	7-2	22
22	Georgia	12-1	NR
23	Syracuse	6-1	24
24	Iowa State	9-4	NR
25	Tennessee	9-2	23

Also receiving votes: South Dakota State, Texas, Missouri State, West Virginia, Washington State, **Alabama**, Nebraska, Rice, Arizona State, IUPUI.

USA TODAY Coaches' Top 25

(Week 8: Jan. 19)

Rk	Team	Record	Prev
1	Louisville (30)	12-0	2
2	NC State (1)	10-0	3
3	South Carolina	10-1	4
4	Stanford (1)	11-1	1
5	Connecticut	7-0	5
6	UCLA	8-2	8
7	Maryland	11-1	9
8	Texas A&M	13-1	7
9	Baylor	8-2	6
10	Arizona	10-2	13
11	Michigan	10-0	12
12	Kentucky	10-3	11
13	Oregon	9-3	10
14	South Florida	10-1	17
15	Indiana	8-3	18
16	Ohio State	7-1	15
17	Arkansas	11-5	16
18	Gonzaga	12-2	19
19	Mississippi State	8-4	14
20	Syracuse	6-1	21
21	DePaul	8-3	22
22	Northwestern	7-2	23
23	Georgia	12-1	NR
24	Texas	9-3	20
25	Missouri State	6-2	25

Also receiving votes: Tennessee, South Dakota State, Iowa, West Virginia, Iowa State, Virginia Tech, Florida Gulf Coast, Michigan State, Colorado, Washington State, Nebraska, Dayton, IUPUI, Delaware, Arizona State.

ALL THE NEW FACES

» Of the 15 players on the roster, 10 of them wore an Auburn uniform for the first time in game action vs. USC Upstate. All 10 newcomers saw the floor in the Tigers' 82-41 win on Nov. 25 and again vs. Gardner-Webb on Dec. 1.

» Auburn added three junior college transfers during the offseason, including two NJCAA All-Americans:

» Kira Lowery came to Auburn from Dyersburg State CC (Tenn.) where she ranked third in the nation in scoring (23.3 ppg) and second in steals (4.0/game) and was an NJCAA All-American in 2020. Lowery has started eight games at PG and leads Auburn with 1.8 assists/game.

» Keya Patton was a two-time All-American at Wabash Valley College (Ill.), where she scored over 1,000 points in two seasons and averaged 20.8 points, 6.8 rebounds and 6.4 steals as a sophomore. She scored a season-best 14 points vs. Gardner-Webb (12/1) and made her first Auburn start vs. Georgia (1/3).

» Alycia Reese joins the Tigers from just down the road at Chattahoochee Valley CC in Phenix City, where she led the team with 12.8 points/game last season. Reese scored 10 points and hit Auburn's only two 3-pointers at Houston (12/5).

» Sophomore Alaina Rice joined the Tigers in June after transferring from Florida A&M. Rice was MEAC Rookie of the Year in 2020 at FAMU where she averaged 10.3 points and 4.7 rebounds. Rice led Auburn with 5 assists in the season-opener and scored 9 points vs. North Florida.

» The Tigers signed two freshmen during the offseason: Romi Levy (6-2, F, Herzliya, Israel) and Aicha Coulibaly (6-0, F/G, Mali). Two others joined Auburn as walk-ons: Riley Donahue (5-10, G, Atlanta, Ga.) and Carsen McFadden (5-7, G, Fairview, Texas). Coulibaly started the first four games; Levy is averaging 5.6 points, 3.8 rebounds and 2.1 steals, and she had a career-high 7 assists against Kentucky. McFadden played significant minutes in the win over South Alabama, sharing the team lead with three assists, and she played in her first road game at Florida.

UNIQUE LEADS THE WAY

» Through games of Jan. 21, Unique Thompson leads the nation in rebounds per game (14.6), offensive rebounds per game (6.4), and double-doubles (9). She leads the SEC in both rebounding categories and double-doubles; she missed the Tigers' first three games of SEC play and the next two were postponed.

» In addition to being the SEC and national active career leader in double-doubles, Unique Thompson is the SEC active leader in career rebounds (1,034), second among SEC players in career steals (165) and is fourth among active SEC players in career scoring (1,356).

» Last season, Thompson was second in the SEC and 10th nationally in rebounding (11.4/game), led the SEC and was 8th nationally in offensive rebounds (4.4/game), and was third in the SEC and 15th nationally in field goal percentage (58.2%).

SEEING DOUBLE

» With nine double-doubles so far this season, Unique Thompson has 51 career double-doubles, the all-time Auburn career record. She surpassed Auburn great DeWanna Bonner's record with her 41st double-double at Missouri on Feb. 27, 2020.

» Unique needs 6 more double-doubles this season to enter the SEC's all-time top 10.

» In 2019-20, Thompson had 22 double-doubles to lead the SEC and finish second overall nationally. She is the nation's leading returner in double-doubles.

» Thompson has averaged a double-double for two straight seasons and for her career, the first Auburn player to accomplish that feat.

» Thompson is first among active SEC players in career double-doubles (as of Jan. 21):

Player (School)	20-21	Career
Unique Thompson (Auburn)	9	51
N'dea Jones (Texas A&M)	9	35
Rennia Davis (Tennessee)	5	34
Ciera Johnson (Texas A&M)	3	21
Aliyah Boston (South Carolina)	6	19

20-20 VISION

» With 26 points and 23 rebounds at Houston (12/5), Thompson was the first Auburn player to record a 20-20 game since Lauretta Freeman had 30 points and 21 rebounds at Alabama on Feb. 17, 1993. Her 23 rebounds tied for the third-most in Auburn history.

» Thompson reprised the feat two weeks later with a 20-point, 23-rebound effort against Belmont at home.

» Auburn women's basketball has now had seven 20-20 games in its history; Freeman was responsible for three of them, including two in back-to-back games in 1993:

Date	Player	Opponent	Stats
12/20/20	Unique Thompson	Belmont	20 pts/23 reb
12/5/20	Unique Thompson	at Houston	26 pts/23 reb
2/17/93	Lauretta Freeman	Alabama	30 pts/21 reb
2/14/93	Lauretta Freeman	at Florida	24 pts/20 reb
11/29/91	Lauretta Freeman	Wisconsin	20 pts/20 reb
11/26/89	Linda Godby	Oregon	25 pts/21 reb
2/28/88	Sharon Stewart	at Vanderbilt	28 pts/23 reb

HITTING THE ROAD = HITTING THE BOARDS

» In her four seasons, Unique Thompson has put up 12 performances with at least 15 rebounds. Nine of those 12 have come away from Auburn Arena.

Rebs	Opponent (Location)	Date
23	at Houston	12/5/20
23	vs. Belmont	12/20/20
19	at UAB	11/21/19
19	at New Mexico	11/11/18
19	vs. BYU (at Stanford)	3/23/19
18	vs. North Florida	12/17/20
18	vs. North Carolina (at Myrtle Beach)	12/20/18
17	vs. Oklahoma	12/2/18
16	at Virginia Tech	11/13/17
15	at TCU	12/7/19
15	at Kentucky	1/27/20
15	vs. Arkansas (at Greenville)	3/5/20

AUBURN HONOR ROLL

» Unique Thompson was a consensus All-SEC First Team selection by the league's coaches and media.

» Thompson was also one of 20 players nationwide named to the Katrina McClain Award watch list. She was also named to the John R. Wooden Award Preseason Top 30 and Midseason Top 25, and she was named the 20th-best player in the country by ESPN in preseason rankings.

STARTING ON DAY ONE

» Three players making their Auburn debuts

were in the starting lineup for the season opener vs. USC Upstate on Nov. 25: true freshman Aicha Coulibaly, redshirt sophomore Honesty Scott-Grayson and junior Kira Lowery.

» Coulibaly became the eighth Auburn freshman since 2005 to earn a start in her collegiate debut. She was the fourth true freshman under Terri Williams-Flournoy to be in the starting lineup on night one.

Year	Freshman Starter	Opponent	Stats
2020	Aicha Coulibaly	USC Upstate	4 pts, 6 reb
2019	Annie Hughes	Wofford	10 pts, 4 ast
2017	Unique Thompson	@Va. Tech	9 pts, 16 reb
2013	Katie Frerking	Ga. Southern	8 pts, 3 reb
2011	Hasina Muhammad	@Mercer	12 pts, 2 reb
2008	Morgan Jennings	@Ala. A&M	4 pts, 4 reb
2005	Sherell Hobbs	UT Pan-Am.	6 pts, 5 reb
2005	DeWanna Bonner	UT Pan-Am.	19 pts, 4 reb

ON THIS DATE

» Auburn is 7-6 all-time on Jan. 24. The Tigers' last game on this date was a 69-67 loss to Texas A&M in 2018.

TIGERS IN THE PROS

» DeWanna Bonner completed her 11th season in the WNBA in 2020, her first with the Connecticut Sun. It was one of her best in her pro career as she led the Sun to the WNBA semifinals while averaging 19.7 points and a career-best 7.8 rebounds per game. She was an all-WNBA second-team selection for the second time in her career. Bonner has gained North Macedonian citizenship and is competing with North Macedonia's national team in EuroBasket qualifying. She is currently playing for Elitzur Ramla in Israel.

» Daisa Alexander, who graduated in 2020, is playing for Etzella Ettelbruck in Luxembourg. This is her first year as a professional.

WORKING OVERTIME

» Auburn is 22-21 all-time in overtime games. The Tigers are 6-5 in the Coach Flo era when games have gone to an extra period.

OVERTIME GAMES UNDER COACH FLO

Date	Opponent	Location	Result
2/20/20	Mississippi St.	Auburn	L 85-92
11/30/19	Dayton	Estero, Fla.	W 76-74
2/3/19	Georgia	Auburn	W 59-58
12/20/18	North Carolina	Myrtle Beach, S.C.	W 86-81
2/20/17	Alabama	Auburn	L 61-63
12/18/16	Virginia Tech	Auburn	L 87-92
1/24/16	Arkansas	Auburn	W 71-60
12/13/15	Marquette	Milwaukee, Wis.	L 69-70
11/28/15	Minnesota	Guaynabo, P.R.	W 81-79
3/2/14	Ole Miss	Oxford, Miss.	L 71-73
2/27/14	Alabama	Auburn	(2OT) W 70-65

THIS, THAT AND THE OTHER

» Auburn has utilized six different starting lineups in 2020-21. Of the 13 scholarship players on Auburn's roster, 11 have started at least one game this year.

» Eight players - Aicha Coulibaly, Jala Jordan, Romi Levy, Kira Lowery, Keya Patton, Morgan Robinson-Nwagwu, Honesty Scott-Grayson and Sania Wells - have made their first Division I starts this season.

» Auburn's 97 points in the win over Gardner-Webb (12/1) tied for the highest-scoring output of the Terri Williams-Flournoy era. It was the eighth

90-point game for Auburn under Coach Flo. Auburn got its 9th 90-point game of the Coach Flo era with 94 points against North Florida.

» Auburn's last five women's basketball games played the same day as an Iron Bowl have been decided by a combined nine points - two-point wins over Samford (2020), Dayton (2019) and Minnesota (2015) along with a one-point loss to Northwestern (2017) and a two-point loss at Winthrop (2014).

Auburn in the SEC & NCAA Stats

(Thru games of 1/21/21)

Category	Value	SEC	NCAA
Scoring Offense	65.8	13th	174th
Scoring Defense	66.7	12th	198th
Scoring Margin	-0.9	12th	177th
Free Throw Pct.	.702	6th	154th
Field Goal Pct.	.380	14th	243rd
Field Goal Pct. Def.	.420	11th	238th
3-pt FG Pct.	.256	14th	292nd
3-pt FG Pct. Def.	.329	10th	241st
Rebounds	40.2	8th	88th
Rebound Margin	+3.5	9th	95th
Assists	11.6	12th	243rd
Assist/Turnover	0.7	14th	258th
Blocks	2.5	12th	243rd
Turnover Margin	+1.9	7th	97th
Turnovers Forced	19.8	4th	47th
Steals	11.7	1st	10th

INDIVIDUALS (All Games)

Scoring

Unique Thompson	18.6	6th	55th
-----------------	------	-----	------

Rebounding

Unique Thompson	14.6	1st	1st
-----------------	------	-----	-----

Field Goal Pct.

Unique Thompson	.563	3rd	27th
-----------------	------	-----	------

Free Throw Pct.

Unique Thompson	.800	4th	146th
-----------------	------	-----	-------

Steals

Unique Thompson	2.8	2nd	34th
Honesty Scott-Grayson	2.2	6th	106th
Romi Levy	2.1	7th	143rd

Offensive Rebounds

Unique Thompson	6.4	1st	1st
-----------------	-----	-----	-----

Defensive Rebounds

Unique Thompson	8.2	1st	15th
-----------------	-----	-----	------

Double-Doubles

Unique Thompson	9	1st	1st
-----------------	---	-----	-----

Career Record Updates

Auburn Career Scoring

No.	Player	Years	Points
1.	DeWanna Bonner	2005-09	2,162
2.	Becky Jackson	1980-84	2,068
3.	Vickie Orr	1985-89	2,035
4.	Marianne Merritt	1975-79	1,979
5.	Carolyn Jones	1988-91	1,831
6.	Natasha Brackett	2001-05	1,716
7.	Janiah McKay	2015-19	1,647
8.	Brandy Montgomery	2013-17	1,644
9.	Mae Ola Bolton	1984-88	1,616
10.	Alli Smalley	2007-11	1,601
11.	Angie Hannah	1978-82	1,583
12.	Tyrese Tanner	2010-14	1,515
13.	Le'Coe Willingham	1999-03	1,475
14.	Lori Monroe	1979-83	1,415
15.	Tasha Hamilton	1997-01	1,402
16.	Sherell Hobbs	2005-09	1,372
17.	Linda Godby	1986-90	1,365
18.	Unique Thompson	2017-present	1,354
19.	Tra'Cee Tanner	2012-16	1,327
20.	Debra Larkin	1981-85	1,310
21.	C.C. Hayden	1989-92	1,306
22.	Katie Frerking	2013-17	1,271
23.	Conswella Sparrow	1997-00	1,249
24.	Blanche Alverson	2009-13	1,244
25.	Brenda Hill	1981-85	1,222
26.	Daisa Alexander	2016-20	1,215
27.	Monique Morehouse	1992-96	1,191
28.	Lauretta Freeman	1989-93	1,188
29.	Hasina Muhammad	2001-15	1,184
	Sharon Stewart	1984-88	1,184

Auburn Career Double-Doubles

No.	Player	Years	D-Ds
1.	Unique Thompson	2017-present	51
2.	DeWanna Bonner	2005-09	40
3.	Lauretta Freeman	1989-93	38
4.	C.C. Hayden	1989-92	30
5.	Le'Coe Willingham	1999-04	29
6.	Vickie Orr	1985-89	27
7.	Monique Morehouse	1992-96	24
8.	Becky Jackson	1980-84	19
9.	Conswella Sparrow	1997-00	15
10.	Tra'Cee Tanner	2012-16	14
11.	Tasha Hamilton	1997-01	13
	Sharon Stewart	1984-88	13
13.	Daniellette Coleman	1992-94	12
	Marita Payne	2002-06	12
15.	Whitney Boddie	2005-09	11
	KeKe Carrier	2005-10	11
17.	Tia Miller	2001-04	8
	Tara Williams	1995-97	8
19.	Katie Frerking	2013-17	7
	Linda Godby	1986-90	7
	Laticia Morris	1995-97	7
	Mandisa Stevenson	2002-04	7
	Tyrese Tanner	2010-14	7
24.	Justine Agbatan	1995-98	6
	Brenda Hill	1982-83	6
	Kendall Mago	1988-92	6
	Samantha Williams	1991-96	6
28.	Ruthie Bolton	1985-89	5
	Jordan Greenleaf	2006-11	5

SEC Career Double-Doubles

No.	Player	Years	D-Ds
1.	Sylvia Fowles, LSU	2004-08	86
2.	Janet Harris, Georgia	1982-85	78
3.	Teaira McCowan, Miss. State	2016-19	70
4.	Julie Gross, LSU	1978-80	68
5.	Valerie Still, Kentucky	1980-83	67
6.	Murriel Page, Florida	1995-98	65
7.	Quientella Bonner, Florida	1976-81	58
8.	Alaina Coats, South Carolina	2013-17	57
	Armintie Price, Ole Miss	2003-07	57
	Charnique Holdscaw, Tenn.	1996-99	57
11.	Katrina McClain, Georgia	1984-87	56
--	Unique Thompson, Auburn	2017-pres.	51

Auburn Career Free Throws Made

No.	Player	Years	FT
1.	DeWanna Bonner	2005-09	600
2.	Janiah McKay	2015-19	443
3.	Carolyn Jones	1988-91	438
4.	Tyrese Tanner	2010-14	376
5.	Conswella Sparrow	1997-00	346
	Le'Coe Willingham	1999-04	346
7.	Becky Jackson	1980-84	340
8.	Vickie Orr	1985-89	307
	Marianne Merritt	1975-79	305
10.	Tasha Hamilton	1997-01	296
--	Unique Thompson	2017-pres.	292

Auburn Career Rebounding

No.	Player	Years	Rebounds
1.	Becky Jackson	1980-84	1,118
2.	DeWanna Bonner	2005-09	1,047
3.	Unique Thompson	2017-present	1,034
4.	Lori Monroe	1979-83	1,015
5.	Vickie Orr	1985-89	1,006
6.	Lauretta Freeman	1989-93	976
7.	Marianne Merritt	1975-79	972
8.	Le'Coe Willingham	1999-03	927
9.	Monique Morehouse	1992-96	792
10.	Jordan Greenleaf	2006-11	761
	Charlene Thomas	1984-87	761
12.	Tra'Cee Tanner	2012-16	758
13.	Sharon Stewart	1984-88	757
14.	C.C. Hayden	1989-92	749
	Kendall Mago	1988-92	749
16.	Tasha Hamilton	1997-01	663
	Mae Ola Bolton	1984-88	653
18.	Marita Payne	2002-06	630
19.	Katie Frerking	2013-17	627
20.	Sherell Hobbs	2005-09	612
21.	Brenda Hill	1982-85	604
22.	Blanche Alverson	2009-13	602
23.	KeKe Carrier	2005-10	600
24.	Angie Hannah	1978-82	588
	Linda Godby	1986-90	580
26.	Tyrese Tanner	2010-14	572
	Conswella Sparrow	1997-00	572
28.	Diann McNeil	1984-88	498
29.	Samantha Williams	1991-96	495
	Hasina Muhammad	2011-15	494

Auburn Career Field Goals Made

No.	Player	Years	FG
1.	Becky Jackson	1980-84	864
	Vickie Orr	1985-89	864
3.	Marianne Merritt	1975-79	837
4.	DeWanna Bonner	2005-09	744
5.	Angie Hannah	1979-82	735
6.	Mae Ola Bolton	1984-88	697
7.	Carolyn Jones	1988-91	645
8.	Natasha Brackett	2001-05	641
9.	Brandy Montgomery	2013-17	627
10.	Alli Smalley	2007-11	599
--	Unique Thompson	2017-pres.	532

Auburn Career Field Goal Percentage

No.	Player	Years	FG%
1.	Becky Jackson	1980-84	.602 (864-1435)
2.	Conswella Sparrow	1997-00	.590 (451-764)
3.	Vickie Orr	1985-89	.565 (864-1528)
4.	Tra'Cee Tanner	2012-16	.564 (540-957)
5.	KeKe Carrier	2005-10	.555 (417-751)
6.	Linda Godby	1986-90	.550 (590-1072)
7.	Unique Thompson	2017-pres.	.547 (532-973)
8.	Sharon Stewart	1984-88	.543 (458-843)
9.	Charlene Thomas	1983-87	.536 (428-799)
10.	Angie Hannah	1979-82	.527 (735-1396)

TIGERS' RECORD WHEN...

	2020-21	Under Coach Flo
At Home.....	5-4	82-44
On the Road.....	0-4	37-65
At a Neutral Site.....	0-0	21-18
When wearing white.....	5-4	82-40
When wearing blue "Auburn".....	0-3	44-70
When wearing blue "Tigers".....	0-1	0-1
When wearing orange.....	0-0	7-10
When wearing pink.....	0-0	7-6
Leading at the half.....	4-1	110-26
Trailing at the half.....	1-6	30-93
Tied at the half.....	0-1	0-8
Scores 100+ points.....	0-0	0-0
Scores 90-99 points.....	2-0	9-0
Scores 80-89 points.....	1-0	28-3
Scores 70-79 points.....	1-1	41-11
Scores 60-69 points.....	1-1	41-33
Scores fewer than 60 points.....	0-6	19-80
Holds opponent to 41-50 points.....	1-0	33-3
Holds opponent to 31-40 points.....	0-0	7-0
Holds opponent to under 30 points.....	0-0	2-0
Force 25 or more turnovers.....	1-0	54-10
Shoots 50% FG or better.....	1-0	36-3
Shoots 40-49% FG.....	2-1	69-35
Shoots 39.9% or under FG.....	2-6	34-89
Holds opponent under 30% FG.....	2-0	28-2
Shoots higher FG% than opponent.....	2-0	107-23
Shoots lower FG% than opponent.....	3-8	33-99
Shoots same FG% as opponent.....	0-0	0-3
Shoots higher FT% than opponent.....	2-3	61-45
Shoots lower FT% than opponent.....	3-4	76-79
Shoots same FT% as opponent.....	0-1	2-4
Out-rebounds opponent.....	5-4	88-37
Out-rebounded by opponent.....	0-4	48-89
Tied in rebounds.....	0-0	5-2
Versus ranked opponent.....	0-1	5-55
In overtime.....	0-0	6-5
Games decided by 3 points or less.....	1-0	15-18
Games decided by 4-5 points.....	0-2	14-18
Games decided by 6-10 points.....	1-1	33-32
Games decided by 11-20 points.....	1-3	39-34
Games decided by 21-30 points.....	0-1	23-17
Games decided by 30+ points.....	2-1	16-8
On Television/Digital.....	5-8	76-89
In November.....	2-0	35-16
In December.....	3-4	44-14
In January.....	0-4	18-48
In February.....	0-0	26-33
In March.....	0-0	14-15

2020-21 Auburn Superlatives...

First Half

Most points scored in the first quarter.....	28 vs. Gardner-Webb (12/1/20)
Most points scored in the second quarter.....	24 vs. USC Upstate (11/25/20)
Most points scored in the first half.....	49 vs. Gardner-Webb (12/1/20)
Fewest points scored in the first half.....	17 at Houston (12/5/20)
Fewest points allowed in the first half.....	9, vs. USC Upstate (11/25/20)
Most points allowed in the first half.....	45 vs. Belmont (12/20/20)
Best FG % in the first half.....	.514 vs. Gardner-Webb (12/1/20)
Worst FG % in the first half.....	.194 at Florida (1/17/21)
Best FG % by an opponent in the first half.....	.581 vs. Georgia (1/3/21)
Worst FG % by an opponent in the first half.....	.143, vs. USC Upstate (11/25/20)
Most rebounds in the first half.....	27 at Houston (12/5/20) & vs. North Florida (12/17/20)
Fewest rebounds in the first half.....	15 vs. Georgia (1/3/21)
Most rebounds by an opponent in the first half.....	24 at Florida (1/17/21)
Fewest rebounds by an opponent in the first half.....	10 vs. Samford (11/28/20)

Second Half

Most points scored in the third quarter.....	25 vs. South Alabama (12/13/20)
Most points scored in the fourth quarter.....	28 vs. North Florida (12/17/20)
Most points scored in an overtime period.....	
Most points scored in the second half.....	50 vs. North Florida (12/17/20)
Fewest points scored in the second half.....	16 at LSU (12/31/20)
Fewest points allowed in the second half.....	30 at Ole Miss (1/7/21)
Most points allowed in the second half.....	47 vs. North Florida (12/17/20)
Best FG % in the second half.....	.579 vs. Gardner-Webb (12/1/20)
Worst FG % in the second half.....	.240 vs. Georgia (1/3/21)
Best FG % by an opponent in the second half.....	.519 vs. Samford (11/28/20)
Worst FG % by an opponent in the second half.....	.263 vs. Gardner-Webb (12/1/20)
Most rebounds in the second half.....	27 vs. Gardner-Webb (12/1/20)
Fewest rebounds in the second half.....	12 vs. Georgia (1/3/21) & at Ole Miss (1/7/21)
Most rebounds by an opponent in the second half.....	24 vs. Georgia (1/3/21)
Fewest rebounds by an opponent in the second half.....	11, vs. USC Upstate (11/25/20)

Game

Most points scored.....	97 vs. Gardner-Webb (12/1/20)
Fewest points scored.....	43 at LSU (12/31/20)
Most points allowed.....	81 vs. North Florida (12/17/20)
Fewest points allowed.....	41 vs. USC Upstate (11/25/20)
Best FG %.....	.534 vs. Gardner-Webb (12/1/20)
Worst FG %.....	.279 at Florida (1/17/21)
Best FG % by an opponent.....	.521 vs. Samford (11/28/20)
Worst FG % by an opponent.....	.286, vs. USC Upstate (11/25/20)
Most rebounds.....	48 vs. North Florida (12/17/20)
Fewest rebounds.....	27 vs. Georgia (1/3/21)
Most rebounds by an opponent.....	43 vs. Stephen F. Austin (12/16/20), at LSU (12/31/20), vs. Georgia (1/3/21)
Fewest rebounds by an opponent.....	26, vs. USC Upstate (11/25/20)

Miscellaneous

Highest-scoring quarter.....	28, 1Q vs. Gardner-Webb (12/1/20); 4Q vs. North Florida (12/17/20)
Lowest-scoring quarter.....	6, 4Q at LSU (12/31/20); 3Q vs. Georgia (1/3/21)
Highest-scoring opponent quarter.....	28, 4Q vs. North Florida (12/17/20)
Lowest-scoring opponent quarter.....	2, 1Q vs. USC Upstate (11/25/20)
Largest margin in a single quarter.....	+19 (28-9) vs. Gardner-Webb (12/1/20)
Largest margin of victory.....	41, vs. USC Upstate (11/25/20)
Smallest margin of victory.....	2 vs. Samford (11/28/20)
Largest margin of defeat.....	32 vs. Georgia (1/3/21)
Smallest margin of defeat.....	4 at Ole Miss (1/7/21)
Largest halftime lead.....	31, vs. USC Upstate (11/25/20)
Smallest halftime lead.....	8 at LSU (12/31/20)
Times tied at halftime.....	1 - 27-27 vs. Stephen F. Austin (12/16/20)
Largest halftime deficit.....	20 vs. Georgia (1/3/21)
Smallest halftime deficit.....	6 vs. South Alabama (12/13/20)
Largest rebounding margin.....	+19, vs. USC Upstate (11/25/20)
Smallest rebounding margin.....	+1 vs. Samford (11/28/20)
Last time tied in rebounding.....	
Largest rebounding deficit.....	-16 vs. Georgia (1/3/21)
Smallest rebounding deficit.....	-4 at LSU (12/31/20)
Largest deficit overcome to win game.....	12 vs. South Alabama (12/13/20)
Largest lead lost.....	13 at LSU (12/31/20)

MISCELLANEOUS STATISTICS

Category	Season	Career
Double-Doubles		
Unique Thompson	9	51
30+ Point Games		
Unique Thompson	0	1
20+ Point Games		
Unique Thompson	5	20
Honesty Scott-Grayson	1	1
10+ Rebound Games		
Unique Thompson	9	60
Romi Levy	1	1
Kiyae' White	0	1
10+ Assist Games		
5+ Steal Games		
Unique Thompson	2	2
Romi Levy	2	2
Honesty Scott-Grayson	1	1
5+ Block Games		
Unique Thompson	0	1

GAMES LED AUBURN IN...

Category	Season	Career
Scoring		
Unique Thompson	8	33
Honesty Scott-Grayson	3	3
Aicha Coulibaly	1	1
Jala Jordan	1	1
Keya Patton	1	1
Rebounding		
Unique Thompson	10	84
Honesty Scott-Grayson	2	2
Romi Levy	1	1
Alaina Rice	1	1
Kiyae' White	0	1
Assists		
Honesty Scott-Grayson	4	4
Romi Levy	3	3
Kira Lowery	3	3
Unique Thompson	2	12
Alaina Rice	2	2
Morgan Robinson-Nwagwu	1	4
Aicha Coulibaly	1	1
Jala Jordan	1	1
Carsen McFadden	1	1
Annie Hughes	0	2
Sania Wells	0	2
Kiyae' White	0	2

(includes games where lead was shared)

2020-21 DOUBLE-DOUBLES

- Unique Thompson vs. Samford (16 pts, 11 reb)
- Unique Thompson vs. Gardner-Webb (21 pts, 12 reb)
- Unique Thompson at Houston (26 pts, 23 reb)
- Unique Thompson vs S. Alabama (21 pts, 15 reb)
- Unique Thompson vs. SFA (11 pts, 14 reb)
- Unique Thompson vs. N. Florida (19 pts, 18 reb)
- Unique Thompson vs. Belmont (20 pts, 23 reb)
- Unique Thompson at Florida (14 pts, 14 reb)
- Unique Thompson vs. Kentucky (22 pts, 10 reb)

Last Time an Auburn Team...

- Scored 90 points** Auburn 94, North Florida 81 in Auburn, Ala. (Dec. 17, 2020)
- Scored 90 points in an SEC game Auburn 95, Missouri 82, in Columbia, Mo. (Feb. 27, 2020)
- Scored 100 points Auburn 119, Sam Houston State 54, in Auburn, Ala. (Dec. 5, 2008)
- Scored 100 points against an SEC opponent Auburn 102, Tennessee 96, SEC Tournament in Albany, Ga. (Mar. 6, 1987)
- Scored 100 points in an SEC regular-season game Auburn 111, Vanderbilt 67, in Auburn, Ala. (Feb. 18, 1987)
- Scored 100 points at home Auburn 119, Sam Houston State 54, in Auburn, Ala. (Dec. 5, 2008)
- Scored 100 points in a true road game Auburn 103, Mercer 29, in Macon, Ga. (Feb. 23, 1987)
- Scored 110+ points Auburn 119, Sam Houston State 54, in Auburn, Ala. (Dec. 5, 2008)
- Scored 80 points and lost Mississippi State 92, Auburn 85 [OT] in Auburn, Ala. (Feb. 20, 2020)
- Scored 90 points and lost Kentucky 91, Auburn 90 [2OT], in Auburn, Ala. (Feb. 2, 1986)
- Scored 100 points and lost Never
- Scored 50-59 points in a half** **50 (2nd half) vs. North Florida in Auburn, Ala. (Dec. 17, 2020)**
- Scored 60 or more points in a half 62 (2nd half) vs. Drake in New Orleans, La. (Dec. 21, 2016)
- Scored 30 or more points in a quarter 34 (3rd quarter) - at Missouri in Columbia, Mo. (Feb. 27, 2020)
- Scored 50 points or less in a game** **44 - vs. Georgia in Auburn, Ala. (Jan. 3, 2021)**
- Scored 50 points or less and won Auburn 47, Missouri 45 [SEC] in Jacksonville, Fla. (March 3, 2016)
- Scored 40 points or less in a game Georgia 63, Auburn 30, in Athens, Ga. (Jan. 28, 2016)
- Scored less than 10 points in a quarter** **8 points (1st quarter) at Florida in Gainesville, Fla. (Jan. 17, 2021)**
- Scored less than 20 points in a 1st half** **17 points at Houston in Houston, Texas (Dec. 5, 2020)**
- Scored less than 20 points in a 2nd half** **16 points at LSU in Baton Rouge, La. (Dec. 31, 2020)**
- Had 35+ rebound margin 36 - (52-16) vs. Alabama A&M in Normal, Ala. (Nov. 19, 2013)
- Had 25+ rebound margin 33 - (53-26) vs. Grambling State in Auburn, Ala. (Nov. 6, 2018)
- Had 20+ rebound margin 33 - (53-26) vs. Grambling State in Auburn, Ala. (Nov. 6, 2018)
- Attempted 30 free throws 31 - vs. Mississippi State in Auburn, Ala. (Feb. 20, 2020)
- Attempted 35 free throws 36 - vs. Alabama State in Auburn, Ala. (Dec. 29, 2018)
- Attempted 40 free throws 41 - vs. Alabama State in Auburn, Ala. (Nov. 15, 2006)
- Attempted 5 free throws or less 3 - at Texas A&M in College Station, Texas (Feb. 23, 2020)
- Did not attempt a free throw Never
- Made 20-24 free throws** **20 - vs. South Alabama in Auburn, Ala. (Dec. 13, 2020)**
- Made 25+ free throws 28 - vs. Mississippi State in Auburn, Ala. (28-31) (Feb. 20, 2020)
- Made 30 free throws 31 - vs. Northwestern State (31-43) (Dec. 30, 2003)
- Had 25 assists 25 - vs. Ole Miss in Auburn, Ala. (Jan. 8, 2017)
- Had 25 turnovers** **27 - vs. Georgia in Auburn, Ala. (Jan. 3, 2021)**
- Had 10 turnovers or less 6 - vs. Tennessee in Auburn, Ala. (March 1, 2020)
- Had 25+ steals Never
- Had 20-24 steals 21 - vs. Georgia in Auburn, Ala. (Feb. 3, 2019)
- Had 15-19 steals** **16 - vs. North Florida in Auburn, Ala. (Dec. 17, 2020)**
- Had 10-14 blocks 10 - vs. Louisiana Tech in Auburn, Ala. (Nov. 19, 2017)
- Had 15+ blocks 15 - at Florida International in Miami, Fla. (Dec. 29, 2014)
- Won an overtime game Auburn 74, Dayton 72 [1OT] in Estero, Fla. (Nov. 30, 2019)
- Lost an overtime game Mississippi State 92, Auburn 85 [1OT] in Auburn, Ala. (Feb. 20, 2020)
- Played a double overtime game Auburn 70, Alabama 65 [2OT] in Auburn, Ala. (Feb. 27, 2014)
- Played three or more overtimes Never
- Shot 70% for a half 70.4% (19-of-27), 2nd half at Elon in Elon, N.C. (Dec. 22, 2018)
- Shot 60% for a game 63.3% (38-of-60) at Elon in Elon, N.C. (Dec. 22, 2018)
- Shot less than 30% for a game** **27.9% (19-68) at Florida in Gainesville, Fla. (Jan. 17, 2021)**
- Shot 90-99.9% from the free throw line (min. 10 attempts) 90.3% (28-of-31) vs. Mississippi State in Auburn, Ala. (Feb. 20, 2020)
- Shot 100% from the free throw line (min. 10 attempts) 100% (16-of-16) vs. Texas A&M in Auburn, Ala. (Jan. 7, 2018)
- Shot 50% on 3-pointers (minimum 5 attempts) 50.0% (8-of-16) vs. LSU in Auburn, Ala. (Feb. 16, 2020)
- Shot 20-30% in a half** **24.0% (6-25), 2nd half vs. Georgia in Auburn, Ala. (Jan. 3, 2021)**
- Shot less than 20% in a half** **19.4% (7-of-36), 1st half at Florida in Gainesville, Fla. (Jan. 17, 2021)**
- Shot 55% or better and lost 58.1% (25-of-43) vs. Tennessee (Jan. 20, 2005)
- Made 10+ 3-point field goals** **11-of-28 vs. North Florida in Auburn, Ala. (Dec. 17, 2020)**
- Failed to make a 3-point field goal 0-of-5 vs. Southern in Auburn, Ala. (Dec. 9, 2017)
- Had 60+ rebounds 61 - vs. Stephen F. Austin in Auburn, Ala. (Dec. 17, 2007)
- Had 50-59 rebounds 55 vs. Ole Miss in Auburn, Ala. (Jan. 23, 2020)
- Defeated a Top-25 opponent Auburn 58, #25 Missouri 54, in Auburn, Ala. (Feb. 24, 2019)
- Defeated a Top-10 opponent Auburn 66, #7 Kentucky 61, in Auburn, Ala. (Jan. 3, 2016)
- Defeated a Top-25 opponent on the road Auburn 68, #16 Vanderbilt 62, in Nashville, Tenn. (Feb. 13, 2014)

Last Time an Auburn Player...

- Scored 25-29 points** **26 - Unique Thompson at Houston in Houston, Texas. (Dec. 5, 2020)**
- Scored 30-34 points 31 - Unique Thompson at TCU in Fort Worth, Texas (Dec. 7, 2019)
- Scored 35 points 35 - DeWanna Bonner vs. Tennessee in Auburn, Ala. (Jan. 25, 2009)
- Scored 40 points 41 - Conswella Sparrow vs. South Alabama (Feb. 17, 1998)
- Had 15-19 rebounds** **18 - Unique Thompson vs. North Florida in Auburn, Ala. (Dec. 17, 2020)**
- Had 20+ rebounds** **23 - Unique Thompson vs. Belmont in Auburn, Ala. (Dec. 20, 2020)**
- Had 10 assists 10 - Daisa Alexander vs. LSU in Auburn, Ala. (Feb. 16, 2020)
- Had 15 assists 18 - Martha Monk vs. Alabama State (Feb. 18, 1981)
- Had 5 blocks 6 - Unique Thompson vs. Louisiana Tech in Auburn, Ala. (Nov. 19, 2017)
- Had 7 blocks 7 - Jassany Williams vs. Duke (Nov. 18, 2011)
- Had 10 blocks 13 - Marita Payne vs. Arkansas (Feb. 3, 2005)
- Had 5 steals** **6 - Romi Levy vs. Georgia in Auburn, Ala. (Jan. 3, 2021)**
- Had 8 steals 8 - Brandy Montgomery vs. East Carolina in Auburn, Ala. (Dec. 5, 2015)
- Had 10 steals 10 - Kristen Mulligan vs. Northeast Illinois in Auburn, Ala. (Dec. 18, 1992)
- Made 10 field goals** **10 - Unique Thompson [10-18] at Houston in Houston, Texas (Dec. 5, 2020)**
- Made 15 field goals 15 - Conswella Sparrow (15-16) vs. South Alabama (Feb. 17, 1998)
- Attempted 20 field goals 21 - Daisa Alexander vs. Vanderbilt in Greenville, S.C. (March 4, 2020)
- Attempted 25 field goals 28 - Brandy Montgomery (8-28) at Marquette in Milwaukee, Wis. (Dec. 13, 2015)
- Made 5+ three-point field goals 5 - Erin Howard vs. Vanderbilt in Greenville, S.C. (March 4, 2020)
- Made 8 three-point field goals 8 - Tiffany Krantz vs. Troy State in Auburn, Ala. (Nov. 21, 1997)
- Attempted 10 three-point field goals 14 - Lauren Hansen vs. Drake in Estero, Fla. (Dec. 1, 2019)
- Attempted 15 three-point field goals 16 - Brandy Montgomery at Marquette in Milwaukee, Wis. (Dec. 13, 2015)
- Made 10 free throws 12 - Daisa Alexander vs. Mississippi State (Feb. 20, 2020)
- Made 15 free throws Never
- Shot 100% at the free throw line (min. 10 attempts) 12-12 - Daisa Alexander vs. Mississippi State (Feb. 20, 2020)

SEC PRESEASON POLL (Media Vote)**Order of Finish**

1. South Carolina
2. Mississippi State
3. Kentucky
4. Texas A&M
5. Arkansas
6. Tennessee
7. LSU
8. Georgia
9. Alabama
10. Florida
11. Missouri
12. Vanderbilt
13. Auburn
14. Ole Miss

Player of the Year

Rhyne Howard, Kentucky

All-SEC Team

Unique Thompson, Auburn
 Rhyne Howard, Kentucky
 Rickea Jackson, Mississippi State
 Aliyah Boston, South Carolina
 Rennie Davis, Tennessee
 N'dea Jones, Texas A&M

SEC PRESEASON POLL (Coaches' Vote)**Order of Finish**

1. South Carolina
2. Kentucky
3. Texas A&M
4. Arkansas
5. Mississippi State
6. Tennessee
7. LSU
8. Alabama
9. Georgia
10. Missouri
11. Ole Miss
12. Florida
13. Vanderbilt
14. Auburn

Player of the Year

Rhyne Howard, Kentucky

All-SEC First Team

Chelsea Dungee, Arkansas
 Unique Thompson, Auburn
 Rhyne Howard, Kentucky
 Khayla Pointer, LSU
 Rickea Jackson, Mississippi State
 Aliyah Boston, South Carolina
 Rennie Davis, Tennessee
 N'dea Jones, Texas A&M

All-SEC Second Team

Jasmine Walker, Alabama
 Destiny Slocum, Arkansas
 Lavender Briggs, Florida
 Shakira Austin, Ole Miss
 Jessika Carter, Mississippi State
 Aijha Blackwell, Missouri
 Zia Cooke, South Carolina
 Kayla Wells, Texas A&M

Had a double-double..... Unique Thompson (22 pts/10 reb) vs. Kentucky in Auburn, Ala. (Jan. 21, 2021)
Had 2 consecutive double-doubles Unique Thompson: 14/14 at Florida, 22/10 vs. Kentucky (Jan. 17-21, 2021)
Had 3 consecutive double-doubles..... Unique Thompson: 20/23 vs. Belmont, 14/14 at Florida, 22/10 vs. Kentucky (12/20-20-1/21/21)
Had 9 consecutive double-doubles Unique Thompson: First vs. Samford; last vs. Kentucky (Nov. 28, 2020-Jan. 21, 2021)
 ...Had 13 consecutive double-doubles Unique Thompson: First vs. BYU; last at Vandy (March 23, 2019-Jan. 2, 2020)
 ...Had 18 consecutive double-doubles (AU record)..... Laurretta Freeman: First vs. Furman, Last vs. Oral Roberts (Dec. 29, 1992-Feb. 23, 1993)
Had a double-double at halftime Unique Thompson (16 pts/10 rebs) at Iowa State in Ames, Iowa (Nov. 13, 2018)
Two players had a double-double Unique Thompson (14 p/13 r) & Jariah McKay (16 p/10 a) vs. Grambling State (Nov. 6, 2018)
Recorded a double-double with points and assists..... Jariah McKay (16 pts/10 assists) vs. Grambling State (Nov. 6, 2018)
Scored 20 points & had 20 rebounds..... Unique Thompson (20 pts/23 reb) vs. Belmont in Auburn, Ala. (Dec. 20, 2020)
Had a triple-double..... Whitney Boddie (24 pts./11 rebs./12 asst.) vs. Sam Houston State (Dec. 5, 2008)
Two or more players scored 20 points Benton (23), Howard (22), Alexander (21) at Missouri in Columbia, Mo. (Feb. 27, 2020)
Three players scored 20 points Benton (23), Howard (22), Alexander (21) at Missouri in Columbia, Mo. (Feb. 27, 2020)
Two players scored 30 points Laticia Morris (33) & Tara Williams (30) vs. South Alabama (Jan. 14, 1997)
Had 2 straight 25-point games..... Jariah McKay: 27 at South Carolina, 26 vs. Arkansas (Jan. 11-14, 2018)
Had 3 straight 25-point games..... Jariah McKay: 25 pts vs. Texas A&M, 27 pts at South Carolina, 26 pts vs. Arkansas (Jan. 7-14, 2018)
Zero players scored in double figures at Georgia in Athens, Ga. (Jan. 28, 2016)
Only one player scored in double figures Keya Patton (12) vs. Georgia in Auburn, Ala. (Jan. 3, 2021)
Five players scored in double figures Thompson (19), Hughes (17), Scott-Grayson (16), Levy (12), Jordan (11) vs. N. Florida (Dec. 17, 2020)
Six players scored in double figures..... McKay/Benton (16), Primm (15), Thompson (14), Alexander/Jones (13) vs. Grambling (Nov. 6, 2018)
Seven players scored in double figures..... Carrier (19 pts.), Bonner (18 pts.), Smalley (16 pts.), Boddie (13 pts.)
 R. Hobbs (13 pts.), Hilliard (13 pts.) & S. Hobbs (10 pts.) vs. Sam Houston State (Dec. 5, 2008)
Two players had 10 rebounds..... Unique Thompson (13) and Daisa Alexander (10) vs. Ole Miss in Auburn, Ala. (Jan. 23, 2020)
Three players had 10 rebounds J. Greenleaf (12 rebs.), D. Bonner (12 rebs.) & W. Boddie (10 rebs.) vs. Oakland (Nov. 21, 2007)
Played every minute..... Jordan Greenleaf (40 mins.) vs. Florida in Duluth, Ga. [SEC] (Mar. 4, 2010)
Played 40 or more minutes in OT game..... Unique Thompson (43 mins.) vs. Georgia in Auburn, Ala. (Feb. 3, 2019)
Attempted a slam dunk..... Hasina Muhammad vs. St. John's in Auburn, Ala. (Dec. 6, 2013)
Made a shot from half-court or beyond Brooke Moore (end 2nd quarter) vs. Alabama State in Auburn, Ala. (Dec. 29, 2018)

Last Time an Auburn Opponent...

Shot less than 30% in a game (SEC) Ole Miss - 27.4% (17-of-62) in Auburn, Ala. (Jan. 23, 2020)
Shot less than 30% in a game (Non-conf) Gardner-Webb - 29.4% (20-of-68) in Auburn, Ala. (Dec. 1, 2020)
Shot 60% or better in a game Florida - 61.5% (32-of-52) in Auburn, Ala. (Jan. 9, 2020)
Scored 90 points Arkansas 90, Auburn 68 in Greenville, S.C. (March 5, 2020)
Scored 100 points Georgia 102, Auburn 72 in Athens, Ga. (Mar. 3, 1984)
Scored 100 points at Auburn..... Tuskegee 105, Auburn 98 (2OT) (Feb. 12, 1979)
Had 25+ rebound margin..... Never
Had a 20+ rebound margin..... 20 - Alabama (56-36) in Auburn, Ala. (Feb. 20, 2017)
Scored less than 5 points in a quarter 2 - USC Upstate (1st quarter) in Auburn, Ala. (Nov. 25, 2020)
Scored less than 10 points in a quarter 8 - LSU (1st quarter) in Baton Rouge, La. (Dec. 31, 2020)
Scored less than 10 points in all four quarters Winthrop (9-8-8-8) in Auburn, Ala. (Dec. 16, 2015)
Scored 30 or more points in a quarter 34 - Wofford (4th quarter) in Auburn, Ala. (Nov. 6, 2019)
Scored less than 10 points in a half 9 - USC Upstate (1st half) in Auburn, Ala. (Nov. 25, 2020)
Scored less than 20 points in a 1st half..... 19 - LSU in Baton Rouge, La. (Dec. 31, 2020)
Scored less than 20 points in a 2nd half..... 19 - Florida in Auburn, Ala. (Dec. 31, 2017)
Had 50 rebounds 56 - Alabama in Auburn, Ala. (Feb. 20, 2017)
Had 25 assists..... 25 - Arkansas in Greenville, S.C. (March 5, 2020)
Had 25-29 turnovers 25 - USC Upstate in Auburn, Ala. (Nov. 25, 2020)
Had 30-34 turnovers 30 - XULA in Auburn, Ala. (Dec. 28, 2017)
Had 35+ turnovers 35 - ULM in Auburn, Ala. (Nov. 27, 2017)
Had 15 steals 21 - Belmont in Auburn, Ala. (Dec. 20, 2020)
Had 10 blocks..... 10 - Georgia in Athens, Ga. (Jan. 19, 2020)
Failed to make a 3-point field goal..... LSU (0-6) in Baton Rouge, La. (Feb. 1, 2016)
Attempted 35 free throws 35 - Florida in Gainesville, Fla. (Feb. 28, 2016)
Made 30 free throws 30 - Arkansas (Jan. 22, 1995)
Made 10-14 three-point field goals..... 10 - Kentucky in Auburn, Ala. (Jan. 21, 2021)
Made 15+ three-point field goals..... 17 - Arkansas in Greenville, S.C. (March 5, 2020)
Scored 41-50 points in a game 41 - USC Upstate in Auburn, Ala. (Nov. 25, 2020)
Scored 31-40 points in a game..... 38 - Alabama in Auburn, Ala. (Feb. 17, 2019)
Scored 30 points or less..... 26 - Georgia in Athens, Ga. (Feb. 22, 2015)
Scored 25 points or less..... 25 - Puerto Rico-Mayaguez (Dec. 17, 2000)

Last Time an Opposing Player...

Scored 30+ points (non-conference) 35 - Ajah Wayne of Old Dominion in Auburn, Ala. (Nov. 14, 2019)
Scored 30+ points (SEC) 30 - Alexis Tolefree of Arkansas in Greenville, S.C. (March 5, 2020)
Scored 35+ points (all games)..... 35 - Ajah Wayne of Old Dominion in Auburn, Ala. (Nov. 14, 2019)
Scored 40+ points (all games) 41 - Chelsea Dungee of Arkansas in Fayetteville, Ark. (Feb. 10, 2019)
Attempted 25 field goals 27 - Jantel Lavender (9-27) of Ohio State (Nov. 23, 2008)
Scored 20 points & had 20 rebounds Young of Baylor in the WNIT Championship Game, (20 pts./25 rebs.) (Apr. 4, 2003)
Two players scored 20 points Jazz Bond (23) and Rhetta Moore (22) of North Florida in Auburn, Ala. (Dec. 17, 2020)
Three players scored 20 points by LSU in Baton Rouge, Chatman (22 pts.), Johnson (21 pts) & Lowery (20 pts) (Jan. 12, 1991)
Five players scored in double figures Cooke (13), Boston (13), Harris (12), Grissett (11), Herbert Harrigan (11) of S. Carolina (Feb. 13, 2020)
Six players scored in double figures..... Williams (10), Lewis (13), Bonds (18), Peoples (10), Miller (12), Svetle (12) of Florida (Jan. 26, 2014)
Recorded a double-double Kiara Smith (22 pts/13 reb) of Florida in Gainesville, Fla. (Jan. 17, 2021)
Recorded a double-double with points and assists..... Tyasha Harris (12 pts/11 ast) of South Carolina in Columbia, S.C. (Jan. 11, 2018)
Recorded a triple-double Ceira Ricketts (14 pts./13 rebs./12 ast.) of Arkansas (Jan. 18, 2009)
Two players recorded a double-double C. Green (16 pts/11 reb) & Davis (15 pts/10 reb) of Tennessee in Knoxville, Tenn. (Feb. 14, 2019)
Committed 10+ turnovers 10 - Shaquera Wade of Alabama in Greenville, S.C. (March 7, 2019)
Had 15-19 rebounds 15 - by N'dea Jones of Texas A&M in Auburn, Ala. (Jan. 24, 2019)
Had 20+ rebounds 21 - Ayana Mitchell of LSU in Baton Rouge, La. (March 3, 2019)
Had 10 assists 10 - Tyasha Harris of South Carolina in Auburn, Ala. (Feb. 28, 2019)
Had 15 assists 16 - Cindy McMahan of Alabama-Huntsville (Nov. 24, 1980)
Had 5 blocks..... 5 - Ashley Knight of Alabama in Tuscaloosa, Ala. (Feb. 18, 2018)
Had 10 blocks..... Never
Had 5 steals..... 5 - Kiara Smith of Florida in Gainesville, Fla. (Jan. 17, 2021)
Made 15 field goals 15 - Chamique Holdsclaw (15-21) of Tennessee (Feb. 1, 1998)
Made 10 3-point field goals..... 11 - Morgan Eye (11-18) of Missouri in Columbia, Mo. (Jan. 6, 2013)

2020-21 Auburn Individual Highs...**First Half**

Points.....	16, Unique Thompson vs. Gardner-Webb (12/1/20)
Field Goals Made.....	7, Unique Thompson vs. Gardner-Webb (12/1/20)
Field Goal Attempts.....	10, Annie Hughes vs. North Florida (12/17/20)
3-Point Field Goals Made	3, 3x; last, Annie Hughes vs. North Florida (12/17/20)
3-Point Field Goal Attempts	7, Annie Hughes vs. North Florida (12/17/20)
Free Throws Made	5, Honesty Scott-Grayson vs. Belmont (12/20/20)
Free Throws Attempted	7, Honesty Scott-Grayson vs. Belmont (12/20/20)
Rebounds	11, Unique Thompson vs. Belmont (12/20/20)
Assists	4, Romi Levy vs. Kentucky (1/21/21)
Blocked Shots.....	2, 3x; last, Unique Thompson vs. Kentucky (1/21/21)
Steals	4, Romi Levy at LSU (12/31/20)

Second Half

Points.....	22, Unique Thompson at Houston (12/5/20)
Field Goals Made.....	8, 2x; last, Unique Thompson vs. Kentucky (1/21/21)
Field Goal Attempts.....	12, Unique Thompson at Houston (12/5/20)
3-Point Field Goals Made	3, Honesty Scott-Grayson at Ole Miss (1/7/21)
3-Point Field Goal Attempts	4, Honesty Scott-Grayson at Ole Miss (1/7/21)
Free Throws Made	9, Unique Thompson vs. South Alabama (12/13/20)
Free Throws Attempted	9, Unique Thompson vs. South Alabama (12/13/20)
Rebounds	15, Unique Thompson at Houston (12/5/20)
Assists	4, Honesty Scott-Grayson vs. Belmont (12/20/20)
Blocked Shots.....	2, 2x; last, Jala Jordan vs. North Florida (12/17/20)
Steals	3, 3x; last, Morgan Robinson-Nwagwu at Ole Miss (1/7/21)

Game

Points.....	26, Unique Thompson at Houston (12/5/20)
Field Goals Made.....	10, Unique Thompson at Houston (12/5/20)
Field Goal Attempts.....	18, Unique Thompson at Houston (12/5/20)
3-Point Field Goals Made	4, Jala Jordan vs. USC Upstate (11/25/20)
3-Point Field Goal Attempts	8, Annie Hughes vs. North Florida (12/17/20)
Free Throws Made	9, Unique Thompson vs. South Alabama (12/13/20)
Free Throws Attempted	10, Unique Thompson vs. Samford (11/28/20)
Rebounds	23, Unique Thompson at Houston (12/5/20) & vs. Belmont (12/20/20)
Assists	7, Romi Levy vs. Kentucky (1/21/21)
Blocked Shots.....	3, Jala Jordan vs. South Alabama (12/13/20)
Steals	6, Romi Levy vs. Georgia (1/3/21)

2020-21 Auburn Team Highs...**First Half**

Points.....	49 vs. Gardner-Webb (12/1/20)
Field Goals Made.....	19 vs. Gardner-Webb (12/1/20)
Field Goal Attempts.....	43 vs. North Florida (12/17/20)
3-Point Field Goals Made	7 vs. North Florida (12/17/20)
3-Point Field Goal Attempts	17 vs. North Florida (12/17/20)
Free Throws Made	11 vs. Gardner-Webb (12/1/20)
Free Throws Attempted	16 vs. Gardner-Webb (12/1/20)
Rebounds	27 at Houston (12/5/20) & vs. North Florida (12/17/20)
Assists	9 vs. Samford (11/28/20) & vs. Gardner-Webb (12/1/20)
Blocked Shots.....	4 at Houston (12/5/20)
Steals	8 vs. Gardner-Webb (12/1/20) & vs. North Florida (12/17/20)

Second Half

Points.....	50 vs. North Florida (12/17/20)
Field Goals Made.....	20 vs. Gardner-Webb (12/1/20)
Field Goal Attempts.....	37 vs. North Florida (12/17/20) & vs. Kentucky (1/21/21)
3-Point Field Goals Made	5 at Ole Miss (1/7/21)
3-Point Field Goal Attempts	12 vs. Samford (11/28/20) & vs. Belmont (12/20/20)
Free Throws Made	17 vs. South Alabama (12/13/20)
Free Throws Attempted	21 vs. South Alabama (12/13/20)
Rebounds	27 vs. Gardner-Webb (12/1/20)
Assists	11 vs. USC Upstate (11/25/20)
Blocked Shots.....	3 vs. SFA (12/16/20) & vs. North Florida (12/17/20)
Steals	8, 4x; last vs. Georgia (1/3/21)

Game

Points.....	97 vs. Gardner-Webb (12/1/20)
Field Goals Made.....	39 vs. Gardner-Webb (12/1/20)
Field Goal Attempts.....	80 vs. North Florida (12/17/20)
3-Point Field Goals Made	11 vs. North Florida (12/17/20)
3-Point Field Goal Attempts	28 vs. North Florida (12/17/20)
Free Throws Made	20 vs. South Alabama (12/13/20)
Free Throws Attempted	29 vs. Gardner-Webb (12/1/20)
Rebounds	48 vs. North Florida (12/17/20)
Assists	19 vs. USC Upstate (11/25/20)
Blocked Shots.....	5 vs. Stephen F. Austin (12/16/20)
Steals	16 vs. Gardner-Webb (12/1/20) & vs. North Florida (12/17/20)
Turnovers Forced.....	25 vs. USC Upstate (11/25/20)

Specialty Statistics (Auburn-Opponent)

Opponent	Points in the Paint	Points off Turnovers	2nd-Chance Points	Fast-Break Points	Bench Points
USC Upstate	42-6	21-7	15-2	8-0	51-23
Samford	28-28	22-16	15-5	11-5	24-1
Gardner-Webb	62-18	25-14	20-18	14-7	43-24
at Houston	34-30	19-21	19-9	7-6	29-25
South Alabama	24-28	15-14	16-12	14-10	22-10
Stephen F. Austin	28-30	18-18	7-7	10-5	12-17
North Florida	40-38	26-17	19-4	15-12	29-13
Belmont	30-34	15-31	9-14	6-8	12-19
at LSU	22-30	7-22	12-16	6-12	19-25
Georgia	30-42	14-26	4-15	12-14	14-32
at Ole Miss	16-26	17-14	4-8	6-3	10-18
at Florida	24-28	20-14	2-5	15-14	5-12
Kentucky	38-28	16-17	12-6	10-10	27-27

Lead-Deficit Comparison

Opponent	Largest Lead	Largest Deficit	Lead Changes	Ties	Result
USC Upstate	43 (4th, 0:26)	--	0	0	W, 82-41
Samford	16 (3rd, 9:03)	3 (1st, 9:01)	3	1	W, 66-64
Gardner-Webb	36 (4th, 0:19)	3 (1st, 9:25)	1	0	W, 97-61
at Houston	--	17 (2nd, 3:53)	0	0	L, 61-71
South Alabama	12 (4th, 1:01)	12 (2nd, 6:04)	2	1	W, 74-66
Stephen F. Austin	7 (1st, 1:57)	13 (4th, 0:16)	3	7	L, 54-67
North Florida	17 (2nd, 9:05)	8 (1st, 7:09)	3	2	W, 94-81
Belmont	2 (1st, 9:16)	21 (4th, 0:23)	3	4	L, 57-78
at LSU	13 (3rd, 7:14)	13 (4th, 1:54)	2	2	L, 43-56
Georgia	--	37 (3rd, 1:43)	0	1	L, 44-76
at Ole Miss	--	13 (3rd, 5:49)	0	0	L, 58-62
at Florida	--	18 (3rd, 5:39)	0	0	L, 54-68
Kentucky	2 (1st, 6:02)	14 (3rd, 5:41)	8	3	L, 71-76

Scoring Breakdown

(Percentage of total points in parentheses)

Opponent	Front Court	Back Court	Sr.	Jr.	So.	Fr.	Starters	Bench
USC Upstate	44	38	16	14	24	12	31	51
Samford	34	32	16	21	19	10	42	24
Gardner-Webb	51	46	21	19	35	22	54	43
at Houston	39	22	26	18	17	0	32	29
South Alabama	35	39	21	10	32	11	52	22
Stephen F. Austin	23	31	11	2	37	4	42	12
North Florida	44	50	19	2	59	14	65	29
Belmont	24	33	20	0	33	4	45	12
at LSU	25	18	-	5	18	20	24	19
Georgia	18	26	-	15	26	6	30	14
at Ole Miss	21	37	-	6	35	17	48	10
at Florida	16	38	14	0	38	2	49	5
Kentucky	45	26	22	3	34	12	44	27

Comparison Statistics (Auburn/Opponent)

Opponent	1st	2nd	Score	Mar	Total FG	FG Pct	3-Pointers	3FG Pct	Free Throws	FT Pct	Reb.	Mar	Assist	TO	Bk	Stl	Fouls
USC Upstate	40-9	42-32	82-41	+41	30-65/14-49	.462/.286	8-20/7-21	.400/.333	14-17/6-6	.824/1.000	45/26	+19	19/13	14/25	1/0	13/9	7/19
Samford	38-26	28-38	66-64	+2	22-60/25-48	.367/.521	7-25/8-22	.280/.364	15-23/6-10	.652/.600	33/32	+1	11/14	12/21	1/2	14/7	14/19
Gardner-Webb	49-28	48-33	97-61	+36	39-73/20-68	.534/.294	2-11/9-37	.182/.243	12-17/17-29	.706/.586	47/41	+6	16/11	11/24	3/2	16/7	17/23
at Houston	17-34	44-37	61-71	(10)	22-61/26-64	.361/.406	2-12/10-30	.333/.167	15-20/9-12	.750/.750	45/34	+11	9/18	23/17	4/1	10/11	18/21
South Alabama	28-34	46-32	74-66	+8	23-65/21-56	.356/.375	8-22/7-19	.364/.368	20-26/17-27	.769/.630	44/37	+7	10/11	16/21	3/5	12/15	20/21
Stephen F. Austin	27-27	27-40	54-67	(13)	19-56/22-54	.339/.407	2-15/7-25	.133/.280	14-23/16-21	.609/.762	34/43	(9)	7/12	19/24	5/2	14/7	23/21
North Florida	44-32	50-47	94-81	+13	34-80/32-65	.425/.492	11-28/10-31	.393/.323	15-18/7-8	.833/.875	48/34	+14	16/17	15/22	3/0	16/8	16/18
Belmont	28-45	29-33	57-78	(21)	22-60/30-62	.367/.484	3-17/11-22	.176/.500	10-17/7-11	.588/.636	47/30	+17	13/18	27/16	1/0	8/21	12/19
at LSU	27-19	16-37	43-56	(13)	17-60/21-60	.283/.350	3-18/0-9	.167/.000	6-8/14-15	.750/.933	39/43	(4)	7/10	24/19	4/3	10/11	18/13
Georgia	23-43	21-33	44-76	(32)	16-52/31-62	.308/.500	1-11/5-14	.091/357	9-13/11-18	.611/.692	27/43	(16)	2/18	27/22	2/6	12/13	13/16
at Ole Miss	23-32	35-30	58-62	(4)	23-55/22-49	.418/.375	6-21/5-12	.286/.417	6-8/13-18	.750/.722	28/34	(6)	18/19	17/19	0/4	12/10	15/11
at Florida	21-35	33-33	54-68	(14)	19-68/25-59	.279/.424	4-23/7-22	.174/.318	12-15/11-14	.800/.786	44/41	+3	10/12	14/12	3/1	8/9	12/16
Kentucky	32-40	39-36	71-76	(5)	27-68/28-59	.397/.475	5-19/10-28	.263/.357	12-16/10-15	.750/.667	41/38	+3	13/20	14/15	2/2	7/9	15/14

Game-by-Game Leaders

	Points	Rebounds	Assists	Steals	Blocked Shots
USC Upstate	16-Thompson/Jordan	7-Unique Thompson	5-Alaina Rice	4-M. Robinson-Nwagwu	1-Aicha Coulibaly
Samford	16-Unique Thompson	11-Unique Thompson	4-Kira Lowery	5-Unique Thompson	1-Jala Jordan
Gardner-Webb	21-Unique Thompson	12-Unique Thompson	4-Jala Jordan	5-Honesty Scott-Grayson	2-Romi Levy
at Houston	26-Unique Thompson	23-Unique Thompson	2-Thompson/Coulibaly	2-(four players)	2-Romi Levy
South Alabama	21-Unique Thompson	14-Unique Thompson	3-Levy/McFadden	5-Unique Thompson	3-Jala Jordan
Stephen F. Austin	16-Honesty Scott-Grayson	14-Unique Thompson	2-Honesty Scott-Grayson	4-Unique Thompson	2-Unique Thompson
North Florida	19-Unique Thompson	18-Unique Thompson	5-Kira Lowery	3-(three players)	2-Unique Thompson
Belmont	20-Unique Thompson	23-Unique Thompson	4-Honesty Scott-Grayson	3-Honesty Scott-Grayson	1-Annie Hughes
at LSU	12-Aicha Coulibaly	11-Romi Levy	2-(three players)	5-Romi Levy	1-(four players)
Georgia	12-Keya Patton	4-Rice/Scott-Grayson	1-Scott-Grayson/Lowery	6-Romi Levy	1-Jordan/Coulibaly
at Ole Miss	23-Honesty Scott-Grayson	5-Honesty Scott-Grayson	6-M. Robinson-Nwagwu	3-Scott-Grayson/Rob.-Nw.	(none)
at Florida	18-Honesty Scott-Grayson	14-Unique Thompson	4-Unique Thompson	2-Thompson/Scott-Grayson	2-Aicha Coulibaly
Kentucky	22-Unique Thompson	10-Unique Thompson	7-Romi Levy	3-Honesty Scott-Grayson	2-Unique Thompson

2020-21 Starting Lineups

	Point Guard (1)	Wing (2)	Wing (3)	Wing (4)	Post (5)
USC Upstate	Kira Lowery	Annie Hughes	Honesty Scott-Grayson	Aicha Coulibaly	Unique Thompson
Samford	Kira Lowery	Annie Hughes	Honesty Scott-Grayson	Aicha Coulibaly	Unique Thompson
Gardner-Webb	Kira Lowery	Annie Hughes	Honesty Scott-Grayson	Aicha Coulibaly	Unique Thompson
at Houston	Kira Lowery	Romi Levy	Honesty Scott-Grayson	Aicha Coulibaly	Unique Thompson
South Alabama	Kira Lowery	Annie Hughes	Honesty Scott-Grayson	Jala Jordan	Unique Thompson
Stephen F. Austin	Kira Lowery	Annie Hughes	Honesty Scott-Grayson	Jala Jordan	Unique Thompson
North Florida	Kira Lowery	Annie Hughes	Honesty Scott-Grayson	Jala Jordan	Unique Thompson
Belmont	Kira Lowery	Annie Hughes	Honesty Scott-Grayson	Jala Jordan	Unique Thompson
at LSU	Alaina Rice	Sania Wells	Honesty Scott-Grayson	Romi Levy	Jala Jordan
Georgia	Alaina Rice	Keya Patton	Honesty Scott-Grayson	Romi Levy	Jala Jordan
at Ole Miss	Alaina Rice	Keya Patton	Honesty Scott-Grayson	Romi Levy	Jala Jordan
at Florida	M.Robinson-Nwagwu	Annie Hughes	Honesty Scott-Grayson	Romi Levy	Unique Thompson
Kentucky	M.Robinson-Nwagwu	Annie Hughes	Honesty Scott-Grayson	Romi Levy	Unique Thompson

Record by Starting Lineup

Lowery, Hughes, Scott-Grayson, Coulibaly, Thompson	3-0 (1.000)
Lowery, Levy, Scott-Grayson, Coulibaly, Thompson	0-1 (.000)
Lowery, Hughes, Scott-Grayson, Jordan, Thompson	3-1 (.750)
Rice, Wells, Scott-Grayson, Levy, Jordan	0-1 (.000)
Rice, Patton, Scott-Grayson, Levy, Jordan	0-2 (.000)
Robinson-Nwagwu, Hughes, Scott-Grayson, Levy, Thompson	0-2 (.000)



Terri

WILLIAMS-FOURNOY

Head Coach

Ninth Season at Auburn • 17th as a Head Coach • 29th Season in coaching

Hampton, Va. • Penn State, 1991

- *Has taken her teams to postseason appearances in nine of the last 12 years, including six NCAA Tournament appearances*

- *Has had seven players selected to All-SEC teams*

- *Auburn has forced an average of 20.0+ turnovers per game under Coach Flo*

- *Led Auburn to the postseason in five of eight seasons, advancing to WNIT Quarterfinals in 2013 and Third Round in 2014, along with NCAA Tournament in 2016, 2017 and 2019*

- *Won her 100th game at Auburn on Feb. 8, 2018, defeating LSU 70-62*

- *Picked up her 200th career head coaching victory Dec. 5, 2015 at home vs. East Carolina*

- *Won 250th career game at Xavier (La.) on Nov. 28, 2018*

- *Recorded her 400th career win as a collegiate coach in Auburn's 68-58 win over Hofstra on Dec. 9, 2012*

- *Won her 500th game as a collegiate coach with victory over Louisiana-Lafayette on Nov. 25, 2018*

- *Picked up first SEC win in 50-47 win over #23 Arkansas in 2013*

- *Earned second win over ranked opponent at Auburn and snapped 21-game skid to #16 Vanderbilt with 68-62 win in Nashville on Feb. 13, 2014*

- *Picked up first top-10 win with a 66-61 victory over #7 Kentucky on Jan. 3, 2016*

- *Has 283 wins as a head coach and 251 as an assistant for a .610 winning percentage over 28 years as a collegiate coach*

- *Has been part of six conference championships and 21 post-season appearances as an assistant and head coach*

- *2010 Black Coaches Association Coach of the Year*

- *Served as an assistant coach for Team USA that won a gold medal at the 2011 World University Games in Shenzhen, China*

- *Coached teams to 15 NCAA Tournament appearances, nine as an assistant and six as a head coach*

- *Has coached 25 players that have gone on to the professional ranks, including seven in the WNBA*

- *As an assistant, helped coach Georgia to an NCAA Final Four appearance and two NCAA Elite Eight appearances*

- *Coached three Georgetown players to three all-conference honors and one All-America award*

- *Has a 622-381 record in 33 seasons as a head coach, assistant coach and player*

- *Helped coach Georgetown to a Big East title in 1992*

- *As an assistant coach at Southwest Missouri State, helped the team to two straight NCAA Tournaments and two consecutive Missouri Valley Conference Tournament titles*

All-time record as player and coach: 622-382 (.623) 33 seasons

Record as collegiate player: 88-36 (.709) 4 seasons

Record as collegiate coach: 534-346 (.608) 29 seasons

Record as collegiate assistant coach: 251-117 (.683) 12 seasons

Record as collegiate head coach: 283-231 (.552) 17 seasons

Record as Auburn head coach: 140-127 (.527) 9 seasons

Williams-Flournoy Year-by-Year

Penn State, Player (1987-91)

Year	Record	Conf.	Other Information
1987-88	20-13	11-7	NCAA Second Round
1988-89	14-14	12-6	
1989-90	25-7	15-3	NCAA Second Round
1990-91	29-2	17-1	NCAA Second Round

Georgetown, Assistant Coach (1992-96)

Year	Record	Conf.	Other Information
1992-93	23-7	15-3	Big East Champions NCAA Sweet 16
1993-94	12-15	6-12	
1994-95	11-17	6-12	
1995-96	12-15	7-11	

Georgia, Assistant Coach (1996-2002)

Year	Record	Conf.	Other Information
1996-97	25-6	11-1	SEC Champions NCAA Elite Eight
1997-98	17-11	8-6	NCAA First Round
1998-99	27-7	9-5	NCAA Final Four
1999-2000	32-4	13-1	SEC Champions NCAA Elite Eight
2000-01	27-6	11-3	SEC Tournament Champions NCAA Second Round
2001-02	19-11	6-8	NCAA First Round

Southwest Missouri State, Assistant Coach (2002-04)

Year	Record	Conf.	Other Information
2002-03	18-13	11-7	MVC Tournament Champions NCAA First Round
2003-04	28-4	16-2	Missouri Valley Champions MVC Tournament Champions NCAA First Round

Georgetown, Head Coach (2004-12)

Year	Record	Conf.	Other Information
2004-05	12-16	7-9	
2005-06	10-17	3-13	
2006-07	13-16	3-13	
2007-08	15-14	5-11	
2008-09	20-14	7-9	WNIT Quarterfinals
2009-10	26-7	13-3	NCAA Second Round
2010-11	24-11	9-7	NCAA Sweet 16
2011-12	23-9	11-5	NCAA Second Round

Auburn, Head Coach (2012-present)

Year	Record	Conf.	Other Information
2012-13	19-15	5-11	WNIT Quarterfinals
2013-14	19-15	7-9	WNIT Third Round
2014-15	13-18	3-13	
2015-16	20-13	8-8	NCAA Second Round
2016-17	17-15	7-9	NCAA First Round
2017-18	14-15	5-11	
2018-19	22-10	9-7	NCAA First Round
2019-20	11-18	4-12	
2020-21	5-8	0-5	



Alycia REESE

#0

Junior • Guard • 5-9

Columbus, Ga.

Carver HS | Chattahoochee Valley CC (Ala.)

- Scored season-best 10 points on 4-6 shooting, hit Auburn's only two 3-pointers at Houston (12/5)
- Hit four free throws, had one rebound in Auburn debut vs. USC Upstate (11/25)
- Signed with Auburn in the spring of 2020
- Played two seasons at CVCC in Phenix City; appeared in all 24 games as a sophomore in 2019-20; first-team all-conference selection
- Led CVCC with 12.8 points along with 3.8 rebounds, 1.6 assists, 1.5 steals per game in 2019-20
- All-state selection at Carver HS as a junior in 2017; led team to state runner-up finish
- Has a 3-year-old son, Andrew

SEASON/CAREER HIGHS

Points	10	at Houston	12/5/20
Rebounds	1	3x; last at LSU	12/31/20
Assists	1	at Houston	12/5/20
Blocks			
Steals	1	at Houston	12/5/20
Field Goals	4	at Houston	12/5/20
Field Goal Attempts	6	at Houston	12/5/20
3-Point Field Goals	2	at Houston	12/5/20
3-Point FG Attempts	3	at Houston	12/5/20
Free Throws	4	vs. USC Upstate	11/25/20
Free Throw Attempts	4	vs. USC Upstate	11/25/20

Opponent	Start	Min.	FG-A	3PT-A	FT-A	O-D-T	PF	Ast.	TO	Blk.	St.	Pts.
USC UPSTATE		4	0-1	0-1	4-4	0-1-1	1	0	0	0	0	4
SAMFORD						--DNP--						
GARDNER-WEBB		9	1-1	0-0	0-0	0-0-0	0	0	1	0	0	2
at Houston		16	4-6	2-3	0-0	0-1-1	0	1	1	0	1	10
SOUTH ALABAMA						--DNP--						
STEPHEN F. AUSTIN						--DNP--						
NORTH FLORIDA						--DNP--						
BELMONT						--DNP--						
at LSU		8	0-0	0-0	2-2	0-1-1	0	0	0	0	0	2
GEORGIA		5	0-0	0-0	0-0	0-0-0	0	0	0	0	0	0
at Ole Miss		4	0-2	0-2	0-0	0-0-0	0	1	0	0	0	0
at Florida						--DNP--						
KENTUCKY		21	1-4	1-4	0-0	1-3-4	1	0	2	0	0	3
at Alabama												
TEXAS A&M												
at Arkansas												
SOUTH CAROLINA												
at Georgia												
ALABAMA												
at Mississippi State												
VANDERBILT												
ARKANSAS												
at Tennessee												

REESE'S CAREER STATISTICS (at Auburn)

Season	gp-gs	min/avg	Total		3-Point		F-Throws		Rebounds				Scoring							
			fg-fga	pct	fg-fga	pct	ft-fita	pct	off	def	tot	avg	pf	fo	ast	to	blk	stl	pts	avg
2020-21	7-0	67/9.6	6-14	.429	3-10	.300	6-6	1.000	1	6	7	1.0	2	0	2	4	0	1	21	3.0
TOTAL	7-0	67/9.6	6-14	.429	3-10	.300	6-6	1.000	1	6	7	1.0	2	0	2	4	0	1	21	3.0



Keya PATTON

#1

Junior • Guard • 5-6

Indianapolis, Ind.

Cathedral HS | Wabash Valley College (Ill.)

- Made first Auburn start vs. Georgia (1/3); scored 12 points in season-high 27 minutes
- Scored 14 points off the bench in win over Gardner-Webb (12/1)
- Scored 6 points, had 5 rebounds and 2 steals in Auburn debut vs. USC Upstate (11/25)
- Signed with Auburn in the spring of 2020 after two seasons at Wabash Valley College
- Two-time NJCAA All-American; first-team in 2020, third-team in 2019; 2020 regional player of the year
- Scored over 1,000 points in two junior college seasons; set school record with 46 points vs. Olney Central College
- Averaged 20.8 points, 6.8 rebounds, 6.4 assists and 2.9 steals as a sophomore; had 10 double-doubles and a triple double
- Led Wabash Valley to 63-3 record in two seasons; sophomore postseason run cut short by pandemic
- Scored over 1,700 points in four-year high school career at Cathedral HS in Indianapolis; two-time first-team all-state selection

SEASON/CAREER HIGHS

Points	14	vs. Gardner-Webb	12/1/20
Rebounds	5	vs. USC Upstate	11/25/20
Assists	2	vs. Gardner-Webb	12/1/20
Blocks			
Steals	2	2x; last at Houston	12/5/20
Field Goals	5	vs. Gardner-Webb	12/1/20
Field Goal Attempts	10	at Houston	12/5/20
3-Point Field Goals	3	vs. Samford	11/28/20
3-Point FG Attempts	7	vs. Samford	11/28/20
Free Throws	6	vs. Georgia	1/3/21
Free Throw Attempts	7	vs. Georgia	1/3/21

Opponent	Start	Min.	FG-A	3PT-A	FT-A	O-D-T	PF	Ast.	TO	Blk.	St.	Pts.
USC UPSTATE		18	2-6	1-2	1-2	2-3-5	0	1	1	0	2	6
SAMFORD		20	3-9	3-7	0-0	0-1-1	2	0	1	0	0	9
GARDNER-WEBB		16	5-9	0-2	4-6	1-0-1	0	2	0	0	1	14
at Houston		22	2-10	0-2	2-2	1-0-1	2	1	2	0	2	6
SOUTH ALABAMA						--DNP--						
STEPHEN F. AUSTIN		11	0-2	0-0	0-0	0-2-2	1	0	0	0	0	0
NORTH FLORIDA		3	0-0	0-0	0-0	0-0-0	1	0	2	0	0	0
BELMONT		10	0-1	0-1	0-0	0-0-0	1	1	2	0	0	0
at LSU		24	1-4	1-3	0-0	1-1-2	3	0	2	0	1	3
GEORGIA	*	27	3-9	0-1	6-7	2-1-3	1	0	2	0	1	12
at Ole Miss	*	28	2-6	2-4	0-0	0-2-2	2	1	2	0	0	6
at Florida						--DNP--						
KENTUCKY						--DNP--						
at Alabama												
TEXAS A&M												
at Arkansas												
SOUTH CAROLINA												
at Georgia												
ALABAMA												
at Mississippi State												
VANDERBILT												
ARKANSAS												
at Tennessee												

PATTON'S CAREER STATISTICS (at Auburn)

Season	gp-gs	min/avg	Total		3-Point		F-Throws		Rebounds				Scoring							
			fg-fga	pct	fg-fga	pct	ft-fta	pct	off	def	tot	avg	pf	fo	ast	to	blk	stl	pts	avg
2020-21	10-2	202/20.2	18-56	.321	7-22	.318	13-17	.765	7	10	17	1.7	13	0	6	14	0	7	56	5.6
TOTAL	10-2	202/20.2	18-56	.321	7-22	.318	13-17	.765	7	10	17	1.7	13	0	6	14	0	7	56	5.6



Sania WELLS

#2

Sophomore • Guard • 5-7

Moss Point, Miss.

East Central HS

- Career-high 11 points, 3-6 on 3FG in 25 minutes off the bench in win over South Alabama (12/13)
- Scored 7 points in season-opener vs. USC Upstate (11/25)
- Played in 25 games as a freshman, averaging 8.6 minutes/game
- Averaged 1.6 points, 0.8 rebounds, 0.5 assists in 2019-20
- Scored season-high 8 points at Mississippi State (1/30/20) in return to her home state; career-high 21 minutes off the bench
- Ranked as No. 27 point guard nationally out of high school by ESPN HoopGurlz
- USA Today All-Mississippi Team as HS senior
- Averaged 27 points, 5 rebounds, 4 steals as HS senior

SEASON HIGHS

Points	11	vs. South Alabama	12/13/20
Rebounds	5	at Florida	1/17/21
Assists	2	2x; last vs. South Alabama	12/13/20
Blocks			
Steals	1	5x; last at Florida	1/17/21
Field Goals	3	2x; last vs. South Alabama	12/13/20
Field Goal Attempts	11	at Florida	1/17/21
3-Point Field Goals	3	vs. South Alabama	12/13/20
3-Point FG Attempts	6	vs. South Alabama	12/13/20
Free Throws	3	vs. Belmont	12/20/20
Free Throw Attempts	4	3x; last vs. Belmont	12/20/20

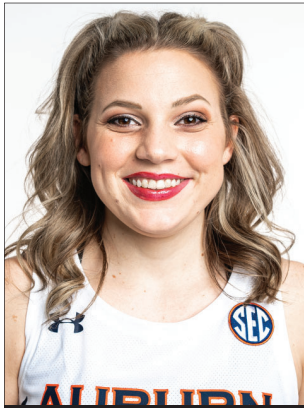
Opponent	Start	Min.	FG-A	3PT-A	FT-A	O-D-T	PF	Ast.	TO	Blk.	St.	Pts.
USC UPSTATE		12	3-6	1-3	0-0	0-0-0	0	1	0	0	0	7
SAMFORD		3	0-0	0-0	0-0	0-0-0	0	0	0	0	0	0
GARDNER-WEBB		14	0-2	0-1	2-2	0-1-1	3	2	2	0	1	2
at Houston		16	0-5	0-1	0-0	1-0-1	1	0	0	0	0	0
SOUTH ALABAMA		25	3-10	3-6	2-4	1-0-1	0	2	2	0	0	11
STEPHEN F. AUSTIN		19	1-6	0-3	2-4	0-0-0	3	0	1	0	1	4
NORTH FLORIDA		13	2-5	2-4	0-0	0-0-0	1	2	0	0	0	6
BELMONT		23	2-7	1-3	3-4	0-0-0	0	1	2	0	0	8
at LSU	*	16	0-5	0-3	0-0	0-2-2	2	1	2	0	1	0
GEORGIA		10	0-1	0-0	0-0	0-0-0	0	0	1	0	0	0
at Ole Miss		11	1-4	0-0	2-2	0-0-0	0	1	0	0	1	4
at Florida		26	2-11	0-2	1-2	2-3-5	1	0	2	0	1	5
KENTUCKY		13	0-4	0-2	0-0	0-0-0	0	0	1	0	0	0
at Alabama												
TEXAS A&M												
at Arkansas												
SOUTH CAROLINA												
at Georgia												
ALABAMA												
at Mississippi State												
VANDERBILT												
ARKANSAS												
at Tennessee												

CAREER HIGHS

Points	11	vs. South Alabama	12/13/20
Rebounds	5	at Florida	1/17/21
Assists	3	vs. Middle Tennessee	11/29/19
Blocks			
Steals	2	vs. Alabama	1/12/20
Field Goals	3	3x; last vs. South Alabama	12/13/20
Field Goal Attempts	11	at Florida	1/17/21
3-Point Field Goals	3	vs. South Alabama	12/13/20
3-Point FG Attempts	6	vs. South Alabama	12/13/20
Free Throws	3	vs. Belmont	12/20/20
Free Throw Attempts	4	4x; last vs. Belmont	12/20/20

WELLS' CAREER STATISTICS

Season	gp-gs	min/avg	Total		3-Point		F-Throws		Rebounds				Scoring							
			fg-fga	pct	fg-fga	pct	ft-fa	pct	off	def	tot	avg	pf	fo	ast	to	blk	stl	pts	avg
2019-20	25-0	214/8.6	14-47	.298	3-17	.176	10-14	.714	5	15	20	0.8	26	0	13	17	0	5	41	1.6
2020-21	13-1	196/15.1	14-66	.212	7-28	.250	12-18	.667	4	6	10	0.8	11	0	10	13	0	5	47	3.6
TOTAL	38-1	410/10.8	28-113	.248	10-45	.222	22-32	.688	9	21	30	0.8	37	0	23	30	0	10	88	2.3



Annie HUGHES

#3

Sophomore • Guard • 5-9

Dutton, Ala.

Pisgah HS

- Career-high 17 points, 7 rebounds, 3 steals in win over North Florida (12/17)
- Season-high 11 points, career-high three 3-pointers in win over South Alabama (12/13)
- Scored 6 points in first five minutes vs. Gardner-Webb (12/1); also added 4 rebounds, 1 assists, 1 steal
- Appeared in all 29 games as a freshman, earning 7 starts
- Averaged 3.6 points, 1.3 rebounds, 0.7 assists, 0.5 steals while playing 16.8 minutes/game
- Shot 45.2% from the field (42-93) and 34.2% (13-38) from 3-point range as a freshman
- Earned start in first collegiate game vs. Wofford (11/6/19); scored 10 points along with 4 assists and 3 steals
- 2019 Alabama Miss Basketball, first to attend Auburn since Whitney Boddie in 2005
- Averaged 21.4 points, 7.0 rebounds, 4.2 assists, 3.5 steals as HS senior; led Pisgah HS to back-to-back state titles in '18 and '19

SEASON HIGHS

Points	17	vs. North Florida	12/17/20
Rebounds	7	vs. North Florida	12/17/20
Assists	1	7x; last at Florida	1/17/21
Blocks	1	vs. Belmont	12/20/20
Steals	3	vs. North Florida	12/17/20
Field Goals	7	vs. North Florida	12/17/20
Field Goal Attempts	16	vs. North Florida	12/17/20
3-Point Field Goals	3	2x; last vs. North Florida	12/17/20
3-Point FG Attempts	8	vs. North Florida	12/17/20
Free Throws	2	vs. Gardner-Webb	12/1/20
Free Throw Attempts	3	vs. Samford	11/28/20

CAREER HIGHS

Points	17	vs. North Florida	12/17/20
Rebounds	7	2x; last vs. North Florida	12/17/20
Assists	4	vs. Wofford	11/6/19
Blocks	1	vs. Belmont	12/20/20
Steals	3	2x; last vs. North Florida	12/17/20
Field Goals	7	vs. North Florida	12/17/20
Field Goal Attempts	16	vs. North Florida	12/17/20
3-Point Field Goals	3	2x; last vs. North Florida	12/17/20
3-Point FG Attempts	8	vs. North Florida	12/17/20
Free Throws	2	2x; last vs. Gardner-Webb	12/1/20
Free Throw Attempts	4	vs. Middle Tennessee	11/29/19

Opponent	Start	Min.	FG-A	3PT-A	FT-A	O-D-T	PF	Ast.	TO	Blk.	St.	Pts.
USC UPSTATE	*	10	0-1	0-0	0-0	1-0-1	0	0	0	0	0	0
SAMFORD	*	21	2-7	0-3	1-3	1-0-1	2	1	1	0	1	5
GARDNER-WEBB	*	20	2-4	0-0	2-2	1-3-4	1	1	1	0	1	6
at Houston		13	0-0	0-0	0-0	1-2-3	0	1	1	0	0	0
SOUTH ALABAMA	*	32	4-8	3-5	0-0	0-3-3	3	0	0	0	2	11
STEPHEN F. AUSTIN	*	25	2-4	0-2	1-2	3-0-3	2	0	0	0	2	5
NORTH FLORIDA	*	31	7-16	3-8	0-0	4-3-7	3	1	1	0	3	17
BELMONT	*	25	3-6	1-2	0-0	2-2-4	2	1	3	1	1	7
at LSU		6	1-1	0-0	0-0	0-0-0	0	0	2	0	0	2
GEORGIA		23	1-2	0-0	1-2	0-3-3	1	0	3	0	1	3
at Ole Miss		12	0-0	0-0	0-0	0-1-1	0	1	1	0	2	0
at Florida	*	30	2-10	1-5	1-2	1-2-3	1	1	0	0	1	6
KENTUCKY	*	17	1-2	0-1	1-1	0-0-0	1	0	0	0	1	3
at Alabama												
TEXAS A&M												
at Arkansas												
SOUTH CAROLINA												
at Georgia												
ALABAMA												
at Mississippi State												
VANDERBILT												
ARKANSAS												
at Tennessee												

HUGHES' CAREER STATISTICS

Season	gp-gs	min/avg	Total		3-Point		F-Throws		Rebounds				Scoring							
			fg-fga	pct	fg-fga	pct	ft-fga	pct	off	def	tot	avg	pf	fo	ast	to	blk	stl	pts	avg
2019-20	29-7	491/16.9	42-93	.452	13-38	.342	6-13	.462	20	17	37	1.3	29	0	19	21	0	14	103	3.6
2020-21	13-9	263/20.2	25-61	.410	8-26	.308	7-12	.583	14	19	33	2.5	16	0	7	13	1	15	65	5.0
TOTAL	42-16	754/18.0	67-154	.435	21-64	.328	13-25	.520	34	36	70	1.7	45	0	26	34	1	29	168	4.0



Riley DONAHUE

#4

Freshman • Guard • 5-10

Atlanta, Ga.

Marist School

- Hit first collegiate shot attempt, a 3-pointer, in final minute vs. Gardner-Webb (12/1)
- Made collegiate debut with one minute of action vs. USC Upstate (11/25)
- Joined Auburn as a walk-on in summer of 2020
- Was a GHSA first-team all-region selection as a senior

SEASON/CAREER HIGHS

Points	3	vs. Gardner-Webb	12/1/20
Rebounds			
Assists			
Blocks			
Steals			
Field Goals	1	vs. Gardner-Webb	12/1/20
Field Goal Attempts	1	vs. Gardner-Webb	12/1/20
3-Point Field Goals	1	vs. Gardner-Webb	12/1/20
3-Point FG Attempts	1	vs. Gardner-Webb	12/1/20
Free Throws			
Free Throw Attempts			

Opponent	Start	Min.	FG-A	3PT-A	FT-A	O-D-T	PF	Ast.	TO	Blk.	St.	Pts.
USC UPSTATE		1	0-0	0-0	0-0	0-0-0	0	0	0	0	0	0
SAMFORD						--DNP--						
GARDNER-WEBB		2	1-1	1-1	0-0	0-0-0	0	0	1	0	0	3
at Houston						--DNP--						
SOUTH ALABAMA		1	0-0	0-0	0-0	0-0-0	1	0	0	0	0	0
STEPHEN F. AUSTIN						--DNP--						
NORTH FLORIDA						--DNP--						
BELMONT						--DNP--						
at LSU						--DNP--						
GEORGIA						--DNP--						
at Ole Miss						--DNP--						
at Florida						--DNP--						
KENTUCKY						--DNP--						
at Alabama												
TEXAS A&M												
at Arkansas												
SOUTH CAROLINA												
at Georgia												
ALABAMA												
at Mississippi State												
VANDERBILT												
ARKANSAS												
at Tennessee												

DONAHUE'S CAREER STATISTICS

Season	gp-gs	min/avg	Total		3-Point		F-Throws		Rebounds				Scoring							
			fg-fga	pct	fg-fga	pct	ft-fta	pct	off	def	tot	avg	pf	fo	ast	to	blk	stl	pts	avg
2020-21	3-0	2/0.7	1-1	1.000	1-1	1.000	0-0	.000	0	0	0	0.0	1	0	0	1	0	0	3	1.0
TOTAL	3-0	2/0.7	1-1	1.000	1-1	1.000	0-0	.000	0	0	0	0.0	1	0	0	1	0	0	3	1.0



Aicha COULIBALY

#5

Freshman • Guard/Forward • 6-0

Mali

IMG Academy (Fla.)

- Led Auburn with season-high 12 points along with 5 rebounds at LSU (12/31)
- Scored 10 points along with 6 rebounds in win over Gardner-Webb (12/1)
- Earned start in first collegiate game vs. USC Upstate (11/25); finished with 4 points, 6 rebounds, 2 assists
- Played for Mali's national team at FIBA U16 African Championships in 2017, leading her team to tournament championship
- Named tournament MVP after scoring 21.8 points/game in that event
- Played high school basketball at IMG Academy in Florida
- Is Auburn's third women's basketball player from Africa, along with Crispina Correia (Cape Verde, 2001-03) and Khady Dieng (Senegal, 2013-17)

SEASON/CAREER HIGHS

Points	12	at LSU	12/31/20
Rebounds	6	vs. Gardner-Webb	12/1/20
Assists	2	2x; last at Houston	12/5/20
Blocks	2	at Florida	1/17/21
Steals	2	vs. Georgia	1/2/21
Field Goals	4	2x; last at LSU	12/31/20
Field Goal Attempts	8	2x; last at LSU	12/31/20
3-Point Field Goals	1	at LSU	12/31/20
3-Point FG Attempts	3	at LSU	12/31/20
Free Throws	3	at LSU	12/31/20
Free Throw Attempts	6	vs. Gardner-Webb	12/1/20

Opponent	Start	Min.	FG-A	3PT-A	FT-A	O-D-T	PF	Ast.	TO	Blk.	St.	Pts.
USC UPSTATE	*	19	2-8	0-2	0-0	1-5-6	2	2	2	1	1	4
SAMFORD	*	15	2-5	0-2	0-0	2-2-4	1	1	0	0	0	4
GARDNER-WEBB	*	22	4-7	0-1	2-6	3-3-6	1	0	1	0	0	10
at Houston	*	12	0-2	0-0	0-2	1-2-3	3	2	1	1	0	0
SOUTH ALABAMA						--DNP--						
STEPHEN F. AUSTIN		19	2-5	0-2	0-1	0-4-4	1	1	2	1	1	4
NORTH FLORIDA		9	0-3	0-1	2-2	1-1-2	0	0	0	0	0	2
BELMONT		8	1-4	0-0	0-0	1-0-1	1	0	0	0	0	2
at LSU		24	4-8	1-3	3-4	2-3-5	1	0	1	0	0	12
GEORGIA		24	3-7	0-1	0-1	0-2-2	2	0	1	1	2	6
at Ole Miss		15	2-6	0-0	0-0	1-1-2	1	1	1	0	0	4
at Florida		16	0-1	0-1	0-0	1-0-1	0	0	2	2	1	0
KENTUCKY		17	3-4	0-0	1-2	2-2-4	2	1	1	0	0	7
at Alabama												
TEXAS A&M												
at Arkansas												
SOUTH CAROLINA												
at Georgia												
ALABAMA												
at Mississippi State												
VANDERBILT												
ARKANSAS												
at Tennessee												

COULIBALY'S CAREER STATISTICS

Season	gp-gs	min/avg	Total		3-Point		F-Throws		Rebounds				Scoring							
			fg-fga	pct	fg-fga	pct	ft-fa	pct	off	def	tot	avg	pf	fo	ast	to	blk	stl	pts	avg
2020-21	12-4	199/16.6	23-60	.383	1-13	.077	8-18	.444	15	25	40	3.3	15	0	8	12	6	5	55	4.6
TOTAL	12-4	199/16.6	23-60	.383	1-13	.077	8-18	.444	15	25	40	3.3	15	0	8	12	6	5	55	4.6



Kiyae' WHITE

#10

Redshirt Junior • Forward • 6-2

Macungie, Pa.

Emmaus HS

- Made season debut vs. South Alabama; grabbed 3 rebounds in 4 minutes (12/13)
- Played in all 29 games as a redshirt sophomore, earning 14 starts; averaged 4.0 points, 4.8 rebounds in '19-20
- Shot 57.3% from the field (43-75) in 2019-20
- Scored career-high 15 points in season finale vs. Arkansas in 2020 SEC Tournament; also had 8 rebounds, 4 assists
- Had then-career high 12 points vs. St. Joseph's (11/24/19); was 3-4 from the field and 6-8 at FT line
- Career-high 11 rebounds in 2019-20 season-opener vs. Wofford while playing just 16 minutes
- Has two brothers that play in the NFL: Kevin White (49ers), Kyzir White (Chargers)

SEASON HIGHS

Points		
Rebounds		
3 vs. South Alabama		12/13/20
Assists		
Blocks		
Steals		
Field Goals		
Field Goal Attempts		
2 vs. South Alabama		12/13/20
3-Point Field Goals		
3-Point FG Attempts		
Free Throws		
Free Throw Attempts		

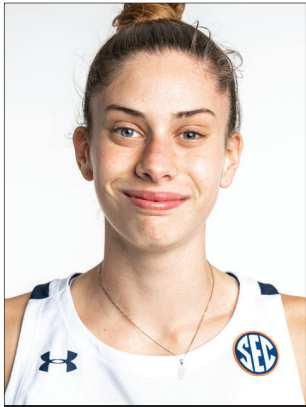
Opponent	Start	Min.	FG-A	3PT-A	FT-A	O-D-T	PF	Ast.	TO	Blk.	St.	Pts.
USC UPSTATE						--DNP--						
SAMFORD						--DNP--						
GARDNER-WEBB						--DNP--						
at Houston						--DNP--						
SOUTH ALABAMA		4	0-2	0-0	0-0	1-2-3	1	0	0	0	0	0
STEPHEN F. AUSTIN						--DNP--						
NORTH FLORIDA						--DNP--						
BELMONT						--DNP--						
at LSU						--DNP--						
GEORGIA						--DNP--						
at Ole Miss						--DNP--						
at Florida						--DNP--						
KENTUCKY						--DNP--						
at Alabama												
TEXAS A&M												
at Arkansas												
SOUTH CAROLINA												
at Georgia												
ALABAMA												
at Mississippi State												
VANDERBILT												
ARKANSAS												
at Tennessee												

CAREER HIGHS

Points		
15 vs. Arkansas		3/5/20
Rebounds		
11 vs. Wofford		11/6/19
Assists		
4 vs. Wofford		11/6/19
Blocks		
1 8x; last at Mississippi State		1/30/20
Steals		
3 2x; last vs. Tennessee		3/1/20
Field Goals		
7 vs. Arkansas		3/5/20
Field Goal Attempts		
9 vs. Arkansas		3/5/20
3-Point Field Goals		
3-Point FG Attempts		
1 at South Carolina		2/13/20
Free Throws		
6 vs. St. Joseph's		11/24/19
Free Throw Attempts		
8 vs. St. Joseph's		11/24/19

WHITE'S CAREER STATISTICS

Season	gp-gs	min/avg	Total		3-Point		F-Throws		Rebounds				Scoring							
			fg-fga	pct	fg-fga	pct	ft-fta	pct	off	def	tot	avg	pf	fo	ast	to	blk	stl	pts	avg
2018-19	29-0	199/6.9	15-39	.385	0-0	.000	8-14	.571	23	28	51	1.8	27	0	9	10	1	2	38	1.3
2019-20	29-14	532/18.3	43-75	.573	0-1	.000	29-56	.518	47	93	140	4.8	63	0	21	36	10	24	115	4.0
2020-21	1-0	4/4.0	0-2	.000	0-0	.000	0-0	.000	1	2	3	3.0	1	0	0	0	0	0	0	0.0
TOTAL	59-14	735/12.5	58-116	.500	0-1	.000	37-70	.529	71	123	194	3.3	91	0	30	46	11	26	153	2.6



Romi LEVY

#11

Freshman • Forward • 6-2

Herzliya, Israel

Hof Hasharon HS

- Had career-high 7 assists vs. Kentucky (1/21), most by an Auburn player so far in 2020-21
- Made second start at LSU, led team with 11 rebounds and 5 steals along with 8 points (12/31)
- Career-high 6 steals vs. Georgia (1/3)
- Career-high 12 points along with 5 rebounds in win over North Florida (12/17)
- Had 8 points, season-high 7 rebounds, and shared team lead with 3 assists vs. South Alabama (12/13)
- Made collegiate debut vs. USC Upstate (11/25); finished with 8 points, 3 rebounds, 2 assists, 2 steals
- Competed in 2018 U18 Women's European Championships with Israeli national team
- Helped lead team to bronze medal, scoring 14 points in win over Lithuania and 13 points vs. Albania
- Completed mandatory national service in Israel before enrolling at Auburn

SEASON/CAREER HIGHS

Points	13	at Ole Miss	1/7/21
Rebounds	11	at LSU	12/31/20
Assists	7	vs. Kentucky	1/21/21
Blocks	2	2x; last at Houston	12/5/20
Steals	6	vs. Georgia	1/2/21
Field Goals	6	at Ole Miss	1/7/21
Field Goal Attempts	12	at LSU	12/31/20
3-Point Field Goals	2	vs. USC Upstate	11/25/20
3-Point FG Attempts	5	at Ole Miss	1/7/21
Free Throws	2	2x; last vs. North Florida	12/17/20
Free Throw Attempts	2	4x; last vs. South Alabama	12/13/20

Opponent	Start	Min.	FG-A	3PT-A	FT-A	O-D-T	PF	Ast.	TO	Blk.	St.	Pts.
USC UPSTATE		19	3-5	2-4	0-2	0-3-3	0	2	0	0	2	8
SAMFORD		26	2-5	1-3	1-2	1-2-3	2	1	2	0	3	6
GARDNER-WEBB		17	4-6	1-1	0-2	0-2-2	1	1	2	2	2	9
at Houston	*	15	0-2	0-1	0-0	0-1-1	2	0	2	2	0	0
SOUTH ALABAMA		24	3-6	0-2	2-2	4-3-7	1	3	2	0	3	8
STEPHEN F. AUSTIN		16	0-1	0-0	0-0	0-1-1	2	1	1	1	1	0
NORTH FLORIDA		19	5-11	2-4	0-0	2-3-5	2	1	1	0	1	12
BELMONT		14	1-4	0-2	0-0	2-1-3	2	0	2	0	1	2
at LSU	*	31	4-12	0-2	0-0	4-7-11	2	2	5	1	5	8
GEORGIA	*	34	0-7	0-4	0-0	0-3-3	2	0	2	0	6	0
at Ole Miss	*	33	6-10	1-5	0-0	0-4-4	3	2	0	0	2	13
at Florida	*	24	1-10	0-6	0-0	0-3-3	1	1	0	0	0	2
KENTUCKY	*	23	2-6	1-2	0-2	1-3-4	1	7	1	0	1	5
at Alabama												
TEXAS A&M												
at Arkansas												
SOUTH CAROLINA												
at Georgia												
ALABAMA												
at Mississippi State												
VANDERBILT												
ARKANSAS												
at Tennessee												

LEVY'S CAREER STATISTICS

Season	gp-gs	min/avg	Total		3-Point		F-Throws		Rebounds				Scoring							
			fg-fga	pct	fg-fga	pct	ft-fga	pct	off	def	tot	avg	pf	fo	ast	to	blk	stl	pts	avg
2020-21	13-6	289/22.2	31-85	.365	8-36	.222	3-10	.300	14	36	50	3.8	21	0	21	20	6	27	73	5.6
TOTAL	13-6	289/22.2	31-85	.365	8-36	.222	3-10	.300	14	36	50	3.8	21	0	21	20	6	27	73	5.6



Kira LOWERY

#13

Junior • Guard • 5-6

Memphis, Tenn.

Southwind HS | Dyersburg State CC (Tenn.)

- Led Auburn with career-high 5 assists, 3 steals in win over North Florida (12/17)
- Scored 12 points with team-best 4 assists, hit clutch free throws in win over Samford (11/28)
- Earned start in first Division I game vs. USC Upstate (11/25); finished with 4 points, 5 rebounds, 4 assists in team-best 24 minutes
- Was a third-team NJCAA All-American in 2020 at Dyersburg State CC in Tennessee
- Ranked third nationally in scoring with 23.3 points/game; second in the nation in steals with 4.0 points/game
- Led DSCC to a 24-8 record and 3rd-place finish in Tennessee Community College Athletic Association; named TCCAA's top offensive player
- Played high school ball at Southwind High School in Memphis; scored over 1,000 career points

SEASON/CAREER HIGHS

Points	12	vs. Samford	11/28/20
Rebounds	5	vs. USC Upstate	11/25/20
Assists	5	vs. North Florida	12/17/20
Blocks	1	2x; last vs. North Florida	12/17/20
Steals	3	vs. North Florida	12/17/20
Field Goals	4	vs. Samford	11/28/20
Field Goal Attempts	7	vs. South Alabama	12/13/20
3-Point Field Goals	1	vs. Samford	11/28/20
3-Point FG Attempts	2	vs. Samford	11/28/20
Free Throws	4	vs. South Alabama	12/13/20
Free Throw Attempts	5	vs. South Alabama	12/13/20

Opponent	Start	Min.	FG-A	3PT-A	FT-A	O-D-T	PF	Ast.	TO	Blk.	St.	Pts.
USC UPSTATE	*	24	1-2	0-0	2-2	0-5-5	0	4	4	0	0	4
SAMFORD	*	24	4-6	1-2	3-4	0-0-0	0	4	1	0	2	12
GARDNER-WEBB	*	19	1-4	0-0	1-1	1-0-1	0	0	1	0	0	3
at Houston	*	21	1-3	0-1	0-0	0-1-1	0	0	3	0	1	2
SOUTH ALABAMA	*	28	3-7	0-0	4-5	1-1-2	1	0	2	0	2	10
STEPHEN F. AUSTIN	*	20	1-2	0-0	0-0	0-1-1	4	1	4	1	2	2
NORTH FLORIDA	*	18	0-0	0-0	2-2	0-0-0	0	5	3	1	3	2
BELMONT	*	15	0-0	0-0	0-0	0-1-1	2	3	4	0	0	0
at LSU		2	0-0	0-0	0-0	0-0-0	0	0	2	0	0	0
GEORGIA		13	1-1	0-0	1-3	0-1-1	0	1	5	0	0	3
at Ole Miss		12	0-1	0-0	0-0	0-1-1	2	1	0	0	0	0
at Florida						--DNP--						
KENTUCKY						--DNP--						
at Alabama												
TEXAS A&M												
at Arkansas												
SOUTH CAROLINA												
at Georgia												
ALABAMA												
at Mississippi State												
VANDERBILT												
ARKANSAS												
at Tennessee												

LOWERY'S CAREER STATISTICS (at Auburn)

Season	gp-gs	min/avg	Total		3-Point		F-Throws		Rebounds				Scoring							
			fg-fga	pct	fg-fga	pct	ft-fta	pct	off	def	tot	avg	pf	fo	ast	to	blk	stl	pts	avg
2020-21	11-8	194/17.6	12-26	.462	1-3	.333	13-17	.765	2	11	13	1.2	9	0	19	28	2	10	38	3.5
TOTAL	11-8	194/17.6	12-26	.462	1-3	.333	13-17	.765	2	11	13	1.2	9	0	19	28	2	10	38	3.5



Jala JORDAN

#14

Redshirt Sophomore • Forward • 6-2

Philadelphia, Pa.

IMG Academy (Fla.) | West Virginia

- Made first career start vs. South Alabama (12/13); had career-high 3 blocks along with 6 points, 5 rebounds, 2 assists
- Led Auburn with 4 assists vs. Gardner-Webb; also scored 11 points and had 5 rebounds (12/1)
- Tied for team lead with 16 points off the bench in season-opener vs. USC Upstate (11/25); was 4-6 on 3-pointers
- Sat out 2019-20 season per NCAA rules after transferring to Auburn from West Virginia in the 2019 offseason
- Appeared in 25 games as a freshman for WVU, averaging 1.7 points and 1.4 rebounds while playing 6.4 minutes/game
- Had season-high 6 points and 2 blocks at Texas Tech
- Rated No. 14 wing in class of 2018 by ESPN HoopGurlz
- Graduated from IMG Academy; also played at St. Francis (Ga.) HS, leading them to two GHSA state titles

SEASON HIGHS

Points	16	vs. USC Upstate	11/25/20
Rebounds	8	vs. North Florida	12/17/20
Assists	4	vs. Gardner-Webb	12/1/20
Blocks	3	vs. South Alabama	12/13/20
Steals	2	at Houston	12/5/20
Field Goals	5	2x; last vs. Gardner-Webb	12/1/20
Field Goal Attempts	14	vs. Georgia	1/2/21
3-Point Field Goals	4	vs. USC Upstate	11/25/20
3-Point FG Attempts	6	2x; last vs. South Alabama	12/13/20
Free Throws	5	at Houston	12/5/20
Free Throw Attempts	5	at Houston	12/5/20

Opponent	Start	Min.	FG-A	3PT-A	FT-A	O-D-T	PF	Ast.	TO	Blk.	St.	Pts.
USC UPSTATE		20	5-9	4-6	2-2	3-0-3	0	0	2	0	1	16
SAMFORD		13	3-4	1-2	1-2	2-2-4	3	0	1	1	0	8
GARDNER-WEBB		23	5-10	0-4	1-1	1-4-5	4	4	0	1	1	11
at Houston		26	4-11	0-4	5-5	2-3-5	5	1	3	1	2	13
SOUTH ALABAMA	*	24	2-8	1-6	1-2	1-4-5	4	2	4	3	0	6
STEPHEN F. AUSTIN	*	12	3-8	1-2	1-1	1-1-2	0	0	0	0	0	8
NORTH FLORIDA	*	20	3-10	2-4	2-4	2-6-8	3	0	1	2	1	11
BELMONT	*	14	0-5	0-2	0-0	2-1-3	1	0	3	0	1	0
at LSU	*	20	1-10	0-5	1-2	1-3-4	3	0	1	1	0	3
GEORGIA	*	18	4-14	1-5	0-1	1-0-1	3	0	3	1	0	9
at Ole Miss	*	27	2-5	0-3	0-2	1-3-4	3	1	1	0	0	4
at Florida		7	0-2	0-1	0-0	0-1-1	1	0	1	0	0	0
KENTUCKY		12	4-9	3-5	0-0	0-1-1	1	0	0	0	0	11
at Alabama												
TEXAS A&M												
at Arkansas												
SOUTH CAROLINA												
at Georgia												
ALABAMA												
at Mississippi State												
VANDERBILT												
ARKANSAS												
at Tennessee												

CAREER HIGHS (incl. 18-19 at WVU)

Points	16	vs. USC Upstate	11/25/20
Rebounds	8	vs. North Florida	12/17/20
Assists	4	vs. Gardner-Webb	12/1/20
Blocks	3	vs. South Alabama	12/13/20
Steals	2	2x; last at Houston	12/5/20
Field Goals	5	2x; last vs. Gardner-Webb	12/1/20
Field Goal Attempts	14	vs. Georgia	1/2/21
3-Point Field Goals	4	vs. USC Upstate	11/25/20
3-Point FG Attempts	6	2x; last vs. South Alabama	12/13/20
Free Throws	5	at Houston	12/5/20
Free Throw Attempts	5	at Houston	12/5/20

JORDAN'S CAREER STATISTICS

Season	gp-gs	min/avg	Total		3-Point		F-Throws		Rebounds				Scoring							
			fg-fga	pct	fg-fga	pct	ft-fga	pct	off	def	tot	avg	pf	fo	ast	to	blk	stl	pts	avg
2018-19*	27-0	163/6.0	14-40	.350	4-11	.364	11-16	.688	8	21	29	1.1	21	0	3	5	8	8	43	1.6
2020-21	13-7	231/17.8	36-105	.343	13-49	.265	15-22	.682	17	29	46	3.5	31	1	8	20	10	6	100	7.7
TOTAL	13-7	231/17.8	36-105	.343	13-49	.265	15-22	.682	17	29	46	3.5	31	1	8	20	10	6	100	7.7



Unique THOMPSON

#20

Senior • Forward • 6-3

****2020 AP Honorable Mention All-American****

Theodore, Ala.

****2020 All-SEC First Team****

Faith Academy

- Preseason All-SEC First Team (media & coaches); 2021 Katrina McClain Award watch list; 2021 Wooden Award Preseason Top 30 watch list
- 3rd in Auburn history with 1,034 career rebounds; Auburn all-time leader with 51 career double-doubles
- Missed first three SEC games for medical reasons; returned to action at Florida (1/17) with 14 points, 14 rebounds
- Leads nation and SEC in rebounds (14.6/game); is SEC active leader and 2nd nationally in career rebounds (1,034)
- 9 double-doubles this season, 51 in her career (as of 1/21); is SEC and national leader in 2020-21 and active career double-doubles
- Had second 20-20 game of season with 20 points, 23 rebounds vs. Belmont (12/20); also grabbed 1,000th career rebound in game
- 26 points, 23 rebounds at Houston (12/5); first 20-20 game for Auburn since 2/17/1993 (Lauretta Freeman, 30 pts/21 rebs vs. Alabama)
- Career-high 5 steals vs. Samford (11/28) and South Alabama (12/13); added 4 more vs. Gardner-Webb (12/1)

SEASON HIGHS

Points	26	at Houston	12/5/20
Rebounds	23	2x; last vs. Belmont	12/20/20
Assists	4	at Florida	1/17/21
Blocks	2	2x; last vs. Kentucky	1/21/21
Steals	5	2x; last vs. South Alabama	12/13/20
Field Goals	10	at Houston	12/5/20
Field Goal Attempts	18	at Houston	12/5/20
3-Point Field Goals			
3-Point FG Attempts			
Free Throws	9	vs. South Alabama	12/13/20
Free Throw Attempts	10	vs. Samford	11/28/20

Opponent	Start	Min.	FG-A	3PT-A	FT-A	O-D-T	PF	Ast.	TO	Blk.	St.	Pts.
USC UPSTATE	*	22	7-9	0-0	2-2	4-3-7	3	0	1	0	2	16
SAMFORD	*	33	4-10	0-0	8-10	5-6-11	2	1	3	0	5	16
GARDNER-WEBB	*	20	9-12	0-0	3-4	5-7-12	2	0	1	0	4	21
at Houston	*	32	10-18	0-0	6-7	10-13-23	3	2	7	0	2	26
SOUTH ALABAMA	*	31	6-14	0-0	9-9	7-7-14	5	0	4	0	5	21
STEPHEN F. AUSTIN	*	34	3-9	0-0	5-8	3-11-14	3	1	1	2	4	11
NORTH FLORIDA	*	32	8-12	0-0	3-3	8-10-18	2	3	3	0	2	19
BELMONT	*	34	9-14	0-0	2-6	9-14-23	0	1	1	0	1	20
at LSU						--DNP--						
GEORGIA						--DNP--						
at Ole Miss						--DNP--						
at Florida	*	33	6-14	0-0	2-2	7-7-14	4	4	1	1	2	14
KENTUCKY	*	29	9-14	0-0	4-4	6-4-10	4	2	1	2	1	22
at Alabama												
TEXAS A&M												
at Arkansas												
SOUTH CAROLINA												
at Georgia												
ALABAMA												
at Mississippi State												
VANDERBILT												
ARKANSAS												
at Tennessee												

CAREER HIGHS

Points	31	at TCU	12/7/19
Rebounds	23	2x; last vs. Belmont	12/20/20
Assists	6	vs. Arkansas	1/5/20
Blocks	6	vs. Louisiana Tech	11/19/17
Steals	5	2x; last vs. South Alabama	12/13/20
Field Goals	12	at TCU	12/7/19
Field Goal Attempts	21	vs. Alabama	1/12/20
3-Point Field Goals			
3-Point FG Attempts			
Free Throws	10	at Ole Miss	1/31/19
Free Throw Attempts	12	at Ole Miss	1/31/19

THOMPSON'S CAREER STATISTICS

Season	gp-gs	min/avg	Total		3-Point		F-Throws		Rebounds				Scoring							
			fg-fga	pct	fg-fga	pct	ft-fta	pct	off	def	tot	avg	pf	fo	ast	to	blk	stl	pts	avg
2017-18	27-27	811/30.0	131-271	.483	0-0	.000	49-87	.563	112	115	227	8.4	63	0	28	66	21	32	311	11.5
2018-19	32-32	996/31.1	153-272	.563	0-0	.000	83-136	.610	143	187	330	10.3	71	1	35	63	20	57	389	12.2
2019-20	29-29	948/32.7	177-304	.582	0-0	.000	116-168	.690	128	203	331	11.4	63	0	51	81	12	48	470	16.2
2020-21	10-10	294/29.4	71-126	.563	0-0	.000	44-55	.800	64	82	146	14.6	28	1	14	23	5	28	186	18.6
TOTAL	98-98	3049/31.1	532-973	.547	0-0	.000	292-446	.655	447	587	1034	10.6	225	2	128	233	58	165	1356	13.8



Alaina RICE

#22

Sophomore • Guard • 5-8

Rockledge, Fla.

IMG Academy | Florida A&M

- Made first Auburn start at LSU, finished with 5 points, 5 rebounds, 2 assists (12/31)
- Season-high 9 points, 2 steals, first two Auburn 3-pointers in win over North Florida (12/17)
- Matched career-high, led team with 5 assists in Auburn debut vs. USC Upstate (11/25)
- Transferred from Florida A&M to Auburn in 2020 offseason; granted immediate eligibility by NCAA in November 2020
- Named MEAC Rookie of the Year in 2020 after averaging 10.3 points, 4.7 rebounds, 2.4 assists in 27 games as a freshman
- Scored in double-figures 17 times, including a career-high 22 points at Howard

SEASON HIGHS

Points	9 vs. North Florida	12/17/20
Rebounds	5 at LSU	12/31/20
Assists	5 vs. USC Upstate	11/25/20
Blocks		
Steals	2 vs. North Florida	12/17/20
Field Goals	3 vs. North Florida	12/17/20
Field Goal Attempts	6 vs. North Florida	12/17/20
3-Point Field Goals	2 vs. North Florida	12/17/20
3-Point FG Attempts	4 vs. North Florida	12/17/20
Free Throws	4 vs. SFA	12/16/20
Free Throw Attempts	4 vs. SFA	12/16/20

Opponent	Start	Min.	FG-A	3PT-A	FT-A	O-D-T	PF	Ast.	TO	Blk.	St.	Pts.
USC UPSTATE		16	1-5	0-1	2-2	3-1-4	0	5	2	0	0	4
SAMFORD		11	0-1	0-0	1-2	2-0-2	0	1	1	0	0	1
GARDNER-WEBB		6	0-1	0-0	0-0	0-1-1	1	0	1	0	0	0
at Houston		3	0-1	0-0	0-0	0-0-0	0	0	0	0	0	0
SOUTH ALABAMA						--DNP--						
STEPHEN F. AUSTIN		20	0-3	0-1	4-4	0-0-0	4	1	6	0	1	4
NORTH FLORIDA		17	3-6	2-4	1-2	0-0-0	1	1	0	0	2	9
BELMONT		19	0-5	0-2	0-0	1-1-2	1	3	0	0	0	0
at LSU	*	24	2-6	1-1	0-0	4-1-5	3	2	4	0	1	5
GEORGIA	*	19	1-5	0-0	1-2	2-2-4	1	0	5	0	0	3
at Ole Miss	*	14	1-4	0-2	0-0	1-2-3	0	1	4	0	1	2
at Florida						--DNP--						
KENTUCKY		22	2-5	0-0	2-3	1-2-3	1	0	1	0	1	6
at Alabama												
TEXAS A&M												
at Arkansas												
SOUTH CAROLINA												
at Georgia												
ALABAMA												
at Mississippi State												
VANDERBILT												
ARKANSAS												
at Tennessee												

CAREER HIGHS (incl. 19-20 at FAMU)

Points	22 at Howard	1/25/20
Rebounds	11 at S.C. State	1/18/20
Assists	5 2x; last vs. USC Upstate	11/25/20
Blocks	2 at Howard	1/25/20
Steals	5 vs. Coppin State	1/13/20
Field Goals	7 at Bethune-Cookman	3/5/20
Field Goal Attempts	17 vs. Morgan State	1/11/20
3-Point Field Goals	5 at UMES	2/17/20
3-Point FG Attempts	8 at Howard	1/25/20
Free Throws	8 at Howard	1/25/20
Free Throw Attempts	15 at Howard	1/25/20

RICE'S CAREER STATISTICS

Season	gp-gs	min/avg	Total		3-Point		F-Throws		Rebounds				Scoring							
			fg-fga	pct	fg-fga	pct	ft-fta	pct	off	def	tot	avg	pf	fo	ast	to	blk	stl	pts	avg
2019-20*	27-23	731/27.1	91-286	.318	34-106	.321	63-99	.636	41	85	126	4.7	64	1	64	142	6	43	279	10.3
2020-21	11-3	170/15.5	10-42	.238	3-11	.273	11-15	.733	14	10	24	2.2	12	0	12	27	0	6	34	3.1
TOTAL	11-3	170/15.5	10-42	.238	3-11	.273	11-15	.733	14	10	24	2.2	12	0	12	27	0	6	34	3.1
All*	38-26	901/23.7	101-328	.308	37-117	.316	74-114	.649	55	95	150	3.9	76	1	76	169	6	49	313	8.2



Honesty SCOTT-GRAYSON

#23

RS Sophomore • Guard • 5-8

Brick, N.J.

Paul VI HS | Baylor

- Career-high 23 points at Ole Miss (1/7)
- Scored 16 points in back-to-back games vs. SFA and North Florida (12/16-17)
- 14 points, 7 rebounds, 5 steals in win over Gardner-Webb (12/1)
- Scored 7 points in Auburn debut vs. USC Upstate (11/25)
- Sat out the 2019-20 season under NCAA rules after transferring to Auburn from Baylor
- Played in 28 games as a freshman at Baylor, averaging 6.9 minutes/game, 2.5 points, 0.9 rebounds, 0.9 assists
- 2018 McDonald's All-American & 2018 Jordan Brand Classic All-American
- Ranked as No. 20 overall player and No. 3 guard by ESPN out of high school

SEASON HIGHS

Points	23	at Ole Miss	1/7/21
Rebounds	9	at LSU	12/31/20
Assists	4	vs. Belmont	12/20/20
Blocks	1	at LSU	12/31/20
Steals	5	vs. Gardner-Webb	12/1/20
Field Goals	9	at Ole Miss	1/7/21
Field Goal Attempts	16	3x; last at Kentucky	1/21/21
3-Point Field Goals	3	at Ole Miss	1/7/21
3-Point FG Attempts	5	4x; last at Florida	1/17/21
Free Throws	5	vs. Belmont	12/20/20
Free Throw Attempts	7	vs. Belmont	12/20/20

Opponent	Start	Min.	FG-A	3PT-A	FT-A	O-D-T	PF	Ast.	TO	Blk.	St.	Pts.
USC UPSTATE	*	17	3-8	0-0	1-1	0-1-1	0	2	1	0	1	7
SAMFORD	*	25	2-12	1-5	0-0	0-0-0	1	1	0	0	2	5
GARDNER-WEBB	*	21	6-13	0-1	2-5	2-5-7	3	3	0	0	5	14
at Houston	*	25	1-3	0-0	2-4	0-3-3	2	1	2	0	2	4
SOUTH ALABAMA	*	24	1-8	1-3	1-2	0-3-3	4	0	2	0	0	4
STEPHEN F. AUSTIN	*	25	7-16	1-5	1-3	1-2-3	3	2	4	0	2	16
NORTH FLORIDA	*	31	6-15	0-2	4-5	0-2-2	3	1	3	0	3	16
BELMONT	*	31	6-13	1-4	5-7	3-1-4	2	4	5	0	3	18
at LSU	*	34	4-12	0-0	0-0	2-7-9	3	2	1	1	2	8
GEORGIA	*	16	2-5	0-0	2-2	1-3-4	2	1	0	0	1	6
at Ole Miss	*	29	9-16	3-5	2-2	1-4-5	4	2	4	0	3	23
at Florida	*	31	6-14	2-5	4-4	1-4-5	1	2	1	0	2	18
KENTUCKY	*	29	4-16	0-4	2-2	2-6-8	4	1	3	0	3	10
at Alabama												
TEXAS A&M												
at Arkansas												
SOUTH CAROLINA												
at Georgia												
ALABAMA												
at Mississippi State												
VANDERBILT												
ARKANSAS												
at Tennessee												

CAREER HIGHS (incl. 18-19 at Baylor)

Points	23	at Ole Miss	1/7/21
Rebounds	9	at LSU	12/31/20
Assists	5	vs. St. Francis	11/8/18
Blocks	1	2x; last at LSU	12/31/20
Steals	5	vs. Gardner-Webb	12/1/20
Field Goals	9	at Ole Miss	1/7/21
Field Goal Attempts	16	2x; last at Ole Miss	1/7/21
3-Point Field Goals	3	at Ole Miss	1/7/21
3-Point FG Attempts	5	4x; last at Florida	1/17/21
Free Throws	5	vs. Belmont	12/20/20
Free Throw Attempts	7	vs. Belmont	12/20/20

SCOTT-GRAYSON'S CAREER STATISTICS

Season	gp-gs	min/avg	Total		3-Point		F-Throws		Rebounds				Scoring							
			fg-fga	pct	fg-fga	pct	ft-fta	pct	off	def	tot	avg	pf	fo	ast	to	blk	stl	pts	avg
2018-19*	29-0	193/6.7	25-51	.490	5-11	.455	19-26	.731	10	15	25	0.9	26	1	24	24	3	9	74	2.6
2020-21	13-13	337/25.9	57-151	.377	9-34	.265	26-37	.703	13	41	54	4.2	31	0	22	26	1	29	149	11.5
TOTAL	13-13	337/25.9	57-151	.377	9-34	.265	26-37	.703	13	41	54	4.2	31	0	22	26	1	29	149	11.5
All*	42-13	530/12.6	82-202	.406	14-45	.311	45-63	.714	23	56	79	1.9	57	1	46	50	4	38	223	5.3



Carsen McFADDEN

#24

Freshman • Guard • 5-7

Fairview, Texas

Lovejoy HS

- Played 9 minutes vs. South Alabama; scored first 3 collegiate points and shared team lead with 3 assists (12/13)
- Made Auburn debut vs. USC Upstate (11/25); pulled down a rebound in final minute of game
- Joined Auburn as a walk-on in the summer of 2020
- All-state selection at Lovejoy HS as a senior and two-year team captain
- Owns high school records for rebounds in a single game (19), season (340) and career (1,047) and steals in a game (15), season (145) and career (418)
- Also competed in track & field
- Has a twin sister, Claire, who also attends Auburn

SEASON/CAREER HIGHS

Points	3 vs. South Alabama	12/13/20
Rebounds	1 3x; last at Florida	1/17/21
Assists	3 vs. South Alabama	12/13/20
Blocks		
Steals	1 vs. North Florida	12/17/20
Field Goals	1 vs. South Alabama	12/13/20
Field Goal Attempts	2 vs. South Alabama	12/13/20
3-Point Field Goals		
3-Point FG Attempts		
Free Throws	1 vs. South Alabama	12/13/20
Free Throw Attempts	2 vs. South Alabama	12/13/20

Opponent	Start	Min.	FG-A	3PT-A	FT-A	O-D-T	PF	Ast.	TO	Blk.	St.	Pts.
USC UPSTATE		1	0-0	0-0	0-0	0-1-1	0	0	0	0	0	0
SAMFORD						--DNP--						
GARDNER-WEBB		2	0-0	0-0	0-0	1-0-1	0	1	0	0	0	0
at Houston						--DNP--						
SOUTH ALABAMA		9	1-2	0-0	1-2	0-0-0	0	3	0	0	0	3
STEPHEN F. AUSTIN						--DNP--						
NORTH FLORIDA		2	0-1	0-0	0-0	0-0-0	0	0	0	0	1	0
BELMONT						--DNP--						
at LSU						--DNP--						
GEORGIA		4	0-0	0-0	0-0	0-0-0	0	0	1	0	0	0
at Ole Miss						--DNP--						
at Florida		2	0-0	0-0	0-0	1-0-1	0	0	0	0	0	0
KENTUCKY						--DNP--						
at Alabama												
TEXAS A&M												
at Arkansas												
SOUTH CAROLINA												
at Georgia												
ALABAMA												
at Mississippi State												
VANDERBILT												
ARKANSAS												
at Tennessee												

McFADDEN'S CAREER STATISTICS

Season	gp-gs	min/avg	Total		3-Point		F-Throws		Rebounds				Scoring							
			fg-fga	pct	fg-fga	pct	ft-fa	pct	off	def	tot	avg	pf	fo	ast	to	blk	stl	pts	avg
2020-21	6-0	21/3.5	1-3	.333	0-0	.000	1-2	.500	2	1	3	0.5	0	0	4	1	0	1	3	0.5
TOTAL	6-0	21/3.5	1-3	.333	0-0	.000	1-2	.500	2	1	3	0.5	0	0	4	1	0	1	3	0.5



Morgan ROBINSON-NWAGWU

#30

Sophomore • Guard • 5-8

Norcross, Ga.

Norcross HS

- Scored career-high 9 points in first career start at Florida (1/17)
- Missed 3 games with ankle injury suffered in pregame warmups at Houston; returned to action vs. North Florida
- Career-high 4 steals; tied career-high with 6 points, 4 rebounds off the bench vs. USC Upstate (11/25)
- Played in all 29 games as a freshman; averaged 1.3 points, 1.3 rebounds, 1.5 assists, 0.7 steals in 10.9 minutes/game
- Scored season-high 6 points vs. Bethune-Cookman (12/15) and Florida (1/9)
- Season-high 4 rebounds twice, vs. ODU (11/14) and vs. Alabama (1/12)
- Recorded 3 rebounds, 2 assists, 2 steals at Missouri (2/27)
- Season-high 4 assists at TCU (12/7)
- Ranked as No. 28 guard nationally by ESPN HoopGurlz; first-team all-state selection at Norcross HS by Atlanta Journal-Constitution

SEASON HIGHS

Points	9	at Florida	1/17/21
Rebounds	4	vs. USC Upstate	11/25/20
Assists	6	at Ole Miss	1/7/21
Blocks	1	at LSU	12/31/20
Steals	4	vs. USC Upstate	11/25/20
Field Goals	3	vs. USC Upstate	11/25/20
Field Goal Attempts	6	at Florida	1/17/21
3-Point Field Goals	1	at Florida	1/17/21
3-Point FG Attempts	3	at Florida	1/17/21
Free Throws	4	at Florida	1/17/21
Free Throw Attempts	5	at Florida	1/17/21

Opponent	Start	Min.	FG-A	3PT-A	FT-A	O-D-T	PF	Ast.	TO	Blk.	St.	Pts.
USC UPSTATE		17	3-5	0-1	0-0	0-4-4	1	2	1	0	4	6
SAMFORD		9	0-1	0-1	0-0	0-0-0	1	1	2	0	1	0
GARDNER-WEBB		10	1-3	0-0	0-0	0-2-2	1	2	1	0	1	2
at Houston						--DNP--						
SOUTH ALABAMA						--DNP--						
STEPHEN F. AUSTIN						--DNP--						
NORTH FLORIDA		6	0-1	0-1	0-0	0-1-1	0	2	1	0	0	0
BELMONT		6	0-1	0-1	0-0	0-1-1	0	1	2	0	1	0
at LSU		13	0-2	0-1	0-0	0-0-0	1	0	2	1	0	0
GEORGIA		9	1-1	0-0	0-0	0-1-1	1	0	3	0	1	2
at Ole Miss		13	0-1	0-0	2-2	0-0-0	0	6	2	0	3	2
at Florida	*	31	2-6	1-3	4-5	1-2-3	2	2	6	0	1	9
KENTUCKY	*	18	1-4	0-1	2-2	1-1-2	0	2	4	0	0	4
at Alabama												
TEXAS A&M												
at Arkansas												
SOUTH CAROLINA												
at Georgia												
ALABAMA												
at Mississippi State												
VANDERBILT												
ARKANSAS												
at Tennessee												

CAREER HIGHS

Points	9	at Florida	1/17/21
Rebounds	4	3x; last vs. USC Upstate	11/25/20
Assists	6	at Ole Miss	1/7/21
Blocks	1	3x; last at LSU	12/31/20
Steals	4	vs. USC Upstate	11/25/20
Field Goals	3	2x; last vs. USC Upstate	11/25/20
Field Goal Attempts	12	vs. Florida	1/9/20
3-Point Field Goals	1	3x; last at Florida	1/17/21
3-Point FG Attempts	5	vs. Florida	1/9/20
Free Throws	4	at Florida	1/17/21
Free Throw Attempts	5	at Florida	1/17/21

ROBINSON-NWAGWU'S CAREER STATISTICS

Season	gp-gs	min/avg	Total		3-Point		F-Throws		Rebounds				Scoring							
			fg-fga	pct	fg-fga	pct	ft-fa	pct	off	def	tot	avg	pf	fo	ast	to	blk	stl	pts	avg
2019-20	29-0	314/10.8	13-64	.203	2-10	.200	11-21	.524	13	25	38	1.3	32	1	44	46	2	19	39	1.3
2020-21	10-2	131/13.1	8-25	.320	1-9	.111	8-9	.889	2	12	14	1.4	7	0	18	24	1	12	25	2.5
TOTAL	39-2	445/11.4	21-89	.236	3-19	.158	19-30	.633	15	37	52	1.3	39	1	62	70	3	31	64	1.6

Game 1: Nov. 25, 2020
Auburn 82, USC Upstate 41
Auburn Arena
Auburn, Ala.

Official Basketball Box Score - Game Totals - Final Statistics
 USC Upstate vs Auburn
 11/25/20 6:00 pm at Auburn, AL

USC Upstate 41 • 0-1,0-0 Big Six

#	Player	Total		3-Ptr		Rebounds		PF	TP	A	TO	Bk	Stl	Min
		FG	FGA	FT	FTA	Off	Def							
27	Marnicha Prudent	1	2-7	0-0	6-6	1	9	10	0	3	0	2	32	
23	Michaela Gibbons	1	1-5	0-1	0-0	0	1	2	0	2	0	0	13	
01	Denisha Wilson	4	0-7	0-2	0-0	0	0	2	0	1	5	0	32	
05	Molly McCutcheon	4	2-7	2-6	0-0	0	0	2	6	5	2	0	32	
15	Anda Kuzmina	4	0-2	0-1	0-0	0	1	1	0	2	1	0	17	
00	Dakota McCaughan	5	1-11	5-11	0-0	0	0	2	15	5	6	0	30	
03	Gift Sampson	1	2-0	0-0	0	1	1	0	2	0	1	0	2	
23	Lillian Flantos	2-5	0-0	0-0	2	3	5	2	4	0	3	0	1	26
25	Maya Timberlake	0-1	0-0	0-0	1	1	3	0	2	0	0	0	11	
04	Molly Coleman	1-2	0-0	0-0	2	1	1	2	0	0	0	0	5	
Team														
Totals			14-49	7-21	6-6	5	21	46	19	41	13	25	0	9

1st FG %: 1-0 100.0% 2nd: 3-11 27.3% 3rd: 7-15 46.7% 4th: 4-13 30.8% Games: 14-49 28.6% Deadball Rebounds: 0
 3FG %: 0-0 0.0% 2nd: 1-5 20.0% 3rd: 5-7 71.4% 4th: 2-5 40.0% 5-11 45.5% 6-10 60.0%
 FT %: 0-0 0.0% 2-2 100.0%

Auburn 82 • 1-0,0-0 SEC

#	Player	Total		3-Ptr		Rebounds		PF	TP	A	TO	Bk	Stl	Min
		FG	FGA	FT	FTA	Off	Def							
20	Unique Thompson	1	7-9	0-0	2-2	4	3	7	3	16	0	1	0	22
03	Annie Hughes	4	0-1	0-0	0	1	0	1	0	0	0	0	0	10
05	Aicha Coulibaly	4	2-8	0-2	0	1	5	6	2	4	2	2	1	19
13	Kira Lowery	4	1-2	0-0	2-2	0	5	5	0	4	4	4	0	24
23	H. Scott-Grayson	4	3-8	0-0	1-1	0	1	1	0	7	2	1	0	17
00	Alycia Reese	0-1	0-1	4-4	0	1	1	4	0	0	0	0	0	4
01	Keya Patton	2-6	1-2	1-2	2	3	5	0	6	1	1	0	2	18
02	Sania Wells	3-6	1-3	0-0	0	0	0	0	7	1	0	0	0	12
04	Riley Donahue	0-0	0-0	0-0	0	0	0	0	0	0	0	0	0	1
11	Romi Levy	2-4	0-2	0-0	3	3	0	0	0	2	0	0	2	19
14	Jala Jordan	5-9	4-6	2-2	3	0	3	0	16	2	0	1	20	
22	Alaina Rice	1-5	0-1	2-2	3	4	4	0	4	5	2	0	0	16
24	Carsen McFadden	0-0	0-0	0-0	0	1	1	0	0	0	0	0	0	1
30	M. Robinson-Nwagwu	3-5	0-1	0-0	1	4	4	1	6	2	1	0	4	17
Team														
Totals			30-65	8-20	14-17	15	30	45	7	82	19	14	1	13

1st FG %: 6-15 40.0% 2nd: 8-19 42.1% 3rd: 8-19 42.1% 4th: 8-16 50.0% Games: 30-65 46.2% Deadball Rebounds: 2
 3FG %: 2-5 40.0% 5-5 100.0% 3-6 50.0% 3-6 50.0% 14-17 82.4%

Officials: Ashlee Goode,Kylie Galloway,Michael McConnell

Technical fouls: USC Upstate-None, Auburn-None.

Attendance: 588

2020-21 Women's Basketball. Round: 0. Auburn vs USC Upstate. Played at Auburn

Score by periods	1st	2nd	3rd	4th	Total
USC Upstate	2	23	9	9	41
Auburn	16	24	23	19	82

Last FG - USC: 4th-00:15, AU: 4th-01:32.
 Largest lead - USC: 11-09:25, AU: 16-3rd-09:03.
 SU led for 00:37, AU led for 37:54. Game was tied for 01:29.

Score tied - 1 time. Lead changed - 0 times.

Points in Paint: 21-15, 8-11
 USCU: 6-7, 2-0, 23-0
 AU: 6-2, 21-8, 8-11

Score tied - 0 times. Lead changed - 1 time.

AUBURN-- The new-look Auburn women's basketball team showcased its depth, speed and balance in their season-opener, running away with an 82-41 win over USC Upstate Wednesday night at Auburn Arena.

All 14 players on the roster saw action for the Tigers (1-0), 11 of the 14 found the scoresheet, and 12 players grabbed at least one rebound. Auburn's trademark defense was back, too, turning 25 USC Upstate (0-1) turnovers into 21 points.

Senior Unique Thompson and redshirt sophomore Jala Jordan shared the team lead with 16 points apiece. Thompson also pulled down seven rebounds to lead the Tigers, but the Tigers' 45 rebounds were spread amongst 13 players as Auburn did a great job crashing the boards.

Auburn's newcomers made an immediate impact. Along with Jordan's 16 points and three rebounds, freshman Romi Levy turned some heads with eight points, three rebounds, two assists and two steals. Sophomore transfer Honesty Scott-Grayson finished with seven points and two assists in her Auburn debut. And fellow newcomers Keya Patton, Kira Lowery, Aicha Coulibaly, Alaina Rice and Alycia Reese all found their way onto the scoresheet. Rice was the team's assist leader with five on the night, and Coulibaly had Auburn's only blocked shot.

Among the returners, sophomore Morgan Robinson-Nwagwu matched a career-high with six points along with four rebounds and a team-leading four steals, a career-best. And Sania Wells finished with seven points, one shy of her career-high.

As a team, Auburn shot 46.2 percent from the floor (30-65) and hit 8-of-20 3-point attempts (40%). The Tigers also knocked down 12-of-17 attempts at the line (82.4%). The Tigers outrebounded the Spartans 45-26.

Auburn never trailed, jumping out to a 16-0 lead before the Spartans got on the board late in the first quarter to make it 16-2 after one period. That lead would balloon to 31 points at the end of the first half as the Tigers led 40-9; it's the first time Auburn has held an opponent to single digits since the 2016-17 season when Jacksonville scored just eight in the opening 20 minutes.

Game 2: Nov. 28, 2020
Auburn 66, Samford 64
Auburn Arena
Auburn, Ala.

Official Basketball Box Score - Game Totals - Final Statistics
 Samford vs Auburn
 11/27/20 6:00 pm at Auburn, AL

Samford 64 • 0-2,0-0 SoCon

#	Player	Total		3-Ptr		Rebounds		PF	TP	A	TO	Bk	Stl	Min
		FG	FGA	FT	FTA	Off	Def							
44	Annie Ramil	1	2-7	0-0	0-0	0	6	6	3	4	3	4	0	24
46	Natalia Armstrong	1	5-7	0-1	0-0	2	4	6	5	10	0	1	2	26
03	Shauntal Allen	4	8-12	2-6	1-2	1	3	4	0	19	1	6	0	40
21	Katie Eatten	4	6-11	6-10	3-4	1	5	6	1	21	2	2	0	35
22	Raven Omar	4	4-8	0-2	1-2	1	2	3	5	9	8	5	0	37
12	Malory Hampton	0-1	0-1	0-0	0	1	2	0	0	1	0	0	0	8
33	Makaila Woolard	0-2	0-2	1-2	0	3	3	1	0	1	0	0	0	20
Team														
Totals			25-48	8-22	6-10	7	25	32	19	64	14	21	2	7

1st FG %: 1-3 33.3% 2nd: 4-9 44.4% 3rd: 6-13 46.2% 4th: 8-15 53.3% Games: 25-48 52.1% Deadball Rebounds: 4
 3FG %: 2-5 40.0% 0-2 0.0% 1-4 25.0% 5-11 45.5% 8-22 36.4%
 FT %: 0-0 0.0% 2-4 50.0%

Auburn 66 • 2-0,0-0 SEC

#	Player	Total		3-Ptr		Rebounds		PF	TP	A	TO	Bk	Stl	Min
		FG	FGA	FT	FTA	Off	Def							
20	Unique Thompson	1	4-10	0-0	8-10	5	6	11	2	16	1	3	0	33
03	Annie Hughes	4	2-7	0-0	1-3	1	0	1	2	5	1	1	0	20
05	Aicha Coulibaly	4	2-5	0-0	0-0	2	2	4	1	4	1	0	0	15
13	Kira Lowery	4	4-6	1-2	3-4	0	0	0	0	12	4	1	0	24
23	H. Scott-Grayson	4	2-12	1-5	0-0	0	0	1	5	1	0	0	2	26
01	Keya Patton	0-0	0-0	0-0	0-0	0	0	0	0	0	0	0	0	0
02	Sania Wells	0-0	0-0	0-0	0-0	0	0	0	0	0	0	0	0	0
11	Romi Levy	2-5	1-3	1-2	1	2	3	2	6	1	2	0	3	25
14	Jala Jordan	3-4	1-2	1-2	2	2	4	3	8	0	1	1	0	13
22	Alaina Rice	0-1	0-0	1-2	2	2	0	0	1	1	1	0	0	10
30	M. Robinson-Nwagwu	0-1	0-1	0-0	0	0	0	1	0	1	2	0	1	10
Team														
Totals			22-60	7-25	18-23	18	15	33	14	66	11	12	1	14

1st FG %: 4-12 33.3% 2nd: 6-19 31.6% 3rd: 4-14 28.6% 4th: 4-15 26.7% Games: 22-60 36.7% Deadball Rebounds: 3
 3FG %: 5-7 71.4% 1-6 16.7% 1-5 20.0% 1-5 20.0% 7-25 28.0%
 FT %: 1-2 50.0% 3-6 50.0% 4-6 66.7%

Officials: Sal'Eshe Maggie-Tiemann,Felicia Brunker

Technical fouls: Samford-None, Auburn-None.

Attendance: 540

2020-21 Women's Basketball. Round: 0. Auburn vs Samford. Played at Auburn Area

Score by periods	1st	2nd	3rd	4th	Total
Samford	16	10	16	22	64
Auburn	22	16	12	16	66

Last FG - SU: 4th-00:07, AU: 4th-00:56.
 Largest lead - SU: 9-15:09:05, AU: 16-3rd-09:03.
 SU led for 00:37, AU led for 37:54. Game was tied for 01:29.

Score tied - 1 time. Lead changed - 3 times.

Points in Paint: 16-15, 5-24
 SU: 28-16, 5-24
 AU: 28-22, 15-11, 24

Score tied - 0 times. Lead changed - 1 time.

AUBURN-- Senior Unique Thompson picked up her first double-double of the season, and Auburn was able to fend off a late 3-point flurry from Samford to pick up a 66-64 win Saturday night at Auburn Arena.

The Tigers (2-0) led by as many as 16 early in the second half. But Samford (0-2) chipped away over the final 20 minutes - led by five 3-pointers from the Bulldogs' Katie Eatten in the fourth quarter, three of them in the final 79 seconds - to put major pressure on the Tigers.

A pair of key shots from redshirt sophomore Jala Jordan kept the Bulldogs at bay, and clutch free throws from Thompson and junior Kira Lowery secured the win as Samford missed a final 3-point heave at the buzzer.

Thompson led Auburn with 16 points for the second straight game and pulled down 11 rebounds for her first double-double of the season and 43rd of her career. She also led the Tigers with five steals. Lowery added 12 points on 4-of-6 shooting and had a team-leading four assists in her second game as a Tiger. She also added a pair of steals.

The Tigers led 22-16 after one on the strength of hitting five of their first seven 3-point attempts of the night. But they would only make 2-of-18 from long range the rest of the way. Crashing the offensive glass in the second quarter helped pad the lead to 38-26 at the break.

It would be 42-26 less than a minute into the third on back-to-back buckets from Lowery, but from there, Auburn began to cool as Samford heated up. The Tigers saw their lead shrink to 50-42 at the end of three, then an 8-4 Bulldog run over the first three minutes of the fourth cut it to 54-50.

Auburn would make just two more field goals the rest of the way - both clutch shots from Jordan in the final three minutes. Her second, a 3-pointer with under a minute to play, pushed the lead to five at 61-56. From there, Allen sank two treys in a 10-second stretch, sandwiched around four free throws from Thompson and Lowery, to make it a 1-point game at 65-64. Lowery was fouled again, made one of two, and a long-range heave from Samford's Makaila Woolard was off the mark.

Game 3: Dec. 1, 2020
Auburn 97, Gardner-Webb 61
Auburn Arena
Auburn, Ala.

Official Basketball Box Score - Game Totals - Final Statistics
 Gardner-Webb vs Auburn
 11/27/20 6:00 pm at Auburn, AL

Gardner-Webb 61 • 0-2,0-0 Big Six

#	Player	Total		3-Ptr		Rebounds		PF	TP	A	TO	Bk	Stl	Min
		FG	FGA	FT	FTA	Off	Def							
34	Alexis Hueston	1	1-7	1-3	0-0	0	4	4	2	3	0	2	0	22
24	Lyrissa Deans	4	2-3	0-0	0-0	1	0	1	3	4	1	0	1	14
01	Ki'Ani Cain	4	1-11	3-8	2-2	0	1	1	3	13	4	3	0	34
12	Jessyka Williams	4	2-10	1-6	2-3	0	6	6	2	7	3	5	1	31
00	Alasia Smith	4	3-6											

Game 4: Dec. 5, 2020
Houston 71, Auburn 61
Fertitta Center
Houston, Texas

Official Basketball Box Score - Game Totals - Final Statistics
Auburn vs Houston
12/05/20 12:00 pm at Houston, TX

Auburn 61 • 3-1,0-0 SEC

#	Player	r	Total			3-Ptr			Rebounds			PF	TP	A	T	Bk	Stl	Min
			FG	FGA	FT	FTA	FG	FGA	FT	FTA	Off							
11	Romi Levy	r	0	2	0-0	0	1	2	0	0	2	2	0	0	2	0	0	14
20	Unique Thompson	r	10	18	0-0	6-7	10	13	23	3	26	2	7	0	2	3	32	
05	Aicha Coulibaly	g	0	2	0-0	0-2	1	2	3	0	2	1	1	0	1	0	12	
13	Kira Lowery	g	1-3	0-1	0-0	0	1	1	0	2	0	2	0	1	0	0	22	
23	H. Scott-Grayson	g	1-3	0-0	2-4	0	3	2	4	1	2	0	2	0	2	0	25	
02	Alycia Reese	g	4-6	2-3	0-0	0	1	1	10	1	10	1	1	0	1	0	16	
01	Keya Patton	g	2-10	0-2	2-2	1	1	2	6	1	2	0	2	0	2	22		
02	Sania Wells	g	0-5	0-1	0-0	1	0	1	1	0	1	0	0	0	0	0	15	
03	Annie Hughes	g	0-0	0-0	0-0	1	2	3	0	0	1	0	0	1	0	0	13	
14	Jala Jordan	g	4-11	0-4	5-5	2	3	5	13	1	3	1	0	2	0	2	26	
22	Alaina Rice	g	0-1	0-0	0-0	0	0	0	0	0	0	0	0	0	0	0	3	
Team																		
Totals			22-61	2-12	15-20	16	27	45	18	61	9	23	4	10	20	0	0	200

1st FG %:	3-12	25.0%	2nd:	4-17	23.5%	3rd:	7-14	50.0%	4th:	0-8	0.0%	Game:	22-61	36.1%	Deadball	
3FG %:	0-1	0.0%	0-5	0.0%	1-4	25.0%	1-2	16.7%	Rebounds							
FT %:	3-6	50.0%	0-0	0.0%	4-4	100.0%	15-20	75.0%	3	3	6					

Houston 71 • 2-1,0-0 AAC

#	Player	r	Total			3-Ptr			Rebounds			PF	TP	A	T	Bk	Stl	Min
			FG	FGA	FT	FTA	FG	FGA	FT	FTA	Off							
01	Bria Patterson	r	1-5	0-2	0-0	3	3	3	2	3	2	0	1	1	2	0	0	25
30	Tatyana Hill	r	4-9	0-0	0-1	1	1	2	5	8	1	0	1	1	2	1	21	
05	Dymond Gladney	g	6-13	3-9	3-4	0	0	0	2	18	1	3	0	0	0	0	38	
03	Britney Onyeje	g	5-13	5-9	0-0	2	2	4	3	15	1	0	0	2	2	0	28	
23	Julia Blacksheff-Fai	g	1-5	0-1	1-2	3	3	6	2	3	7	1	0	2	3	1	31	
00	Erlyka Sidney	g	1-3	0-2	0-0	0	0	1	2	1	2	0	1	0	0	0	14	
02	Miya Crump	g	3-8	2-6	0-0	0	4	4	1	8	1	2	0	2	0	15		
14	Laila Blair	g	2-3	0-1	1-1	1	2	3	0	5	3	5	0	1	1	14		
21	Daphane White	g	3-4	0-0	4-4	1	6	7	4	10	0	1	1	1	1	13		
44	Jazmine Lewis	g	0-1	0-0	0-0	0	0	0	0	0	0	0	0	0	0	1		
Team																		
Totals			26-64	10-30	9-12	12	22	34	21	71	17	11	7	11	20	0	0	200

1st FG %:	5-13	38.5%	2nd:	5-14	35.7%	3rd:	8-16	50.0%	4th:	0-0	0.0%	Game:	26-64	40.9%	Deadball	
3FG %:	0-1	0.0%	0-5	0.0%	1-4	25.0%	1-2	16.7%	Rebounds							
FT %:	1-2	50.0%	0-0	0.0%	4-4	100.0%	9-12	75.0%	2	2	4					

Officials: Puelani Sporch-Welsh, Tom Danaheer, Joseph Vassily
 Technical fouls: Auburn-None; Houston-None.
 Attendance: 509
 2020-21 Women's Basketball. Round: 0. Auburn vs Houston. Played at Fertitta Ce

Score by periods	Auburn				Total
	1st	2nd	3rd	4th	
Auburn	9	8	23	21	61
Houston	22	12	20	17	71

Last FG - AU 4th-00:55, UH 4th-00:43.
 Largest lead - AU None, UH by 17 2nd-03:53.
 AU led for 00:00, UH led for 38:15. Game was tied for 01:25.

HOUSTON-- Auburn senior Unique Thompson scored 26 points and had 23 rebounds, but the Tigers were unable to climb out of a deep first-half hole as Auburn fell for the first time this season, 71-61 at Houston.

The Tigers (3-1) had turnover trouble early, went cold for a large portion of the second quarter, and dealt with foul trouble to key contributors as Houston (2-1) took a 34-17 halftime lead. Auburn fought back in the second half, cutting the deficit to as few as six points before running out of time to complete the comeback.

Thompson's career night was the first 20-point, 20-rebound game by an Auburn player since 1993, when Lauretta Freeman had 30 points and 21 rebounds against Alabama. Thompson's 23 rebounds tied for the third-most in a game in Auburn history, the most since Sharon Stewart had 23 against Vanderbilt in 1988. She now has three double-doubles in four games this year and 45 for her career.

But the rest of Auburn's offense struggled as the Tigers shot 36 percent for the game (22-of-61) and hit just two 3-pointers. Both of those treys came from junior Alycia Reese, the Chattahoochee Valley CC transfer, who scored 10 points off the bench. Jala Jordan added 13 points and five rebounds, hitting 5-of-5 free throws.

Auburn turned the ball over 10 times in the first quarter and finished with 23 for the game, which turned into 21 Houston points. The Cougars led 22-9 after one, then with Thompson on the bench in foul trouble, both teams went cold to start the second before Houston took a 34-17 lead to the break.

The Tigers started quipping away, cutting the deficit to 14 at the end of the quarter and getting within single digits with 6:47 to play. It would be as close as six points at 59-53 with 4:18 to play after a Jordan layup. But every time Auburn threatened to get within striking distance, Houston answered. The Cougars hit four of their final five shots in the game to extinguish Auburn's comeback hopes.

Game 5: Dec. 13, 2020
Auburn 74, South Alabama 66
Auburn Arena
Auburn, Ala.

Official Basketball Box Score - Game Totals - Final Statistics
South Alabama vs Auburn
12/13/20 3:00 pm at Auburn, AL

South Alabama 66 • 3-2,0-0 Sun Belt

#	Player	r	Total			3-Ptr			Rebounds			PF	TP	A	T	Bk	Stl	Min
			FG	FGA	FT	FTA	FG	FGA	FT	FTA	Off							
22	Javien Mallard	r	3-4	0-1	2-2	1	3	4	4	8	0	0	0	1	2	8	28	
35	Antoinette Lewis	r	5-13	0-1	5-10	5	5	10	5	15	2	6	3	2	3	31		
03	Javla Morrow	g	2-5	2-4	1-2	0	2	2	2	7	4	0	3	3	5	35		
04	Mahogany Vaught	g	4-13	1-2	4-5	0	5	5	3	13	6	4	0	8	38			
45	Devyn Lowe	g	4-13	0-9	1-2	1	2	3	13	0	2	0	1	3	36			
02	Serin Dunne	g	0-0	0-0	0-0	0	0	0	0	0	1	1	0	0	7			
10	Janelle Jones	g	0-2	0-2	0-0	0	0	0	2	0	0	1	0	0	4			
11	Jadonna Davis	g	3-6	0-0	4-6	1	4	5	2	10	0	2	2	0	0	20		
34	Ashanti Lavergne	g	0-0	0-0	0-0	0	0	0	0	0	0	0	0	0	1			
Team																		
Totals			21-56	7-19	17-27	11	26	37	21	66	11	21	5	15	20	0	0	200

1st FG %:	6-12	50.0%	2nd:	5-13	38.5%	3rd:	7-18	38.9%	4th:	3-13	23.1%	Game:	21-56	37.5%	Deadball	
3FG %:	4-10	40.0%	3-5	60.0%	2-5	40.0%	0-6	0.0%	Rebounds							
FT %:	1-2	50.0%	4-6	66.7%	2-5	40.0%	10-14	71.4%	17-27	63.0%						

Auburn 74 • 4-1,0-0 SEC

#	Player	r	Total			3-Ptr			Rebounds			PF	TP	A	T	Bk	Stl	Min
			FG	FGA	FT	FTA	FG	FGA	FT	FTA	Off							
14	Jala Jordan	r	2-8	1-6	1-2	1	4	5	4	6	2	4	3	0	0	23		
20	Unique Thompson	r	6-14	0-0	9-9	7	7	14	5	21	0	4	0	5	31			
03	Annie Hughes	g	4-8	3-5	0-0	0	3	3	11	0	0	0	2	32				
13	Kira Lowery	g	3-7	0-0	4-5	1	1	2	1	10	0	2	0	2	28			
23	H. Scott-Grayson	g	1-8	1-3	1-2	0	3	3	4	4	0	2	0	2	24			
02	Sania Wells	g	3-10	3-6	2-4	1	0	1	11	2	2	0	0	25				
04	Riley Donahue	g	0-0	0-0	0-0	0	0	0	1	0	0	0	0	0				
20	Kyae White	g	0-0	0-0	0-0	0	0	0	0	0	0	0	0	0				
11	Romi Levy	g	3-6	0-2	2-2	4	3	7	1	8	2	0	0	4				
24	Carsen McFadden	g	1-2	0-0	1-2	0	0	0	0	3	3	0	0	9				
Team																		
Totals			23-65	8-22	20-26	18	26	44	20	74	10	16	3	12	20	0	0	200

1st FG %:	5-10	50.0%	2nd:	5-15	33.3%	3rd:	8-16	50.0%	4th:	5-14	35.7%	Game:	23-65	35.4%	Deadball	
3FG %:	0-6	0.0%	5-10	50.0%	3-3	33.3%	2-3	66.7%	Rebounds							
FT %:	2-3	66.7%	1-2	50.0%	8-10	80.0%	6-11	81.8%	20-26	76.9%	4-1					

Officials: Ashlee Goode, Meadow Overstreet, Beverly Roberts
 Technical fouls: South Alabama-None; Auburn-None.
 Attendance: 520
 2020-21 Women's Basketball. Round: 0. Auburn vs South Alabama. Played at Auburn

Score by periods	Auburn				Total
	1st	2nd	3rd	4th	
Auburn	17	17	16	16	66
South Alabama	12	16	25	21	74

Last FG - USA 4th-00:47, AU 4th-00:24.
 Largest lead - USA by 12 2nd-06:06, AU by 12 4th-01:01.
 USA led for 25:47, AU led for 12:56. Game was tied for 00:43.

Game 6: Dec. 16, 2020
Stephen F. Austin 67, Auburn 54
Auburn Arena
Auburn, Ala.

Official Basketball Box Score - Game Totals - Final Statistics
SFA vs Auburn
12/16/20 6:00 pm at Auburn, AL

SFA 67 • 6-2,0-0 Southern

#	Player	r	Total			3-Ptr			Rebounds			PF	TP	A	T	Bk	Stl	Min
			FG	FGA	FT	FTA	FG	FGA	FT	FTA	Off							
21	Avyana Johnson	r	1-4	0-0	2-4	3	9	12	3	4	3	2	1	0	0	29		

Game 7: Dec. 17, 2020
Auburn 94, North Florida 81
Auburn Arena
Auburn, Ala.

Official Basketball Box Score - Game Totals - Final Statistics

North Florida vs Auburn
 12/17/20 6:00 pm at Auburn, AL

North Florida 81 • 2-4-0-0 ASUN

#	Player	Total		3-Ptr		Rebounds		PF	TP	A	To	Bk	Stl	Min	
		FG	FGA	FT	FTA	Off	Def								Total
11	Jazz Bond	10	18	2	6	1	2	7	9	3	23	1	5	0	36
14	Erin Jones	4	5	1	2	0	0	5	5	0	9	2	2	0	32
40	Emma Broermann	1	3	0	0	0	0	3	2	1	1	0	0	11	
4	Marissa Mackins	4	14	2	0	2	12	3	12	8	5	0	3	39	
13	Rhettua Moore	9	16	4	8	0	1	9	10	4	22	3	8	0	39
00	Elise Harden	1	1	0	2	4	0	2	4	0	1	0	0	9	
01	Nubia Bendeeth	3	8	1	5	0	0	2	11	2	0	0	2	33	
23	Summah Evans	0	0	0	0	0	0	0	0	0	0	0	0	1	
	Team														
	Totals	32	65	10	31	7	8	5	29	34	81	17	22	0	8

1st FG %:	7-17	41.2%	2nd:	7-13	53.8%	3rd:	2-16	43.8%	4th:	11-19	57.9%	Game:	32-65	49.2%	Deatball	
3pt %:	2-8	25.0%	FT %:	5-12	41.7%	Rebounds:	15	20.0%	10-31	32.3%	Rebounds					
FT %:	0-1	0.0%	0-0	0.0%	2-2	100.0%	0-0	0.0%	7-8	87.5%	0					

Auburn 94 • 5-2-0-0 SEC

#	Player	Total		3-Ptr		Rebounds		PF	TP	A	To	Bk	Stl	Min	
		FG	FGA	FT	FTA	Off	Def								Total
14	Jala Jordan	3	10	2	4	3	6	3	11	0	1	2	1	17	
20	Unique Thompson	8	12	0	0	3	8	10	18	2	19	3	3	0	28
03	Annie Hughes	9	16	3	8	0	4	3	7	17	1	1	0	30	
13	Kira Lowery	6	0	0	2	0	0	0	0	0	5	3	1	3	16
23	H. Scott-Grayson	6	15	0	2	4	5	0	2	1	3	0	3	29	
01	Keya Patton	0	0	0	0	0	0	1	0	2	0	0	0	25	
02	Sania Wells	2	5	2	4	0	0	0	0	1	6	2	0	8	
05	Aicha Coulibaly	0	3	0	1	2	0	2	0	0	0	0	0	8	
11	Romi Levy	5	24	2	4	0	0	2	12	1	1	0	1	18	
22	Alaina Rice	3	6	2	2	0	0	0	1	9	1	0	2	15	
24	Carsen McFadden	0	1	0	0	0	0	0	0	0	0	0	0	1	
30	M. Robinson-Nwagwu	0	1	0	1	0	0	0	0	2	1	0	0	4	
	Team														
	Totals	34	80	11	28	15	18	19	29	48	16	94	16	15	3

1st FG %:	9-18	50.0%	2nd:	7-25	28.0%	3rd:	9-20	45.0%	4th:	6-17	35.3%	Game:	34-80	42.5%	Deatball	
3pt %:	6-7	85.7%	FT %:	3-3	100.0%	Rebounds:	12	22.0%	11-28	39.3%	Rebounds					
FT %:	0-1	0.0%	0-0	0.0%	2-2	100.0%	0-0	0.0%	15-18	83.3%	1					

Officials: Kristen Bell, Bianca Burns, Felicia Grinter
 Technical fouls: North Florida-None, Auburn-None.
 Attendance: 469
 2020-21 Women's Basketball, Round: 0, Auburn vs North Florida, Played at Auburn

Score by periods	1st				2nd				3rd				4th				Total
	1st	2nd	3rd	4th	1st	2nd	3rd	4th	1st	2nd	3rd	4th	1st	2nd	3rd	4th	
North Florida	16	16	21	28	81												
Auburn	27	17	22	28	94												

Last FG - UNF 4th-01:19, AU 4th-00:56.
 Largest lead - UNF by 8 1st-07:09, AU by 17 2nd-09:05.
 UNF led for: 04:20, AU led for: 34:20. Game was tied for: 01:20.

AUBURN-- Five Tigers scored in double-figures as Auburn topped the 90-point mark for the second time this season with a 94-81 win over North Florida Thursday night at Auburn Arena.

The Tigers (5-2) were able to bounce back from tough offensive night Wednesday in their loss to SFA with their second-highest scoring total of the season, getting big rebounds from senior Unique Thompson and sophomore Annie Hughes to lead the way.

Thompson led Auburn with 19 points and 18 rebounds, her sixth straight double-double and the 48th of her career. Her 18 rebounds were the most in a home game in her Auburn career; she also contributed three assists and two steals. Hughes hit for a career-high 17 points and matched a career-high with seven rebounds, knocking down three 3-pointers for the second time in three games. She also shared the team lead with three steals.

Redshirt sophomore Honesty Scott-Grayson scored 16 points for the second straight night, matching her career high from Wednesday's game. She also had three steals. Freshman Romi Levy also had a career-high 12 points along with five rebounds, and Jala Jordan came up just short of her first career double-double with 11 points and eight rebounds. Alaina Rice added nine points off the bench, her best at Auburn, and Kira Lowery led the Tigers with five assists and a career-best three steals.

Auburn shot 42.5 percent for the game, hitting 34 of a season-high 80 shots. The Tigers also hit a season-best 11 3-pointers, three from Hughes and two each from Jordan, Levy, Rice and Sania Wells. It was also a much-improved night at the free-throw line as the Tigers hit 15-of-18 attempts (83.3%). Auburn out-rebounded UNF 48-34 and forced the Ospreys into 22 turnovers, leading to 26 points.

Auburn maintained its double-digit lead throughout the third as the Ospreys kept launching 3-pointers, but the Tigers increased their lead by one more point to 66-53 headed to the fourth. Taking advantage of tired legs on the part of Auburn, UNF cut the lead to as few as seven points, shooting 58 percent in the fourth. But Auburn got big buckets from Thompson, Levy and Rice down the stretch to hold off the Ospreys' comeback bid.

Game 8: Dec. 20, 2020
Belmont 78, Auburn 57
Auburn Arena
Auburn, Ala.

Official Basketball Box Score - Game Totals - Final Statistics

Belmont vs Auburn
 12/17/20 2:00 pm at Auburn, AL

Belmont 78 • 4-2-1-0 OVC

#	Player	Total		3-Ptr		Rebounds		PF	TP	A	To	Bk	Stl	Min	
		FG	FGA	FT	FTA	Off	Def								Total
10	Allison Luly	3	6	0	0	0	3	2	5	2	6	0	0	0	23
20	Conley Chinn	9	15	3	6	0	3	6	2	21	3	5	0	28	
00	Tuti Jones	5	10	3	4	0	1	3	4	13	2	1	0	30	
11	Destinee Wells	5	12	1	3	4	1	4	5	15	6	3	0	30	
14	Jamilyn Kinney	2	7	0	2	0	0	3	0	4	5	2	0	11	
01	Madison Trecea	0	0	0	0	0	0	0	0	0	0	0	0	1	
03	Madison Bartley	0	1	0	0	0	0	0	0	0	1	0	0	0	
05	Whitney Hay	1	3	1	2	2	0	2	2	5	2	1	0	14	
11	Blair Schenwald	0	0	0	1	2	0	1	0	0	1	0	0	1	
22	Maddie Cook	1	1	0	0	0	0	3	2	0	1	0	0	14	
23	Nikki Baird	4	6	3	5	0	0	2	3	11	0	3	0	2	
34	Cam Browning	0	1	0	0	0	1	2	0	0	0	0	0	1	
	Team														
	Totals	30	62	11	22	7	11	10	30	19	78	18	16	0	21

1st FG %:	11-21	52.4%	2nd:	7-14	50.0%	3rd:	7-13	53.8%	4th:	5-14	35.7%	Game:	30-62	48.4%	Deatball	
3pt %:	4-8	50.0%	FT %:	2-4	50.0%	Rebounds:	2	2.4	10-31	32.3%	Rebounds					
FT %:	0-1	0.0%	0-0	0.0%	2-4	50.0%	0-0	0.0%	1-1	100.0%	0					

Auburn 57 • 5-3-0-0 SEC

#	Player	Total		3-Ptr		Rebounds		PF	TP	A	To	Bk	Stl	Min	
		FG	FGA	FT	FTA	Off	Def								Total
14	Jala Jordan	0	5	0	2	0	2	1	3	1	0	3	0	15	
20	Unique Thompson	9	14	0	2	6	9	14	23	0	20	1	1	34	
03	Annie Hughes	3	6	1	2	0	2	2	4	7	1	1	1	25	
13	Kira Lowery	0	0	0	0	0	0	1	4	2	0	4	0	15	
23	H. Scott-Grayson	9	0	0	0	0	3	1	4	2	18	4	5	31	
01	Keya Patton	0	1	0	0	0	0	0	0	1	0	2	0	10	
02	Sania Wells	2	7	1	3	4	0	0	0	8	1	2	0	23	
05	Aicha Coulibaly	1	4	0	0	0	1	0	1	2	0	0	0	8	
11	Romi Levy	1	4	0	0	0	2	1	2	2	0	2	0	14	
22	Alaina Rice	0	5	0	2	0	1	1	2	1	0	1	0	19	
30	M. Robinson-Nwagwu	0	1	0	0	0	2	1	0	0	1	0	0	6	
	Team														
	Totals	22	60	3	17	10	17	22	25	47	12	57	13	27	1

1st FG %:	11-24	45.8%	2nd:	5-12	41.7%	3rd:	7-15	46.7%	4th:	5-19	26.3%	Game:	22-60	36.7%	Deatball	
3pt %:	0-2	0.0%	FT %:	3-3	100.0%	Rebounds:	3	3.0	10-31	32.3%	Rebounds					
FT %:	4-5	80.0%	0-0	0.0%	3-3	100.0%	0-1	0.0%	10-17	58.8%	0					

Officials: Carmen Portorreal/Marcus Clayton,Douglas Knight
 Technical fouls: Belmont-None, Auburn-None.
 Attendance: 513
 2020-21 Women's Basketball, Round: 0, Auburn vs Belmont, Played at Auburn Area

Score by periods	1st				2nd				3rd				4th				Total
	1st	2nd	3rd	4th	1st	2nd	3rd	4th	1st	2nd	3rd	4th	1st	2nd	3rd	4th	
Belmont	25	19	18	15	78												
Auburn	14	14	19	10	57												

Last FG - BEL 4th-01:14, AU 4th-02:06.
 Largest lead - BEL by 21 4th-00:23, AU by 2 1st-09:16.
 BEL led for: 35:03, AU led for: 02:52. Game was tied for: 02:05.

Game 9: Dec. 31, 2020
LSU 56, Auburn 43
Pete Maravich Assembly Center
Baton Rouge, La.

Official Basketball Box Score - Game Totals - Final Statistics

Auburn vs LSU
 12/31/20 6:00 pm at Baton Rouge, LA

Auburn 43 • 5-4-0-1 SEC

#	Player	Total		3-Ptr		Rebounds		PF	TP	A	To	Bk	Stl	Min
		FG	FGA	FT	FTA	Off	Def							
11	Romi Levy	4	12	0	2	0	4	7	11	2</				

Game 10: Jan. 3, 2021
Georgia 76, Auburn 44
Auburn Arena
Auburn, Ala.

Official Basketball Box Score - Game Totals - Final Statistics

Georgia vs Auburn

01/07/21 2:00 pm at Auburn, AL

Georgia 76 • 9-1,1-1 SEC

#	Player	Total			3-Ptr			Rebounds			PF	TP	A	TO	Bk	Stl	Min
		FG	FGA	FT	FTA	FG	FGA	FT	FTA	Off							
20	Jordan Isaacs	f	2-3	0-0	0-0	2-5	7-1	4-1	1-3	0-0	0	17					
14	Jenna Staiti	f	5-11	0-0	3-4	2-3	5-3	13-0	1-4	1-1	19						
02	Gabby Connally	g	3-4	2-2	1-2	0-0	0-1	9-1	1-1	0-1	15						
11	Maya Caldwell	g	4-8	1-3	0-1	0-2	2-2	9-2	2-2	0-1	23						
23	Que Morrison	g	4-6	1-2	0-0	1-2	3-0	9-5	4-0	4-15							
00	Zoesha Smith	g	0-1	0-0	0-0	1-1	1-0	0-1	0-1	0-1	6						
01	Chloe Chapman	g	0-1	0-1	0-0	1-1	1-3	0-3	3-0	1-1	20						
03	Sarah Ashlee Barker	g	3-7	1-4	0-0	0-4	4-1	7-2	2-0	1-1	19						
04	Mikayla Combs	g	3-6	0-0	2-2	2-2	4-0	8-2	2-2	0-2	20						
10	Caitlin Hesse	g	0-3	0-2	0-0	0-1	1-0	0-0	1-0	0-0	8						
15	Heuri Davenport	g	1-1	0-0	0-0	0-0	1-2	0-0	2-1	1-8							
22	Malury Bates	g	2-5	0-0	2-2	1-2	3-1	6-2	1-1	0-0	13						
35	Javyn Nicholson	g	4-6	0-0	1-2	2-6	8-2	9-1	1-0	0-0	17						
	Team					2-4											
	Totals		31-62	5-14	9-13	15	30	43	16	76	18	22	6	13	200		

1st FG %:	11.9	57.0%	2nd:	7.12	58.3%	3rd:	9.15	60.0%	4th:	4.16	25.0%	Game:	31.62	50.0%	Rebounds:	Deadball	
3Pt %:	3.5	60.0%	1st:	100.0%	2nd:	14.4	25.0%	3rd:	5.4	15.7%	4th:	5.14	25.0%	Rebounds:	2		
FT %:	3.2	50.0%	1st:	100.0%	2nd:	100.0%	3rd:	0-1	0.0%	4th:	6.8	75.0%	Game:	9.13	69.2%	Rebounds:	4

Auburn 44 • 5-0,0-2 SEC

#	Player	Total			3-Ptr			Rebounds			PF	TP	A	TO	Bk	Stl	Min
		FG	FGA	FT	FTA	FG	FGA	FT	FTA	Off							
11	Romi Levy	f	0-7	0-4	0-0	0-3	2-2	0-0	2-0	0-6	34						
14	Jala Jordan	f	4-14	1-5	0-1	1-0	1-3	9-0	0-3	1-0	17						
01	Keya Patton	g	3-9	0-1	6-7	2-1	3-1	12-0	2-0	0-1	27						
22	Alaina Rice	g	1-5	0-0	1-2	2-4	1-3	0-5	0-0	0-19							
23	H. Scott-Grayson	g	2-5	0-0	2-2	1-3	4-2	6-1	0-0	0-1	17						
00	Alycia Reese	g	0-0	0-0	0-0	0-0	0-0	0-0	0-0	0-4							
02	Sania Wells	g	0-1	0-0	0-0	0-0	0-0	0-0	1-0	0-10							
03	Annie Hughes	g	1-2	0-0	1-2	0-3	3-1	3-0	3-0	1-22							
05	Aicha Coulibaly	g	3-7	0-1	0-1	0-2	2-2	6-1	1-1	2-24							
13	Kira Lowery	g	1-1	0-0	1-3	0-1	1-3	0-1	1-0	0-1	14						
24	Carsen McFadden	g	0-0	0-0	0-0	0-0	0-0	0-0	0-0	0-5							
30	M. Robinson-Nwagwu	g	1-1	0-0	0-0	0-0	0-0	0-0	1-1	0-9							
	Team					3-2	5-5										
	Totals		16-52	1-11	11-18	9	18	27	13	44	2	27	2	12	200		

1st FG %:	4.13	30.0%	2nd:	6.14	42.0%	3rd:	1.13	7.7%	4th:	5.12	41.7%	Game:	16.52	30.8%	Rebounds:	Deadball	
3Pt %:	0.4	0.0%	1st:	0.0%	0.4	0.0%	2nd:	0.5	0.0%	3rd:	1.13	61.1%	Game:	11.18	61.1%	Rebounds:	4
FT %:	0.0	0.0%	1st:	0.0%	0.4	100.0%	2nd:	5.7	71.4%	3rd:	11.18	61.1%	Game:	11.18	61.1%	Rebounds:	4

Officials: Carla Fountain,Angelica Suffren,Dee Kantner

Technical fouls: Georgia=None, Auburn=Aicha Coulibaly.

Attendance: 657

2020-21 Women's Basketball, Round: 0, Auburn vs Ole Miss, Played at Auburn Arena

Score by periods	1st	2nd	3rd	4th	Total	Points	Paint	2nd	Fast	Bench
Georgia	26	17	19	14	76					
Auburn	10	13	6	15	44					

Last FG - UGA 4th-02:15, AU 4th-02:30.

Largest lead - UGA by 37 3rd-01:43, AU None.

UGA led for 36:37, AU led for 00:00, Game was tied for 01:33.

Score tied - 1 time.

Lead changed - 0 times.

AUBURN-- Georgia's size and depth were too much to overcome for the Auburn women's basketball team Sunday afternoon as the Tigers fell 76-44 to the Lady Bulldogs at Auburn Arena.

The Tigers (5-5, 0-2 SEC), without leading scorer and rebounder Unique Thompson for the second straight game, were unable to get much going on offense and turned the ball over a season-high 27 times. Georgia (9-1, 1-1) converted those turnovers into 26 points and had seven players score at least eight points in the game.

Junior Keya Patton was Auburn's only player in double figures with 12 points, going 6-of-7 at the free-throw line. Jala Jordan added nine points. Romi Levy added a career-best six steals, the most by an Auburn player this season. Alaina Rice and Honesty Scott-Grayson were the Tigers' top rebounders with four apiece.

Auburn shot 30.8 percent from the field (16-52) and just one 3-pointer on 11 tries. Georgia shot 50 percent on the day (31-62) and out-rebounded the Tigers 43-27.

Jenna Staiti led the Lady Bulldogs with 13 points and four blocks. Gabby Connally, Maya Caldwell, Que Morrison and Javyn Nicholson all added nine points; Nicholson was the Dawgs' top rebounder with eight.

Game 11: Jan. 7, 2021
Ole Miss 62, Auburn 58
The Pavilion at Ole Miss
Oxford, Miss.

Official Basketball Box Score - Game Totals - Final Statistics

Auburn vs Ole Miss

01/07/21 6:00 pm at Oxford, MS

Auburn 58 • 5-6,0-3 SEC

#	Player	Total			3-Ptr			Rebounds			PF	TP	A	TO	Bk	Stl	Min
		FG	FGA	FT	FTA	FG	FGA	FT	FTA	Off							
11	Romi Levy	f	6-10	1-5	0-0	0-4	4-3	13-2	0-0	0-2	33						
14	Jala Jordan	f	2-5	0-3	0-2	1-3	4-3	4-1	1-0	0-27							
01	Keya Patton	g	2-6	2-4	0-0	0-2	2-2	6-1	2-0	0-28							
22	Alaina Rice	g	1-4	0-2	0-0	1-2	3-0	2-1	4-0	1-14							
23	H. Scott-Grayson	g	9-16	3-5	2-2	1-4	5-4	23-2	4-0	3-30							
00	Alycia Reese	g	1-1	0-1	0-0	0-2	1-1	0-0	1-0	0-4							
02	Sania Wells	g	1-4	0-0	2-2	0-0	0-0	0-0	1-0	0-11							
03	Annie Hughes	g	0-0	0-0	0-0	0-1	1-0	0-0	1-1	0-12							
05	Aicha Coulibaly	g	2-6	0-0	0-0	1-1	2-1	4-1	1-0	0-15							
13	Kira Lowery	g	0-1	0-0	0-0	0-1	1-2	0-0	1-0	0-12							
30	M. Robinson-Nwagwu	g	2-1	0-0	2-2	0-0	0-0	2-0	2-2	0-14							
	Team					2-4	6-21	6-8	6	22	28	15	58	18	17	0	12
	Totals		23-55	6-21	6-8	6	22	28	15	58	18	17	0	12	200		

1st FG %:	4.14	28.6%	2nd:	7.18	38.9%	3rd:	4.11	41.4%	4th:	8.12	66.7%	Game:	23.55	41.8%	Rebounds:	Deadball	
3Pt %:	0.0	0.0%	1st:	5.6	16.7%	2nd:	5.0	50.0%	3rd:	2.4	50.0%	4th:	4.4	100.0%	Game:	6.8	75.0%
FT %:	0.0	0.0%	1st:	0.0	0.0%	2nd:	3.4	50.0%	3rd:	4.4	100.0%	4th:	6.8	75.0%	Game:	6.8	75.0%

Ole Miss 62 • 7-1,1-1 SEC

#	Player	Total			3-Ptr			Rebounds			PF	TP	A	TO	Bk	Stl	Min
		FG	FGA	FT	FTA	FG	FGA	FT	FTA	Off							
00	Shakira Austin	f	10-17	1-2	4-5	2-8	10-2	25-2	2-0	3-34							
32	Iyanika Kitchens	f	3-4	0-0	0-2	1-2	3-3	6-1	2-0	0-18							
02	Mimi Reid	g	2-5	1-1	0-0	0-2	1-1	5-6	6-0	0-28							
00	Dannetta Johnson	g	2-4	0-1	3-3	0-3	0-0	7-6	3-1	1-34							
21	Taylor Smith	g	0-5	0-1	1-2	1-1	2-1	0-0	1-2	1-0-23							
04	Valerie Nesbitt	g	1-2	0-0	5-6	0-0	0-0	7-2	2-0	3-18							
05	Snudda Collins	g	3-8	3-7	0-0	0-7	4-9	0-1	3-0	0-30							
25	Tiya Douglas	g	1-3	0-0	0-0	0-1	1-1	2-0	2-0	1-15							
	Team					2-6	0-0										
	Totals		22-49	5-12	13-18	7	27	34	11	62	19	19	4	10	200		

1st FG %:	6.12	50.0%	2nd:	6.13	46.2%	3rd:	7.16	43.8%	4th:	3.8	37.0%	Game:	24.99	44.0%	Rebounds:	Deadball
3Pt %:	2.4	50.0%	1st:	5.0	50.0%	2nd:	1.2	50.0%	3rd:	5.12	41.7%	Game:	13.18	72.2%	Rebounds:	3
FT %:	2.2	100.0%	1st:	0.3	66.7%	2nd:	1.									

Game 13: Jan. 21, 2021
#12 Kentucky 76, Auburn 71
Auburn Arena
Auburn, Ala.

Official Basketball Box Score - Game Totals - Final Statistics
Kentucky vs Auburn
01/21/21 7:30 pm at Auburn, AL

Kentucky 76 • 11-3,4-2 SEC

#	Player	Total		3-Ptr		Rebounds		PF	TP	A	TO	Bk	Stl	Min	
		FG	FGA	FG	FGA	FT	FTA								Off
03	KeKe McKinney	f	2-5	1-4	0-0	2	6	8	4	5	1	1	1	0	26
00	Olivia Owens	c	2-4	0-0	1-2	0	1	1	3	5	0	0	0	0	15
05	Blair Green	g	7-9	2-3	2-2	0	3	3	0	18	1	2	0	0	32
10	Rhynne Howard	g	4-8	3-7	3-4	3	2	5	3	14	4	2	1	2	32
15	Chasity Patterson	g	2-8	1-5	2-2	1	2	3	0	7	5	2	0	4	21
01	Robyn Benton	g	3-11	2-6	2-3	2	1	3	1	10	1	0	0	1	23
13	Jazmine Massengill	g	1-4	1-3	0-0	1	2	3	1	3	7	3	0	1	17
14	Tatyana Wyatt	g	2-4	0-0	0-0	1	2	3	0	4	0	1	0	0	15
44	Dre'Una Edwards	g	5-6	0-0	0-2	0	5	5	2	10	1	2	0	1	19
Team						1	3	4							
Totals			28-59	10-28	10-15	11	27	38	14	76	20	15	2	9	200

1st	FG %:	8-12	66.7%	2nd:	8-21	38.1%	3rd:	7-15	46.7%	4th:	5-11	45.5%	Game:	28-59	47.5%	Deadball
	3FG %:	2-7	28.6%		2-8	25.0%		2-5	40.0%		2-8	25.0%		10-38	26.3%	Rebounds
	FT %:	2-3	66.7%		0-0	0.0%		3-4	75.0%		3-5	60.0%		10-15	66.7%	1

Auburn 71 • 5-8,0-5 SEC

#	Player	Total		3-Ptr		Rebounds		PF	TP	A	TO	Bk	Stl	Min	
		FG	FGA	FT	FTA	Off	Def								Tot
11	Romi Levy	f	2-6	1-2	0-2	1	3	4	1	5	7	1	0	1	23
20	Unique Thompson	f	9-14	0-0	4-4	6	4	10	4	22	2	1	2	1	29
03	Annie Hughes	g	1-2	0-1	1-1	0	0	0	1	3	0	0	0	1	16
23	H. Scott-Grayson	g	4-16	0-4	2-2	2	6	8	4	10	1	3	0	3	29
30	M. Robinson-Wagwu	g	1-4	0-1	2-2	1	1	2	0	4	2	4	0	0	17
00	Alycia Reese	g	1-4	1-4	0-0	1	3	4	1	3	0	2	0	0	22
02	Sania Wells	g	0-4	0-2	0-0	0	0	0	0	0	1	0	0	0	13
05	Aicha Coulibaly	g	3-4	0-0	1-2	2	2	4	2	7	1	1	0	0	17
14	Jala Jordan	g	4-9	3-5	0-0	0	1	1	1	11	0	0	0	0	11
22	Alaina Rice	g	2-5	0-0	2-3	1	2	3	1	6	0	1	0	1	23
Team						3	2	5							
Totals			27-68	5-19	12-16	17	24	41	15	71	13	14	2	7	200

1st	FG %:	7-18	38.9%	2nd:	4-13	30.8%	3rd:	7-18	38.9%	4th:	6-19	31.6%	Game:	27-68	39.7%	Deadball
	3FG %:	1-4	25.0%		2-5	40.0%		2-6	33.3%		0-4	0.0%		5-19	26.3%	Rebounds
	FT %:	2-4	50.0%		3-6	50.0%		2-3	66.7%		3-3	100.0%		12-16	75.0%	1

Officials: Douglas Knight,Brian Garland,Angelica Suffman
 Technical fouls: Kentucky-None. Auburn-None.
 Attendance: 578
 2020-21 Women's Basketball. Round: 0. Auburn vs Kentucky. Played at Auburn Arena

Score by periods	1st				2nd				3rd				4th				Total
	1st	2nd	3rd	4th	1st	2nd	3rd	4th	1st	2nd	3rd	4th	1st	2nd	3rd	4th	
Kentucky	22	18	19	17	76												
Auburn	17	15	18	21	71												

Last FG - UK 4th-02:43, AU 4th-00:21.
 Largest lead - UK by 16:2nd-05:41, AU by 2 1st-06:02.
 UK led for 36:29, AU led for 01:52. Game was tied for 01:39.
 Score tied - 3 times.
 Lead changed - 6 times.

AUBURN-- Auburn battled the nation's 12th-ranked team for a full 40 minutes Thursday night, but a late rally fell just short in a 76-71 loss to No. 12 Kentucky at Auburn Arena.

The Tigers got 22 points from senior Unique Thompson - 13 of them in the fourth quarter - and never let the Wildcats out of their sights in Auburn's most complete effort so far in SEC play.

Auburn was nearly at full strength with 12 players dressed for Thursday's game, and the added depth was readily apparent as the Tigers' bench scored 27 points, their most since dropping 29 against North Florida on Dec. 17.

Thompson led all scorers with 22 points and picked up her ninth straight double-double with 10 rebounds as well. Jala Jordan had her best performance in SEC play with 11 points, and Honesty Scott-Grayson added 10 points and eight rebounds. Romi Levy contributed a career-high seven assists, the most by an Auburn player this year, along with five points and four rebounds.

Auburn shot 40 percent from the field (27-68) and hit five 3-pointers, in addition to going 12-of-16 at the free-throw line. The Tigers forced Kentucky into 15 turnovers, converting those into 16 points, and Auburn out-rebounded the Wildcats 41-38. Auburn scored 38 of its 71 points in the paint and turned 17 offensive rebounds into 12 second-chance points.

Kentucky, however, had the hot hand early, finishing at 47 percent for the game (28-59), including 10 3-pointers that proved to be the difference.

The teams traded leads throughout the first quarter with Kentucky going on an 11-3 run late that gave the Wildcats a 22-17 lead after 10 minutes. The lead grew to as many as 11, but Auburn cut it to eight at the half, holding UK to just one bucket in the final 2:30 of the half to make it 40-32 at the break.

Kentucky's lead grew as large as 14 in the third quarter, but Thompson took over in the fourth, willing Auburn back into the ballgame with a personal 5-0 run over a 30-second stretch to cut a 10-point deficit to 72-67 with just over a minute to play.

2020-21 Auburn Women's Basketball
Auburn Combined Team Statistics (as of Jan 22, 2021)
All games

RECORD:	OVERALL	HOME	AWAY	NEUTRAL
ALL GAMES	5-8	5-4	0-4	0-0
CONFERENCE	0-5	0-2	0-3	0-0
NON-CONFERENCE	5-3	5-2	0-1	0-0

##	Player	gp-gs	min	avg	Total		3-Point		F-Throw		Rebounds				pf	dq	a	to	blk	stl	pts	avg			
					fg-fga	fg%	3fg-fga	3fg%	ft-fa	ft%	off	def	tot	avg											
20	Unique Thompson	10-10	294	29.4	71-126	.563	0-0	.000	44-55	.800	64	82	146	14.6	28	1	14	23	5	28	186	18.6			
23	H. Scott-Grayson	13-13	337	25.9	57-151	.377	9-34	.265	26-37	.703	13	41	54	4.2	31	0	22	26	1	29	149	11.5			
14	Jala Jordan	13-7	231	17.8	36-105	.343	13-49	.265	15-22	.682	17	29	46	3.5	31	1	8	20	10	6	100	7.7			
11	Romi Levy	13-6	289	22.2	31-85	.365	8-36	.222	3-10	.300	14	36	50	3.8	21	0	21	20	6	27	73	5.6			
01	Keya Patton	10-2	202	20.2	18-56	.321	7-22	.318	13-17	.765	7	10	17	1.7	13	0	6	14	0	7	56	5.6			
03	Annie Hughes	13-9	263	20.2	25-61	.410	8-26	.308	7-12	.583	14	19	33	2.5	16	0	7	13	1	15	65	5.0			
05	Aicha Coulibaly	12-4	199	16.6	23-60	.383	1-13	.077	8-18	.444	15	25	40	3.3	15	0	8	12	6	5	55	4.6			
02	Sania Wells	13-1	196	15.1	14-66	.212	7-28	.250	12-18	.667	4	6	10	0.8	11	0	10	13	0	5	47	3.6			
13	Kira Lowery	11-8	194	17.6	12-26	.462	1-3	.333	13-17	.765	2	11	13	1.2	9	0	19	28	2	10	38	3.5			
22	Alaina Rice	11-3	170	15.5	10-42	.238	3-11	.273	11-15	.733	14	10	24	2.2	12	0	12	27	0	6	34	3.1			
00	Alycia Reese	7-0	67	9.6	6-14	.429	3-10	.300	6-6	1.000	1	6	7	1.0	2	0	2	4	0	1	21	3.0			
30	M. Robinson-Nwagwu	10-2	131	13.1	8-25	.320	1-9	.111	8-9	.889	2	12	14	1.4	7	0	18	24	1	12	25	2.5			
04	Riley Donahue	3-0	2	0.7	1-1	1.000	1-1	1.000	0-0	.000	0	0	0	0.0	1	0	0	1	0	0	3	1.0			
24	Carsen McFadden	6-0	21	3.5	1-3	.333	0-0	.000	1-2	.500	2	1	3	0.5	0	0	4	1	0	1	3	0.5			
10	Kiyae' White	1-0	4	4.0	0-2	.000	0-0	.000	0-0	.000	1	2	3	3.0	1	0	0	0	0	0	0	0.0			
Team											32	30	62												6
Total.....		13	2600		313-823	.380	62-242	.256	167-238	.702	202	320	522	40.2	198	2	151	232	32	152	855	65.8			
Opponents.....		13	2600		317-755	.420	96-292	.329	137-187	.733	136	340	476	36.6	231	-	193	257	28	137	867	66.7			

TEAM STATISTICS	AU	OPP	Date	Opponent	Score	Att.	
SCORING	855	867	11/25/20	USC UPSTATE	W	82-41	588
Points per game	65.8	66.7	11/28/20	SAMFORD	W	66-64	540
Scoring margin	-0.9	-	12/01/20	GARDNER-WEBB	W	97-61	487
FIELD GOALS-ATT	313-823	317-755	12/05/20	at Houston	L	61-71	509
Field goal pct	.380	.420	12/13/20	SOUTH ALABAMA	W	74-66	520
3 POINT FG-ATT	62-242	96-292	12/16/20	SFA	L	54-67	445
3-point FG pct	.256	.329	12/17/20	NORTH FLORIDA	W	94-81	449
3-pt FG made per game	4.8	7.4	12/20/20	BELMONT	L	57-78	515
FREE THROWS-ATT	167-238	137-187	* 12/31/20	at LSU	L	43-56	687
Free throw pct	.702	.733	* 01/03/21	GEORGIA	L	44-76	657
F-Throws made per game	12.8	10.5	* 01/07/21	at Ole Miss	L	58-62	851
REBOUNDS	522	476	* 01/17/21	at Florida	L	54-68	702
Rebounds per game	40.2	36.6	* 01/21/21	KENTUCKY	L	71-76	578
Rebounding margin	+3.5	-					
ASSISTS	151	193	* - Conference game				
Assists per game	11.6	14.8					
TURNOVERS	232	257					
Turnovers per game	17.8	19.8					
Turnover margin	+1.9	-					
Assist/turnover ratio	0.7	0.8					
STEALS	152	137					
Steals per game	11.7	10.5					
BLOCKS	32	28					
Blocks per game	2.5	2.2					
ATTENDANCE	4779	2749					
Home games-Avg/Game	9-531	4-687					
Neutral site-Avg/Game	-	0-0					

Score by Periods	1st	2nd	3rd	4th	Totals
Auburn	202	195	228	230	855
Opponents	213	191	236	227	867

2020-21 Auburn Women's Basketball
Auburn Combined Team Statistics (as of Jan 22, 2021)
Conference games only

RECORD:	OVERALL	HOME	AWAY	NEUTRAL
ALL GAMES	0-5	0-2	0-3	0-0
CONFERENCE	0-5	0-2	0-3	0-0
NON-CONFERENCE	0-0	0-0	0-0	0-0

#	Player	gp-gs	min	avg	Total		3-Point		F-Throw		Rebounds				a	to	blk	stl	pts	avg					
					fg-fga	fg%	3fg-fga	3fg%	ft-fa	ft%	off	def	tot	avg							pf	dq			
20	Unique Thompson	2-2	62	31.0	15-28	.536	0-0	.000	6-6	1.000	13	11	24	12.0	8	0	6	2	3	3	36	18.0			
23	H. Scott-Grayson	5-5	139	27.8	25-63	.397	5-14	.357	10-10	1.000	7	24	31	6.2	14	0	8	9	1	11	65	13.0			
01	Keya Patton	3-2	79	26.3	6-19	.316	3-8	.375	6-7	.857	3	4	7	2.3	6	0	1	6	0	2	21	7.0			
05	Aicha Coulibaly	5-0	96	19.2	12-26	.462	1-5	.200	4-7	.571	6	8	14	2.8	6	0	2	6	3	3	29	5.8			
11	Romi Levy	5-5	143	28.6	13-45	.289	2-19	.105	0-2	.000	5	20	25	5.0	9	0	12	8	1	14	28	5.6			
14	Jala Jordan	5-3	82	16.4	11-40	.275	4-19	.211	1-5	.200	3	8	11	2.2	11	0	1	6	2	0	27	5.4			
22	Alaina Rice	4-3	80	20.0	6-20	.300	1-3	.333	3-5	.600	8	7	15	3.8	5	0	3	14	0	3	16	4.0			
30	M. Robinson-Nwagwu	5-2	84	16.8	4-14	.286	1-5	.200	8-9	.889	2	4	6	1.2	4	0	10	17	1	5	17	3.4			
03	Annie Hughes	5-2	88	17.6	5-15	.333	1-6	.167	3-5	.600	1	6	7	1.4	3	0	2	6	0	5	14	2.8			
02	Sania Wells	5-1	76	15.2	3-25	.120	0-7	.000	3-4	.750	2	5	7	1.4	3	0	2	6	0	3	9	1.8			
00	Alycia Reese	4-0	38	9.5	1-6	.167	1-6	.167	2-2	1.000	1	4	5	1.3	1	0	1	2	0	0	5	1.3			
13	Kira Lowery	3-0	26	8.7	1-2	.500	0-0	.000	1-3	.333	0	2	2	0.7	2	0	2	7	0	0	3	1.0			
24	Carsen McFadden	2-0	7	3.5	0-0	.000	0-0	.000	0-0	.000	1	0	1	0.5	0	0	0	1	0	0	0	0.0			
Team											14	10	24												5
Total.....		5	1000		102-303	.337	19-92	.207	47-65	.723	66	113	179	35.8	72	0	50	95	11	49	270	54.0			
Opponents.....		5	1000		127-289	.439	27-85	.318	57-75	.760	56	143	199	39.8	70	-	79	87	16	52	338	67.6			

TEAM STATISTICS	AU	OPP	Date	Opponent	Score	Att.
SCORING	270	338	* 12/31/20	at LSU	L 43-56	687
Points per game	54.0	67.6	* 01/03/21	GEORGIA	L 44-76	657
Scoring margin	-13.6	-	* 01/07/21	at Ole Miss	L 58-62	851
FIELD GOALS-ATT	102-303	127-289	* 01/17/21	at Florida	L 54-68	702
Field goal pct	.337	.439	* 01/21/21	KENTUCKY	L 71-76	578
3 POINT FG-ATT	19-92	27-85	* - Conference game			
3-point FG pct	.207	.318				
3-pt FG made per game	3.8	5.4				
FREE THROWS-ATT	47-65	57-75				
Free throw pct	.723	.760				
F-Throws made per game	9.4	11.4				
REBOUNDS	179	199				
Rebounds per game	35.8	39.8				
Rebounding margin	-4.0	-				
ASSISTS	50	79				
Assists per game	10.0	15.8				
TURNOVERS	95	87				
Turnovers per game	19.0	17.4				
Turnover margin	-1.6	-				
Assist/turnover ratio	0.5	0.9				
STEALS	49	52				
Steals per game	9.8	10.4				
BLOCKS	11	16				
Blocks per game	2.2	3.2				
ATTENDANCE	1235	2240				
Home games-Avg/Game	2-618	3-747				
Neutral site-Avg/Game	-	0-0				

Score by Periods	1st	2nd	3rd	4th	Totals
Auburn	57	69	64	80	270
Opponents	93	76	89	80	338



Alycia Reese
Junior • G • 5-9
Columbus, Ga.
Chattahoochee Valley CC



Keya Patton
Junior • G • 5-6
Indianapolis, Ind.
Wabash Valley CC



Sania Wells
Sophomore • G • 5-7
Moss Point, Miss.
East Central HS



Annie Hughes
Sophomore • G • 5-9
Dutton, Ala.
Pisgah HS



Riley Donahue
Freshman • G • 5-10
Atlanta, Ga.
Marist School



Aicha Coulibaly
Freshman • G/F • 6-0
Mali
IMG Academy (Fla.)



Kiyae' White
RS Junior • F • 6-2
Macungie, Pa.
Emmaus HS



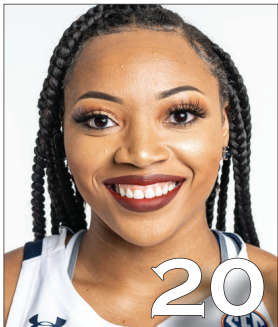
Romi Levy
Freshman • F • 6-2
Herzliya, Israel
Hof Hasharon HS



Kira Lowery
Junior • G • 5-6
Memphis, Tenn.
Dyersburg State CC



Jala Jordan
RS Sophomore • F • 6-2
Philadelphia, Pa.
West Virginia



Unique Thompson
Senior • F • 6-3
Theodore, Ala.
Faith Academy



Alaina Rice
Sophomore • G • 5-8
Rockledge, Fla.
Florida A&M



Honesty Scott-Grayson
RS Sophomore • G • 5-9
Brick, N.J.
Baylor



Carsen McFadden
Freshman • G • 5-7
Lucas, Texas
Lovejoy HS



Morgan Robinson-Nwagwu
Sophomore • G • 5-8
Norcross, Ga.
Norcross HS



Terri Williams-Flournoy
Head Coach
Penn State (1991)
Ninth Season



Clarisse Garcia
Assistant Coach
Villanova (2007)
Fourth Season



La'Keshia Frett Meredith
Assistant Coach
Georgia (1997)
Second Season