

2019-20 TCU WOMEN'S BASKETBALL GAME NOTES

GAME 7 | DEC. 7, 2019 | 2 P.M. | SCHOLLMAYER ARENA



TCU
HORNED FROGS
(6-0, 0-0)

Head Coach: Raegan Pebley
at TCU: 101-71 (6th Yr.)
Career: 257-246 (17th Yr.)



AUBURN
TIGERS
(4-4, 0-0)

Head Coach: Teri Williams-Flournoy
at Auburn: 128-105 (8th Yr.)
Career: 271-209 (16th Yr.)

GAME INFORMATION



Saturday,
Dec. 7, 2019



2 p.m.



Fort Worth, Texas



Schollmaier Arena



HFTV



KTCU 88.7 FM
Jeff Williams (PxP)



gofrogs.com/watch



SIDARM Stats
gofrogs.com/wbbstats

SERIES INFORMATION

Overall: Auburn leads, 1-0
in Fort Worth: 0-0
in Auburn: 0-1
at Neutral Site: 0-0
Current Streak: Auburn, Won 1
Last Meeting: Nov. 26, 1994
..... Auburn won, 78-32, in Auburn
Pebley vs. Opponent: 0-0

FOLLOW THE TCU HORNED FROGS



@TCUWBasketball
@RaeganPebleyTCU



@TCUWbasketball



@TCUWBB

SCHEDULE / RESULTS

NOVEMBER (5-0)

Tues. 5	Robert Morris	HFTV	W, 66-61
Sun. 10	Cornell	HFTV	W, 59-49
Thurs. 14	Nicholls State	HFTV	W, 72-47
Wed. 20	at SMU	---	W, 57-56
Tues. 26	at Army	---	W, 66-52

DECEMBER (0-0)

Sun. 1	Boise State (1)	FSSW+	W, 77-65
Sat. 7	Auburn (2)	HFTV	2 p.m.
Wed. 11	at Texas A&M	SECN+	7 p.m.
Sun. 15	Ohio	HFTV	2 p.m.
Sun. 22	Texas State	HFTV	12 p.m.
Sun. 29	at Middle Tennessee	ESPN+	1 p.m.

JANUARY (0-0)

Fri. 3	at Texas*	LHN	6 p.m.
Wed. 8	Texas Tech*	HFTV	6:30 p.m.
Sun. 12	Kansas*	FSSW	2 p.m.
Wed. 15	at Iowa State*	Cyclonestv	6:30 p.m.
Sun. 19	at Oklahoma*	FSOK	3 p.m.
Wed. 22	Baylor*	HFTV	6:30 p.m.
Sun. 26	West Virginia*	FS1	7:30 p.m.
Wed. 29	at Oklahoma State*	B12N	7 p.m.

FEBRUARY (0-0)

Sat. 1	Kansas State*	FSSW	1 p.m.
Sat. 8	at Kansas*	B12N	5 p.m.
Wed. 12	at Baylor*	B12N	7 p.m.
Sun. 16	Iowa State*	FSN	12 p.m.
Wed. 19	at Kansas State*	B12N	6:30 p.m.
Sun. 23	Oklahoma State*	FSSW+	2 p.m.
Wed. 26	Texas*	FSSW+	6:30 p.m.

MARCH (0-0)

Sun. 1	at Texas Tech*	FSN	12 p.m.
Wed. 4	Oklahoma*	FSSW+	6 p.m.
Sat. 7	at West Virginia*	Nexstar	5 p.m.

All times central | Home games in bold

* - Big 12 conference game

1 - Maggie Dixon Classic

2 - Big 12/SEC Challenge

PROJECTED STARTERS



10

JAYCEE BRADLEY
G | 5-10 | Sr.
Norfolk, Neb.

PPG	9.2
RPG	1.7
APG	1.3
FG%	.383
3FG%	.366
FT%	1.000



15

JAYDE WOODS
G | 6-11 | Sr.
Yorba Linda, Calif.

PPG	10.0
RPG	5.7
APG	2.6
FG%	.462
3FG%	.500
FT%	.511



20

LAUREN HEARD
G | 5-9 | Jr.
Denton, Texas

PPG	14.2
RPG	4.5
APG	3.6
FG%	.475
3FG%	.400
FT%	.700



25

KIANNA RAY
G | 6-11 | Sr.
Austin, Texas

PPG	12.3
RPG	5.7
APG	2.0
FG%	.325
3FG%	.310
FT%	.474



33

ADEOLA AKOMALAFE
F | 6-11 | Sr.
El Paso, Texas

PPG	3.7
RPG	4.3
APG	1.3
FG%	.273
3FG%	.000
FT%	.571

OFF THE BENCH

No.	Name	Pos.	Ht.	Cl.	Hometown	Stats/Notes
1	Ryann Payne	G	5-6	So.	Valencia, Calif.	4.0 ppg, 10 assists
2	Becky Obinma	C	6-3	RS-Fr.	Menifee, Calif.	2.3 ppg, 2.3 rpg
5	Yummy Morris	F	6-3	So.	North Little Rock, Ark.	3.3 ppg, 7 blocks
11	Maddi Puli	G/F	6-2	Fr.	Werribee, Australia	2.0 ppg, 1.0 rpg
13	Tavy Diggs	G	6-2	Fr.	Richardson, Texas	1.3 ppg, 1.3 rpg
21	Alexandria Crain	G	5-9	So.	McKinney, Texas	0.7 ppg, 0.8 rpg
23	Michelle Berry	F	6-2	Sr.	Miami, Fla.	5.0 ppg, 4.7 rpg
31	Ella Hellessey	F	6-2	Sr.	Dromana, Australia	0.5 ppg, 1.5 rpg

STATISTICAL COMPARISON

	TCU	Auburn
Scoring Offense	66.2	74.0
Scoring Defense	55.0	75.6
Scoring Margin	+11.2	-1.6
Field Goal %	.384	.438
Field Goal % Defense	.374	.468
3-PT Field Goals/Game	6.8	6.9
3-PT Field Goal %	.347	.344
3-PT Field Goal % Defense	.268	.374
Free Throw %	.532	.650
Rebounds/Game	41.5	35.6
Rebounding Margin	+2.5	+4.6
Assists	14.8	11.8
Blocks	4.8	2.1
Steals	9.7	10.0
Turnovers	16.8	15.9

QUICK FACTS

GENERAL INFORMATION

Location Fort Worth, Texas
 Founded 1873
 Enrollment 10,918
 Colors Purple and White
 Nickname Horned Frogs
 Facility Schollmaier Arena (6,700)
 Opened 2015
 Conference Big 12 Conference
 Affiliation NCAA Division I
 Chancellor Dr. Victor J. Boschini Jr.
 Athletics Director Jeremiah Donati
 Senior Woman Administrator Kim Johnson
 Faculty Athletics Representative Rhonda Hatcher
 Athletics Department Phone (817) 257-5658

HISTORY

First Season 1977-78 (43rd season)
 First NCAA Division I Season .. 1982-83 (37th season)
 Record All-Time 612-649 (.485)
 Record in NCAA Division I 537-575 (.482)
 Record in Big 12 50-76 (.396)
 Regular Season Conference Championships 3
 WAC (2000-01)
 Conference USA (2001-02)
 Mountain West (2009-10)
 Conference Tournament Championships 3
 WAC (2001)
 Conference USA (2003, 2005)
 Years in NCAA Championships (Last) 9 (2010)
 Record in NCAA Championships 5-9
 Years in WNIT (Last) 7 (2019)
 Record in WNIT 13-7

BASKETBALL COACHING STAFF

Head Coach Raegan Pebley (Colorado, 1997)
 Record at TCU 101-71 (6th season)
 Career Record 257-246 (17th season)
 Associate Head Coach Hanna Howard (6th)
 Associate Coach Britney Brown (4th)
 Assistant Coach Abi Olajuwon (2nd)
 Player Development Coordinator Leah Foster (2nd)
 Director of Operations Angela Gonzaga (6th)
 Graduate Assistants Karviar Shepherd (1st)
 Natascha Hartvich (2nd)
 Administrative Assistant Jodi Clifton
 Office Phone Number (817) 257-7962

2018-19 REVIEW

Overall Record 24-11
 Home: 17-3 Away: 7-6 Neutral: 0-2
 Big 12 Record (Finish) 10-8 (6th)
 Conference Tournament First Round
 vs. #21 Texas, L (64-66)
 Postseason WNIT Semifinals
 vs. Arizona, L (53-59)
 Final AP/USA Today RankingNR/NR

ATHLETICS COMMUNICATIONS

Women's Basketball Contact Dameon Myres
 Cell Phone (817) 897-5331
 Office Phone (817) 257-5367
 E-mail d.myres@tcu.edu
 Twitter @DameonMyres
 Office Address TCU Box 297600
 Fort Worth, TX 76129
 Athletics Web Site www.gofrogs.com
 Twitter @TCUWBBasketball
 Facebook /TCUWBBasketball
 Instagram @TCUWBB



2019-20 TCU WOMEN'S BASKETBALL ROSTER

No.	Name	Pos.	Ht.	Cl.	Hometown / Previous School
1	Ryann Payne	G	5-6	So.	Valencia, Calif. / Sierra Canyon HS
2	Becky Obinma	C	6-3	RS-Fr.	Menifee, Calif. / Rosary Academy
5	Yummy Morris	F	6-3	So.	North Little Rock, Ark. / North Little Rock HS
10	Jaycee Bradley	G	5-10	Sr.	Norfolk, Neb. / South Dakota
11	Maddi Puli	G/F	6-2	Fr.	Werribee, Australia / Mackillop College
13	Tavy Diggs	G	6-2	Fr.	Richardson, Texas / Plano East HS
15	Jayde Woods	G	6-1	Sr.	Yorba Linda, Calif. / Oregon
20	Lauren Heard	G	5-9	Jr.	Denton, Texas / Guyer HS
21	Alexandria Crain	G	5-9	So.	McKinney, Texas / Dallas Thunder
23	Michelle Berry	F	6-2	Sr.	Miami, Fla. / Virginia Tech
25	Kianna Ray	G	6-1	Sr.	Austin, Texas / Bowie HS
31	Ella Hellessey	F	6-2	Sr.	Dromana, Australia / Padua College
33	Adeola Akomolafe	F	6-3	Sr.	El Paso, Texas / El Dorado HS

TCU COACHING STAFF

Head Coach:	Raegan Pebley (Colorado, 1996), Sixth Season
Associate Head Coach:	Hanna Howard (Portland, 2005), Sixth Season
Associate Coach:	Britney Brown (Oklahoma, 2007), Fourth Season
Assistant Coach/Recruiting Coordinator:	Abi Olajuwon (Oklahoma, 2010), Second Season
Director of Operations:	Angela Gonzaga (Santa Clara, 2004), Sixth Season
Player Development Coordinator:	Leah Foster (St. Edward's, 2006), Second Season
Graduate Assistant:	Natascha Hartvich (Vanguard, 2017) Second Season
Graduate Assistant:	Karviar Shepherd (TCU, 2017) First Season
Athletic Training:	TBA
Strength & Conditioning	Taylor Larson (Michigan State), Second Season

PRONUNCIATIONS

Adeola Akomolafe	add-ee-OH-luh oh-koh-moh-LOFF-ay
Tavy Diggs	TAH-vee (sounds like taffy)
Ella Hellessey	hell-uh-see
Becky Obinma	OH-bin-mah
Maddi Puli	mad-EE POO-lie
Abi Olajuwon	ah-LAH-zhoo-wahn
Raegan Pebley	PEE-blee

ROSTER BREAKDOWN

HORNED FROGS BY CLASS

Seniors (6)

Adeola Akomolafe
 Michelle Berry
 Jaycee Bradley
 Ella Hellessey
 Kianna Ray
 Jayde Woods

Juniors (1)

Lauren Heard

Sophomores (3)

Alexandria Crain
 Yummy Morris
 Ryann Payne

Freshmen (3)

Tavy Diggs
 Becky Obinma
 Maddie Puli

FROG FAST BREAKS

- TCU and Auburn will meet up for the sixth edition of the Big 12/SEC Challenge, this Saturday, Dec. 7. Tip-off is set for 2 p.m. at Schollmaier Arena.
- The Horned Frogs (6-0) are coming off a 77-65 win over Boise State this past Sunday in Fort Worth, while the Tigers (5-4) head to Texas following an 82-62 road win over South Alabama on Wednesday.
- Head coach Raegan Pebley is in her sixth season at the helm of the Horned Frog program. Pebley has compiled a record of 101-71 on the sidelines in Fort Worth, while donning an overall record of 257-246 in 17 seasons.
- With TCU's 66-52 win at Army on Nov. 26, coach Pebley secured her 100th victory at the helm of the TCU women's basketball program. Pebley became just the second coach in school history to eclipse the 100-win mark with the Horned Frogs.
- TCU has opened the season at 6-0, which marks the best start for a Horned Frog team under head coach Pebley, as well as the best start overall since 2003-04.
- A win over Auburn would give the Horned Frogs a 7-0 record and TCU's best start to a season in program history.

THE GAME

- TCU and Auburn will tip-off from Schollmaier Arena at 2 p.m. on Saturday, Dec. 1.
- The Horned Frogs and Tigers will participate in the sixth edition of the Big 12/SEC Challenge.
- This will mark the fourth straight year that all 10 of the teams in the league will play against an SEC opponent.
- Over the past three seasons, the SEC holds a 16-14 advantage over the Big 12.
- TCU is 2-1 in the Big 12/SEC Challenge, including back-to-back wins over Alabama and Ole Miss in the past two seasons.
- The Frogs bested the Crimson Tide, 88-67, at home in 2017 before going on the road to down the Rebels, 55-50, a year ago.
- TCU's lone defeat in the Big 12/SEC Challenge came on the road at LSU in 2016.

COVERING THE HORNED FROGS

- Saturday's contest will be live-streamed on Horned Frogs TV ([HFTV](#)).
- Fans can listen to the radio broadcast on KTCU (88.7 FM), with Jeff Williams calling the action.
- Live stats links for Sunday's contest can be found at www.GoFrogs.com/wbbstats.

SCOUTING AUBURN

- Auburn is coming off an 82-62 win at South

Alabama on Wednesday and has won two of its last three games overall.

- The Tigers are 4-4 overall, which includes a 1-1 mark in true road games this season. Along with its win over South Alabama, Auburn's road loss came to Alabama-Birmingham back on Nov. 21.
- Saturday's contest at TCU will mark Auburn's first game against a Power 5 contingent this season. Minus its SEC slat, the Tigers went 2-1 against Power 5 squads last season.
- Auburn has four players scoring in double figures on the year, with Unique Thompson leading the way at 17.6 points per game. Thompson is averaging a double-double on the year as she also leads the team with 12.0 rebounds per contest.
- Defensively the Tigers rank among the top 50 in the nation with 80 steals on the season. On the offensive side of the court, Auburn is among the nation's best in free throw attempts (26th) and free throws made (39th).
- Auburn shoots .438 from the field, .344 from three-point range and .650 from the charity stripe.

SERIES HISTORY

- TCU and Auburn will meet for just the second time overall and for the first time since the 1994-95 season.
- The Tigers won the only meeting between the two teams, downing the Horned Frogs, 78-32, in the season-opener at the Dial Classic back on Nov. 26, 1994.
- Saturday's contest will mark the first-ever meeting between the two teams in Fort Worth.

THE LAST TIME OUT

- TCU registered another non-conference win, a 77-65 victory over Boise State, this past Sunday at Schollmaier Arena.
- The win moved TCU to 6-0 on the year, which ranks as the best start to a season since the 2003-04 season.
- It also marked TCU's 21st consecutive home win over a non-conference opponent, which dates back to the 2017-18 season.
- TCU and Boise State were the first of a two-game doubleheader in the Maggie Dixon Classic. Sunday marked the 14th Annual Maggie Dixon Classic, which was played in Fort Worth for a second straight season.
- TCU moved to 2-1 all-time when participating in the Maggie Dixon Classic.
- No. 12 Florida State downed No. 6 Texas A&M, 80-58, in the second game of the doubleheader.

NON-CONFERENCE CHALK TALK

- TCU has won 21 straight home games over

TOP-25 POLLS

ASSOCIATED PRESS TOP-25 (Dec 1, 2019)

No.	Team	Rec.	Pts.	Last
1	Stanford (23)	8-0	740	3
2	Louisville (5)	8-0	708	8
3	Oregon	6-1	662	1
4	UConn (2)	6-0	657	4
5	Oregon State	7-0	623	7
6	South Carolina	8-1	609	5
7	Baylor	7-1	597	2
8	Florida State	7-0	517	12
9	Maryland	7-1	507	9
10	Mississippi State	8-1	472	10
11	UCLA	7-0	430	11
12	Texas A&M	5-1	429	6
13	North Carolina State	8-0	397	12
14	Indiana	6-1	368	17
15	Kentucky	7-0	367	14
16	DePaul	6-1	291	16
17	Tennessee	7-0	230	20
18	Gonzaga	6-1	218	22
19	Michigan State	6-1	184	15
20	Arizona	7-0	182	24
21	Miami (Fla.)	5-2	144	19
22	Missouri State	7-1	101	NR
23	Arkansas	7-1	94	25
24	Michigan	6-1	42	NR
25	LSU	7-1	41	NR

OTHERS RECEIVING VOTES: Syracuse 29, Florida Gulf Coast 28, South Dakota 27, West Virginia 24, Minnesota 10, North Carolina 5, Notre Dame 5, Northwestern 3, Rutgers 3, Purdue 2, Colorado 1, Creighton 1, Drake 1, TCU 1.

USA TODAY COACHES TOP-25 (Dec. 3, 2019)

No.	Team	Rec.	Pts.	Last
1	Stanford (24)	8-0	787	3
2	Louisville (5)	8-0	734	9
3	Oregon (1)	6-1	713	1
4	Connecticut	6-0	712	4
5	Oregon St.	7-0	681	5
6	Baylor	7-1	648	2
7	South Carolina	8-1	605	6
8	Mississippi State	8-1	547	8
9	Maryland	7-1	534	10
10	Florida State	7-0	519	13
11	UCLA	7-0	465	11
12	NC State	8-0	463	12
13	Texas A&M	5-1	424	7
14	Kentucky	7-0	370	14
15	DePaul	6-1	303	17
16	Indiana	6-1	293	23
17	Gonzaga	6-1	235	21
18	Missouri St.	7-1	225	19
19	Tennessee	7-0	187	25
19	Arizona	8-0	187	22
21	Michigan St	6-1	186	15
22	Miami-Florida	5-2	138	18
23	Arkansas	7-1	125	24
24	South Dakota	7-1	80	NR
25	Michigan	6-1	53	NR

OTHERS RECEIVING VOTES: Syracuse 49; Louisiana State 42; Florida Gulf Coast 26; Oklahoma State 14; Arizona State 12; West Virginia 8; Minnesota 8; South Florida 6; Purdue 5; Princeton 4; Northwestern 3; Notre Dame 2; Marquette 2; Green Bay 2; New Mexico 1; Iowa State 1; Creighton 1.

TCU BY THE NUMBERS

.938

Winning percentage under head coach Raegan Pebley when the Horned Frogs limit opposing teams to 60 points or less.

4

Number of players TCU had recognized on last season's Big 12 All-Academic team. Kianna Ray, Amy Okonkwo and Ella Hellessey were first team selections, while Jayde Woods earned second team honors.

6

Years Raegan Pebley has been at the helm of the TCU Women's Basketball Program.

8

Number of teams the Horned Frogs will face in 2019-20 that were NCAA Tournament selections a year ago. Three (Baylor, Iowa State, Texas A&M) of those eight tournament teams went on to play in the Sweet 16.

10

Number of Big 12 wins the Horned Frogs earned in 2018-19, which ranks as the most wins since joining the league in 2012-13.

24

The number of overall wins the Horned Frogs registered in 2018-19, which ranks as the most single-season win total since TCU notched 25 wins back in 2003-04.

101

Wins head coach Raegan Pebley has totaled on the TCU sidelines, becoming just the second coach in school history to record 100 program wins.

875

Points senior Kianna Ray has tallied in her four-year career at TCU. The Austin native needs just 125 points to become just the 20th player in school history to score 1,000 career points.

non-conference opponents, which dates back to the 2017-18 season.

- The Horned Frogs last home loss to a non-conference opponent came back on Nov. 21, 2017, in a defeat to Yale.
- Under head coach Raegan Pebley, TCU has tallied an overall non-conference record of 61-21, which also includes postseason WNIT games.

TO THE POLLS

- TCU earned a point after receiving at least one vote in the latest AP Top-25 Poll.
- TCU received votes in the poll for the first time since totaling six points in the Feb. 12, 2018, poll.

PEBLEY NOTCHES WIN #100 AT TCU

- In her sixth season roaming the sidelines at TCU, Raegan Pebley registered her 100th win at the helm of the program when the Horned Frogs knocked off Army, 66-52, on Nov. 26, 2019.
- Pebley has tallied a 100-71 all-time record in Fort Worth, becoming just the second head coach in school history to eclipse the 100-win mark.
- Pebley, who already ranks second all-time in program history with 100 wins, is now 256-246 all-time in her 17 seasons as a collegiate head coach.

DOUBLE-DIGITS AND A RAY OF LIGHT

- Kianna Ray has scored in double-figures in all six games for the Horned Frogs this season.
- Ray is the only Horned Frog to post double-digit scoring efforts through the first six games on the year.
- The Austin, Texas, native ranks second on the team with a 12.3 points per game scoring average.

ON THE WAY, TO SCORING 1K

- Kianna Ray entered her senior campaign at TCU with 801 points scored in her career.
- Ray heads into her next game with 875 career points scored. She is just 125 points shy from scoring her 1,000th career point for the Frogs.
- Ray would become the 20th player in school history to score at least 1,000 points in their career at TCU.

DID SOMEONE SAY 1,000 POINTS?

- Senior Jaycee Bradley, who is in her first season at TCU, is also nearing the 1,000-career points mark.
- Bradley, who transferred to TCU from South Dakota, has tallied 970 points in her career and is now just 30 points shy from scoring her

1,000th career point.

- Bradley registered 915 points in three seasons at South Dakota. She has totaled 55 points as a Horned Frog for a total of 970 points scored.
- Bradley currently ranks fourth on the team with a 9.2 points per game scoring average.

TICKETS TO THE LO SHOW FOR A DIME

- Lauren Heard has dished out a team-best 22 assists on the season.
- Heard's 3.7 assists per game average ranks 12th among players in the Big 12, while also ranking among the nation's top 200 overall.

HISTORY IN THE MAKING?

- TCU heads into Saturday's game having opened the season at 6-0 for the first time since the 2003-04 season.
- A win on Saturday would not only give the Horned Frogs its best start ever under head coach Raegan Pebley, but it would also mark the first time in school history to open the year at 7-0.
- A seventh straight win would also tie TCU's second longest wins streak under Pebley. The Frogs won eight straight games in 2018-19 and seven straight back in 2017-18.

FORCING THE ISSUE

- TCU has forced 20+ turnovers to all six opponents this season.
- This marks the first time that a TCU team has forced 20+ turnovers in six straight games in the Pebley era.
- TCU has forced 20+ turnovers in six straight games for the first time since the 2006-07 season.
- The Horned Frogs forced 20+ turnovers in 10 straight games that year.
- The Frogs average 22.2 forced turnovers on the year, which ranks No. 1 in the Big 12 and No. 21 in the nation.

PLAYING AGAINST THE BEST

- TCU is scheduled to face seven different teams that were ranked or at least earned points in the AP preseason top-25 poll.
- The Horned Frogs will face No. 2 Baylor, No. 6 Texas A&M and No. 15 Texas, along with teams that are receiving votes: West Virginia, Boise State, Auburn and Kansas State.
- The schedule also includes games against eight teams that were selected to play in last season's NCAA Tournament.

UP NEXT

- TCU heads back out on the road with a trip to College Station next Wednesday, Dec. 11, to take on No. 12-ranked Texas A&M.
- Tip-off is set for 7 p.m. at Reed Arena.

LAST TIME OUT: VS. BOISE STATE (DEC. 1, 2019)

LAST TIME VS. AUBURN (NOV. 26, 1994)

Official Basketball Box Score - Final															Game Time: 1:00 PM		
Boise St. at TCU															Game Duration: 1:46		
1201/19 Ed and Rae Schollmaier Arena, Fort Worth															Attendance: 1,500		
2019-20 Women's Basketball															Officials:		
Boise St. - 65															Record: 4-4		
NO.	Name	Min	FG	3P	FT	Rebounds	Fouls	TP	AS	TO	ST	Blocks	+	-	Shooting By Period		
42	A'Shanti Coleman	F 21:07	3-7	0-0	0-0	0 1 1	1 1	6	0	5	3	0	0	-14	1 st FG%	5-13 38.5%	
44	Mallory McGwire	C 26:03	5-9	1-1	0-0	2 7 9	2 2	11	1	1	1	2	0	-21	3P%	1-5 20.0%	
14	Braydey Hodgins	G 28:35	3-9	1-3	4-5	0 3 3	4 5	11	5	3	1	0	0	-13	FT%	0-0 0%	
21	Riley Lupfer	G 27:48	3-9	2-7	0-0	1 0 1	0 0	8	1	1	1	0	0	-19	2 nd FG%	4-13 30.8%	
23	Jayde Christopher	G 29:36	2-2	0-0	0-3	0 1 1	3 3	4	8	6	1	0	0	-9	3P%	0-1 0.0%	
22	Ellie Woerner	17:34	3-4	1-1	1-1	3 2 5	3 3	8	0	1	0	0	0	-13	FT%	4-7 57.1%	
25	Rachel Bowers	15:34	3-5	0-0	0-1	0 2 2	3 2	6	1	1	0	1	0	11	3 rd FG%	8-15 53.3%	
30	Jade Loville	19:03	3-8	0-1	0-1	0 1 1	3 1	6	1	1	0	0	0	9	3P%	3-6 50.0%	
3	Maggie Freeman	10:10	0-1	0-0	3-4	0 0 0	2 2	3	0	1	1	0	0	2	FT%	1-2 50%	
5	Lala Soler	04:30	1-1	0-0	0-0	0 1 1	0 1	2	0	0	1	0	0	7	4 th FG%	9-14 64.3%	
Team															GM FG%	26-55 47.3%	
Totals															3P%	5-13 38.5%	
															FT%	8-15 53.3%	
															Dead Ball Rebounds: 2, 1		
															Technical Fouls: NONE		
TCU - 77															Record: 6-0		
NO.	Name	Min	FG	3P	FT	Rebounds	Fouls	TP	AS	TO	ST	Blocks	+	-	Shooting By Period		
33	Adeola Akomolafe	F 28:27	2-11	0-0	2-3	3 3 6	4 2	6	1	4	1	1	1	11	1 st FG%	7-15 46.7%	
10	Jaycee Bradley	G 24:21	3-7	3-7	0-0	0 2 2	3 0	9	2	1	0	0	0	14	3P%	3-6 50.0%	
15	Jayde Woods	G 21:59	3-5	1-1	3-6	2 2 4	3 6	10	2	1	0	0	0	2 18	FT%	5-7 71.4%	
20	Lauren Heard	G 31:43	7-11	3-5	8-9	2 3 5	0 6	25	4	4	2	0	0	11	2 nd FG%	5-16 31.3%	
25	Kianna Ray	G 37:31	5-12	2-5	2-5	3 4 7	1 3	14	3	2	3	0	0	16	3P%	3-8 37.5%	
21	Alexandria Crain	07:30	0-0	0-0	0-0	0 0 0	0 1	0	1	3	0	0	0	-3	FT%	2-4 50%	
23	Michelle Berry	23:03	2-6	1-2	2-2	5 8 13	2 2	7	2	2	0	0	0	1	3 rd FG%	6-12 50.0%	
1	Ryann Payne	07:59	1-2	0-0	0-0	0 0 0	1 0	2	2	0	0	0	0	4	3P%	2-2 100.0%	
5	Yummy Morris	06:50	0-1	0-0	0-0	0 1 1	2 1	0	0	0	0	0	0	-4	FT%	8-11 72.7%	
13	Tary Diggs	02:09	0-0	0-0	0-0	0 0 0	0 0	0	0	0	0	0	0	2	4 th FG%	7-15 46.7%	
2	Becky Obinna	03:28	1-1	0-0	0-0	0 0 0	1 0	2	0	1	0	0	0	-1	3P%	2-5 40.0%	
11	Madi Fuli	03:44	1-1	0-0	0-0	0 1 1	2 0	2	0	0	0	0	0	-7	FT%	2-3 66.7%	
31	Ella Hellessey	01:16	0-1	0-1	0-0	0 2 2	1 0	0	0	1	0	0	0	-2	GM FG%	25-58 43.1%	
Team															3P%	10-21 47.6%	
Totals															FT%	17-25 68.0%	
															Dead Ball Rebounds: 4, 0		
															Technical Fouls: NONE		
Biggest lead			BSU		TCU		Points from		BSU		TCU		Period by Period Scoring				
Best Scoring Run			7 (4 th 0:23)		10 (1 st 3:11)		Turnovers		19		18		1st 2nd 3rd 4th TOT				
Lead Changes			0				Paint		36		26		BSU 11 12 20 22 65				
Times Tied			1				Second Chance		4		11		TCU 22 15 22 18 77				
Time with Lead			00:00		38:41		Fast Breaks		4		8						
							Bench		25		13						

BOX SCORE
NOT AVAILABLE

FORT WORTH – TCU junior Lauren Heard scored a season-high 25 points and dished out a team-best four assists in the Horned Frogs' 77-65 win over the Boise State Broncos, Sunday evening in the Maggie Dixon Classic at Schollmaier Arena.

Senior Kianna Ray added 14 points and fellow senior Jayde Woods chipped in with 10 points, while Michelle Berry, also a senior, pulled down a game-high 13 rebounds.

TCU moved to 6-0 on the year, registering its best start to a season since 2003-04. The Horned Frogs also won for the 21st straight time over a non-conference opponent at home. Boise State fell to 4-4 overall with the defeat.

THE RUNDOWN

Ray opened the game with a three-pointer and TCU never looked back on the way to the 12-point victory. TCU led by as many as 21 points and never trailed in the game. A 10-0 run early in the first quarter helped the home team jump out to a lead it would never relinquish.

The Horned Frogs shot just 38 percent from the field overall in the first half, but drained six three-pointers on the way to a 37-23 lead at the break. Heard, who led all players with her 25 points on the night, was perfect from three-point range in the first half as she knocked down all three of her attempts from beyond the arc.

TCU shot 50 percent from the field in the third quarter, which included a 100 percent effort from beyond the arc, and led 59-43 at the end of the period. Boise scored 20 points in the quarter, but Woods scored a team-high eight points with a pair of buckets and going 3-of-6 from the charity stripe. The Broncos had pulled within 11 points, but TCU closed the final moments with a 9-3 run.

TCU led by as many as 21 points in the fourth quarter, up 68-47 with 6:51 to play, and then up 73-52 with 5:35 on the clock. The Broncos managed to close out the final five-plus minutes on a 13-4 run, but TCU's fast start proved to be too much.

The Horned Frogs finished the game shooting 43 percent from the field overall, which included a season-high 47 percent effort from beyond the arc.

STAT OF THE GAME

+16 – TCU's rebounding margin in the game, the team's largest of the season. The Horned Frogs registered 40+ rebounds for just the third time this season, winning the battle of the boards, 43-27. It not only marked TCU's largest rebounding margin on the year, but it also totaled the lowest rebounding total given up to an opponent this year.

SERIES BREAKDOWN



vs.



Date Series Began Nov. 26, 1994
 All-Time Series Auburn leads, 1-0
 Last Game Played Nov. 26, 1994
 Current Winning Streak Auburn, won 1

LAST 10 GAMES

Date	W/L	Score	Location
Nov. 26, 1994	L	32-78	Auburn, Ala.*

* - Dial Classic

2019-20 BIG 12 STANDINGS

TEAM	BIG 12	PCT.	H	A	STREAK	OVERALL	PCT.	H	A	N	STREAK
Kansas	0-0	0.000	0-0	0-0	---	7-0	1.000	5-0	1-0	1-0	W7
TCU	0-0	0.000	0-0	0-0	---	6-0	1.000	4-0	2-0	0-0	W6
Texas Tech	0-0	0.000	0-0	0-0	---	6-0	1.000	4-0	1-0	1-0	W6
Baylor	0-0	0.000	0-0	0-0	---	8-1	0.889	6-0	0-0	2-1	W1
Iowa State	0-0	0.000	0-0	0-0	---	5-1	0.833	4-0	1-1	0-0	W4
West Virginia	0-0	0.000	0-0	0-0	---	5-1	0.833	4-0	0-0	1-1	W1
Oklahoma State	0-0	0.000	0-0	0-0	---	6-2	0.750	4-0	1-0	1-2	W1
Kansas State	0-0	0.000	0-0	0-0	---	4-3	0.571	4-1	0-0	0-2	W1
Oklahoma	0-0	0.000	0-0	0-0	---	4-4	0.500	4-1	0-3	0-0	L2
Texas	0-0	0.000	0-0	0-0	---	4-4	0.500	3-1	0-2	1-1	L1

BIG 12 PRESEASON HONORS

PRESEASON PLAYER OF THE YEAR

Lauren Cox, Baylor, F, 6-4, Sr, Flower Mound, Texas

PRESEASON NEWCOMER OF THE YEAR

Te'a Cooper, Baylor, G, 5-8, Gr, Powder Springs, Ga.

PRESEASON FRESHMAN OF THE YEAR

Celeste Taylor, Texas, G, 5-11, Valley Stream, N.Y.

PRESEASON ALL-BIG 12 TEAM

Lauren Cox, Baylor, F, 6-4, Sr., Flower Mound, Texas
 Juicy Landrum, Baylor, G, 5-8, Sr., Waco, Texas
 NaLyssa Smith, Baylor, F, 6-2, So., Converse, Texas
 Kristin Scott, Iowa State, F/C, 6-3, Jr., Kasson, Minn.
 Peyton Williams, K-State, F, 6-4, Sr., Topeka, Kan.
 Ana Llanusa, Oklahoma, G, 6-0, Jr., Choctaw, Okla.
 Vivian Gray, Oklahoma State, F, 6-1, Jr., Argyle, Texas
 Joyner Holmes, Texas, F, 6-3, Sr., Cedar Hill, Texas
 Sug Sutton, Texas, G, 5-8, Sr., St. Louis, Mo.
 Brittany Brewer, Texas Tech, F, 6-5, Sr., Abilene, Texas
 Tynice Martin, West Virginia, G, 5-11, Sr., Atlanta, Ga.

HONORABLE MENTION

Te'a Cooper (Baylor)
 DiDi Richards (Baylor)
 Ashley Joens (Iowa State)
 Rachel Ranke (K-State)
Kianna Ray (TCU)
 Charli Collier (Texas)
 Lashann Higgs (Texas)
 Chrislyn Carr (Texas Tech)
 Kari Niblack (West Virginia)
 Madisen Smith (West Virginia)

BIG 12 PRESEASON POLL

- 1. Baylor (9) 81
- 2. Texas (1) 71
- 3. West Virginia 66
- 4. Iowa State 49
- 5. Kansas State 47
- 6. Oklahoma State 39
- 7. Oklahoma 34
- 8. TCU 27**
- 9. Texas Tech 26
- 10. Kansas 10

BIG 12 PLAYERS OF THE WEEK

DATE	PLAYER	SCHOOL
Nov. 11	NaLyssa Smith	Baylor
	Holly Kersgieter	Kansas
Nov. 18	Te'a Cooper	Baylor
Nov. 25	Ashley Joens	Iowa State
Dec. 2	Brittany Brewer	Texas Tech
	Taylor Robertson	Oklahoma
Dec. 9		
Dec. 16		
Dec. 23		
Dec. 30		
Jan. 6		
Jan. 13		
Jan. 20		
Jan. 27		
Feb. 3		
Feb. 10		
Feb. 17		
Feb. 24		
Mar. 2		
Mar. 9		

BIG 12 FRESHMAN OF THE WEEK

DATE	PLAYER	SCHOOL
Nov. 11	Holly Kersgieter	Kansas
Nov. 18	Alexis Tucker	Texas Tech
Nov. 25	Ayoka Lee	Kansas State
Dec. 2	Ayoka Lee	Kansas State
Dec. 9		
Dec. 16		
Dec. 23		
Dec. 30		
Jan. 6		
Jan. 13		
Jan. 20		
Jan. 27		
Feb. 3		
Feb. 10		
Feb. 17		
Feb. 24		
Mar. 2		
Mar. 9		

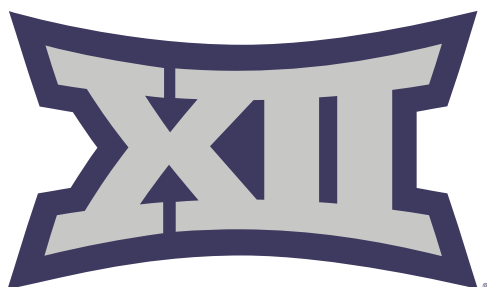
TCU HONOR ROLL

KIANNA RAY | SENIOR | AUSTIN, TEXAS

Preseason All-Big 12 Honorable Mention (10/09/19)

LAUREN HEARD | JUNIOR | DENTON, TEXAS

TCU Student-Athlete of the Week (12/02/19)



ED & RAE SCHOLLMAIER ARENA | OPENED 2015-16



Previously known as the Daniel-Meyer Coliseum, the facility underwent a \$72 million renovation that was completed during the 2015-16 season. The Schollmaiers provided the lead gift of \$10 million. The Daniel-Meyer name is still prominent as the entire area is known as the Daniel-Meyer Athletic Complex.

The TCU men's and women's basketball programs received new locker rooms and team meeting rooms as well as an expanded sports medicine center. There is also locker rooms for visiting teams and a new video board.

The new building facade for the Ed and Rae Schollmaier Arena architecturally complements Amon G. Carter Stadium and the TCU campus. The interior has a lower playing surface to increase courtside seating and provide a more intimate atmosphere. Wider concourses and multiple public entries have helped ease congestion. The fan experience is further enhanced by new concession stands, a food court and restrooms as well as increased points of sale. A new courtside club lounge is also located on floor level. The facility also includes offices for the athletics administrative staff as well as coaches in various sports, allowing the Ed and Rae Schollmaier Arena to be the hub of TCU Athletics.

Additional features of the Ed and Rae Schollmaier Arena are the Jane & John Justin TCU Athletics Hall of Fame on the concourse level, offices for Olympic sports and administration and a larger main ticket office to support the arena and Amon G. Carter Stadium.

ED AND RAE SCHOLLMAIER HISTORY

Ed Schollmaier is the retired CEO of Alcon Laboratories, Inc., while the late Rae Schollmaier was a dedicated civic volunteer. Through the Schollmaier Foundation, they are longtime philanthropic leaders in Fort Worth.

A TCU Trustee since 1996, Ed Schollmaier chaired the Building and Grounds Committee and served on the Executive, Fiscal Affairs and Intercollegiate Athletics committees, as well as the Committee on Trusteeship.

Ed Schollmaier was a member of the Neeley School International Board of Visitors and the recipient of Neeley's Ike Harrison Award. He has been recognized as an Honorary Alumnus and an Honorary TCU Letterman. Rae Schollmaier served on the College of Fine Arts International Board of Visitors, the Fine Arts Task Force of The Commission on the Future of TCU and the KinderFrogs School Advisory Board. For their service and generous support, the Schollmaiers were honored with TCU's Horizon Award and the Royal Purple Award.

The Schollmaiers have also supported TCU Athletics through the Ed and Rae Schollmaier Basketball Complex, which opened in 2004.



ED & RAE SCHOLLMAIER ARENA FACILITY FACTS

- ▶ \$72 Million Renovation
- ▶ Lowered Playing Surface
- ▶ Court Side Club Lounge
- ▶ New Concession Stands
- ▶ Wider Concourses
- ▶ Food Court
- ▶ Team Meeting Rooms
- ▶ New Locker Rooms
- ▶ New Video Boards
- ▶ TCU Athletics Hall of Fame
- ▶ Sport Offices
- ▶ Expanded Sports Medicine

HEAD COACH | RAEGAN PEBLEY | 6TH SEASON



Raegan Pebley is in her sixth season as TCU women's basketball head coach in 2019-20 and has led the Frogs to four postseason appearances in her first five seasons, including runs to the WNIT Semifinals in each of the past two years.

Pebley (pronounced Pee-blee) has had the Frogs on an upward trend over the past two seasons, as their 47 total wins during that stretch are tied for third among all Big 12 teams while its 19 conference victories rank fourth.

TCU posted an impressive 23-14 record two years ago and finished just one win off of the school record with a 24-11 mark last season. In addition, TCU also set program records with 17 home victories and 10 Big 12 Conference wins during the 2018-19 campaign.

The Frogs went on a tear in the postseason for the second consecutive year, winning four games in the WNIT before falling on the road to eventual champion Arizona in the semifinals. Pebley's squad dominated the early rounds of the tournament, winning its first four games by an average of 17 points, including three victories at home and an impressive road win at Arkansas.

TCU finished among the top-three teams in the Big 12 in several statistical categories in 2018-19, including scoring defense, blocked shots, assists, turnover margin and steals. The Frogs finished eighth in the NCAA in both total blocked shots (189) and blocked shots per game (5.4) and led the Big 12 in total steals (331), steals per game (9.5) and turnovers forced per game (17.34).

The 24 wins in 2018-19 give Pebley 95 wins after five seasons at TCU, already the second-most in program history as she moved past Fran Garmon, a Women's Basketball Hall of Fame member, last year.

The 2018-19 season was a continuation of a successful climb for TCU under Pebley. The Frogs won 18 games in each of her first two seasons with a WNIT Second Round appearance in 2014-15 followed by appearances in the WNIT Third Round and Semifinals in 2015-16 and 2017-18, respectively. TCU's WNIT victory in 2015 was its first postseason win in seven years.

During the 2017-18 campaign, the Frogs earned their first national ranking since 2010, claiming a spot in the top-25 for three weeks. The ranking came in the midst of a seven-game Big 12 winning streak, the Frogs' best conference winning streak since 2008. During the streak, the Frogs beat No. 7 Texas then knocked off No. 15 West Virginia on the road, marking just the second time in program history TCU won back-to-back games against ranked teams.

The Frogs went on to finish 9-9 in the Big 12 in 2017-18, capping the regular season with a win over Oklahoma in the Big 12 Championship quarterfinal and advancing to the first semifinal since the Frogs joined the Big 12.

TCU then played in its third WNIT under Pebley and made a deep run in the tournament, advancing to the semifinal where the Frogs fell on the road to eventual champion Indiana. Along the way, TCU won four games in the tournament, including a pair of road wins, pushing TCU's total to 10 wins away from home in 2017-18, the program's most since 2004-05.

In 2017-18, TCU was the only Big 12 team to finish in the Big 12's top three in field goal, 3-point and free throw percentage. The Frogs averaged 74.8 points and 16.5 assists per game, both the second best

in program history, and posted a program-best 1.1 assist-turnover ratio.

Individually, numerous players have flourished in Pebley's system, perhaps none more than TCU's all-time leading scorer, Zahna Medley who earned three All-Big 12 First Team honors in her career, two under Pebley, and was the first three-time all-conference first team selection in program history.

Medley finished her career with TCU bests of 1,975 career points, a 15.6 points per game scoring average and 316 made 3-pointers. She finished second in TCU history with 633 made field goals and 510 assists.

Medley's two selections are part of 11 All-Big 12 selections for the Frogs in Pebley's five seasons, including 2018-19 All-Big 12 First Team honoree Jordan Moore and second-team selection Amy Okonkwo.

Moore's progression throughout her TCU career is indicative of Pebley's teaching ability. The Round Rock, Texas, native finished her career as TCU's all-time leader in field goal percentage, shooting 54.7 percent in her four years in Fort Worth, as well as the single-season leader after shooting 59.0 percent in her senior campaign. She also finished seventh in the TCU record book with 1,514 points, second with 892 rebounds and third with 243 blocks.

Additionally, the Frogs have won both of their Big 12 individual awards under Pebley, most recently with Okonkwo earning the Sixth Man Award in 2017-18. Chelsea Prince was named the Big 12 Defensive Player of the Year in 2014-15, marking the fourth-straight such selection under Pebley.

Off the court, the Frogs have seen incredible success under Pebley. In her five seasons, TCU student-athletes have earned 23 Academic All-Big 12 honors, that after earning just four in the two years prior to Pebley's arrival.

Included in the 23 selections is a record three first-team selections in both 2016-17 and 2018-19. Jada Butts was one of the 2016-17 first team selections and became the first Frog to earn Academic All-Big 12 honors in four straight years.

Pebley has not only served TCU, but also the women's basketball community as a whole. She is a member of the Kay Yow Cancer Fund Board of Directors, helping guide the Fund's mission to extend and improve the lives of all women battling cancer by raising money for research and assisting the underserved.

She is also a member of the Women's Basketball Coaches Association (WBCA) Board of Directors, helping the Association's mission to improve and advance the game of women's basketball.

TCU officially announced the hiring of Pebley as the program's seventh head coach on April 1, 2014.

Pebley arrived at TCU after spending the previous two seasons at Fresno State where she led the Bulldogs to Mountain West tournament titles and berths into the NCAA Tournament in each of her two seasons. Fresno State compiled a 46-20 (.697) overall record under the direction of Pebley, including a 26-8 (.765) mark in league play, while four Bulldogs earned All-Mountain West honors, including back-to-back Defensive Player of the Year selections.

Pebley's Fresno State squads featured one of the top defensive units in the country, as the 2012-13 Bulldogs ranked third in the NCAA in steals with 12.9 per game, doing so while only fouling 12.1 times per game to rank No. 7 nationally for the fewest fouls committed per game. The Bulldogs allowed a paltry 62.4 points per contest in the two seasons under Pebley.

The Orem, Utah, native faced a tall task in her

PEPLEY'S TIMELINE

1997-99:	George Mason	Assistant Coach
1999-2001:	Colorado State	Assistant Coach
2002-12:	Utah State	Head Coach
2012-14:	Fresno State	Head Coach
2014-present:	TCU	Head Coach

COACHING HIGHLIGHTS

HONORS (AT TCU)

- ▶ Four WNIT appearances
- ▶ 11 postseason wins
- ▶ 11 All-Big 12 selections
- ▶ Big 12 Defensive Player of the Year
- ▶ Big 12 Sixth Man of the Year
- ▶ 22 Academic All-Big 12 selections

HONORS (PRIOR TO TCU)

- ▶ Seven NCAA Tournaments (two as head coach, one as assistant coach, four as player)
- ▶ 12 overall postseason appearances (NCAA and WNIT)
- ▶ WBCA National Coach of the Year Finalist (2001)
- ▶ WAC Coach of the Year (2001)
- ▶ Rebuilt Utah State program that was reinstated in 2003 after 25-year hiatus

PLAYING HIGHLIGHTS

- ▶ 106-24 record, four NCAA Tournament appearances in four seasons at Colorado
- ▶ Elite Eight appearance as sophomore
- ▶ Two Sweet Sixteen appearances
- ▶ Finished all four seasons ranked in Associated Press Top 25; two AP top-five finishes
- ▶ 1,045 career points, 701 career rebounds
- ▶ Two-time all-conference, including second-team All-Big 12 in 1997
- ▶ 21st overall selection in 1997 WNBA Draft (Utah Starzz)
- ▶ Played in WNBA's first two seasons (Utah Starzz, Cleveland Rockers)

COACHING RECORD

YEAR	SCHOOL	OVERALL	CONF	FINISH
2003-04	Utah State	5-22	5-13	T-8th
2004-05	Utah State	14-14	9-9	6th
2005-06	Utah State	3-24	2-14	9th
2006-07	Utah State	11-18	7-9	6th
2007-08	Utah State	9-20	5-11	7th
2008-09	Utah State	16-15	9-7	T-5th
2009-10	Utah State	13-17	5-11	7th
2010-11	Utah State	18-15	10-6	3rd
2011-12	Utah State	21-10	11-3	2nd
2012-13	Fresno State	24-9	13-3	2nd
2013-14	Fresno State	22-11	13-5	2nd
2014-15	TCU	18-14	9-9	T-3rd
2015-16	TCU	18-15	8-10	T-6th
2016-17	TCU	12-18	4-14	9th
2017-18	TCU	23-13	9-9	5th
2018-19	TCU	24-11	10-8	6th
2019-20	TCU	6-0	0-0	-

SCHOOL	YEARS	OVERALL	CONF
Utah State	9	110-155	63-94
Fresno State	2	46-20	26-8
TCU	6	101-71	40-50
	17	257-246	129-152

first head coaching position, starting the Utah State women's basketball program after its reinstatement in 2003 following a 25-year hiatus. Pebley led the Aggies for nine seasons, building the program from scratch into back-to-back WNIT berths, marking the first postseason appearances in school history.

Pebley garnered WAC Coach of the Year accolades for the 2010-11 season after the Aggies advanced to their first WNIT, where they toppled Arizona, and was a WBCA National Coach of the Year finalist in 2012 after Utah State registered its first-ever 20-win season and returned to the WNIT.

In her nine seasons at Utah State, 12 Aggies earned all-conference honors, including Ashlee Brown, who was named the WAC Defensive Player of the Year in 2012, the first of four straight student-athletes to earn the league's top defensive awards under Pebley. Before taking over the Utah State program, Pebley served as an assistant coach at George Mason from 1997-99 under Jim Lewis and Debbie Taneyhill and at Colorado State from 1999-01 under Tom Collen.

At CSU, the Rams went 48-17 in her two seasons with the team reaching the second round of the NCAA Tournament in 2001 and the semifinals of the WNIT in 2000.

A standout at the University of Colorado, Pebley was selected with the 21st overall pick of the inaugural WNBA Draft in 1997, where she played two seasons with the Cleveland Rockers and Utah Starzz. She has since returned to a role within the league as she regularly serves as the color analyst on television broadcasts for the Dallas Wings.

During her collegiate career at Colorado, Pebley helped lead the Buffs to a 106-24 overall record and four conference championships, including winning the inaugural Big 12 tournament title in 1997. In her career, Pebley earned all-conference accolades twice, including a second team All-Big 12 selection in 1997. She is the first former All-Big 12 selection to return to coach in the league.

CU made two Sweet 16 appearances during her career, including a trip to the Elite Eight during her sophomore season, as the Buffs won a school-record 30 games (30-3 overall). Colorado won 25-straight games that season and finished the year ranked No. 2 in the final AP poll.

Pebley, whose maiden name is Scott, was one of nine players in CU history to score over 1,000 career points (1,045) and collect over 700 rebounds (701). Pebley played under legendary head coach Ceal Barry who was a 2018 inductee into the Women's Basketball Hall of Fame.

Pebley and her husband, Keith, have one son, Joseph, and one daughter, Harper.



PEBLEY VS. OPPONENTS

Air Force	5-1	Oklahoma State	4-6
Alabama	1-0	Ole Miss	1-0
Alcorn State	2-0	Oral Roberts	1-0
American	0-1	Oregon	0-1
Arizona	2-1	Pacific	2-5
Arkansas	1-0	Pepperdine	0-1
Army	2-0	Portland	3-3
Asbury	1-0	Portland State	0-2
Auburn	0-0	Prairie View A&M	3-0
Baylor	0-11	Robert Morris	1-0
Boise State	13-9	Saint Louis	0-2
Bowling Green	0-1	Saint Mary's	2-0
Butler	1-1	Sam Houston State	4-0
BYU	0-7	San Diego	0-1
Cal Maritime	1-0	San Diego Christian	1-0
Cal Poly	3-1	San Diego State	4-2
Cal State Bakersfield	1-0	San Francisco	2-2
Cal State Fullerton	2-3	San Jose State	12-4
Cal State Northridge	4-1	Santa Clara	1-1
California	0-1	Seton Hall	0-1
Cincinnati	1-0	South Dakota	1-0
Colgate	1-0	Stephen F. Austin	2-0
Colorado	0-1	SMU	6-0
Colorado State	4-2	South Dakota State	1-1
Cornell	1-0	Southeastern Louisiana	1-0
Dixie State	0-1	Southern	1-0
Duquesne	1-0	Southern Miss	0-1
Eastern Michigan	1-0	Southern Utah	6-1
Eastern Washington	2-0	Stanford	0-2
Fresno State	2-14	Texas	2-10
Georgia	0-1	Texas A&M	0-5
Grambling	2-0	Texas Southern	2-0
Hampton	1-0	Texas State	2-0
Hawaii	6-8	Texas Tech	8-3
Houston Baptist	1-0	UC Irvine	4-3
Idaho	11-10	UC Merced	1-0
Idaho State	2-7	UC Riverside	3-2
Illinois	0-1	UC Santa Barbara	0-4
Incarinate Word	1-0	ULM	1-0
Indiana	0-1	UNLV	6-1
Iowa State	6-5	USC	1-1
IPFW	0-1	UT Arlington	2-0
Kansas	9-2	Utah	1-3
Kansas State	5-5	Utah State	1-0
Lamar	2-0	Utah Valley	5-3
Liberty	1-0	UTEP	0-1
Long Beach State	1-4	UTRGV	2-0
Louisiana Tech	2-14	Washington State	1-1
LSU	0-1	Weber State	4-4
Massachusetts	0-1	West Virginia	3-7
McNeese	1-0	Western Michigan	0-1
Middle Tennessee	0-0	Wyoming	3-5
Mississippi Valley State	1-0	Yale	0-1
Missouri State	2-0		
Monmouth	0-1		
Montana	0-4		
Montana State	2-4		
Montana State Northern	1-0		
Montana Western	1-0		
Nevada	11-10		
New Mexico	4-0		
New Mexico State	9-6		
New Orleans	1-0		
Nebraska	0-1		
Nicholls State	1-0		
Notre Dame	0-2		
North Dakota State	1-1		
Northern Arizona	4-0		
Northern Colorado	0-2		
Northwestern State	1-0		
Ohio	0-0		
Oklahoma	4-7		

2019-20 Opponents in Bold

TV/RADIO BROADCAST NOTES



1

RYANN PAYNE
G | 5-6 | SO. | 1L
VALENCIA, CALIF.
SIERRA CANYON HS

LAST GAME PTS: 2 REB: 0 AST: 0 STL: 0
SEASON HIGHS PTS: 11 REB: 3 AST: 3 STL: 5
CAREER HIGHS PTS: 12 REB: 4 AST: 5 STL: 5



2

BECKY OBINMA
C | 6-3 | FR. | RS
MENIFEE, CALIF.
ROSARY ACADEMY

LAST GAME PTS: 2 REB: 0 AST: 0 STL: 0
SEASON HIGHS PTS: 5 REB: 5 AST: 1 STL: 1
CAREER HIGHS PTS: 5 REB: 5 AST: 1 STL: 1



5

YUMMY MORRIS
F | 6-3 | SO. | 1L
NORTH LITTLE ROCK, ARK.
NORTH LITTLE ROCK HS

LAST GAME PTS: 0 REB: 1 AST: 0 STL: 0
SEASON HIGHS PTS: 6 REB: 7 AST: 1 STL: 2
CAREER HIGHS PTS: 13 REB: 9 AST: 1 STL: 3



10

JAYCEE BRADLEY
G | 5-10 | SR. | RS
NORFOLK, NEB.
SOUTH DAKOTA

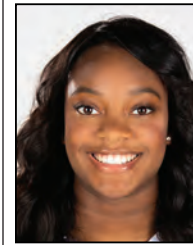
LAST GAME PTS: 9 REB: 2 AST: 2 STL: 0
SEASON HIGHS PTS: 15 REB: 3 AST: 3 STL: 2
CAREER HIGHS PTS: 27 REB: 8 AST: 5 STL: 4



11

MADDI PULI
G/F | 6-2 | FR. | HS
WERRIBEE, AUSTRALIA
MACKILLOP COLLEGE

LAST GAME PTS: 2 REB: 1 AST: 0 STL: 0
SEASON HIGHS PTS: 2 REB: 1 AST: -- STL: --
CAREER HIGHS PTS: 2 REB: 1 AST: -- STL: --



13

TAVY DIGGS
G | 6-2 | FR. | HS
RICHARDSON, TEXAS
PLANO EAST HS

LAST GAME PTS: 0 REB: 0 AST: 0 STL: 0
SEASON HIGHS PTS: 5 REB: 3 AST: 0 STL: 1
CAREER HIGHS PTS: 5 REB: 3 AST: 0 STL: 1



15

JAYDE WOODS
G | 6-1 | SR. | 3L
YORBA LINDA, CALIF.
WINDWARD HS

LAST GAME PTS: 10 REB: 4 AST: 2 STL: 0
SEASON HIGHS PTS: 20 REB: 10 AST: 6 STL: 4
CAREER HIGHS PTS: 20 REB: 10 AST: 8 STL: 4



20

LAUREN HEARD
G | 5-9 | JR. | 2L
DENTON, TEXAS
GUYER HS

LAST GAME PTS: 25 REB: 5 AST: 4 STL: 2
SEASON HIGHS PTS: 25 REB: 6 AST: 5 STL: 4
CAREER HIGHS PTS: 27 REB: 14 AST: 6 STL: 8



21

ALEXANDRIA CRAIN
G | 5-9 | SO. | 1L
MCKINNEY, TEXAS
DALLAS THUNDER

LAST GAME PTS: 0 REB: 0 AST: 1 STL: 0
SEASON HIGHS PTS: 3 REB: 4 AST: 1 STL: 1
CAREER HIGHS PTS: 11 REB: 3 AST: 4 STL: 1



23

MICHELLE BERRY
F | 6-2 | SR. | TR
MIAMI, FLA.
VIRGINIA TECH

LAST GAME PTS: 7 REB: 13 AST: 2 STL: 0
SEASON HIGHS PTS: 7 REB: 13 AST: 2 STL: 1
CAREER HIGHS PTS: 38 REB: 14 AST: 6 STL: 5



25

KIANNA RAY
G | 6-1 | SR. | 3L
AUSTIN, TEXAS
BOWIE HS

LAST GAME PTS: 14 REB: 7 AST: 3 STL: 3
SEASON HIGHS PTS: 14 REB: 9 AST: 4 STL: 4
CAREER HIGHS PTS: 24 REB: 11 AST: 10 STL: 5



31

ELLA HELLESSEY
F | 6-2 | SR. | 3L
DOMANA, AUSTRALIA
PADUA COLLEGE

LAST GAME PTS: 0 REB: 2 AST: 0 STL: 0
SEASON HIGHS PTS: 2 REB: 3 AST: 2 STL: 0
CAREER HIGHS PTS: 11 REB: 8 AST: 4 STL: 1



33

ADEOLA AKOMOLAFE
F | 6-1 | SR. | 3L
EL PASO, TEXAS
EL DORADO HS

LAST GAME PTS: 6 REB: 6 AST: 1 STL: 1
SEASON HIGHS PTS: 6 REB: 7 AST: 4 STL: 3
CAREER HIGHS PTS: 15 REB: 13 AST: 6 STL: 5



TCU RECORD BREAKDOWN

	2019-20 RECORD	PEBBLY ERA
Overall	6-0	101-71
Big 12	--	40-50
Home	4-0	75-23
Away	2-0	23-41
Neutral	--	4-7
vs Top 25	--	6-36
vs Top 10	--	1-18
Overtime games	--	1-1
November	5-0	33-7
December	1-0	21-9
January	--	21-22
February	--	187-23
March	--	13-10
April	--	0-1

REBOUNDING

TCU out-rebounds opponent	4-0	65-8
Opponent has equal/more rebounds	2-0	36-63

SCORING

TCU leads after 1st quarter	6-0	60-21*
Opponent leads after 1st quarter	--	20-33*
Tied after 1st quarter	--	3-3*

TCU leads at halftime	6-0	85-13
Opponent leads at halftime	--	15-53
Tied at halftime	--	1-5

TCU leads after 3rd quarter	4-0	72-8*
Opponent leads after 3rd quarter	2-0	11-48*
Tied after 3rd quarter	--	0-1*

TCU scores less than 60	2-0	6-22
TCU scores 60-69	2-0	19-23
TCU scores 70-79	2-0	39-23
TCU scores 80+	--	37-3
Opponent scores less than 60	4-0	46-3
Opponent scores 60-69	2-0	36-10
Opponent scores 70-79	--	15-27
Opponent scores 80+	--	4-31
Games decided by 6 points or less	2-0	23-17

FIELD GOALS

TCU has higher FG%	2-0	80-9
TCU has lower FG%	4-0	21-62
TCU shoots higher than 40%	3-0	82-24
TCU shoots lower than 40%	3-0	19-47
Opponent shoots higher than 40%	2-0	35-65
Opponent shoots lower than 40%	4-0	66-6

THREE-POINT FIELD GOALS

TCU makes 7 or more 3-pointers	2-0	64-34
TCU makes 6 or fewer 3-pointers	4-0	37-37
TCU has higher 3PT FG%	5-0	72-18
TCU has lower 3PT FG%	1-0	29-53

FREE THROWS

TCU attempts more FT's	6-0	71-20
TCU attempts equal/fewer FT's	--	30-51

SPECIALTY STATS

TCU has more points in the paint	2-0	67-14
TCU has equal/fewer points in the paint	4-0	34-57
TCU has more 2nd-chance points	5-0	63-18
TCU has equal/fewer 2nd-chance points	1-0	38-53
TCU has more bench points	3-0	72-38
TCU has equal/fewer bench points	3-0	29-33

* - Does not include 2014-15 season when only halves were played

TCU PERFORMANCE LIST

SCORING LEADER	2019-20	CAREER
Kianna Ray	1	8
Lauren Heard	3	7
Jayde Woods	2	3
Jaycee Bradley	1	1

REBOUNDING LEADER	2019-20	CAREER
Kianna Ray	1	8
Adeola Akomolafe	1	8
Jayde Woods	3	6
Lauren Heard	1	6
Yummy Morris	1	4
Michelle Berry	1	1

ASSISTS LEADER	2019-20	CAREER
Kianna Ray	0	41
Lauren Heard	5	22
Jayde Woods	2	19
Adeola Akomolafe	0	5
Ryann Payne	0	2
Ella Hellessey	0	1

10+ POINTS	2019-20	CAREER
Kianna Ray	6	37
Lauren Heard	5	21
Jayde Woods	3	13
Adeola Akomolafe	0	6
Yummy Morris	0	4
Jaycee Bradley	3	3
Ryann Payne	1	2
Ella Hellessey	0	2
Alexandria Crain	0	1

15+ POINTS	2019-20	CAREER
Kianna Ray	0	13
Lauren Heard	2	7
Adeola Akomolafe	0	2
Jaycee Bradley	1	1
Jayde Woods	1	1

20+ POINTS	2019-20	CAREER
Lauren Heard	2	4
Kianna Ray	0	4
Jayde Woods	1	1

3+ 3-POINTERS	2019-20	CAREER
Kianna Ray	1	16
Lauren Heard	1	5
Jaycee Bradley	3	3
Jayde Woods	0	2
Alexandria Crain	0	1

10+ REBOUNDS	2019-20	CAREER
Adeola Akomolafe	0	3
Kianna Ray	0	2
Lauren Heard	0	1
Jayce Woods	1	1
Michelle Berry	1	1

15+ REBOUNDS	2019-20	CAREER
--	--	--

5+ ASSISTS	2019-20	CAREER
Kianna Ray	0	27
Lauren Heard	1	11
Jayde Woods	1	11
Adeola Akomolafe	0	5
Ryann Payne	0	2

10+ ASSISTS	2019-20	CAREER
Kianna Ray	0	1

3+ STEALS	2019-20	CAREER
Kianna Ray	2	21
Lauren Heard	1	12
Adeola Akomolafe	1	6
Jayde Woods	0	3
Ryann Payne	1	3
Yummy Morris	0	1

3+ BLOCKS	2019-20	CAREER
Kianna Ray	1	7
Yummy Morris	1	4
Adeola Akomolafe	0	1

DOUBLE-DOUBLES	2019-20	CAREER
Adeola Akomolafe	0	2
Kianna Ray	0	1
Jayde Woods	1	1

TCU BIG 12 & NATIONAL STATISTICS RANKINGS

CATEGORY	NATIONAL	BIG 12	STATISTIC
Assist Turnover Ratio (348 ranked)	131	9	0.88
Assists (348 ranked)	191	9	89
Assists Per Game (348 ranked)	102	8	14.8
Blocked Shots (347 ranked)	81	6	29
Blocked Shots Per Game (348 ranked)	36	6	4.8
Fewest Fouls (345 ranked)	171	7	123
Fewest Turnovers (348 ranked)	92	3	101
Field-Goal Percentage Defense (348 ranked)	111	9	37.4
Free Throw Attempts (348 ranked)	105	8	139
Free Throws Made (348 ranked)	242	9	74
Free-Throw Percentage (348 ranked)	344	10	53.2
Personal Fouls Per Game (348 ranked)	301	10	20.5
Rebound Margin (348 ranked)	137	8	2.5
Rebounds (348 ranked)	234	8	249
Rebounds Per Game (348 ranked)	77	8	41.50
Scoring Defense (348 ranked)	32	4	55.0
Scoring Margin (348 ranked)	81	8	11.2
Scoring Offense (348 ranked)	195	10	66.2
Steals (348 ranked)	161	4	58
Steals Per Game (348 ranked)	92	4	9.7
Three Pt FG Defense (348 ranked)	67	4	26.8
Three-Point Field Goals Made (348 ranked)	180	6	41
Three-Point Field Goals Per Game (348 ranked)	111	6	6.8
Three-Point Field-Goal Percentage (348 ranked)	77	5	34.7
Turnover Margin (348 ranked)	49	4	5.33
Turnovers Forced (348 ranked)	23	1	22.17
Turnovers Per Game (348 ranked)	188	5	16.8

TCU 2019-20 HIGHS/LOWS

MOST 1ST QUARTER POINTS

TCU	22 (2x)	last, Boise State (12/01/19)
Opponent	16	Cornell (11/10/19)

FEWEST 1ST QUARTER POINTS

TCU	14	at SMU (11/20/19)
Opponent	9	at SMU (11/20/19)

MOST 2ND QUARTER POINTS

TCU	24	Nicholls State (11/14/19)
Opponent	19	Robert Morris (11/05/19)

FEWEST 2ND QUARTER POINTS

TCU	10	Robert Morris (11/05/19)
Opponent	9 (2x)	last, Nicholls State (11/14/19)

MOST FIRST HALF POINTS

TCU	40 (2x)	last, Nicholls State (11/14/19)
Opponent	30	Robert Morris (11/05/19)

FEWEST FIRST HALF POINTS

TCU	29	at SMU (11/20/19)
Opponent	21	Nicholls State (11/14/19)

MOST 3RD QUARTER POINTS

TCU	23	Nicholls State (11/14/19)
Opponent	22	Boise State (12/01/19)

FEWEST 3RD QUARTER POINTS

TCU	5	Cornell (11/10/19)
Opponent	14	Cornell (11/10/19)

MOST 4TH QUARTER POINTS

TCU	22	Boise State (12/01/19)
Opponent	18	Boise State (12/01/19)

FEWEST 4TH QUARTER POINTS

TCU	9	Nicholls State (11/14/19)
Opponent	10 (3x)	last, at Army (11/26/19)

MOST POINTS IN A GAME

TCU	77	Boise State (12/01/19)
Opponent	65	Boise State (12/01/19)

FEWEST POINTS IN A GAME

TCU	57	at SMU (11/20/19)
Opponent	47	Nicholls State (11/14/19)

BIGGEST WIN MARGIN

TCU	25 (72-47)	Nicholls State (11/14/19)
Opponent	--	--

CLOSEST WIN MARGIN

TCU	1 (57-56)	at SMU (11/20/19)
Opponent	--	--

SPECIALTY STATISTICS COMPARISON

OPPONENT	IN PAINT	OFF T/O	2ND-CHANCE	FAST BREAK	BENCH
Robert Morris	26-34	19-7	15-9	19-2	12-18
Cornell	20-20	20-11	9-8	5-0	9-16
Nicholls State	48-26	21-9	14-11	14-10	32-18
at SMU	18-28	23-16	16-17	10-3	17-12
at Amry	28-24	12-12	14-4	8-10	18-3
Boise State	26-36	18-19	11-4	8-4	13-25
Auburn					
at Texas A&M					
Ohio					
Texas State					
at Middle Tennessee					
at Texas					
Texas Tech					
Kansas					
at Iowa State					
at Oklahoma					
Baylor					
West Virginia					
at Oklahoma State					
Kansas State					
at Kansas					
at Baylor					
Iowa State					
at Kansas State					
Oklahoma State					
Texas					
at Texas Tech					
Oklahoma					
at West Virginia					

TCU STARTERS

OPPONENT	G	G	G	G/F	F/C	RECORD
Robert Morris	Heard	Ray	Bradley	Woods	Akomolafe	1-0
Cornell	Heard	Ray	Bradley	Woods	Akomolafe	2-0
Nicholls State	Heard	Ray	Bradley	Woods	Akomolafe	3-0
at SMU	Heard	Ray	Bradley	Woods	Akomolafe	4-0
at Amry	Heard	Ray	Bradley	Woods	Akomolafe	5-0
Boise State	Heard	Ray	Bradley	Woods	Akomolafe	6-0
Auburn						
at Texas A&M						
Ohio						
Texas State						
at Middle Tennessee						
at Texas						
Texas Tech						
Kansas						
at Iowa State						
at Oklahoma						
Baylor						
West Virginia						
at Oklahoma State						
Kansas State						
at Kansas						
at Baylor						
Iowa State						
at Kansas State						
Oklahoma State						
Texas						
at Texas Tech						
Oklahoma						
at West Virginia						

THE LAST TIME

... A TCU TEAM

Scored 100+ points	W, 112-62 vs. Southeastern La. (12/10/17)
Scored 100+ points in non-overtime game	W, 112-62 vs. Southeastern La. (12/10/17)
Scored 100+ points in a conference game	W, 100-96 (4OT) at Utah (2/10/10)
Scored 100+ points in a Big 12 game	None
Scored 90+ points	W, 96-49, vs Mississippi Valley State (11/11/18)
Scored 90+ points in a conference game	W, 93-72, vs Texas Tech (1/7/18)
Played an overtime game	W, 76-74 (OT) at West Virginia (1/13/18)
Won an overtime game	W, 76-74 (OT) at West Virginia (1/13/18)
Played a two overtime game	W, 87-73 (2OT) vs. SMU (11/17/10)
Played a three overtime game	L, 111-121 (3OT) vs Hardin-Simmons (11/28/81)
Played a four overtime game	W, 100-96 (4OT) at Utah (2/10/10)
Played consecutive overtime games	None
Held a team to 40 points or less	W, 88-31 vs Alcorn State (12/29/18)
Held a team to 20 points or less in a half	.20 (1st half) vs UT Arlington (3/23/19)
Shot 60+ percent FG	60.8 (31-51) vs Lamar (3/15/18)
Shot 60+ percent FG in a half	60.0 (18-30) 2nd vs Mississippi Valley State (11/11/18)
Held a team to 20 percent FG	15.7 (8-of-51) vs Sam Houston State (11/15/16)
Held a team to 20 percent FG in a half	20.0 (7-of-35) (1st) vs UT Arlington (3/23/19)
Made 10+ 3-pointers	10 vs. Boise State (12/01/19)
Made 15+ 3-pointers	18 vs. Southeastern La. (12/10/17)
Did not make a 3-pointer	(0-of-9) vs UTRGV (1/5/12)
	<i>Active streak of 252 games with a 3-pointer</i>
Held a team to zero 3-pointers	(0-of-1) at LSU (12/4/16)
Shot 90 percent FT (min. 10 att.)	92.0 (23-of-25) at Arkansas (3/28/19)
Attempted 35+ free throws	39 vs Oklahoma (3/3/18)
Made 30+ free throws	32 vs Oklahoma (3/3/18)
Had 30+ assists	.33 vs. Southeastern La. (12/10/17)
Had 25+ assists	.25 vs Texas Tech (1/16/19)
Forced 30+ turnovers	.30 vs Alcorn State (12/29/18)
Forced 25+ turnovers	.30 vs Alcorn State (12/29/18)
Had 20+ steals	.20 vs Cornell (1/2/06)
Had 15+ steals	16 at West Virginia (2/16/19)
Had 15+ blocks	19 vs UAB (1/16/05)*
	<i>*NCAA Record</i>
Had 10+ blocks	10 vs Montana State (12/8/18)
Never trailed in a game	77-65, win vs. Boise State (12/01/19)
Overcame a 10-point deficit to win	at Oklahoma (3/2/19)
	Trailed by 10, 38-28, with 2:25 left in 2Q, won 76-63
Overcame a 15-point deficit to win	at Texas Tech (2/6/19)
	Trailed by 15, 50-35, with 4:29 left in 3Q, won 70-63
Overcame a 20-point deficit to win	vs Iowa State (1/7/15)
	Trailed by 24, 51-27, with 16:21 left in second half, won 86-84
Had six players score in double figures	vs Texas Tech (1/7/18)
	Jordan Moore (18), Amy Okonkwo (17), Kianna Ray (13), Toree Thompson (13), Lauren Heard (12), Amber Ramirez (10)
Had five players score in double figures	at Oklahoma (3/2/19)
	Jordan Moore (23), Dakota Vann (13), Amy Okonkwo (12), Lauren Heard (12), Kianna Ray (10)
Had two players score 20+ points	vs Robert Morris (11/5/19)
	Jayde Woods (20), Lauren Heard (20)
Had three players score 20+ points	vs Stephen F. Austin (3/19/15)
	Jada Butts (21), Veja Hamilton (21), Chelsea Prince (20)
Had two players record double-doubles	at Arizona (04/03/19)
	Amy Okonkwo (22 pts, 11 reb), Jordan Moore (11 pts, 10 reb)
Beat a ranked team	W, 76-69, vs #18 Iowa State (2/13/19)
Beat a top-10 team	W, 79-77, vs #7 Texas (1/10/18)
Beat a top-5 team	W, 82-73, at #3 California (12/7/08)
Beat a ranked team on the road	W, 76-74 (OT), at #15 West Virginia (1/13/18)
Won consecutive games against ranked team	W, 76-74 (OT), at #15 West Virginia (1/13/18), W, 79-77, vs #7 Texas (1/10/18)
Was ranked in AP Poll	Feb. 5, 2018 (24th)
Was ranked in Coaches Poll	Feb. 6, 2018 (24th)
Highest AP Poll ranking	.13th (2/23/04)
Highest Coaches Poll ranking	.15th (3/1/04)
Received votes in AP Poll	Week 2 - Nov. 19, 2018
Received votes in Coaches Poll	Feb. 13, 2018

THE LAST TIME

... A TCU PLAYER

Scored 40+ points	43, Emily Carter vs. SMU (11/17/10)
Scored 30+ points	36, Amy Okonkwo at Arkansas (3/28/19)
Scored 20+ points	25, Lauren Heard vs. Boise State (12/01/19)
Scored 20+ points in half	21 (2nd half), 36, Amy Okonkwo at Arkansas (3/28/19)
Scored 10+ points in 10 or more consecutive games	12, Amy Okonkwo vs Baylor (1/12/19) thru Kansas State (2/23/19)
Scored 10+ points in 15 or more consecutive games	18, Zahna Medley vs Oklahoma State (1/29/14) thru vs Texas Southern (11/22/14)
Scored 20+ points in consecutive games	3, Amy Okonkwo 36 at Arkansas (3/28/19) thru 22 at Arizona (04/03/19)
Scored 20+ points in three or more consecutive games	3, Amy Okonkwo 36 at Arkansas (3/28/19) thru 22 at Arizona (04/03/19)
Scored 20+ points in five or more consecutive games	5, Sandora Irvin vs Oklahoma (12/9/04) thru vs Grambling (12/29/04)
Made 10+ field goals	10, 36, Amy Okonkwo at Arkansas (3/28/19)
Shot 100% FG (min. 5 att.) (2x)	Last 8-of-8, Jordan Moore at West Virginia (2/16/19)
Made 8+ 3-pointers	11, Amber Ramirez vs. Southeastern La. (12/10/17)
Made 5+ 3-pointers	5, Jaycee Bradley vs. Cornell (11/10/19)
Made 15+ free throws	16, Emily Carter vs SMU (11/17/10)
Made 10+ free throws	10, Jayde Woods vs Robert Morris (11/5/19)
Had 20+ rebounds	21, Sandora Irvin vs USF (2/9/11)
Had 15+ rebounds	16, Amy Okonkwo vs Texas (3/9/19)
Had a double-double	Jayde Woods (20 Points, 10 Rebounds) vs Robert Morris (11/5/19)
Had consecutive double-doubles	3, Amy Okonkwo 36 pts, 14 reb at Arkansas (3/28/19) thru (22 pts, 11 reb) at Arizona (04/03/19)
Had double-double in three or more consecutive games	3, Amy Okonkwo 36 pts, 14 reb at Arkansas (3/28/19) thru (22 pts, 11 reb) at Arizona (04/03/19)
Had double-double in four or more consecutive games	4, Sandora Irvin at Utah (12/19/04) thru vs UT Arlington (1/2/05)
Had double-double in five or more consecutive games	15, Sandora Irvin vs Cincinnati (1/25/04) thru vs Georgia (3/22/04)
Had a triple-double	Helena Sverrisdottir (16 pts, 11 st, 10 reb) vs Oral Roberts (3/17/11) (Three in TCU history)
Had 13+ assists	13, Zahna Medley vs Oklahoma (1/9/13)
Had 10+ assists	10, Kianna Ray vs Duquesne (11/6/18)
Had 7+ steals	8, Lauren Heard at West Virginia (2/16/19)
Had 5+ steals	5, Ryann Payne vs. Nicholls State (11/14/19)
Had 10+ blocks	10, Latrica Lovings vs Stephen F. Austin (12/4/13)
Had 5+ blocks	5, Jordan Moore vs Kansas State (2/23/19)
Played every minute in a game	Kianna Ray, Lauren Heard vs Texas (3/5/19)
Played more than 40 min.	Chelsea Prince (42), Jada Butts (41), Zahna Medley (42) and Natalie Ventress (41) vs Southern Miss (3/22/15)



RYANN PAYNE

1 SOPHOMORE

GUARD | 5-6

VALENCIA, CALIF.

SIERRA CANYON HIGH SCHOOL

2019-20 GAME-BY-GAME STATISTICS

DATE	OPPONENT	MIN	FG	3FG	FT	O-D-R	A	T/O	B	S	TP
11/5	Robert Morris	9	1-2	0-0	1-2	0-0-0	0	2	0	2	3
11/10	Cornell	5	1-2	0-0	0-0	0-1-1	1	0	0	0	2
11/14	Nicholls State	24	5-9	1-2	0-0	0-1-1	3	3	0	5	11
11/20	at SMU	16	0-6	0-2	2-2	1-2-3	3	0	0	2	2
11/26	at Army	18	2-4	0-0	0-0	0-0-0	1	1	0	2	4
12/1	Boise State	8	1-2	0-0	0-0	0-0-0	2	0	0	0	2
12/7	Auburn										
12/11	at Texas A&M										
12/15	Ohio										
12/22	Texas State										
12/29	at Middle Tennessee										
1/3	at Texas*										
1/8	Texas Tech*										
1/12	Kansas*										
1/15	at Iowa State*										
1/19	at Oklahoma*										
1/22	Baylor*										
1/26	West Virginia*										
1/29	at Oklahoma State*										
2/1	Kansas State*										
2/8	at Kansas*										
2/12	at Baylor*										
2/16	Iowa State*										
2/19	at Kansas State*										
2/23	Oklahoma State*										
2/26	Texas*										
3/1	at Texas Tech*										
3/4	Oklahoma*										
3/7	at West Virginia*										

SEASON HIGHS

PTS	11	Nicholls State (11/14/19)
MIN	24	Nicholls State (11/14/19)
FG	5	Nicholls State (11/14/19)
FGA	9	Nicholls State (11/14/19)
3FG	1	Nicholls State (11/14/19)
3FGA	2	Nicholls State (11/14/19)
FT	2	at SMU (11/20/19)
FTA	2 (2x)	last, at SMU (11/20/19)
REB	3	at SMU (11/20/19)
AST	3 (2x)	last, at SMU (11/20/19)
BLK	--	--
STL	5	Nicholls State (11/14/19)

CAREER HIGHS

PTS	12	Montana State (12/08/18)
MIN	24	Nicholls State (11/14/19)
FG	5 (2x)	last, Nicholls State (11/14/19)
FGA	12	Alcorn State (12/29/18)
3FG	2	Montana State (12/08/18)
3FGA	3 (2x)	last, Alcorn State (12/29/18)
FT	3	Prairie View A&M (03/21/19)
FTA	6	Prairie View A&M (03/21/19)
REB	4	at Texas (01/19/19)
AST	5 (2x)	last, Alcorn State (12/29/18)
BLK	--	--
STL	5	Nicholls State (11/14/19)

RYANN PAYNE'S CAREER STATISTICS

OVERALL	GP	GS	MIN	AVG.	FG	ATT	PCT	3FG	ATT	PCT	FT	ATT	PCT	OFF	DEF	TOT	AVG.	PF	D	AST	A/G	TO	B	S	TP	AVG.
2018-19	32	0	254	7.9	25	96	.260	5	25	.200	11	23	.478	9	22	31	1.0	21	0	22	0.7	30	0	17	66	2.1
2019-20	6	0	80	13.3	10	25	.400	1	4	.250	3	4	.750	1	4	5	0.8	5	0	10	1.7	6	0	11	24	4.0
TOTAL	38	0	334	8.8	35	121	.289	6	29	.207	14	27	.519	10	26	36	0.9	26	0	32	0.8	36	0	28	90	2.4



BECKY OBINMA

2 REDSHIRT FRESHMAN

CENTER | 6-3

MENIFEE, CALIF.

ROSARY ACADEMY

2019-20 GAME-BY-GAME STATISTICS

DATE	OPPONENT	MIN	FG	3FG	FT	O-D-R	A	T/O	B	S	TP
11/5	Robert Morris	8	0-1	0-0	1-4	1-1-2	1	2	0	0	1
11/10	Cornell	4	0-0	0-0	0-0	0-0-0	0	0	0	0	0
11/14	Nicholls State	7	1-2	0-0	0-2	2-3-5	0	0	0	0	2
11/20	at SMU	8	2-3	0-0	1-2	3-1-4	1	2	1	1	5
11/26	at Army	4	2-3	0-0	0-0	1-2-3	0	0	1	0	4
12/1	Boise State	3	1-1	0-0	0-0	0-0-0	0	1	0	0	2
12/7	Auburn										
12/11	at Texas A&M										
12/15	Ohio										
12/22	Texas State										
12/29	at Middle Tennessee										
1/3	at Texas*										
1/8	Texas Tech*										
1/12	Kansas*										
1/15	at Iowa State*										
1/19	at Oklahoma*										
1/22	Baylor*										
1/26	West Virginia*										
1/29	at Oklahoma State*										
2/1	Kansas State*										
2/8	at Kansas*										
2/12	at Baylor*										
2/16	Iowa State*										
2/19	at Kansas State*										
2/23	Oklahoma State*										
2/26	Texas*										
3/1	at Texas Tech*										
3/4	Oklahoma*										
3/7	at West Virginia*										

SEASON HIGHS

PTS	5	at SMU (11/20/19)
MIN	8 (2x)	last, at SMU (11/20/19)
FG	2 (2x)	last, at Army (11/26/19)
FGA	3 (2x)	last, at Army (11/26/19)
3FG	--	--
3FGA	--	--
FT	1 (2x)	last, at SMU (11/20/19)
FTA	4	Robert Morris (11/05/19)
REB	5	Nicholls State (11/14/19)
AST	1 (2x)	last, at SMU (11/20/19)
BLK	1 (2x)	last, at Army (11/26/19)
STL	1	at SMU (11/20/19)

CAREER HIGHS

PTS	5	at SMU (11/20/19)
MIN	8 (2x)	last, at SMU (11/20/19)
FG	2 (2x)	last, at Army (11/26/19)
FGA	3 (2x)	last, at Army (11/26/19)
3FG	--	--
3FGA	--	--
FT	1 (2x)	last, at SMU (11/20/19)
FTA	4	Robert Morris (11/05/19)
REB	5	Nicholls State (11/14/19)
AST	1 (2x)	last, at SMU (11/20/19)
BLK	1 (2x)	last, at Army (11/26/19)
STL	1	at SMU (11/20/19)

BECKY OBINMA'S CAREER STATISTICS

OVERALL	GP	GS	MIN	AVG.	FG	ATT	PCT	3FG	ATT	PCT	FT	ATT	PCT	OFF	DEF	TOT	AVG.	PF	D	AST	A/G	TO	B	S	TP	AVG.
2019-20	6	0	34	5.7	6	10	.600	0	0	.000	2	8	.250	7	7	14	2.3	9	0	2	0.3	5	2	1	14	2.3
TOTAL	6	0	34	5.7	6	10	.600	0	0	.000	2	8	.250	7	7	14	2.3	9	0	2	0.3	5	2	1	14	2.3



YUMMY MORRIS

5 SOPHOMORE

FORWARD | 6-3

NORTH LITTLE ROCK, ARK.

NORTH LITTLE ROCK HIGH SCHOOL

2019-20 GAME-BY-GAME STATISTICS

DATE	OPPONENT	MIN	FG	3FG	FT	O-D-R	A	T/O	B	S	TP
11/5	Robert Morris	10	1-4	0-0	0-0	0-1-1	0	0	0	1	2
11/10	Cornell	18	1-4	0-0	0-0	4-3-7	0	1	4	1	2
11/14	Nicholls State	12	2-4	0-0	1-2	4-3-7	0	1	2	0	5
11/20	at SMU	13	3-6	0-0	0-0	2-2-4	0	1	0	0	6
11/26	at Army	10	2-3	0-0	1-2	2-1-3	1	4	1	2	5
12/1	Boise State	7	0-1	0-0	0-0	0-1-1	0	0	0	0	0
12/7	Auburn										
12/11	at Texas A&M										
12/15	Ohio										
12/22	Texas State										
12/29	at Middle Tennessee										
1/3	at Texas*										
1/8	Texas Tech*										
1/12	Kansas*										
1/15	at Iowa State*										
1/19	at Oklahoma*										
1/22	Baylor*										
1/26	West Virginia*										
1/29	at Oklahoma State*										
2/1	Kansas State*										
2/8	at Kansas*										
2/12	at Baylor*										
2/16	Iowa State*										
2/19	at Kansas State*										
2/23	Oklahoma State*										
2/26	Texas*										
3/1	at Texas Tech*										
3/4	Oklahoma*										
3/7	at West Virginia*										

SEASON HIGHS

PTS	6	at SMU (11/20/19)
MIN	18	Cornell (11/10/19)
FG	3	at SMU (11/20/19)
FGA	6	at SMU (11/20/19)
3FG	--	--
3FGA	--	--
FT	1 (2x)	last, at Army (11/26/19)
FTA	2 (2x)	last, at Army (11/26/19)
REB	7 (2x)	last, Nicholls State (11/14/19)
AST	1	at Army (11/26/19)
BLK	4	Cornell (11/10/19)
STL	2	at Army (11/26/19)

CAREER HIGHS

PTS	13	Alcorn State (12/29/18)
MIN	19	Prairie View A&M (03/21/19)
FG	4	Alcorn State (12/29/18)
FGA	6 (3x)	last, Prairie View A&M (03/21/19)
3FG	--	--
3FGA	--	--
FT	6	Southern (12/16/18)
FTA	10	Southern (12/16/18)
REB	9	Southern (12/16/18)
AST	1 (4x)	last, at Army (11/26/19)
BLK	4	Cornell (11/10/19)
STL	3	Mississippi Valley State (11/11/18)

YUMMY MORRIS' CAREER STATISTICS

OVERALL	GP	GS	MIN	AVG.	FG	ATT	PCT	3FG	ATT	PCT	FT	ATT	PCT	OFF	DEF	TOT	AVG.	PF	D	AST	A/G	TO	B	S	TP	AVG.
2018-19	25	0	170	6.8	24	51	.471	0	0	.000	30	41	.732	19	34	53	2.1	26	0	3	0.1	22	18	6	78	3.1
2019-20	6	0	70	11.7	9	22	.409	0	0	.000	2	4	.500	12	11	23	3.8	16	0	1	0.2	7	7	4	20	3.3
TOTAL	31	0	240	7.7	33	73	.452	0	0	.000	32	45	.711	31	45	76	2.5	42	0	4	0.1	29	25	10	98	3.2



JAYCEE BRADLEY

10 SENIOR

GUARD | 5-10
NORFOLK, NEB.
NORFOLK HIGH SCHOOL (SOUTH DAKOTA)

2019-20 GAME-BY-GAME STATISTICS

DATE	OPPONENT	MIN	FG	3FG	FT	O-D-R	A	T/O	B	S	TP
11/5	Robert Morris	15	0-3	0-1	2-2	0-1-1	0	2	0	1	2
11/10	Cornell	32	5-11	5-11	0-0	0-3-3	2	3	0	2	15
11/14	Nicholls State	19	4-10	3-9	0-0	0-0-0	0	0	0	0	11
11/20	at SMU	28	3-8	2-6	0-0	0-1-1	1	1	0	0	8
11/26	at Army	29	3-8	2-7	2-2	0-3-3	3	0	1	1	10
12/1	Boise State	24	3-7	3-7	0-0	0-2-2	2	1	0	0	9
12/7	Auburn										
12/11	at Texas A&M										
12/15	Ohio										
12/22	Texas State										
12/29	at Middle Tennessee										
1/3	at Texas*										
1/8	Texas Tech*										
1/12	Kansas*										
1/15	at Iowa State*										
1/19	at Oklahoma*										
1/22	Baylor*										
1/26	West Virginia*										
1/29	at Oklahoma State*										
2/1	Kansas State*										
2/8	at Kansas*										
2/12	at Baylor*										
2/16	Iowa State*										
2/19	at Kansas State*										
2/23	Oklahoma State*										
2/26	Texas*										
3/1	at Texas Tech*										
3/4	Oklahoma*										
3/7	at West Virginia*										

SEASON HIGHS

PTS	15	Cornell (11/10/19)
MIN	32	Cornell (11/10/19)
FG	5	Cornell (11/10/19)
FGA	11	Cornell (11/10/19)
3FG	5	Cornell (11/10/19)
3FGA	11	Cornell (11/10/19)
FT	2 (2x)	last, at Army (11/26/19)
FTA	2 (2x)	last, at Army (11/26/19)
REB	3 (2x)	last, at Army (11/26/19)
AST	3	at Army (11/26/19)
BLK	1	at Army (11/26/19)
STL	2	Cornell (11/10/19)

CAREER HIGHS

PTS	27	vs Fort Wayne (03/03/18) *
MIN	41	at Wyoming (12/04/16) *
FG	9	at CSU Bakersfield (11/27/16) *
FGA	16	North Dakota State (01/26/17) *
3FG	7 (2x)	vs Fort Wayne (03/03/18) *
3FGA	12	TCU (03/25/18) *
FT	4 (5x)	last vs Colorado State (03/18/18) *
FTA	4 (7x)	last vs Colorado State (03/18/18) *
REB	8	at North Dakota State (01/04/17) *
AST	5 (4x)	last vs TCU (03/25/18) *
BLK	1 (3x)	last, at Army (11/26/19)
STL	4	at North Dakota State (01/04/17) *

* - at South Dakota

JAYCEE BRADLEY'S CAREER STATISTICS

OVERALL	GP	GS	MIN	AVG.	FG	ATT	PCT	3FG	ATT	PCT	FT	ATT	PCT	OFF	DEF	TOT	AVG.	PF	D	AST	A/G	TO	B	S	TP	AVG.
2019-20	6	6	147	24.5	18	47	.383	15	41	.366	4	4	1.000	0	10	10	1.7	7	0	8	1.3	7	1	4	55	9.2
TOTAL	6	6	147	24.5	18	47	.383	15	41	.366	4	4	1.000	0	10	10	1.7	7	0	8	1.3	7	1	4	55	9.2



MADDI PULI

11 FRESHMAN

GUARD/FORWARD | 6-2

WERRIBEE, AUSTRALIA

MACKILLOP COLLEGE

2019-20 GAME-BY-GAME STATISTICS

DATE	OPPONENT	MIN	FG	3FG	FT	O-D-R	A	T/O	B	S	TP
11/5	Robert Morris	-	-	-	-	DNP	-	-	-	-	-
11/10	Cornell	-	-	-	-	DNP	-	-	-	-	-
11/14	Nicholls State	-	-	-	-	DNP	-	-	-	-	-
11/20	at SMU	-	-	-	-	DNP	-	-	-	-	-
11/26	at Army	-	-	-	-	DNP	-	-	-	-	-
12/1	Boise State	4	1-1	0-0	0-0	0-1-1	0	0	0	0	2
12/7	Auburn										
12/11	at Texas A&M										
12/15	Ohio										
12/22	Texas State										
12/29	at Middle Tennessee										
1/3	at Texa*										
1/8	Texas Tech*										
1/12	Kansas*										
1/15	at Iowa State*										
1/19	at Oklahoma*										
1/22	Baylor*										
1/26	West Virginia*										
1/29	at Oklahoma State*										
2/1	Kansas State*										
2/8	at Kansas*										
2/12	at Baylor*										
2/16	Iowa State*										
2/19	at Kansas State*										
2/23	Oklahoma State*										
2/26	Texas*										
3/1	at Texas Tech*										
3/4	Oklahoma*										
3/7	at West Virginia*										

SEASON HIGHS

PTS	2	Boise State (12/01/19)
MIN	4	Boise State (12/01/19)
FG	1	Boise State (12/01/19)
FGA	1	Boise State (12/01/19)
3FG	--	--
3FGA	--	--
FT	--	--
FTA	--	--
REB	1	Boise State (12/01/19)
AST	--	--
BLK	--	--
STL	--	--

CAREER HIGHS

PTS	2	Boise State (12/01/19)
MIN	4	Boise State (12/01/19)
FG	1	Boise State (12/01/19)
FGA	1	Boise State (12/01/19)
3FG	--	--
3FGA	--	--
FT	--	--
FTA	--	--
REB	1	Boise State (12/01/19)
AST	--	--
BLK	--	--
STL	--	--

MADDI PULI'S CAREER STATISTICS

OVERALL	GP	GS	MIN	AVG.	FG	ATT	PCT	3FG	ATT	PCT	FT	ATT	PCT	OFF	DEF	TOT	AVG.	PF	D	AST	A/G	TO	B	S	TP	AVG.
2019-20	1	0	4	4.0	1	1	1.000	0	0	.000	0	0	.000	0	1	1	1.0	2	0	0	0.0	0	0	0	2	2.0
TOTAL	1	0	4	4.0	1	1	1.000	0	0	.000	0	0	.000	0	1	1	1.0	2	0	0	0.0	0	0	0	2	2.0



TAVY DIGGS

13 FRESHMAN

GUARD | 6-2

RICHARDSON, TEXAS

PLANO EAST HIGH SCHOOL

2019-20 GAME-BY-GAME STATISTICS

DATE	OPPONENT	MIN	FG	3FG	FT	O-D-R	A	T	B	S	TP
11/5	Robert Morris	-	-	-	-	DNP	-	-	-	-	-
11/10	Cornell	-	-	-	-	DNP	-	-	-	-	-
11/14	Nicholls State	15	2-5	0-0	1-2	1-2-3	0	4	1	1	5
11/20	at SMU	1	0-0	0-0	0-0	0-2-2	0	0	0	0	0
11/26	at Army	1	0-1	0-0	0-0	0-0-0	0	0	0	0	0
12/1	Boise State	2	0-0	0-0	0-0	0-0-0	0	0	0	0	0
12/7	Auburn										
12/11	at Texas A&M										
12/15	Ohio										
12/22	Texas State										
12/29	at Middle Tennessee										
1/3	at Texa*										
1/8	Texas Tech*										
1/12	Kansas*										
1/15	at Iowa State*										
1/19	at Oklahoma*										
1/22	Baylor*										
1/26	West Virginia*										
1/29	at Oklahoma State*										
2/1	Kansas State*										
2/8	at Kansas*										
2/12	at Baylor*										
2/16	Iowa State*										
2/19	at Kansas State*										
2/23	Oklahoma State*										
2/26	Texas*										
3/1	at Texas Tech*										
3/4	Oklahoma*										
3/7	at West Virginia*										

SEASON HIGHS

PTS	5	Nicholls State (11/14/19)
MIN	15	Nicholls State (11/14/19)
FG	2	Nicholls State (11/14/19)
FGA	5	Nicholls State (11/14/19)
3FG	--	--
3FGA	--	--
FT	1	Nicholls State (11/14/19)
FTA	2	Nicholls State (11/14/19)
REB	3	Nicholls State (11/14/19)
AST	--	--
BLK	1	Nicholls State (11/14/19)
STL	1	Nicholls State (11/14/19)

CAREER HIGHS

PTS	5	Nicholls State (11/14/19)
MIN	15	Nicholls State (11/14/19)
FG	2	Nicholls State (11/14/19)
FGA	5	Nicholls State (11/14/19)
3FG	--	--
3FGA	--	--
FT	1	Nicholls State (11/14/19)
FTA	2	Nicholls State (11/14/19)
REB	3	Nicholls State (11/14/19)
AST	--	--
BLK	1	Nicholls State (11/14/19)
STL	1	Nicholls State (11/14/19)

TAVY DIGGS' CAREER STATISTICS

OVERALL	GP	GS	MIN	AVG.	FG	ATT	PCT	3FG	ATT	PCT	FT	ATT	PCT	OFF	DEF	TOT	AVG.	PF	D	AST	A/G	TO	B	S	TP	AVG.
2019-20	4	0	19	4.8	2	6	.333	0	0	.000	1	2	.500	1	4	5	1.3	4	0	0	0.0	4	1	1	5	1.3
TOTAL	4	0	19	4.8	2	6	.333	0	0	.000	1	2	.500	1	4	5	1.3	4	0	0	0.0	4	1	1	5	1.3



JAYDE WOODS

15 SENIOR

GUARD | 6-1
YORBA LINDA, CALIF.
WINDWARD HIGH SCHOOL (OREGON)

2019-20 GAME-BY-GAME STATISTICS

DATE	OPPONENT	MIN	FG	3FG	FT	O-D-R	A	T/O	B	S	TP
11/5	Robert Morris	34	5-9	0-0	10-11	6-4-10	1	1	0	1	20
11/10	Cornell	31	1-7	0-0	2-6	1-1-2	3	5	0	2	4
11/14	Nicholls State	22	2-3	0-0	0-4	2-2-4	5	1	1	1	4
11/20	at SMU	22	2-5	0-0	4-8	4-2-6	1	2	1	0	8
11/26	at Army	33	5-10	0-1	4-10	2-5-7	4	1	0	0	14
12/1	Boise State	23	3-5	1-1	3-6	2-2-4	2	1	0	0	10
12/7	Auburn										
12/11	at Texas A&M										
12/15	Ohio										
12/22	Texas State										
12/29	at Middle Tennessee										
1/3	at Texas*										
1/8	Texas Tech*										
1/12	Kansas*										
1/15	at Iowa State*										
1/19	at Oklahoma*										
1/22	Baylor*										
1/26	West Virginia*										
1/29	at Oklahoma State*										
2/1	Kansas State*										
2/8	at Kansas*										
2/12	at Baylor*										
2/16	Iowa State*										
2/19	at Kansas State*										
2/23	Oklahoma State*										
2/26	Texas*										
3/1	at Texas Tech*										
3/4	Oklahoma*										
3/7	at West Virginia*										

SEASON HIGHS

PTS	20	Robert Morris (11/05/19)
MIN	34	Robert Morris (11/05/19)
FG	5 (2x)	last, at Army (11/26/19)
FGA	10	at Army (11/26/19)
3FG	1	Boise State (12/01/19)
3FGA	1 (2x)	last, Boise State (12/01/19)
FT	10	Robert Morris (11/05/19)
FTA	11	Robert Morris (11/05/19)
REB	10	Robert Morris (11/05/19)
AST	5	Nicholls State (11/14/19)
BLK	1 (2x)	last, at SMU (11/20/19)
STL	2	Cornell (11/10/19)

CAREER HIGHS

PTS	20	Robert Morris (11/05/19)
MIN	36 (2x)	last, at Arkansas (03/28/19)
FG	5 (5x)	last, at Army (11/26/19)
FGA	12	vs Texas (03/09/19)
3FG	3 (2x)	last, vs Texas (03/09/19)
3FGA	7	vs Texas (03/09/19)
FT	10	Robert Morris (11/05/19)
FTA	11	Robert Morris (11/05/19)
REB	10	Robert Morris (11/05/19)
AST	8	Iowa State (02/14/18)
BLK	1 (9x)	last, Nicholls State (11/14/19)
STL	4	Kansas (01/27/19)

JAYDE WOODS' CAREER STATISTICS

OVERALL	GP	GS	MIN	AVG.	FG	ATT	PCT	3FG	ATT	PCT	FT	ATT	PCT	OFF	DEF	TOT	AVG.	PF	D	AST	A/G	TO	B	S	TP	AVG.
2017-18	31	27	687	22.2	59	119	.496	8	20	.400	46	75	.613	27	66	93	3.0	72	2	92	3.0	72	6	22	172	5.5
2018-19	35	22	852	24.3	64	160	.400	15	50	.300	55	91	.604	24	67	91	2.6	80	3	86	2.5	71	2	31	198	5.7
2019-20	6	6	165	27.5	18	39	.462	1	2	.500	23	45	.511	17	16	33	5.5	15	1	16	2.7	11	2	4	60	10.0
TOTAL	72	55	1704	23.7	141	318	.443	24	72	.333	124	211	.588	68	149	217	3.0	167	6	194	2.7	154	10	57	430	6.0



LAUREN HEARD

20 JUNIOR

GUARD | 5-9
DENTON, TEXAS
GUYER HIGH SCHOOL

2019-20 GAME-BY-GAME STATISTICS

DATE	OPPONENT	MIN	FG	3FG	FT	O-D-R	A	T/O	B	S	TP
11/5	Robert Morris	28	7-10	1-1	5-7	0-3-3	3	3	0	2	20
11/10	Cornell	30	5-12	2-4	1-3	1-2-3	4	2	0	1	13
11/14	Nicholls State	14	2-5	0-1	1-2	2-2-4	5	4	0	0	5
11/20	at SMU	29	5-15	0-4	2-3	3-3-6	4	8	0	4	12
11/26	at Army	23	3-8	0-0	4-6	1-5-6	2	1	0	2	10
12/1	Boise State	31	7-11	3-5	8-9	2-3-5	4	4	0	2	25
12/7	Auburn										
12/11	at Texas A&M										
12/15	Ohio										
12/22	Texas State										
12/29	at Middle Tennessee										
1/3	at Texas*										
1/8	Texas Tech*										
1/12	Kansas*										
1/15	at Iowa State*										
1/19	at Oklahoma*										
1/22	Baylor*										
1/26	West Virginia*										
1/29	at Oklahoma State*										
2/1	Kansas State*										
2/8	at Kansas*										
2/12	at Baylor*										
2/16	Iowa State*										
2/19	at Kansas State*										
2/23	Oklahoma State*										
2/26	Texas*										
3/1	at Texas Tech*										
3/4	Oklahoma*										
3/7	at West Virginia*										

SEASON HIGHS

PTS	25	Boise State (12/01/19)
MIN	31	Boise State (12/01/19)
FG	7 (2x)	last, Boise State (12/01/19)
FGA	15	at SMU (11/20/19)
3FG	3	Boise State (12/01/19)
3FGA	5	Boise State (12/01/19)
FT	8	Boise State (12/01/19)
FTA	9	Boise State (12/01/19)
REB	6 (2x)	last, at Army (11/26/19)
AST	5	Nicholls State (11/14/19)
BLK	--	--
STL	4	at SMU (11/20/19)

CAREER HIGHS

PTS	27	Iowa State (02/13/19)
MIN	40	Texas (03/05/19)
FG	7 (3x)	last, Boise State (12/01/19)
FGA	20	Iowa State (02/13/19)
3FG	5	Iowa State (02/13/19)
3FGA	10	Iowa State (02/13/19)
FT	8 (4x)	last, Boise State (12/01/19)
FTA	11	at Oklahoma (03/02/19)
REB	14	Oklahoma State (02/03/19)
AST	6 (4x)	last, Texas-Arlington (03/23/19)
BLK	1 (3x)	last, Montana State (12/08/18)
STL	8	at West Virginia (02/16/19)

LAUREN HEARD'S CAREER STATISTICS

OVERALL	GP	GS	MIN	AVG.	FG	ATT	PCT	3FG	ATT	PCT	FT	ATT	PCT	OFF	DEF	TOT	AVG.	PF	D	AST	A/G	TO	B	S	TP	AVG.
2017-18	36	6	709	19.7	70	187	.374	20	61	.328	63	86	.733	26	81	107	3.0	75	0	61	1.7	56	1	37	223	6.2
2018-19	35	34	993	28.4	92	293	.314	28	107	.262	91	140	.650	33	126	159	4.5	75	1	113	3.2	84	2	63	303	8.7
2019-20	6	6	155	25.8	29	61	.475	6	15	.400	21	30	.700	9	18	27	4.5	15	0	22	3.7	22	0	11	85	14.2
TOTAL	77	46	1857	24.1	191	541	.353	54	183	.295	175	256	.684	68	225	293	3.8	165	1	196	2.5	162	3	111	611	7.9



ALEXANDRIA CRAIN

21 SOPHOMORE

GUARD | 5-9
McKINNEY, TEXAS
DALLAS THUNDER

2019-20 GAME-BY-GAME STATISTICS

DATE	OPPONENT	MIN	FG	3FG	FT	O-D-R	A	T/O	B	S	TP
11/5	Robert Morris	3	0-0	0-0	0-0	0-0-0	0	0	0	0	0
11/10	Cornell	6	1-4	1-2	0-0	0-0-0	0	0	0	0	3
11/14	Nicholls State	18	0-4	0-2	1-4	0-4-4	1	1	0	0	1
11/20	at SMU	6	0-1	0-1	0-0	0-1-1	0	1	0	0	0
11/26	at Army	4	0-0	0-0	0-0	0-0-0	0	1	0	1	0
12/1	Boise State	7	0-0	0-0	0-0	0-0-0	1	3	0	0	0
12/7	Auburn										
12/11	at Texas A&M										
12/15	Ohio										
12/22	Texas State										
12/29	at Middle Tennessee										
1/3	at Texas*										
1/8	Texas Tech*										
1/12	Kansas*										
1/15	at Iowa State*										
1/19	at Oklahoma*										
1/22	Baylor*										
1/26	West Virginia*										
1/29	at Oklahoma State*										
2/1	Kansas State*										
2/8	at Kansas*										
2/12	at Baylor*										
2/16	Iowa State*										
2/19	at Kansas State*										
2/23	Oklahoma State*										
2/26	Texas*										
3/1	at Texas Tech*										
3/4	Oklahoma*										
3/7	at West Virginia*										

SEASON HIGHS

PTS	3	Cornell (11/10/19)
MIN	18	Nicholls State (11/14/19)
FG	1	Cornell (11/10/19)
FGA	4 (2x)	last, Nicholls State (11/14/19)
3FG	1	Cornell (11/10/19)
3FGA	2 (2x)	last, Nicholls State (11/14/19)
FT	1	Nicholls State (11/14/19)
FTA	4	Nicholls State (11/14/19)
REB	4	Nicholls State (11/14/19)
AST	1 (2x)	Boise State (12/01/19)
BLK	--	--
STL	1	at Army (11/26/19)

CAREER HIGHS

PTS	11	Texas Tech (01/16/19)
MIN	19	Southern (12/16/18)
FG	4	Texas Tech (01/16/19)
FGA	7	Southern (12/16/18)
3FG	3	Texas Tech (01/16/19)
3FGA	3	Texas Tech (01/16/19)
FT	2 (2x)	last, Army (12/02/18)
FTA	4	Nicholls State (11/14/19)
REB	4	Nicholls State (11/14/19)
AST	4	Texas Tech (01/16/19)
BLK	1	Army (12/02/18)
STL	1 (3x)	last, at Army (11/26/19)

ALEXANDRIA CRAIN'S CAREER STATISTICS

OVERALL	GP	GS	MIN	AVG.	FG	ATT	PCT	3FG	ATT	PCT	FT	ATT	PCT	OFF	DEF	TOT	AVG.	PF	D	AST	A/G	TO	B	S	TP	AVG.
2018-19	23	0	148	6.4	13	37	.351	7	15	.467	4	4	1.000	5	12	17	0.7	13	0	6	0.3	6	1	2	37	1.6
2019-20	6	0	44	7.3	1	9	.111	1	5	.200	1	4	.250	0	5	5	0.8	8	0	2	0.3	6	0	1	4	0.7
TOTAL	29	0	192	6.6	14	46	.304	8	20	.400	5	8	.625	5	17	22	0.8	21	0	8	0.3	12	1	3	41	1.4



MICHELLE BERRY

23 SENIOR

FORWARD | 6-2

MIAMI, FLA.

MIAMI COUNTRY DAY (VIRGINIA TECH)

2019-20 GAME-BY-GAME STATISTICS

DATE	OPPONENT	MIN	FG	3FG	FT	O-D-R	A	T/O	B	S	TP
11/5	Robert Morris	26	2-4	2-4	0-0	0-5-5	1	3	0	1	6
11/10	Cornell	15	1-3	0-0	0-0	0-2-2	1	0	0	0	2
11/14	Nicholls State	14	3-6	0-0	0-2	1-2-3	1	2	0	0	6
11/20	at SMU	20	1-7	1-2	1-6	1-3-4	0	2	0	0	4
11/26	at Army	18	2-4	0-0	1-2	1-0-1	1	0	0	0	5
12/1	Boise State	24	2-6	1-2	2-2	5-8-13	2	2	0	0	7
12/7	Auburn										
12/11	at Texas A&M										
12/15	Ohio										
12/22	Texas State										
12/29	at Middle Tennessee										
1/3	at Texas*										
1/8	Texas Tech*										
1/12	Kansas*										
1/15	at Iowa State*										
1/19	at Oklahoma*										
1/22	Baylor*										
1/26	West Virginia*										
1/29	at Oklahoma State*										
2/1	Kansas State*										
2/8	at Kansas*										
2/12	at Baylor*										
2/16	Iowa State*										
2/19	at Kansas State*										
2/23	Oklahoma State*										
2/26	Texas*										
3/1	at Texas Tech*										
3/4	Oklahoma*										
3/7	at West Virginia*										

SEASON HIGHS

PTS	7	Boise State (12/01/19)
MIN	26	Robert Morris (11/05/19)
FG	3	Nicholls State (11/14/19)
FGA	7	at SMU (11/20/19)
3FG	2	Robert Morris (11/05/19)
3FGA	4	Robert Morris (11/05/19)
FT	2	Boise State (12/01/19)
FTA	6	at SMU (11/20/19)
REB	13	Boise State (12/01/19)
AST	2	Boise State (12/01/19)
BLK	--	--
STL	1	Robert Morris (11/05/19)

CAREER HIGHS

PTS	38	Portland State (11/13/15) ^
MIN	42	Wyoming (11/24/15) ^
FG	13	Portland State (11/13/15) ^
FGA	27 (2x)	last, at Hawaii (01/28/16) ^
3FG	3 (2x)	last, Cornell (12/21/15) ^
3FGA	7	Cornell (12/21/15) ^
FT	9	Portland State (11/13/15) ^
FTA	16	Portland State (11/13/15) ^
REB	14	Cal Poly (02/18/16) ^
AST	6	at Long Beach State (01/20/16) ^
BLK	1 (10x)	last, Clemson (02/18/18) *
STL	5	at Pepperdine (11/20/15) ^

* - at Virginia Tech | ^ - at Cal State Fullerton

MICHELLE BERRY'S CAREER STATISTICS

OVERALL	GP	GS	MIN	AVG.	FG	ATT	PCT	3FG	ATT	PCT	FT	ATT	PCT	OFF	DEF	TOT	AVG.	PF	D	AST	A/G	TO	B	S	TP	AVG.
2019-20	6	0	117	19.5	11	30	.367	4	8	.500	4	12	.333	8	20	28	4.7	10	0	6	1.0	9	0	1	30	5.0
TOTAL	6	0	117	19.5	11	30	.367	4	8	.500	4	12	.333	8	20	28	4.7	10	0	6	1.0	9	0	1	30	5.0



KIANNA RAY

25 SENIOR

GUARD | 6-1

AUSTIN, TEXAS

BOWIE HIGH SCHOOL

2019-20 GAME-BY-GAME STATISTICS

DATE	OPPONENT	MIN	FG	3FG	FT	O-D-R	A	T/O	B	S	TP
11/5	Robert Morris	36	4-16	2-9	2-6	0-3-3	0	3	2	4	12
11/10	Cornell	38	5-15	3-7	1-2	2-7-9	1	0	3	2	14
11/14	Nicholls State	27	6-14	2-7	0-0	2-4-6	4	0	1	1	14
11/20	at SMU	39	3-10	2-6	2-4	1-3-4	2	1	1	1	10
11/26	at Army	37	3-13	2-8	2-2	0-5-5	2	3	2	2	10
12/1	Boise State	38	5-12	2-5	2-5	3-4-7	3	2	0	3	14
12/7	Auburn										
12/11	at Texas A&M										
12/15	Ohio										
12/22	Texas State										
12/29	at Middle Tennessee										
1/3	at Texas*										
1/8	Texas Tech*										
1/12	Kansas*										
1/15	at Iowa State*										
1/19	at Oklahoma*										
1/22	Baylor*										
1/26	West Virginia*										
1/29	at Oklahoma State*										
2/1	Kansas State*										
2/8	at Kansas*										
2/12	at Baylor*										
2/16	Iowa State*										
2/19	at Kansas State*										
2/23	Oklahoma State*										
2/26	Texas*										
3/1	at Texas Tech*										
3/4	Oklahoma*										
3/7	at West Virginia*										

SEASON HIGHS

PTS	14 (3x)	last, Boise State (12/01/19)
MIN	39	at SMU (11/20/19)
FG	6	Nicholls State (11/14/19)
FGA	16	Robert Morris (11/05/19)
3FG	3	Cornell (11/10/19)
3FGA	9	Robert Morris (11/05/19)
FT	2 (4x)	last, Boise State (12/01/19)
FTA	6	Robert Morris (11/05/19)
REB	9	Cornell (11/10/19)
AST	4	Nicholls State (11/14/19)
BLK	3	Cornell (11/10/19)
STL	4	Robert Morris (11/05/19)

CAREER HIGHS

PTS	24	Texas Tech (01/16/19)
MIN	40 (5x)	last, Texas (03/05/19)
FG	10	Texas Tech (01/16/19)
FGA	19	Texas Tech (01/16/19)
3FG	6	SMU (11/18/18)
3FGA	12	Oklahoma State (02/03/19)
FT	8	vs Oklahoma (03/03/18)
FTA	8 (5x)	last, vs Oklahoma (03/03/18)
REB	11 (2x)	last, at West Virginia (01/13/18)
AST	10	Duquesne (11/06/18)
BLK	4	Butler (11/30/16)
STL	5	Texas Tech (01/16/19)

KIANNA RAY'S CAREER STATISTICS

OVERALL	GP	GS	MIN	AVG.	FG	ATT	PCT	3FG	ATT	PCT	FT	ATT	PCT	OFF	DEF	TOT	AVG.	PF	D	AST	A/G	TO	B	S	TP	AVG.
2016-17	30	28	774	25.8	64	171	.374	22	61	.361	50	71	.704	12	86	98	3.3	53	3	69	2.3	42	29	38	200	6.7
2017-18	30	18	830	27.7	82	209	.392	29	91	.319	51	69	.739	11	100	111	3.7	70	3	109	3.6	64	30	42	244	8.1
2018-19	35	35	1209	34.5	119	323	.368	75	209	.359	44	67	.657	21	87	108	3.1	64	1	142	4.1	66	31	66	357	10.2
2019-20	6	6	215	35.8	26	80	.325	13	42	.310	9	19	.474	8	26	34	5.7	11	0	12	2.0	9	9	13	74	12.3
TOTAL	101	87	3028	30.0	291	783	.372	139	403	.345	154	226	.681	52	299	351	3.5	198	7	332	3.3	181	99	159	875	8.7



ELLA HELLESSEY

31 SENIOR

FORWARD | 6-2

DOMANA, AUSTRALIA

PADUA COLLEGE

2019-20 GAME-BY-GAME STATISTICS

DATE	OPPONENT	MIN	FG	3FG	FT	O-D-R	A	T/O	B	S	TP
11/5	Robert Morris	-	-	-	-	DNP	-	-	-	-	-
11/10	Cornell	3	0-0	0-0	0-0	0-0-0	2	0	0	0	0
11/14	Nicholls State	11	1-3	0-0	0-0	0-3-3	0	0	2	0	2
11/20	at SMU	-	-	-	-	DNP	-	-	-	-	-
11/26	at Army	1	0-0	0-0	0-0	0-1-1	0	0	0	0	0
12/1	Boise State	1	0-1	0-1	0-0	0-2-2	0	1	0	0	0
12/7	Auburn										
12/11	at Texas A&M										
12/15	Ohio										
12/22	Texas State										
12/29	at Middle Tennessee										
1/3	at Texas*										
1/8	Texas Tech*										
1/12	Kansas*										
1/15	at Iowa State*										
1/19	at Oklahoma*										
1/22	Baylor*										
1/26	West Virginia*										
1/29	at Oklahoma State*										
2/1	Kansas State*										
2/8	at Kansas*										
2/12	at Baylor*										
2/16	Iowa State*										
2/19	at Kansas State*										
2/23	Oklahoma State*										
2/26	Texas*										
3/1	at Texas Tech*										
3/4	Oklahoma*										
3/7	at West Virginia*										

SEASON HIGHS

PTS	2	Nicholls State (11/14/19)
MIN	11	Nicholls State (11/14/19)
FG	1	Nicholls State (11/14/19)
FGA	3	Nicholls State (11/14/19)
3FG	--	--
3FGA	1	Boise State (12/01/19)
FT	--	--
FTA	--	--
REB	3	Nicholls State (11/14/19)
AST	2	Cornell (11/10/19)
BLK	2	Nicholls State (11/14/19)
STL	--	--

CAREER HIGHS

PTS	11	Mississippi Valley State (11/11/18)
MIN	21	Mississippi Valley State (11/11/18)
FG	5	Mississippi Valley State (11/11/18)
FGA	8	Mississippi Valley State (11/11/18)
3FG	2	Prairie View A&M (03/21/19)
3FGA	5	at Iowa State (01/09/19)
FT	2 (2x)	last, Oklahoma (01/27/18)
FTA	3	Alcorn State (12/20/16)
REB	8 (2x)	last, Alcorn State (12/20/16)
AST	4	Grambling (11/22/16)
BLK	2 (4x)	last, Army (12/02/18)
STL	1 (10x)	last, Texas-Arlington (03/23/19)

ELLA HELLESSEY'S CAREER STATISTICS

OVERALL	GP	GS	MIN	AVG.	FG	ATT	PCT	3FG	ATT	PCT	FT	ATT	PCT	OFF	DEF	TOT	AVG.	PF	D	AST	A/G	TO	B	S	TP	AVG.
2016-17	17	0	97	5.7	14	28	.500	1	6	.167	3	5	.600	7	21	28	1.6	12	0	7	0.4	8	5	4	32	1.9
2017-18	19	0	98	5.2	18	40	.450	6	15	.400	2	2	1.000	7	19	26	1.4	6	0	7	0.4	10	5	4	44	2.3
2018-19	18	0	106	5.9	13	36	.361	4	18	.222	0	0	.000	8	18	26	1.4	6	0	5	0.3	9	9	2	30	1.7
2019-20	4	0	16	4.0	1	4	.250	0	1	.000	0	0	.000	0	6	6	1.5	3	0	2	0.5	1	2	0	2	0.5
TOTAL	58	0	317	5.5	46	108	.426	11	40	.275	5	7	.714	22	64	86	1.5	27	0	21	0.4	28	21	10	108	1.9



ADEOLA AKOMALAFE

33 SENIOR

FORWARD | 6-1

EL PASO, TEXAS

EL DORADO HIGH SCHOOL

2019-20 GAME-BY-GAME STATISTICS

DATE	OPPONENT	MIN	FG	3FG	FT	O-D-R	A	T/O	B	S	TP
11/5	Robert Morris	31	0-3	0-0	0-0	0-2-2	2	1	1	1	0
11/10	Cornell	18	2-5	0-0	0-0	2-1-3	0	0	0	0	4
11/14	Nicholls State	17	3-3	0-0	0-2	3-4-7	4	3	0	3	6
11/20	at SMU	18	0-3	0-0	2-2	0-2-2	0	2	1	1	2
11/26	at Army	22	2-8	0-0	0-0	3-3-6	1	2	2	1	4
12/1	Boise State	28	2-11	0-0	2-3	3-3-6	1	4	1	1	6
12/7	Auburn										
12/11	at Texas A&M										
12/15	Ohio										
12/22	Texas State										
12/29	at Middle Tennessee										
1/3	at Texas*										
1/8	Texas Tech*										
1/12	Kansas*										
1/15	at Iowa State*										
1/19	at Oklahoma*										
1/22	Baylor*										
1/26	West Virginia*										
1/29	at Oklahoma State*										
2/1	Kansas State*										
2/8	at Kansas*										
2/12	at Baylor*										
2/16	Iowa State*										
2/19	at Kansas State*										
2/23	Oklahoma State*										
2/26	Texas*										
3/1	at Texas Tech*										
3/4	Oklahoma*										
3/7	at West Virginia*										

SEASON HIGHS

PTS	6 (2x)	last, Boise State (12/01/19)
MIN	31	Robert Morris (11/05/19)
FG	3	Nicholls State (11/14/19)
FGA	11	Boise State (12/01/19)
3FG	--	--
3FGA	--	--
FT	2 (2x)	last, Boise State (12/01/19)
FTA	2 (3x)	last, Boise State (12/01/19)
REB	7	Nicholls State (11/14/19)
AST	4	Nicholls State (11/14/19)
BLK	2	at Army (11/26/19)
STL	3	Nicholls State (11/14/19)

CAREER HIGHS

PTS	15 (2x)	last, Alcorn State (12/29/18)
MIN	33	at Kansas State (01/30/19)
FG	7 (2x)	last, Alcorn State (12/29/18)
FGA	9	Southern (12/16/18)
3FG	1 (4x)	last, at Oklahoma State (01/06/19)
3FGA	4	at Iowa State (01/09/19)
FT	4 (4x)	last, Northwestern State (12/17/17)
FTA	6 (2x)	last, Kansas State (02/23/19)
REB	13	Alcorn State (12/20/16)
AST	6	Oklahoma (01/22/19)
BLK	3	vs Oklahoma (03/03/18)
STL	5	Oklahoma (02/25/17)

ADEOLA AKOMALAFE'S CAREER STATISTICS

OVERALL	GP	GS	MIN	AVG.	FG	ATT	PCT	3FG	ATT	PCT	FT	ATT	PCT	OFF	DEF	TOT	AVG.	PF	D	AST	A/G	TO	B	S	TP	AVG.
2015-16	5	0	59	11.8	6	17	.353	0	2	.000	2	4	.500	6	6	12	2.4	11	0	2	0.4	2	3	4	14	2.8
2016-17	30	9	437	14.6	28	68	.412	0	0	.000	26	35	.743	49	66	115	3.8	67	0	23	0.8	34	18	14	82	2.7
2017-18	36	22	491	13.6	40	69	.580	2	2	1.000	20	28	.714	35	69	104	2.9	76	1	41	1.1	19	21	12	102	2.8
2018-19	35	22	751	21.5	56	133	.421	2	21	.095	21	43	.488	58	66	124	3.5	83	1	57	1.6	29	18	35	135	3.9
2019-20	6	6	134	22.3	9	33	.273	0	0	.000	4	7	.571	11	15	26	4.3	18	0	8	1.3	12	5	7	22	3.7
TOTAL	112	59	1872	16.7	139	320	.434	4	25	.160	73	117	.624	159	222	381	3.4	255	2	131	1.2	96	65	72	355	3.2

TCU BASKETBALL COMBINED STATISTICS

Game Records

Record	Overall	Home	Away	Neutral
ALL GAMES	6-0	4-0	2-0	0-0
CONFERENCE	0-0	0-0	0-0	0-0
NON-CONFERENCE	6-0	4-0	2-0	0-0

Score by Periods

Team	1st	2nd	3rd	4th	OT	TOT
TCU	110	100	94	93	0	397
Opponents	74	75	106	75	0	330

Team Box Score

No.	Player	Total			3-Point		F-Throw		Rebounds				Other Stats									
		GP-GS	MIN	AVG	FG-FGA	FG%	3FG-FGA	3FG%	FT-FTA	FT%	OFF	DEF	TOT	AVG	PF	DQ	A	TO	BLK	STL	PTS	AVG
20	HEARD, Lauren	6-6	155:38	25.9	29-61	.475	6-15	.400	21-30	.700	9	18	27	4.5	15	0	22	22	0	11	85	14.2
25	RAY, Kianna	6-6	213:21	35.6	26-80	.325	13-42	.310	9-19	.474	8	26	34	5.7	11	0	12	9	9	13	74	12.3
15	WOODS, Jayde	6-6	167:13	27.9	18-39	.462	1-2	.500	23-45	.511	17	16	33	5.5	15	1	16	11	2	4	60	10.0
10	BRADLEY, Jaycee	6-6	147:52	24.6	18-47	.383	15-41	.366	4-4	1.000	0	10	10	1.7	7	0	8	7	1	4	55	9.2
23	BERRY, Michelle	6-0	114:17	19.0	11-30	.367	4-8	.500	4-12	.333	8	20	28	4.7	10	0	6	9	0	1	30	5.0
1	PAYNE, Ryann	6-0	78:26	13.1	10-25	.400	1-4	.250	3-4	.750	1	4	5	0.8	5	0	10	6	0	11	24	4.0
33	AKOMOLAFE, Adeola	6-6	132:37	22.1	9-33	.273	0-0	.000	4-7	.571	11	15	26	4.3	18	0	8	12	5	7	22	3.7
5	MORRIS, Yummy	6-0	72:33	12.1	9-22	.409	0-0	.000	2-4	.500	12	11	23	3.8	16	0	1	7	7	4	20	3.3
2	OBINMA, Becky	6-0	33:40	5.6	6-10	.600	0-0	.000	2-8	.250	7	7	14	2.3	9	0	2	5	2	1	14	2.3
11	PULI, Madi	1-0	03:44	3.7	1-1	1.000	0-0	.000	0-0	.000	0	1	1	1.0	2	0	0	0	0	0	2	2.0
13	DIGGS, Tavy	4-0	19:52	5.0	2-6	.333	0-0	.000	1-2	.500	1	4	5	1.3	4	0	0	4	1	1	5	1.3
21	CRAIN, Alexandria	6-0	44:09	7.4	1-9	.111	1-5	.200	1-4	.250	0	5	5	0.8	8	0	2	6	0	1	4	0.7
31	HELLESSEY, Ella	4-0	16:28	4.1	1-4	.250	0-1	.000	0-0	.000	0	6	6	1.5	3	0	2	1	2	0	2	0.5
Team											16	16	32					2				
Total		6	1200		141-367	.384	41-118	.347	74-139	.532	90	159	249	41.5	123	1	89	101	29	58	397	66.2
Opponents		6	1200		123-329	.374	26-97	.268	58-107	.542	70	164	234	39.0	132	-	77	133	16	38	330	55.0

Team Statistics

	TCU	OPP
Scoring	397	330
Points per game	66.2	55.0
Scoring margin	+11.2	-
Field goals-att	141-367	123-329
Field goal pct	.384	.374
3 point fg-att	41-118	26-97
3-point FG pct	.347	.268
3-pt FG made per game	6.8	4.3
Free throws-att	74-139	58-107
Free throw pct	.532	.542
F-Throws made per game	12.3	9.7
Rebounds	249	234
Rebounds per game	41.5	39.0
Rebounding margin	+2.5	-
Assists	89	77
Assists per game	14.8	12.8
Turnovers	101	133
Turnovers per game	16.8	22.2
Turnover margin	+5.3	-
Assist/turnover ratio	0.9	0.6
Steals	58	38
Steals per game	9.7	6.3
Blocks	29	16
Blocks per game	4.8	2.7
Winning streak	6	-
Home win streak	4	-
Attendance	9684	1191
Home games-Avg/Game	4-2421	2-596
Neutral site-Avg/Game	-	0-0

Team Results

Date	Opponent	W/L	Score	Att.
11/05/2019	Robert Morris	W	66-61	3922
11/10/2019	Cornell	W	59-49	1755
11/14/2019	Nicholls St.	W	72-47	1800
11/20/2019	at SMU	W	57-56	658
11/26/2019	at Army West Point	W	66-52	533
12/01/2019	Boise St.	W	77-65	2207



OVERALL STATISTICS

Game Records

Record	Overall	Home	Away	Neutral
ALL GAMES	6-0	4-0	2-0	0-0
CONFERENCE	0-0	0-0	0-0	0-0
NON-CONFERENCE	6-0	4-0	2-0	0-0

Team Box Score

No.	Player	Total			3-Point		F-Throw		Rebounds				Other Stats									
		GP-GS	MIN	AVG	FG-FGA	FG%	3FG-FGA	3FG%	FT-FTA	FT%	OFF	DEF	TOT	AVG	PF	DQ	A	TO	BLK	STL	PTS	AVG
20	HEARD, Lauren	6-6	155:38	25.9	29-61	.475	6-15	.400	21-30	.700	9	18	27	4.5	15	0	22	22	0	11	85	14.2
25	RAY, Kianna	6-6	213:21	35.6	26-80	.325	13-42	.310	9-19	.474	8	26	34	5.7	11	0	12	9	9	13	74	12.3
15	WOODS, Jayde	6-6	167:13	27.9	18-39	.462	1-2	.500	23-45	.511	17	16	33	5.5	15	1	16	11	2	4	60	10.0
10	BRADLEY, Jaycee	6-6	147:52	24.6	18-47	.383	15-41	.366	4-4	1.000	0	10	10	1.7	7	0	8	7	1	4	55	9.2
23	BERRY, Michelle	6-0	114:17	19.0	11-30	.367	4-8	.500	4-12	.333	8	20	28	4.7	10	0	6	9	0	1	30	5.0
1	PAYNE, Ryann	6-0	78:26	13.1	10-25	.400	1-4	.250	3-4	.750	1	4	5	0.8	5	0	10	6	0	11	24	4.0
33	AKOMOLAFE, Adeola	6-6	132:37	22.1	9-33	.273	0-0	.000	4-7	.571	11	15	26	4.3	18	0	8	12	5	7	22	3.7
5	MORRIS, Yummy	6-0	72:33	12.1	9-22	.409	0-0	.000	2-4	.500	12	11	23	3.8	16	0	1	7	7	4	20	3.3
2	OBINMA, Becky	6-0	33:40	5.6	6-10	.600	0-0	.000	2-8	.250	7	7	14	2.3	9	0	2	5	2	1	14	2.3
11	PULI, Madi	1-0	03:44	3.7	1-1	1.000	0-0	.000	0-0	.000	0	1	1	1.0	2	0	0	0	0	0	2	2.0
13	DIGGS, Tavy	4-0	19:52	5.0	2-6	.333	0-0	.000	1-2	.500	1	4	5	1.3	4	0	0	4	1	1	5	1.3
21	CRAIN, Alexandria	6-0	44:09	7.4	1-9	.111	1-5	.200	1-4	.250	0	5	5	0.8	8	0	2	6	0	1	4	0.7
31	HELLESSEY, Ella	4-0	16:28	4.1	1-4	.250	0-1	.000	0-0	.000	0	6	6	1.5	3	0	2	1	2	0	2	0.5
Team											16	16	32				2					
Total		6	1200		141-367	.384	41-118	.347	74-139	.532	90	159	249	41.5	123	1	89	101	29	58	397	66.2
Opponents		6	1200		123-329	.374	26-97	.268	58-107	.542	70	164	234	39.0	132	-	77	133	16	38	330	55.0

Score by Periods

Team	1st	2nd	3rd	4th	OT	TOT
TCU	110	100	94	93	0	397
Opponents	74	75	106	75	0	330

BIG 12 ONLY STATISTICS (2018-19)

RECORD:	OVERALL	HOME	AWAY	NEUTRAL
ALL GAMES	10-8	6-3	4-5	0-0
CONFERENCE	10-8	6-3	4-5	0-0
NON-CONFERENCE	0-0	0-0	0-0	0-0

#	Player	Total			3-Point		F-Throw		Rebounds				Other Stats									
		gp-gs	min	avg	fg-fga	fg%	3fg-fga	3fg%	ft-fa	ft%	off	def	tot	avg	pf	dq	a	to	blk	stl	pts	avg
22	Moore, Jordan	18-18	555	30.8	114-204	.559	0-1	.000	77-120	.642	71	91	162	9.0	39	0	24	40	49	27	305	16.9
00	Okonkwo, Amy	18-14	484	26.9	95-219	.434	39-100	.390	34-38	.895	22	90	112	6.2	44	0	13	37	6	16	263	14.6
20	Heard, Lauren	18-18	541	30.1	54-162	.333	15-54	.278	63-96	.656	18	65	83	4.6	41	1	64	48	0	37	186	10.3
25	Ray, Kianna	18-18	670	37.2	63-174	.362	33-107	.308	19-32	.594	13	38	51	2.8	38	1	56	38	14	28	178	9.9
15	Woods, Jayde	18-5	427	23.7	35-89	.393	7-25	.280	34-53	.642	11	24	35	1.9	45	2	36	42	1	18	111	6.2
24	Vann, Dakota	18-0	280	15.6	23-65	.354	2-27	.074	13-19	.684	9	16	25	1.4	42	1	8	16	3	14	61	3.4
33	Akomolafe, Adeola	18-17	408	22.7	19-60	.317	1-11	.091	11-20	.550	20	35	55	3.1	47	1	26	15	8	22	50	2.8
01	Payne, Ryann	16-0	121	7.6	12-45	.267	2-10	.200	3-9	.333	4	13	17	1.1	13	0	5	13	0	6	29	1.8
05	Morris, Yummy	10-0	44	4.4	4-11	.364	0-0	.000	7-9	.778	5	8	13	1.3	6	0	1	4	2	1	15	1.5
21	Crain, Alexandria	11-0	53	4.8	5-13	.385	4-8	.500	0-0	.000	2	1	3	0.3	8	0	4	1	0	0	14	1.3
31	Hellessey, Ella	5-0	17	3.4	1-7	.143	1-6	.167	0-0	.000	0	3	3	0.6	0	0	2	0	1	0	3	0.6
Team											36	28	64				13					
Total.....		18	3600		425-1049	.405	104-349	.298	261-396	.659	211	412	623	34.6	323	6	239	267	84	169	1215	67.5
Opponents.....		18	3600		447-1044	.428	103-314	.328	232-315	.737	214	479	693	38.5	353	-	258	312	65	138	1229	68.3

Score by Periods	1st	2nd	3rd	4th	Totals
TCU	290	262	328	335	1215
Opponents	300	276	344	309	1229

TCU BASKETBALL SEASON/CAREER STATISTICS



2019-20 TCU Women's Basketball
Season/Career Statistics
All games

Page 1/1
as of Dec 04, 2019

Summary

Player	Season Statistics										Career Statistics									
	GP-GS	MIN/G	FG%	3FG%	FT%	R/G	A/G	STL	BLK	PTS/G	GP-GS	MIN/G	FG%	3FG%	FT%	R/G	A/G	STL	BLK	PTS/G
AKOMOLAFE, Adeola	6-6	22.1	.273	.000	.571	4.3	1.3	7	5	3.7	112-59	16.7	.434	.160	.624	3.4	1.2	72	65	3.2
BERRY, Michelle	6-0	19.0	.367	.500	.333	4.7	1.0	1	0	5.0	6-0	19.0	.367	.500	.333	4.7	1.0	1	0	5.0
BRADLEY, Jaycee	6-6	24.6	.383	.366	1.000	1.7	1.3	4	1	9.2	6-6	24.6	.383	.366	1.000	1.7	1.3	4	1	9.2
CRAIN, Alexandria	6-0	7.4	.111	.200	.250	0.8	0.3	1	0	0.7	29-0	6.6	.304	.400	.625	0.8	0.3	3	1	1.4
DIGGS, Tavy	4-0	5.0	.333	.000	.500	1.3	0.0	1	1	1.3	4-0	5.0	.333	.000	.500	1.3	0.0	1	1	1.3
HEARD, Lauren	6-6	25.9	.475	.400	.700	4.5	3.7	11	0	14.2	77-46	24.1	.353	.295	.684	3.8	2.5	111	3	7.9
HELLESSEY, Ella	4-0	4.1	.250	.000	.000	1.5	0.5	0	2	0.5	58-0	5.5	.426	.275	.714	1.5	0.4	10	21	1.9
MORRIS, Yummy	6-0	12.1	.409	.000	.500	3.8	0.2	4	7	3.3	31-0	7.8	.452	.000	.711	2.5	0.1	10	25	3.2
OBINMA, Becky	6-0	5.6	.600	.000	.250	2.3	0.3	1	2	2.3	6-0	5.6	.600	.000	.250	2.3	0.3	1	2	2.3
PAYNE, Ryann	6-0	13.1	.400	.250	.750	0.8	1.7	11	0	4.0	38-0	8.8	.289	.207	.519	0.9	0.8	28	0	2.4
PULI, Madi	1-0	3.7	1.000	.000	.000	1.0	0.0	0	0	2.0	1-0	3.7	1.000	.000	.000	1.0	0.0	0	0	2.0
RAY, Kianna	6-6	35.6	.325	.310	.474	5.7	2.0	13	9	12.3	101-87	30.0	.372	.345	.681	3.5	3.3	159	99	8.7
WOODS, Jayde	6-6	27.9	.462	.500	.511	5.5	2.7	4	2	10.0	72-55	23.7	.443	.333	.588	3.0	2.7	57	10	6.0

Scoring

Player	Season Statistics								Career Statistics							
	FG-FGA	FG%	3FG-3FGA	3FG%	FT-FTA	FT%	PTS	PTS/G	FG-FGA	FG%	3FG-3FGA	3FG%	FT-FTA	FT%	PTS	PTS/G
AKOMOLAFE, Adeola	9-33	.273	0-0	.000	4-7	.571	22	3.7	139-320	.434	4-25	.160	73-117	.624	355	3.2
BERRY, Michelle	11-30	.367	4-8	.500	4-12	.333	30	5.0	11-30	.367	4-8	.500	4-12	.333	30	5.0
BRADLEY, Jaycee	18-47	.383	15-41	.366	4-4	1.000	55	9.2	18-47	.383	15-41	.366	4-4	1.000	55	9.2
CRAIN, Alexandria	1-9	.111	1-5	.200	1-4	.250	4	0.7	14-46	.304	8-20	.400	5-8	.625	41	1.4
DIGGS, Tavy	2-6	.333	0-0	.000	1-2	.500	5	1.3	2-6	.333	0-0	.000	1-2	.500	5	1.3
HEARD, Lauren	29-61	.475	6-15	.400	21-30	.700	85	14.2	191-541	.353	54-183	.295	175-256	.684	611	7.9
HELLESSEY, Ella	1-4	.250	0-1	.000	0-0	.000	2	0.5	46-108	.426	11-40	.275	5-7	.714	108	1.9
MORRIS, Yummy	9-22	.409	0-0	.000	2-4	.500	20	3.3	33-73	.452	0-0	.000	32-45	.711	98	3.2
OBINMA, Becky	6-10	.600	0-0	.000	2-8	.250	14	2.3	6-10	.600	0-0	.000	2-8	.250	14	2.3
PAYNE, Ryann	10-25	.400	1-4	.250	3-4	.750	24	4.0	35-121	.289	6-29	.207	14-27	.519	90	2.4
PULI, Madi	1-1	1.000	0-0	.000	0-0	.000	2	2.0	1-1	1.000	0-0	.000	0-0	.000	2	2.0
RAY, Kianna	26-80	.325	13-42	.310	9-19	.474	74	12.3	291-783	.372	139-403	.345	154-226	.681	875	8.7
WOODS, Jayde	18-39	.462	1-2	.500	23-45	.511	60	10.0	141-318	.443	24-72	.333	124-211	.588	430	6.0

Totals

Player	Season Statistics								Career Statistics							
	O-REB	D-REB	TOTAL	PF	FO	A	TO	A/TO	O-REB	D-REB	TOTAL	PF	FO	A	TO	A/TO
AKOMOLAFE, Adeola	11	15	26	18	0	8	12	0.7	159	222	381	255	2	131	96	1.4
BERRY, Michelle	8	20	28	10	0	6	9	0.7	8	20	28	10	0	6	9	0.7
BRADLEY, Jaycee	0	10	10	7	0	8	7	1.1	0	10	10	7	0	8	7	1.1
CRAIN, Alexandria	0	5	5	8	0	2	6	0.3	5	17	22	21	0	8	12	0.7
DIGGS, Tavy	1	4	5	4	0	0	4	0.0	1	4	5	4	0	0	4	0.0
HEARD, Lauren	9	18	27	15	0	22	22	1.0	68	225	293	165	1	196	162	1.2
HELLESSEY, Ella	0	6	6	3	0	2	1	2.0	22	64	86	27	0	21	28	0.8
MORRIS, Yummy	12	11	23	16	0	1	7	0.1	31	45	76	42	0	4	29	0.1
OBINMA, Becky	7	7	14	9	0	2	5	0.4	7	7	14	9	0	2	5	0.4
PAYNE, Ryann	1	4	5	5	0	10	6	1.7	10	26	36	26	0	32	36	0.9
PULI, Madi	0	1	1	2	0	0	0	0.0	0	1	1	2	0	0	0	0.0
RAY, Kianna	8	26	34	11	0	12	9	1.3	52	299	351	198	7	331	181	1.8
WOODS, Jayde	17	16	33	15	1	16	11	1.5	68	149	217	167	5	194	154	1.3