



2011-12 Auburn Women's Basketball

Game 5 • November 27, 2011

vs. South Carolina-Upstate

18 NCAA Tournament Appearances • Three Final Fours • Five SEC Titles • Four SEC Tournament Titles

AUBURN MEDIA RELATIONS

Associate Director/WBB Contact: Matt Crouch • mcrouch@auburn.edu

Auburn Athletic Complex / 392 South Donahue / Auburn, AL 36849

O: 334.844.9800 • C: 334.740.4109 • F: 334.844.9807

www.AuburnTigers.com

Twitter: @AuburnWBB • Facebook: [facebook.com/AUWBB](https://www.facebook.com/AUWBB)

2011-12 SCHEDULE/RESULTS

OCTOBER		
30	Georgia College	W, 85-25
NOVEMBER		
11	at Mercer	W, 77-43
15	Belmont	W, 80-53
18	at Duke	L, 50-73
23	George Washington	W, 55-47
27	South Carolina-Upstate	2 p.m.
30	Troy	6 p.m.
DECEMBER		
3	at Temple	12 p.m.
14	South Florida	6 p.m.
18	Purdue	2 p.m.
21	1-vs. Marist	1:30 p.m.
22	1-vs. Hofstra or Central Conn. St.	TBA
29	2-vs. North Carolina-Charlotte	7 p.m.
30	2-vs. FIU or Albany	3 or 5 p.m.
JANUARY		
1	Tennessee* (CSS)	2 p.m.
5	at Alabama*	6:30 p.m.
8	Georgia* (CSS)	1 p.m.
12	at Vanderbilt* (CSS)	8 p.m.
15	at Arkansas* (FSN)	1:30 p.m.
19	South Carolina*	6 p.m.
22	at Mississippi State*	2 p.m.
26	Kentucky*	6 p.m.
29	at Ole Miss* (FSN)	1 p.m.
FEBRUARY		
2	Vanderbilt*	6 p.m.
5	at Tennessee* (SECN)	1 p.m.
9	at Florida*	6 p.m.
12	Arkansas* (ESPN2)	1:30 p.m.
19	at LSU*	2 p.m.
23	Alabama* (CSS)	8 p.m.
26	Ole Miss* (FSN)	2:30 p.m.
MARCH		
1-4	Southeastern Conference Tournament	
	Nashville, Tenn. • Bridgestone Arena	
17-20	NCAA Tournament First and Second Rounds	
24-27	NCAA Tournament Regionals	
APRIL		
1-3	NCAA Tournament Final Four	
	Denver, Colo. • Pepsi Center	

* - SEC Game

All Times are Central

1 - Hofstra Holiday Classic (Hempstead, N.Y.)

2 - Sun and Fun Classic (Miami, Fla.)

All home games played at Auburn Arena

Bold indicates home games

www.AuburnTigers.com



VS



GAME 4

[NR/NR] Auburn (3-1) vs. [NR/NR] South Carolina-Upstate (0-5)

When: Sunday, November 27 • 2 p.m. CT

Where: Auburn Arena (9,121) • Auburn, Ala.

TV/Webcast: AuburnTigers.com

Radio: 96.7 WMXA; Andy Burcham (play-by-play), Arnika Edwards (color)

Audio Webcast: AuburnTigers.com

GameTracker: AuburnTigers.com

Series: First Meeting

Last Meeting: First Meeting

Up Next: Auburn will wrap up its three-game homestand with a 6 p.m., Wednesday game against in-state rival Troy

AUBURN PROJECTED STARTERS

No.	Pos.	Name	Ht.	Year	PPG	RPG	Hometown
0	G	Hasina Muhammad	6-1	Fr.	9.3	3.0	Memphis, Tenn.
2	G	Morgan Jennings	5-8	Sr.	5.0	(apg) 6.3	Atlanta, Ga.
14	F	Blanche Alverson	6-3	Jr.	9.8	5.3	Andalusia, Ala.
25	F	Jassany Williams	6-2	So.	7.5	4.3	Davie, Fla.
32	G/F	Tyrese Tanner	6-1	So.	12.5	2.8	Birmingham, Ala.

OFF THE BENCH

3	G	Najat Ouardad	5-1	Jr.	2.8	(spg) 2.0	Orleans, France
4	G	Parrisha Simmons	6-0	Sr.	2.8	5.0	Macon, Ga.
11	G	Courtney Strain	5-9	So.	--	--	Woodland, Ala.
20	C	Pascale West	6-8	Jr.	1.7	1.7	LaGrange, Ga.
22	G	Camille Glymph	5-10	So.	9.5	2.5	Greenville, S.C.
23	F	Chantel Hilliard	6-2	Sr.	5.0	5.8	Biloxi, Miss.
34	C	Peyton Davis	6-5	So.	--	--	Pinson, Ala.

Head Coach: Nell Fortner / Associate Head Coach: Kerry Cremeans / Assistant Coaches: Mark Simons and Carla McGhee

SOUTH CAROLINA-UPSTATE PROJECTED STARTERS

No.	Pos.	Name	Ht.	Year	PPG	RPG	Hometown
1	G	Tyra Smith	5-9	Jr.	5.0	(apg) 4.3	Lawrenceville, Ga.
13	F	Hannah Ohl	5-8	Jr.	7.8	1.4	Danville, Ill.
15	F	Lauren McRoberts	6-1	Jr.	2.7	7.0	Carmel, Ind.
21	F	Madisen Webb	5-10	So.	6.5	5.5	Georgetown, Ky.
23	G	Tee'Ara Copney	5-7	Jr.	16.8	3.4	Asheville, N.C.

Head Coach: Tammy George / Assistant Coaches: Ayana McWilliams, Shawn Poppie and Bill Tinder

Media Information

The Auburn media relations department considers its work with the media a top priority. The 2011-12 Auburn Women's Basketball Almanac has been prepared to assist the working media in their coverage of Tiger basketball. If you have not received a copy, or if you need additional information, interview or photograph requests, or have any questions, please contact Matt Crouch in the media relations office at 334.844.9709.

Interview Policy

Coach Fortner, her assistants and all women's basketball players are available for phone and personal interviews by contacting Matt Crouch in the media relations office. Post-game interviews will be allowed following a 10-minute cooling off period. Non-game day requests will be met based on the players class and practice schedules.

Credentials

Anyone wishing to cover an Auburn women's basketball game should contact Matt Crouch in the media relations office at least one day in advance in order to make the proper arrangements.

On the Air

The Tigers can be heard live locally in Auburn on Mix 96.7 FM for the entire regular and postseasons. Andy Burcham, in his 24th season with the women's basketball program and handles play-by-play duties. Arnika Edwards joins Burcham for her fifth season and provides color commentary. Each game can also be heard live on the internet at www.AuburnTigers.com.

Weekly Live Radio Show

Starting in January, every Tuesday at 6 p.m. CT Nell Fortner will host a live show from Logan's Roadhouse in Tiger Town with Andy Burcham. Fans can listen to the show on 96.7 FM. The number to call in to the show is 1-800-282-2557.

Game-Day Services

Statistics, rosters and game notes will be provided prior to the game in the media work room. Box scores will also be handed out during and following the game. Phones and fax machines are available in the media work room.

Photo/Video Services

Todd Van Emst of the Auburn Media Relations office handles all photo requests. Please contact Van Emst at 334-844-9514. Video highlights of selected Auburn women's basketball games are available for the media. For information on how to access the FTP server, contact Steve Sain in the Auburn Media Relations office at 334.844.9809.

On the Web

The home for Auburn Athletics on the web, www.AuburnTigers.com, is your source for Auburn Women's Basketball. The website offers the most recent information and news on the Tigers. At AuburnTigers.com, you can also listen to each women's basketball game broadcast live and follow along on live scoring for every home game.



Follow Auburn Women's Basketball on Twitter

@AuburnWBB



Become a fan of Auburn Women's Basketball on Facebook

www.Facebook.com/AUWBB

2011-12 Numerical Roster

No.	Name	Height	Position	Class	Hometown/High School
0	Hasina Muhammad	6-1	Guard/Forward	FR	Memphis, Tenn./Ridgeway
2	Morgan Jennings	5-8	Guard	SR	Atlanta, Ga./Frederick Douglass
3	Najat Ouardad	5-1	Guard	JR	Orleans, France/Pensacola St. College
4	Parrisha Simmons	6-0	Guard	SR	Macon, Ga./Southwest Macon
11	Courtney Strain	5-9	Guard	SO	Woodland, Ala./Woodland
14	Blanche Alverson	6-3	Foward/Guard	JR	Andalusia, Ala./Buford (Ga.)
20	Pascale "P.J." West	6-8	Center	JR	LaGrange, Ga./Troup County
22	Camille Glymph	5-10	Guard	SO	Greenville, S.C./J.L. Mann
23	Chantel Hilliard	6-2	Forward/Center	SR	Biloxi, Miss./St. Martin
25	Jassany Williams	6-2	Forward	SO	Davie, Fla./Nova
32	Tyrese Tanner	6-1	Guard/Forward	SO	Birmingham, Ala./Hoover
34	Peyton Davis	6-5	Center	SO	Pinson, Ala./Mortimer Jordan

2011-12 Alphabetical Roster

No.	Name	Height	Pos.	Ht.	Hometown
14	Blanche Alverson	6-3	Foward/Guard	JR	Andalusia, Ala./Buford (Ga.)
34	Peyton Davis	6-5	Center	SO	Pinson, Ala./Mortimer Jordan
22	Camille Glymph	5-10	Guard	SO	Greenville, S.C./J.L. Mann
23	Chantel Hilliard	6-2	Forward/Center	SR	Biloxi, Miss./St. Martin
2	Morgan Jennings	5-8	Guard	SR	Atlanta, Ga./Frederick Douglass
0	Hasina Muhammad	6-1	Guard/Forward	FR	Memphis, Tenn./Ridgeway
3	Najat Ouardad	5-1	Guard	JR	Orleans, France/Pensacola St. College
4	Parrisha Simmons	6-0	Guard	SR	Macon, Ga./Southwest Macon
11	Courtney Strain	5-9	Guard	SO	Woodland, Ala./Woodland
32	Tyrese Tanner	6-1	Guard/Forward	SO	Birmingham, Ala./Hoover
20	Pascale "P.J." West	6-8	Center	JR	LaGrange, Ga./Troup County
25	Jassany Williams	6-2	Forward	SO	Davie, Fla./Nova

STAFF:

Head Coach: Nell Fortner (Texas, 1982)

Associate Head Coach: Kerry Cremeans (Florida, 1994)

Assistant Coach: Mark Simons (Aquinas College, 1972)

Assistant Coach: Carla McGhee (Tennessee, 1990)

Director of Basketball Operations: Melissa Maines (Texas Tech, 1998)

Video Coordinator: Wes Kitchens (Auburn, 2011)

Administrative Assistant: Janese Banks (Wisconsin, 2008)

Director of Administrative Support Services: Arnika Edwards (Alabama A&M, 1991)

Athletic Trainer: Angie Lawrence (Appalachian State, 1997)

BY CLASS:

Seniors (3): Chantel Hilliard, Morgan Jennings, Parrisha Simmons

Juniors (3): Blanche Alverson, Najat Ouardad, Pascale "P.J." West

Sophomores (5): Peyton Davis, Camille Glymph, Courtney Strain, Tyrese Tanner, Jassany Williams

Freshmen (1): Hasina Muhammad

Projected Auburn Starters



Hasina Muhammad

Guard/Forward
6-1
Freshman
Memphis, Tenn.
Ridgeway
9.3 ppg / 3.0 rpg / .519 fg%

0

- Has scored in double figures in 3 of 4 games this season
- Started and scored 12 points in the season-opener at Mercer
- Is one of just nine players all-time at Auburn from Tennessee
- Ranked as the 17th-best guard in the country as a senior by ESPN



Morgan Jennings

Guard
5-8
Senior
Atlanta, Ga.
Frederick Douglass High School
5.0 ppg / 6.3 apg / 4.0 rpg

2

- Leads Auburn with 6.3 assists per game
- Dished out career-high 9 assists vs. Belmont in home-opener
- Started and scored 6 points with 8 assists in the season-opener at Mercer
- Scored career high 16 points vs. Kentucky in final regular-season game



Blanche Alverson

Guard/Forward
6-3
Junior
Andalusia, Ala.
Buford (Ga.) High School
9.8 ppg / 5.3 rpg / .333 3fg%

14

- Coming off season-high 14 points against George Washington
- Came off the bench in season-opener, has started all 3 games since
- Is nine 3-pointers away from tying for 6th in career treys at Auburn
- Notched first career double-double (12 pts./10 rebs.) in season-opener



Jassany Williams

Forward
6-2
Sophomore
Davie, Fla.
Nova High School
7.5 ppg / 4.3 rpg / 3.3 bpg

25

- Her .619 field goal percentage leads Auburn
- Her 7 blocks at Duke tie for 13th all-time at AU in single-game blocks
- Scored 12 points with 7 rebounds vs. Belmont in home-opener
- Notched career-highs of 13 pts vs. USA and 12 rebs vs. Alabama last season



Tyrese Tanner

Guard/Forward
6-1
Sophomore
Hoover, Ala.
Hoover High School
12.5 ppg / 2.8 rpg / 1.0 spg

32

- AU's top scorer with 12.5 ppg through four games
- Coming off an 11-point outing against George Washington
- Scored career-high 16 points vs. Belmont in season-opener
- Pulled down career-high 7 rebounds vs. Tennessee Tech and Toledo

Auburn Women's Basketball Quick Hitters

- Auburn is 3-1 through four games; the Tigers were 1-3 through four games last season
- The USC-Upstate game is the second of a three-game homestand for Auburn, its longest homestand of the season
- Auburn picked up its 800th win in program history last week against Belmont, 80-53
- Blanche Alverson is nine 3-pointers away from tying for 6th all-time at Auburn in career 3-pointers
- USC-Upstate is coming off a 91-84 loss to Norfolk State on Monday; Auburn is coming off a 55-47 win over GW
- This will be the first meeting between Auburn and South Carolina-Upstate
- Auburn is 15-9 all-time against teams from the Atlantic Sun Conference
- South Carolina-Upstate is the third Atlantic Sun team on Auburn's schedule this season (joining Mercer and Belmont)
- Auburn is 8-2 all-time on Nov. 27 and 106-27 all-time in the month of November, 35-14 under Fortner
- The Tigers are 32-18 all-time when playing a team from the State of South Carolina
- This is the first meeting between Nell Fortner and USC-Upstate coach Tammy George
- Auburn is 87-2 under Nell Fortner when scoring 70 or more points in a game
- Nell Fortner has guided Auburn to a 82-35 record in non-conference games
- Auburn's defense has averaged scoring 21.3 points off turnovers in the three games this season
- The Tiger bench has stepped up, averaging 23.0 points per game this season
- Nell Fortner has guided Auburn to an 82-35 record in non-conference games
- When facing non-conference opponents at home, Auburn has a 131-10 record since Jan. 5, 1992
- Auburn returned seven players that had seen time as a starter, accounting for 123 career starts
- The Tigers return three starters from last season, along with seven players who saw time as a starter a year ago
- Auburn was picked ninth in the SEC Preseason Media and Coaches polls, Tennessee was picked to win the league
- Nell Fortner is in her eighth season at Auburn, marking her longest tenure at any job
- The Tigers welcome two newcomers: junior college transfer Najat Ouardad and freshman Hasina Muhammad
- Auburn is coming off a 16-16 season in 2010-11, one that ended with a berth in the WNIT
- The Tigers have advanced to the post-season in four of the last five seasons
- Auburn signed four players during the Early Signing Period: Cabriana Capers (6-1, F, Bolingbrook, Ill.), Chadarryl Clay (5-7, G, Chattanooga, Tenn.), Nicole Tanner (6-3, F, Hoover, Ala.) and Nariah Taylor (6-5, P, Indianapolis, Ind.)

INDIVIDUAL CATEGORY LEADERS

Auburn		South Carolina-Upstate
Tyrese Tanner - 12.5	Points	Tee'Ara Copney - 16.8
Chantel Hilliard - 5.8	Rebounds	Lauren McRoberts - 7.0
Morgan Jennings - 6.3	Assists	Tyra Smith - 4.3
Najat Ouardad - 2.0	Steals	Tyra Smith - 3.8
Jassany Williams - 3.3	Blocks	Tee'Ara Copney - 0.6
Morgan Jennings - 30.3	Minutes Played	Tee'Ara Copney - 33.4
Jassany Williams - .619	Field Goal Percentage	Briana Robinson - .455
Alverson, Glymph, Tanner - .333	3-Point Percentage	Hannah Ohl - .375
Tyrese Tanner - .800	Free-Throw Percentage	Kim Roach - .824

AUBURN WOMEN'S BASKETBALL WEEKLY SCHEDULE

	Monday 21	Tuesday 22	Wednesday 23	Thursday 24	Friday 25	Saturday 26	Sunday 27
Nov. 21 through Nov. 27	Practice 4 - 6 p.m. Auburn Arena	Practice 12 - 2 p.m. Auburn Arena	Auburn vs. George Washington W, 55-47 Auburn Arena	OFF	Practice 1 - 4 p.m. Auburn Arena	Practice 10 a.m. - 12 p.m. Auburn Arena	Auburn vs. USC-Upstate 2 p.m. CT Auburn Arena

General Information

School..... Auburn University
City / Zip..... Auburn, Ala. / 36831
Founded..... Oct. 1, 1856
Enrollment..... 24,602
Nickname..... Tigers
Colors..... Burnt Orange and Navy Blue
Home Court (Capacity)..... Auburn Arena (9,121)
Affiliation..... NCAA Division I
Conference..... Southeastern Conference
President..... Dr. Jay Gogue
Athletic Director..... Jay Jacobs
Senior Women's Administrator..... Meredith Jenkins
University Website..... www.Auburn.edu

Team Information

2010-11 Record (SEC Record)..... 16-16 (8-8)
SEC Finish / Tournament Finish..... T5th / First Round
All-time SEC Record..... 187-157 (.544)
All-time SEC Tournament Record..... 34-28
Starters Returning/Lost..... 3/2
Letterwinners Returning/Lost..... 10/3
Newcomers..... 2
First Year of Basketball..... 1971
All-Time Overall Record..... 801-362 (.689)
NCAA Tournament Appearances/Last..... 18/2009
NCAA Tournament Record..... 29-18
WNIT Appearances/Last..... 3/2011
WNIT Record..... 8-2

Basketball Staff

Head Coach (Alma Mater)..... Nell Fortner (Texas, 1982)
Career Record..... 152-101 (.601) / 9 years
Record at Auburn..... 135-90 (.600) / 8 years
Associate Head Coach (Alma Mater)..... Kerry Cremeans (Florida, 1994)
Assistant Coaches (Alma Mater)..... Mark Simons (Aquinas College, 1972)
..... Carla McGhee (Tennessee, 1990)
Director of Basketball Operations..... Melissa Maines
Director of Administrative Support Services..... Arnika Edwards
Administrative Assistant..... Janese Banks
Video Coordinator..... Wes Kitchens
Secretary..... Ann Yates
Basketball Office Phone..... (334) 844-9200
Basketball Office Fax..... (334) 844-9862
Strength and Conditioning..... Megan Young
Athletic Trainer..... Angie Lawrence
Academic Counselor..... Jenna Sample

Radio Broadcast Information

Radio Station..... WMXA (96.7 FM)
Play-by-Play..... Andy Burcham
Color..... Arnika Edwards
Burcham Email..... aburcham@ounetwork.com
Burcham Office Phone..... (334) 826-2929
Network Address..... Auburn Network, Inc.
..... P.O. Box 950
..... Auburn, AL 36831-0950

SOUTH CAROLINA-UPSTATE MEDIA RELATIONS

For information on the South Carolina-Upstate Spartan women's basketball team, contact Katie Parker in the media relations office. Her number is 864.205.0625 and her email is kparker@uscupstate.edu.

For more information, go to www.UpstateSpartans.com.

OFFICIALS

TBA

RANKINGS

Auburn and South Carolina-Upstate are not ranked.

NEXT UP FOR THE TIGERS

Auburn will conclude its three-game homestand with a 6 p.m., Wednesday game against Troy at Auburn Arena.

AUBURN'S POST-GAME PROCEDURE

The Auburn locker room is closed. Coach Nell Fortner and selected Tiger players will be brought to the interview room after the 10-minute "cooling off" period.

QUICK HITS

Auburn is in its 41st season of women's basketball and sports an all-time record of 801-362... AU has made 18 NCAA Tournament appearances, three WNIT appearances and three Final Fours in the program's history... Head Coach Nell Fortner is in her eighth season at Auburn with a 152-101 career record and a 135-90 record on the Plains... The Tigers are coming off a 16-16 season in 2011 with an appearance in the second round of the WNIT.

800 AND COUNTING

Auburn picked up its 800th program victory Nov. 15, defeating Belmont 80-53. Of the 800 wins, Auburn head coach Nell Fortner had coached the Tigers to 134 of them.

By reaching 800, the Tigers became the 14th team in NCAA Division I history to reach the 800-win plateau.

AUBURN-SOUTH CAROLINA-UPSTATE SERIES

This will be the first meeting between Auburn and South Carolina-Upstate. The Spartans are one of four first-time opponents for the Tigers this season.

SCOUTING SOUTH CAROLINA-UPSTATE

South Carolina-Upstate entered the 2011-12 season with a mix of experience and new talent. The Spartans returned three starters from last season that went 17-13 and tied for third in the Atlantic Sun, while adding eight newcomers.

USC Upstate has struggled in its first five games, averaging just 53.2 points per game while its opponents have almost doubled that with 86.6 points per game. The same has held true for rebounding with the Spartans averaging just 29.5 rebounds per game, versus 47.0 by their opponents.

Tee'Ara Copney and Kim Roach lead USC-Upstate in scoring with 16.8 and 8.0 points per game, respectively. Copney has added eight steals and three blocks on the season. Lauren McRoberts leads the team with 7.0 boards per game.

SCOUTING AUBURN

Auburn returns three starters and 10 letterwinners from last season's team that went 16-16 and advanced to the second round of the WNIT. Of the 10 letterwinners on Auburn's roster, seven started at least one game last season. The Tigers are under the direction of head coach Nell Fortner, who is in her eighth season on The Plains with a 135-90 record.

Auburn's top returning player is junior Blanche Alverson with 10.2 points and 4.7 rebounds per game last season. Chantel Hilliard (6.4 ppg, 3.5 rpg) and Parrisha Simmons (2.3 ppg, 3.1 rpg) are the only other Tigers that started more than 10 games last season. Senior Morgan Jennings and sophomore Jassany Williams both came on late in the season for Auburn. Jennings started six of the last eight games of the season at point guard while Williams started the final nine games in the post.

Through four games in 2011-12, sophomore Tyrese Tanner leads the team in scoring with 12.5 points per game. Three others are near double figures as she leads Alverson (9.8 ppg), Camille Glymph (9.5 ppg) and freshman Hasina Muhammad (9.3 ppg).

Statistical Comparison - Auburn vs. USC-Upstate

Coch:	Auburn Nell Fortner	USC-Upstate Tammy George
Career Record:	152-101	125-119
Top Scorer:	Tanner (12.5)	Copney (16.8)
Top Rebounder:	Hilliard (5.8)	McRoberts (7.0)
Series Record:	First Meeting	
- at Auburn	First Meeting	
- at Spartanburg, S.C.	N/A	
- at Neutral	N/A	
- Overall Streak	First Meeting	
Record	3-1	0-5
Conference Record	--	--
Points Per Game	65.5	53.2
Scoring Margin	+11.5	-33.4
FG Percentage	.425	.323
Opp. FG %	.345	.517
3FG Percentage	.297	.265
Opp. 3FG %	.259	.365
Rebounds	39.2	28.8
Opp. Rebounds	37.2	46.0
Rebound Margin	+2.0	-17.2
Turnovers	16.3	22.0
Opp. Turnovers	18.8	17.2
Steals	10.3	10.2
Opp. Steals	8.5	13.0
Blocks	6.5	2.2
Opp. Blocks	2.0	3.6

Around the SEC (Through Games of Nov. 25, 2011)

	SEC	Pct.	Overall	Pct.
Kentucky	0-0	.000	6-0	1.000
Vanderbilt	0-0	.000	5-0	1.000
Georgia	0-0	.000	4-0	1.000
Arkansas	0-0	.000	5-1	.833
Florida	0-0	.000	4-1	.800
Mississippi State	0-0	.000	4-1	.800
South Carolina	0-0	.000	4-1	.800
Auburn	0-0	.000	3-1	.750
Ole Miss	0-0	.000	3-1	.750
Alabama	0-0	.000	4-2	.667
Tennessee	0-0	.000	2-1	.667
LSU	0-0	.000	3-2	.600

This Week in the SEC**Friday, November 25**

Alabama vs. Seton Hall	UA, 62-56 (OT)
Lipscomb at Vanderbilt	VU, 81-39
Florida vs. LaSalle	UF, 85-74
Sam Houston State at Kentucky	UK, 73-52
Grambling State at Arkansas	UA, 69-49

Saturday, November 26

Ole Miss at Massachusetts	12 p.m.
Florida vs. North Carolina-Charlotte	1 p.m.
Mississippi State at Savannah State	1 p.m.
Alabama vs. Louisiana Tech	2:15 p.m.
Oklahoma at Vanderbilt	4 p.m.
Georgia vs. Georgetown	5:30 p.m.

Sunday, November 27

Mississippi Valley State at Kentucky	12 p.m.
Presbyterian at South Carolina	12 p.m.
Baylor at Tennessee (ESPN)	1 p.m.
South Carolina-Upstate at Auburn	2 p.m.
LSU at Ohio State	4 p.m.

LAST TIME OUT FOR AUBURN

The Auburn women's basketball team overcame a seven-point halftime deficit to rally and defeat George Washington, 55-47, Nov. 23 at the Auburn Arena. The Tigers opened the second half on a 10-2 run, holding the Colonials to two points for the first 9:37 of the half.

Junior Blanche Alverson led the Tigers in scoring with 14 points, followed by Tyrese Tanner with 11 and freshman Hasina Muhammad with 10. Senior Parrisha Simmons provided a spark off the bench, accounting for seven points and a team-high eight rebounds.

Auburn came out of the locker room after halftime eager to turn things around. The Tigers went on a 10-2 run, fueled by four points each from Tanner and Simmons, taking a 33-28 lead. George Washington was never able to regain the lead in the second half as the Tigers would go on to lead by as many as 10 points with 14 seconds left before a Danni Jackson layup on the final possession cut it to eight.

Senior Morgan Jennings led Auburn with five assists while Muhammad added four. Six different Tigers tallied a steal in the game with Alverson leading with two.

LAST TIME OUT FOR SOUTH CAROLINA-UPSTATE

The USC Upstate women's basketball team fell to Norfolk State Nov. 21, 94-81, at the Hodge Center in Spartanburg, S.C.

For the first time this season, Upstate had a quartet of shooters scoring in double-digits. Junior Tee'Ara Copney posted a season-high 25 points, while freshman Briana Robinson posted a career-high 18 points. Sophomore Kim Roach tallied 16 points, while junior Hannah Ohl added 10.

Upstate junior Lauren McRoberts snagged a team-high seven rebounds. Sophomore Madisen Webb pulled down five boards while junior Tyra Smith handed out nine assists for the Upstate Spartans.

Upstate led by as many as eight in the first half, but Norfolk State came back and took a 41-39 lead at halftime. Norfolk State continued to roll from there, leading by as many as 17 in the second half before holding on for the 94-81 win.

FORTNER VS. GEORGE

This will be the first meeting between Auburn Head Coach Nell Fortner and South Carolina-Upstate's Tammy George.

Fortner is in her eighth season at Auburn and holds a 135-90 record on The Plains. George is in her seventh season as a head coach at USC Upstate and has an 82-98 record with the Spartans.

VS. THE ATLANTIC SUN CONFERENCE

Auburn is 15-9 all-time against current members of the Atlantic Sun conference with 21 of those 24 games coming against Mercer. Auburn's last meeting with an A-Sun team came on Nov. 15, 2011 as the Tigers downed Belmont, 80-53, in Auburn.

PLAYING THE A-SUN

USC Upstate is the last of three Atlantic Sun teams on Auburn's schedule this season. The Tigers opened the season at Mercer and picked up a 77-43 win before hosting Belmont in Auburn's home opener and defeating the Bruins, 80-53.

ON THIS DATE. . .

Auburn is 8-2 all-time when playing on Nov. 27 and 2-2 under Head Coach Nell Fortner. The Tigers' last game on Nov. 27 was an 85-51 over Seton Hall last season in Freeport, Bahamas. Auburn's last home game on Nov. 27 resulted in a 72-56 win over Kent State in 1999.

IN NOVEMBER

Auburn is 106-27 all-time in the month of November, including a 35-14 mark under Nell Fortner (records begin in 1978-79 season, not all dates provided prior to or during that season).

AGAINST THE PALMETTO STATE

Auburn holds a 32-18 all-time record against teams from South Carolina. Records against South Carolina teams: Charleston Southern (3-0), Clemson (4-3), Furman (5-0) and South Carolina (20-15).

TURNING THE TABLES

Through four games this season, Auburn has put together a 3-1 record, the opposite of its mark a year ago. After four games during the 2009-10 season, the Tigers entered Game 5 with a 1-3 record.

MOVING ON UP

Junior Blanche Alverson hit a 3-pointer as time expired on the shot clock with 6:48 to go in the game against George Washington, giving her 94 on her career, tying her with Shana Askew for seventh all-time at Auburn.

Alverson needs nine 3-pointers to move into a tie for sixth with Carolyn Jones at 103.

OFFENSE WINS GAMES

Auburn is 87-2 when scoring 70 or more points in the Nell Fortner era. The only times Auburn has lost when scoring at least 70 points was on Jan. 20, 2005 vs. No. 7 Tennessee, 71-81 and Feb. 19, 2009 at No. 18 Vanderbilt, 73-70. When scoring less than 70 points, Auburn is 48-88 during the Fortner era.

DEFENSE MAKES OFFENSE

In Auburn's first four games of the season, the Tigers have used their defense to spark their offense. Auburn has forced 75 turnovers (18.8 per game) this season on 41 steals (10.3 per game), turning them into 21.3 points per game (85 total points).

GOING TO THE BENCH

Auburn's bench has stepped up this season, scoring 92 points in the four games. Blanche Alverson led Auburn off the bench at Mercer, scoring 12 points, while Camille Glymph led the Tigers off the bench vs. Belmont, leading the way with 18 points, and again at Duke with 12 points. Parrisha Simmons came off the bench for seven points vs. George Washington.

So far, the Auburn bench is averaging 23.0 points per game this season.

Associated Press Top-25 Poll**Week 2 (Nov. 21)**

Rank	School	Record	Points	Pvs
1	Baylor (39)	4-0	999	1
2	Connecticut	2-0	927	4
3	Stanford	3-0	903	5
4	Notre Dame	3-1	888	2
5	Texas A&M (1)	4-0	861	6
6	Tennessee	2-1	765	3
7	Duke	3-0	757	8
8	Maryland	4-0	727	10
9	Miami (Fla.)	2-1	642	7
10	Georgia	4-0	616	12
11	Louisville	3-1	610	9
12	Oklahoma	2-0	507	13
13	Rutgers	3-0	466	15
14	Kentucky	4-0	452	17
15	Purdue	3-0	446	16
16	North Carolina	3-0	390	19
17	Penn State	3-1	324	11
18	Ohio State	2-0	212	24
19	Texas Tech	2-0	201	25
20	LSU	2-1	171	20
21	Georgetown	2-2	166	14
22	Virginia	4-0	153	NR
23	DePaul	4-1	151	18
24	Texas	2-1	113	NR
25	UCLA	2-1	106	22

Others Receiving Votes: Wisconsin-Green Bay 92, Delaware 79, Gonzaga 67, Georgia Tech 59, Iowa State 29, Florida State 20, Kansas State 19, Nebraska 13, San Diego State 13, Tulane 11, **Vanderbilt 10**, Princeton 9, Southern California 9, UNLV 8, California 4, Michigan 2, Michigan State 2, **Arkansas 1**.

USA Today / ESPN Top-25 Coaches Poll**Week 2 (Nov. 22)**

Rank	School	Record	Points	Pvs
1	Baylor (29)	4-0	773	1
2	Connecticut (2)	3-0	734	4
3	Notre Dame	3-1	701	2
4	Texas A&M	4-0	678	6
5	Stanford	3-1	638	5
6	Duke	3-0	603	8
7	Tennessee	2-1	602	3
8	Maryland	4-0	550	9
9	Miami (Fla.)	2-1	500	7
10	Georgia	4-0	497	11
11	Kentucky	4-0	455	13
12	Louisville	3-1	447	10
13	Rutgers	3-0	385	15
14	Oklahoma	2-0	364	14
15	North Carolina	3-0	324	17
16	Penn State	3-1	272	12
17	Purdue	3-0	271	20
18	Wisconsin-Green Bay	3-0	191	23
19	Ohio State	2-0	156	25
20	DePaul	4-1	150	18
21	Georgetown	3-2	141	16
22	Texas	2-1	125	24
23	LSU	3-1	96	21
24	Florida State	3-2	68	19
25	Georgia Tech	3-0	64	NR

Others Receiving Votes: Vanderbilt 62, Iowa State 47, Gonzaga 46, Virginia 28, Texas Tech 25, Syracuse 19, Delaware 13, Oklahoma State 10, UCLA 9, Kansas 6, Princeton 4, St. John's 4, UNLV 3, Villanova 3, Michigan 2, **Temple 2**, Tulane 2, James Madison 1, Middle Tennessee State 1, Nebraska 1, San Diego State 1, Southern California 1.

Bold denotes 2010-11 opponents

OUTSIDE THE LEAGUE

Nell Fortner has guided the Tigers to an 82-35 ledger in non-conference play. When playing at home, Fortner's teams have posted a 35-7 mark. The only seven non-conference losses at home came from Xavier on Dec. 2, 2005 (58-60), No. 2 Duke on Dec. 31, 2004 (61-80), No. 20 George Washington on Jan. 3, 2008 (66-68), No. 15 Texas A&M on Nov. 22, 2009 (59-79), No. 16 Florida State on Nov. 15, 2010 (61-67), No. 6 Duke on Nov. 18, 2010 (62-75) and Temple on Dec. 4, 2010 (62-61).

HOME COOKIN'

Since a 77-70 loss to Virginia on Jan. 5, 1992, the Auburn Tigers have compiled a 131-10 record against non-conference opponents when playing at home.

TIGERS PICKED NINTH IN PRESEASON POLL

Auburn was predicted to finish ninth in the SEC in a voting of a select panel of both SEC and national media members. Tennessee was picked to win the league with all 22 first-place votes.

The Lady Vols were followed by Georgia (228), Kentucky (212), LSU (189), Vanderbilt (172) and Florida (151) rounding out the top half of the league. Arkansas (142), South Carolina (107), Auburn (94), Alabama (55), Mississippi State (54) and Ole Miss (48) round out the bottom half.

STARTING EXPERIENCE

Auburn has seven players on its roster that had started at least one game prior to the 2011-12 season. That group of seven also combined for 123 career starts, led by Blanche Alverson with 45. Senior Parrisha Simmons has started 41 while her classmates, Chantel Hilliard and Morgan Jennings, have started 12 each.

NEW FACES

The Tigers welcome two new faces to the roster this season in Hasina Muhammad and Najat Ouardad. Muhammad is a true freshman from Memphis, Tenn., playing at Ridgeway High School. Ouardad, a native of Orleans, France, comes to Auburn from Pensacola State College.

MAKING IT HOME

Nell Fortner enters her eighth season as Auburn's head coach, marking her longest tenure at any position in her career. The longest Fortner had stayed at a job prior to Auburn came from 1990-95 while she was an assistant coach at Louisiana Tech under legendary head coach Leon Barmore.

AUBURN SIGNS FOUR FOR 2012-13

Auburn head coach Nell Fortner has signed four players for the 2012-13 season during the Early Signing Period. They are Cabrana Capers, a 6-1 forward from Bolingbrook, Ill., Chadarryl Clay, a 5-7 guard from Chattanooga, Tenn., Nicole Tanner, a 6-3 forward from Hoover, Ala., and Nariah Taylor, a 6-5 post from Indianapolis, Ind.

Capers is rated a three-star prospect by ESPN's Hoopgurlz and is rated as the No. 35 post prospect in the country. Clay is rated as

the No. 77 overall player in the country and 12th-best guard in the country according to ESPN's Hoopgurlz.

Tanner, the younger sister of Auburn sophomore Tyrese Tanner, is rated as one of the top five prospects in the state of Alabama and a top-100 post in the country. Taylor is ranked as the No. 14 post player in the country by ESPN's Hoopgurlz. She is also ranked as the No. 88 overall player in the nation by Blue Star Basketball and 97th by the All-Star Girls Report.

TIGERS ON THE TUBE

The Auburn women's basketball team will appear on television at least nine times during the 2011-12 season as part of the Southeastern Conference Women's Basketball Television Package, the league announced Sept. 22.

The Tigers will make their first appearance on Sunday, Jan. 1 with a 2 p.m. matchup against defending SEC champion Tennessee at Auburn Arena. Auburn will then appear on CSS in back-to-back games, first on Sunday, Jan. 8 at 1 p.m. against Georgia in Auburn. The next is an 8 p.m., Thursday, Jan. 12 game at Vanderbilt.

The Tigers' will make their first appearance on FSN on Jan. 15 in the first of three Sunday afternoon appearances on the network. Auburn will travel to Arkansas for a 1:30 p.m., Jan. 15 game before returning to the network on Jan. 29 for a 1 p.m. game at Ole Miss.

Auburn's lone appearances on the SEC Network, a part of the ESPN Regional Network, will be on Feb. 5 at Tennessee. The game is set for a 1 p.m. CT tipoff. The Tigers will then host Arkansas on Feb. 12 in a 1:30 p.m. game that will air live on ESPN2.

Auburn's final appearance on CSS will come on Thursday, Feb. 23 with in-state rival Alabama coming to town for an 8 p.m. matchup. The Tigers' final regular-season TV appearance will be Sunday, Feb. 26 on FSN with Auburn hosting Ole Miss at 2:30 p.m.

The Southeastern Conference**Commissioner:** Mike Slive**Founded:** 1933**Members:**

Alabama Crimson Tide
 Arkansas Lady Razorbacks
 Auburn Tigers
 Florida Gators
 Georgia Bulldogs
 Kentucky Wildcats
 LSU Tigers
 Mississippi Rebels
 Mississippi State Bulldogs
 South Carolina Gamecocks
 Tennessee Lady Volunteers
 Texas A&M Aggies (Beginning 2012-13)
 Vanderbilt Commodores

SEC Media Relations**Women's Basketball Contact:** Tommy Wilson**Address:**

2201 Richard Arrington Blvd.
 Birmingham, Ala. 35203-1103

Phone: 205.458.3000**Fax:** 205.458.3031**E-mail:** twilson@sec.org**Web site:** www.SECsports.com**SEC Women's Basketball Notes**

- The SEC has posted impressive non-conference records in the last decade. The SEC compiled a 131-49 (.728) non-conference record for the 2009-10 season.
 - Since the 1990 season, the SEC has compiled a 2914-894 (.765) record against other conferences. The league has recorded 150+ wins during eight seasons and has never recorded a non-conference winning percentage below .723.
 - SEC teams have earned appearances in 25 of 30 NCAA Final Fours, an accomplishment unmatched by any other league.
- Overall, SEC squads have filled 34 of the 120 Final Four berths, including having two Final Four teams in 1988 (Auburn, Tennessee), 1989 (Auburn, Tennessee), 1995 (Georgia, Tennessee), 1996 (Georgia, Tennessee), 1998 (Arkansas, Tennessee), 2004 (LSU, Tennessee), 2005 (LSU, Tennessee), 2007 (LSU, Tennessee) and 2008 (LSU, Tennessee).
- SEC teams have made 18 appearances in a nation-high 16 NCAA Championship games, winning eight NCAA Championships (Tennessee: 1987, 1989, 1991, 1996, 1997, 1998, 2007 and 2008).
- The league also had the distinction of providing both national finalists twice in its history in 1996 (Tennessee 83, Georgia 65) and in 1989 (Tennessee 76, Auburn 60).
 - SEC teams have won 335 NCAA Tournament games against 172 losses (.661) for an average of 11.2 NCAA wins per year.
- In addition, all 12 current members have appeared in the NCAA Tournament.
- The SEC has paced the pack in NCAA tournament bids 21 times in its 30-year history.
 - The SEC was the first league to ever have eight teams invited to the NCAA Tournament, doing so in 1999 and 2002.
 - The SEC was also the first league to ever have seven teams invited to the NCAA Tournament and earned this honor a leading seven times (1986, 1991, 1995, 1996, 1997, 2003, 2004).
 - The SEC is one of a handful of leagues to have won three national tournament titles with eight NCAA, two WNIT and three NWIT. Along with the eight NCAA championships won by Tennessee, Arkansas (1999) and Auburn (2003) captured the current Women's NIT titles. But the first-ever SEC national title belongs to Georgia, winners of the 1981 NWIT which predates the current NCAA tournament. LSU (1985) and Kentucky (1990) each won NWIT titles. Both Arkansas (1987) and South Carolina (1979) won the WNIT as members of their previous conferences.
 - In 2003, Auburn won the WNIT title with wins over South Alabama, Florida State, Richmond, Creighton and Baylor. In 1999, the Arkansas Lady Razorbacks defeated Wisconsin 76-64 to claim the SEC's first WNIT championship.
 - In 1981, Georgia defeated Pittsburg, California and Arizona State (in OT) to capture the NWIT Championship, the first-ever national championship of any kind for the SEC in women's basketball.

SEC PRESEASON POLL (Media Vote)
(First-place votes in Parentheses)**SEC Champion**

Tennessee (22)

Order of Finish

1. Tennessee.....	264
2. Georgia.....	228
3. Kentucky.....	212
4. LSU.....	189
5. Vanderbilt.....	172
6. Florida.....	151
7. Arkansas.....	142
8. South Carolina.....	107
9. Auburn.....	94
10. Alabama.....	55
11. Mississippi State.....	54
12. Ole Miss.....	48

Player of the Year

Shekinna Stricklen, Tennessee (16); Glory Johnson, Tennessee (3); LaSondra Barrett, LSU (2); Jasmine James, Georgia (1)

All-SEC First Team

Jasmine James, Georgia
 A'dia Mathies, Kentucky
 LaSondra Barrett, LSU
 Glory Johnson, Tennessee
 Shekinna Stricklen, Tennessee

All-SEC Second Team

C'eria Ricketts, Arkansas
 Sarah Watkins, Arkansas
 Valencia McFarland, Ole Miss
 Meighan Simmons, Tennessee
 Stephanie Holzer, Vanderbilt

SEC PRESEASON POLL (Coaches' Vote)**SEC Champion**

Tennessee

Order of Finish

1. Tennessee.....	120
2. Kentucky.....	100
3. Georgia.....	98
4. LSU.....	96
5. Florida.....	92
6. Vanderbilt.....	85
7. South Carolina.....	62
8. Arkansas.....	57
9. Auburn.....	39
10. Alabama.....	29
11. Mississippi State.....	25
12. Ole Miss.....	16

Player of the Year

Shekinna Stricklen, UT (6); Glory Johnson, UT (3); A'dia Mathies, UK (1); LaSondra Barrett, LSU (1); Meighan Simmons, UT (1)

All-SEC First Team

C'eria Ricketts, Arkansas
 Jasmine James, Georgia
 A'dia Mathies, Kentucky
 LaSondra Barrett, LSU
 Glory Johnson, Tennessee
 Meighan Simmons, Tennessee
 Shekinna Stricklen, Tennessee
 Stephanie Holzer, Vanderbilt

All-SEC Second Team

Ericka Russell, Alabama
 Sarah Watkins, Arkansas
 Jasmine Hassell, Georgia
 Adrienne Webb, LSU
 Valencia McFarland, Ole Miss
 La'Keisha Sutton, South Carolina
 Teasia Walker, South Carolina
 Tiffany Clarke, Vanderbilt

Quoting Head Coach Nell Fortner

On USC-Upstate...

"We are excited to have the opportunity to play at home again in front of the Auburn Family on Sunday against USC-Upstate. They are still looking for their first win this season, but they are a hungry team that we cannot overlook. USC-Upstate has played a demanding schedule and has improved in each game they have played. They have a very good front court presence with Tee'Ara Copney and will definitely be a challenge."

On the start of the season...

"It feels great to be ahead in the win-loss column, but we still have a long way to go as a team, as far as being as good as we want to be. We have had some great practices and we are ready to play again, we look forward to playing on Sunday at home and look forward to improving. These kids are showing a real eagerness to get better in the film room, on the practice court, and that makes them a lot of fun to coach. I think it will bring a lot more success to us."

On the second-half turnaround vs. GW...

"Out of a 40-minute game, it was 38 minutes of zone: zone press, half-court zone defense. It just kind of slows you down, it really makes you have to think and it slows down your attack on the basket. It was the first time we had played that much zone offense all year long and we had to work our way through it a bit. After the first half, we felt a bit more comfortable with it and came out and did some nice things in the second half."

MISCELLANEOUS STATISTICS

Double-Doubles	Season	Career
Blanche Alverson	1	1
Chantel Hilliard	0	1

20+ Point Games	Season	Career
Blanche Alverson	1	1

10+ Rebound Games	Season	Career
Blanche Alverson	1	1
Chantel Hilliard	0	2
Parrisha Simmons	0	1
Jassany Williams	0	1

10+ Assist Games	Season	Career
------------------	--------	--------

GAMES LED AUBURN IN . .

Scoring	Season	Career
Blanche Alverson	1	9
Camille Glymph	2	2
Chantel Hilliard	0	4
Tyrese Tanner	1	2

Rebounding	Season	Career
Blanche Alverson	1	10
Peyton Davis	0	1
Chantel Hilliard	1	6
Morgan Jennings	1	2
Parrisha Simmons	1	9
Tyrese Tanner	0	1
Jassany Williams	0	5

Assists	Season	Career
Blanche Alverson	0	4
Camille Glymph	0	1
Morgan Jennings	4	9
Parrisha Simmons	0	3
Tyrese Tanner	0	1

2011-12 DOUBLE-DOUBLES

Player	Points	Other
Blanche Alverson (vs. Mercer)	14	10 (reb.)

Last Time an Auburn Team...

Scored 100 points	Auburn 119, Sam Houston State 54 (Dec. 5, 2008)
Scored 100 points in an SEC game	Auburn 102, Tennessee 96, SEC Tournament in Albany, Ga. (Mar. 6, 1987)
Scored 100 at Auburn	Auburn 119, Sam Houston State 54 (Dec. 5, 2008)
Scored 100 points and lost	Never
Scored 110 points	Auburn 119, Sam Houston State 54 (Dec. 5, 2008)
Scored 115 points	Auburn 119, Sam Houston State 54 (Dec. 5, 2008)
Scored at least 60 points in a half	62-vs. Sam Houston State (Dec. 5, 2008)
Had 25+ rebound margin	28-Auburn 55, Sam Houston State 27 (Dec. 5, 2008)
Had 20+ rebound margin	23-Auburn 50, Mercer 27 (Nov. 11, 2011)
Attempted 35 free throws	35-vs. Florida A&M (Nov. 28, 2009)
Attempted 40 free throws	41-vs. Alabama State (Nov. 15, 2006)
Made 30 free throws	31-vs. Northwestern State (31-43) (Dec. 30, 2003)
Had 25 assists	25- vs. Alabama (Jan. 22, 2009)
Had 25 turnovers	29- vs. Kentucky (Feb. 27, 2011)
Had 25 steals	25- vs. Arkansas-Little Rock (Dec. 2, 2000)
Scored 25 points or less	25- vs. Mercer (1971)
Played an overtime game	at LSU (Jan. 10, 2010)
Won an overtime game	Auburn 64, LSU 62 at Baton Rouge, La. (Jan. 10, 2010)
Lost an overtime game	Florida 71, Auburn 68 (2OT) at Gainesville, Fla. (Jan. 7, 2010)
Played a double overtime game	Florida 71, Auburn 68 at Gainesville, Fla. (Jan. 7, 2010)
Played at least three overtimes	Never
Shot 70% for a half	73.9%, 17-23-vs. Alabama (Jan. 22, 2009)
Shot 60% for a game	vs. Alabama (61.8%, 34-55) (Jan. 22, 2009)
Shot less than 30% for a game	(29.7%, 19-64) at George Washington at Washington, D.C. (Dec. 15, 2010)
Shot 90% from the free throw line (minimum 10 attempts)	(10-10) vs. Mississippi State (Feb. 3, 2008)
Shot 50% from 3-point line	(5-8, 62.5%) vs. Florida in Auburn, Ala. (Jan. 6, 2011)
Shot less than 30% in a half	26.9% in the second half at Duke in Durham, N.C. (Nov. 18, 2011)
Shot less than 20% in a half	19.0% in the first half vs. LSU, (Feb. 14, 2010)
Shot 55% or better and lost	58.1%, 25-43-vs. Tennessee, (Jan. 20, 2005)
Made at least 10 3-point field goals	10-of-21 vs. Belmont in Auburn, Ala. (Nov. 15, 2011)
Failed to make a 3-point field goal	0-9 at Mercer in Macon, Ga. (Nov. 11, 2011)
Had at least 60 rebounds	61 vs. Stephen F. Austin, (Dec. 17, 2007)
Had at least 50 rebounds	50- vs. Mercer in Macon, Ga. (Nov. 11, 2011)
Scored less than 20 points in a 1st half	19 points vs. George Washington in Auburn, Ala. (Nov. 23, 2011)
Scored less than 20 points in a 2nd half	19 points at Duke in Durham, N.C. (Nov. 18, 2011)
Scored less than 50 points in a game	47 points vs. Mississippi State in SEC Tournament in Nashville, Tenn. (Mar. 3, 2011)

Last Time an Auburn Player...

Scored 40 points	41-Consweila Sparrow vs. South Alabama (Feb. 17, 1998)
Scored 35 points	35-DeWanna Bonner vs. Tennessee (Jan. 25, 2009)
Scored 30 points	32-DeWanna Bonner vs. Ole Miss (Mar. 6, 2009)
Attempted 25 field goals	25-Natasha Brackett (9-25) at LSU (Jan. 30, 2005)
Recorded a double-double	Blanche Alverson (12 pts./10 rebs.) at Mercer in Macon, Ga. (Nov. 11, 2011)
Recorded a double-double with points and assists	Morgan Toles (10 pts./10 asst.) vs. Jacksonville State in Auburn, Ala., (Dec. 30, 2010)
Recorded consecutive double-doubles	KeKe Carrier (18 pts./10 rebs) vs. Mississippi State (Jan. 3, 2010)
	and (24 pts./12 rebs) vs. Florida in Gainesville, Fla. (Jan. 7, 2010)
Two players recorded a double-double	DeWanna Bonner (32 pts./13 rebs) & Whitney Boddie (15 pts./10 asst.)
	vs. Ole Miss in the SEC Tournament in North Little Rock, Ark. (March 6, 2009)
Had a double-double at halftime	DeWanna Bonner (14 pts./10 rebs.) vs. Ole Miss (Mar. 6, 2009)
Recorded a triple-double	Whitney Boddie (24 pts./11 rebs./12 asst.) vs. Sam Houston State (Dec. 5, 2008)
Had 10 assists	10- Morgan Toles vs. Jacksonville State (Dec. 30, 2010)
Had 15 assists	18-Martha Monk vs. Alabama State (Feb. 18, 1981)
Had 10 blocks	13- Marita Payne vs. Arkansas (Feb. 3, 2005)
Had 5 blocks	7 - Jassany Williams at Duke in Durham, N.C. (Nov. 18, 2011)
Had 5 steals	6-DeWanna Bonner vs. Tennessee (Jan. 25, 2009)
Had 15 rebounds	16-Jordan Greenleaf vs. Mississippi State (Jan. 3, 2010)
Had 20 rebounds	20-Monique Morehouse at LSU (Feb. 4, 1995)
Made 15 field goals	15-Consweila Sparrow (15-16) vs. USA (Feb. 17, 1998)
Made 5 three-point field goals	5 - Camille Glymph (5-8) vs. Belmont in Auburn, Ala. (Nov. 15, 2011)
Two players scored 20 points	Alli Smalley (27 pts.) & KeKe Carrier (20 pts.) vs. Alabama (Jan. 14, 2010)
Two players scored 30 points	Laticia Morris (33 points) & Tara Williams (30 points) vs. South Alabama (Jan. 14, 1997)
Back-to-back 25-point games	Alli Smalley 26 pts. vs. Kentucky (Feb. 28, 2010) & 29 pts. vs. Florida in SEC Tournament in Duluth, Ga. (Mar. 4, 2010)
Only one player scored in double figures	Morgan Toles (13 pts.) vs. Alabama in Auburn, Ala. (Feb. 17, 2011)
Five players scored in double figures	Alverson (17 pts.), Greenleaf (15 pts.), Tanner (11 pts.), Smalley (11 pts.) & Toles (10 pts.) vs. Jacksonville State (Dec. 30, 2010)

TIGERS' RECORD WHEN...

When wearing white.....	2-0
When wearing orange.....	0-1
When wearing blue.....	1-0
When wearing pink.....	0-0
Leading at the half.....	2-0
Trailing at the half.....	1-1
Tied at the half.....	0-0
Scores 100+ points.....	0-0
Scores 90-99 points.....	0-0
Scores 80-89 points.....	1-0
Scores 70-79 points.....	1-0
Scores 60-69 points.....	0-0
Scores fewer than 60 points.....	1-1
Holds opponent to 41-50 points.....	2-0
Holds opponent to 31-40 points.....	0-0
Holds opponent to under 30 points.....	0-0
Shoots 50% FG or better.....	1-0
Shoots 40-49% FG.....	1-0
Shoots 39% or under FG.....	1-1
Holds opponent under 30% FG.....	1-0
Shoots higher FG% than opponent.....	3-0
Shoots lower FG% than opponent.....	0-1
Shoots higher FT% than opponent.....	2-0
Shoots lower FT% than opponent.....	1-1
Out-rebounds opponent.....	3-0
Out-rebounded by opponent.....	0-1
Tied in rebounds.....	0-0
Versus ranked opponent.....	0-1
In overtime.....	0-0
Games decided by 3 points or less.....	0-0
Games decided by 4-5 points.....	0-0
Games decided by 6-10 points.....	1-0
Games decided by 11-20 points.....	0-0
Games decided by 21-30 points.....	1-1
Games decided by 30+ points.....	1-0
On Television.....	0-0
In November.....	3-1
In December.....	0-0
In January.....	0-0
In February.....	0-0
In March.....	0-0

Six players scored in double figures.....	Carrier (19 pts.), Bonner (18 pts.), Smalley (16 pts.), Boddie (13 pts.), R. Hobbs (13 pts.), Hilliard (13 pts.) & S. Hobbs (10 pts.) vs. Sam Houston State (Dec. 5, 2008)
Seven players scored in double figures.....	Carrier (19 pts.), Bonner (18 pts.), Smalley (16 pts.), Boddie (13 pts.), R. Hobbs (13 pts.), Hilliard (13 pts.) & S. Hobbs (10 pts.) vs. Sam Houston State (Dec. 5, 2008)
Scored 20 points & had 20 rebounds.....	Lauretta Freeman (30 pts/21 rebs.) vs. Alabama, (Feb. 17, 1993)
Two players had 10 rebounds.....	KeKe Carrier (12 rebs.) & Jordan Greenleaf (10 rebs) vs. Florida in Gainesville, Fla. (Jan. 7, 2010)
Three players had 10 rebounds.....	Jordan Greenleaf (12 rebs.), DeWanna Bonner (12 rebs.) & Whitney Boddie (10 rebs.) vs. Oakland (Nov. 21, 2007)
Played every minute.....	Jordan Greenleaf (40 Mins.) vs. Florida, SEC Tournament, Duluth, Ga., (Mar. 4, 2010)
Played more than 40 minutes.....	Alli Smalley (45 mins.), Jordan Greenleaf (43 mins.) & Morgan Toles (41 mins.) at LSU (Jan. 10, 2010)

Last Time an Auburn Opponent...

Shot less than 30% in a game (SEC).....	LSU - 27.3% in Baton Rouge, La. (Feb. 10, 2011)
Shot less than 30% in a game (Non-conf).....	Mercer - 26.8% in Macon, Ga. (Nov. 11, 2011)
Shot 60% in a game.....	Vanderbilt 60.4% in Nashville, Tennessee in the SEC Tournament, (Mar. 5, 2004)
Scored 100 points.....	Georgia 102, Auburn 72 in Athens, Ga. (Mar. 3, 1984)
Scored 100 points at Auburn.....	Tuskegee 105, Auburn 98 (20T) (Feb. 12, 1979)
Scored 100 points and Lost.....	Never
Scored 110 points.....	Never
Had 25+ rebound margin.....	Never
Had a 20+ rebound margin.....	Never
Scored less than 20 points in a 1st half.....	Mercer, 19 points in Macon, Ga. (Nov. 11, 2011)
Scored less than 20 points in a 2nd half.....	Mississippi State, 19 points in Starkville, Miss. (Jan. 20, 2011)
Had 50 rebounds.....	52 - at Duke in Durham, N.C. (Nov. 18, 2011)
Had 25 assists.....	25- by Florida International in Miami, Fla. (Dec. 19, 1993)
Had 25 turnovers.....	29- by Alabama A&M in Auburn, Ala. (Dec. 28, 2010)
Had 15 steals.....	15- by Kentucky in Auburn, Ala. (Feb. 27, 2011)
Had 10 blocks.....	12-by Tennessee (Jan. 10, 2008)
Failed to make a 3-point field goal.....	by Duke (0-12) in Durham, N.C. (Nov. 18, 2011)
Attempted 35 free throws.....	36 - by Arizona 25-36 (Dec. 19, 2000)
Made 30 free throws.....	30- by Arkansas (Jan. 22, 1995)
Made 10 three-point field goals.....	by South Florida 10 3-point FGs, in Tampa, Fla., (Nov. 22, 2010)
Scored less than 50 points in a game.....	Mercer, 43 in Macon, Ga. (Nov. 11, 2011)
Scored 40 points or less.....	36- by Mississippi State (Feb. 21, 2010)
Scored 25 points or less.....	25- by Puerto Rico Mayaguez (Dec. 17, 2000)
Scored 11 points or less.....	11-by Montevallo (1973) and 11-by Jeff Davis (1973)

Last Time an Auburn Opponent's Player...

Scored 30 points (non-conference).....	33-Andrea Smith of South Florida in Tampa, Fla. (Nov. 22, 2010)
Scored 30 points (SEC).....	31-Tierney Jenkins of Alabama in Tuscaloosa, Ala. (Jan. 2, 2011)
Scored 35 points.....	38-Lindsay Shearer of Kent State in Kent, Ohio (Nov. 20, 2005)
Attempted 25 field goals.....	27- Jantel Lavender (9-27) of Ohio State (Nov. 23, 2008)
Scored 20 points & had 20 rebounds.....	Young of Baylor in the Women's NIT Championship Game, (20 pts./25 rebs.), (Apr. 4, 2003)
Two players scored 20 points.....	by Ole Miss, Kayla Melson (29 pts) & Shae Nelson (21 pts), (Jan. 13, 2011)
Three players scored 20 points.....	by LSU in Baton Rouge, Chatman (22 pts), Johnson (21 pts) & Lowery (20 pts), (Jan. 12, 1991)
Five players scored in double figures.....	J. Thomas (16 pts), Gray (13 pts), K. Thomas (11 pts), Christmas (10 pts) & Peters (10 pts) of Duke (Nov. 18, 2010)
Six players scored in double figures.....	Smith (15 pts), Bales (14 pts), Foley (11 pts), Williams (10 pts), Currie (10 pts) & Kurz (10 pts) of Duke (Dec. 31, 2004)
Recorded a double-double.....	Elizabeth Williams (18 pts/13 rebs) of Duke in Durham, N.C. (Nov. 18, 2011)
Recorded a double-double with points and assists.....	Ceira Ricketts of Arkansas in Fayetteville, Ark., (14 pts/13 rebs/12 assts.), (Jan. 18, 2009)
Recorded a triple-double.....	Ceira Ricketts (14 pts./13 rebs./12 asst.) of Arkansas (Jan. 18, 2009)
Two players recorded a double-double.....	Ashley Daniels (22 pts/11 rebs) and Sarah Watkins (12 pts/10 rebs) of Arkansas in Fayetteville, Ark. (Feb. 13, 2011)
Had 15 rebounds.....	15-by Ashley Brown of Mississippi State (Jan. 20, 2011)
Had 20 rebounds.....	20-Sylvia Fowles of LSU (Jan. 28, 2007)
Had 10 assists.....	10-Valencia McFarland of Ole Miss (Jan. 13, 2011)
Had 10 blocks.....	Never
Had 5 blocks.....	5-Azania Stewart of Florida (Jan. 7, 2010)
Had 5 steals.....	5-Tierney Jenkins of Alabama in Tuscaloosa, Ala. (Jan. 2, 2011)
Made 15 field goals.....	15-Chamique Holdsclaw (15-21) of Tennessee (Feb. 1, 1998)
Had 15 assists.....	16-Cindy McMahan of Alabama-Huntsville (Nov. 24, 1980)

2011-12 Auburn Superlatives...

First Half

Most points scored in the first half.....	39, vs. Belmont (11-15-11)
Fewest points scored in the first half.....	19, vs. George Washington (11-23-11)
Fewest points allowed in the first half.....	19, at Mercer (11-11-11)
Most points allowed in the first half.....	32, at Duke (11-18-11)
Best FG % in the first half.....	.565, at Mercer (11-11-11)
Worst FG % in the first half.....	.250, vs. George Washington (11-23-11)
Best FG % by an opponent in the first half.....	.435, vs. Belmont (11-15-11)
Worst FG % by an opponent in the first half.....	.226 at Mercer (11-11-11)
Most rebounds in the first half.....	26, at Mercer (11-11-11)
Fewest rebounds in the first half.....	16, vs. Belmont (11-15-11)
Most rebounds by an opponent in the first half.....	24, at Duke (11-18-11)
Fewest rebounds by an opponent in the first half.....	15, at Mercer (11-11-11)

Second Half

Most points scored in the second half.....	41, at Mercer (11-11-11) and vs. Belmont (11-15-11)
Fewest points scored in the second half.....	19, at Duke (11-18-11)
Fewest points allowed in the second half.....	21, vs. George Washington (11-23-11)
Most points allowed in the second half.....	41, at Duke (11-18-11)
Best FG % in the second half.....	.577, vs. Belmont (11-15-11)
Worst FG % in the second half.....	.269, at Duke (11-18-11)
Best FG % by an opponent in the second half.....	.417, at Duke (11-18-11)
Worst FG % by an opponent in the second half.....	.250, vs. George Washington (11-23-11)
Most rebounds in the second half.....	22, at Mercer (11-11-11)
Fewest rebounds in the second half.....	13, at Duke (11-18-11)
Most rebounds by an opponent in the second half.....	28, at Duke (11-18-11)
Fewest rebounds by an opponent in the second half.....	12, at Mercer (11-11-11)

Game

Most points scored.....	80, vs. Belmont (11-15-11)
Fewest points scored.....	50, at Duke (11-18-11)
Most points allowed.....	73, at Duke (11-18-11)
Fewest points allowed.....	43, at Mercer (11-11-11)
Best FG %.....	.554, at Mercer (11-11-11)
Worst FG %.....	.328, at Duke (11-18-11)
Best FG % by an opponent.....	.396, vs. Belmont (11-15-11)
Worst FG % by an opponent.....	.273, at Mercer (11-11-11)
Most rebounds.....	48, at Mercer (11-11-11)
Fewest rebounds.....	35, vs. Belmont (11-15-11) and at Duke (11-18-11)
Most rebounds by an opponent.....	52, at Duke (11-18-11)
Fewest rebounds by an opponent.....	27, at Mercer (11-11-11)

Miscellaneous

Largest margin of victory.....	34, at Mercer (11-11-11)
Smallest margin of victory.....	8, vs. George Washington (11-23-11)
Largest margin of defeat.....	23, at Duke (11-18-11)
Smallest margin of defeat.....	23, at Duke (11-18-11)
Largest halftime lead.....	17, at Mercer (11-11-11)
Smallest halftime lead.....	14, vs. Belmont (11-15-11)
Last time tied at halftime.....	N/A
Largest halftime deficit.....	7, vs. George Washington (11-23-11)
Smallest halftime deficit.....	1, at Duke (11-18-11)
Largest rebounding margin.....	21, at Mercer (11-11-11)
Smallest rebounding margin.....	1, vs. George Washington (11-23-11)
Last time tied in rebounding.....	N/A
Opponent's largest rebounding margin.....	17, at Duke (11-18-11)
Opponents smallest rebounding margin.....	17, at Duke (11-18-11)

2011-12 Auburn Individual Highs...**First Half**

Points..... 12, Tyrese Tanner vs. Belmont (11-15-11)
 Field Goals Made..... 4, Tanner vs. Belmont (11-15-11) and Muhammad at Duke (11-18-11)
 Field Goal Attempts 7, Tyrese Tanner vs. George Washington (11-23-11)
 3-Point Field Goals Made 4, Tyrese Tanner vs. Belmont (11-15-11)
 3-Point Field Goal Attempts..... 5, Camille Glymph vs. Belmont (11-15-11)
 Free Throws Made..... 2, on seven occasions
 Free Throws Attempted..... 5, Morgan Jennings vs. Mercer (11-11-11)
 Rebounds..... 7, Chantel Hilliard vs. Belmont (11-15-11)
 Assists 3, Tanner at Mercer (11-11-11) and Jennings vs. Belmont (11-15-11)
 Blocked Shots 3, Jassany Williams vs. Belmont (11-15-11)
 Steals..... 2, on three occasions

Second Half

Points..... 11, Blanche Alverson vs. George Washington (11-23-11)
 Field Goals Made..... 5, Tyrese Tanner at Mercer (11-11-11)
 Field Goal Attempts 7, Tyrese Tanner vs. George Washington (11-23-11)
 3-Point Field Goals Made 2, on three occasions, last by Hasina Muhammad vs. GW (11-23-11)
 3-Point Field Goal Attempts..... 5, Camille Glymph at Duke (11-18-11)
 Free Throws Made..... 5, Tyrese Tanner vs. George Washington (11-23-11)
 Free Throws Attempted..... 8, Tyrese Tanner vs. George Washington (11-23-11)
 Rebounds..... 7, Blanche Alverson vs. Mercer (11-11-11)
 Assists 7, Morgan Jennings vs. Mercer (11-11-11)
 Blocked Shots 6, Jassany Williams at Duke (11-18-11)
 Steals..... 5, by five players on five occasions

Game

Points..... 18, Camille Glymph vs. Belmont (11-15-11)
 Field Goals Made..... 6 on three occasions
 Field Goal Attempts 14, Tyrese Tanner vs. George Washington (11-23-11)
 3-Point Field Goals Made 5, Camille Glymph vs. Belmont (11-15-11)
 3-Point Field Goal Attempts..... 8, Camille Glymph vs. Belmont (11-15-11) and at Duke (11-18-11)
 Free Throws Made..... 5, Tyrese Tanner vs. George Washington (11-23-11)
 Free Throws Attempted..... 8, Tyrese Tanner vs. George Washington (11-23-11)
 Rebounds..... 10, Blanche Alverson at Mercer (11-11-11)
 Assists 9, Morgan Jennings vs. Belmont (11-15-11)
 Blocked Shots 7, Jassany Williams at Duke (11-18-11)
 Steals..... 3 on three occasions

2011-12 Opponent Individual Highs...**First Half**

Points..... 9, Sara Mostafa of George Washington (11-23-11)
 Field Goals Made..... 4, Elizabeth Williams of Duke (11-18-11)
 Field Goal Attempts 9, Briana Williams of Mercer (11-11-11)
 3-Point Field Goals Made 2, Cacy Burnett of Belmont (11-15-11)
 3-Point Field Goal Attempts..... 5, Briana Williams of Mercer (11-11-11)
 Free Throws Made..... 3, on three occasions, last by Sara Mostafa of George Washington (11-23-11)
 Free Throws Attempted.. 4, on three occasions, last by Sara Mostafa of George Washington (11-23-11)
 Rebounds..... 7, Elizabeth Williams of Duke (11-18-11)
 Assists 6, Adrienne Tarrence of Belmont (11-15-11)
 Blocked Shots 2, Elizabeth Williams of Duke (11-18-11)
 Steals..... 3, Sharnea Boykin of Mercer (11-11-11)

Second Half

Points..... 12, Danni Jackson of George Washington (11-23-11)
 Field Goals Made..... 5, Hayley Peters of Duke (11-18-11)
 Field Goal Attempts 9, Hayley Peters of Duke (11-18-11) and Danni Jackson of GW (11-23-11)
 3-Point Field Goals Made 2, A. Williams of Mercer (11-11-11) and Ernst of Belmont (11-15-11)
 3-Point Field Goal Attempts..... 4, Briana Williams of Mercer (11-11-11)
 Free Throws Made..... 4, Chloe Wells of Duke (11-18-11)
 Free Throws Attempted..... 4, on three occasions
 Rebounds..... 6, Elizabeth Williams and Richae Jackson of Duke (11-18-11)
 Assists 4, Chelsea Gray of Duke (11-18-11)
 Blocked Shots 2, Elizabeth Williams of Duke (11-18-11)
 Steals..... 2, Hayley Nelson of Belmont (11-15-11)

Game

Points..... 18, Elizabeth Williams of Duke (11-18-11)
 Field Goals Made..... 8, Elizabeth Williams of Duke (11-18-11)
 Field Goal Attempts 14, Briana Williams of Mercer (11-11-11)
 3-Point Field Goals Made 3, Cacy Burnett of Belmont (11-15-11)
 3-Point Field Goal Attempts..... 9, Briana Williams of Mercer (11-11-11)
 Free Throws Made..... 6, Chloe Wells of Duke (11-18-11)
 Free Throws Attempted..... 6, Nelson of Belmont (11-15-11) and Wells of Duke (11-18-11)
 Rebounds..... 13, Elizabeth Williams of Duke (11-18-11)
 Assists 8, Tarrence of Belmont (11-15-11) and Gray of Duke (11-18-11)
 Blocked Shots 4, Elizabeth Williams of Duke (11-18-11)
 Steals..... 4, Sharnea Boykin of Mercer (11-11-11)

2011-12 Starting Lineups

	Guard (1)	Guard (2)	Guard/Forward (3)	Forward (4)	Forward/Center (5)
at Mercer	Morgan Jennings	Tyrese Tanner	Hasina Muhammad	Jassany Williams	Chantel Hilliard
BELMONT	Morgan Jennings	Tyrese Tanner	Hasina Muhammad	Jassany Williams	Blanche Alverson
at Duke	Morgan Jennings	Tyrese Tanner	Hasina Muhammad	Jassany Williams	Blanche Alverson
GEORGE WASHINGTON	Morgan Jennings	Tyrese Tanner	Hasina Muhammad	Jassany Williams	Blanche Alverson

Record by Starting Lineup

Jennings, Tanner, Muhammad, Williams, Hilliard	1-0 (1.000)
Jennings, Tanner, Muhammad, Williams, Alverson	2-1 (.667)

Game-by-Game Leaders

	Points	Rebounds	Assists	Steals	Blocked Shots
at Mercer	14-Tanner	10-Alverson	8-Jennings	3-Ouwardad	2-Williams
BELMONT	18-Glymph	9-Hilliard	9-Jennings	3-Ouwardad/Jennings	4-Williams
at #8 Duke	12-Glymph	6-Jennings	3-Jennings	2-Williams/Jennings	7-Williams
GEORGE WASHINGTON	14-Alverson	8-Simmons	5-Jennings	2-Alverson	2-Glymph

Comparison Statistics (Auburn/Opponent)

Opponent	1st	2nd	Score	Mar	Total FG	FG Pct	3-Pointers	3FG Pct	Free Throws	FT Pct	Reb.	Mar	Assist	TO	Bk	Stl	Fouls
at Mercer	36/19	41/24	77-43	+34	31-56/15-55	.554/.273	0-9/4-18	.000/.222	15-24/9-16	.625/.563	48-27	+21	23/7	21/19	5/1	11/10	19/20
BELMONT	39/25	41/28	80-53	+27	29-61/19-48	.475/.396	10-21/8-19	.476/.421	12-15/7-14	.800/.500	35-32	+3	20/12	12/24	7/1	15/6	15/14
at Duke	31/32	19/41	50-73	(-23)	19-58/27-71	.328/.380	5-16/0-12	.313/.000	7-12/19-23	.583/.826	35-52	(-17)	9/16	22/16	11/5	8/11	18/14
G. WASHINGTON	19/26	36/21	55-47	+8	18-53/15-46	.340/.326	4-18/3-9	.222/.333	15-25/14-19	.600/.737	39-38	+1	14/7	10/16	3/1	7/7	15/16

Scoring Breakdown

(Percentage of total points in parentheses)

Opponent	Front Court	Back Court	Sr.	Jr.	So.	Fr.	Starters	Bench
at Mercer	34 (44.2)	43 (55.8)	17	21	27	12	47 (61.0)	30 (39.0)
BELMONT	31 (38.8)	49 (61.2)	19	10	46	5	49 (61.2)	31 (38.8)
at Duke	15 (30.0)	35 (70.0)	8	7	25	10	30 (60.0)	20 (40.0)
GEORGE WASHINGTON	26 (47.3)	29 (52.7)	11	14	20	10	44 (80.0)	11 (20.0)

Lead-Deficit Comparison

Opponent	Largest Lead	Largest Deficit	Lead Changes	Ties	Result
at Mercer	34 (2nd, 2:17)	---	0	0	W, 77-43
BELMONT	27 (2nd, 0:45)	6 (1st, 18:37)	3	2	W, 80-53
at Duke	1 (1st, 19:39)	23 (2nd, 2:10)	2	1	L, 50-73
GEORGE WASHINGTON	10 (2nd, 0:14)	9 (1st, 0:31)	1	5	W, 55-47

Specialty Statistics (Auburn-Opponent)

Opponent	Bench Points	Points in the Paint	Points off Turnovers	Second Chance Points	Fast Break Points
at Mercer	30-22	54-14	20-13	12-1	10-4
BELMONT	31-18	32-17	35-9	13-10	13-2
at Duke	20-21	18-44	17-23	14-12	7-14
GEORGE WASHINGTON	11-11	14-18	13-9	8-7	2-4



Nell FORTNER

Head Coach

Eighth Season

Jackson, Miss • Texas, 1981

- Coached Auburn to its first SEC title in 20 years during 2008-09 season
- Produced Auburn's first SEC Player of the Year since 1988 in DeWanna Bonner
- Has an overall record of 152-101 for a .601 winning percentage
- Sports a 709-252 (.738) record as a head coach, assistant coach and player at all levels (college, professional, international)
- Coached teams to 11 NCAA Tournament appearances, eight as an assistant coach and three as a head coach
- 2000 USA Basketball Coach of the Year
- 1997 and 2009 Basketball Times National Coach of the Year
- 2009 Russell Athletic/WBCA Region III Coach of the Year
- 1997 Big Ten Coach of the Year
- 2009 SEC Coach of the Year
- Led the U.S. National Team to a gold medal in the 2000 Olympics
- Coached 10 different U.S. squads to a 101-14 (.878) record
- Served as an assistant coach for the U.S. National Team that won a gold medal at the 1996 Olympics
- Coached three players to State Farm/WBCA All-America honors
- Coached eight players to 10 all-conference honors
- Coached Auburn to three straight 20-win seasons, including a 30-win season in 2009 - Auburn's first in 20 years
- Produced two WNBA draft picks (DeWanna Bonner and Whitney Boddie) out of her first recruiting class at Auburn
- Spent three years as Head Coach and General Manager of the WNBA's Indiana Fever, leading the team to the playoffs in her second season
- As an assistant coach at Louisiana Tech, helped the team to the Elite Eight in 1993 and the National Championship game in 1994
- Spent four years as a studio analyst with ESPN (2001-04, 2005 WNBA Playoffs)

All-time record as player and coach at all levels:	709-252 (.738)	30 years
Record as a WNBA coach:	42-56 (.429)	3 seasons
Record as USA Head Coach:	101-14 (.878)	4 years
Record as a collegiate player:	127-26 (.830)	4 seasons
Record as a collegiate coach:	387-156 (.713)	17 seasons
Record as a collegiate assistant coach:	235-55 (.810)	9 seasons
Record as a collegiate head coach:	152-101 (.601)	9 seasons
Record at Auburn:	135-90 (.600)	8 seasons
SEC Record:	48-54 (.471)	7 seasons

Fortner Year-by-Year

Texas, Player (1977-81)

Year	Record	Conf.	Other Information
1977-78	29-10	--	5th AIAW
1978-79	37-4	--	3rd AIAW
1979-80	33-4	--	5th AIAW
1980-81	28-8	--	9th AIAW

Stephen F. Austin, Graduate Assistant/Assistant (1986-90)

Year	Record	Conf.	Other Information
1986-87	25-6	9-1	WNIT Third Round
1987-88	29-5	13-1	Southland Champions NCAA Second Round
1988-89	30-4	13-1	Southland Champions NCAA Regional Finalist
1989-90	28-3	14-0	Southland Champions NCAA Regional Finalist

Louisiana Tech, Assistant Coach (1990-95)

Year	Record	Conf.	Other Information
1990-91	18-12	9-3	American South Conference Runner-Up NCAA First Round
1991-92	20-10	12-4	NCAA First Round
1992-93	26-6	13-1	Sun Belt Conference Champion NCAA Elite Eight
1993-94	31-4	14-0	Sun Belt Conference Champion NCAA Runner-up
1994-95	28-5	13-1	Sun Belt Conference Champion NCAA Sweet 16

USA Basketball, Assistant Coach (1995-96)

52-0 Overall Record (1.000)

Purdue, Head Coach (1996-97)

Year	Record	Conf.	Other Information
1996-97	17-11	12-4	Big Ten Co-Champions NCAA Second Round

USA Basketball, Head Coach (1997-2000)

101-14 Overall Record (.878)

Indiana Fever (WNBA), Head Coach (2001-03)

Year	Record	Conf.	Other Information
2001	10-22	--	
2002	16-16	--	WNBA Playoffs First Round
2003	16-18	--	

Auburn, Head Coach (2004-present)

Year	Record	Conf.	Other Information
2004-05	16-13	6-8	
2005-06	14-15	4-10	
2006-07	21-13	6-8	WNIT Quarterfinals
2007-08	20-12	7-7	NCAA First Round
2008-09	30-4	12-2	SEC Champions SEC Tournament Runner-Up NCAA Second Round
2009-10	15-16	5-11	
2010-11	16-16	8-8	WNIT Second Round
2011-12	3-1		



Chantel HILLIARD

#23

Senior • Forward/Center • 6-2

Biloxi, Miss.

St. Martin High School

NOTES:

- Neared a double-double with 9 rebounds and 8 points in home-opener vs. Belmont
- Started and scored 6 points with 5 rebounds and 2 steals at Mercer in the season-opener
- Started nine of the final 10 games of the 2010-11 season
- Picked up her first career double-double with career highs of 18 points and 11 rebounds vs. Mississippi State in the SEC Tournament
- Was Auburn's most efficient shooter last season with a .522 field goal percentage
- Led Auburn in scoring for the first time in her career, coming off the bench for a career-high 16 points on 7-of-9 shooting at South Florida
- Scored in double figures nine times this season, including four of the last six games of the season

Opponent	Start	Min.	FG-A	3PT-A	FT-A	O-D-T	PF	Ast.	TO	Blk.	St.	Pts.
GCSU (Exhibition)	*	19	3-9	0-0	4-6	8-7-15	2	0	3	2	1	10
at Mercer	*	18	3-5	0-0	0-0	0-5-5	2	1	4	0	2	6
BELMONT		19	4-5	0-0	0-0	3-6-9	2	2	2	1	2	8
at Duke		23	3-7	0-1	0-0	2-2-4	3	0	1	1	0	6
GEORGE WASHINGTON		16	0-1	0-0	0-0	2-3-5	4	0	0	0	1	0
SOUTH CAROLINA-UPSTATE												
TROY												
at Temple												
SOUTH FLORIDA												
PURDUE												
vs. Marist												
vs. Hofstra/Central Connecticut State												
vs. North Carolina-Charlotte												
vs. Florida International/Albany												
TENNESSEE												
at Alabama												
GEORGIA												
at Vanderbilt												
at Arkansas												
SOUTH CAROLINA												
at Mississippi State												
KENTUCKY												
at Ole Miss												
VANDERBILT												
at Tennessee												
at Florida												
ARKANSAS												
at LSU												
ALABAMA												
OLE MISS												

HILLIARD CAREER STATISTICS

Year	GP-GS	FG-FGA	Pct	3FG-FGA	Pct	FT-FTA	Pct	O-D-T (Reb.)	Avg	PF	FO	Ast	TO	Blk	Stl	Pts	Avg
2008-09	30-0	53-106	.500	0-2	.000	15-32	.469	29-56-85	2.8	50	0	7	26	12	13	121	4.0
2009-10	27-2	37-89	.416	0-0	.000	20-43	.465	31-35-66	2.4	49	1	6	35	13	11	94	3.5
2010-11	32-10	83-159	.522	0-2	.000	39-61	.639	44-69-113	3.5	62	0	9	50	13	18	205	6.4
2011-12	4-1	10-18	.556	0-1	.000	0-0	.000	7-16-23	5.8	11	0	3	7	2	5	20	5.0
TOTAL	93-13	183-372	.492	0-5	.000	74-136	.544	111-176-287	3.1	172	1	25	118	40	47	440	4.7

SEASON HIGHS

Points		
8	vs. Belmont	(11/15/11)
Rebounds		
9	vs. Belmont	(11/15/11)
Assists		
2	vs. Belmont	(11/15/11)
Blocks		
1	twice, last at Duke	(11/18/11)
Steals		
2	twice, last vs. Belmont	(11/15/11)
Field Goals		
4	vs. Belmont	(11/15/11)
Field Goal Attempts		
7	at Duke	(11/18/11)
3-Point Field Goals		
		N/A
3-Point FG Attempts		
1	at Duke	(11/18/11)
Free Throws		
		N/A
Free Throw Attempts		
		N/A

CAREER HIGHS

Points		
18	vs. Mississippi State	(3/3/11)
Rebounds		
11	Twice, last vs. Mississippi	(3/3/11)
Assists		
2	3 times, last vs. Belmont	(11/15/11)
Blocks		
3	twice, last vs. Duquesne	(12/29/08)
Steals		
3	vs. Duquesne	(12/29/08)
Field Goals		
8	vs. Mississippi State	(3/3/11)
Field Goal Attempts		
15	vs. Mississippi State	(3/3/11)
3-Point Field Goals		
		N/A
3-Point FG Attempts		
1	5 times, last at Duke	(11/18/11)
Free Throws		
7	vs. Florida	(1/6/11)
Free Throw Attempts		
12	vs. Sam Houston State	(12/5/08)



Morgan JENNINGS

#2

Senior • Guard • 5-8

Atlanta, Ga.

Frederick Douglass High School

NOTES:

- Averaging 6.3 assists per game through four games this season
- Dished out a career-high 9 assists, along with 8 points, in home-opener vs. Belmont
- Started at point guard in the season-opener, tallying 6 points, 6 rebounds and 8 assists at Mercer
- Started the final six games of the 2010-11 season
- Scored career-high 16 points vs. Kentucky on Feb. 27, including career-high 6 free throws
- Earned first start in almost two months at USC; tallied 6 points, 4 rebounds, 3 steals while playing more minutes than she had in the last seven games combined
- Collected career-high 4 steals against Alabama A&M last season

Opponent	Start	Min.	FG-A	3PT-A	FT-A	O-D-T	PF	Ass.	TO	Blk.	St.	Pts.
GCSU (Exhibition)	*	21	2-6	0-1	2-2	1-4-5	1	2	1	0	0	6
at Mercer	*	24	2-6	0-1	2-5	2-4-6	1	8	3	0	0	6
BELMONT	*	30	4-9	0-1	0-0	1-1-2	2	9	1	0	3	8
at Duke	*	30	0-4	0-0	2-4	0-6-6	5	3	5	0	2	2
GEORGE WASHINGTON	*	37	1-7	0-0	2-2	1-1-2	0	5	2	0	1	4
SOUTH CAROLINA-UPSTATE												
TROY												
at Temple												
SOUTH FLORIDA												
PURDUE												
vs. Marist												
vs. Hofstra/Central Connecticut State												
vs. North Carolina-Charlotte												
vs. Florida International/Albany												
TENNESSEE												
at Alabama												
GEORGIA												
at Vanderbilt												
at Arkansas												
SOUTH CAROLINA												
at Mississippi State												
KENTUCKY												
at Ole Miss												
VANDERBILT												
at Tennessee												
at Florida												
ARKANSAS												
at LSU												
ALABAMA												
OLE MISS												

SEASON HIGHS

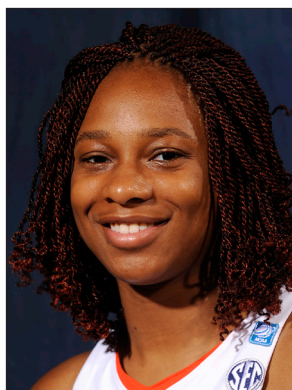
Points		
8	vs Belmont	(11/15/11)
Rebounds		
6	at Mercer	(11/11/11)
Assists		
9	vs Belmont	(11/15/11)
Blocks		
		N/A
Steals		
3	vs Belmont	(11/15/11)
Field Goals		
4	vs Belmont	(11/15/11)
Field Goal Attempts		
9	vs Belmont	(11/15/11)
3-Point Field Goals		
		N/A
3-Point FG Attempts		
1	twice, last vs. Belmont	(11/15/11)
Free Throws		
2	3 times, last vs. GW	(11/23/11)
Free Throw Attempts		
5	at Mercer	(11/11/11)

CAREER HIGHS

Points		
16	vs. Kentucky	(2/27/11)
Rebounds		
5	4 times, last at Tenn. Tech	(3/17/11)
Assists		
9	vs. Belmont	(11/15/11)
Blocks		
1	twice, last vs. Temple	(12/4/10)
Steals		
4	vs. Alabama A&M	(12/28/10)
Field Goals		
7	at Seton Hall	(11/27/10)
Field Goal Attempts		
9	twice, last vs. Belmont	(11/15/11)
3-Point Field Goals		
		N/A
3-Point FG Attempts		
1	3 times, last vs. Belmont	(11/15/11)
Free Throws		
6	vs. Kentucky	(2/27/11)
Free Throw Attempts		
7	vs. Kentucky	(2/27/11)

JENNINGS CAREER STATISTICS

Year	GP-GS	FG-FGA	Pct	3FG-FGA	Pct	FT-FTA	Pct	O-D-T (Reb.)	Avg	PF	FO	Ass	TO	Blk	Stl	Pts	Avg
2008-09	30-4	30-77	.390	0-0	.000	11-24	.458	18-30-48	1.6	25	0	34	41	0	16	71	2.4
2009-10	13-0	9-32	.281	0-1	.000	1-4	.250	2-9-11	0.8	9	0	15	14	0	2	19	1.5
2010-11	31-8	37-101	.366	0-1	.000	32-47	.681	19-38-57	1.8	31	0	41	46	2	30	106	3.4
2011-12	4-4	7-26	.269	0-2	.000	6-11	.545	4-12-16	4.0	8	1	25	11	0	6	20	5.0
TOTAL	78-16	83-236	.352	0-4	.000	50-86	.581	43-89-132	1.7	73	1	115	112	2	54	216	2.8



Parrisha SIMMONS

#4

Senior • Guard • 6-0

Macon, Ga.

Southwest Macon High School

NOTES:

- Came off the bench to score 5 points with 9 rebounds while playing in her hometown at Mercer in the season-opener
- Scored season-high 6 points vs. Purdue; tied the mark against Florida and vs. Mississippi State last season
- Snagged career-high 3 steals vs. Alabama A&M
- A defensive and rebounding specialist

Opponent	Start	Min.	FG-A	3PT-A	FT-A	O-D-T	PF	Ast.	TO	Blk.	Stl.	Pts.
GCSU (Exhibition)	17	1-2	0-0	2-2	2-7-9	1	2	0	1	3	4	
at Mercer	18	1-3	0-0	3-4	5-4-9	2	0	2	1	0	5	
BELMONT	14	1-1	0-0	1-2	2-0-2	1	1	1	0	1	3	
at Duke	12	0-1	0-0	0-0	0-1-1	0	0	0	0	1	0	
GEORGE WASHINGTON	20	2-4	0-0	3-5	3-5-8	3	0	2	0	1	7	
SOUTH CAROLINA-UPSTATE												
TROY												
at Temple												
SOUTH FLORIDA												
PURDUE												
vs. Marist												
vs. Hofstra/Central Connecticut State												
vs. North Carolina-Charlotte												
vs. Florida International/Albany												
TENNESSEE												
at Alabama												
GEORGIA												
at Vanderbilt												
at Arkansas												
SOUTH CAROLINA												
at Mississippi State												
KENTUCKY												
at Ole Miss												
VANDERBILT												
at Tennessee												
at Florida												
ARKANSAS												
at LSU												
ALABAMA												
OLE MISS												

SIMMONS CAREER STATISTICS

Year	GP-GS	FG-FGA	Pct	3FG-FGA	Pct	FT-FTA	Pct	O-D-T (Reb.)	Avg	PF	FO	Ast	TO	Blk	Stl	Pts	Avg
2008-09	21-0	9-25	.360	0-0	.000	4-20	.200	20-36-56	2.7	13	0	12	14	4	6	22	1.0
2009-10	31-22	39-89	.435	0-0	.000	17-49	.347	88-71-159	5.1	51	0	34	43	1	16	95	3.1
2010-11	32-19	24-66	.364	0-0	.000	26-58	.448	54-46-100	3.1	38	0	27	28	2	18	74	2.3
2011-12	4-0	4-9	.444	0-0	.000	7-11	.636	10-10-20	5.0	6	0	1	5	1	3	15	3.8
TOTAL	88-41	76-189	.402	0-0	.000	54-138	.391	172-163-335	3.8	108	0	74	90	8	43	206	2.3

SEASON HIGHS

Points

7 vs. George Washington (11/23/11)

Rebounds

9 at Mercer (11/11/11)

Assists

N/A

Blocks

1 at Mercer (11/11/11)

Steals

1 3 times, last vs. GW (11/23/11)

Field Goals

2 vs. George Washington (11/23/11)

Field Goal Attempts

4 vs. George Washington (11/23/11)

3-Point Field Goals

N/A

3-Point FG Attempts

N/A

Free Throws

3 twice, last vs. GW (11/23/11)

Free Throw Attempts

5 vs. George Washington (11/23/11)

CAREER HIGHS

Points

9 twice, last vs. Vanderbilt (1/21/10)

Rebounds

12 vs. George Washington (12/5/09)

Assists

4 vs. Valparaiso (12/28/09)

Blocks

1 7 times, last vs. JSU (12/30/10)

Steals

3 vs. Alabama A&M (12/28/10)

Field Goals

4 twice, last at N.C. A&T (12/1/09)

Field Goal Attempts

7 twice, last vs. USC (1/30/11)

3-Point Field Goals

N/A

3-Point FG Attempts

N/A

Free Throws

5 vs. South Alabama (12/2/10)

Free Throw Attempts

9 at Chicago State (12/21/10)



Blanche ALVERSON

#14

Junior • Forward/Center • 6-3

Andalusia, Ala.

Buford (Ga.) High School

NOTES:

- Scored a season-high 14 points against George Washington
- Returned to the starting lineup for 8 points and 3 rebounds in the home-opener vs. Belmont
- Came off the bench, breaking a 38-game start streak, to register her first career double-double with 12 points and 10 rebounds at Mercer in the season-opener
- Is nine 3-pointers away from tying Carolyn Jones for 6th all-time at Auburn in career 3-pointers
- Had a career outing last season vs. Ole Miss with 27 points, including a career-high five 3-pointers
- Pulled down a career-high 10 rebounds at Mercer in the 2011-12 season-opener
- Scored Auburn's first field goal in the new Auburn Arena, a 3-pointer that came 56 seconds into the game against Mercer in 2010
- A deep shooting threat, she is also one of the most versatile players on the team because of her size and post skills

Opponent	Start	Min.	FG-A	3PT-A	FT-A	O-D-T	PF	Asst.	TO	Blk.	St.	Pts.
GCSU (Exhibition)	*	23	3-8	2-6	1-1	0-2-2	1	4	0	0	4	9
at Mercer		26	5-6	0-0	2-4	1-9-10	0	1	1	1	0	12
BELMONT	*	21	2-9	1-5	3-3	1-2-3	2	0	1	0	0	8
at Duke	*	22	2-8	1-4	0-0	0-3-3	2	1	2	0	0	5
GEORGE WASHINGTON	*	26	5-7	2-3	2-2	0-5-5	0	0	2	0	2	14

SOUTH CAROLINA-UPSTATE

TROY

at Temple

SOUTH FLORIDA

PURDUE

vs. Marist

vs. Hofstra/Central Connecticut State

vs. North Carolina-Charlotte

vs. Florida International/Albany

TENNESSEE

at Alabama

GEORGIA

at Vanderbilt

at Arkansas

SOUTH CAROLINA

at Mississippi State

KENTUCKY

at Ole Miss

VANDERBILT

at Tennessee

at Florida

ARKANSAS

at LSU

ALABAMA

OLE MISS

SEASON HIGHS

Points

14 vs. George Washington (11/23/11)

Rebounds

10 at Mercer (11/11/11)

Assists

1 at Mercer (11/11/11)

Blocks

1 at Mercer (11/11/11)

Steals

2 vs. George Washington (11/23/11)

Field Goals

5 twice, last vs. GW (11/23/11)

Field Goal Attempts

9 vs. Belmont (11/15/11)

3-Point Field Goals

2 vs. George Washington (11/23/11)

3-Point FG Attempts

5 vs. Belmont (11/15/11)

Free Throws

3 vs. Belmont (11/15/11)

Free Throw Attempts

4 at Mercer (11/11/11)

CAREER HIGHS

Points

27 vs. Ole Miss (1/13/11)

Rebounds

10 at Mercer (11/11/11)

Assists

5 3 times, last vs. Alabama (1/2/11)

Blocks

3 twice, last at Alabama (1/2/11)

Steals

4 vs. LSU (1/16/11)

Field Goals

11 vs. Ole Miss (1/13/11)

Field Goal Attempts

17 twice, last vs. Mississippi St. (2/6/11)

3-Point Field Goals

5 vs. Ole Miss (1/13/11)

3-Point FG Attempts

9 3 times, last vs. Kentucky (2/27/11)

Free Throws

4 twice, last vs. Seton Hall (11/27/10)

Free Throw Attempts

5 vs. Seton Hall (11/27/10)

ALVERSON CAREER STATISTICS

Year	GP-GS	FG-FGA	Pct	3FG-FGA	Pct	FT-FTA	Pct	O-D-T (Reb.)	Avg	PF	FO	Asst	TO	Blk	Stl	Pts	Avg
2009-10	31-13	78-218	.358	40-128	.313	19-27	.704	26-92-118	3.8	39	1	51	44	17	15	215	6.9
2010-11	32-32	126-333	.378	50-171	.292	25-35	.714	33-118-151	4.7	44	0	33	61	17	27	327	10.2
2011-12	4-3	14-30	.467	4-12	.333	7-9	.778	2-19-21	5.3	4	0	2	6	1	2	39	9.8
TOTAL	67-48	218-581	.375	94-311	.302	51-71	.718	61-229-290	4.3	87	1	86	111	35	44	581	8.7



Najat OUARDAD

#3

Junior • Guard • 5-1

Orleans, France

Pensacola State College

NOTES:

- Scored 7 points with 4 assists and 3 rebounds in debut as a Tiger at Mercer
- Entering her first season at Auburn after transferring from Pensacola State College
- A two-time All-Panhandle Conference selection while at Pensacola State College
- Averaged 6.4 points, 2.6 rebounds, 5.1 assists and 2.5 steals per game, after averaging 6.6 points, 2.0 rebounds, 6.5 assists and 2.5 steals per game as a freshman
- Led Pensacola State to a third-place finish at the 2011 NJCAA National Basketball Championship, compiling a 36-1 record along the way
- Played for the French National Team while in high school
- Attended Oak Ridge Military Academy (Oak Ridge, N.C.) and Forsyth Country Day (Lewisville, N.C.) before going to PSC

Opponent	Start	Min.	FG-A	3PT-A	FT-A	O-D-T	PF	Asst.	TO	Blk.	Stl.	Pts.
GCSU (Exhibition)	18		0-2	0-1	2-2	1-1-2	3	3	2	0	5	2
at Mercer	16		2-5	0-2	3-4	1-2-3	1	4	4	0	3	7
BELMONT	13		1-4	0-2	0-0	0-0-0	1	3	2	0	3	2
at Duke	14		1-2	0-0	0-1	1-1-2	2	2	4	0	1	2
GEORGE WASHINGTON	15		0-3	0-3	0-0	2-1-3	0	2	2	0	1	0

SOUTH CAROLINA-UPSTATE

TROY

at Temple

SOUTH FLORIDA

PURDUE

vs. Marist

vs. Hofstra/Central Connecticut State

vs. North Carolina-Charlotte

vs. Florida International/Albany

TENNESSEE

at Alabama

GEORGIA

at Vanderbilt

at Arkansas

SOUTH CAROLINA

at Mississippi State

KENTUCKY

at Ole Miss

VANDERBILT

at Tennessee

at Florida

ARKANSAS

at LSU

ALABAMA

OLE MISS

OUARDAD CAREER STATISTICS

Year	GP-GS	FG-FGA	Pct	3FG-FGA	Pct	FT-FTA	Pct	O-D-T (Reb.)	Avg	PF	FO	Asst	TO	Blk	Stl	Pts	Avg
2011-12	4-0	4-14	.286	0-7	.000	3-5	.600	4-4-8	2.0	4	0	11	12	0	8	11	2.8
TOTAL	4-0	4-14	.286	0-7	.000	3-5	.600	4-4-8	2.0	4	0	11	12	0	8	11	2.8

SEASON HIGHS

Points

7 at Mercer (11/11/11)

Rebounds

3 twice, last vs. GW (11/23/11)

Assists

4 at Mercer (11/11/11)

Blocks

N/A

Steals

3 vs Belmont (11/15/11)

Field Goals

2 at Mercer (11/11/11)

Field Goal Attempts

5 at Mercer (11/11/11)

3-Point Field Goals

N/A

3-Point FG Attempts

2 twice, last vs. Belmont (11/15/11)

Free Throws

3 at Mercer (11/11/11)

Free Throw Attempts

4 at Mercer (11/11/11)



Pascale WEST

#20

Junior • Center • 6-8

LaGrange, Ga.

Troup County Comprehensive High School

NOTES:

- Pulled down season-high 4 rebounds with a block against George Washington
- Came off the bench for 2 points and a rebound in the season-opener at Mercer
- Tied her career high again with 4 points at LSU last season
- Is the tallest player in the SEC
- Her 22 blocks during the 2009-10 season rank her ninth all-time among Auburn freshmen

Opponent	Start	Min.	FG-A	3PT-A	FT-A	O-D-T	PF	Ast.	TO	Blk.	St.	Pts.
GCSU (Exhibition)	13		1-4	0-0	2-3	0-3-3	0	1	1	0	0	4
at Mercer	5		0-0	0-0	2-2	0-1-1	3	0	1	0	0	2
BELMONT	6		0-0	0-0	0-0	0-0-0	2	0	1	0	0	0
at Duke						---	DNP - COACHES' DECISION ---					
GEORGE WASHINGTON	12		0-0	0-0	0-0	2-2-4	3	0	0	1	0	0
SOUTH CAROLINA-UPSTATE												
TROY												
at Temple												
SOUTH FLORIDA												
PURDUE												
vs. Marist												
vs. Hofstra/Central Connecticut State												
vs. North Carolina-Charlotte												
vs. Florida International/Albany												
TENNESSEE												
at Alabama												
GEORGIA												
at Vanderbilt												
at Arkansas												
SOUTH CAROLINA												
at Mississippi State												
KENTUCKY												
at Ole Miss												
VANDERBILT												
at Tennessee												
at Florida												
ARKANSAS												
at LSU												
ALABAMA												
OLE MISS												

WEST CAREER STATISTICS

Year	GP-GS	FG-FGA	Pct	3FG-FGA	Pct	FT-FTA	Pct	O-D-T (Reb.)	Avg	PF	FO	Ast	TO	Blk	Stl	Pts	Avg
2009-10	24-0	7-15	.467	0-0	.000	4-11	.364	9-23-32	1.3	31	0	5	14	22	6	18	0.8
2010-11	13-0	5-8	.625	0-0	.000	1-6	.167	1-5-6	0.5	15	0	1	9	3	1	11	0.8
2011-12	3-0	0-0	.000	0-0	.000	2-2	1.000	2-3-5	1.7	8	0	0	2	1	0	2	0.7
TOTAL	40-0	12-23	.522	0-0	.000	7-19	.368	12-31-43	1.1	54	0	6	25	26	7	31	0.8

SEASON HIGHS

Points		
2	at Mercer	(11/11/11)
Rebounds		
4	vs. George Washington	(11/23/11)
Assists		
		N/A
Blocks		
1	vs. George Washington	(11/23/11)
Steals		
		N/A
Field Goals		
		N/A
Field Goal Attempts		
		N/A
3-Point Field Goals		
		N/A
3-Point FG Attempts		
		N/A
Free Throws		
2	at Mercer	(11/11/11)
Free Throw Attempts		
2	at Mercer	(11/11/11)

CAREER HIGHS

Points		
4	4 times, last at LSU	(2/10/11)
Rebounds		
5	vs. Alabama A&M	(11/19/09)
Assists		
1	3 times, last vs. Ala. A&M	(12/28/10)
Blocks		
7	vs. Alabama A&M	(11/19/09)
Steals		
1	7 times, last vs. Purdue	(12/18/10)
Field Goals		
2	4 times, last at LSU	(2/10/11)
Field Goal Attempts		
4	at North Carolina A&T	(12/1/09)
3-Point Field Goals		
		N/A
3-Point FG Attempts		
		N/A
Free Throws		
2	at Mercer	(11/11/11)
Free Throw Attempts		
4	vs. Florida A&M	(11/28/09)



Peyton DAVIS

#34

Sophomore • Center • 6-5

Pinson, Ala.

Mortimer Jordan High School

NOTES:

- Played season-high 21 minutes at Arkansas as a freshman, tallying 4 points, 6 rebounds and a season-high 3 blocks
- Had a career outing at Vanderbilt, notching season highs in points (6), rebounds (7) and steals (2) in a season-high 15 minutes
- Led Auburn in rebounding for the first time with 7 at Vanderbilt
- A two-sport star athlete in high school, also fielded several NCAA Division I volleyball offers
- Holds a black belt in Taekwondo

Opponent	Start	Min.	FG-A	3PT-A	FT-A	O-D-T	PF	Asst.	TO	Blk.	Stl.	Pts.
GCSU (Exhibition)						--- DNP - INJURED ---						
at Mercer						--- DNP - INJURED ---						
BELMONT						--- DNP - INJURED ---						
at Duke						--- DNP - COACHES' DECISION ---						
GEORGE WASHINGTON						--- DNP - INJURED ---						
SOUTH CAROLINA-UPSTATE												
TROY												
at Temple												
SOUTH FLORIDA												
PURDUE												
vs. Marist												
vs. Hofstra/Central Connecticut State												
vs. North Carolina-Charlotte												
vs. Florida International/Albany												
TENNESSEE												
at Alabama												
GEORGIA												
at Vanderbilt												
at Arkansas												
SOUTH CAROLINA												
at Mississippi State												
KENTUCKY												
at Ole Miss												
VANDERBILT												
at Tennessee												
at Florida												
ARKANSAS												
at LSU												
ALABAMA												
OLE MISS												

DAVIS CAREER STATISTICS

Year	GP-GS	FG-FGA	Pct	3FG-FGA	Pct	FT-FTA	Pct	O-D-T (Reb.)	Avg	PF	FO	Asst	TO	Blk	Stl	Pts	Avg
2010-11	26-0	12-41	.293	0-0	.000	9-15	.600	18-16-34	1.3	38	0	7	13	7	4	33	1.3
TOTAL	26-0	12-41	.293	0-0	.000	9-15	.600	18-16-34	1.3	38	0	7	13	7	4	33	1.3

SEASON HIGHS

Points

Rebounds

Assists

Blocks

Steals

Field Goals

Field Goal Attempts

3-Point Field Goals

3-Point FG Attempts

Free Throws

Free Throw Attempts

CAREER HIGHS

Points

6 at Vanderbilt (1/9/11)

Rebounds

7 at Vanderbilt (1/9/11)

Assists

1 7 times, last vs. MSU (3/3/11)

Blocks

3 at Arkansas (2/13/11)

Steals

2 at Vanderbilt (1/9/11)

Field Goals

2 4 times, last at Arkansas (2/13/11)

Field Goal Attempts

6 vs. Alabama A&M (12/28/10)

3-Point Field Goals

N/A

3-Point FG Attempts

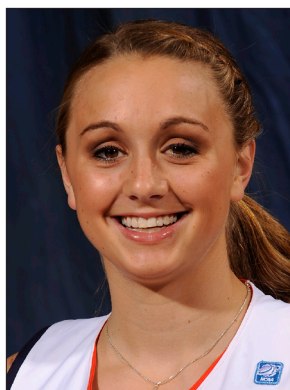
N/A

Free Throws

3 vs. Mercer (11/12/10)

Free Throw Attempts

4 vs. Mercer (11/12/10)



Camille GLYMPH

#22

Sophomore • Guard • 5-10

Greenville, S.C.

J.L. Mann High School

NOTES:

- Has led Auburn in scoring in two of the last three games and is third on the team in scoring with 9.5 points per game
- Is 9-of-23 (.391) from beyond the arc in the last three games
- Came off the bench in home-opener vs. Belmont for career-high 18 points on 5-of-8 shooting from beyond the arc
- Came off the bench for 4 points, 3 rebounds, 3 assists and 2 steals at Mercer in the season-opener
- Scored season-high 8 points at Toledo in the second round of the 2011 WNIT
- Made her collegiate and SEC debut on Jan. 13, 2011 against Ole Miss after missing half the season with an injury, recording 4 points and a steal

Opponent	Start	Min.	FG-A	3PT-A	FT-A	O-D-T	PF	Ast.	TO	Blk.	St.	Pts.
GCSU (Exhibition)	22		5-14	5-12	0-0	0-1-1	2	1	0	0	1	15
at Mercer	24		2-7	0-4	0-0	1-2-3	0	3	0	0	2	4
BELMONT	23		6-11	5-8	1-1	0-1-1	0	3	1	0	1	18
at Duke	28		4-12	4-8	0-0	0-3-3	0	0	0	0	1	12
GEORGE WASHINGTON	19		2-9	0-7	0-0	0-3-3	1	1	0	2	0	4
SOUTH CAROLINA-UPSTATE												
TROY												
at Temple												
SOUTH FLORIDA												
PURDUE												
vs. Marist												
vs. Hofstra/Central Connecticut State												
vs. North Carolina-Charlotte												
vs. Florida International/Albany												
TENNESSEE												
at Alabama												
GEORGIA												
at Vanderbilt												
at Arkansas												
SOUTH CAROLINA												
at Mississippi State												
KENTUCKY												
at Ole Miss												
VANDERBILT												
at Tennessee												
at Florida												
ARKANSAS												
at LSU												
ALABAMA												
OLE MISS												

GLYMPH CAREER STATISTICS

Year	GP-GS	FG-FGA	Pct	3FG-FGA	Pct	FT-FTA	Pct	O-D-T (Reb.)	Avg	PF	FO	Ast	TO	Blk	Stl	Pts	Avg
2010-11	13-0	11-40	.275	5-21	.238	2-2	1.000	3-9-12	0.9	3	0	8	15	2	3	29	2.2
2011-12	4-0	14-39	.359	9-27	.333	1-1	1.000	1-9-10	2.5	1	0	7	1	2	4	38	9.5
TOTAL	17-0	25-79	.316	14-48	.292	3-3	1.000	4-18-22	1.3	4	0	15	16	4	7	67	3.9

SEASON HIGHS

Points		
18	vs Belmont	(11/15/11)
Rebounds		
3	twice, last at Duke	(11/18/11)
Assists		
3	twice, last vs Belmont	(11/15/11)
Blocks		
2	vs. George Washington	(11/23/11)
Steals		
2	at Mercer	(11/11/11)
Field Goals		
6	vs Belmont	(11/15/11)
Field Goal Attempts		
12	at Duke	(11/18/11)
3-Point Field Goals		
5	vs Belmont	(11/15/11)
3-Point FG Attempts		
8	twice, last at Duke	(11/18/11)
Free Throws		
1	vs Belmont	(11/15/11)
Free Throw Attempts		
1	vs Belmont	(11/15/11)

CAREER HIGHS

Points		
18	vs Belmont	(11/15/11)
Rebounds		
4	vs. Alabama	(2/17/11)
Assists		
3	3 times, last vs. Belmont	(11/15/11)
Blocks		
2	vs. George Washington	(11/23/11)
Steals		
2	at Mercer	(11/11/11)
Field Goals		
6	vs Belmont	(11/15/11)
Field Goal Attempts		
12	twice, last at Duke	(11/18/11)
3-Point Field Goals		
5	vs Belmont	(11/15/11)
3-Point FG Attempts		
8	twice, last at Duke	(11/18/11)
Free Throws		
2	vs. Ole Miss	(1/13/11)
Free Throw Attempts		
2	vs. Ole Miss	(1/13/11)



Courtney STRAIN

#11

Sophomore • Guard • 5-9

Woodland, Ala.

Woodland High School

NOTES:

- Tallied a total of 6 points in exhibition against Georgia College
- Played season-high 22 minutes at Arkansas last season, setting season highs in points (12) and rebounds (4)
- Earned first collegiate start vs. Seton Hall at the 2010 Junkanoo Jam, scoring 7 points
- Scored 3 points with 2 rebounds in collegiate debut vs. Mercer in 2010
- Broke the Alabama state scoring record as a junior in high school, finished her career with 5,283 points - more than 1,000 than her nearest competitor
- Was also a varsity cheerleader for six years, serving as captain as a senior
- Graduated as salutatorian of her graduating class

Opponent	Start	Min.	FG-A	3PT-A	FT-A	O-D-T	PF	Ast.	TO	Blk.	St.	Pts.
GCSU (Exhibition)		18	3-7	0-3	0-2	0-1-1	3	0	0	0	1	6
at Mercer						--- DNP - INJURED ---						
BELMONT						--- DNP - INJURED ---						
at Duke						--- DNP - INJURED ---						
GEORGE WASHINGTON						--- DNP - INJURED ---						
SOUTH CAROLINA-UPSTATE												
TROY												
at Temple												
SOUTH FLORIDA												
PURDUE												
vs. Marist												
vs. Hofstra/Central Connecticut State												
vs. North Carolina-Charlotte												
vs. Florida International/Albany												
TENNESSEE												
at Alabama												
GEORGIA												
at Vanderbilt												
at Arkansas												
SOUTH CAROLINA												
at Mississippi State												
KENTUCKY												
at Ole Miss												
VANDERBILT												
at Tennessee												
at Florida												
ARKANSAS												
at LSU												
ALABAMA												
OLE MISS												

STRAIN CAREER STATISTICS

Year	GP-GS	FG-FGA	Pct	3FG-FGA	Pct	FT-FTA	Pct	O-D-T (Reb.)	Avg	PF	FO	Ast	TO	Blk	Stl	Pts	Avg
2010-11	24-1	24-76	.316	5-19	.263	8-15	.533	6-14-20	0.8	13	0	7	16	0	7	61	2.5
TOTAL	24-1	24-76	.316	5-19	.263	8-15	.533	6-14-20	0.8	13	0	7	16	0	7	61	2.5

SEASON HIGHS

Points

Rebounds

Assists

Blocks

Steals

Field Goals

Field Goal Attempts

3-Point Field Goals

3-Point FG Attempts

Free Throws

Free Throw Attempts

CAREER HIGHS

Points

12 at Arkansas (2/13/11)

Rebounds

4 at Arkansas (2/13/11)

Assists

1 7 times, last at Toledo (3/19/11)

Blocks

N/A

Steals

1 7 times, last vs. Kentucky (2/27/11)

Field Goals

5 at Arkansas (2/13/11)

Field Goal Attempts

8 at Toledo (3/19/11)

3-Point Field Goals

1 5 times, last at LSU (2/10/11)

3-Point FG Attempts

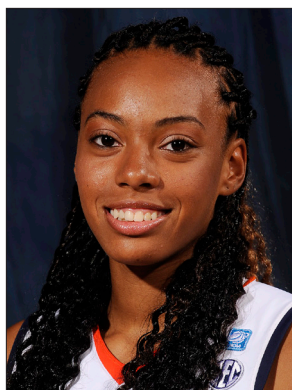
3 twice, last vs. Seton Hall (11/27/10)

Free Throws

3 vs. Sacred Heart (11/26/10)

Free Throw Attempts

6 vs. Sacred Heart (11/26/10)



Tyrese TANNER

#32

Sophomore • Forward • 6-1

Birmingham, Ala.

Hoover High School

NOTES:

- Leads Auburn in scoring with 12.5 points per game this season, scoring in double figures in three of four games this season
- Scored career-high 16 points in home-opener win over Belmont on career-high 4-of-5 shooting from 3-point range
- Started and led Auburn in scoring with 14 points in the season-opener at Mercer, also tallied 3 assists and 2 steals
- Averaged 11.0 points, 7.0 rebounds and 1.5 blocks per game in the two 2011 WNIT games
- Tied her career high with 15 points at Alabama, hitting four free throws in the final 20 seconds for the win
- Made first collegiate start vs. Seton Hall, went on to start the next two games

Opponent	Start	Min.	FG-A	3PT-A	FT-A	O-D-T	PF	Ass.	TO	Blk.	St.	Pts.
GCSU (Exhibition)		7	3-4	1-1	1-2	1-0-1	2	0	1	1	1	8
at Mercer	*	17	6-8	0-1	2-2	0-0-0	4	3	1	0	2	14
BELMONT	*	28	5-11	4-5	2-2	2-2-4	1	1	1	1	1	16
at Duke	*	26	3-11	0-3	3-3	0-4-4	2	1	3	2	1	9
GEORGE WASHINGTON	*	30	3-14	0-3	5-8	0-3-3	3	2	0	0	0	11
SOUTH CAROLINA-UPSTATE												
TROY												
at Temple												
SOUTH FLORIDA												
PURDUE												
vs. Marist												
vs. Hofstra/Central Connecticut State												
vs. North Carolina-Charlotte												
vs. Florida International/Albany												
TENNESSEE												
at Alabama												
GEORGIA												
at Vanderbilt												
at Arkansas												
SOUTH CAROLINA												
at Mississippi State												
KENTUCKY												
at Ole Miss												
VANDERBILT												
at Tennessee												
at Florida												
ARKANSAS												
at LSU												
ALABAMA												
OLE MISS												

TANNER CAREER STATISTICS

Year	GP-GS	FG-FGA	Pct	3FG-FGA	Pct	FT-FTA	Pct	O-D-T (Reb.)	Avg	PF	FO	Ass	TO	Blk	Stl	Pts	Avg
2010-11	32-3	53-159	.333	6-37	.162	43-64	.672	48-53-101	3.2	57	1	27	48	24	21	155	4.8
2011-12	4-4	17-44	.386	4-12	.333	12-15	.800	2-9-11	2.8	10	0	7	5	3	4	50	12.5
TOTAL	36-7	70-203	.345	10-49	.204	55-79	.696	50-62-112	3.1	67	1	34	53	27	25	205	5.7

SEASON HIGHS

Points		
16	vs Belmont	(11/15/11)
Rebounds		
4	twice, last at Duke	(11/18/11)
Assists		
3	at Mercer	(11/11/11)
Blocks		
2	at Duke	(11/18/11)
Steals		
2	at Mercer	(11/11/11)
Field Goals		
6	at Mercer	(11/11/11)
Field Goal Attempts		
14	vs. George Washington	(11/23/11)
3-Point Field Goals		
4	vs Belmont	(11/15/11)
3-Point FG Attempts		
5	at Mercer	(11/15/11)
Free Throws		
3	at Duke	(11/18/11)
Free Throw Attempts		
3	at Duke	(11/18/11)

CAREER HIGHS

Points		
16	vs Belmont	(11/15/11)
Rebounds		
7	twice, last at Toledo	(3/19/11)
Assists		
3	4 times, last vs. Belmont	(11/15/11)
Blocks		
3	at Tennessee Tech	(3/17/11)
Steals		
3	three times, last at Toledo	(3/19/11)
Field Goals		
6	at Mercer	(11/11/11)
Field Goal Attempts		
14	vs. George Washington	(11/23/11)
3-Point Field Goals		
4	vs Belmont	(11/15/11)
3-Point FG Attempts		
5	twice, last vs. Belmont	(11/15/11)
Free Throws		
6	twice, last at Toledo	(3/19/11)
Free Throw Attempts		
6	5 times, last at Toledo	(3/19/11)



Jassany WILLIAMS

#25

Sophomore • Forward • 6-2

Davie, Fla.

Nova High School

NOTES:

- Blocked a career-high 7 shots at Duke, tying for 13th all-time at Auburn in single-game blocks
- Neared a double-double with 12 points and 7 rebounds in home-opening win over Belmont; blocked career-high 4 shots
- Started and logged 9 points, 5 rebounds and 2 blocks in the season-opener at Mercer
- Started the last nine games of the 2010-11 season
- Pulled down a career-high 12 rebounds against Alabama
- Earned her first career start at LSU, scoring 6 points with 2 rebounds and 2 blocked shots in 19 minutes
- Came off the bench to score career high 13 points vs. South Alabama

Opponent	Start	Min.	FG-A	3PT-A	FT-A	O-D-T	PF	Ast.	TO	Blk.	St.	Pts.
GCSU (Exhibition)	*	24	2-4	0-0	4-6	4-7-11	1	2	0	1	1	8
at Mercer	*	29	4-6	0-0	1-2	1-4-5	3	2	1	2	1	9
BELMONT	*	29	5-8	0-0	2-2	1-6-7	3	0	1	4	2	7
at Duke	*	23	2-5	0-0	0-0	2-2-4	2	1	2	7	2	4
GEORGE WASHINGTON	*	7	2-2	0-0	1-4	1-0-1	1	0	0	0	0	5

SOUTH CAROLINA-UPSTATE

TROY

at Temple

SOUTH FLORIDA

PURDUE

vs. Marist

vs. Hofstra/Central Connecticut State

vs. North Carolina-Charlotte

vs. Florida International/Albany

TENNESSEE

at Alabama

GEORGIA

at Vanderbilt

at Arkansas

SOUTH CAROLINA

at Mississippi State

KENTUCKY

at Ole Miss

VANDERBILT

at Tennessee

at Florida

ARKANSAS

at LSU

ALABAMA

OLE MISS

SEASON HIGHS

Points

12 vs. Belmont (11/15/11)

Rebounds

7 vs. Belmont (11/15/11)

Assists

2 at Mercer (11/11/11)

Blocks

7 at Duke (11/18/11)

Steals

2 twice, last at Duke (11/18/11)

Field Goals

5 vs. Belmont (11/15/11)

Field Goal Attempts

8 vs. Belmont (11/15/11)

3-Point Field Goals

N/A

3-Point FG Attempts

N/A

Free Throws

2 vs. Belmont (11/15/11)

Free Throw Attempts

4 vs. George Washington (11/23/11)

CAREER HIGHS

Points

13 vs. South Alabama (12/2/10)

Rebounds

12 vs. Alabama (2/17/11)

Assists

2 twice, last at Mercer (11/11/11)

Blocks

7 at Duke (11/18/11)

Steals

3 3 times, last vs. USC (1/30/11)

Field Goals

5 twice, last vs. Belmont (11/15/11)

Field Goal Attempts

13 vs. Mercer (11/12/10)

3-Point Field Goals

N/A

3-Point FG Attempts

N/A

Free Throws

3 4 times, last vs. Florida (1/6/11)

Free Throw Attempts

7 vs. Alabama (2/17/11)

WILLIAMS CAREER STATISTICS

Year	GP-GS	FG-FGA	Pct	3FG-FGA	Pct	FT-FTA	Pct	O-D-T (Reb.)	Avg	PF	FO	Ast	TO	Blk	Stl	Pts	Avg
2010-11	32-9	45-113	.398	0-0	.000	28-52	.538	52-68-120	3.8	53	1	7	39	23	26	118	3.7
2011-12	4-4	13-21	.619	0-0	.000	4-8	.500	5-12-17	4.3	9	0	3	4	13	5	30	7.5
TOTAL	36-13	58-134	.433	0-0	.000	32-60	.533	57-80-137	3.8	62	1	10	43	36	31	148	4.1



Hasina MUHAMMAD

#0

Freshman • Guard/Forward • 6-1

Memphis, Tenn.

Ridgeway High School

NOTES:

- Has scored in double figures in three of her four games as a Tiger
- Became first Auburn true freshman to start in season-opener since Morgan Jennings started the season-opener in 2008
- Tallied 12 points, two rebounds, a block and a steal in her debut as a Tiger at Mercer
- Entering her first season at Auburn as the Tigers' lone freshman
- Ranked as the No. 66 overall player in the country by ESPN's HoopGurlz, also ranked as the 17th-best guard in the country and the No. 2 prospect in Tennessee
- Ranked as the No. 50 overall prospect by the All-Star Girls Report and No. 47 by the Girls Basketball Report
- Averaged 17.8 points, 7.4 rebounds, 2.3 assists, 3.9 blocks and 2.6 steals per game as a senior, leading Ridgeway to a 20-9 record
- Two-time All-State selection and three-time All-Region; also was a finalist for Tennessee's Miss Basketball

Opponent	Start	Min.	FG-A	3PT-A	FT-A	O-D-T	PF	Asst.	TO	Blk.	Stl.	Pts.
GCSU (Exhibition)	*	18	5-10	0-2	3-5	4-0-4	1	1	0	1	2	13
at Mercer	*	23	6-10	0-1	0-1	0-2-2	3	1	4	1	1	12
BELMONT	*	17	1-3	0-0	3-5	1-4-5	1	1	1	1	2	5
at Duke	*	22	4-8	0-0	2-4	1-2-3	2	1	4	1	0	10
GEORGE WASHINGTON	*	18	3-6	2-2	2-4	1-1-2	0	4	2	0	1	10

SOUTH CAROLINA-UPSTATE

TROY

at Temple

SOUTH FLORIDA

PURDUE

vs. Marist

vs. Hofstra/Central Connecticut State

vs. North Carolina-Charlotte

vs. Florida International/Albany

TENNESSEE

at Alabama

GEORGIA

at Vanderbilt

at Arkansas

SOUTH CAROLINA

at Mississippi State

KENTUCKY

at Ole Miss

VANDERBILT

at Tennessee

at Florida

ARKANSAS

at LSU

ALABAMA

OLE MISS

MUHAMMAD CAREER STATISTICS

Year	GP-GS	FG-FGA	Pct	3FG-FGA	Pct	FT-FTA	Pct	O-D-T (Reb.)	Avg	PF	FO	Asst	TO	Blk	Stl	Pts	Avg
2011-12	4-4	14-27	.519	2-3	.667	7-14	.500	3-9-12	3.0	6	0	7	11	3	4	37	9.3
TOTAL	4-4	14-27	.519	2-3	.667	7-14	.500	3-9-12	3.0	6	0	7	11	3	4	37	9.3

SEASON HIGHS

Points

12 at Mercer (11/11/11)

Rebounds

5 vs. Belmont (11/15/11)

Assists

4 vs. George Washington (11/23/11)

Blocks

1 3 times, last at Duke (11/18/11)

Steals

2 vs. Belmont (11/15/11)

Field Goals

6 at Mercer (11/11/11)

Field Goal Attempts

10 at Mercer (11/11/11)

3-Point Field Goals

2 vs. George Washington (11/23/11)

3-Point FG Attempts

2 vs. George Washington (11/23/11)

Free Throws

3 vs. Belmont (11/15/11)

Free Throw Attempts

5 vs. Belmont (11/15/11)

Exhibition Game: Oct. 30, 2011
Auburn 85, Georgia College 25
Auburn Arena
Auburn, Ala.

Official Basketball Box Score -- Game Totals -- Final Statistics
 GCSU vs Auburn
 10-30-11 2 p.m. at Auburn, Ala. -- Auburn Arena

VISITORS: Georgia College

#	Player	fg-fga	3fg-fga	ft-fa	of	de	tot	pf	tp	a	to	blk	s	min
12	Abby Slocumb*	0-2	0-0	0-0	1	2	2	0	1	2	1	0	19	
32	Krysta Lewis*	1-9	0-3	0-2	3	4	7	3	2	0	1	0	19	
04	Myeshia Simms*	1-5	0-0	4-6	0	3	3	1	6	1	8	0	4	30
21	Mikalyn DeFoor*	0-3	0-2	0-0	0	0	0	3	0	0	0	0	16	
23	Shanteona Keys*	2-10	1-5	3-4	1	2	3	8	0	2	0	1	25	
02	Terryuana Godwin	2-4	0-0	1-1	2	0	2	5	0	0	0	0	6	
10	Lisa Mitchell	0-3	0-2	0-0	0	2	2	1	0	0	3	0	12	
03	Hollyn Phelps	0-0	0-0	0-0	1	0	1	1	0	0	1	0	15	
14	Enisha Donley	1-4	1-1	0-3	1	3	4	2	3	0	1	0	19	
24	Jasmine Williams	0-7	0-1	0-0	0	6	6	3	0	0	1	0	1	22
33	Belinda Schaafsma	0-4	0-1	1-2	0	4	4	2	1	0	3	0	17	
TEAM		4 1 5												
Totals.....		7-51	2-15	9-18	13	26	39	21	25	2	22	1	6	200

HOME: Auburn

#	Player	fg-fga	3fg-fga	ft-fa	of	de	tot	pf	tp	a	to	blk	s	min
14	Alverson, Blanche*	3-8	2-6	1-1	0	2	2	1	9	4	0	0	4	23
25	Williams, Jassany*	2-4	0-0	4-6	4	7	11	1	8	2	0	1	1	24
23	Hilliard, Chantel*	3-9	0-0	4-6	8	7	15	2	10	0	3	2	1	19
00	Muhammad, Hasina*	5-10	0-2	3-5	4	0	4	1	13	1	0	1	2	18
02	Jennings, Morgan*	2-6	0-1	2-2	1	4	5	1	6	2	1	0	0	21
03	Ouardad, Najat	0-2	0-1	2-2	1	1	2	3	2	3	2	0	5	18
04	Simmons, Parrisha	1-2	0-0	2-2	2	7	9	1	4	2	0	1	3	17
11	Strain, Courtney	3-7	0-3	0-2	0	1	1	3	6	0	0	0	1	18
20	West, Pascale	1-4	0-0	2-3	0	3	3	0	4	1	1	0	0	13
22	Glymph, Camille	5-14	5-12	0-0	0	1	1	2	15	1	0	0	1	22
32	Tanner, Tyrese	3-4	1-1	1-2	1	0	1	2	8	0	1	1	1	7
TEAM		2 4 6												
Totals.....		28-70	8-26	21-31	23	37	60	17	85	16	8	6	19	200

Officials: Nannette Sisk (R), Denise Brooks (U1), Dawn Marsh (U2)

Technical fouls: GCSU-None. Auburn-None.

Attendance: 731

Score by Periods	1st	2nd	Total
GCSU	6	19	25
Auburn	43	42	85

Exhibition Game

AUBURN - The Auburn women's basketball team took a decisive 85-25 win over Georgia College and State University in its exhibition game on Oct. 30 at the Auburn Arena. Sophomore Camille Glymph led the Tigers with 15 points off the bench while senior Chantel Hilliard notched a double-double with 10 points and 15 rebounds.

Senior Blanche Alverson started things off for Auburn, draining a 3-pointer just 18 seconds into the game. The Tigers newly implemented defense held the Bobcats scoreless for the first 12:45 of the game, until Georgia College ended the drought on a free throw from Shanteona Keys with 7:15 remaining in the half.

Holding the Bobcats to just six points off of free throws in the first half, the Tigers went into the locker room at the half with a substantial 43-6 lead. Auburn scored 19 points off of Georgia College's 15 first-half turnovers.

The Tigers came out strong in the second half and once again kept the Bobcats scoreless for the opening three minutes, while adding seven points to their lead. Georgia College hit its first field goal of the game with 13:55 remaining on a layup from Terryuana Godwin.

The Tigers eventually led by as many as 62 points with 5:13 left in the game before holding on for the 85-25 win.

Auburn shot 40.0 percent from the field while holding the Bobcats to 13.7 percent. Auburn also forced 22 turnovers, turning them in to 27 points on the other end.

Game 1: Nov. 11, 2011
Auburn 77, Mercer 43
University Center
Macon, Ga.

Official Basketball Box Score -- Game Totals -- Final Statistics
 Auburn vs Mercer
 11-11-11 7 p.m. at Macon, Ga. - University Center

VISITORS: Auburn (1-0)

#	Player	fg-fga	3fg-fga	ft-fa	of	de	tot	pf	tp	a	to	blk	s	min
00	Muhammad, Hasina*	6-10	0-1	0-1	0	2	2	3	12	1	4	1	1	23
02	Jennings, Morgan*	2-6	0-1	2-5	2	4	6	1	6	8	3	0	0	24
23	Hilliard, Chantel*	3-5	0-0	0-0	0	5	5	2	6	1	4	0	2	18
25	Williams, Jassany*	4-6	0-0	1-2	1	4	5	3	9	2	1	2	1	29
32	Tanner, Tyrese*	6-8	0-1	2-2	0	0	0	4	14	3	1	0	2	17
03	Ouardad, Najat	2-5	0-2	3-4	1	2	3	1	7	4	4	0	3	16
04	Simmons, Parrisha	1-3	0-0	3-4	5	4	9	2	5	0	2	1	0	18
14	Alverson, Blanche	5-6	0-0	2-4	1	9	10	0	12	1	1	1	0	26
20	West, Pascale	0-0	0-0	2-2	0	1	1	3	2	0	1	0	0	5
22	Glymph, Camille	2-7	0-4	0-0	1	2	3	0	4	3	0	0	2	24
TEAM		2 2 4												
Totals.....		31-56	0-9	15-24	13	35	48	19	77	23	21	5	11	200

HOME: Mercer (0-1)

#	Player	fg-fga	3fg-fga	ft-fa	of	de	tot	pf	tp	a	to	blk	s	min
01	BUCHANAN, Ry'van*	2-6	0-0	0-0	2	1	3	3	4	0	1	0	2	20
02	WILLIAMS, Briana*	2-14	1-9	4-5	1	2	3	2	9	1	3	0	1	33
05	SMITH, Sharmesia*	0-2	0-0	0-2	2	4	6	1	0	0	3	0	1	24
22	BOYKIN, Sharnea*	1-3	0-0	0-0	0	2	2	2	2	4	3	0	4	34
33	BRIDGES, Precious*	3-7	0-1	0-0	0	0	0	2	6	2	0	0	1	21
04	WILLIAMS, Alicia	2-5	2-4	3-4	0	0	0	0	9	0	2	0	0	18
11	SMITH, Alesha	0-1	0-0	0-0	0	0	0	0	0	0	0	0	0	2
15	PHILLIPS, Alex	0-3	0-1	0-1	1	0	1	3	0	0	0	0	0	6
23	HAZEL, Brittnee	3-9	0-0	0-0	0	5	5	3	6	0	3	1	1	20
24	BLAKEMORE, Jasmine	1-2	0-0	2-4	0	1	1	3	4	0	2	0	0	10
51	BRADSHAW, Tobitha	1-3	1-3	0-0	1	1	2	1	3	0	1	0	0	12
TEAM		1 3 4												
Totals.....		15-55	4-18	9-16	8	19	27	20	43	7	19	1	10	200

Officials: Nan Sisk, Alan Sheffield, Kevin Self

Technical fouls: Auburn-None. Mercer-None.

Attendance: 2728

Score by Periods	1st	2nd	Total
Auburn	36	41	77
Mercer	19	24	43

Largest women's basketball crowd in University Center history

Season-opening game

MACON, Ga. - Auburn scored the first 12 points of the game and never looked back as the Tigers trounced Mercer 77-43 Nov. 11 in Macon, Ga. Sophomore Tyrese Tanner started and led the Tigers with 14 points in the season-opening victory for the women's basketball team.

Tanner was one of three Tigers in double figures in the game, followed by freshman Hasina Muhammad and junior Blanche Alverson with 12 points each. Alverson tallied the first double-double of her career, also pulling down a career-high 10 rebounds.

Auburn held Mercer scoreless for the first four minutes of the game and led by as many as 20 points before taking a 36-19 lead into the locker room at halftime.

The Bears came out and went shot-for-shot with Auburn in the early going of the second half, cutting the lead to 14 with 14:51 to play. The Tigers answered with an 8-0 to get the lead back to 22, fueled by six transition baskets by Tanner.

Mercer would get no closer than 18 points the rest of the way as Auburn gradually pulled away for the eventual 34-point, 77-43, victory.

The game was the Auburn debut for a pair of new Tigers, freshman Muhammad and junior point guard Najat Ouardad. Muhammed started and scored 12 points with two rebounds, a block and a steal. Ouardad came off the bench for seven points, four assists, three rebounds and three steals.

Game 2: Nov. 15, 2011
Auburn 80, Belmont 53
Auburn Arena
Auburn, Ala.

Official Basketball Box Score -- Game Totals -- Final Statistics
 Belmont vs Auburn
 11-15-11 6 p.m. at Auburn, Ala. -- Auburn Arena

VISITORS: Belmont (0-3)

#	Player	fg-fga	3fg-fga	ft-fa	of	de	tot	pf	tp	a	to	blk	s	min
33	DANIEL, Triston*	1-3	1-3	0-0	0	1	1	1	3	1	2	0	0	15
44	NELSON, Haley*	5-12	0-1	3-6	1	10	11	2	13	1	3	1	3	33
01	TARRENCE, Adrienne*	1-3	0-0	2-3	1	1	2	1	4	8	3	0	0	28
20	ERNST, Molly*	2-8	2-6	0-0	1	2	3	2	6	0	2	0	0	23
22	BURNETT, Cacy*	3-6	3-4	0-0	1	0	1	2	9	0	0	0	0	19
04	DOWNS, Julianne	2-2	1-1	0-0	0	2	2	1	5	0	0	0	0	16
10	CARROLL, Katie	0-1	0-1	0-0	0	0	0	2	0	0	3	0	2	10
11	MAYERS, Amara	2-6	0-1	1-2	0	0	0	2	5	0	1	0	1	20
23	VAUGHT, Torie	0-0	0-0	0-0	0	0	0	0	0	0	2	0	0	4
24	WILKINS, Shai	0-0	0-0	0-0	1	0	1	0	0	0	0	0	0	2
32	BROOKS, Katie	0-0	0-0	0-0	0	1	1	0	0	2	3	0	0	12
50	VISBEEN, Alyssa	3-7	1-2	1-3	0	1	1	1	8	0	5	0	0	18
TEAM		4 5 9												
Totals.....		19-48	8-19	7-14	9	23	32	14	53	12	24	1	6	200

HOME: Auburn (2-0)

#	Player	fg-fga	3fg-fga	ft-fa	of	de	tot	pf	tp	a	to	blk	s	min
14	Alverson, Blanche*	2-9	1-5	3-3	1	2	3	2	8	0	1	0	0	21
25	Williams, Jassany*	5-8	0-0	2-2	1	6	7	3	12	0	1	4	2	29
32	Tanner, Tyrese*	5-11	4-5	2-2	2	2	4	1	16	1	1	1	1	28
00	Muhammad, Hasina*	1-3	0-0	3-5	1	4	5	1	5	1	1	1	2	17
02	Jennings, Morgan*	4-9	0-1	0-0	1	1	2	2	8	9	1	0	3	30
03	Ouardad, Najat	1-4	0-2	0-0	0	0	0	1	2	3	2	0	3	13
04	Simmons, Parrisha	1-1	0-0	1-2	2	0	2	1	3	1	1	0	1	14
20	West, Pascale	0-0	0-0	0-0	0	0	0	2	0	0	1	0	0	6
22	Glymph, Camille	6-11	5-8	1-1	0	1	1	0	18	3	1	0	1	23
23	Hilliard, Chantel	4-5	0-0	0-0	3	6	9	2	8	2	2	1	2	19
TEAM		2 2												
Totals.....		29-61	10-21	12-15	11	24	35	15	80	20	12	7	15	200

Officials: Wesley Dean (R), Billy Smith (U1), Metta Roberts (U2)

Technical fouls: Belmont-None. Auburn-None.

Attendance: 2249

Score by Periods</

Game 3: Nov. 18, 2011
Auburn 50, #8 Duke 73
Cameron Indoor Stadium
Durham, N.C.

Official Basketball Box Score -- Game Totals -- Final Statistics
 Auburn vs #8 Duke
 11-18-11 12:05 p.m. at Durham, N.C. (Cameron Indoor Stadium)

VISITORS: Auburn (2-1)

#	Player	rebounds													s	min
		fg-fga	3fg-fga	ft-fa	of	de	tot	pf	tp	a	to	blk	s	min		
14	Alverson, Blanche*	2-8	1-4	0-0	0	3	3	2	5	1	2	0	0	22		
25	Williams, Jassany*	2-5	0-0	0-0	2	2	4	2	4	1	2	7	2	23		
32	Tanner, Tyrese*	3-11	0-3	3-3	0	4	4	2	9	1	3	2	1	26		
00	Muhammad, Hasina*	4-8	0-0	2-4	1	2	3	2	10	1	4	1	0	22		
02	Jennings, Morgan*	0-4	0-0	2-4	0	6	6	5	2	3	5	0	2	30		
03	Ouardad, Najat	1-2	0-0	0-1	1	1	2	2	2	2	4	0	1	14		
04	Simmons, Parrisha	0-1	0-0	0-0	0	1	1	0	0	0	0	0	1	12		
22	Glymph, Camille	4-12	4-8	0-0	0	3	3	0	12	0	0	0	1	28		
23	Hilliard, Chantel	3-7	0-1	0-0	2	2	4	3	6	0	1	1	0	23		
TEAM		4 1 5													1	
Totals.....		19-58	5-16	7-12	10	25	35	18	50	9	22	11	8	200		

HOME: #8 Duke (2-0)

#	Player	rebounds													s	min
		fg-fga	3fg-fga	ft-fa	of	de	tot	pf	tp	a	to	blk	s	min		
33	Haley Peters*	5-12	0-1	0-0	2	3	5	3	10	1	2	0	1	21		
01	Elizabeth Williams*	8-12	0-0	2-4	4	9	13	2	18	1	1	4	1	33		
03	Shay Selby*	0-4	0-2	3-4	0	2	2	2	3	4	3	1	2	24		
04	Chloe Wells*	4-9	0-1	6-6	0	1	1	4	14	0	0	0	3	27		
12	Chelsea Gray*	3-11	0-3	1-1	2	5	7	1	7	8	5	0	2	30		
14	Ka'la Johnson	0-0	0-0	0-0	0	0	0	0	0	0	0	0	0	3		
15	Richa Jackson	3-9	0-1	2-2	4	5	9	1	8	1	0	0	0	26		
24	Kathleen Scheer	1-1	0-0	2-2	0	2	2	0	4	0	1	0	0	4		
30	Amber Henson	0-1	0-1	1-2	0	1	1	0	1	0	2	0	1	7		
32	Tricia Liston	0-6	0-3	0-0	1	1	2	1	0	1	0	0	0	14		
43	Allison Vernerey	3-6	0-0	2-2	2	1	3	0	8	0	2	0	1	11		
TEAM		6 1 7														
Totals.....		27-71	0-12	19-23	21	31	52	14	73	16	16	5	11	200		

Officials: Dee Kantner, Eric Brewton, Jules Gallien

Technical fouls: Auburn-None. #8/8 Duke-None.

Attendance: 4219

Score by Periods

	1st	2nd	Total
Auburn	31	19	50
#8 Duke	32	41	73

AU: Morgan Jennings fouled out at 00:14.5 of the 2nd half

DURHAM, N.C. - Duke's Elizabeth Williams notched a double-double with 18 points and 13 rebounds, leading the No. 8-ranked Blue Devils to a 73-50 win over Auburn, handing the Tigers their first loss of the season.

Sophomore Camille Glymph came off the bench and led the Tigers in scoring for the second game in a row, shooting 4-of-6 from 3-point range for a team-high 12 points. Freshman Hasina Muhammad also finished in double figures, finishing with 10 points and three rebounds.

It was a tale of two halves for the Tigers as Auburn clawed back from being down double figures to pull within one, 32-31, at halftime. Duke turned the tables on Auburn in the second half, out-scoring the Tigers 41-19 to pull away for the win.

Auburn shot just 32.8 percent from the field while Duke shot 41.7 percent in the second half to finish at 38.0 percent for the game. The Blue Devils won the rebounding battle, 52-35, and dominated inside with 44 points in the paint.

Auburn was 5-of-16 from 3-point range with Glymph accounting for four of Auburn's treys. The Tigers held Duke to 0-for-12 from beyond the arc.

Williams was one of three Blue Devils in double figures, ahead of Chloe Wells and Haley Peters with 14 and 10 points each, respectively. Senior Morgan Jennings led Auburn with six rebounds and three assists.

Game 4: Nov. 23, 2011
Auburn 55, George Washington 47
Auburn Arena
Auburn, Ala.

Official Basketball Box Score -- Game Totals -- Final Statistics
 George Washington vs Auburn
 11-23-11 6 p.m. at Auburn, Ala. -- Auburn Arena

VISITORS: George Washington (1-3)

#	Player	rebounds													s	min
		fg-fga	3fg-fga	ft-fa	of	de	tot	pf	tp	a	to	blk	s	min		
11	WILSON, Brooke*	1-3	1-1	0-0	0	8	8	1	3	3	0	1	3	27		
12	JACKSON, Danni*	4-10	1-1	3-3	1	2	3	3	12	0	2	0	1	21		
31	BOOKER, Tara*	3-9	1-4	0-0	2	5	7	2	7	0	4	0	0	37		
44	MOSTAFA, Sara*	4-6	0-0	5-6	1	2	3	3	13	0	2	0	1	22		
03	ALDRIDGE, Kristin*	0-5	0-0	1-2	0	5	5	1	1	1	1	5	0	29		
01	MILLER, Chakecia	1-4	0-1	3-4	1	2	3	4	5	2	0	0	0	19		
05	MYERS, Tiana	0-2	0-1	0-0	0	2	2	2	0	0	1	0	0	5		
10	SHIPP, Shi-Heria	0-1	0-0	0-0	0	0	0	0	0	0	1	0	0	4		
14	PAINTER, Chelisa	1-3	0-0	1-2	1	1	2	0	3	0	1	0	0	12		
21	BOURGEOIS, Bria	0-0	0-0	0-0	0	0	0	0	0	0	0	0	0	2		
22	NIPE, Megan	1-3	0-1	1-2	1	3	4	0	3	1	0	0	0	22		
TEAM		1 1														
Totals.....		15-46	3-9	14-19	8	30	38	16	47	7	16	1	7	200		

HOME: Auburn (3-1)

#	Player	rebounds													s	min
		fg-fga	3fg-fga	ft-fa	of	de	tot	pf	tp	a	to	blk	s	min		
14	Alverson, Blanche*	5-7	2-3	2-2	0	5	5	0	14	0	2	0	2	26		
25	Williams, Jassany*	2-2	0-0	1-4	1	0	1	1	5	0	0	0	0	7		
32	Tanner, Tyrese*	3-14	0-3	5-8	0	3	3	3	11	2	0	0	0	30		
00	Muhammad, Hasina*	3-6	2-2	2-4	1	1	2	0	10	4	2	0	1	18		
02	Jennings, Morgan*	1-7	0-0	2-2	1	1	2	0	4	5	2	0	1	37		
03	Ouardad, Najat	0-3	0-3	0-0	2	1	3	0	0	2	2	0	1	15		
04	Simmons, Parrisha	2-4	0-0	3-5	3	5	8	3	7	0	2	0	1	20		
20	West, Pascale	0-0	0-0	0-0	2	2	4	3	0	0	0	1	0	12		
22	Glymph, Camille	2-9	0-7	0-0	0	3	3	1	4	1	0	2	0	19		
23	Hilliard, Chantel	0-1	0-0	0-0	2	3	5	4	0	0	0	0	1	16		
TEAM		3 3														
Totals.....		18-53	4-18	15-25	12	27	39	15	55	14	10	3	7	200		

Officials: Dennis DelMayo (R), Bill Lorange (U1), Amy Bonner (U2)

Technical fouls: George Washington-None. Auburn-None.

Attendance: 1624

Score by Periods

	1st	2nd	Total
George Washington	26	21	47
Auburn	19	36	55

AUBURN - The Auburn women's basketball team overcame a seven-point halftime deficit to rally and defeat George Washington, 55-47, Nov. 23 at the Auburn Arena. The Tigers opened the second half on a 10-2 run, holding the Colonials to two points for the first 9:37 of the half.

Junior Blanche Alverson led the Tigers in scoring with 14 points, followed by Tyrese Tanner with 11 and freshman Hasina Muhammad with 10. Senior Parrisha Simmons provided a spark off the bench, accounting for seven points and a team-high eight rebounds.

Auburn came out of the locker room after halftime eager to turn things around. The Tigers went on a 10-2 run, fueled by four points each from Tanner and Simmons, taking a 33-28 lead. George Washington was never able to regain the lead in the second half as the Tigers would go on to lead by as many as 10 points with 14 seconds left before a Danni Jackson layup on the final possession cut it to eight.

Auburn shot a much-improved 44 percent in the second half and went 11-of-14 from the line. The Tigers forced 16 GW turnovers in the game, turning them into 13 points. Auburn also edged out the rebounding battle, 39-38.

Senior Morgan Jennings led Auburn with five assists while Muhammad added four. Six different Tigers tallied a steal in the game with Alverson leading with two.

Season Statistics

RECORD:	OVERALL	HOME	AWAY	NEUTRAL
ALL GAMES	3-1	2-0	1-1	0-0
CONFERENCE	0-0	0-0	0-0	0-0
NON-CONFERENCE	3-1	2-0	1-1	0-0

#	Player	gp-gs	min	avg	Total		3-Point		F-Throw		Rebounds								pts	avg		
					fg-fga	fg%	3fg-fga	3fg%	ft-fa	ft%	off	def	tot	avg	pf	dq	a	to			blk	stl
32	Tanner, Tyrese	4-4	101	25.3	17-44	.386	4-12	.333	12-15	.800	2	9	11	2.8	10	0	7	5	3	4	50	12.5
14	Alverson, Blanche	4-3	95	23.8	14-30	.467	4-12	.333	7-9	.778	2	19	21	5.3	4	0	2	6	1	2	39	9.8
22	Glymph, Camille	4-0	94	23.5	14-39	.359	9-27	.333	1-1	1.000	1	9	10	2.5	1	0	7	1	2	4	38	9.5
00	Muhammad, Hasina	4-4	80	20.0	14-27	.519	2-3	.667	7-14	.500	3	9	12	3.0	6	0	7	11	3	4	37	9.3
25	Williams, Jassany	4-4	88	22.0	13-21	.619	0-0	.000	4-8	.500	5	12	17	4.3	9	0	3	4	13	5	30	7.5
02	Jennings, Morgan	4-4	121	30.3	7-26	.269	0-2	.000	6-11	.545	4	12	16	4.0	8	1	25	11	0	6	20	5.0
23	Hilliard, Chantel	4-1	76	19.0	10-18	.556	0-1	.000	0-0	.000	7	16	23	5.8	11	0	3	7	2	5	20	5.0
04	Simmons, Parrisha	4-0	64	16.0	4-9	.444	0-0	.000	7-11	.636	10	10	20	5.0	6	0	1	5	1	3	15	3.8
03	Ouardad, Najat	4-0	58	14.5	4-14	.286	0-7	.000	3-5	.600	4	4	8	2.0	4	0	11	12	0	8	11	2.8
20	West, Pascale	3-0	23	7.7	0-0	.000	0-0	.000	2-2	1.000	2	3	5	1.7	8	0	0	2	1	0	2	0.7
	Team										6	8	14				1					
	Total.....	4	800		97-228	.425	19-64	.297	49-76	.645	46	111	157	39.2	67	1	66	65	26	41	262	65.5
	Opponents.....	4	800		76-220	.345	15-58	.259	49-72	.681	46	103	149	37.2	64	-	42	75	8	34	216	54.0

TEAM STATISTICS	AU	OPP
SCORING	262	216
Points per game	65.5	54.0
Scoring margin	+11.5	-
FIELD GOALS-ATT	97-228	76-220
Field goal pct	.425	.345
3 POINT FG-ATT	19-64	15-58
3-point FG pct	.297	.259
3-pt FG made per game	4.8	3.8
FREE THROWS-ATT	49-76	49-72
Free throw pct	.645	.681
F-Throws made per game	12.3	12.3
REBOUNDS	157	149
Rebounds per game	39.2	37.2
Rebounding margin	+2.0	-
ASSISTS	66	42
Assists per game	16.5	10.5
TURNOVERS	65	75
Turnovers per game	16.3	18.8
Turnover margin	+2.5	-
Assist/turnover ratio	1.0	0.6
STEALS	41	34
Steals per game	10.3	8.5
BLOCKS	26	8
Blocks per game	6.5	2.0
ATTENDANCE	3873	6947
Home games-Avg/Game	2-1936	2-3474
Neutral site-Avg/Game	-	0-0

Date	Opponent		Score	Att.
11-11-11	at Mercer	w	77-43	2728
11-15-11	BELMONT	w	80-53	2249
11-18-11	at #8/8 Duke	L	50-73	4219
11-23-11	GEORGE WASHINGTON	w	55-47	1624

* - Conference game

Score by Periods	1st	2nd	Totals
Auburn	125	137	262
Opponents	102	114	216