



2011-12 Auburn Women's Basketball

Exhibition Game • October 30, 2011

vs. Georgia College & State University

18 NCAA Tournament Appearances • Three Final Fours • Five SEC Titles • Four SEC Tournament Titles

AUBURN MEDIA RELATIONS

Associate Director/WBB Contact: Matt Crouch • mcrouch@auburn.edu

Auburn Athletic Complex / 392 South Donahue / Auburn, AL 36849

O: 334.844.9800 • C: 334.740.4109 • F: 334.844.9807

www.AuburnTigers.com

Twitter: @AuburnWBB • Facebook: [facebook.com/AUWBB](https://www.facebook.com/AUWBB)

2010-11 SCHEDULE/RESULTS

OCTOBER

30 Georgia College & State University 2 p.m.

NOVEMBER

11 at Mercer 6 p.m.

15 Belmont 6 p.m.

18 at Duke 11 a.m.

23 George Washington 6 p.m.

27 South Carolina-Upstate 2 p.m.

30 Troy 6 p.m.

DECEMBER

3 at Temple 12 p.m.

14 South Florida 6 p.m.

18 Purdue 2 p.m.

21 1-vs. Marist 1:30 p.m.

22 1-vs. Hofstra or Central Conn. St. TBA

29 2-vs. North Carolina-Charlotte 7 p.m.

30 2-vs. FIU or Albany 3 or 5 p.m.

JANUARY

1 Tennessee* (CSS) 2 p.m.

5 at Alabama* 6:30 p.m.

8 Georgia* (CSS) 1 p.m.

12 at Vanderbilt* (CSS) 8 p.m.

15 at Arkansas* (FSN) 1:30 p.m.

19 South Carolina* 6 p.m.

22 at Mississippi State* 2 p.m.

26 Kentucky* 6 p.m.

29 at Ole Miss* (FSN) 1 p.m.

FEBRUARY

2 Vanderbilt* 6 p.m.

5 at Tennessee* (SECN) 1 p.m.

9 at Florida* 6 p.m.

12 Arkansas* (ESPN2) 1:30 p.m.

19 at LSU* 2 p.m.

23 Alabama* (CSS) 8 p.m.

26 Ole Miss* (FSN) 2:30 p.m.

MARCH

1-4 Southeastern Conference Tournament

Nashville, Tenn. • Bridgestone Arena

17-20 NCAA Tournament First and Second Rounds

24-27 NCAA Tournament Regionals

APRIL

1-3 NCAA Tournament Final Four

Denver, Colo. • Pepsi Center

* - SEC Game

All Times are Central

1 - Hofstra Holiday Classic (Hempstead, N.Y.)

2 - Sun and Fun Classic (Miami, Fla.)

All home games played at Auburn Arena

Bold indicates home games

www.AuburnTigers.com



VS.



EXHIBITION GAME

[NR/NR] Auburn (0-0) vs. [NR/NR] Georgia College & State University (0-0)

When: Sunday, October 30 • 2 p.m. CT

Where: Auburn Arena (9,121) • Auburn, Ala.

TV/Webcast: AuburnTigers.com

Radio: AuburnTigers.com; Andy Burcham (play-by-play), Arnika Edwards (color)

Audio Webcast: AuburnTigers.com

Gametracker: AuburnTigers.com

Series: N/A

Last Meeting: Auburn def. GCSU 73-50 in Auburn, Ala. (11-8-09)

Last Meeting in Auburn: Auburn def. GCSU 73-50 in Auburn, Ala. (11-8-09)

Up Next: Auburn will play its 2011-12 season-opener on Friday, Nov. 11 at Mercer in Macon, Ga. The home-opener will follow on Nov. 15 vs. Belmont.

AUBURN PROJECTED STARTERS (2010-11 stats)

No.	Pos.	Name	Ht.	Year	PPG	RPG	Hometown
0	G	Hasina Muhammad	6-1	Fr.	--	--	Memphis, Tenn.
2	G	Morgan Jennings	5-8	Sr.	3.4	1.8	Atlanta, Ga.
14	F	Blanche Alverson	6-3	Jr.	10.2	4.7	Andalusia, Ala.
23	F	Chantel Hilliard	6-2	Sr.	6.4	3.5	Biloxi, Miss.
25	F	Jassany Williams	6-2	So.	3.7	3.8	Davie, Fla.

OFF THE BENCH

3	G	Najat Ouaddad	5-1	Jr.	--	--	Orleans, France
4	G	Parrisha Simmons	6-0	Sr.	2.3	3.1	Macon, Ga.
11	G	Courtney Strain	5-9	So.	2.5	0.8	Woodland, Ala.
20	C	Pascale West	6-8	Jr.	0.8	0.5	LaGrange, Ga.
22	G	Camille Glymph	5-10	So.	2.2	0.9	Greenville, S.C.
32	G/F	Tyrese Tanner	6-1	So.	4.8	3.2	Birmingham, Ala.
34	C	Peyton Davis	6-5	So.	1.3	1.3	Pinson, Ala.

Head Coach: Nell Fortner / Associate Head Coach: Kerry Cremeans / Assistant Coaches: Mark Simons and Carla McGhee

GEORGIA COLLEGE & STATE UNIVERSITY PROJECTED STARTERS (2010-11 stats)

No.	Pos.	Name	Ht.	Year	PPG	RPG	Hometown
4	G	Myeshia Simms	5-0	Sr.	3.9	(apg) 3.6	Macon, Ga.
12	F	Abby Slocumb	6-0	So.	4.3	5.2	Suwanee, Ga.
21	G	Mikalyn DeFoor	5-10	Fr.	--	--	Gainesville, Ga.
23	G	Shanteona Keys	5-8	Fr.	--	--	Roswell, Ga.
32	F	Krysta Lewis	6-0	So.	5.2	3.7	Woodstock, Ga.

Head Coach: Maurice Smith / Assistant Coach: Toby Wagoner

Media Information

The Auburn media relations department considers its work with the media a top priority. The 2011-12 Auburn Women's Basketball Almanac has been prepared to assist the working media in their coverage of Tiger basketball. If you have not received a copy, or if you need additional information, interview or photograph requests, or have any questions, please contact Matt Crouch in the media relations office at 334.844.9709.

Interview Policy

Coach Fortner, her assistants and all women's basketball players are available for phone and personal interviews by contacting Matt Crouch in the media relations office. Post-game interviews will be allowed following a 10-minute cooling off period. Non-game day requests will be met based on the players class and practice schedules.

Credentials

Anyone wishing to cover an Auburn women's basketball game should contact Matt Crouch in the media relations office at least one day in advance in order to make the proper arrangements.

On the Air

The Tigers can be heard live locally in Auburn on Mix 96.7 FM for the entire regular and postseasons. Andy Burcham, in his 24th season with the women's basketball program and handles play-by-play duties. Arnika Edwards joins Burcham for her fifth season and provides color commentary. Each game can also be heard live on the internet at www.AuburnTigers.com.

Weekly Live Radio Show

Starting in January, every Tuesday at 6 p.m. CT Nell Fortner will host a live show from Logan's Roadhouse in Tiger Town with Andy Burcham. Fans can listen to the show on 96.7 FM. The number to call in to the show is 1-800-282-2557.

Game-Day Services

Statistics, rosters and game notes will be provided prior to the game in the media work room. Box scores will also be handed out during and following the game. Phones and fax machines are available in the media work room.

Photo/Video Services

Todd Van Emst of the Auburn Media Relations office handles all photo requests. Please contact Van Emst at 334-844-9514. Video highlights of selected Auburn women's basketball games are available for the media. For information on how to access the FTP server, contact Steve Sain in the Auburn Media Relations office at 334.844.9809.

On the Web

The home for Auburn Athletics on the web, www.AuburnTigers.com, is your source for Auburn Women's Basketball. The website offers the most recent information and news on the Tigers. At AuburnTigers.com, you can also listen to each women's basketball game broadcast live and follow along on live scoring for every home game.



Follow Auburn Women's Basketball on Twitter

@AuburnWBB



Become a fan of Auburn Women's Basketball on Facebook

www.Facebook.com/AUWBB

2011-12 Numerical Roster

No.	Name	Height	Position	Class	Hometown/High School
0	Hasina Muhammad	6-1	Guard/Forward	FR	Memphis, Tenn./Ridgeway
2	Morgan Jennings	5-8	Guard	SR	Atlanta, Ga./Frederick Douglass
3	Najat Ouardad	5-1	Guard	JR	Orleans, France/Pensacola St. College
4	Parrisha Simmons	6-0	Guard	SR	Macon, Ga./Southwest Macon
11	Courtney Strain	5-9	Guard	SO	Woodland, Ala./Woodland
14	Blanche Alverson	6-3	Foward/Guard	JR	Andalusia, Ala./Buford (Ga.)
20	Pascale "P.J." West	6-8	Center	JR	LaGrange, Ga./Troup County
22	Camille Glymph	5-10	Guard	SO	Greenville, S.C./J.L. Mann
23	Chantel Hilliard	6-2	Forward/Center	SR	Biloxi, Miss./St. Martin
25	Jassany Williams	6-2	Forward	SO	Davie, Fla./Nova
32	Tyrese Tanner	6-1	Guard/Forward	SO	Birmingham, Ala./Hoover
34	Peyton Davis	6-5	Center	SO	Pinson, Ala./Mortimer Jordan

2011-12 Alphabetical Roster

No.	Name	Height	Pos.	Ht.	Hometown
14	Blanche Alverson	6-3	Foward/Guard	JR	Andalusia, Ala./Buford (Ga.)
34	Peyton Davis	6-5	Center	SO	Pinson, Ala./Mortimer Jordan
22	Camille Glymph	5-10	Guard	SO	Greenville, S.C./J.L. Mann
23	Chantel Hilliard	6-2	Forward/Center	SR	Biloxi, Miss./St. Martin
2	Morgan Jennings	5-8	Guard	SR	Atlanta, Ga./Frederick Douglass
0	Hasina Muhammad	6-1	Guard/Forward	FR	Memphis, Tenn./Ridgeway
3	Najat Ouardad	5-1	Guard	JR	Orleans, France/Pensacola St. College
4	Parrisha Simmons	6-0	Guard	SR	Macon, Ga./Southwest Macon
11	Courtney Strain	5-9	Guard	SO	Woodland, Ala./Woodland
32	Tyrese Tanner	6-1	Guard/Forward	SO	Birmingham, Ala./Hoover
20	Pascale "P.J." West	6-8	Center	JR	LaGrange, Ga./Troup County
25	Jassany Williams	6-2	Forward	SO	Davie, Fla./Nova

STAFF:

Head Coach: Nell Fortner (Texas, 1982)

Associate Head Coach: Kerry Cremeans (Florida, 1994)

Assistant Coach: Mark Simons (Aquinas College, 1972)

Assistant Coach: Carla McGhee (Tennessee, 1990)

Director of Basketball Operations: Melissa Maines (Texas Tech, 1998)

Video Coordinator: Wes Kitchens (Auburn, 2011)

Administrative Assistant: Janese Banks (Wisconsin, 2008)

Director of Administrative Support Services: Arnika Edwards (Alabama A&M, 1991)

Athletic Trainer: Angie Lawrence (Appalachian State, 1997)

BY CLASS:

Seniors (3): Chantel Hilliard, Morgan Jennings, Parrisha Simmons

Juniors (3): Blanche Alverson, Najat Ouardad, Pascale "P.J." West

Sophomores (5): Peyton Davis, Camille Glymph, Courtney Strain, Tyrese Tanner, Jassany Williams

Freshmen (1): Hasina Muhammad

Projected Auburn Starters



Hasina Muhammad

Guard/Forward
6-1
Freshman
Memphis, Tenn.
Ridgeway

0

- A true freshman, she is making her first appearance in an Auburn uniform
- Is one of just nine players all-time at Auburn from Tennessee
- Ranked as the 17th-best guard in the country as a senior by ESPN
- Averaged 17.8 points and 7.4 rebounds per game last season



Morgan Jennings

Guard
5-8
Senior
Atlanta, Ga.
Frederick Douglass High School
2.6 ppg / 1.2 apg / 1.6 rpg (career stats)

2

- Started 6 of the last 8 games last season at point guard
- Scored career high 16 points vs. Kentucky in final regular-season game
- Averaged 3.4 points and 1.8 rebounds per game last season
- Is one of three seniors on the Auburn squad



Blanche Alverson

Guard/Forward
6-3
Junior
Andalusia, Ala.
Buford (Ga.) High School
8.6 ppg / 4.3 rpg / .301 3fg% (career stats)

14

- Scored 4 points with 6 rebounds as a frosh against GCSU in 2009
- Auburn's top returning scorer with 10.2 points per game last season
- Scored career-high 27 points vs. Ole Miss last season
- Tied for 8th all-time at Auburn with 90 career 3-pointers



Chantel Hilliard

Forward/Center
6-2
Senior
Biloxi, Miss.
St. Martin High School
4.7 ppg / 3.0 rpg / .489 fg% (career stats)

23

- Started and scored 11 pts with 5 rebs in 2009 vs. GCSU
- Registered a team-best .522 field goal percentage last season
- Emerged as a starter late last season, starting 9 of final 10 games
- Is one of three seniors on the Auburn roster



Jassany Williams

Forward
6-2
Sophomore
Davie, Fla.
Nova High School
3.7 ppg / 3.8 rpg / 0.7 bpg

25

- Earned a starting position last season as a freshman, starting 9 of 32 games
- Averaged 3.7 points and 2.8 rebounds per game as a freshman
- Scored season-high 13 points vs. South Alabama; pulled down 12 rebounds at home vs. Alabama

Auburn Women's Basketball Quick Hitters

- The Tigers are entering their second year in Auburn Arena
- Auburn is 7-0 under head coach Nell Fortner in exhibition games
- This will be the second exhibition game meeting between Auburn and GCSU with the Tigers taking a 73-50 win in 2009
- In seven pre-season exhibition games under Auburn head coach Nell Fortner, the Tigers average scoring 84.3 points per game and winning by 38.6 points
- Four Tigers, Chantel Hilliard (11 pts, 5 rebs), Parrisha Simmons (14 pts, 11 rebs), Blanche Alverson (4 pts, 6 rebs) and Pascale West (6 pts, 4 rebs), all played against GCSU in the 2009 exhibition game
- Auburn senior Parrisha Simmons played alongside GCSU senior Myeshia Simms together at Southwest HS in Macon, Ga.
- The Tigers return three starters from last season, along with seven players who saw time as a starter a year ago
- Auburn was picked ninth in the SEC Preseason Media poll, Tennessee was picked to win the league
- Nell Fortner is beginning her eighth season at Auburn, marking her longest tenure at any job
- The Tigers welcome two newcomers: junior college transfer Najat Ouardad and freshman Hasina Muhammad
- Three Tigers (Morgan Jennings [Atlanta], Parrisha Simmons [Macon] and Pascale West [LaGrange]) are from Georgia while Blanche Alverson attended high school in Buford, Ga.
- Auburn is coming off a 16-16 season in 2010-11, one that ended with a berth in the WNIT
- The Tigers have advanced to the post-season in four of the last five seasons

RETURNING INDIVIDUAL CATEGORY LEADERS (based on 2010-11 stats)

Auburn	GCSU
Blanche Alverson - 10.2.....	Points.....Krysta Lewis - 5.2
Blanche Alverson - 4.7.....	Rebounds.....Abby Slocumb - 5.2
Morgan Jennings - 1.3.....	Assists.....Abby Slocumb - 0.8
Morgan Jennings - 1.0.....	Steals.....Abby Slocumb - 0.6
Tyrese Tanner - 0.8.....	Blocks.....Abby Slocumb - 0.7
Blanche Alverson - 29.3.....	Minutes Played.....Abby Slocumb - 27.7
Chantel Hilliard - .522.....	Field Goal Percentage.....Abby Slocumb - .510
Blanche Alverson - .292.....	3-Point Percentage.....Krysta Lewis - .238
Blanche Alverson - .714.....	Free-Throw Percentage.....Krysta Lewis - .727

AUBURN WOMEN'S BASKETBALL WEEKLY SCHEDULE

	Friday 28	Saturday 29	Sunday 30	Monday 31	Tuesday 1	Wednesday 2	Thursday 3
Oct. 28 through Nov. 3	Practice 3 - 5 p.m. Auburn Arena	OFF	Auburn vs. GCSU 2 p.m. Auburn Arena	Practice 3 - 5 p.m. Auburn Arena	OFF	Practice 3 - 5 p.m. Auburn Arena	Practice 3 - 5 p.m. Auburn Arena

General Information

School..... Auburn University
City / Zip..... Auburn, Ala. / 36831
Founded..... Oct. 1, 1856
Enrollment..... 24,602
Nickname..... Tigers
Colors..... Burnt Orange and Navy Blue
Home Court (Capacity)..... Auburn Arena (9,121)
Affiliation..... NCAA Division I
Conference..... Southeastern Conference
President..... Dr. Jay Gogue
Athletic Director..... Jay Jacobs
Senior Women's Administrator..... Meredith Jenkins
University Website..... www.Auburn.edu

Team Information

2010-11 Record (SEC Record)..... 16-16 (8-8)
SEC Finish / Tournament Finish..... T5th / First Round
All-time SEC Record..... 187-157 (.544)
All-time SEC Tournament Record..... 34-28
Starters Returning/Lost..... 3/2
Letterwinners Returning/Lost..... 10/3
Newcomers..... 2
First Year of Basketball..... 1971
All-Time Overall Record..... 795-362 (.687)
NCAA Tournament Appearances/Last..... 18/2009
NCAA Tournament Record..... 29-18
WNIT Appearances/Last..... 3/2011
WNIT Record..... 8-2

Basketball Staff

Head Coach (Alma Mater)..... Nell Fortner (Texas, 1982)
Career Record..... 149-100 (.613) / 8 years
Record at Auburn..... 132-89 (.614) / 7 years
Associate Head Coach (Alma Mater)..... Kerry Creameans (Florida, 1994)
Assistant Coaches (Alma Mater)..... Mark Simons (Aquinas College, 1972)
..... Carla McGhee (Tennessee, 1990)
Director of Basketball Operations..... Melissa Maines
Director of Administrative Support Services..... Arnika Edwards
Administrative Assistant..... Janese Banks
Video Coordinator..... Wes Kitchens
Secretary..... Ann Yates
Basketball Office Phone..... (334) 844-9200
Basketball Office Fax..... (334) 844-9862
Strength and Conditioning..... Megan Young
Athletic Trainer..... Angie Lawrence
Academic Counselor..... Jenna Sample

Radio Broadcast Information

Radio Station..... WMXA (96.7 FM)
Play-by-Play..... Andy Burcham
Color..... Arnika Edwards
Burcham Email..... aburcham@auburnnetwork.com
Burcham Office Phone..... (334) 826-2929
Network Address..... Auburn Network, Inc.
..... P.O. Box 950
..... Auburn, AL 36831-0950

KENTUCKY MEDIA RELATIONS

For information on the Georgia College & State University women's basketball team, contact Brian DeCandia in the media relations office. His number is 478.45.1779 and his email is brian.decandia@gmail.com.

For more information, go to www.GCSUBobcats.com.

OFFICIALS

TBA

RANKINGS

Auburn and GCSU are not ranked.

NEXT UP FOR THE TIGERS

Auburn will play its season-opener on Nov. 11 at Mercer in Macon, Ga. The Tigers will return home to Auburn Arena on Nov. 15 for their home-opener against Belmont at 6 p.m.

AUBURN'S POST-GAME PROCEDURE

The Auburn locker room is closed. Coach Nell Fortner and selected Tiger players will be brought to the interview room after the 10-minute "cooling off" period.

QUICK HITS

Auburn is in its 41st season of women's basketball and sports an all-time record of 795-362... AU has made 18 NCAA Tournament appearances, three WNIT appearances and three Final Fours in the program's history... Head Coach Nell Fortner is in her eighth season at Auburn with a 149-100 career record and a 132-89 record on the Plains... The Tigers are coming off a 16-16 season in 2011 with an appearance in the second round of the WNIT.

AUBURN-GCSU SERIES

While Auburn and Georgia College & State University have never met in the regular season, this marks the second time in three years for the teams to meet in an exhibition game. The Tigers and Bobcats last met on Nov. 8, 2009 with Auburn taking a 73-50 win.

IN EXHIBITION GAMES

Auburn is 7-0 in exhibition games under head coach Nell Fortner. The Tigers defeated EA Sports (84-56) and Athletes in Action (74-56) in 2004; Tuskegee (71-46) in 2005; Tuskegee (91-23) in 2006; Carson-Newman (94-52) in 2007; Anderson (103-37) in 2008 and Georgia College & State University in 2009 (73-50).

GCSU CONNECTION

Auburn assistant coach Mark Simons has a connection to Georgia College & State University as he was the head men's basketball coach there from 1991-93. Simons guided the Bobcats to a 9-20 record in his first season, but turned it around in year two for a 15-13 mark.

FORMER TEAMMATE

Auburn senior Parrisha Simmons will see a familiar face on the court Sunday as she takes on her former high school teammate, Myeshia Simms. Simmons and Simms played together all four years at Southwest High School in Macon, Ga.

SCOUTING GCSU

After winning the Peach Belt Conference Tournament last season, the Georgia College and State University Bobcats return just two players from last year while welcoming in 11 newcomers. In head coach Maurice Smith's first year at the helm, the Bobcats finished 22-7 (11-6 PBC) and second in the PBC West. After defeating No. 4 Lander and No. 12 USC Aiken en route to the program's fifth conference tournament championship, the Bobcats earned their seventh trip to the NCAA Tournament, losing in the first round to No. 5 Barton College, 80-79.

Returning for the Bobcats are sophomores Krysta Lewis and Abby Slocumb. Last year Lewis averaged 5.2 points and 3.7 rebounds per game, but was a key contributor in the Bobcats' run to their conference tournament championship. She scored 29 points on 12-of-22 shooting, while grabbing 19 rebounds in the three game stretch. Slocumb averaged 4.3 points and 5.2 rebounds per game. GCSU will welcome in a senior transfer from Florida A&M in Myeshia Simms. The former Rattler averaged 3.9 points per game and led the team with 109 assists last season.

SCOUTING AUBURN

Auburn returns three starters and 10 letterwinners from last season's team that went 16-16 and advanced to the second round of the WNIT. Of the 10 letterwinners on Auburn's roster, seven started at least one game last season. The Tigers are under the direction of head coach Nell Fortner, who is in her eighth season on The Plains with a 132-89 record.

Auburn's top returning player is junior Blanche Alverson with 10.2 points and 4.7 rebounds per game last season. Chantel Hilliard (6.4 ppg, 3.5 rpg) and Parrisha Simmons (2.3 ppg, 3.1 rpg) are the only other Tigers that started more than 10 games last season. Senior Morgan Jennings and sophomore Jassany Williams

Statistical Comparison - Auburn vs. GCSU

Coach:	Auburn Nell Fortner	GCSU Maurice Smith
Career Record:	149-100	22-7
Top Scorer:	Alverson (10.2)	Lewis (5.2)
Top Rebounder:	Alverson (4.7)	Slocumb (5.2)
Series Record:	N/A	
- at Auburn	N/A	
- at Milledgeville, Ga.	N/A	
- at Neutral	N/A	
- Overall Streak	Auburn won the last meeting, 73-50	
Record	16-16	22-7
Conference Record	8-8	11-6
Points Per Game	61.1	61.8
Scoring Margin	+0.5	+6.8
FG Percentage	.391	.383
Opp. FG %	.392	.340
3FG Percentage	.296	.311
Opp. 3FG %	.341	.288
Rebounds	37.9	39.7
Opp. Rebounds	37.9	37.0
Rebound Margin	---	+2.7
Turnovers	16.9	16.3
Opp. Turnovers	18.6	17.4
Steals	8.5	8.5
Opp. Steals	7.6	8.3
Blocks	3.9	3.9
Opp. Blocks	3.1	2.2

Around the SEC (FINAL 2011)

	SEC	Pct.	Overall	Pct.
* ^ Tennessee	16-0	1.000	34-3	.918
Kentucky	11-5	.688	25-9	.735
Vanderbilt	10-6	.625	20-12	.625
Georgia	10-6	.625	23-11	.676
South Carolina	8-8	.500	18-15	.545
Auburn	8-8	.500	16-16	.500
LSU	8-8	.500	19-13	.594
Florida	7-9	.438	20-15	.571
Arkansas	6-10	.375	20-11	.647
Alabama	5-11	.313	18-15	.545
Mississippi State	4-12	.250	13-17	.433
Ole Miss	3-13	.188	10-19	.345

Post-Season Finishes

SEC Champion	Tennessee
SEC Tournament Champion	Tennessee
NCAA Tournament Participant	Georgia (Sweet 16)
	Kentucky (Second Round)
	Tennessee (Elite 8)
	Vanderbilt (First Round)
WNIT Participant	Alabama (Third Round)
	Arkansas (Quarterfinals)
	Auburn (Second Round)
	Florida (Third Round)
	South Carolina (Second Round)

both came on late in the season for Auburn. Jennings started six of the last eight games of the season at point guard while Williams started the final nine games in the post.

GEORGIA TIGERS

Three players on the Auburn roster call the Peach State their home. Morgan Jennings (Atlanta), Parrisha Simmons (Macon) and Pascale West (LaGrange) all hail from the state of Georgia. While not from Georgia, junior Blanche Alverson attended high school in Buford, Ga.

TIGERS PICKED NINTH IN PRESEASON POLL

Auburn was predicted to finish ninth in the SEC in a voting of a select panel of both SEC and national media members. Tennessee was picked to win the league with all 22 first-place votes.

The Lady Vols were followed by Georgia (228), Kentucky (212), LSU (189), Vanderbilt (172) and Florida (151) rounding out the top half of the league. Arkansas (142), South Carolina (107), Auburn (94), Alabama (55), Mississippi State (54) and Ole Miss (48) round out the bottom half.

STARTING EXPERIENCE

Auburn has seven players on its roster that have started at least one game. That group of seven also combines for 123 career starts, led by Blanche Alverson with 45. Senior Parrisha Simmons has started 41 while her classmates, Chantel Hilliard and Morgan Jennings, have started 12 each.

NEW FACES

The Tigers welcome two new faces to the roster this season in Hasina Muhammad and Najat Ouadad. Muhammad is a true freshman from Memphis, Tenn., playing at Ridgeway High School. Ouadad, a native of Orleans, France, comes to Auburn from Pensacola State College.

MAKING IT HOME

Nell Fortner enters her eighth season as Auburn's head coach, marking her longest tenure at any position in her career. The longest Fortner had stayed at a job prior to Auburn came from 1990-95 while she was an assistant coach at Louisiana Tech under legendary head coach Leon Barmore.

TIGERS ON THE TUBE

The Auburn women's basketball team will appear on television at least nine times during the 2011-12 season as part of the Southeastern Conference Women's Basketball Television Package, the league announced Sept. 22.

The Tigers will make their first appearance on Sunday, Jan. 1 with a 2 p.m. matchup against defending SEC champion Tennessee at Auburn Arena. Auburn will then appear on CSS in back-to-back games, first on Sunday, Jan. 8 at 1 p.m. against Georgia in Auburn. The next is an 8 p.m., Thursday, Jan. 12 game at Vanderbilt.

The Tigers' will make their first appearance on FSN on Jan. 15 in the first of three Sunday afternoon appearances on the network. Auburn will travel to Arkansas for a 1:30 p.m., Jan. 15 game before

returning to the network on Jan. 29 for a 1 p.m. game at Ole Miss.

Auburn's lone appearances on the SEC Network, a part of the ESPN Regional Network, will be on Feb. 5 at Tennessee. The game is set for a 1 p.m. CT tipoff. The Tigers will then host Arkansas on Feb. 12 in a 1:30 p.m. game that will air live on ESPN2.

Auburn's final appearance on CSS will come on Thursday, Feb. 23 with in-state rival Alabama coming to town for an 8 p.m. matchup. The Tigers' final regular-season TV appearance will be Sunday, Feb. 26 on FSN with Auburn hosting Ole Miss at 2:30 p.m.

The Southeastern Conference**Commissioner:** Mike Slive**Founded:** 1933**Members:**

Alabama Crimson Tide
 Arkansas Lady Razorbacks
 Auburn Tigers
 Florida Gators
 Georgia Bulldogs
 Kentucky Wildcats
 LSU Tigers
 Mississippi Rebels
 Mississippi State Bulldogs
 South Carolina Gamecocks
 Tennessee Lady Volunteers
 Texas A&M Aggies (Beginning 2012-13)
 Vanderbilt Commodores

SEC Media Relations**Women's Basketball Contact:** Tammy Wilson**Address:**

2201 Richard Arrington Blvd.
 Birmingham, Ala. 35203-1103

Phone: 205.458.3000**Fax:** 205.458.3031**E-mail:** twilson@sec.org**Web site:** www.SECsports.com**SEC Women's Basketball Notes**

- The SEC has posted impressive non-conference records in the last decade. The SEC compiled a 131-49 (.728) non-conference record for the 2009-10 season.
 - Since the 1990 season, the SEC has compiled a 2914-894 (.765) record against other conferences. The league has recorded 150+ wins during eight seasons and has never recorded a non-conference winning percentage below .723.
 - SEC teams have earned appearances in 25 of 30 NCAA Final Fours, an accomplishment unmatched by any other league.
 - Overall, SEC squads have filled 34 of the 120 Final Four berths, including having two Final Four teams in 1988 (Auburn, Tennessee), 1989 (Auburn, Tennessee), 1995 (Georgia, Tennessee), 1996 (Georgia, Tennessee), 1998 (Arkansas, Tennessee), 2004 (LSU, Tennessee), 2005 (LSU, Tennessee), 2007 (LSU, Tennessee) and 2008 (LSU, Tennessee).
 - SEC teams have made 18 appearances in a nation-high 16 NCAA Championship games, winning eight NCAA Championships (Tennessee: 1987, 1989, 1991, 1996, 1997, 1998, 2007 and 2008).
 - The league also had the distinction of providing both national finalists twice in its history in 1996 (Tennessee 83, Georgia 65) and in 1989 (Tennessee 76, Auburn 60).
 - SEC teams have won 335 NCAA Tournament games against 172 losses (.661) for an average of 11.2 NCAA wins per year.
 - In addition, all 12 current members have appeared in the NCAA Tournament.
 - The SEC has paced the pack in NCAA tournament bids 21 times in its 30-year history.
 - The SEC was the first league to ever have eight teams invited to the NCAA Tournament, doing so in 1999 and 2002.
 - The SEC was also the first league to ever have seven teams invited to the NCAA Tournament and earned this honor a leading seven times (1986, 1991, 1995, 1996, 1997, 2003, 2004).
 - The SEC is one of a handful of leagues to have won three national tournament titles with eight NCAA, two WNIT and three NWIT. Along with the eight NCAA championships won by Tennessee, Arkansas (1999) and Auburn (2003) captured the current Women's NIT titles. But the first-ever SEC national title belongs to Georgia, winners of the 1981 NWIT which predates the current NCAA tournament. LSU (1985) and Kentucky (1990) each won NWIT titles. Both Arkansas (1987) and South Carolina (1979) won the WNIT as members of their previous conferences.
 - In 2003, Auburn won the WNIT title with wins over South Alabama, Florida State, Richmond, Creighton and Baylor. In 1999, the Arkansas Lady Razorbacks defeated Wisconsin 76-64 to claim the SEC's first WNIT championship.
 - In 1981, Georgia defeated Pittsburg, California and Arizona State (in OT) to capture the NWIT Championship, the first-ever national championship of any kind for the SEC in women's basketball.

SEC PRESEASON POLL (Media Vote)

(First-place votes in Parentheses)

SEC Champion

Tennessee (22)

Order of Finish

1. Tennessee	264
2. Georgia	228
3. Kentucky	212
4. LSU	189
5. Vanderbilt	172
6. Florida	151
7. Arkansas	142
8. South Carolina	107
9. Auburn	94
10. Alabama	55
11. Mississippi State	54
12. Ole Miss	48

Player of the Year

Shekinna Stricklen, Tennessee (16); Glory Johnson, Tennessee (3); LaSondra Barrett, LSU (2); Jasmine James, Georgia (1)

All-SEC First Team

Jasmine James, Georgia
 A'dia Mathies, Kentucky
 LaSondra Barrett, LSU
 Glory Johnson, Tennessee
 Shekinna Stricklen, Tennessee

All-SEC Second Team

C'eria Ricketts, Arkansas
 Sarah Watkins, Arkansas
 Valencia McFarland, Ole Miss
 Meighan Simmons, Tennessee
 Stephanie Holzer, Vanderbilt

Quoting Head Coach Nell Fortner

On GCSU...

"Georgia College has a great tradition and have won a lot of conference championships and been to the NCAA Tournament at their level. They are re-building right now with a lot of new players, so it will be really interesting to see what they come out with."

On playing the exhibition...

"One of the main things you want to do is get your players out on the court in front of the fans and officials, in a game setting to work some of their jitters out. Hopefully you can see them perform and see how they execute the things you've been working on. I know right now that our defense is ahead of our offense, so hopefully we will see some good things on the defensive end. To get that game experience and get the nerves out so you can perform better are important."

On what she hopes to see out of the team...

"Defensively, I feel pretty good. We have put in a new defense and they are picking it up pretty good. Offensively, we are a little rusty still, it just takes time for them to gel. Once we see what a true rotation is going to be in a game, it is going to give us an opportunity to gel quicker. We have to find a way to get some good looks because we have some kids that can put the ball in the hole."



Nell FORTNER

Head Coach

Eighth Season

Jackson, Miss • Texas, 1981

- Coached Auburn to its first SEC title in 20 years during 2008-09 season
- Produced Auburn's first SEC Player of the Year since 1988 in DeWanna Bonner
- Has an overall record of 149-100 for a .598 winning percentage
- Sports a 706-251 (.737) record as a head coach, assistant coach and player at all levels (college, professional, international)
- Coached teams to 11 NCAA Tournament appearances, eight as an assistant coach and three as a head coach
- 2000 USA Basketball Coach of the Year
- 1997 and 2009 Basketball Times National Coach of the Year
- 2009 Russell Athletic/WBCA Region III Coach of the Year
- 1997 Big Ten Coach of the Year
- 2009 SEC Coach of the Year
- Led the U.S. National Team to a gold medal in the 2000 Olympics
- Coached 10 different U.S. squads to a 101-14 (.878) record
- Served as an assistant coach for the U.S. National Team that won a gold medal at the 1996 Olympics
- Coached three players to State Farm/WBCA All-America honors
- Coached eight players to 10 all-conference honors
- Coached Auburn to three straight 20-win seasons, including a 30-win season in 2009 - Auburn's first in 20 years
- Produced two WNBA draft picks (DeWanna Bonner and Whitney Boddie) out of her first recruiting class at Auburn
- Spent three years as Head Coach and General Manager of the WNBA's Indiana Fever, leading the team to the playoffs in her second season
- As an assistant coach at Louisiana Tech, helped the team to the Elite Eight in 1993 and the National Championship game in 1994
- Spent four years as a studio analyst with ESPN (2001-04, 2005 WNBA Playoffs)

All-time record as player and coach at all levels:	706-251 (.737)	29 years
Record as a WNBA coach:	42-56 (.429)	3 seasons
Record as USA Head Coach:	101-14 (.878)	4 years
Record as a collegiate player:	127-26 (.830)	4 seasons
Record as a collegiate coach:	384-155 (.712)	16 seasons
Record as a collegiate assistant coach:	235-55 (.810)	9 seasons
Record as a collegiate head coach:	149-100 (.298)	8 seasons
Record at Auburn:	132-89 (.597)	7 seasons
SEC Record:	48-54 (.471)	7 seasons

Fortner Year-by-Year

Texas, Player (1977-81)

Year	Record	Conf.	Other Information
1977-78	29-10	--	5th AIAW
1978-79	37-4	--	3rd AIAW
1979-80	33-4	--	5th AIAW
1980-81	28-8	--	9th AIAW

Stephen F. Austin, Graduate Assistant/Assistant (1986-90)

Year	Record	Conf.	Other Information
1986-87	25-6	9-1	WNIT Third Round
1987-88	29-5	13-1	Southland Champions NCAA Second Round
1988-89	30-4	13-1	Southland Champions NCAA Regional Finalist
1989-90	28-3	14-0	Southland Champions NCAA Regional Finalist

Louisiana Tech, Assistant Coach (1990-95)

Year	Record	Conf.	Other Information
1990-91	18-12	9-3	American South Conference Runner-Up NCAA First Round
1991-92	20-10	12-4	NCAA First Round
1992-93	26-6	13-1	Sun Belt Conference Champion NCAA Elite Eight
1993-94	31-4	14-0	Sun Belt Conference Champion NCAA Runner-up
1994-95	28-5	13-1	Sun Belt Conference Champion NCAA Sweet 16

USA Basketball, Assistant Coach (1995-96)

52-0 Overall Record (1.000)

Purdue, Head Coach (1996-97)

Year	Record	Conf.	Other Information
1996-97	17-11	12-4	Big Ten Co-Champions NCAA Second Round

USA Basketball, Head Coach (1997-2000)

101-14 Overall Record (.878)

Indiana Fever (WNBA), Head Coach (2001-03)

Year	Record	Conf.	Other Information
2001	10-22	--	
2002	16-16	--	WNBA Playoffs First Round
2003	16-18	--	

Auburn, Head Coach (2004-present)

Year	Record	Conf.	Other Information
2004-05	16-13	6-8	
2005-06	14-15	4-10	
2006-07	21-13	6-8	WNIT Quarterfinals
2007-08	20-12	7-7	NCAA First Round
2008-09	30-4	12-2	SEC Champions SEC Tournament Runner-Up NCAA Second Round
2009-10	15-16	5-11	
2010-11	16-16	8-8	WNIT Second Round



Chantel HILLIARD

#23

Senior • Forward/Center • 6-2

Biloxi, Miss.

St. Martin High School

NOTES:

- Started nine of the final 10 games of the 2010-11 season
- Scored 13 points on 6-of-8 shooting in just 17 minutes at Tennessee Tech in first round of the 2011 WNIT
- Picked up her first career double-double with career highs of 18 points and 11 rebounds vs. Mississippi State in the SEC Tournament
- Was Auburn's most efficient shooter last season with a .522 field goal percentage
- Led Auburn in scoring for the first time in her career, coming off the bench for a career-high 16 points on 7-of-9 shooting at South Florida
- Scored in double figures nine times this season, including four of the last six games of the season

Opponent	Start	Min.	FG-A	3PT-A	FT-A	O-D-T	PF	Ast.	TO	Blk.	St.	Pts.
GCSU (Exhibition)												
at Mercer												
BELMONT												
at Duke												
GEORGE WASHINGTON												
SOUTH CAROLINA-UPSTATE												
TROY												
at Temple												
SOUTH FLORIDA												
PURDUE												
vs. Marist												
vs. Hofstra/Central Connecticut State												
vs. North Carolina-Charlotte												
vs. Florida International/Albany												
TENNESSEE												
at Alabama												
GEORGIA												
at Vanderbilt												
at Arkansas												
SOUTH CAROLINA												
at Mississippi State												
KENTUCKY												
at Ole Miss												
VANDERBILT												
at Tennessee												
at Florida												
ARKANSAS												
at LSU												
ALABAMA												
OLE MISS												

HILLIARD CAREER STATISTICS

Year	GP-GS	FG-FGA	Pct	3FG-FGA	Pct	FT-FTA	Pct	O-D-T (Reb.)	Avg	PF	FO	Ast	TO	Blk	Stl	Pts	Avg
2008-09	30-0	53-106	.500	0-2	.000	15-32	.469	29-56-85	2.8	50	0	7	26	12	13	121	4.0
2009-10	27-2	37-89	.416	0-0	.000	20-43	.465	31-35-66	2.4	49	1	6	35	13	11	94	3.5
2010-11	32-10	83-159	.522	0-2	.000	39-61	.639	44-69-113	3.5	62	0	9	50	13	18	205	6.4
TOTAL	89-12	173-354	.489	0-4	.000	74-136	.544	104-160-264	3.0	161	1	22	111	38	42	420	4.7

SEASON HIGHS

Points

Rebounds

Assists

Blocks

Steals

Field Goals

Field Goal Attempts

3-Point Field Goals

3-Point FG Attempts

Free Throws

Free Throw Attempts

CAREER HIGHS

Points

18 vs. Mississippi State (3/3/11)

Rebounds

11 Twice, last vs. Mississippi (3/3/11)

Assists

2 twice, last at Kentucky (1/24/10)

Blocks

3 twice, last vs. Duquesne (12/29/08)

Steals

3 vs. Duquesne (12/29/08)

Field Goals

8 vs. Mississippi State (3/3/11)

Field Goal Attempts

15 vs. Mississippi State (3/3/11)

3-Point Field Goals

N/A

3-Point FG Attempts

1 4 times, last vs. Kentucky (2/27/11)

Free Throws

7 vs. Florida (1/6/11)

Free Throw Attempts

12 vs. Sam Houston State (12/5/08)



Morgan JENNINGS

#2

Senior • Guard • 5-8

Atlanta, Ga.

Frederick Douglass High School

NOTES:

- Started the final six games of the 2010-11 season
- Scored career-high 16 points vs. Kentucky on Feb. 27, including career-high 6 free throws
- Earned first start in almost two months at USC; tallied 6 points, 4 rebounds, 3 steals while playing more minutes than she had in the last seven games combined
- Collected career-high 4 steals against Alabama A&M last season

Opponent	Start	Min.	FG-A	3PT-A	FT-A	O-D-T	PF	Ast.	TO	Blk.	Stl.	Pts.
GCSU (Exhibition)												
at Mercer												
BELMONT												
at Duke												
GEORGE WASHINGTON												
SOUTH CAROLINA-UPSTATE												
TROY												
at Temple												
SOUTH FLORIDA												
PURDUE												
vs. Marist												
vs. Hofstra/Central Connecticut State												
vs. North Carolina-Charlotte												
vs. Florida International/Albany												
TENNESSEE												
at Alabama												
GEORGIA												
at Vanderbilt												
at Arkansas												
SOUTH CAROLINA												
at Mississippi State												
KENTUCKY												
at Ole Miss												
VANDERBILT												
at Tennessee												
at Florida												
ARKANSAS												
at LSU												
ALABAMA												
OLE MISS												

JENNINGS CAREER STATISTICS

Year	GP-GS	FG-FGA	Pct	3FG-FGA	Pct	FT-FTA	Pct	O-D-T (Reb.)	Avg	PF	FO	Ast	TO	Blk	Stl	Pts	Avg
2008-09	30-4	30-77	.390	0-0	.000	11-24	.458	18-30-48	1.6	25	0	34	41	0	16	71	2.4
2009-10	13-0	9-32	.281	0-1	.000	1-4	.250	2-9-11	0.8	9	0	15	14	0	2	19	1.5
2010-11	31-8	37-101	.366	0-1	.000	32-47	.681	19-38-57	1.8	31	0	41	46	2	30	106	3.4
TOTAL	74-12	76-210	.362	0-2	.000	44-75	.587	39-77-116	1.6	65	0	90	101	2	48	196	2.6

SEASON HIGHS

Points

Rebounds

Assists

Blocks

Steals

Field Goals

Field Goal Attempts

3-Point Field Goals

3-Point FG Attempts

Free Throws

Free Throw Attempts

CAREER HIGHS

Points

16 vs. Kentucky (2/27/11)

Rebounds

5 4 times, last at Tenn. Tech (3/17/11)

Assists

6 twice, last at GW (12/15/10)

Blocks

1 twice, last vs. Temple (12/4/10)

Steals

4 vs. Alabama A&M (12/28/10)

Field Goals

7 at Seton Hall (11/27/10)

Field Goal Attempts

9 at Tennessee Tech (3/17/11)

3-Point Field Goals

N/A

3-Point FG Attempts

1 twice, last vs. Kentucky (2/27/11)

Free Throws

6 vs. Kentucky (2/27/11)

Free Throw Attempts

7 vs. Kentucky (2/27/11)



Parrisha SIMMONS

#4

Senior • Guard • 6-0

Macon, Ga.

Southwest Macon High School

NOTES:

- Scored season-high 6 points vs. Purdue; tied the mark against Florida and vs. Mississippi State last season
- Snagged career-high 3 steals vs. Alabama A&M
- A defensive and rebounding specialist

Opponent	Start	Min.	FG-A	3PT-A	FT-A	O-D-T	PF	Ass.	TO	Blk.	St.	Pts.
GCSU (Exhibition)												
at Mercer												
BELMONT												
at Duke												
GEORGE WASHINGTON												
SOUTH CAROLINA-UPSTATE												
TROY												
at Temple												
SOUTH FLORIDA												
PURDUE												
vs. Marist												
vs. Hofstra/Central Connecticut State												
vs. North Carolina-Charlotte												
vs. Florida International/Albany												
TENNESSEE												
at Alabama												
GEORGIA												
at Vanderbilt												
at Arkansas												
SOUTH CAROLINA												
at Mississippi State												
KENTUCKY												
at Ole Miss												
VANDERBILT												
at Tennessee												
at Florida												
ARKANSAS												
at LSU												
ALABAMA												
OLE MISS												

SIMMONS CAREER STATISTICS

Year	GP-GS	FG-FGA	Pct	3FG-FGA	Pct	FT-FTA	Pct	O-D-T (Reb.)	Avg	PF	FO	Ass	TO	Blk	Stl	Pts	Avg
2008-09	21-0	9-25	.360	0-0	.000	4-20	.200	20-36-56	2.7	13	0	12	14	4	6	22	1.0
2009-10	31-22	39-89	.435	0-0	.000	17-49	.347	88-71-159	5.1	51	0	34	43	1	16	95	3.1
2010-11	32-19	24-66	.364	0-0	.000	26-58	.448	54-46-100	3.1	38	0	27	28	2	18	74	2.3
TOTAL	84-41	72-180	.400	0-0	.000	47-127	.370	162-153-315	3.8	102	0	73	85	7	40	191	2.3

SEASON HIGHS

Points

Rebounds

Assists

Blocks

Steals

Field Goals

Field Goal Attempts

3-Point Field Goals

3-Point FG Attempts

Free Throws

Free Throw Attempts

CAREER HIGHS

Points

9 twice, last vs. Vanderbilt (1/21/10)

Rebounds

12 vs. George Washington (12/5/09)

Assists

4 vs. Valparaiso (12/28/09)

Blocks

1 7 times, last vs. JSU (12/30/10)

Steals

3 vs. Alabama A&M (12/28/10)

Field Goals

4 twice, last at N.C. A&T (12/1/09)

Field Goal Attempts

7 twice, last vs. USC (1/30/11)

3-Point Field Goals

N/A

3-Point FG Attempts

N/A

Free Throws

5 vs. South Alabama (12/2/10)

Free Throw Attempts

9 at Chicago State (12/21/10)



Blanche ALVERSON

#14

Junior • Forward/Center • 6-3

Andalusia, Ala.

Buford (Ga.) High School

NOTES:

- Is four 3-pointers away from tying Shana Askew for 7th all-time at Auburn in career 3-pointers
- Had a career outing last season vs. Ole Miss with 27 points, including a career-high five 3-pointers
- Topped her career rebounding mark with 9 at Alabama, tied it vs. South Carolina, at LSU and at Tennessee Tech
- Scored in double figures in 15 of the last 25 games a year ago
- Led Auburn in scoring seven times last season
- Scored Auburn's first field goal in the new Auburn Arena, a 3-pointer that came 56 seconds into the game against Mercer
- A deep shooting threat, she is also one of the most versatile players on the team because of her size and post skills

Opponent	Start	Min.	FG-A	3PT-A	FT-A	O-D-T	PF	Ass.	TO	Blk.	St.	Pts.
GCSU (Exhibition)												
at Mercer												
BELMONT												
at Duke												
GEORGE WASHINGTON												
SOUTH CAROLINA-UPSTATE												
TROY												
at Temple												
SOUTH FLORIDA												
PURDUE												
vs. Marist												
vs. Hofstra/Central Connecticut State												
vs. North Carolina-Charlotte												
vs. Florida International/Albany												
TENNESSEE												
at Alabama												
GEORGIA												
at Vanderbilt												
at Arkansas												
SOUTH CAROLINA												
at Mississippi State												
KENTUCKY												
at Ole Miss												
VANDERBILT												
at Tennessee												
at Florida												
ARKANSAS												
at LSU												
ALABAMA												
OLE MISS												

ALVERSON CAREER STATISTICS

Year	GP-GS	FG-FGA	Pct	3FG-FGA	Pct	FT-FTA	Pct	O-D-T (Reb.)	Avg	PF	FO	Ass	TO	Blk	Stl	Pts	Avg
2009-10	31-13	78-218	.358	40-128	.313	19-27	.704	26-92-118	3.8	39	1	51	44	17	15	215	6.9
2010-11	32-32	126-333	.378	50-171	.292	25-35	.714	33-118-151	4.7	44	0	33	61	17	27	327	10.2
TOTAL	63-45	204-551	.370	90-299	.301	44-62	.710	59-210-269	4.3	83	1	84	105	34	42	542	8.6

SEASON HIGHS

Points

Rebounds

Assists

Blocks

Steals

Field Goals

Field Goal Attempts

3-Point Field Goals

3-Point FG Attempts

Free Throws

Free Throw Attempts

CAREER HIGHS

Points

27 vs. Ole Miss (1/13/11)

Rebounds

9 4 times, last at Tenn. Tech (3/17/11)

Assists

5 3 times, last vs. Alabama (1/2/11)

Blocks

3 twice, last at Alabama (1/2/11)

Steals

4 vs. LSU (1/16/11)

Field Goals

11 vs. Ole Miss (1/13/11)

Field Goal Attempts

17 twice, last vs. Mississippi St. (2/6/11)

3-Point Field Goals

5 vs. Ole Miss (1/13/11)

3-Point FG Attempts

9 3 times, last vs. Kentucky (2/27/11)

Free Throws

4 twice, last vs. Seton Hall (11/27/10)

Free Throw Attempts

5 vs. Seton Hall (11/27/10)



Najat OUARDAD

#3

Junior • Guard • 5-1

Orleans, France

Pensacola State College

NOTES:

- Entering her first season at Auburn after transferring from Pensacola State College
- A two-time All-Panhandle Conference selection while at Pensacola State College
- Averaged 6.4 points, 2.6 rebounds, 5.1 assists and 2.5 steals per game, after averaging 6.6 points, 2.0 rebounds, 6.5 assists and 2.5 steals per game as a freshman
- Led Pensacola State to a third-place finish at the 2011 NJCAA National Basketball Championship, compiling a 36-1 record along the way
- Played for the French National Team while in high school
- Attended Oak Ridge Military Academy (Oak Ridge, N.C.) and Forsyth Country Day (Lewisville, N.C.) before going to PSC

Opponent	Start	Min.	FG-A	3PT-A	FT-A	O-D-T	PF	Asst.	TO	Blk.	St.	Pts.
GCSU (Exhibition)												
at Mercer												
BELMONT												
at Duke												
GEORGE WASHINGTON												
SOUTH CAROLINA-UPSTATE												
TROY												
at Temple												
SOUTH FLORIDA												
PURDUE												
vs. Marist												
vs. Hofstra/Central Connecticut State												
vs. North Carolina-Charlotte												
vs. Florida International/Albany												
TENNESSEE												
at Alabama												
GEORGIA												
at Vanderbilt												
at Arkansas												
SOUTH CAROLINA												
at Mississippi State												
KENTUCKY												
at Ole Miss												
VANDERBILT												
at Tennessee												
at Florida												
ARKANSAS												
at LSU												
ALABAMA												
OLE MISS												

SEASON HIGHS

Points

Rebounds

Assists

Blocks

Steals

Field Goals

Field Goal Attempts

3-Point Field Goals

3-Point FG Attempts

Free Throws

Free Throw Attempts



Pascale WEST

#20

Junior • Center • 6-8

LaGrange, Ga.

Troup County Comprehensive High School

NOTES:

- Tied her career high again with 4 points at LSU last season
- Is the tallest player in the SEC
- Her 22 blocks during the 2009-10 season rank her ninth all-time among Auburn freshmen

Opponent	Start	Min.	FG-A	3PT-A	FT-A	O-D-T	PF	Ast.	TO	Blk.	St.	Pts.
GCSU (Exhibition)												
at Mercer												
BELMONT												
at Duke												
GEORGE WASHINGTON												
SOUTH CAROLINA-UPSTATE												
TROY												
at Temple												
SOUTH FLORIDA												
PURDUE												
vs. Marist												
vs. Hofstra/Central Connecticut State												
vs. North Carolina-Charlotte												
vs. Florida International/Albany												
TENNESSEE												
at Alabama												
GEORGIA												
at Vanderbilt												
at Arkansas												
SOUTH CAROLINA												
at Mississippi State												
KENTUCKY												
at Ole Miss												
VANDERBILT												
at Tennessee												
at Florida												
ARKANSAS												
at LSU												
ALABAMA												
OLE MISS												

WEST CAREER STATISTICS

Year	GP-GS	FG-FGA	Pct	3FG-FGA	Pct	FT-FTA	Pct	O-D-T (Reb.)	Avg	PF	FO	Ast	TO	Blk	Stl	Pts	Avg
2009-10	24-0	7-15	.467	0-0	.000	4-11	.364	9-23-32	1.3	31	0	5	14	22	6	18	0.8
2010-11	13-0	5-8	.625	0-0	.000	1-6	.167	1-5-6	0.5	15	0	1	9	3	1	11	0.8
TOTAL	37-0	12-23	.522	0-0	.000	5-17	.294	10-28-38	1.0	46	0	6	23	25	7	29	0.8

SEASON HIGHS

Points

Rebounds

Assists

Blocks

Steals

Field Goals

Field Goal Attempts

3-Point Field Goals

3-Point FG Attempts

Free Throws

Free Throw Attempts

CAREER HIGHS

Points

4 4 times, last at LSU (2/10/11)

Rebounds

5 vs. Alabama A&M (11/19/09)

Assists

1 3 times, last vs. Ala. A&M (12/28/10)

Blocks

7 vs. Alabama A&M (11/19/09)

Steals

1 7 times, last vs. Purdue (12/18/10)

Field Goals

2 4 times, last at LSU (2/10/11)

Field Goal Attempts

4 at North Carolina A&T (12/1/09)

3-Point Field Goals

N/A

3-Point FG Attempts

N/A

Free Throws

1 5 times, last vs. Seton Hall (11/27/10)

Free Throw Attempts

4 vs. Florida A&M (11/28/09)



Peyton DAVIS

#34

Sophomore • Center • 6-5

Pinson, Ala.

Mortimer Jordan High School

NOTES:

- Played season-high 21 minutes at Arkansas as a freshman, tallying 4 points, 6 rebounds and a season-high 3 blocks
- Had a career outing at Vanderbilt, notching season highs in points (6), rebounds (7) and steals (2) in a season-high 15 minutes
- Led Auburn in rebounding for the first time with 7 at Vanderbilt
- A two-sport star athlete in high school, also fielded several NCAA Division I volleyball offers
- Holds a black belt in Taekwondo

Opponent	Start	Min.	FG-A	3PT-A	FT-A	O-D-T	PF	Ass.	TO	Blk.	St.	Pts.
GCSU (Exhibition)												
at Mercer												
BELMONT												
at Duke												
GEORGE WASHINGTON												
SOUTH CAROLINA-UPSTATE												
TROY												
at Temple												
SOUTH FLORIDA												
PURDUE												
vs. Marist												
vs. Hofstra/Central Connecticut State												
vs. North Carolina-Charlotte												
vs. Florida International/Albany												
TENNESSEE												
at Alabama												
GEORGIA												
at Vanderbilt												
at Arkansas												
SOUTH CAROLINA												
at Mississippi State												
KENTUCKY												
at Ole Miss												
VANDERBILT												
at Tennessee												
at Florida												
ARKANSAS												
at LSU												
ALABAMA												
OLE MISS												

DAVIS CAREER STATISTICS

Year	GP-GS	FG-FGA	Pct	3FG-FGA	Pct	FT-FTA	Pct	O-D-T (Reb.)	Avg	PF	FO	Ass	TO	Blk	Stl	Pts	Avg
2010-11	26-0	12-41	.293	0-0	.000	9-15	.600	18-16-34	1.3	38	0	7	13	7	4	33	1.3
TOTAL	26-0	12-41	.293	0-0	.000	9-15	.600	18-16-34	1.3	38	0	7	13	7	4	33	1.3

SEASON HIGHS

Points

Rebounds

Assists

Blocks

Steals

Field Goals

Field Goal Attempts

3-Point Field Goals

3-Point FG Attempts

Free Throws

Free Throw Attempts

CAREER HIGHS

Points

6 at Vanderbilt (1/9/11)

Rebounds

7 at Vanderbilt (1/9/11)

Assists

1 7 times, last vs. MSU (3/3/11)

Blocks

3 at Arkansas (2/13/11)

Steals

2 at Vanderbilt (1/9/11)

Field Goals

2 4 times, last at Arkansas (2/13/11)

Field Goal Attempts

6 vs. Alabama A&M (12/28/10)

3-Point Field Goals

N/A

3-Point FG Attempts

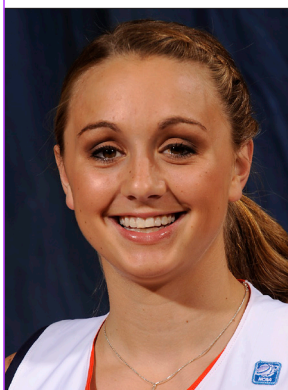
N/A

Free Throws

3 vs. Mercer (11/12/10)

Free Throw Attempts

4 vs. Mercer (11/12/10)



Camille GLYMPH

#22

Sophomore • Guard • 5-10

Greenville, S.C.

J.L. Mann High School

NOTES:

- Scored season-high 8 points at Toledo in the second round of the 2011 WNIT
- Made her collegiate and SEC debut on Jan. 13, 2011 against Ole Miss after missing half the season with an injury, recording 4 points and a steal

Opponent	Start	Min.	FG-A	3PT-A	FT-A	O-D-T	PF	Ass.	TO	Blk.	St.	Pts.
GCSU (Exhibition)												
at Mercer												
BELMONT												
at Duke												
GEORGE WASHINGTON												
SOUTH CAROLINA-UPSTATE												
TROY												
at Temple												
SOUTH FLORIDA												
PURDUE												
vs. Marist												
vs. Hofstra/Central Connecticut State												
vs. North Carolina-Charlotte												
vs. Florida International/Albany												
TENNESSEE												
at Alabama												
GEORGIA												
at Vanderbilt												
at Arkansas												
SOUTH CAROLINA												
at Mississippi State												
KENTUCKY												
at Ole Miss												
VANDERBILT												
at Tennessee												
at Florida												
ARKANSAS												
at LSU												
ALABAMA												
OLE MISS												

GLYMPH CAREER STATISTICS

Year	GP-GS	FG-FGA	Pct	3FG-FGA	Pct	FT-FTA	Pct	O-D-T (Reb.)	Avg	PF	FO	Ass	TO	Blk	Stl	Pts	Avg
2010-11	13-0	11-40	.275	5-21	.238	2-2	1.000	3-9-12	0.9	3	0	8	15	2	3	29	2.2
TOTAL	13-0	11-40	.275	5-21	.238	2-2	1.000	3-9-12	0.9	3	0	8	15	2	3	29	2.2

SEASON HIGHS

Points

Rebounds

Assists

Blocks

Steals

Field Goals

Field Goal Attempts

3-Point Field Goals

3-Point FG Attempts

Free Throws

Free Throw Attempts

CAREER HIGHS

Points

8 at Toledo (3/19/11)

Rebounds

4 vs. Alabama (2/17/11)

Assists

3 vs. Mississippi State (2/6/11)

Blocks

1 twice, last at Tennessee Tech (3/17/11)

Steals

1 three times, last at Toledo (3/19/11)

Field Goals

3 at Toledo (3/19/11)

Field Goal Attempts

12 at Toledo (3/19/11)

3-Point Field Goals

2 at Toledo (3/19/11)

3-Point FG Attempts

7 at Toledo (3/19/11)

Free Throws

2 vs. Ole Miss (1/13/11)

Free Throw Attempts

2 vs. Ole Miss (1/13/11)



Courtney STRAIN

#11

Sophomore • Guard • 5-9

Woodland, Ala.

Woodland High School

NOTES:

- Played season-high 22 minutes at Arkansas last season, setting season highs in points (12) and rebounds (4)
- Earned first collegiate start vs. Seton Hall at the 2010 Junkanoo Jam, scoring 7 points
- Scored 3 points with 2 rebounds in collegiate debut vs. Mercer in 2010
- Broke the Alabama state scoring record as a junior in high school, finished her career with 5,283 points - more than 1,000 than her nearest competitor
- Was also a varsity cheerleader for six years, serving as captain as a senior
- Graduated as salutatorian of her graduating class

Opponent	Start	Min.	FG-A	3PT-A	FT-A	O-D-T	PF	Ass.	TO	Blk.	St.	Pts.
GCSU (Exhibition)												
at Mercer												
BELMONT												
at Duke												
GEORGE WASHINGTON												
SOUTH CAROLINA-UPSTATE												
TROY												
at Temple												
SOUTH FLORIDA												
PURDUE												
vs. Marist												
vs. Hofstra/Central Connecticut State												
vs. North Carolina-Charlotte												
vs. Florida International/Albany												
TENNESSEE												
at Alabama												
GEORGIA												
at Vanderbilt												
at Arkansas												
SOUTH CAROLINA												
at Mississippi State												
KENTUCKY												
at Ole Miss												
VANDERBILT												
at Tennessee												
at Florida												
ARKANSAS												
at LSU												
ALABAMA												
OLE MISS												

STRAIN CAREER STATISTICS

Year	GP-GS	FG-FGA	Pct	3FG-FGA	Pct	FT-FTA	Pct	O-D-T (Reb.)	Avg	PF	FO	Ass	TO	Blk	Stl	Pts	Avg
2010-11	24-1	24-76	.316	5-19	.263	8-15	.533	6-14-20	0.8	13	0	7	16	0	7	61	2.5
TOTAL	24-1	24-76	.316	5-19	.263	8-15	.533	6-14-20	0.8	13	0	7	16	0	7	61	2.5

SEASON HIGHS

Points

Rebounds

Assists

Blocks

Steals

Field Goals

Field Goal Attempts

3-Point Field Goals

3-Point FG Attempts

Free Throws

Free Throw Attempts

CAREER HIGHS

Points

12 at Arkansas (2/13/11)

Rebounds

4 at Arkansas (2/13/11)

Assists

1 7 times, last at Toledo (3/19/11)

Blocks

N/A

Steals

1 7 times, last vs. Kentucky (2/27/11)

Field Goals

5 at Arkansas (2/13/11)

Field Goal Attempts

8 at Toledo (3/19/11)

3-Point Field Goals

1 5 times, last at LSU (2/10/11)

3-Point FG Attempts

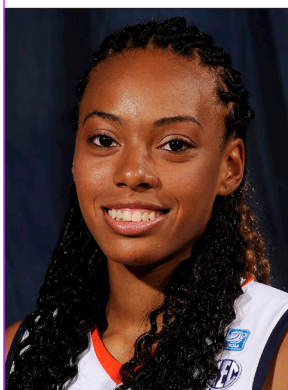
3 twice, last vs. Seton Hall (11/27/10)

Free Throws

3 vs. Sacred Heart (11/26/10)

Free Throw Attempts

6 vs. Sacred Heart (11/26/10)



Tyrese TANNER

#32

Sophomore • Forward • 6-1

Birmingham, Ala.

Hoover High School

NOTES:

- Averaged 11.0 points, 7.0 rebounds and 1.5 blocks per game in the two 2011 WNIT games
- Tied her career high with 15 points at Alabama, hitting four free throws in the final 20 seconds for the win
- Made first collegiate start vs. Seton Hall, went on to start the next two games
- Named to 2010 Junkanoo Jam All-Tournament Team

Opponent	Start	Min.	FG-A	3PT-A	FT-A	O-D-T	PF	Ast.	TO	Blk.	St.	Pts.
GCSU (Exhibition)												
at Mercer												
BELMONT												
at Duke												
GEORGE WASHINGTON												
SOUTH CAROLINA-UPSTATE												
TROY												
at Temple												
SOUTH FLORIDA												
PURDUE												
vs. Marist												
vs. Hofstra/Central Connecticut State												
vs. North Carolina-Charlotte												
vs. Florida International/Albany												
TENNESSEE												
at Alabama												
GEORGIA												
at Vanderbilt												
at Arkansas												
SOUTH CAROLINA												
at Mississippi State												
KENTUCKY												
at Ole Miss												
VANDERBILT												
at Tennessee												
at Florida												
ARKANSAS												
at LSU												
ALABAMA												
OLE MISS												

TANNER CAREER STATISTICS

Year	GP-GS	FG-FGA	Pct	3FG-FGA	Pct	FT-FTA	Pct	O-D-T (Reb.)	Avg	PF	FO	Ast	TO	Blk	Stl	Pts	Avg
2010-11	32-3	53-159	.333	6-37	.162	43-64	.672	48-53-101	3.2	57	1	27	48	24	21	155	4.8
TOTAL	32-3	53-159	.333	6-37	.162	43-64	.672	48-53-101	3.2	57	1	27	48	24	21	155	4.8

SEASON HIGHS

Points

Rebounds

Assists

Blocks

Steals

Field Goals

Field Goal Attempts

3-Point Field Goals

3-Point FG Attempts

Free Throws

Free Throw Attempts

CAREER HIGHS

Points

15 twice, last at Alabama (1/2/11)

Rebounds

7 twice, last at Toledo (3/19/11)

Assists

3 twice, last vs. Florida (1/6/11)

Blocks

3 at Tennessee Tech (3/17/11)

Steals

3 three times, last at Toledo (3/19/11)

Field Goals

5 at Alabama (1/2/11)

Field Goal Attempts

11 at Alabama (1/2/11)

3-Point Field Goals

2 vs. Duke (11/18/10)

3-Point FG Attempts

5 vs. Tennessee (1/23/11)

Free Throws

6 twice, last at Toledo (3/19/11)

Free Throw Attempts

6 5 times, last at Toledo (3/19/11)



Jassany WILLIAMS

#25

Sophomore • Forward • 6-2

Davie, Fla.

Nova High School

NOTES:

- Started the last nine games of the 2010-11 season
- Pulled down a career-high 12 rebounds against Alabama
- Earned her first career start at LSU, scoring 6 points with 2 rebounds and 2 blocked shots in 19 minutes
- Came off the bench to score career high 13 points vs. South Alabama

Opponent	Start	Min.	FG-A	3PT-A	FT-A	O-D-T	PF	Ast.	TO	Blk.	Stl.	Pts.
GCSU (Exhibition)												
at Mercer												
BELMONT												
at Duke												
GEORGE WASHINGTON												
SOUTH CAROLINA-UPSTATE												
TROY												
at Temple												
SOUTH FLORIDA												
PURDUE												
vs. Marist												
vs. Hofstra/Central Connecticut State												
vs. North Carolina-Charlotte												
vs. Florida International/Albany												
TENNESSEE												
at Alabama												
GEORGIA												
at Vanderbilt												
at Arkansas												
SOUTH CAROLINA												
at Mississippi State												
KENTUCKY												
at Ole Miss												
VANDERBILT												
at Tennessee												
at Florida												
ARKANSAS												
at LSU												
ALABAMA												
OLE MISS												

WILLIAMS CAREER STATISTICS

Year	GP-GS	FG-FGA	Pct	3FG-FGA	Pct	FT-FTA	Pct	O-D-T (Reb.)	Avg	PF	FO	Ast	TO	Blk	Stl	Pts	Avg
2010-11	32-9	45-113	.398	0-0	.000	28-52	.538	52-68-120	3.8	53	1	7	39	23	26	118	3.7
TOTAL	32-9	45-113	.398	0-0	.000	28-52	.538	52-68-120	3.8	53	1	7	39	23	26	118	3.7

SEASON HIGHS

Points

Rebounds

Assists

Blocks

Steals

Field Goals

Field Goal Attempts

3-Point Field Goals

3-Point FG Attempts

Free Throws

Free Throw Attempts

CAREER HIGHS

Points

13 vs. South Alabama (12/2/10)

Rebounds

12 vs. Alabama (2/17/11)

Assists

2 at Tennessee Tech (3/17/11)

Blocks

2 8 times, last at Tenn. Tech (3/17/11)

Steals

3 3 times, last vs. USC (1/30/11)

Field Goals

5 vs. South Alabama (12/2/10)

Field Goal Attempts

13 vs. Mercer (11/12/10)

3-Point Field Goals

N/A

3-Point FG Attempts

N/A

Free Throws

3 4 times, last vs. Florida (1/6/11)

Free Throw Attempts

7 vs. Alabama (2/17/11)



Hasina MUHAMMAD

#0

Freshman • Guard/Forward • 6-1

Memphis, Tenn.

Ridgeway High School

NOTES:

- Entering her first season at Auburn as the Tigers' lone freshman
- Ranked as the No. 66 overall player in the country by ESPN's HoopGurlz, also ranked as the 17th-best guard in the country and the No. 2 prospect in Tennessee
- Ranked as the No. 50 overall prospect by the All-Star Girls Report and No. 47 by the Girls Basketball Report
- Averaged 17.8 points, 7.4 rebounds, 2.3 assists, 3.9 blocks and 2.6 steals per game as a senior, leading Ridgeway to a 20-9 record
- Two-time All-State selection and three-time All-Region; also was a finalist for Tennessee's Miss Basketball

Opponent	Start	Min.	FG-A	3PT-A	FT-A	O-D-T	PF	Ass.	TO	Blk.	St.	Pts.
GCSU (Exhibition)												
at Mercer												
BELMONT												
at Duke												
GEORGE WASHINGTON												
SOUTH CAROLINA-UPSTATE												
TROY												
at Temple												
SOUTH FLORIDA												
PURDUE												
vs. Marist												
vs. Hofstra/Central Connecticut State												
vs. North Carolina-Charlotte												
vs. Florida International/Albany												
TENNESSEE												
at Alabama												
GEORGIA												
at Vanderbilt												
at Arkansas												
SOUTH CAROLINA												
at Mississippi State												
KENTUCKY												
at Ole Miss												
VANDERBILT												
at Tennessee												
at Florida												
ARKANSAS												
at LSU												
ALABAMA												
OLE MISS												

SEASON HIGHS

Points

Rebounds

Assists

Blocks

Steals

Field Goals

Field Goal Attempts

3-Point Field Goals

3-Point FG Attempts

Free Throws

Free Throw Attempts

Season Statistics

RECORD:	OVERALL	HOME	AWAY	NEUTRAL
ALL GAMES	16-16	8-7	7-6	1-3
CONFERENCE	8-8	4-4	4-4	0-0
NON-CONFERENCE	8-8	4-3	3-2	1-3

##	Player	gp-gs	min	avg	Total		3-Point		F-Throw		Rebounds				pf	dq	a	to	blk	stl	pts	avg
					fg-fga	fg%	3fg-fga	3fg%	ft-fa	ft%	off	def	tot	avg								
05	Smalley, Alli	32-31	967	30.2	144-363	.397	47-129	.364	59-75	.787	22	82	104	3.3	69	1	71	100	4	49	394	12.3
14	Alverson, Blanche	32-32	938	29.3	126-333	.378	50-171	.292	25-35	.714	33	118	151	4.7	44	0	33	61	17	27	327	10.2
21	Greenleaf, Jordan	23-23	737	32.0	81-197	.411	1-5	.200	47-69	.681	90	81	171	7.4	50	1	39	46	27	38	210	9.1
01	Toles, Morgan	27-24	772	28.6	98-245	.400	1-4	.250	34-55	.618	24	56	80	3.0	37	1	139	59	1	30	231	8.6
23	Hilliard, Chantel	32-10	533	16.7	83-159	.522	0-2	.000	39-61	.639	44	69	113	3.5	62	0	9	50	13	18	205	6.4
32	Tanner, Tyrese	32-3	476	14.9	53-159	.333	6-37	.162	43-64	.672	48	53	101	3.2	57	1	27	48	24	21	155	4.8
25	Williams, Jassany	32-9	481	15.0	45-113	.398	0-0	.000	28-52	.538	52	68	120	3.8	53	1	7	39	23	26	118	3.7
02	Jennings, Morgan	31-8	449	14.5	37-101	.366	0-1	.000	32-47	.681	19	38	57	1.8	31	0	41	46	2	30	106	3.4
11	Strain, Courtney	24-1	236	9.8	24-76	.316	5-19	.263	8-15	.533	6	14	20	0.8	13	0	7	16	0	7	61	2.5
04	Simmons, Parrisha	32-19	453	14.2	24-66	.364	0-0	.000	26-58	.448	54	46	100	3.1	38	0	27	28	2	18	74	2.3
22	Glymph, Camille	13-0	114	8.8	11-40	.275	5-21	.238	2-2	1.000	3	9	12	0.9	3	0	8	15	2	3	29	2.2
34	Davis, Peyton	26-0	172	6.6	12-41	.293	0-0	.000	9-15	.600	18	16	34	1.3	38	0	7	13	7	4	33	1.3
20	West, Pascale	13-0	72	5.5	5-8	.625	0-0	.000	1-6	.167	1	5	6	0.5	15	0	1	9	3	1	11	0.8
Team											69	76	145				12					
Total.....		32	6400		743-1901	.391	115-389	.296	353-554	.637	483	731	1214	37.9	510	5	416	542	125	272	1954	61.1
Opponents.....		32	6400		707-1804	.392	169-496	.341	357-503	.710	444	770	1214	37.9	537	13	376	595	98	244	1940	60.6

TEAM STATISTICS	AU	OPP
SCORING	1954	1940
Points per game	61.1	60.6
Scoring margin	+0.4	-
FIELD GOALS-ATT	743-1901	707-1804
Field goal pct	.391	.392
3 POINT FG-ATT	115-389	169-496
3-point FG pct	.296	.341
3-pt FG made per game	3.6	5.3
FREE THROWS-ATT	353-554	357-503
Free throw pct	.637	.710
F-Throws made per game	11.0	11.2
REBOUNDS	1214	1214
Rebounds per game	37.9	37.9
Rebounding margin	+0.0	-
ASSISTS	416	376
Assists per game	13.0	11.8
TURNOVERS	542	595
Turnovers per game	16.9	18.6
Turnover margin	+1.7	-
Assist/turnover ratio	0.8	0.6
STEALS	272	244
Steals per game	8.5	7.6
BLOCKS	125	98
Blocks per game	3.9	3.1
ATTENDANCE	45087	41510
Home games-Avg/Game	15-3006	13-2261
Neutral site-Avg/Game	-	4-3028

Score by Periods	1st	2nd	Totals
Auburn	887	1067	1954
Opponents	887	1053	1940

Date	Opponent	Score	Att.
11-12-10	MERCER	W 79-61	2459
11-15-10	FLORIDA STATE	L 61-67	2176
11-18-10	DUKE	L 62-75	3188
11-22-10	at USF	L 49-67	1106
# 11-26-10	vs Sacred Heart	L 53-65	371
# 11-27-10	vs Seton Hall	W 85-51	247
12-02-10	SOUTH ALABAMA	W 75-70	2006
12-04-10	TEMPLE	L 61-62	3206
12-15-10	at George Washington	W 52-45	320
! 12-18-10	vs Purdue	L 56-76	7666
12-21-10	at Chicago State	W 67-63	325
12-28-10	ALABAMA A&M	W 84-45	2039
12-30-10	JACKSONVILLE STATE	W 79-60	1965
* 01-02-11	at Alabama	W 66-55	2906
* 01-06-11	FLORIDA	W 73-56	1981
* 01-09-11	at Vanderbilt	L 59-67	4146
* 01-13-11	OLE MISS	W 85-73	2277
* 01-16-11	LSU	W 65-53	3088
* 01-20-11	at Mississippi State	W 45-41	850
* 01-23-11	TENNESSEE	L 53-73	7536
* 01-30-11	SOUTH CAROLINA	W 54-47	3110
* 02-03-11	at KENTUCKY	L 38-69	6003
* 02-06-11	MISSISSIPPI STATE	L 45-57	3047
* 02-10-11	at LSU	L 52-55	2517
* 02-13-11	at Arkansas	W 64-59	1348
* 02-17-11	ALABAMA	L 51-59	3735
* 02-20-11	at South Carolina	L 49-65	4114
* 02-24-11	at Georgia	W 63-58	3016
* 02-27-11	KENTUCKY	L 62-76	3274
\$ 03-03-11	vs MISSISSIPPI STATE	L 47-49	3827
^ 03-17-11	at Tennessee Tech	W 68-54	1358
% 03-19-11	at TOLEDO	L 52-67	1390

* - Southeastern Conference game

- Junkanoo Jam (Freeport, Bahamas)

\$ - Southeastern Conference Tournament (Nashville, Tenn.)

! - Boilermaker Blockbuster (Conseco Fieldhouse, Indianapolis, Ind.)

^ - WNIT First Round (Cookeville, Tenn.)

% - WNIT Second Round (Toledo, Ohio)