



# 2011-12 Auburn Women's Basketball

Game 1 • November 11, 2011

at Mercer • Season-Opener

18 NCAA Tournament Appearances • Three Final Fours • Five SEC Titles • Four SEC Tournament Titles

## AUBURN MEDIA RELATIONS

Associate Director/WBB Contact: Matt Crouch • [mcrouch@auburn.edu](mailto:mcrouch@auburn.edu)

Auburn Athletic Complex / 392 South Donahue / Auburn, AL 36849

O: 334.844.9800 • C: 334.740.4109 • F: 334.844.9807

[www.AuburnTigers.com](http://www.AuburnTigers.com)

Twitter: @AuburnWBB • Facebook: [facebook.com/AUWBB](https://www.facebook.com/AUWBB)

## 2010-11 SCHEDULE/RESULTS

<b>OCTOBER</b>		
30	Georgia College	W, 85-25
<b>NOVEMBER</b>		
11	at Mercer	6 p.m.
15	Belmont	6 p.m.
18	at Duke	11 a.m.
23	George Washington	6 p.m.
27	South Carolina-Upstate	2 p.m.
30	Troy	6 p.m.
<b>DECEMBER</b>		
3	at Temple	12 p.m.
14	South Florida	6 p.m.
18	Purdue	2 p.m.
21	1-vs. Marist	1:30 p.m.
22	1-vs. Hofstra or Central Conn. St.	TBA
29	2-vs. North Carolina-Charlotte	7 p.m.
30	2-vs. FIU or Albany	3 or 5 p.m.
<b>JANUARY</b>		
1	Tennessee* (CSS)	2 p.m.
5	at Alabama*	6:30 p.m.
8	Georgia* (CSS)	1 p.m.
12	at Vanderbilt* (CSS)	8 p.m.
15	at Arkansas* (FSN)	1:30 p.m.
19	South Carolina*	6 p.m.
22	at Mississippi State*	2 p.m.
26	Kentucky*	6 p.m.
29	at Ole Miss* (FSN)	1 p.m.
<b>FEBRUARY</b>		
2	Vanderbilt*	6 p.m.
5	at Tennessee* (SECN)	1 p.m.
9	at Florida*	6 p.m.
12	Arkansas* (ESPN2)	1:30 p.m.
19	at LSU*	2 p.m.
23	Alabama* (CSS)	8 p.m.
26	Ole Miss* (FSN)	2:30 p.m.
<b>MARCH</b>		
1-4	Southeastern Conference Tournament Nashville, Tenn. • Bridgestone Arena	
17-20	NCAA Tournament First and Second Rounds	
24-27	NCAA Tournament Regionals	
<b>APRIL</b>		
1-3	NCAA Tournament Final Four Denver, Colo. • Pepsi Center	

\* - SEC Game

All Times are Central

1 - Hofstra Holiday Classic (Hempstead, N.Y.)

2 - Sun and Fun Classic (Miami, Fla.)

All home games played at Auburn Arena

**Bold indicates home games**

[www.AuburnTigers.com](http://www.AuburnTigers.com)



AT



## GAME 1

[NR/NR] Auburn (0-0) at [NR/NR] Mercer (0-0)

**When:** Friday, November 11 • 6 p.m. CT

**Where:** University Center (3,200) • Macon, Ga.

**TV/Webcast:** ASun.TV (\$5.99 subscription)

**Radio:** 96.7 WMXA; Andy Burcham (play-by-play), Arnika Edwards (color)

**Audio Webcast:** AuburnTigers.com

**Live Stats:** AuburnTigers.com

**Series:** Auburn leads, 11-9 (3-4 when playing in Macon, Ga.)

**Last Meeting:** Auburn def. Mercer 79-61 in Auburn, Ala. (11-12-10)

**Last Meeting in Macon:** Auburn def. Mercer 103-29 (2-23-87)

**Up Next:** Auburn will return to Auburn Arena for its home-opener against Belmont;  
tipoff is set for 6 p.m. CT, Tuesday, Nov. 15

## AUBURN PROJECTED STARTERS (2010-11 stats)

No.	Pos.	Name	Ht.	Year	PPG	RPG	Hometown
0	G	Hasina Muhammad	6-1	Fr.	--	--	Memphis, Tenn.
2	G	Morgan Jennings	5-8	Sr.	3.4	1.8	Atlanta, Ga.
14	F	Blanche Alverson	6-3	Jr.	10.2	4.7	Andalusia, Ala.
23	F	Chantel Hilliard	6-2	Sr.	6.4	3.5	Biloxi, Miss.
25	F	Jassany Williams	6-2	So.	3.7	3.8	Davie, Fla.

## OFF THE BENCH

3	G	Najat Ouardad	5-1	Jr.	--	--	Orleans, France
4	G	Parrisha Simmons	6-0	Sr.	2.3	3.1	Macon, Ga.
11	G	Courtney Strain	5-9	So.	2.5	0.8	Woodland, Ala.
20	C	Pascale West	6-8	Jr.	0.8	0.5	LaGrange, Ga.
22	G	Camille Glymph	5-10	So.	2.2	0.9	Greenville, S.C.
32	G/F	Tyrese Tanner	6-1	So.	4.8	3.2	Birmingham, Ala.
34	C	Peyton Davis	6-5	So.	1.3	1.3	Pinson, Ala.

Head Coach: Nell Fortner / Associate Head Coach: Kerry Cremeans / Assistant Coaches: Mark Simons and Carla McGhee

## MERCER PROJECTED STARTERS (2010-11 stats)

No.	Pos.	Name	Ht.	Year	PPG	RPG	Hometown
1	F	Ry'van Buchanan	5-11	Jr.	--	--	Atlanta, Ga.
2	G	Briana Williams	5-7	So.	18.0	2.8	McDonough, Ga.
15	F	Alex Phillips	6-3	Jr.	7.5	5.6	Duluth, Ga.
22	G	Sharnea Boykin	5-5	So.	3.2	2.8	Atlanta, Ga.
33	G	Precious Bridges	5-6	Fr.	--	--	West Palm Beach, Fla.

Head Coach: Susie Gardner / Assistant Coaches: Marisah Henderson, Tiffany Swoffard and Rhet Wierzb

**Media Information**

The Auburn media relations department considers its work with the media a top priority. The 2011-12 Auburn Women's Basketball Almanac has been prepared to assist the working media in their coverage of Tiger basketball. If you have not received a copy, or if you need additional information, interview or photograph requests, or have any questions, please contact Matt Crouch in the media relations office at 334.844.9709.

**Interview Policy**

Coach Fortner, her assistants and all women's basketball players are available for phone and personal interviews by contacting Matt Crouch in the media relations office. Post-game interviews will be allowed following a 10-minute cooling off period. Non-game day requests will be met based on the players class and practice schedules.

**Credentials**

Anyone wishing to cover an Auburn women's basketball game should contact Matt Crouch in the media relations office at least one day in advance in order to make the proper arrangements.

**On the Air**

The Tigers can be heard live locally in Auburn on Mix 96.7 FM for the entire regular and postseasons. Andy Burcham, in his 24th season with the women's basketball program and handles play-by-play duties. Arnika Edwards joins Burcham for her fifth season and provides color commentary. Each game can also be heard live on the internet at [www.AuburnTigers.com](http://www.AuburnTigers.com).

**Weekly Live Radio Show**

Starting in January, every Tuesday at 6 p.m. CT Nell Fortner will host a live show from Logan's Roadhouse in Tiger Town with Andy Burcham. Fans can listen to the show on 96.7 FM. The number to call in to the show is 1-800-282-2557.

**Game-Day Services**

Statistics, rosters and game notes will be provided prior to the game in the media work room. Box scores will also be handed out during and following the game. Phones and fax machines are available in the media work room.

**Photo/Video Services**

Todd Van Emst of the Auburn Media Relations office handles all photo requests. Please contact Van Emst at 334-844-9514. Video highlights of selected Auburn women's basketball games are available for the media. For information on how to access the FTP server, contact Steve Sain in the Auburn Media Relations office at 334.844.9809.

**On the Web**

The home for Auburn Athletics on the web, [www.AuburnTigers.com](http://www.AuburnTigers.com), is your source for Auburn Women's Basketball. The website offers the most recent information and news on the Tigers. At [AuburnTigers.com](http://AuburnTigers.com), you can also listen to each women's basketball game broadcast live and follow along on live scoring for every home game.



**Follow Auburn Women's Basketball on Twitter**

**@AuburnWBB**



**Become a fan of Auburn Women's Basketball on Facebook**

**[www.Facebook.com/AUWBB](http://www.Facebook.com/AUWBB)**

**2011-12 Numerical Roster**

No.	Name	Height	Position	Class	Hometown/High School
0	Hasina Muhammad	6-1	Guard/Forward	FR	Memphis, Tenn./Ridgeway
2	Morgan Jennings	5-8	Guard	SR	Atlanta, Ga./Frederick Douglass
3	Najat Ouardad	5-1	Guard	JR	Orleans, France/Pensacola St. College
4	Parrisha Simmons	6-0	Guard	SR	Macon, Ga./Southwest Macon
11	Courtney Strain	5-9	Guard	SO	Woodland, Ala./Woodland
14	Blanche Alverson	6-3	Forward/Guard	JR	Andalusia, Ala./Buford (Ga.)
20	Pascale "P.J." West	6-8	Center	JR	LaGrange, Ga./Troup County
22	Camille Glymph	5-10	Guard	SO	Greenville, S.C./J.L. Mann
23	Chantel Hilliard	6-2	Forward/Center	SR	Biloxi, Miss./St. Martin
25	Jassany Williams	6-2	Forward	SO	Davie, Fla./Nova
32	Tyrese Tanner	6-1	Guard/Forward	SO	Birmingham, Ala./Hoover
34	Peyton Davis	6-5	Center	SO	Pinson, Ala./Mortimer Jordan

**2011-12 Alphabetical Roster**

No.	Name	Height	Pos.	Ht.	Hometown
14	Blanche Alverson	6-3	Forward/Guard	JR	Andalusia, Ala./Buford (Ga.)
34	Peyton Davis	6-5	Center	SO	Pinson, Ala./Mortimer Jordan
22	Camille Glymph	5-10	Guard	SO	Greenville, S.C./J.L. Mann
23	Chantel Hilliard	6-2	Forward/Center	SR	Biloxi, Miss./St. Martin
2	Morgan Jennings	5-8	Guard	SR	Atlanta, Ga./Frederick Douglass
0	Hasina Muhammad	6-1	Guard/Forward	FR	Memphis, Tenn./Ridgeway
3	Najat Ouardad	5-1	Guard	JR	Orleans, France/Pensacola St. College
4	Parrisha Simmons	6-0	Guard	SR	Macon, Ga./Southwest Macon
11	Courtney Strain	5-9	Guard	SO	Woodland, Ala./Woodland
32	Tyrese Tanner	6-1	Guard/Forward	SO	Birmingham, Ala./Hoover
20	Pascale "P.J." West	6-8	Center	JR	LaGrange, Ga./Troup County
25	Jassany Williams	6-2	Forward	SO	Davie, Fla./Nova

**STAFF:**

**Head Coach:** Nell Fortner (Texas, 1982)

**Associate Head Coach:** Kerry Cremeans (Florida, 1994)

**Assistant Coach:** Mark Simons (Aquinas College, 1972)

**Assistant Coach:** Carla McGhee (Tennessee, 1990)

**Director of Basketball Operations:** Melissa Maines (Texas Tech, 1998)

**Video Coordinator:** Wes Kitchens (Auburn, 2011)

**Administrative Assistant:** Janese Banks (Wisconsin, 2008)

**Director of Administrative Support Services:** Arnika Edwards (Alabama A&M, 1991)

**Athletic Trainer:** Angie Lawrence (Appalachian State, 1997)

**BY CLASS:**

**Seniors (3):** Chantel Hilliard, Morgan Jennings, Parrisha Simmons

**Juniors (3):** Blanche Alverson, Najat Ouardad, Pascale "P.J." West

**Sophomores (5):** Peyton Davis, Camille Glymph, Courtney Strain, Tyrese Tanner, Jassany Williams

**Freshmen (1):** Hasina Muhammad

## Projected Auburn Starters



### Hasina Muhammad

Guard/Forward  
6-1  
Freshman  
Memphis, Tenn.  
Ridgeway

0

- A true freshman, she is making her first appearance in an Auburn uniform
- Scored 13 points with 4 rebounds in the exhibition game vs. GCSU
- Is one of just nine players all-time at Auburn from Tennessee
- Ranked as the 17th-best guard in the country as a senior by ESPN



### Morgan Jennings

Guard  
5-8  
Senior  
Atlanta, Ga.  
Frederick Douglass High School  
2.6 ppg / 1.2 apg / 1.6 rpg (career stats)

2

- Scored 6 points with 5 rebounds and 2 assists vs. GCSU in exhibition game
- Had 6 points and 3 steals vs. Mercer last season
- Started 6 of the last 8 games last season at point guard
- Scored career high 16 points vs. Kentucky in final regular-season game



### Blanche Alverson

Guard/Forward  
6-3  
Junior  
Andalusia, Ala.  
Buford (Ga.) High School  
8.6 ppg / 4.3 rpg / .301 3fg% (career stats)

14

- Scored 9 points with 4 steals and 4 assists vs. GCSU in exhibition
- Started and scored 11 points with 3 assists vs. Mercer last season
- Scored career-high 27 points vs. Ole Miss last season
- Tied for 8th all-time at Auburn with 90 career 3-pointers



### Chantel Hilliard

Forward/Center  
6-2  
Senior  
Biloxi, Miss.  
St. Martin High School  
4.7 ppg / 3.0 rpg / .489 fg% (career stats)

23

- Notched a double-double with 10 pts and 15 rebs vs. GCSU in exhibition
- Came off the bench for 4 points and 3 rebounds vs. Mercer last season
- Registered a team-best .522 field goal percentage last season
- Emerged as a starter late last season, starting 9 of final 10 games



### Jassany Williams

Forward  
6-2  
Sophomore  
Davie, Fla.  
Nova High School  
3.7 ppg / 3.8 rpg / 0.7 bpg

25

- Scored 8 points with 11 rebounds in exhibition win over GCSU
- Came off the bench for 9 points and 6 rebounds last season vs. Mercer
- Earned a starting position last season as a freshman, starting 9 of 32 games
- Notched season-highs 13 pts vs. South Alabama and 12 rebs vs. Alabama

## Auburn Women's Basketball Quick Hitters

- Starting the season on Nov. 11 is tied for the second earliest start ever for Auburn
- Blanche Alverson is four 3-pointers away from tying for 7th all-time at Auburn in career 3-pointers
- Auburn and Mercer both played an exhibition game against Georgia College; the Tigers trounced the Bobcats 85-25 while the Bears defeated GCSU, 73-43
- The Tigers faced Mercer in the season-opener last season, defeating the Bears, 79-61
- Auburn is 13-9 all-time against teams from the Atlantic Sun Conference
- Auburn is 32-8 in season-openers, 6-1 under head coach Nell Fortner
- The Tigers are 10-5 when opening the season away from home and are 25-15 in road openers
- This will be the 21st meeting between Auburn and Mercer with AU leading the series, 11-9 (3-4 when in Macon, Ga.)
- Auburn is 1-0 all-time on Nov. 11 and 103-26 all-time in the month of November, 32-13 under Fortner
- The Tigers are 43-48 all-time when playing a team from the state of Georgia
- When playing inside the state of Georgia, the Tigers hold a 30-39 record
- Auburn senior Parrisha Simmons is a native of Macon, Ga., graduating from Southwest Macon High School
- Senior Morgan Jennings played with Mercer junior Ry'van Buchanan at Frederick Douglass High School in Atlanta
- This is the fifth meeting between Fortner and Mercer head coach Susie Gardner with the series tied 2-2
- Three Tigers (Morgan Jennings [Atlanta], Parrisha Simmons [Macon] and Pascale West [LaGrange]) are from Georgia while Blanche Alverson attended high school in Buford, Ga.
- Auburn is 85-2 under Nell Fortner when scoring 70 or more points in a game
- Nell Fortner has guided Auburn to a 79-34 record in non-conference games
- Auburn returns seven players that have seen time as a starter, accounting for 123 career starts
- The Tigers return three starters from last season, along with seven players who saw time as a starter a year ago
- Auburn was picked ninth in the SEC Preseason Media and Coaches polls, Tennessee was picked to win the league
- Nell Fortner is beginning her eighth season at Auburn, marking her longest tenure at any job
- The Tigers welcome two newcomers: junior college transfer Najat Ouwardad and freshman Hasina Muhammad
- Auburn is coming off a 16-16 season in 2010-11, one that ended with a berth in the WNIT
- The Tigers have advanced to the post-season in four of the last five seasons

### RETURNING INDIVIDUAL CATEGORY LEADERS (based on 2010-11 stats)

Auburn	Mercer
Blanche Alverson - 10.2.....	Points..... Briana Williams - 18.0
Blanche Alverson - 4.7.....	Rebounds..... Sharmesia Smith - 7.5
Morgan Jennings - 1.3.....	Assists..... Sharnea Boykin - 5.8
Morgan Jennings - 1.0.....	Steals..... Sharnea Boykin - 1.9
Tyrese Tanner - 0.8.....	Blocks..... Alex Phillips - 1.5
Blanche Alverson - 29.3.....	Minutes Played..... Sharnea Boykin - 37.7
Chantel Hilliard - .522.....	Field Goal Percentage..... Brittnee Hazel - .469
Blanche Alverson - .292.....	3-Point Percentage..... Kendra Grant - .373
Blanche Alverson - .714.....	Free-Throw Percentage..... Briana Williams - .685

## AUBURN WOMEN'S BASKETBALL WEEKLY SCHEDULE

	Wednesday 9	Thursday 10	Friday 11	Saturday 12	Sunday 13	Monday 14	Tuesday 15
<b>Nov. 9 through Nov. 15</b>	Practice 3 - 5 p.m. Auburn Arena	Practice 2 - 4 p.m. Auburn Arena Depart for Macon, Ga.	Auburn at Mercer 6 p.m. CT University Center	OFF	TBA	Practice 3 - 5 p.m. Auburn Arena	Auburn vs. Belmont 6 p.m. CT Auburn Arena

## General Information

School..... Auburn University  
City / Zip..... Auburn, Ala. / 36831  
Founded..... Oct. 1, 1856  
Enrollment..... 24,602  
Nickname..... Tigers  
Colors..... Burnt Orange and Navy Blue  
Home Court (Capacity)..... Auburn Arena (9,121)  
Affiliation..... NCAA Division I  
Conference..... Southeastern Conference  
President..... Dr. Jay Gogue  
Athletic Director..... Jay Jacobs  
Senior Women's Administrator..... Meredith Jenkins  
University Website..... www.Auburn.edu

## Team Information

2010-11 Record (SEC Record)..... 16-16 (8-8)  
SEC Finish / Tournament Finish..... T5th / First Round  
All-time SEC Record..... 187-157 (.544)  
All-time SEC Tournament Record..... 34-28  
Starters Returning/Lost..... 3/2  
Letterwinners Returning/Lost..... 10/3  
Newcomers..... 2  
First Year of Basketball..... 1971  
All-Time Overall Record..... 795-362 (.687)  
NCAA Tournament Appearances/Last..... 18/2009  
NCAA Tournament Record..... 29-18  
WNIT Appearances/Last..... 3/2011  
WNIT Record..... 8-2

## Basketball Staff

Head Coach (Alma Mater)..... Nell Fortner (Texas, 1982)  
Career Record..... 149-100 (.613) / 8 years  
Record at Auburn..... 132-89 (.614) / 7 years  
Associate Head Coach (Alma Mater)..... Kerry Cremeans (Florida, 1994)  
Assistant Coaches (Alma Mater)..... Mark Simons (Aquinas College, 1972)  
..... Carla McGhee (Tennessee, 1990)  
Director of Basketball Operations..... Melissa Maines  
Director of Administrative Support Services..... Arnika Edwards  
Administrative Assistant..... Janese Banks  
Video Coordinator..... Wes Kitchens  
Secretary..... Ann Yates  
Basketball Office Phone..... (334) 844-9200  
Basketball Office Fax..... (334) 844-9862  
Strength and Conditioning..... Megan Young  
Athletic Trainer..... Angie Lawrence  
Academic Counselor..... Jenna Sample

## Radio Broadcast Information

Radio Station..... WMTX (96.7 FM)  
Play-by-Play..... Andy Burcham  
Color..... Arnika Edwards  
Burcham Email..... aburcham@auburnnetwork.com  
Burcham Office Phone..... (334) 826-2929  
Network Address..... Auburn Network, Inc.  
..... P.O. Box 950  
..... Auburn, AL 36831-0950

## MERCER MEDIA RELATIONS

For information on the Mercer women's basketball team, contact Andy Stabell in the media relations office. His number is 203.605.4462 and his email is stabell\_al@mercer.edu.

For more information, go to [www.MercerBears.com](http://www.MercerBears.com).

## OFFICIALS

TBA

## RANKINGS

Auburn and Mercer are not ranked.

## NEXT UP FOR THE TIGERS

Auburn will return to Auburn Arena for its home-opener against Belmont. Tipoff is set for 6 p.m. CT, Tuesday, Nov. 15.

## AUBURN'S POST-GAME PROCEDURE

The Auburn locker room is closed. Coach Nell Fortner and selected Tiger players will be brought to the interview room after the 10-minute "cooling off" period.

## QUICK HITS

Auburn is in its 41st season of women's basketball and sports an all-time record of 795-362... AU has made 18 NCAA Tournament appearances, three WNIT appearances and three Final Fours in the program's history... Head Coach Nell Fortner is in her eighth season at Auburn with a 149-100 career record and a 132-89 record on the Plains... The Tigers are coming off a 16-16 season in 2011 with an appearance in the second round of the WNIT.

## AUBURN-MERCER SERIES

This will be the 21st meeting between Auburn and Mercer with Auburn holding a 11-9 series advantage. Auburn has won the last 11 meetings and has a 3-4 record when playing in Macon, Ga. Head coach Nell Fortner is 1-0 against Mercer.

## Previous Meetings with Mercer:

Jan. 15, 1972	L	25-66	Auburn
Feb. 19, 1972	L	27-57	Macon, Ga.
Feb. 24, 1973	L	28-63	Auburn
Feb. 9, 1974	L	70-84	Macon, Ga.
Feb. 1, 1975	L	58-105	Carrollton, Ga. (11)
Nov. 25, 1975	L	73-86	Auburn
Jan. 10, 1976	L	66-93	Macon, Ga.
Mar. 8, 1979	L	69-77	Auburn
Dec. 15, 1979	L	69-77	Macon, Ga.

Jan. 21, 1981	W	83-70	Auburn
Jan. 18, 1982	W	67-47	Macon, Ga.
Nov. 29, 1982	W	86-68	Auburn
Dec. 14, 1983	W	58-49	Macon, Ga.
Dec. 11, 1984	W	86-57	Auburn
Dec. 11, 1985	W	101-50	Auburn
Feb. 23, 1987	W	103-29	Macon, Ga.
Nov. 26, 1999	W	82-41	Auburn
Dec. 8, 2000	W	79-35	Auburn
Dec. 8, 2001	W	97-59	Auburn
Nov. 12, 2010	W	79-61	Auburn

## IN SEASON-OPENERS GAMES

In 40 seasons, Auburn has put together a 32-8 record in season openers (home or away). The Tigers are 10-5 when opening the season away from home (road or neutral) and 6-2 when opening the season with a true road game.

The Tigers are 6-1 under head coach Nell Fortner in season openers and are winners of six straight season-opening games.

Auburn's last season-opening win on the road came on Nov. 14, 2008 as the Tigers won at Alabama A&M, 91-53. The last season-opening road loss came on Nov. 19, 2004 with AU falling to Wisconsin-Green Bay, 64-56, at the Vermont Tournament in Burlington, Vt. The last true road loss came on Nov. 22, 1980 with Auburn falling 79-74 at Vanderbilt.

## IN ROAD-OPENERS

In 40 seasons, Auburn has put together a 25-15 record in road openers (away or neutral) and a 15-11 mark when playing a true road game. The Tigers are 3-4 in road openers under Nell Fortner.

## MERCER CONNECTION

Auburn senior Morgan Jennings will see a familiar face across the court Friday as she takes on former high school teammate Ry'van Buchanan (Frederick Douglass High School). Buchanan, a junior, is in her first season at Mercer after playing the last two years at Georgia Perimeter College.

## HOME SWEET HOME

The game at Mercer will be a homecoming for Auburn senior Parrisha Simmons, a native of Macon, Ga. Simmons played high school basketball at Southwest Macon High School and is the all-time leading rebounder in school history.

## Statistical Comparison - Auburn at Mercer

<b>Coch:</b>	<b>Auburn</b> Nell Fortner	<b>Mercer</b> Susie Gardner
<b>Career Record:</b>	149-100	178-174
<b>Top Scorer:</b>	Alverson (10.2)	Williams (18.0)
<b>Top Rebounder:</b>	Alverson (4.7)	Smith (7.5)
<b>Series Record:</b>	Auburn leads, 11-9	
- at Auburn	Auburn leads, 8-4	
- at Milledgeville, Ga.	Auburn trails, 3-4	
- at Neutral	Auburn trails, 0-1	
- Overall Streak	Auburn won the last meeting, 79-61	
Record	16-16	2-27
Conference Record	8-8	2-18
Points Per Game	61.1	58.9
Scoring Margin	+0.5	-14.9
FG Percentage	.391	.376
Opp. FG %	.392	.419
3FG Percentage	.296	.292
Opp. 3FG %	.341	.344
Rebounds	37.9	36.3
Opp. Rebounds	37.9	45.4
Rebound Margin	---	-9.1
Turnovers	16.9	19.3
Opp. Turnovers	18.6	17.9
Steals	8.5	8.7
Opp. Steals	7.6	10.8
Blocks	3.9	4.2
Opp. Blocks	3.1	2.4

## Around the SEC (FINAL 2011)

	SEC	Pct.	Overall	Pct.
* ^ Tennessee	16-0	1.000	34-3	.918
Kentucky	11-5	.688	25-9	.735
Vanderbilt	10-6	.625	20-12	.625
Georgia	10-6	.625	23-11	.676
South Carolina	8-8	.500	18-15	.545
Auburn	8-8	.500	16-16	.500
LSU	8-8	.500	19-13	.594
Florida	7-9	.438	20-15	.571
Arkansas	6-10	.375	20-11	.647
Alabama	5-11	.313	18-15	.545
Mississippi State	4-12	.250	13-17	.433
Ole Miss	3-13	.188	10-19	.345

## Post-Season Finishes

<b>SEC Champion</b>	Tennessee
<b>SEC Tournament Champion</b>	Tennessee
<b>NCAA Tournament Participant</b>	Georgia (Sweet 16)
	Kentucky (Second Round)
	Tennessee (Elite 8)
	Vanderbilt (First Round)
<b>WNIT Participant</b>	Alabama (Third Round)
	Arkansas (Quarterfinals)
	Auburn (Second Round)
	Florida (Third Round)
	South Carolina (Second Round)

## SCOUTING MERCER

Susie Gardner will return to the sideline for her second year as head coach of the Mercer Bears with all five starters from last year's squad that finished 2-27 (2-18 A-Sun). During Gardner's first year, the Bears defeated Belmont on the road, 69-56, before beating Kennesaw State in overtime 82-76.

Of the returning five starters, Mercer will look to sophomore Briana Williams to lead the way. As a freshman, Williams led the team in scoring by averaging 18.0 points per game, which ranked 37th in the nation and second overall among freshman. The Atlantic Sun Freshman of the Year started her career off by scoring in double digits in her first eight games, including 23 points in her collegiate debut against Auburn.

The Bears will also look to sophomore forward Britnee Hazel. Last year, the 5-11 Georgia native led the Bears in rebounding with 5.9 rebounds per game and was second in scoring, averaging 11.3 points per game. Hazel also accounted for two of Mercer's five double-doubles last season.

## SCOUTING AUBURN

Auburn returns three starters and 10 letterwinners from last season's team that went 16-16 and advanced to the second round of the WNIT. Of the 10 letterwinners on Auburn's roster, seven started at least one game last season. The Tigers are under the direction of head coach Nell Fortner, who is in her eighth season on The Plains with a 132-89 record.

Auburn's top returning player is junior Blanche Alverson with 10.2 points and 4.7 rebounds per game last season. Chantel Hilliard (6.4 ppg, 3.5 rpg) and Parrisha Simmons (2.3 ppg, 3.1 rpg) are the only other Tigers that started more than 10 games last season. Senior Morgan Jennings and sophomore Jassany Williams both came on late in the season for Auburn. Jennings started six of the last eight games of the season at point guard while Williams started the final nine games in the post.

## GEORGIA TIGERS

Three players on the Auburn roster call the Peach State their home. Morgan Jennings (Atlanta), Parrisha Simmons (Macon) and Pascale West (LaGrange) all hail from the state of Georgia. While not from Georgia, junior Blanche Alverson attended high school in Buford, Ga.

## LAST TIME OUT FOR AUBURN

The Auburn women's basketball team took a decisive 85-25 win over Georgia College and State University in its exhibition game Oct. 30 at Auburn Arena. Sophomore Camille Glymph led the Tigers with 15 points off the bench while senior Chantel Hilliard notched a double-double with 10 points and 15 rebounds.

Freshman Hasina Muhammad tallied 13 points, four rebounds and a pair of steals in her debut as a Tiger.

The Tigers held Georgia College scoreless for the first 12:45 of the game, taking a 32-1 lead after a Bobcat free throw. GCSU was held without a field goal until the 13:55 mark in the second half.

## LAST TIME OUT FOR MERCER

Three Mercer players finished in double figures as the Bears handed Georgia College a 73-43 loss in the team's lone exhibition game. Junior Ry'van Buchanan and sophomore Briana Williams each had 13 points to lead Mercer offensively while freshman Precious Bridges chipped in 11 points of her own.

Mercer led by just three points at halftime, but erupted for a 41-14 second half en route to the win. The Bears also out-rebounded GCSU 55-43 and forced 33 turnovers in the win.

## FORTNER VS. GARDNER

This will be the fifth meeting between Auburn head coach Nell Fortner and Mercer's Susie Gardner. The pair met three times while Gardner was the head coach at Arkansas from 2003-07 and then again last season.

Fortner won the first meeting on Feb. 3, 2005, 62-51, in Auburn, but lost the next two meetings. Fortner coached the Tigers to a 79-61 win over Mercer and Gardner last year in the season-opener.

## LAST TIME VS. MERCER

Senior Jordan Greenleaf led the Tigers with a double-double, scoring 16 points with 12 rebounds, as the Auburn women's basketball team opened the new Auburn Arena with a 79-61 win over Mercer on Nov. 12, 2010. Senior Alli Smalley also scored 16 points with sophomore Blanche Alverson adding 11.

Mercer's Sharnae Boykin scored the first basket in Auburn Arena while Alverson scored Auburn's first basket in the new facility.

Auburn used its defense to spark its offense, scoring 27 points off turnovers. The Tigers tallied 15 steals and six blocks, forcing 19 Mercer turnovers.

Briana Williams led the Bears in scoring with 23 points while Alex Phillips and Kendra Grant led the team in rebounding with eight each.

## VS. THE ATLANTIC SUN

Auburn is 13-9 all-time against current members of the Atlantic Sun conference with 20 of those 22 games coming against Mercer. Auburn's last meeting with an A-Sun team came on Nov. 12, 2010 as the Tigers downed Mercer, 79-61, in Auburn.

## ON THIS DATE. . .

Friday's game at Mercer will mark the second time Auburn has played on Nov. 11 and is the third-earliest start to the season for the Tigers - Auburn opened the 2006-07 season on Nov. 10 and the 2007-08 season on Nov. 11. The last time Auburn played on Nov. 11, the Tigers defeated Detroit, 91-47, in Auburn.

## IN NOVEMBER

Auburn is 103-26 all-time in the month of November, including a 32-13 mark under Nell Fortner (records begin in 1978-79 season, not all dates provided prior to or during that season).



**Associated Press Top-25 Poll  
Preseason (Preseason)**

Rank	School	Record	Points	Pvs
1	Baylor (33)	0-0	988	3
2	Notre Dame (6)	0-0	934	9
<b>3</b>	<b>Tennessee</b>	<b>0-0</b>	<b>906</b>	<b>4</b>
4	Connecticut	0-0	876	1
5	Stanford	0-0	852	2
6	Texas A&M (1)	0-0	772	7
7	Miami (Fla.)	0-0	750	11
<b>8</b>	<b>Duke</b>	<b>0-0</b>	<b>705</b>	<b>6</b>
9	Louisville	0-0	690	NR
10	Georgetown	0-0	585	22
11	Maryland	0-0	569	16
12	Penn State	0-0	491	NR
<b>13</b>	<b>Georgia</b>	<b>0-0</b>	<b>432</b>	<b>NR</b>
14	Florida State	0-0	428	15
15	Oklahoma	0-0	344	21
16	Rutgers	0-0	283	NR
<b>17</b>	<b>Purdue</b>	<b>0-0</b>	<b>277</b>	<b>NR</b>
<b>18</b>	<b>Kentucky</b>	<b>0-0</b>	<b>275</b>	<b>17</b>
19	DePaul	0-0	263	10
20	North Carolina	0-0	261	14
<b>21</b>	<b>LSU</b>	<b>0-0</b>	<b>228</b>	<b>NR</b>
22	UCLA	0-0	175	8
23	Southern California	0-0	158	NR
24	Texas	0-0	152	NR
25	St. John's	0-0	151	NR

**Others Receiving Votes:** Ohio State 118, Michigan State 95, Gonzaga 57, Texas Tech 41, Wisconsin-Green Bay 32, Iowa 20, California 19, Georgia Tech 17, Kansas State 15, Iowa State 12, Xavier 6, Dayton 4, **Marist 4**, **Temple 4**, **Vanderbilt 4**, **Florida 2**, Oral Roberts 2, Delaware 1, Marquette 1, Pittsburgh 1.

**USA Today / ESPN Top-25 Coaches Poll  
Preseason (Preseason)**

Rank	School	Record	Points	Pvs
1	Baylor (17)	0-0	745	5
2	Notre Dame (5)	0-0	728	2
<b>3</b>	<b>Tennessee (3)</b>	<b>0-0</b>	<b>686</b>	<b>6</b>
4	Connecticut (2)	0-0	683	3
5	Stanford (2)	0-0	681	4
6	Texas A&M (2)	0-0	635	1
7	Miami (Fla.)	0-0	557	16
<b>8</b>	<b>Duke</b>	<b>0-0</b>	<b>553</b>	<b>7</b>
9	Louisville	0-0	482	19
10	Maryland	0-0	416	23
11	Georgetown	0-0	415	14
<b>12</b>	<b>Georgia</b>	<b>0-0</b>	<b>376</b>	<b>24</b>
13	Florida State	0-0	332	20
14	Penn State	0-0	320	NR
<b>15</b>	<b>Kentucky</b>	<b>0-0</b>	<b>296</b>	<b>22</b>
16	Oklahoma	0-0	262	15
17	Rutgers	0-0	245	NR
18	DePaul	0-0	182	10
19	North Carolina	0-0	172	12
20	Texas	0-0	161	NR
<b>21</b>	<b>Purdue</b>	<b>0-0</b>	<b>149</b>	<b>NR</b>
<b>22</b>	<b>LSU</b>	<b>0-0</b>	<b>143</b>	<b>NR</b>
23	Southern California	0-0	129	NR
24	Wisconsin-Green Bay	0-0	127	9
25	Michigan State	0-0	88	18

**Others Receiving Votes:** Gonzaga 70, Ohio State 61, UCLA 59, St. John's 57, Marist 46, Xavier 41, Iowa 35, California 20, Iowa State 20, **Vanderbilt 19**, Georgia Tech 18, Dayton 16, Middle Tennessee State 10, **Temple 10**, Texas Christian 8, South Dakota State 7, Texas Tech 7, Marquette 3, Syracuse 2, West Virginia 1, Memphis 1, Houston 1.

**Bold denotes 2010-11 opponents**

**AGAINST THE PEACH STATE**

Auburn holds a 43-48 record against teams from the state of Georgia. Records against Georgia teams: Berry College (0-2), Fort Valley State (0-1), Georgia (16-23), Georgia Southern (4-0), Georgia State (7-7), Georgia Tech (3-0), Mercer (11-9), North Georgia (0-1), Shorter College (0-1), Valdosta State (0-1) and West Georgia (2-3).

**WHEN PLAYING IN GEORGIA...**

When playing in the state of Georgia, Auburn holds a 30-39 record. Records against teams when playing in Georgia: Alabama [Albany] (1-0), Arkansas [Columbus] (0-1), Berry College [Mt. Berry] (0-1), Clemson [Atlanta] (1-0), Florida [Athens] (1-0), Florida [Albany] (2-0), Florida [Duluth] (1-0), Fordham [Atlanta] (1-0), Georgia [Athens] (4-15), Georgia [Albany] (1-0), Georgia Southern [Statesboro] (1-1), Georgia State [Atlanta] (3-4), Georgia Tech [Atlanta] (2-0), Kentucky [Duluth] (0-1), LSU [Albany] (2-0), Maryland [Athens] (1-0), Mercer [Macon] (3-4), Mercer [Carrollton] (0-1), Ole Miss [Albany] (3-1), Mississippi State [Albany] (1-0), North Georgia [Dahlonega] (0-1), Shorter College [Rome] (0-1), South Carolina [Duluth] (0-1), Tennessee [Albany] (2-3), Vanderbilt [Athens] (0-1) and West Georgia [Carrollton] (0-3).

**OFFENSE WINS GAMES**

Auburn is 85-2 when scoring 70 or more points in the Nell Fortner era. The only times Auburn has lost when scoring at least 70 points was on Jan. 20, 2005 vs. No. 7 Tennessee, 71-81 and Feb. 19, 2009 at No. 18 Vanderbilt, 73-70. When scoring less than 70 points, Auburn is 47-87 during the Fortner era.

**OUTSIDE THE LEAGUE**

Nell Fortner has guided the Tigers to a 79-34 ledger in non-conference play. When playing at home, Fortner's teams have posted a 33-7 mark. The only seven non-conference losses at home came from Xavier on Dec. 2, 2005 (58-60), No. 2 Duke on Dec. 31, 2004 (61-80), No. 20 George Washington on Jan. 3, 2008 (66-68), No. 15 Texas A&M on Nov. 22, 2009 (59-79), No. 16 Florida State on Nov. 15, 2010 (61-67), No. 6 Duke on Nov. 18, 2010 (62-75) and Temple on Dec. 4, 2010 (62-61).

**TIGERS PICKED NINTH IN PRESEASON POLL**

Auburn was predicted to finish ninth in the SEC in a voting of a select panel of both SEC and national media members. Tennessee was picked to win the league with all 22 first-place votes.

The Lady Vols were followed by Georgia (228), Kentucky (212), LSU (189), Vanderbilt (172) and Florida (151) rounding out the top half of the league. Arkansas (142), South Carolina (107), Auburn (94), Alabama (55), Mississippi State (54) and Ole Miss (48) round out the bottom half.

**STARTING EXPERIENCE**

Auburn has seven players on its roster that have started at least one game. That group of seven also combines for 123 career starts, led by Blanche Alverson with 45. Senior Parrisha Simmons

has started 41 while her classmates, Chantel Hilliard and Morgan Jennings, have started 12 each.

**NEW FACES**

The Tigers welcome two new faces to the roster this season in Hasina Muhammad and Najat Ouwardad. Muhammad is a true freshman from Memphis, Tenn., playing at Ridgeway High School. Ouwardad, a native of Orleans, France, comes to Auburn from Pensacola State College.

**MAKING IT HOME**

Nell Fortner enters her eighth season as Auburn's head coach, marking her longest tenure at any position in her career. The longest Fortner had stayed at a job prior to Auburn came from 1990-95 while she was an assistant coach at Louisiana Tech under legendary head coach Leon Barmore.

**TIGERS ON THE TUBE**

The Auburn women's basketball team will appear on television at least nine times during the 2011-12 season as part of the Southeastern Conference Women's Basketball Television Package, the league announced Sept. 22.

The Tigers will make their first appearance on Sunday, Jan. 1 with a 2 p.m. matchup against defending SEC champion Tennessee at Auburn Arena. Auburn will then appear on CSS in back-to-back games, first on Sunday, Jan. 8 at 1 p.m. against Georgia in Auburn. The next is an 8 p.m., Thursday, Jan. 12 game at Vanderbilt.

The Tigers' will make their first appearance on FSN on Jan. 15 in the first of three Sunday afternoon appearances on the network. Auburn will travel to Arkansas for a 1:30 p.m., Jan. 15 game before returning to the network on Jan. 29 for a 1 p.m. game at Ole Miss.

Auburn's lone appearances on the SEC Network, a part of the ESPN Regional Network, will be on Feb. 5 at Tennessee. The game is set for a 1 p.m. CT tipoff. The Tigers will then host Arkansas on Feb. 12 in a 1:30 p.m. game that will air live on ESPN2.

Auburn's final appearance on CSS will come on Thursday, Feb. 23 with in-state rival Alabama coming to town for an 8 p.m. matchup. The Tigers' final regular-season TV appearance will be Sunday, Feb. 26 on FSN with Auburn hosting Ole Miss at 2:30 p.m.

**The Southeastern Conference****Commissioner:** Mike Slive**Founded:** 1933**Members:**

Alabama Crimson Tide  
 Arkansas Lady Razorbacks  
 Auburn Tigers  
 Florida Gators  
 Georgia Bulldogs  
 Kentucky Wildcats  
 LSU Tigers  
 Mississippi Rebels  
 Mississippi State Bulldogs  
 South Carolina Gamecocks  
 Tennessee Lady Volunteers  
 Texas A&M Aggies (Beginning 2012-13)  
 Vanderbilt Commodores

**SEC Media Relations****Women's Basketball Contact:** Tommy Wilson**Address:**

2201 Richard Arrington Blvd.  
 Birmingham, Ala. 35203-1103

**Phone:** 205.458.3000**Fax:** 205.458.3031**E-mail:** twilson@sec.org**Web site:** www.SECsports.com**SEC Women's Basketball Notes**

- The SEC has posted impressive non-conference records in the last decade. The SEC compiled a 131-49 (.728) non-conference record for the 2009-10 season.
  - Since the 1990 season, the SEC has compiled a 2914-894 (.765) record against other conferences. The league has recorded 150+ wins during eight seasons and has never recorded a non-conference winning percentage below .723.
  - SEC teams have earned appearances in 25 of 30 NCAA Final Fours, an accomplishment unmatched by any other league.
- Overall, SEC squads have filled 34 of the 120 Final Four berths, including having two Final Four teams in 1988 (Auburn, Tennessee), 1989 (Auburn, Tennessee), 1995 (Georgia, Tennessee), 1996 (Georgia, Tennessee), 1998 (Arkansas, Tennessee), 2004 (LSU, Tennessee), 2005 (LSU, Tennessee), 2007 (LSU, Tennessee) and 2008 (LSU, Tennessee).
- SEC teams have made 18 appearances in a nation-high 16 NCAA Championship games, winning eight NCAA Championships (Tennessee: 1987, 1989, 1991, 1996, 1997, 1998, 2007 and 2008).
- The league also had the distinction of providing both national finalists twice in its history in 1996 (Tennessee 83, Georgia 65) and in 1989 (Tennessee 76, Auburn 60).
  - SEC teams have won 335 NCAA Tournament games against 172 losses (.661) for an average of 11.2 NCAA wins per year.
- In addition, all 12 current members have appeared in the NCAA Tournament.
- The SEC has paced the pack in NCAA tournament bids 21 times in its 30-year history.
  - The SEC was the first league to ever have eight teams invited to the NCAA Tournament, doing so in 1999 and 2002.
  - The SEC was also the first league to ever have seven teams invited to the NCAA Tournament and earned this honor a leading seven times (1986, 1991, 1995, 1996, 1997, 2003, 2004).
  - The SEC is one of a handful of leagues to have won three national tournament titles with eight NCAA, two WNIT and three NWIT. Along with the eight NCAA championships won by Tennessee, Arkansas (1999) and Auburn (2003) captured the current Women's NIT titles. But the first-ever SEC national title belongs to Georgia, winners of the 1981 NWIT which predates the current NCAA tournament. LSU (1985) and Kentucky (1990) each won NWIT titles. Both Arkansas (1987) and South Carolina (1979) won the WNIT as members of their previous conferences.
  - In 2003, Auburn won the WNIT title with wins over South Alabama, Florida State, Richmond, Creighton and Baylor. In 1999, the Arkansas Lady Razorbacks defeated Wisconsin 76-64 to claim the SEC's first WNIT championship.
  - In 1981, Georgia defeated Pittsburg, California and Arizona State (in OT) to capture the NWIT Championship, the first-ever national championship of any kind for the SEC in women's basketball.

**SEC PRESEASON POLL (Media Vote)**  
(First-place votes in Parentheses)**SEC Champion**

Tennessee (22)

**Order of Finish**

1. Tennessee.....	264
2. Georgia.....	228
3. Kentucky.....	212
4. LSU.....	189
5. Vanderbilt.....	172
6. Florida.....	151
7. Arkansas.....	142
8. South Carolina.....	107
9. Auburn.....	94
10. Alabama.....	55
11. Mississippi State.....	54
12. Ole Miss.....	48

**Player of the Year**

Shekinna Stricklen, Tennessee (16); Glory Johnson, Tennessee (3); LaSondra Barrett, LSU (2); Jasmine James, Georgia (1)

**All-SEC First Team**

Jasmine James, Georgia  
 A'dia Mathies, Kentucky  
 LaSondra Barrett, LSU  
 Glory Johnson, Tennessee  
 Shekinna Stricklen, Tennessee

**All-SEC Second Team**

C'eira Ricketts, Arkansas  
 Sarah Watkins, Arkansas  
 Valencia McFarland, Ole Miss  
 Meighan Simmons, Tennessee  
 Stephanie Holzer, Vanderbilt

**SEC PRESEASON POLL (Coaches' Vote)****SEC Champion**

Tennessee

**Order of Finish**

1. Tennessee.....	120
2. Kentucky.....	100
3. Georgia.....	98
4. LSU.....	96
5. Florida.....	92
6. Vanderbilt.....	85
7. South Carolina.....	62
8. Arkansas.....	57
9. Auburn.....	39
10. Alabama.....	29
11. Mississippi State.....	25
12. Ole Miss.....	16

**Player of the Year**

Shekinna Stricklen, UT (6); Glory Johnson, UT (3); A'dia Mathies, UK (1); LaSondra Barrett, LSU (1); Meighan Simmons, UT (1)

**All-SEC First Team**

C'eira Ricketts, Arkansas  
 Jasmine James, Georgia  
 A'dia Mathies, Kentucky  
 LaSondra Barrett, LSU  
 Glory Johnson, Tennessee  
 Meighan Simmons, Tennessee  
 Shekinna Stricklen, Tennessee  
 Stephanie Holzer, Vanderbilt

**All-SEC Second Team**

Ericka Russell, Alabama  
 Sarah Watkins, Arkansas  
 Jasmine Hassell, Georgia  
 Adrienne Webb, LSU  
 Valencia McFarland, Ole Miss  
 La'Keisha Sutton, South Carolina  
 Teasia Walker, South Carolina  
 Tiffany Clarke, Vanderbilt

**Quoting Head Coach Nell Fortner**

On Mercer...

"Mercer is a well-coached team and they will be pumped up with it being their Homecoming game.

They have everyone back from last season and are led by Briana Williams, a nice guard that scored 23 points on us last year as a freshman. They are going to try to push the ball, but they are also a good half-court team, so we will have to be ready to play."

On starting the season...

"We are just excited about getting it started. Opening up on the road creates a tough challenge and Mercer is really marketing the game well, and they should have a really good crowd. We are taking Parrisha Simmons home, so hopefully we will have a good Auburn contingent there. Susie Gardner is in her second year there and she has done a nice job of recruiting. She is a really good coach and she will have her team ready to play. It is going to be a great test for us starting on the road, but we are excited about getting the season started."

On what was learned from the exhibition...

"I thought we showed that we can be very fast, we can be a physical and defensive team, and that we have quality depth coming off the bench. We can play at a faster tempo, which that makes the game very exciting to play. We are doing a few things different defensively, but we are excited about where we are right now."



# Nell FORTNER

Head Coach

Eighth Season

Jackson, Miss • Texas, 1981

- Coached Auburn to its first SEC title in 20 years during 2008-09 season
- Produced Auburn's first SEC Player of the Year since 1988 in DeWanna Bonner
- Has an overall record of 149-100 for a .598 winning percentage
- Sports a 706-251 (.737) record as a head coach, assistant coach and player at all levels (college, professional, international)
- Coached teams to 11 NCAA Tournament appearances, eight as an assistant coach and three as a head coach
- 2000 USA Basketball Coach of the Year
- 1997 and 2009 Basketball Times National Coach of the Year
- 2009 Russell Athletic/WBCA Region III Coach of the Year
- 1997 Big Ten Coach of the Year
- 2009 SEC Coach of the Year
- Led the U.S. National Team to a gold medal in the 2000 Olympics
- Coached 10 different U.S. squads to a 101-14 (.878) record
- Served as an assistant coach for the U.S. National Team that won a gold medal at the 1996 Olympics
- Coached three players to State Farm/WBCA All-America honors
- Coached eight players to 10 all-conference honors
- Coached Auburn to three straight 20-win seasons, including a 30-win season in 2009 - Auburn's first in 20 years
- Produced two WNBA draft picks (DeWanna Bonner and Whitney Boddie) out of her first recruiting class at Auburn
- Spent three years as Head Coach and General Manager of the WNBA's Indiana Fever, leading the team to the playoffs in her second season
- As an assistant coach at Louisiana Tech, helped the team to the Elite Eight in 1993 and the National Championship game in 1994
- Spent four years as a studio analyst with ESPN (2001-04, 2005 WNBA Playoffs)

All-time record as player and coach at all levels:	706-251 (.737)	29 years
Record as a WNBA coach:	42-56 (.429)	3 seasons
Record as USA Head Coach:	101-14 (.878)	4 years
Record as a collegiate player:	127-26 (.830)	4 seasons
Record as a collegiate coach:	384-155 (.712)	16 seasons
Record as a collegiate assistant coach:	235-55 (.810)	9 seasons
Record as a collegiate head coach:	149-100 (.598)	8 seasons
Record at Auburn:	132-89 (.597)	7 seasons
SEC Record:	48-54 (.471)	7 seasons

## Fortner Year-by-Year

### Texas, Player (1977-81)

Year	Record	Conf.	Other Information
1977-78	29-10	--	5th AIAW
1978-79	37-4	--	3rd AIAW
1979-80	33-4	--	5th AIAW
1980-81	28-8	--	9th AIAW

### Stephen F. Austin, Graduate Assistant/Assistant (1986-90)

Year	Record	Conf.	Other Information
1986-87	25-6	9-1	WNIT Third Round
1987-88	29-5	13-1	Southland Champions NCAA Second Round
1988-89	30-4	13-1	Southland Champions NCAA Regional Finalist
1989-90	28-3	14-0	Southland Champions NCAA Regional Finalist

### Louisiana Tech, Assistant Coach (1990-95)

Year	Record	Conf.	Other Information
1990-91	18-12	9-3	American South Conference Runner-Up NCAA First Round
1991-92	20-10	12-4	NCAA First Round
1992-93	26-6	13-1	Sun Belt Conference Champion NCAA Elite Eight
1993-94	31-4	14-0	Sun Belt Conference Champion NCAA Runner-up
1994-95	28-5	13-1	Sun Belt Conference Champion NCAA Sweet 16

### USA Basketball, Assistant Coach (1995-96)

52-0 Overall Record (1.000)

### Purdue, Head Coach (1996-97)

Year	Record	Conf.	Other Information
1996-97	17-11	12-4	Big Ten Co-Champions NCAA Second Round

### USA Basketball, Head Coach (1997-2000)

101-14 Overall Record (.878)

### Indiana Fever (WNBA), Head Coach (2001-03)

Year	Record	Conf.	Other Information
2001	10-22	--	
2002	16-16	--	WNBA Playoffs First Round
2003	16-18	--	

### Auburn, Head Coach (2004-present)

Year	Record	Conf.	Other Information
2004-05	16-13	6-8	
2005-06	14-15	4-10	
2006-07	21-13	6-8	WNIT Quarterfinals
2007-08	20-12	7-7	NCAA First Round
2008-09	30-4	12-2	SEC Champions SEC Tournament Runner-Up NCAA Second Round
2009-10	15-16	5-11	
2010-11	16-16	8-8	WNIT Second Round





# Chantel HILLIARD

# #23

Senior • Forward/Center • 6-2

Biloxi, Miss.

St. Martin High School

## NOTES:

- Tallied a double-double with 10 points and 15 rebounds in exhibition against Georgia College
- Started nine of the final 10 games of the 2010-11 season
- Scored 13 points on 6-of-8 shooting in just 17 minutes at Tennessee Tech in first round of the 2011 WNIT
- Picked up her first career double-double with career highs of 18 points and 11 rebounds vs. Mississippi State in the SEC Tournament
- Was Auburn's most efficient shooter last season with a .522 field goal percentage
- Led Auburn in scoring for the first time in her career, coming off the bench for a career-high 16 points on 7-of-9 shooting at South Florida
- Scored in double figures nine times this season, including four of the last six games of the season

Opponent	Start	Min.	FG-A	3PT-A	FT-A	O-D-T	PF	Ast.	TO	Blk.	St.	Pts.
GCSU (Exhibition)	*	19	3-9	0-0	4-6	8-7-15	2	0	3	2	1	10
at Mercer												
BELMONT												
at Duke												
GEORGE WASHINGTON												
SOUTH CAROLINA-UPSTATE												
TROY												
at Temple												
SOUTH FLORIDA												
PURDUE												
vs. Marist												
vs. Hofstra/Central Connecticut State												
vs. North Carolina-Charlotte												
vs. Florida International/Albany												
TENNESSEE												
at Alabama												
GEORGIA												
at Vanderbilt												
at Arkansas												
SOUTH CAROLINA												
at Mississippi State												
KENTUCKY												
at Ole Miss												
VANDERBILT												
at Tennessee												
at Florida												
ARKANSAS												
at LSU												
ALABAMA												
OLE MISS												

## HILLIARD CAREER STATISTICS

Year	GP-GS	FG-FGA	Pct	3FG-FGA	Pct	FT-FTA	Pct	O-D-T (Reb.)	Avg	PF	FO	Ast	TO	Blk	Stl	Pts	Avg
2008-09	30-0	53-106	.500	0-2	.000	15-32	.469	29-56-85	2.8	50	0	7	26	12	13	121	4.0
2009-10	27-2	37-89	.416	0-0	.000	20-43	.465	31-35-66	2.4	49	1	6	35	13	11	94	3.5
2010-11	32-10	83-159	.522	0-2	.000	39-61	.639	44-69-113	3.5	62	0	9	50	13	18	205	6.4
<b>TOTAL</b>	<b>89-12</b>	<b>173-354</b>	<b>.489</b>	<b>0-4</b>	<b>.000</b>	<b>74-136</b>	<b>.544</b>	<b>104-160-264</b>	<b>3.0</b>	<b>161</b>	<b>1</b>	<b>22</b>	<b>111</b>	<b>38</b>	<b>42</b>	<b>420</b>	<b>4.7</b>

## SEASON HIGHS

## Points

## Rebounds

## Assists

## Blocks

## Steals

## Field Goals

## Field Goal Attempts

## 3-Point Field Goals

## 3-Point FG Attempts

## Free Throws

## Free Throw Attempts

## CAREER HIGHS

## Points

18 vs. Mississippi State (3/3/11)

## Rebounds

11 Twice, last vs. Mississippi (3/3/11)

## Assists

2 twice, last at Kentucky (1/24/10)

## Blocks

3 twice, last vs. Duquesne (12/29/08)

## Steals

3 vs. Duquesne (12/29/08)

## Field Goals

8 vs. Mississippi State (3/3/11)

## Field Goal Attempts

15 vs. Mississippi State (3/3/11)

## 3-Point Field Goals

N/A

## 3-Point FG Attempts

1 4 times, last vs. Kentucky (2/27/11)

## Free Throws

7 vs. Florida (1/6/11)

## Free Throw Attempts

12 vs. Sam Houston State (12/5/08)



# Morgan JENNINGS

# #2

Senior • Guard • 5-8

Atlanta, Ga.

Frederick Douglass High School

## NOTES:

- Tallied 6 points and 5 rebounds in exhibition against Georgia College
- Started the final six games of the 2010-11 season
- Scored career-high 16 points vs. Kentucky on Feb. 27, including career-high 6 free throws
- Earned first start in almost two months at USC; tallied 6 points, 4 rebounds, 3 steals while playing more minutes than she had in the last seven games combined
- Collected career-high 4 steals against Alabama A&M last season

Opponent	Start	Min.	FG-A	3PT-A	FT-A	O-D-T	PF	Ast.	TO	Blk.	St.	Pts.
GCSU (Exhibition)	*	21	2-6	0-1	2-2	1-4-5	1	2	1	0	0	6
at Mercer												
BELMONT												
at Duke												
GEORGE WASHINGTON												
SOUTH CAROLINA-UPSTATE												
TROY												
at Temple												
SOUTH FLORIDA												
PURDUE												
vs. Marist												
vs. Hofstra/Central Connecticut State												
vs. North Carolina-Charlotte												
vs. Florida International/Albany												
TENNESSEE												
at Alabama												
GEORGIA												
at Vanderbilt												
at Arkansas												
SOUTH CAROLINA												
at Mississippi State												
KENTUCKY												
at Ole Miss												
VANDERBILT												
at Tennessee												
at Florida												
ARKANSAS												
at LSU												
ALABAMA												
OLE MISS												

## JENNINGS CAREER STATISTICS

Year	GP-GS	FG-FGA	Pct	3FG-FGA	Pct	FT-FTA	Pct	O-D-T (Reb.)	Avg	PF	FO	Ast	TO	Blk	Stl	Pts	Avg
2008-09	30-4	30-77	.390	0-0	.000	11-24	.458	18-30-48	1.6	25	0	34	41	0	16	71	2.4
2009-10	13-0	9-32	.281	0-1	.000	1-4	.250	2-9-11	0.8	9	0	15	14	0	2	19	1.5
2010-11	31-8	37-101	.366	0-1	.000	32-47	.681	19-38-57	1.8	31	0	41	46	2	30	106	3.4
<b>TOTAL</b>	<b>74-12</b>	<b>76-210</b>	<b>.362</b>	<b>0-2</b>	<b>.000</b>	<b>44-75</b>	<b>.587</b>	<b>39-77-116</b>	<b>1.6</b>	<b>65</b>	<b>0</b>	<b>90</b>	<b>101</b>	<b>2</b>	<b>48</b>	<b>196</b>	<b>2.6</b>

## SEASON HIGHS

## Points

## Rebounds

## Assists

## Blocks

## Steals

## Field Goals

## Field Goal Attempts

## 3-Point Field Goals

## 3-Point FG Attempts

## Free Throws

## Free Throw Attempts

## CAREER HIGHS

## Points

16 vs. Kentucky (2/27/11)

## Rebounds

5 4 times, last at Tenn. Tech (3/17/11)

## Assists

6 twice, last at GW (12/15/10)

## Blocks

1 twice, last vs. Temple (12/4/10)

## Steals

4 vs. Alabama A&amp;M (12/28/10)

## Field Goals

7 at Seton Hall (11/27/10)

## Field Goal Attempts

9 at Tennessee Tech (3/17/11)

## 3-Point Field Goals

N/A

## 3-Point FG Attempts

1 twice, last vs. Kentucky (2/27/11)

## Free Throws

6 vs. Kentucky (2/27/11)

## Free Throw Attempts

7 vs. Kentucky (2/27/11)



# Parrisha SIMMONS

# #4

Senior • Guard • 6-0

Macon, Ga.

Southwest Macon High School

## NOTES:

- Tallied 9 points and 4 rebounds in exhibition against Georgia College
- Scored season-high 6 points vs. Purdue; tied the mark against Florida and vs. Mississippi State last season
- Snagged career-high 3 steals vs. Alabama A&M
- A defensive and rebounding specialist

Opponent	Start	Min.	FG-A	3PT-A	FT-A	O-D-T	PF	Ast.	TO	Blk.	St.	Pts.
GCSU (Exhibition)		17	1-2	0-0	2-2	2-7-9	1	2	0	1	3	4
at Mercer												
BELMONT												
at Duke												
GEORGE WASHINGTON												
SOUTH CAROLINA-UPSTATE												
TROY												
at Temple												
SOUTH FLORIDA												
PURDUE												
vs. Marist												
vs. Hofstra/Central Connecticut State												
vs. North Carolina-Charlotte												
vs. Florida International/Albany												
TENNESSEE												
at Alabama												
GEORGIA												
at Vanderbilt												
at Arkansas												
SOUTH CAROLINA												
at Mississippi State												
KENTUCKY												
at Ole Miss												
VANDERBILT												
at Tennessee												
at Florida												
ARKANSAS												
at LSU												
ALABAMA												
OLE MISS												

## SIMMONS CAREER STATISTICS

Year	GP-GS	FG-FGA	Pct	3FG-FGA	Pct	FT-FTA	Pct	O-D-T (Reb.)	Avg	PF	FO	Ast	TO	Blk	Stl	Pts	Avg
2008-09	21-0	9-25	.360	0-0	.000	4-20	.200	20-36-56	2.7	13	0	12	14	4	6	22	1.0
2009-10	31-22	39-89	.435	0-0	.000	17-49	.347	88-71-159	5.1	51	0	34	43	1	16	95	3.1
2010-11	32-19	24-66	.364	0-0	.000	26-58	.448	54-46-100	3.1	38	0	27	28	2	18	74	2.3
<b>TOTAL</b>	<b>84-41</b>	<b>72-180</b>	<b>.400</b>	<b>0-0</b>	<b>.000</b>	<b>47-127</b>	<b>.370</b>	<b>162-153-315</b>	<b>3.8</b>	<b>102</b>	<b>0</b>	<b>73</b>	<b>85</b>	<b>7</b>	<b>40</b>	<b>191</b>	<b>2.3</b>

## SEASON HIGHS

Points

Rebounds

Assists

Blocks

Steals

Field Goals

Field Goal Attempts

3-Point Field Goals

3-Point FG Attempts

Free Throws

Free Throw Attempts

## CAREER HIGHS

Points

9 twice, last vs. Vanderbilt (1/21/10)

Rebounds

12 vs. George Washington (12/5/09)

Assists

4 vs. Valparaiso (12/28/09)

Blocks

1 7 times, last vs. JSU (12/30/10)

Steals

3 vs. Alabama A&amp;M (12/28/10)

Field Goals

4 twice, last at N.C. A&amp;T (12/1/09)

Field Goal Attempts

7 twice, last vs. USC (1/30/11)

3-Point Field Goals

N/A

3-Point FG Attempts

N/A

Free Throws

5 vs. South Alabama (12/2/10)

Free Throw Attempts

9 at Chicago State (12/21/10)



# Blanche ALVERSON

# #14

Junior • Forward/Center • 6-3

Andalusia, Ala.

Buford (Ga.) High School

#### NOTES:

- Scored a total of 9 points in exhibition against Georgia College
- Is four 3-pointers away from tying Shana Askew for 7th all-time at Auburn in career 3-pointers
- Had a career outing last season vs. Ole Miss with 27 points, including a career-high five 3-pointers
- Topped her career rebounding mark with 9 at Alabama, tied it vs. South Carolina, at LSU and at Tennessee Tech
- Scored in double figures in 15 of the last 25 games a year ago
- Led Auburn in scoring seven times last season
- Scored Auburn's first field goal in the new Auburn Arena, a 3-pointer that came 56 seconds into the game against Mercer
- A deep shooting threat, she is also one of the most versatile players on the team because of her size and post skills

Opponent	Start	Min.	FG-A	3PT-A	FT-A	O-D-T	PF	Ast.	TO	Blk.	St.	Pts.
GCSU (Exhibition)	*	23	3-8	2-6	1-1	0-2-2	1	4	0	0	4	9
at Mercer												
BELMONT												
at Duke												
GEORGE WASHINGTON												
SOUTH CAROLINA-UPSTATE												
TROY												
at Temple												
SOUTH FLORIDA												
PURDUE												
vs. Marist												
vs. Hofstra/Central Connecticut State												
vs. North Carolina-Charlotte												
vs. Florida International/Albany												
TENNESSEE												
at Alabama												
GEORGIA												
at Vanderbilt												
at Arkansas												
SOUTH CAROLINA												
at Mississippi State												
KENTUCKY												
at Ole Miss												
VANDERBILT												
at Tennessee												
at Florida												
ARKANSAS												
at LSU												
ALABAMA												
OLE MISS												

#### ALVERSON CAREER STATISTICS

Year	GP-GS	FG-FGA	Pct	3FG-FGA	Pct	FT-FTA	Pct	O-D-T (Reb.)	Avg	PF	FO	Ast	TO	Blk	Stl	Pts	Avg
2009-10	31-13	78-218	.358	40-128	.313	19-27	.704	26-92-118	3.8	39	1	51	44	17	15	215	6.9
2010-11	32-32	126-333	.378	50-171	.292	25-35	.714	33-118-151	4.7	44	0	33	61	17	27	327	10.2
<b>TOTAL</b>	<b>63-45</b>	<b>204-551</b>	<b>.370</b>	<b>90-299</b>	<b>.301</b>	<b>44-62</b>	<b>.710</b>	<b>59-210-269</b>	<b>4.3</b>	<b>83</b>	<b>1</b>	<b>84</b>	<b>105</b>	<b>34</b>	<b>42</b>	<b>542</b>	<b>8.6</b>

#### SEASON HIGHS

##### Points

##### Rebounds

##### Assists

##### Blocks

##### Steals

##### Field Goals

##### Field Goal Attempts

##### 3-Point Field Goals

##### 3-Point FG Attempts

##### Free Throws

##### Free Throw Attempts

#### CAREER HIGHS

##### Points

27 vs. Ole Miss (1/13/11)

##### Rebounds

9 4 times, last at Tenn. Tech (3/17/11)

##### Assists

5 3 times, last vs. Alabama (1/2/11)

##### Blocks

3 twice, last at Alabama (1/2/11)

##### Steals

4 vs. LSU (1/16/11)

##### Field Goals

11 vs. Ole Miss (1/13/11)

##### Field Goal Attempts

17 twice, last vs. Mississippi St. (2/6/11)

##### 3-Point Field Goals

5 vs. Ole Miss (1/13/11)

##### 3-Point FG Attempts

9 3 times, last vs. Kentucky (2/27/11)

##### Free Throws

4 twice, last vs. Seton Hall (11/27/10)

##### Free Throw Attempts

5 vs. Seton Hall (11/27/10)





# Najat OUARDAD

# #3

Junior • Guard • 5-1

Orleans, France

Pensacola State College

#### NOTES:

- Tallied 5 steals in exhibition against Georgia College
- Entering her first season at Auburn after transferring from Pensacola State College
- A two-time All-Panhandle Conference selection while at Pensacola State College
- Averaged 6.4 points, 2.6 rebounds, 5.1 assists and 2.5 steals per game, after averaging 6.6 points, 2.0 rebounds, 6.5 assists and 2.5 steals per game as a freshman
- Led Pensacola State to a third-place finish at the 2011 NJCAA National Basketball Championship, compiling a 36-1 record along the way
- Played for the French National Team while in high school
- Attended Oak Ridge Military Academy (Oak Ridge, N.C.) and Forsyth Country Day (Lewisville, N.C.) before going to PSC

Opponent	Start	Min.	FG-A	3PT-A	FT-A	O-D-T	PF	Asst.	TO	Blk.	St.	Pts.
GCSU (Exhibition)		18	0-2	0-1	2-2	1-1-2	3	3	2	0	5	2
at Mercer												
BELMONT												
at Duke												
GEORGE WASHINGTON												
SOUTH CAROLINA-UPSTATE												
TROY												
at Temple												
SOUTH FLORIDA												
PURDUE												
vs. Marist												
vs. Hofstra/Central Connecticut State												
vs. North Carolina-Charlotte												
vs. Florida International/Albany												
TENNESSEE												
at Alabama												
GEORGIA												
at Vanderbilt												
at Arkansas												
SOUTH CAROLINA												
at Mississippi State												
KENTUCKY												
at Ole Miss												
VANDERBILT												
at Tennessee												
at Florida												
ARKANSAS												
at LSU												
ALABAMA												
OLE MISS												

#### SEASON HIGHS

Points

Rebounds

Assists

Blocks

Steals

Field Goals

Field Goal Attempts

3-Point Field Goals

3-Point FG Attempts

Free Throws

Free Throw Attempts



# Pascale WEST

# #20

Junior • Center • 6-8

LaGrange, Ga.

Troup County Comprehensive High School

## NOTES:

- Tallied 4 points and 3 rebounds in exhibition against Georgia College
- Tied her career high againn with 4 points at LSU last season
- Is the tallest player in the SEC
- Her 22 blocks during the 2009-10 season rank her ninth all-time among Auburn freshmen

Opponent	Start	Min.	FG-A	3PT-A	FT-A	O-D-T	PF	Ast.	TO	Blk.	St.	Pts.
GCSU (Exhibition)		13	1-4	0-0	2-3	0-3-3	0	1	1	0	0	4
at Mercer												
BELMONT												
at Duke												
GEORGE WASHINGTON												
SOUTH CAROLINA-UPSTATE												
TROY												
at Temple												
SOUTH FLORIDA												
PURDUE												
vs. Marist												
vs. Hofstra/Central Connecticut State												
vs. North Carolina-Charlotte												
vs. Florida International/Albany												
TENNESSEE												
at Alabama												
GEORGIA												
at Vanderbilt												
at Arkansas												
SOUTH CAROLINA												
at Mississippi State												
KENTUCKY												
at Ole Miss												
VANDERBILT												
at Tennessee												
at Florida												
ARKANSAS												
at LSU												
ALABAMA												
OLE MISS												

## WEST CAREER STATISTICS

Year	GP-GS	FG-FGA	Pct	3FG-FGA	Pct	FT-FTA	Pct	O-D-T (Reb.)	Avg	PF	FO	Ast	TO	Blk	Stl	Pts	Avg
2009-10	24-0	7-15	.467	0-0	.000	4-11	.364	9-23-32	1.3	31	0	5	14	22	6	18	0.8
2010-11	13-0	5-8	.625	0-0	.000	1-6	.167	1-5-6	0.5	15	0	1	9	3	1	11	0.8
<b>TOTAL</b>	<b>37-0</b>	<b>12-23</b>	<b>.522</b>	<b>0-0</b>	<b>.000</b>	<b>5-17</b>	<b>.294</b>	<b>10-28-38</b>	<b>1.0</b>	<b>46</b>	<b>0</b>	<b>6</b>	<b>23</b>	<b>25</b>	<b>7</b>	<b>29</b>	<b>0.8</b>

## SEASON HIGHS

Points

Rebounds

Assists

Blocks

Steals

Field Goals

Field Goal Attempts

3-Point Field Goals

3-Point FG Attempts

Free Throws

Free Throw Attempts

## CAREER HIGHS

Points

4 4 times, last at LSU (2/10/11)

Rebounds

5 vs. Alabama A&amp;M (11/19/09)

Assists

1 3 times, last vs. Ala. A&amp;M (12/28/10)

Blocks

7 vs. Alabama A&amp;M (11/19/09)

Steals

1 7 times, last vs. Purdue (12/18/10)

Field Goals

2 4 times, last at LSU (2/10/11)

Field Goal Attempts

4 at North Carolina A&amp;T (12/1/09)

3-Point Field Goals

N/A

3-Point FG Attempts

N/A

Free Throws

1 5 times, last vs. Seton Hall (11/27/10)

Free Throw Attempts

4 vs. Florida A&amp;M (11/28/09)



# Peyton DAVIS

# #34

Sophomore • Center • 6-5

Pinson, Ala.

Mortimer Jordan High School

#### NOTES:

- Played season-high 21 minutes at Arkansas as a freshman, tallying 4 points, 6 rebounds and a season-high 3 blocks
- Had a career outing at Vanderbilt, notching season highs in points (6), rebounds (7) and steals (2) in a season-high 15 minutes
- Led Auburn in rebounding for the first time with 7 at Vanderbilt
- A two-sport star athlete in high school, also fielded several NCAA Division I volleyball offers
- Holds a black belt in Taekwondo

Opponent	Start	Min.	FG-A	3PT-A	FT-A	O-D-T	PF	Asst.	TO	Blk.	Stl.	Pts.
GCSU (Exhibition)						---	DNP - Injured ---					
at Mercer												
BELMONT												
at Duke												
GEORGE WASHINGTON												
SOUTH CAROLINA-UPSTATE												
TROY												
at Temple												
SOUTH FLORIDA												
PURDUE												
vs. Marist												
vs. Hofstra/Central Connecticut State												
vs. North Carolina-Charlotte												
vs. Florida International/Albany												
TENNESSEE												
at Alabama												
GEORGIA												
at Vanderbilt												
at Arkansas												
SOUTH CAROLINA												
at Mississippi State												
KENTUCKY												
at Ole Miss												
VANDERBILT												
at Tennessee												
at Florida												
ARKANSAS												
at LSU												
ALABAMA												
OLE MISS												

#### DAVIS CAREER STATISTICS

Year	GP-GS	FG-FGA	Pct	3FG-FGA	Pct	FT-FTA	Pct	O-D-T (Reb.)	Avg	PF	FO	Asst	TO	Blk	Stl	Pts	Avg
2010-11	26-0	12-41	.293	0-0	.000	9-15	.600	18-16-34	1.3	38	0	7	13	7	4	33	1.3
<b>TOTAL</b>	<b>26-0</b>	<b>12-41</b>	<b>.293</b>	<b>0-0</b>	<b>.000</b>	<b>9-15</b>	<b>.600</b>	<b>18-16-34</b>	<b>1.3</b>	<b>38</b>	<b>0</b>	<b>7</b>	<b>13</b>	<b>7</b>	<b>4</b>	<b>33</b>	<b>1.3</b>

#### SEASON HIGHS

Points

Rebounds

Assists

Blocks

Steals

Field Goals

Field Goal Attempts

3-Point Field Goals

3-Point FG Attempts

Free Throws

Free Throw Attempts

#### CAREER HIGHS

Points

6 at Vanderbilt (1/9/11)

Rebounds

7 at Vanderbilt (1/9/11)

Assists

1 7 times, last vs. MSU (3/3/11)

Blocks

3 at Arkansas (2/13/11)

Steals

2 at Vanderbilt (1/9/11)

Field Goals

2 4 times, last at Arkansas (2/13/11)

Field Goal Attempts

6 vs. Alabama A&M (12/28/10)

3-Point Field Goals

N/A

3-Point FG Attempts

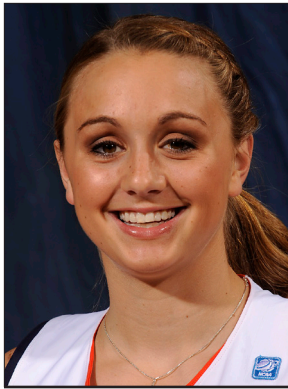
N/A

Free Throws

3 vs. Mercer (11/12/10)

Free Throw Attempts

4 vs. Mercer (11/12/10)



# Camille GLYMPH

# #22

Sophomore • Guard • 5-10

Greenville, S.C.

J.L. Mann High School

#### NOTES:

- Led Auburn in scoring with 15 points in exhibition win over Georgia College
- Scored season-high 8 points at Toledo in the second round of the 2011 WNIT
- Made her collegiate and SEC debut on Jan. 13, 2011 against Ole Miss after missing half the season with an injury, recording 4 points and a steal

Opponent	Start	Min.	FG-A	3PT-A	FT-A	O-D-T	PF	Ast.	TO	Blk.	St.	Pts.
GCSU (Exhibition)		22	5-14	5-12	0-0	0-1-1	2	1	0	0	1	15
at Mercer												
BELMONT												
at Duke												
GEORGE WASHINGTON												
SOUTH CAROLINA-UPSTATE												
TROY												
at Temple												
SOUTH FLORIDA												
PURDUE												
vs. Marist												
vs. Hofstra/Central Connecticut State												
vs. North Carolina-Charlotte												
vs. Florida International/Albany												
TENNESSEE												
at Alabama												
GEORGIA												
at Vanderbilt												
at Arkansas												
SOUTH CAROLINA												
at Mississippi State												
KENTUCKY												
at Ole Miss												
VANDERBILT												
at Tennessee												
at Florida												
ARKANSAS												
at LSU												
ALABAMA												
OLE MISS												

#### GLYMPH CAREER STATISTICS

Year	GP-GS	FG-FGA	Pct	3FG-FGA	Pct	FT-FTA	Pct	O-D-T (Reb.)	Avg	PF	FO	Ast	TO	Blk	Stl	Pts	Avg
2010-11	13-0	11-40	.275	5-21	.238	2-2	1.000	3-9-12	0.9	3	0	8	15	2	3	29	2.2
<b>TOTAL</b>	<b>13-0</b>	<b>11-40</b>	<b>.275</b>	<b>5-21</b>	<b>.238</b>	<b>2-2</b>	<b>1.000</b>	<b>3-9-12</b>	<b>0.9</b>	<b>3</b>	<b>0</b>	<b>8</b>	<b>15</b>	<b>2</b>	<b>3</b>	<b>29</b>	<b>2.2</b>

#### SEASON HIGHS

Points

Rebounds

Assists

Blocks

Steals

Field Goals

Field Goal Attempts

3-Point Field Goals

3-Point FG Attempts

Free Throws

Free Throw Attempts

#### CAREER HIGHS

Points

8 at Toledo (3/19/11)

Rebounds

4 vs. Alabama (2/17/11)

Assists

3 vs. Mississippi State (2/6/11)

Blocks

1 twice, last at Tennessee Tech (3/17/11)

Steals

1 three times, last at Toledo (3/19/11)

Field Goals

3 at Toledo (3/19/11)

Field Goal Attempts

12 at Toledo (3/19/11)

3-Point Field Goals

2 at Toledo (3/19/11)

3-Point FG Attempts

7 at Toledo (3/19/11)

Free Throws

2 vs. Ole Miss (1/13/11)

Free Throw Attempts

2 vs. Ole Miss (1/13/11)





# Courtney STRAIN

# #11

Sophomore • Guard • 5-9

Woodland, Ala.

Woodland High School

#### NOTES:

- Tallied a total of 6 points in exhibition against Georgia College
- Played season-high 22 minutes at Arkansas last season, setting season highs in points (12) and rebounds (4)
- Earned first collegiate start vs. Seton Hall at the 2010 Junkanoo Jam, scoring 7 points
- Scored 3 points with 2 rebounds in collegiate debut vs. Mercer in 2010
- Broke the Alabama state scoring record as a junior in high school, finished her career with 5,283 points - more than 1,000 than her nearest competitor
- Was also a varsity cheerleader for six years, serving as captain as a senior
- Graduated as salutatorian of her graduating class

Opponent	Start	Min.	FG-A	3PT-A	FT-A	O-D-T	PF	Ass.	TO	Blk.	St.	Pts.
GCSU (Exhibition)		18	3-7	0-3	0-2	0-1-1	3	0	0	0	1	6
at Mercer												
BELMONT												
at Duke												
GEORGE WASHINGTON												
SOUTH CAROLINA-UPSTATE												
TROY												
at Temple												
SOUTH FLORIDA												
PURDUE												
vs. Marist												
vs. Hofstra/Central Connecticut State												
vs. North Carolina-Charlotte												
vs. Florida International/Albany												
TENNESSEE												
at Alabama												
GEORGIA												
at Vanderbilt												
at Arkansas												
SOUTH CAROLINA												
at Mississippi State												
KENTUCKY												
at Ole Miss												
VANDERBILT												
at Tennessee												
at Florida												
ARKANSAS												
at LSU												
ALABAMA												
OLE MISS												

#### STRAIN CAREER STATISTICS

Year	GP-GS	FG-FGA	Pct	3FG-FGA	Pct	FT-FTA	Pct	O-D-T (Reb.)	Avg	PF	FO	Ass	TO	Blk	Stl	Pts	Avg
2010-11	24-1	24-76	.316	5-19	.263	8-15	.533	6-14-20	0.8	13	0	7	16	0	7	61	2.5
<b>TOTAL</b>	<b>24-1</b>	<b>24-76</b>	<b>.316</b>	<b>5-19</b>	<b>.263</b>	<b>8-15</b>	<b>.533</b>	<b>6-14-20</b>	<b>0.8</b>	<b>13</b>	<b>0</b>	<b>7</b>	<b>16</b>	<b>0</b>	<b>7</b>	<b>61</b>	<b>2.5</b>

#### SEASON HIGHS

Points

Rebounds

Assists

Blocks

Steals

Field Goals

Field Goal Attempts

3-Point Field Goals

3-Point FG Attempts

Free Throws

Free Throw Attempts

#### CAREER HIGHS

Points

12 at Arkansas (2/13/11)

Rebounds

4 at Arkansas (2/13/11)

Assists

1 7 times, last at Toledo (3/19/11)

Blocks

N/A

Steals

1 7 times, last vs. Kentucky (2/27/11)

Field Goals

5 at Arkansas (2/13/11)

Field Goal Attempts

8 at Toledo (3/19/11)

3-Point Field Goals

1 5 times, last at LSU (2/10/11)

3-Point FG Attempts

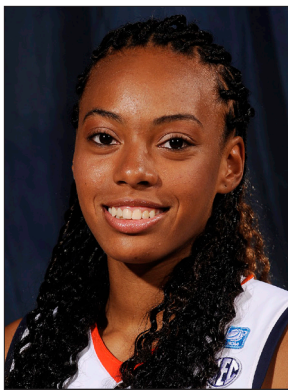
3 twice, last vs. Seton Hall (11/27/10)

Free Throws

3 vs. Sacred Heart (11/26/10)

Free Throw Attempts

6 vs. Sacred Heart (11/26/10)



# Tyrese TANNER

# #32

Sophomore • Forward • 6-1

Birmingham, Ala.

Hoover High School

#### NOTES:

- Tallied a total of 8 points in exhibition against Georgia College
- Averaged 11.0 points, 7.0 rebounds and 1.5 blocks per game in the two 2011 WNIT games
- Tied her career high with 15 points at Alabama, hitting four free throws in the final 20 seconds for the win
- Made first collegiate start vs. Seton Hall, went on to start the next two games
- Named to 2010 Junkanoo Jam All-Tournament Team

Opponent	Start	Min.	FG-A	3PT-A	FT-A	O-D-T	PF	Ass.	TO	Blk.	St.	Pts.
GCSU (Exhibition)		7	3-4	1-1	1-2	1-0-1	2	0	1	1	1	8
at Mercer												
BELMONT												
at Duke												
GEORGE WASHINGTON												
SOUTH CAROLINA-UPSTATE												
TROY												
at Temple												
SOUTH FLORIDA												
PURDUE												
vs. Marist												
vs. Hofstra/Central Connecticut State												
vs. North Carolina-Charlotte												
vs. Florida International/Albany												
TENNESSEE												
at Alabama												
GEORGIA												
at Vanderbilt												
at Arkansas												
SOUTH CAROLINA												
at Mississippi State												
KENTUCKY												
at Ole Miss												
VANDERBILT												
at Tennessee												
at Florida												
ARKANSAS												
at LSU												
ALABAMA												
OLE MISS												

#### TANNER CAREER STATISTICS

Year	GP-GS	FG-FGA	Pct	3FG-FGA	Pct	FT-FTA	Pct	O-D-T (Reb.)	Avg	PF	FO	Ass	TO	Blk	Stl	Pts	Avg
2010-11	32-3	53-159	.333	6-37	.162	43-64	.672	48-53-101	3.2	57	1	27	48	24	21	155	4.8
<b>TOTAL</b>	<b>32-3</b>	<b>53-159</b>	<b>.333</b>	<b>6-37</b>	<b>.162</b>	<b>43-64</b>	<b>.672</b>	<b>48-53-101</b>	<b>3.2</b>	<b>57</b>	<b>1</b>	<b>27</b>	<b>48</b>	<b>24</b>	<b>21</b>	<b>155</b>	<b>4.8</b>

#### SEASON HIGHS

##### Points

##### Rebounds

##### Assists

##### Blocks

##### Steals

##### Field Goals

##### Field Goal Attempts

##### 3-Point Field Goals

##### 3-Point FG Attempts

##### Free Throws

##### Free Throw Attempts

#### CAREER HIGHS

##### Points

15 twice, last at Alabama (1/2/11)

##### Rebounds

7 twice, last at Toledo (3/19/11)

##### Assists

3 twice, last vs. Florida (1/6/11)

##### Blocks

3 at Tennessee Tech (3/17/11)

##### Steals

3 three times, last at Toledo (3/19/11)

##### Field Goals

5 at Alabama (1/2/11)

##### Field Goal Attempts

11 at Alabama (1/2/11)

##### 3-Point Field Goals

2 vs. Duke (11/18/10)

##### 3-Point FG Attempts

5 vs. Tennessee (1/23/11)

##### Free Throws

6 twice, last at Toledo (3/19/11)

##### Free Throw Attempts

6 5 times, last at Toledo (3/19/11)



# Jassany WILLIAMS

# #25

Sophomore • Forward • 6-2

Davie, Fla.

Nova High School

#### NOTES:

- Tallied a total of 8 points with 11 rebounds in exhibition against Georgia College
- Started the last nine games of the 2010-11 season
- Pulled down a career-high 12 rebounds against Alabama
- Earned her first career start at LSU, scoring 6 points with 2 rebounds and 2 blocked shots in 19 minutes
- Came off the bench to score career high 13 points vs. South Alabama

Opponent	Start	Min.	FG-A	3PT-A	FT-A	O-D-T	PF	Ast.	TO	Blk.	St.	Pts.
GCSU (Exhibition)	*	24	2-4	0-0	4-6	4-7-11	1	2	0	1	1	8
at Mercer												
BELMONT												
at Duke												
GEORGE WASHINGTON												
SOUTH CAROLINA-UPSTATE												
TROY												
at Temple												
SOUTH FLORIDA												
PURDUE												
vs. Marist												
vs. Hofstra/Central Connecticut State												
vs. North Carolina-Charlotte												
vs. Florida International/Albany												
TENNESSEE												
at Alabama												
GEORGIA												
at Vanderbilt												
at Arkansas												
SOUTH CAROLINA												
at Mississippi State												
KENTUCKY												
at Ole Miss												
VANDERBILT												
at Tennessee												
at Florida												
ARKANSAS												
at LSU												
ALABAMA												
OLE MISS												

#### WILLIAMS CAREER STATISTICS

Year	GP-GS	FG-FGA	Pct	3FG-FGA	Pct	FT-FTA	Pct	O-D-T (Reb.)	Avg	PF	FO	Ast	TO	Blk	Stl	Pts	Avg
2010-11	32-9	45-113	.398	0-0	.000	28-52	.538	52-68-120	3.8	53	1	7	39	23	26	118	3.7
<b>TOTAL</b>	<b>32-9</b>	<b>45-113</b>	<b>.398</b>	<b>0-0</b>	<b>.000</b>	<b>28-52</b>	<b>.538</b>	<b>52-68-120</b>	<b>3.8</b>	<b>53</b>	<b>1</b>	<b>7</b>	<b>39</b>	<b>23</b>	<b>26</b>	<b>118</b>	<b>3.7</b>

#### SEASON HIGHS

Points

Rebounds

Assists

Blocks

Steals

Field Goals

Field Goal Attempts

3-Point Field Goals

3-Point FG Attempts

Free Throws

Free Throw Attempts

#### CAREER HIGHS

Points

13 vs. South Alabama (12/2/10)

Rebounds

12 vs. Alabama (2/17/11)

Assists

2 at Tennessee Tech (3/17/11)

Blocks

2 8 times, last at Tenn. Tech (3/17/11)

Steals

3 3 times, last vs. USC (1/30/11)

Field Goals

5 vs. South Alabama (12/2/10)

Field Goal Attempts

13 vs. Mercer (11/12/10)

3-Point Field Goals

N/A

3-Point FG Attempts

N/A

Free Throws

3 4 times, last vs. Florida (1/6/11)

Free Throw Attempts

7 vs. Alabama (2/17/11)



# Hasina MUHAMMAD

# #0

Freshman • Guard/Forward • 6-1

Memphis, Tenn.

Ridgeway High School

#### NOTES:

- Tallied a total of 13 points in exhibition against Georgia College
- Entering her first season at Auburn as the Tigers' lone freshman
- Ranked as the No. 66 overall player in the country by ESPN's HoopGurlz, also ranked as the 17th-best guard in the country and the No. 2 prospect in Tennessee
- Ranked as the No. 50 overall prospect by the All-Star Girls Report and No. 47 by the Girls Basketball Report
- Averaged 17.8 points, 7.4 rebounds, 2.3 assists, 3.9 blocks and 2.6 steals per game as a senior, leading Ridgeway to a 20-9 record
- Two-time All-State selection and three-time All-Region; also was a finalist for Tennessee's Miss Basketball

Opponent	Start	Min.	FG-A	3PT-A	FT-A	O-D-T	PF	Ass.	TO	Blk.	St.	Pts.
GCSU (Exhibition)	*	18	5-10	0-2	3-5	4-0-4	1	1	0	1	2	13
at Mercer												
BELMONT												
at Duke												
GEORGE WASHINGTON												
SOUTH CAROLINA-UPSTATE												
TROY												
at Temple												
SOUTH FLORIDA												
PURDUE												
vs. Marist												
vs. Hofstra/Central Connecticut State												
vs. North Carolina-Charlotte												
vs. Florida International/Albany												
TENNESSEE												
at Alabama												
GEORGIA												
at Vanderbilt												
at Arkansas												
SOUTH CAROLINA												
at Mississippi State												
KENTUCKY												
at Ole Miss												
VANDERBILT												
at Tennessee												
at Florida												
ARKANSAS												
at LSU												
ALABAMA												
OLE MISS												

#### SEASON HIGHS

Points

Rebounds

Assists

Blocks

Steals

Field Goals

Field Goal Attempts

3-Point Field Goals

3-Point FG Attempts

Free Throws

Free Throw Attempts



## Season Statistics

RECORD:	OVERALL	HOME	AWAY	NEUTRAL
ALL GAMES	16-16	8-7	7-6	1-3
CONFERENCE	8-8	4-4	4-4	0-0
NON-CONFERENCE	8-8	4-3	3-2	1-3

##	Player	gp-gs	min	avg	Total		3-Point		F-Throw		Rebounds				pf	dq	a	to	blk	stl	pts	avg
					fg-fga	fg%	3fg-fga	3fg%	ft-fa	ft%	off	def	tot	avg								
05	Smalley, Alli	32-31	967	30.2	144-363	.397	47-129	.364	59-75	.787	22	82	104	3.3	69	1	71	100	4	49	394	12.3
14	Alverson, Blanche	32-32	938	29.3	126-333	.378	50-171	.292	25-35	.714	33	118	151	4.7	44	0	33	61	17	27	327	10.2
21	Greenleaf, Jordan	23-23	737	32.0	81-197	.411	1-5	.200	47-69	.681	90	81	171	7.4	50	1	39	46	27	38	210	9.1
01	Toles, Morgan	27-24	772	28.6	98-245	.400	1-4	.250	34-55	.618	24	56	80	3.0	37	1	139	59	1	30	231	8.6
23	Hilliard, Chantel	32-10	533	16.7	83-159	.522	0-2	.000	39-61	.639	44	69	113	3.5	62	0	9	50	13	18	205	6.4
32	Tanner, Tyrese	32-3	476	14.9	53-159	.333	6-37	.162	43-64	.672	48	53	101	3.2	57	1	27	48	24	21	155	4.8
25	Williams, Jassany	32-9	481	15.0	45-113	.398	0-0	.000	28-52	.538	52	68	120	3.8	53	1	7	39	23	26	118	3.7
02	Jennings, Morgan	31-8	449	14.5	37-101	.366	0-1	.000	32-47	.681	19	38	57	1.8	31	0	41	46	2	30	106	3.4
11	Strain, Courtney	24-1	236	9.8	24-76	.316	5-19	.263	8-15	.533	6	14	20	0.8	13	0	7	16	0	7	61	2.5
04	Simmons, Parrisha	32-19	453	14.2	24-66	.364	0-0	.000	26-58	.448	54	46	100	3.1	38	0	27	28	2	18	74	2.3
22	Glymph, Camille	13-0	114	8.8	11-40	.275	5-21	.238	2-2	1.000	3	9	12	0.9	3	0	8	15	2	3	29	2.2
34	Davis, Peyton	26-0	172	6.6	12-41	.293	0-0	.000	9-15	.600	18	16	34	1.3	38	0	7	13	7	4	33	1.3
20	West, Pascale	13-0	72	5.5	5-8	.625	0-0	.000	1-6	.167	1	5	6	0.5	15	0	1	9	3	1	11	0.8
Team											69	76	145				12					
Total.....		32	6400		743-1901	.391	115-389	.296	353-554	.637	483	731	1214	37.9	510	5	416	542	125	272	1954	61.1
Opponents.....		32	6400		707-1804	.392	169-496	.341	357-503	.710	444	770	1214	37.9	537	13	376	595	98	244	1940	60.6

TEAM STATISTICS	AU	OPP
SCORING	1954	1940
Points per game	61.1	60.6
Scoring margin	+0.4	-
FIELD GOALS-ATT	743-1901	707-1804
Field goal pct	.391	.392
3 POINT FG-ATT	115-389	169-496
3-point FG pct	.296	.341
3-pt FG made per game	3.6	5.3
FREE THROWS-ATT	353-554	357-503
Free throw pct	.637	.710
F-Throws made per game	11.0	11.2
REBOUNDS	1214	1214
Rebounds per game	37.9	37.9
Rebounding margin	+0.0	-
ASSISTS	416	376
Assists per game	13.0	11.8
TURNOVERS	542	595
Turnovers per game	16.9	18.6
Turnover margin	+1.7	-
Assist/turnover ratio	0.8	0.6
STEALS	272	244
Steals per game	8.5	7.6
BLOCKS	125	98
Blocks per game	3.9	3.1
ATTENDANCE	45087	41510
Home games-Avg/Game	15-3006	13-2261
Neutral site-Avg/Game	-	4-3028

Score by Periods	1st	2nd	Totals
Auburn	887	1067	1954
Opponents	887	1053	1940

Date	Opponent	Score	Att.
11-12-10	MERCER	W 79-61	2459
11-15-10	FLORIDA STATE	L 61-67	2176
11-18-10	DUKE	L 62-75	3188
11-22-10	at USF	L 49-67	1106
# 11-26-10	vs Sacred Heart	L 53-65	371
# 11-27-10	vs Seton Hall	W 85-51	247
12-02-10	SOUTH ALABAMA	W 75-70	2006
12-04-10	TEMPLE	L 61-62	3206
12-15-10	at George Washington	W 52-45	320
! 12-18-10	vs Purdue	L 56-76	7666
12-21-10	at Chicago State	W 67-63	325
12-28-10	ALABAMA A&M	W 84-45	2039
12-30-10	JACKSONVILLE STATE	W 79-60	1965
* 01-02-11	at Alabama	W 66-55	2906
* 01-06-11	FLORIDA	W 73-56	1981
* 01-09-11	at Vanderbilt	L 59-67	4146
* 01-13-11	OLE MISS	W 85-73	2277
* 01-16-11	LSU	W 65-53	3088
* 01-20-11	at Mississippi State	W 45-41	850
* 01-23-11	TENNESSEE	L 53-73	7536
* 01-30-11	SOUTH CAROLINA	W 54-47	3110
* 02-03-11	at KENTUCKY	L 38-69	6003
* 02-06-11	MISSISSIPPI STATE	L 45-57	3047
* 02-10-11	at LSU	L 52-55	2517
* 02-13-11	at Arkansas	W 64-59	1348
* 02-17-11	ALABAMA	L 51-59	3735
* 02-20-11	at South Carolina	L 49-65	4114
* 02-24-11	at Georgia	W 63-58	3016
* 02-27-11	KENTUCKY	L 62-76	3274
\$ 03-03-11	vs MISSISSIPPI STATE	L 47-49	3827
^ 03-17-11	at Tennessee Tech	W 68-54	1358
% 03-19-11	at TOLEDO	L 52-67	1390

\* - Southeastern Conference game

# - Junkanoo Jam (Freeport, Bahamas)

\$ - Southeastern Conference Tournament (Nashville, Tenn.)

! - Boilermaker Blockbuster (Conseco Fieldhouse, Indianapolis, Ind.)

^ - WNIT First Round (Cookeville, Tenn.)

% - WNIT Second Round (Toledo, Ohio)