

WE ARE NEW YORK'S TEAM ... WE ARE ST. JOHN'S!

# ST. JOHN'S

## BASKETBALL



Athletic Communications  
Carnesecca Arena • Rm. 157  
9000 Utopia Parkway  
Queens, N.Y. 11439  
718-990-1520  
@StJohnsWBB



## 2014-15 RED STORM SCHEDULE/RESULTS

DAY	DATE	OPPONENT	TV	TIME/SCORE
Sat.	N15	at Yale		W, 61-50
Thur.	N20	FLORIDA	BEDN	W, 72-66
Mon.	N24	at Marist		W, 49-48
Fri.	N28	BINGHAMTON	ESPN3	W, 67-51
Sun.	N30	WAGNER	ESPN3	W, 71-49
Wed.	D3	*XAVIER	BEDN	W, 65-42
Sun.	D7	at USF		W, 55-52
Thur.	D11	UCF	ESPN3	W, 62-48
Sun.	D14	NJIT	ESPN3	W, 66-42
Sat.	D20	AUBURN &	ESPN3	12 p.m.
Sun.	D21	SMU/INDIANA ST. &	ESPN3	12/2:30 p.m.
Tues.	D30	at Providence		2 p.m.
Fri.	J2	• SETON HALL	CBS SN	6 p.m.
Sun.	J4	vs. Connecticut ^	ESPN2	1 p.m.
Fri.	J9	• BUTLER	FOX Sports 1	8 p.m.
Sun.	J11	• at Creighton		2 p.m.
Fri.	J16	• DE PAUL	BEDN	11:30 a.m.
Sun.	J18	• MARQUETTE	ESPN3	2 p.m.
Fri.	J23	• at Georgetown		6 p.m.
Sun.	J25	• at Villanova		12 p.m.
Sun.	F1	• at Seton Hall		2 p.m.
Fri.	F6	• CREIGHTON	BEDN	7 p.m.
Sun.	F8	• PROVIDENCE	ESPN3	2 p.m.
Fri.	F13	• at Marquette	FOX Sports 1	9 p.m.
Sun.	F15	• at DePaul	FOX Sports 1	2 p.m.
Fri.	F20	• VILLANOVA	BEDN	7 p.m.
Sun.	F22	• GEORGETOWN	ESPN3	2 p.m.
Fri.	F27	• at Butler		7 p.m.
Sun.	M1	• at Xavier		2 p.m.
Sat.	M7	BIG EAST First Round #		TBA
Sun.	M8	BIG EAST Quarterfinals #		TBA
Mon.	M9	BIG EAST Semifinals #	FOX Sports 1/2	TBA
Tues.	M10	BIG EAST Final #	FOX Sports 1	8 p.m.

& St. John's Chartwells Holiday Classic (Queens, N.Y.)  
^ Maggie Dixon Classic (New York, N.Y.)  
• Denotes BIG EAST Conference match up.  
# BIG EAST Tournament  
All times Eastern

CBS SN- CBS Sports Network  
BEDN- BIG EAST Digital Network, available through the  
FOX Sports GO App and foxsports.go.com  
ESPN3- Live simulcast on ESPN3.com and Watch ESPN

## MEDIA RELATIONS INFORMATION

Associate A.D. for Communications: Stephen Dombroski  
Athletic Communications Phone: 718-990-1520  
Office Fax: 718-969-8468  
Women's Basketball Contact: Andrew O'Connell  
Assistant Director of Athletic Communications  
O'Connell's Office Phone: 718-990-1522  
O'Connell's Mobile Phone: 516-581-3229  
O'Connell's E-mail: oconnela@stjohns.edu  
Women's Basketball Secondary: Ed Boulat  
Boulat's E-Mail: edouard.boulat13@stjohns.edu  
Website: www.RedStormSports.com  
Twitter: @StJohnsWBB

All media requests for interviews with the St. John's basketball players and coaches should be directed to Asst. Dir. of Athletic Communications Andrew O'Connell 24 hours in advance. Credential requests must be made by sports editors or sports directors no later than 24 hours prior to the event. They may be mailed, faxed or emailed to Andrew O'Connell.

## 2014-15 RED STORM WOMEN'S BASKETBALL GAME NOTES

## GAME

10



SATURDAY, DEC. 20 • 2:00 PM  
CARNESECCA ARENA • QUEENS, N.Y.

## GAME DAY MEDIA INFORMATION:

TV/WEBSTREAM: ESPN3

LIVE STATS: WWW.REDSTORMSPORTS.COM



RV/25 ST. JOHN'S RED STORM (9-0, 1-0 BIG EAST)

VS.

AUBURN TIGERS (7-2, 0-0 SEC)

## RED STORM QUICK HITS

- With nine victories in as many tries this season, the Red Storm will look to continue its best start in a decade when it hosts the Seventh Annual St. John's Chartwells Holiday Classic on Dec. 20 and Dec. 21. The game will be broadcast on ESPN3 with Ralph Bednarczyk and Scott Greene on the call.
- Jumping into the 25th slot on Tuesday, the Red Storm is currently enjoying its first ranking in the USA Today Sports Coaches Poll since the 2012-13 campaign. Sitting just one spot out of the top 25 the week before, the Red Storm knocked out conference foe DePaul following wins over UCF and NJIT, making St. John's the only ranked squad in the BIG EAST. The Red Storm earned a spot in the Associated Press Top 25 for two weeks last season, climbing as high as no. 22., and is currently receiving votes in that poll.
- Coming into this weekend, the Red Storm is one of just 12 teams remaining in the country without a tally in the loss column.
- The Red Storm's one-two scoring punch of Aliyyah Handford and Danaejah Grant has proven to be one of the best in the country over the course of the season. The pair is averaging 37.5 of the team's 63.1 points per game, the best total for two teammates in the BIG EAST. Handford and Grant's output is also good enough for the fourth-best combined scoring average for two teammates in the nation, ranking only behind duos from Ohio State, Akron and Washington State.
- One of the most successful young head coaches in the nation, Joe Tartamella picked up his 50th career victory on Sunday against NJIT. The St. James, N.Y., native is the second-fastest coach in program history to reach the 50-win mark behind Vickie Kresse and the first since the NCAA began sponsoring women's basketball.
- Senior forward Amber Thompson has been an absolute force on the inside this season, leading the BIG EAST and ranking eighth nationally with 12.6 rebounds per game. With 827 rebounds for her career, the Newark, N.J., native is just 41 rebounds shy of becoming the school's all-time leader in that category and 13 boards away from tying Cozette Ballentine for second on the career list. Thompson also ranks fourth on the St. John's career blocks list with 118.

## St. John's Probable Starters

#	Player	Pos.	Yr.	Ht.	Hometown	PPG	RPG	APG	FG%	Min.
2	Amber Thompson	F	Sr.	6-2	Newark, N.J.	5.3	12.6	1.4	.500	32.8
- Preseason All-BIG EAST Honorable Mention   Ranks eighth nationally in rebounding										
3	Aliyyah Handford	G	Jr.	5-9	Newark, N.J.	18.1	5.7	2.7	.460	30.9
- Fourth-leading scorer in the conference   Naismith Women's 50 Watch List Selection										
4	Aaliyah Lewis	G	So.	5-5	Staten Island, N.Y.	6.1	2.8	4.1	.346	32.7
- Team leader in assists   Sports an assist-to-turnover ratio of 1.9 (Fifth in the BIG EAST)										
15	Danaejah Grant	G	Jr.	5-9	Piscataway, N.J.	19.4	5.6	2.1	.470	33.4
- BIG EAST Player of the Week (11/17)   Conference's leading scorer										
24	Jade Walker	F	So.	6-1	Maplewood, N.J.	8.6	5.1	0.3	.436	23.1
- BIG EAST All-Freshman Team Selection last year   Potential breakout player for St. John's										

## Key Reserves

#	Player	Pos.	Yr.	Ht.	Hometown	PPG	RPG	APG	FG%	Min.
12	Kyra Dunn	F	Gr.	6-3	Sacramento, Calif.	1.8	2.9	0.1	.286	12.4
1	Tamesha Alexander	G	Fr.	5-7	Philadelphia, Pa.	0.2	0.7	0.7	.111	7.1
5	Tonoia Wade	F	Fr.	6-0	Bloomington, Minn.	0.8	0.9	0.1	.182	7.2
13	Crystal Simmons	G	Fr.	5-10	Madrid, Spain	0.9	1.0	0.3	.231	9.2



## 2014-15 St. John's Women's Basketball Roster

### NUMERICAL

No.	Name	Pos.	Ht.	Cl.	Hometown (Previous School)
1	Tamesha Alexander	G	5-7	Fr.	Philadelphia, Pa. (The Shipley School)
2	Amber Thompson	F	6-2	Sr.	Newark, N.J. (University High)
3	Aliyyah Handford	G	5-9	Jr.	Newark, N.J. (M.X. Shabazz)
4	Aaliyah Lewis	G	5-5	So.	Staten Island, N.Y. (Bishop Ford (Brooklyn, N.Y.))
5	Tonoia Wade	F	6-0	Fr.	Bloomington, Minn. (John F. Kennedy)
12	Kyra Dunn	F	6-3	Gr.	Sacramento, Calif. (California)
13	Crystal Simmons	G	5-10	Fr.	Madrid, Spain (Life Center Academy)
15	Danaejah Grant	G	5-9	Jr.	Piscataway, N.J. (Clemson)
23	Kimberly Spruill	G	5-9	So.	Raleigh, N.C. (Needham B. Broughton)
24	Jade Walker	F	6-1	So.	Maplewood, N.J. (DePaul Catholic)
33	Sandra Udobi	F	6-2	Jr.	Delta State, Nigeria (Life Center Academy)
35	Imani Littleton	F	6-3	Fr.	San Diego, Calif. (The Bishop's School)
54	Selina Archer	F	6-4	R-Sr.	Clermont, Fla. (Miami)

### ALPHABETICAL

No.	Name	Pos.	Ht.	Cl.	Hometown (Previous School)
1	Tamesha Alexander	G	5-7	Fr.	Philadelphia, Pa. (The Shipley School)
54	Selina Archer	F	6-4	R-Sr.	Clermont, Fla. (Miami)
12	Kyra Dunn	F	6-3	Gr.	Sacramento, Calif. (California)
15	Danaejah Grant	G	5-9	Jr.	Piscataway, N.J. (Clemson)
3	Aliyyah Handford	G	5-9	Jr.	Newark, N.J. (M.X. Shabazz)
4	Aaliyah Lewis	G	5-5	So.	Staten Island, N.Y. (Bishop Ford (Brooklyn, N.Y.))
35	Imani Littleton	F	6-3	Fr.	San Diego, Calif. (The Bishop's School)
13	Crystal Simmons	G	5-10	Fr.	Madrid, Spain (Life Center Academy)
23	Kimberly Spruill	G	5-9	So.	Raleigh, N.C. (Needham B. Broughton)
2	Amber Thompson	F	6-2	Sr.	Newark, N.J. (University High)
33	Sandra Udobi	F	6-2	Jr.	Delta State, Nigeria (Life Center Academy)
5	Tonoia Wade	F	6-0	Fr.	Bloomington, Minn. (John F. Kennedy)
24	Jade Walker	F	6-1	So.	Maplewood, N.J. (DePaul Catholic)

**HEAD COACH:** Joe Tartamella, Third Year at St. John's (James Madison '01)

**ASSISTANT COACHES:** Joe Pellicane, Fourth Year at St. John's (Dowling '70), Jonath Nicholas, Seventh Year at St. John's (Trinity University '97), Priscilla Edwards, Third Year at St. John's (St. Bonaventure '08)

**DIRECTOR OF BASKETBALL OPERATIONS:** Veronica Mullen, Seventh Year at St. John's (Adelphi '03)

**VIDEO COORDINATOR:** Alioune Ndiaye, Second Year at St. John's (Dowling '10)

**STRENGTH AND CONDITIONING COACH:** Al Caronia, Sixth Year at St. John's (Springfield '89)

**SPORTS MEDICINE:** Jill Christensen, (Iowa '87)

**GRADUATE ASSISTANTS:** Seja Gamble, Second Year at St. John's (Dowling '13); Alysha Giarra, First Year at St. John's (Elmira '10)

**MEDIA POLICIES**

- All media requests for interviews with St. John's women's basketball players and coaches should be directed to Assistant Director of Athletic Communications, Sagan Byrne, 24 hours in advance.
- Calling players at home or on cell phones without permission from the St. John's Athletic Communications office will not be tolerated. The players' dorms, training room and weight room are also off limits.
- The St. John's locker room is closed to the media following the game. The team is allowed the customary 10-minute cooling off period and time with the coaching staff to meet with the team after each game. The St. John's Athletic Communications staff will secure coach and student-athletes for the interview room. Coach Joe Tartamella will enter with student-athletes, unless detained by radio/television interviews. Coach and student-athletes will complete interviews and be available for one-on-ones.
- The only pregame interviews allowed on game days will be for St. John's radio, and local or national television productions. No game day interviews will be allowed unless specifically requested for televised games.

**CREDENTIAL REQUESTS**

- Credential requests must be made by sports editors or sports directors on official letterhead no later than five days prior to an event. They should be sent to the Athletic Communications Office, Room 157 Carnesecca Arena, St. John's University, 8000 Utopia Parkway, Queens, NY 11439. They also may be faxed to 718-969-8468 or emailed to Sagan Byrne at byrnes@stjohns.edu.

**RADIO POLICY**

- St. John's has permanent phone lines available to visiting radio stations at \$100 per line. Arrangements for phone lines must be made through the Athletic Communications office. All radio stations will be limited to three working credentials on press row. The fee for phone lines must be paid in advance of the game. Make check payable to St. John's University.

**PHOTOGRAPHY REGULATIONS**

- All photographers and camera operators must remain seated in baseline photo areas, as per NCAA regulations. Locations will be assigned for more crowded games. Season media credentials are issued to those outlets which cover St. John's Athletics on a regular basis. They do not guarantee working space in the media work area. With the exception of Red Storm beat reporters covering the team on a regular basis and producing regular reports, all passes are approved and issued on a game-by-game basis. Passes are not transferable and are subject to immediate revocation if transferred to non-working members of a media outlet.

**HOW YOU SAY IT....**

3	Aliyyah (UH-LEE-UH) Handford
4	Aaliyah (UH-LEE-UH) Lewis
5	Tonoia (TA-NO-AH) Wade
15	Danaejah (DUH-NAY-JAH) Grant
33	Sandra (S-AHN-DRUH) Udobi (YOU-DOE-BEE)
	Jonath (JOE-NAH) Nicholas

**STATE/COUNTRY BREAKDOWN....**

<b>California (2)-</b> Dunn, Littleton
<b>Florida (1) -</b> Archer
<b>Minnesota (1)-</b> Wade
<b>New Jersey (4) -</b> Grant, Handford, Thompson, Walker
<b>New York (1) -</b> Lewis
<b>Nigeria (1) -</b> Udobi
<b>North Carolina (1)-</b> Spruill
<b>Pennsylvania (1)-</b> Alexander
<b>Spain (1)-</b> Simmons

**CLASS BREAKDOWN....**

<b>Seniors/Grad (3) -</b> Archer (RS), Thompson, Dunn (Gr.)
<b>Juniors (3) -</b> Grant (RS), Handford, Udobi
<b>Sophomores (3) -</b> Lewis, Spruill, Walker
<b>Freshmen (4) -</b> Alexander, Littleton, Simmons, Wade

**SCOUTING AUBURN**

- Following a 62-56 win over Savannah State at home on Wednesday night, Auburn enters the St. John's Chartwells Holiday Classic with an overall record of 7-2. The Tigers have been spectacular at home, winning all seven of their contests, but have struggled outside of Auburn Arena, losing both of their road contests.
- Allowing only 53.4 points per game, the Tigers sport the 19th best scoring defense in the nation. One reason for this has been their ability to turnover their opponents, averaging 13.4 steals and 22.2 opponent turnovers per game.
- The Tigers also rank in the top 20 nationally in assists per game, recording helpers on over 60 percent of their made field goals.
- The Tigers feature two scorers averaging double figures. Tra'Cee Tanner leads the squad with 14.4 points per game, shooting over 60 percent from the floor. Brandy Montgomery is the team's most prolific three-point shooter, shooting 42 percent from beyond the arc and averaging 11.7 points per contest.

**ST. JOHN'S VS. AUBURN- THE SERIES**

- The Red Storm and the Tigers met for the first time in the history of the two programs last season, as Auburn earned a 69-55 victory on its home court.
- Hasina Muhammad led the Tigers with 28 points on 11-19 shooting in the victory on Dec 6.

**DEFENSIVE STALWARTS**

- Under Joe Tartamella, the Red Storm has always prided itself on its defensive intensity. This year is no different, as St. John's sports one of the most prolific defenses in the nation.
- Allowing just 49.8 points per outing, the Red Storm currently hold the NCAA's sixth-best opponent scoring average.
- The Red Storm's defensive success can largely be attributed to the team's ability to force bad shots or alter good ones. Opponents are shooting just 34.2 percent from the floor and an abysmal 24.1 percent from beyond the arc.

**CHASING HISTORY**

- While the Red Storm's 9-0 start to the season has certainly been impressive, this year's squad is still two wins away from matching the best start to a season in school history.
- In 2004-05, the Red Storm rattled off 11-straight wins to start the season en route to a 20-11 final record.
- That season, St. John's made its first postseason appearance since 1988, earning a berth in the WNIT.

**GRANT THE GREAT**

- After having to sit out a year following her transfer from Clemson to St. John's in December of 2012, Danaejah Grant hit the floor last winter and made an immediate impact for the Red Storm.
- This year, the Piscataway, N.J., native is off to a phenomenal start, averaging a team-high 19.4 points per game, good enough for tops in the BIG EAST and 33rd in the nation.
- She started off the season with a career-high 30 points against Yale and followed that up with a 26-point performance in the Red Storm's home-opener against Florida. For her performance against the Bulldogs, Grant was named the BIG EAST Player of the Week.
- Against UCF, Grant connected on 10 of her 15 shot attempts on the night, finishing with a game-high 20 points.
- Grant has scored at least 20 points in four out of nine games this season.
- A junior, Grant was recently voted one of the team's captains, joining senior Amber Thompson as the only two players on the team with that distinction.

**HANDFORD NAMED TO NAISMITH WOMEN'S 50**

- No stranger to national recognition, Aliyyah Handford was recently named to the early season watch list for the Naismith Trophy, given out to the top player in the nation at the end of the season.

**REBOUNDING RED STORM**

- Led by Amber Thompson at 12.6 rebounds per game, the Red Storm has been dominating on the glass so far this season.
- Coach Tartamella's squad boasts a BIG EAST-best rebounding margin of +10.8, over eight rebounds higher than the team in second place (Marquette, +2.2).
- The Red Storm rank 20th in the nation in rebounding margin.

**BEAST ON THE BOARDS**

- Through nine games on the season, Amber Thompson ranks eighth in the nation and first in the BIG EAST in rebounds per contest with 12.6.

Associated Press Top 25 Poll  
(Week 6- Dec. 15)

Rk	School	Rec.	Pts.
1	South Carolina (25)9-0		865
2	Connecticut (6) 6-1		828
3	Texas (4) 8-0		795
4	Texas A&M 11-0		768
5	Notre Dame 10-1		741
6	North Carolina 9-0		709
7	Stanford 6-2		636
8	Kentucky 10-1		609
9	Baylor 8-1		579
10	Louisville 8-1		553
11	Tennessee 7-2		518
12	Nebraska 9-1		437
13	Duke 5-3		423
14	Maryland 8-2		409
15	Georgia 10-0		378
16	Oregon St 7-0		364
17	Rutgers 8-2		283
18	Michigan St 6-2		251
19	Syracuse 7-1		225
19	Oklahoma St 6-1		225
21	Mississippi St 10-0		224
22	West Virginia 8-1		150
23	Iowa 8-2		90
24	California 7-2		80
25	DePaul 6-3		71

Others receiving votes: Green Bay 43, Northwestern 19, Arizona St 18, **St. John's 17**, Princeton 15, Oregon 14, Washington 8, James Madison 7, Western Kentucky 7, Oklahoma 5, Washington St 5, Florida St 4, Arkansas 2

USA Today Top 25 Poll  
(Week 6- Dec. 16)

Rk	School	Rec.	Pts.
1	South Carolina (23)9-0		767
2	Connecticut (6) 6-1		746
3	Texas (1) 8-0		705
4	Notre Dame (1) 10-1		666
5	Texas A&M 11-0		658
6	North Carolina 9-0		628
7	Stanford 6-2		581
8	Kentucky 10-1		542
9	Baylor 8-1		511
10	Louisville 9-1		489
11	Maryland 8-2		453
12	Tennessee 7-2		423
13	Duke 5-3		396
14	Oregon St 7-0		340
15	Nebraska 9-1		331
16	Oklahoma St 7-1		292
17	Georgia 10-0		281
18	West Virginia 8-1		231
19	Rutgers 8-2		183
20	Mississippi St 11-0		168
21	Michigan St 6-2		158
22	Syracuse 7-1		134
23	California 7-2		105
24	Iowa 8-2		79
25	<b>St. John's 9-0</b>		<b>47</b>

Others receiving votes: DePaul 40, James Madison 25, Northwestern 21, South Florida 16, Seton Hall 13, Oklahoma 11, Florida St 9, Green Bay 7, Washington 6, Washington St 5, George Washington 3, Dayton 2, Tulane 1, Arkansas-Little Rock 1, Arizona St 1

- The senior forward has a very real opportunity to become the school's all-time leader in rebounding, sitting just 41 rebounds away from tying the mark. She currently sits in third place on that career list (820), passing Da'Shena Stevens (815) against UCF.
- With 827 over her four seasons at St. John's, Thompson is the conference's active leader in career boards.
- Thompson recently became only the second player in school history to amass 700 points, 800 rebounds and 100 blocks for her career (Dianne Pugh).

## HANDFORD OFF TO HOT START

- A WBCA Honorable-Mention All-American a season ago, Aliyyah Handford is off to another fantastic start in 2013-14.
- A three-time selection to the BIG EAST Weekly Honor Roll already this season, Handford ranks second on the team and fourth in the conference with 18.1 points per game. The Newark, N.J., native is also the team's second leading rebounder, pulling down 5.7 boards per outing, including a season-high 12 in the Red Storm's win on the road at Marist.
- Handford was a unanimous selection to the Preseason All-BIG EAST Team announced in October.
- With 1,022 points for her career, Handford recently became the 21st player in program history to reach the 1,000-point plateau and the second-quickest player in school history to do so.

## LEWIS EXCELLING IN POINT GUARD ROLE

- Before the season, Coach Tartamella displayed extreme confidence in Aaliyah Lewis' ability to take over the reins at the point guard position following the graduation of Eugeneia McPherson. Lewis has rewarded her coach's conviction so far, excelling as the team's primary ball handler this season.
- Despite a career-high eight turnovers in her team's 62-48 win over UCF, Lewis still leads the team an assist-to-turnover ratio of 1.9, good enough for fifth in the BIG EAST.
- Against the Knights, Lewis piled up her best statistical performance of the season. The sophomore guard tallied 12 points, a career-high eight rebounds and six assists.
- Coach Tartamella also characterizes Lewis as the team's defensive spark plug. The Staten Island, N.Y., native ranks second on the team with 14 steals.

## WALKER HITTING HER STRIDE

- At St. John's media day on Oct. 15, Coach Tartamella praised the hard work of sophomore forward Jade Walker, who shed 15 pounds during the offseason to get into the best shape of her career.
- Walker has reached double figures on six occasions this season, ranking third on the team with 8.6 points per game. The Maplewood, N.J., native is also one of four players averaging more than five rebounds per game, pulling down 5.1 boards per contest.
- Walker was critical in the Red Storm's road win over Marist, setting career-highs with 14 points and eight re-

## RED STORM IN NATIONAL POLLS

2014-15

Week	AP	USA TODAY
Preseason	RV	RV
Nov. 17	RV	RV
Nov. 24	RV	RV
Dec. 1	RV	RV
Dec. 8	RV	RV
Dec. 15	RV	25

## BIG EAST Women's Preseason Coaches Poll

Rk	School (First-place Votes)	Pts.
1.	DePaul (9)	81
2.	St. John's (1)	73
3.	Villanova	60
4.	Creighton	55
5.	Seton Hall	51
6.	Providence	36
7.	Marquette	34
8.	Georgetown	26
9.	Xavier	24
10.	Butler	10

## PRESEASON PLAYER OF THE YEAR

Marissa Janning, Creighton

## PRESEASON ROOKIE OF THE YEAR

Dorothy Adomako, Georgetown

## PRESEASON ALL-BIG EAST

Caroline Coyer, Villanova, Jr., G

Danaejah Grant, St. John's, Jr., G

Aliyyah Handford, St. John's, Jr., G\*

Alexis Harris, Providence, Sr., F

Brittany Hrynko, DePaul, Sr., G\*

Arlesia Morse, Marquette, Sr., G

Tabatha Richardson-Smith, Seton Hall, Jr., F

Megan Rogowski, DePaul, Sr., G\*

Ka-Deidre Simmons, Seton Hall, RS-Sr., G\*

Faith Woodard, Georgetown, So., F

## Preseason All-BIG EAST Honorable Mention

Sarah Beal, Providence, So., G

Amber Thompson, St. John's, Sr., F

\*Unanimous Selection

bounds. She would then go on to set a new career best in rebounding with 11 boards against Binghamton in the team's next outing.

### SHATTERING SCHOOL RECORDS

- The Red Storm's 2013-14 campaign was historic in a number of ways. In addition to reaching the NCAA Tournament for the fifth straight season, plenty of school records also fell.
- Amber Thompson broke the school's single-season rebounding record, pulling down 313 boards on the campaign.
- With 827 rebounds for her career already, Thompson is now just 41 boards shy of tying the school's career record.
- Aliyyah Handford led the team in points per game last season, breaking the program's sophomore scoring mark with 567 points on the year.
- Handford's effort was good enough for the sixth-highest single-season point total in school history.
- In addition to these individual records, the team also set or tied records for most BIG EAST wins (13), most games played (34), most free throws made (484) and most free throws attempted (755).

### FIVE STRAIGHT NCAA TOURNAMENTS

- The 2013-14 Red Storm made an appearance in the NCAA Tournament for the fifth-straight season and the ninth time in program history overall.
- For the fourth time in those five appearances, the Red Storm won at least one game in the tournament, downing Southern California in its opening contest in Knoxville, Tenn.
- The Red Storm has one Sweet 16 appearance to its name, advancing to the Regional Semi-final in 2011-12 with wins over Creighton and Oklahoma before eventually falling to the Duke Blue Devils. St. John's was a three-seed in that year's tournament.

### TEARING UP THE BIG EAST

- A charter member of the BIG EAST conference, the Red Storm enjoyed its most successful conference campaign in decades last season.
- Coach Tartamella guided the Red Storm to a BIG EAST record of 13-5, tying the 2011-12 squad for the most conference wins in program history.
- The Red Storm also enjoyed success at the BIG EAST Tournament that had been unprecedented in recent history, reaching the BIG EAST Championship Game for the first time since the Red Storm's last conference title in 1988.
- The team's run through conference play also included an 11-game winning streak that lasted over a month from early January until the middle of February.

### PRESEASON HONOREES

- On Oct. 22, the BIG EAST held its annual Media Day at Madison Square Garden, where three St. John's players were bestowed with Preseason All-BIG EAST honors.
- Aliyyah Handford was a unanimous selection to the Preseason All-BIG EAST squad, where she was joined by teammate Danaejah Grant.
- Amber Thompson, who was named Honorable Mention All-BIG EAST at the end of last season, received the same accolades before the start of 2014-15.
- The preseason poll, determined a vote of the league's coaches, was also revealed at Media Day. DePaul was the unanimous choice to repeat as league champions, while St. John's checked in at second. Villanova checked in 13 points behind St. John's in the poll to claim the third spot and Creighton was picked one spot behind the Wildcats in fourth. The Seton Hall Pirates were selected to finish fifth, while Providence, Marquette, Georgetown, Xavier and Butler rounded out the prognostications, respectively.

### TARTAMELLA SETS STANDARD FOR NATION'S YOUNG COACHES

- One of the youngest coaches in Division I basketball at the age of 35, Joe Tartamella has enjoyed unparalleled success in his time on the bench for someone his age.
- Since first joining the staff as a graduate assistant for the 2002-03 season, Tartamella has been a part of six trips to the NCAA Tournament as a member of the St. John's staff.
- Beginning with his elevation to the position of associate head coach for the 2008-09 campaign, the Red Storm has yet to miss a postseason. St. John's earned a WNIT bid in his first year as an associate head coach and has since earned five-straight NCAA berths, the last two of which have come during his tenure as a head coach.
- In his two-plus seasons as a head coach, Tartamella's Red Storm has compiled a record of 50-24, good enough for a winning percentage of .676.
- Last season, Tartamella also guided the Red Storm to its first appearance in the BIG EAST Championship Game since 1988.

### ELEVEN-GAME BIG EAST WIN STREAK SETS PROGRAM HIGH

- Last season, the Red Storm accomplished something rarely seen in today's competitive college basketball landscape, a 11-game winning streak during conference play.
- Beginning with a 67-48 win over Creighton on January 8, the Red Storm then peeled off ten more wins in a row, going over a full month before their next loss on February 18.

## BASKETBALL QUICK FACTS

### GENERAL INFORMATION

Location: ..... Queens, N.Y. 11439  
 Founded: ..... 1870  
 Enrollment: ..... 19,047  
 Nickname: ..... Red Storm  
 Colors: ..... Red and White  
 Arena (Capacity): ..... Carnesecca Arena (5,602)  
 Affiliation: ..... NCAA Division I  
 Conference: ..... BIG EAST  
 President: ..... Dr. Conrado "Bobby" Gempesaw  
 Director of Athletics: ..... Chris Monasch  
 Athletic Department Phone: ..... 718-990-6217  
 Basketball Office Phone: ..... 718-990-6002  
 Press Row Phone: ..... 718-990-5713 (CA)

### COACHING STAFF

Head Coach: ..... Joe Tartamella  
 Alma Mater: ..... James Madison '01  
 Seasons at St. John's: ..... Third season  
 Record at St. John's (Yrs.): ..... 50-24 (3)  
 Career Coaching Record (Yrs.): ..... Same  
 Basketball Office Phone: ..... 718-990-6002  
 Best Way to Contact: ..... Contact SID Office  
 Assistant Coach: ..... Joe Pellicane  
 Assistant Coach: ..... Jonath Nicholas  
 Assistant Coach: ..... Priscilla Edwards  
 Director of Operations: ..... Veronica Mullen  
 Video Coordinator: ..... Alioune Ndiaye  
 Graduate Assistants: ..... Seja Gamble  
 ..... Alysha Giarra

### HISTORY

First Year of Women's Basketball: ..... 1974-75  
 Overall All-Time Record: ..... 658-540 (.549)  
 BIG EAST Championships: ..... 1983, 1984, 1988  
 Postseason Appearances (since 1983): ..... 12  
 NCAA Tournament Appearances: ..... Nine  
 1983, 1984, 1988, 2006, 2010, 2011, 2012, 2013, 2014

### TEAM INFORMATION

2013-14 Record: ..... 23-11  
 Home: ..... 11-4  
 Away: ..... 8-6  
 Neutral: ..... 4-1  
 Conference Record: ..... 13-5  
 Regular Season Conference Finish: ..... 2nd  
 2013-14 Postseason: ..... NCAA Tournament Second Round  
 ..... W, 71-68 vs. USC (March 22, 2014)  
 ..... L, 67-51 vs. Tennessee (March 24, 2014)  
 2013-14 NCAA Final RPI: ..... 28  
 2013-14 Final Top 25 (AP/ESPN-USA Today): ..... RV/RV  
 Starters Returning/Lost: ..... 2/3  
 Letterwinners Returning/Lost: ..... 7/5  
 Newcomers: ..... 6

### ATHLETIC COMMUNICATIONS

Assoc. A.D. for Communications: ..... Stephen Dombroski  
 Athletic Communications Phone: ..... 718-990-1520  
 Office Fax: ..... 718-969-8468  
 Women's Basketball Contact: ..... Andrew O'Connell  
 O'Connell's Office Phone: ..... 718-990-1522  
 O'Connell's Mobile Phone: ..... 516-581-3229  
 O'Connell's E-mail: ..... oconnela@stjohns.edu  
 Women's Basketball Secondary Contact: ..... Ed Boulat  
 Boulat's Email: ..... edouard.boulat13@stjohns.edu  
 Website: ..... www.RedStormSports.com  
 Mailing Address: ..... Carnesecca Arena, Room 157  
 ..... 8000 Utopia Parkway, Queens, NY 11439

- Twice in the history of the program, the Red Storm has amassed winning streaks of 16 games, once during 1975-76 and again during 1983-84.

### TAKING EUROPE BY STORM

- For the first time in program history, the St. John's Women's Basketball team embarked on a foreign tour this summer, spending two weeks in Italy and Spain in late August.
- The team played four games during its travels compiling a record of 3-1 against tough European competition.
- In its travels, the team visited Rome, Florence, Madrid and Barcelona, taking in once-in-a-lifetime sites and participating in community service projects.
- Those interested in seeing video recaps from the trip can do so at [www.RedStormSports.com](http://www.RedStormSports.com) or by visiting the athletic department's YouTube page (St. John's Red Storm).

### RED STORM PARTICIPATES IN FOURTH-ANNUAL DRIBBLE FOR THE CURE

- For the fourth-consecutive year, the St. John's men's and women's basketball teams took part in Dribble for The Cure, an event raising funds for pediatric cancer research.
- This year's event raised \$30,000 for the Pediatric Cancer Research Fund.
- This event holds a special place in the heart of the St. John's community, as men's basketball head coach Steve Lavin battled cancer early in his tenure as the head man of the Red Storm.
- "Today is a great day for St. John's," said Joe Tartamella. "Not only do we have several teams coming together to raise funds for pediatric cancer research, but we have countless other community service projects taking place in conjunction with University Service Day. Today makes me proud to be a coach at St. John's University."

### RED STORM TO RENEW SERIES WITH UCONN

- On Jan. 4 inside "The World's Most Famous Arena," the St. John's Red Storm will renew a rivalry with former conference foe UConn.
- This will mark the first meeting between the two schools since UConn departed from the BIG EAST following the 2012-13 season.
- During UConn's last two years in the conference, the Huskies and the Red Storm played a set of thrilling matchups. In 2012-13, the Red Storm played the third-ranked team in the country close throughout the entire game, eventually falling by just six to the eventual national champs in Carnesecca Arena.
- In 2011-12, the Red Storm made history in Storrs, ending a 99-game home winning streak for Geno Auriemma's squad.
- This season's contest will come as part of The Maggie Dixon Classic. This will be the fourth-straight season that the Red Storm will participate in this event, held in honor of Maggie Dixon, the former Army women's basketball head coach who passed away tragically in 2006 at the age of 28 after leading the Black Knights to the NCAA Tournament.
- Throughout the event, funds will be raised for the American Heart Association, while fans will be treated to complimentary heart-health screenings.

### RED STORM WELCOMES FOUR FRESHMEN FOR 2014-15

- Joe Tartamella welcomed his largest recruiting class as a head coach to St. John's this summer, as Tamesha "Sox" Alexander, Imani Littleton, Crystal Simmons and Tonia Wade joined the Red Storm.
- Alexander is a proven winner from The Shipley School outside Philadelphia, having helped lead her high school team to four league championships and two state titles during her tenure.
- Littleton, a 6-3 forward, comes to Queens from San Diego, where she amassed an astounding total of more than 2,200 points and 1,200 rebounds during her playing days at The Bishop's School.
- Simmons, a native of Madrid, Spain, played her last two years of high school basketball at Life Center Academy in New Jersey, where she honed her skill set as an aggressive, feisty defender.
- Wade, a native of Bloomington, Minn., rounds out the freshman class. The 6-0 forward sports a versatile game, possessing the size of a forward with the skill set of a guard.

### TARTAMELLA INKS TWO IN THE EARLY SIGNING PERIOD

- In mid-November, Joe Tartamella announced the signing of two student-athletes to National Letters of Intent for the 2015-16 season. Jordan Agustus and Akina Wellere will join the Red Storm beginning next fall.
- Agustus, a local product, will come to St. John's following a standout high school career at St. Mary's High School in Manhasset, N.Y. A two-time All-Long Island selection by Newsday, Agustus led the Gaels to a NSCHSAA title last spring, pouring in 29 points in the final against St. Anthony's. As a junior, Agustus averaged 15.3 points and 9.1 rebounds per game.

### St. John's Trending (2014-15)

Overall.....	9-0
Conference .....	1-0
At Home .....	6-0
On the Road .....	3-0
Neutral.....	0-0
In Overtime .....	0-0

#### AT HALFTIME

Leading .....	7-0
Trailing.....	1-0
Tied .....	1-0

#### SCORING

More than 80 pts.....	0-0
70-79 pts.....	2-0
60-69 pts.....	4-0
50-59 pts.....	1-0
49 pts. or less.....	1-0

#### ST. JOHN'S FG %

50% or better.....	3-0
40-49%.....	4-0
39% or less.....	2-0

#### OPPONENT FG %

50% or better.....	0-0
40-49%.....	1-0
39% or less.....	8-0

#### ST. JOHN'S FREE THROW %

Better than 75%.....	1-0
50-74.9%.....	4-0
49.9% or less.....	4-0

#### OPPONENT FREE THROW %

Better than 75%.....	0-0
50-74.9%.....	9-0
49.9% or less.....	0-0

#### 3-POINT SHOOTING %

50% or better.....	1-0
40-49%.....	0-0
39% or less.....	8-0

#### OPPONENT 3-POINT SHOOTING %

50% or better.....	0-0
40-49%.....	0-0
39% or less.....	9-0

#### REBOUNDS

More than opponent.....	8-0
Less than opponent .....	1-0
Rebounds Equal .....	0-0

#### TURNOVERS

More than opponent.....	2-0
Less than opponent .....	7-0
Turnovers Equal .....	0-0

#### ASSISTS

More than opponent.....	7-0
Less than opponent .....	1-0
Assists Equal .....	1-0

#### By Score (Margin of W/L)

More than 30 pts.....	0-0
20-29 pts.....	3-0
10-19 pts.....	3-0
4-9 pts.....	2-0
1-3 pts.....	1-0

#### BY DAY

Monday .....	1-0
Tuesday .....	0-0
Wednesday .....	1-0
Thursday .....	2-0
Friday .....	1-0
Saturday .....	1-0
Sunday.....	3-0

#### BY MONTH

In November .....	5-0
In December.....	4-0
In January.....	0-0
In February.....	0-0
In March.....	0-0

#### OPPONENTS

vs. Ranked opponents .....	0-0
at Home vs. ranked opponent.....	0-0
on Road vs. ranked opponent.....	0-0
Neutral site vs. ranked opponent.....	0-0
vs. Unranked opponent .....	9-0
at Home vs. unranked opponent.....	6-0
On Road vs. unranked opponent.....	3-0
Neutral site vs. unranked opponent.....	0-0

- Standing at 6-1, Augustus is ranked 16th nationally at her position by ESPN Hoopgurlz.
- Wellere, a native of The Windy City, comes to New York from Gwendolyn Brooks College Preparatory Academy, where she led the Eagles to a 20-6 record and an appearance in the Chicago Public League finals in 2013-14.
- In her team's semifinal victory, Wellere paced a Brooks comeback by registering an astounding 37 points and nine rebounds.
- Wellere, a 5-11 shooting guard/small forward is ranked 19th nationally at her position by ESPN Hoopgurlz and the ninth-best recruit in Illinois by Midwest Recruiting Report.

## ST. JOHN'S SOCIAL MEDIA

- Follow St. John's women's basketball on Twitter via the handle **@StJohnsWBB**. Updates from head coach **Joe Tartamella** can also be found on Twitter at **@SJU\_CoachT**. Join the conversation with the hashtag **#SJUWBB**. St. John's official athletic department twitter is **@STJohnsRedStorm**.
- St. John's women's basketball can be found on Facebook at **Facebook.com/SJUWBB** and on Instagram by following **@stjohn-swbb** and searching **#SJUWBB**.

## The Last Time St. John's...

Scored 100+ Points .....	102-48 (W), vs. UNC-Asheville (Dec. 28, 1994)
Scored 90-99 Points .....	96-86 (W), at DePaul (Jan. 11, 2014)
Scored 39 or Fewer Points .....	69-36 (L), at Notre Dame (Jan. 23, 2011)
Opponent Scored 100+ Points .....	100-69 (L), at Louisiana (Nov. 17, 1998)
Opponent Scored 90-99 Points .....	96-90 (L), vs. Dayton (March 24, 2013)
Opponent Scored 30-39 Points .....	61-31 (W), vs. Pitt (Jan. 16, 2013)
Opponent Scored 29 or Fewer Points .....	55-25 (W), at Seton Hall (Feb. 4, 2012)
Won in Overtime .....	68-63 (W2OT), vs. Creighton (March 10, 2014)
Lost in Overtime .....	96-90 (L), vs. Dayton (March 24, 2013)
Won by 50+ Points .....	102-48 (W, +54), vs. UNC-Asheville (Dec. 28, 1994)
Won by 30+ Points .....	80-48 (W, +32), vs. Xavier (Jan. 29, 2014)
Lost by 30+ Points .....	74-43 (L, -31), vs. Connecticut (March 5, 2012)
Shot 55.0 % or Better FG % .....	603 (35-58) , at DePaul (W, 96-86) (Jan. 11, 2014)
Shot 50.0 % or Better FG % .....	545 (30-55), vs. NJIT (W, 66-42) (Dec. 14, 2014)
Shot 50.0 % or Better from Three.....	571 (4-7), at USF (W, 55-52) (Dec. 7, 2014)
Shot Less Than 30 % FG % .....	245 (13-53), vs. Drexel (L, 62-55) (Dec. 14, 2013)
Shot Less Than 25 % FG % .....	245 (13-53), vs. Drexel (L, 62-55) (Dec. 14, 2013)
Opponent Shot 29.9% - 20% FG %.....	288 (15-52), vs. Xavier (W, 65-42) (Dec. 3, 2014)
Opponent Shot Less Than 20% FG % .....	180 (9-50), at Seton Hall (W, 55-25) (Feb. 4, 2012)
Shot 90% or Better FT % .....	905 (19-21), vs. Dayton (L, 96-90) (March 24, 2013)
Had 55+ Rebounds .....	59, vs. Providence (W, 85-65) (Feb. 8, 2014)
Had 50+ Rebounds .....	51 vs. Binghamton (W, 67-51) (Nov. 28, 2014)
Had 25+ Turnovers .....	25, at Sacred Heart (W, 77-72) (Nov. 8, 2013)
Had Less Than Eight Turnovers.....	7, at USF (W, 55-52) (Dec. 7, 2014)
Had Four or Fewer Turnovers .....	4, vs. Iona (W, 78-48) (Nov. 12, 2013)
Forced 25+ Turnovers .....	27, at Providence (W, 63-42) (March 3, 2014)
Had 15+ Steals .....	21, vs. Providence (W, 85-65) (Feb. 8, 2014)
Had 25+ Assists .....	25, vs. Stetson (W, 87-51) (Dec. 1, 2009)
Had 10+ Blocked Shots .....	12, vs. No. 14/17 UCLA (L, 53-52) (Dec. 16, 2012)
Opponent had 15+ Steals .....	17, at Notre Dame (L, 69-36) (Jan. 23, 2011)
Opponent Had 20-24 Assists .....	22, at DePaul (W, 96-86) (Jan. 11, 2014)
Opponent Had 10+ Blocked Shots .....	10, vs. No. 4/3 Notre Dame (W, 76-71) (Feb. 16, 2010)

### FIVE PLAYERS IN DOUBLE FIGURES

Aliyyah Handford (14), Eugeneia McPherson (13), Danaejah Grant (12), Keylantra Langley (12), Amber Thompson (10) vs. DePaul (L, 80-65) (March 1, 2014)

### TWO PLAYERS SCORE 20 OR MORE POINTS

Aliyyah Handford (27), Danaejah Grant (26) vs. Florida (W, 72-66) (Nov. 20, 2014)

### TWO PLAYERS OR MORE WITH DOUBLE-FIGURE REBOUNDS

Amber Thompson (13), Jade Walker (11) vs. Binghamton (W, 67-51) (Nov. 28, 2014)

### TWO PLAYERS RECORD DOUBLE-DOUBLES

Aliyyah Handford (27 pts., 11 reb.), Amber Thompson (12 pts., 10 reb.) vs. Quinnipiac (W, 76-66) (Nov. 20, 2013)

### THREE PLAYERS RECORD DOUBLE-DOUBLES

Shenneika Smith (23 pts, 12 reb.), Nadirah McKeith (19 pts, 10 reb.), Briana Brown (11 pts, 10 reb.) vs. UCF (W, 72-4) (Nov. 11, 2012)

### SJU PLAYER WITH 15 OR MORE REBOUNDS

Amber Thompson (16) at USF (W, 55-52) (Dec. 7, 2014)

### SJU PLAYER WITH 10 OR MORE ASSISTS

Eugeneia McPherson (11) vs. Providence (W, 85-65) (Feb. 8, 2014)

### SJU PLAYER WITH FIVE OR MORE STEALS

Aliyyah Handford (5) at Marist (W, 49-48) (Nov. 24, 2014)

### SJU PLAYER WITH FIVE OR MORE BLOCKS

Amber Thompson (6) vs. Xavier (W, 65-42) (Dec. 3, 2014)

### SJU PLAYER SCORED 30-39 POINTS

Danaejah Grant (30), vs. Yale (W, 61-50) (Nov. 15, 2014)

### SJU PLAYER SCORED 40+ POINTS

Cozette Ballentine (40), vs. Providence (Feb. 13, 1991)

## TALE OF THE TAPE 14-15 STATS



	SJU	AUBURN
RECORD	9-0	7-2
CONFERENCE RECORD	1-0	0-0
RPI (DEC. 19)	33	69
RANKINGS (AP/USATODAY) RV/25	NR/NR	NR/NR
SCORING	63.1	68.6
OPP. SCORING	49.8	53.4
SCORING MARGIN	+13.3	+15.1
FG %	.431	.452
OPP. FG %	.342	.354
3-PT. FG %	.243	.328
OPP. 3 PT. FG %	.241	.287
FT %	.547	.548
OPP. FT %	.630	.667
REBOUNDS/GAME	43.7	38.2
OPP. REBOUNDS/GAME	32.9	35.2
REBOUNDING MARGIN	+10.8	+3.0
ASSISTS/GAME	12.2	17.7
TURNOVERS/GAME	13.0	15.6
OPP. TURNOVERS/GAME	15.6	22.2
STEALS/GAME	7.2	13.4
BLOCKS/GAME	4.4	3.3
1ST HALF PTS.	30.6	32.8
OPP. 1ST HALF PTS.	23.3	26.2
2ND HALF PTS.	32.6	35.8
OPP. 2ND HALF PTS.	27.4	27.2

# 2014-15 Season Stats

RECORD:	OVERALL	HOME	AWAY	NEUTRAL
ALL GAMES	9-0	6-0	3-0	0-0
CONFERENCE	1-0	1-0	0-0	0-0
NON-CONFERENCE	8-0	5-0	3-0	0-0

#	Player	gp-gs	min	avg	Total		3-Point		F-Throw		Rebounds											
					fg-fga	fg%	3fg-fga	3fg%	ft-fa	ft%	off	def	tot	avg	pf	dq	a	to	blk	stl	pts	avg
15	GRANT, Danaejah	9-9	301	33.4	71-151	.470	8-32	.250	25-39	.641	21	29	50	5.6	12	0	19	15	1	6	175	19.4
03	HANDFORD, Aliyyah	9-9	278	30.9	69-150	.460	2-8	.250	23-42	.548	15	36	51	5.7	24	0	24	25	1	24	163	18.1
24	WALKER, Jade	9-9	208	23.1	34-78	.436	0-0	.000	9-13	.692	15	31	46	5.1	27	1	3	19	5	3	77	8.6
04	LEWIS, Aaliyah	9-9	294	32.7	18-52	.346	5-17	.294	14-25	.560	6	19	25	2.8	17	0	37	20	0	14	55	6.1
02	THOMPSON, Amber	9-9	295	32.8	22-44	.500	0-0	.000	4-11	.364	43	70	113	12.6	27	0	13	14	20	6	48	5.3
35	LITTLETON, Imani	7-0	76	10.9	7-14	.500	0-0	.000	1-4	.250	8	4	12	1.7	6	0	1	8	2	1	15	2.1
12	DUNN, Kyra	9-0	112	12.4	4-14	.286	0-0	.000	8-15	.533	10	16	26	2.9	8	0	1	5	9	1	16	1.8
13	SIMMONS, Crystal	9-0	83	9.2	3-13	.231	1-5	.200	1-5	.200	2	7	9	1.0	10	0	3	4	2	5	8	0.9
05	WADE, Tonoia	9-0	65	7.2	2-11	.182	1-7	.143	2-2	1.000	0	8	8	0.9	4	0	1	0	0	3	7	0.8
54	ARCHER, Selina	4-0	21	5.3	1-2	.500	0-0	.000	0-0	.000	0	1	1	0.3	0	0	1	0	0	0	2	0.5
01	ALEXANDER,Tamesh	9-0	64	7.1	1-9	.111	0-1	.000	0-3	.000	1	5	6	0.7	6	0	6	5	0	2	2	0.2
23	SPRUILL, Kimberly	1-0	3	3.0	0-0	.000	0-0	.000	0-0	.000	0	1	1	1.0	0	0	1	0	0	0	0	0.0
Team											17	28	45				2					
Total.....		9	1800		232-538	.431	17-70	.243	87-159	.547	138	255	393	43.7	141	1	110	117	40	65	568	63.1
Opponents.....		9	1800		163-476	.342	35-145	.241	87-138	.630	89	207	296	32.9	153	-	77	140	31	56	448	49.8

TEAM STATISTICS	SJU	OPP	Date	Opponent	Score	Att.
SCORING	568	448	11-15-14	at YALE	w 61-50	225
Points per game	63.1	49.8	11/20/14	FLORIDA	w 72-66	1272
Scoring margin	+13.3	-	11/24/14	at Marist	w 49-48	1891
FIELD GOALS-ATT	232-538	163-476	11/28/14	BINGHAMTON	w 67-51	537
Field goal pct	.431	.342	11/30/14	WAGNER	w 71-49	425
3 POINT FG-ATT	17-70	35-145	* 12/03/14	XAVIER	w 65-42	691
3-point FG pct	.243	.241	12/7/14	at USF	w 55-52	1648
3-pt FG made per game	1.9	3.9	12/11/14	UCF	w 62-48	603
FREE THROWS-ATT	87-159	87-138	N 12/14/14	NJIT	w 66-42	760
Free throw pct	.547	.630				
F-Throws made per game	9.7	9.7				
REBOUNDS	393	296				
Rebounds per game	43.7	32.9				
Rebounding margin	+10.8	-				
ASSISTS	110	77				
Assists per game	12.2	8.6				
TURNOVERS	117	140				
Turnovers per game	13.0	15.6				
Turnover margin	+2.6	-				
Assist/turnover ratio	0.9	0.6				
STEALS	65	56				
Steals per game	7.2	6.2				
BLOCKS	40	31				
Blocks per game	4.4	3.4				
ATTENDANCE	4288	3764				
Home games-Avg/Game	6-715	3-1255				
Neutral site-Avg/Game	-	0-0				

\* = Conference game

Score by Periods	1st	2nd	Totals
St. John's	275	293	568
Opponents	201	247	448

# 2014-15 Points, Rebounds, Assists

Opponent	Date	Score		01 ALEXANDER,	02 THOMPSON,A	03 HANDFORD,A	04 LEWIS,AALI	05 WADE,TONOI	12 DUNN,KYRA	13 SIMMONS,CR
at YALE	11-15-14	61-50	w	0-0-0	3-14-2	18-5-4	4-2-2	0-0-0	0-2-0	0-1-0
FLORIDA	11/20/14	72-66	w	0-0-0	1-10-1	27-7-0	6-4-8	0-1-0	1-1-0	0-0-0
at Marist	11/24/14	49-48	w	0-1-0	6-17-3	7-12-3	8-0-1	0-0-0	0-2-0	0-0-0
BINGHAMTON	11/28/14	67-51	w	0-0-0	4-13-0	19-3-4	9-2-4	0-0-0	2-3-0	0-3-0
WAGNER	11/30/14	71-49	w	2-2-0	14-10-1	21-8-2	6-1-5	2-3-0	4-3-1	5-1-0
XAVIER	12/03/14	65-42	w	0-0-1	6-14-4	14-5-2	8-5-5	0-0-0	1-4-0	3-1-0
at USF	12/7/14	55-52	w	0-1-2	6-16-0	25-6-2	2-2-3	0-0-0	1-5-0	0-0-0
UCF	12/11/14	62-48	w	0-2-0	4-12-2	15-1-3	12-8-6	0-1-0	0-4-0	0-2-0
NJIT	12/14/14	66-42	w	0-0-3	4-7-0	17-4-4	0-1-3	5-3-1	7-2-0	0-1-3

Opponent	Date	Score		15 GRANT,DANA	23 SPRUILL,KI	24 WALKER,JAD	35 LITTLETON,	54 ARCHER,SEL
at YALE	11-15-14	61-50	w	30-4-4	DNP	4-7-0	2-5-0	DNP
FLORIDA	11/20/14	72-66	w	26-6-3	DNP	11-2-0	0-0-0	0-0-0
at Marist	11/24/14	49-48	w	12-3-2	DNP	14-8-0	2-0-0	DNP
BINGHAMTON	11/28/14	67-51	w	19-8-3	DNP	10-11-1	4-2-0	0-0-0
WAGNER	11/30/14	71-49	w	14-9-3	DNP	2-3-0	1-1-1	0-0-0
XAVIER	12/03/14	65-42	w	23-5-1	DNP	10-7-0	0-1-0	DNP
at USF	12/7/14	55-52	w	17-3-1	DNP	4-3-1	DNP	DNP
UCF	12/11/14	62-48	w	20-7-2	DNP	11-2-0	DNP	DNP
NJIT	12/14/14	66-42	w	14-5-0	0-1-1	11-3-1	6-3-0	2-1-1

# 2014-15

## St. John's Game Highs

POINTS	72	FLORIDA (11/20/14)
	71	WAGNER (11/30/14)
	67	BINGHAMTON (11/28/14)
	66	NJIT (12/14/14)
	65	XAVIER (12/03/14)
FIELD GOALS MADE	30	NJIT (12/14/14)
	29	WAGNER (11/30/14)
FIELD GOAL ATTEMPTS	67	at USF (12/7/14)
	67	BINGHAMTON (11/28/14)
FIELD GOAL PERCENTAGE	.545 (30-55)	NJIT (12/14/14)
	.509 (29-57)	WAGNER (11/30/14)
3 PT FIELD GOALS MADE	4	at USF (12/7/14)
	4	FLORIDA (11/20/14)
3 PT FG ATTEMPTS	12	FLORIDA (11/20/14)
	10	at Marist (11/24/14)
3 PT FG PERCENTAGE	.571 (4-7)	at USF (12/7/14)
	.333 (4-12)	FLORIDA (11/20/14)
	.333 (1-3)	at YALE (11-15-14)
FREE THROWS MADE	18	FLORIDA (11/20/14)
	13	XAVIER (12/03/14)
	13	BINGHAMTON (11/28/14)
FREE THROW ATTEMPTS	27	FLORIDA (11/20/14)
	22	XAVIER (12/03/14)
FREE THROW PERCENTAGE	.813 (13-16)	BINGHAMTON (11/28/14)
	.667 (18-27)	FLORIDA (11/20/14)
REBOUNDS	51	BINGHAMTON (11/28/14)
	47	at Marist (11/24/14)
	47	at YALE (11-15-14)
ASSISTS	17	NJIT (12/14/14)
	13	UCF (12/11/14)
	13	XAVIER (12/03/14)
	13	WAGNER (11/30/14)
STEALS	8	NJIT (12/14/14)
	8	at USF (12/7/14)
	8	XAVIER (12/03/14)
	8	WAGNER (11/30/14)
	8	BINGHAMTON (11/28/14)
BLOCKED SHOTS	10	XAVIER (12/03/14)
	6	WAGNER (11/30/14)
	6	FLORIDA (11/20/14)
TURNOVERS	19	UCF (12/11/14)
	18	FLORIDA (11/20/14)
FOULS	23	at Marist (11/24/14)
	20	at YALE (11-15-14)

# 2014-15

## St. John's Game Lows

POINTS	49		at Marist (11/24/14)
	55		at USF (12/7/14)
	61		at YALE (11-15-14)
	62		UCF (12/11/14)
	65		XAVIER (12/03/14)
FIELD GOALS MADE	21		at Marist (11/24/14)
	21		at USF (12/7/14)
FIELD GOAL ATTEMPTS	52		UCF (12/11/14)
	55		NJIT (12/14/14)
FIELD GOAL PERCENTAGE	.313	(21-67)	at USF (12/7/14)
	.356	(21-59)	at Marist (11/24/14)
3 PT FIELD GOALS MADE	0		BINGHAMTON (11/28/14)
	0		XAVIER (12/03/14)
3 PT FG ATTEMPTS	3		at YALE (11-15-14)
	3		XAVIER (12/03/14)
3 PT FG PERCENTAGE	.000	(0-9)	BINGHAMTON (11/28/14)
	.000	(0-3)	XAVIER (12/03/14)
	.200	(2-10)	at Marist (11/24/14)
FREE THROWS MADE	4		NJIT (12/14/14)
	5		at Marist (11/24/14)
FREE THROW ATTEMPTS	9		NJIT (12/14/14)
	15		at YALE (11-15-14)
	15		at Marist (11/24/14)
FREE THROW PERCENTAGE	.333	(5-15)	at Marist (11/24/14)
	.400	(6-15)	at YALE (11-15-14)
REBOUNDS	34		FLORIDA (11/20/14)
	37		NJIT (12/14/14)
ASSISTS	9		at Marist (11/24/14)
	9		at USF (12/7/14)
STEALS	5		UCF (12/11/14)
	6		FLORIDA (11/20/14)
BLOCKED SHOTS	0		NJIT (12/14/14)
	3		at Marist (11/24/14)
	3		BINGHAMTON (11/28/14)
TURNOVERS	7		at USF (12/7/14)
	9		XAVIER (12/03/14)
FOULS	8		NJIT (12/14/14)
	10		BINGHAMTON (11/28/14)

# 2014-15

## Opponent Game Lows

POINTS	42	XAVIER (12/03/14)
	42	NJIT (12/14/14)
	48	at Marist (11/24/14)
	48	UCF (12/11/14)
	49	WAGNER (11/30/14)
FIELD GOALS MADE	15	at YALE (11-15-14)
	15	at Marist (11/24/14)
	15	XAVIER (12/03/14)
FIELD GOAL ATTEMPTS	49	at YALE (11-15-14)
	50	at Marist (11/24/14)
FIELD GOAL PERCENTAGE	.288 (15-52)	XAVIER (12/03/14)
	.300 (15-50)	at Marist (11/24/14)
3 PT FIELD GOALS MADE	1	NJIT (12/14/14)
	2	WAGNER (11/30/14)
3 PT FG ATTEMPTS	11	at YALE (11-15-14)
	11	WAGNER (11/30/14)
3 PT FG PERCENTAGE	.071 (1-14)	NJIT (12/14/14)
	.176 (3-17)	UCF (12/11/14)
	.182 (2-11)	WAGNER (11/30/14)
FREE THROWS MADE	3	BINGHAMTON (11/28/14)
	5	NJIT (12/14/14)
FREE THROW ATTEMPTS	6	BINGHAMTON (11/28/14)
	8	NJIT (12/14/14)
FREE THROW PERCENTAGE	.500 (3-6)	BINGHAMTON (11/28/14)
	.542 (13-24)	at Marist (11/24/14)
REBOUNDS	24	NJIT (12/14/14)
	26	BINGHAMTON (11/28/14)
ASSISTS	5	WAGNER (11/30/14)
	6	at YALE (11-15-14)
	6	UCF (12/11/14)
STEALS	2	at YALE (11-15-14)
	3	at USF (12/7/14)
BLOCKED SHOTS	1	XAVIER (12/03/14)
	2	WAGNER (11/30/14)
	2	UCF (12/11/14)
TURNOVERS	12	UCF (12/11/14)
	13	NJIT (12/14/14)
FOULS	10	NJIT (12/14/14)
	15	at YALE (11-15-14)
	15	at USF (12/7/14)

# 2014-15

## Individual Game Highs

Points	30	GRANT, Danaejah at YALE (11-15-14)
	27	HANDFORD, Aliyyah vs Florida (11/20/14)
	26	GRANT, Danaejah vs Florida (11/20/14)
	25	HANDFORD, Aliyyah at USF (12/7/14)
	23	GRANT, Danaejah vs Xavier (12/03/14)
Field Goals Made	14	GRANT, Danaejah at YALE (11-15-14)
	12	HANDFORD, Aliyyah vs Florida (11/20/14)
Field Goal Att.	27	HANDFORD, Aliyyah at USF (12/7/14)
	26	GRANT, Danaejah at YALE (11-15-14)
FG Pct (min 5 made)	.727 (8-11)	HANDFORD, Aliyyah vs NJIT (12/14/14)
	.714 (10-14)	HANDFORD, Aliyyah vs WAGNER (11/30/14)
	.714 (5-7)	WALKER, Jade vs Florida (11/20/14)
3-Point FG Made	4	GRANT, Danaejah at USF (12/7/14)
	2	LEWIS, Aaliyah vs UCF (12/11/14)
	2	LEWIS, Aaliyah at Marist (11/24/14)
	2	HANDFORD, Aliyyah vs Florida (11/20/14)
	2	GRANT, Danaejah vs Florida (11/20/14)
3-Point FG Att.	8	GRANT, Danaejah vs Florida (11/20/14)
	5	GRANT, Danaejah at USF (12/7/14)
	5	GRANT, Danaejah at Marist (11/24/14)
3-Pt FG Pct (min 2 made)	.800 (4-5)	GRANT, Danaejah at USF (12/7/14)
	.667 (2-3)	LEWIS, Aaliyah at Marist (11/24/14)
	.667 (2-3)	HANDFORD, Aliyyah vs Florida (11/20/14)
Free Throws Made	10	GRANT, Danaejah vs Florida (11/20/14)
	5	HANDFORD, Aliyyah at USF (12/7/14)
	5	GRANT, Danaejah vs Xavier (12/03/14)
Free Throw Att.	13	GRANT, Danaejah vs Florida (11/20/14)
	8	HANDFORD, Aliyyah at USF (12/7/14)
FT Pct (min 3 made)	.769 (10-13)	GRANT, Danaejah vs Florida (11/20/14)
	.750 (3-4)	LEWIS, Aaliyah vs Binghamton (11/28/14)
	.750 (3-4)	GRANT, Danaejah vs Binghamton (11/28/14)
	.750 (3-4)	HANDFORD, Aliyyah vs Binghamton (11/28/14)
Rebounds	17	THOMPSON, Amber at Marist (11/24/14)
	16	THOMPSON, Amber at USF (12/7/14)
Assists	8	LEWIS, Aaliyah vs Florida (11/20/14)
	6	LEWIS, Aaliyah vs UCF (12/11/14)
Steals	5	HANDFORD, Aliyyah at Marist (11/24/14)
	4	HANDFORD, Aliyyah at USF (12/7/14)
Blocked Shots	6	THOMPSON, Amber vs Xavier (12/03/14)
	4	THOMPSON, Amber vs Florida (11/20/14)
Turnovers	8	LEWIS, Aaliyah vs UCF (12/11/14)
	6	HANDFORD, Aliyyah at Marist (11/24/14)
Fouls	5	WALKER, Jade at Marist (11/24/14)
	4	THOMPSON, Amber vs UCF (12/11/14)
	4	WALKER, Jade vs UCF (12/11/14)
	4	DUNN, Kyra vs UCF (12/11/14)
	4	WALKER, Jade vs Xavier (12/03/14)
	4	HANDFORD, Aliyyah vs WAGNER (11/30/14)
	4	THOMPSON, Amber at Marist (11/24/14)
	4	HANDFORD, Aliyyah at Marist (11/24/14)
	4	WALKER, Jade vs Florida (11/20/14)
	4	THOMPSON, Amber vs Florida (11/20/14)
	4	GRANT, Danaejah vs Florida (11/20/14)

## Game One-St. John's at Yale

### W, 61-50-Nov. 15, 2014-New Haven, Conn.

The dynamic duo of Danaejah Grant and Aliyyah Handford combined for 79 percent of the Red Storm's scoring on Saturday afternoon, leading their team to a 61-50 season-opening win over Yale on the road.

"I'm really proud of our effort in the season-opener today. Not only did we get great performances out of our back court, but the whole team stepped up in the closing minutes to help seal the victory. Road wins are always important, especially as we prepare for conference play."

Grant tallied 30 points on the afternoon, connecting on 14 of 26 shot attempts and shattering her old career-high of 21. Grant also registered four assists and four rebounds and surrendered only one turnover on the day.

Handford, a WBCA Honorable Mention All-America selection last season, finished the game with 18 points, five rebounds, four assists and three steals.

Amber Thompson was a force underneath for the Red Storm, finishing the game with 14 rebounds and a pair of blocks.

Jade Walker added four points and seven boards in the win, while Aaliyah Lewis chipped in four points, two assists and two steals.

Yale had the hot scoring touch early, using a pair of three-pointers from Katie Werner and Meghan McIntyre to take an 8-4 lead over the Red Storm less than three minutes into the contest. From there, Handford scored five-straight for the Red Storm, giving her team a 9-8 lead with just over 12 minutes to go in the opening half.

The teams traded baskets and leads several times over the next few minutes before a Handford bucket off an inbound pass gave the Red Storm a 19-17 advantage.

Two minutes later, Grant connected on her sixth field goal of the half. Soon after, Aaliyah Lewis converted on an acrobatic layup before Grant and Handford each added baskets, capping a 10-0 St. John's run to give the Red Storm a 27-17 lead with three minutes to go in the opening period.

The Red Storm closed out the half with its ten-point lead intact, going into the locker room ahead, 31-21. The St. John's back court of Grant, Handford and Lewis registered all of their team's points in the opening half, scoring 16, 11 and 4, respectively.

Grant opened up the second half with the same scoring touch she showed in the opening stanza, netting the Red Storm's first six points and setting a new career high when registered her 22nd point of the day.

With the Red Storm ahead 37-26 and three minutes gone in the second half, Yale began to slowly chip away at the St. John's lead. The Elis uncorked a 16-6 run over the course of the next ten minutes, eventually trimming the deficit to as little as one with about seven minutes to go.

Facing a shrinking lead, the Red Storm kicked it into high gear, holding Yale scoreless for nearly four minutes. With the defense firing on all cylinders, Grant, Handford and Thompson combined for eight unanswered points, helping extend the St. John's lead back to seven, 51-44, with 3:16 left in the game.

The Red Storm continued to apply pressure in the closing minutes, eventually leaving New Haven with a 61-50 victory.

#### St. John's 61 • 1-0

#	Player		Total		3-Ptr		Rebounds			PF	TP	A	TO	Blk	Stl	Min
			FG-FGA		FG-FGA		FT-FTA	Off	Def	Tot						
02	THOMPSON, Amber	f	1-5		0-0		1-2	5	9	14	3	3	2	2	2	36
24	WALKER, Jade	f	2-8		0-0		0-0	3	4	7	4	4	0	3	0	16
03	HANDFORD, Aliyyah	g	7-16		0-0		4-6	0	5	5	4	18	4	3	0	32
04	LEWIS, Aaliyah	g	2-4		0-0		0-2	1	1	2	4	4	2	0	0	35
15	GRANT, Danaejah	g	14-26		1-3		1-5	3	1	4	2	30	4	1	1	38
01	ALEXANDER, Tamesha		0-0		0-0		0 0 0	0	0	0	0	0	0	0	0	4
05	WADE, Tonoia		0-0		0-0		0 0 0	0	0	0	0	0	0	0	1	5
12	DUNN, Kyra		0-1		0-0		1 1 2	1	0	2	1	0	0	2	1	9
13	SIMMONS, Crystal		0-0		0-0		0 0 1	1	1	1	1	0	0	0	0	4
35	LITTLETON, Imani		1-3		0-0		3 2 5	1	2		1	2	0	1	0	21
Team							5	2	7							
Totals			27-63		1-3		6-15	21	26	47	20	61	12	12	4	200
FG % 1st Half:			15-36	41.7%	2nd half:	12-27	44.4%	Game:	27-63	42.9%	Deadball Rebounds 5					
3FG % 1st Half:			0-1	0.0%	2nd half:	1-2	50.0%	Game:	1-3	33.3%						
FT % 1st Half:			1-5	20.0%	2nd half:	5-10	50.0%	Game:	6-15	40.0%						

#### YALE 50 • 0-1

#	Player		Total		3-Ptr		Rebounds			PF	TP	A	TO	Blk	Stl	Min
			FG-FGA		FG-FGA		FT-FTA	Off	Def	Tot						
05	Katie Werner	f	2-5		1-1		3-4	4	2	6	3	8	1	0	0	1
32	Meredith Boardman	f	1-4		0-0		3-4	1	5	6	3	5	0	1	1	0
04	Nyasha Sarju	g	1-4		0-2		2-2	0	1	1	1	4	2	3	0	22
11	Sarah Halejian	g	5-13		1-4		4-7	0	1	1	2	15	3	3	2	1
15	Meghan McIntyre	g	2-8		2-3		2-2	2	3	5	1	8	0	0	0	24
13	Jen Berkowitz		1-4		0-1		2-3	2	2	4	2	4	0	2	1	0
23	Tamara Simpson		2-6		0-0		1 2 3	1	2	3	1	4	0	1	0	14
24	Lena Munzer		0-0		0-0		0 0 0	0	0	0	1	0	0	2	0	7
34	Mary Ann Santucci		1-5		0-0		0 0 1	1	1	2	1	2	0	1	0	21
Team							1	2	3					1		
Totals			15-49		4-11		16-22	12	19	31	15	50	6	14	4	200
FG % 1st Half:			7-22	31.8%	2nd half:	8-27	29.6%	Game:	15-49	30.8%	Deadball Rebounds 2					
3FG % 1st Half:			3-5	60.0%	2nd half:	1-6	16.7%	Game:	1-3	33.3%						
FT % 1st Half:			4-4	100.0%	2nd half:	12-18	66.7%	Game:	16-22	72.7%						

Officials: Gary Schimel, Shannon Feck, Leslie Porschen

Technical fouls: St. John's-None. YALE-None.

Attendance: 225

Score by periods	1st	2nd	Total
St. John's	31	30	61
YALE	21	29	50

## Game Two-St. John's vs. Florida

### W, 72-66-Nov. 20, 2014-Queens, N.Y.

The dynamic scoring duo of Aliyyah Handford and Danaejah Grant put forth another pair of spectacular performances on Thursday night in Carnesecca Arena, netting 27 and 26 points, respectively, to lead the Red Storm to a 72-66 victory over Florida.

"I'm very proud of our effort, especially from a resiliency standpoint and how we were able to withstand runs, especially in the second half," said head coach Joe Tartamella. "We also made some big time shots and I thought we executed our game plan extremely well, particularly in the first half. We were able to take them out of their rhythm a little bit and get a great player like [Florida forward] Ronni Williams in some foul trouble. Florida is going to be a great team in the SEC this season so this was a great early test for us and great for our league. I'm happy with everything we did today."

In addition to her 27 points, Handford pulled down seven boards and grabbed three steals to pace the Red Storm (2-0), while Grant added six rebounds and three assists. Most notably on display Thursday night from Handford was her newfound ability to hit from the outside. Having registered just one career three-pointer heading into the game, the Newark, N.J., native buried two of her three tries from beyond the arc against the Gators.

Sophomore Jade Walker also finished in double figure for the Red Storm, pouring in 11 points on just 5-7 shooting. The Maplewood, N.J., native's stat line becomes even more impressive when taking into account the fact that she played only 18 minutes due to foul trouble.

Senior forward Amber Thompson registered her second double-digit rebounding performance in as many tries this season, corralling 10 boards and swatting a game-high four blocks.

Aaliyah Lewis turned in another impressive effort at the point guard position, recording eight assists, six points and two steals.

Florida (2-1) featured three players in double figures, highlighted by Carlie Needles' 16 point, eight rebound outing.

St. John's sported a hot hand in the early going, converting on four of its first seven field-goal attempts to grab an 11-4 lead at the game's first media timeout. Walker scored five during that stretch and Handford added four.

In response, the Gators uncorked a tear, outscoring the Red Storm 9-2 and moving within five, 26-21, just inside the six-minute mark. Grant, however, answered back with eight unanswered of her own, giving the Red Storm a 34-21 advantage less than 90 seconds later.

The two teams proceeded to trade buckets over the closing minutes of the first half, and the Red Storm entered the locker room with a 40-26 lead.

Handford led all scorers with 17 in the opening stanza, while Grant finished right behind her with 16. Thompson led all players on the glass with six boards.

Coming out of the break, the Gators shored up holes in their defense and looked crisper on offense, narrowing the St. John's lead to seven, 43-36, at the first media timeout of the second half.

Handford nailed a jumper out of the stoppage to move the Red Storm lead back to nine, but Florida rattled off five in a row to trim the gap to four, the Red Storm's smallest lead since the 12-minute mark of the first half.

With its lead dwindling, the Red Storm dug deep and regained its scoring touch, bumping the lead to nine with just over nine minutes to go on buckets from Handford and Grant.

Down by nine, Florida fired off 11-consecutive points over the course of the next three minutes, taking its first lead of the game, 55-54, with just six minutes to go.

Grant put the Red Storm back on top with a jumper less than a minute later, kicking off a stretch of back-and-forth basketball that saw a couple of lead changes.

With the Red Storm up one and just over three minutes left on the clock, Handford knocked down her second triple of the contest from the right wing, extending the St. John's lead to four, 62-58. A few possessions later, Lewis swiped the ball away on defense and orchestrated a brilliant two-on-one fast break that ended with a Handford layup, bumping the Red Storm lead to six.

Florida would trim the lead to as little as three in the closing minutes, but the Red Storm always had an answer, closing out the game and earning a hard-fought 72-66 victory.

#### Florida 66 • 2-1

#	Player		Total		3-Ptr		Rebounds			PF	TP	A	TO	Blk	Stl	Min
			FG-FGA		FG-FGA		FT-FTA	Off	Def	Tot						
01	Williams, Ronni		5-9		0-0		0-2	0	1	1	4	10	0	1	1	0
22	Lewis, Kayla	c	4-9		0-1		2-4	4	5	9	3	10	1	3	1	33
04	Needles, Carlie	g	5-6		4-5		2-2	4	4	8	3	16	2	3	0	0
05	Bannister, Antoinette	g	4-8		0-2		0-0	2	2	4	2	8	3	2	0	37
13	Peoples, Cassie	g	0-7		0-6		5-6	0	1	1	2	5	4	4	1	1
03	Miller, January		2-7		1-2		2-2	1	2	3	4	7	2	3	0	21
11	Anderson, Dyandria		1-1		0-0		0-0	0	0	0	2	2	1	0	0	7
15	Dimaite, Viktorija		1-2		0-1		0-2	1	1	2	0	2	1	1	1	0
23	Copeland, Brooke		0-0		0-0		0 0 0	0	0	0	0	0	0	0	0	0
32	Batchelor, Carla		2-3		0-1		0-0	0	0	0	2	4	0	1	0	0
44	Lorenzen, Haley		1-3		0-0		0 0 0	0	0	0	0	2	0	1	0	1
Team							1	2	3							
Totals			25-55		5-18		11-18	13	18	31	22	66	14	19	4	10
FG % 1st Half:			12-25	48.0%	2nd half:	13-30	43.3%	Game:	25-55	45.5%	Deadball Rebounds 4.1					
3FG % 1st Half:			2-8	25.0%	2nd half:	3-10	30.0%	Game:	5-18	27.8%						
FT % 1st Half:			0-4	0.0%	2nd half:	11-14	78.6%	Game:	11-18	61.1%						

#### St. John's 72 • 2-0

#	Player		Total		3-Ptr		Rebounds					PF	TP	A	TO	Blk	Stl	Min
			FG-FGA		FG-FGA		FT-FTA	Off	Def	Tot								
02	THOMPSON, Amber	f	0-2		0-0		1-2	4	6	10	4	1	1	1	4	0	37	
24	WALKER, Jade	f	5-7		0-0		1-1	1	1	2	4	11	0	2	1	0	18	
03	HANDFORD, Aliyyah	g	12-25		2-3		1-2	5	2	7	2	27	0	4	0	3	40	
04	LEWIS, Aaliyah	g	1-4		0-1		4-7	1	3	4	1	6	8	3	0	2	37	
15	GRANT, Danaejah	g	7-16		2-8		10-13	2	4	6	4	26	3	5	0	1	36	
01	ALEXANDER, Tamesha		0-0		0-0		0-0	0	0	0	0	0	0	0	0	0	3	
05	WADE, Tonoia		0-1		0-0		0-0	0	1	1	0	0	0	0	0	0	4	
12	DUNN, Kyra		0-1		0-0		1-2	1	0	1	0	1	0	0	1	0	13	
13	SIMMONS, Crystal		0-0		0-0		0-0	0	0	0	0	0	0	0	0	0	4	
35	LITTLETON, Imani		0-0		0-0		0-0	0	0	0	0	0	0	2	0	0	6	
54	ARCHER, Selina		0-0		0-0		0-0	0	0	0	0	0	0	0	0	0	2	
Team								0	3	3				1				
Totals			25-56		4-12		18-27	14	20	34	15	72	12	18	6	6	200	
FG % 1st Half: 15-29			51.7%	2nd half: 10-27			37.0%	Game: 25-56			44.6%	Deadball Rebounds 7						
3FG % 1st Half: 2-6			33.3%	2nd half: 2-6			33.3%	Game: 4-12			33.3%							
FT % 1st Half: 8-12			66.7%	2nd half: 10-15			66.7%	Game: 18-27			66.7%							



## Game Five-St. John's vs. Wagner

### W, 71-49-Nov. 30, 2014-Queens, N.Y.

The Red Storm cruised to victory on Sunday afternoon, leading wire-to-wire and securing the best start in the Joe Tartamella era with a 71-49 victory over Wagner in Carnesecca Arena.

"I'm happy with our performance in a number of areas. I thought this was a better team win for us as far as how we played for a forty-minute span than we did the other day," said head coach Joe Tartamella. "We had improvements in a number of areas and were able to go to our bench today, which was great for us. Getting 14 points from them is a step in the right direction for us from the past games. This was an important game from the standpoint that it was a Friday-Sunday doubleheader like we are going to play in the BIG EAST. We wanted to prepare ourselves and give us an opportunity to get in that rhythm. Now we turn the page and have our first BIG EAST game on Wednesday against Xavier, who is a very, very good team."

Aliyyah Handford led the Red Storm on the score sheet, tallying 21 points on 10-of-14 shooting and pulling down eight rebounds.

Amber Thompson recorded her first double-double of the year, scoring a season-high 14 points and pulling down 10 boards. The senior from Newark, N.J., who ranks in the top ten nationally on the glass, now has at least 10 rebounds in each of her five games this season.

Danaejah Grant narrowly missed her first double-double of the year, recording 14 points and nine rebounds in just 25 minutes of action.

Aliyah Lewis continued to excel as the team's floor general, dishing out five assists and surrendering only one turnover. The Staten Island, N.Y., native also poured in six points and picked up a pair of steals.

Three members of the Red Storm scored the first points of their collegiate careers on Sunday: Crystal Simmons, Tonoia Wade and Tamesha Alexander.

As a team, the Red Storm was lights out from the floor, shooting 51 percent on the game. It was the Red Storm's first time shooting over 50 percent from the floor since Feb. 1, 2014 against Seton Hall.

St. John's controlled the contest from the outset, scoring the game's first 12 points over the course of four and a half minutes. Handford paced the Red Storm with six points during that stretch, boosted by field goals from Jade Walker, Grant and Thompson.

After the Seahawks converted on a three to get on the board five minutes into the contest, the Red Storm rattled off five more unanswered on a three-pointer from Lewis and another field goal from Handford to build its lead to 14, 17-3, near the 14 minute mark of the half.

Lyndsay Rowe soon converted on her second triple of the game to narrow the gap to 11, 17-6. From there, the Red Storm's smothering defense helped ignite a 15-2 run in favor of the home team, capped off by a Kyra Dunn free throw with 5:38 remaining until the intermission.

Over the final 13:08 of the opening half, the Red Storm outscored the Seahawks 20-8, taking a 37-16 lead into the locker room.

Thompson recorded the first four points on the second half, reaching double-digit for the first time this season.

Wagner would narrow the lead to as little as 20 near the midway point of the half, but Simmons scored the first five points of her career to help keep the Seahawks at bay. The Madrid, Spain, native sank a three before swiping an inbounds pass and converting on the layup.

With a young lineup on the court, the Red Storm saw its leads shrink to as little as 17, 58-41, with under seven minutes to go. Coach Tartamella soon sent several starters back into the contest and the veterans scored four in a row to put the Red Storm up by 21.

The Red Storm would lead by as many as 27 following the first points of Tamesha Alexander's career with just over two minutes remaining before closing out the contest, 71-49.

#### WAGNER 49 • 0-5

#	Player		Total		3-Ptr		Rebounds			PF	TP	A TO Blk Stl				Min
			FG-FGA	FG-FGA	FT-FTA	FT-FTA	Off	Def	Tot							
20	DLUHI, Jackie	f	0-1	0-0	0-0	0	1	1	1	0	1	0	0	0	0	20
33	NWAIGWE, Ugo	c	4-4	0-0	0-0	1	1	2	2	8	0	0	2	0	0	15
01	NWAJELI, Jasmine	g	8-19	0-1	5-8	1	5	6	2	21	1	6	0	2	2	29
14	ROWE, Lyndsay	g	3-8	2-4	0-0	0	3	3	4	8	1	3	0	4	4	38
24	PECK, Jordyn	g	2-10	0-4	2-4	0	1	1	1	6	0	0	0	1	1	30
03	RUSSELL, Tanasia		0-0	0-0	0-0	0	0	0	1	0	0	3	0	0	0	5
05	WADE, Tessa		0-2	0-1	2-2	1	1	2	0	2	0	0	0	0	0	8
13	ROMA, Sofia		1-4	0-0	0-0	1	1	2	2	2	0	1	0	0	0	8
21	SULLIVAN, Samantha		0-0	0-0	0-0	0	1	1	1	0	1	2	0	0	0	11
25	CONYERS-JORDAN, M.		0-5	0-1	0-0	3	2	5	4	0	1	2	0	2	2	20
32	BUTIGIAN, Taylor		1-2	0-0	0-0	0	2	2	2	2	0	0	0	0	1	16
Team						2	3	5								
Totals			19-55	2-11	9-14	9	21	30	20	49	5	17	2	10		200
FG % 1st Half: 7-28			25.0%	2nd half: 12-27		44.4%	Game: 19-55		34.5%	Deadball Rebounds 1						
3FG % 1st Half: 2-9			22.2%	2nd half: 0-2		0.0%	Game: 2-11		18.2%							
FT % 1st Half: 0-2			0.0%	2nd half: 9-12		75.0%	Game: 9-14		64.3%							

#### St. John's 71 • 5-0

#	Player		Total		3-Ptr		Rebounds			PF	TP	A TO Blk Stl				Min
			FG-FGA	FG-FGA	FT-FTA	FT-FTA	Off	Def	Tot							
02	THOMPSON, Amber	f	6-9	0-0	2-4	6	4	10	1	14	1	3	2	1	25	
24	WALKER, Jade	f	1-5	0-0	0-0	1	2	3	2	2	0	1	1	0	19	
03	HANDFORD, Aliyyah	g	10-14	0-0	1-1	2	6	8	4	21	2	2	0	1	23	
04	LEWIS, Aaliyah	g	2-5	1-2	1-2	1	0	1	2	6	5	1	0	2	29	
15	GRANT, Danaejah	g	6-12	0-2	2-2	3	6	9	0	14	3	4	0	1	25	
01	ALEXANDER,Tamesha		1-2	0-0	0-1	0	2	3	2	0	1	0	1	0	11	
05	WADE, Tonoia		0-4	0-4	2-2	0	3	3	1	2	0	0	0	0	16	
12	DUNN, Kyra		1-1	0-0	2-4	0	3	3	2	4	1	1	1	0	19	
13	SIMMONS, Crystal		2-5	1-1	0-0	0	1	1	2	5	0	1	1	2	17	
35	LITTLETON, Imani		0-0	0-0	1-4	0	1	1	0	1	1	1	1	0	11	
54	ARCHER, Selina		0-0	0-0	0-0	0	0	0	0	0	0	0	0	0	5	
Team						1	3	4								
Totals			29-57	2-9	11-20	14	31	45	17	71	13	15	6	8		200
FG % 1st Half: 17-31			54.8%	2nd half: 12-26		46.2%	Game: 29-57		50.9%	Deadball Rebounds 2						
3FG % 1st Half: 1-4			25.0%	2nd half: 1-5		20.0%	Game: 2-9		22.2%							
FT % 1st Half: 2-6			33.3%	2nd half: 9-14		64.3%	Game: 11-20		55.0%							

Officials: Kathy Lonergan, Daryl Humphrey, Heather C. Brown

Technical fouls: WAGNER-None. St. John's-None.

Attendance: 425

Delay of game warning on SJU #3 Aliyyah Handford - 1st half 18:22

Score by periods				1st	2nd	Total
WAGNER				16	33	49
St. John's				37	34	71

Points	In Paint	Off T/O	2nd Chance	Fast Break	Bench
WAGNER	28	15	6	2	6
SJU	38	21	14	18	14

Last FG - WAGNER 2nd-00:09. SJU 2nd-02:42.

Largest lead - WAGNER None, SJU by 27 2nd-02:42.

WAGNER led for 00:00. SJU led for 39:34. Game was tied for 00:26.

Score tied - 0 times.

Lead changed - 0 times.

## Game Six-St. John's vs. Xavier

### W, 65-42-Dec. 3, 2014-Queens, N.Y.

The BIG EAST's leading scorer during non-conference play with over 20 points per game, Danaejah Grant had another spectacular performance in the Red Storm's conference-opener, scoring 23 points on 9-of-13 shooting and leading St. John's to a 65-42 victory in Carnesecca Arena on Wednesday night.

"Tonight was a great opportunity at home to get our first BIG EAST win of the year," said St. John's head coach Joe Tartamella. "We knew this was an important game against a much improved Xavier team... I'm very happy with the way we came out in the second half and were able to really dig in defensively, giving us the stops we needed to get out on the offensive end."

Sitting at 6-0 following the first game of league play, the Red Storm is the only team in the league that lacks a loss on the season. The Musketeers fell to 5-2 with the defeat.

Amber Thompson put forth another dominant effort on the glass, collecting 14 rebounds and tying a career-high with six blocks. In addition, the Newark, N.J., native also scored six points, dished out a career-high four assists and recorded a pair of steals.

Two other members of the Red Storm reached double figures against the Musketeers, as Aliyyah Handford tallied 14 points, five rebounds, two assists and two steals, while Jade Walker finished with 10 points and seven boards.

Aaliyah Lewis continued her steady play at the point guard position, dishing out five assists and surrendering only a pair of turnovers. The Staten Island, N.Y., native also poured in eight points and pulled down five rebounds.

The Red Storm is now 3-0 in BIG EAST openers under Tartamella.

Xavier sported the hot hand in the early going, jumping out to an 8-4 lead just four minutes into the action, making three of its first six attempts from the floor. The Red Storm soon responded with a streak of its own, pouring in six unanswered to retake the lead, 10-8, on a Grant layup less than two minutes later.

The Red Storm continued to pour it on in the ensuing six minutes, using a 13-4 overall run to take a 21-12 lead near the eight-minute mark of the half. All five members of the Red Storm's starting lineup recorded buckets during that stretch.

Trailing by nine, the Musketeers began to claw their way back. By the close of the half, Xavier had narrowed the Red Storm lead to just three, outscoring St. John's 13-7 over the closing minutes and entering the break with a 28-25 deficit.

Thompson started off the second half for the Red Storm, converting on a second-chance opportunity to put the Red Storm up five, 30-25. Grant and Lewis soon followed suit with buckets of their own and the Red Storm defense continued to hold tough, keeping Xavier off the score sheet for nearly five minutes and jumping out to a 34-25 lead.

The Red Storm continued to pour it on in the ensuing minutes, highlighted by a Grant and-one to put her team up 41-29 with 11:57 left on the clock.

By the time the Musketeers stopped the bleeding, the Red Storm had unleashed an 18-4 run to start the second half, claiming a 46-29 lead just inside the midway mark of the period.

Xavier made one final push a few minutes later, narrowing the gap to 14, but St. John's once again pushed the pedal to the metal, widening the advantage to 23 by the end of the contest and kicking off BIG EAST play with a 65-42 victory.

#### Xavier 42 • 5-2 (0-1 BE)

#	Player		Total		3-Ptr		Rebounds			PF	TP	A TO Blk Stl				Min
			FG-FGA	FG-FGA	FT-FTA	FT-FTA	Off	Def	Tot							
14	GLOVER, Briana	f	4-11	2-2	0-0	3	2	5	1	10	1	0	0	0	29	
23	SCHAEFFER, Leah	f	2-5	0-0	1-1	1	2	3	1	5	2	3	0	0	31	
00	TURNER, Marquia	g	1-3	1-2	0-0	0	4	4	4	3	1	3	0	0	20	
00	GAFFNEY, Raeshawn	g	1-6	0-1	0-0	0	3	3	1	2	2	1	0	2	25	
35	CRITTENDON, Jenna	g	2-6	0-2	0-0	0	3	3	4	0	1	0	1	0	2	16
01	FINCHER, Kindell		2-7	0-3	4-6	1	5	6	3	8	1	5	0	0	21	
02	KYNARD, Maleeka		2-8	0-2	2-2	0	4	4	3	6	1	2	0	0	20	
15	ZANTT, Aliyah		1-2	0-1	0-0	0	0	0	3	2	1	1	0	0	18	
21	BLACKWELL, Maddison		0-2	0-0	0-2	1	0	1	2	0	0	0	1	0	6	
25	AJANEN, Anniina		0-2	0-0	2-2	0	3	3	1	2	0	2	0	0	14	
Team						1	3	4								
Totals			15-52	3-13	9-13	7	29	36	22	42	9	18	1	4		200
FG % 1st Half: 10-29			34.5%	2nd half: 5-23		21.7%	Game: 15-52		28.8%	Deadball Rebounds 2						
3FG % 1st Half: 2-7			28.6%	2nd half: 1-6		16.7%	Game: 3-13		23.1%							
FT % 1st Half: 3-5			60.0%	2nd half: 6-8		75.0%	Game: 9-13		69.2%							

#### St. John's 65 • 6-0 (1-0 BE)

#	Player		Total		3-Ptr		Rebounds			PF	TP					Min
			FG-FGA	FG-FGA	FT-FTA	Off	Def	Tot	A			TO	Blk	Stl		
02	THOMPSON, Amber	f	3-5	0-0	0-1	2	12	14	3	6	4	0	6	2	34	
24	WALKER, Jade	f	4-9	0-0	2-2	1	6	7	4	10	0	3	1	0	24	
03	HANDFORD, Aliyyah	g	5-15	0-0	4-6	1	4	5	3	14	2	2	0	2	31	
04	LEWIS, Aaliyah	g	4-13	0-2	0-0	2	3	5	1	8	5	2	0	1	37	
05	GRANT, Danaejah	g	9-13	0-1	5-7	2	3	5	2	23	1	0	0	1	34	
01	ALEXANDER,Tamesha		0-1	0-0	0-0	0	0	0	1	0	1	0	0	0	3	
05	WADE, Tonoia		0-0	0-0	0-0	0	0	0	0	0	0	0	0	1	2	
12	DUNN, Kyra		0-1	0-0	1-2	1	3	4	0	1	0	0	1	0	12	
13	SIMMONS, Crystal		1-2	0-0	1-4	0	1	1	2	3	0	1	1	2	13	
35	LITTLETON, Imani		0-3	0-0	0-0	1	0	1	0	0	0	1	1	0	10	
Team						1			0	1						
Totals			26-62	0-3	13-22	11	32	43	16	65	13	9	10	8	200	
FG % 1st Half: 12-28			42.9%	2nd half: 14-34		41.2%	Game: 26-62		41.9%	Deadball Rebounds 5						
3FG % 1st Half: 0-3			0.0%	2nd half: 0-0		0.0%	Game: 0-3		0.0%							
FT % 1st Half: 4-8			50.0%	2nd half: 9-14		64.3%	Game: 13-22		59.1%							

## Game Seven-St. John's at USF W, 55-52- Dec. 7, 2014 - Tampa, Fla.

Trailing at the intermission for the first time this season, Aliyyah Handford and Danaejah Grant combined for 28 of their team's 32 second-half points, helping the Red Storm erase a five-point halftime deficit and pick up a 55-52 resume-building road win at RV/ South Florida to remain undefeated.

"That was a great basketball game by both teams," said Head Coach Joe Tartamella. "South Florida is a very good team that will see the postseason. This was a great road win for our team and I was very happy with our resiliency throughout the second half, especially when we needed to get stops on the defensive end."

This season marks the fifth time since the 2004-05 campaign that the Red Storm (7-0) has started a season with a record of 7-0 or better.

Handford scored 17 of her game-high 25 points in the latter stanza, while Grant registered 11 of her 17 in the second half. Handford also tallied six rebounds and four steals against the Bulls.

Grant, who had hit just three of her 21 attempts from beyond the arc heading into Sunday, sank four of her five tries from deep, including a perfect 3-for-3 in the second half.

Amber Thompson, the sixth-leading rebounder in the nation, grabbed a game-high 16 boards in addition to scoring six points.

One of the top defenses in the nation, St. John's held USF to nearly 20 points below its season scoring average of 70.6.

The Bulls (6-3) found it tough to miss in the early going, connecting on four of their first six shots and jumping out to a 9-4 lead on a Courtney Williams layup just over three minutes into the game.

After allowing the Bulls to shoot at or above 50 percent from the floor in the opening minutes of the contest, the Red Storm defense went into lockdown mode. Forcing seven turnovers and 10-straight missed shots, the Red Storm held USF without a point for a whopping nine minutes and 40 seconds, peeling off a 13-3 run to take a 21-16 lead with 4:35 remaining until the break. Handford and Grant each scored six points on the tear.

Trailing by five, the Bulls fired off a 10-0 run in the waning minutes of the opening half, moving back ahead 26-21 with just under two minutes left in the half. Thompson would narrow the lead to three with her third field goal of the game, but USF converted from the floor with just one second left on the clock, heading into the locker room with a 28-23 advantage.

Down five at the break, the Red Storm outscored USF 6-2 in the opening minutes of the second stanza, trimming the deficit to one, 30-29, at the half's first media timeout.

A running layup from Ariadna Pujol put the Bulls back up by three less than a minute later, but Handford and Grant combined for four unanswered over the Red Storm's next two possessions to give St. John's its first lead of the half, 33-32, at the 14 minute mark.

The Bulls responded with four unanswered of their own to reclaim a three-point advantage, 36-33, but Handford made a tough shot through contact and sank the ensuing free throw, knotting the game at 36 with just under 12 to go.

The game took on the characteristic of a back-and-forth affair over the next several minutes before Handford and Grant combined to help St. John's take control. Trailing 39-38, the pair rattled off the Johnnies' next 10 points, helping the Red Storm moved ahead 48-44 with just over six minutes to go.

USF closed the gap to just one, 48-47, near the five minute mark before both squads went scoreless for over two minutes.

With just over three minutes remaining, Handford found Grant on the right side for her fourth triple of the game, putting the Red Storm back up by four, 51-47.

USF would narrow the lead to one on a Laura Ferreira three-pointer, but Handford responded with another bucket to increase the lead to three, 53-50, with just over two minutes to go.

Aaliyah Lewis sank a pair of clutch free throws to extend the advantage to five, 55-50, ninety second later, and the Red Storm warded off a late push from the Bulls to claim the hard-fought victory.

## Game Eight-St. John's vs. UCF W, 62-48- Dec. 11, 2014 - Queens, N.Y.

BIG EAST leading scorer Danaejah Grant poured in a game-high 20 points and Aliyyah Handford reached a career milestone, punctuating a 62-48 win over UCF on Thursday night in Carnesecca Arena.

With the victory, the Red Storm moved to 8-0 on the season, one of just 15 teams in the nation with an unblemished record. UCF fell to 4-4 on the year.

"I thought the first four minutes of the second half were an important part of how the game finished," said head coach Joe Tartamella on the critical stretch that allowed his team to pull away from the Knights. "We're obviously happy to come away with the win, but we know we have to get ready for a quick turnaround on Sunday."

With a fastbreak layup one minute into the second half, Handford scored the 1,000th and 1,001st points of her college career. The Newark, N.J., native is the 21st player in St. John's history to reach the 1,000-point plateau and the second-fastest in school history to reach the mark. Only Cozette Ballentine tallied 1,000 in fewer games.

Grant and Handford were two of a season-high four players to reach double figures for the Red Storm. Aaliyah Lewis registered a season-high with 12, while Jade Walker tallied 11 on five-of-eight shooting. Lewis, a native of Staten Island, N.Y., who stands at just 5-5, also pulled down a career-high eight rebounds and dished out a game-high six assists.

Amber Thompson, who ranked in the top five nationally in rebounding coming into the contest, grabbed 12 boards and swatted three blocks in the victory. The Newark, N.J., product also recorded four points, two assists and two steals.

UCF got off to a hot start on Thursday, hitting three out of their first four attempts from the floor to take an early 6-4 lead on a Brittini Montgomery jumper 90 seconds into the contest. Luckily for the Red Storm, Handford attacked the rim with a vengeance, tallying seven points in the opening three minutes to give her team a 7-6 advantage.

Trailing 9-8 near the 14-minute mark of the half, UCF rattled off five unanswered, holding the Red Storm scoreless for over three minutes and jumping out to a 13-9 lead.

With the Red Storm down four, 15-11, less than two minutes later, Aaliyah Lewis converted on a three-pointer, which was promptly followed up by a tough Grant layup inside, putting the Red Storm back ahead, 16-15, with nine minutes to go.

The teams continued their back-and-forth affair over the next seven minutes before UCF strung together five in-a-row, moving ahead 24-20 with two minutes to play.

Aaliyah Lewis responded with a three to narrow the deficit to one, but Zykira Lewis answered with a bucket of her own, bumping the lead back to three. Aaliyah Lewis drew a foul shooting a triple on the half's final possession, knocking down all three and knotting the score at 26 at the intermission.

Overall, the first half featured four ties and 11 lead changes. The Red Storm came out of the locker room on fire, scoring the period's first 10 points over the opening four minutes of the half and jumping out to a 36-26 lead. The run was highlighted by a fastbreak layup from Handford, giving the junior her 1,001st career point.

UCF narrowed the lead to as little as eight, 46-38, near the midway mark of the period. Walker then led a 5-0 St. John's run, scoring three points as the Red Storm upped the lead to 13, 51-38, with eight minutes to go.

The Red Storm built its lead to as many as 16, 58-42, with just under five minutes remaining in the game before eventually closing the contest with a 14-point margin of victory.

### St. John's 55 • 7-0, 1-0

#	Player		Total		3-Ptr	Rebounds					PF	TP	A	TO	Blk	Stl	Min
			FG-FGA	FG-FGA	FT-FTA	Off	Def	Tot									
02	THOMPSON, Amber	f	3-6	0-0	0-0	6	10	16	3	6	0	1	0	1		35	
24	WALKER, Jade	f	2-8	0-0	0-1	0	3	3	3	4	1	1	0	0		25	
03	HANDFORD, Aliyyah	g	10-27	0-1	5-8	3	3	6	1	25	2	1	1	1	4	40	
04	LEWIS, Aaliyah	g	0-2	0-0	2-2	0	2	2	3	2	3	2	0	1		34	
15	GRANT, Danaejah	g	6-18	4-5	1-4	0	3	3	0	17	1	1	0	0		37	
01	ALEXANDER,Tamesha		0-1	0-0	0-0	0	1	1	1	0	2	0	0	0		5	
05	WADE, Tonoia		0-0	0-0	0-0	0	0	0	1	0	0	0	0	1		5	
12	DUNN, Kyra		0-4	0-0	1-2	2	3	5	1	1	0	0	3	1		19	
13	SIMMONS, Crystal		0-1	0-1	0-0	0	0	0	0	0	0	0	0	0		0+	
Team						5	2	7				1					
Totals			21-67	4-7	9-17	16	27	43	13	55	9	7	4	8		200	
FG % 1st Half: 10-37			27.0%	2nd half: 11-30	36.7%	Game: 21-67		31.3%									Deadball
3FG % 1st Half: 1-3			33.3%	2nd half: 3-4	75.0%	Game: 4-7		57.1%									Rebounds
FT % 1st Half: 2-5			40.0%	2nd half: 7-12	58.3%	Game: 9-17		52.9%									2

### USF 52 • 6-3

#	Player		Total		3-Ptr	Rebounds					PF	TP	A	TO	Blk	Stl	Min
			FG-FGA	FG-FGA	FT-FTA	Off	Def	Tot									
20	FERREIRA, Laura	f	6-12	2-7	0-0	2	2	4	4	14	1	2	1	0		29	
24	JENKINS, Alisia	f	1-6	0-1	1-4	3	11	14	1	3	0	3	3	2		34	
45	WEBER, Katelyn	c	2-5	0-0	0-0	2	1	3	2	4	0	0	1	0		21	
10	WILLIAMS, Courtney	g	5-19	1-5	4-6	3	9	12	4	15	3	7	2	1		31	
23	STRINGFIELD, Shaleth	g	2-4	1-1	3-4	0	3	3	1	8	2	4	0	0		29	
03	TAYLOR, Tamara		0-2	0-2	0-0	0	1	1	0	0	0	0	0	0		10	
11	PUJOL, Ariadna		1-4	0-1	0-0	0	1	1	1	2	2	0	0	0		11	
13	MARCOS CANEDO, Laur		0-0	0-0	2-2	0	1	1	0	2	1	0	0	0		8	
14	CASHIN, Paige		0-0	0-0	0-0	0	0	0	1	0	0	0	0	0		2	
15	NAYLOR, Shavontae		1-1	0-0	2-2	1	2	3	1	4	0	0	0	0		11	
22	FLORES, Laia		0-0	0-0	0-0	0	0	0	0	0	0	1	0	0		3	
32	JESPERSEN, Maria		0-1	0-1	0-0	0	2	2	0	0	0	0	0	0		11	
Team								2	3	5							
Totals			18-54	4-18	12-18	13	36	49	15	52	9	17	7	3		200	
FG % 1st Half: 11-30			36.7%	2nd half: 7-24	29.2%	Game: 18-54		33.3%									Deadball
3FG % 1st Half: 3-10			30.0%	2nd half: 1-8	12.5%	Game: 4-18		22.2%									Rebounds
FT % 1st Half: 3-4			75.0%	2nd half: 9-14	64.3%	Game: 12-18		66.7%									2

Officials: Dennis DeMayo, Ron Ledington, Brandon Enterline  
Technical fouls: St. John's-None. USF-None.  
Attendance: 1648

Score by periods			1st	2nd	Total			
St. John's			23	32	55	Points	In	Off
USF			28	24	52	SJU	Paint	T/O
						USF	24	15
							7	16
								10
								0
								4
								1
								8

Last FG - SJU 2nd-02:13. USF 2nd-00:19.  
Largest lead - SJU by 5 1st-04:37. USF by 7 1st-14:48.  
SJU led for 14:16. USF led for 24:17. Game was tied for 01:08.

Score tied - 3 times.  
Lead changed - 5 times.

### UCF 48 • 4-4

#	Player		Total		3-Ptr	Rebounds					PF	TP	A	TO	Blk	Stl	Min
			FG-FGA	FG-FGA	FT-FTA	Off	Def	Tot									
13	MONTGOMERY, Brittini	f	1-3	0-0	1-3	1	1	2	2	3	0	1	0	0			21
24	NDOUR, Fifi	f	2-9	0-2	0-0	2	3	5	4	4	0	3	0	1			25
14	JUARBE, Erica	g	1-2	0-1	0-2	3	1	4	2	2	0	1	0	1			25
22	GREGORY, Aliyah	g	8-14	2-2	1-2	1	2	3	3	19	1	3	0	1			23
23	LEWIS, Zykira	g	5-18	1-9	4-4	0	1	1	1	15	2	2	0	2			32
02	HINES, Andrea		1-5	0-2	3-4	0	7	7	2	5	2	2	0	0			35
04	JACKSON, Jordan		0-3	0-0	0-0	0	1	1	0	0	1	0	0	1			8
10	BLAIR, Bryeasha		0-2	0-1	0-0	0	0	0	1	0	0	0	0	0			3
11	GORDON, Yanique		0-0	0-0	0-0	1	2	3	0	0	0	0	2	0			18
42	TAYLOR, Stephanie		0-0	0-0	0-0	0	0	0	1	0	0	0	0	0			10
Team						0	2	2									
Totals			18-56	3-17	9-15	8	20	28	16	48	6	12	2	6			200
FG % 1st Half: 11-32			34.4%	2nd half: 7-24	29.2%	Game: 18-56		32.1%									
3FG % 1st Half: 1-10			10.0%	2nd half: 2-7	28.6%	Game: 3-17		17.6%									
FT % 1st Half: 3-4			75.0%	2nd half: 6-11	54.5%	Game: 9-15		60.0%									
																	Deadball Rebounds 1

### St. John's 62 • 8-0 (1-0)

##	Player		Total		3-Ptr	Rebounds						PF	TP	A	TO	Blk	Stl	Min
			FG-FGA	FG-FGA	FT-FTA	Off	Def	Tot										
02	THOMPSON, Amber	f	2-3	0-0	0-1	3	9	12	4	4	2	2	3	2	40			
24	WALKER, Jade	f	5-8	0-0	1-4	1	1	2	4	11	0	3	0	0	23			
03	HANDFORD, Aliyyah	g	6-12	0-0	3-6	1	0	1	3	15	3	1	0	1	20			
04	LEWIS, Aaliyah	g	3-9	2-4	4-6	1	7	8	2	12	6	8	0	1	37			
15	GRANT, Danaejah	g	10-15	0-2	0-0	3	4	7	1	20	2	3	0	1	38			
01	ALEXANDER,Tamesha		0-1	0-0	0-0	0	2	2	0	0	0	1	0	0	3			
05	WADE, Tonoia		0-1	0-1	0-0	0	1	1	1	0	0	0	0	0	13			
12	DUNN, Kyra		0-1	0-0	0-0	1	3	4	4	0	0	1	1	0	17			
03	SIMMONS, Crystal		0-2	0-1	0-1	0	2	2	0	0	0	0	0	0	9			
Team						1	6	7										
Totals				26-52	2-8	8-18	11	35	46	19	62	13	19	4	5	200		
FG % 1st Half: 9-23			39.1%	2nd half: 17-29	58.6%	Game: 26-52	50.0%											
3FG % 1st Half: 2-5			40.0%	2nd half: 0-3	0.0%	Game: 2-8	25.0%											
FT % 1st Half: 6-12			50.0%	2nd half: 2-6	33.3%	Game: 8-18	44.4%			Deadball Rebounds 5								

## Game Nine-St. John's vs. NJIT

## W, 66-42- Dec. 14, 2014 - Queens, N.Y.

The Red Storm shot a season-best 54.5 percent from the floor and saw eight different players score on Sunday afternoon, as St. John's improved to 9-0 with a 66-42 win at home over NJIT.

"Obviously I'm happy that we were able to come away with the win today against an improved program in NJIT," said Head Coach Joe Tartamella. "Now we move forward and get ready for our weekend tournament coming up on Saturday and Sunday, which is going to be a great test for everybody involved."

Aliyyah Handford scored a game-high 17 points on 8-of-11 shooting in a contest that saw no St. John's starter play more than 28 minutes. Danaejah Grant was the second of three Red Storm players in double figures with 14, while Jade Walker finished the game with 11 points.

Amber Thompson paced the Red Storm with seven rebounds in just 19 minutes of action. Sunday marked the first time this season that the senior forward, who ranked in the top-five nationally in rebounding coming into the game, recorded fewer than 10 boards in any contest this season.

The Red Storm received 20 points from its bench against the Highlanders, a season-high. Kyra Dunn led the St. John's reserves with seven points, while Imani Littleton added six and Tonoia Wade chipped in five. Selina Archer also added two points for St. John's.

Sunday marked the 50th career win for Tartamella, who became the second-fastest coach in program history behind Vickie Kresse to reach the mark.

The Highlanders (5-7) converted on their first two possessions of the game, jumping out to a quick 4-0 lead. Handford and Grant responded in no time, scoring their team's next seven points and giving the Red Storm a 7-6 lead with just over four minutes gone in the game.

The Red Storm continued to find the bottom of the bucket over the next few minutes, as Walker scored four points to help extend the St. John's run to 15-4, giving the Johnnies a 15-8 lead less than eight minutes into the contest.

After NJIT made a bucket to trim the deficit to five, Grant scored five points on an 11-0 tear for the Red Storm, giving her team a 26-10 advantage with six and a half minutes remaining in the opening period.

NJIT would narrow the Red Storm lead to as little as 11 in the closing minutes of the opening stanza, but Grant scored the final five points of the half for St. John's to give her team a 33-17 advantage at the break.

The Red Storm extended its lead to 20, 42-22, in the opening minutes of the second half, with Walker scoring five of the Red Storm's first nine points.

Following a brief spurt by the Highlanders, the Red Storm rattled off a 7-0 run over the next two minutes, building its lead to 25, 51-26, with 9:35 to go.

With the starters on the bench for the remainder of the contest, the St.

John's reserves maintained the Red Storm advantage, as Coach Tartamella's squad emerged with a 66-42 victory.

## NJIT 42 • 5-7

#	Player	Total			3-Ptr			Rebounds			PF	TP	A	TO	Blk	Stl	Min
		FG-FGA	FG-FGA	FT-FTA	FG-FGA	FG-FGA	FT-FTA	Off	Def	Tot							
34	Leah Horton	f	6-13	0-0	1-2	0	2	2	4	13	0	0	0	1	26		
11	Nicole Maticka	c	3-7	0-1	0-0	1	2	3	0	6	1	3	2	1	20		
01	Alana Dudley	g	3-5	1-2	1-2	0	0	0	2	8	0	1	0	0	22		
02	Kim Tullis	g	0-2	0-1	0-0	1	2	3	1	0	1	1	0	2	18		
03	Alyssa Albanese	g	1-6	0-3	2-2	0	2	2	0	4	6	2	0	1	32		
04	Ruta Vetra		1-1	0-0	0-0	0	2	2	0	2	1	0	1	0	8		
10	Ronni Grandison		1-3	0-0	0-0	1	3	4	1	2	0	2	0	1	14		
12	Olivia Dudley		0-2	0-2	1-2	0	0	0	0	1	1	0	0	0	8		
14	Martina Matejickova		1-6	0-3	0-0	0	1	1	1	2	1	2	1	0	18		
21	Maria Ruban		1-1	0-0	0-0	0	3	3	0	2	0	0	0	1	11		
24	Camerin Spahn		1-4	0-2	0-0	2	0	2	0	2	0	2	0	1	16		
25	Bianca Picard		0-1	0-0	0-0	0	0	0	1	0	0	0	0	2	7		
Team						0	2	2									
Totals			18-51	1-14	5-8	5	19	24	10	42	11	13	4	10	200		
FG % 1st Half:		8-25	32.0%	2nd half:	10-26	38.5%	Game:	18-51	35.3%	Deadball Rebounds							
3FG % 1st Half:		1-7	14.3%	2nd half:	0-7	0.0%	Game:	1-14	7.1%								
FT % 1st Half:		0-0	0.0%	2nd half:	5-8	62.5%	Game:	5-8	62.5%								

## St. John's 66 • 9-0 (1-0 BE)

#	Player	Total			3-Ptr			Rebounds			PF	TP	A	TO	Blk	Stl	Min
		FG-FGA	FG-FGA	FT-FTA	FG-FGA	FG-FGA	FT-FTA	Off	Def	Tot							
02	THOMPSON, Amber	f	2-4	0-0	0-0	3	4	7	2	4	0	1	0	0	19		
24	WALKER, Jade	f	5-10	0-0	1-1	1	2	3	0	11	1	3	0	3	21		
03	HANDFORD, Aliyyah	g	8-11	0-1	1-3	0	4	4	0	17	4	4	0	2	28		
04	LEWIS, Aaliyah	g	0-2	0-1	0-0	0	1	1	0	0	3	1	0	2	22		
15	GRANT, Danaejah	g	6-11	1-4	1-2	2	3	5	0	14	0	0	0	0	25		
01	ALEXANDER, Tamesha		0-2	0-1	0-0	0	0	0	0	0	3	2	0	0	18		
05	WADE, Tonoia		2-4	1-1	0-0	0	3	3	1	5	1	0	0	0	14		
12	DUNN, Kyra		3-4	0-0	1-3	1	1	2	0	7	0	0	0	0	10		
13	SIMMONS, Crystal		0-1	0-1	0-0	0	1	1	3	0	3	1	0	0	11		
23	SPRUILL, Kimberly		0-0	0-0	0-0	0	1	1	0	0	1	0	0	0	3		
35	LITTLETON, Imani		3-4	0-0	0-0	2	1	3	2	6	0	3	0	1	18		
54	ARCHER, Selina		1-2	0-0	0-0	0	1	1	0	2	1	0	0	0	11		
Team						1	5	6									
Totals			30-55	2-9	4-9	10	27	37	8	66	17	15	0	8	200		
FG % 1st Half:		15-30	50.0%	2nd half:	15-25	60.0%	Game:	30-55	54.5%	Deadball Rebounds							
3FG % 1st Half:		1-5	20.0%	2nd half:	1-4	25.0%	Game:	2-9	22.2%								
FT % 1st Half:		2-4	50.0%	2nd half:	2-5	40.0%	Game:	4-9	44.4%								

Officials: Joanne Aldrich, Tiara Cruse, Elizabeth Kuzmeski

Technical fouls: NJIT-None. St. John's-None.

Attendance: 760

Score by periods	1st	2nd	Total
NJIT	17	25	42
St. John's	33	33	66

Points	In Paint	Off T/O	2nd Chance	Fast Break	Bench
NJIT	14	8	2	0	11
SJU	34	11	7	8	20

Last FG - NJIT 2nd-00:41, SJU 2nd-01:14.

Largest lead - NJIT by 4 1st-18:55, SJU by 27 2nd-03:16.

NJIT led for 02:10. SJU led for 35:19. Game was tied for 02:03.

Score tied - 2 times.

Lead changed - 1 time.

WE ARE ST. JOHN'S.



# JOE TARTAMELLA

Head Coach • Third Season • James Madison '01

WE ARE  
ST. JOHN'S

Joe Tartamella was introduced as the eighth head coach in the history of the St. John's women's basketball program on April 27, 2012.

In his two-plus years at the helm of the Red Storm, Tartamella has continued the tradition of success that he helped to implement as a member of the coaching staff from 2002-2012.

On Dec. 14, Tartamella recorded his 50th win as the head coach of the Red Storm, becoming the second-fastest coach in program history to reach that mark.

This past season, Tartamella guided the Red Storm to 23 victories and a trip to the second round of the NCAA Tournament, the program's fifth-straight trip to the Big Dance. Aside from the team's NCAA Tournament berth, the campaign featured a number of other highlights, including a win over nationally-ranked Texas A&M in Madison Square Garden, a 13-5 BIG EAST mark, the program's first appearance in the BIG EAST Tournament Final since 1988 and an 11-game winning streak.

Under Tartamella, St. John's has made two trips to the NCAA tournament and averaged over 20 wins a year, while his players have garnered an array of individual awards. Following his first year as head coach, Tartamella saw Shenneika Smith and Nadirah McKeith earn



First Team All-BIG EAST honors. In addition, Smith earned a spot on the All-Met First Team, while McKeith was named the All-Met Player of the Year and Aliyyah Handford took home the hardware as the MBWA Rookie of the Year. Most notably, however, McKeith and Smith were both taken in that spring's WNBA Draft and McKeith became the first St. John's player to sign a WNBA contract, playing the 2013 season with the Washington Mystics. The duo also earned WBCA Honorable Mention All-America accolades.

Following the 2013-14 campaign, Handford found a spot on the All-Met and All-BIG EAST First Teams, while Eugeneia McPherson, Jade Walker and Amber Thompson were also recognized by the conference.

In his first season as head coach, Tartamella guided the Red Storm to its fourth-straight NCAA Tournament berth after finishing the season tied for third in the BIG EAST Conference with an 11-5 record and winning eight of its last 10 regular season games. St. John's was also

the host school for the First and Second Rounds of the 2013 NCAA Tournament.

Tartamella made his head coaching debut at the WBI Tip Off Invitational in November 2012. He earned his first-career coaching victory, 72-54, vs. UCF on Nov. 11 at the Ocean Center in Daytona Beach, Fla. Against Rutgers on Jan. 6, 2013, Tartamella killed two birds with one stone, recording his first-career BIG EAST win and

## THE JOE TARTAMELLA FILE

### COACHING EXPERIENCE

**2012-present:** St. John's University..... Head Coach  
..... Career Record: 50-24 (.676)  
**2008-2012:** St. John's University ..... Associate Head Coach  
**2005-08:** St. John's University ..... Assistant Coach  
**2004-05:** SUNY Maritime College ..... Assistant Coach  
**2002-04:** St. John's University ..... Graduate Assistant  
**2001-02:** St. Anthony's High School ..... Assistant Coach

### PERSONAL

**Education:**..... B.B.A., James Madison University, 2001  
..... M.B.A., St. John's University, 2004

his first-career BIG EAST road win, 48-44, over the Scarlet Knights. On March 9, 2013 Tartamella notched his first BIG EAST Tournament victory, 51-45, against Seton Hall.

Regarded as one of the top up-and-coming mentors in women's basketball, Tartamella's coaching career was forged over a nine-year tenure assisting St. John's all-time winningest coach Kim Barnes Arico (2003-12). Beginning as a Red Storm graduate assistant in 2002, Tartamella, 35, worked his way through the ranks and served as Barnes Arico's associate head coach for the four seasons leading up to his elevation to head coach. He has been an integral part of a staff that has been to six NCAA Tournaments, including St. John's run to its first-ever NCAA Sweet 16 in 2012. As a program, St. John's has been to the NCAA Tournament nine times.

In his career with the Red Storm, Tartamella has played a vital role in helping turn around the St. John's women's basketball program and lead it to its present successes. During Tartamella's tenure, St. John's has advanced to 10 BIG EAST Tournaments, two Women's National Invitation Tournament appearances, including a WNIT Quarterfinals in 2007-08, and six NCAA Tournaments, including the program's first NCAA Tournament berth in more than 17 years during the 2005-06 campaign, and St. John's first-ever NCAA Regional Semifinal appearance in 2011-12. Tartamella has coached 24 All-BIG EAST and All-Rookie players, 15 All-Met selections and has enjoyed many a national Top 25 ranking during his time at St. John's, including a program-best No. 13 Associated Press ranking during the 2011-12 campaign.

In 2008-09, Tartamella's first season as associate head coach, he helped then-freshman Da'Shena Stevens become one of the best rookies in St. John's history, as she broke the freshman scoring record and became the second player in program history to earn BIG EAST Freshman of the Year honors. Stevens further developed under his tutelage, as she was named a 2010 Associated Press All-American Honorable Mention Selection, an All-BIG EAST First Team honoree and the 2010 MBWA Player of the Year.

During the successful 2011-12 season, Tartamella helped St. John's to its third-straight NCAA Tournament appearance as a program-best No. 3 seed. St. John's advanced to the NCAA Regional Semifinals for the first time in program history and enjoyed a 24-10 final record. St. John's was also the No. 2 seed in the BIG EAST Tournament and ad-

# 2014-15 WOMEN'S BASKETBALL Game Notes

## Head Coach Joe Tartamella



vanced to the semifinals for the first time since 1988.

Tartamella's scouting and game-planning tactics have proved to be invaluable as St. John's has enjoyed numerous victories over Top 25 opponents, including the team's three historic upset-victories over Notre Dame when the Irish were ranked No. 13 in 2005-06, No. 9 in 2007-08 and No. 4/3 in 2009-10. In 2011-12, he boasted the winning scout in St. John's win over then-No. 2 Connecticut on Feb. 18, ending the Huskies' 99-game home-winning streak. With Tartamella as part of Barnes Arico's staff, the Red Storm claimed a .560 winning percentage.

Tartamella is also known for his recruiting prowess and has consistently brought in top-rated talent for the Red Storm. Highlighting his role as recruiting coordinator was the 2009-10 class that ESPN.com ranked as 10th best in the nation and No. 1 in the BIG EAST. The class, seniors during the 2012-13 season, included All-BIG EAST Freshmen Shenneika Smith and Nadirah McKenith, who blossomed into national headliners as they both were selected in the 2013 WNBA draft and both signed professional contracts in the summer of 2013, in addition to their many collegiate accolades and school records.

Tartamella sports another solid recruiting class for the 2014-15 campaign, as all four of his freshman signees ranked inside the top 25 nationally at their position according to ESPN HoopGurlz.

Prior to St. John's, Tartamella spent a year as an assistant men's basketball coach under the direction of head coach Tom Spina at SUNY Maritime College in Throgs Neck, N.Y. His responsibilities included recruiting and developing long and short-range strategies, administering game plans to players for execution in practice and games, and organizing and implementing pre- and post-season conditioning programs. Tartamella also served as the assistant director of career services at SUNY Maritime College.

After graduating from James Madison University in 2001 with a bachelor's degree in business administration in marketing information, he coached alongside Joe Castiglie - the most successful coach in Stony Brook men's basketball history - at St. Anthony's High School. After his stint coaching boys' varsity, Tartamella was hired as the graduate assistant coach for the St. John's women's basketball team.

A native of St. James, N.Y., Tartamella earned his master's degree in marketing management from St. John's in 2004.

A fiery competitor as a coach and athlete, Tartamella was a two-sport star at Smithtown High School, enjoying success as a basketball and baseball player. His success as a prep star resulted in numerous scholarship offers before an injury ended his promising playing career and led him to coaching.

A member of the Women's Basketball Coaches Association (WBCA), Tartamella was invited to the Nike Villa 7 Coaches Consortium in 2010 and in 2011. The consortium was developed to bring together university athletic directors and the country's elite assistant basketball coaches in an effort to prepare coaches for the next level. In 2013, Tartamella was invited back to the Nike Villa 7 as a panelist/speaker in Minneapolis, Minn. In June 2013, he was one of 32 women's college basketball coaches to be involved in the first session of the Center For Coaching Excellence (CCE) at Columbia University.

Tartamella and his wife, Shannon, reside in Long Island, New York. The couple has two sons, three-year-old Brady and J.J., born in June 2014.



### TARTAMELLA'S TIMELINE

APRIL 27, 2012	.....	Introduced as eighth head coach in St. John's history
JULY 24, 2012	.....	Signs first NLI with Aliyyah Handford, a standout guard from Shabazz High School in New Jersey
NOV. 11, 2012	.....	First-career victory, 72-54, over UCF in Daytona Beach, Fla. at the WBI Tip Off Invitational
NOV. 25, 2012	.....	First-career road win, 66-54, at Hartford
JAN. 6, 2013	.....	First BIG EAST win, 48-44, at Rutgers - televised live nationally on ESPNU
MARCH 9, 2013	.....	First BIG EAST Tournament victory, 51-45 vs. Seton Hall (Second Round)
APRIL 16, 2013	.....	Nadirah McKenith and Shenneika Smith became first-ever WNBA Draft picks for St. John's
MARCH 3, 2014	.....	First 20-win season as head coach with 63-42 win at Providence
MARCH 22, 2014	.....	First NCAA Tournament win, 71-68, vs. No. 25 USC (First Round)



## **WOMEN'S BASKETBALL PLAYER PROFILES**

### **SENIORS/GRAD STUDENTS**

<b>NO.</b>	<b>PLAYER</b>
54	Selina Archer (RS)
2	Amber Thompson
12	Kyra Dunn

### **JUNIORS**

<b>NO.</b>	<b>PLAYER</b>
15	Danaejah Grant
3	Aliyyah Handford
33	Sandra Udobi

### **SOPHOMORES**

<b>NO.</b>	<b>PLAYER</b>
4	Aaliyah Lewis
24	Jade Walker
23	Kimberly Spruill

### **FRESHMEN**

<b>NO.</b>	<b>PLAYER</b>
1	Tamesha Alexander
35	Imani Littleton
13	Crystal Simmons
5	Tonoia Wade

**WE ARE NEW YORK'S TEAM ... WE ARE ST. JOHN'S!**



WE ARE ST. JOHN'S.

# SELINA ARCHER

Clermont, Fla. (Miami)

F • 6-4 • RS-Sr  
1V

54

## CAREER HIGHS-ALL GAMES

Points.....8, Three Times\*  
 FG Made.....4, Twice\*  
 FG Atts.....6, Twice\*  
 3-Pt. FG.....  
 3-Pt. FGA.....  
 FT .....3, vs. Lipscomb (1/11)\*  
 FT Att.....4, Twice\*  
 Off. Reb.....3, Three Times\*  
 Def. Reb. ....4, vs. Alcorn State (12/11/10)\*  
 Total Reb.....5, Four Times\*  
 Assists.....1, Six Times\*  
 TO .....3, vs. FAU (11/26/10)\*  
 Blocks .....2, vs. Wake Forest (2/21/11)\*  
 Steals.....3, vs. Clemson (1/14/11)\*  
 Minutes .....22, vs. Alcorn State (12/11/10)\*

## BIG EAST HIGHS

Points.....6, vs. Xavier (1/29/14)  
 FG Made.....3, vs. Xavier (1/29/14)  
 FG Atts.....4, Twice  
 3-Pt. FG.....  
 3-Pt. FGA.....  
 FT .....  
 FT Att.....1, vs. Marquette (2/26/14)  
 Off. Reb.....3, vs. Providence (2/8/14)  
 Def. Reb. ....2, Three Times  
 Total Reb.....4, Twice  
 Assists.....1, vs. Xavier (1/29/14)  
 TO .....1, Three Times  
 Blocks .....1, at Marquette (1/18/14)  
 Steals.....  
 Minutes .....12, at Marquette (1/18/14)

## 2014-15 SEASON HIGHS

Points.....2, vs. NJIT (12/14/14)  
 FG Made.....1, vs. NJIT (12/14/14)  
 FG Atts.....2, vs. NJIT (12/14/14)  
 3-Pt. FG.....  
 3-Pt. FGA.....  
 FT .....  
 FT Att.....  
 Off. Reb.....  
 Def. Reb. ....1, vs. NJIT (12/14/14)  
 Total Reb.....1, vs. NJIT (12/14/14)  
 Assists.....1, vs. NJIT (12/14/14)  
 TO .....  
 Blocks .....  
 Steals.....  
 Minutes .....11, vs. NJIT (12/14/14)

\*At (or includes time at) Miami

## AS A REDSHIRT SENIOR (2014-15)

- Registered her first points of the season against NJIT (12/14).

## 2014-15 SEASON STATISTICS

Date	Opponent	GP-GS	Min	TOTAL		3-PTS		REBOUNDS											
				FG-FGA	Pct	3FG-3FGA	3Pct	FT-FTA	Pct	Off	Def	Tot	Avg	PF	FO	A	TO	Blk	Stl
N15	at Sacred Heart	DNP																	
N20	FLORIDA	1-0	2	0-0	.000	0-0	.000	0-0	.000	0	0	0	0.0	0	0	0	0	0	0.0
N24	at Marist	DNP																	
N28	BINGHAMTON	1-0	3	0-0	.000	0-0	.000	0-0	.000	0	0	0	0.0	0	0	0	0	0	0.0
N30	WAGNER	1-0	5	0-0	.000	0-0	.000	0-0	.000	0	0	0	0.0	0	0	0	0	0	0.0
D3	XAVIER*	DNP																	
D7	at USF	DNP																	
D11	UCF	DNP																	
D14	NJIT	1-0	11	1-2	.500	0-0	.000	0-0	.000	0	1	1	0.3	0	0	1	0	0	2.0
Totals		4-0	21	1-2	.500	0-0	.000	0-0	.000	0	1	1	0.3	0	0	1	0	0	0.5

## ARCHER'S CAREER STATISTICS (St. John's)

Season	GP-GS	min/Avg	FG-FGA	Pct.	3FG-FGA	3Pct.	FT-FTA	Pct.	OFF	DEF	TOT	Avg.	pf	FO	A	TO	BLK	STL	PTS	Avg.
2013-14	14-0	74/5.3	10-20	.500	0-0	.000	2-3	.667	10	14	24	1.7	7	0	1	4	2	0	22	1.6
2014-15	4-0	21/5.3	1-2	.500	0-0	.000	0-0	.000	0	1	1	0.3	0	0	1	0	0	0	2	0.5
TOTAL	18-0	95/5.3	11-22	.500	0-0	.000	2-3	.667	10	15	25	1.4	7	0	1	4	2	0	24	1.3

WE ARE ST. JOHN'S.



# AMBER THOMPSON

Newark, N.J. (University High)

F • 6-2 Sr.  
3V

2

## CAREER HIGHS-ALL GAMES

Points.....20, vs. DePaul (3/4/13)  
 FG Made..... 9, vs. DePaul (3/4/13)  
 FG Atts..... 15, Twice  
 3-Pt. FG.....  
 3-Pt. FGA.....  
 FT .....9, vs. Hartford (12/4/11)  
 FT Att.....14, vs. Hartford (12/4/11)  
 Off. Reb.....12, vs. DePaul (12/7/11)  
 Def. Reb. .... 12, 3x, last vs. Xavier (12/3/14)  
 Total Reb.....17, 3x, last at Marist (11/24/14)  
 Assists.....4, vs. Xavier (12/3/14)  
 TO ..... 3, Seven Times  
 Blocks ..... 6, 2x, last vs. Xavier (12/3/14)  
 Steals .....3, Twice  
 Minutes .....42, Three Times

## BIG EAST HIGHS

Points.....20, vs. DePaul (3/4/13)  
 FG Made..... 9, vs. DePaul (3/4/13)  
 FG Atts..... 15, at Xavier (1/5/14)  
 3-Pt. FG.....  
 3-Pt. FGA.....  
 FT .....5, at DePaul (1/11/14)  
 FT Att.....8, vs. West Virginia (2/21/12)  
 Off. Reb.....12, vs. DePaul (12/7/11)  
 Def. Reb. .... 12, 2x, last vs. Xavier (12/3/14)  
 Total Reb.....17, vs. Villanova (2/15/14)  
 Assists.....4, vs. Xavier (12/3/14)  
 TO ..... 3, Five Times  
 Blocks ..... 6, 2x, last vs. Xavier (12/3/14)  
 Steals .....3, Twice  
 Minutes ..... 40, at Georgetown (2/18/14)

## 2014-15 SEASON HIGHS

Points.....10, vs. Wagner (11/30/14)  
 FG Made.....6, vs. Wagner (11/30/14)  
 FG Atts.....9, vs. Wagner (11/30/14)  
 3-Pt. FG.....  
 3-Pt. FGA.....  
 FT .....2, vs. Wagner (11/30/14)  
 FT Att.....4, vs. Wagner (11/30/14)  
 Off. Reb..... 8, vs. Binghamton (11/28/14)  
 Def. Reb. .... 12, vs. Xavier (12/3/14)  
 Total Reb.....17, at Marist (11/24/14)  
 Assists.....4, vs. Xavier (11/24/14)  
 TO .....3, vs. Wagner (11/30/14)  
 Blocks ..... 6, 2x, last vs. Xavier (12/3/14)  
 Steals .....2, 2x, last vs. UCF (12/11/14)  
 Minutes .....40, 2x, last vs. UCF (12/11/14)

## AS A SENIOR (2014-15)

- Pulled down 14 rebounds in the Red Storm's season-opening win over Yale (11/15)
- Tallied double-digit rebounds (10) for the second-straight game vs. Florida (11/20)
- Tied a career-high with 17 boards at Marist (11/24)
- Made it four in a row with 10+ boards, grabbing 13 against Binghamton (11/28)
- Grabbed 14 boards and tied a career-high with six blocks vs. Xavier (12/3)
- Pulled down 16 rebounds in a crucial road win at USF (12/7)
- Record 12 boards and three blocks against UCF (12/11).

## Thompson' Career Accolades

- 2014-15 Preseason All-BIG EAST Honorable Mention
- 2013-14 All-BIG EAST Honorable Mention
- BIG EAST Weekly Honor Roll (Jan. 13, Jan. 27)
- 2011-12 BIG EAST All-Freshman Team

## 2014-15 SEASON STATISTICS

Date	Opponent	GP-GS	Min	TOTAL		3-PTS		REBOUNDS										PF	FO	A	TO	BLK	STL	PTS	Avg
				FG-FGA	Pct	3FG-3FGA	3Pct	FT-FTA	Pct	Off	Def	Tot	Avg												
N15	at Yale	1-1	36	1-5	.200	0-0	.000	1-2	.500	5	9	14	14.0	3	0	2	2	0	3	3.0					
N20	FLORIDA	1-1	37	0-2	.000	0-0	.000	1-2	.500	4	6	10	12.0	4	0	1	1	4	0	1	2.0				
N24	at Marist	1-1	40	3-5	.600	0-0	.000	0-1	.000	6	11	17	13.7	4	0	3	2	1	0	6	3.3				
N28	BINGHAMTON	1-1	29	2-5	.400	0-0	.000	0-0	.000	8	5	13	13.5	3	0	0	2	2	0	4	3.5				
N30	WAGNER	1-1	25	6-9	.667	0-0	.000	2-4	.500	6	4	10	12.8	1	0	1	3	2	1	14	5.6				
D3	XAVIER*	1-1	34	3-5	.600	0-0	.000	0-1	.000	2	12	14	13.0	3	0	4	0	6	2	6	5.7				
D7	at USF	1-1	35	3-6	.500	0-0	.000	0-0	.000	6	10	16	13.4	3	0	0	1	0	1	6	5.7				
D11	UCF	1-1	40	2-3	.667	0-0	.000	0-1	.000	3	9	12	13.3	4	0	2	2	3	2	4	5.5				
D14	NJIT	1-1	19	2-4	.500	0-0	.000	0-0	.000	3	4	7	12.6	2	0	0	1	0	0	4	5.3				
Totals		9-9	295	22-44	.500	0-0	.000	4-11	.364	43	70	113	12.6	27	0	13	14	20	6	48	5.3				

## THOMPSON'S CAREER STATISTICS

Season	GP-GS	min/Avg	FG-FGA	Pct.	3FG-FGA	3Pct.	FT-FTA	Pct.	OFF	DEF	TOT	Avg.	pf	FO	A	TO	BLK	STL	PTS	Avg.
2011-12	34-23	708/20.8	84-187	.449	0-0	.000	38-72	.528	91	107	198	5.8	88	2	7	35	21	9	206	6.1
2012-13	31-8	720/23.2	85-164	.518	0-0	.000	30-61	.492	77	126	203	6.5	57	1	3	34	32	15	200	6.5
2013-14	34-33	942/27.7	111-222	.500	0-0	.000	43-78	.551	114	199	313	9.2	88	2	13	37	45	23	265	7.8
2014-15	9-9	295/32.8	22-44	.500	0-0	.000	4-11	.364	43	70	113	12.6	27	0	13	14	20	6	48	5.3
TOTAL	108-74	2665/24.7	302-617	.489	0-0	.000	117-227	.515	325	502	827	7.7	260	5	36	120	118	53	719	6.7

WE ARE ST. JOHN'S.

# KYRA DUNN

Sacramento, Calif. (California)

F • 6-3 • Gr.  
Tr.

12

**CAREER HIGHS-ALL GAMES**

Points.. 11, 2x, last vs. Providence (1/28/12)  
 FG Made.....  
 FG Atts.....  
 3-Pt. FG.....  
 3-Pt. FGA.....  
 FT .....

**2014-15 SEASON HIGHS**

Points.....7, vs. NJIT (12/14/14)  
 FG Made.....3, vs. NJIT (12/14/14)  
 FG Atts..... 4, 2x, last vs. NJIT (12/14/14)  
 3-Pt. FG.....  
 3-Pt. FGA.....  
 FT ..... 2, 2x, last vs. Marist (11/30/14)  
 FT Att.....4, vs. Marist (11/30/14)  
 Off. Reb..... 2, 2x, last vs. USF (12/7/14)  
 Def. Reb. .... 3, 4x, last vs. UCF (12/11/14)  
 Total Reb..... 5, at USF (12/7/14)  
 Assists..... 1, vs. Marist (11/30/14)  
 TO ..... 2, at Yale (11/15/14)  
 Blocks ..... 3, at USF (12/7/14)  
 Steals.....  
 Minutes .....19, 2x, last at USF (12/7/14)

**AS A GRAD STUDENT (2014-15)**

- Picked up her first point as a member of the Red Storm against Florida (11/20)
- Grabbed two boards at Marist (11/24)
- Pulled down a season-high four boards against Xavier (12/3)
- Grabbed a season-high five rebounds and blocked three shots at USF (12/7).
- Tallied four rebounds and a block against UCF (12/11).

**2014-15 SEASON STATISTICS**

Date	Opponent	GP-GS	Min	TOTAL		3-PTS				REBOUNDS											PF	FO	A	TO	Blk	Stl	Pts	Avg
				FG-FGA	Pct	3FG-3FGA	3Pct	FT-FTA	Pct	Off	Def	Tot	Avg															
N15	at Yale	1-0	9	0-1	.000	0-0	.000	0-0	.000	1	2	2.0	1	0	0	2	1	0	0	0	0	0.0						
N20	FLORIDA	1-0	13	0-1	.000	0-0	.000	1-2	.500	1	0	1.5	0	0	0	0	1	0	1	0	0	0.5						
N24	at Marist	1-0	5	0-1	.000	0-0	.000	0-0	.000	1	2	1.7	0	0	0	0	0	0	0	0	0	0.3						
N28	BINGHAMTON	1-0	8	0-0	.000	0-0	.000	2-2	1.000	2	1	3	2.0	0	0	1	1	0	2	1	0	2	0.8					
N30	WAGNER	1-0	19	1-1	1.000	0-0	.000	2-4	.500	0	3	3	2.2	2	0	1	1	1	0	4	1	1.4						
D3	XAVIER*	1-0	12	0-1	.000	0-0	.000	1-2	.500	1	3	4	2.5	0	0	0	0	1	0	1	0	1.3						
D7	at USF	1-0	19	0-4	.000	0-0	.000	1-2	.500	2	3	5	2.9	1	0	0	0	3	1	1	1	1.3						
D11	UCF	1-0	17	0-1	.000	0-0	.000	0-0	.000	1	3	4	3.0	4	0	0	1	1	0	0	1	1.1						
D14	NJIT	1-0	10	3-4	.750	0-0	.000	1-3	.333	1	1	2	2.9	0	0	0	0	0	0	0	7	1.8						
Totals		9-0	112	4-14	.286	0-0	.000	8-15	.533	10	16	26	2.9	8	0	1	5	9	1	16	1.8							

**DUNN'S CAREER STATISTICS**

Season	GP-GS	min/Avg	FG-FGA	Pct.	3FG-FGA	3Pct.	FT-FTA	Pct.	OFF	DEF	TOT	Avg.	pf	FO	A	TO	BLK	STL	PTS	Avg.
2010-11	27-0	251/9.3	15-27	.556	0-0	.000	13-26	.500	18	45	63	2.3	24	0	10	22	21	2	43	1.6
2011-12	30-21	650/22.0	57-126	.452	0-0	.000	37-63	.587	64	105	169	5.6	56	1	19	44	36	20	151	5.0
2013-14	14-0	78/5.6	5-12	.417	0-0	.000	4-8	.500	6	8	14	1.0	9	0	1	7	8	1	14	1.0
2014-15	9-0	112/12.4	4-14	.286	0-0	.000	8-15	.533	10	16	26	2.9	8	0	1	5	9	1	16	1.8
TOTAL	80-21	1091/13.6	81-179	.453	0-0	.000	62-110	.564	98	174	272	3.4	97	1	31	78	74	24	224	2.8

WE ARE ST. JOHN'S.



# DANAEJAH GRANT

Piscataway, N.J. (Clemson)

G • 5-9 • Jr.  
1V

15

## CAREER HIGHS-ALL GAMES

Points.....30, at Yale (11/15/14)  
 FG Made.....14, at Yale (11/15/14)  
 FG Atts.....26, at Yale (11/15/14)  
 3-Pt. FG.....4, at USF (12/7/14)  
 3-Pt. FGA...8, 2x, last vs. Florida (11/20/14)  
 FT .....10, vs. Florida (11/20/14)  
 FT Att.....13, vs. Florida (11/20/14)  
 Off. Reb.....5, at Villanova (1/22/14)  
 Def. Reb.....8, Twice  
 Total Reb.....10, Twice  
 Assists.....5, at Tennessee (3/24/14)  
 TO .....5, Five Times\*  
 Blocks .....3, vs. Presbyterian (11/11/12)\*  
 Steals.....2, Six Times\*  
 Minutes .....39, vs. Creighton (3/10/14)

## BIG EAST HIGHS

Points.....23, vs. Xavier (12/3/14)  
 FG Made.....9, vs. Xavier (12/3/14)  
 FG Atts.....16, vs. Villanova (2/15/14)  
 3-Pt. FG.....2, Three Times  
 3-Pt. FGA.....4, Twice  
 FT .....6, Twice  
 FT Att.....9, at Butler (2/5/14)  
 Off. Reb.....5, at Villanova (1/22/14)  
 Def. Reb.....8, at Butler (2/5/14)  
 Total Reb.....10, vs. Providence (2/8/14)  
 Assists.....3, at Seton Hall (2/1/14)  
 TO .....5, Twice  
 Blocks .....2, Twice  
 Steals.....2, Three Times  
 Minutes .....34, vs. Xavier (12/3/14)

## 2014-15 SEASON HIGHS

Points.....30, at Yale (11/15/14)  
 FG Made.....14, at Yale (11/15/14)  
 FG Atts.....26, at Yale (11/15/14)  
 3-Pt. FG.....4, at USF (12/7/14)  
 3-Pt. FGA.....5, 2x, at USF (12/7/14)  
 FT .....10, vs. Florida (11/20/14)  
 FT Att.....13, vs. Florida (11/20/14)  
 Off. Reb.....4, vs. Binghamton (11/28/14)  
 Def. Reb.....6, vs. Wagner (11/30/14)  
 Total Reb.....9, vs. Wagner (11/30/14)  
 Assists.....4, at Yale (11/15/14)  
 TO .....5, vs. Florida (11/20/14)  
 Blocks .....1, at Yale (11/15/14)  
 Steals.....1, 6x, last vs. UCF (12/11/14)  
 Minutes .....38, 2x, last vs. UCF (12/11/14)

\*At (or includes time at) Clemson

## AS A JUNIOR (2014-15)

- Started off the season with a bang, converting of 14 of 26 field goals for a career-high 30 points at Yale (11/15)
- Tallied 26 points and six rebounds against Florida (11/20)
- Scored a team-high 19 at home against Binghamton (11/28)
- Narrowly missed a double-double with 14 points and nine boards vs. Wagner (11/30)
- Poured in 30 points in the Red Storm's BIG EAST opener against Xavier (12/3)
- Connected on four of her fives attempts from deep, scoring 17 points at USF (12/7)
- Tallied a game-high against UCF on 10-of-15 shooting (12/11).

## Grant's Career Accolades

-Preseason All-BIG EAST (2014-15)

-BIG EAST Player of the Week (Nov. 17, 2014)

## 2014-15 SEASON STATISTICS

Date	Opponent	GP-GS	Min	TOTAL		3-PTS		REBOUNDS										PF	FO	A	TO	BLK	STL	Pts	Avg
				FG-FGA	Pct	3FG-3FGA	3Pct	FT-FTA	Pct	Off	Def	Tot	Avg												
N15	at Yale	1-1	38	14-26	.538	1-3	.333	1-5	.200	3	1	4	4.0	2	0	4	1	1	1	30	30.0				
N20	FLORIDA	1-1	36	7-16	.438	2-8	.250	10-13	.769	2	4	6	5.0	4	0	3	5	0	1	26	26.0				
N24	at Marist	1-1	34	5-19	.263	0-5	.000	2-2	1.000	2	1	3	4.3	3	0	2	1	0	1	12	12.7				
N28	BINGHAMTON	1-1	34	8-21	.381	0-2	.000	3-4	.750	4	4	8	5.3	0	0	3	0	0	1	19	21.8				
N30	WAGNER	1-1	25	6-12	.500	0-2	.000	2-2	1.000	3	6	9	6.0	0	0	3	4	0	1	14	20.2				
D3	XAVIER*	1-1	34	9-13	.692	0-1	.000	5-7	.714	2	3	5	5.8	2	0	1	0	0	0	23	20.7				
D7	at USF	1-1	37	6-18	.333	4-5	.800	1-4	.250	0	3	3	5.4	0	0	1	1	0	0	17	20.1				
D11	UCF	1-1	38	10-15	.667	0-2	.000	0-0	.000	3	4	7	5.6	1	0	2	3	0	1	20	20.1				
D14	NJIT	1-1	25	6-11	.545	1-4	.250	1-2	.500	2	3	5	5.6	0	0	0	0	0	0	14	19.4				
Totals		9-9	301	71-151	.470	8-32	.250	25-39	.641	21	29	50	5.6	12	0	19	15	1	6	175	19.4				

## GRANT'S CAREER STATISTICS

Season	GP-GS	min/Avg	FG-FGA	Pct.	3FG-FGA	3Pct.	FT-FTA	Pct.	OFF	DEF	TOT	Avg.	pf	FO	A	TO	BLK	STL	PTS	Avg.
2012-13*	7-7	220/31.4	32-101	.317	8-35	.229	22-33	.667	10	31	41	5.9	12	0	10	18	5	8	94	13.4
2013-14	25-6	647/25.9	99-234	.423	13-38	.342	61-100	.610	34	90	124	5.0	64	1	32	64	9	20	272	10.9
2014-15	9-9	301	71-151	.470	8-32	.250	25-39	.658	21	29	50	5.6	12	0	19	15	1	6	175	19.4
TOTAL	41-22	1168/28.5	202-486	.416	29-105	.276	108-172	.629	65	150	215	5.2	88	1	61	96	15	34	552	13.5

\* At Clemson



WE ARE ST. JOHN'S.

# ALIYYAH HANDFORD

Newark, N.J. (Malcolm X. Shabazz)

G • 5-9 • Jr.  
2V

3

## CAREER HIGHS-ALL GAMES

Points..... 32, vs. Iona (11/12/13)  
 FG Made..... 16, vs. Iona (11/12/13)  
 FG Atts..... 27, at USF (12/7/14)  
 3-Pt. FG..... 2, vs. Florida (11/20/14)  
 3-Pt. FGA..... 3, vs. Florida (11/20/14)  
 FT..... 11, vs. USC (3/22/14)  
 FT Att..... 15, vs. USC (3/22/14)  
 Off. Reb..... 6, Twice  
 Def. Reb..... 10, at Marist (11/24/14)  
 Total Reb..... 13, at Sacred Heart (11/8/13)  
 Assists..... 6, at Providence (1/30/13)  
 TO ..... 8, vs. Sacred Heart (11/8/13)  
 Blocks ..... 2, Twice  
 Steals ..... 8, vs. St. Francis (11/16/13)  
 Minutes ..... 47, vs. Creighton (3/10/14)

## BIG EAST HIGHS

Points..... 25, vs. Villanova (2/15/14)  
 FG Made..... 10, vs. Villanova (2/15/14)  
 FG Atts..... 18, vs. Villanova (2/15/14)  
 3-Pt. FG..... 1, vs. Georgetown (2/9/13)  
 3-Pt. FGA..... 1, vs. Georgetown (2/9/13)  
 FT ..... 8, vs. Georgetown (2/9/13)  
 FT Att..... 10, at Seton Hall (2/1/14)  
 Off. Reb..... 5, at USF (2/13/13)  
 Def. Reb..... 7, vs. Seton Hall (1/12/13)  
 Total Reb..... 9, at USF (2/13/13)  
 Assists..... 6, at Providence (1/30/13)  
 TO ..... 6, at Marquette (1/18/14)  
 Blocks ..... 1, Twice  
 Steals ..... 5, vs. Butler (1/15/14)  
 Minutes ..... 38, Twice

## 2014-15 SEASON HIGHS

Points..... 27, vs. Florida (11/20/14)  
 FG Made..... 12, vs. Florida (11/20/14)  
 FG Atts..... 27, at USF (12/7/14)  
 3-Pt. FG..... 2, vs. Florida (11/20/14)  
 3-Pt. FGA..... 3, vs. Florida (11/20/14)  
 FT..... 5, at USF (12/7/14)  
 FT Att..... 8, at USF (12/7/14)  
 Off. Reb..... 5, vs. Florida (11/20/14)  
 Def. Reb..... 10, at Marist (11/24/14)  
 Total Reb..... 12, at Marist (11/24/14)  
 Assists..... 4, 3x, last vs. NJIT (12/14/14)  
 TO ..... 6, at Marist (11/24/14)  
 Blocks ..... 1, at USF (12/7/14)  
 Steals ..... 5, at Marist (11/24/14)  
 Minutes ..... 40, 2x, last at USF (12/7/14)

## AS A JUNIOR (2014-15)

- Opened the season with an 18 point, five rebound performance at Yale (11/15).
- Paced the Red Storm with 27 points and seven boards vs. Florida (11/20)
- Scored a team-high 19 points vs. Binghamton (11/28)
- Paced the Red Storm with 21 points on 10-of-14 shooting against Wagner (11/30)
- Scored 17 of her game-high 25 in the second half against USF (12/7)
- Notched her 1,000th career point with 15 against UCF (12/11).

## Handford's Career Accolades

- 2014 BIG EAST Weekly Honor Roll (Nov. 24, Dec. 1, Dec. 8)
- 2014-15 Preseason All-BIG EAST
- 2013-14 WBCA All-America Honorable Mention
- 2013-14 All-BIG EAST First Team
- 2013-14 All-Met First Team
- 2014 BIG EAST All-Tournament Team
- BIG EAST Player of the Week (Dec. 23, Feb. 17)
- 2012-13 BIG EAST All-Freshman Team
- Three-time BIG EAST Rookie of the Week

## 2014-15 SEASON STATISTICS

Date	Opponent	GP-GS	Min	TOTAL		3-PTS		REBOUNDS		PF	FO	A	TO	Blk	Stl	Pts	Avg
				FG-FGA	Pct	3FG-3FGA	3Pct	FT-FTA	Pct	Off	Def	Tot	Avg				
N15	at Yale	1-1	32	7-16	.438	0-0	.000	4-6	.667	0	5	5	5.0	4	0	4	3
N20	FLORIDA	1-1	40	12-25	.480	2-3	.667	1-2	.500	5	2	7	6.0	2	0	4	0
N24	at Marist	1-1	35	3-17	.176	0-1	.000	1-6	.167	2	10	12	8.0	4	0	3	6
N28	BINGHAMTON	1-1	29	8-13	.615	0-2	.000	3-4	.750	1	2	3	6.8	3	0	4	2
N30	WAGNER	1-1	23	10-14	.714	0-0	.000	1-1	1.000	2	6	8	7.0	4	0	2	2
D3	XAVIER*	1-1	31	5-15	.333	0-0	.000	4-6	.667	1	4	5	6.7	3	0	2	2
D7	at USF	1-1	40	10-27	.370	0-1	.000	5-8	.625	3	3	6	6.6	1	0	2	1
D11	UCF	1-1	20	6-12	.500	0-0	.000	3-6	.500	1	0	1	5.9	3	0	3	1
D14	NJIT	1-1	28	8-11	.727	0-1	.000	1-3	.333	0	4	4	5.7	0	0	4	4
Totals		9-9	278	69-150	.460	2-8	.250	23-42	.548	15	36	51	5.7	24	0	24	25

## HANDFORD'S CAREER STATISTICS

Season	GP-GS	min/Avg	FG-FGA	Pct.	3FG-3FGA	3Pct.	FT-FTA	Pct.	OFF	DEF	TOT	Avg.	pf	FO	A	TO	BLK	STL	PTS	Avg.
2012-13	31-25	851/27.5	111-259	.429	1-2	.500	69-120	.575	63	75	138	4.5	87	1	49	79	5	49	292	9.4
2013-14	34-34	1113/32.7	214-448	.478	0-0	.000	139-216	.644	55	118	173	5.1	90	1	61	118	3	63	567	16.7
2014-15	9-9	278/30.9	69-150	.460	2-8	.250	23-42	.548	15	36	51	5.7	24	0	24	25	1	24	163	18.1
TOTAL	74-68	2242/30.3	394-857	.460	3-10	.300	231-378	.611	133	229	362	4.9	201	2	134	222	9	136	1,022	13.8

WE ARE ST. JOHN'S.

# SANDRA UDOBI

Delta State, Nigeria (Life Center Academy)

F • 6-2 • Jr.  
2V

33

## CAREER HIGHS-ALL GAMES

Points.....8, vs. Cincinnati (2/17/13)  
 FG Made.....3, Twice  
 FG Atts.....6, vs. Iona (11/12/13)  
 3-Pt. FG.....  
 3-Pt. FGA.....  
 FT .....6, vs. Cincinnati (2/17/13)  
 FT Att.....6, vs. Cincinnati (2/17/13)  
 Off. Reb.....4, vs. Hofstra (11/17/12)  
 Def. Reb.....6, vs. NJIT (12/18/12)  
 Total Reb.....9, vs. NJIT (12/18/12)  
 Assists.....1, Four Times  
 TO .....2, Four Times  
 Blocks .....1, Ten Times  
 Steals.....2, at Rutgers (1/6/13)  
 Minutes .....21, vs. NJIT (12/18/12)

## BIG EAST HIGHS

Points.....8, vs. Cincinnati (2/17/13)  
 FG Made.....3, at DePaul (1/11/14)  
 FG Atts.....5, at DePaul (1/11/14)  
 3-Pt. FG.....  
 3-Pt. FGA.....  
 FT .....6, vs. Cincinnati (2/17/13)  
 FT Att.....6, vs. Cincinnati (2/17/13)  
 Off. Reb.....2, vs. Providence (2/8/14)  
 Def. Reb.....4, vs. Providence (2/8/14)  
 Total Reb.....4, at Marquette (1/18/14)  
 Assists.....1, Three Times  
 TO .....2, Five Times  
 Blocks .....1, Six Times  
 Steals.....2, at Rutgers (1/6/13)  
 Minutes .....20, at DePaul (1/11/14)

## 2014-15 SEASON HIGHS

Points.....  
 FG Made.....  
 FG Atts.....  
 3-Pt. FG.....  
 3-Pt. FGA.....  
 FT .....  
 FT Att.....  
 Off. Reb.....  
 Def. Reb.....  
 Total Reb.....  
 Assists.....  
 TO.....  
 Blocks.....  
 Steals.....  
 Minutes .....

## AS A SOPHOMORE (2013-14)

- Scored a season-high seven points on 3-of-5 shooting to go with four rebounds in a season-high 20 minutes in the victory at DePaul (Jan. 11).
- Tallied six points and a season-high six rebounds in 19 minutes in a loss at Florida (Nov. 26).
- Tied her career best of one block against Quinnipiac (Nov. 20), Florida (Nov. 26), Seton Hall (Dec. 28), Xavier (Jan. 5), Butler (Feb. 5), Providence (Feb. 8) and Creighton (Feb. 23).
- Recorded her first career assist in the home victory over Iona (Nov. 12) before recording single assists against DePaul (Jan. 11), Villanova (Jan. 22) and Seton Hall (Feb. 1).
- Was 24-of-52 (.462) from the field in the first 26 games she appeared in, including 18 starts.
- Tallied six points and three rebounds in her first career start in the victory over No. 24 Texas A&M (Dec. 22) at the Maggie Dixon Classic.
- Scored four points and pulled down a season-high three offensive rebounds at Delaware (Dec. 30).

## 2014-15 SEASON STATISTICS

Date	Opponent	GP-GS	Min	TOTAL		3-PTS				REBOUNDS																																																																																																																																																																																																																																																																																																																																																																																																																																																																																																																																																																																																																																																																																																																																																																																																																																																																																																																																																																																																																																																																																																																																																																																																																																																																																																																																																										
				FG-FGA	Pct	3FG-3FGA	3Pct	FT-FTA	Pct	Off	Def	Tot	Avg	PF	FO	A	TO	Blk	Stl	Pts	Avg																																																																																																																																																																																																																																																																																																																																																																																																																																																																																																																																																																																																																																																																																																																																																																																																																																																																																																																																																																																																																																																																																																																																																																																																																																																																																																																																															
N15	at Yale		DNP-INJ																																																																																																																																																																																																																																																																																																																																																																																																																																																																																																																																																																																																																																																																																																																																																																																																																																																																																																																																																																																																																																																																																																																																																																																																																																																																																																																																																																	

## UDOBI'S CAREER STATISTICS

Season	GP-GS	min/Avg	FG-FGA	Pct.	3FG-FGA	3Pct.	FT-FTA	Pct.	OFF	DEF	TOT	Avg.	pf	FO	A	TO	BLK	STL	PTS	Avg.
2012-13	19-0	151/7.9	9-25	.360	0-0	.000	16-22	.727	12	19	31	1.6	16	0	0	8	3	3	34	1.8
2013-14	26-18	252/9.7	24-52	.462	0-0	.000	7-14	.500	15	32	47	1.8	29	0	4	16	7	5	55	2.1
2014-15	0-0	0/0.0	0-0	.000	0-0	.000	0-0	.000	0	0	0	0.0	0	0	0	0	0	0	0	0.0
TOTAL	45-18	403/9.0	33-77	.429	0-0	.000	23-36	.639	27	51	78	1.8	45	0	4	24	10	8	89	2.0



WE ARE ST. JOHN'S.

# AALIYAH LEWIS

Staten Island, N.Y. (Bishop Ford)

G • 5-5 • So  
1V

4

**CAREER HIGHS-ALL GAMES**

Points..... 19, vs. Harvard (12/1/13)  
 FG Made..... 7, vs. Harvard (12/1/13)  
 FG Atts. .... 15, 2x, vs. Xavier (12/3/14)  
 3-Pt. FG..... 2, 3x, last vs. UCF (12/11/14)  
 3-Pt. FGA..... 4, 2x, last vs. UCF (12/11/14)  
 FT ..... 5, Twice  
 FT Att..... 7, vs. Florida (11/20/14)  
 Off. Reb..3, vs. James Madison (12/15/2013)  
 Def. Reb. .... 7, vs. UCF (12/11/14)  
 Tot. Reb.....8, vs. UCF (12/11/14)  
 Assists..... 8, vs. Florida (11/20/14)  
 TO ..... 8, vs. UCF (12/11/14)  
 Blocks ..... 1, vs. Seton Hall (12/28/13)  
 Steals ..... 5, vs. Harvard (12/1/13)  
 Minutes ..... 44, at Sacred Heart (11/8/13)

**BIG EAST HIGHS**

Points..... 8, 2x, last vs. Xavier (12/3/14)  
 FG Made..... 4, 2x, last vs. Xavier (12/3/14)  
 FG Atts. .... 13, vs. Xavier (12/3/14)  
 3-Pt. FG..... 1, vs. Xavier (12/29/14)  
 3-Pt. FGA..... 3, vs. Providence (2/8/14)  
 FT ..... 2, vs. Providence (2/8/14)  
 FT Att..... 2, Three Times  
 Off. Reb..... 2, vs. Xavier (12/3/14)  
 Def. Reb. .... 3, 2x, vs. Xavier (12/3/14)  
 Total Reb. .... 5, vs. Xavier (12/3/14)  
 Assists..... 6, vs. Providence (2/8/14)  
 TO ..... 2, 3x, last vs. Xavier (12/3/14)  
 Blocks ..... 1, vs. Seton Hall (12/28/13)  
 Steals ..... 2, at Marquette (1/18/14)  
 Minutes ..... 37, vs. Xavier (12/3/14)

**2014-15 SEASON HIGHS**

Points..... 9, vs. Binghamton (11/28/14)  
 FG Made..... 4, vs. Xavier (12/3/14)  
 FG Atts. .... 13, vs. Xavier (12/3/14)  
 3-Pt. FG..... 2, 3x, last vs. UCF (12/11/14)  
 3-Pt. FGA..... 4, 2x, last vs. UCF (12/11/14)  
 FT ..... 4, vs. Florida (11/20/14)  
 FT Att..... 7, vs. Florida (11/20/14)  
 Off. Reb..... 2, vs. Xavier (12/3/14)  
 Def. Reb. .... 7, vs. UCF (12/11/14)  
 Tot. Reb..... 8, vs. UCF (12/11/14)  
 Assists..... 5, 2x, last vs. Xavier (12/3/14)  
 TO ..... 8, vs. UCF (12/11/14)  
 Blocks .....  
 Steals..... 3, vs. Binghamton (11/28/14)  
 Minutes ..... 37, 3x, last vs. UCF (12/11/14)

**AS A SOPHOMORE (2014-15)**

- Recorded four points, two assists and two steals at Yale (11/15).
- Tallied eight points at Marist (11/24)
- Registered nine points and four assists against Binghamton (11/28)
- Scored six points and dished out a season-high five assists against Wagner (11/30)

**Lewis' Career Accolades**

- BIG EAST Rookie of the Week (Dec. 2, 2013)

**2014-15 SEASON STATISTICS**

Date	Opponent	GP-GS	Min	TOTAL		3-PTS		REBOUNDS		PF	FO	A	TO	Blk	Stl	Pts	Avg
				FG-FGA	Pct	3FG-3FGA	3Pct	FT-FTA	Pct								
N15	at Yale	1-1	35	2-4	.500	0-0	.000	0-2	.000	1	1	2	2.0	4	0	2	4.0
N20	FLORIDA	1-1	37	1-4	.250	0-1	.000	4-7	.571	1	3	4	3.0	1	0	8	5.0
N24	at Marist	1-1	28	3-5	.600	2-3	.667	0-2	.000	0	0	0	2.0	2	0	1	6.0
N28	BINGHAMTON	1-1	35	3-8	.375	0-4	.000	3-4	.750	0	2	2	2.0	2	0	4	6.8
N30	WAGNER	1-1	29	2-5	.400	1-2	.500	1-2	.500	1	0	1	1.8	2	0	5	6.6
D3	XAVIER*	1-1	37	4-13	.308	0-2	.000	0-0	.000	2	3	5	2.3	1	0	5	6.8
D7	at USF	1-1	34	0-2	.000	0-0	.000	2-2	1.000	0	2	2	2.3	3	0	3	6.1
D11	UCF	1-1	37	3-9	.333	2-4	.400	4-6	.667	1	7	8	3.0	2	0	6	6.9
D14	NJIT	1-1	22	0-2	.000	0-1	.000	0-0	.000	0	1	1	2.8	0	0	3	6.1
Totals		9-9	294	18-52	.346	5-17	.294	14-25	.560	6	19	25	2.8	17	0	37	6.1

**LEWIS' CAREER STATISTICS**

Season	GP-GS	min/Avg	FG-FGA	Pct.	3FG-FGA	3Pct.	FT-FTA	Pct.	OFF	DEF	TOT	Avg.	pf	FO	A	TO	BLK	STL	PTS	Avg.
2013-14	33-8	628/19.0	33-123	.268	5-27	.185	28-45	.622	10	32	42	1.3	45	0	69	47	1	18	99	3.0
2014-15	9-9	294/32.7	18-52	.346	5-17	.294	14-25	.560	6	19	25	2.8	17	0	37	20	0	14	55	6.1
TOTAL	42-17	922/22.0	51-175	.291	10-44	.227	42-70	.600	16	51	67	1.6	62	0	106	67	1	32	154	3.7



WE ARE ST. JOHN'S.

# JADE WALKER

Maplewood, N.J. (DePaul Catholic)

F • 6-1 • So  
1V

24

## CAREER HIGHS-ALL GAMES

Points.....14, 2x, last at Marist (11/24/14)  
 FG Made.....6, 2x, last at Marist (11/24/14)  
 FG Atts.....13, vs. Binghamton (11/28/14)  
 3-Pt. FG.....1, vs. Seton Hall (3/9/14)  
 FT .....3, Three Times  
 FT Att.....5, at Seton Hall (2/1/14)  
 Off. Reb.....4, 2x, last vs. Bing. (11/28/14)  
 Def. Reb.....7, vs. Bing. (11/28/14)  
 Total Reb.....11, vs. Bing. (11/28/14)  
 Assists.....2, vs. Creighton (1/8/14)  
 TO .....5, at Seton Hall (2/1/14)  
 Blocks .....3, vs. James Madison (12/15/13)  
 Steals.....3, vs. NJIT (12/14/14)  
 Minutes .....33, vs. Binghamton (11/28/14)

## BIG EAST HIGHS

Points.....14, vs. Providence (2/8/14)  
 FG Made.....6, vs. Providence (2/8/14)  
 FG Atts.....9, vs. Providence (2/8/14)  
 3-Pt. FG.....1, vs. Providence (2/8/14)  
 3-Pt. FGA.....3, Twice  
 FT .....5, at Seton Hall (2/1/14)  
 Off. Reb.....3, vs. Providence (2/8/14)  
 Def. Reb.....6, vs. Xavier (12/3/14)  
 Total Reb.....7, vs. Xavier (12/3/14)  
 Assists.....2, vs. Creighton (1/8/14)  
 TO .....5, at Seton Hall (2/1/14)  
 Blocks .....2, Twice  
 Steals.....1, Twice  
 Minutes .....25, at Seton Hall (2/1/14)

## 2014-15 SEASON HIGHS

Points.....14, 2x, last at Marist (11/24/14)  
 FG Made.....6, 2x, last at Marist (11/24/14)  
 FG Atts.....13, vs. Binghamton (11/28/14)  
 3-Pt. FG.....1, vs. Binghamton (11/28/14)  
 3-Pt. FGA.....2, 3x, last vs. Xavier (12/3/14)  
 FT .....4, vs. UCF (12/11/14)  
 FT Att.....4, vs. UCF (12/11/14)  
 Off. Reb.....4, 2x, last vs. Bing. (11/28/14)  
 Def. Reb.....7, vs. Bing. (11/28/14)  
 Total Reb.....11, vs. Bing. (11/28/14)  
 Assists.....1, 2x, last at USF (12/7/14)  
 TO .....3, 3x, last vs. UCF (12/11/14)  
 Blocks .....2, at Marist (11/24/14)  
 Steals.....3, vs. NJIT (12/14/14)  
 Minutes .....33, vs. Binghamton (11/28/14)

## AS A SOPHOMORE (2014-15)

- Scored four points and pulled down a career-high seven boards in the Red Storm's season-opening win over Yale (11/15).
- Netted 11 points in just 18 minutes against Florida (11/20)
- Set or tied career-highs in points, rebounds and minutes played at Marist (11/24).
- Tallied her first career double-double with 10 points and 11 boards (career high) against Binghamton (11/28).
- Reached double figures with 11 points of five-of-eight shooting vs. UCF (12/11).

## Walker's Career Accolades

- 2013-14 BIG EAST All-Freshman Team

## 2014-15 SEASON STATISTICS

Date	Opponent	GP-GS	Min	TOTAL		3-PTS				REBOUNDS							PF	FO	A	TO	Blk	Stl	Pts	Avg
				FG-FGA	Pct	3FG-3FGA	3Pct	FT-FTA	Pct	Off	Def	Tot	Avg											
N15	at Yale	1-1	16	2-8	.250	0-0	.000	0-0	.000	3	4	7	7.0	4	0	0	3	0	0	4	4.0			
N20	FLORIDA	1-1	18	5-7	.714	0-0	.000	1-1	1.000	1	1	2	4.5	4	0	0	2	1	0	11	7.5			
N24	at Marist	1-1	29	6-10	.600	0-0	.000	2-2	1.000	3	5	8	5.7	5	1	0	2	2	0	14	9.7			
N28	BINGHAMTON	1-1	33	4-13	.308	0-0	.000	2-2	1.000	4	7	11	7.0	1	0	1	1	0	0	10	9.8			
N30	WAGNER	1-1	19	1-5	.200	0-0	.000	0-0	.000	1	2	3	6.2	2	0	0	1	1	0	2	8.2			
D3	XAVIER*	1-1	24	4-9	.444	0-0	.000	2-2	1.000	1	6	7	6.3	4	0	0	3	1	0	10	8.5			
D7	at USF	1-1	25	2-8	.250	0-0	.000	0-1	.000	0	3	3	5.9	3	0	1	1	0	0	4	7.9			
D11	UCF	1-1	23	5-8	.625	0-0	.000	1-4	.250	1	1	2	5.4	4	0	0	3	0	0	11	8.3			
D14	NJIT	1-1	21	5-10	.500	0-0	.000	1-1	1.000	1	2	3	5.1	0	0	1	3	0	3	11	8.6			
Totals		9-9	208	34-78	.436	0-0	.000	9-13	.692	15	31	46	5.1	27	1	3	19	5	3	77	8.6			

## WALKER'S CAREER STATISTICS

Season	GP-GS	min/Avg	FG-FGA	Pct.	3FG-FGA	3Pct.	FT-FTA	Pct.	OFF	DEF	TOT	Avg.	pf	FO	A	TO	BLK	STL	PTS	Avg.
2013-14	31-0	388/12.5	64-119	.538	0-1	.000	17-44	.386	28	31	59	1.9	75	3	12	43	13	3	145	4.7
2014-15	9-9	208/23.1	34-78	.436	0-0	.000	9-13	.692	15	31	46	5.1	27	1	3	19	5	3	77	8.6
TOTAL	40-9	596/14.9	98-197	.497	0-1	.000	26-57	.456	43	62	105	2.6	102	4	15	62	18	6	222	5.6



WE ARE ST. JOHN'S.

# KIMBERLY SPRUILL

Raleigh, N.C./Needham B. Broughton

G • 5-9 So.-  
HS

23

**CAREER HIGHS-ALL GAMES**

Points.....  
 FG Made.....  
 FG Atts.....  
 3-Pt. FG.....  
 3-Pt. FGA.....  
 FT.....  
 FT Att.....  
 Off. Reb.....  
 Def. Reb. .... 1, vs. NJIT (12/14/14)  
 Total Reb. .... 1, vs. NJIT (12/14/14)  
 Assists..... 1, vs. NJIT (12/14/14)  
 TO.....  
 Blocks.....  
 Steals.....  
 Minutes ..... 3, vs. NJIT (12/14/14)

**AS A SOPHOMORE (2014-15)**

- Made her collegiate debut against NJIT, grabbing a board and dishing out an assist in three minutes of action (12/14).

**2014-15 SEASON STATISTICS**

Date	Opponent	GP-GS	Min	TOTAL		3-PTS				REBOUNDS											
				FG-FGA	Pct	3FG-3FGA	3Pct	FT-FTA	Pct	Off	Def	Tot	Avg	PF	FO	A	TO	Blk	Stl	Pts	Avg
N15	at Yale	DNP																			
N20	FLORIDA	DNP																			
N24	at Marist	DNP																			
N28	BINGHAMTON	DNP																			
N30	WAGNER	DNP																			
D3	XAVIER*	DNP																			
D7	at USF	DNP																			
D11	UCF	DNP																			
D14	NJIT	1-0	3	0-0	.000	0-0	.000	0-0	.000	0	1	1	1.0	0	0	1	0	0	0	0	0.0
Totals		1-0	3	0-0	.000	0-0	.000	0-0	.000	0	1	1	1.0	0	0	1	0	0	0	0	0.0



WE ARE ST. JOHN'S.

# TAMESHA ALEXANDER

Philadelphia, Pa. (The Shipley School)

G • 5-7 • Fr.  
HS

1

## CAREER HIGHS-ALL GAMES

Points.....2, vs. Wagner (11/30/14)  
 FG Made.....1, vs. Wagner (11/30/14)  
 FG Atts. .... 2, 2x, last vs. Wagner (11/30/14)  
 3-Pt. FG.....  
 3-Pt. FGA.....  
 FT .....  
 FT Att..... 2, at Marist (11/24/14)  
 Off. Reb..... 1, at Marist (11/24/14)  
 Def. Reb. .... 2, 2x, last vs. UCF (12/11/14)  
 Total Reb. .... 2, 2x, last vs. UCF (12/11/14)  
 Assists.....3, vs. NJIT (12/14/14)  
 TO.....2, vs. NJIT (12/14/14)  
 Blocks .....  
 Steals..... 1, 2x, vs. Wagner (11/30/14)  
 Minutes ..... 18, vs. NJIT (12/14/14)

## At The Shipley School:

- A four-star point guard with strong ball handling and precise passing skills regarded as one of the top point guards in her class and ranked No. 24 at her position by ESPN HoopGurlz.
- Led The Shipley School to three Friends League Championships and one Independent School State Championship entering her senior campaign.
- Led The Shipley School to a 63-22 overall record in her first three seasons there while starting in every game but one.
- Surpassed the 1,000-point mark as a junior and became The Shipley School's all-time leading scorer for both boys and girls as a senior with over 1,300 points.
- An all-around threat on the hardwood who entered her senior year with 284 rebounds, 456 assists and 334 steals.
- Earned three selections to the All-Main Line First Team and three nods to the All-Friends School League First Team.
- Excelled on the AAU circuit under Philadelphia Belles head coach Sean Costello, winning two Boo Williams Invitational Championships in 2009 and 2010 and three Mid-Atlantic Region Championships.
- Has been known as "Sox" by her teammates since she was 11-years old.

## 2014-15 SEASON STATISTICS

Date	Opponent	GP-GS	Min	TOTAL		3-PTS				REBOUNDS											PF	FO	A	TO	Blk	Stl	Pts	Avg
				FG-FGA	Pct	3FG-3FGA	3Pct	FT-FTA	Pct	Off	Def	Tot	Avg															
N15	at Yale	1-0	4	0-0	.000	0-0	.000	0-0	.000	0-0	.000	0	0	0	0.0	0	0	0	0	0	0	0	0	0	0			
N20	FLORIDA	1-0	3	0-0	.000	0-0	.000	0-0	.000	0-0	.000	0	0	0	0.0	0	0	0	0	0	0	0	0	0	0			
N24	at Marist	1-0	11	0-0	.000	0-0	.000	0-2	.000	1	0	1	0.3	1	0	0	0	0	0	0	0	0	0	0	0			
N28	BINGHAMTON	1-0	6	0-2	.000	0-0	.000	0-0	.000	0	0	0	0.3	0	0	0	0	1	0	1	0	1	0	0	0			
N30	WAGNER	1-0	11	1-2	.500	0-0	.000	0-1	.000	0	2	2	0.6	3	0	0	1	0	1	0	1	2	0	4	0.4			
D3	XAVIER*	1-0	3	0-1	.000	0-0	.000	0-0	.000	0	0	0	0.5	1	0	1	0	0	0	0	0	0	0	0	0.3			
D7	at USF	1-0	5	0-1	.000	0-0	.000	0-0	.000	0	1	1	0.6	1	0	2	0	0	0	0	0	0	0	0	0.3			
D11	UCF	1-0	3	0-1	.000	0-0	.000	0-0	.000	0	2	2	0.8	0	0	0	1	0	0	0	0	0	0	0	0.3			
D14	NJIT	1-0	18	0-2	.000	0-1	.000	0-0	.000	0	0	0	0.7	0	0	3	2	0	0	0	0	0	0	0	0.2			
Totals		9-0	64	1-9	.111	0-1	.000	0-3	.000	1	5	6	0.7	6	0	6	5	0	2	2	2	0	2	0	0.2			



WE ARE ST. JOHN'S.

# IMANI LITTLETON

San Diego, Calif. (The Bishop's School)

F • 6-3 • Fr.  
HS

35

## CAREER HIGHS-ALL GAMES

Points..... 6, vs. NJIT (12/14/14)  
 FG Made..... 3, vs. NJIT (12/14/14)  
 FG Atts..... 4, vs. NJIT (12/14/14)  
 3-Pt. FG.....  
 3-Pt. FGA.....  
 FT ..... 1, vs. Wagner (11/30/14)  
 FT Att..... 4, vs. Wagner (11/30/14)  
 Off. Reb..... 3, at Yale (11/15/14)  
 Def. Reb..... 2, at Yale (11/15/14)  
 Total Reb..... 5, at Yale (11/15/14)  
 Assists..... 1, vs. Wagner (11/30/14)  
 TO..... 3, vs. NJIT (12/14/14)  
 Blocks ..... 1, 2x, last vs. Xavier (12/3/14)  
 Steals.....  
 Minutes ..... 21, at Yale (11/15/14)

## At The Bishops School:

- A four-star recruit and athletic forward ranked No. 22 at her position by ESPN HoopGurlz and 61st overall by ProspectsNation.com.
- High-impact player who can run the floor and contribute on both ends due to her speed and agility.
- A 2,000-point scorer at The Bishop School, one of the most premiere independent schools on the West Coast known for both academics and athletics.
- Burst onto the national scene after scoring 720 points during a stellar junior campaign.
- A dominant post presence who averaged 17.8 points, 9.7 rebounds, 3.1 steals and 1.6 blocks per game throughout her high school career.

## 2014-15 SEASON STATISTICS

Date	Opponent	GP-GS	Min	TOTAL		3-PTS				REBOUNDS											
				FG-FGA	Pct	3FG-3FGA	3Pct	FT-FTA	Pct	Off	Def	Tot	Avg	PF	FO	A	TO	Blk	Stl	Pts	Avg
N15	at Yale	1-0	21	1-3	.333	0-0	.000	0-0	.000	3	2	5	5.0	1	0	0	1	0	0	2	2.0
N20	FLORIDA	1-0	6	0-0	.000	0-0	.000	0-0	.000	0	0	0	2.5	0	0	0	2	0	0	0	1.0
N24	at Marist	1-0	5	1-1	1.000	0-0	.000	0-0	.000	0	0	0	1.7	3	0	0	0	0	0	2	1.3
N28	BINGHAMTON	1-0	5	2-3	.667	0-0	.000	0-0	.000	2	0	2	1.8	0	0	0	0	0	0	4	2.0
N30	WAGNER	1-0	11	0-0	.000	0-0	.000	1-4	.250	0	1	1	1.6	0	0	1	1	1	0	1	1.8
D3	XAVIER*	1-0	10	0-3	.000	0-0	.000	0-0	.000	1	0	1	1.5	0	0	0	1	1	0	0	1.5
D7	at USF	DNP																			
D11	UCF	DNP																			
D14	NJIT	1-0	18	3-4	.750	0-0	.000	0-0	.000	2	1	3	1.7	2	0	0	3	0	1	6	2.1
Totals		7-0	76	7-14	.500	0-0	.000	1-4	.250	8	4	12	1.7	6	0	1	8	2	1	15	2.1



WE ARE ST. JOHN'S.

# CRYSTAL SIMMONS

Madrid, Spain (Life Center Academy)

G • 5-10 • Fr.  
HS

13

## CAREER HIGHS-ALL GAMES

Points.....5, vs. Wagner (11/30/14)  
 FG Made.....2, vs. Wagner (11/30/14)  
 FG Atts.....5, vs. Wagner (11/30/14)  
 3-Pt. FG.....1, vs. Wagner (11/30/14)  
 3-Pt. FGA.....1, 4x, last vs. NJIT (12/14/14)  
 FT .....1, vs. Xavier (12/3/14)  
 FT Att.....4, vs. Xavier (12/3/14)  
 Off. Reb.....2, vs. Binghamton (11/28/14)  
 Def. Reb.....2, vs. UCF (12/11/14)  
 Total Reb.....3, vs. Binghamton (11/28/14)  
 Assists.....3, vs. NJIT (12/14/14)  
 TO.....1, 4x, last vs. NJIT (12/14/14)  
 Blocks .....1, 2x, last vs. Xavier (12/3/14)  
 Steals.....2, 2x, last vs. Xavier (12/3/14)  
 Minutes .....17, vs. Wagner (11/30/14)

## At Life Center Academy:

- A combo guard with a versatile skill set and contagious personality off the court hailing from Madrid, Spain.
- In two years living in the U.S. developed into one of the top guards in her class in the state of New Jersey, ranking 24th at her position by ESPN HoopGurlz as a three-star recruit.
- Averaged 9.7 points, 4.5 assists, 3.9 rebounds, 4.5 steals and 0.9 blocks in 62 games in her first two years at the Life Center Academy.
- Posted season-highs of 14 points, 12 rebounds, 11 assists, 11 steals and four blocks as a junior.
- Former teammate of current Red Storm junior Sandra Udobi.
- Known for her quickness and aggressive play as well as her ability to get to the basket and apply on-ball defensive pressure.
- Missed entire senior season due to injury.

## 2014-15 SEASON STATISTICS

Date	Opponent	GP-GS	Min	TOTAL		3-PTS			REBOUNDS									
				FG-FGA	Pct	3FG-3FGA	3Pct	FT-FTA	Pct	Off	Def	Tot	Avg	PF	FO	A	TO	Blk
N15	at Yale	1-0	4	0-0	.000	0-0	.000	0-0	.000	0	1	1	1.0	1	0	0	0	0.0
N20	FLORIDA	1-0	4	0-0	.000	0-0	.000	0-0	.000	0	0	0	0.5	0	0	0	0	0.0
N24	at Marist	1-0	9	0-0	.000	0-0	.000	0-0	.000	0	0	0	0.3	1	0	0	0	0.0
N28	BINGHAMTON	1-0	16	0-2	.000	0-1	.000	0-0	.000	2	1	3	1.0	1	0	0	1	0.0
N30	WAGNER	1-0	17	2-5	.400	1-1	1.000	0-0	.000	0	1	1	1.0	2	0	0	1	1.0
D3	XAVIER*	1-0	13	1-2	.500	0-0	.000	1-4	.250	0	1	1	1.0	2	0	0	1	1.3
D7	at USF	1-0	0+	0-1	.000	0-1	.000	0-0	.000	0	0	0	0.9	0	0	0	0	1.1
D11	UCF	1-0	9	0-2	.000	0-1	.000	0-0	.000	0	2	2	1.0	0	0	0	0	1.0
D14	NJIT	1-0	11	0-1	.000	0-1	.000	0-0	.000	0	1	1	1.0	3	0	3	1	0.9
Totals		9-0	83	3-13	.231	1-5	.200	1-4	.250	2	7	9	1.0	10	0	3	4	0.9



WE ARE ST. JOHN'S.

# TONOIA WADE

Bloomington, Minn. (John F. Kennedy)

F • 6-0 • Fr.  
HS

5

**CAREER HIGHS-ALL GAMES**

Points..... 5, vs. NJIT (12/14/14)  
 FG Made..... 2, vs. NJIT (12/14/14)  
 FG Atts..... 4, 2x, last vs. NJIT (12/14/14)  
 3-Pt. FG..... 1, vs. NJIT (12/14/14)  
 3-Pt. FGA..... 4, vs. Wagner (11/30/14)  
 FT ..... 2, vs. Wagner (11/30/14)  
 FT Att..... 2, vs. Wagner (11/30/14)  
 Off. Reb.....  
 Def. Reb. .... 3, 2x, last vs. NJIT (12/14/14)  
 Total Reb..... 3, 2x, last vs. NJIT (12/14/14)  
 Assists..... 1, vs. NJIT (12/14/14)  
 TO.....  
 Blocks .....  
 Steals..... 1, 3x, last at USF (12/7/14)  
 Minutes ..... 16, vs. Wagner (11/30/14)

**At Kennedy:**

- A four-star recruit ranked No. 22 at her position by ESPN HoopGurlz and No. 99 nationally by ProspectsNation.com
- A versatile athlete capable of playing both guard and forward.
- Uses size and strength to offer a strong paint presence but can help stretch defenses by knocking down shots from behind the arc.
- Averaged 15 points, seven rebounds, two steals and two blocks per game during a 22-game junior campaign at Kennedy, considered one of the top programs both athletically and academically in Minnesota.

**2014-15 SEASON STATISTICS**

Date	Opponent	GP-GS	Min	TOTAL		3-PTS				REBOUNDS												
				FG-FGA	Pct	3FG-3FGA	3Pct	FT-FTA	Pct	Off	Def	Tot	Avg	PF	FO	A	TO	Blk	Stl	Pts	Avg	
N15	at Yale	1-0	5	0-0	.000	0-0	.000	0-0	.000	0-0	.000	0	0	0	0	0	0	0	0	1	0	0.0
N20	FLORIDA	1-0	4	0-1	.000	0-0	.000	0-0	.000	0	1	1	0.5	0	0	0	0	0	0	0	0	0.0
N24	at Marist	1-0	4	0-1	.000	0-1	.000	0-0	.000	0	0	0	0.3	0	0	0	0	0	0	0	0	0.0
N28	BINGHAMTON	1-0	2	0-0	.000	0-0	.000	0-0	.000	0	0	0	0.3	0	0	0	0	0	0	0	0	0.0
N30	WAGNER	1-0	16	0-4	.000	0-4	.000	2-2	1.000	0	3	3	0.8	1	0	0	0	0	0	2	0	0.4
D3	XAVIER*	1-0	2	0-0	.000	0-0	.000	0-0	.000	0	0	0	0.7	0	0	0	0	0	0	1	0	0.3
D7	at USF	1-0	5	0-0	.000	0-0	.000	0-0	.000	0	0	0	0.6	1	0	0	0	0	0	1	0	0.3
D11	UCF	1-0	13	0-1	.000	0-1	.000	0-0	.000	0	1	1	0.6	1	0	0	0	0	0	0	0	0.3
D14	NJIT	1-0	14	2-4	.500	1-1	1.000	0-0	.000	0	3	3	0.9	1	0	1	0	0	0	5	0	0.8
Totals		9-0	65	2-11	.182	1-7	.143	2-2	1.000	0	8	8	0.9	4	0	1	0	0	0	4	7	0.8

## ST. JOHN'S WOMEN'S BASKETBALL TV/RADIO CHART



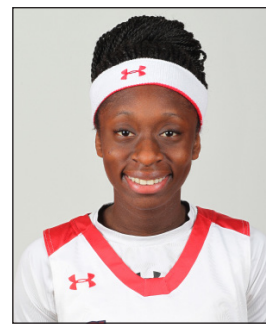
**#1 TAMESHA ALEXANDER**  
FR • G • 5-7  
PHILADELPHIA, PA.  
THE SHIPLEY SCHOOL



**#2 AMBER THOMPSON**  
SR • F • 6-2  
NEWARK, N.J.  
UNIVERSITY HIGH



**#3 ALIYYAH HANDFORD**  
JR • G • 5-9  
NEWARK, N.J.  
SHABAZZ



**#4 AALIYAH LEWIS**  
SO • G • 5-5  
STATEN ISLAND, N.Y.  
BISHOP FORD



**#5 TONOIA WADE**  
FR • F • 6-0  
BLOOMINGTON, MINN.  
KENNEDY



**#12 KYRA DUNN**  
GS • F • 6-3  
SACRAMENTO, CALIF.  
CAL-BERKELEY



**#13 CRYSTAL SIMMONS**  
FR • G • 5-10  
MADRID, SPAIN  
LIFE CENTER ACADEMY



**#15 DANAELAJAH GRANT**  
JR • G • 5-9  
PISCATAWAY, N.J.  
CLEMSON



**#23 KIMBERLY SPRUILL**  
SO • G • 5-9  
RALEIGH, N.C.  
BROUGHTON



**#24 JADE WALKER**  
SO • F • 6-1  
MAPLEWOOD, N.J.  
DEPAUL CATHOLIC



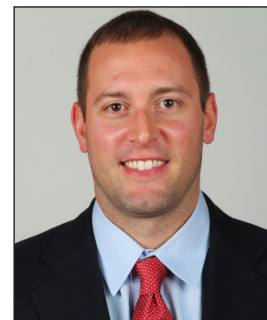
**#33 SANDRA UDOBU**  
JR • F • 6-2  
DELTA STATE, NIGERIA  
LIFE CENTER ACADEMY



**#35 IMANI LITTLETON**  
FR • F • 6-3  
SAN DIEGO, CALIF.  
THE BISHOP'S SCHOOL



**#54 SELINA ARCHER**  
R-SR • F • 6-4  
CLERMONT, FLA.  
MIAMI (FL.)



**JOE TARTAMELLA**  
HEAD COACH  
THIRD SEASON



**JOSEPH PELLICANE**  
ASSISTANT COACH  
FOURTH SEASON



**JONATH NICHOLAS**  
ASSISTANT COACH  
SEVENTH SEASON



**PRISCILLA EDWARDS**  
ASSISTANT COACH  
THIRD SEASON



**VERONICA MULLEN**  
DIR. OF OPERATIONS  
SEVENTH SEASON