

GARDNER-WEBB

BASKETBALL

2020-2021 WOMEN'S BASKETBALL GAME NOTES

RUNNIN' BULLDOGS

0-1

OVERALL

ALEX SIMMONS
HEAD COACH

60.0

OFFENSE

0-0

BIG SOUTH

34-27
at GWU (3rd)

88.0

DEFENSE



AT



2-0

OVERALL

TERRI WILLIAMS-FLOURNOY
HEAD COACH

74.0

OFFENSE

0-0

SEC

137-119
at AU (9th)

52.5

DEFENSE

TIGERS

2020-2021 SCHEDULE

| DATE | OPPONENT | LOCATION | TIME/RESULT |
|---------|-------------------------|-----------------------|-------------|
| Nov. 25 | ELON | BOILING SPRINGS, N.C. | L, 88-60 |
| Dec. 1 | at Auburn | Auburn, Ala. | 7:00 PM |
| Dec. 4 | at Richmond | Richmond, Va. | 5:00 PM |
| Dec. 6 | at Virginia Tech | Blacksburg, Va. | 2:00 PM |
| Dec. 16 | at Presbyterian* | Clinton, S.C. | |
| Dec. 17 | at Presbyterian* | Clinton, S.C. | |
| Dec. 20 | at Vanderbilt | Nashville, Tenn. | 3:00 PM |
| Dec. 30 | HAMPTON* | BOILING SPRINGS, N.C. | 4:00 PM |
| Dec. 31 | HAMPTON* | BOILING SPRINGS, N.C. | 2:00 PM |
| Jan. 4 | at Charleston Southern* | Charleston, S.C. | |
| Jan. 5 | at Charleston Southern* | Charleston, S.C. | |
| Jan. 15 | RADFORD* | BOILING SPRINGS, N.C. | |
| Jan. 16 | RADFORD* | BOILING SPRINGS, N.C. | |
| Jan. 22 | USC UPSTATE* | BOILING SPRINGS, N.C. | |
| Jan. 23 | USC UPSTATE* | BOILING SPRINGS, N.C. | |
| Jan. 29 | at Campbell* | Buies Creek, N.C. | |
| Jan. 30 | at Campbell* | Buies Creek, N.C. | |
| Feb. 5 | WINTHROP* | BOILING SPRINGS, N.C. | |
| Feb. 6 | WINTHROP* | BOILING SPRINGS, N.C. | |
| Feb. 12 | at High Point* | High Point, N.C. | |
| Feb. 13 | at High Point* | High Point, N.C. | |
| Feb. 19 | LONGWOOD* | BOILING SPRINGS, N.C. | |
| Feb. 20 | LONGWOOD* | BOILING SPRINGS, N.C. | |
| Feb. 26 | at UNC Asheville* | Asheville, N.C. | |
| Feb. 27 | at UNC Asheville* | Asheville, N.C. | |

| 2021 BIG SOUTH CONFERENCE WOMEN'S BASKETBALL CHAMPIONSHIP | | | |
|---|---------------|--------------|-----|
| Mar. 9 | First Round | Higher Seeds | TBA |
| Mar. 11 | Quarterfinals | No. 1 Seed | TBA |
| Mar. 12 | Semifinals | No. 1 Seed | TBA |
| Mar. 14 | Finals | Highest Seed | TBA |

HOME GAMES BOLD / ALL CAPS

* Denotes Big South Conference Game

All Times Eastern and Subject to Change

2020-2021 ROSTER

| NO. | NAME | PRONUNCIATION | YR. | POS. | HT. | HOMETOWN/PREVIOUS SCHOOL |
|-----|---------------------|-----------------|-------|------|------|-------------------------------------|
| 0 | Micahla Funderburk | | Fr. | G/F | 5-9 | Charlotte, N.C./Butler HS |
| 1 | Ki'Ari Cain | "KEY-ari" | So. | G | 5-6 | Sumpster, S.C./Sumpster HS |
| 2 | Lauren Bevis | "BEV-is" | So. | G | 5-5 | High Point, N.C./Homeschooled |
| 5 | Cierra Bell | | Fr. | G | 5-10 | Hampton, Va./Hampton HS |
| 11 | Grace Knutsen | "NEWT-sen" | So. | F | 6-0 | Alpharetta, Ga./Alpharetta HS |
| 12 | Jhessyka Williams | | Jr. | G/F | 5-10 | Augusta, Ga./Laney HS |
| 13 | Laura Kozo | "Loo-a CO-zo" | So. | C | 6-3 | Ontario, Canada/J. Addison School |
| 22 | Nia Lee | "KNEE-uh" | Sr. | G/F | 5-11 | Lawrenceville, Ga./Collins Hill HS |
| 24 | Lyrissa Deans | "LUH-rissa" | R-Jr. | C | 6-3 | Waldorf, Md./Charlotte |
| 30 | Alasia Smith | | Fr. | G/F | 5-10 | Johnson City, Tenn./Science Hill HS |
| 31 | Emily Gillis | | Fr. | G | 5-11 | Levittown, N.Y./Division Avenue HS |
| 33 | Emma Capps | | Fr. | F/C | 6-1 | Crossville, Tenn./Stone Memoria HS |
| 34 | Alexis Hueston | | Sr. | F | 5-11 | Roanoke, Va./Northside HS |
| 42 | Gabrielle Caponegro | "CAP-on-EGG-ro" | R-Sr. | F | 6-0 | Allenwood, N.J./LIU Brooklyn |

Head Coach: Alex Simmons

Assistant Coaches: Garner Small, Danielle Bell
Chynna Turner

Graduate Manager: Morgan Pointer

Director of Basketball Operations: Bailey Small

GAME

2

GARDNER-WEBB AT AUBURN

Tuesday | December 1 | 7:00 PM

Auburn, Ala. | Auburn Arena

TV/VIDEO: SEC Network +

TALENT: Brad Law, Mimi Hill

LIVE STATS: StatBroadcast.com

TUESDAY'S PROJECTED STARTERS



| CAIN | WILLIAMS | DEANS | SMITH | HUESTON |
|-----------|----------|-----------|-----------|----------|
| So. G | Jr. G | R-Jr. C | Fr. F | Sr. F |
| MIN 31.0 | MIN 29.0 | MIN 21.0 | MIN 25.0 | MIN 9.0 |
| PPG 6.0 | PPG 15.0 | PPG 2.0 | PPG 21.0 | PPG 0.0 |
| FG% 20.0 | FG% 50.0 | FG% 25.0 | FG% 61.5 | FG% 0.0 |
| FT% 50.0 | FT% 60.0 | FT% 0.0 | FT% 66.7 | FT% 0.0 |
| AST 4.0 | REB 8.0 | REB 3.0 | REB 9.0 | REB 0.0 |
| 3FG% 14.3 | STL 1.0 | BLK 1.0 | 3FG% 60.0 | 3FG% 0.0 |

2020-2021 WOMEN'S BASKETBALL GAME NOTES

HEAD COACH ALEX SIMMONS ◀

THIRD SEASON | TENNESSEE '08 | 34-27



- ▶ Third season at Gardner-Webb with an 34-27 overall record.
- ▶ Led GWU to an 18-11 record in 2019-20, including 13-7 in Big South play to place fifth in league standings.
- ▶ 21-9 while coaching inside Paul Porter Arena.
- ▶ Named head coach on April 24, 2018.
- ▶ Power Five win over Florida.
- ▶ Three All-Big South selections (Carley Plentovich x2, Jhessyka Williams)
- ▶ Assistant at Ole Miss and Middle Tennessee State
- ▶ Played at Tennessee (2004-2009) under legendary head coach Pat Summitt, leading the Lady Vols to back-to-back NCAA Division I National Championships in 2007 and 2008.

HEAD COACHING HISTORY ◀

| GARDNER-WEBB | OVERALL | BIG SOUTH |
|--------------|---------|-----------|
| 2018-2019 | 16-15 | 10-8 |
| 2019-2020 | 18-11 | 13-7 |
| 2020-2021 | 0-1 | 0-0 |

PREVIOUS COACHING EXPERIENCE ◀

| | | |
|-----------|------------------------|--------------------|
| 2013-2018 | Ole Miss | Assistant Coach |
| 2010-2013 | Middle Tennessee State | Assistant Coach |
| 2009-2010 | Kansas | Graduate Assistant |

MEDIA RELATIONS INFORMATION ◀

| | |
|--|--------------------------|
| Director of Sports Information (WBK Contact) | Ryan Bridges |
| Email | rbridge@gardner-webb.edu |
| Office Phone | (704) 406-3523 |
| Cell Phone | (704) 472-7072 |
| Twitter/Instagram | @GWU_WBK |
| Press Row Phone | (704) 406-4475 |
| Athletics Website | GWUSports.com |
| Typical Daily Practice Time | Early Afternoon |
| Best Time To Reach Coach Simmons | Mid-Morning |

THE GAME ◀

Gardner-Webb hits the road for the first time this season, opening a five-game trip at Auburn on Tuesday evening at 7:00 pm. The game will be broadcast live on SEC Network + (WatchESPN.com/ESPN App).

GARDNER-WEBB QUICK LOOK ◀

- ▶ Freshman **Alasia Smith** was tabbed the Big South Conference Freshman of the Week on November 30 for her season opening performance against Elon, in which she scored 21 points on 8-of-13 shooting, including 3-of-5 from long distance. She also had nine rebounds, three steals, and two assists. Her 21 points was the most scored by a freshman in their collegiate debut in GWU's Division I era (2000-present).
- ▶ Gardner-Webb dropped an 88-60 decision to Elon in the season opener this past Wednesday afternoon. Freshman **Alasia Smith** had a memorable debut for the Runnin' Bulldogs, scoring 21 points with nine rebounds. Junior **Jhessyka Williams** followed with 15 points and eight boards. Turnovers proved to be GWU's biggest issue in the matchup with 24 miscues by the 'Dogs leading to 31 points for Elon.
- ▶ GWU was voted to place fifth in the Big South Conference preseason poll. Campbell was tabbed the preseason favorite by the league's head coaches.
- ▶ Junior **Jhessyka Williams** is GWU's top returner from 2019-20, in which she averaged 10.2 points and 6.0 rebounds per contest. The 5-10 guard had 13 games with ten or more points, including 21 against Hampton on February 8, 2020.
- ▶ Gardner-Webb will have to replace a large part of its offense from the 2019-20 season, with Carley and Savannah Plentovich, Morgan Pointer, and Corinna Wiegand graduating after last season. Carley Plentovich averaged a team-high 14.0 points per game en route to earning All-Big South second-team honors, while twin sister Savannah ranked second on the squad with 11.5 points per game.
- ▶ The Runnin' Bulldogs were 11-3 in Paul Porter Arena last season and have a record of 21-9 at home since the beginning of the 2018-19 season.
- ▶ Sophomore guard **Lauren Bevis** is a third-generation student-athlete at Gardner-Webb. Her grandfather, Maurice Bevis, and father Shep Bevis, were both members of the GWU football team during their time in Boiling Springs.

SERIES NOTES ◀

| SERIES | First Meeting | LAST MEETING | N/A | STREAK | N/A |
|--------|---------------|--------------|-----|--------|-----|
| | | | | | |

Tuesday's game will mark the first ever meeting between the two programs. It will be just the fourth time that Gardner-Webb has faced an SEC foe, with the 'Dogs owning a 1-2 record against league opponents. In GWU head coach Alex Simmons' debut, Gardner-Webb upset Florida by a 60-58 score.



2020-2021 WOMEN'S BASKETBALL GAME NOTES

2019-20 BIG SOUTH CONFERENCE STANDINGS

| SCHOOL | CONF | CPCT | OVERALL | PCT. | HOME | AWAY | NEUTRAL | STREAK |
|----------------|------|-------|---------|-------|------|------|---------|--------|
| Charleston So. | 0-0 | 0.000 | 1-0 | 1.000 | 1-0 | 0-0 | 0-0 | W1 |
| Campbell | 0-0 | 0.000 | 1-1 | 0.500 | 0-1 | 1-0 | 0-0 | W1 |
| UNC Asheville | 0-0 | 0.000 | 1-1 | 0.500 | 1-0 | 0-1 | 0-0 | L1 |
| Hampton | 0-0 | 0.000 | 0-0 | 0.000 | 0-0 | 0-0 | 0-0 | --- |
| Gardner-Webb | 0-0 | 0.000 | 0-1 | 0.000 | 0-1 | 0-0 | 0-0 | L1 |
| High Point | 0-0 | 0.000 | 0-1 | 0.000 | 0-0 | 0-1 | 0-0 | L1 |
| Presbyterian | 0-0 | 0.000 | 0-1 | 0.000 | 0-0 | 0-1 | 0-0 | L1 |
| Radford | 0-0 | 0.000 | 0-1 | 0.000 | 0-0 | 0-1 | 0-0 | L1 |
| USC Upstate | 0-0 | 0.000 | 0-1 | 0.000 | 0-0 | 0-1 | 0-0 | L1 |
| Winthrop | 0-0 | 0.000 | 0-1 | 0.000 | 0-0 | 0-1 | 0-0 | L1 |
| Longwood | 0-0 | 0.000 | 0-2 | 0.000 | 0-1 | 0-1 | 0-0 | L2 |



GARDNER-WEBB QUICK FACTS

| |
|--|
| School Name: Gardner-Webb University |
| Location: Boiling Springs, N.C. |
| Founded: 1905 |
| Enrollment: 3,535 |
| Team Nickname: Runnin' Bulldogs |
| Team Colors: Scarlet (PMS 187), White & Black |
| President: Dr. William Downs |
| Athletics Director: Chuck Burch |
| Arena: Paul Porter Arena (3,500) |
| Division I Regular Season Conference Championships: 1 (2009-10) |
| Division I Conference Tournament Championships: 1 (2011) |
| Postseason Appearances in Division I Era: 2 (WNIT-2010, NCAA-2011) |
| Head Coach: Alex Simmons (3rd Season) |
| Career Record: 34-27 (3rd Season) |
| GWU Record: 34-27 (3rd Season) |
| Assistant Coach: Garner Small |
| Assistant Coach: Danielle Bell |
| Assistant Coach: Chynna Turner |
| Graduate Manager: Morgan Pointer |
| Director of Basketball Operations: Bailey Small |
| Athletic Trainer: Manny Castro |
| Director of Sports Information: Ryan Bridges |
| Office Phone: (704) 406-3523 |
| Cell Phone: (704) 472-7072 |
| Email: rbridge1@gardner-webb.edu |
| Official Website: GWUSports.com |

Notable Major Conference Wins: at Florida (60-58, Nov. 6, 2018), at North Carolina (66-65, Nov. 13, 2015), at Purdue (56-55, Dec. 21, 2009)

CAREER-HIGH QUICK CHART

| | | PTS | REB | AST | STL | BLK |
|-----------|----------------------------|--|------------------------------------|---------------------------------------|-----------------------------------|---------------------------------------|
| 0 | MICAHLA FUNDERBURK | - | - | - | - | - |
| 1 | KI'ARI CAIN | 15 2/1/20 vs. Charleston So. | 3 12/21/19 at Charleston So. | 7 12/27/19 vs. Western Carolina | 3 11/30/19 vs. Furman | 1 1/28/20 vs. High Point |
| 2 | LAUREN BEVIS | 19 11/27/19 vs. Western Carolina | 5 12/31/19 at Charleston So. | 3 11/25/20 vs. Elon | 2 11/25/20 vs. Elon | 1 1/21/20 at UNC Asheville |
| 5 | CIERRA BELL | 2 11/25/20 vs. Elon | 1 11/25/20 vs. Elon | - | - | - |
| 11 | GRACE KNUTSEN | 3 2/25/20 vs. UNC Asheville | 2 11/15/19 at Charlotte | - | - | - |
| 12 | JHESSYKA WILLIAMS | 29 1/29/19 vs. Charleston So. | 11 2/11/20 vs. Longwood | 8 12/20/19 at Mercer | 8 2/8/20 vs. Hampton | 2 2/8/20 vs. Hampton |
| 13 | LAURA KOZO | 4 12/31/19 at Charleston So. | 5 12/31/19 at Charleston So. | 1 12/22/19 at Georgia | 1 2/4/20 at Radford | 1 1/25/20 vs. Radford |
| 22 | NIA LEE | 8 11/10/17 vs. Pfeiffer | 11 3/6/19 vs. Presbyterian | 2 12/3/18 vs. Mount St. Mary's | 4 1/10/19 vs. UNC Asheville | 1 11/27/19 vs. Western Carolina |
| 24 | LYRISSA DEANS | 2 1/13/19 at Western Ky. | 3 11/25/20 vs. Elon | 1 2/23/18 vs. Western Ky. | - | 1 11/25/20 vs. Elon |
| 30 | ALASIA SMITH | 21 11/25/20 vs. Elon | 9 11/25/20 vs. Elon | 2 11/25/20 vs. Elon | 3 11/25/20 vs. Elon | - |
| 31 | EMILY GILLIS | - | - | - | - | - |
| 33 | EMMA CAPPS | 3 11/25/20 vs. Elon | 1 11/25/20 vs. Elon | - | - | - |
| 34 | ALEXIS HUESTON | 19 11/28/19 at Longwood | 10 12/28/19 at Longwood | 3 12/28/19 at Longwood | 4 2/5/19 at Radford | 3 12/8/19 at Virginia Tech |
| 42 | GABRIELLE CAPONEGRO | 20 2/25/20 vs. UNC Asheville | 15 11/14/18 vs. Davidson | 2 11/14/19 vs. Wofford | 4 3/7/30 vs. Campbell | 4 1/19/19 vs. Winthrop |





2020-21 Gardner-Webb Women's Basketball
Gardner-Webb Combined Team Statistics (as of Nov 28, 2020)
All games



| RECORD: | OVERALL | HOME | AWAY | NEUTRAL |
|----------------|----------------|-------------|-------------|----------------|
| ALL GAMES | 0-1 | 0-1 | 0-0 | 0-0 |
| CONFERENCE | 0-0 | 0-0 | 0-0 | 0-0 |
| NON-CONFERENCE | 0-1 | 0-1 | 0-0 | 0-0 |

| # | Player | gp-gs | min | avg | Total | | 3-Point | | F-Throw | | Rebounds | | | | pf | dq | a | to | blk | stl | pts | avg |
|----|--------------------|-------|-----|------|--------|-------|---------|-------|---------|-------|----------|-----|-----|------|----|----|----|----|-----|-----|-----|------|
| | | | | | fg-fga | fg% | 3fg-fga | 3fg% | ft-fga | ft% | off | def | tot | avg | | | | | | | | |
| 30 | SMITH, Alasia | 1-1 | 25 | 25.0 | 8-13 | .615 | 3-5 | .600 | 2-3 | .667 | 4 | 5 | 9 | 9.0 | 5 | 1 | 2 | 2 | 0 | 3 | 21 | 21.0 |
| 12 | WILLIAMS, Jhessyka | 1-1 | 29 | 29.0 | 4-8 | .500 | 1-1 | 1.000 | 6-10 | .600 | 1 | 7 | 8 | 8.0 | 3 | 0 | 0 | 4 | 0 | 1 | 15 | 15.0 |
| 02 | BEVIS, Lauren | 1-0 | 24 | 24.0 | 3-8 | .375 | 2-5 | .400 | 1-2 | .500 | 0 | 2 | 2 | 2.0 | 4 | 0 | 3 | 4 | 0 | 2 | 9 | 9.0 |
| 01 | CAIN, Ki'Ari | 1-1 | 31 | 31.0 | 2-10 | .200 | 1-7 | .143 | 1-2 | .500 | 0 | 0 | 0 | 0.0 | 4 | 0 | 4 | 4 | 0 | 2 | 6 | 6.0 |
| 33 | CAPPS, Emma | 1-0 | 7 | 7.0 | 1-3 | .333 | 0-1 | .000 | 1-1 | 1.000 | 0 | 1 | 1 | 1.0 | 0 | 0 | 0 | 2 | 0 | 0 | 3 | 3.0 |
| 05 | BELL, Cierra | 1-0 | 8 | 8.0 | 1-5 | .200 | 0-0 | .000 | 0-0 | .000 | 1 | 2 | 3 | 3.0 | 3 | 0 | 0 | 0 | 0 | 0 | 2 | 2.0 |
| 22 | LEE, Nia | 1-0 | 24 | 24.0 | 1-1 | 1.000 | 0-0 | .000 | 0-0 | .000 | 1 | 4 | 5 | 5.0 | 3 | 0 | 0 | 1 | 0 | 0 | 2 | 2.0 |
| 24 | DEANS, LyriSSa | 1-1 | 21 | 21.0 | 1-4 | .250 | 0-0 | .000 | 0-2 | .000 | 2 | 1 | 3 | 3.0 | 2 | 0 | 0 | 3 | 1 | 0 | 2 | 2.0 |
| 42 | CAPONEGRO, Gabriel | 1-0 | 8 | 8.0 | 0-2 | .000 | 0-0 | .000 | 0-0 | .000 | 1 | 0 | 1 | 1.0 | 2 | 0 | 0 | 0 | 0 | 0 | 0 | 0.0 |
| 34 | HUESTON, Alexis | 1-1 | 9 | 9.0 | 0-0 | .000 | 0-0 | .000 | 0-0 | .000 | 0 | 0 | 0 | 0.0 | 0 | 0 | 0 | 2 | 0 | 0 | 0 | 0.0 |
| 31 | GILLIS, Emily | 1-0 | 2 | 2.0 | 0-0 | .000 | 0-0 | .000 | 0-0 | .000 | 0 | 0 | 0 | 0.0 | 0 | 0 | 0 | 0 | 0 | 0 | 0 | 0.0 |
| 13 | KOZO, Laura | 1-0 | 4 | 4.0 | 0-1 | .000 | 0-0 | .000 | 0-0 | .000 | 0 | 0 | 0 | 0.0 | 1 | 0 | 0 | 0 | 0 | 0 | 0 | 0.0 |
| 00 | FUNDERBURK, Micah | 1-0 | 8 | 8.0 | 0-0 | .000 | 0-0 | .000 | 0-0 | .000 | 0 | 0 | 0 | 0.0 | 1 | 0 | 0 | 1 | 0 | 0 | 0 | 0.0 |
| | Team | | | | | | | | | | 3 | 1 | 4 | | | | 1 | | | | | |
| | Total..... | 1 | 200 | | 21-55 | .382 | 7-19 | .368 | 11-20 | .550 | 13 | 23 | 36 | 36.0 | 28 | 1 | 9 | 24 | 1 | 8 | 60 | 60.0 |
| | Opponents..... | 1 | 200 | | 29-61 | .475 | 6-18 | .333 | 24-36 | .667 | 15 | 26 | 41 | 41.0 | 20 | - | 16 | 16 | 3 | 14 | 88 | 88.0 |

| TEAM STATISTICS | GWU | OPP | Date | Opponent | Score | Att. |
|------------------------|------------|------------|---------------------|-----------------|--------------|-------------|
| SCORING | 60 | 88 | 11/25/20 | ELON | L 60-88 | 0 |
| Points per game | 60.0 | 88.0 | * - Conference game | | | |
| Scoring margin | -28.0 | - | | | | |
| FIELD GOALS-ATT | 21-55 | 29-61 | | | | |
| Field goal pct | .382 | .475 | | | | |
| 3 POINT FG-ATT | 7-19 | 6-18 | | | | |
| 3-point FG pct | .368 | .333 | | | | |
| 3-pt FG made per game | 7.0 | 6.0 | | | | |
| FREE THROWS-ATT | 11-20 | 24-36 | | | | |
| Free throw pct | .550 | .667 | | | | |
| F-Throws made per game | 11.0 | 24.0 | | | | |
| REBOUNDS | 36 | 41 | | | | |
| Rebounds per game | 36.0 | 41.0 | | | | |
| Rebounding margin | -5.0 | - | | | | |
| ASSISTS | 9 | 16 | | | | |
| Assists per game | 9.0 | 16.0 | | | | |
| TURNOVERS | 24 | 16 | | | | |
| Turnovers per game | 24.0 | 16.0 | | | | |
| Turnover margin | -8.0 | - | | | | |
| Assist/turnover ratio | 0.4 | 1.0 | | | | |
| STEALS | 8 | 14 | | | | |
| Steals per game | 8.0 | 14.0 | | | | |
| BLOCKS | 1 | 3 | | | | |
| Blocks per game | 1.0 | 3.0 | | | | |
| ATTENDANCE | 0 | 0 | | | | |
| Home games-Avg/Game | 1-0 | 0-0 | | | | |
| Neutral site-Avg/Game | - | 0-0 | | | | |

| Score by Periods | 1st | 2nd | 3rd | 4th | Totals |
|-------------------------|------------|------------|------------|------------|---------------|
| Gardner-Webb | 15 | 15 | 14 | 16 | 60 |
| Opponents | 23 | 17 | 26 | 22 | 88 |



2020-21 Gardner-Webb Women's Basketball
Gardner-Webb Game-by-Game Highs (as of Nov 30, 2020)
All games



| Opponent | Date | Score | Points | Rebounds | Assists | Steals | Blocked shots |
|-----------------|-------------|--------------|------------------|-----------------|----------------|-----------------|----------------------|
| ELON | 11/25/20 | 60-88 | 21-SMITH, Alasia | 9-SMITH, Alasia | 4-CAIN, Ki'Ari | 3-SMITH, Alasia | 1-DEANS, Lyrissa |



2020-21 Gardner-Webb Women's Basketball
 Gardner-Webb Individual Game-by-Game (as of Nov 30, 2020)
 All games



#00 FUNDERBURK, Micahla

| Opponent | Date | gs | min | Total | | 3-Pointers | | Free throws | | Rebounds | | | | pf | a | t/o | blk | stl | pts | avg |
|----------|----------|----|-----|--------|------|------------|------|-------------|------|----------|-----|-----|-----|----|---|-----|-----|-----|-----|-----|
| | | | | fg-fga | pct | 3fg-fga | pct | ft-fa | pct | off | def | tot | avg | | | | | | | |
| ELON | 11/25/20 | | 8 | 0-0 | .000 | 0-0 | .000 | 0-0 | .000 | 0 | 0 | 0 | 0.0 | 1 | 0 | 1 | 0 | 0 | 0 | 0.0 |
| Totals | | 0 | 8 | 0-0 | .000 | 0-0 | .000 | 0-0 | .000 | 0 | 0 | 0 | 0.0 | 1 | 0 | 1 | 0 | 0 | 0 | 0.0 |

Games played: 1
 Minutes/game: 8.0

Turnovers/game: 1.0



2020-21 Gardner-Webb Women's Basketball
 Gardner-Webb Individual Game-by-Game (as of Nov 30, 2020)
 All games



#01 CAIN, Ki'Ari

| Opponent | Date | gs | min | Total | | 3-Pointers | | Free throws | | Rebounds | | | | pf | a | t/o | blk | stl | pts | avg |
|----------|----------|----|-----|--------|------|------------|------|-------------|------|----------|-----|-----|-----|----|---|-----|-----|-----|-----|-----|
| | | | | fg-fga | pct | 3fg-fga | pct | ft-fa | pct | off | def | tot | avg | | | | | | | |
| ELON | 11/25/20 | * | 31 | 2-10 | .200 | 1-7 | .143 | 1-2 | .500 | 0 | 0 | 0 | 0.0 | 4 | 4 | 4 | 0 | 2 | 6 | 6.0 |
| Totals | | 1 | 31 | 2-10 | .200 | 1-7 | .143 | 1-2 | .500 | 0 | 0 | 0 | 0.0 | 4 | 4 | 4 | 0 | 2 | 6 | 6.0 |

Games played: 1
 Minutes/game: 31.0
 Points/game: 6.0
 FG Pct: 20.0
 3FG Pct: 14.3
 FT Pct: 50.0

Assists/game: 4.0
 Turnovers/game: 4.0
 Assist/turnover ratio: 1.0
 Steals/game: 2.0



2020-21 Gardner-Webb Women's Basketball
 Gardner-Webb Individual Game-by-Game (as of Nov 30, 2020)
 All games



#02 BEVIS, Lauren

| Opponent | Date | gs | min | Total | | 3-Pointers | | Free throws | | Rebounds | | | | pf | a | t/o | blk | stl | pts | avg |
|----------|----------|----|-----|--------|------|------------|------|-------------|------|----------|-----|-----|-----|----|---|-----|-----|-----|-----|-----|
| | | | | fg-fga | pct | 3fg-fga | pct | ft-fga | pct | off | def | tot | avg | | | | | | | |
| ELON | 11/25/20 | | 24 | 3-8 | .375 | 2-5 | .400 | 1-2 | .500 | 0 | 2 | 2 | 2.0 | 4 | 3 | 4 | 0 | 2 | 9 | 9.0 |
| Totals | | 0 | 24 | 3-8 | .375 | 2-5 | .400 | 1-2 | .500 | 0 | 2 | 2 | 2.0 | 4 | 3 | 4 | 0 | 2 | 9 | 9.0 |

Games played: 1
 Minutes/game: 24.0
 Points/game: 9.0
 FG Pct: 37.5
 3FG Pct: 40.0
 FT Pct: 50.0

Rebounds/game: 2.0
 Assists/game: 3.0
 Turnovers/game: 4.0
 Assist/turnover ratio: 0.8
 Steals/game: 2.0



2020-21 Gardner-Webb Women's Basketball
 Gardner-Webb Individual Game-by-Game (as of Nov 30, 2020)
 All games



#05 BELL, Cierra

| Opponent | Date | gs | min | Total | | 3-Pointers | | Free throws | | Rebounds | | | | pf | a | t/o | blk | stl | pts | avg |
|----------|----------|----|-----|--------|------|------------|------|-------------|------|----------|-----|-----|-----|----|---|-----|-----|-----|-----|-----|
| | | | | fg-fga | pct | 3fg-fga | pct | ft-fa | pct | off | def | tot | avg | | | | | | | |
| ELON | 11/25/20 | | 8 | 1-5 | .200 | 0-0 | .000 | 0-0 | .000 | 1 | 2 | 3 | 3.0 | 3 | 0 | 0 | 0 | 0 | 2 | 2.0 |
| Totals | | 0 | 8 | 1-5 | .200 | 0-0 | .000 | 0-0 | .000 | 1 | 2 | 3 | 3.0 | 3 | 0 | 0 | 0 | 0 | 2 | 2.0 |

Games played: 1
 Minutes/game: 8.0
 Points/game: 2.0
 FG Pct: 20.0

Rebounds/game: 3.0



2020-21 Gardner-Webb Women's Basketball
 Gardner-Webb Individual Game-by-Game (as of Nov 30, 2020)
 All games



#12 WILLIAMS, Jhessyka

| Opponent | Date | gs | min | Total | | 3-Pointers | | Free throws | | Rebounds | | | | pf | a | t/o | blk | stl | pts | avg |
|----------|----------|----|-----|--------|------|------------|-------|-------------|------|----------|-----|-----|-----|----|---|-----|-----|-----|-----|------|
| | | | | fg-fga | pct | 3fg-fga | pct | ft-fa | pct | off | def | tot | avg | | | | | | | |
| ELON | 11/25/20 | * | 29 | 4-8 | .500 | 1-1 | 1.000 | 6-10 | .600 | 1 | 7 | 8 | 8.0 | 3 | 0 | 4 | 0 | 1 | 15 | 15.0 |
| Totals | | 1 | 29 | 4-8 | .500 | 1-1 | 1.000 | 6-10 | .600 | 1 | 7 | 8 | 8.0 | 3 | 0 | 4 | 0 | 1 | 15 | 15.0 |

Games played: 1
 Minutes/game: 29.0
 Points/game: 15.0
 FG Pct: 50.0
 3FG Pct: 100.0
 FT Pct: 60.0

Rebounds/game: 8.0
 Turnovers/game: 4.0
 Steals/game: 1.0



2020-21 Gardner-Webb Women's Basketball
 Gardner-Webb Individual Game-by-Game (as of Nov 30, 2020)
 All games



#13 KOZO, Laura

| Opponent | Date | gs | min | Total | | 3-Pointers | | Free throws | | Rebounds | | | | pf | a | t/o | blk | stl | pts | avg |
|----------|----------|----|-----|--------|------|------------|------|-------------|------|----------|-----|-----|-----|----|---|-----|-----|-----|-----|-----|
| | | | | fg-fga | pct | 3fg-fga | pct | ft-fga | pct | off | def | tot | avg | | | | | | | |
| ELON | 11/25/20 | | 4 | 0-1 | .000 | 0-0 | .000 | 0-0 | .000 | 0 | 0 | 0 | 0.0 | 1 | 0 | 0 | 0 | 0 | 0 | 0.0 |
| Totals | | 0 | 4 | 0-1 | .000 | 0-0 | .000 | 0-0 | .000 | 0 | 0 | 0 | 0.0 | 1 | 0 | 0 | 0 | 0 | 0 | 0.0 |

Games played: 1
 Minutes/game: 4.0
 FG Pct: 0.0



2020-21 Gardner-Webb Women's Basketball
 Gardner-Webb Individual Game-by-Game (as of Nov 30, 2020)
 All games



22 LEE, Nia

| Opponent | Date | gs | min | Total | | 3-Pointers | | Free throws | | Rebounds | | | | pf | a | t/o | blk | stl | pts | avg |
|----------|----------|----|-----|--------|-------|------------|------|-------------|------|----------|-----|-----|-----|----|---|-----|-----|-----|-----|-----|
| | | | | fg-fga | pct | 3fg-fga | pct | ft-fga | pct | off | def | tot | avg | | | | | | | |
| ELON | 11/25/20 | | 24 | 1-1 | 1.000 | 0-0 | .000 | 0-0 | .000 | 1 | 4 | 5 | 5.0 | 3 | 0 | 1 | 0 | 0 | 2 | 2.0 |
| Totals | | 0 | 24 | 1-1 | 1.000 | 0-0 | .000 | 0-0 | .000 | 1 | 4 | 5 | 5.0 | 3 | 0 | 1 | 0 | 0 | 2 | 2.0 |

Games played: 1
 Minutes/game: 24.0
 Points/game: 2.0
 FG Pct: 100.0

Rebounds/game: 5.0
 Turnovers/game: 1.0



2020-21 Gardner-Webb Women's Basketball
 Gardner-Webb Individual Game-by-Game (as of Nov 30, 2020)
 All games



#24 DEANS, Lyrissa

| Opponent | Date | gs | min | Total | | 3-Pointers | | Free throws | | Rebounds | | | | pf | a | t/o | blk | stl | pts | avg |
|----------|----------|----|-----|--------|------|------------|------|-------------|------|----------|-----|-----|-----|----|---|-----|-----|-----|-----|-----|
| | | | | fg-fga | pct | 3fg-fga | pct | ft-fta | pct | off | def | tot | avg | | | | | | | |
| ELON | 11/25/20 | * | 21 | 1-4 | .250 | 0-0 | .000 | 0-2 | .000 | 2 | 1 | 3 | 3.0 | 2 | 0 | 3 | 1 | 0 | 2 | 2.0 |
| Totals | | 1 | 21 | 1-4 | .250 | 0-0 | .000 | 0-2 | .000 | 2 | 1 | 3 | 3.0 | 2 | 0 | 3 | 1 | 0 | 2 | 2.0 |

Games played: 1
 Minutes/game: 21.0
 Points/game: 2.0
 FG Pct: 25.0
 FT Pct: 0.0

Rebounds/game: 3.0
 Turnovers/game: 3.0
 Blocks/game: 1.0



2020-21 Gardner-Webb Women's Basketball
 Gardner-Webb Individual Game-by-Game (as of Nov 30, 2020)
 All games



#30 SMITH, Alasia

| Opponent | Date | gs | min | Total | | 3-Pointers | | Free throws | | Rebounds | | | | pf | a | t/o | blk | stl | pts | avg |
|----------|----------|----|-----|--------|------|------------|------|-------------|------|----------|-----|-----|-----|----|---|-----|-----|-----|-----|------|
| | | | | fg-fga | pct | 3fg-fga | pct | ft-fta | pct | off | def | tot | avg | | | | | | | |
| ELON | 11/25/20 | * | 25 | 8-13 | .615 | 3-5 | .600 | 2-3 | .667 | 4 | 5 | 9 | 9.0 | 5 | 2 | 2 | 0 | 3 | 21 | 21.0 |
| Totals | | 1 | 25 | 8-13 | .615 | 3-5 | .600 | 2-3 | .667 | 4 | 5 | 9 | 9.0 | 5 | 2 | 2 | 0 | 3 | 21 | 21.0 |

Games played: 1
 Minutes/game: 25.0
 Points/game: 21.0
 FG Pct: 61.5
 3FG Pct: 60.0
 FT Pct: 66.7

Rebounds/game: 9.0
 Assists/game: 2.0
 Turnovers/game: 2.0
 Assist/turnover ratio: 1.0
 Steals/game: 3.0



2020-21 Gardner-Webb Women's Basketball
 Gardner-Webb Individual Game-by-Game (as of Nov 30, 2020)
 All games



#31 GILLIS, Emily

| Opponent | Date | gs | min | Total | | 3-Pointers | | Free throws | | Rebounds | | | | pf | a | t/o | blk | stl | pts | avg |
|----------|----------|----|-----|--------|------|------------|------|-------------|------|----------|-----|-----|-----|----|---|-----|-----|-----|-----|-----|
| | | | | fg-fga | pct | 3fg-fga | pct | ft-fga | pct | off | def | tot | avg | | | | | | | |
| ELON | 11/25/20 | | 2 | 0-0 | .000 | 0-0 | .000 | 0-0 | .000 | 0 | 0 | 0 | 0.0 | 0 | 0 | 0 | 0 | 0 | 0 | 0.0 |
| Totals | | 0 | 2 | 0-0 | .000 | 0-0 | .000 | 0-0 | .000 | 0 | 0 | 0 | 0.0 | 0 | 0 | 0 | 0 | 0 | 0 | 0.0 |

Games played: 1
 Minutes/game: 2.0



2020-21 Gardner-Webb Women's Basketball
 Gardner-Webb Individual Game-by-Game (as of Nov 30, 2020)
 All games



#33 CAPPS, Emma

| Opponent | Date | gs | min | Total | | 3-Pointers | | Free throws | | Rebounds | | | | pf | a | t/o | blk | stl | pts | avg |
|----------|----------|----|-----|--------|------|------------|------|-------------|-------|----------|-----|-----|-----|----|---|-----|-----|-----|-----|-----|
| | | | | fg-fga | pct | 3fg-fga | pct | ft-fta | pct | off | def | tot | avg | | | | | | | |
| ELON | 11/25/20 | | 7 | 1-3 | .333 | 0-1 | .000 | 1-1 | 1.000 | 0 | 1 | 1 | 1.0 | 0 | 0 | 2 | 0 | 0 | 3 | 3.0 |
| Totals | | 0 | 7 | 1-3 | .333 | 0-1 | .000 | 1-1 | 1.000 | 0 | 1 | 1 | 1.0 | 0 | 0 | 2 | 0 | 0 | 3 | 3.0 |

Games played: 1
 Minutes/game: 7.0
 Points/game: 3.0
 FG Pct: 33.3
 3FG Pct: 0.0
 FT Pct: 100.0

Rebounds/game: 1.0
 Turnovers/game: 2.0



2020-21 Gardner-Webb Women's Basketball
 Gardner-Webb Individual Game-by-Game (as of Nov 30, 2020)
 All games



#34 HUESTON, Alexis

| Opponent | Date | gs | min | Total | | 3-Pointers | | Free throws | | Rebounds | | | | pf | a | t/o | blk | stl | pts | avg |
|----------|----------|----|-----|--------|------|------------|------|-------------|------|----------|-----|-----|-----|----|---|-----|-----|-----|-----|-----|
| | | | | fg-fga | pct | 3fg-fga | pct | ft-fa | pct | off | def | tot | avg | | | | | | | |
| ELON | 11/25/20 | * | 9 | 0-0 | .000 | 0-0 | .000 | 0-0 | .000 | 0 | 0 | 0 | 0.0 | 0 | 0 | 2 | 0 | 0 | 0 | 0.0 |
| Totals | | 1 | 9 | 0-0 | .000 | 0-0 | .000 | 0-0 | .000 | 0 | 0 | 0 | 0.0 | 0 | 0 | 2 | 0 | 0 | 0 | 0.0 |

Games played: 1
 Minutes/game: 9.0

Turnovers/game: 2.0



2020-21 Gardner-Webb Women's Basketball
 Gardner-Webb Individual Game-by-Game (as of Nov 30, 2020)
 All games



#42 CAPONEGRO, Gabrielle

| Opponent | Date | gs | min | Total | | 3-Pointers | | Free throws | | Rebounds | | | | pf | a | t/o | blk | stl | pts | avg |
|----------|----------|----|-----|--------|------|------------|------|-------------|------|----------|-----|-----|-----|----|---|-----|-----|-----|-----|-----|
| | | | | fg-fga | pct | 3fg-fga | pct | ft-fta | pct | off | def | tot | avg | | | | | | | |
| ELON | 11/25/20 | | 8 | 0-2 | .000 | 0-0 | .000 | 0-0 | .000 | 1 | 0 | 1 | 1.0 | 2 | 0 | 0 | 0 | 0 | 0 | 0.0 |
| Totals | | 0 | 8 | 0-2 | .000 | 0-0 | .000 | 0-0 | .000 | 1 | 0 | 1 | 1.0 | 2 | 0 | 0 | 0 | 0 | 0 | 0.0 |

Games played: 1
 Minutes/game: 8.0
 FG Pct: 0.0

Rebounds/game: 1.0



2020-21 Gardner-Webb Women's Basketball
 Gardner-Webb Individual Game-by-Game (as of Nov 30, 2020)
 All games



#TM TEAM

| Opponent | Date | gs | min | Total | | 3-Pointers | | Free throws | | Rebounds | | | | pf | a | t/o | blk | stl | pts | avg |
|----------|----------|----|-----|--------|------|------------|------|-------------|------|----------|-----|-----|-----|----|---|-----|-----|-----|-----|-----|
| | | | | fg-fga | pct | 3fg-fga | pct | ft-fa | pct | off | def | tot | avg | | | | | | | |
| ELON | 11/25/20 | | 0 | 0-0 | .000 | 0-0 | .000 | 0-0 | .000 | 3 | 1 | 4 | 4.0 | 0 | 0 | 1 | 0 | 0 | 0 | 0.0 |
| Totals | | 0 | 0 | 0-0 | .000 | 0-0 | .000 | 0-0 | .000 | 3 | 1 | 4 | 4.0 | 0 | 0 | 1 | 0 | 0 | 0 | 0.0 |

Games played: 1

Rebounds/game: 4.0
 Turnovers/game: 1.0

2020-21 GARDNER-WEBB WOMEN'S BASKETBALL TV/RADIO CHART



0 - MICAHLA FUNDERBURK
G/F | 5-9 | FR.
CHARLOTTE, N.C.



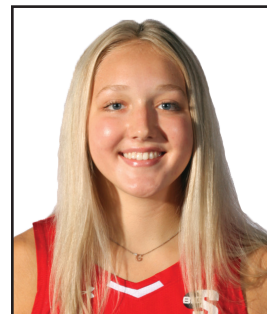
1 - K'ARI CAIN
G | 5-6 | SO.
SUMPTER, S.C.



2 - LAUREN BEVIS
G | 5-5 | SO.
HIGH POINT, N.C.



5- CIERRA BELL
G | 5-10 | FR.
HAMPTON, VA.



11 - GRACE KNUTSEN
F | 6-0 | SO.
ALPHARETTA, GA.



12 - JHESSYKA WILLIAMS
G/F | 5-10 | JR.
AUGUSTA, GA.



13 - LAURA KOZO
C | 6-3 | SO.
ONTARIO, CANADA



22 - NIA LEE
F | 5-11 | SR.
LAWRENCEVILLE, GA.



24 - LYRISSA DEANS
C | 6-3 | R-JR.
WALDORF, MD



30 - ALASIA SMITH
F | 5-10 | FR.
JOHNSON CITY, TENN.



31 - EMILY GILLIS
F | 5-10 | FR.
JOHNSON CITY, TENN.



33 - EMMA CAPPS
F/C | 6-1 | FR.
CROSSVILLE, TENN.



34 - ALEXIS HUESTON
F | 5-11 | SR.
ROANOKE, VA



42 - GABRIELLE CAPONEGRO
F | 6-0 | R-SR.
ALLENWOOD, N.J



ALEX SIMMONS
HEAD COACH
THIRD SEASON



DANIELLE BELL
ASSISTANT COACH
THIRD SEASON



GARNER SMALL
ASSISTANT COACH
THIRD SEASON



CHYNNA TURNER
ASSISTANT COACH
THIRD SEASON



BAILEY SMALL
DIRECTOR OF OPERATIONS
THIRD SEASON