



2017 AUBURN GYMNASTICS

AUBURN ATHLETICS COMMUNICATIONS: 392 SOUTH DONAHUE DRIVE || AUBURN, AL 36830 || AUBURNTIGERS.COM || @AUBURNGYM

2017 GYMNASTICS SCHEDULE

0-6, 0-4 SEC

Date	Opponent	Time (CT)/Result
Jan. 6	OREGON STATE	L, 195.275-195.575
Jan. 13	GEORGIA*	L, 196.075-196.800
Jan. 20	at Kentucky*	L, 195.800-197.100
Jan. 27	at Florida*	L, 196.400-197.700
Jan. 29	vs. Alabama#	L, 194.675-195.850
Feb. 3	ARKANSAS*	L, 196.075-196.375
Feb. 10	vs. Oklahoma^	6:45 p.m.
Feb. 17	at Alabama*	7:30 p.m. (SECN)
Feb. 24	LSU*	7:30 p.m. (SECN)
March 3	at Missouri*	7 p.m. (SEC+)
March 10	PITTSBURGH	7 p.m. (SEC+)
March 18	SEC Championships	TBA
April 1	NCAA Regional%	TBA
April 14-15	NCAA Championships&	TBA

* -- SEC meets

-- Elevate Meet at the Birmingham-Jefferson Convention Complex

^ -- Perfect 10.0 Challenge - Oklahoma City, Okla.

S -- Veterans Memorial Arena - Jacksonville, Fla.

% -- Seattle, Wash.; Gainesville, Fla.; Fayetteville, Ark.; Champaign, Ill.; Lincoln, Neb.; Morgantown, W.V.

& -- Chaifetz Arena -- St. Louis, Mo.

COACHING STAFF

Head Coach	Jeff Graba (Seventh Season)
Assistant Coach	Kurt Hettinger (Ninth Season)
Assistant Coach	Mary McDaniel (Second Season)
Director of Ops	Dawn Schueller (Sixth Season)
Athletic Trainer	Janet Taylor (12th Season)

SOCIAL: #WarEagle

» Twitter	@AuburnGym
» Facebook	AuburnGym
» Instagram	@AuburnGymnastics

TV: FSSW/FCSC

» Play-by-Play	Bart Conner
» Analyst	Kelly Garrison-Funderburk
» Reporter	Meg McDonald
» Watch	Available on Fox Sports GO app

AUBURN ATHLETICS COMMUNICATIONS

Kendra Willard	kal0014@auburn.edu
Web	AuburnTigers.com
Office Phone	(334) 844-9800

Quick Facts

Location	Auburn, Ala.
Nickname	Tigers
Enrollment	25,469
Colors	Burnt Orange and Navy Blue
Conference	Southeastern
President	Dr. Jay Gogue
Athletic Director	Jay Jacobs
Facility	Auburn Arena



#1 OKLAHOMA

Friday, Feb. 10 • 6:45 p.m. CT

Cox Convention Center • Oklahoma City, Okla.



Site	Oklahoma City, Okla.
Venue	Cox Convention Center
TV	FSSW/FCSC or Fox Sports GO app
Live Stats	AuburnTigers.com
Series Record	Oklahoma leads 7-3 at Neutral Sites
Last Regular Season Meeting	Feb. 5, 2016 at TWU Oklahoma, 197.925-196.825

AUBURN	Rankings	16
	2017 Record	0-6
	Head Coach	Jeff Graba
Record at AU (Year)		72-94-1 (7th)
OKLAHOMA	Rankings	1
	2017 Record	7-0
	Head Coach	K.J. Kindler
Record at OKLA (Year)		289-52-3 (11th)

PROBABLE LINEUP (CAREER STARTS IN EVENT)

VAULT

Emma Engler (9)
 Katie Becker (6)
 A'Miracal Phillips (9)
 Taylor Krippner (20)
 MJ Rott (46)
 Gracie Day (6)
 Alt: Kelsey Kopec

BEAM

Kullen Hlawek (26)
 Samantha Cerio (10)
 Katie Becker (4)
 Emma Engler (16)
 Emma Slappey (6)
 Taylor Krippner (19)
 Alt: Gracie Day

BARS

Kendal Moss (3)
 Samantha Cerio (16)
 Kelsey Kopec (47)
 Taylor Krippner (20)
 Emma Engler (10)
 Gracie Day (6)
 Alt: Katie Becker

FLOOR

Katie Becker (4)
 Samantha Cerio (6)
 Lucia Scaglione (10)
 Kullen Hlawek (30)
 Emma Slappey (5)
 MJ Rott (40)
 Alt: Gracie Day

NO. 16 AUBURN FACES NO. 1 OKLAHOMA AT PERFECT 10 CHALLENGE

The No. 16 Auburn gymnastics team will take on the nation's top team Oklahoma Friday, Feb. 10, in Oklahoma City. The Tigers and the Sooners face off at 6:45 p.m. CT in the annual Perfect 10 Challenge held in the Cox Convention Center.

"We are excited to embrace the fact that we're going up against a high-quality team in Oklahoma," head coach Jeff Graba said. "We'll be on the podium again and that will be very beneficial for the postseason. I'm really excited at where this team is after all the adversity we've faced recently and am looking forward to us putting it all together this weekend."

IN THE RANKINGS

The Auburn gymnastics team moved up in the recent RoadToNationals.com rankings and is the 16th-ranked team with a 195.717 average.

"It's good to see us start moving up the rankings," head coach Jeff Graba said. "Being at No. 16 this week is an improvement and I really believe our young team is nearly adjusted to competition and life without Telah (Black) and Abby (Milliet) in the lineup. We obviously have a tough assignment this weekend with No. 1 Oklahoma, but I know our team is excited for the opportunity."

The Sooners hold strong to the top spot nationally, while LSU, Florida, Utah, and UCLA round out the Top 5. Alabama, Michigan, Boise State, Georgia, and Kentucky are Nos. 6-10.

Behind a season-high score of 49.375 last Friday, the Tigers moved up to No. 6 nationally on bars with an average of 49.121. Auburn stands 18th on floor (48.933), 19th on vault (48.929), and 22nd on beam (48.733).

#WarEagle



AuburnTigers.com



@AuburnGym | @AuburnTigers
@CoachJeffGraba



/AuburnGym
/AuburnTigers

TEAM SCHEDULE AND MEDIA AVAILABILITY » WEEK OF FEBRUARY 6 -

MONDAY February 6	TUESDAY February 7	WEDNESDAY February 8	THURSDAY February 9	FRIDAY February 10	SATURDAY February 11	SUNDAY February 12
PRACTICE 1 p.m. - 4 p.m. McWhorter Center	MEDIA INTERVIEWS 12:45 p.m. McWhorter Center PRACTICE 1 p.m. - 4 p.m. McWhorter Center	TRAVEL DAY	PRACTICE 1 p.m. - 4 p.m. McWhorter Center	MEET 6:45 p.m. Auburn vs Oklahoma	TRAVEL DAY	OFF

AUBURN ATHLETICS COMMUNICATIONS

AUBURNTIGERS.COM

For updated game notes, statistics and all the latest information on Auburn gymnastics and meet weekend activities, go to AuburnTigers.com.

INTERVIEW POLICY

Coach Graba, assistant coaches and all athletes are available for phone and personal interviews by contacting Kendra Willard in the media relations office. Post-meet interviews will be conducted in the media room following a 10-minute cooling-off period.

CREDENTIALS

Anyone wishing to cover an Auburn gymnastics meet should contact Kendra Willard in the communications office at least one day in advance in order to make the proper arrangements. Credentials are required for attendance.

MATCH DAY SERVICES

Notes for both teams and lineup sheets will be provided prior to the meet. Stats will be distributed between each rotation and after the meet. Wireless internet is available in the Arena; ask Kendra Willard for the password.

VIDEO SERVICES

FTP feeds of selected Auburn gymnastics highlights are available for the media. A number of studio and satellite services may be arranged for electronic media by calling Andrew Aaron in the Auburn video services office at 334.750.7133 or by emailing aba0016@auburn.edu.

PHOTO SERVICES

For photos of Auburn gymnastics or anything pertaining to Auburn Athletics, contact Wade Rackley at 334-750-6907 or via email at wwr0004@auburn.edu

COMMUNICATIONS STAFF

Kendra Willard Gymnastics contact
cell: 614-929-8029
email: kal0014@auburn.edu
Kirk Sampson Associate AD
cell: 334-750-1385
email: sampska@auburn.edu
Cassie Arner SEC Network/TV contact
cell: 334-750-0502
email: carner@auburn.edu

GAMEDAY EXPERIENCE: AUBURN ARENA

» The Auburn gymnastics program has enjoyed four sellouts (7,424) in the last three seasons at Auburn Arena. The Tigers have reached new heights already in 2017 as season ticket holder numbers have risen yet again.



SCOUTING OKLAHOMA

The Oklahoma gymnastics team stands at 7-0 on the season and is coming off a quad meet win vs. Denver, Nebraska and TWU. The Sooners have a season average of 197.760 to rank No. 1 nationally. The team is also the top squad in the nation on bars (49.460), beam (49.410), and floor (49.475).

Individually, freshman Maggie Nichols ranks No. 1 in all individual events nationally. She is averaging a 39.785 in the all-around and is on top in vault (9.940), bars (9.945), beam (9.945), and floor (9.955).

AUBURN/OKLAHOMA SERIES HISTORY

Oklahoma leads the all-time series with a 7-3 overall mark. The series dates back to 1990 when the teams opened the season at Alabama.

Auburn won three of the first four meetings, first beating the Sooners in 1990, 183.300-181.950. The Tigers bested OU again in 1997 at home (193.850-189.850). Auburn's last W vs. the Sooners came at the NCAA Central Regional in 2003 where the Tigers advanced to the NCAA Championship with a 196.350. Oklahoma finished fourth that night at 196.300. Since then, the Sooners have topped the Tigers four times during the regular season and twice in the postseason.

AUBURN LINEUP VS OKLAHOMA

Auburn will feature 18 routines from sophomores and freshmen Friday vs. Arkansas, while the other six will come from the team's four seniors.

The team opens the meet on its best event so far this as Auburn has continued to progress on bars. Going third for the Tigers and making her 48th start in the event will be redshirt senior Kelsey Kopec. Freshman Kendal Moss moved up to the leadoff spot for the Tigers and is followed by sophomore Samantha Cerio. Sophomores Taylor Krippner and Emma Engler along with freshman Gracie Day will close out the first rotation.

On vault, senior MJ Rott will guide the youthful lineup as she is set to compete in her 47th meet in this event. Engler, sophomore A'Miracal Phillips, and Krippner join Rott, while freshmen Katie Becker and Day are also set to compete.

Floor brings the most experience for Auburn as seniors Kullen Hlawek and Lucia Scaglione join Rott in the lineup. Becker, Cerio and redshirt freshman Emma Slaphey will also compete for points for Auburn.

GYMNAST TO WATCH: SAMANTHA CERIO

» Sophomore Samantha Cerio had quite the meet vs. Arkansas, setting new career highs on bars and floor. She captured both event titles with a pair of 9.9s and has moved her way up into the regional ranks in three events (bars, beam, floor).

Auburn's youth shines through on beam as three spots are held by sophomores (Cerio, Engler, Krippner), while Becker and Slaphey are also set to compete. Hlawek will lead things off for the Tigers in the final rotation.

LAST REGULAR SEASON MEETING (FEBRUARY 5, 2016)

Auburn and Oklahoma last met at the Texas Woman's University quad meet, Feb. 5, 2016, and the Sooners came away with the top score of the night, 195.925. The Tigers finished second at 196.825, while Illinois State finished third (191.975) and host TWU came in fourth (191.550).

The Tigers opened strong on beam, finishing with a 49.05. Caitlin Atkinson notched a score of 9.875 for Auburn. Kullen Hlawek kicked off the apparatus with a strong score of 9.8 and was followed by Samantha Cerio with another 9.8. Abby Milliet, competing in her hometown, also chipped in a 9.8, while Lexus Demers closed out scoring with a 9.775.

Auburn kept momentum going into the second rotation and scored a 49.475 on floor. A trio of Tigers earned a 9.925 in MJ Rott, Kait Kluz and Atkinson. Demers followed with a 9.875 and Hlawek closed out the scoring with a season-best 9.825.

Another solid score was reached in the third rotation as Auburn put together a 49.325 on vault. Atkinson led the Tigers with a 9.9, while Demers and Rott each added a 9.875, respectively. Kelsey Kopec, competing in the event for the first time that season, totaled a 9.85 and Taylor Krippner finished with a 9.825.

The Tigers closed out the night on bars, totaling a 48.975. Atkinson once again led the squad and finished with a 9.875. Krippner had another solid performance, earning a 9.875. Kluz followed with a 9.8 and Cerio totaled a 9.775. Kopec closed out scoring with a 9.65.

LAST TIME OUT - 14 INDIVIDUAL BESTS VS. ARK

Auburn saw 14 season-high individual scores last Friday vs. Arkansas in Auburn Arena, but the Razorbacks came away with the team victory, 196.375-196.075.

Auburn opened things on vault and finished with a season-best score of 49.05. Senior MJ Rott captured the event title with a season-high 9.9. Sophomore A'Miracal Phillips earned a season-best score, picking up a 9.8.

The team excelled on bars once again, putting together a season-high score of 49.375. All five counted scores in the second rotation were individual bests for the Tigers. Sophomore

SEC STANDINGS & SCHEDULE

	<i>(as of Feb. 7)</i>						AVG
	SEC Meets			All Meets			
	W	L	Pct.	W	L	Pct.	
LSU	4	0	1.000	5	0	1.000	197.555
Florida	2	1	.800	4	1	.800	197.430
Alabama	2	2	.500	3	3	.500	196.671
Georgia	4	1	.800	5	1	.833	196.179
Kentucky	1	3	.250	3	3	.500	196.054
Missouri	1	3	.250	5	3	.625	195.883
AUBURN	0	4	.000	0	6	.000	195.717
Arkansas	2	2	.500	2	3	.400	195.305

THIS WEEK IN THE SEC**Friday, February 10**

#6 Alabama at #10 Kentucky, 6 p.m.

#9 Georgia at #3 Florida, 6 p.m.

#16 Auburn vs. #1 Oklahoma, 6:45 p.m.

#25 Iowa State, #14 Georgia Washington, Lindenwood at

#13 Missouri - 7 p.m.

#2 LSU at #23 Arkansas, 7:30 p.m.

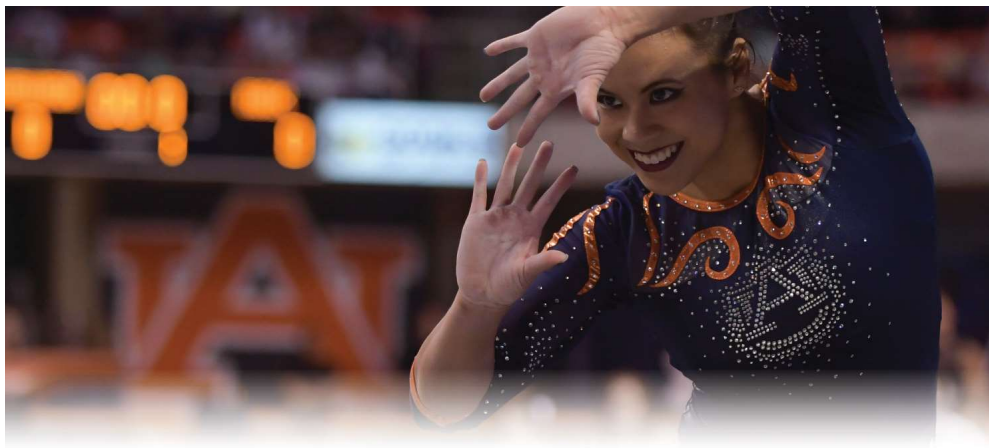
AUBURN IN THE RANKINGS**TEAM (as of Feb. 6)**

EVENT	AVG	NAT'L	REG.
Vault	48.929	19th	4th
Bars	49.121	6th	2nd
Beam	48.733	22nd	5th
Floor	48.933	18th	4th
Team Total	195.717	16th	4th

INDIVIDUAL RANKS (Top 50 National :: Top 25 Region)

(as of Feb. 6)

GYMNAST	EVENT	AVG	NAT'L	REG.
Katie Becker	Floor	9.825	-	t-17th
Samantha Cerio	Bars	9.804	-	24th
	Beam	9.775	-	t-22nd
	Floor	9.820	-	t-21st
Gracie Day	Bars	9.833	t-49th	12th
Emma Engler	Bars	9.838	t-42nd	9th
Taylor Krippner	Bars	9.808	-	t-20th
Abby Milliet	A-A	38.700	-	16th
	Bars	9.808	-	t-20th
	Beam	9.808	-	16th
MJ Rott	Vault	9.813	-	16th
	Floor	9.837	-	14th



NATIONAL RANKINGS

(Feb. 6)

Rk	Team	Avg.	High
1	Oklahoma	197.760	198.025
2	LSU	197.555	197.825
3	Florida	197.430	197.700
4	Utah	196.950	197.625
5	UCLA	196.750	197.325
6	Alabama	196.671	197.825
7	Michigan	196.400	197.225
8	Boise State	196.238	197.025
9	Georgia	196.179	197.075
10	Kentucky	196.054	197.100
11	Oregon State	195.980	196.900
12	Denver	195.900	196.875
13	Missouri	195.883	196.225
14	George Washington	195.865	196.400
15	California	195.785	196.300
16	AUBURN	195.717	196.400
17	Washington	195.656	196.300
18	Ohio State	195.585	196.450
19	Nebraska	195.565	196.825
20	Southern Utah	195.425	196.150
21	Illinois	195.410	196.025
22	Iowa	195.325	196.175
23	Arkansas	195.305	196.375
24	West Virginia	195.215	196.300
25	Iowa State	194.938	196.125

BOLD - 2017 regular season opponents

Inside the Matchup

Auburn vs. Oklahoma 3-7 (.300)

In Auburn: 1-2
 In Norman: 0-2
 Neutral: 2-3

Last 10 Meetings (7-3)

1990	Neutral	W	183.300-181.950
1996	Away	L	191.450-192.350
1997	Home	W	193.850-189.850
2003	NCAA Regional	W	196.350-196.300
2005	Home	L	191.900-195.000
2008	Away	L	195.900-196.750
2010	Home	L	195.325-196.300
2015	NCAA Semifinal	L	197.075-197.400
2015	NCAA Super Six	L	195.625-197.525
2016	at TWU	L	196.825-197.925

Samantha Cerio finished with a career-high score and captured the event title with a 9.9. Freshman Kendal Moss led things off with a career score of 9.85, while redshirt senior Kelsey Kopec and sophomores Taylor Krippner and Emma Engler followed with 9.875s.

The Tigers headed to beam and had another solid score of 49.075. Krippner anchored the apparatus for Auburn and earned a career high of 9.9 on her way to the first beam title of her career. Senior Kullen Hlawek's 9.8 and Cerio's 9.825 were each season highs. Becker followed with a career score of 9.8.

Cerio's solid showing finished off with a 9.9 on floor, setting a career best and awarding her the event title for her second of the evening. Becker and senior Lucia Scaglione opened things off with a pair of 9.85s. That score was a career high for each.

YOUTH MOVEMENT

Auburn's roster boasts five sophomores, one redshirt freshman, and three true freshmen. All nine student-athletes have contributed to the Tigers team score this season and have been key players all year.

Sophomore Samantha Cerio has worked her way into three lineups - bars, beam, floor - and ranks in the top 25 regionally on all three. Sophomores Taylor Krippner and Emma Engler have been solid for the Tigers on vault, bars, and beam, while classmate A'Miracal Phillips has been a mainstay in the vault lineup. Prior to her injury, Telah Black also added depth to vault.

Redshirt freshman Emma Slappey has been Auburn's most consistent scorer in both beam and floor, bringing an element of grace to both. Freshman Katie Becker is featured on vault, beam, and floor, while classmate Gracie Day anchors vault and bars. Freshman Kendal Moss has stepped up big for the Tigers recently, providing solid bars scores in her last three appearances.

SWINGING HIGH ON BARS

The bars corps has progressively gotten better and better with each meet and reached new highs this past weekend, scoring a 49.375 vs. Arkansas. The Tigers jumped to No. 6 nationally in the event with a 49.121 average.

Sophomore Emma Engler ranks ninth in the Central Region with a 9.838 average, while freshman Gracie Day is 12th at 9.833. In addition, sophomores Taylor Krippner and Samantha Cerio also rank in the top 20 regionally with a 9.808 and a 9.804 average, respectively.

GYMNAST TO WATCH: TAYLOR KRIPPNER

» Sophomore Taylor Krippner had an outstanding showing vs. Arkansas last Friday. The Cypress, Texas, product won her first-ever event title, earning a career-high score of 9.9 on beam. She also tied a career best on bars with a 9.875 against the Razorbacks.

STRENGTH OF SCHEDULE

In a poll on RoadtoNationals.com, Auburn's 2017 schedule ranks the second toughest schedule in the nation.

Ten of Auburn's 11 regular season meets are against teams ranked in top 25 of the NACGC/W Preseason Poll. Those include match ups with five teams who competed in last year's Super Six - Oklahoma (Feb. 10), LSU (Feb. 24), Alabama (Jan. 29, Feb. 17), Florida (Jan. 27), Georgia (Jan. 13).

SEASON TICKET RECORDS

In addition to setting a new program preseason ranking record, this year's team reached another height before the season began. With the competition year about to begin, Auburn has over 1,550 season ticket holders, marking the most sold for the program.

The Tigers have sold out Auburn Arena three times in the last two years (7,424) and are looking forward to hosting SEC rivals Georgia, Arkansas, and LSU, in addition to Oregon State and Pittsburgh this season.

MAKING THEIR COMEBACK

Sophomores Emma Engler and A'Miracal Phillips each suffered season-ending injuries at Arkansas last season (Jan. 29, 2016), but are on their way to making a big impact in 2017.

Engler, who hurt her knee on her beam dismount vs. the Razorbacks, has worked her way back into the beam and bars lineups. Phillips, a powerful vaulter from Enterprise, Ala., injured her foot at Arkansas and returned to competition vs. Georgia.

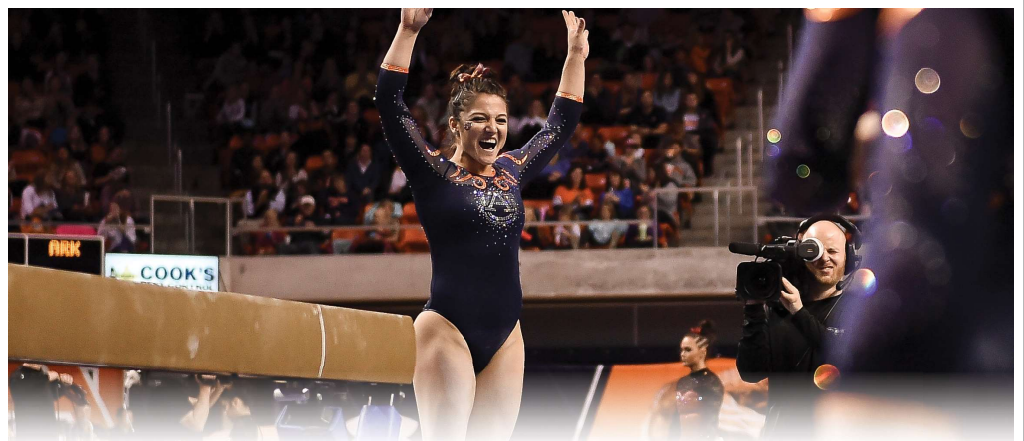
SMARTY PANTS

A trio of Tigers in Kelsey Kopec, Kullen Hlawek, and Samantha Cerio are engrossed in their studies as all three are engineering majors. Kopec, who graduated last spring with a degree in mechanical engineering, is currently working on her MBA at Auburn.

In addition, senior Lucia Scaglione is a Biomedical Science major.

UP NEXT

Auburn continues its road swing, facing No. 6 Alabama in Tuscaloosa. The Tigers and the Tide will go head-to-head at 7:30 p.m. CT, Feb. 17, live on SEC Network.



2017 AUBURN GYMNASTICS ROSTER

NAME	EVENT	HT	CL	HOMETOWN/CLUB
Katie Becker	AA	5-4	Fr.	Boone, N.C./Everest Gymnastics
Telah Black	AA	5-3	So.	Helena, Ala./Jamjev Gymnastics
Samantha Cerio	AA	5-0	So.	Huntersville, N.C./KPAC
Gracie Day	AA	5-4	Fr.	San Antonio, Texas/Aerial Athletics
Emma Engler	AA	5-3	So.	Raleigh, N.C./Sunshine Gymnastics
Kennedy Finister	AA	5-1	Jr.	Magnolia, Texas/Champion Gymnastics
Sarah Garcia	AA	5-3	Jr.	Temecula, Calif./SCEGA
Kullen Hlawek	AA	5-1	Sr.	Fulshear, Texas/Champion Gymnastics
Kelsey Kopec	AA	5-7	RS Sr.	Alpharetta, Ga./Ultimate Gymnastics
Taylor Krippner	AA	5-1	So.	Cypress, Texas/World Champions
Abby Milliet	AA	5-1	Jr.	Denton, Texas/Denton Gymnastics Academy
Kendal Moss	AA	5-4	Fr.	Cornelius, N.C./Everest Gymnastics
A' Miracal Phillips	AA	5-6	So.	Enterprise, Ala./Alabama Elite
MJ Rott	AA	5-0	Sr.	Stillwater, Minn./Rising Stars Gymnastics
Lucia Scaglione	FX/VT	5-0	Sr.	Tampa, Fla./Lafleurs Tampa
Emma Slappey	AA	5-2	RS Fr.	Jacksonville, Fla./Starlight Gymnastics
Cara Stricklin	AA	5-5	Jr.	Mandeville, La./Cypress Pointe Gymnastics

Head Coach:	Jeff Graba (Seventh year at Auburn)
Assistant Coach:	Kurt Hettinger (Ninth year at Auburn)
Assistant Coach:	Mary McDaniel (Second year at Auburn)
Director of Operations:	Dawn Schueller (Sixth year at Auburn)
Volunteer Assistant:	Rachel Inniss (First year at Auburn)
Athletic Trainer:	Janet Taylor (12th year at Auburn)
Graduate Assistant:	Corrie Lathrop (First year at Auburn)
Student Managers:	Alexa Moates, Blake Jones

PRONUNCIATION GUIDE

TELAH Black	TAY-lah
Samantha CERIO	SAIR-ee-oh
KULLEN HLAWEK	KULL-in LAUW-ick
Kelsey KOPEC	CO-peck
Abby MILLIET	mill-AYE
A' MIRACAL Phillips	uh-MIRacle
MJ ROTT	WROTE
LUCIA SCAGLIONE	lou-CHEE-uh scag-lee-OH-knee
Jeff GRABA	GRAY-buh



Head Coach Jeff Graba

at Auburn & Overall : 72-94-1 (7th)



Hometown:
Forest Lake, Minn.
Education:
Minnesota, 1992

COACHING EXPERIENCE

Flips Gym Head Coach (1988-1995)
 • White Bear Lake, Minn.
 Hamline University Assistant Coach (1992-1998)
 • St. Paul, Minn.
 Midwest Gym Head Coach (1995-2003)
 • Little Canada, Minn.
 Utah State Assistant Coach (2004-2005)
 • Logan, Utah
 Utah Assistant Coach (2006-2010)
 • Salt Lake City, Utah
 Auburn Head Coach (2010-)
 • Auburn, Ala.

Three-time SEC Coach of the Year Jeff Graba enters his seventh season at the helm of the Auburn gymnastics program in 2017 and has guided the Tigers record heights during his time on The Plains.

For his efforts over the past six seasons, the Minnesota native was named SEC Coach of the Year in 2014 and 2015 and SEC co-Coach of the Year in 2012.

Most recently, Graba and the 2016 team added to the list of firsts for the program under his guidance. The Tigers snapped the 117-meet losing skid to Alabama in February of that season, defeating the Crimson Tide at home (197.275-197.250). Auburn also defeated Georgia in Athens for the first time in program history, setting a new program-high road score on the way (197.325).

In addition, the Tigers earned the program's first No. 1 NCAA regional seed and captured the NCAA Ann Arbor Regional title with a 196.525.

Auburn enjoyed a breakout season in 2015 as Graba led the Tigers to the NCAA Championship Super Six for the first time in 22 years. That season, Auburn broke or tied 52 program records that season.

Auburn's sixth place finish at the Super Six was the Tigers' second best in history and highest since 1993 with a NCAA nationals record score of 197.075. The Tigers also had a program record Super Six score of 195.625.

Auburn reached the 2015 NCAA Championship for the first time since 2003 and for only the fourth time overall as the Tigers tied a school-best with a runner-up finish at the NCAA Regional with a regional record score of 196.900.

Graba was named Auburn head coach on August 16, 2010. He came to The Plains after spending five years as an assistant coach at Utah. While with the Utes, he was named the 2009 West Region Assistant Coach of the Year while coaching bars, collaborating on floor routines and serving as the recruiting coordinator.

2017 MEET-BY-MEET RESULTS

DATE	MEET	RESULT	VAULT	BARS	BEAM	FLOOR	TEAM	OPP. 1	OPP. 2	OPP. 3
1/6	#12 OREGON STATE	L	48.900	48.900	48.800	48.675	195.275	195.575	---	---
1/13	GEORGIA	L	48.900	49.125	48.825	49.225	196.075	196.800	---	---
1/20	at Kentucky	L	48.800	49.125	48.950	48.925	195.800	197.100	---	---
1/27	at Florida	L	49.025	49.050	49.150	49.175	196.400	197.700	---	---
1/29	vs. Alabama	L	48.900	49.150	47.600	49.025	194.675	195.850	---	---
2/3	ARKANSAS	L	49.050	49.375	49.075	48.575	196.075	196.375	---	---
2/10	vs. Oklahoma	---	---	---	---	---	---	---	---	---
2/17	at Alabama	---	---	---	---	---	---	---	---	---
2/24	LSU	---	---	---	---	---	---	---	---	---
3/3	at Missouri	---	---	---	---	---	---	---	---	---
3/10	PITTSBURGH	---	---	---	---	---	---	---	---	---
3/18	at SEC Championship	---	---	---	---	---	---	---	---	---
4/1	at NCAA Regional	---	---	---	---	---	---	---	---	---
4/17-18	at NCAA Championships	---	---	---	---	---	---	---	---	---

AUBURN

0-6

SEC WEEKLY TEAM RANKINGS

(as of Feb. 6)

Team Total			
Rank	Team	AVG	High
1.	LSU	197.555	197.825
2.	Florida	197.430	197.700
3.	Alabama	196.671	197.825
4.	Georgia	196.179	197.075
5.	Kentucky	196.054	197.100
6.	Missouri	195.883	196.225
7.	AUBURN	195.717	196.400
8.	Arkansas	195.305	195.825

Vault			
Rank	Team	AVG	High
1.	Florida	49.420	49.500
2.	LSU	49.390	49.600
†3.	Georgia	49.179	49.275
†3.	Alabama	49.179	49.375
5.	Missouri	49.150	49.425
6.	AUBURN	48.929	49.050
7.	Kentucky	48.892	49.200
8.	Arkansas	48.865	48.975

Bars			
Rank	Team	AVG	High
1.	Florida	49.325	49.475
2.	LSU	49.320	49.450
3.	AUBURN	49.121	49.375
4.	Georgia	49.096	49.275
5.	Alabama	49.017	49.400
6.	Kentucky	48.979	49.300
7.	Missouri	48.721	49.200
8.	Arkansas	48.525	49.200

Beam			
Rank	Team	AVG	High
1.	LSU	49.375	49.475
2.	Florida	49.335	49.425
3.	Alabama	49.317	49.600
4.	Kentucky	49.117	49.425
5.	Arkansas	48.985	49.125
6.	Missouri	48.954	49.175
7.	AUBURN	48.733	49.150
8.	Georgia	48.688	49.225

Floor Exercise			
Rank	Team	AVG	High
1.	LSU	49.470	49.550
2.	Florida	49.350	49.575
3.	Georgia	49.217	49.500
4.	Alabama	49.158	49.625
5.	Kentucky	49.067	49.525
6.	Missouri	49.058	49.225
7.	AUBURN	48.933	49.225
8.	Arkansas	48.930	49.075

SEC WEEKLY INDIVIDUAL RANKINGS

(as of Feb. 6)

All-Around			
Rank	Name, School	A-A AVG	High
1.	Kennedy Baker, UF	39.550	39.575
†2.	Ashleigh Gnat, LSU	39.500	39.525
†2.	Kennedi Edney, LSU	39.500	39.625
4.	Alicia Boren, UF	39.475	39.625
5.	Kiana Winston, UA	39.469	39.700

Vault			
Rank	Name, School	Vault AVG	High
1.	Ashleigh Gnat, LSU	9.940	10.000
2.	Alex McMurtry, UF	9.920	9.950
3.	Rachel Slocum, UF	9.919	9.950
4.	Alicia Boren, UF	9.905	9.950
†5.	Amanda Wellick, ARK	9.900	9.900
†5.	Sydney Snead, UG	9.900	9.950

Bars			
Rank	Name, School	Bars AVG	High
1.	Alex McMurtry, UF	9.915	9.950
2.	Natalie Vaculik, UG	9.900	9.900
3.	Amelia Hundley, UF	9.885	9.950
4.	Lexie Priessman, LSU	9.880	9.925
5.	Mollie Korth, UK	9.871	9.925

Beam			
Rank	Name, School	Beam AVG	High
1.	Kiana Winston, UA	9.900	9.950
2.	Alex Hyland, UK	9.892	9.925
3.	Nickie Guerrero, UA	9.887	9.950
4.	Myia Hambrick, LSU	9.880	9.900
5.	Aja Sims, UA	9.875	9.950

Floor			
Rank	Name, School	Floor AVG	High
1.	Kennedy Baker, UF	9.950	10.000
2.	Kiana Winston, UA	9.938	10.000
3.	Ashleigh Gnat, LSU	9.935	9.950
4.	Rachel Dickson, UG	9.912	9.950
5.	Alicia Boren, UF	9.905	9.950

AUBURN SCORING RECORDS**TOP TEAM SCORES - OVERALL**

	SCORE	OPPONENT	DATE
1.	197.750	vs. Georgia	2/27/15
2.	197.325	at Georgia	3/4/16
3.	197.300	vs. LSU	2/13/15
4.	197.275	vs. Alabama	2/12/16
5.	197.200	vs. Missouri	2/26/16

TOP TEAM SCORES - HOME ONLY

	SCORE	OPPONENT	DATE
1.	197.750	vs. Georgia	2/27/15
2.	197.300	vs. LSU	2/13/15
3.	197.275	vs. Alabama	2/12/16
4.	197.200	vs. Missouri	2/26/16
5.	197.175	vs. LSU	2/22/13
	197.175	vs. Arizona State	3/11/16

TOP TEAM SCORES - AWAY ONLY

	SCORE	OPPONENT	DATE
1.	197.325	at Georgia	3/4/16
2.	197.125	at LSU	2/19/16
3.	196.875	at Missouri	2/20/15
4.	196.850	at LSU	1/25/14
5.	196.825	at Alabama	2/6/15
	196.825	at TWU	2/5/16

TOP TEAM SCORES - VAULT

	SCORE	OPPONENT	DATE
1.	49.500	vs. LSU	2/13/15
	49.500	at Denver	3/2/08
3.	49.425	vs. North Carolina	3/13/15
	49.425	at LSU	1/25/14
5.	49.400	vs. Florida	1/17/14
	49.400	vs. Illinois-Chicago	3/11/07
	49.400	at NCAA Regional (Auburn)	4/4/15

TOP TEAM SCORES - BARS

	SCORE	OPPONENT	DATE
1.	49.525	vs. Arkansas	1/23/15
2.	49.500	vs. Centenary	3/5/00
3.	49.475	vs. Florida	2/17/12
4.	49.450	vs. Georgia	2/27/15
	49.450	vs. Maryland	3/20/10

TOP TEAM SCORES - BEAM

	SCORE	OPPONENT	DATE
1.	49.600	at Centenary	2/29/04
2.	49.425	at Denver	3/2/08
	49.425	at Alabama	2/15/13
4.	49.400	at LSU	2/8/08
	49.400	at Arkansas	2/2/08
	49.400	at Alabama	2/6/15
	49.400	at SEC Championship	3/21/15

TOP TEAM SCORES - FLOOR

	SCORE	OPPONENT	DATE
1.	49.600	vs. Florida	2/13/04
	49.600	vs. Arizona State	3/11/16
3.	49.550	vs. Georgia	2/27/15
4.	49.525	vs. Maryland	3/1/13
5.	49.500	vs. Missouri	2/26/16

PROGRAM BESTS**TEAM**

EVENT	SCORE	DATE
TOTAL	197.750	February 27, 2015
VAULT	49.500	February 13, 2015
	49.500	March 2, 2008
BARS	49.525	January 23, 2015
BEAM	49.600	February 29, 2004
FLOOR	49.600	February 13, 2004
	49.600	March 11, 2016

INDIVIDUAL

EVENT	SCORE	GYMNAST, YEAR
ALL AROUND	39.750	Caitlin Atkinson, 2015
VAULT	9.975	MJ Rott, 2015
	9.975	MJ Rott, 2014
	9.975	Julie Dwyer, 2008
BARS	10.0	Sarah Wentworth, 2000
BEAM	10.0	Rachael Tarantino, 2004
	10.0	Sally Cantrell, 2002
FLOOR	10.0	Becky Erwin, 1993

2017 INDIVIDUAL TOP SCORES**VAULT**

1.	9.900	MJ Rott	ARKANSAS (Feb. 3)
t-2.	9.850	Gracie Day	OREGON STATE (Jan. 6)
t-2.	9.850	Gracie Day	GEORGIA (Jan. 13)
t-2.	9.850	MJ Rott	at Florida (Jan. 27)
t-5.	9.825	Four times	

BARS

1.	9.900	Samantha Cerio	ARKANSAS (Feb. 3)
t-2.	9.875	Gracie Day	at Florida (Jan. 27)
t-2.	9.875	Kelsey Kopec	vs. Alabama (Jan. 29)
t-2.	9.875	Kelsey Kopec	ARKANSAS (Feb. 3)
t-2.	9.875	Taylor Krippner	ARKANSAS (Feb. 3)
t-2.	9.875	Emma Engler	ARKANSAS (Feb. 3)

BEAM

t-1.	9.900	Emma Engler	at Florida (Jan. 27)
t-1.	9.900	Taylor Krippner	ARKANSAS (Feb. 3)
t-3.	9.875	Abby Milliet	at Kentucky (Jan. 20)
t-3.	9.875	Taylor Krippner	at Florida (Jan. 27)
5.	9.850	Emma Slappey	vs. Alabama (Jan. 29)

FLOOR

1.	9.950	MJ Rott	GEORGIA (Jan. 13)
t-2.	9.900	Emma Slappey	at Florida (Jan. 27)
t-2.	9.900	Samantha Cerio	ARKANSAS (Feb. 3)
4.	9.875	MJ Rott	ARKANSAS (Feb. 3)
5.	9.850	Six times	

2017 SEASON BESTS**TEAM**

EVENT	SCORE	DATE
TOTAL	196.400	at Florida (Jan. 27)
VAULT	49.050	vs. Arkansas (Feb. 3)
BARS	49.375	vs. Arkansas (Feb. 3)
BEAM	49.150	at Florida (Jan. 27)
FLOOR	49.225	Georgia (Jan. 13)

INDIVIDUAL

EVENT	SCORE	GYMNAST (DATE)
TOTAL	38.700	Abby Milliet (Jan. 6)
VAULT	9.900	MJ Rott (Feb. 3)
BARS	9.900	Samantha Cerio (Feb. 3)
BEAM	9.900	2x, last Taylor Krippner (Feb. 3)
FLOOR	9.950	MJ Rott (Jan. 13)

2017 TEAM TOP SCORES**TEAM TOTAL**

1.	196.400	at Florida	Jan. 27
t-2.	196.075	GEORGIA	Jan. 13
t-2.	196.075	ARKANSAS	Feb. 3
4.	195.800	at Kentucky	Jan. 20
5.	195.275	OREGON STATE	Jan. 6

VAULT

1.	49.050	ARKANSAS	Feb. 3
2.	49.025	vs. Florida	Jan. 27
t-3.	48.900	OREGON STATE	Jan. 6
t-3.	48.900	GEORGIA	Jan. 13
t-3.	48.900	vs. Alabama	Jan. 29

BARS

1.	49.375	ARKANSAS	Feb. 3
2.	49.150	vs. Alabama	Jan. 29
t-3.	49.125	GEORGIA	Jan. 13
t-3.	49.125	at Kentucky	Jan. 20
5.	49.050	at Florida	Jan. 27

BEAM

1.	49.150	at Florida	Jan. 27
2.	49.075	ARKANSAS	Feb. 3
3.	48.925	at Kentucky	Jan. 20
4.	48.825	GEORGIA	Jan. 13
5.	48.800	OREGON STATE	Jan. 6

FLOOR

1.	49.225	GEORGIA	Jan. 13
2.	49.175	at Florida	Jan. 27
3.	49.025	vs. Alabama	Jan. 29
4.	48.925	at Kentucky	Jan. 20
5.	48.675	OREGON STATE	Jan. 6

INDIVIDUAL SEASON AND CAREER SCORES

KATIE BECKER :: FRESHMAN

2017	VAULT	BARS	BEAM	FLOOR	AA
OREGON STATE	9.725	---	---	---	---
GEORGIA	9.775	---	---	9.850	---
at Kentucky	9.700	---	9.775	---	---
at Florida	9.800	---	9.250	9.800	---
vs. Alabama	9.825	---	9.100	9.800	---
ARKANSAS	9.775	---	9.800	9.850	---
vs. Oklahoma	---	---	---	---	---
at Alabama	---	---	---	---	---
LSU	---	---	---	---	---
at Missouri	---	---	---	---	---
PITTSBURGH	---	---	---	---	---
at SEC	---	---	---	---	---
NCAA Regional	---	---	---	---	---
NCAA National	---	---	---	---	---
Season Average	9.767	---	9.481	9.825	---
Season High	9.825	---	9.800	9.850	---
Career High	9.825	---	9.800	9.850	---

EMMA ENGLER :: SOPHOMORE

2017	VAULT	BARS	BEAM	FLOOR	AA
OREGON STATE	---	9.775	8.800	---	---
GEORGIA	---	9.850	9.775	---	---
at Kentucky	9.600	9.850	9.725	---	---
at Florida	9.700	9.850	9.900	---	---
vs. Alabama	9.800	9.825	8.850	---	---
ARKANSAS	9.775	9.875	9.750	---	---
vs. Oklahoma	---	---	---	---	---
at Alabama	---	---	---	---	---
LSU	---	---	---	---	---
at Missouri	---	---	---	---	---
PITTSBURGH	---	---	---	---	---
at SEC	---	---	---	---	---
NCAA Regional	---	---	---	---	---
NCAA National	---	---	---	---	---
Season Average	9.719	9.838	9.467	---	---
Season High	9.800	9.875	9.900	---	---
Career High	9.825	9.875	9.900	---	---

KELSEY KOPEC :: REDSHIRT SENIOR

2017	VAULT	BARS	BEAM	FLOOR	AA
OREGON STATE	---	9.775	---	---	---
GEORGIA	---	9.775	---	---	---
at Kentucky	---	9.825	---	---	---
at Florida	---	8.800	---	---	---
vs. Alabama	---	9.875	---	---	---
ARKANSAS	---	9.875	---	---	---
vs. Oklahoma	---	---	---	---	---
at Alabama	---	---	---	---	---
LSU	---	---	---	---	---
at Missouri	---	---	---	---	---
PITTSBURGH	---	---	---	---	---
at SEC	---	---	---	---	---
NCAA Regional	---	---	---	---	---
NCAA National	---	---	---	---	---
Season Average	---	9.654	---	---	---
Season High	---	9.875	---	---	---
Career High	9.850	9.900	---	---	---

TELAH BLACK :: SOPHOMORE

2017	VAULT	BARS	BEAM	FLOOR	AA
OREGON STATE	9.725	---	---	---	---
GEORGIA	9.725	---	---	---	---
at Kentucky	9.700	---	---	---	---
at Florida	---	---	---	---	---
vs. Alabama	---	---	---	---	---
ARKANSAS	---	---	---	---	---
vs. Oklahoma	---	---	---	---	---
at Alabama	---	---	---	---	---
LSU	---	---	---	---	---
at Missouri	---	---	---	---	---
PITTSBURGH	---	---	---	---	---
at SEC	---	---	---	---	---
NCAA Regional	---	---	---	---	---
NCAA National	---	---	---	---	---
Season Average	9.717	---	---	---	---
Season High	9.725	---	---	---	---
Career High	9.725	---	---	---	---

KENNEDY FINISTER :: JUNIOR

2017	VAULT	BARS	BEAM	FLOOR	AA
OREGON STATE	---	---	---	---	---
GEORGIA	---	---	---	---	---
at Kentucky	---	---	---	---	---
at Florida	---	---	---	---	---
vs. Alabama	---	---	---	---	---
ARKANSAS	---	---	---	---	---
vs. Oklahoma	---	---	---	---	---
at Alabama	---	---	---	---	---
LSU	---	---	---	---	---
at Missouri	---	---	---	---	---
PITTSBURGH	---	---	---	---	---
at SEC	---	---	---	---	---
NCAA Regional	---	---	---	---	---
NCAA National	---	---	---	---	---
Season Average	---	---	---	---	---
Season High	---	---	---	---	---
Career High	---	---	---	---	---

TAYLOR KRIPPNER :: SOPHOMORE

2017	VAULT	BARS	BEAM	FLOOR	AA
OREGON STATE	9.775	9.750	9.825	---	---
GEORGIA	9.750	9.850	9.150	---	---
at Kentucky	9.775	9.725	---	---	---
at Florida	9.825	9.825	9.875	---	---
vs. Alabama	9.775	9.825	9.200	---	---
ARKANSAS	9.800	9.875	9.900	---	---
vs. Oklahoma	---	---	---	---	---
at Alabama	---	---	---	---	---
LSU	---	---	---	---	---
at Missouri	---	---	---	---	---
PITTSBURGH	---	---	---	---	---
at SEC	---	---	---	---	---
NCAA Regional	---	---	---	---	---
NCAA National	---	---	---	---	---
Season Average	9.783	9.808	9.590	---	---
Season High	9.825	9.875	9.900	---	---
Career High	9.850	9.875	9.900	---	---

SAMANTHA CERIO :: SOPHOMORE

2017	VAULT	BARS	BEAM	FLOOR	AA
OREGON STATE	---	9.750	9.775	9.800	---
GEORGIA	---	9.750	9.725	9.775	---
at Kentucky	---	9.800	9.800	9.850	---
at Florida	---	9.800	9.800	9.775	---
vs. Alabama	---	9.825	9.725	---	---
ARKANSAS	---	9.900	9.825	9.900	---
vs. Oklahoma	---	---	---	---	---
at Alabama	---	---	---	---	---
LSU	---	---	---	---	---
at Missouri	---	---	---	---	---
PITTSBURGH	---	---	---	---	---
at SEC	---	---	---	---	---
NCAA Regional	---	---	---	---	---
NCAA National	---	---	---	---	---
Season Average	---	9.804	9.775	9.820	---
Season High	---	9.900	9.825	9.900	---
Career High	---	9.900	9.875	9.900	---

SARAH GARCIA :: JUNIOR

2017	VAULT	BARS	BEAM	FLOOR	AA
OREGON STATE	---	---	---	---	---
GEORGIA	---	---	---	---	---
at Kentucky	---	---	---	---	---
at Florida	---	---	---	---	---
vs. Alabama	---	---	---	---	---
ARKANSAS	---	---	---	---	---
vs. Oklahoma	---	---	---	---	---
at Alabama	---	---	---	---	---
LSU	---	---	---	---	---
at Missouri	---	---	---	---	---
PITTSBURGH	---	---	---	---	---
at SEC	---	---	---	---	---
NCAA Regional	---	---	---	---	---
NCAA National	---	---	---	---	---
Season Average	---	---	---	---	---
Season High	---	---	---	---	---
Career High	9.800	9.700	---	---	---

ABBY MILLIET :: JUNIOR

2017	VAULT	BARS	BEAM	FLOOR	AA
OREGON STATE	9.600	9.775	9.775	9.550	38.700
GEORGIA	---	9.850	9.775	---	---
at Kentucky	---	9.800	9.875	---	---
at Florida	---	---	---	---	---
vs. Alabama	---	---	---	---	---
ARKANSAS	---	---	---	---	---
vs. Oklahoma	---	---	---	---	---
at Alabama	---	---	---	---	---
LSU	---	---	---	---	---
at Missouri	---	---	---	---	---
PITTSBURGH	---	---	---	---	---
at SEC	---	---	---	---	---
NCAA Regional	---	---	---	---	---
NCAA National	---	---	---	---	---
Season Average	9.600	9.808	9.808	9.550	38.700
Season High	9.600	9.850	9.875	9.550	38.700
Career High	9.600	9.950	9.900	9.875	---

GRACIE DAY :: FRESHMAN

2017	VAULT	BARS	BEAM	FLOOR	AA
OREGON STATE	9.850	9.825	---	9.775	---
GEORGIA	9.850	9.800	---	---	---
at Kentucky	9.825	9.850	---	9.575	---
at Florida	9.825	9.875	---	9.850	---
vs. Alabama	9.750	9.800	---	9.675	---
ARKANSAS	9.450	9.850	---	---	---
vs. Oklahoma	---	---	---	---	---
at Alabama	---	---	---	---	---
LSU	---	---	---	---	---
at Missouri	---	---	---	---	---
PITTSBURGH	---	---	---	---	---
at SEC	---	---	---	---	---
NCAA Regional	---	---	---	---	---
NCAA National	---	---	---	---	---
Season Average	9.758	9.833	---	9.719	---
Season High	9.850	9.875	---	9.850	---
Career High	9.850	9.875	---	9.850	---

KULLEN HLAWEK :: SENIOR

2017	VAULT	BARS	BEAM	FLOOR	AA
OREGON STATE	---	---	9.725	8.875	---
GEORGIA	---	---	9.750	9.750	---
at Kentucky	---	---	9.725	9.700	---
at Florida	---	---	9.775	---	---
vs. Alabama	---	---	9.725	9.825	---
ARKANSAS	---	---	9.800	9.100	---
vs. Oklahoma	---	---	---	---	---
at Alabama	---	---	---	---	---
LSU	---	---	---	---	---
at Missouri	---	---	---	---	---
PITTSBURGH	---	---	---	---	---
at SEC	---	---	---	---	---
NCAA Regional	---	---	---	---	---
NCAA National	---	---	---	---	---
Season Average	---	---	9.750	9.450	---
Season High	---	---	9.800	9.825	---
Career High	9.650	9.825	9.850	9.925	---

KENDAL MOSS :: FRESHMAN

2017	VAULT	BARS	BEAM	FLOOR	AA
OREGON STATE	---	---	---	---	---
GEORGIA	---	---	---	---	---
at Kentucky	---	---	---	---	---
at Florida	---	9.700	---	---	---
vs. Alabama	---	9.775	---	---	---
ARKANSAS	---	9.850	---	---	---
vs. Oklahoma	---	---	---	---	---
at Alabama	---	---	---	---	---
LSU	---	---	---	---	---
at Missouri	---	---	---	---	---
PITTSBURGH	---	---	---	---	---
at SEC	---	---	---	---	---
NCAA Regional	---	---	---	---	---
NCAA National	---	---	---	---	---
Season Average	---	9.775	---	---	---
Season High	---	9.850	---	---	---
Career High	---	9.850	---	---	---

INDIVIDUAL SEASON AND CAREER SCORES

A'MIRACAL PHILLIPS :: SOPHOMORE

2017	VAULT	BARS	BEAM	FLOOR	AA
OREGON STATE	---	---	---	---	---
GEORGIA	9.550	---	---	---	---
at Kentucky	---	---	---	---	---
at Florida	9.725	---	---	---	---
vs. Alabama	9.750	---	---	---	---
ARKANSAS	9.800	---	---	---	---
vs. Oklahoma	---	---	---	---	---
at Alabama	---	---	---	---	---
LSU	---	---	---	---	---
at Missouri	---	---	---	---	---
PITTSBURGH	---	---	---	---	---
at SEC	---	---	---	---	---
NCAA Regional	---	---	---	---	---
NCAA National	---	---	---	---	---
Season Average	9.706	---	---	---	---
Season High	9.800	---	---	---	---
Career High	9.850	---	---	---	---

EMMA SLAPPEY :: REDSHIRT FRESHMAN

2017	VAULT	BARS	BEAM	FLOOR	AA
OREGON STATE	---	---	9.700	---	---
GEORGIA	---	---	9.800	9.850	---
at Kentucky	---	---	9.775	9.825	---
at Florida	---	---	9.800	9.900	---
vs. Alabama	---	---	9.850	9.775	---
ARKANSAS	---	---	9.325	9.050	---
vs. Oklahoma	---	---	---	---	---
at Alabama	---	---	---	---	---
LSU	---	---	---	---	---
at Missouri	---	---	---	---	---
PITTSBURGH	---	---	---	---	---
at SEC	---	---	---	---	---
NCAA Regional	---	---	---	---	---
NCAA National	---	---	---	---	---
Season Average	---	---	9.708	9.680	---
Season High	---	---	9.850	9.900	---
Career High	---	---	9.850	9.900	---

MJ ROTT :: SENIOR

2017	VAULT	BARS	BEAM	FLOOR	AA
OREGON STATE	9.825	---	---	9.825	---
GEORGIA	9.800	---	---	9.950	---
at Kentucky	9.800	---	---	9.750	---
at Florida	9.850	---	---	9.800	---
vs. Alabama	9.700	---	---	9.825	---
ARKANSAS	9.900	---	---	9.875	---
vs. Oklahoma	---	---	---	---	---
at Alabama	---	---	---	---	---
LSU	---	---	---	---	---
at Missouri	---	---	---	---	---
PITTSBURGH	---	---	---	---	---
at SEC	---	---	---	---	---
NCAA Regional	---	---	---	---	---
NCAA National	---	---	---	---	---
Season Average	9.813	---	---	9.837	---
Season High	9.900	---	---	9.950	---
Career High	9.975	9.825	9.900	9.950	38.925

CARA STRICKLIN :: JUNIOR

2017	VAULT	BARS	BEAM	FLOOR	AA
OREGON STATE	---	---	---	---	---
GEORGIA	---	---	---	---	---
at Kentucky	---	---	---	---	---
at Florida	---	---	---	---	---
vs. Alabama	---	---	---	---	---
ARKANSAS	---	---	---	---	---
vs. Oklahoma	---	---	---	---	---
at Alabama	---	---	---	---	---
LSU	---	---	---	---	---
at Missouri	---	---	---	---	---
PITTSBURGH	---	---	---	---	---
at SEC	---	---	---	---	---
NCAA Regional	---	---	---	---	---
NCAA National	---	---	---	---	---
Average	---	---	---	---	---
Season High	---	---	---	---	---
Career High	---	---	---	---	---

LUCIA SCAGLIONE :: SENIOR

2017	VAULT	BARS	BEAM	FLOOR	AA
OREGON STATE	---	---	---	9.725	---
GEORGIA	---	---	---	9.800	---
at Kentucky	---	---	---	9.800	---
at Florida	---	---	---	9.825	---
vs. Alabama	---	---	---	9.800	---
ARKANSAS	---	---	---	9.850	---
vs. Oklahoma	---	---	---	---	---
at Alabama	---	---	---	---	---
LSU	---	---	---	---	---
at Missouri	---	---	---	---	---
PITTSBURGH	---	---	---	---	---
at SEC	---	---	---	---	---
NCAA Regional	---	---	---	---	---
NCAA National	---	---	---	---	---
Season Average	---	---	---	9.800	---
Season High	---	---	---	9.850	---
Career High	---	---	---	9.850	---

2017 EVENT TITLES

MEET	VAULT	BARS	BEAM	FLOOR	ALL-AROUND
#13 OREGON STATE	Day	---	---	Rott	---
GEORGIA	---	---	---	Rott	---
at #9 Kentucky	---	---	---	---	---
at #3 Florida	---	---	---	---	---
vs. #5 Alabama (Elevate Meet)	---	Kopec	---	---	---
ARKANSAS	Rott	Cerio	Krippner	Rott	---
vs. Oklahoma (Perfect 10 Challenge)	---	---	---	---	---
at Alabama	---	---	---	---	---
LSU	---	---	---	---	---
at Missouri	---	---	---	---	---
PITTSBURGH	---	---	---	---	---
at SEC Championship	---	---	---	---	---
NCAA Regional Championship	---	---	---	---	---
NCAA Championship	---	---	---	---	---
NCAA Super Six	---	---	---	---	---
	2	2	1	3	---



KATIE BECKER
Fr. • AA • 5-4



TELAH BLACK
So. • AA • 5-3



SAMANTHA CERIO
So. • AA • 5-0



GRACIE DAY
Fr. • AA • 5-4



EMMA ENGLER
So. • AA • 5-3



KENNEDY FINISTER
Jr. • AA • 5-1



SARAH GARCIA
Jr. • VT • 5-3



KULLEN HLAWEK
Sr. • AA • 5-1



KELSEY KOPEC
R-Sr. • AA • 5-7



TAYLOR KRIPPNER
So. • AA • 5-1



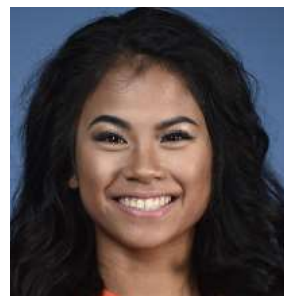
ABBY MILLIET
Jr. • AA • 5-1



KENDAL MOSS
Fr. • AA • 5-4



A'MIRACAL PHILLIPS
So. • AA • 5-6



MJ ROTT
Sr. • AA • 5-0



LUCIA SCAGLIONE
Sr. • FX • 5-0



EMMA SLAPHEY
R-Fr. • AA • 5-2



CARA STRICKLIN
Jr. • AA • 5-5



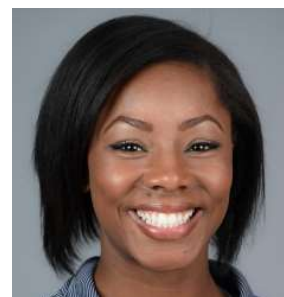
JEFF GRABA
HEAD COACH



KURT HETTINGER
ASSISTANT COACH



MARY MCDANIEL
ASSISTANT COACH



RACHEL INNISS
VOLUNTEER ASSISTANT



DAWN SCHUELLER
DIRECTOR OF OPERATIONS