



# 2017 AUBURN GYMNASTICS

AUBURN ATHLETICS COMMUNICATIONS: 392 SOUTH DONAHUE DRIVE || AUBURN, AL 36830 || AUBURNTIGERS.COM || @AUBURNGYM

## 2017 GYMNASTICS SCHEDULE

0-7, 0-5 SEC

Date	Opponent	Time (CT)/Result
Jan. 6	<b>OREGON STATE</b>	L, 195.275-195.575
Jan. 13	<b>GEORGIA*</b>	L, 196.075-196.800
Jan. 20	at Kentucky*	L, 195.800-197.100
Jan. 27	at Florida*	L, 196.400-197.700
Jan. 29	vs. Alabama#	L, 194.675-195.850
Feb. 3	<b>ARKANSAS*</b>	L, 196.075-196.375
Feb. 10	vs. Oklahoma^	L, 195.725-198.075
Feb. 17	at Alabama*	7:30 p.m. (SECN)
Feb. 24	<b>LSU*</b>	7:30 p.m. (SECN)
March 3	at Missouri*	7 p.m. (SEC+)
March 10	<b>PITTSBURGH</b>	7 p.m. (SEC+)
March 18	SEC Championships	TBA
April 1	NCAA Regional%	TBA
April 14-15	NCAA Championships&	TBA

\* -- SEC meets

# -- Elevate Meet at the Birmingham-Jefferson Convention Complex

^ -- Perfect 10.0 Challenge - Oklahoma City, Okla.

S -- Veterans Memorial Arena - Jacksonville, Fla.

% -- Seattle, Wash.; Gainesville, Fla.; Fayetteville, Ark.; Champaign, Ill.; Lincoln, Neb.; Morgantown, W.V.

& -- Chaifetz Arena -- St. Louis, Mo.

### COACHING STAFF

<b>Head Coach</b> .....	Jeff Graba (Seventh Season)
<b>Assistant Coach</b> .....	Kurt Hettinger (Ninth Season)
<b>Assistant Coach</b> .....	Mary McDaniel (Second Season)
<b>Director of Ops</b> .....	Dawn Schueller (Sixth Season)
<b>Athletic Trainer</b> .....	Janet Taylor (12th Season)

### SOCIAL: #WarEagle

» <b>Twitter</b> .....	@AuburnGym
» <b>Facebook</b> .....	AuburnGym
» <b>Instagram</b> .....	@AuburnGymnastics

### TV: SEC NETWORK

» <b>Play-by-Play</b> .....	Holly Rowe
» <b>Analyst</b> .....	Courtney Kupets Carter
» <b>Reporter</b> .....	Lauren Sisler
» <b>Watch</b> .....	<a href="http://es.pn/2kbhgnV">http://es.pn/2kbhgnV</a>

### AUBURN ATHLETICS COMMUNICATIONS

Kendra Willard.....	kal0014@auburn.edu
Web.....	AuburnTigers.com
Office Phone.....	(334) 844-9800

## Quick Facts

Location.....	Auburn, Ala.
Nickname.....	Tigers
Enrollment.....	25,469
Colors.....	Burnt Orange and Navy Blue
Conference.....	Southeastern
President.....	Dr. Jay Gogue
Athletic Director.....	Jay Jacobs
Facility.....	Auburn Arena



## #6 ALABAMA

Friday, Feb. 17 • 7:30 p.m. CT  
Coleman Coliseum • Tuscaloosa, Ala.



Site.....	Tuscaloosa, Ala.
Venue.....	Coleman Coliseum
TV.....	SEC Network
Live Stats.....	RollTide.com
Series Record.....	Alabama leads 119-10
Last Regular Season Meeting.....	Jan. 29 in Birmingham Alabama, 195.850-195.675

AUBURN	Rankings.....	17
	2017 Record.....	0-7 / 0-4
	Head Coach.....	Jeff Graba
	Record at AU (Year).....	72-95-1 (7th)

ALABAMA	Rankings.....	6
	2017 Record.....	3-4 / 2-3
	Head Coach.....	Dana Duckworth
	Year at UA.....	Third

### PROBABLE LINEUP (CAREER STARTS IN EVENT)

#### VAULT

Emma Engler (10)  
Katie Becker (7)  
A' Miracal Phillips (10)  
Taylor Krippner (21)  
MJ Rott (47)  
Gracie Day (7)  
Alt: Kelsey Kopec

#### BEAM

Kullen Hlawek (27)  
Samantha Cerio (11)  
Katie Becker (5)  
Emma Engler (17)  
Emma Slappey (7)  
Taylor Krippner (20)  
Alt: Gracie Day

#### BARS

Katie Becker (0)  
Samantha Cerio (17)  
Kelsey Kopec (48)  
Taylor Krippner (21)  
Emma Engler (11)  
Gracie Day (7)  
Alt: Kendal Moss

#### FLOOR

Katie Becker (5)  
Samantha Cerio (7)  
Lucia Scaglione (11)  
Kullen Hlawek (31)  
Emma Slappey (6)  
MJ Rott (41)  
Alt: Gracie Day

### NO. 17 TIGERS WITH TOUGH ROAD CHALLENGE AT NO. 6 ALABAMA

The No. 17 Auburn gymnastics team returns to Southeastern Conference competition this week, traveling to in-state rival Alabama Friday. Competition between the Tigers and the No. 6 Crimson Tide will kick off at 7:30 p.m. CT in Coleman Coliseum live on SEC Network.

"Alabama is coming off a loss and will be ready to get back into the win column," head coach Jeff Graba said. "It's going to be a tough environment for us against a team that will be hungry for a win so it will be imperative to stay mentally focused. I think we're physically ready to go so we just have to stay focused and go in there doing what we know how to do."

### IN THE RANKINGS

Auburn enters its Rivalry Week at No. 17 in the national RoadtoNationals.com rankings with a 195.718 average.

"There were some positives and negatives from last week's meet, but we mainly need to get mentally tougher," head coach Jeff Graba said. "With a road meet at Alabama Friday, we need to mentally prepare for that environment. It's simply another opportunity for this team to gel."

Oklahoma holds on to No. 1 with a 197.813 average, while LSU, Florida, UCLA and Utah remain in the Top 5. Alabama (sixth), Kentucky (ninth), and Georgia (10th) also represent the SEC in the Top 10.

Auburn ranks in the Top 20 on all four events, coming in at No. 13 on bars with a 49.021 average. The Tigers are 18th on vault (48.961), 19th on floor (48.957), and tied for 20th on beam (48.779).

#WarEagle



AuburnTigers.com

@AuburnGym | @AuburnTigers  
@CoachJeffGraba/AuburnGym  
/AuburnTigers

## TEAM SCHEDULE AND MEDIA AVAILABILITY » WEEK OF FEBRUARY 13 - 19

MONDAY February 13	TUESDAY February 14	WEDNESDAY February 15	THURSDAY February 16	FRIDAY February 17	SATURDAY February 18	SUNDAY February 19
<b>PRACTICE</b> 1 p.m. - 4 p.m. McWhorter Center	<b>MEDIA INTERVIEWS</b> 12:45 p.m. McWhorter Center  <b>PRACTICE</b> 1 p.m. - 4 p.m. McWhorter Center	<b>PRACTICE</b> 1 p.m. - 4 p.m. McWhorter Center	<b>TRAVEL DAY</b>	<b>MEET</b> 7:30 p.m. Auburn at Alabama	<b>PRACTICE</b> Morning Conditioning McWhorter Center	<b>OFF</b>

## AUBURN ATHLETICS COMMUNICATIONS

## AUBURNTIGERS.COM

For updated game notes, statistics and all the latest information on Auburn gymnastics and meet weekend activities, go to [AuburnTigers.com](http://AuburnTigers.com).

## INTERVIEW POLICY

Coach Graba, assistant coaches and all athletes are available for phone and personal interviews by contacting Kendra Willard in the media relations office. Post-meet interviews will be conducted in the media room following a 10-minute cooling-off period.

## CREDENTIALS

Anyone wishing to cover an Auburn gymnastics meet should contact Kendra Willard in the communications office at least one day in advance in order to make the proper arrangements. Credentials are required for attendance.

## MATCH DAY SERVICES

Notes for both teams and lineup sheets will be provided prior to the meet. Stats will be distributed between each rotation and after the meet. Wireless internet is available in the Arena; ask Kendra Willard for the password.

## VIDEO SERVICES

FTP feeds of selected Auburn gymnastics highlights are available for the media. A number of studio and satellite services may be arranged for electronic media by calling Andrew Aaron in the Auburn video services office at 334.750.7133 or by emailing [aba0016@auburn.edu](mailto:aba0016@auburn.edu).

## PHOTO SERVICES

For photos of Auburn gymnastics or anything pertaining to Auburn Athletics, contact Wade Rackley at 334-750-6907 or via email at [wwr0004@auburn.edu](mailto:wwr0004@auburn.edu)

## COMMUNICATIONS STAFF

Kendra Willard      Gymnastics contact  
cell: 614-929-8029  
email: [kal0014@auburn.edu](mailto:kal0014@auburn.edu)

Kirk Sampson Associate AD  
cell: 334-750-1385  
email: [sampska@auburn.edu](mailto:sampska@auburn.edu)

Cassie Arner SEC Network/TV contact  
cell: 334-750-0502  
email: [carner@auburn.edu](mailto:carner@auburn.edu)

## GAMEDAY EXPERIENCE: AUBURN ARENA

» The Auburn gymnastics program has enjoyed four sellouts (7,424) in the last three seasons at Auburn Arena. The Tigers have reached new heights already in 2017 as season ticket holder numbers have risen yet again.



**SCOUTING ALABAMA**

The Alabama gymnastics team is the sixth-ranked team nationally, having a 196.725 average. The team is coming off a loss at nationally-ranked Kentucky and are 3-4 on the season with a 2-3 mark in SEC competition.

The Tide are in the Top 10 in all events, having the fifth-best average on beam at 49.289. The team is sixth on vault (49.179), seventh floor (49.193), and 10th on bars (49.064).

Individually, Kiana Winston is eighth in the all-around at 39.475, while coming in fourth on floor (9.936) and tied for fifth on beam (9.892). Nickie Guerrero is fourth nationally on beam at 9.896.

**AUBURN/ALABAMA SERIES HISTORY**

The Crimson Tide have held the upper hand throughout the entire series and stands at 119-10 vs. the Tigers. Alabama has not been beaten by Auburn at home in Tuscaloosa.

The Tigers snapped an Alabama winning streak that dated back to 1979 last season. Auburn defeated its instate rival, 197.275-197.250 in Auburn Arena in front of a sellout crowd of 7,424. Former Tiger Caitlin Atkinson captured all five event titles, including the all-around with a 39.650.

**AUBURN LINEUP VS OKLAHOMA**

Auburn will feature 18 routines from sophomores and freshmen Friday vs. Arkansas, while the other six will come from the team's four seniors.

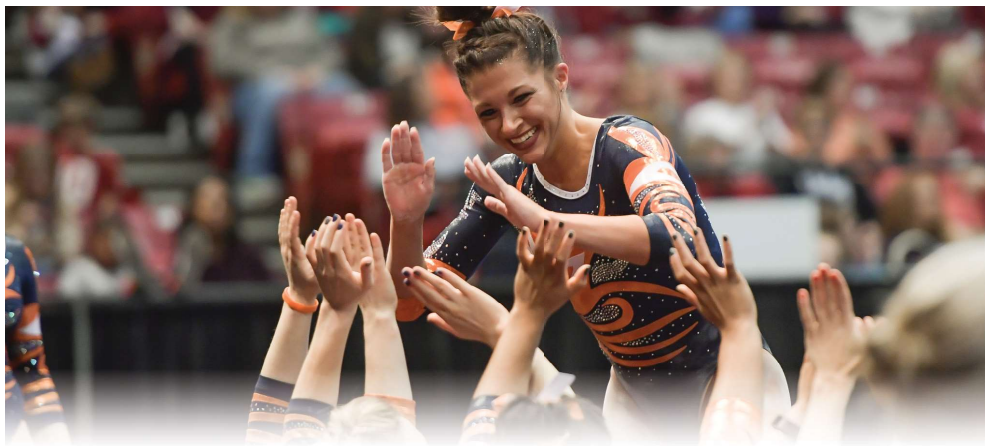
For just the second time this season, Auburn's lineup will boast an all-arounder. Freshman Katie Becker is set to make her first appearance in the team's bars lineup, while she's been a steady contributor on the other three events.

The team opens the meet on its best event so far this as Auburn has continued to progress on bars. Going third for the Tigers and making her 49th start in the event will be redshirt senior Kelsey Kopec. Becker will kick things off in the leadoff spot for the Tigers and is followed by sophomore Samantha Cerio. Sophomores Taylor Krippner and Emma Engler along with freshman Gracie Day will close out the first rotation.

On vault, senior MJ Rott will guide the youthful lineup as she is set to compete in her 48th meet in this event. Engler, sophomore A'Miracal Phillips, and Krippner join Rott, while Becker and Day are also set to compete.

**GYMNAST TO WATCH: KULLEN HLAWEK**

» Senior Kullen Hlawek had a solid showing vs. No. 1 Oklahoma last weekend in Oklahoma City. She tied a season-best on floor with an 9.825, while also contributing to the team's overall beam score.



Floor brings the most experience for Auburn as seniors Kullen Hlawek and Lucia Scaglione join Rott in the lineup. Becker, Cerio and redshirt freshman Emma Slaphey will also compete for points for Auburn.

Auburn's youth shines through on beam as three spots are held by sophomores (Cerio, Engler, Krippner), while Becker and Slaphey are also set to compete. Hlawek will lead things off for the Tigers in the final rotation.

**LAST REGULAR SEASON MEETING (JANUARY 29, 2017)**

The Auburn gymnastics team concluded its full weekend of travel at the third-annual Elevate the Stage meet Sunday, Jan. 29, and fell to No. 5 Alabama, 195.850-194.675, in the Legacy Arena at the BJCC.

The Tigers opened up the day on bars and came away with a season-high score of 49.150. Leading the young Auburn team was redshirt senior Kelsey Kopec, who captured the event title with a 9.875. A trio of sophomores in Samantha Cerio, Taylor Krippner, and Emma Engler added a 9.825 each, while freshman Gracie Day finished things off at 9.8.

Auburn moved on to vault in the second rotation and finished with a 48.9. Freshman Katie Becker earned a career high in the event, leading the Tigers with a 9.825. Engler followed with a season best at 9.8, while Krippner finished at 9.775. Day and sophomore A'Miracal Phillips closed out scoring at 9.75.

The third rotation had the squad on floor and the team was awarded a 49.025 collectively. Seniors MJ Rott and Kullen Hlawek put together solid performances for a pair of 9.825s. That total was a season-best for Hlawek. Becker and senior Lucia Scaglione opened the event with 9.8s and redshirt freshman Emma Slaphey picked up a 9.775.

The youthful Tiger team concluded the day on beam and was led by a career-high score from Slaphey, totaling a 9.85. Hlawek and Cerio each chipped in a 9.725 for Auburn. The team had to count two falls in the event and finished with a 47.6.

**LAST TIME OUT - FACING NO. 1 IN OKC**

Auburn traveled to Oklahoma City for the annual Perfect 10 Challenge and competed on podium for the second time this season, scoring a 195.725. The Tigers went up against No. 1 Oklahoma, who finished with a 198.075 Friday night.

The Tigers scored a season-best 49.150 on vault in the second rotation, seeing three individual best scores. Taylor Krippner, MJ

**SEC STANDINGS & SCHEDULE**

	<i>(as of Feb. 13)</i>						AVG
	SEC Meets			All Meets			
	W	L	Pct.	W	L	Pct.	
LSU	5	0	1.000	6	0	1.000	197.579
Florida	3	1	.750	5	1	.833	197.521
Alabama	2	3	.400	3	4	.429	196.725
Kentucky	2	3	.400	4	3	.571	196.257
Georgia	4	2	.667	5	2	.714	196.229
Missouri	1	3	.250	8	3	.727	195.861
AUBURN	0	4	.000	0	7	.000	195.718
Arkansas	2	3	.400	2	4	.333	195.475

**THIS WEEK IN THE SEC**

**Friday, February 17**

#3 Florida at #23 Arkansas, 6 p.m.

**GYMQuarters Mardi Gras Invitational**

#10 Georgia/#2 LSU/#1 Oklahoma/#15 Missouri, 6:30 p.m.

#17 Auburn at #6 Alabama, 7:30 p.m.

**Sunday, February 19**

#9 Kentucky/Penn/William & Mary at Maryland, 1 p.m.

#20 Georgia Washington/#22 Iowa at #2 LSU, 2:30 p.m.

**AUBURN IN THE RANKINGS**

**TEAM (as of Feb. 13)**

EVENT	AVG	NAT'L	REG.
Vault	48.961	18th	4th
Bars	49.021	13th	4th
Beam	48.779	t-20th	5th
Floor	48.957	t-19th	4th
Team Total	195.718	17th	4th

**INDIVIDUAL RANKS (Top 50 National :: Top 25 Region)**

*(as of Feb. 13)*

GYMNAST	EVENT	AVG	NAT'L	REG.
Katie Becker	Floor	9.820	-	t-20th
Samantha Cerio	Bars	9.811	-	19th
	Beam	9.779	-	t-22nd
Gracie Day	Bars	9.836	47th	11th
Emma Engler	Bars	9.829	-	t-13th
Taylor Krippner	Vault	9.793	-	22nd
Abby Milliet	A-A	38.700	-	18th
	Bars	9.808	-	t-22nd
	Beam	9.808	-	15th
MJ Rott	Vault	9.818	-	15th
	Floor	9.836	-	15th
Lucia Scaglione	Floor	9.807	-	24th

## NATIONAL RANKINGS

(Feb. 13)

Rk	Team	Avg.	High
1	<b>Oklahoma</b>	197.813	198.075
2	<b>LSU</b>	197.579	197.825
3	<b>Florida</b>	197.521	197.975
4	UCLA	197.025	198.125
5	Utah	196.879	197.625
6	<b>Alabama</b>	196.725	197.825
7	Boise State	196.405	197.075
8	Michigan	196.338	197.225
9	<b>Kentucky</b>	196.257	197.475
10	<b>Georgia</b>	196.229	197.075
11	Denver	196.161	197.125
12	<b>Oregon State</b>	196.075	196.900
13	Southern Utah	195.940	196.725
14	Washington	195.875	196.750
15	<b>Missouri</b>	195.861	196.225
16	Nebraska	195.729	196.825
17	<b>AUBURN</b>	195.718	196.400
18	California	195.708	196.300
19	Ohio State	195.646	196.450
20	George Washington	195.613	196.400
21	Illinois	195.517	196.050
22	Iowa	195.489	196.475
23	<b>Arkansas</b>	195.467	196.375
24	West Virginia	195.108	196.300
25	Arizona	195.038	196.100

**BOLD** - 2017 regular season opponents

## Inside the Matchup

**Auburn vs. Oklahoma** 10-119 (.077)

## Last 10 Meetings (1-9)

2015	Away	L	196.825-197.325
2015	Elevate Meet	L	197.025-197.200
2015	SEC Championship	L	196.925-197.525
2015	NCAA Regional	L	196.900-197.575
2015	NCAA Semifinal	L	197.075-197.100
2015	NCAA Super Six	L	195.625-197.275
2016	Elevate Meet	L	196.075-196.875
2016	Home	W	197.275-197.250
2016	SEC Championship	L	196.975-197.750
2017	Elevate Meet	L	194.675-195.850

Rott, and Gracie Day led the squad with 9.85s. That score tied a career best for both Krippner and Day. Katie Becker also tied a career-high score, earning a 9.825. Emma Engler opened up the event with a 9.775.

Auburn went to floor for rotation three and the squad finished with a 49.100. Lucia Scaglione was once again a solid contributor for the Tigers and tied a career best with a 9.85. Kullen Hlawek made her debut of the night and tied a season-high score of 9.825. Rott anchored the event with a 9.825, while Emma Slaphey put together a 9.8 performance. Becker kicked off the rotation with a 9.8.

The Tigers closed out the evening on beam, coming away with a 49.050. Krippner anchored with a beautiful routine, tying her career best of 9.9. Slaphey had another solid performance for the Tigers and earned a 9.825, while Cerio picked up a 9.8. Becker and Hlawek capped scoring with a 9.775 and 9.75, respectively.

The team opened things off on bars highlighted by a pair of 9.85s from Cerio and Day. Kelsey Kopec added a 9.775 for the Tigers.

**YOUTH MOVEMENT**

Auburn's roster boasts five sophomores, one redshirt freshman, and three true freshmen. All nine student-athletes have contributed to the Tigers team score this season and have been key players all year.

Sophomore Samantha Cerio has worked her way into three line-ups - bars, beam, floor - and ranks in the top 25 regionally on bars and beam. Sophomores Taylor Krippner and Emma Engler have been solid for the Tigers on vault, bars, and beam, while classmate A'Miracal Phillips has been a mainstay in the vault lineup. Prior to her injury, Telah Black also added depth to vault.

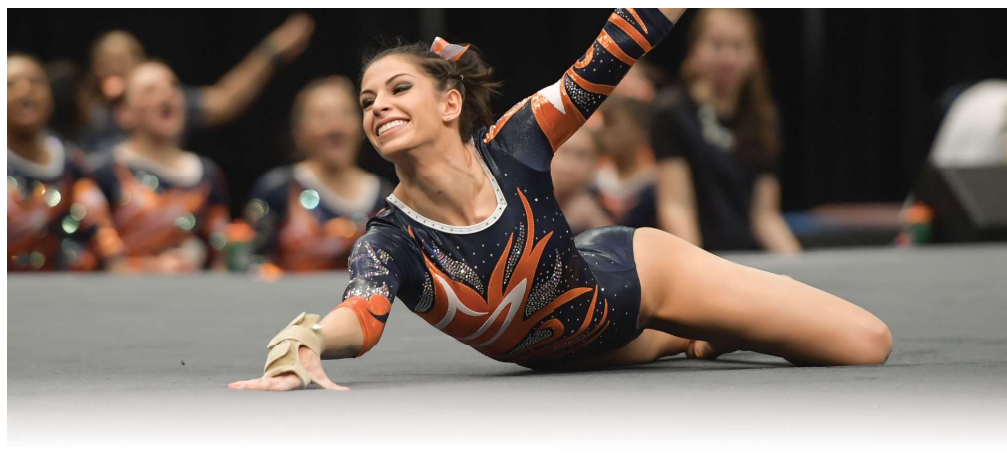
Redshirt freshman Emma Slaphey has been Auburn's most consistent scorer in both beam and floor, bringing an element of grace to both.

Freshman Katie Becker has been a major contributor on vault, beam, and floor all season. The Boone, N.C., product will be making her first all-around appearance Friday vs. the Tide as she earned the leadoff spot on bars.

Classmate Gracie Day anchors vault and bars, having put up a handful of top scores this season for Auburn in both events.

**GYMNAST TO WATCH: LUCIA SCAGLIONE**

» Senior Lucia Scaglione has become a staple in the team's floor line up and has progressively gotten better each week. She has set and tied her career high in the event over the last two meets, earning a 9.85 vs. Arkansas and again vs. Oklahoma.



Freshman Kendal Moss has stepped up big for the Tigers recently, providing solid bars scores.

**STRENGTH OF SCHEDULE**

In a poll on RoadtoNationals.com, Auburn's 2017 schedule ranks the second toughest schedule in the nation.

Ten of Auburn's 11 regular season meets are against teams ranked in top 25 of the NACGC/W Preseason Poll. Those include match ups with five teams who competed in last year's Super Six - Oklahoma (Feb. 10), LSU (Feb. 24), Alabama (Jan. 29, Feb. 17), Florida (Jan. 27), Georgia (Jan. 13).

**SEASON TICKET RECORDS**

In addition to setting a new program preseason ranking record, this year's team reached another height before the season began. With the competition year about to begin, Auburn has over 1,550 season ticket holders, marking the most sold for the program.

The Tigers have sold out Auburn Arena three times in the last two years (7,424) and are looking forward to hosting SEC rivals Georgia, Arkansas, and LSU, in addition to Oregon State and Pittsburgh this season.

**MAKING THEIR COMEBACK**

Sophomores Emma Engler and A'Miracal Phillips each suffered season-ending injuries at Arkansas last season (Jan. 29, 2016), but are on their way to making a big impact in 2017.

Engler, who hurt her knee on her beam dismount vs. the Razorbacks, has worked her way back into the beam and bars lineups. Phillips, a powerful vaulter from Enterprise, Ala., injured her foot at Arkansas and returned to competition vs. Georgia.

**SMARTY PANTS**

A trio of Tigers in Kelsey Kopec, Kullen Hlawek, and Samantha Cerio are engrossed in their studies as all three are engineering majors. Kopec, who graduated last spring with a degree in mechanical engineering, is currently working on her MBA at Auburn.

In addition, senior Lucia Scaglione is a Biomedical Science major.

**UP NEXT**

The Tigers return to The Plains for another SEC meet in Auburn Arena, hosting No. 2 LSU. Auburn and the Bayou Bengals are set to square off at 7:30 p.m. CT Friday, Feb. 24, on SEC Network.

## 2017 AUBURN GYMNASTICS ROSTER

NAME	EVENT	HT	CL	HOMETOWN/CLUB
Katie Becker	AA	5-4	Fr.	Boone, N.C./Everest Gymnastics
Telah Black	AA	5-3	So.	Helena, Ala./Jamjev Gymnastics
Samantha Cerio	AA	5-0	So.	Huntersville, N.C./KPAC
Gracie Day	AA	5-4	Fr.	San Antonio, Texas/Aerial Athletics
Emma Engler	AA	5-3	So.	Raleigh, N.C./Sonshine Gymnastics
Kennedy Finister	AA	5-1	Jr.	Magnolia, Texas/Champion Gymnastics
Sarah Garcia	AA	5-3	Jr.	Temecula, Calif./SCEGA
Kullen Hlawek	AA	5-1	Sr.	Fulshear, Texas/Champion Gymnastics
Kelsey Kopec	AA	5-7	RS Sr.	Alpharetta, Ga./Ultimate Gymnastics
Taylor Krippner	AA	5-1	So.	Cypress, Texas/World Champions
Abby Milliet	AA	5-1	Jr.	Denton, Texas/Denton Gymnastics Academy
Kendal Moss	AA	5-4	Fr.	Cornelius, N.C./Everest Gymnastics
A' Miracal Phillips	AA	5-6	So.	Enterprise, Ala./Alabama Elite
MJ Rott	AA	5-0	Sr.	Stillwater, Minn./Rising Stars Gymnastics
Lucia Scaglione	FX/VT	5-0	Sr.	Tampa, Fla./Lafleurs Tampa
Emma Slappey	AA	5-2	RS Fr.	Jacksonville, Fla./Starlight Gymnastics
Cara Stricklin	AA	5-5	Jr.	Mandeville, La./Cypress Pointe Gymnastics

<b>Head Coach:</b>	Jeff Graba (Seventh year at Auburn)
<b>Assistant Coach:</b>	Kurt Hettinger (Ninth year at Auburn)
<b>Assistant Coach:</b>	Mary McDaniel (Second year at Auburn)
<b>Director of Operations:</b>	Dawn Schueller (Sixth year at Auburn)
<b>Volunteer Assistant:</b>	Rachel Inniss (First year at Auburn)
<b>Athletic Trainer:</b>	Janet Taylor (12th year at Auburn)
<b>Graduate Assistant:</b>	Corrie Lathrop (First year at Auburn)
<b>Student Managers:</b>	Alexa Moates, Blake Jones

## PRONUNCIATION GUIDE

TELAH Black	TAY-lah
Samantha CERIO	SAIR-ee-oh
KULLEN HLAWEK	KULL-in LAUW-ick
Kelsey KOPEC	CO-peck
Abby MILLIET	mill-AYE
A' MIRACAL Phillips	uh-MIRacle
MJ ROTT	WROTE
LUCIA SCAGLIONE	lou-CHEE-uh scag-lee-OH-knee
Jeff GRABA	GRAY-buh



## Head Coach Jeff Graba

at Auburn & Overall: 72-95-1 (7th)



**Hometown:**  
Forest Lake, Minn.  
**Education:**  
Minnesota, 1992

## COACHING EXPERIENCE

Flips Gym Head Coach (1988-1995)  
 • White Bear Lake, Minn.  
 Hamline University Assistant Coach (1992-1998)  
 • St. Paul, Minn.  
 Midwest Gym Head Coach (1995-2003)  
 • Little Canada, Minn.  
 Utah State Assistant Coach (2004-2005)  
 • Logan, Utah  
 Utah Assistant Coach (2006-2010)  
 • Salt Lake City, Utah  
 Auburn Head Coach (2010-)  
 • Auburn, Ala.

Three-time SEC Coach of the Year Jeff Graba enters his seventh season at the helm of the Auburn gymnastics program in 2017 and has guided the Tigers record heights during his time on The Plains.

For his efforts over the past six seasons, the Minnesota native was named SEC Coach of the Year in 2014 and 2015 and SEC co-Coach of the Year in 2012.

Most recently, Graba and the 2016 team added to the list of firsts for the program under his guidance. The Tigers snapped the 117-meet losing skid to Alabama in February of that season, defeating the Crimson Tide at home (197.275-197.250). Auburn also defeated Georgia in Athens for the first time in program history, setting a new program-high road score on the way (197.325).

In addition, the Tigers earned the program's first No. 1 NCAA regional seed and captured the NCAA Ann Arbor Regional title with a 196.525.

Auburn enjoyed a breakout season in 2015 as Graba led the Tigers to the NCAA Championship Super Six for the first time in 22 years. That season, Auburn broke or tied 52 program records that season.

Auburn's sixth place finish at the Super Six was the Tigers' second best in history and highest since 1993 with a NCAA nationals record score of 197.075. The Tigers also had a program record Super Six score of 195.625.

Auburn reached the 2015 NCAA Championship for the first time since 2003 and for only the fourth time overall as the Tigers tied a school-best with a runner-up finish at the NCAA Regional with a regional record score of 196.900.

Graba was named Auburn head coach on August 16, 2010. He came to The Plains after spending five years as an assistant coach at Utah. While with the Utes, he was named the 2009 West Region Assistant Coach of the Year while coaching bars, collaborating on floor routines and serving as the recruiting coordinator.

## 2017 MEET-BY-MEET RESULTS

DATE	MEET	RESULT	VAULT	BARS	BEAM	FLOOR	TEAM	OPP. 1	OPP. 2	OPP. 3
1/6	#12 OREGON STATE	L	48.900	48.900	48.800	48.675	195.275	195.575	---	---
1/13	GEORGIA	L	48.900	49.125	48.825	49.225	196.075	196.800	---	---
1/20	at Kentucky	L	48.800	49.125	48.950	48.925	195.800	197.100	---	---
1/27	at Florida	L	49.025	49.050	49.150	49.175	196.400	197.700	---	---
1/29	vs. Alabama	L	48.900	49.150	47.600	49.025	194.675	195.850	---	---
2/3	ARKANSAS	L	49.050	49.375	49.075	48.575	196.075	196.375	---	---
2/10	vs. Oklahoma	L	49.150	48.425	49.050	49.100	195.725	198.075	---	---
2/17	at Alabama	---	---	---	---	---	---	---	---	---
2/24	LSU	---	---	---	---	---	---	---	---	---
3/3	at Missouri	---	---	---	---	---	---	---	---	---
3/10	PITTSBURGH	---	---	---	---	---	---	---	---	---
3/18	at SEC Championship	---	---	---	---	---	---	---	---	---
4/1	at NCAA Regional	---	---	---	---	---	---	---	---	---
4/17-18	at NCAA Championships	---	---	---	---	---	---	---	---	---

AUBURN

0-7

## SEC WEEKLY TEAM RANKINGS

(as of Feb. 14)

Team Total Rank	Team	AVG	High
1.	LSU	197.579	197.825
2.	Florida	197.521	197.975
3.	Alabama	196.725	197.825
4.	Kentucky	196.257	197.475
5.	Georgia	196.229	197.075
6.	Missouri	195.861	196.225
7.	<b>AUBURN</b>	195.718	196.400
8.	Arkansas	195.473	196.325

Vault Rank	Team	AVG	High
1.	Florida	49.425	49.500
2.	LSU	49.363	49.600
3.	Alabama	49.179	49.375
4.	Georgia	49.168	49.275
5.	Missouri	49.136	49.425
6.	<b>AUBURN</b>	48.961	49.150
7.	Kentucky	48.954	49.325
8.	Arkansas	48.888	49.000

Bars Rank	Team	AVG	High
1.	Florida	49.367	49.575
2.	LSU	49.333	49.450
3.	Georgia	49.096	49.275
4.	Alabama	49.064	49.400
5.	<b>AUBURN</b>	49.021	49.375
6.	Kentucky	49.018	49.300
7.	Missouri	48.700	49.200
8.	Arkansas	48.617	49.200

Beam Rank	Team	AVG	High
1.	LSU	49.400	49.525
2.	Florida	49.367	49.525
3.	Alabama	49.289	49.600
4.	Kentucky	49.161	49.425
5.	Arkansas	48.983	49.125
6.	Missouri	48.954	49.175
7.	<b>AUBURN</b>	48.779	49.150
8.	Georgia	48.757	49.225

Floor Exercise Rank	Team	AVG	High
1.	LSU	49.483	49.550
2.	Florida	49.363	49.575
3.	Georgia	49.207	49.500
4.	Alabama	49.193	49.625
5.	Kentucky	49.125	49.525
6.	Missouri	49.071	49.225
7.	Arkansas	48.988	49.275
8.	<b>AUBURN</b>	48.957	49.225

## SEC WEEKLY INDIVIDUAL RANKINGS

(as of Feb. 14)

All-Around Rank	Name, School	A-A AVG	High
1.	Kennedy Baker, UF	39.550	39.575
2.	Alicia Boren, UF	39.517	39.725
t-3.	Ashleigh Gnat, LSU	39.500	39.525
t-3.	Kennedi Edney, LSU	39.500	39.625
5.	Kiana Winston, UA	39.475	39.700

Vault Rank	Name, School	Vault AVG	High
1.	Ashleigh Gnat, LSU	9.933	10.000
2.	Rachel Slocum, UF	9.930	9.975
3.	Alex McMurtry, UF	9.917	9.950
4.	Alicia Boren, UF	9.912	9.950
t-5.	Amanda Wellick, ARK	9.900	9.900
t-5.	Sydney Snead, UG	9.900	9.950

Bars Rank	Name, School	Bars AVG	High
1.	Alex McMurtry, UF	9.929	10.000
t-2.	Natalie Vaculik, UG	9.900	9.900
t-2.	Amelia Hundley, UF	9.900	9.975
4.	Lexie Priessman, LSU	9.883	9.925
5.	Mollie Korh, UK	9.879	9.925

Beam Rank	Name, School	Beam AVG	High
1.	Alex Hyland, UK	9.900	9.950
2.	Nickie Guerrero, UA	9.896	9.950
t-3.	Myia Hambrick, LSU	9.892	9.950
t-3.	Kiana Winston, UA	9.892	9.950
5.	Alex McMurtry, UF	9.875	9.950

Floor Rank	Name, School	Floor AVG	High
1.	Kennedy Baker, UF	9.950	10.000
2.	Ashleigh Gnat, LSU	9.937	9.950
3.	Kiana Winston, UA	9.936	10.000
4.	Alicia Boren, UF	9.913	9.950
5.	Rachel Dickson, UG	9.900	9.950

**AUBURN SCORING RECORDS****TOP TEAM SCORES - OVERALL**

SCORE	OPPONENT	DATE
1. 197.750	vs. Georgia	2/27/15
2. 197.325	at Georgia	3/4/16
3. 197.300	vs. LSU	2/13/15
4. 197.275	vs. Alabama	2/12/16
5. 197.200	vs. Missouri	2/26/16

**TOP TEAM SCORES - HOME ONLY**

SCORE	OPPONENT	DATE
1. 197.750	vs. Georgia	2/27/15
2. 197.300	vs. LSU	2/13/15
3. 197.275	vs. Alabama	2/12/16
4. 197.200	vs. Missouri	2/26/16
5. 197.175	vs. LSU	2/22/13
197.175	vs. Arizona State	3/11/16

**TOP TEAM SCORES - AWAY ONLY**

SCORE	OPPONENT	DATE
1. 197.325	at Georgia	3/4/16
2. 197.125	at LSU	2/19/16
3. 196.875	at Missouri	2/20/15
4. 196.850	at LSU	1/25/14
5. 196.825	at Alabama	2/6/15
196.825	at TWU	2/5/16

**TOP TEAM SCORES - VAULT**

SCORE	OPPONENT	DATE
1. 49.500	vs. LSU	2/13/15
49.500	at Denver	3/2/08
3. 49.425	vs. North Carolina	3/13/15
49.425	at LSU	1/25/14
5. 49.400	vs. Florida	1/17/14
49.400	vs. Illinois-Chicago	3/11/07
49.400	at NCAA Regional (Auburn)	4/4/15

**TOP TEAM SCORES - BARS**

SCORE	OPPONENT	DATE
1. 49.525	vs. Arkansas	1/23/15
2. 49.500	vs. Centenary	3/5/00
3. 49.475	vs. Florida	2/17/12
4. 49.450	vs. Georgia	2/27/15
49.450	vs. Maryland	3/20/10

**TOP TEAM SCORES - BEAM**

SCORE	OPPONENT	DATE
1. 49.600	at Centenary	2/29/04
2. 49.425	at Denver	3/2/08
49.425	at Alabama	2/15/13
4. 49.400	at LSU	2/8/08
49.400	at Arkansas	2/2/08
49.400	at Alabama	2/6/15
49.400	at SEC Championship	3/21/15

**TOP TEAM SCORES - FLOOR**

SCORE	OPPONENT	DATE
1. 49.600	vs. Florida	2/13/04
49.600	vs. Arizona State	3/11/16
3. 49.550	vs. Georgia	2/27/15
4. 49.525	vs. Maryland	3/1/13
5. 49.500	vs. Missouri	2/26/16

**PROGRAM BESTS**

TEAM	EVENT	SCORE	DATE
TOTAL	TOTAL	197.750	February 27, 2015
	VAULT	49.500	February 13, 2015
	49.500	March 2, 2008	
	BARS	49.525	January 23, 2015
	BEAM	49.600	February 29, 2004
FLOOR	FLOOR	49.600	February 13, 2004
	49.600	March 11, 2016	

**INDIVIDUAL**

EVENT	SCORE	GYMNAST, YEAR
ALL AROUND	39.750	Caitlin Atkinson, 2015
VAULT	9.975	MJ Rott, 2015
	9.975	MJ Rott, 2014
	9.975	Julie Dwyer, 2008
BARS	10.0	Sarah Wentworth, 2000
BEAM	10.0	Rachael Tarantino, 2004
	10.0	Sally Cantrell, 2002
FLOOR	10.0	Becky Erwin, 1993

**2017 INDIVIDUAL TOP SCORES**

VAULT	SCORE	GYMNAST	OPPONENT	DATE
1.	9.900	MJ Rott	ARKANSAS	(Feb. 3)
t-2.	9.850	Gracie Day	OREGON STATE	(Jan. 6)
t-2.	9.850	Gracie Day	GEORGIA	(Jan. 13)
t-2.	9.850	MJ Rott	at Florida	(Jan. 27)
t-2.	9.850	Gracie Day	vs. Oklahoma	(Feb. 10)
t-2.	9.850	Taylor Krippner	vs. Oklahoma	(Feb. 10)
t-2.	9.850	MJ Rott	vs. Oklahoma	(Feb. 10)

**BARS**

1.	9.900	Samantha Cerio	ARKANSAS	(Feb. 3)
t-2.	9.875	Gracie Day	at Florida	(Jan. 27)
t-2.	9.875	Kelsey Kopec	vs. Alabama	(Jan. 29)
t-2.	9.875	Kelsey Kopec	ARKANSAS	(Feb. 3)
t-2.	9.875	Taylor Krippner	ARKANSAS	(Feb. 3)
t-2.	9.875	Emma Engler	ARKANSAS	(Feb. 3)

**BEAM**

t-1.	9.900	Emma Engler	at Florida	(Jan. 27)
t-1.	9.900	Taylor Krippner	ARKANSAS	(Feb. 3)
t-1.	9.900	Taylor Krippner	vs. Oklahoma	(Feb. 10)
t-4.	9.875	Abby Milliet	at Kentucky	(Jan. 20)
t-4.	9.875	Taylor Krippner	at Florida	(Jan. 27)

**FLOOR**

1.	9.950	MJ Rott	GEORGIA	(Jan. 13)
t-2.	9.900	Emma Slappey	at Florida	(Jan. 27)
t-2.	9.900	Samantha Cerio	ARKANSAS	(Feb. 3)
4.	9.875	MJ Rott	ARKANSAS	(Feb. 3)
5.	9.850	Seven times		

**2017 SEASON BESTS**

TEAM	EVENT	SCORE	DATE
TOTAL	TOTAL	196.400	at Florida (Jan. 27)
VAULT	VAULT	49.150	vs. Oklahoma (Feb. 10)
BARS	BARS	49.375	vs. Arkansas (Feb. 3)
BEAM	BEAM	49.150	at Florida (Jan. 27)
FLOOR	FLOOR	49.225	Georgia (Jan. 13)

**INDIVIDUAL**

EVENT	SCORE	GYMNAST (DATE)
TOTAL	38.700	Abby Milliet (Jan. 6)
VAULT	9.900	MJ Rott (Feb. 3)
BARS	9.900	Samantha Cerio (Feb. 3)
BEAM	9.900	3x, last Taylor Krippner (Feb. 10)
FLOOR	9.950	MJ Rott (Jan. 13)

**2017 TEAM TOP SCORES**

TEAM TOTAL	SCORE	OPPONENT	DATE
1.	196.400	at Florida	Jan. 27
t-2.	196.075	GEORGIA	Jan. 13
t-2.	196.075	ARKANSAS	Feb. 3
4.	195.800	at Kentucky	Jan. 20
5.	195.725	vs. Oklahoma	Feb. 10

**VAULT**

1.	49.150	vs. Oklahoma	Feb. 10
2.	49.050	ARKANSAS	Feb. 3
3.	49.025	vs. Florida	Jan. 27
t-4.	48.900	OREGON STATE	Jan. 6
t-4.	48.900	GEORGIA	Jan. 13
t-4.	48.900	vs. Alabama	Jan. 29

**BARS**

1.	49.375	ARKANSAS	Feb. 3
2.	49.150	vs. Alabama	Jan. 29
t-3.	49.125	GEORGIA	Jan. 13
t-3.	49.125	at Kentucky	Jan. 20
5.	49.050	at Florida	Jan. 27

**BEAM**

1.	49.150	at Florida	Jan. 27
2.	49.075	ARKANSAS	Feb. 3
3.	49.050	vs. Oklahoma	Feb. 10
4.	48.925	at Kentucky	Jan. 20
5.	48.825	GEORGIA	Jan. 13

**FLOOR**

1.	49.225	GEORGIA	Jan. 13
2.	49.175	at Florida	Jan. 27
3.	49.100	vs. Oklahoma	Feb. 10
4.	49.025	vs. Alabama	Jan. 29
5.	48.925	at Kentucky	Jan. 20





## INDIVIDUAL SEASON AND CAREER SCORES

**A'MIRACAL PHILLIPS :: SOPHOMORE**

2017	VAULT	BARS	BEAM	FLOOR	AA
OREGON STATE	---	---	---	---	---
GEORGIA	9.550	---	---	---	---
at Kentucky	---	---	---	---	---
at Florida	9.725	---	---	---	---
vs. Alabama	9.750	---	---	---	---
ARKANSAS	9.800	---	---	---	---
vs. Oklahoma	9.750	---	---	---	---
at Alabama	---	---	---	---	---
LSU	---	---	---	---	---
at Missouri	---	---	---	---	---
PITTSBURGH	---	---	---	---	---
at SEC	---	---	---	---	---
NCAA Regional	---	---	---	---	---
NCAA National	---	---	---	---	---
Season Average	9.715	---	---	---	---
Season High	9.800	---	---	---	---
Career High	9.850	---	---	---	---

**EMMA SLAPPEY :: REDSHIRT FRESHMAN**

2017	VAULT	BARS	BEAM	FLOOR	AA
OREGON STATE	---	---	9.700	---	---
GEORGIA	---	---	9.800	9.850	---
at Kentucky	---	---	9.775	9.825	---
at Florida	---	---	9.800	9.900	---
vs. Alabama	---	---	9.850	9.775	---
ARKANSAS	---	---	9.325	9.050	---
vs. Oklahoma	---	---	9.825	9.800	---
at Alabama	---	---	---	---	---
LSU	---	---	---	---	---
at Missouri	---	---	---	---	---
PITTSBURGH	---	---	---	---	---
at SEC	---	---	---	---	---
NCAA Regional	---	---	---	---	---
NCAA National	---	---	---	---	---
Season Average	---	---	9.725	9.700	---
Season High	---	---	9.850	9.900	---
Career High	---	---	9.850	9.900	---

**MJ ROTT :: SENIOR**

2017	VAULT	BARS	BEAM	FLOOR	AA
OREGON STATE	9.825	---	---	9.825	---
GEORGIA	9.800	---	---	9.950	---
at Kentucky	9.800	---	---	9.750	---
at Florida	9.850	---	---	9.800	---
vs. Alabama	9.700	---	---	9.825	---
ARKANSAS	9.900	---	---	9.875	---
vs. Oklahoma	9.850	---	---	9.825	---
at Alabama	---	---	---	---	---
LSU	---	---	---	---	---
at Missouri	---	---	---	---	---
PITTSBURGH	---	---	---	---	---
at SEC	---	---	---	---	---
NCAA Regional	---	---	---	---	---
NCAA National	---	---	---	---	---
Season Average	9.818	---	---	9.836	---
Season High	9.900	---	---	9.950	---
Career High	9.975	9.825	9.900	9.950	38.925

**CARA STRICKLIN :: JUNIOR**

2017	VAULT	BARS	BEAM	FLOOR	AA
OREGON STATE	---	---	---	---	---
GEORGIA	---	---	---	---	---
at Kentucky	---	---	---	---	---
at Florida	---	---	---	---	---
vs. Alabama	---	---	---	---	---
ARKANSAS	---	---	---	---	---
vs. Oklahoma	---	---	---	---	---
at Alabama	---	---	---	---	---
LSU	---	---	---	---	---
at Missouri	---	---	---	---	---
PITTSBURGH	---	---	---	---	---
at SEC	---	---	---	---	---
NCAA Regional	---	---	---	---	---
NCAA National	---	---	---	---	---
Average	---	---	---	---	---
Season High	---	---	---	---	---
Career High	---	---	---	---	---

**LUCIA SCAGLIONE :: SENIOR**

2017	VAULT	BARS	BEAM	FLOOR	AA
OREGON STATE	---	---	---	9.725	---
GEORGIA	---	---	---	9.800	---
at Kentucky	---	---	---	9.800	---
at Florida	---	---	---	9.825	---
vs. Alabama	---	---	---	9.800	---
ARKANSAS	---	---	---	9.850	---
vs. Oklahoma	---	---	---	9.850	---
at Alabama	---	---	---	---	---
LSU	---	---	---	---	---
at Missouri	---	---	---	---	---
PITTSBURGH	---	---	---	---	---
at SEC	---	---	---	---	---
NCAA Regional	---	---	---	---	---
NCAA National	---	---	---	---	---
Season Average	---	---	---	9.807	---
Season High	---	---	---	9.850	---
Career High	---	---	---	9.850	---

## 2017 EVENT TITLES

MEET	VAULT	BARS	BEAM	FLOOR	ALL-AROUND
#13 OREGON STATE	Day	---	---	Rott	---
GEORGIA	---	---	---	Rott	---
at #9 Kentucky	---	---	---	---	---
at #3 Florida	---	---	---	---	---
vs. #5 Alabama (Elevate Meet)	---	Kopec	---	---	---
ARKANSAS	Rott	Cerio	Krippner	Rott	---
vs. Oklahoma (Perfect 10 Challenge)	---	---	---	---	---
at Alabama	---	---	---	---	---
LSU	---	---	---	---	---
at Missouri	---	---	---	---	---
PITTSBURGH	---	---	---	---	---
at SEC Championship	---	---	---	---	---
NCAA Regional Championship	---	---	---	---	---
NCAA Championship	---	---	---	---	---
NCAA Super Six	---	---	---	---	---
	<b>2</b>	<b>2</b>	<b>1</b>	<b>3</b>	<b>---</b>



**KATIE BECKER**  
Fr. • AA • 5-4



**TELAH BLACK**  
So. • AA • 5-3



**SAMANTHA CERIO**  
So. • AA • 5-0



**GRACIE DAY**  
Fr. • AA • 5-4



**EMMA ENGLER**  
So. • AA • 5-3



**KENNEDY FINISTER**  
Jr. • AA • 5-1



**SARAH GARCIA**  
Jr. • VT • 5-3



**KULLEN HLAWEK**  
Sr. • AA • 5-1



**KELSEY KOPEC**  
R-Sr. • AA • 5-7



**TAYLOR KRIPPNER**  
So. • AA • 5-1



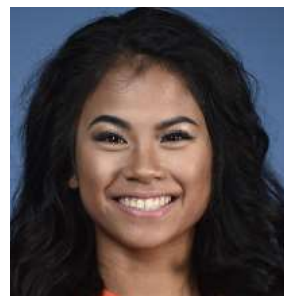
**ABBY MILLIET**  
Jr. • AA • 5-1



**KENDAL MOSS**  
Fr. • AA • 5-4



**A'MIRACAL PHILLIPS**  
So. • AA • 5-6



**MJ ROTT**  
Sr. • AA • 5-0



**LUCIA SCAGLIONE**  
Sr. • FX • 5-0



**EMMA SLAPPEY**  
R-Fr. • AA • 5-2



**CARA STRICKLIN**  
Jr. • AA • 5-5



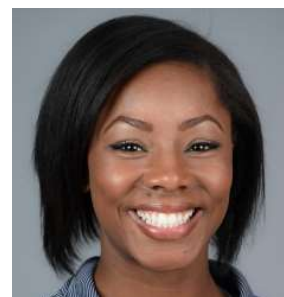
**JEFF GRABA**  
HEAD COACH



**KURT HETTINGER**  
ASSISTANT COACH



**MARY MCDANIEL**  
ASSISTANT COACH



**RACHEL INNISS**  
VOLUNTEER ASSISTANT



**DAWN SCHUELLER**  
DIRECTOR OF OPERATIONS