



# 2023 AUBURN SOCCER

AUBURN ATHLETICS COMMUNICATIONS: 392 SOUTH DONAHUE DRIVE || AUBURN, AL 36830 || AUBURNTIGERS.COM || @AUBURNSOCCER

## SCHEDULE

Overall Record: 3-0-1  
SEC Record: 0-0-0

H: 1-0-1 // A: 2-0-0 // N: 0-0-0

| Date     | Opponent                | Time/Result |
|----------|-------------------------|-------------|
| Aug. 9   | <b>Mercer</b> (Exh.)    | T, 0-0      |
| Aug. 12  | at South Alabama (Exh.) | T, 0-0      |
| Aug. 17  | <b>Samford</b>          | T, 0-0      |
| Aug. 20  | <b>Troy</b>             | W, 5-0      |
| Aug. 24  | at Syracuse             | W, 2-1      |
| Aug. 27  | at Army                 | W, 3-2      |
| Aug. 31  | <b>Wake Forest</b>      | 6:30 p.m.   |
| Sept. 3  | <b>American</b>         | 2 p.m.      |
| Sept. 7  | at West Virginia        | 6 p.m.      |
| Sept. 10 | at Ohio State           | 11 a.m.     |
| Sept. 15 | at Mississippi State    | 6:30 p.m.   |
| Sept. 21 | <b>Missouri</b>         | 6:30 p.m.   |
| Sept. 24 | at Ole Miss             | 2 p.m.      |
| Sept. 29 | <b>South Carolina</b>   | 6:30 p.m.   |
| Oct. 5   | at Alabama              | 6 p.m.      |
| Oct. 8   | <b>Arkansas</b>         | 6 p.m.      |
| Oct. 13  | <b>Texas A&amp;M</b>    | 6:30 p.m.   |
| Oct. 19  | at Florida              | 5 p.m.      |
| Oct. 21  | <b>LSU</b>              | 4 p.m.      |
| Oct. 26  | at Georgia              | 5 p.m.      |

all times central // home games in bold



## vs. Wake Forest

Thursday, August 31 • 6:30 p.m. CT



|                             |                                  |
|-----------------------------|----------------------------------|
| Site.....                   | Auburn, Ala.                     |
| Venue.....                  | Auburn Soccer Complex (1,500)    |
| TV.....                     | SECN+                            |
| Live Game Updates.....      | @AuburnSoccer (Twitter)          |
| Series vs. Wake Forest..... | Wake Forest leads, 2-1-1         |
| Series in Auburn.....       | Wake Forest leads, 2-0           |
| Last Five.....              | Wake Forest leads, 2-1-1         |
| Last Meeting.....           | 0-0 draw in Winston-Salem (2022) |

## INSIDE THE MATCHUP

### AUBURN TIGERS

|                             |                                 |
|-----------------------------|---------------------------------|
| Rankings.....               | USC: UR   TopDrawer: UR         |
| 2022 Record.....            | 6-6-6                           |
| 2023 Record.....            | 3-0-1                           |
| SEC.....                    | 0-0-0                           |
| Home.....                   | 1-0-1                           |
| Away.....                   | 2-0-0                           |
| Neutral.....                | 0-0-0                           |
| Head Coach.....             | Karen Hoppa                     |
| Record at Auburn.....       | 275-181-52                      |
| Overall Record.....         | 339-225-61                      |
| Record vs. Wake Forest..... | 0-1-1                           |
| Team Leaders                |                                 |
| Goals.....                  | Arias, Haddock, S. Richards (2) |
| Assists.....                | Colson, Haddock, Mooney (2)     |
| Points.....                 | Haddock, (6)                    |
| Shooting Percentage.....    | Haddock (.333)                  |
| Saves.....                  | M. Prohaska (7)                 |
| GAA.....                    | M. Prohaska (0.80)              |
| Minutes.....                | L. Knox (360)                   |

### WAKE FOREST DEMON DEACONS

|                            |                            |
|----------------------------|----------------------------|
| Rankings.....              | USC: UR   TopDrawer: UR    |
| 2022 Record.....           | 9-7-3                      |
| 2023 Record.....           | 3-0-1                      |
| ACC.....                   | 0-0-0                      |
| Home.....                  | 2-0-1                      |
| Away.....                  | 1-0-0                      |
| Neutral.....               | 0-0-0                      |
| Head Coach.....            | Tony da Luz                |
| Record at Wake Forest..... | 296-193-55                 |
| Overall Record.....        | 342-235-58                 |
| Record vs. Auburn.....     | 2-1-1                      |
| Team Leaders               |                            |
| Goals.....                 | Hanks, Murphy, Stowell (2) |
| Assists.....               | Small (3)                  |
| Points.....                | Hanks, Murphy (5)          |
| Shooting Percentage.....   | Stowell (.400)             |
| Saves.....                 | Howard (10)                |
| GAA.....                   | Amaral (0.00)              |
| Minutes.....               | Ansbro (341)               |

## PITCH IT TO ME

### 25 SEASONS OF HOPPA

» The fall of 2023 will mark Auburn Soccer's 25th season with head coach Karen Hoppa at the helm. Hoppa is one of 13 active DI coaches with at least 30 years of head coaching experience. Of the 13 coaches, she is one of two who are women and one of two in the SEC. (G Guerrieri - Texas A&M)

### IT'S IN THE GENES

» Auburn soccer has five players with siblings who currently play or formerly played a sport at the DI or professional level.

» Olivia Candelino — brother, Ross, is a freshman on Wisconsin's basketball team and sister, Jillian, runs XC and track at Tennessee.

» Maddie Prohaska — sister, Abby, played basketball at Notre Dame & San Diego State.

» Haley Duca — sister, Lexie, played on North Alabama's soccer team.

» LJ Knox — brother, Dawson, is a tight end for the Buffalo Bills and late brother, Luke, played football at Ole Miss & FIU.

» Mal Mooney — brother, Michael, runs XC & track at Colorado State & sister, Madison, runs XC & track at Wisconsin.

### WORLDWIDE REPRESENTATION

» The Tigers have bolstered their roster with a pair of rookies that have experience playing on an international level. Jessica Osborne is a member of England's U18 Women's National Team and Maquena O'Callaghan has played for Mexico's U17

**A CLOSER LOOK**

| <b>Auburn</b>           | <b>Value</b> |
|-------------------------|--------------|
| Goals .....             | 10           |
| Assists .....           | 12           |
| Points .....            | 32           |
| Goals per Game .....    | 2.50         |
| Assists Per Game .....  | 3.00         |
| Shots Per Game.....     | 15.00        |
| SOG Per Game.....       | 7.75         |
| Shooting %.....         | 0.167        |
| Saves Per Game .....    | 1.75         |
| Save Percentage.....    | 0.700        |
| GAA .....               | 0.75         |
| Shutout Percentage..... | 0.500        |
| Shutouts.....           | 2            |
| Goals Allowed.....      | 3            |

| <b>Wake Forest</b>      | <b>Value</b> |
|-------------------------|--------------|
| Goals .....             | 7            |
| Assists .....           | 7            |
| Points .....            | 21           |
| Goals per Game .....    | 1.75         |
| Assists Per Game .....  | 1.75         |
| Shots Per Game.....     | 20.8         |
| SOG Per Game.....       | 7.75         |
| Shooting %.....         | 0.084        |
| Saves Per Game .....    | 2.75         |
| Save Percentage.....    | 0.917        |
| GAA .....               | 0.25         |
| Shutout Percentage..... | 0.750        |
| Shutouts.....           | 3            |
| Goals Allowed.....      | 1            |

| <b>NCAA Leaders</b>     | <b>Value</b>          |
|-------------------------|-----------------------|
| Goals .....             | UAPB (21)             |
| Assists .....           | Three Tied (18)       |
| Points .....            | Oklahoma (54)         |
| Goals per Game .....    | UAPB (5.25)           |
| Assists Per Game .....  | Two Tied (6.00)       |
| Shots Per Game.....     | Texas (25.00)         |
| SOG Per Game.....       | South Alabama (14.50) |
| Shooting %.....         | PVAMU(1.000)          |
| Saves Per Game .....    | Hampton (10.25)       |
| Save Percentage.....    | 11 Tied (1.000)       |
| GAA .....               | 11 Tied (0.00)        |
| Shutout Percentage..... | 11 Tied (1.000)       |
| Shutouts.....           | 5 Tied (4)            |
| Goals Allowed.....      | 11 Tied (0)           |

Women's National Team.

**KEEPING IT 200**

» Tigers starting goalkeeper Maddie Prohaska stands on 3 saves from recording the 200th of her career. Only five former players have surpassed the mark with Amy Howard (2009-12) holding the program record at 387 career saves.

**STARTING STRONG**

» Auburn has started the season lossless through its first four matches for the fifth time in the last six years.  
 » During the period, the Tigers have recorded a 2-1-1 record in the fifth match when going lossless through the first four.

**BREAK THE WAKE**

» Last season, Auburn and Wake Forest battled to a scoreless tie in Winston-Salem. The Demon Deacons outshot the Tigers 12-6, however Auburn did have a chance to win the match on a PK, but it was saved by the Wake Forest goalkeeper.  
 » Auburn returns 13 players who saw time in the 2022 match, including seven who earned the start.  
 » The Tigers have only beat the Demon Deacons once in school history, in 1994, and have never beaten them in Auburn.

**BROWN(IE) POINTS**

» Last week at Army, senior midfielder Sammie Brown scored the first goal of her collegiate career in the 38th minute.  
 » Brown was assisted by Sydney Richards and Maquena O'Callaghan. It was also O'Callaghan's first career assist.  
 » The Tigers now have 10 goals from seven different players.

**OLE RELIABLE**

» Auburn fought from behind to take down Army, but could not have done it without the presence of senior Anna Haddock.  
 » Haddock broke the 2-2 draw to put the Tigers ahead for good in the 62nd minute for the seventh game-winner of her collegiate career. The play was assisted by Mallory Mooney and Carly Thatcher.  
 » In the program record book, Haddock ranks fifth in assists (26), ninth in shots taken (176) and 11th in game-winners (7).

**ACC YOU LATER**

» Auburn looks to turn the tide facing another squad from soccer's best conference, the ACC. The Tigers have an 12-28-6 all-time record versus ACC foes, however, have only beaten two since 2017 (Syracuse 2019, 23 & Virginia Tech 2021)  
 » Since 2017, Auburn is 3-6-2 versus ACC foes.

**NEWFOUND FIREPOWER**

» The Tigers are aiming to ignite the offense after a 2022 season that saw little to none.  
 » Heading into the week, Auburn has already found 44% of goals, 42% of assists and 32% of shots on-goal from a season ago.

**ROAD WARRIORS**

» Auburn heads into the Wake Forest match following a successful 2-0 week on the road. Auburn won just one road match in 2022.  
 » The road wins did not come easy as the Tigers handed Army their first home loss in two years. The Black Knight had only dropped four contests at home since 2020.

**HELLO MY NAME IS: AUBURN SOCCER NICKNAME GUIDE**

» Don't ask, just observe.

|                               |                  |                             |                     |
|-------------------------------|------------------|-----------------------------|---------------------|
| (0) Madeline Moore .....      | "Moozle"         | (13) Taylor Richards .....  | "T Rich, Trish"     |
| (00) Madie Prohaska .....     | "Nut, Crumbs"    | (14) Sydney Richards .....  | "Syd Kicker"        |
| (1) Maddie Lo .....           | "Lo"             | (15) Sydnie Thibodaux ..... | "Thibs"             |
| (2) Maquena O'Callaghan ..... | "Maq"            | (16) Dylan Driver .....     | "Dilly, Dyl Pickle" |
| (3) Helene Tyburczy .....     | "Tot"            | (17) Maddy Bondon.....      | "Bing Bong, Bonnie" |
| (4) Anna Haddock.....         | "Nae Nae"        | (18) Jaycie Silhan.....     | "JC"                |
| (5) Jessica Osborne.....      | "Jess"           | (19) Marissa Arias .....    | "Riss, Slime"       |
| (6) Becky Contreras .....     | "Becky"          | (20) Hayden Colson .....    | "Denny, Toot"       |
| (7) Carly Thatcher.....       | "Carl"           | (22) Olivia Woodson .....   | "Liv"               |
| (8) Mallory Mooney .....      | "Mal, Mallard"   | (23) Olivia Candelino ..... | "Cando, Cander"     |
| (9) Sydney Ritter .....       | "Ritter"         | (28) Erin Houston .....     | "E-Money"           |
| (10) Sammie Brown.....        | "Shmeal, Samuel" | (32) Maddie Simpson.....    | "Simp, Simpy"       |
| (11) LJ Knox .....            | "Juice"          | (77) Mya Williams .....     | "Mya"               |
| (12) Haley Duca.....          | "Dukey, Dukes"   | (78) Jenna Sapong .....     | "Jenna"             |

**TEAM SCHEDULE AND MEDIA AVAILABILITY » WEEK OF AUGUST 30**

|  |   |   |  |   |  |   |
|--|---|---|--|---|--|---|
| <b>WEDNESDAY</b><br>August 30<br><b>PRACTICE</b><br>1 - 4 p.m. CT<br><b>FILM</b><br>4:15 - 5 p.m. CT | <b>THURSDAY</b><br>August 31<br><b>GAMEDAY</b><br>vs. Wake Forest, 6:30 p.m. CT | <b>FRIDAY</b><br>September 1<br><b>FILM</b><br>1:15 - 2 p.m. CT<br><b>PRACTICE</b><br>2:15 - 4:15 p.m. CT | <b>SATURDAY</b><br>September 2<br><b>PRACTICE</b><br>9 a.m. - 12 p.m. CT<br><b>FILM</b><br>12:15 - 1 p.m. CT | <b>SUNDAY</b><br>September 3<br><b>GAMEDAY</b><br>vs. American, 2 p.m. CT | <b>MONDAY</b><br>September 4<br><b>OFF DAY</b><br>No Media | <b>TUESDAY</b><br>September 5<br><b>PRACTICE</b><br>1:30 - 4:30 p.m. CT |
|--|---|---|--|---|--|---|

**AUBURN ATHLETICS COMMUNICATIONS**

**AUBURNTIGERS.COM**

For updated game notes, statistics and latest information on Auburn soccer and Auburn Athletics, visit AuburnTigers.com.

**INTERVIEW POLICY**

Coach Hoppa, assistant coaches and select student-athletes are available for interviews by contacting Tucker Cleverdon in the communications office. Specific interview request should be made at least 24 hours in advance to ensure availability. Additional requests will be granted based on student-athlete availability throughout the week.

Postgame interviews with Coach Hoppa and requested players will be conducted in-person following a brief cool-down period. Interviews will be conducted out front of the white tent on the west end of the field.

**GAMEDAY / PRESS SERVICES**

Press releases, statistics and game information will be available each week via AuburnTigers.com/Soccer. Media members may request to be added to email lists to automatically receive up-to-date information on Auburn soccer. Notes and statistics will be available digitally. A limited number of printed copies of game notes, statistics and box scores will be available on gamedays. Wireless internet is available at the Auburn Soccer Complex.

**VIDEO SERVICES**

FTP feeds of selected Auburn soccer highlights are available for the media. A number of studio and satellite services may be arranged for electronic media by emailing Teresa Turner at tmt0052@auburn.edu.

**PHOTOGRAPHY**

For photos of Auburn softball or Auburn Athletics, contact Taylor Shirey via email at trs0010@auburn.edu. Credentials to shoot Auburn softball will be issued to only accredited photographers on assignment. Photographers may only shoot in the designated areas.

**CREDENTIALS**

While credentials are not needed to attend, space at the Auburn Soccer Complex is limited, thus media members wishing to cover Auburn soccer should contact Tucker Cleverdon at least 24 hours prior to each home contest. Limited field access will be granted for photography and videography.

**QUICK FACTS**

**UNIVERSITY INFORMATION**

|                         |                            |
|-------------------------|----------------------------|
| City.....               | Auburn, Ala.               |
| Founded.....            | 1856                       |
| Enrollment.....         | 31,526                     |
| Nickname.....           | Tigers                     |
| Colors.....             | Burnt Orange & Navy Blue   |
| Affiliation.....        | NCAA Division I            |
| Conference.....         | Southeastern (SEC)         |
| Stadium.....            | Auburn Soccer Complex      |
| Capacity.....           | 1,500                      |
| President.....          | Dr. Christopher B. Roberts |
| Athletics Director..... | John Cohen                 |

**TEAM INFORMATION**

|                                   |                                  |
|-----------------------------------|----------------------------------|
| Letterwinners Returning/Lost..... | 17/7                             |
| GK.....                           | 1/1                              |
| D.....                            | 5/3                              |
| MF.....                           | 5/2                              |
| F.....                            | 6/1                              |
| Starters Returning/Lost.....      | 7/4                              |
| GK.....                           | 1/0                              |
| D.....                            | 2/2                              |
| MF.....                           | 1/2                              |
| F.....                            | 3/0                              |
| Newcomers.....                    | 8                                |
| GK.....                           | 2                                |
| D.....                            | 1                                |
| MF.....                           | 2                                |
| F.....                            | 3                                |
| Captains.....                     | Bondon, Haddock, Moore, Prohaska |
| Total Players.....                | 28                               |

**STAFF INFORMATION**

|                           |                                     |
|---------------------------|-------------------------------------|
| Head Coach.....           | Karen Hoppa (UCF, 1990)             |
| Associate Head Coach..... | Ben Madsen (Lincoln Memorial, 2003) |
| Assistant Coach.....      | Nick Flohre (Indianapolis, 2003)    |
| Assistant Coach.....      | Kelly Madsen (South Alabama, 2008)  |

|                                  |                    |
|----------------------------------|--------------------|
| Sport Administrator.....         | Meagan Hooshyar    |
| Director of Ops.....             | Amy Reif           |
| Athletic Trainer.....            | Madeline Warner    |
| Sports Performance Coach.....    | Matt Smith         |
| Sport Psychologist.....          | Dr. Jack Roberts   |
| Sports Information Director..... | Tucker Cleverdon   |
| Equipment.....                   | Brad Rapacz        |
| Dietician.....                   | Carly Fancher      |
| Graduate Assistant.....          | Savannah Stoughton |

**ATHLETICS COMMUNICATIONS**

|   |                    |
|---|--------------------|
| Tucker Cleverdon.....                             | SID                |
| Email.....  | jtc0080@auburn.edu |
| Cell.....   | 251-923-9002       |
| Kirk Sampson...Senior Associate AD Communications |                    |
| Email.....  | sampska@auburn.edu |
| Web.....  | AuburnTigers.com   |
| Twitter.....                                      | @AuburnSoccer      |
| Instagram.....                                    | @AuburnSoccer      |
| TikTok.....                                       | @AuburnSoccer      |
| Facebook.....                                     | /AuburnSoccer      |
| Office Phone.....                                 | 334-844-9800       |

**25 YEARS AT THE HELM:** Head Coach Karen Hoppa

» In the spring of 1999, Auburn University and Athletics Director David Housel announced the hiring of head coach Karen Hoppa to lead the women's soccer program. This fall, Hoppa hits the quarter-century mark with the Tigers as one of 13 active DI coaches with at least 30 years of head coaching experience. Of the 13 coaches, Hoppa is one of two who are women and one of two in the SEC. (G Guerrieri - Texas A&M)



# ROSTER

## BY JERSEY NUMBER

| No. | Name                | Pos. | Ht.  | Year  | Hometown (High School/Previous School)    |
|-----|---------------------|------|------|-------|---|
| 0   | Madeline Moore      | D    | 5-9  | Jr.   | Winter Haven, Fla. (Winter Haven Senior)  |
| 00  | Maddie Prohaska     | GK   | 5-9  | Jr.   | West Chester, Ohio (Lakota West)          |
| 1   | Maddie Lo           | GK   | 5-7  | Gr.   | Maple Grove, Minn. (Wayzata/Northwestern) |
| 2   | Maquena O'Callaghan | MF   | 5-6  | Fr.   | Escondido, Calif. (San Pasqual)           |
| 3   | Helene Tyburczy     | MF/D | 5-9  | Fr.   | Ramsey, N.J. (Ramsey)                     |
| 4   | Anna Haddock        | MF   | 5-5  | Jr.   | Bowling Green, Ky. (Greenwood)            |
| 5   | Jessica Osborne     | D    | 6-0  | Fr.   | Summerville, S.C. (Pinewood Prep)         |
| 6   | Becky Contreras     | MF   | 5-6  | R-Sr. | Dacula, Ga. (Dacula/Kennesaw State)       |
| 7   | Carly Thatcher      | F/MF | 5-2  | So.   | Greer, S.C. (Riverside)                   |
| 8   | Mallory Mooney      | D    | 5-2  | Jr.   | Broomfield, Colo. (Broomfield)            |
| 9   | Sydney Ritter       | F    | 5-7  | Fr.   | Berlin, N.J. (Eastern Regional)           |
| 10  | Sammie Brown        | MF   | 5-3  | Jr.   | Morgantown, W.V. (Morgantown)             |
| 11  | LJ Knox             | D    | 5-10 | So.   | Brentwood, Tenn. (Brentwood Academy)      |
| 12  | Haley Duca          | MF   | 5-2  | So.   | Chelsea, Ala. (Chelsea)                   |
| 13  | Taylor Richards     | GK   | 5-8  | Fr.   | Plano, Texas (Plano Senior)               |
| 14  | Sydney Richards     | MF/F | 5-7  | Sr.   | Plano, Texas (Plano Senior)               |
| 15  | Sydney Thibodaux    | MF   | 5-5  | So.   | Montgomery, Texas (Lake Creek)            |
| 16  | Dylan Driver        | F    | 5-11 | Fr.   | Macon, Ga. (Stratford Academy)            |
| 17  | Maddy Bondon        | MF/D | 5-4  | Jr.   | Duluth, Ga. (Peachtree Ridge)             |
| 18  | Jaycie Silhan       | D    | 5-11 | So.   | Spring, Texas (Klein Oak)                 |
| 19  | Marissa Arias       | F    | 5-4  | R-Jr. | San Antonio, Texas (Louis D. Brandeis)    |
| 20  | Hayden Colson       | D    | 5-8  | Fr.   | Denton, Texas (John H. Guyer)             |
| 22  | Olivia Woodson      | F    | 5-4  | Fr.   | Richmond, Va. (Monacan)                   |
| 23  | Olivia Candelino    | F    | 5-5  | Jr.   | Jacksonville, Fla. (The Bolles School)    |
| 28  | Erin Houston        | D    | 5-9  | Fr.   | Kennesaw, Ga. (Harrison)                  |
| 32  | Maddie Simpson      | F    | 5-7  | Jr.   | Wausau, Wisc. (DC Everest Senior)         |
| 77  | Mya Williams        | F    | 5-5  | Fr.   | Carrollton, Texas (Hebron)                |
| 78  | Jenna Spong         | GK   | 5-8  | Fr.   | Johns Creek, Ga. (Northview)              |

Head Coach: Karen Hoppa (25th season at Auburn, 31st overall)  
 Associate Head Coach: Ben Madsen (12th season at Auburn)  
 Assistant Coach: Nick Flohre (5th season at Auburn)  
 Assistant Coach: Kelly Madsen (1st season at Auburn)  
 Director of Operations: Amy Reif (6th season at Auburn)

## BY NAME

| No. | Name                | Pos. |
|-----|---------------------|------|
| 19  | Marissa Arias       | F    |
| 17  | Maddy Bondon        | MF/D |
| 10  | Sammie Brown        | MF   |
| 23  | Olivia Candelino    | F    |
| 20  | Hayden Colson       | D    |
| 6   | Becky Contreras     | MF   |
| 16  | Dylan Driver        | F    |
| 12  | Haley Duca          | MF   |
| 4   | Anna Haddock        | MF   |
| 28  | Erin Houston        | D    |
| 11  | LJ Knox             | D    |
| 1   | Maddie Lo           | GK   |
| 8   | Mallory Mooney      | F    |
| 0   | Madeline Moore      | D    |
| 2   | Maquena O'Callaghan | MF   |
| 5   | Jessica Osborne     | D    |
| 00  | Maddie Prohaska     | GK   |
| 14  | Sydney Richards     | F/MF |
| 13  | Taylor Richards     | GK   |
| 9   | Sydney Ritter       | F    |
| 78  | Jenna Spong         | GK   |
| 18  | Jaycie Silhan       | D    |
| 32  | Maddie Simpson      | F    |
| 7   | Carly Thatcher      | MF   |
| 15  | Sydney Thibodaux    | MF   |
| 3   | Helene Tyburczy     | D    |
| 77  | Mya Williams        | F    |
| 22  | Olivia Woodson      | F    |

## BY CLASS

### Freshmen (8)

Dylan Driver, Maquena O'Callaghan, Jessica Osborne, Taylor Richards, Sydney Ritter, Jenna Spong, Mya Williams, Olivia Woodson

### Sophomores (3)

Hayden Colson, Erin Houston, Helen Tyburczy

### Juniors (5)

Haley Duca, LJ Knox, Jaycie Silhan, Carly Thatcher, Sydney Thibodaux

### Seniors (10)

Marissa Arias, Maddy Bondon, Sammie Brown, Olivia Candelino, Becky Contreras, Anna Haddock, Mallory Mooney, Madeline Moore, Maddie Prohaska, Maddie Simpson

### 5th Year (1)

Sydney Richards

### Graduate Student (1)

Maddie Lo

## PRONUNCIATION GUIDE

Marissa **ARIAS**..... AH-ree-ahss  
 Maddy **BONDON**..... BON-din  
 Olivia **CANDELINO**..... can-duh-LEE-no  
 Haley **DUCA**..... DOO-kah  
 Anna **HADDOCK**..... HAD-ick  
**MAQUENA** O'Callaghan.....like Makenna  
 Maddie **PROHASKA**..... pro-HASS-kah  
 Jenna **SAPONG**..... SAP-ong  
 Jaycie **SILHAN**..... sil-HAN  
 Sydney **THIBODAU**X..... TIB-ah-dough  
**HELENE TYBURZY**..... huh-LEAN ty-BUR-zee  
  
 Nick **FLOHRE**..... floor-EE  
 Amy **REIF**..... reef



@AUCOACHOPPA

# KAREN HOPPA » HEAD COACH

- » Amassed seven SEC Western Division Championships, one regular season title and one conference tournament crown
- » Coached 70 All-SEC selections, including three SEC Players of the Year and two SEC Scholar-Athletes of the Year
- » Guided 52 All-Region honorees and 14 All-Americans since arriving on The Plains
- » Collected Team Academic Award 17 times since 2004
- » Five players have earned College Sports Communicators Academic All-America recognitions while Katy Frierson was named the NSCAA Scholar-Athlete of the Year in 2010.
- » Program has had 17 10-plus win seasons in 24 years
- » Holds record of 70-37-10 (.641) against SEC West teams
- » Made 16 NCAA Tournament appearances, including 12 of last 15 campaigns
- » Reached NCAA Quarterfinals for first time in program history in 2016 and went to the second round of the tournament in a record four straight seasons (2014-17)
- » Set program record in wins in back-to-back seasons in 2015 (16) and 2016 (17)
- » Team has broken 47 single-season records in her tenure with the Tigers
- » Named United States National Team's Youth Goalkeeper Coordinator in 2002
- » Coached on the U19 United States National Team in the inaugural FIFA Women's U19 World Championships in 2002
- » Captured gold over Canada in 2002 U19 World Championships
- » Served as assistant and goalkeeper coach for U18 United States for the Albena Cup in Bulgaria
- » Spent 12 years at UCF as student-athlete, assistant coach and head coach
- » Won five Trans America Athletic Conference titles, including four in a row during the 1993-96 campaigns
- » Three-year starter as goalkeeper for the Golden Knights
- » Allowed just 30 goals (0.594 per game) en route to 43-13-7 playing record
- » Holds three career records, including fewest goals allowed, lowest goals against average and total shutouts at UCF
- » Named 1990 NCAA Goalkeeper of the Year and was a finalist for the Hermann Award in 1990
- » Graduated Magna Cum Laude with a degree in psychology from UCF
- » Served as the United Soccer Coaches Chair of NCAA Division I Women's Coaches from 2017-20
- » Married Scott Hoppa and has one daughter, Bailey

## Coaching Record by Year

| Year             | School | Record            |
|------------------|--------|-------------------|
| 1993             | UCF    | 8-7-1             |
| 1994             | UCF    | 13-5-1            |
| 1995             | UCF    | 10-7-4            |
| 1996             | UCF    | 13-7-1            |
| 1997             | UCF    | 8-10-2            |
| 1998             | UCF    | 12-8              |
| 1999             | Auburn | 6-13              |
| 2000             | Auburn | 13-7              |
| 2001             | Auburn | 11-8-1            |
| 2002             | Auburn | 15-5-2            |
| 2003             | Auburn | 14-4-3            |
| 2004             | Auburn | 15-4-2            |
| 2005             | Auburn | 8-12-1            |
| 2006             | Auburn | 11-6-3            |
| 2007             | Auburn | 10-8-2            |
| 2008             | Auburn | 12-9-2            |
| 2009             | Auburn | 10-9-3            |
| 2010             | Auburn | 11-8-2            |
| 2011             | Auburn | 15-7-2            |
| 2012             | Auburn | 13-11-1           |
| 2013             | Auburn | 8-9-4             |
| 2014             | Auburn | 12-7-3            |
| 2015             | Auburn | 16-6-1            |
| 2016             | Auburn | 17-7-0            |
| 2017             | Auburn | 8-7-5             |
| 2018             | Auburn | 12-6-2            |
| 2019             | Auburn | 7-10-2            |
| 2020             | Auburn | 10-5-3            |
| 2021             | Auburn | 12-7-1            |
| 2022             | Auburn | 6-6-6             |
| 2023             | Auburn | 3-0-1             |
| <b>at UCF</b>    |        | <b>64-44-9</b>    |
| <b>at Auburn</b> |        | <b>275-181-52</b> |
| <b>Overall</b>   |        | <b>339-225-61</b> |

## Career Milestone Matches

First Win .....2-1 vs. Saint Mary's (1993)  
 100th Win ..... 4-0 vs. South Alabama (2002)  
 200th Win ..... 1-0 vs. Alabama (2010)  
 300th Win .....1-0 at Missouri (2018)

## Auburn Milestone Matches

First Win .....4-0 vs. Southwest Texas State (1999)  
 First Ranked Win .....3-1 vs. #23 Marquette (2000)  
 50th Win .....2-0 at Dartmouth (2003)  
 100th Win ..... 1-0 at Mississippi State (2007)  
 150th Win.....3-2 vs. #23 Florida (2011)  
 200th Win .....3-2 vs. #15 Texas Tech (2015)  
 250th Win..... 1-0 vs. Georgia (2021)

**THIS SEASON**

|                                   |       |
|-----------------------------------|-------|
| Overall .....                     | 3-0-1 |
| home .....                        | 1-0-1 |
| away .....                        | 2-0-0 |
| neutral .....                     | 0-0-0 |
| SEC .....                         | 0-0-0 |
| home .....                        | 0-0-0 |
| away .....                        | 0-0-0 |
| vs. ranked opponents .....        | 0-0-0 |
| vs. unranked opponents .....      | 3-0-1 |
| scoring first .....               | 2-0-0 |
| opponent scores first .....       | 1-0-0 |
| leading at half .....             | 2-0-0 |
| trailing at half .....            | 1-0-0 |
| tied at half .....                | 0-0-1 |
| outshooting opponent .....        | 2-0-1 |
| outshot by opponent .....         | 0-0-0 |
| same number of shots .....        | 1-0-0 |
| taking more corner kicks .....    | 3-0-1 |
| allowing more corner kicks .....  | 0-0-0 |
| same number of corner kicks ..... | 0-0-0 |
| making more saves .....           | 0-0-0 |
| allowing more saves .....         | 2-0-1 |
| same number of saves .....        | 1-0-0 |
| committing more fouls .....       | 1-0-0 |
| drawing more fouls .....          | 2-0-1 |
| same number of fouls .....        | 0-0-0 |
| linear games .....                | 0-0-0 |
| digital games .....               | 3-0-1 |
| no television/stream .....        | 0-0-0 |
| wearing white kits .....          | 1-0-1 |
| wearing blue kits .....           | 2-0-0 |
| Sunday .....                      | 2-0-0 |
| Monday .....                      | 0-0-0 |
| Tuesday .....                     | 0-0-0 |
| Wednesday .....                   | 0-0-0 |
| Thursday .....                    | 1-0-1 |
| Friday .....                      | 0-0-0 |
| Saturday .....                    | 0-0-0 |
| August .....                      | 3-0-1 |
| September .....                   | 0-0-0 |
| October .....                     | 0-0-0 |

**THE LAST TIME...**

**TEAM**

|                                    |  |
|------------------------------------|--|
| scored 5-plus goals .....          | 5, vs. Troy (8/20/23)                      |
| scored 4 goals .....               | vs. UMass Lowell (9/8/22)                  |
| scored 3 goals .....               | at Army (8/27/23)                          |
| scored 2 goals .....               | at Syracuse (8/24/23)                      |
| scored 1 goal .....                | at Texas A&M (10/14/22)                    |
| was shutout .....                  | vs. Samford (8/17/23)                      |
| allowed 5-plus goals .....         | 5, vs. Arkansas (11/4/21)                  |
| allowed 4 goals .....              | vs. Arkansas (11/17/20)                    |
| allowed 3 goals .....              | at Texas A&M (10/14/22)                    |
| allowed 2 goals .....              | at Army (8/27/23)                          |
| allowed 1 goal .....               | vs. Tennessee (10/20/22)                   |
| shutout an opponent .....          | vs. Troy (8/20/23)                         |
| attempted 30-plus shots .....      | 49, vs. Alabama A&M (9/9/21)               |
| attempted 20-29 shots .....        | 25, vs. UMass Lowell (9/8/22)              |
| attempted 10-19 shots .....        | 13, at Army (8/27/23)                      |
| allowed 20-plus shots .....        | 21, at Arkansas (9/22/22)                  |
| allowed 15-19 shots .....          | 12, at Army (8/27/23)                      |
| allowed 10-15 shots .....          | 13, at LSU (10/23/22)                      |
| allowed 5-9 shots .....            | 8, at Syracuse (8/24/23)                   |
| allowed 1-4 shots .....            | 2, vs. Troy (8/20/23)                      |
| won in overtime .....              | 1-0 (OT), vs. LSU (10/10/21)               |
| lost in overtime .....             | 2-1 (2OT), at Tennessee (9/23/21)          |
| tied in overtime .....             | 2-2 (2OT), at Ole Miss (10/24/21)          |
| had 10-20 corner kicks .....       | 11, at Syracuse (8/24/23)                  |
| won a penalty kick shootout .....  | 2-2 (5-3 PK), vs. South Carolina (11/4/15) |
| lost a penalty kick shootout ..... | 1-1 (2-1 PK), vs. Florida (10/28/18)       |

**INDIVIDUAL**

|                                 |  |
|---------------------------------|--|
| scored 3 goals in a half .....  | 3, Mallory Mooney vs. Virginia Tech (4/17/2021)        |
| scored 3 goals in a match ..... | 3, Carly Thatcher vs. Alabama A&M (9/9/2021)           |
| scored 4 goals in a match ..... | 4, Tiffany Smith vs. LaGrange (9/25/1993)              |
| had 3 assists in a match .....  | 3, Casie Ramsier vs. UConn (11/18/2016)                |
| had 4 assists in a match .....  | 4, Anna Haddock vs. Kennesaw State (2/19/2021)         |
| took 10 shots in a match .....  | 10, Kristen Dodson vs. High Point (9/8/2017)           |
| had 10 saves in a match .....   | 10, Maddie Prohaska vs. Arkansas (10/30/2020)          |
| had 15 saves in a match .....   | 15, Meredith McPherson vs. Arkansas (9/24/1994)        |
| recorded a shutout .....        | Maddie Prohaska vs. Troy (8/20/23)                     |
| had consecutive shutouts .....  | 2, Maddie Prohaska vs. Samford & Troy (8/17 - 8/20/23) |
| scored a penalty kick .....     | Brooke Berdan vs. Southern Miss (8/21/2022)            |
| saved a penalty kick .....      | Sarah Le Beau vs. Florida (9/27/2021)                  |
| goalkeeper scored a goal .....  | Karina Micomonaco at West Florida (10/23/1993)         |
| goalkeeper had an assist .....  | Alyse Scott vs. Memphis (9/5/2014)                     |

**CAREER MILESTONE TRACKER**

| Milestone   | Player      | Has | Needs |
|-------------|-------------|-----|-------|
| 20 Goals    | S. Richards | 19  | 1     |
|             | Haddock     | 16  | 4     |
| 25 Shutouts | Prohaska    | 22  | 3     |
| 50 Points   | S. Richards | 46  | 4     |
| 200 Saves   | Prohaska    | 199 | 1     |

**SEASON RECORD WATCH**

| Record (#) | Player | Has |
|------------|--------|-----|
|------------|--------|-----|

**CAREER RECORD WATCH**

| Record (#)          | Player      | Has  |
|---------------------|-------------|------|
| GAA (0.81)          | Prohaska    | 0.91 |
| Shutouts (33)       | Prohaska    | 22   |
| Matches Played (97) | S. Richards | 77   |

**GOAL TRACKER**

| No. | Scorer (No.) | Opponent (Result) | Time  |
|-----|--------------|-------------------|-------|
| 1   | Haddock (1)  | Troy (W, 5-0)     | 14:11 |
| 2   | Bondon (1)   | Troy (W, 5-0)     | 44:21 |
| 3   | Richards (1) | Troy (W, 5-0)     | 50:36 |
| 4   | Richards (2) | Troy (W, 5-0)     | 55:35 |
| 5   | Arias (1)    | Troy (W, 5-0)     | 74:25 |
| 6   | Arias (2)    | Syracuse (W, 2-1) | 24:53 |
| 7   | Knox (1)     | Syracuse (W, 2-1) | 60:44 |
| 8   | Brown (1)    | Army (W, 3-2)     | 37:16 |
| 9   | TEAM (1)     | Army (W, 3-2)     | 50:31 |
| 10  | Haddock (2)  | Army (W, 3-2)     | 61:45 |

**PROJECTED STARTERS**

| POS | NO | NAME             | GP | GS | SH | SOG | SOG%  | G | A | PTS | GWG |
|-----|----|------------------|----|----|----|-----|-------|---|---|-----|-----|
| D   | 0  | Madeline Moore   | 4  | 4  | 0  | 0   | -     | 0 | 0 | 0   | 0   |
| D   | 8  | Mallory Mooney   | 4  | 4  | 2  | 1   | .500  | 0 | 2 | 2   | 0   |
| D   | 11 | LJ Knox          | 4  | 4  | 4  | 2   | .500  | 1 | 1 | 3   | 1   |
| D   | 20 | Hayden Colson    | 4  | 4  | 0  | 0   | -     | 0 | 2 | 2   | 0   |
| MF  | 4  | Anna Haddock     | 4  | 4  | 6  | 4   | .667  | 2 | 2 | 6   | 2   |
| MF  | 7  | Carly Thatcher   | 4  | 4  | 5  | 0   | .000  | 0 | 1 | 1   | 0   |
| MF  | 10 | Sammie Brown     | 4  | 4  | 5  | 3   | .600  | 1 | 0 | 2   | 0   |
| F   | 14 | Sydney Richards  | 4  | 4  | 10 | 6   | .600  | 2 | 1 | 5   | 0   |
| F   | 19 | Marissa Arias    | 4  | 1  | 3  | 3   | 1.000 | 2 | 0 | 4   | 0   |
| F   | 23 | Olivia Candelino | 4  | 4  | 10 | 5   | .500  | 0 | 1 | 1   | 0   |

| POS | NO | NAME            | GP | GS | GA | SV | PCT  | GAA  | WLT   | SHO | CBO |
|-----|----|-----------------|----|----|----|----|------|------|-------|-----|-----|
| GK  | 00 | Maddie Prohaska | 4  | 4  | 3  | 7  | .787 | 0.80 | 3-0-1 | 1   | 1   |

**GOAL TIMING**

|                       |   |
|-----------------------|---|
| between minutes 1-5   | 0 |
| between minutes 6-15  | 1 |
| between minutes 16-25 | 1 |
| between minutes 26-35 | 0 |
| between minutes 36-45 | 2 |
| between minutes 46-50 | 0 |
| between minutes 51-60 | 3 |
| between minutes 61-70 | 2 |
| between minutes 71-80 | 1 |
| between minutes 81-90 | 0 |

**OPPOSING GOAL TIMING**

|                       |   |
|-----------------------|---|
| between minutes 1-5   | 0 |
| between minutes 6-15  | 0 |
| between minutes 16-25 | 1 |
| between minutes 26-35 | 0 |
| between minutes 36-45 | 1 |
| between minutes 46-50 | 0 |
| between minutes 51-60 | 0 |
| between minutes 61-70 | 1 |
| between minutes 71-80 | 0 |
| between minutes 81-90 | 0 |

**2023 AUBURN HONOR ROLL**

**TEAM CAPTAINS**

Maddy Bondon  
 Anna Haddock  
 Madeline Moore  
 Maddie Prohaska

**ACADEMIC CAPTAIN**

Jaycie Silhan

**SEC PRESEASON WATCH LIST**

Anna Haddock  
 Madeline Moore  
 Maddie Prohaska  
 Sydney Richards

**TDS PRESEASON BEST XI**

Anna Haddock (Third Team)

**TDS PRESEASON  
 PLAYER RANKINGS**

Anna Haddock (23)

**PLAYER TO WATCH**



**#23 OLIVIA CANDELINO**

After sticking a season-high four shots on goal last match, senior forward Olivia Candelino is knocking on the door of her first goal of the 2023 season. Candelino has six career goals from her previous three seasons as a Tiger.

## AUBURN MATCH-BY-MATCH STATS

| Opponent    | G | A | PTS | SH | SOG | CK | FO | GA | SV |
|-------------|---|---|-----|----|-----|----|----|----|----|
| Samford     | 0 | 0 | 0   | 14 | 5   | 5  | 7  | 0  | 0  |
| Troy        | 5 | 6 | 16  | 17 | 9   | 5  | 4  | 0  | 1  |
| at Syracuse | 2 | 2 | 6   | 16 | 10  | 11 | 14 | 1  | 1  |
| at Army     | 3 | 4 | 10  | 13 | 7   | 6  | 10 | 2  | 5  |

## AUBURN IN THE POLLS

| WK | USC | TDS |
|----|-----|-----|
| 0  | UR  | UR  |
| 1  | UR  | UR  |
| 2  | UR  | UR  |

## STARTERS SUMMARY

| PLAYER       | GS | GK | D | MF | F |
|--------------|----|----|---|----|---|
| M. Arias     | 1  | -  | - | -  | 1 |
| S. Brown     | 4  | -  | - | 4  | - |
| O. Candelino | 4  | -  | - | -  | 4 |
| H. Colson    | 4  | -  | 4 | -  | - |
| A. Haddock   | 4  | -  | - | 4  | - |
| L. Knox      | 4  | -  | 4 | -  | - |
| M. Mooney    | 4  | -  | 4 | -  | - |
| M. Moore     | 4  | -  | 4 | -  | - |
| M. Prohaska  | 4  | 4  | - | -  | - |
| S. Richards  | 4  | -  | - | 1  | 3 |
| C. Thatcher  | 4  | -  | - | 3  | 1 |
| O. Woodson   | 3  | -  | - | -  | 3 |

## FORMATION TRACKER

| MATCH       | STARTING FORMATION | RESULT |
|-------------|--------------------|--------|
| vs. Samford | 4-3-3              | T, 0-0 |
| vs. Troy    | 4-3-3              | W, 5-0 |
| at Syracuse | 4-3-3              | W, 2-1 |
| at Army     | 4-3-3              | W, 3-2 |



PLAYER CAPSULES



**MADELINE MOORE**

**0**

**DEFENDER**

**Sr. | 5-9**

**Winter Haven, Fla. | Winter Haven Senior HS**

**SEASON HIGH**

**CAREER HIGH**

90, at Army (8/27) ..... **MINS** .....110, vs. LSU (2/26/21)  
 ..... **G** .....  
 ..... **A** .....1 (4x), last vs. UMass Lowell (9/8/22)  
 ..... **PTS** .....1 (4x), last vs. UMass Lowell (9/8/22)  
 ..... **SH** .....1 (2x), last vs. Georgia (11/15/20)  
 ..... **SOG** .....

2023 SEASON HIGHLIGHTS

GAME BY GAME

| Date          | Opponent    | Game Started | Minutes    | Goals    | Assists  | Points   | Shots    | Shots On Goal | Game Winner |
|---------------|-------------|--------------|------------|----------|----------|----------|----------|---------------|-------------|
| 8/17          | Samford     | *            | 89         | 0        | 0        | 0        | 0        | 0             | 0           |
| 8/20          | Troy        | *            | 65         | 0        | 0        | 0        | 0        | 0             | 0           |
| 8/24          | at Syracuse | *            | 84         | 0        | 0        | 0        | 0        | 0             | 0           |
| 8/27          | at Army     | *            | 90         | 0        | 0        | 0        | 0        | 0             | 0           |
| <b>SEASON</b> |             | <b>4</b>     | <b>328</b> | <b>0</b> | <b>0</b> | <b>0</b> | <b>0</b> | <b>0</b>      | <b>0</b>    |

CAREER VS WAKE FOREST

| Match         | Starter  | Minutes   | Goals    | Assists  | Shots    | Shots On Goal | Result       |
|---------------|----------|-----------|----------|----------|----------|---------------|--------------|
| 8/28/22       | *        | 65        | 0        | 0        | 0        | 0             | T, 0-0       |
| <b>CAREER</b> | <b>1</b> | <b>65</b> | <b>0</b> | <b>0</b> | <b>0</b> | <b>0</b>      | <b>0-0-1</b> |

MOORE'S CAREER STATS

| YEAR         | GP-GS        | MIN          | G        | A        | PTS      | SH       | SOG      | SOG%        | SH%         | PK-ATT     | GW       |
|--------------|--------------|--------------|----------|----------|----------|----------|----------|-------------|-------------|------------|----------|
| 2020         | 18-18        | 1,412        | 0        | 1        | 1        | 2        | 0        | .000        | .000        | 0-0        | 0        |
| 2021         | 8-8          | 604          | 0        | 2        | 2        | 0        | 0        | -           | -           | 0-0        | 0        |
| 2022         | 18-18        | 1,522        | 0        | 1        | 1        | 0        | 0        | -           | -           | 0-0        | 0        |
| 2023         | 4-4          | 328          | 0        | 0        | 0        | 0        | 0        | -           | -           | 0-0        | 0        |
| <b>TOTAL</b> | <b>48-48</b> | <b>3,866</b> | <b>0</b> | <b>4</b> | <b>4</b> | <b>2</b> | <b>0</b> | <b>.000</b> | <b>.000</b> | <b>0-0</b> | <b>0</b> |

PLAYER CAPSULES



**MADDIE PROHASKA**

**00**

**GOALKEEPER**

**Sr. | 5-9**

**West Chester, Ohio | Lakota West HS**

**SEASON HIGH**

**CAREER HIGH**

90 (3x), last at Army (8/27) ..... **MINS** ..... 110 (4x), last at Ole Miss (10/24/21)  
 2, at Army (8/27) ..... **GA** ..... 5, vs. Arkansas (11/4/21)  
 5, at Army (8/27) ..... **SV** ..... 10, at Arkansas (10/30/20)  
 13, at Army(8/27) ..... **SF** ..... 21, at Arkansas (9/22/22)

2023 SEASON HIGHLIGHTS

GAME BY GAME

| Date          | Opponent    | Game Started | Minutes    | Goals Allowed | Saves    | Shots Faced | Shutout  | Combined Shutout | GAA         |
|---------------|-------------|--------------|------------|---------------|----------|-------------|----------|------------------|-------------|
| 8/17          | Samford     | *            | 90         | 0             | 0        | 0           | 1        | 0                | 0.00        |
| 8/20          | Troy        | *            | 69         | 0             | 1        | 1           | 0        | 1                | 0.00        |
| 8/24          | at Syracuse | *            | 90         | 1             | 1        | 2           | 0        | 0                | 0.36        |
| 8/27          | at Army     | *            | 90         | 2             | 5        | 7           | 0        | 0                | 0.80        |
| <b>SEASON</b> |             | <b>4</b>     | <b>339</b> | <b>3</b>      | <b>7</b> | <b>10</b>   | <b>1</b> | <b>1</b>         | <b>0.80</b> |

CAREER VS WAKE FOREST

| Match         | Starter  | Minutes   | Goals Allowed | Saves    | Shots Faced | Save %       | Result       |
|---------------|----------|-----------|---------------|----------|-------------|--------------|--------------|
| 8/28/22       | *        | 90        | 0             | 5        | 5           | 1.000        | T, 0-0       |
| <b>CAREER</b> | <b>1</b> | <b>90</b> | <b>0</b>      | <b>5</b> | <b>5</b>    | <b>1.000</b> | <b>0-0-1</b> |

PROHASKA'S CAREER STATS

| YEAR         | GP-GS        | MIN          | GA        | GAA         | SV         | SV%         | W-L-T          | SHO       | CBO      | SF         |
|--------------|--------------|--------------|-----------|-------------|------------|-------------|----------------|-----------|----------|------------|
| 2020         | 17-17        | 1,576        | 14        | 0.80        | 75         | .843        | 9-5-2          | 6         | 2        | 165        |
| 2021         | 20-20        | 1,834        | 24        | 1.18        | 56         | .700        | 12-7-1         | 7         | 0        | 206        |
| 2022         | 18-18        | 1,585        | 13        | 0.74        | 61         | .824        | 6-6-6          | 7         | 0        | 188        |
| 2023         | 4-4          | 339          | 3         | 0.80        | 7          | .700        | 3-0-1          | 1         | 1        | 25         |
| <b>TOTAL</b> | <b>59-59</b> | <b>5,332</b> | <b>54</b> | <b>0.91</b> | <b>199</b> | <b>.787</b> | <b>30-18-9</b> | <b>21</b> | <b>3</b> | <b>584</b> |

PLAYER CAPSULES



**MADDIE LO**

**1**

**GOALKEEPER**

**Gr. | 5-7**

Maple Grove, Minn. | Wayzata HS | Northwestern

**SEASON HIGH**

**CAREER HIGH**

|                           |                   |                     |
|---------------------------|-------------------|---------------------|
| 22, vs. Troy (8/20) ..... | <b>MINS</b> ..... | 22, vs. Troy (8/20) |
| .....                     | <b>GA</b> .....   | .....               |
| .....                     | <b>SV</b> .....   | .....               |
| .....                     | <b>SF</b> .....   | .....               |

2023 SEASON HIGHLIGHTS

Made Auburn debut vs Troy (8/20), playing 22 minutes...

GAME BY GAME

| Date | Opponent | Game Started | Minutes | Goals Allowed | Saves | Shots Faced | Shutout | Combined Shutout | GAA  |
|------|----------|--------------|---------|---------------|-------|-------------|---------|------------------|------|
| 8/20 | Troy     |              | 22      | 0             | 0     | 0           | 0       | 1                | 0.00 |

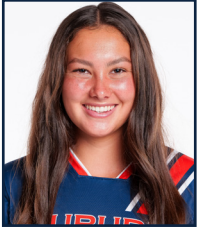
CAREER VS WAKE FOREST

| Match | Starter | Minutes | Goals Allowed | Saves | Shots Faced | Save % | Result |
|-------|---------|---------|---------------|-------|-------------|--------|--------|
|-------|---------|---------|---------------|-------|-------------|--------|--------|

LO'S CAREER STATS

| YEAR         | GP-GS      | MIN       | GA       | GAA         | SV       | SV%      | W-L-T        | SHO      | CBO      | SF       |
|--------------|------------|-----------|----------|-------------|----------|----------|--------------|----------|----------|----------|
| 2022         | 1-0        | 7         | 0        | 0.00        | 0        | -        | 0-0-0        | 0        | 1        | 0        |
| 2023         | 1-0        | 22        | 0        | 0.00        | 0        | -        | 0-0-0        | 0        | 1        | 0        |
| <b>TOTAL</b> | <b>2-0</b> | <b>29</b> | <b>0</b> | <b>0.00</b> | <b>0</b> | <b>-</b> | <b>0-0-0</b> | <b>0</b> | <b>2</b> | <b>0</b> |

PLAYER CAPSULES



**MAQUENA O'CALLAGHAN** **2**  
**MIDFIELDER**  
**Fr. | 5-6**  
**Escondido, Calif. | San Pasqual HS**

| SEASON HIGH                          | CAREER HIGH   |
|--------------------------------------|---|
| 49, vs. Troy (8/20).....             | <b>MINS</b> ..... 49, vs. Troy (8/20/23)            |
| .....                                | <b>G</b> .....                                      |
| 1, at Army (8/27).....               | <b>A</b> ..... 1, at Army (8/27/23)                 |
| 1, at Army (8/27).....               | <b>PTS</b> ..... 1, at Army (8/27/23)               |
| 1 (2x), last at Syracuse (8/24)..... | <b>SH</b> ..... 1 (2x), last at Syracuse (8/24/23)  |
| 1 (2x), last at Syracuse (8/24)..... | <b>SOG</b> ..... 1 (2x), last at Syracuse (8/24/23) |

2023 SEASON HIGHLIGHTS

Picked up first collegiate assist in the 38th minute at Army (8/27)...

GAME BY GAME

| Date          | Opponent    | Game Started | Minutes   | Goals    | Assists  | Points   | Shots    | Shots On Goal | Game Winner |
|---------------|-------------|--------------|-----------|----------|----------|----------|----------|---------------|-------------|
| 8/17          | Samford     |              | 11        | 0        | 0        | 0        | 0        | 0             | 0           |
| 8/20          | Troy        |              | 49        | 0        | 0        | 0        | 1        | 1             | 0           |
| 8/24          | at Syracuse |              | 23        | 0        | 0        | 0        | 1        | 1             | 0           |
| 8/27          | at Army     |              | 15        | 0        | 1        | 1        | 0        | 0             | 0           |
| <b>SEASON</b> |             | <b>0</b>     | <b>98</b> | <b>0</b> | <b>1</b> | <b>1</b> | <b>2</b> | <b>2</b>      | <b>0</b>    |

O'CALLAGHAN'S CAREER STATS

| YEAR         | GP-GS      | MIN       | G        | A        | PTS      | SH       | SOG      | SOG%         | SH%         | PK-ATT     | GW       |
|--------------|------------|-----------|----------|----------|----------|----------|----------|--------------|-------------|------------|----------|
| 2023         | 4-0        | 98        | 0        | 1        | 1        | 2        | 2        | 1.000        | .000        | 0-0        | 0        |
| <b>TOTAL</b> | <b>4-0</b> | <b>98</b> | <b>0</b> | <b>1</b> | <b>1</b> | <b>2</b> | <b>2</b> | <b>1.000</b> | <b>.000</b> | <b>0-0</b> | <b>0</b> |

PLAYER CAPSULES



**HELENE TYBURCZY**

**3**

**MIDFIELDER/DEFENDER**  
So. | 5-9  
Ramsey, N.J. | Ramsey HS

**SEASON HIGH**

**CAREER HIGH**

..... MINS ..... 27, vs Southern Miss (8/21/22)  
..... G .....  
..... A .....  
..... PTS .....  
..... SH .....  
..... SOG .....

2023 SEASON HIGHLIGHTS

GAME BY GAME

| Date | Opponent | Game Started | Minutes | Goals | Assists | Points | Shots | Shots On Goal | Game Winner |
|------|----------|--------------|---------|-------|---------|--------|-------|---------------|-------------|
|------|----------|--------------|---------|-------|---------|--------|-------|---------------|-------------|

CAREER VS WAKE FOREST

| Match | Starter | Minutes | Goals | Assists | Shots | Shots On Goal | Result |
|-------|---------|---------|-------|---------|-------|---------------|--------|
|-------|---------|---------|-------|---------|-------|---------------|--------|

TYBURCZY'S CAREER STATS

| YEAR         | GP-GS      | MIN       | G        | A        | PTS      | SH       | SOG      | SOG%     | SH%      | PK-ATT     | GW       |
|--------------|------------|-----------|----------|----------|----------|----------|----------|----------|----------|------------|----------|
| 2022         | 3-0        | 36        | 0        | 0        | 0        | 0        | 0        | -        | -        | 0-0        | 0        |
| <b>TOTAL</b> | <b>3-0</b> | <b>36</b> | <b>0</b> | <b>0</b> | <b>0</b> | <b>0</b> | <b>0</b> | <b>-</b> | <b>-</b> | <b>0-0</b> | <b>0</b> |



## PLAYER CAPSULES

**ANNA HADDOCK****4****MIDFIELDER****Sr. | 5-5****Bowling Green, Ky. | Greenwood HS****SEASON HIGH****CAREER HIGH**

90, at Syracuse (8/24) ..... **MINS** ..... 110 (2x), last vs. Ole Miss (10/13/20)  
 1 (2x), last at Army (8/27) ..... **G** ..... 2 (2x), last vs. Georgia (9/17/21)  
 1 (2x), at Syracuse (8/24) ..... **A** ..... 4, vs. Kennesaw State (2/19/21)  
 3, vs. Troy (8/20) ..... **PTS** ..... 4 (4x), last vs. Georgia (9/17/21)  
 3, vs. Troy (8/20) ..... **SH** ..... 8, vs. LSU (2/26/21)  
 1 (3x), last at Army (8/27) ..... **SOG** ..... 5, vs. BYU (8/21/21)

## 2023 SEASON HIGHLIGHTS

Collected the sixth game-winner of her career with the opening goal in the 5-0 rout of Troy (8/20)... Picked up another game-winner at Army (8/27), finding the back of the net in minute 62...

## GAME BY GAME

| Date          | Opponent    | Game Started | Minutes    | Goals    | Assists  | Points   | Shots    | Shots On Goal | Game Winner |
|---------------|-------------|--------------|------------|----------|----------|----------|----------|---------------|-------------|
| 8/17          | Samford     | *            | 85         | 0        | 0        | 0        | 1        | 1             | 0           |
| 8/20          | Troy        | *            | 78         | 1        | 1        | 3        | 3        | 1             | 1           |
| 8/24          | at Syracuse | *            | 90         | 0        | 1        | 1        | 1        | 1             | 0           |
| 8/27          | at Army     | *            | 85         | 1        | 0        | 2        | 1        | 1             | 1           |
| <b>SEASON</b> |             | <b>4</b>     | <b>338</b> | <b>2</b> | <b>2</b> | <b>6</b> | <b>6</b> | <b>4</b>      | <b>2</b>    |

## CAREER VS WAKE FOREST

| Match         | Starter  | Minutes   | Goals    | Assists  | Shots    | Shots On Goal | Result       |
|---------------|----------|-----------|----------|----------|----------|---------------|--------------|
| 8/28/22       | *        | 84        | 0        | 0        | 2        | 2             | T, 0-0       |
| <b>CAREER</b> | <b>1</b> | <b>84</b> | <b>0</b> | <b>0</b> | <b>2</b> | <b>2</b>      | <b>0-0-1</b> |

## HADDOCK'S CAREER STATS

| YEAR         | GP-GS        | MIN          | G         | A         | PTS       | SH         | SOG       | SOG%        | SH%         | PK-ATT     | GW       |
|--------------|--------------|--------------|-----------|-----------|-----------|------------|-----------|-------------|-------------|------------|----------|
| 2020         | 18-18        | 1,694        | 2         | 10        | 14        | 54         | 24        | .444        | .037        | 0-0        | 0        |
| 2021         | 20-20        | 1,676        | 9         | 8         | 26        | 65         | 27        | .415        | .138        | 1-1        | 4        |
| 2022         | 18-18        | 1,521        | 3         | 6         | 12        | 51         | 25        | .490        | .059        | 0-2        | 1        |
| 2023         | 4-4          | 338          | 2         | 2         | 6         | 6          | 4         | .667        | .333        | 0-0        | 2        |
| <b>TOTAL</b> | <b>60-60</b> | <b>5,229</b> | <b>16</b> | <b>26</b> | <b>58</b> | <b>176</b> | <b>80</b> | <b>.455</b> | <b>.091</b> | <b>1-3</b> | <b>7</b> |



PLAYER CAPSULES



**BECKY CONTRERAS** **6**

**MIDFIELDER**  
**R-Sr. | 5-6**  
**Dacula, Ga. | Dacula HS | Kennesaw State**

| SEASON HIGH              | CAREER HIGH   |
|--------------------------|---|
| 12, vs. Troy (8/20)..... | <b>MINS</b> ..... 110, vs. Lipscomb (11/9/19)               |
| .....                    | <b>G</b> ..... 1 (8x), last at FGCU (4/15/21)               |
| .....                    | <b>A</b> ..... 1 (5x), last vs. Central Arkansas (10/29/21) |
| .....                    | <b>PTS</b> ..... 2 (8x), last at FGCU (4/15/21)             |
| 1, vs. Troy (8/20).....  | <b>SH</b> ..... 9, at FGCU (4/15/21)                        |
| 1, vs. Troy (8/20).....  | <b>SOG</b> ..... 7, at FGCU (4/15/21)                       |

2023 SEASON HIGHLIGHTS

Made Auburn debut vs Troy (8/20), playing 12 mins at attacking mid and ripping off a shot on-goal...

GAME BY GAME

| Date          | Opponent    | Game Started | Minutes   | Goals    | Assists  | Points   | Shots    | Shots On Goal | Game Winner |
|---------------|-------------|--------------|-----------|----------|----------|----------|----------|---------------|-------------|
| 8/20          | Troy        |              | 12        | 0        | 0        | 0        | 1        | 1             | 0           |
| 8/24          | at Syracuse |              | 1         | 0        | 0        | 0        | 0        | 0             | 0           |
| 8/27          | at Army     |              | 4         | 0        | 0        | 0        | 0        | 0             | 0           |
| <b>SEASON</b> |             | <b>0</b>     | <b>17</b> | <b>0</b> | <b>0</b> | <b>0</b> | <b>1</b> | <b>1</b>      | <b>0</b>    |

CAREER VS WAKE FOREST

| Match | Starter | Minutes | Goals | Assists | Shots | Shots On Goal | Result |
|-------|---------|---------|-------|---------|-------|---------------|--------|
|-------|---------|---------|-------|---------|-------|---------------|--------|

CONTRERAS' CAREER STATS

| YEAR         | GP-GS        | MIN          | G        | A        | PTS       | SH         | SOG       | SOG%        | SH%         | PK-ATT     | GW       |
|--------------|--------------|--------------|----------|----------|-----------|------------|-----------|-------------|-------------|------------|----------|
| 2019         | 20-20        | 1,523        | 6        | 2        | 14        | 69         | 36        | .522        | .087        | 0-0        | 4        |
| 2020         | 12-10        | 872          | 2        | 2        | 6         | 38         | 16        | .421        | .053        | 0-0        | 2        |
| 2021         | 10-6         | 593          | 0        | 1        | 1         | 10         | 3         | .300        | .000        | 0-0        | 0        |
| 2023         | 3-0          | 17           | 0        | 0        | 0         | 1          | 1         | 1.000       | .000        | 0-0        | 0        |
| <b>TOTAL</b> | <b>44-36</b> | <b>3,005</b> | <b>8</b> | <b>5</b> | <b>21</b> | <b>118</b> | <b>56</b> | <b>.496</b> | <b>.068</b> | <b>0-0</b> | <b>6</b> |

PLAYER CAPSULES



**CARLY THATCHER**

**7**

**FORWARD/MIDFIELDER**  
**Jr. | 5-2**  
**Greer S.C. | Riverside HS**

**SEASON HIGH**

**CAREER HIGH**

84, at Syracuse (8/24) ..... **MINS** ..... 84, at Syracuse (8/24/23)  
 ..... **G** ..... 3, vs. Alabama A&M (9/9/21)  
 1, at Army (8/27) ..... **A** ..... 1 (5x), last vs. Army (8/27/23)  
 1, at Army (8/27) ..... **PTS** ..... 6, vs. Alabama A&M (9/9/21)  
 4, vs. Samford (8/17) ..... **SH** ..... 5, vs. Alabama (10/27/22)  
 ..... **SOG** ..... 3 (3x), last vs. Mississippi State (10/9/22)

**2023 SEASON HIGHLIGHTS**

Picked up first assist of season at Army (8/27), combining with Haddock for a goal in the 62nd minute.

**GAME BY GAME**

| Date          | Opponent    | Game Started | Minutes    | Goals    | Assists  | Points   | Shots    | Shots On Goal | Game Winner |
|---------------|-------------|--------------|------------|----------|----------|----------|----------|---------------|-------------|
| 8/17          | Samford     | *            | 74         | 0        | 0        | 0        | 4        | 0             | 0           |
| 8/20          | Troy        | *            | 58         | 0        | 0        | 0        | 0        | 0             | 0           |
| 8/24          | at Syracuse | *            | 84         | 0        | 0        | 0        | 0        | 0             | 0           |
| 8/27          | at Army     | *            | 61         | 0        | 1        | 1        | 1        | 0             | 0           |
| <b>SEASON</b> |             | <b>4</b>     | <b>277</b> | <b>0</b> | <b>1</b> | <b>1</b> | <b>5</b> | <b>0</b>      | <b>0</b>    |

**CAREER VS WAKE FOREST**

| Match         | Starter  | Minutes   | Goals    | Assists  | Shots    | Shots On Goal | Result       |
|---------------|----------|-----------|----------|----------|----------|---------------|--------------|
| 9/4/22        |          | 34        | 0        | 0        | 0        | 0             | T, 0-0       |
| <b>CAREER</b> | <b>0</b> | <b>34</b> | <b>0</b> | <b>0</b> | <b>0</b> | <b>0</b>      | <b>0-0-1</b> |

**THATCHER'S CAREER STATS**

| YEAR         | GP-GS        | MIN          | G        | A        | PTS       | SH        | SOG       | SOG%        | SH%         | PK-ATT     | GW       |
|--------------|--------------|--------------|----------|----------|-----------|-----------|-----------|-------------|-------------|------------|----------|
| 2021         | 17-0         | 447          | 3        | 2        | 8         | 13        | 7         | .538        | .231        | 0-0        | 0        |
| 2022         | 17-7         | 926          | 2        | 2        | 6         | 28        | 13        | .464        | .071        | 0-0        | 1        |
| 2023         | 4-4          | 277          | 0        | 1        | 1         | 5         | 0         | .000        | .000        | 0-0        | 0        |
| <b>TOTAL</b> | <b>38-11</b> | <b>1,639</b> | <b>5</b> | <b>5</b> | <b>15</b> | <b>46</b> | <b>20</b> | <b>.435</b> | <b>.109</b> | <b>0-0</b> | <b>1</b> |

PLAYER CAPSULES



**MALLORY MOONEY**

**8**

**Defender**  
**Sr. | 5-2**  
**Broomfield, Colo. | Broomfield HS**

**SEASON HIGH**

**CAREER HIGH**

90 (3x), last at Army (8/27) ..... **MINS** .....104, vs. LSU (2/26/21)  
 ..... **G** .....3, vs. Virginia Tech (4/17/21)  
 1 (2x), last at Army (8/27) ..... **A** .....2 (2x), last vs. UAB (9/2/21)  
 1 (2x), last at Army (8/27) ..... **PTS** .....6, vs. Virginia Tech (4/17/21)  
 1 (2x), last at Army (8/27) ..... **SH** .....4, vs. Virginia Tech (4/17/21)  
 1, at Army (8/27) ..... **SOG** .....3, vs. Virginia Tech (4/17/21)

**2023 SEASON HIGHLIGHTS**

Picked up a pair of assists on a roadswing at Syracuse (8/24) and at Army (8/27)...

**GAME BY GAME**

| Date          | Opponent    | Game Started | Minutes  | Goals      | Assists  | Points   | Shots    | Shots On Goal | Game Winner |
|---------------|-------------|--------------|----------|------------|----------|----------|----------|---------------|-------------|
| 8/17          | Samford     | *            | 90       | 0          | 0        | 0        | 0        | 0             | 0           |
| 8/20          | Troy        | *            | 69       | 0          | 0        | 0        | 0        | 0             | 0           |
| 8/24          | at Syracuse | *            | 90       | 0          | 1        | 1        | 1        | 0             | 0           |
| 8/27          | at Army     | *            | 90       | 0          | 1        | 1        | 1        | 1             | 0           |
| <b>SEASON</b> |             |              | <b>4</b> | <b>339</b> | <b>0</b> | <b>2</b> | <b>2</b> | <b>1</b>      | <b>0</b>    |

**CAREER VS WAKE FOREST**

| Match | Starter | Minutes | Goals | Assists | Shots | Shots On Goal | Result |
|-------|---------|---------|-------|---------|-------|---------------|--------|
|-------|---------|---------|-------|---------|-------|---------------|--------|

**MOONEY'S CAREER STATS**

| YEAR         | GP-GS        | MIN          | G        | A         | PTS       | SH        | SOG       | SOG%        | SH%         | PK-ATT     | GW       |
|--------------|--------------|--------------|----------|-----------|-----------|-----------|-----------|-------------|-------------|------------|----------|
| 2020         | 18-17        | 1,261        | 5        | 4         | 14        | 17        | 10        | .588        | .294        | 0-0        | 2        |
| 2021         | 20-20        | 1,681        | 0        | 4         | 4         | 8         | 1         | .125        | .000        | 0-0        | 0        |
| 2022         | 8-0          | 56           | 0        | 0         | 0         | 2         | 1         | .500        | .000        | 0-0        | 0        |
| 2023         | 4-4          | 339          | 0        | 2         | 2         | 2         | 1         | .500        | .000        | 0-0        | 0        |
| <b>TOTAL</b> | <b>50-41</b> | <b>3,337</b> | <b>5</b> | <b>10</b> | <b>20</b> | <b>29</b> | <b>13</b> | <b>.448</b> | <b>.172</b> | <b>0-0</b> | <b>2</b> |





PLAYER CAPSULES



**SAMMIE BROWN**

**10**

**MIDFIELDER**

**Sr. | 5-3**

**Morgantown, W.V. | Morgantown HS**

**SEASON HIGH**

**CAREER HIGH**

75, vs. Samford (8/17)..... **MINS** .....75, vs. Samford (8/17/23)  
 1, at Army (8/27) ..... **G** .....1, at Army (8/27/23)  
 ..... **A** .....  
 2, at Army (8/27)..... **PTS** .....2, at Army (8/27/23)  
 2 (2x), last at Army (8/27) ..... **SH** .....2 (2x), last at Army (8/27/23)  
 1 (2x), last at Army (8/27) ..... **SOG** .....1 (5x), last at Army (8/27/23)

**2023 SEASON HIGHLIGHTS**

Scored first career goal in the 38th minute at Army (8/27)...

**GAME BY GAME**

| Date          | Opponent    | Game Started | Minutes    | Goals    | Assists  | Points   | Shots    | Shots On Goal | Game Winner |
|---------------|-------------|--------------|------------|----------|----------|----------|----------|---------------|-------------|
| 8/17          | Samford     | *            | 75         | 0        | 0        | 0        | 0        | 0             | 0           |
| 8/20          | Troy        | *            | 55         | 0        | 0        | 0        | 1        | 1             | 0           |
| 8/24          | at Syracuse | *            | 71         | 0        | 0        | 0        | 2        | 1             | 0           |
| 8/27          | at Army     | *            | 74         | 1        | 0        | 2        | 2        | 1             | 0           |
| <b>SEASON</b> |             | <b>4</b>     | <b>275</b> | <b>1</b> | <b>0</b> | <b>2</b> | <b>4</b> | <b>3</b>      | <b>0</b>    |

**CAREER VS WAKE FOREST**

| Match | Starter | Minutes | Goals | Assists | Shots | Shots On Goal | Result |
|-------|---------|---------|-------|---------|-------|---------------|--------|
|-------|---------|---------|-------|---------|-------|---------------|--------|

**BROWN'S CAREER STATS**

| YEAR         | GP-GS       | MIN        | G        | A        | PTS      | SH       | SOG      | SOG%        | SH%         | PK-ATT     | GW       |
|--------------|-------------|------------|----------|----------|----------|----------|----------|-------------|-------------|------------|----------|
| 2020         | 1-0         | 2          | 0        | 0        | 0        | 0        | 0        | -           | -           | 0-0        | 0        |
| 2022         | 15-0        | 247        | 0        | 0        | 0        | 3        | 2        | .667        | .000        | 0-0        | 0        |
| 2023         | 4-4         | 275        | 1        | 0        | 2        | 5        | 3        | .600        | .200        | 0-0        | 0        |
| <b>TOTAL</b> | <b>20-4</b> | <b>524</b> | <b>1</b> | <b>0</b> | <b>2</b> | <b>8</b> | <b>5</b> | <b>.625</b> | <b>.125</b> | <b>0-0</b> | <b>0</b> |

PLAYER CAPSULES



**LJ KNOX**

**11**

**DEFENDER**

**Jr. | 5-10**

**Brentwood, Tenn. | Brentwood Academy**

**SEASON HIGH**

**CAREER HIGH**

90 (4x), last at Army (8/27) ..... **MINS** ..... 90 (4x), last at Army (8/27/23)  
 1, at Syracuse (8/24) ..... **G** ..... 1, at Syracuse (8/24/23)  
 1, vs. Troy (8/20) ..... **A** ..... 1, vs. Troy (8/20/23)  
 2, at Syracuse (8/24) ..... **PTS** ..... 2, at Syracuse (8/24/23)  
 2 (2x), last at Syracuse (8/24) ..... **SH** ..... 2 (2x), last at Syracuse (8/24/23)  
 2, at Syracuse (8/24) ..... **SOG** ..... 2, at Syracuse (8/24)

**2023 SEASON HIGHLIGHTS**

Picked up first career assist vs Troy (8/20), heading a corner to the right foot on Richards for the fourth goal of the match... Scored first career goal, a game-winner, in the 61st minute at Syracuse...

**GAME BY GAME**

| Date          | Opponent    | Game Started | Minutes  | Goals      | Assists  | Points   | Shots    | Shots On Goal | Game Winner |          |
|---------------|-------------|--------------|----------|------------|----------|----------|----------|---------------|-------------|----------|
| 8/17          | Samford     | *            | 90       | 0          | 0        | 0        | 2        | 0             | 0           |          |
| 8/20          | Troy        | *            | 90       | 0          | 1        | 1        | 0        | 0             | 0           |          |
| 8/24          | at Syracuse | *            | 90       | 1          | 0        | 2        | 2        | 2             | 1           |          |
| 8/27          | at Ar.y     | *            | 90       | 0          | 0        | 0        | 0        | 0             | 0           |          |
| <b>SEASON</b> |             |              | <b>4</b> | <b>360</b> | <b>1</b> | <b>1</b> | <b>3</b> | <b>4</b>      | <b>2</b>    | <b>1</b> |

**CAREER VS WAKE FOREST**

| Match         | Starter | Minutes   | Goals    | Assists  | Shots    | Shots On Goal | Result       |
|---------------|---------|-----------|----------|----------|----------|---------------|--------------|
| 8/28/22       |         | 25        | 0        | 0        | 0        | 0             | T, 0-0       |
| <b>CAREER</b> |         | <b>25</b> | <b>0</b> | <b>0</b> | <b>0</b> | <b>0</b>      | <b>0-0-1</b> |

**KNOX'S CAREER STATS**

| YEAR         | GP-GS       | MIN        | G        | A        | PTS      | SH       | SOG      | SOG%        | SH%         | PK-ATT     | GW       |
|--------------|-------------|------------|----------|----------|----------|----------|----------|-------------|-------------|------------|----------|
| 2021         | 7-0         | 126        | 0        | 0        | 0        | 1        | 0        | .000        | .000        | 0-0        | 0        |
| 2022         | 10-0        | 141        | 0        | 0        | 0        | 0        | 0        | .000        | .000        | 0-0        | 0        |
| 2023         | 4-4         | 360        | 1        | 1        | 3        | 4        | 2        | .500        | .250        | 0-0        | 1        |
| <b>TOTAL</b> | <b>21-4</b> | <b>671</b> | <b>1</b> | <b>1</b> | <b>3</b> | <b>5</b> | <b>2</b> | <b>.400</b> | <b>.200</b> | <b>0-0</b> | <b>1</b> |

PLAYER CAPSULES



**HALEY DUCA**

**12**

**DEFENDER**

**Jr. | 5-2**

**Chelsea, Ala. | Chelsea HS**

**SEASON HIGH**

**CAREER HIGH**

25, vs. Troy (8/20)..... **MINS** ..... 27, vs. Southern Miss (8/21/22)  
 ..... **G** .....  
 ..... **A** .....  
 ..... **PTS** .....  
 ..... **SH** ..... 1, vs. Southern Miss (8/21/22)  
 ..... **SOG** ..... 1, vs. Southern Miss (8/21/22)

**2023 SEASON HIGHLIGHTS**

**GAME BY GAME**

| Date          | Opponent | Game Started | Minutes   | Goals    | Assists  | Points   | Shots    | Shots On Goal | Game Winner |
|---------------|----------|--------------|-----------|----------|----------|----------|----------|---------------|-------------|
| 8/20          | Troy     |              | 25        | 0        | 0        | 0        | 0        | 0             | 0           |
| 8/27          | at Army  |              | 7         | 0        | 0        | 0        | 0        | 0             | 0           |
| <b>SEASON</b> |          | <b>0</b>     | <b>32</b> | <b>0</b> | <b>0</b> | <b>0</b> | <b>0</b> | <b>0</b>      | <b>0</b>    |

**CAREER VS WAKE FOREST**

| Match         | Starter  | Minutes  | Goals    | Assists  | Shots    | Shots On Goal | Result   |
|---------------|----------|----------|----------|----------|----------|---------------|----------|
| 8/28/22       |          | 1        | 0        | 0        | 0        | 0             | 0        |
| <b>CAREER</b> | <b>0</b> | <b>1</b> | <b>0</b> | <b>0</b> | <b>0</b> | <b>0</b>      | <b>0</b> |

**DUCA'S CAREER STATS**

| YEAR         | GP-GS      | MIN       | G        | A        | PTS      | SH       | SOG      | SOG%         | SH%         | PK-ATT     | GW       |
|--------------|------------|-----------|----------|----------|----------|----------|----------|--------------|-------------|------------|----------|
| 2022         | 2-0        | 28        | 0        | 0        | 0        | 1        | 1        | 1.000        | .000        | 0-0        | 0        |
| 2023         | 2-0        | 32        | 0        | 0        | 0        | 0        | 0        | -            | -           | 0-0        | 0        |
| <b>TOTAL</b> | <b>4-0</b> | <b>60</b> | <b>0</b> | <b>0</b> | <b>0</b> | <b>1</b> | <b>1</b> | <b>1.000</b> | <b>.000</b> | <b>0-0</b> | <b>0</b> |





PLAYER CAPSULES



**SYDNEY RICHARDS**

**14**

**MIDFIELDER/FORWARD**  
**5th | 5-7**  
**Plano, Texas | Plano Senior HS**

**SEASON HIGH**

**CAREER HIGH**

83, vs. Samford (8/17)..... **MINS** .....101, vs. Georgia 11/15/20  
 2, vs. Troy (8/20)..... **G** .....2 (3x), last vs. Troy (8/20/23)  
 1, at Army (8/27)..... **A** .....2, vs. Southern Miss (8/21/22)  
 4, vs. Troy (8/20)..... **PTS** .....4 (3x), last vs. Troy (8/20/23)  
 5, at Syracuse (8/24)..... **SH** .....6, vs. Troy (9/8/19)  
 3, at Syracuse (8/24)..... **SOG** .....4, vs. Troy (9/8/19)

**2023 SEASON HIGHLIGHTS**

Recorded third career brace with goals in minutes 51 and 56 vs Troy (8/20)...

**GAME BY GAME**

| Date          | Opponent    | Game Started | Minutes    | Goals    | Assists  | Points   | Shots     | Shots On Goal | Game Winner |
|---------------|-------------|--------------|------------|----------|----------|----------|-----------|---------------|-------------|
| 8/17          | Samford     | *            | 83         | 0        | 0        | 0        | 1         | 1             | 0           |
| 8/20          | Troy        | *            | 46         | 2        | 0        | 4        | 3         | 2             | 0           |
| 8/24          | at Syracuse | *            | 71         | 0        | 0        | 0        | 5         | 3             | 0           |
| 8/27          | at Army     | *            | 76         | 0        | 1        | 1        | 1         | 0             | 0           |
| <b>SEASON</b> |             | <b>4</b>     | <b>276</b> | <b>2</b> | <b>1</b> | <b>5</b> | <b>10</b> | <b>6</b>      | <b>0</b>    |

**CAREER VS WAKE FOREST**

| Match         | Starter  | Minutes   | Goals    | Assists  | Shots    | Shots On Goal | Result       |
|---------------|----------|-----------|----------|----------|----------|---------------|--------------|
| 8/28/22       | *        | 66        | 0        | 0        | 0        | 0             | T, 0-0       |
| <b>CAREER</b> | <b>1</b> | <b>66</b> | <b>0</b> | <b>0</b> | <b>0</b> | <b>0</b>      | <b>0-0-1</b> |

**RICHARDS' CAREER STATS**

| YEAR         | GP-GS        | MIN          | G         | A        | PTS       | SH         | SOG       | SOG%        | SH%         | PK-ATT     | GW       |
|--------------|--------------|--------------|-----------|----------|-----------|------------|-----------|-------------|-------------|------------|----------|
| 2019         | 19-18        | 1,329        | 4         | 1        | 9         | 27         | 14        | .519        | .148        | 0-0        | 2        |
| 2020         | 16-16        | 1,266        | 5         | 1        | 11        | 25         | 9         | .360        | .200        | 1-1        | 1        |
| 2021         | 20-20        | 1,440        | 7         | 1        | 15        | 45         | 19        | .422        | .156        | 1-1        | 3        |
| 2022         | 18-18        | 1,255        | 1         | 4        | 6         | 26         | 8         | .308        | .038        | 0-0        | 0        |
| 2023         | 4-4          | 276          | 2         | 1        | 5         | 10         | 6         | .600        | .200        | 0-0        | 0        |
| <b>TOTAL</b> | <b>77-76</b> | <b>5,566</b> | <b>19</b> | <b>8</b> | <b>46</b> | <b>133</b> | <b>56</b> | <b>.421</b> | <b>.143</b> | <b>2-2</b> | <b>6</b> |

## PLAYER CAPSULES


**SYDNIÉ THIBODAUX** **15**
**MIDFIELDER**
**Jr. | 5-5**
**Montgomery, Texas | Lake Creek HS**

## SEASON HIGH

## CAREER HIGH

31, at Army (8/27) ..... **MINS** ..... 60, at Arkansas (9/22/22)  
 ..... **G** ..... 1 (3x), last at Florida State (8/25/22)  
 ..... **A** ..... 1, vs. UMass Lowell (9/8/22)  
 ..... **PTS** ..... 2 (3x), last at Florida State (8/25/22)  
 ..... **SH** ..... 4, vs. Southern Miss (8/21/22)  
 ..... **SOG** ..... 1 (6x), last at Arkansas (9/22/22)

## 2023 SEASON HIGHLIGHTS

Made season debut at Army (8/27), played 31 minutes...

## GAME BY GAME

| Date          | Opponent | Game Started | Minutes   | Goals    | Assists  | Points   | Shots    | Shots On Goal | Game Winner |
|---------------|----------|--------------|-----------|----------|----------|----------|----------|---------------|-------------|
| 8/27          | at Army  |              | 31        | 0        | 0        | 0        | 0        | 0             | 0           |
| <b>SEASON</b> |          | <b>0</b>     | <b>31</b> | <b>0</b> | <b>0</b> | <b>0</b> | <b>0</b> | <b>0</b>      | <b>0</b>    |

## CAREER VS WAKE FOREST

| Match         | Starter | Minutes   | Goals    | Assists  | Shots    | Shots On Goal | Result       |
|---------------|---------|-----------|----------|----------|----------|---------------|--------------|
| 8/28/22       |         | 26        | 0        | 0        | 2        | 1             | T, 0-0       |
| <b>CAREER</b> |         | <b>26</b> | <b>0</b> | <b>0</b> | <b>2</b> | <b>1</b>      | <b>0-0-1</b> |

## THIBODAUX'S CAREER STATS

| YEAR         | GP-GS       | MIN        | G        | A        | PTS      | SH        | SOG      | SOG%        | SH%         | PK-ATT     | GW       |
|--------------|-------------|------------|----------|----------|----------|-----------|----------|-------------|-------------|------------|----------|
| 2021         | 15-0        | 268        | 1        | 0        | 2        | 8         | 1        | .125        | .125        | 0-0        | 0        |
| 2022         | 15-2        | 338        | 2        | 1        | 5        | 14        | 5        | .357        | .143        | 0-0        | 0        |
| 2023         | 1-0         | 31         | 0        | 0        | 0        | 0         | 0        | -           | -           | 0-0        | 0        |
| <b>TOTAL</b> | <b>31-2</b> | <b>637</b> | <b>3</b> | <b>1</b> | <b>7</b> | <b>23</b> | <b>6</b> | <b>.261</b> | <b>.130</b> | <b>0-0</b> | <b>0</b> |

PLAYER CAPSULES



**DYLAN DRIVER**

**16**

**FORWARD**  
**R-Fr. | 5-11**  
**Macon, Ga. | Stratford Academy**

**SEASON HIGH**

**CAREER HIGH**

30, vs. Troy (8/20)..... **MINS** .....30, vs. Troy (8/20)  
 ..... **G** .....  
 ..... **A** .....  
 ..... **PTS** .....  
 ..... **SH** .....  
 ..... **SOG** .....

2023 SEASON HIGHLIGHTS

GAME BY GAME

| Date          | Opponent    | Game Started | Minutes   | Goals    | Assists  | Points   | Shots    | Shots On Goal | Game Winner |
|---------------|-------------|--------------|-----------|----------|----------|----------|----------|---------------|-------------|
| 8/17          | Samford     |              | 2         | 0        | 0        | 0        | 0        | 0             | 0           |
| 8/20          | Troy        |              | 30        | 0        | 0        | 0        | 0        | 0             | 0           |
| 8/24          | at Syracuse |              | 10        | 0        | 0        | 0        | 0        | 0             | 0           |
| 8/27          | at Army     |              | 21        | 0        | 0        | 0        | 0        | 0             | 0           |
| <b>SEASON</b> |             | <b>0</b>     | <b>63</b> | <b>0</b> | <b>0</b> | <b>0</b> | <b>0</b> | <b>0</b>      | <b>0</b>    |

DRIVER'S CAREER STATS

| YEAR         | GP-GS      | MIN       | G        | A        | PTS      | SH       | SOG      | SOG%     | SH%      | PK-ATT     | GW       |
|--------------|------------|-----------|----------|----------|----------|----------|----------|----------|----------|------------|----------|
| 2023         | 4-0        | 63        | 0        | 0        | 0        | 0        | 0        | -        | -        | 0-0        | 0        |
| <b>TOTAL</b> | <b>4-0</b> | <b>63</b> | <b>0</b> | <b>0</b> | <b>0</b> | <b>0</b> | <b>0</b> | <b>-</b> | <b>-</b> | <b>0-0</b> | <b>0</b> |

PLAYER CAPSULES



**MADDY BONDON** **17**  
**MIDFIELDER/DEFENDER**  
**Sr. | 5-4**  
**Duluth, Ga. | Peachtree Ridge HS**

**SEASON HIGH** **CAREER HIGH**  
 25, vs. Troy (8/20)..... **MINS** .....29, vs. Kennesaw State (2/19/21)  
 1, vs. Troy (8/20)..... **G** .....1, vs. Troy (8/20/23)  
 ..... **A** .....  
 2, vs. Troy (8/20)..... **PTS** .....2, vs. Troy (8/20/23)  
 1, vs. Troy (8/20)..... **SH** .....1, vs. Troy (8/20/23)  
 1, vs. Troy (8/20)..... **SOG** .....1, vs. Troy (8/20/23)

2023 SEASON HIGHLIGHTS

Scored first collegiate goal on first collegiate shot in the 45th minute against Troy (8/20)...

GAME BY GAME

| Date          | Opponent    | Game Started | Minutes   | Goals    | Assists  | Points   | Shots    | Shots On Goal | Game Winner |
|---------------|-------------|--------------|-----------|----------|----------|----------|----------|---------------|-------------|
| 8/17          | Samford     |              | 1         | 0        | 0        | 0        | 0        | 0             | 0           |
| 8/20          | Troy        |              | 25        | 1        | 0        | 2        | 1        | 1             | 0           |
| 8/24          | at Syracuse |              | 2         | 0        | 0        | 0        | 0        | 0             | 0           |
| 8/27          | at Army     |              | 16        | 0        | 0        | 0        | 0        | 0             | 0           |
| <b>SEASON</b> |             | <b>0</b>     | <b>44</b> | <b>1</b> | <b>0</b> | <b>2</b> | <b>1</b> | <b>1</b>      | <b>0</b>    |

CAREER VS WAKE FOREST

| Match | Starter | Minutes | Goals | Assists | Shots | Shots On Goal | Result |
|-------|---------|---------|-------|---------|-------|---------------|--------|
|-------|---------|---------|-------|---------|-------|---------------|--------|

BONDON'S CAREER STATS

| YEAR         | GP-GS      | MIN        | G        | A        | PTS      | SH       | SOG      | SOG%         | SH%          | PK-ATT     | GW       |
|--------------|------------|------------|----------|----------|----------|----------|----------|--------------|--------------|------------|----------|
| 2020         | 3-0        | 36         | 0        | 0        | 0        | 0        | 0        | -            | -            | 0-0        | 0        |
| 2021         | 1-0        | 25         | 0        | 0        | 0        | 0        | 0        | -            | -            | 0-0        | 0        |
| 2022         | 0-0        | 0          | 0        | 0        | 0        | 0        | 0        | -            | -            | 0-0        | 0        |
| 2023         | 4-0        | 44         | 1        | 0        | 2        | 1        | 1        | 1.000        | 1.000        | 0-0        | 0        |
| <b>TOTAL</b> | <b>8-0</b> | <b>105</b> | <b>1</b> | <b>0</b> | <b>2</b> | <b>1</b> | <b>1</b> | <b>1.000</b> | <b>1.000</b> | <b>0-0</b> | <b>0</b> |

PLAYER CAPSULES



**JAYCIE SILHAN**

**18**

**FORWARD/DEFENDER**  
**Jr. | 5-11**  
**Spring, Texas | Klein Oak HS**

**SEASON HIGH**

**CAREER HIGH**

12, vs. Troy (8/20) ..... **MINS** ..... 27, vs. Alabama A&M (9/9/21)  
 ..... **G** .....  
 ..... **A** .....  
 ..... **PTS** .....  
 ..... **SH** ..... 1 (2x), last vs. Southern Miss (8/21/22)  
 ..... **SOG** .....

2023 SEASON HIGHLIGHTS

GAME BY GAME

| Date          | Opponent | Game Started | Minutes   | Goals    | Assists  | Points   | Shots    | Shots On Goal | Game Winner |
|---------------|----------|--------------|-----------|----------|----------|----------|----------|---------------|-------------|
| 8/20          | Troy     |              | 12        | 0        | 0        | 0        | 0        | 0             | 0           |
| <b>SEASON</b> |          | <b>0</b>     | <b>12</b> | <b>0</b> | <b>0</b> | <b>0</b> | <b>0</b> | <b>0</b>      | <b>0</b>    |

CAREER VS WAKE FOREST

| Match | Starter | Minutes | Goals | Assists | Shots | Shots On Goal | Result |
|-------|---------|---------|-------|---------|-------|---------------|--------|
|       |         |         |       |         |       |               |        |

SILHAN'S CAREER STATS

| YEAR         | GP-GS       | MIN        | G        | A        | PTS      | SH       | SOG      | SOG%        | SH%         | PK-ATT     | GW       |
|--------------|-------------|------------|----------|----------|----------|----------|----------|-------------|-------------|------------|----------|
| 2021         | 9-0         | 102        | 0        | 0        | 0        | 1        | 0        | .000        | .000        | 0-0        | 0        |
| 2022         | 1-0         | 17         | 0        | 0        | 0        | 1        | 0        | .000        | .000        | 0-0        | 0        |
| 2023         | 1-0         | 12         | 0        | 0        | 0        | 0        | 0        | -           | -           | 0-0        | 0        |
| <b>TOTAL</b> | <b>11-0</b> | <b>131</b> | <b>0</b> | <b>0</b> | <b>0</b> | <b>2</b> | <b>0</b> | <b>.000</b> | <b>.000</b> | <b>0-0</b> | <b>0</b> |

PLAYER CAPSULES



**MARISSA ARIAS**

**19**

**FORWARD**

**R-Sr. | 5-5**

**San Antonio, Texas | Louis D. Brandeis HS**

**SEASON HIGH**

**CAREER HIGH**

46, at Army (8/27)..... **MINS** .....67, vs. Arkansas (10/21/21)  
 1 (2x), last at Syracuse (8/24)..... **G**.....2, vs. Alabama A&M (9/9/21)  
 ..... **A**.....1 (4x), last vs. Southern Miss (8/21/22)  
 2 (2x), last at Syracuse (8/24)..... **PTS**.....5, vs. Alabama A&M (9/9/21)  
 2, vs. Troy (8/20)..... **SH**.....6, vs. Alabama A&M (9/9/21)  
 2, vs. Troy (8/20)..... **SOG**.....4, vs. Alabama A&M (9/9/21)

**2023 SEASON HIGHLIGHTS**

Got on the scoresheet in back-to-back matches, scoring in the 75th minute versus Troy (8/20) and the 25th minute at Syracuse (8/24)...

**GAME BY GAME**

| Date          | Opponent    | Game Started | Minutes    | Goals    | Assists  | Points   | Shots    | Shots On Goal | Game Winner |
|---------------|-------------|--------------|------------|----------|----------|----------|----------|---------------|-------------|
| 8/17          | Samford     |              | 29         | 0        | 0        | 0        | 0        | 0             | 0           |
| 8/20          | Troy        |              | 32         | 1        | 0        | 0        | 2        | 2             | 0           |
| 8/24          | at Syracuse |              | 40         | 1        | 0        | 0        | 1        | 1             | 0           |
| 8/27          | at Army     | *            | 46         | 0        | 0        | 0        | 0        | 0             | 0           |
| <b>SEASON</b> |             | <b>1</b>     | <b>147</b> | <b>2</b> | <b>0</b> | <b>0</b> | <b>3</b> | <b>3</b>      | <b>0</b>    |

**CAREER VS WAKE FOREST**

| Match         | Starter  | Minutes   | Goals    | Assists  | Shots    | Shots On Goal | Result       |
|---------------|----------|-----------|----------|----------|----------|---------------|--------------|
| 8/28/22       | *        | 45        | 0        | 0        | 1        | 0             | T, 0-0       |
| <b>CAREER</b> | <b>1</b> | <b>45</b> | <b>0</b> | <b>0</b> | <b>1</b> | <b>0</b>      | <b>0-0-1</b> |

**ARIAS' CAREER STATS**

| YEAR         | GP-GS        | MIN          | G         | A        | PTS       | SH        | SOG       | SOG%        | SH%         | PK-ATT     | GW       |
|--------------|--------------|--------------|-----------|----------|-----------|-----------|-----------|-------------|-------------|------------|----------|
| 2020         | 11-0         | 314          | 1         | 0        | 2         | 4         | 2         | .500        | .250        | 0-0        | 0        |
| 2021         | 20-13        | 903          | 7         | 3        | 17        | 26        | 14        | .538        | .269        | 0-0        | 3        |
| 2022         | 18-6         | 715          | 0         | 1        | 1         | 14        | 2         | .143        | .000        | 0-0        | 0        |
| 2023         | 4-1          | 147          | 2         | 0        | 4         | 3         | 3         | 1.000       | .500        | 0-0        | 0        |
| <b>TOTAL</b> | <b>53-20</b> | <b>2,079</b> | <b>10</b> | <b>4</b> | <b>24</b> | <b>47</b> | <b>21</b> | <b>.447</b> | <b>.213</b> | <b>0-0</b> | <b>3</b> |

PLAYER CAPSULES



**HAYDEN COLSON** **20**

**DEFENDER**  
**So. | 5-8**  
**Denton, Texas | John H. Guyer HS**

**SEASON HIGH**

**CAREER HIGH**

90 (3x), last at Syracuse (8/24)..... **MINS** ..... 90 (3x), last at Syracuse (8/24/23)  
 ..... **G** ..... 1, vs. Southern Miss (8/21/22)  
 2, vs. Troy (8/20)..... **A** ..... 2, vs. Troy (8/20/23)  
 2, vs. Troy (8/20)..... **PTS** ..... 2 (2x), last vs. Troy (8/20/23)  
 ..... **SH** ..... 1 (7x), last at Kentucky (10/6/22)  
 ..... **SOG** ..... 1 (5x), last at Kentucky (10/6/22)

**2023 SEASON HIGHLIGHTS**

Picked up first two assists of collegiate career vs. Troy (8/20)...

**GAME BY GAME**

| Date          | Opponent    | Game Started | Minutes    | Goals    | Assists  | Points   | Shots    | Shots On Goal | Game Winner |
|---------------|-------------|--------------|------------|----------|----------|----------|----------|---------------|-------------|
| 8/17          | Samford     | *            | 90         | 0        | 0        | 0        | 0        | 0             | 0           |
| 8/20          | Troy        | *            | 90         | 0        | 2        | 2        | 0        | 0             | 0           |
| 8/24          | at Syracuse | *            | 90         | 0        | 0        | 0        | 0        | 0             | 0           |
| 8/27          | at Syracuse | *            | 68         | 0        | 0        | 0        | 0        | 0             | 0           |
| <b>SEASON</b> |             | <b>4</b>     | <b>338</b> | <b>0</b> | <b>2</b> | <b>2</b> | <b>0</b> | <b>0</b>      | <b>0</b>    |

**CAREER VS WAKE FOREST**

| Match         | Starter  | Minutes   | Goals    | Assists  | Shots    | Shots On Goal | Result       |
|---------------|----------|-----------|----------|----------|----------|---------------|--------------|
| 8/28/22       | *        | 53        | 0        | 0        | 0        | 0             | T, 0-0       |
| <b>CAREER</b> | <b>1</b> | <b>53</b> | <b>0</b> | <b>0</b> | <b>0</b> | <b>0</b>      | <b>0-0-1</b> |

**COLSON'S CAREER STATS**

| YEAR         | GP-GS        | MIN          | G        | A        | PTS      | SH       | SOG      | SOG%        | SH%         | PK-ATT     | GW       |
|--------------|--------------|--------------|----------|----------|----------|----------|----------|-------------|-------------|------------|----------|
| 2022         | 18-18        | 1,343        | 1        | 0        | 2        | 7        | 5        | .714        | .143        | 0-0        | 0        |
| 2023         | 4-4          | 338          | 0        | 2        | 2        | 0        | 0        | -           | -           | 0-0        | 0        |
| <b>TOTAL</b> | <b>22-22</b> | <b>1,693</b> | <b>1</b> | <b>2</b> | <b>4</b> | <b>7</b> | <b>5</b> | <b>.714</b> | <b>.143</b> | <b>0-0</b> | <b>0</b> |

PLAYER CAPSULES



**OLIVIA WOODSON** **22**

**FORWARD**  
**Fr. | 5-4**  
**Richmond, Va. | Monacan HS**

**SEASON HIGH**

**CAREER HIGH**

54, vs. Samford (8/17) ..... **MINS** ..... 54, vs. Samford (8/17/23)  
 ..... **G** .....  
 ..... **A** .....  
 ..... **PTS** .....  
 3, vs. Samford (8/17) ..... **SH** ..... 3, vs. vs. Samford (8/17/23)  
 2, vs. Samford (8/17) ..... **SOG** ..... 2, vs. Samford (8/17/23)

2023 SEASON HIGHLIGHTS

GAME BY GAME

| Date          | Opponent    | Game Started | Minutes    | Goals    | Assists  | Points   | Shots    | Shots On Goal | Game Winner |
|---------------|-------------|--------------|------------|----------|----------|----------|----------|---------------|-------------|
| 8/17          | Samford     | *            | 54         | 0        | 0        | 0        | 3        | 2             | 0           |
| 8/20          | Troy        | *            | 53         | 0        | 0        | 0        | 2        | 1             | 0           |
| 8/24          | at Syracuse | *            | 41         | 0        | 0        | 0        | 2        | 0             | 0           |
| 8/27          | at Army     |              | 24         | 0        | 0        | 0        | 2        | 0             | 0           |
| <b>SEASON</b> |             | <b>3</b>     | <b>172</b> | <b>0</b> | <b>0</b> | <b>0</b> | <b>9</b> | <b>3</b>      | <b>0</b>    |

WOODSON'S CAREER STATS

| YEAR         | GP-GS      | MIN        | G        | A        | PTS      | SH       | SOG      | SOG%        | SH%         | PK-ATT     | GW       |
|--------------|------------|------------|----------|----------|----------|----------|----------|-------------|-------------|------------|----------|
| 2023         | 4-3        | 172        | 0        | 0        | 0        | 9        | 3        | .333        | .000        | 0-0        | 0        |
| <b>TOTAL</b> | <b>4-3</b> | <b>172</b> | <b>0</b> | <b>0</b> | <b>0</b> | <b>9</b> | <b>3</b> | <b>.333</b> | <b>.000</b> | <b>0-0</b> | <b>0</b> |



PLAYER CAPSULES



**OLIVIA CANDELINO** **23**  
**FORWARD**  
**Sr. | 5-5**  
**Jacksonville, Fla. | The Bolles School**

**SEASON HIGH** ..... **CAREER HIGH**  
 75, at Syracuse (8/24)..... **MINS** ..... 89, vs. Samford (11/12/22)  
 ..... **G** ..... 2, vs. Chattanooga (9/5/21)  
 1, vs. Troy (8/20)..... **A** ..... 1 (13x), last vs. Troy (8/20/23)  
 1, vs. Troy (8/20)..... **PTS** ..... 4, vs. Chattanooga (9/5/21)  
 5, at Army (8/27) ..... **SH** ..... 5 (2x), last at Army (8/27/23)  
 4, at Army (8/27)..... **SOG** ..... 4, at Army (8/27/23)

2023 SEASON HIGHLIGHTS

Picked up first assist of the season in the 51st minute versus Troy (8/20)... Ripped off a career-high four shots on-goal at Army (8/27)...

GAME BY GAME

| Date          | Opponent    | Game Started | Minutes    | Goals    | Assists  | Points   | Shots     | Shots On Goal | Game Winner |
|---------------|-------------|--------------|------------|----------|----------|----------|-----------|---------------|-------------|
| 8/17          | Samford     | *            | 72         | 0        | 0        | 0        | 2         | 1             | 0           |
| 8/20          | Troy        | *            | 60         | 0        | 1        | 1        | 3         | 0             | 0           |
| 8/24          | at Syracuse | *            | 75         | 0        | 0        | 0        | 0         | 0             | 0           |
| 8/27          | at Army     | *            | 68         | 0        | 0        | 0        | 5         | 4             | 0           |
| <b>SEASON</b> |             | <b>4</b>     | <b>275</b> | <b>0</b> | <b>1</b> | <b>1</b> | <b>10</b> | <b>5</b>      | <b>0</b>    |

CAREER VS WAKE FOREST

| Match         | Starter  | Minutes   | Goals    | Assists  | Shots    | Shots On Goal | Result       |
|---------------|----------|-----------|----------|----------|----------|---------------|--------------|
| 8/28/22       | 0        | 41        | 0        | 0        | 0        | 0             | T, 0-0       |
| <b>CAREER</b> | <b>0</b> | <b>41</b> | <b>0</b> | <b>0</b> | <b>0</b> | <b>0</b>      | <b>0-0-1</b> |

CANDELINO'S CAREER STATS

| YEAR         | GP-GS        | MIN          | G        | A         | PTS       | SH        | SOG       | SOG%        | SH%         | PK-ATT     | GW       |
|--------------|--------------|--------------|----------|-----------|-----------|-----------|-----------|-------------|-------------|------------|----------|
| 2020         | 17-8         | 712          | 3        | 1         | 7         | 14        | 6         | .429        | .214        | 0-0        | 2        |
| 2021         | 20-20        | 1,331        | 2        | 8         | 12        | 31        | 13        | .419        | .065        | 0-0        | 0        |
| 2022         | 16-13        | 874          | 1        | 3         | 5         | 20        | 5         | .250        | .050        | 0-0        | 0        |
| 2023         | 4-4          | 275          | 0        | 1         | 1         | 10        | 5         | .500        | .000        | 0-0        | 0        |
| <b>TOTAL</b> | <b>57-45</b> | <b>3,192</b> | <b>6</b> | <b>13</b> | <b>25</b> | <b>75</b> | <b>29</b> | <b>.387</b> | <b>.080</b> | <b>0-0</b> | <b>2</b> |

PLAYER CAPSULES



**ERIN HOUSTON**

**28**

**DEFENDER**  
So. | 5-9  
Kennesaw, Ga. | Harrison HS

**SEASON HIGH**

**CAREER HIGH**

34, at Army (8/27)..... **MINS** ..... 49, vs. Southern Miss (8/21/22)  
..... **G** .....  
..... **A** ..... 2, vs. Southern Miss (8/21/22)  
..... **PTS** ..... 2, vs. Southern Miss (8/21/22)  
..... **SH** .....  
..... **SOG** .....

2023 SEASON HIGHLIGHTS

GAME BY GAME

| Date          | Opponent    | Game Started | Minutes   | Goals    | Assists  | Points   | Shots    | Shots On Goal | Game Winner |
|---------------|-------------|--------------|-----------|----------|----------|----------|----------|---------------|-------------|
| 8/17          | Samford     |              | 12        | 0        | 0        | 0        | 0        | 0             | 0           |
| 8/20          | Troy        |              | 21        | 0        | 0        | 0        | 0        | 0             | 0           |
| 8/24          | at Syracuse |              | 6         | 0        | 0        | 0        | 0        | 0             | 0           |
| 8/27          | at Army     |              | 34        | 0        | 0        | 0        | 0        | 0             | 0           |
| <b>SEASON</b> |             | <b>0</b>     | <b>67</b> | <b>0</b> | <b>0</b> | <b>0</b> | <b>0</b> | <b>0</b>      | <b>0</b>    |

CAREER VS WAKE FOREST

| Match         | Starter  | Minutes   | Goals    | Assists  | Shots    | Shots On Goal | Result       |
|---------------|----------|-----------|----------|----------|----------|---------------|--------------|
| 8/28/22       |          | 37        | 0        | 0        | 0        | 0             | T, 0-0       |
| <b>CAREER</b> | <b>0</b> | <b>37</b> | <b>0</b> | <b>0</b> | <b>0</b> | <b>0</b>      | <b>0-0-1</b> |

HOUSTON'S CAREER STATS

| YEAR         | GP-GS       | MIN        | G        | A        | PTS      | SH       | SOG      | SOG%     | SH%      | PK-ATT     | GW       |
|--------------|-------------|------------|----------|----------|----------|----------|----------|----------|----------|------------|----------|
| 2022         | 14-0        | 283        | 0        | 2        | 2        | 0        | 0        | -        | -        | 0-0        | 0        |
| 2023         | 3-0         | 67         | 0        | 0        | 0        | 0        | 0        | -        | -        | 0-0        | 0        |
| <b>TOTAL</b> | <b>17-0</b> | <b>350</b> | <b>0</b> | <b>2</b> | <b>2</b> | <b>0</b> | <b>0</b> | <b>-</b> | <b>-</b> | <b>0-0</b> | <b>0</b> |

PLAYER CAPSULES



**MADDIE SIMPSON**

**32**

**FORWARD**

**Sr. | 5-7**

**Wasau, Wisc. | DC Everest Senior HS**

**SEASON HIGH**

**CAREER HIGH**

43, vs. Samford (8/17) ..... **MINS** ..... 66 (3x), last at Missouri (9/16/22)  
 ..... **G** ..... 1 (6x), last at Texas A&M (10/14/22)  
 1, vs. Troy (8/20)..... **A** ..... 1 (3x), last vs. Troy (8/20/23)  
 1 (2x), last at Syracuse (8/24)..... **PTS** ..... 3, vs. UMass Lowell (9/8/22)  
 1 (2x), last at Syracuse (8/24)..... **SH** ..... 5, vs. UMass Lowell (9/8/22)  
 1, at Syracuse (8/24) ..... **SOG** ..... 3, vs. Florida (10/17/21)

**2023 SEASON HIGHLIGHTS**

Picked up first assist of the 2023 season in the 45th minute versus Troy (8/20)...

**GAME BY GAME**

| Date          | Opponent    | Game Started | Minutes    | Goals    | Assists  | Points   | Shots    | Shots On Goal | Game Winner |
|---------------|-------------|--------------|------------|----------|----------|----------|----------|---------------|-------------|
| 8/17          | Samford     |              | 43         | 0        | 0        | 0        | 1        | 0             | 0           |
| 8/20          | Troy        |              | 30         | 0        | 1        | 1        | 0        | 0             | 0           |
| 8/24          | at Syracuse |              | 32         | 0        | 0        | 0        | 1        | 1             | 0           |
| <b>SEASON</b> |             | <b>0</b>     | <b>105</b> | <b>0</b> | <b>1</b> | <b>1</b> | <b>2</b> | <b>1</b>      | <b>0</b>    |

**CAREER VS WAKE FOREST**

| Match         | Starter  | Minutes   | Goals    | Assists  | Shots    | Shots On Goal | Result       |
|---------------|----------|-----------|----------|----------|----------|---------------|--------------|
| 8/28/22       | *        | 61        | 0        | 0        | 0        | 0             | T, 0-0       |
| <b>CAREER</b> | <b>1</b> | <b>61</b> | <b>0</b> | <b>0</b> | <b>0</b> | <b>0</b>      | <b>0-0-1</b> |

**SIMPSON'S CAREER STATS**

| YEAR         | GP-GS        | MIN          | G        | A        | PTS       | SH        | SOG       | SOG%        | SH%         | PK-ATT     | GW       |
|--------------|--------------|--------------|----------|----------|-----------|-----------|-----------|-------------|-------------|------------|----------|
| 2020         | 17-1         | 501          | 2        | 0        | 4         | 10        | 5         | .500        | .200        | 0-0        | 0        |
| 2021         | 16-0         | 403          | 0        | 1        | 1         | 16        | 7         | .438        | .000        | 0-0        | 0        |
| 2022         | 18-11        | 838          | 4        | 1        | 9         | 25        | 10        | .400        | .160        | 0-0        | 1        |
| 2023         | 3-0          | 105          | 0        | 1        | 1         | 2         | 1         | .000        | .000        | 0-0        | 0        |
| <b>TOTAL</b> | <b>54-12</b> | <b>1,847</b> | <b>6</b> | <b>3</b> | <b>15</b> | <b>53</b> | <b>23</b> | <b>.434</b> | <b>.113</b> | <b>0-0</b> | <b>1</b> |



PLAYER CAPSULES



**JENNA SAPONG**

**78**

**GOALKEEPER**

Fr. | 5-8

Johns Creek, Ga. | Northview HS

**SEASON HIGH**

**CAREER HIGH**

MINS

GA

SV

SF

2023 SEASON HIGHLIGHTS

GAME BY GAME

| Date | Opponent | Game Started | Minutes | Goals Allowed | Saves | Shots Faced | Shutout | Combined Shutout | GAA |
|------|----------|--------------|---------|---------------|-------|-------------|---------|------------------|-----|
|------|----------|--------------|---------|---------------|-------|-------------|---------|------------------|-----|

SAPONG'S CAREER STATS

| YEAR         | GP-GS      | MIN      | GA       | GAA         | SV       | SV%      | W-L-T        | SHO      | CBO      | SF       |
|--------------|------------|----------|----------|-------------|----------|----------|--------------|----------|----------|----------|
| 2023         | 0-0        | 0        | 0        | 0.00        | 0        | -        | 0-0-0        | 0        | 0        | 0        |
| <b>TOTAL</b> | <b>0-0</b> | <b>0</b> | <b>0</b> | <b>0.00</b> | <b>0</b> | <b>-</b> | <b>0-0-0</b> | <b>0</b> | <b>0</b> | <b>0</b> |



**2023-24 Auburn Women's Soccer  
Extended Individual Statistics  
All games**

Page 1/1  
as of Aug 30, 2023

**Game Records**

| Overall | Conference | Home  | Away  | Neutral |
|---------|------------|-------|-------|---------|
| 3-0-1   | 0-0-0      | 1-0-1 | 2-0-0 | 0-0-0   |

**Team Box Score Extended**

| No.              | Player               | GP-GS    | G         | GPG         | A         | APG         | PTS       | PPG         | SH        | SPG          | SH%         | SOG       | SOG/G       | SOG%        | YC       | RC       | GWG      | PK-ATT     |
|------------------|----------------------|----------|-----------|-------------|-----------|-------------|-----------|-------------|-----------|--------------|-------------|-----------|-------------|-------------|----------|----------|----------|------------|
| 4                | Haddock, Anna        | 4-4      | 2         | 0.50        | 2         | 0.50        | 6         | 1.50        | 6         | 1.50         | .333        | 4         | 1.00        | .667        | 1        | 0        | 2        | 0-0        |
| 14               | Richards, Sydney     | 4-4      | 2         | 0.50        | 1         | 0.25        | 5         | 1.25        | 10        | 2.50         | .200        | 6         | 1.50        | .600        | 0        | 0        | 0        | 0-0        |
| 19               | Arias, Marissa       | 4-1      | 2         | 0.50        | 0         | 0.00        | 4         | 1.00        | 3         | 0.75         | .667        | 3         | 0.75        | 1.000       | 0        | 0        | 0        | 0-0        |
| 11               | Knox, LJ             | 4-4      | 1         | 0.25        | 1         | 0.25        | 3         | 0.75        | 4         | 1.00         | .250        | 2         | 0.50        | .500        | 0        | 0        | 1        | 0-0        |
| 10               | Brown, Sammie        | 4-4      | 1         | 0.25        | 0         | 0.00        | 2         | 0.50        | 5         | 1.25         | .200        | 2         | 0.50        | .400        | 0        | 0        | 0        | 0-0        |
| 17               | Bondon, Maddy        | 4-0      | 1         | 0.25        | 0         | 0.00        | 2         | 0.50        | 1         | 0.25         | 1.000       | 1         | 0.25        | 1.000       | 0        | 0        | 0        | 0-0        |
| 8                | Mooney, Mallory      | 4-4      | 0         | 0.00        | 2         | 0.50        | 2         | 0.50        | 2         | 0.50         | .000        | 1         | 0.25        | .500        | 0        | 0        | 0        | 0-0        |
| 20               | Colson, Hayden       | 4-4      | 0         | 0.00        | 2         | 0.50        | 2         | 0.50        | 0         | 0.00         | .000        | 0         | 0.00        | .000        | 0        | 0        | 0        | 0-0        |
| 23               | Candelino, Olivia    | 4-4      | 0         | 0.00        | 1         | 0.25        | 1         | 0.25        | 10        | 2.50         | .000        | 5         | 1.25        | .500        | 0        | 0        | 0        | 0-0        |
| 7                | Thatcher, Carly      | 4-4      | 0         | 0.00        | 1         | 0.25        | 1         | 0.25        | 5         | 1.25         | .000        | 0         | 0.00        | .000        | 0        | 0        | 0        | 0-0        |
| 2                | O'Callaghan, Maquena | 4-0      | 0         | 0.00        | 1         | 0.25        | 1         | 0.25        | 2         | 0.50         | .000        | 2         | 0.50        | 1.000       | 0        | 0        | 0        | 0-0        |
| 32               | Simpson, Maddie      | 3-0      | 0         | 0.00        | 1         | 0.33        | 1         | 0.33        | 2         | 0.67         | .000        | 1         | 0.33        | .500        | 0        | 0        | 0        | 0-0        |
| 22               | Woodson, Olivia      | 4-3      | 0         | 0.00        | 0         | 0.00        | 0         | 0.00        | 9         | 2.25         | .000        | 3         | 0.75        | .333        | 0        | 0        | 0        | 0-0        |
| 6                | Contreras, Becky     | 3-0      | 0         | 0.00        | 0         | 0.00        | 0         | 0.00        | 1         | 0.33         | .000        | 1         | 0.33        | 1.000       | 0        | 0        | 0        | 0-0        |
| 16               | Driver, Dylan        | 4-0      | 0         | 0.00        | 0         | 0.00        | 0         | 0.00        | 0         | 0.00         | .000        | 0         | 0.00        | .000        | 0        | 0        | 0        | 0-0        |
| 12               | Duca, Haley          | 2-0      | 0         | 0.00        | 0         | 0.00        | 0         | 0.00        | 0         | 0.00         | .000        | 0         | 0.00        | .000        | 0        | 0        | 0        | 0-0        |
| 18               | Silhan, Jaycie       | 1-0      | 0         | 0.00        | 0         | 0.00        | 0         | 0.00        | 0         | 0.00         | .000        | 0         | 0.00        | .000        | 0        | 0        | 0        | 0-0        |
| 28               | Houston, Erin        | 4-0      | 0         | 0.00        | 0         | 0.00        | 0         | 0.00        | 0         | 0.00         | .000        | 0         | 0.00        | .000        | 0        | 0        | 0        | 0-0        |
| 15               | Thibodaux, Sydnie    | 1-0      | 0         | 0.00        | 0         | 0.00        | 0         | 0.00        | 0         | 0.00         | .000        | 0         | 0.00        | .000        | 0        | 0        | 0        | 0-0        |
| 0                | Moore, Madeline      | 4-4      | 0         | 0.00        | 0         | 0.00        | 0         | 0.00        | 0         | 0.00         | .000        | 0         | 0.00        | .000        | 0        | 0        | 0        | 0-0        |
| 00               | Prohaska, Maddie     | 4-4      | 0         | 0.00        | 0         | 0.00        | 0         | 0.00        | 0         | 0.00         | .000        | 0         | 0.00        | .000        | 0        | 0        | 0        | 0-0        |
| 1                | Lo, Maddie           | 1-0      | 0         | 0.00        | 0         | 0.00        | 0         | 0.00        | 0         | 0.00         | .000        | 0         | 0.00        | .000        | 0        | 0        | 0        | 0-0        |
| <b>Total</b>     |                      | <b>4</b> | <b>10</b> | <b>2.50</b> | <b>12</b> | <b>3.00</b> | <b>32</b> | <b>8.00</b> | <b>60</b> | <b>15.00</b> | <b>.167</b> | <b>31</b> | <b>7.75</b> | <b>.517</b> | <b>1</b> | <b>0</b> | <b>-</b> | <b>0-0</b> |
| <b>Opponents</b> |                      | <b>4</b> | <b>3</b>  | <b>0.75</b> | <b>5</b>  | <b>1.25</b> | <b>11</b> | <b>2.75</b> | <b>25</b> | <b>6.25</b>  | <b>.120</b> | <b>10</b> | <b>2.50</b> | <b>.400</b> | <b>4</b> | <b>1</b> | <b>-</b> | <b>0-0</b> |

| ##               | Player           | GP-GS    | MINUTES       | GA        | GA AVG      | SAVES     | SAVES/G     | SAVES%      | W        | L        | T        | SHO/CBO  |
|------------------|------------------|----------|---------------|-----------|-------------|-----------|-------------|-------------|----------|----------|----------|----------|
| 00               | Prohaska, Maddie | 4-4      | 338:56        | 3         | 0.80        | 7         | 1.75        | .700        | 3        | 0        | 1        | 1/1      |
| 1                | Lo, Maddie       | 1-0      | 21:04         | 0         | 0.00        | 0         | 0.00        | .000        | 0        | 0        | 0        | 0/1      |
| TM               | TEAM             | -        | 00:00         | 0         | 0.00        | 0         | 0.00        | .000        | 0        | 0        | 0        | 1/0      |
| <b>Total</b>     |                  | <b>4</b> | <b>360:00</b> | <b>3</b>  | <b>0.75</b> | <b>7</b>  | <b>1.75</b> | <b>.700</b> | <b>3</b> | <b>0</b> | <b>1</b> | <b>2</b> |
| <b>Opponents</b> |                  | <b>4</b> | <b>360:00</b> | <b>10</b> | <b>2.50</b> | <b>22</b> | <b>5.50</b> | <b>.688</b> | <b>0</b> | <b>3</b> | <b>1</b> | <b>1</b> |

**Goals by Period**

| Team      | 1st | 2nd | OT1 | OT2 | TOTAL |
|-----------|-----|-----|-----|-----|-------|
| AUB       | 4   | 6   | 0   | 0   | 10    |
| Opponents | 2   | 1   | 0   | 0   | 3     |

**Corners by Period**

| Team      | 1st | 2nd | OT1 | OT2 | TOTAL |
|-----------|-----|-----|-----|-----|-------|
| AUB       | 17  | 10  | 0   | 0   | 27    |
| Opponents | 4   | 7   | 0   | 0   | 11    |

**Shots by Period**

| Team      | 1st | 2nd | OT1 | OT2 | TOTAL |
|-----------|-----|-----|-----|-----|-------|
| AUB       | 27  | 33  | 0   | 0   | 60    |
| Opponents | 8   | 17  | 0   | 0   | 25    |

**Fouls by Period**

| Team      | 1st | 2nd | OT1 | OT2 | TOTAL |
|-----------|-----|-----|-----|-----|-------|
| AUB       | 14  | 21  | 0   | 0   | 35    |
| Opponents | 30  | 22  | 0   | 0   | 52    |

**Saves by Period**

| Team      | 1st | 2nd | OT1 | OT2 | TOTAL |
|-----------|-----|-----|-----|-----|-------|
| AUB       | 3   | 4   | 0   | 0   | 7     |
| Opponents | 6   | 16  | 0   | 0   | 22    |

**Attendance Summary**

|                    | AUB     | Opponents |
|--------------------|---------|-----------|
| Total              | 1493    | 937       |
| Dates/Avg Per Date | 2 / 747 | 2 / 469   |
| Neutral Site #/Avg | 0 / 0   |           |



**2023-24 Auburn Women's Soccer  
Team Game-by-Game  
All games**

Page 1/1  
as of Aug 30, 2023

| Date             | Opponent           | Score       | G         | A         | Pts       | Sh        | Sh%         | Sog       | Sog%        | GW       | GT       | UA       | OT       | PK-Att     | YC       | RC       | MIN        |
|------------------|--------------------|-------------|-----------|-----------|-----------|-----------|-------------|-----------|-------------|----------|----------|----------|----------|------------|----------|----------|------------|
| 08/17/2023       | Samford            | 0-0         | 0         | 0         | 0         | 14        | .000        | 5         | .357        | 0        | 0        | -        | 0        | 0-0        | 0        | 0        | 112        |
| 08/20/2023       | Troy               | 5-0         | 5         | 6         | 16        | 17        | .294        | 9         | .529        | 1        | 0        | -        | 0        | 0-0        | 0        | 0        | 132        |
| 08/24/2023       | at Syracuse        | 2-1         | 2         | 2         | 6         | 16        | .125        | 10        | .625        | 1        | 0        | -        | 0        | 0-0        | 1        | 0        | 116        |
| 08/27/2023       | at Army West Point | 3-2         | 3         | 4         | 10        | 13        | .231        | 7         | .538        | 1        | 0        | -        | 0        | 0-0        | 0        | 0        | 118        |
| <b>Totals</b>    |                    | <b>10-3</b> | <b>10</b> | <b>12</b> | <b>32</b> | <b>60</b> | <b>.167</b> | <b>31</b> | <b>.517</b> | <b>-</b> | <b>-</b> | <b>-</b> | <b>0</b> | <b>0-0</b> | <b>1</b> | <b>0</b> | <b>478</b> |
| <b>Opponents</b> |                    |             | <b>3</b>  | <b>5</b>  | <b>11</b> | <b>25</b> | <b>.120</b> | <b>10</b> | <b>.400</b> | <b>-</b> | <b>-</b> | <b>-</b> | <b>0</b> | <b>0-0</b> | <b>4</b> | <b>1</b> | <b>-</b>   |

**TEAM PER-GAME**

| Games played | Shots per game | Goals per game | Assists per game | Points per game |
|--------------|----------------|----------------|------------------|-----------------|
| <b>4</b>     | <b>15.00</b>   | <b>2.50</b>    | <b>3.00</b>      | <b>8.00</b>     |

| Date             | Opponent           | Score       | Minutes       | GA        | GAAvg       | Saves     | Save%       | W        | L        | T        | SHO      |
|------------------|--------------------|-------------|---------------|-----------|-------------|-----------|-------------|----------|----------|----------|----------|
| 08/17/2023       | Samford            | 0-0         | 90:00         | 0         | 0.00        | 0         | .000        | 0        | 0        | 1        | 1        |
| 08/20/2023       | Troy               | 5-0         | 90:00         | 0         | 0.00        | 1         | 1.000       | 1        | 0        | 0        | 1        |
| 08/24/2023       | at Syracuse        | 2-1         | 90:00         | 1         | 1.00        | 1         | .500        | 1        | 0        | 0        | 0        |
| 08/27/2023       | at Army West Point | 3-2         | 90:00         | 2         | 2.00        | 5         | .714        | 1        | 0        | 0        | 0        |
| <b>Totals</b>    |                    | <b>10-3</b> | <b>360:00</b> | <b>3</b>  | <b>0.75</b> | <b>7</b>  | <b>.700</b> | <b>3</b> | <b>0</b> | <b>1</b> | <b>2</b> |
| <b>Opponents</b> |                    |             | <b>360:00</b> | <b>10</b> | <b>0.75</b> | <b>22</b> | <b>.688</b> | <b>0</b> | <b>3</b> | <b>1</b> | <b>1</b> |



2023-24 Auburn Women's Soccer  
Category Leaders  
All games

Page 1/1  
as of Aug 30, 2023

| ## | Points           | GP | G | A | Pts | Shots |
|----|------------------|----|---|---|-----|-------|
| 4  | Haddock, Anna    | 4  | 2 | 2 | 6   | 6     |
| 14 | Richards, Sydney | 4  | 2 | 1 | 5   | 10    |
| 19 | Arias, Marissa   | 4  | 2 | 0 | 4   | 3     |
| 11 | Knox, LJ         | 4  | 1 | 1 | 3   | 4     |
| 10 | Brown, Sammie    | 4  | 1 | 0 | 2   | 5     |
| 17 | Bondon, Maddy    | 4  | 1 | 0 | 2   | 1     |

| ## | Shots                | GP | G | A | Shots | Shot% |
|----|----------------------|----|---|---|-------|-------|
| 14 | Richards, Sydney     | 4  | 2 | 1 | 10    | .200  |
| 23 | Candelino, Olivia    | 4  | 0 | 1 | 10    | .000  |
| 22 | Woodson, Olivia      | 4  | 0 | 0 | 9     | .000  |
| 4  | Haddock, Anna        | 4  | 2 | 2 | 6     | .333  |
| 7  | Thatcher, Carly      | 4  | 0 | 1 | 5     | .000  |
| 10 | Brown, Sammie        | 4  | 1 | 0 | 5     | .200  |
| 11 | Knox, LJ             | 4  | 1 | 1 | 4     | .250  |
| 19 | Arias, Marissa       | 4  | 2 | 0 | 3     | .667  |
| 2  | O'Callaghan, Maquena | 4  | 0 | 1 | 2     | .000  |
| 8  | Mooney, Mallory      | 4  | 0 | 2 | 2     | .000  |
| 32 | Simpson, Maddie      | 3  | 0 | 1 | 2     | .000  |

| ## | Goals            | GP | G | A | Pts | Shots |
|----|------------------|----|---|---|-----|-------|
| 14 | Richards, Sydney | 4  | 2 | 1 | 5   | 10    |
| 19 | Arias, Marissa   | 4  | 2 | 0 | 4   | 3     |
| 4  | Haddock, Anna    | 4  | 2 | 2 | 6   | 6     |
| 11 | Knox, LJ         | 4  | 1 | 1 | 3   | 4     |
| 10 | Brown, Sammie    | 4  | 1 | 0 | 2   | 5     |
| 17 | Bondon, Maddy    | 4  | 1 | 0 | 2   | 1     |

| ## | Shots On Goal        | GP | G | A | Shots | Sog | Sog%  |
|----|----------------------|----|---|---|-------|-----|-------|
| 14 | Richards, Sydney     | 4  | 2 | 1 | 10    | 6   | .600  |
| 23 | Candelino, Olivia    | 4  | 0 | 1 | 10    | 5   | .500  |
| 4  | Haddock, Anna        | 4  | 2 | 2 | 6     | 4   | .667  |
| 19 | Arias, Marissa       | 4  | 2 | 0 | 3     | 3   | 1.000 |
| 22 | Woodson, Olivia      | 4  | 0 | 0 | 9     | 3   | .333  |
| 11 | Knox, LJ             | 4  | 1 | 1 | 4     | 2   | .500  |
| 2  | O'Callaghan, Maquena | 4  | 0 | 1 | 2     | 2   | 1.000 |
| 10 | Brown, Sammie        | 4  | 1 | 0 | 5     | 2   | .400  |
| 8  | Mooney, Mallory      | 4  | 0 | 2 | 2     | 1   | .500  |
| 6  | Contreras, Becky     | 3  | 0 | 0 | 1     | 1   | 1.000 |
| 17 | Bondon, Maddy        | 4  | 1 | 0 | 1     | 1   | 1.000 |
| 32 | Simpson, Maddie      | 3  | 0 | 1 | 2     | 1   | .500  |

| ## | Assists              | GP | G | A | Pts | Shots |
|----|----------------------|----|---|---|-----|-------|
| 20 | Colson, Hayden       | 4  | 0 | 2 | 2   | 0     |
| 4  | Haddock, Anna        | 4  | 2 | 2 | 6   | 6     |
| 8  | Mooney, Mallory      | 4  | 0 | 2 | 2   | 2     |
| 7  | Thatcher, Carly      | 4  | 0 | 1 | 1   | 5     |
| 14 | Richards, Sydney     | 4  | 2 | 1 | 5   | 10    |
| 11 | Knox, LJ             | 4  | 1 | 1 | 3   | 4     |
| 2  | O'Callaghan, Maquena | 4  | 0 | 1 | 1   | 2     |
| 23 | Candelino, Olivia    | 4  | 0 | 1 | 1   | 10    |
| 32 | Simpson, Maddie      | 3  | 0 | 1 | 1   | 2     |



TV/RADIO SPOT CHART



**0**  
Madeline  
**MOORE**  
D » Sr.



**00**  
Maddie  
**PROHASKA**  
GK » Sr.



**1**  
Maddie  
**LO**  
GK » Gr.



**2**  
Maquena  
**O'CALLAGHAN**  
MF » Fr.



**3**  
Helene  
**TYBURCZY**  
MF/D » So.



**4**  
Anna  
**HADDOCK**  
MF » Sr.



**5**  
Jessica  
**OSBORNE**  
D/MF » Fr.



**6**  
Becky  
**CONTRERAS**  
MF » R-Jr.



**7**  
Carly  
**THATCHER**  
F/MF » Jr.



**8**  
Mallory  
**MOONEY**  
F/MF » Sr.



**9**  
Sydney  
**RITTER**  
F » Fr.



**10**  
Sammie  
**BROWN**  
MF » Sr.



**11**  
LJ  
**KNOX**  
D » Jr.



**12**  
Haley  
**DUCA**  
D » Jr.



**13**  
Taylor  
**RICHARDS**  
GK » R-Fr.



**14**  
Sydney  
**RICHARDS**  
F/MF » 5th



**15**  
Sydnie  
**THIBODAU**  
MF » Jr.



**16**  
Dylan  
**DRIVER**  
F » R-Fr.



**17**  
Maddy  
**BONDON**  
MF/D » Sr.



**18**  
Jaycie  
**SILHAN**  
F/D » Jr.



**19**  
Marissa  
**ARIAS**  
F » R-Sr.



**20**  
Hayden  
**COLSON**  
D » So.



**22**  
Olivia  
**WOODSON**  
F » Fr.



**23**  
Olivia  
**CANDELINO**  
F » Sr.



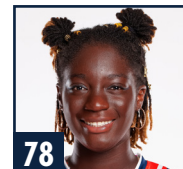
**28**  
Erin  
**HOUSTON**  
D » So.



**32**  
Maddie  
**SIMPSON**  
F » Sr.



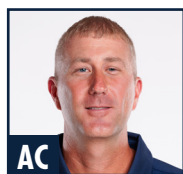
**77**  
Mya  
**WILLIAMS**  
F/D » Fr.



**78**  
Jenna  
**SAPONG**  
GK » Fr.



**HC**  
Karen  
**HOPPA**  
25th season



**AC**  
Ben  
**MADSEN**  
12th season



**AC**  
Nick  
**FLOHRE**  
5th season



**AC**  
Kelly  
**MADSEN**  
1st season



**DO**  
Amy  
**REIF**  
6th season