



# 2020-21 AUBURN WOMEN'S BASKETBALL

AUBURN ATHLETICS COMMUNICATIONS: 392 SOUTH DONAHUE DRIVE || AUBURN, AL 36830 || AUBURNTIGERS.COM || @AUBURNWBB

## 2020-21 SCHEDULE/RESULTS

5-6, 0-3 SEC

DATE	OPPONENT	TIME/TV/RESULT
Nov. 25	USC UPSTATE	W 82-41
Nov. 28	SAMFORD	W 66-64
Dec. 1	GARDNER-WEBB	W 97-61
Dec. 5	at Houston	L 61-71
Dec. 8	BELMONT	PPD
Dec. 13	SOUTH ALABAMA	W 74-66
Dec. 16	STEPHEN F. AUSTIN	L 54-67
Dec. 17	NORTH FLORIDA	W 94-81
Dec. 20	BELMONT	L 57-78
Dec. 31	*at LSU	L 43-56
Jan. 3	*GEORGIA	L 44-76
Jan. 7	*at Ole Miss	L 58-62
Jan. 10	*MISSOURI	+ 2 pm
Jan. 14	*KENTUCKY	SECN 7:30 pm
Jan. 17	*at Florida	SECN Noon
Jan. 24	*at Alabama	ESPNU 1 pm
Jan. 28	*TEXAS A&M	SECN 7:30 pm
Jan. 31	*at Arkansas	+ 2 pm
Feb. 4	*SOUTH CAROLINA	+ 6 pm
Feb. 11	*at Georgia	+ 6 pm
Feb. 14	*ALABAMA	SECN 5 pm
Feb. 18	*at Mississippi State	SECN 8 pm
Feb. 21	*VANDERBILT	+ 2 pm
Feb. 25	*ARKANSAS	SECN 8 pm
Feb. 28	*at Tennessee	SECN 1 pm
Mar. 3-7	SEC Tournament	Greenville
M19-22	NCAA First-Second Rounds	TBD
M26-29	NCAA Regionals	TBD
Apr 2-4	Women's Final Four	San Antonio

All times Central. Home Games in **BOLD CAPS**.  
\* SEC Game  
+ = SEC Network + / ESPN3.com

### AUBURN ATHLETICS COMMUNICATIONS

WES TODD .....Assistant Director/WBB Contact  
.....wlt0006@auburn.edu  
.....C: 334-750-5682  
KIRK SAMPSON ..... Associate AD  
.....kirk@auburn.edu

Web .....AuburnTigers.com  
Twitter .....@AuburnWBB  
Facebook ...../AuburnWBB  
Instagram .....@AuburnWBB  
Office Phone ..... (334) 844-9800



## GAME 12

## Missouri (4-3, 0-2)

Sunday, Jan. 10, 2021 • 2 p.m. CT



Site ..... Auburn, Ala.  
 Venue ..... Auburn Arena  
 TV ..... SEC Network + (Brad Law, Joe Ciampi)  
 Radio ..... WQSI 93.9 FM (Brit Bowen, Larry DiChiara)  
 Audio Webcast ..... AuburnTigers.com  
 Live Stats ..... AuburnStats.com  
 Twitter ..... @AuburnWBB  
 Series Record ..... Missouri leads 7-6  
 in Auburn ..... Series tied 3-3  
 Last Meeting ..... Auburn 95, Missouri 82 (Feb. 27, 2020, in Columbia, Mo.)

### GAMEDAY BREAKDOWN

#### AUBURN TIGERS

Rankings ..... AP: NR | Coaches: NR  
 2020-21 Record ..... 5-6  
 SEC ..... 0-3  
 Home ..... 5-3  
 Away ..... 0-3  
 Neutral ..... 0-0  
 Streak ..... L4  
 Head Coach ..... Terri Williams-Flournoy  
 Record at AU (Yrs.) ..... 140-125 (9th)  
 Overall Record (Yrs.) ..... 283-229 (16th)  
 Record vs. Missouri ..... 4-8

#### MISSOURI TIGERS

Rankings ..... AP: NR | Coaches: NR  
 2020-21 Record ..... 4-3  
 SEC ..... 0-2  
 Home ..... 4-1  
 Away ..... 0-2  
 Neutral ..... 0-0  
 Streak ..... L2  
 Head Coach ..... Robin Pingeton  
 Record at MU (Yrs.) ..... 184-144 (11th)  
 Overall Record (Yrs.) ..... 519-301 (27th)  
 Record vs. Auburn ..... 7-4

### AUBURN PROJECTED STARTERS (based on last game)



**KEYA PATTON**  
G • JR • 5-6  
Indianapolis, Ind.

PPG: 5.6  
RPG: 1.7  
APG: 0.6



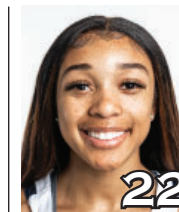
**ROMI LEVY**  
F • FR • 6-2  
Herzliya, Israel

PPG: 6.0  
RPG: 3.9  
APG: 1.3



**UNIQUE THOMPSON**  
F • SR • 6-3  
Theodore, Ala.

PPG: 18.8  
RPG: 15.3  
APG: 1.0



**ALAINA RICE**  
G • SO • 5-8  
Rockledge, Fla.

PPG: 2.8  
RPG: 2.1  
APG: 1.2



**HONESTY SCOTT-GRAYSON**  
G • R-SO • 5-8  
Brick, N.J.

PPG: 11.0  
RPG: 3.7  
APG: 1.7

### OFF THE BENCH

No.	Pos.	Name	Ht.	Year	PPG	RPG	Hometown
0	G	Alycia Reese	5-9	Jr.	3.0	0.5	Columbus, Ga.
2	G	Sania Wells	5-7	So.	3.8	0.5	Moss Point, Miss.
3	G	Annie Hughes	5-9	So.	5.1	2.7	Dutton, Ala.
4	G	Riley Donahue	5-10	Fr.	1.0	0.0	Atlanta, Ga.
5	F	Aicha Coulibaly	6-0	Fr.	4.8	3.5	Mali
10	F	Kiyae' White	6-2	R-Jr.	0.0	3.0	Macungie, Pa.
13	G	Kira Lowery	5-6	Jr.	3.5	1.2	Memphis, Tenn.
14	F	Jala Jordan	6-2	R-So.	8.1	4.0	Philadelphia, Pa.
24	G	Carsen McFadden	5-7	Fr.	0.6	0.4	Lucas, Texas
30	G	Morgan Robinson-Nwagwu	5-8	So.	1.5	1.1	Norcross, Ga.

**Head Coach:** Terri Williams-Flournoy

**Assistants:** La'Keshia Frett Meredith, Clarisse Garcia, Reneisha Hobbs

#WarEagle  
#TeamOfExcellence



AuburnTigers.com



@AuburnWBB | @AuburnTigers  
@AUCoachFlo



/AuburnWBB  
/AuburnTigers

**TEAM SCHEDULE AND MEDIA AVAILABILITY >> JANUARY 4-10** (times Central unless noted otherwise)

MONDAY January 4	TUESDAY January 5	WEDNESDAY January 6	THURSDAY January 7	FRIDAY January 8	SATURDAY January 9	SUNDAY January 10
OFF DAY	<b>PRACTICE</b> 1-4 p.m. Auburn Arena	<b>PRACTICE</b> 9 am-Noon Auburn Arena	<b>GAME</b> 6:00 Auburn at Ole Miss	<b>PRACTICE</b> 2:30-5 pm Auburn Arena	<b>PRACTICE</b> Noon-3 pm Auburn Arena	<b>GAME</b> 2:00 Auburn vs. Missouri
		<b>TRAVEL</b> to Oxford, Miss.	<b>Interviews postgame via Zoom Return to Auburn</b>	<b>Gymnastics vs. Florida</b>	<b>MBB vs. Alabama</b>	<b>Interviews postgame via Zoom</b>

**AUBURN ATHLETICS COMMUNICATIONS SERVICES (COVID-19 EDITION)**

**QUICK FACTS**

**AUBURNTIGERS.COM**

For updated game notes, statistics and all the latest information on Auburn basketball and gameday activities, go to AuburnTigers.com.

**INTERVIEW POLICIES**

--Coach Williams-Flournoy, assistant coaches and selected athletes are available for phone and virtual interviews by contacting Wes Todd in the athletic communications office.

--Following home games, interviews with Coach Flo and selected players will be conducted **via Zoom** following a 10-minute cooling-off period. Visiting coaches and players, if requested, will be available first **on the same Zoom link**.

--Interviews following road contests will be conducted **via Zoom**; the visiting **SID will send out links beforehand**.

--Practices are closed to the public and media until further notice.

**CREDENTIALS**

Anyone wishing to cover Auburn women's basketball should contact Wes Todd in the communications office at least one day in advance in order to make the proper arrangements. Game credentials will be held at media will call, **which will be at the north main entrance for the 2020-21 season**. There will be no season credentials. Parking passes are not needed.

**GAME DAY SERVICES**

--Printed flip cards will be available at each media seat. All other information (game notes, stats, etc.) will be available on AuburnTigers.com and StatBroadcast.com. Wireless internet is available in the Arena.

--Media will only be permitted to access the concourse level of the arena. With the exception of an extremely limited number of photographers/videographers, access to the playing floor by persons not subject to the SEC's COVID-19 testing protocol is strictly prohibited.

--Pool photos and video will be available on the SEC FTP site following most games.

**VIDEO SERVICES**

FTP feeds of selected Auburn basketball highlights are available for the media. Highlights and postgame press conference video will be posted following each game to ImagenCloud and the SEC FTP site.

**COMMUNICATIONS STAFF**

Wes Todd Women's Basketball contact  
cell: 334-750-5682  
email: wlt0006@auburn.edu  
Kirk Sampson Associate AD  
cell: 334-750-1385  
email: sampska@auburn.edu

**GENERAL INFORMATION**

Location..... Auburn, Ala.  
Founded .....1856  
Enrollment.....30,440  
Nickname ..... Tigers  
Colors..... Burnt Orange and Navy Blue  
Facility (Capacity) ..... Auburn Arena (9,121)  
2020-21 Reduced Capacity .....1,438  
President ..... Dr. Jay Gogue  
Director of Athletics ..... Allen Greene  
Sr. Assoc. AD/SWA..... Monique Holland

**WOMEN'S BASKETBALL HISTORY**

First Year of Women's Basketball .....1971  
All-Time Record (Years)..... 952-503 (50th)  
All-Time SEC Record (since 1981) ..... 240-251  
All-Time Home Record .....445-127  
at Auburn Arena (since 2010).....98-56  
NCAA Tournament Appearances .....21  
Last NCAA App./Result.....2019 - First Round  
SEC Regular-Season Championships ..... 5  
..... 1981, 1987, 1988, 1989, 2009  
SEC Tournament Championships..... 4  
..... 1981, 1987, 1990, 1997

**COACHING & SUPPORT STAFF**

Head Coach..... Terri Williams-Flournoy  
Alma Mater, Year .....Penn State, 1991  
Overall Record ..... 283-229 (.553) / 17th year  
Auburn Record ..... 140-125 (.528) / 9th year  
Assistant Coach (Year) ..... La'Keshia Frett Meredith (2nd)  
Alma Mater, Year .....Georgia (1997)  
Assistant Coach (Year at Auburn) ..... Clarisse Garcia (5th)  
Alma Mater, Year ..... Villanova (2007)  
Special Asst. to the Head Coach..... Reneisha Hobbs  
Strength & Conditioning Coach ..... Lee Taylor  
Director of Basketball Operations ..... Bianca Webb  
Director of Basketball Services ..... Justin Peak  
Athletic Trainer..... Catherine Gordon  
Grad. Student Mgrs ..... Sean Holmes, AK Prestridge

**GAMEDAY EXPERIENCE: AUBURN ARENA**

>> Auburn Arena is in its 11th season as home of Auburn Basketball. The Tigers are 98-55 since moving to the Arena in 2010-11. The facility seats 9,121 for basketball and also hosts Auburn volleyball and gymnastics.



**TEAM INFORMATION**

2019-20 Record..... 11-18  
2019-20 SEC Record..... 4-12  
SEC Finish..... T-12th  
Starters Returning/Lost .....1/4  
Letterwinners Returning/Lost ..... 5/8  
Redshirts Returning ..... 2  
Newcomers.....8

# AUBURN TIGERS SPEED CHART

Overall: 5-6 SEC: 0-3

Head Coach: Terri Williams-Flournoy (9th Season)

Aicha Coulibaly - ay-EE-sha coo-li-BALL-ee  
 Jala Jordan - JAY-lah  
 Romi Levy - RO-mee LEV-ee  
 Kira Lowery - KYE-rah  
 Alycia Reese - a-LEE-see-ah

Morgan Robinson-Nwagwu - WAH-goo  
 Sania Wells - sa-NYE-uh  
 Kiyae' White - kye-YAY  
 Terri Williams-Flournoy - FluH-NOY

		Pts	Reb	Ast	Stl	Blk		
0	<b>ALYCIA REESE</b> G • 5-9 • Jr. • Columbus, Ga. • Chattahoochee Valley CC	Season High	10	1	1	1	-	
		Career High	10	1	1	1	-	
		PPG	3.0	0.5	0.3	.500	.333	1.000
		20-21	3.0	0.5	0.3	.500	.333	1.000
							<b>LAST GAME (at OM):</b> 1 assist, 4 minutes • 10 pts, 2-3 3FG in 16 mins at Houston (12/5) • 4 points in Auburn debut vs. USC Upstate (11/25) • Played 2 seasons at CVCC in Phenix City • Started all 24 games as soph.; avg. 12.8 ppg, 3.8 rpg	
1	<b>KEYA PATTON</b> G • 5-6 • Jr. • Indianapolis, Ind. • Wabash Valley College	Season High	14	5	2	2	-	
		Career High	14	5	2	2	-	
		PPG	5.6	1.7	0.6	.321	.318	.765
		20-21	5.6	1.7	0.6	.321	.318	.765
							<b>LAST GAME (at OM):</b> 6 pts, 2 reb, 1 ast, 2-4 3FG • Season-high 14 points in win over Gardner-Webb • Two-time NJCAA All-American; 1st team in 2020 • Avg. 20.8 pts, 6.8 reb, 6.4 ast, 2.9 stl as JC sophomore • Scored 1,000+ points in two JC seasons	
2	<b>SANIA WELLS</b> G • 5-7 • So. • Moss Point, Miss. • East Central HS	Season High	11	2	2	1	-	
		Career High	11	3	3	2	-	
		PPG	3.8	0.5	0.9	.235	.292	.688
		20-21	3.8	0.5	0.9	.235	.292	.688
							<b>LAST GAME (at OM):</b> 4 pts, 1 ast, 1 stl • Career-high 11 points w/ 3 3FG vs. S. Alabama (12/13) • Played in 25 games as freshman; 8.6 mins/game • Career-high 8 points in 21 mins at Miss. State (1/30) • Scored 4 points in Auburn debut at UAB	
3	<b>ANNIE HUGHES</b> G • 5-9 • So. • Dutton, Ala. • Pisgah HS	Season High	17	7	1	3	1	
		Career High	17	7	4	3	1	
		PPG	5.1	2.7	0.6	.449	.350	.556
		20-21	5.1	2.7	0.6	.449	.350	.556
							<b>LAST GAME (at OM):</b> 1 reb, 1 ast, 2 stl • Career-high 17 pts, 7 reb, 3 stl vs. North Florida (12/17) • Scored SEC-best 8 points at Missouri (2/27/20) • Played in all 29 games in '19-20; started 7	
4	<b>RILEY DONAHUE</b> G • 5-10 • Fr. • Atlanta, Ga. • Marist School	Season High	3	-	-	-	-	
		Career High	3	-	-	-	-	
		PPG	1.0	0.0	0.0	1.000	1.000	-
		20-21	1.0	0.0	0.0	1.000	1.000	-
							<b>LAST GAME (at OM):</b> DNP • Scored first AU points on 3FG in last minute vs. GWU • Joined Tigers as walk-on in August • First-team GHSA all-region selection as HS senior	
5	<b>AICHA COULIBALY</b> G/F • 6-0 • Fr. • Mali • IMG Academy (Fla.)	Season High	12	6	2	2	1	
		Career High	12	6	2	2	1	
		PPG	4.8	3.5	0.7	.364	.083	.438
		20-21	4.8	3.5	0.7	.364	.083	.438
							<b>LAST GAME (at OM):</b> 4 pts, 2 reb, 1 ast • Started 1st 3 gms; 10 pts, 6 reb vs. GWU • Played for Mali U16 National Team at '17 African Champ. • Named tournament MVP, averaged 21.8 ppg in event • 3rd AU WBB player from Africa (C. Correia; K. Dieng)	
10	<b>KIYAE' WHITE</b> F • 6-2 • R-Jr. • Macungie, Pa. • Emmaus HS	Season High	-	3	-	-	-	
		Career High	15	11	4	3	1	
		PPG	0.0	3.0	0.0	.000	-	-
		20-21	0.0	3.0	0.0	.000	-	-
							<b>LAST GAME (at OM):</b> DNP • Made '20-21 debut vs. South Alabama, 3 rebs in 4 mins • Played all 29 games, started 14 in 2019-20 • Career-high 15 points in SEC Tour. vs. Arkansas • Career-high 11 rebs in '19-20 opener vs. Wofford	
11	<b>ROMI LEVY</b> F • 6-2 • Fr. • Herzliya, Israel • Hof Hasharon HS	Season High	12	11	3	6	2	
		Career High	12	11	3	6	2	
		PPG	6.0	3.9	1.3	.406	.250	.375
		20-21	6.0	3.9	1.3	.406	.250	.375
							<b>LAST GAME (at OM):</b> 13 pts, 4 reb, 2 ast, 2 stl • Season-high 13 pts at Ole Miss (1/7) • Scored 8 points off bench in Auburn debut vs. USCU • Bronze medal at '18 Euro Champs. with Israel U18 team • First AU WBB player from Israel	
13	<b>KIRA LOWERY</b> G • 5-6 • Jr. • Memphis, Tenn. • Dyersburg State CC	Season High	12	5	5	3	1	
		Career High	12	5	5	3	1	
		PPG	3.5	1.2	1.8	.462	.333	.765
		20-21	3.5	1.2	1.8	.462	.333	.765
							<b>LAST GAME (at OM):</b> 1 reb, 1 ast, 12 minutes • Led AU w/ 5 assists, 3 steals in win over UNF (12/17) • 12 points in 2nd AU game vs. Samford (11/28) • Third-team NJCAA All-American in '20 • 3rd in NJCAA in scoring (23.3 ppg); 2nd in steals (4.0/gm)	
14	<b>JALA JORDAN</b> F • 6-2 • R-So. • Philadelphia, Pa. • West Virginia	Season High	16	8	4	2	3	
		Career High	16	8	4	2	3	
		PPG	8.1	4.0	0.7	.340	.233	.682
		20-21	8.1	4.0	0.7	.340	.233	.682
							<b>LAST GAME (at OM):</b> 4 pts, 4 reb, 1 ast • Career-hi 3 blocks in 1st career start vs. S. Ala. (12/13) • Shared AU lead w/ 16 pts in season-opener vs. USCU • Redshirted 2019-20 season after transfer from WVU • Appeared in 25 games as freshman at WVU	
20	<b>UNIQUE THOMPSON</b> F • 6-3 • Sr. • Theodore, Ala. • Faith Academy	Season High	26	23	3	5	2	
		Career High	31	23	6	5	6	
		PPG	18.8	15.3	3.1	.571	-	.776
		20-21	18.8	15.3	3.1	.571	-	.776
							<b>LAST GAME (at OM):</b> DNP • Preseason All-SEC; McClain, Wooden Watch Lists • 26 pts, 23 reb at HOU (12/5); 1st 20-20 at AU since '93 • 49 career double-doubles, 1st in AU history • National leader in rebounds (15.3), double-doubles (7)	
22	<b>ALAINA RICE</b> G • 5-8 • So. • Rockledge, Fla. • Florida A&M	Season High	9	4	5	2	-	
		Career High	22	11	5	5	2	
		PPG	2.8	2.1	1.2	.216	.273	.750
		20-21	2.8	2.1	1.2	.216	.273	.750
							<b>LAST GAME (at OM):</b> 2 pts, 3 reb, 1 ast, 1 stl • Season-high 9 pts, 2 stl vs. North Florida (12/17) • Led Auburn w/ 5 assists in debut vs. USC Upstate • 2020 MEAC Rookie of the Year at FAMU • Averaged 10.3 pts, 4.7 reb., 2.4 ast. as freshman in '20	
23	<b>HONESTY SCOTT-GRAYSON</b> G • 5-8 • R-So. • Brick, N.J. • Baylor	Season High	23	7	4	5	-	
		Career High	23	7	5	5	1	
		PPG	11.0	3.7	1.7	.388	.280	.645
		20-21	11.0	3.7	1.7	.388	.280	.645
							<b>LAST GAME (at OM):</b> 23 pts, 5 reb, 2 ast, 3 stl, 3-5 3FG • Career-hi 23 pts, 5 reb, 3 stl at Ole Miss (1/7) • Back-to-back 16-point games vs. SFA, UNF • Redshirted '19-20 after transfer from Baylor • 2018 McDonald's All-American	
24	<b>CARSEN McFADDEN</b> G • 5-7 • Fr. • Fairview, Texas • Lovejoy HS	Season High	3	1	3	1	-	
		Career High	3	1	3	1	-	
		PPG	0.6	0.4	0.8	.333	-	.500
		20-21	0.6	0.4	0.8	.333	-	.500
							<b>LAST GAME (at OM):</b> DNP • 1st AU points, led AU w/ 3 ast vs. S. Ala. (12/13) • Had a rebound and an assist in final minute vs. GWU • Joined Tigers as walk-on in August • Had 1,047 rebounds and 418 steals in HS career	
30	<b>MORGAN ROBINSON-NWAGWU</b> G • 5-8 • So. • Norcross, Ga. • Norcross HS	Season High	6	4	6	4	1	
		Career High	6	4	6	4	1	
		PPG	1.5	1.1	1.8	.333	.000	1.000
		20-21	1.5	1.1	1.8	.333	.000	1.000
							<b>LAST GAME (at OM):</b> 2 pts, 6 ast, 3 stl • Career-high 6 assists at Ole Miss (1/7) • Career-high 4 steals in season-opener vs. USC Upstate • Played in all 29 games as a freshman; 10.9 mins/game • Career-high 6 points, 2 steals vs. Florida (1/9)	

Inside the Matchup

**Auburn vs. Missouri 6-7 (.462)**

In Auburn: 3-3  
 --At Auburn Arena: 2-3  
 In Columbia: 1-4  
 Neutral Sites: 2-0  
 Trend: Auburn has won the last two meetings

Mar. 19, 1983	W	89-76	Auburn@
Jan. 3, 1985	W	75-62	Miami, Fla.
Jan. 6, 2013	L	76-82	Columbia, Mo.
Feb. 24, 2013	W	67-59	Auburn
Feb. 16, 2014	L	58-68	Auburn
Feb. 8, 2015	L	49-59	Columbia, Mo.
Feb. 21, 2016	L	55-69	Auburn
Mar. 3, 2016	W	47-45	Jacksonville, Fla.*
Jan. 21, 2017	L	53-68	Columbia, Mo.
Feb. 15, 2018	L	51-59	Auburn
Jan. 27, 2019	L	65-74	Columbia, Mo.
Feb. 24, 2019	W	58-54	Auburn
Feb. 27, 2020	W	95-82	Columbia, Mo.

@NCAA Tournament  
 \*SEC Tournament

**Auburn Women's Basketball Quick Hitters**

- Auburn and Missouri are meeting for the 14th time in women's basketball
- Missouri leads the all-time series 7-6, but Auburn has won the last two meetings
- Unique Thompson pulled down her 1,000th career rebound vs. Belmont (12/20); she is fourth in Auburn history with 1,010 rebounds
- Thompson is the nation's active career leader in double-doubles (49) and rebounds (1,010)
- Thompson's 26-point, 23-rebound game at Houston was Auburn's first 20-20 game since Laretta Freeman had 30 points, 21 rebounds vs. Alabama on Feb. 17, 1993; she followed that up with 20 points, 23 rebounds vs. Belmont (12/20)
- Thompson's 23 rebounds at Houston and vs. Belmont were a career-high and tied for the third-most in Auburn history (Sharon Stewart, 23 at Vanderbilt, Feb. 28, 1988)
- As of Jan. 7, Thompson's 23 rebounds at Houston and vs. Belmont were tied for the most by a player in NCAA Division I so far this season
- Thompson leads the nation with 7 double-doubles this season and is second nationally with 15.3 rebounds per game
- Thompson is the SEC's active leader in career double-doubles (49), rebounds (1,010) and steals (162)
- Honesty Scott-Grayson scored a career-high 23 points at Ole Miss; she is averaging 11.0 points/game
- Morgan Robinson-Nwagwu's 6 assists at Ole Miss were a career-high and the most by an Auburn player this season
- Auburn has utilized five different starting lineups through 10 games; seven players have made their first Division I starts this season
- Annie Hughes scored a career-high 17 points with 7 rebounds in the win over North Florida
- Auburn's 97 points in their win over Gardner-Webb tied the most scored by the Tigers under Terri Williams-Flournoy
- The Gardner-Webb win was Auburn's eighth 90-point game in the Williams-Flournoy era; the UNF win was the 9th
- The Tigers held USC Upstate to 41 points in the opener, the lowest for an opponent since Feb. 17, 2019 vs. Alabama (77-38)
- Auburn's 41-point margin of victory over USC Upstate was its largest since a 56-point win at Elon (96-44) on Dec. 22, 2018; it tied for the fifth-largest winning margin at Auburn Arena
- Ten players made their Auburn debuts in the win over USC Upstate; three newcomers were in the starting lineup
- Aicha Coulibaly became the eighth Auburn player since 2005 and fourth under Coach Flo to earn a starting nod in their first game as a true freshman
- Redshirt sophomore Jala Jordan scored a career-high 16 points off the bench to share the team lead in her Auburn debut vs. USC Upstate; the WVU transfer also hit 4-of-6 3-pointers on the night
- Auburn is in its 50th season of women's basketball and has 952 program wins
- Senior forward Unique Thompson was a consensus preseason first-team All-SEC selection (coaches & media)
- Coach Terri Williams-Flournoy is in her ninth season at Auburn, her 17th as a head coach, and her 29th overall in college coaching

**Moving On Up (Auburn Career Milestone Watch) . . .**

- **Unique Thompson** has 49 career double-doubles, is Auburn's all-time leader and SEC and NCAA active career leader
- **Unique Thompson** needs 8 double-doubles to tie for 10th in SEC history (Alaina Coates, Chamique Holdscraw, Armintie Price, 57)
- **Unique Thompson** is 4th in career rebounds with 1,010; needs 5 to tie for 3rd (Lori Monroe, 1,015); needs 37 to tie for 2nd (DeWanna Bonner, 1,047)
- **Unique Thompson** is 1st in career rebounding average at 10.5; Marianne Merritt (1975-79) is 2nd at 10.0
- **Unique Thompson** is 19th in career scoring with 1,320 points; needs 7 to tie for 18th (Tra' Cee Tanner, 1,327)
- **Coach Terri Williams-Flournoy** needs 17 wins for 300 in her head coaching career
- **Auburn** needs 2 home wins for 100 all-time at Auburn Arena

**INDIVIDUAL CATEGORY LEADERS**

<b>Auburn</b>	<b>Missouri</b>
Unique Thompson - 18.8	Points ..... Aijha Blackwell - 15.1
Unique Thompson - 15.3	Rebounds ..... Aijha Blackwell - 9.6
Lowery/Scott-Grayson- 1.7	Assists ..... Shug Dickson - 3.8
Unique Thompson - 3.1	Steals ..... Shannon Dufficy - 1.3
Jala Jordan - 0.9	Blocks ..... Ladazhia Williams - 1.4
Unique Thompson - 29.7	Minutes Played ..... Hayley Frank - 27.0
Unique Thompson - .571	Field Goal Percentage ..... Hayley Frank - .680
Annie Hughes - .350	3-Point Percentage ..... Haley Troup - .538
Unique Thompson - .776	Free-Throw Percentage ..... Hayley Frank - .923

**OPENING TIP**

» The Auburn Tigers are back home for their next two games, beginning Sunday afternoon as Missouri visits Auburn Arena. Game time is 2 p.m. CT.

» Auburn is 5-6 overall, 0-3 in SEC play. The Tigers' comeback bid at Ole Miss fell just short Thursday night in a 62-58 loss.

» Missouri is 4-3 overall, 0-2 in the SEC. Mizzou did not play Thursday, but dropped a close 91-88 decision at Arkansas last Sunday.

**LAST TIME OUT**

» Auburn sophomore Honesty Scott-Grayson scored a career-high 23 points, but the Tigers' best effort so far in SEC play came up just short in a 62-58 loss at Ole Miss Thursday night.

» The Tigers trailed by as many as 12 points late in the third quarter, but opened the fourth on a 7-0 run and got within two in the final minute of the game. But Ole Miss made a pair of free throws in the closing seconds to secure the victory.

» Scott-Grayson was 9-of-16 from the field and hit three times from 3-point range; she also led the Tigers with five rebounds and shared the team lead with three steals. Romi Levy added 13 points, and Morgan Robinson-Nwagwu equaled Scott-Grayson's steals total with three of her own.

» As a team, Auburn shot 41.8 percent (23-55) and was 6-of-21 from 3-point range (28.6%). But the fourth quarter saw the Tigers hit 8-of-12 shots as they nearly completed the comeback. Ole Miss outrebounded Auburn 34-28, but the Tigers turned 19 Rebel turnovers into 17 points, their best showing in the turnover department in SEC play.

**UP NEXT**

» Auburn hosts No. 10 Kentucky Thursday night. Game time is 7:30 p.m. CT with a national broadcast on SEC Network.

**AN AUBURN WIN WOULD...**

» Snap a four-game losing streak.

» Be Auburn's third straight win over Missouri.

» Be the Tigers' 99th all-time win inside Auburn Arena.

**AUBURN-MISSOURI SERIES**

» Auburn is 6-7 all-time against Missouri with the series tied 3-3 on The Plains. Auburn earned a 58-54 win in 2019 in the teams' last meeting at Auburn Arena.

**LAST MEETING: Feb. 27, 2020 in Columbia Auburn 95, Missouri 82**

» Unique Thompson set the Auburn career record with her 41st double-double, three players finished with 20-plus points, and Auburn got its first road SEC win of the season with a 95-82 victory at Missouri.

» Auburn used a blistering third quarter, hitting their first 10 shots of the period, to pull ahead to as much as an 18-point lead, and Missouri would get no closer than seven points the rest of the way. The Tigers' 34 points in the third quarter was a school record for a single period, and Auburn's 95 points on the night were its most in an SEC game since 1990.

» Thompson finished with 12 points and 14 rebounds to get her 21st double-double of the season and the 41st of her career, passing DeWanna Bonner for the all-time Auburn lead.

Lauretta Freeman owns the single-season mark with 23.

» Daisa Alexander was 7-of-9 from the floor for 21 points to go along with six assists. As a team, Auburn shot a season-high 59 percent (35-59) and hit 9-of-23 3-pointers (39.1%). The Tigers forced Mizzou into 20 turnovers, converting those into a season-high 28 points. Auburn also out-rebounded Missouri 35-25.

**SCOUTING MISSOURI**

» Missouri is 4-3 overall and 0-2 in SEC play. The Tigers have wins over North Alabama, New Orleans, Southern Illinois and Oral Roberts to their credit with losses to Missouri State, Alabama and Arkansas.

» Mizzou has the top field goal percentage in the SEC, shooting 51.8% from the field. They average 78.9 points/game while holding opponents to 64.6.

» Aijha Blackwell leads Mizzou with 15.1 points and 9.6 rebounds per game.

**SCOUTING AUBURN**

» Senior forward Unique Thompson leads the nation with 15.3 rebounds per game this year and leads Auburn with 18.8 points/game. She is also the national leader in double-doubles with seven. Thompson pulled down her 1,000th career rebound against Belmont on Dec. 20 and is the only active player nationally with over 1,000 career rebounds. An honorable-mention All-American and first-team All-SEC performer a year ago, Thompson is Auburn's lone returning starter. She averaged a double-double for the second straight year in 2020 with 16.2 points and 11.4 rebounds, leading Auburn in both categories.

» Thompson has been unavailable the last three games due to medical issues, but is expected to return vs. Missouri.

» Two redshirt sophomore transfers that sat out last season are making an immediate impact. Honesty Scott-Grayson (Baylor) and Jala Jordan (West Virginia) have both earned significant minutes through the first several games. Scott-Grayson has started all 11 games and had a career-high 23 points at Ole Miss, 18 points vs. Belmont, 16 points against both SFA and North Florida, and 14 points, 7 rebounds and 5 steals vs. Gardner-Webb. Jordan is Auburn's third-leading scorer with 8.1 points/game; she's also the Tigers' second-leading rebounder (4.0/game) and leading shot-blocker (0.9/game)

» Four other returners saw game action for Auburn last season: redshirt junior Kiyae' White and sophomores Annie Hughes, Morgan Robinson-Nwagwu and Sania Wells. Hughes scored a career-high 17 points against North Florida and has started seven games. Wells and Robinson-Nwagwu played significant minutes in the opener; Robinson-Nwagwu had a career-high four steals and matched career-highs with 6 points and 4 rebounds. She also had a career-high 6 steals at Ole Miss. Wells scored a career-high 11 points in the win over South Alabama and made her first career start at LSU.

**ALL THE NEW FACES**

» Of the 15 players on the roster, 10 of them wore an Auburn uniform for the first time in game action vs. USC Upstate. All 10 newcomers saw the floor in the Tigers' 82-41 win on Nov. 25 and again vs. Gardner-Webb on Dec. 1.

**SEC STANDINGS & SCHEDULE**

	<i>(thru games of Jan. 7)</i>					
	SEC Games			All Games		
	W	L	Pct.	W	L	Pct.
South Carolina	2	0	1.000	7	1	.875
Tennessee	1	0	1.000	7	1	.875
Texas A&M	2	0	1.000	11	0	1.000
Alabama	2	1	.667	9	1	.900
LSU	2	1	.667	4	5	.444
Kentucky	2	1	.667	9	2	.818
Mississippi St.	2	1	.667	7	2	.777
Georgia	1	1	.500	9	1	.900
Ole Miss	1	1	.500	7	1	.875
Arkansas	1	2	.333	10	3	.769
AUBURN	0	3	.000	5	6	.455
Florida	0	3	.000	7	4	.636
Missouri	0	2	.000	4	3	.571
Vanderbilt	0	0	.000	4	1	.800

**Thursday, Jan. 7**

Alabama 67, LSU 59

Mississippi State 68, Florida 56

Ole Miss 62, Auburn 58

Tennessee 88, Arkansas 73

Texas A&M 77, Kentucky 60

**Sunday, Jan. 10**

\*11:00 - Florida at Georgia (SEC Network)

\*1:00 - Alabama at Vanderbilt (SEC Network)

\*1:00 - Tennessee at LSU (+)

\*2:00 - Missouri at Auburn (+)

\*3:00 - Texas A&M at Arkansas (SEC Network)

\*5:00 - Ole Miss at Mississippi State (SEC Network)

\*5:00 - South Carolina at Kentucky (ESPN)

**Thursday, Jan. 14**

\*5:30 - Georgia at Tennessee (SEC Network)

\*6:00 - Missouri at Ole Miss (+)

\*6:00 - Texas A&M at LSU (+)



\*7:00 - South Carolina at Vanderbilt (+)

\*7:00 - Florida at Arkansas (+)

\*7:00 - Alabama at Mississippi State (+)

\*7:30 - Kentucky at Auburn (SEC Network)

**Inside the Numbers**

CATEGORY		
	AUBURN	MISSOURI
Points Per Game	66.4	78.9
Scoring Margin	+0.6	+14.3
Field Goal %	38.9%	51.8%
Opp. Field Goal %	41.4%	35.2%
3 pt Field Goal %	26.5%	36.1%
Opp. 3FG %	32.6%	28.8%
Rebounds	39.7	40.7
Opp. Rebounds	36.1	30.6
Rebound Margin	+3.6	+10.1
Turnovers	18.6	17.3
Opp. Turnovers	20.9	14.1
Steals	12.5	7.7
Opp. Steals	10.8	7.1
Blocks	2.5	4.1
Opp. Blocks	2.3	1.7

## Associated Press Top 25

(Week 6: Jan. 4)

Rk	Team	Record	Prev
1	Stanford (27)	9-0	1
2	Louisville	7-0	2
3t	NC State (2)	10-0	3
3t	Connecticut (1)	6-0	3
5	<b>South Carolina</b>	<b>6-1</b>	<b>5</b>
6	Baylor	8-1	7
7	Arizona	8-1	6
8	<b>Texas A&amp;M</b>	<b>10-0</b>	<b>9</b>
9	UCLA	6-2	11
10	<b>Kentucky</b>	<b>9-1</b>	<b>13</b>
11	Oregon	9-1	8
12	Maryland	6-1	14
13	<b>Arkansas</b>	<b>10-2</b>	<b>10</b>
14	<b>Mississippi State</b>	<b>6-2</b>	<b>12</b>
15	Michigan	7-0	16
16	Ohio State	4-0	17
17	Texas	8-1	19
18	South Florida	7-1	21
19	Indiana	5-2	20
20	DePaul	5-3	18
21	Gonzaga	8-2	23
22	Northwestern	4-2	15
23	Michigan State	8-0	25
24	Syracuse	5-1	22
25	Missouri State	4-2	24

**Also receiving votes:** North Carolina, South Dakota State, Georgia, Iowa, Tennessee, Rice, Alabama, Arizona State, Washington State, Oregon State, Iowa State.

## USA TODAY Coaches' Top 25

(Week 6: Jan. 5)

Rk	Team	Record	Prev
1	Stanford (31)	9-0	1
2	Louisville (1)	7-0	2
3	NC State	10-0	3
4	<b>South Carolina</b>	<b>7-1</b>	<b>4</b>
5	Connecticut	6-0	5
6	Baylor	8-1	6
7	<b>Texas A&amp;M</b>	<b>10-0</b>	<b>9</b>
8	<b>Kentucky</b>	<b>9-1</b>	<b>11</b>
9	UCLA	6-2	12
10	Arizona	8-1	8
11	Oregon	8-1	7
12	Maryland	7-1	14
13	<b>Arkansas</b>	<b>10-2</b>	<b>10</b>
14	Michigan	7-0	17
15	<b>Mississippi State</b>	<b>6-2</b>	<b>13</b>
16	Ohio State	5-0	15
17	Texas	8-1	19
18	Indiana	5-3	18
19	South Florida	7-1	22
20	Syracuse	5-1	20
21	Gonzaga	9-2	23
22	DePaul	5-3	21
23	Northwestern	4-2	16
24	Michigan State	8-0	NR
25	Missouri State	4-2	24

**Also receiving votes:** South Dakota State, Georgia, Iowa, Florida State, Arizona State, Florida Gulf Coast, Tennessee, North Carolina, Central Florida, IUPUI, Clemson, Dayton.

» Auburn added three junior college transfers during the offseason, including two NJCAA All-Americans:

» Kira Lowery came to Auburn from Dyersburg State CC (Tenn.) where she ranked third in the nation in scoring (23.3 ppg) and second in steals (4.0/game) and was an NJCAA All-American in 2020. Lowery has started eight games at PG and leads Auburn with 1.8 assists/game.

» Keya Patton was a two-time All-American at Wabash Valley College (Ill.), where she scored over 1,000 points in two seasons and averaged 20.8 points, 6.8 rebounds and 6.4 steals as a sophomore. She scored a season-best 14 points vs. Gardner-Webb (12/1) and made her first Auburn start vs. Georgia (1/3).

» Alycia Reese joins the Tigers from just down the road at Chattahoochee Valley CC in Phenix City, where she led the team with 12.8 points/game last season. Reese scored 10 points and hit Auburn's only two 3-pointers at Houston (12/5).

» Sophomore Alaina Rice joined the Tigers in June after transferring from Florida A&M. Rice was MEAC Rookie of the Year in 2020 at FAMU where she averaged 10.3 points and 4.7 rebounds. Rice led Auburn with 5 assists in the season-opener and scored 9 points vs. North Florida.

» The Tigers signed two freshmen during the offseason: Romi Levy (6-2, F, Herzliya, Israel) and Aicha Coulibaly (6-0, F/G, Mali). Two others joined Auburn as walk-ons: Riley Donahue (5-10, G, Atlanta, Ga.) and Carsen McFadden (5-7, G, Fairview, Texas). Coulibaly started the first four games; Levy is averaging 6.0 points, 3.9 rebounds and 2.4 steals. McFadden played significant minutes in the win over South Alabama, sharing the team lead with three assists.

## UNIQUE LEADS THE WAY

» Through games of Jan. 7, Unique Thompson leads the nation in double-doubles (7) and offensive rebounds per game (6.4), and ranks second nationally in rebounds per game (15.2). She also leads the SEC in all three categories.

» In addition to being the SEC and national active career leader in double-doubles, Unique Thompson is the SEC and national active leader in career rebounds (1,010), the SEC active leader in steals (162) and is third among active SEC players in career scoring (1,320).

» Last season, Thompson was second in the SEC and 10th nationally in rebounding (11.4/game), led the SEC and was 8th nationally in offensive rebounds (4.4/game), and was third in the SEC and 15th nationally in field goal percentage (58.2%).

## SEEING DOUBLE

» With seven double-doubles so far this season, Unique Thompson has 49 career double-doubles, the all-time Auburn career record. She surpassed Auburn great DeWanna Bonner's record with her 41st double-double at Missouri on Feb. 27, 2020.

» Unique needs 8 more double-doubles this season to enter the SEC's all-time top 10.

» In 2019-20, Thompson had 22 double-doubles to lead the SEC and finish second overall nationally. She is the nation's leading returner in double-doubles.

» Thompson has averaged a double-double for two straight seasons and for her career, the first Auburn player to accomplish that feat.

» Thompson is first among active SEC players in

career double-doubles (as of Jan. 7):

Player (School)	20-21	Career
<b>Unique Thompson (Auburn)</b>	<b>7</b>	<b>49</b>
N'dea Jones (Texas A&M)	7	33
Rennia Davis (Tennessee)	4	33
Ciera Johnson (Texas A&M)	2	20
Shakira Austin (Ole Miss)	2	17
Aliyah Boston (South Carolina)	3	16

## 20-20 VISION

» With 26 points and 23 rebounds at Houston (12/5), Thompson was the first Auburn player to record a 20-20 game since Lauretta Freeman had 30 points and 21 rebounds at Alabama on Feb. 17, 1993. Her 23 rebounds tied for the third-most in Auburn history.

» Thompson reprised the feat two weeks later with a 20-point, 23-rebound effort against Belmont at home.

» Auburn women's basketball has now had seven 20-20 games in its history; Freeman was responsible for three of them, including two in back-to-back games in 1993:

Date	Player	Opponent	Stats
<b>12/20/20</b>	<b>Unique Thompson</b>	<b>Belmont</b>	<b>20 pts/23 reb</b>
<b>12/5/20</b>	<b>Unique Thompson</b>	<b>at Houston</b>	<b>26 pts/23 reb</b>
2/17/93	Lauretta Freeman	Alabama	30 pts/21 reb
2/14/93	Lauretta Freeman	at Florida	24 pts/20 reb
11/29/91	Lauretta Freeman	Wisconsin	20 pts/20 reb
11/26/89	Linda Godby	Oregon	25 pts/21 reb
2/28/88	Sharon Stewart	at Vanderbilt	28 pts/23 reb

## HITTING THE ROAD = HITTING THE BOARDS

» In her four seasons, Unique Thompson has put up 12 performances with at least 15 rebounds. Nine of those 12 have come away from Auburn Arena.

Rebs	Opponent (Location)	Date
<b>23</b>	<b>at Houston</b>	<b>12/5/20</b>
<b>23</b>	<b>vs. Belmont</b>	<b>12/20/20</b>
19	at UAB	11/21/19
19	at New Mexico	11/11/18
19	vs. BYU (at Stanford)	3/23/19
<b>18</b>	<b>vs. North Florida</b>	<b>12/17/20</b>
18	vs. North Carolina (at Myrtle Beach)	12/20/18
17	vs. Oklahoma	12/2/18
16	at Virginia Tech	11/13/17
15	at TCU	12/7/19
15	at Kentucky	1/27/20
15	vs. Arkansas (at Greenville)	3/5/20

## AUBURN HONOR ROLL

» Unique Thompson was a consensus All-SEC First Team selection by the league's coaches and media.

» Thompson was also one of 20 players nationwide named to the Katrina McClain Award watch list. She was also named to the John R. Wooden Award Preseason Top 30 and Midseason Top 25, and she was named the 20th-best player in the country by ESPN.

## STARTING ON DAY ONE

» Three players making their Auburn debuts were in the starting lineup for the season opener vs. USC Upstate on Nov. 25: true freshman Aicha Coulibaly, redshirt sophomore Honesty Scott-Grayson and junior Kira Lowery.

» Coulibaly became the eighth Auburn freshman since 2005 to earn a start in her collegiate debut. She was the fourth true freshman under Terri Williams-Flournoy to be in the starting lineup on night one.

Year	Freshman Starter	Opponent	Stats
2020	Aicha Coulibaly	USC Upstate	4 pts, 6 reb
2019	Annie Hughes	Wofford	10 pts, 4 ast
2017	Unique Thompson	@Va. Tech	9 pts, 16 reb
2013	Katie Frerking	Ga. Southern	8 pts, 3 reb
2011	Hasina Muhammad	@Mercer	12 pts, 2 reb
2008	Morgan Jennings	@Ala. A&M	4 pts, 4 reb
2005	Sherell Hobbs	UT Pan-Am.	6 pts, 5 reb
2005	DeWanna Bonner	UT Pan-Am.	19 pts, 4 reb

**ON THIS DATE**

» Auburn is 8-5 all-time on Jan. 7. The Tigers' last game on this date was a 60-45 loss at Mississippi State in 2016.

**TIGERS IN THE PROS**

» DeWanna Bonner completed her 11th season in the WNBA in 2020, her first with the Connecticut Sun. It was one of her best in her pro career as she led the Sun to the WNBA semifinals while averaging 19.7 points and a career-best 7.8 rebounds per game. She was an all-WNBA second-team selection for the second time in her career. Bonner has gained North Macedonian citizenship and is competing with North Macedonia's national team in EuroBasket qualifying.

» Daisa Alexander, who graduated in 2020, is playing for Etzella Ettelbruck in Luxembourg. This is her first year as a professional.

**WORKING OVERTIME**

» Auburn is 22-21 all-time in overtime games. The Tigers are 6-5 in the Coach Flo era when games have gone to an extra period.

**OVERTIME GAMES UNDER COACH FLO**

Date	Opponent	Location	Result
2/20/20	Mississippi St.	Auburn	L 85-92
11/30/19	Dayton	Esteros, Fla.	W 76-74
2/3/19	Georgia	Auburn	W 59-58
12/20/18	North Carolina	Myrtle Beach, S.C.	W 86-81
2/20/17	Alabama	Auburn	L 61-63
12/18/16	Virginia Tech	Auburn	L 87-92
1/24/16	Arkansas	Auburn	W 71-60
12/13/15	Marquette	Milwaukee, Wis.	L 69-70
11/28/15	Minnesota	Guaynabo, P.R.	W 81-79
3/2/14	Ole Miss	Oxford, Miss.	L 71-73
2/27/14	Alabama	Auburn	(2OT) W 70-65

**THIS, THAT AND THE OTHER**

» Auburn has utilized five different starting lineups in 2020-21. Seven players - Aicha Coulibaly, Jala Jordan, Romi Levy, Kira Lowery, Keya Patton, Honesty Scott-Grayson and Sania Wells - have made their first Division I starts this season.

» Auburn's 97 points in the win over Gardner-Webb (12/1) tied for the highest-scoring output of the Terri Williams-Flournoy era. It was the eighth 90-point game for Auburn under Coach Flo. Auburn got its 9th 90-point game of the Coach Flo era with 94 points against North Florida.

» Auburn's last five women's basketball games played the same day as an Iron Bowl have been decided by a combined nine points - two-point wins over Samford (2020), Dayton (2019) and Minnesota (2015) along with a one-point loss to Northwestern (2017) and a two-point loss at Winthrop (2014).

**Auburn in the SEC & NCAA Stats***(Thru games of 1/7/21)*

Category	Value	SEC	NCAA
Scoring Offense	66.4	13th	175th
Scoring Defense	65.7	12th	158th
Scoring Margin	+0.6	13th	156th
Field Goal Pct.	.389	13th	207th
Field Goal Pct. Def.	.414	13th	221st
3-pt FG Pct.	.265	13th	263rd
3-pt FG Pct. Def.	.326	13th	228th
Free Throw Pct.	.691	7th	171st
Rebounds	39.7	11th	124th
Rebound Margin	+3.6	11th	99th
Assists	11.6	12th	240th
Assist/Turnover	0.6	14th	254th
Blocks	2.5	13th	240th
Turnover Margin	+2.3	7th	96th
Turnovers Forced	20.9	3rd	28th
Steals	12.5	1st	9th

**INDIVIDUALS (All Games)****Scoring**

Unique Thompson	18.8	6th*	--
-----------------	------	------	----

**Rebounding**

Unique Thompson	15.3	1st*	--
-----------------	------	------	----

**Field Goal Pct.**

Unique Thompson	.571	6th*	--
-----------------	------	------	----

**Free Throw Pct.**

Unique Thompson	.776	7th*	--
-----------------	------	------	----

**Steals**

Unique Thompson	3.1	2nd*	--
Romi Levy	2.4	5th	86th
Honesty Scott-Grayson	2.2	6th	119th

**Offensive Rebounds**

Unique Thompson	6.4	1st*	--
-----------------	-----	------	----

**Defensive Rebounds**

Unique Thompson	8.9	1st*	--
-----------------	-----	------	----

**Double-Doubles**

Unique Thompson	7	1st	1st
-----------------	---	-----	-----

\*Has not appeared in minimum number of games to appear in actual rankings

## Career Record Updates

## Auburn Career Scoring

No.	Player	Years	Points
1.	DeWanna Bonner	2005-09	2,162
2.	Becky Jackson	1980-84	2,068
3.	Vickie Orr	1985-89	2,035
4.	Marianne Merritt	1975-79	1,979
5.	Carolyn Jones	1988-91	1,831
6.	Natasha Brackett	2001-05	1,716
7.	Janiah McKay	2015-19	1,647
8.	Brandy Montgomery	2013-17	1,644
9.	Mae Ola Bolton	1984-88	1,616
10.	Alli Smalley	2007-11	1,601
11.	Angie Hannah	1978-82	1,583
12.	Tyrese Tanner	2010-14	1,515
13.	Le'Coe Willingham	1999-03	1,475
14.	Lori Monroe	1979-83	1,415
15.	Tasha Hamilton	1997-01	1,402
16.	Sherell Hobbs	2005-09	1,372
17.	Linda Godby	1986-90	1,365
18.	Tra'Cee Tanner	2012-16	1,327
19.	<b>Unique Thompson</b>	<b>2017-present</b>	<b>1,320</b>
20.	Debra Larkin	1981-85	1,310
21.	C.C. Hayden	1989-92	1,306
22.	Katie Frerking	2013-17	1,271
23.	Conswella Sparrow	1997-00	1,249
24.	Blanche Alverson	2009-13	1,244
25.	Brenda Hill	1981-85	1,222
26.	Daisa Alexander	2016-20	1,215
27.	Monique Morehouse	1992-96	1,191
28.	Lauretta Freeman	1989-93	1,188
29.	Hasina Muhammad	2001-15	1,184
	Sharon Stewart	1984-88	1,184

## Auburn Career Double-Doubles

No.	Player	Years	D-Ds
1.	<b>Unique Thompson</b>	<b>2017-present</b>	<b>49</b>
2.	DeWanna Bonner	2005-09	40
3.	Lauretta Freeman	1989-93	38
4.	C.C. Hayden	1989-92	30
5.	Le'Coe Willingham	1999-04	29
6.	Vickie Orr	1985-89	27
7.	Monique Morehouse	1992-96	24
8.	Becky Jackson	1980-84	19
9.	Conswella Sparrow	1997-00	15
10.	Tra'Cee Tanner	2012-16	14
11.	Tasha Hamilton	1997-01	13
	Sharon Stewart	1984-88	13
13.	Daniellette Coleman	1992-94	12
	Marita Payne	2002-06	12
15.	Whitney Boddie	2005-09	11
	KeKe Carrier	2005-10	11
17.	Tia Miller	2001-04	8
	Tara Williams	1995-97	8
19.	Katie Frerking	2013-17	7
	Linda Godby	1986-90	7
	Laticia Morris	1995-97	7
	Mandisa Stevenson	2002-04	7
	Tyrese Tanner	2010-14	7
24.	Justine Agbatan	1995-98	6
	Brenda Hill	1982-83	6
	Kendall Mago	1988-92	6
	Samantha Williams	1991-96	6
28.	Ruthie Bolton	1985-89	5
	Jordan Greenleaf	2006-11	5

## SEC Career Double-Doubles

No.	Player	Years	D-Ds
1.	Sylvia Fowles, LSU	2004-08	86
2.	Janet Harris, Georgia	1982-85	78
3.	Teaira McCowan, Miss. State	2016-19	70
4.	Julie Gross, LSU	1978-80	68
5.	Valerie Still, Kentucky	1980-83	67
6.	Murriel Page, Florida	1995-98	65
7.	Quientella Bonner, Florida	1976-81	58
8.	Alaina Coats, South Carolina	2013-17	57
	Armintie Price, Ole Miss	2003-07	57
	Charnique Holdsclaw, Tenn.	1996-99	57
11.	Katrina McClain, Georgia	1984-87	56
--	<b>Unique Thompson, Auburn</b>	<b>2017-pres.</b>	<b>49</b>

## Auburn Career Free Throws Made

No.	Player	Years	FT
1.	DeWanna Bonner	2005-09	600
2.	Janiah McKay	2015-19	443
3.	Carolyn Jones	1988-91	438
4.	Tyrese Tanner	2010-14	376
5.	Conswella Sparrow	1997-00	346
	Le'Coe Willingham	1999-04	346
7.	Becky Jackson	1980-84	340
8.	Vickie Orr	1985-89	307
	Marianne Merritt	1975-79	305
10.	Tasha Hamilton	1997-01	296
--	<b>Unique Thompson</b>	<b>2017-pres.</b>	<b>286</b>

## Auburn Career Rebounding

No.	Player	Years	Rebounds
1.	Becky Jackson	1980-84	1,118
2.	DeWanna Bonner	2005-09	1,047
3.	Lori Monroe	1979-83	1,015
4.	<b>Unique Thompson</b>	<b>2017-present</b>	<b>1,010</b>
5.	Vickie Orr	1985-89	1,006
6.	Lauretta Freeman	1989-93	976
7.	Marianne Merritt	1975-79	972
8.	Le'Coe Willingham	1999-03	927
9.	Monique Morehouse	1992-96	792
10.	Jordan Greenleaf	2006-11	761
	Charlene Thomas	1984-87	761
12.	Tra'Cee Tanner	2012-16	758
13.	Sharon Stewart	1984-88	757
14.	C.C. Hayden	1989-92	749
	Kendall Mago	1988-92	749
16.	Tasha Hamilton	1997-01	663
	Mae Ola Bolton	1984-88	653
18.	Marita Payne	2002-06	630
19.	Katie Frerking	2013-17	627
20.	Sherell Hobbs	2005-09	612
21.	Brenda Hill	1982-85	604
22.	Blanche Alverson	2009-13	602
23.	KeKe Carrier	2005-10	600
24.	Angie Hannah	1978-82	588
	Linda Godby	1986-90	580
26.	Tyrese Tanner	2010-14	572
	Conswella Sparrow	1997-00	572
28.	Diann McNeil	1984-88	498
29.	Samantha Williams	1991-96	495
	Hasina Muhammad	2011-15	494

## Auburn Career Field Goals Made

No.	Player	Years	FG
1.	Becky Jackson	1980-84	864
	Vickie Orr	1985-89	864
3.	Marianne Merritt	1975-79	837
4.	DeWanna Bonner	2005-09	744
5.	Angie Hannah	1979-82	735
6.	Mae Ola Bolton	1984-88	697
7.	Carolyn Jones	1988-91	645
8.	Natasha Brackett	2001-05	641
9.	Brandy Montgomery	2013-17	627
10.	Alli Smalley	2007-11	599
--	<b>Unique Thompson</b>	<b>2017-pres.</b>	<b>517</b>

## Auburn Career Field Goal Percentage

No.	Player	Years	FG%
1.	Becky Jackson	1980-84	.602 (864-1435)
2.	Conswella Sparrow	1997-00	.590 (451-764)
3.	Vickie Orr	1985-89	.565 (864-1528)
4.	Tra'Cee Tanner	2012-16	.564 (540-957)
5.	KeKe Carrier	2005-10	.555 (417-751)
6.	Linda Godby	1986-90	.550 (590-1072)
7.	<b>Unique Thompson</b>	<b>2017-pres.</b>	<b>.547 (517-945)</b>
8.	Sharon Stewart	1984-88	.543 (458-843)
9.	Charlene Thomas	1983-87	.536 (428-799)
10.	Angie Hannah	1979-82	.527 (735-1396)



## TIGERS' RECORD WHEN...

	2020-21	Under Coach Flo
At Home.....	5-3	82-43
On the Road.....	0-3	37-64
At a Neutral Site.....	0-0	21-18
When wearing white.....	5-3	82-39
When wearing blue "Auburn".....	0-2	44-69
When wearing blue "Tigers".....	0-1	0-1
When wearing orange.....	0-0	7-10
When wearing pink.....	0-0	7-6
Leading at the half.....	4-1	110-26
Trailing at the half.....	1-4	30-91
Tied at the half.....	0-1	0-8
Scores 100+ points.....	0-0	0-0
Scores 90-99 points.....	2-0	9-0
Scores 80-89 points.....	1-0	28-3
Scores 70-79 points.....	1-0	41-10
Scores 60-69 points.....	1-1	41-33
Scores fewer than 60 points.....	0-5	19-79
Holds opponent to 41-50 points.....	1-0	33-3
Holds opponent to 31-40 points.....	0-0	7-0
Holds opponent to under 30 points.....	0-0	2-0
Force 25 or more turnovers.....	1-0	54-10
Shoots 50% FG or better.....	1-0	36-3
Shoots 40-49% FG.....	2-1	69-35
Shoots 39.9% or under FG.....	2-5	34-88
Holds opponent under 30% FG.....	2-0	28-2
Shoots higher FG% than opponent.....	2-0	107-23
Shoots lower FG% than opponent.....	3-6	33-97
Shoots same FG% as opponent.....	0-0	0-3
Shoots higher FT% than opponent.....	2-1	61-43
Shoots lower FT% than opponent.....	3-4	76-79
Shoots same FT% as opponent.....	0-1	2-4
Out-rebounds opponent.....	5-2	88-35
Out-rebounded by opponent.....	0-4	48-89
Tied in rebounds.....	0-0	5-2
Versus ranked opponent.....	0-0	5-54
In overtime.....	0-0	6-5
Games decided by 3 points or less.....	1-0	15-18
Games decided by 4-5 points.....	0-1	14-17
Games decided by 6-10 points.....	1-1	33-32
Games decided by 11-20 points.....	1-2	39-33
Games decided by 21-30 points.....	0-1	23-17
Games decided by 30+ points.....	2-1	16-8
On Television/Digital.....	5-6	76-87
In November.....	2-0	35-16
In December.....	3-4	44-14
In January.....	0-2	18-46
In February.....	0-0	26-33
In March.....	0-0	14-15

## 2020-21 Auburn Superlatives...

## First Half

Most points scored in the first quarter.....	28 vs. Gardner-Webb (12/1/20)
Most points scored in the second quarter.....	24 vs. USC Upstate (11/25/20)
Most points scored in the first half.....	49 vs. Gardner-Webb (12/1/20)
Fewest points scored in the first half.....	17 at Houston (12/5/20)
Fewest points allowed in the first half.....	9, vs. USC Upstate (11/25/20)
Most points allowed in the first half.....	45 vs. Belmont (12/20/20)
Best FG % in the first half.....	.514 vs. Gardner-Webb (12/1/20)
Worst FG % in the first half.....	.241 at Houston (12/5/20)
Best FG % by an opponent in the first half.....	.581 vs. Georgia (1/3/21)
Worst FG % by an opponent in the first half.....	.143, vs. USC Upstate (11/25/20)
Most rebounds in the first half.....	27 at Houston (12/5/20) & vs. North Florida (12/17/20)
Fewest rebounds in the first half.....	15 vs. Georgia (1/3/21)
Most rebounds by an opponent in the first half.....	23 vs. South Alabama (12/13/20)
Fewest rebounds by an opponent in the first half.....	10 vs. Samford (11/28/20)

## Second Half

Most points scored in the third quarter.....	25 vs. South Alabama (12/13/20)
Most points scored in the fourth quarter.....	28 vs. North Florida (12/17/20)
Most points scored in an overtime period.....	
Most points scored in the second half.....	50 vs. North Florida (12/17/20)
Fewest points scored in the second half.....	16 at LSU (12/31/20)
Fewest points allowed in the second half.....	30 at Ole Miss (1/7/21)
Most points allowed in the second half.....	47 vs. North Florida (12/17/20)
Best FG % in the second half.....	.579 vs. Gardner-Webb (12/1/20)
Worst FG % in the second half.....	.240 vs. Georgia (1/3/21)
Best FG % by an opponent in the second half.....	.519 vs. Samford (11/28/20)
Worst FG % by an opponent in the second half.....	.263 vs. Gardner-Webb (12/1/20)
Most rebounds in the second half.....	27 vs. Gardner-Webb (12/1/20)
Fewest rebounds in the second half.....	12 vs. Georgia (1/3/21) & at Ole Miss (1/7/21)
Most rebounds by an opponent in the second half.....	24 vs. Georgia (1/3/21)
Fewest rebounds by an opponent in the second half.....	11, vs. USC Upstate (11/25/20)

## Game

Most points scored.....	97 vs. Gardner-Webb (12/1/20)
Fewest points scored.....	43 at LSU (12/31/20)
Most points allowed.....	81 vs. North Florida (12/17/20)
Fewest points allowed.....	41 vs. USC Upstate (11/25/20)
Best FG %.....	.534 vs. Gardner-Webb (12/1/20)
Worst FG %.....	.283 at LSU (12/31/20)
Best FG % by an opponent.....	.521 vs. Samford (11/28/20)
Worst FG % by an opponent.....	.286, vs. USC Upstate (11/25/20)
Most rebounds.....	48 vs. North Florida (12/17/20)
Fewest rebounds.....	27 vs. Georgia (1/3/21)
Most rebounds by an opponent.....	43 vs. Stephen F. Austin (12/16/20), at LSU (12/31/20), vs. Georgia (1/3/21)
Fewest rebounds by an opponent.....	26, vs. USC Upstate (11/25/20)

## Miscellaneous

Highest-scoring quarter.....	28, 1Q vs. Gardner-Webb (12/1/20); 4Q vs. North Florida (12/17/20)
Lowest-scoring quarter.....	6, 4Q at LSU (12/31/20); 3Q vs. Georgia (1/3/21)
Highest-scoring opponent quarter.....	28, 4Q vs. North Florida (12/17/20)
Lowest-scoring opponent quarter.....	2, 1Q vs. USC Upstate (11/25/20)
Largest margin in a single quarter.....	+19 (28-9) vs. Gardner-Webb (12/1/20)
Largest margin of victory.....	41, vs. USC Upstate (11/25/20)
Smallest margin of victory.....	2 vs. Samford (11/28/20)
Largest margin of defeat.....	32 vs. Georgia (1/3/21)
Smallest margin of defeat.....	4 at Ole Miss (1/7/21)
Largest halftime lead.....	31, vs. USC Upstate (11/25/20)
Smallest halftime lead.....	8 at LSU (12/31/20)
Times tied at halftime.....	1 - 27-27 vs. Stephen F. Austin (12/16/20)
Largest halftime deficit.....	20 vs. Georgia (1/3/21)
Smallest halftime deficit.....	6 vs. South Alabama (12/13/20)
Largest rebounding margin.....	+19, vs. USC Upstate (11/25/20)
Smallest rebounding margin.....	+1 vs. Samford (11/28/20)
Last time tied in rebounding.....	
Largest rebounding deficit.....	-16 vs. Georgia (1/3/21)
Smallest rebounding deficit.....	-4 at LSU (12/31/20)
Largest deficit overcome to win game.....	12 vs. South Alabama (12/13/20)
Largest lead lost.....	13 at LSU (12/31/20)

MISCELLANEOUS STATISTICS

Double-Doubles	Season	Career
Unique Thompson	7	49
30+ Point Games	Season	Career
Unique Thompson	0	1
20+ Point Games	Season	Career
Unique Thompson	4	19
Honesty Scott-Grayson	1	1
10+ Rebound Games	Season	Career
Unique Thompson	7	58
Romi Levy	1	1
Kiyae' White	0	1
10+ Assist Games	Season	Career
5+ Steal Games	Season	Career
Unique Thompson	2	2
Romi Levy	2	2
Honesty Scott-Grayson	1	1
5+ Block Games	Season	Career
Unique Thompson	0	1

GAMES LED AUBURN IN...

Scoring	Season	Career
Unique Thompson	7	32
Honesty Scott-Grayson	2	2
Aicha Coulibaly	1	1
Jala Jordan	1	1
Keya Patton	1	1

Rebounding	Season	Career
Unique Thompson	8	82
Honesty Scott-Grayson	2	2
Romi Levy	1	1
Alaina Rice	1	1
Kiyae' White	0	1

Assists	Season	Career
Honesty Scott-Grayson	4	4
Kira Lowery	3	3
Romi Levy	2	2
Alaina Rice	2	2
Unique Thompson	1	11
Morgan Robinson-Nwagwu	1	4
Aicha Coulibaly	1	1
Jala Jordan	1	1
Carsen McFadden	1	1
Annie Hughes	0	2
Sania Wells	0	2
Kiyae' White	0	2

(includes games where lead was shared)

2020-21 DOUBLE-DOUBLES

- Unique Thompson vs. Samford (16 pts, 11 reb)
- Unique Thompson vs. Gardner-Webb (21 pts, 12 reb)
- Unique Thompson at Houston (26 pts, 23 reb)
- Unique Thompson vs S. Alabama (21 pts, 15 reb)
- Unique Thompson vs. SFA (11 pts, 14 reb)
- Unique Thompson vs. N. Florida (19 pts, 18 reb)
- Unique Thompson vs. Belmont (20 pts, 23 reb)

Last Time an Auburn Team...

**Scored 90 points** ..... Auburn 94, North Florida 81 in Auburn, Ala. (Dec. 17, 2020)  
 Scored 90 points in an SEC game ..... Auburn 95, Missouri 82, in Columbia, Mo. (Feb. 27, 2020)  
 Scored 100 points ..... Auburn 119, Sam Houston State 54, in Auburn, Ala. (Dec. 5, 2008)  
 Scored 100 points against an SEC opponent ..... Auburn 102, Tennessee 96, SEC Tournament in Albany, Ga. (Mar. 6, 1987)  
 Scored 100 points in an SEC regular-season game ..... Auburn 111, Vanderbilt 67, in Auburn, Ala. (Feb. 18, 1987)  
 Scored 100 points at home ..... Auburn 119, Sam Houston State 54, in Auburn, Ala. (Dec. 5, 2008)  
 Scored 100 points in a true road game ..... Auburn 103, Mercer 29, in Macon, Ga. (Feb. 23, 1987)  
 Scored 110+ points ..... Auburn 119, Sam Houston State 54, in Auburn, Ala. (Dec. 5, 2008)  
 Scored 80 points and lost ..... Mississippi State 92, Auburn 85 [OT] in Auburn, Ala. (Feb. 20, 2020)  
 Scored 90 points and lost ..... Kentucky 91, Auburn 90 [2OT], in Auburn, Ala. (Feb. 2, 1986)  
 Scored 100 points and lost ..... Never  
**Scored 50-59 points in a half** ..... **50 (2nd half) vs. North Florida in Auburn, Ala. (Dec. 17, 2020)**  
 Scored 60 or more points in a half ..... 62 (2nd half) vs. Drake in New Orleans, La. (Dec. 21, 2016)  
 Scored 30 or more points in a quarter ..... 34 (3rd quarter) - at Missouri in Columbia, Mo. (Feb. 27, 2020)  
**Scored 50 points or less in a game** ..... **44 - vs. Georgia in Auburn, Ala. (Jan. 3, 2021)**  
 Scored 50 points or less and won ..... Auburn 47, Missouri 45 [SEC] in Jacksonville, Fla. (March 3, 2016)  
 Scored 40 points or less in a game ..... Georgia 63, Auburn 30, in Athens, Ga. (Jan. 28, 2016)  
**Scored less than 10 points in a quarter** ..... **8 points (1st quarter) at Ole Miss in Oxford, Miss. (Jan. 7, 2021)**  
**Scored less than 20 points in a 1st half** ..... **17 points at Houston in Houston, Texas (Dec. 5, 2020)**  
**Scored less than 20 points in a 2nd half** ..... **16 points at LSU in Baton Rouge, La. (Dec. 31, 2020)**  
 Had 35+ rebound margin ..... 36 - (52-16) vs. Alabama A&M in Normal, Ala. (Nov. 19, 2013)  
 Had 25+ rebound margin ..... 33 - (53-26) vs. Grambling State in Auburn, Ala. (Nov. 6, 2018)  
 Had 20+ rebound margin ..... 33 - (53-26) vs. Grambling State in Auburn, Ala. (Nov. 6, 2018)  
 Attempted 30 free throws ..... 31 - vs. Mississippi State in Auburn, Ala. (Feb. 20, 2020)  
 Attempted 35 free throws ..... 36 - vs. Alabama State in Auburn, Ala. (Dec. 29, 2018)  
 Attempted 40 free throws ..... 41 - vs. Alabama State in Auburn, Ala. (Nov. 15, 2006)  
 Attempted 5 free throws or less ..... 3 - at Texas A&M in College Station, Texas (Feb. 23, 2020)  
 Did not attempt a free throw ..... Never  
**Made 20-24 free throws** ..... **20 - vs. South Alabama in Auburn, Ala. (Dec. 13, 2020)**  
 Made 25+ free throws ..... 28 - vs. Mississippi State in Auburn, Ala. (28-31) (Feb. 20, 2020)  
 Made 30 free throws ..... 31 - vs. Northwestern State (31-43) (Dec. 30, 2003)  
 Had 25 assists ..... 25 - vs. Ole Miss in Auburn, Ala. (Jan. 8, 2017)  
**Had 25 turnovers** ..... **27 - vs. Georgia in Auburn, Ala. (Jan. 3, 2021)**  
 Had 10 turnovers or less ..... 6 - vs. Tennessee in Auburn, Ala. (March 1, 2020)  
 Had 25+ steals ..... Never  
 Had 20-24 steals ..... 21 - vs. Georgia in Auburn, Ala. (Feb. 3, 2019)  
**Had 15-19 steals** ..... **16 - vs. North Florida in Auburn, Ala. (Dec. 17, 2020)**  
 Had 10-14 blocks ..... 10 - vs. Louisiana Tech in Auburn, Ala. (Nov. 19, 2017)  
 Had 15+ blocks ..... 15 - at Florida International in Miami, Fla. (Dec. 29, 2014)  
 Won an overtime game ..... Auburn 74, Dayton 72 [1OT] in Estero, Fla. (Nov. 30, 2019)  
 Lost an overtime game ..... Mississippi State 92, Auburn 85 [1OT] in Auburn, Ala. (Feb. 20, 2020)  
 Played a double overtime game ..... Auburn 70, Alabama 65 [2OT] in Auburn, Ala. (Feb. 27, 2014)  
 Played three or more overtimes ..... Never  
 Shot 70% for a half ..... 70.4% (19-of-27), 2nd half at Elon in Elon, N.C. (Dec. 22, 2018)  
 Shot 60% for a game ..... 63.3% (38-of-60) at Elon in Elon, N.C. (Dec. 22, 2018)  
**Shot less than 30% for a game** ..... **28.3% (17-60) at LSU in Baton Rouge, La. (Dec. 31, 2020)**  
 Shot 90-99.9% from the free throw line (min. 10 attempts) ..... 90.3% (28-of-31) vs. Mississippi State in Auburn, Ala. (Feb. 20, 2020)  
 Shot 100% from the free throw line (min. 10 attempts) ..... 100% (16-of-16) vs. Texas A&M in Auburn, Ala. (Jan. 7, 2018)  
 Shot 50% on 3-pointers (minimum 5 attempts) ..... 50.0% (8-of-16) vs. LSU in Auburn, Ala. (Feb. 16, 2020)  
**Shot 20-30% in a half** ..... **24.0% (6-25), 2nd half vs. Georgia in Auburn, Ala. (Jan. 3, 2021)**  
 Shot less than 20% in a half ..... 18.4% (7-of-38), 1st half vs. Missouri in Auburn, Ala. (Feb. 15, 2018)  
 Shot 55% or better and lost ..... 58.1% (25-of-43) vs. Tennessee (Jan. 20, 2005)  
**Made 10+ 3-point field goals** ..... **11-of-28 vs. North Florida in Auburn, Ala. (Dec. 17, 2020)**  
 Failed to make a 3-point field goal ..... 0-of-5 vs. Southern in Auburn, Ala. (Dec. 9, 2017)  
 Had 60+ rebounds ..... 61 - vs. Stephen F. Austin in Auburn, Ala. (Dec. 17, 2007)  
 Had 50-59 rebounds ..... 55 vs. Ole Miss in Auburn, Ala. (Jan. 23, 2020)  
 Defeated a Top-25 opponent ..... Auburn 58, #25 Missouri 54, in Auburn, Ala. (Feb. 24, 2019)  
 Defeated a Top-10 opponent ..... Auburn 66, #7 Kentucky 61, in Auburn, Ala. (Jan. 3, 2016)  
 Defeated a Top-25 opponent on the road ..... Auburn 68, #16 Vanderbilt 62, in Nashville, Tenn. (Feb. 13, 2014)

Last Time an Auburn Player...

**Scored 25-29 points** ..... **26 - Unique Thompson at Houston in Houston, Texas. (Dec. 5, 2020)**  
 Scored 30-34 points ..... 31 - Unique Thompson at TCU in Fort Worth, Texas (Dec. 7, 2019)  
 Scored 35 points ..... 35 - DeWanna Bonner vs. Tennessee in Auburn, Ala. (Jan. 25, 2009)  
 Scored 40 points ..... 41 - Conswella Sparrow vs. South Alabama (Feb. 17, 1998)  
**Had 15-19 rebounds** ..... **18 - Unique Thompson vs. North Florida in Auburn, Ala. (Dec. 17, 2020)**  
**Had 20+ rebounds** ..... **23 - Unique Thompson vs. Belmont in Auburn, Ala. (Dec. 20, 2020)**  
 Had 10 assists ..... 10 - Daisa Alexander vs. LSU in Auburn, Ala. (Feb. 16, 2020)  
 Had 15 assists ..... 18 - Martha Monk vs. Alabama State (Feb. 18, 1981)  
 Had 5 blocks ..... 6 - Unique Thompson vs. Louisiana Tech in Auburn, Ala. (Nov. 19, 2017)  
 Had 7 blocks ..... 7 - Jassany Williams vs. Duke (Nov. 18, 2011)  
 Had 10 blocks ..... 13 - Marita Payne vs. Arkansas (Feb. 3, 2005)  
**Had 5 steals** ..... **6 - Romi Levy vs. Georgia in Auburn, Ala. (Jan. 3, 2021)**  
 Had 8 steals ..... 8 - Brandy Montgomery vs. East Carolina in Auburn, Ala. (Dec. 5, 2015)  
 Had 10 steals ..... 10 - Kristen Mulligan vs. Northeast Illinois in Auburn, Ala. (Dec. 18, 1992)  
**Made 10 field goals** ..... **10 - Unique Thompson [10-18] at Houston in Houston, Texas (Dec. 5, 2020)**  
 Made 15 field goals ..... 15 - Conswella Sparrow (15-16) vs. South Alabama (Feb. 17, 1998)  
 Attempted 20 field goals ..... 21 - Daisa Alexander vs. Vanderbilt in Greenville, S.C. (March 4, 2020)  
 Attempted 25 field goals ..... 28 - Brandy Montgomery (8-28) at Marquette in Milwaukee, Wis. (Dec. 13, 2015)  
 Made 5+ three-point field goals ..... 5 - Erin Howard vs. Vanderbilt in Greenville, S.C. (March 4, 2020)  
 Made 8 three-point field goals ..... 8 - Tiffany Krantz vs. Troy State in Auburn, Ala. (Nov. 21, 1997)  
 Attempted 10 three-point field goals ..... 14 - Lauren Hansen vs. Drake in Estero, Fla. (Dec. 1, 2019)  
 Attempted 15 three-point field goals ..... 16 - Brandy Montgomery at Marquette in Milwaukee, Wis. (Dec. 13, 2015)  
 Made 10 free throws ..... 12 - Daisa Alexander vs. Mississippi State (Feb. 20, 2020)  
 Made 15 free throws ..... Never  
 Shot 100% at the free throw line (min. 10 attempts) ..... 12-12 - Daisa Alexander vs. Mississippi State (Feb. 20, 2020)

**SEC PRESEASON POLL (Media Vote)****Order of Finish**

1. South Carolina
2. Mississippi State
3. Kentucky
4. Texas A&M
5. Arkansas
6. Tennessee
7. LSU
8. Georgia
9. Alabama
10. Florida
11. Missouri
12. Vanderbilt
13. Auburn
14. Ole Miss

**Player of the Year**

Rhyne Howard, Kentucky

**All-SEC Team**

Unique Thompson, Auburn  
 Rhyne Howard, Kentucky  
 Rickea Jackson, Mississippi State  
 Aliyah Boston, South Carolina  
 Renna Davis, Tennessee  
 N'dea Jones, Texas A&M

**SEC PRESEASON POLL (Coaches' Vote)****Order of Finish**

1. South Carolina
2. Kentucky
3. Texas A&M
4. Arkansas
5. Mississippi State
6. Tennessee
7. LSU
8. Alabama
9. Georgia
10. Missouri
11. Ole Miss
12. Florida
13. Vanderbilt
14. Auburn

**Player of the Year**

Rhyne Howard, Kentucky

**All-SEC First Team**

Chelsea Dungee, Arkansas  
 Unique Thompson, Auburn  
 Rhyne Howard, Kentucky  
 Khayla Pointer, LSU  
 Rickea Jackson, Mississippi State  
 Aliyah Boston, South Carolina  
 Renna Davis, Tennessee  
 N'dea Jones, Texas A&M

**All-SEC Second Team**

Jasmine Walker, Alabama  
 Destiny Slocum, Arkansas  
 Lavender Briggs, Florida  
 Shakira Austin, Ole Miss  
 Jessika Carter, Mississippi State  
 Aijha Blackwell, Missouri  
 Zia Cooke, South Carolina  
 Kayla Wells, Texas A&M

**Had a double-double**.....Unique Thompson (20 pts/23 reb) vs. Belmont in Auburn, Ala. (Dec. 20, 2020)  
**Had 2 consecutive double-doubles**..... Unique Thompson: 19/18 vs. North Florida, 20/23 vs. Belmont (Dec. 17-20, 2020)  
**Had 3 consecutive double-doubles**..... Unique Thompson: 11/14 vs. SFA, 19/18 vs. North Florida, 20/23 vs. Belmont (Dec. 16-20, 2020)  
**...Had 7 consecutive double-doubles**.....Unique Thompson: First vs. Samford; last vs. Belmont (Nov. 28-Dec. 20, 2020)  
 ...Had 13 consecutive double-doubles.....Unique Thompson: First vs. BYU; last at Vandy (March 23, 2019-Jan. 2, 2020)  
 ...Had 18 consecutive double-doubles (AU record)..... Laretta Freeman: First vs. Furman, Last vs. Oral Roberts (Dec. 29, 1992-Feb. 23, 1993)  
**Had a double-double at halftime**..... Unique Thompson (16 pts/10 rebs) at Iowa State in Ames, Iowa (Nov. 13, 2018)  
**Two players had a double-double**..... Unique Thompson (14 p/13 r) & Jariah McKay (16 p/10 a) vs. Grambling State (Nov. 6, 2018)  
**Recorded a double-double with points and assists**..... Jariah McKay (16 pts/10 assists) vs. Grambling State (Nov. 6, 2018)  
**Scored 20 points & had 20 rebounds**.....Unique Thompson (20 pts/23 reb) vs. Belmont in Auburn, Ala. (Dec. 20, 2020)  
**Had a triple-double**..... Whitney Boddie (24 pts./11 rebs./12 ast.) vs. Sam Houston State (Dec. 5, 2008)  
**Two or more players scored 20 points**..... Benton (23), Howard (22), Alexander (21) at Missouri in Columbia, Mo. (Feb. 27, 2020)  
**Three players scored 20 points**..... Benton (23), Howard (22), Alexander (21) at Missouri in Columbia, Mo. (Feb. 27, 2020)  
**Two players scored 30 points**..... Laticia Morris (33) & Tara Williams (30) vs. South Alabama (Jan. 14, 1997)  
**Had 2 straight 25-point games**..... Jariah McKay: 27 at South Carolina, 26 vs. Arkansas (Jan. 11-14, 2018)  
**Had 3 straight 25-point games**..... Jariah McKay: 25 pts vs. Texas A&M, 27 pts at South Carolina, 26 pts vs. Arkansas (Jan. 7-14, 2018)  
**Zero players scored in double figures**..... at Georgia in Athens, Ga. (Jan. 28, 2016)  
**Only one player scored in double figures**..... Keya Patton (12) vs. Georgia in Auburn, Ala. (Jan. 3, 2021)  
**Five players scored in double figures**..... Thompson (19), Hughes (17), Scott-Grayson (16), Levy (12), Jordan (11) vs. N. Florida (Dec. 17, 2020)  
**Six players scored in double figures**..... McKay/Benton (16), Primm (15), Thompson (14), Alexander/Jones (13) vs. Grambling (Nov. 6, 2018)  
**Seven players scored in double figures**..... Carrier (19 pts.), Bonner (18 pts.), Smalley (16 pts.), Boddie (13 pts.)  
 ..... R. Hobbs (13 pts.), Hilliard (13 pts.) & S. Hobbs (10 pts.) vs. Sam Houston State (Dec. 5, 2008)  
**Two players had 10 rebounds**..... Unique Thompson (13) and Daisa Alexander (10) vs. Ole Miss in Auburn, Ala. (Jan. 23, 2020)  
**Three players had 10 rebounds**..... J. Greenleaf (12 rebs.), D. Bonner (12 rebs.) & W. Boddie (10 rebs.) vs. Oakland (Nov. 21, 2007)  
**Played every minute**..... Jordan Greenleaf (40 mins.) vs. Florida in Duluth, Ga. [SEC] (Mar. 4, 2010)  
**Played 40 or more minutes in OT game**..... Unique Thompson (43 mins.) vs. Georgia in Auburn, Ala. (Feb. 3, 2019)  
**Attempted a slam dunk**..... Hasina Muhammad vs. St. John's in Auburn, Ala. (Dec. 6, 2013)  
**Made a shot from half-court or beyond**..... Brooke Moore (end 2nd quarter) vs. Alabama State in Auburn, Ala. (Dec. 29, 2018)

**Last Time an Auburn Opponent...**

**Shot less than 30% in a game (SEC)**.....Ole Miss - 27.4% (17-of-62) in Auburn, Ala. (Jan. 23, 2020)  
**Shot less than 30% in a game (Non-conf)**..... Gardner-Webb - 29.4% (20-of-68) in Auburn, Ala. (Dec. 1, 2020)  
**Shot 60% or better in a game**..... Florida - 61.5% (32-of-52) in Auburn, Ala. (Jan. 9, 2020)  
**Scored 90 points**..... Arkansas 90, Auburn 68 in Greenville, S.C. (March 5, 2020)  
**Scored 100 points**..... Georgia 102, Auburn 72 in Athens, Ga. (Mar. 3, 1984)  
**Scored 100 points at Auburn**..... Tuskegee 105, Auburn 98 (2OT) (Feb. 12, 1979)  
**Had 25+ rebound margin**..... Never  
**Had a 20+ rebound margin**..... 20 - Alabama (56-36) in Auburn, Ala. (Feb. 20, 2017)  
**Scored less than 5 points in a quarter**..... 2 - USC Upstate (1st quarter) in Auburn, Ala. (Nov. 25, 2020)  
**Scored less than 10 points in a quarter**..... 8 - LSU (1st quarter) in Baton Rouge, La. (Dec. 31, 2020)  
**Scored less than 10 points in all four quarters**..... Winthrop (9-8-8-8) in Auburn, Ala. (Dec. 16, 2015)  
**Scored 30 or more points in a quarter**..... 34 - Wofford (4th quarter) in Auburn, Ala. (Nov. 6, 2019)  
**Scored less than 10 points in a half**..... 9 - USC Upstate (1st half) in Auburn, Ala. (Nov. 25, 2020)  
**Scored less than 20 points in a 1st half**..... 19 - LSU in Baton Rouge, La. (Dec. 31, 2020)  
**Scored less than 20 points in a 2nd half**..... 19 - Florida in Auburn, Ala. (Dec. 31, 2017)  
**Had 50 rebounds**..... 56 - Alabama in Auburn, Ala. (Feb. 20, 2017)  
**Had 25 assists**..... 25 - Arkansas in Greenville, S.C. (March 5, 2020)  
**Had 25-29 turnovers**..... 25 - USC Upstate in Auburn, Ala. (Nov. 25, 2020)  
**Had 30-34 turnovers**..... 30 - XULA in Auburn, Ala. (Dec. 28, 2017)  
**Had 35+ turnovers**..... 35 - ULM in Auburn, Ala. (Nov. 27, 2017)  
**Had 15 steals**..... 21 - Belmont in Auburn, Ala. (Dec. 20, 2020)  
**Had 10 blocks**..... 10 - Georgia in Athens, Ga. (Jan. 19, 2020)  
**Failed to make a 3-point field goal**..... LSU (0-6) in Baton Rouge, La. (Feb. 1, 2016)  
**Attempted 35 free throws**..... 35 - Florida in Gainesville, Fla. (Feb. 28, 2016)  
**Made 30 free throws**..... 30 - Arkansas (Jan. 22, 1995)  
**Made 10-14 three-point field goals**..... 11 - Belmont in Auburn, Ala. (Dec. 20, 2020)  
**Made 15+ three-point field goals**..... 17 - Arkansas in Greenville, S.C. (March 5, 2020)  
**Scored 41-50 points in a game**..... 41 - USC Upstate in Auburn, Ala. (Nov. 25, 2020)  
**Scored 31-40 points in a game**..... 38 - Alabama in Auburn, Ala. (Feb. 17, 2019)  
**Scored 30 points or less**..... 26 - Georgia in Athens, Ga. (Feb. 22, 2015)  
**Scored 25 points or less**..... 25 - Puerto Rico-Mayaguez (Dec. 17, 2000)

**Last Time an Opposing Player...**

**Scored 30+ points (non-conference)**..... 35 - Ajah Wayne of Old Dominion in Auburn, Ala. (Nov. 14, 2019)  
**Scored 30+ points (SEC)**..... 30 - Alexis Tolefree of Arkansas in Greenville, S.C. (March 5, 2020)  
**Scored 35+ points (all games)**..... 35 - Ajah Wayne of Old Dominion in Auburn, Ala. (Nov. 14, 2019)  
**Scored 40+ points (all games)**..... 41 - Chelsea Dungee of Arkansas in Fayetteville, Ark. (Feb. 10, 2019)  
**Attempted 25 field goals**..... 27 - Jantel Lavender (9-27) of Ohio State (Nov. 23, 2008)  
**Scored 20 points & had 20 rebounds**..... Young of Baylor in the WNIT Championship Game, (20 pts./25 rebs.) (Apr. 4, 2003)  
**Two players scored 20 points**..... Jazz Bond (23) and Rhetta Moore (22) of North Florida in Auburn, Ala. (Dec. 17, 2020)  
**Three players scored 20 points**..... by LSU in Baton Rouge, Chatman (22 pts.), Johnson (21 pts) & Lowery (20 pts) (Jan. 12, 1991)  
**Five players scored in double figures**..... Cooke (13), Boston (13), Harris (12), Grissett (11), Herbert Harrigan (11) of S. Carolina (Feb. 13, 2020)  
**Six players scored in double figures**..... Williams (10), Lewis (13), Bonds (18), Peoples (10), Miller (12), Svetle (12) of Florida (Jan. 26, 2014)  
**Recorded a double-double**..... Shakira Austin of Ole Miss (25 pts/10 reb) in Oxford, Miss. (Jan. 7, 2021)  
**Recorded a double-double with points and assists**..... Tyasha Harris (12 pts/11 ast) of South Carolina in Columbia, S.C. (Jan. 11, 2018)  
**Recorded a triple-double**..... Ceira Ricketts (14 pts./13 rebs./12 ast.) of Arkansas (Jan. 18, 2009)  
**Two players recorded a double-double**..... C. Green (16 pts/11 reb) & Davis (15 pts/10 reb) of Tennessee in Knoxville, Tenn. (Feb. 14, 2019)  
**Committed 10+ turnovers**..... 10 - Shaquera Wade of Alabama in Greenville, S.C. (March 7, 2019)  
**Had 15-19 rebounds**..... 15 - by N'dea Jones of Texas A&M in Auburn, Ala. (Jan. 24, 2019)  
**Had 20+ rebounds**..... 21 - Ayana Mitchell of LSU in Baton Rouge, La. (March 3, 2019)  
**Had 10 assists**..... 10 - Tyasha Harris of South Carolina in Auburn, Ala. (Feb. 28, 2019)  
**Had 15 assists**..... 16 - Cindy McMahan of Alabama-Huntsville (Nov. 24, 1980)  
**Had 5 blocks**..... 5 - Ashley Knight of Alabama in Tuscaloosa, Ala. (Feb. 18, 2018)  
**Had 10 blocks**..... Never  
**Had 5 steals**..... 11 - Jamilyn Kinney of Belmont in Auburn, Ala. (Dec. 20, 2020)  
**Made 15 field goals**..... 15 - Chamique Holdsclaw (15-21) of Tennessee (Feb. 1, 1998)  
**Made 10 3-point field goals**..... 11 - Morgan Eye (11-18) of Missouri in Columbia, Mo. (Jan. 6, 2013)

**2020-21 Auburn Individual Highs...****First Half**

Points.....	16, Unique Thompson vs. Gardner-Webb (12/1/20)
Field Goals Made.....	7, Unique Thompson vs. Gardner-Webb (12/1/20)
Field Goal Attempts.....	10, Annie Hughes vs. North Florida (12/17/20)
3-Point Field Goals Made .....	3, 3x; last, Annie Hughes vs. North Florida (12/17/20)
3-Point Field Goal Attempts .....	7, Annie Hughes vs. North Florida (12/17/20)
Free Throws Made .....	5, Honesty Scott-Grayson vs. Belmont (12/20/20)
Free Throws Attempted .....	7, Honesty Scott-Grayson vs. Belmont (12/20/20)
Rebounds .....	11, Unique Thompson vs. Belmont (12/20/20)
Assists .....	3, 3x; Morgan Robinson-Nwagwu at Ole Miss (1/7/21)
Blocked Shots.....	2, 2x; last, Jala Jordan vs. South Alabama (12/13/20)
Steals .....	4, Romi Levy at LSU (12/31/20)

**Second Half**

Points.....	22, Unique Thompson at Houston (12/5/20)
Field Goals Made.....	8, Unique Thompson at Houston (12/5/20)
Field Goal Attempts.....	12, Unique Thompson at Houston (12/5/20)
3-Point Field Goals Made .....	3, Honesty Scott-Grayson at Ole Miss (1/7/21)
3-Point Field Goal Attempts .....	4, Honesty Scott-Grayson at Ole Miss (1/7/21)
Free Throws Made .....	9, Unique Thompson vs. South Alabama (12/13/20)
Free Throws Attempted .....	9, Unique Thompson vs. South Alabama (12/13/20)
Rebounds .....	15, Unique Thompson at Houston (12/5/20)
Assists .....	4, Honesty Scott-Grayson vs. Belmont (12/20/20)
Blocked Shots.....	2, 2x; last, Jala Jordan vs. North Florida (12/17/20)
Steals .....	3, 3x; last, Morgan Robinson-Nwagwu at Ole Miss (1/7/21)

**Game**

Points.....	26, Unique Thompson at Houston (12/5/20)
Field Goals Made.....	10, Unique Thompson at Houston (12/5/20)
Field Goal Attempts.....	18, Unique Thompson at Houston (12/5/20)
3-Point Field Goals Made .....	4, Jala Jordan vs. USC Upstate (11/25/20)
3-Point Field Goal Attempts .....	8, Annie Hughes vs. North Florida (12/17/20)
Free Throws Made .....	9, Unique Thompson vs. South Alabama (12/13/20)
Free Throws Attempted .....	10, Unique Thompson vs. Samford (11/28/20)
Rebounds .....	23, Unique Thompson at Houston (12/5/20) & vs. Belmont (12/20/20)
Assists .....	6, Morgan Robinson-Nwagwu at Ole Miss (1/7/21)
Blocked Shots.....	3, Jala Jordan vs. South Alabama (12/13/20)
Steals .....	6, Romi Levy vs. Georgia (1/3/21)

**2020-21 Auburn Team Highs...****First Half**

Points.....	49 vs. Gardner-Webb (12/1/20)
Field Goals Made.....	19 vs. Gardner-Webb (12/1/20)
Field Goal Attempts.....	43 vs. North Florida (12/17/20)
3-Point Field Goals Made .....	7 vs. North Florida (12/17/20)
3-Point Field Goal Attempts .....	17 vs. North Florida (12/17/20)
Free Throws Made .....	11 vs. Gardner-Webb (12/1/20)
Free Throws Attempted .....	16 vs. Gardner-Webb (12/1/20)
Rebounds .....	27 at Houston (12/5/20) & vs. North Florida (12/17/20)
Assists .....	9 vs. Samford (11/28/20) & vs. Gardner-Webb (12/1/20)
Blocked Shots.....	4 at Houston (12/5/20)
Steals .....	8 vs. Gardner-Webb (12/1/20) & vs. North Florida (12/17/20)

**Second Half**

Points.....	50 vs. North Florida (12/17/20)
Field Goals Made.....	20 vs. Gardner-Webb (12/1/20)
Field Goal Attempts.....	37 vs. North Florida (12/17/20)
3-Point Field Goals Made .....	5 at Ole Miss (1/7/21)
3-Point Field Goal Attempts .....	12 vs. Samford (11/28/20) & vs. Belmont (12/20/20)
Free Throws Made .....	17 vs. South Alabama (12/13/20)
Free Throws Attempted .....	21 vs. South Alabama (12/13/20)
Rebounds .....	27 vs. Gardner-Webb (12/1/20)
Assists .....	11 vs. USC Upstate (11/25/20)
Blocked Shots.....	3 vs. SFA (12/16/20) & vs. North Florida (12/17/20)
Steals .....	8, 4x; last vs. Georgia (1/3/21)

**Game**

Points.....	97 vs. Gardner-Webb (12/1/20)
Field Goals Made.....	39 vs. Gardner-Webb (12/1/20)
Field Goal Attempts.....	80 vs. North Florida (12/17/20)
3-Point Field Goals Made .....	11 vs. North Florida (12/17/20)
3-Point Field Goal Attempts .....	28 vs. North Florida (12/17/20)
Free Throws Made .....	20 vs. South Alabama (12/13/20)
Free Throws Attempted .....	29 vs. Gardner-Webb (12/1/20)
Rebounds .....	48 vs. North Florida (12/17/20)
Assists .....	19 vs. USC Upstate (11/25/20)
Blocked Shots.....	5 vs. Stephen F. Austin (12/16/20)
Steals .....	16 vs. Gardner-Webb (12/1/20) & vs. North Florida (12/17/20)
Turnovers Forced.....	25 vs. USC Upstate (11/25/20)

**Specialty Statistics (Auburn-Opponent)**

Opponent	Points in the Paint	Points off Turnovers	2nd-Chance Points	Fast-Break Points	Bench Points
USC Upstate	42-6	21-7	15-2	8-0	51-23
Samford	28-28	22-16	15-5	11-5	24-1
Gardner-Webb	62-18	25-14	20-18	14-7	43-24
at Houston	34-30	19-21	19-9	7-6	29-25
South Alabama	24-28	15-14	16-12	14-10	22-10
Stephen F. Austin	28-30	18-18	7-7	10-5	12-17
North Florida	40-38	26-17	19-4	15-12	29-13
Belmont	30-34	15-31	9-14	6-8	12-19
at LSU	22-30	7-22	12-16	6-12	19-25
Georgia	30-42	14-26	4-15	12-14	14-32
at Ole Miss	16-26	17-14	4-8	6-3	10-18

**Lead-Deficit Comparison**

Opponent	Largest Lead	Largest Deficit	Lead Changes	Ties	Result
USC Upstate	43 (4th, 0:26)	--	0	0	W, 82-41
Samford	16 (3rd, 9:03)	3 (1st, 9:01)	3	1	W, 66-64
Gardner-Webb	36 (4th, 0:19)	3 (1st, 9:25)	1	0	W, 97-61
at Houston	--	17 (2nd, 3:53)	0	0	L, 61-71
South Alabama	12 (4th, 1:01)	12 (2nd, 6:04)	2	1	W, 74-66
Stephen F. Austin	7 (1st, 1:57)	13 (4th, 0:16)	3	7	L, 54-67
North Florida	17 (2nd, 9:05)	8 (1st, 7:09)	3	2	W, 94-81
Belmont	2 (1st, 9:16)	21 (4th, 0:23)	3	4	L, 57-78
at LSU	13 (3rd, 7:14)	13 (4th, 1:54)	2	2	L, 43-56
Georgia	--	37 (3rd, 1:43)	0	1	L, 44-76
at Ole Miss	--	13 (3rd, 5:49)	0	0	L, 58-62

**Scoring Breakdown**

(Percentage of total points in parentheses)

Opponent	Front Court	Back Court	Sr.	Jr.	So.	Fr.	Starters	Bench
USC Upstate	44	38	16	14	24	12	31	51
Samford	34	32	16	21	19	10	42	24
Gardner-Webb	51	46	21	19	35	22	54	43
at Houston	39	22	26	18	17	0	32	29
South Alabama	35	39	21	10	32	11	52	22
Stephen F. Austin	23	31	11	2	37	4	42	12
North Florida	44	50	19	2	59	14	65	29
Belmont	24	33	20	0	33	4	45	12
at LSU	25	18	-	5	18	20	24	19
Georgia	18	26	-	15	26	6	30	14
at Ole Miss	21	37	-	6	35	17	48	10

### Comparison Statistics (Auburn/Opponent)

Opponent	1st	2nd	Score	Mar	Total FG	FG Pct	3-Pointers	3FG Pct	Free Throws	FT Pct	Reb.	Mar	Assist	TO	Bk	Stl	Fouls
USC Upstate	40-9	42-32	82-41	+41	30-65/14-49	.462/.286	8-20/7-21	.400/.333	14-17/6-6	.824/1.000	45/26	+19	19/13	14/25	1/0	13/9	7/19
Samford	38-26	28-38	66-64	+2	22-60/25-48	.367/.521	7-25/8-22	.280/.364	15-23/6-10	.652/.600	33/32	+1	11/14	12/21	1/2	14/7	14/19
Gardner-Webb	49-28	48-33	97-61	+36	39-73/20-68	.534/.294	2-11/9-37	.182/.243	12-17/17-29	.706/.586	47/41	+6	16/11	11/24	3/2	16/7	17/23
at Houston	17-34	44-37	61-71	(10)	22-61/26-64	.361/.406	2-12/10-30	.333/.167	15-20/9-12	.750/.750	45/34	+11	9/18	23/17	4/1	10/11	18/21
South Alabama	28-34	46-32	74-66	+8	23-65/21-56	.356/.375	8-22/7-19	.364/.368	20-26/17-27	.769/.630	44/37	+7	10/11	16/21	3/5	12/15	20/21
Stephen F. Austin	27-27	27-40	54-67	(13)	19-56/22-54	.339/.407	2-15/7-25	.133/.280	14-23/16-21	.609/.762	34/43	(9)	7/12	19/24	5/2	14/7	23/21
North Florida	44-32	50-47	94-81	+13	34-80/32-65	.425/.492	11-28/10-31	.393/.323	15-18/7-8	.833/.875	48/34	+14	16/17	15/22	3/0	16/8	16/18
Belmont	28-45	29-33	57-78	(21)	22-60/30-62	.367/.484	3-17/11-22	.176/.500	10-17/7-11	.588/.636	47/30	+17	13/18	27/16	1/0	8/21	12/19
at LSU	27-19	16-37	43-56	(13)	17-60/21-60	.283/.350	3-18/0-9	.167/.000	6-8/14-15	.750/.933	39/43	(4)	7/10	24/19	4/3	10/11	18/13
Georgia	23-43	21-33	44-76	(32)	16-52/31-62	.308/.500	1-11/5-14	.091/357	9-13/11-18	.611/.692	27/43	(16)	2/18	27/22	2/6	12/13	13/16
at Ole Miss	23-32	35-30	58-62	(4)	23-55/22-49	.418/.375	6-21/5-12	.286/.417	6-8/13-18	.750/.722	28/34	(6)	18/19	17/19	0/4	12/10	15/11

### Game-by-Game Leaders

	Points	Rebounds	Assists	Steals	Blocked Shots
USC Upstate	16-Thompson/Jordan	7-Unique Thompson	5-Alaina Rice	4-M. Robinson-Nwagwu	1-Aicha Coulibaly
Samford	16-Unique Thompson	11-Unique Thompson	4-Kira Lowery	5-Unique Thompson	1-Jala Jordan
Gardner-Webb	21-Unique Thompson	12-Unique Thompson	4-Jala Jordan	5-Honesty Scott-Grayson	2-Romi Levy
at Houston	26-Unique Thompson	23-Unique Thompson	2-Thompson/Coulibaly	2-(four players)	2-Romi Levy
South Alabama	21-Unique Thompson	14-Unique Thompson	3-Levy/McFadden	5-Unique Thompson	3-Jala Jordan
Stephen F. Austin	16-Honesty Scott-Grayson	14-Unique Thompson	2-Honesty Scott-Grayson	4-Unique Thompson	2-Unique Thompson
North Florida	19-Unique Thompson	18-Unique Thompson	5-Kira Lowery	3-(three players)	2-Unique Thompson
Belmont	20-Unique Thompson	23-Unique Thompson	4-Honesty Scott-Grayson	3-Honesty Scott-Grayson	1-Annie Hughes
at LSU	12-Aicha Coulibaly	11-Romi Levy	2-(three players)	5-Romi Levy	1-(four players)
Georgia	12-Keya Patton	4-Rice/Scott-Grayson	1-Scott-Grayson/Lowery	6-Romi Levy	1-Jordan/Coulibaly
at Ole Miss	23-Honesty Scott-Grayson	5-Honesty Scott-Grayson	6-M. Robinson-Nwagwu	3-Scott-Grayson/Rob.-Nw.	(none)

### 2020-21 Starting Lineups

	Point Guard (1)	Wing (2)	Wing (3)	Wing (4)	Post (5)
USC Upstate	Kira Lowery	Annie Hughes	Honesty Scott-Grayson	Aicha Coulibaly	Unique Thompson
Samford	Kira Lowery	Annie Hughes	Honesty Scott-Grayson	Aicha Coulibaly	Unique Thompson
Gardner-Webb	Kira Lowery	Annie Hughes	Honesty Scott-Grayson	Aicha Coulibaly	Unique Thompson
at Houston	Kira Lowery	Romi Levy	Honesty Scott-Grayson	Aicha Coulibaly	Unique Thompson
South Alabama	Kira Lowery	Annie Hughes	Honesty Scott-Grayson	Jala Jordan	Unique Thompson
Stephen F. Austin	Kira Lowery	Annie Hughes	Honesty Scott-Grayson	Jala Jordan	Unique Thompson
North Florida	Kira Lowery	Annie Hughes	Honesty Scott-Grayson	Jala Jordan	Unique Thompson
Belmont	Kira Lowery	Annie Hughes	Honesty Scott-Grayson	Jala Jordan	Unique Thompson
at LSU	Alaina Rice	Sania Wells	Honesty Scott-Grayson	Romi Levy	Jala Jordan
Georgia	Alaina Rice	Keya Patton	Honesty Scott-Grayson	Romi Levy	Jala Jordan
at Ole Miss	Alaina Rice	Keya Patton	Honesty Scott-Grayson	Romi Levy	Jala Jordan

#### Record by Starting Lineup

Lowery, Hughes, Scott-Grayson, Coulibaly, Thompson	3-0 (1.000)
Lowery, Levy, Scott-Grayson, Coulibaly, Thompson	0-1 (.000)
Lowery, Hughes, Scott-Grayson, Jordan, Thompson	3-1 (.750)
Rice, Wells, Scott-Grayson, Levy, Jordan	0-1 (.000)
Rice, Patton, Scott-Grayson, Levy, Jordan	0-2 (.000)



# Terri

# WILLIAMS-FOURNOY

Head Coach

Ninth Season at Auburn • 17th as a Head Coach • 29th Season in coaching

Hampton, Va. • Penn State, 1991

- *Has taken her teams to postseason appearances in nine of the last 12 years, including six NCAA Tournament appearances*
- *Has had seven players selected to All-SEC teams*
- *Auburn has forced an average of 20.0+ turnovers per game under Coach Flo*
- *Led Auburn to the postseason in five of eight seasons, advancing to WNIT Quarterfinals in 2013 and Third Round in 2014, along with NCAA Tournament in 2016, 2017 and 2019*
- *Won her 100th game at Auburn on Feb. 8, 2018, defeating LSU 70-62*
- *Picked up her 200th career head coaching victory Dec. 5, 2015 at home vs. East Carolina*
- *Won 250th career game at Xavier (La.) on Nov. 28, 2018*
- *Recorded her 400th career win as a collegiate coach in Auburn's 68-58 win over Hofstra on Dec. 9, 2012*
- *Won her 500th game as a collegiate coach with victory over Louisiana-Lafayette on Nov. 25, 2018*
- *Picked up first SEC win in 50-47 win over #23 Arkansas in 2013*
- *Earned second win over ranked opponent at Auburn and snapped 21-game skid to #16 Vanderbilt with 68-62 win in Nashville on Feb. 13, 2014*
- *Picked up first top-10 win with a 66-61 victory over #7 Kentucky on Jan. 3, 2016*
- *Has 283 wins as a head coach and 251 as an assistant for a .610 winning percentage over 28 years as a collegiate coach*
- *Has been part of six conference championships and 21 post-season appearances as an assistant and head coach*
- *2010 Black Coaches Association Coach of the Year*
- *Served as an assistant coach for Team USA that won a gold medal at the 2011 World University Games in Shenzhen, China*
- *Coached teams to 15 NCAA Tournament appearances, nine as an assistant and six as a head coach*
- *Has coached 25 players that have gone on to the professional ranks, including seven in the WNBA*
- *As an assistant, helped coach Georgia to an NCAA Final Four appearance and two NCAA Elite Eight appearances*
- *Coached three Georgetown players to three all-conference honors and one All-America award*
- *Has a 622-380 record in 33 seasons as a head coach, assistant coach and player*
- *Helped coach Georgetown to a Big East title in 1992*
- *As an assistant coach at Southwest Missouri State, helped the team to two straight NCAA Tournaments and two consecutive Missouri Valley Conference Tournament titles*

<b>All-time record as player and coach:</b>	<b>622-380 (.623)</b>	<b>33 seasons</b>
<b>Record as collegiate player:</b>	<b>88-36 (.709)</b>	<b>4 seasons</b>
<b>Record as collegiate coach:</b>	<b>534-344 (.608)</b>	<b>29 seasons</b>
<b>Record as collegiate assistant coach:</b>	<b>251-117 (.683)</b>	<b>12 seasons</b>
<b>Record as collegiate head coach:</b>	<b>283-229 (.553)</b>	<b>17 seasons</b>
<b>Record as Auburn head coach:</b>	<b>140-125 (.528)</b>	<b>9 seasons</b>

## Williams-Flournoy Year-by-Year

### Penn State, Player (1987-91)

Year	Record	Conf.	Other Information
1987-88	20-13	11-7	NCAA Second Round
1988-89	14-14	12-6	
1989-90	25-7	15-3	NCAA Second Round
1990-91	29-2	17-1	NCAA Second Round

### Georgetown, Assistant Coach (1992-96)

Year	Record	Conf.	Other Information
1992-93	23-7	15-3	Big East Champions NCAA Sweet 16
1993-94	12-15	6-12	
1994-95	11-17	6-12	
1995-96	12-15	7-11	

### Georgia, Assistant Coach (1996-2002)

Year	Record	Conf.	Other Information
1996-97	25-6	11-1	SEC Champions NCAA Elite Eight
1997-98	17-11	8-6	NCAA First Round
1998-99	27-7	9-5	NCAA Final Four
1999-2000	32-4	13-1	SEC Champions NCAA Elite Eight
2000-01	27-6	11-3	SEC Tournament Champions NCAA Second Round
2001-02	19-11	6-8	NCAA First Round

### Southwest Missouri State, Assistant Coach (2002-04)

Year	Record	Conf.	Other Information
2002-03	18-13	11-7	MVC Tournament Champions NCAA First Round
2003-04	28-4	16-2	Missouri Valley Champions MVC Tournament Champions NCAA First Round

### Georgetown, Head Coach (2004-12)

Year	Record	Conf.	Other Information
2004-05	12-16	7-9	
2005-06	10-17	3-13	
2006-07	13-16	3-13	
2007-08	15-14	5-11	
2008-09	20-14	7-9	WNIT Quarterfinals
2009-10	26-7	13-3	NCAA Second Round
2010-11	24-11	9-7	NCAA Sweet 16
2011-12	23-9	11-5	NCAA Second Round

### Auburn, Head Coach (2012-present)

Year	Record	Conf.	Other Information
2012-13	19-15	5-11	WNIT Quarterfinals
2013-14	19-15	7-9	WNIT Third Round
2014-15	13-18	3-13	
2015-16	20-13	8-8	NCAA Second Round
2016-17	17-15	7-9	NCAA First Round
2017-18	14-15	5-11	
2018-19	22-10	9-7	NCAA First Round
2019-20	11-18	4-12	
2020-21	5-6	0-3	



# Alycia REESE

# #0

Junior • Guard • 5-9

Columbus, Ga.

Carver HS | Chattahoochee Valley CC (Ala.)

- Scored season-best 10 points on 4-6 shooting, hit Auburn's only two 3-pointers at Houston (12/5)
- Hit four free throws, had one rebound in Auburn debut vs. USC Upstate (11/25)
- Signed with Auburn in the spring of 2020
- Played two seasons at CVCC in Phenix City; appeared in all 24 games as a sophomore in 2019-20; first-team all-conference selection
- Led CVCC with 12.8 points along with 3.8 rebounds, 1.6 assists, 1.5 steals per game in 2019-20
- All-state selection at Carver HS as a junior in 2017; led team to state runner-up finish
- Has a 3-year-old son, Andrew

**SEASON/CAREER HIGHS**

Points	10	at Houston	12/5/20
Rebounds	1	3x; last at LSU	12/31/20
Assists	1	at Houston	12/5/20
Blocks			
Steals	1	at Houston	12/5/20
Field Goals	4	at Houston	12/5/20
Field Goal Attempts	6	at Houston	12/5/20
3-Point Field Goals	2	at Houston	12/5/20
3-Point FG Attempts	3	at Houston	12/5/20
Free Throws	4	vs. USC Upstate	11/25/20
Free Throw Attempts	4	vs. USC Upstate	11/25/20

Opponent	Start	Min.	FG-A	3PT-A	FT-A	O-D-T	PF	Ast.	TO	Blk.	St.	Pts.
USC UPSTATE		4	0-1	0-1	4-4	0-1-1	1	0	0	0	0	4
SAMFORD						--DNP--						
GARDNER-WEBB		9	1-1	0-0	0-0	0-0-0	0	0	1	0	0	2
at Houston		16	4-6	2-3	0-0	0-1-1	0	1	1	0	1	10
SOUTH ALABAMA						--DNP--						
STEPHEN F. AUSTIN						--DNP--						
NORTH FLORIDA						--DNP--						
BELMONT						--DNP--						
at LSU		8	0-0	0-0	2-2	0-1-1	0	0	0	0	0	2
GEORGIA		5	0-0	0-0	0-0	0-0-0	0	0	0	0	0	0
at Ole Miss		4	0-2	0-2	0-0	0-0-0	0	1	0	0	0	0
MISSOURI												
KENTUCKY												
at Florida												
at Alabama												
TEXAS A&M												
at Arkansas												
SOUTH CAROLINA												
at Georgia												
ALABAMA												
at Mississippi State												
VANDERBILT												
ARKANSAS												
at Tennessee												

**REESE'S CAREER STATISTICS (at Auburn)**

Season	gp-gs	min/avg	Total		3-Point		F-Throws		Rebounds				Scoring							
			fg-fga	pct	fg-fga	pct	ft-fta	pct	off	def	tot	avg	pf	fo	ast	to	blk	stl	pts	avg
2020-21	6-0	45/7.5	5-10	.500	2-6	.333	6-6	1.000	0	3	3	0.5	1	0	2	2	0	1	18	3.0
TOTAL	6-0	45/7.5	5-10	.500	2-6	.333	6-6	1.000	0	3	3	0.5	1	0	2	2	0	1	18	3.0





# Keya PATTON

# #1

Junior • Guard • 5-6

Indianapolis, Ind.

Cathedral HS | Wabash Valley College (Ill.)

- Made first Auburn start vs. Georgia (1/3); scored 12 points in season-high 27 minutes
- Scored 14 points off the bench in win over Gardner-Webb (12/1)
- Scored 6 points, had 5 rebounds and 2 steals in Auburn debut vs. USC Upstate (11/25)
- Signed with Auburn in the spring of 2020 after two seasons at Wabash Valley College
- Two-time NJCAA All-American; first-team in 2020, third-team in 2019; 2020 regional player of the year
- Scored over 1,000 points in two junior college seasons; set school record with 46 points vs. Olney Central College
- Averaged 20.8 points, 6.8 rebounds, 6.4 assists and 2.9 steals as a sophomore; had 10 double-doubles and a triple double
- Led Wabash Valley to 63-3 record in two seasons; sophomore postseason run cut short by pandemic
- Scored over 1,700 points in four-year high school career at Cathedral HS in Indianapolis; two-time first-team all-state selection

**SEASON/CAREER HIGHS**

Points	14	vs. Gardner-Webb	12/1/20
Rebounds	5	vs. USC Upstate	11/25/20
Assists	2	vs. Gardner-Webb	12/1/20
Blocks			
Steals	2	2x; last at Houston	12/5/20
Field Goals	5	vs. Gardner-Webb	12/1/20
Field Goal Attempts	10	at Houston	12/5/20
3-Point Field Goals	3	vs. Samford	11/28/20
3-Point FG Attempts	7	vs. Samford	11/28/20
Free Throws	6	vs. Georgia	1/3/21
Free Throw Attempts	7	vs. Georgia	1/3/21

Opponent	Start	Min.	FG-A	3PT-A	FT-A	O-D-T	PF	Ast.	TO	Blk.	St.	Pts.
USC UPSTATE		18	2-6	1-2	1-2	2-3-5	0	1	1	0	2	6
SAMFORD		20	3-9	3-7	0-0	0-1-1	2	0	1	0	0	9
GARDNER-WEBB		16	5-9	0-2	4-6	1-0-1	0	2	0	0	1	14
at Houston		22	2-10	0-2	2-2	1-0-1	2	1	2	0	2	6
SOUTH ALABAMA						--DNP--						
STEPHEN F. AUSTIN		11	0-2	0-0	0-0	0-2-2	1	0	0	0	0	0
NORTH FLORIDA		3	0-0	0-0	0-0	0-0-0	1	0	2	0	0	0
BELMONT		10	0-1	0-1	0-0	0-0-0	1	1	2	0	0	0
at LSU		24	1-4	1-3	0-0	1-1-2	3	0	2	0	1	3
GEORGIA	*	27	3-9	0-1	6-7	2-1-3	1	0	2	0	1	12
at Ole Miss	*	28	2-6	2-4	0-0	0-2-2	2	1	2	0	0	6
MISSOURI												
KENTUCKY												
at Florida												
at Alabama												
TEXAS A&M												
at Arkansas												
SOUTH CAROLINA												
at Georgia												
ALABAMA												
at Mississippi State												
VANDERBILT												
ARKANSAS												
at Tennessee												

**PATTON'S CAREER STATISTICS (at Auburn)**

Season	gp-gs	min/avg	Total		3-Point		F-Throws		Rebounds				Scoring							
			fg-fga	pct	fg-fga	pct	ft-fta	pct	off	def	tot	avg	pf	fo	ast	to	blk	stl	pts	avg
2020-21	10-2	202/20.2	18-56	.321	7-22	.318	13-17	.765	7	10	17	1.7	13	0	6	14	0	7	56	5.6
TOTAL	10-2	202/20.2	18-56	.321	7-22	.318	13-17	.765	7	10	17	1.7	13	0	6	14	0	7	56	5.6



# Sania WELLS

# #2

Sophomore • Guard • 5-7

Moss Point, Miss.

East Central HS

- Career-high 11 points, 3-6 on 3FG in 25 minutes off the bench in win over South Alabama (12/13)
- Scored 7 points in season-opener vs. USC Upstate (11/25)
- Played in 25 games as a freshman, averaging 8.6 minutes/game
- Averaged 1.6 points, 0.8 rebounds, 0.5 assists in 2019-20
- Scored season-high 8 points at Mississippi State (1/30/20) in return to her home state; career-high 21 minutes off the bench
- Ranked as No. 27 point guard nationally out of high school by ESPN HoopGurlz
- USA Today All-Mississippi Team as HS senior
- Averaged 27 points, 5 rebounds, 4 steals as HS senior

### SEASON HIGHS

Points	11	vs. South Alabama	12/13/20
Rebounds	2	at LSU	12/31/20
Assists	2	2x; last vs. South Alabama	12/13/20
Blocks			
Steals	1	3x; last at LSU	12/31/20
Field Goals	3	2x; last vs. South Alabama	12/13/20
Field Goal Attempts	10	vs. South Alabama	12/13/20
3-Point Field Goals	3	vs. South Alabama	12/13/20
3-Point FG Attempts	6	vs. South Alabama	12/13/20
Free Throws	3	vs. Belmont	12/20/20
Free Throw Attempts	4	3x; last vs. Belmont	12/20/20

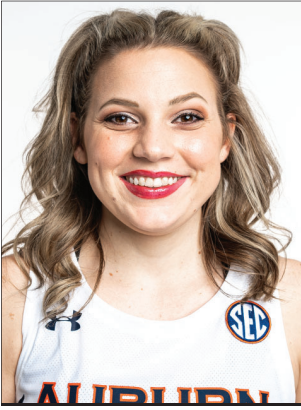
Opponent	Start	Min.	FG-A	3PT-A	FT-A	O-D-T	PF	Ast.	TO	Blk.	St.	Pts.
USC UPSTATE		12	3-6	1-3	0-0	0-0-0	0	1	0	0	0	7
SAMFORD		3	0-0	0-0	0-0	0-0-0	0	0	0	0	0	0
GARDNER-WEBB		14	0-2	0-1	2-2	0-1-1	3	2	2	0	1	2
at Houston		16	0-5	0-1	0-0	1-0-1	1	0	0	0	0	0
SOUTH ALABAMA		25	3-10	3-6	2-4	1-0-1	0	2	2	0	0	11
STEPHEN F. AUSTIN		19	1-6	0-3	2-4	0-0-0	3	0	1	0	1	4
NORTH FLORIDA		13	2-5	2-4	0-0	0-0-0	1	2	0	0	0	6
BELMONT		23	2-7	1-3	3-4	0-0-0	0	1	2	0	0	8
at LSU	*	16	0-5	0-3	0-0	0-2-2	2	1	2	0	1	0
GEORGIA		10	0-1	0-0	0-0	0-0-0	0	0	1	0	0	0
at Ole Miss		11	1-4	0-0	2-2	0-0-0	0	1	0	0	1	4
MISSOURI												
KENTUCKY												
at Florida												
at Alabama												
TEXAS A&M												
at Arkansas												
SOUTH CAROLINA												
at Georgia												
ALABAMA												
at Mississippi State												
VANDERBILT												
ARKANSAS												
at Tennessee												

### CAREER HIGHS

Points	11	vs. South Alabama	12/13/20
Rebounds	3	3x; last at Alabama	2/9/20
Assists	3	vs. Middle Tennessee	11/29/19
Blocks			
Steals	2	vs. Alabama	1/12/20
Field Goals	3	3x; last vs. South Alabama	12/13/20
Field Goal Attempts	10	vs. South Alabama	12/13/20
3-Point Field Goals	3	vs. South Alabama	12/13/20
3-Point FG Attempts	6	vs. South Alabama	12/13/20
Free Throws	3	vs. Belmont	12/20/20
Free Throw Attempts	4	4x; last vs. Belmont	12/20/20

### WELLS' CAREER STATISTICS

Season	gp-gs	min/avg	Total		3-Point		F-Throws		Rebounds				Scoring							
			fg-fga	pct	fg-fga	pct	ft-fta	pct	off	def	tot	avg	pf	fo	ast	to	blk	stl	pts	avg
2019-20	25-0	214/8.6	14-47	.298	3-17	.176	10-14	.714	5	15	20	0.8	26	0	13	17	0	5	41	1.6
2020-21	11-1	157/14.3	12-51	.235	7-24	.292	11-16	.688	2	3	5	0.5	10	0	10	10	0	4	42	3.8
TOTAL	36-1	371/10.3	26-98	.265	10-41	.244	21-30	.700	7	18	25	0.7	36	0	23	27	0	9	83	2.3



# Annie HUGHES

# #3

Sophomore • Guard • 5-9

Dutton, Ala.

Pisgah HS

- Career-high 17 points, 7 rebounds, 3 steals in win over North Florida (12/17)
- Season-high 11 points, career-high three 3-pointers in win over South Alabama (12/13)
- Scored 6 points in first five minutes vs. Gardner-Webb (12/1); also added 4 rebounds, 1 assists, 1 steal
- Appeared in all 29 games as a freshman, earning 7 starts
- Averaged 3.6 points, 1.3 rebounds, 0.7 assists, 0.5 steals while playing 16.8 minutes/game
- Shot 45.2% from the field (42-93) and 34.2% (13-38) from 3-point range as a freshman
- Earned start in first collegiate game vs. Wofford (11/6/19); scored 10 points along with 4 assists and 3 steals
- 2019 Alabama Miss Basketball, first to attend Auburn since Whitney Boddie in 2005
- Averaged 21.4 points, 7.0 rebounds, 4.2 assists, 3.5 steals as HS senior; led Pisgah HS to back-to-back state titles in '18 and '19

#### SEASON HIGHS

Points	17	vs. North Florida	12/17/20
Rebounds	7	vs. North Florida	12/17/20
Assists	1	4x; last vs. North Florida	12/17/20
Blocks	1	vs. Belmont	12/20/20
Steals	3	vs. North Florida	12/17/20
Field Goals	7	vs. North Florida	12/17/20
Field Goal Attempts	16	vs. North Florida	12/17/20
3-Point Field Goals	3	2x; last vs. North Florida	12/17/20
3-Point FG Attempts	8	vs. North Florida	12/17/20
Free Throws	2	vs. Gardner-Webb	12/1/20
Free Throw Attempts	3	vs. Samford	11/28/20

#### CAREER HIGHS

Points	17	vs. North Florida	12/17/20
Rebounds	7	2x; last vs. North Florida	12/17/20
Assists	4	vs. Wofford	11/6/19
Blocks	1	vs. Belmont	12/20/20
Steals	3	2x; last vs. North Florida	12/17/20
Field Goals	7	vs. North Florida	12/17/20
Field Goal Attempts	16	vs. North Florida	12/17/20
3-Point Field Goals	3	2x; last vs. North Florida	12/17/20
3-Point FG Attempts	8	vs. North Florida	12/17/20
Free Throws	2	2x; last vs. Gardner-Webb	12/1/20
Free Throw Attempts	4	vs. Middle Tennessee	11/29/19

Opponent	Start	Min.	FG-A	3PT-A	FT-A	O-D-T	PF	Ast.	TO	Blk.	St.	Pts.
USC UPSTATE	*	10	0-1	0-0	0-0	1-0-1	0	0	0	0	0	0
SAMFORD	*	21	2-7	0-3	1-3	1-0-1	2	1	1	0	1	5
GARDNER-WEBB	*	20	2-4	0-0	2-2	1-3-4	1	1	1	0	1	6
at Houston		13	0-0	0-0	0-0	1-2-3	0	1	1	0	0	0
SOUTH ALABAMA	*	32	4-8	3-5	0-0	0-3-3	3	0	0	0	2	11
STEPHEN F. AUSTIN	*	25	2-4	0-2	1-2	3-0-3	2	0	0	0	2	5
NORTH FLORIDA	*	31	7-16	3-8	0-0	4-3-7	3	1	1	0	3	17
BELMONT	*	25	3-6	1-2	0-0	2-2-4	2	1	3	1	1	7
at LSU		6	1-1	0-0	0-0	0-0-0	0	0	2	0	0	2
GEORGIA		23	1-2	0-0	1-2	0-3-3	1	0	3	0	1	3
at Ole Miss		12	0-0	0-0	0-0	0-1-1	0	1	1	0	2	0
MISSOURI												
KENTUCKY												
at Florida												
at Alabama												
TEXAS A&M												
at Arkansas												
SOUTH CAROLINA												
at Georgia												
ALABAMA												
at Mississippi State												
VANDERBILT												
ARKANSAS												
at Tennessee												

#### HUGHES' CAREER STATISTICS

Season	gp-gs	min/avg	Total		3-Point		F-Throws		Rebounds				Scoring							
			fg-fga	pct	fg-fga	pct	ft-fga	pct	off	def	tot	avg	pf	fo	ast	to	blk	stl	pts	avg
2019-20	29-7	491/16.9	42-93	.452	13-38	.342	6-13	.462	20	17	37	1.3	29	0	19	21	0	14	103	3.6
2020-21	11-7	216/19.6	22-49	.449	7-20	.350	5-9	.556	13	17	30	2.7	14	0	6	13	1	13	56	5.1
TOTAL	40-14	707/17.7	64-142	.451	20-58	.345	11-22	.500	33	34	67	1.7	43	0	25	34	1	27	159	4.0



# Riley DONAHUE

# #4

Freshman • Guard • 5-10

Atlanta, Ga.

Marist School

- Hit first collegiate shot attempt, a 3-pointer, in final minute vs. Gardner-Webb (12/1)
- Made collegiate debut with one minute of action vs. USC Upstate (11/25)
- Joined Auburn as a walk-on in summer of 2020
- Was a GHSA first-team all-region selection as a senior

**SEASON/CAREER HIGHS**

Points	3	vs. Gardner-Webb	12/1/20
Rebounds			
Assists			
Blocks			
Steals			
Field Goals	1	vs. Gardner-Webb	12/1/20
Field Goal Attempts	1	vs. Gardner-Webb	12/1/20
3-Point Field Goals	1	vs. Gardner-Webb	12/1/20
3-Point FG Attempts	1	vs. Gardner-Webb	12/1/20
Free Throws			
Free Throw Attempts			

Opponent	Start	Min.	FG-A	3PT-A	FT-A	O-D-T	PF	Ast.	TO	Blk.	St.	Pts.
USC UPSTATE		1	0-0	0-0	0-0	0-0-0	0	0	0	0	0	0
SAMFORD						--DNP--						
GARDNER-WEBB		2	1-1	1-1	0-0	0-0-0	0	0	1	0	0	3
at Houston						--DNP--						
SOUTH ALABAMA		1	0-0	0-0	0-0	0-0-0	1	0	0	0	0	0
STEPHEN F. AUSTIN						--DNP--						
NORTH FLORIDA						--DNP--						
BELMONT						--DNP--						
at LSU						--DNP--						
GEORGIA						--DNP--						
at Ole Miss						--DNP--						
MISSOURI												
KENTUCKY												
at Florida												
at Alabama												
TEXAS A&M												
at Arkansas												
SOUTH CAROLINA												
at Georgia												
ALABAMA												
at Mississippi State												
VANDERBILT												
ARKANSAS												
at Tennessee												

**DONAHUE'S CAREER STATISTICS**

Season	gp-gs	min/avg	Total		3-Point		F-Throws		Rebounds				Scoring							
			fg-fga	pct	fg-fga	pct	ft-fta	pct	off	def	tot	avg	pf	fo	ast	to	blk	stl	pts	avg
2020-21	3-0	2/0.7	1-1	1.000	1-1	1.000	0-0	.000	0	0	0	0.0	1	0	0	1	0	0	3	1.0
TOTAL	3-0	2/0.7	1-1	1.000	1-1	1.000	0-0	.000	0	0	0	0.0	1	0	0	1	0	0	3	1.0



# Aicha COULIBALY

# #5

Freshman • Guard/Forward • 6-0

Mali

IMG Academy (Fla.)

- Led Auburn with season-high 12 points along with 5 rebounds at LSU (12/31)
- Scored 10 points along with 6 rebounds in win over Gardner-Webb (12/1)
- Earned start in first collegiate game vs. USC Upstate (11/25); finished with 4 points, 6 rebounds, 2 assists
- Played for Mali's national team at FIBA U16 African Championships in 2017, leading her team to tournament championship
- Named tournament MVP after scoring 21.8 points/game in that event
- Played high school basketball at IMG Academy in Florida
- Is Auburn's third women's basketball player from Africa, along with Crispina Correia (Cape Verde, 2001-03) and Khady Dieng (Senegal, 2013-17)

**SEASON/CAREER HIGHS**

Points	12	at LSU	12/31/20
Rebounds	6	vs. Gardner-Webb	12/1/20
Assists	2	2x; last at Houston	12/5/20
Blocks	1	4x; last vs. Georgia	1/2/21
Steals	2	vs. Georgia	1/2/21
Field Goals	4	2x; last at LSU	12/31/20
Field Goal Attempts	8	2x; last at LSU	12/31/20
3-Point Field Goals	1	at LSU	12/31/20
3-Point FG Attempts	3	at LSU	12/31/20
Free Throws	3	at LSU	12/31/20
Free Throw Attempts	6	vs. Gardner-Webb	12/1/20

Opponent	Start	Min.	FG-A	3PT-A	FT-A	O-D-T	PF	Ast.	TO	Blk.	St.	Pts.
USC UPSTATE	*	19	2-8	0-2	0-0	1-5-6	2	2	2	1	1	4
SAMFORD	*	15	2-5	0-2	0-0	2-2-4	1	1	0	0	0	4
GARDNER-WEBB	*	22	4-7	0-1	2-6	3-3-6	1	0	1	0	0	10
at Houston	*	12	0-2	0-0	0-2	1-2-3	3	2	1	1	0	0
SOUTH ALABAMA						--DNP--						
STEPHEN F. AUSTIN		19	2-5	0-2	0-1	0-4-4	1	1	2	1	1	4
NORTH FLORIDA		9	0-3	0-1	2-2	1-1-2	0	0	0	0	0	2
BELMONT		8	1-4	0-0	0-0	1-0-1	1	0	0	0	0	2
at LSU		24	4-8	1-3	3-4	2-3-5	1	0	1	0	0	12
GEORGIA		24	3-7	0-1	0-1	0-2-2	2	0	1	1	2	6
at Ole Miss		15	2-6	0-0	0-0	1-1-2	1	1	1	0	0	4
MISSOURI												
KENTUCKY												
at Florida												
at Alabama												
TEXAS A&M												
at Arkansas												
SOUTH CAROLINA												
at Georgia												
ALABAMA												
at Mississippi State												
VANDERBILT												
ARKANSAS												
at Tennessee												

**COULIBALY'S CAREER STATISTICS**

Season	gp-gs	min/avg	Total		3-Point		F-Throws		Rebounds				Scoring							
			fg-fga	pct	fg-fga	pct	ft-fta	pct	off	def	tot	avg	pf	fo	ast	to	blk	stl	pts	avg
2020-21	10-4	165/16.5	20-55	.364	1-12	.083	7-16	.438	12	23	35	3.5	13	0	7	9	4	4	48	4.8
TOTAL	10-4	165/16.5	20-55	.364	1-12	.083	7-16	.438	12	23	35	3.5	13	0	7	9	4	4	48	4.8



# Kiyae' WHITE

# #10

Redshirt Junior • Forward • 6-2

Macungie, Pa.

Emmaus HS

- Made season debut vs. South Alabama; grabbed 3 rebounds in 4 minutes (12/13)
- Played in all 29 games as a redshirt sophomore, earning 14 starts; averaged 4.0 points, 4.8 rebounds in '19-20
- Shot 57.3% from the field (43-75) in 2019-20
- Scored career-high 15 points in season finale vs. Arkansas in 2020 SEC Tournament; also had 8 rebounds, 4 assists
- Had then-career high 12 points vs. St. Joseph's (11/24/19); was 3-4 from the field and 6-8 at FT line
- Career-high 11 rebounds in 2019-20 season-opener vs. Wofford while playing just 16 minutes
- Has two brothers that play in the NFL: Kevin White (49ers), Kyzir White (Chargers)

**SEASON HIGHS**

Points		
Rebounds		
3 vs. South Alabama		12/13/20
Assists		
Blocks		
Steals		
Field Goals		
Field Goal Attempts		
2 vs. South Alabama		12/13/20
3-Point Field Goals		
3-Point FG Attempts		
Free Throws		
Free Throw Attempts		

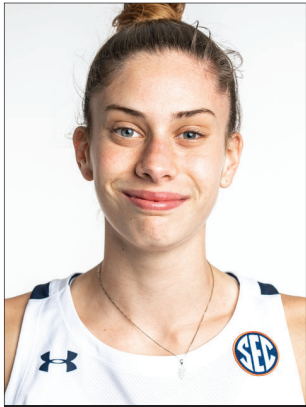
Opponent	Start	Min.	FG-A	3PT-A	FT-A	O-D-T	PF	Ast.	TO	Blk.	St.	Pts.
USC UPSTATE						--DNP--						
SAMFORD						--DNP--						
GARDNER-WEBB						--DNP--						
at Houston						--DNP--						
SOUTH ALABAMA		4	0-2	0-0	0-0	1-2-3	1	0	0	0	0	0
STEPHEN F. AUSTIN						--DNP--						
NORTH FLORIDA						--DNP--						
BELMONT						--DNP--						
at LSU						--DNP--						
GEORGIA						--DNP--						
at Ole Miss						--DNP--						
MISSOURI						--DNP--						
KENTUCKY						--DNP--						
at Florida						--DNP--						
at Alabama						--DNP--						
TEXAS A&M						--DNP--						
at Arkansas						--DNP--						
SOUTH CAROLINA						--DNP--						
at Georgia						--DNP--						
ALABAMA						--DNP--						
at Mississippi State						--DNP--						
VANDERBILT						--DNP--						
ARKANSAS						--DNP--						
at Tennessee						--DNP--						

**CAREER HIGHS**

Points		
15 vs. Arkansas		3/5/20
Rebounds		
11 vs. Wofford		11/6/19
Assists		
4 vs. Wofford		11/6/19
Blocks		
1 8x; last at Mississippi State		1/30/20
Steals		
3 2x; last vs. Tennessee		3/1/20
Field Goals		
7 vs. Arkansas		3/5/20
Field Goal Attempts		
9 vs. Arkansas		3/5/20
3-Point Field Goals		
3-Point FG Attempts		
1 at South Carolina		2/13/20
Free Throws		
6 vs. St. Joseph's		11/24/19
Free Throw Attempts		
8 vs. St. Joseph's		11/24/19

**WHITE'S CAREER STATISTICS**

Season	gp-gs	min/avg	Total		3-Point		F-Throws		Rebounds				Scoring							
			fg-fga	pct	fg-fga	pct	ft-fta	pct	off	def	tot	avg	pf	fo	ast	to	blk	stl	pts	avg
2018-19	29-0	199/6.9	15-39	.385	0-0	.000	8-14	.571	23	28	51	1.8	27	0	9	10	1	2	38	1.3
2019-20	29-14	532/18.3	43-75	.573	0-1	.000	29-56	.518	47	93	140	4.8	63	0	21	36	10	24	115	4.0
2020-21	1-0	4/4.0	0-2	.000	0-0	.000	0-0	.000	1	2	3	3.0	1	0	0	0	0	0	0	0.0
TOTAL	59-14	735/12.5	58-116	.500	0-1	.000	37-70	.529	71	123	194	3.3	91	0	30	46	11	26	153	2.6



# Romi LEVY

# #11

Freshman • Forward • 6-2

Herzliya, Israel

Hof Hasharon HS

- Made second start at LSU, led team with 11 rebounds and 5 steals along with 8 points (12/31)
- Career-high 6 steals vs. Georgia (1/3)
- Career-high 12 points along with 5 rebounds in win over North Florida (12/17)
- Had 8 points, season-high 7 rebounds, and shared team lead with 3 assists vs. South Alabama (12/13)
- Made collegiate debut vs. USC Upstate (11/25); finished with 8 points, 3 rebounds, 2 assists, 2 steals
- Competed in 2018 U18 Women's European Championships with Israeli national team
- Helped lead team to bronze medal, scoring 14 points in win over Lithuania and 13 points vs. Albania
- Completed mandatory national service in Israel before enrolling at Auburn

**SEASON/CAREER HIGHS**

Points	13	at Ole Miss	1/7/21
Rebounds	11	at LSU	12/31/20
Assists	3	vs. South Alabama	12/13/20
Blocks	2	2x; last at Houston	12/5/20
Steals	6	vs. Georgia	1/2/21
Field Goals	6	at Ole Miss	1/7/21
Field Goal Attempts	12	at LSU	12/31/20
3-Point Field Goals	2	vs. USC Upstate	11/25/20
3-Point FG Attempts	5	at Ole Miss	1/7/21
Free Throws	2	2x; last vs. North Florida	12/17/20
Free Throw Attempts	2	4x; last vs. South Alabama	12/13/20

Opponent	Start	Min.	FG-A	3PT-A	FT-A	O-D-T	PF	Ast.	TO	Blk.	St.	Pts.
USC UPSTATE		19	3-5	2-4	0-2	0-3-3	0	2	0	0	2	8
SAMFORD		26	2-5	1-3	1-2	1-2-3	2	1	2	0	3	6
GARDNER-WEBB		17	4-6	1-1	0-2	0-2-2	1	1	2	2	2	9
at Houston	*	15	0-2	0-1	0-0	0-1-1	2	0	2	2	0	0
SOUTH ALABAMA		24	3-6	0-2	2-2	4-3-7	1	3	2	0	3	8
STEPHEN F. AUSTIN		16	0-1	0-0	0-0	0-1-1	2	1	1	1	1	0
NORTH FLORIDA		19	5-11	2-4	0-0	2-3-5	2	1	1	0	1	12
BELMONT		14	1-4	0-2	0-0	2-1-3	2	0	2	0	1	2
at LSU	*	31	4-12	0-2	0-0	4-7-11	2	2	5	1	5	8
GEORGIA	*	34	0-7	0-4	0-0	0-3-3	2	0	2	0	6	0
at Ole Miss	*	33	6-10	1-5	0-0	0-4-4	3	2	0	0	2	13
MISSOURI												
KENTUCKY												
at Florida												
at Alabama												
TEXAS A&M												
at Arkansas												
SOUTH CAROLINA												
at Georgia												
ALABAMA												
at Mississippi State												
VANDERBILT												
ARKANSAS												
at Tennessee												

**LEVY'S CAREER STATISTICS**

Season	gp-gs	min/avg	Total		3-Point		F-Throws		Rebounds				Scoring							
			fg-fga	pct	fg-fga	pct	ft-fa	pct	off	def	tot	avg	pf	fo	ast	to	blk	stl	pts	avg
2020-21	11-4	243/22.1	28-69	.406	7-28	.250	3-8	.375	13	30	43	3.9	19	0	13	19	6	26	66	6.0
TOTAL	11-4	243/22.1	28-69	.406	7-28	.250	3-8	.375	13	30	43	3.9	19	0	13	19	6	26	66	6.0



# Kira LOWERY

# #13

Junior • Guard • 5-6

Memphis, Tenn.

Southwind HS | Dyersburg State CC (Tenn.)

- Led Auburn with career-high 5 assists, 3 steals in win over North Florida (12/17)
- Scored 12 points with team-best 4 assists, hit clutch free throws in win over Samford (11/28)
- Earned start in first Division I game vs. USC Upstate (11/25); finished with 4 points, 5 rebounds, 4 assists in team-best 24 minutes
- Was a third-team NJCAA All-American in 2020 at Dyersburg State CC in Tennessee
- Ranked third nationally in scoring with 23.3 points/game; second in the nation in steals with 4.0 points/game
- Led DSCC to a 24-8 record and 3rd-place finish in Tennessee Community College Athletic Association; named TCCAA's top offensive player
- Played high school ball at Southwind High School in Memphis; scored over 1,000 career points

**SEASON/CAREER HIGHS**

Points	12	vs. Samford	11/28/20
Rebounds	5	vs. USC Upstate	11/25/20
Assists	5	vs. North Florida	12/17/20
Blocks	1	2x; last vs. North Florida	12/17/20
Steals	3	vs. North Florida	12/17/20
Field Goals	4	vs. Samford	11/28/20
Field Goal Attempts	7	vs. South Alabama	12/13/20
3-Point Field Goals	1	vs. Samford	11/28/20
3-Point FG Attempts	2	vs. Samford	11/28/20
Free Throws	4	vs. South Alabama	12/13/20
Free Throw Attempts	5	vs. South Alabama	12/13/20

Opponent	Start	Min.	FG-A	3PT-A	FT-A	O-D-T	PF	Ast.	TO	Blk.	St.	Pts.
USC UPSTATE	*	24	1-2	0-0	2-2	0-5-5	0	4	4	0	0	4
SAMFORD	*	24	4-6	1-2	3-4	0-0-0	0	4	1	0	2	12
GARDNER-WEBB	*	19	1-4	0-0	1-1	1-0-1	0	0	1	0	0	3
at Houston	*	21	1-3	0-1	0-0	0-1-1	0	0	3	0	1	2
SOUTH ALABAMA	*	28	3-7	0-0	4-5	1-1-2	1	0	2	0	2	10
STEPHEN F. AUSTIN	*	20	1-2	0-0	0-0	0-1-1	4	1	4	1	2	2
NORTH FLORIDA	*	18	0-0	0-0	2-2	0-0-0	0	5	3	1	3	2
BELMONT	*	15	0-0	0-0	0-0	0-1-1	2	3	4	0	0	0
at LSU		2	0-0	0-0	0-0	0-0-0	0	0	2	0	0	0
GEORGIA		13	1-1	0-0	1-3	0-1-1	0	1	5	0	0	3
at Ole Miss		12	0-1	0-0	0-0	0-1-1	2	1	0	0	0	0
MISSOURI												
KENTUCKY												
at Florida												
at Alabama												
TEXAS A&M												
at Arkansas												
SOUTH CAROLINA												
at Georgia												
ALABAMA												
at Mississippi State												
VANDERBILT												
ARKANSAS												
at Tennessee												

**LOWERY'S CAREER STATISTICS (at Auburn)**

Season	gp-gs	min/avg	Total		3-Point		F-Throws		Rebounds				Scoring							
			fg-fga	pct	fg-fga	pct	ft-fta	pct	off	def	tot	avg	pf	fo	ast	to	blk	stl	pts	avg
2020-21	11-8	194/17.6	12-26	.462	1-3	.333	13-17	.765	2	11	13	1.2	9	0	19	28	2	10	38	3.5
TOTAL	11-8	194/17.6	12-26	.462	1-3	.333	13-17	.765	2	11	13	1.2	9	0	19	28	2	10	38	3.5





# Jala JORDAN

# #14

Redshirt Sophomore • Forward • 6-2

Philadelphia, Pa.

IMG Academy (Fla.) | West Virginia

- Made first career start vs. South Alabama (12/13); had career-high 3 blocks along with 6 points, 5 rebounds, 2 assists
- Led Auburn with 4 assists vs. Gardner-Webb; also scored 11 points and had 5 rebounds (12/1)
- Tied for team lead with 16 points off the bench in season-opener vs. USC Upstate (11/25); was 4-6 on 3-pointers
- Sat out 2019-20 season per NCAA rules after transferring to Auburn from West Virginia in the 2019 offseason
- Appeared in 25 games as a freshman for WVU, averaging 1.7 points and 1.4 rebounds while playing 6.4 minutes/game
- Had season-high 6 points and 2 blocks at Texas Tech
- Rated No. 14 wing in class of 2018 by ESPN HoopGurlz
- Graduated from IMG Academy; also played at St. Francis (Ga.) HS, leading them to two GHSA state titles

### SEASON HIGHS

Points	16	vs. USC Upstate	11/25/20
Rebounds	8	vs. North Florida	12/17/20
Assists	4	vs. Gardner-Webb	12/1/20
Blocks	3	vs. South Alabama	12/13/20
Steals	2	at Houston	12/5/20
Field Goals	5	2x; last vs. Gardner-Webb	12/1/20
Field Goal Attempts	14	vs. Georgia	1/2/21
3-Point Field Goals	4	vs. USC Upstate	11/25/20
3-Point FG Attempts	6	2x; last vs. South Alabama	12/13/20
Free Throws	5	at Houston	12/5/20
Free Throw Attempts	5	at Houston	12/5/20

Opponent	Start	Min.	FG-A	3PT-A	FT-A	O-D-T	PF	Ast.	TO	Blk.	St.	Pts.
USC UPSTATE		20	5-9	4-6	2-2	3-0-3	0	0	2	0	1	16
SAMFORD		13	3-4	1-2	1-2	2-2-4	3	0	1	1	0	8
GARDNER-WEBB		23	5-10	0-4	1-1	1-4-5	4	4	0	1	1	11
at Houston		26	4-11	0-4	5-5	2-3-5	5	1	3	1	2	13
SOUTH ALABAMA	*	24	2-8	1-6	1-2	1-4-5	4	2	4	3	0	6
STEPHEN F. AUSTIN	*	12	3-8	1-2	1-1	1-1-2	0	0	0	0	0	8
NORTH FLORIDA	*	20	3-10	2-4	2-4	2-6-8	3	0	1	2	1	11
BELMONT	*	14	0-5	0-2	0-0	2-1-3	1	0	3	0	1	0
at LSU	*	20	1-10	0-5	1-2	1-3-4	3	0	1	1	0	3
GEORGIA	*	18	4-14	1-5	0-1	1-0-1	3	0	3	1	0	9
at Ole Miss	*	27	2-5	0-3	0-2	1-3-4	3	1	1	0	0	4
MISSOURI												
KENTUCKY												
at Florida												
at Alabama												
TEXAS A&M												
at Arkansas												
SOUTH CAROLINA												
at Georgia												
ALABAMA												
at Mississippi State												
VANDERBILT												
ARKANSAS												
at Tennessee												

### CAREER HIGHS (incl. 18-19 at WVU)

Points	16	vs. USC Upstate	11/25/20
Rebounds	8	vs. North Florida	12/17/20
Assists	4	vs. Gardner-Webb	12/1/20
Blocks	3	vs. South Alabama	12/13/20
Steals	2	2x; last at Houston	12/5/20
Field Goals	5	2x; last vs. Gardner-Webb	12/1/20
Field Goal Attempts	14	vs. Georgia	1/2/21
3-Point Field Goals	4	vs. USC Upstate	11/25/20
3-Point FG Attempts	6	2x; last vs. South Alabama	12/13/20
Free Throws	5	at Houston	12/5/20
Free Throw Attempts	5	at Houston	12/5/20

### JORDAN'S CAREER STATISTICS

Season	gp-gs	min/avg	Total		3-Point		F-Throws		Rebounds				Scoring							
			fg-fga	pct	fg-fga	pct	ft-fga	pct	off	def	tot	avg	pf	fo	ast	to	blk	stl	pts	avg
2018-19*	27-0	163/6.0	14-40	.350	4-11	.364	11-16	.688	8	21	29	1.1	21	0	3	5	8	8	43	1.6
2020-21	11-7	213/19.4	32-94	.340	10-43	.233	15-22	.682	17	27	44	4.0	29	1	8	19	10	6	89	8.1
TOTAL	11-7	213/19.4	32-94	.340	10-43	.233	15-22	.682	17	27	44	4.0	29	1	8	19	10	6	89	8.1



# Unique THOMPSON

# #20

Senior • Forward • 6-3

**\*\*2020 AP Honorable Mention All-American\*\***

Theodore, Ala.

**\*\*2020 All-SEC First Team\*\***

Faith Academy

**• Preseason All-SEC First Team (media & coaches)**

**• 2021 Katrina McClain Award watch list; 2021 Wooden Award Preseason Top 30 watch list**

**• 5th player in Auburn history with 1,000 career rebounds; Auburn all-time leader with 49 career double-doubles**

**• Leads nation and SEC in rebounds (15.3/game); is national active career leader in rebounds (1,010)**

**• 7 double-doubles this season, 49 in her career (as of 12/20); is SEC and national leader in 2020-21 and active career double-doubles**

**• Had second 20-20 game of season with 20 points, 23 rebounds vs. Belmont (12/20); also grabbed 1,000th career rebound in game**

**• 26 points, 23 rebounds at Houston (12/5); first 20-20 game for Auburn since 2/17/1993 (Lauretta Freeman, 30 pts/21 rebs vs. Alabama)**

**• Career-high 5 steals vs. Samford (11/28) and South Alabama (12/13); added 4 more vs. Gardner-Webb (12/1)**

**• SEC's active career leader with 49 double-doubles, 1,010 rebounds, 162 steals; 3rd among active SEC players with 1,320 points**

**SEASON HIGHS**

Points	26	at Houston	12/5/20
Rebounds	23	2x; last vs. Belmont	12/20/20
Assists	3	vs. North Florida	12/17/20
Blocks			
Steals	5	2x; last vs. South Alabama	12/13/20
Field Goals	10	at Houston	12/5/20
Field Goal Attempts	18	at Houston	12/5/20
3-Point Field Goals			
3-Point FG Attempts			
Free Throws	9	vs. South Alabama	12/13/20
Free Throw Attempts	10	vs. Samford	11/28/20

**CAREER HIGHS**

Points	31	at TCU	12/7/19
Rebounds	23	2x; last vs. Belmont	12/20/20
Assists	6	vs. Arkansas	1/5/20
Blocks	6	vs. Louisiana Tech	11/19/17
Steals	5	2x; last vs. South Alabama	12/13/20
Field Goals	12	at TCU	12/7/19
Field Goal Attempts	21	vs. Alabama	1/12/20
3-Point Field Goals			
3-Point FG Attempts			
Free Throws	10	at Ole Miss	1/31/19
Free Throw Attempts	12	at Ole Miss	1/31/19

Opponent	Start	Min.	FG-A	3PT-A	FT-A	O-D-T	PF	Ast.	TO	Blk.	St.	Pts.
USC UPSTATE	*	22	7-9	0-0	2-2	4-3-7	3	0	1	0	2	16
SAMFORD	*	33	4-10	0-0	8-10	5-6-11	2	1	3	0	5	16
GARDNER-WEBB	*	20	9-12	0-0	3-4	5-7-12	2	0	1	0	4	21
at Houston	*	32	10-18	0-0	6-7	10-13-23	3	2	7	0	2	26
SOUTH ALABAMA	*	31	6-14	0-0	9-9	7-7-14	5	0	4	0	5	21
STEPHEN F. AUSTIN	*	34	3-9	0-0	5-8	3-11-14	3	1	1	2	4	11
NORTH FLORIDA	*	32	8-12	0-0	3-3	8-10-18	2	3	3	0	2	19
BELMONT	*	34	9-14	0-0	2-6	9-14-23	0	1	1	0	1	20
at LSU						--DNP--						
GEORGIA						--DNP--						
at Ole Miss						--DNP--						
MISSOURI												
KENTUCKY												
at Florida												
at Alabama												
TEXAS A&M												
at Arkansas												
SOUTH CAROLINA												
at Georgia												
ALABAMA												
at Mississippi State												
VANDERBILT												
ARKANSAS												
at Tennessee												

**THOMPSON'S CAREER STATISTICS**

Season	gp-gs	min/avg	Total		3-Point		F-Throws		Rebounds				Scoring							
			fg-fga	pct	fg-fga	pct	ft-fga	pct	off	def	tot	avg	pf	fo	ast	to	blk	stl	pts	avg
2017-18	27-27	811/30.0	131-271	.483	0-0	.000	49-87	.563	112	115	227	8.4	63	0	28	66	21	32	311	11.5
2018-19	32-32	996/31.1	153-272	.563	0-0	.000	83-136	.610	143	187	330	10.3	71	1	35	63	20	57	389	12.2
2019-20	29-29	948/32.7	177-304	.582	0-0	.000	116-168	.690	128	203	331	11.4	63	0	51	81	12	48	470	16.2
2020-21	8-8	232/29.0	56-98	.571	0-0	.000	38-49	.776	51	71	122	15.3	20	1	8	21	2	25	150	18.8
TOTAL	96-96	2987/31.1	517-945	.547	0-0	.000	286-440	.650	434	576	1010	10.5	217	2	122	231	55	162	1320	13.8



# Alaina RICE

# #22

Sophomore • Guard • 5-8

Rockledge, Fla.

IMG Academy | Florida A&M

- Made first Auburn start at LSU, finished with 5 points, 5 rebounds, 2 assists (12/31)
- Season-high 9 points, 2 steals, first two Auburn 3-pointers in win over North Florida (12/17)
- Matched career-high, led team with 5 assists in Auburn debut vs. USC Upstate (11/25)
- Transferred from Florida A&M to Auburn in 2020 offseason; granted immediate eligibility by NCAA in November 2020
- Named MEAC Rookie of the Year in 2020 after averaging 10.3 points, 4.7 rebounds, 2.4 assists in 27 games as a freshman
- Scored in double-figures 17 times, including a career-high 22 points at Howard

### SEASON HIGHS

Points	9 vs. North Florida	12/17/20
Rebounds	5 at LSU	12/31/20
Assists	5 vs. USC Upstate	11/25/20
Blocks		
Steals	2 vs. North Florida	12/17/20
Field Goals	3 vs. North Florida	12/17/20
Field Goal Attempts	6 vs. North Florida	12/17/20
3-Point Field Goals	2 vs. North Florida	12/17/20
3-Point FG Attempts	4 vs. North Florida	12/17/20
Free Throws	4 vs. SFA	12/16/20
Free Throw Attempts	4 vs. SFA	12/16/20

Opponent	Start	Min.	FG-A	3PT-A	FT-A	O-D-T	PF	Ast.	TO	Blk.	St.	Pts.
USC UPSTATE		16	1-5	0-1	2-2	3-1-4	0	5	2	0	0	4
SAMFORD		11	0-1	0-0	1-2	2-0-2	0	1	1	0	0	1
GARDNER-WEBB		6	0-1	0-0	0-0	0-1-1	1	0	1	0	0	0
at Houston		3	0-1	0-0	0-0	0-0-0	0	0	0	0	0	0
SOUTH ALABAMA						--DNP--						
STEPHEN F. AUSTIN		20	0-3	0-1	4-4	0-0-0	4	1	6	0	1	4
NORTH FLORIDA		17	3-6	2-4	1-2	0-0-0	1	1	0	0	2	9
BELMONT		19	0-5	0-2	0-0	1-1-2	1	3	0	0	0	0
at LSU	*	24	2-6	1-1	0-0	4-1-5	3	2	4	0	1	5
GEORGIA	*	19	1-5	0-0	1-2	2-2-4	1	0	5	0	0	3
at Ole Miss	*	14	1-4	0-2	0-0	1-2-3	0	1	4	0	1	2
MISSOURI												
KENTUCKY												
at Florida												
at Alabama												
TEXAS A&M												
at Arkansas												
SOUTH CAROLINA												
at Georgia												
ALABAMA												
at Mississippi State												
VANDERBILT												
ARKANSAS												
at Tennessee												

### CAREER HIGHS (incl. 19-20 at FAMU)

Points	22 at Howard	1/25/20
Rebounds	11 at S.C. State	1/18/20
Assists	5 2x; last vs. USC Upstate	11/25/20
Blocks	2 at Howard	1/25/20
Steals	5 vs. Coppin State	1/13/20
Field Goals	7 at Bethune-Cookman	3/5/20
Field Goal Attempts	17 vs. Morgan State	1/11/20
3-Point Field Goals	5 at UMES	2/17/20
3-Point FG Attempts	8 at Howard	1/25/20
Free Throws	8 at Howard	1/25/20
Free Throw Attempts	15 at Howard	1/25/20

### RICE'S CAREER STATISTICS

Season	gp-gs	min/avg	Total		3-Point		F-Throws		Rebounds				Scoring							
			fg-fga	pct	fg-fga	pct	ft-fta	pct	off	def	tot	avg	pf	fo	ast	to	blk	stl	pts	avg
2019-20*	27-23	731/27.1	91-286	.318	34-106	.321	63-99	.636	41	85	126	4.7	64	1	64	142	6	43	279	10.3
2020-21	10-3	147/14.7	8-37	.216	3-11	.273	9-12	.750	13	8	21	2.1	11	0	12	26	0	5	28	2.8
TOTAL	10-3	147/14.7	8-37	.216	3-11	.273	9-12	.750	13	8	21	2.1	11	0	12	26	0	5	28	2.8
All*	37-26	878/23.7	99-323	.307	37-117	.316	72-111	.649	54	93	147	4.0	75	1	76	168	6	48	307	8.3



# Honesty SCOTT-GRAYSON

# #23

RS Sophomore • Guard • 5-8

Brick, N.J.

Paul VI HS | Baylor

- Career-high 23 points at Ole Miss (1/7)
- Scored 16 points in back-to-back games vs. SFA and North Florida (12/16-17)
- 14 points, 7 rebounds, 5 steals in win over Gardner-Webb (12/1)
- Scored 7 points in Auburn debut vs. USC Upstate (11/25)
- Sat out the 2019-20 season under NCAA rules after transferring to Auburn from Baylor
- Played in 28 games as a freshman at Baylor, averaging 6.9 minutes/game, 2.5 points, 0.9 rebounds, 0.9 assists
- 2018 McDonald's All-American & 2018 Jordan Brand Classic All-American
- Ranked as No. 20 overall player and No. 3 guard by ESPN out of high school

### SEASON HIGHS

Points	23	at Ole Miss	1/7/21
Rebounds	9	at LSU	12/31/20
Assists	4	vs. Belmont	12/20/20
Blocks	1	at LSU	12/31/20
Steals	5	vs. Gardner-Webb	12/1/20
Field Goals	9	at Ole Miss	1/7/21
Field Goal Attempts	16	2x; last at Ole Miss	1/7/21
3-Point Field Goals	3	at Ole Miss	1/7/21
3-Point FG Attempts	5	3x; last at Ole Miss	1/7/21
Free Throws	5	vs. Belmont	12/20/20
Free Throw Attempts	7	vs. Belmont	12/20/20

Opponent	Start	Min.	FG-A	3PT-A	FT-A	O-D-T	PF	Ast.	TO	Blk.	St.	Pts.
USC UPSTATE	*	17	3-8	0-0	1-1	0-1-1	0	2	1	0	1	7
SAMFORD	*	25	2-12	1-5	0-0	0-0-0	1	1	0	0	2	5
GARDNER-WEBB	*	21	6-13	0-1	2-5	2-5-7	3	3	0	0	5	14
at Houston	*	25	1-3	0-0	2-4	0-3-3	2	1	2	0	2	4
SOUTH ALABAMA	*	24	1-8	1-3	1-2	0-3-3	4	0	2	0	0	4
STEPHEN F. AUSTIN	*	25	7-16	1-5	1-3	1-2-3	3	2	4	0	2	16
NORTH FLORIDA	*	31	6-15	0-2	4-5	0-2-2	3	1	3	0	3	16
BELMONT	*	31	6-13	1-4	5-7	3-1-4	2	4	5	0	3	18
at LSU	*	34	4-12	0-0	0-0	2-7-9	3	2	1	1	2	8
GEORGIA	*	16	2-5	0-0	2-2	1-3-4	2	1	0	0	1	6
at Ole Miss	*	29	9-16	3-5	2-2	1-4-5	4	2	4	0	3	23
MISSOURI												
KENTUCKY												
at Florida												
at Alabama												
TEXAS A&M												
at Arkansas												
SOUTH CAROLINA												
at Georgia												
ALABAMA												
at Mississippi State												
VANDERBILT												
ARKANSAS												
at Tennessee												

### CAREER HIGHS (incl. 18-19 at Baylor)

Points	23	at Ole Miss	1/7/21
Rebounds	9	at LSU	12/31/20
Assists	5	vs. St. Francis	11/8/18
Blocks	1	2x; last at LSU	12/31/20
Steals	5	vs. Gardner-Webb	12/1/20
Field Goals	9	at Ole Miss	1/7/21
Field Goal Attempts	16	2x; last at Ole Miss	1/7/21
3-Point Field Goals	3	at Ole Miss	1/7/21
3-Point FG Attempts	5	3x; last at Ole Miss	1/7/21
Free Throws	5	vs. Belmont	12/20/20
Free Throw Attempts	7	vs. Belmont	12/20/20

### SCOTT-GRAYSON'S CAREER STATISTICS

Season	gp-gs	min/avg	Total		3-Point		F-Throws		Rebounds				Scoring							
			fg-fga	pct	fg-fga	pct	ft-fga	pct	off	def	tot	avg	pf	fo	ast	to	blk	stl	pts	avg
2018-19*	29-0	193/6.7	25-51	.490	5-11	.455	19-26	.731	10	15	25	0.9	26	1	24	24	3	9	74	2.6
2020-21	11-11	278/25.3	47-121	.388	7-25	.280	20-31	.645	10	31	41	3.7	26	0	19	22	1	24	121	11.0
TOTAL	11-11	278/25.3	47-121	.388	7-25	.280	20-31	.645	10	31	41	3.7	26	0	19	22	1	24	121	11.0
All*	40-11	471/11.8	72-172	.419	12-36	.333	39-57	.684	20	46	66	1.7	52	1	43	46	4	33	195	4.9



# Carsen McFADDEN

# #24

Freshman • Guard • 5-7

Fairview, Texas

Lovejoy HS

- Played 9 minutes vs. South Alabama; scored first 3 collegiate points and shared team lead with 3 assists (12/13)
- Made Auburn debut vs. USC Upstate (11/25); pulled down a rebound in final minute of game
- Joined Auburn as a walk-on in the summer of 2020
- All-state selection at Lovejoy HS as a senior and two-year team captain
- Owns high school records for rebounds in a single game (19), season (340) and career (1,047) and steals in a game (15), season (145) and career (418)
- Also competed in track & field
- Has a twin sister, Claire, who also attends Auburn

**SEASON/CAREER HIGHS**

Points	3	vs. South Alabama	12/13/20
Rebounds	1	2x; last vs. Gardner-Webb	12/1/20
Assists	3	vs. South Alabama	12/13/20
Blocks			
Steals	1	vs. North Florida	12/17/20
Field Goals	1	vs. South Alabama	12/13/20
Field Goal Attempts	2	vs. South Alabama	12/13/20
3-Point Field Goals			
3-Point FG Attempts			
Free Throws	1	vs. South Alabama	12/13/20
Free Throw Attempts	2	vs. South Alabama	12/13/20

Opponent	Start	Min.	FG-A	3PT-A	FT-A	O-D-T	PF	Ast.	TO	Blk.	St.	Pts.
USC UPSTATE		1	0-0	0-0	0-0	0-1-1	0	0	0	0	0	0
SAMFORD						--DNP--						
GARDNER-WEBB		2	0-0	0-0	0-0	1-0-1	0	1	0	0	0	0
at Houston						--DNP--						
SOUTH ALABAMA		9	1-2	0-0	1-2	0-0-0	0	3	0	0	0	3
STEPHEN F. AUSTIN						--DNP--						
NORTH FLORIDA		2	0-1	0-0	0-0	0-0-0	0	0	0	0	1	0
BELMONT						--DNP--						
at LSU						--DNP--						
GEORGIA		4	0-0	0-0	0-0	0-0-0	0	0	1	0	0	0
at Ole Miss						--DNP--						
MISSOURI												
KENTUCKY												
at Florida												
at Alabama												
TEXAS A&M												
at Arkansas												
SOUTH CAROLINA												
at Georgia												
ALABAMA												
at Mississippi State												
VANDERBILT												
ARKANSAS												
at Tennessee												

**McFADDEN'S CAREER STATISTICS**

Season	gp-gs	min/avg	Total		3-Point		F-Throws		Rebounds				Scoring							
			fg-fga	pct	fg-fga	pct	ft-fta	pct	off	def	tot	avg	pf	fo	ast	to	blk	stl	pts	avg
2020-21	5-0	19/3.8	1-3	.333	0-0	.000	1-2	.500	1	1	2	0.4	0	0	4	1	0	1	3	0.6
TOTAL	5-0	19/3.8	1-3	.333	0-0	.000	1-2	.500	1	1	2	0.4	0	0	4	1	0	1	3	0.6



# Morgan ROBINSON-NWAGWU

# #30

Sophomore • Guard • 5-8

Norcross, Ga.

Norcross HS

- Missed 3 games with ankle injury suffered in pregame warmups at Houston; returned to action vs. North Florida
- Career-high 4 steals; tied career-high with 6 points, 4 rebounds off the bench vs. USC Upstate (11/25)
- Played in all 29 games as a freshman; averaged 1.3 points, 1.3 rebounds, 1.5 assists, 0.7 steals in 10.9 minutes/game
- Scored season-high 6 points vs. Bethune-Cookman (12/15) and Florida (1/9)
- Season-high 4 rebounds twice, vs. ODU (11/14) and vs. Alabama (1/12)
- Recorded 3 rebounds, 2 assists, 2 steals at Missouri (2/27)
- Season-high 4 assists at TCU (12/7)
- Ranked as No. 28 guard nationally by ESPN HoopGurlz; first-team all-state selection at Norcross HS by Atlanta Journal-Constitution

### SEASON HIGHS

Points	6	vs. USC Upstate	11/25/20
Rebounds	4	vs. USC Upstate	11/25/20
Assists	6	at Ole Miss	1/7/21
Blocks	1	at LSU	12/31/20
Steals	4	vs. USC Upstate	11/25/20
Field Goals	3	vs. USC Upstate	11/25/20
Field Goal Attempts	5	vs. USC Upstate	11/25/20
3-Point Field Goals	1	5x; last at LSU	12/31/20
Free Throws			
Free Throw Attempts			

Opponent	Start	Min.	FG-A	3PT-A	FT-A	O-D-T	PF	Ast.	TO	Blk.	St.	Pts.
USC UPSTATE		17	3-5	0-1	0-0	0-4-4	1	2	1	0	4	6
SAMFORD		9	0-1	0-1	0-0	0-0-0	1	1	2	0	1	0
GARDNER-WEBB		10	1-3	0-0	0-0	0-2-2	1	2	1	0	1	2
at Houston						--DNP--						
SOUTH ALABAMA						--DNP--						
STEPHEN F. AUSTIN						--DNP--						
NORTH FLORIDA		6	0-1	0-1	0-0	0-1-1	0	2	1	0	0	0
BELMONT		6	0-1	0-1	0-0	0-1-1	0	1	2	0	1	0
at LSU		13	0-2	0-1	0-0	0-0-0	1	0	2	1	0	0
GEORGIA		9	1-1	0-0	0-0	0-1-1	1	0	3	0	1	2
at Ole Miss		13	0-1	0-0	2-2	0-0-0	0	6	2	0	3	2
MISSOURI												
KENTUCKY												
at Florida												
at Alabama												
TEXAS A&M												
at Arkansas												
SOUTH CAROLINA												
at Georgia												
ALABAMA												
at Mississippi State												
VANDERBILT												
ARKANSAS												
at Tennessee												

### CAREER HIGHS

Points	6	3x; last vs. USC Upstate	11/25/20
Rebounds	4	3x; last vs. USC Upstate	11/25/20
Assists	6	at Ole Miss	1/7/21
Blocks	1	3x; last at LSU	12/31/20
Steals	4	vs. USC Upstate	11/25/20
Field Goals	3	2x; last vs. USC Upstate	11/25/20
Field Goal Attempts	12	vs. Florida	1/9/20
3-Point Field Goals	1	2x; last vs. Arkansas	1/5/20
3-Point FG Attempts	5	vs. Florida	1/9/20
Free Throws	3	at TCU	12/7/19
Free Throw Attempts	4	3x; last at TCU	12/7/19

### ROBINSON-NWAGWU'S CAREER STATISTICS

Season	gp-gs	min/avg	Total		3-Point		F-Throws		Rebounds				Scoring							
			fg-fga	pct	fg-fga	pct	ft-fa	pct	off	def	tot	avg	pf	fo	ast	to	blk	stl	pts	avg
2019-20	29-0	314/10.8	13-64	.203	2-10	.200	11-21	.524	13	25	38	1.3	32	1	44	46	2	19	39	1.3
2020-21	8-0	83/10.4	5-15	.333	0-5	.000	2-2	1.000	0	9	9	1.1	5	0	14	14	1	11	12	1.5
TOTAL	37-0	397/10.7	18-79	.228	2-15	.133	13-23	.565	13	34	47	1.3	37	1	58	60	3	30	51	1.4

**Game 1: Nov. 25, 2020**  
**Auburn 82, USC Upstate 41**  
**Auburn Arena**  
**Auburn, Ala.**

Official Basketball Box Score - Game Totals - Final Statistics  
 USC Upstate vs Auburn  
 11/25/20 6:00 pm at Auburn, AL

**USC Upstate 41 • 0-1,0-0 Big Six**

#	Player	Total		3-Ptr		Rebounds		PF	TP	A	TO	Bk	Stl	Min
		FG	FGA	FT	FTA	Off	Def							
27	Marnicha Prudent	1	2-7	0-0	6-6	1	9	10	0	3	0	2	32	
23	Michaela Gibbons	1	1-5	0-1	0-0	0	1	2	0	2	0	0	13	
01	Denisha Wilson	4	0-7	0-2	0-0	0	0	2	0	1	5	0	32	
05	Molly McCutcheon	9	2-7	2-6	0-0	0	0	2	6	5	2	0	32	
15	Anda Kuzmina	9	0-2	0-1	0-0	0	1	1	0	2	1	0	17	
00	Dakota McCaughan	5	1-11	5-11	0-0	0	0	2	15	5	6	0	30	
03	Gift Sampson	1	2-0	0-0	0	1	1	0	2	0	1	0	2	
23	Lillian Flantos	2-5	0-0	0-0	2	3	5	2	4	0	3	0	1	26
25	Maya Timberlake	0-1	0-0	0-0	1	1	3	0	2	0	0	0	11	
04	Molly Coleman	1-2	0-0	0-0	2	1	1	0	2	0	0	0	5	
<b>Team</b>														
<b>Totals</b>			14-49	7-21	6-6	5	21	46	19	41	13	25	0	9

1st FG %: 1-0 100.0% 2nd: 2-11 18.2% 3rd: 7-15 46.7% 4th: 4-13 30.8% Games: 14-49 28.6% Deadball  
 3FG %: 0-0 0.0% 2nd: 0-0 0.0% 3rd: 5-7 71.4% 4th: 2-2 100.0% Rebounds: 0  
 FT %: 0-0 0.0% 2nd: 100.0%

**Auburn 82 • 1-0,0-0 SEC**

#	Player	Total		3-Ptr		Rebounds		PF	TP	A	TO	Bk	Stl	Min
		FG	FGA	FT	FTA	Off	Def							
20	Unique Thompson	1	7-9	0-0	2-2	4	3	7	3	16	0	1	0	22
03	Annie Hughes	9	0-1	0-0	0	1	0	1	0	0	0	0	0	10
05	Aicha Coulibaly	9	2-8	0-2	0	1	5	6	2	4	2	2	1	19
13	Kira Lowery	9	1-2	0-0	2-2	0	5	5	0	4	4	4	0	24
23	H. Scott-Grayson	9	3-8	0-0	1-1	0	1	1	0	7	2	1	0	17
00	Alycia Reese	0-1	0-1	4-4	0	1	1	4	0	0	0	0	0	4
01	Keya Patton	2-6	1-2	1-2	2	3	5	0	6	1	1	0	2	18
02	Sania Wells	3-6	1-3	0-0	0	0	0	0	7	1	0	0	0	12
04	Riley Donahue	0-0	0-0	0-0	0	0	0	0	0	0	0	0	0	1
11	Romi Levy	2-4	0-2	0-0	3	3	0	0	0	2	0	0	2	19
14	Jala Jordan	5-9	4-6	2-2	3	0	3	0	16	2	0	1	20	
22	Alaina Rice	1-5	0-1	2-2	3	4	4	0	4	5	2	0	0	16
24	Carsen McFadden	0-0	0-0	0-0	0	1	1	0	0	0	0	0	0	1
30	M. Robinson-Nwagwu	3-5	0-1	0-0	1	4	4	1	6	2	1	0	4	17
<b>Team</b>														
<b>Totals</b>			30-65	8-20	14-17	15	30	45	7	82	19	14	1	13

1st FG %: 6-15 40.0% 2nd: 8-19 42.1% 3rd: 8-19 42.1% 4th: 8-16 50.0% Games: 30-65 46.2% Deadball  
 3FG %: 2-5 40.0% 2nd: 4-9 44.4% 3rd: 4-10 40.0% 4th: 3-6 50.0% Rebounds: 2  
 FT %: 2-2 100.0%

Officials: Ashlee Goode,Kylie Galloway,Michael McConnell

Technical fouls: USC Upstate-None, Auburn-None.

Attendance: 588

2020-21 Women's Basketball. Round: 0. Auburn vs USC Upstate. Played at Auburn

Score by periods	1st	2nd	3rd	4th	Total
USC Upstate	2	23	9	9	41
Auburn	16	24	23	19	82

Last FG - USC: 4th-00:15, AU: 4th-01:32.  
 Largest lead - USC: 11-09:25, AU: 16-3rd-09:03.  
 SU led for 00:37, AU led for 37:54. Game was tied for 01:29.

Score tied - 1 time.  
 Lead changed - 0 times.

Points in Paint: 21-15, 8-11  
 USCU: 6-7, 2-0, 23-0  
 AU: 6-2, 21-8, 8-11

Score tied - 0 times.  
 Lead changed - 0 times.

**AUBURN**-- The new-look Auburn women's basketball team showcased its depth, speed and balance in their season-opener, running away with an 82-41 win over USC Upstate Wednesday night at Auburn Arena.

All 14 players on the roster saw action for the Tigers (1-0), 11 of the 14 found the scoresheet, and 12 players grabbed at least one rebound. Auburn's trademark defense was back, too, turning 25 USC Upstate (0-1) turnovers into 21 points.

Senior Unique Thompson and redshirt sophomore Jala Jordan shared the team lead with 16 points apiece. Thompson also pulled down seven rebounds to lead the Tigers, but the Tigers' 45 rebounds were spread amongst 13 players as Auburn did a great job crashing the boards.

Auburn's newcomers made an immediate impact. Along with Jordan's 16 points and three rebounds, freshman Romi Levy turned some heads with eight points, three rebounds, two assists and two steals. Sophomore transfer Honesty Scott-Grayson finished with seven points and two assists in her Auburn debut. And fellow newcomers Keya Patton, Kira Lowery, Aicha Coulibaly, Alaina Rice and Alycia Reese all found their way onto the scoresheet. Rice was the team's assist leader with five on the night, and Coulibaly had Auburn's only blocked shot.

Among the returners, sophomore Morgan Robinson-Nwagwu matched a career-high with six points along with four rebounds and a team-leading four steals, a career-best. And Sania Wells finished with seven points, one shy of her career-high.

As a team, Auburn shot 46.2 percent from the floor (30-65) and hit 8-of-20 3-point attempts (40%). The Tigers also knocked down 12-of-17 attempts at the line (82.4%). The Tigers outrebounded the Spartans 45-26.

Auburn never trailed, jumping out to a 16-0 lead before the Spartans got on the board late in the first quarter to make it 16-2 after one period. That lead would balloon to 31 points at the end of the first half as the Tigers led 40-9; it's the first time Auburn has held an opponent to single digits since the 2016-17 season when Jacksonville scored just eight in the opening 20 minutes.

**Game 2: Nov. 28, 2020**  
**Auburn 66, Samford 64**  
**Auburn Arena**  
**Auburn, Ala.**

Official Basketball Box Score - Game Totals - Final Statistics  
 Samford vs Auburn  
 11/28/20 6:00 pm at Auburn, AL

**Samford 64 • 0-2,0-0 SoCon**

#	Player	Total		3-Ptr		Rebounds		PF	TP	A	TO	Bk	Stl	Min
		FG	FGA	FT	FTA	Off	Def							
44	Annie Ramil	1	2-7	0-0	0-0	0	6	6	3	4	3	4	0	24
46	Natalia Armstrong	1	5-7	0-1	0-0	2	4	6	5	10	0	1	2	26
03	Shauntal Allen	8	1-2	2-6	1-2	1	3	4	0	19	1	6	0	40
21	Katie Eatten	6	1-11	6-10	3-4	1	5	6	1	21	2	2	0	35
22	Raven Omar	9	4-8	0-2	1-2	1	2	3	5	9	8	5	0	37
12	Malory Hampton	0-1	0-1	0-0	0	1	2	0	0	1	0	0	0	8
33	Makaila Woolard	0-2	0-2	1-2	0	3	3	1	0	1	0	0	0	20
<b>Team</b>														
<b>Totals</b>			25-48	8-22	6-10	7	25	32	19	64	14	21	2	7

1st FG %: 3-11 27.3% 2nd: 4-9 44.4% 3rd: 6-13 46.2% 4th: 8-15 53.3% Games: 25-48 52.1% Deadball  
 3FG %: 2-5 40.0% 2nd: 0-0 0.0% 3rd: 1-4 25.0% 4th: 5-11 45.5% Rebounds: 19  
 FT %: 0-0 0.0% 2nd: 2-4 50.0%

**Auburn 66 • 2-0,0-0 SEC**

#	Player	Total		3-Ptr		Rebounds		PF	TP	A	TO	Bk	Stl	Min
		FG	FGA	FT	FTA	Off	Def							
20	Unique Thompson	1	4-10	0-0	8-10	5	6	11	2	16	1	3	0	33
03	Annie Hughes	9	2-7	0-0	1-3	1	0	1	2	5	1	1	0	20
05	Aicha Coulibaly	9	2-5	0-0	2-2	2	4	1	4	1	0	0	0	15
13	Kira Lowery	9	4-6	1-2	3-4	0	0	0	0	12	4	1	0	24
23	H. Scott-Grayson	9	2-12	1-5	0-0	0	0	1	5	1	0	0	2	26
01	Keya Patton	0-0	0-0	0-0	0-0	0	0	0	0	0	0	0	0	0
02	Sania Wells	0-0	0-0	0-0	0-0	0	0	0	0	0	0	0	0	0
11	Romi Levy	2-5	1-3	1-2	1	2	3	2	6	1	2	0	3	25
14	Jala Jordan	3-4	1-2	1-2	2	2	4	3	8	0	1	1	0	13
22	Alaina Rice	0-1	0-0	1-2	2	0	2	0	1	1	1	0	0	10
30	M. Robinson-Nwagwu	0-1	0-1	0-0	0	0	0	1	0	1	2	0	1	10
<b>Team</b>														
<b>Totals</b>			22-60	7-25	18-23	18	15	33	14	66	11	12	1	14

1st FG %: 4-12 33.3% 2nd: 6-19 31.6% 3rd: 4-14 28.6% 4th: 4-15 26.7% Games: 22-60 36.7% Deadball  
 3FG %: 5-7 71.4% 1-6 16.7% 1-5 20.0% 1-5 20.0% Rebounds: 33  
 FT %: 1-2 50.0%

Officials: Sal'Eshe Maggie-Tiemann,Felicia Brunker

Technical fouls: Samford-None, Auburn-None.

Attendance: 540

2020-21 Women's Basketball. Round: 0. Auburn vs Samford. Played at Auburn Aren

Score by periods	1st	2nd	3rd	4th	Total
Samford	16	10	16	22	64
Auburn	22	16	12	16	66

Last FG - SU: 4th-00:07, AU: 4th-00:56.  
 Largest lead - SU: 9-15:09:05, AU: 16-3rd-09:03.  
 SU led for 00:37, AU led for 37:54. Game was tied for 01:29.

Score tied - 1 time.  
 Lead changed - 3 times.

Points in Paint: 16-15, 5-24  
 SU: 28-16, 5-24  
 AU: 28-22, 15-11, 24

Score tied - 0 times.  
 Lead changed - 0 times.

**AUBURN**-- Senior Unique Thompson picked up her first double-double of the season, and Auburn was able to fend off a late 3-point flurry from Samford to pick up a 66-64 win Saturday night at Auburn Arena.

The Tigers (2-0) led by as many as 16 early in the second half. But Samford (0-2) chipped away over the final 20 minutes - led by five 3-pointers from the Bulldogs' Katie Eatten in the fourth quarter, three of them in the final 79 seconds - to put major pressure on the Tigers.

A pair of key shots from redshirt sophomore Jala Jordan kept the Bulldogs at bay, and clutch free throws from Thompson and junior Kira Lowery secured the win as Samford missed a final 3-point heave at the buzzer.

Thompson led Auburn with 16 points for the second straight game and pulled down 11 rebounds for her first double-double of the season and 43rd of her career. She also led the Tigers with five steals. Lowery added 12 points on 4-of-6 shooting and had a team-leading four assists in her second game as a Tiger. She also added a pair of steals.

The Tigers led 22-16 after one on the strength of hitting five of their first seven 3-point attempts of the night. But they would only make 2-of-18 from long range the rest of the way. Crashing the offensive glass in the second quarter helped pad the lead to 38-26 at the break.

It would be 42-26 less than a minute into the third on back-to-back buckets from Lowery, but from there, Auburn began to cool as Samford heated up. The Tigers saw their lead shrink to 50-42 at the end of three, then an 8-4 Bulldog run over the first three minutes of the fourth cut it to 54-50.

Auburn would make just two more field goals the rest of the way - both clutch shots from Jordan in the final three minutes. Her second, a 3-pointer with under a minute to play, pushed the lead to five at 61-56. From there, Allen sank two treys in a 10-second stretch, sandwiched around four free throws from Thompson and Lowery, to make it a 1-point game at 65-64. Lowery was fouled again, made one of two, and a long-range heave from Samford's Makaila Woolard was off the mark.

**Game 3: Dec. 1, 2020**  
**Auburn 97, Gardner-Webb 61**  
**Auburn Arena**  
**Auburn, Ala.**

Official Basketball Box Score - Game Totals - Final Statistics  
 Gardner-Webb vs Auburn  
 12/01/20 6:00 pm at Auburn, AL

**Gardner-Webb 61 • 0-2,0-0 Big Six**

#	Player	Total		3-Ptr		Rebounds		PF	TP	A	TO	Bk	Stl	Min
		FG	FGA	FT	FTA	Off	Def							
34	Alexis Hueston	1	1-7	1-3	0-0	0	4	2	3	0	2	0	0	23
24	Lyrisia Deans	1	0-0	0-0	0-0	1	0	1	3	4	1	0	1	14
01	Ki'Ani Cain	9	4-11	3-8	2-2	0	1	1	3	13	4	3	0	34
12	Jessyka Williams	9	2-10	1-6	2-3	0	6	6	2	7	3	5	1	31
00	Alasia Smith	9	3-6	1-4	3-5</									

**Game 4: Dec. 5, 2020**  
**Houston 71, Auburn 61**  
**Fertitta Center**  
**Houston, Texas**

**Official Basketball Box Score - Game Totals - Final Statistics**  
**Auburn vs Houston**  
**12/05/20 12:00 pm at Houston, TX**

**Auburn 61 • 3-1,0-0 SEC**

#	Player	Total			3-Ptr			Rebounds			PF	TP	A	T	Bk	Stl	Min
		FG	FGA	FT	FTA	FG	FGA	FT	FTA	Off							
11	Romi Levy	1	0-2	0-0	0	1	2	0	0	2	2	0	0	0	0	14	
20	Unique Thompson	1	0-18	0-0	6-7	10	13	23	3	26	2	7	0	2	3	32	
05	Aicha Coulibaly	g	0-2	0-0	0-2	1	2	3	0	2	1	1	0	1	0	12	
13	Kira Lowery	g	1-3	0-1	0-0	1	1	0	2	0	2	0	1	0	0	22	
23	H. Scott-Grayson	g	1-3	0-0	2-4	0	3	2	4	1	2	0	2	0	25		
02	Alycia Reese	g	4-6	2-3	0-0	1	0	1	1	0	1	1	0	1	16		
01	Keya Patton	g	2-10	0-2	2-2	1	1	2	6	1	2	0	2	0	22		
02	Sania Wells	g	0-5	0-1	0-0	1	0	1	0	1	0	0	0	0	15		
03	Annie Hughes	g	0-0	0-0	0-0	1	2	3	0	0	1	0	0	0	13		
14	Jala Jordan	g	4-11	0-4	5-5	2	3	5	13	1	3	1	2	0	26		
22	Alaina Rice	g	0-1	0-0	0-0	0	0	0	0	0	0	0	0	0	3		
<b>Team</b>																	
<b>Totals</b>			22-61	2-12	15-20	16	27	45	18	61	9	23	4	10	20		

1st FG %: 31.2 25.0% 2nd: 4-17 23.5% 3rd: 7-14 50.0% 4th: 0-8 0.0% 44.4% Game: 22-61 36.1% Deadball  
 3FG %: 0-1 0.0% 0-5 0.0% 1-4 25.0% 1-2 50.0% 1-2 50.0% 1-2 50.0% 1-2 50.0% 1-2 50.0% 1-2 50.0%  
 FT %: 3-6 50.0% 0-0 0.0% 4-6 66.7% 2-5 40.0% 0-6 0.0% 0-6 0.0% 10-14 71.4% 1-7 14.3% 17-27 63.0% Rebounds

**Houston 71 • 2-1,0-0 AAC**

#	Player	Total			3-Ptr			Rebounds			PF	TP	A	T	Bk	Stl	Min
		FG	FGA	FT	FTA	FG	FGA	FT	FTA	Off							
01	Bria Patterson	r	1-5	0-2	0-0	3	3	6	3	2	3	2	0	1	0	25	
30	Tatyana Hill	r	4-9	0-0	0-1	1	1	2	5	8	1	0	1	1	21		
05	Dymond Gladney	g	6-13	3-9	3-4	0	0	0	2	18	1	3	0	0	38		
03	Britney Onyeje	g	5-13	5-9	0-0	2	2	4	3	15	1	0	0	2	28		
23	Julia Blacksheff-Fai	g	1-5	0-1	1-2	3	6	2	3	7	1	0	2	1	31		
00	Eryka Sidney	g	1-3	0-2	0-0	0	0	1	2	1	2	0	0	0	14		
02	Miya Crump	g	3-8	2-6	0-0	0	4	4	1	8	1	2	0	2	15		
14	Laila Blair	g	2-3	0-1	1-1	1	2	0	3	5	0	1	0	1	14		
21	Daphane White	g	3-4	0-0	4-4	1	6	7	4	10	0	1	1	1	13		
44	Jazmine Lewis	g	0-1	0-0	0-0	0	0	0	0	0	0	0	0	0	1		
<b>Team</b>																	
<b>Totals</b>			26-64	10-30	9-12	12	22	34	21	71	17	11	1	11	20		

1st FG %: 30.0 39.3% 2nd: 5-14 35.7% 3rd: 3-10 30.0% 4th: 4-10 40.0% Game: 26-64 40.6% Deadball  
 3FG %: 1-1 10.0% 2-4 50.0% 2-4 50.0% 1-1 10.0% 1-1 10.0% 1-1 10.0% 1-1 10.0% 1-1 10.0%  
 FT %: 1-2 50.0% 2-4 50.0% 4-6 66.7% 8-10 80.0% 0-0 0.0% 0-2 0.0% 9-12 75.0% Rebounds

Officials: Puelani Sporch-Welsh, Tom Danaheer, Joseph Vassily  
 Technical fouls: Auburn-None; Houston-None.  
 Attendance: 509  
 2020-21 Women's Basketball. Round: 0. Auburn vs Houston. Played at Fertitta Ce

**HOUSTON--** Auburn senior Unique Thompson scored 26 points and had 23 rebounds, but the Tigers were unable to climb out of a deep first-half hole as Auburn fell for the first time this season, 71-61 at Houston.

The Tigers (3-1) had turnover trouble early, went cold for a large portion of the second quarter, and dealt with foul trouble to key contributors as Houston (2-1) took a 34-17 halftime lead. Auburn fought back in the second half, cutting the deficit to as few as six points before running out of time to complete the comeback.

Thompson's career night was the first 20-point, 20-rebound game by an Auburn player since 1993, when Lauretta Freeman had 30 points and 21 rebounds against Alabama. Thompson's 23 rebounds tied for the third-most in a game in Auburn history, the most since Sharon Stewart had 23 against Vanderbilt in 1988. She now has three double-doubles in four games this year and 45 for her career.

But the rest of Auburn's offense struggled as the Tigers shot 36 percent for the game (22-of-61) and hit just two 3-pointers. Both of those treys came from junior Alycia Reese, the Chattahoochee Valley CC transfer, who scored 10 points off the bench. Jala Jordan added 13 points and five rebounds, hitting 5-of-5 free throws.

Auburn turned the ball over 10 times in the first quarter and finished with 23 for the game, which turned into 21 Houston points. The Cougars led 22-9 after one, then with Thompson on the bench in foul trouble, both teams went cold to start the second before Houston took a 34-17 lead to the break.

The Tigers started quipping away, cutting the deficit to 14 at the end of the quarter and getting within single digits with 6:47 to play. It would be as close as six points at 59-53 with 4:18 to play after a Jordan layup. But every time Auburn threatened to get within striking distance, Houston answered. The Cougars hit four of their final five shots in the game to extinguish Auburn's comeback hopes.

**Game 5: Dec. 13, 2020**  
**Auburn 74, South Alabama 66**  
**Auburn Arena**  
**Auburn, Ala.**

**Official Basketball Box Score - Game Totals - Final Statistics**  
**South Alabama vs Auburn**  
**12/13/20 3:00 pm at Auburn, AL**

**South Alabama 66 • 3-2,0-0 Sun Belt**

#	Player	Total			3-Ptr			Rebounds			PF	TP	A	T	Bk	Stl	Min
		FG	FGA	FT	FTA	FG	FGA	FT	FTA	Off							
22	Javien Mallard	r	3-4	0-1	2-2	1	3	4	4	8	0	0	0	1	28		
35	Antoinette Lewis	r	5-13	0-1	5-10	5	5	10	5	15	2	6	3	2	31		
03	Javia Morrow	g	2-5	2-4	1-2	0	2	2	2	7	2	4	0	3	35		
04	Mahogany Vaught	g	4-13	1-2	4-5	0	5	3	13	6	4	0	8	38			
45	Devyn Lowe	g	4-13	4-9	1-2	1	2	3	13	0	2	0	1	36			
02	Serin Dunne	g	0-0	0-0	0-0	0	0	0	0	0	1	1	0	7			
10	Janelle Jones	g	0-2	0-2	0-0	0	0	0	2	0	0	1	0	4			
11	Jadonna Davis	g	3-6	0-0	4-6	1	4	5	2	10	0	2	2	0	20		
34	Ashanti Lavergne	g	0-0	0-0	0-0	0	0	0	0	0	0	0	0	1			
<b>Team</b>																	
<b>Totals</b>			21-56	7-19	17-27	11	26	37	21	66	11	21	5	15	20		

1st FG %: 61.2 50.0% 2nd: 5-13 38.5% 3rd: 7-18 38.9% 4th: 3-13 23.1% Game: 21-56 37.5% Deadball  
 3FG %: 4-4 100.0% 3-5 60.0% 0-0 0.0% 0-0 0.0% 1-1 100.0% 1-1 100.0% 1-1 100.0% 1-1 100.0%  
 FT %: 1-2 50.0% 4-6 66.7% 2-5 40.0% 0-0 0.0% 0-0 0.0% 10-14 71.4% 1-7 14.3% 17-27 63.0% Rebounds

**Auburn 74 • 4-1,0-0 SEC**

#	Player	Total			3-Ptr			Rebounds			PF	TP	A	T	Bk	Stl	Min
		FG	FGA	FT	FTA	FG	FGA	FT	FTA	Off							
14	Jala Jordan	r	2-8	1-6	1-2	1	4	5	4	6	2	4	3	0	23		
20	Unique Thompson	r	6-14	0-0	9-9	7	7	14	5	21	0	4	0	5	31		
03	Annie Hughes	g	4-8	3-5	0-0	0	3	3	11	0	0	0	2	32			
13	Kira Lowery	g	3-7	0-0	4-5	1	1	2	1	10	0	2	0	28			
23	H. Scott-Grayson	g	1-8	1-3	1-2	0	3	3	4	4	0	2	0	24			
02	Sania Wells	g	3-10	3-6	2-4	1	0	1	11	2	2	0	0	25			
04	Riley Donahue	g	0-0	0-0	0-0	0	0	0	1	0	0	0	0	0+			
00	Kyree White	g	0-0	0-0	0-0	0	0	0	0	0	0	0	0	0			
11	Romi Levy	g	3-6	0-2	2-2	4	3	7	1	8	2	0	0	4			
24	Carsen McFadden	g	1-2	0-0	1-2	0	0	0	0	3	0	0	0	9			
<b>Team</b>																	
<b>Totals</b>			23-62	8-22	20-26	18	26	44	20	74	10	16	3	12	20		

1st FG %: 50.0 25.0% 2nd: 5-15 33.3% 3rd: 8-16 50.0% 4th: 5-14 35.7% Game: 23-62 35.4% Deadball  
 3FG %: 0-6 0.0% 5-10 50.0% 2-3 66.7% 0-2 0.0% 0-2 0.0% 0-2 0.0% 0-2 0.0% 0-2 0.0%  
 FT %: 2-3 66.7% 1-2 50.0% 8-10 80.0% 6-11 54.5% 0-0 0.0% 0-0 0.0% 10-14 71.4% 1-7 14.3% 20-26 76.9% Rebounds

Officials: Ashlee Goode, Meadow Overstreet, Beverly Roberts  
 Technical fouls: South Alabama-None; Auburn-None.  
 Attendance: 520  
 2020-21 Women's Basketball. Round: 0. Auburn vs South Alabama. Played at Auburn

**AUBURN--** A shorthanded Auburn women's basketball team fought its way back from an early double-digit deficit to earn a 74-66 win over South Alabama Sunday afternoon at Auburn Arena.

Led by 21 points and 14 rebounds from senior Unique Thompson, four players scored in double-figures as the Tigers (4-1) trailed by as many as 12 and led by as many as 12 in a game that was truly a tale of two halves.

A flurry of 3-pointers to open the game gave South Alabama (3-2) an early lead, and a cold streak by the Tigers to open the second period pushed the Jaguars' lead to as many as 12 points at 24-12 with 6:04 to play in the half. But Auburn knocked down five straight 3-pointers in the final four minutes of the period to cut the halftime deficit to just six at 34-28.

With the Jaguars still holding the lead as the teams traded buckets the first six minutes of the second half, Auburn turned USA turnovers into points in a 9-0 run that spanned 82 seconds late in the quarter to take a 49-46 lead, its first since it was 2-0 to start the game. The Tigers would never trail again, pushing their lead to as many as 12 points with just over a minute to play.

Thompson's double-double was her fourth of the season and 46th of her career; she's totaled 47 points and 37 rebounds over her last two games. Sophomore Sania Wells added a career-high 13 points, knocking down three 3-pointers and a pair of free throws to go along with a pair of assists.

Sophomore Annie Hughes also poured in 11 points with a career-high three 3-pointers, and junior Kira Lowery added 10 points on the night. Freshman Romi Levy also had a strong performance with 8 points, 7 rebounds, 3 assists and 3 steals.

Auburn missed its first 11 3-point attempts of the night but made eight of its final 11 to finish at 36 percent. Overall, Auburn was 23-of-65 (35%) from the field and had a strong night at the free-throw line, going 20-for-26 (77%). The Tigers out-rebounded the Jags 44-37 and turned 21 USA turnovers into 15 points. Meanwhile, the Jags hit their first five 3-point attempts of the night but went just 2-of-14 from long range the rest of the way.

**Game 6: Dec. 16, 2020**  
**Stephen F. Austin 67, Auburn 54**  
**Auburn Arena**  
**Auburn, Ala.**

**Official Basketball Box Score - Game Totals - Final Statistics**  
**SFA vs Auburn**  
**12/16/20 6:00 pm at Auburn, AL**

**SFA 67 • 6-2,0-0 Southern**

#	Player	Total			3-Ptr			Rebounds			PF	TP	A	T	Bk	Stl	Min
		FG	FGA	FT	FTA	FG	FGA	FT	FTA	Off							
21	Avyana Johnson	r	1-4	0-0	2-4	3	9	12	3	4	3	2	1	0	29		
02	Alyssa Mayfield	g	7-12	1-2	4-4	0	4	4	2	19	1	2	0	1	29		
13	Stephanie Visscher	g	6-13	3-8	0-0	0	7	3	15	1	1	1	2	40			
14	Marissa Banfield	g	1-10	1-10	0-0	0	0	0	0	3	2	1	0	25			
22	Zya Nugent	g	3-4	1-2	2-3	0	2	3	0	2	0	0	0	23			
05	Tasharian Robinson	g	0-0	0-0	0-0	1	1	2	3	0	0	0	0	8			
10	Brianna Mitchell	g	2-5	1-2	8-9	1	1	2	13	3	3	0	1	24			
11	Avery Brittingham	g	0-4	0-0	0-1	1	3	4	0	2	0	0	1	18			
33	Aaiton Johnson	g	2-1	0-0	0-0	1	1	2	0	2	0	0	0	4			
<b>Team</b>																	





**Game 10: Jan. 3, 2021**  
**Georgia 76, Auburn 44**  
 Auburn Arena  
 Auburn, Ala.

**Game 11: Jan. 7, 2021**  
**Ole Miss 62, Auburn 58**  
 The Pavilion at Ole Miss  
 Oxford, Miss.

**Official Basketball Box Score - Game Totals - Final Statistics**

Georgia vs Auburn  
 01/03/21 2:00 pm at Auburn, AL

Georgia 76 • 9-1,1-1 SEC

#	Player	Total			3-Ptr			Rebounds			PF	TP	A	TO	Blk	Stl	Min
		FG	FGA	FT	FTA	FG	FGA	FT	FTA	Off							
20	Jordan Isaacs	f	2-3	0-0	0-0	2	5	7	1	4	1	3	0	0	0	17	
14	Jenna Staiti	f	5-11	0-0	3-4	2	3	5	3	13	0	1	4	1	19		
02	Gabby Connally	c	3-4	2-2	1-2	0	0	0	1	9	1	1	0	1	15		
11	Maya Caldwell	g	4-8	1-3	0-1	0	2	2	2	9	2	2	0	1	23		
23	Que Morrison	g	4-6	1-2	0-0	1	2	3	0	9	5	4	0	4	15		
00	Zoesha Smith	g	0-1	0-0	0-0	1	0	1	0	1	0	1	0	1	6		
01	Chloe Chapman	g	0-1	0-0	0-0	1	1	3	0	3	3	0	1	20			
03	Sarah Ashlee Barker	g	3-7	1-4	0-0	0	4	4	1	7	2	2	0	1	19		
04	Mikayla Coombs	g	3-6	0-0	2-2	2	4	0	8	2	2	0	2	20			
10	Callin Hesse	g	0-3	0-2	0-0	0	1	1	0	0	1	0	0	8			
15	Mauri Davenport	g	1-1	0-0	0-0	0	0	1	2	0	2	1	8				
22	Malury Bates	g	2-5	0-0	2-2	1	2	3	1	6	2	1	0	13			
35	Javyn Nicholson	g	4-6	0-0	1-2	2	6	8	2	9	0	1	0	17			
Team			2			4											
Totals			31-62	5-14	9-13	15	30	43	16	76	18	22	6	13	200		

1st	FG %:	11-19	57.9%	2nd:	7-12	58.3%	3rd:	5-15	66.0%	4th:	4-16	25.0%	Game:	31-62	50.0%	Deadball
	3FG %:	1-5	60.0%		1-2	100.0%		1-4	25.0%		5-14	35.7%		15-28	53.6%	Rebounds
	FT %:	1-2	50.0%		2-2	100.0%		0-1	0.0%		6-8	75.0%		9-13	69.2%	4

Auburn 44 • 5-0,0-2 SEC

#	Player	Total			3-Ptr			Rebounds			PF	TP	A	TO	Blk	Stl	Min
		FG	FGA	FT	FTA	FG	FGA	FT	FTA	Off							
11	Romi Levy	f	0-7	0-4	0-0	0	3	3	2	0	0	2	0	6	34		
14	Jala Jordan	f	4-14	1-5	0-1	1	0	1	3	9	0	3	1	0	17		
01	Keya Patton	g	3-9	0-1	6-7	2	1	3	1	12	0	2	0	1	27		
22	Alaina Rice	g	1-5	0-0	1-2	2	2	4	1	3	0	5	0	0	19		
23	H. Scott-Grayson	g	2-5	0-0	2-2	1	3	4	2	6	1	0	0	1	17		
00	Alycia Reese	g	0-0	0-0	0-0	0	0	0	0	0	0	0	0	0	4		
02	Sania Wells	g	0-1	0-0	0-0	0	0	0	0	0	0	1	0	10			
03	Annie Hughes	g	1-2	0-0	1-2	0	3	3	1	3	0	3	0	1	22		
05	Aicha Coulibaly	g	3-7	0-1	0-1	2	2	2	2	6	0	1	2	24			
13	Kira Lowery	g	1-1	0-0	1-3	0	1	1	0	3	1	5	0	0	12		
24	Carsen McFadden	g	0-0	0-0	0-0	0	0	0	0	0	0	0	0	5			
30	M. Robinson-Nwagwu	g	1-1	0-0	0-0	0	1	1	1	2	0	3	0	1	9		
Team			3			2			5								
Totals			16-52	1-11	11-18	9	18	27	13	44	2	27	2	12	200		

1st	FG %:	4-13	30.8%	2nd:	6-14	42.9%	3rd:	1-3	7.7%	4th:	5-12	41.7%	Game:	16-52	30.8%	Deadball
	3FG %:	1-4	25.0%		1-2	50.0%		0-4	0.0%		1-3	33.3%		1-11	9.1%	Rebounds
	FT %:	1-2	50.0%		0-2	0.0%		5-7	71.4%		11-18	61.1%		11-18	61.1%	4

Officials: Carla Fountain,Angelica Suffren,Dee Kantner

Technical fouls: Georgia-None; Auburn-Aicha Coulibaly.

Attendance: 657

2020-21 Women's Basketball, Round: 0, Auburn vs Georgia, Played at Auburn Arena

Score by periods	Total				Points	Paint	2nd	Fast	Bench
	1st	2nd	3rd	4th					
Georgia	26	17	19	14	76	42	29	12	33
Auburn	10	13	6	15	44	30	14	4	12

Last FG - USA 4th-02:15, AU 4th-02:30.  
 Largest lead - USA by 37 3rd-01:43, AU None.  
 USA led for 38:27, AU led for 00:00, Game was tied for 01:33.

**AUBURN--** Georgia's size and depth were too much to overcome for the Auburn women's basketball team Sunday afternoon as the Tigers fell 76-44 to the Lady Bulldogs at Auburn Arena.

The Tigers (5-5, 0-2 SEC), without leading scorer and rebounder Unique Thompson for the second straight game, were unable to get much going on offense and turned the ball over a season-high 27 times. Georgia (9-1, 1-1) converted those turnovers into 26 points and had seven players score at least eight points in the game.

Junior Keya Patton was Auburn's only player in double figures with 12 points, going 6-of-7 at the free-throw line. Jala Jordan added nine points. Romi Levy added a career-best six steals, the most by an Auburn player this season. Alaina Rice and Honesty Scott-Grayson were the Tigers' top rebounders with four apiece.

Auburn shot 30.8 percent from the field (16-52) and hit just one 3-pointer on 11 tries. Georgia shot 50 percent on the day (31-62) and out-rebounded the Tigers 43-27.

Jenna Staiti led the Lady Bulldogs with 13 points and four blocks. Gabby Connally, Maya Caldwell, Que Morrison and Javyn Nicholson all added nine points; Nicholson was the Dawgs' top rebounder with eight.

**Official Basketball Box Score - Game Totals - Final Statistics**

Auburn vs Ole Miss

01/07/21 6:00 pm at Oxford, MS

Auburn 58 • 5-6,0-3 SEC

#	Player	Total			3-Ptr			Rebounds			PF	TP	A	TO	Blk	Stl	Min
		FG	FGA	FT	FTA	FG	FGA	FT	FTA	Off							
11	Romi Levy	f	6-10	1-5	0-0	0	4	4	3	13	2	0	0	2	33		
14	Jala Jordan	f	2-5	0-3	0-2	1	3	4	3	4	1	1	0	0	27		
01	Keya Patton	g	2-6	2-4	0-0	0	2	2	2	6	1	2	0	0	28		
22	Alaina Rice	g	1-4	0-2	0-0	1	2	3	0	2	1	4	0	1	14		
23	H. Scott-Grayson	g	9-16	3-5	2-2	1	4	5	4	23	2	4	0	3	30		
00	Alycia Reese	g	0-2	0-0	0-0	0	0	0	0	0	0	1	0	0	4		
02	Sania Wells	g	1-4	0-0	2-2	0	0	0	0	0	0	1	0	1	11		
03	Annie Hughes	g	0-0	0-0	0-0	0	1	1	0	0	1	1	0	2	12		
05	Aicha Coulibaly	g	2-6	0-0	0-0	1	1	2	1	4	1	1	0	0	15		
13	Kira Lowery	g	0-1	0-0	0-0	0	1	1	2	0	1	0	0	0	12		
30	M. Robinson-Nwagwu	g	0-1	0-0	2-2	0	0	0	0	0	2	6	2	0	14		
Team			2			4			15								
Totals			23-55	6-21	6-8	6	22	28	15	58	18	17	0	12	200		

1st	FG %:	4-14	28.6%	2nd:	7-18	38.9%	3rd:	4-11	36.4%	4th:	8-12	66.7%	Game:	23-55	41.8%	Deadball
	3FG %:	0-6	0.0%		1-6	16.7%		2-4	50.0%		4-4	100.0%		1-11	9.1%	Rebounds
	FT %:	0-0	0.0%		2-6	33.3%		2-4	50.0%		6-8	75.0%		6-8	75.0%	1

Ole Miss 62 • 7-1,1-1 SEC

#	Player	Total			3-Ptr			Rebounds			PF	TP	A	TO	Blk	Stl	Min
		FG	FGA	FT	FTA	FG	FGA	FT	FTA	Off							
00	Shakira Austin	f	10-17	1-2	4-5	2	8	10	2	25	2	2	0	3	34		
32	Iyanila Kitchens	f	3-4	0-0	0-2	1	2	3	6	1	2	0	0	18			
02	Mimi Reid	g	2-5	1-1	0-0	0	2	2	1	5	6	0	0	28			
03	Donnetta Johnson	g	2-5	0-1	3-3	0	3	3	0	7	6	3	1	34			
21	Taylor Smith	g	0-5	0-1	1-2	1	1	2	0	1	2	1	0	23			
04	Valerie Nesbitt	g	1-2	0-0	5-6	0	0	0	0	7	2	0	3	18			
05	Snudda Collins	g	3-8	3-7	0-0	0	7	4	9	0	1	3	0	30			
25	Tiya Douglas	g	1-3	0-0	0-0	0	1	1	2	0	2	0	1	15			
Team			2			0			6								
Totals			22-49	5-12	13-18	7	27	34	11	62	19	19	4	10	200		

1st	FG %:	6-12	50.0%	2nd:	6-13	46.2%	3rd:	7-16	43.8%	4th:	3-8	37.5%	Game:	22-49	44.9%	Deadball
	3FG %:	2-4	50.0%		2-4	50.0%		1-2	50.0%		0-2	0.0%		6-12	41.7%	Rebounds
	FT %:	1-2	50.0%		3-3	100.0%		1-1	100.0%		8-12	66.7%		13-18	72.2%	3

Officials: Karleena Tobin,Laura Morris,Gina Cross

Technical fouls: Auburn-None; Ole Miss-None.

Attendance: 651

2020-21 Women's Basketball, Round: 0, Auburn vs Ole Miss, Played at The Pavilion

Score by periods	Total				Points	Paint	2nd	Fast	Bench
	1st	2nd	3rd	4th					
Auburn	8	15	13	22	58	16	17	4	6
Ole Miss	16	16	16	14	62	26	14	8	3

Last FG - AU 4th-00:39, OM 4th-03:37.  
 Largest lead - AU None, OM by 12 3rd-05:49.  
 AU led for 00:00, OM led for 38:37, Game was tied for 01:03.

**OXFORD, Miss.--** Auburn sophomore Honesty Scott-Grayson scored a career-high 23 points, but the Tigers' best effort so far in SEC play came up just short in a 62-58 loss at Ole Miss Thursday night.

The Tigers trailed by as many as 12 points late in the third quarter, but opened the fourth on a 7-0 run and got within two in the final minute of the game. But Ole Miss made a pair of free throws in the closing seconds to secure the victory.

Scott-Grayson was 9-of-16 from the field and hit three times from 3-point range; she also led the Tigers with five rebounds and shared the team lead with three steals. Romi Levy added 13 points, and Morgan Robinson-Nwagwu equaled Scott-Grayson's steals total with three of her own.

As a team, Auburn shot 41.8 percent (23-55) and was 6-of-21 from 3-point range (28.6%). But the fourth quarter

**2020-21 Auburn Women's Basketball**  
**Auburn Combined Team Statistics (as of Jan 08, 2021)**  
**All games**

<b>RECORD:</b>	<b>OVERALL</b>	<b>HOME</b>	<b>AWAY</b>	<b>NEUTRAL</b>
ALL GAMES	5-6	5-3	0-3	0-0
CONFERENCE	0-3	0-1	0-2	0-0
NON-CONFERENCE	5-3	5-2	0-1	0-0

##	Player	gp-gs	min	avg	Total		3-Point		F-Throw		Rebounds				a	to	blk	stl	pts	avg			
					fg-fga	fg%	3fg-fga	3fg%	ft-fa	ft%	off	def	tot	avg							pf	dq	
20	Unique Thompson	8-8	232	29.0	56-98	.571	0-0	.000	38-49	.776	51	71	122	15.3	20	1	8	21	2	25	150	18.8	
23	H. Scott-Grayson	11-11	278	25.3	47-121	.388	7-25	.280	20-31	.645	10	31	41	3.7	26	0	19	22	1	24	121	11.0	
14	Jala Jordan	11-7	213	19.4	32-94	.340	10-43	.233	15-22	.682	17	27	44	4.0	29	1	8	19	10	6	89	8.1	
11	Romi Levy	11-4	243	22.1	28-69	.406	7-28	.250	3-8	.375	13	30	43	3.9	19	0	13	19	6	26	66	6.0	
01	Keya Patton	10-2	202	20.2	18-56	.321	7-22	.318	13-17	.765	7	10	17	1.7	13	0	6	14	0	7	56	5.6	
03	Annie Hughes	11-7	216	19.6	22-49	.449	7-20	.350	5-9	.556	13	17	30	2.7	14	0	6	13	1	13	56	5.1	
05	Aicha Coulibaly	10-4	165	16.5	20-55	.364	1-12	.083	7-16	.438	12	23	35	3.5	13	0	7	9	4	4	48	4.8	
02	Sania Wells	11-1	157	14.3	12-51	.235	7-24	.292	11-16	.688	2	3	5	0.5	10	0	10	10	0	4	42	3.8	
13	Kira Lowery	11-8	194	17.6	12-26	.462	1-3	.333	13-17	.765	2	11	13	1.2	9	0	19	28	2	10	38	3.5	
00	Alycia Reese	6-0	45	7.5	5-10	.500	2-6	.333	6-6	1.000	0	3	3	0.5	1	0	2	2	0	1	18	3.0	
22	Alaina Rice	10-3	147	14.7	8-37	.216	3-11	.273	9-12	.750	13	8	21	2.1	11	0	12	26	0	5	28	2.8	
30	M. Robinson-Nwagwu	8-0	83	10.4	5-15	.333	0-5	.000	2-2	1.000	0	9	9	1.1	5	0	14	14	1	11	12	1.5	
04	Riley Donahue	3-0	2	0.7	1-1	1.000	1-1	1.000	0-0	.000	0	0	0	0.0	1	0	0	1	0	0	3	1.0	
24	Carsen McFadden	5-0	19	3.8	1-3	.333	0-0	.000	1-2	.500	1	1	2	0.4	0	0	4	1	0	1	3	0.6	
10	Kiyae' White	1-0	4	4.0	0-2	.000	0-0	.000	0-0	.000	1	2	3	3.0	1	0	0	0	0	0	0	0.0	
Team											23	26	49										
Total.....		11	2200		267-687	.389	53-200	.265	143-207	.691	165	272	437	39.7	172	2	128	205	27	137	730	66.4	
Opponents.....		11	2200		264-637	.414	79-242	.326	116-158	.734	114	283	397	36.1	201	-	161	230	25	119	723	65.7	

<b>TEAM STATISTICS</b>	<b>AU</b>	<b>OPP</b>	<b>Date</b>	<b>Opponent</b>	<b>Score</b>	<b>Att.</b>	
SCORING	730	723	11/25/20	USC UPSTATE	w	82-41	588
Points per game	66.4	65.7	11/28/20	SAMFORD	w	66-64	540
Scoring margin	+0.6	-	12/01/20	GARDNER-WEBB	w	97-61	487
FIELD GOALS-ATT	267-687	264-637	12/05/20	at Houston	L	61-71	509
Field goal pct	.389	.414	12/13/20	SOUTH ALABAMA	w	74-66	520
3 POINT FG-ATT	53-200	79-242	12/16/20	SFA	L	54-67	445
3-point FG pct	.265	.326	12/17/20	NORTH FLORIDA	w	94-81	449
3-pt FG made per game	4.8	7.2	12/20/20	BELMONT	L	57-78	515
FREE THROWS-ATT	143-207	116-158	* 12/31/20	at LSU	L	43-56	687
Free throw pct	.691	.734	* 01/03/21	GEORGIA	L	44-76	657
F-Throws made per game	13.0	10.5	* 01/07/21	at Ole Miss	L	58-62	851
REBOUNDS	437	397	* - Conference game				
Rebounds per game	39.7	36.1					
Rebounding margin	+3.6	-					
ASSISTS	128	161					
Assists per game	11.6	14.6					
TURNOVERS	205	230					
Turnovers per game	18.6	20.9					
Turnover margin	+2.3	-					
Assist/turnover ratio	0.6	0.7					
STEALS	137	119					
Steals per game	12.5	10.8					
BLOCKS	27	25					
Blocks per game	2.5	2.3					
ATTENDANCE	4201	2047					
Home games-Avg/Game	8-525	3-682					
Neutral site-Avg/Game	-	0-0					

<b>Score by Periods</b>	<b>1st</b>	<b>2nd</b>	<b>3rd</b>	<b>4th</b>	<b>Totals</b>
Auburn	177	167	193	193	730
Opponents	170	159	202	192	723

**2020-21 Auburn Women's Basketball  
Auburn Combined Team Statistics (as of Jan 08, 2021)  
Conference games only**

<b>RECORD:</b>	<b>OVERALL</b>	<b>HOME</b>	<b>AWAY</b>	<b>NEUTRAL</b>
ALL GAMES	0-3	0-1	0-2	0-0
CONFERENCE	0-3	0-1	0-2	0-0
NON-CONFERENCE	0-0	0-0	0-0	0-0

##	Player	gp-gs	min	avg	Total		3-Point		F-Throw		Rebounds				pf	dq	a	to	blk	stl	pts	avg		
					fg-fga	fg%	3fg-fga	3fg%	ft-fa	ft%	off	def	tot	avg										
23	H. Scott-Grayson	3-3	80	26.7	15-33	.455	3-5	.600	4-4	1.000	4	14	18	6.0	9	0	5	5	1	6	37	12.3		
05	Aicha Coulibaly	3-0	62	20.7	9-21	.429	1-4	.250	3-5	.600	3	6	9	3.0	4	0	1	3	1	2	22	7.3		
01	Keya Patton	3-2	79	26.3	6-19	.316	3-8	.375	6-7	.857	3	4	7	2.3	6	0	1	6	0	2	21	7.0		
11	Romi Levy	3-3	97	32.3	10-29	.345	1-11	.091	0-0	.000	4	14	18	6.0	7	0	4	7	1	13	21	7.0		
14	Jala Jordan	3-3	64	21.3	7-29	.241	1-13	.077	1-5	.200	3	6	9	3.0	9	0	1	5	2	0	16	5.3		
22	Alaina Rice	3-3	57	19.0	4-15	.267	1-3	.333	1-2	.500	7	5	12	4.0	4	0	3	13	0	2	10	3.3		
03	Annie Hughes	3-0	41	13.7	2-3	.667	0-0	.000	1-2	.500	0	4	4	1.3	1	0	1	6	0	3	5	1.7		
02	Sania Wells	3-1	37	12.3	1-10	.100	0-3	.000	2-2	1.000	0	2	2	0.7	2	0	2	3	0	2	4	1.3		
30	M. Robinson-Nwagwu	3-0	36	12.0	1-4	.250	0-1	.000	2-2	1.000	0	1	1	0.3	2	0	6	7	1	4	4	1.3		
13	Kira Lowery	3-0	26	8.7	1-2	.500	0-0	.000	1-3	.333	0	2	2	0.7	2	0	2	7	0	0	3	1.0		
00	Alycia Reese	3-0	16	5.3	0-2	.000	0-2	.000	2-2	1.000	0	1	1	0.3	0	0	1	0	0	0	2	0.7		
24	Carsen McFadden	1-0	5	5.0	0-0	.000	0-0	.000	0-0	.000	0	0	0	0.0	0	0	0	1	0	0	0	0.0		
Team											5	6	11											
Total.....		3	600	56-167		.335	10-50	.200	23-34	.676	29	65	94	31.3	46	0	27	68	6	34	145	48.3		
Opponents.....		3	600	74-171		.433	10-35	.286	36-46	.783	34	86	120	40.0	40	-	47	60	13	34	194	64.7		

<b>TEAM STATISTICS</b>	<b>AU</b>	<b>OPP</b>	<b>Date</b>	<b>Opponent</b>	<b>Score</b>	<b>Att.</b>
SCORING	145	194	* 12/31/20	at LSU	L 43-56	687
Points per game	48.3	64.7	* 01/03/21	GEORGIA	L 44-76	657
Scoring margin	-16.3	-	* 01/07/21	at Ole Miss	L 58-62	851
FIELD GOALS-ATT	56-167	74-171	* - Conference game			
Field goal pct	.335	.433				
3 POINT FG-ATT	10-50	10-35				
3-point FG pct	.200	.286				
3-pt FG made per game	3.3	3.3				
FREE THROWS-ATT	23-34	36-46				
Free throw pct	.676	.783				
F-Throws made per game	7.7	12.0				
REBOUNDS	94	120				
Rebounds per game	31.3	40.0				
Rebounding margin	-8.7	-				
ASSISTS	27	47				
Assists per game	9.0	15.7				
TURNOVERS	68	60				
Turnovers per game	22.7	20.0				
Turnover margin	-2.7	-				
Assist/turnover ratio	0.4	0.8				
STEALS	34	34				
Steals per game	11.3	11.3				
BLOCKS	6	13				
Blocks per game	2.0	4.3				
ATTENDANCE	657	1538				
Home games-Avg/Game	1-657	2-769				
Neutral site-Avg/Game	-	0-0				

<b>Score by Periods</b>	<b>1st</b>	<b>2nd</b>	<b>3rd</b>	<b>4th</b>	<b>Totals</b>
Auburn	32	41	29	43	145
Opponents	50	44	55	45	194



**Alycia Reese**  
Junior • G • 5-9  
Columbus, Ga.  
*Chattahoochee Valley CC*



**Keya Patton**  
Junior • G • 5-6  
Indianapolis, Ind.  
*Wabash Valley CC*



**Sania Wells**  
Sophomore • G • 5-7  
Moss Point, Miss.  
*East Central HS*



**Annie Hughes**  
Sophomore • G • 5-9  
Dutton, Ala.  
*Pisgah HS*



**Riley Donahue**  
Freshman • G • 5-10  
Atlanta, Ga.  
*Marist School*



**Aicha Coulibaly**  
Freshman • G/F • 6-0  
Mali  
*IMG Academy (Fla.)*



**Kiyae' White**  
RS Junior • F • 6-2  
Macungie, Pa.  
*Emmaus HS*



**Romi Levy**  
Freshman • F • 6-2  
Herzliya, Israel  
*Hof Hasharon HS*



**Kira Lowery**  
Junior • G • 5-6  
Memphis, Tenn.  
*Dyersburg State CC*



**Jala Jordan**  
RS Sophomore • F • 6-2  
Philadelphia, Pa.  
*West Virginia*



**Unique Thompson**  
Senior • F • 6-3  
Theodore, Ala.  
*Faith Academy*



**Alaina Rice**  
Sophomore • G • 5-8  
Rockledge, Fla.  
*Florida A&M*



**Honesty Scott-Grayson**  
RS Sophomore • G • 5-9  
Brick, N.J.  
*Baylor*



**Carsen McFadden**  
Freshman • G • 5-7  
Lucas, Texas  
*Lovejoy HS*



**Morgan Robinson-Nwagwu**  
Sophomore • G • 5-8  
Norcross, Ga.  
*Norcross HS*



**Terri Williams-Flournoy**  
Head Coach  
Penn State (1991)  
*Ninth Season*



**Clarisse Garcia**  
Assistant Coach  
Villanova (2007)  
*Fourth Season*



**La'Keshia Frett Meredith**  
Assistant Coach  
Georgia (1997)  
*Second Season*