



2017 AUBURN VOLLEYBALL

AUBURN ATHLETICS COMMUNICATIONS: 392 SOUTH DONAHUE DRIVE || AUBURN, AL 36830 || AUBURNTIGERS.COM || @AUBURNVB

2017 SCHEDULE/RESULTS

0-0, 0-0 SEC

DATE OPPONENT TIME/TV/RESULT

Hyatt Regency Invitational - Atlanta, Ga.

Aug. 25	at Georgia Tech	5 p.m.	ACCN
Aug. 26	vs. No. 17 Michigan State	11 a.m.	-
	vs. Furman	5 p.m.	-

Aug. 29	ALABAMA STATE	7 p.m.	-
---------	---------------	--------	---

SEC vs. ACC Challenge - San Juan, Puerto Rico

Sept. 2	vs. North Carolina	5 p.m.	-
Sept. 3	vs. North Carolina State	5 p.m.	-

War Eagle Invitational - Auburn, Ala.

Sept. 8	SOUTH ALABAMA	6 p.m.	-
Sept. 9	CLEMSON	6 p.m.	-

UM/FIU Invitational - Miami, Fla.

Sept. 15	vs. James Madison	10:30 a.m.	-
	at Florida Invitational	6:30 p.m.	-
Sept. 16	at Miami (Fla.)	10:30 a.m.	-

Sept. 22	at Ole Miss*	6:30 p.m.	SEC+
Sept. 24	at Georgia*	12:30 p.m.	SEC+
Sept. 29	MISSOURI*	7 p.m.	SEC+
Oct. 1	ARKANSAS*	1:30 p.m.	SEC+
Oct. 4	at Tennessee*	7 p.m.	SECN
Oct. 8	at Kentucky*	1 p.m.	ESPNU
Oct. 13	LSU*	7 p.m.	SEC+
Oct. 15	at Texas A&M	1:30 p.m.	SEC+
Oct. 18	SOUTH CAROLINA*	7 p.m.	SECN
Oct. 22	FLORIDA*	1:30 p.m.	SEC+
Oct. 29	at South Carolina*	12:30 p.m.	SEC+
Nov. 1	ALABAMA*	7 p.m.	SECN
Nov. 9	TENNESSEE*	7 p.m.	SEC+
Nov. 12	KENTUCKY*	1:30 p.m.	SEC+
Nov. 15	at LSU*	7 p.m.	SECN
Nov. 19	MISSISSIPPI STATE*	1:30 p.m.	SEC+
Nov. 22	at Florida*	6 p.m.	ESPNU
Nov. 25	at Arkansas*	1 p.m.	SEC+

All times Central. Home Matches in **BOLD CAPS**.

+ = SEC Network +/-ESPNU.com ACCN = ACC Network Extra

AUBURN ATHLETICS COMMUNICATIONS

KIRK SAMPSON..... Associate AD
 sampska@auburn.edu
 KENDRA WILLARD..... Volleyball Contact
 kal0014@auburn.edu
 C: 614-929-8029

Web..... AuburnTigers.com
 Twitter..... @AuburnVB
 Instagram..... @auburnvolleyball
 Office Phone..... (334) 844-9800

MATCH

1

GEORGIA TECH

Friday, Aug. 25 • 5 p.m. CT
Atlanta, Ga. • O'Keefe Gym



MATCH

2

NO. 17 MICHIGAN STATE

Saturday, Aug. 26 • 11 a.m. CT
Atlanta, Ga. • O'Keefe Gym



MATCH

3

FURMAN

Saturday, Aug. 26 • 5 p.m. CT
Atlanta, Ga. • O'Keefe Gym



Site.....	Atlanta, Ga.
Venue.....	O'Keefe Gym
TV.....	ACC Network Extra (GT match only)
Radio.....	WEGL 91.1 (Saturday matches only)
Live Stats.....	AuburnTigers.com
Twitter.....	@AuburnVB
GT Series Record.....	Auburn leads 8-7 in Atlanta
Trend.....	Tied at 3-3
Last Meeting.....	8/26/16 in Auburn
	Georgia Tech, 3-1 (21-25, 25-22, 25-18, 25-18)
MSU Series Record.....	Michigan State leads 2-0
Last Meeting.....	8/31/01 in East Lansing
	Michigan State, 3-1 (30-19, 21-30, 30-25, 30-22)
Furman Series Record.....	Auburn leads 2-1
Last Meeting.....	8/27/16 in Auburn
	Furman, 3-1 (25-21, 25-19, 20-25, 25-16)

AUBURN	Rankings.....	N/R
	2016 Record.....	15-16
	Head Coach.....	Rick Nold
Record at AU (Year).....		93-89 (7th)
GEORGIA TECH	Rankings.....	N/R
	2016 Record.....	24-8
	Head Coach.....	Michelle Collier
Record at GT (Year).....		55-40 (4th)
MICHIGAN STATE	Rankings.....	17
	2016 Record.....	25-9
	Head Coach.....	Cathy George
Record at MSU (Year).....		232-163 (13th)
FURMAN	Rankings.....	N/R
	2016 Record.....	11-19
	Head Coach.....	Michelle Young
Record at FUR (Year).....		322-207 (18th)

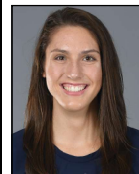
THREE HITS

1 Auburn boasts a roster of eight returners and six newcomers. The new faces include four freshmen and two transfers.

2 Seniors Jesse Earl and Alexa Filley return for their final season as All-SEC performers in 2016. Earl also picked up AVCA All-South Regional honors, while Filley was placed on the honorable mention team. Both Earl and Filley reached 1,000 career digs as juniors.

3 Libero Jesse Earl had a full summer of volleyball as the Indianapolis product competed for the USA Volleyball Collegiate National Team in Croatia in July. Her squad went undefeated, winning the four-day tournament.

AUBURN'S POTENTIAL STARTERS



BRENNA MCILROY
#8 • OH • JR • 5-11



GWYN JONES
#10 • RS • SO • 6-3



BREANNA BARKSDALE
#4 • MB • SO • 6-1



MACY REECE
#22 • MB • FR • 6-1



KELLY STEWART
#7 • OH • SR • 6-1



ALEXA FILLEY
#21 • S • SR • 5-9



JESSE EARL
#3 • L • SR • 5-8

#WarEagle



AuburnTigers.com



@AuburnVB | @AuburnTigers
@CoachRickNold



/AuburnVB
/AuburnTigers

TEAM SCHEDULE AND MEDIA AVAILABILITY » WEEK OF AUGUST 21-27

MONDAY August 21	TUESDAY August 22	WEDNESDAY August 23	THURSDAY August 24	FRIDAY August 25	SATURDAY August 26	SUNDAY August 27
OFF	PRACTICE 5:30 p.m. - 8:30 p.m. Auburn Arena Interviews by request	PRACTICE 5:30 p.m. - 8:30 p.m. Auburn Arena Interviews by request	TRAVEL DAY	MATCH 5 p.m. Auburn at Georgia Tech	MATCH 10 a.m. Auburn vs. Michigan St. 5 p.m. Auburn vs. Furman	OFF

AUBURN ATHLETICS COMMUNICATIONS

QUICK FACTS

AUBURNTIGERS.COM

For updated game notes, statistics and all the latest information on Auburn volleyball and game weekend activities, go to AuburnTigers.com.

INTERVIEW POLICY

Coach Nold, assistant coaches and all athletes are available for phone and personal interviews by contacting Kendra Willard in the media relations office. Post-match interviews will be conducted on the court or in the media room following a 10-minute cooling-off period.

CREDENTIALS

Anyone wishing to cover an Auburn volleyball match should contact Kendra Willard in the communications office at least one day in advance in order to make the proper arrangements. Credentials are not required for attendance at the match, but those wishing to reserve a seat on press row should provide advance notice.

MATCH DAY SERVICES

Notes for both teams and flip cards will be provided prior to the match. Stats will be distributed between sets and after the match. Wireless internet is available in the Arena; ask Kendra Willard for the password.

VIDEO SERVICES

FTP feeds of selected Auburn volleyball highlights are available for the media. A number of studio and satellite services may be arranged for electronic media by calling Blake Leach in the Auburn video services office at 334.750.4322 or by emailing blake.leach@auburn.edu.

PHOTO SERVICES

For photos of Auburn volleyball or anything pertaining to Auburn Athletics, contact Wade Rackley at 334-750-6907 or via email at wwr0004@auburn.edu

COMMUNICATIONS STAFF

Kendra Willard Volleyball contact
cell: 614-929-8029
email: kal0014@auburn.edu
Kirk Sampson Associate AD
cell: 334-750-1385
email: sampska@auburn.edu
Cassie Arner SEC Network/TV contact
cell: 334-750-0502
email: carner@auburn.edu

GENERAL INFORMATION

Location Auburn, Ala.
Founded 1856
Enrollment 25,469
Nickname Tigers
Colors Burnt Orange and Navy Blue
Facility (Capacity) Auburn Arena (9,121)
President Dr. Steven Leath
Director of Athletics Jay Jacobs
Sr. Assoc. AD/SWA Meredith Jenkins
Sport Administrator David Mines

VOLLEYBALL HISTORY

First Year of Volleyball 1967
..... (discontinued 1981; reinstated 1986)
All-Time Record 621-617-4 (.500)
All-Time SEC Record (since 1986) 169-299 (.361)
All-Time Home Record (since 1986) 208-175 (.543)
at Auburn Arena (since 2013) 36-22 (.621)
NCAA Tournament Appearances 1
Last NCAA App./Result 2010 - Second Round
SEC Championships 1
Last 1996 - Co-West Champions

COACHING STAFF

Head Coach Rick Nold
Alma Mater, Year Louisville, 1998
Year at Auburn Seventh
Overall Record 265-187 (.586) / 16th year
Auburn Record 93-89 (.511) / 7th year
Assistant Coach Eysha Ambler
Alma Mater, Year Jacksonville State, 2001
Year at Auburn Seventh
Assistant Coach Alex Wilharm
Alma Mater, Year Clarke, 2011
Year at Auburn Third
Director of Operations Paige Wetzell
Athletic Trainer Marie Siler
Strength & Conditioning Coach Bryan Karkoska
Student Manager Morgan Brackin

GAMEDAY EXPERIENCE: AUBURN ARENA

» Auburn Arena is in its fifth season as home of Auburn Volleyball. The Tigers are 36-22 since moving to the Arena in 2013. The facility seats approximately 2,000 fans for volleyball and 9,121 for basketball.



TEAM INFORMATION

2016 Record 15-16
2016 SEC Record 9-9
SEC Finish 1-5th
Starters Returning/Lost 4+Libero/1
Letterwinners Returning/Lost 8/9
Newcomers 6

FIRST SERVE

- » The Auburn Tigers open its 46th season of volleyball and the seventh under head coach Rick Nold this weekend, traveling to Atlanta for the Hyatt Regency Invitational hosted by Georgia Tech, Aug. 25-26.
- » For the second-straight year, Auburn and Georgia Tech kick off the season facing each other. The Tigers and the host Yellow Jackets open 2017 with a 5 p.m. CT match Friday. Auburn then takes on No. 17 Michigan State and Furman Saturday at 11 a.m. CT and 5 p.m. CT, respectively. All matches will be played in O'Keefe Gym on Georgia Tech's campus.
- » Auburn enters the season with an all-time record of 621-617-4 (.500) in its 46th full season of volleyball. The Tigers hold a 169-299 record in SEC play.
- » The Tigers are 208-175 overall at home, including 36-22 in Auburn Arena.
- » Head Coach Rick Nold stands at 93-89 in his seventh season on the Plains and is the fourth-winningest coach in Auburn volleyball history.
- » Auburn's 2017 schedule features nine 2016 NCAA Tournament participants.
- » The Tiger roster features four seniors, two juniors, four sophomores, and four freshmen.

LAST TIME OUT

- » Auburn concluded the 2016 season with a 15-16 overall record and the team went 9-9 in SEC play. The Tigers finished tied for fifth in the league, marking the best conference finish since 2010.
- » Key returners for the Tigers are seniors Jesse Earl and Alexa Filley. The pair earned All-SEC honors last year and were both recognized by the AVCA All-South region.
- » Auburn's 2017 schedule features nine 2016 NCAA Tournament participants.
- » The Tiger roster features four seniors, two juniors, four sophomores, and four freshmen.

UP NEXT

- » The Tigers open their home schedule Tuesday, Aug. 29, hosting Alabama State in Auburn Arena at 7 p.m. CT. The team then will travel to San Juan, Puerto Rico, for the SEC/ACC Challenge, Sept. 2-3. Auburn opens with a match against nationally-ranked North Carolina Saturday and caps the weekend against North Carolina State Sunday.

AUBURN IN SEASON OPENERS

- » Auburn has won 10 out of its last 13 season-opening matches, dating back to the 2004 season, and four of six under coach Rick Nold.

PLAYER TO WATCH: ALEXA FILLEY

- » Senior Alexa Filley has had a successful career so far on The Plains and holds the program's single-season assists record (rally scoring only) after reaching 1,227 in 2016.



Year	Opponent	Result
2016	Georgia Tech	L, 1-3
2015	Stephen F. Austin	W, 3-2
2014	North Dakota (at Washington, DC)	W, 3-1
2013	at Saint Louis	W, 3-0
2012	Central Michigan (at Green Bay, Wis.)	W, 3-2
2011	North Carolina (at Gainesville, Fla.)	L, 0-3
2010	Troy	W, 3-0
2009	Alabama A&M	W, 3-0
2008	Samford	L, 0-3
2007	Troy	W, 3-1
2006	ULM (at Dallas, Texas)	W, 3-0
2005	Grambling State	W, 3-0
2004	East Tennessee State	W, 3-0

SCOUTING GEORGIA TECH

- » The Georgia Tech Yellow Jackets concluded 2016 at 24-8 and 15-5 in the ACC. The squad was an impressive 11-2 at home at O'Keefe Gym.
- » GT was selected to finish ninth in the ACC Preseason Poll.
- » Senior outside hitter Gabriela Stavnetchei was selected to the Preseason All-ACC team. She finished with double-digit kills in 17 matches last year and had eight double-doubles.
- » The Yellow Jackets are led by head coach Michelle Collier in her fourth season.

A WIN OVER GEORGIA TECH WOULD...

- » Be Auburn's ninth win over the Yellow Jackets in the series history.
- » Be Auburn's fifth season-opening victory over the last six years.

SCOUTING MICHIGAN STATE

- » The No. 17 Michigan State Spartans are coming off a 25-9 overall mark in 2016 and a 13-7 record in the Big Ten. The team was selected to finish fourth in the BIG preseason poll.
- » The Spartans are guided by head coach Cathy George, who is in her 13th season with the program.
- » The team is led by AVCA All-Americans Alyssa Garvelink, Autumn Bailey, and Rachel Minarick. The trio are all in their final season with the Spartans.
- » The MSU roster is senior heavy, having three redshirt seniors and four student-athletes in their fourth year.

A WIN OVER MICHIGAN STATE WOULD...

- » Be Auburn's first win over the Spartans. MSU leads the series 2-0 with the last meeting coming 2001.
- » Be Auburn's fifth win in program history over a nationally-ranked opponent.

SEC STANDINGS & SCHEDULE

	(Preseason)					
	SEC Matches			All Matches		
	W	L	Pct.	W	L	Pct.
Alabama	0	0	.000	0	0	.000
Arkansas	0	0	.000	0	0	.000
AUBURN	0	0	.000	0	0	.000
Florida	0	0	.000	0	0	.000
Georgia	0	0	.000	0	0	.000
Kentucky	0	0	.000	0	0	.000
LSU	0	0	.000	0	0	.000
Ole Miss	0	0	.000	0	0	.000
Mississippi State	0	0	.000	0	0	.000
Missouri	0	0	.000	0	0	.000
South Carolina	0	0	.000	0	0	.000
Tennessee	0	0	.000	0	0	.000
Texas A&M	0	0	.000	0	0	.000

THIS WEEK IN THE SEC

Friday, August 25

- Alabama vs. Cleveland State - 11 a.m.
- Alabama vs. Oral Roberts - 4:30 p.m.
- Arkansas vs. Cal State Bakersfield - 7 p.m.
- Auburn at Georgia Tech - 5 p.m.
- Georgia vs. Presbyterian - 10:30 a.m.
- Georgia vs. George Mason - 6 p.m.
- #12 Florida vs. #1 Texas - 6 p.m.
- #14 Kentucky vs. Arkansas State - 10 a.m.
- #14 Kentucky vs. #23 Utah - 8 p.m.
- LSU vs. AR-Pine Bluff - 3 p.m.
- Ole Miss vs. La Tech - 11 a.m.
- Ole Miss vs. North Dakota - 6 p.m.
- Mississippi State at SMU - 12:30 p.m.
- Mississippi State vs. Texas A&M-CC - 4:30 p.m.
- #19 Missouri vs. Marshall - 12:30 p.m.
- #19 Missouri vs. Middle Tennessee - 5:30 p.m.
- South Carolina vs. Mercer - 6 p.m.
- Tennessee vs. Western Michigan - 6 p.m.
- Texas A&M vs. Sam Houston State - 6:30 p.m.

Saturday, August 26

- Alabama at #25 Purdue - 2 p.m.
- Arkansas vs. Louisiana-Monroe - 10 a.m.
- Arkansas vs. Utah State - 7 p.m.
- Auburn vs. #17 Michigan State - 10 a.m.
- Auburn vs. Furman - 5 p.m.
- Georgia vs. UNC Asheville - 12 p.m.
- Georgia vs. LIU Brooklyn - 6 p.m.
- #12 Florida vs. #5 Nebraska - 4 p.m.
- #14 Kentucky vs. Cincinnati - 6:30 p.m.
- LSU vs. Northwestern - 12 p.m.
- LSU at South Florida - 6 p.m.
- Ole Miss vs. Chattanooga - 1 p.m.
- Mississippi State vs. Rice - 12 p.m.
- #19 Missouri vs. Northern Iowa - 10 a.m.
- #19 Missouri vs. Austin Peay - 5 p.m.
- South Carolina vs. Troy - 12 p.m.
- South Carolina vs. North Florida - 6 p.m.
- Tennessee vs. Wofford - 11 a.m.
- Tennessee vs. George Washington - 6 p.m.
- Texas A&M vs. Texas State - 1 p.m.
- Texas A&M vs. VCU - 6:30 p.m.

Sunday, August 27

- Ole Miss vs. Florida A&M - 1 p.m.

AVCA Top 25

(Preseason: Aug. 9)

Rk	Team	Record	2016 Final Rank
1	Texas	27-5	2
2	Stanford	27-7	1
3	Washington	29-5	7
4	Minnesota	29-5	3
5	Nebraska (64)	31-3	4
6	Penn State	24-10	10
7	Wisconsin	28-5	5
8	Kansas	27-3	12
9	Creighton	29-7	9
10	BYU	29-4	8
11	North Carolina	29-4	11
12	Florida	27-4	15
13	UCLA	27-7	6
14	Kentucky	23-8	23
15	Florida State	26-6	13
16	Michigan	2-10	14
17	Michigan State	25-9	19
18	Oregon	21-10	21
19	Missouri	27-6	16
20	Hawai'i	23-6	17
21	Ohio State	22-13	18
22	San Diego	24-6	22
23	Utah	20-12	25
24	Arizona	20-15	20
25	Purdue	19-14	RV

Also receiving votes: USC, Western Kentucky, Dayton, Washington State, Iowa State, Colorado State, Pittsburgh, Baylor, Kansas State, Boise State, Wichita State, **Texas A&M**, SMU

Inside the Matchup

Auburn at Georgia Tech 8-7 (.533)

In Auburn: 3-2
In Atlanta: 4-3
Neutral: 1-2

Last 10 Meetings (4-6)

1989	Auburn	W	3-1
1989	Atlanta	W	3-1
1990	Auburn	W	3-0
1992	Atlanta	L	1-3
1993	Auburn	L	1-3
1994	Neutral	L	2-3
1995	Atlanta	L	2-3
1996	Auburn	W	3-1
2015	Atlanta	L	1-3
2016	Auburn	L	1-3

Auburn vs. Michigan State 0-2 (.000)

In East Lansing: 0-1
Neutral: 0-1

Last Meetings (0-2)

1986	Neutral	L	0-3
2001	East Lansing	L	1-3

Auburn vs. Furman 2-1 (.667)

In Auburn: 1-1
In Greenville: 1-0

Last Meetings (2-1)

1998	Greenville	W	3-0
2005	Auburn	W	3-1
2016	Auburn	L	1-3

SCOUTING FURMAN

» The Furman Paladins were chosen to finish sixth in the Southern Conference preseason poll after going 11-19 in 2016 and 6-10 in the league.
» The team returns nine student-athletes who started at least one match last year.
» The Paladin roster boasts a large group of upperclassmen, having three seniors, one redshirt junior, and four juniors.

A WIN OVER FURMAN WOULD...

» Be Auburn's third win over the Paladins in program history.
» Be redemption for the Tigers as Furman topped Auburn in 2016 at the War Eagle Invitation, winning in four sets.

NOLD MOVING UP THE CHARTS

» Now in his seventh season at Auburn, head coach Rick Nold has a 93-89 overall record on the Plains.
» He is the fourth-winningest coach in Auburn volleyball history, moving into that spot with his 55th Auburn victory, a 3-2 win over Northwestern State in 2015.

Coach	Years at Auburn	Record
Sandra Newkirk	1967-79	134-107-4 (.556)
Pat Ghaslin	1986-90	105-77 (.577)
Liz Underwood	1992-97	99-77 (.577)
Rick Nold	2011-present	93-89 (.511)

2016 MILESTONES REACHED

» Jesse Earl had an outstanding season defensively for the Tigers. She reached the 1,000 dig mark against Kentucky (Nov. 4), becoming the 12th student-athlete in program history to get to that number.
» In less than two seasons with Auburn, Earl became the fastest Tiger to reach 1,000 career digs.
» She stands seventh on the career digs list with 1,128 so far in her career.

» In addition, Earl broke her own single-season digs record vs. Ole Miss (Nov. 6). She finished with 612 on the year after breaking the record in 2015 with 516.

» Setter Alexa Filley also reached 1,000 career digs last year. She became the second setter in program history to reach the milestone and is 10th overall with 1,009.

EARL'S SUCCESSFUL SUMMER

» Senior libero Jesse Earl earned a spot on the USA Volleyball Collegiate National Team this summer and traveled to Croatia in July.
» Earl was the only defensive specialist on the team and excelled in the libero role for her team. She guided the squad to a

first-place finish at the 13th Annual European Global Challenge, going undefeated four four days of competition.

PACING THE OFFENSE

» Setter Alexa Filley enters her final season on The Plains as the team's No. 1 in the position since her freshman campaign.
» She set her own assists record (rally scoring only) in 2016 with 1,227 assists. In addition, she was very successful in the back row as she finished second on the team in digs with 367.
» Filley has also become a threat at the net as she totaled three triple-doubles last year. Her first came against Colgate (9/17) when she totaled a career-high 11 kills and 25 digs to go with 44 assists. Filley's two other triple-doubles were both against Ole Miss – 10k, 45a, 18d (10/19), 10k, 42a, 10d (11/6).
» Serving in a back-up role this season is freshman Morgan Kull. The St. Charles, Ill., product brings a tremendous work ethic to the court for the Tigers.

BACK ROW OUTLOOK

» Senior Jesse Earl will be relied upon to lead the defensive corps for the Tigers this season. She's a two-time AVCA All-South Region honoree and picked up All-SEC accolades at the end of last season.
» Earl set a new Auburn single-season record in 2016 with 612 digs on the year, while her 4.98 digs/set was also a program best. Both those numbers led all student-athletes in the SEC. She also reached her 1,000th career dig, becoming the quickest Tiger to reach that milestone.
» Along with her skills in the back row, Earl also excels at the service line. Her 46 service aces last year set another Auburn single season record (rally scoring only) and her .37 aces/set was a program best.
» Joining Earl in the back is sophomore Karis Beasley and freshman Payton White. Both are expected to make immediate impacts at the start of the season.

OUTSIDE EXPERIENCE

» Senior Courtney Crable and junior Brenna McIlroy are set to lead the charge with sophomore Enija Bidzane bringing a powerful attack to the court as well.
» McIlroy, a 5-11 junior from Garland, Texas, has been the team's top attacker on the outside over her first two seasons. She led the Tigers in kills in 2016 (351) despite sitting out two matches and has had a major role defensively, being among the top on the squad in digs as well.
» Crable's experience will be key for the youthful squad this season as the Louisville product has played in over 300 matches for the Tigers over her career. Standing at 6-1, Crable is less than 200 kills away from 1,000 in her time here at Auburn and with a powerful

PLAYER TO WATCH: JESSE EARL

» Senior Jesse Earl enters her final season as one of the best backrow players in the SEC. She reached 1,000 career digs in 2016 after two seasons of competition (played at Xavier in 2014). Earl became the fastest Tiger to reach that milestone and she holds the program's single season digs record with 612 in 2016.



swing, she'll be relied upon in big situations.

» Bidzane enters her second season with the Tigers following knee surgery in the spring. The 5-9 student-athlete from Latvia had a successful first season for Auburn, bringing passion and power to the court.

OPTIONS IN THE MIDDLE

» Auburn's roster has a total of six student-athletes with experience at middle blocker, including four newcomers.

» Senior Macy Reece finished as one of the team's top blockers, while also providing offensive numbers. The 6-2 senior from Hendersonville, Tenn., started 20 matches at middle in 2016, totaling three matches in double-digit kills and setting a career-best seven blocks on two occasions.

» Gwyn Jones, a SEC All-Freshman Team member in 2016, spent her first season with the Tigers on the right side. However, her wealth of experience at the middle along with her strong leadership will make her a valuable member of the group. Standing at 6-3, the Greenville, Ind., product was second on the team last year in kills at 321 and totaled double-digit kills in all but two SEC match.

» Joining the pair are freshmen Anna Stevenson and Shea McNamara with sophomore transfer Shaina White and junior transfer Isabella Thompson.

» Stevenson and White are 6-1 athletes expected to make immediate impacts for the Tigers this year, while McNamara and Thompson both bring strong blocking abilities to provide more defensive options Auburn.

FILLING UP THE SEATS

» Since moving into Auburn Arena in 2013, Auburn has drawn eight of its 13 biggest crowds in program history.

» Auburn sets its program attendance record with a crowd of 2,474 on Nov. 7, 2014, against Arkansas. The match was part of a doubleheader along with a men's basketball exhibition game.

Date	Opponent	Attendance
11/7/14	Arkansas	2,474
11/4/16	Kentucky	2,237
10/2/13	Alabama	1,810
10/9/16	Alabama	1,407
9/26/14	Florida	1,383
9/25/09	LSU ^	1,215
9/22/06	Alabama *	1,211

11/4/05	Georgia ^	1,200
9/23/16	LSU	1,191
9/23/12	Alabama ^	1,146
10/22/14	Alabama	1,101
9/23/11	Alabama ^	1,037
8/26/16	Georgia Tech	1,027

^ at Student Act | * at Beard-Eaves Coliseum

TIGERS PICKED FIFTH IN PRESEASON POLL

» Auburn was chosen to finish fifth in the Southeastern Conference in this season's preseason coaches' poll.

» The selection marks the highest selection for the program under head coach Rick Nold.

» Auburn picked up 96 points from the league's 13 coaches. Florida was the favorite to win the conference championship with Kentucky following in second. Missouri and Texas A&M were selected third and fourth, respectively. Tennessee, South Carolina, Arkansas, LSU, Alabama, Georgia, Ole Miss, and Mississippi State round out the poll.

THIS, THAT, AND THE OTHER

» Seniors Alexa Filley and Macy Reece not only out perform on the court, but also in the classroom. Reece graduated in three years with a degree in finance and is currently working on her MBA in the Raymond J. Harbert College of Business. Filley is already enrolled in the Harrison School of Pharmacy and is balancing a full schedule of volleyball and school.

» Sophomore Karis Beasley's mother was a member of the Canadian National Softball Team from 1987-1996 and competed at the 1996 Olympics in Atlanta.

» Sophomore Gwyn Jones comes from a family background filled with volleyball success. Her mother played volleyball at Kentucky, while her aunt, Mary Jones Buczek, also played for the Wildcats. Buczek went on to coach at Wake Forest (1995-2000) and Georgia (2000-2005).

» Freshman Payton White comes from a volleyball family as well. Her oldest sister played at College of Charleston, while her other sister is a sophomore on Penn State's volleyball team.

Head Coach Rick Nold

at Auburn: 93-89 (7th)
Overall: 265-187 (16th)



Hometown:
Louisville, Ky.

Education:
Louisville, 1998

COACHING EXPERIENCE

- Falls Cities Volleyball Club (1989-92)
 - Louisville, Ky.
- Assumption High School (1992-95)
 - Louisville, Ky.
- USA Volleyball (Intern) (1995)
- Kentucky-Indiana Volleyball Academy (1995-02)
 - Louisville, Ky.
- Louisville Assistant Coach (1998-01)
 - Louisville, Ky.
- Jacksonville State Head Coach (2002-10)
 - Jacksonville, Ala.
- Auburn Head Coach (2011 -)
 - Auburn, Ala.

Rick Nold enters his seventh season as Auburn's head volleyball coach in 2017 after being named the 10th head coach in program history on April 10, 2011. In his six seasons on the Plains, Nold has put together an 93-89 overall record (.511). He enters the season with a career winning percentage of .586 in 16 years as a collegiate head coach, having a 265-187 mark.

Auburn had one of its best finishes in the SEC in 2016, going 9-9 and finishing tied for fifth overall. The league finish was the best for the program since 2010 as the squad went 15-16 overall. Jesse Earl and Alexa Filley were named All-SEC and honored by the AVCA All-South region. Earl and Filley both reached 1,000 career digs as juniors and Earl's path to that total marked the fastest by any Tiger in program history. Gwyn Jones picked up SEC All-Freshman honors, marking the second-straight season a Tiger has been recognized.

The 2015 season was an exciting one for the young Tiger team as the squad went 18-12 overall and came in sixth in the conference with an 10-8 mark. The team upped its defensive presence from the previous season and finished second overall among SEC opponents with a 15.62 digs/set average. Freshman Brenna McIlroy earned SEC All-Freshman accolades, marking the first time since 2010 that a Tiger newbie was honored by the league. Stephanie Campbell was named the SEC Scholar-Athlete of the Year — the fourth honor in program history. Auburn's 3-2 win over then-No. 11 Florida was the team's first win over a nationally-ranked opponent since 2013 and snapped a 41-match losing streak to the Gators. Auburn finished 11-3 at home in Auburn Arena.

The Tigers finished 19-11 during the 2013 season, tying for sixth in the SEC with a 10-8 conference record. The 10 victories in SEC play were the most by the Tigers since 2010 and just the second time in the last 15 years that Auburn posted 10 wins in league action. Nold also guided the Tigers to their first-ever win over a top-10 opponent, knocking off No. 10 Nebraska, 3-1.

His second season (2012) saw a six-match improvement from his first as he took the Tigers from an 11-19 mark (5-15 SEC) in 2011 to a 17-13 record (8-12 SEC) in 2012. He led the Tigers to nine straight wins to open the season, the second-longest winning streak in program history. Nold also picked up his 200th career head coaching victory on Nov. 4 with a 3-1 win over Georgia.

During his time at Auburn, Nold's players have re-written the Tigers' record book. Camila Jersonsky finished her career as Auburn's all-time leader in hitting percentage (.355), while also ranking in the top-10 in program history with 368 total blocks, 317 block assists, blocks per set and solo blocks.

Nold came to Auburn after directing Jacksonville State to unprecedented heights during his nine-year tenure, winning three regular season conference titles, three conference tournament titles and making three NCAA postseason appearances. He compiled an overall record of 172-98, while posting an impressive 107-42 (72 percent) mark in league games.

2017 AUBURN VOLLEYBALL ROSTER

No.	Name	Cl.	Pos.	Ht.	Hometown/Previous School
2	Isabella Thompson	Jr.	MB	6-0	Stockton, Calif./Santa Barbara City Collge
3	Jesse Earl	Sr.	L/DS	5-8	Indianapolis, Ind./Xavier
4	Shaina White	So.	MB	5-1	Mission Viejo, Calif./Northeastern
5	Shea McNamara	Fr.	MB	6-1	Cumming, Ga./South Forsyth HS
7	Courtney Crable	Sr.	OH	6-1	Louisville, Ky./Mercy Academy
8	Brenna McIlroy	Jr.	OH	5-11	Garland, Texas/Rowlett HS
9	Karis Beasley	So.	OH/DS	5-9	Granbury, Texas/Granbury HS
10	Gwyn Jones	So.	MB	6-3	Greenville, Ind./Floyd Central HS
11	Morgan Kull	Fr.	S	5-9	St. Charles, Ill./St. Charles East HS
13	Enija Bidzane	So.	OH	5-9	Talsi, Latvia/Murjanu Sports Gymnasium
14	Payton White	Fr.	DS/L	5-7	Zionsville, Ind./Cathedral HS
21	Alexa Filley	Sr.	S	5-9	Louisville, Ky./Assumption HS
22	Anna Stevenson	Fr.	MB	6-1	Laurens, S.C./Laurens HS
33	Macy Reece	Sr.	MB	6-2	Hendersonville, Tenn./Goodpasture Christian School

- Head Coach:** Rick Nold (Seventh year at Auburn/16th year as a head coach)
- Assistant Coach:** Eysha Ambler (Seventh year at Auburn)
- Assistant Coach:** Alex Wilharm (First year at Auburn)
- Director of Operations:** Paige Wetzel (Second year at Auburn)
- Volunteer:** Price Foshee
- Athletic Trainer:** Marie Siler
- Student Manager:** Morgan Brackin

Inside the Numbers (last season)



CATEGORY	AUBURN	GEORGIA TECH
Kills	1645	1662
Per Set	13.4	13.6
Errors	698	655
Total Attacks	4583	4493
Hitting Pct.	.207	.224
Assists	1540	1567
Per Set	12.5	12.8
Service Aces	173	146
Per Set	1.4	1.2
Service Errors	336	178
Reception Errors	121	118
Per Set	1.0	1.0
Digs	1878	1981
Per Set	15.3	16.2
Solo Blocks	60	78
Block Assists	300	425
Total Blocks	210.0	290.5
Per Set	1.7	2.4



CATEGORY	MICHIGAN ST.	FURMAN
Kills	1575	1375
Per Set	13.5	12.3
Errors	629	655
Total Attacks	3875	4067
Hitting Pct.	.244	.177
Assists	1447	1292
Per Set	12.4	11.5
Service Aces	223	118
Per Set	1.9	1.1
Service Errors	286	183
Reception Errors	123	136
Per Set	1.1	1.2
Digs	1477	1826
Per Set	12.6	16.3
Solo Blocks	47	77
Block Assists	486	261
Total Blocks	290.0	207.5
Per Set	2.5	1.9

INDIVIDUAL CAREER HIGHS

#2 ISABELLA THOMPSON

Category	Career High	Opponent/Date
Kills	16	2x, last at Missouri, 11/18/16
Attempts	41	vs. Ole Miss, 11/6/16
Hitting Percentage	.526	at Texas A&M, 9/25/16
Assists	1	at Georgia, 10/2/16
Digs	2	7x, last vs. South Carolina, 11/20/16
Blocks	4	5x, last vs. Mississippi State, 10/16/16
Aces	-	-
Points	17.0	at Arkansas, 10/23/16

#3 JESSE EARL

Category	Career High	Opponent/Date
Kills	1	12x, last vs. Kentucky, 11/4/16
Attempts	4	2x, last at Mississippi State, 9/30/16
Hitting Percentage	1.000	7x, last vs. Kentucky, 11/4/16
Assists	16	vs. Colgate, 9/17/16
Digs	34	at Mississippi State, 11/13/15
Blocks	-	-
Aces	5	at Georgia, 10/2/16
Points	5.0	at Georgia, 10/2/16

#4 SHAINA WHITE

Category	Career High	Opponent/Date
Kills	-	-
Attempts	-	-
Hitting Percentage	-	-
Assists	-	-
Digs	-	-
Blocks	-	-
Aces	-	-
Points	-	-

#5 SHEA MCNAMARA

Category	Career High	Opponent/Date
Kills	-	-
Attempts	-	-
Hitting Percentage	-	-
Assists	-	-
Digs	-	-
Blocks	-	-
Aces	-	-
Points	-	-

#7 COURTNEY CRABLE

Category	Career High	Opponent/Date
Kills	20	4x; last vs. Florida, 11/8/15
Attempts	56	vs. Winthrop, 9/13/14
Hitting Percentage	.381	vs. Georgia, 10/21/15
Assists	4	vs. South Carolina, 10/5/14
Digs	19	vs. Northwestern State, 9/20/14
Blocks	4	3x; last at South Florida, 9/19/15
Aces	4	twice, last vs. Georgia, 10/1/14
Points	21.5	at South Carolina, 11/16/14

#8 BRENNIA MCILROY

Category	Career High	Opponent/Date
Kills	21	at Georgia, 10/2/16
Attempts	61	2x, last vs. Santa Clara, 9/3/16
Hitting Percentage	.444	at Tennessee, 11/25/16
Assists	5	at Ole Miss, 10/19/16
Digs	22	vs. LSU, 10/4/15
Blocks	4	at LSU, 10/25/15
Aces	4	2x, last vs. Jacksonville, 9/10/16
Points	21.0	3x, last vs. Kentucky, 11/4/16

#9 KARIS BEASLEY

Category	Career High	Opponent/Date
Kills	-	-
Attempts	-	-
Hitting Percentage	-	-
Assists	-	-
Digs	-	-
Blocks	-	-
Aces	-	-
Points	-	-

#10 GWYN JONES

Category	Career High	Opponent/Date
Kills	16	2x, last at Missouri, 11/18/16
Attempts	41	vs. Ole Miss, 11/6/16
Hitting Percentage	.526	at Texas A&M, 9/25/16
Assists	1	at Georgia, 10/2/16
Digs	2	7x, last vs. South Carolina, 11/20/16
Blocks	4	5x, last vs. Mississippi State, 10/16/16
Aces	-	-
Points	17.0	at Arkansas, 10/23/16

#11 MORGAN KULL

Category	Career High	Opponent/Date
Kills	-	-
Attempts	-	-
Hitting Percentage	-	-
Assists	-	-
Digs	-	-
Blocks	-	-
Aces	-	-
Points	-	-

#13 ENIJA BIDZANE

Category	Career High	Opponent/Date
Kills	19	at Eastern Michigan, 9/17/16
Attempts	38	at Eastern Michigan, 9/17/16
Hitting Percentage	.667	vs. Colgate, 9/17/16
Assists	2	vs. Georgia, 10/12/16
Digs	10	vs. Georgia, 10/12/16
Blocks	5	vs. Mississippi State, 10/16/16
Aces	3	vs. Missouri, 10/7/16
Points	19.5	at Eastern Michigan, 9/17/16

#14 PAYTON WHITE

Category	Career High	Opponent/Date
Kills	-	-
Attempts	-	-
Hitting Percentage	-	-
Assists	-	-
Digs	-	-
Blocks	-	-
Aces	-	-
Points	-	-

#21 ALEXA FILLEY

Category	Career High	Opponent/Date
Kills	11	vs. Colgate, 9/17/16
Attempts	27	at Ole Miss, 10/19/16
Hitting Percentage	.778	vs. Florida A&M, 9/1/15
Assists	63	vs. South Carolina, 10/5/14
Digs	25	vs. Colgate, 9/17/16
Blocks	6	at Kentucky, 11/27/15
Aces	5	vs. LSU, 10/4/15
Points	15.5	vs. LSU, 10/4/15

#22 ANNA STEVENSON

Category	Career High	Opponent/Date
Kills	-	-
Attempts	-	-
Hitting Percentage	-	-
Assists	-	-
Digs	-	-
Blocks	-	-
Aces	-	-
Points	-	-

#33 MACY REECE

Category	Career High	Opponent/Date
Kills	25	vs. USEF, 9/13/14
Attempts	48	vs. USEF, 9/13/14
Hitting Percentage	.875	vs. Georgia, 10/12/16
Assists	1	6x, last at Ole Miss, 10/19/16
Digs	3	6x, last vs. Colgate, 9/17/16
Blocks	7	2x, last at Alabama, 11/9/16
Aces	1	2x, last vs. USEF, 9/13/14
Points	28.0	vs. USEF, 9/13/14

THE LAST TIME AUBURN...

Won in three sets.....	11/20/16 vs. South Carolina (25-20, 27-25, 25-14)
Won in four sets.....	10/23/16 at Arkansas (25-21, 23-25, 25-20, 25-19)
Won in five sets.....	11/6/16 vs. Ole Miss (23-25, 25-16, 25-19, 21-25, 15-13)
Lost in three sets.....	10/30/16 at Tennessee (25-21, 25-23, 30-28)
Lost in four sets.....	11/26/16 vs. Texas A&M (19-25, 25-12, 25-21, 25-23)
Lost in five sets.....	11/9/16 at Alabama (25-21, 19-25, 18-25, 25-20, 15-8)
Lost first set in a win.....	11/6/16 vs. Ole Miss (23-25, 25-16, 25-19, 21-25, 15-13)
Won first set in a loss.....	11/26/16 vs. Texas A&M (19-25, 25-12, 25-21, 25-23)
Lost first two sets in a win.....	9/3/16 at #21 Louisville (15-25, 17-25, 25-14, 25-22, 15-8)
Won first two sets in a loss.....	11/4/16 vs #18 Kentucky (23-25, 22-25, 26-24, 30-28, 15-12)
Beat a ranked opponent.....	9/3/16 at #21 Louisville (15-25, 17-25, 25-14, 25-22, 15-8)
Hit .300-.399 in a match.....	11/20/16 vs. South Carolina (.353)
Hit .400-.499 in a match.....	11/29/14 vs. Mississippi State (.478)
Hit .500 or better in a match.....	10/18/98 at Ole Miss (.514)
Held opponent at .000-.100 in a match.....	10/12/16 vs. Georgia (.076)
Held opponent to negative hitting pct.....	9/20/14 vs. Jacksonville State (-.037)
Had 70-79 kills in a match.....	9/23/16 vs. LSU (70)
Had 80+ kills in a match.....	9/17/06 at Georgia (84)
Had 80-99 digs in a match.....	10/19/16 at Ole Miss (99)
Had 100+ digs in a match.....	10/25/15 at LSU (109)
Had 15+ blocks in a match.....	11/9/14 vs. Tennessee (16.0)
Had 10+ service aces in a match.....	9/2/16 vs. Stony Brook (11)
Had a player(s) with 20-24 kills in a match.....	10/2/16, Brenna McLroy at Georgia (21)
Had a player(s) with 25-29 kills in a match.....	9/13/14, Macy Reece vs. USF (25)
Had a player(s) with 30+ kills in a match.....	10/8/04, Ashlee Johns vs. Arkansas (30)
Had a player(s) with 10+ blocks in a match.....	11/23/16, Breanna Barksdale at #9 Florida (11)
Had a player(s) with 25-29 digs in a match.....	11/6/16, Jesse Earl vs. Ole Miss (29)
Had a player(s) with 30+ digs in a match.....	11/13/15, Jesse Earl at Mississippi State (34)
Had a player(s) with 50+ assists in a match.....	11/4/16, Alexa Filley vs. #18 Kentucky (53)
Had a player(s) with 60 + assists in a match.....	10/25/15, Alexa Filley at LSU (61)
Had a player(s) with 5+ aces in a match.....	10/2/16, Jesse Earl at Georgia (5)

AUBURN'S 2016 RECORD WHEN...

Overall.....	15-16
SEC.....	9-9
Non-Conference.....	6-7
vs. Ranked Teams.....	1-5
Home.....	9-7
Away.....	4-8
Neutral.....	2-1
By Set:	
Three Sets.....	5-5
Four Sets.....	4-8
Five Sets.....	6-3
Won first set.....	13-7
Lost first set.....	2-9
Won second set.....	9-5
Lost second set.....	6-11
Won first two sets.....	8-1
Lost first two sets.....	1-6
Situational:	
More kills than opponent.....	13-8
Fewer kills than opponent.....	2-7
Kills are tied.....	0-1
More digs than opponent.....	9-3
Fewer digs than opponent.....	6-13
Digs are tied.....	0-0
More aces than opponent.....	10-10
Fewer aces than opponent.....	4-6
Aces are tied.....	1-0
Higher hitting percentage than opponent.....	13-0
Lower hitting percentage than opponent.....	2-16
Tied in hitting percentage.....	0-0
Hitting percentage:	
.400 or above.....	0-0
.300-.399.....	2-0
.200-.299.....	10-4
.100-.199.....	3-12
.000-.099.....	0-0
Negative.....	0-0
Opponents' hitting percentage:	
.400 or above.....	0-0
.300-.399.....	0-3
.200-.299.....	4-13
.100-.199.....	8-0
.000-.099.....	3-0
Negative.....	0-0
By Day:	
Tuesday.....	1-0
Wednesday.....	2-2
Friday.....	3-7
Saturday.....	3-5
Sunday.....	6-2
Day Matches (first serve before 6 p.m.).....	9-6
Night Matches (first serve after 6 p.m.).....	6-10
By Month:	
August.....	1-3
September.....	6-6
October.....	6-2
November.....	2-5
By Jersey Color:	
Navy.....	4-9
Orange.....	10-7
Pink.....	1-0

AUBURN'S 2016 DOUBLE-DOUBLES

Player	Opponent (Sets)	Date	Stats
Breanna Barksdale (1)	at #9 Florida (4)	11/23/16	13 kills, 11 blocks
Jesse Earl (5)	vs. Santa Clara (4)	9/3/16	28 digs, 14 assists
	vs. Miami (OH) (5)	9/9/16	28 digs, 10 assists
	vs. Colgate (4)	9/17/16	26 digs, 16 assists
	vs. Ole Miss (5)	11/6/16	29 digs, 13 assists
	at #25 Missouri (4)	11/18/16	14 digs, 11 assists
Alexa Filley (18)	vs. Kennesaw State (5)	8/30/16	53 assists, 13 digs
	vs. Santa Clara (4)	9/3/16	32 assists, 15 digs
	at #21 Louisville (5)	9/3/16	48 assists, 19 digs
	vs. Memphis (3)	9/9/16	30 assists, 10 digs
	vs. Miami (OH) (5)	9/9/16	51 assists, 24 digs
	vs. Jacksonville (3)	9/10/16	29 assists, 17 digs
	vs. Colgate (4)	9/17/16	11 kills, 44 assists, 25 digs
	at Eastern Michigan (4)	9/17/16	42 assists, 13 digs
	vs. Missouri (3)	10/7/16	26 assists, 15 digs
	vs. Alabama (4)	10/9/16	43 assists, 10 digs
	vs. Georgia (3)	10/12/16	29 assists, 12 digs
	at Ole Miss (5)	10/19/16	10 kills, 45 assists, 18 digs
	at Arkansas (4)	10/23/16	46 assists, 19 digs
	at Tennessee (3)	10/30/16	39 assists, 15 digs
	vs. #18 Kentucky (5)	11/4/16	56 assists, 15 digs
	vs. Ole Miss (5)	11/6/16	10 kills, 42 assists, 10 digs
	at Alabama (5)	11/9/16	49 assists, 15 digs
	at #25 Missouri (4)	11/18/16	35 assists, 16 digs
Brenna McLroy (11)	vs. Georgia Tech (4)	8/26/16	11 kills, 15 digs
	vs. Kennesaw State (5)	8/30/16	12 kills, 10 digs
	vs. Santa Clara (4)	9/3/16	12 kills, 13 digs
	vs. Miami (OH) (5)	9/9/16	17 kills, 12 digs
	vs. LSU (5)	9/23/16	20 kills, 13 digs
	at Ole Miss (5)	10/19/16	14 kills, 16 digs
	at Arkansas (4)	10/23/16	10 kills, 15 digs
	vs. #18 Kentucky (5)	11/4/16	18 kills, 17 digs
	vs. Ole Miss (5)	11/6/16	18 kills, 10 digs
	at Alabama (5)	11/9/16	12 kills, 14 digs
	at #25 Missouri (4)	11/18/16	13 kills, 14 digs



2016 Auburn Volleyball
Auburn Overall Individual Statistics (as of Jun 01, 2017)
All matches



Overall record: 15-16 Conf: 9-9 Home: 9-7 Away: 4-8 Neutral: 2-1

##	Player	sp	mp-ms	Attack					Set				Serve				
				k	k/s	e	ta	pct	a	a/s	ta	pct	sa	sa/s	se	ta	pct
8	McIlroy, Brenna	112	29-27	351	3.13	166	1113	.166	23	0.21	150	.153	36	0.32	72	373	.807
10	Jones, Gwyn	123	31-25	321	2.61	117	771	.265	1	0.01	20	.050	0	0.00	2	5	.600
11	Barksdale, Breanna	115	31-30	267	2.32	107	622	.257	12	0.10	48	.250	16	0.14	48	294	.837
21	Filley, Alexa	123	31-31	153	1.24	53	448	.223	1227	9.98	3047	.403	14	0.11	32	411	.922
7	Crable, Courtney	89	27-5	177	1.99	96	587	.138	3	0.03	18	.167	0	0.00	0	1	1.000
33	Reece, Macy	84	22-20	146	1.74	43	372	.277	2	0.02	14	.143	0	0.00	0	0	.000
13	Bidzane, Enija	55	22-6	103	1.87	55	325	.148	3	0.05	19	.158	7	0.13	9	60	.850
5	Klitzke, Emily	36	10-9	95	2.64	31	209	.306	0	0.00	7	.000	0	0.00	1	2	.500
3	Earl, Jesse	123	31-0	5	0.04	4	19	.053	188	1.53	635	.296	46	0.37	55	517	.894
1	Stewart, Kelly	118	30-25	0	0.00	3	9	-.333	27	0.23	161	.168	29	0.25	64	448	.857
32	Campbell, Stephanie	15	7-1	18	1.20	8	63	.159	1	0.07	6	.167	1	0.07	1	30	.967
12	Miller, Abigail	100	31-5	1	0.01	1	4	.000	22	0.22	90	.244	12	0.12	22	264	.917
16	Pember, Tate	103	30-1	0	0.00	2	4	-.500	23	0.22	93	.247	11	0.11	28	294	.905
19	Silva, CiCi	7	5-1	7	1.00	12	35	-.143	0	0.00	0	.000	0	0.00	0	0	.000
4	Tankesley, Brienna	10	7-0	1	0.10	0	1	1.000	1	0.10	3	.333	1	0.10	1	17	.941
6	Hammill, Taylor	1	1-0	0	0.00	0	1	.000	7	7.00	25	.280	0	0.00	1	1	.000
	AUBURN	123	31-31	1645	13.37	698	4583	.207	1540	12.52	4336	.355	173	1.41	336	2717	.876
	Opponents	123	31-31	1514	12.31	614	4219	.213	1409	11.46	4060	.347	121	0.98	239	2705	.912

##	Player	sp	Recept			Dig		Blocking					Points		
			re	ta	pct	dig	dig/s	bs	ba	total	blk/s	be	bhe	pts	pts/s
8	McIlroy, Brenna	112	12	414	.971	257	2.29	13	17	30	0.27	6	1	408.5	3.65
10	Jones, Gwyn	123	0	27	1.000	21	0.17	0	59	59	0.48	7	1	350.5	2.85
11	Barksdale, Breanna	115	0	1	1.000	48	0.42	14	83	97	0.84	22	4	338.5	2.94
21	Filley, Alexa	123	1	8	.875	367	2.98	4	58	62	0.50	10	10	200.0	1.63
7	Crable, Courtney	89	0	35	1.000	37	0.42	4	6	10	0.11	9	0	184.0	2.07
33	Reece, Macy	84	1	16	.938	18	0.21	13	43	56	0.67	9	1	180.5	2.15
13	Bidzane, Enija	55	7	73	.904	46	0.84	3	12	15	0.27	2	1	119.0	2.16
5	Klitzke, Emily	36	1	3	.667	6	0.17	8	15	23	0.64	3	0	110.5	3.07
3	Earl, Jesse	123	30	603	.950	612	4.98	0	0	0	0.00	0	3	51.0	0.41
1	Stewart, Kelly	118	25	715	.965	240	2.03	0	0	0	0.00	0	2	29.0	0.25
32	Campbell, Stephanie	15	0	6	1.000	8	0.53	1	6	7	0.47	4	1	23.0	1.53
12	Miller, Abigail	100	17	240	.929	95	0.95	0	0	0	0.00	1	0	13.0	0.13
16	Pember, Tate	103	13	296	.956	115	1.12	0	0	0	0.00	0	0	11.0	0.11
19	Silva, CiCi	7	0	0	.000	2	0.29	0	1	1	0.14	2	0	7.5	1.07
4	Tankesley, Brienna	10	1	15	.933	5	0.50	0	0	0	0.00	0	0	2.0	0.20
6	Hammill, Taylor	1	0	0	.000	1	1.00	0	0	0	0.00	0	1	0.0	0.00
-	TEAM	-	13	-	-	-	-	-	-	-	-	-	-	-	-
	AUBURN.....	123	121	2466	.951	1878	15.27	60	300	210.0	1.71	75	25	2028.0	16.49
	Opponents.....	123	173	2378	.927	1925	15.65	59	405	261.5	2.13	85	30	1896.5	15.42

AUBURN VOLLEYBALL SINGLE-SEASON INDIVIDUAL RECORDS (25-POINT RALLY SCORING ERA)

KILLS

1. Jessica Glover (2008).....	410
2. Sarah Bullock (2012).....	371
3. Sarah Bullock (2010).....	354
4. Brenna McIlroy (2016)	351
5. Kelly Fidero (2011).....	341
6. Courtney Crable (2015)	333
Brenna McIlroy (2015)	333
8. Katherine Culwell (2012).....	330
9. Katherine Culwell (2013).....	326
10. Morgan Johns (2010).....	325

KILLS PER SET (MIN. 100 KILLS)

1. Sarah Bullock (2012).....	3.50
2. Jessica Glover (2008).....	3.45
3. Kelly Fidero (2011).....	3.22
4. Brenna McIlroy (2016)	3.13
Katherine Culwell (2013).....	3.13
6. Katherine Culwell (2012).....	3.03
Sarah Bullock (2010).....	3.03
8. Courtney Crable (2015).....	2.82
9. Courtney Crable (2014).....	2.78
Camila Jersonsky (2013).....	2.78

ATTACK PCT. (MIN. 250 ATTACKS)

1. Camila Jersonsky (2012).....	356
Camila Jersonsky (2011).....	356
3. Camila Jersonsky (2010).....	354
4. Camila Jersonsky (2013).....	351
5. Alyssa Davis (2009).....	316
6. Morgan Johns (2010).....	305
7. Stephanie Campbell (2013).....	281
8. Stephanie Campbell (2015).....	280
9. Stephanie Campbell (2014).....	279
10. Macy Reece (2016)	277

ATTACKS

1. Brenna McIlroy (2016)	1113
2. Sarah Bullock (2012).....	1090
3. Courtney Crable (2014)	1062
4. Brenna McIlroy (2015)	1043
5. Katherine Culwell (2012).....	1033
6. Sarah Bullock (2010).....	993
7. Jessica Glover (2008).....	988
8. Katherine Culwell (2013).....	981
9. Courtney Crable (2015)	935
10. Sarah Bullock (2009).....	889

ASSISTS

1. Alexa Filley (2016)	1227
2. Alexa Filley (2015)	1226
3. Alexa Filley (2014)	1175
4. Sara Shanks (2008).....	995
5. Chelsea Wintzinger (2011).....	791
6. Christina Solverson (2010).....	740
7. Chelsea Wintzinger (2012).....	680
8. Chelsea Wintzinger (2013).....	642
9. Christina Solverson (2009).....	608
10. Sara Shanks (2009).....	559

ASSISTS PER SET (MIN. 200 ASSISTS)

1. Alexa Filley (2014)	10.22
2. Alexa Filley (2015)	10.13
3. Alexa Filley (2016)	9.98
4. Sara Shanks (2008).....	8.43
5. Chelsea Wintzinger (2011).....	7.39
6. Chelsea Wintzinger (2012).....	6.24
7. Chelsea Wintzinger (2013).....	6.17
Christina Solverson (2010).....	6.17
9. Christina Solverson (2009).....	5.48
10. Sara Shanks (2009).....	5.13

ACES

1. Jesse Earl (2016)	46
2. Jesse Earl (2015)	39
3. Brenna McIlroy (2016)	36
4. Chelsea Wintzinger (2013).....	35
5. Courtney Crable (2014)	33
6. Brenna McIlroy (2015)	32
7. Sara Shanks (2008).....	30
Alexa Filley (2015)	30
9. Kelly Stewart (2016).....	29
10. Ciara Richards (2012).....	26

ACES PER SET (MIN. 15 ACES)

1. Jesse Earl (2016)	0.37
2. Chelsea Wintzinger (2013).....	0.34
3. Jesse Earl (2015)	0.32
Brenna McIlroy (2016)	0.32
5. Courtney Crable (2014)	0.27
Brenna McIlroy (2015)	0.26
7. Alexa Filley (2015)	0.25
Sara Shanks (2008).....	0.25
Kelly Stewart (2016).....	0.25
10. Ciara Richards (2012).....	0.24

DIGS

1. Jesse Earl (2016)	612
2. Jesse Earl (2015)	516
3. Sarah Wroblecky (2013).....	481
4. Liz Crouch (2010).....	469
5. Liz Crouch (2009).....	453
6. Alyssa Ivey (2014).....	434
7. Sarah Wroblecky (2012).....	431
8. Liz Crouch (2008).....	389
9. Alexa Filley (2016)	367
10. Sarah Bullock (2012).....	351

DIGS PER SET (MIN. 100 DIGS)

1. Jesse Earl (2016)	4.98
2. Sarah Wroblecky (2013).....	4.62
3. Jesse Earl (2015)	4.26
4. Liz Crouch (2009).....	4.08
5. Alyssa Ivey (2014).....	4.02
6. Liz Crouch (2010).....	4.01
7. Sarah Wroblecky (2012).....	3.99
8. Liz Crouch (2008).....	3.70
9. Sarah Bullock (2012).....	3.31
10. Katherine Culwell (2013).....	3.17

SOLO BLOCKS

1. Katherine Culwell (2012).....	25
2. Sarah Bullock (2012).....	18
Jessica Glover (2008).....	18
4. Kelly Fidero (2011).....	17
Sarah Bullock (2011).....	17
6. Katherine Culwell (2013).....	16
Camila Jersonsky (2013).....	16
8. Camila Jersonsky (2011).....	15
9. Macy Reece (2014).....	14
Breanna Barksdale (2014).....	14
Stephanie Campbell (2014).....	14
Breanna Barksdale (2014).....	14

BLOCK ASSISTS

1. Camila Jersonsky (2012).....	108
2. Lauren Mellor (2009).....	90
3. Camila Jersonsky (2013).....	89
4. Breanna Barksdale (2014).....	87
5. Courtney McDonald (2012).....	84
6. Breanna Barksdale (2016).....	83
7. Breanna Barksdale (2015).....	82
8. Stephanie Campbell (2014).....	72
9. Emily Klitzke (2014).....	70
10. Chloe Rowand (2012).....	67

TOTAL BLOCKS

1. Camila Jersonsky (2012).....	119
2. Camila Jersonsky (2013).....	105
3. Breanna Barksdale (2014).....	101
4. Lauren Mellor (2009).....	97
Breanna Barksdale (2016).....	97
6. Breanna Barksdale (2015).....	94
7. Courtney McDonald (2012).....	89
8. Stephanie Campbell (2014).....	86
9. Emily Klitzke (2014).....	80
10. Katherine Culwell (2012).....	78

BLOCKS PER SET (MIN. 50 BLOCKS)

1. Camila Jersonsky (2012).....	1.09
2. Camila Jersonsky (2013).....	1.01
3. Chloe Rowand (2011).....	0.97
4. Breanna Barksdale (2014).....	0.91
5. Stephanie Campbell (2015).....	0.90
6. Camila Jersonsky (2011).....	0.89
7. Lauren Mellor (2009).....	0.88
8. Breanna Barksdale (2016).....	0.84
9. Courtney McDonald (2012).....	0.82
Lauren Mellor (2010).....	0.82

AUBURN VOLLEYBALL CAREER RECORD BOOK (SIDEOUT + RALLY ERA)

KILLS

1.	Jaunelle Hamilton (1997-00)	1848
2.	Allyson Beecroft (1993-96)	1727
3.	Brooke McCarley (1997-00)	1704
4.	Gina Thomas (1988-92)	1467
5.	Rachel Shanks (2004-07)	1319
6.	Sarah Bullock (2009-12)	1272
7.	Bridgitte Sims (1989-91)	1149
8.	Jessica Glover (2005-08)	1137
9.	Rani Whitson (1993-96)	1102
10.	Whitney Jacob (2004-07)	1093

KILLS PER SET (MIN. 500 KILLS)

1.	Brooke McCarley (1997-00)	4.40
2.	Jaunelle Hamilton (1997-00)	4.23
3.	Allyson Beecroft (1993-96)	4.00
4.	Ashlee Johns (2003-04)	3.82
5.	Terri Duckworth (1987-88)	3.63
6.	Jennifer Amobi (2003-05)	3.57
7.	Rachel Shanks (2004-07)	3.43
8.	Bridgitte Sims (1989-91)	3.40
9.	Jessica Glover (2005-08)	3.17
10.	Brenna McIlroy (2015-present)	2.94
11.	Sarah Bullock (2009-12)	2.93

ATTACK PCT. (MIN. 1000 ATTACKS)

1.	Camila Jersonsky (2010-13)	355	894-237-1853
2.	Jaunelle Hamilton (1997-00)	344	1848-532-3827
3.	Brooke McCarley (1997-00)	325	1704-455-3847
4.	Terri Duckworth (1987-99)	315	876-291-1860
5.	Rani Whitson (1993-96)	281	1102-383-2562
6.	Julie Bosler (2003-06)	280	558-178-1359
7.	Gina Thomas (1988-92)	279	1467-540-3319
8.	Stephanie Campbell (2013-16)	276	673-205-1669
9.	Whitney Jacob (2004-07)	264	1093-428-2522
10.	La'Toi Finley (1994-97)	256	727-306-1647

ATTACKS

1.	Allyson Beecroft (1993-96)	4349
2.	Brooke McCarley (1997-00)	3847
3.	Jaunelle Hamilton (1997-00)	3827
4.	Sarah Bullock (2009-12)	3774
5.	Rachel Shanks (2004-07)	3703
6.	Gina Thomas (1988-92)	3319
7.	Katherine Culwell (2009-13)	3130
	Jessica Glover (2005-08)	3130
8.	Jenifer Kleyn (1988-91)	3107
10.	Gretchen Thompson (1986-89)	2913

ASSISTS

1.	Piper Craig (1995-98)	5053
2.	Janel Newkirk (1989-92)	4071
3.	Alexa Filley (2014-present)	3628
4.	Mary Omdorff (1986-89)	3242
5.	Chelsea Wintzinger (2010-13)	2654
6.	Tama English (1991-94)	2535
7.	Joanna Pappas (2005-06)	2073

ASSISTS PER SET (MIN. 500 ASSISTS)

1.	Piper Craig (1995-98)	12.86
2.	Traci Price (1999-00)	11.77
3.	Maira Magollon (2003-04)	11.38
4.	Chris Murphy (1993-96)	11.35
5.	Joanna Pappas (2005-06)	11.15
6.	Alexa Filley (2014-present)	10.11

ACES

1.	Jenifer Kleyn (1988-91)	338
2.	Lori Russell (1989-92)	201
3.	Gretchen Thompson (1986-89)	164
4.	Tory Gutierrez (1989-92)	160
5.	Terri Duckworth (1987-88)	158
6.	Jaunelle Hamilton (1997-00)	148
7.	Allyson Beecroft (1993-96)	138
8.	Whitney Jacob (2004-07)	134
9.	Janel Newkirk (1989-92)	129
10.	Bridgitte Sims (1989-91)	126

ACES PER SET (MIN. 40 ACES)

1.	Jenifer Kleyn (1988-91)	0.71
2.	Terri Duckworth (1987-88)	0.66
3.	Lori Russell (1989-92)	0.46
4.	Jenny Fisler (1987-88)	0.40
5.	Bridgitte Sims (1989-91)	0.37
6.	Gretchen Thompson (1986-89)	0.36
7.	Maira Magollon (2003-04)	0.35
	Tory Gutierrez (1989-92)	0.35
	Jesse Earl (2015-present)	0.35
10.	Jaunelle Hamilton (1997-00)	0.34

DIGS

1.	Liz Crouch (2007-10)	1703
2.	Gretchen Thompson (1986-89)	1495
3.	Allyson Beecroft (1993-96)	1249
4.	Sarah Wroblecky (2010-13)	1238
5.	Sarah Bullock (2009-12)	1210
6.	Rachel Shanks (2004-07)	1185
7.	Jesse Earl (2015-present)	1128
8.	Sarah Watson (1992-95)	1036
9.	Janel Newkirk (1989-92)	1026
10.	Alexa Filley (2014-present)	1009
11.	Katherine Culwell (2009-13)	1005
12.	Jaunelle Hamilton (1997-00)	1002

DIGS PER SET (MIN. 500 DIGS)

1.	Jesse Earl (2015-present)	4.62
2.	Liz Crouch (2007-10)	4.00
3.	Sarah Wroblecky (2010-13)	3.65
4.	Gretchen Thompson (1986-89)	3.26
5.	Rachel Shanks (2004-07)	3.08
6.	Allyson Beecroft (1993-96)	2.89
7.	Alexa Filley (2014-present)	2.81
8.	Bailey Veit (2002-05)	2.80
	Emily Suter (1995-98)	2.80
10.	Sarah Bullock (2009-12)	2.79

SOLO BLOCKS

1.	Gina Thomas (1988-92)	159
2.	Tory Gutierrez (1989-92)	157
3.	Jaunelle Hamilton (1997-00)	106
4.	Julie Bosler (2003-06)	98
5.	Rani Whitson (1993-96)	61
6.	Katherine Culwell (2009-13)	59
7.	Mary Olks (1986-89)	58
8.	Whitney Jacob (2004-07)	56
9.	Sarah Bullock (2009-12)	54
10.	Camila Jersonsky (2010-13)	51

BLOCK ASSISTS

1.	Jaunelle Hamilton (1997-00)	465
2.	Rani Whitson (1993-96)	426
3.	Gina Thomas (1988-92)	360
4.	Whitney Jacob (2004-07)	351
5.	Tory Gutierrez (1989-92)	318
6.	Camila Jersonsky (2010-13)	317
7.	Julie Bosler (2003-06)	265
8.	La'Toi Finley (1994-97)	261
	Krista Singleton (1994-97)	261
10.	Breanna Barksdale (2014-16)	252

TOTAL BLOCKS

1.	Jaunelle Hamilton (1997-00)	571
2.	Gina Thomas (1988-92)	519
3.	Rani Whitson (1993-96)	487
4.	Tory Gutierrez (1989-92)	475
5.	Whitney Jacob (2004-07)	407
6.	Camila Jersonsky (2010-13)	368
7.	Julie Bosler (2003-06)	363
8.	Breanna Barksdale (2014-16)	292
9.	La'Toi Finley (1994-97)	289
10.	Krista Singleton (1994-97)	276

BLOCKS PER SET (MIN. 100 BLOCKS)

1.	Jaunelle Hamilton (1997-00)	1.31
2.	Rani Whitson (1993-96)	1.16
3.	Julie Bosler (2003-06)	1.06
4.	Tory Gutierrez (1989-92)	1.03
5.	Gina Thomas (1988-92)	0.98
6.	Whitney Jacob (2004-07)	0.96
7.	Camila Jersonsky (2009-13)	0.92
8.	Heather Franey (1995-96, 98)	0.90
9.	La'Toi Finley (1994-97)	0.88
10.	Breanna Barksdale (2014-present)	0.85



#2 • ISABELLA THOMPSON
Jr. • MB • 6-0



#3 • JESSE EARL
Sr. • L/DS • 5-8



#4 • SHAINA WHITE
So. • MB • 6-1



#5 • SHEA MCNAMARA
Fr. • MB • 6-1



#7 • COURTNEY CRABLE
Sr. • OH • 6-1



#8 • BRENNA MCILROY
Jr. • OH • 5-11



#9 • KARIS BEASLEY
So. • OH/DS • 5-9



#10 • GWYN JONES
So. • MB • 6-3



#11 • MORGAN KULL
Fr. • S • 5-9



#13 • ENIJA BIDZANE
So. • OH • 5-9



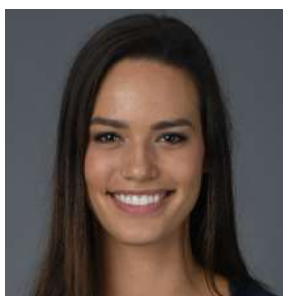
#14 • PAYTON WHITE
Fr. • L/DS • 5-7



#21 • ALEXA FILLEY
Sr. • S • 5-9



#22 • ANNA STEVENSON
Fr. • MB • 6-1



#33 • MACY REECE
Sr. • MB • 6-2



RICK NOLD
Head Coach



EYSHA AMBLER
Assistant Coach



ALEX WILHARM
Assistant Coach



PAIGE WETZEL
Director of Operations



COURTNEY CRABLE

SENIOR / 6-1 / OH
LOUISVILLE, KY.
MERCY ACADEMY



Category	Career High	Opponent/Date
Kills	20	4x; last vs. Florida, 11/8/15
Attempts	56	vs. Winthrop, 9/13/14
Hitting Percentage	.381	vs. Georgia, 10/21/15
Assists	4	vs. South Carolina, 10/5/14
Digs	19	vs. Northwestern State, 9/20/14
Blocks	4	3x; last at South Florida, 9/19/15
Aces	4	twice, last vs. Georgia, 10/1/14
Points	21.5	at South Carolina, 11/16/14

AWARDS AND HONORS

- 2016 SEC Academic Honor Roll
- 2015 USF Invitational All-Tournament Team
- 2015 SEC Academic Honor Roll
- 2014-15 First-Year SEC Academic Honor Roll
- 2014 George Washington All-Invitational Team

2016: Started five matches for Auburn on the outside ... Six matches with double-digit kills ... Fourth on the team with 177 kills and a 1.99 kills/set average ... Picked up a season-high 16 kills vs. Kentucky (11/4) ... Added 15 kills in road win at Arkansas (10/23) ... Finished with 14 kills at Ole Miss (10/19) ... Season-best .333 hitting percentage at Tennessee (10/30) with 13 kills vs. the Lady Vols ... Had 10 kills on two occasions - vs. Colgate (9/17) and at Alabama (11/9).

2015: One of Auburn's top attackers, playing in all 30 matches at outside hitter and starting 18 ... Tied for first on the team with 333 kills and first in kills per set (2.82) ... Led Auburn with 216 kills against conference opponents and had a 2.92 kills/set average in league play ... Finished with a .202 hitting percentage ... Second on the team in points with 349 and a 2.96 average ... Had double-digit kills in 16 matches with 13 in SEC play ... Led the squad in kills in 12 matches ... Tied a career-high with 20 kills and a .360 hitting clip in the team's 3-2 upset of No. 11 Florida (11/8) ... Recorded 20 kills against Syracuse (9/4) and at LSU (10/25) ... Totaled 17 kills on two occasions: vs. Little Rock (9/11) and vs. St. John's (9/19) ... Hit a career-high .381 versus Georgia (10/21), having 10 kills on 21 attempts ... Finished with a .333 hitting percentage vs. Ole Miss (11/20) with 14 kills on 33 attempts ... Posted 16 kills at home against Tennessee (9/25) ... Also had 16 kills in a 3-1 win at home over South Carolina (11/6) ... Finished the year with 27 blocks (5 solo, 22 block assists) ... Tied a career-high with four blocks at South Florida (9/19) ... Had three blocks with 11 kills at Mississippi State (11/13).

2014: Started all 31 matches and played in all 115 sets ... Led the team in kills (320), kills per set (2.78) and attacks (1,062) ... Finished with double-digit kills in 14 matches, including seven times in conference play ... Led the club in kills in 10 matches ... Posted a season-high 20 kills along with six digs in a five-set win at South Carolina (11/16) ... Recorded 16 kills and hit .275 at Mississippi State (10/31) ... Picked up 15 kills in matches versus Southern Illinois (9/5), Troy (9/12) and Mississippi State (10/31) ... Posted 15 kills and eight digs against Ole Miss (10/17) ... Also had 13 kills on the road at No. 6 Florida State (9/16) ... Hit a season-high .323 versus Southern Illinois (9/5) at

the D.C. Koehl Sports Imports Classic ... Finished with 13 kills and a .310 hitting percentage against Arkansas State (8/30) ... Was Auburn's top-server with 33 aces (0.29/set) ... Recorded four service aces against Winthrop (9/20) and Georgia (10/1) ... Had three aces versus Jacksonville State (9/20) and Mississippi State (11/29) ... Logged a season-best 19 digs against Northwestern State (9/20) ... Earned double-doubles against FGCU (9/7), Winthrop (9/13) and Northwestern State (9/20) ... Picked up four total blocks against USF (9/13) and Jacksonville State (9/20).

HIGH SCHOOL/CLUB: Played high school volleyball at Mercy Academy ... Club team was KIVA (Kentucky-Indiana Volleyball Association) ... Named a 2013-14 Under Armour First-Team All-American ... 2013 Kentucky "Miss Volleyball" ... 2012 Kentucky Gatorade Player of the Year ... 2010 ESPN Rise National Freshman of the Year ... 2011, 2012, 2013 all-state selection ... 2012, 2013 regional player of the year ... School record-holder in kills ... Led Mercy Academy to four-straight district and regional titles ... Mercy was 38-2 this year and advanced to state semifinal, where they fell to eventual state champion Assumption and fellow Auburn signee Alexa Filley in five sets.

PERSONAL: Full name is Courtney Louise Crable ... Parents are Kim and Jeff Crable ... Has two sisters, Kristen and Katie ... Working on her degree from the School of Kinesiology in the College of Education.

CAREER STATISTICS

Year	Sets	MP	Kills	KPS	E	TA	Pct.	Ast.	APS	SA	SAPS	SE	Digs	DPS	RE	BS	BA	TB	BPS	Pts.	PTS
2014	115	31	320	2.78	184	1062	.128	29	.25	33	.29	75	169	1.47	32	10	24	34	.30	375.0	3.26
2015	118	30	333	2.82	144	935	.202	5	.04	0	.00	5	64	.54	4	5	22	27	.23	349.0	2.96
2016	89	27	177	1.99	96	587	.138	3	.03	0	.00	0	37	.42	0	4	6	10	.11	184.0	2.07
TOTAL	322	88	830	2.58	424	2584	.157	37	.11	33	.10	80	270	.84	36	19	52	71	.22	908.0	2.82

SEC STATISTICS

Year	Sets	MP	Kills	KPS	E	TA	Pct.	Ast.	APS	SA	SAPS	SE	Digs	DPS	RE	BS	BA	TB	BPS	Pts.	PTS
2014	66	18	184	2.79	106	615	.127	20	.30	18	.27	44	90	1.36	15	2	12	14	.21	210.0	3.18
2015	74	18	216	2.92	90	599	.210	4	.05	0	.00	0	33	.45	2	3	13	16	.22	225.5	3.04
2016	53	15	119	2.25	53	359	.184	3	.06	0	.00	0	24	.45	0	3	3	6	.11	123.5	2.32
TOTAL	193	51	519	2.69	249	1573	.172	27	.14	18	.09	44	147	.76	17	8	28	36	.19	559.0	2.90



JESSE EARL

SENIOR / 5-8 / L/DS
 INDIANAPOLIS, IND.
 XAVIER UNIVERSITY
 LAWRENCE NORTH HS



Category	Career High	Opponent/Date
Kills	1	12x, last vs. Kentucky, 11/4/16
Attempts	4	2x, last at Mississippi State, 9/30/16
Hitting Percentage	1.000	.7x, last vs. Kentucky, 11/4/16
Assists	16	vs. Colgate, 9/17/16
Digs	34	at Mississippi State, 11/13/15
Blocks	-	-
Aces	5	at Georgia, 10/2/16
Points	5.0	at Georgia, 10/2/16

AWARDS AND HONORS

- 2017 USA Volleyball Collegiate National Team - Europe Tour (July 2017)
- 2016 AVCA All-South Region
- 2016 All-SEC
- 2016 SEC Defensive Player of the Week (Sept. 7)
- 2015 AVCA All-South Region
- 2015 SEC Defensive Player of the Week (Sept. 28)

2016: Had a record-setting season for Auburn, starting in all 31 matches at libero ... Recorded double-digit digs in 30 matches ... Set a new Auburn single-season record with 612 digs on the season and her 4.98 digs/set average was also a program best ... Her digs total and average led all student-athletes in the SEC ... Totaled 14 20+ dig performances on the year ... Recorded her 1,000th career dig vs. Kentucky (11/4) and ranks seventh overall with 1,128 in program history ... Broke her own single-season digs record after recording 29 vs. Ole Miss (11/6) ... Set a season-best total of 29 first at Mississippi State (9/30) ... Had five double-doubles on the year (digs/assists) ... Double-double against Colgate (9/17) saw her total a career-high 16 assists with 26 digs ... Two 28-dig performances - LSU (9/23), at Ole Miss (10/19) ... Opened the year with 24 digs vs. Georgia Tech (8/26) ... Set a career high with five aces at Georgia (10/2) ... Finished with 46 service aces on the season, setting a new single season Auburn record (rally scoring only), averaging .37/set ... Her aces average also set a new Auburn record, while finishing fifth in the league.

2015: Played in all 121 sets, starting 27 matches at libero and three at defensive specialist ... Led all Tigers and was second in the SEC with 516 digs on the year ... Her 4.26 digs/set average is third on the single-season records list and ranked fifth overall in the conference ... Totaled a league-best 339 digs in conference play, while her 4.58 digs/set was second ... Finished fourth in the SEC with a .32 aces/set average, having with a team-best 39 on the year ... Her 27 aces and .36 aces/set average in league play ranked third in the SEC ... Had a service in ace in all but six matches ... Came in second on the team with 124 assists and a 1.02 average ... Recorded 26 double-digit dig performances on the year with one double-double ... Reached 20 or more digs 11 times ... Set a career-high with 34 digs in the come-from-behind win at Mississippi State (11/13) ... Collected her first double-double in the 3-2 win versus LSU (10/4), having 17 digs and 10 assists ... Had 28 digs, two aces and nine assists against St. John's (9/19) ... Totaled 26 digs vs. Tennessee (9/25) and then again in the upset of No. 11 Florida (11/8) ... Recorded 23 digs on three occasions: vs. No. 20 Kentucky (10/16), at Missouri (11/1), vs. Ole Miss (11/20) ... Set a career-best with four aces versus Georgia (10/21)

and again against the Rebels.

2014 (AT XAVIER): Played in 31 matches, totaling 116 sets ... Led the team in service aces (42) and digs (523) ... Her 523 digs ranked third in single-season history ... Ranked second in the BIG EAST in service aces and fourth in digs -- leading all freshmen in both categories ... Also ranked 44th nationally in service aces and 84th in total digs ... Was named BIG EAST Freshman of the Week on three occasions ... Was also named to the BIG EAST Weekly honor roll once ... Was second on the team in assists (122) ... Also had two kills on the year.

HIGH SCHOOL/CLUB: Was ranked as the 85th best player overall and the No. 5 libero in the nation by Volleyball Prep ... Named all-state second team as a junior and senior, while also garnering recognition as all-conference and all-county following senior campaign.

PERSONAL: Daughter of Stacia Davis and Scott Earl ... Mother played volleyball at Ball State and father played baseball at Eastern Kentucky ... Has two siblings, Jordan and Jake ... Working on her degree in the University College.

CAREER STATISTICS

Year	Sets	MP	Kills	KPS	E	TA	Pct.	Ast.	APS	SA	SAPS	SE	Digs	DPS	RE	BS	BA	TB	BPS	Pts.	PTS
2015	121	30	7	.06	2	31	.161	124	1.02	39	.32	72	516	4.26	24	0	0	0	.00	46.0	.38
2016	123	31	5	.04	4	19	.053	188	1.53	46	.37	55	612	4.98	30	0	0	0	.00	51.0	.41
TOTAL	244	61	12	.05	6	50	.120	312	1.28	85	.35	127	1128	4.62	54	0	0	0	.00	97.0	.40

SEC STATISTICS

Year	Sets	MP	Kills	KPS	E	TA	Pct.	Ast.	APS	SA	SAPS	SE	Digs	DPS	RE	BS	BA	TB	BPS	Pts.	PTS
2015	74	18	4	.05	2	15	.133	72	.97	27	.36	45	339	4.58	14	0	0	0	.00	31.0	.42
2016	73	18	2	.03	2	11	.000	109	1.49	27	.37	33	348	4.77	20	0	0	0	.00	29.0	.40
TOTAL	147	36	6	.04	4	26	.077	181	1.23	54	.37	78	687	4.67	34	0	0	0	.00	60.0	.41



ALEXA FILLEY

SENIOR / 5-9 / S
LOUISVILLE, KY.
ASSUMPTION HS

Category	Career High	Opponent/Date
Kills	11	vs. Colgate, 9/17/16
Attempts	27	at Ole Miss, 10/19/16
Hitting Percentage	.778	vs. Florida A&M, 9/1/15
Assists	63	vs. South Carolina, 10/5/14
Digs	25	vs. Colgate, 9/17/16
Blocks	6	at Kentucky, 11/27/15
Aces	5	vs. LSU, 10/4/15
Points	15.5	vs. LSU, 10/4/15

AWARDS AND HONORS

- 2016 AVCA All-South Region Honorable Mention
- 2016 All-SEC
- 2016 Michigan Challenge Team
- 2016 Auburn Invitational All-Tournament Team
- 2016 Active Ankle Challenge All-Tournament Team
- 2016 SEC Academic Honor Roll
- 2015 AVCA All-South Region Honorable Mention
- 2015 Memphis Invitational All-Tournament Team (MVP)
- 2015 SEC Academic Honor Roll
- 2014 War Eagle Invitational All-Tournament Team (MVP)
- 2014 Active Ankle Challenge All-Tournament Team
- 2014-15 First-Year SEC Academic Honor Roll

2016: Started all 31 matches and played in 123 sets for Auburn ... Broke her own 25-point rally scoring era record for assists, having 1,227 ... That total placed her seventh on Auburn's overall season records list ... Her 9.98 assists/set average ranked seventh in the SEC, while her 10.22 average in conference-only matches was eighth ... Her 18 double-doubles (assists/digs) ranked second in the SEC ... Picked up three triple-doubles (assists/digs/kills) on the year ... First triple-double of her career came vs. Colgate (9/17) - career-high 11 kills, 44 assists, career-high 25 digs ... Picked up another triple-double in win at Ole Miss (10/19) - 10k, 45a, 18d ... Final triple-double came vs. Ole Miss at home (11/6) - 10k, 42a, 10d ... Totaled 50+ assists on four occasions ... Had a season-best 56 assists vs. Kentucky (11/4) ... Second on the team with 367 digs and a 2.98 average ... Reached 1,000 career digs at Florida (11/23), becoming just the second setter in program history to accomplish the feat ... Had 20+ digs in two matches ... Finished with a season-high three aces vs. Stony Brook (9/2) ... Had season-best five blocks vs. Santa Clara (9/3) and again vs. Kentucky (11/4).

2015: Started all 30 matches and played in all 121 sets as Auburn's setter ... Totaled 1,226 assists and averaged 10.13 assists/set ... Her assists total was the eighth-most assists all time in a season at Auburn ... Came in second on the team in digs, having 313 for a 2.59 digs/set average ... Totaled 119 kills on the year ... Finished second on the team with 30 aces ... Led the team with 14 double-doubles, which was fourth-most in the SEC this year ... Was one kill away from a triple-double in the five-set win over LSU (10/4), having a nine kills with 43 assists and 20 digs ... Also set a career-high with five aces and 15.5 points against the Tigers at home ... Notched a season-best 61 assists with a season-best

24 digs at LSU (10/25) ... Had eight kills, 45 assists and 17 digs with four blocks versus No. 20 Kentucky (10/16) ... Hit .778 with seven kills on nine attempts against Florida A&M (9/1), adding 36 assists and five blocks ... Posted three-straight double-doubles to open the season at the War Eagle Invitational, finishing with 144 assists and 39 digs over 14 sets played ... Totaled 46 assists and 19 digs in a the 3-1 win over Tennessee (9/25) ... Led the Tigers with 55 assists and 12 digs in the team's 3-2 upset over No. 11 Florida (11/8) ... Recorded double-doubles at Arkansas (10/30) and at Missouri (11/1) ... Closed out the season with 42 assists and a career-high six blocks at No. 24 Kentucky.

2014: Started all 31 matches and played in all 115 sets as Auburn's setter ... Had 1,175 her freshman season, while averaging 10.22 assists/set ... Posted the ninth-most assists all-time in a single season which set a freshman record at Auburn ... Dished out 63 assists against South Carolina (10/5) ... Collected 50-plus assists in matches versus Winthrop (9/13), USF (9/13), Northwestern State (9/20), Georgia (11/2) and Kentucky (11/26) ... Ranked second on the team in digs with 329 (2.86/set) ... Earned 17 double-doubles, including 11 in league play - the most in the SEC ... Finished with 55 assists and 20 digs in a win over Winthrop (9/13) ... Recorded 55 assists, 19 digs and four blocks against USF (9/13) ... Posted 57 assists and 19 digs at Georgia (11/2) ... Finished with 52 assists, 16 digs and five kills against Northwestern State (9/20) ... Collected a season-high five blocks versus South Carolina (10/5) ... Ranked third on the club with 17 service aces (0.15/set).

HIGH SCHOOL/CLUB: Played at Assumption High School ... Club team was KIVA ... Named 2013-14 Gatorade National Player of the Year ... Kentucky Gatorade Player of the Year ... 2013 USA Today All-USA High School Volleyball Team selection ... 2013-14 Under Armour Second-Team All-American ... Ranked 40th among PrepVolleyball.com's "Senior Aces" ... Ranked 20th among seniors nationally by Student Sports Volleyball ... 2013 MaxPreps.com Preseason All-American ... Led Assumption High School to four straight Kentucky state titles and was MVP of the state tournament in 2012 and 2013 ... Assumption was ranked as No. 1 team in the nation in preseason ... Won five-set match against rival Mercy Academy and Courtney Crable in state semifinals ... Named MVP of state tournament in 2012 and 2013 ... USA High Performance Select A1 Team in 2010 and 2011 ... Had 1,238 assists, 332 digs and 54 blocks during her senior season.

PERSONAL: Full name is Alexa Reanne Filley ... Parents are Richard and Sherry Filley ... Has a brother, Hunter ... Her aunt, Annie Filley Boehnlein, played volleyball at Louisville from 1994-98 ... Pursuing her degree in pharmacy from the Harrison School of Pharmacy.

CAREER STATISTICS

Year	Sets	MP	Kills	KPS	E	TA	Pct.	Ast.	APS	SA	SAPS	SE	Digs	DPS	RE	BS	BA	TB	BPS	Pts.	PTS
2014	115	31	85	.74	35	247	.202	1175	10.22	17	.15	27	329	2.86	1	5	41	46	.40	127.5	1.10
2015	121	30	119	.98	39	340	.235	1226	10.13	30	.25	40	313	2.59	0	6	53	59	.49	181.5	1.50
2016	123	31	153	1.24	53	448	.223	1227	9.98	14	.11	32	367	2.98	1	4	58	62	.50	200.0	1.63
TOTAL	359	92	357	.99	127	1035	.222	3628	10.11	61	.17	99	1009	2.81	2	15	152	167	.47	509.0	1.42

SEC STATISTICS

Year	Sets	MP	Kills	KPS	E	TA	Pct.	Ast.	APS	SA	SAPS	SE	Digs	DPS	RE	BS	BA	TB	BPS	Pts.	PTS
2014	66	18	50	.76	16	134	.254	681	10.32	8	.12	18	188	2.85	0	1	26	27	.41	72.0	1.09
2015	74	18	74	1.00	25	219	.224	733	9.91	17	.23	24	202	2.73	0	5	35	40	.54	113.5	1.53
2016	73	18	90	1.23	29	265	.230	746	10.22	7	.10	20	198	2.71	0	3	35	38	.52	117.5	1.60
TOTAL	213	54	214	1.00	70	618	.233	2160	10.14	32	.15	62	588	2.76	0	9	96	105	.49	303.0	1.42



MACY REECE

SENIOR / 6-2 / MB
 HENDERSONVILLE, TENN.
 GOODPASTURE CHRISTIAN SCHOOL

Category	Career High	Opponent/Date
Kills	25	vs. USF, 9/13/14
Attempts	48	vs. USF, 9/13/14
Hitting Percentage	.875	vs. Georgia, 10/12/16
Assists	1	6x, last at Ole Miss, 10/19/16
Digs	3	7x, last vs. Ole Miss, 11/4/16
Blocks	7	2x, last at Alabama, 11/9/16
Aces	1	2x, last vs. USF, 9/13/14
Points	28.0	vs. USF, 9/13/14

AWARDS AND HONORS

- 2016 SEC Community Service Team
- 2016 SEC Academic Honor Roll
- 2015 SEC Academic Honor Roll
- 2014-15 First-Year SEC Academic Honor Roll

2016: Started 20 matches at middle blocker, totaling 146 kills and a 1.74 kills/set average ... Had 56 blocks with a .67 average, which was second-best on the squad ... Totaled a career-best seven blocks with a season-high 12 kills in the team's 3-2 win over Mississippi State (10/16) ... Added seven blocks and 11 kills at Alabama (11/9) ... Chipped in 11 kills and six block assists vs. Kentucky (11/4) ... Finished with nine kills and a .533 attack percentage vs. Colgate (9/17) ... Hit a stifling .875 (7-0-8) vs. Georgia and finished with four blocks (10/12) ... Went .700 (7-0-10) vs. Missouri (10/7).

2015: Competed in 11 matches with one start for Auburn ... Had 30 kills and a 1.43 kills/set average on the year ... Chipped in 14 blocks for a .67/set average ... Totaled a season-best 10 kills in the team's win over Jacksonville (8/29) and set a season-high with five blocks in the match ... Recorded seven kills and three blocks in the three-set sweep of Florida A&M (9/1) ... Had four kills versus Tennessee (9/25) ... Picked up a pair of blocks against Little Rock (9/11) and Tennessee Tech (9/12).

2014: Played in 26 matches and made 12 starts during her freshman season ... Finished fourth on the team with 255 kills (2.68/set) ... Had the second-best kills/set at 2.68 ... Tied for the team lead with 14 solo blocks ... Turned in best performance of the season in a five-set match against USF (9/13), posting 25 kills on 48 attempts to hit .417 ... The kills against USF is tied for the fifth-most ever in a single match by an Auburn player since rally scoring began in 2001 ... Eclipsed the 20-kill mark at Georgia with 21 and hit .432 (11/2) ... Recorded 16 kills in Auburn's thrilling road victory at South Carolina (11/16) ... Hit a season-best .550 versus Mississippi State (11/29) with 11 kills ... Recorded a hitting percentage above .400 in four matches ... Tied season-best with four blocks against Georgia (10/1) and Tennessee (11/9) ... Made collegiate debut against George Washington (8/29) and recorded 11 kills and a block ... Collected three digs on five different occasions - vs. Winthrop (9/13), at Florida State (9/16), vs. Northwestern State (9/20), vs. Tennessee (11/9) and at South Carolina (11/16).

HIGH SCHOOL/CLUB: Played high school volleyball at Goodpasture Christian School, just outside Nashville ... Club team was Alliance Volleyball Club ... Named to 2013-14 Under Armour

Honorable Mention All-America Team ... 2013 USA Today All-USA High School Third Team ... Led Goodpasture to back-to-back Tennessee state titles in 2012 and 2013 and a runner-up finish in 2011 ... 2013 State Tournament MVP ... Helped Goodpasture to 82 consecutive wins in 2012 and 2013, a Tennessee state record ... Team went 50-0 in 2013, the first undefeated season by a Tennessee high school since 1977 ... 2011, 2012, 2013 all-state selection ... Nominated for Gatorade State Player of the Year in 2012 and 2013 ... Team captain as a senior ... Helped Alliance Volleyball Club to four-straight national top-25 finishes ... Hit .612 as a senior, best in Tennessee and second-best nationally, according to MaxPreps.com ... Had 199 solo blocks in 2013, ranking top-10 nationally ... Owns high school career records for kills, blocks, aces and hitting percentage.

PERSONAL: Full name is Macy Katherine Reece ... Parents are Steve and Dana Reece ... Has a sister, Taylor ... Both parents played basketball at Vanderbilt ... Sister currently plays basketball at Samford ... Earned her degree from the Raymond J. Harbert College of Business in Spring 2017 and is currently working on her MBA through the college.

CAREER STATISTICS

Year	Sets	MP	Kills	KPS	E	TA	Pct.	Ast.	APS	SA	SAPS	SE	Digs	DPS	RE	BS	BA	TB	BPS	Pts.	PTS
2014	95	26	255	2.68	116	684	.203	4	.04	2	.02	1	40	.42	1	14	24	38	.40	283.0	2.98
2015	21	11	30	1.43	11	89	.213	0	.00	0	.00	1	6	.29	0	3	11	14	.67	38.5	1.81
2016	84	22	146	1.74	43	372	.277	2	.02	0	.00	0	18	.21	1	13	43	56	.67	180.5	2.14
TOTAL	200	59	431	2.15	170	1145	.228	6	.03	2	.01	2	64	.32	2	30	78	108	.54	502.0	2.51

SEC STATISTICS

Year	Sets	MP	Kills	KPS	E	TA	Pct.	Ast.	APS	SA	SAPS	SE	Digs	DPS	RE	BS	BA	TB	BPS	Pts.	PTS
2014	48	13	132	2.75	61	356	.199	3	.06	0	.00	0	22	.46	1	3	16	19	.40	143.0	2.98
2015	6	5	6	1.00	2	24	.167	0	.00	0	.00	1	3	.50	0	1	1	2	.33	7.5	1.17
2016	73	18	127	1.74	33	320	.294	2	.03	0	.00	0	15	.21	1	13	41	54	.74	160.5	2.19
TOTAL	127	36	265	2.09	96	700	.241	5	.04	0	.00	1	40	.31	2	17	58	75	.59	311.0	2.45



BRENNA MCILROY

JUNIOR / 5-11 / OH
GARLAND, TEXAS
ROWLETT HS



Category	Career High	Opponent/Date
Kills	21	at Georgia, 10/2/16
Attempts	61	2x, last vs. Santa Clara, 9/3/16
Hitting Percentage	.444	at Tennessee, 11/25/16
Assists	5	at Ole Miss, 10/19/16
Digs	22	vs. LSU, 10/4/15
Blocks	4	at LSU, 10/25/15
Aces	4	2x, last vs. Jacksonville, 9/10/16
Points	21.0	2x, last at Georgia, 10/2/16

AWARDS AND HONORS

- 2016 War Eagle Invitational All-Tournament Team
- 2016 Active Ankle Challenge All-Tournament Team
- 2016 SEC Academic Honor Roll
- 2015 SEC All-Freshman Team
- 2015 War Eagle Invitational All-Tournament Team (MVP)
- 2015 SEC Freshman of the Week (Aug. 31, Sept. 14, Nov. 9)

2016: Played in 29 matches with 27 starts at outside hitter ... Led the squad with 351 kills and a 3.13 kills/set average ... Totaled 1,113 attempts ... Second on the team with 36 service aces and her .32 aces/set average came in seventh in the SEC ... Among the best in the league with 12 double-doubles on the year (digs/kills) ... Finished with 20 double-digit kill performances ... Set a career-best vs. Georgia (10/2), having 21 kills and a .417 hitting percentage ... Totaled 20 kills with 13 digs vs. LSU (9/23) ... Had 18 kills and a season-best 17 digs vs. Kentucky (11/4) ... Put together an 18-kill performance in the upset of No. 21 Louisville (9/3) ... Came in third on the team with a 2.29 digs/set average, having 257 for the season ... Tied a career-high with four aces vs. Jacksonville (9/10).

2015: Played in all 121 sets and started all 30 matches at outside hitter for Auburn ... Finished tied for first on the team with 333 kills, having a 2.75 kills/set average ... Had a team-high 1,043 attempts for the season ... Totaled 19 double-digit kill performances and 11 double-doubles ... Reached double-digit digs in 13 matches ... Came in third on the squad with 291 digs and a 2.40 average ... Her 32 service aces and .26 aces/set average finished second on the team ... Recorded three or more blocks in nine matches ... Set a season-high in kills with 19 in the team's 3-2 win over No. 11 Florida (11/8) ... Opened the season with a pair of double-doubles, having 17 kills and 11 digs against Stephen F. Austin (8/28) and 18 kills with 13 digs vs. Jacksonville (8/29) ... Notched 16 kills and 18 digs with three blocks against St. John's (9/19) ... Reached 20 or more digs in two matches ... Set a career-high with 22 digs at home vs. LSU (10/4) ... Totaled 15 kills, 21 digs and a career-best four blocks at LSU (10/25) ... Had 15 kills against Texas A&M (9/30), at Arkansas (10/30) and at No. 24 Kentucky (11/27) ... Had 16 in a 3-1 win over South Carolina at home (11/6) ... Picked up 13 kills in a five-set victory against Ole Miss (11/20).

HIGH SCHOOL/CLUB: Played for Rowlett High School ... Club team was Dallas Premier ... Two-time district MVP (2012, 2013) ... Was named to PrepVolleyball's Frosh 59, Soph 79 and top 100 Senior Aces ... Helped team to 2012 district title and Garland ISD tournament titles in 2011 and 2014

... led team in kills three straight seasons.

PERSONAL: Full name is Brenna Kate McIlroy ... Parents are Kerry and Tracy McIlroy ... Has three siblings, Reese, Elizabeth and Erin ... Erin played volleyball at John Brown University ... Father played basketball at Stephen F. Austin ... Working to get a degree from the College of Education.

CAREER STATISTICS

Year	Sets	MP	Kills	KPS	E	TA	Pct.	Ast.	APS	SA	SAPS	SE	Digs	DPS	RE	BS	BA	TB	BPS	Pts.	PTS
2015	121	30	333	2.75	183	1043	.144	16	.13	32	.26	60	291	2.40	27	13	31	44	.36	393.5	3.25
2016	112	29	351	3.13	166	1113	.166	23	.21	36	.32	72	257	2.29	12	13	17	30	.27	408.5	3.64
TOTAL	233	59	684	2.94	349	2156	.155	39	.17	68	.29	13	548	2.35	39	26	48	74	.32	802.0	3.44

SEC STATISTICS

Year	Sets	MP	Kills	KPS	E	TA	Pct.	Ast.	APS	SA	SAPS	SE	Digs	DPS	RE	BS	BA	TB	BPS	Pts.	PTS
2015	74	18	197	2.66	111	636	.135	9	.12	18	.24	38	174	2.35	18	11	16	27	.36	234.0	3.16
2016	62	16	193	3.11	98	589	.161	15	.24	17	.27	42	153	2.47	5	6	11	17	.27	221.5	3.56
TOTAL	136	34	390	2.87	209	1225	.148	24	.18	35	.26	80	327	2.40	23	17	27	44	.32	455.5	3.35



ENIJA BIDZANE

SOPHOMORE / 5-9 / OH
TALSI, LATVIA
MURJANU GYMNASIUM

Category	Career High	Opponent/Date
Kills	19	at Eastern Michigan, 9/17/16
Attempts	38	at Eastern Michigan, 9/17/16
Hitting Percentage	.667	vs. Colgate, 9/17/16
Assists	2	vs. Georgia, 10/12/16
Digs	10	vs. Georgia, 10/12/16
Blocks	5	vs. Mississippi State, 10/16/16
Aces	3	vs. Missouri, 10/7/16
Points	19.5	at Eastern Michigan, 9/17/16

2016: Started in six matches for the Tigers and appeared in 22 at outside hitter ... Finished with 103 kills on the season with a 1.87 kills/set average ... Career-high 19 kills at Eastern Michigan (9/17) ... Led the team with 14 kills and a .500 hitting percentage vs. Alabama (10/9) ... Had a career-high 10 digs with seven kills in 3-0 sweep of Georgia (10/12) ... Totaled three service aces against Missouri (10/7) ... Finished with a career-best five blocks in 3-2 win over Mississippi State (10/16).

PRIOR TO AUBURN: Brings a wealth of international experience ... Member of the Latvian team at the 2015 Women's European Championship ... Participated in the U20 and U18 European Qualification for the World Championships in 2015 and 2013, respectively ... Competed at the 2014 U19 and 2013 U18 European Championships ... Member of the Zeltaleja club that competes in the Baltic Women's League ... Named the top hitter following the 2014-15 Latvia Women's Volleyball Championship ... Member of the 2011-12 Latvian Youth championship team and was named the top player.

PERSONAL: Daughter of Kristina Bidzane and Mareks Bidzans ... Has a brother, Valts Bidzans ... Enjoys anything related to art ... Working on a degree from the College of Liberal Arts.

CAREER STATISTICS

Year	Sets	MP	Kills	KPS	E	TA	Pct.	Ast.	APS	SA	SAPS	SE	Digs	DPS	RE	BS	BA	TB	BPS	Pts.	PTS
2016	55	22	103	1.87	55	325	.148	3	.05	7	.13	9	46	.84	7	3	12	15	.27	119.0	2.16
TOTAL	55	22	103	1.87	55	325	.148	3	.05	7	.13	9	46	.84	7	3	12	15	.27	119.0	2.16

SEC STATISTICS

Year	Sets	MP	Kills	KPS	E	TA	Pct.	Ast.	APS	SA	SAPS	SE	Digs	DPS	RE	BS	BA	TB	BPS	Pts.	PTS
2016	39	14	65	1.67	32	216	.153	3	.08	7	.18	8	42	1.08	7	3	10	13	.33	80.0	2.05
TOTAL	39	14	65	1.67	32	216	.153	3	.08	7	.18	8	42	1.08	7	3	10	13	.33	80.0	2.05



GWYN JONES

SOPHOMORE / 6-3 / MB
GREENVILLE, IND.
FLOYD CENTRAL HS

Category	Career High	Opponent/Date
Kills	16	2x, last at Missouri, 11/18/16
Attempts	41	vs. Ole Miss, 11/6/16
Hitting Percentage	.526	at Texas A&M, 9/25/16
Assists	1	at Georgia, 10/2/16
Digs	2	7x, last vs. South Carolina, 11/20/16
Blocks	4	5x, last vs. Mississippi State, 10/16/16
Aces	-	-
Points	17.0	at Arkansas, 10/23/16

AWARDS AND HONORS

2016 SEC All-Freshman Team

2016: Competed in all 123 sets for the Tigers, primarily on the right side ... Second on the team with 321 kills and a 2.61 kills/set average ... Totaled 59 blocks to come in second on the squad ... Recorded double-digit kills in all but two SEC matches this season ... Set a career-high at Arkansas, having 16 kills in the 3-1 win (10/23) ... Followed with another 16-kill performance at nationally-ranked Missouri (11/18) ... Dropped 15 kills at Georgia (10/2) ... Finished with 14 kills on three occasions - Miami (OH) (9/9), at Mississippi State (9/30), and Ole Miss (11/4) ... Recorded four blocks on five occasions ... Hit a season-best .526 (10-0-19) at Texas A&M (9/25).

HIGH SCHOOL/CLUB: Played for Floyd Central High School ... Competed club volleyball with KIVA (Kentucky Indiana Volleyball Academy) ... 2015 Indiana All-State first team honoree ... named Indiana All-State second team as a junior ... PrepVolleyball "Senior Ace" ... member of the 2014 Junior Volleyball Association All-National Team ... Three-time Hoosier Hills All-Conference ... Guided Floyd Central to three-straight sectional and regional championships (2013, 2014, 2015) ... conference champions in 2013 and 2014 ... 2014 AVCA Phenom list ... 2013 PrepVolleyball All-American.

PERSONAL: Full name is Gwyn Jeannine Jones ... Daughter of Paul and Jill Jones ... Has a brother, Garrett ... Mother, Jill, played volleyball at Kentucky, while her father, Paul, played football at Eastern Kentucky ... Aunt, Mary Jones Buczek, played volleyball at Kentucky and was also head volleyball coach at Wake Forest (1995-2000) and Georgia (2000-2005) ... Plans on earning a degree from the Raymond J. Harbert College of Business.

CAREER STATISTICS

Year	Sets	MP	Kills	KPS	E	TA	Pct.	Ast.	APS	SA	SAPS	SE	Digs	DPS	RE	BS	BA	TB	BPS	Pts.	PTS
2016	123	31	321	2.61	117	771	.265	1	.01	0	.00	2	21	.17	0	0	59	59	.48	350.5	2.85
TOTAL	123	31	321	2.61	117	771	.265	1	.01	0	.00	2	21	.17	0	0	59	59	.48	350.5	2.85

SEC STATISTICS

Year	Sets	MP	Kills	KPS	E	TA	Pct.	Ast.	APS	SA	SAPS	SE	Digs	DPS	RE	BS	BA	TB	BPS	Pts.	PTS
2016	73	18	216	2.96	80	507	.268	1	.01	0	.00	0	9	.12	0	0	30	.41	.41	231.0	3.16
TOTAL	73	18	216	2.96	80	507	.268	1	.01	0	.00	0	9	.12	0	0	30	.41	.41	231.0	3.16



ISABELLA THOMPSON

JUNIOR / 6-0 / MB
STOCKTON, CALIF.
SANTA BARBARA CITY COLLEGE
SAINT MARY'S HS

2

AT SBCC: Two-time All-WSC North performer ... Guided Santa Barbara City College to two WSC North titles and helped the team go 48-8 over two seasons (2015, 2016) ... Totaled 101 kills and 70 blocks in 2016, while her 50 solo blocks ranked No. 2 in the Western State Conference.

HIGH SCHOOL/CLUB: Played high school volleyball at Saint Mary's High School ... Competed with Pacific Coast Volleyball Club ... Four-time conference champion with Saint Mary's ... Member of the PCVC team that captured the Southern California Volleyball Association championship in 2015.

PERSONAL: Full name is Isabella Louise Thompson ... Daughter of Gina and Kevin Thompson ... Has an older brother, Nathaniel ... Plans on majoring in psychology through the College of Liberal Arts.



KARIS BEASLEY

SOPHOMORE / 5-9 / OH/DS
GRANBURY, TEXAS
GRANBURY HS

9

2016: Did not play because of injury.

HIGH SCHOOL/CLUB: Played high school volleyball at Granbury High School ... Club team was Texas Image ... Two-time All-State honoree ... All-District First Team member as a junior and a senior ... Second Team All-District her sophomore season ... A part of the 2013 team that captured a district championship and was a Texas Regional Finalist ... Four-time Academic All-State member ... Finished her career at Granbury as the school's career kills record holder with 1,280 ... Team captain as a junior and a senior ... 2012 All-District Newcomer of the Year.

PERSONAL: Full name is Karis Elaine Beasley ... Daughter of Sandy and Sam Beasley ... Has one brother, Rustin ... Her mother, Sandy, was a member of the Canadian National Softball Team from 1987-1996 and competed at the 1996 Olympics in Atlanta ... Sandy also played softball at Stephen F. Austin ... Working on a degree from the School of Kinesiology in the College of Education.



SHAINA WHITE

SOPHOMORE / 6-1 / MB
MISSION VIEJO, CALIF.
NORTHEASTERN UNIVERSITY
MISSION VIEJO HS

4

AT NORTHEASTERN: CAA All-Rookie Team ... Two-time CAA Rookie of the Week (Sept. 26, Oct. 17) ... Ranked third on the team in total kills (203) and total blocks (61) ... Hit over .600 in back-to-back games with zero errors against Bethune-Cookman and North Florida (Aug 26-27 -- FAU Invitational) ... Against California, tallied 11 kills and a career high five blocks (Sept. 3) ... Registered a career high 12 kills and added four blocks at New Hampshire (Sept. 20) ... In the conference opener, hit .476 on 10 kills and zero errors (Sept. 23) ... Hit another 12 kills and put up seven digs versus James Madison (Oct. 2).

HIGH SCHOOL/CLUB: Four-year letter winner at Mission Viejo High School ... Team captain and MVP ... During her senior season, she collected 343 kills and 301 digs ... Four-time All-Sea View League Honors ... Competed for Laguna Beach Volleyball Club ... Earned silver in USA Volleyball's Girls Junior National 18 Open Championship (GJNC) ... 2016 All-Tournament player.

PERSONAL: Full name is Shaina Noelle White ... Daughter of Jan and Charles White ... Sister, Danielle, played volleyball at Georgetown ... Plans on majoring in accounting through the Raymond J. Harbert College of Business.



MORGAN KULL

FRESHMAN / 5-9 / S
ST. CHARLES, ILL.
ST. CHARLES EAST HS

11

HIGH SCHOOL/CLUB: Played high school volleyball at St. Charles East High School ... Two-time team captain ... Four-time Academic All-Conference ... Two-time All-Conference ... 2016 All-Area Team ... Kane County Athlete of the Month - November 2016 ... Played for Club Fusion Volleyball and was captain for 18 White ... 2017 United State Marine Corps Distinguished Athlete Award winner ... Also played soccer both at the high school and club level and was a three-year letterwinner for St. Charles.

PERSONAL: Full name is Morgan Rae Kull ... Daughter of Jim and Jennifer Kull ... Has an older sister, Katherine ... Mother, Jennifer, played volleyball at Wichita State ... Pursuing a pre-political science degree through the College of Liberal Arts.



SHEA MCNAMARA

FRESHMAN / 6-1 / MB
CUMMING, GA.
SOUTH FORSYTH HS

5

HIGH SCHOOL/CLUB: Guided South Forsyth High School to the state championship in 2015 and the state Final Four in 2016 ... 2015 All-State honorable mention ... 2015 All-Region first team ... 2015 Breakout Player of the Year ... 2014 All-County honorable mention ... Competed with A5 Volleyball Club.

PERSONAL: Full name is Shealyn Christin McNamara ... Daughter of Joe and Karen McNamara ... Has an older brother, Liam, who currently attends Auburn ... Has a younger brother, Reilly ... Grandfather played football at Kings College in Pennsylvania ... Plans on pursuing a degree in biomedical sciences with the College of Science and Mathematics.



ANNA STEVENSON

FRESHMAN / 6-1 / MB
LAURENS, S.C.
LAURENS HS

22

HIGH SCHOOL/CLUB: Played high school volleyball at Laurens District 55 and was a member of Upward Stars Volleyball Club ... 2016 Under Armour High School All-America Third Team ... PrepVolleyball Senior Ace ... Helped 18U team win the 2016 AAU National Title ... 2016 Index Journal Player of the Year ... 2015 AVCA Phenom list ... 2016 All-State ... Three-time All-Region selection ... Four-time team Most Valuable Player (2013-16).

PERSONAL: Full name is Anna Elise Stevenson ... Daughter of Rodney and Valerie Stevenson ... Has a brother, David ... Plans on pursuing a degree in elementary education through the College of Education.



PAYTON WHITE

FRESHMAN / 5-7 / DS/L
ZIONSVILLE, IND.
CATHEDRAL HS

14

HIGH SCHOOL/CLUB: Two-time AAU All-American ... 2014 AVCA and PrepVolleyball All-America Watch List ... PrepVolleyball Senior Ace ... 2015 AVCA Phenom Watch List ... Guided Cathedral High School to back-to-back Indiana 4A State titles (2015, 2016) ... Indiana Senior All-Star ... 2015 All-City honorable mention ... High school squad played to a runner-up finish at the state tournament in 2014 ... Competed for Munciana Volleyball Club ... 2014 runner-up at AAU Nationals.

PERSONAL: Full name is Payton Mackenzie White ... Daughter of Stephanie and Brad White ... Has three siblings - Sloane, Kendall, Max ... Father, Brad, played both football and baseball at Indiana ... Sister, Sloane, played volleyball at College of Charleston ... Other sister, Kendall, is a current member of the Penn State volleyball team.