



# 2017 AUBURN GYMNASTICS

AUBURN ATHLETICS COMMUNICATIONS: 392 SOUTH DONAHUE DRIVE || AUBURN, AL 36830 || AUBURNTIGERS.COM || @AUBURNGYM

## 2017 GYMNASTICS SCHEDULE

0-5, 0-3 SEC

Date	Opponent	Time (CT)/Result
Jan. 6	<b>OREGON STATE</b>	L, 195.275-195.575
Jan. 13	<b>GEORGIA*</b>	L, 196.075-196.800
Jan. 20	at Kentucky*	L, 195.800-197.100
Jan. 27	at Florida*	L, 196.400-197.700
Jan. 29	vs. Alabama#	L, 194.675-195.850
Feb. 3	<b>ARKANSAS*</b>	7 p.m. (SEC+)
Feb. 10	vs. Oklahoma^	6:45 p.m.
Feb. 17	at Alabama*	7:30 p.m. (SECN)
Feb. 24	<b>LSU*</b>	7:30 p.m. (SECN)
March 3	at Missouri*	7 p.m. (SEC+)
March 10	<b>PITTSBURGH</b>	7 p.m. (SEC+)
March 18	SEC Championships	TBA
April 1	NCAA Regional	TBA
April 14-15	NCAA Championships	TBA

\* -- SEC meets

# -- Elevate Meet at the Birmingham-Jefferson Convention Complex

^ -- Perfect 10.0 Challenge - Oklahoma City, Okla.

S -- Veterans Memorial Arena - Jacksonville, Fla.

% -- Seattle, Wash.; Gainesville, Fla.; Fayetteville, Ark.; Champaign, Ill.; Lincoln, Neb.; Morgantown, W.V.

& -- Chaifetz Arena -- St. Louis, Mo.

### COACHING STAFF

<b>Head Coach</b>	Jeff Graba (Seventh Season)
<b>Assistant Coach</b>	Kurt Hettinger (Ninth Season)
<b>Assistant Coach</b>	Mary McDaniel (Second Season)
<b>Director of Ops</b>	Dawn Schueller (Sixth Season)
<b>Athletic Trainer</b>	Janet Taylor (12th Season)

### SOCIAL: #WarEagle

» <b>Twitter</b>	@AuburnGym
» <b>Facebook</b>	AuburnGym
» <b>Instagram</b>	@AuburnGymnastics

### TV: SEC NETWORK

» <b>Play-by-Play</b>	John Roethlisberger
» <b>Analyst</b>	Alicia Sacramone Quinn
» <b>Online:</b>	WatchESPN.com

### AUBURN ATHLETICS COMMUNICATIONS

Kendra Willard	kal0014@auburn.edu
Web	AuburnTigers.com
Office Phone	(334) 844-9800

## Quick Facts

Location	Auburn, Ala.
Nickname	Tigers
Enrollment	25,469
Colors	Burnt Orange and Navy Blue
Conference	Southeastern
President	Dr. Jay Gogue
Athletic Director	Jay Jacobs
Facility	Auburn Arena



## #24 ARKANSAS

Friday, Feb. 3 • 7 p.m. CT  
Auburn Arena • Auburn, Ala.



Site	Auburn, Ala.
Venue	Auburn Arena
TV	SEC Network+
Live Stats	AuburnTigers.com
Series Record	Auburn leads 15-14 in Auburn
Last Regular Season Meeting	Jan. 29, 2016 in Fayetteville Arkansas, 196.600-195.975

<b>AUBURN</b>	Rankings	17
	2017 Record	0-5
	Head Coach	Jeff Graba
	Record at AU (Year)	72-93-1 (7th)
<b>ARKANSAS</b>	Rankings	24
	2017 Record	1-3
	Head Coach	Mark Cook
	Record at ARK (Year)	179-219-4 (15th)

## PROBABLE LINEUP (CAREER STARTS)

### VAULT

Emma Engler (8)  
A' Miracal Phillips (8)  
Katie Becker (5)  
Taylor Krippner (19)  
MJ Rott (45)  
Gracie Day (5)  
Alt: Kelsey Kopec

### BEAMS

Samantha Cerio (15)  
Kendal Moss (2)  
Kelsey Kopec (46)  
Taylor Krippner (19)  
Emma Engler (9)  
Gracie Day (5)  
Alt: Katie Becker

### BEAM

Kullen Hlawek (25)  
Samantha Cerio (9)  
Emma Engler (15)  
Katie Becker (3)  
Emma Slappey (5)  
Taylor Krippner (18)  
Alt: Gracie Day

### FLOOR

Katie Becker (3)  
Lucia Scaglione (9)  
Gracie Day (4)  
Kullen Hlawek (29)  
Emma Slappey (4)  
MJ Rott (39)  
Alt: Samantha Cerio

## NO. 17 AUBURN RETURNS TO THE PLAINS HOSTING NO. 24 ARKANSAS

The No. 17 Auburn gymnastics team returns to The Plains after two long weeks on the road, hosting No. 24 Arkansas Friday, Feb. 3. The Tigers and the Razorbacks are set to face off at 7 p.m. CT in Auburn Arena and the meet will be streamed live on SEC Network+.

"This has been a good rivalry for us," head coach Jeff Graba. "Arkansas has had our number early on in the series, but we've battled back and evened things up over the last couple seasons. They are going to come into Auburn with some swagger and we have to figure things out quickly if we want to be successful."

### IN THE RANKINGS

After a busy week of travel and tough competition, Auburn stands at No. 17 in the recent RoadToNationals.com poll with a 195.645 average.

"Last week was a roller coaster week for this team," Graba said. "We lost two gymnasts that included our team leader and anchor on three events. We handled the adversity Friday and scored our season high. However, our young team couldn't seal the deal Sunday. We are all frustrated with the beam performance against Alabama Sunday and are going to be hard at work to address it."

Behind two strong showings on bars, the Tigers moved up to No. 9 in the event nationally with a 49.070 average. Auburn also stands at No. 14 on floor, averaging 49.005.

#WarEagle



AuburnTigers.com

@AuburnGym | @AuburnTigers  
@CoachJeffGraba/AuburnGym  
/AuburnTigers

## TEAM SCHEDULE AND MEDIA AVAILABILITY » WEEK OF JANUARY 9 - 15

MONDAY January 30	TUESDAY January 31	WEDNESDAY February 1	THURSDAY February 2	FRIDAY February 3	SATURDAY February 4	SUNDAY February 5
OFF	<b>MEDIA INTERVIEWS</b> 12:45 p.m. McWhorter Center	<b>PRACTICE</b> 1 p.m. - 4 p.m. McWhorter Center	<b>PRACTICE</b> 1 p.m. - 4 p.m. McWhorter Center	<b>MEET</b> 7 p.m. <b>Auburn vs Arkansas SEC Network+</b>	<b>PRACTICE</b> Earl Morning Conditioning McWhorter Center	OFF
	<b>PRACTICE</b> 1 p.m. - 4 p.m. McWhorter Center					

## AUBURN ATHLETICS COMMUNICATIONS

## AUBURNTIGERS.COM

For updated game notes, statistics and all the latest information on Auburn gymnastics and meet weekend activities, go to [AuburnTigers.com](http://AuburnTigers.com).

## INTERVIEW POLICY

Coach Graba, assistant coaches and all athletes are available for phone and personal interviews by contacting Kendra Willard in the media relations office. Post-meet interviews will be conducted in the media room following a 10-minute cooling-off period.

## CREDENTIALS

Anyone wishing to cover an Auburn gymnastics meet should contact Kendra Willard in the communications office at least one day in advance in order to make the proper arrangements. Credentials are required for attendance.

## MATCH DAY SERVICES

Notes for both teams and lineup sheets will be provided prior to the meet. Stats will be distributed between each rotation and after the meet. Wireless internet is available in the Arena; ask Kendra Willard for the password.

## VIDEO SERVICES

FTP feeds of selected Auburn gymnastics highlights are available for the media. A number of studio and satellite services may be arranged for electronic media by calling Andrew Aaron in the Auburn video services office at 334.750.7133 or by emailing [aba0016@auburn.edu](mailto:aba0016@auburn.edu).

## PHOTO SERVICES

For photos of Auburn gymnastics or anything pertaining to Auburn Athletics, contact Wade Rackley at 334-750-6907 or via email at [wwr0004@auburn.edu](mailto:wwr0004@auburn.edu)

## COMMUNICATIONS STAFF

Kendra Willard      Gymnastics contact  
cell: 614-929-8029  
email: [kal0014@auburn.edu](mailto:kal0014@auburn.edu)

Kirk Sampson Associate AD  
cell: 334-750-1385  
email: [sampska@auburn.edu](mailto:sampska@auburn.edu)

Cassie Arner SEC Network/TV contact  
cell: 334-750-0502  
email: [carner@auburn.edu](mailto:carner@auburn.edu)

## GAMEDAY EXPERIENCE: AUBURN ARENA

» The Auburn gymnastics program has enjoyed four sellouts (7,424) in the last three seasons at Auburn Arena. The Tigers have reached new heights already in 2017 as season ticket holder numbers have risen yet again.



**SCOUTING ARKANSAS**

The Arkansas gymnastics team picked up its third-straight victory over Alabama Friday, Jan. 27, as the Razorbacks topped the Tide, 195.825-195.325, at home in Barnhill Arena.

The team set season bests on vault (48.900) and beam (49.125), while matching a season best on bars (48.825). Freshman Jessica Yamzon won the all-around title with a score of 39.225.

The Razorbacks enter the week at No. 24 in the national rankings. The team ranks tied for 15th nationally on beam at 48.950 and are 18th on floor with a 48.894 average. They stand 24th on vault at 48.838.

**AUBURN/ARKANSAS SERIES HISTORY**

Auburn holds the edge in the all-time series against Arkansas with a 15-14 overall record. The series between the two squads dates back to 2003 when the Razorback gymnastics team first joined the collegiate competition.

The Tigers have held the advantage in the last 10 meetings, standing at 7-3. Auburn traveled to Fayetteville last year and fell to the Razorbacks, 196.600-195.975. Prior to 2016, Auburn had captured three-straight regular season wins.

**AUBURN LINEUP VS ARKANSAS**

Auburn will feature 18 routines from sophomores and freshmen Friday vs. Arkansas, while the other six will come from the team's four seniors.

On vault, senior MJ Rott will guide the youthful lineup as she is set to compete in her 46th meet in this event. Sophomores Emma Engler, A'Miracal Phillips, and Taylor Krippner join Rott, while freshmen Katie Becker and Gracie Day are also set to compete.

The team has excelled on bars this season and will be led by redshirt senior Kelsey Kopec, making her 47th start in the event. Sophomore Samantha Cerio will lead off the event with freshman Kendal Moss following. Krippner, Engler, and Day will each represent the Tigers in the second rotation.

Auburn's youth shines through on beam as three spots are held by sophomores (Cerio, Engler, Krippner), while Becker and redshirt freshman Emma Slappey are also set to compete. Senior Kullen Hlawek is set to lead off for the Tigers in rotation three.

Floor brings the most experience for Auburn as Rott and Hlawek

**GYMNAST TO WATCH: KELSEY KOPEC**

» Redshirt senior Kelsey Kopec picked up a season-high score on bars against Alabama in the annual Elevate the Stage meet Sunday. She captured the event title with a 9.875.



are joined by classmate Lucia Scaglione in the event. Becker, Day and Slappey will also compete for points for Auburn.

**LAST REGULAR SEASON MEETING (JANUARY 29, 2016)**

Auburn fell to Arkansas, 196.6-195.975, in Barnhill Arena.

The Tigers opened competition on their strongest event, scoring a 49.25 on bars. Emma Engler and Abby Milliet captured the event title, scoring a 9.875, respectively. That mark was a career-high for Engler. Kait Kluz and Caitlin Atkinson each finished with a 9.85 for Auburn, while Taylor Krippner closed out scoring with a 9.8.

Next on vault, MJ Rott set a season-high with a 9.9 to tie for first overall on the apparatus. Atkinson followed with a 9.875, while Engler and Lexus Demers were awarded a 9.775 each. Krippner's 9.7 capped the scoring for Auburn as the team totaled a 49.025 in the second rotation.

The team earned its best floor score of the season, totaling a 49.275 following solid routines throughout the third rotation. Atkinson scored a 9.9 to lead the Tigers. Kluz earned a 9.875 and Rott followed with a 9.85. Kullen Hlawek and Demers finished with a 9.825 a piece for Auburn.

The Tigers closed out the meet on beam and were led by Demers with a 9.85. Milliet earned a 9.825 and Atkinson scored 9.775 for the Auburn. Hlawek and Krippner each had a 9.65 and a 9.325, respectively, to end the night.

**LAST TIME OUT - OVERCOMING ADVERSITY IN FL**

The No. 16 Auburn gymnastics team put together its best performance of the season, finishing with a 196.4 on the road at No. 3 Florida last Friday.

A total of 12 individual career or season-best scores were met, while 19 of the 24 routines came from sophomores and freshmen.

Auburn opened the evening on bars and totaled a 49.05, having four Tigers reach season-best scores. Samantha Cerio tied a season high with a 9.8 to kick things off. Kendal Moss appeared in her first collegiate meet and came away with a 9.7. Taylor Krippner earned a 9.825 in the fourth slot and was followed by a season-tying score of 9.85 from Emma Engler. Gracie Day anchored the event and after just a small step on her double Arabian dismount, she finished with a career high, 9.875.

The Tigers concluded the second rotation with a 49.025 on

**SEC STANDINGS & SCHEDULE**

	<i>(as of Jan. 30)</i>							
	SEC Meets			All Meets			AVG	
	W	L	Pct.	W	L	Pct.		
LSU	3	0	1.000	4	0	1.000	197.588	
Florida	2	0	1.000	4	0	1.000	197.431	
Alabama	1	2	.333	2	3	.400	196.440	
Georgia	3	1	.750	4	1	.800	196.115	
Kentucky	1	2	.333	3	2	.600	196.035	
Missouri	1	2	.333	5	2	.714	195.975	
AUBURN	0	3	.000	0	5	.000	195.645	
Arkansas	1	2	.333	1	3	.250	195.038	

**THIS WEEK IN THE SEC**

Friday, February 3

- #9 Georgia at #10 Kentucky, 6 p.m.
- #24 Arkansas at #17 Auburn, 7 p.m.
- #3 Florida at #6 Alabama, 7:30 p.m.
- #11 Missouri at #2 LSU, 7:30 p.m.

**AUBURN IN THE RANKINGS**

**TEAM (as of Jan. 30)**

EVENT	AVG	NAT'L	REG.
Vault	48.905	20th	4th
Bars	49.070	9th	3rd
Beam	48.665	24th	5th
Floor	49.005	14th	4th
Team Total	195.645	17th	4th

**INDIVIDUAL RANKS (Top 50 National :: Top 25 Region)**

GYMNAST	EVENT	AVG	NAT'L	REG.	
Katie Becker	Floor	9.817	-	21st	
	Vault	9.820	-	t-15th	
		9.830	-	t-11th	
Emma Engler	Bars	9.830	-	t-11th	
	Vault	9.780	-	25th	
Taylor Krippner	A-A	38.700	-	16th	
		Bars	9.808	-	t-22nd
		Beam	9.808	-	t-15th
MJ Rott	Vault	9.795	-	21st	
	Floor	9.830	-	19th	
Emma Slappey	Beam	9.785	-	21st	
	Floor	9.837	-	15th	

## NATIONAL RANKINGS

(Jan. 30)

Rk	Team	Avg.	High
1	<b>Oklahoma</b>	197.781	198.025
2	<b>LSU</b>	197.588	197.825
3	<b>Florida</b>	197.431	197.700
4	Utah	197.075	197.625
5	UCLA	196.617	197.325
6	<b>Alabama</b>	196.440	197.225
7	Michigan	196.381	197.225
8	Denver	196.250	196.875
9	<b>Georgia</b>	196.115	197.075
10	<b>Kentucky</b>	196.035	197.100
t-11	Southern Utah	195.975	196.150
t-11	<b>Missouri</b>	195.975	196.225
t-11	Boise State	195.975	196.400
14	<b>Oregon State</b>	195.925	196.900
15	California	195.800	196.300
16	George Washington	195.731	196.150
17	<b>AUBURN</b>	195.645	196.400
18	Washington	195.600	196.300
19	Ohio State	195.538	196.450
20	Nebraska	195.517	196.050
21	Illinois	195.256	195.900
22	Iowa	195.245	196.175
23	Minnesota	195.075	196.800
24	<b>Arkansas</b>	195.038	195.825
25	West Virginia	195.031	196.300

**BOLD** - 2017 regular season opponents

## Inside the Matchup

**Auburn vs. Arkansas** 25-14 (.517)

In Auburn: 4-3

In Fayetteville: 1-6

Neutral: 10-5

## Last 10 Meetings (7-3)

2012	Away	L	195.800-196.800
2012	SEC Championship	L	194.100-194.175
2013	Home	W	196.325-195.650
2013	SEC Championship	W	196.550-196.400
2014	Away	W	196.550-196.100
2014	SEC Championship	W	195.550-194.900
2015	Home	W	197.075-196.250
2015	SEC Championship	W	196.925-195.950
2016	Away	L	195.975-196.600
2016	SEC Championship	W	196.975-196.500

vault. Opening up the event was Katie Becker with a 9.8, while A'Miracal Phillips added a 9.725. Auburn earned a pair of 9.825s from Krippner (season best) and Day and MJ Rott finished with a 9.85 for another season best in the event.

Auburn's youthful squad moved on to floor and had three Tigers come away with personal bests. Lucia Scaglione and Emma Slaphey highlighted the event with a pair of career-high scores in a 9.825 and a 9.9, respectively. Day's 9.85 was also a career best. Becker and Rott chipped in 9.8s each as Auburn finished with a 49.175.

The Tigers closed out the meet with a season-best 49.15 on beam as Engler and Krippner finished with a pair of career highs on the evening. Engler highlighted the evening with a 9.9, while Krippner anchored the event with a 9.875. Kullen Hlawek's 9.775 was her best of the season as she led off the rotation. Cerio and Slaphey each earned 9.8s.

**ELEVATE MEET - HIGHS AND LOWS**

Auburn and Alabama faced off in the third-annual Elevate the Stage Meet Sunday, Jan. 29, in Birmingham. The Tigers put together solid performances on bars, vault, and floor, but struggled on beam in their loss to the Tide.

The bars crew kicked things off in the first rotation with a season-high 49.150 as the team saw great dismounts and sticks from the competitors. Redshirt senior Kelsey Kopec led the way with an event-winning score of 9.875.

The Auburn vaulters saw season highs from freshman Katie Becker (9.825) and sophomore Emma Engler (9.8) on the way to a 48.9. Floor also had solid performances, including a season-best score of 9.825 from senior Kullen Hlawek.

The fourth and final rotation had the Tigers on beam and the youthful lineup ended up counting two falls.

**SWINGING HIGH ON BARS**

The bars corps has progressively gotten better and better with each meet and reached new highs this past weekend, scoring a 49.050 at Florida and a 49.150 vs. Alabama. With the help of these top scores, the Tigers jumped to No. 9 nationally in the event with a 49.070 average.

Freshman Gracie Day and sophomore Emma Engler are tied for 11th in the Central Region rankings, having 9.830 average on bars each. Most recently, redshirt senior Kelsey Kopec picked up

**GYMNAST TO WATCH: EMMA SLAPHEY**

» Redshirt freshman Emma Slaphey had a solid weekend last week for the Tigers on the road. Against Florida (Jan. 27), she earned a career-best 9.9 on floor. In addition, she picked a career-high 9.85 on beam vs. Alabama Sunday.

the event title vs. Alabama with a 9.875.

**STRENGTH OF SCHEDULE**

In a poll on RoadtoNationals.com, Auburn's 2017 schedule ranks the second toughest schedule in the nation.

Ten of Auburn's 11 regular season meets are against teams ranked in top 25 of the NACGC/W Preseason Poll. Those include match ups with five teams who competed in last year's Super Six - Oklahoma (Feb. 10), LSU (Feb. 24), Alabama (Jan. 29, Feb. 17), Florida (Jan. 27), Georgia (Jan. 13).

**SEASON TICKET RECORDS**

In addition to setting a new program preseason ranking record, this year's team reached another height before the season began. With the competition year about to begin, Auburn has over 1,550 season ticket holders, marking the most sold for the program.

The Tigers have sold out Auburn Arena three times in the last two years (7,424) and are looking forward to hosting SEC rivals Georgia, Arkansas, and LSU, in addition to Oregon State and Pittsburgh this season.

**MAKING THEIR COMEBACK**

Sophomores Emma Engler and A'Miracal Phillips each suffered season-ending injuries at Arkansas last season (Jan. 29, 2016), but are on their way to making a big impact in 2017.

Engler, who hurt her knee on her beam dismount vs. the Razorbacks, has worked her way back into the beam and bars lineups. Phillips, a powerful vaulter from Enterprise, Ala., injured her foot at Arkansas and returned to competition vs. Georgia.

**SMARTY PANTS**

A trio of Tigers in Kelsey Kopec, Kullen Hlawek, and Samantha Cerio are engrossed in their studies as all three are engineering majors. Kopec, who graduated last spring with a degree in mechanical engineering, is currently working on her MBA at Auburn.

In addition, senior Lucia Scaglione and junior Kennedy Finister are Biomedical Science majors.

**UP NEXT**

Auburn takes to the road again for a neutral site meet vs. No. 1 Oklahoma, Feb. 10. The Tigers and the Sooners face off in the annual Perfect 10.0 Challenge in Oklahoma City, starting at 6:45 p.m. CT.



## 2017 AUBURN GYMNASTICS ROSTER

NAME	EVENT	HT	CL	HOMETOWN/CLUB
Katie Becker	AA	5-4	Fr.	Boone, N.C./Everest Gymnastics
Telah Black	AA	5-3	So.	Helena, Ala./Jamjev Gymnastics
Samantha Cerio	AA	5-0	So.	Huntersville, N.C./KPAC
Gracie Day	AA	5-4	Fr.	San Antonio, Texas/Aerial Athletics
Emma Engler	AA	5-3	So.	Raleigh, N.C./Sonshine Gymnastics
Kennedy Finister	AA	5-1	Jr.	Magnolia, Texas/Champion Gymnastics
Sarah Garcia	AA	5-3	Jr.	Temecula, Calif./SCEGA
Kullen Hlawek	AA	5-1	Sr.	Fulshear, Texas/Champion Gymnastics
Kelsey Kopec	AA	5-7	RS Sr.	Alpharetta, Ga./Ultimate Gymnastics
Taylor Krippner	AA	5-1	So.	Cypress, Texas/World Champions
Abby Milliet	AA	5-1	Jr.	Denton, Texas/Denton Gymnastics Academy
Kendal Moss	AA	5-4	Fr.	Cornelius, N.C./Everest Gymnastics
A' Miracal Phillips	AA	5-6	So.	Enterprise, Ala./Alabama Elite
MJ Rott	AA	5-0	Sr.	Stillwater, Minn./Rising Stars Gymnastics
Lucia Scaglione	FX/VT	5-0	Sr.	Tampa, Fla./Lafleurs Tampa
Emma Slappey	AA	5-2	RS Fr.	Jacksonville, Fla./Starlight Gymnastics
Cara Stricklin	AA	5-5	Jr.	Mandeville, La./Cypress Pointe Gymnastics

<b>Head Coach:</b>	Jeff Graba (Seventh year at Auburn)
<b>Assistant Coach:</b>	Kurt Hettinger (Ninth year at Auburn)
<b>Assistant Coach:</b>	Mary McDaniel (Second year at Auburn)
<b>Director of Operations:</b>	Dawn Schueller (Sixth year at Auburn)
<b>Volunteer Assistant:</b>	Rachel Inniss (First year at Auburn)
<b>Athletic Trainer:</b>	Janet Taylor (12th year at Auburn)
<b>Graduate Assistant:</b>	Corrie Lathrop (First year at Auburn)
<b>Student Managers:</b>	Alexa Moates, Blake Jones

## PRONUNCIATION GUIDE

TELAH Black	TAY-lah
Samantha CERIO	SAIR-ee-oh
KULLEN HLAWEK	KULL-in LAUW-ick
Kelsey KOPEC	CO-peck
Abby MILLIET	mill-AYE
A' MIRACAL Phillips	uh-MIRacle
MJ ROTT	WROTE
LUCIA SCAGLIONE	lou-CHEE-uh scag-lee-OH-knee
Jeff GRABA	GRAY-buh



## Head Coach Jeff Graba

at Auburn & Overall: 72-93-1 (7th)



**Hometown:**  
Forest Lake, Minn.  
**Education:**  
Minnesota, 1992

## COACHING EXPERIENCE

Flips Gym Head Coach (1988-1995)  
 • White Bear Lake, Minn.  
 Hamline University Assistant Coach (1992-1998)  
 • St. Paul, Minn.  
 Midwest Gym Head Coach (1995-2003)  
 • Little Canada, Minn.  
 Utah State Assistant Coach (2004-2005)  
 • Logan, Utah  
 Utah Assistant Coach (2006-2010)  
 • Salt Lake City, Utah  
 Auburn Head Coach (2010-)  
 • Auburn, Ala.

Three-time SEC Coach of the Year Jeff Graba enters his seventh season at the helm of the Auburn gymnastics program in 2017 and has guided the Tigers record heights during his time on The Plains.

For his efforts over the past six seasons, the Minnesota native was named SEC Coach of the Year in 2014 and 2015 and SEC co-Coach of the Year in 2012.

Most recently, Graba and the 2016 team added to the list of firsts for the program under his guidance. The Tigers snapped the 117-meet losing skid to Alabama in February of that season, defeating the Crimson Tide at home (197.275-197.250). Auburn also defeated Georgia in Athens for the first time in program history, setting a new program-high road score on the way (197.325).

In addition, the Tigers earned the program's first No. 1 NCAA regional seed and captured the NCAA Ann Arbor Regional title with a 196.525.

Auburn enjoyed a breakout season in 2015 as Graba led the Tigers to the NCAA Championship Super Six for the first time in 22 years. That season, Auburn broke or tied 52 program records that season.

Auburn's sixth place finish at the Super Six was the Tigers' second best in history and highest since 1993 with a NCAA nationals record score of 197.075. The Tigers also had a program record Super Six score of 195.625.

Auburn reached the 2015 NCAA Championship for the first time since 2003 and for only the fourth time overall as the Tigers tied a school-best with a runner-up finish at the NCAA Regional with a regional record score of 196.900.

Graba was named Auburn head coach on August 16, 2010. He came to The Plains after spending five years as an assistant coach at Utah. While with the Utes, he was named the 2009 West Region Assistant Coach of the Year while coaching bars, collaborating on floor routines and serving as the recruiting coordinator.

## 2017 MEET-BY-MEET RESULTS

DATE	MEET	RESULT	VAULT	BARS	BEAM	FLOOR	TEAM	OPP. 1	OPP. 2	OPP. 3
1/6	#12 OREGON STATE	L	48.900	48.900	48.800	48.675	195.275	195.575	---	---
1/13	GEORGIA	L	48.900	49.125	48.825	49.225	196.075	196.800	---	---
1/20	at Kentucky	L	48.800	49.125	48.950	48.925	195.800	197.100	---	---
1/27	at Florida	L	49.025	49.050	49.150	49.175	196.400	197.700	---	---
1/29	vs. Alabama	L	48.900	49.150	47.600	49.025	194.675	195.850	---	---
2/3	ARKANSAS	---	---	---	---	---	---	---	---	---
2/10	vs. Oklahoma	---	---	---	---	---	---	---	---	---
2/17	at Alabama	---	---	---	---	---	---	---	---	---
2/24	LSU	---	---	---	---	---	---	---	---	---
3/3	at Missouri	---	---	---	---	---	---	---	---	---
3/10	PITTSBURGH	---	---	---	---	---	---	---	---	---
3/18	at SEC Championship	---	---	---	---	---	---	---	---	---
4/1	at NCAA Regional	---	---	---	---	---	---	---	---	---
4/17-18	at NCAA Championships	---	---	---	---	---	---	---	---	---

AUBURN

0-2

## SEC WEEKLY TEAM RANKINGS

(as of Jan. 30)

Team Total Rank	Team	AVG	High
1.	LSU	197.588	197.825
2.	Florida	197.431	197.700
3.	Alabama	196.440	197.225
4.	Georgia	196.115	197.075
5.	Kentucky	196.035	197.100
6.	Missouri	195.975	196.225
7.	<b>AUBURN</b>	195.645	196.400
8.	Arkansas	195.038	195.825

Vault Rank	Team	AVG	High
1.	Florida	49.438	49.500
2.	LSU	49.388	49.600
3.	Georgia	49.175	49.275
4.	Missouri	49.155	49.425
5.	Alabama	49.140	49.375
6.	<b>AUBURN</b>	48.905	49.025
7.	Kentucky	48.895	49.200
8.	Arkansas	48.838	48.900

Bars Rank	Team	AVG	High
1.	LSU	49.338	49.450
2.	Florida	49.325	49.475
3.	<b>AUBURN</b>	49.070	49.150
4.	Georgia	49.060	49.275
5.	Kentucky	48.990	49.300
6.	Alabama	48.940	49.325
7.	Missouri	48.795	49.200
8.	Arkansas	48.356	48.825

Beam Rank	Team	AVG	High
1.	LSU	49.388	49.475
2.	Florida	49.344	49.425
3.	Alabama	49.295	49.600
4.	Kentucky	49.075	49.425
t-5.	Arkansas	48.950	49.125
t-5.	Missouri	48.950	49.175
7.	Georgia	48.695	49.225
8.	<b>AUBURN</b>	48.665	49.150

Floor Exercise Rank	Team	AVG	High
1.	LSU	49.475	49.525
2.	Florida	49.325	49.325
3.	Georgia	49.185	49.025
t-4.	Missouri	49.075	49.175
t-4.	Kentucky	49.075	49.325
6.	Alabama	49.065	49.375
7.	<b>AUBURN</b>	49.005	49.225
8.	Arkansas	48.894	49.050

## SEC WEEKLY INDIVIDUAL RANKINGS

(as of Jan. 30)

All-Around Rank	Name, School	A-A AVG	High
1.	Kennedi Edney, LSU	39.625	39.625
2.	Kennedy Baker, UF	39.538	39.575
3.	Rachel Dickson, UG	39.525	39.525
t-5.	Alicia Boren, UF	39.500	39.625
t-5.	Ashleigh Gnat, LSU	39.500	39.525

Vault Rank	Name, School	Vault AVG	High
1.	Ashleigh Gnat, LSU	9.938	10.000
t-2.	Alicia Boren, UF	9.925	9.950
t-2.	Alex McMurtry, UF	9.925	9.950
4.	Rachel Slocum, UF	9.917	9.950
t-5.	Amanda Wellick, ARK	9.900	9.900
t-5.	Sydney Snead, UG	9.900	9.950

Bars Rank	Name, School	Bars AVG	High
1.	Alex McMurtry, UF	9.919	9.950
t-2.	Lexie Priessman, LSU	9.888	9.925
t-2.	Amelia Hundley, UF	9.888	9.950
4.	Sarah Finnegan, LSU	9.881	9.925
t-5.	Kennedi Edney, LSU	9.875	9.925
t-5.	Mollie Korh, UK	9.875	9.925

Beam Rank	Name, School	Beam AVG	High
1.	Kiana Winston, UA	9.912	9.950
2.	Alex Hyland, UK	9.885	9.900
t-3.	Myia Hambrick, LSU	9.875	9.900
t-3.	Nickie Guerrero, UA	9.875	9.950
5.	Aja Sims, UA	9.870	9.950

Floor Rank	Name, School	Floor AVG	High
t-1.	Rachel Dickson, UG	9.950	9.950
t-1.	Kennedy Baker, UF	9.950	10.000
3.	Myia Hambrick, LSU	9.933	9.950
4.	Ashleigh Gnat, LSU	9.931	9.950
t-5.	Kiana Winston, UA	9.925	9.950
t-5.	Kennedi Edney, LSU	9.925	9.925

**AUBURN SCORING RECORDS****TOP TEAM SCORES - OVERALL**

	SCORE	OPPONENT	DATE
1.	197.750	vs. Georgia	2/27/15
2.	197.325	at Georgia	3/4/16
3.	197.300	vs. LSU	2/13/15
4.	197.275	vs. Alabama	2/12/16
5.	197.200	vs. Missouri	2/26/16

**TOP TEAM SCORES - HOME ONLY**

	SCORE	OPPONENT	DATE
1.	197.750	vs. Georgia	2/27/15
2.	197.300	vs. LSU	2/13/15
3.	197.275	vs. Alabama	2/12/16
4.	197.200	vs. Missouri	2/26/16
5.	197.175	vs. LSU	2/22/13
	197.175	vs. Arizona State	3/11/16

**TOP TEAM SCORES - AWAY ONLY**

	SCORE	OPPONENT	DATE
1.	197.325	at Georgia	3/4/16
2.	197.125	at LSU	2/19/16
3.	196.875	at Missouri	2/20/15
4.	196.850	at LSU	1/25/14
5.	196.825	at Alabama	2/6/15
	196.825	at TWU	2/5/16

**TOP TEAM SCORES - VAULT**

	SCORE	OPPONENT	DATE
1.	49.500	vs. LSU	2/13/15
	49.500	at Denver	3/2/08
3.	49.425	vs. North Carolina	3/13/15
	49.425	at LSU	1/25/14
5.	49.400	vs. Florida	1/17/14
	49.400	vs. Illinois-Chicago	3/11/07
	49.400	at NCAA Regional (Auburn)	4/4/15

**TOP TEAM SCORES - BARS**

	SCORE	OPPONENT	DATE
1.	49.525	vs. Arkansas	1/23/15
2.	49.500	vs. Centenary	3/5/00
3.	49.475	vs. Florida	2/17/12
4.	49.450	vs. Georgia	2/27/15
	49.450	vs. Maryland	3/20/10

**TOP TEAM SCORES - BEAM**

	SCORE	OPPONENT	DATE
1.	49.600	at Centenary	2/29/04
2.	49.425	at Denver	3/2/08
	49.425	at Alabama	2/15/13
4.	49.400	at LSU	2/8/08
	49.400	at Arkansas	2/2/08
	49.400	at Alabama	2/6/15
	49.400	at SEC Championship	3/21/15

**TOP TEAM SCORES - FLOOR**

	SCORE	OPPONENT	DATE
1.	49.600	vs. Florida	2/13/04
	49.600	vs. Arizona State	3/11/16
3.	49.550	vs. Georgia	2/27/15
4.	49.525	vs. Maryland	3/1/13
5.	49.500	vs. Missouri	2/26/16

**2017 SEASON BESTS****TEAM**

EVENT	SCORE	DATE
TOTAL	196.075	Georgia (Jan. 13)
VAULT	49.025	at Florida (Jan. 27)
BARS	49.150	vs. Alabama (Jan. 29)
BEAM	49.150	at Florida (Jan. 27)
FLOOR	49.225	Georgia (Jan. 13)

**INDIVIDUAL**

EVENT	SCORE	GYMNAST (DATE)
TOTAL	38.700	Abby Milliet (Jan. 6)
VAULT	9.850	3x, last MJ Rott (Jan. 27)
BARS	9.875	2x, last Kelsey Kopec (Jan. 29)
BEAM	9.900	Emma Engler (Jan. 27)
FLOOR	9.950	MJ Rott (Jan. 13)

**2017 TEAM SUPERLATIVES****TEAM TOTAL**

1.	196.400	at Florida	Jan. 27
2.	196.075	GEORGIA	Jan. 13
3.	195.800	at Kentucky	Jan. 20
4.	195.275	OREGON STATE	Jan. 6
5.	194.675	vs. Alabama	Jan. 29

**VAULT**

1.	49.025	vs. Florida	Jan. 27
t-2.	48.900	OREGON STATE	Jan. 6
t-2.	48.900	GEORGIA	Jan. 13
t-2.	48.900	vs. Alabama	Jan. 29
5.	48.800	at Kentucky	Jan. 20

**BARS**

1.	49.150	vs. Alabama	Jan. 29
t-2.	49.125	GEORGIA	Jan. 13
t-2.	49.125	at Kentucky	Jan. 20
4.	49.050	at Florida	Jan. 27
5.	48.900	OREGON STATE	Jan. 6

**BEAM**

1.	49.150	at Florida	Jan. 27
2.	48.925	at Kentucky	Jan. 20
3.	48.825	GEORGIA	Jan. 13
4.	48.800	OREGON STATE	Jan. 6
5.	47.600	vs. Alabama	Jan. 29

**FLOOR**

1.	49.225	GEORGIA	Jan. 13
2.	49.175	at Florida	Jan. 27
3.	49.025	vs. Alabama	Jan. 29
4.	48.925	at Kentucky	Jan. 20
5.	48.675	OREGON STATE	Jan. 6

**PROGRAM BESTS****TEAM**

EVENT	SCORE	DATE
TOTAL	197.750	February 27, 2015
VAULT	49.500	February 13, 2015
	49.500	March 2, 2008
BARS	49.525	January 23, 2015
BEAM	49.600	February 29, 2004
FLOOR	49.600	February 13, 2004
	49.600	March 11, 2016

**INDIVIDUAL**

EVENT	SCORE	GYMNAST, YEAR
ALL AROUND	39.750	Caitlin Atkinson, 2015
VAULT	9.975	MJ Rott, 2015
	9.975	MJ Rott, 2014
	9.975	Julie Dwyer, 2008
BARS	10.0	Sarah Wentworth, 2000
BEAM	10.0	Rachael Tarantino, 2004
	10.0	Sally Cantrell, 2002
FLOOR	10.0	Becky Erwin, 1993

**THE LAST TIME AUBURN...****WON A HOME MEET...**

March 11, 2016 -- vs. Arizona State (197.175)

**WON A ROAD MEET...**

March 4, 2016 -- at Georgia (197.325)

**WON A NEUTRAL SITE MEET...**

March 2, 2016 -- NCAA Ann Arbor Regional (196.525)

**LOST A HOME MEET...**

January 13, 2017 -- Georgia (196.075)

**LOST A ROAD MEET...**

January 27, 2017 -- at Florida (196.400)

**TIED A MEET...**

March 2, 2016 -- NCAA Ann Arbor Regional (196.525)

**SCORED A 197 OR HIGHER...**

March 11, 2016 -- vs. Arizona State (197.175)

**SCORED A PERFECT 10.0...**

February 29, 2004 -- Rachael Tarantino (Beam)





INDIVIDUAL SEASON AND CAREER SCORES

**A'MIRACAL PHILLIPS :: SOPHOMORE**

2017	VAULT	BARS	BEAM	FLOOR	AA
OREGON STATE	---	---	---	---	---
GEORGIA	9.550	---	---	---	---
at Kentucky	---	---	---	---	---
at Florida	9.725	---	---	---	---
vs. Alabama	9.750	---	---	---	---
ARKANSAS	---	---	---	---	---
vs. Oklahoma	---	---	---	---	---
at Alabama	---	---	---	---	---
LSU	---	---	---	---	---
at Missouri	---	---	---	---	---
PITTSBURGH	---	---	---	---	---
at SEC	---	---	---	---	---
NCAA Regional	---	---	---	---	---
NCAA National	---	---	---	---	---
Season Average	9.675	---	---	---	---
Season High	9.750	---	---	---	---
Career High	9.850	---	---	---	---

**EMMA SLAPPEY :: REDSHIRT FRESHMAN**

2017	VAULT	BARS	BEAM	FLOOR	AA
OREGON STATE	---	---	9.700	---	---
GEORGIA	---	---	9.800	9.850	---
at Kentucky	---	---	9.775	9.825	---
at Florida	---	---	9.800	9.900	---
vs. Alabama	---	---	9.850	9.775	---
ARKANSAS	---	---	---	---	---
vs. Oklahoma	---	---	---	---	---
at Alabama	---	---	---	---	---
LSU	---	---	---	---	---
at Missouri	---	---	---	---	---
PITTSBURGH	---	---	---	---	---
at SEC	---	---	---	---	---
NCAA Regional	---	---	---	---	---
NCAA National	---	---	---	---	---
Season Average	---	---	9.785	9.837	---
Season High	---	---	9.850	9.900	---
Career High	---	---	9.850	9.900	---

**MJ ROTT :: SENIOR**

2017	VAULT	BARS	BEAM	FLOOR	AA
OREGON STATE	9.825	---	---	9.825	---
GEORGIA	9.800	---	---	9.950	---
at Kentucky	9.800	---	---	9.750	---
at Florida	9.850	---	---	9.800	---
vs. Alabama	9.700	---	---	9.825	---
ARKANSAS	---	---	---	---	---
vs. Oklahoma	---	---	---	---	---
at Alabama	---	---	---	---	---
LSU	---	---	---	---	---
at Missouri	---	---	---	---	---
PITTSBURGH	---	---	---	---	---
at SEC	---	---	---	---	---
NCAA Regional	---	---	---	---	---
NCAA National	---	---	---	---	---
Season Average	9.795	---	---	9.830	---
Season High	9.850	---	---	9.950	---
Career High	9.975	9.825	9.900	9.950	38.925

**CARA STRICKLIN :: JUNIOR**

2017	VAULT	BARS	BEAM	FLOOR	AA
OREGON STATE	---	---	---	---	---
GEORGIA	---	---	---	---	---
at Kentucky	---	---	---	---	---
at Florida	---	---	---	---	---
vs. Alabama	---	---	---	---	---
ARKANSAS	---	---	---	---	---
vs. Oklahoma	---	---	---	---	---
at Alabama	---	---	---	---	---
LSU	---	---	---	---	---
at Missouri	---	---	---	---	---
PITTSBURGH	---	---	---	---	---
at SEC	---	---	---	---	---
NCAA Regional	---	---	---	---	---
NCAA National	---	---	---	---	---
Average	---	---	---	---	---
Season High	---	---	---	---	---
Career High	---	---	---	---	---

**LUCIA SCAGLIONE :: SENIOR**

2017	VAULT	BARS	BEAM	FLOOR	AA
OREGON STATE	---	---	---	9.725	---
GEORGIA	---	---	---	9.800	---
at Kentucky	---	---	---	9.800	---
at Florida	---	---	---	9.825	---
vs. Alabama	---	---	---	9.800	---
ARKANSAS	---	---	---	---	---
vs. Oklahoma	---	---	---	---	---
at Alabama	---	---	---	---	---
LSU	---	---	---	---	---
at Missouri	---	---	---	---	---
PITTSBURGH	---	---	---	---	---
at SEC	---	---	---	---	---
NCAA Regional	---	---	---	---	---
NCAA National	---	---	---	---	---
Season Average	---	---	---	9.790	---
Season High	---	---	---	9.825	---
Career High	---	---	---	9.825	---

2017 EVENT TITLES

MEET	VAULT	BARS	BEAM	FLOOR	ALL-AROUND
#13 OREGON STATE	Day	---	---	Rott	---
GEORGIA	---	---	---	Rott	---
at #9 Kentucky	---	---	---	---	---
at #3 Florida	---	---	---	---	---
vs. #5 Alabama (Elevate Meet)	---	Kopec	---	---	---
ARKANSAS	---	---	---	---	---
vs. Oklahoma (Perfect 10 Challenge)	---	---	---	---	---
at Alabama	---	---	---	---	---
LSU	---	---	---	---	---
at Missouri	---	---	---	---	---
PITTSBURGH	---	---	---	---	---
at SEC Championship	---	---	---	---	---
NCAA Regional Championship	---	---	---	---	---
NCAA Championship	---	---	---	---	---
NCAA Super Six	---	---	---	---	---
	1	1	---	2	---



**KATIE BECKER**  
Fr. • AA • 5-4



**TELAH BLACK**  
So. • AA • 5-3



**SAMANTHA CERIO**  
So. • AA • 5-0



**GRACIE DAY**  
Fr. • AA • 5-4



**EMMA ENGLER**  
So. • AA • 5-3



**KENNEDY FINISTER**  
Jr. • AA • 5-1



**SARAH GARCIA**  
Jr. • VT • 5-3



**KULLEN HLAWEK**  
Sr. • AA • 5-1



**KELSEY KOPEC**  
R-Sr. • AA • 5-7



**TAYLOR KRIPPNER**  
So. • AA • 5-1



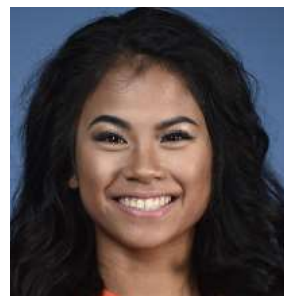
**ABBY MILLIET**  
Jr. • AA • 5-1



**KENDAL MOSS**  
Fr. • AA • 5-4



**A'MIRACAL PHILLIPS**  
So. • AA • 5-6



**MJ ROTT**  
Sr. • AA • 5-0



**LUCIA SCAGLIONE**  
Sr. • FX • 5-0



**EMMA SLAPHEY**  
R-Fr. • AA • 5-2



**CARA STRICKLIN**  
Jr. • AA • 5-5



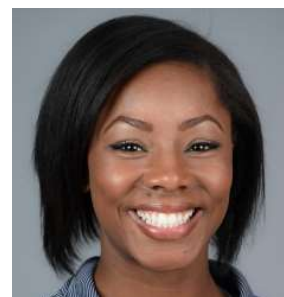
**JEFF GRABA**  
HEAD COACH



**KURT HETTINGER**  
ASSISTANT COACH



**MARY MCDANIEL**  
ASSISTANT COACH



**RACHEL INNISS**  
VOLUNTEER ASSISTANT



**DAWN SCHUELLER**  
DIRECTOR OF OPERATIONS