



2017-18 AUBURN WOMEN'S GOLF

AUBURN ATHLETICS COMMUNICATIONS: 392 SOUTH DONAHUE DRIVE || AUBURN, AL 36830 || AUBURNTIGERS.COM || @AUBURNWGOLF

2017-18 SCHEDULE/RESULTS

September

15-17 Mason Rudolph Championship 7th/15
Vanderbilt Legends Club (Franklin, Tenn.)

October

1-3 Magnolia Invitational T-4th/10
Old Waverly GC (West Point, Miss.)

22-24 Maryb S. Kauth Invitational 9th/14
Briggs Ranch GC (San Antonio, Texas)

November

3-5 Battle at the Beach T-5th/14
Club Campestre (San Jose del Cabo, Mexico)

February

4-6 UCF Challenge 3rd/16
Eagle Creek GC (Orlando, Fla.)

March

2-4 Darius Rucker Intercollegiate T-7th/18
Long Cove Club (Hilton Head Island, S.C.)

18-20 **Evans Derby Experience** 4th/12
Auburn University Club (Auburn, Ala.)

April

6-8 Bryan National Collegiate T-3rd/17
Bryan Park Champions Course (Browns Summit, NC)

18-22 SEC Championship T-5th/14
Greystone G&CC (Birmingham, Ala.)
Match Play QF: lost to Georgia, 3-2

May

7-9 NCAA Austin Regional T-3rd/18
University of Texas GC (Austin, Texas)

18-23 NCAA Championship Karsten Creek GC (Stillwater, Okla.)

AUBURN ATHLETICS COMMUNICATIONS

WES TODD Assistant Director/W. Golf Contact
..... wlt0006@auburn.edu
..... C: 334-750-5682
KIRK SAMPSON Associate AD
..... kirk@auburn.edu

Web AuburnTigers.com
Twitter @AuburnWGolf
Facebook /AuburnWGolf
Instagram @AuburnWGolf
Office Phone (334) 844-9800

2018 NCAA CHAMPIONSHIPS

Friday-Wednesday, May 18-23
Karsten Creek Golf Club • Stillwater, Okla.
Par 72 • 6,328/6,247 Yards



Live Scoring:
Auburn Tee Times:

golfstatresults.com
Friday: 7:30 a.m. CT (#1 tee)
Saturday: 12:10 p.m. CT (#10 tee)
Sunday/Monday: TBD
Golf Channel

TV (Monday-Wednesday):

SETTING THE STAGE/TOURNAMENT STORYLINES

- For the first time since 2013, the No. 19 Auburn women's golf team will compete for a national championship. Auburn heads to the 2018 NCAA Championships in Stillwater, Okla., which run May 18-23 at Karsten Creek Golf Club.
- The event begins Friday morning with Auburn teeing off at 7:30 a.m. CT on the No. 1 tee, paired with Oklahoma and Florida State. The same three teams will begin play Saturday at 12:10 p.m. CT on the No. 10 tee. Following Saturday's second round, the teams will be reshuffled for the third round based on their scores. The field will be cut to the top 15 teams for the final round of stroke play Monday, then the top eight will compete in match play. Monday through Wednesday's play will be televised live on Golf Channel.
- Auburn enters the week with a head-to-head Division I record of 91-40-7 in stroke play competition for the 2017-18 season.
- The Tigers have top-5 team finishes in seven events this season, including the last four in a row. Auburn finished fourth at its home tournament, the Evans Derby Experience, followed by a tie for third at the Bryan National Collegiate, a tie for fifth in stroke play at the SEC Championship, and a tie for third at the NCAA Austin Regional.
- Senior Kelli Murphy was named to the All-SEC Second Team, and freshman Kaleigh Telfer earned a selection to the SEC All-Freshman Team.
- Freshman Kaleigh Telfer has been Auburn's top finisher in the Tigers' last two events - a tie for ninth at the SEC Championships and a tie for 16th at the NCAA Austin Regional.
- Head coach Melissa Luellen is in her third season at Auburn and 18th season as a collegiate head coach. This is her first NCAA Championship appearance at Auburn and 15th overall (13 at Arizona State; 2 at Tulsa). Luellen, then Melissa McNamara, was the individual medalist at the 1988 NCAA Championships in Las Cruces, N.M., while a student-athlete for the University of Tulsa.
- This is Auburn's 17th all-time appearance in the NCAA Championship and the first since 2013. The Tigers' best finish at the NCAA Championships was a tie for second in 2002 in Auburn, Washington.

TOURNAMENT FIELD BY SEED

- Alabama
- Arkansas
- UCLA
- Duke
- Stanford
- Southern California
- Furman
- Texas
- Arizona
- Arizona State
- Florida
- Northwestern
- Washington
- Kent State
- Wake Forest
- Auburn
- Oklahoma
- Florida State
- Louisville
- Baylor
- Virginia
- Colorado
- Ole Miss
- Ohio State

By Conference:

Pac-12 (7), SEC (5), ACC (5), Big 12 (3), Big Ten (2), Southern (1), MAC (1)

AUBURN STARTING LINEUP



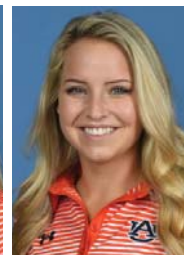
Kaleigh Telfer
Fr. • Kyalami, South Africa



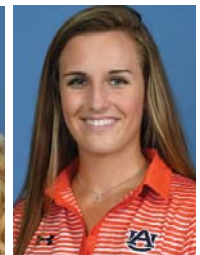
Elena Hualde
So. • Pamplona, Spain



Kelli Murphy
Sr. • Elgin, S.C.



Michaela Owen
Sr. • Atlanta, Ga.



Kayley Marschke
So. • Suwanee, Ga.

THE NCAA CHAMPIONSHIP FIELD

- The nation's top teams head to Stillwater for the NCAA Championship. Of the 24 teams in the field, 19 are ranked in the GolfStat top 25.
- Five Southeastern Conference teams made the field - No. 1 Alabama, No. 2 Arkansas, No. 12 Florida, No. 19 Auburn and No. 34 Ole Miss.

AUBURN'S LINEUP

- Auburn will send out a lineup of two seniors, two sophomores and one freshman for the NCAA Championship. Freshman Kaleigh Telfer sits atop the Auburn lineup, followed by seniors Michaela Owen and Kelli Murphy, along with sophomores Elena Hualde and Kayley Marschke.
- This will be the first NCAA Championship appearance for any of the players in Auburn's lineup.

AUBURN AGAINST THE FIELD

- Auburn has faced Auburn has faced 17 of the other 23 teams in the championship field this season, compiling a 15-26-3 record against those teams.
- Auburn owns a .500 or better record against nine of the 17 teams they have faced this year.
- The Tigers have the following records against the field: Alabama (0-4), Arkansas (0-6), UCLA (0-1), Duke (0-2), Furman (0-2), Texas (0-2), Arizona State (1-1), Florida (1-0-2), Northwestern (0-2), Wake Forest (2-2), Oklahoma (1-2), Florida State (1-0), Louisville (1-0), Baylor (2-0-1), Virginia (3-1), Ole Miss (2-1), Ohio State (1-0).
- Auburn has not faced Stanford, USC, Arizona, Washington, Kent State or Colorado this season.

NCAA CHAMPIONSHIP FORMAT

- The championship format consists of all 24 teams and 12 individuals completing 54 holes of stroke play, and then the top 15 teams and top nine individual not on an advancing team advance for one additional day of stroke play to determine the top eight teams for match play competition and the 72-hole stroke play individual champion. The top eight teams then compete in match play for the championship.
- Golf Channel will have live coverage of the final round of stroke play and all three rounds of match play.

THE COURSE

- Karsten Creek Golf Club is home to the Oklahoma State men's and women's golf teams. The Tom Fazio design opened in 1994 and was named "Best New Course" that year by Golf Digest. The zoysia fairways were cut from a forest of oaks and black jacks,

complemented by an undulating terrain that flows throughout the course.

- The course will play to par 72 and alternate between 6,328 and 6,247 yards for the championship.

IN THE RANKINGS

- Auburn enters the NCAA Regional ranked No. 19 nationally by Golfstat and No. 22 by Golfweek.
- Individually, senior Kelli Murphy is ranked No. 80 nationally by Golfstat and No. 87 by Golfweek.

AUBURN AT THE NCAA CHAMPIONSHIPS

- Auburn is making its 17th NCAA Championship appearance in program history and its first since 2013. It is the first championship berth for Auburn under head coach Melissa Luellen, now in her third year on The Plains.
- Auburn's top finish at the NCAA Championship was a tie for second place in 2002 in Auburn, Wash.

LOOKING BACK: 2013 NCAA CHAMPIONSHIP

- An improbable run for the Auburn women's golf team at the 2013 NCAA Championship ended with a sixth-place finish at 1183 (+31). Making their first championship appearance since 2010, it was Auburn's best finish at the national finals since 2005.
- After finishing the first round of the tournament in last place, the Tigers worked their way up through the standings over the final 54 holes. Auburn moved from 24th to a tie for 19th in the second round to a tie for ninth after the third round.
- The Tigers were the highest-finishing team from the SEC out of seven that competed at the UGA Golf Course in Athens, Ga.
- Junior Marta Sanz led the team with a 10th-place finish, shooting a final-round 74 to finish at 2-over 290. She became the ninth Auburn player to earn a top-10 individual finish at the NCAA Championship.
- The Tigers' run was improbable for several reasons: coach Kim Evans was diagnosed with ovarian cancer in late April, forcing her to miss the NCAA Regional played at the Auburn University Club. The team was also without an assistant coach at the time. Student assistant Danielle Downey coached the team in the regional, leading to an eighth-place finish and a berth in the national championships.

LAST TIME OUT: NCAA AUSTIN REGIONAL

- Four Tigers recorded final rounds at even par or better, leading the 19th-ranked Auburn women's golf team to a tie for third place at the NCAA Austin Regional and a berth in the NCAA Championships.

2017-18 Quick Facts

Location	Auburn, Ala.
Founded	1856
Enrollment	28,290
Nickname	Tigers
Colors	Burnt Orange, Navy Blue (PMS 172, 289)
Home Course.....	Auburn University Club (Par 72)
Affiliation.....	NCAA Division I
Conference.....	Southeastern
President.....	Dr. Steven Leath
Athletics Director	Allen Greene
Associate Athletics Director/SWA	Meredith Jenkins

Coaching Staff

Head Coach	Melissa Luellen (3rd season at Auburn) (Tulsa, 1988)
Associate Head Coach	Andrew Pratt (5th season) (Tennessee, 2004)
Director of Operations	Joan Alexander (2nd season) (College of Charleston, 1990)
Women's Golf Office	334.844.9766

Team Information

2016-17 Record	87-69-8
2017 SEC Tournament Finish	14th
2017 NCAA Finish.....	12th - Athens Regional
Letterwinners R/L.....	5/2
Newcomers.....	4

Program History

Number of Seasons.....	41
All-Time Record (entering 17-18).....	3500-1758-59 (.664)
NCAA Championship Appearances (Last)	16 (2013)
NCAA Regional Appearances (Last).....	24 (2017)
SEC Championships	9
1989, 1996, 2000, 2003, 2005, 2006, 2009, 2011, 2012	
Highest NCAA Finish.....	T2nd (2002)

Athletics Communications

Assoc. AD/Communications.....	Kirk Sampson
Asst. SID/Golf Contact.....	Wes Todd
Email	wlt0006@auburn.edu
Cell	334-750-5682
Official Website	AuburnTigers.com
Twitter/Instagram/Facebook	@AuburnWGolf

2017-18 Auburn Women's Golf Roster

Name	Class	Hometown	Last School
Elena Hualde	Sophomore	Pamplona, Spain	Miravalles HS
Kayley Marschke	Sophomore	Suwanee, Ga.	Lambert HS
Julie McCarthy	Freshman	Swords, Ireland	Santa Sabina Dominican College
Kelli Murphy	Senior	Elgin, S.C.	Lugoff-Elgin HS
Mychael O'Berry	Freshman	Hoover, Ala.	Hoover HS
Michaela Owen	Senior	Atlanta, Ga.	Lambert HS
Brooke Sansom	Freshman	Pike Road, Ala.	Park Crossing HS
Melanie Talbott	Junior	Woodstock, Ga.	Etowah HS
Kaleigh Telfer	Freshman	Kyalami, South Africa	Education Incorporated

Head Coach: Melissa Luellen - 3rd season at Auburn/18th as a head coach (Tulsa, 1988)

Associate Head Coach: Andrew Pratt - 5th season at Auburn (Tennessee, 2004)

Director of Operations: Joan Alexander - 2nd season at Auburn (College of Charleston, 1990)

- The Tigers shot 286 (-2) as a team in the final round at the University of Texas Golf Club, one of just three team rounds under par on the day, and finished at 869 (+5) for the week, nine shots clear of the cut line to head to the finals in Stillwater, Okla.
- Freshman Kaleigh Telfer led Auburn with a tie for 16th place at 1-under 215 for the week. Sophomore Elena Hualde was one shot back at even-par 216, tied for 19th place.

STEADY VETERANS

- Seniors Michaela Owen and Kelli Murphy have been Auburn's top two players this season as they seek to end their careers on a high note.
- Owen is second on the team with a 73.42 scoring average that includes 11 rounds at par or better, a top-10 finish at the Magnolia Invitational, and four top-20 showings.
- Murphy owns a 73.43 scoring average for the season and also has four top-20 finishes. She has posted 13 rounds at even par or better, including tying for the team's low round of the year with a 67 in the second round of the Maryb S. Kauth Invitational.
- Sophomore Kayley Marschke has turned in two of Auburn's top single-round performances this season and owns its two best individual finishes. She won the Lake Oconee Individual Championship in February with a 68 (-4) for her first collegiate victory. In the Evans Derby Experience, playing as an individual, she carded a final-round 68 that included five straight birdies to tie for 12th. And in the team's final regular-season event, she was steady over three rounds in awful weather conditions to tie for fifth at the Bryan National Collegiate.
- Murphy & Owen enter the SEC Championship in the top 10 in career scoring average at Auburn. Murphy ranks eighth at 74.67 and Owen is 10th at 74.93.
- Murphy's single-season average of 73.42 (min. 24 rounds played) currently ranks 10th in Auburn history; Owen is 11th at 73.43.

WELCOME TO THE FAMILY

- Three student-athletes have signed with Auburn this season and will begin play for the Tigers in the fall of 2018.
- Brooke Sansom (Pike Road, Ala.), Chandler Rosholt (Austin, Texas) and Anika Bolcikova (Martin, Slovakia) have all signed National Letters of Intent to play for the Tigers.
- Sansom enrolled at Auburn in January and is practicing with the team while redshirting the spring semester. Rosholt and Bolcikova will join the Tigers in the fall.

HONOR ROLL

- Kelli Murphy: Second-Team All-SEC; SEC Community Service Team
- Kaleigh Telfer: SEC All-Freshman Team

LUELLEN, MCNAMARA NAMED IBA AWARD WINNERS

- Auburn head coach Melissa Luellen and her mother, Dale McNamara, were named the 2018 Henry P. Iba Citizen Athlete Award winners by the Rotary Club of Tulsa. They will be presented these awards on June 18 in Tulsa.
- McNamara was head coach at the University of Tulsa for 26 seasons, leading TU to four national championships. One of those came in 1988 when Melissa McNamara was the individual medalist. Melissa followed in her mother's footsteps, taking over as Tulsa's head coach in 2000 after Dale's retirement.
- The Iba Awards were created in 1994 by the Rotary Club of Tulsa to recognize individuals for their success in sport and for being positive role models who give back to their communities. The awards are named after Henry P. Iba, former Oklahoma State basketball coach and three-time U.S. Olympic coach.

A LOOK BACK: SEC CHAMPIONSHIP

- Auburn had its best showing at an SEC Championship in five years, tying for fifth place in the stroke play portion of the event and advancing to match play in the first year of the new format.
- The Tigers shot 306-301-289=896 (+32) in stroke play, led by freshman Kaleigh Telfer, who tied for ninth place at 75-72-71=218 (+2).
- In its first foray into match play this season, the Tigers fell in the quarterfinals to Georgia, 3-2. Freshman Julie McCarthy and senior Kelli Murphy won their matches.

2017-18 Season Superlatives

Low 18-Hole Round - Individual

67 - Elena Hualde
Mason Rudolph Championship, 1st round [9/15/17]
67 - Kelli Murphy
Maryb S. Kauth Invitational, 2nd round [10/23/17]

Low 18-Hole Round - Team

284 - Hualde, Owen, Marschke, Murphy, Talbott
Mason Rudolph Championship, 2nd round [9/16/17]

Low 54-Hole Total - Individual

209 - Elena Hualde
Mason Rudolph Championship [9/15-17/17]

Low 54-Hole Total - Team

857 - Hualde, Owen, Marschke, Murphy, Talbott
Mason Rudolph Championship [9/15-17/17]

Low First Round

67 - Elena Hualde
Mason Rudolph Championship, 1st round [9/15/17]

Low Second Round

67 - Kelli Murphy
Maryb S. Kauth Invitational, 2nd round [10/23/17]

Low Third Round

68 - Kayley Marschke
Evans Derby Experience, 3rd round [3/20/18]

Rounds of 70 or Better

67

Elena Hualde, Mason Rudolph Championship (1)
Kelli Murphy, Maryb S. Kauth Invitational (2)

68

Kayley Marschke, Lake Oconee Individual Championship
Kayley Marschke, Evans Derby Experience (3)

69

Elena Hualde, Mason Rudolph Championship (2)
Elena Hualde, Magnolia Invitational (3)
Elena Hualde, UCF Challenge (3)
Michaela Owen, Evans Derby Experience (1)

70

Elena Hualde, Battle at the Beach (1)
Kayley Marschke, Mason Rudolph Championship (2)
Kelli Murphy, Mason Rudolph Championship (3)
Kelli Murphy, Battle at the Beach (1)
Kelli Murphy, Darius Rucker Intercollegiate (3)
Kelli Murphy, Evans Derby Experience (3)
Mychael O'Berry, Battle at the Beach (3)
Michaela Owen, Mason Rudolph Championship (1,2)
Michaela Owen, Magnolia Invitational (1)
Michaela Owen, Battle at the Beach (2)
Kaleigh Telfer, UCF Challenge (2)

Auburn Lineup by Tournament

	1	2	3	4	5
1-Mason Rudolph	Murphy	Owen	Marschke	Hualde	Talbott
2-Magnolia Invitational	Murphy	Owen	Hualde	Marschke	Telfer
3-Maryb S. Kauth	Owen	Hualde	Murphy	Telfer	O'Berry
4-Battle at the Beach	Owen	Hualde	Murphy	Telfer	Marschke
5-UCF Challenge	Hualde	Telfer	Murphy	O'Berry	McCarthy
6-Darius Rucker	Hualde	Murphy	McCarthy	Marschke	Owen
7-Evans Derby Exp.	Hualde	Murphy	Owen	Telfer	O'Berry
8-Bryan National	Hualde	Murphy	Marschke	McCarthy	O'Berry
9-SEC Championship	Owen	Murphy	Marschke	Telfer	McCarthy
10-NCAA Regional	Telfer	Owen	Murphy	Hualde	Marschke
11 NCAA Championship	Telfer	Hualde	Murphy	Owen	Marschke

Individuals: Marschke (5, 7); McCarthy (7); O'Berry (4); Talbott (2, 7)

2017-18 Statistics/Results

Team Results by Event

Date	Tournament	Team Score	Team Finish	Low Individual	Individual Score	Individual Finish
Sept. 15-17	Mason Rudolph Championship	285-284-288=857 (-7)	7th of 15	Elena Hualde	67-69-73=209 (-7)	7th of 81
Oct. 1-3	Magnolia Invitational	291-294-292=877 (+13)	T-4th of 10	Michaela Owen	70-74-73=217 (+1)	T-8th of 63
Oct. 22-24	Maryb S. Kauth Invitational	301-286-296=883 (+19)	9th of 14	Kelli Murphy	73-67-72=212 (-4)	T-6th of 74
Nov. 3-5	Battle at the Beach	288-292-290=870 (+18)	T-5th of 14	Michaela Owen	73-70-73=216 (+3)	T-18th of 84
Feb. 4-6	UCF Challenge	299-293-286=878 (+14)	3rd of 16	Murphy/Hualde	218 (+2)	T-9th of 90
Feb. 10	Lake Oconee Individual Champ.	--	--	Kayley Marschke	68 (-4)	1st of 37
March 2-4	Darius Rucker Intercollegiate	304-303-291=898 (+46)	T-7th of 18	Kelli Murphy	77-73-70=220 (+7)	T-15th of 93
March 18-20	Evans Derby Experience	285-290-288=863 (-1)	4th of 12	Murphy/Marschke	213 (-3)	T-12th of 74
April 6-8	Bryan National Collegiate	295-294-308=897 (+33)	T-3rd of 17	Kayley Marschke	72-73-75=220 (+4)	T-5th of 95
April 18-20	SEC Championship (stroke play)	306-301-289=896 (+32)	T-5th of 14	Kaleigh Telfer	75-72-71=218 (+2)	T-9th of 70
April 21-22	SEC Championship (match play)	QF: lost to Georgia, 3-2	--	--	--	--
May 7-9	NCAA Regional	292-291-286=869 (+5)	T-3rd of 18	Kaleigh Telfer	73-71-71=215 (-1)	T-16th of 96
May 18-23	NCAA Championship					

Individual Stroke Play Results by Event

Mason Rudolph Championship (Par 72)

7	Elena Hualde	67-69-73=209 (-7)
T14	Michaela Owen	70-70-71=211 (-5)
T40	Kayley Marschke	73-70-75=218 (+2)
T49	Kelli Murphy	75-75-70=220 (+4)
T65	Melanie Talbott	78-75-74=227 (+11)

Magnolia Invitational (Par 72)

T8	Michaela Owen	70-74-73=217 (+1)
11	Elena Hualde	73-76-69=218 (+2)
T27	Kaleigh Telfer	75-73-76=224 (+8)
T34	Kelli Murphy	80-72-74=226 (+10)
T34	Kayley Marschke	73-75-78=226 (+10)
*T56	Melanie Talbott	74-75-86=235 (+19)

Maryb S. Kauth Invitational (Par 72)

T6	Kelli Murphy	73-67-72=212 (-4)
T37	Kaleigh Telfer	76-71-76=223 (+7)
T46	Michaela Owen	77-72-77=226 (+10)
T54	Mychael O'Berry	75-76-78=229 (+13)
T57	Elena Hualde	80-79-71=230 (+14)

Battle at the Beach (Par 71)

T18	Michaela Owen	73-70-73=216 (+3)
T22	Kelli Murphy	70-74-73=217 (+4)
T26	Elena Hualde	70-77-71=218 (+5)
T38	Kaleigh Telfer	75-72-73=220 (+7)
*64	Mychael O'Berry	78-81-70=229 (+16)
T78	Kayley Marschke	79-76-82=237 (+24)

UCF Challenge (Par 72)

T9	Elena Hualde	76-73-69=218 (+2)
T9	Kelli Murphy	72-74-72=218 (+2)
T29	Kaleigh Telfer	77-70-76=223 (+7)
T37	Mychael O'Berry	75-76-73=224 (+8)
*T37	Kayley Marschke	76-72-76=224 (+8)
T44	Julie McCarthy	76-77-72=225 (+9)

Lake Oconee Individual Championship (Par 72)

*1	Kayley Marschke	68 (-4)
*T7	Kaleigh Telfer	71 (-1)
*T17	Julie McCarthy	75 (+3)
*T27	Mychael O'Berry	79 (+7)

Darius Rucker Intercollegiate (Par 71)

T15	Kelli Murphy	77-73-70=220 (+7)
T36	Elena Hualde	77-74-74=225 (+12)
T36	Michaela Owen	75-79-71=225 (+12)
T56	Julie McCarthy	75-78-76=229 (+16)
T79	Kayley Marschke	78-78-78=234 (+21)

Evans Derby Experience (Par 72)

T12	Kelli Murphy	72-71-70=213 (-3)
*T12	Kayley Marschke	71-74-68=213 (-3)
T17	Michaela Owen	69-72-73=214 (-2)
T28	Mychael O'Berry	73-73-72=218 (+2)
T32	Elena Hualde	72-74-73=219 (+3)
T32	Kaleigh Telfer	72-74-73=219 (+3)
*T38	Julie McCarthy	71-75-76=222 (+6)
*T67	Melanie Talbott	77-83-75=235 (+19)

Bryan National Collegiate (Par 72)

T5	Kayley Marschke	72-73-75=220 (+4)
T10	Julie McCarthy	76-72-75=223 (+7)
T37	Mychael O'Berry	74-78-77=229 (+13)
T40	Kelli Murphy	75-74-81=230 (+14)
T47	Elena Hualde	74-75-83=232 (+16)

SEC Championship (Par 72)

T9	Kaleigh Telfer	75-72-71=218 (+2)
T21	Kelli Murphy	76-76-72=224 (+8)
T31	Michaela Owen	80-78-71=229 (+13)
T31	Kayley Marschke	76-77-76=229 (+13)
T39	Julie McCarthy	79-76-75=230 (+14)

NCAA Austin Regional (Par 72)

T16	Kaleigh Telfer	73-71-71=215 (-1)
T19	Elena Hualde	73-71-72=216 (E)
T42	Kelli Murphy	72-73-78=223 (+7)
T42	Kayley Marschke	74-76-71=223 (+7)
T47	Michaela Owen	76-76-72=224 (+8)

*Played as an individual

Records vs. Opponents

Alabama	0-4	North Texas	1-0
Arizona State	1-1	Northwestern	0-2
Arkansas	0-6	Noire Dame	1-0
Augusta	1-0	Ohio State	1-0
Baylor	2-0-1	Oklahoma	1-2
BYU	1-0	Oklahoma State	1-0
Central Florida	3-0	Old Dominion	1-0
Charlotte	2-0	Penn State	1-0
Chattanooga	1-0	South Carolina	3-2
Clemson	2-0	SMU	1-0
College of Charleston	1-0	Southern Miss	1-0
Colorado State	1-0	Tennessee	3-1
Denver	0-1	Texas	0-2
Duke	0-2	Texas A&M	2-1
East Carolina	1-1	TCU	1-1
Florida	1-0-2	Texas State	1-0
Florida State	1-0	Texas Tech	3-0
Furman	0-2	Texas-San Antonio	2-0
Georgetown	2-0	Troy	1-0
Georgia	1-1*	Tulane	2-0
Houston	2-1-1	UCLA	0-1
Houston Baptist	1-0	Vanderbilt	4-1
Iowa State	1-0	Virginia	3-1
Kansas State	1-1	Virginia Tech	1-0
Kentucky	2-0	Wake Forest	2-2
Louisville	1-0	Wisconsin	1-0
LSU	3-0		
Maryland	0-1	OVERALL	91-40-7
Memphis	1-1		
Miami	2-1	*0-1 in match play	
Michigan	2-0		
Michigan State	1-0		
Middle Tennessee	2-0		
Mississippi	2-1		
Mississippi State	5-0-1		
Missouri	1-0		
Missouri State	1-0		
North Carolina	2-0-2		
NC State	1-0		
UNC Wilmington	1-0		

2017-18 Individual Statistics

Name	Tourn.	Rounds	Team Count	Low 54	Low 18	Par/Better	Wins	Top 5	Top 10	Top 20	Strokes	Avg.
Elena Hualde	9	27	22	209	67	10	0	0	2	4	1985	73.52
Kayley Marschke	10	28	13	213	68	7	1	2	2	3	2092	74.71
Julie McCarthy	6	16	10	222	71	3	0	0	1	2	1204	75.25
Kelli Murphy	10	30	28	212	67	13	0	0	2	4	2203	73.43
Mychael O'Berry	6	16	9	218	70	2	0	0	0	0	1208	75.50
Michaela Owen	8	24	20	211	69	11	0	0	1	4	1762	73.42
Melanie Talbott	3	9	2	227	74	0	0	0	0	0	697	77.44
Kaleigh Telfer	8	22	20	215	70	8	0	0	2	3	1613	73.32
Team	10	30	--	857	284	8	0	7	10	10	8788	292.93

Career Individual Statistics

Name	Tourn.	Rounds	Low 54	Low 18	Par/Better	Wins	Top 5	Top 10	Top 20	Strokes	Avg.
Elena Hualde	20	59	209	67	27	2	1	5	8	4319	73.20
Kayley Marschke	22	59	213	67	11	1	2	3	6	4406	74.68
Julie McCarthy	6	16	222	71	3	0	0	1	2	1204	75.25
Kelli Murphy	41	115	209	65	27	0	2	4	9	857	74.67
Mychael O'Berry	6	16	218	70	2	0	0	0	0	1208	75.50
Michaela Owen	34	89	210	68	25	0	1	4	11	6669	74.93
Melanie Talbott	13	36	220	71	1	1	1	1	2	2789	77.47
Kaleigh Telfer	8	22	215	70	8	0	0	2	3	1613	73.32

2017-18 Individual Stroke Play Results

Elena Hualde (Sophomore • Pamplona, Spain)

Tourn.	Scores	To Par	Finish
Mason Rudolph Championship	67-69-73=209	-7	7th of 81
Magnolia Invitational	73-76-69=218	+2	11th of 63
Maryb S. Kauth Invitational	80-79-71=230	+14	T-57th of 74
Battle at the Beach	70-77-71=218	+5	T-26th of 84
UCF Challenge	76-73-69=218	+2	T-9th of 90
Darius Rucker Intercollegiate	77-74-74=225	+12	T-36th of 93
Evans Derby Experience	72-74-73=219	+3	T-32nd of 74
Bryan National Collegiate	74-75-83=232	+16	T-47th of 95
NCAA Austin Regional	73-71-72=216	E	T-19th of 96

Kayley Marschke (Sophomore • Suwanee, Ga.)

Tourn.	Scores	To Par	Finish
Mason Rudolph Championship	73-70-75=218	+2	T-40th of 81
Magnolia Invitational	73-75-78=226	+10	T-34th of 63
Battle at the Beach	79-76-82=237	+24	T-78th of 84
*UCF Challenge	76-72-76=224	+8	T-37th of 90
*Lake Oconee Individual Championship	68	-4	1st of 37
Darius Rucker Intercollegiate	78-78-78=234	+21	T-79th of 93
*Evans Derby Experience	71-74-68=213	-3	T-12th of 74
Bryan National Collegiate	72-73-75=220	+4	T-5th of 95
SEC Championship	76-77-76=229	+13	T-31st of 70
NCAA Austin Regional	74-78-71=223	+7	T-42nd of 96

Julie McCarthy (Freshman • Swords, Ireland)

Tourn.	Scores	To Par	Finish
UCF Challenge	76-77-72=225	+9	T-44th of 90
*Lake Oconee Individual Championship	75	+3	T-17th of 37
Darius Rucker Intercollegiate	75-78-76=229	+16	T-56th of 93
*Evans Derby Experience	71-75-76=222	+6	T-38th of 74
Bryan National Collegiate	76-72-75=223	+7	T-10th of 95
SEC Championship	79-76-75=230	+14	T-39th of 70

Kelli Murphy (Senior • Elgin, S.C.)

Tourn.	Scores	To Par	Finish
Mason Rudolph Championship	75-75-70=220	+4	T-49th of 81
Magnolia Invitational	80-72-74=226	+10	T-34th of 63
Maryb S. Kauth Invitational	73-67-72=212	-4	T-6th of 74
Battle at the Beach	70-74-73=217	+4	T-22nd of 84
UCF Challenge	72-74-72=218	+2	T-9th of 90
Darius Rucker Intercollegiate	77-73-70=220	+7	T-15th of 93
Evans Derby Experience	72-71-70=213	-3	T-12th of 74
Bryan National Collegiate	75-74-81=230	+14	T-40th of 95
SEC Championship	76-76-72=224	+8	T-21st of 70
NCAA Austin Regional	72-73-78=223	+7	T-42nd of 96

Mychael O'Berry (Freshman • Hoover, Ala.)

Tourn.	Scores	To Par	Finish
Maryb S. Kauth Invitational	75-76-78=229	+13	T-54th of 74
Battle at the Beach	78-81-70=229	+16	64th of 84
UCF Challenge	75-76-73=224	+8	T-37th of 90
*Lake Oconee Individual Championship	79	+7	T-27th of 37
Evans Derby Experience	73-73-72=218	+2	T-28th of 74
Bryan National Collegiate	74-78-77=229	+13	T-37th of 95

Michaela Owen (Senior • Atlanta, Ga.)

Tourn.	Scores	To Par	Finish
Mason Rudolph Championship	70-70-71=211	-5	T-14th of 81
Magnolia Invitational	70-74-73=217	+1	T-8th of 63
Maryb S. Kauth Invitational	77-72-77=226	+10	T-46th of 74
Battle at the Beach	73-70-73=216	+3	T-18th of 84
Darius Rucker Intercollegiate	75-79-71=225	+12	T-36th of 93
Evans Derby Experience	69-72-73=214	-2	T-17th of 74
SEC Championship	80-78-71=229	+13	T-31st of 70
NCAA Austin Regional	76-76-72=224	+8	T-47th of 96

Melanie Talbott (Junior • Woodstock, Ga.)

Tourn.	Scores	To Par	Finish
Mason Rudolph Championship	78-75-74=227	+11	T-65th of 81
*Magnolia Invitational	74-75-86=235	+19	T-56th of 63
*Evans Derby Experience	77-83-75=235	+19	T-67th of 74

Kaleigh Telfer (Freshman • Kyalami, South Africa)

Tourn.	Scores	To Par	Finish
Magnolia Invitational	75-73-76=224	+8	T-27th of 63
Maryb S. Kauth Invitational	76-71-76=223	+7	T-37th of 74
Battle at the Beach	75-72-73=220	+7	T-38th of 84
UCF Challenge	77-70-76=223	+7	T-29th of 90
*Lake Oconee Individual Championship	71	-1	T-7th of 37
Evans Derby Experience	72-74-73=219	+3	T-32nd of 74
SEC Championship	75-72-71=218	+2	T-9th of 70
NCAA Austin Regional	73-71-71=215	-1	T-16th of 96

2017-18 Tournament-by-Tournament Results

MASON RUDOLPH CHAMPIONSHIP • Sept. 15-17 Vanderbilt Legends Club-North • Franklin, Tenn. Par 72 • 6,335 Yards

1	Arkansas	273-277-273=823 (-41)
2	Alabama	284-272-273=829 (-35)
3	Arizona State	277-276-286=839 (-25)
4	Vanderbilt	275-283-284=842 (-22)
5	Northwestern	285-280-282=847 (-17)
6	South Carolina	289-284-280=853 (-11)
7	Auburn	285-284-288=857 (-7)
8	Virginia	290-289-282=861 (-3)
9	Clemson	296-281-290=867 (+3)
10	Houston	288-286-287=871 (+7)
11	North Carolina	294-288-291=873 (+9)
12	Chattanooga	292-293-297=882 (+18)
13	UCF	300-291-298=889 (+25)
14	Middle Tennessee	294-302-294=890 (+26)
15	Charlotte	300-300-299=899 (+35)

Individual Medalists

Lauren Stephenson, Alabama	68-68-64=200 (-16)
Maria Fassi, Arkansas	65-71-74=200 (-16)

Auburn Individuals

7	Elena Hualde	67-69-73=209 (-7)
T14	Michaela Owen	70-70-71=211 (-5)
T40	Kayley Marschke	73-70-75=218 (+2)
T49	Kelli Murphy	75-75-70=220 (+4)
T65	Melanie Talbott	78-75-74=227 (+11)

MAGNOLIA INVITATIONAL • Oct. 1-3 Old Waverly Golf Club • West Point, Miss. Par 72 • 6,320 Yards

1	Ole Miss	278-289-287=854 (-10)
2	Memphis	291-289-281=861 (-3)
3	Tennessee	287-292-293=872 (+8)
T4	Mississippi State	296-287-294=877 (+13)
T4	Auburn	291-294-292=877 (+13)
6	LSU	301-293-288=882 (+18)
7	Southern Miss	303-291-296=890 (+26)
8	Augusta	307-296-293=896 (+32)
9	Kansas State	301-298-299=898 (+34)
10	Troy	321-294-305=920 (+56)

Individual Medalists

^Julia Johnson, Ole Miss	68-69-72=209 (-7)
Abby Hermann, Memphis	70-70-69=209 (-7)
^won playoff	

Auburn Individuals

T8	Michaela Owen	70-74-73=217 (+1)
11	Elena Hualde	73-76-69=218 (+2)
T27	Kaleigh Telfer	75-73-76=224 (+8)
T34	Kelli Murphy	80-72-74=226 (+10)
T34	Kayley Marschke	73-75-78=226 (+10)
*T56	Melanie Talbott	74-75-86=235 (+19)
*individual		

MARYB S. KAUTH INVITATIONAL • Oct. 22-24 Briggs Ranch Golf Club • San Antonio, Texas Par 72 • 6,450 Yards

1	Arkansas	281-273-288=842 (-22)
T2	Texas A&M	296-279-285=860 (-4)
T2	TCU	290-292-288=860 (-4)
4	Denver	297-280-293=870 (+6)
5	Oklahoma	295-290-288=873 (+9)
6	Houston	295-282-297=874 (+10)
7	Kansas State	291-297-290=878 (+14)
8	Maryland	296-287-297=880 (+16)
9	Auburn	301-286-296=883 (+19)
10	UTSA	294-297-296=887 (+23)
11	North Texas	300-299-301=900 (+36)
12	Texas Tech	311-300-293=904 (+40)
13	Middle Tennessee	310-290-305=905 (+41)
14	Texas State	307-300-305=912 (+48)

Individual Medalist

Connie Jaffrey, Kansas State	66-71-70=207 (-9)
------------------------------	-------------------

Auburn Individuals

T6	Kelli Murphy	73-67-72=212 (-4)
T37	Kaleigh Telfer	76-71-76=223 (+7)
T46	Michaela Owen	77-72-77=226 (+10)
T54	Mychael O'Berry	75-76-78=229 (+13)
T57	Elena Hualde	80-79-71=230 (+14)

BATTLE AT THE BEACH • Nov. 3-5 Club Campestre • San Jose del Cabo, Mexico Par 71 • 6,162 Yards

1	UCLA	282-285-272=839 (-13)
2	Oklahoma	281-281-280=842 (-10)
3	Texas	286-281-281=848 (-4)
4	Virginia	290-291-284=865 (+13)
T5	Auburn	288-292-290=870 (+18)
T5	Houston	283-297-290=870 (+18)
T7	Wake Forest	290-296-285=871 (+19)
T7	Baylor	290-285-296=871 (+19)
9	Vanderbilt	299-290-287=876 (+24)
10	Mississippi State	296-296-287=879 (+27)
T11	TCU	296-299-293=888 (+36)
T11	North Carolina	294-300-294=888 (+36)
13	Tulane	302-298-295=895 (+43)
14	Ohio State	301-298-303=902 (+50)

Individual Medalist

Lilia Vu, UCLA	69-69-67=205 (-8)
----------------	-------------------

Auburn Individuals

T18	Michaela Owen	73-70-73=216 (+3)
T22	Kelli Murphy	70-74-73=217 (+4)
T26	Elena Hualde	70-77-71=218 (+5)
T38	Kaleigh Telfer	75-72-73=220 (+7)
*64	Mychael O'Berry	78-81-70=229 (+16)
T78	Kayley Marschke	79-76-82=237 (+24)
*individual		

UCF CHALLENGE • Feb. 4-6 Eagle Creek GC • Orlando, Fla. Par 72 • 6,349 Yards

1	Miami	295-285-288=868 (+4)
2	East Carolina	293-296-283=872 (+8)
3	Auburn	299-293-286=878 (+14)
T4	Vanderbilt	304-285-291=880 (+16)
T4	Wisconsin	297-287-296=880 (+16)
6	Iowa State	293-294-294=881 (+17)
7	Central Florida	299-290-294=883 (+19)
8	Mississippi State	302-295-288=885 (+21)
T9	Penn State	303-294-290=888 (+24)
T9	SMU	301-293-294=888 (+24)
11	Texas Tech	300-299-290=889 (+25)
12	Old Dominion	305-297-288=890 (+26)
T13	College of Charleston	313-296-297=906 (+42)
T13	Memphis	300-294-312=906 (+42)
15	UNC Wilmington	311-299-302=912 (+48)
16	Tulane	297-308-311=916 (+52)

Individual Medalist

Dewi Weber, Miami	73-66-70=209 (-7)
-------------------	-------------------

Auburn Individuals

T9	Elena Hualde	76-73-69=218 (+2)
T9	Kelli Murphy	72-74-72=218 (+2)
T29	Kaleigh Telfer	77-70-76=223 (+7)
T37	Mychael O'Berry	75-76-73=224 (+8)
*T37	Kayley Marschke	76-72-76=224 (+8)
T44	Julie McCarthy	76-77-72=225 (+9)
*individual		

LAKE OCONEE INDIVIDUAL CHAMP. • Feb. 10 Lake Oconee Great Waters • Eatonton, Ga. Par 72 • 6,026 Yards

Individual Medalist	
Kayley Marschke, Auburn	68 (-4)

Auburn Individuals

*1	Kayley Marschke	68 (-4)
*T7	Kaleigh Telfer	71 (-1)
*T17	Julie McCarthy	75 (+3)
*T27	Mychael O'Berry	79 (+7)
*individual		

2017-18 Tournament-by-Tournament Results

DARIUS RUCKER INTERCOLLEGIATE • March 2-4

Long Cove Club • Hilton Head Island, S.C.

Par 71 • 6,220 Yards

1	Alabama	286-291-289=866 (+14)
2	Arkansas	290-296-288=874 (+22)
3	Wake Forest	296-294-288=878 (+26)
4	Duke	295-296-288=879 (+27)
5	Northwestern	287-296-303=886 (+34)
6	Furman	292-297-302=891 (+39)
T7	Auburn	304-303-291=898 (+46)
T7	North Carolina	293-308-297=898 (+46)
9	South Carolina	298-300-301=899 (+47)
10	LSU	291-302-307=900 (+48)
T11	Georgia	294-303-304=901 (+49)
T11	Vanderbilt	295-300-306=901 (+49)
13	Baylor	299-306-299=904 (+52)
14	Arizona State	293-309-303=905 (+53)
15	Oklahoma State	304-302-300=906 (+54)
T16	Tennessee	300-305-302=907 (+55)
T16	Mississippi State	292-311-304=907 (+55)
18	Virginia	301-315-293=909 (+57)

Individual Medalist

Maria Fassi, Arkansas 70-71-69=210 (-3)

Auburn Individuals

T15	Kelli Murphy	77-73-70=220 (+7)
T36	Elena Hualde	77-74-74=225 (+12)
T36	Michaela Owen	75-79-71=225 (+12)
T56	Julie McCarthy	75-78-76=229 (+16)
T79	Kayley Marschke	78-78-78=234 (+21)

EVANS DERBY EXPERIENCE • March 18-20

Auburn University Club • Auburn, Ala.

Par 72 • 6,280 Yards

1	Arkansas	280-279-277=836 (-28)
2	Duke	285-279-281=845 (-19)
3	Alabama	288-284-278=850 (-14)
4	Auburn	285-290-288=863 (-1)
5	Florida State	278-292-295=865 (+1)
T6	South Carolina	286-290-290=866 (+2)
T6	Florida	292-289-285=866 (+2)
8	Louisville	295-288-293=876 (+12)
9	Wake Forest	293-290-297=880 (+16)
10	Ole Miss	297-293-298=888 (+24)
11	Mississippi State	302-302-307=911 (+47)
12	Michigan	302-311-300=913 (+49)

Individual Medalist

Maria Fassi, Arkansas 64-67-71=202 (-14)

Auburn Individuals

T12	Kelli Murphy	72-71-70=213 (-3)
*T12	Kayley Marschke	71-74-68=213 (-3)
T17	Michaela Owen	69-72-73=214 (-2)
T28	Mychael O'Berry	73-73-72=218 (+2)
T32	Elena Hualde	72-74-73=219 (+3)
T32	Kaleigh Telfer	72-74-73=219 (+3)
*T38	Julie McCarthy	71-75-76=222 (+6)
*T67	Melanie Talbott	77-83-75=235 (+19)

**individual*

BRYAN NATIONAL COLLEGIATE • April 6-8

Bryan Park Champions Course • Browns Summit, N.C.

Par 72 • 6,386 Yards

1	Wake Forest	300-289-299=888 (+24)
2	Furman	297-291-305=893 (+29)
T3	Auburn	295-294-308=897 (+33)
T3	North Carolina	301-286-310=897 (+33)
5	South Carolina	296-298-304=898 (+34)
6	NC State	292-301-306=899 (+35)
7	Tennessee	297-294-315=906 (+42)
8	Michigan	291-309-310=910 (+46)
9	Clemson	297-297-321=915 (+51)
10	Miami	307-307-303=917 (+53)
11	Virginia	299-306-316=921 (+57)
12	Central Florida	308-303-311=922 (+58)
13	Notre Dame	304-295-325=924 (+60)
14	Kentucky	313-296-316=925 (+61)
15	Colorado State	308-306-316=930 (+66)
16	Charlotte	313-309-319=941 (+77)
17	Georgetown	308-309-327=944 (+80)

Individual Medalist

Jennifer Kupcho, Wake Forest 72-72-71=215 (-1)

Auburn Individuals

T5	Kayley Marschke	72-73-75=220 (+4)
T10	Julie McCarthy	76-72-75=223 (+7)
T37	Mychael O'Berry	74-78-77=229 (+13)
T40	Kelli Murphy	75-74-81=230 (+14)
T47	Elena Hualde	74-75-83=232 (+16)

SEC CHAMPIONSHIP (Stroke Play) • April 18-20

Greystone G&CC - Legacy • Birmingham, Ala.

Par 72 • 6,253 Yards

1	South Carolina	291-291-285=867 (+3)
2	Alabama	286-304-282=872 (+8)
3	Arkansas	299-293-283=875 (+11)
4	Georgia	306-290-299=895 (+31)
T5	Auburn	306-301-289=896 (+32)
T5	Florida	298-301-297=896 (+32)
7	Vanderbilt	296-306-297=899 (+35)
8	Missouri	304-308-295=907 (+43)
9	Kentucky	309-301-303=913 (+49)
10	Mississippi State	308-305-302=915 (+51)
11	Ole Miss	316-305-295=916 (+52)
12	Tennessee	310-304-304=918 (+54)
13	Texas A&M	312-315-296=923 (+59)
14	LSU	313-311-303=927 (+63)

Individual Medalist

*Ainhoa Olarra, South Carolina 70-69-70=209

Maria Fassi, Arkansas 70-70-69=209

**won playoff*

Auburn Individuals

T9	Kaleigh Telfer	75-72-71=218 (+2)
T21	Kelli Murphy	76-76-72=224 (+8)
T31	Michaela Owen	80-78-71=229 (+13)
T31	Kayley Marschke	76-77-76=229 (+13)
T39	Julie McCarthy	79-76-75=230 (+14)

SEC CHAMPIONSHIP (Match Play) • April 21

Greystone G&CC - Legacy • Birmingham, Ala.

Par 72 • 6,253 Yards

Quarterfinals

(4) Georgia 3, (5) Auburn 2

Julie McCarthy (AU) def. Gaby Coello (UGA)	2 & 1
Rinko Mitsunaga (UGA) def. Kaleigh Telfer (AU)	2 & 1
Paula Neira Garcia (UGA) def. Michaela Owen (AU)	3 & 1
Kelli Murphy (AU) vs. Isabella Skinner (UGA)	2 up thru 16*
Jillian Hollis (UGA) def. Kayley Marschke (AU)	6 & 5

**match unfinished*

(2) Alabama 3, (7) Vanderbilt 2

(1) South Carolina 3, (8) Missouri 0

(3) Arkansas 3, (6) Florida 2

Semifinals

(1) South Carolina 4, (4) Georgia 1

(3) Arkansas 3, (2) Alabama 1

Final

(3) Arkansas 3, (1) South Carolina 2

NCAA AUSTIN REGIONAL • May 7-9

University of Texas Golf Club • Austin, Texas

Par 72 • 6,341 Yards

1	Arkansas	284-271-283=838 (-26)
2	Texas	281-285-283=849 (-15)
T3	Auburn	292-291-286=869 (+5)
T3	Florida	291-287-291=869 (+5)
T3	Baylor	288-293-288=869 (+5)
6	Oklahoma	299-282-289=870 (+6)

7	Texas A&M	295-286-297=878 (+14)
8	Michigan State	285-302-295=882 (+18)
9	BYU	291-296-298=885 (+21)
10	Virginia Tech	288-293-307=888 (+24)
11	Houston	300-297-293=890 (+26)
12	UTSA	298-295-299=892 (+28)
13	Texas Tech	300-299-300=899 (+35)
14	Houston Baptist	301-299-310=910 (+46)
15	Miami	298-306-310=914 (+50)
16	Georgetown	302-304-311=917 (+53)
17	Missouri State	319-319-308=946 (+82)
18	East Carolina	299-WD-WD

Individual Medalist

Maria Fassi, Arkansas 69-70-69=208 (-8)

Auburn Individuals

T16	Kaleigh Telfer	73-71-71=215 (-1)
T19	Elena Hualde	73-71-72=216 (E)
T42	Kelli Murphy	72-73-78=223 (+7)
T42	Kayley Marschke	74-76-71=223 (+7)
T47	Michaela Owen	76-76-72=224 (+8)

Auburn History & Records

Team Records

Low 18-Hole Team Round

Score	Tournament
271	ACC/SEC Challenge, 2004
275	Alamo Invitational, 2014
278	Mason Rudolph Championship, 2009
	Lady Gamecock Classic, 2006
	NCAA Fall Preview, 2004
	NCAA East Regional, 2003
280	Alamo Invitational, 2014
	Liz Murphey Collegiate, 2011
	NCAA East Regional, 2010
	Lady Buckeye Invitational, 2006
	SEC Championship, 2002
281	Lady Buckeye Invitational, 2006
282	The "Mo" Morial, 2014
	NCAA East Regional, 2007
	SEC Championship, 2006
	Lady Gator Invitational, 1995

Low 54-Hole Team Total

Score	Tournament
849	Lady Buckeye Invitational, 2006
850	Alamo Invitational, 2014
857	Mason Rudolph Championship, 2017
	ACC/SEC Challenge, 2004
860	The "Mo" Morial, 2014
861	SEC Championship, 2010
	Tar Heel Invitational, 2011
	NCAA East Regional, 2007
863	Evans Derby Experience, 2018
	UCF Challenge, 2012
864	UCF Challenge, 2017
	SEC Championship, 2011
	Wildcat Invitational, 2006
	SEC Championship, 2002
867	NCAA East Regional, 2003
868	Pinehurst Challenge, 2016
	Lady Gator Invitational, 2001
	NCAA East Regional, 2010
869	NCAA Austin Regional, 2018
	Cougar Classic, 2016
	NCAA Fall Preview, 2004

Individual Records

Season Scoring Average (min. 24 rounds)

Player	Year	Average
1. Cydney Clanton	2010	71.45
2. Maria Martinez	2006	71.89
3. Candace Schepperle	2009	72.00
4. Cydney Clanton	2011	72.29
5. Celeste Troche	2001	72.45
6. Elena Hualde	2017	72.94
7. Diana Ramage	2005	73.00
8. Celeste Troche	2002	73.05
9. Marta Sanz	2014	73.25
10. Michaela Owen	2018	73.42
11. Kelli Murphy	2018	73.43

Career Scoring Average (min. 60 rounds)

Player	Years	Average
1. Cydney Clanton	2007-11	72.98
2. Celeste Troche	1999-03	73.66
3. Candace Schepperle	2006-10	73.91
4. Nicole Hage	2003-07	74.17
5. Maria Martinez	2002-06	74.21
6. Marta Sanz	2010-14	74.28
7. Diana Ramage	2000-05	74.41
8. Kelli Murphy	2014-present	74.67
9. Danielle Downey	1999-03	74.70
10. Michaela Owen	2014-present	74.93

Low 18-Hole Score

Score	Player (Tournament)
64	Diana Ramage (ACC/SEC Challenge, '04)
65	Kelli Murphy (Pinehurst Challenge, '16)
	Sophia Schubert (Alamo Inv. (1) '14)
	Sophia Schubert (Alamo Inv. (3) '14)
66	Clara Baena ("Mo" Morial, '14)
	Cydney Clanton (NCAA Champ., '10)
	Candace Schepperle (Mason Rudolph, '09)
	Candace Schepperle (NCAA Preview, '08)
	Cydney Clanton (UCF Challenge, '08)
	Maria Martinez (NCAA Regional, '03)
67	17 times; most recent:
	Kelli Murphy (Maryb S. Kauth Invitational, '17)
	Elena Hualde (Mason Rudolph Champ., '17)
68	38 times; most recent:
	Kayley Marschke (Evans Derby Experience, '18)
	Kayley Marschke (Lake Oconee Indiv., '18)

Low 54-Hole Score

Score	Player (Tournament)
204	Sophia Schubert (Alamo Inv., '14)
206	Diana Ramage (ACC/SEC Challenge, '04)
207	Marta Sanz (Lady Tar Heel, '11)
	Nicole Hage (NCAA Regional, '07)
	Maria Martinez (Lady Buckeye Inv., '06)
208	Marta Sanz (Sugar Bowl, '14)
	Cydney Clanton (Mason Rudolph, '10)
	Nicole Hage (Lady Buckeye Inv., '06)
209	Elena Hualde (Mason Rudolph, '17)
	Kelli Murphy (Pinehurst Challenge, '16)
	Clara Baena ("Mo" Morial, '14)
	Cydney Clanton (Pac-10/SEC Challenge, '10)
	Candace Schepperle (Mason Rudolph, '08)
	Maria Martinez (Derby Invitational, '05)

Most Rounds Under Par (Season)

Player	Year	Rounds	
1. Cydney Clanton	2010	16	
2. Maria Martinez	2006	14	
3. Celeste Troche	2001	13	
4. Celeste Troche	2002	12	
5. Cydney Clanton	2011	10	
6. Diana Ramage	2005	9	
	Marci Clemons	1996	9
	Nicole Hage	2006	9
	Candace Schepperle	2009	9
	Marta Sanz	2013	9

Most Rounds Under Par (Career)

Player	Year	Rounds	
1. Cydney Clanton	2007-11	38	
2. Celeste Troche	1999-03	35	
3. Nicole Hage	2003-07	23	
	Diana Ramage	2000-05	23
	Maria Martinez	2002-06	23

Tournament Winners

Player	Wins	
1. Maria Martinez	5	
2. Marci Clemons	4	
	Robin Cook	4
	Diana Ramage	4
5. Cydney Clanton	3	
	Danielle Downey	3
	Margaret Platt	3
8. Elena Hualde	2	
	Barbara Paul	2
	Celeste Troche	2
	Marta Sanz	2
12. Melanie Talbott	1	
	Kayley Marschke	1
	Clara Baena	1
	Alex Harrell	1
	Maria Milligan	1
	Diane Rama	1
	Joal Rieder	1
	Patricia Sanz	1
	Sophia Schubert	1
	Kami Smith	1
	Courtney Swaim	1
	Victoria Trapani	1
	Missy Tuck	1
	Carlie Yadloczky	1

Auburn History at the NCAA Championships



1989 (13th)
Stanford Golf Course
 Palo Alto, Calif.
 Host: Stanford

Auburn.....	315-310-309-317--1251
Margaret Platt.....	76-71-75-77--299 (8th)
Diane Rama.....	77-77-75-83--312(t-37th)
Diana Miles.....	84-81-78-82--325 (t-82nd)
Sallie Ransom.....	81-84-81-79--325 (t-82nd)
Missy Tuck.....	81-81-86-79--327 (t-89th)



1990 (8th)
Arthur Hills Course at Palmetto Dunes
 Hilton Head, S.C.
 Host: South Carolina

Auburn.....	306-307-318-298--1229
Missy Tuck.....	77-72-76-75--300 (t-8th)
Joal Rieder.....	74-79-82-73--308 (t-25th)
Diane Rama.....	76-77-81-77--311 (t-35th)
Anne Jones.....	79-82-82-75--318 (t-61st)
Rebeca Garcia.....	82-79-79-WD



1996 (18th)
La Quinta Country Club (Dunes Course)
 La Quinta, Calif.
 Host: UCLA

Auburn.....	327-330-332-320--1309
Marci Clemons.....	77-78-82-74--311(t-16th)
Robin Cook.....	82-81-83-81--327 (t-61st)
Katie Gallina.....	78-87-84-81--330 (76th)
Marty Goldthorp.....	90-84-83-84--341(t-90th)
Tracy Veto.....	90-89-97-91--367 (96th)



1997 (13th)
The Scarlet Course
 Columbus, Ohio
 Host: Ohio State

Auburn.....	303-319-296-303--1221
Marci Clemons.....	76-80-69-76--301 (t-31st)
Robin Cook.....	76-78-75-77--306(t-49th)
Katie Gallina.....	77-82-76-74--309 (t-61st)
Marty Goldthorp.....	81-83-76-76--316(t-79th)
Kami Smith.....	74-79-80-87--320 (t-88th)



1998 (19th)
University Ridge Golf Course
 Madison, Wis.
 Host: Wisconsin

Auburn.....	295-314-309-313--1231
Robin Cook.....	80-73-72-74--299 (t-27th)
Marty Goldthorp.....	74-79-75-78--306 (t-55th)
Katie Gallina.....	72-84-79-79--314 (t-82nd)
Audrey Fisher.....	72-80-83-82--317 (t-89th)
Kami Smith.....	77-82-85-82--326 (97th)



1999 (t-15th)
Tulsa Country Club
 Tulsa, Okla.
 Host: Tulsa

Auburn.....	318-312-314--944
Robin Cook.....	78-76-73--227 (t-15th)
Courtney Swaim.....	75-76-78--229 (t-24th)
Kami Smith.....	84-77-80--241 (74th)
Marty Goldthorp.....	81-86-83--250 (t-95th)
Audrey Fisher.....	84-83-87--254 (t-97th)



2000 (6th)
Crosswater Club
 Sunriver, Ore.
 Host: Oregon State

Auburn.....	302-302-300-306--1210
Danielle Downey.....	71-74-72-77--294 (4th)
Celeste Troche.....	77-77-73-74--301(t-25th)
Courtney Swaim.....	73-76-77-78--304 (t-41st)
Kimberly Strong.....	81-75-78-77--311(t-77th)
Kami Smith.....	81-77-81-82--321(t-107th)



2001 (4th)
Mission Inn Golf and Tennis Resort
 Howey-in-the-Hills, Fla.
 Host: Stetson

Auburn.....	300-294-294-305--1193
Celeste Troche.....	72-68-74-77--291 (9th)
Courtney Swaim.....	73-74-76-77--300(t-30th)
Danielle Downey.....	76-78-75-73--302(t-39th)
Diana Ramage.....	82-74-69-80--305(t-55th)
Kimberly Strong.....	79-78-85-78--320(t-106th)



2002 (t-2nd)
Washington National Golf Club
 Auburn, Wash.
 Host: Washington

Auburn.....	298-300-285-287--1170
Danielle Downey.....	73-69-70-72--284 (t-2nd)
Celeste Troche.....	72-75-71-71--289 (t-10th)
Diana Ramage.....	76-78-71-73--298 (t-45th)
Courtney Swaim.....	77-78-75-71--301 (t-60th)
Kingsley Barrett.....	84-79-73-75--311 (106th)

Auburn History at the NCAA Championships



2003 (9th)
Kampen Course
West Lafayette, Ind.
Host: Purdue

Auburn.....	317-303-300-304-1224
Danielle Downey	76-73-77-74-300 (t-6th)
Diana Ramage.....	81-72-74-74-301 (t-11th)
Celeste Troche.....	76-81-71-75-303 (t-19th)
Maria Martinez.....	84-77-81-81-323 (101st)
Kingsley Barrett.....	87-85-78-83-333 (120th)



2005 (3rd)
Sunriver Course
Bend, Ore.
Host: Oregon

Auburn.....	290-296-295-295--1176
Nicole Hage.....	73-75-70-71-289 (5th)
Diana Ramage.....	73-71-76-73-293 (t-12th)
Maria Martinez.....	72-73-77-74-296 (t-16th)
Abigale Schepperle	72-77-74-81-304 (t-68th)
Margaret Shirley.....	79-79-75-77-310 (t-98th)



2006 (12th)
Ohio State Scarlet Course
Columbus, Ohio
Host: Ohio State

Auburn	301-298-305-304-1208
Abigal Schepperle	74-71-77-75-297 (t-21st)
Maria Martinez	73-76-75-77-301 (t-38th)
Margaret Shirley	77-73-78-79-307 (t-68th)
Nicole Hage	77-82-75-75-309 (t-79th)
Jessica Lovell.....	80-78-80-77-315 (t-98th)



2007 (9th)
LPGA International
Daytona Beach, Fla.
Host: Central Florida

Auburn	309-304-300-300-1213
Candace Schepperle	79-72-74-73-298 (t-14th)
Nicole Hage.....	78-77-77-71-303 (t-34th)
Margaret Shirley.....	77-76-72-78-303 (t-34th)
Marisa Milligan.....	75-79-77-78-309 (t-65th)
Abigale Schepperle	82-80-77-78-317 (t-95th)



2008 (t-12th)
New Mexico Championship Golf Club
Albuquerque, N.M.
Host: New Mexico

Auburn.....	289-315-309-302-1215
Cydney Clanton	74-75-77-71-297 (t-23rd)
Margaret Shirley.....	71-80-78-76-305 (t-63rd)
Candace Schepperle	69-82-79-78-308 (t-75th)
Sarah Thead.....	75-78-75-80-308 (t-75th)
Mariana Macias.....	76-82-80-77-315 (t-96th)



2010 (t-11th)
Country Club of Landfall
Wilmington, N.C.
Host: North Carolina-Wilmington

Auburn.....	293-296-295-299-1183
Cydney Clanton	72-71-72-66-281 (t-3rd)
Candace Schepperle	73-71-74-78-296 (t-43rd)
Haley Wilson	73-77-74-78-302 (t-76th)
Patricia Sanz	75-77-75-77-304 (t-86th)
Carlie Yadloczky	77-76-81-80-317 (120th)



2013 (6th)
University of Georgia Golf Course
Athens, Ga.
Host: Georgia

Auburn.....	305-292-285-301-1183
Marta Sanz.....	79-69-68-74-290 (t-10th)
Victoria Trapani	80-72-69-74-295 (t-29th)
Carlie Yadloczky	74-77-70-75-296 (t-32nd)
Diana Fernandez	72-75-78-80-305 (t-73rd)
Jamie Yun	81-76-83-78-318 (t-120th)

Auburn History at the NCAA Championships

Year	Site	AU Finish	AU Low Individual	Team Champion	Tournament Medalist
2013	Athens, Ga.	6th [1,183]	Marta Sanz [290, t-10th]	USC [1,133]	Annie Park, USC [278]
2010	Wilmington, N.C.	T-11th [1,183]	Cydney Clanton [281, t-3rd]	Purdue [1,153]	Caroline Hedwall, Oklahoma State [276]
2008	Albuquerque, N.M.	T-12th [1,215]	Cydney Clanton [297, t-23rd]	USC [1,168]	Azahara Munoz, Arizona State [287]
2007	Daytona Beach, Fla.	9th [1,213]	Candace Schepperle [298, t-14th]	Duke [1,170]	Stacy Lewis, Arkansas [282]
2006	Columbus, Ohio	12th [1,208]	Abigale Schepperle [297, t-21st]	Duke [1,167]	Dewi Schreefel, USC [286]
2005	Bend, Ore.	3rd [1,176]	Nicole Hage [289, 5th]	Duke [1,170]	Anna Grzebien, Duke [286]
2003	West Lafayette, Ind.	9th [1,224]	Danielle Downey [300, t-6th]	USC [1,197]	Mikaela Parmlid, USC [297]
2002	Auburn, Wash.	T-2nd [1,170]	Danielle Downey [284, t-2nd]	Duke [1,164]	Virada Nirapathpongorn, Duke [279]
2001	Howey-in-the-Hills, Fla.	4th [1,193]	Celeste Troche [291, 9th]	Georgia [1,176]	Candy Hannemann, Duke [285]
2000	Sunriver, Ore.	6th [1,210]	Danielle Downey [294, 4th]	Arizona [1,175]	Jenna Daniels, Arizona [287]
1999	Tulsa, Okla.	t-15th [944]	Robin Cook [227, t-15th]	Duke [895]	Grace Park, Arizona State [212]
1998	Madison, Wis.	19th [1,231]	Robin Cook [299, t-27th]	Arizona State [1,155]	Jennifer Rosales, USC [279]
1997	Columbus, Ohio	13th [1,221]	Marci Clemons [301, t-31st]	Arizona State [1,178]	Heather Bowie, Texas [285]
1996	La Quinta, Calif.	18th [1,309]	Marci Clemons [311, t-16th]	Arizona [1,240]	Marisa Baena, Arizona [296]
1990	Hilton Head Island, S.C.	8th [1,229]	Missy Tuck [300, t-8th]	Arizona State [1,206]	Susan Slaughter, Arizona [297]
1989	Palo Alto, Calif.	13th [1,251]	Margaret Platt [299, 8th]	San Jose State [1,208]	Pat Hurst, San Jose State [292]

Auburn NCAA Championship Records

Team Records

Best Finish	
1.	t-2nd2002
2.	3rd2005
3.	4th2001
4.	6th2000
	6th2013
6.	8th1990
7.	9th2003

Low Final Score (72 Holes)	
1.	1,170 strokes2002
2.	1,183 strokes2010
	1,183 strokes2013
4.	1,193 strokes2001
5.	1,208 strokes2006

Low Final Score (54 Holes)	
1.	944 strokes1999

Low Round	
1.	285 strokes (3rd round)2002
	285 strokes (3rd round)2013
3.	287 strokes (4th round)2002
4.	289 strokes (1st round)2008
5.	292 strokes (2nd round)2013

Individual Records

Best Finish	
1.	Danielle Downey (t-2nd)2002
2.	Cydney Clanton (t-3rd)2010
3.	Danielle Downey (4th)2000
4.	Danielle Downey (t-6th)2003
5.	Margaret Platt (8th)1989
	Missy Tuck (t-8th)1990
7.	Celeste Troche (9th)2001
8.	Celeste Troche (t-10th)2002
	Marta Sanz (t-10th)2013

Low Final Score (72 Holes)	
1.	Cydney Clanton (281)2010
2.	Danielle Downey (284)2002
3.	Celeste Troche (289)2002
4.	Marta Sanz (290)2013
5.	Celeste Troche (291)2001
6.	Danielle Downey (295)2000
	Victoria Trapani (295)2013

Low Final Score (54 Holes)	
1.	Robin Cook (227)1999
2.	Courtney Swaim (229)1999

Low Round	
1.	Cydney Clanton (66, 4th rd.)2010
2.	Marta Sanz (68, 3rd rd.)2013
	Celeste Troche (68, 2nd rd.)2001
4.	Marta Sanz (69, 2nd rd.)2013
	Danielle Downey (69, 2nd rd.)2002
	Marci Clemons (69, 3rd rd.)1997
7.	Carlie Yadloczky (70, 3rd rd.)2013
	Danielle Downey (70, 3rd rd.)2002



Melissa LUELLEN

 @CoachLuellenAU

Head Coach

Third Season at Auburn • 18th as a Head Coach

Tulsa, Okla. • Tulsa, 1988

Melissa Luellen is in her third season as Auburn's head women's golf coach in 2017-18. She came to Auburn after spending the previous 13 years as the women's golf coach at Arizona State, leading the program to an NCAA title in 2009.

An 18-year head coaching veteran, Luellen spent two years as head coach of her alma mater at the University of Tulsa from 2001-02 prior to her arrival at ASU.

In 2016-17, Luellen's second season on The Plains saw the Tigers take a major step forward. Auburn made a return trip to the NCAA Regionals and saw their players earn three individual tournament wins, including two from freshman Elena Hualde. The 2016-17 season also saw Auburn improve in nearly every statistical category and have Hualde named to the SEC All-Freshman Team.

During her very successful tenure at Arizona State, Luellen led the program to an NCAA team title, 10 NCAA Top 10 finishes, two conference championships and 25 team titles. She also coached one NCAA Individual Champion, three Pac-12 Golfers of the Year, three NGCA Freshmen of the Year, 14 All-Americans and 21 individual tournament medalists.

Luellen's coaching accomplishments have earned her several personal coaching honors. After the Sun Devils' NCAA Championship run in 2009, she was named SkyCaddie NGCA National Coach of the Year. Luellen was also named Pac-10 Coach of the Year three times (2006, 2007, 2009) and West Regional Coach of the Year four times (2005, 2006, 2007, 2009). While at Tulsa, Luellen was named Central Regional Coach of the Year in 2002 and WAC Coach of the Year in 2001 and 2002.

Luellen's golfers have also achieved excellence in the classroom. NCAA Champion Azahara Munoz became the first two-time winner of the Edith Cummings Munson Award, which is given to the All-American with the highest grade point average. The following year, Sun Devil Juliana Murcia won the same honor.

In her two seasons as Tulsa's head coach, Luellen led her team to seven tournament titles including back-to-back Western Athletic Conference and NCAA Central Regional championships in each year. The 2001-02 season saw her team win five tournaments, including the 2002 PING/ASU Championship at Karsten Golf Course, earn a No. 3 national ranking for most of the season, and finish 12th at the 2002 NCAA Championships. Luellen was named the Western Athletic Conference Coach of the Year in each of her two seasons and was the 2002 Central Regional Coach of the Year.

A four-time All-American for the Golden Hurricane, Luellen succeeded her mother, Dale McNamara, who retired in 2000 following a 26-year career that included four national championships.

As a player at Tulsa, Luellen won medalist honors at four tournaments and recorded 22 top-10 finishes in 41 career events. She capped off a stellar collegiate career by capturing a two-stroke individual victory at the 1988 NCAA Championship while leading the Golden Hurricanes to the national team title.

After graduating with a bachelor's degree in Marketing from Tulsa in 1988, Luellen competed on the Futures and Ladies European Tours in 1988 and 1989 before qualifying for the LPGA Tour in October of 1989. She spent 11 years on the LPGA Tour, winning the 1991 Stratton Mountain LPGA Classic and teamed with Mike Springer to win the 1993 JC Penney Classic. She was also elected to the LPGA Executive Committee in her final two years on the tour.

Prior to college, she was a three-time Oklahoma state high school champion, a two-time Women's Oklahoma Golf Association Girls' Junior Champion (1981, 1982), the 1983 WOGA State Amateur, and the 1983 AJGA Player of the Year. Luellen was inducted into the Women's Golf Coaches Association Player Hall of Fame in 1998, the WGCA Coaches Hall of Fame in 2014 and the University of Tulsa Athletic Hall of Fame in 2000.

Luellen Year-by-Year

Tulsa, Player (1984-1988)

Year	Wins	Conf./NCAA	Other Information
1984-85	8	--/2nd	
1985-86	4	--/5th	
1986-87	0	--/--	
1987-88	4	--/1st	NCAA Medalist

Tulsa, Head Coach (2000-02)

Year	Wins	Conf./NCAA	Other Information
2000-01	2	1st/10th	WAC Coach of the Year
2001-02	5	1st/12th	WAC Coach of the Year Central Region Coach of the Year

Arizona State, Head Coach (2002-15)

Year	Wins	Conf./NCAA	Other Information
2002-03		5th/18th	
2003-04	2	T-4th/10th	
2004-05	1	2nd/T-8th	West Regional Coach of the Year
2005-06	2	2nd/4th	Pac-10 Coach of the Year West Regional Coach of the Year
2006-07	4	1st/T-13th	Pac-10 Coach of the Year West Regional Coach of the Year
2007-08	3	3rd/5th	
2008-09	4	1st/1st	Pac-10 Coach of the Year West Regional Coach of the Year National Coach of the Year
2009-10	3	DNF/4th	
2010-11	3	6th/3rd	
2011-12	1	5th/T-6th	
2012-13		6th/5th	
2013-14		6th/5th	
2014-15	1	9th/9th (Regional)	

Auburn, Head Coach (2015-present)

Year	Wins	Conf./NCAA	Other Information
2015-16	--	13th/--	
2016-17	1	14th/12th (regional)	
2017-18	--	T-5th/TBD	



Elena HUALDE

Sophomore • 5-5

Pamplona, Spain

Miravalles

****2017 SEC All-Freshman Team****

Sophomore Year (2017-18)

Played in nine team events as a sophomore ... Enters NCAA Championship with scoring average of 73.52 ... Has four top-20 finishes this season ... Six of 12 tournament rounds in fall season were at even par or better ... Low round was a 67 in the first round of the Mason Rudolph Championship, which ties for team's low round of season ... Finished seventh at Mason Rudolph with rounds of 67-69-73=209 (-7); 54-hole score was a collegiate best ... Finished 11th at Magnolia Invitational with 73-76-69=218 (+2) ... Opened spring season with tie for ninth at UCF Challenge, shooting 76-73-69=218 (+2) ... Finished at even-par 216 with rounds of 73-71-72 at NCAA Austin Regional to tie for 19th ... Needs one more round to qualify for career scoring average minimum (60 rounds); current average of 73.20 would rank second in Auburn history.

Freshman Year (2016-17)

Played in all 12 varsity team events ... Finished as medalist in two events as a freshman ... Was co-medalist in first collegiate event, shooting 73-68=141 (-3) to tie for first at Fall Kickoff ... Won Auburn-Tennessee Challenge by three strokes, shooting 68-72=140 (-4) at the AU Club ... Named SEC Freshman of the Week (3/1) after AU-UT win ... Had three other top-20 results during the season ... Finished sixth at Mason Rudolph Championship, shooting 68-72-72=212 (-4) ... Tied for seventh at UCF Challenge with rounds of 71-67-72=210 (-6); second-round 67 was season-low... Earned a top-20 in first collegiate postseason appearance, leading Auburn with a 19th-place tie at the NCAA Athens Regional with rounds of 75-72-73=220 (+4) ... Tied for 24th at Liz Murphey Collegiate Classic qualifying with a 78 (+6) ... Posted scores of 79-70-72=221 (+5) to tie for 35th at Briar's Creek Invitational ... Tied for 33rd at SEC Championship with scores of 77-72-72=221 (+5) ... Shot 74-73-74=221 (+5) at Cougar Classic to tie for 50th ... Closed strong at Pinehurst Challenge to tie for 37th, posting scores of 76-78-71=225 (+9) ... Finished fall season with tie for 26th at Maryb S. Kauth Invitational, shooting 74-72-73=219 (+3) ... Led Auburn with scoring average of 72.94 ... 17 of 32 rounds on the season were at even par or better ... Had at least one round of par or better in 11 of 12 events ... Named to SEC All-Freshman Team.

Prior to Auburn

Was the fifth-ranked junior golfer in Spain under age 18 ... T-3rd at 2015 European Girls Team Championship in stroke play and helped the Spanish team to the tournament title ... Also competed at 2016 European Girls Team Championship, finished T-30th in stroke play ... T-5th at 2015 Spanish Ladies International ... T-7th at 2015 Grand Prix des Landes ... T-9th at 2015 Biarritz Cup ... Also competed at British Girls Junior ... Best score in competition was a 64.

Personal

Full name is Elena Maria Hualde Zúñiga ... Parents are Ana Zúñiga Fonseca and Luis Hualde Manso ... Has two brothers, Pablo and Jaime, and a sister, Victoria ... Home course is Club de Golf Castillo de Gorraiz ... Enrolled in the Ginn College of Engineering.

Career Tournament-by-Tournament Results

2017-18

Mason Rudolph Championship.....	67-69-73=209 (-7)	7th/81
Magnolia Invitational.....	73-76-69=218 (+2)	11th/63
Maryb S. Kauth Invitational.....	80-79-71=230 (+14)	T-57th/74
Battle at the Beach.....	70-77-71=218 (+5)	T-26th/84
UCF Challenge.....	76-73-69=218 (+2)	T-9th/90
Darius Rucker Intercollegiate.....	77-74-74=225 (+12)	T-36th/93
Evans Derby Experience.....	72-74-73=219 (+3)	T-32nd/74
Bryan National Collegiate.....	74-75-83=232 (+16)	T-47th/95
NCAA Austin Regional.....	73-71-72=216 (E)	T-19th/96

2016-17

Fall Kickoff.....	73-68=141 (-3)	T-1st/51
Mason Rudolph Championship.....	68-72-72=212 (-4)	6th/81
Cougar Classic.....	74-73-74=221 (+5)	T-50th/108
Pinehurst Challenge.....	76-78-71=225 (+9)	T-37th/96
Maryb S. Kauth Invitational.....	74-72-73=219 (+3)	T-26th/75
UCF Challenge.....	71-67-72=210 (-6)	T-7th/96
Auburn-Tennessee Challenge.....	68-72=140 (-4)	1st/15
Darius Rucker Intercollegiate.....	73-70-83=226 (+13)	T-47th/90
Briar's Creek Invitational.....	79-70-72=221 (+5)	T-35th/93
Liz Murphey Collegiate Classic.....	78 (+6)	T-24th/60
SEC Championship.....	77-72-72=221 (+5)	T-33rd/70
NCAA Athens Regional.....	75-72-73=220 (+4)	T-19th/96

Career Match Play Results

2016-17 - Liz Murphey Collegiate Classic (0-2-1)

Quarterfinal - lost to Kaylee Benton (Arkansas), 3 & 2
 Consolation - vs. Jiwon Jeon (Daytona State), halved
 Fifth-Place Match - lost to Gabriella Then (USC), 3 up thru 15

Hualde's Year-by-Year Stats

Season	Tourn.	Rounds	Team Count	Low 54	Low 18	Par/Better	Wins	Top 5	Top 10	Top 20	Strokes	Avg.
2016-17	12	32	30	210	67	17	2	1	3	4	2334	72.94
2017-18	9	27	22	209	67	10	0	0	2	4	1985	73.52
Career Totals	21	59	52	209	67	27	2	1	5	8	4319	73.20



Kayley MARSCHKE

Sophomore • 5-5

Suwanee, Ga.

Lambert HS

Sophomore Year (Fall 2017)

Has played in 10 events this season, seven as part of the lineup and three individual appearances ... Enters NCAA Championship with scoring average of 74.71 ... Has Auburn's two best individual finishes this season ... Was medalist at 18-hole Lake Oconee Individual Championship in February, shooting a 68 (-4) ... Battled brutal weather conditions to shoot final-round 75 and tie for fifth place at Bryan National Collegiate at 220 (+4) ... Playing as an individual, tied for 12th at Evans Derby Experience at 213 (-3) after a final-round 68 that included a run of five straight birdies ... Recorded fifth round under par of season with 1-under 71 in final round at NCAA Austin Regional; tied for 42nd at 223 (+7) ... Tied for 31st at SEC Championship at 229 (+13).

Freshman Year (2016-17)

Played 12 tournaments as a freshman, including 11 varsity team events ... Went 3-0 in match play at Liz Murphey Collegiate Classic to earn SEC Freshman of the Week honors (4/12) ... Rallied for four straight birdies to defeat USC's Victoria Morgan, 2-up, to clinch Auburn's victory over second-ranked Trojans in fifth-place match ... Defeated Arkansas' Summar Roachell, 3 and 1, and earned 3 and 1 win over Daytona State's Kendall Johnson ... Best full-field varsity finish was a tie for 14th at Pinehurst Challenge with scores of 77-73-71=221 (+5) ... Tied for 20th at Maryb S. Kauth Invitational, shooting 73-69-76=218 (+2) ... Finished in a tie for sixth as an individual at the Samford Spring Shootout with scores of 73-76=149 (+5) ... Best round of season came in first round at Briar's Creek Invitational; shot 67-73-81=221 (+5) to tie for 35th ... Led Auburn with a tie for 27th at Darius Rucker Intercollegiate, shooting 70-79-73=222 (+9) ... Tied for 24th in stroke-play qualifying at Liz Murphey Collegiate Classic with a 78 (+6) ... Earned a tie for 25th in collegiate debut at Fall Kickoff, posting scores of 78-75=153 (+9) ... Made first postseason appearance at NCAA Athens Regional, shooting 76-74-75=225 (+9) to tie for 37th place ... Tied for 44th at Mason Rudolph Championship, 45th at Cougar Classic and 59th at SEC Championship... Season scoring average was 74.65.

Prior to Auburn

Graduated from Lambert High School and was a high school teammate of Auburn teammate Michaela Owen ... Named Player of the Year by the Atlanta Journal-Constitution ... Helped Lambert to three consecutive state titles ... Was the state tournament medalist in 2014 ... Won the 2014 AJGA Will Claxton at the Auburn University Club with a 2-over 218 over three rounds ... Took fourth place at the 2014 Bubba Conlee, finishing 1-under ... Selected by Golfweek as one of the top 50 female recruits for the class of 2016 ... Ranked 45th in the class of 2016 by Junior Golf Scoreboard.

Personal

Full name is Kayley Marie Marschke ... Parents are Tammy and Mark Marschke ... Has a brother, Garrett ... Home course is Olde Atlanta Club ... Enrolled in the College of Education.

Career Tournament-by-Tournament Results

2017-18

Mason Rudolph Championship.....	73-70-75=218 (+2)	T-40th/81
Magnolia Invitational.....	73-75-78=226 (+10)	T-34th/63
Battle at the Beach.....	79-76-82=237 (+24)	T-78th/84
*UCF Challenge.....	76-72-76=224 (+8)	T-37th/90
*Lake Oconee Individual Champ.....	68 (-4)	1st/37
Darius Rucker Intercollegiate.....	78-78-78=234 (+21)	T-79th/93
*Evans Derby Experience.....	71-74-68=213 (-3)	T-12th/74
Bryan National Collegiate.....	72-73-75=220 (+4)	T-5th/95
SEC Championship.....	76-77-76=229 (+13)	T-31st/70
NCAA Austin Regional.....	74-78-71=223 (+7)	T-42nd/96

2016-17

Fall Kickoff.....	78-75=153 (+9)	T-25th/51
Mason Rudolph Championship.....	77-74-74=225 (+9)	T-44th/81
Cougar Classic.....	74-73-73=220 (+4)	T-45th/108
Pinehurst Challenge.....	77-73-71=221 (+5)	T-14th/96
Maryb S. Kauth Invitational.....	73-69-76=218 (+2)	T-20th/75
*Samford Spring Shootout.....	73-76=149 (+5)	T-6th/49
Auburn-Tennessee Challenge.....	73-80=153 (+9)	8th/15
Darius Rucker Intercollegiate.....	70-79-73=222 (+9)	T-27th/90
Briar's Creek Invitational.....	67-73-81=221 (+5)	T-35th/93
Liz Murphey Collegiate Classic.....	78 (+6)	T-24th/60
SEC Championship.....	74-79-76=229 (+13)	T-59th/70
NCAA Athens Regional.....	76-74-75=225 (+9)	T-37th/96

Career Match Play Results

2017-18 - SEC Championship (0-1)

Quarterfinal - lost to Jillian Hollis (Georgia), 6 & 5

2016-17 - Liz Murphey Collegiate Classic (3-0)

Quarterfinal - def. Summar Roachell (Arkansas), 3 & 1

Consolation - def. Kendall Johnson (Daytona State), 3 & 1

Fifth-Place Match - def. Victoria Morgan (USC), 2 up

*played as individual

Marschke's Year-by-Year Stats

Season	Tourn.	Rounds	Team Count	Low 54	Low 18	Par/Better	Wins	Top 5	Top 10	Top 20	Strokes	Avg.
2016-17	12	31	25	218	67	4	0	0	1	3	2314	74.65
2017-18	10	28	13	213	68	7	1	2	2	3	2092	74.71
Career Totals	22	59	38	213	67	11	1	2	3	6	4406	74.68



Kelli MURPHY

Senior • 5-3

Elgin, S.C.

Lugoff-Elgin HS

****2018 All-SEC Second Team****

****2016, 2017, 2018 SEC Community Service Team****

****2015, 2016, 2017 WGCA All-America Scholar****

****2015 SEC All-Freshman Team****

Senior Year (2017-18)

Second-team All-SEC selection ... Has competed in every team event over her four-year career ... Enters final collegiate tournament with career average of 74.67, 8th-best in Auburn history ... Season average of 73.43 ... Team's top finisher in four events this season ... Tied for 12th at Evans Derby Experience with 72-71-70=213 (-3) ... Tied for 15th at Darius Rucker with 77-73-70=220 (+7) ... Earned best individual finish of fall for Auburn with tie for sixth place at Maryb S. Kauth Invitational, shooting 73-67-73=212 (-4) ... Her second-round 67 is tied for the team's best of the season ... Tied for 22nd at Battle at the Beach with scores of 70-74-73=217 (+4) ... Finished in tie for 34th at Magnolia Invitational with scores of 80-72-74=226 (+10) ... Selected to SEC Community Service Team for third straight season ... Graduated from Auburn with degree in communications in May 2018.

Junior Year (2016-17)

Played in all 12 team events as a junior ... Equaled career-best finish with runner-up showing at Pinehurst Challenge, carding rounds of 65-73-71=209 (-7); first-round 65 was a career-best and tied for the second-lowest round in Auburn history ... Had another top-20 at season-opening Fall Kickoff, shooting 72-79=151 (+7) to tie for 16th ... Tied for 36th at SEC Championship with scores of 72-73-77=222 (+6) ... Shot 75-73-73=221 (+5) to tie for 35th at Briar's Creek Invitational ... Tied for 43rd in NCAA Athens Regional, shooting 77-75-74=226 (+10) ... Had seven rounds of par or better during the season ... Named to SEC Community Service Team for second straight year.

Sophomore Year (2015-16)

Played in all nine team tournaments as a sophomore ... Was Auburn's top finisher in three events ... Best finish of the season came at season-opening Cougar Classic in September, where she tied for 17th with scores of 73-73-74=220 (+4) ... Earned Auburn's top finish at the LSU Tiger Golf Classic in March, posting 79-79-75=233 (+17) to tie for 34th ... Was the Tigers' top scorer at the SEC Championship with rounds of 74-77-75=226 (+10), tying for 31st ... Won her match over Arkansas' Summar Roachell, 3 and 2, at the Liz Murphey Collegiate Classic ... Qualified for 2015 U.S. Women's Amateur ... Named to SEC Community Service Team.

Freshman Year (2014-15)

Played in all 10 team events ... Earned runner-up finish at Bryan National Collegiate, shooting 72-76-69=217 (+1), one shot out of the lead ... Named SEC Freshman of the Week for her efforts ... Tied for 12th in her first collegiate tournament, shooting 77-72-74=223 (+7) at the "Mo" Morial, helping Auburn to a team title ... Shot 75-74-75=224 (+8) at the Mason Rudolph Championship to tie for 26th ... Shot 69-73-74=216 (E) to tie for 21st at Alamo Invitational ... Tied for Auburn's top finish at Lady Puerto Rico Classic, shooting 74-80-71=225 (+9) to tie for 27th with teammate Victoria Trapani ... Won one match at Liz Murphey Collegiate Classic, defeating Alabama's Mia Landegren, 4 and 3 ... Tied for 36th at SEC Championship with 78-74-73=225 (+9) ... Season scoring average was 74.68 ... Named to SEC All-Freshman Team.

Prior to Auburn

One of the top junior golfers in South Carolina ... Four-time all-state selection at Lugoff-Elgin High School, where she played on the boys' team ... Co-captain as a junior and a senior ... Competed at 2013 North/South All-Star Cup Matches ... Qualified for 2013 U.S. Women's Amateur ... Competed at 2012 and 2013 U.S. Girls' Junior, reaching the quarterfinals in 2012 ... Was junior medalist at 2012 Women's TRANS National Amateur ... 2011 and 2013 Carolina Junior Girls Champion ... 2012 Carolinas Golf Association Junior Player of the Year ... Represented Carolinas team for Mid-Atlantic Challenges, Carolina-Georgia matches and Canadian-American matches ... Played for Team USA at 2009 and 2010 U.S. Kids' Golf World Cup Team Matches ... Three-time winner of Columbia Women's City Championship (2010, 2011 and 2012), the youngest player to ever win the tournament ... Named Golfweek Junior Player of the Week in August 2011.

Personal

Full name is Kelli Cheri Murphy ... Parents are Kathi and Peter Murphy ... Has two brothers, Mike and Matt ... Home course is The Members' Club at Woodcreek and Wildewood in Columbia, S.C.

Career Tournament-by-Tournament Results

2017-18	Mason Rudolph Championship	75-75-70=220 (+4)	T-49th/81
	Magnolia Invitational	80-72-74=226 (+10)	T-34th/63
	Maryb S. Kauth Invitational	73-67-72=212 (-4)	T-6th/74
	Battle at the Beach	70-74-73=217 (+4)	T-22nd/84
	UCF Challenge	72-74-72=218 (+2)	T-9th/90
	Darius Rucker Intercollegiate	77-73-70=220 (+7)	T-15th/93
	Evans Derby Experience	72-71-70=213 (-3)	T-12th/74
	Bryan National Collegiate	75-74-81=230 (+14)	T-40th/95
	SEC Championship	76-76-72=224 (+8)	T-21st/70
	NCAA Austin Regional	72-73-78=223 (+7)	T-42nd/96

2016-17	Fall Kickoff	72-79=151 (+7)	T-16th/51
	Mason Rudolph Championship	76-77-73=226 (+10)	T-50th/81
	Cougar Classic	69-75-75=219 (+3)	T-34th/108
	Pinehurst Challenge	65-73-71=209 (-7)	2nd/96
	Maryb S. Kauth Invitational	71-73-75=219 (+3)	T-26th/75
	UCF Challenge	70-77-75=222 (+6)	T-54th/96
	Auburn-Tennessee Challenge	76-76=152 (+8)	T-6th/15
	Darius Rucker Intercollegiate	75-74-76=225 (+12)	T-43rd/90
	Briar's Creek Invitational	75-73-73=221 (+5)	T-35th/93
	Liz Murphey Collegiate Classic	79 (+7)	T-27th/60
	SEC Championship	73-72-77=222 (+6)	T-36th/70
	NCAA Athens Regional	77-75-74=226 (+10)	T-43rd/96

2015-16	Cougar Classic	73-73-74=220 (+4)	T-17th/107
	Mason Rudolph Championship	73-73-75=221 (+5)	T-36th/90
	Tar Heel Invitational	75-80-79=234 (+18)	T-71st/95
	Stanford Intercollegiate	82-80-84=246 (+33)	88th/90
	Lady Puerto Rico Classic	81-76-76=233 (+17)	66th/88
	Darius Rucker Intercollegiate	77-72-77=226 (+13)	T-34th/96
	Liz Murphey Collegiate Classic	83 (+11)	60th/60
	SEC Championship	74-77-75=226 (+10)	T-31st/70

2014-15	The "Mo" Morial	77-72-74=223 (+7)	T-12th/65
	Mason Rudolph Championship	75-74-75=224 (+8)	T-26th/81
	Tar Heel Invitational	76-75-78=229 (+13)	T-56th/96
	Alamo Invitational	69-73-74=216 (E)	T-21st/78
	Lady Puerto Rico Classic	74-80-71=225 (+9)	T-27th/82
	Darius Rucker Intercollegiate	75-78-75=228 (+15)	T-47th/90
	Liz Murphey Collegiate Classic	82 (+10)	T-40th/60
	Bryan National Collegiate	72-76-69=217 (+1)	T-2nd/96
	SEC Championship	78-74-73=225 (+9)	T-36th/70
	NCAA San Antonio Regional	75-76-71=222 (+6)	T-54th/96

Career Match Play Results

2017-18 - SEC Championship (1-0)

Quarterfinal - def. Isabella Skinner (Georgia), 2 up thru 16

2016-17 - Liz Murphey Collegiate Classic (0-3)

Quarterfinal - lost to Maria Fassi (Arkansas), 3 & 2
 Consolation - lost to Grace St-Germain (Daytona State), 3 & 2
 Fifth-Place Match - lost to Tiffany Chen (USC), 1 up

2015-16 - Liz Murphey Collegiate Classic (1-2)

def. Summar Roachell (Arkansas), 3 & 2
 lost to Virginia Elena Carta (Duke), 5 & 4
 lost to Haley Nist (Oregon State), 2 & 1

2014-15 - Liz Murphey Collegiate Classic (1-2)

lost to Marta Martin (Purdue), 2 & 1
 lost to Quirine Eijkenboom (Stanford), 2 & 1
 def. Mia Landegren (Alabama), 4 & 3

Murphy's Year-by-Year Stats

Season	Tourn.	Rounds	Team Count	Low 54	Low 18	Par/Better	Wins	Top 5	Top 10	Top 20	Strokes	Avg.
2014-15	10	28	26	216	69	7	0	1	1	2	2091	74.68
2015-16	9	24	20	220	72	0	0	0	0	1	1922	76.88
2016-17	12	32	28	209	65	7	0	1	1	2	2371	74.09
2017-18	10	30	28	212	67	13	0	0	2	4	2203	73.43
Career Totals	41	115	102	209	65	27	0	2	4	9	8587	74.67



Michaela OWEN

Senior • 5-7

Atlanta, Ga.

Lambert HS

Senior Year (2017-18)

Has played in eight events as a senior ... Has a 73.42 season scoring average, second-best on the team and currently 10th-best in Auburn history ... Career average of 74.93 currently ranks 10th in Auburn history ... Has not had a final round higher than 73 in her last five events ... Posted final-round 71 to help push Auburn to fifth place at SEC Championship ... Closed out NCAA Austin Regional with a 72 ... Tied for team lead with seven rounds under par this season ... Opened season with four straight rounds under par ... Tied for 14th at season-opening Mason Rudolph Championship with 70-70-71=211 (-5) ... Earned best finish of fall with a tie for eighth place at Magnolia Invitational, posting rounds of 70-74-73=217 (+1) ... Tied for 18th at Battle at the Beach, shooting 73-70-73=216 (+3) ... Led Tigers with 72.50 scoring average over 12 rounds in the fall season ... Earned degree in sociology in May 2018.

Junior Year (2016-17)

Competed in all 12 team events as a junior ... Earned team-best six top-20 finishes during the season ... Led Auburn in scoring average for the fall (72.57), playing in all five events ... Finished in top 20 in all five fall tournaments ... Earned back-to-back top-10 finishes at Cougar Classic (7th) and Pinehurst Challenge (6th) ... Was under par all three rounds at Cougar Classic with scores of 68-71-71=210 (-6) ... Shot 71-74-73=218 (+2) at Pinehurst Challenge ... Tied for 16th at Maryb S. Kauth Invitational with scores of 73-70-74=217 (+1) ... Shot 71-75-73=219 (+3) to tie for 18th at Mason Rudolph Championship ... Opened fall season with tie for 20th at Fall Kickoff, shooting 75-77=152 (+8) ... Best spring finish came in Liz Murphey Collegiate Classic qualifying where she tied for 18th with a 77 (+5) ... Went 2-0-1 in match play at Liz Murphey, defeating Arkansas' Cara Gorlei, 2 and 1, and USC's Allisen Corpuz, 2 and 1 ... Was Auburn's top finisher at the Briar's Creek Invitational, shooting 72-75-72=219 (+3) to tie for 22nd ... Posted two rounds under par to tie for 28th at UCF Challenge with scores of 70-76-71=217 (+1) ... Tied for 36th at SEC Championship with 76-74-72=222 (+6) ... Tied for 59th in NCAA Athens Regional, shooting 77-77-75=229 (+13) ... Recorded 11 rounds at par or better throughout the season ... Tied teammate Kelli Murphy for second-best scoring average on team with 74.09 ... 31 of 32 rounds counted toward the team score.

Sophomore Year (2015-16)

Played in all nine team events as a sophomore ... Was Auburn's leader in scoring average at 75.64, an improvement of 3.99 strokes from her freshman season ... Earned Auburn's top stroke-play finish in four events ... Best finish was a tie for fourth in the stroke-play portion of the Liz Murphey Collegiate Championship, where she shot 71 (-1) in the 18-hole qualifying round ... Also won two matches at the Liz Murphey, defeating Arkansas' Regina Plasencia, 4 and 3, and defeating Oregon State's Hannah Swanson, 4 and 2 ... Tied for 36th to lead Auburn at Tar Heel Invitational with rounds of 74-74-77=225 (+9) ... Posted scores of 73-70-79=222 (+9) to tie for 26th at Darius Rucker Intercollegiate; second-round 70 was a season-best ... Led Auburn with a T-43 finish at the Lady Puerto Rico Classic, shooting 73-81-73=227 (+11) ... Played in first SEC Championship, tying for 40th with scores of 76-78-75=229 (+13) ... Also competed at Stanford Intercollegiate and LSU Tiger Golf Classic.

Freshman Year (2014-15)

Played in three tournaments as a freshman ... Tied for 22nd at Lady Bulldog Individual Championship with rounds of 84-80=161 (+20) ... Competed as an individual at Lady Puerto Rico Classic, finishing 43rd with scores of 78-77-75=230 (+14) ... Was part of the Auburn starting lineup for the first time at Bryan National Collegiate; shot 80-86-85=251 (+35) to finish 87th.

Prior to Auburn

Came to Auburn ranked 129th in the AJGA Polo Junior Golf Rankings ... Had been ranked as high as 74th ... Runner-up at 2014 Will Claxton Junior at Auburn University Club ... Graduated a year early from Lambert High School ... Won 2013 GHSA Class 6A State Championship, tying for medalist honors and winning a playoff ... School record-holder in several categories at Lambert HS ... Won three times in the last year on the Southeastern Junior Golf Tour ... Medalist at U.S. Girls' Junior Amateur qualifier in Prattville, Ala., in 2013 ... Won 2013 SJGT UGA Golf Course Junior Classic.

Career Tournament-by-Tournament Results

2017-18

Mason Rudolph Championship.....	70-70-71=211 (-5)	T-14th/81
Magnolia Invitational.....	70-74-73=217 (+1)	T-8th/63
Maryb S. Kauth Invitational.....	77-72-77=226 (+10)	T-46th/74
Battle at the Beach.....	73-70-73=216 (+3)	T-18th/84
Darius Rucker Intercollegiate.....	75-79-71=225 (+12)	T-36th/93
Evans Derby Experience.....	69-72-73=214 (-2)	T-17th/74
SEC Championship.....	80-78-71=229 (+13)	T-31st/70
NCAA Austin Regional.....	76-76-72=224 (+8)	T-47th/96

2016-17

Fall Kickoff.....	75-77=152 (+8)	T-20th/51
Mason Rudolph Championship.....	71-75-73=219 (+3)	T-18th/81
Cougar Classic.....	68-71-71=210 (-6)	7th/108
Pinehurst Challenge.....	71-74-73=218 (+2)	T-6th/96
Maryb S. Kauth Invitational.....	73-70-74=217 (+1)	T-16th/75
UCF Challenge.....	70-76-71=217 (+1)	T-28th/96
Auburn-Tennessee Challenge.....	75-77=152 (+8)	T-6th/15
Darius Rucker Intercollegiate.....	82-78-79=239 (+26)	80th/90
Briar's Creek Invitational.....	72-75-72=219 (+3)	T-22nd/93
Liz Murphey Collegiate Classic.....	77 (+5)	T-18th/60
SEC Championship.....	76-74-72=222 (+6)	T-36th/70
NCAA Athens Regional.....	77-77-75=229 (+13)	T-59th/96

2016-17

Cougar Classic.....	72-73-80=225 (+9)	T-40th/107
Mason Rudolph Championship.....	73-73-75=221 (+5)	T-36th/90
Tar Heel Invitational.....	74-74-77=225 (+9)	T-36th/95
Stanford Intercollegiate.....	75-80-75=230 (+17)	T-69th/90
Lady Puerto Rico Classic.....	73-81-73=227 (+11)	T-43rd/88
Darius Rucker Intercollegiate.....	73-70-79=222 (+9)	T-26th/90
LSU Tiger Golf Classic.....	86-77-78=241 (+25)	T-65th/96
Liz Murphey Collegiate Classic.....	71 (-1)	T-4th/60
SEC Championship.....	76-78-75=229 (+13)	T-40th/70

2015-16

*Lady Bulldog Individual Champ.....	84-80=164 (+20)	T-22nd/51
*Lady Puerto Rico Classic.....	78-77-75=230 (+14)	43rd/82
Bryan National Collegiate.....	80-86-85=251 (+35)	87th/96

Career Match Play Results

2017-18 - SEC Championship (0-1-0)
Quarterfinal - lost to Paula Neira Garcia (Georgia), 3 & 1

2016-17 - Liz Murphey Collegiate Classic (2-0-1)
Quarterfinal - def. Cara Gorlei (Arkansas), 2 & 1
Consolation - vs. Claire Becker (Daytona State), halved
Fifth-Place Match - def. Allisen Corpuz (USC), 2 & 1

2016-17 - Liz Murphey Collegiate Classic (2-1-0)
def. Regina Plasencia (Arkansas), 4 & 3
lost to Gurbani Singh (Duke), 1 up
def. Hannah Swanson (Oregon State), 4 & 2

*played as individual

Owen's Year-by-Year Stats

Season	Tourn.	Rounds	Team Count	Low 54	Low 18	Par/Better	Wins	Top 5	Top 10	Top 20	Strokes	Avg.
2014-15	3	8	0	230	75	0	0	0	0	0	645	80.63
2015-16	9	25	23	221	70	3	0	1	1	1	1891	75.64
2016-17	12	32	31	210	68	11	0	0	2	6	2371	74.09
2017-18	8	24	20	211	69	11	0	0	1	4	1762	73.42
Career Totals	34	89	74	210	68	25	0	1	4	11	6669	74.93



Kaleigh TELFER

Freshman • 5-6

Kyalami, South Africa

Education Incorporated

****2018 SEC All-Freshman Team****

Freshman Year (Fall 2017)

Has played in seven team events and one individual event as a freshman ... Best two tournaments have come in the postseason ... Was Auburn's top finisher at both SEC Championship and NCAA Austin Regional ... Tied for ninth at SEC Championship with rounds of 75-72-71=218 (+2) ... Finished under par for 54 holes for the first time in her collegiate career at NCAA Austin Regional with rounds of 73-71-71=215 (-1), tying for 16th place ... 20 of 22 rounds played have counted for Auburn's team score ... Has lowest scoring average on team with 73.32 ... Made collegiate debut at Magnolia Invitational, tying for 27th with scores of 75-73-76=224 (+8) ... Tied for 37th at Maryb S. Kauth Invitational, shooting 76-71-76=223 (+7) ... Finished off fall season with tie for 38th at Battle at the Beach, posting scores of 75-72-73=220 (+7) ... Fall scoring average was 74.11.

Prior to Auburn

Started 2016 as No. 1 ranked player on both the Junior and Senior Women's Golf South Africa rankings ... Received both junior and senior South African National (Protea) Colors in 2015 and 2016 ... Represented South Africa at 2014 Youth Olympic Games in Nanjing, China ... Competed for her country at the World Amateur Team Championship in Mexico in 2016 ... Won 10 junior and senior provincial tournaments between 2013 and 2015 ... South Africa Junior Player of the Year in 2014 ... Ernie Els and Fancourt Foundation Player of the Year in 2015.

Personal

Full name is Kaleigh Dene Telfer ... Parents are Warren and Catherine Telfer .. Has a sibling, Keagan ... Home course is Bryanston Country Club.

Career Tournament-by-Tournament Results

2017-18

Magnolia Invitational.....	75-73-76=224 (+8)	T-27th/63
Maryb S. Kauth Invitational	76-71-76=223 (+7)	T-37th/74
Battle at the Beach	75-72-73=220 (+7)	T-38th/84
UCF Challenge	77-70-76=223 (+7)	T-29th/90
*Lake Oconee Individual Champ.	71 (-1)	T-7th/37
Evans Derby Experience.....	72-74-73=219 (+3)	T-32nd/74
SEC Championship	75-72-71=218 (+2)	T-9th/70
NCAA Austin Regional	73-71-71=215 (-1)	T-16th/96

Career Match Play Results

2017-18 - SEC Championship (0-1)

Quarterfinal - lost to Rinko Mitsunaga (Georgia), 2 & 1

Telfer's Year-by-Year Stats

Season	Tourn.	Rounds	Team Count	Low 54	Low 18	Par/Better	Wins	Top 5	Top 10	Top 20	Strokes	Avg.
2017-18	8	22	20	215	70	8	0	0	2	3	1613	73.32
Career Totals	8	22	20	215	70	8	0	0	2	3	1613	73.32