



# 2017 AUBURN GYMNASTICS

AUBURN ATHLETICS COMMUNICATIONS: 392 SOUTH DONAHUE DRIVE || AUBURN, AL 36830 || AUBURNTIGERS.COM || @AUBURNGYM

## 2017 GYMNASTICS SCHEDULE

0-1, 0-0 SEC

Date	Opponent	Time (CT)/Result
Jan. 6	OREGON STATE	L, 195.275-195.575
Jan. 13	GEORGIA*	6 p.m. (SECN)
Jan. 20	at Kentucky*	6 p.m. (SEC+)
Jan. 27	at Florida*	6 p.m. (SECN)
Jan. 29	vs. Alabama#	4 p.m.
Feb. 3	ARKANSAS*	7 p.m. (SEC+)
Feb. 10	vs. Oklahoma^	6:45 p.m.
Feb. 17	at Alabama*	7:30 p.m. (SECN)
Feb. 24	LSU*	7:30 p.m. (SECN)
March 3	at Missouri*	7 p.m. (SEC+)
March 10	PITTSBURGH	7 p.m. (SEC+)
March 18	SEC Championships	TBA
April 1	NCAA Regional	TBA
April 14-15	NCAA Championships	TBA

\* -- SEC meets

# -- Elevate Meet at the Birmingham-Jefferson Convention Complex

^ -- Perfect 10.0 Challenge - Oklahoma City, Okla.

S -- Veterans Memorial Arena - Jacksonville, Fla.

% -- Seattle, Wash.; Gainesville, Fla.; Fayetteville, Ark.; Champaign, Ill.; Lincoln, Neb.; Morgantown, W.V.

& -- Chaifetz Arena -- St. Louis, Mo.

### COACHING STAFF

Head Coach	Jeff Graba (Seventh Season)
Assistant Coach	Kurt Hettinger (Ninth Season)
Assistant Coach	Mary McDaniel (Second Season)
Director of Ops	Dawn Schueller (Sixth Season)
Athletic Trainer	Janet Taylor (12th Season)

SOCIAL: #WarEagle

>> Twitter @AuburnGym

>> Facebook AuburnGym

>> Instagram @AuburnGymnastics

TV: SEC NETWORK

>> Play-by-Play Holly Rowe

>> Analyst Courtney Kupets-Carter

>> Sideline Lauren Sisler

>> Online WatchESPN.com

### AUBURN ATHLETICS COMMUNICATIONS

Kendra Willard kal0014@auburn.edu

Web AuburnTigers.com

Office Phone (334) 844-9800

### Quick Facts

Location	Auburn, Ala.
Nickname	Tigers
Enrollment	25,469
Colors	Burnt Orange and Navy Blue
Conference	Southeastern
President	Dr. Jay Gogue
Athletic Director	Jay Jacobs
Facility	Auburn Arena



## GEORGIA

Friday, Jan. 13 • 6 p.m. CT  
Auburn, Ala. • Auburn Arena



Site	Auburn, Ala.
Venue	Auburn Arena (7,424)
TV	SEC Network
Live Stats	AuburnTigers.com
Series Record	Georgia leads 74-7 in Auburn
Last Regular Season Meeting	March 4, 2016 in Athens Auburn, 197.325-197.275

AUBURN	Rankings	13
	2017 Record	0-1
	Head Coach	Jeff Graba
Record at AU (Year)		72-89-1 (7th)
GEORGIA	Rankings	30
	2017 Record	0-1
	Head Coach	Danna Durante
Record at UGA (Year)		68-65-1 (5th)

### PROBABLE LINEUP

#### VAULT

Telah Black  
Katie Becker  
A'Miracal Phillips  
Taylor Krippner  
Gracie Day  
MJ Rott  
Alt: Emma Engler

#### BEAM

Kullen Hlawek  
Samantha Cerio  
Emma Engler  
Taylor Krippner  
Emma Slapppy  
Abby Millet  
Alt: Gracie Day

#### BARS

Samantha Cerio  
Kelsey Kopeck  
Taylor Krippner  
Emma Engler  
Gracie Day  
Abby Millet  
Alt: Kendal Moss

#### FLOOR

Samantha Cerio  
Emma Slapppy  
Gracie Day  
Lucia Scaglione  
Kullen Hlawek  
MJ Rott  
Alt: Katie Becker

### NO. 13 AUBURN WELCOMES GEORGIA TO THE PLAINS FRIDAY

The No. 13 Auburn gymnastics team continues its homestand this weekend, hosting SEC rival Georgia Friday night in Auburn Arena. The Tigers and the Bulldogs square off at 6 p.m. CT and the meet will be televised live on SEC Network. The meet will also serve as Auburn's "Flip for a Cure" meet and all fans are encouraged to wear pink.

"It's always a battle in the SEC, especially with a team like Georgia," head coach Jeff Graba said. "They beat us out last year to advance to the Super Six and are a national powerhouse. The home field advantage is so important in this sport. Friday is going to be a big task with Georgia coming to town and we're looking forward to having a great crowd in Auburn Arena."

### IN THE RANKINGS

Auburn enters the week ranked No. 13 in the national rankings after opening the 2017 season last Friday in Auburn Arena. The young Tigers finished with a 195.275 in the loss to the nationally ranked Oregon State team.

"We don't try to put too much attention to the rankings at this point in the season since it is so early," head coach Jeff Graba said. "However, to be ranked in the top 15 at this point is good news for our young squad. We obviously have some work to do, but overall we are happy to be headed in the right direction."

LSU moved up into the top spot nationally with Oklahoma slightly behind at No. 2. Florida stands third, while Alabama and Utah close out the top five.

Auburn ranks in the top 15 in three events early in the year. The Tigers are 12th on vault, tied for 12th on bars, and tied for 15th on beam.

#WarEagle



AuburnTigers.com

@AuburnGym | @AuburnTigers  
@CoachJeffGraba/AuburnGym  
/AuburnTigers

## TEAM SCHEDULE AND MEDIA AVAILABILITY » WEEK OF JANUARY 9 - 15

MONDAY January 9	TUESDAY January 10	WEDNESDAY January 11	THURSDAY January 12	FRIDAY January 13	SATURDAY January 14	SUNDAY January 15
<b>PRACTICE</b> 1 p.m. - 4 p.m. McWhorter Center	<b>MEDIA INTERVIEWS</b> 12:45 p.m. McWhorter Center  <b>PRACTICE</b> 1 p.m. - 4 p.m. McWhorter Center	<b>PRACTICE</b> 1 p.m. - 4 p.m. McWhorter Center	<b>PRACTICE</b> 1 p.m. - 4 p.m. McWhorter Center	<b>MEET</b> 6 p.m. <b>Auburn vs Georgia SEC Network</b>	<b>PRACTICE</b> Morning Conditioning McWhorter Center	<b>OFF</b>

## AUBURN ATHLETICS COMMUNICATIONS

## AUBURNTIGERS.COM

For updated game notes, statistics and all the latest information on Auburn gymnastics and meet weekend activities, go to [AuburnTigers.com](http://AuburnTigers.com).

## INTERVIEW POLICY

Coach Graba, assistant coaches and all athletes are available for phone and personal interviews by contacting Kendra Willard in the media relations office. Post-meet interviews will be conducted in the media room following a 10-minute cooling-off period.

## CREDENTIALS

Anyone wishing to cover an Auburn gymnastics meet should contact Kendra Willard in the communications office at least one day in advance in order to make the proper arrangements. Credentials are required for attendance.

## MATCH DAY SERVICES

Notes for both teams and lineup sheets will be provided prior to the meet. Stats will be distributed between each rotation and after the meet. Wireless internet is available in the Arena; ask Kendra Willard for the password.

## VIDEO SERVICES

FTP feeds of selected Auburn gymnastics highlights are available for the media. A number of studio and satellite services may be arranged for electronic media by calling Andrew Aaron in the Auburn video services office at 334.750.7133 or by emailing [aba0016@auburn.edu](mailto:aba0016@auburn.edu).

## PHOTO SERVICES

For photos of Auburn gymnastics or anything pertaining to Auburn Athletics, contact Wade Rackley at 334-750-6907 or via email at [wwr0004@auburn.edu](mailto:wwr0004@auburn.edu)

## COMMUNICATIONS STAFF

Kendra Willard    Gymnastics contact  
cell: 614-929-8029  
email: [kal0014@auburn.edu](mailto:kal0014@auburn.edu)

Kirk Sampson    Associate AD  
cell: 334-750-1385  
email: [sampska@auburn.edu](mailto:sampska@auburn.edu)

Cassie Arner    SEC Network/TV contact  
cell: 334-750-0502  
email: [carner@auburn.edu](mailto:carner@auburn.edu)

## GAMEDAY EXPERIENCE: AUBURN ARENA

» The Auburn gymnastics program has enjoyed three sellouts (7,424) in the last two seasons at Auburn Arena. The Tigers have reached new heights already in 2017 as season ticket holder numbers have risen yet again.



**SCOUTING GEORGIA**

The Georgia Bulldogs come to the Plains at No. 30 nationally following a season-opening score of 193.6 at then-No. 2 LSU. The Bulldogs were bested by LSU's 197.825 in Baton Rouge.

Sophomore Sydney Snead led UGA in the opening week, finishing with a 39.225 in the all-around. She led the Bulldogs in three of the four events on the night, scoring a pair of 9.875s on bars and vault and a 9.8 on beam.

**AUBURN/GEORGIA SERIES HISTORY**

The Bulldogs held the advantage throughout most of the series history as UGA stands at 74-7 vs. Auburn. However, the Tigers have found the upper hand recently, holding a 4-1 record vs. the Bulldogs over the last two seasons.

Auburn went 2-1 in 2016 vs. UGA, including a historic victory in Athens, March 4. The Tigers topped the Bulldogs on the road for the first time in program history, 197.325-197.275. In addition, Auburn came in fourth at the SEC Championship with a 196.975, besting Georgia's fifth-place finish (196.850).

**AUBURN LINEUP VS GEORGIA**

This year's squad is all about it's youth and it shows for Friday's meet as 16 of the 24 lineup slots vs. Georgia are held by sophomores or freshmen. (Lineups are subject to change prior to the meet).

Auburn's vault lineup will feature two freshmen in Katie Becker and Gracie Day and three sophomores in Telah Black, A'Miracal Phillips, and Taylor Krippner. The five youngsters will be joined by senior veteran MJ Rott who holds Auburn's school record in the event with a 9.975.

The second rotation is one of Auburn's strongest events and will feature experienced student-athletes on bars. Sophomore Samantha Cerio and redshirt senior Kelsey Kopec will lead things off for the Tigers. Krippner follows, while sophomore Emma Engler holds the fourth slot. Day and junior Abby Milliet will close out the event.

Beam is another event where the Tigers boast experienced depth. After senior Kullen Hlawek opens the rotation for AU, Cerio, Engler, and Krippner are set to follow. Emma Slappey makes her second start of her career on beam for the Tigers,

while Milliet caps the rotation in the anchor spot.

The Tigers close out the night on floor with Cerio in the lead-off slot. Following are Slappey, Day, senior Lucia Scaglione, Hlawek, and Rott.

**LAST REGULAR SEASON MEETING (MARCH 4, 2016)**

The No. 8 Auburn gymnastics team beat No. 10 Georgia for the second-consecutive season as the squad totaled a season-high score in Stegeman Coliseum, defeating the Bulldogs, 197.325-197.275.

Auburn's team total also set a new program-record road score. Individually, the Tigers set or tied 11 season or career highs on the night.

Auburn opened the meet on bars and totaled a 49.350 as a team. Abby Milliet captured the event title with a career-best 9.950, while Kait Kluz set a season-high of 9.900. Samantha Cerio tied her career score with a 9.850 and Taylor Krippner and Caitlin Atkinson capped scoring with a 9.825 apiece.

The Tigers put together a season-best performance on vault, totaling a 49.375. MJ Rott led the team with a season-high 9.950 to tie for first in the event, while Atkinson finished fourth overall with a 9.875. Lexus Demers, Krippner and Kluz finished with 9.850.

On floor, Kullen Hlawek tied a season-high with a 9.900 to lead Auburn. Four Tigers earned 9.85s in Milliet, Kluz, Demers and Atkinson as the team finished with a 49.300.

Auburn went into the final rotation with a 148.025-147.725 lead.

The Tigers closed out the evening with a season-tying score of 49.300 on beam, giving the team it's historic win. Atkinson tied a season-best score of 9.925 to finish first in the event. Milliet also tied her season-high with a 9.875 and was followed by a career-high from Hlawek of 9.850. Cerio and Demers each totaled a 9.825 for the team.

**LAST TIME OUT - DAY WITH SOLID COLLEGIATE DEBUT**

Freshman Gracie Day put together a solid night for the Tigers in the team's season opener, Jan. 6. The then-No. 8 Auburn team fell to a veteran Oregon State squad, 195.575-

**SEC STANDINGS & SCHEDULE**

	<i>(as of Jan. 10)</i>						AVG
	SEC Meets			All Meets			
	W	L	Pct.	W	L	Pct.	
LSU	1	0	1.000	1	0	1.000	197.825
Alabama	0	0	.000	0	1	.000	196.700
Florida	0	0	.000	1	0	1.000	197.100
Missouri	0	0	.000	2	0	1.000	196.225
Arkansas	0	0	.000	0	1	.000	195.350
AUBURN	0	0	.000	0	1	.000	195.275
Kentucky	0	0	.000	1	0	.000	195.075
Georgia	0	1	.000	0	1	.000	193.600

**THIS WEEK IN THE SEC****Friday, January 13**

Georgia at Auburn - 6 p.m.

Kentucky at Florida - 6 p.m.

Missouri at Arkansas - 7 p.m.

LSU at Alabama - 8:30 p.m.

**Sunday, January 15**

Missouri/SEMO at Lindenwood - 3 p.m.

**Monday, January 16**

NC State at Georgia - 1 p.m.

**AUBURN IN THE RANKINGS****TEAM (as of Jan. 8)**

EVENT	AVG	NAT'L	REG.
Vault	48.900	12th	3rd
Bars	48.900	t-12th	4th
Beam	48.800	t-15th	t-3rd
Floor	48.675	t-24th	6th
Team Total	195.275	13th	3rd

**INDIVIDUAL RANKS (Top 50 National :: Top 25 Region)**

*(as of Jan. 10)*

GYMNAST	EVENT	AVG	NAT'L	REG.
Abby Milliet	A-A	38.700	t-46th	-
Gracie Day	Vault	9.850	t-24th	t-24th
	Bars	9.825	t-47th	-
Taylor Krippner	Beam	9.825	t-50th	-
MJ Rott	Vault	9.825	t-38th	-
	Floor	9.825	t-46th	-

**GYMNAST TO WATCH: GRACIE DAY**

>> Freshman Gracie Day made her collegiate debut against Oregon State and came away with the vault title (9.850). She also had a team-best 9.825 on bars, while adding a 9.775 on floor for the Tigers.





**NATIONAL RANKINGS**

(Jan. 9)

Rk	Team	Avg.	High
1	<b>LSU</b>	197.825	197.825
2	<b>Oklahoma</b>	197.750	197.750
3	<b>Florida</b>	197.100	197.100
4	<b>Alabama</b>	196.700	196.700
5	Utah	196.625	196.625
6	<b>Missouri</b>	196.225	196.225
7	Denver	195.875	195.875
8	UCLA	195.700	195.700
9	<b>Oregon State</b>	195.575	195.575
10	George Washington	195.550	195.550
11	Michigan	195.525	195.525
12	<b>Arkansas</b>	195.350	195.350
13	<b>AUBURN</b>	195.275	195.275
14	<b>Kentucky</b>	195.075	195.075
15	NC State	194.925	194.925
16	Northern Illinois	194.825	194.825
17	Minnesota	194.725	194.725
18	Penn State	194.625	194.625
19	West Virginia	194.400	194.400
20	Ohio State	194.375	194.375
21	BYU	194.225	194.225
t-22	Illinois	194.200	194.200
t-22	Iowa	194.200	194.200
24	Michigan State	194.175	194.175
25	Arizona	194.025	194.025

**BOLD** - 2017 regular season opponents

**Inside the Matchup**

**Auburn vs. Georgia 7-74 (.083)**

In Auburn: 2-18

In Athens: 1-22

Neutral: 4-34

**Last 10 Meetings (4-6)**

2012	NCAA Regionals (Auburn)	L	196.100-197.100
2013	Away	L	195.700-196.050
2013	SEC Champs (Little Rock)	L	196.550-197.325
2014	Home	L	196.100-196.875
2014	SEC Champs (B'ham)	L	195.550-197.150
2015	Home	W	197.750-196.775
2015	SEC Champs (Duluth)	W	196.925-196.000
2016	Away	W	197.325-197.275
2016	SEC Champs (Little Rock)	W	196.975-196.850
2016	NCAA Semis (Fort Worth)	L	195.1000 -196.7250

195.275.

Day led the Tigers in two of the three events she competed in, capturing the vault title with a 9.850. She went 9.825 on bars to finish second overall in the meet and her 9.775 was fifth among all competitors.

In addition, senior MJ Rott won the floor title with a 9.825 and sophomore Samantha Cerio made her collegiate debut on floor with a 9.8 for fourth in the meet.

**STRENGTH OF SCHEDULE**

In a recent poll on RoadtoNationals.com, Auburn's 2017 schedule ranks the second toughest schedule in the nation.

Ten of Auburn's 11 regular season meets are against teams ranked in top 25 of the NACGC/W Preseason Poll. Those include match ups with five teams who competed in last year's Super Six - Oklahoma (Feb. 10), LSU (Feb. 24), Alabama (Jan. 29, Feb. 17), Florida (Jan. 27), Georgia (Jan. 13).

**SEASON TICKET RECORDS**

In addition to setting a new program preseason ranking record, this year's team reached another height before the season began. With the competition year about to begin, Auburn has over 1,550 season ticket holders, marking the most sold for the program.

The Tigers have sold out Auburn Arena three times in the last two years (7,424) and are looking forward to hosting SEC rivals Georgia, Arkansas, and LSU, in addition to Oregon State and Pittsburgh this season.

**SENIOR LEADERS**

Auburn will look to it's four seasoned seniors in Kullen Hlawek, Kelsey Kopec, MJ Rott, and Lucia Scaglione a lot this season as the Tiger squad boasts a youthful roster.

Hlawek and Rott have been mainstays in the team's floor lineup, while Rott is the program's record holder on vault and Hlawek has been solid on beam for the Tigers. Kopec is the team's resident bars expert, while Scaglione has provided depth and points for Auburn on floor.

**GYMNAST TO WATCH: TAYLOR KRIPPNER**

» Sophomore Taylor Krippner contributed on all three events for Auburn last week vs. Oregon State. The Cypress, Texas, product tied a career high on beam against the Beavers, scoring a 9.825.

**DEPTH IS A GOOD THING**

Auburn has found itself in a tough, but good situation when it comes to picking out the perfect lineup. Coach Graba and staff has put together a roster that allows a great deal of depth as each apparatus can go as much as 10 deep on the lineup chart.

"It's going to be a challenge for us as a staff on where we are going to place people," Graba said. "We're going to need three or four nights of competition before we really figure things out. The benefit of depth is that we can switch people around, which is a great opportunity. We're a strong team that we're going to be good with any lineup and we can't be afraid to change things up until we get it right."

**MAKING THEIR COMEBACK**

Sophomores Emma Engler and A'Miracal Phillips each suffered season-ending injuries at Arkansas last season (Jan. 29, 2016), but are on their way to making a big impact in 2017.

Engler, who hurt her knee on her beam dismount vs. the Razorbacks, will compete for the Tigers Friday vs. OSU on bars and beam. Phillips, a powerful vaulter from Enterprise, Ala., injured her foot at Arkansas and will return to competition Friday in the exhibition slot in the event.

**MORE FIRSTS IN 2016**

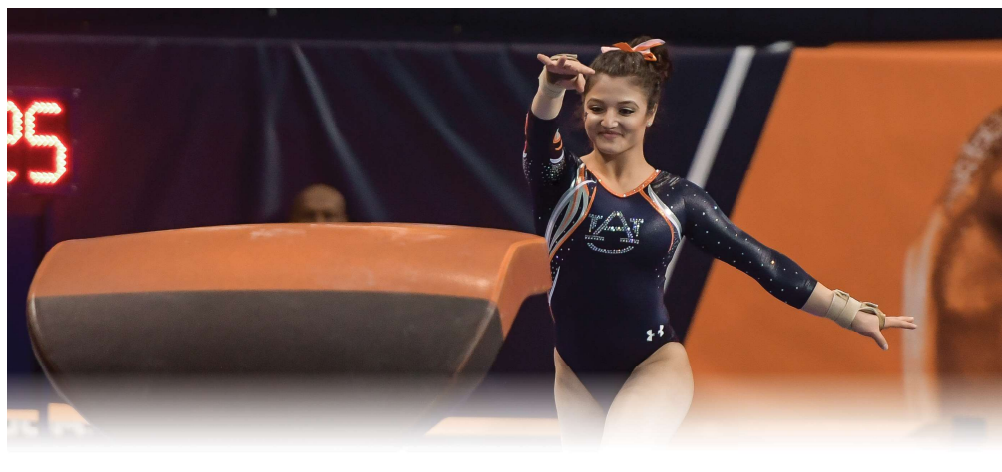
After a record-breaking season in 2015, the 2016 edition of Auburn gymnastics also reached many firsts for the program.

Highlighting the season was Auburn's victory over Alabama as the Tigers snapped a 117-meet streak to the Crimson Tide with a 197.275-197.250 win at home (Feb. 12).

In addition, the Tigers earned a No. 1 NCAA regional seed for the first time ever and captured the NCAA Ann Arbor Regional title with a 196.525. Auburn also set a new road-score record, defeating Georgia in Athens for the first time in program history with a 197.325 (March 4).

**UP NEXT**

Auburn takes to the road for the first time this season, traveling to nationally-ranked Kentucky. The Tigers and the Wildcats face off at 6 p.m. CT in Lexington, Jan. 20, and the meet will stream on SEC Network+.



## 2017 AUBURN GYMNASTICS ROSTER

NAME	EVENT	HT	CL	HOMETOWN/CLUB
Katie Becker	AA	5-4	Fr.	Boone, N.C./Everest Gymnastics
Telah Black	AA	5-3	So.	Helena, Ala./Jamjev Gymnastics
Samantha Cerio	AA	5-0	So.	Huntersville, N.C./KPAC
Gracie Day	AA	5-4	Fr.	San Antonio, Texas/Aerial Athletics
Emma Engler	AA	5-3	So.	Raleigh, N.C./Sunshine Gymnastics
Kennedy Finister	AA	5-1	Jr.	Magnolia, Texas/Champion Gymnastics
Sarah Garcia	AA	5-3	Jr.	Temecula, Calif./SCEGA
Kullen Hlawek	AA	5-1	Sr.	Fulshear, Texas/Champion Gymnastics
Kelsey Kopec	AA	5-7	RS Sr.	Alpharetta, Ga./Ultimate Gymnastics
Taylor Krippner	AA	5-1	So.	Cypress, Texas/World Champions
Abby Milliet	AA	5-1	Jr.	Denton, Texas/Denton Gymnastics Academy
Kendal Moss	AA	5-4	Fr.	Cornelius, N.C./Everest Gymnastics
A' Miracal Phillips	AA	5-6	So.	Enterprise, Ala./Alabama Elite
MJ Rott	AA	5-0	Sr.	Stillwater, Minn./Rising Stars Gymnastics
Lucia Scaglione	FX/VT	5-0	Sr.	Tampa, Fla./Lafleurs Tampa
Emma Slappey	AA	5-2	RS Fr.	Jacksonville, Fla./Starlight Gymnastics
Cara Stricklin	AA	5-5	Jr.	Mandeville, La./Cypress Pointe Gymnastics

<b>Head Coach:</b>	Jeff Graba (Seventh year at Auburn)
<b>Assistant Coach:</b>	Kurt Hettinger (Ninth year at Auburn)
<b>Assistant Coach:</b>	Mary McDaniel (Second year at Auburn)
<b>Director of Operations:</b>	Dawn Schueller (Sixth year at Auburn)
<b>Volunteer Assistant:</b>	Rachel Inniss (First year at Auburn)
<b>Athletic Trainer:</b>	Janet Taylor (12th year at Auburn)
<b>Graduate Assistant:</b>	Corrie Lathrop (First year at Auburn)
<b>Student Managers:</b>	Alexa Moates, Blake Jones

## PRONUNCIATION GUIDE

TELAH Black	TAY-lah
Samantha CERIO	SAIR-ee-oh
KULLEN HLAWEK	KULL-in LAUW-ick
Kelsey KOPEC	CO-peck
Abby MILLIET	mill-AYE
A' MIRACAL Phillips	uh-MIRacle
MJ ROTT	WROTE
LUCIA SCAGLIONE	lou-CHEE-uh scag-lee-OH-knee
Jeff GRABA	GRAY-buh



## Head Coach Jeff Graba

at Auburn & Overall: 72-89-1 (7th)



**Hometown:**  
Forest Lake, Minn.  
**Education:**  
Minnesota, 1992

## COACHING EXPERIENCE

Flips Gym Head Coach (1988-1995)  
 • White Bear Lake, Minn.  
 Hamline University Assistant Coach (1992-1998)  
 • St. Paul, Minn.  
 Midwest Gym Head Coach (1995-2003)  
 • Little Canada, Minn.  
 Utah State Assistant Coach (2004-2005)  
 • Logan, Utah  
 Utah Assistant Coach (2006-2010)  
 • Salt Lake City, Utah  
 Auburn Head Coach (2010-)  
 • Auburn, Ala.

Three-time SEC Coach of the Year Jeff Graba enters his seventh season at the helm of the Auburn gymnastics program in 2017 and has guided the Tigers record heights during his time on The Plains.

For his efforts over the past six seasons, the Minnesota native was named SEC Coach of the Year in 2014 and 2015 and SEC co-Coach of the Year in 2012.

Most recently, Graba and the 2016 team added to the list of firsts for the program under his guidance. The Tigers snapped the 117-meet losing skid to Alabama in February of that season, defeating the Crimson Tide at home (197.275-197.250). Auburn also defeated Georgia in Athens for the first time in program history, setting a new program-high road score on the way (197.325).

In addition, the Tigers earned the program's first No. 1 NCAA regional seed and captured the NCAA Ann Arbor Regional title with a 196.525.

Auburn enjoyed a breakout season in 2015 as Graba led the Tigers to the NCAA Championship Super Six for the first time in 22 years. That season, Auburn broke or tied 52 program records that season.

Auburn's sixth place finish at the Super Six was the Tigers' second best in history and highest since 1993 with a NCAA nationals record score of 197.075. The Tigers also had a program record Super Six score of 195.625.

Auburn reached the 2015 NCAA Championship for the first time since 2003 and for only the fourth time overall as the Tigers tied a school-best with a runner-up finish at the NCAA Regional with a regional record score of 196.900. Auburn's No. 2 regional seed was the highest in history.

Graba was named Auburn head coach on August 16, 2010. He came to The Plains after spending five years as an assistant coach at Utah. While with the Utes, he was named the 2009 West Region Assistant Coach of the Year while coaching bars, collaborating on floor routines and serving as the recruiting coordinator.

## 2017 MEET-BY-MEET RESULTS

DATE	MEET	RESULT	VAULT	BARS	BEAM	FLOOR	TEAM	OPP. 1	OPP. 2	OPP. 3
1/6	#12 OREGON STATE	L	48.900	48.900	48.800	48.675	195.275	195.575	---	---
1/13	GEORGIA	---	---	---	---	---	---	---	---	---
1/20	at Kentucky	---	---	---	---	---	---	---	---	---
1/27	at Florida	---	---	---	---	---	---	---	---	---
1/29	vs. Alabama	---	---	---	---	---	---	---	---	---
2/3	ARKANSAS	---	---	---	---	---	---	---	---	---
2/10	vs. Oklahoma	---	---	---	---	---	---	---	---	---
2/17	at Alabama	---	---	---	---	---	---	---	---	---
2/24	LSU	---	---	---	---	---	---	---	---	---
3/3	at Missouri	---	---	---	---	---	---	---	---	---
3/10	PITTSBURGH	---	---	---	---	---	---	---	---	---
3/18	at SEC Championship	---	---	---	---	---	---	---	---	---
4/1	at NCAA Regional	---	---	---	---	---	---	---	---	---
4/17-18	at NCAA Championships	---	---	---	---	---	---	---	---	---

AUBURN

0-1

## SEC WEEKLY TEAM RANKINGS

(as of Jan. 8)

Team Total Rank	Team	AVG	High
1.	LSU	197.825	197.825
2.	Florida	197.100	197.100
3.	Alabama	196.700	196.700
4.	Missouri	196.225	196.225
5.	Arkansas	195.350	195.350
6.	<b>AUBURN</b>	195.275	195.275
7.	Kentucky	195.075	195.075
8.	Georgia	193.600	193.600

Vault Rank	Team	AVG	High
1.	LSU	49.525	49.525
2.	Florida	49.450	49.450
3.	Alabama	49.000	49.000
4.	<b>AUBURN</b>	48.900	48.900
5.	Arkansas	48.875	48.875
6.	Georgia	48.850	48.850
7.	Missouri	48.775	48.775
8.	Kentucky	48.650	48.650

Bars Rank	Team	AVG	High
1.	LSU	49.375	49.375
2.	Alabama	49.325	49.325
3.	Missouri	49.200	49.200
4.	Florida	49.125	49.125
5.	<b>AUBURN</b>	48.900	48.900
6.	Kentucky	48.850	48.850
7.	Arkansas	48.825	48.825
8.	Georgia	48.700	48.700

Beam Rank	Team	AVG	High
1.	LSU	49.450	49.450
2.	Florida	49.400	49.400
3.	Alabama	49.350	49.350
4.	Missouri	49.175	49.175
5.	Arkansas	48.900	48.900
t-6.	Kentucky	48.800	48.800
t-6.	<b>AUBURN</b>	48.800	48.800
8.	Georgia	47.225	47.225

Floor Exercise Rank	Team	AVG	High
1.	LSU	49.475	49.475
2.	Florida	49.125	49.125
3.	Missouri	49.075	49.075
4.	Alabama	49.025	49.025
5.	Georgia	48.825	48.825
6.	Kentucky	48.775	48.775
7.	Arkansas	48.750	48.750
8.	<b>AUBURN</b>	48.675	48.675

## SEC WEEKLY INDIVIDUAL RANKINGS

(as of Jan. 8)

All-Around Rank	Name, School	A-A AVG	High
1.	Myia Hambrick, LSU	39.575	39.575
2.	Ashleigh Gnat, LSU	39.525	39.525
t-3.	Kiana Winston, UA	39.500	39.500
t-3.	Kennedy Baker, UF	39.500	39.500
5.	Alicia Boren, UF	39.475	39.475
13.	<b>ABBY MILLIET, AU</b>	38.700	38.700

Vault Rank	Name, School	Vault AVG	High
t-1.	Alicia Boren, UF	9.950	9.950
t-1.	Kennedi Edney, LSU	9.950	9.950
t-3.	Ashleigh Gnat, LSU	9.925	9.925
t-3.	Myia Hambrick, LSU	9.925	9.925
t-5.	Amanda Wellick, ARK	9.900	9.900
t-5.	Kennedy Baker, UF	9.900	9.900

Bars Rank	Name, School	Bars AVG	High
1.	Madeleine Huber, MO	9.925	9.925
t-2.	Kiana Winston, UA	9.900	9.900
t-2.	Alex McMurtry, UF	9.900	9.900
t-2.	Sarah Finnegan, LSU	9.900	9.900
t-5.	6 at 9.875		

Beam Rank	Name, School	Beam AVG	High
t-1.	Kiana Winston, UA	9.950	9.950
t-1.	Sarah Finnegan, LSU	9.950	9.950
3.	Alicia Boren, UF	9.925	9.925
4.	Sydney Ewing, LSU	9.900	9.900
t-5.	8 at 9.875		

Floor Rank	Name, School	Floor AVG	High
1.	Ashleigh Gnat, LSU	9.950	9.950
t-2.	Kennedy Baker, UF	9.925	9.925
t-2.	McKenna Kelley, LSU	9.925	9.925
4.	Myia Hambrick, LSU	9.900	9.900
t-5.	11 at 9.850		

**AUBURN SCORING RECORDS****TOP TEAM SCORES - OVERALL**

	SCORE	OPPONENT	DATE
1.	197.750	vs. Georgia	2/27/15
2.	197.325	at Georgia	3/4/16
3.	197.300	vs. LSU	2/13/15
4.	197.275	vs. Alabama	2/12/16
5.	197.200	vs. Missouri	2/26/16

**TOP TEAM SCORES - HOME ONLY**

	SCORE	OPPONENT	DATE
1.	197.750	vs. Georgia	2/27/15
2.	197.300	vs. LSU	2/13/15
3.	197.275	vs. Alabama	2/12/16
4.	197.200	vs. Missouri	2/26/16
5.	197.175	vs. LSU	2/22/13
	197.175	vs. Arizona State	3/11/16

**TOP TEAM SCORES - AWAY ONLY**

	SCORE	OPPONENT	DATE
1.	197.325	at Georgia	3/4/16
2.	197.125	at LSU	2/19/16
3.	196.875	at Missouri	2/20/15
4.	196.850	at LSU	1/25/14
5.	196.825	at Alabama	2/6/15
	196.825	at TWU	2/5/16

**TOP TEAM SCORES - VAULT**

	SCORE	OPPONENT	DATE
1.	49.500	vs. LSU	2/13/15
	49.500	at Denver	3/2/08
3.	49.425	vs. North Carolina	3/13/15
	49.425	at LSU	1/25/14
5.	49.400	vs. Florida	1/17/14
	49.400	vs. Illinois-Chicago	3/11/07
	49.400	at NCAA Regional (Auburn)	4/4/15

**TOP TEAM SCORES - BARS**

	SCORE	OPPONENT	DATE
1.	49.525	vs. Arkansas	1/23/15
2.	49.500	vs. Centenary	3/5/00
3.	49.475	vs. Florida	2/17/12
4.	49.450	vs. Georgia	2/27/15
	49.450	vs. Maryland	3/20/10

**TOP TEAM SCORES - BEAM**

	SCORE	OPPONENT	DATE
1.	49.600	at Centenary	2/29/04
2.	49.425	at Denver	3/2/08
	49.425	at Alabama	2/15/13
4.	49.400	at LSU	2/8/08
	49.400	at Arkansas	2/2/08
	49.400	at Alabama	2/6/15
	49.400	at SEC Championship	3/21/15

**TOP TEAM SCORES - FLOOR**

	SCORE	OPPONENT	DATE
1.	49.600	vs. Florida	2/13/04
	49.600	vs. Arizona State	3/11/16
3.	49.550	vs. Georgia	2/27/15
4.	49.525	vs. Maryland	3/1/13
5.	49.500	vs. Missouri	2/26/16

**2017 SEASON BESTS****TEAM**

EVENT	SCORE	DATE
TOTAL	195.275	Oregon State (Jan. 6)
VAULT	48.900	Oregon State (Jan. 6)
BARS	48.900	Oregon State (Jan. 6)
BEAM	48.800	Oregon State (Jan. 6)
FLOOR	48.675	Oregon State (Jan. 6)

**INDIVIDUAL**

EVENT	SCORE	GYMNAST (DATE)
TOTAL	38.700	Abby Milliet (Jan. 6)
VAULT	9.850	Gracie Day (Jan. 6)
BARS	9.825	Gracie Day (Jan. 6)
BEAM	9.825	Taylor Krippner (Jan. 6)
FLOOR	9.825	MJ Rott (Jan. 6)

**2017 TEAM SUPERLATIVES****TEAM TOTAL**

1.	195.275	OREGON STATE	Jan. 6
2.	---	---	---
3.	---	---	---
4.	---	---	---
5.	---	---	---

**VAULT**

1.	48.900	OREGON STATE	Jan. 6
2.	---	---	---
3.	---	---	---
4.	---	---	---
5.	---	---	---

**BARS**

1.	48.900	OREGON STATE	Jan. 6
2.	---	---	---
3.	---	---	---
4.	---	---	---
5.	---	---	---

**BEAM**

1.	48.800	OREGON STATE	Jan. 6
2.	---	---	---
3.	---	---	---
4.	---	---	---
5.	---	---	---

**FLOOR**

1.	48.675	OREGON STATE	Jan. 6
2.	---	---	---
3.	---	---	---
4.	---	---	---
5.	---	---	---

**PROGRAM BESTS****TEAM**

EVENT	SCORE	DATE
TOTAL	197.750	February 27, 2015
VAULT	49.500	February 13, 2015
	49.500	March 2, 2008
BARS	49.525	January 23, 2015
BEAM	49.600	February 29, 2004
FLOOR	49.600	February 13, 2004
	49.600	March 11, 2016

**INDIVIDUAL**

EVENT	SCORE	GYMNAST, YEAR
ALL AROUND	39.750	Caitlin Atkinson, 2015
VAULT	9.975	MJ Rott, 2015
	9.975	MJ Rott, 2014
	9.975	Julie Dwyer, 2008
BARS	10.0	Sarah Wentworth, 2000
BEAM	10.0	Rachael Tarantino, 2004
	10.0	Sally Cantrell, 2002
FLOOR	10.0	Becky Erwin, 1993

**THE LAST TIME AUBURN...****WON A HOME MEET...**

March 11, 2016 -- vs. Arizona State (197.175)

**WON A ROAD MEET...**

March 4, 2016 -- at Georgia (197.325)

**WON A NEUTRAL SITE MEET...**

March 2, 2016 -- NCAA Ann Arbor Regional (196.525)

**LOST A HOME MEET...**

January 22, 2016 -- vs. Florida (195.900)

**LOST A ROAD MEET...**

February 19, 2016 -- at LSU (197.125)

**TIED A MEET...**

March 2, 2016 -- NCAA Ann Arbor Regional (196.525)

**SCORED A 197 OR HIGHER...**

March 11, 2016 -- vs. Arizona State (197.175)

**SCORED A PERFECT 10.0...**

February 29, 2004 -- Rachael Tarantino (Beam)







## INDIVIDUAL SEASON AND CAREER SCORES

**A'MIRACAL PHILLIPS :: SOPHOMORE**

2017	VAULT	BARS	BEAM	FLOOR	AA
OREGON STATE	---	---	---	---	---
GEORGIA	---	---	---	---	---
at Kentucky	---	---	---	---	---
at Florida	---	---	---	---	---
vs. Alabama	---	---	---	---	---
ARKANSAS	---	---	---	---	---
vs. Oklahoma	---	---	---	---	---
at Alabama	---	---	---	---	---
LSU	---	---	---	---	---
at Missouri	---	---	---	---	---
PITTSBURGH	---	---	---	---	---
at SEC	---	---	---	---	---
NCAA Regional	---	---	---	---	---
NCAA National	---	---	---	---	---
Season Average	---	---	---	---	---
Season High	---	---	---	---	---
Career High	9.850	---	---	---	---

**CARA STRICKLIN :: JUNIOR**

2017	VAULT	BARS	BEAM	FLOOR	AA
OREGON STATE	---	---	---	---	---
GEORGIA	---	---	---	---	---
at Kentucky	---	---	---	---	---
at Florida	---	---	---	---	---
vs. Alabama	---	---	---	---	---
ARKANSAS	---	---	---	---	---
vs. Oklahoma	---	---	---	---	---
at Alabama	---	---	---	---	---
LSU	---	---	---	---	---
at Missouri	---	---	---	---	---
PITTSBURGH	---	---	---	---	---
at SEC	---	---	---	---	---
NCAA Regional	---	---	---	---	---
NCAA National	---	---	---	---	---
Average	---	---	---	---	---
Season High	---	---	---	---	---
Career High	---	---	---	---	---

**MJ ROTT :: SENIOR**

2017	VAULT	BARS	BEAM	FLOOR	AA
OREGON STATE	9.825	---	---	9.825	---
GEORGIA	---	---	---	---	---
at Kentucky	---	---	---	---	---
at Florida	---	---	---	---	---
vs. Alabama	---	---	---	---	---
ARKANSAS	---	---	---	---	---
vs. Oklahoma	---	---	---	---	---
at Alabama	---	---	---	---	---
LSU	---	---	---	---	---
at Missouri	---	---	---	---	---
PITTSBURGH	---	---	---	---	---
at SEC	---	---	---	---	---
NCAA Regional	---	---	---	---	---
NCAA National	---	---	---	---	---
Season Average	9.825	---	---	9.825	---
Season High	9.825	---	---	9.825	---
Career High	9.975	9.825	9.900	9.950	38.925

**LUCIA SCAGLIONE :: SENIOR**

2017	VAULT	BARS	BEAM	FLOOR	AA
OREGON STATE	---	---	---	9.725	---
GEORGIA	---	---	---	---	---
at Kentucky	---	---	---	---	---
at Florida	---	---	---	---	---
vs. Alabama	---	---	---	---	---
ARKANSAS	---	---	---	---	---
vs. Oklahoma	---	---	---	---	---
at Alabama	---	---	---	---	---
LSU	---	---	---	---	---
at Missouri	---	---	---	---	---
PITTSBURGH	---	---	---	---	---
at SEC	---	---	---	---	---
NCAA Regional	---	---	---	---	---
NCAA National	---	---	---	---	---
Season Average	---	---	---	9.725	---
Season High	---	---	---	9.725	---
Career High	---	---	---	9.775	---

**EMMA SLAPPEY :: REDSHIRT FRESHMAN**

2017	VAULT	BARS	BEAM	FLOOR	AA
OREGON STATE	---	---	9.700	---	---
GEORGIA	---	---	---	---	---
at Kentucky	---	---	---	---	---
at Florida	---	---	---	---	---
vs. Alabama	---	---	---	---	---
ARKANSAS	---	---	---	---	---
vs. Oklahoma	---	---	---	---	---
at Alabama	---	---	---	---	---
LSU	---	---	---	---	---
at Missouri	---	---	---	---	---
PITTSBURGH	---	---	---	---	---
at SEC	---	---	---	---	---
NCAA Regional	---	---	---	---	---
NCAA National	---	---	---	---	---
Season Average	---	---	9.700	---	---
Season High	---	---	9.700	---	---
Career High	---	---	9.700	---	---



**KATIE BECKER**  
Fr. • AA • 5-4



**TELAH BLACK**  
So. • AA • 5-3



**SAMANTHA CERIO**  
So. • AA • 5-0



**GRACIE DAY**  
Fr. • AA • 5-4



**EMMA ENGLER**  
So. • AA • 5-3



**KENNEDY FINISTER**  
Jr. • AA • 5-1



**SARAH GARCIA**  
Jr. • VT • 5-3



**KULLEN HLAWEK**  
Sr. • AA • 5-1



**KELSEY KOPEC**  
R-Sr. • AA • 5-7



**TAYLOR KRIPPNER**  
So. • AA • 5-1



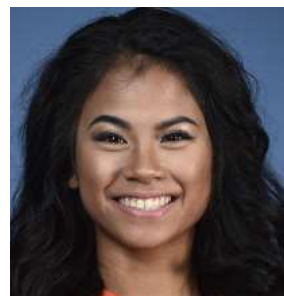
**ABBY MILLIET**  
Jr. • AA • 5-1



**KENDAL MOSS**  
Fr. • AA • 5-4



**A'MIRACAL PHILLIPS**  
So. • AA • 5-6



**MJ ROTT**  
Sr. • AA • 5-0



**LUCIA SCAGLIONE**  
Sr. • FX • 5-0



**EMMA SLAPHEY**  
R-Fr. • AA • 5-2



**CARA STRICKLIN**  
Jr. • AA • 5-5



**JEFF GRABA**  
HEAD COACH



**KURT HETTINGER**  
ASSISTANT COACH



**MARY MCDANIEL**  
ASSISTANT COACH



**RACHEL INNISS**  
VOLUNTEER ASSISTANT



**DAWN SCHUELLER**  
DIRECTOR OF OPERATIONS